

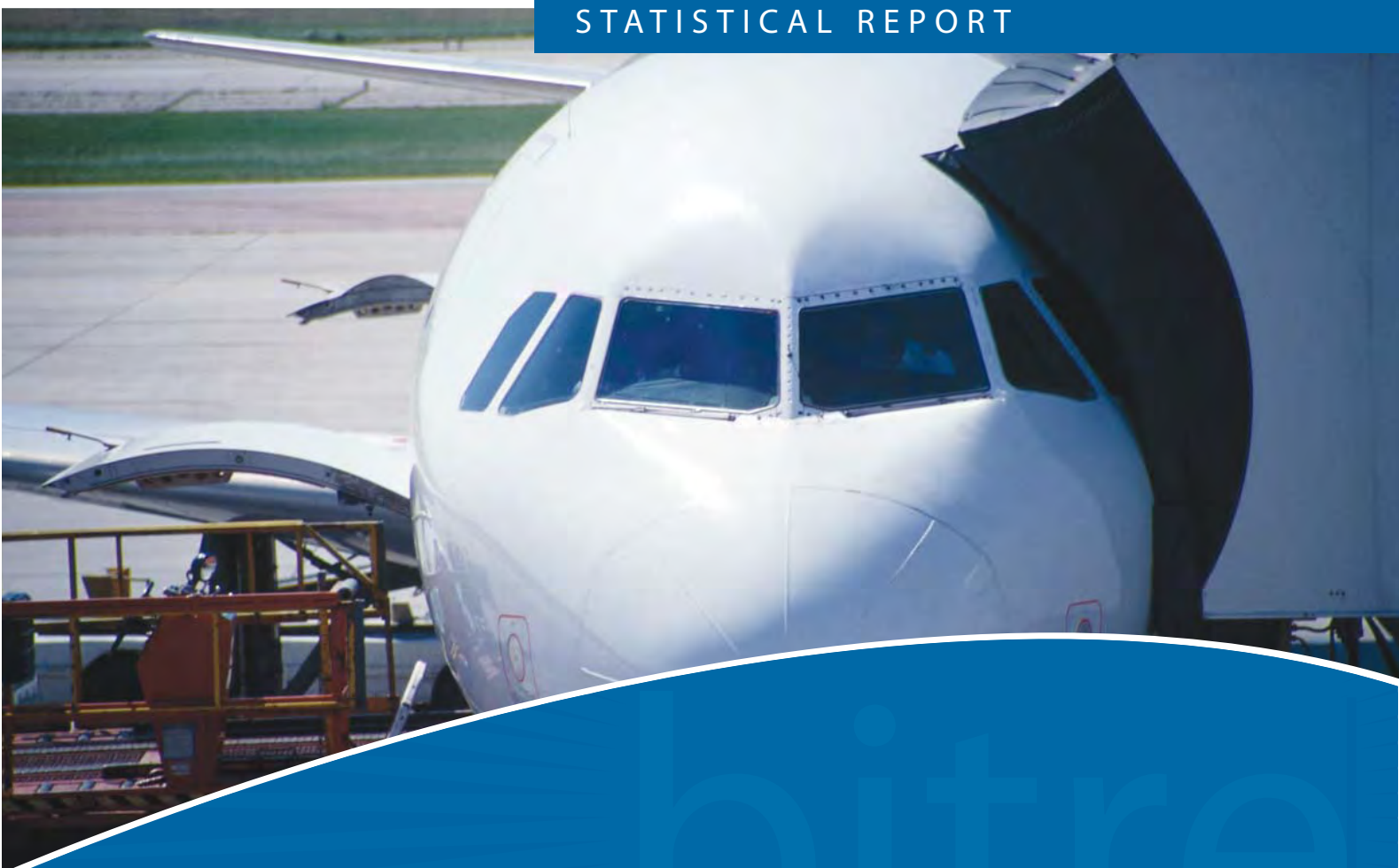


Australian Government

Department of Infrastructure and Regional Development

Bureau of Infrastructure, Transport and Regional Economics

STATISTICAL REPORT



Aviation

Domestic aviation activity
October 2017

© Commonwealth of Australia 2017

ISSN: 1832 - 1968

Ownership of intellectual property rights in this publication

Unless otherwise noted, copyright (and any other intellectual property rights, if any) in this publication is owned by the Commonwealth of Australia (referred to below as the Commonwealth).

Disclaimer

The material contained in this publication is made available on the understanding that the Commonwealth is not providing professional advice, and that users exercise their own skill and care with respect to its use, and seek independent advice if necessary.

The Commonwealth makes no representations or warranties as to the contents or accuracy of the information contained in this publication. To the extent permitted by law, the Commonwealth disclaims liability to any person or organisation in respect of anything done, or omitted to be done, in reliance upon information contained in this publication.

Creative Commons licence

With the exception of (a) the Coat of Arms; and (b) the Department of Infrastructure and Regional Development's photos and graphics, copyright in this publication is licensed under a Creative Commons Attribution 3.0 Australia Licence.

Creative Commons Attribution 3.0 Australia Licence is a standard form licence agreement that allows you to copy, communicate and adapt this publication provided that you attribute the work to the Commonwealth and abide by the other licence terms. A summary of the licence terms is available from <http://creativecommons.org/licenses/by/3.0/au/deed.en>. The full licence terms are available from <http://creativecommons.org/licenses/by/3.0/au/legalcode>.

Use of the Coat of Arms

The Department of the Prime Minister and Cabinet sets the terms under which the Coat of Arms is used. Please refer to the Department's Commonwealth Coat of Arms and Government branding web page <http://www.dpmc.gov.au/guidelines/index.cfm#brand> and, in particular, the Guidelines on the use of the Commonwealth Coat of Arms publication.

An appropriate citation for this report is:

Bureau of Infrastructure, Transport and Regional Economics (BITRE), 2017, Domestic aviation activity, Statistical Report, BITRE, Canberra ACT.

Contact us

This publication is available in PDF format. All other rights are reserved, including in relation to any Departmental logos or trade marks which may exist. For enquiries regarding the licence and any use of this publication, please contact:

Bureau of Infrastructure, Transport and Regional Economics (BITRE)
Department of Infrastructure and Regional Development
GPO Box 501, Canberra ACT 2601, Australia
Telephone: (international) +61 2 6274 7210
Fax: (international) +61 2 6274 6855
Email: bitre@infrastructure.gov.au
Website: www.bitre.gov.au

Inquiries

Should you require additional information about the statistics contained in this publication:

Nebojsa Pavlovic

Telephone (02) 6274 6817 or Facsimile (02) 6274 7727

Electronic mail: AVSTATS@infrastructure.gov.au

Nebojsa.Pavlovic@infrastructure.gov.au

Web site: <http://www.bitre.gov.au/statistics/aviation/domestic.aspx>

FOREWORD

This report provides an overview of domestic (including charter) commercial aviation activity in Australia for the month of October 2017.

The data cover revenue passengers carried by Australian-registered operators of scheduled regular public transport services over Australian flight stages and fixed-wing charter operators. These estimates include passengers carried between domestic airports on international flights operated by these carriers. The passengers carried refer to traffic on board by stages.

Estimates of passengers and aircraft movements for charter aviation are included in this publication, where BITRE confidentiality standards are met.

Individual routes shown are restricted to those with an average exceeding 8 000 passengers per month over the previous six months where two or more airlines operate in competition. For the month of October 2017 there were 66 such routes.

Information on the total network for the month of October 2017 and on the Regular Public Transport (RPT) network for the month of October 2017 is presented on page 2, with estimates for the year ended October 2017 presented on page 3.

Detailed information on the 66 individual routes can be found in the RPT summary pages 4-13 of this publication.

The top ten airports in terms of RPT passenger movements are shown on page 14.

Data on domestic RPT cargo movements at the top five cargo airports are provided on page 15. The table includes cargo carried on passenger flights operated by the Qantas group (including Jetstar), Virgin Australia, Air North and Skippers as well as the cargo carried by dedicated freighter aircraft operated by Qantas Freight, Toll Priority and Virgin Australia Cargo.

The long-term trends for the top ten competitive RPT routes are presented graphically on pages 16-25.

Domestic RPT passenger movements at the top 50 regional airports are presented on pages 26-27.

Tables providing estimates of domestic charter aviation activity are shown on page 28. BITRE confidentiality standards restrict publication of detailed estimates for individual Australian airports, with the exception of Perth Airport.

A list of definitions can be found on page 29.

This report was prepared by the Aviation Statistics Section of the Bureau of Infrastructure, Transport and Regional Economics with data provided by airlines.

Estimates are included where data were not available and data presented in this publication may contain revisions to previously published data.

Where figures have been rounded, discrepancies may occur between sums of component items and totals, and in percentage changes which are derived from figures prior to rounding.

CONTENTS

Highlights	1
Total network	2
RPT network	2
Top competitive routes	4
Top ten airports – passenger movements	14
Top five airports – cargo movements	15
Top ten routes	16
1. Melbourne – Sydney	16
2. Brisbane – Sydney	17
3. Brisbane – Melbourne	18
4. Gold Coast – Sydney	19
5. Adelaide – Melbourne	20
6. Gold Coast – Melbourne	21
7. Melbourne – Perth	22
8. Adelaide – Sydney	23
9. Perth – Sydney	24
10. Hobart – Melbourne	25
Top fifty regional airports	26
Domestic charter activity	28
Definitions	29

This page is intentionally left blank.

HIGHLIGHTS

There were 5.63 million passengers carried on Australian domestic commercial aviation (including charter operations) in October 2017, an increase of 3.6 per cent on October 2016. For the month of October 2017 there were 59 385 aircraft trips, an increase of 1.0 per cent compared to October 2016.

5.42 million passengers were carried on RPT flights in October 2017, an increase of 3.4 per cent on October 2016.

For the year ending October 2017 there were 59.69 million RPT passengers, an increase of 1.6 per cent on the year ending October 2016.

RPT revenue passenger kilometres (RPKs) performed were 6.35 billion for the month, up 2.3 per cent compared with October 2016. Capacity, measured by available seat kilometres (ASKs), decreased by 0.5 per cent compared with October 2016 to a total of 7.72 billion.

With RPT passenger traffic increasing and capacity decreasing, the industry wide load factor (RPKs/ASKs) increased from 80.0 per cent in October 2016 to 82.3 per cent in October 2017, the highest industry wide load factor recorded since October 2011 (83.0 per cent). Load factors on individual routes increased on 45 of the 64 RPT routes for which data is available for publishing in both years.

For the month of October 2017, Melbourne – Sydney remained Australia's busiest RPT route with 810 641 passengers, an increase of 4.5 per cent compared with October 2016. It was followed by Brisbane – Sydney with 419 015 passengers (up 3.7 per cent) and Brisbane – Melbourne with 328 434 passengers (up 6.2 per cent).

The greatest percentage increase in RPT passenger numbers, compared to October 2016, was on the Brisbane – Proserpine route (up 27.5 per cent). There were large increases on a number of other routes, including Broome – Perth (up 20.5 per cent), Melbourne – Sunshine Coast (up 19.3 per cent) and Adelaide – Canberra (up 12.6 per cent).

Routes with traffic decreases in October 2017 compared with October 2016 included Hamilton Island – Sydney (down 29.4 per cent), Brisbane – Hamilton Island (down 19.6 per cent), Adelaide – Gold Coast (down 11.9 per cent) and Brisbane – Gladstone (down 11.3 per cent).

In October 2017, Sydney remained Australia's busiest domestic airport with 2.45 million passenger movements, followed by Melbourne with 2.30 million passenger movements and Brisbane with 1.56 million passenger movements.

Total cargo movements at Australian airports on domestic RPT flights were 39.6 thousand tonnes in October 2017, an increase of 5.3 per cent compared with October 2016.

In October 2017 there were 2.22 million domestic passenger movements through regional airports, 3.2 per cent higher than in October 2016. Out of the top 50 regional airports, the strongest growth was at Olympic Dam airport (up 86.4 per cent on October 2016), while the largest decrease was at Hamilton Island airport (down 24.3 per cent on October 2016).

Fixed-wing charter operators carried 209.79 thousand passengers in October 2017, an increase of 9.9 per cent on October 2016. Perth airport accounted for 37.3 per cent of all charter passengers in Australia.

TOTAL NETWORK

Summary of monthly commercial aviation activity

	Oct 2016	Oct 2017	% Change
Total passengers carried (millions)	5.43	5.63	3.6
Aircraft trips (000s)	58.8	59.4	1.0

Note: Regular Public Transport and charter aviation activity
Helicopter, joyflights and sightseeing charter flights not included.

RPT NETWORK

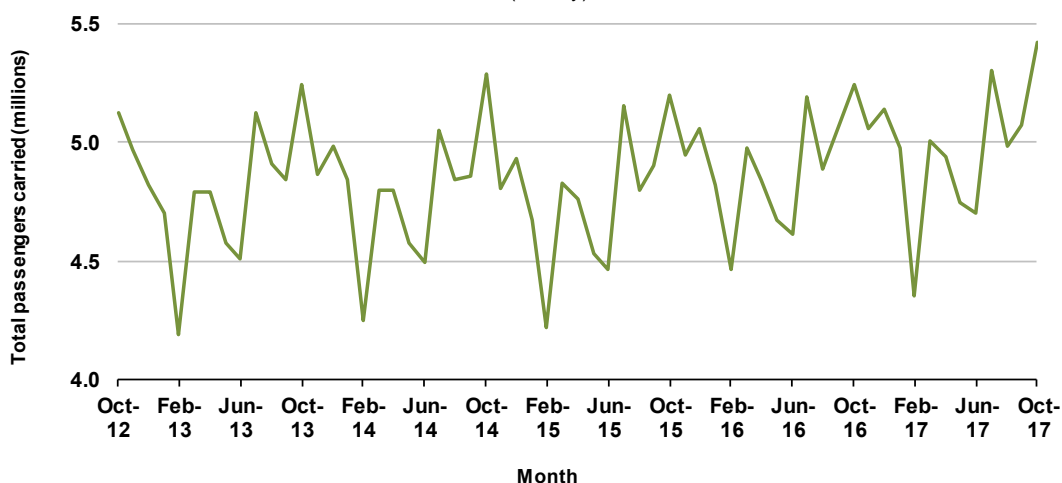
Summary of monthly RPT activity

	Oct 2016	Oct 2017	% Change
Total passengers carried (millions)	5.24	5.42	3.4
Revenue passenger kilometres (billions)	6.21	6.35	2.3
Available seats (millions)	6.68	6.71	0.6
Available seat kilometres (billions)	7.76	7.72	-0.5
Load factor %	80.0	82.3	2.3 *
Aircraft trips (000s)	55.3	55.4	0.2

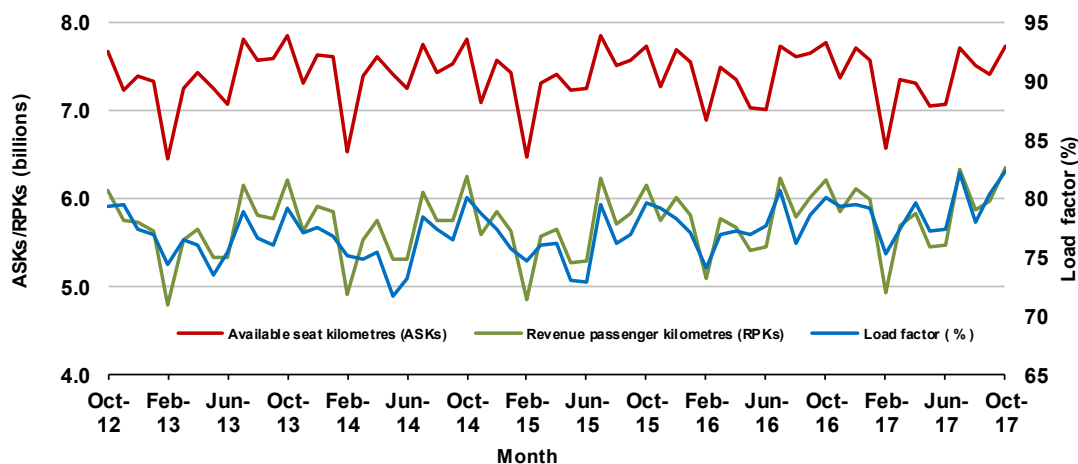
* percentage point difference

Domestic RPT passenger traffic

(monthly)



RPT Network utilisation



TOTAL NETWORK

Summary of annual commercial aviation activity

	YE Oct 2016	YE Oct 2017	% Change
Total passengers carried (millions)	61.20	62.13	1.5
Aircraft trips (000s)	687.1	685.2	-0.3

Note: Regular Public Transport and charter aviation activity
Helicopter, joyflights and sightseeing charter flights not included.

RPT NETWORK

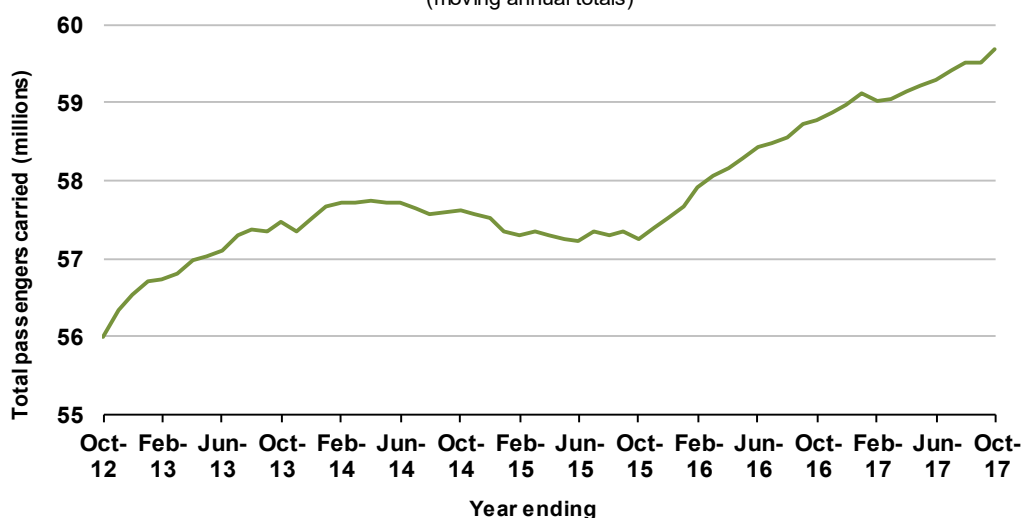
Summary of annual RPT activity

	YE Oct 2016	YE Oct 2017	% Change
Total passengers carried (millions)	58.78	59.69	1.6
Revenue passenger kilometres (billions)	69.15	69.77	0.9
Available seats (millions)	77.29	77.11	-0.2
Available seat kilometres (billions)	88.97	88.30	-0.8
Load factor %	77.7	79.0	1.3 *
Aircraft trips (000s)	642.1	639.4	-0.4

* percentage point difference

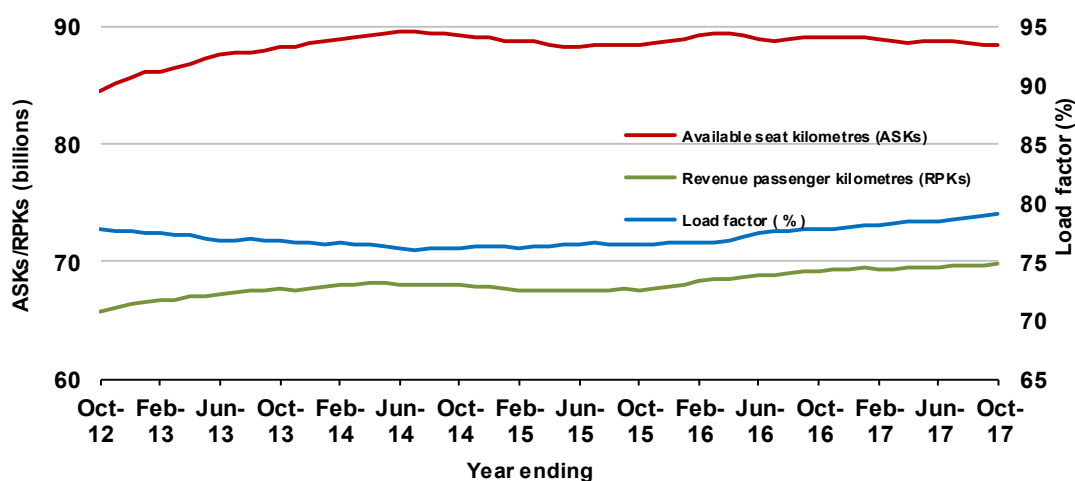
Domestic RPT passenger traffic

(moving annual totals)



RPT Network utilisation

(moving annual totals)



TOP COMPETITIVE ROUTES

Table 1: Passengers carried (000s) — annual activity

	City-Pair	YE Oct 2016	YE Oct 2017	% Change
1	Melbourne - Sydney	8 874.6	9 034.4	1.8
2	Brisbane - Sydney	4 647.8	4 723.2	1.6
3	Brisbane - Melbourne	3 477.6	3 536.5	1.7
4	Gold Coast - Sydney	2 708.0	2 717.6	0.4
5	Adelaide - Melbourne	2 382.1	2 436.1	2.3
6	Melbourne - Perth	2 075.8	2 035.3	-2.0
7	Gold Coast - Melbourne	1 944.5	2 006.6	3.2
8	Adelaide - Sydney	1 867.9	1 892.3	1.3
9	Perth - Sydney	1 757.5	1 720.2	-2.1
10	Hobart - Melbourne	1 544.0	1 620.0	4.9
11	Brisbane - Cairns	1 347.5	1 375.2	2.1
12	Cairns - Sydney	1 102.0	1 127.1	2.3
13	Canberra - Melbourne	1 012.2	1 119.4	10.6
14	Brisbane - Perth	989.8	967.3	-2.3
15	Brisbane - Townsville	983.1	955.9	-2.8
16	Canberra - Sydney	951.9	954.0	0.2
17	Launceston - Melbourne	920.4	916.3	-0.4
18	Cairns - Melbourne	815.6	842.3	3.3
19	Adelaide - Brisbane	830.4	838.9	1.0
20	Brisbane - Mackay	687.3	689.7	0.3
21	Hobart - Sydney	608.8	650.6	6.9
22	Adelaide - Perth	617.3	613.9	-0.6
23	Brisbane - Canberra	570.2	589.6	3.4
24	Brisbane - Newcastle	568.4	587.6	3.4
25	Sunshine Coast - Sydney	530.4	572.5	7.9
26	Brisbane - Rockhampton	564.9	533.6	-5.5
27	Melbourne - Sunshine Coast	434.2	474.5	9.3
28	Melbourne - Newcastle	445.6	470.8	5.7
29	Karratha - Perth	508.2	443.7	-12.7
30	Brisbane - Darwin	406.3	406.9	0.2
31	Ballina - Sydney	378.5	399.0	5.4
32	Coffs Harbour - Sydney	338.3	345.1	2.0
33	Perth - Port Hedland	341.7	343.9	0.6
34	Darwin - Sydney	318.4	320.9	0.8
35	Darwin - Melbourne	299.3	307.2	2.6
36	Broome - Perth	297.9	303.0	1.7
37	Brisbane - Gladstone	345.6	289.5	-16.2
38	Launceston - Sydney	287.5	288.0	0.2
39	Newman - Perth	311.3	285.9	-8.2
40	Brisbane - Proserpine	229.9	250.0	8.8
41	Kalgoorlie - Perth	229.5	240.3	4.7
42	Albury - Sydney	224.7	224.7	0.0
43	Adelaide - Gold Coast	223.4	211.6	-5.3
44	Melbourne - Mildura	205.3	210.5	2.5
45	Brisbane - Hobart	203.4	210.4	3.4
46	Hamilton Island - Sydney	260.2	206.9	-20.5
47	Brisbane - Emerald	200.4	199.0	-0.7
48	Darwin - Perth	183.4	195.3	6.5
49	Port Macquarie - Sydney	193.3	192.9	-0.2
50	Dubbo - Sydney	186.9	191.4	2.4

continued

Table 1: (continued) Passengers carried (000s) — annual activity

	City-Pair	YE Oct 2016	YE Oct 2017	% Change
51	Ayers Rock - Sydney	179.0	190.4	6.4
52	Sydney - Wagga Wagga	189.1	184.8	-2.3
53	Sydney - Tamworth	173.4	181.6	4.7
54	Adelaide - Canberra	171.4	180.1	5.1
55	Brisbane - Bundaberg	171.4	175.4	2.4
56	Adelaide - Port Lincoln	181.0	172.4	-4.8
57	Sydney - Townsville	157.5	159.5	1.3
58	Cairns - Townsville	139.3	141.1	1.3
59	Brisbane - Hamilton Island	147.6	132.1	-10.5
60	Armidale - Sydney	127.5	126.9	-0.4
61	Brisbane - Mount Isa	120.7	124.5	3.1
62	Adelaide - Alice Springs	120.5	123.7	2.6
63	Alice Springs - Darwin	116.1	117.7	1.4
64	Geraldton - Perth	117.8	111.9	-5.0
65	Melbourne - Townsville	..	28.2	NA (a)
66	Proserpine - Sydney	..	22.8	NA (b)
	Total domestic network	58 775.3	59 694.3	1.6

(a) Melbourne - Townsville route included from September 2017, prior data not shown.

(b) Proserpine - Sydney route included from September 2017, prior data not shown.

Table 2: Passengers carried (000s) — monthly activity

	City-Pair	Oct 2016	Oct 2017	% Change
1	Melbourne - Sydney	775.7	810.6	4.5
2	Brisbane - Sydney	404.0	419.0	3.7
3	Brisbane - Melbourne	309.2	328.4	6.2
4	Gold Coast - Sydney	240.5	243.7	1.3
5	Adelaide - Melbourne	211.9	222.0	4.8
6	Gold Coast - Melbourne	186.8	193.1	3.3
7	Melbourne - Perth	182.8	180.0	-1.5
8	Adelaide - Sydney	165.5	170.6	3.0
9	Perth - Sydney	152.0	150.1	-1.2
10	Hobart - Melbourne	132.0	137.1	3.9
11	Brisbane - Cairns	118.1	124.0	5.0
12	Cairns - Sydney	104.5	104.2	-0.3
13	Canberra - Melbourne	91.1	101.5	11.5
14	Brisbane - Perth	87.8	88.2	0.5
15	Canberra - Sydney	84.2	84.6	0.5
16	Brisbane - Townsville	83.1	83.5	0.6
17	Adelaide - Brisbane	78.0	82.3	5.5
18	Cairns - Melbourne	77.4	81.8	5.7
19	Launceston - Melbourne	76.3	78.3	2.6
20	Brisbane - Mackay	59.2	63.9	8.0
21	Hobart - Sydney	55.1	61.0	10.7
22	Sunshine Coast - Sydney	52.1	57.5	10.4
23	Adelaide - Perth	56.3	56.4	0.2
24	Brisbane - Canberra	52.0	54.4	4.5
25	Brisbane - Newcastle	53.4	52.0	-2.7
26	Melbourne - Sunshine Coast	40.9	48.8	19.3
27	Brisbane - Rockhampton	49.5	47.7	-3.7
28	Melbourne - Newcastle	43.4	45.9	5.7
29	Ballina - Sydney	36.7	39.1	6.6
30	Karratha - Perth	40.9	37.9	-7.2
31	Brisbane - Darwin	35.6	35.1	-1.6
32	Broome - Perth	27.8	33.5	20.5
33	Coffs Harbour - Sydney	31.0	32.2	4.2
34	Perth - Port Hedland	28.3	30.2	6.9
35	Darwin - Sydney	28.8	28.5	-1.0
36	Darwin - Melbourne	26.5	26.5	0.2
37	Brisbane - Proserpine	20.5	26.1	27.5
38	Newman - Perth	24.6	25.7	4.5
39	Brisbane - Gladstone	26.8	23.8	-11.3
40	Kalgoorlie - Perth	19.6	21.3	8.7
41	Launceston - Sydney	21.2	21.3	0.3
42	Albury - Sydney	19.7	19.7	0.1
43	Melbourne - Mildura	18.4	19.7	6.8
44	Adelaide - Gold Coast	22.0	19.4	-11.9
45	Brisbane - Hobart	18.3	18.9	3.2
46	Hamilton Island - Sydney	26.1	18.4	-29.4
47	Darwin - Perth	16.6	18.3	10.1
48	Brisbane - Emerald	17.5	18.0	2.6
49	Ayers Rock - Sydney	17.5	17.5	0.0
50	Adelaide - Canberra	15.4	17.4	12.6

continued

Table 2: (continued) Passengers carried (000s) — monthly activity

	City-Pair	Oct 2016	Oct 2017	% Change
51	Dubbo - Sydney	16.6	17.3	4.0
52	Sydney - Wagga Wagga	16.8	16.7	-0.4
53	Port Macquarie - Sydney	17.0	16.7	-2.1
54	Sydney - Townsville	15.4	15.6	1.3
55	Sydney - Tamworth	16.3	15.5	-5.2
56	Brisbane - Bundaberg	15.4	14.9	-3.5
57	Melbourne - Townsville	..	14.3	NA (a)
58	Adelaide - Port Lincoln	15.5	14.2	-8.1
59	Cairns - Townsville	11.9	13.0	9.0
60	Adelaide - Alice Springs	11.6	12.1	4.4
61	Proserpine - Sydney	..	11.8	NA (b)
62	Armidale - Sydney	11.5	11.7	2.4
63	Brisbane - Hamilton Island	13.8	11.1	-19.6
64	Brisbane - Mount Isa	10.6	11.0	4.5
65	Alice Springs - Darwin	11.0	10.9	-1.1
66	Geraldton - Perth	10.1	9.5	-5.9
	Total domestic network	5 242.5	5 420.3	3.4

(a) Melbourne - Townsville route included from September 2017, prior data not shown.

(b) Proserpine - Sydney route included from September 2017, prior data not shown.

Table 3: Available seats (000s) — monthly activity

	City-Pair	Oct 2016	Oct 2017	% Change
1	Melbourne - Sydney	913.4	936.0	2.5
2	Brisbane - Sydney	486.1	496.7	2.2
3	Brisbane - Melbourne	374.7	384.3	2.5
4	Gold Coast - Sydney	275.6	277.8	0.8
5	Adelaide - Melbourne	256.5	263.5	2.7
6	Gold Coast - Melbourne	215.9	216.1	0.1
7	Melbourne - Perth	227.3	207.2	-8.9
8	Adelaide - Sydney	196.9	198.1	0.6
9	Perth - Sydney	183.4	182.0	-0.7
10	Hobart - Melbourne	164.2	157.7	-3.9
11	Brisbane - Cairns	140.5	142.8	1.6
12	Cairns - Sydney	123.7	120.0	-3.0
13	Canberra - Melbourne	130.1	151.0	16.0
14	Brisbane - Perth	106.0	104.7	-1.3
15	Canberra - Sydney	116.0	110.0	-5.2
16	Brisbane - Townsville	113.0	106.1	-6.1
17	Adelaide - Brisbane	98.3	99.7	1.4
18	Cairns - Melbourne	89.3	90.4	1.2
19	Launceston - Melbourne	90.1	92.3	2.4
20	Brisbane - Mackay	77.4	77.8	0.5
21	Hobart - Sydney	67.0	71.0	6.1
22	Sunshine Coast - Sydney	61.7	68.6	11.2
23	Adelaide - Perth	78.3	74.1	-5.4
24	Brisbane - Canberra	66.8	73.4	9.8
25	Brisbane - Newcastle	66.5	67.5	1.5
26	Melbourne - Sunshine Coast	46.4	54.3	17.1
27	Brisbane - Rockhampton	65.4	54.4	-16.9
28	Melbourne - Newcastle	51.8	53.9	3.9
29	Ballina - Sydney	43.1	46.7	8.3
30	Karratha - Perth	68.1	57.7	-15.2
31	Brisbane - Darwin	43.7	42.9	-1.8
32	Broome - Perth	37.0	42.3	14.2
33	Coffs Harbour - Sydney	37.0	42.8	15.6
34	Perth - Port Hedland	49.8	45.1	-9.4
35	Darwin - Sydney	39.5	37.9	-4.1
36	Darwin - Melbourne	32.7	32.7	0.1
37	Brisbane - Proserpine	22.6	29.9	32.1
38	Newman - Perth	49.6	45.4	-8.5
39	Brisbane - Gladstone	45.1	31.4	-30.5
40	Kalgoorlie - Perth	33.3	36.5	9.7
41	Launceston - Sydney	24.4	24.5	0.3
42	Albury - Sydney	29.8	26.5	-10.9
43	Melbourne - Mildura	26.6	28.8	8.3
44	Adelaide - Gold Coast	26.4	21.9	-17.2
45	Brisbane - Hobart	20.9	21.2	1.4
46	Hamilton Island - Sydney	30.8	26.8	-13.0
47	Darwin - Perth	22.8	22.1	-3.0
48	Brisbane - Emerald	30.5	24.5	-19.6
49	Ayers Rock - Sydney	20.9	21.5	2.7
50	Adelaide - Canberra	22.6	26.4	16.8

continued

Table 3: (continued) Available seats (000s) — monthly activity

	City-Pair	Oct 2016	Oct 2017	% Change
51	Dubbo - Sydney	24.3	22.7	-6.6
52	Sydney - Wagga Wagga	25.0	25.0	-0.2
53	Port Macquarie - Sydney	22.2	21.1	-5.1
54	Sydney - Townsville	21.6	20.4	-5.3
55	Sydney - Tamworth	24.6	23.6	-4.1
56	Brisbane - Bundaberg	19.2	19.4	0.9
57	Melbourne - Townsville	..	17.2	NA (a)
58	Adelaide - Port Lincoln	24.9	24.9	0.1
59	Cairns - Townsville	24.1	23.1	-4.3
60	Adelaide - Alice Springs	15.2	15.8	3.5
61	Proserpine - Sydney	..	14.4	NA (b)
62	Armidale - Sydney	16.9	16.3	-3.6
63	Brisbane - Hamilton Island	15.8	15.7	-0.9
64	Brisbane - Mount Isa	18.4	15.4	-16.2
65	Alice Springs - Darwin	19.5	19.2	-1.5
66	Geraldton - Perth	20.8	19.0	-8.7
	Total domestic network	6 677.0	6 714.8	0.6

(a) Melbourne - Townsville route included from September 2017, prior data not shown.

(b) Proserpine - Sydney route included from September 2017, prior data not shown.

Table 4: Load factors (%) — monthly activity

	City-Pair	Oct 2016	Oct 2017	% Point diff
1	Melbourne - Sydney	84.9	86.6	1.7
2	Brisbane - Sydney	83.1	84.4	1.3
3	Brisbane - Melbourne	82.5	85.5	3.0
4	Gold Coast - Sydney	87.2	87.7	0.5
5	Adelaide - Melbourne	82.6	84.3	1.7
6	Gold Coast - Melbourne	86.6	89.3	2.7
7	Melbourne - Perth	80.4	86.9	6.5
8	Adelaide - Sydney	84.1	86.1	2.0
9	Perth - Sydney	82.9	82.5	-0.4
10	Hobart - Melbourne	80.4	86.9	6.5
11	Brisbane - Cairns	84.1	86.8	2.7
12	Cairns - Sydney	84.5	86.8	2.3
13	Canberra - Melbourne	70.0	67.2	-2.8
14	Brisbane - Perth	82.8	84.3	1.5
15	Canberra - Sydney	72.6	77.0	4.4
16	Brisbane - Townsville	73.5	78.7	5.2
17	Adelaide - Brisbane	79.4	82.6	3.2
18	Cairns - Melbourne	86.7	90.5	3.8
19	Launceston - Melbourne	84.7	84.9	0.2
20	Brisbane - Mackay	76.4	82.1	5.7
21	Hobart - Sydney	82.3	85.9	3.6
22	Sunshine Coast - Sydney	84.4	83.7	-0.7
23	Adelaide - Perth	71.9	76.1	4.2
24	Brisbane - Canberra	77.8	74.1	-3.7
25	Brisbane - Newcastle	80.3	77.0	-3.3
26	Melbourne - Sunshine Coast	88.1	89.8	1.7
27	Brisbane - Rockhampton	75.6	87.7	12.1
28	Melbourne - Newcastle	83.7	85.1	1.4
29	Ballina - Sydney	85.2	83.8	-1.4
30	Karratha - Perth	60.0	65.7	5.7
31	Brisbane - Darwin	81.6	81.8	0.2
32	Broome - Perth	75.1	79.2	4.1
33	Coffs Harbour - Sydney	83.7	75.4	-8.3
34	Perth - Port Hedland	56.8	67.0	10.2
35	Darwin - Sydney	72.9	75.3	2.4
36	Darwin - Melbourne	81.0	81.1	0.1
37	Brisbane - Proserpine	90.3	87.1	-3.2
38	Newman - Perth	49.5	56.6	7.1
39	Brisbane - Gladstone	59.5	75.8	16.3
40	Kalgoorlie - Perth	58.8	58.2	-0.6
41	Launceston - Sydney	86.7	86.7	0.0
42	Albury - Sydney	66.3	74.5	8.2
43	Melbourne - Mildura	69.2	68.2	-1.0
44	Adelaide - Gold Coast	83.2	88.5	5.3
45	Brisbane - Hobart	87.9	89.4	1.5
46	Hamilton Island - Sydney	84.6	68.6	-16.0
47	Darwin - Perth	72.8	82.7	9.9
48	Brisbane - Emerald	57.5	73.4	15.9
49	Ayers Rock - Sydney	84.0	81.8	-2.2
50	Adelaide - Canberra	68.2	65.8	-2.4

continued

Table 4: (continued) Load factors (%) — monthly activity

	City-Pair	Oct 2016	Oct 2017	% Point diff
51	Dubbo - Sydney	68.3	76.0	7.7
52	Sydney - Wagga Wagga	67.1	66.9	-0.2
53	Port Macquarie - Sydney	76.8	79.3	2.5
54	Sydney - Townsville	71.4	76.4	5.0
55	Sydney - Tamworth	66.1	65.4	-0.7
56	Brisbane - Bundaberg	80.4	76.9	-3.5
57	Melbourne - Townsville	..	83.0	NA (a)
58	Adelaide - Port Lincoln	62.3	57.1	-5.2
59	Cairns - Townsville	49.5	56.4	6.9
60	Adelaide - Alice Springs	76.0	76.7	0.7
61	Proserpine - Sydney	..	82.1	NA (b)
62	Armidale - Sydney	67.8	72.0	4.2
63	Brisbane - Hamilton Island	87.2	70.7	-16.5
64	Brisbane - Mount Isa	57.5	71.6	14.1
65	Alice Springs - Darwin	56.7	56.9	0.2
66	Geraldton - Perth	48.5	50.0	1.5
	Total domestic network	80.0	82.3	2.3

(a) Melbourne - Townsville route included from September 2017, prior data not shown.

(b) Proserpine - Sydney route included from September 2017, prior data not shown.

Table 5: Aircraft trips ^(a) — monthly activity

	City-Pair	Oct 2016	Oct 2017	% Change
1	Melbourne - Sydney	5 081	5 156	1.5
2	Brisbane - Sydney	2 986	3 042	1.9
3	Brisbane - Melbourne	2 232	2 259	1.2
4	Gold Coast - Sydney	1 611	1 565	-2.9
5	Adelaide - Melbourne	1 669	1 651	-1.1
6	Gold Coast - Melbourne	1 144	1 140	-0.3
7	Melbourne - Perth	1 028	957	-6.9
8	Adelaide - Sydney	1 190	1 179	-0.9
9	Perth - Sydney	787	774	-1.7
10	Hobart - Melbourne	1 028	976	-5.1
11	Brisbane - Cairns	890	893	0.3
12	Cairns - Sydney	703	654	-7.0
13	Canberra - Melbourne	918	1 009	9.9
14	Brisbane - Perth	490	527	7.6
15	Canberra - Sydney	1 441	1 406	-2.4
16	Brisbane - Townsville	778	740	-4.9
17	Adelaide - Brisbane	588	595	1.2
18	Cairns - Melbourne	471	475	0.8
19	Launceston - Melbourne	712	734	3.1
20	Brisbane - Mackay	663	629	-5.1
21	Hobart - Sydney	423	439	3.8
22	Sunshine Coast - Sydney	374	409	9.4
23	Adelaide - Perth	492	497	1.0
24	Brisbane - Canberra	510	527	3.3
25	Brisbane - Newcastle	546	510	-6.6
26	Melbourne - Sunshine Coast	261	306	17.2
27	Brisbane - Rockhampton	778	687	-11.7
28	Melbourne - Newcastle	294	302	2.7
29	Ballina - Sydney	284	304	7.0
30	Karratha - Perth	573	507	-11.5
31	Brisbane - Darwin	265	260	-1.9
32	Broome - Perth	305	371	21.6
33	Coffs Harbour - Sydney	438	437	-0.2
34	Perth - Port Hedland	392	368	-6.1
35	Darwin - Sydney	234	224	-4.3
36	Darwin - Melbourne	187	186	-0.5
37	Brisbane - Proserpine	128	168	31.3
38	Newman - Perth	363	334	-8.0
39	Brisbane - Gladstone	586	412	-29.7
40	Kalgoorlie - Perth	288	303	5.2
41	Launceston - Sydney	142	142	0.0
42	Albury - Sydney	547	495	-9.5
43	Melbourne - Mildura	418	417	-0.2
44	Adelaide - Gold Coast	149	124	-16.8
45	Brisbane - Hobart	120	120	0.0
46	Hamilton Island - Sydney	186	162	-12.9
47	Darwin - Perth	140	132	-5.7
48	Brisbane - Emerald	404	326	-19.3
49	Ayers Rock - Sydney	121	122	0.8
50	Adelaide - Canberra	150	156	4.0

continued

Table 5: (continued) Aircraft trips — monthly activity

	City-Pair	Oct 2016	Oct 2017	% Change
51	Dubbo - Sydney	537	527	-1.9
52	Sydney - Wagga Wagga	484	489	1.0
53	Port Macquarie - Sydney	387	369	-4.7
54	Sydney - Townsville	133	116	-12.8
55	Sydney - Tamworth	393	378	-3.8
56	Brisbane - Bundaberg	328	296	-9.8
57	Melbourne - Townsville	..	96	NA (b)
58	Adelaide - Port Lincoln	641	644	0.5
59	Cairns - Townsville	410	368	-10.2
60	Adelaide - Alice Springs	96	113	17.7
61	Proserpine - Sydney	..	80	NA (c)
62	Armidale - Sydney	392	388	-1.0
63	Brisbane - Hamilton Island	126	125	-0.8
64	Brisbane - Mount Isa	153	151	-1.3
65	Alice Springs - Darwin	158	167	5.7
66	Geraldton - Perth	208	190	-8.7
	Total domestic network	55 294	55 402	0.2

(a) Includes RPT Cargo flights.

(b) Melbourne - Townsville route included from September 2017, prior data not shown.

(c) Proserpine - Sydney route included from September 2017, prior data not shown.

TOP TEN AIRPORTS – PASSENGER MOVEMENTS

Table 6: Top ten airports, RPT passenger movements (000s) - annual activity

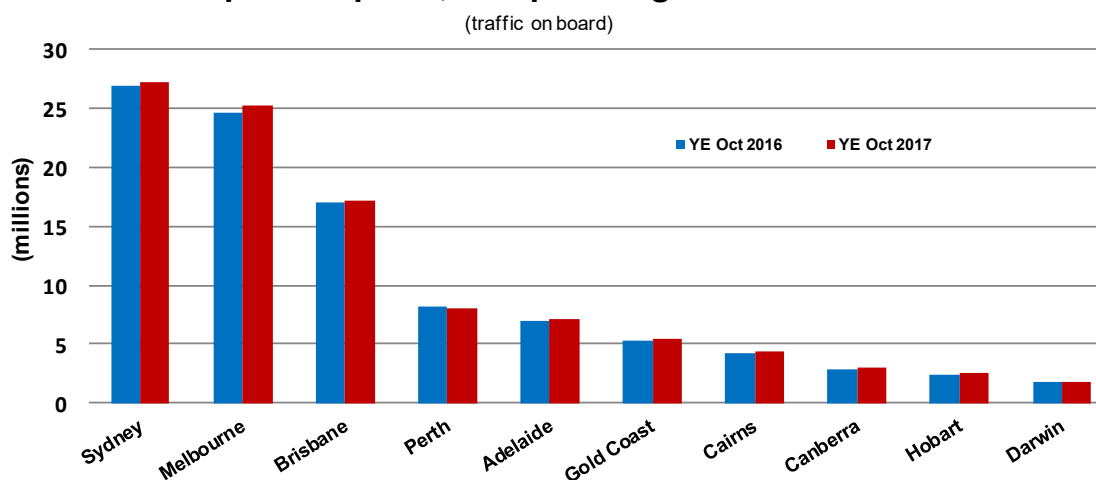
Airport	YE Oct 2016	YE Oct 2017	% Change	% of Total
1 Sydney	26 841.5	27 199.7	1.3	22.8
2 Melbourne	24 652.9	25 217.8	2.3	21.1
3 Brisbane	17 071.6	17 231.2	0.9	14.4
4 Perth	8 163.9	7 998.9	-2.0	6.7
5 Adelaide	6 970.7	7 097.0	1.8	5.9
6 Gold Coast	5 307.0	5 376.8	1.3	4.5
7 Cairns	4 218.2	4 307.4	2.1	3.6
8 Canberra	2 856.5	3 004.5	5.2	2.5
9 Hobart	2 356.8	2 481.6	5.3	2.1
10 Darwin	1 794.0	1 805.8	0.7	1.5
Total top ten airports	100 233.1	101 720.8	1.5	85.2
Total domestic network	117 550.5	119 388.6	1.6	100.0

Table 7: Top ten airports, RPT passenger movements (000s) - monthly activity

Airport	Oct 2016	Oct 2017	% Change	% of Total
1 Sydney	2 380.1	2 446.8	2.8	22.6
2 Melbourne	2 198.0	2 301.1	4.7	21.2
3 Brisbane	1 503.6	1 559.4	3.7	14.4
4 Perth	712.4	715.8	0.5	6.6
5 Adelaide	636.3	653.6	2.7	6.0
6 Gold Coast	489.6	496.3	1.4	4.6
7 Cairns	391.6	401.6	2.5	3.7
8 Canberra	256.7	272.0	6.0	2.5
9 Hobart	205.4	217.1	5.7	2.0
10 Darwin	163.9	158.9	-3.1	1.5
Total top ten airports	8 937.5	9 222.6	3.2	85.1
Total domestic network	10 485.0	10 840.6	3.4	100.0

Note: Airport passenger movement numbers are the sum of passenger arrivals and departures at each airport.

Top ten airports, RPT passenger movements



TOP FIVE AIRPORTS – CARGO MOVEMENTS

Table 8: Top five airports, domestic RPT cargo movements (000s tonnes) - annual activity

Airport	YE Oct 2016	YE Oct 2017	% Change	% of Total
1 Melbourne	118.4	130.9	10.6	29.0
2 Sydney	102.0	105.4	3.3	23.3
3 Brisbane	64.3	66.3	3.1	14.7
4 Perth	57.3	64.2	12.0	14.2
5 Adelaide	23.6	26.6	12.9	5.9
Total top five airports	365.6	393.4	7.6	87.0
Total domestic network	419.5	452.2	7.8	100.0

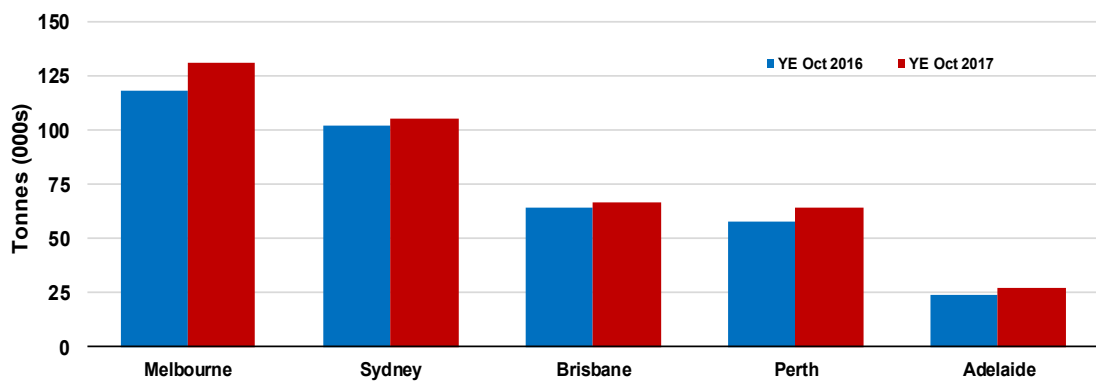
Table 9: Top five airports, domestic RPT cargo movements (000s tonnes) - monthly activity

Airport	Oct 2016	Oct 2017	% Change	% of Total
1 Melbourne	10.6	11.5	8.1	28.9
2 Sydney	8.9	9.4	5.9	23.8
3 Brisbane	5.7	5.7	-0.4	14.4
4 Perth	5.0	5.6	11.4	14.1
5 Adelaide	2.0	2.4	16.7	6.0
Total top five airports	32.2	34.5	7.1	87.2
Total domestic network	37.6	39.6	5.3	100.0

Note: Airport cargo tonnes are the sum of cargo tonnes on arrivals and departures at each airport.

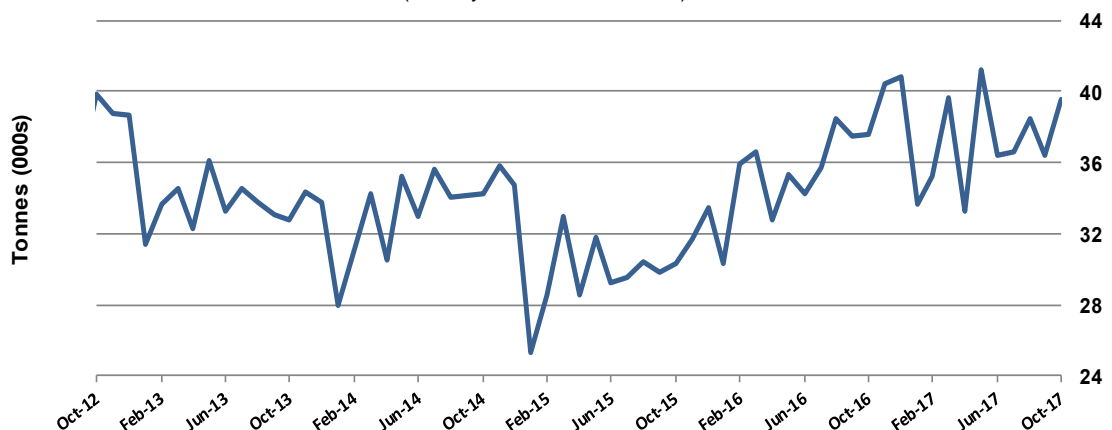
Top five airports, cargo movements

(Domestic cargo traffic - traffic on board)



Total domestic network - cargo movement

(monthly totals - traffic on board)



Note: Airport cargo tonnes are the sum of cargo tonnes on arrivals and departures at each airport.

TOP TEN ROUTES

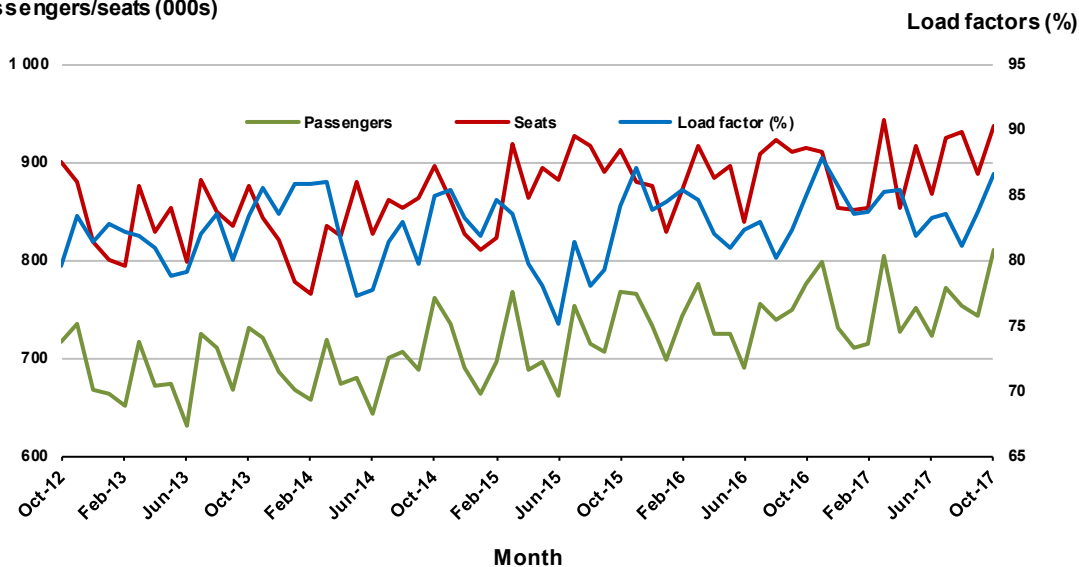
1. Melbourne - Sydney

Monthly data

	Oct 2016	Oct 2017	% Change
Passengers carried (000s)	775.7	810.6	4.5
Seats (000s)	913.4	936.0	2.5
Load factor %	84.9	86.6	1.7 *
Aircraft trips	5 081	5 156	1.5

* percentage point difference

Passengers/seats (000s)

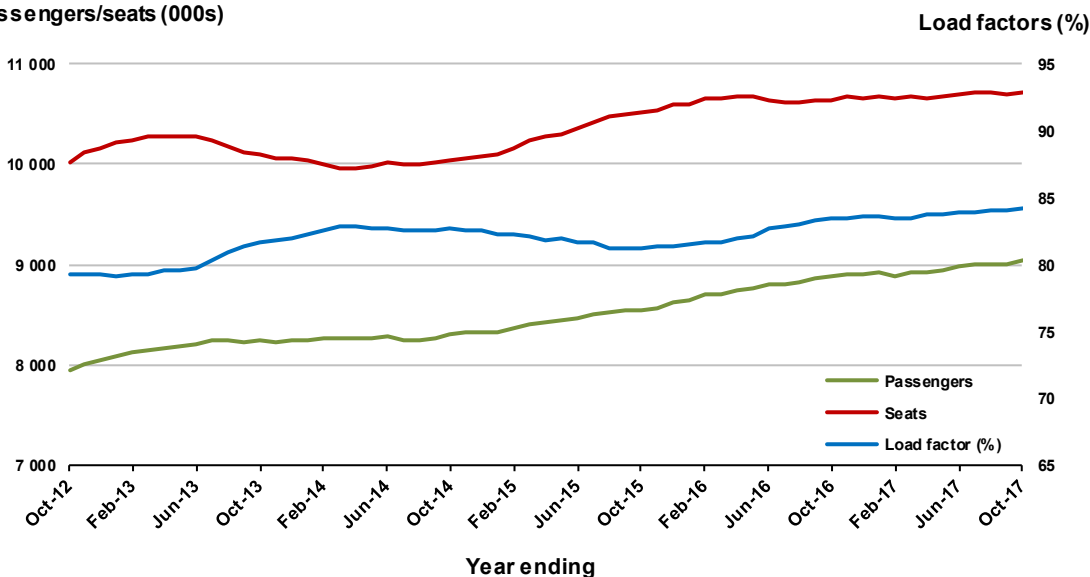


Moving annual data

	YE Oct 2016	YE Oct 2017	% Change
Passengers carried (000s)	8 874.6	9 034.4	1.8
Seats (000s)	10 644.3	10 723.0	0.7
Load factor %	83.4	84.3	0.9 *
Aircraft trips	59 413	59 699	0.5

* percentage point difference

Passengers/seats (000s)

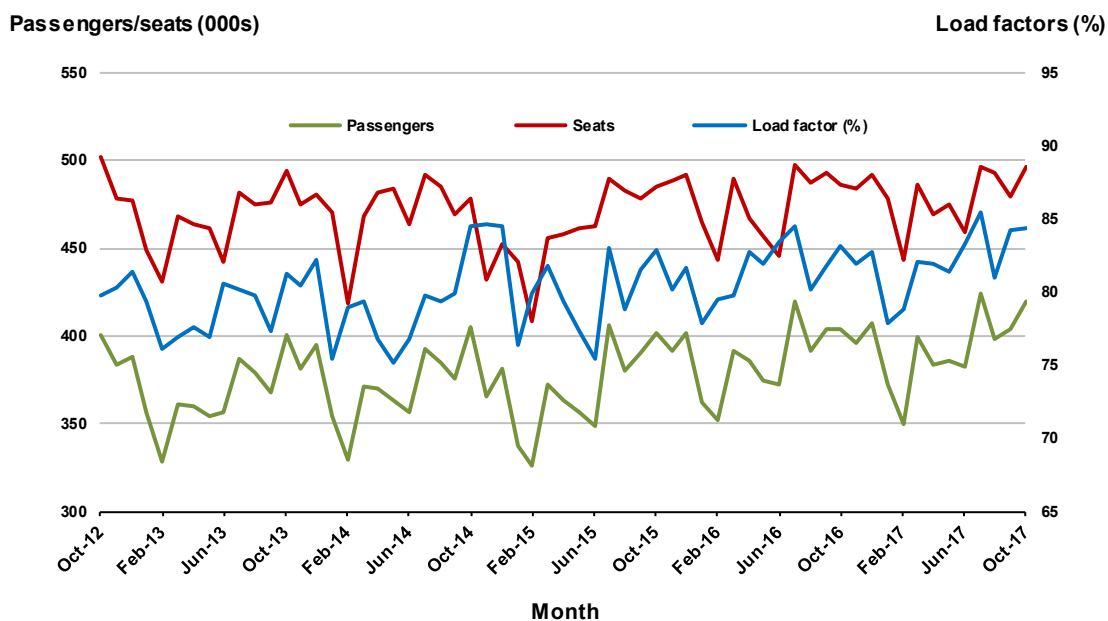


2. Brisbane - Sydney

Monthly data

	Oct 2016	Oct 2017	% Change
Passengers carried (000s)	404.0	419.0	3.7
Seats (000s)	486.1	496.7	2.2
Load factor %	83.1	84.4	1.3 *
Aircraft trips	2 986	3 042	1.9

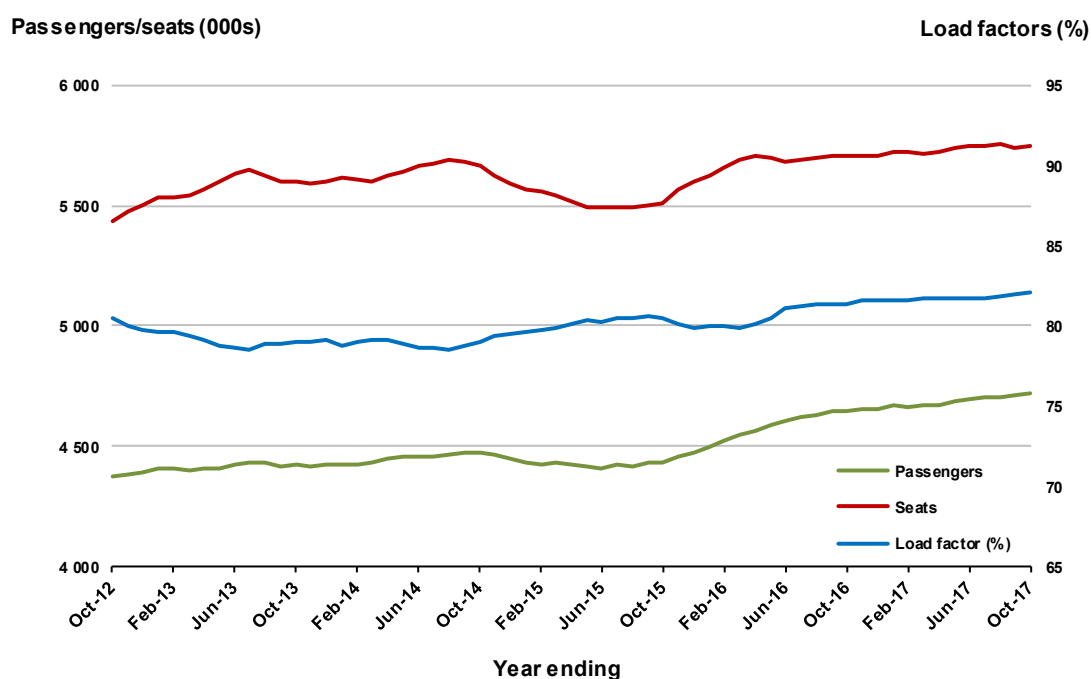
* percentage point difference



Moving annual data

	YE Oct 2016	YE Oct 2017	% Change
Passengers carried (000s)	4 647.8	4 723.2	1.6
Seats (000s)	5 710.1	5 751.2	0.7
Load factor %	81.4	82.1	0.7 *
Aircraft trips	35 462	35 459	0.0

* percentage point difference

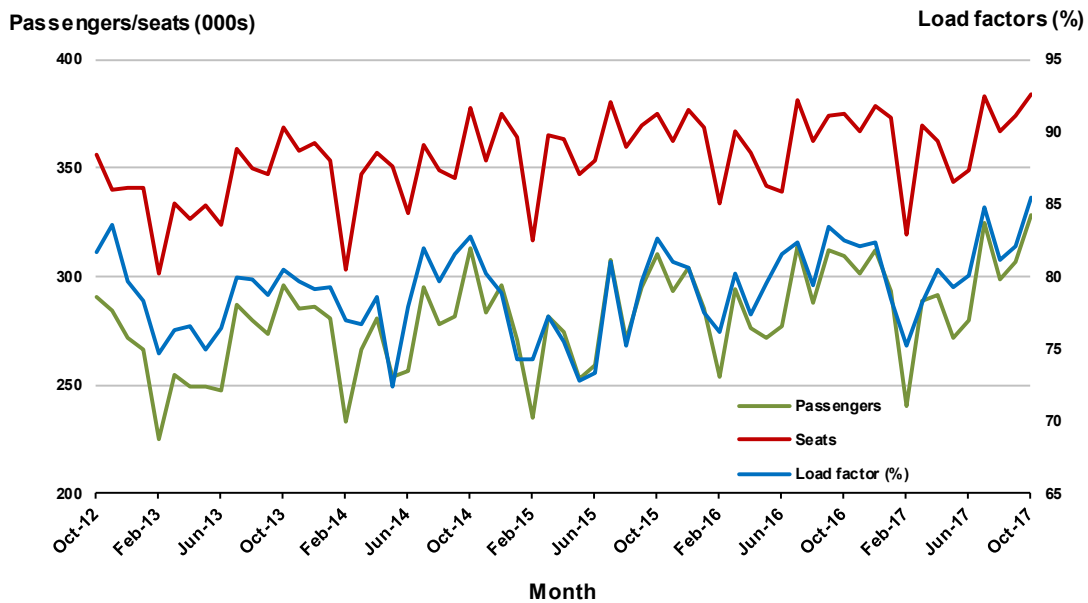


3. Brisbane - Melbourne

Monthly data

	Oct 2016	Oct 2017	% Change
Passengers carried (000s)	309.2	328.4	6.2
Seats (000s)	374.7	384.3	2.5
Load factor %	82.5	85.5	3.0 *
Aircraft trips	2 232	2 259	1.2

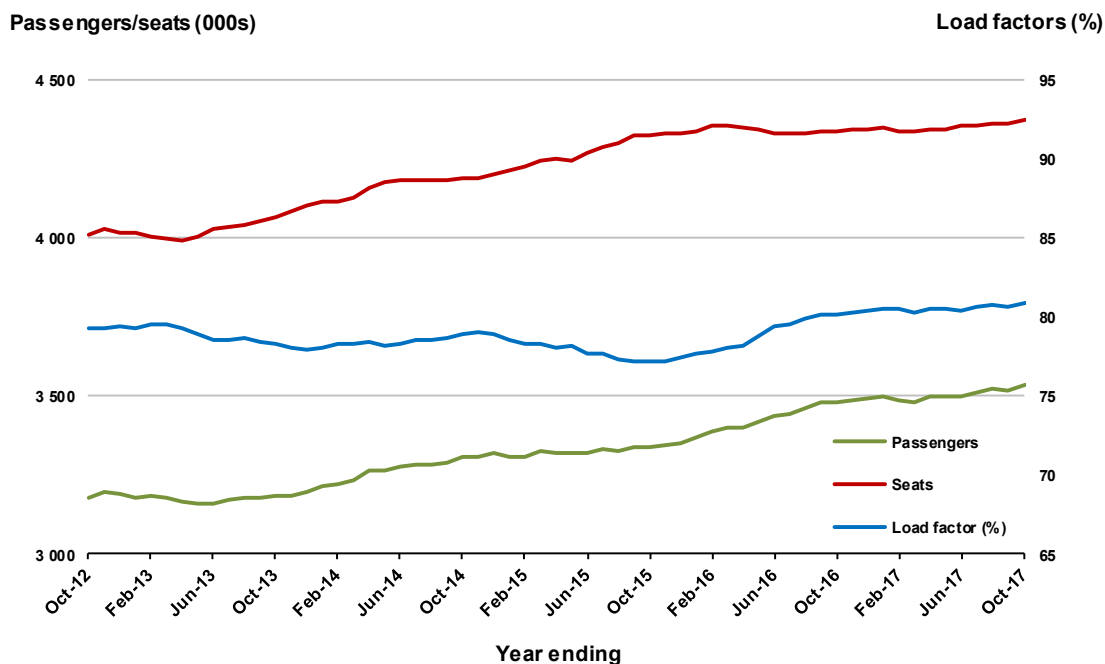
* percentage point difference



Moving annual data

	YE Oct 2016	YE Oct 2017	% Change
Passengers carried (000s)	3 477.6	3 536.5	1.7
Seats (000s)	4 336.6	4 371.4	0.8
Load factor %	80.2	80.9	0.7 *
Aircraft trips	25 958	25 818	-0.5

* percentage point difference



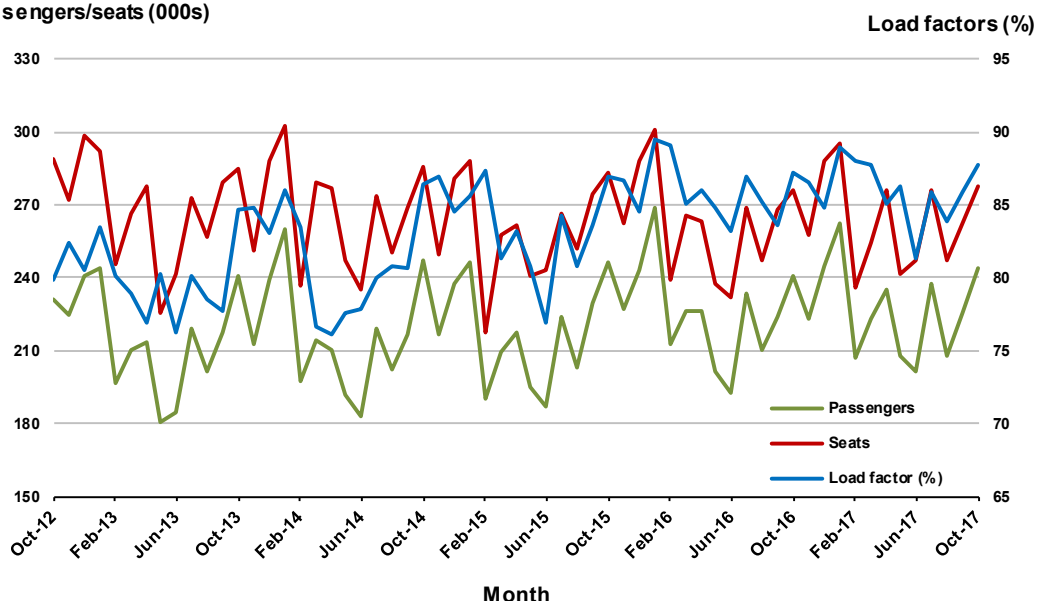
4. Gold Coast - Sydney

Monthly data

	Oct 2016	Oct 2017	% Change
Passengers carried (000s)	240.5	243.7	1.3
Seats (000s)	275.6	277.8	0.8
Load factor %	87.2	87.7	0.5 *
Aircraft trips	1 611	1 565	-2.9

* percentage point difference

Passengers/seats (000s)

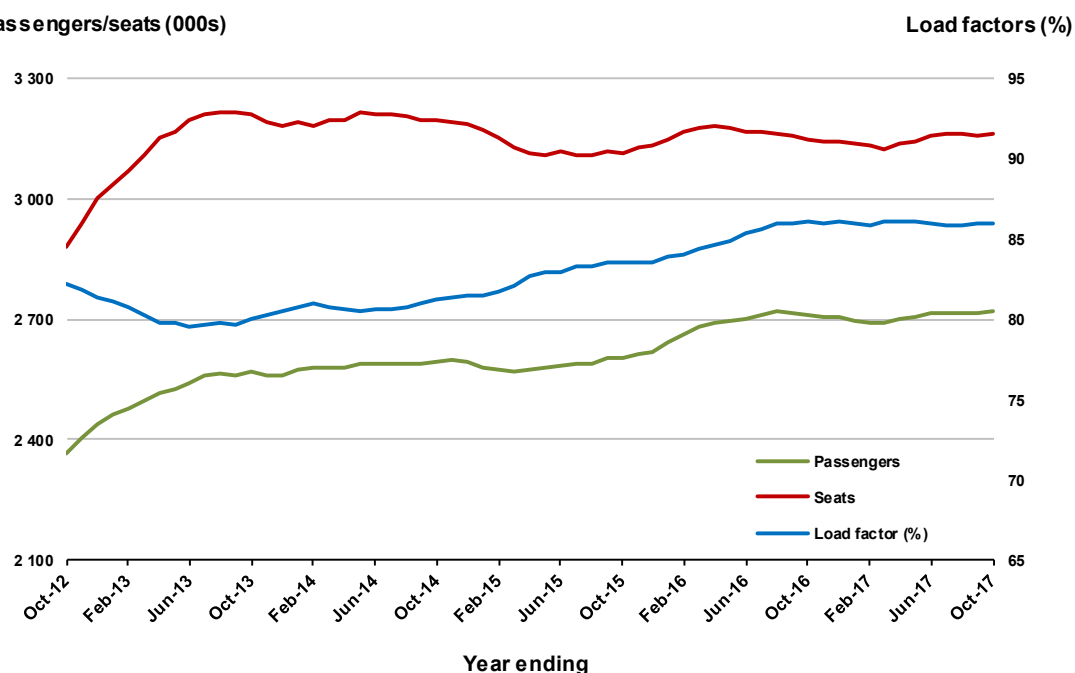


Moving annual data

	YE Oct 2016	YE Oct 2017	% Change
Passengers carried (000s)	2 708.0	2 717.6	0.4
Seats (000s)	3 147.9	3 159.6	0.4
Load factor %	86.0	86.0	0.0 *
Aircraft trips	18 432	18 047	-2.1

* percentage point difference

Passengers/seats (000s)



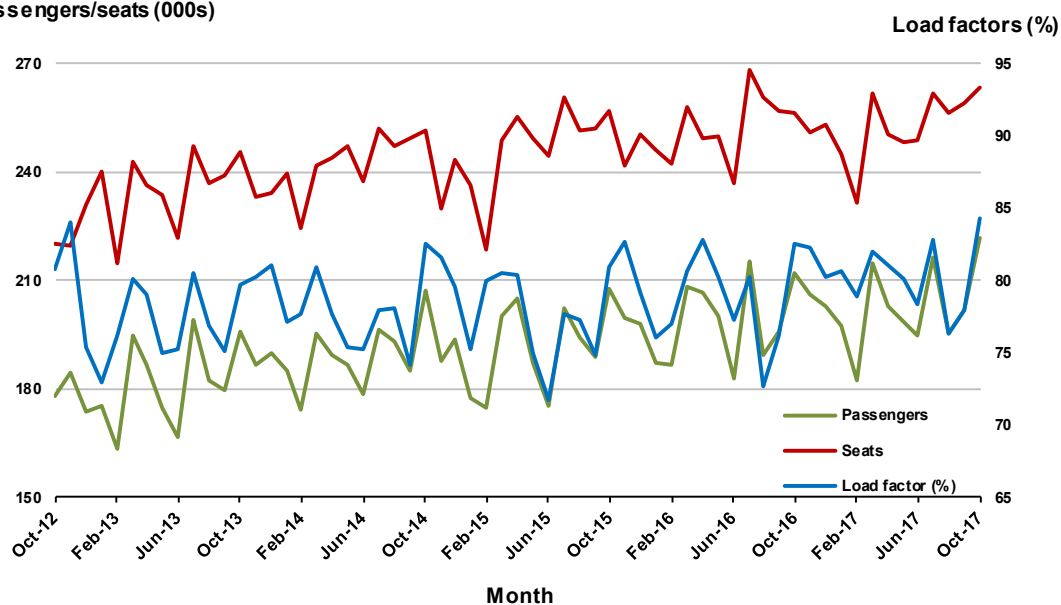
5. Adelaide - Melbourne

Monthly data

	Oct 2016	Oct 2017	% Change
Passengers carried (000s)	211.9	222.0	4.8
Seats (000s)	256.5	263.5	2.7
Load factor %	82.6	84.3	1.7 *
Aircraft trips	1 669	1 651	-1.1

* percentage point difference

Passengers/seats (000s)

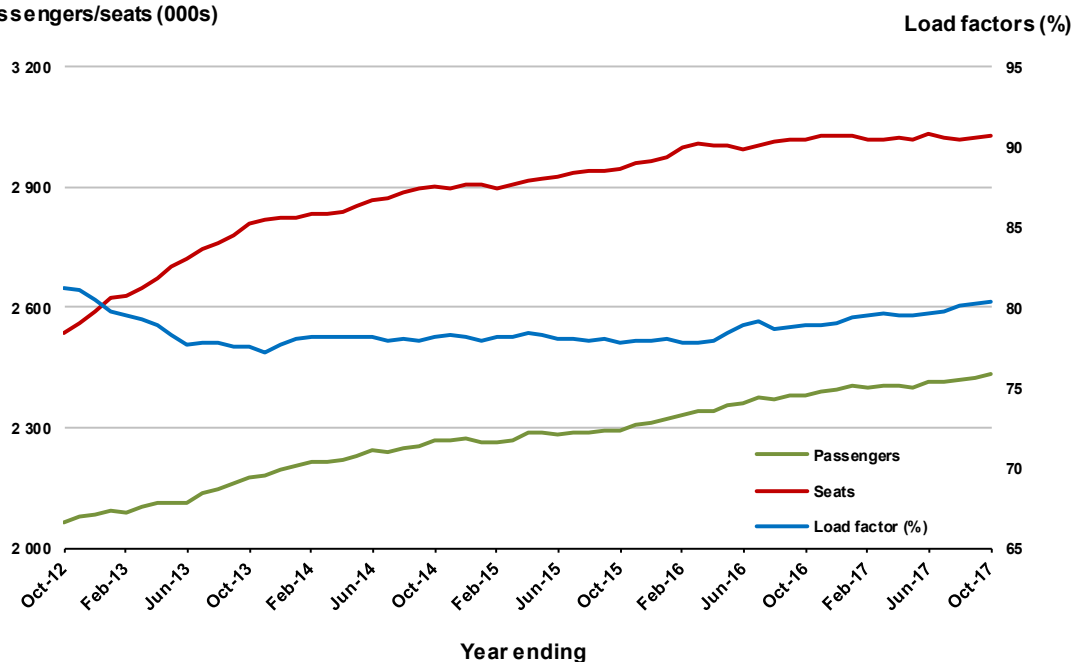


Moving annual data

	YE Oct 2016	YE Oct 2017	% Change
Passengers carried (000s)	2 382.1	2 436.1	2.3
Seats (000s)	3 017.2	3 029.4	0.4
Load factor %	79.0	80.4	1.5 *
Aircraft trips	19 312	19 061	-1.3

* percentage point difference

Passengers/seats (000s)



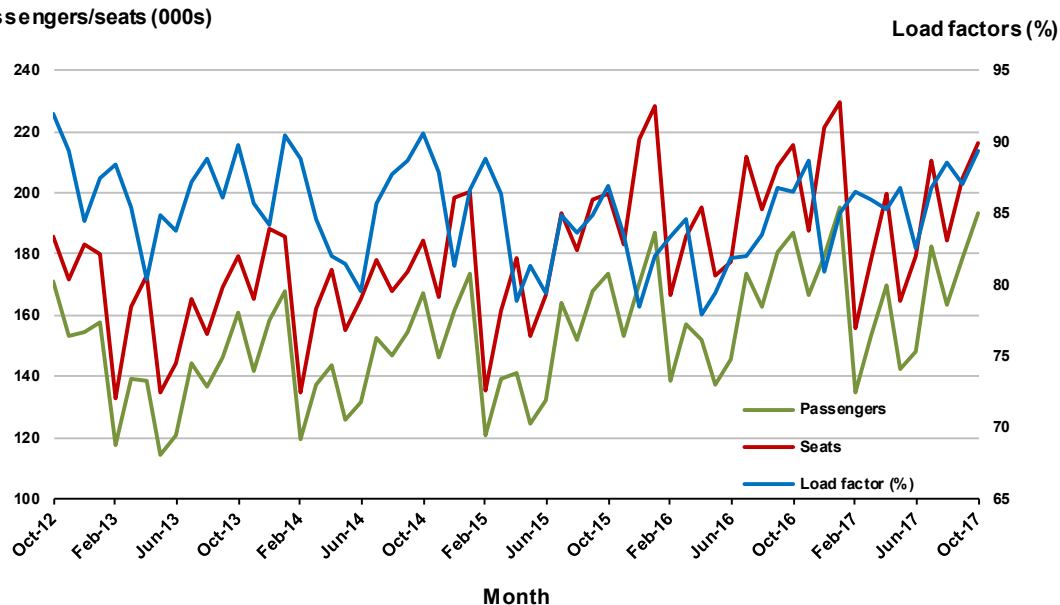
6. Gold Coast - Melbourne

Monthly data

	Oct 2016	Oct 2017	% Change
Passengers carried (000s)	186.8	193.1	3.3
Seats (000s)	215.9	216.1	0.1
Load factor %	86.6	89.3	2.7 *
Aircraft trips	1 144	1 140	-0.3

* percentage point difference

Passengers/seats (000s)

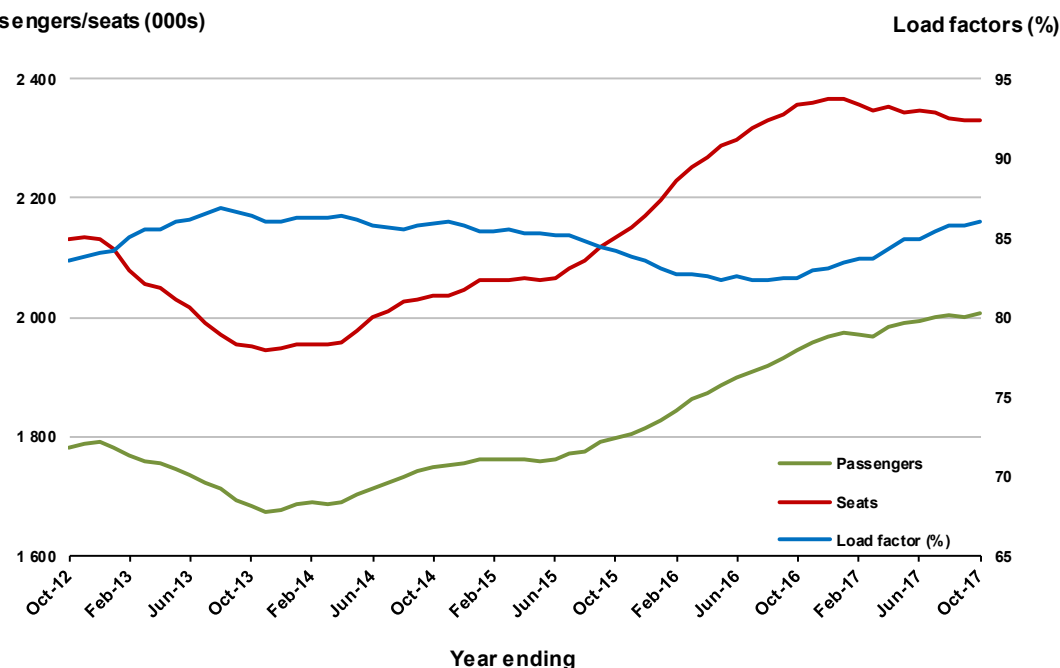


Moving annual data

	YE Oct 2016	YE Oct 2017	% Change
Passengers carried (000s)	1 944.5	2 006.6	3.2
Seats (000s)	2 357.1	2 331.6	-1.1
Load factor %	82.5	86.1	3.6 *
Aircraft trips	12 632	12 433	-1.6

* percentage point difference

Passengers/seats (000s)



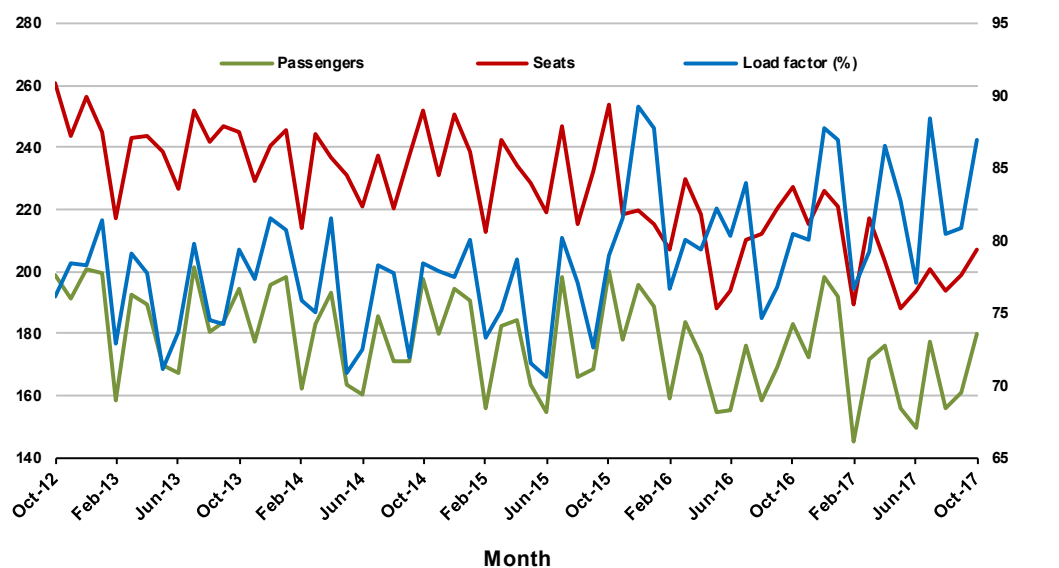
7. Melbourne - Perth

Monthly data

	Oct 2016	Oct 2017	% Change
Passengers carried (000s)	182.8	180.0	-1.5
Seats (000s)	227.3	207.2	-8.9
Load factor %	80.4	86.9	6.5 *
Aircraft trips	1 028	957	-6.9

* percentage point difference

Passengers/seats (000s)

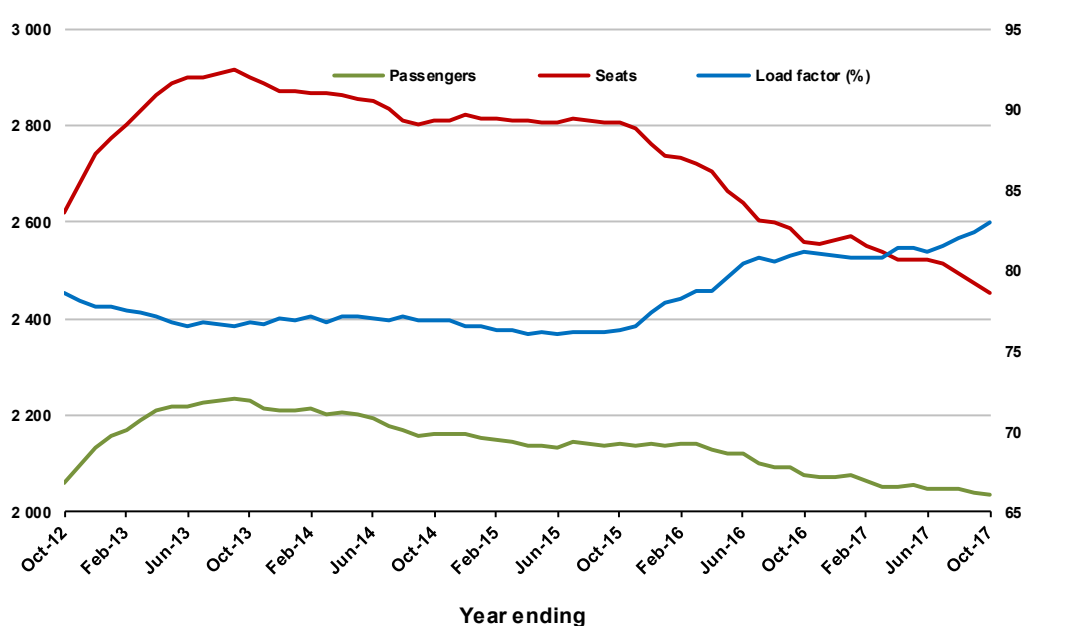


Moving annual data

	YE Oct 2016	YE Oct 2017	% Change
Passengers carried (000s)	2 075.8	2 035.3	-2.0
Seats (000s)	2 559.6	2 453.8	-4.1
Load factor %	81.1	82.9	1.8 *
Aircraft trips	11 597	11 164	-3.7

* percentage point difference

Passengers/seats (000s)

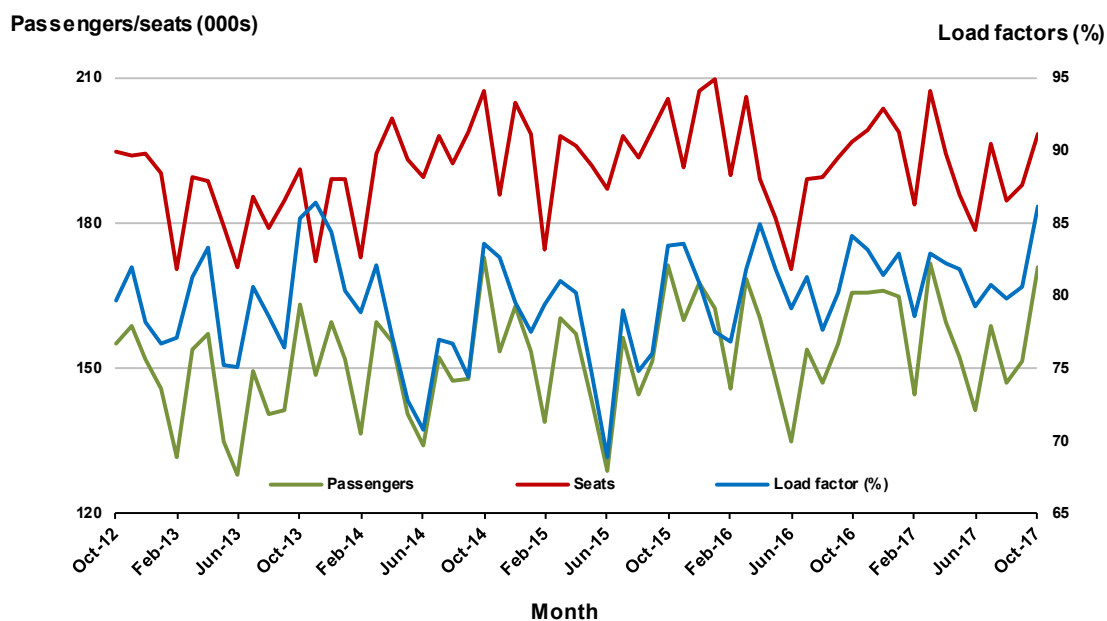


8. Adelaide - Sydney

Monthly data

	Oct 2016	Oct 2017	% Change
Passengers carried (000s)	165.5	170.6	3.0
Seats (000s)	196.9	198.1	0.6
Load factor %	84.1	86.1	2.0 *
Aircraft trips	1 190	1 179	-0.9

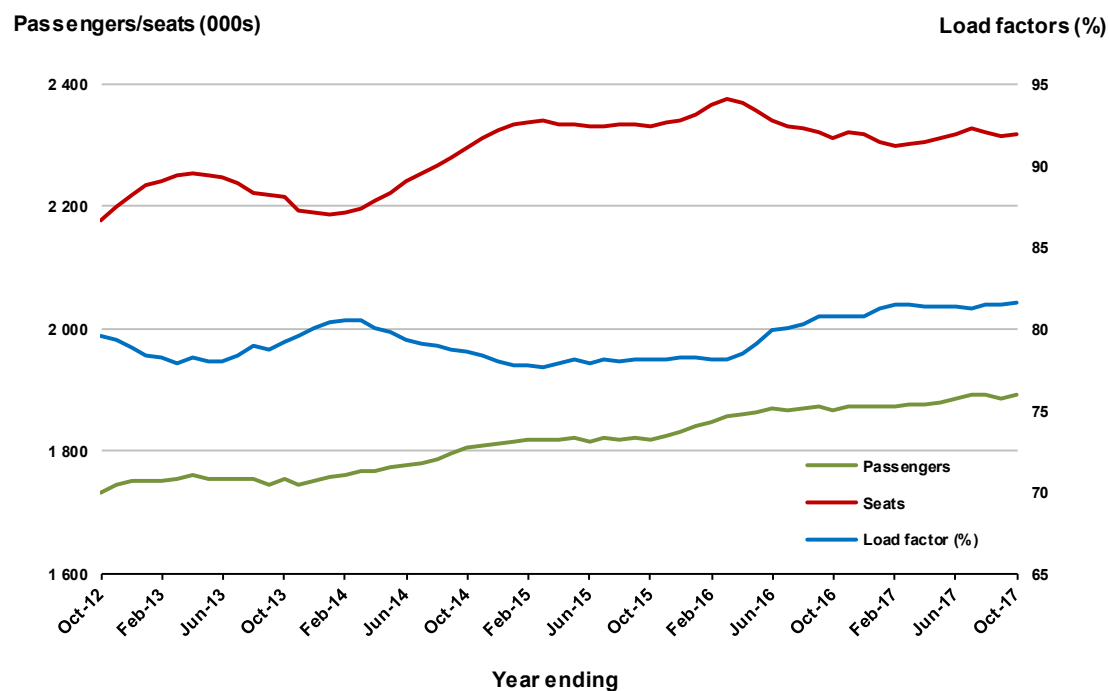
* percentage point difference



Moving annual data

	YE Oct 2016	YE Oct 2017	% Change
Passengers carried (000s)	1 867.9	1 892.3	1.3
Seats (000s)	2 313.0	2 317.2	0.2
Load factor %	80.8	81.7	0.9 *
Aircraft trips	14 081	14 015	-0.5

* percentage point difference



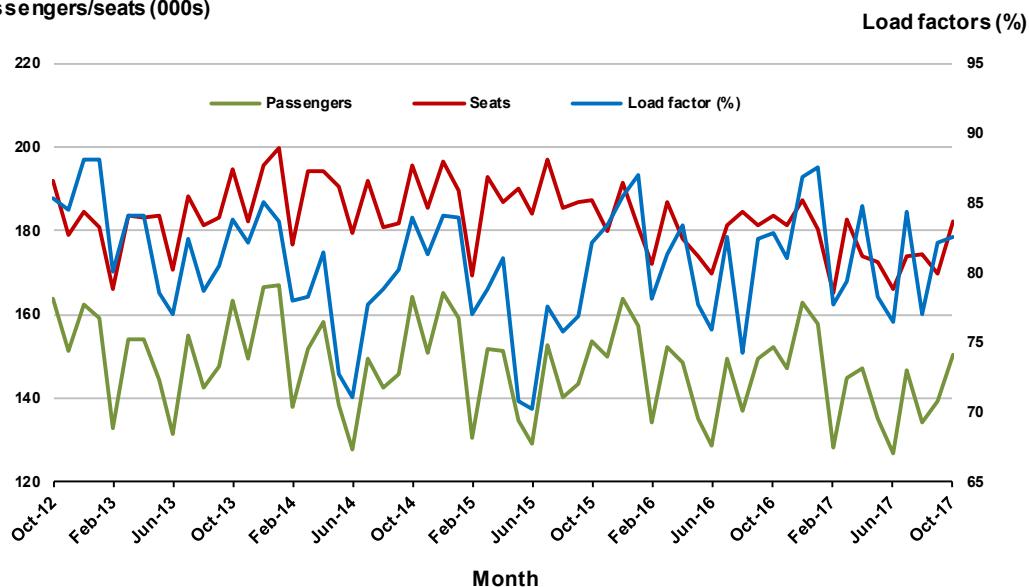
9. Perth - Sydney

Monthly data

	Oct 2016	Oct 2017	% Change
Passengers carried (000s)	152.0	150.1	-1.2
Seats (000s)	183.4	182.0	-0.7
Load factor %	82.9	82.5	-0.4 *
Aircraft trips	787	774	-1.7

* percentage point difference

Passengers/seats (000s)

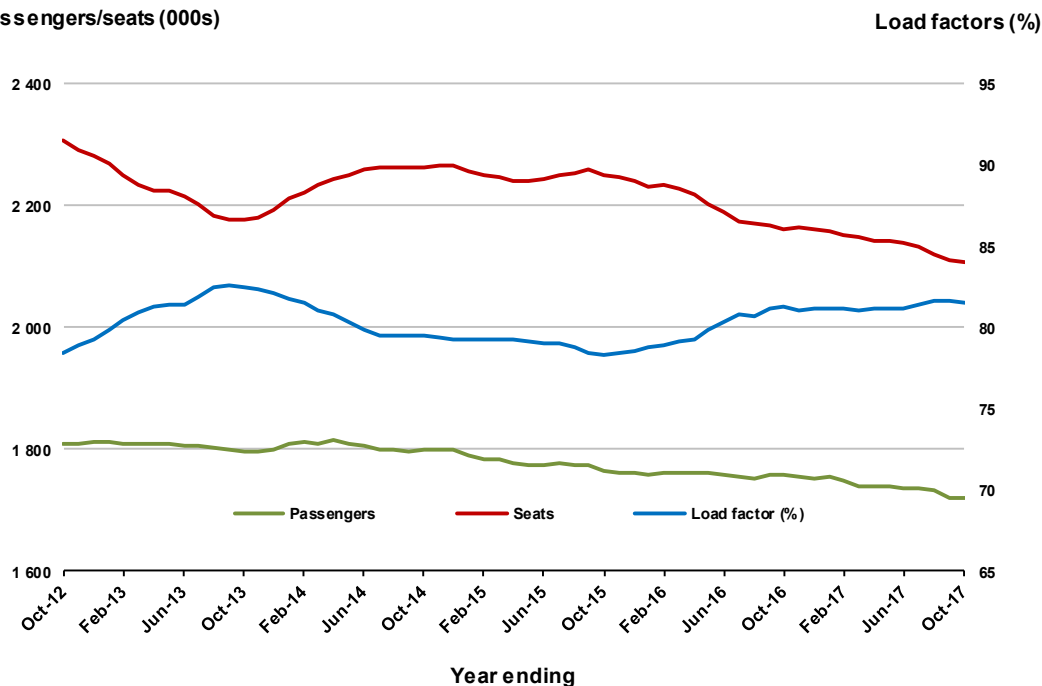


Moving annual data

	YE Oct 2016	YE Oct 2017	% Change
Passengers carried (000s)	1 757.5	1 720.2	-2.1
Seats (000s)	2 163.2	2 108.7	-2.5
Load factor %	81.2	81.6	0.3 *
Aircraft trips	9 163	9 057	-1.2

* percentage point difference

Passengers/seats (000s)

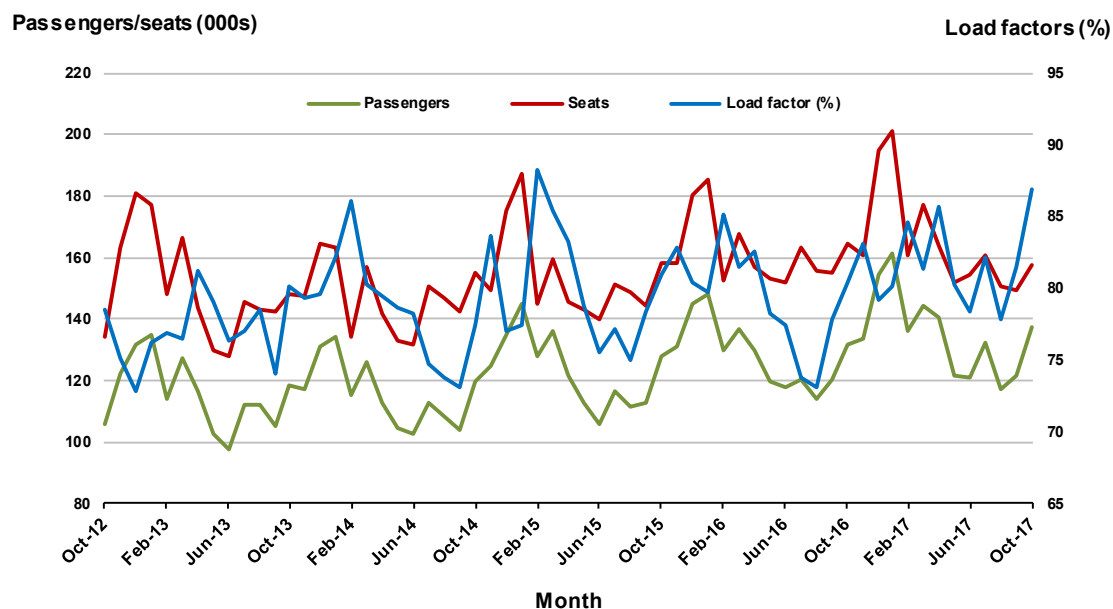


10. Hobart - Melbourne

Monthly data

	Oct 2016	Oct 2017	% Change
Passengers carried (000s)	132.0	137.1	3.9
Seats (000s)	164.2	157.7	-3.9
Load factor %	80.4	86.9	6.5 *
Aircraft trips	1 028	976	-5.1

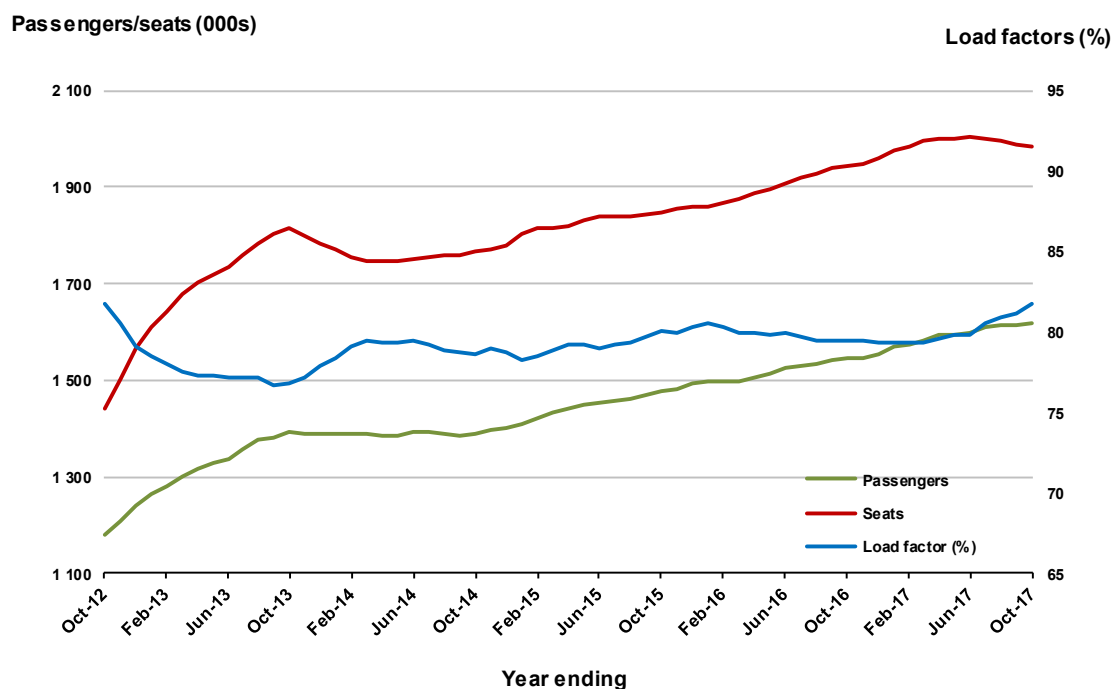
* percentage point difference



Moving annual data

	YE Oct 2016	YE Oct 2017	% Change
Passengers carried (000s)	1 544.0	1 620.0	4.9
Seats (000s)	1 944.4	1 982.8	2.0
Load factor %	79.4	81.7	2.3 *
Aircraft trips	12 217	12 183	-0.3

* percentage point difference



TOP FIFTY REGIONAL AIRPORTS

Table 10: Top fifty regional airports (000s) — passenger movements, monthly

	Airport	Oct 2016	Oct 2017	% Change
1	Cairns	391.6	401.6	2.5
2	Hobart	205.4	217.1	5.7
3	Darwin	163.9	158.9	-3.1
4	Townsville	133.3	144.2	8.2
5	Newcastle	116.3	118.4	1.7
6	Launceston	108.2	110.8	2.4
7	Mackay	68.2	71.9	5.4
8	Alice Springs	58.0	57.3	-1.1
9	Rockhampton	50.9	50.2	-1.4
10	Ballina	47.4	49.6	4.6
11	Proserpine	31.7	43.6	37.7
12	Hamilton Island	53.0	40.2	-24.3
13	Broome	33.8	39.3	16.1
14	Karratha	41.2	38.1	-7.3
15	Coffs Harbour	35.9	37.9	5.4
16	Ayers Rock	33.6	34.7	3.3
17	Port Hedland	29.7	31.4	5.6
18	Newman	24.9	25.8	3.7
19	Gladstone	26.8	23.8	-11.3
20	Mildura	22.1	23.5	6.3
21	Albury	22.1	23.1	4.6
22	Kalgoorlie	20.4	22.2	9.0
23	Dubbo	18.3	21.3	16.0
24	Wagga Wagga	19.5	20.6	5.8
25	Port Macquarie	19.6	20.1	2.4
26	Mount Isa	16.3	18.0	10.9
27	Emerald	17.6	18.0	1.9
28	Tamworth	16.5	17.1	3.9
29	Hervey Bay	15.1	15.9	5.6
30	Bundaberg	15.4	14.9	-3.5
31	Paraburdoo	14.5	14.6	1.2
32	Wellcamp	11.9	14.4	20.8
33	Port Lincoln	15.5	14.3	-8.0
34	Devonport	13.5	14.2	5.5
35	Armidale	11.5	12.5	8.5
36	Geraldton	10.1	9.5	-5.9
37	Kununurra	8.3	9.1	9.2
38	Moranbah	9.9	8.9	-10.0
39	Thursday Island	9.4	8.9	-4.8
40	Gove	8.0	7.9	-1.8
41	Olympic Dam	4.2	7.8	86.4
42	Roma	7.6	7.5	-1.3
43	Weipa	6.9	7.3	5.3
44	Learmonth	6.8	7.1	3.7
45	Mount Gambier	6.6	6.9	4.1
46	Orange	4.8	6.5	35.7
47	Griffith	6.5	6.4	-1.5
48	Whyalla	5.1	6.1	19.9
49	Burnie	5.6	6.1	8.0
50	Norfolk Island	5.8	5.9	2.3
	Total top 50 regional airports	2 029.4	2 091.4	3.1
	Total regional airports	2 148.8	2 216.6	3.2
	Total domestic network	10 485.0	10 840.6	3.4

Note: Airport passenger movement numbers are the sum of passenger arrivals and departures at each airport.

Table 11: Top fifty regional airports (000s) — passenger movements, annual

Airport	YE Oct 2016	YE Oct 2017	% Change
1 Cairns	4 218.2	4 307.4	2.1
2 Hobart	2 356.8	2 481.6	5.3
3 Darwin	1 794.0	1 805.8	0.7
4 Townsville	1 537.7	1 569.0	2.0
5 Launceston	1 330.8	1 335.6	0.4
6 Newcastle	1 220.5	1 280.0	4.9
7 Mackay	802.7	779.8	-2.9
8 Alice Springs	610.5	614.1	0.6
9 Rockhampton	584.6	563.3	-3.6
10 Ballina	477.5	506.0	6.0
11 Hamilton Island	539.2	447.4	-17.0
12 Karratha	513.5	445.6	-13.2
13 Coffs Harbour	389.6	413.2	6.1
14 Proserpine	344.3	399.6	16.1
15 Broome	377.5	377.5	0.0
16 Ayers Rock	353.8	362.8	2.6
17 Port Hedland	361.4	351.1	-2.8
18 Gladstone	346.1	289.8	-16.3
19 Newman	313.1	286.9	-8.4
20 Albury	250.4	265.4	6.0
21 Mildura	246.2	253.4	2.9
22 Kalgoorlie	238.1	250.1	5.0
23 Dubbo	202.6	237.0	17.0
24 Port Macquarie	225.2	231.3	2.7
25 Wagga Wagga	215.5	219.6	1.9
26 Emerald	200.8	199.2	-0.8
27 Mount Isa	189.3	198.9	5.1
28 Tamworth	175.3	198.5	13.2
29 Bundaberg	171.7	176.2	2.6
30 Hervey Bay	169.9	174.8	2.9
31 Port Lincoln	181.1	172.6	-4.7
32 Paraburdoo	164.4	166.7	1.4
33 Wellcamp	109.9	150.9	37.3
34 Devonport	147.5	147.2	-0.2
35 Armidale	129.3	132.6	2.5
36 Moranbah	118.6	120.0	1.2
37 Geraldton	118.4	113.7	-3.9
38 Kununurra	108.4	104.7	-3.5
39 Thursday Island	99.4	100.1	0.7
40 Gove	79.2	83.9	5.9
41 Roma	91.7	83.3	-9.1
42 Learmonth	85.7	82.3	-4.1
43 Mount Gambier	76.1	79.7	4.8
44 Weipa	78.2	77.8	-0.5
45 Griffith	69.4	72.9	5.1
46 Merimbula	62.3	65.8	5.5
47 Olympic Dam	50.8	64.5	26.9
48 Whyalla	63.6	64.0	0.6
49 Orange	51.3	61.6	20.2
50 Burnie	60.3	60.9	1.0
Total top 50 regional airports	22 702.3	23 026.1	1.4
Total regional airports	24 019.7	24 410.4	1.6
Total domestic network	117 550.5	119 388.6	1.6

Note: Airport passenger movement numbers are the sum of passenger arrivals and departures at each airport.

DOMESTIC CHARTER ACTIVITY

Table 12: Charter passengers carried and aircraft trips - annual activity

	YE Oct 2016	YE Oct 2017	% Change
Total domestic charter passengers	2 428 625	2 431 585	0.1
Total domestic charter aircraft trips	45 006	45 758	1.7

Note: Helicopter, joyflights and sightseeing charter flights not included.

Table 13: Charter passengers carried and aircraft trips - monthly activity

	Oct 2016	Oct 2017	% Change
Total domestic charter passengers	190 849	209 787	9.9
Total domestic charter aircraft trips	3 517	3 983	13.2

Note: Helicopter, joyflights and sightseeing charter flights not included.

Table 14: Domestic airports - charter activity - annual

	YE Oct 2016	YE Oct 2017	% Change
Total domestic charter passenger movements	4 857 250	4 863 170	0.1
Total domestic charter aircraft movements	90 012	91 516	1.7
Perth airport charter passenger movements	1 872 769	1 860 470	-0.7
Perth airport charter aircraft movements	31 331	31 557	0.7

Note: Helicopter, joyflights and sightseeing charter flights not included.

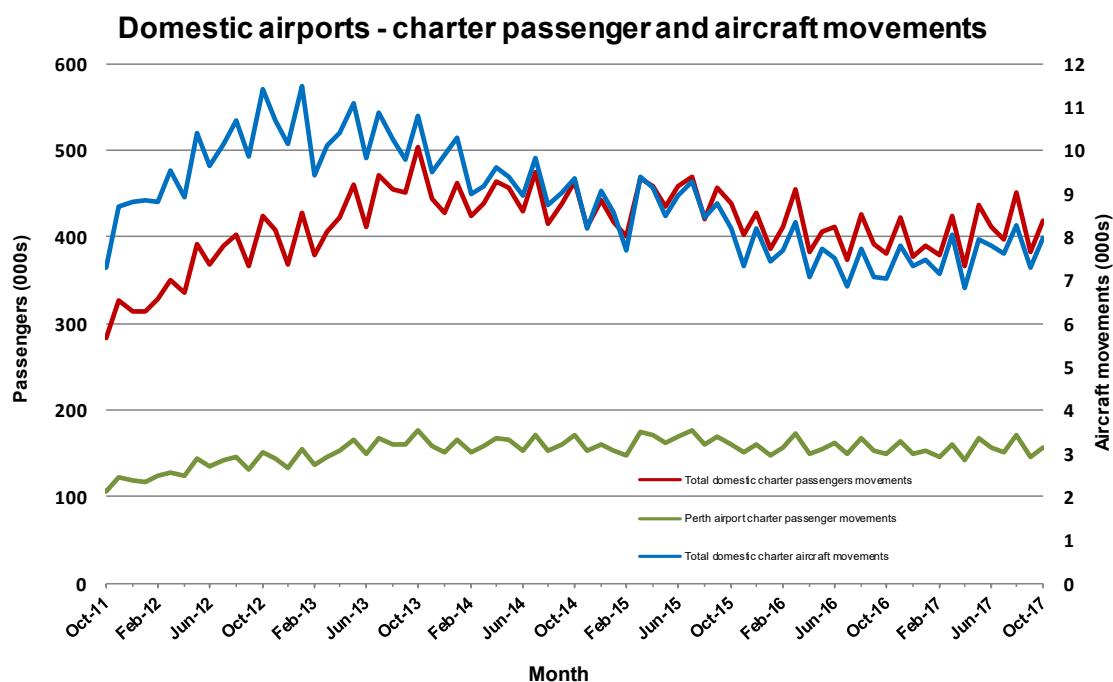
Charter passenger and aircraft movement numbers are the sum of arrivals and departures at each airport.

Table 15: Domestic airports - charter activity - monthly

	Oct 2016	Oct 2017	% Change
Total domestic charter passenger movements	381 698	419 574	9.9
Total domestic charter aircraft movements	7 034	7 966	13.2
Perth airport charter passenger movements	149 186	156 394	4.8
Perth airport charter aircraft movements	2 520	2 609	3.5

Note: Helicopter, joyflights and sightseeing charter flights not included.

Charter passenger and aircraft movement numbers are the sum of arrivals and departures at each airport.



DEFINITIONS

Aircraft Trips	The number of flight stages. A return flight counts as two aircraft trips.
Airport Movements	Airport movements (passenger and cargo) are measured once on arrival and once on departure. Each domestic trip generates two movements at airports. For example, a trip from Melbourne to Sydney will be counted twice, as a passenger departure at Melbourne and as a passenger arrival at Sydney. At the national level, the sum of all domestic airport traffic will therefore be equal to twice the number of trips undertaken.
Available Seat Kilometres (ASKs)	Calculated by multiplying the number of seats available on each flight stage, by the distance in kilometres between the ports. The distances used are Great Circle Distances.
City-Pair	The ports shown make up the city-pair route. Passenger movements shown for a city pair reflect total traffic in both directions.
Flight Stage	The operation of an aircraft from take-off to landing.
Load Factor	The total revenue passenger kilometres performed as a percentage of the total available seat kilometres.
Passengers Carried	Revenue passengers carried.
Regular Public Transport Services (RPT)	All air service operations in which aircraft are available for the transport of members of the public and are conducted in accordance with fixed schedules. It does not include charter or other non-scheduled operations.
Revenue Passengers	All passengers paying any fare. Frequent flyer redemption travellers are regarded as revenue passengers.
Revenue Passenger Kilometres (RPKs)	Calculated by multiplying the number of revenue passengers travelling on each flight stage, by the distance in kilometres between the ports. The distances used are Great Circle Distances.
Traffic on board by stages	The total of all traffic (revenue passengers) on each flight stage between two directly connected airports.
..	Data not included
NA	Not applicable