



Australian Government

Department of Infrastructure, Regional Development and Cities

Bureau of Infrastructure, Transport and Regional Economics

STATISTICAL REPORT



Aviation

Domestic aviation activity

November 2018

© Commonwealth of Australia 2019

ISSN: 1832 - 1968

Ownership of intellectual property rights in this publication

Unless otherwise noted, copyright (and any other intellectual property rights, if any) in this publication is owned by the Commonwealth of Australia (referred to below as the Commonwealth).

Disclaimer

The material contained in this publication is made available on the understanding that the Commonwealth is not providing professional advice, and that users exercise their own skill and care with respect to its use, and seek independent advice if necessary.

The Commonwealth makes no representations or warranties as to the contents or accuracy of the information contained in this publication. To the extent permitted by law, the Commonwealth disclaims liability to any person or organisation in respect of anything done, or omitted to be done, in reliance upon information contained in this publication.

Creative Commons licence

With the exception of (a) the Coat of Arms; and (b) the Department of Infrastructure, Regional Development and Cities' photos and graphics, copyright in this publication is licensed under a Creative Commons Attribution 3.0 Australia Licence.

Creative Commons Attribution 3.0 Australia Licence is a standard form licence agreement that allows you to copy, communicate and adapt this publication provided that you attribute the work to the Commonwealth and abide by the other licence terms. A summary of the licence terms is available from <http://creativecommons.org/licenses/by/3.0/au/deed.en>.

The full licence terms are available from <http://creativecommons.org/licenses/by/3.0/au/legalcode>.

Use of the Coat of Arms

The Department of the Prime Minister and Cabinet sets the terms under which the Coat of Arms is used. Please refer to the Department's Commonwealth Coat of Arms and Government branding web page <http://www.dpmc.gov.au/guidelines/index.cfm#brand> and, in particular, the Guidelines on the use of the Commonwealth Coat of Arms publication.

An appropriate citation for this report is:

Bureau of Infrastructure, Transport and Regional Economics (BITRE), 2019, Domestic aviation activity, Statistical Report, BITRE, Canberra ACT.

Contact us

This publication is available in PDF format. All other rights are reserved, including in relation to any Departmental logos or trade marks which may exist. For enquiries regarding the licence and any use of this publication, please contact:

Bureau of Infrastructure, Transport and Regional Economics (BITRE)
Department of Infrastructure, Regional Development and Cities
GPO Box 501, Canberra ACT 2601, Australia
Telephone: (international) +61 2 6274 7210
Fax: (international) +61 2 6274 6855
Email: bitre@infrastructure.gov.au
Website: www.bitre.gov.au

Inquiries

Should you require additional information about the statistics contained in this publication:

Nebojsa Pavlovic

Telephone (02) 6274 6817 or Facsimile (02) 6274 7727

Electronic mail: AVSTATS@infrastructure.gov.au

Nebojsa.Pavlovic@infrastructure.gov.au

Web site: <http://www.bitre.gov.au/statistics/aviation/domestic.aspx>

FOREWORD

This report provides an overview of domestic (including charter) commercial aviation activity in Australia for the month of November 2018.

The data cover revenue passengers carried by Australian-registered operators of scheduled regular public transport services over Australian flight stages and fixed-wing charter operators. These estimates include passengers carried between domestic airports on international flights operated by these carriers. The passengers carried refer to traffic on board by stages.

Estimates of passengers and aircraft movements for charter aviation are included in this publication, where BITRE confidentiality standards are met.

Individual routes shown are restricted to those with an average exceeding 8 000 passengers per month over the previous six months where two or more airlines operate in competition. For the month of November 2018, there were 65 such routes.

Information on the total network for the month of November 2018 and on the Regular Public Transport (RPT) network for the month of November 2018 is presented on page 2, with estimates for the year ended November 2018 presented on page 3.

Detailed information on the 65 individual routes can be found in the RPT summary pages 4-13 of this publication.

The top ten airports in terms of RPT passenger movements are shown on page 14.

Data on domestic RPT cargo movements at the top five cargo airports are provided on page 15. The table includes cargo carried on passenger flights operated by the Qantas group (including Jetstar), Virgin Australia, Air North and Skippers as well as the cargo carried by dedicated freighter aircraft operated by Qantas Freight, Toll Priority and Virgin Australia Cargo.

The long-term trends for the top ten competitive RPT routes are presented graphically on pages 16-25.

Domestic RPT passenger movements at the top 50 regional airports are presented on pages 26-27.

Tables providing estimates of domestic charter aviation activity are shown on page 28. BITRE confidentiality standards restrict publication of detailed estimates for individual Australian airports, with the exception of Perth Airport.

A list of definitions can be found on page 29.

This report was prepared by the Aviation Statistics Section of the Bureau of Infrastructure, Transport and Regional Economics with data provided by airlines.

Estimates are included where data were not available and data presented in this publication may contain revisions to previously published data.

Where figures have been rounded, discrepancies may occur between sums of component items and totals, and in percentage changes which are derived from figures prior to rounding.

CONTENTS

Highlights	1
Total network	2
RPT network	2
Top competitive routes	4
Top ten airports – passenger movements	14
Top five airports – cargo movements	15
Top ten routes	16
1. Melbourne – Sydney	16
2. Brisbane – Sydney.....	17
3. Brisbane – Melbourne	18
4. Gold Coast – Sydney	19
5. Adelaide – Melbourne	20
6. Melbourne – Perth	21
7. Gold Coast – Melbourne	22
8. Adelaide – Sydney	23
9. Perth – Sydney	24
10. Hobart – Melbourne	25
Top fifty regional airports	26
Domestic charter activity	28
Definitions	29

This page is intentionally left blank.

HIGHLIGHTS

There were 5.45 million passengers carried on Australian domestic commercial aviation (including charter operations) in November 2018, an increase of 0.1 per cent on November 2017. For the month of November 2018 there were 56 566 aircraft trips, a decrease of 2.8 per cent compared to November 2017.

5.23 million passengers were carried on RPT flights in November 2018, an increase of 0.2 per cent on November 2017.

For the year ending November 2018 there were 61.18 million RPT passengers, an increase of 2.2 per cent on the year ending November 2017.

RPT revenue passenger kilometres (RPKs) performed were 6.00 billion for the month, up 0.3 per cent compared with November 2017. Capacity, measured by available seat kilometres (ASKs), decreased by 1.3 per cent compared with November 2017 to a total of 7.21 billion.

With RPT passenger traffic increasing and capacity decreasing, the industry wide load factor (RPKs/ASKs) increased from 82.0 per cent in November 2017 to 83.3 per cent in November 2018, the highest monthly load factor recorded since October 2009. Load factors on individual routes increased on 37 of the 65 RPT routes.

For the month of November 2018, Melbourne – Sydney remained Australia's busiest RPT route with 805 760 passengers, a decrease of 3.4 per cent compared with November 2017. It was followed by Brisbane – Sydney with 423 397 passengers (up 2.3 per cent) and Brisbane – Melbourne with 315 431 passengers (up 2.2 per cent).

The greatest percentage increase in RPT passenger numbers, compared to November 2017, was on the Kalgoorlie – Perth route (up 18.2 per cent). There were large increases on a number of other routes, including Sydney – Townsville (up 17.2 per cent) and Brisbane – Hobart (up 11.6 per cent).

Routes with traffic decreases in November 2018 compared with November 2017 included Proserpine – Sydney (down 20.2 per cent), Brisbane – Darwin (down 19.4 per cent), Darwin – Perth (down 15.4 per cent) and Brisbane – Proserpine (down 13.3 per cent).

In November 2018, Sydney remained Australia's busiest domestic airport with 2.38 million passenger movements, followed by Melbourne with 2.24 million passenger movements and Brisbane with 1.49 million passenger movements.

Total cargo movements at Australian airports on domestic RPT flights were 42.2 thousand tonnes in November 2018, an increase of 1.9 per cent compared with November 2017.

In November 2018, there were 2.09 million domestic passenger movements through regional airports, 0.3 per cent higher than in November 2017. Out of the top 50 regional airports, the strongest growth was at Griffith airport (up 30.8 per cent on November 2017), while the largest decrease was recorded at Proserpine airport (down 13.2 per cent on November 2017).

Fixed-wing charter operators carried 217.7 thousand passengers in November 2018, a decrease of 0.4 per cent on November 2017. Perth Airport accounted for 38.2 per cent of all charter passengers in Australia.

TOTAL NETWORK

Summary of monthly commercial aviation activity

	Nov 2017	Nov 2018	% Change
Total passengers carried (millions)	5.44	5.45	0.1
Aircraft trips (000s)	58.2	56.6	-2.8

Note: Regular Public Transport and charter aviation activity
Helicopter, joyflights and sightseeing charter flights not included.

RPT NETWORK

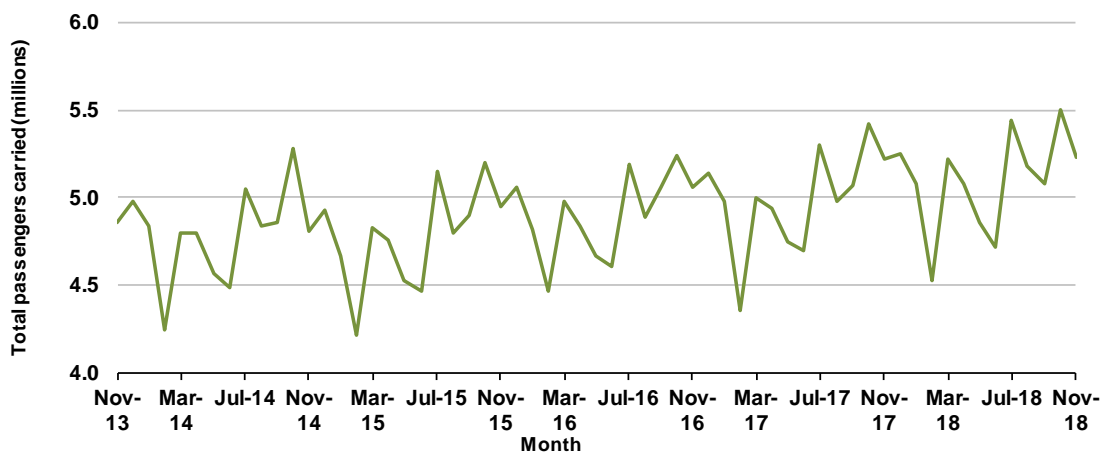
Summary of monthly RPT activity

	Nov 2017	Nov 2018	% Change
Total passengers carried (millions)	5.22	5.23	0.2
Revenue passenger kilometres (billions)	5.99	6.00	0.3
Available seats (millions)	6.49	6.39	-1.6
Available seat kilometres (billions)	7.30	7.21	-1.3
Load factor %	82.0	83.3	1.3 *
Aircraft trips (000s)	54.1	52.8	-2.3

* percentage point difference

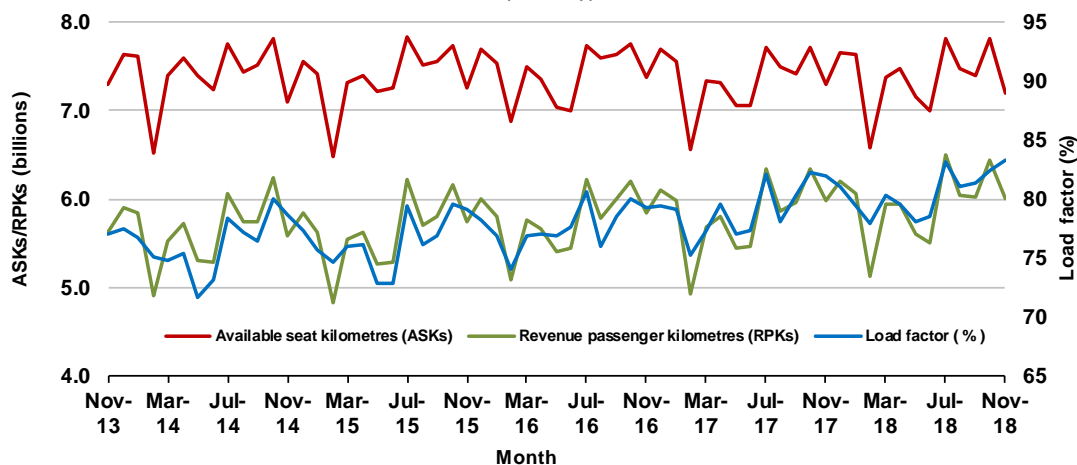
Domestic RPT passenger traffic

(monthly)



RPT Network utilisation

(monthly)



TOTAL NETWORK

Summary of annual commercial aviation activity

	YE Nov 2017	YE Nov 2018	% Change
Total passengers carried (millions)	62.31	63.66	2.2
Aircraft trips (000s)	685.7	674.3	-1.7

Note: Regular Public Transport and charter aviation activity
Helicopter, joyflights and sightseeing charter flights not included.

RPT NETWORK

Summary of annual RPT activity

	YE Nov 2017	YE Nov 2018	% Change
Total passengers carried (millions)	59.86	61.18	2.2
Revenue passenger kilometres (billions)	69.92	71.39	2.1
Available seats (millions)	77.14	77.47	0.4
Available seat kilometres (billions)	88.24	88.57	0.4
Load factor %	79.2	80.6	1.4 *
Aircraft trips (000s)	639.2	630.1	-1.4

* percentage point difference

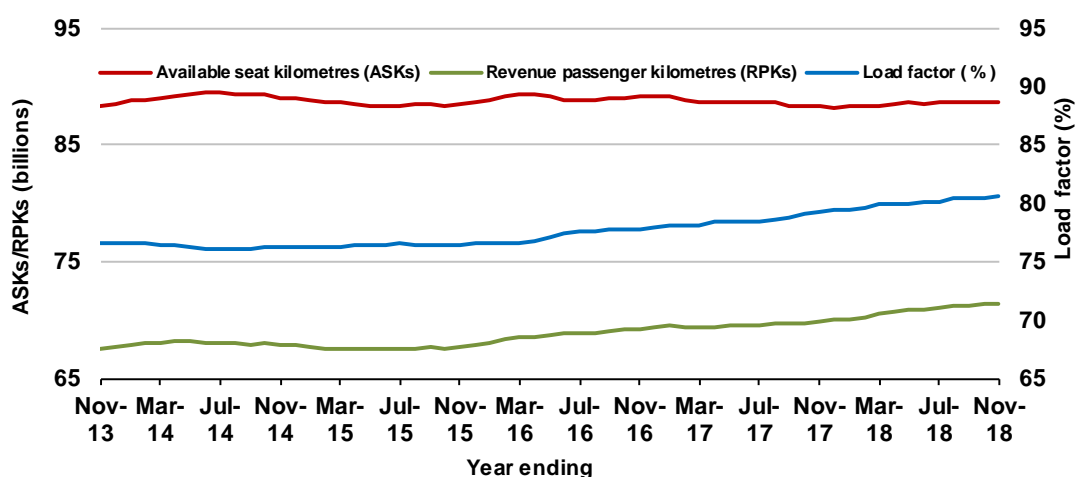
Domestic RPT passenger traffic

(moving annual totals)



RPT Network utilisation

(moving annual totals)



TOP COMPETITIVE ROUTES

Table 1: Passengers carried (000s) — annual activity

	City-Pair	YE Nov 2017	YE Nov 2018	% Change
1	Melbourne - Sydney	9 071.2	9 261.7	2.1
2	Brisbane - Sydney	4 741.0	4 830.3	1.9
3	Brisbane - Melbourne	3 543.6	3 575.6	0.9
4	Gold Coast - Sydney	2 731.9	2 736.2	0.2
5	Adelaide - Melbourne	2 443.0	2 504.9	2.5
6	Melbourne - Perth	2 038.9	2 111.1	3.5
7	Gold Coast - Melbourne	2 009.4	2 062.1	2.6
8	Adelaide - Sydney	1 893.8	1 913.9	1.1
9	Perth - Sydney	1 719.4	1 724.4	0.3
10	Hobart - Melbourne	1 628.1	1 650.0	1.3
11	Brisbane - Cairns	1 380.2	1 329.1	-3.7
12	Canberra - Melbourne	1 128.3	1 177.4	4.4
13	Cairns - Sydney	1 126.8	1 136.9	0.9
14	Brisbane - Townsville	958.1	998.7	4.2
15	Brisbane - Perth	969.0	964.4	-0.5
16	Canberra - Sydney	950.7	957.8	0.7
17	Launceston - Melbourne	919.4	956.9	4.1
18	Cairns - Melbourne	841.3	854.6	1.6
19	Adelaide - Brisbane	842.8	852.0	1.1
20	Brisbane - Mackay	694.0	741.7	6.9
21	Hobart - Sydney	653.8	703.4	7.6
22	Brisbane - Canberra	592.4	644.4	8.8
23	Adelaide - Perth	615.0	635.2	3.3
24	Sunshine Coast - Sydney	576.5	626.0	8.6
25	Brisbane - Newcastle	589.8	585.2	-0.8
26	Melbourne - Sunshine Coast	480.0	544.9	13.5
27	Brisbane - Rockhampton	529.0	513.0	-3.0
28	Melbourne - Newcastle	473.7	492.4	3.9
29	Karratha - Perth	439.2	441.5	0.5
30	Ballina - Sydney	401.2	435.4	8.5
31	Brisbane - Darwin	407.3	378.6	-7.1
32	Perth - Port Hedland	339.2	360.8	6.3
33	Coffs Harbour - Sydney	347.2	341.0	-1.8
34	Broome - Perth	308.0	340.1	10.4
35	Darwin - Sydney	321.7	313.3	-2.6
36	Darwin - Melbourne	307.3	307.5	0.1
37	Newman - Perth	284.7	304.3	6.9
38	Launceston - Sydney	287.1	289.1	0.7
39	Kalgoorlie - Perth	241.1	275.3	14.2
40	Brisbane - Proserpine	255.3	255.2	-0.1
41	Brisbane - Gladstone	285.5	254.0	-11.0
42	Brisbane - Hobart	210.4	226.4	7.6
43	Albury - Sydney	224.7	225.8	0.5
44	Melbourne - Mildura	211.0	225.8	7.0
45	Adelaide - Gold Coast	211.9	221.4	4.5
46	Hamilton Island - Sydney	201.0	205.7	2.3
47	Darwin - Perth	197.3	196.3	-0.5
48	Ayers Rock - Sydney	190.3	196.1	3.0
49	Adelaide - Canberra	181.0	195.6	8.1
50	Brisbane - Emerald	198.8	195.2	-1.8

continued

Table 1: (continued) Passengers carried (000s) — annual activity

	City-Pair	YE Nov 2017	YE Nov 2018	% Change
51	Dubbo - Sydney	191.7	189.4	-1.2
52	Port Macquarie - Sydney	192.7	187.7	-2.6
53	Sydney - Wagga Wagga	184.3	181.5	-1.5
54	Sydney - Tamworth	181.4	175.5	-3.3
55	Adelaide - Port Lincoln	172.5	169.8	-1.6
56	Sydney - Townsville	159.8	168.7	5.5
57	Brisbane - Bundaberg	175.1	164.0	-6.4
58	Cairns - Townsville	142.1	149.2	5.0
59	Proserpine - Sydney	35.0	137.0	NA (a)
60	Adelaide - Alice Springs	124.3	129.6	4.3
61	Brisbane - Mount Isa	125.4	129.4	3.2
62	Brisbane - Hamilton Island	130.1	123.6	-5.0
63	Armidale - Sydney	126.8	122.3	-3.5
64	Geraldton - Perth	112.6	113.2	0.5
65	Alice Springs - Darwin	118.8	110.7	-6.8
	Total domestic network	59 862.5	61 185.0	2.2

(a) Proserpine - Sydney route included from September 2017, prior data not shown.

Table 2: Passengers carried (000s) — monthly activity

	City-Pair	Nov 2017	Nov 2018	% Change
1	Melbourne - Sydney	834.3	805.8	-3.4
2	Brisbane - Sydney	414.0	423.4	2.3
3	Brisbane - Melbourne	308.6	315.4	2.2
4	Gold Coast - Sydney	237.2	222.0	-6.4
5	Adelaide - Melbourne	213.2	219.3	2.9
6	Melbourne - Perth	175.9	180.7	2.7
7	Gold Coast - Melbourne	169.1	173.1	2.4
8	Adelaide - Sydney	167.0	166.2	-0.5
9	Perth - Sydney	146.1	148.4	1.6
10	Hobart - Melbourne	141.6	144.5	2.0
11	Canberra - Melbourne	104.0	110.5	6.2
12	Brisbane - Cairns	117.9	107.2	-9.1
13	Cairns - Sydney	92.9	92.6	-0.3
14	Canberra - Sydney	87.9	86.4	-1.7
15	Launceston - Melbourne	81.3	82.4	1.4
16	Brisbane - Perth	83.0	80.3	-3.2
17	Brisbane - Townsville	78.5	80.1	2.0
18	Adelaide - Brisbane	75.0	74.3	-0.9
19	Cairns - Melbourne	66.5	66.4	-0.2
20	Brisbane - Mackay	59.3	61.8	4.2
21	Hobart - Sydney	58.7	61.8	5.2
22	Brisbane - Canberra	51.9	56.0	7.8
23	Sunshine Coast - Sydney	53.0	55.1	4.0
24	Adelaide - Perth	53.6	54.3	1.3
25	Brisbane - Newcastle	52.5	54.0	2.9
26	Melbourne - Sunshine Coast	44.2	47.5	7.6
27	Brisbane - Rockhampton	43.0	43.3	0.6
28	Melbourne - Newcastle	41.0	40.9	-0.2
29	Karratha - Perth	37.4	37.8	1.0
30	Ballina - Sydney	32.4	32.6	0.7
31	Coffs Harbour - Sydney	32.9	31.5	-4.1
32	Perth - Port Hedland	28.7	31.2	8.7
33	Newman - Perth	25.9	26.9	3.6
34	Broome - Perth	26.2	26.1	-0.4
35	Kalgoorlie - Perth	21.9	25.9	18.2
36	Brisbane - Darwin	30.5	24.6	-19.4
37	Launceston - Sydney	24.3	23.4	-3.4
38	Brisbane - Gladstone	22.3	21.6	-3.0
39	Darwin - Melbourne	21.6	21.5	-0.3
40	Darwin - Sydney	22.3	21.5	-3.6
41	Brisbane - Proserpine	23.6	20.5	-13.3
42	Brisbane - Hobart	18.0	20.1	11.6
43	Melbourne - Mildura	18.3	19.9	8.7
44	Albury - Sydney	19.2	19.8	3.2
45	Hamilton Island - Sydney	18.2	18.2	0.1
46	Adelaide - Canberra	18.0	17.6	-2.4
47	Adelaide - Gold Coast	17.8	16.8	-5.6
48	Brisbane - Emerald	17.0	16.5	-2.7
49	Dubbo - Sydney	17.0	16.4	-3.7
50	Port Macquarie - Sydney	16.6	16.2	-2.4

continued

Table 2: (continued) Passengers carried (000s) — monthly activity

	City-Pair	Nov 2017	Nov 2018	% Change
51	Sydney - Wagga Wagga	16.3	16.1	-1.7
52	Ayers Rock - Sydney	15.7	15.5	-1.2
53	Sydney - Tamworth	14.9	14.7	-1.4
54	Adelaide - Port Lincoln	14.7	14.7	-0.4
55	Sydney - Townsville	12.0	14.1	17.2
56	Darwin - Perth	16.1	13.6	-15.4
57	Brisbane - Bundaberg	13.9	13.5	-3.0
58	Cairns - Townsville	12.6	12.9	1.9
59	Brisbane - Hamilton Island	10.9	11.2	3.1
60	Adelaide - Alice Springs	10.9	11.1	1.7
61	Armidale - Sydney	11.6	10.9	-6.0
62	Brisbane - Mount Isa	11.1	10.9	-1.8
63	Geraldton - Perth	9.3	10.0	8.0
64	Proserpine - Sydney	12.2	9.7	-20.2
65	Alice Springs - Darwin	10.2	9.2	-9.9
	Total domestic network	5 224.3	5 232.5	0.2

Table 3: Available seats (000s) — monthly activity

	City-Pair	Nov 2017	Nov 2018	% Change
1	Melbourne - Sydney	939.5	901.6	-4.0
2	Brisbane - Sydney	491.2	484.0	-1.5
3	Brisbane - Melbourne	367.6	358.5	-2.5
4	Gold Coast - Sydney	266.3	250.8	-5.9
5	Adelaide - Melbourne	260.1	258.0	-0.8
6	Melbourne - Perth	199.6	208.6	4.5
7	Gold Coast - Melbourne	188.2	189.6	0.7
8	Adelaide - Sydney	198.2	187.3	-5.5
9	Perth - Sydney	171.9	171.2	-0.4
10	Hobart - Melbourne	164.2	177.5	8.1
11	Canberra - Melbourne	151.0	152.7	1.1
12	Brisbane - Cairns	131.4	117.9	-10.3
13	Cairns - Sydney	101.3	101.1	-0.3
14	Canberra - Sydney	114.9	109.8	-4.5
15	Launceston - Melbourne	100.4	99.5	-0.8
16	Brisbane - Perth	99.8	95.2	-4.7
17	Brisbane - Townsville	102.9	100.7	-2.1
18	Adelaide - Brisbane	97.6	87.4	-10.4
19	Cairns - Melbourne	74.2	72.5	-2.3
20	Brisbane - Mackay	73.2	78.6	7.3
21	Hobart - Sydney	66.4	72.7	9.4
22	Brisbane - Canberra	72.1	69.3	-4.0
23	Sunshine Coast - Sydney	64.6	63.8	-1.3
24	Adelaide - Perth	69.4	69.3	-0.2
25	Brisbane - Newcastle	70.4	72.3	2.7
26	Melbourne - Sunshine Coast	51.0	55.0	7.9
27	Brisbane - Rockhampton	53.1	56.1	5.6
28	Melbourne - Newcastle	47.0	47.4	0.9
29	Karratha - Perth	56.6	58.5	3.3
30	Ballina - Sydney	35.9	36.0	0.2
31	Coffs Harbour - Sydney	43.5	42.1	-3.1
32	Perth - Port Hedland	44.7	46.7	4.6
33	Newman - Perth	44.6	45.1	1.2
34	Broome - Perth	36.6	32.1	-12.2
35	Kalgoorlie - Perth	34.8	41.2	18.2
36	Brisbane - Darwin	39.2	31.1	-20.5
37	Launceston - Sydney	27.4	27.0	-1.4
38	Brisbane - Gladstone	30.0	31.4	4.7
39	Darwin - Melbourne	28.6	29.1	1.6
40	Darwin - Sydney	33.0	32.9	-0.3
41	Brisbane - Proserpine	28.6	26.4	-7.4
42	Brisbane - Hobart	21.3	24.3	13.9
43	Melbourne - Mildura	29.2	29.6	1.4
44	Albury - Sydney	26.9	27.2	1.2
45	Hamilton Island - Sydney	27.5	23.2	-15.4
46	Adelaide - Canberra	25.9	23.6	-8.6
47	Adelaide - Gold Coast	21.2	19.9	-6.1
48	Brisbane - Emerald	23.8	23.9	0.5
49	Dubbo - Sydney	22.4	21.7	-3.0
50	Port Macquarie - Sydney	19.9	20.1	0.6

continued

Table 3: (continued) Available seats (000s) — monthly activity

	City-Pair	Nov 2017	Nov 2018	% Change
51	Sydney - Wagga Wagga	23.9	22.4	-6.4
52	Ayers Rock - Sydney	18.4	20.0	9.0
53	Sydney - Tamworth	20.6	21.7	5.1
54	Adelaide - Port Lincoln	23.9	24.6	2.9
55	Sydney - Townsville	15.6	17.0	8.9
56	Darwin - Perth	19.9	20.4	2.6
57	Brisbane - Bundaberg	19.2	19.3	0.4
58	Cairns - Townsville	21.9	20.7	-5.4
59	Brisbane - Hamilton Island	15.8	14.0	-11.1
60	Adelaide - Alice Springs	15.3	15.0	-2.5
61	Armidale - Sydney	15.3	15.5	1.1
62	Brisbane - Mount Isa	16.0	15.3	-4.2
63	Geraldton - Perth	18.9	19.0	0.5
64	Proserpine - Sydney	15.5	10.9	-29.5
65	Alice Springs - Darwin	17.6	17.6	-0.4
	Total domestic network	6 488.7	6 385.9	-1.6

Table 4: Load factors (%) — monthly activity

	City-Pair	Nov 2017	Nov 2018	% Point diff
1	Melbourne - Sydney	88.8	89.4	0.6
2	Brisbane - Sydney	84.3	87.5	3.2
3	Brisbane - Melbourne	83.9	88.0	4.1
4	Gold Coast - Sydney	89.1	88.5	-0.6
5	Adelaide - Melbourne	82.0	85.0	3.0
6	Melbourne - Perth	88.1	86.6	-1.5
7	Gold Coast - Melbourne	89.9	91.3	1.4
8	Adelaide - Sydney	84.2	88.7	4.5
9	Perth - Sydney	85.0	86.7	1.7
10	Hobart - Melbourne	86.3	81.4	-4.9
11	Canberra - Melbourne	68.8	72.3	3.5
12	Brisbane - Cairns	89.7	90.9	1.2
13	Cairns - Sydney	91.7	91.7	0.0
14	Canberra - Sydney	76.5	78.7	2.2
15	Launceston - Melbourne	81.0	82.8	1.8
16	Brisbane - Perth	83.2	84.4	1.2
17	Brisbane - Townsville	76.3	79.5	3.2
18	Adelaide - Brisbane	76.8	85.0	8.2
19	Cairns - Melbourne	89.7	91.5	1.8
20	Brisbane - Mackay	80.9	78.6	-2.3
21	Hobart - Sydney	88.4	85.0	-3.4
22	Brisbane - Canberra	72.0	80.8	8.8
23	Sunshine Coast - Sydney	82.1	86.4	4.3
24	Adelaide - Perth	77.2	78.4	1.2
25	Brisbane - Newcastle	74.7	74.8	0.1
26	Melbourne - Sunshine Coast	86.7	86.4	-0.3
27	Brisbane - Rockhampton	81.0	77.2	-3.8
28	Melbourne - Newcastle	87.2	86.3	-0.9
29	Karratha - Perth	66.1	64.6	-1.5
30	Ballina - Sydney	90.2	90.7	0.5
31	Coffs Harbour - Sydney	75.7	74.9	-0.8
32	Perth - Port Hedland	64.2	66.8	2.6
33	Newman - Perth	58.2	59.5	1.3
34	Broome - Perth	71.7	81.3	9.6
35	Kalgoorlie - Perth	63.0	63.0	0.0
36	Brisbane - Darwin	77.8	79.0	1.2
37	Launceston - Sydney	88.4	86.7	-1.7
38	Brisbane - Gladstone	74.3	68.8	-5.5
39	Darwin - Melbourne	75.5	74.1	-1.4
40	Darwin - Sydney	67.6	65.3	-2.3
41	Brisbane - Proserpine	82.6	77.3	-5.3
42	Brisbane - Hobart	84.6	82.9	-1.7
43	Melbourne - Mildura	62.7	67.3	4.6
44	Albury - Sydney	71.2	72.7	1.5
45	Hamilton Island - Sydney	66.3	78.4	12.1
46	Adelaide - Canberra	69.7	74.5	4.8
47	Adelaide - Gold Coast	84.2	84.7	0.5
48	Brisbane - Emerald	71.3	69.1	-2.2
49	Dubbo - Sydney	76.2	75.6	-0.6
50	Port Macquarie - Sydney	83.0	80.5	-2.5

continued

Table 4: (continued) Load factors (%) — monthly activity

	City-Pair	Nov 2017	Nov 2018	% Point diff
51	Sydney - Wagga Wagga	68.3	71.8	3.5
52	Ayers Rock - Sydney	85.3	77.4	-7.9
53	Sydney - Tamworth	72.5	68.0	-4.5
54	Adelaide - Port Lincoln	61.6	59.6	-2.0
55	Sydney - Townsville	77.3	83.2	5.9
56	Darwin - Perth	80.8	66.7	-14.1
57	Brisbane - Bundaberg	72.6	70.1	-2.5
58	Cairns - Townsville	57.7	62.2	4.5
59	Brisbane - Hamilton Island	69.2	80.2	11.0
60	Adelaide - Alice Springs	71.1	74.1	3.0
61	Armidale - Sydney	76.0	70.7	-5.3
62	Brisbane - Mount Isa	69.2	71.0	1.8
63	Geraldton - Perth	49.2	52.9	3.7
64	Proserpine - Sydney	78.8	89.2	10.4
65	Alice Springs - Darwin	57.9	52.4	-5.5
	Total domestic network	82.0	83.3	1.3

Table 5: Aircraft trips ^(a) — monthly activity

	City-Pair	Nov 2017	Nov 2018	% Change
1	Melbourne - Sydney	5 244	5 085	-3.0
2	Brisbane - Sydney	3 009	2 940	-2.3
3	Brisbane - Melbourne	2 181	2 134	-2.2
4	Gold Coast - Sydney	1 498	1 415	-5.5
5	Adelaide - Melbourne	1 619	1 611	-0.5
6	Melbourne - Perth	929	998	7.4
7	Gold Coast - Melbourne	1 002	986	-1.6
8	Adelaide - Sydney	1 183	1 149	-2.9
9	Perth - Sydney	737	782	6.1
10	Hobart - Melbourne	979	968	-1.1
11	Canberra - Melbourne	995	961	-3.4
12	Brisbane - Cairns	832	799	-4.0
13	Cairns - Sydney	556	530	-4.7
14	Canberra - Sydney	1 432	1 431	-0.1
15	Launceston - Melbourne	763	765	0.3
16	Brisbane - Perth	496	521	5.0
17	Brisbane - Townsville	725	719	-0.8
18	Adelaide - Brisbane	582	554	-4.8
19	Cairns - Melbourne	381	373	-2.1
20	Brisbane - Mackay	590	591	0.2
21	Hobart - Sydney	403	432	7.2
22	Brisbane - Canberra	511	515	0.8
23	Sunshine Coast - Sydney	388	379	-2.3
24	Adelaide - Perth	470	458	-2.6
25	Brisbane - Newcastle	513	502	-2.1
26	Melbourne - Sunshine Coast	287	308	7.3
27	Brisbane - Rockhampton	670	694	3.6
28	Melbourne - Newcastle	264	264	0.0
29	Karratha - Perth	502	510	1.6
30	Ballina - Sydney	242	243	0.4
31	Coffs Harbour - Sydney	432	399	-7.6
32	Perth - Port Hedland	369	374	1.4
33	Newman - Perth	342	334	-2.3
34	Broome - Perth	330	283	-14.2
35	Kalgoorlie - Perth	298	318	6.7
36	Brisbane - Darwin	246	202	-17.9
37	Launceston - Sydney	158	156	-1.3
38	Brisbane - Gladstone	394	408	3.6
39	Darwin - Melbourne	163	164	0.6
40	Darwin - Sydney	197	195	-1.0
41	Brisbane - Proserpine	161	150	-6.8
42	Brisbane - Hobart	120	141	17.5
43	Melbourne - Mildura	413	417	1.0
44	Albury - Sydney	500	504	0.8
45	Hamilton Island - Sydney	166	147	-11.4
46	Adelaide - Canberra	153	142	-7.2
47	Adelaide - Gold Coast	120	112	-6.7
48	Brisbane - Emerald	315	311	-1.3
49	Dubbo - Sydney	511	461	-9.8
50	Port Macquarie - Sydney	346	301	-13.0

continued

Table 5: (continued) Aircraft trips ^(a) — monthly activity

	City-Pair	Nov 2017	Nov 2018	% Change
51	Sydney - Wagga Wagga	462	443	-4.1
52	Ayers Rock - Sydney	104	112	7.7
53	Sydney - Tamworth	334	341	2.1
54	Adelaide - Port Lincoln	619	636	2.7
55	Sydney - Townsville	90	96	6.7
56	Darwin - Perth	120	122	1.7
57	Brisbane - Bundaberg	299	300	0.3
58	Cairns - Townsville	367	329	-10.4
59	Brisbane - Hamilton Island	132	104	-21.2
60	Adelaide - Alice Springs	113	108	-4.4
61	Armidale - Sydney	370	373	0.8
62	Brisbane - Mount Isa	155	179	15.5
63	Geraldton - Perth	189	190	0.5
64	Proserpine - Sydney	86	60	-30.2
65	Alice Springs - Darwin	157	149	-5.1
	Total domestic network	54 066	52 840	-2.3

(a) Includes RPT Cargo flights.

TOP TEN AIRPORTS – PASSENGER MOVEMENTS

Table 6: Top ten airports, RPT passenger movements (000s) - annual activity

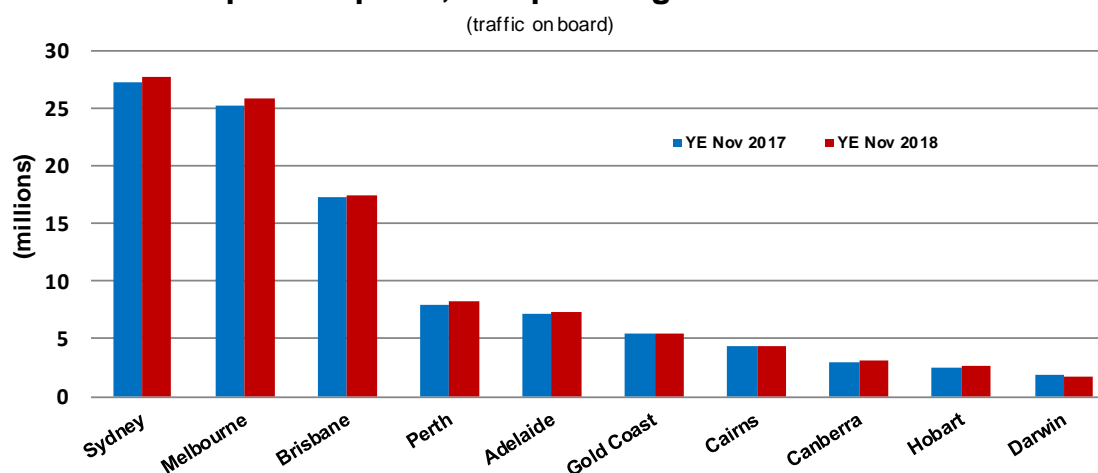
Airport	YE Nov 2017	YE Nov 2018	% Change	% of Total
1 Sydney	27 277.1	27 768.2	1.8	22.7
2 Melbourne	25 298.1	25 894.8	2.4	21.2
3 Brisbane	17 280.1	17 408.1	0.7	14.2
4 Perth	7 994.7	8 226.2	2.9	6.7
5 Adelaide	7 114.3	7 342.7	3.2	6.0
6 Gold Coast	5 398.8	5 502.6	1.9	4.5
7 Cairns	4 312.1	4 318.7	0.2	3.5
8 Canberra	3 015.1	3 161.4	4.9	2.6
9 Hobart	2 495.7	2 665.5	6.8	2.2
10 Darwin	1 805.1	1 753.9	-2.8	1.4
Total top ten airports	101 991.0	104 042.1	2.0	85.0
Total domestic network	119 725.0	122 369.9	2.2	100.0

Table 7: Top ten airports, RPT passenger movements (000s) - monthly activity

Airport	Nov 2017	Nov 2018	% Change	% of Total
1 Sydney	2 418.0	2 384.5	-1.4	22.8
2 Melbourne	2 235.9	2 242.4	0.3	21.4
3 Brisbane	1 486.6	1 491.0	0.3	14.2
4 Perth	681.5	699.7	2.7	6.7
5 Adelaide	627.9	634.0	1.0	6.1
6 Gold Coast	458.8	452.3	-1.4	4.3
7 Cairns	355.7	346.9	-2.5	3.3
8 Canberra	276.3	286.7	3.7	2.7
9 Hobart	221.1	237.7	7.5	2.3
10 Townsville	133.0	133.8	0.6	1.3
Total top ten airports	8 894.9	8 909.0	0.2	85.1
Total domestic network	10 448.5	10 464.9	0.2	100.0

Note: Airport passenger movement numbers are the sum of passenger arrivals and departures at each airport.

Top ten airports, RPT passenger movements



TOP FIVE AIRPORTS – CARGO MOVEMENTS

Table 8: Top five airports, domestic RPT cargo movements (000s tonnes) - annual activity

Airport	YE Nov 2017	YE Nov 2018	% Change	% of Total
1 Melbourne	130.9	135.6	3.5	28.5
2 Sydney	105.4	109.2	3.6	23.0
3 Brisbane	66.3	72.5	9.4	15.3
4 Perth	64.1	67.1	4.5	14.1
5 Adelaide	26.6	28.3	6.1	6.0
Total top five airports	393.4	412.6	4.9	86.9
Total domestic network	453.2	474.9	4.8	100.0

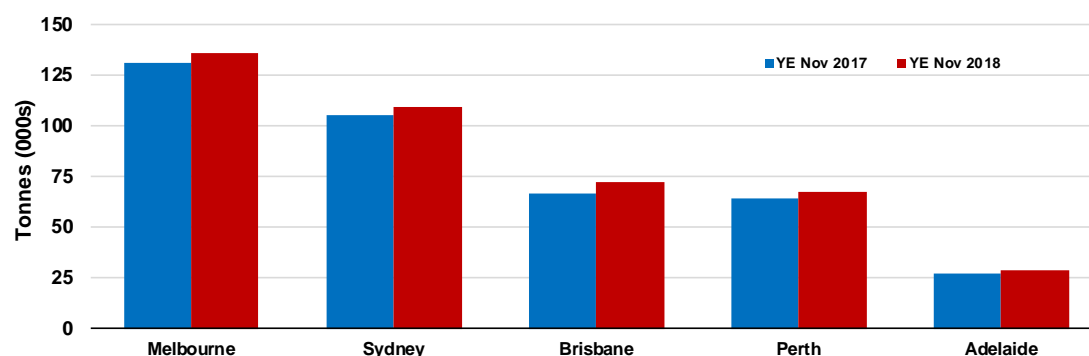
Table 9: Top five airports, domestic RPT cargo movements (000s tonnes) - monthly activity

Airport	Nov 2017	Nov 2018	% Change	% of Total
1 Melbourne	11.9	11.3	-5.0	26.9
2 Sydney	10.1	9.6	-4.9	22.7
3 Brisbane	6.2	6.9	12.2	16.4
4 Perth	5.6	6.1	8.1	14.4
5 Adelaide	2.4	2.7	10.0	6.3
Total top five airports	36.2	36.6	1.0	86.7
Total domestic network	41.4	42.2	1.9	100.0

Note: Airport cargo tonnes are the sum of cargo tonnes on arrivals and departures at each airport.

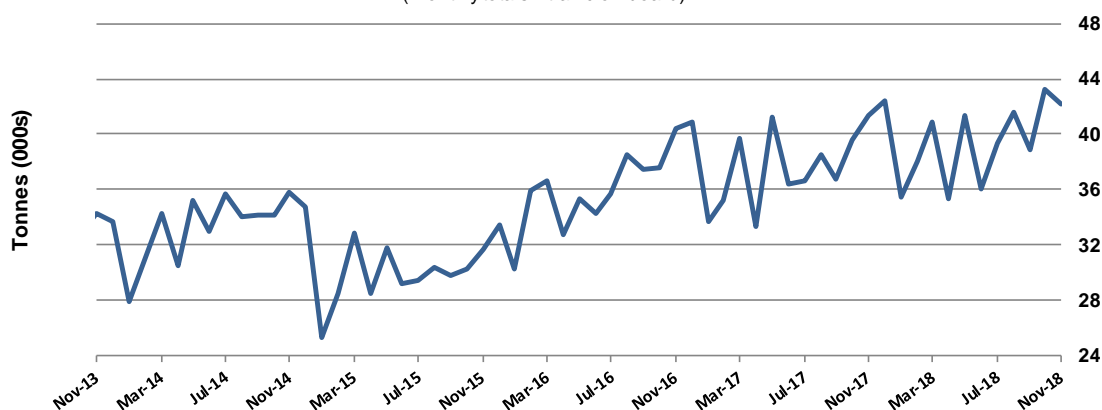
Top five airports, cargo movements

(Domestic cargo traffic - traffic on board)



Total domestic network - cargo movement

(monthly totals - traffic on board)



Note: Airport cargo tonnes are the sum of cargo tonnes on arrivals and departures at each airport.

TOP TEN ROUTES

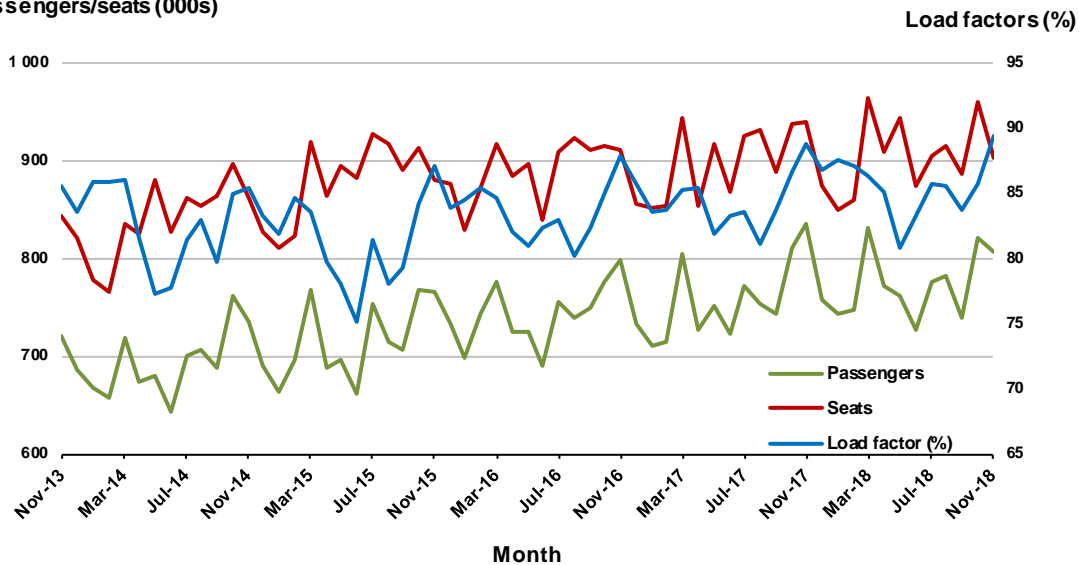
1. Melbourne - Sydney

Monthly data

	Nov 2017	Nov 2018	% Change
Passengers carried (000s)	834.3	805.8	-3.4
Seats (000s)	939.5	901.6	-4.0
Load factor %	88.8	89.4	0.6 *
Aircraft trips	5 244	5 085	-3.0

* percentage point difference

Passengers/seats (000s)

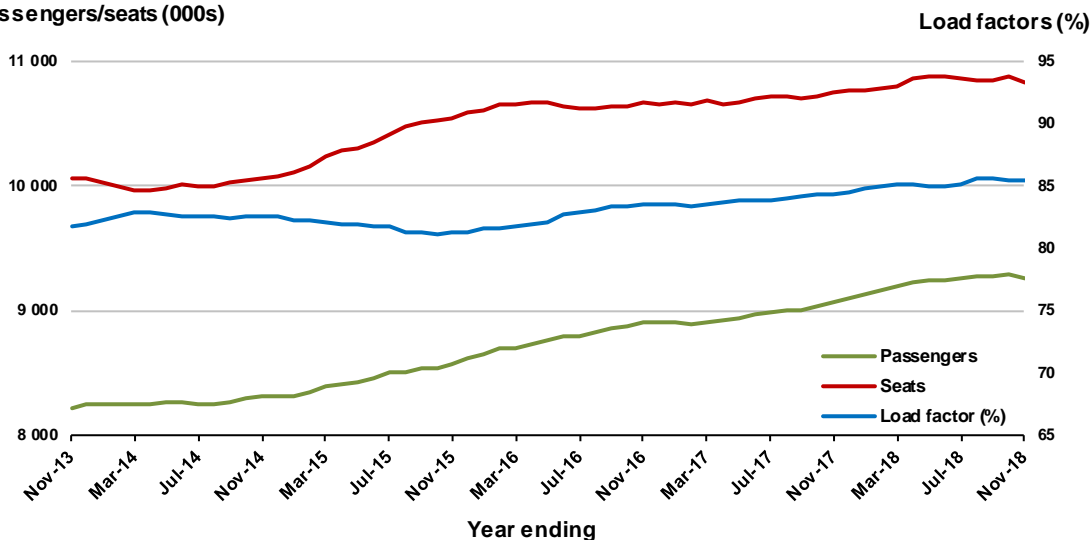


Moving annual data

	YE Nov 2017	YE Nov 2018	% Change
Passengers carried (000s)	9 071.2	9 261.7	2.1
Seats (000s)	10 753.5	10 832.7	0.7
Load factor %	84.4	85.5	1.2 *
Aircraft trips	59 930	60 159	0.4

* percentage point difference

Passengers/seats (000s)

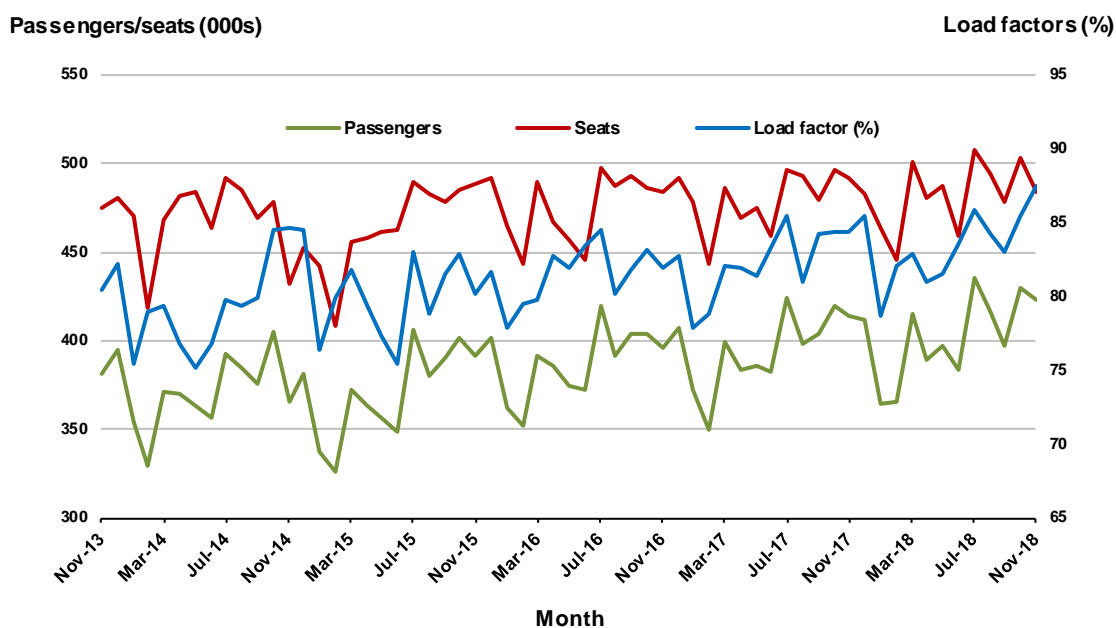


2. Brisbane - Sydney

Monthly data

	Nov 2017	Nov 2018	% Change
Passengers carried (000s)	414.0	423.4	2.3
Seats (000s)	491.2	484.0	-1.5
Load factor %	84.3	87.5	3.2 *
Aircraft trips	3 009	2 940	-2.3

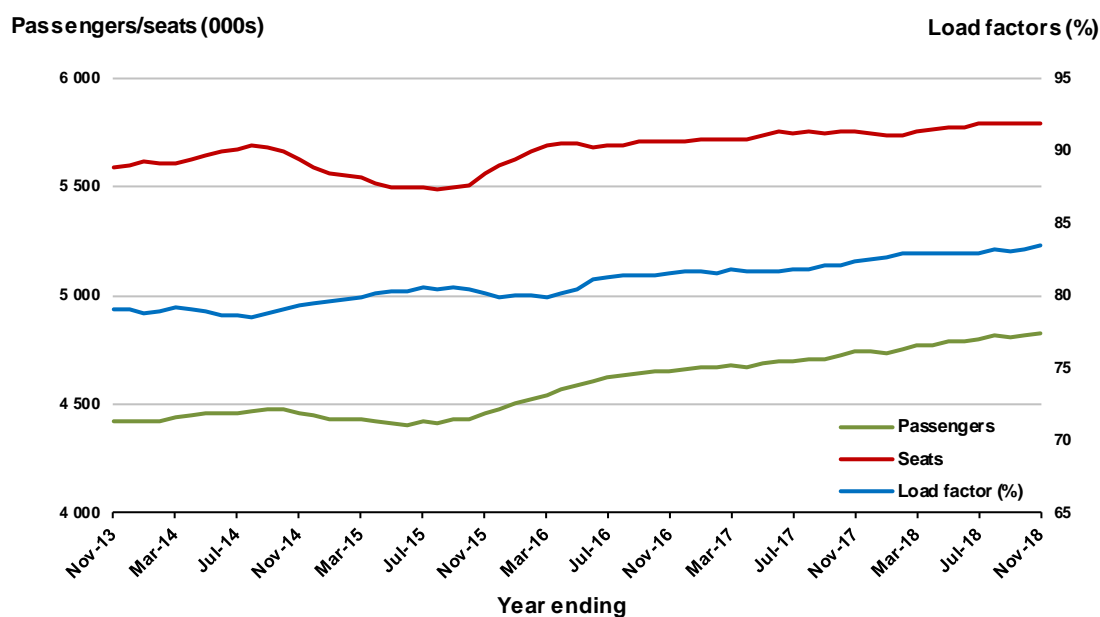
* percentage point difference



Moving annual data

	YE Nov 2017	YE Nov 2018	% Change
Passengers carried (000s)	4 741.0	4 830.3	1.9
Seats (000s)	5 758.4	5 786.8	0.5
Load factor %	82.3	83.5	1.1 *
Aircraft trips	35 487	35 187	-0.8

* percentage point difference

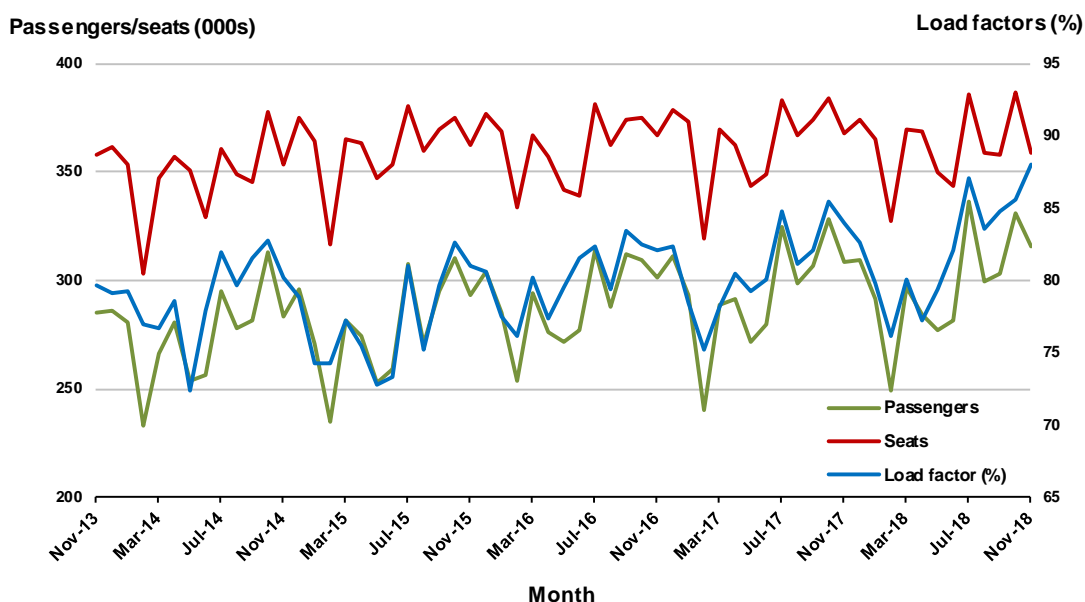


3. Brisbane - Melbourne

Monthly data

	Nov 2017	Nov 2018	% Change
Passengers carried (000s)	308.6	315.4	2.2
Seats (000s)	367.6	358.5	-2.5
Load factor %	83.9	88.0	4.1 *
Aircraft trips	2 181	2 134	-2.2

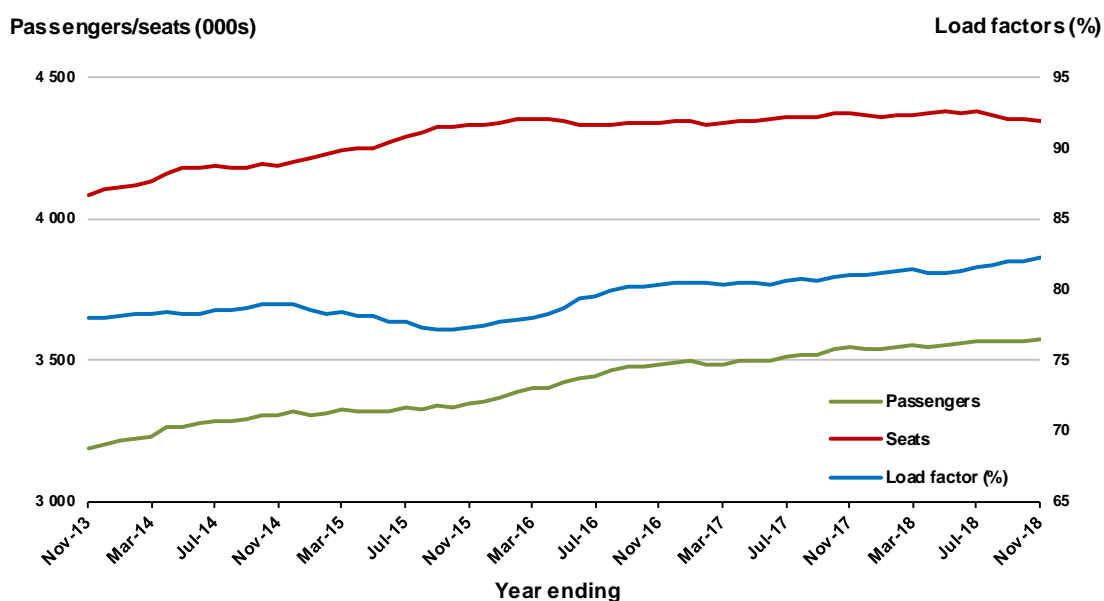
* percentage point difference



Moving annual data

	YE Nov 2017	YE Nov 2018	% Change
Passengers carried (000s)	3 543.6	3 575.6	0.9
Seats (000s)	4 371.8	4 344.6	-0.6
Load factor %	81.1	82.3	1.2 *
Aircraft trips	25 841	25 531	-1.2

* percentage point difference



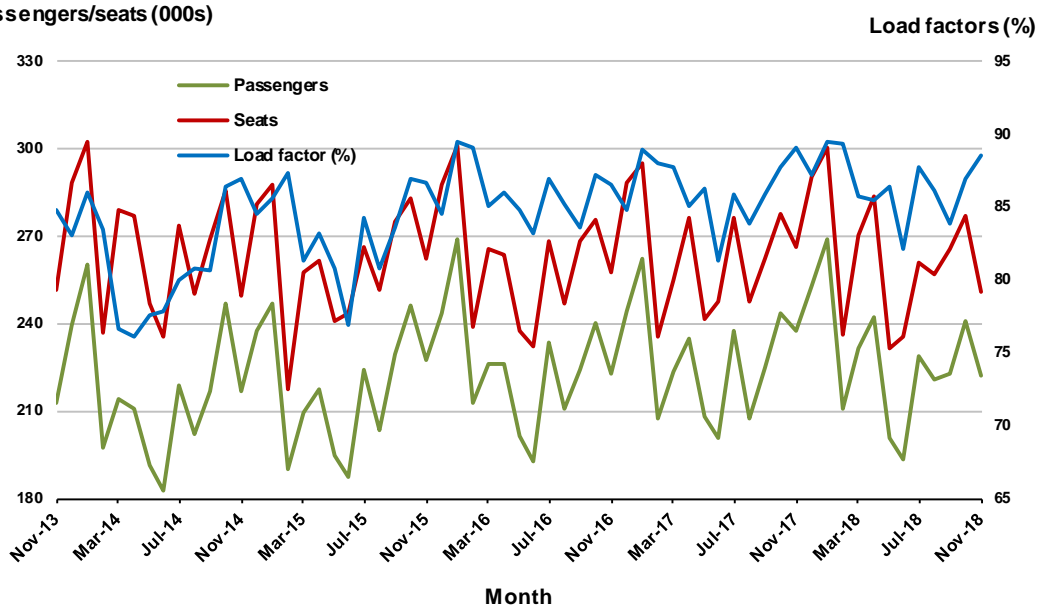
4. Gold Coast - Sydney

Monthly data

	Nov 2017	Nov 2018	% Change
Passengers carried (000s)	237.2	222.0	-6.4
Seats (000s)	266.3	250.8	-5.9
Load factor %	89.1	88.5	-0.6 *
Aircraft trips	1 498	1 415	-5.5

* percentage point difference

Passengers/seats (000s)

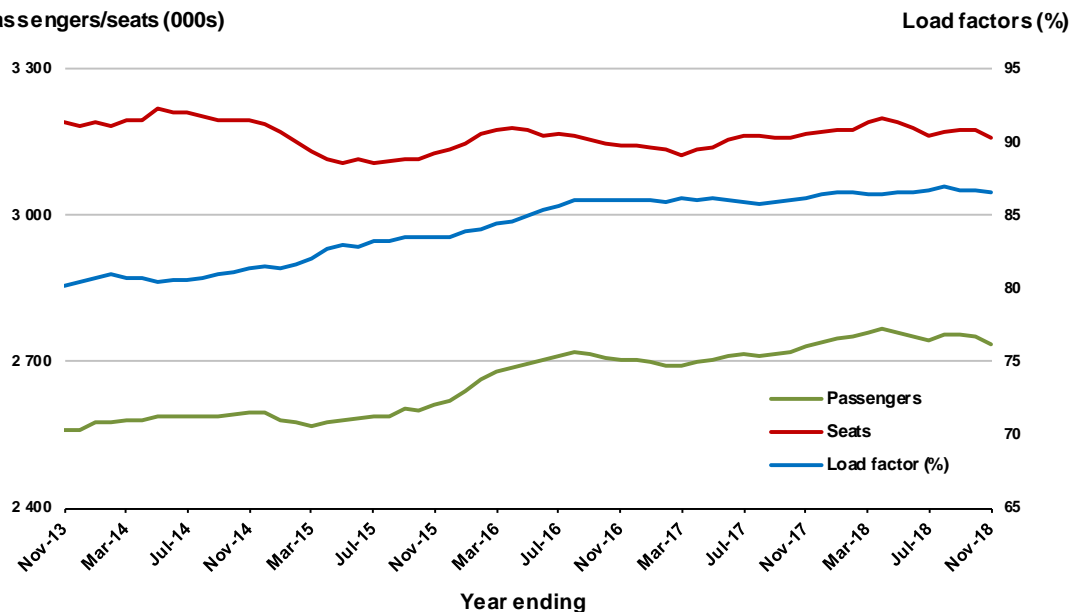


Moving annual data

	YE Nov 2017	YE Nov 2018	% Change
Passengers carried (000s)	2 731.9	2 736.2	0.2
Seats (000s)	3 168.3	3 158.3	-0.3
Load factor %	86.2	86.6	0.4 *
Aircraft trips	18 062	17 929	-0.7

* percentage point difference

Passengers/seats (000s)



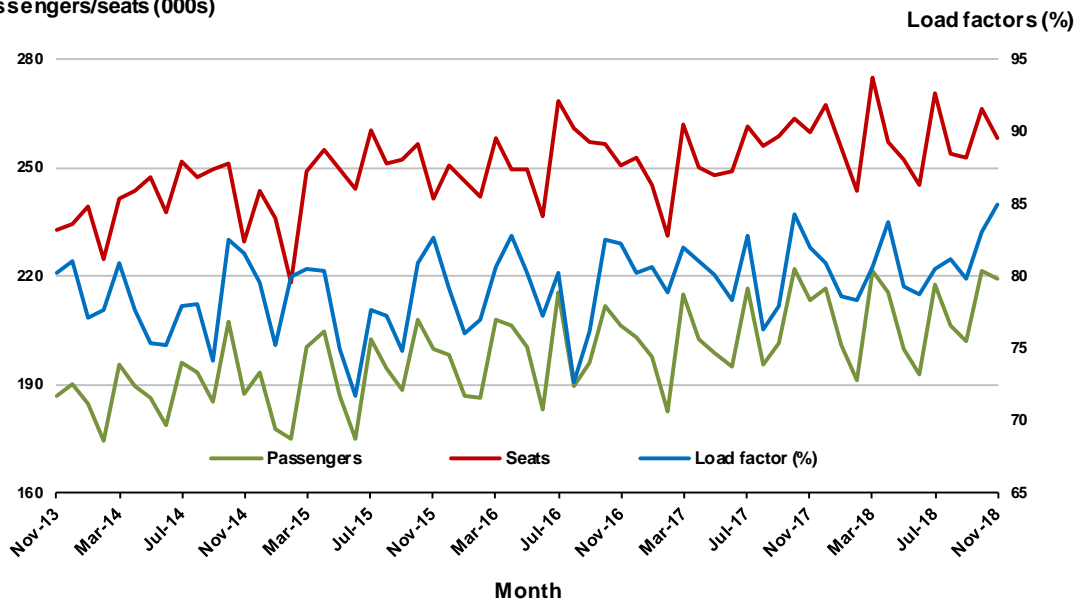
5. Adelaide - Melbourne

Monthly data

	Nov 2017	Nov 2018	% Change
Passengers carried (000s)	213.2	219.3	2.9
Seats (000s)	260.1	258.0	-0.8
Load factor %	82.0	85.0	3.0 *
Aircraft trips	1 619	1 611	-0.5

* percentage point difference

Passengers/seats (000s)

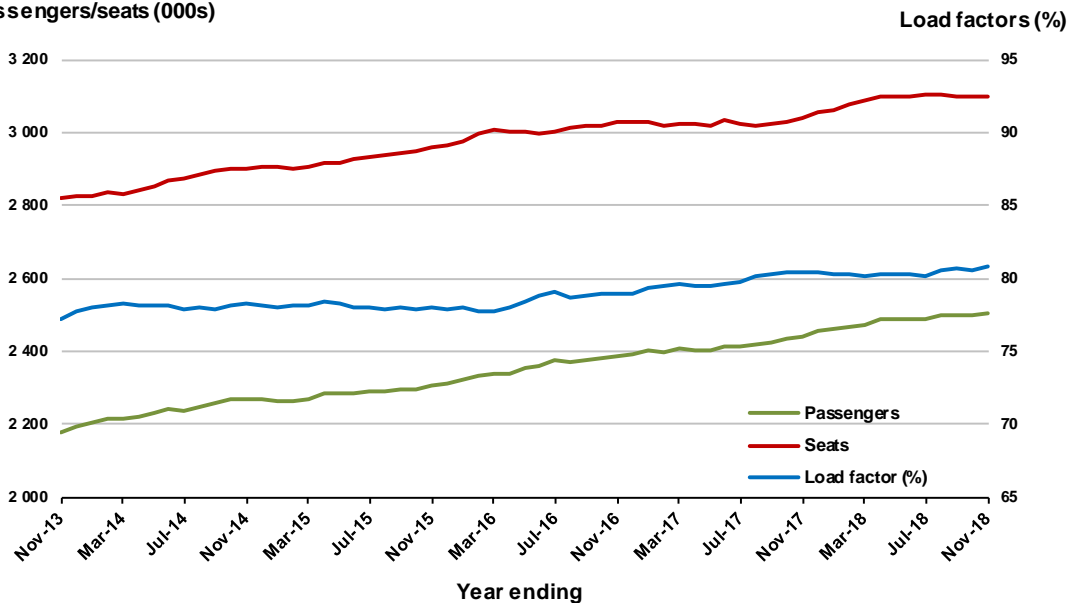


Moving annual data

	YE Nov 2017	YE Nov 2018	% Change
Passengers carried (000s)	2 443.0	2 504.9	2.5
Seats (000s)	3 038.7	3 098.1	2.0
Load factor %	80.4	80.9	0.5 *
Aircraft trips	19 068	19 241	0.9

* percentage point difference

Passengers/seats (000s)



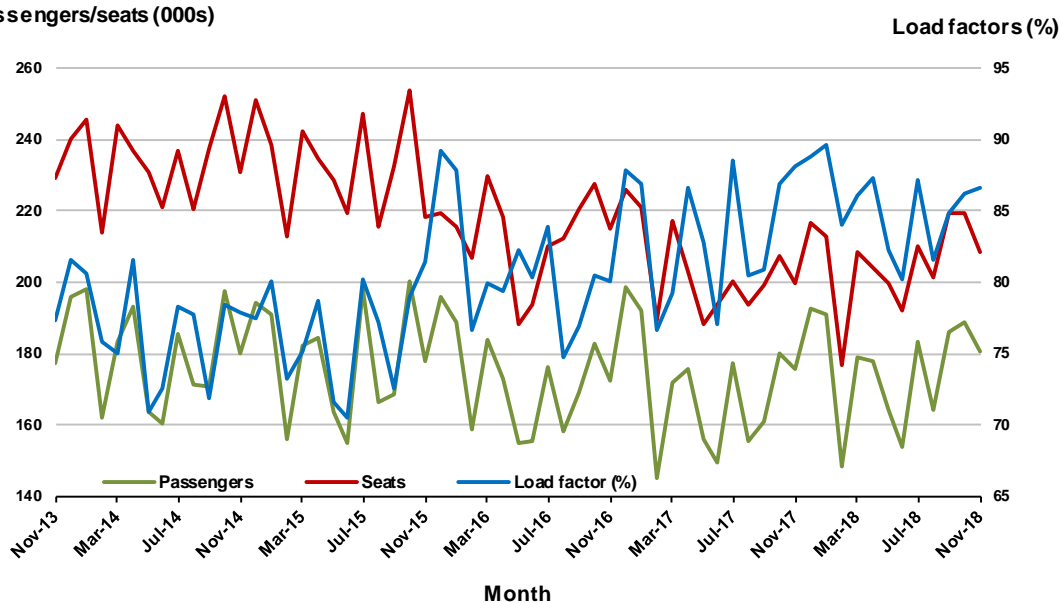
6. Melbourne - Perth

Monthly data

	Nov 2017	Nov 2018	% Change
Passengers carried (000s)	175.9	180.7	2.7
Seats (000s)	199.6	208.6	4.5
Load factor %	88.1	86.6	-1.5 *
Aircraft trips	929	998	7.4

* percentage point difference

Passengers/seats (000s)

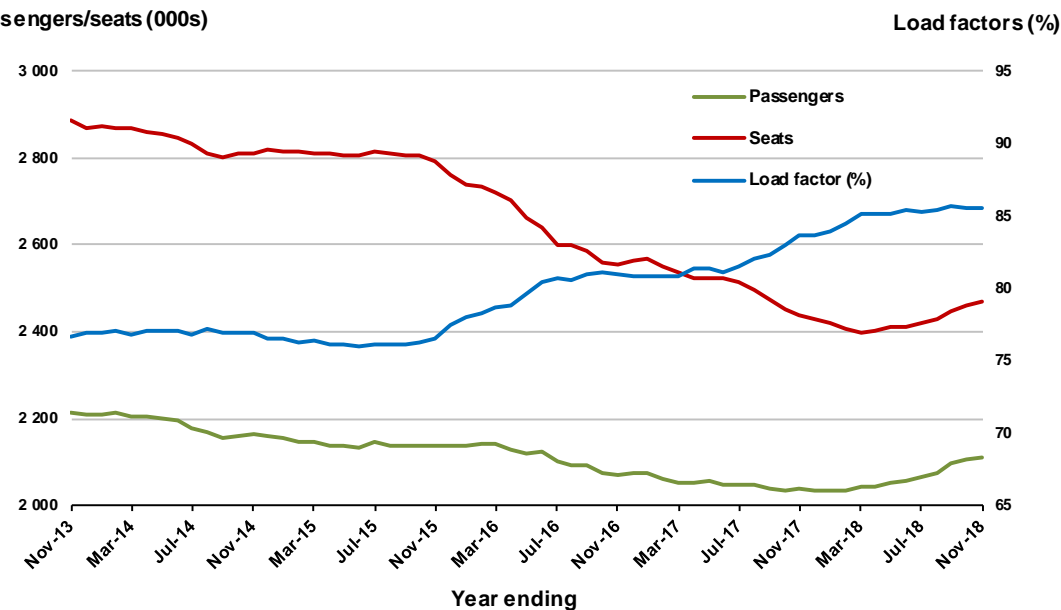


Moving annual data

	YE Nov 2017	YE Nov 2018	% Change
Passengers carried (000s)	2 038.9	2 111.1	3.5
Seats (000s)	2 438.2	2 469.4	1.3
Load factor %	83.6	85.5	1.9 *
Aircraft trips	11 140	11 607	4.2

* percentage point difference

Passengers/seats (000s)



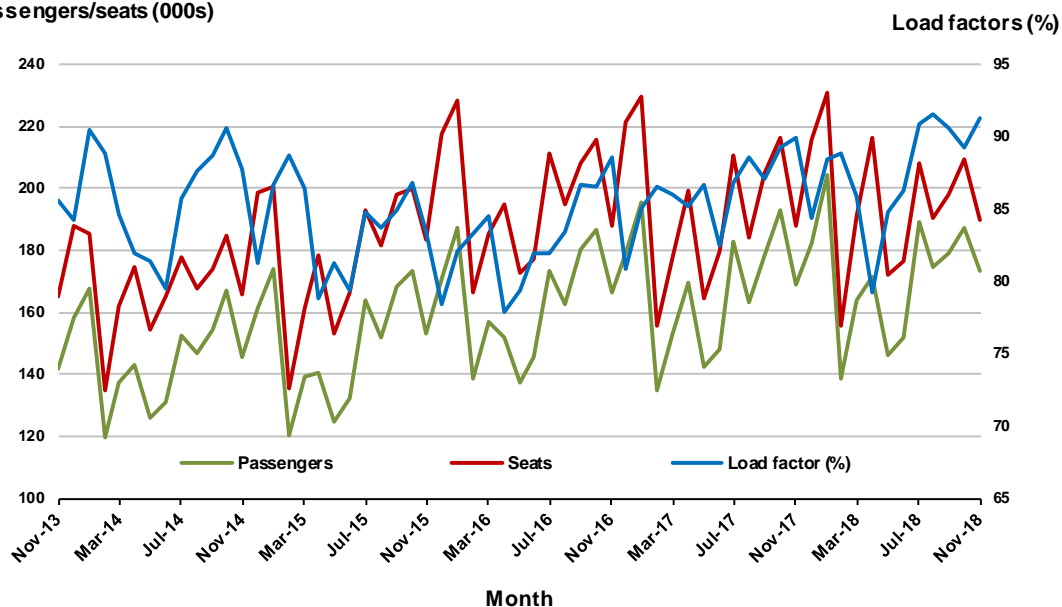
7. Gold Coast - Melbourne

Monthly data

	Nov 2017	Nov 2018	% Change
Passengers carried (000s)	169.1	173.1	2.4
Seats (000s)	188.2	189.6	0.7
Load factor %	89.9	91.3	1.4 *
Aircraft trips	1 002	986	-1.6

* percentage point difference

Passengers/seats (000s)

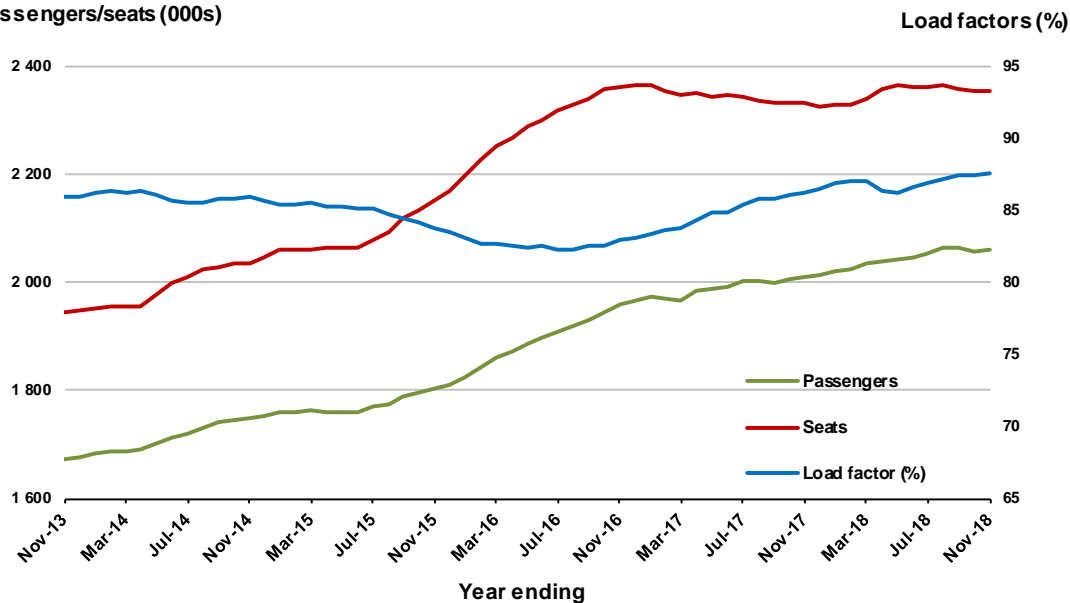


Moving annual data

	YE Nov 2017	YE Nov 2018	% Change
Passengers carried (000s)	2 009.4	2 062.1	2.6
Seats (000s)	2 332.0	2 354.5	1.0
Load factor %	86.2	87.6	1.4 *
Aircraft trips	12 423	12 452	0.2

* percentage point difference

Passengers/seats (000s)



8. Adelaide - Sydney

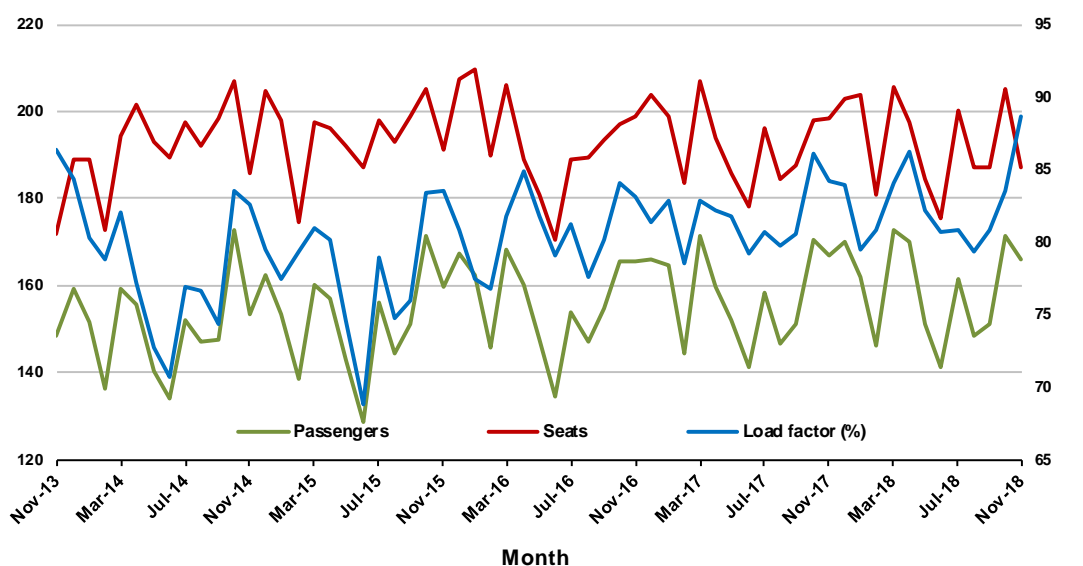
Monthly data

	Nov 2017	Nov 2018	% Change
Passengers carried (000s)	167.0	166.2	-0.5
Seats (000s)	198.2	187.3	-5.5
Load factor %	84.2	88.7	4.5 *
Aircraft trips	1 183	1 149	-2.9

* percentage point difference

Passengers/seats (000s)

Load factors (%)



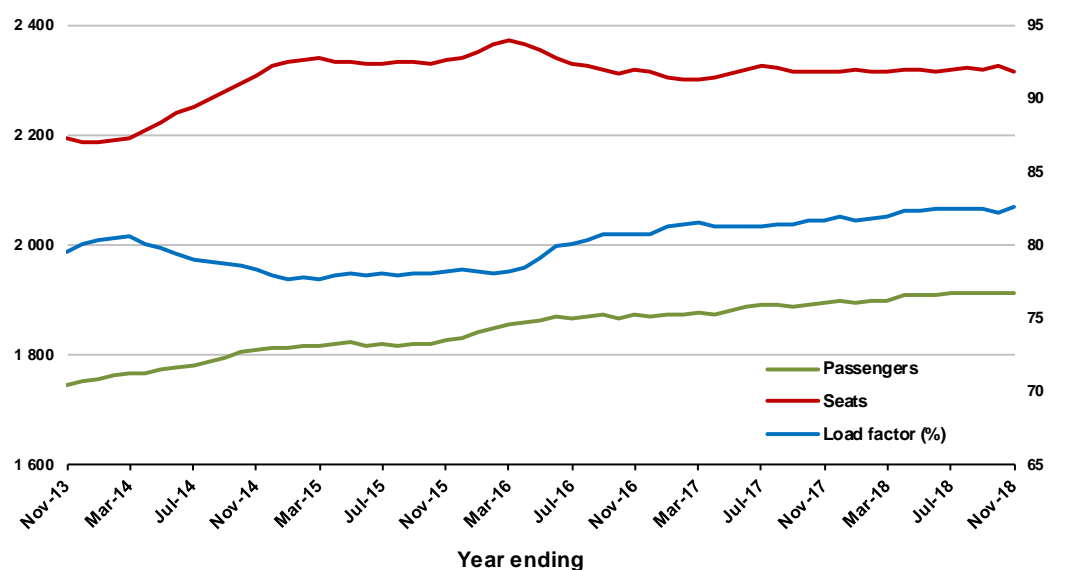
Moving annual data

	YE Nov 2017	YE Nov 2018	% Change
Passengers carried (000s)	1 893.8	1 913.9	1.1
Seats (000s)	2 316.4	2 317.0	0.0
Load factor %	81.8	82.6	0.8 *
Aircraft trips	13 989	13 939	-0.4

* percentage point difference

Passengers/seats (000s)

Load factors (%)



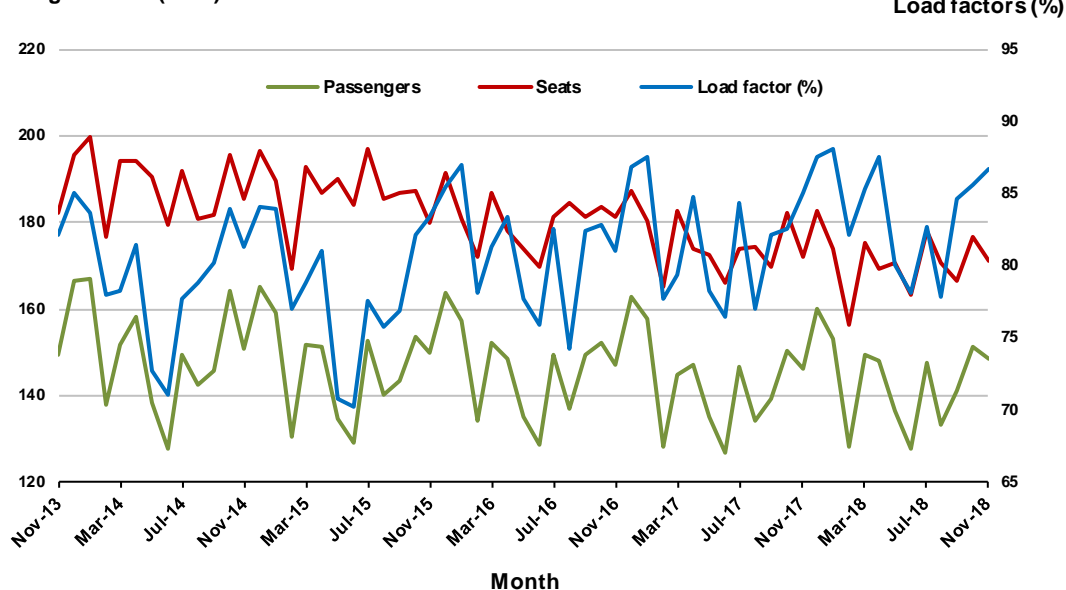
9. Perth - Sydney

Monthly data

	Nov 2017	Nov 2018	% Change
Passengers carried (000s)	146.1	148.4	1.6
Seats (000s)	171.9	171.2	-0.4
Load factor %	85.0	86.7	1.7 *
Aircraft trips	737	782	6.1

* percentage point difference

Passengers/seats (000s)

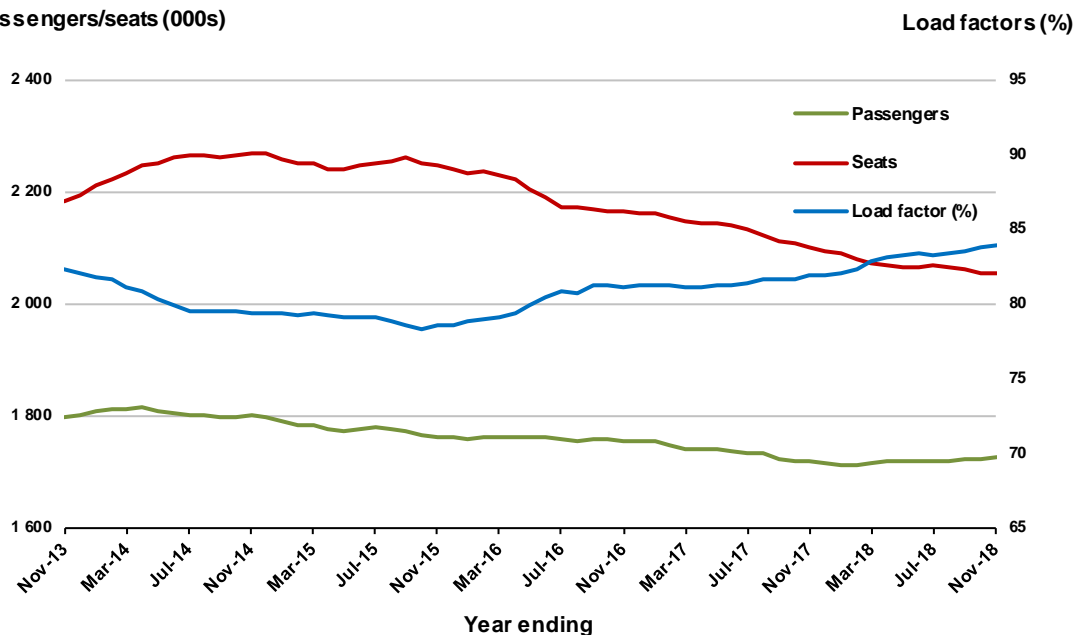


Moving annual data

	YE Nov 2017	YE Nov 2018	% Change
Passengers carried (000s)	1 719.4	1 724.4	0.3
Seats (000s)	2 099.3	2 054.8	-2.1
Load factor %	81.9	83.9	2.0 *
Aircraft trips	9 034	9 061	0.3

* percentage point difference

Passengers/seats (000s)



10. Hobart - Melbourne

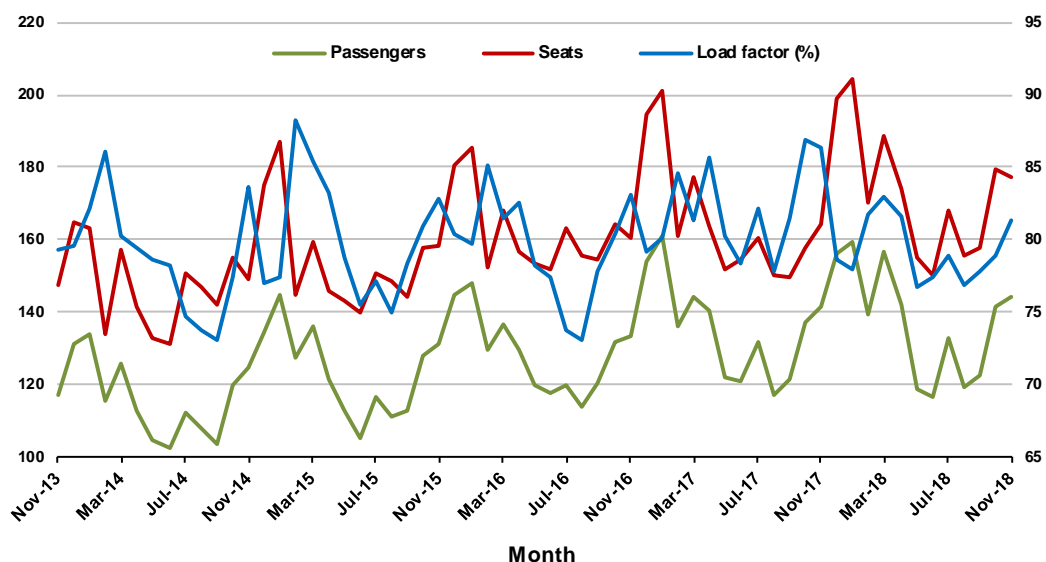
Monthly data

	Nov 2017	Nov 2018	% Change
Passengers carried (000s)	141.6	144.5	2.0
Seats (000s)	164.2	177.5	8.1
Load factor %	86.3	81.4	-4.9 *
Aircraft trips	979	968	-1.1

* percentage point difference

Passengers/seats (000s)

Load factors (%)



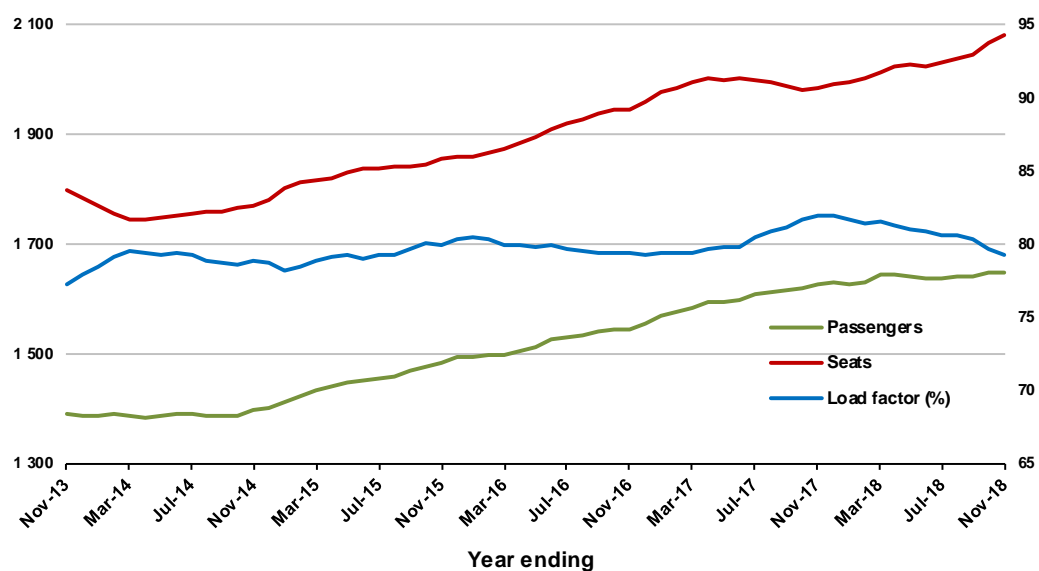
Moving annual data

	YE Nov 2017	YE Nov 2018	% Change
Passengers carried (000s)	1 628.1	1 650.0	1.3
Seats (000s)	1 986.4	2 080.6	4.7
Load factor %	82.0	79.3	-2.7 *
Aircraft trips	12 159	11 728	-3.5

* percentage point difference

Passengers/seats (000s)

Load factors (%)



TOP FIFTY REGIONAL AIRPORTS

Table 10: Top fifty regional airports (000s) — passenger movements, monthly

	Airport	Nov 2017	Nov 2018	% Change
1	Cairns	355.7	346.9	-2.5
2	Hobart	221.1	237.7	7.5
3	Townsville	133.0	133.8	0.6
4	Darwin	136.3	124.4	-8.8
5	Launceston	117.2	117.2	0.0
6	Newcastle	113.7	112.2	-1.3
7	Mackay	67.6	70.8	4.7
8	Alice Springs	54.6	53.3	-2.4
9	Rockhampton	46.9	46.0	-2.0
10	Ballina	43.1	43.0	-0.2
11	Hamilton Island	37.4	38.5	3.2
12	Karratha	37.7	38.1	1.1
13	Coffs Harbour	38.9	37.3	-4.0
14	Ayers Rock	32.1	36.6	14.2
15	Proserpine	41.3	35.8	-13.2
16	Port Hedland	29.5	31.8	7.9
17	Broome	29.7	29.7	0.0
18	Newman	26.0	27.0	3.9
19	Kalgoorlie	22.7	26.8	18.1
20	Mildura	22.3	22.2	-0.1
21	Albury	23.1	22.1	-4.4
22	Gladstone	22.5	21.6	-3.8
23	Dubbo	20.7	19.2	-7.5
24	Wagga Wagga	20.7	18.8	-9.3
25	Port Macquarie	19.3	18.6	-3.5
26	Mount Isa	17.9	18.0	0.9
27	Emerald	17.0	16.5	-2.7
28	Tamworth	16.3	15.9	-2.4
29	Paraburdoo	14.5	15.1	4.0
30	Port Lincoln	14.8	14.7	-0.6
31	Bundaberg	13.9	13.5	-3.0
32	Hervey Bay	13.8	13.1	-5.2
33	Devonport	12.7	12.5	-1.2
34	Armidale	12.4	11.6	-6.9
35	Toowoomba Wellcamp	11.9	10.5	-12.0
36	Geraldton	9.3	10.0	7.5
37	Moranbah	9.0	9.6	6.9
38	Griffith	6.6	8.6	30.8
39	Roma	8.1	8.5	5.6
40	Thursday Island	8.4	8.5	0.5
41	Kununurra	6.9	8.3	19.8
42	Mount Gambier	7.6	7.7	1.6
43	Orange	6.7	7.7	14.2
44	Gove	7.2	7.4	3.3
45	Whyalla	6.2	7.1	14.7
46	Olympic Dam	7.7	6.8	-12.5
47	Broken Hill	6.3	6.7	6.9
48	Learmonth	5.7	6.7	17.0
49	Weipa	6.7	6.5	-2.4
50	Burnie	5.2	6.0	16.1
Total top 50 regional airports		1 965.6	1 966.8	0.1
Total regional airports		2 086.4	2 093.7	0.3
Total domestic network		10 448.5	10 464.9	0.2

Note: Airport passenger movement numbers are the sum of passenger arrivals and departures at each airport.

Regional airports are defined as airports which are, according to the Australian Bureau of Statistics

"The Australian Statistical Geography Standard (ASGS)", not based in Major Urban areas.

Table 11: Top fifty regional airports (000s) — passenger movements, annual

Airport	YE Nov 2017	YE Nov 2018	% Change
1 Cairns	4 312.1	4 318.7	0.2
2 Hobart	2 495.7	2 665.5	6.8
3 Darwin	1 805.1	1 753.9	-2.8
4 Townsville	1 582.0	1 655.5	4.6
5 Launceston	1 337.6	1 383.6	3.4
6 Newcastle	1 285.5	1 263.1	-1.7
7 Mackay	783.8	845.4	7.9
8 Alice Springs	618.4	622.6	0.7
9 Rockhampton	563.1	552.5	-1.9
10 Ballina	508.7	538.0	5.8
11 Proserpine	413.3	456.4	10.4
12 Karratha	441.3	442.9	0.4
13 Hamilton Island	435.1	426.0	-2.1
14 Broome	382.9	417.6	9.1
15 Ayers Rock	363.4	414.5	14.1
16 Coffs Harbour	416.0	404.8	-2.7
17 Port Hedland	349.5	369.9	5.8
18 Newman	285.6	305.0	6.8
19 Kalgoorlie	250.9	286.5	14.2
20 Mildura	254.3	271.9	6.9
21 Albury	269.6	262.0	-2.8
22 Gladstone	286.2	254.2	-11.2
23 Dubbo	237.8	221.8	-6.7
24 Wagga Wagga	224.5	219.5	-2.2
25 Port Macquarie	229.2	216.4	-5.6
26 Mount Isa	200.5	210.8	5.1
27 Emerald	198.9	195.3	-1.8
28 Tamworth	198.7	190.1	-4.3
29 Paraburdoo	166.6	177.4	6.5
30 Port Lincoln	172.8	170.1	-1.6
31 Hervey Bay	174.5	164.9	-5.5
32 Bundaberg	175.3	164.0	-6.5
33 Devonport	147.9	147.2	-0.5
34 Toowoomba Wellcamp	151.4	139.7	-7.7
35 Armidale	133.2	129.6	-2.7
36 Geraldton	112.7	113.3	0.5
37 Kununurra	104.9	106.8	1.8
38 Moranbah	117.8	103.1	-12.5
39 Thursday Island	100.4	100.9	0.5
40 Learmonth	82.7	87.4	5.7
41 Roma	83.5	87.3	4.6
42 Gove	84.0	85.0	1.2
43 Mount Gambier	80.1	80.6	0.6
44 Weipa	78.1	80.5	3.1
45 Griffith	73.4	78.7	7.2
46 Orange	62.9	76.4	21.4
47 Whyalla	64.6	75.7	17.3
48 Olympic Dam	67.6	75.7	11.9
49 Burnie	60.9	70.2	15.2
50 Broken Hill	61.0	69.7	14.3
Total top 50 regional airports	23 086.2	23 548.9	2.0
Total regional airports	24 430.8	24 956.3	2.2
Total domestic network	119 725.0	122 369.9	2.2

Note: Airport passenger movement numbers are the sum of passenger arrivals and departures at each airport. Regional airports are defined as airports which are, according to the Australian Bureau of Statistics "The Australian Statistical Geography Standard (ASGS)", not based in Major Urban areas.

DOMESTIC CHARTER ACTIVITY

Table 12: Charter passengers carried and aircraft trips - annual activity

	YE Nov 2017	YE Nov 2018	% Change
Total domestic charter passengers	2 447 200	2 470 799	1.0
Total domestic charter aircraft trips	46 504	44 223	-4.9

Note: Helicopter, joyflights and sightseeing charter flights not included.

Table 13: Charter passengers carried and aircraft trips - monthly activity

	Nov 2017	Nov 2018	% Change
Total domestic charter passengers	218 519	217 701	-0.4
Total domestic charter aircraft trips	4 136	3 726	-9.9

Note: Helicopter, joyflights and sightseeing charter flights not included.

Table 14: Domestic airports - charter activity - annual

	YE Nov 2017	YE Nov 2018	% Change
Total domestic charter passenger movements	4 894 400	4 941 598	1.0
Total domestic charter aircraft movements	93 008	88 446	-4.9
Perth airport charter passenger movements	1 863 891	1 868 082	0.2
Perth airport charter aircraft movements	31 901	30 065	-5.8

Note: Helicopter, joyflights and sightseeing charter flights not included.

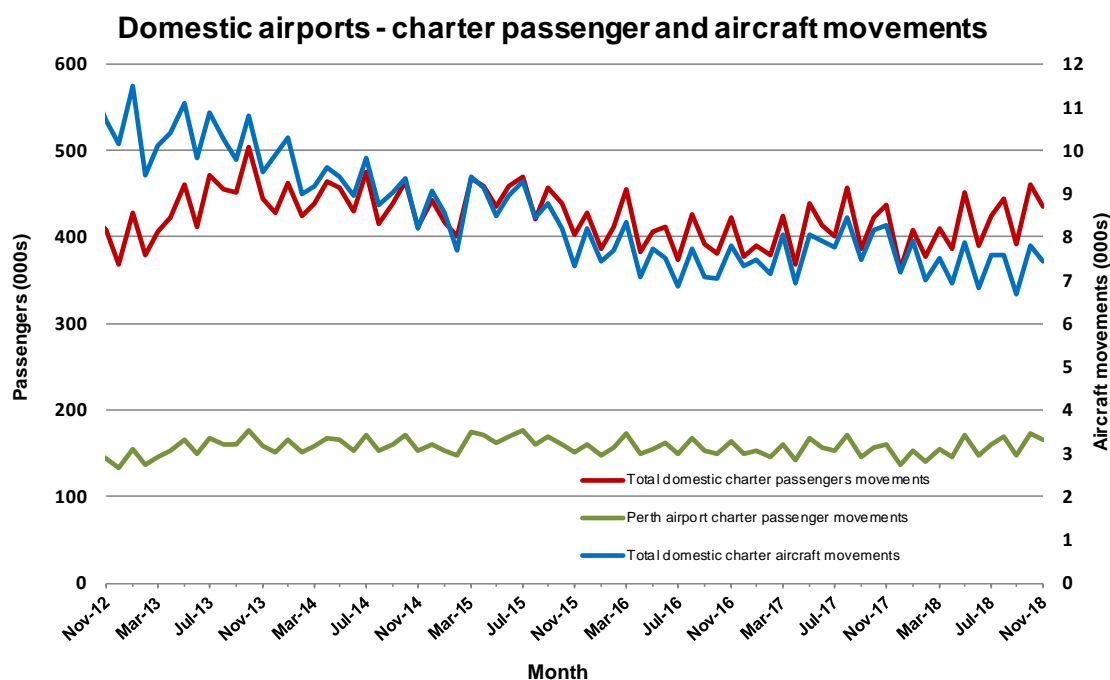
Charter passenger and aircraft movement numbers are the sum of arrivals and departures at each airport.

Table 15: Domestic airports - charter activity - monthly

	Nov 2017	Nov 2018	% Change
Total domestic charter passenger movements	437 038	435 402	-0.4
Total domestic charter aircraft movements	8 272	7 452	-9.9
Perth airport charter passenger movements	161 045	166 310	3.3
Perth airport charter aircraft movements	2 718	2 561	-5.8

Note: Helicopter, joyflights and sightseeing charter flights not included.

Charter passenger and aircraft movement numbers are the sum of arrivals and departures at each airport.



DEFINITIONS

Aircraft Trips	The number of flight stages. A return flight counts as two aircraft trips.
Airport Movements	Airport movements (passenger and cargo) are measured once on arrival and once on departure. Each domestic trip generates two movements at airports. For example, a trip from Melbourne to Sydney will be counted twice, as a passenger departure at Melbourne and as a passenger arrival at Sydney. At the national level, the sum of all domestic airport traffic will therefore be equal to twice the number of trips undertaken.
Available Seat Kilometres (ASKs)	Calculated by multiplying the number of seats available on each flight stage, by the distance in kilometres between the ports. The distances used are Great Circle Distances.
City-Pair	The ports shown make up the city-pair route. Passenger movements shown for a city pair reflect total traffic in both directions.
Flight Stage	The operation of an aircraft from take-off to landing.
Load Factor	The total revenue passenger kilometres performed as a percentage of the total available seat kilometres.
Passengers Carried	Revenue passengers carried.
Regular Public Transport Services (RPT)	All air service operations in which aircraft are available for the transport of members of the public and are conducted in accordance with fixed schedules. It does not include charter or other non-scheduled operations.
Revenue Passengers	All passengers paying any fare. Frequent flyer redemption travellers are regarded as revenue passengers.
Revenue Passenger Kilometres (RPKs)	Calculated by multiplying the number of revenue passengers travelling on each flight stage, by the distance in kilometres between the ports. The distances used are Great Circle Distances.
Traffic on board by stages	The total of all traffic (revenue passengers) on each flight stage between two directly connected airports.
..	Data not included
NA	Not applicable