



Australian Government

Department of Infrastructure, Transport, Cities and Regional Development

Bureau of Infrastructure, Transport and Regional Economics

STATISTICAL REPORT



Aviation

Domestic aviation activity
May 2019

© Commonwealth of Australia 2019

ISSN: 1832 - 1968

Ownership of intellectual property rights in this publication

Unless otherwise noted, copyright (and any other intellectual property rights, if any) in this publication is owned by the Commonwealth of Australia (referred to below as the Commonwealth).

Disclaimer

The material contained in this publication is made available on the understanding that the Commonwealth is not providing professional advice, and that users exercise their own skill and care with respect to its use, and seek independent advice if necessary.

The Commonwealth makes no representations or warranties as to the contents or accuracy of the information contained in this publication. To the extent permitted by law, the Commonwealth disclaims liability to any person or organisation in respect of anything done, or omitted to be done, in reliance upon information contained in this publication.

Creative Commons licence

With the exception of (a) the Coat of Arms; and (b) the Department of Infrastructure, Transport, Cities and Regional Developments' photos and graphics, copyright in this publication is licensed under a Creative Commons Attribution 3.0 Australia Licence.

Creative Commons Attribution 3.0 Australia Licence is a standard form licence agreement that allows you to copy, communicate and adapt this publication provided that you attribute the work to the Commonwealth and abide by the other licence terms. A summary of the licence terms is available from <http://creativecommons.org/licenses/by/3.0/au/deed.en>.

The full licence terms are available from <http://creativecommons.org/licenses/by/3.0/au/legalcode>.

Use of the Coat of Arms

The Department of the Prime Minister and Cabinet sets the terms under which the Coat of Arms is used. Please refer to the Department's Commonwealth Coat of Arms and Government branding web page <http://www.dpmc.gov.au/guidelines/index.cfm#brand> and, in particular, the Guidelines on the use of the Commonwealth Coat of Arms publication.

An appropriate citation for this report is:

Bureau of Infrastructure, Transport and Regional Economics (BITRE), 2019, Domestic aviation activity, Statistical Report, BITRE, Canberra ACT.

Contact us

This publication is available in PDF format. All other rights are reserved, including in relation to any Departmental logos or trade marks which may exist. For enquiries regarding the licence and any use of this publication, please contact:

Bureau of Infrastructure, Transport and Regional Economics (BITRE)
Department of Infrastructure, Transport, Cities and Regional Development
GPO Box 501, Canberra ACT 2601, Australia
Telephone: (international) +61 2 6274 7210
Fax: (international) +61 2 6274 6855
Email: bitre@infrastructure.gov.au
Website: www.bitre.gov.au

Inquiries

Should you require additional information about the statistics contained in this publication:

Nebojsa Pavlovic

Telephone (02) 6274 6817 or Facsimile (02) 6274 7727

Electronic mail: AVSTATS@infrastructure.gov.au

Nebojsa.Pavlovic@infrastructure.gov.au

Web site: <http://www.bitre.gov.au/statistics/aviation/domestic.aspx>

FOREWORD

This report provides an overview of domestic (including charter) commercial aviation activity in Australia for the month of May 2019.

The data cover revenue passengers carried by Australian-registered operators of scheduled regular public transport services over Australian flight stages and fixed-wing charter operators. These estimates include passengers carried between domestic airports on international flights operated by these carriers. The passengers carried refer to traffic on board by stages.

Estimates of passengers and aircraft movements for charter aviation are included in this publication, where BITRE confidentiality standards are met.

Individual routes shown are restricted to those with an average exceeding 8 000 passengers per month over the previous six months where two or more airlines operate in competition. For the month of May 2019, there were 65 such routes.

Information on the total network for the month of May 2019 and on the Regular Public Transport (RPT) network for the month of May 2019 is presented on page 2, with estimates for the year ended May 2019 presented on page 3.

Detailed information on the 65 individual routes can be found in the RPT summary pages 4-13 of this publication.

The top ten airports in terms of RPT passenger movements are shown on page 14.

Data on domestic RPT cargo movements at the top five cargo airports are provided on page 15. The table includes cargo carried on passenger flights operated by the Qantas group (including Jetstar), Virgin Australia, Air North and Skippers as well as the cargo carried by dedicated freighter aircraft operated by Qantas Freight, Toll Aviation and Virgin Australia Cargo.

The long-term trends for the top ten competitive RPT routes are presented graphically on pages 16-25.

Domestic RPT passenger movements at the top 50 regional airports are presented on pages 26-27.

Tables providing estimates of domestic charter aviation activity are shown on page 28. BITRE confidentiality standards restrict publication of detailed estimates for individual Australian airports, with the exception of Perth Airport.

A list of definitions can be found on page 29.

This report was prepared by the Aviation Statistics Section of the Bureau of Infrastructure, Transport and Regional Economics with data provided by airlines.

Estimates are included where data were not available and data presented in this publication may contain revisions to previously published data.

Where figures have been rounded, discrepancies may occur between sums of component items and totals, and in percentage changes which are derived from figures prior to rounding.

CONTENTS

Highlights	1
Total network.....	2
RPT network.....	2
Top competitive routes.....	4
Top ten airports – passenger movements.....	14
Top five airports – cargo movements.....	15
Top ten routes	16
1. Melbourne – Sydney	16
2. Brisbane – Sydney.....	17
3. Brisbane – Melbourne	18
4. Gold Coast – Sydney	19
5. Adelaide – Melbourne	20
6. Melbourne – Perth	21
7. Gold Coast – Melbourne	22
8. Adelaide – Sydney	23
9. Perth – Sydney	24
10. Hobart – Melbourne	25
Top fifty regional airports	26
Domestic charter activity.....	28
Definitions	29

This page is intentionally left blank.

HIGHLIGHTS

There were 5.12 million passengers carried on Australian domestic commercial aviation (including charter operations) in May 2019, an increase of 0.7 per cent on May 2018. For the month of May 2019 there were 58.4 thousand aircraft trips, an increase of 3.0 per cent compared to May 2018.

4.88 million passengers were carried on RPT flights in May 2019, an increase of 0.4 per cent on May 2018.

For the year ending May 2019 there were 60.97 million RPT passengers, an increase of 0.4 per cent on the year ending May 2018.

RPT revenue passenger kilometres (RPKs) performed were 5.61 billion for the month, up 0.2 per cent compared with May 2018. Capacity, measured by available seat kilometres (ASKs), increased by 1.2 per cent compared with May 2018 to a total of 7.25 billion.

With capacity increasing at a faster rate than RPT passenger traffic the industry wide load factor (RPKs/ASKs) decreased from 78.2 per cent in May 2018 to 77.4 per cent in May 2019. Load factors on individual routes decreased on 39 of the 65 RPT for which complete data is available in both years.

For the month of May 2019, Melbourne – Sydney remained Australia's busiest RPT route with 768 109 passengers, an increase of 0.9 per cent compared with May 2018. It was followed by Brisbane – Sydney with 396 519 passengers (down 0.2 per cent) and Brisbane – Melbourne with 276 470 passengers (down 0.3 per cent).

The greatest percentage increase in RPT passenger numbers, compared to May 2018, was on the Adelaide – Alice Springs route (up 26.4 per cent). There were large increases on a number of other routes, including Newman – Perth (up 10.6 per cent), Sydney – Townsville (up 9.7 per cent) and Armidale – Sydney (up 9.6 per cent).

Routes with traffic decreases in May 2019 compared with May 2018 included Brisbane – Darwin (down 10.3 per cent), Darwin – Perth (down 9.4 per cent), Canberra – Sydney (down 8.9 per cent) and Alice Springs – Darwin (down 8.7 per cent).

In May 2019, Sydney remained Australia's busiest domestic airport with 2.22 million passenger movements, followed by Melbourne with 2.03 million passenger movements and Brisbane with 1.42 million passenger movements.

Total cargo movements at Australian airports on domestic RPT flights were 41.1 thousand tonnes in May 2019, a decrease of 0.6 per cent compared with May 2018.

In May 2019, there were 2.00 million domestic passenger movements through regional airports, 0.7 per cent higher than in May 2018. Out of the top 50 regional airports, the strongest increase was at Ayers Rock airport (up 37.4 per cent on May 2018), while the largest decrease was recorded at Weipa airport (down 13.0 per cent on May 2018).

Fixed-wing charter operators carried 239.3 thousand passengers in May 2019, an increase of 5.9 per cent on May 2018. Perth Airport accounted for 39.0 per cent of all charter passengers in Australia.

TOTAL NETWORK

Summary of monthly commercial aviation activity

	May 2018	May 2019	% Change
Total passengers carried (millions)	5.09	5.12	0.7
Aircraft trips (000s)	56.7	58.4	3.0

Note: Regular Public Transport and charter aviation activity
Helicopter, joyflights and sightseeing charter flights not included.

RPT NETWORK

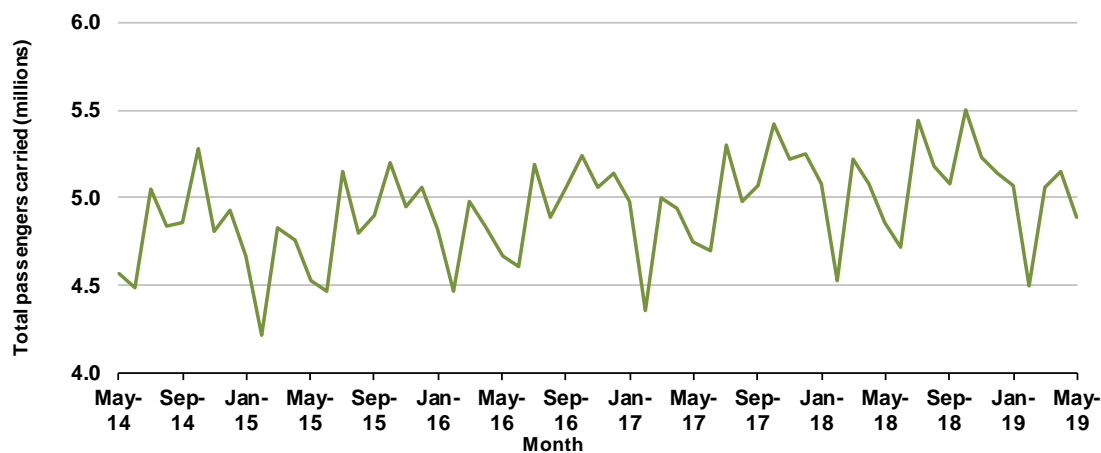
Summary of monthly RPT activity

	May 2018	May 2019	% Change
Total passengers carried (millions)	4.86	4.88	0.4
Revenue passenger kilometres (billions)	5.60	5.61	0.2
Available seats (millions)	6.34	6.46	1.9
Available seat kilometres (billions)	7.16	7.25	1.2
Load factor %	78.2	77.4	-0.8 *
Aircraft trips (000s)	52.8	54.4	3.0

* percentage point difference

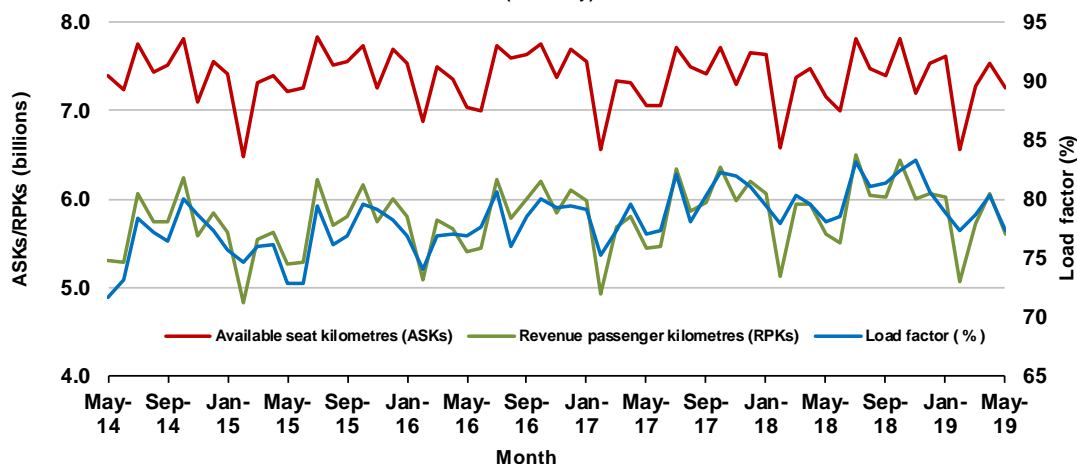
Domestic RPT passenger traffic

(monthly)



RPT Network utilisation

(monthly)



TOTAL NETWORK

Summary of annual commercial aviation activity

	YE May 2018	YE May 2019	% Change
Total passengers carried (millions)	63.19	63.52	0.5
Aircraft trips (000s)	682.8	676.7	-0.9

Note: Regular Public Transport and charter aviation activity
Helicopter, joyflights and sightseeing charter flights not included.

RPT NETWORK

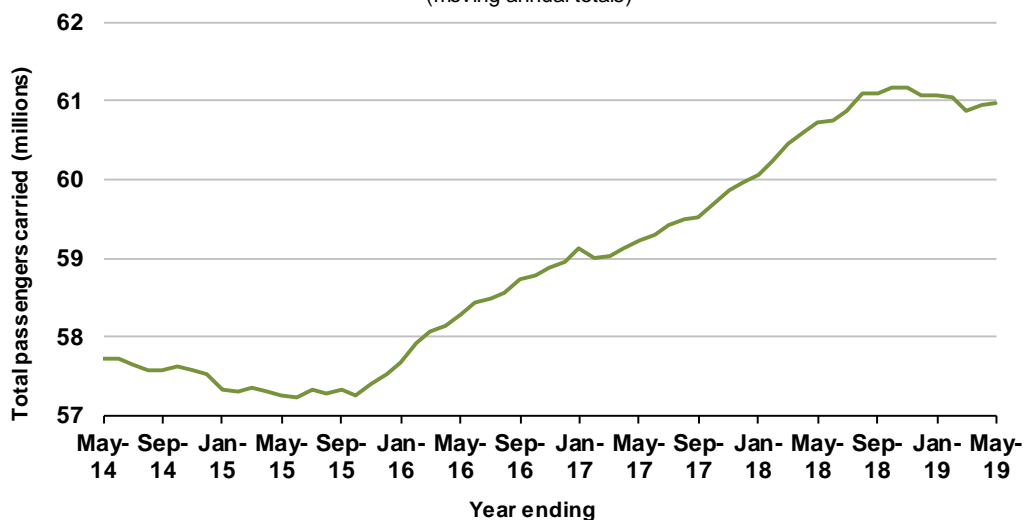
Summary of annual RPT activity

	YE May 2018	YE May 2019	% Change
Total passengers carried (millions)	60.73	60.97	0.4
Revenue passenger kilometres (billions)	70.82	71.06	0.3
Available seats (millions)	77.57	77.40	-0.2
Available seat kilometres (billions)	88.57	88.47	-0.1
Load factor %	80.0	80.3	0.4 *
Aircraft trips (000s)	636.4	632.3	-0.7

* percentage point difference

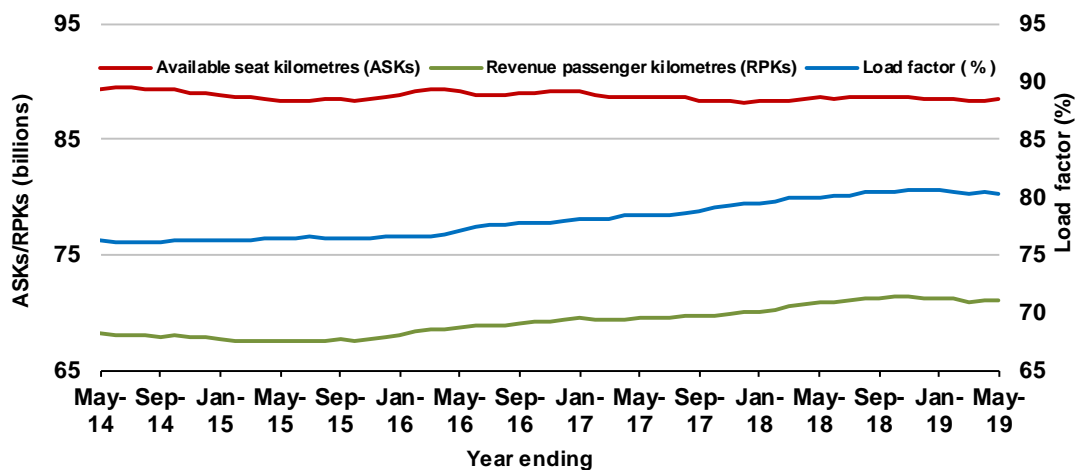
Domestic RPT passenger traffic

(moving annual totals)



RPT Network utilisation

(moving annual totals)



TOP COMPETITIVE ROUTES

Table 1: Passengers carried (000s) — annual activity

	City-Pair	YE May 2018	YE May 2019	% Change
1	Melbourne - Sydney	9 246.5	9 220.5	-0.3
2	Brisbane - Sydney	4 786.5	4 818.4	0.7
3	Brisbane - Melbourne	3 554.5	3 601.6	1.3
4	Gold Coast - Sydney	2 759.0	2 687.2	-2.6
5	Adelaide - Melbourne	2 489.2	2 510.2	0.8
6	Melbourne - Perth	2 053.3	2 115.6	3.0
7	Gold Coast - Melbourne	2 041.4	2 080.6	1.9
8	Adelaide - Sydney	1 908.3	1 881.2	-1.4
9	Perth - Sydney	1 719.1	1 693.4	-1.5
10	Hobart - Melbourne	1 643.0	1 653.9	0.7
11	Brisbane - Cairns	1 371.3	1 291.4	-5.8
12	Canberra - Melbourne	1 150.3	1 180.8	2.6
13	Cairns - Sydney	1 132.5	1 108.8	-2.1
14	Brisbane - Townsville	980.2	1 002.1	2.2
15	Launceston - Melbourne	940.6	961.6	2.2
16	Brisbane - Perth	981.1	939.2	-4.3
17	Canberra - Sydney	951.9	931.6	-2.1
18	Cairns - Melbourne	842.6	859.6	2.0
19	Adelaide - Brisbane	854.9	848.9	-0.7
20	Brisbane - Mackay	716.9	754.1	5.2
21	Hobart - Sydney	681.4	710.0	4.2
22	Brisbane - Canberra	616.3	645.4	4.7
23	Sunshine Coast - Sydney	608.2	639.8	5.2
24	Adelaide - Perth	624.6	633.5	1.4
25	Brisbane - Newcastle	586.5	585.6	-0.2
26	Melbourne - Sunshine Coast	511.8	549.7	7.4
27	Brisbane - Rockhampton	525.1	520.4	-0.9
28	Melbourne - Newcastle	486.1	488.4	0.5
29	Karratha - Perth	433.2	446.1	3.0
30	Ballina - Sydney	422.9	432.9	2.4
31	Perth - Port Hedland	343.8	365.5	6.3
32	Brisbane - Darwin	397.6	362.7	-8.8
33	Coffs Harbour - Sydney	347.5	333.6	-4.0
34	Broome - Perth	342.6	329.8	-3.7
35	Newman - Perth	293.1	320.2	9.3
36	Darwin - Melbourne	303.5	309.0	1.8
37	Darwin - Sydney	320.6	307.8	-4.0
38	Launceston - Sydney	284.5	289.2	1.6
39	Kalgoorlie - Perth	253.7	284.6	12.2
40	Brisbane - Gladstone	266.8	247.6	-7.2
41	Brisbane - Proserpine	275.4	244.8	-11.1
42	Brisbane - Hobart	217.2	237.7	9.4
43	Albury - Sydney	221.5	229.0	3.4
44	Melbourne - Mildura	217.2	228.2	5.0
45	Adelaide - Gold Coast	219.3	216.0	-1.5
46	Hamilton Island - Sydney	198.0	202.2	2.1
47	Brisbane - Emerald	195.8	196.1	0.1
48	Adelaide - Canberra	189.1	195.3	3.3
49	Ayers Rock - Sydney	195.1	192.3	-1.4
50	Port Macquarie - Sydney	190.7	187.2	-1.9

continued

Table 1: (continued) Passengers carried (000s) — annual activity

	City-Pair	YE May 2018	YE May 2019	%Change
51	Dubbo - Sydney	189.5	186.2	-1.8
52	Darwin - Perth	204.2	184.7	-9.5
53	Sydney - Wagga Wagga	179.0	180.3	0.7
54	Sydney - Tamworth	177.8	173.9	-2.2
55	Sydney - Townsville	159.8	173.9	8.8
56	Adelaide - Port Lincoln	170.2	168.7	-0.9
57	Brisbane - Bundaberg	170.3	157.4	-7.5
58	Cairns - Townsville	147.9	144.6	-2.2
59	Adelaide - Alice Springs	127.9	137.1	7.2
60	Brisbane - Mount Isa	127.4	133.2	4.6
61	Brisbane - Hamilton Island	124.2	124.4	0.2
62	Proserpine - Sydney	103.0	123.2	NA (a)
63	Armidale - Sydney	124.5	122.5	-1.6
64	Geraldton - Perth	112.4	110.9	-1.3
65	Alice Springs - Darwin	114.3	109.8	-4.0
	Total domestic network	60 727.7	60 965.0	0.4

(a) Proserpine - Sydney route included from September 2017, prior data not shown.

Table 2: Passengers carried (000s) — monthly activity

	City-Pair	May 2018	May 2019	% Change
1	Melbourne - Sydney	761.5	768.1	0.9
2	Brisbane - Sydney	397.3	396.5	-0.2
3	Brisbane - Melbourne	277.3	276.5	-0.3
4	Gold Coast - Sydney	200.6	206.4	2.9
5	Adelaide - Melbourne	200.0	199.1	-0.5
6	Melbourne - Perth	164.3	160.2	-2.5
7	Gold Coast - Melbourne	146.0	148.4	1.6
8	Adelaide - Sydney	151.4	146.8	-3.0
9	Perth - Sydney	136.7	133.0	-2.7
10	Hobart - Melbourne	119.1	119.9	0.7
11	Brisbane - Cairns	106.2	104.7	-1.4
12	Canberra - Melbourne	101.3	99.6	-1.7
13	Brisbane - Townsville	85.0	86.2	1.5
14	Canberra - Sydney	88.6	80.7	-8.9
15	Brisbane - Perth	77.9	78.1	0.3
16	Cairns - Sydney	78.8	76.1	-3.4
17	Adelaide - Brisbane	66.4	69.6	4.9
18	Launceston - Melbourne	67.5	69.3	2.6
19	Brisbane - Mackay	62.1	65.4	5.3
20	Cairns - Melbourne	60.8	60.5	-0.4
21	Adelaide - Perth	52.8	54.4	3.1
22	Brisbane - Canberra	52.1	52.5	0.7
23	Sunshine Coast - Sydney	45.5	49.4	8.7
24	Hobart - Sydney	45.5	49.2	8.0
25	Brisbane - Newcastle	48.4	49.0	1.2
26	Brisbane - Rockhampton	47.2	46.1	-2.4
27	Karratha - Perth	39.2	39.7	1.3
28	Melbourne - Newcastle	39.1	37.9	-3.2
29	Melbourne - Sunshine Coast	35.1	37.2	5.9
30	Perth - Port Hedland	33.3	33.1	-0.6
31	Newman - Perth	27.6	30.5	10.6
32	Ballina - Sydney	31.4	30.5	-2.9
33	Brisbane - Darwin	32.5	29.2	-10.3
34	Broome - Perth	30.5	28.8	-5.9
35	Coffs Harbour - Sydney	28.3	27.6	-2.7
36	Darwin - Melbourne	25.4	25.9	1.8
37	Darwin - Sydney	25.5	25.7	0.8
38	Kalgoorlie - Perth	25.4	25.0	-1.6
39	Brisbane - Gladstone	21.6	21.0	-2.6
40	Melbourne - Mildura	19.6	20.4	3.8
41	Albury - Sydney	19.0	19.8	4.3
42	Brisbane - Proserpine	18.0	18.7	3.8
43	Ayers Rock - Sydney	16.8	18.2	8.0
44	Launceston - Sydney	16.7	17.6	5.4
45	Brisbane - Emerald	17.2	17.3	0.8
46	Port Macquarie - Sydney	16.3	16.9	3.8
47	Adelaide - Canberra	16.7	16.5	-1.3
48	Adelaide - Gold Coast	17.3	16.3	-5.9
49	Dubbo - Sydney	16.7	16.3	-2.7
50	Sydney - Wagga Wagga	15.9	16.2	2.0

continued

Table 2: (continued) Passengers carried (000s) — monthly activity

	City-Pair	May 2018	May 2019	% Change
51	Sydney - Tamworth	14.7	15.4	4.9
52	Brisbane - Hobart	14.3	15.1	5.7
53	Darwin - Perth	16.1	14.6	-9.4
54	Adelaide - Port Lincoln	13.4	14.0	4.8
55	Brisbane - Bundaberg	13.6	13.2	-3.3
56	Adelaide - Alice Springs	10.1	12.7	26.4
57	Sydney - Townsville	11.5	12.6	9.7
58	Cairns - Townsville	13.3	12.3	-7.1
59	Brisbane - Mount Isa	11.4	12.3	7.7
60	Hamilton Island - Sydney	12.9	12.0	-6.6
61	Armidale - Sydney	10.2	11.2	9.6
62	Brisbane - Hamilton Island	9.8	10.1	2.6
63	Geraldton - Perth	10.1	9.8	-3.0
64	Alice Springs - Darwin	10.4	9.5	-8.7
65	Proserpine - Sydney	9.6	9.1	-5.3
	Total domestic network	4 863.8	4 884.4	0.4

Table 3: Available seats (000s) — monthly activity

	City-Pair	May 2018	May 2019	% Change
1	Melbourne - Sydney	942.2	931.9	-1.1
2	Brisbane - Sydney	487.5	499.6	2.5
3	Brisbane - Melbourne	349.4	342.0	-2.1
4	Gold Coast - Sydney	231.7	254.5	9.9
5	Adelaide - Melbourne	252.3	260.9	3.4
6	Melbourne - Perth	199.7	197.2	-1.2
7	Gold Coast - Melbourne	172.1	180.6	4.9
8	Adelaide - Sydney	184.3	182.5	-1.0
9	Perth - Sydney	170.7	163.9	-4.0
10	Hobart - Melbourne	155.2	155.6	0.3
11	Brisbane - Cairns	116.4	126.6	8.8
12	Canberra - Melbourne	155.5	152.7	-1.8
13	Brisbane - Townsville	110.5	117.0	5.9
14	Canberra - Sydney	116.9	109.9	-5.9
15	Brisbane - Perth	94.6	96.4	1.9
16	Cairns - Sydney	99.6	93.2	-6.4
17	Adelaide - Brisbane	85.0	94.3	11.0
18	Launceston - Melbourne	85.3	87.5	2.6
19	Brisbane - Mackay	80.5	87.6	8.8
20	Cairns - Melbourne	78.3	72.5	-7.5
21	Adelaide - Perth	70.0	74.4	6.3
22	Brisbane - Canberra	76.1	75.8	-0.3
23	Sunshine Coast - Sydney	56.1	63.9	13.9
24	Hobart - Sydney	57.2	62.3	8.9
25	Brisbane - Newcastle	64.8	67.6	4.2
26	Brisbane - Rockhampton	60.7	58.7	-3.3
27	Karratha - Perth	59.9	65.5	9.4
28	Melbourne - Newcastle	51.4	47.1	-8.4
29	Melbourne - Sunshine Coast	40.8	44.2	8.3
30	Perth - Port Hedland	47.9	55.3	15.3
31	Newman - Perth	49.9	52.8	5.8
32	Ballina - Sydney	37.7	38.3	1.6
33	Brisbane - Darwin	40.6	35.2	-13.5
34	Broome - Perth	37.2	38.1	2.5
35	Coffs Harbour - Sydney	41.0	37.9	-7.7
36	Darwin - Melbourne	33.2	30.4	-8.5
37	Darwin - Sydney	34.0	31.5	-7.3
38	Kalgoorlie - Perth	39.7	47.3	19.0
39	Brisbane - Gladstone	31.0	32.6	5.0
40	Melbourne - Mildura	30.7	30.6	-0.3
41	Albury - Sydney	28.3	29.2	3.4
42	Brisbane - Proserpine	20.2	24.3	20.3
43	Ayers Rock - Sydney	22.2	22.2	0.2
44	Launceston - Sydney	19.2	20.7	7.9
45	Brisbane - Emerald	23.8	26.3	10.5
46	Port Macquarie - Sydney	21.6	23.6	9.0
47	Adelaide - Canberra	24.2	27.1	12.0
48	Adelaide - Gold Coast	20.3	20.6	1.6
49	Dubbo - Sydney	22.9	23.5	2.4
50	Sydney - Wagga Wagga	22.9	24.3	6.1

continued

Table 3: (continued) Available seats (000s) — monthly activity

	City-Pair	May 2018	May 2019	% Change
51	Sydney - Tamworth	23.6	23.5	-0.5
52	Brisbane - Hobart	16.9	18.5	9.4
53	Darwin - Perth	21.5	21.5	0.2
54	Adelaide - Port Lincoln	22.8	24.6	7.9
55	Brisbane - Bundaberg	19.6	19.0	-3.5
56	Adelaide - Alice Springs	16.4	17.4	6.0
57	Sydney - Townsville	15.0	17.0	13.1
58	Cairns - Townsville	22.0	21.1	-4.1
59	Brisbane - Mount Isa	15.1	17.2	13.7
60	Hamilton Island - Sydney	20.3	18.6	-8.6
61	Armidale - Sydney	16.1	16.0	-0.9
62	Brisbane - Hamilton Island	15.2	15.1	-1.1
63	Geraldton - Perth	19.1	15.8	-17.3
64	Alice Springs - Darwin	20.5	27.1	32.0
65	Proserpine - Sydney	13.0	12.7	-2.2
	Total domestic network	6 340.8	6 463.2	1.9

Table 4: Load factors (%) — monthly activity

	City-Pair	May 2018	May 2019	% Point diff
1	Melbourne - Sydney	80.8	82.4	1.6
2	Brisbane - Sydney	81.5	79.4	-2.1
3	Brisbane - Melbourne	79.4	80.8	1.4
4	Gold Coast - Sydney	86.4	81.1	-5.3
5	Adelaide - Melbourne	79.3	76.3	-3.0
6	Melbourne - Perth	82.3	81.2	-1.1
7	Gold Coast - Melbourne	84.8	82.2	-2.6
8	Adelaide - Sydney	82.2	80.4	-1.8
9	Perth - Sydney	80.1	81.2	1.1
10	Hobart - Melbourne	76.7	77.1	0.4
11	Brisbane - Cairns	91.2	82.7	-8.5
12	Canberra - Melbourne	65.2	65.2	0.0
13	Brisbane - Townsville	76.9	73.7	-3.2
14	Canberra - Sydney	75.8	73.4	-2.4
15	Brisbane - Perth	82.3	81.0	-1.3
16	Cairns - Sydney	79.2	81.6	2.4
17	Adelaide - Brisbane	78.1	73.8	-4.3
18	Launceston - Melbourne	79.2	79.2	0.0
19	Brisbane - Mackay	77.1	74.7	-2.4
20	Cairns - Melbourne	77.1	83.6	6.5
21	Adelaide - Perth	75.4	73.1	-2.3
22	Brisbane - Canberra	68.5	69.2	0.7
23	Sunshine Coast - Sydney	81.1	77.3	-3.8
24	Hobart - Sydney	79.6	79.0	-0.6
25	Brisbane - Newcastle	74.7	72.5	-2.2
26	Brisbane - Rockhampton	77.8	78.6	0.8
27	Karratha - Perth	65.6	60.7	-4.9
28	Melbourne - Newcastle	76.1	80.5	4.4
29	Melbourne - Sunshine Coast	86.2	84.3	-1.9
30	Perth - Port Hedland	69.1	59.8	-9.3
31	Newman - Perth	56.1	57.8	1.7
32	Ballina - Sydney	83.4	79.8	-3.6
33	Brisbane - Darwin	80.0	82.9	2.9
34	Broome - Perth	82.2	75.5	-6.7
35	Coffs Harbour - Sydney	69.1	72.8	3.7
36	Darwin - Melbourne	76.5	85.2	8.7
37	Darwin - Sydney	74.9	81.5	6.6
38	Kalgoorlie - Perth	63.9	52.8	-11.1
39	Brisbane - Gladstone	69.6	64.5	-5.1
40	Melbourne - Mildura	63.9	66.5	2.6
41	Albury - Sydney	67.1	67.7	0.6
42	Brisbane - Proserpine	89.3	77.0	-12.3
43	Ayers Rock - Sydney	75.9	81.8	5.9
44	Launceston - Sydney	86.9	84.9	-2.0
45	Brisbane - Emerald	72.1	65.8	-6.3
46	Port Macquarie - Sydney	75.2	71.6	-3.6
47	Adelaide - Canberra	69.0	60.8	-8.2
48	Adelaide - Gold Coast	85.5	79.3	-6.2
49	Dubbo - Sydney	73.0	69.4	-3.6
50	Sydney - Wagga Wagga	69.5	66.8	-2.7

continued

Table 4: (continued) Load factors (%) — monthly activity

	City-Pair	May 2018	May 2019	% Point diff
51	Sydney - Tamworth	62.4	65.8	3.4
52	Brisbane - Hobart	84.3	81.5	-2.8
53	Darwin - Perth	75.0	67.8	-7.2
54	Adelaide - Port Lincoln	58.7	57.0	-1.7
55	Brisbane - Bundaberg	69.4	69.6	0.2
56	Adelaide - Alice Springs	61.6	73.4	11.8
57	Sydney - Townsville	76.3	74.1	-2.2
58	Cairns - Townsville	60.3	58.5	-1.8
59	Brisbane - Mount Isa	75.5	71.6	-3.9
60	Hamilton Island - Sydney	63.4	64.8	1.4
61	Armidale - Sydney	63.2	69.9	6.7
62	Brisbane - Hamilton Island	64.4	66.9	2.5
63	Geraldton - Perth	52.0	62.2	10.2
64	Alice Springs - Darwin	50.7	35.1	-15.6
65	Proserpine - Sydney	73.5	71.2	-2.3
	Total domestic network	78.2	77.4	-0.8

Table 5: Aircraft trips ^(a) — monthly activity

	City-Pair	May 2018	May 2019	% Change
1	Melbourne - Sydney	5 156	5 218	1.2
2	Brisbane - Sydney	2 952	3 036	2.8
3	Brisbane - Melbourne	2 048	2 018	-1.5
4	Gold Coast - Sydney	1 310	1 478	12.8
5	Adelaide - Melbourne	1 567	1 601	2.2
6	Melbourne - Perth	970	999	3.0
7	Gold Coast - Melbourne	909	955	5.1
8	Adelaide - Sydney	1 110	1 078	-2.9
9	Perth - Sydney	762	742	-2.6
10	Hobart - Melbourne	861	862	0.1
11	Brisbane - Cairns	768	894	16.4
12	Canberra - Melbourne	981	973	-0.8
13	Brisbane - Townsville	747	781	4.6
14	Canberra - Sydney	1 484	1 427	-3.8
15	Brisbane - Perth	507	524	3.4
16	Cairns - Sydney	541	481	-11.1
17	Adelaide - Brisbane	527	540	2.5
18	Launceston - Melbourne	670	685	2.2
19	Brisbane - Mackay	620	678	9.4
20	Cairns - Melbourne	406	371	-8.6
21	Adelaide - Perth	460	492	7.0
22	Brisbane - Canberra	555	554	-0.2
23	Sunshine Coast - Sydney	343	400	16.6
24	Hobart - Sydney	366	407	11.2
25	Brisbane - Newcastle	431	491	13.9
26	Brisbane - Rockhampton	720	695	-3.5
27	Karratha - Perth	517	524	1.4
28	Melbourne - Newcastle	287	258	-10.1
29	Melbourne - Sunshine Coast	230	247	7.4
30	Perth - Port Hedland	386	425	10.1
31	Newman - Perth	369	379	2.7
32	Ballina - Sydney	256	256	0.0
33	Brisbane - Darwin	255	226	-11.4
34	Broome - Perth	336	331	-1.5
35	Coffs Harbour - Sydney	392	402	2.6
36	Darwin - Melbourne	175	165	-5.7
37	Darwin - Sydney	202	180	-10.9
38	Kalgoorlie - Perth	312	373	19.6
39	Brisbane - Gladstone	406	436	7.4
40	Melbourne - Mildura	420	429	2.1
41	Albury - Sydney	514	542	5.4
42	Brisbane - Proserpine	114	138	21.1
43	Ayers Rock - Sydney	124	124	0.0
44	Launceston - Sydney	112	115	2.7
45	Brisbane - Emerald	316	387	22.5
46	Port Macquarie - Sydney	330	351	6.4
47	Adelaide - Canberra	144	162	12.5
48	Adelaide - Gold Coast	114	115	0.9
49	Dubbo - Sydney	485	520	7.2
50	Sydney - Wagga Wagga	453	488	7.7

continued

Table 5: (continued) Aircraft trips ^(a) — monthly activity

	City-Pair	May 2018	May 2019	% Change
51	Sydney - Tamworth	343	365	6.4
52	Brisbane - Hobart	96	109	13.5
53	Darwin - Perth	128	124	-3.1
54	Adelaide - Port Lincoln	579	640	10.5
55	Brisbane - Bundaberg	272	306	12.5
56	Adelaide - Alice Springs	117	123	5.1
57	Sydney - Townsville	94	94	0.0
58	Cairns - Townsville	354	334	-5.6
59	Brisbane - Mount Isa	160	146	-8.8
60	Hamilton Island - Sydney	132	122	-7.6
61	Armidale - Sydney	384	387	0.8
62	Brisbane - Hamilton Island	122	118	-3.3
63	Geraldton - Perth	191	158	-17.3
64	Alice Springs - Darwin	179	163	-8.9
65	Proserpine - Sydney	72	70	-2.8
	Total domestic network	52 804	54 374	3.0

(a) Includes RPT Cargo flights.

TOP TEN AIRPORTS – PASSENGER MOVEMENTS

Table 6: Top ten airports, RPT passenger movements (000s) - monthly activity

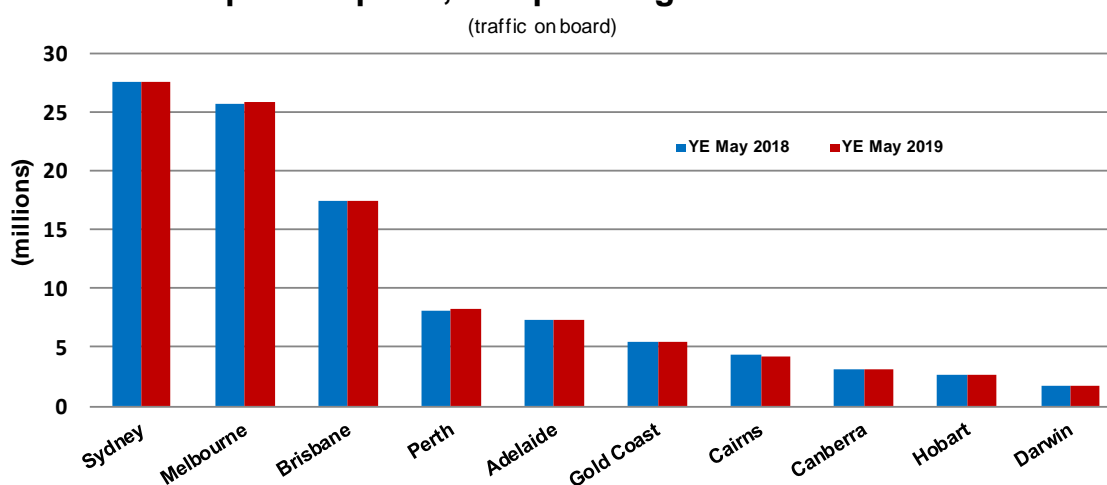
Airport	May 2018	May 2019	% Change	% of Total
1 Sydney	2 211.7	2 218.7	0.3	22.7
2 Melbourne	2 023.0	2 030.1	0.4	20.8
3 Brisbane	1 410.0	1 419.2	0.7	14.5
4 Perth	677.0	671.6	-0.8	6.9
5 Adelaide	589.5	590.8	0.2	6.0
6 Gold Coast	394.3	406.5	3.1	4.2
7 Cairns	322.4	313.8	-2.7	3.2
8 Canberra	272.7	263.0	-3.5	2.7
9 Hobart	183.6	194.7	6.1	2.0
10 Darwin	147.2	142.0	-3.6	1.5
Total top ten airports	8 231.3	8 250.4	0.2	84.5
Total domestic network	9 727.5	9 768.7	0.4	100.0

Table 7: Top ten airports, RPT passenger movements (000s) - annual activity

Airport	YE May 2018	YE May 2019	% Change	% of Total
1 Sydney	27 634.4	27 540.4	-0.3	22.6
2 Melbourne	25 662.6	25 926.8	1.0	21.3
3 Brisbane	17 405.3	17 370.0	-0.2	14.2
4 Perth	8 095.0	8 208.6	1.4	6.7
5 Adelaide	7 263.0	7 310.7	0.7	6.0
6 Gold Coast	5 496.9	5 464.3	-0.6	4.5
7 Cairns	4 329.8	4 238.3	-2.1	3.5
8 Canberra	3 081.2	3 137.3	1.8	2.6
9 Hobart	2 591.9	2 708.4	4.5	2.2
10 Darwin	1 786.8	1 717.5	-3.9	1.4
Total top ten airports	103 346.9	103 622.4	0.3	85.0
Total domestic network	121 455.4	121 930.0	0.4	100.0

Note: Airport passenger movement numbers are the sum of passenger arrivals and departures at each airport.

Top ten airports, RPT passenger movements



TOP FIVE AIRPORTS – CARGO MOVEMENTS

Table 8: Top five airports, domestic RPT cargo movements (000s tonnes) - monthly activity

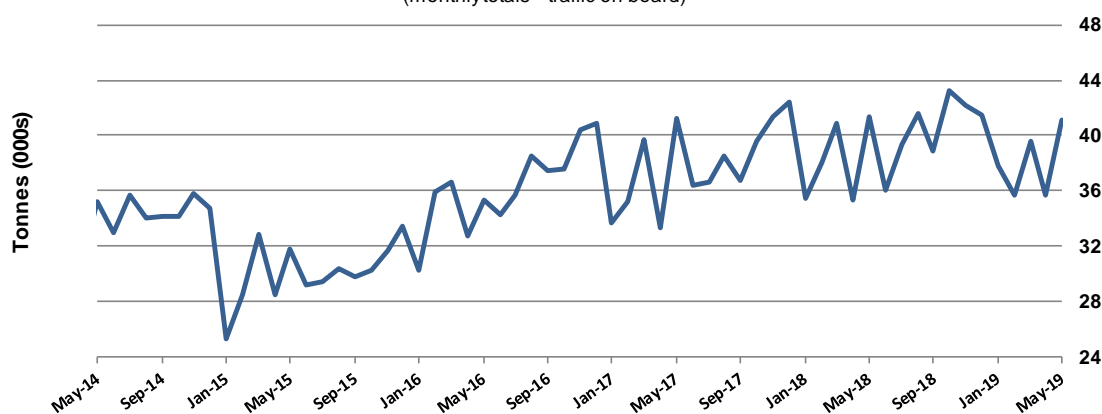
Airport	May 2018	May 2019	% Change	% of Total
1 Melbourne	12.1	10.9	-10.2	26.5
2 Sydney	9.4	8.9	-5.0	21.8
3 Brisbane	6.1	6.2	1.5	15.1
4 Perth	5.9	5.5	-6.2	13.4
5 Adelaide	2.5	2.5	3.0	6.2
Total top five airports	36.0	34.1	-5.3	83.0
Total domestic network	41.4	41.1	-0.6	100.0

Table 9: Top five airports, domestic RPT cargo movements (000s tonnes) - annual activity

Airport	YE May 2018	YE May 2019	% Change	% of Total
1 Melbourne	134.0	128.4	-4.1	27.2
2 Sydney	106.3	104.4	-1.8	22.1
3 Brisbane	68.7	73.8	7.4	15.6
4 Perth	66.2	65.5	-1.1	13.8
5 Adelaide	27.5	28.8	4.9	6.1
Total top five airports	402.7	401.0	-0.4	84.8
Total domestic network	462.8	472.7	2.2	100.0

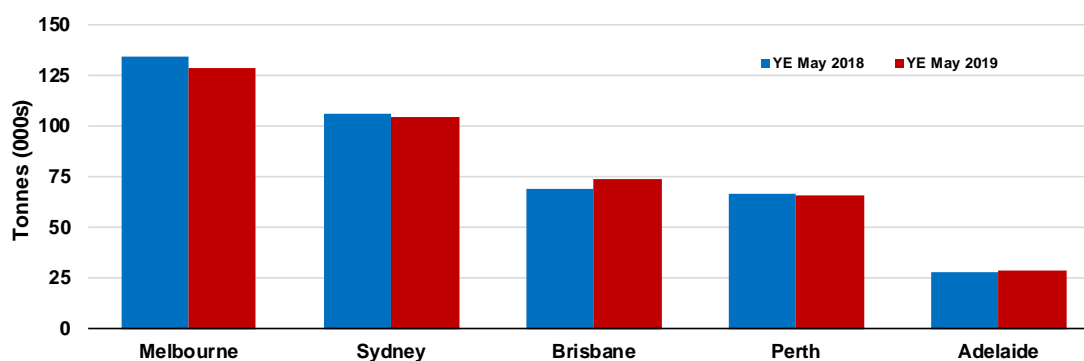
Note: Airport cargo tonnes are the sum of cargo tonnes on arrivals and departures at each airport.

Total domestic network - cargo movement (monthly totals - traffic on board)



Top five airports, cargo movements

(Domestic cargo traffic - traffic on board)



TOP TEN ROUTES

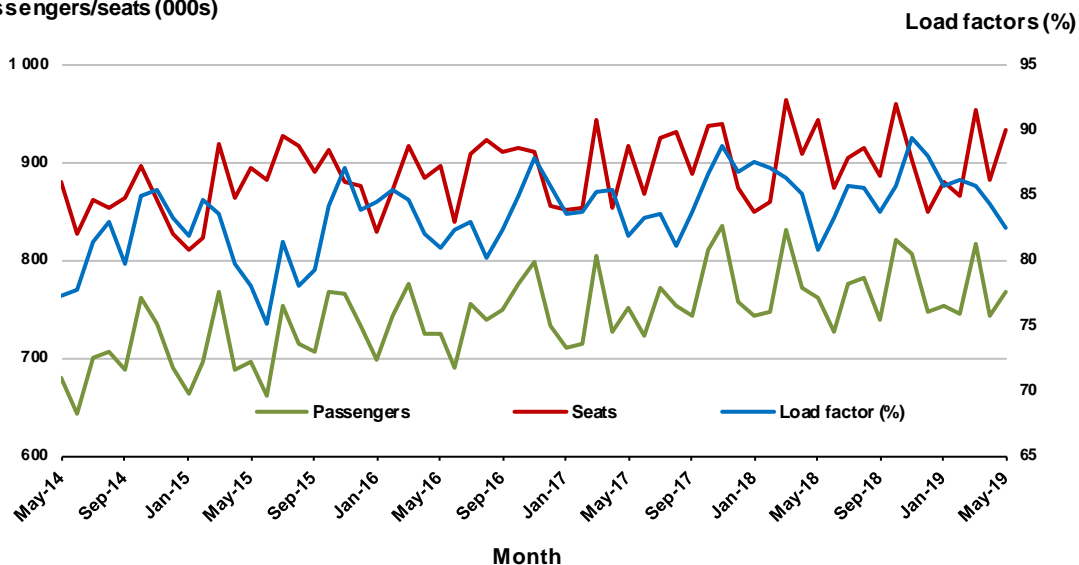
1. Melbourne - Sydney

Monthly data

	May 2018	May 2019	% Change
Passengers carried (000s)	761.5	768.1	0.9
Seats (000s)	942.2	931.9	-1.1
Load factor %	80.8	82.4	1.6 *
Aircraft trips	5 156	5 218	1.2

* percentage point difference

Passengers/seats (000s)

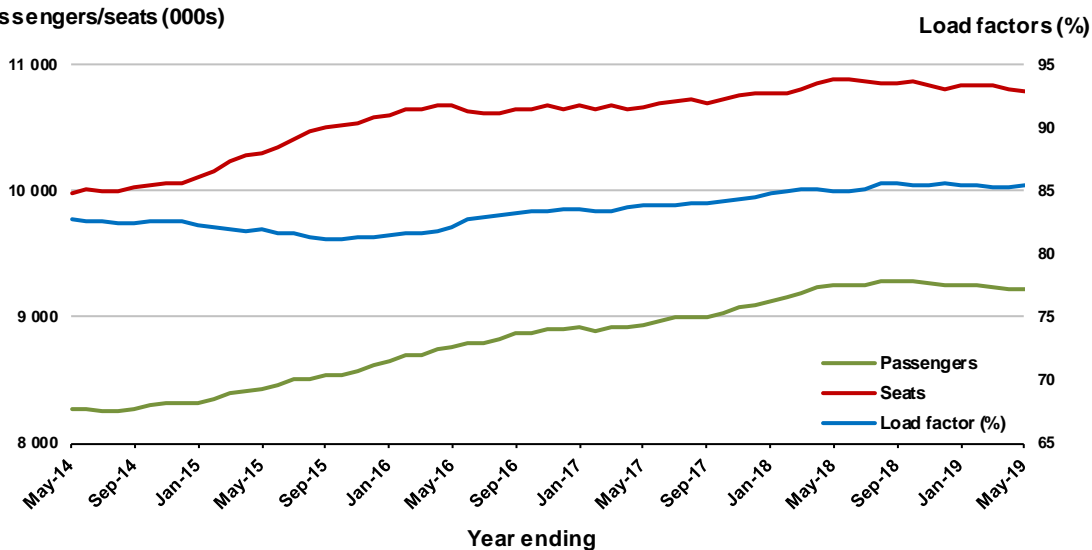


Moving annual data

	YE May 2018	YE May 2019	% Change
Passengers carried (000s)	9 246.5	9 220.5	-0.3
Seats (000s)	10 879.3	10 798.4	-0.7
Load factor %	85.0	85.4	0.4 *
Aircraft trips	60 378	60 250	-0.2

* percentage point difference

Passengers/seats (000s)

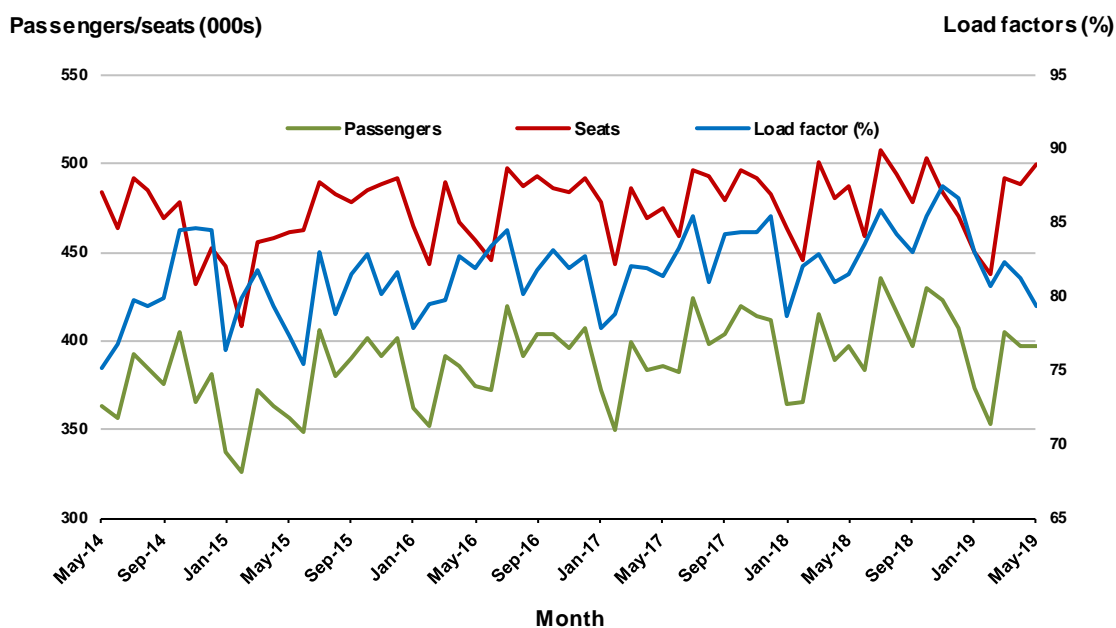


2. Brisbane - Sydney

Monthly data

	May 2018	May 2019	% Change
Passengers carried (000s)	397.3	396.5	-0.2
Seats (000s)	487.5	499.6	2.5
Load factor %	81.5	79.4	-2.1 *
Aircraft trips	2 952	3 036	2.8

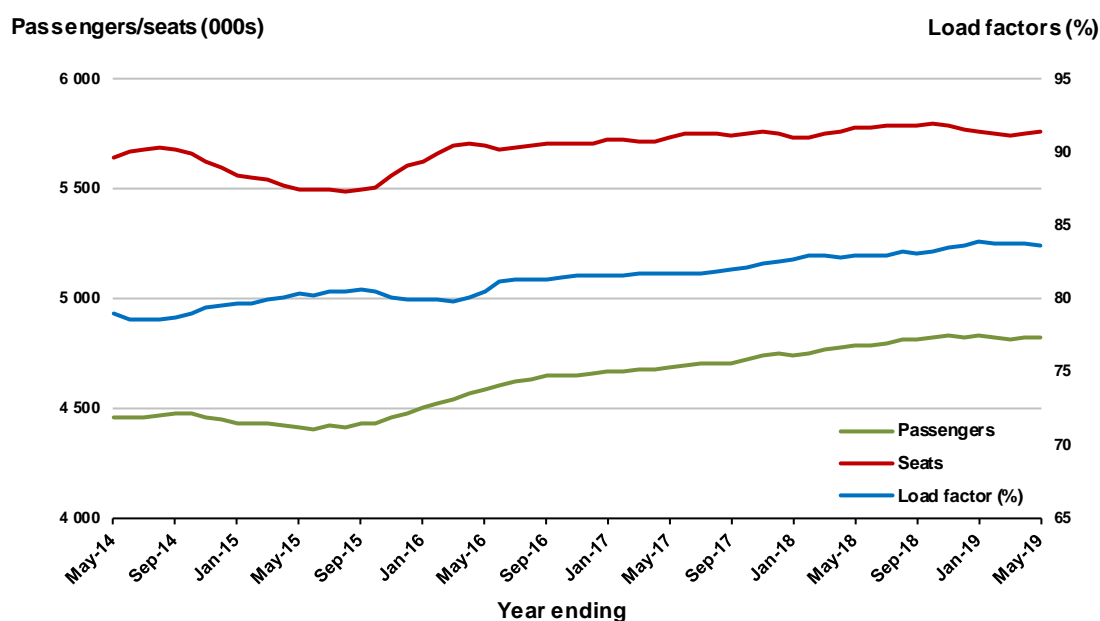
* percentage point difference



Moving annual data

	YE May 2018	YE May 2019	% Change
Passengers carried (000s)	4 786.5	4 818.4	0.7
Seats (000s)	5 775.5	5 764.2	-0.2
Load factor %	82.9	83.6	0.7 *
Aircraft trips	35 256	35 038	-0.6

* percentage point difference

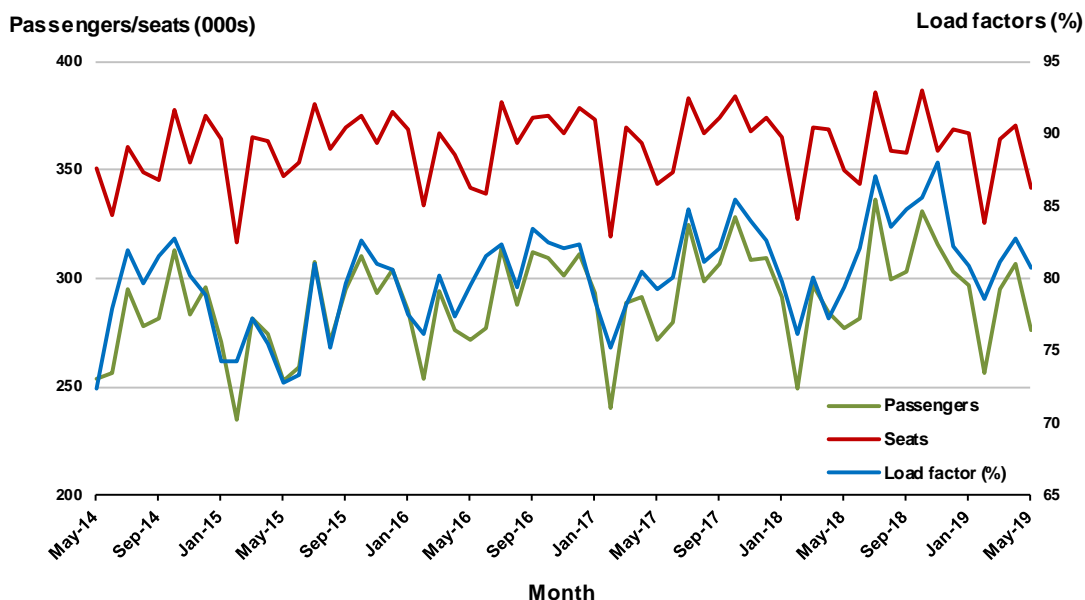


3. Brisbane - Melbourne

Monthly data

	May 2018	May 2019	% Change
Passengers carried (000s)	277.3	276.5	-0.3
Seats (000s)	349.4	342.0	-2.1
Load factor %	79.4	80.8	1.4 *
Aircraft trips	2 048	2 018	-1.5

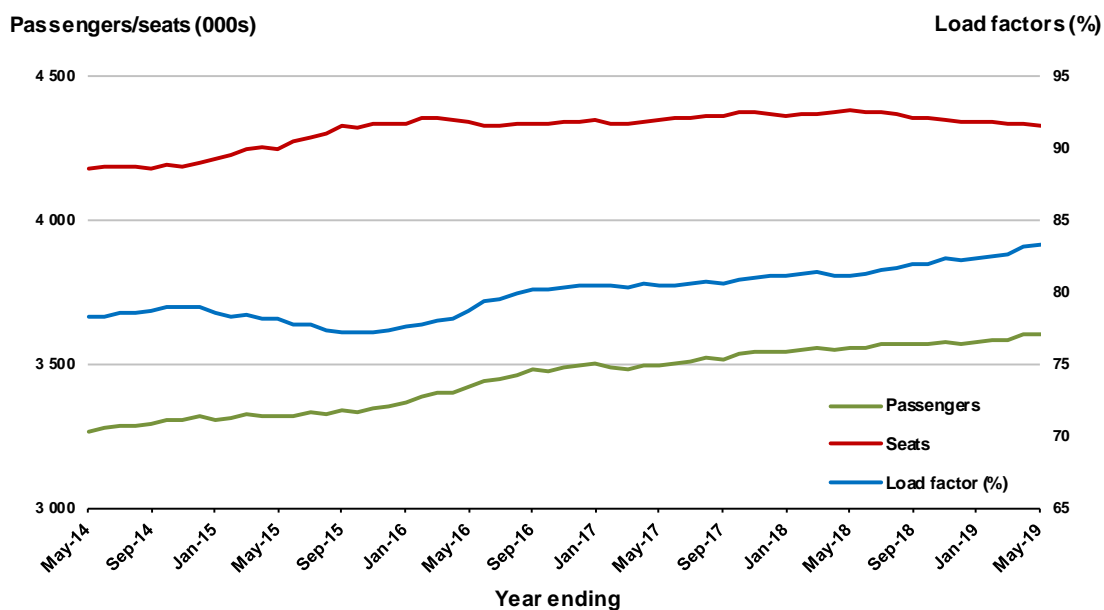
* percentage point difference



Moving annual data

	YE May 2018	YE May 2019	% Change
Passengers carried (000s)	3 554.5	3 601.6	1.3
Seats (000s)	4 379.5	4 327.3	-1.2
Load factor %	81.2	83.2	2.1 *
Aircraft trips	25 854	25 511	-1.3

* percentage point difference



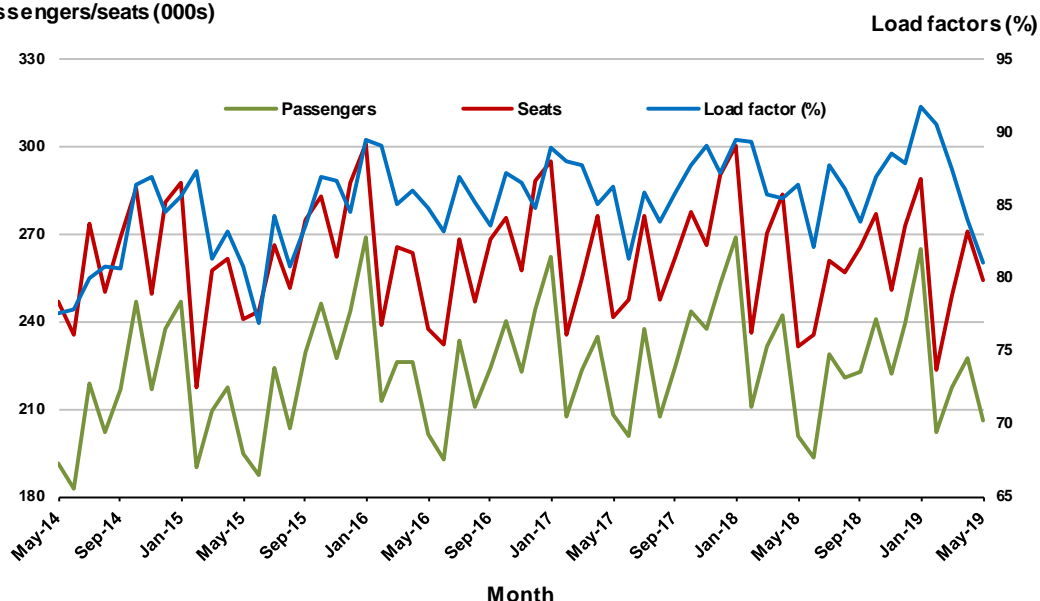
4. Gold Coast - Sydney

Monthly data

	May 2018	May 2019	% Change
Passengers carried (000s)	200.6	206.4	2.9
Seats (000s)	231.7	254.5	9.9
Load factor %	86.4	81.1	-5.3 *
Aircraft trips	1 310	1 478	12.8

* percentage point difference

Passengers/seats (000s)

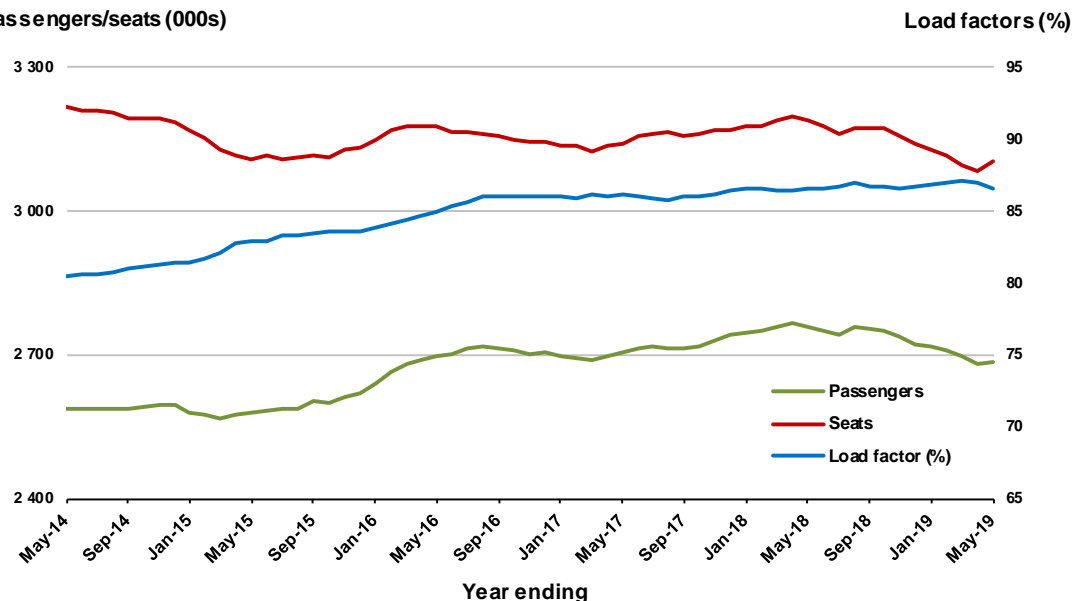


Moving annual data

	YE May 2018	YE May 2019	% Change
Passengers carried (000s)	2 759.0	2 687.2	-2.6
Seats (000s)	3 189.2	3 105.8	-2.6
Load factor %	86.5	86.5	0.0 *
Aircraft trips	18 002	17 718	-1.6

* percentage point difference

Passengers/seats (000s)



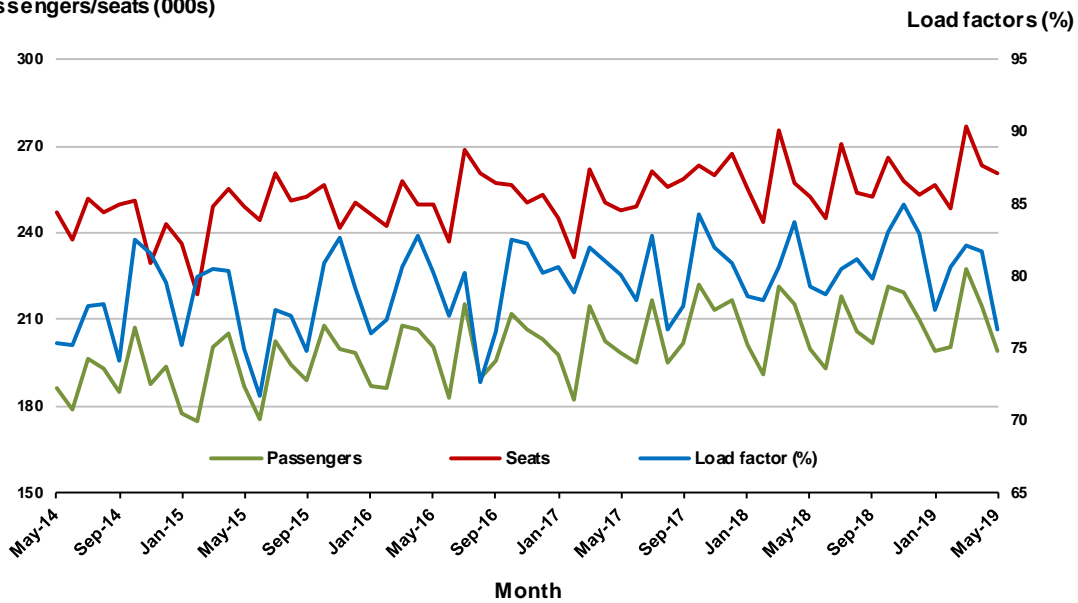
5. Adelaide - Melbourne

Monthly data

	May 2018	May 2019	% Change
Passengers carried (000s)	200.0	199.1	-0.5
Seats (000s)	252.3	260.9	3.4
Load factor %	79.3	76.3	-3.0 *
Aircraft trips	1 567	1 601	2.2

* percentage point difference

Passengers/seats (000s)

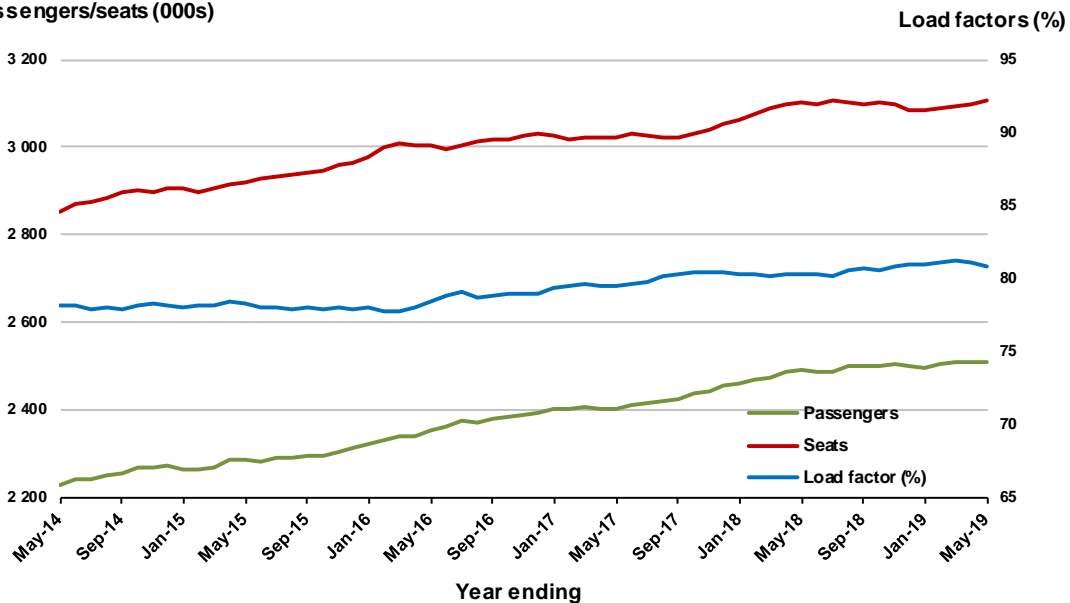


Moving annual data

	YE May 2018	YE May 2019	% Change
Passengers carried (000s)	2 489.2	2 510.2	0.8
Seats (000s)	3 100.6	3 105.6	0.2
Load factor %	80.3	80.8	0.5 *
Aircraft trips	19 254	19 058	-1.0

* percentage point difference

Passengers/seats (000s)



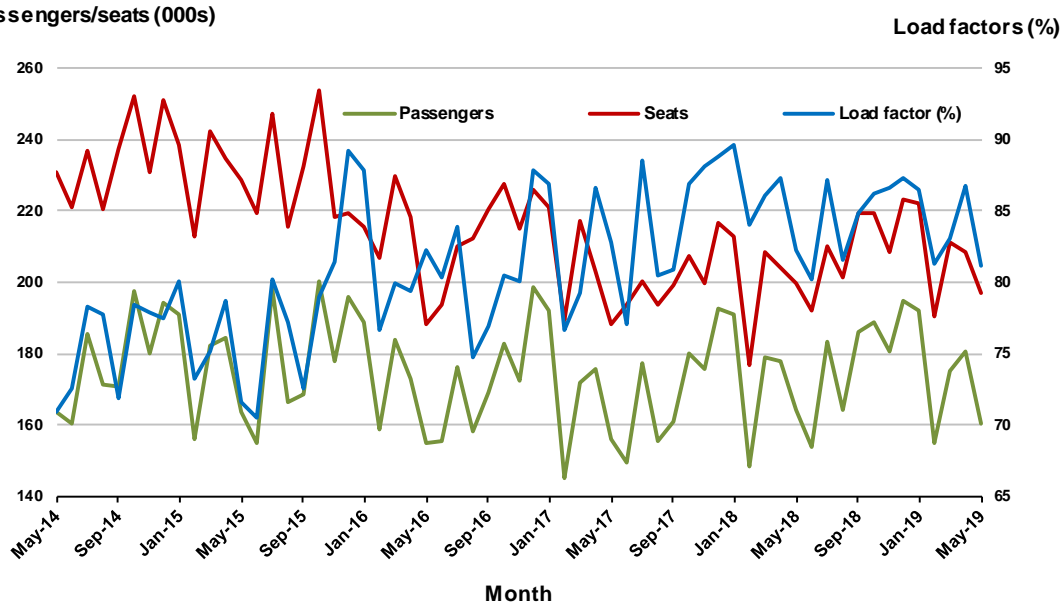
6. Melbourne - Perth

Monthly data

	May 2018	May 2019	% Change
Passengers carried (000s)	164.3	160.2	-2.5
Seats (000s)	199.7	197.2	-1.2
Load factor %	82.3	81.2	-1.1 *
Aircraft trips	970	999	3.0

* percentage point difference

Passengers/seats (000s)

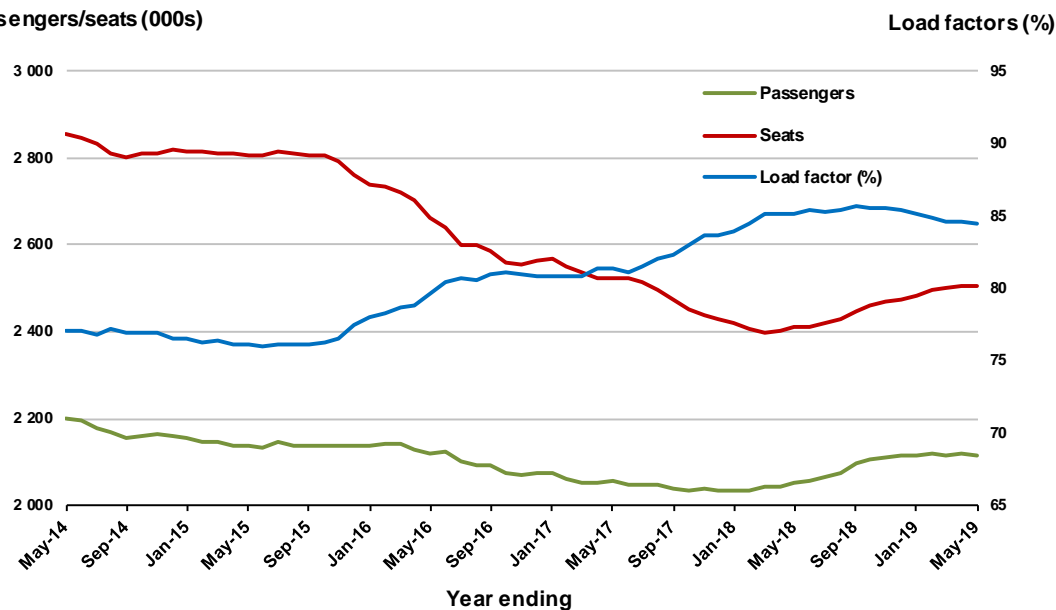


Moving annual data

	YE May 2018	YE May 2019	% Change
Passengers carried (000s)	2 053.3	2 115.6	3.0
Seats (000s)	2 412.0	2 503.3	3.8
Load factor %	85.1	84.5	-0.6 *
Aircraft trips	11 160	12 181	9.1

* percentage point difference

Passengers/seats (000s)



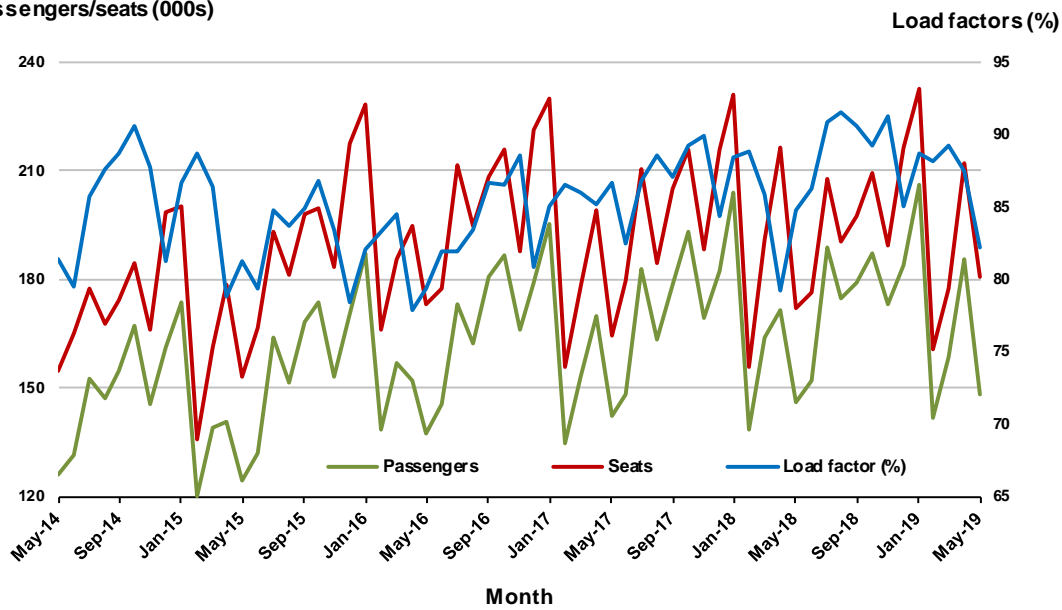
7. Gold Coast - Melbourne

Monthly data

	May 2018	May 2019	% Change
Passengers carried (000s)	146.0	148.4	1.6
Seats (000s)	172.1	180.6	4.9
Load factor %	84.8	82.2	-2.6 *
Aircraft trips	909	955	5.1

* percentage point difference

Passengers/seats (000s)

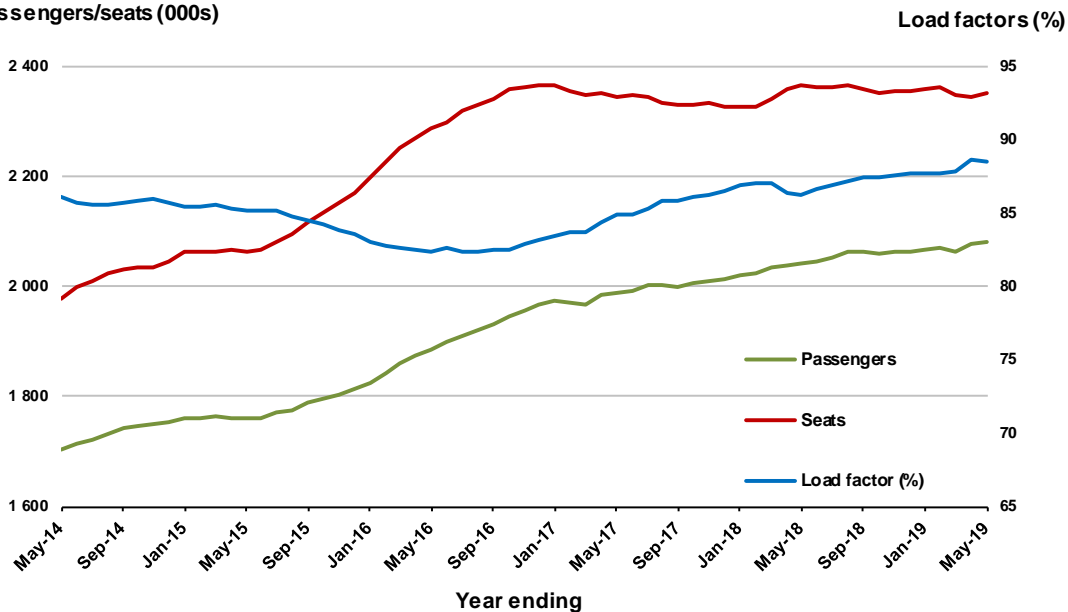


Moving annual data

	YE May 2018	YE May 2019	% Change
Passengers carried (000s)	2 041.4	2 080.6	1.9
Seats (000s)	2 366.1	2 352.7	-0.6
Load factor %	86.3	88.4	2.2 *
Aircraft trips	12 534	12 428	-0.8

* percentage point difference

Passengers/seats (000s)



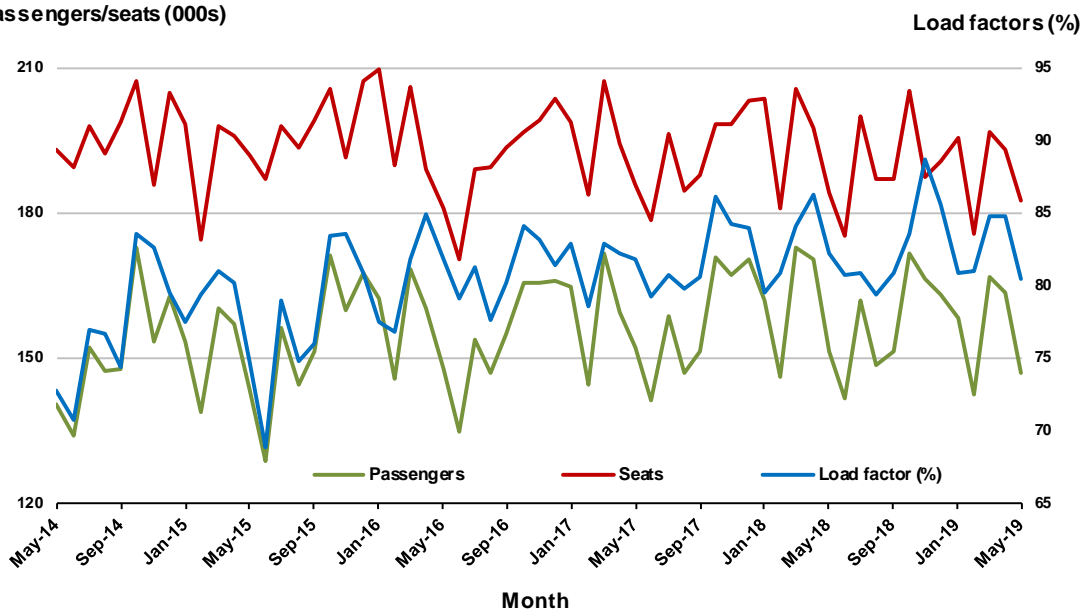
8. Adelaide - Sydney

Monthly data

	May 2018	May 2019	% Change
Passengers carried (000s)	151.4	146.8	-3.0
Seats (000s)	184.3	182.5	-1.0
Load factor %	82.2	80.4	-1.8 *
Aircraft trips	1 110	1 078	-2.9

* percentage point difference

Passengers/seats (000s)

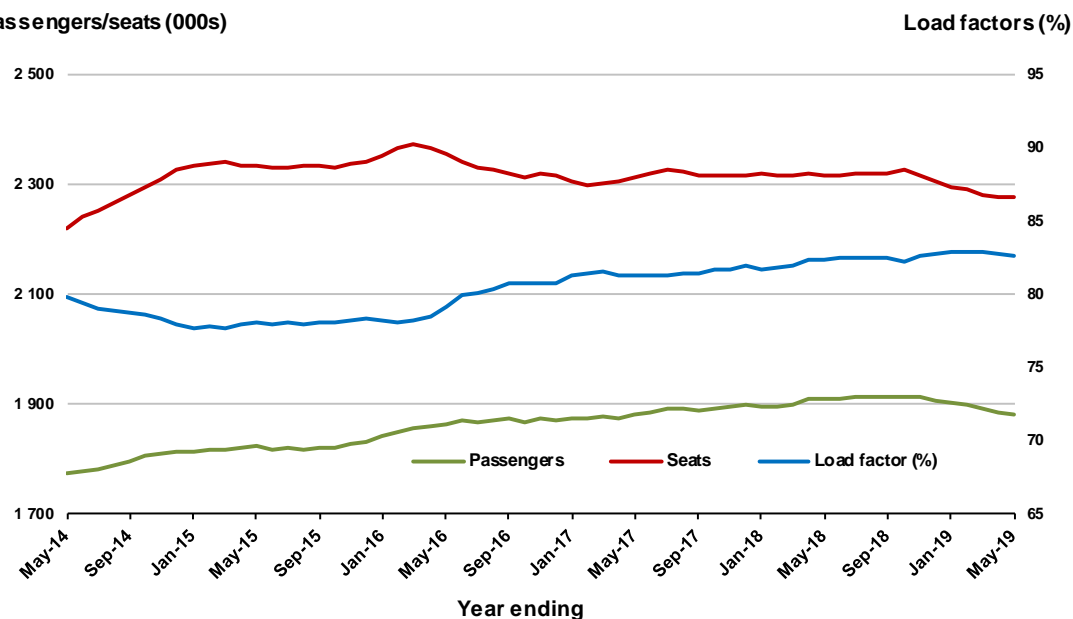


Moving annual data

	YE May 2018	YE May 2019	% Change
Passengers carried (000s)	1 908.3	1 881.2	-1.4
Seats (000s)	2 318.1	2 276.0	-1.8
Load factor %	82.3	82.7	0.3 *
Aircraft trips	13 900	13 680	-1.6

* percentage point difference

Passengers/seats (000s)



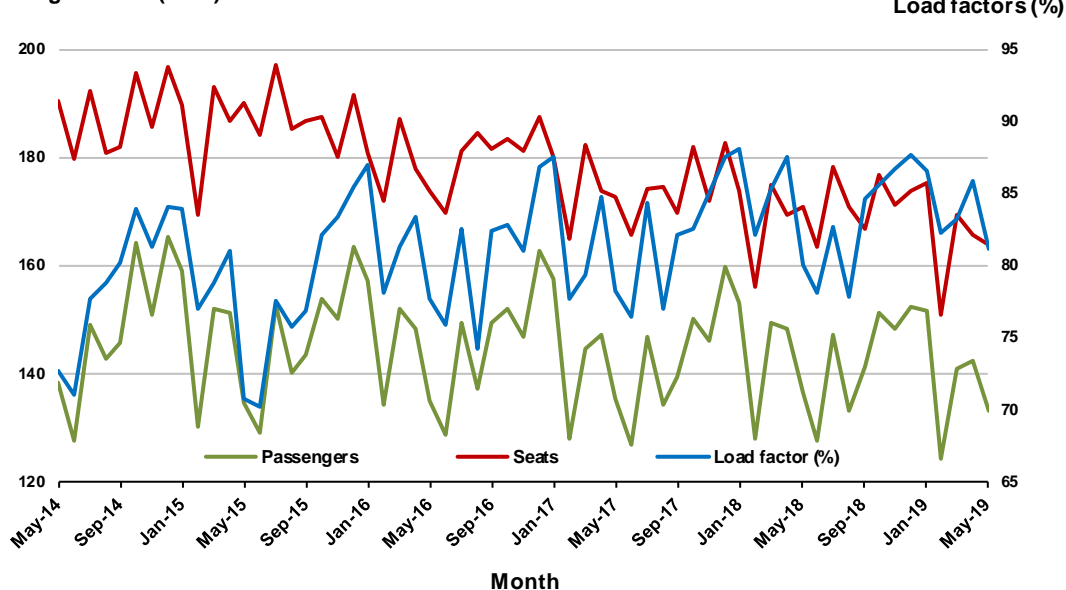
9. Perth - Sydney

Monthly data

	May 2018	May 2019	% Change
Passengers carried (000s)	136.7	133.0	-2.7
Seats (000s)	170.7	163.9	-4.0
Load factor %	80.1	81.2	1.1 *
Aircraft trips	762	742	-2.6

* percentage point difference

Passengers/seats (000s)

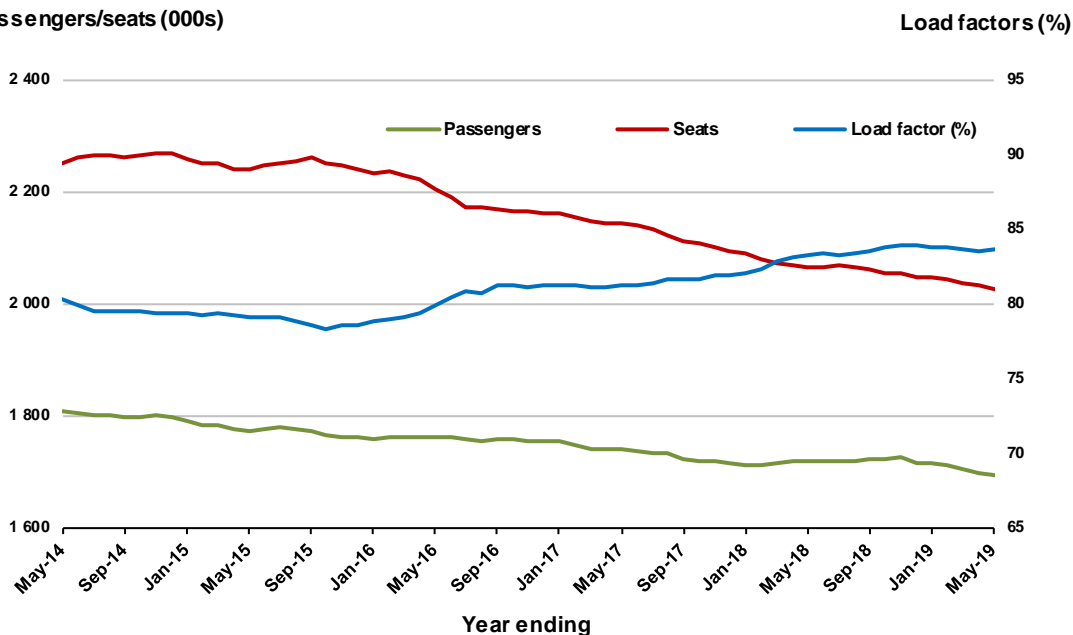


Moving annual data

	YE May 2018	YE May 2019	% Change
Passengers carried (000s)	1 719.1	1 693.4	-1.5
Seats (000s)	2 065.6	2 026.2	-1.9
Load factor %	83.2	83.6	0.3 *
Aircraft trips	9 041	9 107	0.7

* percentage point difference

Passengers/seats (000s)



10. Hobart - Melbourne

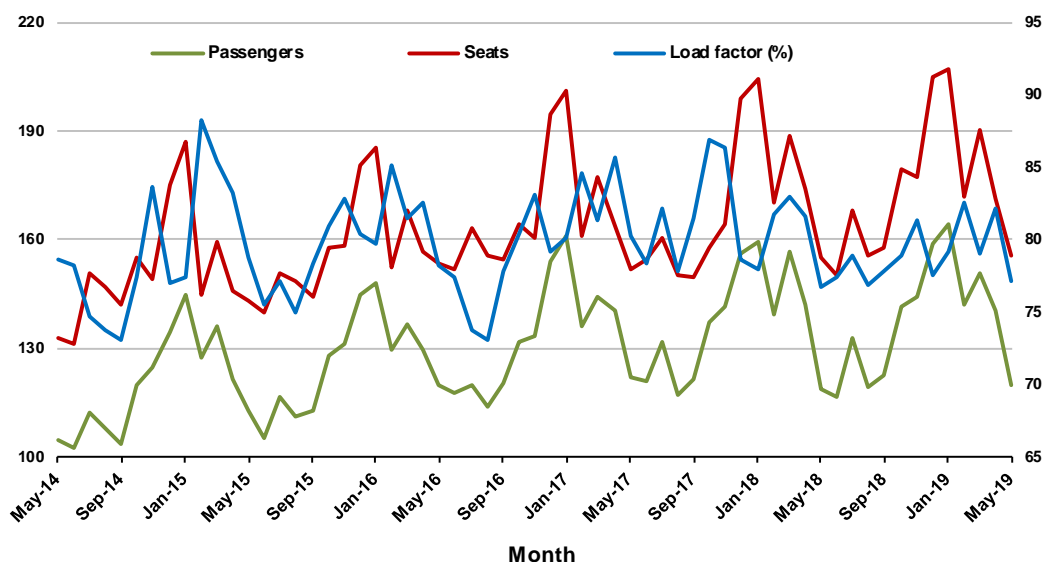
Monthly data

	May 2018	May 2019	% Change
Passengers carried (000s)	119.1	119.9	0.7
Seats (000s)	155.2	155.6	0.3
Load factor %	76.7	77.1	0.4 *
Aircraft trips	861	862	0.1

* percentage point difference

Passengers/seats (000s)

Load factors (%)



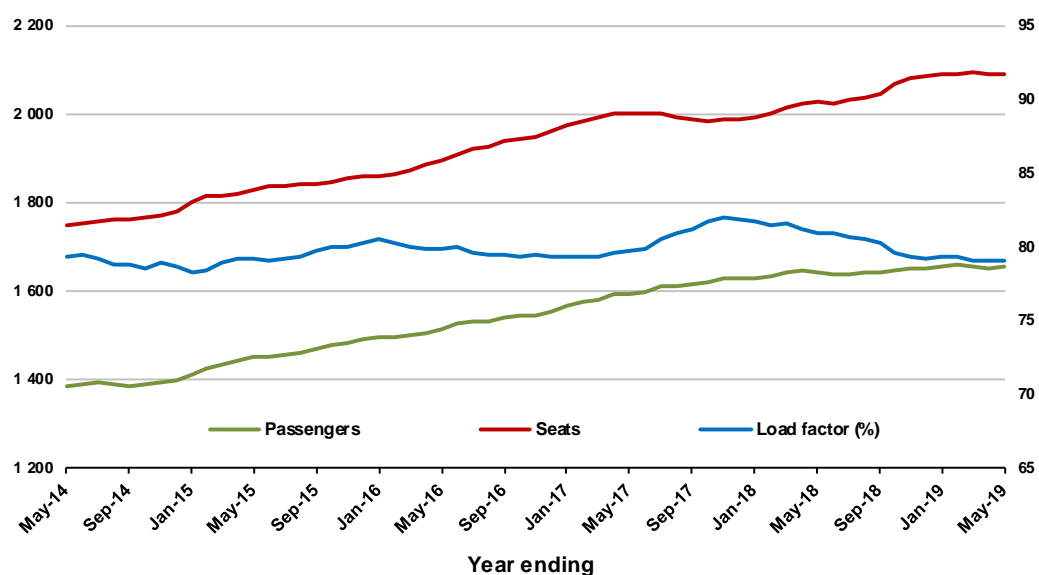
Moving annual data

	YE May 2018	YE May 2019	% Change
Passengers carried (000s)	1 643.0	1 653.9	0.7
Seats (000s)	2 028.8	2 090.3	3.0
Load factor %	81.0	79.1	-1.9 *
Aircraft trips	12 021	11 468	-4.6

* percentage point difference

Passengers/seats (000s)

Load factors (%)



TOP FIFTY REGIONAL AIRPORTS

Table 10: Top fifty regional airports (000s) — passenger movements, monthly

	Airport	May 2018	May 2019	% Change
1	Cairns	322.4	313.8	-2.7
2	Hobart	183.6	194.7	6.1
3	Darwin	147.2	142.0	-3.6
4	Townsville	138.7	140.1	1.0
5	Newcastle	102.3	102.7	0.5
6	Launceston	92.8	96.1	3.6
7	Mackay	72.1	74.8	3.7
8	Rockhampton	52.0	49.0	-5.7
9	Alice Springs	50.0	44.6	-10.9
10	Ayers Rock	31.0	42.5	37.4
11	Karratha	39.2	39.7	1.3
12	Ballina	37.4	36.3	-2.9
13	Broome	38.0	36.1	-5.1
14	Port Hedland	34.2	33.8	-1.2
15	Coffs Harbour	32.6	32.5	-0.2
16	Proserpine	31.2	31.8	1.9
17	Newman	27.6	30.6	10.8
18	Hamilton Island	27.0	28.3	4.9
19	Kalgoorlie	26.2	25.7	-1.6
20	Mildura	23.9	22.5	-5.7
21	Albury	23.0	22.0	-4.4
22	Gladstone	21.6	21.0	-2.6
23	Mount Isa	18.8	20.1	6.9
24	Port Macquarie	18.4	19.0	3.3
25	Dubbo	20.1	19.0	-5.5
26	Wagga Wagga	20.0	18.7	-6.3
27	Emerald	17.2	17.3	0.8
28	Paraburdoo	16.3	17.0	3.8
29	Tamworth	16.0	16.7	4.5
30	Port Lincoln	13.4	14.1	4.7
31	Bundaberg	13.6	13.2	-3.3
32	Hervey Bay	12.4	12.5	0.8
33	Armidale	10.9	11.9	9.5
34	Devonport	12.1	11.8	-2.1
35	Kununurra	10.6	10.8	1.7
36	Moranbah	9.0	10.3	13.9
37	Toowoomba Wellcamp	11.5	10.1	-12.3
38	Geraldton	10.3	9.8	-4.3
39	Roma	7.8	8.8	12.4
40	Griffith	6.6	8.2	22.8
41	Learmonth	9.0	8.1	-9.5
42	Mount Gambier	7.5	8.0	6.3
43	Thursday Island	8.3	7.9	-5.3
44	Orange	7.1	7.6	7.7
45	Whyalla	7.0	7.4	5.3
46	Olympic Dam	6.5	7.2	10.8
47	Gove	7.5	6.8	-8.7
48	Weipa	7.1	6.2	-13.0
49	Broken Hill	6.7	5.8	-12.9
50	Albany	5.4	5.7	5.0
Total top 50 regional airports		1 870.8	1 880.6	0.5
Total regional airports		1 991.3	2 004.7	0.7
Total domestic network		9 727.5	9 768.7	0.4

Note: Airport passenger movement numbers are the sum of passenger arrivals and departures at each airport.

Regional airports are defined as airports which are, according to the Australian Bureau of Statistics

"The Australian Statistical Geography Standard (ASGS)", not based in Major Urban areas.

Table 11: Top fifty regional airports (000s) — passenger movements, annual

Airport	YE May 2018	YE May 2019	% Change
1 Cairns	4 323.2	4 246.9	-1.8
2 Hobart	2 588.9	2 697.2	4.2
3 Darwin	1 786.8	1 722.8	-3.6
4 Townsville	1 630.3	1 641.9	0.7
5 Launceston	1 361.1	1 387.5	1.9
6 Newcastle	1 281.8	1 257.9	-1.9
7 Mackay	806.3	855.9	6.1
8 Alice Springs	612.9	613.3	0.1
9 Rockhampton	563.6	555.4	-1.4
10 Ballina	521.7	535.7	2.7
11 Karratha	435.1	447.7	2.9
12 Ayers Rock	373.8	433.5	16.0
13 Proserpine	471.0	431.0	-8.5
14 Hamilton Island	411.9	428.1	3.9
15 Broome	410.8	410.7	0.0
16 Coffs Harbour	416.3	398.3	-4.3
17 Port Hedland	350.8	375.3	7.0
18 Newman	291.5	318.1	9.1
19 Kalgoorlie	260.8	295.0	13.1
20 Mildura	260.6	264.9	1.6
21 Albury	269.1	255.1	-5.2
22 Gladstone	268.7	248.3	-7.6
23 Mount Isa	205.7	214.5	4.3
24 Port Macquarie	233.3	214.5	-8.0
25 Dubbo	224.9	214.1	-4.8
26 Wagga Wagga	226.0	210.0	-7.1
27 Emerald	195.6	196.0	0.2
28 Tamworth	196.1	187.2	-4.5
29 Paraburdoo	169.0	180.5	6.8
30 Port Lincoln	171.1	168.3	-1.6
31 Hervey Bay	172.4	160.8	-6.8
32 Bundaberg	171.8	157.9	-8.1
33 Devonport	147.7	146.8	-0.6
34 Armidale	132.8	129.1	-2.8
35 Toowoomba Wellcamp	151.7	126.7	-16.5
36 Geraldton	112.2	111.5	-0.5
37 Kununurra	103.8	109.6	5.6
38 Moranbah	108.2	108.0	-0.2
39 Thursday Island	99.9	100.1	0.2
40 Roma	84.4	90.9	7.8
41 Griffith	85.8	86.1	0.2
42 Learmonth	74.9	83.9	12.1
43 Gove	85.3	82.2	-3.6
44 Mount Gambier	80.9	81.0	0.1
45 Orange	78.1	79.6	1.9
46 Weipa	69.3	79.1	14.2
47 Whyalla	67.7	77.5	14.4
48 Olympic Dam	74.8	76.9	2.9
49 Burnie	64.2	72.4	12.8
50 Merimbula	66.5	69.0	3.8
Total top 50 regional airports	23 351.1	23 434.6	0.4
Total regional airports	24 777.4	24 855.8	0.3
Total domestic network	121 455.4	121 930.0	0.4

Note: Airport passenger movement numbers are the sum of passenger arrivals and departures at each airport. Regional airports are defined as airports which are, according to the Australian Bureau of Statistics "The Australian Statistical Geography Standard (ASGS)", not based in Major Urban areas.

DOMESTIC CHARTER ACTIVITY

Table 12: Charter passengers carried and aircraft trips - monthly activity

	May 2018	May 2019	% Change
Total domestic charter passengers	226 044	239 291	5.9
Total domestic charter aircraft trips	3 937	4 046	2.8

Note: Helicopter, joyflights and sightseeing charter flights not included.

Table 13: Charter passengers carried and aircraft trips - annual activity

	YE May 2018	YE May 2019	% Change
Total domestic charter passengers	2 457 706	2 552 651	3.9
Total domestic charter aircraft trips	46 306	44 393	-4.1

Note: Helicopter, joyflights and sightseeing charter flights not included.

Table 14: Domestic airports - charter activity - monthly

	May 2018	May 2019	% Change
Total domestic charter passenger movements	452 088	478 582	5.9
Total domestic charter aircraft movements	7 874	8 092	2.8
Perth airport charter passenger movements	170 703	186 766	9.4
Perth airport charter aircraft movements	2 689	2 865	6.5

Note: Helicopter, joyflights and sightseeing charter flights not included.

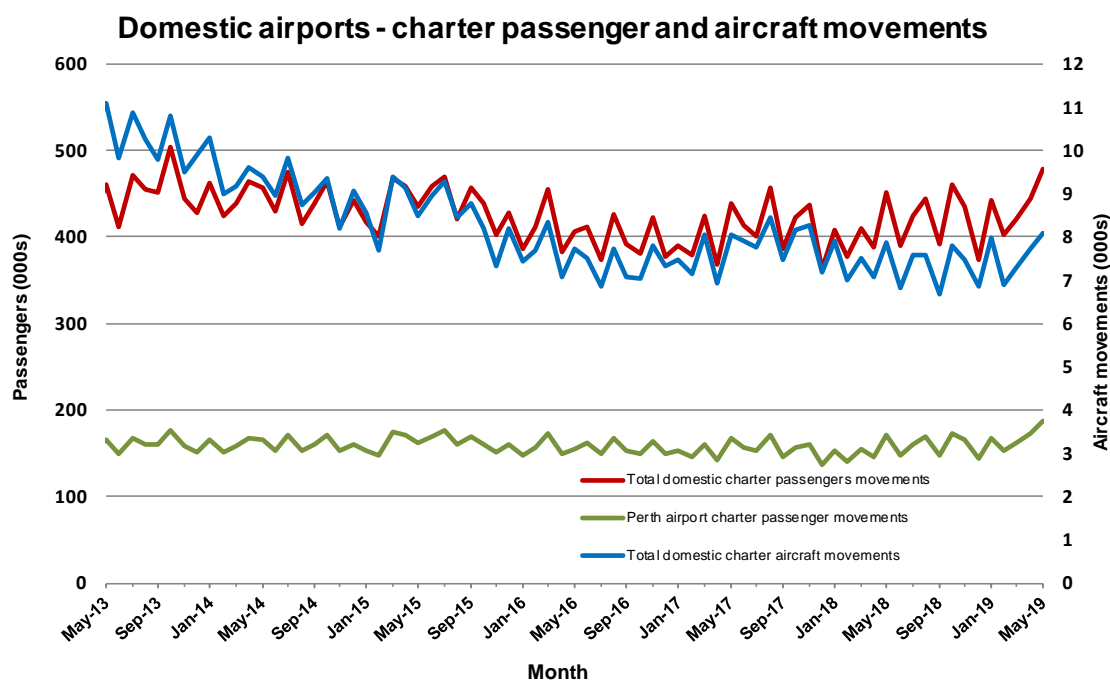
Charter passenger and aircraft movement numbers are the sum of arrivals and departures at each airport.

Table 15: Domestic airports - charter activity - annual

	YE May 2018	YE May 2019	% Change
Total domestic charter passenger movements	4 915 412	5 105 302	3.9
Total domestic charter aircraft movements	92 612	88 786	-4.1
Perth airport charter passenger movements	1 848 727	1 950 809	5.5
Perth airport charter aircraft movements	31 085	30 650	-1.4

Note: Helicopter, joyflights and sightseeing charter flights not included.

Charter passenger and aircraft movement numbers are the sum of arrivals and departures at each airport.



DEFINITIONS

Aircraft Trips	The number of flight stages. A return flight counts as two aircraft trips.
Airport Movements	Airport movements (passenger and cargo) are measured once on arrival and once on departure. Each domestic trip generates two movements at airports. For example, a trip from Melbourne to Sydney will be counted twice, as a passenger departure at Melbourne and as a passenger arrival at Sydney. At the national level, the sum of all domestic airport traffic will therefore be equal to twice the number of trips undertaken.
Available Seat Kilometres (ASKs)	Calculated by multiplying the number of seats available on each flight stage, by the distance in kilometres between the ports. The distances used are Great Circle Distances.
City-Pair	The ports shown make up the city-pair route. Passenger movements shown for a city pair reflect total traffic in both directions.
Flight Stage	The operation of an aircraft from take-off to landing.
Load Factor	The total revenue passenger kilometres performed as a percentage of the total available seat kilometres.
Passengers Carried	Revenue passengers carried.
Regular Public Transport Services (RPT)	All air service operations in which aircraft are available for the transport of members of the public and are conducted in accordance with fixed schedules. It does not include charter or other non-scheduled operations.
Revenue Passengers	All passengers paying any fare. Frequent flyer redemption travellers are regarded as revenue passengers.
Revenue Passenger Kilometres (RPKs)	Calculated by multiplying the number of revenue passengers travelling on each flight stage, by the distance in kilometres between the ports. The distances used are Great Circle Distances.
Traffic on board by stages	The total of all traffic (revenue passengers) on each flight stage between two directly connected airports.
..	Data not included
NA	Not applicable