



Australian Government

Department of Infrastructure, Regional Development and Cities

Bureau of Infrastructure, Transport and Regional Economics

STATISTICAL REPORT



Aviation

Domestic aviation activity
May 2018

© Commonwealth of Australia 2018

ISSN: 1832 - 1968

Ownership of intellectual property rights in this publication

Unless otherwise noted, copyright (and any other intellectual property rights, if any) in this publication is owned by the Commonwealth of Australia (referred to below as the Commonwealth).

Disclaimer

The material contained in this publication is made available on the understanding that the Commonwealth is not providing professional advice, and that users exercise their own skill and care with respect to its use, and seek independent advice if necessary.

The Commonwealth makes no representations or warranties as to the contents or accuracy of the information contained in this publication. To the extent permitted by law, the Commonwealth disclaims liability to any person or organisation in respect of anything done, or omitted to be done, in reliance upon information contained in this publication.

Creative Commons licence

With the exception of (a) the Coat of Arms; and (b) the Department of Infrastructure, Regional Development and Cities' photos and graphics, copyright in this publication is licensed under a Creative Commons Attribution 3.0 Australia Licence.

Creative Commons Attribution 3.0 Australia Licence is a standard form licence agreement that allows you to copy, communicate and adapt this publication provided that you attribute the work to the Commonwealth and abide by the other licence terms. A summary of the licence terms is available from <http://creativecommons.org/licenses/by/3.0/au/deed.en>. The full licence terms are available from <http://creativecommons.org/licenses/by/3.0/au/legalcode>.

Use of the Coat of Arms

The Department of the Prime Minister and Cabinet sets the terms under which the Coat of Arms is used. Please refer to the Department's Commonwealth Coat of Arms and Government branding web page <http://www.dpmc.gov.au/guidelines/index.cfm#brand> and, in particular, the Guidelines on the use of the Commonwealth Coat of Arms publication.

An appropriate citation for this report is:

Bureau of Infrastructure, Transport and Regional Economics (BITRE), 2018, Domestic aviation activity, Statistical Report, BITRE, Canberra ACT.

Contact us

This publication is available in PDF format. All other rights are reserved, including in relation to any Departmental logos or trade marks which may exist. For enquiries regarding the licence and any use of this publication, please contact:

Bureau of Infrastructure, Transport and Regional Economics (BITRE)
Department of Infrastructure, Regional Development and Cities
GPO Box 501, Canberra ACT 2601, Australia
Telephone: (international) +61 2 6274 7210
Fax: (international) +61 2 6274 6855
Email: bitre@infrastructure.gov.au
Website: www.bitre.gov.au

Inquiries

Should you require additional information about the statistics contained in this publication:

Aiden Brown

Telephone (02) 6274 7658 or Facsimile (02) 6274 7727

Electronic mail: AVSTATS@infrastructure.gov.au

Aiden.Brown@infrastructure.gov.au

Web site: <http://www.bitre.gov.au/statistics/aviation/domestic.aspx>

FOREWORD

This report provides an overview of domestic (including charter) commercial aviation activity in Australia for the month of May 2018.

The data cover revenue passengers carried by Australian-registered operators of scheduled regular public transport services over Australian flight stages and fixed-wing charter operators. These estimates include passengers carried between domestic airports on international flights operated by these carriers. The passengers carried refer to traffic on board by stages.

Estimates of passengers and aircraft movements for charter aviation are included in this publication, where BITRE confidentiality standards are met.

Individual routes shown are restricted to those with an average exceeding 8 000 passengers per month over the previous six months where two or more airlines operate in competition. For the month of May 2018, there were 66 such routes.

Information on the total network for the month of May 2018 and on the Regular Public Transport (RPT) network for the month of May 2018 is presented on page 2, with estimates for the year ended May 2018 presented on page 3.

Detailed information on the 66 individual routes can be found in the RPT summary pages 4-13 of this publication.

The top ten airports in terms of RPT passenger movements are shown on page 14.

Data on domestic RPT cargo movements at the top five cargo airports are provided on page 15. The table includes cargo carried on passenger flights operated by the Qantas group (including Jetstar), Virgin Australia, Air North and Skippers as well as the cargo carried by dedicated freighter aircraft operated by Qantas Freight, Toll Priority and Virgin Australia Cargo.

The long-term trends for the top ten competitive RPT routes are presented graphically on pages 16-25.

Domestic RPT passenger movements at the top 50 regional airports are presented on pages 26-27.

Tables providing estimates of domestic charter aviation activity are shown on page 28. BITRE confidentiality standards restrict publication of detailed estimates for individual Australian airports, with the exception of Perth Airport.

A list of definitions can be found on page 29.

This report was prepared by the Aviation Statistics Section of the Bureau of Infrastructure, Transport and Regional Economics with data provided by airlines.

Estimates are included where data were not available and data presented in this publication may contain revisions to previously published data.

Where figures have been rounded, discrepancies may occur between sums of component items and totals, and in percentage changes which are derived from figures prior to rounding.

CONTENTS

Highlights	1
Total network.....	2
RPT network	2
Top competitive routes.....	4
Top ten airports – passenger movements.....	14
Top five airports – cargo movements.....	15
Top ten routes	16
1. Melbourne – Sydney	16
2. Brisbane – Sydney	17
3. Brisbane – Melbourne	18
4. Gold Coast – Sydney	19
5. Adelaide – Melbourne	20
6. Melbourne – Perth	21
7. Adelaide – Sydney	22
8. Gold Coast – Melbourne	23
9. Perth – Sydney	24
10. Hobart – Melbourne	25
Top fifty regional airports	26
Domestic charter activity.....	28
Definitions	29

This page is intentionally left blank.

HIGHLIGHTS

There were 5.09 million passengers carried on Australian domestic commercial aviation (including charter operations) in May 2018, an increase of 2.6 per cent on May 2017. For the month of May 2018 there were 56 765 aircraft trips, a decrease of 1.4 per cent compared to May 2017.

4.87 million passengers were carried on RPT flights in May 2018, an increase of 2.6 per cent on May 2017.

For the year ending May 2018 there were 60.77 million RPT passengers, an increase of 2.6 per cent on the year ending May 2017.

RPT revenue passenger kilometres (RPKs) performed were 5.60 billion for the month, up 3.0 per cent compared with May 2017. Capacity, measured by available seat kilometres (ASKs), increased by 1.7 per cent compared with May 2017 to a total of 7.17 billion.

With RPT passenger traffic increasing at a higher rate than capacity, the industry wide load factor (RPKs/ASKs) increased from 77.1 per cent in May 2017 to 78.1 per cent in May 2018. Load factors on individual routes increased on 46 of the 64 RPT routes for which data is available for publishing in both years.

For the month of May 2018, Melbourne – Sydney remained Australia's busiest RPT route with 761 474 passengers, an increase of 1.5 per cent compared with May 2017. It was followed by Brisbane – Sydney with 397 312 passengers (up 2.9 per cent) and Brisbane – Melbourne with 277 345 passengers (up 2.0 per cent).

The greatest percentage increase in RPT passenger numbers, compared to May 2017, was on the Adelaide – Canberra route (up 21.1 per cent). There were large increases on a number of other routes, including Broome – Perth (up 21.0 per cent), Kalgoorlie – Perth (up 17.1 per cent), Hamilton Island – Sydney (up 15.4 per cent), and Sunshine Coast – Sydney (up 13.0 per cent).

Routes with traffic decreases in May 2018 compared with May 2017 included Brisbane – Bundaberg (down 9.5 per cent), Brisbane – Hobart (down 6.5 per cent), Armidale – Sydney (down 6.4 per cent) and Brisbane – Gladstone (down 5.5 per cent).

In May 2018, Sydney remained Australia's busiest domestic airport with 2.21 million passenger movements, followed by Melbourne with 2.03 million passenger movements and Brisbane with 1.41 million passenger movements.

Total cargo movements at Australian airports on domestic RPT flights were 41.4 thousand tonnes in May 2018, an increase of 0.3 per cent compared with May 2017.

In May 2018, there were 2.05 million domestic passenger movements through regional airports, 2.3 per cent higher than in May 2017. Out of the top 50 regional airports, the strongest growth was at Whyalla airport (up 24.8 per cent on May 2017), while the largest decrease was at Moranbah airport (down 19.4 per cent on May 2017).

Fixed-wing charter operators carried 224.9 thousand passengers in May 2018, an increase of 3.0 per cent on May 2017. Perth airport accounted for 37.7 per cent of all charter passengers in Australia.

TOTAL NETWORK

Summary of monthly commercial aviation activity

	May 2017	May 2018	% Change
Total passengers carried (millions)	4.97	5.09	2.6
Aircraft trips (000s)	57.6	56.8	-1.4

Note: Regular Public Transport and charter aviation activity
Helicopter, joyflights and sightseeing charter flights not included.

RPT NETWORK

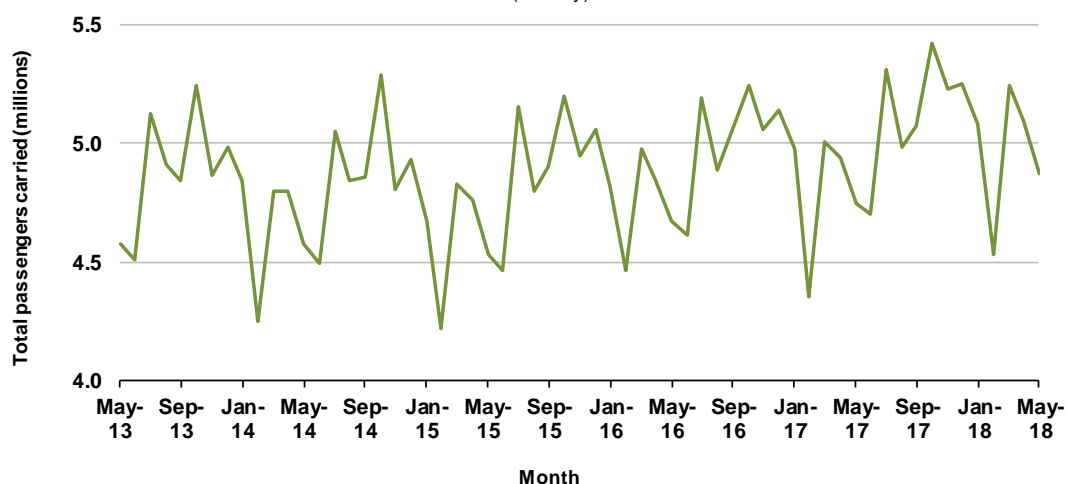
Summary of monthly RPT activity

	May 2017	May 2018	% Change
Total passengers carried (millions)	4.75	4.87	2.6
Revenue passenger kilometres (billions)	5.44	5.60	3.0
Available seats (millions)	6.28	6.35	1.1
Available seat kilometres (billions)	7.05	7.17	1.7
Load factor %	77.1	78.1	1.0 *
Aircraft trips (000s)	53.6	52.9	-1.3

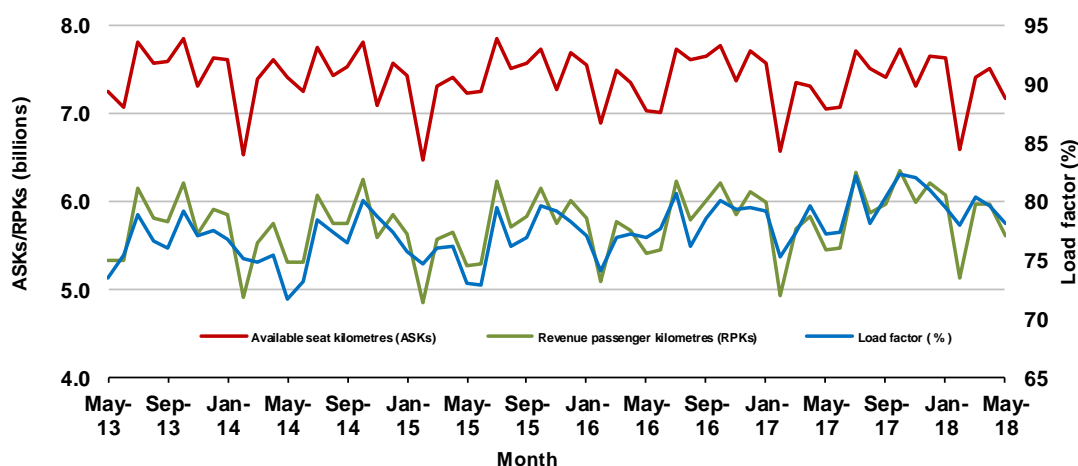
* percentage point difference

Domestic RPT passenger traffic

(monthly)



RPT Network utilisation



TOTAL NETWORK

Summary of annual commercial aviation activity

	YE May 2017	YE May 2018	% Change
Total passengers carried (millions)	61.59	63.21	2.6
Aircraft trips (000s)	685.5	683.1	-0.4

Note: Regular Public Transport and charter aviation activity
Helicopter, joyflights and sightseeing charter flights not included.

RPT NETWORK

Summary of annual RPT activity

	YE May 2017	YE May 2018	% Change
Total passengers carried (millions)	59.22	60.77	2.6
Revenue passenger kilometres (billions)	69.46	70.88	2.0
Available seats (millions)	77.16	77.64	0.6
Available seat kilometres (billions)	88.63	88.65	0.0
Load factor %	78.4	80.0	1.6 *
Aircraft trips (000s)	641.2	637.4	-0.6

* percentage point difference

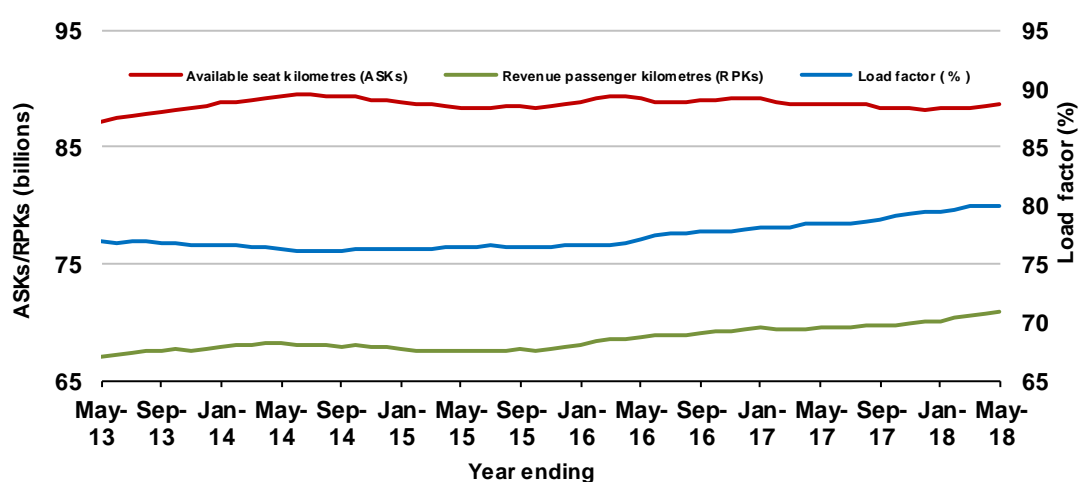
Domestic RPT passenger traffic

(moving annual totals)



RPT Network utilisation

(moving annual totals)



TOP COMPETITIVE ROUTES

Table 1: Passengers carried (000s) — annual activity

	City-Pair	YE May 2017	YE May 2018	%Change
1	Melbourne - Sydney	8 943.2	9 246.5	3.4
2	Brisbane - Sydney	4 685.0	4 786.5	2.2
3	Brisbane - Melbourne	3 497.9	3 554.5	1.6
4	Gold Coast - Sydney	2 704.5	2 759.8	2.0
5	Adelaide - Melbourne	2 401.5	2 489.2	3.7
6	Melbourne - Perth	2 054.3	2 053.3	-0.1
7	Gold Coast - Melbourne	1 989.6	2 041.4	2.6
8	Adelaide - Sydney	1 880.0	1 908.3	1.5
9	Perth - Sydney	1 739.7	1 719.1	-1.2
10	Hobart - Melbourne	1 595.3	1 643.0	3.0
11	Brisbane - Cairns	1 356.5	1 371.3	1.1
12	Canberra - Melbourne	1 066.7	1 150.3	7.8
13	Cairns - Sydney	1 128.1	1 132.5	0.4
14	Brisbane - Perth	964.8	981.1	1.7
15	Brisbane - Townsville	959.9	980.2	2.1
16	Canberra - Sydney	954.6	951.9	-0.3
17	Launceston - Melbourne	916.3	940.6	2.7
18	Adelaide - Brisbane	831.2	854.9	2.9
19	Cairns - Melbourne	836.9	845.8	1.1
20	Brisbane - Mackay	674.4	716.9	6.3
21	Hobart - Sydney	631.2	681.4	8.0
22	Adelaide - Perth	618.4	624.6	1.0
23	Brisbane - Canberra	583.9	616.3	5.6
24	Sunshine Coast - Sydney	555.0	608.2	9.6
25	Brisbane - Newcastle	585.8	586.5	0.1
26	Brisbane - Rockhampton	542.4	525.1	-3.2
27	Melbourne - Sunshine Coast	460.5	511.8	11.1
28	Melbourne - Newcastle	467.4	486.1	4.0
29	Karratha - Perth	464.5	433.0	-6.8
30	Ballina - Sydney	391.5	422.9	8.0
31	Brisbane - Darwin	409.4	397.6	-2.9
32	Coffs Harbour - Sydney	340.8	347.5	2.0
33	Perth - Port Hedland	342.6	344.0	0.4
34	Broome - Perth	286.6	342.6	19.5
35	Darwin - Sydney	319.0	320.6	0.5
36	Darwin - Melbourne	304.3	303.5	-0.3
37	Newman - Perth	294.8	293.5	-0.5
38	Launceston - Sydney	291.0	284.5	-2.2
39	Brisbane - Proserpine	225.6	275.4	22.1
40	Brisbane - Gladstone	308.6	266.8	-13.5
41	Kalgoorlie - Perth	235.2	253.7	7.9
42	Albury - Sydney	224.1	221.5	-1.1
43	Adelaide - Gold Coast	217.1	219.3	1.0
44	Melbourne - Mildura	207.1	217.2	4.9
45	Brisbane - Hobart	207.0	217.2	4.9
46	Darwin - Perth	188.7	204.2	8.2
47	Hamilton Island - Sydney	239.9	198.0	-17.5
48	Brisbane - Emerald	198.2	195.8	-1.2
49	Ayers Rock - Sydney	191.3	195.1	2.0
50	Port Macquarie - Sydney	192.2	190.7	-0.8

continued

Table 1: (continued) Passengers carried (000s) — annual activity

	City-Pair	YE May 2017	YE May 2018	% Change
51	Dubbo - Sydney	188.8	189.5	0.4
52	Adelaide - Canberra	174.8	189.1	8.2
53	Sydney - Wagga Wagga	186.8	179.0	-4.2
54	Sydney - Tamworth	180.1	177.8	-1.3
55	Brisbane - Bundaberg	174.2	170.3	-2.3
56	Adelaide - Port Lincoln	175.3	170.2	-2.9
57	Sydney - Townsville	158.7	159.8	0.7
58	Cairns - Townsville	139.6	147.9	6.0
59	Adelaide - Alice Springs	122.2	127.9	4.7
60	Brisbane - Mount Isa	120.6	127.4	5.6
61	Armidale - Sydney	126.0	124.5	-1.2
62	Brisbane - Hamilton Island	142.6	124.2	-12.9
63	Alice Springs - Darwin	116.8	114.3	-2.1
64	Geraldton - Perth	115.8	112.6	-2.7
65	Melbourne - Townsville	..	109.0	NA (a)
66	Proserpine - Sydney	..	103.0	NA (b)
Total domestic network		59 217.2	60 773.2	2.6

(a) Melbourne - Townsville route included from September 2017, prior data not shown.

(b) Proserpine - Sydney route included from September 2017, prior data not shown.

Table 2: Passengers carried (000s) — monthly activity

	City-Pair	May 2017	May 2018	% Change
1	Melbourne - Sydney	750.6	761.5	1.5
2	Brisbane - Sydney	386.3	397.3	2.9
3	Brisbane - Melbourne	272.0	277.3	2.0
4	Gold Coast - Sydney	207.9	201.4	-3.1
5	Adelaide - Melbourne	198.7	200.0	0.7
6	Melbourne - Perth	155.9	164.3	5.4
7	Adelaide - Sydney	152.1	151.4	-0.5
8	Gold Coast - Melbourne	142.6	146.0	2.4
9	Perth - Sydney	135.3	136.7	1.1
10	Hobart - Melbourne	121.8	119.1	-2.3
11	Brisbane - Cairns	105.5	106.2	0.6
12	Canberra - Melbourne	97.3	101.3	4.2
13	Canberra - Sydney	88.2	88.6	0.4
14	Brisbane - Townsville	78.7	85.0	8.0
15	Cairns - Sydney	79.5	78.8	-0.8
16	Brisbane - Perth	75.4	77.9	3.3
17	Launceston - Melbourne	67.4	67.5	0.1
18	Adelaide - Brisbane	65.7	66.4	1.0
19	Brisbane - Mackay	58.5	62.1	6.0
20	Cairns - Melbourne	58.5	61.5	5.0
21	Adelaide - Perth	47.9	52.8	10.3
22	Brisbane - Canberra	47.1	52.1	10.6
23	Brisbane - Newcastle	47.0	48.4	3.2
24	Brisbane - Rockhampton	46.2	47.2	2.2
25	Hobart - Sydney	43.2	45.5	5.4
26	Sunshine Coast - Sydney	40.3	45.5	13.0
27	Karratha - Perth	39.6	39.2	-1.0
28	Melbourne - Newcastle	36.6	39.1	6.9
29	Melbourne - Sunshine Coast	31.2	35.1	12.5
30	Perth - Port Hedland	30.5	33.5	9.9
31	Brisbane - Darwin	33.0	32.5	-1.4
32	Ballina - Sydney	28.5	31.4	10.3
33	Broome - Perth	25.2	30.5	21.0
34	Coffs Harbour - Sydney	28.3	28.3	0.3
35	Newman - Perth	25.3	28.0	10.6
36	Darwin - Sydney	25.8	25.5	-0.9
37	Darwin - Melbourne	25.1	25.4	1.1
38	Kalgoorlie - Perth	21.7	25.4	17.1
39	Brisbane - Gladstone	22.9	21.6	-6.0
40	Melbourne - Mildura	18.3	19.6	7.3
41	Albury - Sydney	19.3	19.0	-1.9
42	Brisbane - Proserpine	17.9	18.0	0.7
43	Adelaide - Gold Coast	17.4	17.3	-0.5
44	Brisbane - Emerald	16.8	17.2	2.2
45	Ayers Rock - Sydney	15.6	16.8	7.5
46	Dubbo - Sydney	17.3	16.7	-3.1
47	Adelaide - Canberra	13.8	16.7	21.1
48	Launceston - Sydney	17.5	16.7	-4.8
49	Port Macquarie - Sydney	17.1	16.3	-4.8
50	Darwin - Perth	15.7	16.1	2.5

continued

Table 2: (continued) Passengers carried (000s) — monthly activity

	City-Pair	May 2017	May 2018	% Change
51	Sydney - Wagga Wagga	16.3	15.9	-2.7
52	Sydney - Tamworth	15.6	14.7	-5.5
53	Brisbane - Hobart	15.3	14.3	-6.5
54	Brisbane - Bundaberg	15.1	13.6	-9.5
55	Adelaide - Port Lincoln	14.0	13.4	-4.6
56	Cairns - Townsville	12.6	13.3	5.7
57	Hamilton Island - Sydney	11.2	12.9	15.4
58	Sydney - Townsville	10.5	11.5	9.5
59	Brisbane - Mount Isa	10.9	11.4	4.7
60	Melbourne - Townsville	..	11.1	NA (a)
61	Alice Springs - Darwin	10.8	10.4	-3.8
62	Geraldton - Perth	9.9	10.4	5.4
63	Armidale - Sydney	10.9	10.2	-6.4
64	Adelaide - Alice Springs	9.4	10.1	7.1
65	Brisbane - Hamilton Island	9.8	9.8	0.5
66	Proserpine - Sydney	..	9.6	NA (b)
Total domestic network		4 747.3	4 869.0	2.6

(a) Melbourne - Townsville route included from September 2017, prior data not shown.

(b) Proserpine - Sydney route included from September 2017, prior data not shown.

Table 3: Available seats (000s) — monthly activity

	City-Pair	May 2017	May 2018	% Change
1	Melbourne - Sydney	917.1	942.2	2.7
2	Brisbane - Sydney	474.3	487.5	2.8
3	Brisbane - Melbourne	343.6	349.4	1.7
4	Gold Coast - Sydney	241.3	233.0	-3.4
5	Adelaide - Melbourne	248.1	252.3	1.7
6	Melbourne - Perth	188.3	199.7	6.0
7	Adelaide - Sydney	185.9	184.3	-0.9
8	Gold Coast - Melbourne	164.4	172.1	4.7
9	Perth - Sydney	172.7	170.7	-1.2
10	Hobart - Melbourne	151.9	155.2	2.1
11	Brisbane - Cairns	128.3	116.4	-9.3
12	Canberra - Melbourne	152.4	155.5	2.0
13	Canberra - Sydney	122.3	116.9	-4.5
14	Brisbane - Townsville	109.0	110.5	1.3
15	Cairns - Sydney	98.5	99.6	1.1
16	Brisbane - Perth	92.0	94.6	2.9
17	Launceston - Melbourne	85.1	85.3	0.2
18	Adelaide - Brisbane	86.9	85.0	-2.1
19	Brisbane - Mackay	74.8	80.5	7.6
20	Cairns - Melbourne	72.6	79.7	9.7
21	Adelaide - Perth	63.1	70.0	11.0
22	Brisbane - Canberra	71.5	76.1	6.3
23	Brisbane - Newcastle	64.5	64.8	0.5
24	Brisbane - Rockhampton	54.9	60.7	10.6
25	Hobart - Sydney	52.1	57.2	9.8
26	Sunshine Coast - Sydney	52.4	56.1	7.0
27	Karratha - Perth	61.3	59.9	-2.3
28	Melbourne - Newcastle	50.2	51.4	2.4
29	Melbourne - Sunshine Coast	37.3	40.8	9.4
30	Perth - Port Hedland	47.5	48.5	2.2
31	Brisbane - Darwin	42.1	40.6	-3.6
32	Ballina - Sydney	36.9	37.7	2.0
33	Broome - Perth	32.0	37.2	16.2
34	Coffs Harbour - Sydney	38.3	41.0	7.2
35	Newman - Perth	50.2	49.9	-0.5
36	Darwin - Sydney	35.4	34.0	-3.9
37	Darwin - Melbourne	31.1	33.2	6.7
38	Kalgoorlie - Perth	36.1	39.7	10.2
39	Brisbane - Gladstone	32.7	31.0	-5.3
40	Melbourne - Mildura	29.2	30.7	5.1
41	Albury - Sydney	29.7	28.3	-4.7
42	Brisbane - Proserpine	24.3	20.2	-17.0
43	Adelaide - Gold Coast	22.2	20.3	-8.8
44	Brisbane - Emerald	24.7	23.8	-3.5
45	Ayers Rock - Sydney	21.8	22.2	1.8
46	Dubbo - Sydney	26.7	22.9	-14.0
47	Adelaide - Canberra	23.1	24.2	5.0
48	Launceston - Sydney	20.6	19.2	-6.9
49	Port Macquarie - Sydney	23.6	21.6	-8.3
50	Darwin - Perth	21.3	21.5	0.7

continued

Table 3: (continued) Available seats (000s) — monthly activity

	City-Pair	May 2017	May 2018	% Change
51	Sydney - Wagga Wagga	26.4	22.9	-13.2
52	Sydney - Tamworth	26.1	23.6	-9.8
53	Brisbane - Hobart	18.6	16.9	-8.8
54	Brisbane - Bundaberg	19.8	19.6	-1.0
55	Adelaide - Port Lincoln	24.8	22.8	-7.9
56	Cairns - Townsville	24.2	22.0	-9.3
57	Hamilton Island - Sydney	20.5	20.3	-0.7
58	Sydney - Townsville	13.9	15.0	8.1
59	Brisbane - Mount Isa	16.5	15.1	-8.2
60	Melbourne - Townsville	..	15.0	NA (a)
61	Alice Springs - Darwin	19.7	20.5	4.5
62	Geraldton - Perth	20.4	20.0	-2.0
63	Armidale - Sydney	17.1	16.1	-5.8
64	Adelaide - Alice Springs	15.7	16.4	4.3
65	Brisbane - Hamilton Island	15.9	15.2	-4.3
66	Proserpine - Sydney	..	13.0	NA (b)
Total domestic network		6 282.5	6 350.9	1.1

(a) Melbourne - Townsville route included from September 2017, prior data not shown.

(b) Proserpine - Sydney route included from September 2017, prior data not shown.

Table 4: Load factors (%) — monthly activity

	City-Pair	May 2017	May 2018	% Point diff
1	Melbourne - Sydney	81.8	80.8	-1.0
2	Brisbane - Sydney	81.4	81.5	0.1
3	Brisbane - Melbourne	79.2	79.4	0.2
4	Gold Coast - Sydney	86.2	86.4	0.2
5	Adelaide - Melbourne	80.1	79.3	-0.8
6	Melbourne - Perth	82.8	82.3	-0.5
7	Adelaide - Sydney	81.8	82.2	0.4
8	Gold Coast - Melbourne	86.7	84.8	-1.9
9	Perth - Sydney	78.3	80.1	1.8
10	Hobart - Melbourne	80.2	76.7	-3.5
11	Brisbane - Cairns	82.3	91.2	8.9
12	Canberra - Melbourne	63.8	65.2	1.4
13	Canberra - Sydney	72.1	75.8	3.7
14	Brisbane - Townsville	72.2	76.9	4.7
15	Cairns - Sydney	80.7	79.2	-1.5
16	Brisbane - Perth	82.0	82.3	0.3
17	Launceston - Melbourne	79.3	79.2	-0.1
18	Adelaide - Brisbane	75.7	78.1	2.4
19	Brisbane - Mackay	78.3	77.1	-1.2
20	Cairns - Melbourne	80.6	77.1	-3.5
21	Adelaide - Perth	75.9	75.4	-0.5
22	Brisbane - Canberra	65.9	68.5	2.6
23	Brisbane - Newcastle	72.8	74.7	1.9
24	Brisbane - Rockhampton	84.2	77.8	-6.4
25	Hobart - Sydney	82.9	79.6	-3.3
26	Sunshine Coast - Sydney	76.8	81.1	4.3
27	Karratha - Perth	64.7	65.6	0.9
28	Melbourne - Newcastle	72.9	76.1	3.2
29	Melbourne - Sunshine Coast	83.8	86.2	2.4
30	Perth - Port Hedland	64.3	69.1	4.8
31	Brisbane - Darwin	78.3	80.0	1.7
32	Ballina - Sydney	77.1	83.4	6.3
33	Broome - Perth	78.9	82.2	3.3
34	Coffs Harbour - Sydney	73.9	69.1	-4.8
35	Newman - Perth	50.4	56.1	5.7
36	Darwin - Sydney	72.7	74.9	2.2
37	Darwin - Melbourne	80.8	76.5	-4.3
38	Kalgoorlie - Perth	60.1	63.9	3.8
39	Brisbane - Gladstone	70.1	69.6	-0.5
40	Melbourne - Mildura	62.6	63.9	1.3
41	Albury - Sydney	65.2	67.1	1.9
42	Brisbane - Proserpine	73.6	89.3	15.7
43	Adelaide - Gold Coast	78.4	85.5	7.1
44	Brisbane - Emerald	68.1	72.1	4.0
45	Ayers Rock - Sydney	71.9	75.9	4.0
46	Dubbo - Sydney	64.9	73.0	8.1
47	Adelaide - Canberra	59.9	69.0	9.1
48	Launceston - Sydney	85.0	86.9	1.9
49	Port Macquarie - Sydney	72.4	75.2	2.8
50	Darwin - Perth	73.7	75.0	1.3

continued

Table 4: (continued) Load factors (%) — monthly activity

	City-Pair	May 2017	May 2018	% Point diff
51	Sydney - Wagga Wagga	62.0	69.5	7.5
52	Sydney - Tamworth	59.6	62.4	2.8
53	Brisbane - Hobart	82.3	84.3	2.0
54	Brisbane - Bundaberg	75.9	69.4	-6.5
55	Adelaide - Port Lincoln	56.7	58.7	2.0
56	Cairns - Townsville	51.8	60.3	8.5
57	Hamilton Island - Sydney	54.5	63.4	8.9
58	Sydney - Townsville	75.4	76.3	0.9
59	Brisbane - Mount Isa	66.2	75.5	9.3
60	Melbourne - Townsville	..	74.0	NA (a)
61	Alice Springs - Darwin	55.1	50.7	-4.4
62	Geraldton - Perth	49.1	52.0	2.9
63	Armidale - Sydney	63.6	63.2	-0.4
64	Adelaide - Alice Springs	59.9	61.6	1.7
65	Brisbane - Hamilton Island	61.4	64.4	3.0
66	Proserpine - Sydney	..	73.5	NA (b)
Total domestic network		77.1	78.1	1.0

(a) Melbourne - Townsville route included from September 2017, prior data not shown.

(b) Proserpine - Sydney route included from September 2017, prior data not shown.

Table 5: Aircraft trips ^(a) — monthly activity

	City-Pair	May 2017	May 2018	% Change
1	Melbourne - Sydney	5 152	5 156	0.1
2	Brisbane - Sydney	2 939	2 952	0.4
3	Brisbane - Melbourne	2 032	2 048	0.8
4	Gold Coast - Sydney	1 367	1 323	-3.2
5	Adelaide - Melbourne	1 583	1 567	-1.0
6	Melbourne - Perth	895	970	8.4
7	Adelaide - Sydney	1 126	1 110	-1.4
8	Gold Coast - Melbourne	884	909	2.8
9	Perth - Sydney	748	762	1.9
10	Hobart - Melbourne	936	861	-8.0
11	Brisbane - Cairns	808	768	-5.0
12	Canberra - Melbourne	968	981	1.3
13	Canberra - Sydney	1 482	1 484	0.1
14	Brisbane - Townsville	761	747	-1.8
15	Cairns - Sydney	532	541	1.7
16	Brisbane - Perth	462	507	9.7
17	Launceston - Melbourne	697	670	-3.9
18	Adelaide - Brisbane	535	527	-1.5
19	Brisbane - Mackay	610	620	1.6
20	Cairns - Melbourne	386	410	6.2
21	Adelaide - Perth	410	460	12.2
22	Brisbane - Canberra	522	555	6.3
23	Brisbane - Newcastle	501	431	-14.0
24	Brisbane - Rockhampton	689	720	4.5
25	Hobart - Sydney	341	366	7.3
26	Sunshine Coast - Sydney	321	343	6.9
27	Karratha - Perth	549	517	-5.8
28	Melbourne - Newcastle	281	287	2.1
29	Melbourne - Sunshine Coast	210	230	9.5
30	Perth - Port Hedland	402	392	-2.5
31	Brisbane - Darwin	257	255	-0.8
32	Ballina - Sydney	255	256	0.4
33	Broome - Perth	283	336	18.7
34	Coffs Harbour - Sydney	442	392	-11.3
35	Newman - Perth	355	369	3.9
36	Darwin - Sydney	210	202	-3.8
37	Darwin - Melbourne	177	175	-1.1
38	Kalgoorlie - Perth	296	312	5.4
39	Brisbane - Gladstone	452	406	-10.2
40	Melbourne - Mildura	430	420	-2.3
41	Albury - Sydney	544	514	-5.5
42	Brisbane - Proserpine	137	114	-16.8
43	Adelaide - Gold Coast	126	114	-9.5
44	Brisbane - Emerald	331	316	-4.5
45	Ayers Rock - Sydney	123	124	0.8
46	Dubbo - Sydney	584	485	-17.0
47	Adelaide - Canberra	136	144	5.9
48	Launceston - Sydney	124	112	-9.7
49	Port Macquarie - Sydney	394	330	-16.2
50	Darwin - Perth	128	128	0.0

continued

Table 5: (continued) Aircraft trips — monthly activity

	City-Pair	May 2017	May 2018	% Change
51	Sydney - Wagga Wagga	514	453	-11.9
52	Sydney - Tamworth	414	343	-17.1
53	Brisbane - Hobart	106	96	-9.4
54	Brisbane - Bundaberg	335	272	-18.8
55	Adelaide - Port Lincoln	641	579	-9.7
56	Cairns - Townsville	408	354	-13.2
57	Hamilton Island - Sydney	122	132	8.2
58	Sydney - Townsville	81	94	16.0
59	Brisbane - Mount Isa	161	160	-0.6
60	Melbourne - Townsville	..	85	NA (b)
61	Alice Springs - Darwin	158	179	13.3
62	Geraldton - Perth	204	200	-2.0
63	Armidale - Sydney	404	384	-5.0
64	Adelaide - Alice Springs	98	117	19.4
65	Brisbane - Hamilton Island	130	122	-6.2
66	Proserpine - Sydney	..	72	NA (c)
Total domestic network		53 597	52 887	-1.3

(a) Includes RPT Cargo flights.

(b) Melbourne - Townsville route included from September 2017, prior data not shown.

(c) Proserpine - Sydney route included from September 2017, prior data not shown.

TOP TEN AIRPORTS – PASSENGER MOVEMENTS

Table 6: Top ten airports, RPT passenger movements (000s) - annual activity

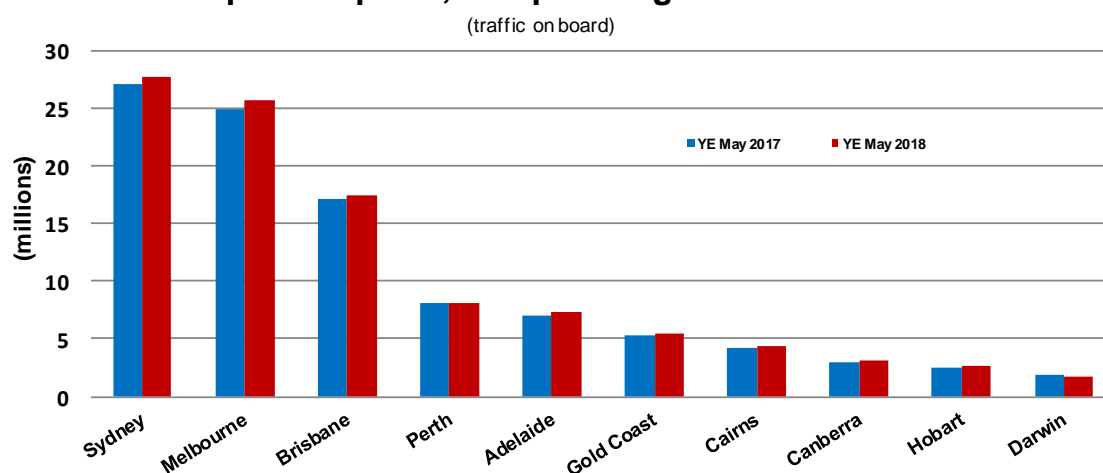
Airport	YE May 2017	YE May 2018	% Change	% of Total
1 Sydney	27 029.4	27 647.2	2.3	22.7
2 Melbourne	24 954.6	25 680.1	2.9	21.1
3 Brisbane	17 083.4	17 405.6	1.9	14.3
4 Perth	8 042.0	8 154.5	1.4	6.7
5 Adelaide	7 035.4	7 274.1	3.4	6.0
6 Gold Coast	5 351.5	5 501.2	2.8	4.5
7 Cairns	4 289.4	4 334.0	1.0	3.6
8 Canberra	2 934.7	3 081.7	5.0	2.5
9 Hobart	2 434.1	2 591.9	6.5	2.1
10 Darwin	1 811.4	1 798.2	-0.7	1.5
Total top ten airports	100 965.9	103 468.5	2.5	85.1
Total domestic network	118 434.4	121 546.3	2.6	100.0

Table 7: Top ten airports, RPT passenger movements (000s) - monthly activity

Airport	May 2017	May 2018	% Change	% of Total
1 Sydney	2 184.8	2 214.4	1.4	22.7
2 Melbourne	1 982.4	2 026.1	2.2	20.8
3 Brisbane	1 379.0	1 410.2	2.3	14.5
4 Perth	643.9	723.1	12.3	7.4
5 Adelaide	570.9	589.5	3.3	6.1
6 Gold Coast	398.7	395.8	-0.7	4.1
7 Cairns	315.8	323.3	2.4	3.3
8 Canberra	258.5	272.7	5.5	2.8
9 Hobart	180.6	183.6	1.7	1.9
10 Darwin	147.2	147.2	0.0	1.5
Total top ten airports	8 061.6	8 286.1	2.8	85.1
Total domestic network	9 494.7	9 738.0	2.6	100.0

Note: Airport passenger movement numbers are the sum of passenger arrivals and departures at each airport.

Top ten airports, RPT passenger movements



TOP FIVE AIRPORTS – CARGO MOVEMENTS

Table 8: Top five airports, domestic RPT cargo movements (000s tonnes) - annual activity

Airport	YE May 2017	YE May 2018	% Change	% of Total
1 Melbourne	126.3	133.4	5.6	29.0
2 Sydney	105.0	105.9	0.8	23.0
3 Brisbane	66.6	68.3	2.6	14.8
4 Perth	60.6	66.1	8.9	14.3
5 Adelaide	25.3	27.3	7.8	5.9
Total top five airports	383.8	400.9	4.5	87.1
Total domestic network	447.8	460.5	2.8	100.0

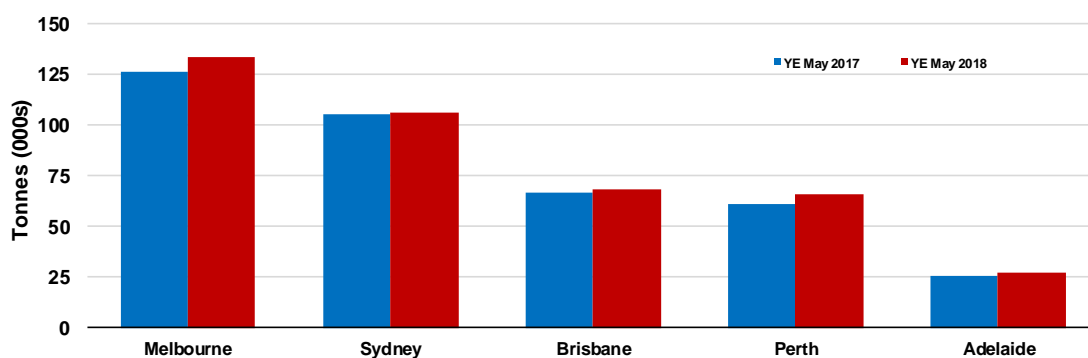
Table 9: Top five airports, domestic RPT cargo movements (000s tonnes) - monthly activity

Airport	May 2017	May 2018	% Change	% of Total
1 Melbourne	12.4	12.1	-1.6	29.4
2 Sydney	9.7	9.4	-3.3	22.8
3 Brisbane	5.9	6.1	3.5	14.8
4 Perth	5.6	5.9	4.5	14.3
5 Adelaide	2.3	2.5	6.5	6.0
Total top five airports	36.0	36.1	0.3	87.2
Total domestic network	41.2	41.4	0.3	100.0

Note: Airport cargo tonnes are the sum of cargo tonnes on arrivals and departures at each airport.

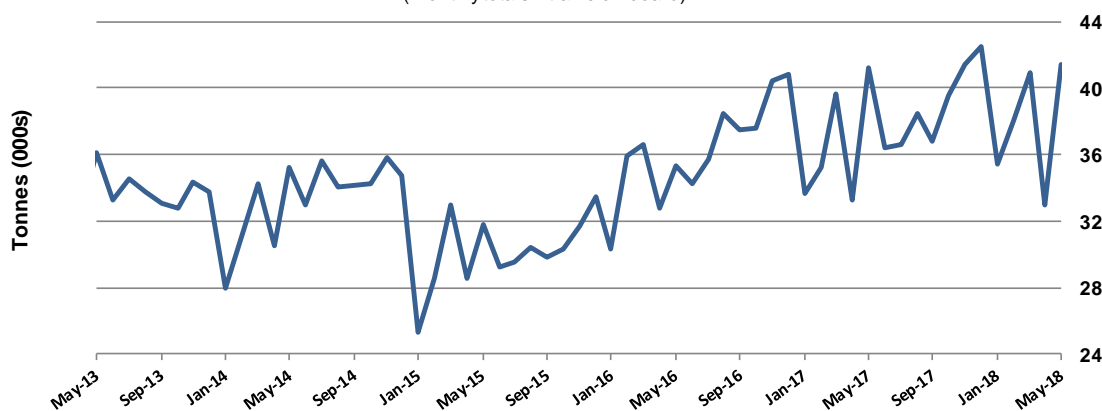
Top five airports, cargo movements

(Domestic cargo traffic - traffic on board)



Total domestic network - cargo movement

(monthly totals - traffic on board)



Note: Airport cargo tonnes are the sum of cargo tonnes on arrivals and departures at each airport.

TOP TEN ROUTES

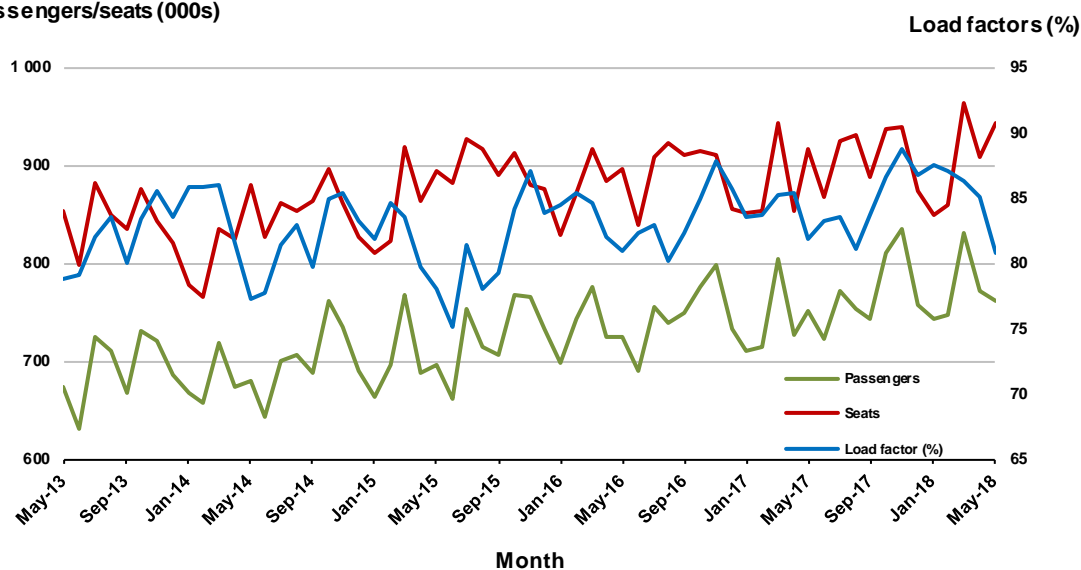
1. Melbourne - Sydney

Monthly data

	May 2017	May 2018	% Change
Passengers carried (000s)	750.6	761.5	1.5
Seats (000s)	917.1	942.2	2.7
Load factor %	81.8	80.8	-1.0 *
Aircraft trips	5 152	5 156	0.1

* percentage point difference

Passengers/seats (000s)

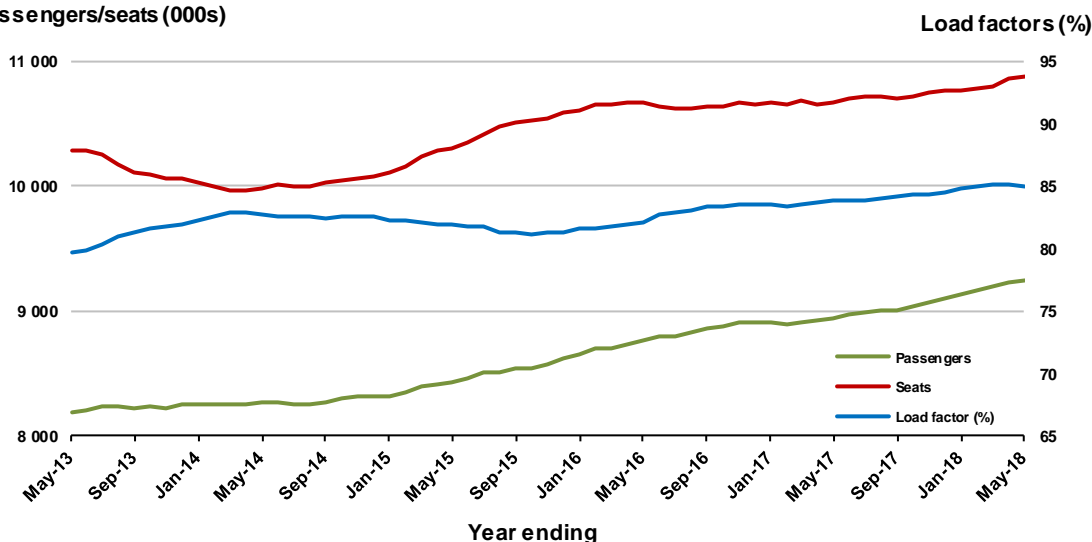


Moving annual data

	YE May 2017	YE May 2018	% Change
Passengers carried (000s)	8 943.2	9 246.5	3.4
Seats (000s)	10 671.4	10 879.3	1.9
Load factor %	83.8	85.0	1.2 *
Aircraft trips	59 440	60 378	1.6

* percentage point difference

Passengers/seats (000s)



2. Brisbane - Sydney

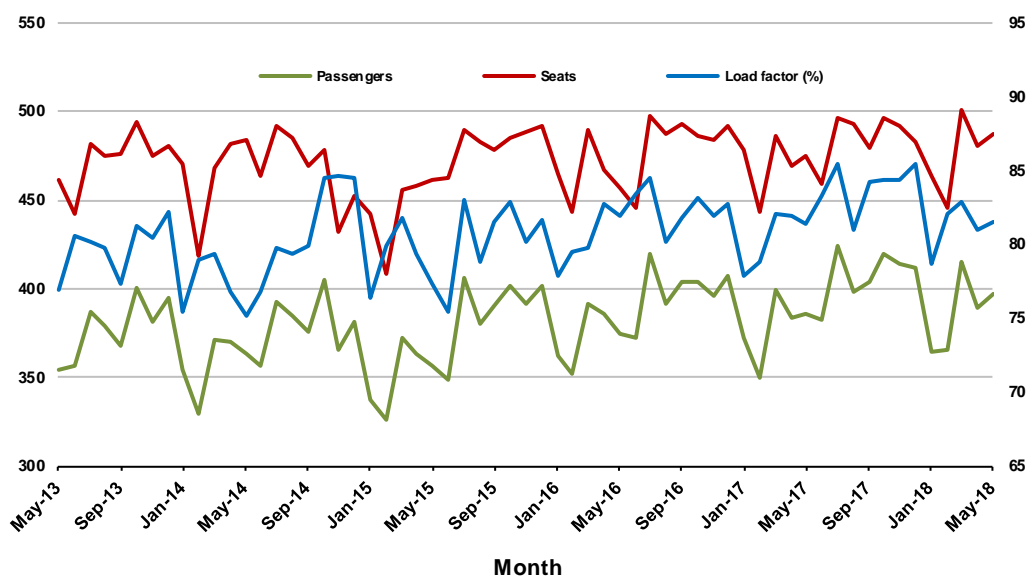
Monthly data

	May 2017	May 2018	% Change
Passengers carried (000s)	386.3	397.3	2.9
Seats (000s)	474.3	487.5	2.8
Load factor %	81.4	81.5	0.1 *
Aircraft trips	2 939	2 952	0.4

* percentage point difference

Passengers/seats (000s)

Load factors (%)



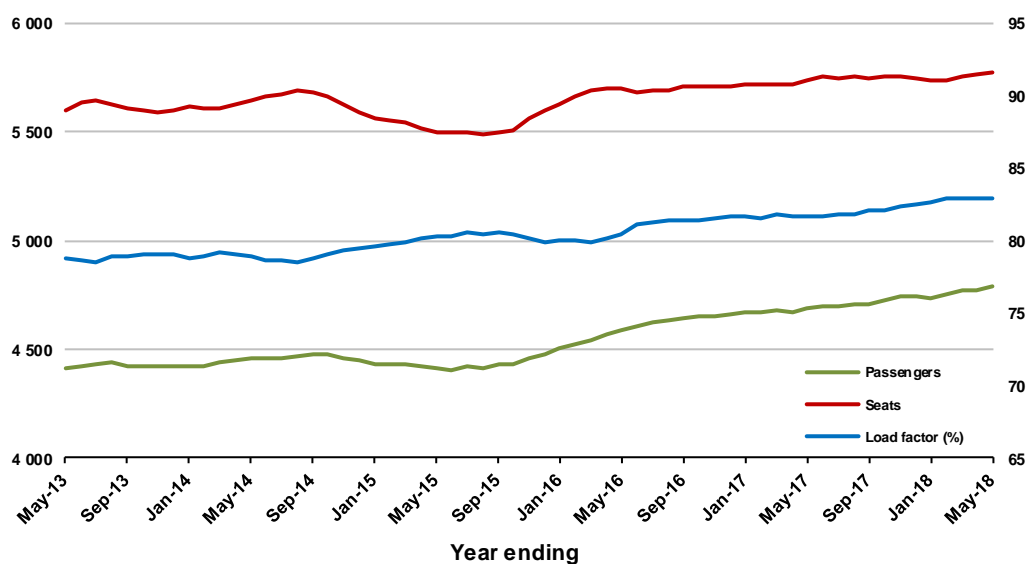
Moving annual data

	YE May 2017	YE May 2018	% Change
Passengers carried (000s)	4 685.0	4 786.5	2.2
Seats (000s)	5 737.0	5 775.5	0.7
Load factor %	81.7	82.9	1.2 *
Aircraft trips	35 467	35 256	-0.6

* percentage point difference

Passengers/seats (000s)

Load factors (%)

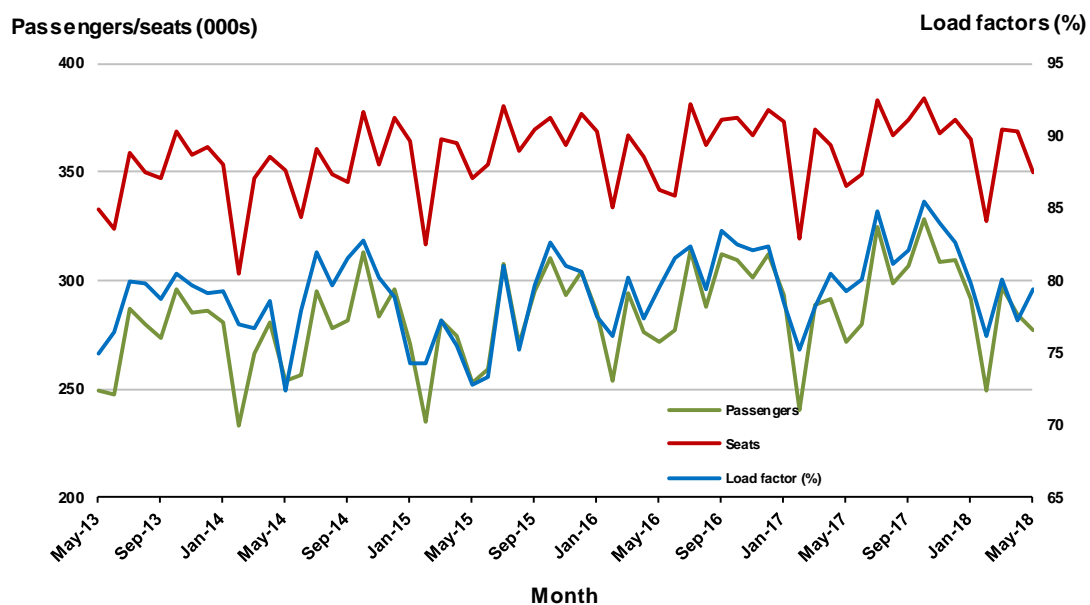


3. Brisbane - Melbourne

Monthly data

	May 2017	May 2018	% Change
Passengers carried (000s)	272.0	277.3	2.0
Seats (000s)	343.6	349.4	1.7
Load factor %	79.2	79.4	0.2 *
Aircraft trips	2 032	2 048	0.8

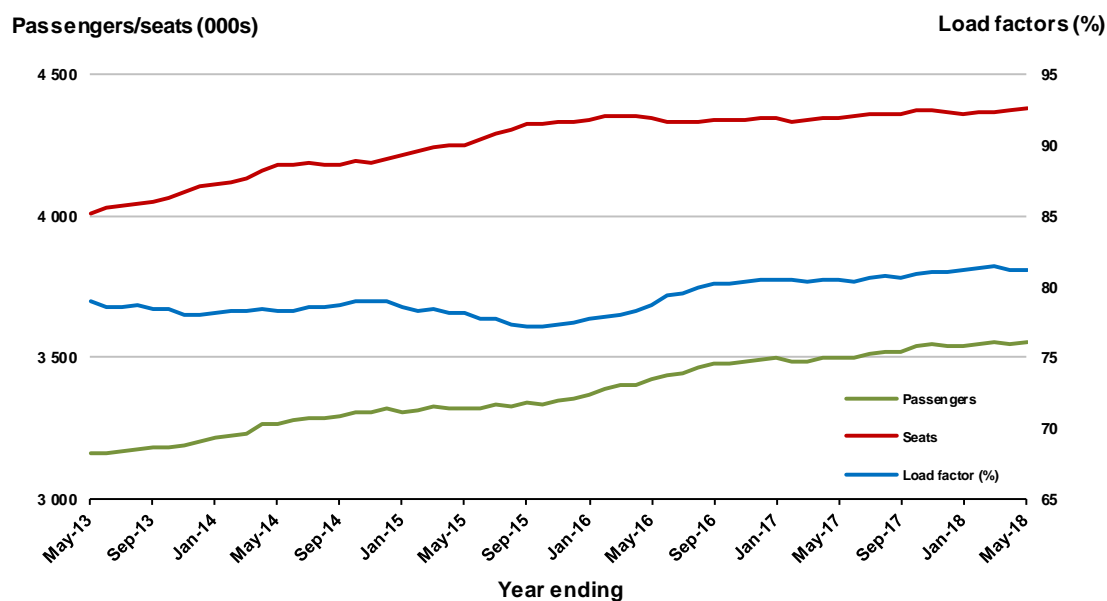
* percentage point difference



Moving annual data

	YE May 2017	YE May 2018	% Change
Passengers carried (000s)	3 497.9	3 554.5	1.6
Seats (000s)	4 345.0	4 379.5	0.8
Load factor %	80.5	81.2	0.7 *
Aircraft trips	25 743	25 854	0.4

* percentage point difference



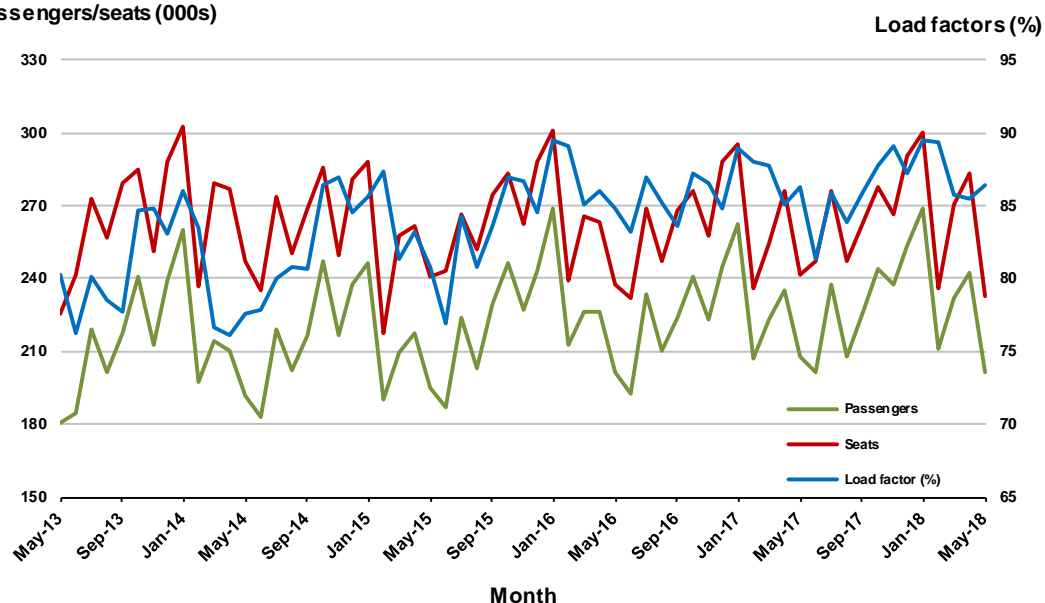
4. Gold Coast - Sydney

Monthly data

	May 2017	May 2018	% Change
Passengers carried (000s)	207.9	201.4	-3.1
Seats (000s)	241.3	233.0	-3.4
Load factor %	86.2	86.4	0.2 *
Aircraft trips	1 367	1 323	-3.2

* percentage point difference

Passengers/seats (000s)

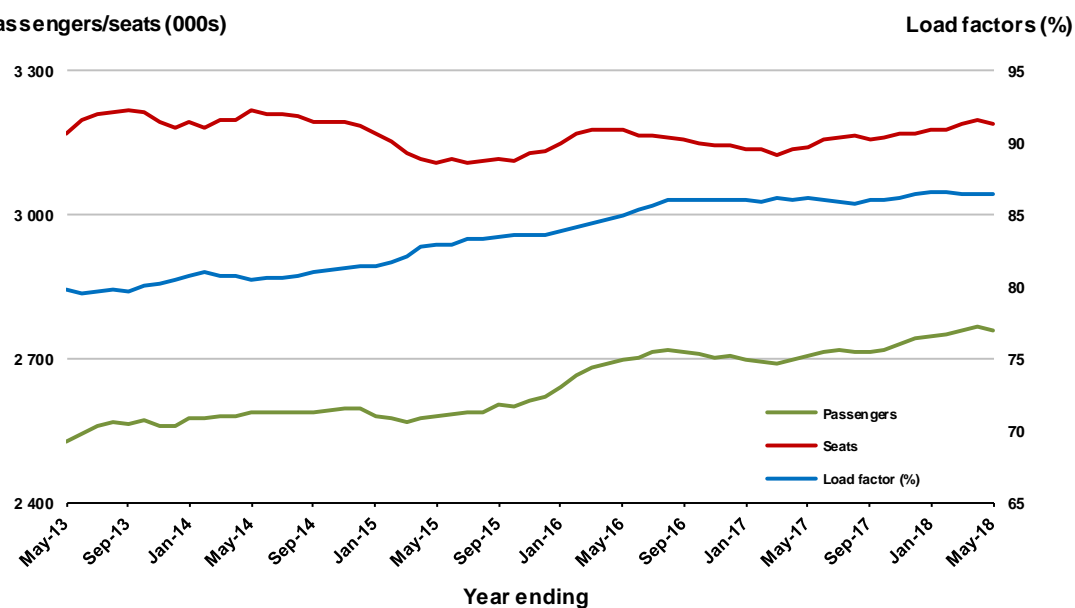


Moving annual data

	YE May 2017	YE May 2018	% Change
Passengers carried (000s)	2 704.5	2 759.8	2.0
Seats (000s)	3 139.8	3 190.5	1.6
Load factor %	86.1	86.5	0.4 *
Aircraft trips	18 228	18 015	-1.2

* percentage point difference

Passengers/seats (000s)



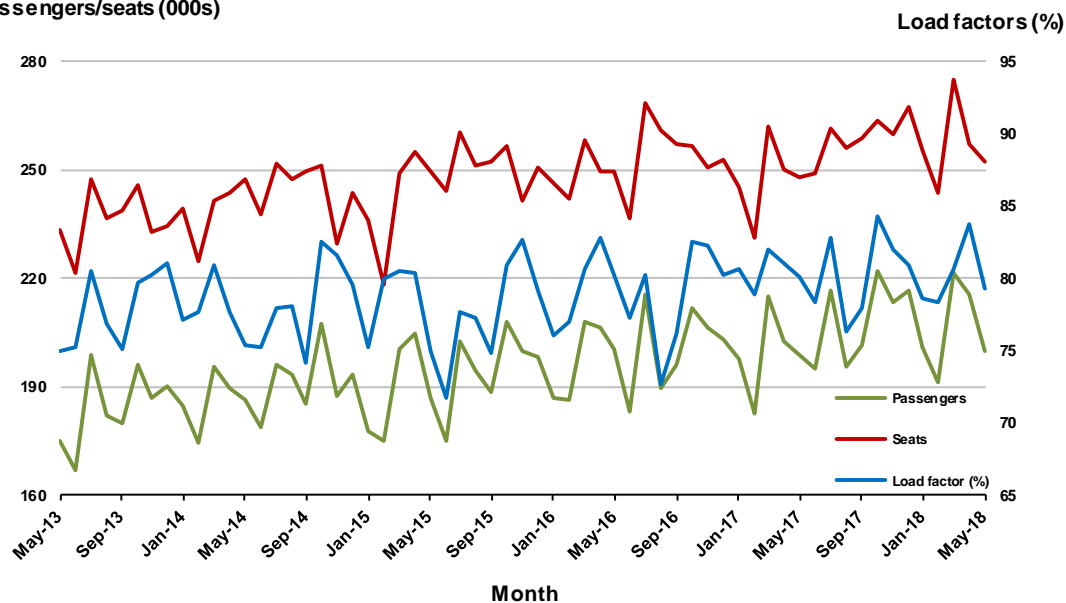
5. Adelaide - Melbourne

Monthly data

	May 2017	May 2018	% Change
Passengers carried (000s)	198.7	200.0	0.7
Seats (000s)	248.1	252.3	1.7
Load factor %	80.1	79.3	-0.8 *
Aircraft trips	1 583	1 567	-1.0

* percentage point difference

Passengers/seats (000s)

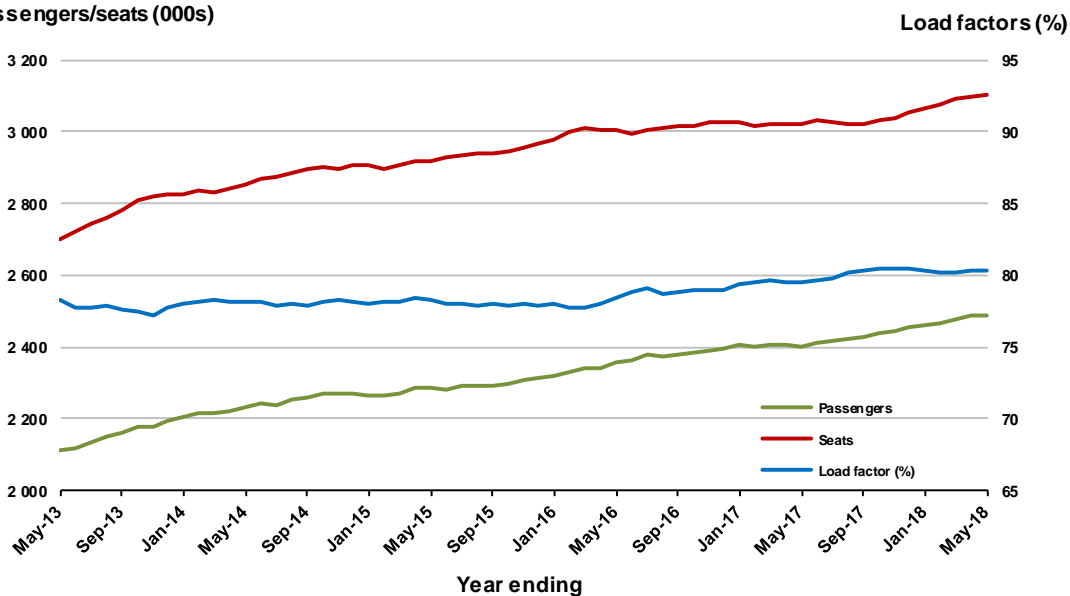


Moving annual data

	YE May 2017	YE May 2018	% Change
Passengers carried (000s)	2 401.5	2 489.2	3.7
Seats (000s)	3 020.3	3 100.6	2.7
Load factor %	79.5	80.3	0.8 *
Aircraft trips	19 233	19 254	0.1

* percentage point difference

Passengers/seats (000s)



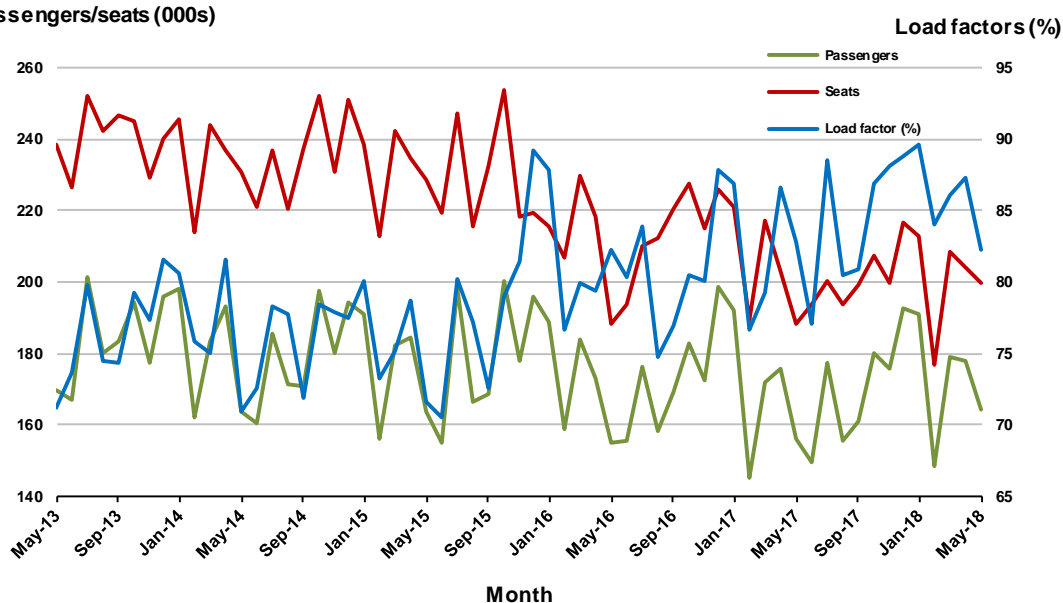
6. Melbourne - Perth

Monthly data

	May 2017	May 2018	% Change
Passengers carried (000s)	155.9	164.3	5.4
Seats (000s)	188.3	199.7	6.0
Load factor %	82.8	82.3	-0.5 *
Aircraft trips	895	970	8.4

* percentage point difference

Passengers/seats (000s)

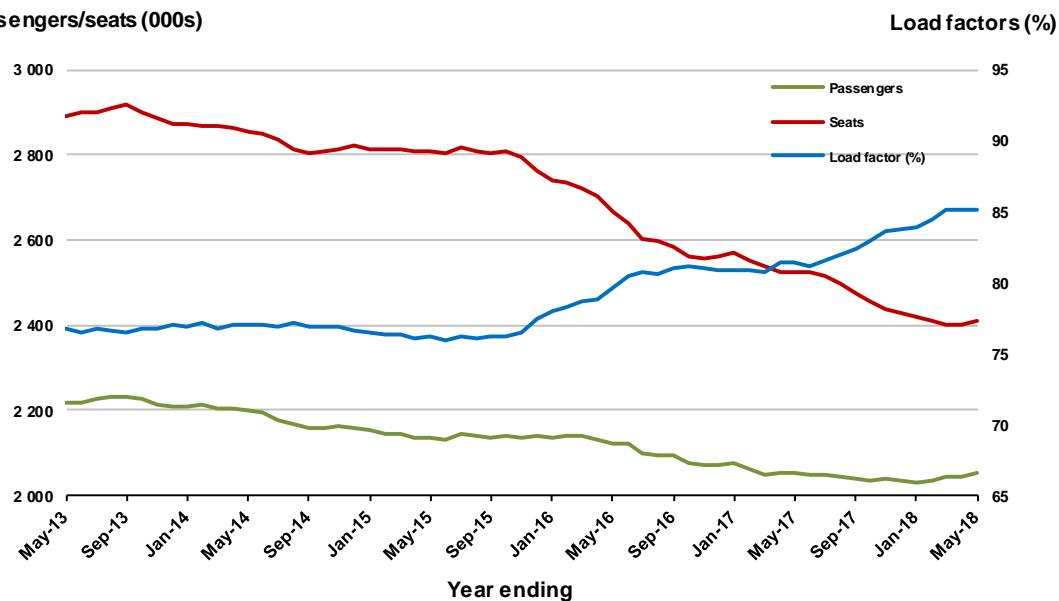


Moving annual data

	YE May 2017	YE May 2018	% Change
Passengers carried (000s)	2 054.3	2 053.3	-0.1
Seats (000s)	2 523.3	2 412.0	-4.4
Load factor %	81.4	85.1	3.7 *
Aircraft trips	11 458	11 160	-2.6

* percentage point difference

Passengers/seats (000s)



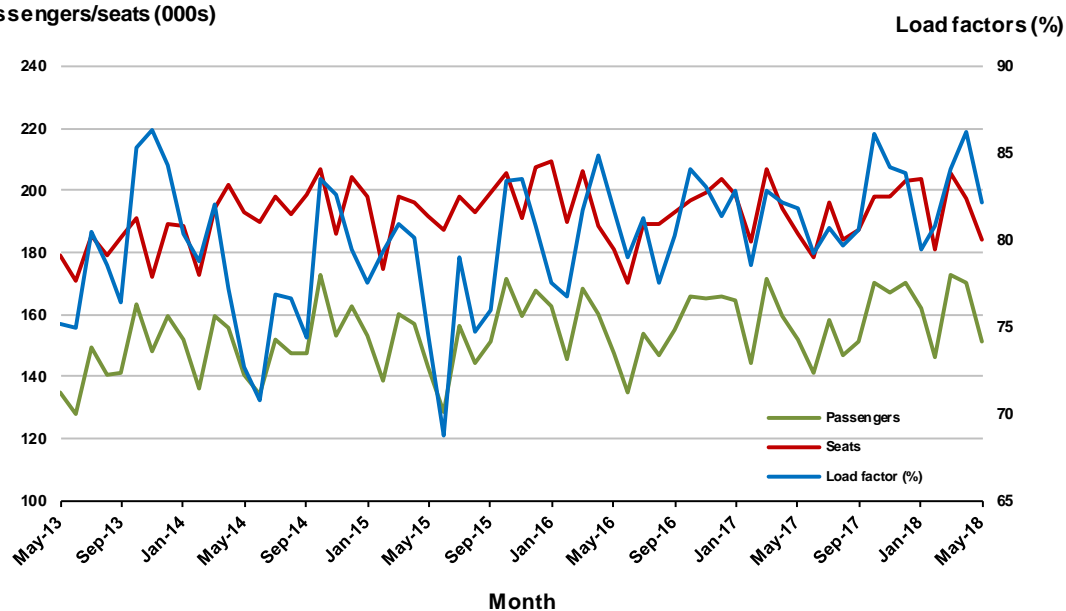
7. Adelaide - Sydney

Monthly data

	May 2017	May 2018	% Change
Passengers carried (000s)	152.1	151.4	-0.5
Seats (000s)	185.9	184.3	-0.9
Load factor %	81.8	82.2	0.4 *
Aircraft trips	1 126	1 110	-1.4

* percentage point difference

Passengers/seats (000s)

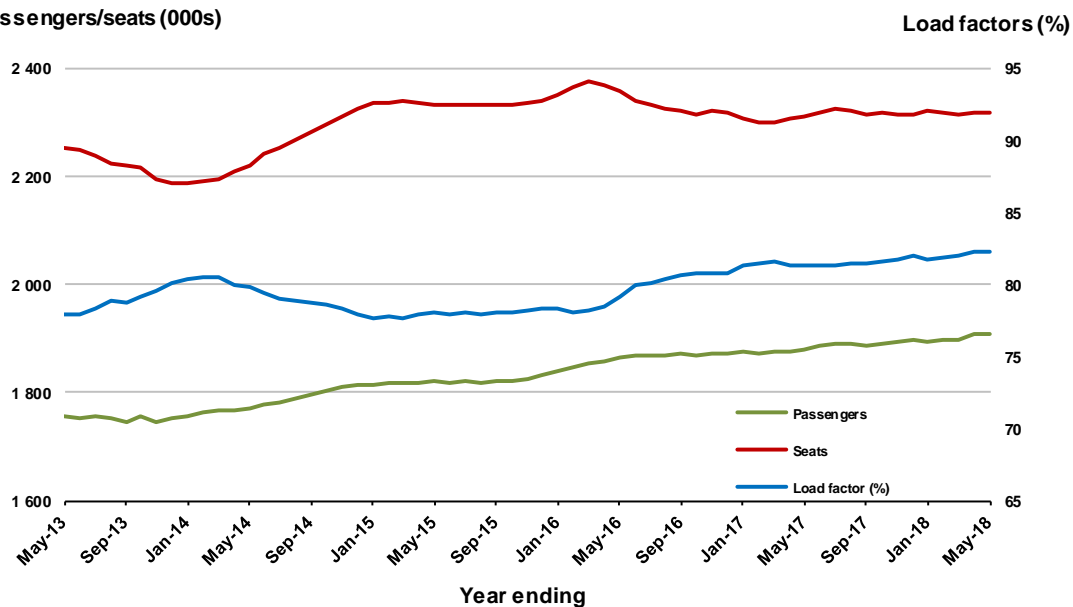


Moving annual data

	YE May 2017	YE May 2018	% Change
Passengers carried (000s)	1 880.0	1 908.3	1.5
Seats (000s)	2 311.5	2 318.1	0.3
Load factor %	81.3	82.3	1.0 *
Aircraft trips	14 013	13 900	-0.8

* percentage point difference

Passengers/seats (000s)



8. Gold Coast - Melbourne

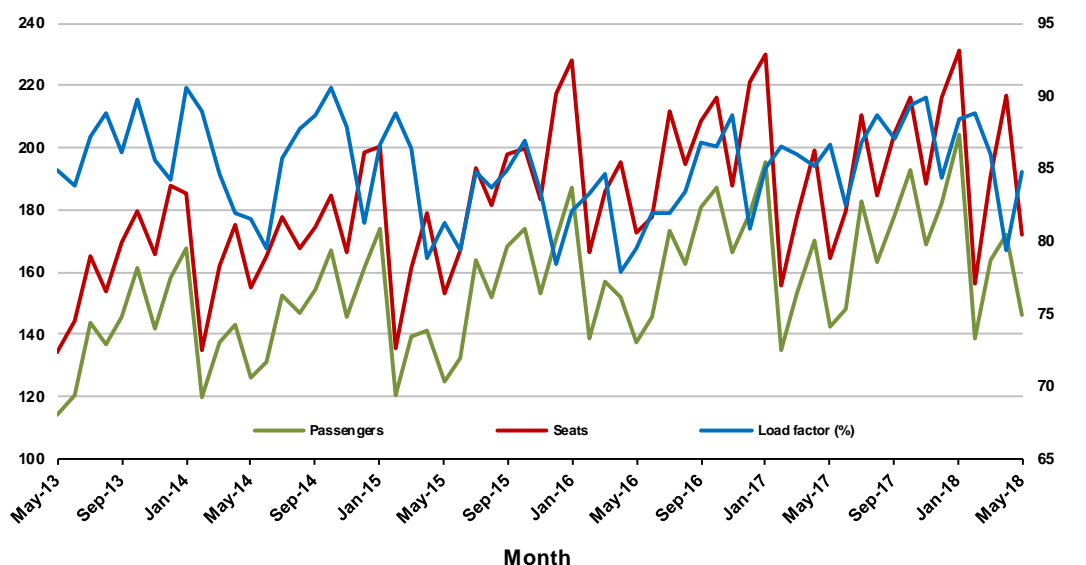
Monthly data

	May 2017	May 2018	% Change
Passengers carried (000s)	142.6	146.0	2.4
Seats (000s)	164.4	172.1	4.7
Load factor %	86.7	84.8	-1.9 *
Aircraft trips	884	909	2.8

* percentage point difference

Passengers/seats (000s)

Load factors (%)



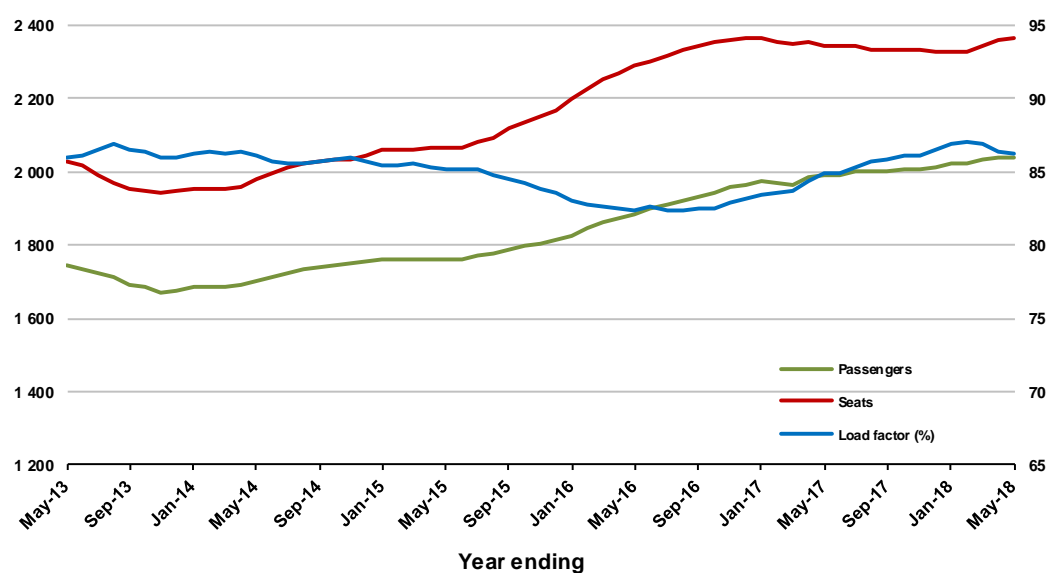
Moving annual data

	YE May 2017	YE May 2018	% Change
Passengers carried (000s)	1 989.6	2 041.4	2.6
Seats (000s)	2 344.1	2 366.1	0.9
Load factor %	84.9	86.3	1.4 *
Aircraft trips	12 550	12 534	-0.1

* percentage point difference

Passengers/seats (000s)

Load factors (%)



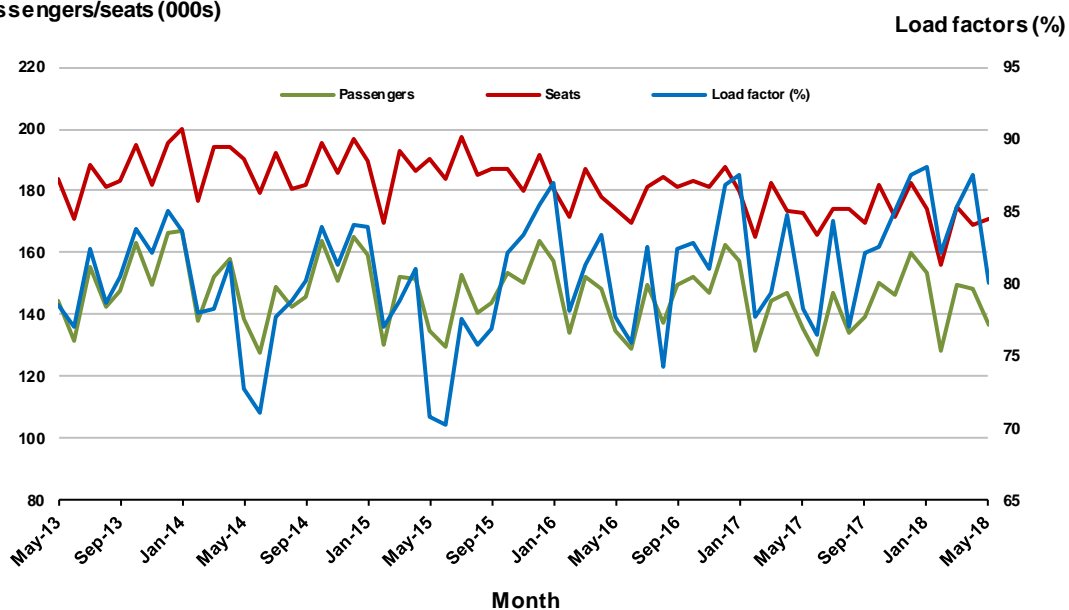
9. Perth - Sydney

Monthly data

	May 2017	May 2018	% Change
Passengers carried (000s)	135.3	136.7	1.1
Seats (000s)	172.7	170.7	-1.2
Load factor %	78.3	80.1	1.8 *
Aircraft trips	748	762	1.9

* percentage point difference

Passengers/seats (000s)

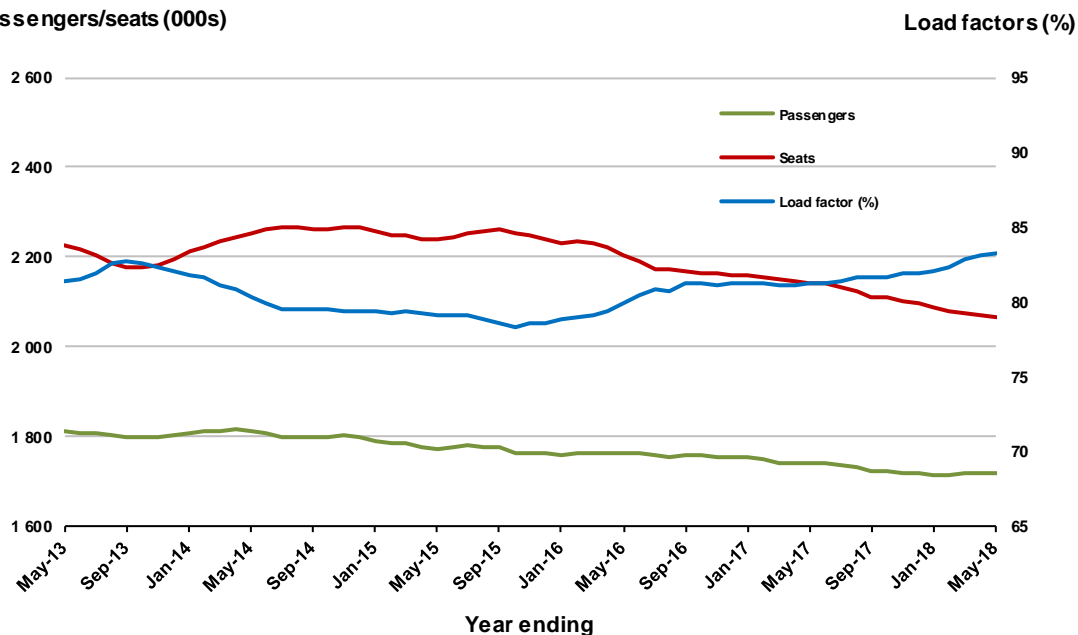


Moving annual data

	YE May 2017	YE May 2018	% Change
Passengers carried (000s)	1 739.7	1 719.1	-1.2
Seats (000s)	2 142.8	2 065.6	-3.6
Load factor %	81.2	83.2	2.0 *
Aircraft trips	9 106	9 041	-0.7

* percentage point difference

Passengers/seats (000s)



10. Hobart - Melbourne

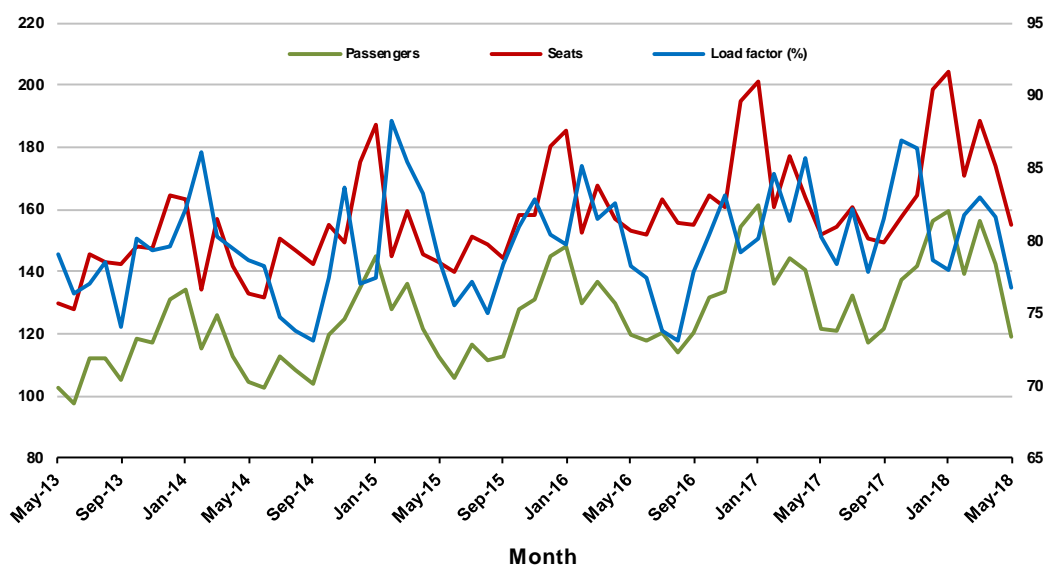
Monthly data

	May 2017	May 2018	% Change
Passengers carried (000s)	121.8	119.1	-2.3
Seats (000s)	151.9	155.2	2.1
Load factor %	80.2	76.7	-3.5 *
Aircraft trips	936	861	-8.0

* percentage point difference

Passengers/seats (000s)

Load factors (%)



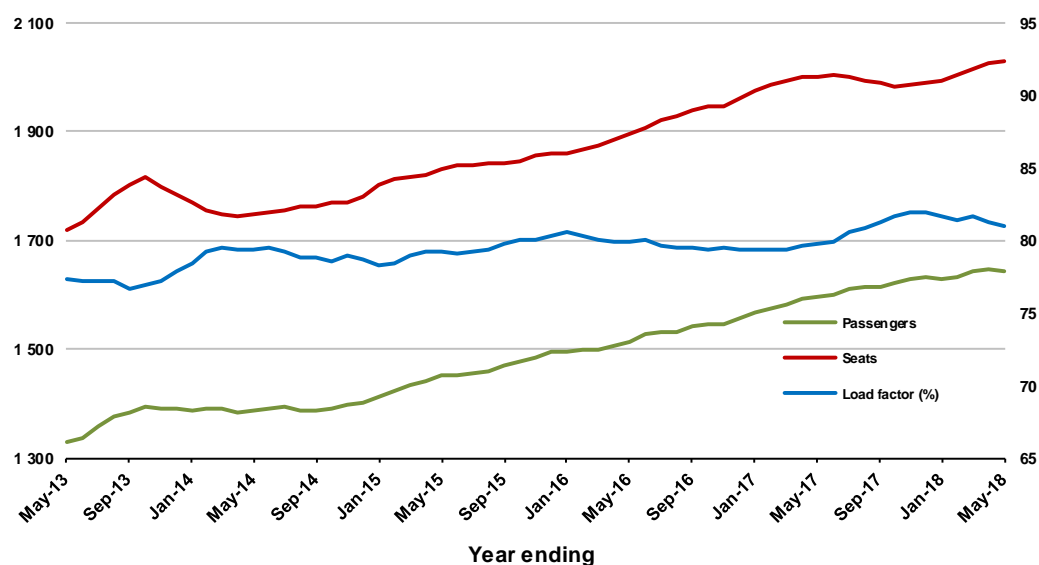
Moving annual data

	YE May 2017	YE May 2018	% Change
Passengers carried (000s)	1 595.3	1 643.0	3.0
Seats (000s)	1 999.7	2 028.8	1.5
Load factor %	79.8	81.0	1.2 *
Aircraft trips	12 398	12 021	-3.0

* percentage point difference

Passengers/seats (000s)

Load factors (%)



TOP FIFTY REGIONAL AIRPORTS

Table 10: Top fifty regional airports (000s) — passenger movements, monthly

	Airport	May 2017	May 2018	% Change
1	Cairns	315.8	323.3	2.4
2	Hobart	180.6	183.6	1.7
3	Darwin	147.2	147.2	0.0
4	Townsville	126.6	138.9	9.7
5	Newcastle	102.3	102.3	0.0
6	Launceston	94.3	92.8	-1.6
7	Mackay	66.5	72.1	8.3
8	Rockhampton	48.8	52.0	6.5
9	Alice Springs	49.2	50.0	1.7
10	Karratha	39.7	39.2	-1.1
11	Broome	32.9	38.2	16.2
12	Ballina	34.2	37.4	9.3
13	Port Hedland	31.4	34.4	9.5
14	Coffs Harbour	34.0	32.6	-4.2
15	Proserpine	30.2	31.2	3.2
16	Ayers Rock	27.4	31.0	12.8
17	Newman	25.3	28.0	10.5
18	Hamilton Island	25.3	27.0	6.6
19	Kalgoorlie	22.3	26.2	17.5
20	Mildura	22.1	24.1	9.0
21	Albury	22.8	23.0	0.9
22	Gladstone	22.9	21.6	-6.0
23	Dubbo	21.5	20.1	-6.6
24	Wagga Wagga	20.1	20.0	-0.5
25	Mount Isa	17.8	18.8	5.8
26	Port Macquarie	19.6	18.4	-5.7
27	Emerald	16.8	17.2	2.2
28	Paraburdoo	14.8	16.4	11.2
29	Tamworth	17.0	16.0	-6.1
30	Bundaberg	15.1	13.6	-9.8
31	Port Lincoln	14.1	13.4	-4.4
32	Hervey Bay	13.6	12.4	-9.0
33	Devonport	12.2	12.1	-0.8
34	Geraldton	9.9	11.6	18.0
35	Toowoomba Wellcamp	11.5	11.5	-0.3
36	Armidale	11.5	10.9	-5.1
37	Kununurra	10.4	10.6	1.8
38	Moranbah	11.2	9.0	-19.4
39	Learmonth	7.7	9.0	16.0
40	Thursday Island	8.2	8.3	1.7
41	Roma	7.2	7.8	9.0
42	Mount Gambier	7.6	7.5	-1.1
43	Gove	6.8	7.5	9.6
44	Weipa	6.5	7.1	9.1
45	Orange	6.3	7.1	12.5
46	Whyalla	5.6	7.0	24.8
47	Broken Hill	5.9	6.7	13.9
48	Griffith	6.5	6.6	2.1
49	Olympic Dam	5.7	6.5	14.8
50	Albany	5.1	6.3	23.9
Total top 50 regional airports		1 817.8	1 875.4	3.2
Total regional airports		2 008.5	2 054.6	2.3
Total domestic network		9 494.7	9 738.0	2.6

Note: Airport passenger movement numbers are the sum of passenger arrivals and departures at each airport.

Table 11: Top fifty regional airports (000s) — passenger movements, annual

	Airport	YE May 2017	YE May 2018	% Change
1	Cairns	4 289.4	4 334.0	1.0
2	Hobart	2 434.1	2 591.9	6.5
3	Darwin	1 811.4	1 798.2	-0.7
4	Townsville	1 530.3	1 642.6	7.3
5	Launceston	1 339.0	1 359.6	1.5
6	Newcastle	1 272.1	1 281.8	0.8
7	Mackay	772.7	811.9	5.1
8	Alice Springs	619.1	613.8	-0.9
9	Rockhampton	567.3	566.7	-0.1
10	Ballina	501.8	524.8	4.6
11	Proserpine	344.9	472.0	36.9
12	Karratha	467.0	434.7	-6.9
13	Broome	361.5	416.3	15.2
14	Coffs Harbour	403.5	414.9	2.8
15	Hamilton Island	508.7	413.6	-18.7
16	Ayers Rock	366.8	377.3	2.9
17	Port Hedland	355.3	353.7	-0.4
18	Newman	296.5	294.2	-0.8
19	Albury	259.6	269.3	3.7
20	Gladstone	309.3	267.3	-13.6
21	Kalgoorlie	243.8	264.9	8.7
22	Mildura	249.3	262.6	5.3
23	Dubbo	223.0	231.8	3.9
24	Wagga Wagga	216.6	225.9	4.3
25	Port Macquarie	226.5	223.7	-1.2
26	Mount Isa	191.9	206.7	7.7
27	Emerald	198.6	196.0	-1.3
28	Tamworth	189.9	195.1	2.7
29	Hervey Bay	170.5	171.2	0.4
30	Paraburdoo	166.5	170.8	2.6
31	Port Lincoln	175.4	170.5	-2.8
32	Bundaberg	174.6	170.3	-2.5
33	Toowoomba Wellcamp	137.7	151.7	10.2
34	Devonport	146.4	147.7	0.8
35	Armidale	128.9	132.3	2.6
36	Geraldton	116.0	113.9	-1.8
37	Moranbah	119.4	106.0	-11.2
38	Kununurra	103.3	103.9	0.6
39	Thursday Island	101.4	100.0	-1.4
40	Learmonth	81.9	87.1	6.3
41	Gove	84.6	86.0	1.7
42	Roma	83.8	85.0	1.4
43	Mount Gambier	77.8	80.8	3.8
44	Weipa	78.7	78.7	0.0
45	Olympic Dam	53.4	75.6	41.6
46	Griffith	71.4	75.0	5.0
47	Orange	55.0	70.0	27.5
48	Whyalla	61.6	69.1	12.3
49	Merimbula	64.5	66.8	3.5
50	Broken Hill	56.0	66.1	17.9
Total top 50 regional airports		22 858.6	23 423.8	2.5
Total regional airports		24 180.8	24 749.7	2.4
Total domestic network		118 434.4	121 546.3	2.6

Note: Airport passenger movement numbers are the sum of passenger arrivals and departures at each airport.

DOMESTIC CHARTER ACTIVITY

Table 12: Charter passengers carried and aircraft trips - annual activity

	YE May 2017	YE May 2018	% Change
Total domestic charter passengers	2 377 022	2 439 236	2.6
Total domestic charter aircraft trips	44 292	45 690	3.2

Note: Helicopter, joyflights and sightseeing charter flights not included.

Table 13: Charter passengers carried and aircraft trips - monthly activity

	May 2017	May 2018	% Change
Total domestic charter passengers	218 324	224 862	3.0
Total domestic charter aircraft trips	3 975	3 878	-2.4

Note: Helicopter, joyflights and sightseeing charter flights not included.

Table 14: Domestic airports - charter activity - annual

	YE May 2017	YE May 2018	% Change
Total domestic charter passenger movements	4 754 044	4 878 472	2.6
Total domestic charter aircraft movements	88 584	91 380	3.2
Perth airport charter passenger movements	1 847 756	1 835 500	-0.7
Perth airport charter aircraft movements	31 303	30 493	-2.6

Note: Helicopter, joyflights and sightseeing charter flights not included.

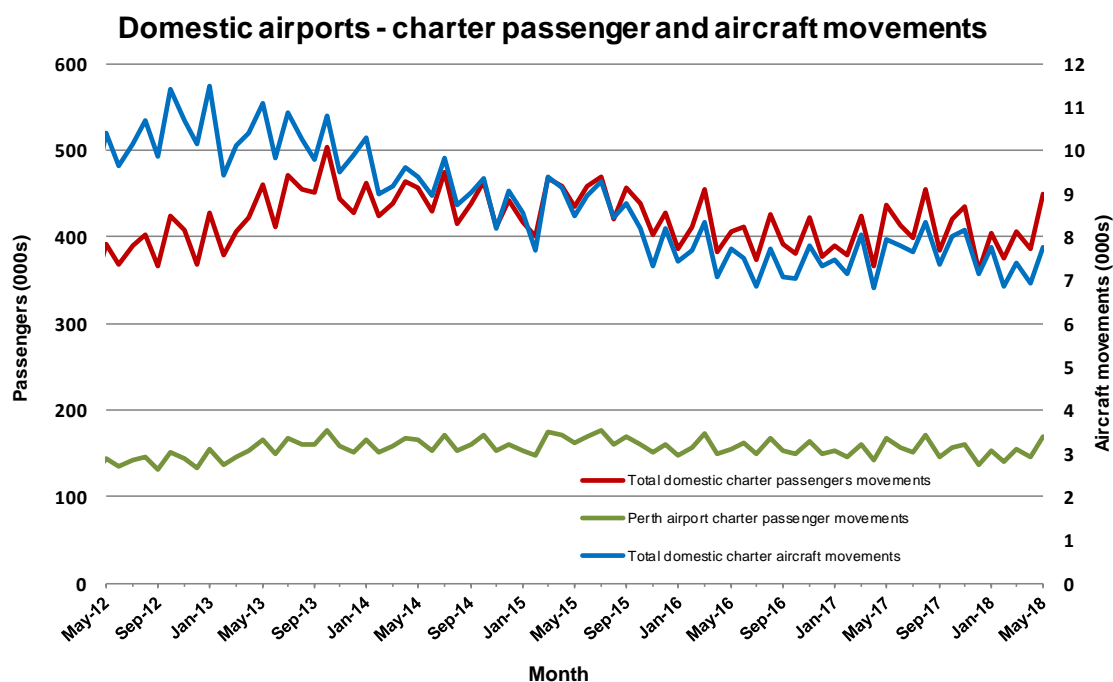
Charter passenger and aircraft movement numbers are the sum of arrivals and departures at each airport.

Table 15: Domestic airports - charter activity - monthly

	May 2017	May 2018	% Change
Total domestic charter passenger movements	436 648	449 724	3.0
Total domestic charter aircraft movements	7 950	7 756	-2.4
Perth airport charter passenger movements	167 028	169 700	1.6
Perth airport charter aircraft movements	2 760	2 633	-4.6

Note: Helicopter, joyflights and sightseeing charter flights not included.

Charter passenger and aircraft movement numbers are the sum of arrivals and departures at each airport.



DEFINITIONS

Aircraft Trips	The number of flight stages. A return flight counts as two aircraft trips.
Airport Movements	Airport movements (passenger and cargo) are measured once on arrival and once on departure. Each domestic trip generates two movements at airports. For example, a trip from Melbourne to Sydney will be counted twice, as a passenger departure at Melbourne and as a passenger arrival at Sydney. At the national level, the sum of all domestic airport traffic will therefore be equal to twice the number of trips undertaken.
Available Seat Kilometres (ASKs)	Calculated by multiplying the number of seats available on each flight stage, by the distance in kilometres between the ports. The distances used are Great Circle Distances.
City-Pair	The ports shown make up the city-pair route. Passenger movements shown for a city pair reflect total traffic in both directions.
Flight Stage	The operation of an aircraft from take-off to landing.
Load Factor	The total revenue passenger kilometres performed as a percentage of the total available seat kilometres.
Passengers Carried	Revenue passengers carried.
Regular Public Transport Services (RPT)	All air service operations in which aircraft are available for the transport of members of the public and are conducted in accordance with fixed schedules. It does not include charter or other non-scheduled operations.
Revenue Passengers	All passengers paying any fare. Frequent flyer redemption travellers are regarded as revenue passengers.
Revenue Passenger Kilometres (RPKs)	Calculated by multiplying the number of revenue passengers travelling on each flight stage, by the distance in kilometres between the ports. The distances used are Great Circle Distances.
Traffic on board by stages	The total of all traffic (revenue passengers) on each flight stage between two directly connected airports.
..	Data not included
NA	Not applicable