



Australian Government

Department of Infrastructure, Regional Development and Cities

Bureau of Infrastructure, Transport and Regional Economics

STATISTICAL REPORT



Aviation

Domestic aviation activity

March 2019

© Commonwealth of Australia 2019

ISSN: 1832 - 1968

Ownership of intellectual property rights in this publication

Unless otherwise noted, copyright (and any other intellectual property rights, if any) in this publication is owned by the Commonwealth of Australia (referred to below as the Commonwealth).

Disclaimer

The material contained in this publication is made available on the understanding that the Commonwealth is not providing professional advice, and that users exercise their own skill and care with respect to its use, and seek independent advice if necessary.

The Commonwealth makes no representations or warranties as to the contents or accuracy of the information contained in this publication. To the extent permitted by law, the Commonwealth disclaims liability to any person or organisation in respect of anything done, or omitted to be done, in reliance upon information contained in this publication.

Creative Commons licence

With the exception of (a) the Coat of Arms; and (b) the Department of Infrastructure, Regional Development and Cities' photos and graphics, copyright in this publication is licensed under a Creative Commons Attribution 3.0 Australia Licence.

Creative Commons Attribution 3.0 Australia Licence is a standard form licence agreement that allows you to copy, communicate and adapt this publication provided that you attribute the work to the Commonwealth and abide by the other licence terms. A summary of the licence terms is available from <http://creativecommons.org/licenses/by/3.0/au/deed.en>.

The full licence terms are available from <http://creativecommons.org/licenses/by/3.0/au/legalcode>.

Use of the Coat of Arms

The Department of the Prime Minister and Cabinet sets the terms under which the Coat of Arms is used. Please refer to the Department's Commonwealth Coat of Arms and Government branding web page <http://www.dpmc.gov.au/guidelines/index.cfm#brand> and, in particular, the Guidelines on the use of the Commonwealth Coat of Arms publication.

An appropriate citation for this report is:

Bureau of Infrastructure, Transport and Regional Economics (BITRE), 2019, Domestic aviation activity, Statistical Report, BITRE, Canberra ACT.

Contact us

This publication is available in PDF format. All other rights are reserved, including in relation to any Departmental logos or trade marks which may exist. For enquiries regarding the licence and any use of this publication, please contact:

Bureau of Infrastructure, Transport and Regional Economics (BITRE)
Department of Infrastructure, Regional Development and Cities
GPO Box 501, Canberra ACT 2601, Australia
Telephone: (international) +61 2 6274 7210
Fax: (international) +61 2 6274 6855
Email: bitre@infrastructure.gov.au
Website: www.bitre.gov.au

Inquiries

Should you require additional information about the statistics contained in this publication:

Nebojsa Pavlovic

Telephone (02) 6274 6817 or Facsimile (02) 6274 7727

Electronic mail: AVSTATS@infrastructure.gov.au

Nebojsa.Pavlovic@infrastructure.gov.au

Web site: <http://www.bitre.gov.au/statistics/aviation/domestic.aspx>

FOREWORD

This report provides an overview of domestic (including charter) commercial aviation activity in Australia for the month of March 2019.

The data cover revenue passengers carried by Australian-registered operators of scheduled regular public transport services over Australian flight stages and fixed-wing charter operators. These estimates include passengers carried between domestic airports on international flights operated by these carriers. The passengers carried refer to traffic on board by stages.

Estimates of passengers and aircraft movements for charter aviation are included in this publication, where BITRE confidentiality standards are met.

Individual routes shown are restricted to those with an average exceeding 8 000 passengers per month over the previous six months where two or more airlines operate in competition. For the month of March 2019, there were 65 such routes.

Information on the total network for the month of March 2019 and on the Regular Public Transport (RPT) network for the month of March 2019 is presented on page 2, with estimates for the year ended March 2019 presented on page 3.

Detailed information on the 65 individual routes can be found in the RPT summary pages 4-13 of this publication.

The top ten airports in terms of RPT passenger movements are shown on page 14.

Data on domestic RPT cargo movements at the top five cargo airports are provided on page 15. The table includes cargo carried on passenger flights operated by the Qantas group (including Jetstar), Virgin Australia, Air North and Skippers as well as the cargo carried by dedicated freighter aircraft operated by Qantas Freight, Toll Aviation and Virgin Australia Cargo.

The long-term trends for the top ten competitive RPT routes are presented graphically on pages 16-25.

Domestic RPT passenger movements at the top 50 regional airports are presented on pages 26-27.

Tables providing estimates of domestic charter aviation activity are shown on page 28. BITRE confidentiality standards restrict publication of detailed estimates for individual Australian airports, with the exception of Perth Airport.

A list of definitions can be found on page 29.

This report was prepared by the Aviation Statistics Section of the Bureau of Infrastructure, Transport and Regional Economics with data provided by airlines.

Estimates are included where data were not available and data presented in this publication may contain revisions to previously published data.

Where figures have been rounded, discrepancies may occur between sums of component items and totals, and in percentage changes which are derived from figures prior to rounding.

CONTENTS

Highlights	1
Total network	2
RPT network	2
Top competitive routes	4
Top ten airports – passenger movements	14
Top five airports – cargo movements	15
Top ten routes	16
1. Melbourne – Sydney	16
2. Brisbane – Sydney.....	17
3. Brisbane – Melbourne	18
4. Adelaide – Melbourne	19
5. Gold Coast – Sydney	20
6. Melbourne – Perth	21
7. Adelaide – Sydney	22
8. Gold Coast – Melbourne	23
9. Hobart – Melbourne	24
10. Perth – Sydney	25
Top fifty regional airports	26
Domestic charter activity	28
Definitions	29

This page is intentionally left blank.

HIGHLIGHTS

There were 5.28 million passengers carried on Australian domestic commercial aviation (including charter operations) in March 2019, a decrease of 2.8 per cent on March 2018. For the month of March 2019 there were 57.3 thousand aircraft trips, a decrease of 0.4 per cent compared to March 2018.

5.06 million passengers were carried on RPT flights in March 2019, a decrease of 3.1 per cent on March 2018. This was the fourth consecutive monthly decrease in the number of RPT passengers.

For the year ending March 2019 there were 60.88 million RPT passengers, an increase of 0.7 per cent on the year ending March 2018.

RPT revenue passenger kilometres (RPKs) performed were 5.73 billion for the month, down 3.6 per cent compared with March 2018. Capacity, measured by available seat kilometres (ASKs), decreased by 1.5 per cent compared with March 2018 to a total of 7.27 billion.

With RPT passenger traffic decreasing at a faster rate than capacity the industry wide load factor (RPKs/ASKs) decreased from 80.4 per cent in March 2018 to 78.7 per cent in March 2019. Load factors on individual routes decreased on 47 of the 65 RPT routes.

For the month of March 2019, Melbourne – Sydney remained Australia's busiest RPT route with 816 417 passengers, a decrease of 1.8 per cent compared with March 2018. It was followed by Brisbane – Sydney with 404 452 passengers (down 2.6 per cent) and Brisbane – Melbourne with 295 315 passengers (down 0.4 per cent).

The greatest percentage decrease in RPT passenger numbers, compared to March 2018, was on the Proserpine – Sydney route (down 30.8 per cent). There were large decreases on a number of other routes, including Cairns – Townsville (down 22.0 per cent), Darwin – Perth (down 17.3 per cent) and Broome – Perth (down 14.6 per cent).

Routes with traffic increases in March 2019 compared with March 2018 included Brisbane – Hobart (up 8.5 per cent), Newman – Perth (up 6.0 per cent), Sydney – Townsville (up 5.8) and Kalgoorlie – Perth (up 4.7 per cent).

In March 2019, Sydney remained Australia's busiest domestic airport with 2.33 million passenger movements, followed by Melbourne with 2.19 million passenger movements and Brisbane with 1.43 million passenger movements.

Total cargo movements at Australian airports on domestic RPT flights were 38.2 thousand tonnes in March 2019, a decrease of 6.5 per cent compared with March 2018.

In March 2019, there were 2.00 million domestic passenger movements through regional airports, 4.8 per cent lower than in March 2018. Out of the top 50 regional airports, the largest decrease was at Learmonth airport (down 22.8 per cent on March 2018), while the strongest increase was recorded at Kununurra airport (up 15.3 per cent on March 2018).

Fixed-wing charter operators carried 210.8 thousand passengers in March 2019, an increase of 3.0 per cent on March 2018. Perth Airport accounted for 38.4 per cent of all charter passengers in Australia.

TOTAL NETWORK

Summary of monthly commercial aviation activity

	Mar 2018	Mar 2019	% Change
Total passengers carried (millions)	5.43	5.28	-2.8
Aircraft trips (000s)	57.5	57.3	-0.4

Note: Regular Public Transport and charter aviation activity
Helicopter, joyflights and sightseeing charter flights not included.

RPT NETWORK

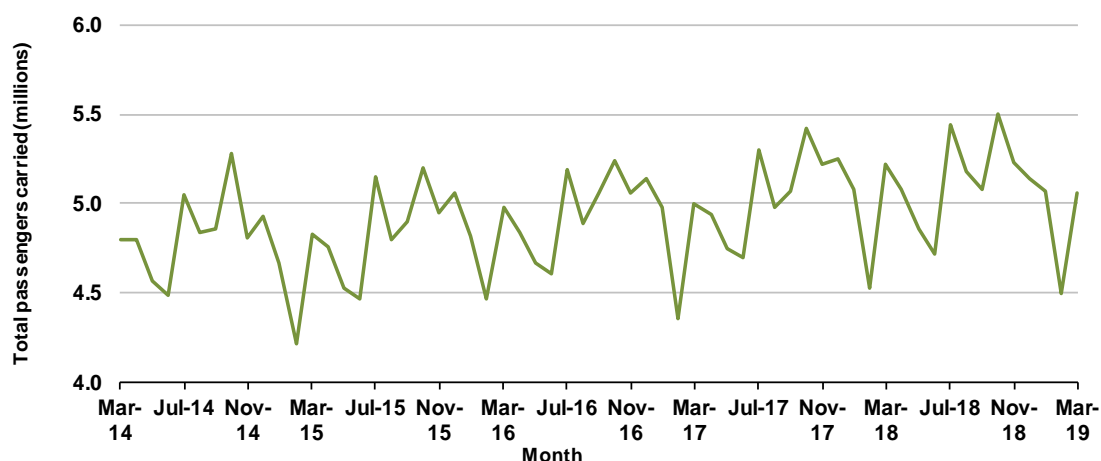
Summary of monthly RPT activity

	Mar 2018	Mar 2019	% Change
Total passengers carried (millions)	5.22	5.06	-3.1
Revenue passenger kilometres (billions)	5.94	5.73	-3.6
Available seats (millions)	6.60	6.50	-1.5
Available seat kilometres (billions)	7.38	7.27	-1.5
Load factor %	80.4	78.7	-1.7 *
Aircraft trips (000s)	53.7	53.7	-0.2

* percentage point difference

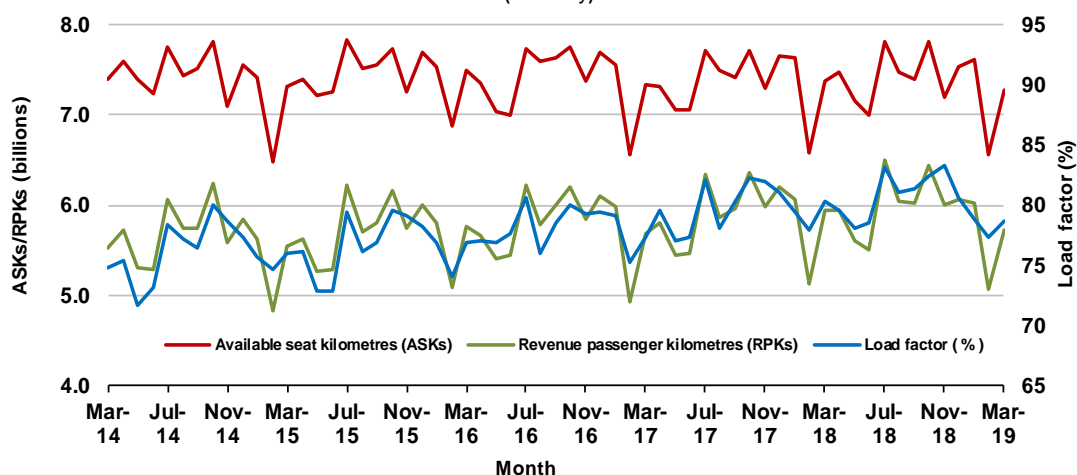
Domestic RPT passenger traffic

(monthly)



RPT Network utilisation

(monthly)



TOTAL NETWORK

Summary of annual commercial aviation activity

	YE Mar 2018	YE Mar 2019	% Change
Total passengers carried (millions)	62.91	63.39	0.8
Aircraft trips (000s)	683.2	673.4	-1.4

Note: Regular Public Transport and charter aviation activity
Helicopter, joyflights and sightseeing charter flights not included.

RPT NETWORK

Summary of annual RPT activity

	YE Mar 2018	YE Mar 2019	% Change
Total passengers carried (millions)	60.47	60.88	0.7
Revenue passenger kilometres (billions)	70.53	70.94	0.6
Available seats (millions)	77.35	77.20	-0.2
Available seat kilometres (billions)	88.31	88.31	0.0
Load factor %	79.9	80.3	0.5 *
Aircraft trips (000s)	636.9	629.4	-1.2

* percentage point difference

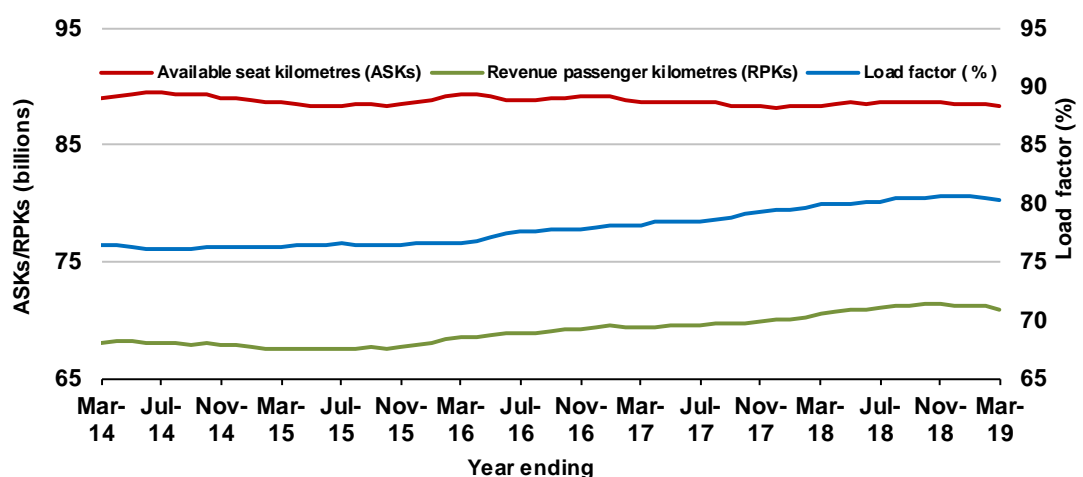
Domestic RPT passenger traffic

(moving annual totals)



RPT Network utilisation

(moving annual totals)



TOP COMPETITIVE ROUTES

Table 1: Passengers carried (000s) — annual activity

	City-Pair	YE Mar 2018	YE Mar 2019	%Change
1	Melbourne - Sydney	9 191.7	9 242.9	0.6
2	Brisbane - Sydney	4 770.0	4 811.8	0.9
3	Brisbane - Melbourne	3 555.8	3 580.0	0.7
4	Gold Coast - Sydney	2 758.6	2 696.2	-2.3
5	Adelaide - Melbourne	2 475.2	2 511.5	1.5
6	Melbourne - Perth	2 042.7	2 116.9	3.6
7	Gold Coast - Melbourne	2 036.1	2 064.2	1.4
8	Adelaide - Sydney	1 898.3	1 892.5	-0.3
9	Perth - Sydney	1 716.7	1 702.9	-0.8
10	Hobart - Melbourne	1 644.0	1 654.7	0.7
11	Brisbane - Cairns	1 382.1	1 294.4	-6.3
12	Canberra - Melbourne	1 140.0	1 182.5	3.7
13	Cairns - Sydney	1 138.2	1 111.5	-2.3
14	Brisbane - Townsville	974.8	996.9	2.3
15	Launceston - Melbourne	936.4	957.5	2.3
16	Canberra - Sydney	947.6	943.3	-0.4
17	Brisbane - Perth	973.6	941.1	-3.3
18	Cairns - Melbourne	845.2	852.2	0.8
19	Adelaide - Brisbane	854.5	841.5	-1.5
20	Brisbane - Mackay	715.9	746.9	4.3
21	Hobart - Sydney	675.1	705.4	4.5
22	Brisbane - Canberra	605.7	643.0	6.2
23	Adelaide - Perth	616.3	630.4	2.3
24	Sunshine Coast - Sydney	601.5	629.9	4.7
25	Brisbane - Newcastle	586.1	586.0	0.0
26	Melbourne - Sunshine Coast	507.2	541.1	6.7
27	Brisbane - Rockhampton	512.4	518.5	1.2
28	Melbourne - Newcastle	482.3	489.8	1.5
29	Karratha - Perth	433.0	442.5	2.2
30	Ballina - Sydney	419.1	433.1	3.3
31	Brisbane - Darwin	400.7	367.4	-8.3
32	Perth - Port Hedland	339.8	365.7	7.6
33	Coffs Harbour - Sydney	347.5	335.0	-3.6
34	Broome - Perth	331.7	332.3	0.2
35	Newman - Perth	288.3	312.2	8.3
36	Darwin - Sydney	321.1	307.4	-4.3
37	Darwin - Melbourne	303.9	306.2	0.8
38	Launceston - Sydney	285.4	286.9	0.5
39	Kalgoorlie - Perth	246.9	285.0	15.4
40	Brisbane - Gladstone	276.7	248.4	-10.3
41	Brisbane - Proserpine	274.6	241.0	-12.3
42	Brisbane - Hobart	217.2	235.1	8.2
43	Melbourne - Mildura	214.7	227.7	6.0
44	Albury - Sydney	223.0	227.5	2.0
45	Adelaide - Gold Coast	218.2	217.6	-0.3
46	Hamilton Island - Sydney	187.8	202.0	7.6
47	Brisbane - Emerald	195.5	196.1	0.3
48	Adelaide - Canberra	184.6	194.8	5.5
49	Ayers Rock - Sydney	193.6	190.6	-1.5
50	Dubbo - Sydney	190.1	187.4	-1.4

continued

Table 1: (continued) Passengers carried (000s) — annual activity

	City-Pair	YE Mar 2018	YE Mar 2019	% Change
51	Darwin - Perth	203.5	186.8	-8.2
52	Port Macquarie - Sydney	191.7	186.4	-2.8
53	Sydney - Wagga Wagga	180.4	180.0	-0.2
54	Sydney - Tamworth	179.3	173.7	-3.1
55	Sydney - Townsville	161.6	170.6	5.6
56	Adelaide - Port Lincoln	170.8	168.1	-1.6
57	Brisbane - Bundaberg	172.6	158.6	-8.1
58	Cairns - Townsville	146.6	145.7	-0.7
59	Brisbane - Mount Isa	125.9	131.5	4.5
60	Adelaide - Alice Springs	127.2	131.1	3.1
61	Proserpine - Sydney	82.6	125.1	NA (a)
62	Brisbane - Hamilton Island	121.6	122.7	0.9
63	Armidale - Sydney	124.9	121.9	-2.4
64	Geraldton - Perth	112.3	111.2	-1.0
65	Alice Springs - Darwin	115.6	110.5	-4.4
	Total domestic network	60 468.5	60 877.8	0.7

(a) Proserpine - Sydney route included from September 2017, prior data not shown.

Table 2: Passengers carried (000s) — monthly activity

	City-Pair	Mar 2018	Mar 2019	% Change
1	Melbourne - Sydney	831.5	816.4	-1.8
2	Brisbane - Sydney	415.3	404.5	-2.6
3	Brisbane - Melbourne	296.5	295.3	-0.4
4	Adelaide - Melbourne	221.8	227.4	2.6
5	Gold Coast - Sydney	231.5	217.5	-6.0
6	Melbourne - Perth	179.2	175.4	-2.1
7	Adelaide - Sydney	172.8	166.6	-3.6
8	Gold Coast - Melbourne	163.9	158.5	-3.4
9	Hobart - Melbourne	156.5	150.7	-3.7
10	Perth - Sydney	149.4	140.9	-5.7
11	Canberra - Melbourne	108.9	106.6	-2.2
12	Brisbane - Cairns	106.7	99.6	-6.6
13	Launceston - Melbourne	91.2	86.7	-5.0
14	Brisbane - Townsville	84.5	85.9	1.7
15	Canberra - Sydney	89.1	81.7	-8.4
16	Cairns - Sydney	86.9	80.8	-7.1
17	Brisbane - Perth	80.1	75.7	-5.4
18	Adelaide - Brisbane	70.5	69.0	-2.0
19	Hobart - Sydney	64.6	62.7	-2.9
20	Brisbane - Mackay	61.9	61.3	-1.0
21	Adelaide - Perth	54.4	53.0	-2.6
22	Sunshine Coast - Sydney	50.5	51.6	2.1
23	Cairns - Melbourne	55.8	51.5	-7.8
24	Brisbane - Canberra	52.5	51.2	-2.3
25	Brisbane - Newcastle	48.3	50.5	4.5
26	Brisbane - Rockhampton	43.6	43.9	0.6
27	Melbourne - Newcastle	41.6	40.5	-2.5
28	Melbourne - Sunshine Coast	40.7	40.5	-0.7
29	Ballina - Sydney	35.7	35.7	0.0
30	Karratha - Perth	36.7	35.3	-3.8
31	Coffs Harbour - Sydney	31.0	28.1	-9.5
32	Perth - Port Hedland	30.2	27.5	-9.1
33	Newman - Perth	25.5	27.0	6.0
34	Launceston - Sydney	27.5	26.9	-2.4
35	Brisbane - Darwin	27.0	23.6	-12.5
36	Kalgoorlie - Perth	22.1	23.1	4.7
37	Broome - Perth	25.9	22.1	-14.6
38	Darwin - Melbourne	21.6	21.4	-1.1
39	Melbourne - Mildura	20.2	20.6	2.2
40	Brisbane - Gladstone	22.9	20.6	-9.9
41	Brisbane - Hobart	18.3	19.8	8.5
42	Darwin - Sydney	21.3	19.5	-8.5
43	Albury - Sydney	18.9	19.3	2.2
44	Brisbane - Proserpine	20.1	18.8	-6.4
45	Adelaide - Canberra	17.6	17.8	1.5
46	Adelaide - Gold Coast	18.4	17.1	-7.2
47	Ayers Rock - Sydney	17.6	16.5	-6.6
48	Port Macquarie - Sydney	16.4	16.3	-0.1
49	Brisbane - Emerald	17.5	16.3	-6.5
50	Dubbo - Sydney	16.8	16.2	-3.7

continued

Table 2: (continued) Passengers carried (000s) — monthly activity

	City-Pair	Mar 2018	Mar 2019	% Change
51	Adelaide - Port Lincoln	15.8	15.5	-2.2
52	Sydney - Wagga Wagga	16.3	15.4	-5.5
53	Sydney - Tamworth	15.2	15.0	-1.1
54	Hamilton Island - Sydney	15.6	14.3	-8.7
55	Darwin - Perth	15.7	13.0	-17.3
56	Brisbane - Bundaberg	14.5	12.9	-11.5
57	Cairns - Townsville	15.5	12.1	-22.0
58	Sydney - Townsville	10.7	11.3	5.8
59	Brisbane - Mount Isa	10.9	11.0	1.8
60	Adelaide - Alice Springs	10.9	11.0	1.8
61	Armidale - Sydney	10.5	10.6	1.2
62	Brisbane - Hamilton Island	10.7	9.8	-8.2
63	Geraldton - Perth	9.7	9.3	-4.8
64	Alice Springs - Darwin	8.3	8.6	3.1
65	Proserpine - Sydney	11.8	8.2	-30.8
	Total domestic network	5 224.5	5 064.6	-3.1

Table 3: Available seats (000s) — monthly activity

	City-Pair	Mar 2018	Mar 2019	% Change
1	Melbourne - Sydney	964.0	954.0	-1.0
2	Brisbane - Sydney	500.9	491.6	-1.9
3	Brisbane - Melbourne	370.0	363.9	-1.7
4	Adelaide - Melbourne	275.2	277.0	0.6
5	Gold Coast - Sydney	270.2	248.6	-8.0
6	Melbourne - Perth	208.2	211.2	1.4
7	Adelaide - Sydney	205.5	196.7	-4.3
8	Gold Coast - Melbourne	191.0	177.7	-6.9
9	Hobart - Melbourne	188.8	190.4	0.9
10	Perth - Sydney	175.1	169.3	-3.3
11	Canberra - Melbourne	156.0	151.0	-3.2
12	Brisbane - Cairns	121.1	119.1	-1.6
13	Launceston - Melbourne	108.9	110.9	1.8
14	Brisbane - Townsville	106.6	106.1	-0.5
15	Canberra - Sydney	128.1	111.3	-13.2
16	Cairns - Sydney	105.0	101.0	-3.9
17	Brisbane - Perth	95.4	96.0	0.6
18	Adelaide - Brisbane	96.2	88.4	-8.2
19	Hobart - Sydney	76.4	75.5	-1.2
20	Brisbane - Mackay	78.3	81.3	3.8
21	Adelaide - Perth	71.4	73.0	2.3
22	Sunshine Coast - Sydney	60.1	61.7	2.7
23	Cairns - Melbourne	69.2	65.5	-5.3
24	Brisbane - Canberra	75.1	70.4	-6.3
25	Brisbane - Newcastle	66.8	69.7	4.3
26	Brisbane - Rockhampton	53.1	57.5	8.2
27	Melbourne - Newcastle	47.6	46.9	-1.5
28	Melbourne - Sunshine Coast	49.8	48.0	-3.6
29	Ballina - Sydney	43.4	41.3	-4.9
30	Karratha - Perth	58.9	55.5	-5.9
31	Coffs Harbour - Sydney	41.8	38.0	-9.0
32	Perth - Port Hedland	45.3	44.6	-1.4
33	Newman - Perth	44.4	43.9	-1.2
34	Launceston - Sydney	31.3	31.8	1.4
35	Brisbane - Darwin	34.0	32.4	-4.6
36	Kalgoorlie - Perth	37.6	43.3	15.1
37	Broome - Perth	34.3	33.0	-3.9
38	Darwin - Melbourne	27.7	28.9	4.2
39	Melbourne - Mildura	29.2	30.1	3.0
40	Brisbane - Gladstone	31.6	31.6	0.3
41	Brisbane - Hobart	21.5	25.3	17.4
42	Darwin - Sydney	30.5	29.8	-2.1
43	Albury - Sydney	26.8	29.0	8.3
44	Brisbane - Proserpine	23.1	25.3	9.6
45	Adelaide - Canberra	25.3	24.7	-2.3
46	Adelaide - Gold Coast	22.6	21.5	-5.0
47	Ayers Rock - Sydney	20.6	20.1	-2.7
48	Port Macquarie - Sydney	19.8	22.2	11.8
49	Brisbane - Emerald	24.2	25.2	4.1
50	Dubbo - Sydney	22.3	23.7	6.1

continued

Table 3: (continued) Available seats (000s) — monthly activity

	City-Pair	Mar 2018	Mar 2019	% Change
51	Adelaide - Port Lincoln	24.0	25.4	5.8
52	Sydney - Wagga Wagga	23.6	23.6	0.0
53	Sydney - Tamworth	21.8	23.1	5.7
54	Hamilton Island - Sydney	22.3	21.6	-3.1
55	Darwin - Perth	20.4	21.4	4.6
56	Brisbane - Bundaberg	20.8	19.5	-6.4
57	Cairns - Townsville	21.9	21.0	-3.8
58	Sydney - Townsville	14.8	14.4	-2.8
59	Brisbane - Mount Isa	14.4	16.1	11.7
60	Adelaide - Alice Springs	15.3	16.3	6.4
61	Armidale - Sydney	14.0	15.2	8.6
62	Brisbane - Hamilton Island	14.5	15.3	5.3
63	Geraldton - Perth	19.0	15.0	-21.1
64	Alice Springs - Darwin	16.5	17.8	7.7
65	Proserpine - Sydney	15.1	10.9	-27.8
	Total domestic network	6 602.7	6 502.9	-1.5

Table 4: Load factors (%) — monthly activity

	City-Pair	Mar 2018	Mar 2019	% Point diff
1	Melbourne - Sydney	86.3	85.6	-0.7
2	Brisbane - Sydney	82.9	82.3	-0.6
3	Brisbane - Melbourne	80.1	81.2	1.1
4	Adelaide - Melbourne	80.6	82.1	1.5
5	Gold Coast - Sydney	85.7	87.5	1.8
6	Melbourne - Perth	86.1	83.1	-3.0
7	Adelaide - Sydney	84.1	84.7	0.6
8	Gold Coast - Melbourne	85.9	89.2	3.3
9	Hobart - Melbourne	82.9	79.1	-3.8
10	Perth - Sydney	85.3	83.2	-2.1
11	Canberra - Melbourne	69.8	70.6	0.8
12	Brisbane - Cairns	88.1	83.6	-4.5
13	Launceston - Melbourne	83.7	78.2	-5.5
14	Brisbane - Townsville	79.2	81.0	1.8
15	Canberra - Sydney	69.6	73.4	3.8
16	Cairns - Sydney	82.8	80.0	-2.8
17	Brisbane - Perth	83.9	78.9	-5.0
18	Adelaide - Brisbane	73.2	78.1	4.9
19	Hobart - Sydney	84.6	83.1	-1.5
20	Brisbane - Mackay	79.1	75.4	-3.7
21	Adelaide - Perth	76.2	72.6	-3.6
22	Sunshine Coast - Sydney	84.1	83.6	-0.5
23	Cairns - Melbourne	80.3	78.5	-1.8
24	Brisbane - Canberra	69.8	72.8	3.0
25	Brisbane - Newcastle	72.3	72.4	0.1
26	Brisbane - Rockhampton	82.1	76.4	-5.7
27	Melbourne - Newcastle	87.4	86.5	-0.9
28	Melbourne - Sunshine Coast	81.9	84.3	2.4
29	Ballina - Sydney	82.3	86.6	4.3
30	Karratha - Perth	62.1	63.5	1.4
31	Coffs Harbour - Sydney	74.2	73.8	-0.4
32	Perth - Port Hedland	66.8	61.6	-5.2
33	Newman - Perth	57.4	61.5	4.1
34	Launceston - Sydney	87.9	84.6	-3.3
35	Brisbane - Darwin	79.5	72.9	-6.6
36	Kalgoorlie - Perth	58.7	53.4	-5.3
37	Broome - Perth	75.3	66.9	-8.4
38	Darwin - Melbourne	77.9	73.9	-4.0
39	Melbourne - Mildura	69.1	68.5	-0.6
40	Brisbane - Gladstone	72.4	65.1	-7.3
41	Brisbane - Hobart	84.9	78.4	-6.5
42	Darwin - Sydney	69.9	65.4	-4.5
43	Albury - Sydney	70.6	66.6	-4.0
44	Brisbane - Proserpine	86.8	74.1	-12.7
45	Adelaide - Canberra	69.4	72.1	2.7
46	Adelaide - Gold Coast	81.4	79.5	-1.9
47	Ayers Rock - Sydney	85.5	82.0	-3.5
48	Port Macquarie - Sydney	82.5	73.8	-8.7
49	Brisbane - Emerald	72.1	64.8	-7.3
50	Dubbo - Sydney	75.3	68.4	-6.9

continued

Table 4: (continued) Load factors (%) — monthly activity

	City-Pair	Mar 2018	Mar 2019	% Point diff
51	Adelaide - Port Lincoln	66.0	61.0	-5.0
52	Sydney - Wagga Wagga	69.0	65.2	-3.8
53	Sydney - Tamworth	69.6	65.1	-4.5
54	Hamilton Island - Sydney	70.0	65.9	-4.1
55	Darwin - Perth	77.1	60.9	-16.2
56	Brisbane - Bundaberg	69.9	66.2	-3.7
57	Cairns - Townsville	70.9	57.5	-13.4
58	Sydney - Townsville	72.2	78.6	6.4
59	Brisbane - Mount Isa	75.3	68.6	-6.7
60	Adelaide - Alice Springs	71.0	67.9	-3.1
61	Armidale - Sydney	74.7	69.6	-5.1
62	Brisbane - Hamilton Island	73.6	64.1	-9.5
63	Geraldton - Perth	51.2	61.8	10.6
64	Alice Springs - Darwin	50.3	48.2	-2.1
65	Proserpine - Sydney	78.2	74.9	-3.3
	Total domestic network	80.4	78.7	-1.7

Table 5: Aircraft trips ^(a) — monthly activity

	City-Pair	Mar 2018	Mar 2019	% Change
1	Melbourne - Sydney	5 304	5 280	-0.5
2	Brisbane - Sydney	3 030	2 972	-1.9
3	Brisbane - Melbourne	2 173	2 133	-1.8
4	Adelaide - Melbourne	1 688	1 662	-1.5
5	Gold Coast - Sydney	1 522	1 408	-7.5
6	Melbourne - Perth	966	1 065	10.2
7	Adelaide - Sydney	1 224	1 192	-2.6
8	Gold Coast - Melbourne	1 011	941	-6.9
9	Hobart - Melbourne	1 082	1 024	-5.4
10	Perth - Sydney	774	782	1.0
11	Canberra - Melbourne	1 016	952	-6.3
12	Brisbane - Cairns	768	795	3.5
13	Launceston - Melbourne	813	821	1.0
14	Brisbane - Townsville	734	715	-2.6
15	Canberra - Sydney	1 423	1 466	3.0
16	Cairns - Sydney	584	517	-11.5
17	Brisbane - Perth	486	520	7.0
18	Adelaide - Brisbane	576	539	-6.4
19	Hobart - Sydney	431	448	3.9
20	Brisbane - Mackay	599	623	4.0
21	Adelaide - Perth	481	470	-2.3
22	Sunshine Coast - Sydney	363	369	1.7
23	Cairns - Melbourne	356	332	-6.7
24	Brisbane - Canberra	538	523	-2.8
25	Brisbane - Newcastle	447	492	10.1
26	Brisbane - Rockhampton	638	677	6.1
27	Melbourne - Newcastle	267	258	-3.4
28	Melbourne - Sunshine Coast	281	269	-4.3
29	Ballina - Sydney	283	268	-5.3
30	Karratha - Perth	521	490	-6.0
31	Coffs Harbour - Sydney	418	399	-4.5
32	Perth - Port Hedland	374	345	-7.8
33	Newman - Perth	332	338	1.8
34	Launceston - Sydney	180	176	-2.2
35	Brisbane - Darwin	213	201	-5.6
36	Kalgoorlie - Perth	299	338	13.0
37	Broome - Perth	309	283	-8.4
38	Darwin - Melbourne	155	163	5.2
39	Melbourne - Mildura	404	416	3.0
40	Brisbane - Gladstone	408	418	2.5
41	Brisbane - Hobart	122	142	16.4
42	Darwin - Sydney	182	174	-4.4
43	Albury - Sydney	487	537	10.3
44	Brisbane - Proserpine	130	142	9.2
45	Adelaide - Canberra	150	150	0.0
46	Adelaide - Gold Coast	128	121	-5.5
47	Ayers Rock - Sydney	116	114	-1.7
48	Port Macquarie - Sydney	328	332	1.2
49	Brisbane - Emerald	319	375	17.6
50	Dubbo - Sydney	476	515	8.2

continued

Table 5: (continued) Aircraft trips ^(a) — monthly activity

	City-Pair	Mar 2018	Mar 2019	% Change
51	Adelaide - Port Lincoln	611	656	7.4
52	Sydney - Wagga Wagga	458	470	2.6
53	Sydney - Tamworth	333	356	6.9
54	Hamilton Island - Sydney	137	134	-2.2
55	Darwin - Perth	122	124	1.6
56	Brisbane - Bundaberg	288	304	5.6
57	Cairns - Townsville	360	314	-12.8
58	Sydney - Townsville	94	82	-12.8
59	Brisbane - Mount Isa	154	148	-3.9
60	Adelaide - Alice Springs	112	118	5.4
61	Armidale - Sydney	341	373	9.4
62	Brisbane - Hamilton Island	112	122	8.9
63	Geraldton - Perth	190	150	-21.1
64	Alice Springs - Darwin	148	137	-7.4
65	Proserpine - Sydney	84	60	-28.6
	Total domestic network	53 746	53 653	-0.2

(a) Includes RPT Cargo flights.

TOP TEN AIRPORTS – PASSENGER MOVEMENTS

Table 6: Top ten airports, RPT passenger movements (000s) - monthly activity

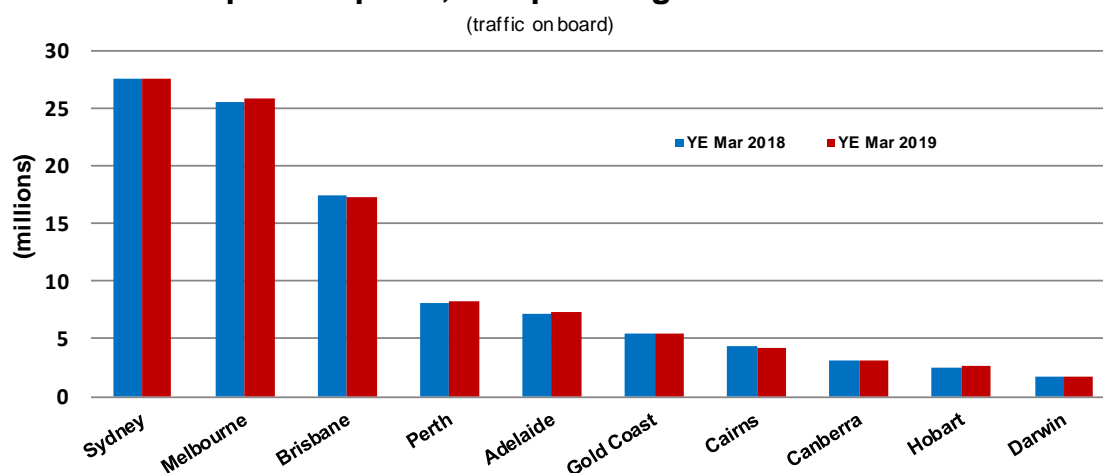
Airport	Mar 2018	Mar 2019	% Change	% of Total
1 Sydney	2 417.2	2 334.3	-3.4	23.0
2 Melbourne	2 237.2	2 194.0	-1.9	21.7
3 Brisbane	1 457.5	1 427.1	-2.1	14.1
4 Perth	689.9	663.2	-3.9	6.5
5 Adelaide	639.0	632.7	-1.0	6.2
6 Gold Coast	453.2	427.9	-5.6	4.2
7 Cairns	329.0	300.7	-8.6	3.0
8 Canberra	282.7	268.9	-4.9	2.7
9 Hobart	248.5	244.0	-1.8	2.4
10 Townsville	139.8	132.0	-5.6	1.3
Total top ten airports	8 893.9	8 624.8	-3.0	85.1
Total domestic network	10 449.1	10 129.1	-3.1	100.0

Table 7: Top ten airports, RPT passenger movements (000s) - annual activity

Airport	YE Mar 2018	YE Mar 2019	% Change	% of Total
1 Sydney	27 530.5	27 567.3	0.1	22.6
2 Melbourne	25 559.5	25 886.1	1.3	21.3
3 Brisbane	17 378.6	17 305.3	-0.4	14.2
4 Perth	8 033.4	8 207.2	2.2	6.7
5 Adelaide	7 207.5	7 306.7	1.4	6.0
6 Gold Coast	5 486.7	5 451.1	-0.6	4.5
7 Cairns	4 341.3	4 242.7	-2.3	3.5
8 Canberra	3 047.1	3 147.0	3.3	2.6
9 Hobart	2 573.6	2 692.7	4.6	2.2
10 Darwin	1 792.2	1 721.5	-3.9	1.4
Total top ten airports	102 950.4	103 527.6	0.6	85.0
Total domestic network	120 937.0	121 755.5	0.7	100.0

Note: Airport passenger movement numbers are the sum of passenger arrivals and departures at each airport.

Top ten airports, RPT passenger movements



TOP FIVE AIRPORTS – CARGO MOVEMENTS

Table 8: Top five airports, domestic RPT cargo movements (000s tonnes) - monthly activity

Airport	Mar 2018	Mar 2019	% Change	% of Total
1 Melbourne	11.9	10.2	-14.3	26.7
2 Sydney	9.2	8.1	-12.6	21.1
3 Brisbane	6.0	6.2	2.6	16.2
4 Perth	5.9	5.3	-10.0	14.0
5 Adelaide	2.4	1.9	-18.5	5.1
Total top five airports	35.5	31.8	-10.5	83.1
Total domestic network	40.9	38.2	-6.5	100.0

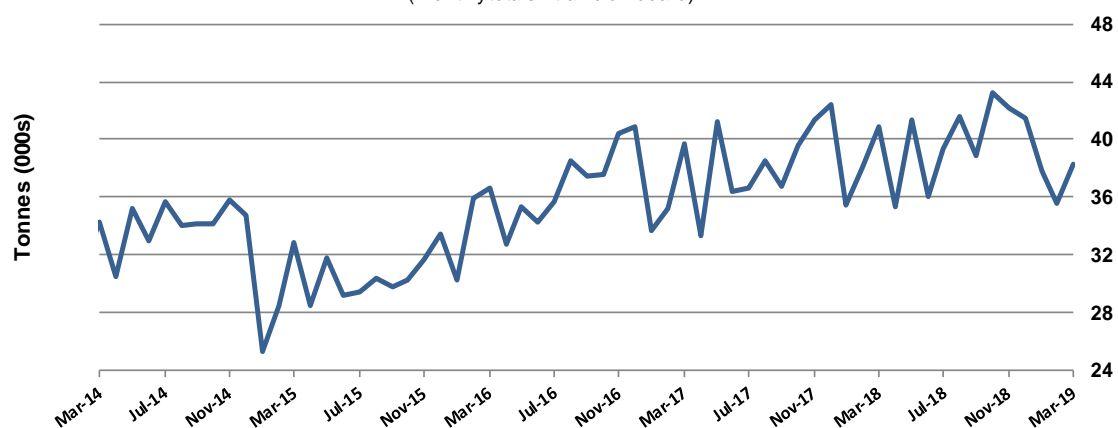
Table 9: Top five airports, domestic RPT cargo movements (000s tonnes) - annual activity

Airport	YE Mar 2018	YE Mar 2019	% Change	% of Total
1 Melbourne	133.6	131.6	-1.5	27.9
2 Sydney	106.3	104.4	-1.8	22.2
3 Brisbane	68.2	74.8	9.8	15.9
4 Perth	65.7	66.7	1.5	14.2
5 Adelaide	27.1	26.1	-3.7	5.5
Total top five airports	400.9	403.6	0.7	85.6
Total domestic network	460.6	471.3	2.3	100.0

Note: Airport cargo tonnes are the sum of cargo tonnes on arrivals and departures at each airport.

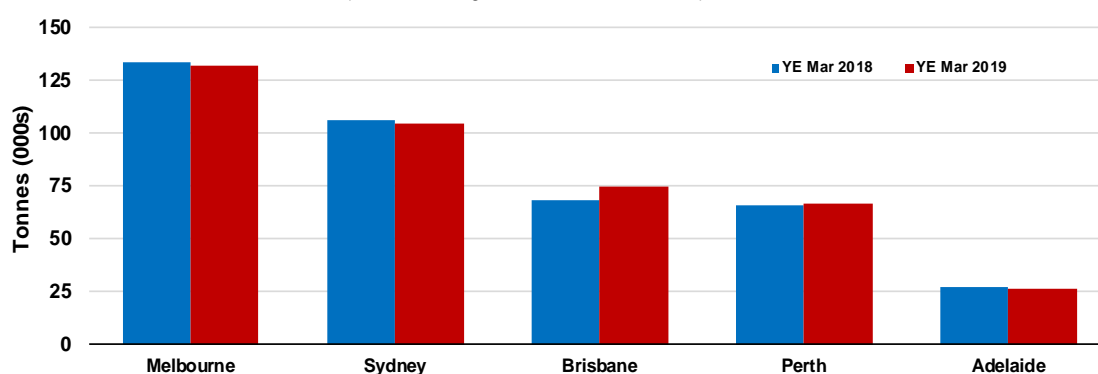
Total domestic network - cargo movement

(monthly totals - traffic on board)



Top five airports, cargo movements

(Domestic cargo traffic - traffic on board)



TOP TEN ROUTES

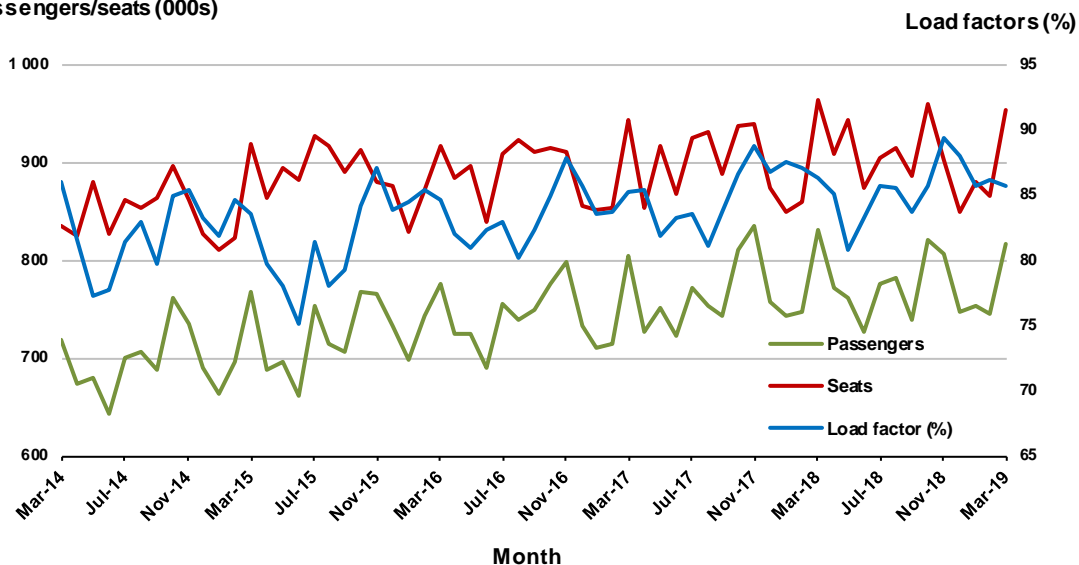
1. Melbourne - Sydney

Monthly data

	Mar 2018	Mar 2019	% Change
Passengers carried (000s)	831.5	816.4	-1.8
Seats (000s)	964.0	954.0	-1.0
Load factor %	86.3	85.6	-0.7 *
Aircraft trips	5 304	5 280	-0.5

* percentage point difference

Passengers/seats (000s)

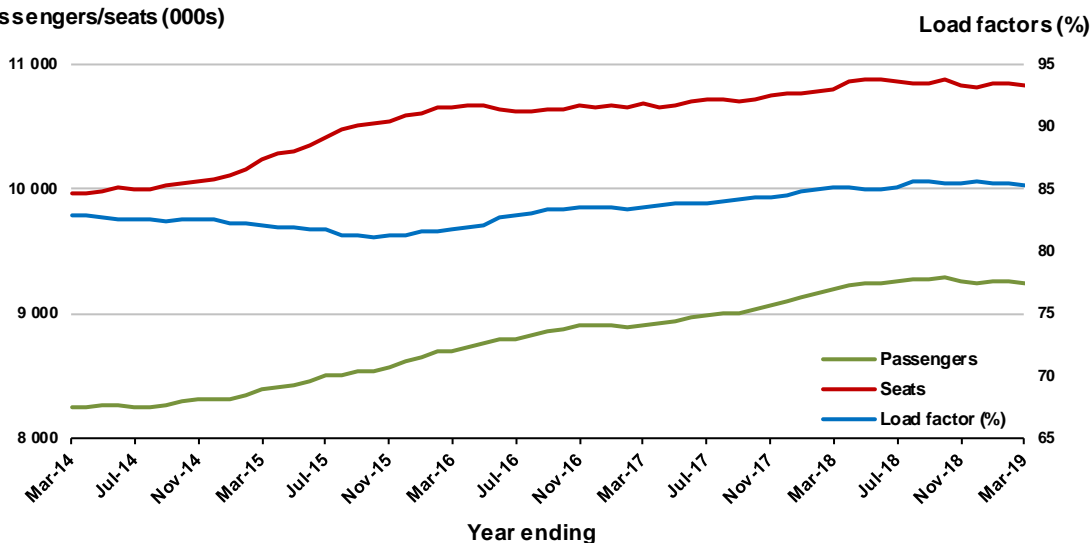


Moving annual data

	YE Mar 2018	YE Mar 2019	% Change
Passengers carried (000s)	9 191.7	9 242.9	0.6
Seats (000s)	10 799.4	10 835.2	0.3
Load factor %	85.1	85.3	0.2 *
Aircraft trips	60 136	60 220	0.1

* percentage point difference

Passengers/seats (000s)

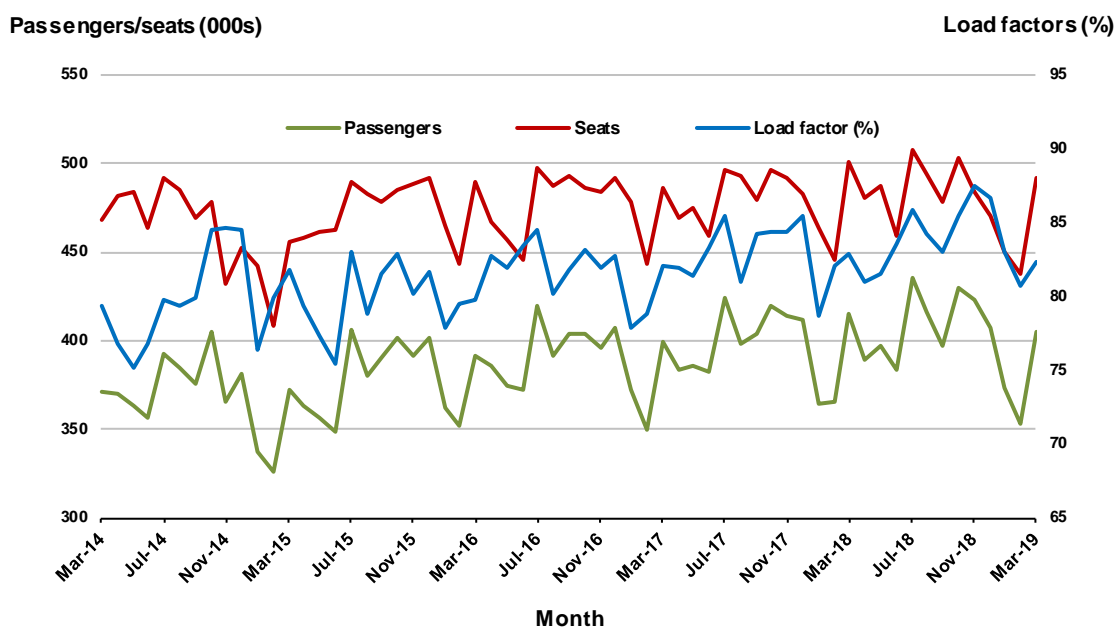


2. Brisbane - Sydney

Monthly data

	Mar 2018	Mar 2019	% Change
Passengers carried (000s)	415.3	404.5	-2.6
Seats (000s)	500.9	491.6	-1.9
Load factor %	82.9	82.3	-0.6 *
Aircraft trips	3 030	2 972	-1.9

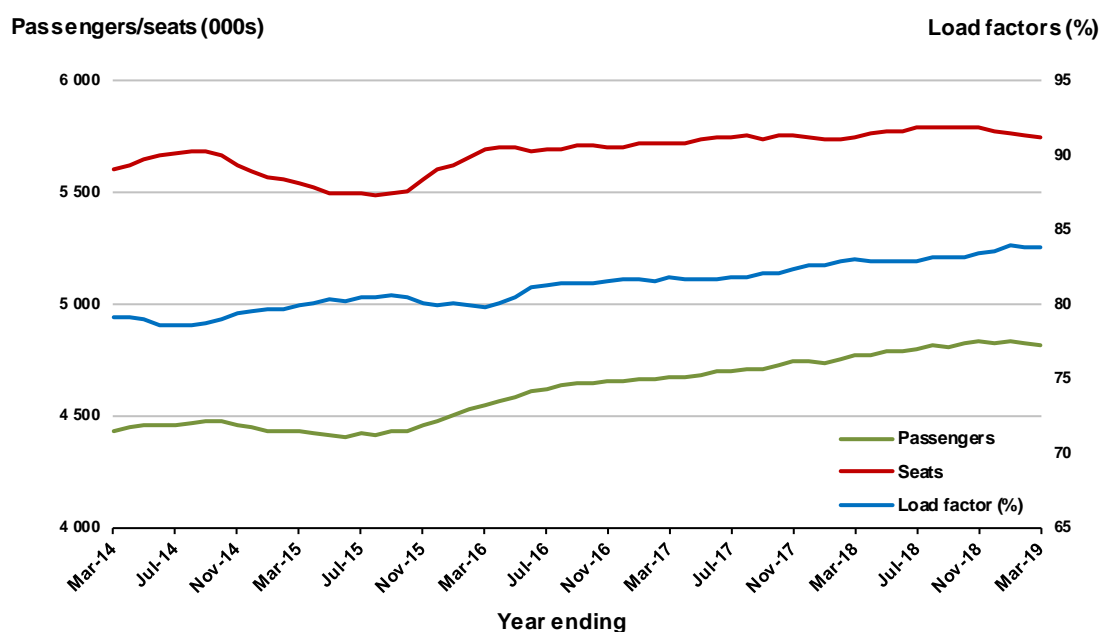
* percentage point difference



Moving annual data

	YE Mar 2018	YE Mar 2019	% Change
Passengers carried (000s)	4 770.0	4 811.8	0.9
Seats (000s)	5 750.1	5 744.6	-0.1
Load factor %	83.0	83.8	0.8 *
Aircraft trips	35 246	34 901	-1.0

* percentage point difference

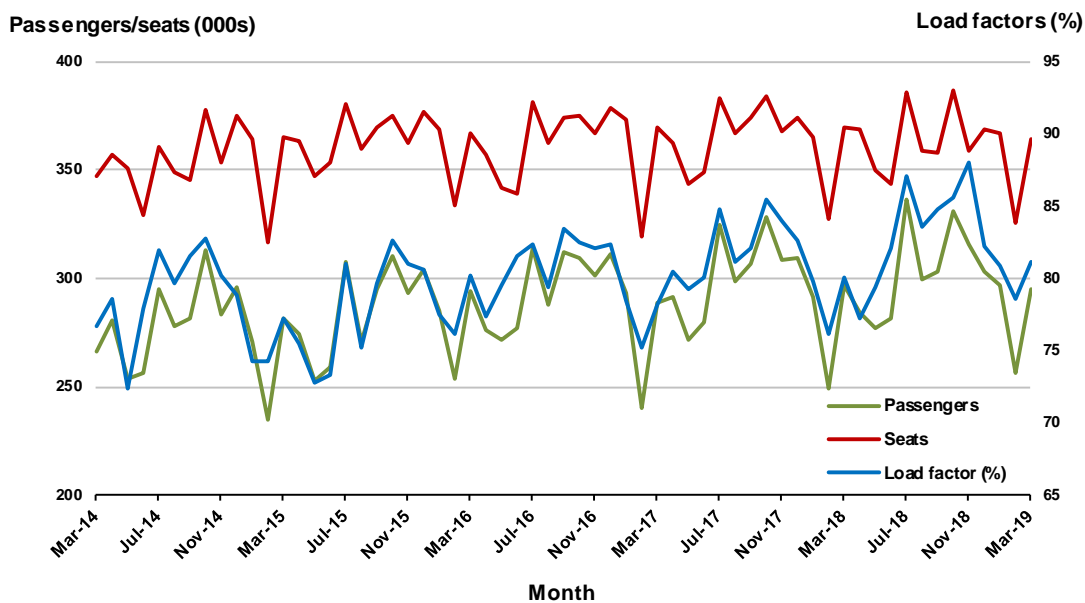


3. Brisbane - Melbourne

Monthly data

	Mar 2018	Mar 2019	% Change
Passengers carried (000s)	296.5	295.3	-0.4
Seats (000s)	370.0	363.9	-1.7
Load factor %	80.1	81.2	1.1 *
Aircraft trips	2 173	2 133	-1.8

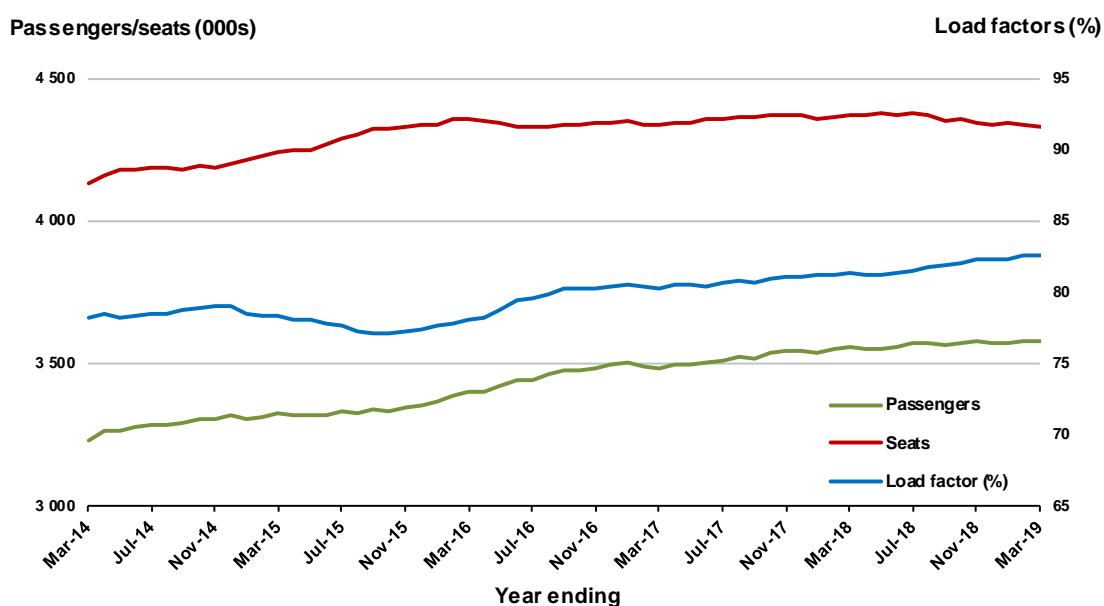
* percentage point difference



Moving annual data

	YE Mar 2018	YE Mar 2019	% Change
Passengers carried (000s)	3 555.8	3 580.0	0.7
Seats (000s)	4 367.4	4 332.4	-0.8
Load factor %	81.4	82.6	1.2 *
Aircraft trips	25 828	25 542	-1.1

* percentage point difference



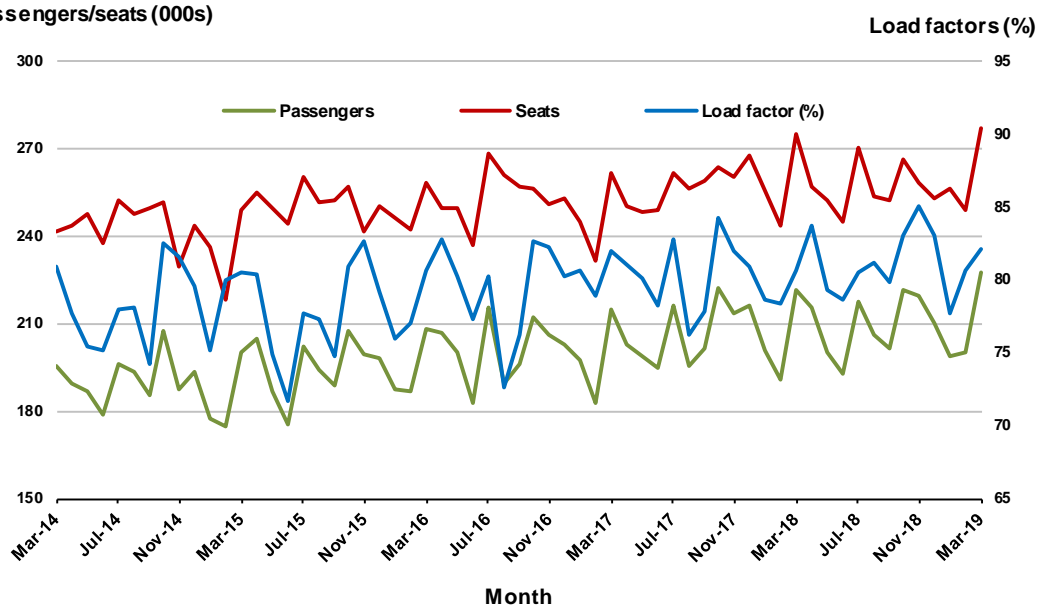
4. Adelaide - Melbourne

Monthly data

	Mar 2018	Mar 2019	% Change
Passengers carried (000s)	221.8	227.4	2.6
Seats (000s)	275.2	277.0	0.6
Load factor %	80.6	82.1	1.5 *
Aircraft trips	1 688	1 662	-1.5

* percentage point difference

Passengers/seats (000s)

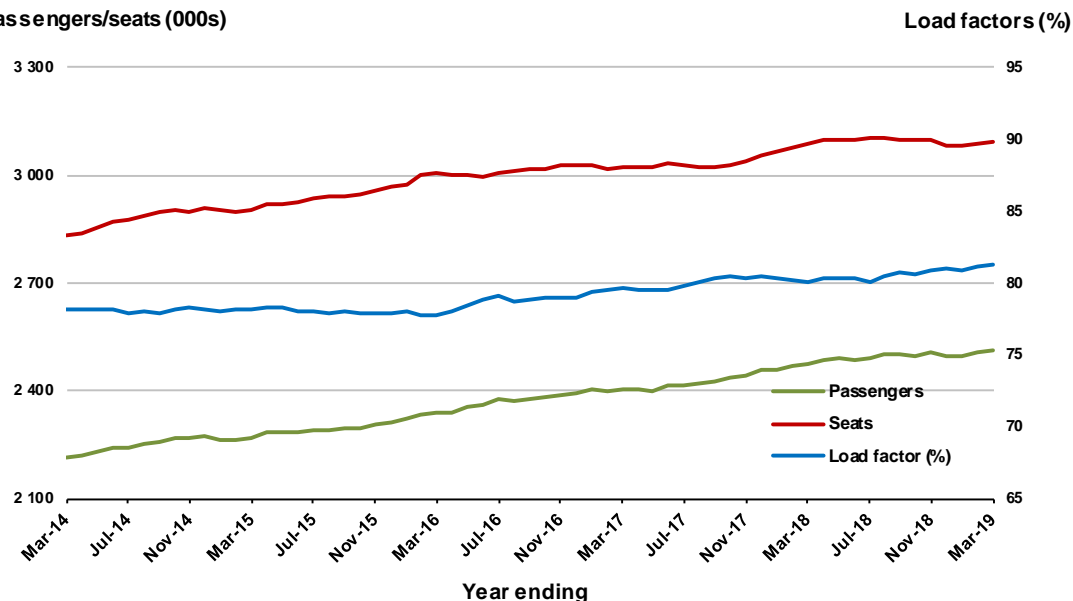


Moving annual data

	YE Mar 2018	YE Mar 2019	% Change
Passengers carried (000s)	2 475.2	2 511.5	1.5
Seats (000s)	3 089.4	3 091.2	0.1
Load factor %	80.1	81.2	1.1 *
Aircraft trips	19 248	19 019	-1.2

* percentage point difference

Passengers/seats (000s)



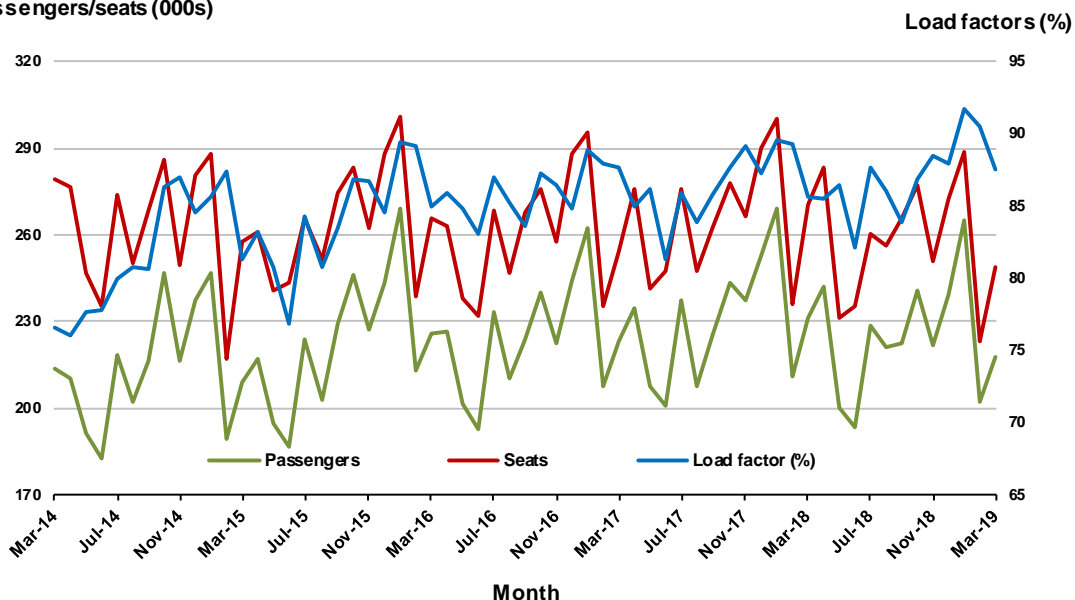
5. Gold Coast - Sydney

Monthly data

	Mar 2018	Mar 2019	% Change
Passengers carried (000s)	231.5	217.5	-6.0
Seats (000s)	270.2	248.6	-8.0
Load factor %	85.7	87.5	1.8 *
Aircraft trips	1 522	1 408	-7.5

* percentage point difference

Passengers/seats (000s)

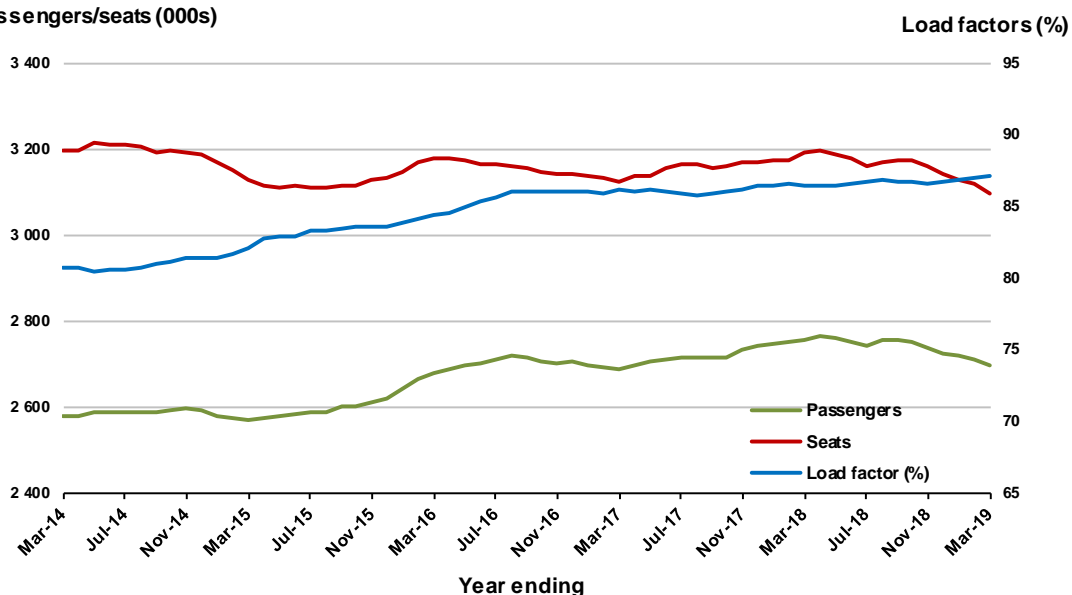


Moving annual data

	YE Mar 2018	YE Mar 2019	% Change
Passengers carried (000s)	2 758.6	2 696.2	-2.3
Seats (000s)	3 191.4	3 095.6	-3.0
Load factor %	86.4	87.1	0.7 *
Aircraft trips	18 021	17 589	-2.4

* percentage point difference

Passengers/seats (000s)



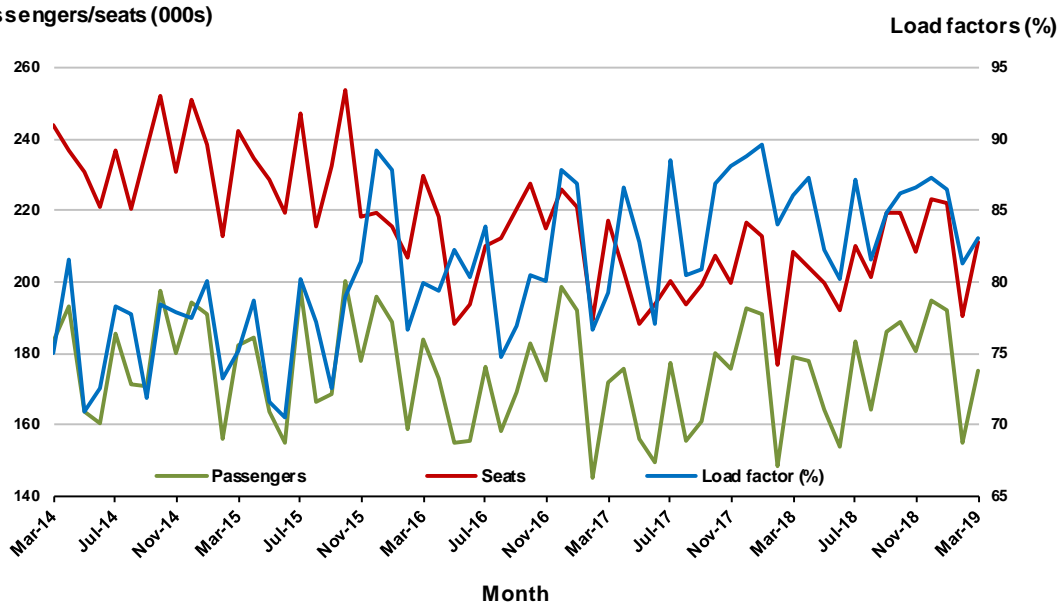
6. Melbourne - Perth

Monthly data

	Mar 2018	Mar 2019	% Change
Passengers carried (000s)	179.2	175.4	-2.1
Seats (000s)	208.2	211.2	1.4
Load factor %	86.1	83.1	-3.0 *
Aircraft trips	966	1 065	10.2

* percentage point difference

Passengers/seats (000s)

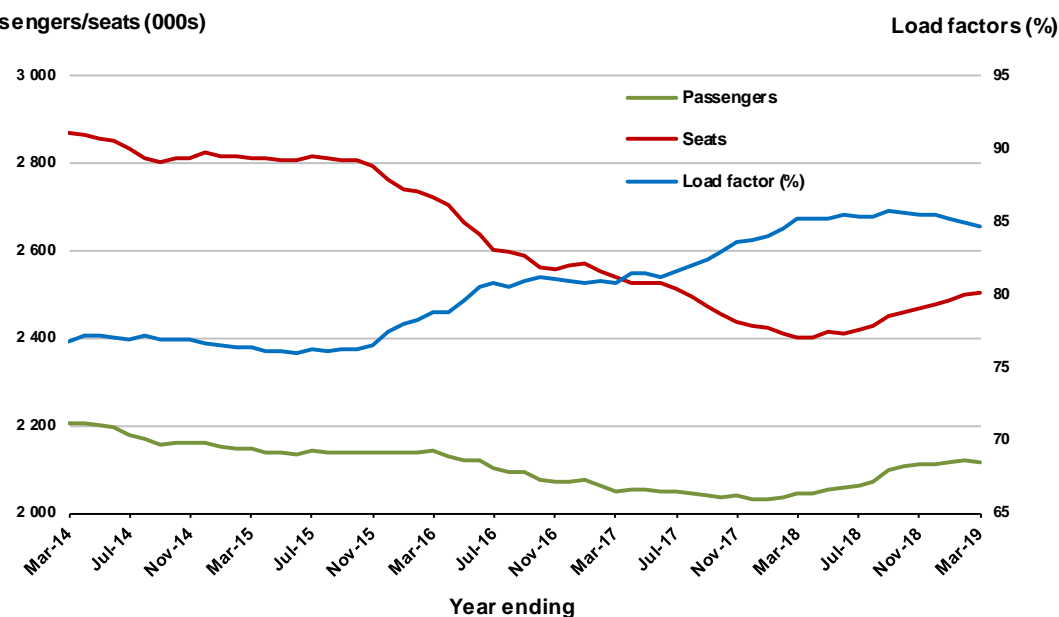


Moving annual data

	YE Mar 2018	YE Mar 2019	% Change
Passengers carried (000s)	2 042.7	2 116.9	3.6
Seats (000s)	2 399.8	2 501.3	4.2
Load factor %	85.1	84.6	-0.5 *
Aircraft trips	11 059	12 077	9.2

* percentage point difference

Passengers/seats (000s)



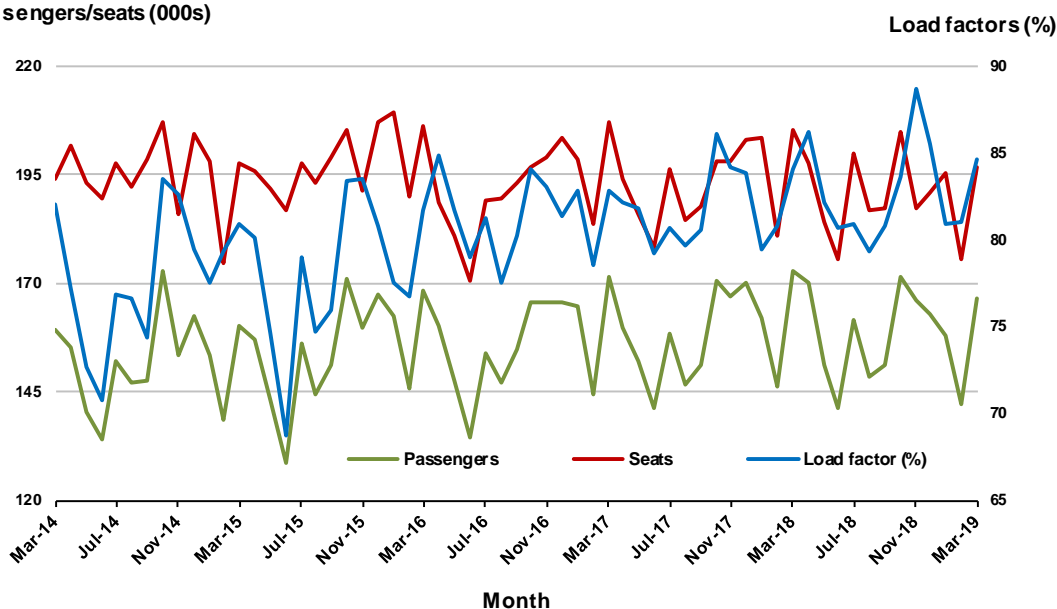
7. Adelaide - Sydney

Monthly data

	Mar 2018	Mar 2019	% Change
Passengers carried (000s)	172.8	166.6	-3.6
Seats (000s)	205.5	196.7	-4.3
Load factor %	84.1	84.7	0.6 *
Aircraft trips	1 224	1 192	-2.6

* percentage point difference

Passengers/seats (000s)

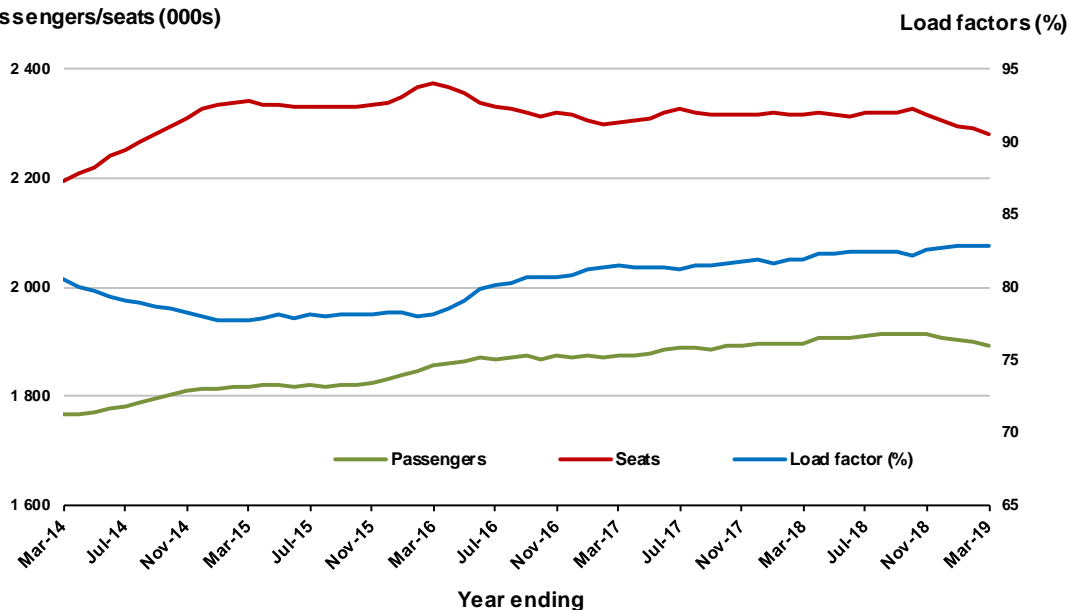


Moving annual data

	YE Mar 2018	YE Mar 2019	% Change
Passengers carried (000s)	1 898.3	1 892.5	-0.3
Seats (000s)	2 316.2	2 282.3	-1.5
Load factor %	82.0	82.9	1.0 *
Aircraft trips	13 906	13 766	-1.0

* percentage point difference

Passengers/seats (000s)



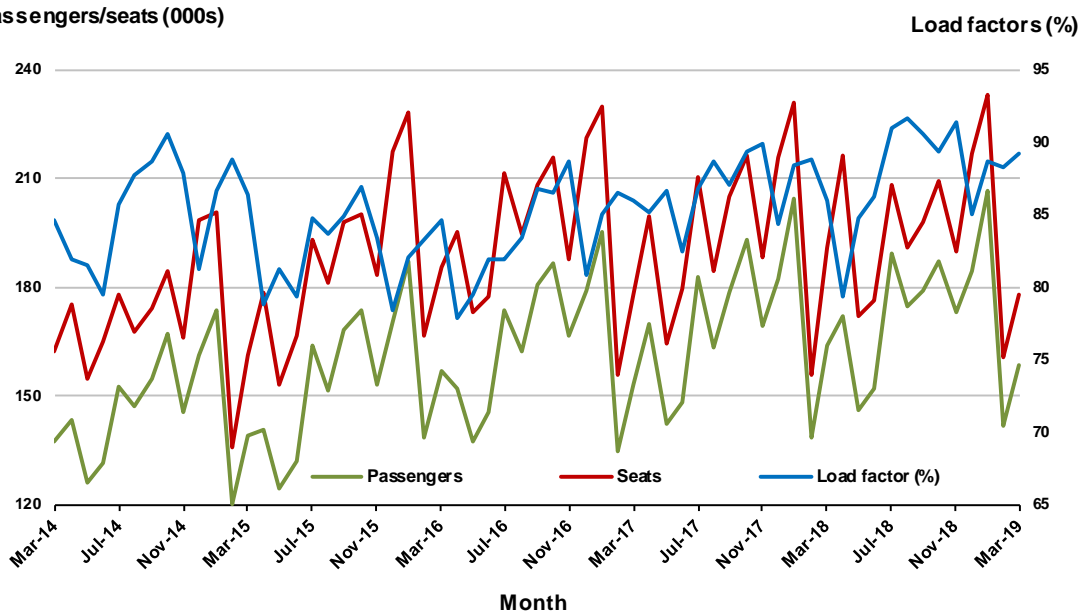
8. Gold Coast - Melbourne

Monthly data

	Mar 2018	Mar 2019	% Change
Passengers carried (000s)	163.9	158.5	-3.4
Seats (000s)	191.0	177.7	-6.9
Load factor %	85.9	89.2	3.3 *
Aircraft trips	1 011	941	-6.9

* percentage point difference

Passengers/seats (000s)

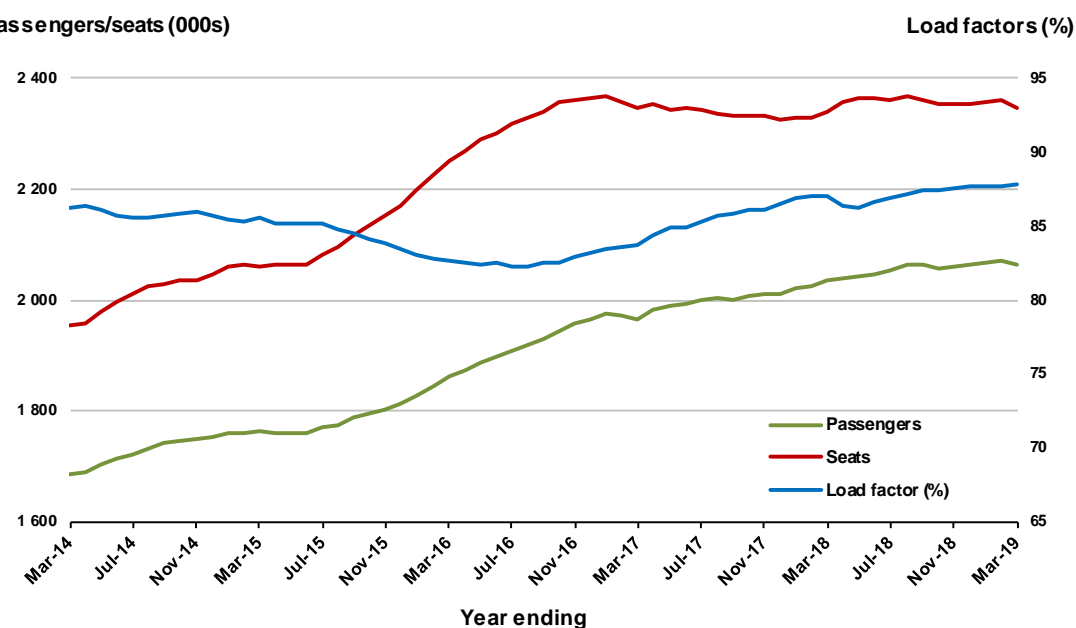


Moving annual data

	YE Mar 2018	YE Mar 2019	% Change
Passengers carried (000s)	2 036.1	2 064.2	1.4
Seats (000s)	2 341.2	2 348.4	0.3
Load factor %	87.0	87.9	0.9 *
Aircraft trips	12 458	12 394	-0.5

* percentage point difference

Passengers/seats (000s)



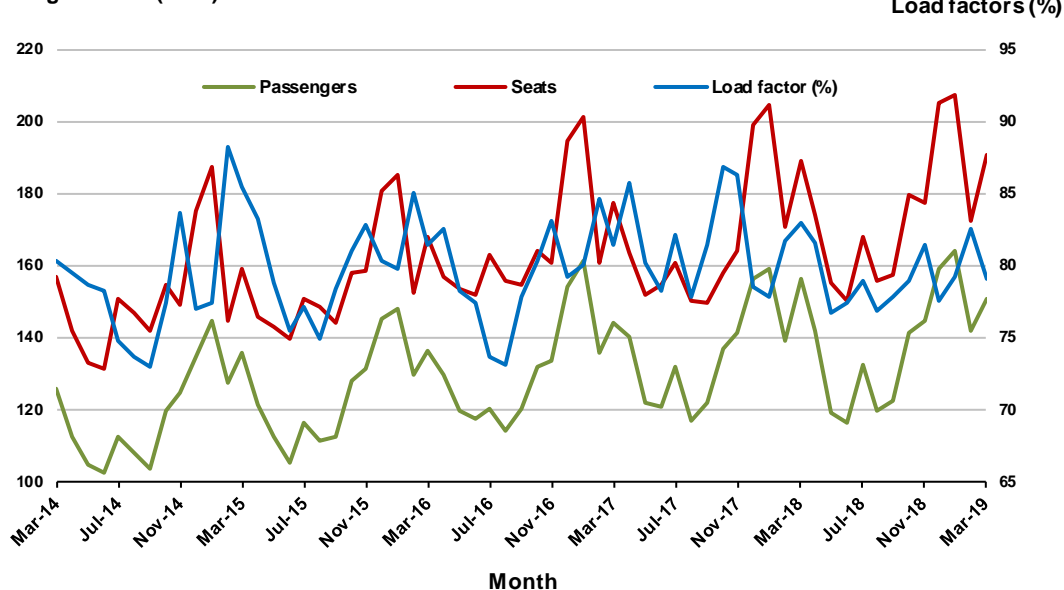
9. Hobart - Melbourne

Monthly data

	Mar 2018	Mar 2019	% Change
Passengers carried (000s)	156.5	150.7	-3.7
Seats (000s)	188.8	190.4	0.9
Load factor %	82.9	79.1	-3.8 *
Aircraft trips	1 082	1 024	-5.4

* percentage point difference

Passengers/seats (000s)

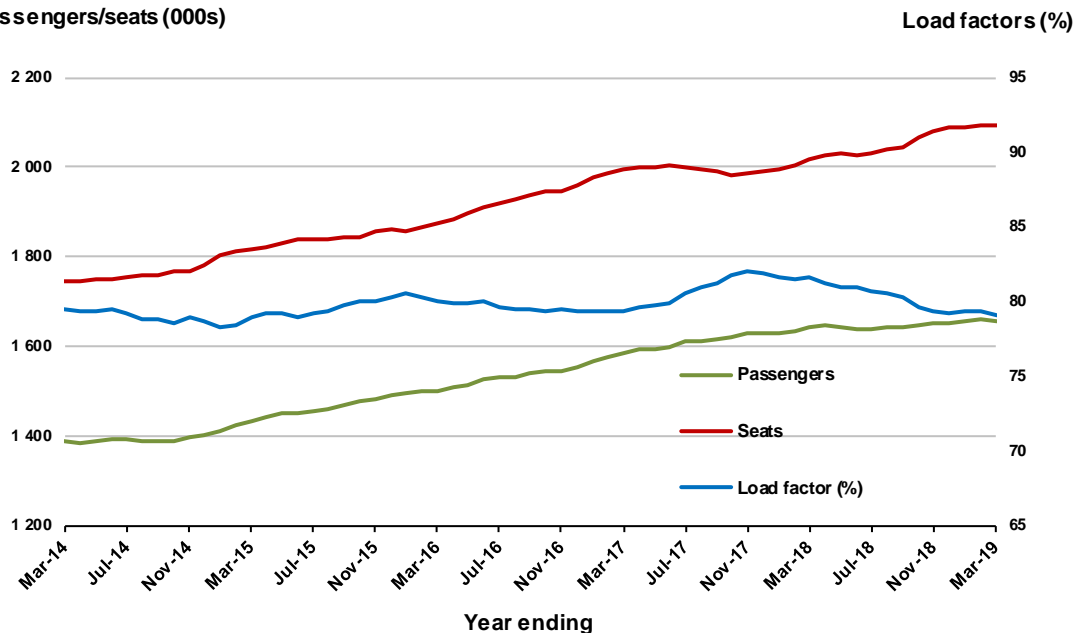


Moving annual data

	YE Mar 2018	YE Mar 2019	% Change
Passengers carried (000s)	1 644.0	1 654.7	0.7
Seats (000s)	2 015.2	2 092.9	3.9
Load factor %	81.6	79.1	-2.5 *
Aircraft trips	12 148	11 491	-5.4

* percentage point difference

Passengers/seats (000s)

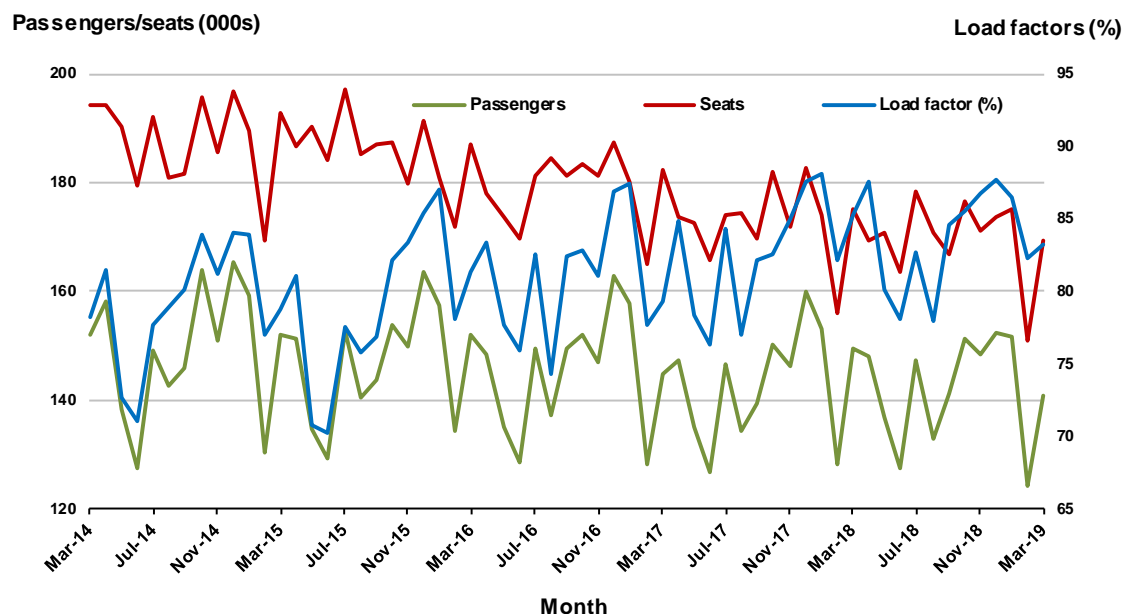


10. Perth - Sydney

Monthly data

	Mar 2018	Mar 2019	% Change
Passengers carried (000s)	149.4	140.9	-5.7
Seats (000s)	175.1	169.3	-3.3
Load factor %	85.3	83.2	-2.1 *
Aircraft trips	774	782	1.0

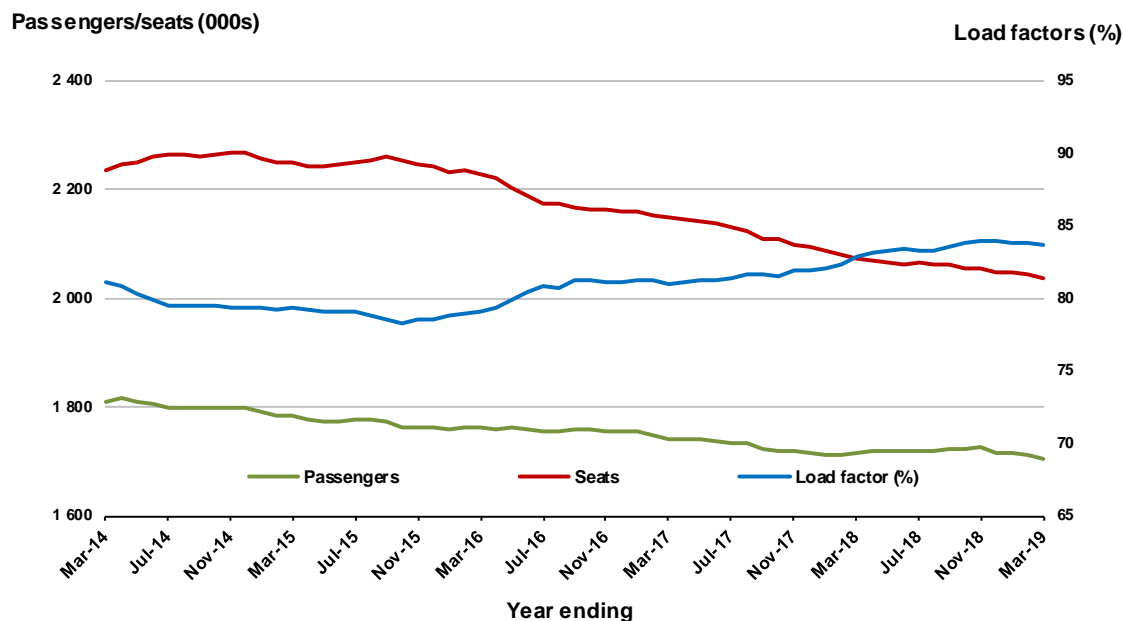
* percentage point difference



Moving annual data

	YE Mar 2018	YE Mar 2019	% Change
Passengers carried (000s)	1 716.7	1 702.9	-0.8
Seats (000s)	2 072.0	2 036.6	-1.7
Load factor %	82.9	83.6	0.8 *
Aircraft trips	9 035	9 131	1.1

* percentage point difference



TOP FIFTY REGIONAL AIRPORTS

Table 10: Top fifty regional airports (000s) — passenger movements, monthly

	Airport	Mar 2018	Mar 2019	% Change
1	Cairns	329.0	300.7	-8.6
2	Hobart	248.5	244.0	-1.8
3	Townsville	139.8	132.0	-5.6
4	Launceston	132.4	126.1	-4.8
5	Darwin	127.3	117.5	-7.7
6	Newcastle	107.3	104.9	-2.2
7	Mackay	70.9	70.2	-1.0
8	Alice Springs	51.0	48.5	-4.9
9	Rockhampton	47.6	46.6	-2.2
10	Ballina	44.7	44.7	0.0
11	Ayers Rock	34.5	38.0	10.2
12	Karratha	36.6	35.5	-2.9
13	Coffs Harbour	37.0	33.6	-9.2
14	Proserpine	37.0	32.4	-12.5
15	Hamilton Island	32.4	30.3	-6.6
16	Port Hedland	31.0	28.1	-9.3
17	Newman	25.5	27.2	6.6
18	Broome	29.1	25.7	-11.9
19	Kalgoorlie	23.0	23.9	3.8
20	Mildura	24.4	22.6	-7.5
21	Albury	23.2	21.6	-7.1
22	Gladstone	22.9	20.6	-9.8
23	Port Macquarie	18.5	18.7	1.0
24	Dubbo	20.1	18.5	-8.1
25	Mount Isa	18.3	18.3	0.0
26	Wagga Wagga	20.7	18.0	-13.2
27	Emerald	17.5	16.4	-6.3
28	Tamworth	16.4	16.3	-0.3
29	Port Lincoln	15.8	15.5	-2.2
30	Paraburdoo	15.4	14.6	-5.4
31	Bundaberg	14.5	12.9	-11.5
32	Hervey Bay	13.9	12.8	-8.1
33	Devonport	13.6	12.6	-7.9
34	Armidale	11.1	11.3	2.4
35	Toowoomba Wellcamp	12.5	9.6	-22.7
36	Moranbah	8.4	9.4	12.3
37	Geraldton	9.8	9.3	-5.0
38	Roma	7.4	8.4	13.7
39	Kununurra	7.0	8.1	15.3
40	Griffith	6.9	7.7	11.3
41	Mount Gambier	7.3	7.3	0.9
42	Orange	6.9	7.2	3.3
43	Thursday Island	8.1	6.8	-15.6
44	Whyalla	6.3	6.6	5.7
45	Olympic Dam	6.1	6.6	8.8
46	Gove	6.8	6.4	-5.8
47	Norfolk Island	6.3	6.2	-2.2
48	Burnie	6.7	6.1	-8.3
49	Learmonth	7.9	6.1	-22.8
50	Broken Hill	6.1	5.9	-2.5
Total top 50 regional airports		1 971.4	1 878.1	-4.7
Total regional airports		2 097.6	1 996.4	-4.8
Total domestic network		10 449.1	10 129.1	-3.1

Note: Airport passenger movement numbers are the sum of passenger arrivals and departures at each airport.

Regional airports are defined as airports which are, according to the Australian Bureau of Statistics

"The Australian Statistical Geography Standard (ASGS)", not based in Major Urban areas.

Table 11: Top fifty regional airports (000s) — passenger movements, annual

Airport	YE Mar 2018	YE Mar 2019	% Change
1 Cairns	4 341.3	4 242.7	-2.3
2 Hobart	2 573.6	2 692.7	4.6
3 Darwin	1 792.2	1 721.5	-3.9
4 Townsville	1 629.5	1 634.8	0.3
5 Launceston	1 357.1	1 381.5	1.8
6 Newcastle	1 286.9	1 253.4	-2.6
7 Mackay	807.9	851.5	5.4
8 Alice Springs	616.1	614.8	-0.2
9 Rockhampton	550.4	553.0	0.5
10 Ballina	522.8	534.6	2.2
11 Karratha	434.5	444.3	2.2
12 Proserpine	465.5	429.4	-7.8
13 Hamilton Island	395.9	424.2	7.1
14 Ayers Rock	370.3	423.4	14.3
15 Broome	405.8	411.3	1.3
16 Coffs Harbour	417.1	397.6	-4.7
17 Port Hedland	349.5	374.8	7.2
18 Newman	289.1	313.0	8.3
19 Kalgoorlie	257.5	294.9	14.6
20 Mildura	258.9	266.8	3.1
21 Albury	269.9	256.2	-5.1
22 Gladstone	277.4	248.5	-10.4
23 Dubbo	234.4	215.4	-8.1
24 Mount Isa	203.4	214.1	5.2
25 Port Macquarie	225.6	214.0	-5.1
26 Wagga Wagga	227.1	210.6	-7.3
27 Emerald	195.7	196.2	0.2
28 Tamworth	197.0	188.0	-4.5
29 Paraburdoo	168.5	179.9	6.8
30 Port Lincoln	171.0	168.3	-1.6
31 Hervey Bay	173.2	160.2	-7.5
32 Bundaberg	172.7	158.6	-8.1
33 Devonport	148.7	146.0	-1.8
34 Armidale	132.6	129.3	-2.5
35 Toowoomba Wellcamp	151.8	128.8	-15.1
36 Geraldton	112.4	111.6	-0.7
37 Kununurra	103.8	109.4	5.4
38 Moranbah	109.6	106.8	-2.6
39 Thursday Island	100.0	99.0	-0.9
40 Roma	83.9	90.0	7.3
41 Learmonth	84.8	86.1	1.6
42 Griffith	74.2	83.1	12.0
43 Gove	85.0	82.8	-2.5
44 Mount Gambier	80.7	80.5	-0.3
45 Weipa	78.0	80.1	2.7
46 Orange	68.3	78.6	15.2
47 Whyalla	66.7	77.4	16.0
48 Olympic Dam	73.4	76.5	4.2
49 Burnie	63.6	72.4	13.9
50 Broken Hill	64.0	69.5	8.6
Total top 50 regional airports	23 319.1	23 377.9	0.3
Total regional airports	24 681.2	24 778.3	0.4
Total domestic network	120 937.0	121 755.5	0.7

Note: Airport passenger movement numbers are the sum of passenger arrivals and departures at each airport. Regional airports are defined as airports which are, according to the Australian Bureau of Statistics "The Australian Statistical Geography Standard (ASGS)", not based in Major Urban areas.

DOMESTIC CHARTER ACTIVITY

Table 12: Charter passengers carried and aircraft trips - monthly activity

	Mar 2018	Mar 2019	% Change
Total domestic charter passengers	204 726	210 779	3.0
Total domestic charter aircraft trips	3 763	3 639	-3.3

Note: Helicopter, joyflights and sightseeing charter flights not included.

Table 13: Charter passengers carried and aircraft trips - annual activity

	YE Mar 2018	YE Mar 2019	% Change
Total domestic charter passengers	2 440 475	2 512 189	2.9
Total domestic charter aircraft trips	46 321	43 964	-5.1

Note: Helicopter, joyflights and sightseeing charter flights not included.

Table 14: Domestic airports - charter activity - monthly

	Mar 2018	Mar 2019	% Change
Total domestic charter passenger movements	409 452	421 558	3.0
Total domestic charter aircraft movements	7 526	7 278	-3.3
Perth airport charter passenger movements	155 420	161 898	4.2
Perth airport charter aircraft movements	2 534	2 532	-0.1

Note: Helicopter, joyflights and sightseeing charter flights not included.

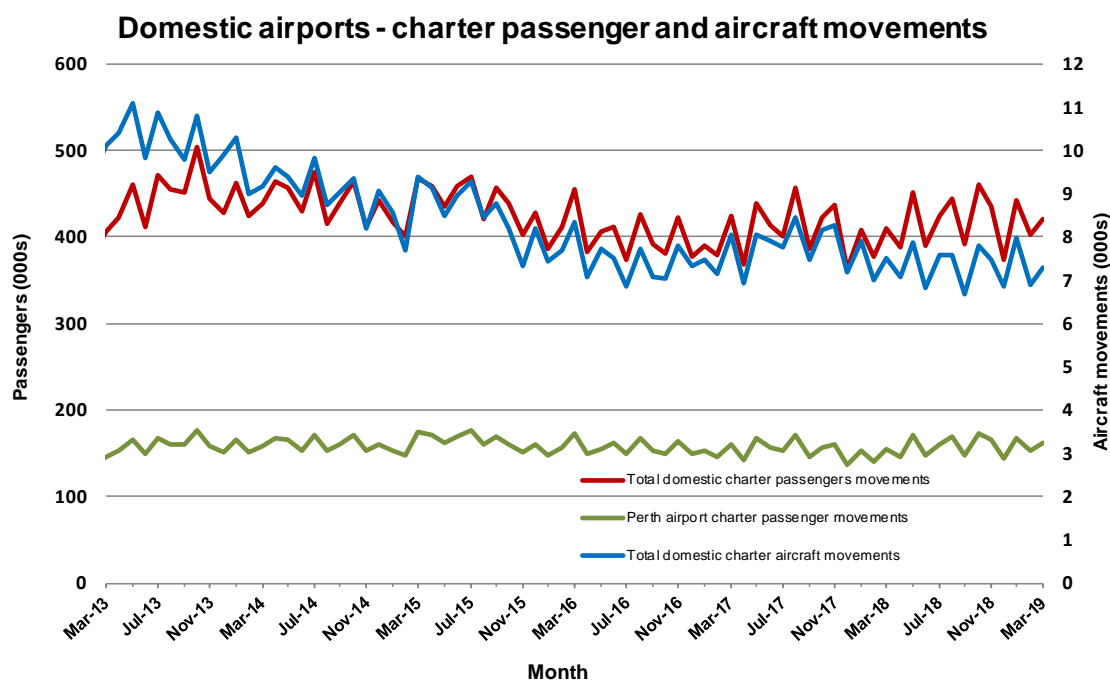
Charter passenger and aircraft movement numbers are the sum of arrivals and departures at each airport.

Table 15: Domestic airports - charter activity - annual

	YE Mar 2018	YE Mar 2019	% Change
Total domestic charter passenger movements	4 880 950	5 024 378	2.9
Total domestic charter aircraft movements	92 642	87 928	-5.1
Perth airport charter passenger movements	1 841 741	1 908 033	3.6
Perth airport charter aircraft movements	31 261	30 125	-3.6

Note: Helicopter, joyflights and sightseeing charter flights not included.

Charter passenger and aircraft movement numbers are the sum of arrivals and departures at each airport.



DEFINITIONS

Aircraft Trips	The number of flight stages. A return flight counts as two aircraft trips.
Airport Movements	Airport movements (passenger and cargo) are measured once on arrival and once on departure. Each domestic trip generates two movements at airports. For example, a trip from Melbourne to Sydney will be counted twice, as a passenger departure at Melbourne and as a passenger arrival at Sydney. At the national level, the sum of all domestic airport traffic will therefore be equal to twice the number of trips undertaken.
Available Seat Kilometres (ASKs)	Calculated by multiplying the number of seats available on each flight stage, by the distance in kilometres between the ports. The distances used are Great Circle Distances.
City-Pair	The ports shown make up the city-pair route. Passenger movements shown for a city pair reflect total traffic in both directions.
Flight Stage	The operation of an aircraft from take-off to landing.
Load Factor	The total revenue passenger kilometres performed as a percentage of the total available seat kilometres.
Passengers Carried	Revenue passengers carried.
Regular Public Transport Services (RPT)	All air service operations in which aircraft are available for the transport of members of the public and are conducted in accordance with fixed schedules. It does not include charter or other non-scheduled operations.
Revenue Passengers	All passengers paying any fare. Frequent flyer redemption travellers are regarded as revenue passengers.
Revenue Passenger Kilometres (RPKs)	Calculated by multiplying the number of revenue passengers travelling on each flight stage, by the distance in kilometres between the ports. The distances used are Great Circle Distances.
Traffic on board by stages	The total of all traffic (revenue passengers) on each flight stage between two directly connected airports.
..	Data not included
NA	Not applicable