



Australian Government

Department of Infrastructure, Regional Development and Cities

Bureau of Infrastructure, Transport and Regional Economics

STATISTICAL REPORT



Aviation

Domestic aviation activity
March 2018

© Commonwealth of Australia 2018

ISSN: 1832 - 1968

Ownership of intellectual property rights in this publication

Unless otherwise noted, copyright (and any other intellectual property rights, if any) in this publication is owned by the Commonwealth of Australia (referred to below as the Commonwealth).

Disclaimer

The material contained in this publication is made available on the understanding that the Commonwealth is not providing professional advice, and that users exercise their own skill and care with respect to its use, and seek independent advice if necessary.

The Commonwealth makes no representations or warranties as to the contents or accuracy of the information contained in this publication. To the extent permitted by law, the Commonwealth disclaims liability to any person or organisation in respect of anything done, or omitted to be done, in reliance upon information contained in this publication.

Creative Commons licence

With the exception of (a) the Coat of Arms; and (b) the Department of Infrastructure, Regional Development and Cities' photos and graphics, copyright in this publication is licensed under a Creative Commons Attribution 3.0 Australia Licence.

Creative Commons Attribution 3.0 Australia Licence is a standard form licence agreement that allows you to copy, communicate and adapt this publication provided that you attribute the work to the Commonwealth and abide by the other licence terms. A summary of the licence terms is available from <http://creativecommons.org/licenses/by/3.0/au/deed.en>. The full licence terms are available from <http://creativecommons.org/licenses/by/3.0/au/legalcode>.

Use of the Coat of Arms

The Department of the Prime Minister and Cabinet sets the terms under which the Coat of Arms is used. Please refer to the Department's Commonwealth Coat of Arms and Government branding web page <http://www.dpmc.gov.au/guidelines/index.cfm#brand> and, in particular, the Guidelines on the use of the Commonwealth Coat of Arms publication.

An appropriate citation for this report is:

Bureau of Infrastructure, Transport and Regional Economics (BITRE), 2018, Domestic aviation activity, Statistical Report, BITRE, Canberra ACT.

Contact us

This publication is available in PDF format. All other rights are reserved, including in relation to any Departmental logos or trade marks which may exist. For enquiries regarding the licence and any use of this publication, please contact:

Bureau of Infrastructure, Transport and Regional Economics (BITRE)
Department of Infrastructure, Regional Development and Cities
GPO Box 501, Canberra ACT 2601, Australia
Telephone: (international) +61 2 6274 7210
Fax: (international) +61 2 6274 6855
Email: bitre@infrastructure.gov.au
Website: www.bitre.gov.au

Inquiries

Should you require additional information about the statistics contained in this publication:

Aiden Brown

Telephone (02) 6274 7658 or Facsimile (02) 6274 7727

Electronic mail: AVSTATS@infrastructure.gov.au

Aiden.Brown@infrastructure.gov.au

Web site: <http://www.bitre.gov.au/statistics/aviation/domestic.aspx>

FOREWORD

This report provides an overview of domestic (including charter) commercial aviation activity in Australia for the month of March 2018.

The data cover revenue passengers carried by Australian-registered operators of scheduled regular public transport services over Australian flight stages and fixed-wing charter operators. These estimates include passengers carried between domestic airports on international flights operated by these carriers. The passengers carried refer to traffic on board by stages.

Estimates of passengers and aircraft movements for charter aviation are included in this publication, where BITRE confidentiality standards are met.

Individual routes shown are restricted to those with an average exceeding 8 000 passengers per month over the previous six months where two or more airlines operate in competition. For the month of March 2018, there were 66 such routes.

Information on the total network for the month of March 2018 and on the Regular Public Transport (RPT) network for the month of March 2018 is presented on page 2, with estimates for the year ended March 2018 presented on page 3.

Detailed information on the 66 individual routes can be found in the RPT summary pages 4-13 of this publication.

The top ten airports in terms of RPT passenger movements are shown on page 14.

Data on domestic RPT cargo movements at the top five cargo airports are provided on page 15. The table includes cargo carried on passenger flights operated by the Qantas group (including Jetstar), Virgin Australia, Air North and Skippers as well as the cargo carried by dedicated freighter aircraft operated by Qantas Freight, Toll Priority and Virgin Australia Cargo.

The long-term trends for the top ten competitive RPT routes are presented graphically on pages 16-25.

Domestic RPT passenger movements at the top 50 regional airports are presented on pages 26-27.

Tables providing estimates of domestic charter aviation activity are shown on page 28. BITRE confidentiality standards restrict publication of detailed estimates for individual Australian airports, with the exception of Perth Airport.

A list of definitions can be found on page 29.

This report was prepared by the Aviation Statistics Section of the Bureau of Infrastructure, Transport and Regional Economics with data provided by airlines.

Estimates are included where data were not available and data presented in this publication may contain revisions to previously published data.

Where figures have been rounded, discrepancies may occur between sums of component items and totals, and in percentage changes which are derived from figures prior to rounding.

CONTENTS

Highlights	1
Total network.....	2
RPT network	2
Top competitive routes.....	4
Top ten airports – passenger movements.....	14
Top five airports – cargo movements.....	15
Top ten routes	16
1. Melbourne – Sydney	16
2. Brisbane – Sydney	17
3. Brisbane – Melbourne	18
4. Gold Coast – Sydney	19
5. Adelaide – Melbourne	20
6. Melbourne – Perth	21
7. Adelaide – Sydney	22
8. Gold Coast – Melbourne	23
9. Hobart – Melbourne	24
10. Perth – Sydney	25
Top fifty regional airports	26
Domestic charter activity.....	28
Definitions	29

This page is intentionally left blank.

HIGHLIGHTS

There were 5.44 million passengers carried on Australian domestic commercial aviation (including charter operations) in March 2018, an increase of 4.4 per cent on March 2017. For the month of March 2018 there were 57 572 aircraft trips, a decrease of 2.0 per cent compared to March 2017.

5.24 million passengers were carried on RPT flights in March 2018, an increase of 4.7 per cent on March 2017.

For the year ending March 2018 there were 60.50 million RPT passengers, an increase of 2.5 per cent on the year ending March 2017.

RPT revenue passenger kilometres (RPKs) performed were 5.96 billion for the month, up 4.9 per cent compared with March 2017. Capacity, measured by available seat kilometres (ASKs), increased by 0.9 per cent compared with March 2017 to a total of 7.41 billion.

With RPT passenger traffic increasing at faster rate than capacity, the industry wide load factor (RPKs/ASKs) increased from 77.4 per cent in March 2017 to 80.4 per cent in March 2018. Load factors on individual routes increased on 50 of the 64 RPT routes for which data is available for publishing in both years.

For the month of March 2018, Melbourne – Sydney remained Australia's busiest RPT route with 831 520 passengers, an increase of 3.3 per cent compared with March 2017. It was followed by Brisbane – Sydney with 415 257 passengers (up 3.9 per cent) and Brisbane – Melbourne with 296 549 passengers (up 2.7 per cent).

The greatest percentage increase in RPT passenger numbers, compared to March 2017, was on the Broome – Perth route (up 39.4 per cent). There were large increases on a number of other routes, including Cairns – Townsville (up 39.2 per cent), Brisbane – Proserpine (up 30.0 per cent), Melbourne – Sunshine Coast (up 22.0 per cent) and Brisbane – Mackay (up 20.7 per cent).

Routes with traffic decreases in March 2018 compared with March 2017 included Alice Springs – Darwin (down 14.9 per cent), Brisbane – Darwin (down 7.5 per cent), Sydney – Tamworth (down 7.2 per cent) and Brisbane – Rockhampton (down 7.1 per cent).

In March 2018, Sydney remained Australia's busiest domestic airport with 2.42 million passenger movements, followed by Melbourne with 2.24 million passenger movements and Brisbane with 1.46 million passenger movements.

Total cargo movements at Australian airports on domestic RPT flights were 40.9 thousand tonnes in March 2018, an increase of 3.2 per cent compared with March 2017.

In March 2018, there were 2.11 million domestic passenger movements through regional airports, 6.2 per cent higher than in March 2017. Out of the top 50 regional airports, the strongest growth was at Proserpine airport (up 59.1 per cent on March 2017), while the largest decrease was at Moranbah airport (down 24.1 per cent on March 2017).

Fixed-wing charter operators carried 203.5 thousand passengers in March 2018, a decrease of 3.9 per cent on March 2017. Perth airport accounted for 37.9 per cent of all charter passengers in Australia.

TOTAL NETWORK

Summary of monthly commercial aviation activity

	Mar 2017	Mar 2018	% Change
Total passengers carried (millions)	5.22	5.44	4.4
Aircraft trips (000s)	58.8	57.6	-2.0

Note: Regular Public Transport and charter aviation activity
Helicopter, joyflights and sightseeing charter flights not included.

RPT NETWORK

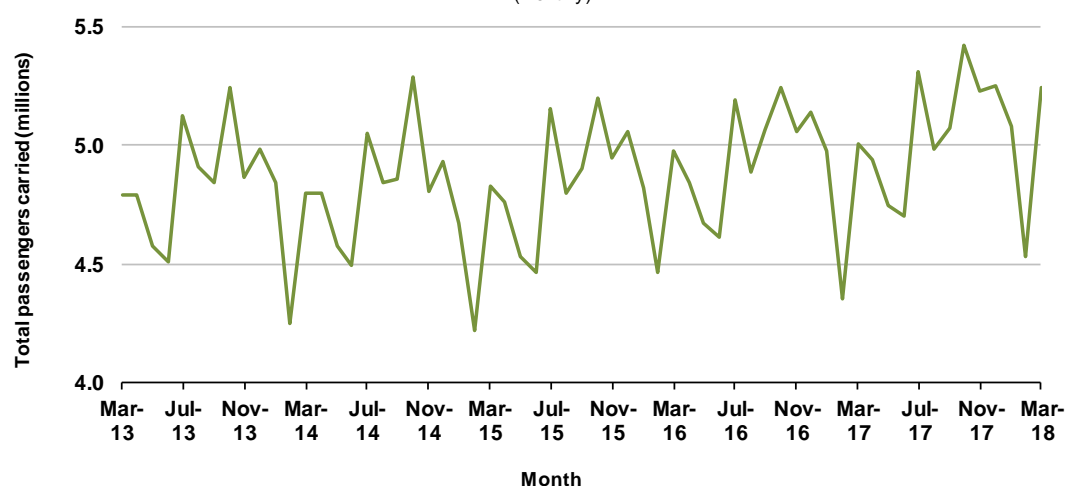
Summary of monthly RPT activity

	Mar 2017	Mar 2018	% Change
Total passengers carried (millions)	5.00	5.24	4.7
Revenue passenger kilometres (billions)	5.68	5.96	4.9
Available seats (millions)	6.51	6.62	1.7
Available seat kilometres (billions)	7.35	7.41	0.9
Load factor %	77.4	80.4	3.0 *
Aircraft trips (000s)	54.7	53.9	-1.6

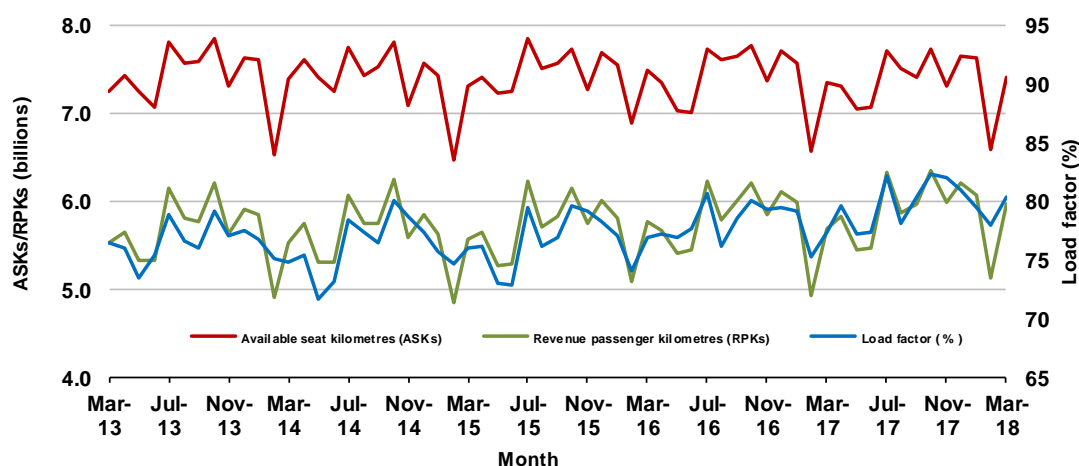
* percentage point difference

Domestic RPT passenger traffic

(monthly)



RPT Network utilisation



TOTAL NETWORK

Summary of annual commercial aviation activity

	YE Mar 2017	YE Mar 2018	% Change
Total passengers carried (millions)	61.44	62.93	2.4
Aircraft trips (000s)	686.5	683.7	-0.4

Note: Regular Public Transport and charter aviation activity
Helicopter, joyflights and sightseeing charter flights not included.

RPT NETWORK

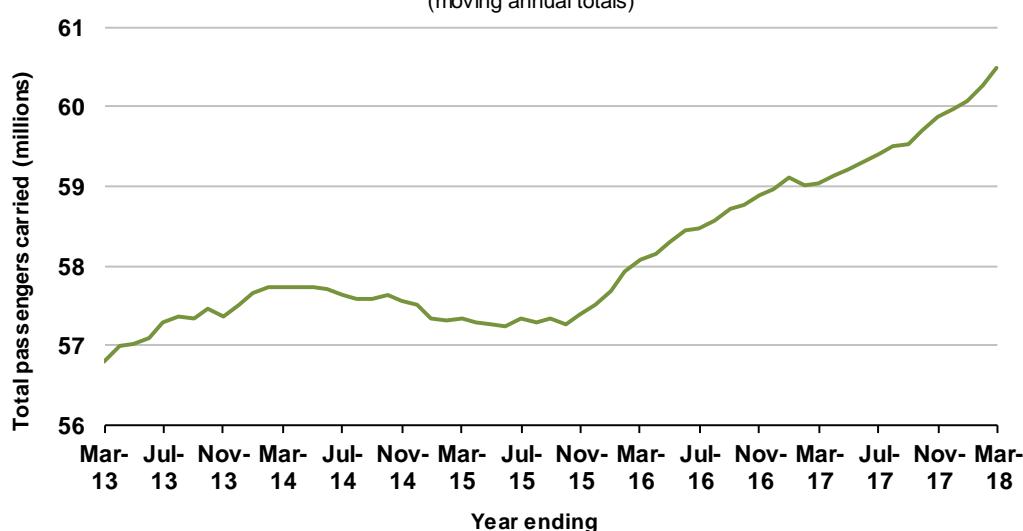
Summary of annual RPT activity

	YE Mar 2017	YE Mar 2018	% Change
Total passengers carried (millions)	59.04	60.50	2.5
Revenue passenger kilometres (billions)	69.28	70.57	1.9
Available seats (millions)	77.14	77.39	0.3
Available seat kilometres (billions)	88.64	88.35	-0.3
Load factor %	78.2	79.9	1.7 *
Aircraft trips (000s)	642.0	637.7	-0.7

* percentage point difference

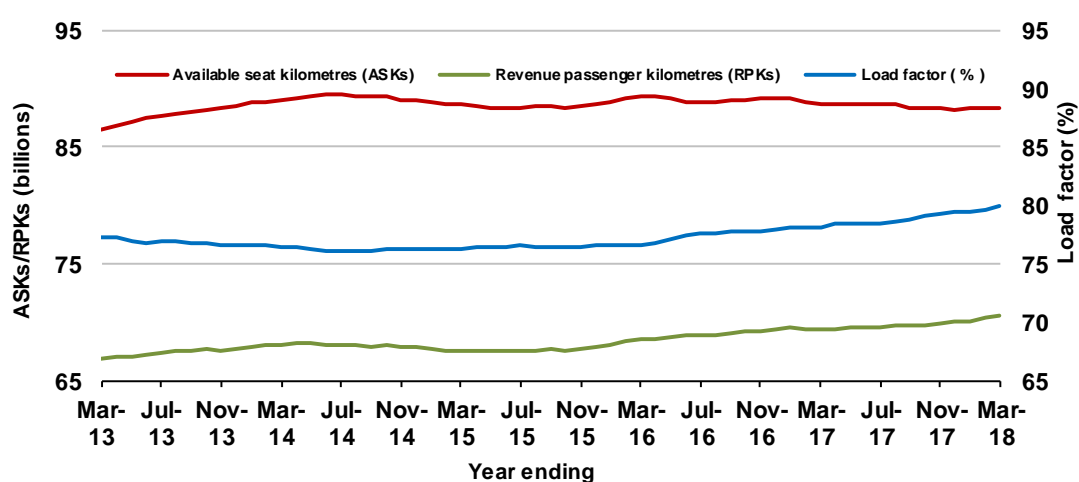
Domestic RPT passenger traffic

(moving annual totals)



RPT Network utilisation

(moving annual totals)



TOP COMPETITIVE ROUTES

Table 1: Passengers carried (000s) — annual activity

	City-Pair	YE Mar 2017	YE Mar 2018	% Change
1	Melbourne - Sydney	8 915.2	9 191.7	3.1
2	Brisbane - Sydney	4 674.8	4 770.0	2.0
3	Brisbane - Melbourne	3 482.1	3 555.8	2.1
4	Gold Coast - Sydney	2 689.9	2 758.6	2.6
5	Adelaide - Melbourne	2 407.1	2 475.2	2.8
6	Melbourne - Perth	2 050.5	2 042.7	-0.4
7	Gold Coast - Melbourne	1 966.4	2 036.1	3.5
8	Adelaide - Sydney	1 876.3	1 898.3	1.2
9	Perth - Sydney	1 740.7	1 716.7	-1.4
10	Hobart - Melbourne	1 582.8	1 644.0	3.9
11	Brisbane - Cairns	1 341.7	1 382.1	3.0
12	Canberra - Melbourne	1 052.5	1 140.0	8.3
13	Cairns - Sydney	1 115.3	1 138.2	2.1
14	Brisbane - Townsville	969.6	974.8	0.5
15	Brisbane - Perth	969.9	973.6	0.4
16	Canberra - Sydney	959.3	947.6	-1.2
17	Launceston - Melbourne	918.0	936.4	2.0
18	Adelaide - Brisbane	829.0	854.5	3.1
19	Cairns - Melbourne	820.4	847.0	3.2
20	Brisbane - Mackay	670.7	715.9	6.7
21	Hobart - Sydney	624.9	675.1	8.0
22	Adelaide - Perth	621.7	616.3	-0.9
23	Brisbane - Canberra	582.2	605.7	4.0
24	Sunshine Coast - Sydney	544.7	601.5	10.4
25	Brisbane - Newcastle	580.9	586.1	0.9
26	Brisbane - Rockhampton	563.0	512.4	-9.0
27	Melbourne - Sunshine Coast	452.1	507.2	12.2
28	Melbourne - Newcastle	457.8	482.3	5.3
29	Karratha - Perth	476.5	432.8	-9.2
30	Ballina - Sydney	385.4	419.1	8.8
31	Brisbane - Darwin	409.1	400.7	-2.0
32	Coffs Harbour - Sydney	340.7	347.5	2.0
33	Perth - Port Hedland	338.5	339.8	0.4
34	Broome - Perth	289.0	331.7	14.8
35	Darwin - Sydney	319.8	321.1	0.4
36	Darwin - Melbourne	303.8	303.9	0.0
37	Newman - Perth	301.1	288.3	-4.3
38	Launceston - Sydney	291.3	285.4	-2.0
39	Brisbane - Gladstone	312.8	276.7	-11.5
40	Brisbane - Proserpine	222.2	274.6	23.6
41	Kalgoorlie - Perth	235.1	246.9	5.0
42	Albury - Sydney	223.7	223.0	-0.3
43	Adelaide - Gold Coast	217.8	218.2	0.2
44	Brisbane - Hobart	204.6	217.2	6.2
45	Melbourne - Mildura	207.0	214.7	3.7
46	Darwin - Perth	186.5	203.5	9.1
47	Brisbane - Emerald	198.5	195.5	-1.5
48	Ayers Rock - Sydney	190.7	193.6	1.5
49	Port Macquarie - Sydney	192.9	191.7	-0.6
50	Dubbo - Sydney	188.4	190.1	0.9

continued

Table 1: (continued) Passengers carried (000s) — annual activity

	City-Pair	YE Mar 2017	YE Mar 2018	% Change
51	Hamilton Island - Sydney	260.8	187.8	-28.0
52	Adelaide - Canberra	175.3	184.6	5.3
53	Sydney - Wagga Wagga	187.2	180.4	-3.7
54	Sydney - Tamworth	177.2	179.3	1.2
55	Brisbane - Bundaberg	174.1	172.6	-0.9
56	Adelaide - Port Lincoln	176.7	170.8	-3.3
57	Sydney - Townsville	156.0	161.6	3.5
58	Cairns - Townsville	139.5	146.6	5.1
59	Adelaide - Alice Springs	121.3	127.2	4.8
60	Brisbane - Mount Isa	120.0	125.9	4.9
61	Armidale - Sydney	126.5	124.9	-1.2
62	Brisbane - Hamilton Island	150.3	121.6	-19.1
63	Alice Springs - Darwin	117.0	115.6	-1.2
64	Geraldton - Perth	117.1	112.3	-4.1
65	Melbourne - Townsville	..	86.0	NA (a)
66	Proserpine - Sydney	..	82.6	NA (b)
Total domestic network		59 040.1	60 496.7	2.5

(a) Melbourne - Townsville route included from September 2017, prior data not shown.

(b) Proserpine - Sydney route included from September 2017, prior data not shown.

Table 2: Passengers carried (000s) — monthly activity

	City-Pair	Mar 2017	Mar 2018	% Change
1	Melbourne - Sydney	804.6	831.5	3.3
2	Brisbane - Sydney	399.6	415.3	3.9
3	Brisbane - Melbourne	288.9	296.5	2.7
4	Gold Coast - Sydney	223.4	231.5	3.6
5	Adelaide - Melbourne	214.8	221.8	3.2
6	Melbourne - Perth	171.9	179.2	4.3
7	Adelaide - Sydney	171.6	172.8	0.7
8	Gold Coast - Melbourne	153.0	163.9	7.2
9	Hobart - Melbourne	144.2	156.5	8.5
10	Perth - Sydney	144.7	149.4	3.2
11	Canberra - Melbourne	107.2	108.9	1.6
12	Brisbane - Cairns	109.7	106.7	-2.7
13	Launceston - Melbourne	81.7	91.2	11.6
14	Canberra - Sydney	88.1	89.1	1.2
15	Cairns - Sydney	83.5	86.9	4.1
16	Brisbane - Townsville	76.1	84.5	11.0
17	Brisbane - Perth	77.9	80.1	2.8
18	Adelaide - Brisbane	70.2	70.5	0.4
19	Hobart - Sydney	57.0	64.6	13.4
20	Brisbane - Mackay	51.3	61.9	20.7
21	Cairns - Melbourne	52.7	57.7	9.4
22	Adelaide - Perth	52.5	54.4	3.6
23	Brisbane - Canberra	48.5	52.5	8.2
24	Sunshine Coast - Sydney	44.2	50.5	14.3
25	Brisbane - Newcastle	49.6	48.3	-2.6
26	Brisbane - Rockhampton	47.0	43.6	-7.1
27	Melbourne - Newcastle	37.8	41.6	10.1
28	Melbourne - Sunshine Coast	33.4	40.7	22.0
29	Karratha - Perth	38.8	36.5	-6.0
30	Ballina - Sydney	32.5	35.7	9.8
31	Coffs Harbour - Sydney	30.0	31.0	3.2
32	Perth - Port Hedland	28.9	30.2	4.6
33	Launceston - Sydney	26.9	27.5	2.3
34	Brisbane - Darwin	29.2	27.0	-7.5
35	Broome - Perth	18.6	25.9	39.4
36	Newman - Perth	24.3	25.5	5.0
37	Brisbane - Gladstone	23.4	22.9	-2.5
38	Kalgoorlie - Perth	21.8	22.1	1.4
39	Darwin - Melbourne	22.3	21.6	-2.9
40	Darwin - Sydney	20.6	21.3	3.7
41	Melbourne - Mildura	19.3	20.2	4.5
42	Brisbane - Proserpine	15.4	20.1	30.0
43	Albury - Sydney	20.1	18.9	-5.7
44	Adelaide - Gold Coast	17.7	18.4	4.4
45	Brisbane - Hobart	17.9	18.3	2.4
46	Ayers Rock - Sydney	16.8	17.6	5.0
47	Adelaide - Canberra	16.5	17.6	6.8
48	Brisbane - Emerald	17.4	17.5	0.4
49	Dubbo - Sydney	17.1	16.8	-1.6
50	Port Macquarie - Sydney	16.7	16.4	-1.8

continued

Table 2: (continued) Passengers carried (000s) — monthly activity

	City-Pair	Mar 2017	Mar 2018	% Change
51	Sydney - Wagga Wagga	16.7	16.3	-2.5
52	Adelaide - Port Lincoln	16.4	15.8	-3.7
53	Darwin - Perth	13.9	15.7	13.5
54	Hamilton Island - Sydney	15.9	15.6	-1.8
55	Cairns - Townsville	11.2	15.5	39.2
56	Sydney - Tamworth	16.4	15.2	-7.2
57	Brisbane - Bundaberg	14.1	14.5	3.1
58	Proserpine - Sydney	..	11.8	NA (a)
59	Brisbane - Mount Isa	10.4	10.9	4.4
60	Adelaide - Alice Springs	10.3	10.9	5.5
61	Melbourne - Townsville	..	10.8	NA (b)
62	Sydney - Townsville	10.6	10.7	0.8
63	Brisbane - Hamilton Island	11.1	10.7	-4.0
64	Armidale - Sydney	11.0	10.5	-4.9
65	Geraldton - Perth	10.3	9.7	-5.5
66	Alice Springs - Darwin	9.8	8.3	-14.9
Total domestic network		5 004.1	5 239.2	4.7

(a) Proserpine - Sydney route included from September 2017, prior data not shown.

(b) Melbourne - Townsville route included from September 2017, prior data not shown.

Table 3: Available seats (000s) — monthly activity

	City-Pair	Mar 2017	Mar 2018	% Change
1	Melbourne - Sydney	943.8	964.0	2.1
2	Brisbane - Sydney	486.5	500.9	3.0
3	Brisbane - Melbourne	369.5	370.0	0.1
4	Gold Coast - Sydney	254.6	270.2	6.1
5	Adelaide - Melbourne	261.9	275.2	5.1
6	Melbourne - Perth	217.0	208.2	-4.0
7	Adelaide - Sydney	207.1	205.5	-0.8
8	Gold Coast - Melbourne	177.8	191.0	7.4
9	Hobart - Melbourne	177.2	188.8	6.6
10	Perth - Sydney	182.5	175.1	-4.0
11	Canberra - Melbourne	150.7	156.0	3.5
12	Brisbane - Cairns	131.1	121.1	-7.6
13	Launceston - Melbourne	104.1	108.9	4.7
14	Canberra - Sydney	122.9	128.1	4.3
15	Cairns - Sydney	103.0	105.0	1.9
16	Brisbane - Townsville	99.4	106.6	7.2
17	Brisbane - Perth	101.2	95.4	-5.7
18	Adelaide - Brisbane	97.3	96.2	-1.1
19	Hobart - Sydney	67.5	76.4	13.1
20	Brisbane - Mackay	65.2	78.3	20.1
21	Cairns - Melbourne	66.9	71.9	7.5
22	Adelaide - Perth	75.6	71.4	-5.5
23	Brisbane - Canberra	71.7	75.1	4.7
24	Sunshine Coast - Sydney	55.2	60.1	8.8
25	Brisbane - Newcastle	66.9	66.8	-0.2
26	Brisbane - Rockhampton	60.7	53.1	-12.5
27	Melbourne - Newcastle	47.4	47.6	0.5
28	Melbourne - Sunshine Coast	39.0	49.8	27.7
29	Karratha - Perth	63.2	58.8	-7.1
30	Ballina - Sydney	40.7	43.4	6.6
31	Coffs Harbour - Sydney	41.7	41.8	0.2
32	Perth - Port Hedland	46.4	45.3	-2.4
33	Launceston - Sydney	31.2	31.3	0.3
34	Brisbane - Darwin	39.2	34.0	-13.4
35	Broome - Perth	30.0	34.3	14.6
36	Newman - Perth	47.0	44.4	-5.4
37	Brisbane - Gladstone	34.1	31.6	-7.4
38	Kalgoorlie - Perth	34.9	37.6	7.8
39	Darwin - Melbourne	29.5	27.7	-5.9
40	Darwin - Sydney	31.7	30.5	-3.7
41	Melbourne - Mildura	27.5	29.2	6.1
42	Brisbane - Proserpine	18.3	23.1	26.5
43	Albury - Sydney	30.5	26.8	-12.1
44	Adelaide - Gold Coast	22.2	22.6	1.8
45	Brisbane - Hobart	21.4	21.5	0.7
46	Ayers Rock - Sydney	20.9	20.6	-1.1
47	Adelaide - Canberra	25.1	25.3	0.8
48	Brisbane - Emerald	28.8	24.2	-15.9
49	Dubbo - Sydney	25.5	22.3	-12.4
50	Port Macquarie - Sydney	21.9	19.8	-9.6

continued

Table 3: (continued) Available seats (000s) — monthly activity

	City-Pair	Mar 2017	Mar 2018	% Change
51	Sydney - Wagga Wagga	26.2	23.6	-9.7
52	Adelaide - Port Lincoln	25.2	24.0	-4.8
53	Darwin - Perth	21.4	20.4	-4.4
54	Hamilton Island - Sydney	20.6	22.3	8.1
55	Cairns - Townsville	23.1	21.9	-5.2
56	Sydney - Tamworth	25.2	21.8	-13.3
57	Brisbane - Bundaberg	18.6	20.8	12.1
58	Proserpine - Sydney	..	15.1	NA (a)
59	Brisbane - Mount Isa	16.1	14.4	-10.6
60	Adelaide - Alice Springs	15.6	15.3	-1.9
61	Melbourne - Townsville	..	13.5	NA (b)
62	Sydney - Townsville	14.6	14.8	1.5
63	Brisbane - Hamilton Island	14.5	14.5	-0.2
64	Armidale - Sydney	16.2	14.0	-13.2
65	Geraldton - Perth	20.9	19.0	-9.1
66	Alice Springs - Darwin	17.6	16.5	-6.5
Total domestic network		6 513.6	6 621.3	1.7

(a) Proserpine - Sydney route included from September 2017, prior data not shown.

(b) Melbourne - Townsville route included from September 2017, prior data not shown.

Table 4: Load factors (%) — monthly activity

	City-Pair	Mar 2017	Mar 2018	% Point diff
1	Melbourne - Sydney	85.2	86.3	1.1
2	Brisbane - Sydney	82.1	82.9	0.8
3	Brisbane - Melbourne	78.2	80.1	1.9
4	Gold Coast - Sydney	87.7	85.7	-2.0
5	Adelaide - Melbourne	82.0	80.6	-1.4
6	Melbourne - Perth	79.2	86.1	6.9
7	Adelaide - Sydney	82.9	84.1	1.2
8	Gold Coast - Melbourne	86.0	85.9	-0.1
9	Hobart - Melbourne	81.4	82.9	1.5
10	Perth - Sydney	79.3	85.3	6.0
11	Canberra - Melbourne	71.1	69.8	-1.3
12	Brisbane - Cairns	83.7	88.1	4.4
13	Launceston - Melbourne	78.5	83.7	5.2
14	Canberra - Sydney	71.7	69.6	-2.1
15	Cairns - Sydney	81.1	82.8	1.7
16	Brisbane - Townsville	76.5	79.2	2.7
17	Brisbane - Perth	77.0	83.9	6.9
18	Adelaide - Brisbane	72.1	73.2	1.1
19	Hobart - Sydney	84.4	84.6	0.2
20	Brisbane - Mackay	78.7	79.1	0.4
21	Cairns - Melbourne	78.8	80.3	1.5
22	Adelaide - Perth	69.5	76.2	6.7
23	Brisbane - Canberra	67.6	69.8	2.2
24	Sunshine Coast - Sydney	80.1	84.1	4.0
25	Brisbane - Newcastle	74.2	72.3	-1.9
26	Brisbane - Rockhampton	77.3	82.1	4.8
27	Melbourne - Newcastle	79.7	87.4	7.7
28	Melbourne - Sunshine Coast	85.7	81.9	-3.8
29	Karratha - Perth	61.4	62.1	0.7
30	Ballina - Sydney	79.9	82.3	2.4
31	Coffs Harbour - Sydney	72.0	74.2	2.2
32	Perth - Port Hedland	63.1	66.8	3.7
33	Launceston - Sydney	86.2	87.9	1.7
34	Brisbane - Darwin	74.4	79.5	5.1
35	Broome - Perth	62.1	75.3	13.2
36	Newman - Perth	51.7	57.4	5.7
37	Brisbane - Gladstone	68.8	72.4	3.6
38	Kalgoorlie - Perth	62.4	58.7	-3.7
39	Darwin - Melbourne	75.5	77.9	2.4
40	Darwin - Sydney	64.9	69.9	5.0
41	Melbourne - Mildura	70.1	69.1	-1.0
42	Brisbane - Proserpine	84.5	86.8	2.3
43	Albury - Sydney	65.8	70.6	4.8
44	Adelaide - Gold Coast	79.4	81.4	2.0
45	Brisbane - Hobart	83.5	84.9	1.4
46	Ayers Rock - Sydney	80.5	85.5	5.0
47	Adelaide - Canberra	65.5	69.4	3.9
48	Brisbane - Emerald	60.4	72.1	11.7
49	Dubbo - Sydney	67.0	75.3	8.3
50	Port Macquarie - Sydney	76.0	82.5	6.5

continued

Table 4: (continued) Load factors (%) — monthly activity

	City-Pair	Mar 2017	Mar 2018	% Point diff
51	Sydney - Wagga Wagga	63.9	69.0	5.1
52	Adelaide - Port Lincoln	65.3	66.0	0.7
53	Darwin - Perth	64.9	77.1	12.2
54	Hamilton Island - Sydney	77.0	70.0	-7.0
55	Cairns - Townsville	48.3	70.9	22.6
56	Sydney - Tamworth	65.0	69.6	4.6
57	Brisbane - Bundaberg	76.0	69.9	-6.1
58	Proserpine - Sydney	..	78.2	NA (a)
59	Brisbane - Mount Isa	64.5	75.3	10.8
60	Adelaide - Alice Springs	66.0	71.0	5.0
61	Melbourne - Townsville	..	79.8	NA (b)
62	Sydney - Townsville	72.7	72.2	-0.5
63	Brisbane - Hamilton Island	76.6	73.6	-3.0
64	Armidale - Sydney	68.2	74.7	6.5
65	Geraldton - Perth	50.4	51.2	0.8
66	Alice Springs - Darwin	55.3	50.3	-5.0
Total domestic network		77.4	80.4	3.0

(a) Proserpine - Sydney route included from September 2017, prior data not shown.

(b) Melbourne - Townsville route included from September 2017, prior data not shown.

Table 5: Aircraft trips ^(a) — monthly activity

	City-Pair	Mar 2017	Mar 2018	% Change
1	Melbourne - Sydney	5 260	5 304	0.8
2	Brisbane - Sydney	3 014	3 030	0.5
3	Brisbane - Melbourne	2 161	2 173	0.6
4	Gold Coast - Sydney	1 484	1 522	2.6
5	Adelaide - Melbourne	1 649	1 688	2.4
6	Melbourne - Perth	977	966	-1.1
7	Adelaide - Sydney	1 247	1 224	-1.8
8	Gold Coast - Melbourne	946	1 011	6.9
9	Hobart - Melbourne	1 086	1 082	-0.4
10	Perth - Sydney	776	774	-0.3
11	Canberra - Melbourne	1 004	1 016	1.2
12	Brisbane - Cairns	832	768	-7.7
13	Launceston - Melbourne	799	813	1.8
14	Canberra - Sydney	1 470	1 423	-3.2
15	Cairns - Sydney	572	584	2.1
16	Brisbane - Townsville	719	734	2.1
17	Brisbane - Perth	491	486	-1.0
18	Adelaide - Brisbane	596	576	-3.4
19	Hobart - Sydney	414	431	4.1
20	Brisbane - Mackay	561	599	6.8
21	Cairns - Melbourne	360	364	1.1
22	Adelaide - Perth	482	481	-0.2
23	Brisbane - Canberra	508	538	5.9
24	Sunshine Coast - Sydney	337	363	7.7
25	Brisbane - Newcastle	524	447	-14.7
26	Brisbane - Rockhampton	739	638	-13.7
27	Melbourne - Newcastle	265	267	0.8
28	Melbourne - Sunshine Coast	220	281	27.7
29	Karratha - Perth	558	521	-6.6
30	Ballina - Sydney	273	283	3.7
31	Coffs Harbour - Sydney	451	418	-7.3
32	Perth - Port Hedland	375	374	-0.3
33	Launceston - Sydney	180	180	0.0
34	Brisbane - Darwin	245	213	-13.1
35	Broome - Perth	263	309	17.5
36	Newman - Perth	345	332	-3.8
37	Brisbane - Gladstone	461	408	-11.5
38	Kalgoorlie - Perth	293	299	2.0
39	Darwin - Melbourne	168	155	-7.7
40	Darwin - Sydney	185	182	-1.6
41	Melbourne - Mildura	433	404	-6.7
42	Brisbane - Proserpine	104	130	25.0
43	Albury - Sydney	560	487	-13.0
44	Adelaide - Gold Coast	126	128	1.6
45	Brisbane - Hobart	121	122	0.8
46	Ayers Rock - Sydney	118	116	-1.7
47	Adelaide - Canberra	157	150	-4.5
48	Brisbane - Emerald	381	319	-16.3
49	Dubbo - Sydney	563	476	-15.5
50	Port Macquarie - Sydney	383	328	-14.4

continued

Table 5: (continued) Aircraft trips ^(a) — monthly activity

	City-Pair	Mar 2017	Mar 2018	% Change
51	Sydney - Wagga Wagga	510	458	-10.2
52	Adelaide - Port Lincoln	650	611	-6.0
53	Darwin - Perth	128	122	-4.7
54	Hamilton Island - Sydney	120	137	14.2
55	Cairns - Townsville	389	360	-7.5
56	Sydney - Tamworth	401	333	-17.0
57	Brisbane - Bundaberg	317	288	-9.1
58	Proserpine - Sydney	..	84	NA (b)
59	Brisbane - Mount Isa	159	154	-3.1
60	Adelaide - Alice Springs	98	112	14.3
61	Melbourne - Townsville	..	72	NA (c)
62	Sydney - Townsville	95	94	-1.1
63	Brisbane - Hamilton Island	119	112	-5.9
64	Armidale - Sydney	396	341	-13.9
65	Geraldton - Perth	209	190	-9.1
66	Alice Springs - Darwin	143	148	3.5
	Total domestic network	54 748	53 879	-1.6

(a) Includes RPT Cargo flights.

(b) Proserpine - Sydney route included from September 2017, prior data not shown.

(c) Melbourne - Townsville route included from September 2017, prior data not shown.

TOP TEN AIRPORTS – PASSENGER MOVEMENTS

Table 6: Top ten airports, RPT passenger movements (000s) - annual activity

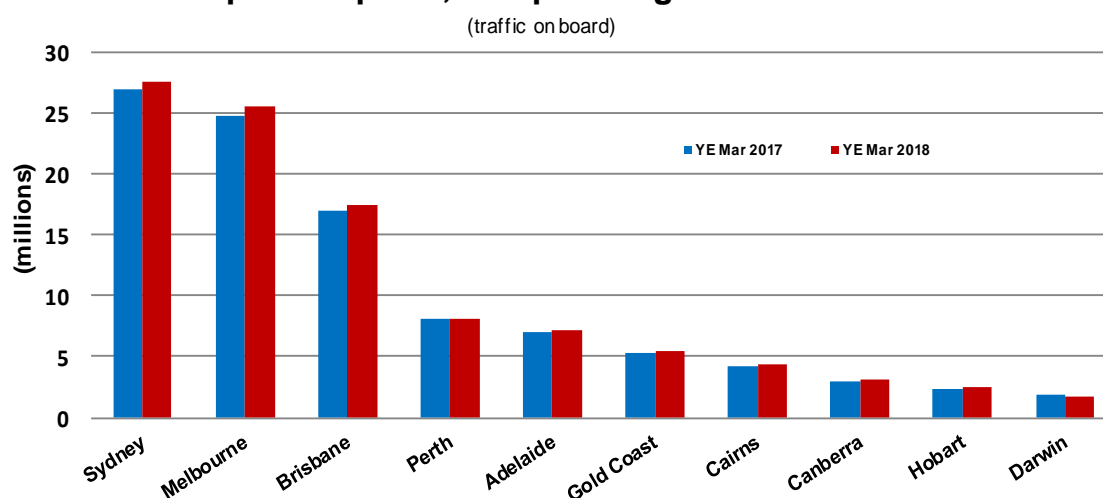
Airport	YE Mar 2017	YE Mar 2018	% Change	% of Total
1 Sydney	26 958.7	27 534.9	2.1	22.8
2 Melbourne	24 838.9	25 566.9	2.9	21.1
3 Brisbane	17 054.1	17 378.6	1.9	14.4
4 Perth	8 059.7	8 047.9	-0.1	6.7
5 Adelaide	7 031.5	7 213.1	2.6	6.0
6 Gold Coast	5 307.5	5 488.4	3.4	4.5
7 Cairns	4 241.6	4 343.4	2.4	3.6
8 Canberra	2 921.4	3 047.6	4.3	2.5
9 Hobart	2 412.6	2 573.6	6.7	2.1
10 Darwin	1 812.4	1 797.9	-0.8	1.5
Total top ten airports	100 638.5	102 992.2	2.3	85.1
Total domestic network	118 080.2	120 993.5	2.5	100.0

Table 7: Top ten airports, RPT passenger movements (000s) - monthly activity

Airport	Mar 2017	Mar 2018	% Change	% of Total
1 Sydney	2 333.5	2 421.4	3.8	23.1
2 Melbourne	2 144.0	2 244.7	4.7	21.4
3 Brisbane	1 411.4	1 457.5	3.3	13.9
4 Perth	663.4	691.0	4.2	6.6
5 Adelaide	621.1	644.5	3.8	6.2
6 Gold Coast	427.5	454.9	6.4	4.3
7 Cairns	317.6	331.0	4.2	3.2
8 Canberra	273.8	283.2	3.4	2.7
9 Hobart	219.2	248.5	13.3	2.4
10 Townsville	118.2	139.8	18.3	1.3
Total top ten airports	8 529.8	8 916.6	4.5	85.1
Total domestic network	10 008.2	10 478.4	4.7	100.0

Note: Airport passenger movement numbers are the sum of passenger arrivals and departures at each airport.
This table has been amended since the initial release of the February publication.

Top ten airports, RPT passenger movements



TOP FIVE AIRPORTS – CARGO MOVEMENTS

Table 8: Top five airports, domestic RPT cargo movements (000s tonnes) - annual activity

Airport	YE Mar 2017	YE Mar 2018	% Change	% of Total
1 Melbourne	125.9	133.6	6.1	29.0
2 Sydney	105.1	106.3	1.2	23.1
3 Brisbane	66.6	68.2	2.3	14.8
4 Perth	60.4	65.7	8.8	14.3
5 Adelaide	25.2	27.1	7.4	5.9
Total top five airports	383.2	400.9	4.6	87.0
Total domestic network	441.4	460.6	4.4	100.0

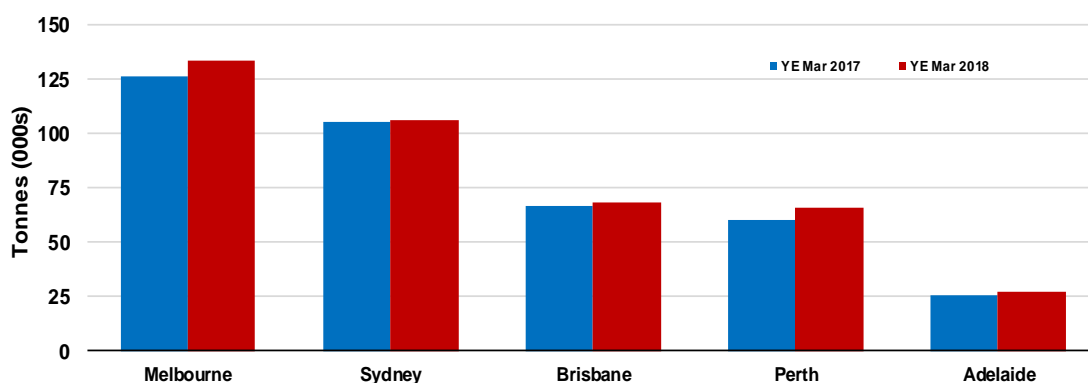
Table 9: Top five airports, domestic RPT cargo movements (000s tonnes) - monthly activity

Airport	Mar 2017	Mar 2018	% Change	% of Total
1 Melbourne	11.6	11.9	2.5	29.1
2 Sydney	9.5	9.2	-2.7	22.6
3 Brisbane	5.6	6.0	7.3	14.8
4 Perth	5.6	6.0	6.5	14.5
5 Adelaide	2.4	2.4	0.0	5.8
Total top five airports	34.7	35.5	2.3	86.8
Total domestic network	39.7	40.9	3.2	100.0

Note: Airport cargo tonnes are the sum of cargo tonnes on arrivals and departures at each airport.

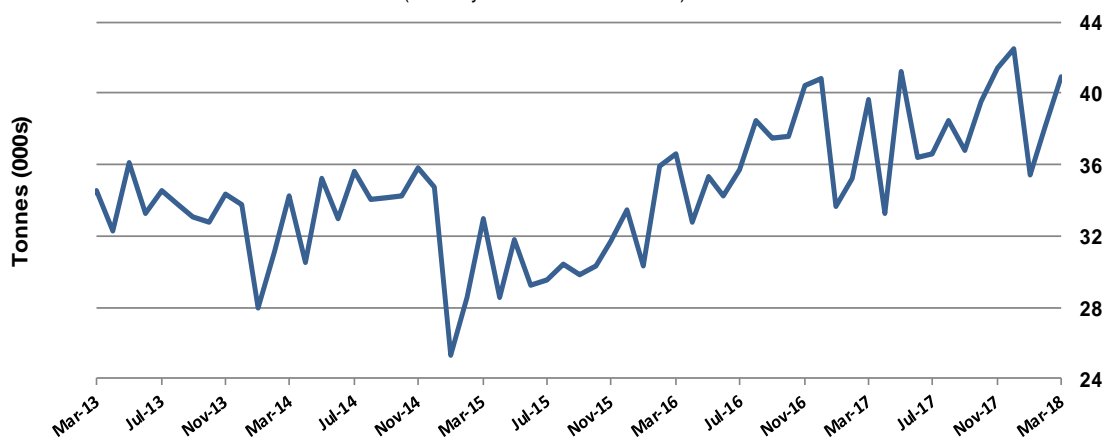
Top five airports, cargo movements

(Domestic cargo traffic - traffic on board)



Total domestic network - cargo movement

(monthly totals - traffic on board)



Note: Airport cargo tonnes are the sum of cargo tonnes on arrivals and departures at each airport.

TOP TEN ROUTES

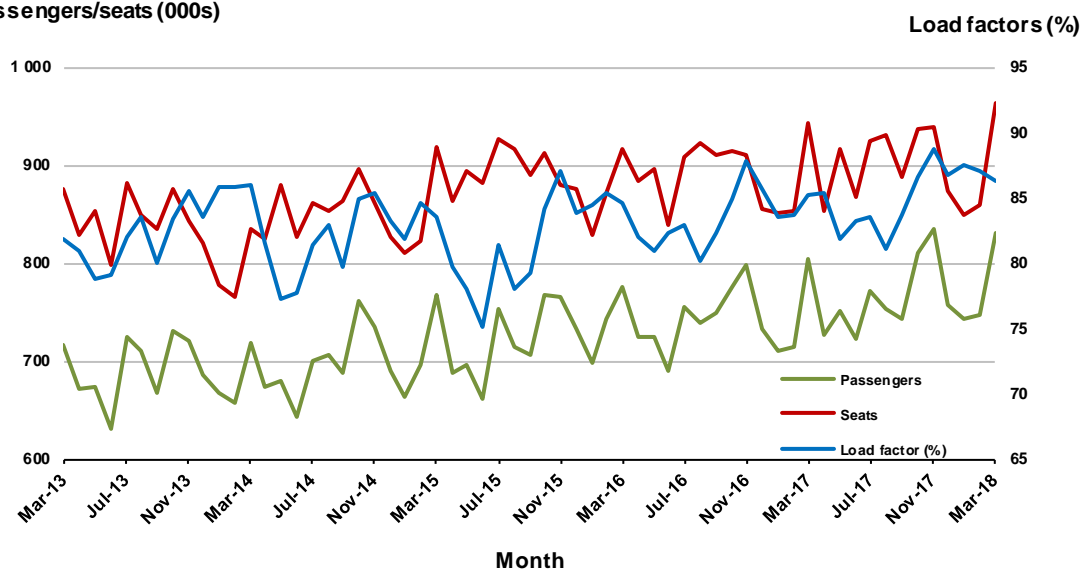
1. Melbourne - Sydney

Monthly data

	Mar 2017	Mar 2018	% Change
Passengers carried (000s)	804.6	831.5	3.3
Seats (000s)	943.8	964.0	2.1
Load factor %	85.2	86.3	1.1 *
Aircraft trips	5 260	5 304	0.8

* percentage point difference

Passengers/seats (000s)

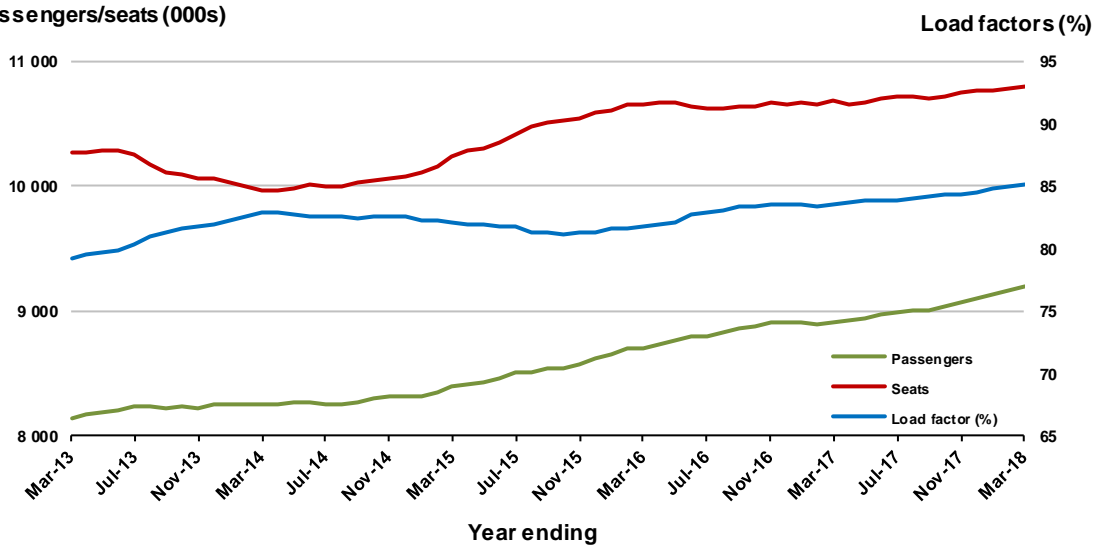


Moving annual data

	YE Mar 2017	YE Mar 2018	% Change
Passengers carried (000s)	8 915.2	9 191.7	3.1
Seats (000s)	10 682.1	10 799.4	1.1
Load factor %	83.5	85.1	1.7 *
Aircraft trips	59 364	60 136	1.3

* percentage point difference

Passengers/seats (000s)



2. Brisbane - Sydney

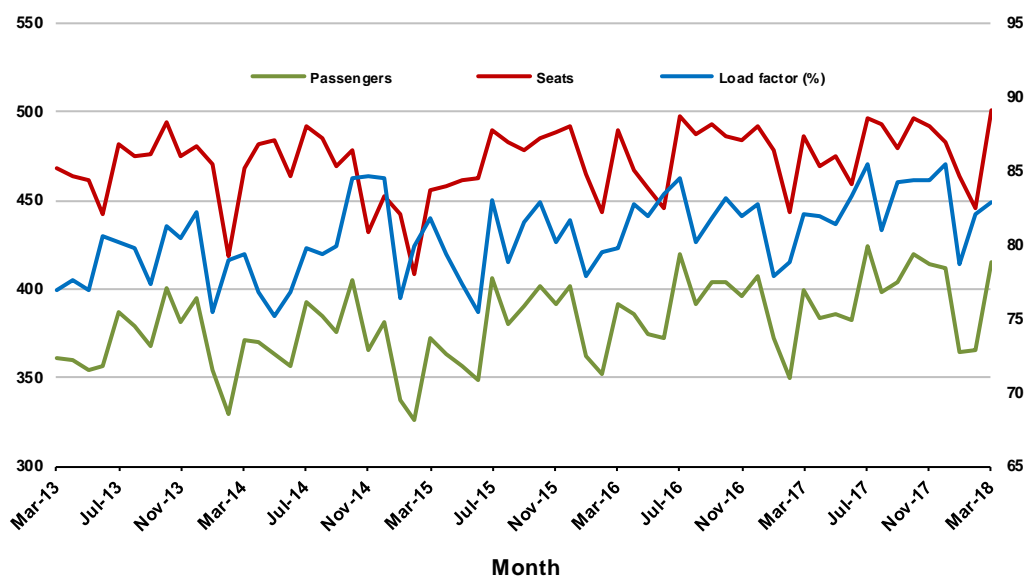
Monthly data

	Mar 2017	Mar 2018	% Change
Passengers carried (000s)	399.6	415.3	3.9
Seats (000s)	486.5	500.9	3.0
Load factor %	82.1	82.9	0.8 *
Aircraft trips	3 014	3 030	0.5

* percentage point difference

Passengers/seats (000s)

Load factors (%)



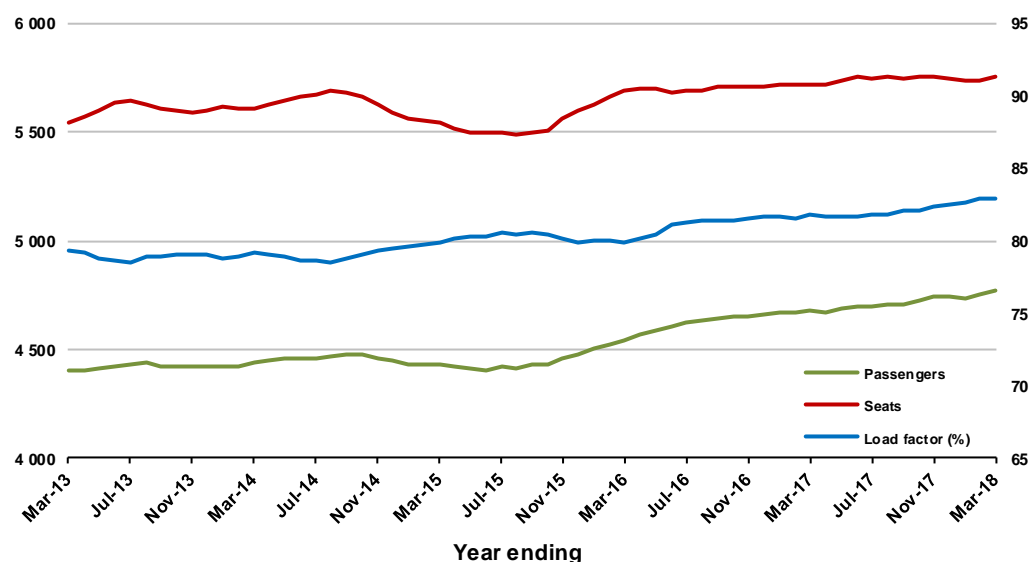
Moving annual data

	YE Mar 2017	YE Mar 2018	% Change
Passengers carried (000s)	4 674.8	4 770.0	2.0
Seats (000s)	5 717.5	5 750.1	0.6
Load factor %	81.8	83.0	1.2 *
Aircraft trips	35 425	35 246	-0.5

* percentage point difference

Passengers/seats (000s)

Load factors (%)

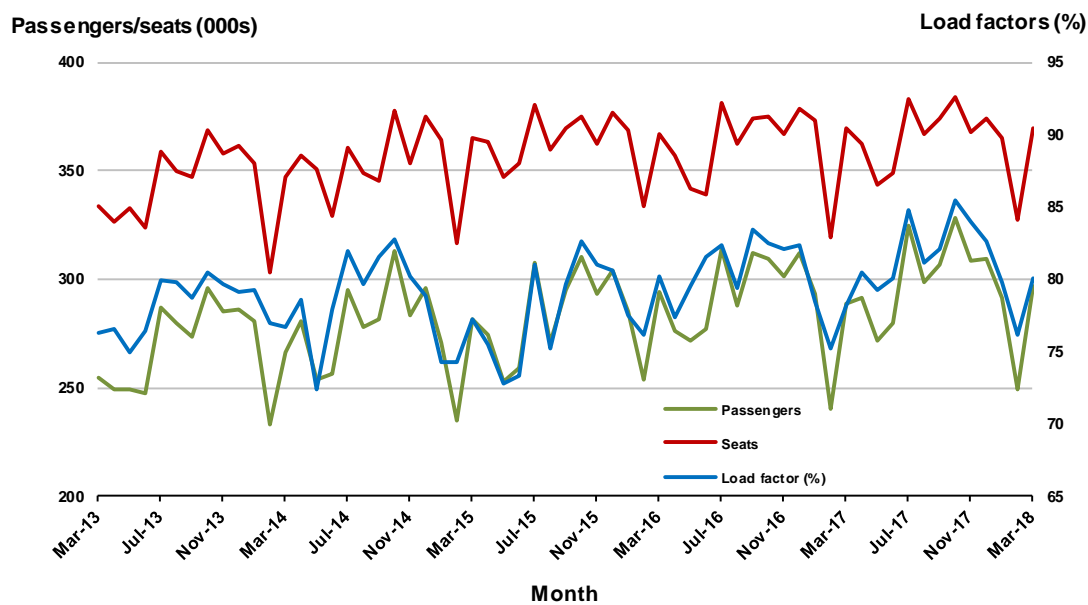


3. Brisbane - Melbourne

Monthly data

	Mar 2017	Mar 2018	% Change
Passengers carried (000s)	288.9	296.5	2.7
Seats (000s)	369.5	370.0	0.1
Load factor %	78.2	80.1	1.9 *
Aircraft trips	2 161	2 173	0.6

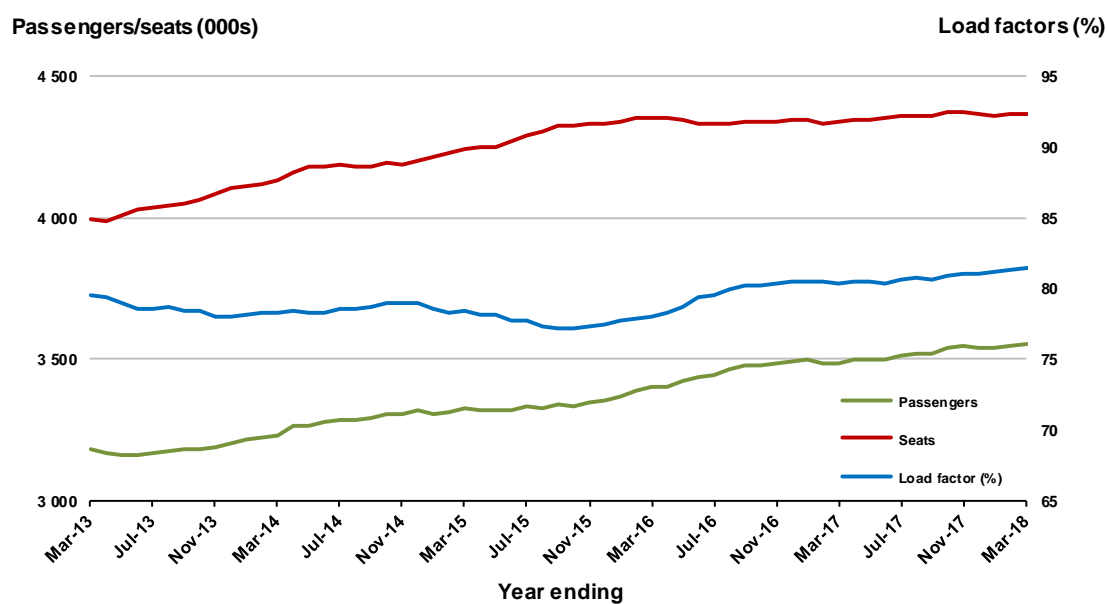
* percentage point difference



Moving annual data

	YE Mar 2017	YE Mar 2018	% Change
Passengers carried (000s)	3 482.1	3 555.8	2.1
Seats (000s)	4 337.2	4 367.4	0.7
Load factor %	80.3	81.4	1.1 *
Aircraft trips	25 775	25 828	0.2

* percentage point difference



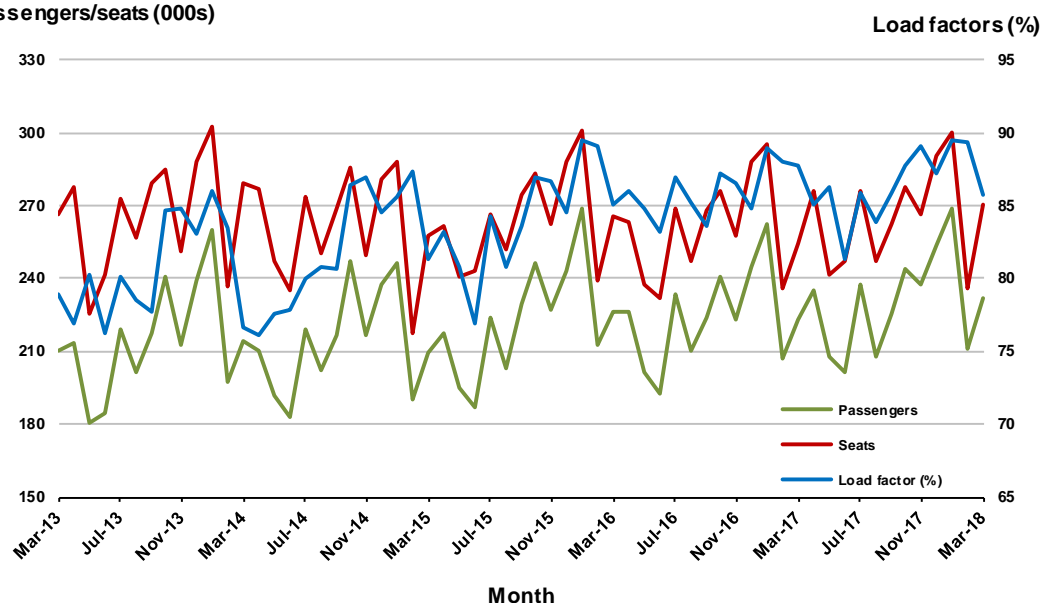
4. Gold Coast - Sydney

Monthly data

	Mar 2017	Mar 2018	% Change
Passengers carried (000s)	223.4	231.5	3.6
Seats (000s)	254.6	270.2	6.1
Load factor %	87.7	85.7	-2.0 *
Aircraft trips	1 484	1 522	2.6

* percentage point difference

Passengers/seats (000s)

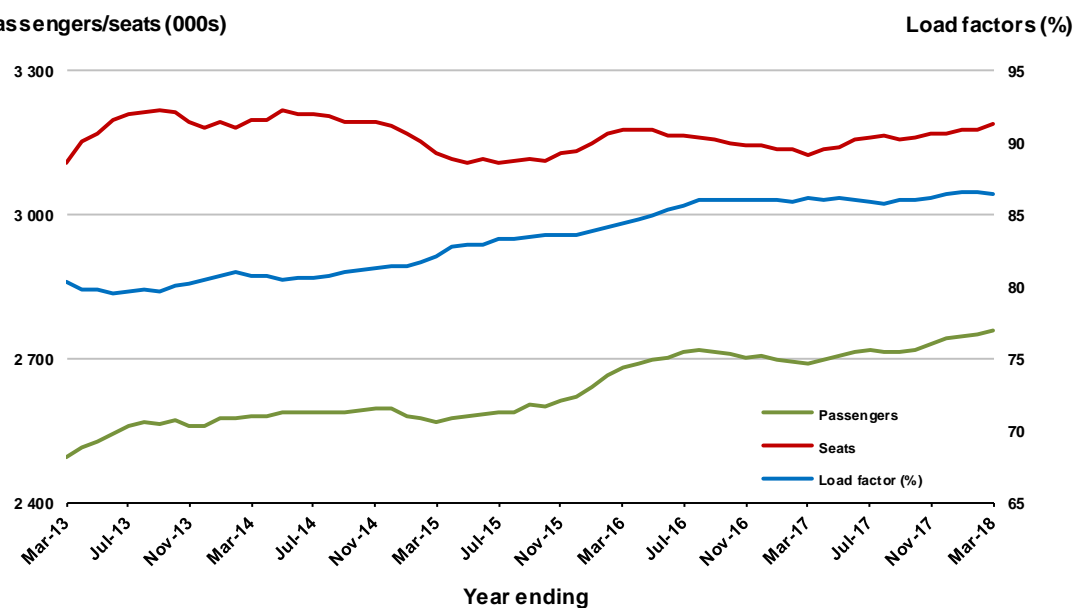


Moving annual data

	YE Mar 2017	YE Mar 2018	% Change
Passengers carried (000s)	2 689.9	2 758.6	2.6
Seats (000s)	3 123.5	3 191.4	2.2
Load factor %	86.1	86.4	0.3 *
Aircraft trips	18 244	18 021	-1.2

* percentage point difference

Passengers/seats (000s)



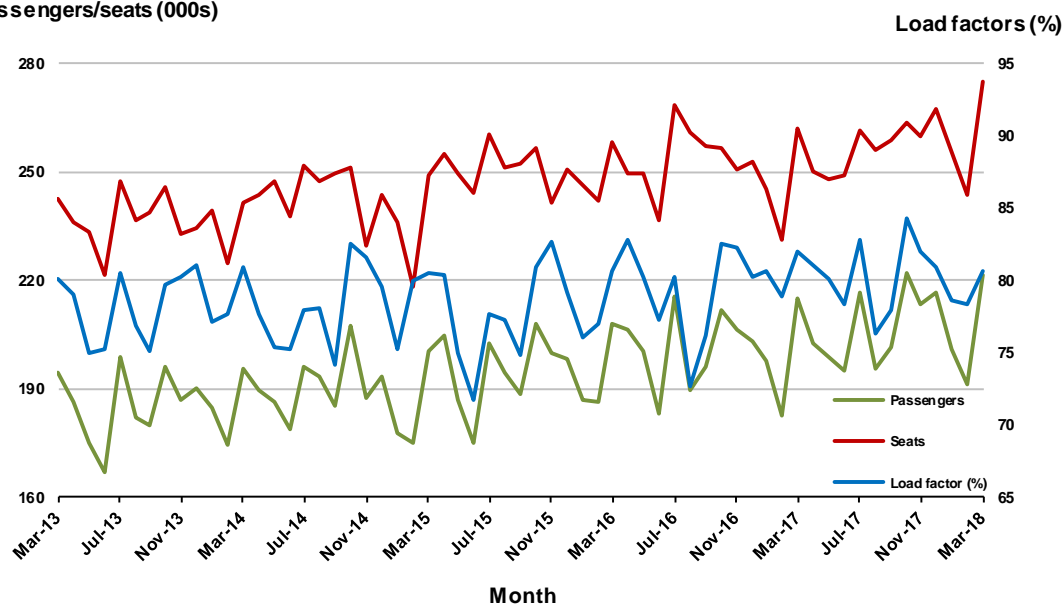
5. Adelaide - Melbourne

Monthly data

	Mar 2017	Mar 2018	% Change
Passengers carried (000s)	214.8	221.8	3.2
Seats (000s)	261.9	275.2	5.1
Load factor %	82.0	80.6	-1.4 *
Aircraft trips	1 649	1 688	2.4

* percentage point difference

Passengers/seats (000s)

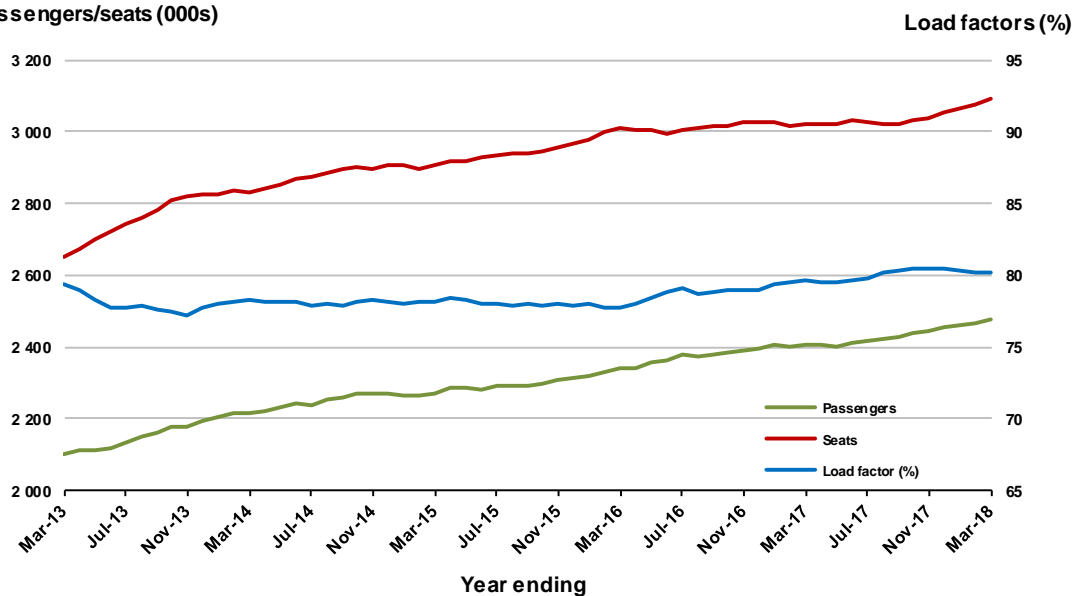


Moving annual data

	YE Mar 2017	YE Mar 2018	% Change
Passengers carried (000s)	2 407.1	2 475.2	2.8
Seats (000s)	3 021.2	3 089.4	2.3
Load factor %	79.7	80.1	0.4 *
Aircraft trips	19 238	19 248	0.1

* percentage point difference

Passengers/seats (000s)



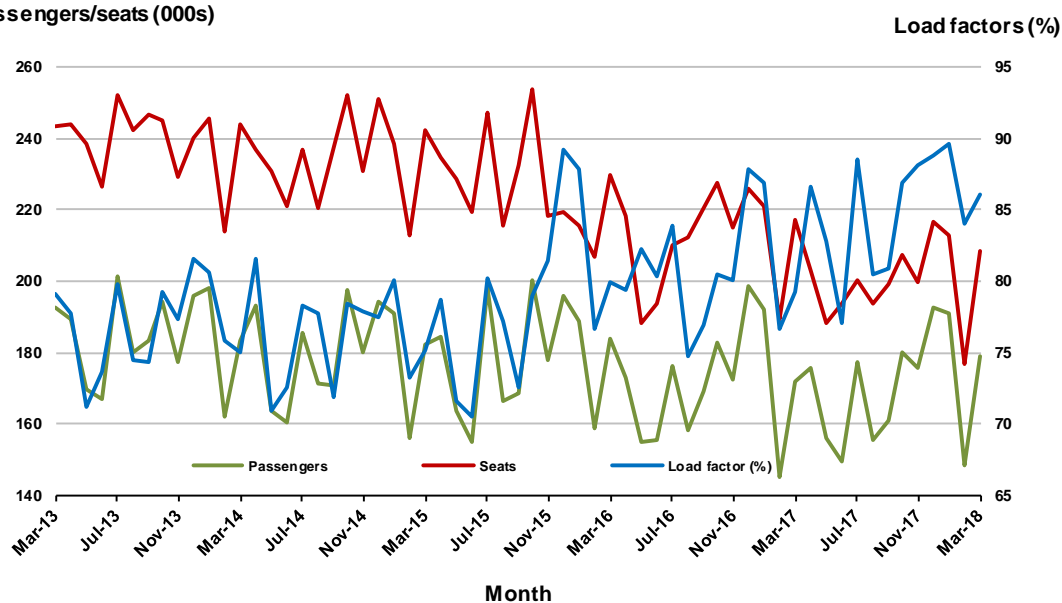
6. Melbourne - Perth

Monthly data

	Mar 2017	Mar 2018	% Change
Passengers carried (000s)	171.9	179.2	4.3
Seats (000s)	217.0	208.2	-4.0
Load factor %	79.2	86.1	6.9 *
Aircraft trips	977	966	-1.1

* percentage point difference

Passengers/seats (000s)

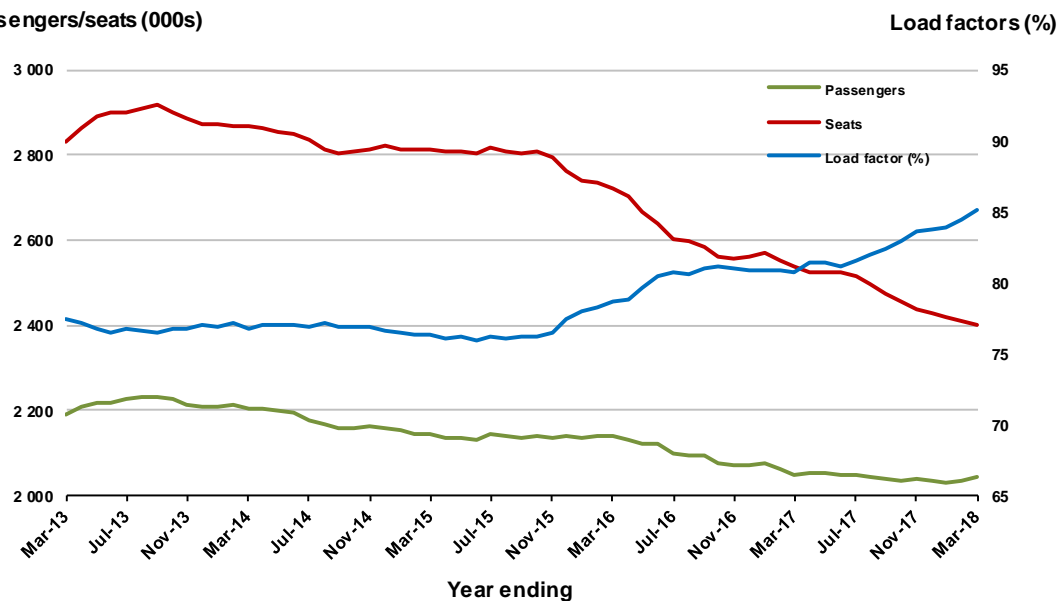


Moving annual data

	YE Mar 2017	YE Mar 2018	% Change
Passengers carried (000s)	2 050.5	2 042.7	-0.4
Seats (000s)	2 538.4	2 399.8	-5.5
Load factor %	80.8	85.1	4.3 *
Aircraft trips	11 490	11 059	-3.8

* percentage point difference

Passengers/seats (000s)



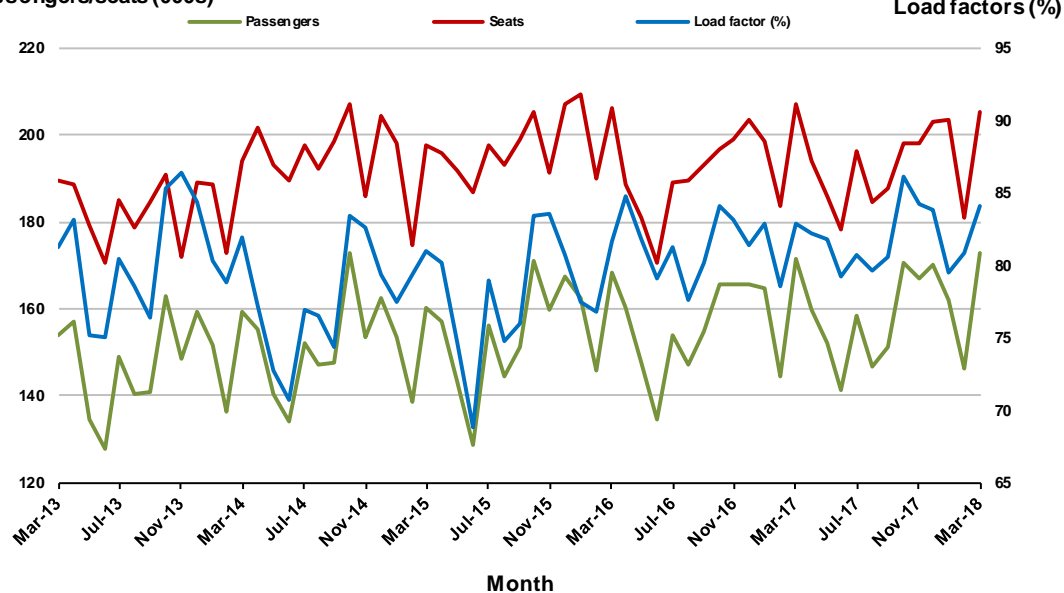
7. Adelaide - Sydney

Monthly data

	Mar 2017	Mar 2018	% Change
Passengers carried (000s)	171.6	172.8	0.7
Seats (000s)	207.1	205.5	-0.8
Load factor %	82.9	84.1	1.2 *
Aircraft trips	1 247	1 224	-1.8

* percentage point difference

Passengers/seats (000s)

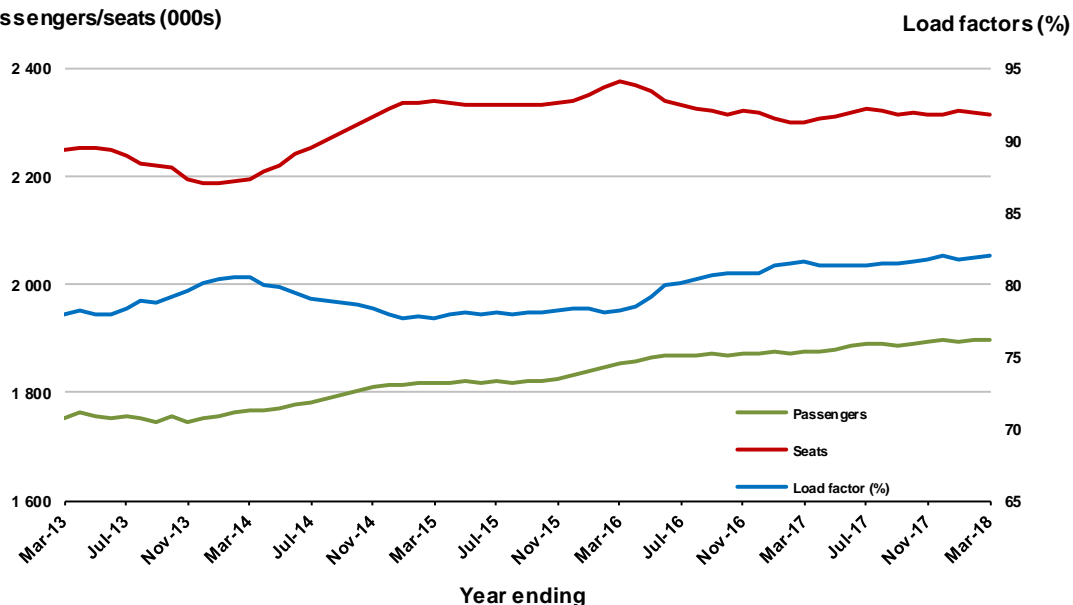


Moving annual data

	YE Mar 2017	YE Mar 2018	% Change
Passengers carried (000s)	1 876.3	1 898.3	1.2
Seats (000s)	2 301.2	2 316.2	0.7
Load factor %	81.5	82.0	0.4 *
Aircraft trips	14 003	13 906	-0.7

* percentage point difference

Passengers/seats (000s)



8. Gold Coast - Melbourne

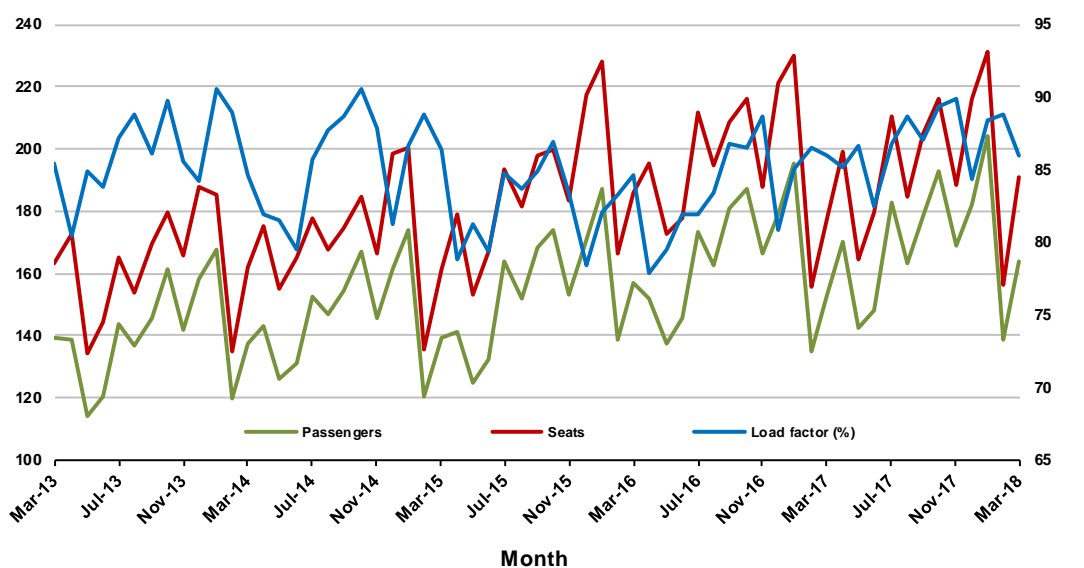
Monthly data

	Mar 2017	Mar 2018	% Change
Passengers carried (000s)	153.0	163.9	7.2
Seats (000s)	177.8	191.0	7.4
Load factor %	86.0	85.9	-0.1 *
Aircraft trips	946	1 011	6.9

* percentage point difference

Passengers/seats (000s)

Load factors (%)



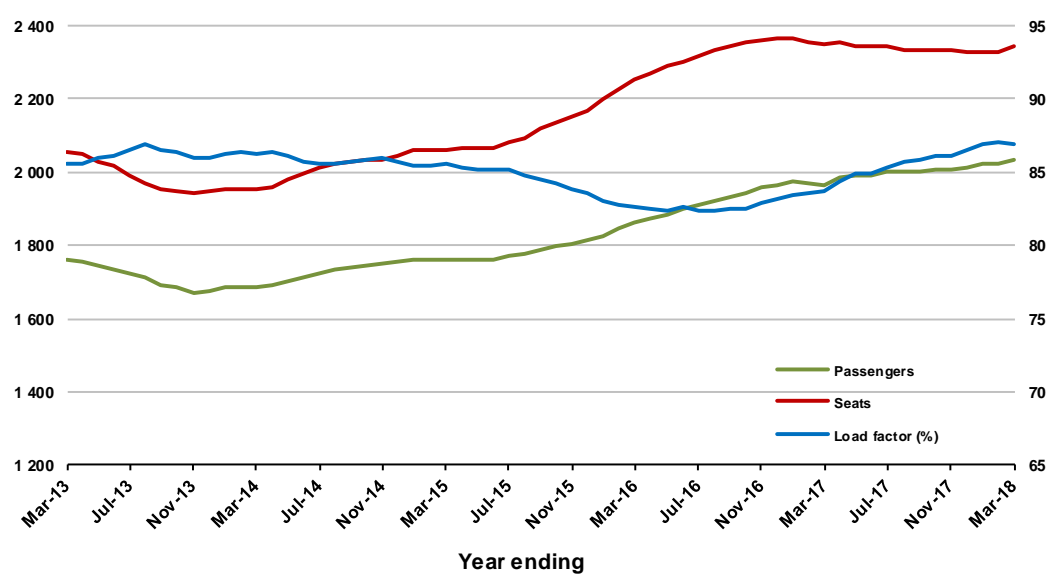
Moving annual data

	YE Mar 2017	YE Mar 2018	% Change
Passengers carried (000s)	1 966.4	2 036.1	3.5
Seats (000s)	2 348.4	2 341.2	-0.3
Load factor %	83.7	87.0	3.2 *
Aircraft trips	12 551	12 458	-0.7

* percentage point difference

Passengers/seats (000s)

Load factors (%)



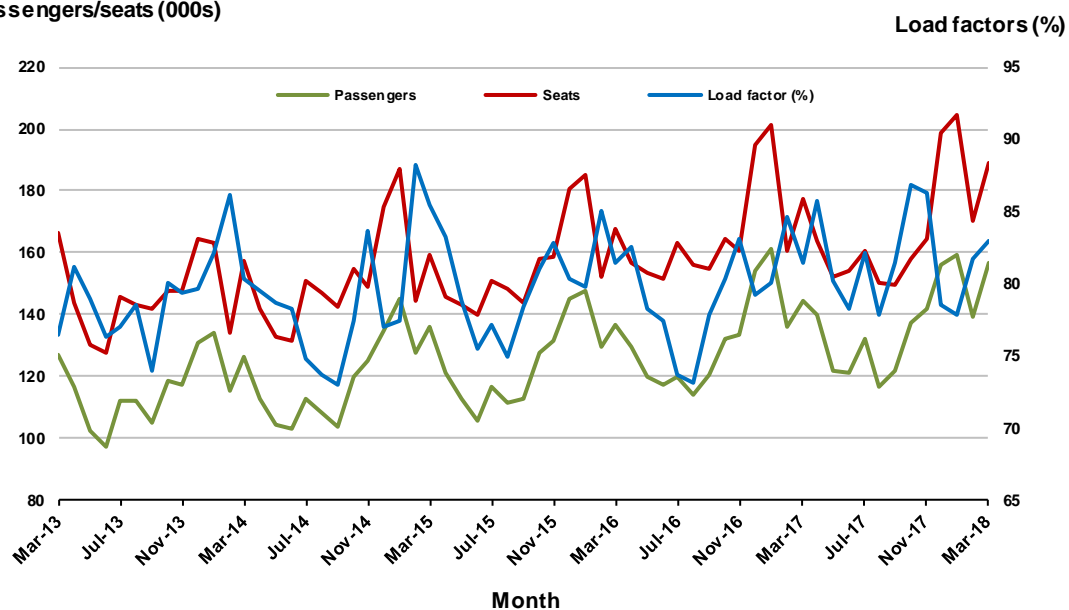
9. Hobart - Melbourne

Monthly data

	Mar 2017	Mar 2018	% Change
Passengers carried (000s)	144.2	156.5	8.5
Seats (000s)	177.2	188.8	6.6
Load factor %	81.4	82.9	1.5 *
Aircraft trips	1 086	1 082	-0.4

* percentage point difference

Passengers/seats (000s)

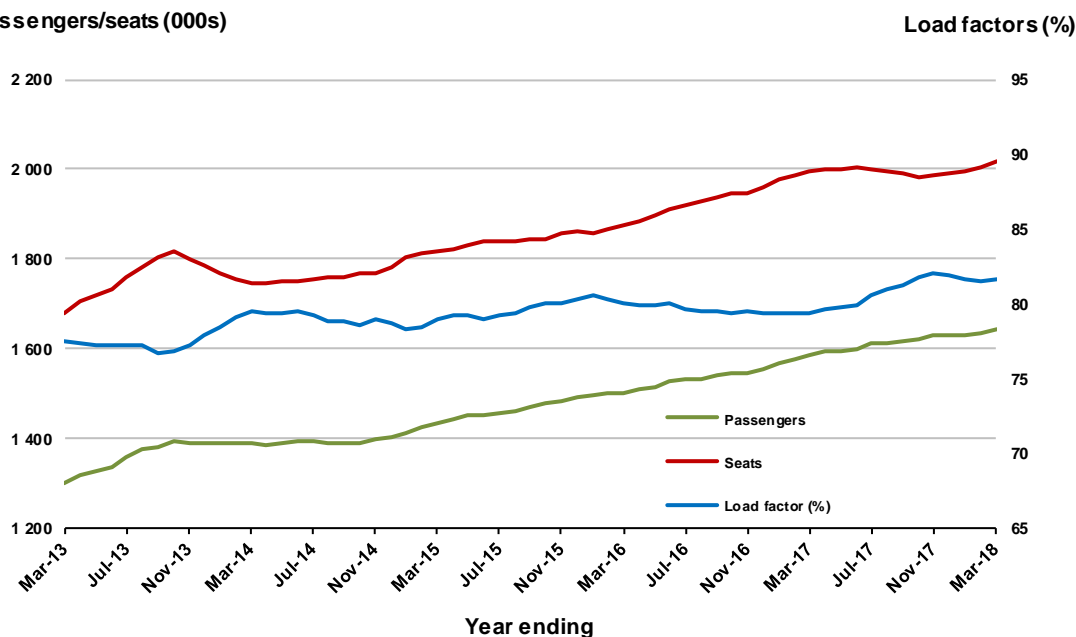


Moving annual data

	YE Mar 2017	YE Mar 2018	% Change
Passengers carried (000s)	1 582.8	1 644.0	3.9
Seats (000s)	1 994.5	2 015.2	1.0
Load factor %	79.4	81.6	2.2 *
Aircraft trips	12 437	12 148	-2.3

* percentage point difference

Passengers/seats (000s)



10. Perth - Sydney

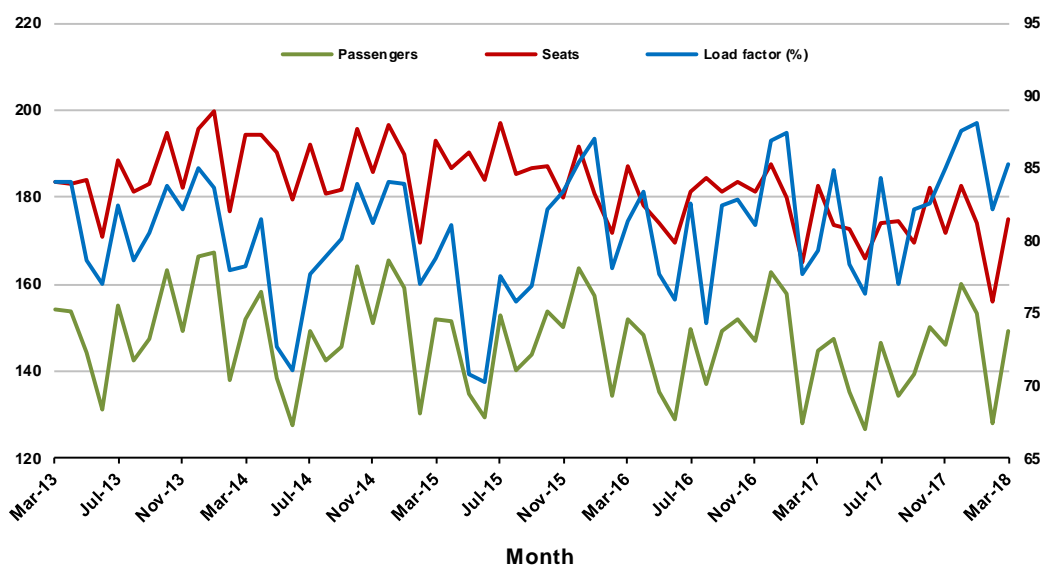
Monthly data

	Mar 2017	Mar 2018	% Change
Passengers carried (000s)	144.7	149.4	3.2
Seats (000s)	182.5	175.1	-4.0
Load factor %	79.3	85.3	6.0 *
Aircraft trips	776	774	-0.3

* percentage point difference

Passengers/seats (000s)

Load factors (%)



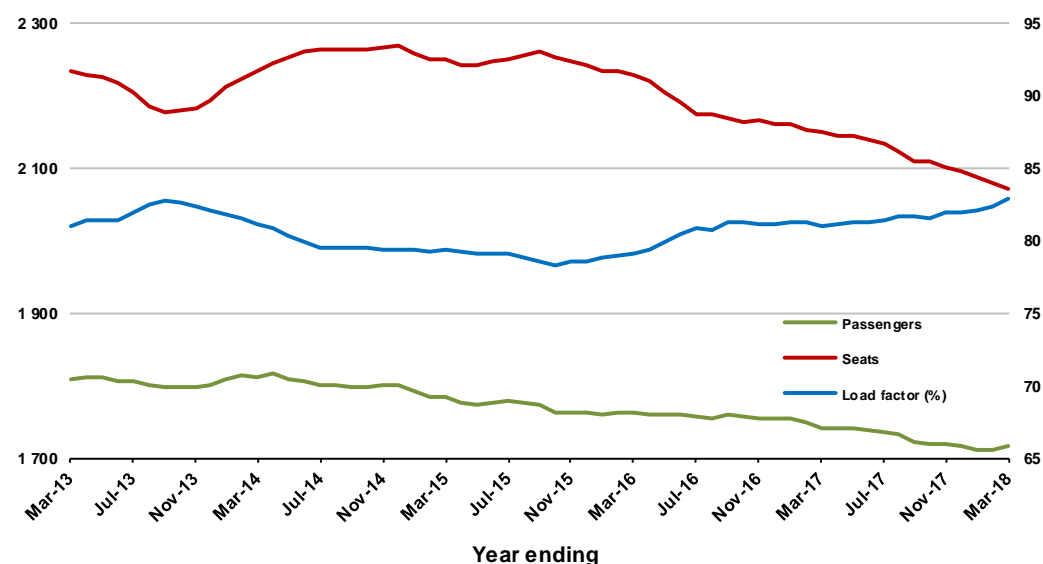
Moving annual data

	YE Mar 2017	YE Mar 2018	% Change
Passengers carried (000s)	1 740.7	1 716.7	-1.4
Seats (000s)	2 148.2	2 072.0	-3.6
Load factor %	81.0	82.9	1.8 *
Aircraft trips	9 075	9 035	-0.4

* percentage point difference

Passengers/seats (000s)

Load factors (%)



TOP FIFTY REGIONAL AIRPORTS

Table 10: Top fifty regional airports (000s) — passenger movements, monthly

	Airport	Mar 2017	Mar 2018	% Change
1	Cairns	317.6	331.0	4.2
2	Hobart	219.2	248.5	13.3
3	Townsville	118.2	139.8	18.3
4	Darwin	130.5	132.9	1.9
5	Launceston	120.8	132.4	9.6
6	Newcastle	106.9	107.3	0.3
7	Mackay	58.0	70.9	22.3
8	Alice Springs	52.0	51.0	-1.9
9	Rockhampton	49.5	47.6	-3.8
10	Ballina	41.1	44.7	8.8
11	Coffs Harbour	35.5	37.0	4.1
12	Proserpine	23.2	37.0	59.1
13	Karratha	39.0	36.6	-6.1
14	Ayres Rock	32.8	34.5	5.4
15	Hamilton Island	36.2	32.4	-10.4
16	Port Hedland	29.6	31.0	4.8
17	Broome	21.7	29.1	34.1
18	Newman	24.4	25.5	4.6
19	Mildura	23.1	24.4	5.7
20	Albury	23.8	23.2	-2.3
21	Kalgoorlie	22.5	23.0	2.4
22	Gladstone	23.4	22.9	-2.5
23	Wagga Wagga	20.2	20.7	2.9
24	Dubbo	21.8	20.1	-7.6
25	Port Macquarie	19.8	18.5	-6.5
26	Mount Isa	16.6	18.3	10.1
27	Emerald	17.5	17.5	0.0
28	Tamworth	18.0	16.4	-9.0
29	Port Lincoln	16.4	15.8	-3.7
30	Paraburdoo	14.4	15.4	7.1
31	Bundaberg	14.1	14.5	2.9
32	Hervey Bay	13.5	13.9	2.7
33	Devonport	13.1	13.6	4.3
34	Toowoomba Wellcamp	12.4	12.5	0.8
35	Armidale	11.3	11.1	-2.0
36	Geraldton	10.4	9.8	-6.0
37	Moranbah	11.1	8.4	-24.1
38	Thursday Island	8.1	8.0	-0.5
39	Learmonth	6.5	7.9	21.1
40	Roma	7.6	7.4	-1.9
41	Mount Gambier	7.6	7.3	-4.7
42	Kununurra	7.3	7.0	-3.1
43	Orange	5.4	6.9	27.4
44	Griffith	6.9	6.9	0.2
45	Gove	6.3	6.8	8.2
46	Burnie	5.4	6.7	23.3
47	Weipa	6.7	6.6	-1.8
48	Norfolk Island	6.0	6.3	5.3
49	Merimbula	5.8	6.3	9.4
50	Whyalla	5.8	6.3	8.3
Total top 50 regional airports		1 864.7	1 979.6	6.2
Total regional airports		1 983.4	2 105.6	6.2
Total domestic network		10 008.2	10 478.4	4.7

Note: Airport passenger movement numbers are the sum of passenger arrivals and departures at each airport.

Table 11: Top fifty regional airports (000s) — passenger movements, annual

	Airport	YE Mar 2017	YE Mar 2018	% Change
1	Cairns	4 241.6	4 343.4	2.4
2	Hobart	2 412.6	2 573.6	6.7
3	Darwin	1 812.4	1 797.9	-0.8
4	Townsville	1 530.8	1 629.5	6.5
5	Launceston	1 338.3	1 357.1	1.4
6	Newcastle	1 254.3	1 286.9	2.6
7	Mackay	774.6	807.9	4.3
8	Alice Springs	616.2	616.1	0.0
9	Rockhampton	586.8	550.4	-6.2
10	Ballina	492.6	522.8	6.1
11	Proserpine	335.7	465.5	38.7
12	Karratha	479.9	434.6	-9.5
13	Coffs Harbour	400.1	417.1	4.2
14	Broome	365.1	406.0	11.2
15	Hamilton Island	550.1	395.9	-28.0
16	Ayers Rock	365.8	370.3	1.2
17	Port Hedland	352.9	349.5	-1.0
18	Newman	303.0	289.1	-4.6
19	Gladstone	313.3	277.4	-11.4
20	Albury	256.4	269.9	5.3
21	Mildura	248.9	258.9	4.1
22	Kalgoorlie	244.0	257.4	5.5
23	Dubbo	216.6	234.4	8.2
24	Wagga Wagga	214.9	227.1	5.7
25	Port Macquarie	227.5	225.6	-0.8
26	Mount Isa	189.9	203.4	7.1
27	Tamworth	184.0	197.0	7.0
28	Emerald	198.9	195.7	-1.6
29	Hervey Bay	170.1	173.2	1.9
30	Bundaberg	174.5	172.7	-1.0
31	Port Lincoln	176.8	171.0	-3.3
32	Paraburdoo	164.7	168.7	2.4
33	Toowoomba Wellcamp	133.0	151.8	14.1
34	Devonport	145.8	148.7	2.0
35	Armidale	128.4	132.6	3.3
36	Geraldton	117.3	112.4	-4.2
37	Moranbah	119.0	109.6	-7.9
38	Kununurra	105.7	103.8	-1.8
39	Thursday Island	101.2	99.9	-1.3
40	Gove	84.5	85.0	0.6
41	Learmonth	83.3	84.8	1.7
42	Roma	85.0	83.9	-1.3
43	Mount Gambier	77.6	80.7	4.0
44	Weipa	78.5	78.0	-0.6
45	Griffith	71.2	74.2	4.2
46	Olympic Dam	52.1	73.4	40.8
47	Orange	53.2	68.3	28.3
48	Whyalla	62.2	66.7	7.3
49	Merimbula	63.8	66.2	3.8
50	Broken Hill	55.0	64.0	16.3
Total top 50 regional airports		22 809.9	23 329.9	2.3
Total regional airports		24 126.3	24 701.4	2.4
Total domestic network		118 080.2	120 993.5	2.5

Note: Airport passenger movement numbers are the sum of passenger arrivals and departures at each airport.

DOMESTIC CHARTER ACTIVITY

Table 12: Charter passengers carried and aircraft trips - annual activity

	YE Mar 2017	YE Mar 2018	% Change
Total domestic charter passengers	2 384 500	2 429 690	1.9
Total domestic charter aircraft trips	44 411	45 646	2.8

Note: Helicopter, joyflights and sightseeing charter flights not included.

Table 13: Charter passengers carried and aircraft trips - monthly activity

	Mar 2017	Mar 2018	% Change
Total domestic charter passengers	211 715	203 499	-3.9
Total domestic charter aircraft trips	4 020	3 693	-8.1

Note: Helicopter, joyflights and sightseeing charter flights not included.

Table 14: Domestic airports - charter activity - annual

	YE Mar 2017	YE Mar 2018	% Change
Total domestic charter passenger movements	4 769 000	4 859 380	1.9
Total domestic charter aircraft movements	88 822	91 292	2.8
Perth airport charter passenger movements	1 855 153	1 831 771	-1.3
Perth airport charter aircraft movements	31 410	30 568	-2.7

Note: Helicopter, joyflights and sightseeing charter flights not included.

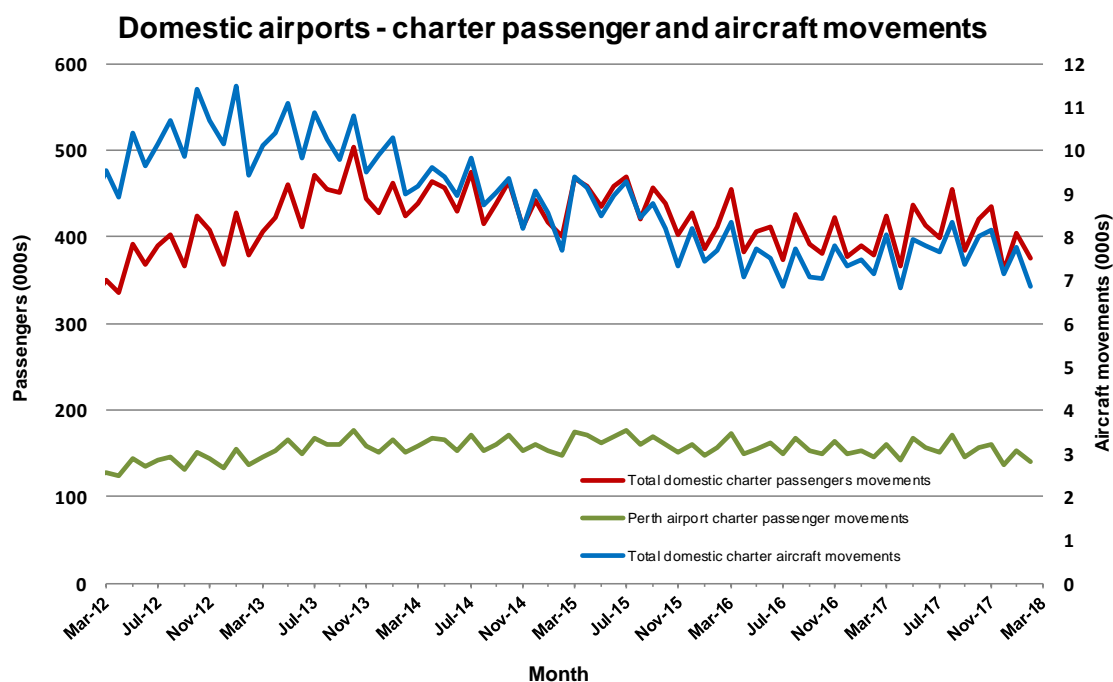
Charter passenger and aircraft movement numbers are the sum of arrivals and departures at each airport.

Table 15: Domestic airports - charter activity - monthly

	Mar 2017	Mar 2018	% Change
Total domestic charter passenger movements	423 430	406 998	-3.9
Total domestic charter aircraft movements	8 040	7 386	-8.1
Perth airport charter passenger movements	160 762	154 435	-3.9
Perth airport charter aircraft movements	2 758	2 470	-10.4

Note: Helicopter, joyflights and sightseeing charter flights not included.

Charter passenger and aircraft movement numbers are the sum of arrivals and departures at each airport.



DEFINITIONS

Aircraft Trips	The number of flight stages. A return flight counts as two aircraft trips.
Airport Movements	Airport movements (passenger and cargo) are measured once on arrival and once on departure. Each domestic trip generates two movements at airports. For example, a trip from Melbourne to Sydney will be counted twice, as a passenger departure at Melbourne and as a passenger arrival at Sydney. At the national level, the sum of all domestic airport traffic will therefore be equal to twice the number of trips undertaken.
Available Seat Kilometres (ASKs)	Calculated by multiplying the number of seats available on each flight stage, by the distance in kilometres between the ports. The distances used are Great Circle Distances.
City-Pair	The ports shown make up the city-pair route. Passenger movements shown for a city pair reflect total traffic in both directions.
Flight Stage	The operation of an aircraft from take-off to landing.
Load Factor	The total revenue passenger kilometres performed as a percentage of the total available seat kilometres.
Passengers Carried	Revenue passengers carried.
Regular Public Transport Services (RPT)	All air service operations in which aircraft are available for the transport of members of the public and are conducted in accordance with fixed schedules. It does not include charter or other non-scheduled operations.
Revenue Passengers	All passengers paying any fare. Frequent flyer redemption travellers are regarded as revenue passengers.
Revenue Passenger Kilometres (RPKs)	Calculated by multiplying the number of revenue passengers travelling on each flight stage, by the distance in kilometres between the ports. The distances used are Great Circle Distances.
Traffic on board by stages	The total of all traffic (revenue passengers) on each flight stage between two directly connected airports.
..	Data not included
NA	Not applicable