



Australian Government

Department of Infrastructure, Transport, Cities and Regional Development

Bureau of Infrastructure, Transport and Regional Economics

STATISTICAL REPORT



Aviation

Domestic aviation activity
June 2019

© Commonwealth of Australia 2019

ISSN: 1832 - 1968

Ownership of intellectual property rights in this publication

Unless otherwise noted, copyright (and any other intellectual property rights, if any) in this publication is owned by the Commonwealth of Australia (referred to below as the Commonwealth).

Disclaimer

The material contained in this publication is made available on the understanding that the Commonwealth is not providing professional advice, and that users exercise their own skill and care with respect to its use, and seek independent advice if necessary.

The Commonwealth makes no representations or warranties as to the contents or accuracy of the information contained in this publication. To the extent permitted by law, the Commonwealth disclaims liability to any person or organisation in respect of anything done, or omitted to be done, in reliance upon information contained in this publication.

Creative Commons licence

With the exception of (a) the Coat of Arms; and (b) the Department of Infrastructure, Transport, Cities and Regional Developments' photos and graphics, copyright in this publication is licensed under a Creative Commons Attribution 3.0 Australia Licence.

Creative Commons Attribution 3.0 Australia Licence is a standard form licence agreement that allows you to copy, communicate and adapt this publication provided that you attribute the work to the Commonwealth and abide by the other licence terms. A summary of the licence terms is available from <http://creativecommons.org/licenses/by/3.0/au/deed.en>.

The full licence terms are available from <http://creativecommons.org/licenses/by/3.0/au/legalcode>.

Use of the Coat of Arms

The Department of the Prime Minister and Cabinet sets the terms under which the Coat of Arms is used. Please refer to the Department's Commonwealth Coat of Arms and Government branding web page <http://www.dpmc.gov.au/guidelines/index.cfm#brand> and, in particular, the Guidelines on the use of the Commonwealth Coat of Arms publication.

An appropriate citation for this report is:

Bureau of Infrastructure, Transport and Regional Economics (BITRE), 2019, Domestic aviation activity, Statistical Report, BITRE, Canberra ACT.

Contact us

This publication is available in PDF format. All other rights are reserved, including in relation to any Departmental logos or trade marks which may exist. For enquiries regarding the licence and any use of this publication, please contact:

Bureau of Infrastructure, Transport and Regional Economics (BITRE)
Department of Infrastructure, Transport, Cities and Regional Development
GPO Box 501, Canberra ACT 2601, Australia
Telephone: (international) +61 2 6274 7210
Fax: (international) +61 2 6274 6855
Email: bitre@infrastructure.gov.au
Website: www.bitre.gov.au

Inquiries

Should you require additional information about the statistics contained in this publication:

Nebojsa Pavlovic

Telephone (02) 6274 6817 or Facsimile (02) 6274 7727

Electronic mail: AVSTATS@infrastructure.gov.au

Nebojsa.Pavlovic@infrastructure.gov.au

Web site: <http://www.bitre.gov.au/statistics/aviation/domestic.aspx>

FOREWORD

This report provides an overview of domestic (including charter) commercial aviation activity in Australia for the month of June 2019.

The data cover revenue passengers carried by Australian-registered operators of scheduled regular public transport services over Australian flight stages and fixed-wing charter operators. These estimates include passengers carried between domestic airports on international flights operated by these carriers. The passengers carried refer to traffic on board by stages.

Estimates of passengers and aircraft movements for charter aviation are included in this publication, where BITRE confidentiality standards are met.

Individual routes shown are restricted to those with an average exceeding 8 000 passengers per month over the previous six months where two or more airlines operate in competition. For the month of June 2019, there were 65 such routes.

Information on the total network for the month of June 2019 and on the Regular Public Transport (RPT) network for the month of June 2019 is presented on page 2, with estimates for the year ended June 2019 presented on page 3.

Detailed information on the 65 individual routes can be found in the RPT summary pages 4-13 of this publication.

The top ten airports in terms of RPT passenger movements are shown on page 14.

Data on domestic RPT cargo movements at the top five cargo airports are provided on page 15. The table includes cargo carried on passenger flights operated by the Qantas group (including Jetstar), Virgin Australia, Air North and Skippers as well as the cargo carried by dedicated freighter aircraft operated by Qantas Freight, Toll Aviation and Virgin Australia Cargo.

The long-term trends for the top ten competitive RPT routes are presented graphically on pages 16-25.

Domestic RPT passenger movements at the top 50 regional airports are presented on pages 26-27.

Tables providing estimates of domestic charter aviation activity are shown on page 28. BITRE confidentiality standards restrict publication of detailed estimates for individual Australian airports, with the exception of Perth Airport.

A list of definitions can be found on page 29.

This report was prepared by the Aviation Statistics Section of the Bureau of Infrastructure, Transport and Regional Economics with data provided by airlines.

Estimates are included where data were not available and data presented in this publication may contain revisions to previously published data.

Where figures have been rounded, discrepancies may occur between sums of component items and totals, and in percentage changes which are derived from figures prior to rounding.

CONTENTS

Highlights	1
Total network	2
RPT network	2
Top competitive routes	4
Top ten airports – passenger movements	14
Top five airports – cargo movements	15
Top ten routes	16
1. Melbourne – Sydney	16
2. Brisbane – Sydney.....	17
3. Brisbane – Melbourne	18
4. Gold Coast – Sydney	19
5. Adelaide – Melbourne	20
6. Gold Coast – Melbourne	21
7. Melbourne – Perth	22
8. Adelaide – Sydney	23
9. Perth – Sydney	24
10. Hobart – Melbourne	25
Top fifty regional airports	26
Domestic charter activity	28
Definitions	29

This page is intentionally left blank.

HIGHLIGHTS

There were 4.92 million passengers carried on Australian domestic commercial aviation (including charter operations) in June 2019, an increase of 0.1 per cent on June 2018. For the month of June 2019 there were 54.6 thousand aircraft trips, an increase of 2.4 per cent compared to June 2018.

4.71 million passengers were carried on RPT flights in June 2019, a decrease of 0.2 per cent on June 2018.

For the year ending June 2019 there were 60.95 million RPT passengers, an increase of 0.3 per cent on the year ending June 2018.

RPT revenue passenger kilometres (RPKs) performed were 5.50 billion for the month, virtually the same as in June 2018. Capacity, measured by available seat kilometres (ASKs), increased by 0.4 per cent compared with June 2018 to a total of 7.03 billion.

The industry wide load factor (RPKs/ASKs) decreased from 78.6 per cent in June 2018 to 78.3 per cent in June 2019. Load factors on individual routes decreased on 37 of the 65 RPT for which complete data is available in both years.

For the month of June 2019, Melbourne – Sydney remained Australia's busiest RPT route with 701 648 passengers, a decrease of 3.3 per cent compared with June 2018. It was followed by Brisbane – Sydney with 379 906 passengers (down 1.0 per cent) and Brisbane – Melbourne with 275 064 passengers (down 2.4 per cent).

The greatest percentage decrease in RPT passenger numbers, compared to June 2018, was on the Proserpine – Sydney route (down 14.0 per cent). There were large decreases on a number of other routes, including Darwin – Perth (down 9.5 per cent), Dubbo – Sydney (down 9.2 per cent) and Brisbane – Bundaberg (down 7.7 per cent).

Routes with traffic increases in June 2019 compared with June 2018 included Adelaide – Alice Springs (up 26.7 per cent), Sunshine Coast – Sydney (up 10.9 per cent), Newman – Perth (up 10.1) and Darwin – Sydney (up 8.2 per cent).

In June 2019, Sydney remained Australia's busiest domestic airport with 2.10 million passenger movements, followed by Melbourne with 1.96 million passenger movements and Brisbane with 1.38 million passenger movements.

Total cargo movements at Australian airports on domestic RPT flights were 36.4 thousand tonnes in June 2019, an increase of 1.1 per cent compared with June 2018.

In June 2019, there were 1.97 million domestic passenger movements through regional airports, 0.7 per cent higher than in June 2018. Out of the top 50 regional airports, the strongest increase was at Ayers Rock airport (up 39.3 per cent on June 2018), while the largest decrease was recorded at Weipa airport (down 13.9 per cent on June 2018).

Fixed-wing charter operators carried 209.5 thousand passengers in June 2019, an increase of 7.6 per cent on June 2018. Perth Airport accounted for 38.8 per cent of all charter passengers in Australia.

TOTAL NETWORK

Summary of monthly commercial aviation activity

	Jun 2018	Jun 2019	% Change
Total passengers carried (millions)	4.91	4.92	0.1
Aircraft trips (000s)	53.3	54.6	2.4

Note: Regular Public Transport and charter aviation activity
Helicopter, joyflights and sightseeing charter flights not included.

RPT NETWORK

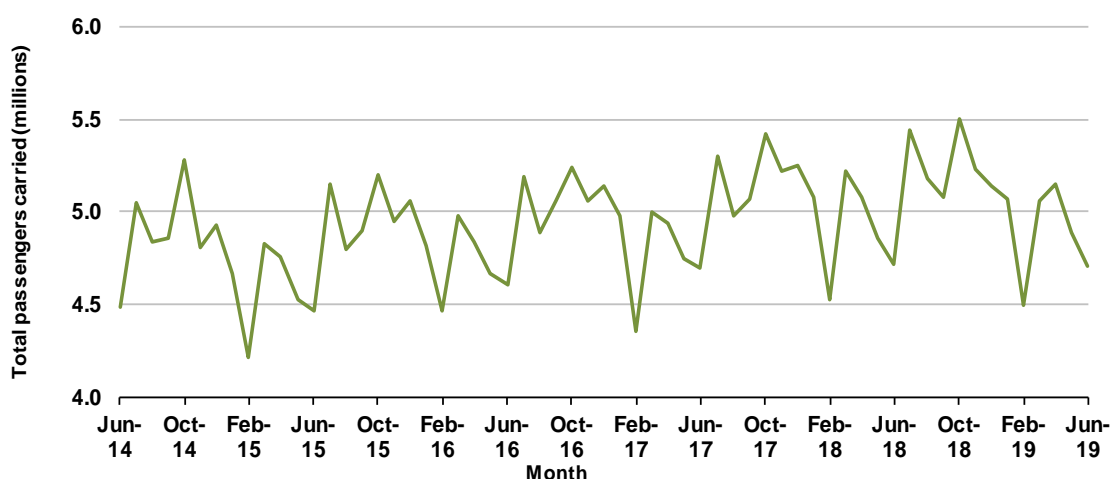
Summary of monthly RPT activity

	Jun 2018	Jun 2019	% Change
Total passengers carried (millions)	4.72	4.71	-0.2
Revenue passenger kilometres (billions)	5.50	5.50	0.0
Available seats (millions)	6.10	6.17	1.2
Available seat kilometres (billions)	7.00	7.03	0.4
Load factor %	78.6	78.3	-0.3 *
Aircraft trips (000s)	49.9	51.0	2.3

* percentage point difference

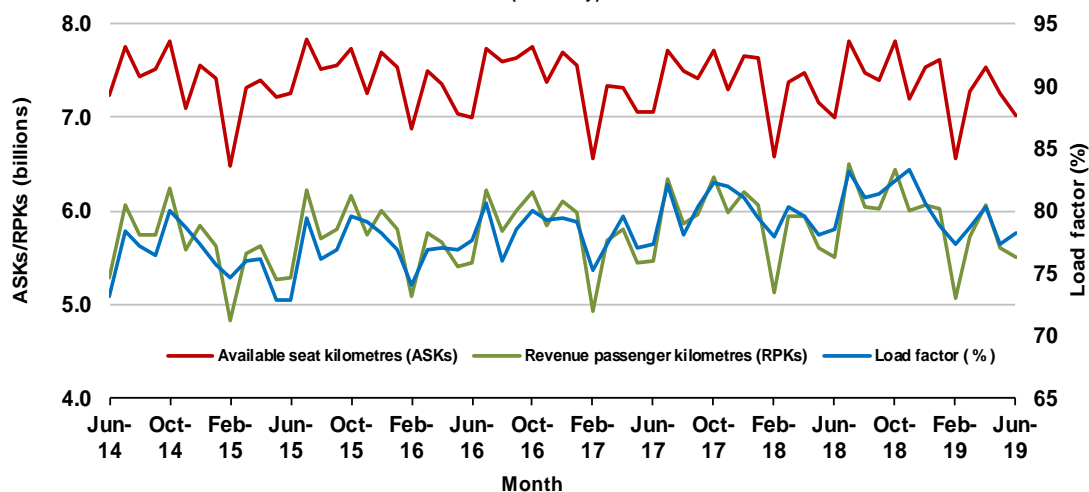
Domestic RPT passenger traffic

(monthly)



RPT Network utilisation

(monthly)



TOTAL NETWORK

Summary of annual commercial aviation activity

	YE Jun 2018	YE Jun 2019	% Change
Total passengers carried (millions)	63.20	63.52	0.5
Aircraft trips (000s)	680.1	677.9	-0.3

Note: Regular Public Transport and charter aviation activity
Helicopter, joyflights and sightseeing charter flights not included.

RPT NETWORK

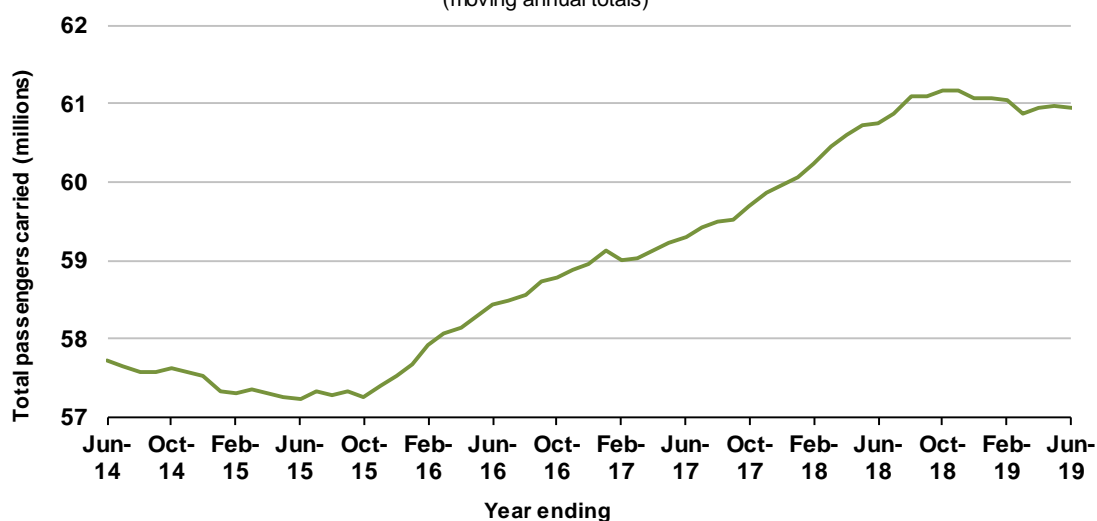
Summary of annual RPT activity

	YE Jun 2018	YE Jun 2019	% Change
Total passengers carried (millions)	60.75	60.95	0.3
Revenue passenger kilometres (billions)	70.86	71.06	0.3
Available seats (millions)	77.49	77.48	0.0
Available seat kilometres (billions)	88.52	88.50	0.0
Load factor %	80.1	80.3	0.2 *
Aircraft trips (000s)	634.4	633.4	-0.1

* percentage point difference

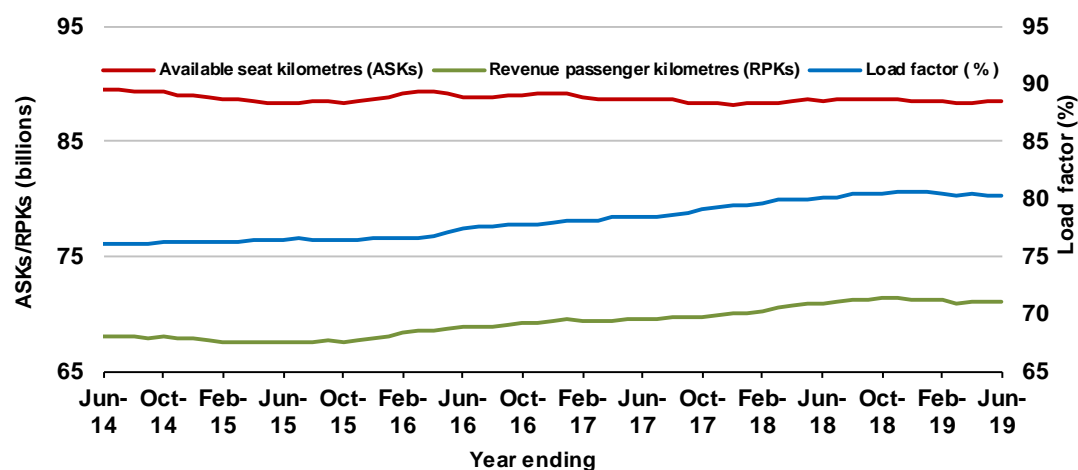
Domestic RPT passenger traffic

(moving annual totals)



RPT Network utilisation

(moving annual totals)



TOP COMPETITIVE ROUTES

Table 1: Passengers carried (000s) — annual activity

	City-Pair	YE Jun 2018	YE Jun 2019	%Change
1	Melbourne - Sydney	9 250.8	9 196.4	-0.6
2	Brisbane - Sydney	4 788.1	4 814.4	0.6
3	Brisbane - Melbourne	3 556.9	3 594.8	1.1
4	Gold Coast - Sydney	2 751.6	2 692.0	-2.2
5	Adelaide - Melbourne	2 487.3	2 506.8	0.8
6	Melbourne - Perth	2 057.8	2 115.7	2.8
7	Gold Coast - Melbourne	2 045.6	2 083.4	1.8
8	Adelaide - Sydney	1 908.6	1 877.3	-1.6
9	Perth - Sydney	1 719.9	1 690.4	-1.7
10	Hobart - Melbourne	1 638.6	1 661.3	1.4
11	Brisbane - Cairns	1 362.5	1 291.9	-5.2
12	Canberra - Melbourne	1 150.5	1 178.1	2.4
13	Cairns - Sydney	1 135.1	1 103.2	-2.8
14	Brisbane - Townsville	976.9	1 006.7	3.0
15	Launceston - Melbourne	945.7	960.8	1.6
16	Brisbane - Perth	976.1	941.9	-3.5
17	Canberra - Sydney	952.0	927.1	-2.6
18	Cairns - Melbourne	847.2	855.6	1.0
19	Adelaide - Brisbane	856.8	850.4	-0.8
20	Brisbane - Mackay	717.3	757.7	5.6
21	Hobart - Sydney	686.2	712.6	3.8
22	Brisbane - Canberra	618.5	647.4	4.7
23	Sunshine Coast - Sydney	612.5	644.6	5.2
24	Adelaide - Perth	629.7	633.8	0.7
25	Brisbane - Newcastle	584.1	588.5	0.7
26	Melbourne - Sunshine Coast	515.8	551.5	6.9
27	Brisbane - Rockhampton	522.3	520.7	-0.3
28	Melbourne - Newcastle	488.4	487.7	-0.1
29	Karratha - Perth	431.8	446.1	3.3
30	Ballina - Sydney	424.9	432.6	1.8
31	Perth - Port Hedland	346.7	365.0	5.3
32	Brisbane - Darwin	396.1	360.1	-9.1
33	Coffs Harbour - Sydney	346.5	331.5	-4.3
34	Broome - Perth	343.8	329.4	-4.2
35	Newman - Perth	293.6	322.7	9.9
36	Darwin - Sydney	318.1	310.3	-2.5
37	Darwin - Melbourne	302.7	309.6	2.3
38	Launceston - Sydney	283.4	289.6	2.2
39	Kalgoorlie - Perth	255.6	284.6	11.4
40	Brisbane - Gladstone	265.3	246.6	-7.1
41	Brisbane - Proserpine	273.2	244.7	-10.4
42	Brisbane - Hobart	217.0	238.8	10.1
43	Melbourne - Mildura	218.5	228.7	4.7
44	Albury - Sydney	221.8	228.7	3.1
45	Adelaide - Gold Coast	220.1	215.2	-2.2
46	Hamilton Island - Sydney	200.0	202.5	1.3
47	Brisbane - Emerald	195.6	196.3	0.4
48	Adelaide - Canberra	190.2	195.0	2.5
49	Ayers Rock - Sydney	196.2	193.5	-1.4
50	Port Macquarie - Sydney	189.8	187.5	-1.2

continued

Table 1: (continued) Passengers carried (000s) — annual activity

	City-Pair	YE Jun 2018	YE Jun 2019	%Change
51	Dubbo - Sydney	189.6	184.7	-2.6
52	Darwin - Perth	203.2	183.1	-9.9
53	Sydney - Wagga Wagga	179.6	179.6	0.0
54	Sydney - Townsville	160.9	174.1	8.2
55	Sydney - Tamworth	176.4	173.6	-1.6
56	Adelaide - Port Lincoln	169.1	168.8	-0.2
57	Brisbane - Bundaberg	169.4	156.4	-7.7
58	Cairns - Townsville	147.9	144.6	-2.2
59	Adelaide - Alice Springs	127.9	139.8	9.4
60	Brisbane - Mount Isa	127.6	134.0	5.0
61	Brisbane - Hamilton Island	123.9	124.9	0.8
62	Armidale - Sydney	123.5	122.8	-0.6
63	Proserpine - Sydney	112.9	121.8	NA (a)
64	Geraldton - Perth	111.7	110.2	-1.3
65	Alice Springs - Darwin	113.8	110.0	-3.3
	Total domestic network	60 750.3	60 953.3	0.3

(a) Proserpine - Sydney route included from September 2017, prior data not shown.

Table 2: Passengers carried (000s) — monthly activity

	City-Pair	Jun 2018	Jun 2019	% Change
1	Melbourne - Sydney	725.8	701.6	-3.3
2	Brisbane - Sydney	383.9	379.9	-1.0
3	Brisbane - Melbourne	281.8	275.1	-2.4
4	Gold Coast - Sydney	193.6	198.5	2.5
5	Adelaide - Melbourne	192.9	189.5	-1.8
6	Gold Coast - Melbourne	152.2	155.1	1.9
7	Melbourne - Perth	153.9	154.1	0.1
8	Adelaide - Sydney	141.5	137.6	-2.8
9	Perth - Sydney	127.6	124.6	-2.4
10	Hobart - Melbourne	116.5	123.9	6.4
11	Brisbane - Cairns	103.4	103.9	0.5
12	Canberra - Melbourne	94.6	91.9	-2.9
13	Brisbane - Townsville	82.2	86.7	5.5
14	Cairns - Sydney	84.6	79.1	-6.6
15	Canberra - Sydney	83.0	78.5	-5.4
16	Brisbane - Perth	70.2	72.9	3.8
17	Cairns - Melbourne	70.9	67.0	-5.5
18	Launceston - Melbourne	66.3	65.5	-1.2
19	Adelaide - Brisbane	63.0	64.4	2.3
20	Brisbane - Mackay	58.9	62.4	6.0
21	Brisbane - Canberra	50.6	52.5	3.8
22	Hobart - Sydney	49.4	51.9	5.2
23	Adelaide - Perth	48.4	48.8	0.8
24	Sunshine Coast - Sydney	43.3	48.1	10.9
25	Brisbane - Newcastle	44.0	46.9	6.5
26	Brisbane - Rockhampton	42.9	43.3	0.9
27	Melbourne - Sunshine Coast	36.5	38.3	4.9
28	Melbourne - Newcastle	37.8	37.1	-1.8
29	Karratha - Perth	36.8	36.9	0.1
30	Brisbane - Darwin	35.5	33.0	-7.2
31	Darwin - Sydney	30.4	32.8	8.2
32	Broome - Perth	30.8	30.4	-1.2
33	Darwin - Melbourne	29.4	30.0	2.1
34	Ballina - Sydney	29.7	29.4	-1.1
35	Perth - Port Hedland	29.8	29.3	-1.8
36	Newman - Perth	25.0	27.5	10.1
37	Coffs Harbour - Sydney	26.8	24.8	-7.6
38	Kalgoorlie - Perth	21.9	22.0	0.2
39	Brisbane - Gladstone	21.0	19.9	-5.1
40	Melbourne - Mildura	18.1	18.6	3.0
41	Albury - Sydney	18.5	18.1	-2.0
42	Ayers Rock - Sydney	16.6	17.7	7.2
43	Brisbane - Proserpine	16.9	16.8	-0.6
44	Launceston - Sydney	16.4	16.8	2.5
45	Brisbane - Emerald	16.4	16.6	1.7
46	Darwin - Perth	17.5	15.9	-9.5
47	Brisbane - Hobart	14.6	15.7	7.6
48	Port Macquarie - Sydney	14.8	15.2	2.3
49	Sydney - Wagga Wagga	15.7	15.0	-4.2
50	Adelaide - Gold Coast	15.7	14.9	-5.2

continued

Table 2: (continued) Passengers carried (000s) — monthly activity

	City-Pair	Jun 2018	Jun 2019	% Change
51	Adelaide - Canberra	15.2	14.9	-1.8
52	Dubbo - Sydney	16.4	14.9	-9.2
53	Sydney - Tamworth	14.4	14.0	-2.2
54	Adelaide - Alice Springs	10.3	13.0	26.7
55	Adelaide - Port Lincoln	12.9	12.9	0.5
56	Brisbane - Bundaberg	13.7	12.7	-7.7
57	Cairns - Townsville	12.5	12.6	0.3
58	Sydney - Townsville	11.8	12.0	1.3
59	Brisbane - Mount Isa	11.1	11.9	6.9
60	Hamilton Island - Sydney	11.4	11.7	2.5
61	Alice Springs - Darwin	10.1	10.3	2.0
62	Brisbane - Hamilton Island	9.4	9.9	5.2
63	Armidale - Sydney	9.4	9.7	3.1
64	Geraldton - Perth	9.2	8.5	-7.3
65	Proserpine - Sydney	9.9	8.5	-14.0
	Total domestic network	4 720.0	4 708.3	-0.2

Table 3: Available seats (000s) — monthly activity

	City-Pair	Jun 2018	Jun 2019	% Change
1	Melbourne - Sydney	872.7	859.0	-1.6
2	Brisbane - Sydney	459.5	469.4	2.2
3	Brisbane - Melbourne	343.2	337.9	-1.5
4	Gold Coast - Sydney	235.7	248.4	5.4
5	Adelaide - Melbourne	245.1	249.0	1.6
6	Gold Coast - Melbourne	176.4	182.1	3.2
7	Melbourne - Perth	192.0	189.8	-1.1
8	Adelaide - Sydney	175.4	175.3	0.0
9	Perth - Sydney	163.4	157.1	-3.9
10	Hobart - Melbourne	150.5	157.3	4.6
11	Brisbane - Cairns	115.7	123.7	6.9
12	Canberra - Melbourne	142.2	142.0	-0.2
13	Brisbane - Townsville	108.1	110.2	2.0
14	Cairns - Sydney	105.7	93.2	-11.9
15	Canberra - Sydney	108.7	101.7	-6.4
16	Brisbane - Perth	87.7	90.0	2.6
17	Cairns - Melbourne	83.5	76.5	-8.4
18	Launceston - Melbourne	83.6	88.2	5.5
19	Adelaide - Brisbane	85.6	89.5	4.5
20	Brisbane - Mackay	76.8	82.8	7.7
21	Brisbane - Canberra	71.0	72.3	1.8
22	Hobart - Sydney	60.4	65.5	8.4
23	Adelaide - Perth	67.2	69.8	3.9
24	Sunshine Coast - Sydney	56.3	62.5	11.0
25	Brisbane - Newcastle	61.0	63.7	4.4
26	Brisbane - Rockhampton	52.4	55.0	5.0
27	Melbourne - Sunshine Coast	42.6	44.8	5.2
28	Melbourne - Newcastle	48.5	49.1	1.2
29	Karratha - Perth	55.8	57.6	3.3
30	Brisbane - Darwin	43.2	39.5	-8.6
31	Darwin - Sydney	38.9	38.5	-0.9
32	Broome - Perth	36.3	38.4	5.6
33	Darwin - Melbourne	36.1	33.8	-6.2
34	Ballina - Sydney	37.3	37.4	0.5
35	Perth - Port Hedland	44.1	49.4	12.2
36	Newman - Perth	43.2	46.8	8.2
37	Coffs Harbour - Sydney	39.8	36.6	-7.9
38	Kalgoorlie - Perth	36.1	42.9	18.7
39	Brisbane - Gladstone	30.7	30.8	0.2
40	Melbourne - Mildura	28.4	28.7	1.2
41	Albury - Sydney	26.4	26.2	-0.8
42	Ayers Rock - Sydney	21.4	21.3	-0.2
43	Brisbane - Proserpine	20.3	21.8	7.2
44	Launceston - Sydney	19.2	20.4	6.3
45	Brisbane - Emerald	22.0	24.3	10.5
46	Darwin - Perth	25.3	20.8	-18.0
47	Brisbane - Hobart	17.2	19.2	12.0
48	Port Macquarie - Sydney	18.9	20.9	10.3
49	Sydney - Wagga Wagga	21.4	22.4	4.8
50	Adelaide - Gold Coast	19.8	18.3	-7.8

continued

Table 3: (continued) Available seats (000s) — monthly activity

	City-Pair	Jun 2018	Jun 2019	% Change
51	Adelaide - Canberra	22.3	23.2	4.2
52	Dubbo - Sydney	21.3	21.8	2.4
53	Sydney - Tamworth	22.3	21.2	-4.6
54	Adelaide - Alice Springs	15.0	16.3	9.0
55	Adelaide - Port Lincoln	22.1	23.1	4.5
56	Brisbane - Bundaberg	19.6	18.4	-6.0
57	Cairns - Townsville	20.9	19.9	-4.6
58	Sydney - Townsville	14.8	14.7	-1.2
59	Brisbane - Mount Isa	14.2	16.3	14.8
60	Hamilton Island - Sydney	19.0	19.1	0.5
61	Alice Springs - Darwin	19.6	25.9	31.8
62	Brisbane - Hamilton Island	13.6	14.8	9.0
63	Armidale - Sydney	14.8	15.2	2.3
64	Geraldton - Perth	18.1	15.0	-17.1
65	Proserpine - Sydney	14.1	11.8	-16.2
	Total domestic network	6 098.8	6 174.7	1.2

Table 4: Load factors (%) — monthly activity

	City-Pair	Jun 2018	Jun 2019	% Point diff
1	Melbourne - Sydney	83.2	81.7	-1.5
2	Brisbane - Sydney	83.6	80.9	-2.7
3	Brisbane - Melbourne	82.1	81.4	-0.7
4	Gold Coast - Sydney	82.1	79.9	-2.2
5	Adelaide - Melbourne	78.7	76.1	-2.6
6	Gold Coast - Melbourne	86.3	85.2	-1.1
7	Melbourne - Perth	80.2	81.2	1.0
8	Adelaide - Sydney	80.7	78.5	-2.2
9	Perth - Sydney	78.1	79.3	1.2
10	Hobart - Melbourne	77.4	78.8	1.4
11	Brisbane - Cairns	89.4	84.0	-5.4
12	Canberra - Melbourne	66.5	64.7	-1.8
13	Brisbane - Townsville	76.0	78.7	2.7
14	Cairns - Sydney	80.0	84.8	4.8
15	Canberra - Sydney	76.3	77.2	0.9
16	Brisbane - Perth	80.0	81.0	1.0
17	Cairns - Melbourne	84.9	87.5	2.6
18	Launceston - Melbourne	79.3	74.3	-5.0
19	Adelaide - Brisbane	73.5	72.0	-1.5
20	Brisbane - Mackay	76.7	75.4	-1.3
21	Brisbane - Canberra	71.2	72.6	1.4
22	Hobart - Sydney	81.7	79.3	-2.4
23	Adelaide - Perth	72.0	69.8	-2.2
24	Sunshine Coast - Sydney	76.9	76.9	0.0
25	Brisbane - Newcastle	72.2	73.6	1.4
26	Brisbane - Rockhampton	81.9	78.6	-3.3
27	Melbourne - Sunshine Coast	85.7	85.5	-0.2
28	Melbourne - Newcastle	78.0	75.7	-2.3
29	Karratha - Perth	66.0	64.0	-2.0
30	Brisbane - Darwin	82.3	83.6	1.3
31	Darwin - Sydney	78.1	85.3	7.2
32	Broome - Perth	84.7	79.3	-5.4
33	Darwin - Melbourne	81.6	88.8	7.2
34	Ballina - Sydney	79.8	78.5	-1.3
35	Perth - Port Hedland	67.7	59.3	-8.4
36	Newman - Perth	57.9	58.9	1.0
37	Coffs Harbour - Sydney	67.4	67.6	0.2
38	Kalgoorlie - Perth	60.7	51.2	-9.5
39	Brisbane - Gladstone	68.5	64.9	-3.6
40	Melbourne - Mildura	63.6	64.8	1.2
41	Albury - Sydney	69.9	69.1	-0.8
42	Ayers Rock - Sydney	77.4	83.1	5.7
43	Brisbane - Proserpine	83.3	77.3	-6.0
44	Launceston - Sydney	85.2	82.1	-3.1
45	Brisbane - Emerald	74.4	68.5	-5.9
46	Darwin - Perth	69.3	76.5	7.2
47	Brisbane - Hobart	85.1	81.8	-3.3
48	Port Macquarie - Sydney	78.2	72.6	-5.6
49	Sydney - Wagga Wagga	73.5	67.2	-6.3
50	Adelaide - Gold Coast	79.4	81.6	2.2

continued

Table 4: (continued) Load factors (%) — monthly activity

	City-Pair	Jun 2018	Jun 2019	% Point diff
51	Adelaide - Canberra	68.4	64.4	-4.0
52	Dubbo - Sydney	76.8	68.1	-8.7
53	Sydney - Tamworth	64.5	66.1	1.6
54	Adelaide - Alice Springs	68.5	79.6	11.1
55	Adelaide - Port Lincoln	58.1	55.9	-2.2
56	Brisbane - Bundaberg	70.1	68.8	-1.3
57	Cairns - Townsville	60.0	63.1	3.1
58	Sydney - Townsville	79.8	81.8	2.0
59	Brisbane - Mount Isa	78.2	72.8	-5.4
60	Hamilton Island - Sydney	60.0	61.2	1.2
61	Alice Springs - Darwin	51.2	39.6	-11.6
62	Brisbane - Hamilton Island	69.2	66.8	-2.4
63	Armidale - Sydney	63.6	64.1	0.5
64	Geraldton - Perth	50.7	56.8	6.1
65	Proserpine - Sydney	70.1	71.9	1.8
	Total domestic network	78.6	78.3	-0.3

Table 5: Aircraft trips ^(a) — monthly activity

	City-Pair	Jun 2018	Jun 2019	% Change
1	Melbourne - Sydney	4 816	4 811	-0.1
2	Brisbane - Sydney	2 768	2 833	2.3
3	Brisbane - Melbourne	2 004	1 990	-0.7
4	Gold Coast - Sydney	1 353	1 441	6.5
5	Adelaide - Melbourne	1 512	1 512	0.0
6	Gold Coast - Melbourne	934	963	3.1
7	Melbourne - Perth	915	968	5.8
8	Adelaide - Sydney	1 051	1 027	-2.3
9	Perth - Sydney	739	707	-4.3
10	Hobart - Melbourne	848	867	2.2
11	Brisbane - Cairns	762	874	14.7
12	Canberra - Melbourne	892	898	0.7
13	Brisbane - Townsville	727	736	1.2
14	Cairns - Sydney	567	474	-16.4
15	Canberra - Sydney	1 399	1 350	-3.5
16	Brisbane - Perth	469	488	4.1
17	Cairns - Melbourne	435	393	-9.7
18	Launceston - Melbourne	643	671	4.4
19	Adelaide - Brisbane	530	513	-3.2
20	Brisbane - Mackay	589	639	8.5
21	Brisbane - Canberra	513	528	2.9
22	Hobart - Sydney	382	421	10.2
23	Adelaide - Perth	452	462	2.2
24	Sunshine Coast - Sydney	343	388	13.1
25	Brisbane - Newcastle	407	461	13.3
26	Brisbane - Rockhampton	641	657	2.5
27	Melbourne - Sunshine Coast	240	250	4.2
28	Melbourne - Newcastle	271	272	0.4
29	Karratha - Perth	481	468	-2.7
30	Brisbane - Darwin	262	239	-8.8
31	Darwin - Sydney	230	221	-3.9
32	Broome - Perth	322	325	0.9
33	Darwin - Melbourne	192	186	-3.1
34	Ballina - Sydney	248	247	-0.4
35	Perth - Port Hedland	363	379	4.4
36	Newman - Perth	317	338	6.6
37	Coffs Harbour - Sydney	374	386	3.2
38	Kalgoorlie - Perth	287	353	23.0
39	Brisbane - Gladstone	402	408	1.5
40	Melbourne - Mildura	381	389	2.1
41	Albury - Sydney	479	483	0.8
42	Ayers Rock - Sydney	120	120	0.0
43	Brisbane - Proserpine	114	122	7.0
44	Launceston - Sydney	112	114	1.8
45	Brisbane - Emerald	295	360	22.0
46	Darwin - Perth	150	120	-20.0
47	Brisbane - Hobart	100	112	12.0
48	Port Macquarie - Sydney	296	320	8.1
49	Sydney - Wagga Wagga	421	457	8.6
50	Adelaide - Gold Coast	112	102	-8.9

continued

Table 5: (continued) Aircraft trips ^(a) — monthly activity

	City-Pair	Jun 2018	Jun 2019	% Change
51	Adelaide - Canberra	132	141	6.8
52	Dubbo - Sydney	446	483	8.3
53	Sydney - Tamworth	328	333	1.5
54	Adelaide - Alice Springs	109	117	7.3
55	Adelaide - Port Lincoln	561	602	7.3
56	Brisbane - Bundaberg	272	292	7.4
57	Cairns - Townsville	335	314	-6.3
58	Sydney - Townsville	89	82	-7.9
59	Brisbane - Mount Isa	151	138	-8.6
60	Hamilton Island - Sydney	122	122	0.0
61	Alice Springs - Darwin	173	156	-9.8
62	Brisbane - Hamilton Island	104	119	14.4
63	Armidale - Sydney	350	359	2.6
64	Geraldton - Perth	181	150	-17.1
65	Proserpine - Sydney	78	65	-16.7
	Total domestic network	49 905	51 041	2.3

(a) Includes RPT Cargo flights.

TOP TEN AIRPORTS – PASSENGER MOVEMENTS

Table 6: Top ten airports, RPT passenger movements (000s) - monthly activity

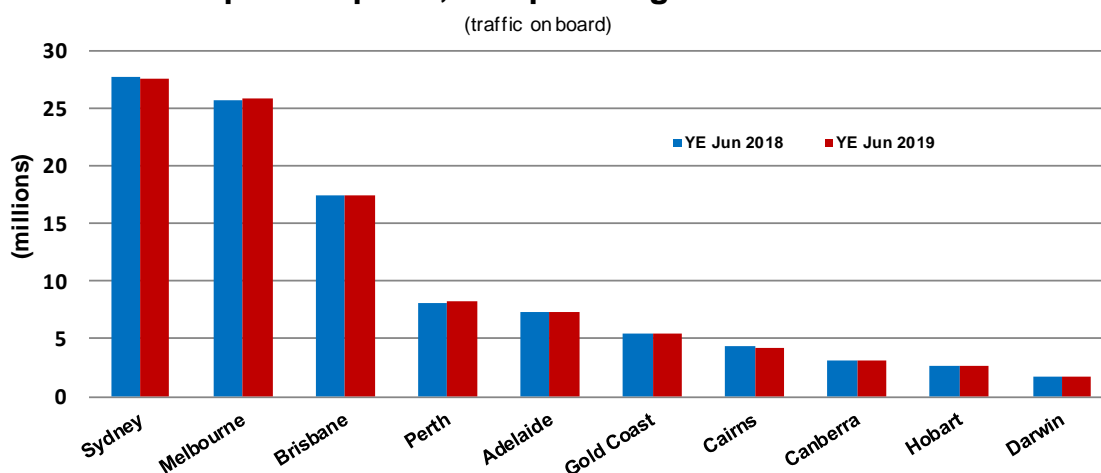
Airport	Jun 2018	Jun 2019	% Change	% of Total
1 Sydney	2 133.9	2 098.7	-1.6	22.3
2 Melbourne	1 989.9	1 959.6	-1.5	20.8
3 Brisbane	1 366.0	1 380.4	1.1	14.7
4 Perth	631.7	632.7	0.1	6.7
5 Adelaide	558.8	555.0	-0.7	5.9
6 Gold Coast	392.4	403.6	2.8	4.3
7 Cairns	337.3	324.2	-3.9	3.4
8 Canberra	257.0	251.5	-2.1	2.7
9 Hobart	184.5	201.6	9.3	2.1
10 Darwin	162.5	160.5	-1.2	1.7
Total top ten airports	8 014.1	7 968.0	-0.6	84.6
Total domestic network	9 440.0	9 416.5	-0.2	100.0

Table 7: Top ten airports, RPT passenger movements (000s) - annual activity

Airport	YE Jun 2018	YE Jun 2019	% Change	% of Total
1 Sydney	27 647.2	27 505.2	-0.5	22.6
2 Melbourne	25 689.0	25 896.5	0.8	21.2
3 Brisbane	17 378.3	17 384.4	0.0	14.3
4 Perth	8 104.1	8 209.5	1.3	6.7
5 Adelaide	7 275.7	7 307.0	0.4	6.0
6 Gold Coast	5 495.4	5 475.5	-0.4	4.5
7 Cairns	4 329.5	4 225.2	-2.4	3.5
8 Canberra	3 086.1	3 131.9	1.5	2.6
9 Hobart	2 596.1	2 725.6	5.0	2.2
10 Darwin	1 778.6	1 715.5	-3.5	1.4
Total top ten airports	103 379.9	103 576.3	0.2	85.0
Total domestic network	121 500.7	121 906.5	0.3	100.0

Note: Airport passenger movement numbers are the sum of passenger arrivals and departures at each airport.

Top ten airports, RPT passenger movements



TOP FIVE AIRPORTS – CARGO MOVEMENTS

Table 8: Top five airports, domestic RPT cargo movements (000s tonnes) - monthly activity

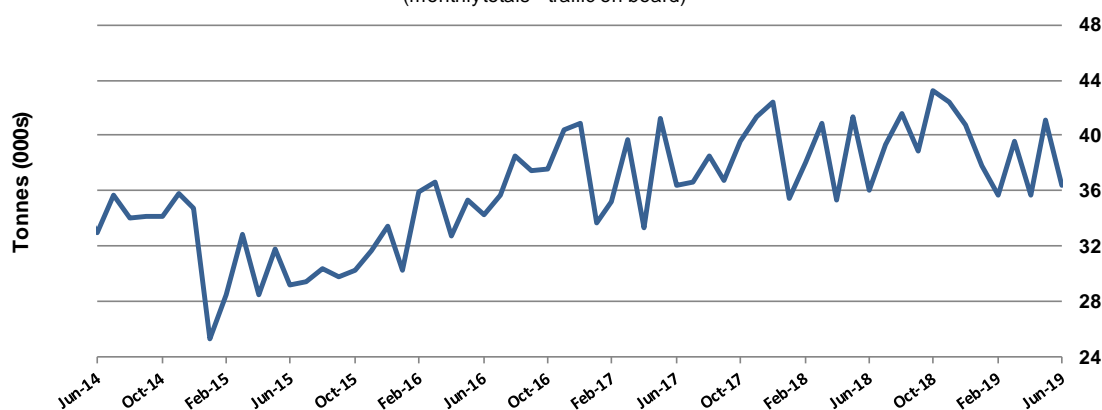
Airport	Jun 2018	Jun 2019	% Change	% of Total
1 Melbourne	10.2	9.4	-7.9	25.8
2 Sydney	8.5	7.9	-6.7	21.7
3 Brisbane	5.5	5.9	6.4	16.1
4 Perth	5.1	5.0	-2.4	13.6
5 Adelaide	1.9	2.2	13.3	5.9
Total top five airports	31.2	30.3	-2.8	83.2
Total domestic network	36.0	36.4	1.1	100.0

Table 9: Top five airports, domestic RPT cargo movements (000s tonnes) - annual activity

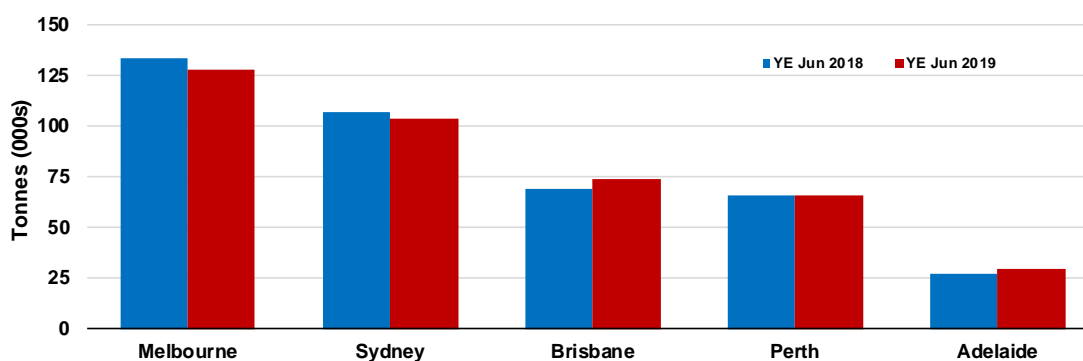
Airport	YE Jun 2018	YE Jun 2019	% Change	% of Total
1 Melbourne	133.7	127.6	-4.5	27.0
2 Sydney	106.5	103.9	-2.5	22.0
3 Brisbane	68.7	74.2	8.0	15.7
4 Perth	66.1	65.3	-1.1	13.8
5 Adelaide	27.3	29.1	6.6	6.2
Total top five airports	402.3	400.1	-0.5	84.6
Total domestic network	462.4	472.6	2.2	100.0

Note: Airport cargo tonnes are the sum of cargo tonnes on arrivals and departures at each airport.

Total domestic network - cargo movement
(monthly totals - traffic on board)



Top five airports, cargo movements
(Domestic cargo traffic - traffic on board)



TOP TEN ROUTES

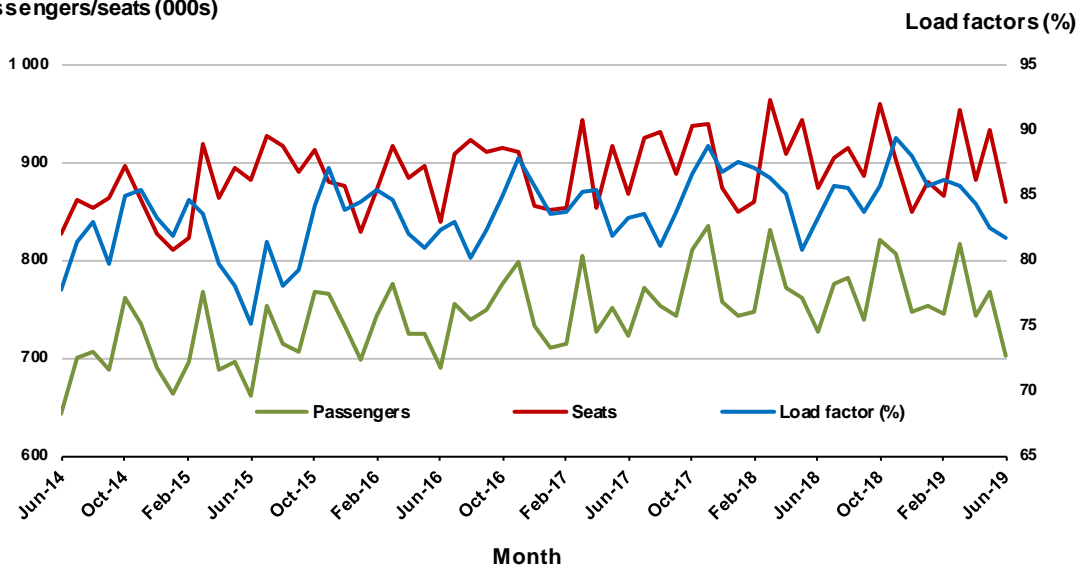
1. Melbourne - Sydney

Monthly data

	Jun 2018	Jun 2019	% Change
Passengers carried (000s)	725.8	701.6	-3.3
Seats (000s)	872.7	859.0	-1.6
Load factor %	83.2	81.7	-1.5 *
Aircraft trips	4 816	4 811	-0.1

* percentage point difference

Passengers/seats (000s)

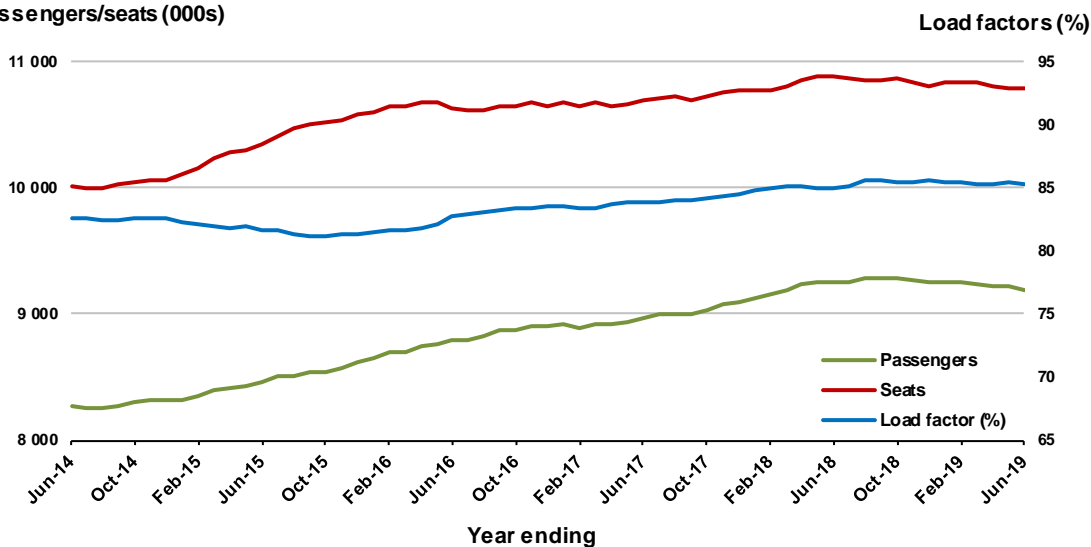


Moving annual data

	YE Jun 2018	YE Jun 2019	% Change
Passengers carried (000s)	9 250.8	9 196.4	-0.6
Seats (000s)	10 884.8	10 784.7	-0.9
Load factor %	85.0	85.3	0.3 *
Aircraft trips	60 368	60 245	-0.2

* percentage point difference

Passengers/seats (000s)

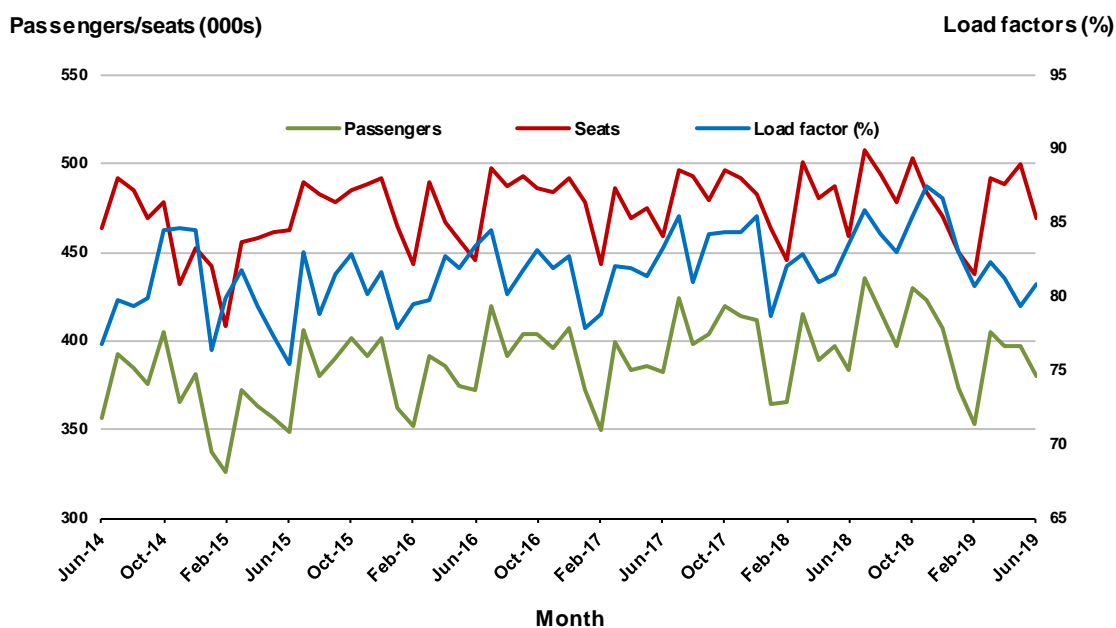


2. Brisbane - Sydney

Monthly data

	Jun 2018	Jun 2019	% Change
Passengers carried (000s)	383.9	379.9	-1.0
Seats (000s)	459.5	469.4	2.2
Load factor %	83.6	80.9	-2.7 *
Aircraft trips	2 768	2 833	2.3

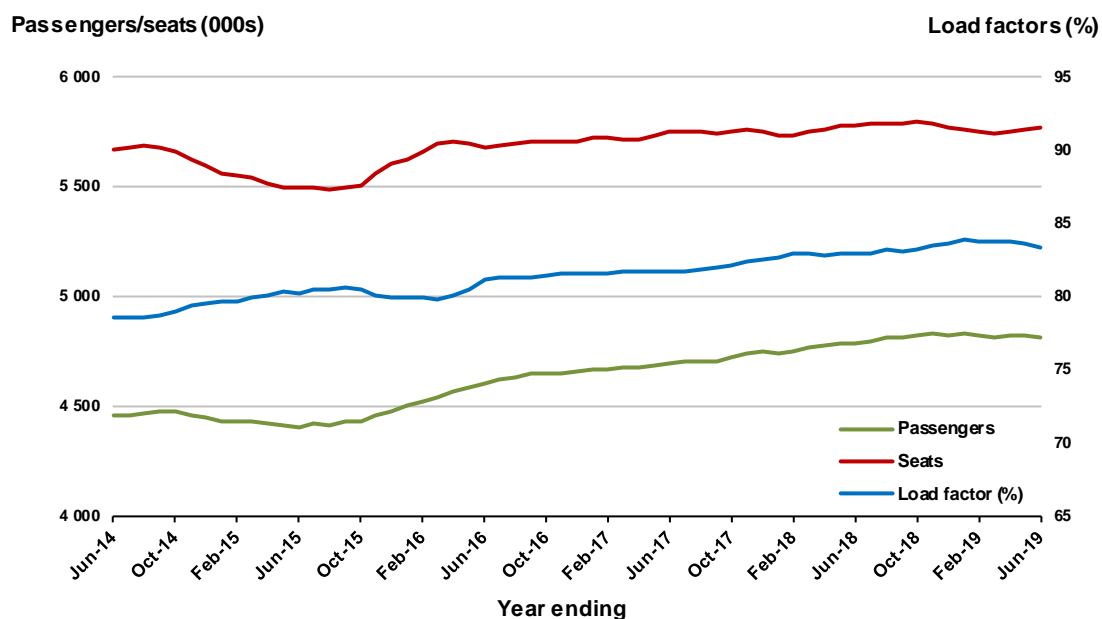
* percentage point difference



Moving annual data

	YE Jun 2018	YE Jun 2019	% Change
Passengers carried (000s)	4 788.1	4 814.4	0.6
Seats (000s)	5 776.2	5 774.2	0.0
Load factor %	82.9	83.4	0.5 *
Aircraft trips	35 198	35 103	-0.3

* percentage point difference

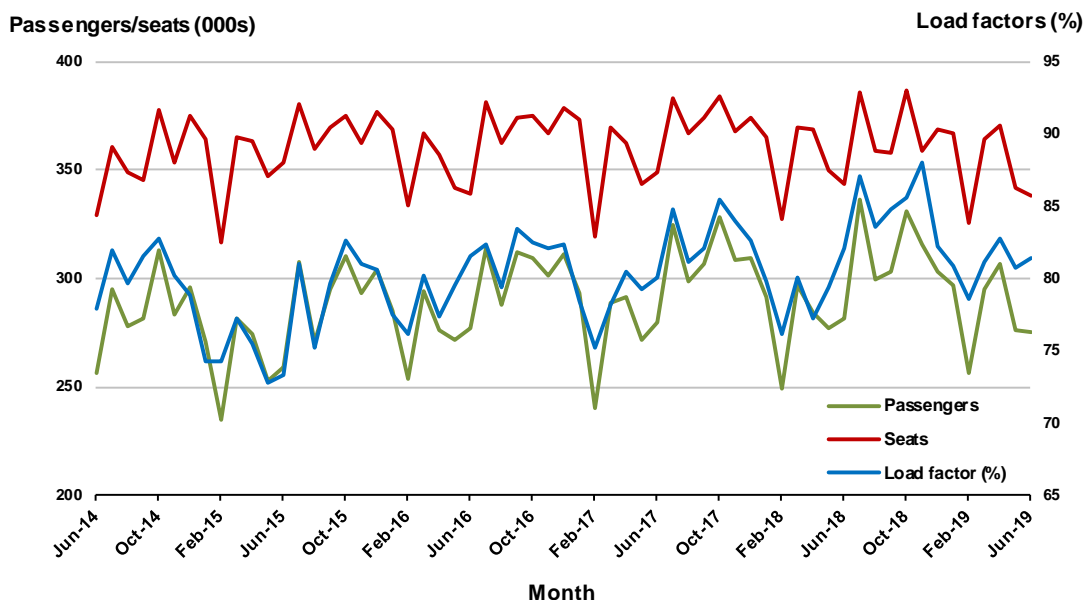


3. Brisbane - Melbourne

Monthly data

	Jun 2018	Jun 2019	% Change
Passengers carried (000s)	281.8	275.1	-2.4
Seats (000s)	343.2	337.9	-1.5
Load factor %	82.1	81.4	-0.7 *
Aircraft trips	2 004	1 990	-0.7

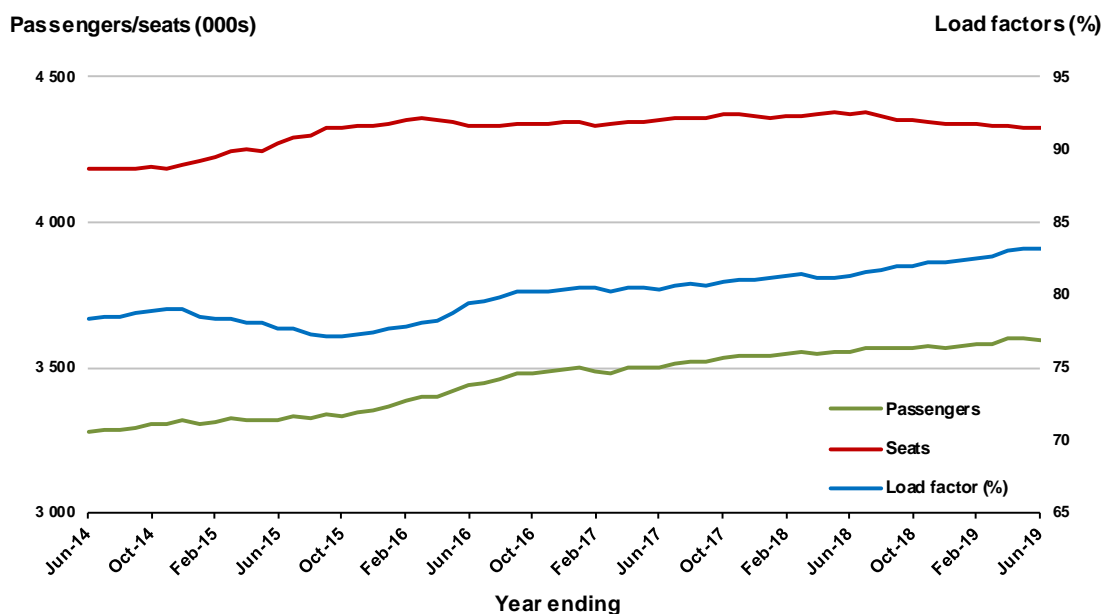
* percentage point difference



Moving annual data

	YE Jun 2018	YE Jun 2019	% Change
Passengers carried (000s)	3 556.9	3 594.8	1.1
Seats (000s)	4 373.6	4 322.1	-1.2
Load factor %	81.3	83.2	1.8 *
Aircraft trips	25 804	25 497	-1.2

* percentage point difference



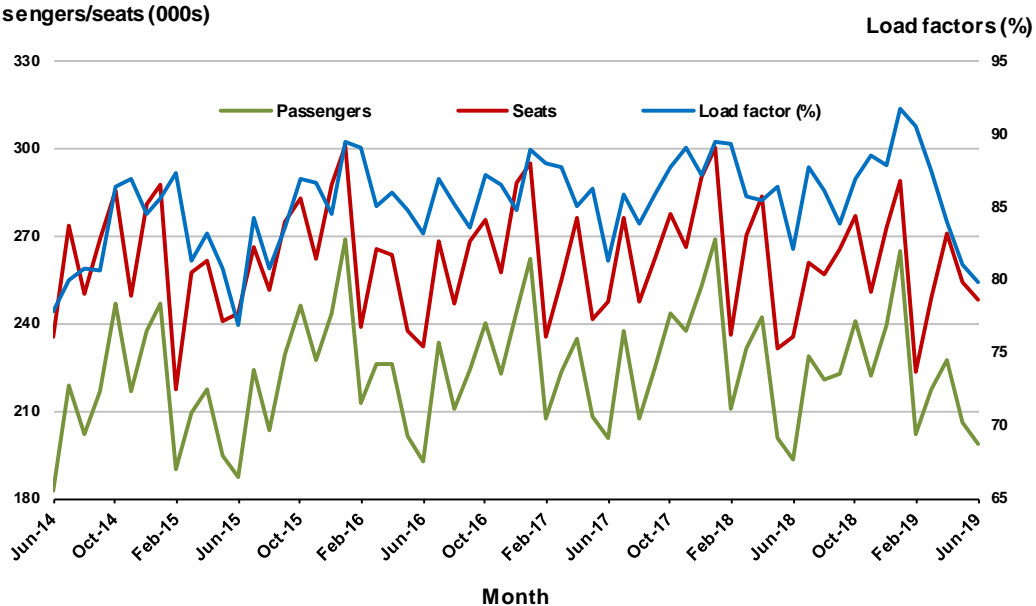
4. Gold Coast - Sydney

Monthly data

	Jun 2018	Jun 2019	% Change
Passengers carried (000s)	193.6	198.5	2.5
Seats (000s)	235.7	248.4	5.4
Load factor %	82.1	79.9	-2.2 *
Aircraft trips	1 353	1 441	6.5

* percentage point difference

Passengers/seats (000s)

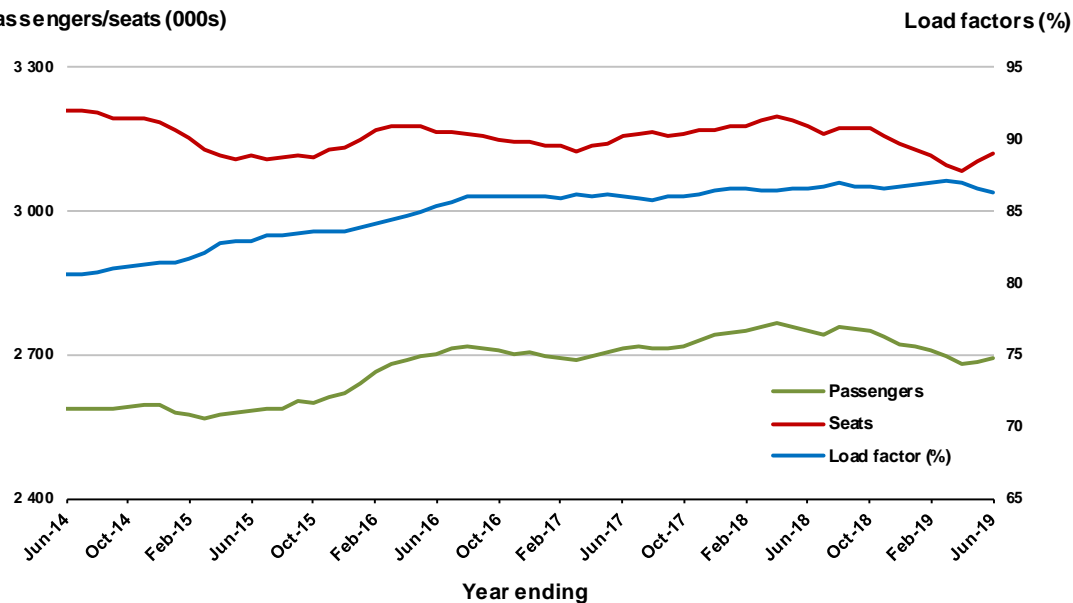


Moving annual data

	YE Jun 2018	YE Jun 2019	% Change
Passengers carried (000s)	2 751.6	2 692.0	-2.2
Seats (000s)	3 177.6	3 118.5	-1.9
Load factor %	86.6	86.3	-0.3 *
Aircraft trips	17 962	17 806	-0.9

* percentage point difference

Passengers/seats (000s)



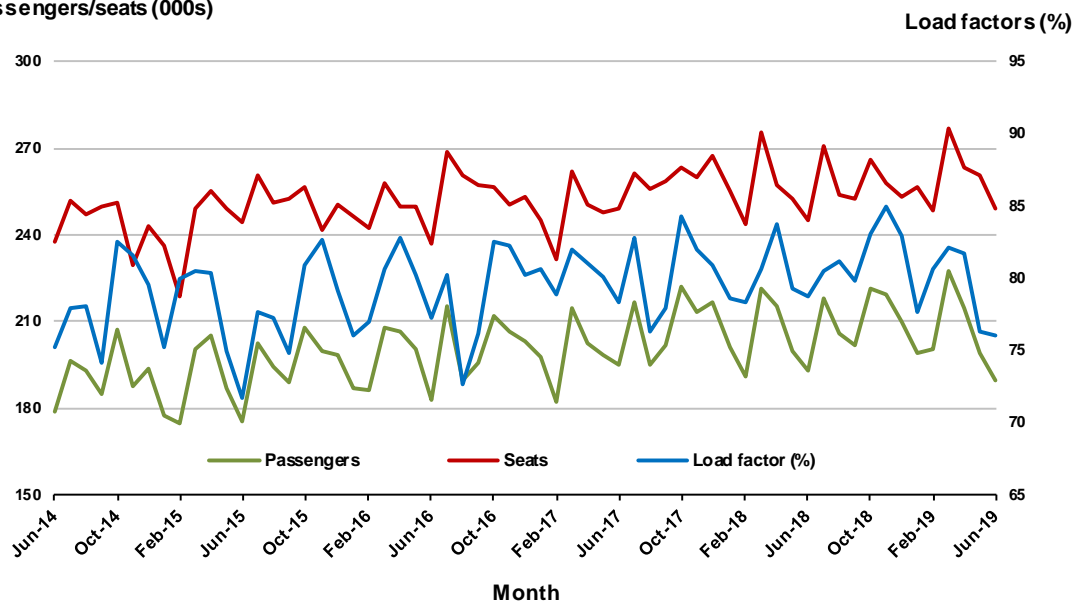
5. Adelaide - Melbourne

Monthly data

	Jun 2018	Jun 2019	% Change
Passengers carried (000s)	192.9	189.5	-1.8
Seats (000s)	245.1	249.0	1.6
Load factor %	78.7	76.1	-2.6 *
Aircraft trips	1 512	1 512	0.0

* percentage point difference

Passengers/seats (000s)

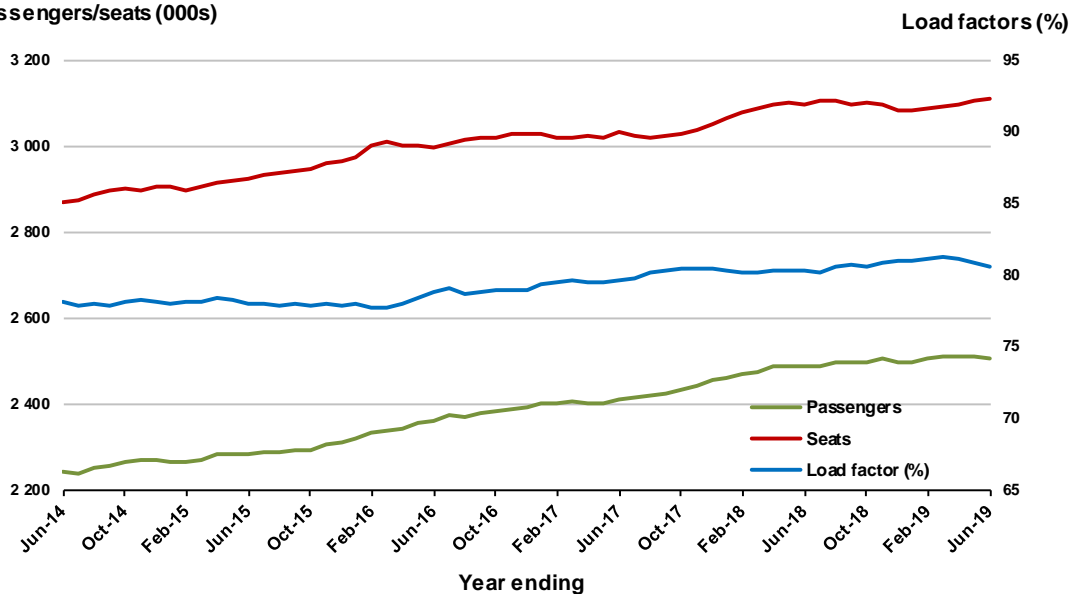


Moving annual data

	YE Jun 2018	YE Jun 2019	% Change
Passengers carried (000s)	2 487.3	2 506.8	0.8
Seats (000s)	3 096.9	3 109.5	0.4
Load factor %	80.3	80.6	0.3 *
Aircraft trips	19 213	19 058	-0.8

* percentage point difference

Passengers/seats (000s)



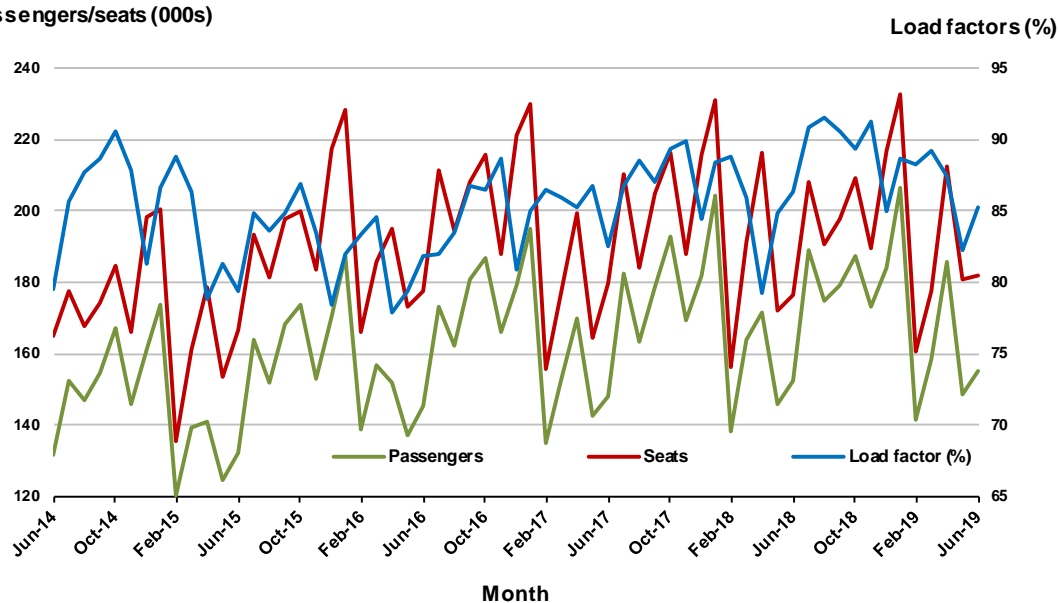
6. Gold Coast - Melbourne

Monthly data

	Jun 2018	Jun 2019	% Change
Passengers carried (000s)	152.2	155.1	1.9
Seats (000s)	176.4	182.1	3.2
Load factor %	86.3	85.2	-1.1 *
Aircraft trips	934	963	3.1

* percentage point difference

Passengers/seats (000s)

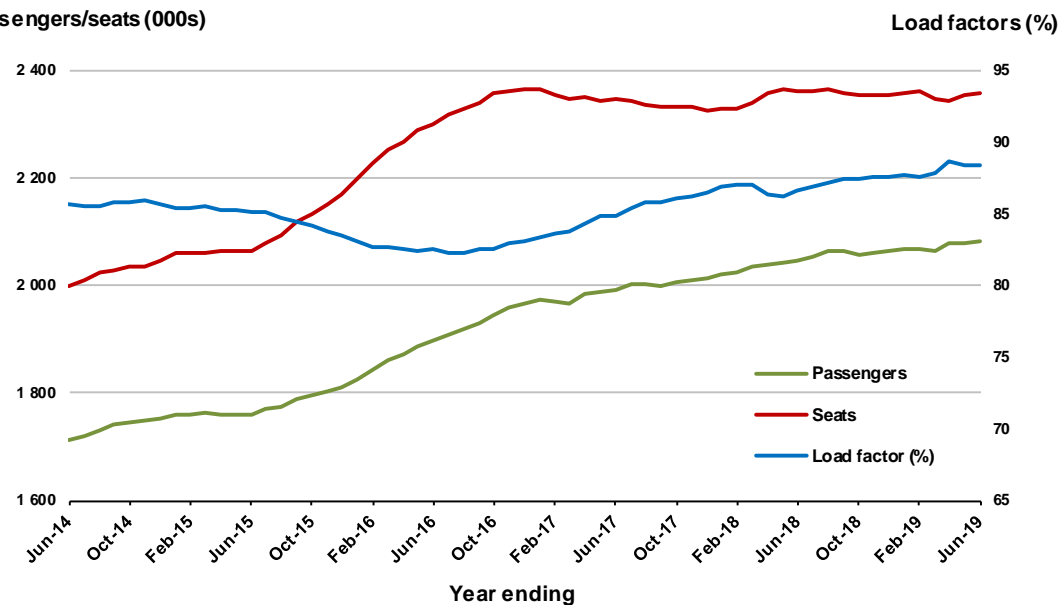


Moving annual data

	YE Jun 2018	YE Jun 2019	% Change
Passengers carried (000s)	2 045.6	2 083.4	1.8
Seats (000s)	2 362.9	2 358.4	-0.2
Load factor %	86.6	88.3	1.8 *
Aircraft trips	12 520	12 457	-0.5

* percentage point difference

Passengers/seats (000s)



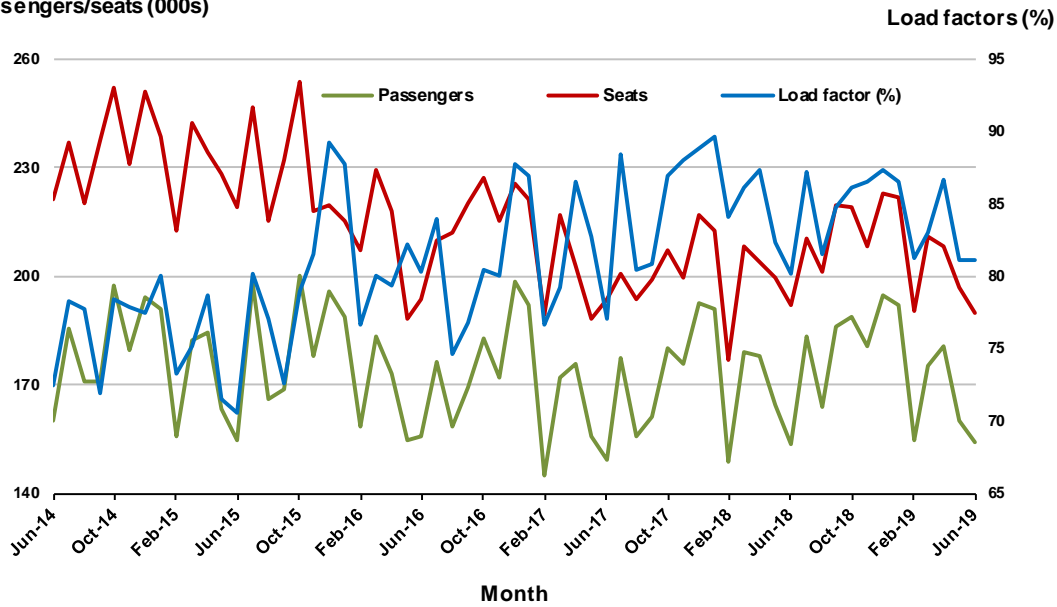
7. Melbourne - Perth

Monthly data

	Jun 2018	Jun 2019	% Change
Passengers carried (000s)	153.9	154.1	0.1
Seats (000s)	192.0	189.8	-1.1
Load factor %	80.2	81.2	1.0 *
Aircraft trips	915	968	5.8

* percentage point difference

Passengers/seats (000s)

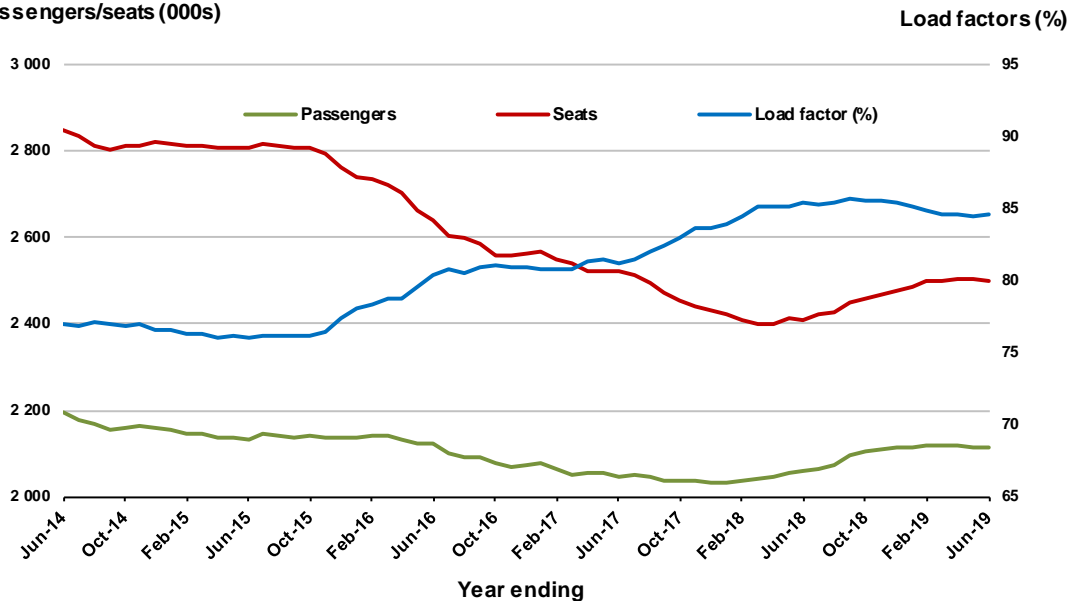


Moving annual data

	YE Jun 2018	YE Jun 2019	% Change
Passengers carried (000s)	2 057.8	2 115.7	2.8
Seats (000s)	2 410.4	2 501.2	3.8
Load factor %	85.4	84.6	-0.8 *
Aircraft trips	11 196	12 234	9.3

* percentage point difference

Passengers/seats (000s)



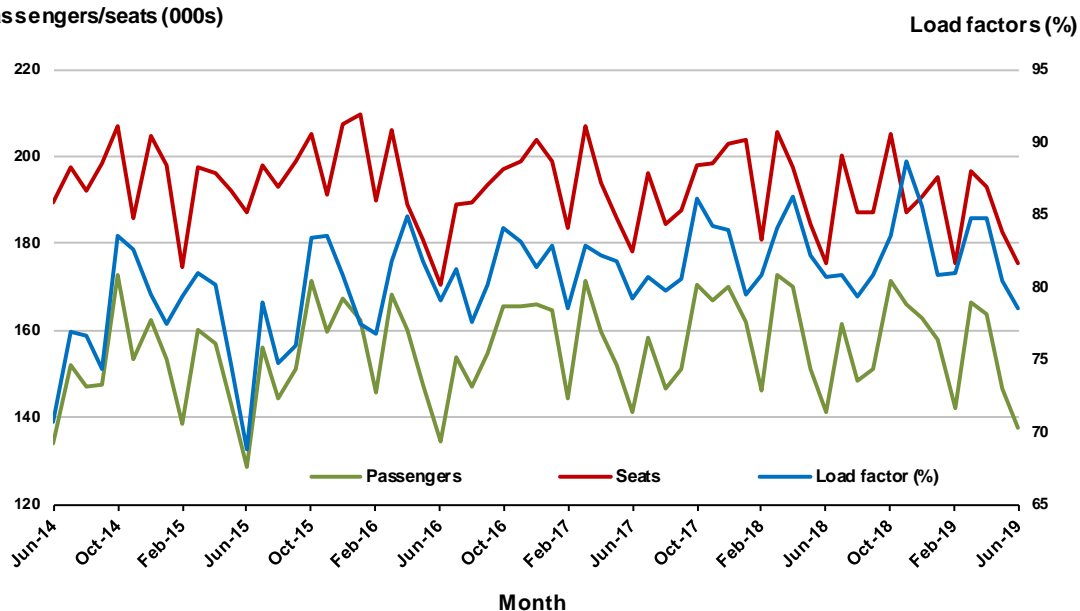
8. Adelaide - Sydney

Monthly data

	Jun 2018	Jun 2019	% Change
Passengers carried (000s)	141.5	137.6	-2.8
Seats (000s)	175.4	175.3	0.0
Load factor %	80.7	78.5	-2.2 *
Aircraft trips	1 051	1 027	-2.3

* percentage point difference

Passengers/seats (000s)

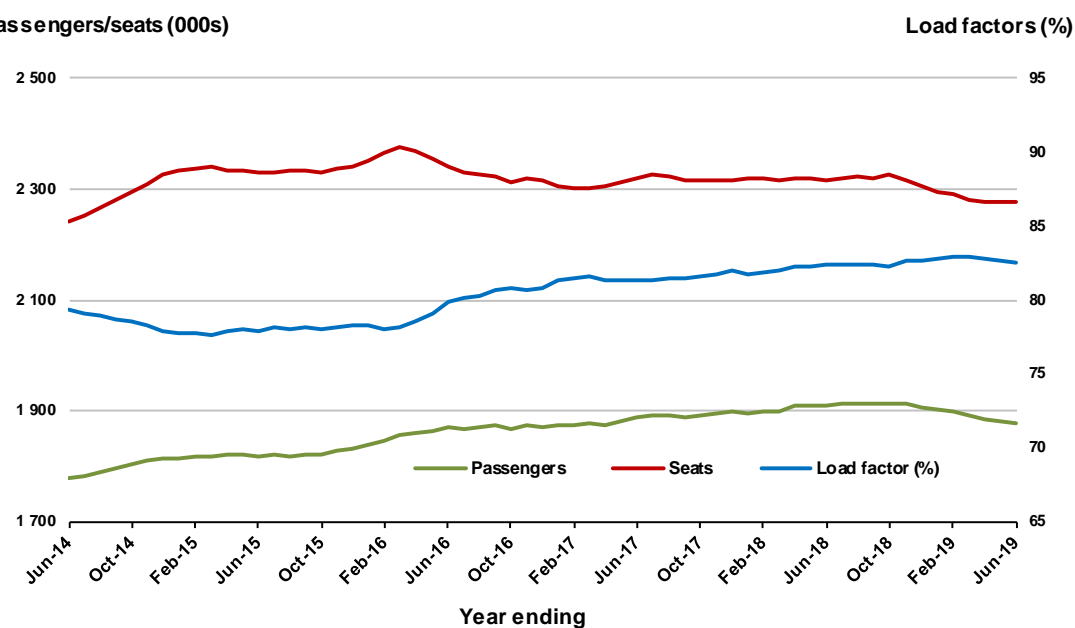


Moving annual data

	YE Jun 2018	YE Jun 2019	% Change
Passengers carried (000s)	1 908.6	1 877.3	-1.6
Seats (000s)	2 315.1	2 275.9	-1.7
Load factor %	82.4	82.5	0.0 *
Aircraft trips	13 876	13 656	-1.6

* percentage point difference

Passengers/seats (000s)



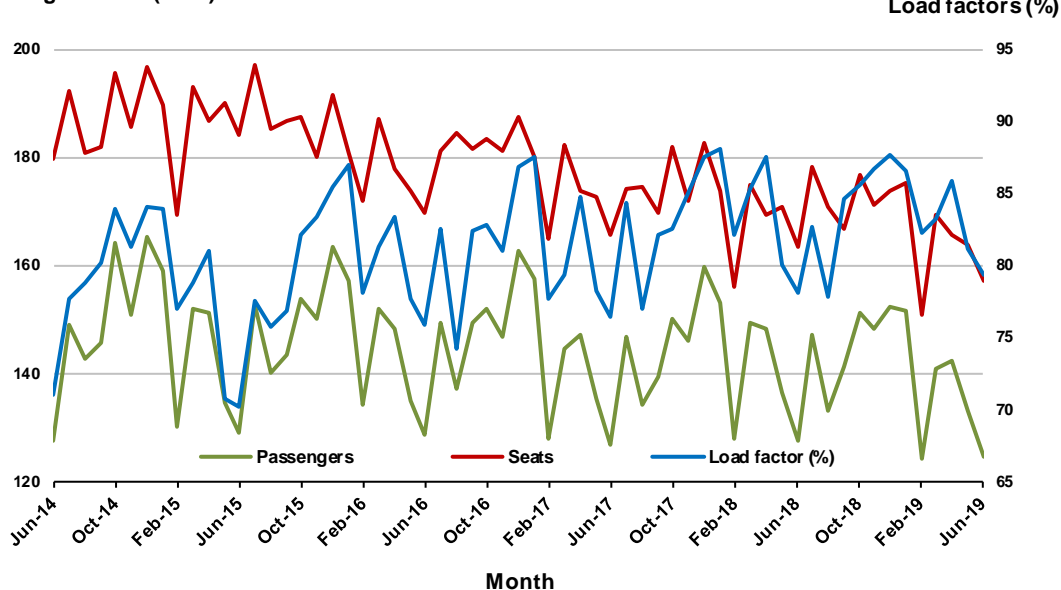
9. Perth - Sydney

Monthly data

	Jun 2018	Jun 2019	% Change
Passengers carried (000s)	127.6	124.6	-2.4
Seats (000s)	163.4	157.1	-3.9
Load factor %	78.1	79.3	1.2 *
Aircraft trips	739	707	-4.3

* percentage point difference

Passengers/seats (000s)

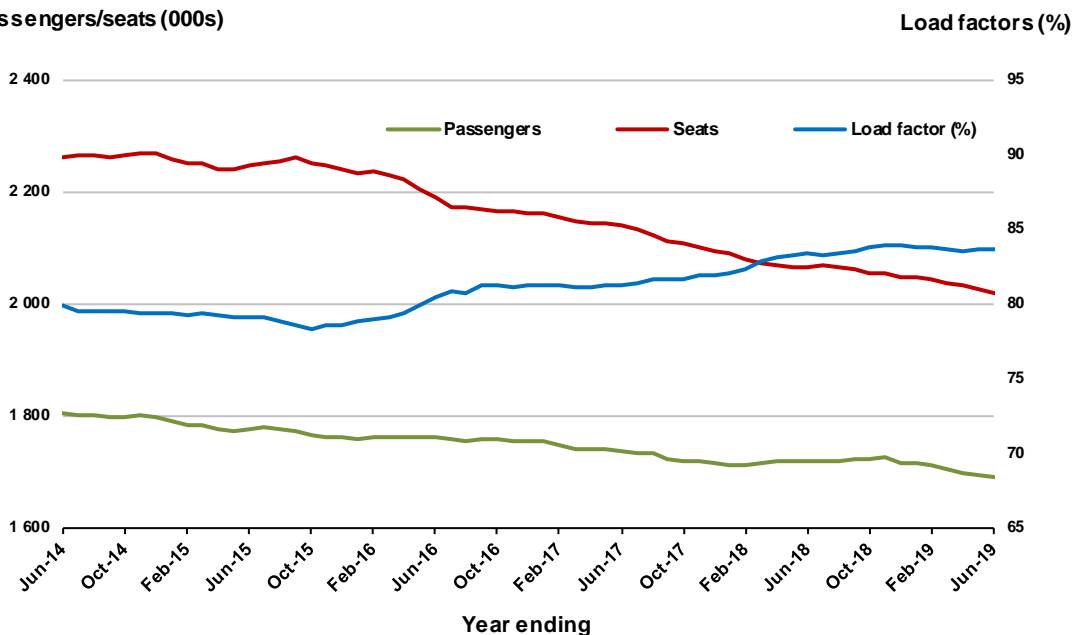


Moving annual data

	YE Jun 2018	YE Jun 2019	% Change
Passengers carried (000s)	1 719.9	1 690.4	-1.7
Seats (000s)	2 063.2	2 019.8	-2.1
Load factor %	83.4	83.7	0.3 *
Aircraft trips	9 062	9 075	0.1

* percentage point difference

Passengers/seats (000s)



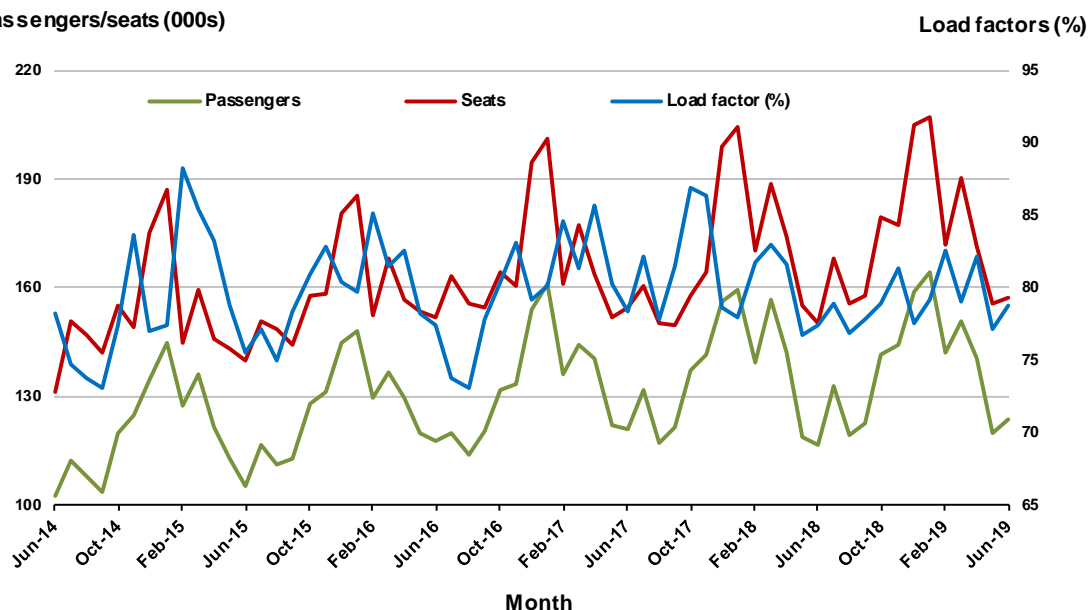
10. Hobart - Melbourne

Monthly data

	Jun 2018	Jun 2019	% Change
Passengers carried (000s)	116.5	123.9	6.4
Seats (000s)	150.5	157.3	4.6
Load factor %	77.4	78.8	1.4 *
Aircraft trips	848	867	2.2

* percentage point difference

Passengers/seats (000s)

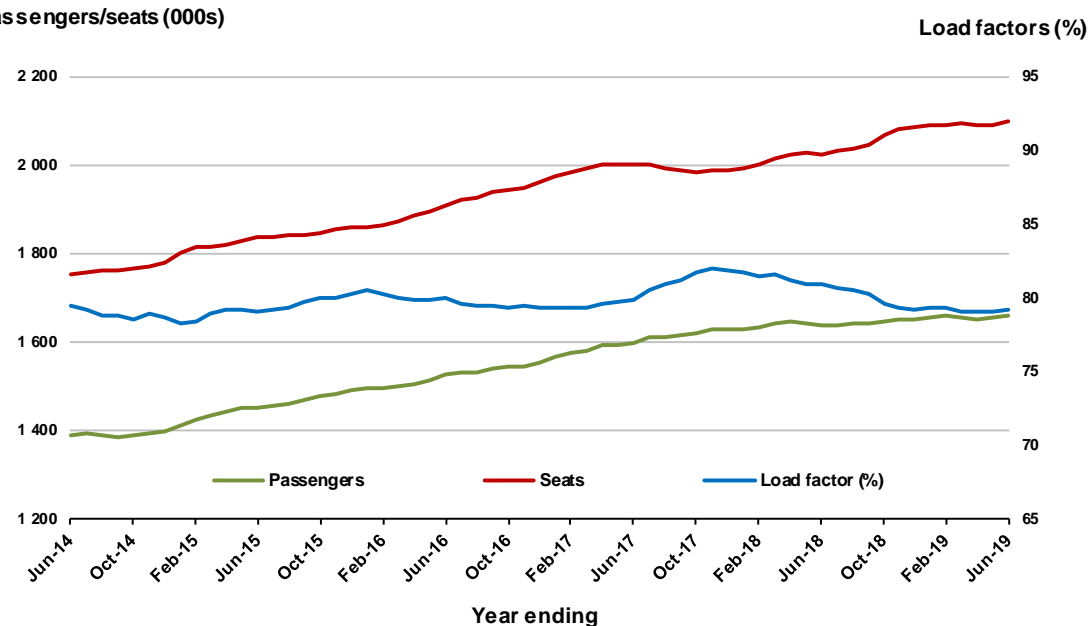


Moving annual data

	YE Jun 2018	YE Jun 2019	% Change
Passengers carried (000s)	1 638.6	1 661.3	1.4
Seats (000s)	2 024.9	2 097.2	3.6
Load factor %	80.9	79.2	-1.7 *
Aircraft trips	11 914	11 487	-3.6

* percentage point difference

Passengers/seats (000s)



TOP FIFTY REGIONAL AIRPORTS

Table 10: Top fifty regional airports (000s) — passenger movements, monthly

	Airport	Jun 2018	Jun 2019	% Change
1	Cairns	337.3	324.2	-3.9
2	Hobart	184.5	201.6	9.3
3	Darwin	162.5	160.5	-1.2
4	Townsville	135.0	140.4	4.0
5	Newcastle	95.5	98.0	2.5
6	Launceston	91.5	91.3	-0.2
7	Mackay	68.1	71.4	4.8
8	Alice Springs	51.1	47.4	-7.2
9	Rockhampton	45.8	46.2	0.9
10	Ayers Rock	30.0	41.8	39.3
11	Broome	41.9	40.9	-2.4
12	Karratha	36.9	37.0	0.3
13	Ballina	35.7	35.3	-1.2
14	Port Hedland	30.7	30.0	-2.2
15	Coffs Harbour	31.7	30.0	-5.2
16	Proserpine	31.0	29.4	-5.1
17	Hamilton Island	26.9	28.8	6.7
18	Newman	25.1	27.6	9.8
19	Kalgoorlie	22.7	22.8	0.5
20	Mildura	21.8	20.4	-6.4
21	Albury	20.4	20.1	-1.6
22	Gladstone	21.0	19.9	-5.1
23	Mount Isa	18.0	19.0	5.3
24	Wagga Wagga	18.0	17.3	-4.2
25	Port Macquarie	17.2	17.2	0.3
26	Dubbo	17.9	17.1	-4.7
27	Emerald	16.4	16.6	1.4
28	Paraburdoo	15.1	15.5	2.5
29	Tamworth	15.4	15.2	-1.5
30	Port Lincoln	12.9	12.9	0.5
31	Hervey Bay	12.2	12.9	5.4
32	Bundaberg	13.7	12.7	-7.7
33	Kununurra	10.9	11.8	8.1
34	Devonport	11.0	11.2	1.9
35	Armidale	10.1	10.3	2.1
36	Toowoomba Wellcamp	10.7	9.6	-10.9
37	Moranbah	8.7	8.9	2.7
38	Learmonth	8.0	8.7	7.9
39	Geraldton	9.3	8.5	-8.4
40	Thursday Island	8.7	8.2	-5.7
41	Roma	7.3	8.2	12.9
42	Griffith	6.5	7.7	18.1
43	Gove	7.6	7.4	-2.1
44	Mount Gambier	6.5	6.9	5.1
45	Orange	6.4	6.8	5.0
46	Olympic Dam	6.5	6.6	2.7
47	Whyalla	6.6	6.6	0.0
48	Weipa	6.8	5.8	-13.9
49	Burnie	5.1	5.2	1.9
50	Merimbula	5.5	5.1	-6.2
Total top 50 regional airports		1 846.2	1 864.9	1.0
Total regional airports		1 960.1	1 974.6	0.7
Total domestic network		9 440.0	9 416.5	-0.2

Note: Airport passenger movement numbers are the sum of passenger arrivals and departures at each airport.

Regional airports are defined as airports which are, according to the Australian Bureau of Statistics

"The Australian Statistical Geography Standard (ASGS)", not based in Major Urban areas.

Table 11: Top fifty regional airports (000s) — passenger movements, annual

Airport	YE Jun 2018	YE Jun 2019	% Change
1 Cairns	4 329.5	4 225.2	-2.4
2 Hobart	2 596.1	2 725.6	5.0
3 Darwin	1 778.6	1 715.5	-3.5
4 Townsville	1 640.5	1 648.7	0.5
5 Launceston	1 363.1	1 390.6	2.0
6 Newcastle	1 279.4	1 260.8	-1.5
7 Mackay	813.9	861.9	5.9
8 Alice Springs	615.1	604.2	-1.8
9 Rockhampton	563.9	552.8	-2.0
10 Ballina	526.8	534.1	1.4
11 Ayers Rock	380.3	456.9	20.1
12 Karratha	433.2	448.3	3.5
13 Hamilton Island	416.4	431.2	3.6
14 Proserpine	470.0	430.0	-8.5
15 Broome	417.9	407.8	-2.4
16 Coffs Harbour	413.2	396.5	-4.0
17 Port Hedland	356.2	374.2	5.0
18 Newman	294.3	323.5	9.9
19 Kalgoorlie	266.6	294.7	10.5
20 Mildura	263.9	262.1	-0.7
21 Albury	268.1	253.8	-5.3
22 Gladstone	265.8	246.7	-7.2
23 Mount Isa	207.1	216.8	4.7
24 Port Macquarie	222.8	214.8	-3.6
25 Dubbo	229.7	212.6	-7.5
26 Wagga Wagga	225.3	208.0	-7.7
27 Emerald	195.8	196.4	0.3
28 Tamworth	192.7	187.7	-2.6
29 Paraburdoo	171.6	181.5	5.8
30 Port Lincoln	169.4	169.0	-0.3
31 Hervey Bay	170.0	161.5	-5.0
32 Bundaberg	169.5	156.4	-7.7
33 Devonport	147.7	146.8	-0.6
34 Armidale	130.9	130.3	-0.5
35 Toowoomba Wellcamp	149.8	124.1	-17.2
36 Kununurra	103.8	110.6	6.6
37 Geraldton	112.0	110.3	-1.5
38 Moranbah	104.3	109.5	5.0
39 Thursday Island	99.4	99.2	-0.3
40 Roma	85.2	92.8	9.0
41 Griffith	75.3	86.6	15.0
42 Learmonth	87.1	85.8	-1.5
43 Mount Gambier	80.6	81.8	1.5
44 Gove	86.6	81.4	-6.0
45 Orange	70.6	80.0	13.3
46 Whyalla	70.3	77.9	10.7
47 Olympic Dam	76.5	77.8	1.7
48 Weipa	79.2	77.7	-1.8
49 Burnie	65.5	72.6	10.8
50 Merimbula	67.0	68.5	2.3
Total top 50 regional airports	23 398.4	23 463.5	0.3
Total regional airports	24 773.5	24 868.1	0.4
Total domestic network	121 500.7	121 906.5	0.3

Note: Airport passenger movement numbers are the sum of passenger arrivals and departures at each airport. Regional airports are defined as airports which are, according to the Australian Bureau of Statistics "The Australian Statistical Geography Standard (ASGS)", not based in Major Urban areas.

DOMESTIC CHARTER ACTIVITY

Table 12: Charter passengers carried and aircraft trips - monthly activity

	Jun 2018	Jun 2019	% Change
Total domestic charter passengers	194 627	209 486	7.6
Total domestic charter aircraft trips	3 409	3 535	3.7

Note: Helicopter, joyflights and sightseeing charter flights not included.

Table 13: Charter passengers carried and aircraft trips - annual activity

	YE Jun 2018	YE Jun 2019	% Change
Total domestic charter passengers	2 445 205	2 567 510	5.0
Total domestic charter aircraft trips	45 768	44 519	-2.7

Note: Helicopter, joyflights and sightseeing charter flights not included.

Table 14: Domestic airports - charter activity - monthly

	Jun 2018	Jun 2019	% Change
Total domestic charter passenger movements	389 254	418 972	7.6
Total domestic charter aircraft movements	6 818	7 070	3.7
Perth airport charter passenger movements	146 988	162 397	10.5
Perth airport charter aircraft movements	2 353	2 492	5.9

Note: Helicopter, joyflights and sightseeing charter flights not included.

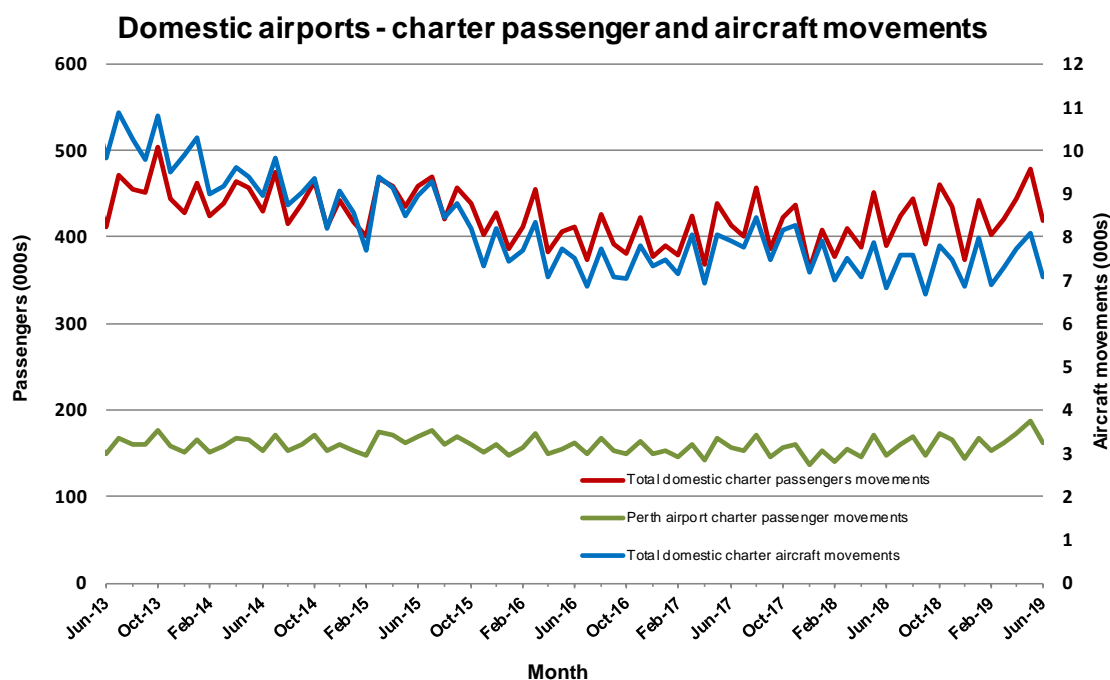
Charter passenger and aircraft movement numbers are the sum of arrivals and departures at each airport.

Table 15: Domestic airports - charter activity - annual

	YE Jun 2018	YE Jun 2019	% Change
Total domestic charter passenger movements	4 890 410	5 135 020	5.0
Total domestic charter aircraft movements	91 536	89 038	-2.7
Perth airport charter passenger movements	1 838 410	1 966 218	7.0
Perth airport charter aircraft movements	30 781	30 789	0.0

Note: Helicopter, joyflights and sightseeing charter flights not included.

Charter passenger and aircraft movement numbers are the sum of arrivals and departures at each airport.



DEFINITIONS

Aircraft Trips	The number of flight stages. A return flight counts as two aircraft trips.
Airport Movements	Airport movements (passenger and cargo) are measured once on arrival and once on departure. Each domestic trip generates two movements at airports. For example, a trip from Melbourne to Sydney will be counted twice, as a passenger departure at Melbourne and as a passenger arrival at Sydney. At the national level, the sum of all domestic airport traffic will therefore be equal to twice the number of trips undertaken.
Available Seat Kilometres (ASKs)	Calculated by multiplying the number of seats available on each flight stage, by the distance in kilometres between the ports. The distances used are Great Circle Distances.
City-Pair	The ports shown make up the city-pair route. Passenger movements shown for a city pair reflect total traffic in both directions.
Flight Stage	The operation of an aircraft from take-off to landing.
Load Factor	The total revenue passenger kilometres performed as a percentage of the total available seat kilometres.
Passengers Carried	Revenue passengers carried.
Regular Public Transport Services (RPT)	All air service operations in which aircraft are available for the transport of members of the public and are conducted in accordance with fixed schedules. It does not include charter or other non-scheduled operations.
Revenue Passengers	All passengers paying any fare. Frequent flyer redemption travellers are regarded as revenue passengers.
Revenue Passenger Kilometres (RPKs)	Calculated by multiplying the number of revenue passengers travelling on each flight stage, by the distance in kilometres between the ports. The distances used are Great Circle Distances.
Traffic on board by stages	The total of all traffic (revenue passengers) on each flight stage between two directly connected airports.
..	Data not included
NA	Not applicable