



Australian Government

Department of Infrastructure, Regional Development and Cities

Bureau of Infrastructure, Transport and Regional Economics

STATISTICAL REPORT



Aviation

Domestic aviation activity

June 2018

© Commonwealth of Australia 2018

ISSN: 1832 - 1968

Ownership of intellectual property rights in this publication

Unless otherwise noted, copyright (and any other intellectual property rights, if any) in this publication is owned by the Commonwealth of Australia (referred to below as the Commonwealth).

Disclaimer

The material contained in this publication is made available on the understanding that the Commonwealth is not providing professional advice, and that users exercise their own skill and care with respect to its use, and seek independent advice if necessary.

The Commonwealth makes no representations or warranties as to the contents or accuracy of the information contained in this publication. To the extent permitted by law, the Commonwealth disclaims liability to any person or organisation in respect of anything done, or omitted to be done, in reliance upon information contained in this publication.

Creative Commons licence

With the exception of (a) the Coat of Arms; and (b) the Department of Infrastructure, Regional Development and Cities' photos and graphics, copyright in this publication is licensed under a Creative Commons Attribution 3.0 Australia Licence.

Creative Commons Attribution 3.0 Australia Licence is a standard form licence agreement that allows you to copy, communicate and adapt this publication provided that you attribute the work to the Commonwealth and abide by the other licence terms. A summary of the licence terms is available from <http://creativecommons.org/licenses/by/3.0/au/deed.en>. The full licence terms are available from <http://creativecommons.org/licenses/by/3.0/au/legalcode>.

Use of the Coat of Arms

The Department of the Prime Minister and Cabinet sets the terms under which the Coat of Arms is used. Please refer to the Department's Commonwealth Coat of Arms and Government branding web page <http://www.dpmc.gov.au/guidelines/index.cfm#brand> and, in particular, the Guidelines on the use of the Commonwealth Coat of Arms publication.

An appropriate citation for this report is:

Bureau of Infrastructure, Transport and Regional Economics (BITRE), 2018, Domestic aviation activity, Statistical Report, BITRE, Canberra ACT.

Contact us

This publication is available in PDF format. All other rights are reserved, including in relation to any Departmental logos or trade marks which may exist. For enquiries regarding the licence and any use of this publication, please contact:

Bureau of Infrastructure, Transport and Regional Economics (BITRE)
Department of Infrastructure, Regional Development and Cities
GPO Box 501, Canberra ACT 2601, Australia
Telephone: (international) +61 2 6274 7210
Fax: (international) +61 2 6274 6855
Email: bitre@infrastructure.gov.au
Website: www.bitre.gov.au

Inquiries

Should you require additional information about the statistics contained in this publication:

Nebojsa Pavlovic

Telephone (02) 6274 7658 or Facsimile (02) 6274 7727

Electronic mail: AVSTATS@infrastructure.gov.au

Nebojsa.Pavlovic@infrastructure.gov.au

Web site: <http://www.bitre.gov.au/statistics/aviation/domestic.aspx>

FOREWORD

This report provides an overview of domestic (including charter) commercial aviation activity in Australia for the month of June 2018.

The data cover revenue passengers carried by Australian-registered operators of scheduled regular public transport services over Australian flight stages and fixed-wing charter operators. These estimates include passengers carried between domestic airports on international flights operated by these carriers. The passengers carried refer to traffic on board by stages.

Estimates of passengers and aircraft movements for charter aviation are included in this publication, where BITRE confidentiality standards are met.

Individual routes shown are restricted to those with an average exceeding 8 000 passengers per month over the previous six months where two or more airlines operate in competition. For the month of June 2018, there were 66 such routes.

Information on the total network for the month of June 2018 and on the Regular Public Transport (RPT) network for the month of June 2018 is presented on page 2, with estimates for the year ended June 2018 presented on page 3.

Detailed information on the 66 individual routes can be found in the RPT summary pages 4-13 of this publication.

The top ten airports in terms of RPT passenger movements are shown on page 14.

Data on domestic RPT cargo movements at the top five cargo airports are provided on page 15. The table includes cargo carried on passenger flights operated by the Qantas group (including Jetstar), Virgin Australia, Air North and Skippers as well as the cargo carried by dedicated freighter aircraft operated by Qantas Freight, Toll Priority and Virgin Australia Cargo.

The long-term trends for the top ten competitive RPT routes are presented graphically on pages 16-25.

Domestic RPT passenger movements at the top 50 regional airports are presented on pages 26-27.

Tables providing estimates of domestic charter aviation activity are shown on page 28. BITRE confidentiality standards restrict publication of detailed estimates for individual Australian airports, with the exception of Perth Airport.

A list of definitions can be found on page 29.

This report was prepared by the Aviation Statistics Section of the Bureau of Infrastructure, Transport and Regional Economics with data provided by airlines.

Estimates are included where data were not available and data presented in this publication may contain revisions to previously published data.

Where figures have been rounded, discrepancies may occur between sums of component items and totals, and in percentage changes which are derived from figures prior to rounding.

CONTENTS

Highlights	1
Total network.....	2
RPT network.....	2
Top competitive routes.....	4
Top ten airports – passenger movements.....	14
Top five airports – cargo movements.....	15
Top ten routes	16
1. Melbourne – Sydney	16
2. Brisbane – Sydney	17
3. Brisbane – Melbourne	18
4. Gold Coast – Sydney	19
5. Adelaide – Melbourne	20
6. Melbourne – Perth	21
7. Gold Coast – Melbourne	22
8. Adelaide – Sydney	23
9. Perth – Sydney	24
10. Hobart – Melbourne	25
Top fifty regional airports	26
Domestic charter activity.....	28
Definitions	29

This page is intentionally left blank.

HIGHLIGHTS

There were 4.91 million passengers carried on Australian domestic commercial aviation (including charter operations) in June 2018, an increase of 0.2 per cent on June 2017. For the month of June 2018 there were 53 253 aircraft trips, a decrease of 4.8 per cent compared to June 2017.

4.72 million passengers were carried on RPT flights in June 2018, an increase of 0.5 per cent on June 2017.

For the year ending June 2018 there were 60.77 million RPT passengers, an increase of 2.5 per cent on the year ending June 2017.

RPT revenue passenger kilometres (RPKs) performed were 5.50 billion for the month, up 0.7 per cent compared with June 2017. Capacity, measured by available seat kilometres (ASKs), decreased by 0.8 per cent compared with June 2017 to a total of 7.00 billion.

With RPT passenger traffic increasing and capacity decreasing, the industry wide load factor (RPKs/ASKs) increased from 77.4 per cent in June 2017 to 78.6 per cent in June 2018. Load factors on individual routes increased on 46 of the 64 RPT routes for which data is available for publishing in both years.

For the month of June 2018, Melbourne – Sydney remained Australia's busiest RPT route with 725 780 passengers, an increase of 0.6 per cent compared with June 2017. It was followed by Brisbane – Sydney with 383 912 passengers (up 0.4 per cent) and Brisbane – Melbourne with 281 817 passengers (up 0.8 per cent).

The greatest percentage increase in RPT passenger numbers, compared to June 2017, was on the Hamilton Island – Sydney route (up 20.9 per cent). There were large increases on a number of other routes, including Melbourne – Sunshine Coast (up 12.4 per cent), Adelaide – Perth (up 11.6 per cent) and Hobart – Sydney (up 11.0 per cent).

Routes with traffic decreases in June 2018 compared with June 2017 included Brisbane – Proserpine (down 11.7 per cent), Armidale – Sydney (down 9.1 per cent), Sydney – Tamworth (down 8.8 per cent) and Brisbane – Cairns (down 7.8 per cent).

In June 2018, Sydney remained Australia's busiest domestic airport with 2.13 million passenger movements, followed by Melbourne with 1.99 million passenger movements and Brisbane with 1.37 million passenger movements.

Total cargo movements at Australian airports on domestic RPT flights were 36.0 thousand tonnes in June 2018, a decrease of 0.9 per cent compared with June 2017.

In June 2018, there were 1.96 million domestic passenger movements through regional airports, 0.2 per cent lower than in June 2017. Out of the top 50 regional airports, the strongest growth was at Whyalla airport (up 21.9 per cent on June 2017), while the largest decrease was at Moranbah airport (down 16.7 per cent on June 2017).

Fixed-wing charter operators carried 193.53 thousand passengers in June 2018, a decrease of 6.2 per cent on June 2017. Perth airport accounted for 37.7 per cent of all charter passengers in Australia.

TOTAL NETWORK

Summary of monthly commercial aviation activity

	Jun 2017	Jun 2018	% Change
Total passengers carried (millions)	4.90	4.91	0.2
Aircraft trips (000s)	55.9	53.3	-4.8

Note: Regular Public Transport and charter aviation activity
Helicopter, joyflights and sightseeing charter flights not included.

RPT NETWORK

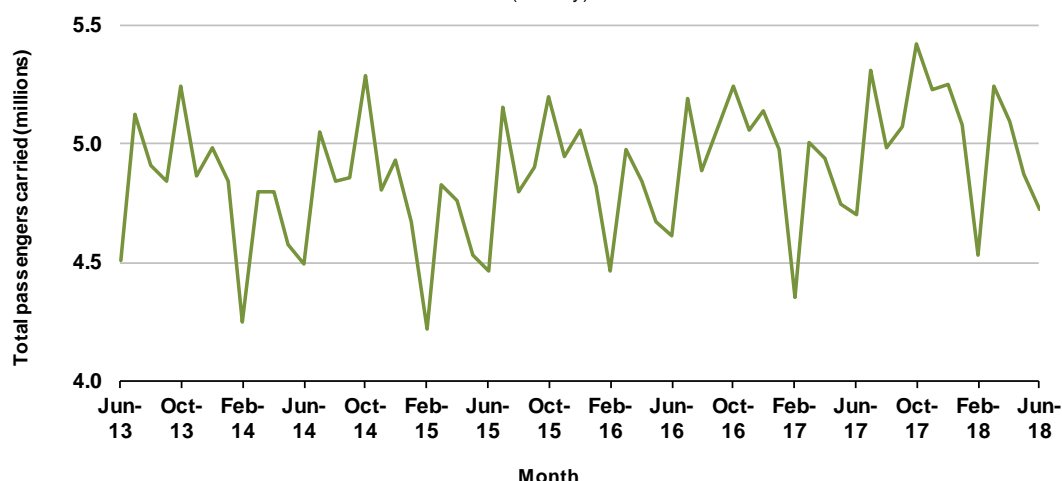
Summary of monthly RPT activity

	Jun 2017	Jun 2018	% Change
Total passengers carried (millions)	4.70	4.72	0.5
Revenue passenger kilometres (billions)	5.46	5.50	0.7
Available seats (millions)	6.18	6.10	-1.4
Available seat kilometres (billions)	7.06	7.00	-0.8
Load factor %	77.4	78.6	1.2 *
Aircraft trips (000s)	52.0	49.9	-4.1

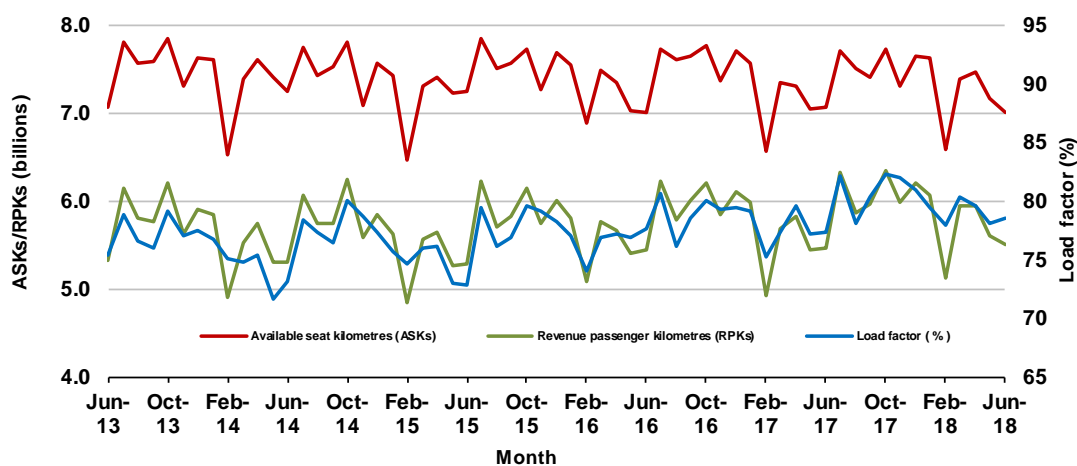
* percentage point difference

Domestic RPT passenger traffic

(monthly)



RPT Network utilisation



TOTAL NETWORK

Summary of annual commercial aviation activity

	YE Jun 2017	YE Jun 2018	% Change
Total passengers carried (millions)	61.70	63.20	2.4
Aircraft trips (000s)	686.3	680.1	-0.9

Note: Regular Public Transport and charter aviation activity
Helicopter, joyflights and sightseeing charter flights not included.

RPT NETWORK

Summary of annual RPT activity

	YE Jun 2017	YE Jun 2018	% Change
Total passengers carried (millions)	59.30	60.77	2.5
Revenue passenger kilometres (billions)	69.49	70.87	2.0
Available seats (millions)	77.25	77.51	0.3
Available seat kilometres (billions)	88.67	88.53	-0.2
Load factor %	78.4	80.1	1.7 *
Aircraft trips (000s)	641.7	635.1	-1.0

* percentage point difference

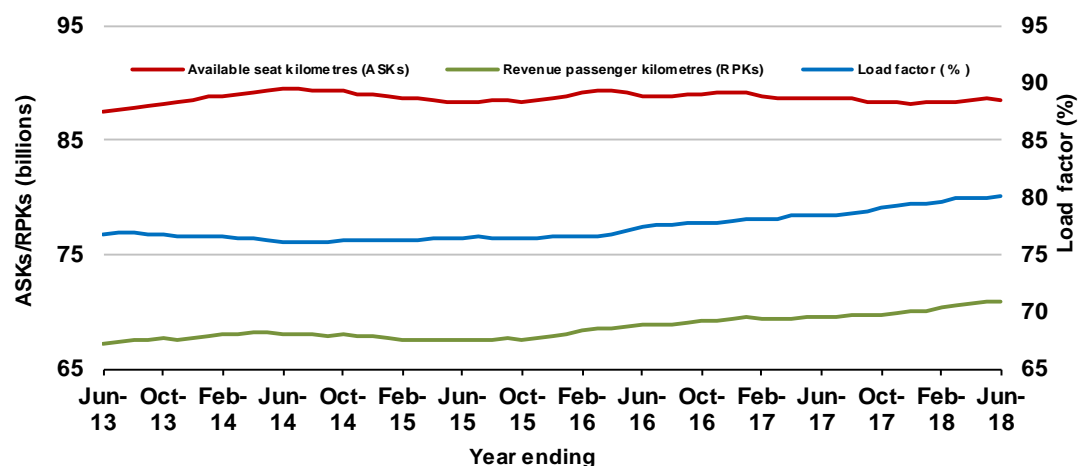
Domestic RPT passenger traffic

(moving annual totals)



RPT Network utilisation

(moving annual totals)



TOP COMPETITIVE ROUTES

Table 1: Passengers carried (000s) — annual activity

	City-Pair	YE Jun 2017	YE Jun 2018	% Change
1	Melbourne - Sydney	8 974.5	9 250.8	3.1
2	Brisbane - Sydney	4 695.7	4 788.1	2.0
3	Brisbane - Melbourne	3 500.5	3 556.9	1.6
4	Gold Coast - Sydney	2 712.7	2 752.4	1.5
5	Adelaide - Melbourne	2 413.4	2 487.3	3.1
6	Melbourne - Perth	2 048.1	2 057.8	0.5
7	Gold Coast - Melbourne	1 992.2	2 045.6	2.7
8	Adelaide - Sydney	1 886.5	1 908.6	1.2
9	Perth - Sydney	1 737.8	1 719.9	-1.0
10	Hobart - Melbourne	1 598.7	1 638.6	2.5
11	Brisbane - Cairns	1 359.6	1 362.5	0.2
12	Canberra - Melbourne	1 078.7	1 150.5	6.7
13	Cairns - Sydney	1 124.8	1 135.1	0.9
14	Brisbane - Townsville	958.6	976.9	1.9
15	Brisbane - Perth	964.8	976.1	1.2
16	Canberra - Sydney	955.0	952.0	-0.3
17	Launceston - Melbourne	912.9	945.7	3.6
18	Adelaide - Brisbane	831.0	856.8	3.1
19	Cairns - Melbourne	830.0	850.3	2.5
20	Brisbane - Mackay	675.1	717.3	6.3
21	Hobart - Sydney	634.4	686.2	8.2
22	Adelaide - Perth	615.2	629.7	2.3
23	Brisbane - Canberra	585.5	618.5	5.6
24	Sunshine Coast - Sydney	558.5	612.5	9.7
25	Brisbane - Newcastle	587.0	584.1	-0.5
26	Brisbane - Rockhampton	540.3	522.3	-3.3
27	Melbourne - Sunshine Coast	458.1	515.8	12.6
28	Melbourne - Newcastle	469.1	488.4	4.1
29	Karratha - Perth	461.5	431.7	-6.5
30	Ballina - Sydney	392.7	424.9	8.2
31	Brisbane - Darwin	408.7	396.1	-3.1
32	Perth - Port Hedland	340.7	346.9	1.8
33	Coffs Harbour - Sydney	342.2	346.5	1.3
34	Broome - Perth	288.9	343.8	19.0
35	Darwin - Sydney	320.1	318.1	-0.6
36	Darwin - Melbourne	306.3	302.7	-1.2
37	Newman - Perth	292.5	293.9	0.5
38	Launceston - Sydney	290.6	283.4	-2.5
39	Brisbane - Proserpine	228.8	273.2	19.4
40	Brisbane - Gladstone	303.0	265.3	-12.4
41	Kalgoorlie - Perth	235.6	255.6	8.5
42	Albury - Sydney	224.4	221.8	-1.2
43	Adelaide - Gold Coast	216.5	220.1	1.7
44	Melbourne - Mildura	207.4	218.5	5.4
45	Brisbane - Hobart	207.1	217.0	4.8
46	Darwin - Perth	190.4	203.2	6.7
47	Hamilton Island - Sydney	233.5	200.0	-14.4
48	Ayers Rock - Sydney	190.4	196.2	3.0
49	Brisbane - Emerald	197.3	195.6	-0.9
50	Adelaide - Canberra	175.3	190.2	8.5

continued

Table 1: (continued) Passengers carried (000s) — annual activity

	City-Pair	YE Jun 2017	YE Jun 2018	% Change
51	Port Macquarie - Sydney	192.9	189.8	-1.6
52	Dubbo - Sydney	189.4	189.6	0.1
53	Sydney - Wagga Wagga	186.6	179.6	-3.8
54	Sydney - Tamworth	181.3	176.4	-2.7
55	Brisbane - Bundaberg	174.4	169.4	-2.8
56	Adelaide - Port Lincoln	175.2	169.1	-3.5
57	Sydney - Townsville	158.1	160.9	1.8
58	Cairns - Townsville	139.9	147.9	5.7
59	Adelaide - Alice Springs	122.1	127.9	4.7
60	Brisbane - Mount Isa	121.2	127.6	5.2
61	Brisbane - Hamilton Island	141.7	123.9	-12.6
62	Armidale - Sydney	126.8	123.5	-2.5
63	Melbourne - Townsville	..	120.5	NA (a)
64	Alice Springs - Darwin	116.4	113.8	-2.2
65	Proserpine - Sydney	..	112.9	NA (b)
66	Geraldton - Perth	115.7	111.9	-3.3
	Total domestic network	59 303.5	60 795.4	2.5

(a) Melbourne - Townsville route included from September 2017, prior data not shown.

(b) Proserpine - Sydney route included from September 2017, prior data not shown.

Table 2: Passengers carried (000s) — monthly activity

	City-Pair	Jun 2017	Jun 2018	% Change
1	Melbourne - Sydney	721.5	725.8	0.6
2	Brisbane - Sydney	382.4	383.9	0.4
3	Brisbane - Melbourne	279.5	281.8	0.8
4	Gold Coast - Sydney	201.1	193.6	-3.7
5	Adelaide - Melbourne	194.8	192.9	-1.0
6	Melbourne - Perth	149.3	153.9	3.1
7	Gold Coast - Melbourne	148.0	152.2	2.8
8	Adelaide - Sydney	141.3	141.5	0.2
9	Perth - Sydney	126.8	127.6	0.7
10	Hobart - Melbourne	120.9	116.5	-3.7
11	Brisbane - Cairns	112.2	103.4	-7.8
12	Canberra - Melbourne	94.5	94.6	0.1
13	Cairns - Sydney	82.0	84.6	3.2
14	Canberra - Sydney	82.9	83.0	0.1
15	Brisbane - Townsville	85.4	82.2	-3.8
16	Cairns - Melbourne	66.4	70.9	6.9
17	Brisbane - Perth	75.2	70.2	-6.7
18	Launceston - Melbourne	61.2	66.3	8.3
19	Adelaide - Brisbane	61.0	63.0	3.2
20	Brisbane - Mackay	58.5	58.9	0.7
21	Brisbane - Canberra	48.4	50.6	4.5
22	Hobart - Sydney	44.5	49.4	11.0
23	Adelaide - Perth	43.3	48.4	11.6
24	Brisbane - Newcastle	46.4	44.0	-5.1
25	Sunshine Coast - Sydney	39.1	43.3	10.9
26	Brisbane - Rockhampton	45.7	42.9	-6.0
27	Melbourne - Newcastle	35.5	37.8	6.6
28	Karratha - Perth	38.2	36.8	-3.5
29	Melbourne - Sunshine Coast	32.5	36.5	12.4
30	Brisbane - Darwin	37.1	35.5	-4.2
31	Broome - Perth	29.5	30.8	4.2
32	Darwin - Sydney	32.9	30.4	-7.6
33	Perth - Port Hedland	27.0	29.8	10.7
34	Ballina - Sydney	27.7	29.7	7.2
35	Darwin - Melbourne	30.2	29.4	-2.7
36	Coffs Harbour - Sydney	27.8	26.8	-3.4
37	Newman - Perth	24.5	25.0	1.9
38	Kalgoorlie - Perth	20.0	21.9	9.4
39	Brisbane - Gladstone	22.5	21.0	-6.6
40	Albury - Sydney	18.1	18.5	1.8
41	Melbourne - Mildura	16.8	18.1	7.8
42	Darwin - Perth	18.5	17.5	-5.4
43	Brisbane - Proserpine	19.2	16.9	-11.7
44	Ayers Rock - Sydney	15.5	16.6	6.9
45	Dubbo - Sydney	16.3	16.4	0.6
46	Brisbane - Emerald	16.5	16.4	-1.1
47	Launceston - Sydney	17.5	16.4	-6.5
48	Adelaide - Gold Coast	15.0	15.7	5.3
49	Sydney - Wagga Wagga	15.1	15.7	3.7
50	Adelaide - Canberra	14.1	15.2	7.6

continued

Table 2: (continued) Passengers carried (000s) — monthly activity

	City-Pair	Jun 2017	Jun 2018	% Change
51	Port Macquarie - Sydney	15.8	14.8	-6.1
52	Brisbane - Hobart	14.8	14.6	-1.3
53	Sydney - Tamworth	15.7	14.4	-8.8
54	Brisbane - Bundaberg	14.5	13.7	-5.7
55	Adelaide - Port Lincoln	13.9	12.9	-7.5
56	Cairns - Townsville	12.6	12.5	-0.5
57	Sydney - Townsville	10.7	11.8	10.5
58	Melbourne - Townsville	..	11.4	NA (a)
59	Hamilton Island - Sydney	9.4	11.4	20.9
60	Brisbane - Mount Isa	10.9	11.1	1.8
61	Adelaide - Alice Springs	10.3	10.3	-0.2
62	Alice Springs - Darwin	10.6	10.1	-5.3
63	Proserpine - Sydney	..	9.9	NA (b)
64	Armidale - Sydney	10.4	9.4	-9.1
65	Brisbane - Hamilton Island	9.7	9.4	-3.0
66	Geraldton - Perth	9.9	9.2	-7.1
	Total domestic network	4 698.6	4 720.8	0.5

(a) Melbourne - Townsville route included from September 2017, prior data not shown.

(b) Proserpine - Sydney route included from September 2017, prior data not shown.

Table 3: Available seats (000s) — monthly activity

	City-Pair	Jun 2017	Jun 2018	% Change
1	Melbourne - Sydney	867.2	872.7	0.6
2	Brisbane - Sydney	458.8	459.5	0.1
3	Brisbane - Melbourne	349.1	343.2	-1.7
4	Gold Coast - Sydney	247.3	235.7	-4.7
5	Adelaide - Melbourne	248.9	245.1	-1.5
6	Melbourne - Perth	193.6	192.0	-0.8
7	Gold Coast - Melbourne	179.5	176.4	-1.8
8	Adelaide - Sydney	178.4	175.4	-1.7
9	Perth - Sydney	165.8	163.4	-1.4
10	Hobart - Melbourne	154.4	150.5	-2.6
11	Brisbane - Cairns	131.7	115.7	-12.1
12	Canberra - Melbourne	143.1	142.2	-0.6
13	Cairns - Sydney	100.6	105.7	5.1
14	Canberra - Sydney	112.0	108.7	-2.9
15	Brisbane - Townsville	104.8	108.1	3.1
16	Cairns - Melbourne	78.1	83.5	7.0
17	Brisbane - Perth	95.8	87.7	-8.4
18	Launceston - Melbourne	82.5	83.6	1.4
19	Adelaide - Brisbane	84.3	85.6	1.6
20	Brisbane - Mackay	72.3	76.8	6.3
21	Brisbane - Canberra	68.6	71.0	3.5
22	Hobart - Sydney	55.6	60.4	8.8
23	Adelaide - Perth	62.6	67.2	7.3
24	Brisbane - Newcastle	64.0	61.0	-4.7
25	Sunshine Coast - Sydney	51.1	56.3	10.2
26	Brisbane - Rockhampton	52.4	52.4	0.0
27	Melbourne - Newcastle	48.2	48.5	0.7
28	Karratha - Perth	58.2	55.8	-4.2
29	Melbourne - Sunshine Coast	38.6	42.6	10.3
30	Brisbane - Darwin	41.4	43.2	4.4
31	Broome - Perth	35.6	36.3	2.0
32	Darwin - Sydney	40.6	38.9	-4.4
33	Perth - Port Hedland	43.4	44.1	1.4
34	Ballina - Sydney	36.9	37.3	0.9
35	Darwin - Melbourne	35.3	36.1	2.1
36	Coffs Harbour - Sydney	39.0	39.8	2.0
37	Newman - Perth	45.1	43.2	-4.1
38	Kalgoorlie - Perth	34.3	36.1	5.3
39	Brisbane - Gladstone	32.4	30.7	-5.2
40	Albury - Sydney	27.8	26.4	-5.0
41	Melbourne - Mildura	29.0	28.4	-2.3
42	Darwin - Perth	23.9	25.3	6.0
43	Brisbane - Proserpine	25.2	20.3	-19.4
44	Ayers Rock - Sydney	21.3	21.4	0.5
45	Dubbo - Sydney	24.7	21.3	-13.7
46	Brisbane - Emerald	24.6	22.0	-10.4
47	Launceston - Sydney	21.9	19.2	-12.4
48	Adelaide - Gold Coast	20.9	19.8	-5.2
49	Sydney - Wagga Wagga	24.3	21.4	-12.0
50	Adelaide - Canberra	22.5	22.3	-1.1

continued

Table 3: (continued) Available seats (000s) — monthly activity

	City-Pair	Jun 2017	Jun 2018	% Change
51	Port Macquarie - Sydney	21.4	18.9	-11.7
52	Brisbane - Hobart	17.5	17.2	-1.9
53	Sydney - Tamworth	25.5	22.3	-12.7
54	Brisbane - Bundaberg	18.8	19.6	4.0
55	Adelaide - Port Lincoln	24.1	22.1	-8.3
56	Cairns - Townsville	23.6	20.9	-11.5
57	Sydney - Townsville	13.5	14.8	9.7
58	Melbourne - Townsville	..	14.4	NA (a)
59	Hamilton Island - Sydney	17.3	19.0	9.8
60	Brisbane - Mount Isa	15.6	14.2	-9.2
61	Adelaide - Alice Springs	15.0	15.0	0.0
62	Alice Springs - Darwin	19.6	19.6	0.5
63	Proserpine - Sydney	..	14.1	NA (b)
64	Armidale - Sydney	15.7	14.8	-5.6
65	Brisbane - Hamilton Island	15.8	13.6	-14.1
66	Geraldton - Perth	19.8	18.1	-8.6
	Total domestic network	6 184.1	6 099.5	-1.4

(a) Melbourne - Townsville route included from September 2017, prior data not shown.

(b) Proserpine - Sydney route included from September 2017, prior data not shown.

Table 4: Load factors (%) — monthly activity

	City-Pair	Jun 2017	Jun 2018	% Point diff
1	Melbourne - Sydney	83.2	83.2	0.0
2	Brisbane - Sydney	83.3	83.6	0.3
3	Brisbane - Melbourne	80.0	82.1	2.1
4	Gold Coast - Sydney	81.3	82.1	0.8
5	Adelaide - Melbourne	78.3	78.7	0.4
6	Melbourne - Perth	77.1	80.2	3.1
7	Gold Coast - Melbourne	82.5	86.3	3.8
8	Adelaide - Sydney	79.2	80.7	1.5
9	Perth - Sydney	76.4	78.1	1.7
10	Hobart - Melbourne	78.3	77.4	-0.9
11	Brisbane - Cairns	85.2	89.4	4.2
12	Canberra - Melbourne	66.0	66.5	0.5
13	Cairns - Sydney	81.5	80.0	-1.5
14	Canberra - Sydney	74.0	76.3	2.3
15	Brisbane - Townsville	81.5	76.0	-5.5
16	Cairns - Melbourne	85.0	84.9	-0.1
17	Brisbane - Perth	78.5	80.0	1.5
18	Launceston - Melbourne	74.2	79.3	5.1
19	Adelaide - Brisbane	72.4	73.5	1.1
20	Brisbane - Mackay	80.9	76.7	-4.2
21	Brisbane - Canberra	70.5	71.2	0.7
22	Hobart - Sydney	80.1	81.7	1.6
23	Adelaide - Perth	69.2	72.0	2.8
24	Brisbane - Newcastle	72.5	72.2	-0.3
25	Sunshine Coast - Sydney	76.4	76.9	0.5
26	Brisbane - Rockhampton	87.1	81.9	-5.2
27	Melbourne - Newcastle	73.7	78.0	4.3
28	Karratha - Perth	65.5	66.0	0.5
29	Melbourne - Sunshine Coast	84.1	85.7	1.6
30	Brisbane - Darwin	89.7	82.3	-7.4
31	Broome - Perth	82.9	84.7	1.8
32	Darwin - Sydney	80.8	78.1	-2.7
33	Perth - Port Hedland	62.0	67.7	5.7
34	Ballina - Sydney	75.1	79.8	4.7
35	Darwin - Melbourne	85.7	81.6	-4.1
36	Coffs Harbour - Sydney	71.1	67.4	-3.7
37	Newman - Perth	54.4	57.9	3.5
38	Kalgoorlie - Perth	58.5	60.7	2.2
39	Brisbane - Gladstone	69.5	68.5	-1.0
40	Albury - Sydney	65.3	69.9	4.6
41	Melbourne - Mildura	57.7	63.6	5.9
42	Darwin - Perth	77.6	69.3	-8.3
43	Brisbane - Proserpine	76.1	83.3	7.2
44	Ayers Rock - Sydney	72.7	77.4	4.7
45	Dubbo - Sydney	65.9	76.8	10.9
46	Brisbane - Emerald	67.3	74.4	7.1
47	Launceston - Sydney	79.8	85.2	5.4
48	Adelaide - Gold Coast	71.4	79.4	8.0
49	Sydney - Wagga Wagga	62.3	73.5	11.2
50	Adelaide - Canberra	62.8	68.4	5.6

continued

Table 4: (continued) Load factors (%) — monthly activity

	City-Pair	Jun 2017	Jun 2018	% Point diff
51	Port Macquarie - Sydney	73.6	78.2	4.6
52	Brisbane - Hobart	84.6	85.1	0.5
53	Sydney - Tamworth	61.7	64.5	2.8
54	Brisbane - Bundaberg	77.3	70.1	-7.2
55	Adelaide - Port Lincoln	57.5	58.1	0.6
56	Cairns - Townsville	53.4	60.0	6.6
57	Sydney - Townsville	79.2	79.8	0.6
58	Melbourne - Townsville	..	79.4	NA (a)
59	Hamilton Island - Sydney	54.4	60.0	5.6
60	Brisbane - Mount Isa	69.7	78.2	8.5
61	Adelaide - Alice Springs	68.6	68.5	-0.1
62	Alice Springs - Darwin	54.3	51.2	-3.1
63	Proserpine - Sydney	..	70.1	NA (b)
64	Armidale - Sydney	66.1	63.6	-2.5
65	Brisbane - Hamilton Island	61.3	69.2	7.9
66	Geraldton - Perth	49.9	50.7	0.8
	Total domestic network	77.4	78.6	1.2

(a) Melbourne - Townsville route included from September 2017, prior data not shown.

(b) Proserpine - Sydney route included from September 2017, prior data not shown.

Table 5: Aircraft trips ^(a) — monthly activity

	City-Pair	Jun 2017	Jun 2018	% Change
1	Melbourne - Sydney	4 826	4 816	-0.2
2	Brisbane - Sydney	2 826	2 768	-2.1
3	Brisbane - Melbourne	2 054	2 004	-2.4
4	Gold Coast - Sydney	1 393	1 353	-2.9
5	Adelaide - Melbourne	1 553	1 512	-2.6
6	Melbourne - Perth	879	915	4.1
7	Gold Coast - Melbourne	948	934	-1.5
8	Adelaide - Sydney	1 075	1 051	-2.2
9	Perth - Sydney	718	739	2.9
10	Hobart - Melbourne	955	848	-11.2
11	Brisbane - Cairns	821	762	-7.2
12	Canberra - Melbourne	910	892	-2.0
13	Cairns - Sydney	541	567	4.8
14	Canberra - Sydney	1 378	1 399	1.5
15	Brisbane - Townsville	739	727	-1.6
16	Cairns - Melbourne	408	435	6.6
17	Brisbane - Perth	481	469	-2.5
18	Launceston - Melbourne	672	643	-4.3
19	Adelaide - Brisbane	516	530	2.7
20	Brisbane - Mackay	597	589	-1.3
21	Brisbane - Canberra	503	513	2.0
22	Hobart - Sydney	355	382	7.6
23	Adelaide - Perth	407	452	11.1
24	Brisbane - Newcastle	499	407	-18.4
25	Sunshine Coast - Sydney	314	343	9.2
26	Brisbane - Rockhampton	677	641	-5.3
27	Melbourne - Newcastle	270	271	0.4
28	Karratha - Perth	525	481	-8.4
29	Melbourne - Sunshine Coast	218	240	10.1
30	Brisbane - Darwin	255	262	2.7
31	Broome - Perth	299	322	7.7
32	Darwin - Sydney	240	230	-4.2
33	Perth - Port Hedland	372	363	-2.4
34	Ballina - Sydney	251	248	-1.2
35	Darwin - Melbourne	201	192	-4.5
36	Coffs Harbour - Sydney	412	374	-9.2
37	Newman - Perth	332	317	-4.5
38	Kalgoorlie - Perth	283	287	1.4
39	Brisbane - Gladstone	452	402	-11.1
40	Albury - Sydney	501	479	-4.4
41	Melbourne - Mildura	415	381	-8.2
42	Darwin - Perth	142	150	5.6
43	Brisbane - Proserpine	142	114	-19.7
44	Ayers Rock - Sydney	120	120	0.0
45	Dubbo - Sydney	543	446	-17.9
46	Brisbane - Emerald	334	295	-11.7
47	Launceston - Sydney	130	112	-13.8
48	Adelaide - Gold Coast	119	112	-5.9
49	Sydney - Wagga Wagga	466	421	-9.7
50	Adelaide - Canberra	134	132	-1.5

continued

Table 5: (continued) Aircraft trips ^(a) — monthly activity

	City-Pair	Jun 2017	Jun 2018	% Change
51	Port Macquarie - Sydney	365	296	-18.9
52	Brisbane - Hobart	100	100	0.0
53	Sydney - Tamworth	404	328	-18.8
54	Brisbane - Bundaberg	324	272	-16.0
55	Adelaide - Port Lincoln	622	561	-9.8
56	Cairns - Townsville	400	335	-16.3
57	Sydney - Townsville	79	89	12.7
58	Melbourne - Townsville	..	80	NA (b)
59	Hamilton Island - Sydney	105	122	16.2
60	Brisbane - Mount Isa	155	151	-2.6
61	Adelaide - Alice Springs	94	109	16.0
62	Alice Springs - Darwin	158	173	9.5
63	Proserpine - Sydney	..	78	NA (c)
64	Armidale - Sydney	372	350	-5.9
65	Brisbane - Hamilton Island	133	104	-21.8
66	Geraldton - Perth	198	181	-8.6
	Total domestic network	52 048	49 903	-4.1

(a) Includes RPT Cargo flights.

(b) Melbourne - Townsville route included from September 2017, prior data not shown.

(c) Proserpine - Sydney route included from September 2017, prior data not shown.

TOP TEN AIRPORTS – PASSENGER MOVEMENTS

Table 6: Top ten airports, RPT passenger movements (000s) - annual activity

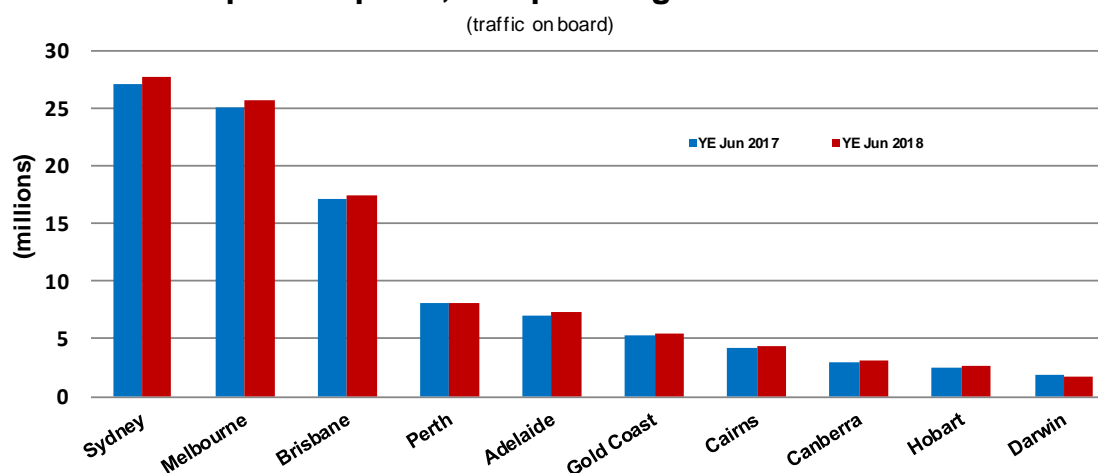
Airport	YE Jun 2017	YE Jun 2018	% Change	% of Total
1 Sydney	27 091.7	27 647.3	2.1	22.7
2 Melbourne	24 996.8	25 689.1	2.8	21.1
3 Brisbane	17 103.0	17 378.3	1.6	14.3
4 Perth	8 029.5	8 118.6	1.1	6.7
5 Adelaide	7 049.2	7 275.7	3.2	6.0
6 Gold Coast	5 362.8	5 495.1	2.5	4.5
7 Cairns	4 283.3	4 329.6	1.1	3.6
8 Canberra	2 950.8	3 086.3	4.6	2.5
9 Hobart	2 440.8	2 596.1	6.4	2.1
10 Darwin	1 809.4	1 778.9	-1.7	1.5
Total top ten airports	101 117.3	103 394.9	2.3	85.1
Total domestic network	118 607.1	121 530.2	2.5	100.0

Table 7: Top ten airports, RPT passenger movements (000s) - monthly activity

Airport	Jun 2017	Jun 2018	% Change	% of Total
1 Sydney	2 121.1	2 133.7	0.6	22.6
2 Melbourne	1 963.5	1 990.1	1.4	21.1
3 Brisbane	1 393.0	1 366.0	-1.9	14.5
4 Perth	623.8	633.0	1.5	6.7
5 Adelaide	546.1	558.8	2.3	5.9
6 Gold Coast	393.9	392.1	-0.4	4.2
7 Cairns	337.7	337.3	-0.1	3.6
8 Canberra	252.1	256.7	1.8	2.7
9 Hobart	180.3	184.5	2.3	2.0
10 Darwin	170.8	162.6	-4.8	1.7
Total top ten airports	7 982.3	8 014.7	0.4	84.9
Total domestic network	9 397.1	9 441.5	0.5	100.0

Note: Airport passenger movement numbers are the sum of passenger arrivals and departures at each airport.

Top ten airports, RPT passenger movements



TOP FIVE AIRPORTS – CARGO MOVEMENTS

Table 8: Top five airports, domestic RPT cargo movements (000s tonnes) - annual activity

Airport	YE Jun 2017	YE Jun 2018	% Change	% of Total
1 Melbourne	129.0	133.1	3.2	28.9
2 Sydney	106.3	106.0	-0.2	23.0
3 Brisbane	67.4	68.3	1.2	14.8
4 Perth	62.0	66.0	6.4	14.3
5 Adelaide	25.9	27.1	4.5	5.9
Total top five airports	390.6	400.5	2.5	87.0
Total domestic network	450.0	460.1	2.3	100.0

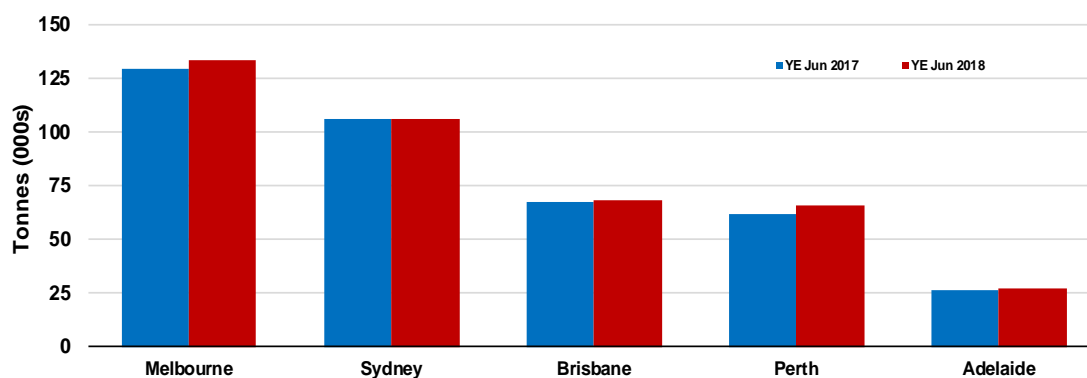
Table 9: Top five airports, domestic RPT cargo movements (000s tonnes) - monthly activity

Airport	Jun 2017	Jun 2018	% Change	% of Total
1 Melbourne	10.5	10.2	-2.4	28.3
2 Sydney	8.3	8.5	2.2	23.6
3 Brisbane	5.6	5.5	-0.9	15.3
4 Perth	5.2	5.1	-2.2	14.1
5 Adelaide	2.1	1.9	-10.2	5.3
Total top five airports	31.7	31.2	-1.4	86.6
Total domestic network	36.4	36.0	-0.9	100.0

Note: Airport cargo tonnes are the sum of cargo tonnes on arrivals and departures at each airport.

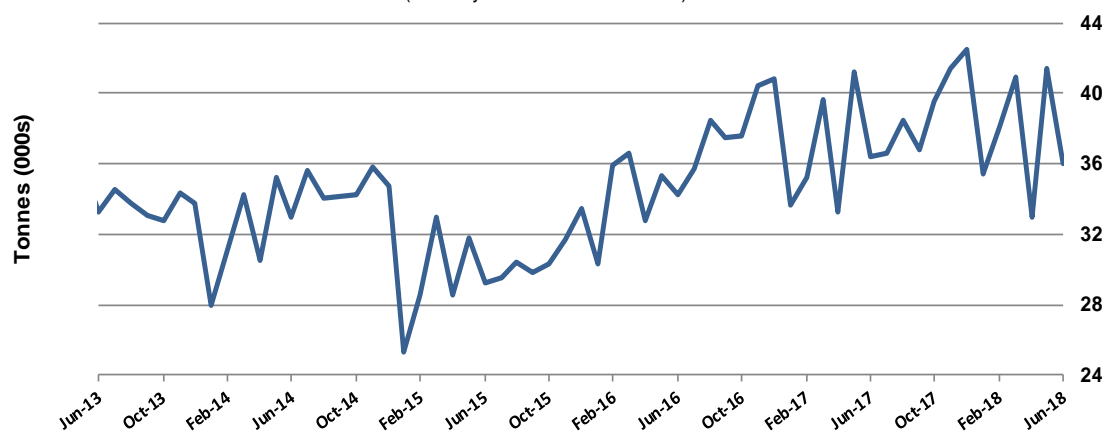
Top five airports, cargo movements

(Domestic cargo traffic - traffic on board)



Total domestic network - cargo movement

(monthly totals - traffic on board)



Note: Airport cargo tonnes are the sum of cargo tonnes on arrivals and departures at each airport.

TOP TEN ROUTES

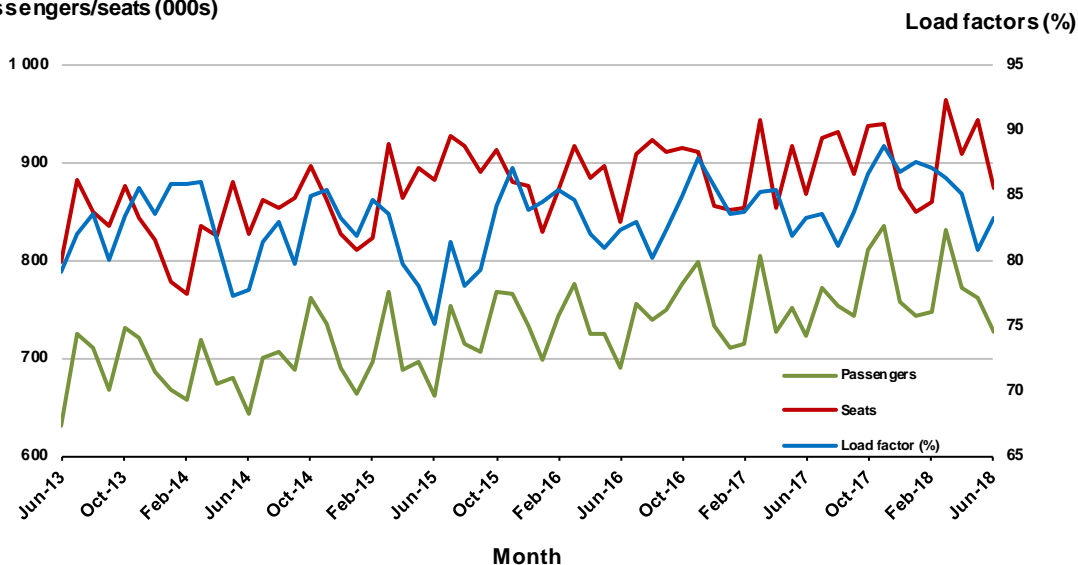
1. Melbourne - Sydney

Monthly data

	Jun 2017	Jun 2018	% Change
Passengers carried (000s)	721.5	725.8	0.6
Seats (000s)	867.2	872.7	0.6
Load factor %	83.2	83.2	0.0 *
Aircraft trips	4 826	4 816	-0.2

* percentage point difference

Passengers/seats (000s)

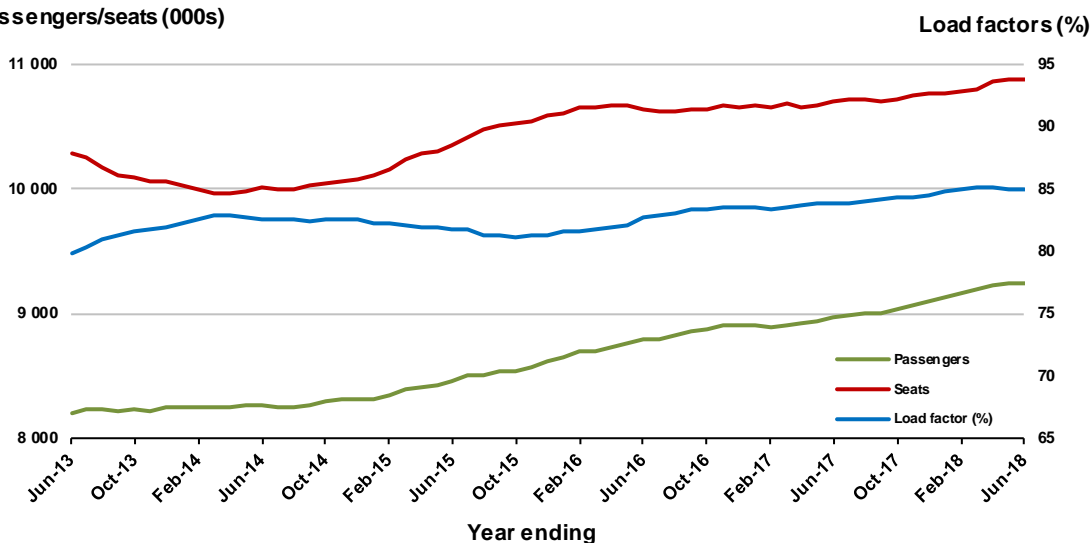


Moving annual data

	YE Jun 2017	YE Jun 2018	% Change
Passengers carried (000s)	8 974.5	9 250.8	3.1
Seats (000s)	10 700.4	10 884.8	1.7
Load factor %	83.9	85.0	1.1 *
Aircraft trips	59 599	60 368	1.3

* percentage point difference

Passengers/seats (000s)



2. Brisbane - Sydney

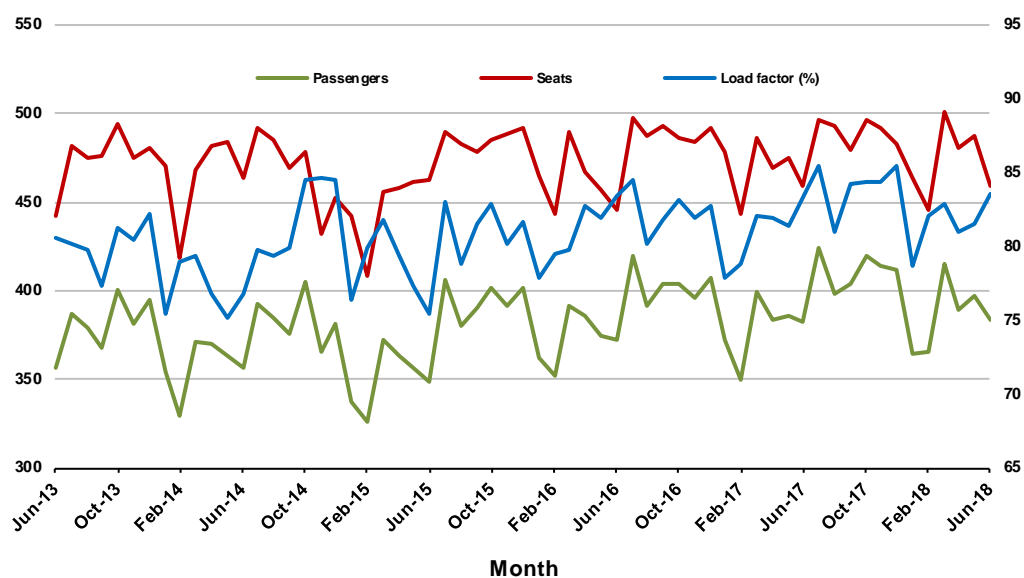
Monthly data

	Jun 2017	Jun 2018	% Change
Passengers carried (000s)	382.4	383.9	0.4
Seats (000s)	458.8	459.5	0.1
Load factor %	83.3	83.6	0.3 *
Aircraft trips	2 826	2 768	-2.1

* percentage point difference

Passengers/seats (000s)

Load factors (%)



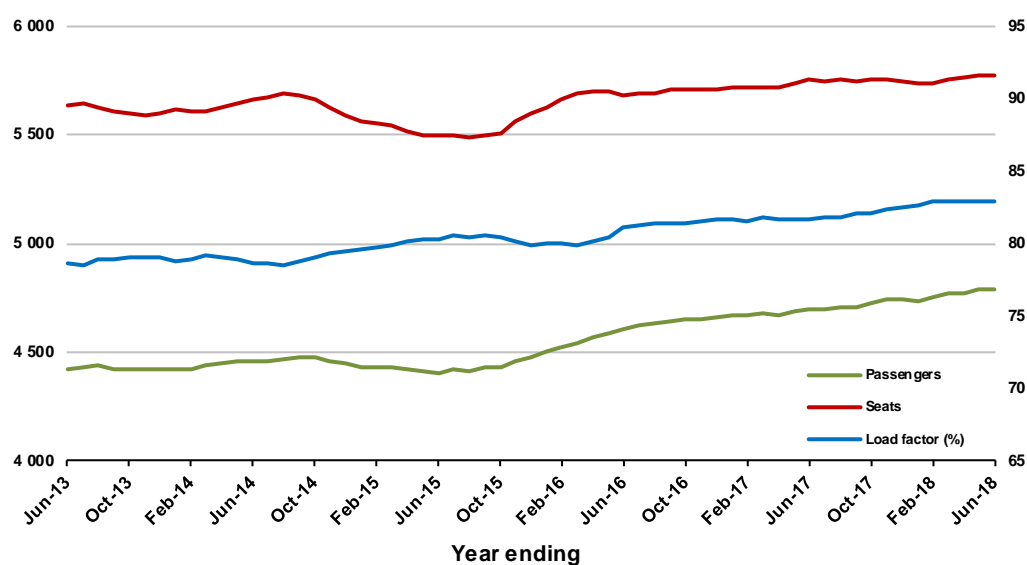
Moving annual data

	YE Jun 2017	YE Jun 2018	% Change
Passengers carried (000s)	4 695.7	4 788.1	2.0
Seats (000s)	5 750.4	5 776.2	0.4
Load factor %	81.7	82.9	1.2 *
Aircraft trips	35 508	35 198	-0.9

* percentage point difference

Passengers/seats (000s)

Load factors (%)

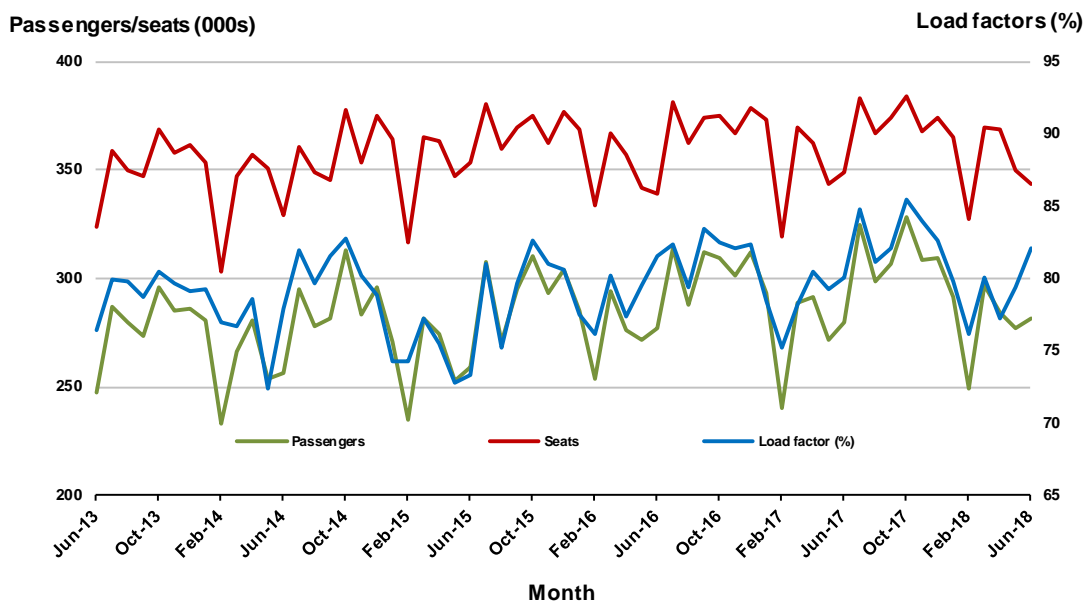


3. Brisbane - Melbourne

Monthly data

	Jun 2017	Jun 2018	% Change
Passengers carried (000s)	279.5	281.8	0.8
Seats (000s)	349.1	343.2	-1.7
Load factor %	80.0	82.1	2.1 *
Aircraft trips	2 054	2 004	-2.4

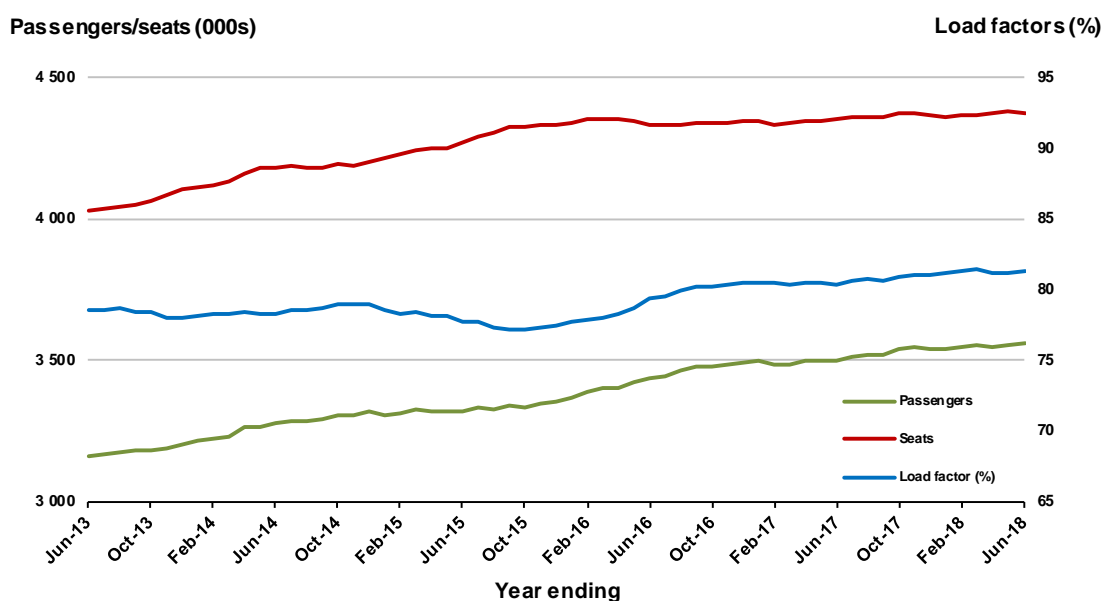
* percentage point difference



Moving annual data

	YE Jun 2017	YE Jun 2018	% Change
Passengers carried (000s)	3 500.5	3 556.9	1.6
Seats (000s)	4 354.7	4 373.6	0.4
Load factor %	80.4	81.3	0.9 *
Aircraft trips	25 757	25 804	0.2

* percentage point difference

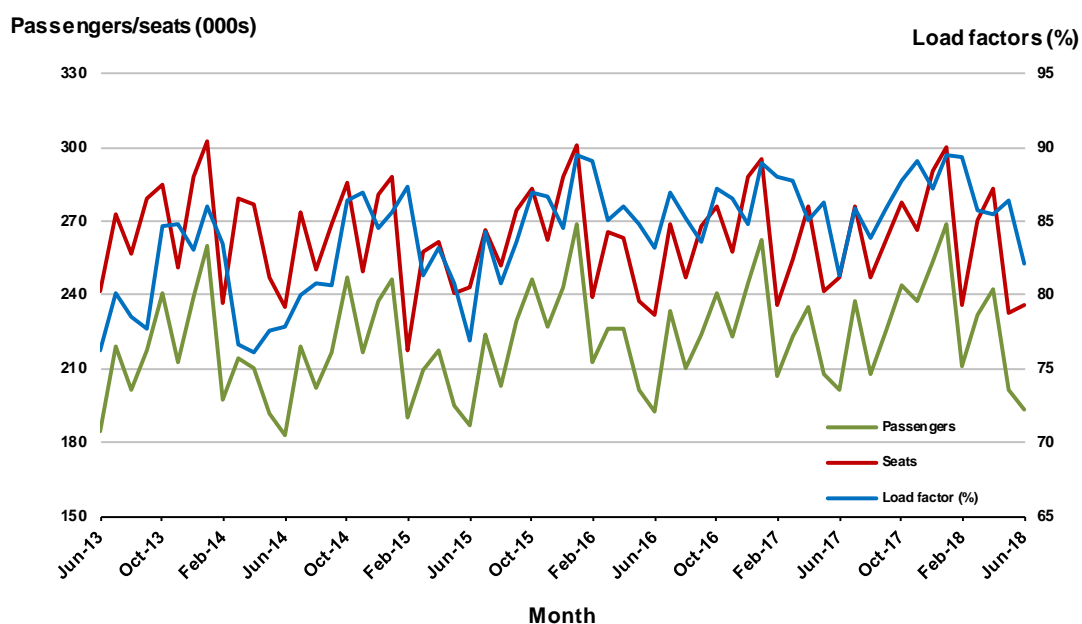


4. Gold Coast - Sydney

Monthly data

	Jun 2017	Jun 2018	% Change
Passengers carried (000s)	201.1	193.6	-3.7
Seats (000s)	247.3	235.7	-4.7
Load factor %	81.3	82.1	0.8 *
Aircraft trips	1 393	1 353	-2.9

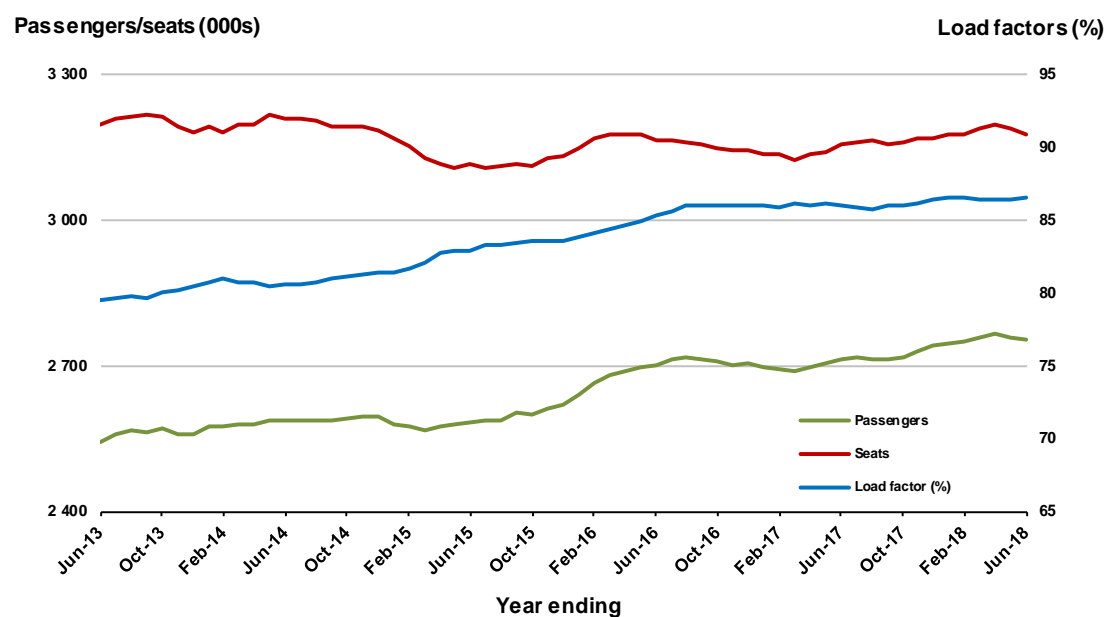
* percentage point difference



Moving annual data

	YE Jun 2017	YE Jun 2018	% Change
Passengers carried (000s)	2 712.7	2 752.4	1.5
Seats (000s)	3 155.0	3 179.0	0.8
Load factor %	86.0	86.6	0.6 *
Aircraft trips	18 250	17 975	-1.5

* percentage point difference



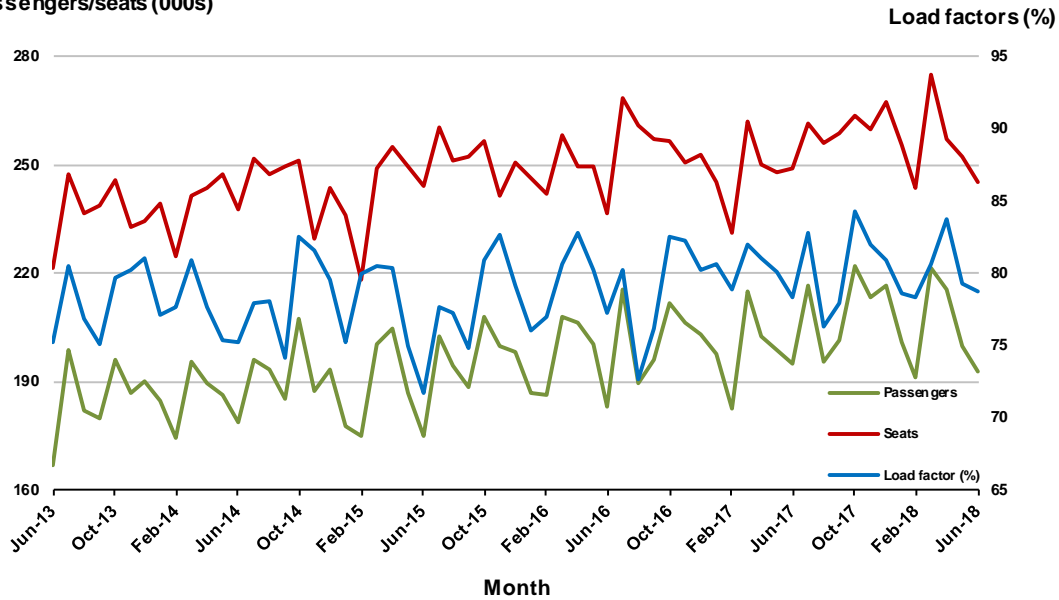
5. Adelaide - Melbourne

Monthly data

	Jun 2017	Jun 2018	% Change
Passengers carried (000s)	194.8	192.9	-1.0
Seats (000s)	248.9	245.1	-1.5
Load factor %	78.3	78.7	0.4 *
Aircraft trips	1 553	1 512	-2.6

* percentage point difference

Passengers/seats (000s)

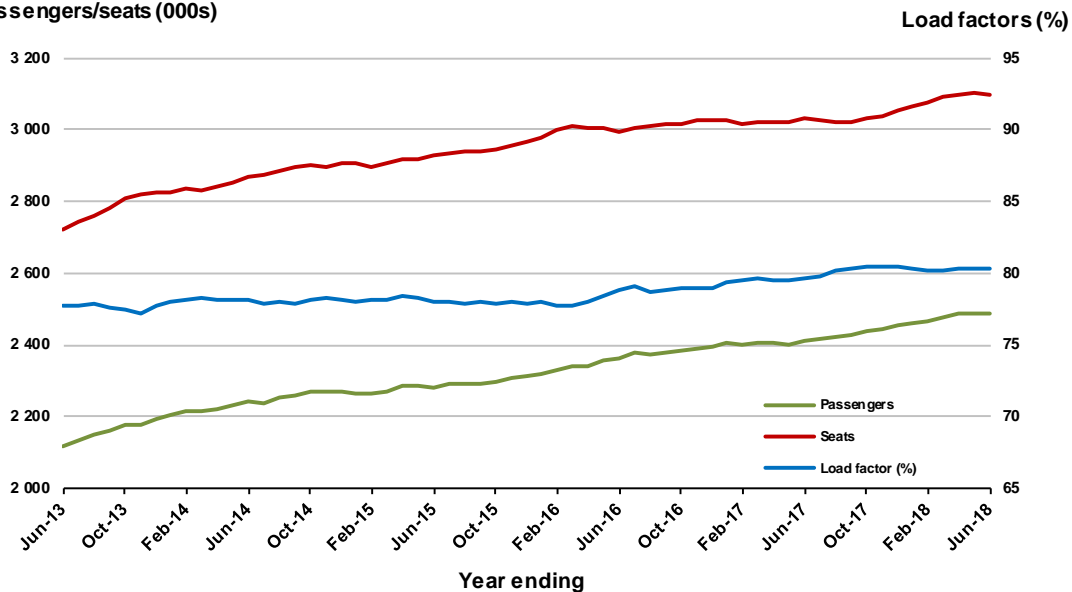


Moving annual data

	YE Jun 2017	YE Jun 2018	% Change
Passengers carried (000s)	2 413.4	2 487.3	3.1
Seats (000s)	3 032.4	3 096.9	2.1
Load factor %	79.6	80.3	0.7 *
Aircraft trips	19 282	19 213	-0.4

* percentage point difference

Passengers/seats (000s)



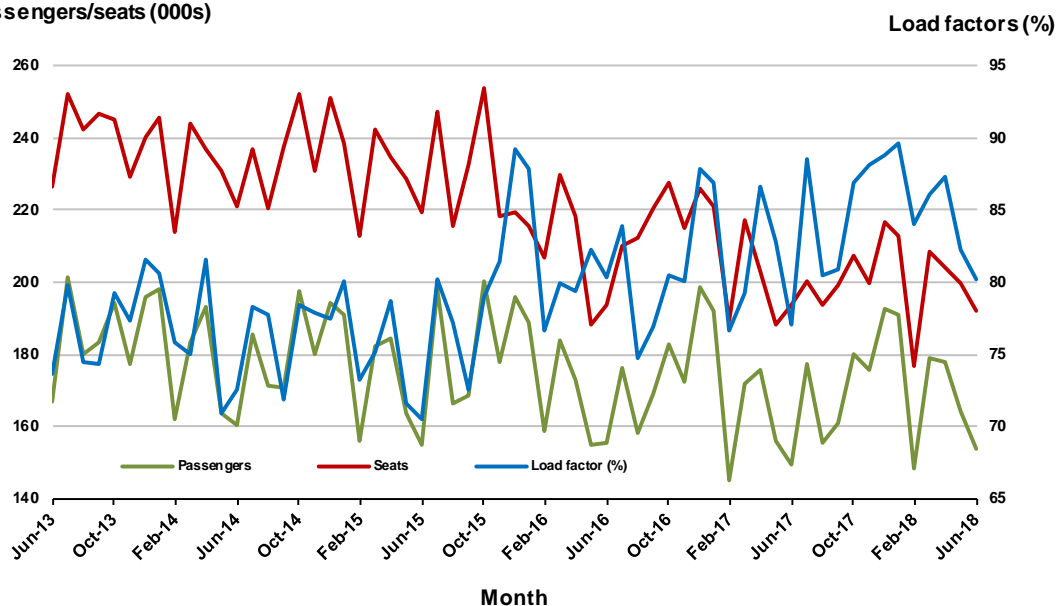
6. Melbourne - Perth

Monthly data

	Jun 2017	Jun 2018	% Change
Passengers carried (000s)	149.3	153.9	3.1
Seats (000s)	193.6	192.0	-0.8
Load factor %	77.1	80.2	3.1 *
Aircraft trips	879	915	4.1

* percentage point difference

Passengers/seats (000s)

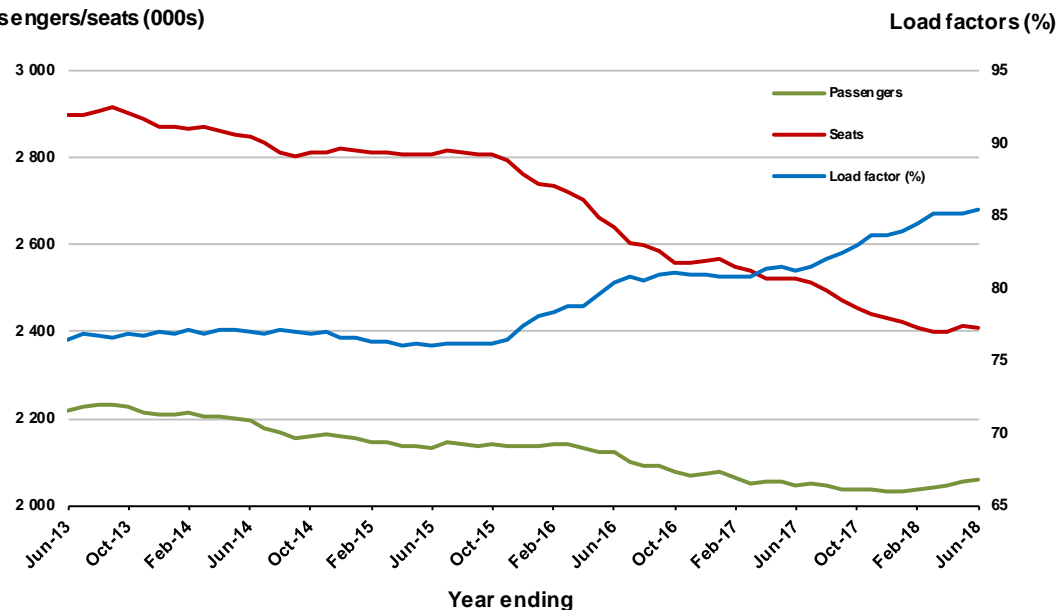


Moving annual data

	YE Jun 2017	YE Jun 2018	% Change
Passengers carried (000s)	2 048.1	2 057.8	0.5
Seats (000s)	2 523.4	2 410.4	-4.5
Load factor %	81.2	85.4	4.2 *
Aircraft trips	11 432	11 196	-2.1

* percentage point difference

Passengers/seats (000s)



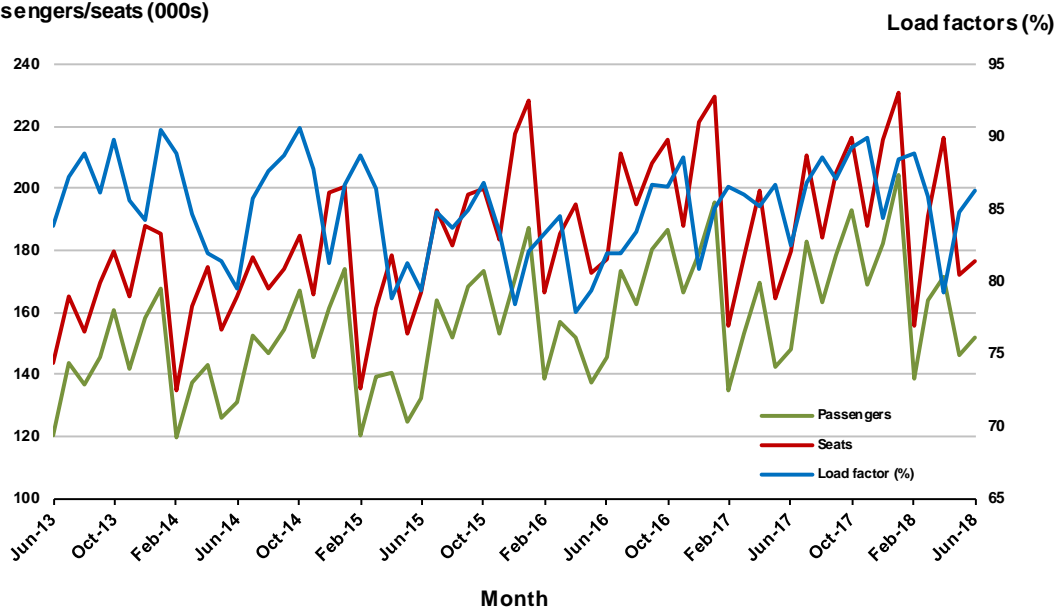
7. Gold Coast - Melbourne

Monthly data

	Jun 2017	Jun 2018	% Change
Passengers carried (000s)	148.0	152.2	2.8
Seats (000s)	179.5	176.4	-1.8
Load factor %	82.5	86.3	3.8 *
Aircraft trips	948	934	-1.5

* percentage point difference

Passengers/seats (000s)

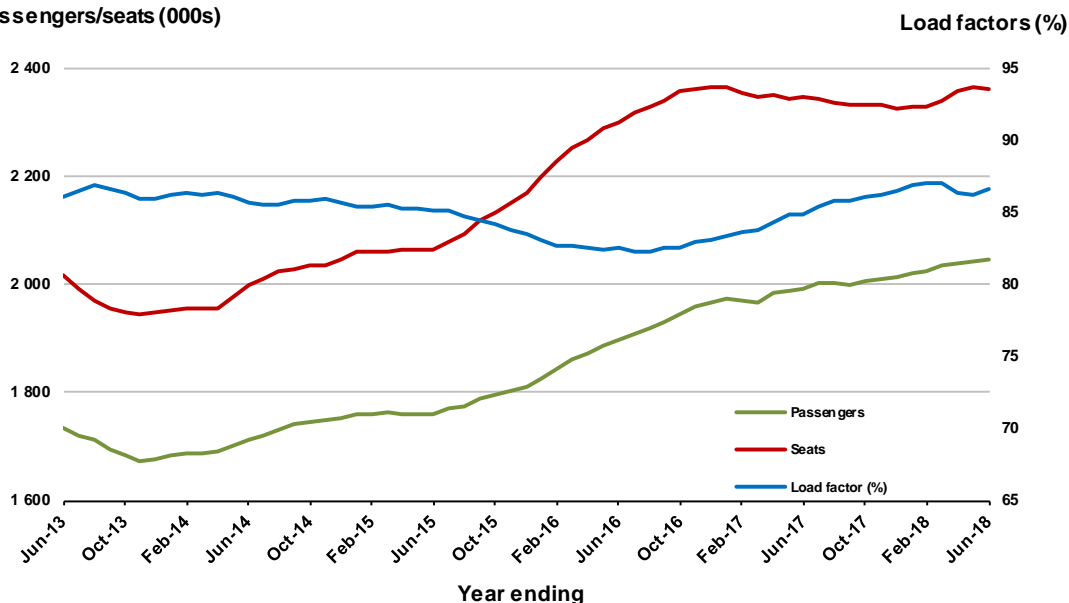


Moving annual data

	YE Jun 2017	YE Jun 2018	% Change
Passengers carried (000s)	1 992.2	2 045.6	2.7
Seats (000s)	2 346.1	2 362.9	0.7
Load factor %	84.9	86.6	1.7 *
Aircraft trips	12 549	12 520	-0.2

* percentage point difference

Passengers/seats (000s)



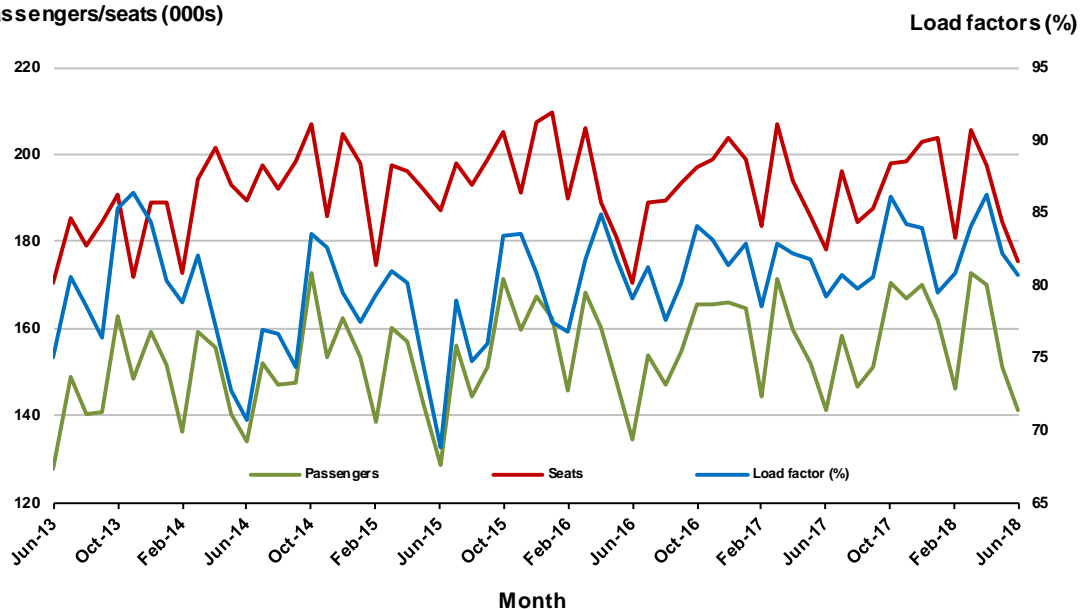
8. Adelaide - Sydney

Monthly data

	Jun 2017	Jun 2018	% Change
Passengers carried (000s)	141.3	141.5	0.2
Seats (000s)	178.4	175.4	-1.7
Load factor %	79.2	80.7	1.5 *
Aircraft trips	1 075	1 051	-2.2

* percentage point difference

Passengers/seats (000s)

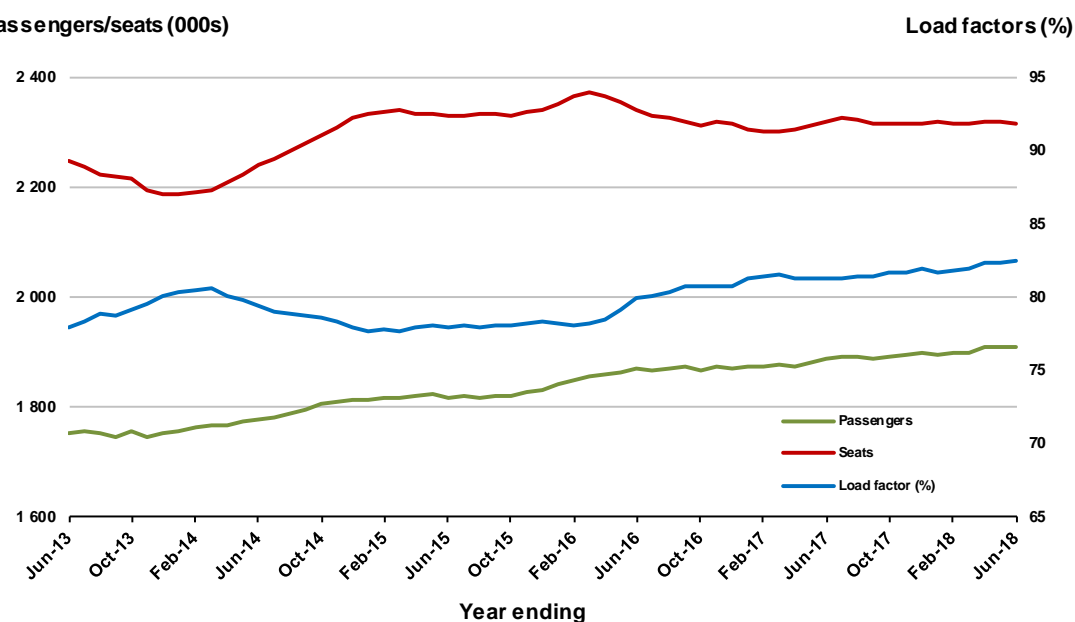


Moving annual data

	YE Jun 2017	YE Jun 2018	% Change
Passengers carried (000s)	1 886.5	1 908.6	1.2
Seats (000s)	2 319.4	2 315.1	-0.2
Load factor %	81.3	82.4	1.1 *
Aircraft trips	14 036	13 876	-1.1

* percentage point difference

Passengers/seats (000s)



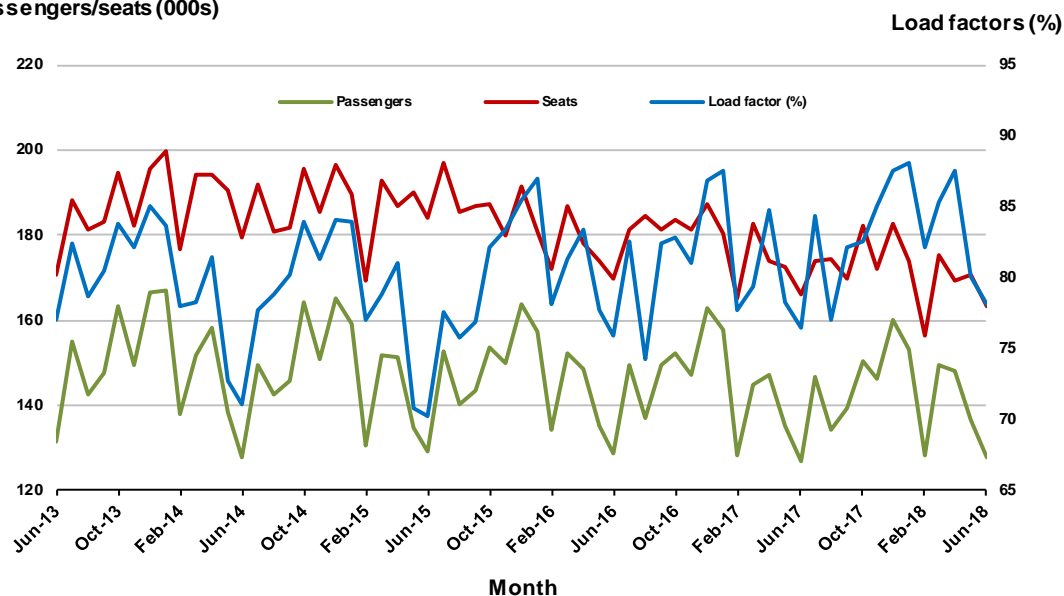
9. Perth - Sydney

Monthly data

	Jun 2017	Jun 2018	% Change
Passengers carried (000s)	126.8	127.6	0.7
Seats (000s)	165.8	163.4	-1.4
Load factor %	76.4	78.1	1.7 *
Aircraft trips	718	739	2.9

* percentage point difference

Passengers/seats (000s)

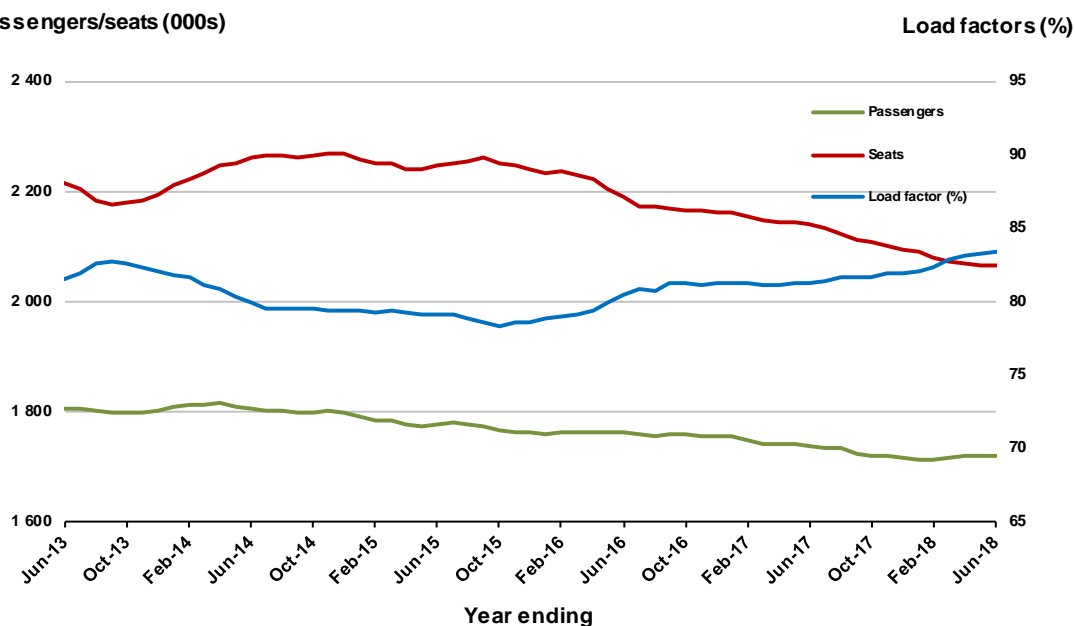


Moving annual data

	YE Jun 2017	YE Jun 2018	% Change
Passengers carried (000s)	1 737.8	1 719.9	-1.0
Seats (000s)	2 139.0	2 063.2	-3.5
Load factor %	81.2	83.4	2.1 *
Aircraft trips	9 098	9 062	-0.4

* percentage point difference

Passengers/seats (000s)



10. Hobart - Melbourne

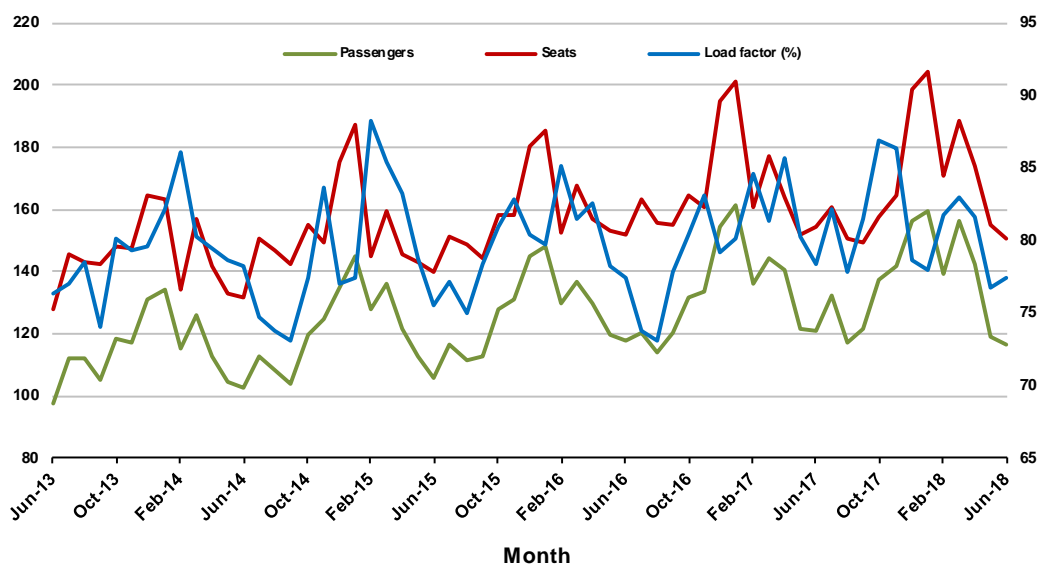
Monthly data

	Jun 2017	Jun 2018	% Change
Passengers carried (000s)	120.9	116.5	-3.7
Seats (000s)	154.4	150.5	-2.6
Load factor %	78.3	77.4	-0.9 *
Aircraft trips	955	848	-11.2

* percentage point difference

Passengers/seats (000s)

Load factors (%)



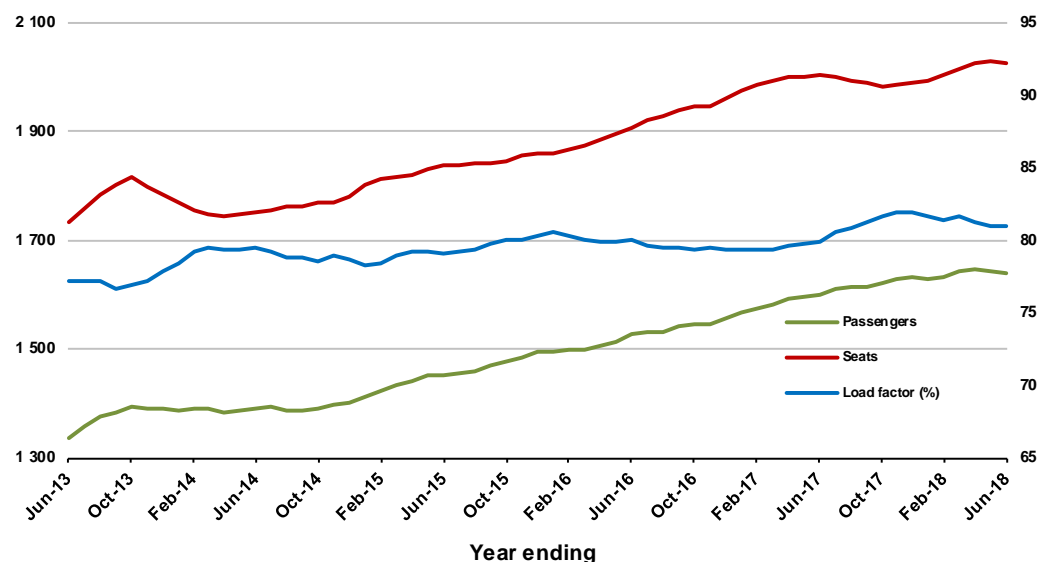
Moving annual data

	YE Jun 2017	YE Jun 2018	% Change
Passengers carried (000s)	1 598.7	1 638.6	2.5
Seats (000s)	2 002.3	2 024.9	1.1
Load factor %	79.8	80.9	1.1 *
Aircraft trips	12 377	11 914	-3.7

* percentage point difference

Passengers/seats (000s)

Load factors (%)



TOP FIFTY REGIONAL AIRPORTS

Table 10: Top fifty regional airports (000s) — passenger movements, monthly

	Airport	Jun 2017	Jun 2018	% Change
1	Cairns	337.7	337.3	-0.1
2	Hobart	180.3	184.5	2.3
3	Darwin	170.8	162.6	-4.8
4	Townsville	136.9	135.0	-1.4
5	Newcastle	97.9	95.2	-2.7
6	Launceston	87.9	91.5	4.0
7	Mackay	66.1	68.1	3.0
8	Alice Springs	49.8	51.1	2.6
9	Rockhampton	48.6	45.8	-5.7
10	Broome	39.9	41.9	4.9
11	Karratha	38.4	36.9	-3.8
12	Ballina	33.8	35.8	6.0
13	Coffs Harbour	33.4	31.7	-5.1
14	Proserpine	33.0	31.0	-6.2
15	Port Hedland	27.9	30.7	9.8
16	Ayers Rock	27.0	30.0	11.1
17	Hamilton Island	24.1	26.9	11.6
18	Newman	24.6	25.1	1.9
19	Kalgoorlie	20.8	22.7	9.0
20	Mildura	20.3	21.8	7.5
21	Gladstone	22.6	21.0	-6.9
22	Albury	21.7	20.4	-5.7
23	Dubbo	20.0	18.1	-9.8
24	Wagga Wagga	18.6	18.0	-3.1
25	Mount Isa	17.7	18.0	1.7
26	Port Macquarie	18.1	17.2	-5.3
27	Emerald	16.5	16.4	-0.8
28	Tamworth	17.8	15.4	-13.4
29	Paraburdoo	14.1	15.1	7.3
30	Bundaberg	14.5	13.7	-5.7
31	Port Lincoln	13.9	12.9	-7.5
32	Hervey Bay	13.3	12.2	-8.5
33	Devonport	10.9	11.0	0.3
34	Kununurra	11.1	10.9	-1.6
35	Toowoomba Wellcamp	12.6	10.7	-15.1
36	Armidale	11.4	10.1	-11.5
37	Geraldton	9.9	9.3	-5.9
38	Thursday Island	9.3	8.7	-6.7
39	Moranbah	10.4	8.7	-16.7
40	Learmonth	8.0	8.0	0.6
41	Gove	6.9	7.6	9.1
42	Roma	7.1	7.3	2.5
43	Weipa	6.3	6.8	8.1
44	Whyalla	5.4	6.6	21.9
45	Mount Gambier	6.8	6.5	-3.2
46	Griffith	6.2	6.5	4.8
47	Olympic Dam	5.6	6.5	16.3
48	Orange	5.9	6.4	9.5
49	Broken Hill	5.3	5.8	9.3
50	Merimbula	5.3	5.5	3.8
Total top 50 regional airports		1 852.4	1 846.8	-0.3
Total regional airports		1 965.3	1 961.0	-0.2
Total domestic network		9 397.1	9 441.5	0.5

Note: Airport passenger movement numbers are the sum of passenger arrivals and departures at each airport.

Table 11: Top fifty regional airports (000s) — passenger movements, annual

	Airport	YE Jun 2017	YE Jun 2018	% Change
1	Cairns	4 283.3	4 329.6	1.1
2	Hobart	2 440.8	2 596.1	6.4
3	Darwin	1 809.4	1 778.9	-1.7
4	Townsville	1 533.7	1 640.5	7.0
5	Launceston	1 335.9	1 363.1	2.0
6	Newcastle	1 275.7	1 279.1	0.3
7	Mackay	772.3	813.9	5.4
8	Alice Springs	617.2	615.1	-0.3
9	Rockhampton	566.3	563.9	-0.4
10	Ballina	502.9	526.9	4.8
11	Proserpine	353.1	470.0	33.1
12	Karratha	464.0	433.2	-6.6
13	Broome	364.1	418.1	14.8
14	Hamilton Island	496.6	416.4	-16.2
15	Coffs Harbour	405.9	413.2	1.8
16	Ayers Rock	364.8	380.3	4.2
17	Port Hedland	353.6	356.2	0.7
18	Newman	294.2	294.3	0.1
19	Albury	261.3	268.1	2.6
20	Kalgoorlie	244.5	266.8	9.1
21	Gladstone	303.7	265.8	-12.5
22	Mildura	249.6	263.9	5.7
23	Dubbo	226.2	229.9	1.6
24	Wagga Wagga	217.7	225.3	3.5
25	Port Macquarie	226.7	222.8	-1.7
26	Mount Isa	193.1	207.1	7.2
27	Emerald	197.8	195.8	-1.0
28	Tamworth	192.7	192.7	0.0
29	Paraburdoo	166.6	171.8	3.1
30	Hervey Bay	170.7	170.0	-0.4
31	Bundaberg	174.8	169.5	-3.1
32	Port Lincoln	175.4	169.4	-3.4
33	Toowoomba Wellcamp	140.5	149.8	6.6
34	Devonport	146.1	147.7	1.1
35	Armidale	130.3	130.9	0.5
36	Geraldton	115.9	112.0	-3.4
37	Moranbah	119.6	104.3	-12.9
38	Kununurra	103.8	103.8	0.0
39	Thursday Island	101.5	99.4	-2.1
40	Learmonth	80.6	87.1	8.1
41	Gove	84.3	86.6	2.7
42	Roma	83.3	85.2	2.2
43	Mount Gambier	78.3	80.6	2.9
44	Weipa	78.2	79.2	1.2
45	Olympic Dam	54.6	76.5	40.3
46	Griffith	71.5	75.3	5.2
47	Orange	56.6	70.6	24.6
48	Whyalla	61.4	70.3	14.5
49	Merimbula	65.1	67.0	2.9
50	Broken Hill	56.7	66.5	17.3
	Total top 50 regional airports	22 863.0	23 400.4	2.4
	Total regional airports	24 196.1	24 788.6	2.4
	Total domestic network	118 607.1	121 530.2	2.5

Note: Airport passenger movement numbers are the sum of passenger arrivals and departures at each airport.

DOMESTIC CHARTER ACTIVITY

Table 12: Charter passengers carried and aircraft trips - annual activity

	YE Jun 2017	YE Jun 2018	% Change
Total domestic charter passengers	2 391 868	2 433 005	1.7
Total domestic charter aircraft trips	44 544	45 042	1.1

Note: Helicopter, joyflights and sightseeing charter flights not included.

Table 13: Charter passengers carried and aircraft trips - monthly activity

	Jun 2017	Jun 2018	% Change
Total domestic charter passengers	206 298	193 529	-6.2
Total domestic charter aircraft trips	3 901	3 350	-14.1

Note: Helicopter, joyflights and sightseeing charter flights not included.

Table 14: Domestic airports - charter activity - annual

	YE Jun 2017	YE Jun 2018	% Change
Total domestic charter passenger movements	4 783 736	4 866 010	1.7
Total domestic charter aircraft movements	89 088	90 084	1.1
Perth airport charter passenger movements	1 855 452	1 827 625	-1.5
Perth airport charter aircraft movements	31 432	30 055	-4.4

Note: Helicopter, joyflights and sightseeing charter flights not included.

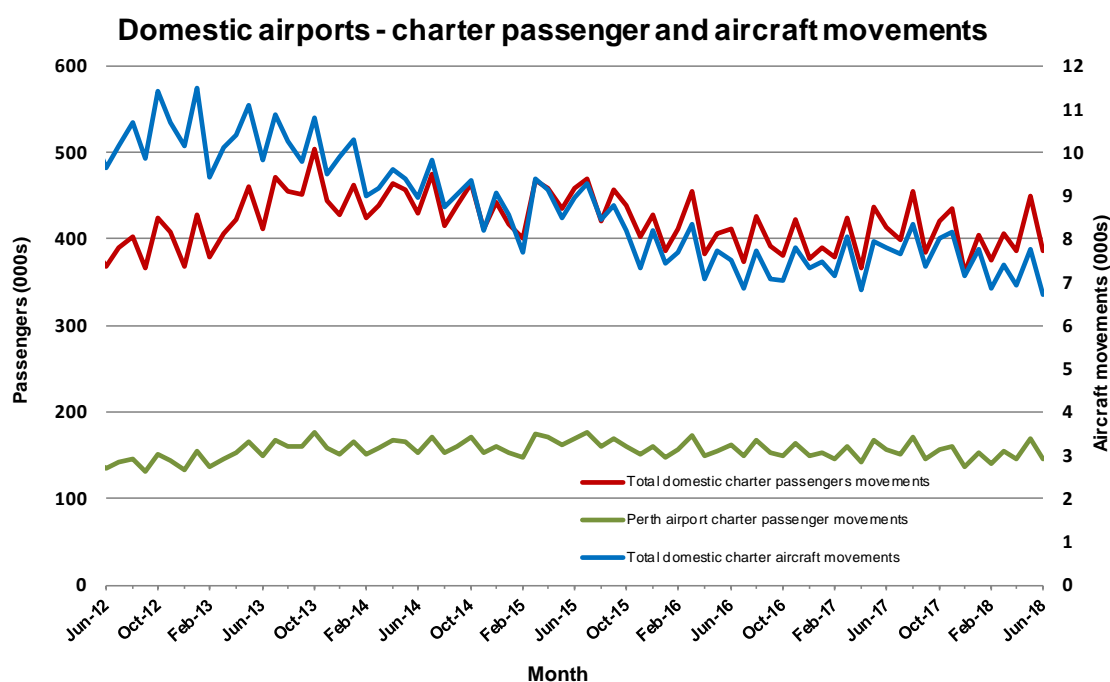
Charter passenger and aircraft movement numbers are the sum of arrivals and departures at each airport.

Table 15: Domestic airports - charter activity - monthly

	Jun 2017	Jun 2018	% Change
Total domestic charter passenger movements	412 596	387 058	-6.2
Total domestic charter aircraft movements	7 802	6 700	-14.1
Perth airport charter passenger movements	156 532	145 985	-6.7
Perth airport charter aircraft movements	2 604	2 293	-11.9

Note: Helicopter, joyflights and sightseeing charter flights not included.

Charter passenger and aircraft movement numbers are the sum of arrivals and departures at each airport.



DEFINITIONS

Aircraft Trips	The number of flight stages. A return flight counts as two aircraft trips.
Airport Movements	Airport movements (passenger and cargo) are measured once on arrival and once on departure. Each domestic trip generates two movements at airports. For example, a trip from Melbourne to Sydney will be counted twice, as a passenger departure at Melbourne and as a passenger arrival at Sydney. At the national level, the sum of all domestic airport traffic will therefore be equal to twice the number of trips undertaken.
Available Seat Kilometres (ASKs)	Calculated by multiplying the number of seats available on each flight stage, by the distance in kilometres between the ports. The distances used are Great Circle Distances.
City-Pair	The ports shown make up the city-pair route. Passenger movements shown for a city pair reflect total traffic in both directions.
Flight Stage	The operation of an aircraft from take-off to landing.
Load Factor	The total revenue passenger kilometres performed as a percentage of the total available seat kilometres.
Passengers Carried	Revenue passengers carried.
Regular Public Transport Services (RPT)	All air service operations in which aircraft are available for the transport of members of the public and are conducted in accordance with fixed schedules. It does not include charter or other non-scheduled operations.
Revenue Passengers	All passengers paying any fare. Frequent flyer redemption travellers are regarded as revenue passengers.
Revenue Passenger Kilometres (RPKs)	Calculated by multiplying the number of revenue passengers travelling on each flight stage, by the distance in kilometres between the ports. The distances used are Great Circle Distances.
Traffic on board by stages	The total of all traffic (revenue passengers) on each flight stage between two directly connected airports.
..	Data not included
NA	Not applicable