



**Australian Government**

**Department of Infrastructure, Transport, Cities and Regional Development**

Bureau of Infrastructure, Transport and Regional Economics

STATISTICAL REPORT



# Aviation

Domestic aviation activity  
July 2019

© Commonwealth of Australia 2019

ISSN: 1832 - 1968

### **Ownership of intellectual property rights in this publication**

Unless otherwise noted, copyright (and any other intellectual property rights, if any) in this publication is owned by the Commonwealth of Australia (referred to below as the Commonwealth).

### **Disclaimer**

The material contained in this publication is made available on the understanding that the Commonwealth is not providing professional advice, and that users exercise their own skill and care with respect to its use, and seek independent advice if necessary.

The Commonwealth makes no representations or warranties as to the contents or accuracy of the information contained in this publication. To the extent permitted by law, the Commonwealth disclaims liability to any person or organisation in respect of anything done, or omitted to be done, in reliance upon information contained in this publication.

### **Creative Commons licence**

With the exception of (a) the Coat of Arms; and (b) the Department of Infrastructure, Transport, Cities and Regional Developments' photos and graphics, copyright in this publication is licensed under a Creative Commons Attribution 3.0 Australia Licence.

Creative Commons Attribution 3.0 Australia Licence is a standard form licence agreement that allows you to copy, communicate and adapt this publication provided that you attribute the work to the Commonwealth and abide by the other licence terms. A summary of the licence terms is available from <http://creativecommons.org/licenses/by/3.0/au/deed.en>.

The full licence terms are available from <http://creativecommons.org/licenses/by/3.0/au/legalcode>.

### **Use of the Coat of Arms**

The Department of the Prime Minister and Cabinet sets the terms under which the Coat of Arms is used. Please refer to the Department's Commonwealth Coat of Arms and Government branding web page <http://www.dpmc.gov.au/guidelines/index.cfm#brand> and, in particular, the Guidelines on the use of the Commonwealth Coat of Arms publication.

An appropriate citation for this report is:

Bureau of Infrastructure, Transport and Regional Economics (BITRE), 2019, Domestic aviation activity, Statistical Report, BITRE, Canberra ACT.

### **Contact us**

This publication is available in PDF format. All other rights are reserved, including in relation to any Departmental logos or trade marks which may exist. For enquiries regarding the licence and any use of this publication, please contact:

Bureau of Infrastructure, Transport and Regional Economics (BITRE)  
Department of Infrastructure, Transport, Cities and Regional Development  
GPO Box 501, Canberra ACT 2601, Australia  
Telephone: (international) +61 2 6274 7210  
Fax: (international) +61 2 6274 6855  
Email: [bitre@infrastructure.gov.au](mailto:bitre@infrastructure.gov.au)  
Website: [www.bitre.gov.au](http://www.bitre.gov.au)

### **Inquiries**

Should you require additional information about the statistics contained in this publication:

Nebojsa Pavlovic

Telephone (02) 6274 6817 or Facsimile (02) 6274 7727

Electronic mail: [AVSTATS@infrastructure.gov.au](mailto:AVSTATS@infrastructure.gov.au)

[Nebojsa.Pavlovic@infrastructure.gov.au](mailto:Nebojsa.Pavlovic@infrastructure.gov.au)

Web site: <http://www.bitre.gov.au/statistics/aviation/domestic.aspx>

## FOREWORD

This report provides an overview of domestic (including charter) commercial aviation activity in Australia for the month of July 2019.

The data cover revenue passengers carried by Australian-registered operators of scheduled regular public transport services over Australian flight stages and fixed-wing charter operators. These estimates include passengers carried between domestic airports on international flights operated by these carriers. The passengers carried refer to traffic on board by stages.

Estimates of passengers and aircraft movements for charter aviation are included in this publication, where BITRE confidentiality standards are met.

Individual routes shown are restricted to those with an average exceeding 8 000 passengers per month over the previous six months where two or more airlines operate in competition. For the month of July 2019, there were 65 such routes.

Information on the total network for the month of July 2019 and on the Regular Public Transport (RPT) network for the month of July 2019 is presented on page 2, with estimates for the year ended July 2019 presented on page 3.

Detailed information on the 65 individual routes can be found in the RPT summary pages 4-13 of this publication.

The top ten airports in terms of RPT passenger movements are shown on page 14.

Data on domestic RPT cargo movements at the top five cargo airports are provided on page 15. The table includes cargo carried on passenger flights operated by the Qantas group (including Jetstar), Virgin Australia, Air North and Skippers as well as the cargo carried by dedicated freighter aircraft operated by Qantas Freight, Toll Aviation and Virgin Australia Cargo.

The long-term trends for the top ten competitive RPT routes are presented graphically on pages 16-25.

Domestic RPT passenger movements at the top 50 regional airports are presented on pages 26-27.

Tables providing estimates of domestic charter aviation activity are shown on page 28. BITRE confidentiality standards restrict publication of detailed estimates for individual Australian airports, with the exception of Perth Airport.

A list of definitions can be found on page 29.

This report was prepared by the Aviation Statistics Section of the Bureau of Infrastructure, Transport and Regional Economics with data provided by airlines.

Estimates are included where data were not available and data presented in this publication may contain revisions to previously published data.

Where figures have been rounded, discrepancies may occur between sums of component items and totals, and in percentage changes which are derived from figures prior to rounding.

# CONTENTS

<b>Highlights</b> .....	<b>1</b>
<b>Total network</b> .....	<b>2</b>
<b>RPT network</b> .....	<b>2</b>
<b>Top competitive routes</b> .....	<b>4</b>
<b>Top ten airports – passenger movements</b> .....	<b>14</b>
<b>Top five airports – cargo movements</b> .....	<b>15</b>
<b>Top ten routes</b> .....	<b>16</b>
1. Melbourne – Sydney .....	16
2. Brisbane – Sydney.....	17
3. Brisbane – Melbourne .....	18
4. Gold Coast – Sydney .....	19
5. Adelaide – Melbourne .....	20
6. Gold Coast – Melbourne .....	21
7. Melbourne – Perth .....	22
8. Adelaide – Sydney .....	23
9. Perth – Sydney .....	24
10. Hobart – Melbourne .....	25
<b>Top fifty regional airports</b> .....	<b>26</b>
<b>Domestic charter activity</b> .....	<b>28</b>
<b>Definitions</b> .....	<b>29</b>

This page is intentionally left blank.

## HIGHLIGHTS

There were 5.70 million passengers carried on Australian domestic commercial aviation (including charter operations) in July 2019, an increase of 0.9 per cent on July 2018. For the month of July 2019 there were 60.2 thousand aircraft trips, an increase of 3.8 per cent compared to July 2018.

5.45 million passengers were carried on RPT flights in July 2019, an increase of 0.2 per cent on July 2018.

For the year ending July 2019 there were 60.97 million RPT passengers, an increase of 0.1 per cent on the year ending July 2018.

RPT revenue passenger kilometres (RPKs) performed were 6.52 billion for the month, up 0.4 per cent compared with July 2018. Capacity, measured by available seat kilometres (ASKs), increased by 1.5 per cent compared with July 2018 to a total of 7.93 billion.

The industry wide load factor (RPKs/ASKs) decreased from 83.2 per cent in July 2018 to 82.3 per cent in July 2019. Load factors on individual routes decreased on 39 of the 65 RPT for which complete data is available in both years.

For the month of July 2019, Melbourne – Sydney remained Australia's busiest RPT route with 758 311 passengers, a decrease of 2.1 per cent compared with July 2018. It was followed by Brisbane – Sydney with 431 064 passengers (down 0.9 per cent) and Brisbane – Melbourne with 330 830 passengers (down 1.6 per cent).

The greatest percentage increase in RPT passenger numbers, compared to July 2018, was on the Adelaide – Alice Springs route (up 15.4 per cent). There were large increases on a number of other routes, including Newman – Perth (up 15.1 per cent), Brisbane – Rockhampton (up 14.0 per cent), Perth – Port Hedland (up 11.4 per cent) and Brisbane – Hamilton Island (up 11.0 per cent).

Routes with traffic decreases in July 2019 compared with July 2018 included Proserpine – Sydney (down 18.9 per cent), Darwin – Perth (down 16.6 per cent) and Brisbane – Darwin (down 5.1 per cent).

In July 2019, Sydney remained Australia's busiest domestic airport with 2.39 million passenger movements, followed by Melbourne with 2.27 million passenger movements and Brisbane with 1.60 million passenger movements.

Total cargo movements at Australian airports on domestic RPT flights were 40.8 thousand tonnes in July 2019, an increase of 3.7 per cent compared with July 2018.

In July 2019, there were 2.30 million domestic passenger movements through regional airports, 0.4 per cent higher than in July 2018. Out of the top 50 regional airports, the strongest increase was at Ayers Rock airport (up 29.5 per cent on July 2018), while the largest decrease was recorded at Toowoomba Wellcamp airport (down 19.2 per cent on July 2018).

Fixed-wing charter operators carried 252.0 thousand passengers in July 2019, an increase of 18.9 per cent on July 2018. It was the highest monthly number of charter passengers reported since the charter survey commenced in July 2011. Perth Airport accounted for 38.6 per cent of all charter passengers in Australia.

## TOTAL NETWORK

### Summary of monthly commercial aviation activity

	Jul 2018	Jul 2019	% Change
Total passengers carried (millions)	5.65	5.70	0.9
Aircraft trips (000s)	58.1	60.2	3.8

Note: Regular Public Transport and charter aviation activity  
Helicopter, joyflights and sightseeing charter flights not included.

## RPT NETWORK

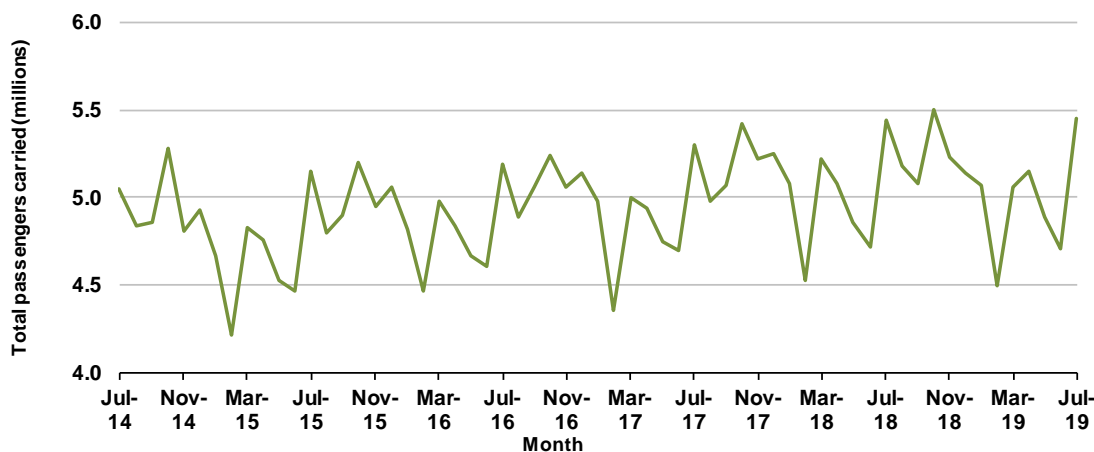
### Summary of monthly RPT activity

	Jul 2018	Jul 2019	% Change
Total passengers carried (millions)	5.44	5.45	0.2
Revenue passenger kilometres (billions)	6.50	6.52	0.4
Available seats (millions)	6.73	6.86	1.9
Available seat kilometres (billions)	7.81	7.93	1.5
Load factor %	83.2	82.3	-0.9 *
Aircraft trips (000s)	54.3	55.9	3.0

\* percentage point difference

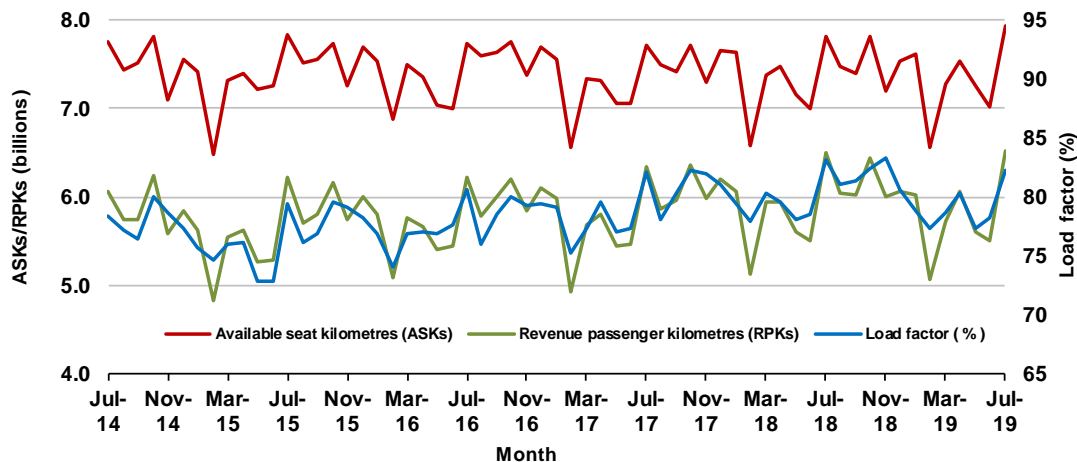
### Domestic RPT passenger traffic

(monthly)



### RPT Network utilisation

(monthly)





## TOTAL NETWORK

### Summary of annual commercial aviation activity

	YE Jul 2018	YE Jul 2019	% Change
Total passengers carried (millions)	63.34	63.57	0.4
Aircraft trips (000s)	679.2	680.1	0.1

Note: Regular Public Transport and charter aviation activity  
Helicopter, joyflights and sightseeing charter flights not included.

## RPT NETWORK

### Summary of annual RPT activity

	YE Jul 2018	YE Jul 2019	% Change
Total passengers carried (millions)	60.88	60.97	0.1
Revenue passenger kilometres (billions)	71.03	71.09	0.1
Available seats (millions)	77.54	77.61	0.1
Available seat kilometres (billions)	88.62	88.61	0.0
Load factor %	80.1	80.2	0.1 *
Aircraft trips (000s)	633.6	635.0	0.2

\* percentage point difference

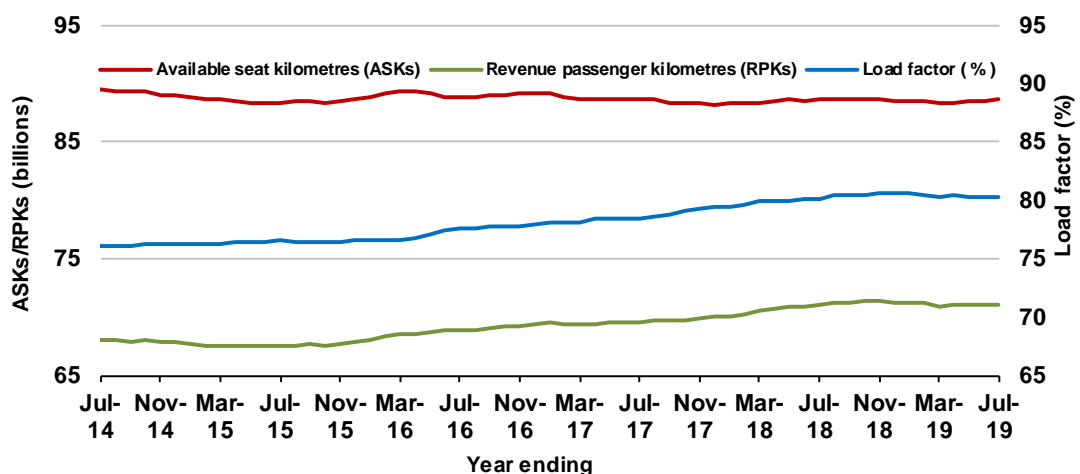
### Domestic RPT passenger traffic

(moving annual totals)



### RPT Network utilisation

(moving annual totals)



## TOP COMPETITIVE ROUTES

**Table 1: Passengers carried (000s) — annual activity**

	City-Pair	YE Jul 2018	YE Jul 2019	% Change
1	Melbourne - Sydney	9 243.2	9 179.6	-0.7
2	Brisbane - Sydney	4 798.6	4 810.2	0.2
3	Brisbane - Melbourne	3 568.5	3 589.4	0.6
4	Gold Coast - Sydney	2 742.9	2 698.8	-1.6
5	Adelaide - Melbourne	2 488.5	2 511.9	0.9
6	Melbourne - Perth	2 063.8	2 116.8	2.6
7	Gold Coast - Melbourne	2 048.5	2 087.4	1.9
8	Adelaide - Sydney	1 912.1	1 874.4	-2.0
9	Perth - Sydney	1 720.6	1 690.1	-1.8
10	Hobart - Melbourne	1 639.3	1 661.4	1.4
11	Brisbane - Cairns	1 357.3	1 286.9	-5.2
12	Canberra - Melbourne	1 159.4	1 176.9	1.5
13	Cairns - Sydney	1 137.8	1 100.6	-3.3
14	Brisbane - Townsville	984.4	1 003.1	1.9
15	Launceston - Melbourne	952.0	957.3	0.6
16	Brisbane - Perth	973.8	943.6	-3.1
17	Canberra - Sydney	954.3	925.7	-3.0
18	Cairns - Melbourne	845.4	858.6	1.6
19	Adelaide - Brisbane	857.6	852.9	-0.6
20	Brisbane - Mackay	728.3	754.5	3.6
21	Hobart - Sydney	690.8	712.9	3.2
22	Sunshine Coast - Sydney	615.6	649.1	5.4
23	Brisbane - Canberra	625.9	648.0	3.5
24	Adelaide - Perth	632.6	636.9	0.7
25	Brisbane - Newcastle	584.8	587.6	0.5
26	Melbourne - Sunshine Coast	521.4	552.1	5.9
27	Brisbane - Rockhampton	517.1	527.0	1.9
28	Melbourne - Newcastle	491.4	486.7	-1.0
29	Karratha - Perth	435.3	448.4	3.0
30	Ballina - Sydney	428.8	432.7	0.9
31	Perth - Port Hedland	351.0	368.7	5.0
32	Brisbane - Darwin	395.5	358.0	-9.5
33	Broome - Perth	342.6	331.5	-3.2
34	Coffs Harbour - Sydney	346.7	330.7	-4.6
35	Newman - Perth	297.4	326.9	9.9
36	Darwin - Melbourne	304.4	310.5	2.0
37	Darwin - Sydney	317.6	310.1	-2.4
38	Launceston - Sydney	285.0	290.6	2.0
39	Kalgoorlie - Perth	259.9	283.6	9.1
40	Brisbane - Gladstone	263.5	247.0	-6.3
41	Brisbane - Proserpine	270.3	245.8	-9.0
42	Brisbane - Hobart	218.7	239.4	9.5
43	Albury - Sydney	222.1	228.9	3.1
44	Melbourne - Mildura	220.3	228.6	3.8
45	Adelaide - Gold Coast	220.9	215.2	-2.6
46	Hamilton Island - Sydney	203.1	203.1	0.0
47	Brisbane - Emerald	195.5	197.0	0.7
48	Adelaide - Canberra	191.2	195.0	2.0
49	Ayers Rock - Sydney	196.5	194.2	-1.2
50	Port Macquarie - Sydney	189.1	187.9	-0.6

continued

**Table 1: (continued) Passengers carried (000s) — annual activity**

	<b>City-Pair</b>	<b>YE Jul 2018</b>	<b>YE Jul 2019</b>	<b>% Change</b>
51	Dubbo - Sydney	189.8	184.1	-3.0
52	Darwin - Perth	202.7	179.5	-11.4
53	Sydney - Wagga Wagga	180.4	179.0	-0.8
54	Sydney - Townsville	162.2	174.8	7.8
55	Sydney - Tamworth	175.9	173.5	-1.4
56	Adelaide - Port Lincoln	169.0	168.3	-0.5
57	Brisbane - Bundaberg	168.1	155.8	-7.3
58	Cairns - Townsville	147.6	144.4	-2.2
59	Adelaide - Alice Springs	128.4	141.8	10.4
60	Brisbane - Mount Isa	128.3	134.8	5.1
61	Brisbane - Hamilton Island	123.0	126.1	2.5
62	Armidale - Sydney	122.8	123.4	0.5
63	Proserpine - Sydney	125.2	119.5	NA (a)
64	Alice Springs - Darwin	113.7	110.8	-2.6
65	Geraldton - Perth	111.3	110.0	-1.1
	<b>Total domestic network</b>	<b>60 884.8</b>	<b>60 965.7</b>	<b>0.1</b>

(a) Proserpine - Sydney route included from September 2017, prior data not shown.

**Table 2: Passengers carried (000s) — monthly activity**

	<b>City-Pair</b>	<b>Jul 2018</b>	<b>Jul 2019</b>	<b>% Change</b>
1	Melbourne - Sydney	774.9	758.3	-2.1
2	Brisbane - Sydney	435.2	431.1	-0.9
3	Brisbane - Melbourne	336.2	330.8	-1.6
4	Gold Coast - Sydney	228.6	235.4	3.0
5	Adelaide - Melbourne	217.8	222.8	2.3
6	Gold Coast - Melbourne	189.0	193.0	2.1
7	Melbourne - Perth	183.5	184.5	0.6
8	Adelaide - Sydney	161.8	158.9	-1.8
9	Perth - Sydney	147.4	147.1	-0.2
10	Hobart - Melbourne	132.6	132.7	0.1
11	Brisbane - Cairns	124.7	119.7	-4.0
12	Cairns - Sydney	112.2	109.6	-2.3
13	Canberra - Melbourne	101.0	99.6	-1.4
14	Brisbane - Townsville	98.8	95.2	-3.6
15	Cairns - Melbourne	89.3	92.3	3.4
16	Brisbane - Perth	83.4	85.1	2.0
17	Canberra - Sydney	85.2	83.6	-1.9
18	Adelaide - Brisbane	76.5	79.0	3.3
19	Launceston - Melbourne	80.6	77.1	-4.4
20	Brisbane - Mackay	71.9	68.8	-4.3
21	Brisbane - Canberra	61.6	62.2	1.0
22	Sunshine Coast - Sydney	53.9	58.4	8.3
23	Adelaide - Perth	54.6	57.4	5.3
24	Hobart - Sydney	56.8	57.1	0.5
25	Melbourne - Sunshine Coast	51.5	52.1	1.1
26	Brisbane - Newcastle	52.6	51.6	-1.9
27	Brisbane - Rockhampton	44.6	50.8	14.0
28	Karratha - Perth	40.1	42.4	5.6
29	Melbourne - Newcastle	42.8	41.8	-2.3
30	Brisbane - Darwin	41.8	39.6	-5.1
31	Darwin - Sydney	38.0	37.8	-0.6
32	Ballina - Sydney	37.5	37.6	0.4
33	Perth - Port Hedland	32.6	36.3	11.4
34	Darwin - Melbourne	34.0	34.9	2.6
35	Broome - Perth	32.6	34.6	6.3
36	Newman - Perth	27.4	31.6	15.1
37	Coffs Harbour - Sydney	28.2	27.4	-3.0
38	Launceston - Sydney	22.7	23.7	4.5
39	Kalgoorlie - Perth	24.0	23.2	-3.6
40	Brisbane - Proserpine	21.8	22.9	5.2
41	Brisbane - Gladstone	22.1	22.5	1.9
42	Albury - Sydney	20.6	20.9	1.4
43	Melbourne - Mildura	20.0	19.9	-0.5
44	Brisbane - Hobart	19.1	19.8	3.4
45	Adelaide - Gold Coast	19.5	19.6	0.3
46	Sydney - Townsville	18.4	19.1	3.8
47	Hamilton Island - Sydney	18.5	19.1	3.3
48	Ayers Rock - Sydney	18.0	18.6	3.5
49	Brisbane - Emerald	18.0	18.6	3.5
50	Darwin - Perth	21.4	17.8	-16.6

continued

**Table 2: (continued) Passengers carried (000s) — monthly activity**

	<b>City-Pair</b>	<b>Jul 2018</b>	<b>Jul 2019</b>	<b>% Change</b>
51	Adelaide - Canberra	16.2	16.1	-0.5
52	Port Macquarie - Sydney	15.6	16.0	2.6
53	Dubbo - Sydney	16.2	15.7	-3.2
54	Sydney - Wagga Wagga	16.2	15.6	-3.8
55	Adelaide - Alice Springs	12.7	14.6	15.4
56	Sydney - Tamworth	14.5	14.4	-1.0
57	Brisbane - Bundaberg	13.9	13.4	-4.1
58	Alice Springs - Darwin	12.3	13.1	6.6
59	Adelaide - Port Lincoln	13.5	13.0	-3.7
60	Cairns - Townsville	13.2	12.9	-1.9
61	Brisbane - Mount Isa	12.0	12.9	7.0
62	Brisbane - Hamilton Island	10.3	11.4	11.0
63	Armidale - Sydney	9.6	10.2	6.2
64	Proserpine - Sydney	12.3	10.0	-18.9
65	Geraldton - Perth	8.9	8.7	-2.2
	<b>Total domestic network</b>	<b>5 440.1</b>	<b>5 452.6</b>	<b>0.2</b>

**Table 3: Available seats (000s) — monthly activity**

	<b>City-Pair</b>	<b>Jul 2018</b>	<b>Jul 2019</b>	<b>% Change</b>
1	Melbourne - Sydney	904.6	908.6	0.5
2	Brisbane - Sydney	507.1	521.7	2.9
3	Brisbane - Melbourne	385.9	387.3	0.4
4	Gold Coast - Sydney	260.6	273.3	4.9
5	Adelaide - Melbourne	270.5	269.3	-0.4
6	Gold Coast - Melbourne	208.0	213.0	2.4
7	Melbourne - Perth	210.4	214.3	1.9
8	Adelaide - Sydney	200.1	191.8	-4.1
9	Perth - Sydney	178.2	174.7	-2.0
10	Hobart - Melbourne	168.0	168.9	0.5
11	Brisbane - Cairns	136.7	141.2	3.4
12	Cairns - Sydney	128.8	124.3	-3.4
13	Canberra - Melbourne	153.3	152.8	-0.3
14	Brisbane - Townsville	115.4	118.4	2.6
15	Cairns - Melbourne	100.8	102.7	1.9
16	Brisbane - Perth	97.3	97.3	-0.1
17	Canberra - Sydney	114.3	111.6	-2.3
18	Adelaide - Brisbane	94.2	95.6	1.5
19	Launceston - Melbourne	101.5	97.2	-4.3
20	Brisbane - Mackay	88.3	89.0	0.8
21	Brisbane - Canberra	75.7	79.4	4.9
22	Sunshine Coast - Sydney	65.3	70.0	7.1
23	Adelaide - Perth	71.6	77.1	7.7
24	Hobart - Sydney	68.2	71.6	5.1
25	Melbourne - Sunshine Coast	58.2	58.5	0.5
26	Brisbane - Newcastle	70.2	71.7	2.0
27	Brisbane - Rockhampton	56.1	58.8	4.9
28	Karratha - Perth	58.0	62.0	6.9
29	Melbourne - Newcastle	53.6	51.0	-4.8
30	Brisbane - Darwin	47.7	47.3	-0.7
31	Darwin - Sydney	45.0	43.8	-2.6
32	Ballina - Sydney	46.8	46.4	-0.9
33	Perth - Port Hedland	46.3	54.7	18.1
34	Darwin - Melbourne	38.6	38.8	0.4
35	Broome - Perth	37.5	39.0	3.9
36	Newman - Perth	46.9	53.9	14.9
37	Coffs Harbour - Sydney	41.2	39.0	-5.4
38	Launceston - Sydney	26.4	27.8	5.1
39	Kalgoorlie - Perth	38.7	42.0	8.6
40	Brisbane - Proserpine	25.2	28.2	11.6
41	Brisbane - Gladstone	30.9	32.5	5.4
42	Albury - Sydney	28.3	29.4	3.9
43	Melbourne - Mildura	29.2	30.6	4.6
44	Brisbane - Hobart	22.6	23.0	1.8
45	Adelaide - Gold Coast	22.0	22.5	2.2
46	Sydney - Townsville	21.9	22.0	0.4
47	Hamilton Island - Sydney	28.1	26.0	-7.4
48	Ayers Rock - Sydney	22.0	22.2	0.9
49	Brisbane - Emerald	23.4	26.4	12.7
50	Darwin - Perth	26.1	21.5	-17.7

continued

**Table 3: (continued) Available seats (000s) — monthly activity**

	<b>City-Pair</b>	<b>Jul 2018</b>	<b>Jul 2019</b>	<b>% Change</b>
51	Adelaide - Canberra	23.6	25.8	9.0
52	Port Macquarie - Sydney	20.7	23.6	14.0
53	Dubbo - Sydney	22.4	24.4	8.7
54	Sydney - Wagga Wagga	23.0	24.9	8.2
55	Adelaide - Alice Springs	15.6	17.8	13.9
56	Sydney - Tamworth	23.8	23.7	-0.5
57	Brisbane - Bundaberg	19.7	19.7	0.3
58	Alice Springs - Darwin	20.1	27.4	36.1
59	Adelaide - Port Lincoln	24.2	24.4	0.8
60	Cairns - Townsville	21.1	21.2	0.1
61	Brisbane - Mount Isa	14.7	17.2	17.0
62	Brisbane - Hamilton Island	14.5	15.5	7.3
63	Armidale - Sydney	15.0	16.2	7.9
64	Proserpine - Sydney	14.5	12.0	-17.1
65	Geraldton - Perth	18.4	14.2	-22.8
	<b>Total domestic network</b>	<b>6 725.9</b>	<b>6 855.0</b>	<b>1.9</b>

**Table 4: Load factors (%) — monthly activity**

	<b>City-Pair</b>	<b>Jul 2018</b>	<b>Jul 2019</b>	<b>% Point diff</b>
1	Melbourne - Sydney	85.7	83.5	-2.2
2	Brisbane - Sydney	85.8	82.6	-3.2
3	Brisbane - Melbourne	87.1	85.4	-1.7
4	Gold Coast - Sydney	87.7	86.1	-1.6
5	Adelaide - Melbourne	80.5	82.8	2.3
6	Gold Coast - Melbourne	90.9	90.6	-0.3
7	Melbourne - Perth	87.2	86.1	-1.1
8	Adelaide - Sydney	80.9	82.8	1.9
9	Perth - Sydney	82.7	84.2	1.5
10	Hobart - Melbourne	78.9	78.6	-0.3
11	Brisbane - Cairns	91.2	84.7	-6.5
12	Cairns - Sydney	87.1	88.2	1.1
13	Canberra - Melbourne	65.9	65.2	-0.7
14	Brisbane - Townsville	85.5	80.4	-5.1
15	Cairns - Melbourne	88.6	89.9	1.3
16	Brisbane - Perth	85.7	87.5	1.8
17	Canberra - Sydney	74.6	74.9	0.3
18	Adelaide - Brisbane	81.2	82.6	1.4
19	Launceston - Melbourne	79.4	79.3	-0.1
20	Brisbane - Mackay	81.4	77.3	-4.1
21	Brisbane - Canberra	81.3	78.3	-3.0
22	Sunshine Coast - Sydney	82.5	83.5	1.0
23	Adelaide - Perth	76.2	74.5	-1.7
24	Hobart - Sydney	83.3	79.7	-3.6
25	Melbourne - Sunshine Coast	88.5	89.1	0.6
26	Brisbane - Newcastle	74.9	72.1	-2.8
27	Brisbane - Rockhampton	79.5	86.4	6.9
28	Karratha - Perth	69.2	68.4	-0.8
29	Melbourne - Newcastle	79.8	81.8	2.0
30	Brisbane - Darwin	87.7	83.7	-4.0
31	Darwin - Sydney	84.4	86.2	1.8
32	Ballina - Sydney	80.0	81.1	1.1
33	Perth - Port Hedland	70.4	66.4	-4.0
34	Darwin - Melbourne	88.0	89.9	1.9
35	Broome - Perth	86.8	88.7	1.9
36	Newman - Perth	58.4	58.5	0.1
37	Coffs Harbour - Sydney	68.5	70.2	1.7
38	Launceston - Sydney	85.8	85.3	-0.5
39	Kalgoorlie - Perth	62.1	55.2	-6.9
40	Brisbane - Proserpine	86.3	81.3	-5.0
41	Brisbane - Gladstone	71.6	69.3	-2.3
42	Albury - Sydney	72.9	71.1	-1.8
43	Melbourne - Mildura	68.6	65.2	-3.4
44	Brisbane - Hobart	84.8	86.1	1.3
45	Adelaide - Gold Coast	88.6	86.9	-1.7
46	Sydney - Townsville	84.1	86.9	2.8
47	Hamilton Island - Sydney	65.8	73.4	7.6
48	Ayers Rock - Sydney	81.6	83.7	2.1
49	Brisbane - Emerald	76.9	70.6	-6.3
50	Darwin - Perth	81.9	82.9	1.0

continued



**Table 4: (continued) Load factors (%) — monthly activity**

	<b>City-Pair</b>	<b>Jul 2018</b>	<b>Jul 2019</b>	<b>% Point diff</b>
51	Adelaide - Canberra	68.4	62.4	-6.0
52	Port Macquarie - Sydney	75.5	68.0	-7.5
53	Dubbo - Sydney	72.4	64.4	-8.0
54	Sydney - Wagga Wagga	70.3	62.5	-7.8
55	Adelaide - Alice Springs	81.0	82.0	1.0
56	Sydney - Tamworth	61.2	60.9	-0.3
57	Brisbane - Bundaberg	70.9	67.7	-3.2
58	Alice Springs - Darwin	61.2	47.9	-13.3
59	Adelaide - Port Lincoln	55.5	53.1	-2.4
60	Cairns - Townsville	62.3	61.1	-1.2
61	Brisbane - Mount Isa	82.0	75.0	-7.0
62	Brisbane - Hamilton Island	70.9	73.4	2.5
63	Armidale - Sydney	64.1	63.2	-0.9
64	Proserpine - Sydney	85.1	83.2	-1.9
65	Geraldton - Perth	48.5	61.5	13.0
	<b>Total domestic network</b>	<b>83.2</b>	<b>82.3</b>	<b>-0.9</b>

**Table 5: Aircraft trips <sup>(a)</sup> — monthly activity**

	<b>City-Pair</b>	<b>Jul 2018</b>	<b>Jul 2019</b>	<b>% Change</b>
1	Melbourne - Sydney	5 046	5 136	1.8
2	Brisbane - Sydney	3 081	3 163	2.7
3	Brisbane - Melbourne	2 236	2 259	1.0
4	Gold Coast - Sydney	1 496	1 587	6.1
5	Adelaide - Melbourne	1 667	1 645	-1.3
6	Gold Coast - Melbourne	1 095	1 125	2.7
7	Melbourne - Perth	999	1 092	9.3
8	Adelaide - Sydney	1 192	1 123	-5.8
9	Perth - Sydney	786	776	-1.3
10	Hobart - Melbourne	925	924	-0.1
11	Brisbane - Cairns	891	988	10.9
12	Cairns - Sydney	696	635	-8.8
13	Canberra - Melbourne	980	963	-1.7
14	Brisbane - Townsville	777	788	1.4
15	Cairns - Melbourne	524	523	-0.2
16	Brisbane - Perth	520	525	1.0
17	Canberra - Sydney	1 466	1 473	0.5
18	Adelaide - Brisbane	587	545	-7.2
19	Launceston - Melbourne	760	733	-3.6
20	Brisbane - Mackay	673	697	3.6
21	Brisbane - Canberra	553	574	3.8
22	Sunshine Coast - Sydney	393	432	9.9
23	Adelaide - Perth	477	505	5.9
24	Hobart - Sydney	427	456	6.8
25	Melbourne - Sunshine Coast	325	324	-0.3
26	Brisbane - Newcastle	456	514	12.7
27	Brisbane - Rockhampton	671	697	3.9
28	Karratha - Perth	497	512	3.0
29	Melbourne - Newcastle	299	283	-5.4
30	Brisbane - Darwin	290	285	-1.7
31	Darwin - Sydney	264	248	-6.1
32	Ballina - Sydney	300	299	-0.3
33	Perth - Port Hedland	381	423	11.0
34	Darwin - Melbourne	205	205	0.0
35	Broome - Perth	336	341	1.5
36	Newman - Perth	343	378	10.2
37	Coffs Harbour - Sydney	397	418	5.3
38	Launceston - Sydney	152	154	1.3
39	Kalgoorlie - Perth	310	338	9.0
40	Brisbane - Proserpine	142	158	11.3
41	Brisbane - Gladstone	405	435	7.4
42	Albury - Sydney	502	541	7.8
43	Melbourne - Mildura	386	425	10.1
44	Brisbane - Hobart	128	132	3.1
45	Adelaide - Gold Coast	124	126	1.6
46	Sydney - Townsville	134	124	-7.5
47	Hamilton Island - Sydney	174	161	-7.5
48	Ayers Rock - Sydney	124	124	0.0
49	Brisbane - Emerald	311	386	24.1
50	Darwin - Perth	155	124	-20.0

continued

**Table 5: (continued) Aircraft trips <sup>(a)</sup> — monthly activity**

	<b>City-Pair</b>	<b>Jul 2018</b>	<b>Jul 2019</b>	<b>% Change</b>
51	Adelaide - Canberra	140	154	10.0
52	Port Macquarie - Sydney	320	354	10.6
53	Dubbo - Sydney	467	531	13.7
54	Sydney - Wagga Wagga	454	493	8.6
55	Adelaide - Alice Springs	111	126	13.5
56	Sydney - Tamworth	347	367	5.8
57	Brisbane - Bundaberg	272	312	14.7
58	Alice Springs - Darwin	175	164	-6.3
59	Adelaide - Port Lincoln	624	639	2.4
60	Cairns - Townsville	339	335	-1.2
61	Brisbane - Mount Isa	158	148	-6.3
62	Brisbane - Hamilton Island	112	119	6.3
63	Armidale - Sydney	349	380	8.9
64	Proserpine - Sydney	80	66	-17.5
65	Geraldton - Perth	184	142	-22.8
	<b>Total domestic network</b>	<b>54 260</b>	<b>55 883</b>	<b>3.0</b>

(a) Includes RPT Cargo flights.

## TOP TEN AIRPORTS – PASSENGER MOVEMENTS

**Table 6: Top ten airports, RPT passenger movements (000s) - monthly activity**

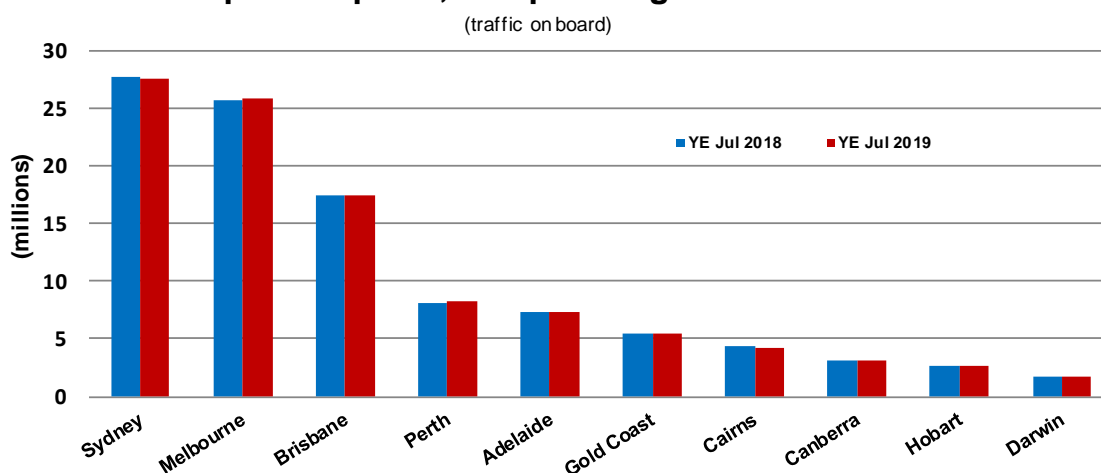
Airport	Jul 2018	Jul 2019	% Change	% of Total
1 Sydney	2 405.7	2 389.0	-0.7	21.9
2 Melbourne	2 281.2	2 267.0	-0.6	20.8
3 Brisbane	1 597.0	1 598.2	0.1	14.7
4 Perth	728.6	744.6	2.2	6.8
5 Adelaide	638.3	646.2	1.2	5.9
6 Gold Coast	480.4	498.9	3.9	4.6
7 Cairns	426.3	412.9	-3.1	3.8
8 Canberra	280.6	278.0	-0.9	2.5
9 Hobart	212.9	221.0	3.8	2.0
10 Darwin	193.9	188.6	-2.8	1.7
<b>Total top ten airports</b>	<b>9 244.9</b>	<b>9 244.5</b>	<b>0.0</b>	<b>84.8</b>
<b>Total domestic network</b>	<b>10 880.1</b>	<b>10 905.2</b>	<b>0.2</b>	<b>100.0</b>

**Table 7: Top ten airports, RPT passenger movements (000s) - annual activity**

Airport	YE Jul 2018	YE Jul 2019	% Change	% of Total
1 Sydney	27 683.2	27 488.5	-0.7	22.5
2 Melbourne	25 748.2	25 882.4	0.5	21.2
3 Brisbane	17 405.5	17 385.6	-0.1	14.3
4 Perth	8 130.8	8 225.5	1.2	6.7
5 Adelaide	7 294.9	7 314.8	0.3	6.0
6 Gold Coast	5 494.8	5 494.0	0.0	4.5
7 Cairns	4 331.0	4 211.9	-2.7	3.5
8 Canberra	3 107.7	3 129.2	0.7	2.6
9 Hobart	2 607.4	2 733.7	4.8	2.2
10 Darwin	1 778.3	1 710.2	-3.8	1.4
<b>Total top ten airports</b>	<b>103 581.8</b>	<b>103 575.8</b>	<b>0.0</b>	<b>84.9</b>
<b>Total domestic network</b>	<b>121 769.6</b>	<b>121 931.4</b>	<b>0.1</b>	<b>100.0</b>

Note: Airport passenger movement numbers are the sum of passenger arrivals and departures at each airport.

### Top ten airports, RPT passenger movements



## TOP FIVE AIRPORTS – CARGO MOVEMENTS

Table 8: Top five airports, domestic RPT cargo movements (000s tonnes) - monthly activity

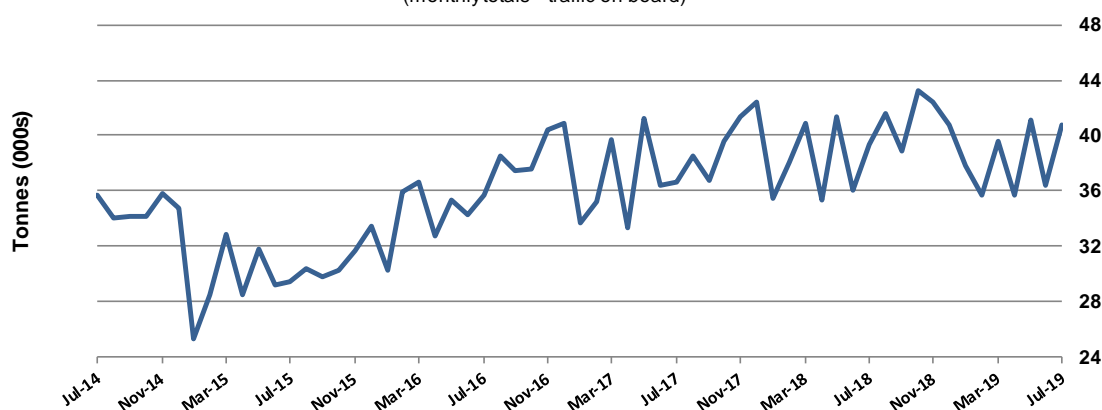
Airport	Jul 2018	Jul 2019	% Change	% of Total
1 Melbourne	11.1	10.8	-2.7	26.6
2 Sydney	9.3	8.7	-5.8	21.4
3 Brisbane	6.0	6.7	11.3	16.4
4 Perth	5.5	5.3	-3.7	13.1
5 Adelaide	2.3	2.5	8.5	6.1
<b>Total top five airports</b>	<b>34.2</b>	<b>34.1</b>	<b>-0.5</b>	<b>83.5</b>
<b>Total domestic network</b>	<b>39.3</b>	<b>40.8</b>	<b>3.7</b>	<b>100.0</b>

Table 9: Top five airports, domestic RPT cargo movements (000s tonnes) - annual activity

Airport	YE Jul 2018	YE Jul 2019	% Change	% of Total
1 Melbourne	134.5	127.3	-5.4	26.9
2 Sydney	107.6	103.3	-4.0	21.8
3 Brisbane	69.1	74.8	8.2	15.8
4 Perth	66.2	65.1	-1.6	13.7
5 Adelaide	27.3	29.3	7.3	6.2
<b>Total top five airports</b>	<b>404.7</b>	<b>399.9</b>	<b>-1.2</b>	<b>84.4</b>
<b>Total domestic network</b>	<b>465.2</b>	<b>474.1</b>	<b>1.9</b>	<b>100.0</b>

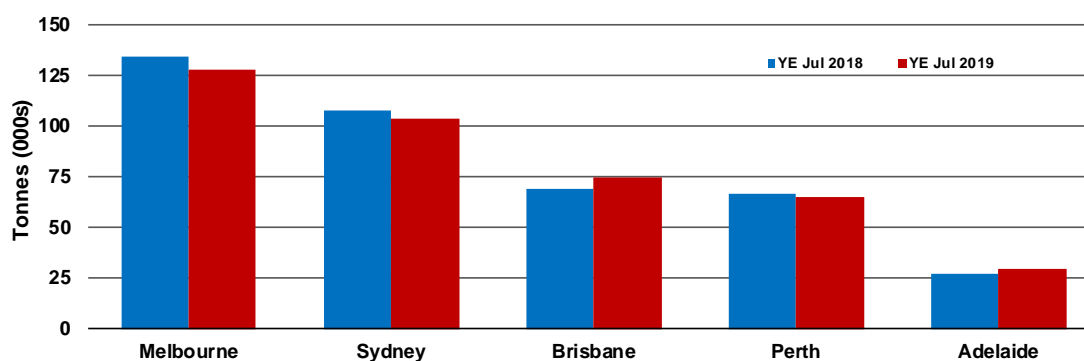
Note: Airport cargo tonnes are the sum of cargo tonnes on arrivals and departures at each airport.

### Total domestic network - cargo movement (monthly totals - traffic on board)



### Top five airports, cargo movements

(Domestic cargo traffic - traffic on board)



## TOP TEN ROUTES

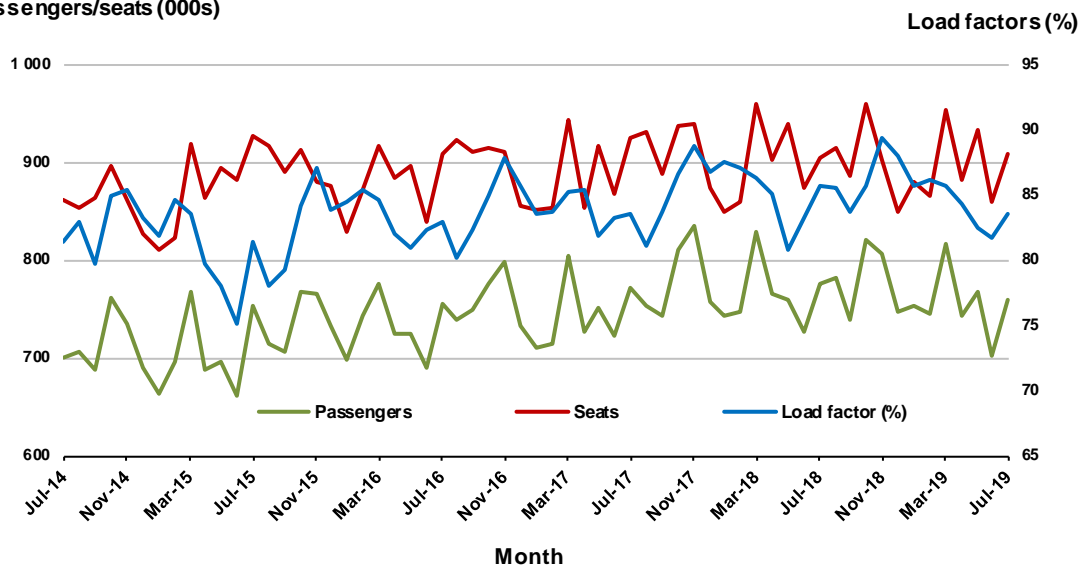
### 1. Melbourne - Sydney

#### Monthly data

	Jul 2018	Jul 2019	% Change
Passengers carried (000s)	774.9	758.3	-2.1
Seats (000s)	904.6	908.6	0.5
Load factor %	85.7	83.5	-2.2 *
Aircraft trips	5 046	5 136	1.8

\* percentage point difference

#### Passengers/seats (000s)

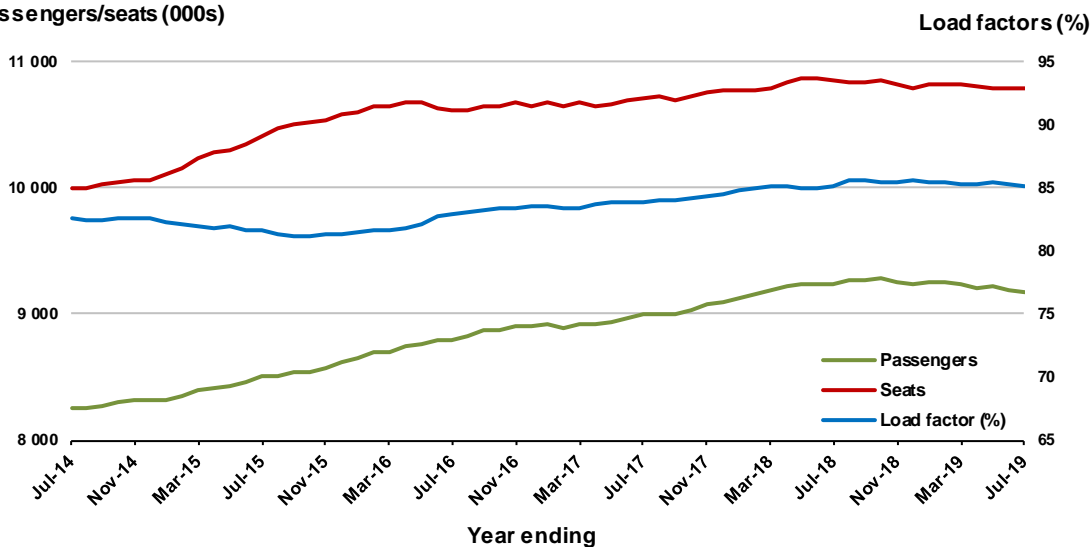


#### Moving annual data

	YE Jul 2018	YE Jul 2019	% Change
Passengers carried (000s)	9 243.2	9 179.6	-0.7
Seats (000s)	10 850.7	10 788.6	-0.6
Load factor %	85.2	85.1	-0.1 *
Aircraft trips	60 225	60 249	0.0

\* percentage point difference

#### Passengers/seats (000s)

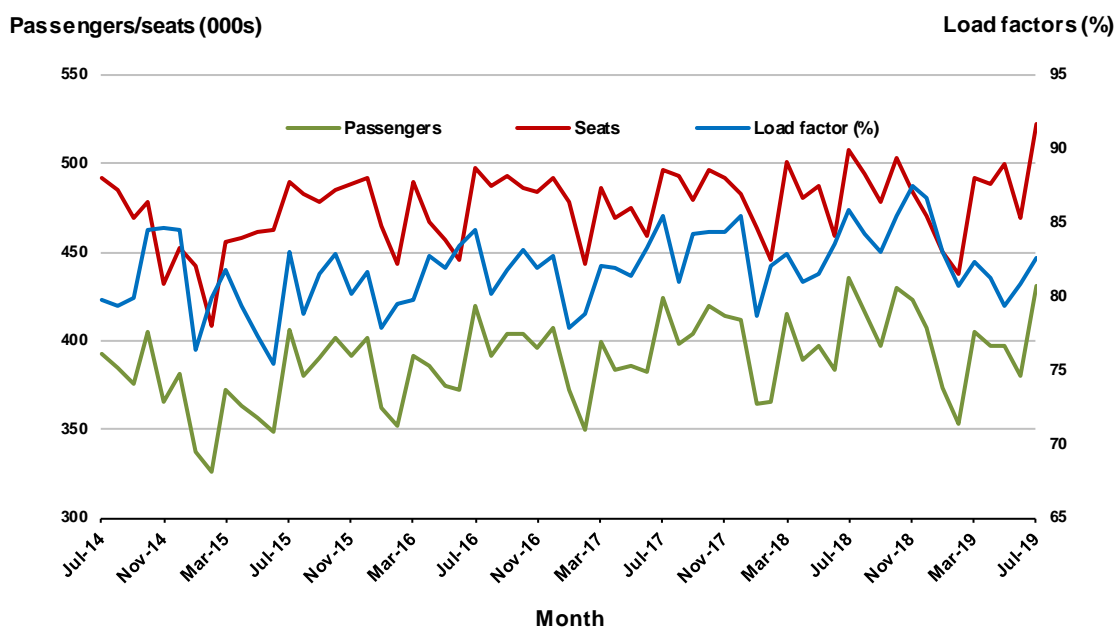


## 2. Brisbane - Sydney

### Monthly data

	Jul 2018	Jul 2019	% Change
Passengers carried (000s)	435.2	431.1	-0.9
Seats (000s)	507.1	521.7	2.9
Load factor %	85.8	82.6	-3.2 *
Aircraft trips	3 081	3 163	2.7

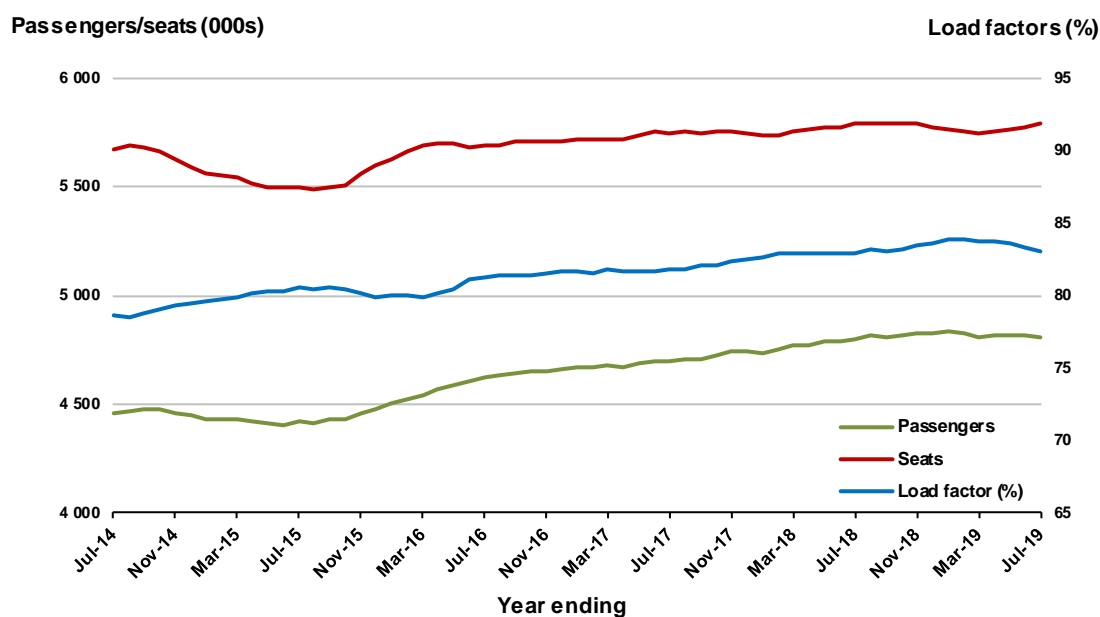
\* percentage point difference



### Moving annual data

	YE Jul 2018	YE Jul 2019	% Change
Passengers carried (000s)	4 798.6	4 810.2	0.2
Seats (000s)	5 786.7	5 788.7	0.0
Load factor %	82.9	83.1	0.2 *
Aircraft trips	35 225	35 336	0.3

\* percentage point difference

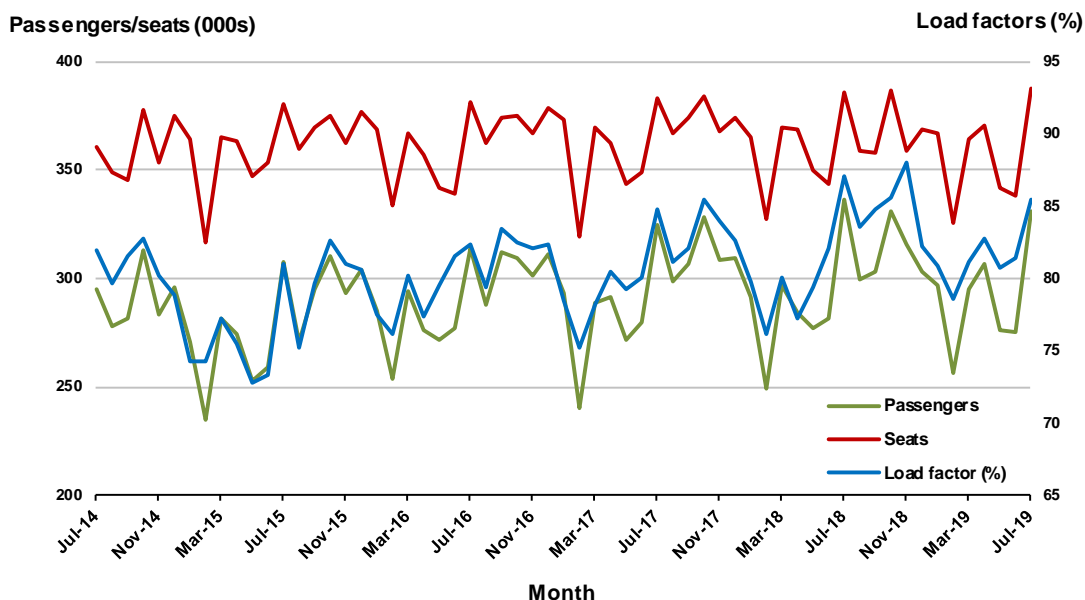


### 3. Brisbane - Melbourne

#### Monthly data

	Jul 2018	Jul 2019	% Change
Passengers carried (000s)	336.2	330.8	-1.6
Seats (000s)	385.9	387.3	0.4
Load factor %	87.1	85.4	-1.7 *
Aircraft trips	2 236	2 259	1.0

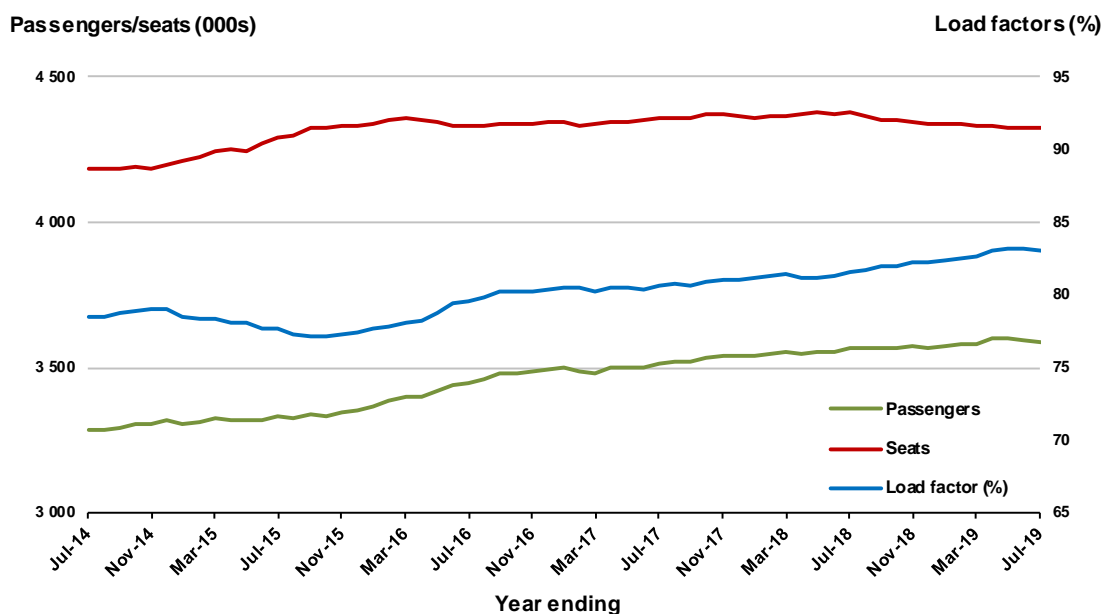
\* percentage point difference



#### Moving annual data

	YE Jul 2018	YE Jul 2019	% Change
Passengers carried (000s)	3 568.5	3 589.4	0.6
Seats (000s)	4 376.8	4 323.5	-1.2
Load factor %	81.5	83.0	1.5 *
Aircraft trips	25 794	25 520	-1.1

\* percentage point difference





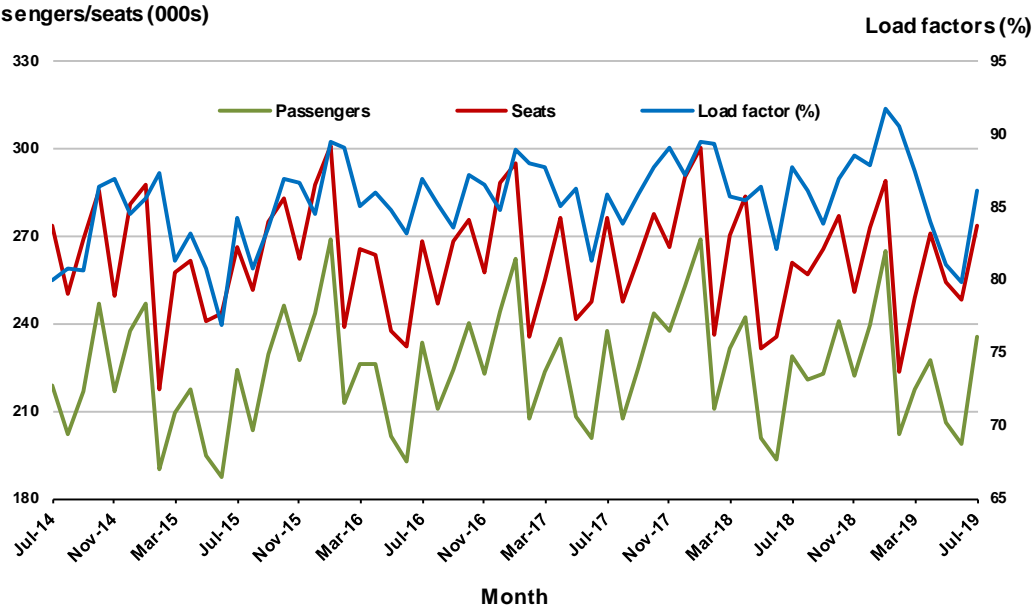
## 4. Gold Coast - Sydney

### Monthly data

	Jul 2018	Jul 2019	% Change
Passengers carried (000s)	228.6	235.4	3.0
Seats (000s)	260.6	273.3	4.9
Load factor %	87.7	86.1	-1.6 *
Aircraft trips	1 496	1 587	6.1

\* percentage point difference

### Passengers/seats (000s)

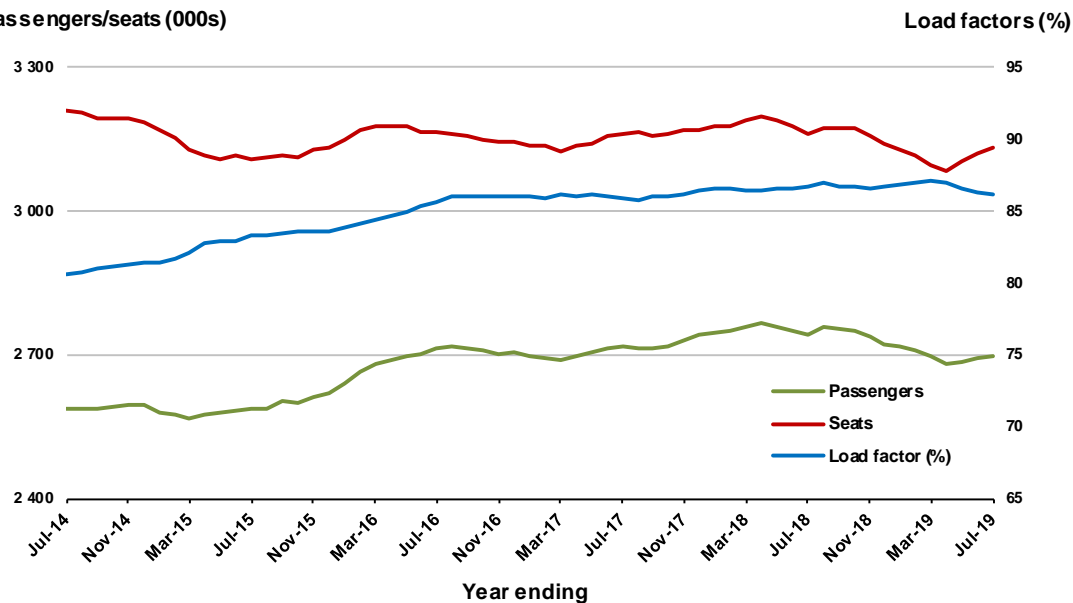


### Moving annual data

	YE Jul 2018	YE Jul 2019	% Change
Passengers carried (000s)	2 742.9	2 698.8	-1.6
Seats (000s)	3 162.0	3 131.3	-1.0
Load factor %	86.7	86.2	-0.6 *
Aircraft trips	17 885	17 897	0.1

\* percentage point difference

### Passengers/seats (000s)



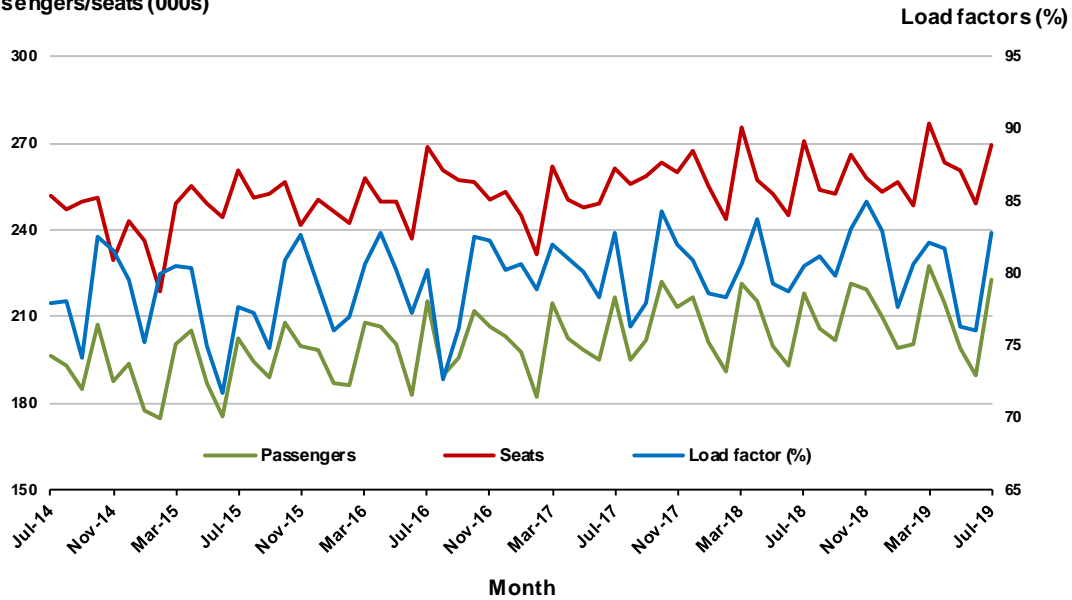
## 5. Adelaide - Melbourne

### Monthly data

	Jul 2018	Jul 2019	% Change
Passengers carried (000s)	217.8	222.8	2.3
Seats (000s)	270.5	269.3	-0.4
Load factor %	80.5	82.8	2.3 *
Aircraft trips	1 667	1 645	-1.3

\* percentage point difference

### Passengers/seats (000s)

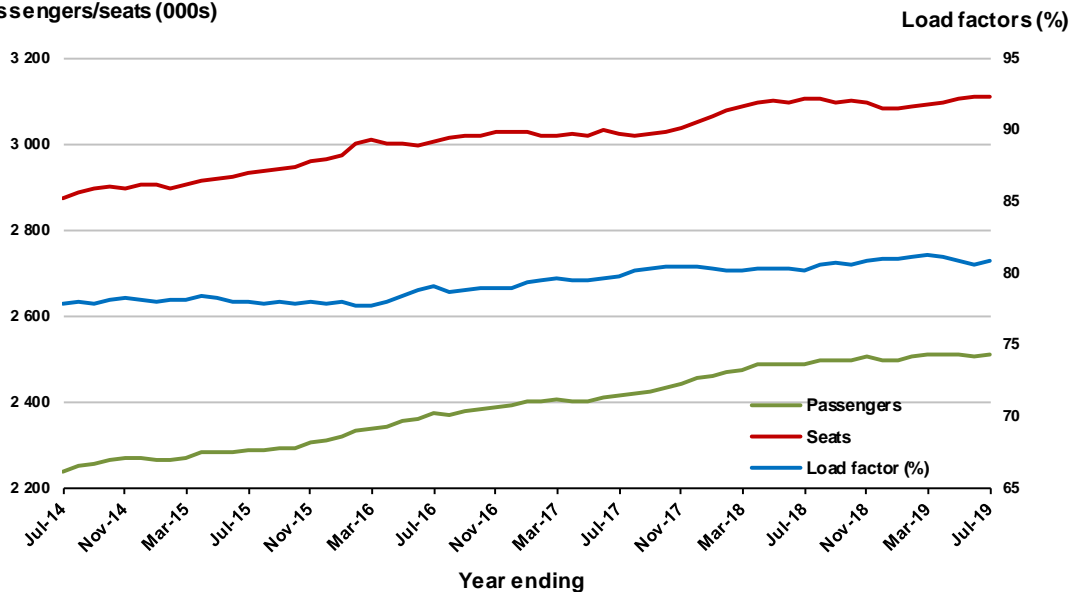


### Moving annual data

	YE Jul 2018	YE Jul 2019	% Change
Passengers carried (000s)	2 488.5	2 511.9	0.9
Seats (000s)	3 105.8	3 108.3	0.1
Load factor %	80.1	80.8	0.7 *
Aircraft trips	19 254	19 005	-1.3

\* percentage point difference

### Passengers/seats (000s)



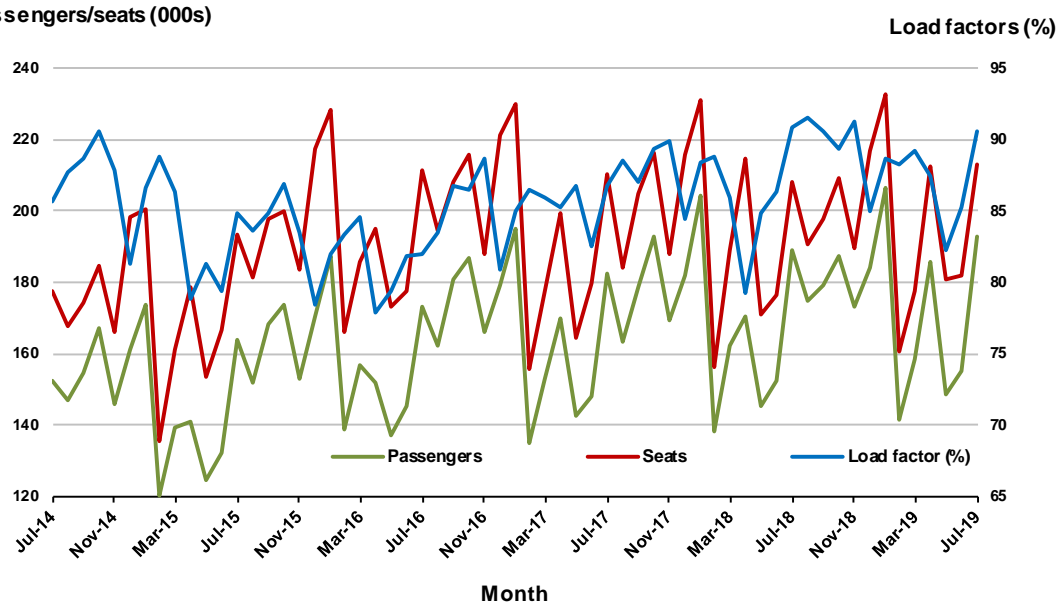
## 6. Gold Coast - Melbourne

### Monthly data

	Jul 2018	Jul 2019	% Change
Passengers carried (000s)	189.0	193.0	2.1
Seats (000s)	208.0	213.0	2.4
Load factor %	90.9	90.6	-0.3 *
Aircraft trips	1 095	1 125	2.7

\* percentage point difference

### Passengers/seats (000s)

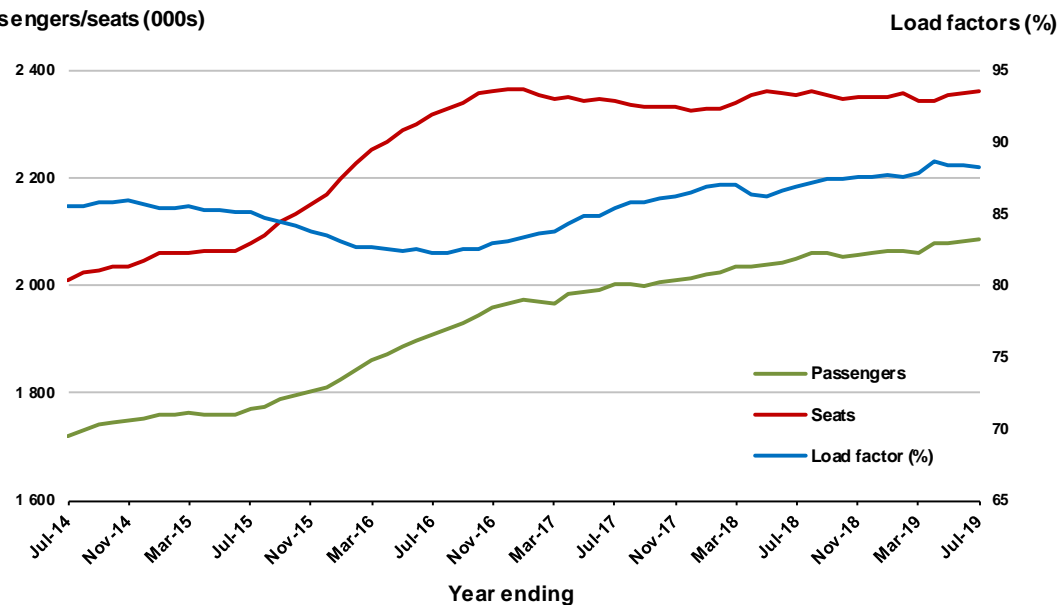


### Moving annual data

	YE Jul 2018	YE Jul 2019	% Change
Passengers carried (000s)	2 048.5	2 087.4	1.9
Seats (000s)	2 355.2	2 363.3	0.3
Load factor %	86.9	88.3	1.4 *
Aircraft trips	12 485	12 487	0.0

\* percentage point difference

### Passengers/seats (000s)



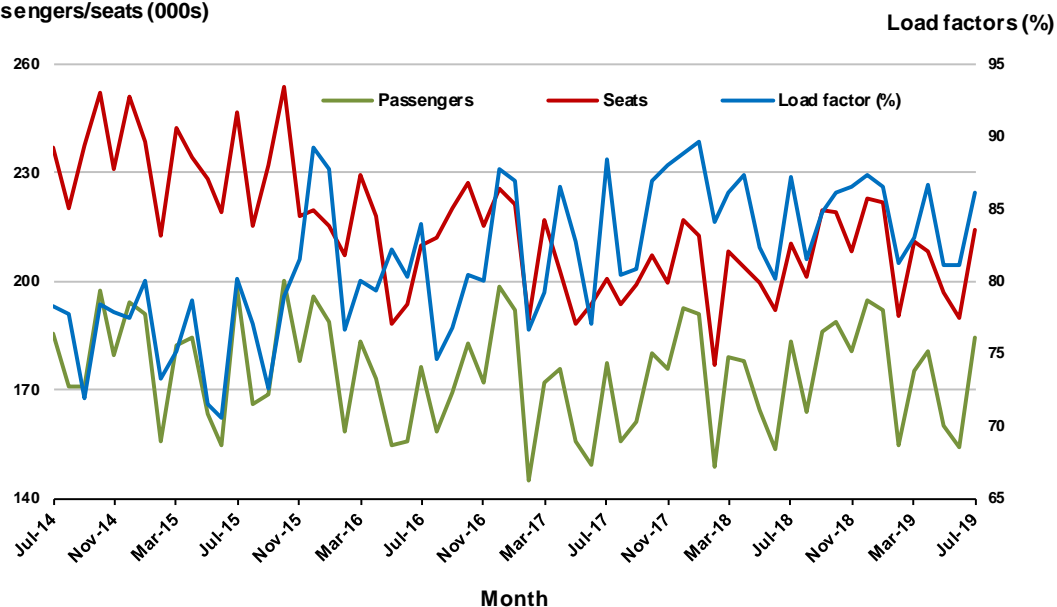
## 7. Melbourne - Perth

### Monthly data

	Jul 2018	Jul 2019	% Change
Passengers carried (000s)	183.5	184.5	0.6
Seats (000s)	210.4	214.3	1.9
Load factor %	87.2	86.1	-1.1 *
Aircraft trips	999	1 092	9.3

\* percentage point difference

### Passengers/seats (000s)

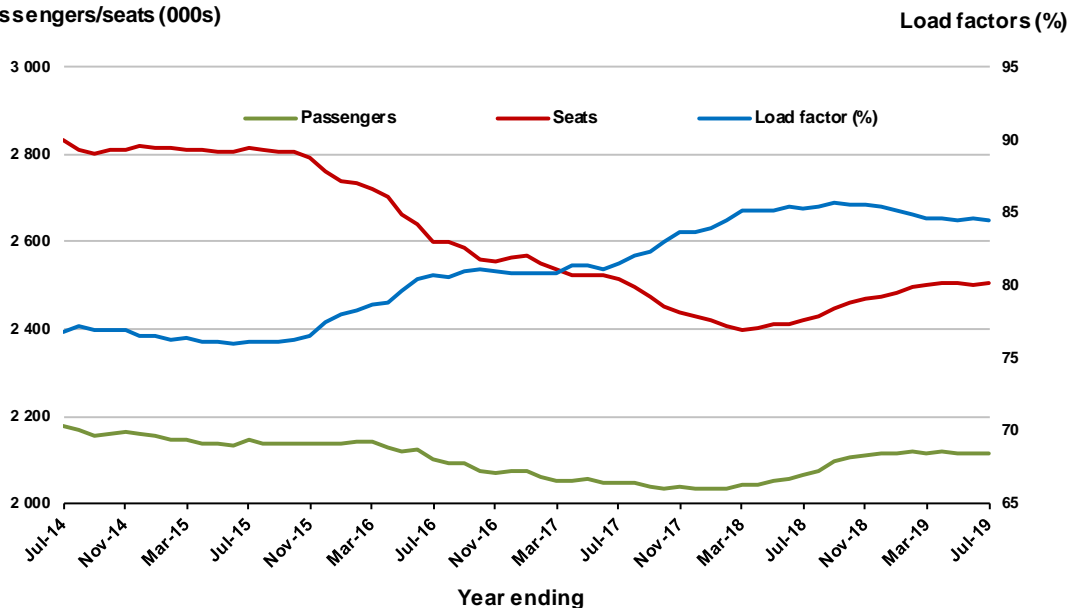


### Moving annual data

	YE Jul 2018	YE Jul 2019	% Change
Passengers carried (000s)	2 063.8	2 116.8	2.6
Seats (000s)	2 420.3	2 505.1	3.5
Load factor %	85.3	84.5	-0.8 *
Aircraft trips	11 284	12 327	9.2

\* percentage point difference

### Passengers/seats (000s)



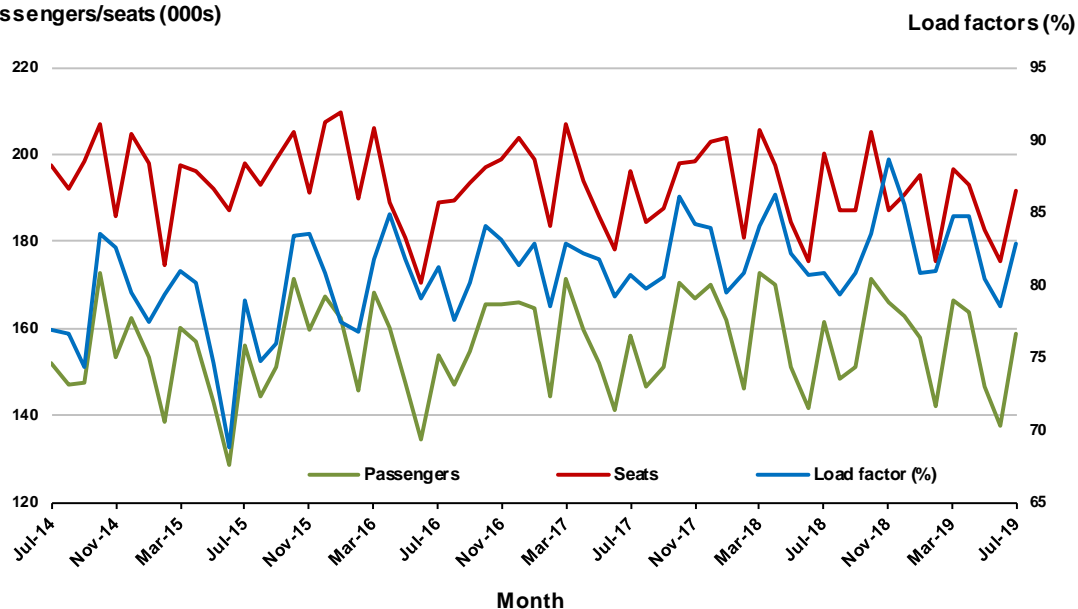
## 8. Adelaide - Sydney

### Monthly data

	Jul 2018	Jul 2019	% Change
Passengers carried (000s)	161.8	158.9	-1.8
Seats (000s)	200.1	191.8	-4.1
Load factor %	80.9	82.8	1.9 *
Aircraft trips	1 192	1 123	-5.8

\* percentage point difference

### Passengers/seats (000s)

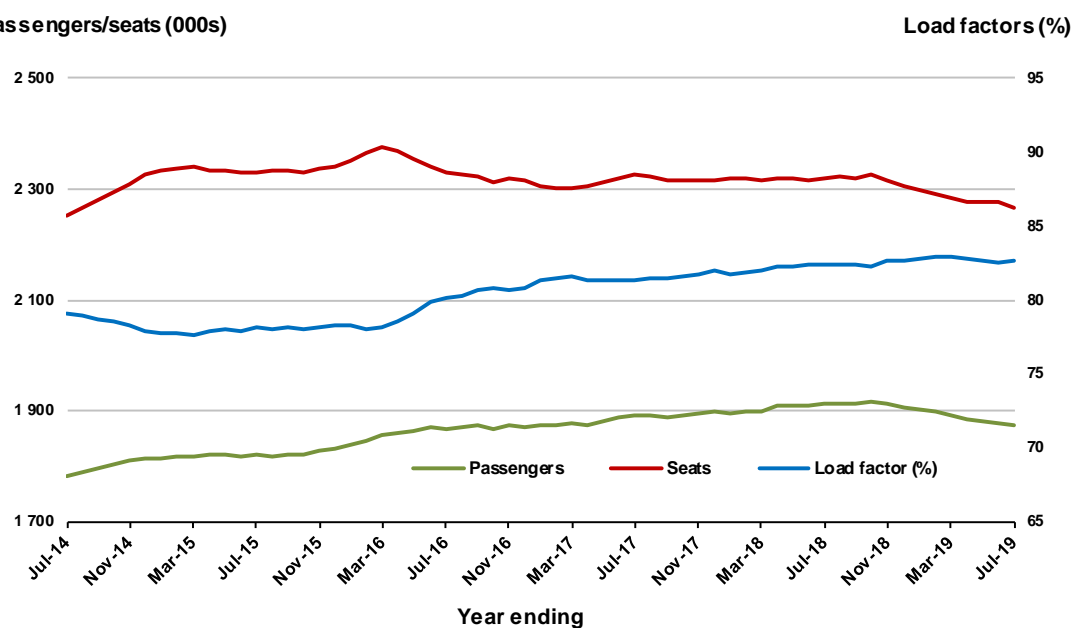


### Moving annual data

	YE Jul 2018	YE Jul 2019	% Change
Passengers carried (000s)	1 912.1	1 874.4	-2.0
Seats (000s)	2 319.0	2 267.6	-2.2
Load factor %	82.5	82.7	0.2 *
Aircraft trips	13 882	13 587	-2.1

\* percentage point difference

### Passengers/seats (000s)



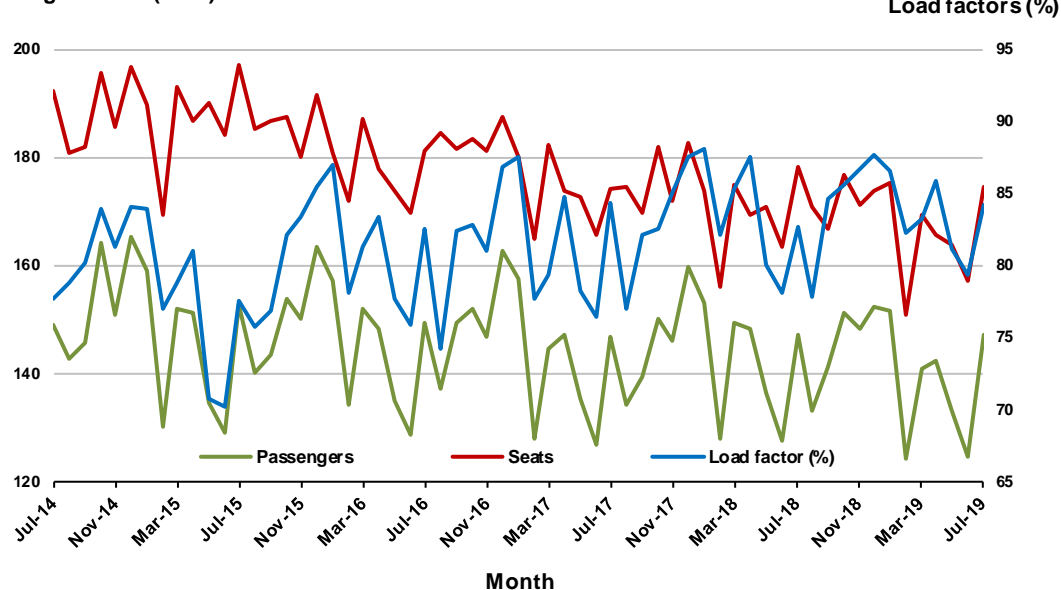
## 9. Perth - Sydney

### Monthly data

	Jul 2018	Jul 2019	% Change
Passengers carried (000s)	147.4	147.1	-0.2
Seats (000s)	178.2	174.7	-2.0
Load factor %	82.7	84.2	1.5 *
Aircraft trips	786	776	-1.3

\* percentage point difference

### Passengers/seats (000s)

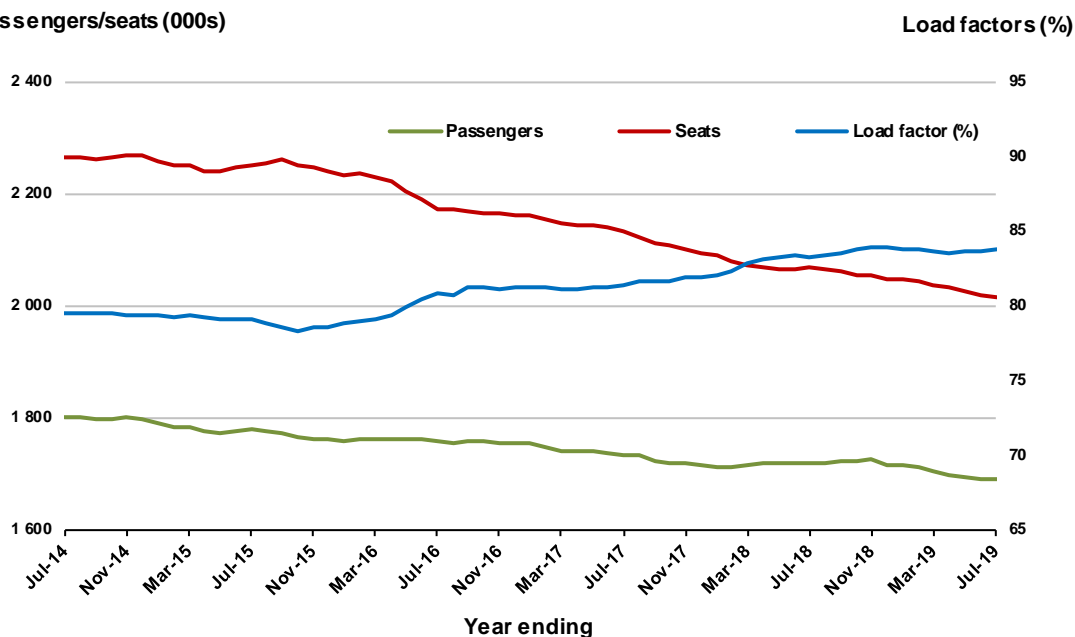


### Moving annual data

	YE Jul 2018	YE Jul 2019	% Change
Passengers carried (000s)	1 720.6	1 690.1	-1.8
Seats (000s)	2 067.3	2 016.3	-2.5
Load factor %	83.2	83.8	0.6 *
Aircraft trips	9 087	9 065	-0.2

\* percentage point difference

### Passengers/seats (000s)



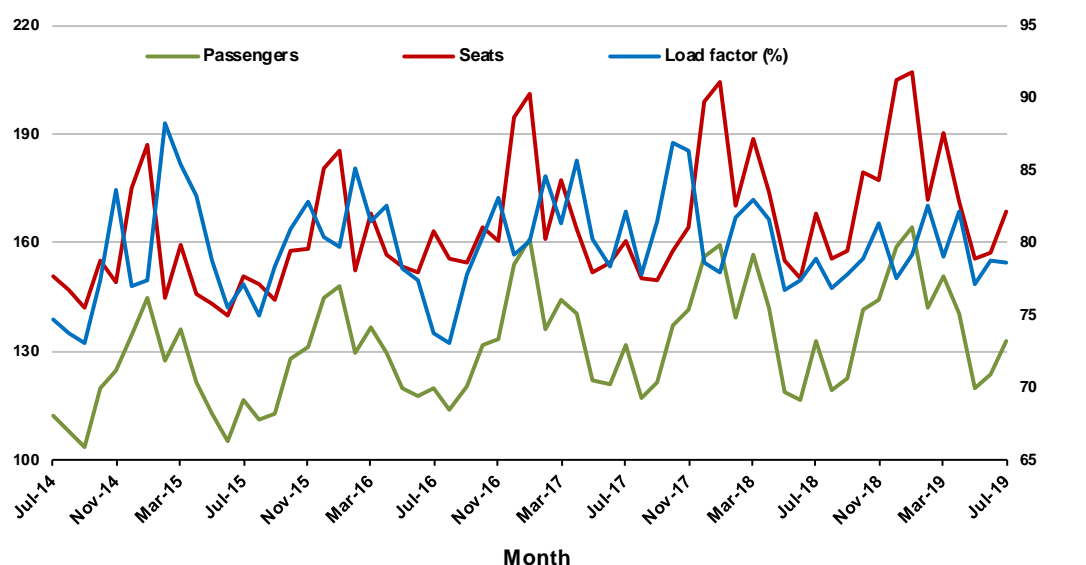
## 10. Hobart - Melbourne

### Monthly data

	Jul 2018	Jul 2019	% Change
Passengers carried (000s)	132.6	132.7	0.1
Seats (000s)	168.0	168.9	0.5
Load factor %	78.9	78.6	-0.3 *
Aircraft trips	925	924	-0.1

\* percentage point difference

### Passengers/seats (000s)

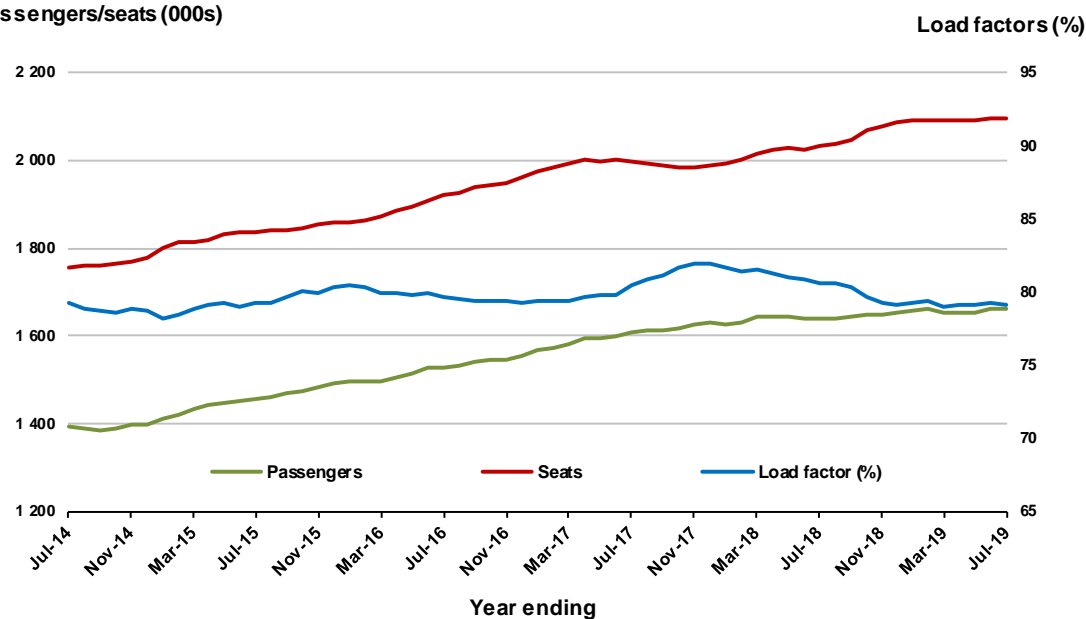


### Moving annual data

	YE Jul 2018	YE Jul 2019	% Change
Passengers carried (000s)	1 639.3	1 661.4	1.4
Seats (000s)	2 032.1	2 098.0	3.2
Load factor %	80.7	79.2	-1.5 *
Aircraft trips	11 849	11 486	-3.1

\* percentage point difference

### Passengers/seats (000s)



## TOP FIFTY REGIONAL AIRPORTS

**Table 10: Top fifty regional airports (000s) — passenger movements, monthly**

	<b>Airport</b>	<b>Jul 2018</b>	<b>Jul 2019</b>	<b>% Change</b>
1	Cairns	426.3	412.9	-3.1
2	Hobart	212.9	221.0	3.8
3	Darwin	193.9	188.6	-2.8
4	Townsville	164.8	160.3	-2.7
5	Newcastle	114.8	113.0	-1.5
6	Launceston	109.7	110.2	0.4
7	Mackay	81.7	79.0	-3.3
8	Alice Springs	63.7	56.9	-10.6
9	Rockhampton	47.6	54.1	13.7
10	Ayers Rock	37.9	49.1	29.5
11	Broome	45.7	46.2	1.2
12	Karratha	46.2	46.0	-0.5
13	Ballina	40.1	42.5	5.9
14	Port Hedland	38.1	40.8	7.1
15	Coffs Harbour	40.0	38.7	-3.1
16	Proserpine	33.6	37.2	10.9
17	Hamilton Island	33.5	33.7	0.7
18	Newman	27.4	31.7	15.5
19	Kalgoorlie	24.9	24.2	-2.6
20	Mildura	22.5	22.8	1.4
21	Albury	22.1	22.5	2.0
22	Gladstone	24.0	21.8	-9.2
23	Mount Isa	19.1	20.5	7.3
24	Wagga Wagga	18.0	18.6	3.5
25	Port Macquarie	17.8	18.4	3.6
26	Dubbo	17.9	18.3	2.1
27	Emerald	18.8	18.0	-4.6
28	Paraburdoo	15.8	16.9	6.6
29	Tamworth	15.7	15.6	-0.7
30	Port Lincoln	14.4	14.9	3.5
31	Hervey Bay	11.5	13.4	16.5
32	Bundaberg	13.9	13.4	-4.0
33	Kununurra	13.5	13.0	-3.8
34	Devonport	13.2	13.0	-2.2
35	Armidale	10.4	11.0	5.9
36	Toowoomba Wellcamp	12.8	10.3	-19.2
37	Moranbah	10.0	9.8	-1.6
38	Learmonth	9.0	9.8	8.5
39	Geraldton	8.9	9.1	2.6
40	Thursday Island	7.3	8.7	19.4
41	Roma	8.9	8.7	-2.2
42	Griffith	6.7	8.0	20.0
43	Gove	7.3	7.7	5.9
44	Mount Gambier	6.7	7.3	9.1
45	Orange	6.5	7.2	11.0
46	Olympic Dam	6.8	7.1	4.0
47	Whyalla	6.6	6.7	1.3
48	Weipa	7.2	6.3	-13.2
49	Burnie	6.6	5.9	-9.7
50	Merimbula	5.7	5.3	-6.8
<b>Total top 50 regional airports</b>		<b>2 168.3</b>	<b>2 176.2</b>	<b>0.4</b>
<b>Total regional airports</b>		<b>2 286.3</b>	<b>2 295.0</b>	<b>0.4</b>
<b>Total domestic network</b>		<b>10 880.1</b>	<b>10 905.2</b>	<b>0.2</b>

Note: Airport passenger movement numbers are the sum of passenger arrivals and departures at each airport.

Regional airports are defined as airports which are, according to the Australian Bureau of Statistics

"The Australian Statistical Geography Standard (ASGS)", not based in Major Urban areas.



**Table 11: Top fifty regional airports (000s) — passenger movements, annual**

<b>Airport</b>	<b>YE Jul 2018</b>	<b>YE Jul 2019</b>	<b>% Change</b>
1 Cairns	4 331.0	4 211.9	-2.7
2 Hobart	2 607.4	2 733.7	4.8
3 Darwin	1 778.3	1 710.2	-3.8
4 Townsville	1 649.9	1 644.2	-0.3
5 Launceston	1 372.8	1 388.8	1.2
6 Newcastle	1 278.3	1 261.3	-1.3
7 Mackay	826.2	859.2	4.0
8 Alice Springs	618.5	597.5	-3.4
9 Rockhampton	558.5	559.4	0.2
10 Ballina	531.5	533.9	0.5
11 Ayers Rock	385.8	468.0	21.3
12 Karratha	436.8	450.7	3.2
13 Hamilton Island	419.4	434.0	3.5
14 Proserpine	468.9	428.7	-8.6
15 Broome	417.7	408.3	-2.3
16 Coffs Harbour	412.4	396.8	-3.8
17 Port Hedland	360.6	377.8	4.8
18 Newman	298.0	327.8	10.0
19 Kalgoorlie	270.8	294.0	8.6
20 Mildura	266.2	259.9	-2.4
21 Albury	266.1	254.1	-4.5
22 Gladstone	263.9	247.1	-6.3
23 Mount Isa	208.3	218.2	4.7
24 Port Macquarie	221.3	215.4	-2.6
25 Dubbo	227.9	213.0	-6.5
26 Wagga Wagga	225.0	207.1	-8.0
27 Emerald	195.7	197.0	0.6
28 Tamworth	191.6	187.6	-2.1
29 Paraburdoo	172.9	182.6	5.6
30 Port Lincoln	169.3	168.4	-0.5
31 Hervey Bay	168.4	162.0	-3.8
32 Bundaberg	168.1	155.9	-7.3
33 Devonport	148.3	146.5	-1.2
34 Armidale	130.3	130.9	0.4
35 Toowoomba Wellcamp	148.1	121.7	-17.9
36 Kununurra	103.3	112.5	8.9
37 Geraldton	111.6	110.1	-1.3
38 Moranbah	102.6	109.7	7.0
39 Thursday Island	99.4	99.0	-0.4
40 Roma	85.6	94.3	10.1
41 Griffith	75.5	87.9	16.5
42 Learmonth	87.3	86.6	-0.8
43 Mount Gambier	80.5	82.5	2.5
44 Gove	85.9	81.9	-4.7
45 Orange	71.9	80.3	11.7
46 Whyalla	71.8	78.5	9.2
47 Olympic Dam	77.4	77.9	0.6
48 Weipa	79.8	76.8	-3.8
49 Burnie	66.8	71.9	7.8
50 Merimbula	67.6	68.2	0.9
<b>Total top 50 regional airports</b>	<b>23 461.1</b>	<b>23 471.4</b>	<b>0.0</b>
<b>Total regional airports</b>	<b>24 842.2</b>	<b>24 879.3</b>	<b>0.1</b>
<b>Total domestic network</b>	<b>121 769.6</b>	<b>121 931.4</b>	<b>0.1</b>

Note: Airport passenger movement numbers are the sum of passenger arrivals and departures at each airport. Regional airports are defined as airports which are, according to the Australian Bureau of Statistics "The Australian Statistical Geography Standard (ASGS)", not based in Major Urban areas.

## DOMESTIC CHARTER ACTIVITY

**Table 12: Charter passengers carried and aircraft trips - monthly activity**

	Jul 2018	Jul 2019	% Change
Total domestic charter passengers	211 967	251 977	18.9
Total domestic charter aircraft trips	3 790	4 347	14.7

Note: Helicopter, joyflights and sightseeing charter flights not included.

**Table 13: Charter passengers carried and aircraft trips - annual activity**

	YE Jul 2018	YE Jul 2019	% Change
Total domestic charter passengers	2 457 183	2 607 520	6.1
Total domestic charter aircraft trips	45 678	45 076	-1.3

Note: Helicopter, joyflights and sightseeing charter flights not included.

**Table 14: Domestic airports - charter activity - monthly**

	Jul 2018	Jul 2019	% Change
Total domestic charter passenger movements	423 934	503 954	18.9
Total domestic charter aircraft movements	7 580	8 694	14.7
Perth airport charter passenger movements	160 700	194 721	21.2
Perth airport charter aircraft movements	2 593	3 059	18.0

Note: Helicopter, joyflights and sightseeing charter flights not included.

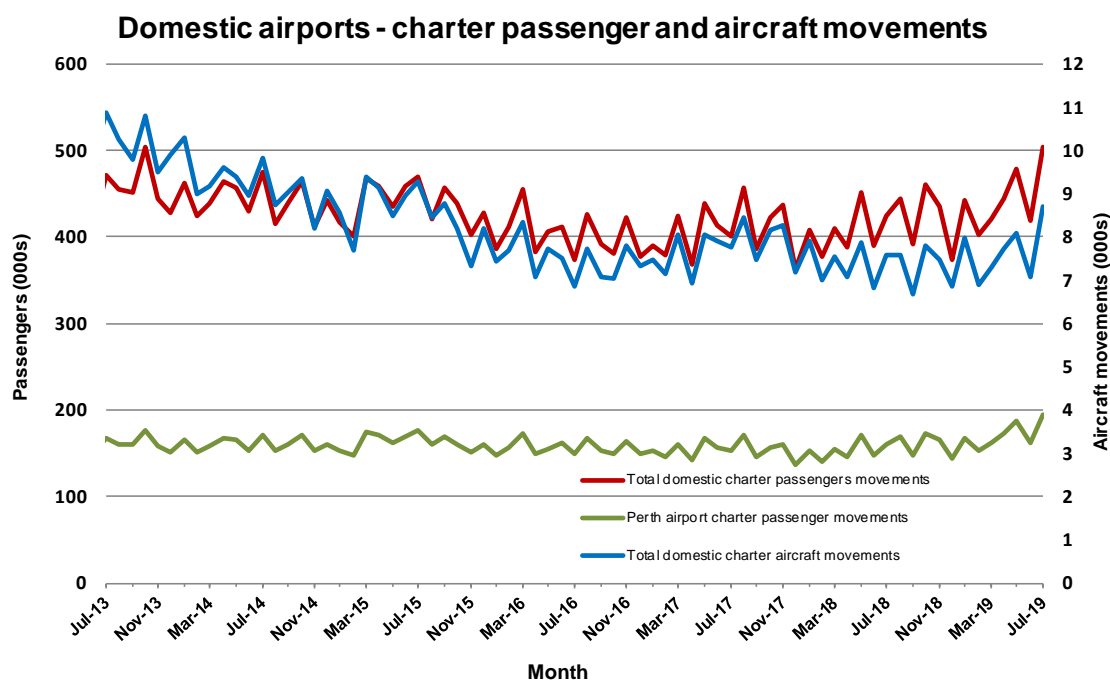
Charter passenger and aircraft movement numbers are the sum of arrivals and departures at each airport.

**Table 15: Domestic airports - charter activity - annual**

	YE Jul 2018	YE Jul 2019	% Change
Total domestic charter passenger movements	4 914 366	5 215 040	6.1
Total domestic charter aircraft movements	91 356	90 152	-1.3
Perth airport charter passenger movements	1 848 874	2 000 239	8.2
Perth airport charter aircraft movements	31 087	31 087	0.0

Note: Helicopter, joyflights and sightseeing charter flights not included.

Charter passenger and aircraft movement numbers are the sum of arrivals and departures at each airport.



## DEFINITIONS

Aircraft Trips	The number of flight stages. A return flight counts as two aircraft trips.
Airport Movements	Airport movements (passenger and cargo) are measured once on arrival and once on departure. Each domestic trip generates two movements at airports. For example, a trip from Melbourne to Sydney will be counted twice, as a passenger departure at Melbourne and as a passenger arrival at Sydney. At the national level, the sum of all domestic airport traffic will therefore be equal to twice the number of trips undertaken.
Available Seat Kilometres (ASKs)	Calculated by multiplying the number of seats available on each flight stage, by the distance in kilometres between the ports. The distances used are Great Circle Distances.
City-Pair	The ports shown make up the city-pair route. Passenger movements shown for a city pair reflect total traffic in both directions.
Flight Stage	The operation of an aircraft from take-off to landing.
Load Factor	The total revenue passenger kilometres performed as a percentage of the total available seat kilometres.
Passengers Carried	Revenue passengers carried.
Regular Public Transport Services (RPT)	All air service operations in which aircraft are available for the transport of members of the public and are conducted in accordance with fixed schedules. It does not include charter or other non-scheduled operations.
Revenue Passengers	All passengers paying any fare. Frequent flyer redemption travellers are regarded as revenue passengers.
Revenue Passenger Kilometres (RPKs)	Calculated by multiplying the number of revenue passengers travelling on each flight stage, by the distance in kilometres between the ports. The distances used are Great Circle Distances.
Traffic on board by stages	The total of all traffic (revenue passengers) on each flight stage between two directly connected airports.
..	Data not included
NA	Not applicable