

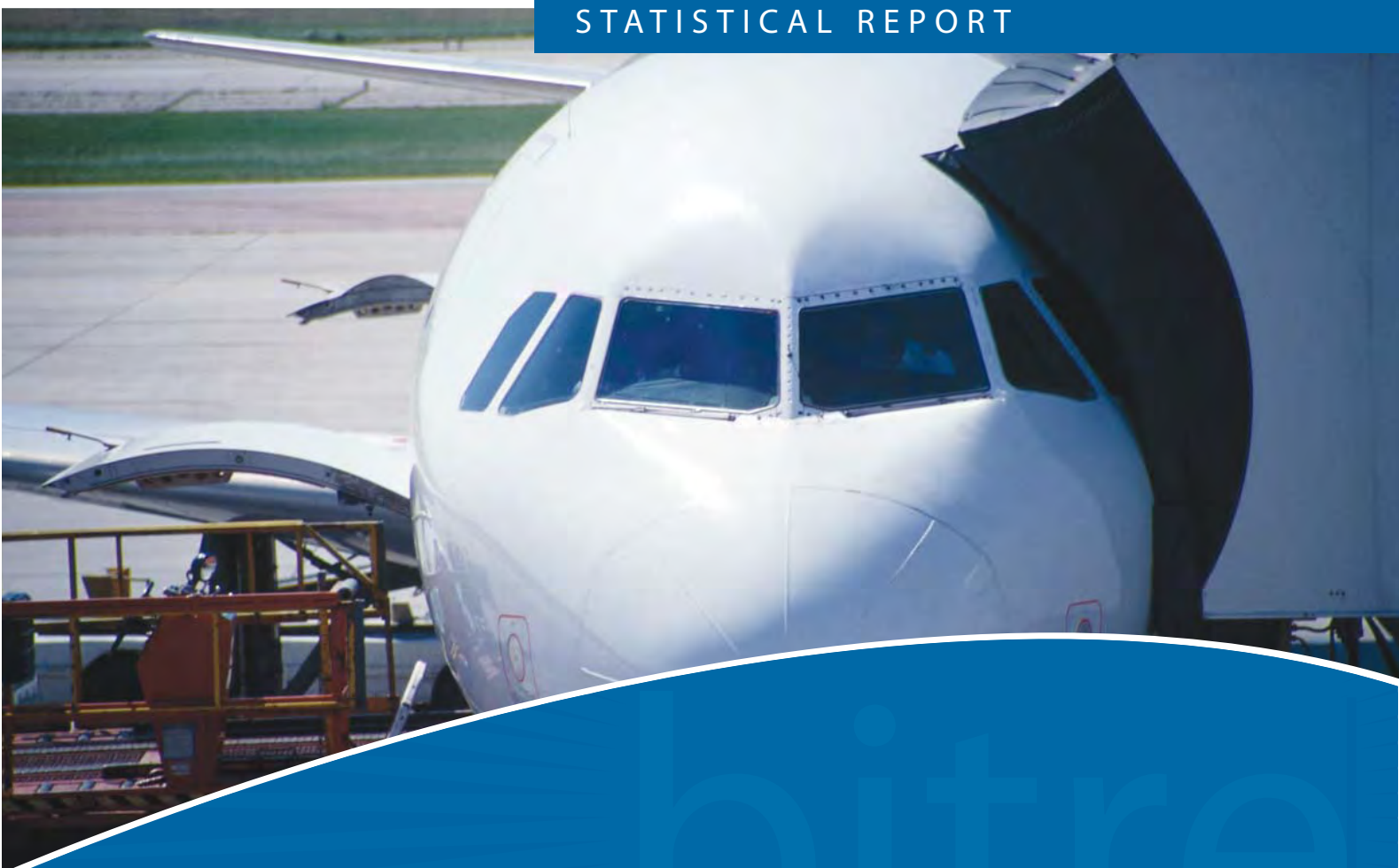


Australian Government

Department of Infrastructure and Regional Development

Bureau of Infrastructure, Transport and Regional Economics

STATISTICAL REPORT



Aviation

Domestic aviation activity
July 2017

© Commonwealth of Australia 2017

ISSN: 1832 - 1968

Ownership of intellectual property rights in this publication

Unless otherwise noted, copyright (and any other intellectual property rights, if any) in this publication is owned by the Commonwealth of Australia (referred to below as the Commonwealth).

Disclaimer

The material contained in this publication is made available on the understanding that the Commonwealth is not providing professional advice, and that users exercise their own skill and care with respect to its use, and seek independent advice if necessary.

The Commonwealth makes no representations or warranties as to the contents or accuracy of the information contained in this publication. To the extent permitted by law, the Commonwealth disclaims liability to any person or organisation in respect of anything done, or omitted to be done, in reliance upon information contained in this publication.

Creative Commons licence

With the exception of (a) the Coat of Arms; and (b) the Department of Infrastructure and Regional Development's photos and graphics, copyright in this publication is licensed under a Creative Commons Attribution 3.0 Australia Licence.

Creative Commons Attribution 3.0 Australia Licence is a standard form licence agreement that allows you to copy, communicate and adapt this publication provided that you attribute the work to the Commonwealth and abide by the other licence terms. A summary of the licence terms is available from <http://creativecommons.org/licenses/by/3.0/au/deed.en>. The full licence terms are available from <http://creativecommons.org/licenses/by/3.0/au/legalcode>.

Use of the Coat of Arms

The Department of the Prime Minister and Cabinet sets the terms under which the Coat of Arms is used. Please refer to the Department's Commonwealth Coat of Arms and Government branding web page <http://www.dpmc.gov.au/guidelines/index.cfm#brand> and, in particular, the Guidelines on the use of the Commonwealth Coat of Arms publication.

An appropriate citation for this report is:

Bureau of Infrastructure, Transport and Regional Economics (BITRE), 2017, Domestic aviation activity, Statistical Report, BITRE, Canberra ACT.

Contact us

This publication is available in PDF format. All other rights are reserved, including in relation to any Departmental logos or trade marks which may exist. For enquiries regarding the licence and any use of this publication, please contact:

Bureau of Infrastructure, Transport and Regional Economics (BITRE)
Department of Infrastructure and Regional Development
GPO Box 501, Canberra ACT 2601, Australia
Telephone: (international) +61 2 6274 7210
Fax: (international) +61 2 6274 6855
Email: bitre@infrastructure.gov.au
Website: www.bitre.gov.au

Inquiries

Should you require additional information about the statistics contained in this publication:

Nebojsa Pavlovic

Telephone (02) 6274 6817 or Facsimile (02) 6274 7727

Electronic mail: AVSTATS@infrastructure.gov.au

Nebojsa.Pavlovic@infrastructure.gov.au

Web site: <http://www.bitre.gov.au/statistics/aviation/domestic.aspx>

FOREWORD

This report provides an overview of domestic (including charter) commercial aviation activity in Australia for the month of July 2017.

The data cover revenue passengers carried by Australian-registered operators of scheduled regular public transport services over Australian flight stages and fixed-wing charter operators. These estimates include passengers carried between domestic airports on international flights operated by these carriers. The passengers carried refer to traffic on board by stages.

Estimates of passengers and aircraft movements for charter aviation are included in this publication, where BITRE confidentiality standards are met.

Individual routes shown are restricted to those with an average exceeding 8 000 passengers per month over the previous six months where two or more airlines operate in competition. For the month of July 2017 there were 65 such routes.

Information on the total network for the month of July 2017 and on the Regular Public Transport (RPT) network for the month of July 2017 is presented on page 2, with estimates for the year ended July 2017 presented on page 3.

Detailed information on the 65 individual routes can be found in the RPT summary pages 4-13 of this publication.

The top ten airports in terms of RPT passenger movements are shown on page 14.

Data on domestic RPT cargo movements at the top five cargo airports are provided on page 15. The table includes cargo carried on passenger flights operated by the Qantas group (including Jetstar), Virgin Australia, Air North and Skippers as well as the cargo carried by dedicated freighter aircraft operated by Qantas Freight, Toll Priority and Virgin Australia Cargo.

The long-term trends for the top ten competitive RPT routes are presented graphically on pages 16-25.

Domestic RPT passenger movements at the top 50 regional airports are presented on pages 26-27.

Tables providing estimates of domestic charter aviation activity are shown on page 28. BITRE confidentiality standards restrict publication of detailed estimates for individual Australian airports, with the exception of Perth Airport.

A list of definitions can be found on page 29.

This report was prepared by the Aviation Statistics Section of the Bureau of Infrastructure, Transport and Regional Economics with data provided by airlines.

Estimates are included where data were not available and data presented in this publication may contain revisions to previously published data.

Where figures have been rounded, discrepancies may occur between sums of component items and totals, and in percentage changes which are derived from figures prior to rounding.

CONTENTS

| | |
|---|-----------|
| Highlights | 1 |
| Total network | 2 |
| RPT network | 2 |
| Top competitive routes | 4 |
| Top ten airports – passenger movements | 14 |
| Top five airports – cargo movements | 15 |
| Top ten routes | 16 |
| 1. Melbourne – Sydney | 16 |
| 2. Brisbane – Sydney | 17 |
| 3. Brisbane – Melbourne | 18 |
| 4. Gold Coast – Sydney..... | 19 |
| 5. Adelaide – Melbourne | 20 |
| 6. Gold Coast – Melbourne | 21 |
| 7. Melbourne – Perth..... | 22 |
| 8. Adelaide – Sydney | 23 |
| 9. Perth – Sydney..... | 24 |
| 10. Hobart – Melbourne | 25 |
| Top fifty regional airports | 26 |
| Domestic charter activity | 28 |
| Definitions | 29 |

This page is intentionally left blank.

HIGHLIGHTS

There were 5.49 million passengers carried on Australian domestic commercial aviation (including charter operations) in July 2017, an increase of 2.2 per cent on July 2016. For the month of July 2017 there were 58 254 aircraft trips, virtually the same as July 2016.

5.29 million passengers were carried on RPT flights in July 2017, an increase of 2.1 per cent on July 2016.

For the year ending July 2017 there were 59.36 million RPT passengers, an increase of 1.6 per cent on the year ending July 2016.

RPT revenue passenger kilometres (RPKs) performed were 6.33 billion for the month, up 1.7 per cent compared with July 2016. Capacity, measured by available seat kilometres (ASKs), decreased by 0.3 per cent compared with July 2016 to a total of 7.70 billion.

With RPT passenger traffic increasing and capacity decreasing, the industry wide load factor (RPKs/ASKs) increased from 80.6 per cent in July 2016 to 82.2 per cent in July 2017. Load factors on individual routes increased on 45 of the 65 RPT routes available for publishing.

For the month of July 2017, Melbourne – Sydney remained Australia's busiest RPT route with 771 829 passengers, an increase of 2.3 per cent compared with July 2016. It was followed by Brisbane – Sydney with 424 563 passengers (up 1.1 per cent) and Brisbane – Melbourne with 324 721 passengers (up 3.5 per cent).

The greatest percentage increase in RPT passenger numbers, compared to July 2016, was on the Brisbane – Proserpine route (up 26.5 per cent). There were large increases on a number of other routes, including Adelaide – Canberra (up 14.6 per cent), Brisbane – Moranbah (up 12.1 per cent) and Hobart – Sydney (up 11.3 per cent).

Routes with traffic decreases in July 2017 compared with July 2016 included Hamilton Island – Sydney (down 34.1 per cent), Brisbane – Gladstone (down 17.7 per cent), Brisbane – Hamilton Island (down 13.1 per cent) and Karratha – Perth (down 10.5 per cent).

In July 2017, Sydney remained Australia's busiest domestic airport with 2.37 million passenger movements, followed by Melbourne with 2.22 million passenger movements and Brisbane with 1.56 million passenger movements.

Total cargo movements at Australian airports on domestic RPT flights were 36.6 thousand tonnes in July 2017, an increase of 2.5 per cent compared to July 2016.

In July 2017 there were 2.21 million domestic passenger movements through regional airports, 2.2 per cent higher than in July 2016. Out of the top 50 regional airports, the strongest growth was at Olympic Dam airport (up 44.9 per cent on July 2016), while the largest decrease was at Hamilton Island airport (down 27.0 per cent on July 2016).

Fixed-wing charter operators carried 198.96 thousand passengers in July 2017, an increase of 6.3 per cent on July 2016. Perth airport accounted for 38.3 per cent of all charter passengers in Australia.

TOTAL NETWORK

Summary of monthly commercial aviation activity

| | Jul 2016 | Jul 2017 | % Change |
|-------------------------------------|----------|----------|----------|
| Total passengers carried (millions) | 5.37 | 5.49 | 2.2 |
| Aircraft trips (000s) | 58.3 | 58.3 | 0.0 |

Note: Regular Public Transport and charter aviation activity
Helicopter, joyflights and sightseeing charter flights not included.

RPT NETWORK

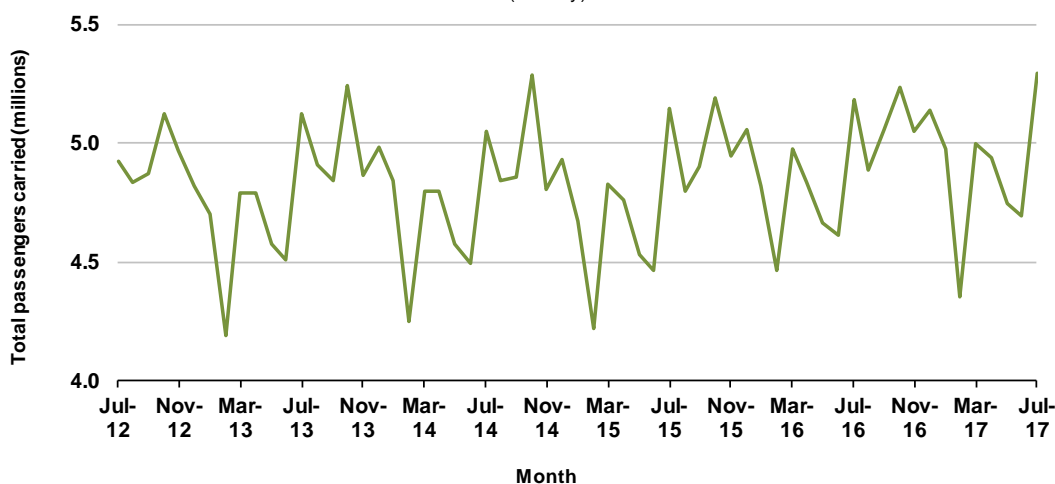
Summary of monthly RPT activity

| | Jul 2016 | Jul 2017 | % Change |
|---|----------|----------|----------|
| Total passengers carried (millions) | 5.19 | 5.29 | 2.1 |
| Revenue passenger kilometres (billions) | 6.22 | 6.33 | 1.7 |
| Available seats (millions) | 6.65 | 6.66 | 0.1 |
| Available seat kilometres (billions) | 7.72 | 7.70 | -0.3 |
| Load factor % | 80.6 | 82.2 | 1.6 * |
| Aircraft trips (000s) | 54.8 | 54.5 | -0.6 |

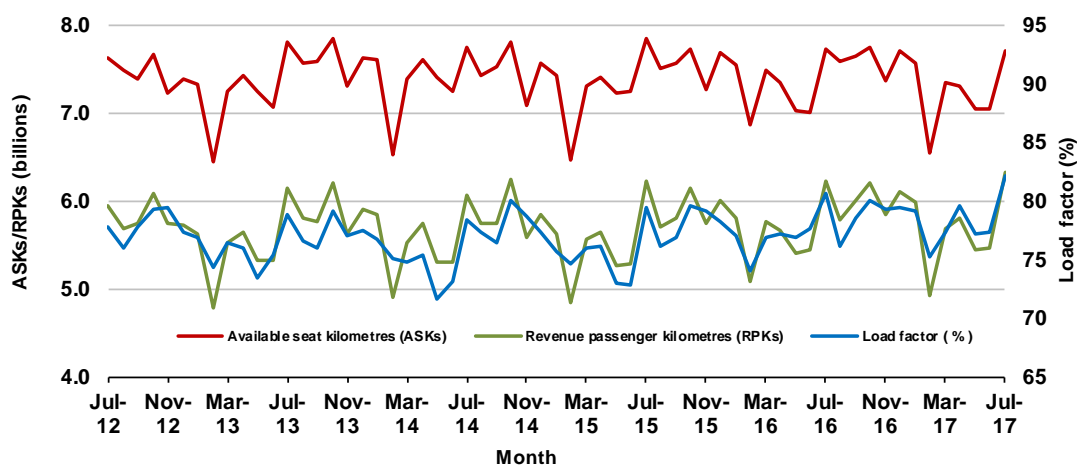
* percentage point difference

Domestic RPT passenger traffic

(monthly)



RPT Network utilisation



TOTAL NETWORK

Summary of annual commercial aviation activity

| | YE Jul 2016 | YE Jul 2017 | % Change |
|-------------------------------------|-------------|-------------|----------|
| Total passengers carried (millions) | 60.93 | 61.77 | 1.4 |
| Aircraft trips (000s) | 682.8 | 681.1 | -0.2 |

Note: Regular Public Transport and charter aviation activity
Helicopter, joyflights and sightseeing charter flights not included.

RPT NETWORK

Summary of annual RPT activity

| | YE Jul 2016 | YE Jul 2017 | % Change |
|---|-------------|-------------|----------|
| Total passengers carried (millions) | 58.44 | 59.36 | 1.6 |
| Revenue passenger kilometres (billions) | 68.83 | 69.57 | 1.1 |
| Available seats (millions) | 77.06 | 77.17 | 0.1 |
| Available seat kilometres (billions) | 88.76 | 88.62 | -0.2 |
| Load factor % | 77.5 | 78.5 | 1.0 * |
| Aircraft trips (000s) | 636.0 | 636.3 | 0.0 |

* percentage point difference

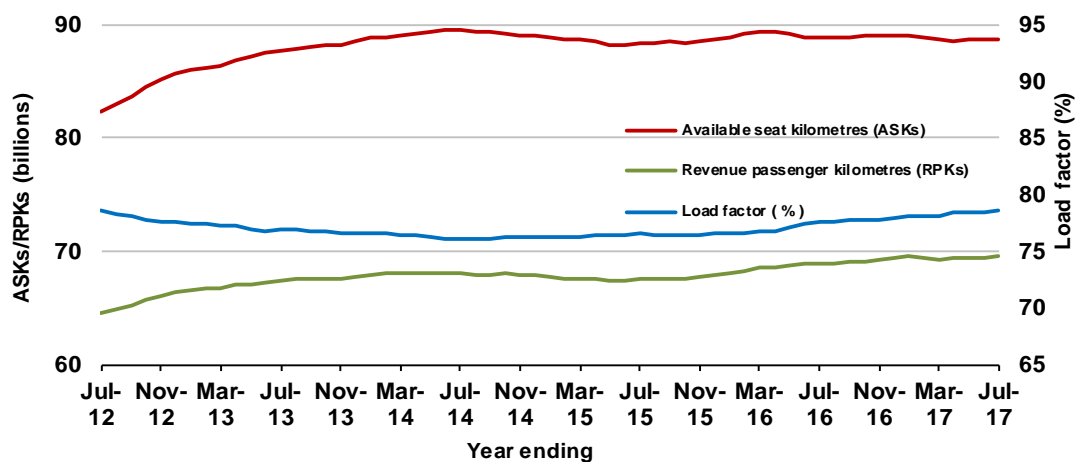
Domestic RPT passenger traffic

(moving annual totals)



RPT Network utilisation

(moving annual totals)



TOP COMPETITIVE ROUTES

Table 1: Passengers carried (000s) — annual activity

| | City-Pair | YE Jul 2016 | YE Jul 2017 | % Change |
|----|----------------------------|-------------|-------------|----------|
| 1 | Melbourne - Sydney | 8 797.4 | 8 992.0 | 2.2 |
| 2 | Brisbane - Sydney | 4 622.0 | 4 700.2 | 1.7 |
| 3 | Brisbane - Melbourne | 3 444.5 | 3 511.5 | 1.9 |
| 4 | Gold Coast - Sydney | 2 711.7 | 2 716.6 | 0.2 |
| 5 | Adelaide - Melbourne | 2 375.8 | 2 414.3 | 1.6 |
| 6 | Melbourne - Perth | 2 100.3 | 2 049.1 | -2.4 |
| 7 | Gold Coast - Melbourne | 1 908.1 | 2 001.5 | 4.9 |
| 8 | Adelaide - Sydney | 1 867.2 | 1 891.2 | 1.3 |
| 9 | Perth - Sydney | 1 756.8 | 1 734.8 | -1.2 |
| 10 | Hobart - Melbourne | 1 529.8 | 1 610.5 | 5.3 |
| 11 | Brisbane - Cairns | 1 338.3 | 1 364.0 | 1.9 |
| 12 | Cairns - Sydney | 1 084.3 | 1 124.5 | 3.7 |
| 13 | Canberra - Melbourne | 1 001.7 | 1 086.5 | 8.5 |
| 14 | Brisbane - Perth | 995.3 | 966.9 | -2.9 |
| 15 | Brisbane - Townsville | 984.9 | 957.0 | -2.8 |
| 16 | Canberra - Sydney | 947.1 | 955.0 | 0.8 |
| 17 | Launceston - Melbourne | 914.1 | 911.1 | -0.3 |
| 18 | Cairns - Melbourne | 806.7 | 835.3 | 3.6 |
| 19 | Adelaide - Brisbane | 819.0 | 830.5 | 1.4 |
| 20 | Brisbane - Mackay | 696.3 | 677.8 | -2.7 |
| 21 | Hobart - Sydney | 589.8 | 639.7 | 8.5 |
| 22 | Adelaide - Perth | 614.2 | 616.2 | 0.3 |
| 23 | Brisbane - Newcastle | 557.7 | 588.9 | 5.6 |
| 24 | Brisbane - Canberra | 563.4 | 586.2 | 4.0 |
| 25 | Sunshine Coast - Sydney | 521.0 | 561.3 | 7.7 |
| 26 | Brisbane - Rockhampton | 566.8 | 541.5 | -4.5 |
| 27 | Melbourne - Newcastle | 439.2 | 469.3 | 6.8 |
| 28 | Melbourne - Sunshine Coast | 431.5 | 461.0 | 6.8 |
| 29 | Karratha - Perth | 535.9 | 457.2 | -14.7 |
| 30 | Brisbane - Darwin | 402.2 | 407.9 | 1.4 |
| 31 | Ballina - Sydney | 374.0 | 393.7 | 5.3 |
| 32 | Perth - Port Hedland | 352.8 | 342.7 | -2.9 |
| 33 | Coffs Harbour - Sydney | 337.3 | 342.6 | 1.6 |
| 34 | Darwin - Sydney | 319.1 | 320.0 | 0.3 |
| 35 | Darwin - Melbourne | 293.2 | 307.3 | 4.8 |
| 36 | Brisbane - Gladstone | 362.3 | 297.8 | -17.8 |
| 37 | Broome - Perth | 298.9 | 290.6 | -2.8 |
| 38 | Newman - Perth | 316.2 | 290.5 | -8.2 |
| 39 | Launceston - Sydney | 290.8 | 289.6 | -0.4 |
| 40 | Kalgoorlie - Perth | 226.9 | 235.7 | 3.9 |
| 41 | Brisbane - Proserpine | 234.7 | 233.9 | -0.3 |
| 42 | Hamilton Island - Sydney | 253.0 | 225.6 | -10.8 |
| 43 | Albury - Sydney | 222.3 | 225.2 | 1.3 |
| 44 | Adelaide - Gold Coast | 223.0 | 214.9 | -3.6 |
| 45 | Melbourne - Mildura | 203.1 | 208.0 | 2.4 |
| 46 | Brisbane - Hobart | 203.2 | 208.0 | 2.4 |
| 47 | Brisbane - Emerald | 202.1 | 198.6 | -1.7 |
| 48 | Port Macquarie - Sydney | 191.6 | 193.8 | 1.1 |
| 49 | Darwin - Perth | 182.6 | 191.9 | 5.1 |
| 50 | Ayers Rock - Sydney | 173.1 | 190.6 | 10.1 |

continued

Table 1: (continued) Passengers carried (000s) — annual activity

| | City-Pair | YE Jul 2016 | YE Jul 2017 | % Change |
|----|-------------------------------|--------------------|--------------------|-----------------|
| 51 | Dubbo - Sydney | 186.8 | 190.3 | 1.9 |
| 52 | Sydney - Wagga Wagga | 189.2 | 186.0 | -1.7 |
| 53 | Sydney - Tamworth | 167.1 | 181.9 | 8.9 |
| 54 | Adelaide - Canberra | 168.6 | 177.2 | 5.1 |
| 55 | Adelaide - Port Lincoln | 181.7 | 174.8 | -3.8 |
| 56 | Brisbane - Bundaberg | 168.2 | 174.2 | 3.5 |
| 57 | Sydney - Townsville | 158.8 | 158.5 | -0.2 |
| 58 | Cairns - Townsville | 138.1 | 140.4 | 1.7 |
| 59 | Brisbane - Hamilton Island | 144.8 | 140.0 | -3.3 |
| 60 | Armidale - Sydney | 127.4 | 126.8 | -0.4 |
| 61 | Adelaide - Alice Springs | 120.1 | 122.5 | 2.0 |
| 62 | Brisbane - Mount Isa | 123.2 | 121.9 | -1.0 |
| 63 | Brisbane - Moranbah | 122.0 | 120.2 | -1.5 |
| 64 | Alice Springs - Darwin | 117.5 | 116.8 | -0.6 |
| 65 | Geraldton - Perth | 117.6 | 113.8 | -3.2 |
| | Total domestic network | 58 441.7 | 59 364.2 | 1.6 |

Table 2: Passengers carried (000s) — monthly activity

| | City-Pair | Jul 2016 | Jul 2017 | % Change |
|----|----------------------------|-----------------|-----------------|-----------------|
| 1 | Melbourne - Sydney | 754.2 | 771.8 | 2.3 |
| 2 | Brisbane - Sydney | 420.1 | 424.6 | 1.1 |
| 3 | Brisbane - Melbourne | 313.7 | 324.7 | 3.5 |
| 4 | Gold Coast - Sydney | 233.4 | 237.3 | 1.7 |
| 5 | Adelaide - Melbourne | 215.4 | 216.5 | 0.5 |
| 6 | Gold Coast - Melbourne | 173.4 | 182.7 | 5.4 |
| 7 | Melbourne - Perth | 176.4 | 177.5 | 0.6 |
| 8 | Adelaide - Sydney | 153.7 | 158.4 | 3.1 |
| 9 | Perth - Sydney | 149.6 | 146.7 | -1.9 |
| 10 | Hobart - Melbourne | 120.2 | 132.0 | 9.8 |
| 11 | Brisbane - Cairns | 125.5 | 129.9 | 3.5 |
| 12 | Cairns - Sydney | 108.9 | 108.7 | -0.2 |
| 13 | Canberra - Melbourne | 84.1 | 91.9 | 9.3 |
| 14 | Brisbane - Townsville | 92.9 | 91.3 | -1.7 |
| 15 | Cairns - Melbourne | 85.6 | 91.0 | 6.3 |
| 16 | Brisbane - Perth | 83.6 | 85.7 | 2.5 |
| 17 | Canberra - Sydney | 82.5 | 82.5 | 0.0 |
| 18 | Adelaide - Brisbane | 76.2 | 75.7 | -0.6 |
| 19 | Launceston - Melbourne | 76.1 | 74.3 | -2.3 |
| 20 | Brisbane - Mackay | 58.3 | 60.9 | 4.5 |
| 21 | Brisbane - Canberra | 53.4 | 54.2 | 1.4 |
| 22 | Hobart - Sydney | 46.9 | 52.2 | 11.3 |
| 23 | Brisbane - Newcastle | 50.0 | 51.9 | 3.7 |
| 24 | Adelaide - Perth | 50.7 | 51.7 | 2.1 |
| 25 | Sunshine Coast - Sydney | 48.0 | 50.7 | 5.8 |
| 26 | Brisbane - Rockhampton | 48.6 | 49.8 | 2.5 |
| 27 | Melbourne - Sunshine Coast | 43.1 | 45.9 | 6.6 |
| 28 | Brisbane - Darwin | 42.9 | 42.1 | -1.8 |
| 29 | Melbourne - Newcastle | 39.6 | 39.8 | 0.4 |
| 30 | Darwin - Sydney | 38.5 | 38.4 | -0.2 |
| 31 | Karratha - Perth | 40.7 | 36.4 | -10.5 |
| 32 | Broome - Perth | 32.4 | 33.9 | 4.4 |
| 33 | Ballina - Sydney | 33.8 | 33.5 | -0.7 |
| 34 | Darwin - Melbourne | 31.2 | 32.3 | 3.4 |
| 35 | Perth - Port Hedland | 29.6 | 28.3 | -4.6 |
| 36 | Coffs Harbour - Sydney | 27.7 | 28.1 | 1.4 |
| 37 | Brisbane - Proserpine | 19.5 | 24.7 | 26.5 |
| 38 | Newman - Perth | 25.6 | 23.6 | -7.9 |
| 39 | Darwin - Perth | 20.3 | 21.8 | 7.4 |
| 40 | Launceston - Sydney | 22.0 | 21.0 | -4.4 |
| 41 | Brisbane - Gladstone | 29.5 | 24.2 | -17.7 |
| 42 | Albury - Sydney | 19.6 | 20.4 | 4.0 |
| 43 | Kalgoorlie - Perth | 19.5 | 19.6 | 0.3 |
| 44 | Adelaide - Gold Coast | 20.2 | 18.7 | -7.7 |
| 45 | Melbourne - Mildura | 17.6 | 18.2 | 3.4 |
| 46 | Brisbane - Emerald | 16.8 | 18.1 | 7.8 |
| 47 | Ayers Rock - Sydney | 17.5 | 17.7 | 1.2 |
| 48 | Brisbane - Hobart | 16.5 | 17.4 | 5.6 |
| 49 | Sydney - Townsville | 16.8 | 17.2 | 2.1 |
| 50 | Port Macquarie - Sydney | 15.4 | 16.3 | 6.2 |

continued

Table 2: (continued) Passengers carried (000s) — monthly activity

| | City-Pair | Jul 2016 | Jul 2017 | % Change |
|----|-------------------------------|-----------------|-----------------|-----------------|
| 51 | Dubbo - Sydney | 15.2 | 16.1 | 5.9 |
| 52 | Sydney - Wagga Wagga | 16.0 | 15.4 | -3.6 |
| 53 | Hamilton Island - Sydney | 23.2 | 15.3 | -34.1 |
| 54 | Adelaide - Canberra | 13.2 | 15.1 | 14.6 |
| 55 | Sydney - Tamworth | 14.5 | 15.1 | 4.2 |
| 56 | Brisbane - Bundaberg | 15.0 | 14.8 | -1.6 |
| 57 | Adelaide - Port Lincoln | 14.0 | 13.6 | -2.9 |
| 58 | Cairns - Townsville | 12.9 | 13.4 | 4.1 |
| 59 | Alice Springs - Darwin | 11.9 | 12.4 | 3.4 |
| 60 | Adelaide - Alice Springs | 11.7 | 12.1 | 3.2 |
| 61 | Brisbane - Mount Isa | 10.7 | 11.4 | 6.2 |
| 62 | Brisbane - Hamilton Island | 12.8 | 11.2 | -13.1 |
| 63 | Brisbane - Moranbah | 9.4 | 10.5 | 12.1 |
| 64 | Armidale - Sydney | 10.2 | 10.3 | 0.7 |
| 65 | Geraldton - Perth | 9.6 | 9.3 | -2.7 |
| | Total domestic network | 5 186.4 | 5 293.9 | 2.1 |

Table 3: Available seats (000s) — monthly activity

| | City-Pair | Jul 2016 | Jul 2017 | % Change |
|----|----------------------------|-----------------|-----------------|-----------------|
| 1 | Melbourne - Sydney | 908.9 | 924.0 | 1.7 |
| 2 | Brisbane - Sydney | 497.2 | 496.4 | -0.1 |
| 3 | Brisbane - Melbourne | 380.8 | 382.8 | 0.5 |
| 4 | Gold Coast - Sydney | 268.4 | 276.2 | 2.9 |
| 5 | Adelaide - Melbourne | 268.4 | 261.5 | -2.6 |
| 6 | Gold Coast - Melbourne | 211.6 | 210.4 | -0.6 |
| 7 | Melbourne - Perth | 210.2 | 200.5 | -4.6 |
| 8 | Adelaide - Sydney | 189.1 | 196.3 | 3.8 |
| 9 | Perth - Sydney | 181.2 | 174.1 | -3.9 |
| 10 | Hobart - Melbourne | 163.0 | 160.8 | -1.3 |
| 11 | Brisbane - Cairns | 142.1 | 146.2 | 2.9 |
| 12 | Cairns - Sydney | 120.7 | 122.5 | 1.5 |
| 13 | Canberra - Melbourne | 125.9 | 150.8 | 19.7 |
| 14 | Brisbane - Townsville | 110.3 | 111.0 | 0.6 |
| 15 | Cairns - Melbourne | 96.8 | 102.7 | 6.1 |
| 16 | Brisbane - Perth | 103.1 | 101.5 | -1.5 |
| 17 | Canberra - Sydney | 114.5 | 112.5 | -1.7 |
| 18 | Adelaide - Brisbane | 94.6 | 93.5 | -1.1 |
| 19 | Launceston - Melbourne | 94.1 | 91.7 | -2.6 |
| 20 | Brisbane - Mackay | 75.4 | 75.8 | 0.4 |
| 21 | Brisbane - Canberra | 67.3 | 70.9 | 5.3 |
| 22 | Hobart - Sydney | 59.8 | 63.8 | 6.7 |
| 23 | Brisbane - Newcastle | 65.2 | 71.0 | 8.9 |
| 24 | Adelaide - Perth | 73.5 | 71.7 | -2.5 |
| 25 | Sunshine Coast - Sydney | 57.5 | 60.7 | 5.6 |
| 26 | Brisbane - Rockhampton | 64.5 | 55.8 | -13.5 |
| 27 | Melbourne - Sunshine Coast | 49.8 | 52.7 | 5.8 |
| 28 | Brisbane - Darwin | 48.0 | 46.1 | -4.0 |
| 29 | Melbourne - Newcastle | 52.1 | 52.0 | -0.2 |
| 30 | Darwin - Sydney | 46.2 | 45.3 | -1.8 |
| 31 | Karratha - Perth | 68.4 | 56.4 | -17.6 |
| 32 | Broome - Perth | 39.1 | 39.8 | 1.8 |
| 33 | Ballina - Sydney | 42.5 | 43.6 | 2.6 |
| 34 | Darwin - Melbourne | 35.6 | 35.9 | 1.0 |
| 35 | Perth - Port Hedland | 50.0 | 43.6 | -12.8 |
| 36 | Coffs Harbour - Sydney | 37.6 | 40.4 | 7.3 |
| 37 | Brisbane - Proserpine | 21.9 | 30.1 | 37.0 |
| 38 | Newman - Perth | 48.4 | 43.8 | -9.5 |
| 39 | Darwin - Perth | 25.0 | 24.6 | -1.5 |
| 40 | Launceston - Sydney | 25.9 | 24.4 | -5.6 |
| 41 | Brisbane - Gladstone | 48.1 | 33.3 | -30.9 |
| 42 | Albury - Sydney | 29.4 | 29.4 | 0.0 |
| 43 | Kalgoorlie - Perth | 33.8 | 36.3 | 7.3 |
| 44 | Adelaide - Gold Coast | 24.6 | 21.9 | -10.9 |
| 45 | Melbourne - Mildura | 27.3 | 29.4 | 7.7 |
| 46 | Brisbane - Emerald | 30.6 | 24.4 | -20.1 |
| 47 | Ayers Rock - Sydney | 21.4 | 21.9 | 2.2 |
| 48 | Brisbane - Hobart | 19.9 | 20.4 | 2.7 |
| 49 | Sydney - Townsville | 20.3 | 20.0 | -1.7 |
| 50 | Port Macquarie - Sydney | 22.2 | 21.4 | -3.6 |

continued

Table 3: (continued) Available seats (000s) — monthly activity

| | City-Pair | Jul 2016 | Jul 2017 | % Change |
|----|-------------------------------|-----------------|-----------------|-----------------|
| 51 | Dubbo - Sydney | 24.6 | 24.4 | -0.8 |
| 52 | Sydney - Wagga Wagga | 25.5 | 25.1 | -1.5 |
| 53 | Hamilton Island - Sydney | 29.5 | 25.1 | -14.9 |
| 54 | Adelaide - Canberra | 20.4 | 25.2 | 23.8 |
| 55 | Sydney - Tamworth | 24.1 | 25.2 | 4.5 |
| 56 | Brisbane - Bundaberg | 20.9 | 18.9 | -9.4 |
| 57 | Adelaide - Port Lincoln | 24.6 | 24.4 | -0.8 |
| 58 | Cairns - Townsville | 25.8 | 24.1 | -6.7 |
| 59 | Alice Springs - Darwin | 19.7 | 19.8 | 0.4 |
| 60 | Adelaide - Alice Springs | 14.7 | 15.3 | 3.7 |
| 61 | Brisbane - Mount Isa | 19.9 | 15.4 | -22.3 |
| 62 | Brisbane - Hamilton Island | 15.9 | 16.2 | 1.9 |
| 63 | Brisbane - Moranbah | 22.2 | 17.6 | -20.6 |
| 64 | Armidale - Sydney | 16.3 | 16.1 | -1.2 |
| 65 | Geraldton - Perth | 20.4 | 19.6 | -3.9 |
| | Total domestic network | 6 650.3 | 6 657.5 | 0.1 |

Table 4: Load factors (%) — monthly activity

| | City-Pair | Jul 2016 | Jul 2017 | % Point diff |
|----|----------------------------|-----------------|-----------------|---------------------|
| 1 | Melbourne - Sydney | 83.0 | 83.5 | 0.5 |
| 2 | Brisbane - Sydney | 84.5 | 85.5 | 1.0 |
| 3 | Brisbane - Melbourne | 82.4 | 84.8 | 2.4 |
| 4 | Gold Coast - Sydney | 87.0 | 85.9 | -1.1 |
| 5 | Adelaide - Melbourne | 80.3 | 82.8 | 2.5 |
| 6 | Gold Coast - Melbourne | 82.0 | 86.8 | 4.8 |
| 7 | Melbourne - Perth | 83.9 | 88.5 | 4.6 |
| 8 | Adelaide - Sydney | 81.3 | 80.7 | -0.6 |
| 9 | Perth - Sydney | 82.6 | 84.3 | 1.7 |
| 10 | Hobart - Melbourne | 73.7 | 82.1 | 8.4 |
| 11 | Brisbane - Cairns | 88.3 | 88.9 | 0.6 |
| 12 | Cairns - Sydney | 90.3 | 88.7 | -1.6 |
| 13 | Canberra - Melbourne | 66.8 | 61.0 | -5.8 |
| 14 | Brisbane - Townsville | 84.2 | 82.3 | -1.9 |
| 15 | Cairns - Melbourne | 88.4 | 88.6 | 0.2 |
| 16 | Brisbane - Perth | 81.1 | 84.4 | 3.3 |
| 17 | Canberra - Sydney | 72.1 | 73.3 | 1.2 |
| 18 | Adelaide - Brisbane | 80.5 | 80.9 | 0.4 |
| 19 | Launceston - Melbourne | 80.8 | 81.0 | 0.2 |
| 20 | Brisbane - Mackay | 77.3 | 80.4 | 3.1 |
| 21 | Brisbane - Canberra | 79.3 | 76.4 | -2.9 |
| 22 | Hobart - Sydney | 78.4 | 81.8 | 3.4 |
| 23 | Brisbane - Newcastle | 76.7 | 73.1 | -3.6 |
| 24 | Adelaide - Perth | 68.9 | 72.1 | 3.2 |
| 25 | Sunshine Coast - Sydney | 83.4 | 83.5 | 0.1 |
| 26 | Brisbane - Rockhampton | 75.3 | 89.3 | 14.0 |
| 27 | Melbourne - Sunshine Coast | 86.5 | 87.2 | 0.7 |
| 28 | Brisbane - Darwin | 89.3 | 91.4 | 2.1 |
| 29 | Melbourne - Newcastle | 76.0 | 76.4 | 0.4 |
| 30 | Darwin - Sydney | 83.4 | 84.7 | 1.3 |
| 31 | Karratha - Perth | 59.5 | 64.6 | 5.1 |
| 32 | Broome - Perth | 82.9 | 85.0 | 2.1 |
| 33 | Ballina - Sydney | 79.5 | 76.9 | -2.6 |
| 34 | Darwin - Melbourne | 87.6 | 89.7 | 2.1 |
| 35 | Perth - Port Hedland | 59.3 | 64.9 | 5.6 |
| 36 | Coffs Harbour - Sydney | 73.6 | 69.6 | -4.0 |
| 37 | Brisbane - Proserpine | 88.8 | 82.0 | -6.8 |
| 38 | Newman - Perth | 52.9 | 53.8 | 0.9 |
| 39 | Darwin - Perth | 81.2 | 88.6 | 7.4 |
| 40 | Launceston - Sydney | 85.0 | 86.1 | 1.1 |
| 41 | Brisbane - Gladstone | 61.2 | 75.0 | 13.8 |
| 42 | Albury - Sydney | 66.8 | 69.4 | 2.6 |
| 43 | Kalgoorlie - Perth | 57.8 | 54.0 | -3.8 |
| 44 | Adelaide - Gold Coast | 82.3 | 85.3 | 3.0 |
| 45 | Melbourne - Mildura | 64.7 | 62.1 | -2.6 |
| 46 | Brisbane - Emerald | 54.9 | 74.0 | 19.1 |
| 47 | Ayers Rock - Sydney | 81.6 | 80.8 | -0.8 |
| 48 | Brisbane - Hobart | 83.1 | 85.4 | 2.3 |
| 49 | Sydney - Townsville | 82.8 | 86.0 | 3.2 |
| 50 | Port Macquarie - Sydney | 69.4 | 76.4 | 7.0 |

continued

Table 4: (continued) Load factors (%) — monthly activity

| | City-Pair | Jul 2016 | Jul 2017 | % Point diff |
|----|-------------------------------|-----------------|-----------------|---------------------|
| 51 | Dubbo - Sydney | 61.9 | 66.1 | 4.2 |
| 52 | Sydney - Wagga Wagga | 62.6 | 61.3 | -1.3 |
| 53 | Hamilton Island - Sydney | 78.7 | 61.0 | -17.7 |
| 54 | Adelaide - Canberra | 64.9 | 60.1 | -4.8 |
| 55 | Sydney - Tamworth | 59.9 | 59.7 | -0.2 |
| 56 | Brisbane - Bundaberg | 71.9 | 80.5 | 8.6 |
| 57 | Adelaide - Port Lincoln | 56.8 | 55.6 | -1.2 |
| 58 | Cairns - Townsville | 50.1 | 55.8 | 5.7 |
| 59 | Alice Springs - Darwin | 60.7 | 62.5 | 1.8 |
| 60 | Adelaide - Alice Springs | 79.5 | 79.0 | -0.5 |
| 61 | Brisbane - Mount Isa | 53.8 | 73.5 | 19.7 |
| 62 | Brisbane - Hamilton Island | 80.6 | 68.7 | -11.9 |
| 63 | Brisbane - Moranbah | 42.2 | 59.6 | 17.4 |
| 64 | Armidale - Sydney | 62.9 | 64.1 | 1.2 |
| 65 | Geraldton - Perth | 47.0 | 47.6 | 0.6 |
| | Total domestic network | 80.6 | 82.2 | 1.6 |

Table 5: Aircraft trips ^(a) — monthly activity

| | City-Pair | Jul 2016 | Jul 2017 | % Change |
|----|----------------------------|-----------------|-----------------|-----------------|
| 1 | Melbourne - Sydney | 5 061 | 5 159 | 1.9 |
| 2 | Brisbane - Sydney | 3 056 | 3 053 | -0.1 |
| 3 | Brisbane - Melbourne | 2 267 | 2 246 | -0.9 |
| 4 | Gold Coast - Sydney | 1 585 | 1 573 | -0.8 |
| 5 | Adelaide - Melbourne | 1 673 | 1 625 | -2.9 |
| 6 | Gold Coast - Melbourne | 1 126 | 1 114 | -1.1 |
| 7 | Melbourne - Perth | 956 | 911 | -4.7 |
| 8 | Adelaide - Sydney | 1 152 | 1 187 | 3.0 |
| 9 | Perth - Sydney | 775 | 761 | -1.8 |
| 10 | Hobart - Melbourne | 1 029 | 990 | -3.8 |
| 11 | Brisbane - Cairns | 876 | 904 | 3.2 |
| 12 | Cairns - Sydney | 698 | 677 | -3.0 |
| 13 | Canberra - Melbourne | 918 | 989 | 7.7 |
| 14 | Brisbane - Townsville | 758 | 770 | 1.6 |
| 15 | Cairns - Melbourne | 512 | 545 | 6.4 |
| 16 | Brisbane - Perth | 477 | 514 | 7.8 |
| 17 | Canberra - Sydney | 1 470 | 1 464 | -0.4 |
| 18 | Adelaide - Brisbane | 571 | 565 | -1.1 |
| 19 | Launceston - Melbourne | 719 | 718 | -0.1 |
| 20 | Brisbane - Mackay | 652 | 608 | -6.7 |
| 21 | Brisbane - Canberra | 501 | 519 | 3.6 |
| 22 | Hobart - Sydney | 383 | 405 | 5.7 |
| 23 | Brisbane - Newcastle | 540 | 526 | -2.6 |
| 24 | Adelaide - Perth | 472 | 460 | -2.5 |
| 25 | Sunshine Coast - Sydney | 345 | 368 | 6.7 |
| 26 | Brisbane - Rockhampton | 806 | 694 | -13.9 |
| 27 | Melbourne - Sunshine Coast | 280 | 296 | 5.7 |
| 28 | Brisbane - Darwin | 291 | 278 | -4.5 |
| 29 | Melbourne - Newcastle | 296 | 292 | -1.4 |
| 30 | Darwin - Sydney | 272 | 266 | -2.2 |
| 31 | Karratha - Perth | 566 | 506 | -10.6 |
| 32 | Broome - Perth | 309 | 332 | 7.4 |
| 33 | Ballina - Sydney | 285 | 286 | 0.4 |
| 34 | Darwin - Melbourne | 203 | 204 | 0.5 |
| 35 | Perth - Port Hedland | 381 | 368 | -3.4 |
| 36 | Coffs Harbour - Sydney | 442 | 418 | -5.4 |
| 37 | Brisbane - Proserpine | 124 | 170 | 37.1 |
| 38 | Newman - Perth | 350 | 320 | -8.6 |
| 39 | Darwin - Perth | 149 | 146 | -2.0 |
| 40 | Launceston - Sydney | 150 | 142 | -5.3 |
| 41 | Brisbane - Gladstone | 623 | 465 | -25.4 |
| 42 | Albury - Sydney | 548 | 537 | -2.0 |
| 43 | Kalgoorlie - Perth | 290 | 288 | -0.7 |
| 44 | Adelaide - Gold Coast | 139 | 124 | -10.8 |
| 45 | Melbourne - Mildura | 426 | 426 | 0.0 |
| 46 | Brisbane - Emerald | 401 | 336 | -16.2 |
| 47 | Ayers Rock - Sydney | 123 | 124 | 0.8 |
| 48 | Brisbane - Hobart | 119 | 116 | -2.5 |
| 49 | Sydney - Townsville | 139 | 124 | -10.8 |
| 50 | Port Macquarie - Sydney | 389 | 371 | -4.6 |

continued

Table 5: (continued) Aircraft trips ^(a) — monthly activity

| | City-Pair | Jul 2016 | Jul 2017 | % Change |
|----|-------------------------------|-----------------|-----------------|-----------------|
| 51 | Dubbo - Sydney | 553 | 547 | -1.1 |
| 52 | Sydney - Wagga Wagga | 498 | 487 | -2.2 |
| 53 | Hamilton Island - Sydney | 180 | 155 | -13.9 |
| 54 | Adelaide - Canberra | 139 | 150 | 7.9 |
| 55 | Sydney - Tamworth | 395 | 405 | 2.5 |
| 56 | Brisbane - Bundaberg | 322 | 329 | 2.2 |
| 57 | Adelaide - Port Lincoln | 634 | 633 | -0.2 |
| 58 | Cairns - Townsville | 449 | 409 | -8.9 |
| 59 | Alice Springs - Darwin | 160 | 160 | 0.0 |
| 60 | Adelaide - Alice Springs | 93 | 96 | 3.2 |
| 61 | Brisbane - Mount Isa | 155 | 154 | -0.6 |
| 62 | Brisbane - Hamilton Island | 127 | 136 | 7.1 |
| 63 | Brisbane - Moranbah | 308 | 256 | -16.9 |
| 64 | Armidale - Sydney | 384 | 385 | 0.3 |
| 65 | Geraldton - Perth | 204 | 196 | -3.9 |
| | Total domestic network | 54 822 | 54 510 | -0.6 |

(a) Includes RPT Cargo flights.

TOP TEN AIRPORTS – PASSENGER MOVEMENTS

Table 6: Top ten airports, RPT passenger movements (000s) - annual activity

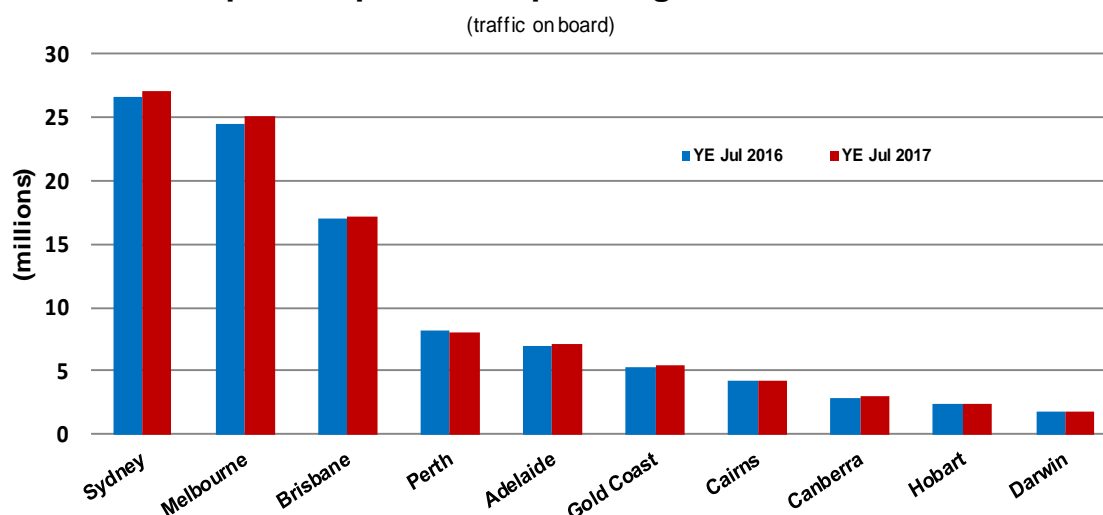
| Airport | YE Jul 2016 | YE Jul 2017 | % Change | % of Total |
|-------------------------------|------------------|------------------|------------|--------------|
| 1 Sydney | 26 643.2 | 27 111.3 | 1.8 | 22.8 |
| 2 Melbourne | 24 496.4 | 25 064.8 | 2.3 | 21.1 |
| 3 Brisbane | 17 019.3 | 17 127.7 | 0.6 | 14.4 |
| 4 Perth | 8 226.2 | 8 027.4 | -2.4 | 6.8 |
| 5 Adelaide | 6 932.2 | 7 060.1 | 1.8 | 5.9 |
| 6 Gold Coast | 5 274.1 | 5 373.5 | 1.9 | 4.5 |
| 7 Cairns | 4 164.0 | 4 291.3 | 3.1 | 3.6 |
| 8 Canberra | 2 815.1 | 2 945.0 | 4.6 | 2.5 |
| 9 Hobart | 2 323.3 | 2 458.8 | 5.8 | 2.1 |
| 10 Darwin | 1 781.6 | 1 810.0 | 1.6 | 1.5 |
| Total top ten airports | 99 675.4 | 101 270.0 | 1.6 | 85.3 |
| Total domestic network | 116 883.4 | 118 728.4 | 1.6 | 100.0 |

Table 7: Top ten airports, RPT passenger movements (000s) - monthly activity

| Airport | Jul 2016 | Jul 2017 | % Change | % of Total |
|-------------------------------|-----------------|-----------------|------------|--------------|
| 1 Sydney | 2 335.1 | 2 368.7 | 1.4 | 22.4 |
| 2 Melbourne | 2 153.8 | 2 221.9 | 3.2 | 21.0 |
| 3 Brisbane | 1 536.5 | 1 561.5 | 1.6 | 14.7 |
| 4 Perth | 704.9 | 702.9 | -0.3 | 6.6 |
| 5 Adelaide | 608.2 | 619.1 | 1.8 | 5.8 |
| 6 Gold Coast | 469.6 | 480.4 | 2.3 | 4.5 |
| 7 Cairns | 416.5 | 424.5 | 1.9 | 4.0 |
| 8 Canberra | 245.2 | 257.4 | 5.0 | 2.4 |
| 9 Hobart | 183.6 | 201.6 | 9.8 | 1.9 |
| 10 Darwin | 193.6 | 194.2 | 0.3 | 1.8 |
| Total top ten airports | 8 847.2 | 9 032.3 | 2.1 | 85.3 |
| Total domestic network | 10 372.7 | 10 587.7 | 2.1 | 100.0 |

Note: Airport passenger movement numbers are the sum of passenger arrivals and departures at each airport.

Top ten airports, RPT passenger movements



TOP FIVE AIRPORTS – CARGO MOVEMENTS

Table 8: Top five airports, domestic RPT cargo movements (000s tonnes) - annual activity

| Airport | YE Jul 2016 | YE Jul 2017 | % Change | % of Total |
|--------------------------------|--------------|--------------|-------------|--------------|
| 1 Melbourne | 111.9 | 129.7 | 15.8 | 28.8 |
| 2 Sydney | 98.8 | 105.8 | 7.1 | 23.5 |
| 3 Brisbane | 59.4 | 67.2 | 13.1 | 14.9 |
| 4 Perth | 54.3 | 62.7 | 15.5 | 13.9 |
| 5 Adelaide | 22.7 | 26.2 | 15.9 | 5.8 |
| Total top five airports | 347.1 | 391.5 | 12.8 | 86.8 |
| Total domestic network | 396.5 | 450.9 | 13.7 | 100.0 |

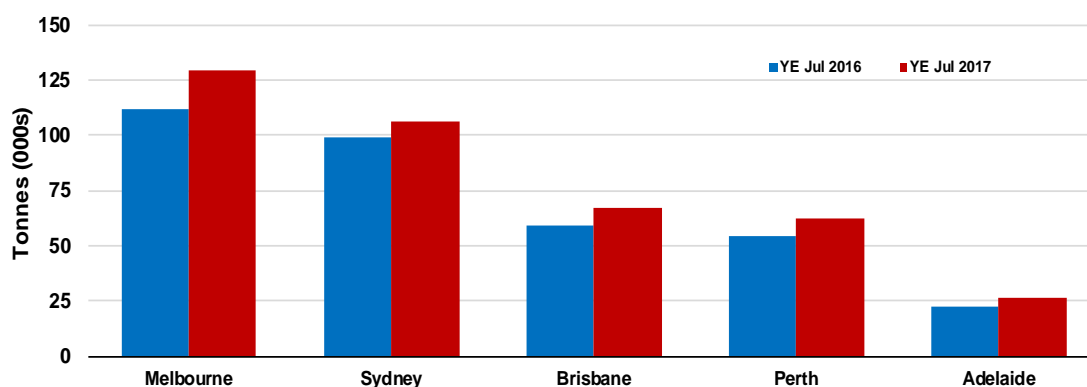
Table 9: Top five airports, domestic RPT cargo movements (000s tonnes) - monthly activity

| Airport | Jul 2016 | Jul 2017 | % Change | % of Total |
|--------------------------------|-------------|-------------|------------|--------------|
| 1 Melbourne | 9.7 | 10.3 | 6.4 | 28.1 |
| 2 Sydney | 8.7 | 8.2 | -5.5 | 22.4 |
| 3 Perth | 5.8 | 5.5 | -4.2 | 15.1 |
| 4 Brisbane | 4.8 | 5.5 | 14.1 | 15.0 |
| 5 Adelaide | 1.9 | 2.3 | 18.3 | 6.2 |
| Total top five airports | 30.9 | 31.8 | 3.0 | 86.8 |
| Total domestic network | 35.7 | 36.6 | 2.5 | 100.0 |

Note: Airport cargo tonnes are the sum of cargo tonnes on arrivals and departures at each airport.

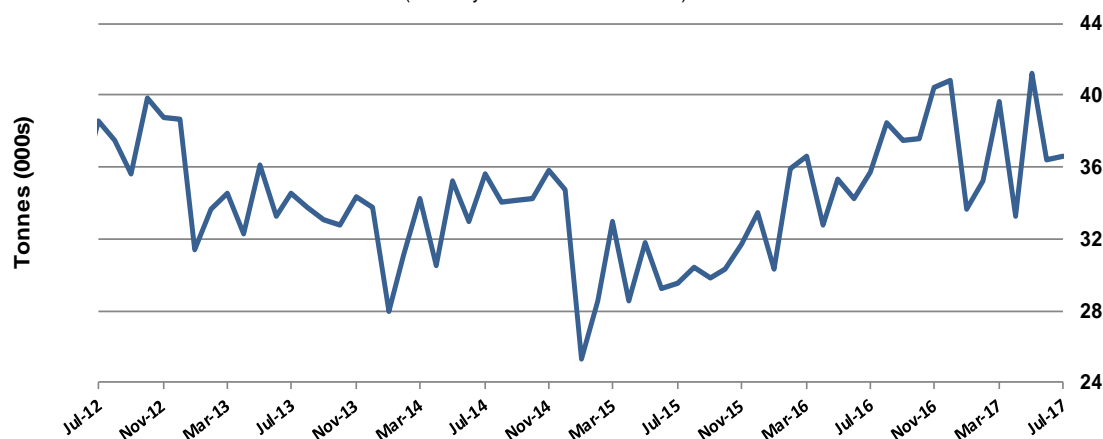
Top five airports, cargo movements

(Domestic cargo traffic - traffic on board)



Total domestic network - cargo movement

(monthly totals - traffic on board)



Note: Airport cargo tonnes are the sum of cargo tonnes on arrivals and departures at each airport.

TOP TEN ROUTES

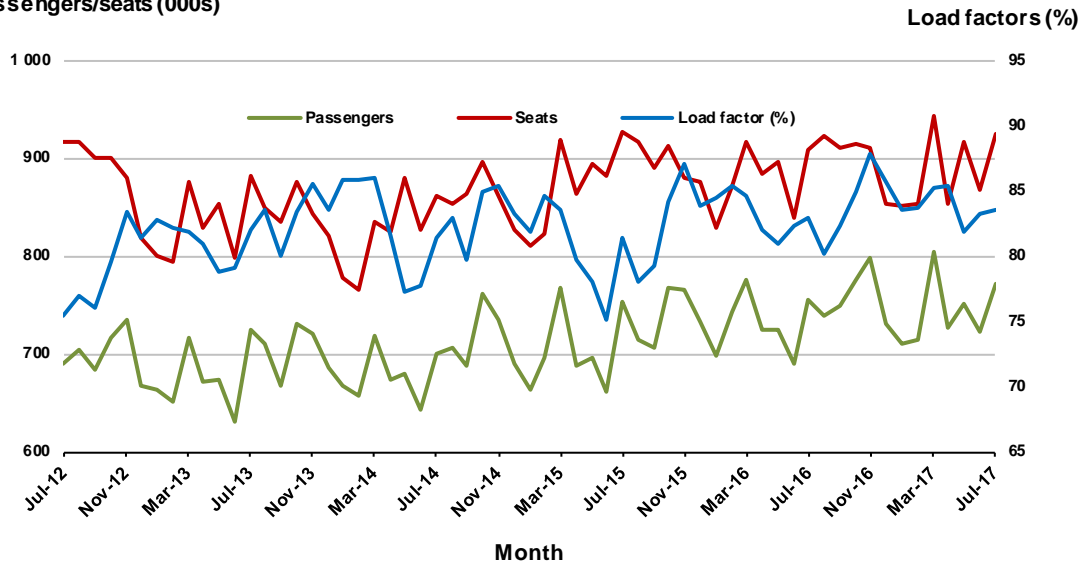
1. Melbourne - Sydney

Monthly data

| | Jul 2016 | Jul 2017 | % Change |
|---------------------------|----------|----------|----------|
| Passengers carried (000s) | 754.2 | 771.8 | 2.3 |
| Seats (000s) | 908.9 | 924.0 | 1.7 |
| Load factor % | 83.0 | 83.5 | 0.5 * |
| Aircraft trips | 5 061 | 5 159 | 1.9 |

* percentage point difference

Passengers/seats (000s)

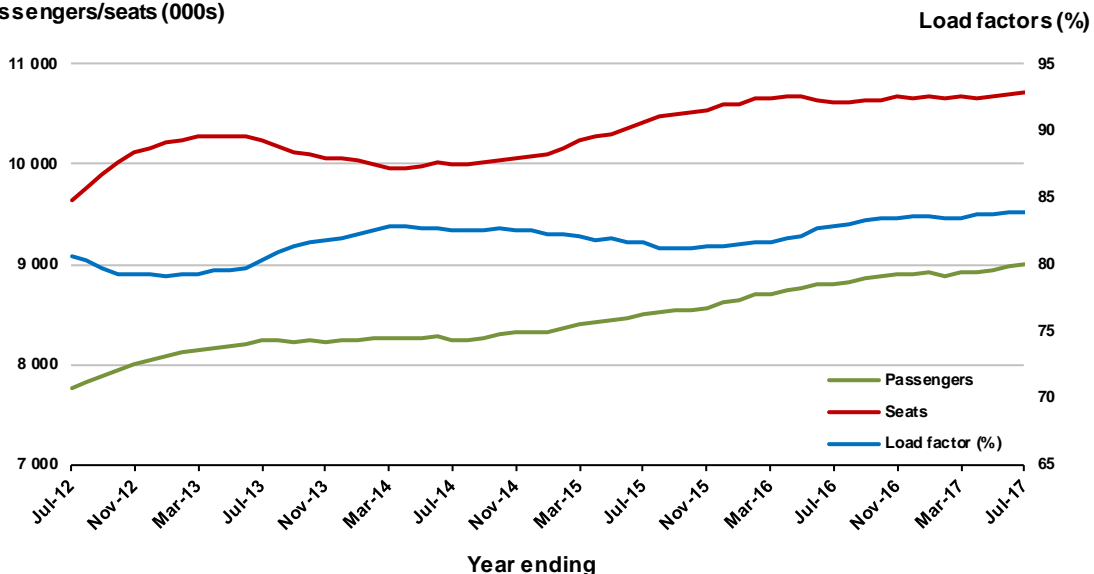


Moving annual data

| | YE Jul 2016 | YE Jul 2017 | % Change |
|---------------------------|-------------|-------------|----------|
| Passengers carried (000s) | 8 797.4 | 8 992.0 | 2.2 |
| Seats (000s) | 10 617.3 | 10 715.3 | 0.9 |
| Load factor % | 82.9 | 83.9 | 1.1 * |
| Aircraft trips | 59 408 | 59 696 | 0.5 |

* percentage point difference

Passengers/seats (000s)

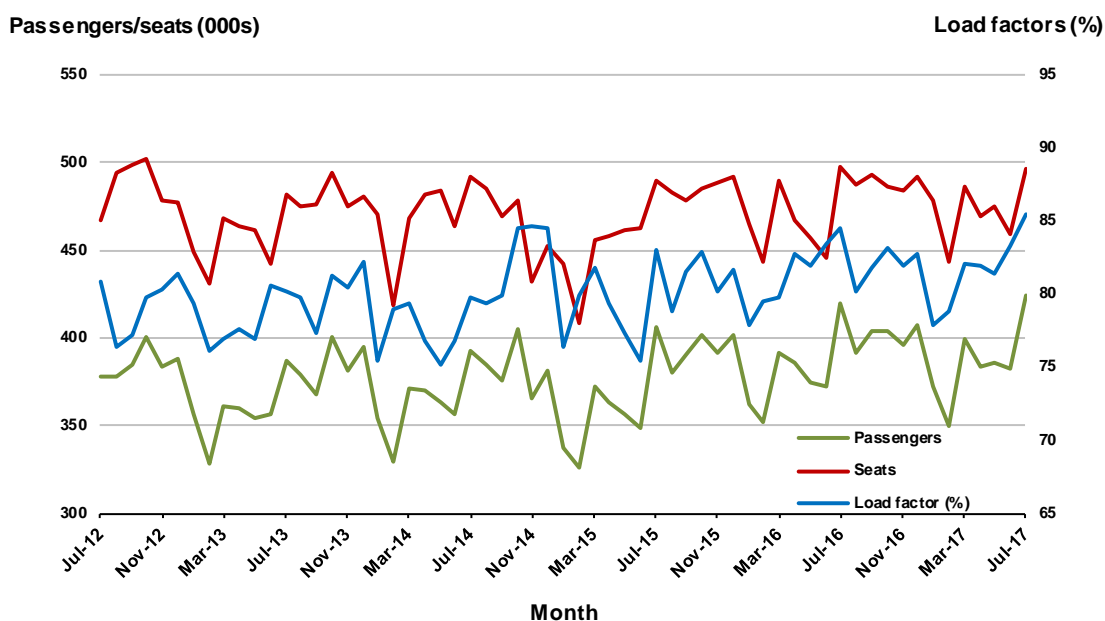


2. Brisbane - Sydney

Monthly data

| | Jul 2016 | Jul 2017 | % Change |
|---------------------------|----------|----------|----------|
| Passengers carried (000s) | 420.1 | 424.6 | 1.1 |
| Seats (000s) | 497.2 | 496.4 | -0.1 |
| Load factor % | 84.5 | 85.5 | 1.0 * |
| Aircraft trips | 3 056 | 3 053 | -0.1 |

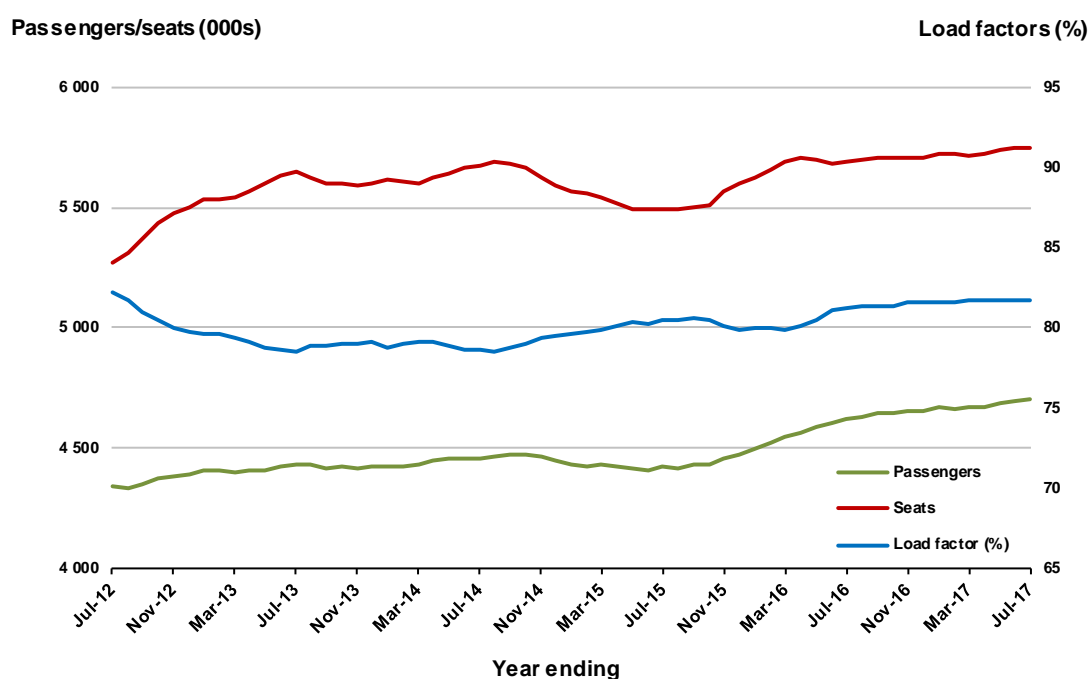
* percentage point difference



Moving annual data

| | YE Jul 2016 | YE Jul 2017 | % Change |
|---------------------------|-------------|-------------|----------|
| Passengers carried (000s) | 4 622.0 | 4 700.2 | 1.7 |
| Seats (000s) | 5 689.5 | 5 749.6 | 1.1 |
| Load factor % | 81.2 | 81.7 | 0.5 * |
| Aircraft trips | 35 593 | 35 505 | -0.2 |

* percentage point difference

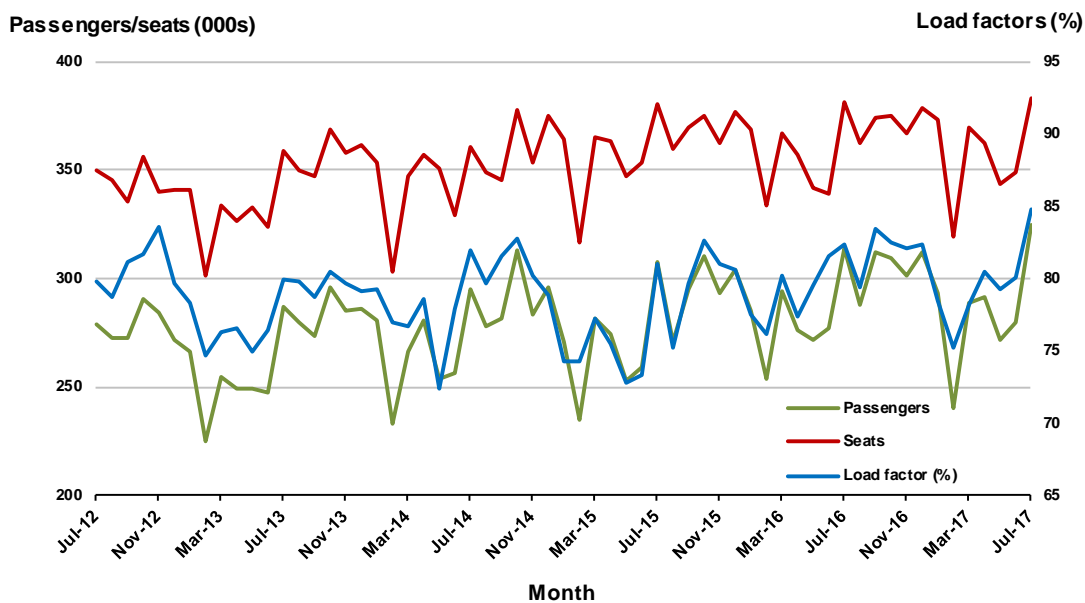


3. Brisbane - Melbourne

Monthly data

| | Jul 2016 | Jul 2017 | % Change |
|---------------------------|----------|----------|----------|
| Passengers carried (000s) | 313.7 | 324.7 | 3.5 |
| Seats (000s) | 380.8 | 382.8 | 0.5 |
| Load factor % | 82.4 | 84.8 | 2.4 * |
| Aircraft trips | 2 267 | 2 246 | -0.9 |

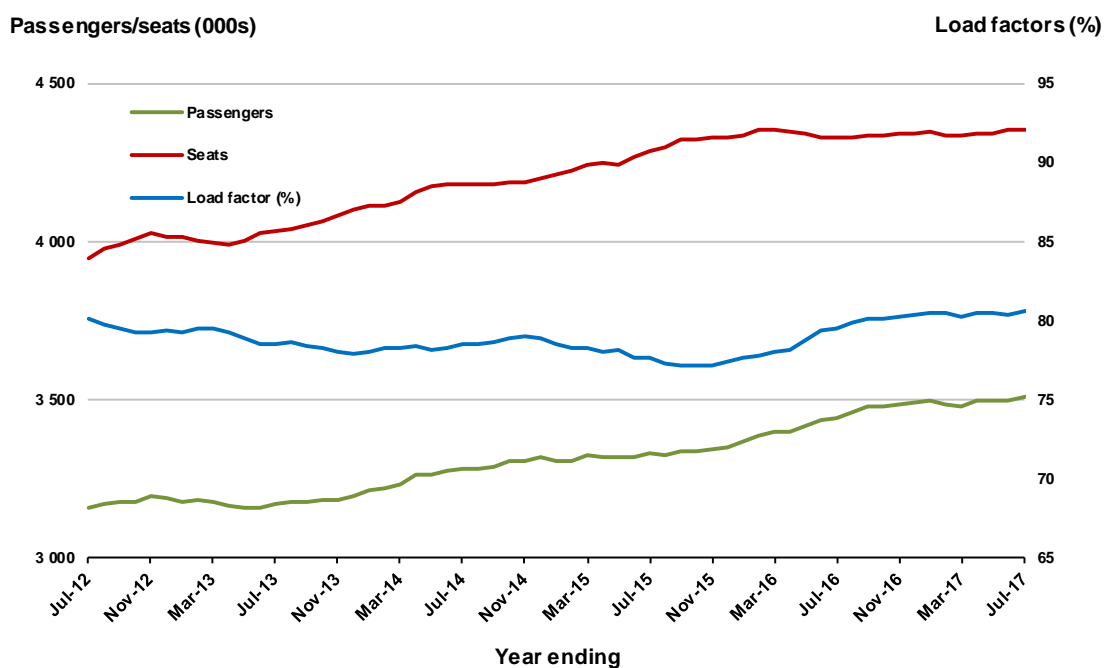
* percentage point difference



Moving annual data

| | YE Jul 2016 | YE Jul 2017 | % Change |
|---------------------------|-------------|-------------|----------|
| Passengers carried (000s) | 3 444.5 | 3 511.5 | 1.9 |
| Seats (000s) | 4 330.6 | 4 356.7 | 0.6 |
| Load factor % | 79.5 | 80.6 | 1.1 * |
| Aircraft trips | 25 986 | 25 736 | -1.0 |

* percentage point difference



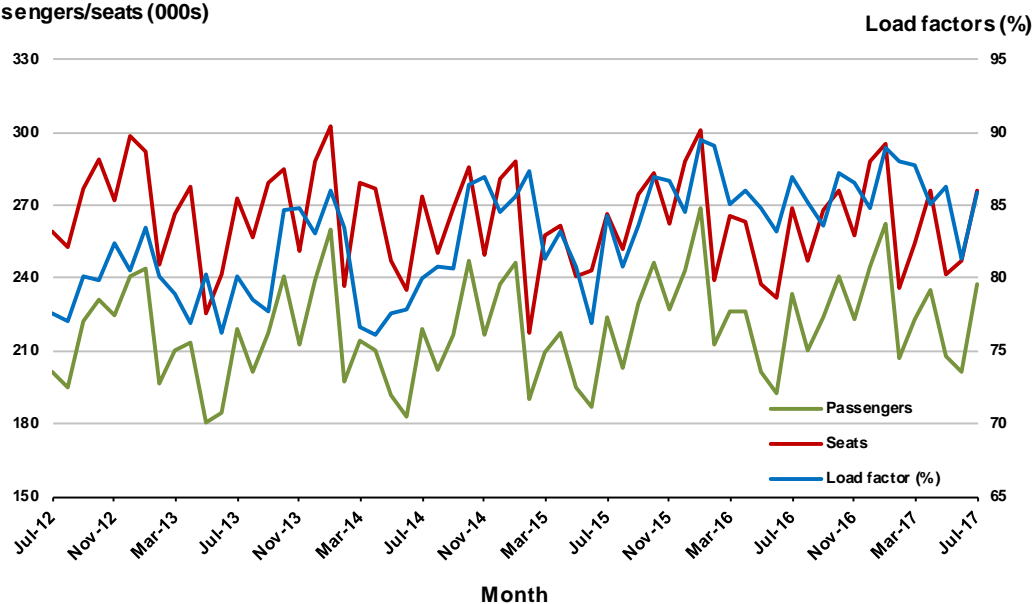
4. Gold Coast - Sydney

Monthly data

| | Jul 2016 | Jul 2017 | % Change |
|---------------------------|----------|----------|----------|
| Passengers carried (000s) | 233.4 | 237.3 | 1.7 |
| Seats (000s) | 268.4 | 276.2 | 2.9 |
| Load factor % | 87.0 | 85.9 | -1.1 * |
| Aircraft trips | 1 585 | 1 573 | -0.8 |

* percentage point difference

Passengers/seats (000s)

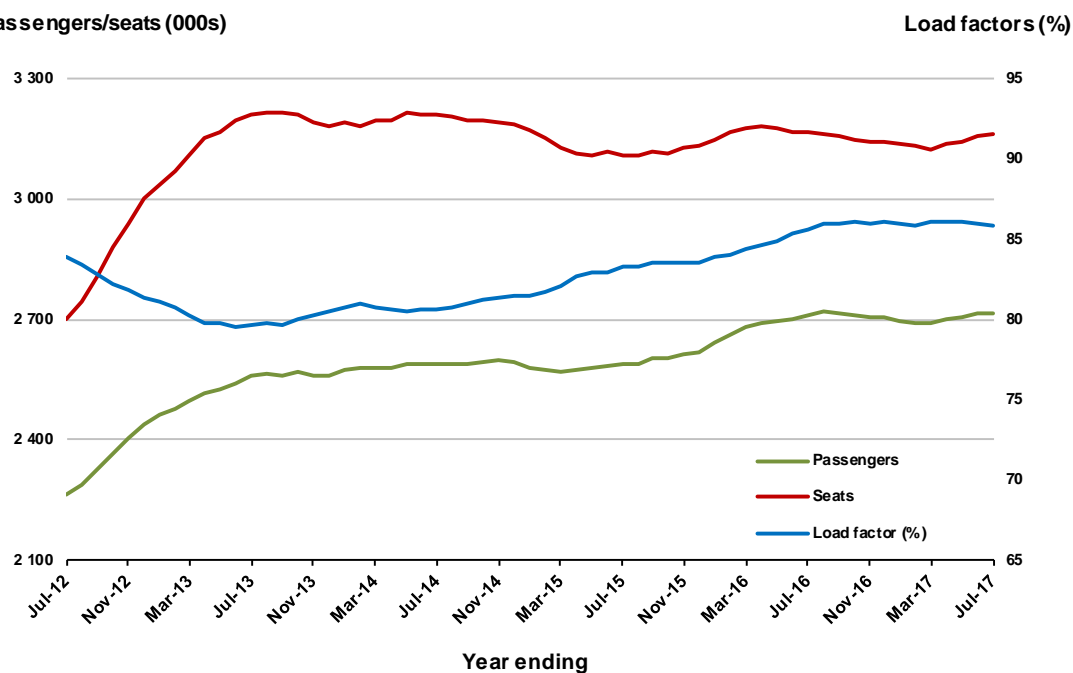


Moving annual data

| | YE Jul 2016 | YE Jul 2017 | % Change |
|---------------------------|-------------|-------------|----------|
| Passengers carried (000s) | 2 711.7 | 2 716.6 | 0.2 |
| Seats (000s) | 3 166.9 | 3 162.8 | -0.1 |
| Load factor % | 85.6 | 85.9 | 0.3 * |
| Aircraft trips | 18 466 | 18 238 | -1.2 |

* percentage point difference

Passengers/seats (000s)



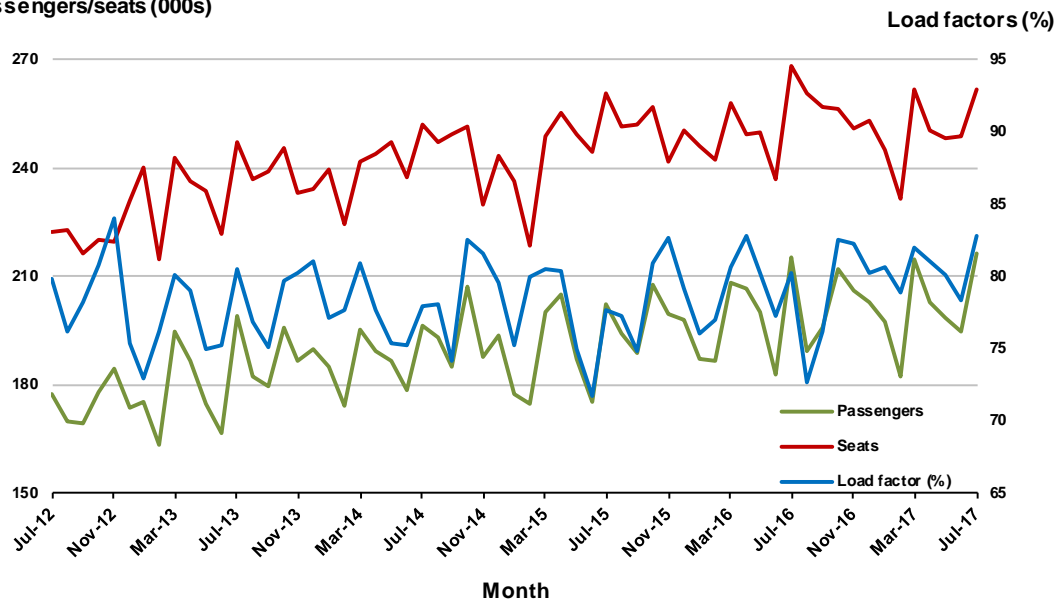
5. Adelaide - Melbourne

Monthly data

| | Jul 2016 | Jul 2017 | % Change |
|---------------------------|----------|----------|----------|
| Passengers carried (000s) | 215.4 | 216.5 | 0.5 |
| Seats (000s) | 268.4 | 261.5 | -2.6 |
| Load factor % | 80.3 | 82.8 | 2.5 * |
| Aircraft trips | 1 673 | 1 625 | -2.9 |

* percentage point difference

Passengers/seats (000s)

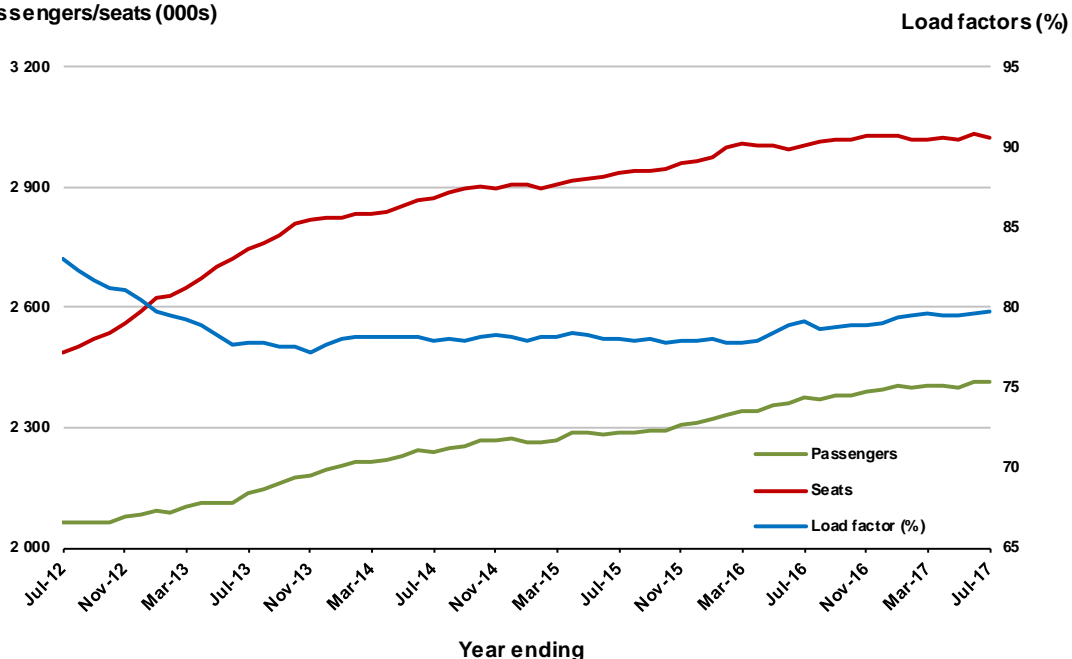


Moving annual data

| | YE Jul 2016 | YE Jul 2017 | % Change |
|---------------------------|-------------|-------------|----------|
| Passengers carried (000s) | 2 375.8 | 2 414.3 | 1.6 |
| Seats (000s) | 3 003.3 | 3 025.3 | 0.7 |
| Load factor % | 79.1 | 79.8 | 0.7 * |
| Aircraft trips | 19 216 | 19 182 | -0.2 |

* percentage point difference

Passengers/seats (000s)



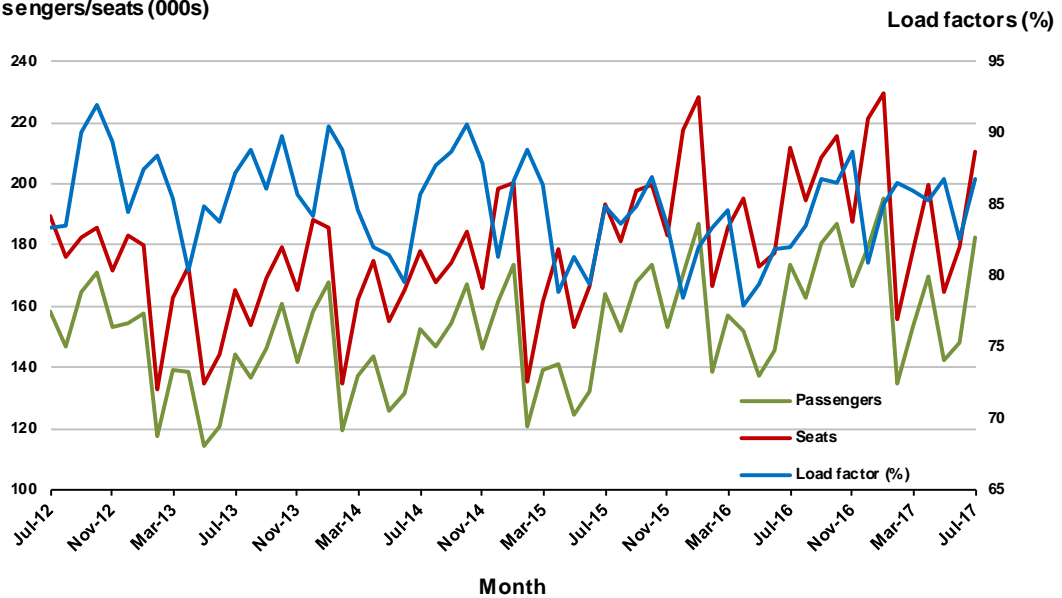
6. Gold Coast - Melbourne

Monthly data

| | Jul 2016 | Jul 2017 | % Change |
|---------------------------|----------|----------|----------|
| Passengers carried (000s) | 173.4 | 182.7 | 5.4 |
| Seats (000s) | 211.6 | 210.4 | -0.6 |
| Load factor % | 82.0 | 86.8 | 4.8 * |
| Aircraft trips | 1 126 | 1 114 | -1.1 |

* percentage point difference

Passengers/seats (000s)

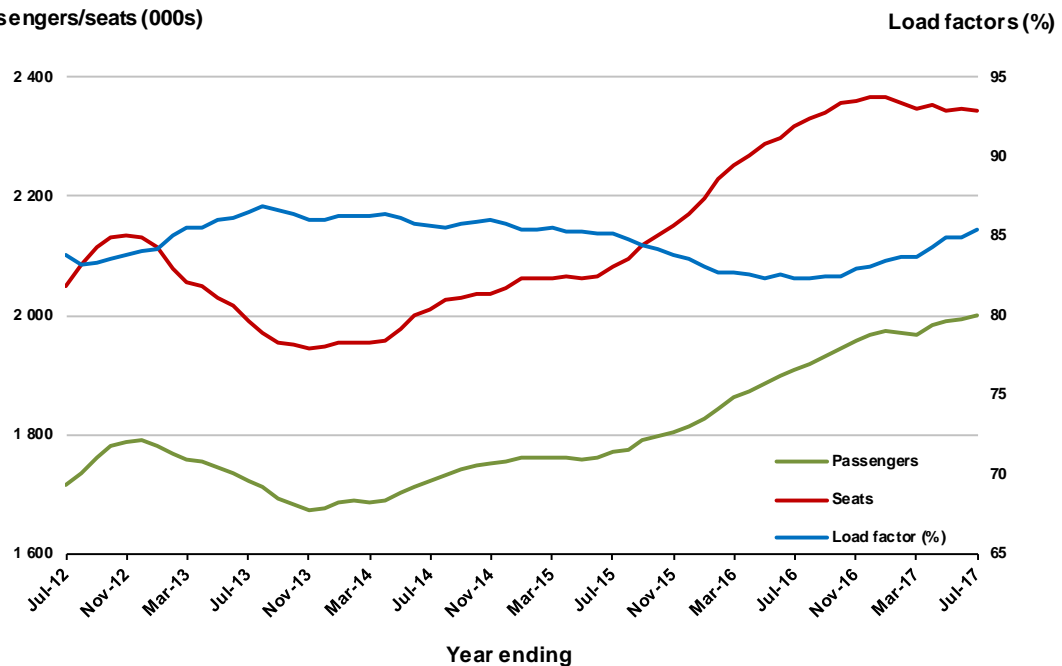


Moving annual data

| | YE Jul 2016 | YE Jul 2017 | % Change |
|---------------------------|-------------|-------------|----------|
| Passengers carried (000s) | 1 908.1 | 2 001.5 | 4.9 |
| Seats (000s) | 2 317.6 | 2 345.0 | 1.2 |
| Load factor % | 82.3 | 85.4 | 3.0 * |
| Aircraft trips | 12 442 | 12 537 | 0.8 |

* percentage point difference

Passengers/seats (000s)



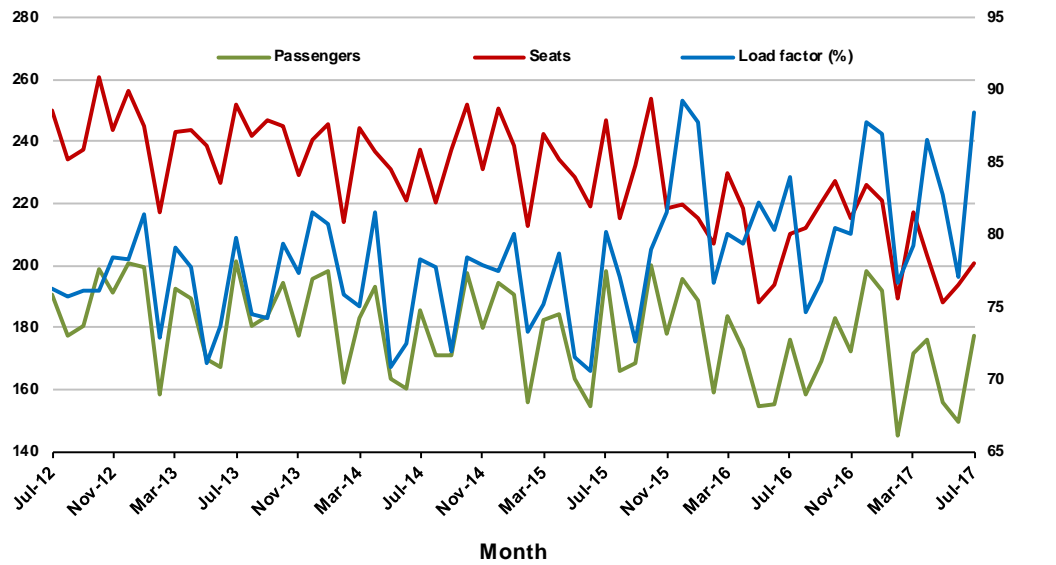
7. Melbourne - Perth

Monthly data

| | Jul 2016 | Jul 2017 | % Change |
|---------------------------|----------|----------|----------|
| Passengers carried (000s) | 176.4 | 177.5 | 0.6 |
| Seats (000s) | 210.2 | 200.5 | -4.6 |
| Load factor % | 83.9 | 88.5 | 4.6 * |
| Aircraft trips | 956 | 911 | -4.7 |

* percentage point difference

Passengers/seats (000s)

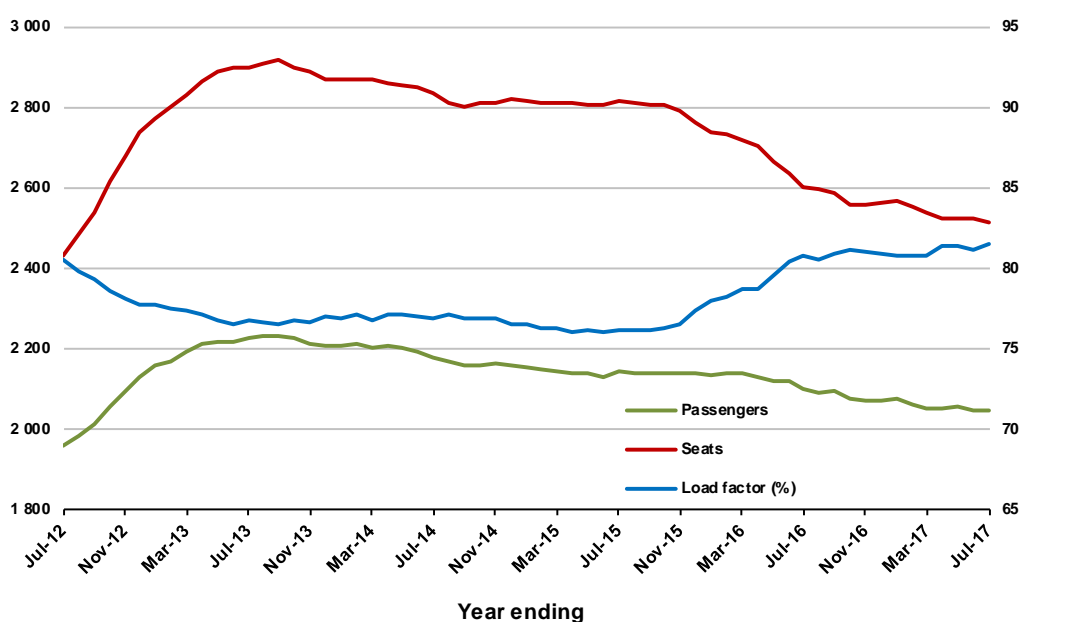


Moving annual data

| | YE Jul 2016 | YE Jul 2017 | % Change |
|---------------------------|-------------|-------------|----------|
| Passengers carried (000s) | 2 100.3 | 2 049.1 | -2.4 |
| Seats (000s) | 2 601.3 | 2 513.8 | -3.4 |
| Load factor % | 80.7 | 81.5 | 0.8 * |
| Aircraft trips | 11 787 | 11 387 | -3.4 |

* percentage point difference

Passengers/seats (000s)

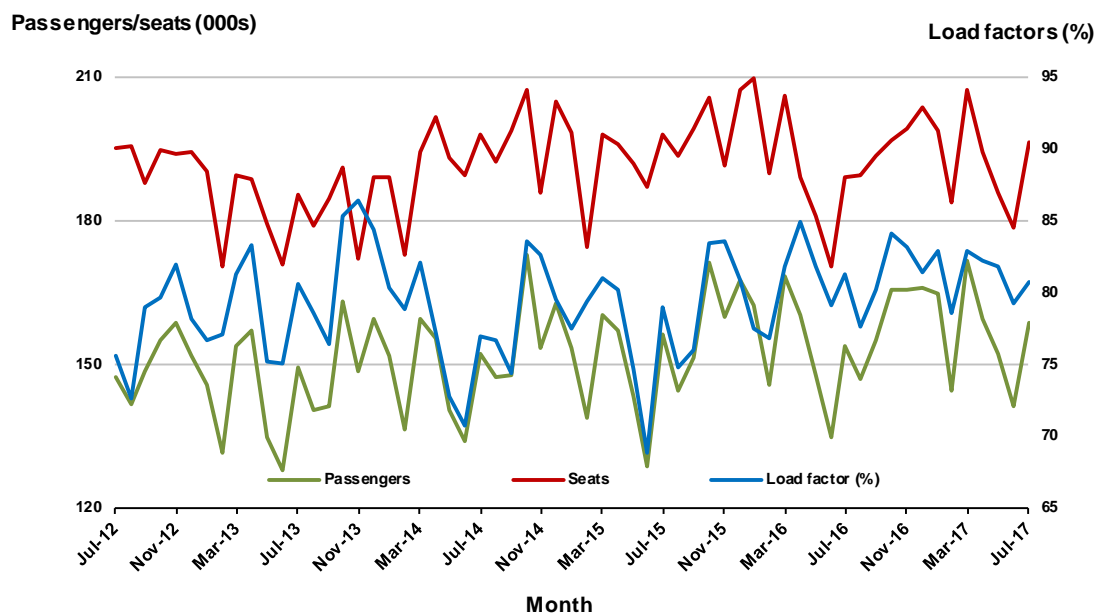


8. Adelaide - Sydney

Monthly data

| | Jul 2016 | Jul 2017 | % Change |
|---------------------------|----------|----------|----------|
| Passengers carried (000s) | 153.7 | 158.4 | 3.1 |
| Seats (000s) | 189.1 | 196.3 | 3.8 |
| Load factor % | 81.3 | 80.7 | -0.6 * |
| Aircraft trips | 1 152 | 1 187 | 3.0 |

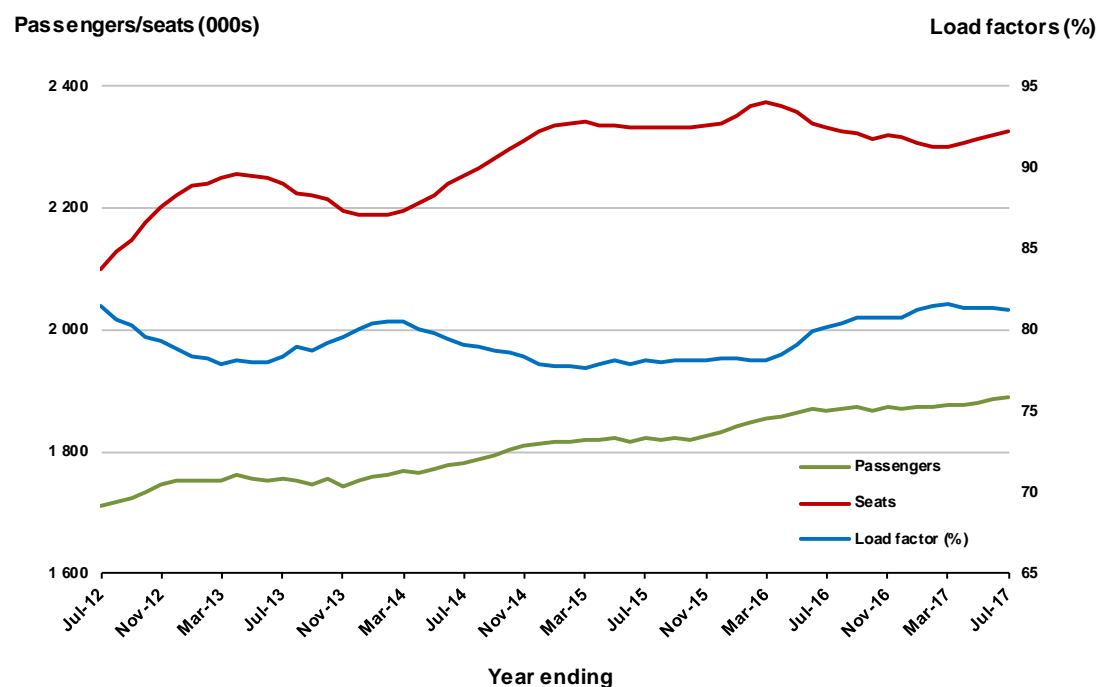
* percentage point difference



Moving annual data

| | YE Jul 2016 | YE Jul 2017 | % Change |
|---------------------------|-------------|-------------|----------|
| Passengers carried (000s) | 1 867.2 | 1 891.2 | 1.3 |
| Seats (000s) | 2 331.1 | 2 326.6 | -0.2 |
| Load factor % | 80.1 | 81.3 | 1.2 * |
| Aircraft trips | 14 236 | 14 071 | -1.2 |

* percentage point difference



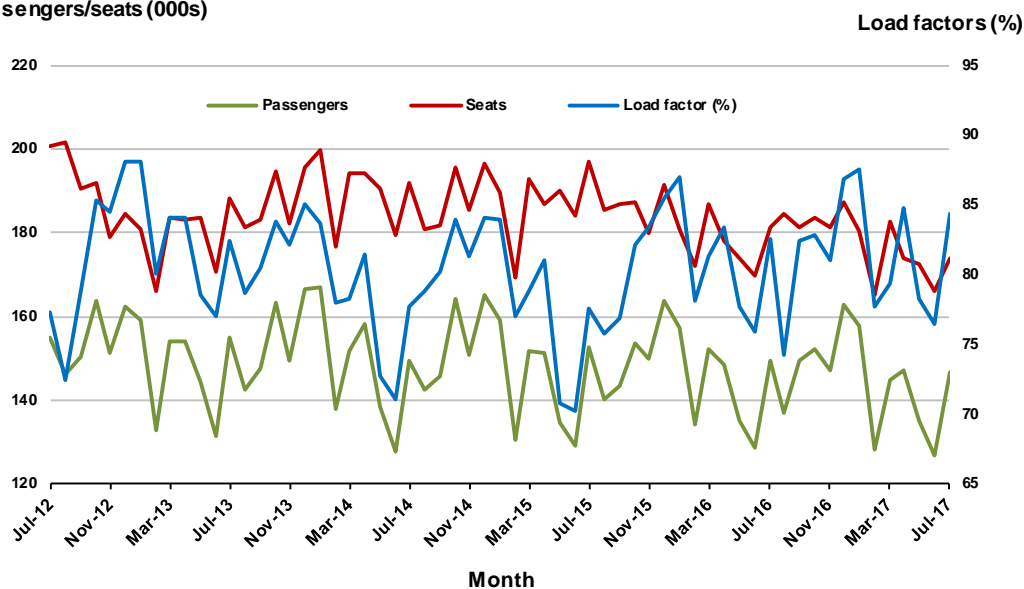
9. Perth - Sydney

Monthly data

| | Jul 2016 | Jul 2017 | % Change |
|---------------------------|----------|----------|----------|
| Passengers carried (000s) | 149.6 | 146.7 | -1.9 |
| Seats (000s) | 181.2 | 174.1 | -3.9 |
| Load factor % | 82.6 | 84.3 | 1.7 * |
| Aircraft trips | 775 | 761 | -1.8 |

* percentage point difference

Passengers/seats (000s)

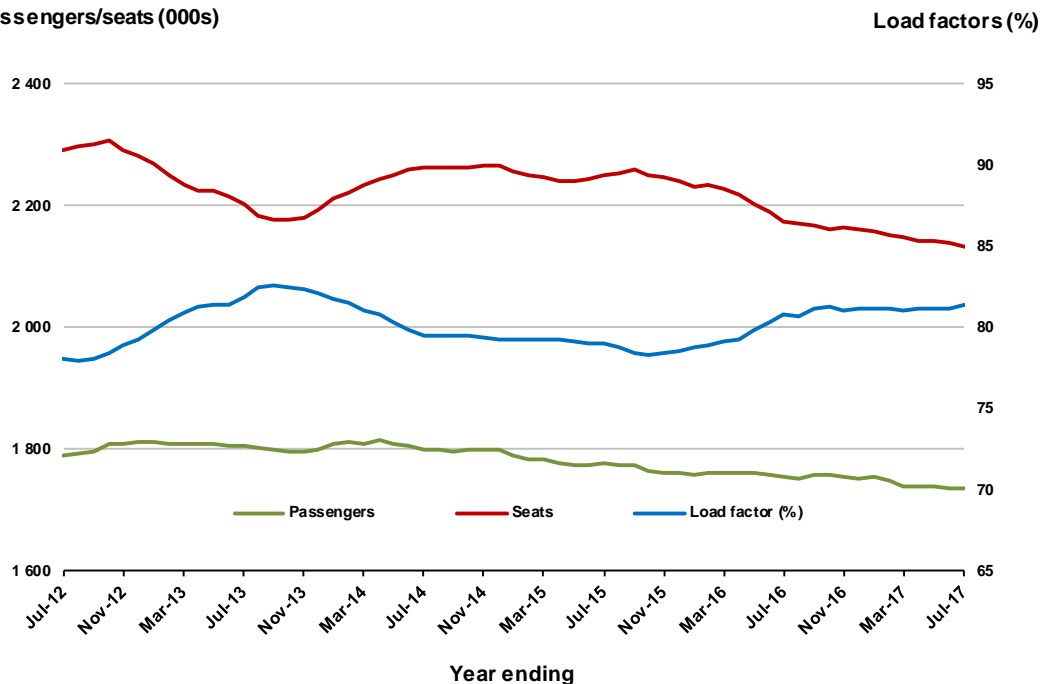


Moving annual data

| | YE Jul 2016 | YE Jul 2017 | % Change |
|---------------------------|-------------|-------------|----------|
| Passengers carried (000s) | 1 756.8 | 1 734.8 | -1.2 |
| Seats (000s) | 2 173.3 | 2 131.9 | -1.9 |
| Load factor % | 80.8 | 81.4 | 0.5 * |
| Aircraft trips | 9 128 | 9 084 | -0.5 |

* percentage point difference

Passengers/seats (000s)

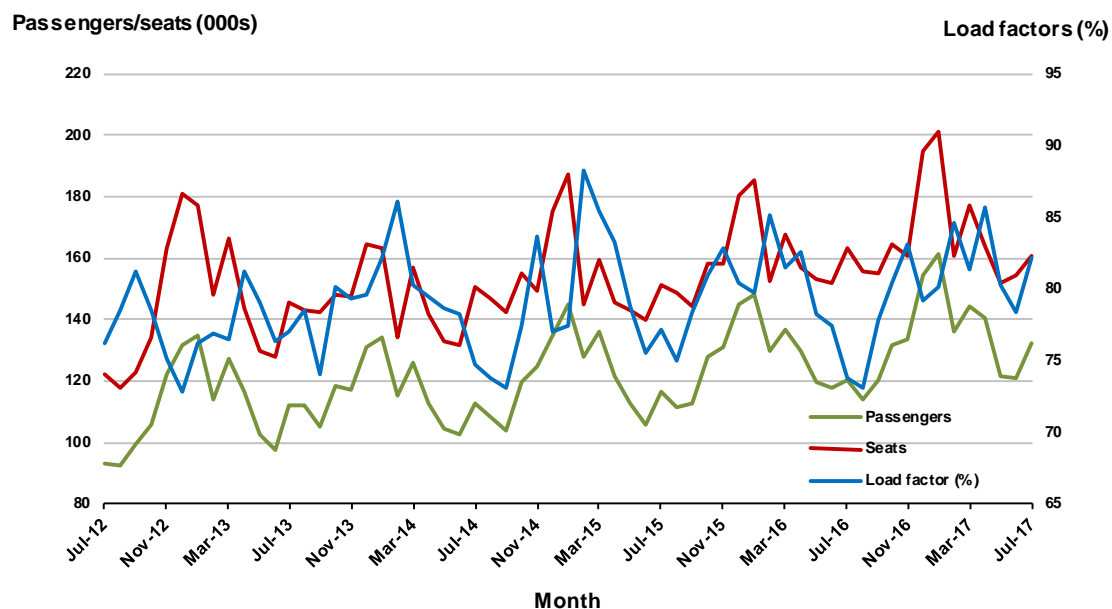


10. Hobart - Melbourne

Monthly data

| | Jul 2016 | Jul 2017 | % Change |
|---------------------------|----------|----------|----------|
| Passengers carried (000s) | 120.2 | 132.0 | 9.8 |
| Seats (000s) | 163.0 | 160.8 | -1.3 |
| Load factor % | 73.7 | 82.1 | 8.4 * |
| Aircraft trips | 1 029 | 990 | -3.8 |

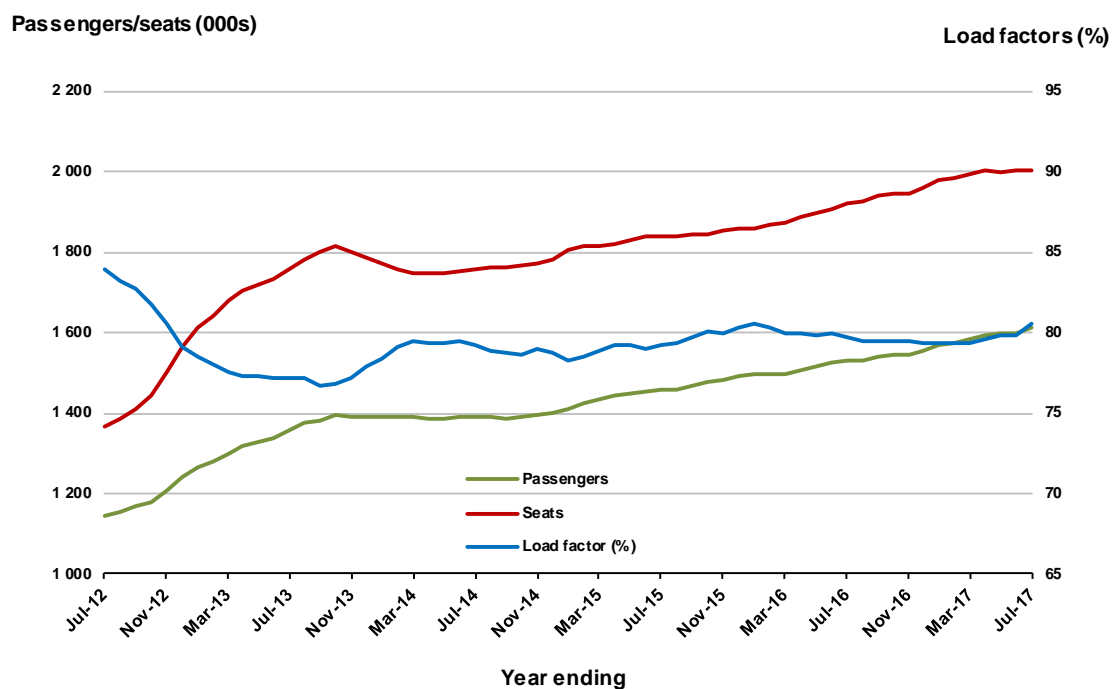
* percentage point difference



Moving annual data

| | YE Jul 2016 | YE Jul 2017 | % Change |
|---------------------------|-------------|-------------|----------|
| Passengers carried (000s) | 1 529.8 | 1 610.5 | 5.3 |
| Seats (000s) | 1 920.1 | 2 000.1 | 4.2 |
| Load factor % | 79.7 | 80.5 | 0.8 * |
| Aircraft trips | 12 114 | 12 338 | 1.8 |

* percentage point difference



TOP FIFTY REGIONAL AIRPORTS

Table 10: Top fifty regional airports (000s) — passenger movements, monthly

| | Airport | Jul 2016 | Jul 2017 | % Change |
|----|---------------------------------------|-----------------|-----------------|-----------------|
| 1 | Cairns | 416.5 | 424.5 | 1.9 |
| 2 | Hobart | 183.6 | 201.6 | 9.8 |
| 3 | Darwin | 193.6 | 194.2 | 0.3 |
| 4 | Townsville | 146.7 | 155.1 | 5.7 |
| 5 | Williamstown | 105.5 | 108.0 | 2.4 |
| 6 | Launceston | 108.1 | 105.1 | -2.8 |
| 7 | Mackay | 69.7 | 69.4 | -0.4 |
| 8 | Alice Springs | 61.3 | 60.3 | -1.7 |
| 9 | Rockhampton | 50.6 | 52.7 | 4.1 |
| 10 | Broome | 44.6 | 45.9 | 3.0 |
| 11 | Proserpine | 29.2 | 41.0 | 40.6 |
| 12 | Ballina | 41.3 | 41.0 | -0.8 |
| 13 | Karratha | 41.2 | 36.5 | -11.4 |
| 14 | Hamilton Island | 48.0 | 35.0 | -27.0 |
| 15 | Coffs Harbour | 32.9 | 34.1 | 3.5 |
| 16 | Ayers Rock | 33.1 | 32.4 | -2.0 |
| 17 | Port Hedland | 31.2 | 29.2 | -6.4 |
| 18 | Albury | 21.9 | 23.7 | 8.3 |
| 19 | Newman | 25.9 | 23.7 | -8.2 |
| 20 | Mildura | 21.0 | 21.7 | 3.6 |
| 21 | Kalgoorlie | 20.6 | 20.6 | 0.0 |
| 22 | Gladstone | 29.6 | 24.3 | -17.9 |
| 23 | Dubbo | 16.4 | 19.3 | 17.9 |
| 24 | Port Macquarie | 18.3 | 19.7 | 7.5 |
| 25 | Emerald | 16.8 | 18.1 | 7.8 |
| 26 | Mount Isa | 16.6 | 17.8 | 6.9 |
| 27 | Wagga Wagga | 18.3 | 17.7 | -3.3 |
| 28 | Tamworth | 14.7 | 16.6 | 12.5 |
| 29 | Hervey Bay | 14.7 | 16.0 | 9.1 |
| 30 | Wellcamp | 11.2 | 14.4 | 28.7 |
| 31 | Paraburdoo | 13.9 | 14.3 | 2.7 |
| 32 | Bundaberg | 15.1 | 15.4 | 2.4 |
| 33 | Port Lincoln | 14.0 | 13.6 | -2.9 |
| 34 | Devonport | 12.2 | 12.6 | 3.9 |
| 35 | Kununurra | 12.4 | 12.0 | -3.2 |
| 36 | Armidale | 10.5 | 11.0 | 5.0 |
| 37 | Moranbah | 9.4 | 10.6 | 12.8 |
| 38 | Thursday Island | 10.1 | 10.0 | -0.7 |
| 39 | Geraldton | 9.6 | 9.3 | -2.7 |
| 40 | Learmonth | 9.0 | 8.8 | -1.6 |
| 41 | Gove | 8.7 | 8.0 | -8.0 |
| 42 | Roma | 6.9 | 6.9 | -0.4 |
| 43 | Weipa | 7.0 | 6.6 | -4.9 |
| 44 | Mount Gambier | 6.2 | 6.6 | 5.9 |
| 45 | Griffith | 5.8 | 6.5 | 12.5 |
| 46 | Olympic Dam | 3.9 | 5.7 | 44.9 |
| 47 | Orange | 4.3 | 5.5 | 30.1 |
| 48 | Burnie | 4.9 | 5.3 | 8.2 |
| 49 | Broken Hill | 4.6 | 5.1 | 12.0 |
| 50 | Whyalla | 5.1 | 5.1 | 0.6 |
| | Total top 50 regional airports | 2 056.7 | 2 099.0 | 2.1 |
| | Total regional airports | 2 166.5 | 2 213.8 | 2.2 |
| | Total domestic network | 10 372.7 | 10 587.7 | 2.1 |

Note: Airport passenger movement numbers are the sum of passenger arrivals and departures at each airport.

Table 11: Top fifty regional airports (000s) — passenger movements, annual

| Airport | YE Jul 2016 | YE Jul 2017 | % Change |
|---------------------------------------|--------------------|--------------------|-----------------|
| 1 Cairns | 4 164.0 | 4 291.3 | 3.1 |
| 2 Hobart | 2 323.3 | 2 458.8 | 5.8 |
| 3 Darwin | 1 781.6 | 1 810.0 | 1.6 |
| 4 Townsville | 1 544.1 | 1 541.8 | -0.1 |
| 5 Launceston | 1 329.3 | 1 332.9 | 0.3 |
| 6 Williamtown | 1 173.1 | 1 242.9 | 5.9 |
| 7 Mackay | 827.5 | 772.0 | -6.7 |
| 8 Alice Springs | 603.1 | 616.2 | 2.2 |
| 9 Rockhampton | 587.5 | 568.2 | -3.3 |
| 10 Ballina | 469.2 | 495.7 | 5.6 |
| 11 Hamilton Island | 524.3 | 483.6 | -7.8 |
| 12 Karratha | 542.8 | 459.3 | -15.4 |
| 13 Coffs Harbour | 379.8 | 404.5 | 6.5 |
| 14 Broome | 381.6 | 365.4 | -4.2 |
| 15 Proserpine | 346.5 | 364.9 | 5.3 |
| 16 Ayers Rock | 342.7 | 364.2 | 6.3 |
| 17 Port Hedland | 375.4 | 351.6 | -6.3 |
| 18 Gladstone | 362.9 | 298.4 | -17.8 |
| 19 Newman | 317.4 | 292.1 | -8.0 |
| 20 Albury | 247.6 | 262.8 | 6.1 |
| 21 Mildura | 244.0 | 250.3 | 2.6 |
| 22 Kalgoorlie | 235.8 | 244.5 | 3.7 |
| 23 Port Macquarie | 225.1 | 228.0 | 1.3 |
| 24 Dubbo | 200.3 | 222.8 | 11.2 |
| 25 Wagga Wagga | 215.2 | 217.1 | 0.9 |
| 26 Emerald | 202.5 | 199.1 | -1.7 |
| 27 Tamworth | 168.7 | 194.6 | 15.3 |
| 28 Mount Isa | 191.7 | 194.2 | 1.3 |
| 29 Port Lincoln | 181.8 | 175.0 | -3.7 |
| 30 Bundaberg | 168.5 | 175.2 | 4.0 |
| 31 Hervey Bay | 170.5 | 172.1 | 0.9 |
| 32 Paraburdoo | 162.5 | 167.0 | 2.8 |
| 33 Devonport | 145.2 | 146.6 | 1.0 |
| 34 Wellcamp | 94.1 | 143.7 | 52.7 |
| 35 Armidale | 129.1 | 130.8 | 1.3 |
| 36 Moranbah | 122.1 | 120.8 | -1.0 |
| 37 Geraldton | 118.6 | 115.7 | -2.5 |
| 38 Kununurra | 107.7 | 103.4 | -4.0 |
| 39 Thursday Island | 96.7 | 101.4 | 4.8 |
| 40 Gove | 74.5 | 83.6 | 12.2 |
| 41 Roma | 101.6 | 83.3 | -18.0 |
| 42 Learmonth | 85.8 | 80.4 | -6.2 |
| 43 Mount Gambier | 76.6 | 78.7 | 2.7 |
| 44 Weipa | 76.6 | 77.9 | 1.7 |
| 45 Griffith | 68.5 | 72.3 | 5.5 |
| 46 Merimbula | 61.7 | 65.3 | 5.8 |
| 47 Whyalla | 65.8 | 61.4 | -6.6 |
| 48 Burnie | 61.2 | 60.3 | -1.5 |
| 49 Orange | 50.0 | 57.9 | 15.8 |
| 50 Broken Hill | 52.7 | 57.3 | 8.7 |
| Total top 50 regional airports | 22 578.9 | 22 857.2 | 1.2 |
| Total regional airports | 23 874.0 | 24 221.7 | 1.5 |
| Total domestic network | 116 883.4 | 118 728.4 | 1.6 |

Note: Airport passenger movement numbers are the sum of passenger arrivals and departures at each airport.

DOMESTIC CHARTER ACTIVITY

Table 12: Charter passengers carried and aircraft trips - annual activity

| | YE Jul 2016 | YE Jul 2017 | % Change |
|---------------------------------------|-------------|-------------|----------|
| Total domestic charter passengers | 2 486 805 | 2 403 506 | -3.3 |
| Total domestic charter aircraft trips | 46 783 | 44 845 | -4.1 |

Note: Helicopter, joyflights and sightseeing charter flights not included.

Table 13: Charter passengers carried and aircraft trips - monthly activity

| | Jul 2016 | Jul 2017 | % Change |
|---------------------------------------|----------|----------|----------|
| Total domestic charter passengers | 187 201 | 198 957 | 6.3 |
| Total domestic charter aircraft trips | 3 436 | 3 744 | 9.0 |

Note: Helicopter, joyflights and sightseeing charter flights not included.

Table 14: Domestic airports - charter activity - annual

| | YE Jul 2016 | YE Jul 2017 | % Change |
|--|-------------|-------------|----------|
| Total domestic charter passenger movements | 4 973 610 | 4 807 012 | -3.3 |
| Total domestic charter aircraft movements | 93 566 | 89 690 | -4.1 |
| Perth airport charter passenger movements | 1 893 023 | 1 858 437 | -1.8 |
| Perth airport charter aircraft movements | 31 879 | 31 429 | -1.4 |

Note: Helicopter, joyflights and sightseeing charter flights not included.

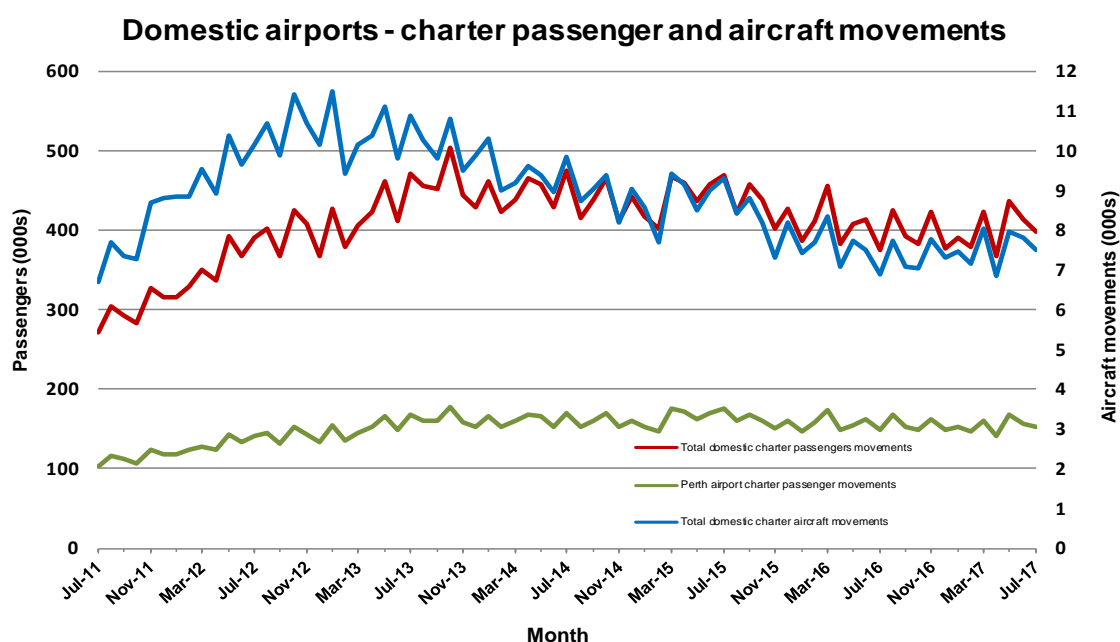
Charter passenger and aircraft movement numbers are the sum of arrivals and departures at each airport.

Table 15: Domestic airports - charter activity - monthly

| | Jul 2016 | Jul 2017 | % Change |
|--|----------|----------|----------|
| Total domestic charter passenger movements | 374 402 | 397 914 | 6.3 |
| Total domestic charter aircraft movements | 6 872 | 7 488 | 9.0 |
| Perth airport charter passenger movements | 149 345 | 152 330 | 2.0 |
| Perth airport charter aircraft movements | 2 528 | 2 525 | -0.1 |

Note: Helicopter, joyflights and sightseeing charter flights not included.

Charter passenger and aircraft movement numbers are the sum of arrivals and departures at each airport.



DEFINITIONS

| | |
|---|---|
| Aircraft Trips | The number of flight stages. A return flight counts as two aircraft trips. |
| Airport Movements | Airport movements (passenger and cargo) are measured once on arrival and once on departure. Each domestic trip generates two movements at airports. For example, a trip from Melbourne to Sydney will be counted twice, as a passenger departure at Melbourne and as a passenger arrival at Sydney. At the national level, the sum of all domestic airport traffic will therefore be equal to twice the number of trips undertaken. |
| Available Seat Kilometres (ASKs) | Calculated by multiplying the number of seats available on each flight stage, by the distance in kilometres between the ports. The distances used are Great Circle Distances. |
| City-Pair | The ports shown make up the city-pair route. Passenger movements shown for a city pair reflect total traffic in both directions. |
| Flight Stage | The operation of an aircraft from take-off to landing. |
| Load Factor | The total revenue passenger kilometres performed as a percentage of the total available seat kilometres. |
| Passengers Carried | Revenue passengers carried. |
| Regular Public Transport Services (RPT) | All air service operations in which aircraft are available for the transport of members of the public and are conducted in accordance with fixed schedules. It does not include charter or other non-scheduled operations. |
| Revenue Passengers | All passengers paying any fare. Frequent flyer redemption travellers are regarded as revenue passengers. |
| Revenue Passenger Kilometres (RPKs) | Calculated by multiplying the number of revenue passengers travelling on each flight stage, by the distance in kilometres between the ports. The distances used are Great Circle Distances. |
| Traffic on board by stages | The total of all traffic (revenue passengers) on each flight stage between two directly connected airports. |
| .. | Data not included |
| NA | Not applicable |