



**Australian Government**

**Department of Infrastructure, Regional Development and Cities**

Bureau of Infrastructure, Transport and Regional Economics

STATISTICAL REPORT



# Aviation

Domestic aviation activity

February 2019

© Commonwealth of Australia 2019

ISSN: 1832 - 1968

### **Ownership of intellectual property rights in this publication**

Unless otherwise noted, copyright (and any other intellectual property rights, if any) in this publication is owned by the Commonwealth of Australia (referred to below as the Commonwealth).

### **Disclaimer**

The material contained in this publication is made available on the understanding that the Commonwealth is not providing professional advice, and that users exercise their own skill and care with respect to its use, and seek independent advice if necessary.

The Commonwealth makes no representations or warranties as to the contents or accuracy of the information contained in this publication. To the extent permitted by law, the Commonwealth disclaims liability to any person or organisation in respect of anything done, or omitted to be done, in reliance upon information contained in this publication.

### **Creative Commons licence**

With the exception of (a) the Coat of Arms; and (b) the Department of Infrastructure, Regional Development and Cities' photos and graphics, copyright in this publication is licensed under a Creative Commons Attribution 3.0 Australia Licence.

Creative Commons Attribution 3.0 Australia Licence is a standard form licence agreement that allows you to copy, communicate and adapt this publication provided that you attribute the work to the Commonwealth and abide by the other licence terms. A summary of the licence terms is available from <http://creativecommons.org/licenses/by/3.0/au/deed.en>.

The full licence terms are available from <http://creativecommons.org/licenses/by/3.0/au/legalcode>.

### **Use of the Coat of Arms**

The Department of the Prime Minister and Cabinet sets the terms under which the Coat of Arms is used. Please refer to the Department's Commonwealth Coat of Arms and Government branding web page <http://www.dpmc.gov.au/guidelines/index.cfm#brand> and, in particular, the Guidelines on the use of the Commonwealth Coat of Arms publication.

An appropriate citation for this report is:

Bureau of Infrastructure, Transport and Regional Economics (BITRE), 2019, Domestic aviation activity, Statistical Report, BITRE, Canberra ACT.

### **Contact us**

This publication is available in PDF format. All other rights are reserved, including in relation to any Departmental logos or trade marks which may exist. For enquiries regarding the licence and any use of this publication, please contact:

Bureau of Infrastructure, Transport and Regional Economics (BITRE)  
Department of Infrastructure, Regional Development and Cities  
GPO Box 501, Canberra ACT 2601, Australia  
Telephone: (international) +61 2 6274 7210  
Fax: (international) +61 2 6274 6855  
Email: [bitre@infrastructure.gov.au](mailto:bitre@infrastructure.gov.au)  
Website: [www.bitre.gov.au](http://www.bitre.gov.au)

### **Inquiries**

Should you require additional information about the statistics contained in this publication:

Nebojsa Pavlovic

Telephone (02) 6274 6817 or Facsimile (02) 6274 7727

Electronic mail: [AVSTATS@infrastructure.gov.au](mailto:AVSTATS@infrastructure.gov.au)

[Nebojsa.Pavlovic@infrastructure.gov.au](mailto:Nebojsa.Pavlovic@infrastructure.gov.au)

Web site: <http://www.bitre.gov.au/statistics/aviation/domestic.aspx>

## FOREWORD

This report provides an overview of domestic (including charter) commercial aviation activity in Australia for the month of February 2019.

The data cover revenue passengers carried by Australian-registered operators of scheduled regular public transport services over Australian flight stages and fixed-wing charter operators. These estimates include passengers carried between domestic airports on international flights operated by these carriers. The passengers carried refer to traffic on board by stages.

Estimates of passengers and aircraft movements for charter aviation are included in this publication, where BITRE confidentiality standards are met.

Individual routes shown are restricted to those with an average exceeding 8 000 passengers per month over the previous six months where two or more airlines operate in competition. For the month of February 2019, there were 65 such routes.

Information on the total network for the month of February 2019 and on the Regular Public Transport (RPT) network for the month of February 2019 is presented on page 2, with estimates for the year ended February 2019 presented on page 3.

Detailed information on the 65 individual routes can be found in the RPT summary pages 4-13 of this publication.

The top ten airports in terms of RPT passenger movements are shown on page 14.

Data on domestic RPT cargo movements at the top five cargo airports are provided on page 15. The table includes cargo carried on passenger flights operated by the Qantas group (including Jetstar), Virgin Australia, Air North and Skippers as well as the cargo carried by dedicated freighter aircraft operated by Qantas Freight, Toll Priority and Virgin Australia Cargo.

The long-term trends for the top ten competitive RPT routes are presented graphically on pages 16-25.

Domestic RPT passenger movements at the top 50 regional airports are presented on pages 26-27.

Tables providing estimates of domestic charter aviation activity are shown on page 28. BITRE confidentiality standards restrict publication of detailed estimates for individual Australian airports, with the exception of Perth Airport.

A list of definitions can be found on page 29.

This report was prepared by the Aviation Statistics Section of the Bureau of Infrastructure, Transport and Regional Economics with data provided by airlines.

Estimates are included where data were not available and data presented in this publication may contain revisions to previously published data.

Where figures have been rounded, discrepancies may occur between sums of component items and totals, and in percentage changes which are derived from figures prior to rounding.

# CONTENTS

|  |           |
|--|-----------|
| <b>Highlights .....</b>                            | <b>1</b>  |
| <b>Total network.....</b>                          | <b>2</b>  |
| <b>RPT network.....</b>                            | <b>2</b>  |
| <b>Top competitive routes.....</b>                 | <b>4</b>  |
| <b>Top ten airports – passenger movements.....</b> | <b>14</b> |
| <b>Top five airports – cargo movements.....</b>    | <b>15</b> |
| <b>Top ten routes .....</b>                        | <b>16</b> |
| 1. Melbourne – Sydney .....                        | 16        |
| 2. Brisbane – Sydney.....                          | 17        |
| 3. Brisbane – Melbourne.....                       | 18        |
| 4. Gold Coast – Sydney .....                       | 19        |
| 5. Adelaide – Melbourne .....                      | 20        |
| 6. Melbourne – Perth .....                         | 21        |
| 7. Adelaide – Sydney.....                          | 22        |
| 8. Hobart – Melbourne .....                        | 23        |
| 9. Gold Coast – Melbourne .....                    | 24        |
| 10. Perth – Sydney .....                           | 25        |
| <b>Top fifty regional airports.....</b>            | <b>26</b> |
| <b>Domestic charter activity.....</b>              | <b>28</b> |
| <b>Definitions .....</b>                           | <b>29</b> |

This page is intentionally left blank.

## HIGHLIGHTS

There were 4.70 million passengers carried on Australian domestic commercial aviation (including charter operations) in February 2019, a decrease of 0.4 per cent on February 2018. For the month of February 2019 there were 52 105 aircraft trips, an increase of 0.1 per cent compared to February 2018.

4.50 million passengers were carried on RPT flights in February 2019, a decrease of 0.7 per cent on February 2018. This was the third consecutive monthly decrease in the number of RPT passengers.

For the year ending February 2019 there were 61.04 million RPT passengers, an increase of 1.3 per cent on the year ending February 2018.

RPT revenue passenger kilometres (RPKs) performed were 5.07 billion for the month, down 1.2 per cent compared with February 2018. Capacity, measured by available seat kilometres (ASKs), decreased by 0.3 per cent compared with February 2018 to a total of 6.56 billion.

With RPT passenger traffic decreasing at a faster rate than capacity the industry wide load factor (RPKs/ASKs) decreased from 78.0 per cent in February 2018 to 77.3 per cent in February 2019. Load factors on individual routes decreased on 36 of the 65 RPT routes.

For the month of February 2019, Melbourne – Sydney remained Australia's busiest RPT route with 744 548 passengers, a decrease of 0.4 per cent compared with February 2018. It was followed by Brisbane – Sydney with 353 301 passengers (down 3.3 per cent) and Brisbane – Melbourne with 255 981 passengers (up 2.7 per cent).

The greatest percentage decrease in RPT passenger numbers, compared to February 2018, was on the Proserpine – Sydney route (down 31.1 per cent). There were large decreases on a number of other routes, including Brisbane – Proserpine (down 18.5 per cent), Geraldton – Perth (down 17.6 per cent) and Darwin – Perth (down 16.2 per cent).

Routes with traffic increases in February 2019 compared with February 2018 included Brisbane – Emerald (up 19.2 per cent), Brisbane – Hobart (up 14.3 per cent), Brisbane – Mount Isa (up 11.5) and Kalgoorlie – Perth (up 11.1 per cent).

In February 2019, Sydney remained Australia's busiest domestic airport with 2.09 million passenger movements, followed by Melbourne with 1.97 million passenger movements and Brisbane with 1.24 million passenger movements.

Total cargo movements at Australian airports on domestic RPT flights were 35.6 thousand tonnes in February 2019, a decrease of 6.3 per cent compared with February 2018.

In February 2019, there were 1.78 million domestic passenger movements through regional airports, 1.3 per cent lower than in February 2018. Out of the top 50 regional airports, the largest decrease was at Toowoomba Wellcamp airport (down 22.2 per cent on February 2018), while the strongest increase was recorded at Burnie airport (up 22.1 per cent on February 2018).

Fixed-wing charter operators carried 201.0 thousand passengers in February 2019, an increase of 6.4 per cent on February 2018. Perth Airport accounted for 38.0 per cent of all charter passengers in Australia.

## TOTAL NETWORK

### Summary of monthly commercial aviation activity

|                                     | Feb 2018 | Feb 2019 | % Change |
|-------------------------------------|----------|----------|----------|
| Total passengers carried (millions) | 4.72     | 4.70     | -0.4     |
| Aircraft trips (000s)               | 52.1     | 52.1     | 0.1      |

Note: Regular Public Transport and charter aviation activity  
Helicopter, joyflights and sightseeing charter flights not included.

## RPT NETWORK

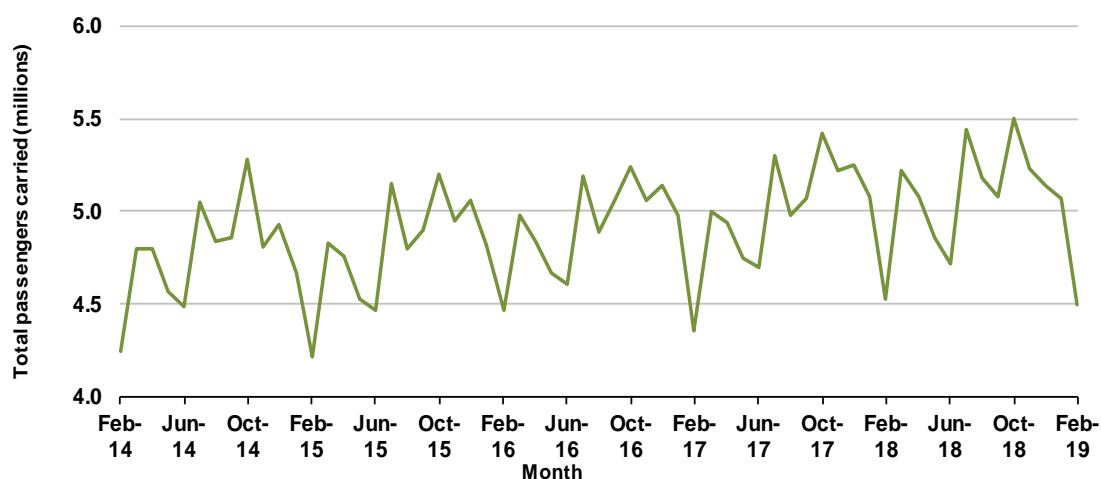
### Summary of monthly RPT activity

|   | Feb 2018 | Feb 2019 | % Change |
|---|----------|----------|----------|
| Total passengers carried (millions)     | 4.53     | 4.50     | -0.7     |
| Revenue passenger kilometres (billions) | 5.13     | 5.07     | -1.2     |
| Available seats (millions)              | 5.90     | 5.87     | -0.5     |
| Available seat kilometres (billions)    | 6.58     | 6.56     | -0.3     |
| Load factor %                           | 78.0     | 77.3     | -0.7 *   |
| Aircraft trips (000s)                   | 48.6     | 48.6     | 0.2      |

\* percentage point difference

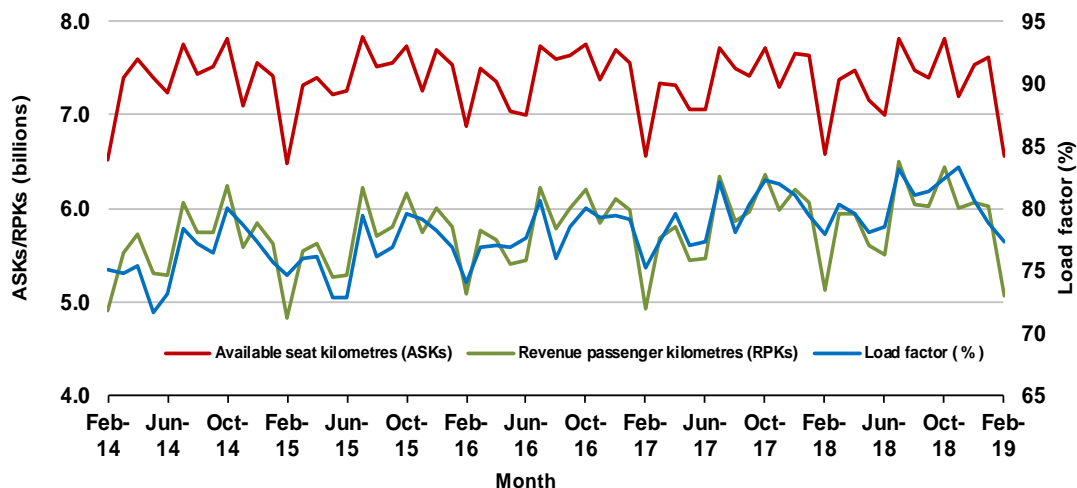
### Domestic RPT passenger traffic

(monthly)



### RPT Network utilisation

(monthly)





## TOTAL NETWORK

### Summary of annual commercial aviation activity

|                                     | YE Feb 2018 | YE Feb 2019 | % Change |
|-------------------------------------|-------------|-------------|----------|
| Total passengers carried (millions) | 62.70       | 63.54       | 1.4      |
| Aircraft trips (000s)               | 684.4       | 673.6       | -1.6     |

Note: Regular Public Transport and charter aviation activity  
Helicopter, joyflights and sightseeing charter flights not included.

## RPT NETWORK

### Summary of annual RPT activity

|   | YE Feb 2018 | YE Feb 2019 | % Change |
|---|-------------|-------------|----------|
| Total passengers carried (millions)     | 60.25       | 61.04       | 1.3      |
| Revenue passenger kilometres (billions) | 70.28       | 71.15       | 1.2      |
| Available seats (millions)              | 77.26       | 77.30       | 0.1      |
| Available seat kilometres (billions)    | 88.27       | 88.42       | 0.2      |
| Load factor %                           | 79.6        | 80.5        | 0.9 *    |
| Aircraft trips (000s)                   | 637.9       | 629.5       | -1.3     |

\* percentage point difference

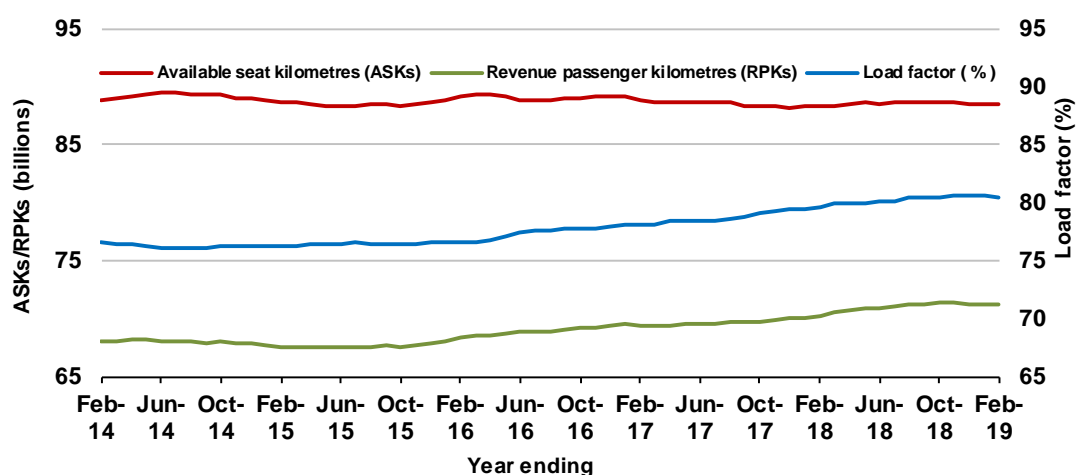
### Domestic RPT passenger traffic

(moving annual totals)



### RPT Network utilisation

(moving annual totals)



## TOP COMPETITIVE ROUTES

**Table 1: Passengers carried (000s) — annual activity**

|    | City-Pair                  | YE Feb 2018 | YE Feb 2019 | % Change |
|----|----------------------------|-------------|-------------|----------|
| 1  | Melbourne - Sydney         | 9 164.7     | 9 258.0     | 1.0      |
| 2  | Brisbane - Sydney          | 4 754.3     | 4 822.6     | 1.4      |
| 3  | Brisbane - Melbourne       | 3 548.1     | 3 581.2     | 0.9      |
| 4  | Gold Coast - Sydney        | 2 750.5     | 2 710.2     | -1.5     |
| 5  | Adelaide - Melbourne       | 2 468.2     | 2 505.8     | 1.5      |
| 6  | Melbourne - Perth          | 2 035.3     | 2 120.6     | 4.2      |
| 7  | Gold Coast - Melbourne     | 2 025.2     | 2 069.6     | 2.2      |
| 8  | Adelaide - Sydney          | 1 897.2     | 1 898.7     | 0.1      |
| 9  | Perth - Sydney             | 1 712.1     | 1 711.4     | 0.0      |
| 10 | Hobart - Melbourne         | 1 631.7     | 1 660.4     | 1.8      |
| 11 | Brisbane - Cairns          | 1 385.1     | 1 301.5     | -6.0     |
| 12 | Canberra - Melbourne       | 1 138.2     | 1 184.9     | 4.1      |
| 13 | Cairns - Sydney            | 1 134.8     | 1 117.7     | -1.5     |
| 14 | Brisbane - Townsville      | 966.4       | 995.5       | 3.0      |
| 15 | Launceston - Melbourne     | 926.9       | 962.0       | 3.8      |
| 16 | Canberra - Sydney          | 946.5       | 950.8       | 0.5      |
| 17 | Brisbane - Perth           | 971.4       | 945.5       | -2.7     |
| 18 | Cairns - Melbourne         | 842.0       | 856.6       | 1.7      |
| 19 | Adelaide - Brisbane        | 854.2       | 843.0       | -1.3     |
| 20 | Brisbane - Mackay          | 705.3       | 747.6       | 6.0      |
| 21 | Hobart - Sydney            | 667.5       | 707.3       | 6.0      |
| 22 | Brisbane - Canberra        | 601.7       | 644.2       | 7.1      |
| 23 | Adelaide - Perth           | 614.4       | 631.8       | 2.8      |
| 24 | Sunshine Coast - Sydney    | 595.2       | 628.9       | 5.7      |
| 25 | Brisbane - Newcastle       | 587.4       | 583.9       | -0.6     |
| 26 | Melbourne - Sunshine Coast | 499.9       | 541.4       | 8.3      |
| 27 | Brisbane - Rockhampton     | 515.7       | 518.2       | 0.5      |
| 28 | Melbourne - Newcastle      | 478.5       | 490.8       | 2.6      |
| 29 | Karratha - Perth           | 435.2       | 443.9       | 2.0      |
| 30 | Ballina - Sydney           | 416.0       | 433.1       | 4.1      |
| 31 | Brisbane - Darwin          | 402.9       | 370.8       | -8.0     |
| 32 | Perth - Port Hedland       | 338.5       | 368.4       | 8.9      |
| 33 | Coffs Harbour - Sydney     | 346.6       | 337.9       | -2.5     |
| 34 | Broome - Perth             | 324.4       | 336.1       | 3.6      |
| 35 | Newman - Perth             | 287.1       | 310.7       | 8.2      |
| 36 | Darwin - Sydney            | 320.3       | 309.2       | -3.5     |
| 37 | Darwin - Melbourne         | 304.5       | 306.4       | 0.6      |
| 38 | Launceston - Sydney        | 284.8       | 287.5       | 1.0      |
| 39 | Kalgoorlie - Perth         | 246.6       | 283.9       | 15.1     |
| 40 | Brisbane - Gladstone       | 277.3       | 250.6       | -9.6     |
| 41 | Brisbane - Proserpine      | 270.0       | 242.3       | -10.3    |
| 42 | Brisbane - Hobart          | 216.8       | 233.6       | 7.7      |
| 43 | Melbourne - Mildura        | 213.8       | 227.2       | 6.3      |
| 44 | Albury - Sydney            | 224.2       | 227.0       | 1.3      |
| 45 | Adelaide - Gold Coast      | 217.4       | 219.0       | 0.7      |
| 46 | Hamilton Island - Sydney   | 188.1       | 203.4       | 8.1      |
| 47 | Brisbane - Emerald         | 195.4       | 197.2       | 0.9      |
| 48 | Adelaide - Canberra        | 183.5       | 194.5       | 6.0      |
| 49 | Ayers Rock - Sydney        | 192.8       | 191.8       | -0.5     |
| 50 | Darwin - Perth             | 201.6       | 189.6       | -6.0     |

continued

**Table 1: (continued) Passengers carried (000s) — annual activity**

|    | <b>City-Pair</b>              | <b>YE Feb 2018</b> | <b>YE Feb 2019</b> | <b>% Change</b> |
|----|-------------------------------|--------------------|--------------------|-----------------|
| 51 | Dubbo - Sydney                | 190.3              | 188.0              | -1.2            |
| 52 | Port Macquarie - Sydney       | 192.0              | 186.4              | -2.9            |
| 53 | Sydney - Wagga Wagga          | 180.8              | 180.9              | 0.1             |
| 54 | Sydney - Tamworth             | 180.5              | 173.9              | -3.7            |
| 55 | Sydney - Townsville           | 161.5              | 170.0              | 5.3             |
| 56 | Adelaide - Port Lincoln       | 171.4              | 168.4              | -1.8            |
| 57 | Brisbane - Bundaberg          | 172.2              | 160.2              | -6.9            |
| 58 | Cairns - Townsville           | 142.3              | 149.1              | 4.8             |
| 59 | Brisbane - Mount Isa          | 125.4              | 131.3              | 4.7             |
| 60 | Adelaide - Alice Springs      | 126.6              | 130.9              | 3.4             |
| 61 | Proserpine - Sydney           | 70.7               | 128.7              | NA (a)          |
| 62 | Brisbane - Hamilton Island    | 122.0              | 123.6              | 1.3             |
| 63 | Armidale - Sydney             | 125.5              | 121.8              | -2.9            |
| 64 | Geraldton - Perth             | 112.9              | 111.7              | -1.0            |
| 65 | Alice Springs - Darwin        | 117.1              | 110.2              | -5.8            |
|    | <b>Total domestic network</b> | <b>60 248.1</b>    | <b>61 037.7</b>    | <b>1.3</b>      |

(a) Proserpine - Sydney route included from September 2017, prior data not shown.

**Table 2: Passengers carried (000s) — monthly activity**

|    | <b>City-Pair</b>           | <b>Feb 2018</b> | <b>Feb 2019</b> | <b>% Change</b> |
|----|----------------------------|-----------------|-----------------|-----------------|
| 1  | Melbourne - Sydney         | 747.8           | 744.5           | -0.4            |
| 2  | Brisbane - Sydney          | 365.4           | 353.3           | -3.3            |
| 3  | Brisbane - Melbourne       | 249.3           | 256.0           | 2.7             |
| 4  | Gold Coast - Sydney        | 210.8           | 202.0           | -4.1            |
| 5  | Adelaide - Melbourne       | 191.0           | 200.5           | 4.9             |
| 6  | Melbourne - Perth          | 148.6           | 154.8           | 4.2             |
| 7  | Adelaide - Sydney          | 146.2           | 142.3           | -2.7            |
| 8  | Hobart - Melbourne         | 139.3           | 142.1           | 2.0             |
| 9  | Gold Coast - Melbourne     | 138.4           | 141.7           | 2.3             |
| 10 | Perth - Sydney             | 128.2           | 124.4           | -2.9            |
| 11 | Canberra - Melbourne       | 88.7            | 95.7            | 7.9             |
| 12 | Brisbane - Cairns          | 102.3           | 93.2            | -8.9            |
| 13 | Launceston - Melbourne     | 77.0            | 81.3            | 5.6             |
| 14 | Cairns - Sydney            | 86.3            | 77.4            | -10.4           |
| 15 | Canberra - Sydney          | 75.3            | 73.0            | -3.0            |
| 16 | Brisbane - Townsville      | 65.5            | 66.1            | 0.9             |
| 17 | Brisbane - Perth           | 70.3            | 65.5            | -6.9            |
| 18 | Hobart - Sydney            | 59.5            | 60.8            | 2.1             |
| 19 | Adelaide - Brisbane        | 60.6            | 58.0            | -4.4            |
| 20 | Brisbane - Mackay          | 51.3            | 54.4            | 6.1             |
| 21 | Cairns - Melbourne         | 50.1            | 51.6            | 2.9             |
| 22 | Adelaide - Perth           | 47.7            | 47.3            | -0.8            |
| 23 | Brisbane - Canberra        | 43.3            | 43.2            | -0.3            |
| 24 | Sunshine Coast - Sydney    | 43.1            | 43.2            | 0.1             |
| 25 | Brisbane - Newcastle       | 42.7            | 42.7            | 0.1             |
| 26 | Brisbane - Rockhampton     | 35.6            | 38.3            | 7.6             |
| 27 | Melbourne - Newcastle      | 35.0            | 34.7            | -0.9            |
| 28 | Karratha - Perth           | 32.3            | 33.5            | 3.5             |
| 29 | Melbourne - Sunshine Coast | 33.8            | 32.5            | -3.9            |
| 30 | Ballina - Sydney           | 33.1            | 30.4            | -8.3            |
| 31 | Perth - Port Hedland       | 25.5            | 27.8            | 8.9             |
| 32 | Newman - Perth             | 23.3            | 25.9            | 11.0            |
| 33 | Launceston - Sydney        | 24.9            | 25.1            | 0.4             |
| 34 | Coffs Harbour - Sydney     | 26.0            | 24.1            | -7.1            |
| 35 | Kalgoorlie - Perth         | 19.9            | 22.1            | 11.1            |
| 36 | Brisbane - Darwin          | 23.3            | 20.5            | -11.8           |
| 37 | Brisbane - Hobart          | 16.6            | 18.9            | 14.3            |
| 38 | Broome - Perth             | 19.5            | 18.0            | -7.7            |
| 39 | Brisbane - Gladstone       | 18.6            | 17.9            | -3.8            |
| 40 | Brisbane - Proserpine      | 21.3            | 17.4            | -18.5           |
| 41 | Melbourne - Mildura        | 16.1            | 17.1            | 6.3             |
| 42 | Darwin - Melbourne         | 17.2            | 16.9            | -1.8            |
| 43 | Albury - Sydney            | 15.1            | 15.7            | 3.9             |
| 44 | Darwin - Sydney            | 15.6            | 15.5            | -0.9            |
| 45 | Brisbane - Emerald         | 12.5            | 14.9            | 19.2            |
| 46 | Hamilton Island - Sydney   | 16.4            | 14.6            | -11.0           |
| 47 | Adelaide - Gold Coast      | 15.4            | 14.5            | -5.8            |
| 48 | Adelaide - Canberra        | 14.5            | 14.3            | -1.4            |
| 49 | Port Macquarie - Sydney    | 14.0            | 14.2            | 1.3             |
| 50 | Dubbo - Sydney             | 14.0            | 13.9            | -1.1            |

continued

**Table 2: (continued) Passengers carried (000s) — monthly activity**

|    | <b>City-Pair</b>              | <b>Feb 2018</b> | <b>Feb 2019</b> | <b>% Change</b> |
|----|-------------------------------|-----------------|-----------------|-----------------|
| 51 | Adelaide - Port Lincoln       | 13.7            | 12.8            | -6.2            |
| 52 | Sydney - Wagga Wagga          | 12.9            | 12.6            | -2.1            |
| 53 | Ayers Rock - Sydney           | 14.7            | 12.5            | -14.8           |
| 54 | Sydney - Tamworth             | 12.6            | 12.2            | -3.0            |
| 55 | Darwin - Perth                | 13.5            | 11.3            | -16.2           |
| 56 | Brisbane - Bundaberg          | 12.0            | 11.2            | -6.2            |
| 57 | Cairns - Townsville           | 11.0            | 10.5            | -4.5            |
| 58 | Brisbane - Hamilton Island    | 10.8            | 10.0            | -7.3            |
| 59 | Brisbane - Mount Isa          | 8.7             | 9.7             | 11.5            |
| 60 | Adelaide - Alice Springs      | 9.2             | 9.5             | 3.0             |
| 61 | Armidale - Sydney             | 9.2             | 9.3             | 1.7             |
| 62 | Sydney - Townsville           | 8.7             | 8.5             | -2.1            |
| 63 | Geraldton - Perth             | 10.2            | 8.4             | -17.6           |
| 64 | Proserpine - Sydney           | 10.8            | 7.5             | -31.1           |
| 65 | Alice Springs - Darwin        | 6.4             | 7.1             | 10.6            |
|    | <b>Total domestic network</b> | <b>4 532.7</b>  | <b>4 499.3</b>  | <b>-0.7</b>     |

**Table 3: Available seats (000s) — monthly activity**

|    | <b>City-Pair</b>           | <b>Feb 2018</b> | <b>Feb 2019</b> | <b>% Change</b> |
|----|----------------------------|-----------------|-----------------|-----------------|
| 1  | Melbourne - Sydney         | 859.6           | 864.8           | 0.6             |
| 2  | Brisbane - Sydney          | 445.1           | 437.8           | -1.7            |
| 3  | Brisbane - Melbourne       | 327.4           | 325.5           | -0.6            |
| 4  | Gold Coast - Sydney        | 236.0           | 223.4           | -5.4            |
| 5  | Adelaide - Melbourne       | 243.7           | 248.8           | 2.1             |
| 6  | Melbourne - Perth          | 176.8           | 190.3           | 7.6             |
| 7  | Adelaide - Sydney          | 180.9           | 175.6           | -2.9            |
| 8  | Hobart - Melbourne         | 170.5           | 172.1           | 1.0             |
| 9  | Gold Coast - Melbourne     | 156.0           | 160.7           | 3.0             |
| 10 | Perth - Sydney             | 156.2           | 151.1           | -3.3            |
| 11 | Canberra - Melbourne       | 141.3           | 139.1           | -1.6            |
| 12 | Brisbane - Cairns          | 115.7           | 109.1           | -5.7            |
| 13 | Launceston - Melbourne     | 96.6            | 97.6            | 1.1             |
| 14 | Cairns - Sydney            | 97.8            | 99.1            | 1.3             |
| 15 | Canberra - Sydney          | 111.5           | 103.2           | -7.5            |
| 16 | Brisbane - Townsville      | 94.4            | 89.3            | -5.5            |
| 17 | Brisbane - Perth           | 91.8            | 86.7            | -5.6            |
| 18 | Hobart - Sydney            | 71.6            | 71.6            | 0.0             |
| 19 | Adelaide - Brisbane        | 85.1            | 80.0            | -6.0            |
| 20 | Brisbane - Mackay          | 69.4            | 74.9            | 8.0             |
| 21 | Cairns - Melbourne         | 58.2            | 67.7            | 16.5            |
| 22 | Adelaide - Perth           | 64.1            | 62.9            | -2.0            |
| 23 | Brisbane - Canberra        | 66.1            | 63.9            | -3.4            |
| 24 | Sunshine Coast - Sydney    | 53.4            | 53.9            | 1.0             |
| 25 | Brisbane - Newcastle       | 61.2            | 61.5            | 0.5             |
| 26 | Brisbane - Rockhampton     | 46.9            | 50.9            | 8.6             |
| 27 | Melbourne - Newcastle      | 39.7            | 40.5            | 2.1             |
| 28 | Karratha - Perth           | 53.2            | 53.7            | 0.8             |
| 29 | Melbourne - Sunshine Coast | 43.6            | 40.4            | -7.3            |
| 30 | Ballina - Sydney           | 40.1            | 35.6            | -11.3           |
| 31 | Perth - Port Hedland       | 41.2            | 44.3            | 7.6             |
| 32 | Newman - Perth             | 41.5            | 41.6            | 0.2             |
| 33 | Launceston - Sydney        | 28.6            | 28.9            | 1.0             |
| 34 | Coffs Harbour - Sydney     | 38.9            | 35.0            | -10.0           |
| 35 | Kalgoorlie - Perth         | 34.6            | 39.3            | 13.4            |
| 36 | Brisbane - Darwin          | 31.2            | 29.3            | -5.9            |
| 37 | Brisbane - Hobart          | 19.8            | 23.9            | 20.6            |
| 38 | Broome - Perth             | 28.8            | 29.1            | 1.1             |
| 39 | Brisbane - Gladstone       | 28.1            | 29.1            | 3.8             |
| 40 | Brisbane - Proserpine      | 25.4            | 22.6            | -10.7           |
| 41 | Melbourne - Mildura        | 26.8            | 27.2            | 1.4             |
| 42 | Darwin - Melbourne         | 25.2            | 24.0            | -4.7            |
| 43 | Albury - Sydney            | 22.9            | 24.7            | 8.2             |
| 44 | Darwin - Sydney            | 26.3            | 22.9            | -12.9           |
| 45 | Brisbane - Emerald         | 18.4            | 23.8            | 29.5            |
| 46 | Hamilton Island - Sydney   | 20.7            | 19.1            | -7.7            |
| 47 | Adelaide - Gold Coast      | 19.8            | 18.5            | -6.5            |
| 48 | Adelaide - Canberra        | 23.8            | 22.7            | -4.5            |
| 49 | Port Macquarie - Sydney    | 17.7            | 20.1            | 13.1            |
| 50 | Dubbo - Sydney             | 20.0            | 21.1            | 5.6             |

continued

**Table 3: (continued) Available seats (000s) — monthly activity**

|    | <b>City-Pair</b>              | <b>Feb 2018</b> | <b>Feb 2019</b> | <b>% Change</b> |
|----|-------------------------------|-----------------|-----------------|-----------------|
| 51 | Adelaide - Port Lincoln       | 21.8            | 22.8            | 4.6             |
| 52 | Sydney - Wagga Wagga          | 20.1            | 20.1            | 0.1             |
| 53 | Ayers Rock - Sydney           | 18.6            | 18.0            | -2.9            |
| 54 | Sydney - Tamworth             | 19.8            | 20.5            | 3.7             |
| 55 | Darwin - Perth                | 19.3            | 19.2            | -0.6            |
| 56 | Brisbane - Bundaberg          | 18.4            | 17.8            | -3.2            |
| 57 | Cairns - Townsville           | 19.8            | 18.5            | -6.7            |
| 58 | Brisbane - Hamilton Island    | 13.1            | 13.9            | 6.4             |
| 59 | Brisbane - Mount Isa          | 13.3            | 14.3            | 7.7             |
| 60 | Adelaide - Alice Springs      | 13.8            | 14.3            | 4.0             |
| 61 | Armidale - Sydney             | 13.4            | 14.2            | 6.4             |
| 62 | Sydney - Townsville           | 12.7            | 12.8            | 0.9             |
| 63 | Geraldton - Perth             | 20.4            | 13.6            | -33.5           |
| 64 | Proserpine - Sydney           | 13.0            | 9.4             | -27.3           |
| 65 | Alice Springs - Darwin        | 13.9            | 14.1            | 1.3             |
|    | <b>Total domestic network</b> | <b>5 898.3</b>  | <b>5 866.4</b>  | <b>-0.5</b>     |

**Table 4: Load factors (%) — monthly activity**

|    | <b>City-Pair</b>           | <b>Feb 2018</b> | <b>Feb 2019</b> | <b>% Point diff</b> |
|----|----------------------------|-----------------|-----------------|---------------------|
| 1  | Melbourne - Sydney         | 87.0            | 86.1            | -0.9                |
| 2  | Brisbane - Sydney          | 82.1            | 80.7            | -1.4                |
| 3  | Brisbane - Melbourne       | 76.2            | 78.6            | 2.4                 |
| 4  | Gold Coast - Sydney        | 89.3            | 90.5            | 1.2                 |
| 5  | Adelaide - Melbourne       | 78.4            | 80.6            | 2.2                 |
| 6  | Melbourne - Perth          | 84.1            | 81.3            | -2.8                |
| 7  | Adelaide - Sydney          | 80.8            | 81.0            | 0.2                 |
| 8  | Hobart - Melbourne         | 81.7            | 82.5            | 0.8                 |
| 9  | Gold Coast - Melbourne     | 88.8            | 88.2            | -0.6                |
| 10 | Perth - Sydney             | 82.1            | 82.3            | 0.2                 |
| 11 | Canberra - Melbourne       | 62.8            | 68.8            | 6.0                 |
| 12 | Brisbane - Cairns          | 88.4            | 85.4            | -3.0                |
| 13 | Launceston - Melbourne     | 79.8            | 83.3            | 3.5                 |
| 14 | Cairns - Sydney            | 88.3            | 78.1            | -10.2               |
| 15 | Canberra - Sydney          | 67.5            | 70.7            | 3.2                 |
| 16 | Brisbane - Townsville      | 69.4            | 74.0            | 4.6                 |
| 17 | Brisbane - Perth           | 76.6            | 75.5            | -1.1                |
| 18 | Hobart - Sydney            | 83.1            | 84.9            | 1.8                 |
| 19 | Adelaide - Brisbane        | 71.2            | 72.5            | 1.3                 |
| 20 | Brisbane - Mackay          | 73.9            | 72.6            | -1.3                |
| 21 | Cairns - Melbourne         | 86.2            | 76.2            | -10.0               |
| 22 | Adelaide - Perth           | 74.5            | 75.3            | 0.8                 |
| 23 | Brisbane - Canberra        | 65.6            | 67.7            | 2.1                 |
| 24 | Sunshine Coast - Sydney    | 80.8            | 80.1            | -0.7                |
| 25 | Brisbane - Newcastle       | 69.8            | 69.5            | -0.3                |
| 26 | Brisbane - Rockhampton     | 75.8            | 75.2            | -0.6                |
| 27 | Melbourne - Newcastle      | 88.1            | 85.5            | -2.6                |
| 28 | Karratha - Perth           | 60.8            | 62.4            | 1.6                 |
| 29 | Melbourne - Sunshine Coast | 77.6            | 80.5            | 2.9                 |
| 30 | Ballina - Sydney           | 82.7            | 85.5            | 2.8                 |
| 31 | Perth - Port Hedland       | 62.0            | 62.7            | 0.7                 |
| 32 | Newman - Perth             | 56.2            | 62.2            | 6.0                 |
| 33 | Launceston - Sydney        | 87.1            | 86.7            | -0.4                |
| 34 | Coffs Harbour - Sydney     | 66.7            | 68.9            | 2.2                 |
| 35 | Kalgoorlie - Perth         | 57.3            | 56.1            | -1.2                |
| 36 | Brisbane - Darwin          | 74.6            | 70.0            | -4.6                |
| 37 | Brisbane - Hobart          | 83.6            | 79.3            | -4.3                |
| 38 | Broome - Perth             | 67.9            | 62.0            | -5.9                |
| 39 | Brisbane - Gladstone       | 66.3            | 61.5            | -4.8                |
| 40 | Brisbane - Proserpine      | 84.2            | 76.8            | -7.4                |
| 41 | Melbourne - Mildura        | 60.0            | 62.9            | 2.9                 |
| 42 | Darwin - Melbourne         | 68.4            | 70.5            | 2.1                 |
| 43 | Albury - Sydney            | 66.1            | 63.4            | -2.7                |
| 44 | Darwin - Sydney            | 59.3            | 67.5            | 8.2                 |
| 45 | Brisbane - Emerald         | 68.1            | 62.7            | -5.4                |
| 46 | Hamilton Island - Sydney   | 78.9            | 76.1            | -2.8                |
| 47 | Adelaide - Gold Coast      | 77.7            | 78.3            | 0.6                 |
| 48 | Adelaide - Canberra        | 60.9            | 62.8            | 1.9                 |
| 49 | Port Macquarie - Sydney    | 78.9            | 70.7            | -8.2                |
| 50 | Dubbo - Sydney             | 70.0            | 65.6            | -4.4                |

continued



**Table 4: (continued) Load factors (%) — monthly activity**

|    | <b>City-Pair</b>              | <b>Feb 2018</b> | <b>Feb 2019</b> | <b>% Point diff</b> |
|----|-------------------------------|-----------------|-----------------|---------------------|
| 51 | Adelaide - Port Lincoln       | 62.8            | 56.4            | -6.4                |
| 52 | Sydney - Wagga Wagga          | 64.2            | 62.8            | -1.4                |
| 53 | Ayers Rock - Sydney           | 79.1            | 69.4            | -9.7                |
| 54 | Sydney - Tamworth             | 63.4            | 59.3            | -4.1                |
| 55 | Darwin - Perth                | 70.1            | 59.1            | -11.0               |
| 56 | Brisbane - Bundaberg          | 64.9            | 62.9            | -2.0                |
| 57 | Cairns - Townsville           | 55.7            | 57.0            | 1.3                 |
| 58 | Brisbane - Hamilton Island    | 82.2            | 71.7            | -10.5               |
| 59 | Brisbane - Mount Isa          | 65.3            | 67.6            | 2.3                 |
| 60 | Adelaide - Alice Springs      | 66.8            | 66.1            | -0.7                |
| 61 | Armidale - Sydney             | 68.4            | 65.4            | -3.0                |
| 62 | Sydney - Townsville           | 68.4            | 66.3            | -2.1                |
| 63 | Geraldton - Perth             | 50.0            | 62.0            | 12.0                |
| 64 | Proserpine - Sydney           | 83.6            | 79.3            | -4.3                |
| 65 | Alice Springs - Darwin        | 46.0            | 50.3            | 4.3                 |
|    | <b>Total domestic network</b> | <b>78.0</b>     | <b>77.3</b>     | <b>-0.7</b>         |

**Table 5: Aircraft trips <sup>(a)</sup> — monthly activity**

|    | <b>City-Pair</b>           | <b>Feb 2018</b> | <b>Feb 2019</b> | <b>% Change</b> |
|----|----------------------------|-----------------|-----------------|-----------------|
| 1  | Melbourne - Sydney         | 4 762           | 4 851           | 1.9             |
| 2  | Brisbane - Sydney          | 2 712           | 2 683           | -1.1            |
| 3  | Brisbane - Melbourne       | 1 942           | 1 956           | 0.7             |
| 4  | Gold Coast - Sydney        | 1 329           | 1 262           | -5.0            |
| 5  | Adelaide - Melbourne       | 1 523           | 1 513           | -0.7            |
| 6  | Melbourne - Perth          | 828             | 960             | 15.9            |
| 7  | Adelaide - Sydney          | 1 086           | 1 057           | -2.7            |
| 8  | Hobart - Melbourne         | 990             | 927             | -6.4            |
| 9  | Gold Coast - Melbourne     | 833             | 846             | 1.6             |
| 10 | Perth - Sydney             | 683             | 699             | 2.3             |
| 11 | Canberra - Melbourne       | 933             | 876             | -6.1            |
| 12 | Brisbane - Cairns          | 720             | 738             | 2.5             |
| 13 | Launceston - Melbourne     | 733             | 728             | -0.7            |
| 14 | Cairns - Sydney            | 540             | 515             | -4.6            |
| 15 | Canberra - Sydney          | 1 294           | 1 344           | 3.9             |
| 16 | Brisbane - Townsville      | 667             | 611             | -8.4            |
| 17 | Brisbane - Perth           | 464             | 471             | 1.5             |
| 18 | Hobart - Sydney            | 392             | 422             | 7.7             |
| 19 | Adelaide - Brisbane        | 505             | 489             | -3.2            |
| 20 | Brisbane - Mackay          | 537             | 571             | 6.3             |
| 21 | Cairns - Melbourne         | 296             | 340             | 14.9            |
| 22 | Adelaide - Perth           | 437             | 407             | -6.9            |
| 23 | Brisbane - Canberra        | 472             | 476             | 0.8             |
| 24 | Sunshine Coast - Sydney    | 323             | 322             | -0.3            |
| 25 | Brisbane - Newcastle       | 411             | 460             | 11.9            |
| 26 | Brisbane - Rockhampton     | 566             | 620             | 9.5             |
| 27 | Melbourne - Newcastle      | 223             | 224             | 0.4             |
| 28 | Karratha - Perth           | 468             | 468             | 0.0             |
| 29 | Melbourne - Sunshine Coast | 246             | 226             | -8.1            |
| 30 | Ballina - Sydney           | 258             | 233             | -9.7            |
| 31 | Perth - Port Hedland       | 340             | 339             | -0.3            |
| 32 | Newman - Perth             | 308             | 319             | 3.6             |
| 33 | Launceston - Sydney        | 164             | 160             | -2.4            |
| 34 | Coffs Harbour - Sydney     | 393             | 370             | -5.9            |
| 35 | Kalgoorlie - Perth         | 274             | 308             | 12.4            |
| 36 | Brisbane - Darwin          | 197             | 187             | -5.1            |
| 37 | Brisbane - Hobart          | 112             | 134             | 19.6            |
| 38 | Broome - Perth             | 261             | 254             | -2.7            |
| 39 | Brisbane - Gladstone       | 369             | 384             | 4.1             |
| 40 | Brisbane - Proserpine      | 142             | 128             | -9.9            |
| 41 | Melbourne - Mildura        | 373             | 368             | -1.3            |
| 42 | Darwin - Melbourne         | 144             | 135             | -6.3            |
| 43 | Albury - Sydney            | 416             | 449             | 7.9             |
| 44 | Darwin - Sydney            | 158             | 133             | -15.8           |
| 45 | Brisbane - Emerald         | 245             | 350             | 42.9            |
| 46 | Hamilton Island - Sydney   | 126             | 118             | -6.3            |
| 47 | Adelaide - Gold Coast      | 112             | 104             | -7.1            |
| 48 | Adelaide - Canberra        | 140             | 136             | -2.9            |
| 49 | Port Macquarie - Sydney    | 307             | 300             | -2.3            |
| 50 | Dubbo - Sydney             | 433             | 456             | 5.3             |

continued

**Table 5: (continued) Aircraft trips <sup>(a)</sup> — monthly activity**

|    | <b>City-Pair</b>              | <b>Feb 2018</b> | <b>Feb 2019</b> | <b>% Change</b> |
|----|-------------------------------|-----------------|-----------------|-----------------|
| 51 | Adelaide - Port Lincoln       | 560             | 588             | 5.0             |
| 52 | Sydney - Wagga Wagga          | 381             | 390             | 2.4             |
| 53 | Ayers Rock - Sydney           | 104             | 104             | 0.0             |
| 54 | Sydney - Tamworth             | 312             | 320             | 2.6             |
| 55 | Darwin - Perth                | 116             | 111             | -4.3            |
| 56 | Brisbane - Bundaberg          | 258             | 278             | 7.8             |
| 57 | Cairns - Townsville           | 334             | 293             | -12.3           |
| 58 | Brisbane - Hamilton Island    | 102             | 111             | 8.8             |
| 59 | Brisbane - Mount Isa          | 142             | 135             | -4.9            |
| 60 | Adelaide - Alice Springs      | 102             | 104             | 2.0             |
| 61 | Armidale - Sydney             | 325             | 340             | 4.6             |
| 62 | Sydney - Townsville           | 74              | 74              | 0.0             |
| 63 | Geraldton - Perth             | 214             | 136             | -36.4           |
| 64 | Proserpine - Sydney           | 72              | 52              | -27.8           |
| 65 | Alice Springs - Darwin        | 126             | 116             | -7.9            |
|    | <b>Total domestic network</b> | <b>48 560</b>   | <b>48 649</b>   | <b>0.2</b>      |

(a) Includes RPT Cargo flights.

## TOP TEN AIRPORTS – PASSENGER MOVEMENTS

**Table 6: Top ten airports, RPT passenger movements (000s) - annual activity**

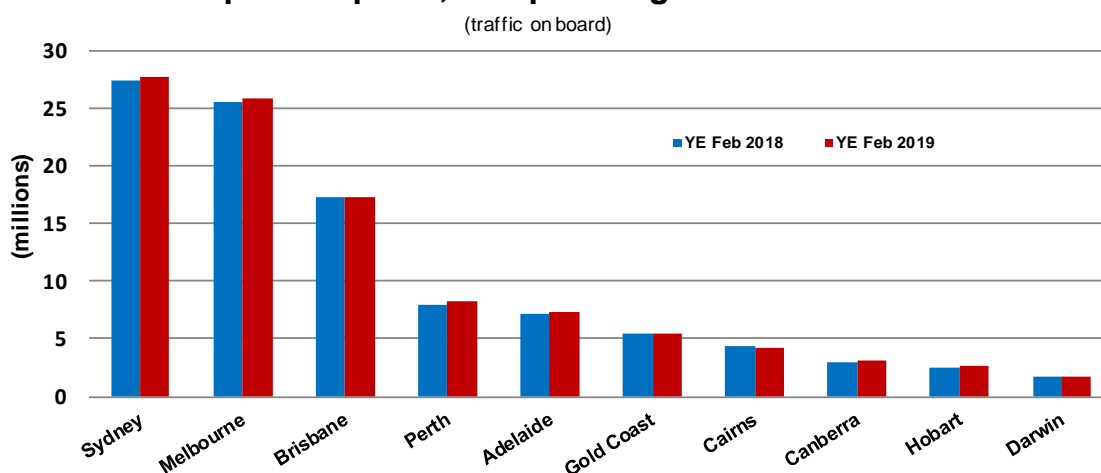
| Airport                       | YE Feb 2018      | YE Feb 2019      | % Change   | % of Total   |
|-------------------------------|------------------|------------------|------------|--------------|
| 1 Sydney                      | 27 446.8         | 27 650.1         | 0.7        | 22.7         |
| 2 Melbourne                   | 25 466.4         | 25 929.3         | 1.8        | 21.2         |
| 3 Brisbane                    | 17 332.5         | 17 335.7         | 0.0        | 14.2         |
| 4 Perth                       | 8 006.9          | 8 233.9          | 2.8        | 6.7          |
| 5 Adelaide                    | 7 189.6          | 7 313.0          | 1.7        | 6.0          |
| 6 Gold Coast                  | 5 461.0          | 5 476.4          | 0.3        | 4.5          |
| 7 Cairns                      | 4 330.0          | 4 271.0          | -1.4       | 3.5          |
| 8 Canberra                    | 3 038.2          | 3 160.8          | 4.0        | 2.6          |
| 9 Hobart                      | 2 544.3          | 2 697.1          | 6.0        | 2.2          |
| 10 Darwin                     | 1 795.3          | 1 731.3          | -3.6       | 1.4          |
| <b>Total top ten airports</b> | <b>102 611.1</b> | <b>103 798.7</b> | <b>1.2</b> | <b>85.0</b>  |
| <b>Total domestic network</b> | <b>120 496.2</b> | <b>122 075.5</b> | <b>1.3</b> | <b>100.0</b> |

**Table 7: Top ten airports, RPT passenger movements (000s) - monthly activity**

| Airport                       | Feb 2018       | Feb 2019       | % Change    | % of Total   |
|-------------------------------|----------------|----------------|-------------|--------------|
| 1 Sydney                      | 2 142.4        | 2 086.7        | -2.6        | 23.2         |
| 2 Melbourne                   | 1 935.6        | 1 968.3        | 1.7         | 21.9         |
| 3 Brisbane                    | 1 259.5        | 1 239.1        | -1.6        | 13.8         |
| 4 Perth                       | 587.9          | 593.3          | 0.9         | 6.6          |
| 5 Adelaide                    | 547.4          | 551.4          | 0.7         | 6.1          |
| 6 Gold Coast                  | 401.5          | 390.1          | -2.8        | 4.3          |
| 7 Cairns                      | 304.2          | 283.5          | -6.8        | 3.2          |
| 8 Canberra                    | 234.4          | 239.0          | 2.0         | 2.7          |
| 9 Hobart                      | 223.0          | 231.9          | 4.0         | 2.6          |
| 10 Launceston                 | 114.0          | 117.3          | 2.9         | 1.3          |
| <b>Total top ten airports</b> | <b>7 749.9</b> | <b>7 700.6</b> | <b>-0.6</b> | <b>85.6</b>  |
| <b>Total domestic network</b> | <b>9 065.4</b> | <b>8 998.6</b> | <b>-0.7</b> | <b>100.0</b> |

Note: Airport passenger movement numbers are the sum of passenger arrivals and departures at each airport.

### Top ten airports, RPT passenger movements



## TOP FIVE AIRPORTS – CARGO MOVEMENTS

Table 8: Top five airports, domestic RPT cargo movements (000s tonnes) - annual activity

| Airport                        | YE Feb 2018  | YE Feb 2019  | % Change   | % of Total   |
|--------------------------------|--------------|--------------|------------|--------------|
| 1 Melbourne                    | 133.3        | 133.3        | 0.0        | 28.1         |
| 2 Sydney                       | 106.6        | 105.6        | -0.9       | 22.3         |
| 3 Brisbane                     | 67.7         | 74.7         | 10.3       | 15.8         |
| 4 Perth                        | 65.4         | 67.3         | 2.9        | 14.2         |
| 5 Adelaide                     | 27.1         | 26.7         | -1.4       | 5.6          |
| <b>Total top five airports</b> | <b>400.1</b> | <b>407.6</b> | <b>1.9</b> | <b>86.0</b>  |
| <b>Total domestic network</b>  | <b>459.4</b> | <b>474.0</b> | <b>3.2</b> | <b>100.0</b> |

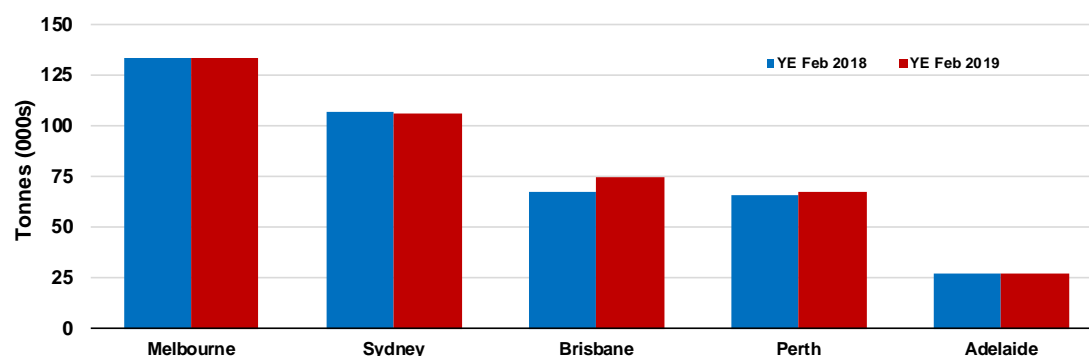
Table 9: Top five airports, domestic RPT cargo movements (000s tonnes) - monthly activity

| Airport                        | Feb 2018    | Feb 2019    | % Change    | % of Total   |
|--------------------------------|-------------|-------------|-------------|--------------|
| 1 Melbourne                    | 11.0        | 9.9         | -10.7       | 27.7         |
| 2 Sydney                       | 8.6         | 7.7         | -10.4       | 21.7         |
| 3 Brisbane                     | 5.6         | 5.7         | 0.9         | 15.9         |
| 4 Perth                        | 5.3         | 4.9         | -7.3        | 13.9         |
| 5 Adelaide                     | 2.2         | 1.9         | -13.4       | 5.4          |
| <b>Total top five airports</b> | <b>32.9</b> | <b>30.2</b> | <b>-8.3</b> | <b>84.6</b>  |
| <b>Total domestic network</b>  | <b>38.0</b> | <b>35.6</b> | <b>-6.3</b> | <b>100.0</b> |

Note: Airport cargo tonnes are the sum of cargo tonnes on arrivals and departures at each airport.

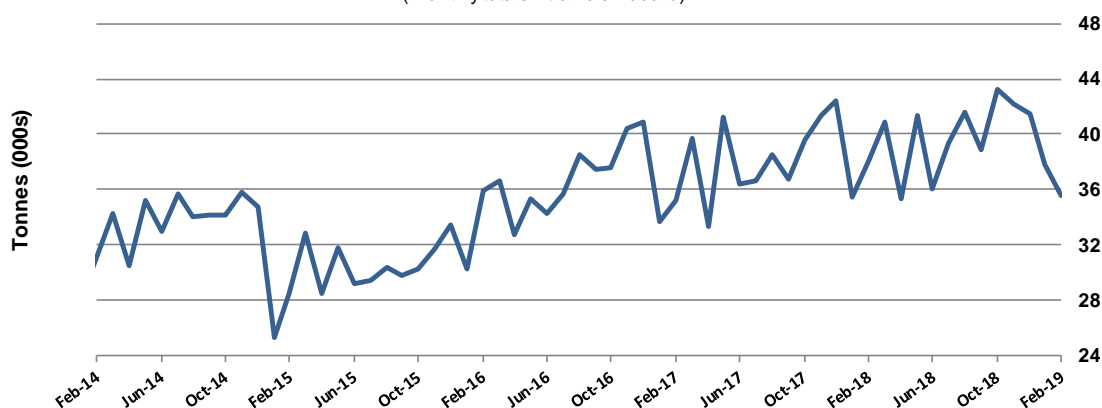
### Top five airports, cargo movements

(Domestic cargo traffic - traffic on board)



### Total domestic network - cargo movement

(monthly totals - traffic on board)



Note: Airport cargo tonnes are the sum of cargo tonnes on arrivals and departures at each airport.

## TOP TEN ROUTES

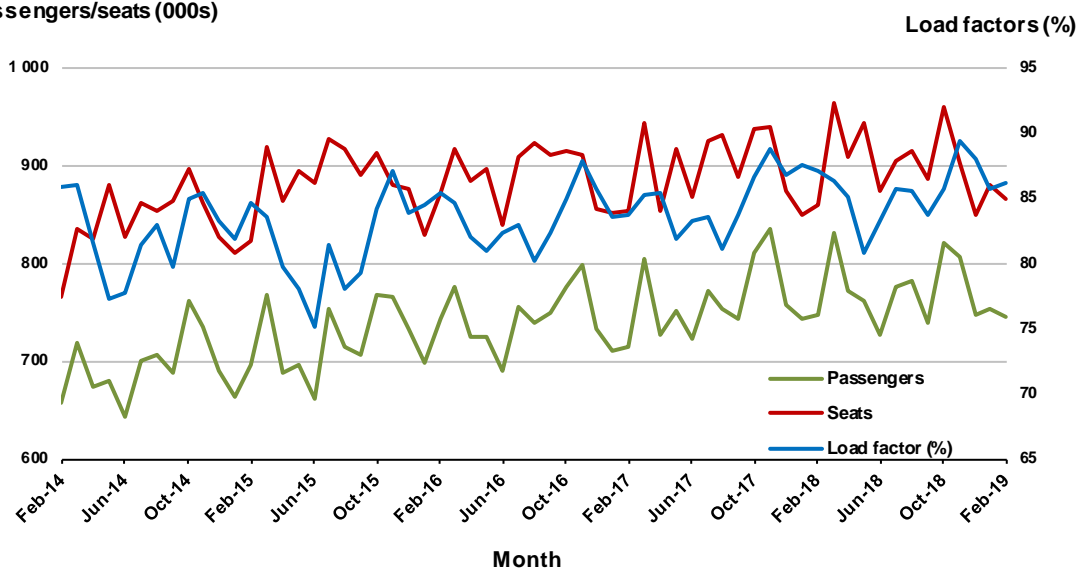
### 1. Melbourne - Sydney

#### Monthly data

|                           | Feb 2018 | Feb 2019 | % Change |
|---------------------------|----------|----------|----------|
| Passengers carried (000s) | 747.8    | 744.5    | -0.4     |
| Seats (000s)              | 859.6    | 864.8    | 0.6      |
| Load factor %             | 87.0     | 86.1     | -0.9 *   |
| Aircraft trips            | 4 762    | 4 851    | 1.9      |

\* percentage point difference

#### Passengers/seats (000s)

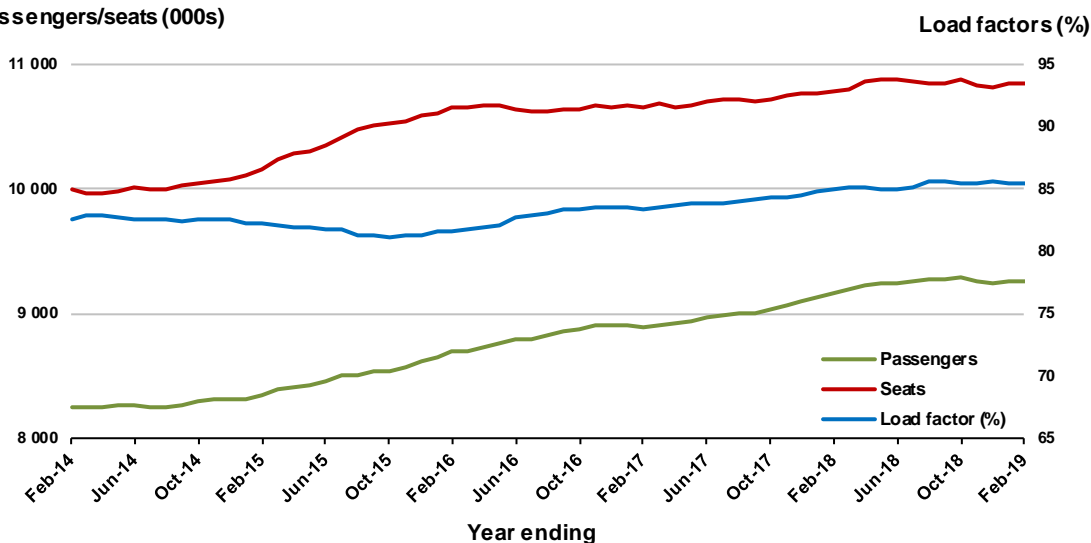


#### Moving annual data

|                           | YE Feb 2018 | YE Feb 2019 | % Change |
|---------------------------|-------------|-------------|----------|
| Passengers carried (000s) | 9 164.7     | 9 258.0     | 1.0      |
| Seats (000s)              | 10 779.2    | 10 845.3    | 0.6      |
| Load factor %             | 85.0        | 85.4        | 0.4 *    |
| Aircraft trips            | 60 092      | 60 244      | 0.3      |

\* percentage point difference

#### Passengers/seats (000s)

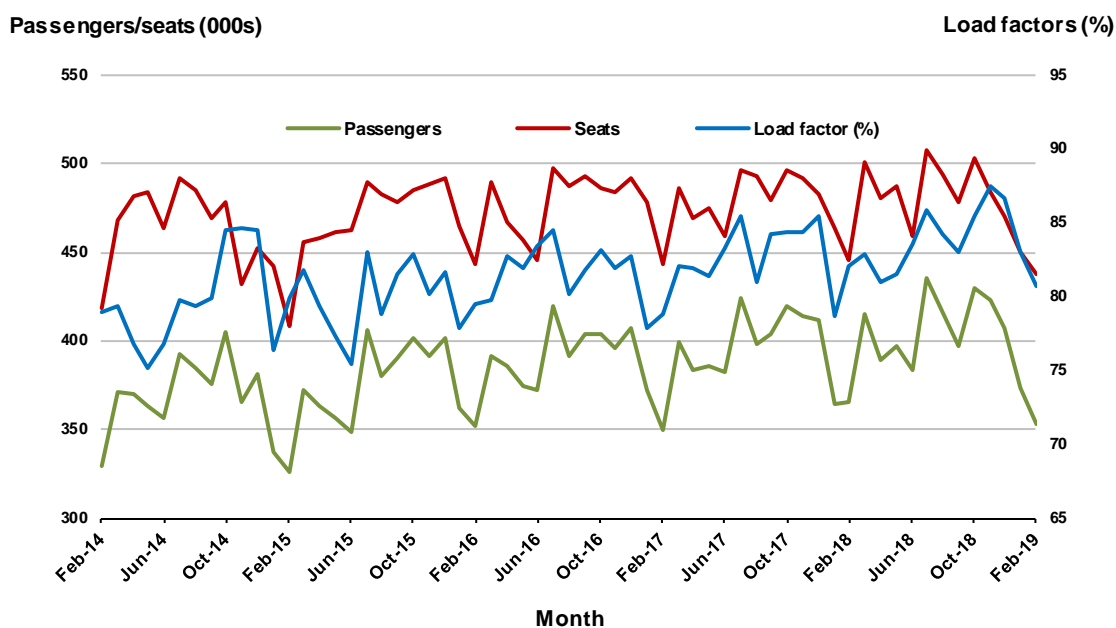


## 2. Brisbane - Sydney

### Monthly data

|                           | Feb 2018 | Feb 2019 | % Change |
|---------------------------|----------|----------|----------|
| Passengers carried (000s) | 365.4    | 353.3    | -3.3     |
| Seats (000s)              | 445.1    | 437.8    | -1.7     |
| Load factor %             | 82.1     | 80.7     | -1.4 *   |
| Aircraft trips            | 2 712    | 2 683    | -1.1     |

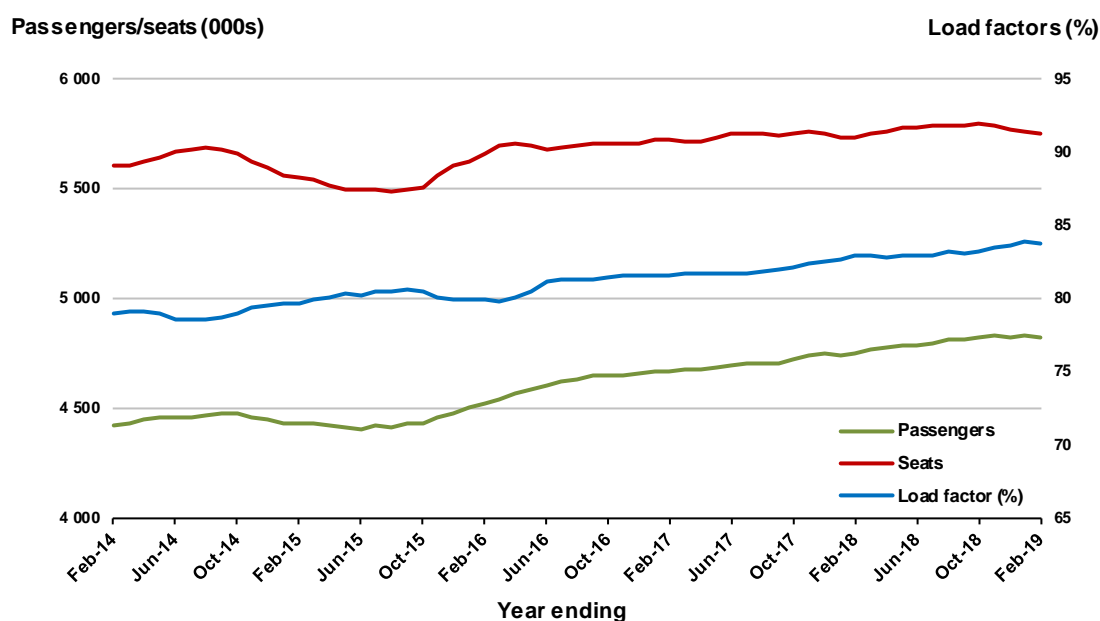
\* percentage point difference



### Moving annual data

|                           | YE Feb 2018 | YE Feb 2019 | % Change |
|---------------------------|-------------|-------------|----------|
| Passengers carried (000s) | 4 754.3     | 4 822.6     | 1.4      |
| Seats (000s)              | 5 735.7     | 5 753.9     | 0.3      |
| Load factor %             | 82.9        | 83.8        | 0.9 *    |
| Aircraft trips            | 35 230      | 34 959      | -0.8     |

\* percentage point difference

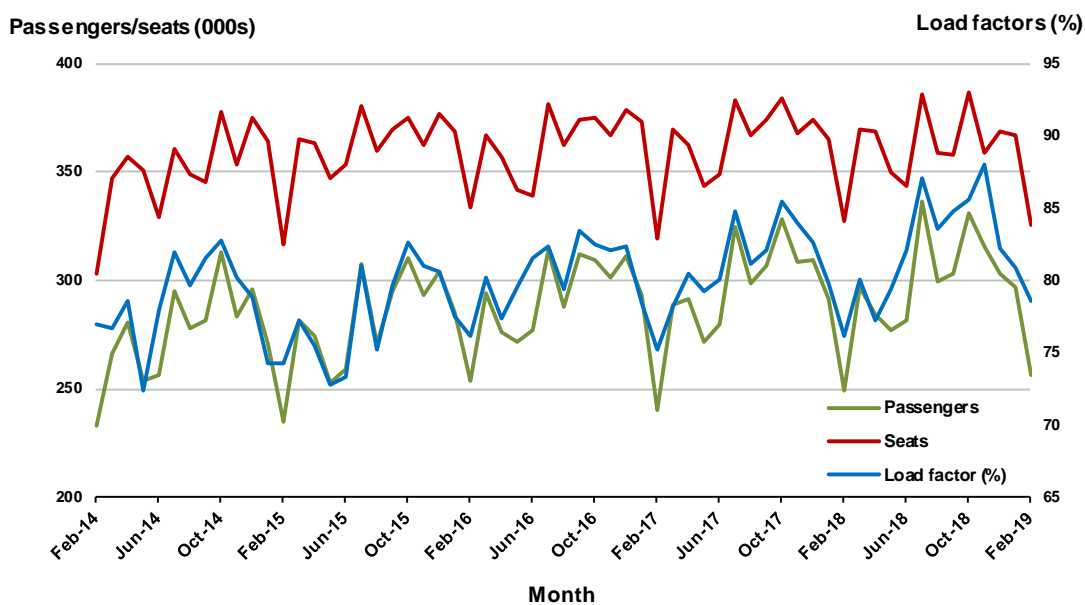


### 3. Brisbane - Melbourne

#### Monthly data

|                           | Feb 2018 | Feb 2019 | % Change |
|---------------------------|----------|----------|----------|
| Passengers carried (000s) | 249.3    | 256.0    | 2.7      |
| Seats (000s)              | 327.4    | 325.5    | -0.6     |
| Load factor %             | 76.2     | 78.6     | 2.4 *    |
| Aircraft trips            | 1 942    | 1 956    | 0.7      |

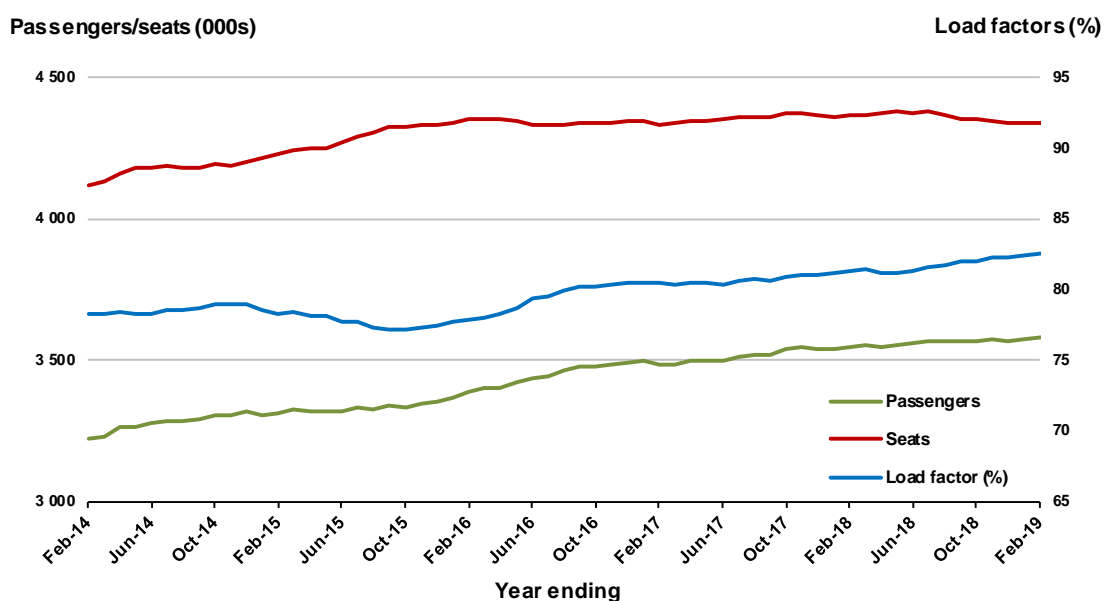
\* percentage point difference



#### Moving annual data

|                           | YE Feb 2018 | YE Feb 2019 | % Change |
|---------------------------|-------------|-------------|----------|
| Passengers carried (000s) | 3 548.1     | 3 581.2     | 0.9      |
| Seats (000s)              | 4 367.0     | 4 338.5     | -0.7     |
| Load factor %             | 81.2        | 82.5        | 1.3 *    |
| Aircraft trips            | 25 816      | 25 582      | -0.9     |

\* percentage point difference





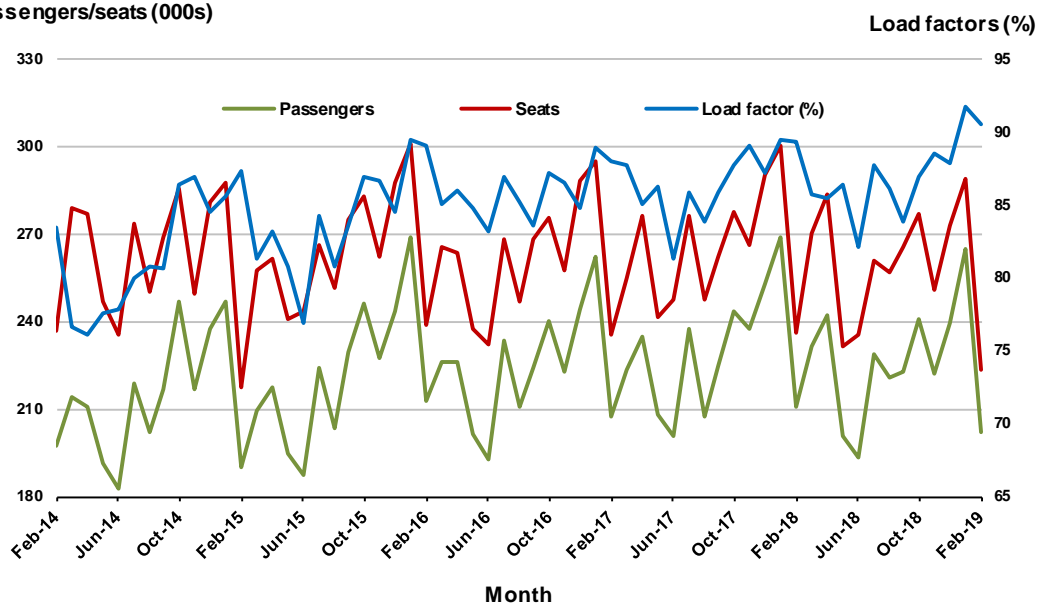
## 4. Gold Coast - Sydney

### Monthly data

|                           | Feb 2018 | Feb 2019 | % Change |
|---------------------------|----------|----------|----------|
| Passengers carried (000s) | 210.8    | 202.0    | -4.1     |
| Seats (000s)              | 236.0    | 223.4    | -5.4     |
| Load factor %             | 89.3     | 90.5     | 1.2 *    |
| Aircraft trips            | 1 329    | 1 262    | -5.0     |

\* percentage point difference

### Passengers/seats (000s)

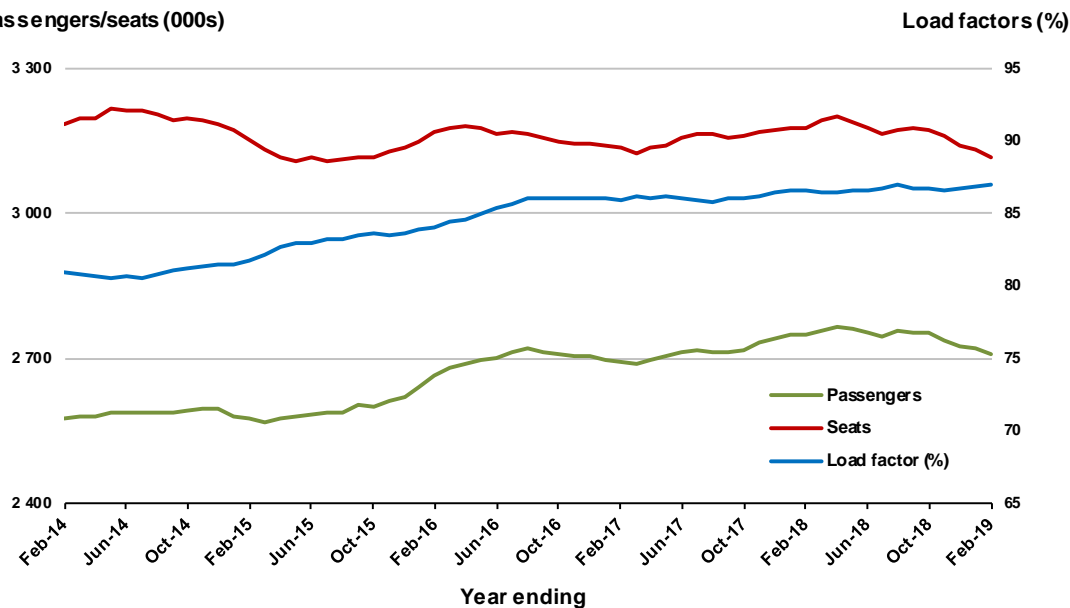


### Moving annual data

|                           | YE Feb 2018 | YE Feb 2019 | % Change |
|---------------------------|-------------|-------------|----------|
| Passengers carried (000s) | 2 750.5     | 2 710.2     | -1.5     |
| Seats (000s)              | 3 175.8     | 3 117.2     | -1.8     |
| Load factor %             | 86.6        | 86.9        | 0.3 *    |
| Aircraft trips            | 17 983      | 17 703      | -1.6     |

\* percentage point difference

### Passengers/seats (000s)



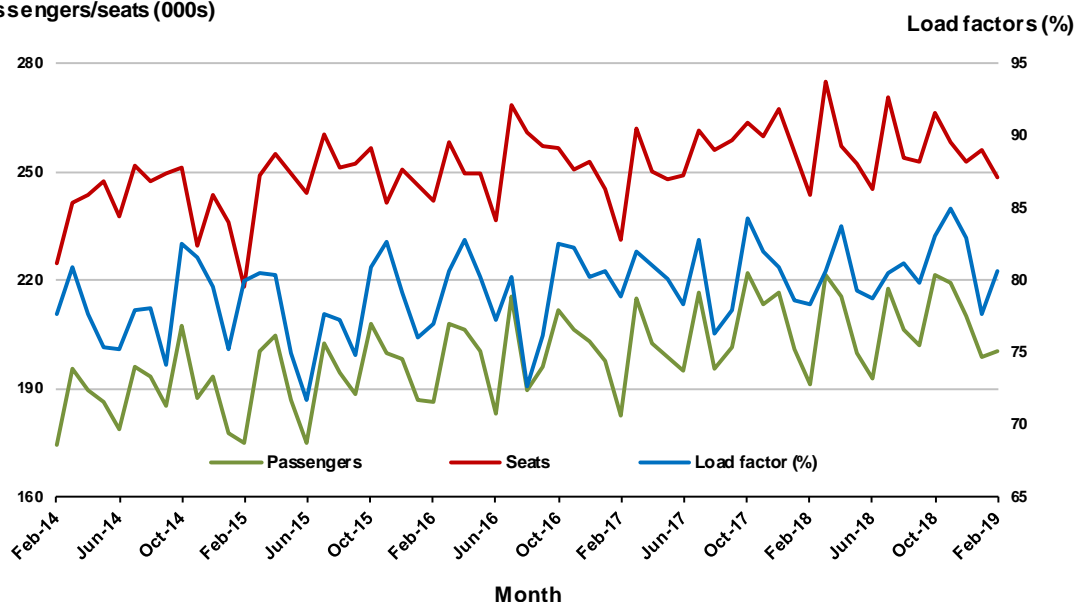
## 5. Adelaide - Melbourne

### Monthly data

|                           | Feb 2018 | Feb 2019 | % Change |
|---------------------------|----------|----------|----------|
| Passengers carried (000s) | 191.0    | 200.5    | 4.9      |
| Seats (000s)              | 243.7    | 248.8    | 2.1      |
| Load factor %             | 78.4     | 80.6     | 2.2 *    |
| Aircraft trips            | 1 523    | 1 513    | -0.7     |

\* percentage point difference

### Passengers/seats (000s)

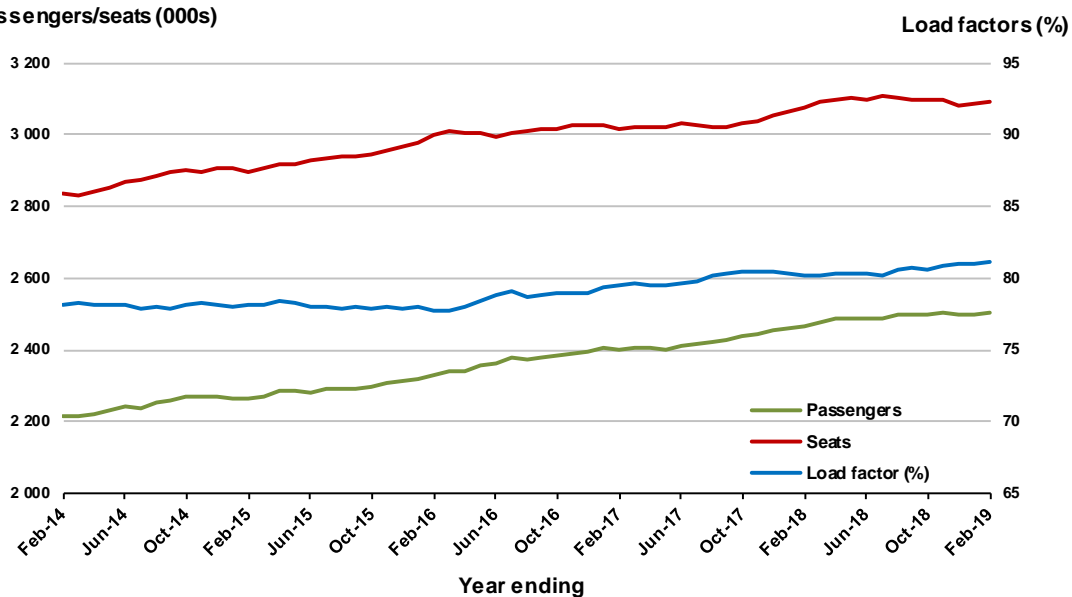


### Moving annual data

|                           | YE Feb 2018 | YE Feb 2019 | % Change |
|---------------------------|-------------|-------------|----------|
| Passengers carried (000s) | 2 468.2     | 2 505.8     | 1.5      |
| Seats (000s)              | 3 076.1     | 3 089.4     | 0.4      |
| Load factor %             | 80.2        | 81.1        | 0.9 *    |
| Aircraft trips            | 19 209      | 19 045      | -0.9     |

\* percentage point difference

### Passengers/seats (000s)



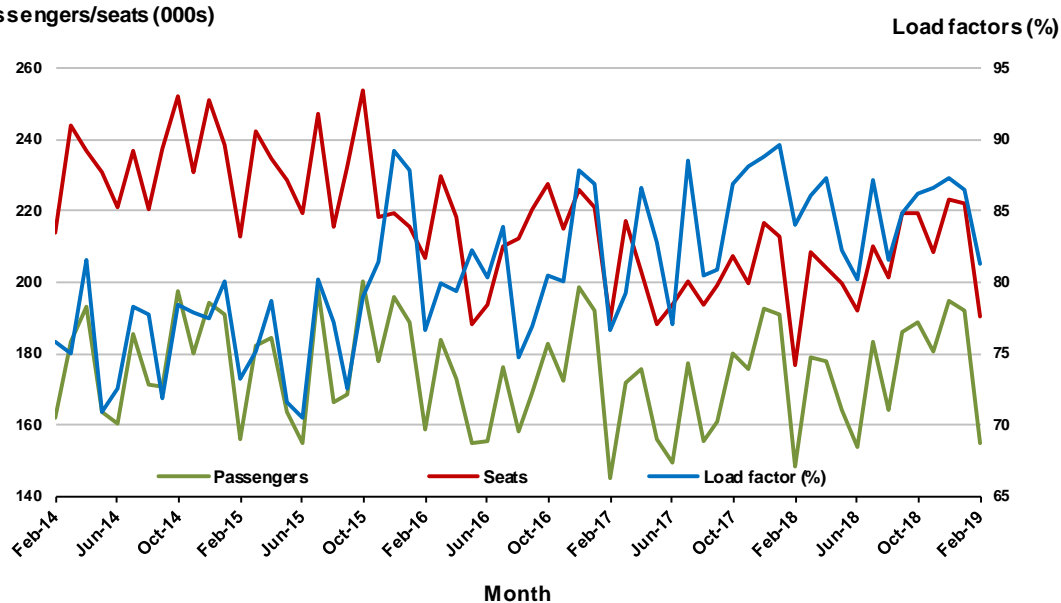
## 6. Melbourne - Perth

### Monthly data

|                           | Feb 2018 | Feb 2019 | % Change |
|---------------------------|----------|----------|----------|
| Passengers carried (000s) | 148.6    | 154.8    | 4.2      |
| Seats (000s)              | 176.8    | 190.3    | 7.6      |
| Load factor %             | 84.1     | 81.3     | -2.8 *   |
| Aircraft trips            | 828      | 960      | 15.9     |

\* percentage point difference

### Passengers/seats (000s)

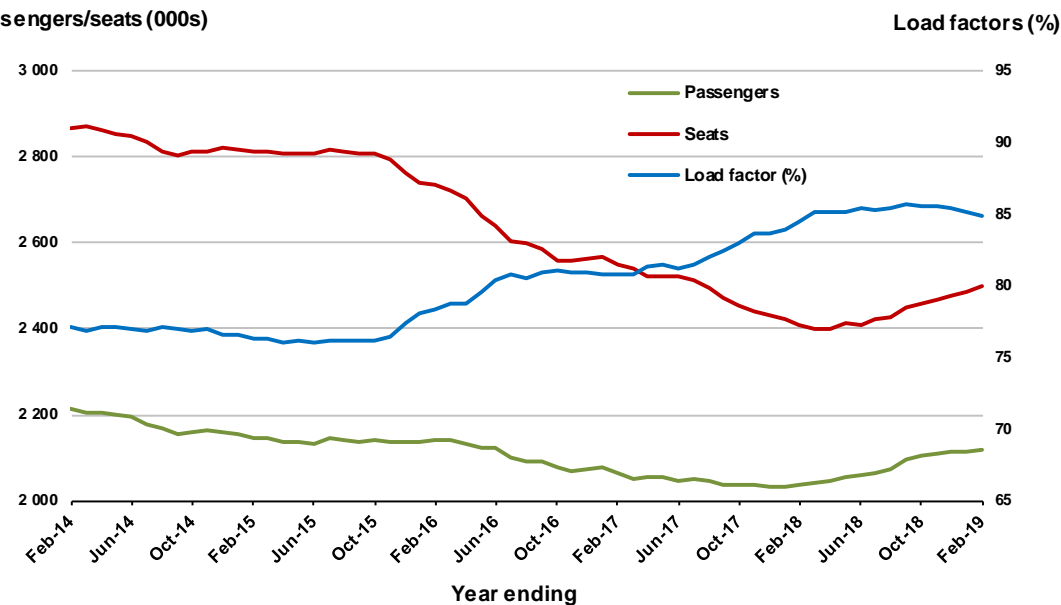


### Moving annual data

|                           | YE Feb 2018 | YE Feb 2019 | % Change |
|---------------------------|-------------|-------------|----------|
| Passengers carried (000s) | 2 035.3     | 2 120.6     | 4.2      |
| Seats (000s)              | 2 408.5     | 2 498.3     | 3.7      |
| Load factor %             | 84.5        | 84.9        | 0.4 *    |
| Aircraft trips            | 11 070      | 11 978      | 8.2      |

\* percentage point difference

### Passengers/seats (000s)



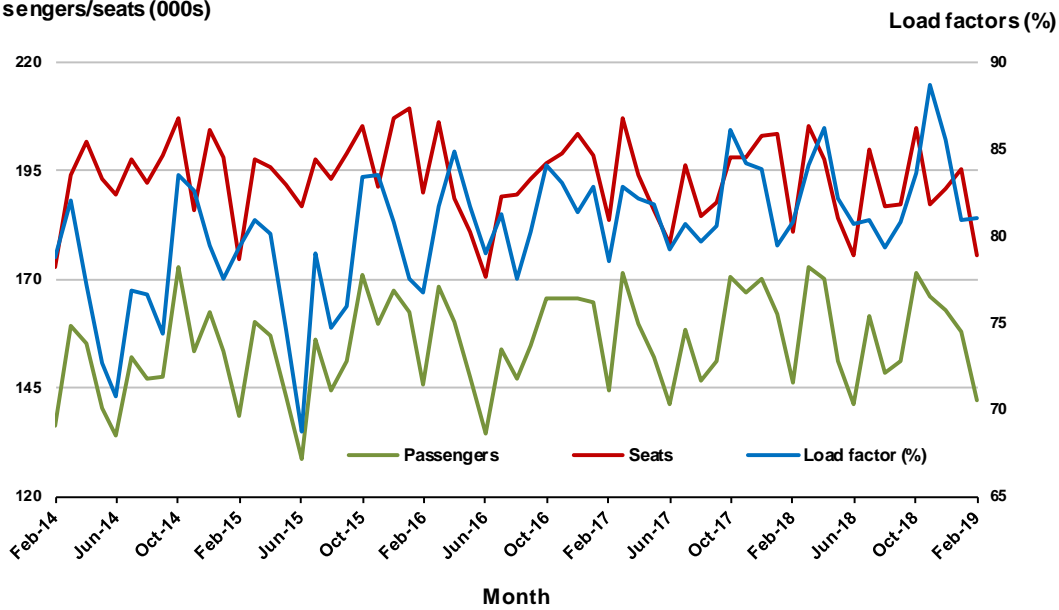
## 7. Adelaide - Sydney

### Monthly data

|                           | Feb 2018 | Feb 2019 | % Change |
|---------------------------|----------|----------|----------|
| Passengers carried (000s) | 146.2    | 142.3    | -2.7     |
| Seats (000s)              | 180.9    | 175.6    | -2.9     |
| Load factor %             | 80.8     | 81.0     | 0.2 *    |
| Aircraft trips            | 1 086    | 1 057    | -2.7     |

\* percentage point difference

### Passengers/seats (000s)

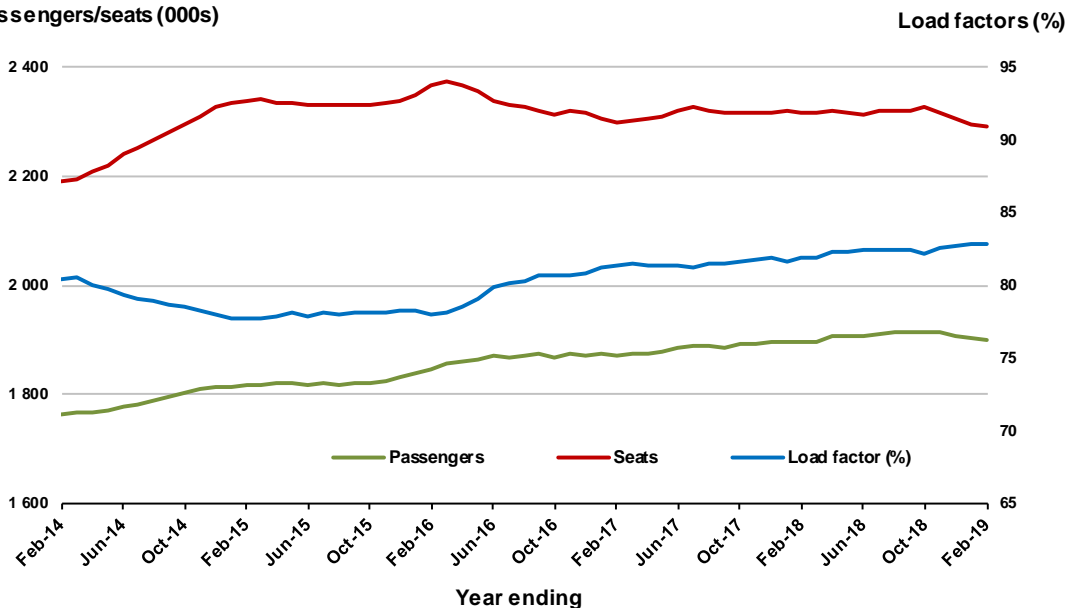


### Moving annual data

|                           | YE Feb 2018 | YE Feb 2019 | % Change |
|---------------------------|-------------|-------------|----------|
| Passengers carried (000s) | 1 897.2     | 1 898.7     | 0.1      |
| Seats (000s)              | 2 317.8     | 2 291.1     | -1.2     |
| Load factor %             | 81.9        | 82.9        | 1.0 *    |
| Aircraft trips            | 13 929      | 13 798      | -0.9     |

\* percentage point difference

### Passengers/seats (000s)



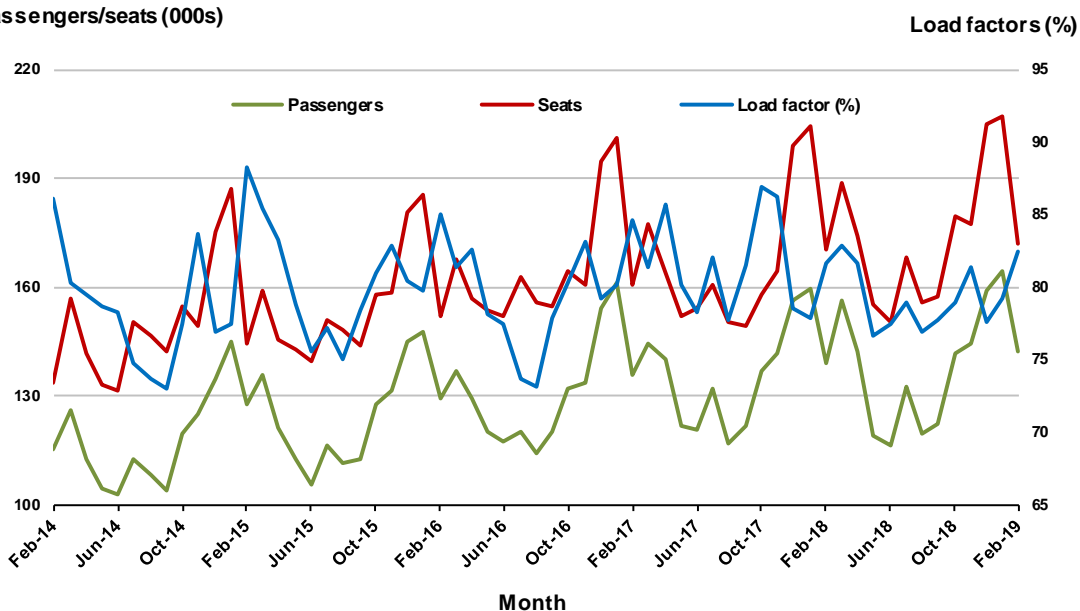
## 8. Hobart - Melbourne

### Monthly data

|                           | Feb 2018 | Feb 2019 | % Change |
|---------------------------|----------|----------|----------|
| Passengers carried (000s) | 139.3    | 142.1    | 2.0      |
| Seats (000s)              | 170.5    | 172.1    | 1.0      |
| Load factor %             | 81.7     | 82.5     | 0.8 *    |
| Aircraft trips            | 990      | 927      | -6.4     |

\* percentage point difference

### Passengers/seats (000s)

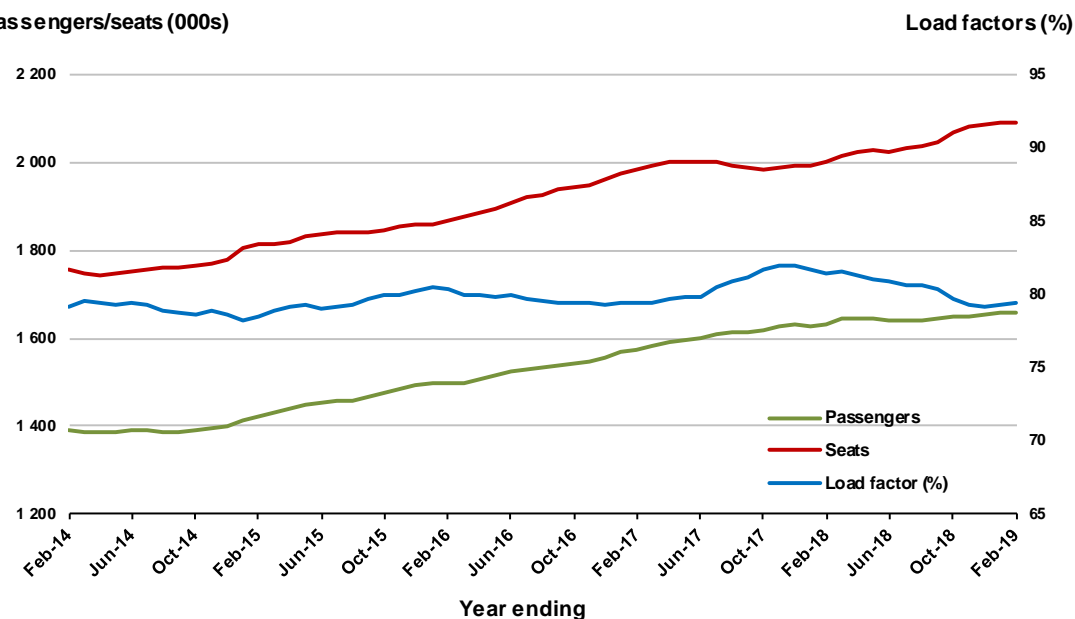


### Moving annual data

|                           | YE Feb 2018 | YE Feb 2019 | % Change |
|---------------------------|-------------|-------------|----------|
| Passengers carried (000s) | 1 631.7     | 1 660.4     | 1.8      |
| Seats (000s)              | 2 003.5     | 2 091.2     | 4.4      |
| Load factor %             | 81.4        | 79.4        | -2.0 *   |
| Aircraft trips            | 12 152      | 11 549      | -5.0     |

\* percentage point difference

### Passengers/seats (000s)



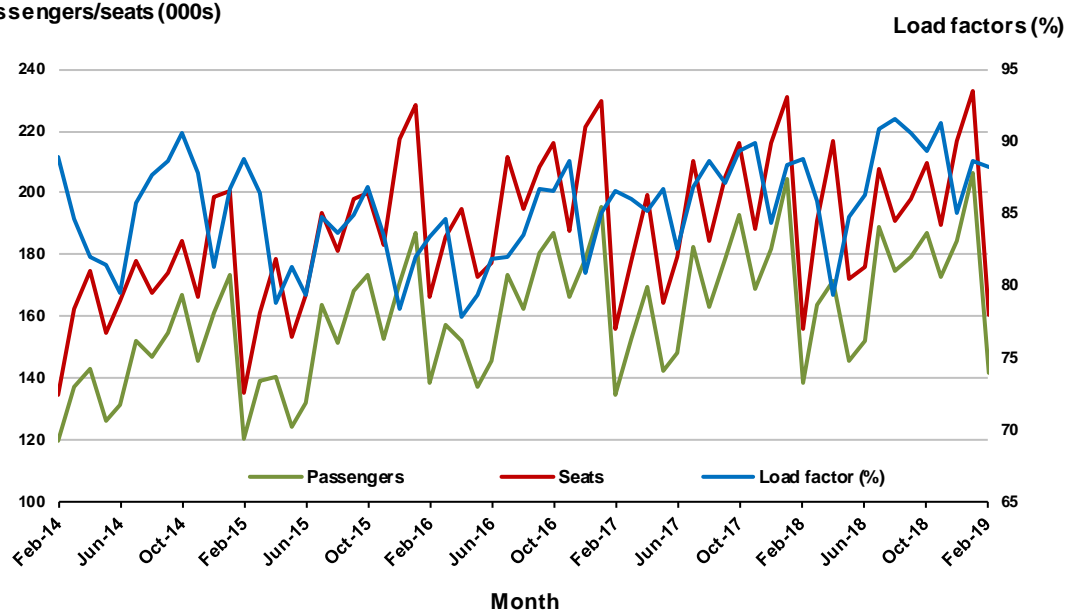
## 9. Gold Coast - Melbourne

### Monthly data

|                           | Feb 2018 | Feb 2019 | % Change |
|---------------------------|----------|----------|----------|
| Passengers carried (000s) | 138.4    | 141.7    | 2.3      |
| Seats (000s)              | 156.0    | 160.7    | 3.0      |
| Load factor %             | 88.8     | 88.2     | -0.6 *   |
| Aircraft trips            | 833      | 846      | 1.6      |

\* percentage point difference

### Passengers/seats (000s)

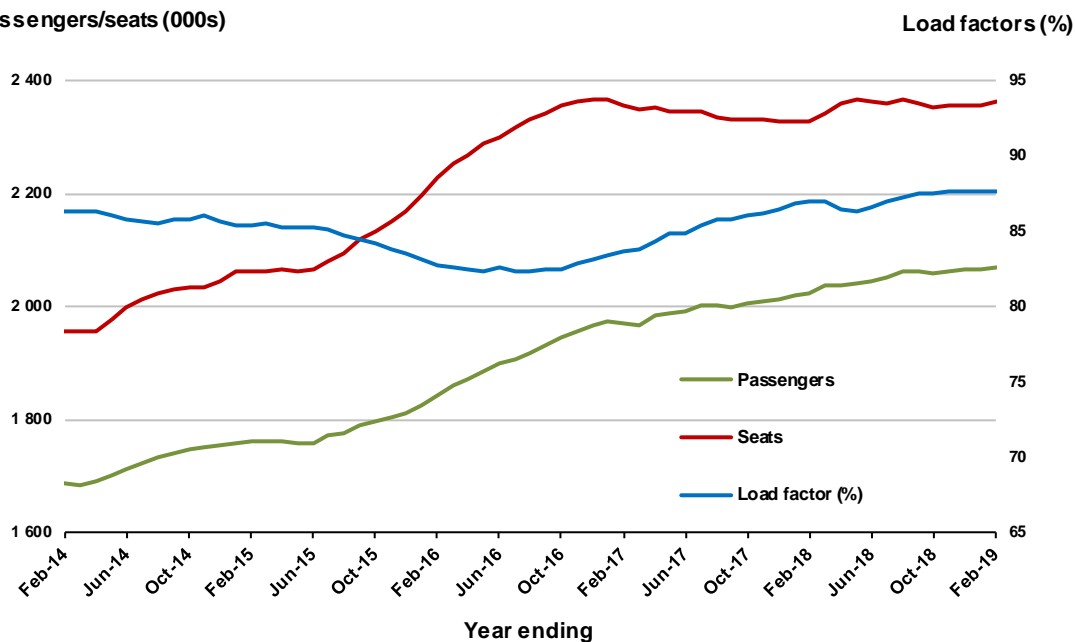


### Moving annual data

|                           | YE Feb 2018 | YE Feb 2019 | % Change |
|---------------------------|-------------|-------------|----------|
| Passengers carried (000s) | 2 025.2     | 2 069.6     | 2.2      |
| Seats (000s)              | 2 328.0     | 2 361.7     | 1.4      |
| Load factor %             | 87.0        | 87.6        | 0.6 *    |
| Aircraft trips            | 12 393      | 12 464      | 0.6      |

\* percentage point difference

### Passengers/seats (000s)



## 10. Perth - Sydney

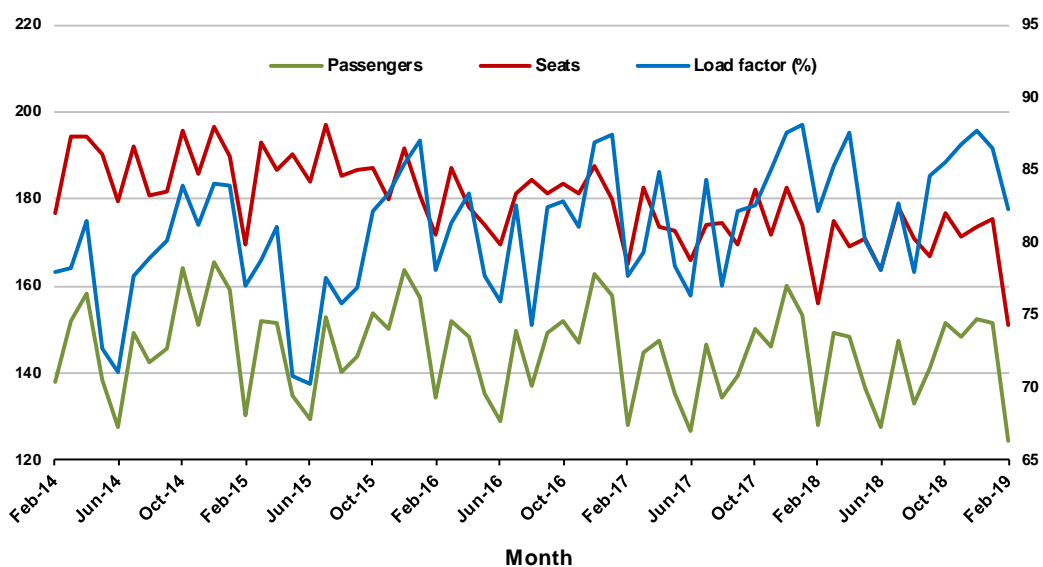
### Monthly data

|                           | Feb 2018 | Feb 2019 | % Change |
|---------------------------|----------|----------|----------|
| Passengers carried (000s) | 128.2    | 124.4    | -2.9     |
| Seats (000s)              | 156.2    | 151.1    | -3.3     |
| Load factor %             | 82.1     | 82.3     | 0.2 *    |
| Aircraft trips            | 683      | 699      | 2.3      |

\* percentage point difference

### Passengers/seats (000s)

### Load factors (%)



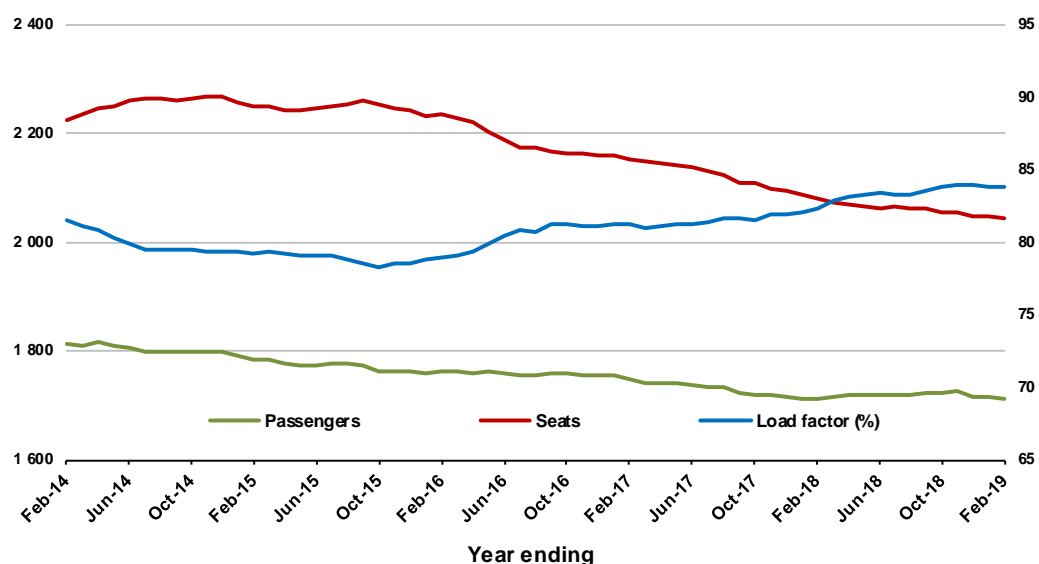
### Moving annual data

|                           | YE Feb 2018 | YE Feb 2019 | % Change |
|---------------------------|-------------|-------------|----------|
| Passengers carried (000s) | 1 712.1     | 1 711.4     | 0.0      |
| Seats (000s)              | 2 079.3     | 2 042.3     | -1.8     |
| Load factor %             | 82.3        | 83.8        | 1.5 *    |
| Aircraft trips            | 9 037       | 9 123       | 1.0      |

\* percentage point difference

### Passengers/seats (000s)

### Load factors (%)



## TOP FIFTY REGIONAL AIRPORTS

**Table 10: Top fifty regional airports (000s) — passenger movements, monthly**

|                                       | <b>Airport</b>     | <b>Feb 2018</b> | <b>Feb 2019</b> | <b>% Change</b> |
|---------------------------------------|--------------------|-----------------|-----------------|-----------------|
| 1                                     | Cairns             | 304.2           | 283.5           | -6.8            |
| 2                                     | Hobart             | 223.0           | 231.9           | 4.0             |
| 3                                     | Launceston         | 114.0           | 117.3           | 2.9             |
| 4                                     | Townsville         | 108.1           | 103.8           | -4.0            |
| 5                                     | Darwin             | 103.3           | 101.3           | -2.0            |
| 6                                     | Newcastle          | 92.8            | 92.1            | -0.8            |
| 7                                     | Mackay             | 58.6            | 62.0            | 5.8             |
| 8                                     | Rockhampton        | 38.7            | 40.5            | 4.6             |
| 9                                     | Alice Springs      | 41.3            | 39.1            | -5.3            |
| 10                                    | Ballina            | 41.6            | 38.2            | -8.3            |
| 11                                    | Karratha           | 32.4            | 33.8            | 4.3             |
| 12                                    | Hamilton Island    | 33.3            | 31.2            | -6.2            |
| 13                                    | Ayers Rock         | 29.0            | 29.6            | 2.0             |
| 14                                    | Proserpine         | 37.3            | 29.3            | -21.4           |
| 15                                    | Port Hedland       | 26.3            | 28.5            | 8.6             |
| 16                                    | Coffs Harbour      | 30.2            | 28.5            | -5.7            |
| 17                                    | Newman             | 23.3            | 26.0            | 11.4            |
| 18                                    | Kalgoorlie         | 20.6            | 22.7            | 9.9             |
| 19                                    | Broome             | 21.8            | 20.6            | -5.8            |
| 20                                    | Mildura            | 19.9            | 19.1            | -3.6            |
| 21                                    | Gladstone          | 18.7            | 17.9            | -4.2            |
| 22                                    | Albury             | 18.2            | 17.4            | -4.4            |
| 23                                    | Dubbo              | 16.9            | 16.1            | -4.7            |
| 24                                    | Mount Isa          | 14.7            | 16.1            | 9.4             |
| 25                                    | Port Macquarie     | 16.3            | 16.0            | -1.8            |
| 26                                    | Emerald            | 12.5            | 14.9            | 19.0            |
| 27                                    | Wagga Wagga        | 16.3            | 14.8            | -9.5            |
| 28                                    | Paraburdoo         | 12.6            | 14.2            | 12.6            |
| 29                                    | Tamworth           | 13.8            | 13.3            | -3.5            |
| 30                                    | Port Lincoln       | 13.7            | 12.8            | -6.2            |
| 31                                    | Bundaberg          | 12.0            | 11.2            | -6.2            |
| 32                                    | Devonport          | 11.0            | 11.2            | 1.5             |
| 33                                    | Hervey Bay         | 11.7            | 10.7            | -8.7            |
| 34                                    | Armidale           | 9.7             | 10.0            | 3.1             |
| 35                                    | Moranbah           | 7.6             | 8.5             | 11.4            |
| 36                                    | Geraldton          | 10.2            | 8.4             | -17.6           |
| 37                                    | Toowoomba Wellcamp | 10.2            | 7.9             | -22.2           |
| 38                                    | Roma               | 6.3             | 7.1             | 13.0            |
| 39                                    | Griffith           | 5.4             | 6.6             | 21.7            |
| 40                                    | Mount Gambier      | 6.3             | 6.5             | 4.0             |
| 41                                    | Orange             | 5.7             | 6.4             | 13.0            |
| 42                                    | Whyalla            | 5.6             | 6.2             | 11.8            |
| 43                                    | Kununurra          | 5.4             | 6.1             | 13.1            |
| 44                                    | Olympic Dam        | 5.4             | 6.0             | 10.9            |
| 45                                    | Burnie             | 4.8             | 5.8             | 22.1            |
| 46                                    | Thursday Island    | 6.2             | 5.7             | -8.3            |
| 47                                    | Merimbula          | 5.1             | 5.4             | 6.9             |
| 48                                    | Gove               | 5.8             | 5.4             | -7.4            |
| 49                                    | Albany             | 4.8             | 5.1             | 5.2             |
| 50                                    | Broken Hill        | 5.3             | 4.9             | -6.9            |
| <b>Total top 50 regional airports</b> |                    | <b>1 697.8</b>  | <b>1 677.5</b>  | <b>-1.2</b>     |
| <b>Total regional airports</b>        |                    | <b>1 803.9</b>  | <b>1 781.2</b>  | <b>-1.3</b>     |
| <b>Total domestic network</b>         |                    | <b>9 065.4</b>  | <b>8 998.6</b>  | <b>-0.7</b>     |

Note: Airport passenger movement numbers are the sum of passenger arrivals and departures at each airport.

Regional airports are defined as airports which are, according to the Australian Bureau of Statistics

"The Australian Statistical Geography Standard (ASGS)", not based in Major Urban areas.



**Table 11: Top fifty regional airports (000s) — passenger movements, annual**

| <b>Airport</b>                        | <b>YE Feb 2018</b> | <b>YE Feb 2019</b> | <b>% Change</b> |
|---------------------------------------|--------------------|--------------------|-----------------|
| 1 Cairns                              | 4 330.0            | 4 271.0            | -1.4            |
| 2 Hobart                              | 2 544.3            | 2 697.1            | 6.0             |
| 3 Darwin                              | 1 795.3            | 1 731.3            | -3.6            |
| 4 Townsville                          | 1 607.9            | 1 642.6            | 2.2             |
| 5 Launceston                          | 1 345.6            | 1 387.8            | 3.1             |
| 6 Newcastle                           | 1 286.6            | 1 255.7            | -2.4            |
| 7 Mackay                              | 794.9              | 852.2              | 7.2             |
| 8 Alice Springs                       | 617.0              | 617.4              | 0.1             |
| 9 Rockhampton                         | 552.3              | 554.0              | 0.3             |
| 10 Ballina                            | 519.2              | 534.6              | 3.0             |
| 11 Karratha                           | 436.9              | 445.3              | 1.9             |
| 12 Proserpine                         | 451.8              | 434.0              | -3.9            |
| 13 Hamilton Island                    | 399.7              | 426.3              | 6.7             |
| 14 Ayers Rock                         | 368.5              | 419.9              | 13.9            |
| 15 Broome                             | 398.4              | 414.8              | 4.1             |
| 16 Coffs Harbour                      | 415.6              | 401.0              | -3.5            |
| 17 Port Hedland                       | 348.1              | 377.7              | 8.5             |
| 18 Newman                             | 288.0              | 311.3              | 8.1             |
| 19 Kalgoorlie                         | 256.9              | 294.7              | 14.7            |
| 20 Mildura                            | 257.6              | 268.7              | 4.3             |
| 21 Albury                             | 270.5              | 257.8              | -4.7            |
| 22 Gladstone                          | 278.0              | 250.8              | -9.8            |
| 23 Dubbo                              | 236.1              | 217.0              | -8.1            |
| 24 Mount Isa                          | 201.7              | 214.0              | 6.1             |
| 25 Port Macquarie                     | 226.9              | 213.8              | -5.8            |
| 26 Wagga Wagga                        | 226.5              | 213.3              | -5.8            |
| 27 Emerald                            | 195.7              | 197.3              | 0.8             |
| 28 Tamworth                           | 198.6              | 188.1              | -5.3            |
| 29 Paraburdoo                         | 167.4              | 180.7              | 7.9             |
| 30 Port Lincoln                       | 171.6              | 168.7              | -1.7            |
| 31 Hervey Bay                         | 172.9              | 161.4              | -6.7            |
| 32 Bundaberg                          | 172.3              | 160.3              | -7.0            |
| 33 Devonport                          | 148.2              | 147.1              | -0.7            |
| 34 Toowoomba Wellcamp                 | 151.7              | 131.7              | -13.2           |
| 35 Armidale                           | 132.8              | 129.0              | -2.9            |
| 36 Geraldton                          | 113.0              | 112.0              | -0.9            |
| 37 Kununurra                          | 104.0              | 108.3              | 4.2             |
| 38 Moranbah                           | 112.3              | 105.7              | -5.8            |
| 39 Thursday Island                    | 99.9               | 100.3              | 0.3             |
| 40 Roma                               | 84.1               | 89.0               | 5.9             |
| 41 Learmonth                          | 83.4               | 87.9               | 5.4             |
| 42 Gove                               | 84.5               | 83.2               | -1.5            |
| 43 Griffith                           | 74.2               | 82.3               | 11.0            |
| 44 Weipa                              | 78.1               | 80.8               | 3.4             |
| 45 Mount Gambier                      | 81.1               | 80.5               | -0.8            |
| 46 Orange                             | 66.8               | 78.4               | 17.4            |
| 47 Whyalla                            | 66.2               | 77.0               | 16.3            |
| 48 Olympic Dam                        | 72.7               | 76.0               | 4.5             |
| 49 Burnie                             | 62.3               | 73.0               | 17.1            |
| 50 Broken Hill                        | 63.3               | 69.6               | 10.0            |
| <b>Total top 50 regional airports</b> | <b>23 211.2</b>    | <b>23 472.3</b>    | <b>1.1</b>      |
| <b>Total regional airports</b>        | <b>24 563.8</b>    | <b>24 879.9</b>    | <b>1.3</b>      |
| <b>Total domestic network</b>         | <b>120 496.2</b>   | <b>122 075.5</b>   | <b>1.3</b>      |

Note: Airport passenger movement numbers are the sum of passenger arrivals and departures at each airport. Regional airports are defined as airports which are, according to the Australian Bureau of Statistics "The Australian Statistical Geography Standard (ASGS)", not based in Major Urban areas.

## DOMESTIC CHARTER ACTIVITY

**Table 12: Charter passengers carried and aircraft trips - annual activity**

|                                       | YE Feb 2018 | YE Feb 2019 | % Change |
|---------------------------------------|-------------|-------------|----------|
| Total domestic charter passengers     | 2 447 464   | 2 506 136   | 2.4      |
| Total domestic charter aircraft trips | 46 578      | 44 088      | -5.3     |

Note: Helicopter, joyflights and sightseeing charter flights not included.

**Table 13: Charter passengers carried and aircraft trips - monthly activity**

|                                       | Feb 2018 | Feb 2019 | % Change |
|---------------------------------------|----------|----------|----------|
| Total domestic charter passengers     | 188 818  | 200 980  | 6.4      |
| Total domestic charter aircraft trips | 3 504    | 3 456    | -1.4     |

Note: Helicopter, joyflights and sightseeing charter flights not included.

**Table 14: Domestic airports - charter activity - annual**

|  | YE Feb 2018 | YE Feb 2019 | % Change |
|--|-------------|-------------|----------|
| Total domestic charter passenger movements | 4 894 928   | 5 012 272   | 2.4      |
| Total domestic charter aircraft movements  | 93 156      | 88 176      | -5.3     |
| Perth airport charter passenger movements  | 1 847 083   | 1 901 555   | 2.9      |
| Perth airport charter aircraft movements   | 31 485      | 30 127      | -4.3     |

Note: Helicopter, joyflights and sightseeing charter flights not included.

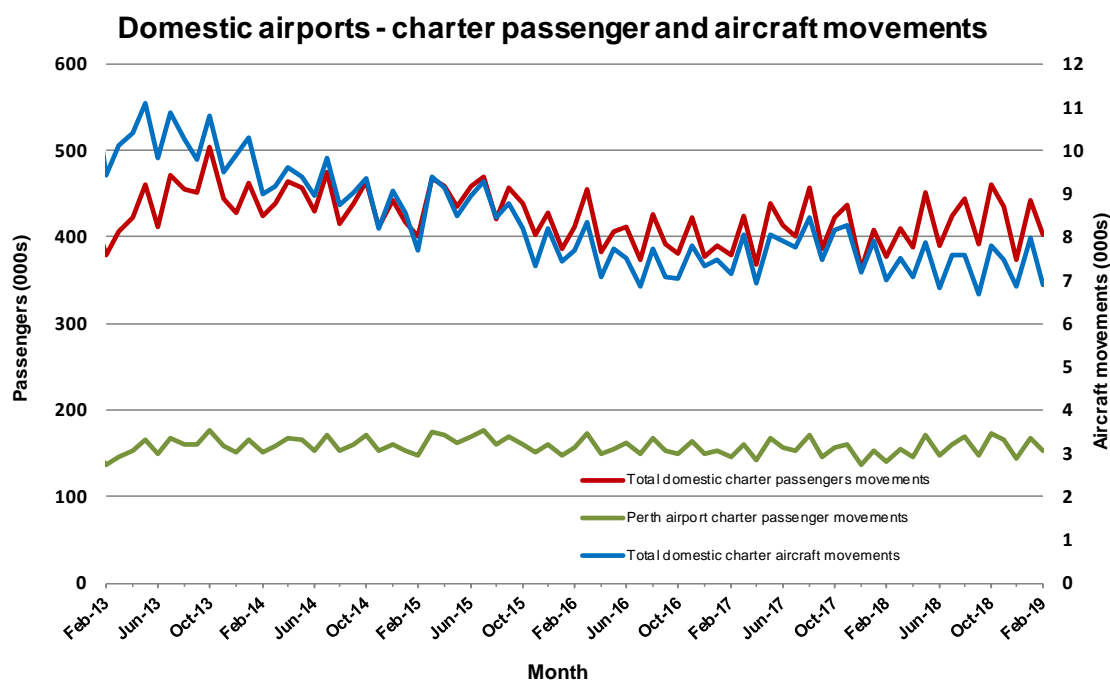
Charter passenger and aircraft movement numbers are the sum of arrivals and departures at each airport.

**Table 15: Domestic airports - charter activity - monthly**

|  | Feb 2018 | Feb 2019 | % Change |
|--|----------|----------|----------|
| Total domestic charter passenger movements | 377 636  | 401 960  | 6.4      |
| Total domestic charter aircraft movements  | 7 008    | 6 912    | -1.4     |
| Perth airport charter passenger movements  | 140 530  | 152 922  | 8.8      |
| Perth airport charter aircraft movements   | 2 317    | 2 379    | 2.7      |

Note: Helicopter, joyflights and sightseeing charter flights not included.

Charter passenger and aircraft movement numbers are the sum of arrivals and departures at each airport.



## DEFINITIONS

|   |   |
|---|---|
| Aircraft Trips                          | The number of flight stages. A return flight counts as two aircraft trips.  |
| Airport Movements                       | Airport movements (passenger and cargo) are measured once on arrival and once on departure. Each domestic trip generates two movements at airports. For example, a trip from Melbourne to Sydney will be counted twice, as a passenger departure at Melbourne and as a passenger arrival at Sydney. At the national level, the sum of all domestic airport traffic will therefore be equal to twice the number of trips undertaken. |
| Available Seat Kilometres (ASKs)        | Calculated by multiplying the number of seats available on each flight stage, by the distance in kilometres between the ports. The distances used are Great Circle Distances.   |
| City-Pair                               | The ports shown make up the city-pair route. Passenger movements shown for a city pair reflect total traffic in both directions.  |
| Flight Stage                            | The operation of an aircraft from take-off to landing.  |
| Load Factor                             | The total revenue passenger kilometres performed as a percentage of the total available seat kilometres.  |
| Passengers Carried                      | Revenue passengers carried.   |
| Regular Public Transport Services (RPT) | All air service operations in which aircraft are available for the transport of members of the public and are conducted in accordance with fixed schedules. It does not include charter or other non-scheduled operations.  |
| Revenue Passengers                      | All passengers paying any fare. Frequent flyer redemption travellers are regarded as revenue passengers.  |
| Revenue Passenger Kilometres (RPKs)     | Calculated by multiplying the number of revenue passengers travelling on each flight stage, by the distance in kilometres between the ports. The distances used are Great Circle Distances.   |
| Traffic on board by stages              | The total of all traffic (revenue passengers) on each flight stage between two directly connected airports.   |
| ..                                      | Data not included   |
| NA                                      | Not applicable  |