



Australian Government

Department of Infrastructure, Regional Development and Cities

Bureau of Infrastructure, Transport and Regional Economics

STATISTICAL REPORT



Aviation

Domestic aviation activity
December 2018

© Commonwealth of Australia 2019

ISSN: 1832 - 1968

Ownership of intellectual property rights in this publication

Unless otherwise noted, copyright (and any other intellectual property rights, if any) in this publication is owned by the Commonwealth of Australia (referred to below as the Commonwealth).

Disclaimer

The material contained in this publication is made available on the understanding that the Commonwealth is not providing professional advice, and that users exercise their own skill and care with respect to its use, and seek independent advice if necessary.

The Commonwealth makes no representations or warranties as to the contents or accuracy of the information contained in this publication. To the extent permitted by law, the Commonwealth disclaims liability to any person or organisation in respect of anything done, or omitted to be done, in reliance upon information contained in this publication.

Creative Commons licence

With the exception of (a) the Coat of Arms; and (b) the Department of Infrastructure, Regional Development and Cities' photos and graphics, copyright in this publication is licensed under a Creative Commons Attribution 3.0 Australia Licence.

Creative Commons Attribution 3.0 Australia Licence is a standard form licence agreement that allows you to copy, communicate and adapt this publication provided that you attribute the work to the Commonwealth and abide by the other licence terms. A summary of the licence terms is available from <http://creativecommons.org/licenses/by/3.0/au/deed.en>.

The full licence terms are available from <http://creativecommons.org/licenses/by/3.0/au/legalcode>.

Use of the Coat of Arms

The Department of the Prime Minister and Cabinet sets the terms under which the Coat of Arms is used. Please refer to the Department's Commonwealth Coat of Arms and Government branding web page <http://www.dpmc.gov.au/guidelines/index.cfm#brand> and, in particular, the Guidelines on the use of the Commonwealth Coat of Arms publication.

An appropriate citation for this report is:

Bureau of Infrastructure, Transport and Regional Economics (BITRE), 2019, Domestic aviation activity, Statistical Report, BITRE, Canberra ACT.

Contact us

This publication is available in PDF format. All other rights are reserved, including in relation to any Departmental logos or trade marks which may exist. For enquiries regarding the licence and any use of this publication, please contact:

Bureau of Infrastructure, Transport and Regional Economics (BITRE)
Department of Infrastructure, Regional Development and Cities
GPO Box 501, Canberra ACT 2601, Australia
Telephone: (international) +61 2 6274 7210
Fax: (international) +61 2 6274 6855
Email: bitre@infrastructure.gov.au
Website: www.bitre.gov.au

Inquiries

Should you require additional information about the statistics contained in this publication:

Nebojsa Pavlovic

Telephone (02) 6274 6817 or Facsimile (02) 6274 7727

Electronic mail: AVSTATS@infrastructure.gov.au

Nebojsa.Pavlovic@infrastructure.gov.au

Web site: <http://www.bitre.gov.au/statistics/aviation/domestic.aspx>

FOREWORD

This report provides an overview of domestic (including charter) commercial aviation activity in Australia for the month of December 2018.

The data cover revenue passengers carried by Australian-registered operators of scheduled regular public transport services over Australian flight stages and fixed-wing charter operators. These estimates include passengers carried between domestic airports on international flights operated by these carriers. The passengers carried refer to traffic on board by stages.

Estimates of passengers and aircraft movements for charter aviation are included in this publication, where BITRE confidentiality standards are met.

Individual routes shown are restricted to those with an average exceeding 8 000 passengers per month over the previous six months where two or more airlines operate in competition. For the month of December 2018, there were 65 such routes.

Information on the total network for the month of December 2018 and on the Regular Public Transport (RPT) network for the month of December 2018 is presented on page 2, with estimates for the year ended December 2018 presented on page 3.

Detailed information on the 65 individual routes can be found in the RPT summary pages 4-13 of this publication.

The top ten airports in terms of RPT passenger movements are shown on page 14.

Data on domestic RPT cargo movements at the top five cargo airports are provided on page 15. The table includes cargo carried on passenger flights operated by the Qantas group (including Jetstar), Virgin Australia, Air North and Skippers as well as the cargo carried by dedicated freighter aircraft operated by Qantas Freight, Toll Priority and Virgin Australia Cargo.

The long-term trends for the top ten competitive RPT routes are presented graphically on pages 16-25.

Domestic RPT passenger movements at the top 50 regional airports are presented on pages 26-27.

Tables providing estimates of domestic charter aviation activity are shown on page 28. BITRE confidentiality standards restrict publication of detailed estimates for individual Australian airports, with the exception of Perth Airport.

A list of definitions can be found on page 29.

This report was prepared by the Aviation Statistics Section of the Bureau of Infrastructure, Transport and Regional Economics with data provided by airlines.

Estimates are included where data were not available and data presented in this publication may contain revisions to previously published data.

Where figures have been rounded, discrepancies may occur between sums of component items and totals, and in percentage changes which are derived from figures prior to rounding.

CONTENTS

Highlights	1
Total network.....	2
RPT network.....	2
Top competitive routes.....	4
Top ten airports – passenger movements.....	14
Top five airports – cargo movements.....	15
Top ten routes	16
1. Melbourne – Sydney	16
2. Brisbane – Sydney.....	17
3. Brisbane – Melbourne	18
4. Gold Coast – Sydney	19
5. Adelaide – Melbourne	20
6. Melbourne – Perth	21
7. Gold Coast – Melbourne	22
8. Adelaide – Sydney	23
9. Hobart – Melbourne	24
10. Perth – Sydney	25
Top fifty regional airports	26
Domestic charter activity.....	28
Definitions	29

This page is intentionally left blank.

HIGHLIGHTS

There were 5.33 million passengers carried on Australian domestic commercial aviation (including charter operations) in December 2018, a decrease of 1.8 per cent on December 2017. For the month of December 2018 there were 55 205 aircraft trips, a decrease of 1.9 per cent compared to December 2017.

5.14 million passengers were carried on RPT flights in December 2018, a decrease of 2.0 per cent on December 2017. This was the first decrease in the number of RPT passengers since October 2015 (excluding the decrease recorded in February 2017, which was largely due to the 2016 leap year).

For the year ending December 2018 there were 61.08 million RPT passengers, an increase of 1.9 per cent on the year ending December 2017.

RPT revenue passenger kilometres (RPKs) performed were 6.07 billion for the month, down 2.1 per cent compared with December 2017. Capacity, measured by available seat kilometres (ASKs), decreased by 1.6 per cent compared with December 2017 to a total of 7.53 billion.

With RPT passenger traffic decreasing at a faster rate than capacity the industry wide load factor (RPKs/ASKs) decreased from 81.0 per cent in December 2017 to 80.6 per cent in December 2018. Load factors on individual routes decreased on 36 of the 65 RPT routes.

For the month of December 2018, Melbourne – Sydney remained Australia's busiest RPT route with 746 815 passengers, a decrease of 1.4 per cent compared with December 2017. It was followed by Brisbane – Sydney with 407 337 passengers (down 1.1 per cent) and Brisbane – Melbourne with 302 663 passengers (down 2.1 per cent).

The greatest percentage decrease in RPT passenger numbers, compared to December 2017, was on the Proserpine – Sydney route (down 24.6 per cent). There were large decreases on a number of other routes, including Brisbane – Proserpine (down 17.3 per cent), Alice Springs – Darwin (down 12.9 per cent) and Darwin – Perth (down 12.7 per cent).

Routes with traffic increases in December 2018 compared with December 2017 included Kalgoorlie – Perth (up 17.8 per cent), Brisbane – Hobart (up 11.2 per cent) and Adelaide – Alice Springs (up 7.1 per cent).

In December 2018, Sydney remained Australia's busiest domestic airport with 2.32 million passenger movements, followed by Melbourne with 2.20 million passenger movements and Brisbane with 1.46 million passenger movements.

Total cargo movements at Australian airports on domestic RPT flights were 41.5 thousand tonnes in December 2018, a decrease of 2.2 per cent compared with December 2017.

In December 2018, there were 2.07 million domestic passenger movements through regional airports, 1.7 per cent lower than in December 2017. Out of the top 50 regional airports, the largest decrease was at Toowoomba Wellcamp airport (down 23.0 per cent on December 2017), while the strongest increase was recorded at Griffith airport (up 19.8 per cent on December 2017).

Fixed-wing charter operators carried 186.8 thousand passengers in December 2018, an increase of 3.0 per cent on December 2017. Perth Airport accounted for 38.4 per cent of all charter passengers in Australia.

TOTAL NETWORK

Summary of monthly commercial aviation activity

	Dec 2017	Dec 2018	% Change
Total passengers carried (millions)	5.43	5.33	-1.8
Aircraft trips (000s)	56.3	55.2	-1.9

Note: Regular Public Transport and charter aviation activity
Helicopter, joyflights and sightseeing charter flights not included.

RPT NETWORK

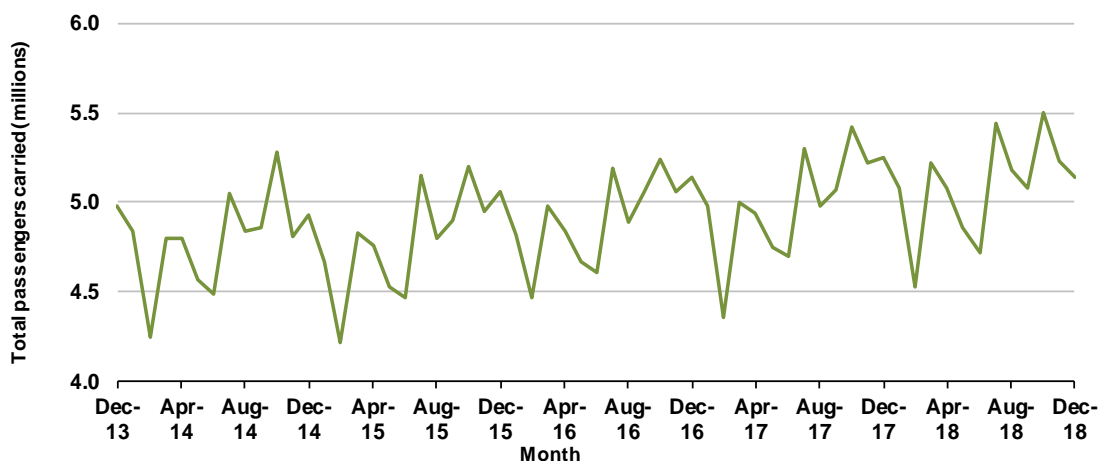
Summary of monthly RPT activity

	Dec 2017	Dec 2018	% Change
Total passengers carried (millions)	5.25	5.14	-2.0
Revenue passenger kilometres (billions)	6.20	6.07	-2.1
Available seats (millions)	6.62	6.49	-2.0
Available seat kilometres (billions)	7.65	7.53	-1.6
Load factor %	81.0	80.6	-0.4 *
Aircraft trips (000s)	52.7	51.8	-1.7

* percentage point difference

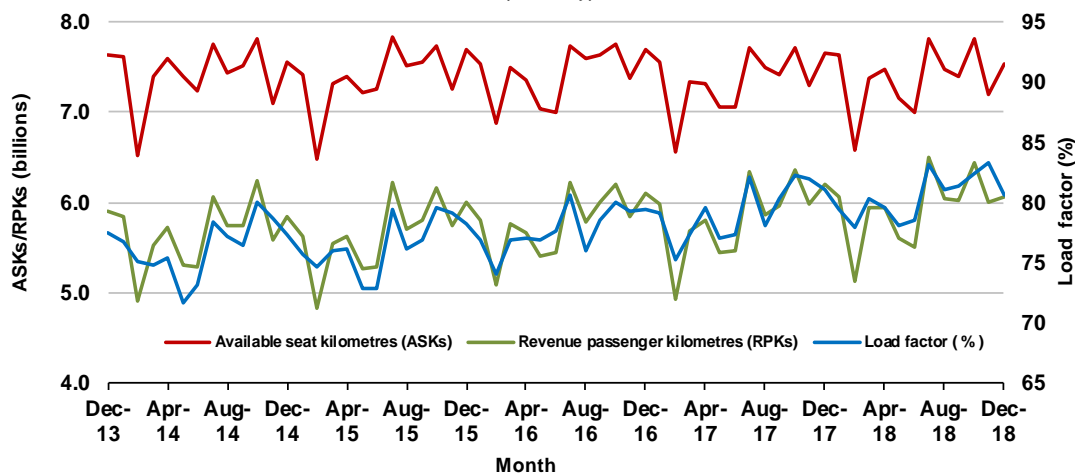
Domestic RPT passenger traffic

(monthly)



RPT Network utilisation

(monthly)



TOTAL NETWORK

Summary of annual commercial aviation activity

	YE Dec 2017	YE Dec 2018	% Change
Total passengers carried (millions)	62.41	63.56	1.8
Aircraft trips (000s)	684.6	673.6	-1.6

Note: Regular Public Transport and charter aviation activity
Helicopter, joyflights and sightseeing charter flights not included.

RPT NETWORK

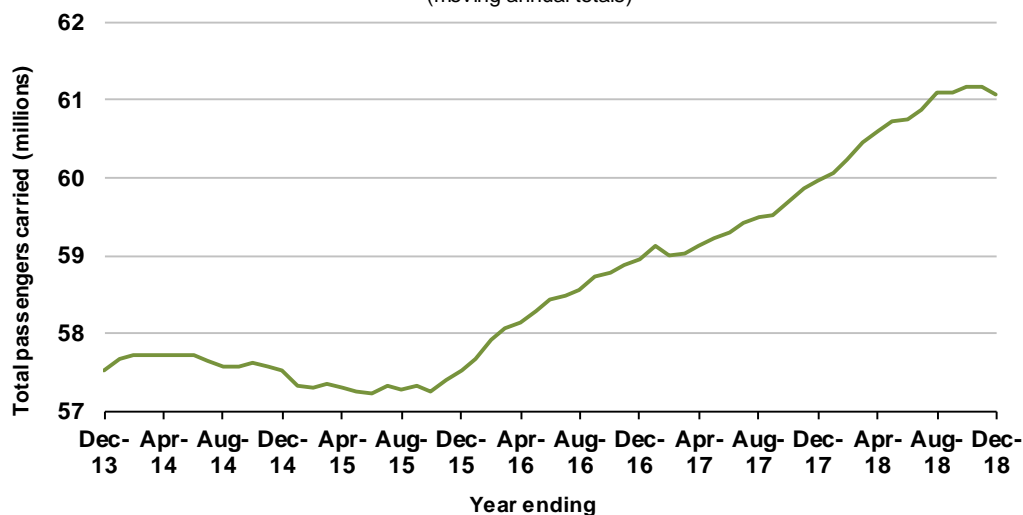
Summary of annual RPT activity

	YE Dec 2017	YE Dec 2018	% Change
Total passengers carried (millions)	59.97	61.08	1.9
Revenue passenger kilometres (billions)	70.01	71.26	1.8
Available seats (millions)	77.13	77.34	0.3
Available seat kilometres (billions)	88.19	88.45	0.3
Load factor %	79.4	80.6	1.2 *
Aircraft trips (000s)	638.2	629.5	-1.3

* percentage point difference

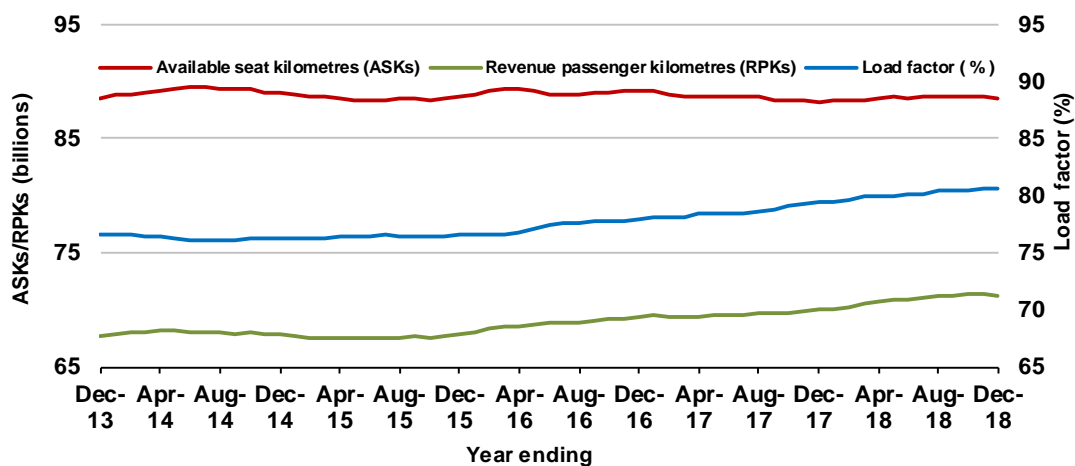
Domestic RPT passenger traffic

(moving annual totals)



RPT Network utilisation

(moving annual totals)



TOP COMPETITIVE ROUTES

Table 1: Passengers carried (000s) — annual activity

	City-Pair	YE Dec 2017	YE Dec 2018	%Change
1	Melbourne - Sydney	9 097.1	9 250.9	1.7
2	Brisbane - Sydney	4 746.3	4 825.7	1.7
3	Brisbane - Melbourne	3 541.1	3 569.2	0.8
4	Gold Coast - Sydney	2 740.7	2 722.8	-0.7
5	Adelaide - Melbourne	2 456.4	2 498.3	1.7
6	Melbourne - Perth	2 033.2	2 113.2	3.9
7	Gold Coast - Melbourne	2 012.6	2 064.2	2.6
8	Adelaide - Sydney	1 898.3	1 906.5	0.4
9	Perth - Sydney	1 716.5	1 716.6	0.0
10	Hobart - Melbourne	1 630.3	1 652.8	1.4
11	Brisbane - Cairns	1 377.9	1 320.1	-4.2
12	Canberra - Melbourne	1 133.0	1 175.7	3.8
13	Cairns - Sydney	1 129.3	1 133.5	0.4
14	Brisbane - Townsville	960.2	996.0	3.7
15	Brisbane - Perth	969.1	956.8	-1.3
16	Launceston - Melbourne	923.2	955.4	3.5
17	Canberra - Sydney	949.2	953.6	0.5
18	Cairns - Melbourne	841.3	857.7	1.9
19	Adelaide - Brisbane	849.6	846.5	-0.4
20	Brisbane - Mackay	697.9	743.3	6.5
21	Hobart - Sydney	655.9	705.6	7.6
22	Brisbane - Canberra	594.3	643.3	8.3
23	Adelaide - Perth	614.1	634.8	3.4
24	Sunshine Coast - Sydney	582.7	628.8	7.9
25	Brisbane - Newcastle	590.7	582.7	-1.3
26	Melbourne - Sunshine Coast	485.8	544.9	12.2
27	Brisbane - Rockhampton	522.1	513.7	-1.6
28	Melbourne - Newcastle	476.1	490.3	3.0
29	Karratha - Perth	436.9	440.8	0.9
30	Ballina - Sydney	403.9	436.0	7.9
31	Brisbane - Darwin	406.2	376.6	-7.3
32	Perth - Port Hedland	337.3	362.4	7.4
33	Coffs Harbour - Sydney	347.2	339.8	-2.1
34	Broome - Perth	313.4	338.9	8.1
35	Darwin - Sydney	321.7	310.7	-3.4
36	Darwin - Melbourne	306.3	307.3	0.3
37	Newman - Perth	284.9	305.7	7.3
38	Launceston - Sydney	286.4	287.9	0.5
39	Kalgoorlie - Perth	241.9	278.6	15.2
40	Brisbane - Gladstone	281.6	253.0	-10.2
41	Brisbane - Proserpine	259.5	250.5	-3.5
42	Brisbane - Hobart	212.7	229.0	7.7
43	Albury - Sydney	224.0	226.3	1.0
44	Melbourne - Mildura	212.0	226.1	6.6
45	Adelaide - Gold Coast	214.2	220.5	2.9
46	Hamilton Island - Sydney	196.0	204.7	4.4
47	Brisbane - Emerald	197.6	195.2	-1.2
48	Adelaide - Canberra	181.6	195.2	7.5
49	Ayers Rock - Sydney	191.5	194.8	1.7
50	Darwin - Perth	198.4	194.3	-2.0

continued

Table 1: (continued) Passengers carried (000s) — annual activity

	City-Pair	YE Dec 2017	YE Dec 2018	% Change
51	Dubbo - Sydney	190.8	188.7	-1.1
52	Port Macquarie - Sydney	192.3	186.9	-2.8
53	Sydney - Wagga Wagga	182.8	181.3	-0.8
54	Sydney - Tamworth	180.7	175.1	-3.1
55	Adelaide - Port Lincoln	171.5	169.6	-1.1
56	Sydney - Townsville	160.6	169.1	5.3
57	Brisbane - Bundaberg	173.9	162.8	-6.3
58	Cairns - Townsville	141.8	149.4	5.4
59	Proserpine - Sydney	47.4	133.9	NA (a)
60	Adelaide - Alice Springs	124.5	130.3	4.7
61	Brisbane - Mount Isa	125.3	129.8	3.6
62	Brisbane - Hamilton Island	128.2	124.3	-3.0
63	Armidale - Sydney	126.2	121.8	-3.5
64	Geraldton - Perth	111.9	113.3	1.2
65	Alice Springs - Darwin	118.8	109.7	-7.6
	Total domestic network	59 968.0	61 081.9	1.9

(a) Proserpine - Sydney route included from September 2017, prior data not shown.

Table 2: Passengers carried (000s) — monthly activity

	City-Pair	Dec 2017	Dec 2018	% Change
1	Melbourne - Sydney	757.6	746.8	-1.4
2	Brisbane - Sydney	412.0	407.3	-1.1
3	Brisbane - Melbourne	309.0	302.7	-2.1
4	Gold Coast - Sydney	253.1	239.8	-5.3
5	Adelaide - Melbourne	216.5	209.9	-3.0
6	Melbourne - Perth	192.7	194.8	1.1
7	Gold Coast - Melbourne	182.2	184.2	1.1
8	Adelaide - Sydney	170.3	163.0	-4.3
9	Hobart - Melbourne	156.4	159.1	1.8
10	Perth - Sydney	159.9	152.2	-4.8
11	Brisbane - Cairns	117.6	108.6	-7.7
12	Cairns - Sydney	99.9	96.5	-3.4
13	Launceston - Melbourne	93.5	92.1	-1.5
14	Canberra - Melbourne	92.3	90.5	-1.9
15	Brisbane - Perth	90.0	82.4	-8.4
16	Brisbane - Townsville	84.4	81.7	-3.3
17	Adelaide - Brisbane	79.5	74.1	-6.9
18	Cairns - Melbourne	70.3	73.4	4.4
19	Hobart - Sydney	68.2	70.4	3.3
20	Canberra - Sydney	69.5	65.3	-6.0
21	Brisbane - Mackay	60.9	62.6	2.7
22	Sunshine Coast - Sydney	58.3	61.1	4.9
23	Adelaide - Perth	56.7	56.3	-0.6
24	Brisbane - Canberra	53.0	51.9	-2.1
25	Brisbane - Newcastle	52.1	49.6	-4.8
26	Melbourne - Sunshine Coast	47.2	47.2	0.1
27	Brisbane - Rockhampton	41.6	42.3	1.8
28	Ballina - Sydney	41.1	41.7	1.5
29	Melbourne - Newcastle	43.0	40.9	-4.9
30	Karratha - Perth	32.9	32.2	-2.1
31	Launceston - Sydney	32.7	31.5	-3.6
32	Brisbane - Darwin	31.8	29.9	-6.1
33	Coffs Harbour - Sydney	29.1	27.9	-4.0
34	Perth - Port Hedland	24.9	26.5	6.5
35	Brisbane - Hobart	22.7	25.3	11.2
36	Broome - Perth	25.5	24.2	-4.9
37	Darwin - Sydney	25.2	22.6	-10.5
38	Darwin - Melbourne	22.6	22.4	-1.0
39	Newman - Perth	20.9	22.3	6.8
40	Kalgoorlie - Perth	18.8	22.1	17.8
41	Brisbane - Proserpine	26.7	22.0	-17.3
42	Brisbane - Gladstone	21.0	20.0	-4.7
43	Hamilton Island - Sydney	20.4	19.3	-5.3
44	Adelaide - Gold Coast	20.2	19.3	-4.3
45	Albury - Sydney	17.5	18.0	2.8
46	Melbourne - Mildura	17.7	18.0	1.7
47	Sydney - Townsville	16.5	16.9	2.4
48	Port Macquarie - Sydney	16.8	15.9	-5.0
49	Adelaide - Canberra	15.4	15.0	-2.6
50	Brisbane - Emerald	14.6	14.7	0.5

continued

Table 2: (continued) Passengers carried (000s) — monthly activity

	City-Pair	Dec 2017	Dec 2018	% Change
51	Adelaide - Port Lincoln	14.9	14.7	-1.4
52	Darwin - Perth	15.9	13.9	-12.7
53	Dubbo - Sydney	14.3	13.7	-4.4
54	Sydney - Tamworth	13.8	13.5	-2.6
55	Sydney - Wagga Wagga	13.6	13.4	-1.5
56	Brisbane - Bundaberg	14.0	12.9	-8.0
57	Ayers Rock - Sydney	13.9	12.6	-9.3
58	Brisbane - Hamilton Island	10.9	11.6	6.4
59	Cairns - Townsville	10.6	10.8	2.2
60	Adelaide - Alice Springs	9.7	10.4	7.1
61	Brisbane - Mount Isa	9.5	9.9	4.4
62	Armidale - Sydney	10.0	9.5	-5.3
63	Proserpine - Sydney	12.4	9.4	-24.6
64	Geraldton - Perth	8.7	8.8	1.1
65	Alice Springs - Darwin	7.5	6.5	-12.9
	Total domestic network	5 246.5	5 144.1	-2.0

Table 3: Available seats (000s) — monthly activity

	City-Pair	Dec 2017	Dec 2018	% Change
1	Melbourne - Sydney	873.2	849.9	-2.7
2	Brisbane - Sydney	482.5	470.0	-2.6
3	Brisbane - Melbourne	374.3	368.2	-1.6
4	Gold Coast - Sydney	290.1	272.9	-5.9
5	Adelaide - Melbourne	267.6	253.0	-5.4
6	Melbourne - Perth	217.0	223.1	2.8
7	Gold Coast - Melbourne	215.9	216.7	0.4
8	Adelaide - Sydney	203.1	190.7	-6.1
9	Hobart - Melbourne	198.9	205.0	3.1
10	Perth - Sydney	182.6	173.7	-4.9
11	Brisbane - Cairns	133.9	127.6	-4.7
12	Cairns - Sydney	116.9	115.8	-1.0
13	Launceston - Melbourne	118.3	120.2	1.6
14	Canberra - Melbourne	135.1	131.6	-2.5
15	Brisbane - Perth	104.3	96.7	-7.3
16	Brisbane - Townsville	108.0	100.5	-7.0
17	Adelaide - Brisbane	100.9	89.4	-11.4
18	Cairns - Melbourne	84.6	89.4	5.7
19	Hobart - Sydney	85.8	86.1	0.4
20	Canberra - Sydney	97.0	87.5	-9.8
21	Brisbane - Mackay	75.2	79.9	6.2
22	Sunshine Coast - Sydney	74.6	75.7	1.5
23	Adelaide - Perth	73.3	70.2	-4.2
24	Brisbane - Canberra	70.3	68.6	-2.5
25	Brisbane - Newcastle	70.2	66.6	-5.2
26	Melbourne - Sunshine Coast	59.1	59.5	0.6
27	Brisbane - Rockhampton	52.3	55.4	5.8
28	Ballina - Sydney	48.8	49.6	1.6
29	Melbourne - Newcastle	52.0	49.5	-4.9
30	Karratha - Perth	53.6	53.1	-0.9
31	Launceston - Sydney	38.6	38.0	-1.7
32	Brisbane - Darwin	41.3	41.6	0.7
33	Coffs Harbour - Sydney	37.9	37.1	-2.2
34	Perth - Port Hedland	40.7	43.9	7.8
35	Brisbane - Hobart	27.8	31.2	12.2
36	Broome - Perth	34.8	33.4	-3.9
37	Darwin - Sydney	35.8	35.0	-2.1
38	Darwin - Melbourne	30.6	30.6	-0.1
39	Newman - Perth	40.6	42.3	4.1
40	Kalgoorlie - Perth	32.8	36.9	12.5
41	Brisbane - Proserpine	32.0	30.2	-5.5
42	Brisbane - Gladstone	28.6	29.6	3.7
43	Hamilton Island - Sydney	29.3	26.7	-9.1
44	Adelaide - Gold Coast	24.1	24.3	0.8
45	Albury - Sydney	24.8	25.1	0.9
46	Melbourne - Mildura	27.3	27.6	1.1
47	Sydney - Townsville	19.7	19.7	0.2
48	Port Macquarie - Sydney	21.4	21.6	1.0
49	Adelaide - Canberra	22.6	21.9	-3.0
50	Brisbane - Emerald	21.9	22.6	3.3

continued

Table 3: (continued) Available seats (000s) — monthly activity

	City-Pair	Dec 2017	Dec 2018	% Change
51	Adelaide - Port Lincoln	22.8	23.6	3.6
52	Darwin - Perth	21.3	21.9	2.8
53	Dubbo - Sydney	19.9	19.8	-0.5
54	Sydney - Tamworth	21.2	21.0	-1.1
55	Sydney - Wagga Wagga	20.2	19.6	-3.3
56	Brisbane - Bundaberg	19.9	19.3	-3.2
57	Ayers Rock - Sydney	18.7	19.8	6.3
58	Brisbane - Hamilton Island	15.1	15.6	3.3
59	Cairns - Townsville	20.0	20.1	0.6
60	Adelaide - Alice Springs	15.2	15.8	4.1
61	Brisbane - Mount Isa	13.4	15.6	16.5
62	Armidale - Sydney	13.9	13.6	-2.5
63	Proserpine - Sydney	14.4	11.4	-20.6
64	Geraldton - Perth	17.0	17.1	0.6
65	Alice Springs - Darwin	14.7	13.9	-5.6
	Total domestic network	6 616.7	6 486.8	-2.0

Table 4: Load factors (%) — monthly activity

	City-Pair	Dec 2017	Dec 2018	% Point diff
1	Melbourne - Sydney	86.8	87.9	1.1
2	Brisbane - Sydney	85.4	86.7	1.3
3	Brisbane - Melbourne	82.6	82.2	-0.4
4	Gold Coast - Sydney	87.2	87.9	0.7
5	Adelaide - Melbourne	80.9	83.0	2.1
6	Melbourne - Perth	88.8	87.3	-1.5
7	Gold Coast - Melbourne	84.4	85.0	0.6
8	Adelaide - Sydney	83.9	85.5	1.6
9	Hobart - Melbourne	78.6	77.6	-1.0
10	Perth - Sydney	87.6	87.7	0.1
11	Brisbane - Cairns	87.8	85.1	-2.7
12	Cairns - Sydney	85.5	83.3	-2.2
13	Launceston - Melbourne	79.0	76.6	-2.4
14	Canberra - Melbourne	68.3	68.8	0.5
15	Brisbane - Perth	86.3	85.2	-1.1
16	Brisbane - Townsville	78.2	81.3	3.1
17	Adelaide - Brisbane	78.8	82.9	4.1
18	Cairns - Melbourne	83.1	82.1	-1.0
19	Hobart - Sydney	79.5	81.8	2.3
20	Canberra - Sydney	71.6	74.6	3.0
21	Brisbane - Mackay	81.0	78.4	-2.6
22	Sunshine Coast - Sydney	78.1	80.7	2.6
23	Adelaide - Perth	77.4	80.3	2.9
24	Brisbane - Canberra	75.4	75.7	0.3
25	Brisbane - Newcastle	74.2	74.5	0.3
26	Melbourne - Sunshine Coast	79.9	79.4	-0.5
27	Brisbane - Rockhampton	79.4	76.4	-3.0
28	Ballina - Sydney	84.2	84.1	-0.1
29	Melbourne - Newcastle	82.6	82.6	0.0
30	Karratha - Perth	61.3	60.6	-0.7
31	Launceston - Sydney	84.7	83.1	-1.6
32	Brisbane - Darwin	77.0	71.7	-5.3
33	Coffs Harbour - Sydney	76.7	75.4	-1.3
34	Perth - Port Hedland	61.4	60.4	-1.0
35	Brisbane - Hobart	81.8	81.0	-0.8
36	Broome - Perth	73.3	72.5	-0.8
37	Darwin - Sydney	70.4	64.4	-6.0
38	Darwin - Melbourne	73.9	73.2	-0.7
39	Newman - Perth	51.4	52.7	1.3
40	Kalgoorlie - Perth	57.3	60.0	2.7
41	Brisbane - Proserpine	83.3	72.9	-10.4
42	Brisbane - Gladstone	73.6	67.6	-6.0
43	Hamilton Island - Sydney	69.5	72.5	3.0
44	Adelaide - Gold Coast	83.6	79.4	-4.2
45	Albury - Sydney	70.6	71.9	1.3
46	Melbourne - Mildura	65.0	65.4	0.4
47	Sydney - Townsville	83.8	85.6	1.8
48	Port Macquarie - Sydney	78.6	73.9	-4.7
49	Adelaide - Canberra	68.1	68.4	0.3
50	Brisbane - Emerald	66.7	64.9	-1.8

continued

Table 4: (continued) Load factors (%) — monthly activity

	City-Pair	Dec 2017	Dec 2018	% Point diff
51	Adelaide - Port Lincoln	65.3	62.1	-3.2
52	Darwin - Perth	74.8	63.5	-11.3
53	Dubbo - Sydney	71.8	69.1	-2.7
54	Sydney - Tamworth	65.2	64.2	-1.0
55	Sydney - Wagga Wagga	67.3	68.6	1.3
56	Brisbane - Bundaberg	70.5	67.1	-3.4
57	Ayers Rock - Sydney	74.7	63.7	-11.0
58	Brisbane - Hamilton Island	72.2	74.3	2.1
59	Cairns - Townsville	52.9	53.7	0.8
60	Adelaide - Alice Springs	64.1	65.9	1.8
61	Brisbane - Mount Isa	71.0	63.6	-7.4
62	Armidale - Sydney	71.9	69.8	-2.1
63	Proserpine - Sydney	86.4	82.0	-4.4
64	Geraldton - Perth	51.0	51.3	0.3
65	Alice Springs - Darwin	50.8	46.9	-3.9
	Total domestic network	81.0	80.6	-0.4

Table 5: Aircraft trips ^(a) — monthly activity

	City-Pair	Dec 2017	Dec 2018	% Change
1	Melbourne - Sydney	4 875	4 740	-2.8
2	Brisbane - Sydney	2 944	2 844	-3.4
3	Brisbane - Melbourne	2 223	2 193	-1.3
4	Gold Coast - Sydney	1 628	1 537	-5.6
5	Adelaide - Melbourne	1 655	1 518	-8.3
6	Melbourne - Perth	987	1 111	12.6
7	Gold Coast - Melbourne	1 150	1 147	-0.3
8	Adelaide - Sydney	1 212	1 149	-5.2
9	Hobart - Melbourne	1 168	1 120	-4.1
10	Perth - Sydney	800	811	1.4
11	Brisbane - Cairns	836	842	0.7
12	Cairns - Sydney	648	606	-6.5
13	Launceston - Melbourne	863	855	-0.9
14	Canberra - Melbourne	896	845	-5.7
15	Brisbane - Perth	519	522	0.6
16	Brisbane - Townsville	746	675	-9.5
17	Adelaide - Brisbane	597	550	-7.9
18	Cairns - Melbourne	444	465	4.7
19	Hobart - Sydney	495	498	0.6
20	Canberra - Sydney	1 180	1 179	-0.1
21	Brisbane - Mackay	578	604	4.5
22	Sunshine Coast - Sydney	446	449	0.7
23	Adelaide - Perth	486	449	-7.6
24	Brisbane - Canberra	507	509	0.4
25	Brisbane - Newcastle	498	500	0.4
26	Melbourne - Sunshine Coast	343	333	-2.9
27	Brisbane - Rockhampton	627	647	3.2
28	Ballina - Sydney	304	303	-0.3
29	Melbourne - Newcastle	288	274	-4.9
30	Karratha - Perth	478	468	-2.1
31	Launceston - Sydney	221	212	-4.1
32	Brisbane - Darwin	249	248	-0.4
33	Coffs Harbour - Sydney	401	396	-1.2
34	Perth - Port Hedland	351	349	-0.6
35	Brisbane - Hobart	156	175	12.2
36	Broome - Perth	319	292	-8.5
37	Darwin - Sydney	212	200	-5.7
38	Darwin - Melbourne	174	173	-0.6
39	Newman - Perth	314	310	-1.3
40	Kalgoorlie - Perth	284	297	4.6
41	Brisbane - Proserpine	181	172	-5.0
42	Brisbane - Gladstone	376	390	3.7
43	Hamilton Island - Sydney	174	163	-6.3
44	Adelaide - Gold Coast	136	136	0.0
45	Albury - Sydney	440	445	1.1
46	Melbourne - Mildura	379	363	-4.2
47	Sydney - Townsville	112	113	0.9
48	Port Macquarie - Sydney	347	319	-8.1
49	Adelaide - Canberra	134	134	0.0
50	Brisbane - Emerald	289	336	16.3

continued

Table 5: (continued) Aircraft trips — monthly activity

	City-Pair	Dec 2017	Dec 2018	% Change
51	Adelaide - Port Lincoln	580	603	4.0
52	Darwin - Perth	129	127	-1.6
53	Dubbo - Sydney	425	421	-0.9
54	Sydney - Tamworth	331	330	-0.3
55	Sydney - Wagga Wagga	364	370	1.6
56	Brisbane - Bundaberg	275	297	8.0
57	Ayers Rock - Sydney	106	112	5.7
58	Brisbane - Hamilton Island	119	124	4.2
59	Cairns - Townsville	327	303	-7.3
60	Adelaide - Alice Springs	110	115	4.5
61	Brisbane - Mount Isa	141	141	0.0
62	Armidale - Sydney	326	325	-0.3
63	Proserpine - Sydney	80	63	-21.3
64	Geraldton - Perth	170	171	0.6
65	Alice Springs - Darwin	134	115	-14.2
	Total domestic network	52 689	51 769	-1.7

TOP TEN AIRPORTS – PASSENGER MOVEMENTS

Table 6: Top ten airports, RPT passenger movements (000s) - annual activity

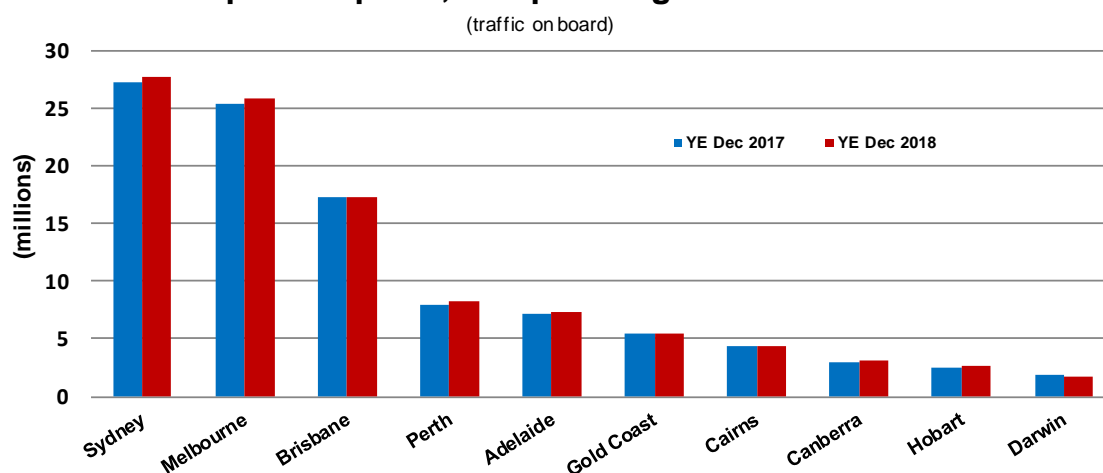
Airport	YE Dec 2017	YE Dec 2018	% Change	% of Total
1 Sydney	27 326.6	27 709.2	1.4	22.7
2 Melbourne	25 346.6	25 875.0	2.1	21.2
3 Brisbane	17 289.4	17 364.7	0.4	14.2
4 Perth	7 985.7	8 222.7	3.0	6.7
5 Adelaide	7 149.2	7 321.2	2.4	6.0
6 Gold Coast	5 420.0	5 489.4	1.3	4.5
7 Cairns	4 312.1	4 309.4	-0.1	3.5
8 Canberra	3 022.4	3 154.4	4.4	2.6
9 Hobart	2 510.3	2 676.6	6.6	2.2
10 Darwin	1 802.4	1 744.5	-3.2	1.4
Total top ten airports	102 164.9	103 867.1	1.7	85.0
Total domestic network	119 936.0	122 163.9	1.9	100.0

Table 7: Top ten airports, RPT passenger movements (000s) - monthly activity

Airport	Dec 2017	Dec 2018	% Change	% of Total
1 Sydney	2 380.7	2 321.7	-2.5	22.6
2 Melbourne	2 216.0	2 196.3	-0.9	21.3
3 Brisbane	1 508.3	1 464.9	-2.9	14.2
4 Perth	705.8	702.2	-0.5	6.8
5 Adelaide	640.9	619.4	-3.4	6.0
6 Gold Coast	504.4	491.1	-2.6	4.8
7 Cairns	369.3	359.9	-2.5	3.5
8 Hobart	255.5	266.7	4.4	2.6
9 Canberra	245.5	238.5	-2.8	2.3
10 Launceston	140.4	138.8	-1.2	1.3
Total top ten airports	8 966.7	8 799.3	-1.9	85.5
Total domestic network	10 493.1	10 288.1	-2.0	100.0

Note: Airport passenger movement numbers are the sum of passenger arrivals and departures at each airport.

Top ten airports, RPT passenger movements



TOP FIVE AIRPORTS – CARGO MOVEMENTS

Table 8: Top five airports, domestic RPT cargo movements (000s tonnes) - annual activity

Airport	YE Dec 2017	YE Dec 2018	% Change	% of Total
1 Melbourne	132.0	133.9	1.5	28.3
2 Sydney	106.2	107.4	1.1	22.6
3 Brisbane	66.5	73.9	11.1	15.6
4 Perth	64.6	67.2	4.1	14.2
5 Adelaide	26.9	27.5	2.2	5.8
Total top five airports	396.2	409.9	3.5	86.5
Total domestic network	454.8	474.0	4.2	100.0

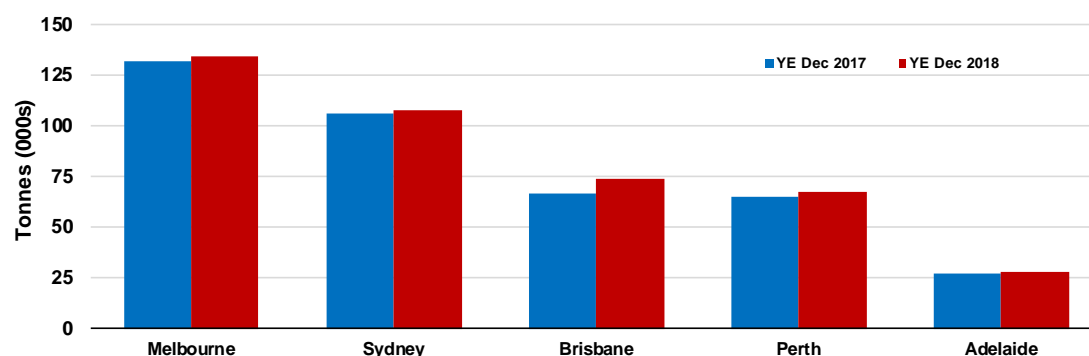
Table 9: Top five airports, domestic RPT cargo movements (000s tonnes) - monthly activity

Airport	Dec 2017	Dec 2018	% Change	% of Total
1 Melbourne	12.5	11.1	-11.0	26.7
2 Sydney	9.9	9.3	-5.8	22.4
3 Brisbane	6.2	6.7	8.0	16.2
4 Perth	6.0	5.9	-2.0	14.3
5 Adelaide	2.6	2.2	-13.2	5.4
Total top five airports	37.2	35.3	-5.1	84.9
Total domestic network	42.4	41.5	-2.2	100.0

Note: Airport cargo tonnes are the sum of cargo tonnes on arrivals and departures at each airport.

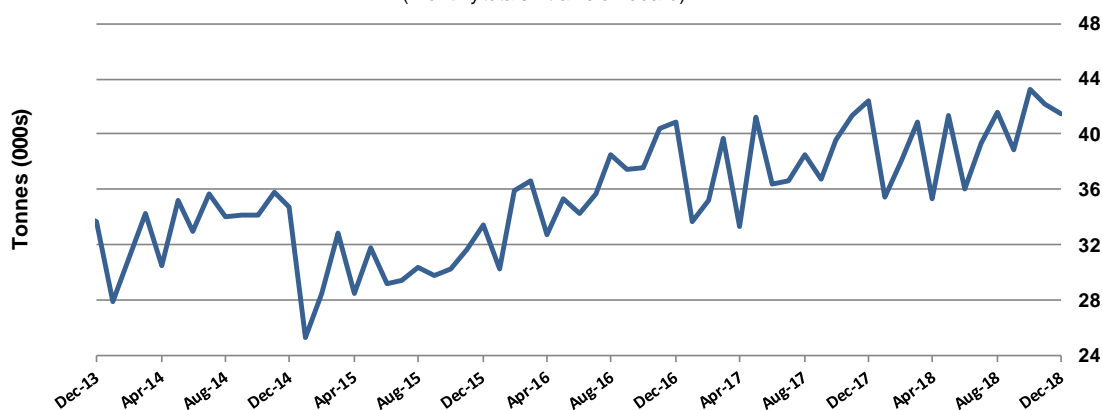
Top five airports, cargo movements

(Domestic cargo traffic - traffic on board)



Total domestic network - cargo movement

(monthly totals - traffic on board)



Note: Airport cargo tonnes are the sum of cargo tonnes on arrivals and departures at each airport.

TOP TEN ROUTES

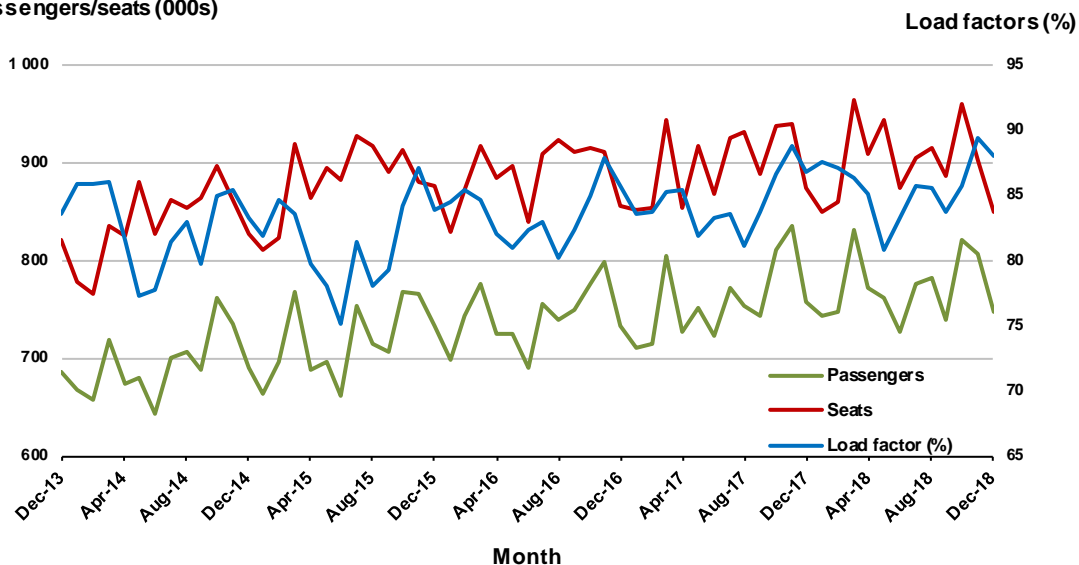
1. Melbourne - Sydney

Monthly data

	Dec 2017	Dec 2018	% Change
Passengers carried (000s)	757.6	746.8	-1.4
Seats (000s)	873.2	849.9	-2.7
Load factor %	86.8	87.9	1.1 *
Aircraft trips	4 875	4 740	-2.8

* percentage point difference

Passengers/seats (000s)

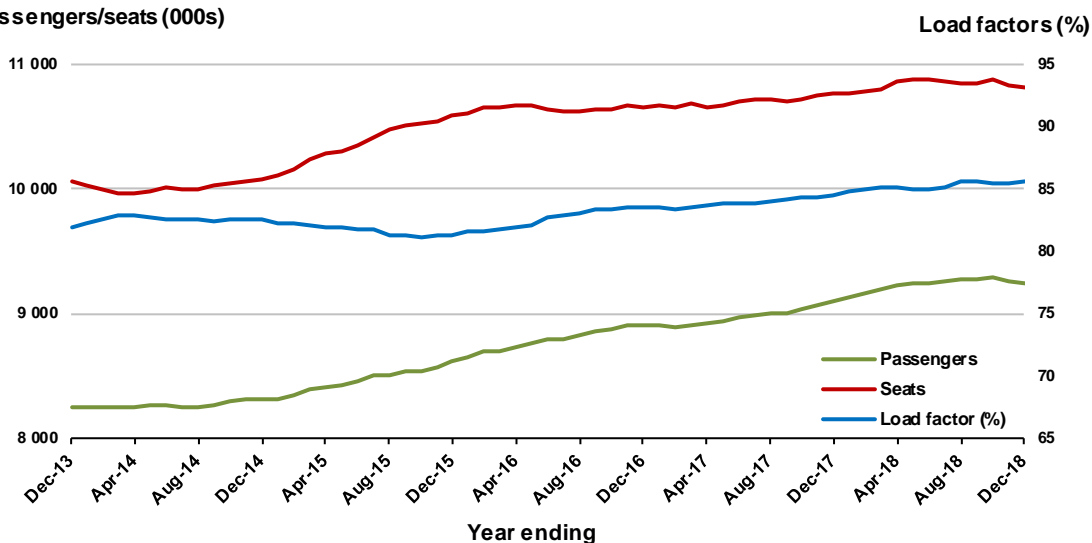


Moving annual data

	YE Dec 2017	YE Dec 2018	% Change
Passengers carried (000s)	9 097.1	9 250.9	1.7
Seats (000s)	10 772.6	10 809.4	0.3
Load factor %	84.5	85.6	1.1 *
Aircraft trips	60 059	60 024	-0.1

* percentage point difference

Passengers/seats (000s)

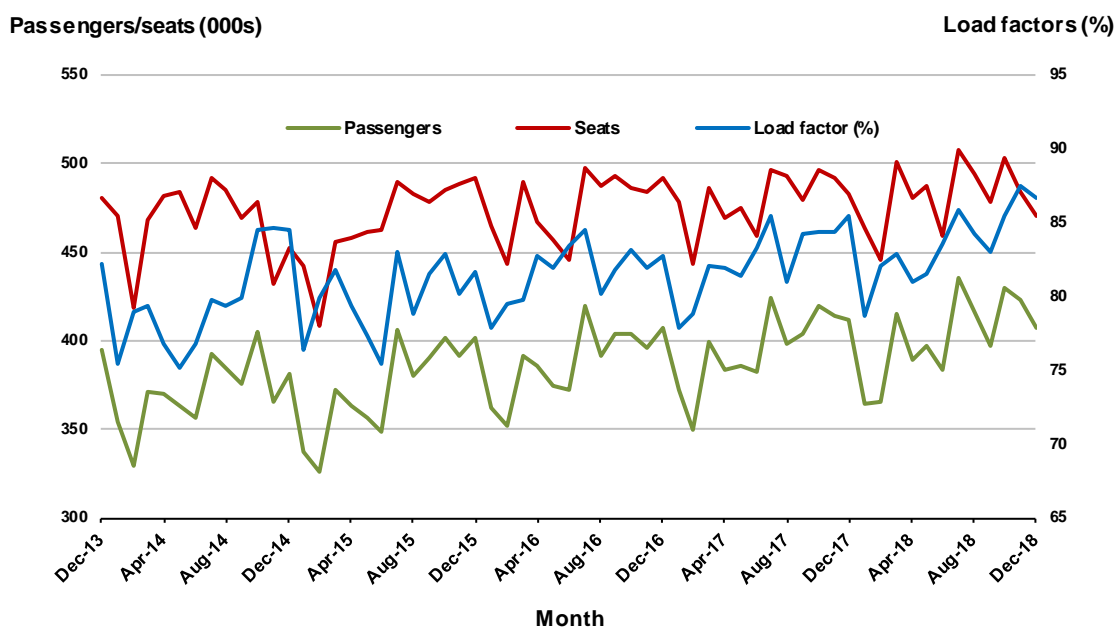


2. Brisbane - Sydney

Monthly data

	Dec 2017	Dec 2018	% Change
Passengers carried (000s)	412.0	407.3	-1.1
Seats (000s)	482.5	470.0	-2.6
Load factor %	85.4	86.7	1.3 *
Aircraft trips	2 944	2 844	-3.4

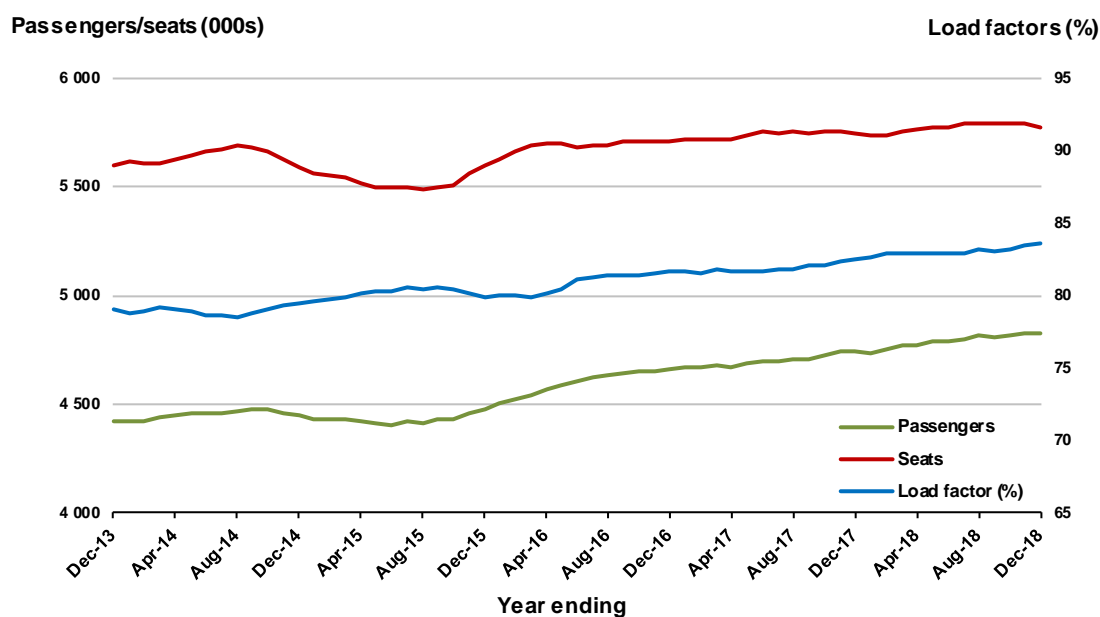
* percentage point difference



Moving annual data

	YE Dec 2017	YE Dec 2018	% Change
Passengers carried (000s)	4 746.3	4 825.7	1.7
Seats (000s)	5 749.6	5 774.3	0.4
Load factor %	82.5	83.6	1.0 *
Aircraft trips	35 401	35 087	-0.9

* percentage point difference

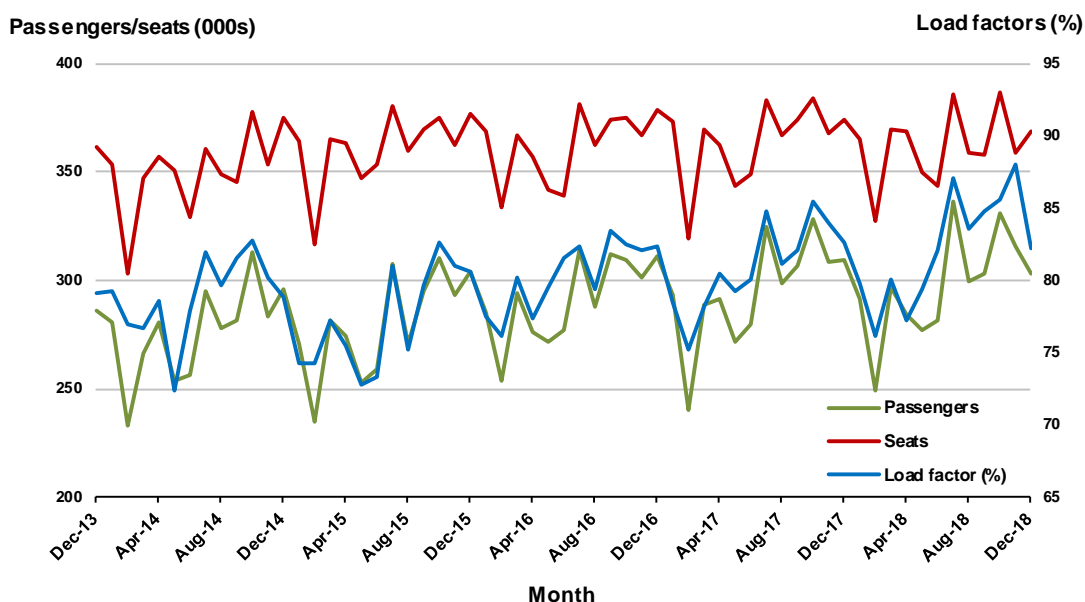


3. Brisbane - Melbourne

Monthly data

	Dec 2017	Dec 2018	% Change
Passengers carried (000s)	309.0	302.7	-2.1
Seats (000s)	374.3	368.2	-1.6
Load factor %	82.6	82.2	-0.4 *
Aircraft trips	2 223	2 193	-1.3

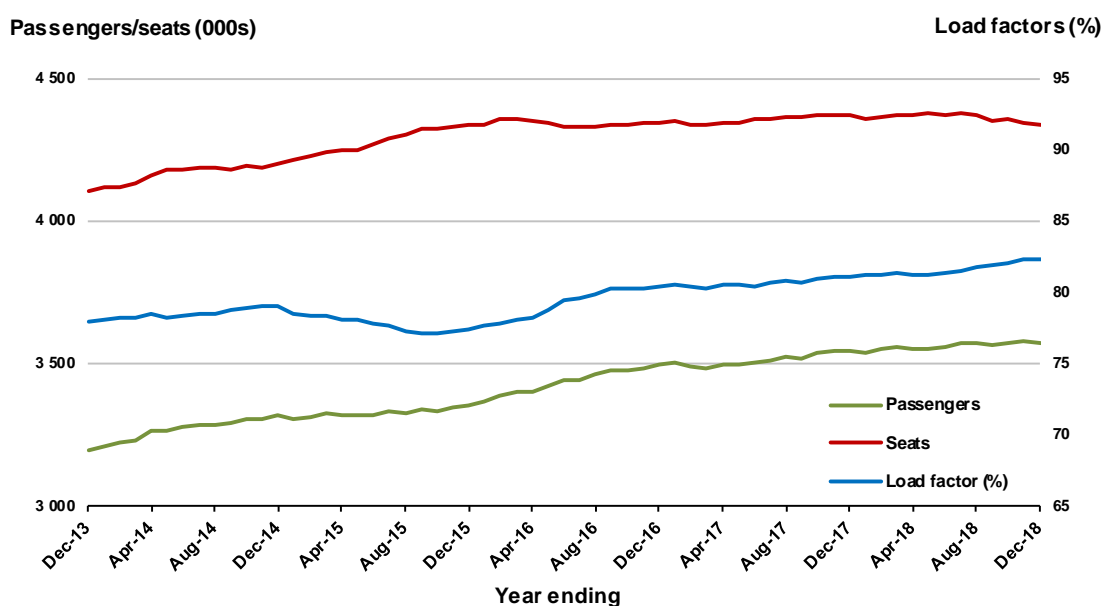
* percentage point difference



Moving annual data

	YE Dec 2017	YE Dec 2018	% Change
Passengers carried (000s)	3 541.1	3 569.2	0.8
Seats (000s)	4 367.8	4 338.5	-0.7
Load factor %	81.1	82.3	1.2 *
Aircraft trips	25 806	25 501	-1.2

* percentage point difference



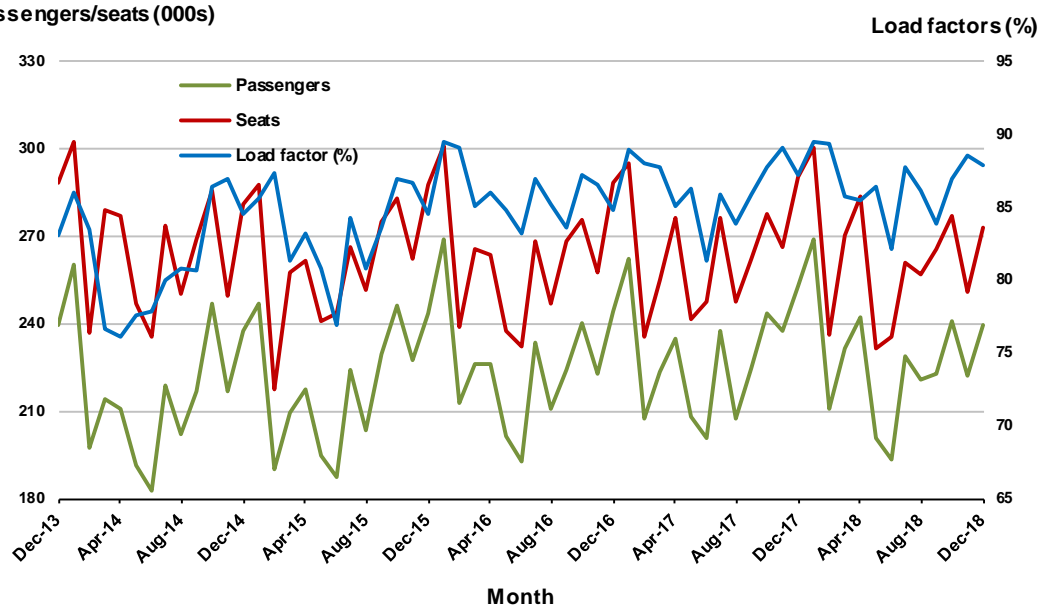
4. Gold Coast - Sydney

Monthly data

	Dec 2017	Dec 2018	% Change
Passengers carried (000s)	253.1	239.8	-5.3
Seats (000s)	290.1	272.9	-5.9
Load factor %	87.2	87.9	0.7 *
Aircraft trips	1 628	1 537	-5.6

* percentage point difference

Passengers/seats (000s)

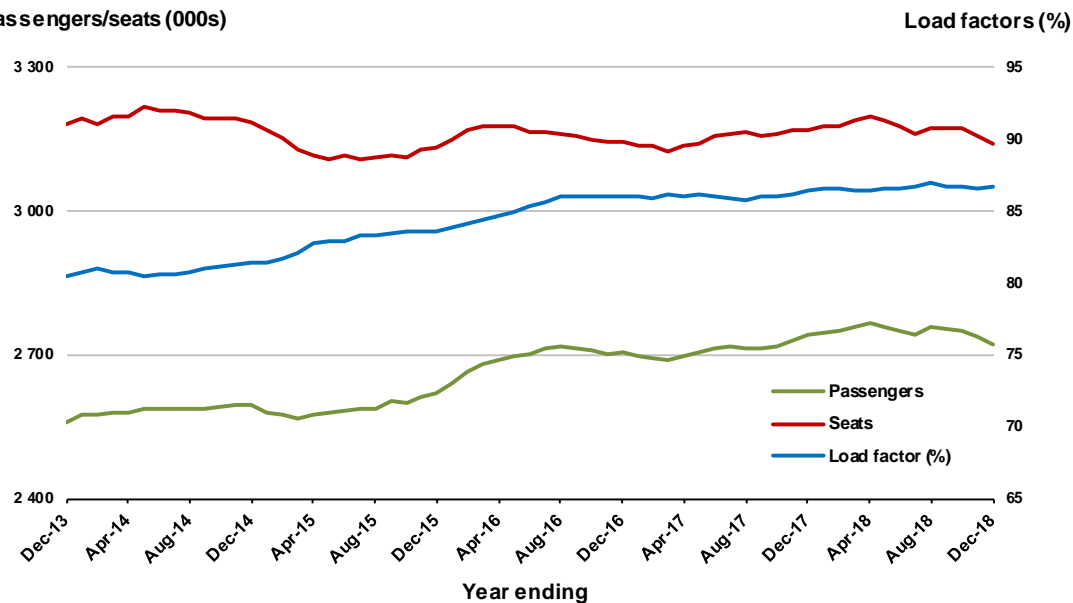


Moving annual data

	YE Dec 2017	YE Dec 2018	% Change
Passengers carried (000s)	2 740.7	2 722.8	-0.7
Seats (000s)	3 170.5	3 141.1	-0.9
Load factor %	86.4	86.7	0.2 *
Aircraft trips	18 038	17 838	-1.1

* percentage point difference

Passengers/seats (000s)



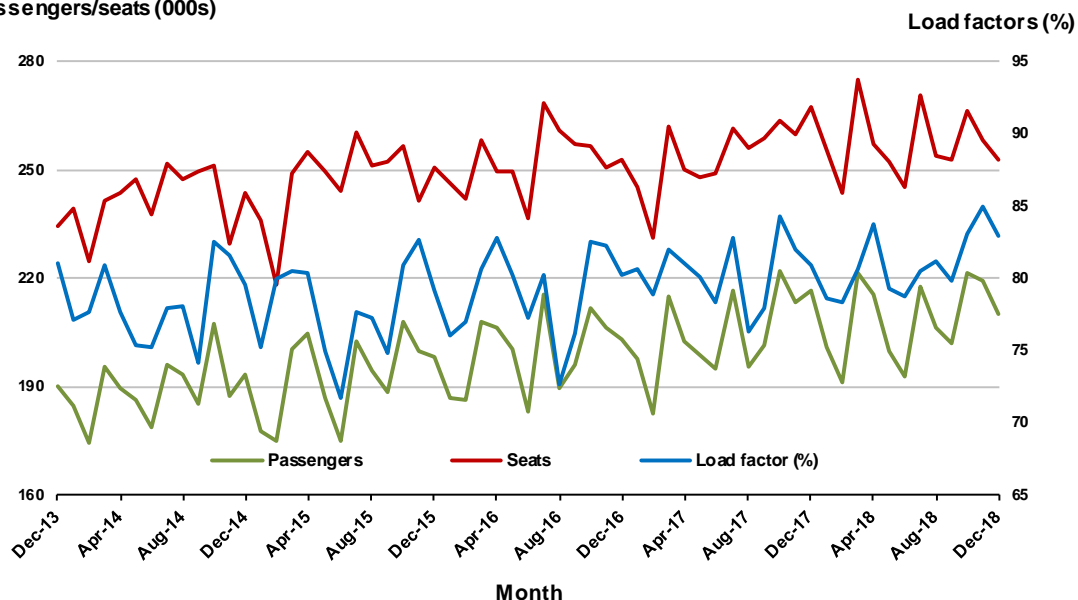
5. Adelaide - Melbourne

Monthly data

	Dec 2017	Dec 2018	% Change
Passengers carried (000s)	216.5	209.9	-3.0
Seats (000s)	267.6	253.0	-5.4
Load factor %	80.9	83.0	2.1 *
Aircraft trips	1 655	1 518	-8.3

* percentage point difference

Passengers/seats (000s)

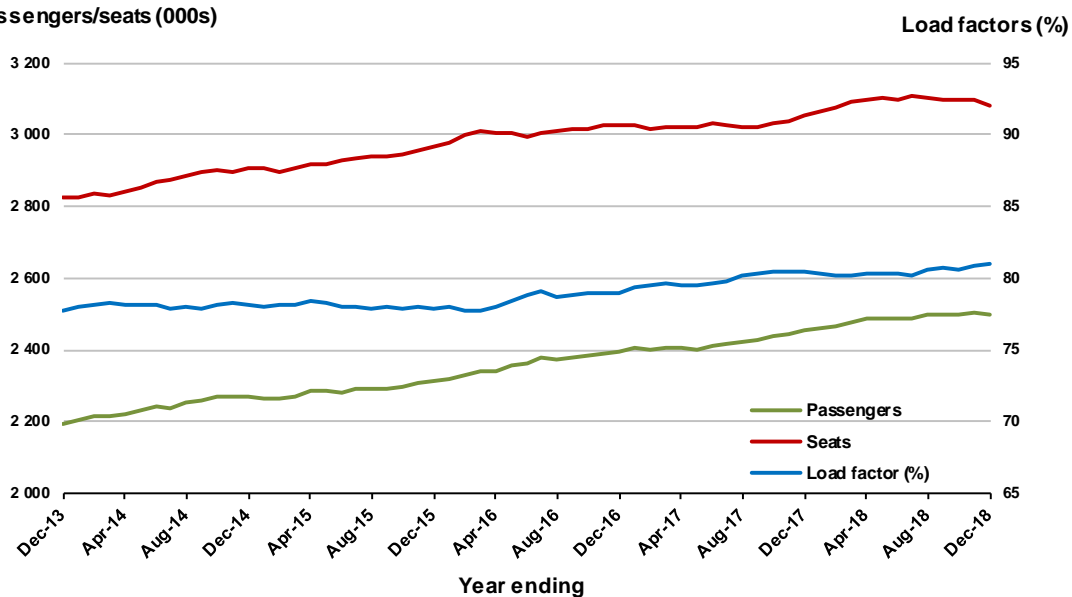


Moving annual data

	YE Dec 2017	YE Dec 2018	% Change
Passengers carried (000s)	2 456.4	2 498.3	1.7
Seats (000s)	3 053.3	3 083.6	1.0
Load factor %	80.5	81.0	0.6 *
Aircraft trips	19 128	19 104	-0.1

* percentage point difference

Passengers/seats (000s)



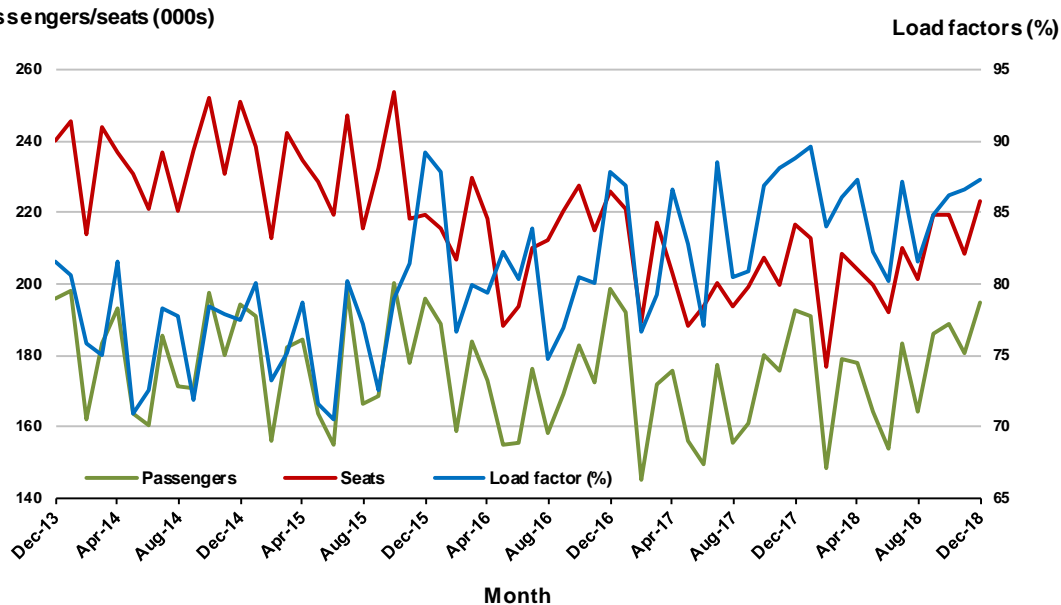
6. Melbourne - Perth

Monthly data

	Dec 2017	Dec 2018	% Change
Passengers carried (000s)	192.7	194.8	1.1
Seats (000s)	217.0	223.1	2.8
Load factor %	88.8	87.3	-1.5 *
Aircraft trips	987	1 111	12.6

* percentage point difference

Passengers/seats (000s)

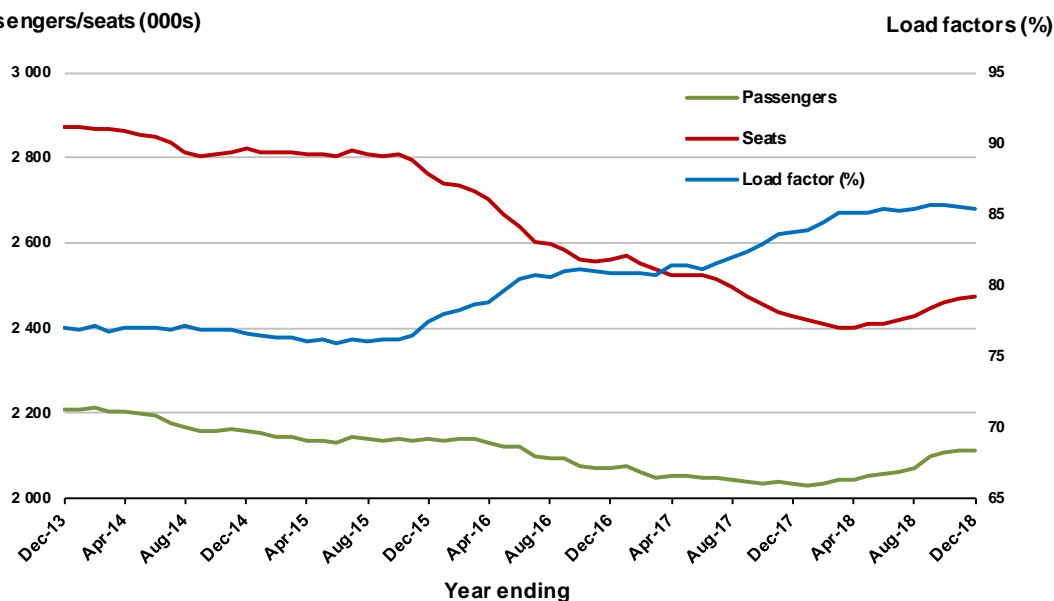


Moving annual data

	YE Dec 2017	YE Dec 2018	% Change
Passengers carried (000s)	2 033.2	2 113.2	3.9
Seats (000s)	2 429.2	2 475.5	1.9
Load factor %	83.7	85.4	1.7 *
Aircraft trips	11 110	11 731	5.6

* percentage point difference

Passengers/seats (000s)



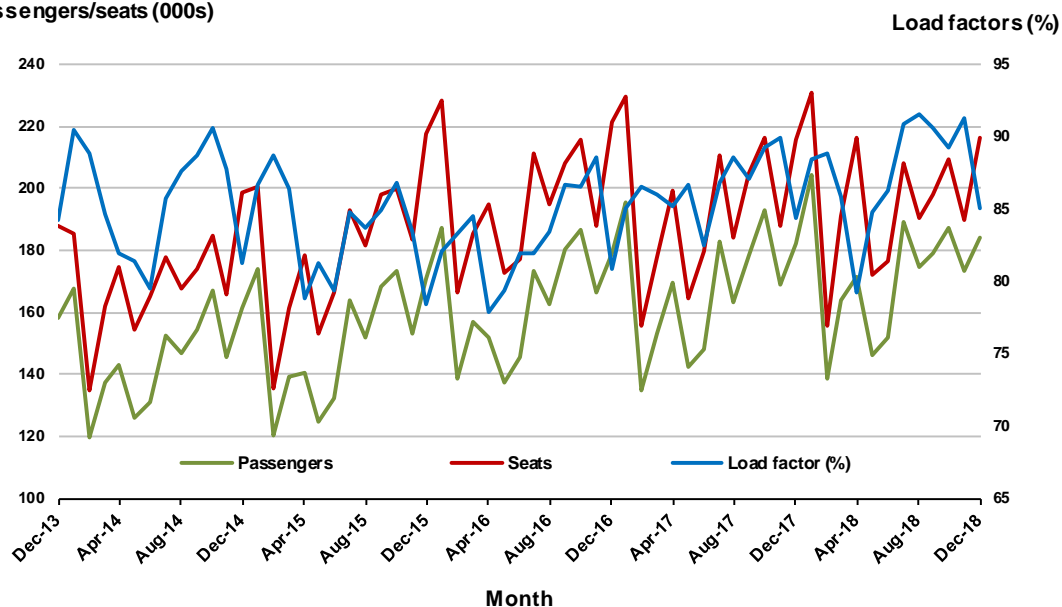
7. Gold Coast - Melbourne

Monthly data

	Dec 2017	Dec 2018	% Change
Passengers carried (000s)	182.2	184.2	1.1
Seats (000s)	215.9	216.7	0.4
Load factor %	84.4	85.0	0.6 *
Aircraft trips	1 150	1 147	-0.3

* percentage point difference

Passengers/seats (000s)

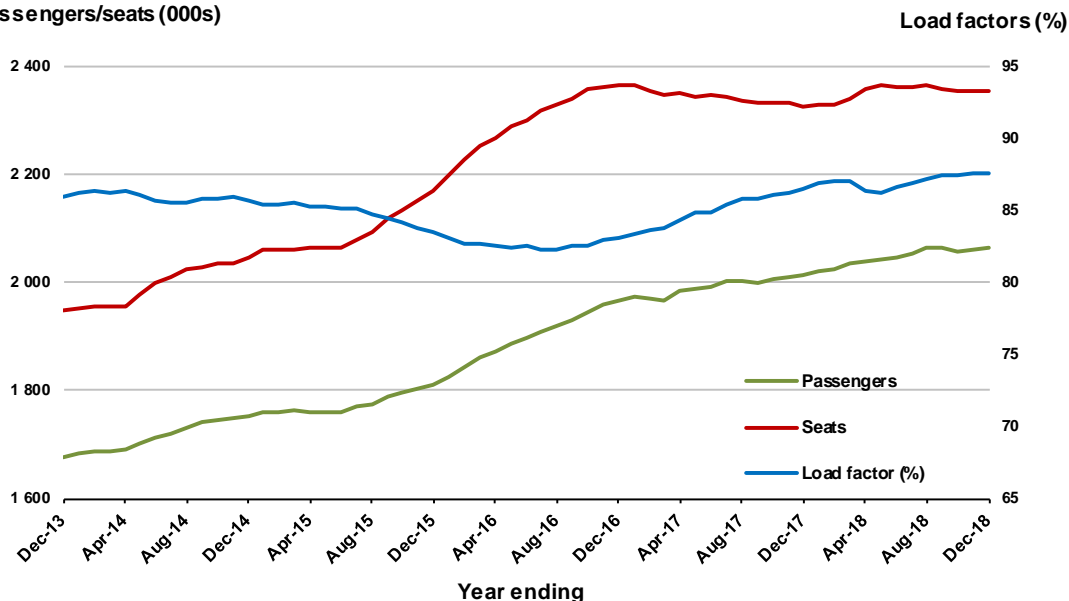


Moving annual data

	YE Dec 2017	YE Dec 2018	% Change
Passengers carried (000s)	2 012.6	2 064.2	2.6
Seats (000s)	2 326.6	2 355.3	1.2
Load factor %	86.5	87.6	1.1 *
Aircraft trips	12 389	12 449	0.5

* percentage point difference

Passengers/seats (000s)



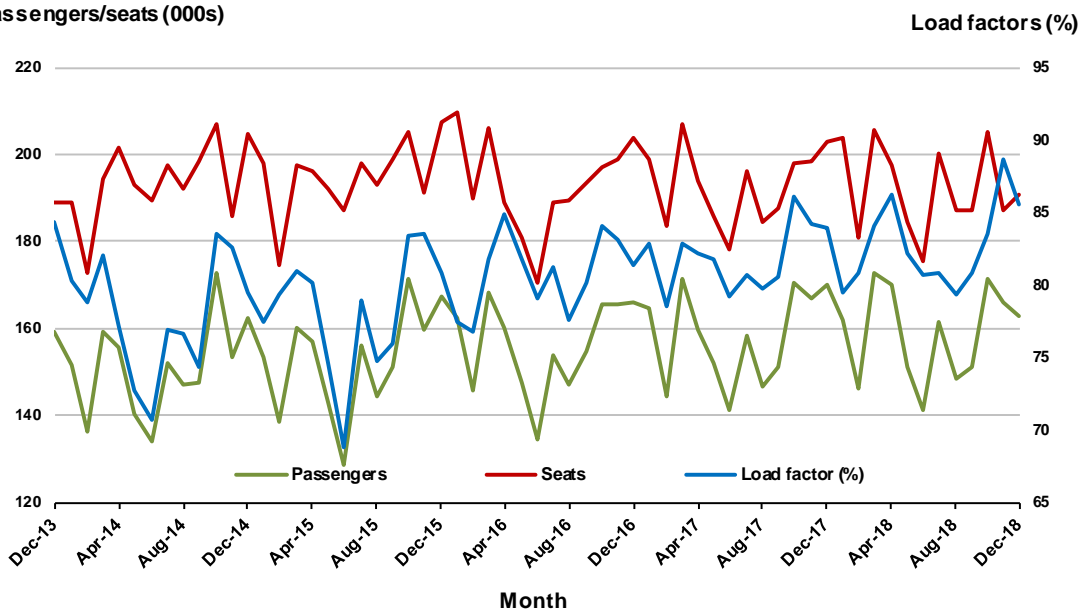
8. Adelaide - Sydney

Monthly data

	Dec 2017	Dec 2018	% Change
Passengers carried (000s)	170.3	163.0	-4.3
Seats (000s)	203.1	190.7	-6.1
Load factor %	83.9	85.5	1.6 *
Aircraft trips	1 212	1 149	-5.2

* percentage point difference

Passengers/seats (000s)

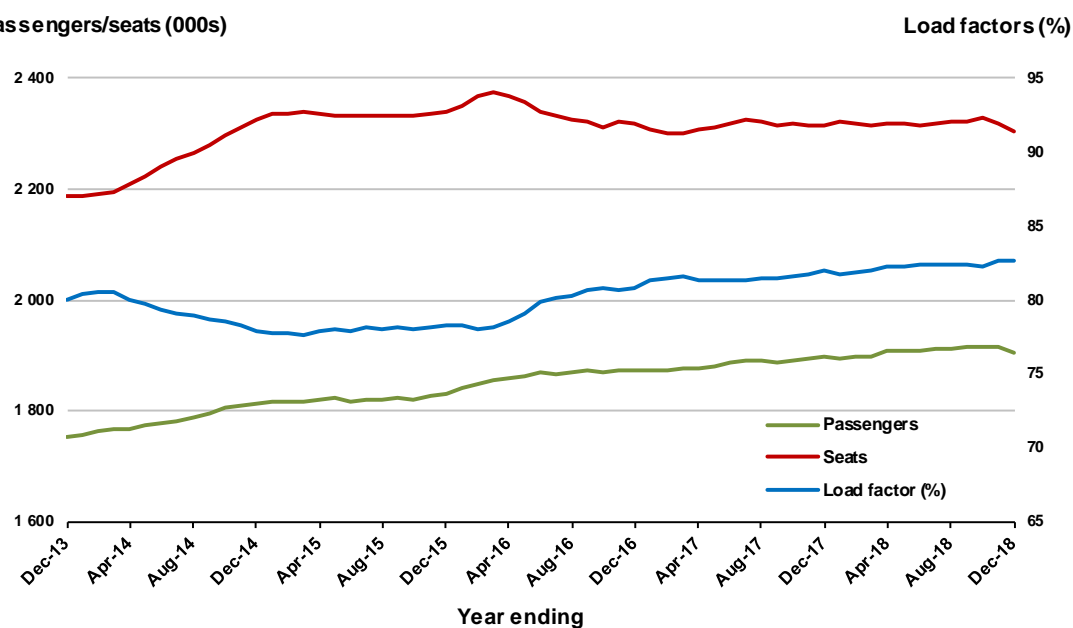


Moving annual data

	YE Dec 2017	YE Dec 2018	% Change
Passengers carried (000s)	1 898.3	1 906.5	0.4
Seats (000s)	2 315.8	2 304.7	-0.5
Load factor %	82.0	82.7	0.8 *
Aircraft trips	13 931	13 876	-0.4

* percentage point difference

Passengers/seats (000s)



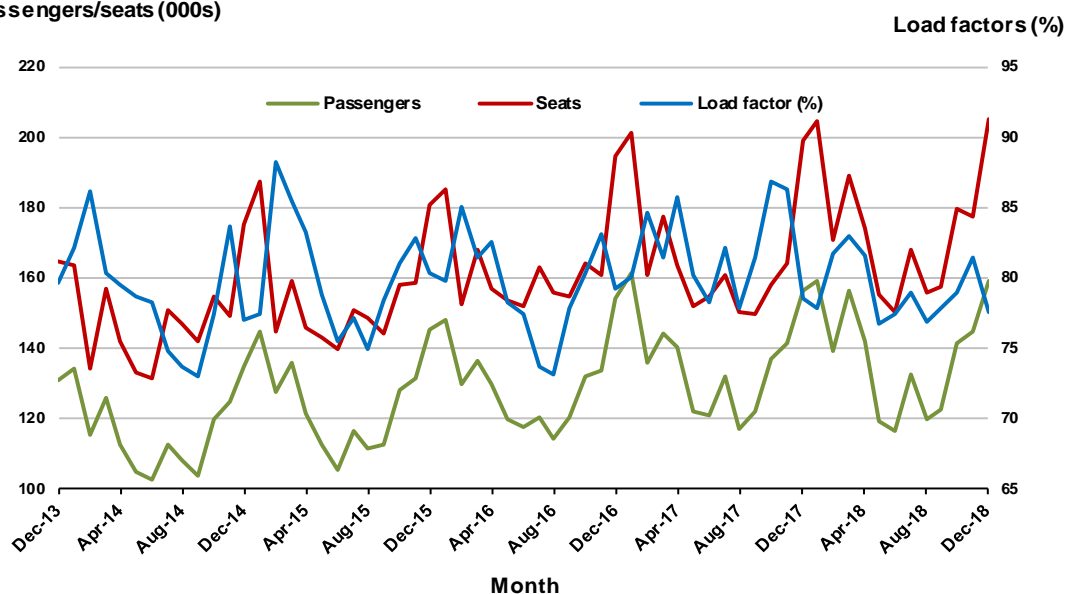
9. Hobart - Melbourne

Monthly data

	Dec 2017	Dec 2018	% Change
Passengers carried (000s)	156.4	159.1	1.8
Seats (000s)	198.9	205.0	3.1
Load factor %	78.6	77.6	-1.0 *
Aircraft trips	1 168	1 120	-4.1

* percentage point difference

Passengers/seats (000s)

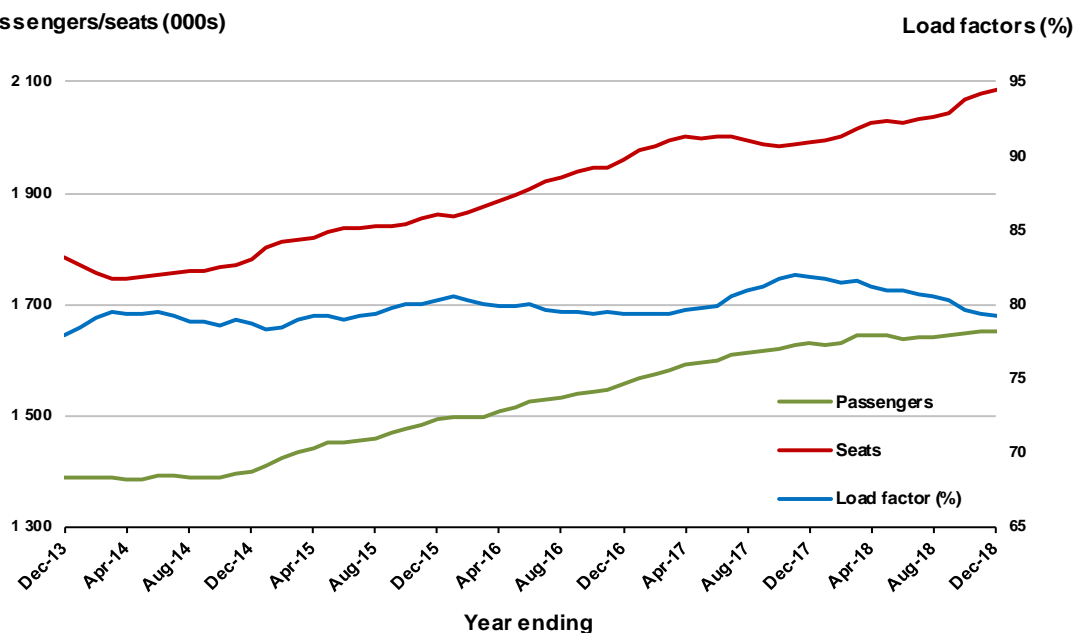


Moving annual data

	YE Dec 2017	YE Dec 2018	% Change
Passengers carried (000s)	1 630.3	1 652.8	1.4
Seats (000s)	1 990.6	2 086.7	4.8
Load factor %	81.9	79.2	-2.7 *
Aircraft trips	12 161	11 680	-4.0

* percentage point difference

Passengers/seats (000s)



10. Perth - Sydney

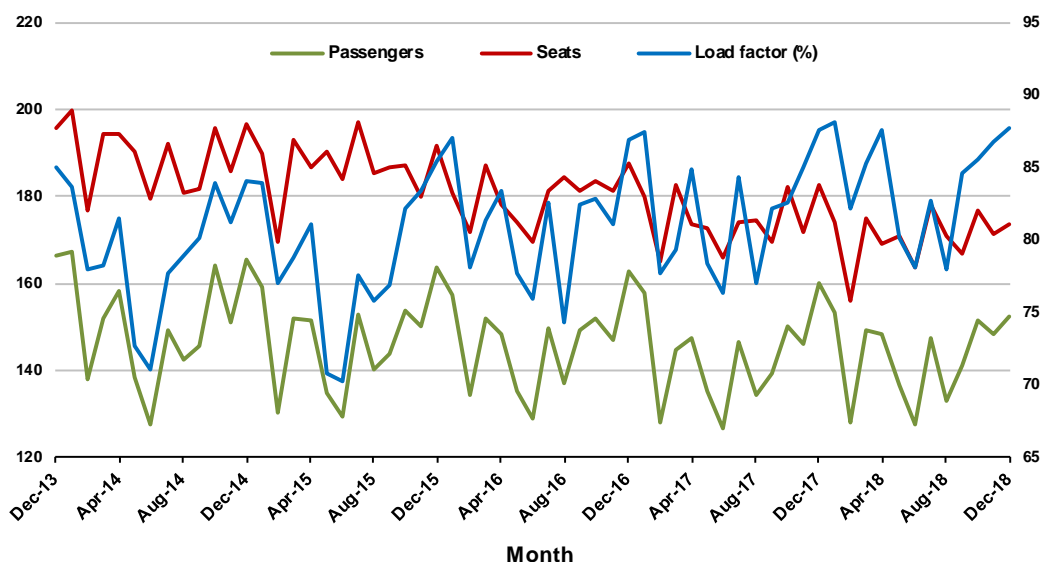
Monthly data

	Dec 2017	Dec 2018	% Change
Passengers carried (000s)	159.9	152.2	-4.8
Seats (000s)	182.6	173.7	-4.9
Load factor %	87.6	87.7	0.1 *
Aircraft trips	800	811	1.4

* percentage point difference

Passengers/seats (000s)

Load factors (%)



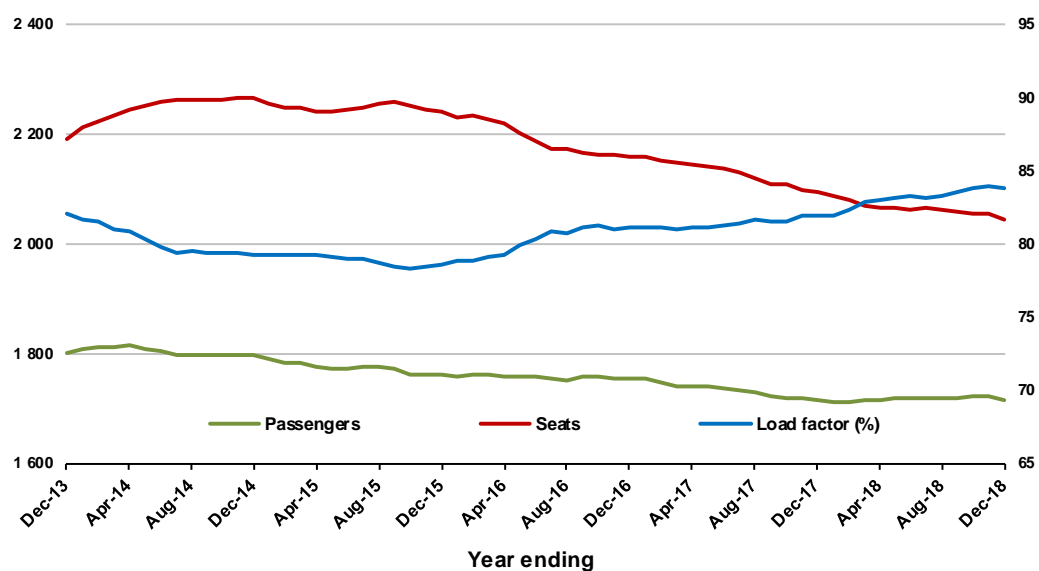
Moving annual data

	YE Dec 2017	YE Dec 2018	% Change
Passengers carried (000s)	1 716.5	1 716.6	0.0
Seats (000s)	2 094.4	2 045.9	-2.3
Load factor %	82.0	83.9	2.0 *
Aircraft trips	9 031	9 072	0.5

* percentage point difference

Passengers/seats (000s)

Load factors (%)



TOP FIFTY REGIONAL AIRPORTS

Table 10: Top fifty regional airports (000s) — passenger movements, monthly

	Airport	Dec 2017	Dec 2018	% Change
1	Cairns	369.3	359.9	-2.5
2	Hobart	255.5	266.7	4.4
3	Launceston	140.4	138.8	-1.2
4	Townsville	140.8	134.5	-4.5
5	Darwin	137.1	127.8	-6.8
6	Newcastle	114.3	106.2	-7.2
7	Mackay	67.9	70.0	3.1
8	Ballina	51.3	51.5	0.4
9	Alice Springs	46.1	45.1	-2.1
10	Rockhampton	45.2	44.5	-1.7
11	Hamilton Island	39.2	40.6	3.6
12	Proserpine	45.1	37.2	-17.5
13	Coffs Harbour	35.1	33.9	-3.4
14	Karratha	33.2	32.2	-2.9
15	Ayers Rock	28.5	30.3	6.5
16	Broome	28.6	27.4	-4.3
17	Port Hedland	25.5	27.1	6.1
18	Kalgoorlie	19.9	23.0	15.6
19	Newman	21.0	22.3	5.9
20	Albury	22.4	20.6	-8.2
21	Mildura	21.3	20.2	-5.4
22	Gladstone	21.0	20.0	-4.7
23	Port Macquarie	19.9	18.5	-6.8
24	Dubbo	18.0	15.9	-11.6
25	Mount Isa	15.1	15.6	3.5
26	Wagga Wagga	17.7	15.2	-13.8
27	Emerald	14.7	14.7	0.0
28	Port Lincoln	14.9	14.7	-1.3
29	Tamworth	15.1	14.6	-3.1
30	Hervey Bay	15.4	14.4	-6.3
31	Bundaberg	14.0	12.9	-8.0
32	Paraburdoo	12.2	12.8	5.4
33	Devonport	12.3	12.6	2.6
34	Toowoomba Wellcamp	13.1	10.1	-23.0
35	Armidale	10.6	9.9	-6.6
36	Geraldton	8.7	8.8	1.1
37	Thursday Island	8.8	8.7	-1.5
38	Moranbah	7.0	7.6	8.4
39	Kununurra	6.6	7.0	6.5
40	Griffith	5.7	6.8	19.8
41	Roma	6.2	6.8	9.0
42	Burnie	5.7	6.6	15.9
43	Weipa	6.3	6.3	-0.6
44	Learmonth	5.2	6.1	17.6
45	Mount Gambier	6.1	6.0	-1.5
46	Gove	6.7	6.0	-11.6
47	Merimbula	5.8	5.9	2.2
48	Whyalla	5.1	5.6	10.5
49	Orange	4.9	5.3	8.8
50	Olympic Dam	6.0	5.2	-14.5
	Total top 50 regional airports	1 996.7	1 960.4	-1.8
	Total regional airports	2 106.4	2 070.8	-1.7
	Total domestic network	10 493.1	10 288.1	-2.0

Note: Airport passenger movement numbers are the sum of passenger arrivals and departures at each airport.

Regional airports are defined as airports which are, according to the Australian Bureau of Statistics

"The Australian Statistical Geography Standard (ASGS)", not based in Major Urban areas.

Table 11: Top fifty regional airports (000s) — passenger movements, annual

Airport	YE Dec 2017	YE Dec 2018	% Change
1 Cairns	4 312.1	4 309.4	-0.1
2 Hobart	2 510.3	2 676.6	6.6
3 Darwin	1 802.4	1 744.5	-3.2
4 Townsville	1 590.5	1 649.2	3.7
5 Launceston	1 341.8	1 382.0	3.0
6 Newcastle	1 289.8	1 254.9	-2.7
7 Mackay	786.4	847.5	7.8
8 Alice Springs	618.5	621.7	0.5
9 Rockhampton	557.1	551.7	-1.0
10 Ballina	509.7	538.2	5.6
11 Proserpine	425.6	448.6	5.4
12 Karratha	439.2	442.0	0.6
13 Hamilton Island	423.6	427.4	0.9
14 Broome	388.4	416.4	7.2
15 Ayers Rock	366.0	416.3	13.8
16 Coffs Harbour	416.1	403.6	-3.0
17 Port Hedland	347.6	371.5	6.9
18 Newman	285.9	306.2	7.1
19 Kalgoorlie	252.1	289.6	14.9
20 Mildura	255.4	270.7	6.0
21 Albury	269.8	260.2	-3.6
22 Gladstone	282.3	253.2	-10.3
23 Dubbo	237.3	219.7	-7.4
24 Wagga Wagga	225.1	217.1	-3.6
25 Port Macquarie	228.1	215.1	-5.7
26 Mount Isa	200.7	211.3	5.3
27 Emerald	197.8	195.3	-1.3
28 Tamworth	198.3	189.6	-4.4
29 Paraburdoo	166.5	178.1	7.0
30 Port Lincoln	171.7	169.9	-1.1
31 Hervey Bay	174.0	163.9	-5.8
32 Bundaberg	174.1	162.9	-6.4
33 Devonport	147.6	147.5	0.0
34 Toowoomba Wellcamp	152.0	136.7	-10.1
35 Armidale	133.0	128.9	-3.0
36 Geraldton	112.1	113.4	1.1
37 Kununurra	104.6	107.2	2.5
38 Moranbah	115.6	103.7	-10.3
39 Thursday Island	100.4	100.8	0.4
40 Learmonth	82.6	88.3	6.9
41 Roma	83.8	87.9	4.9
42 Gove	84.2	84.2	0.1
43 Mount Gambier	80.3	80.5	0.2
44 Weipa	78.1	80.5	3.1
45 Griffith	73.7	79.8	8.3
46 Orange	64.1	76.8	19.9
47 Whyalla	64.8	76.3	17.6
48 Olympic Dam	69.6	74.8	7.4
49 Burnie	61.2	71.1	16.1
50 Broken Hill	61.6	70.1	13.8
Total top 50 regional airports	23 113.2	23 512.9	1.7
Total regional airports	24 491.5	24 962.2	1.9
Total domestic network	119 936.0	122 163.9	1.9

Note: Airport passenger movement numbers are the sum of passenger arrivals and departures at each airport. Regional airports are defined as airports which are, according to the Australian Bureau of Statistics "The Australian Statistical Geography Standard (ASGS)", not based in Major Urban areas.

DOMESTIC CHARTER ACTIVITY

Table 12: Charter passengers carried and aircraft trips - annual activity

	YE Dec 2017	YE Dec 2018	% Change
Total domestic charter passengers	2 439 760	2 476 277	1.5
Total domestic charter aircraft trips	46 447	44 059	-5.1

Note: Helicopter, joyflights and sightseeing charter flights not included.

Table 13: Charter passengers carried and aircraft trips - monthly activity

	Dec 2017	Dec 2018	% Change
Total domestic charter passengers	181 288	186 766	3.0
Total domestic charter aircraft trips	3 600	3 436	-4.6

Note: Helicopter, joyflights and sightseeing charter flights not included.

Table 14: Domestic airports - charter activity - annual

	YE Dec 2017	YE Dec 2018	% Change
Total domestic charter passenger movements	4 879 520	4 952 554	1.5
Total domestic charter aircraft movements	92 894	88 118	-5.1
Perth airport charter passenger movements	1 852 279	1 874 453	1.2
Perth airport charter aircraft movements	31 738	29 992	-5.5

Note: Helicopter, joyflights and sightseeing charter flights not included.

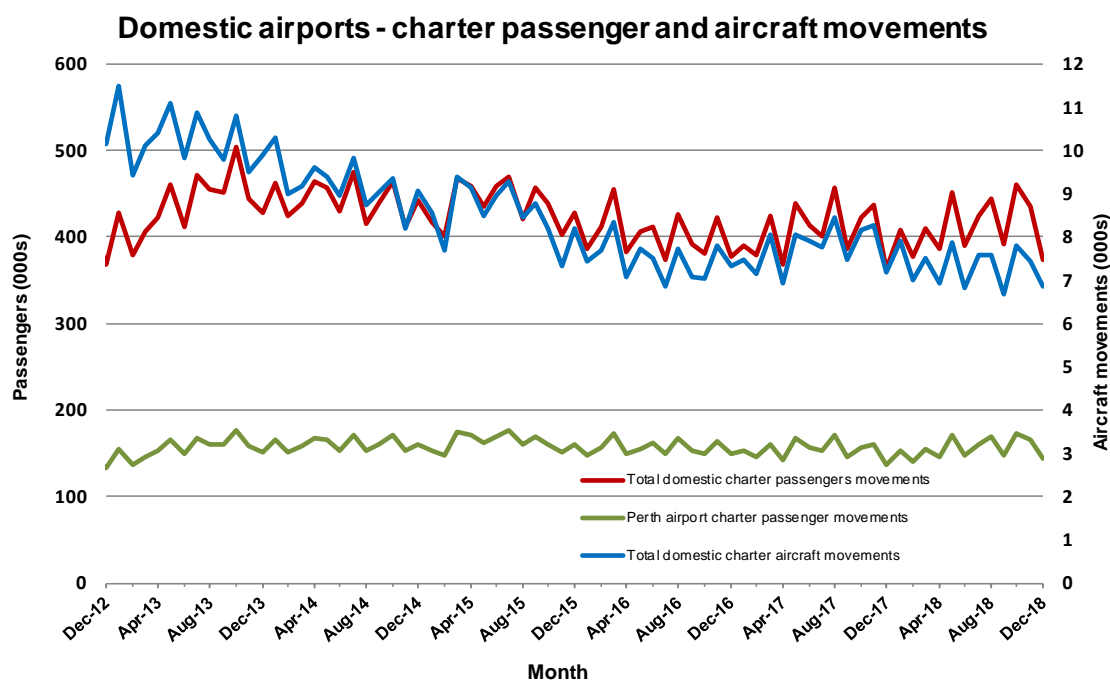
Charter passenger and aircraft movement numbers are the sum of arrivals and departures at each airport.

Table 15: Domestic airports - charter activity - monthly

	Dec 2017	Dec 2018	% Change
Total domestic charter passenger movements	362 576	373 532	3.0
Total domestic charter aircraft movements	7 200	6 872	-4.6
Perth airport charter passenger movements	137 148	143 519	4.6
Perth airport charter aircraft movements	2 455	2 382	-3.0

Note: Helicopter, joyflights and sightseeing charter flights not included.

Charter passenger and aircraft movement numbers are the sum of arrivals and departures at each airport.



DEFINITIONS

Aircraft Trips	The number of flight stages. A return flight counts as two aircraft trips.
Airport Movements	Airport movements (passenger and cargo) are measured once on arrival and once on departure. Each domestic trip generates two movements at airports. For example, a trip from Melbourne to Sydney will be counted twice, as a passenger departure at Melbourne and as a passenger arrival at Sydney. At the national level, the sum of all domestic airport traffic will therefore be equal to twice the number of trips undertaken.
Available Seat Kilometres (ASKs)	Calculated by multiplying the number of seats available on each flight stage, by the distance in kilometres between the ports. The distances used are Great Circle Distances.
City-Pair	The ports shown make up the city-pair route. Passenger movements shown for a city pair reflect total traffic in both directions.
Flight Stage	The operation of an aircraft from take-off to landing.
Load Factor	The total revenue passenger kilometres performed as a percentage of the total available seat kilometres.
Passengers Carried	Revenue passengers carried.
Regular Public Transport Services (RPT)	All air service operations in which aircraft are available for the transport of members of the public and are conducted in accordance with fixed schedules. It does not include charter or other non-scheduled operations.
Revenue Passengers	All passengers paying any fare. Frequent flyer redemption travellers are regarded as revenue passengers.
Revenue Passenger Kilometres (RPKs)	Calculated by multiplying the number of revenue passengers travelling on each flight stage, by the distance in kilometres between the ports. The distances used are Great Circle Distances.
Traffic on board by stages	The total of all traffic (revenue passengers) on each flight stage between two directly connected airports.
..	Data not included
NA	Not applicable