



**Australian Government**

**Department of Infrastructure, Transport, Cities and Regional Development**

Bureau of Infrastructure, Transport and Regional Economics

STATISTICAL REPORT



# Aviation

Domestic aviation activity  
August 2019

© Commonwealth of Australia 2019

ISSN: 1832 - 1968

### **Ownership of intellectual property rights in this publication**

Unless otherwise noted, copyright (and any other intellectual property rights, if any) in this publication is owned by the Commonwealth of Australia (referred to below as the Commonwealth).

### **Disclaimer**

The material contained in this publication is made available on the understanding that the Commonwealth is not providing professional advice, and that users exercise their own skill and care with respect to its use, and seek independent advice if necessary.

The Commonwealth makes no representations or warranties as to the contents or accuracy of the information contained in this publication. To the extent permitted by law, the Commonwealth disclaims liability to any person or organisation in respect of anything done, or omitted to be done, in reliance upon information contained in this publication.

### **Creative Commons licence**

With the exception of (a) the Coat of Arms; and (b) the Department of Infrastructure, Transport, Cities and Regional Developments' photos and graphics, copyright in this publication is licensed under a Creative Commons Attribution 3.0 Australia Licence.

Creative Commons Attribution 3.0 Australia Licence is a standard form licence agreement that allows you to copy, communicate and adapt this publication provided that you attribute the work to the Commonwealth and abide by the other licence terms. A summary of the licence terms is available from <http://creativecommons.org/licenses/by/3.0/au/deed.en>.

The full licence terms are available from <http://creativecommons.org/licenses/by/3.0/au/legalcode>.

### **Use of the Coat of Arms**

The Department of the Prime Minister and Cabinet sets the terms under which the Coat of Arms is used. Please refer to the Department's Commonwealth Coat of Arms and Government branding web page <http://www.dpmc.gov.au/guidelines/index.cfm#brand> and, in particular, the Guidelines on the use of the Commonwealth Coat of Arms publication.

An appropriate citation for this report is:

Bureau of Infrastructure, Transport and Regional Economics (BITRE), 2019, Domestic aviation activity, Statistical Report, BITRE, Canberra ACT.

### **Contact us**

This publication is available in PDF format. All other rights are reserved, including in relation to any Departmental logos or trade marks which may exist. For enquiries regarding the licence and any use of this publication, please contact:

Bureau of Infrastructure, Transport and Regional Economics (BITRE)  
Department of Infrastructure, Transport, Cities and Regional Development  
GPO Box 501, Canberra ACT 2601, Australia  
Telephone: (international) +61 2 6274 7210  
Fax: (international) +61 2 6274 6855  
Email: [bitre@infrastructure.gov.au](mailto:bitre@infrastructure.gov.au)  
Website: [www.bitre.gov.au](http://www.bitre.gov.au)

### **Inquiries**

Should you require additional information about the statistics contained in this publication:

Nebojsa Pavlovic

Telephone (02) 6274 6817 or Facsimile (02) 6274 7727

Electronic mail: [AVSTATS@infrastructure.gov.au](mailto:AVSTATS@infrastructure.gov.au)

[Nebojsa.Pavlovic@infrastructure.gov.au](mailto:Nebojsa.Pavlovic@infrastructure.gov.au)

Web site: <http://www.bitre.gov.au/statistics/aviation/domestic.aspx>

## FOREWORD

This report provides an overview of domestic (including charter) commercial aviation activity in Australia for the month of August 2019.

The data cover revenue passengers carried by Australian-registered operators of scheduled regular public transport services over Australian flight stages and fixed-wing charter operators. These estimates include passengers carried between domestic airports on international flights operated by these carriers. The passengers carried refer to traffic on board by stages.

Estimates of passengers and aircraft movements for charter aviation are included in this publication, where BITRE confidentiality standards are met.

Individual routes shown are restricted to those with an average exceeding 8 000 passengers per month over the previous six months where two or more airlines operate in competition. For the month of August 2019, there were 64 such routes.

Information on the total network for the month of August 2019 and on the Regular Public Transport (RPT) network for the month of August 2019 is presented on page 2, with estimates for the year ended August 2019 presented on page 3.

Detailed information on the 64 individual routes can be found in the RPT summary pages 4-13 of this publication.

The top ten airports in terms of RPT passenger movements are shown on page 14.

Data on domestic RPT cargo movements at the top five cargo airports are provided on page 15. The table includes cargo carried on passenger flights operated by the Qantas group (including Jetstar), Virgin Australia, Air North and Skippers as well as the cargo carried by dedicated freighter aircraft operated by Qantas Freight, Toll Aviation and Virgin Australia Cargo.

The long-term trends for the top ten competitive RPT routes are presented graphically on pages 16-25.

Domestic RPT passenger movements at the top 50 regional airports are presented on pages 26-27.

Tables providing estimates of domestic charter aviation activity are shown on page 28. BITRE confidentiality standards restrict publication of detailed estimates for individual Australian airports, with the exception of Perth Airport.

A list of definitions can be found on page 29.

This report was prepared by the Aviation Statistics Section of the Bureau of Infrastructure, Transport and Regional Economics with data provided by airlines.

Estimates are included where data were not available and data presented in this publication may contain revisions to previously published data.

Where figures have been rounded, discrepancies may occur between sums of component items and totals, and in percentage changes which are derived from figures prior to rounding.

# CONTENTS

|   |           |
|---|-----------|
| <b>Highlights</b> .....                             | <b>1</b>  |
| <b>Total network</b> .....                          | <b>2</b>  |
| <b>RPT network</b> .....                            | <b>2</b>  |
| <b>Top competitive routes</b> .....                 | <b>4</b>  |
| <b>Top ten airports – passenger movements</b> ..... | <b>14</b> |
| <b>Top five airports – cargo movements</b> .....    | <b>15</b> |
| <b>Top ten routes</b> .....                         | <b>16</b> |
| 1. Melbourne – Sydney .....                         | 16        |
| 2. Brisbane – Sydney.....                           | 17        |
| 3. Brisbane – Melbourne .....                       | 18        |
| 4. Gold Coast – Sydney .....                        | 19        |
| 5. Adelaide – Melbourne .....                       | 20        |
| 6. Gold Coast – Melbourne .....                     | 21        |
| 7. Melbourne – Perth .....                          | 22        |
| 8. Adelaide – Sydney .....                          | 23        |
| 9. Perth – Sydney .....                             | 24        |
| 10. Hobart – Melbourne .....                        | 25        |
| <b>Top fifty regional airports</b> .....            | <b>26</b> |
| <b>Domestic charter activity</b> .....              | <b>28</b> |
| <b>Definitions</b> .....                            | <b>29</b> |

This page is intentionally left blank.

## HIGHLIGHTS

There were 5.43 million passengers carried on Australian domestic commercial aviation (including charter operations) in August 2019, an increase of 0.4 per cent on August 2018. For the month of August 2019 there were 57.5 thousand aircraft trips, a decrease of 0.4 per cent compared to August 2018.

5.19 million passengers were carried on RPT flights in August 2019, an increase of 0.2 per cent on August 2018.

For the year ending August 2019 there were 60.97 million RPT passengers, a decrease of 0.2 per cent on the year ending August 2018. This was the first annual decrease recorded since November 2015.

RPT revenue passenger kilometres (RPKs) performed were 6.09 billion for the month, up 0.6 per cent compared with August 2018. Capacity, measured by available seat kilometres (ASKs), decreased by 1.1 per cent compared with August 2018 to a total of 7.39 billion.

The industry wide load factor (RPKs/ASKs) increased from 81.1 per cent in August 2018 to 82.5 per cent in August 2019. Load factors on individual routes increased on 36 of the 64 published RPT routes.

For the month of August 2019, Melbourne – Sydney remained Australia's busiest RPT route with 769.5 thousand passengers, a decrease of 1.6 per cent compared with August 2018. It was followed by Brisbane – Sydney with 413.6 thousand passengers (down 0.7 per cent) and Brisbane – Melbourne with 306.3 thousand passengers (up 2.2 per cent).

The greatest percentage increase in RPT passenger numbers, compared to August 2018, was on the Brisbane – Proserpine route (up 13.5 per cent). There were large increases on a number of other routes, including Brisbane – Hamilton Island (up 13.4 per cent), Newman – Perth and Adelaide – Perth (both up 12.2 per cent) and Adelaide – Alice Springs (up 12.1 per cent).

Routes with traffic decreases in August 2019 compared with August 2018 included Proserpine – Sydney (down 19.9 per cent), Cairns – Townsville (down 10.2 per cent) and Dubbo – Sydney (down 7.5 per cent).

In August 2019, Sydney remained Australia's busiest domestic airport with 2.30 million passenger movements, followed by Melbourne with 2.17 million passenger movements and Brisbane with 1.53 million passenger movements.

Total cargo movements at Australian airports on domestic RPT flights were 38.0 thousand tonnes in August 2019, a decrease of 8.5 per cent compared with August 2018.

In August 2019, there were 2.18 million domestic passenger movements through regional airports, 0.4 per cent lower than in August 2018. Out of the top 50 regional airports, the largest decrease was at Burnie airport (down 19.8 per cent on August 2018), while the strongest increase was recorded at Learmonth airport (up 23.5 per cent on August 2018).

Fixed-wing charter operators carried 236.4 thousand passengers in August 2019, an increase of 6.6 per cent on August 2018. Perth Airport accounted for 38.9 per cent of all charter passengers in Australia.

## TOTAL NETWORK

### Summary of monthly commercial aviation activity

|                                     | Aug 2018 | Aug 2019 | % Change |
|-------------------------------------|----------|----------|----------|
| Total passengers carried (millions) | 5.41     | 5.43     | 0.4      |
| Aircraft trips (000s)               | 57.7     | 57.5     | -0.4     |

Note: Regular Public Transport and charter aviation activity  
Helicopter, joyflights and sightseeing charter flights not included.

## RPT NETWORK

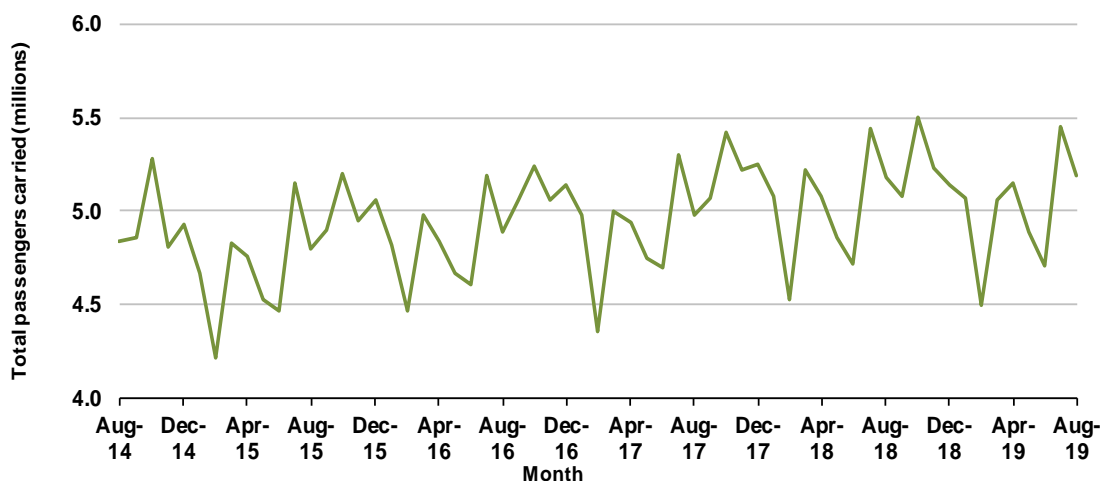
### Summary of monthly RPT activity

|   | Aug 2018 | Aug 2019 | % Change |
|---|----------|----------|----------|
| Total passengers carried (millions)     | 5.18     | 5.19     | 0.2      |
| Revenue passenger kilometres (billions) | 6.05     | 6.09     | 0.6      |
| Available seats (millions)              | 6.52     | 6.47     | -0.8     |
| Available seat kilometres (billions)    | 7.47     | 7.39     | -1.1     |
| Load factor %                           | 81.1     | 82.5     | 1.4 *    |
| Aircraft trips (000s)                   | 53.9     | 53.5     | -0.8     |

\* percentage point difference

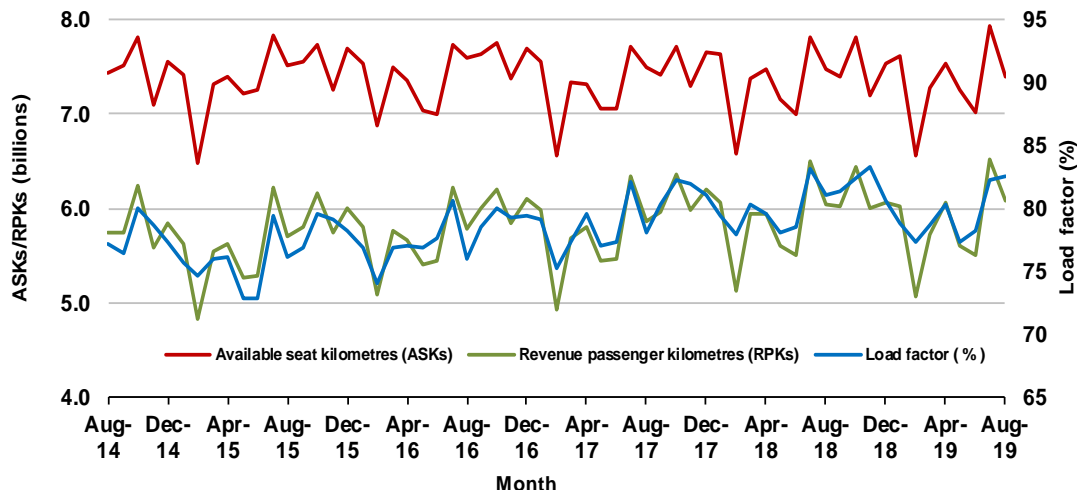
### Domestic RPT passenger traffic

(monthly)



### RPT Network utilisation

(monthly)





## TOTAL NETWORK

### Summary of annual commercial aviation activity

|                                     | YE Aug 2018 | YE Aug 2019 | % Change |
|-------------------------------------|-------------|-------------|----------|
| Total passengers carried (millions) | 63.54       | 63.60       | 0.1      |
| Aircraft trips (000s)               | 677.5       | 679.9       | 0.4      |

Note: Regular Public Transport and charter aviation activity  
Helicopter, joyflights and sightseeing charter flights not included.

## RPT NETWORK

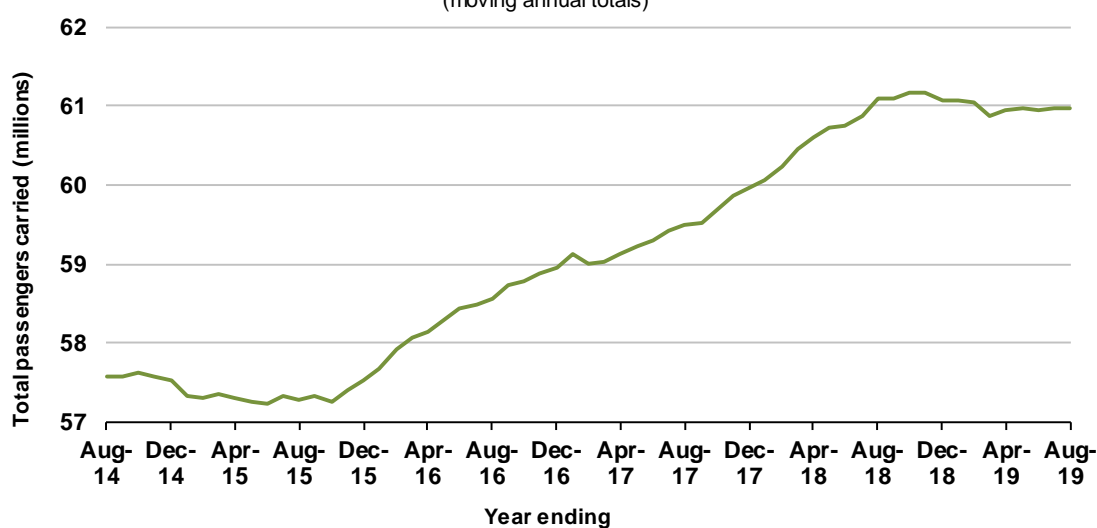
### Summary of annual RPT activity

|   | YE Aug 2018 | YE Aug 2019 | % Change |
|---|-------------|-------------|----------|
| Total passengers carried (millions)     | 61.09       | 60.97       | -0.2     |
| Revenue passenger kilometres (billions) | 71.23       | 71.13       | -0.1     |
| Available seats (millions)              | 77.50       | 77.56       | 0.1      |
| Available seat kilometres (billions)    | 88.59       | 88.53       | -0.1     |
| Load factor %                           | 80.4        | 80.3        | -0.1 *   |
| Aircraft trips (000s)                   | 632.2       | 634.6       | 0.4      |

\* percentage point difference

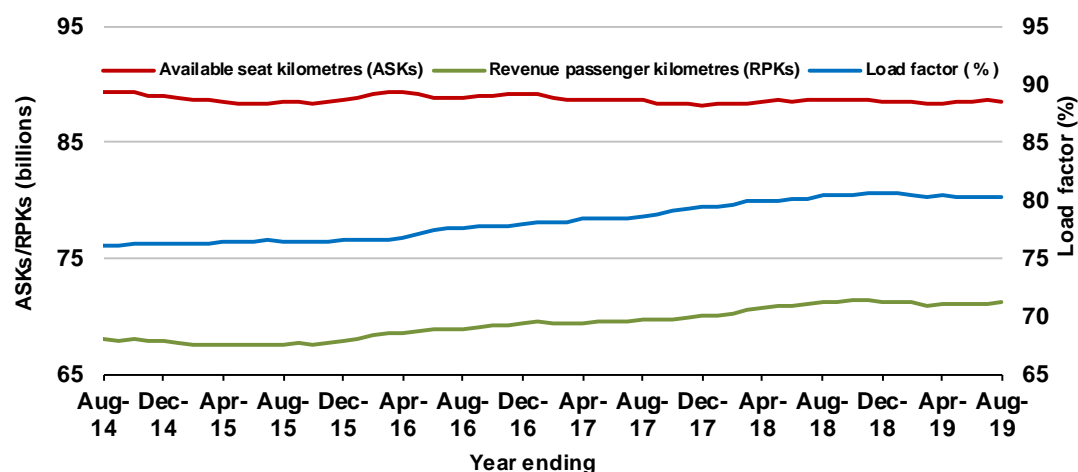
### Domestic RPT passenger traffic

(moving annual totals)



### RPT Network utilisation

(moving annual totals)



## TOP COMPETITIVE ROUTES

**Table 1: Passengers carried (000s) — annual activity**

|    | City-Pair                  | YE Aug 2018 | YE Aug 2019 | %Change |
|----|----------------------------|-------------|-------------|---------|
| 1  | Melbourne - Sydney         | 9 271.4     | 9 166.9     | -1.1    |
| 2  | Brisbane - Sydney          | 4 816.4     | 4 807.3     | -0.2    |
| 3  | Brisbane - Melbourne       | 3 570.2     | 3 595.9     | 0.7     |
| 4  | Gold Coast - Sydney        | 2 756.5     | 2 695.2     | -2.2    |
| 5  | Adelaide - Melbourne       | 2 499.2     | 2 517.8     | 0.7     |
| 6  | Melbourne - Perth          | 2 072.2     | 2 121.5     | 2.4     |
| 7  | Gold Coast - Melbourne     | 2 060.0     | 2 090.3     | 1.5     |
| 8  | Adelaide - Sydney          | 1 913.8     | 1 874.8     | -2.0    |
| 9  | Perth - Sydney             | 1 719.4     | 1 690.5     | -1.7    |
| 10 | Hobart - Melbourne         | 1 641.9     | 1 666.8     | 1.5     |
| 11 | Brisbane - Cairns          | 1 358.6     | 1 281.7     | -5.7    |
| 12 | Canberra - Melbourne       | 1 165.3     | 1 177.3     | 1.0     |
| 13 | Cairns - Sydney            | 1 140.0     | 1 095.3     | -3.9    |
| 14 | Brisbane - Townsville      | 992.7       | 1 002.2     | 1.0     |
| 15 | Launceston - Melbourne     | 953.3       | 957.8       | 0.5     |
| 16 | Brisbane - Perth           | 972.8       | 944.9       | -2.9    |
| 17 | Canberra - Sydney          | 957.5       | 920.8       | -3.8    |
| 18 | Cairns - Melbourne         | 847.3       | 858.9       | 1.4     |
| 19 | Adelaide - Brisbane        | 859.6       | 856.8       | -0.3    |
| 20 | Brisbane - Mackay          | 738.4       | 754.6       | 2.2     |
| 21 | Hobart - Sydney            | 695.6       | 714.2       | 2.7     |
| 22 | Sunshine Coast - Sydney    | 621.3       | 652.7       | 5.1     |
| 23 | Brisbane - Canberra        | 632.6       | 650.5       | 2.8     |
| 24 | Adelaide - Perth           | 634.7       | 642.9       | 1.3     |
| 25 | Brisbane - Newcastle       | 586.8       | 591.4       | 0.8     |
| 26 | Melbourne - Sunshine Coast | 532.6       | 550.0       | 3.3     |
| 27 | Brisbane - Rockhampton     | 517.1       | 527.5       | 2.0     |
| 28 | Melbourne - Newcastle      | 495.5       | 484.1       | -2.3    |
| 29 | Karratha - Perth           | 437.8       | 449.3       | 2.6     |
| 30 | Ballina - Sydney           | 434.2       | 432.2       | -0.4    |
| 31 | Perth - Port Hedland       | 353.4       | 369.6       | 4.6     |
| 32 | Brisbane - Darwin          | 391.0       | 357.0       | -8.7    |
| 33 | Broome - Perth             | 341.7       | 332.4       | -2.7    |
| 34 | Newman - Perth             | 299.3       | 330.2       | 10.3    |
| 35 | Coffs Harbour - Sydney     | 346.2       | 329.6       | -4.8    |
| 36 | Darwin - Sydney            | 315.9       | 310.4       | -1.7    |
| 37 | Darwin - Melbourne         | 305.9       | 309.9       | 1.3     |
| 38 | Launceston - Sydney        | 286.8       | 290.4       | 1.2     |
| 39 | Kalgoorlie - Perth         | 262.9       | 281.8       | 7.2     |
| 40 | Brisbane - Proserpine      | 266.8       | 248.5       | -6.8    |
| 41 | Brisbane - Gladstone       | 259.5       | 245.8       | -5.3    |
| 42 | Brisbane - Hobart          | 220.7       | 240.6       | 9.0     |
| 43 | Albury - Sydney            | 223.3       | 228.9       | 2.5     |
| 44 | Melbourne - Mildura        | 222.2       | 228.4       | 2.8     |
| 45 | Adelaide - Gold Coast      | 221.9       | 214.4       | -3.4    |
| 46 | Hamilton Island - Sydney   | 202.0       | 203.7       | 0.8     |
| 47 | Brisbane - Emerald         | 196.8       | 196.7       | -0.1    |
| 48 | Ayers Rock - Sydney        | 197.2       | 195.3       | -0.9    |
| 49 | Adelaide - Canberra        | 193.3       | 194.2       | 0.4     |
| 50 | Port Macquarie - Sydney    | 188.7       | 188.6       | -0.1    |

continued

**Table 1: (continued) Passengers carried (000s) — annual activity**

|    | <b>City-Pair</b>              | <b>YE Aug 2018</b> | <b>YE Aug 2019</b> | <b>% Change</b> |
|----|-------------------------------|--------------------|--------------------|-----------------|
| 51 | Dubbo - Sydney                | 190.2              | 182.8              | -3.9            |
| 52 | Sydney - Wagga Wagga          | 181.9              | 178.4              | -1.9            |
| 53 | Darwin - Perth                | 201.3              | 178.4              | -11.4           |
| 54 | Sydney - Townsville           | 164.5              | 174.7              | 6.2             |
| 55 | Sydney - Tamworth             | 175.6              | 172.3              | -1.9            |
| 56 | Adelaide - Port Lincoln       | 169.5              | 168.3              | -0.7            |
| 57 | Brisbane - Bundaberg          | 165.5              | 155.2              | -6.2            |
| 58 | Adelaide - Alice Springs      | 128.9              | 143.2              | 11.1            |
| 59 | Cairns - Townsville           | 148.6              | 143.0              | -3.7            |
| 60 | Brisbane - Mount Isa          | 129.3              | 135.2              | 4.6             |
| 61 | Brisbane - Hamilton Island    | 124.2              | 127.5              | 2.7             |
| 62 | Armidale - Sydney             | 123.2              | 122.7              | -0.4            |
| 63 | Proserpine - Sydney           | 137.1              | 117.1              | -14.6           |
| 64 | Alice Springs - Darwin        | 113.2              | 110.8              | -2.1            |
|    | <b>Total domestic network</b> | <b>61 089.2</b>    | <b>60 974.9</b>    | <b>-0.2</b>     |

**Table 2: Passengers carried (000s) — monthly activity**

|    | <b>City-Pair</b>           | <b>Aug 2018</b> | <b>Aug 2019</b> | <b>% Change</b> |
|----|----------------------------|-----------------|-----------------|-----------------|
| 1  | Melbourne - Sydney         | 782.2           | 769.5           | -1.6            |
| 2  | Brisbane - Sydney          | 416.5           | 413.6           | -0.7            |
| 3  | Brisbane - Melbourne       | 299.8           | 306.3           | 2.2             |
| 4  | Gold Coast - Sydney        | 220.9           | 217.2           | -1.7            |
| 5  | Adelaide - Melbourne       | 206.1           | 212.0           | 2.9             |
| 6  | Gold Coast - Melbourne     | 174.8           | 177.6           | 1.6             |
| 7  | Melbourne - Perth          | 164.2           | 168.9           | 2.9             |
| 8  | Adelaide - Sydney          | 148.6           | 149.0           | 0.3             |
| 9  | Perth - Sydney             | 133.1           | 133.5           | 0.3             |
| 10 | Hobart - Melbourne         | 119.6           | 125.1           | 4.5             |
| 11 | Brisbane - Cairns          | 121.0           | 115.8           | -4.2            |
| 12 | Canberra - Melbourne       | 100.8           | 101.3           | 0.4             |
| 13 | Cairns - Sydney            | 103.8           | 98.6            | -5.1            |
| 14 | Brisbane - Townsville      | 92.8            | 91.9            | -1.0            |
| 15 | Canberra - Sydney          | 89.4            | 84.5            | -5.4            |
| 16 | Cairns - Melbourne         | 81.8            | 82.1            | 0.3             |
| 17 | Brisbane - Perth           | 77.8            | 79.2            | 1.7             |
| 18 | Adelaide - Brisbane        | 69.8            | 73.8            | 5.7             |
| 19 | Brisbane - Mackay          | 69.3            | 69.4            | 0.0             |
| 20 | Launceston - Melbourne     | 67.2            | 67.8            | 0.8             |
| 21 | Brisbane - Canberra        | 58.2            | 60.7            | 4.4             |
| 22 | Adelaide - Perth           | 49.4            | 55.4            | 12.2            |
| 23 | Brisbane - Newcastle       | 49.6            | 53.4            | 7.7             |
| 24 | Sunshine Coast - Sydney    | 47.4            | 51.1            | 7.7             |
| 25 | Melbourne - Sunshine Coast | 51.1            | 49.1            | -4.0            |
| 26 | Hobart - Sydney            | 47.6            | 48.9            | 2.6             |
| 27 | Brisbane - Rockhampton     | 47.0            | 47.5            | 1.1             |
| 28 | Karratha - Perth           | 40.0            | 40.9            | 2.3             |
| 29 | Melbourne - Newcastle      | 39.0            | 36.3            | -6.8            |
| 30 | Brisbane - Darwin          | 36.7            | 35.7            | -2.7            |
| 31 | Broome - Perth             | 32.8            | 33.7            | 2.6             |
| 32 | Perth - Port Hedland       | 32.3            | 33.2            | 2.9             |
| 33 | Ballina - Sydney           | 33.6            | 33.1            | -1.5            |
| 34 | Darwin - Sydney            | 31.1            | 31.4            | 1.1             |
| 35 | Darwin - Melbourne         | 31.9            | 31.3            | -1.9            |
| 36 | Newman - Perth             | 26.9            | 30.2            | 12.2            |
| 37 | Coffs Harbour - Sydney     | 27.0            | 25.9            | -4.1            |
| 38 | Kalgoorlie - Perth         | 26.9            | 25.2            | -6.5            |
| 39 | Brisbane - Proserpine      | 20.0            | 22.7            | 13.5            |
| 40 | Brisbane - Gladstone       | 22.5            | 21.4            | -5.0            |
| 41 | Albury - Sydney            | 21.4            | 21.4            | -0.1            |
| 42 | Melbourne - Mildura        | 20.5            | 20.2            | -1.2            |
| 43 | Ayers Rock - Sydney        | 18.5            | 19.7            | 6.4             |
| 44 | Brisbane - Hobart          | 17.5            | 18.6            | 6.6             |
| 45 | Adelaide - Gold Coast      | 19.0            | 18.1            | -4.4            |
| 46 | Brisbane - Emerald         | 18.4            | 18.1            | -1.7            |
| 47 | Launceston - Sydney        | 18.3            | 18.1            | -1.4            |
| 48 | Hamilton Island - Sydney   | 16.4            | 17.0            | 3.8             |
| 49 | Adelaide - Canberra        | 17.7            | 16.9            | -4.4            |
| 50 | Sydney - Wagga Wagga       | 17.1            | 16.5            | -3.4            |

continued

**Table 2: (continued) Passengers carried (000s) — monthly activity**

|    | <b>City-Pair</b>              | <b>Aug 2018</b> | <b>Aug 2019</b> | <b>% Change</b> |
|----|-------------------------------|-----------------|-----------------|-----------------|
| 51 | Sydney - Townsville           | 16.6            | 16.5            | -0.7            |
| 52 | Darwin - Perth                | 17.5            | 16.4            | -6.2            |
| 53 | Port Macquarie - Sydney       | 15.5            | 16.2            | 4.4             |
| 54 | Dubbo - Sydney                | 17.5            | 16.2            | -7.5            |
| 55 | Sydney - Tamworth             | 16.0            | 14.9            | -7.2            |
| 56 | Adelaide - Port Lincoln       | 13.8            | 13.8            | -0.1            |
| 57 | Brisbane - Mount Isa          | 13.2            | 13.5            | 2.7             |
| 58 | Brisbane - Bundaberg          | 13.9            | 13.3            | -4.2            |
| 59 | Adelaide - Alice Springs      | 11.4            | 12.8            | 12.1            |
| 60 | Brisbane - Hamilton Island    | 11.1            | 12.6            | 13.4            |
| 61 | Alice Springs - Darwin        | 12.5            | 12.6            | 0.5             |
| 62 | Cairns - Townsville           | 13.4            | 12.0            | -10.2           |
| 63 | Armidale - Sydney             | 11.1            | 10.4            | -6.4            |
| 64 | Proserpine - Sydney           | 11.9            | 9.6             | -19.9           |
|    | <b>Total domestic network</b> | <b>5 184.7</b>  | <b>5 193.9</b>  | <b>0.2</b>      |

**Table 3: Available seats (000s) — monthly activity**

|    | <b>City-Pair</b>           | <b>Aug 2018</b> | <b>Aug 2019</b> | <b>% Change</b> |
|----|----------------------------|-----------------|-----------------|-----------------|
| 1  | Melbourne - Sydney         | 914.6           | 899.3           | -1.7            |
| 2  | Brisbane - Sydney          | 494.4           | 490.4           | -0.8            |
| 3  | Brisbane - Melbourne       | 358.6           | 358.8           | 0.1             |
| 4  | Gold Coast - Sydney        | 256.6           | 252.6           | -1.6            |
| 5  | Adelaide - Melbourne       | 253.9           | 257.9           | 1.6             |
| 6  | Gold Coast - Melbourne     | 190.7           | 194.7           | 2.1             |
| 7  | Melbourne - Perth          | 201.2           | 193.9           | -3.7            |
| 8  | Adelaide - Sydney          | 187.1           | 173.0           | -7.5            |
| 9  | Perth - Sydney             | 170.8           | 160.7           | -5.9            |
| 10 | Hobart - Melbourne         | 155.7           | 156.0           | 0.2             |
| 11 | Brisbane - Cairns          | 131.8           | 133.8           | 1.5             |
| 12 | Canberra - Melbourne       | 156.6           | 154.2           | -1.5            |
| 13 | Cairns - Sydney            | 118.3           | 111.9           | -5.4            |
| 14 | Brisbane - Townsville      | 108.9           | 113.5           | 4.3             |
| 15 | Canberra - Sydney          | 117.9           | 111.7           | -5.3            |
| 16 | Cairns - Melbourne         | 90.9            | 90.3            | -0.6            |
| 17 | Brisbane - Perth           | 96.0            | 95.5            | -0.6            |
| 18 | Adelaide - Brisbane        | 90.6            | 93.1            | 2.8             |
| 19 | Brisbane - Mackay          | 83.6            | 88.5            | 5.9             |
| 20 | Launceston - Melbourne     | 81.4            | 80.7            | -0.8            |
| 21 | Brisbane - Canberra        | 76.1            | 78.0            | 2.5             |
| 22 | Adelaide - Perth           | 68.7            | 72.9            | 6.2             |
| 23 | Brisbane - Newcastle       | 69.9            | 69.6            | -0.5            |
| 24 | Sunshine Coast - Sydney    | 57.7            | 60.4            | 4.6             |
| 25 | Melbourne - Sunshine Coast | 55.5            | 54.1            | -2.7            |
| 26 | Hobart - Sydney            | 59.0            | 60.2            | 2.0             |
| 27 | Brisbane - Rockhampton     | 56.6            | 56.9            | 0.5             |
| 28 | Karratha - Perth           | 59.4            | 61.5            | 3.6             |
| 29 | Melbourne - Newcastle      | 49.7            | 41.7            | -16.0           |
| 30 | Brisbane - Darwin          | 42.8            | 41.9            | -2.0            |
| 31 | Broome - Perth             | 40.3            | 40.0            | -0.8            |
| 32 | Perth - Port Hedland       | 47.0            | 49.6            | 5.6             |
| 33 | Ballina - Sydney           | 42.7            | 40.7            | -4.6            |
| 34 | Darwin - Sydney            | 37.4            | 36.4            | -2.7            |
| 35 | Darwin - Melbourne         | 37.2            | 34.5            | -7.4            |
| 36 | Newman - Perth             | 47.1            | 50.9            | 8.2             |
| 37 | Coffs Harbour - Sydney     | 37.5            | 34.4            | -8.4            |
| 38 | Kalgoorlie - Perth         | 44.4            | 44.8            | 0.8             |
| 39 | Brisbane - Proserpine      | 22.2            | 25.8            | 16.1            |
| 40 | Brisbane - Gladstone       | 31.8            | 32.5            | 2.2             |
| 41 | Albury - Sydney            | 29.5            | 28.5            | -3.2            |
| 42 | Melbourne - Mildura        | 30.8            | 30.8            | 0.2             |
| 43 | Ayers Rock - Sydney        | 22.2            | 22.2            | 0.0             |
| 44 | Brisbane - Hobart          | 21.8            | 22.4            | 2.6             |
| 45 | Adelaide - Gold Coast      | 22.1            | 20.3            | -8.2            |
| 46 | Brisbane - Emerald         | 23.5            | 25.6            | 9.0             |
| 47 | Launceston - Sydney        | 21.0            | 20.3            | -3.4            |
| 48 | Hamilton Island - Sydney   | 26.8            | 22.6            | -15.7           |
| 49 | Adelaide - Canberra        | 27.1            | 26.4            | -2.8            |
| 50 | Sydney - Wagga Wagga       | 23.4            | 24.1            | 2.9             |

continued

**Table 3: (continued) Available seats (000s) — monthly activity**

|    | <b>City-Pair</b>              | <b>Aug 2018</b> | <b>Aug 2019</b> | <b>% Change</b> |
|----|-------------------------------|-----------------|-----------------|-----------------|
| 51 | Sydney - Townsville           | 19.9            | 20.1            | 1.0             |
| 52 | Darwin - Perth                | 21.5            | 21.4            | -0.3            |
| 53 | Port Macquarie - Sydney       | 19.7            | 22.4            | 13.8            |
| 54 | Dubbo - Sydney                | 23.4            | 24.1            | 3.2             |
| 55 | Sydney - Tamworth             | 23.4            | 22.1            | -5.6            |
| 56 | Adelaide - Port Lincoln       | 25.1            | 24.7            | -1.9            |
| 57 | Brisbane - Mount Isa          | 16.0            | 17.5            | 9.6             |
| 58 | Brisbane - Bundaberg          | 19.6            | 19.2            | -1.8            |
| 59 | Adelaide - Alice Springs      | 16.0            | 16.9            | 6.1             |
| 60 | Brisbane - Hamilton Island    | 14.0            | 15.7            | 12.1            |
| 61 | Alice Springs - Darwin        | 20.5            | 26.5            | 29.4            |
| 62 | Cairns - Townsville           | 21.3            | 21.1            | -1.2            |
| 63 | Armidale - Sydney             | 16.5            | 15.8            | -3.9            |
| 64 | Proserpine - Sydney           | 13.7            | 11.3            | -18.1           |
|    | <b>Total domestic network</b> | <b>6 521.4</b>  | <b>6 472.0</b>  | <b>-0.8</b>     |

**Table 4: Load factors (%) — monthly activity**

|    | City-Pair                  | Aug 2018 | Aug 2019 | % Point diff |
|----|----------------------------|----------|----------|--------------|
| 1  | Melbourne - Sydney         | 85.5     | 85.6     | 0.1          |
| 2  | Brisbane - Sydney          | 84.2     | 84.3     | 0.1          |
| 3  | Brisbane - Melbourne       | 83.6     | 85.4     | 1.8          |
| 4  | Gold Coast - Sydney        | 86.1     | 86.0     | -0.1         |
| 5  | Adelaide - Melbourne       | 81.2     | 82.2     | 1.0          |
| 6  | Gold Coast - Melbourne     | 91.6     | 91.2     | -0.4         |
| 7  | Melbourne - Perth          | 81.6     | 87.1     | 5.5          |
| 8  | Adelaide - Sydney          | 79.4     | 86.1     | 6.7          |
| 9  | Perth - Sydney             | 77.9     | 83.1     | 5.2          |
| 10 | Hobart - Melbourne         | 76.9     | 80.1     | 3.2          |
| 11 | Brisbane - Cairns          | 91.8     | 86.6     | -5.2         |
| 12 | Canberra - Melbourne       | 64.4     | 65.7     | 1.3          |
| 13 | Cairns - Sydney            | 87.8     | 88.0     | 0.2          |
| 14 | Brisbane - Townsville      | 85.2     | 80.9     | -4.3         |
| 15 | Canberra - Sydney          | 75.8     | 75.7     | -0.1         |
| 16 | Cairns - Melbourne         | 90.1     | 90.9     | 0.8          |
| 17 | Brisbane - Perth           | 81.0     | 82.9     | 1.9          |
| 18 | Adelaide - Brisbane        | 77.1     | 79.2     | 2.1          |
| 19 | Brisbane - Mackay          | 82.9     | 78.3     | -4.6         |
| 20 | Launceston - Melbourne     | 82.6     | 84.0     | 1.4          |
| 21 | Brisbane - Canberra        | 76.4     | 77.8     | 1.4          |
| 22 | Adelaide - Perth           | 72.0     | 76.0     | 4.0          |
| 23 | Brisbane - Newcastle       | 71.0     | 76.8     | 5.8          |
| 24 | Sunshine Coast - Sydney    | 82.2     | 84.6     | 2.4          |
| 25 | Melbourne - Sunshine Coast | 92.0     | 90.8     | -1.2         |
| 26 | Hobart - Sydney            | 80.7     | 81.2     | 0.5          |
| 27 | Brisbane - Rockhampton     | 83.0     | 83.5     | 0.5          |
| 28 | Karratha - Perth           | 67.3     | 66.5     | -0.8         |
| 29 | Melbourne - Newcastle      | 78.5     | 87.2     | 8.7          |
| 30 | Brisbane - Darwin          | 85.8     | 85.2     | -0.6         |
| 31 | Broome - Perth             | 81.4     | 84.2     | 2.8          |
| 32 | Perth - Port Hedland       | 68.7     | 67.0     | -1.7         |
| 33 | Ballina - Sydney           | 78.6     | 81.2     | 2.6          |
| 34 | Darwin - Sydney            | 83.1     | 86.3     | 3.2          |
| 35 | Darwin - Melbourne         | 85.7     | 90.8     | 5.1          |
| 36 | Newman - Perth             | 57.2     | 59.3     | 2.1          |
| 37 | Coffs Harbour - Sydney     | 71.9     | 75.2     | 3.3          |
| 38 | Kalgoorlie - Perth         | 60.6     | 56.3     | -4.3         |
| 39 | Brisbane - Proserpine      | 90.3     | 88.2     | -2.1         |
| 40 | Brisbane - Gladstone       | 70.9     | 65.9     | -5.0         |
| 41 | Albury - Sydney            | 72.7     | 75.0     | 2.3          |
| 42 | Melbourne - Mildura        | 66.5     | 65.7     | -0.8         |
| 43 | Ayers Rock - Sydney        | 83.5     | 88.8     | 5.3          |
| 44 | Brisbane - Hobart          | 80.3     | 83.3     | 3.0          |
| 45 | Adelaide - Gold Coast      | 85.8     | 89.4     | 3.6          |
| 46 | Brisbane - Emerald         | 78.5     | 70.8     | -7.7         |
| 47 | Launceston - Sydney        | 87.1     | 89.0     | 1.9          |
| 48 | Hamilton Island - Sydney   | 61.2     | 75.3     | 14.1         |
| 49 | Adelaide - Canberra        | 65.0     | 64.0     | -1.0         |
| 50 | Sydney - Wagga Wagga       | 73.2     | 68.7     | -4.5         |

continued



**Table 4: (continued) Load factors (%) — monthly activity**

|    | <b>City-Pair</b>              | <b>Aug 2018</b> | <b>Aug 2019</b> | <b>% Point diff</b> |
|----|-------------------------------|-----------------|-----------------|---------------------|
| 51 | Sydney - Townsville           | 83.5            | 82.1            | -1.4                |
| 52 | Darwin - Perth                | 81.5            | 76.6            | -4.9                |
| 53 | Port Macquarie - Sydney       | 78.7            | 72.2            | -6.5                |
| 54 | Dubbo - Sydney                | 75.0            | 67.2            | -7.8                |
| 55 | Sydney - Tamworth             | 68.5            | 67.4            | -1.1                |
| 56 | Adelaide - Port Lincoln       | 54.8            | 55.8            | 1.0                 |
| 57 | Brisbane - Mount Isa          | 82.4            | 77.2            | -5.2                |
| 58 | Brisbane - Bundaberg          | 71.1            | 69.4            | -1.7                |
| 59 | Adelaide - Alice Springs      | 71.4            | 75.4            | 4.0                 |
| 60 | Brisbane - Hamilton Island    | 79.6            | 80.6            | 1.0                 |
| 61 | Alice Springs - Darwin        | 61.3            | 47.6            | -13.7               |
| 62 | Cairns - Townsville           | 62.7            | 57.0            | -5.7                |
| 63 | Armidale - Sydney             | 67.1            | 65.3            | -1.8                |
| 64 | Proserpine - Sydney           | 86.9            | 85.0            | -1.9                |
|    | <b>Total domestic network</b> | <b>81.1</b>     | <b>82.5</b>     | <b>1.4</b>          |

**Table 5: Aircraft trips <sup>(a)</sup> — monthly activity**

|    | <b>City-Pair</b>           | <b>Aug 2018</b> | <b>Aug 2019</b> | <b>% Change</b> |
|----|----------------------------|-----------------|-----------------|-----------------|
| 1  | Melbourne - Sydney         | 5 027           | 5 048           | 0.4             |
| 2  | Brisbane - Sydney          | 3 011           | 2 972           | -1.3            |
| 3  | Brisbane - Melbourne       | 2 087           | 2 108           | 1.0             |
| 4  | Gold Coast - Sydney        | 1 478           | 1 463           | -1.0            |
| 5  | Adelaide - Melbourne       | 1 590           | 1 571           | -1.2            |
| 6  | Gold Coast - Melbourne     | 1 003           | 1 024           | 2.1             |
| 7  | Melbourne - Perth          | 953             | 989             | 3.8             |
| 8  | Adelaide - Sydney          | 1 120           | 1 020           | -8.9            |
| 9  | Perth - Sydney             | 731             | 729             | -0.3            |
| 10 | Hobart - Melbourne         | 865             | 863             | -0.2            |
| 11 | Brisbane - Cairns          | 873             | 932             | 6.8             |
| 12 | Canberra - Melbourne       | 995             | 971             | -2.4            |
| 13 | Cairns - Sydney            | 636             | 567             | -10.8           |
| 14 | Brisbane - Townsville      | 762             | 756             | -0.8            |
| 15 | Canberra - Sydney          | 1 500           | 1 434           | -4.4            |
| 16 | Cairns - Melbourne         | 471             | 462             | -1.9            |
| 17 | Brisbane - Perth           | 517             | 513             | -0.8            |
| 18 | Adelaide - Brisbane        | 565             | 537             | -5.0            |
| 19 | Brisbane - Mackay          | 646             | 688             | 6.5             |
| 20 | Launceston - Melbourne     | 645             | 640             | -0.8            |
| 21 | Brisbane - Canberra        | 555             | 566             | 2.0             |
| 22 | Adelaide - Perth           | 466             | 484             | 3.9             |
| 23 | Brisbane - Newcastle       | 454             | 504             | 11.0            |
| 24 | Sunshine Coast - Sydney    | 351             | 379             | 8.0             |
| 25 | Melbourne - Sunshine Coast | 310             | 300             | -3.2            |
| 26 | Hobart - Sydney            | 376             | 393             | 4.5             |
| 27 | Brisbane - Rockhampton     | 683             | 669             | -2.0            |
| 28 | Karratha - Perth           | 514             | 500             | -2.7            |
| 29 | Melbourne - Newcastle      | 276             | 230             | -16.7           |
| 30 | Brisbane - Darwin          | 268             | 257             | -4.1            |
| 31 | Broome - Perth             | 341             | 338             | -0.9            |
| 32 | Perth - Port Hedland       | 385             | 392             | 1.8             |
| 33 | Ballina - Sydney           | 281             | 265             | -5.7            |
| 34 | Darwin - Sydney            | 222             | 207             | -6.8            |
| 35 | Darwin - Melbourne         | 197             | 186             | -5.6            |
| 36 | Newman - Perth             | 348             | 361             | 3.7             |
| 37 | Coffs Harbour - Sydney     | 377             | 389             | 3.2             |
| 38 | Kalgoorlie - Perth         | 340             | 356             | 4.7             |
| 39 | Brisbane - Proserpine      | 124             | 144             | 16.1            |
| 40 | Brisbane - Gladstone       | 417             | 431             | 3.4             |
| 41 | Albury - Sydney            | 535             | 525             | -1.9            |
| 42 | Melbourne - Mildura        | 427             | 426             | -0.2            |
| 43 | Ayers Rock - Sydney        | 124             | 124             | 0.0             |
| 44 | Brisbane - Hobart          | 123             | 126             | 2.4             |
| 45 | Adelaide - Gold Coast      | 124             | 114             | -8.1            |
| 46 | Brisbane - Emerald         | 315             | 378             | 20.0            |
| 47 | Launceston - Sydney        | 123             | 114             | -7.3            |
| 48 | Hamilton Island - Sydney   | 167             | 137             | -18.0           |
| 49 | Adelaide - Canberra        | 160             | 159             | -0.6            |
| 50 | Sydney - Wagga Wagga       | 472             | 474             | 0.4             |

continued

**Table 5: (continued) Aircraft trips <sup>(a)</sup> — monthly activity**

|    | <b>City-Pair</b>              | <b>Aug 2018</b> | <b>Aug 2019</b> | <b>% Change</b> |
|----|-------------------------------|-----------------|-----------------|-----------------|
| 51 | Sydney - Townsville           | 114             | 114             | 0.0             |
| 52 | Darwin - Perth                | 128             | 124             | -3.1            |
| 53 | Port Macquarie - Sydney       | 307             | 348             | 13.4            |
| 54 | Dubbo - Sydney                | 487             | 524             | 7.6             |
| 55 | Sydney - Tamworth             | 345             | 346             | 0.3             |
| 56 | Adelaide - Port Lincoln       | 646             | 642             | -0.6            |
| 57 | Brisbane - Mount Isa          | 163             | 147             | -9.8            |
| 58 | Brisbane - Bundaberg          | 278             | 308             | 10.8            |
| 59 | Adelaide - Alice Springs      | 116             | 122             | 5.2             |
| 60 | Brisbane - Hamilton Island    | 103             | 124             | 20.4            |
| 61 | Alice Springs - Darwin        | 180             | 161             | -10.6           |
| 62 | Cairns - Townsville           | 343             | 334             | -2.6            |
| 63 | Armidale - Sydney             | 391             | 371             | -5.1            |
| 64 | Proserpine - Sydney           | 76              | 62              | -18.4           |
|    | <b>Total domestic network</b> | <b>53 927</b>   | <b>53 500</b>   | <b>-0.8</b>     |

(a) Includes RPT Cargo flights.

## TOP TEN AIRPORTS – PASSENGER MOVEMENTS

**Table 6: Top ten airports, RPT passenger movements (000s) - monthly activity**

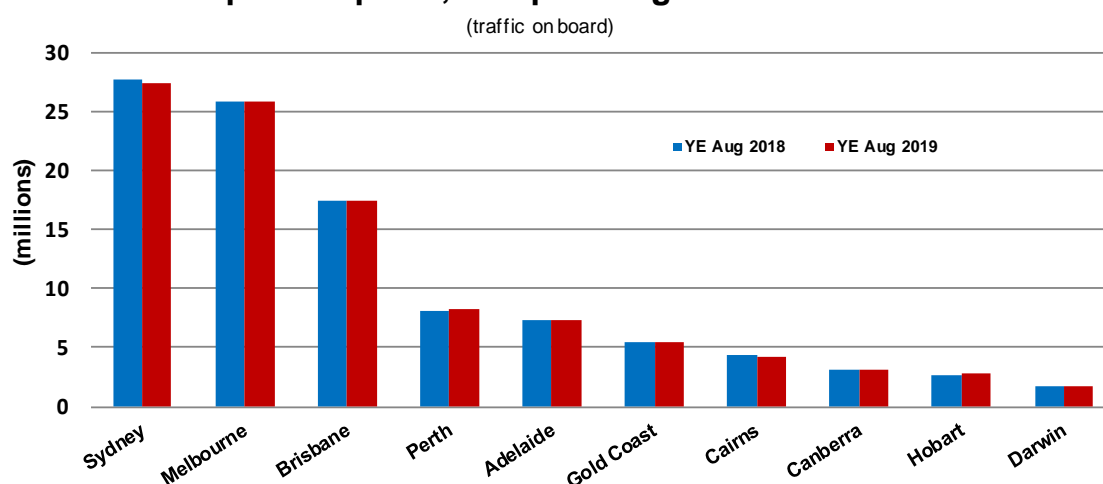
| Airport                       | Aug 2018        | Aug 2019        | % Change   | % of Total   |
|-------------------------------|-----------------|-----------------|------------|--------------|
| 1 Sydney                      | 2 326.8         | 2 297.4         | -1.3       | 22.1         |
| 2 Melbourne                   | 2 158.3         | 2 169.3         | 0.5        | 20.9         |
| 3 Brisbane                    | 1 511.5         | 1 528.5         | 1.1        | 14.7         |
| 4 Perth                       | 675.4           | 690.9           | 2.3        | 6.7          |
| 5 Adelaide                    | 602.9           | 617.5           | 2.4        | 5.9          |
| 6 Gold Coast                  | 450.0           | 449.8           | 0.0        | 4.3          |
| 7 Cairns                      | 400.8           | 380.1           | -5.1       | 3.7          |
| 8 Canberra                    | 282.5           | 278.0           | -1.6       | 2.7          |
| 9 Hobart                      | 188.9           | 203.1           | 7.5        | 2.0          |
| 10 Darwin                     | 175.0           | 172.8           | -1.2       | 1.7          |
| <b>Total top ten airports</b> | <b>8 772.0</b>  | <b>8 787.4</b>  | <b>0.2</b> | <b>84.6</b>  |
| <b>Total domestic network</b> | <b>10 369.4</b> | <b>10 387.7</b> | <b>0.2</b> | <b>100.0</b> |

**Table 7: Top ten airports, RPT passenger movements (000s) - annual activity**

| Airport                       | YE Aug 2018      | YE Aug 2019      | % Change    | % of Total   |
|-------------------------------|------------------|------------------|-------------|--------------|
| 1 Sydney                      | 27 773.6         | 27 459.1         | -1.1        | 22.5         |
| 2 Melbourne                   | 25 837.4         | 25 893.4         | 0.2         | 21.2         |
| 3 Brisbane                    | 17 444.3         | 17 402.5         | -0.2        | 14.3         |
| 4 Perth                       | 8 147.9          | 8 241.1          | 1.1         | 6.8          |
| 5 Adelaide                    | 7 322.9          | 7 329.4          | 0.1         | 6.0          |
| 6 Gold Coast                  | 5 519.9          | 5 493.8          | -0.5        | 4.5          |
| 7 Cairns                      | 4 339.8          | 4 191.3          | -3.4        | 3.4          |
| 8 Canberra                    | 3 127.8          | 3 124.8          | -0.1        | 2.6          |
| 9 Hobart                      | 2 621.0          | 2 747.9          | 4.8         | 2.3          |
| 10 Darwin                     | 1 771.7          | 1 708.0          | -3.6        | 1.4          |
| <b>Total top ten airports</b> | <b>103 906.3</b> | <b>103 591.2</b> | <b>-0.3</b> | <b>84.9</b>  |
| <b>Total domestic network</b> | <b>122 178.4</b> | <b>121 949.7</b> | <b>-0.2</b> | <b>100.0</b> |

Note: Airport passenger movement numbers are the sum of passenger arrivals and departures at each airport.

### Top ten airports, RPT passenger movements



## TOP FIVE AIRPORTS – CARGO MOVEMENTS

**Table 8: Top five airports, domestic RPT cargo movements (000s tonnes) - monthly activity**

| Airport                        | Aug 2018    | Aug 2019    | % Change     | % of Total   |
|--------------------------------|-------------|-------------|--------------|--------------|
| 1 Melbourne                    | 11.8        | 9.9         | -15.6        | 26.1         |
| 2 Sydney                       | 9.1         | 8.2         | -9.7         | 21.6         |
| 3 Brisbane                     | 6.8         | 6.1         | -10.7        | 16.0         |
| 4 Perth                        | 5.8         | 5.0         | -13.3        | 13.2         |
| 5 Adelaide                     | 2.7         | 2.3         | -13.3        | 6.1          |
| <b>Total top five airports</b> | <b>36.1</b> | <b>31.6</b> | <b>-12.6</b> | <b>83.0</b>  |
| <b>Total domestic network</b>  | <b>41.6</b> | <b>38.0</b> | <b>-8.5</b>  | <b>100.0</b> |

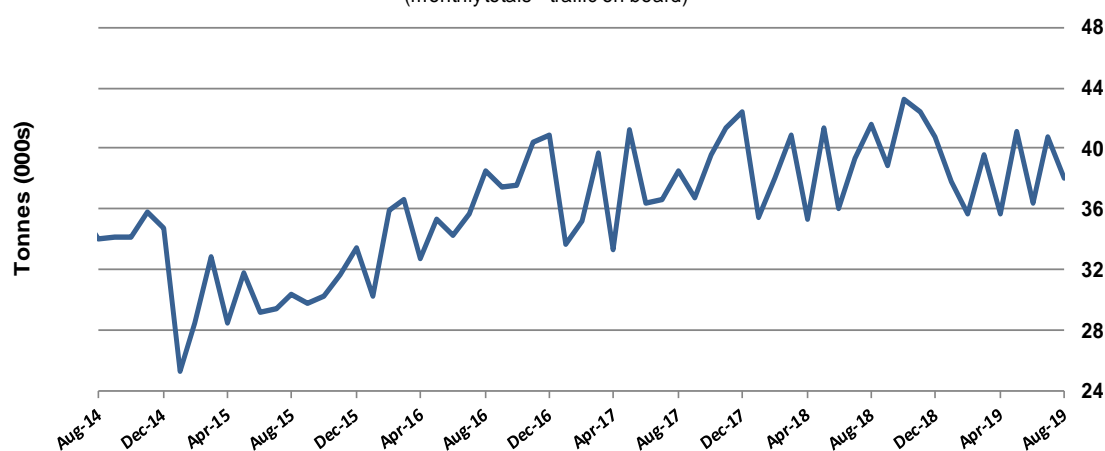
**Table 9: Top five airports, domestic RPT cargo movements (000s tonnes) - annual activity**

| Airport                        | YE Aug 2018  | YE Aug 2019  | % Change    | % of Total   |
|--------------------------------|--------------|--------------|-------------|--------------|
| 1 Melbourne                    | 135.1        | 125.5        | -7.1        | 26.7         |
| 2 Sydney                       | 108.4        | 102.4        | -5.5        | 21.8         |
| 3 Brisbane                     | 70.1         | 74.1         | 5.7         | 15.7         |
| 4 Perth                        | 66.3         | 64.4         | -2.9        | 13.7         |
| 5 Adelaide                     | 27.6         | 28.9         | 4.6         | 6.1          |
| <b>Total top five airports</b> | <b>407.5</b> | <b>395.3</b> | <b>-3.0</b> | <b>84.0</b>  |
| <b>Total domestic network</b>  | <b>468.3</b> | <b>470.5</b> | <b>0.5</b>  | <b>100.0</b> |

Note: Airport cargo tonnes are the sum of cargo tonnes on arrivals and departures at each airport.

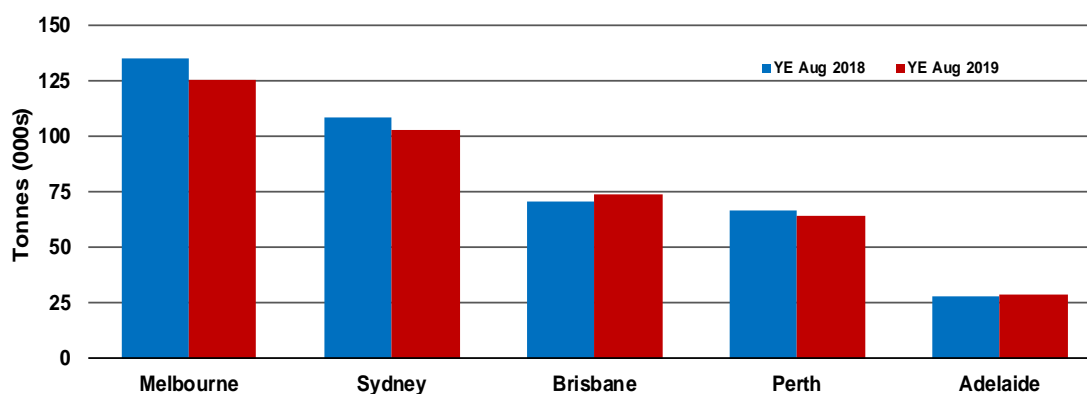
### Total domestic network - cargo movement

(monthly totals - traffic on board)



### Top five airports, cargo movements

(Domestic cargo traffic - traffic on board)



## TOP TEN ROUTES

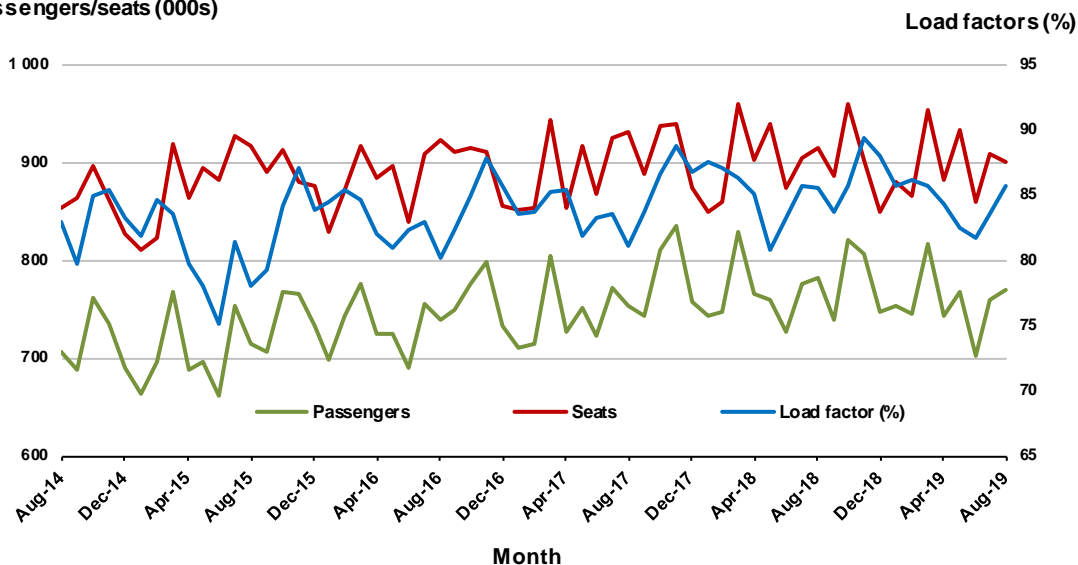
### 1. Melbourne - Sydney

#### Monthly data

|                           | Aug 2018 | Aug 2019 | % Change |
|---------------------------|----------|----------|----------|
| Passengers carried (000s) | 782.2    | 769.5    | -1.6     |
| Seats (000s)              | 914.6    | 899.3    | -1.7     |
| Load factor %             | 85.5     | 85.6     | 0.1 *    |
| Aircraft trips            | 5 027    | 5 048    | 0.4      |

\* percentage point difference

#### Passengers/seats (000s)

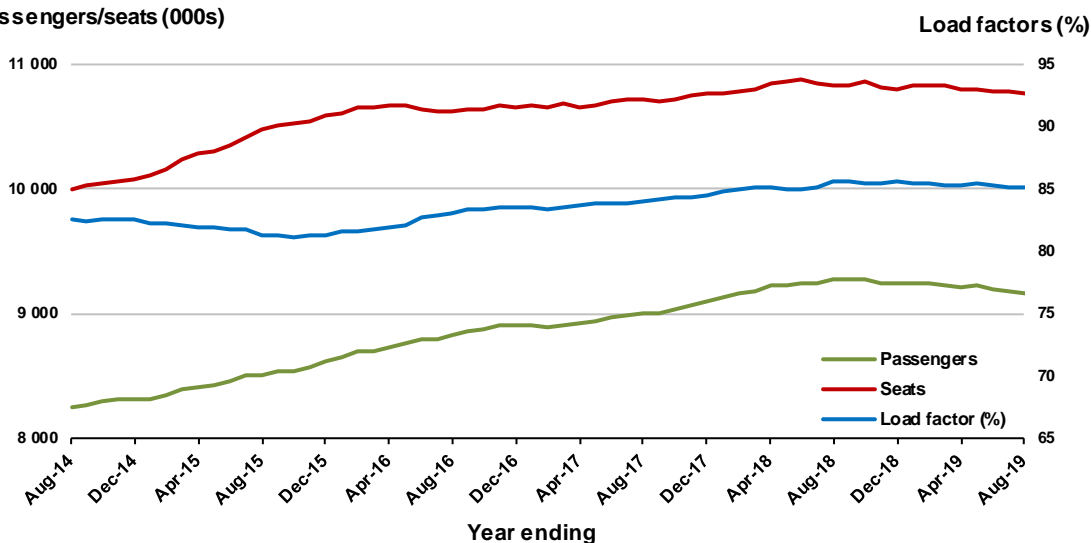


#### Moving annual data

|                           | YE Aug 2018 | YE Aug 2019 | % Change |
|---------------------------|-------------|-------------|----------|
| Passengers carried (000s) | 9 271.4     | 9 166.9     | -1.1     |
| Seats (000s)              | 10 834.9    | 10 773.2    | -0.6     |
| Load factor %             | 85.6        | 85.1        | -0.5 *   |
| Aircraft trips            | 60 039      | 60 270      | 0.4      |

\* percentage point difference

#### Passengers/seats (000s)

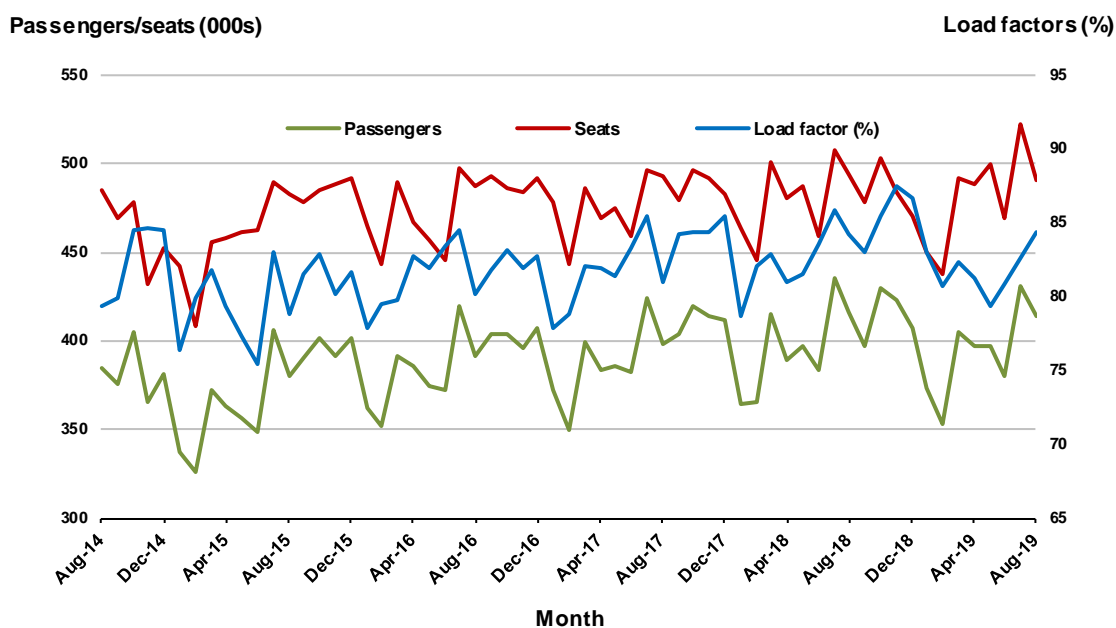


## 2. Brisbane - Sydney

### Monthly data

|                           | Aug 2018 | Aug 2019 | % Change |
|---------------------------|----------|----------|----------|
| Passengers carried (000s) | 416.5    | 413.6    | -0.7     |
| Seats (000s)              | 494.4    | 490.4    | -0.8     |
| Load factor %             | 84.2     | 84.3     | 0.1 *    |
| Aircraft trips            | 3 011    | 2 972    | -1.3     |

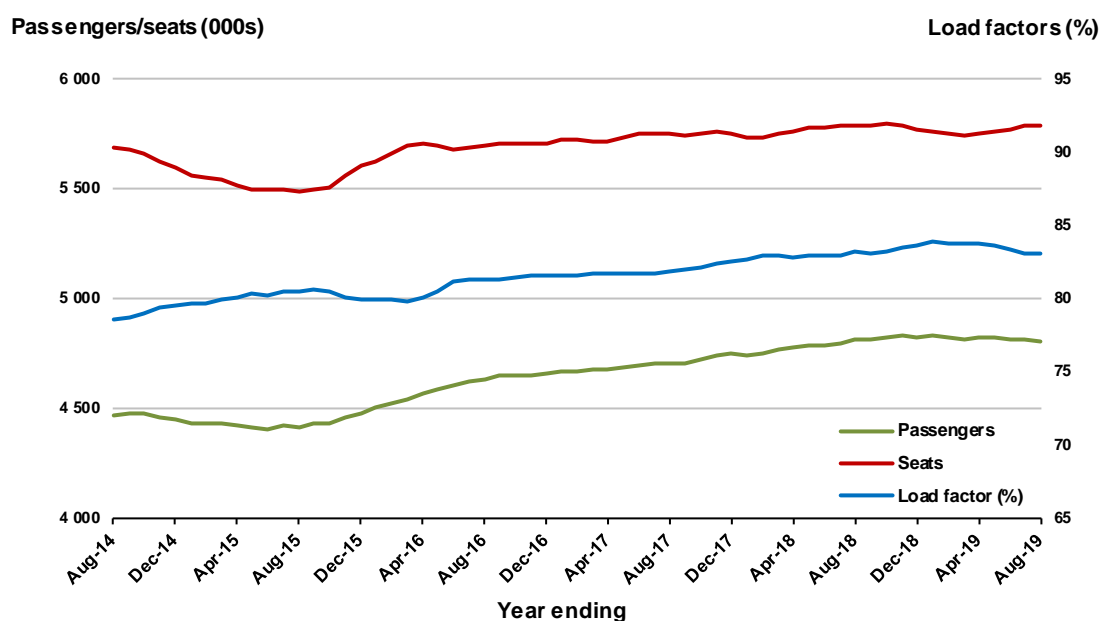
\* percentage point difference



### Moving annual data

|                           | YE Aug 2018 | YE Aug 2019 | % Change |
|---------------------------|-------------|-------------|----------|
| Passengers carried (000s) | 4 816.4     | 4 807.3     | -0.2     |
| Seats (000s)              | 5 788.8     | 5 784.6     | -0.1     |
| Load factor %             | 83.2        | 83.1        | -0.1 *   |
| Aircraft trips            | 35 205      | 35 297      | 0.3      |

\* percentage point difference

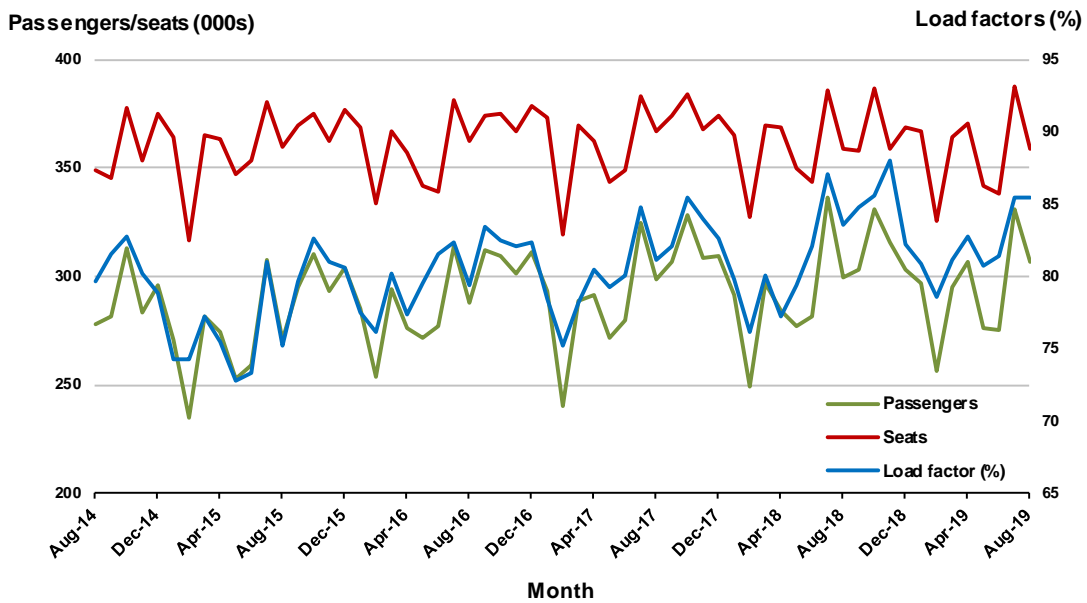


### 3. Brisbane - Melbourne

#### Monthly data

|                           | Aug 2018 | Aug 2019 | % Change |
|---------------------------|----------|----------|----------|
| Passengers carried (000s) | 299.8    | 306.3    | 2.2      |
| Seats (000s)              | 358.6    | 358.8    | 0.1      |
| Load factor %             | 83.6     | 85.4     | 1.8 *    |
| Aircraft trips            | 2 087    | 2 108    | 1.0      |

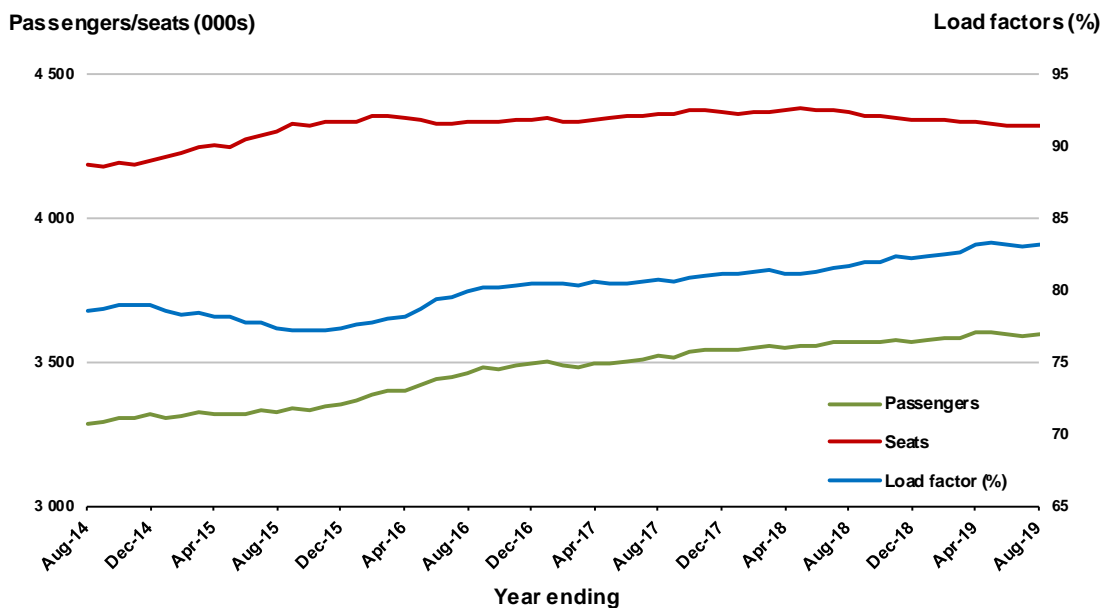
\* percentage point difference



#### Moving annual data

|                           | YE Aug 2018 | YE Aug 2019 | % Change |
|---------------------------|-------------|-------------|----------|
| Passengers carried (000s) | 3 570.2     | 3 595.9     | 0.7      |
| Seats (000s)              | 4 368.4     | 4 323.8     | -1.0     |
| Load factor %             | 81.7        | 83.2        | 1.4 *    |
| Aircraft trips            | 25 647      | 25 541      | -0.4     |

\* percentage point difference





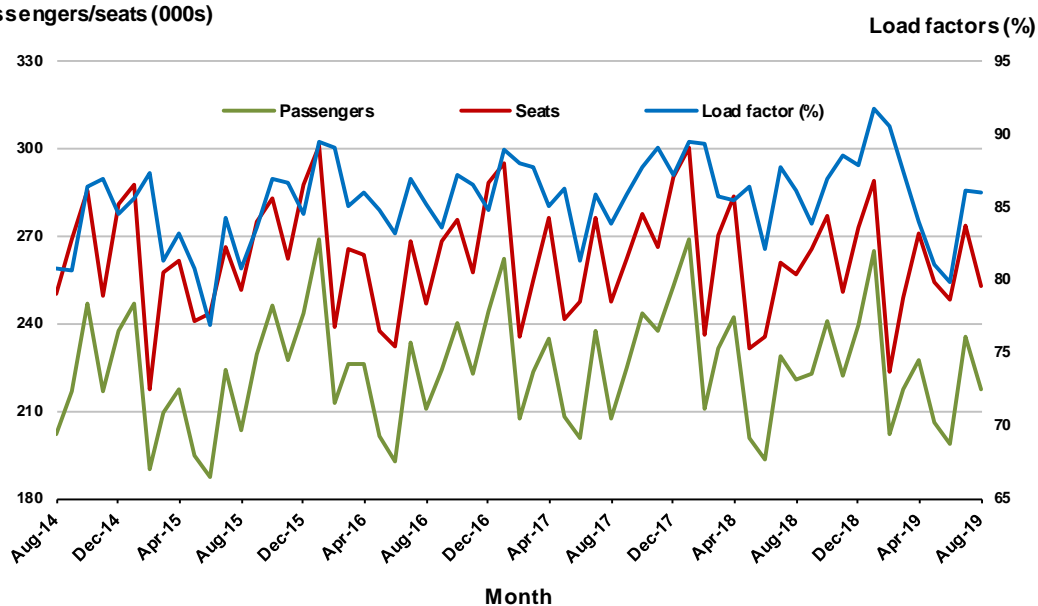
## 4. Gold Coast - Sydney

### Monthly data

|                           | Aug 2018 | Aug 2019 | % Change |
|---------------------------|----------|----------|----------|
| Passengers carried (000s) | 220.9    | 217.2    | -1.7     |
| Seats (000s)              | 256.6    | 252.6    | -1.6     |
| Load factor %             | 86.1     | 86.0     | -0.1 *   |
| Aircraft trips            | 1 478    | 1 463    | -1.0     |

\* percentage point difference

### Passengers/seats (000s)

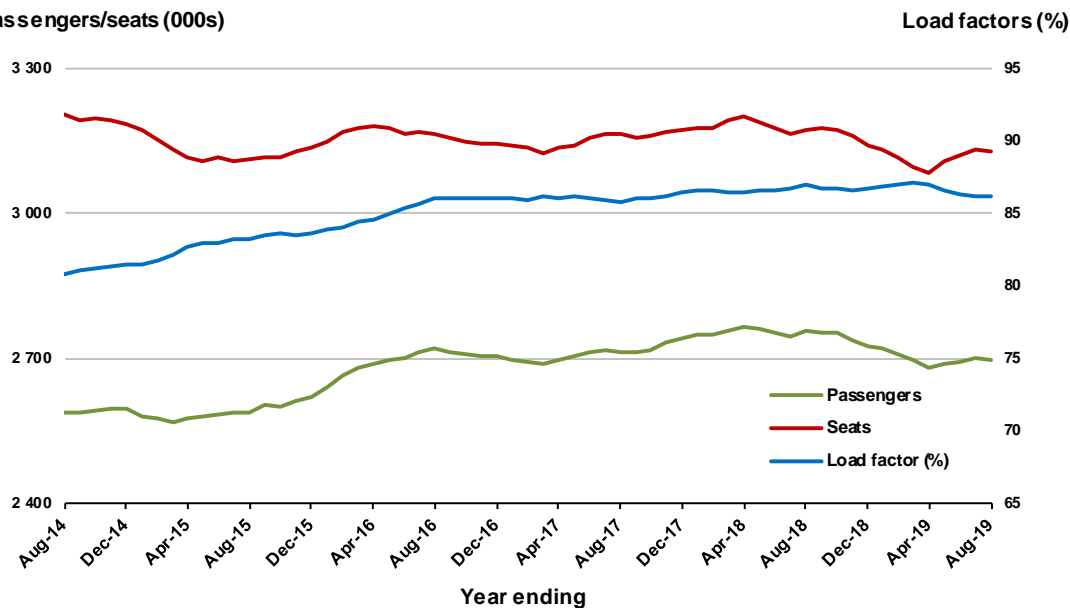


### Moving annual data

|                           | YE Aug 2018 | YE Aug 2019 | % Change |
|---------------------------|-------------|-------------|----------|
| Passengers carried (000s) | 2 756.5     | 2 695.2     | -2.2     |
| Seats (000s)              | 3 171.4     | 3 127.3     | -1.4     |
| Load factor %             | 86.9        | 86.2        | -0.7 *   |
| Aircraft trips            | 17 955      | 17 882      | -0.4     |

\* percentage point difference

### Passengers/seats (000s)



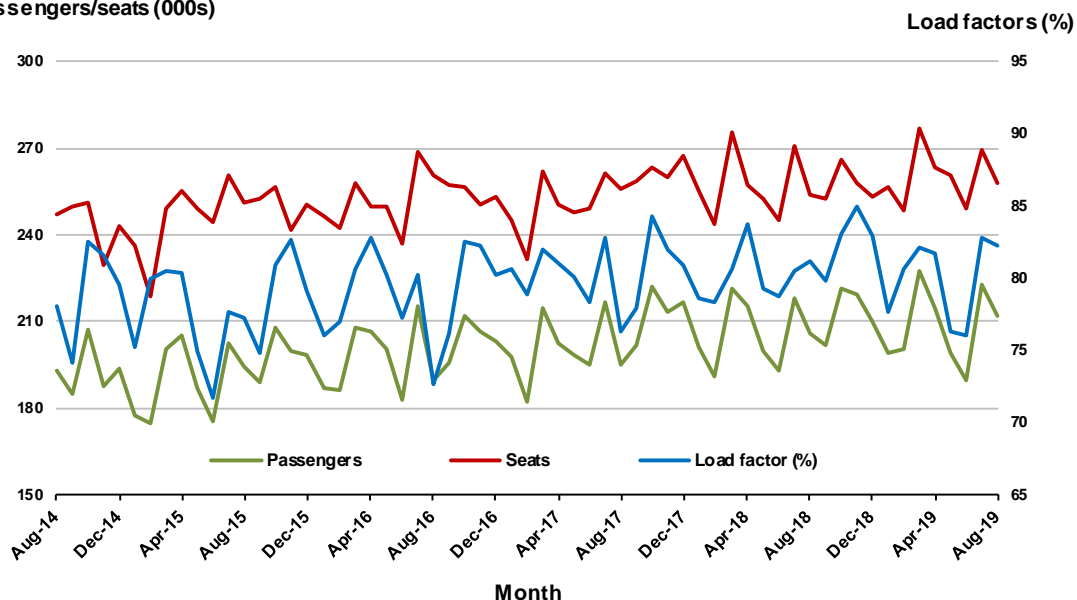
## 5. Adelaide - Melbourne

### Monthly data

|                           | Aug 2018 | Aug 2019 | % Change |
|---------------------------|----------|----------|----------|
| Passengers carried (000s) | 206.1    | 212.0    | 2.9      |
| Seats (000s)              | 253.9    | 257.9    | 1.6      |
| Load factor %             | 81.2     | 82.2     | 1.0 *    |
| Aircraft trips            | 1 590    | 1 571    | -1.2     |

\* percentage point difference

### Passengers/seats (000s)

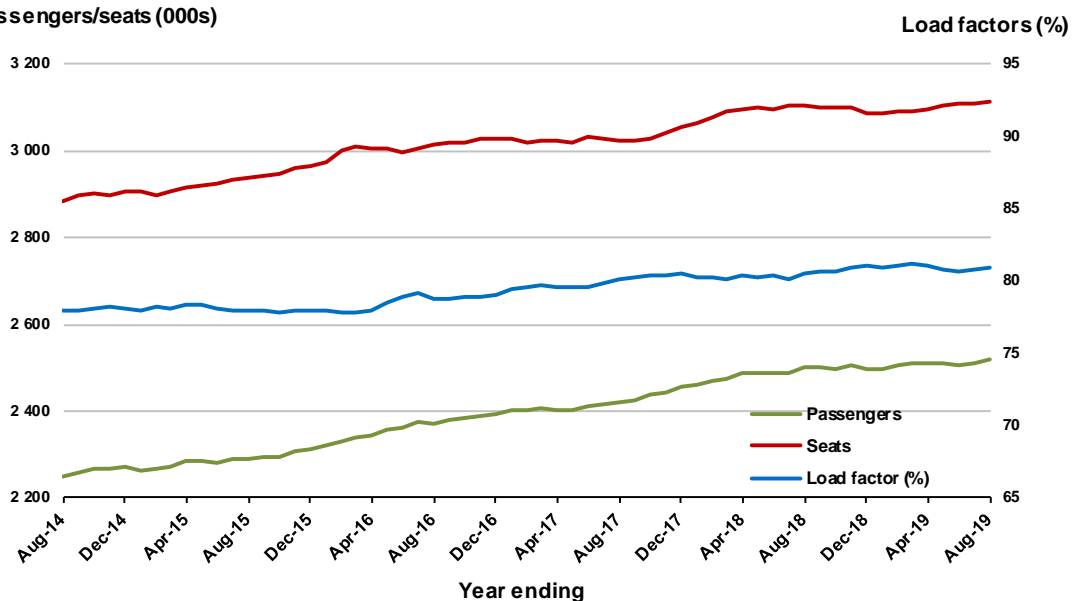


### Moving annual data

|                           | YE Aug 2018 | YE Aug 2019 | % Change |
|---------------------------|-------------|-------------|----------|
| Passengers carried (000s) | 2 499.2     | 2 517.8     | 0.7      |
| Seats (000s)              | 3 103.6     | 3 112.3     | 0.3      |
| Load factor %             | 80.5        | 80.9        | 0.4 *    |
| Aircraft trips            | 19 257      | 18 986      | -1.4     |

\* percentage point difference

### Passengers/seats (000s)



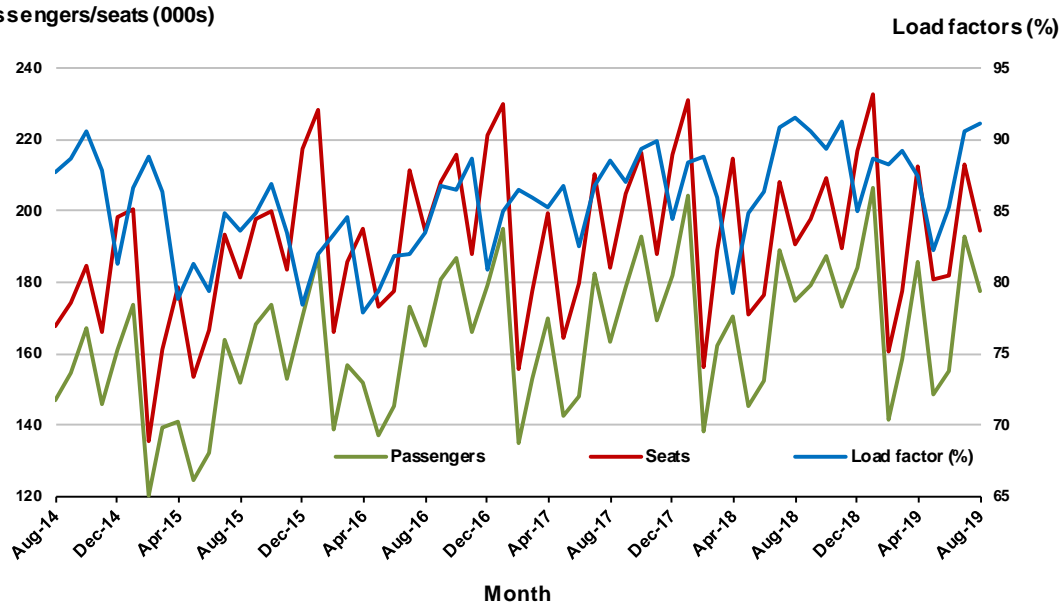
## 6. Gold Coast - Melbourne

### Monthly data

|                           | Aug 2018 | Aug 2019 | % Change |
|---------------------------|----------|----------|----------|
| Passengers carried (000s) | 174.8    | 177.6    | 1.6      |
| Seats (000s)              | 190.7    | 194.7    | 2.1      |
| Load factor %             | 91.6     | 91.2     | -0.4 *   |
| Aircraft trips            | 1 003    | 1 024    | 2.1      |

\* percentage point difference

### Passengers/seats (000s)

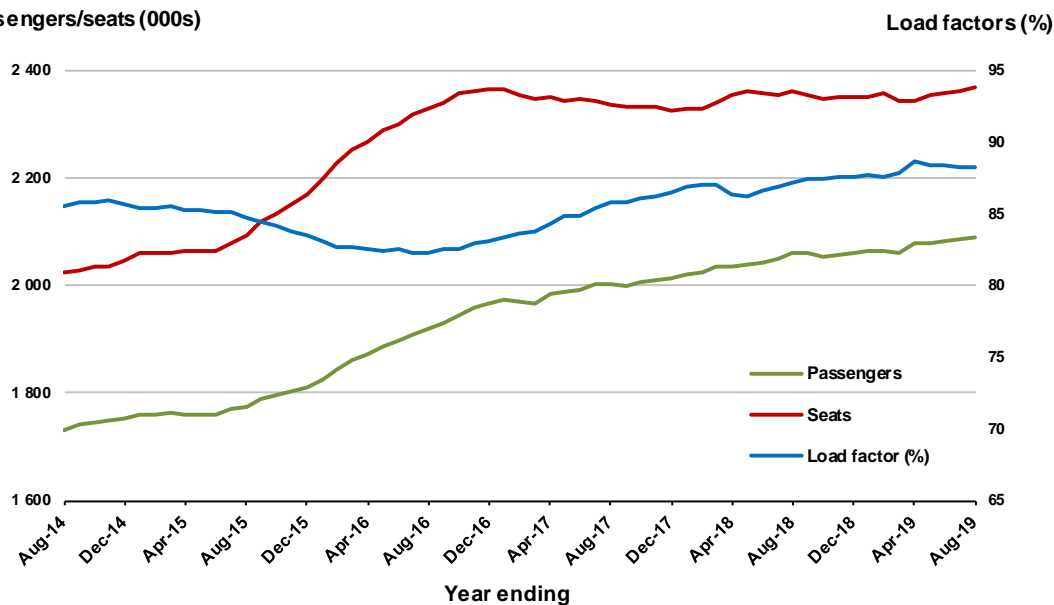


### Moving annual data

|                           | YE Aug 2018 | YE Aug 2019 | % Change |
|---------------------------|-------------|-------------|----------|
| Passengers carried (000s) | 2 060.0     | 2 090.3     | 1.5      |
| Seats (000s)              | 2 361.6     | 2 367.3     | 0.2      |
| Load factor %             | 87.2        | 88.3        | 1.1 *    |
| Aircraft trips            | 12 511      | 12 508      | 0.0      |

\* percentage point difference

### Passengers/seats (000s)



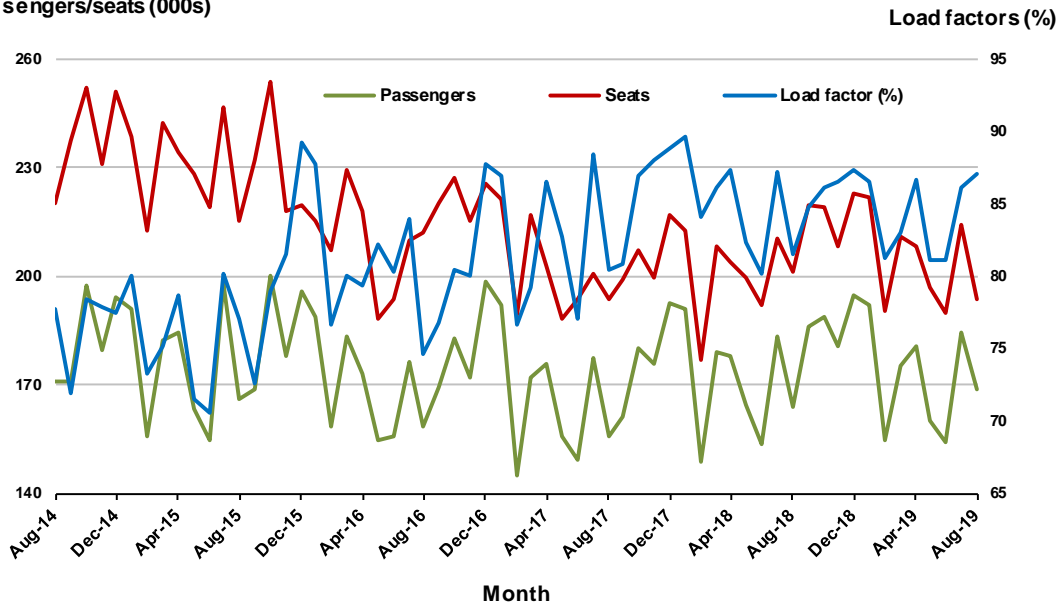
## 7. Melbourne - Perth

### Monthly data

|                           | Aug 2018 | Aug 2019 | % Change |
|---------------------------|----------|----------|----------|
| Passengers carried (000s) | 164.2    | 168.9    | 2.9      |
| Seats (000s)              | 201.2    | 193.9    | -3.7     |
| Load factor %             | 81.6     | 87.1     | 5.5 *    |
| Aircraft trips            | 953      | 989      | 3.8      |

\* percentage point difference

### Passengers/seats (000s)

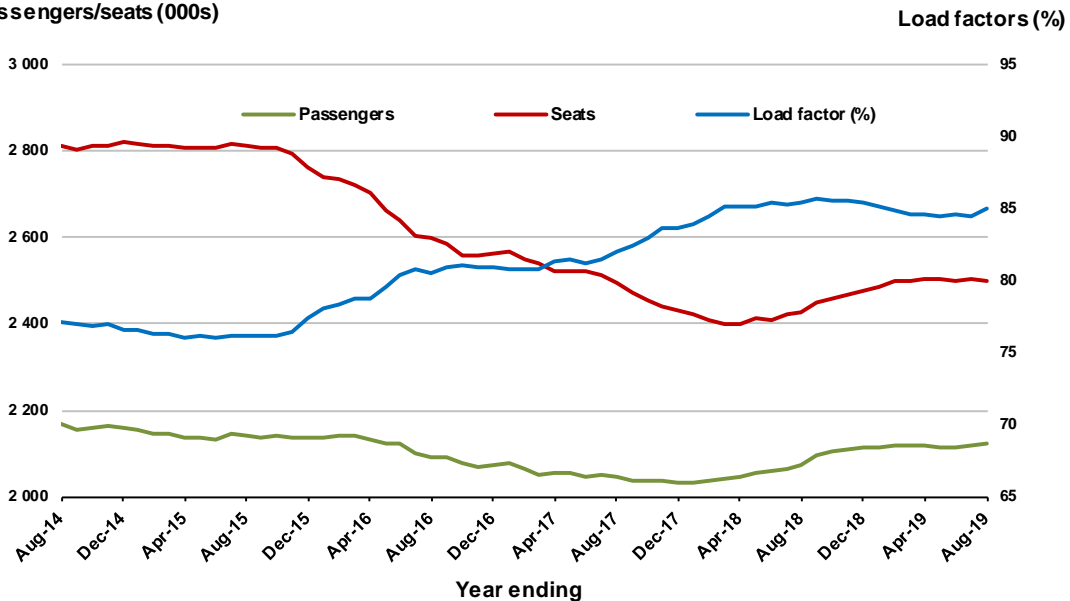


### Moving annual data

|                           | YE Aug 2018 | YE Aug 2019 | % Change |
|---------------------------|-------------|-------------|----------|
| Passengers carried (000s) | 2 072.2     | 2 121.5     | 2.4      |
| Seats (000s)              | 2 427.9     | 2 497.7     | 2.9      |
| Load factor %             | 85.4        | 84.9        | -0.4 *   |
| Aircraft trips            | 11 345      | 12 363      | 9.0      |

\* percentage point difference

### Passengers/seats (000s)



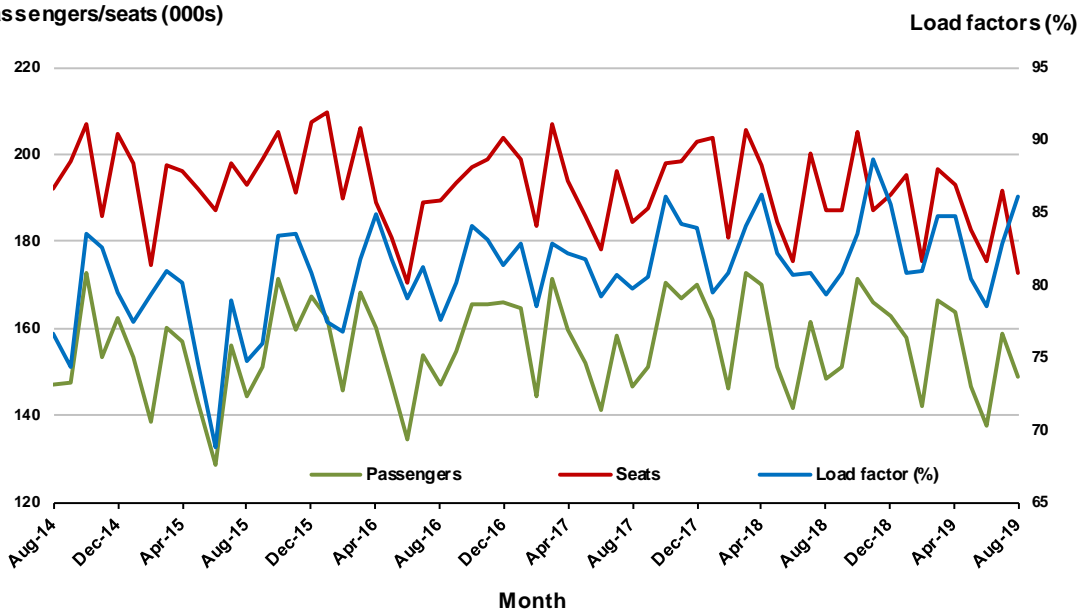
## 8. Adelaide - Sydney

### Monthly data

|                           | Aug 2018 | Aug 2019 | % Change |
|---------------------------|----------|----------|----------|
| Passengers carried (000s) | 148.6    | 149.0    | 0.3      |
| Seats (000s)              | 187.1    | 173.0    | -7.5     |
| Load factor %             | 79.4     | 86.1     | 6.7 *    |
| Aircraft trips            | 1 120    | 1 020    | -8.9     |

\* percentage point difference

### Passengers/seats (000s)

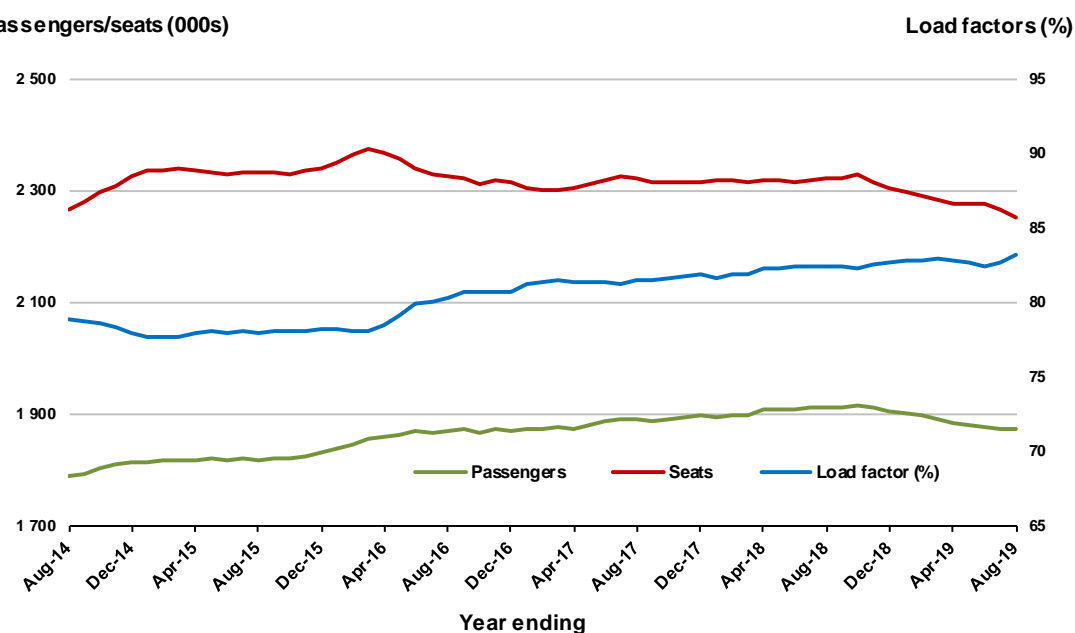


### Moving annual data

|                           | YE Aug 2018 | YE Aug 2019 | % Change |
|---------------------------|-------------|-------------|----------|
| Passengers carried (000s) | 1 913.8     | 1 874.8     | -2.0     |
| Seats (000s)              | 2 321.7     | 2 253.5     | -2.9     |
| Load factor %             | 82.4        | 83.2        | 0.8 *    |
| Aircraft trips            | 13 869      | 13 487      | -2.8     |

\* percentage point difference

### Passengers/seats (000s)



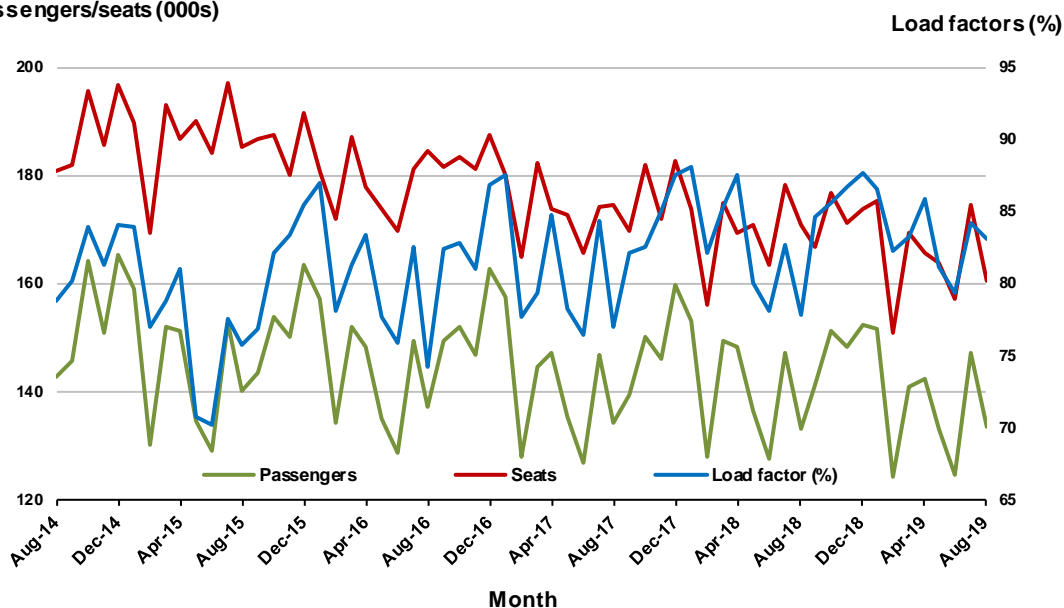
## 9. Perth - Sydney

### Monthly data

|                           | Aug 2018 | Aug 2019 | % Change |
|---------------------------|----------|----------|----------|
| Passengers carried (000s) | 133.1    | 133.5    | 0.3      |
| Seats (000s)              | 170.8    | 160.7    | -5.9     |
| Load factor %             | 77.9     | 83.1     | 5.2 *    |
| Aircraft trips            | 731      | 729      | -0.3     |

\* percentage point difference

### Passengers/seats (000s)

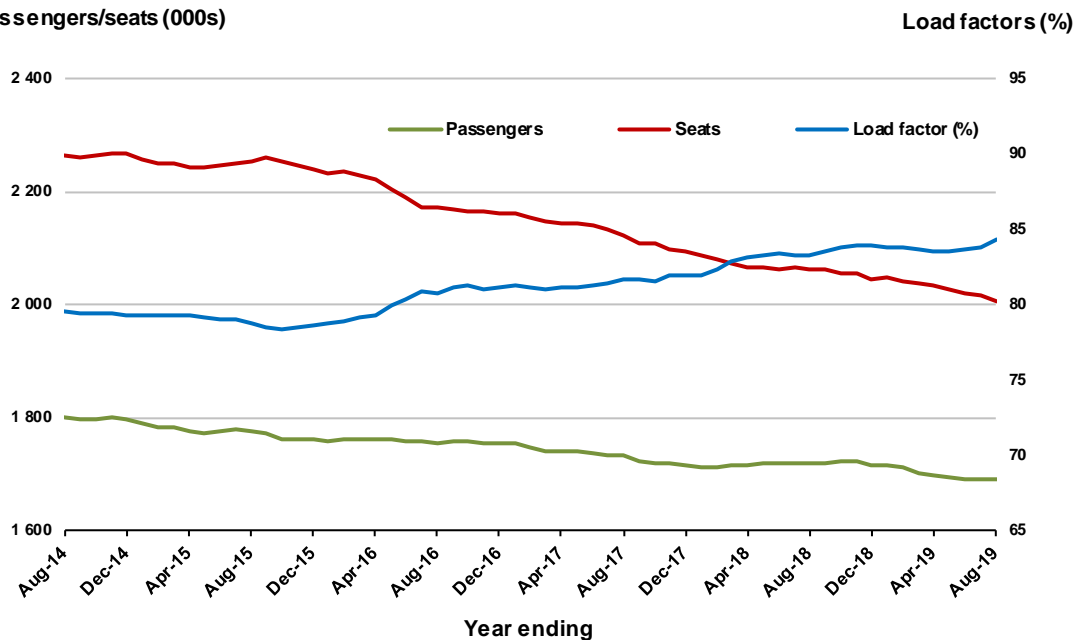


### Moving annual data

|                           | YE Aug 2018 | YE Aug 2019 | % Change |
|---------------------------|-------------|-------------|----------|
| Passengers carried (000s) | 1 719.4     | 1 690.5     | -1.7     |
| Seats (000s)              | 2 063.8     | 2 006.1     | -2.8     |
| Load factor %             | 83.3        | 84.3        | 1.0 *    |
| Aircraft trips            | 9 049       | 9 063       | 0.2      |

\* percentage point difference

### Passengers/seats (000s)



## 10. Hobart - Melbourne

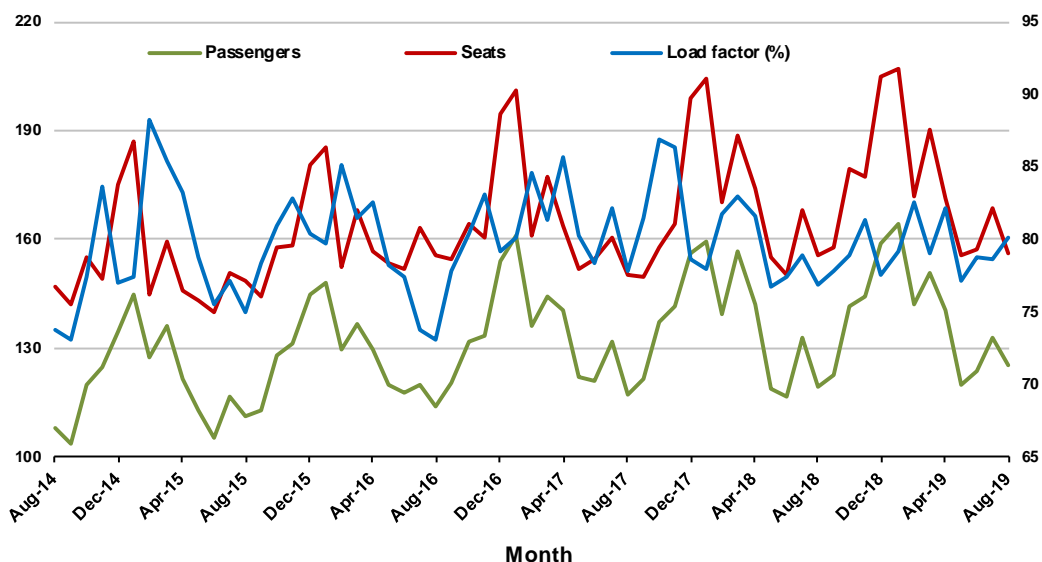
### Monthly data

|                           | Aug 2018 | Aug 2019 | % Change |
|---------------------------|----------|----------|----------|
| Passengers carried (000s) | 119.6    | 125.1    | 4.5      |
| Seats (000s)              | 155.7    | 156.0    | 0.2      |
| Load factor %             | 76.9     | 80.1     | 3.2 *    |
| Aircraft trips            | 865      | 863      | -0.2     |

\* percentage point difference

### Passengers/seats (000s)

### Load factors (%)



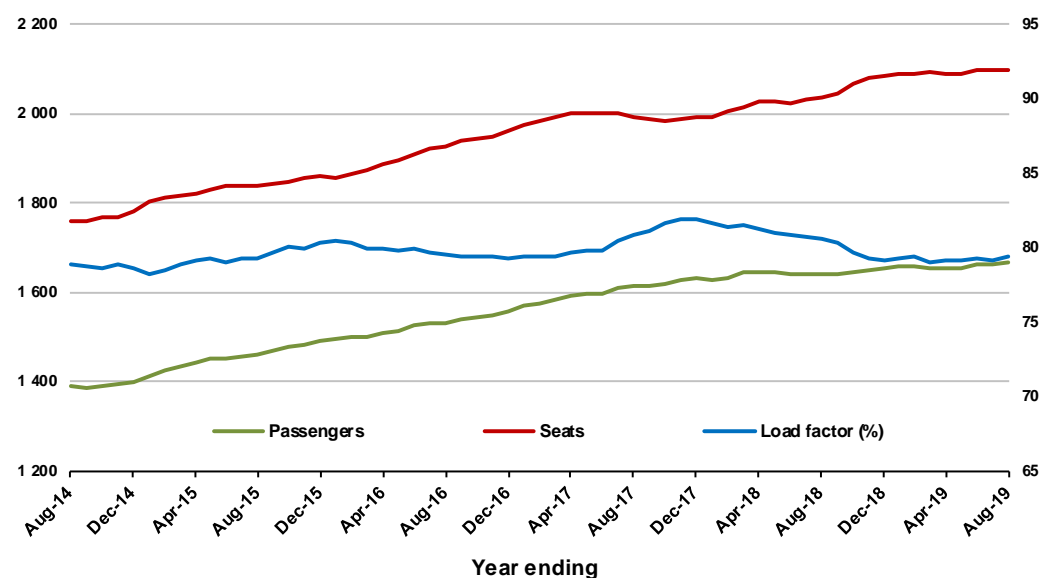
### Moving annual data

|                           | YE Aug 2018 | YE Aug 2019 | % Change |
|---------------------------|-------------|-------------|----------|
| Passengers carried (000s) | 1 641.9     | 1 666.8     | 1.5      |
| Seats (000s)              | 2 037.4     | 2 098.4     | 3.0      |
| Load factor %             | 80.6        | 79.4        | -1.2 *   |
| Aircraft trips            | 11 783      | 11 484      | -2.5     |

\* percentage point difference

### Passengers/seats (000s)

### Load factors (%)



## TOP FIFTY REGIONAL AIRPORTS

**Table 10: Top fifty regional airports (000s) — passenger movements, monthly**

| Airport                               | Aug 2018        | Aug 2019        | % Change    |
|---------------------------------------|-----------------|-----------------|-------------|
| 1 Cairns                              | 400.8           | 380.1           | -5.1        |
| 2 Hobart                              | 188.9           | 203.1           | 7.5         |
| 3 Darwin                              | 175.0           | 172.8           | -1.2        |
| 4 Townsville                          | 151.7           | 151.5           | -0.2        |
| 5 Newcastle                           | 103.8           | 105.1           | 1.2         |
| 6 Launceston                          | 94.6            | 95.2            | 0.6         |
| 7 Mackay                              | 79.3            | 78.2            | -1.4        |
| 8 Alice Springs                       | 60.2            | 53.6            | -11.0       |
| 9 Rockhampton                         | 43.2            | 50.7            | 17.6        |
| 10 Ayers Rock                         | 50.0            | 50.3            | 0.5         |
| 11 Broome                             | 44.4            | 44.3            | -0.3        |
| 12 Karratha                           | 40.2            | 41.0            | 2.0         |
| 13 Ballina                            | 40.1            | 39.6            | -1.4        |
| 14 Port Hedland                       | 36.9            | 39.5            | 6.9         |
| 15 Coffs Harbour                      | 38.0            | 38.0            | 0.1         |
| 16 Proserpine                         | 33.1            | 33.9            | 2.2         |
| 17 Hamilton Island                    | 32.1            | 31.7            | -1.3        |
| 18 Newman                             | 26.9            | 30.2            | 12.2        |
| 19 Kalgoorlie                         | 28.1            | 26.8            | -4.6        |
| 20 Mildura                            | 23.6            | 23.6            | 0.1         |
| 21 Albury                             | 24.8            | 22.0            | -11.4       |
| 22 Gladstone                          | 22.5            | 21.5            | -4.8        |
| 23 Mount Isa                          | 20.8            | 21.0            | 1.2         |
| 24 Wagga Wagga                        | 19.9            | 19.1            | -4.2        |
| 25 Port Macquarie                     | 19.6            | 18.7            | -4.5        |
| 26 Dubbo                              | 17.7            | 18.6            | 4.9         |
| 27 Emerald                            | 18.4            | 18.1            | -1.7        |
| 28 Paraburdoo                         | 16.2            | 16.8            | 3.9         |
| 29 Tamworth                           | 17.3            | 16.3            | -6.0        |
| 30 Port Lincoln                       | 14.1            | 15.3            | 8.8         |
| 31 Hervey Bay                         | 13.8            | 13.8            | -0.3        |
| 32 Bundaberg                          | 13.9            | 13.4            | -3.9        |
| 33 Kununurra                          | 12.5            | 12.7            | 1.6         |
| 34 Devonport                          | 11.3            | 12.6            | 11.5        |
| 35 Armidale                           | 11.9            | 11.2            | -5.6        |
| 36 Toowoomba Wellcamp                 | 11.5            | 10.1            | -11.5       |
| 37 Moranbah                           | 9.7             | 9.2             | -5.4        |
| 38 Learmonth                          | 7.1             | 8.8             | 23.5        |
| 39 Geraldton                          | 9.9             | 8.7             | -11.7       |
| 40 Thursday Island                    | 8.6             | 8.7             | 0.7         |
| 41 Roma                               | 8.0             | 8.6             | 7.4         |
| 42 Griffith                           | 7.4             | 8.5             | 15.4        |
| 43 Gove                               | 8.6             | 8.4             | -2.7        |
| 44 Mount Gambier                      | 7.0             | 7.8             | 12.2        |
| 45 Orange                             | 7.2             | 7.4             | 3.6         |
| 46 Olympic Dam                        | 7.4             | 7.2             | -2.7        |
| 47 Whyalla                            | 7.0             | 6.9             | -1.8        |
| 48 Weipa                              | 6.1             | 6.1             | -0.6        |
| 49 Burnie                             | 7.5             | 6.0             | -19.8       |
| 50 Merimbula                          | 5.7             | 5.5             | -3.6        |
| <b>Total top 50 regional airports</b> | <b>2 064.3</b>  | <b>2 058.0</b>  | <b>-0.3</b> |
| <b>Total regional airports</b>        | <b>2 187.6</b>  | <b>2 177.9</b>  | <b>-0.4</b> |
| <b>Total domestic network</b>         | <b>10 369.4</b> | <b>10 387.7</b> | <b>0.2</b>  |

Note: Airport passenger movement numbers are the sum of passenger arrivals and departures at each airport. Regional airports are defined as airports which are, according to the Australian Bureau of Statistics "The Australian Statistical Geography Standard (ASGS)", not based in Major Urban areas.



**Table 11: Top fifty regional airports (000s) — passenger movements, annual**

| Airport                               | YE Aug 2018      | YE Aug 2019      | % Change    |
|---------------------------------------|------------------|------------------|-------------|
| 1 Cairns                              | 4 331.0          | 4 211.9          | -2.7        |
| 2 Hobart                              | 2 607.4          | 2 733.7          | 4.8         |
| 3 Darwin                              | 1 778.3          | 1 710.2          | -3.8        |
| 4 Townsville                          | 1 649.9          | 1 644.2          | -0.3        |
| 5 Launceston                          | 1 372.8          | 1 388.8          | 1.2         |
| 6 Newcastle                           | 1 278.3          | 1 261.3          | -1.3        |
| 7 Mackay                              | 826.2            | 859.2            | 4.0         |
| 8 Alice Springs                       | 618.5            | 597.5            | -3.4        |
| 9 Rockhampton                         | 558.5            | 559.4            | 0.2         |
| 10 Ballina                            | 531.5            | 533.9            | 0.5         |
| 11 Ayers Rock                         | 385.8            | 468.0            | 21.3        |
| 12 Karratha                           | 436.8            | 450.7            | 3.2         |
| 13 Hamilton Island                    | 419.4            | 434.0            | 3.5         |
| 14 Proserpine                         | 468.9            | 428.7            | -8.6        |
| 15 Broome                             | 417.7            | 408.3            | -2.3        |
| 16 Coffs Harbour                      | 412.4            | 396.8            | -3.8        |
| 17 Port Hedland                       | 360.6            | 377.8            | 4.8         |
| 18 Newman                             | 298.0            | 327.8            | 10.0        |
| 19 Kalgoorlie                         | 270.8            | 294.0            | 8.6         |
| 20 Mildura                            | 266.2            | 259.9            | -2.4        |
| 21 Albury                             | 266.1            | 254.1            | -4.5        |
| 22 Gladstone                          | 263.9            | 247.1            | -6.3        |
| 23 Mount Isa                          | 208.3            | 218.2            | 4.7         |
| 24 Port Macquarie                     | 221.3            | 215.4            | -2.6        |
| 25 Dubbo                              | 227.9            | 213.0            | -6.5        |
| 26 Wagga Wagga                        | 225.0            | 207.1            | -8.0        |
| 27 Emerald                            | 195.7            | 197.0            | 0.6         |
| 28 Tamworth                           | 191.6            | 187.6            | -2.1        |
| 29 Paraburdoo                         | 172.9            | 182.6            | 5.6         |
| 30 Port Lincoln                       | 169.3            | 168.4            | -0.5        |
| 31 Hervey Bay                         | 168.4            | 162.0            | -3.8        |
| 32 Bundaberg                          | 168.1            | 155.9            | -7.3        |
| 33 Devonport                          | 148.3            | 146.5            | -1.2        |
| 34 Armidale                           | 130.3            | 130.9            | 0.4         |
| 35 Toowoomba Wellcamp                 | 148.1            | 121.7            | -17.9       |
| 36 Kununurra                          | 103.3            | 112.5            | 8.9         |
| 37 Moranbah                           | 111.6            | 110.1            | -1.3        |
| 38 Geraldton                          | 102.6            | 109.7            | 7.0         |
| 39 Thursday Island                    | 99.4             | 99.0             | -0.4        |
| 40 Roma                               | 85.6             | 94.3             | 10.1        |
| 41 Griffith                           | 75.5             | 87.9             | 16.5        |
| 42 Learmonth                          | 87.3             | 86.6             | -0.8        |
| 43 Mount Gambier                      | 80.5             | 82.5             | 2.5         |
| 44 Gove                               | 85.9             | 81.9             | -4.7        |
| 45 Orange                             | 71.9             | 80.3             | 11.7        |
| 46 Whyalla                            | 71.8             | 78.5             | 9.2         |
| 47 Olympic Dam                        | 77.4             | 77.9             | 0.6         |
| 48 Weipa                              | 79.8             | 76.8             | -3.8        |
| 49 Burnie                             | 66.8             | 71.9             | 7.8         |
| 50 Merimbula                          | 67.6             | 68.2             | 0.9         |
| <b>Total top 50 regional airports</b> | <b>23 461.1</b>  | <b>23 471.4</b>  | <b>0.0</b>  |
| <b>Total regional airports</b>        | <b>24 918.3</b>  | <b>24 869.6</b>  | <b>-0.2</b> |
| <b>Total domestic network</b>         | <b>122 178.4</b> | <b>121 949.7</b> | <b>-0.2</b> |

Note: Airport passenger movement numbers are the sum of passenger arrivals and departures at each airport.

Regional airports are defined as airports which are, according to the Australian Bureau of Statistics

"The Australian Statistical Geography Standard (ASGS)", not based in Major Urban areas.

## DOMESTIC CHARTER ACTIVITY

**Table 12: Charter passengers carried and aircraft trips - monthly activity**

|                                       | Aug 2018 | Aug 2019 | % Change |
|---------------------------------------|----------|----------|----------|
| Total domestic charter passengers     | 221 858  | 236 397  | 6.6      |
| Total domestic charter aircraft trips | 3 793    | 3 982    | 5.0      |

Note: Helicopter, joyflights and sightseeing charter flights not included.

**Table 13: Charter passengers carried and aircraft trips - annual activity**

|                                       | YE Aug 2018 | YE Aug 2019 | % Change |
|---------------------------------------|-------------|-------------|----------|
| Total domestic charter passengers     | 2 450 810   | 2 622 059   | 7.0      |
| Total domestic charter aircraft trips | 45 239      | 45 265      | 0.1      |

Note: Helicopter, joyflights and sightseeing charter flights not included.

**Table 14: Domestic airports - charter activity - monthly**

|  | Aug 2018 | Aug 2019 | % Change |
|--|----------|----------|----------|
| Total domestic charter passenger movements | 443 716  | 472 794  | 6.6      |
| Total domestic charter aircraft movements  | 7 586    | 7 964    | 5.0      |
| Perth airport charter passenger movements  | 168 449  | 183 823  | 9.1      |
| Perth airport charter aircraft movements   | 2 568    | 2 832    | 10.3     |

Note: Helicopter, joyflights and sightseeing charter flights not included.

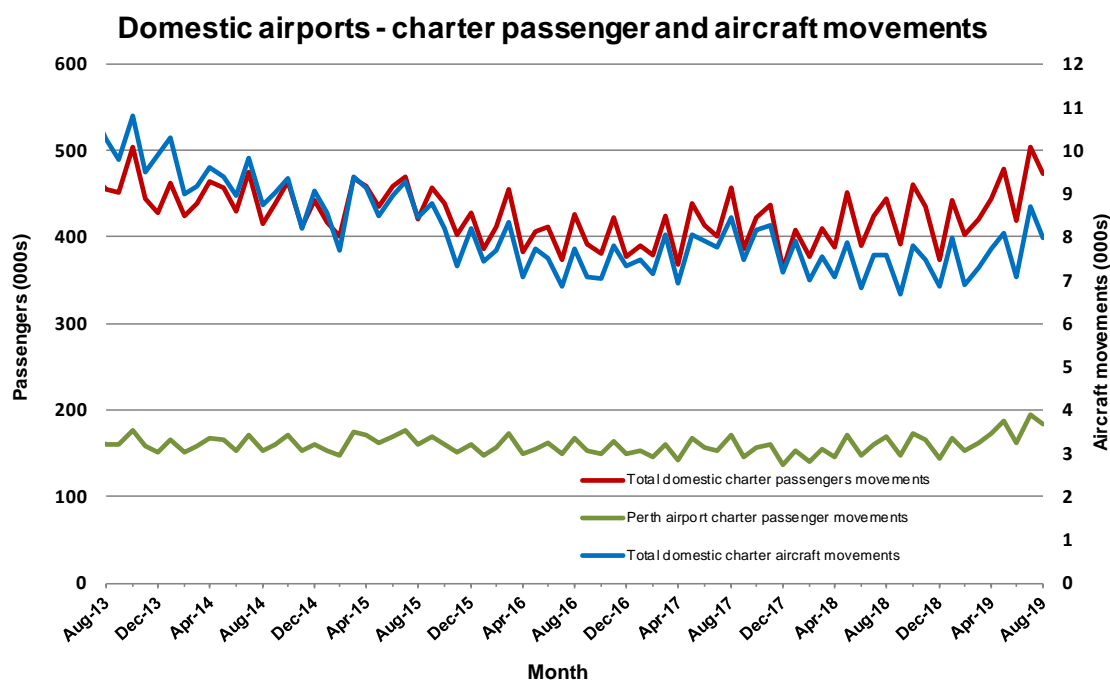
Charter passenger and aircraft movement numbers are the sum of arrivals and departures at each airport.

**Table 15: Domestic airports - charter activity - annual**

|  | YE Aug 2018 | YE Aug 2019 | % Change |
|--|-------------|-------------|----------|
| Total domestic charter passenger movements | 4 901 620   | 5 244 118   | 7.0      |
| Total domestic charter aircraft movements  | 90 478      | 90 530      | 0.1      |
| Perth airport charter passenger movements  | 1 843 586   | 2 015 613   | 9.3      |
| Perth airport charter aircraft movements   | 30 446      | 31 519      | 3.5      |

Note: Helicopter, joyflights and sightseeing charter flights not included.

Charter passenger and aircraft movement numbers are the sum of arrivals and departures at each airport.



## DEFINITIONS

|   |   |
|---|---|
| Aircraft Trips                          | The number of flight stages. A return flight counts as two aircraft trips.  |
| Airport Movements                       | Airport movements (passenger and cargo) are measured once on arrival and once on departure. Each domestic trip generates two movements at airports. For example, a trip from Melbourne to Sydney will be counted twice, as a passenger departure at Melbourne and as a passenger arrival at Sydney. At the national level, the sum of all domestic airport traffic will therefore be equal to twice the number of trips undertaken. |
| Available Seat Kilometres (ASKs)        | Calculated by multiplying the number of seats available on each flight stage, by the distance in kilometres between the ports. The distances used are Great Circle Distances.   |
| City-Pair                               | The ports shown make up the city-pair route. Passenger movements shown for a city pair reflect total traffic in both directions.  |
| Flight Stage                            | The operation of an aircraft from take-off to landing.  |
| Load Factor                             | The total revenue passenger kilometres performed as a percentage of the total available seat kilometres.  |
| Passengers Carried                      | Revenue passengers carried.   |
| Regular Public Transport Services (RPT) | All air service operations in which aircraft are available for the transport of members of the public and are conducted in accordance with fixed schedules. It does not include charter or other non-scheduled operations.  |
| Revenue Passengers                      | All passengers paying any fare. Frequent flyer redemption travellers are regarded as revenue passengers.  |
| Revenue Passenger Kilometres (RPKs)     | Calculated by multiplying the number of revenue passengers travelling on each flight stage, by the distance in kilometres between the ports. The distances used are Great Circle Distances.   |
| Traffic on board by stages              | The total of all traffic (revenue passengers) on each flight stage between two directly connected airports.   |
| ..                                      | Data not included   |
| NA                                      | Not applicable  |