



**Australian Government**

**Department of Infrastructure, Regional Development and Cities**

Bureau of Infrastructure, Transport and Regional Economics

STATISTICAL REPORT



# Aviation

Domestic aviation activity

August 2018

© Commonwealth of Australia 2018

ISSN: 1832 - 1968

### **Ownership of intellectual property rights in this publication**

Unless otherwise noted, copyright (and any other intellectual property rights, if any) in this publication is owned by the Commonwealth of Australia (referred to below as the Commonwealth).

### **Disclaimer**

The material contained in this publication is made available on the understanding that the Commonwealth is not providing professional advice, and that users exercise their own skill and care with respect to its use, and seek independent advice if necessary.

The Commonwealth makes no representations or warranties as to the contents or accuracy of the information contained in this publication. To the extent permitted by law, the Commonwealth disclaims liability to any person or organisation in respect of anything done, or omitted to be done, in reliance upon information contained in this publication.

### **Creative Commons licence**

With the exception of (a) the Coat of Arms; and (b) the Department of Infrastructure, Regional Development and Cities' photos and graphics, copyright in this publication is licensed under a Creative Commons Attribution 3.0 Australia Licence.

Creative Commons Attribution 3.0 Australia Licence is a standard form licence agreement that allows you to copy, communicate and adapt this publication provided that you attribute the work to the Commonwealth and abide by the other licence terms. A summary of the licence terms is available from <http://creativecommons.org/licenses/by/3.0/au/deed.en>. The full licence terms are available from <http://creativecommons.org/licenses/by/3.0/au/legalcode>.

### **Use of the Coat of Arms**

The Department of the Prime Minister and Cabinet sets the terms under which the Coat of Arms is used. Please refer to the Department's Commonwealth Coat of Arms and Government branding web page <http://www.dpmc.gov.au/guidelines/index.cfm#brand> and, in particular, the Guidelines on the use of the Commonwealth Coat of Arms publication.

An appropriate citation for this report is:

Bureau of Infrastructure, Transport and Regional Economics (BITRE), 2018, Domestic aviation activity, Statistical Report, BITRE, Canberra ACT.

### **Contact us**

This publication is available in PDF format. All other rights are reserved, including in relation to any Departmental logos or trade marks which may exist. For enquiries regarding the licence and any use of this publication, please contact:

Bureau of Infrastructure, Transport and Regional Economics (BITRE)  
Department of Infrastructure, Regional Development and Cities  
GPO Box 501, Canberra ACT 2601, Australia  
Telephone: (international) +61 2 6274 7210  
Fax: (international) +61 2 6274 6855  
Email: [bitre@infrastructure.gov.au](mailto:bitre@infrastructure.gov.au)  
Website: [www.bitre.gov.au](http://www.bitre.gov.au)

### **Inquiries**

Should you require additional information about the statistics contained in this publication:

Nebojsa Pavlovic

Telephone (02) 6274 6817 or Facsimile (02) 6274 7727

Electronic mail: [AVSTATS@infrastructure.gov.au](mailto:AVSTATS@infrastructure.gov.au)

[Nebojsa.Pavlovic@infrastructure.gov.au](mailto:Nebojsa.Pavlovic@infrastructure.gov.au)

Web site: <http://www.bitre.gov.au/statistics/aviation/domestic.aspx>

## FOREWORD

This report provides an overview of domestic (including charter) commercial aviation activity in Australia for the month of August 2018.

The data cover revenue passengers carried by Australian-registered operators of scheduled regular public transport services over Australian flight stages and fixed-wing charter operators. These estimates include passengers carried between domestic airports on international flights operated by these carriers. The passengers carried refer to traffic on board by stages.

Estimates of passengers and aircraft movements for charter aviation are included in this publication, where BITRE confidentiality standards are met.

Individual routes shown are restricted to those with an average exceeding 8 000 passengers per month over the previous six months where two or more airlines operate in competition. For the month of August 2018, there were 65 such routes.

Information on the total network for the month of August 2018 and on the Regular Public Transport (RPT) network for the month of August 2018 is presented on page 2, with estimates for the year ended August 2018 presented on page 3.

Detailed information on the 65 individual routes can be found in the RPT summary pages 4-13 of this publication.

The top ten airports in terms of RPT passenger movements are shown on page 14.

Data on domestic RPT cargo movements at the top five cargo airports are provided on page 15. The table includes cargo carried on passenger flights operated by the Qantas group (including Jetstar), Virgin Australia, Air North and Skippers as well as the cargo carried by dedicated freighter aircraft operated by Qantas Freight, Toll Priority and Virgin Australia Cargo.

The long-term trends for the top ten competitive RPT routes are presented graphically on pages 16-25.

Domestic RPT passenger movements at the top 50 regional airports are presented on pages 26-27.

Tables providing estimates of domestic charter aviation activity are shown on page 28. BITRE confidentiality standards restrict publication of detailed estimates for individual Australian airports, with the exception of Perth Airport.

A list of definitions can be found on page 29.

This report was prepared by the Aviation Statistics Section of the Bureau of Infrastructure, Transport and Regional Economics with data provided by airlines.

Estimates are included where data were not available and data presented in this publication may contain revisions to previously published data.

Where figures have been rounded, discrepancies may occur between sums of component items and totals, and in percentage changes which are derived from figures prior to rounding.

# CONTENTS

<b>Highlights .....</b>	<b>1</b>
<b>Total network.....</b>	<b>2</b>
<b>RPT network.....</b>	<b>2</b>
<b>Top competitive routes.....</b>	<b>4</b>
<b>Top ten airports – passenger movements.....</b>	<b>14</b>
<b>Top five airports – cargo movements.....</b>	<b>15</b>
<b>Top ten routes .....</b>	<b>16</b>
1. Melbourne – Sydney .....	16
2. Brisbane – Sydney .....	17
3. Brisbane – Melbourne .....	18
4. Gold Coast – Sydney .....	19
5. Adelaide – Melbourne .....	20
6. Gold Coast – Melbourne .....	21
7. Melbourne – Perth .....	22
8. Adelaide – Sydney .....	23
9. Perth – Sydney .....	24
10. Brisbane – Cairns .....	25
<b>Top fifty regional airports.....</b>	<b>26</b>
<b>Domestic charter activity.....</b>	<b>28</b>
<b>Definitions .....</b>	<b>29</b>

This page is intentionally left blank.

## HIGHLIGHTS

There were 5.41 million passengers carried on Australian domestic commercial aviation (including charter operations) in August 2018, an increase of 3.8 per cent on August 2017. For the month of August 2018 there were 57 645 aircraft trips, a decrease of 3.1 per cent compared to August 2017.

5.18 million passengers were carried on RPT flights in August 2018, an increase of 4.1 per cent on August 2017.

For the year ending August 2018 there were 61.10 million RPT passengers, an increase of 2.7 per cent on the year ending August 2017.

RPT revenue passenger kilometres (RPKs) performed were 6.05 billion for the month, up 3.4 per cent compared with August 2017. Capacity, measured by available seat kilometres (ASKs), decreased by 0.5 per cent compared with August 2017 to a total of 7.47 billion.

With RPT passenger traffic increasing and capacity decreasing, the industry wide load factor (RPKs/ASKs) increased from 78.0 per cent in August 2017 to 81.1 per cent in August 2018. Load factors on individual routes increased on 56 of the 64 RPT routes for which data is available for publishing in both years.

For the month of August 2018, Melbourne – Sydney remained Australia's busiest RPT route with 782 224 passengers, an increase of 3.7 per cent compared with August 2017. It was followed by Brisbane – Sydney with 416 496 passengers (up 4.5 per cent) and Brisbane – Melbourne with 299 829 passengers (up 0.6 per cent).

The greatest percentage increase in RPT passenger numbers, compared to August 2017, was on the Melbourne – Sunshine Coast route (up 28.2 per cent). There were large increases on a number of other routes, including Ballina – Sydney (up 18.9 per cent), Brisbane – Mackay (up 17.0 per cent) and Sydney – Townsville (up 15.8 per cent).

Routes with traffic decreases in August 2018 compared with August 2017 included Brisbane – Bundaberg (down 15.3 per cent), Brisbane – Gladstone (down 15.1 per cent), Brisbane – Proserpine (down 14.9 per cent) and Brisbane – Darwin (down 11.0 per cent).

In August 2018, Sydney remained Australia's busiest domestic airport with 2.33 million passenger movements, followed by Melbourne with 2.16 million passenger movements and Brisbane with 1.51 million passenger movements.

Total cargo movements at Australian airports on domestic RPT flights were 39.3 thousand tonnes in August 2018, an increase of 2.1 per cent compared with August 2017.

In August 2018, there were 2.19 million domestic passenger movements through regional airports, 3.5 per cent higher than in August 2017. Out of the top 50 regional airports, the strongest growth was at Ayers Rock airport (up 25.8 per cent on August 2017), while the largest decreases were recorded at Bundaberg and Gladstone airports (both down 15.3 per cent on August 2017).

Fixed-wing charter operators carried 222.0 thousand passengers in August 2018, a decrease of 2.3 per cent on August 2017. Perth airport accounted for 37.9 per cent of all charter passengers in Australia.

## TOTAL NETWORK

### Summary of monthly commercial aviation activity

	Aug 2017	Aug 2018	% Change
Total passengers carried (millions)	5.21	5.41	3.8
Aircraft trips (000s)	59.5	57.6	-3.1

Note: Regular Public Transport and charter aviation activity  
Helicopter, joyflights and sightseeing charter flights not included.

## RPT NETWORK

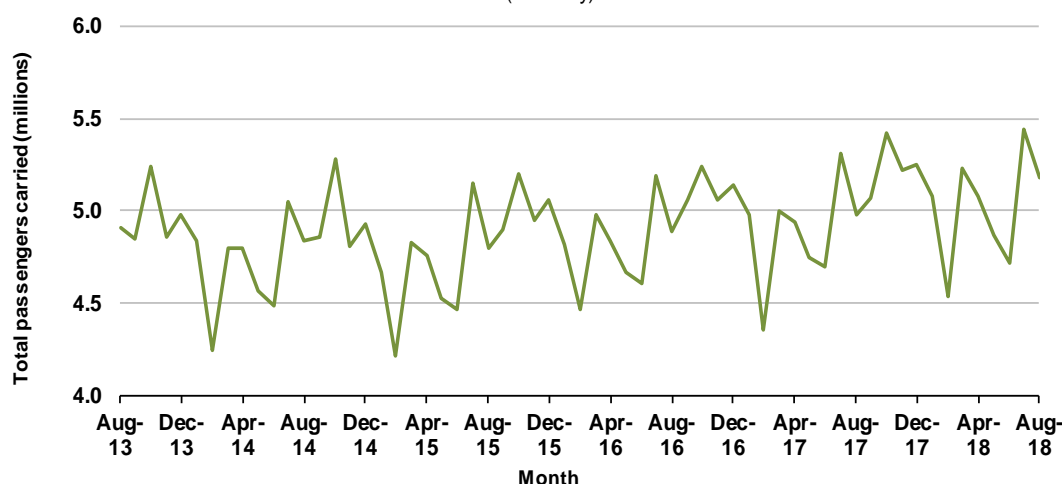
### Summary of monthly RPT activity

	Aug 2017	Aug 2018	% Change
Total passengers carried (millions)	4.98	5.18	4.1
Revenue passenger kilometres (billions)	5.86	6.05	3.4
Available seats (millions)	6.56	6.52	-0.6
Available seat kilometres (billions)	7.50	7.47	-0.5
Load factor %	78.0	81.1	3.1 *
Aircraft trips (000s)	55.3	53.8	-2.7

\* percentage point difference

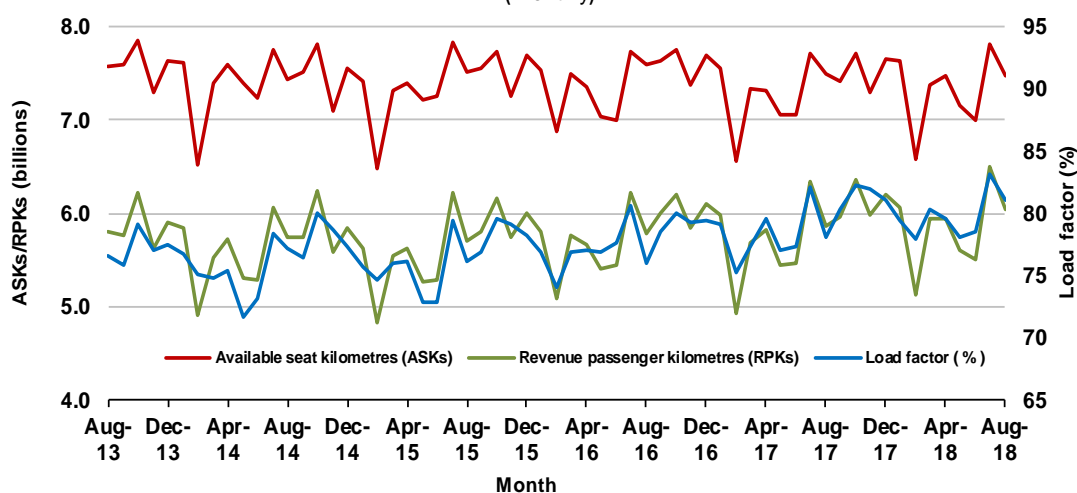
### Domestic RPT passenger traffic

(monthly)



### RPT Network utilisation

(monthly)





## TOTAL NETWORK

### Summary of annual commercial aviation activity

	YE Aug 2017	YE Aug 2018	% Change
Total passengers carried (millions)	61.92	63.55	2.6
Aircraft trips (000s)	686.1	677.8	-1.2

Note: Regular Public Transport and charter aviation activity  
Helicopter, joyflights and sightseeing charter flights not included.

## RPT NETWORK

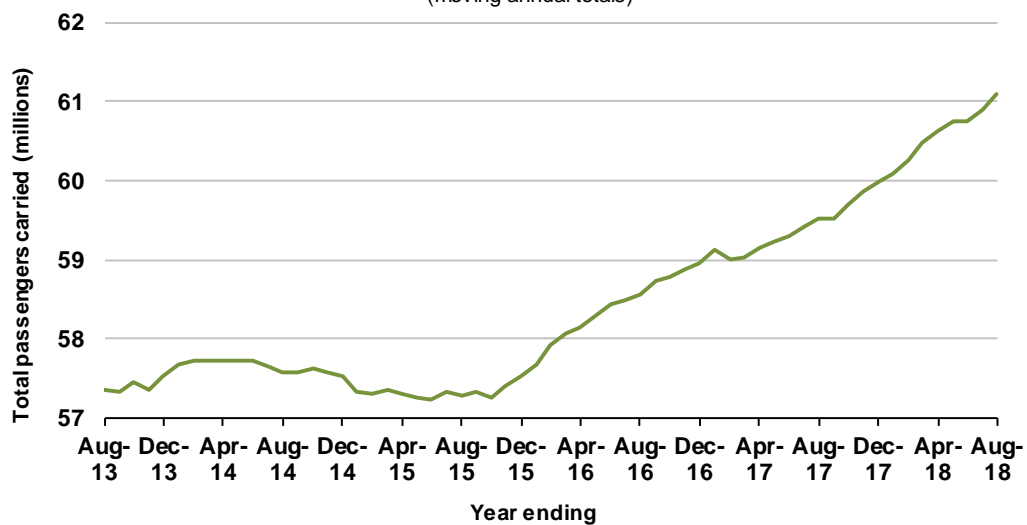
### Summary of annual RPT activity

	YE Aug 2017	YE Aug 2018	% Change
Total passengers carried (millions)	59.51	61.10	2.7
Revenue passenger kilometres (billions)	69.67	71.23	2.2
Available seats (millions)	77.25	77.52	0.4
Available seat kilometres (billions)	88.56	88.60	0.0
Load factor %	78.7	80.4	1.7 *
Aircraft trips (000s)	641.1	632.9	-1.3

\* percentage point difference

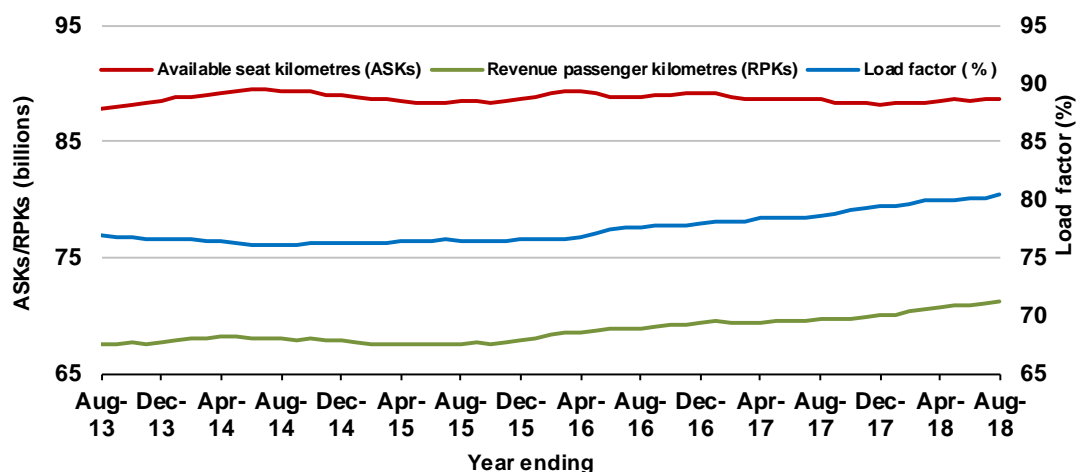
### Domestic RPT passenger traffic

(moving annual totals)



### RPT Network utilisation

(moving annual totals)



## TOP COMPETITIVE ROUTES

**Table 1: Passengers carried (000s) — annual activity**

	City-Pair	YE Aug 2017	YE Aug 2018	%Change
1	Melbourne - Sydney	9 006.8	9 282.1	3.1
2	Brisbane - Sydney	4 707.7	4 816.5	2.3
3	Brisbane - Melbourne	3 522.0	3 570.1	1.4
4	Gold Coast - Sydney	2 713.4	2 756.5	1.6
5	Adelaide - Melbourne	2 420.1	2 499.3	3.3
6	Melbourne - Perth	2 046.5	2 072.2	1.3
7	Gold Coast - Melbourne	2 002.4	2 063.4	3.0
8	Adelaide - Sydney	1 891.1	1 913.7	1.2
9	Perth - Sydney	1 732.0	1 719.4	-0.7
10	Hobart - Melbourne	1 613.5	1 641.9	1.8
11	Brisbane - Cairns	1 366.0	1 358.6	-0.5
12	Canberra - Melbourne	1 097.9	1 165.5	6.2
13	Cairns - Sydney	1 126.3	1 140.8	1.3
14	Brisbane - Townsville	958.6	992.7	3.6
15	Brisbane - Perth	968.5	972.8	0.4
16	Canberra - Sydney	955.5	957.9	0.3
17	Launceston - Melbourne	913.4	953.3	4.4
18	Adelaide - Brisbane	831.0	859.6	3.4
19	Cairns - Melbourne	838.3	850.5	1.5
20	Brisbane - Mackay	679.6	738.4	8.6
21	Hobart - Sydney	642.9	695.6	8.2
22	Adelaide - Perth	614.6	634.5	3.2
23	Brisbane - Canberra	584.0	632.6	8.3
24	Sunshine Coast - Sydney	563.4	621.3	10.3
25	Brisbane - Newcastle	588.7	586.8	-0.3
26	Melbourne - Sunshine Coast	463.6	532.6	14.9
27	Brisbane - Rockhampton	539.5	517.1	-4.2
28	Melbourne - Newcastle	467.3	495.5	6.0
29	Karratha - Perth	453.1	438.0	-3.3
30	Ballina - Sydney	394.5	434.2	10.1
31	Brisbane - Darwin	410.1	391.1	-4.6
32	Perth - Port Hedland	339.2	353.4	4.2
33	Coffs Harbour - Sydney	342.6	346.2	1.0
34	Broome - Perth	294.4	341.7	16.1
35	Darwin - Sydney	320.9	315.9	-1.5
36	Darwin - Melbourne	307.0	305.9	-0.3
37	Newman - Perth	287.1	299.3	4.3
38	Launceston - Sydney	288.8	286.8	-0.7
39	Brisbane - Proserpine	238.1	266.8	12.0
40	Kalgoorlie - Perth	238.0	263.2	10.6
41	Brisbane - Gladstone	296.2	259.5	-12.4
42	Albury - Sydney	225.2	223.3	-0.9
43	Melbourne - Mildura	208.9	222.2	6.4
44	Adelaide - Gold Coast	214.5	221.9	3.5
45	Brisbane - Hobart	208.7	220.7	5.8
46	Hamilton Island - Sydney	221.1	202.0	-8.6
47	Darwin - Perth	193.1	201.3	4.3
48	Ayers Rock - Sydney	190.6	197.2	3.4
49	Brisbane - Emerald	198.8	196.8	-1.0
50	Adelaide - Canberra	177.8	193.3	8.8

continued

**Table 1: (continued) Passengers carried (000s) — annual activity**

	<b>City-Pair</b>	<b>YE Aug 2017</b>	<b>YE Aug 2018</b>	<b>% Change</b>
51	Dubbo - Sydney	191.2	190.2	-0.5
52	Port Macquarie - Sydney	194.2	188.7	-2.8
53	Sydney - Wagga Wagga	185.6	181.9	-2.0
54	Sydney - Tamworth	182.7	175.6	-3.9
55	Adelaide - Port Lincoln	173.7	169.5	-2.4
56	Brisbane - Bundaberg	176.6	165.5	-6.3
57	Sydney - Townsville	158.1	164.5	4.0
58	Cairns - Townsville	140.0	148.6	6.1
59	Proserpine - Sydney	..	137.1	NA (a)
60	Brisbane - Mount Isa	122.9	129.3	5.2
61	Adelaide - Alice Springs	123.2	128.9	4.6
62	Brisbane - Hamilton Island	137.7	124.2	-9.8
63	Armidale - Sydney	126.8	123.2	-2.9
64	Alice Springs - Darwin	117.6	113.2	-3.8
65	Geraldton - Perth	115.2	111.6	-3.1
	<b>Total domestic network</b>	<b>59 512.4</b>	<b>61 103.3</b>	<b>2.7</b>

(a) Proserpine - Sydney route included from September 2017, prior data not shown.

**Table 2: Passengers carried (000s) — monthly activity**

	<b>City-Pair</b>	<b>Aug 2017</b>	<b>Aug 2018</b>	<b>% Change</b>
1	Melbourne - Sydney	754.0	782.2	3.7
2	Brisbane - Sydney	398.6	416.5	4.5
3	Brisbane - Melbourne	298.2	299.8	0.6
4	Gold Coast - Sydney	207.4	220.9	6.5
5	Adelaide - Melbourne	195.4	206.1	5.5
6	Gold Coast - Melbourne	163.3	174.8	7.0
7	Melbourne - Perth	155.8	164.2	5.4
8	Adelaide - Sydney	146.9	148.6	1.2
9	Perth - Sydney	134.3	133.1	-0.9
10	Brisbane - Cairns	119.7	121.0	1.1
11	Hobart - Melbourne	117.0	119.6	2.3
12	Cairns - Sydney	101.7	103.8	2.1
13	Canberra - Melbourne	94.9	100.8	6.3
14	Brisbane - Townsville	84.5	92.8	9.8
15	Canberra - Sydney	86.2	89.4	3.7
16	Cairns - Melbourne	80.0	81.8	2.3
17	Brisbane - Perth	78.8	77.8	-1.3
18	Adelaide - Brisbane	67.9	69.8	2.9
19	Brisbane - Mackay	59.3	69.3	17.0
20	Launceston - Melbourne	65.9	67.2	2.0
21	Brisbane - Canberra	51.5	58.2	13.0
22	Melbourne - Sunshine Coast	39.9	51.1	28.2
23	Brisbane - Newcastle	47.6	49.6	4.2
24	Adelaide - Perth	47.3	49.3	4.3
25	Hobart - Sydney	42.8	47.6	11.2
26	Sunshine Coast - Sydney	41.8	47.4	13.5
27	Brisbane - Rockhampton	47.0	47.0	-0.1
28	Karratha - Perth	37.5	40.0	6.7
29	Melbourne - Newcastle	34.9	39.0	11.6
30	Brisbane - Darwin	41.2	36.7	-11.0
31	Ballina - Sydney	28.2	33.6	18.9
32	Broome - Perth	33.7	32.8	-2.6
33	Perth - Port Hedland	29.9	32.3	8.0
34	Darwin - Melbourne	30.3	31.9	5.1
35	Darwin - Sydney	32.8	31.1	-5.2
36	Kalgoorlie - Perth	24.0	27.0	12.7
37	Coffs Harbour - Sydney	27.5	27.0	-1.8
38	Newman - Perth	25.0	26.9	7.7
39	Brisbane - Gladstone	26.6	22.5	-15.1
40	Albury - Sydney	20.2	21.4	6.2
41	Melbourne - Mildura	18.6	20.5	10.2
42	Brisbane - Proserpine	23.5	20.0	-14.9
43	Adelaide - Gold Coast	18.0	19.0	5.4
44	Ayers Rock - Sydney	17.8	18.5	3.8
45	Brisbane - Emerald	17.2	18.4	7.2
46	Launceston - Sydney	16.6	18.3	10.7
47	Adelaide - Canberra	15.6	17.7	13.4
48	Dubbo - Sydney	17.1	17.5	2.2
49	Darwin - Perth	18.9	17.5	-7.3
50	Brisbane - Hobart	15.4	17.5	13.3

continued

**Table 2: (continued) Passengers carried (000s) — monthly activity**

	<b>City-Pair</b>	<b>Aug 2017</b>	<b>Aug 2018</b>	<b>% Change</b>
51	Sydney - Wagga Wagga	15.6	17.1	9.8
52	Sydney - Townsville	14.3	16.6	15.8
53	Hamilton Island - Sydney	17.5	16.4	-6.3
54	Sydney - Tamworth	16.4	16.0	-2.0
55	Port Macquarie - Sydney	15.8	15.5	-2.0
56	Brisbane - Bundaberg	16.4	13.9	-15.3
57	Adelaide - Port Lincoln	13.4	13.8	3.1
58	Cairns - Townsville	12.4	13.4	7.9
59	Brisbane - Mount Isa	12.1	13.2	8.5
60	Alice Springs - Darwin	13.1	12.5	-4.2
61	Proserpine - Sydney	..	11.9	NA (a)
62	Adelaide - Alice Springs	11.0	11.4	4.0
63	Brisbane - Hamilton Island	9.9	11.1	12.1
64	Armidale - Sydney	10.7	11.1	3.0
65	Geraldton - Perth	9.9	9.9	0.4
	<b>Total domestic network</b>	<b>4 981.4</b>	<b>5 184.5</b>	<b>4.1</b>

(a) Proserpine - Sydney route included from September 2017, prior data not shown.

**Table 3: Available seats (000s) — monthly activity**

	City-Pair	Aug 2017	Aug 2018	% Change
1	Melbourne - Sydney	930.4	914.6	-1.7
2	Brisbane - Sydney	492.4	494.4	0.4
3	Brisbane - Melbourne	367.0	358.6	-2.3
4	Gold Coast - Sydney	247.2	256.6	3.8
5	Adelaide - Melbourne	256.1	253.9	-0.9
6	Gold Coast - Melbourne	184.3	190.7	3.5
7	Melbourne - Perth	193.6	201.2	3.9
8	Adelaide - Sydney	184.4	187.1	1.4
9	Perth - Sydney	174.4	170.8	-2.1
10	Brisbane - Cairns	139.7	131.8	-5.6
11	Hobart - Melbourne	150.3	155.7	3.5
12	Cairns - Sydney	118.3	118.3	0.0
13	Canberra - Melbourne	155.1	156.6	0.9
14	Brisbane - Townsville	110.4	108.9	-1.4
15	Canberra - Sydney	115.9	117.9	1.7
16	Cairns - Melbourne	90.4	90.9	0.5
17	Brisbane - Perth	103.3	96.0	-7.0
18	Adelaide - Brisbane	91.1	90.6	-0.6
19	Brisbane - Mackay	79.9	83.6	4.6
20	Launceston - Melbourne	83.1	81.4	-2.1
21	Brisbane - Canberra	71.9	76.1	5.8
22	Melbourne - Sunshine Coast	45.1	55.5	23.1
23	Brisbane - Newcastle	71.5	69.9	-2.2
24	Adelaide - Perth	68.3	68.6	0.4
25	Hobart - Sydney	54.9	59.0	7.6
26	Sunshine Coast - Sydney	53.9	57.7	7.0
27	Brisbane - Rockhampton	55.8	56.6	1.4
28	Karratha - Perth	58.5	59.4	1.6
29	Melbourne - Newcastle	49.1	49.7	1.1
30	Brisbane - Darwin	48.5	42.8	-11.7
31	Ballina - Sydney	38.2	42.7	11.8
32	Broome - Perth	43.2	40.3	-6.7
33	Perth - Port Hedland	47.0	47.0	-0.1
34	Darwin - Melbourne	36.2	37.2	2.9
35	Darwin - Sydney	40.0	37.4	-6.4
36	Kalgoorlie - Perth	42.0	44.5	5.9
37	Coffs Harbour - Sydney	40.7	37.5	-7.9
38	Newman - Perth	48.7	47.1	-3.3
39	Brisbane - Gladstone	39.0	31.8	-18.4
40	Albury - Sydney	30.5	29.5	-3.3
41	Melbourne - Mildura	29.4	30.8	4.5
42	Brisbane - Proserpine	28.1	22.2	-21.0
43	Adelaide - Gold Coast	21.9	22.1	1.0
44	Ayers Rock - Sydney	22.0	22.2	0.7
45	Brisbane - Emerald	25.4	23.5	-7.4
46	Launceston - Sydney	19.8	21.0	6.3
47	Adelaide - Canberra	26.6	27.1	2.2
48	Dubbo - Sydney	25.0	23.4	-6.8
49	Darwin - Perth	21.5	21.5	-0.2
50	Brisbane - Hobart	18.3	21.8	18.8

continued

**Table 3: (continued) Available seats (000s) — monthly activity**

	<b>City-Pair</b>	<b>Aug 2017</b>	<b>Aug 2018</b>	<b>% Change</b>
51	Sydney - Wagga Wagga	25.3	23.4	-7.7
52	Sydney - Townsville	17.9	19.9	11.0
53	Hamilton Island - Sydney	30.2	26.8	-11.4
54	Sydney - Tamworth	25.1	23.4	-6.9
55	Port Macquarie - Sydney	21.6	19.7	-8.7
56	Brisbane - Bundaberg	22.4	19.6	-12.7
57	Adelaide - Port Lincoln	25.8	25.1	-2.6
58	Cairns - Townsville	24.3	21.3	-12.1
59	Brisbane - Mount Isa	17.0	16.0	-6.2
60	Alice Springs - Darwin	20.4	20.5	0.5
61	Proserpine - Sydney	..	13.7	NA (a)
62	Adelaide - Alice Springs	15.7	16.0	1.9
63	Brisbane - Hamilton Island	15.8	14.0	-11.6
64	Armidale - Sydney	15.3	16.5	7.6
65	Geraldton - Perth	20.2	19.2	-5.0
	<b>Total domestic network</b>	<b>6 560.3</b>	<b>6 521.0</b>	<b>-0.6</b>

(a) Proserpine - Sydney route included from September 2017, prior data not shown.

**Table 4: Load factors (%) — monthly activity**

	<b>City-Pair</b>	<b>Aug 2017</b>	<b>Aug 2018</b>	<b>% Point diff</b>
1	Melbourne - Sydney	81.0	85.5	4.5
2	Brisbane - Sydney	81.0	84.2	3.2
3	Brisbane - Melbourne	81.2	83.6	2.4
4	Gold Coast - Sydney	83.9	86.1	2.2
5	Adelaide - Melbourne	76.3	81.2	4.9
6	Gold Coast - Melbourne	88.6	91.6	3.0
7	Melbourne - Perth	80.5	81.6	1.1
8	Adelaide - Sydney	79.7	79.4	-0.3
9	Perth - Sydney	77.0	77.9	0.9
10	Brisbane - Cairns	85.7	91.8	6.1
11	Hobart - Melbourne	77.8	76.9	-0.9
12	Cairns - Sydney	86.0	87.8	1.8
13	Canberra - Melbourne	61.2	64.4	3.2
14	Brisbane - Townsville	76.5	85.2	8.7
15	Canberra - Sydney	74.4	75.8	1.4
16	Cairns - Melbourne	88.5	90.1	1.6
17	Brisbane - Perth	76.3	81.0	4.7
18	Adelaide - Brisbane	74.5	77.1	2.6
19	Brisbane - Mackay	74.1	82.9	8.8
20	Launceston - Melbourne	79.3	82.6	3.3
21	Brisbane - Canberra	71.6	76.4	4.8
22	Melbourne - Sunshine Coast	88.4	92.0	3.6
23	Brisbane - Newcastle	66.6	71.0	4.4
24	Adelaide - Perth	69.2	72.0	2.8
25	Hobart - Sydney	78.0	80.7	2.7
26	Sunshine Coast - Sydney	77.5	82.2	4.7
27	Brisbane - Rockhampton	84.2	83.0	-1.2
28	Karratha - Perth	64.1	67.3	3.2
29	Melbourne - Newcastle	71.1	78.5	7.4
30	Brisbane - Darwin	85.1	85.8	0.7
31	Ballina - Sydney	73.9	78.6	4.7
32	Broome - Perth	78.0	81.4	3.4
33	Perth - Port Hedland	63.5	68.7	5.2
34	Darwin - Melbourne	83.9	85.7	1.8
35	Darwin - Sydney	81.9	83.1	1.2
36	Kalgoorlie - Perth	57.0	60.6	3.6
37	Coffs Harbour - Sydney	67.4	71.9	4.5
38	Newman - Perth	51.4	57.2	5.8
39	Brisbane - Gladstone	68.1	70.9	2.8
40	Albury - Sydney	66.2	72.7	6.5
41	Melbourne - Mildura	63.1	66.5	3.4
42	Brisbane - Proserpine	83.8	90.3	6.5
43	Adelaide - Gold Coast	82.2	85.8	3.6
44	Ayers Rock - Sydney	81.0	83.5	2.5
45	Brisbane - Emerald	67.8	78.5	10.7
46	Launceston - Sydney	83.7	87.1	3.4
47	Adelaide - Canberra	58.6	65.0	6.4
48	Dubbo - Sydney	68.4	75.0	6.6
49	Darwin - Perth	87.8	81.5	-6.3
50	Brisbane - Hobart	84.2	80.3	-3.9

continued



**Table 4: (continued) Load factors (%) — monthly activity**

	<b>City-Pair</b>	<b>Aug 2017</b>	<b>Aug 2018</b>	<b>% Point diff</b>
51	Sydney - Wagga Wagga	61.6	73.2	11.6
52	Sydney - Townsville	80.0	83.5	3.5
53	Hamilton Island - Sydney	57.9	61.2	3.3
54	Sydney - Tamworth	65.1	68.5	3.4
55	Port Macquarie - Sydney	73.3	78.7	5.4
56	Brisbane - Bundaberg	73.3	71.1	-2.2
57	Adelaide - Port Lincoln	51.8	54.8	3.0
58	Cairns - Townsville	51.1	62.7	11.6
59	Brisbane - Mount Isa	71.3	82.4	11.1
60	Alice Springs - Darwin	64.3	61.3	-3.0
61	Proserpine - Sydney	..	86.9	NA (a)
62	Adelaide - Alice Springs	69.9	71.4	1.5
63	Brisbane - Hamilton Island	62.8	79.6	16.8
64	Armidale - Sydney	70.2	67.1	-3.1
65	Geraldton - Perth	48.8	51.5	2.7
	<b>Total domestic network</b>	<b>78.0</b>	<b>81.1</b>	<b>3.1</b>

(a) Proserpine - Sydney route included from September 2017, prior data not shown.

**Table 5: Aircraft trips <sup>(a)</sup> — monthly activity**

	<b>City-Pair</b>	<b>Aug 2017</b>	<b>Aug 2018</b>	<b>% Change</b>
1	Melbourne - Sydney	5 213	5 023	-3.6
2	Brisbane - Sydney	3 031	3 007	-0.8
3	Brisbane - Melbourne	2 234	2 087	-6.6
4	Gold Coast - Sydney	1 408	1 478	5.0
5	Adelaide - Melbourne	1 587	1 584	-0.2
6	Gold Coast - Melbourne	977	1 003	2.7
7	Melbourne - Perth	892	953	6.8
8	Adelaide - Sydney	1 133	1 120	-1.1
9	Perth - Sydney	769	731	-4.9
10	Brisbane - Cairns	875	873	-0.2
11	Hobart - Melbourne	931	865	-7.1
12	Cairns - Sydney	649	636	-2.0
13	Canberra - Melbourne	1 019	999	-2.0
14	Brisbane - Townsville	772	762	-1.3
15	Canberra - Sydney	1 491	1 504	0.9
16	Cairns - Melbourne	480	471	-1.9
17	Brisbane - Perth	524	517	-1.3
18	Adelaide - Brisbane	559	565	1.1
19	Brisbane - Mackay	632	646	2.2
20	Launceston - Melbourne	642	645	0.5
21	Brisbane - Canberra	525	555	5.7
22	Melbourne - Sunshine Coast	254	310	22.0
23	Brisbane - Newcastle	543	454	-16.4
24	Adelaide - Perth	444	461	3.8
25	Hobart - Sydney	354	376	6.2
26	Sunshine Coast - Sydney	329	351	6.7
27	Brisbane - Rockhampton	705	683	-3.1
28	Karratha - Perth	526	514	-2.3
29	Melbourne - Newcastle	276	276	0.0
30	Brisbane - Darwin	297	268	-9.8
31	Ballina - Sydney	257	281	9.3
32	Broome - Perth	366	341	-6.8
33	Perth - Port Hedland	387	389	0.5
34	Darwin - Melbourne	206	197	-4.4
35	Darwin - Sydney	236	222	-5.9
36	Kalgoorlie - Perth	320	341	6.6
37	Coffs Harbour - Sydney	424	377	-11.1
38	Newman - Perth	357	348	-2.5
39	Brisbane - Gladstone	513	417	-18.7
40	Albury - Sydney	561	535	-4.6
41	Melbourne - Mildura	426	427	0.2
42	Brisbane - Proserpine	158	124	-21.5
43	Adelaide - Gold Coast	124	124	0.0
44	Ayers Rock - Sydney	124	124	0.0
45	Brisbane - Emerald	346	315	-9.0
46	Launceston - Sydney	116	123	6.0
47	Adelaide - Canberra	156	160	2.6
48	Dubbo - Sydney	542	487	-10.1
49	Darwin - Perth	128	128	0.0
50	Brisbane - Hobart	104	123	18.3

continued

**Table 5: (continued) Aircraft trips <sup>(a)</sup> — monthly activity**

	<b>City-Pair</b>	<b>Aug 2017</b>	<b>Aug 2018</b>	<b>% Change</b>
51	Sydney - Wagga Wagga	497	472	-5.0
52	Sydney - Townsville	112	114	1.8
53	Hamilton Island - Sydney	186	167	-10.2
54	Sydney - Tamworth	401	345	-14.0
55	Port Macquarie - Sydney	376	307	-18.4
56	Brisbane - Bundaberg	358	278	-22.3
57	Adelaide - Port Lincoln	661	646	-2.3
58	Cairns - Townsville	405	343	-15.3
59	Brisbane - Mount Isa	162	163	0.6
60	Alice Springs - Darwin	164	180	9.8
61	Proserpine - Sydney	..	76	NA (b)
62	Adelaide - Alice Springs	98	116	18.4
63	Brisbane - Hamilton Island	130	103	-20.8
64	Armidale - Sydney	380	391	2.9
65	Geraldton - Perth	202	192	-5.0
	<b>Total domestic network</b>	<b>55 292</b>	<b>53 799</b>	<b>-2.7</b>

(a) Includes RPT Cargo flights.

(b) Proserpine - Sydney route included from September 2017, prior data not shown.

## TOP TEN AIRPORTS – PASSENGER MOVEMENTS

**Table 6: Top ten airports, RPT passenger movements (000s) - annual activity**

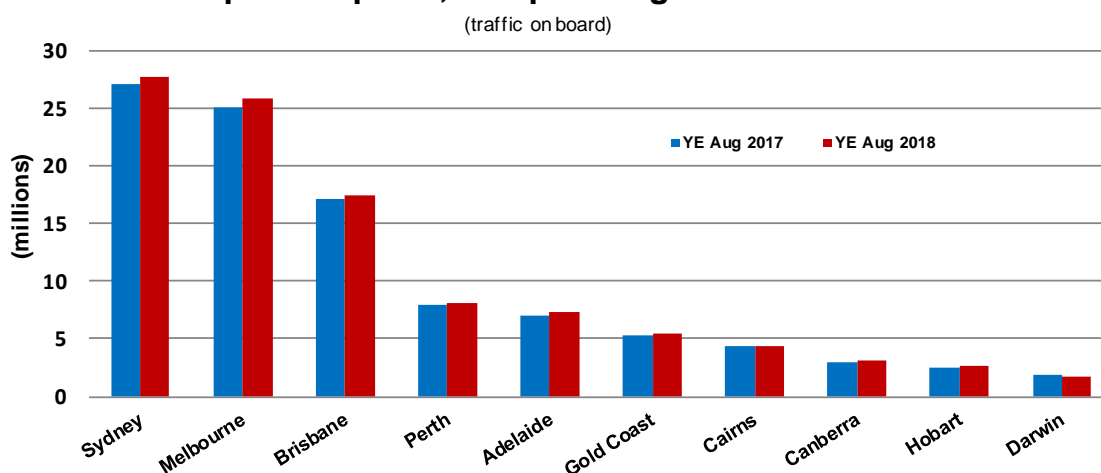
Airport	YE Aug 2017	YE Aug 2018	% Change	% of Total
1 Sydney	27 149.9	27 773.9	2.3	22.7
2 Melbourne	25 114.9	25 837.5	2.9	21.1
3 Brisbane	17 171.2	17 444.3	1.6	14.3
4 Perth	8 022.1	8 161.8	1.7	6.7
5 Adelaide	7 070.5	7 322.9	3.6	6.0
6 Gold Coast	5 372.4	5 519.7	2.7	4.5
7 Cairns	4 296.0	4 339.8	1.0	3.6
8 Canberra	2 974.7	3 128.3	5.2	2.6
9 Hobart	2 465.5	2 621.0	6.3	2.1
10 Darwin	1 814.1	1 771.7	-2.3	1.4
<b>Total top ten airports</b>	<b>101 451.3</b>	<b>103 920.8</b>	<b>2.4</b>	<b>85.0</b>
<b>Total domestic network</b>	<b>119 024.8</b>	<b>122 206.6</b>	<b>2.7</b>	<b>100.0</b>

**Table 7: Top ten airports, RPT passenger movements (000s) - monthly activity**

Airport	Aug 2017	Aug 2018	% Change	% of Total
1 Sydney	2 236.3	2 326.8	4.0	22.4
2 Melbourne	2 069.1	2 158.3	4.3	20.8
3 Brisbane	1 472.8	1 511.5	2.6	14.6
4 Perth	659.4	675.4	2.4	6.5
5 Adelaide	574.9	602.9	4.9	5.8
6 Gold Coast	424.8	450.0	5.9	4.3
7 Cairns	392.0	400.8	2.2	3.9
8 Canberra	262.4	282.5	7.6	2.7
9 Hobart	175.2	188.9	7.8	1.8
10 Darwin	181.6	175.0	-3.7	1.7
<b>Total top ten airports</b>	<b>8 448.6</b>	<b>8 772.0</b>	<b>3.8</b>	<b>84.6</b>
<b>Total domestic network</b>	<b>9 962.8</b>	<b>10 368.9</b>	<b>4.1</b>	<b>100.0</b>

Note: Airport passenger movement numbers are the sum of passenger arrivals and departures at each airport.

### Top ten airports, RPT passenger movements



## TOP FIVE AIRPORTS – CARGO MOVEMENTS

**Table 8: Top five airports, domestic RPT cargo movements (000s tonnes) - annual activity**

Airport	YE Aug 2017	YE Aug 2018	% Change	% of Total
1 Melbourne	130.0	134.2	3.2	28.9
2 Sydney	105.1	108.1	2.9	23.3
3 Brisbane	67.0	69.2	3.3	14.9
4 Perth	63.2	66.0	4.4	14.2
5 Adelaide	26.4	27.4	3.6	5.9
<b>Total top five airports</b>	<b>391.7</b>	<b>404.8</b>	<b>3.4</b>	<b>87.1</b>
<b>Total domestic network</b>	<b>450.9</b>	<b>464.8</b>	<b>3.1</b>	<b>100.0</b>

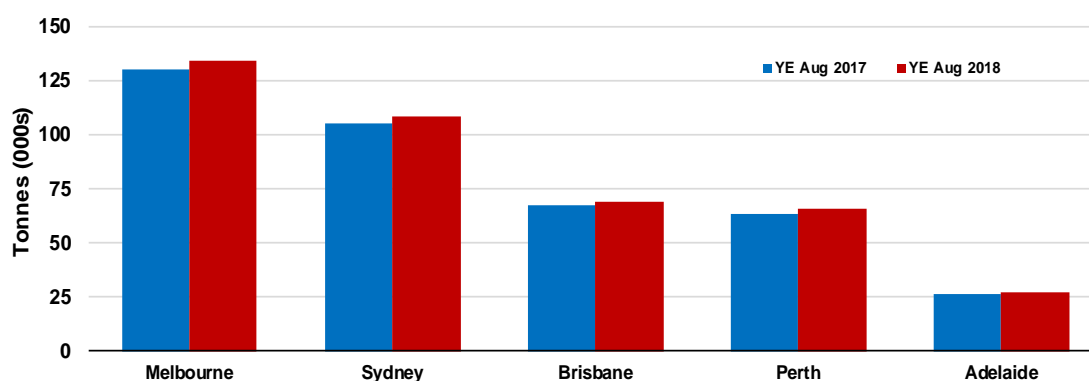
**Table 9: Top five airports, domestic RPT cargo movements (000s tonnes) - monthly activity**

Airport	Aug 2017	Aug 2018	% Change	% of Total
1 Melbourne	11.2	11.1	-0.5	28.4
2 Sydney	8.3	8.9	7.6	22.6
3 Brisbane	5.8	6.1	5.3	15.6
4 Perth	5.7	5.6	-2.5	14.2
5 Adelaide	2.3	2.4	4.1	6.2
<b>Total top five airports</b>	<b>33.3</b>	<b>34.2</b>	<b>2.5</b>	<b>87.0</b>
<b>Total domestic network</b>	<b>38.5</b>	<b>39.3</b>	<b>2.1</b>	<b>100.0</b>

Note: Airport cargo tonnes are the sum of cargo tonnes on arrivals and departures at each airport.

### Top five airports, cargo movements

(Domestic cargo traffic - traffic on board)



### Total domestic network - cargo movement

(monthly totals - traffic on board)



Note: Airport cargo tonnes are the sum of cargo tonnes on arrivals and departures at each airport.

## TOP TEN ROUTES

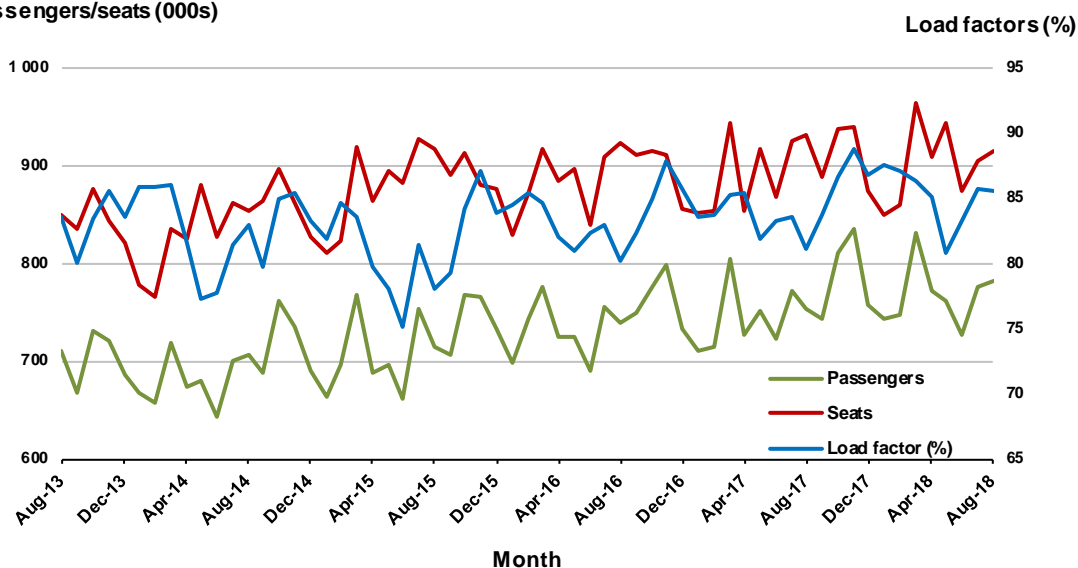
### 1. Melbourne - Sydney

#### Monthly data

	Aug 2017	Aug 2018	% Change
Passengers carried (000s)	754.0	782.2	3.7
Seats (000s)	930.4	914.6	-1.7
Load factor %	81.0	85.5	4.5 *
Aircraft trips	5 213	5 023	-3.6

\* percentage point difference

#### Passengers/seats (000s)

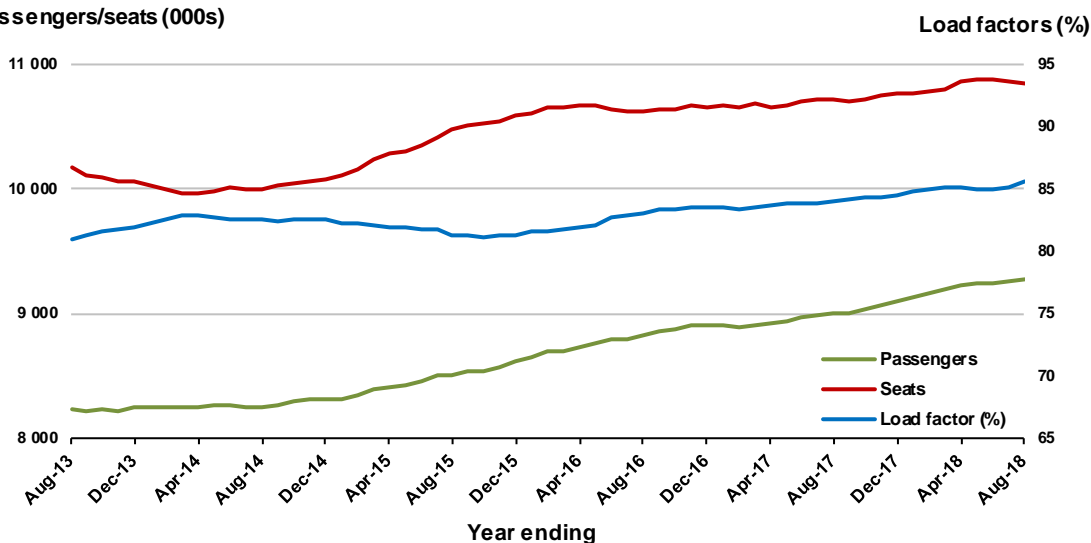


#### Moving annual data

	YE Aug 2017	YE Aug 2018	% Change
Passengers carried (000s)	9 006.8	9 282.1	3.1
Seats (000s)	10 723.8	10 849.6	1.2
Load factor %	84.0	85.6	1.6 *
Aircraft trips	59 737	60 063	0.5

\* percentage point difference

#### Passengers/seats (000s)

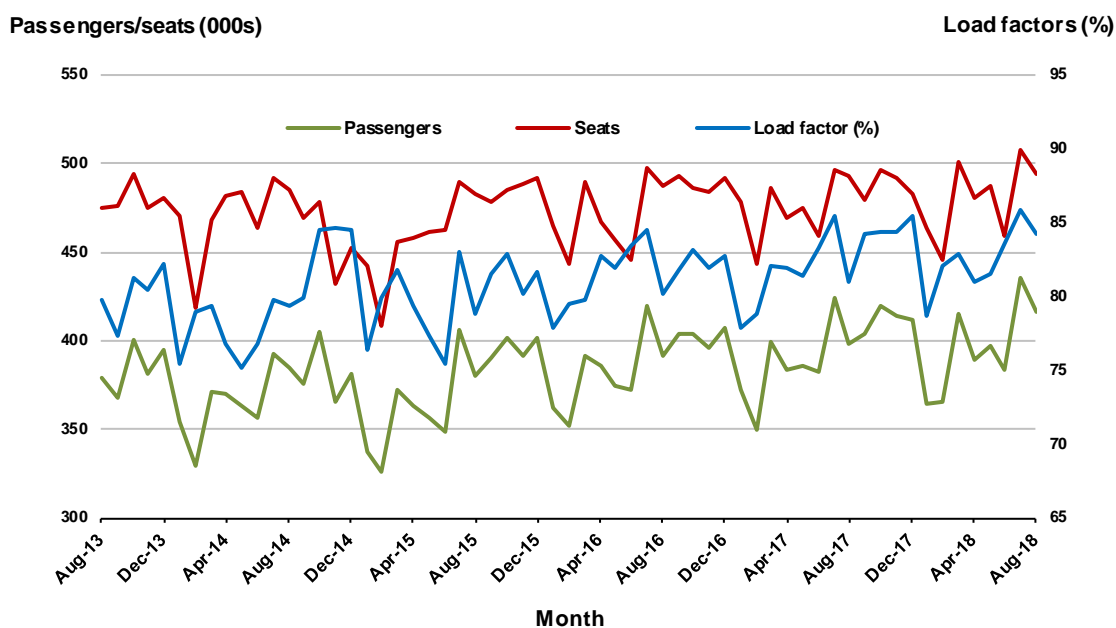


## 2. Brisbane - Sydney

### Monthly data

	Aug 2017	Aug 2018	% Change
Passengers carried (000s)	398.6	416.5	4.5
Seats (000s)	492.4	494.4	0.4
Load factor %	81.0	84.2	3.2 *
Aircraft trips	3 031	3 007	-0.8

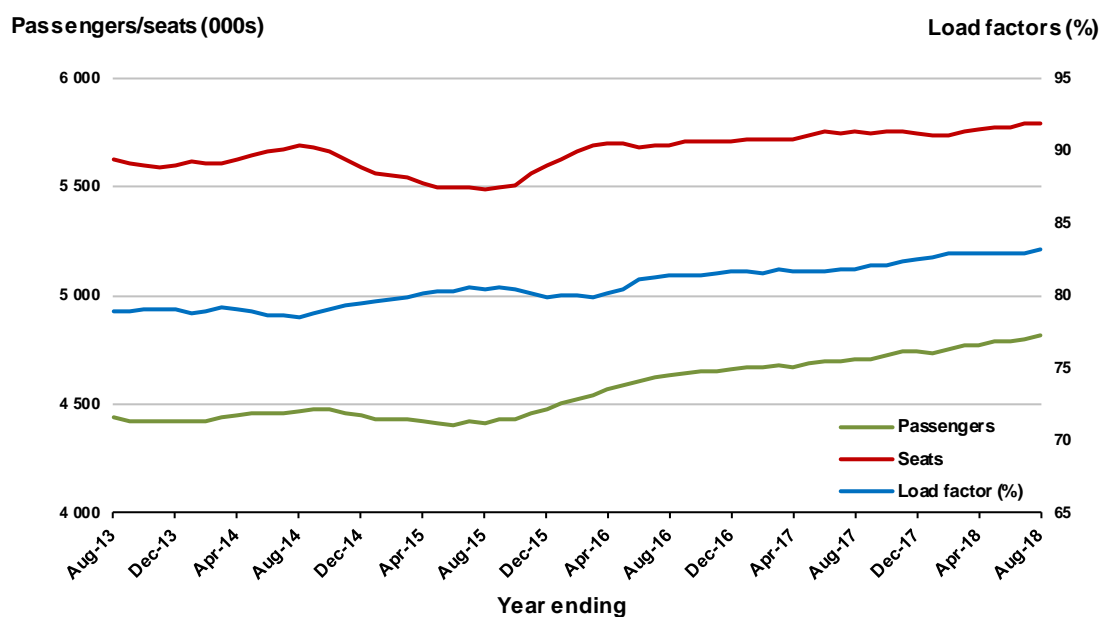
\* percentage point difference



### Moving annual data

	YE Aug 2017	YE Aug 2018	% Change
Passengers carried (000s)	4 707.7	4 816.5	2.3
Seats (000s)	5 754.3	5 788.8	0.6
Load factor %	81.8	83.2	1.4 *
Aircraft trips	35 496	35 200	-0.8

\* percentage point difference

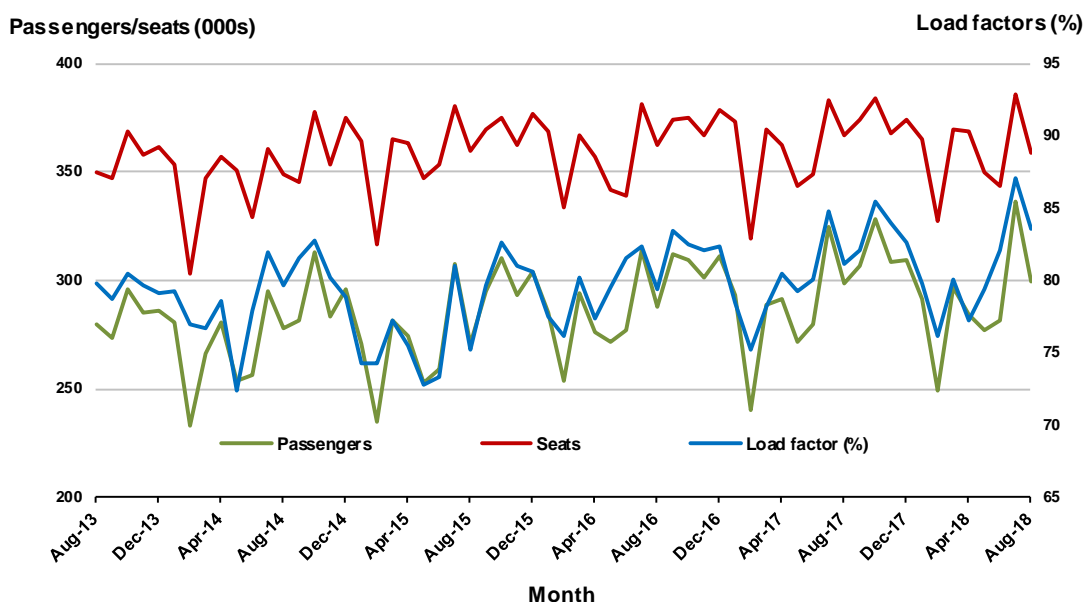


### 3. Brisbane - Melbourne

#### Monthly data

	Aug 2017	Aug 2018	% Change
Passengers carried (000s)	298.2	299.8	0.6
Seats (000s)	367.0	358.6	-2.3
Load factor %	81.2	83.6	2.4 *
Aircraft trips	2 234	2 087	-6.6

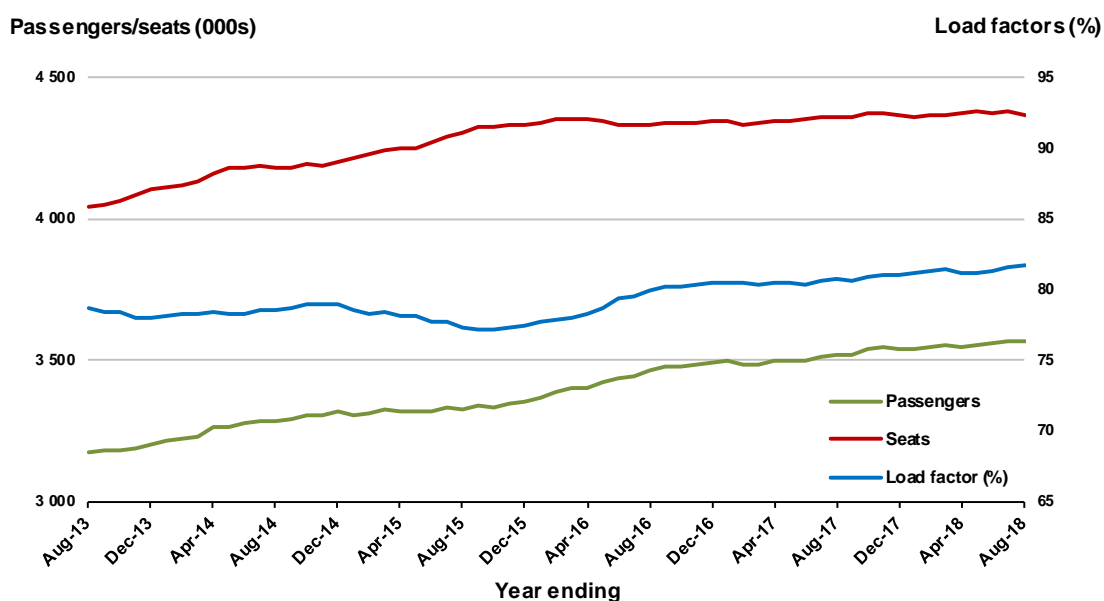
\* percentage point difference



#### Moving annual data

	YE Aug 2017	YE Aug 2018	% Change
Passengers carried (000s)	3 522.0	3 570.1	1.4
Seats (000s)	4 361.7	4 368.2	0.1
Load factor %	80.7	81.7	1.0 *
Aircraft trips	25 819	25 647	-0.7

\* percentage point difference





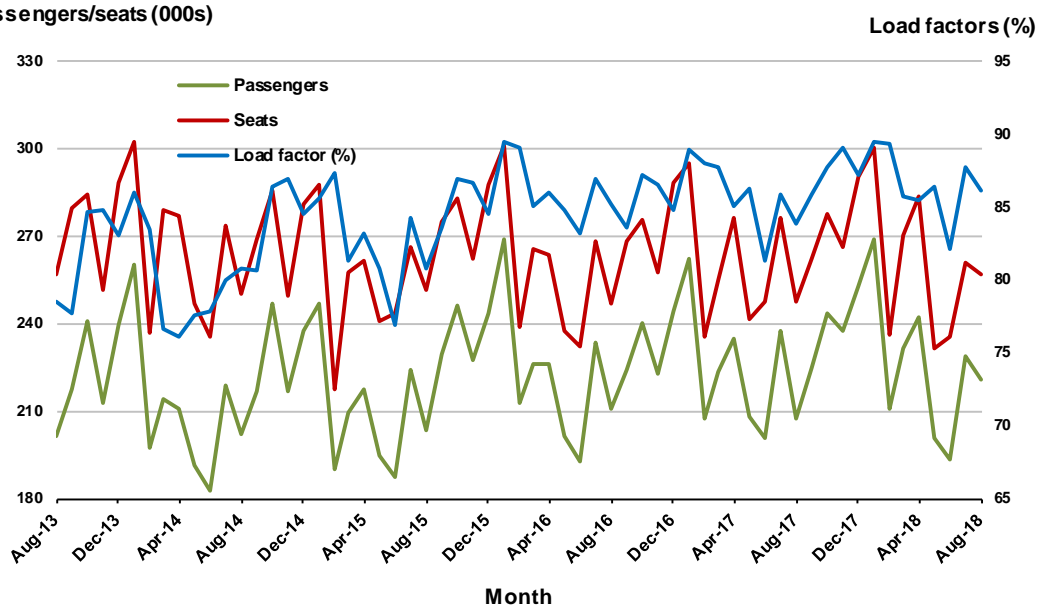
## 4. Gold Coast - Sydney

### Monthly data

	Aug 2017	Aug 2018	% Change
Passengers carried (000s)	207.4	220.9	6.5
Seats (000s)	247.2	256.6	3.8
Load factor %	83.9	86.1	2.2 *
Aircraft trips	1 408	1 478	5.0

\* percentage point difference

### Passengers/seats (000s)

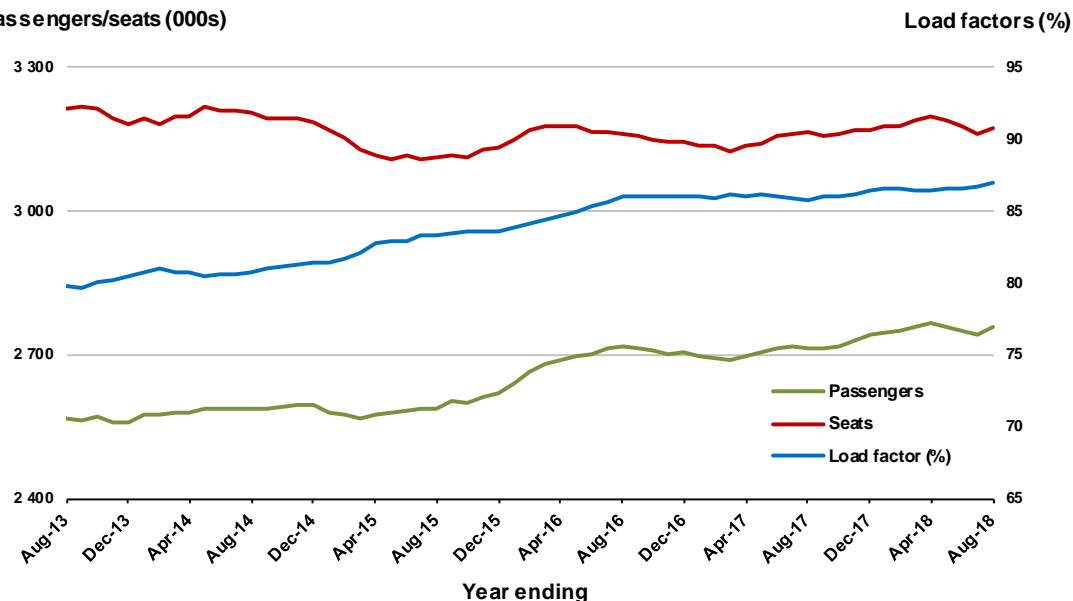


### Moving annual data

	YE Aug 2017	YE Aug 2018	% Change
Passengers carried (000s)	2 713.4	2 756.5	1.6
Seats (000s)	3 163.0	3 171.4	0.3
Load factor %	85.8	86.9	1.1 *
Aircraft trips	18 188	17 955	-1.3

\* percentage point difference

### Passengers/seats (000s)



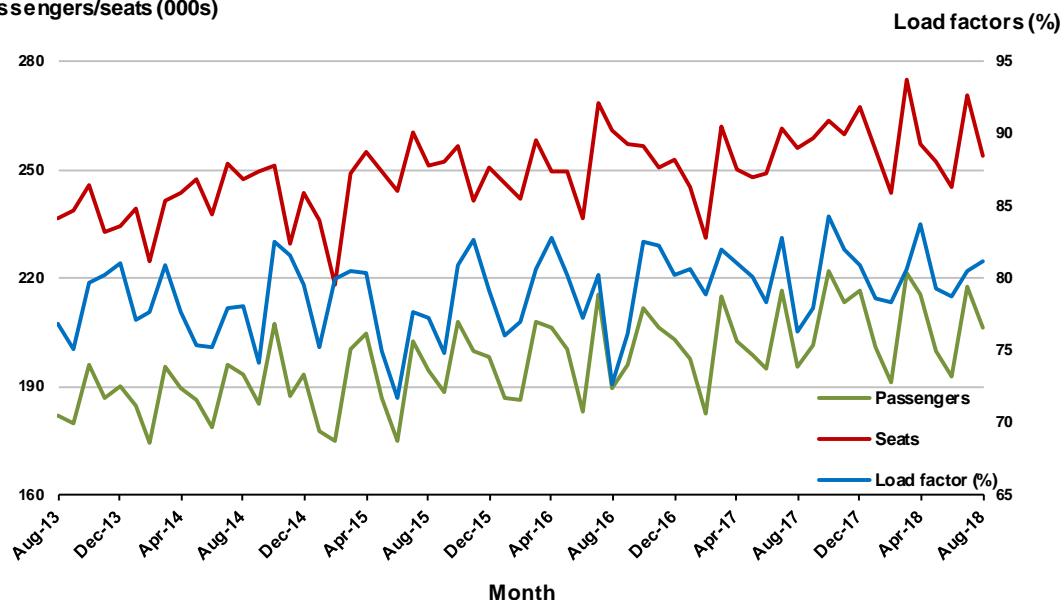
## 5. Adelaide - Melbourne

### Monthly data

	Aug 2017	Aug 2018	% Change
Passengers carried (000s)	195.4	206.1	5.5
Seats (000s)	256.1	253.9	-0.9
Load factor %	76.3	81.2	4.9 *
Aircraft trips	1 587	1 584	-0.2

\* percentage point difference

### Passengers/seats (000s)

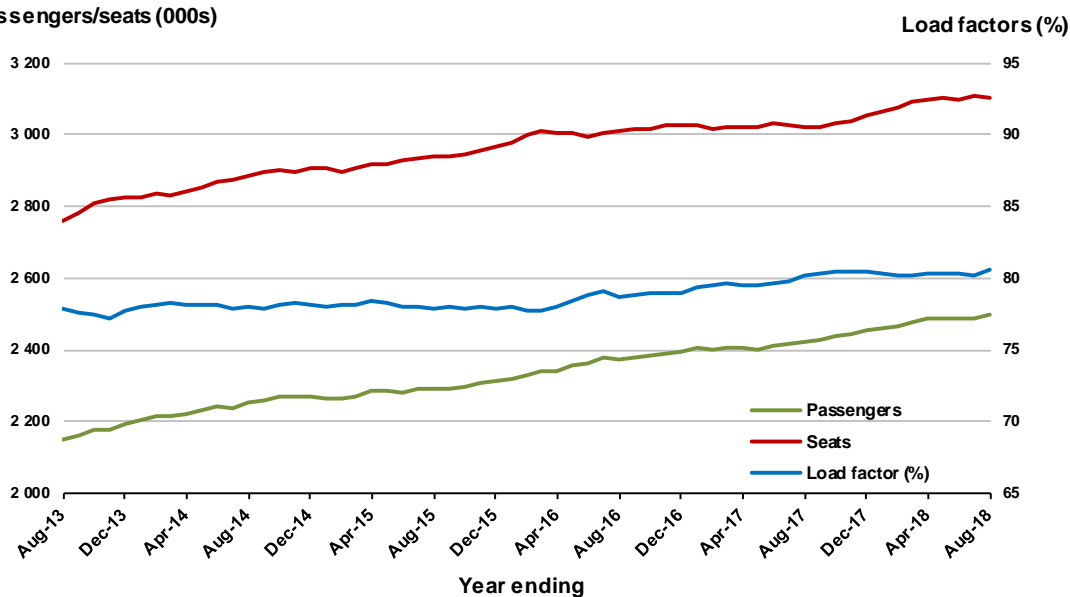


### Moving annual data

	YE Aug 2017	YE Aug 2018	% Change
Passengers carried (000s)	2 420.1	2 499.3	3.3
Seats (000s)	3 020.6	3 103.6	2.7
Load factor %	80.1	80.5	0.4 *
Aircraft trips	19 128	19 248	0.6

\* percentage point difference

### Passengers/seats (000s)



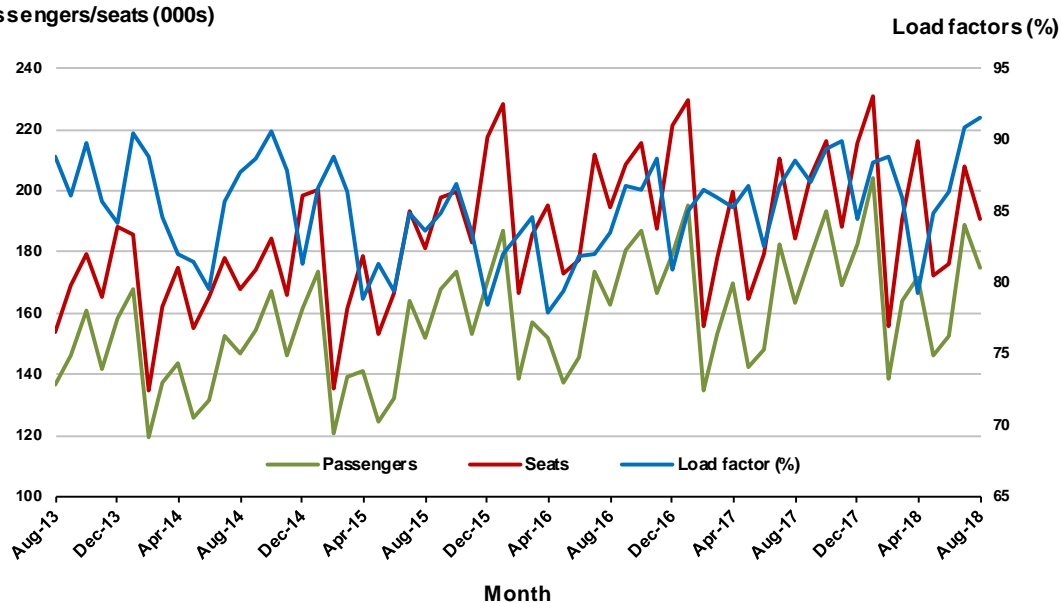
## 6. Gold Coast - Melbourne

### Monthly data

	Aug 2017	Aug 2018	% Change
Passengers carried (000s)	163.3	174.8	7.0
Seats (000s)	184.3	190.7	3.5
Load factor %	88.6	91.6	3.0 *
Aircraft trips	977	1 003	2.7

\* percentage point difference

### Passengers/seats (000s)

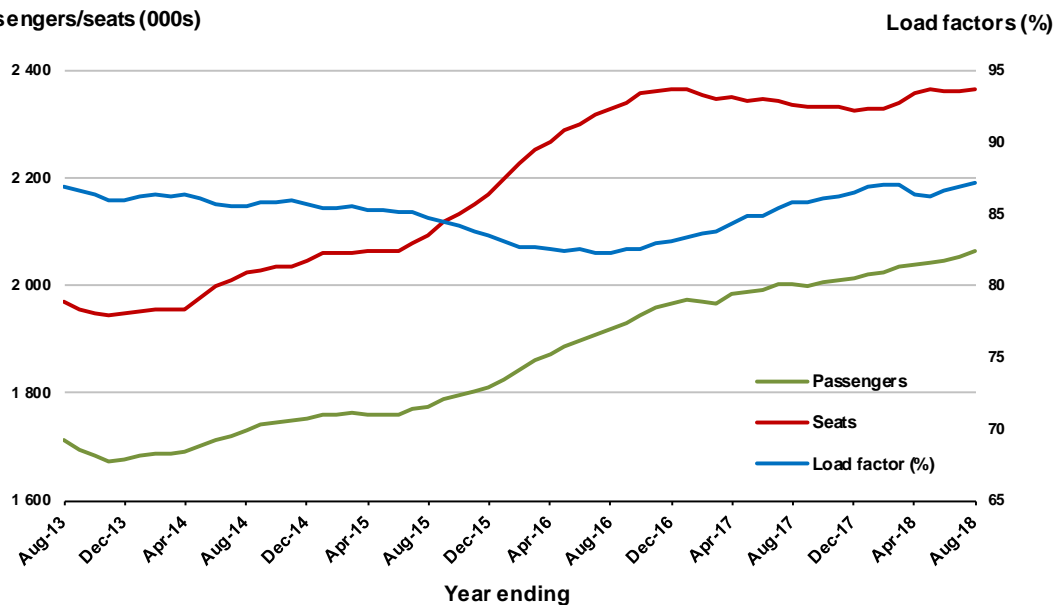


### Moving annual data

	YE Aug 2017	YE Aug 2018	% Change
Passengers carried (000s)	2 002.4	2 063.4	3.0
Seats (000s)	2 334.7	2 366.9	1.4
Load factor %	85.8	87.2	1.4 *
Aircraft trips	12 471	12 527	0.4

\* percentage point difference

### Passengers/seats (000s)



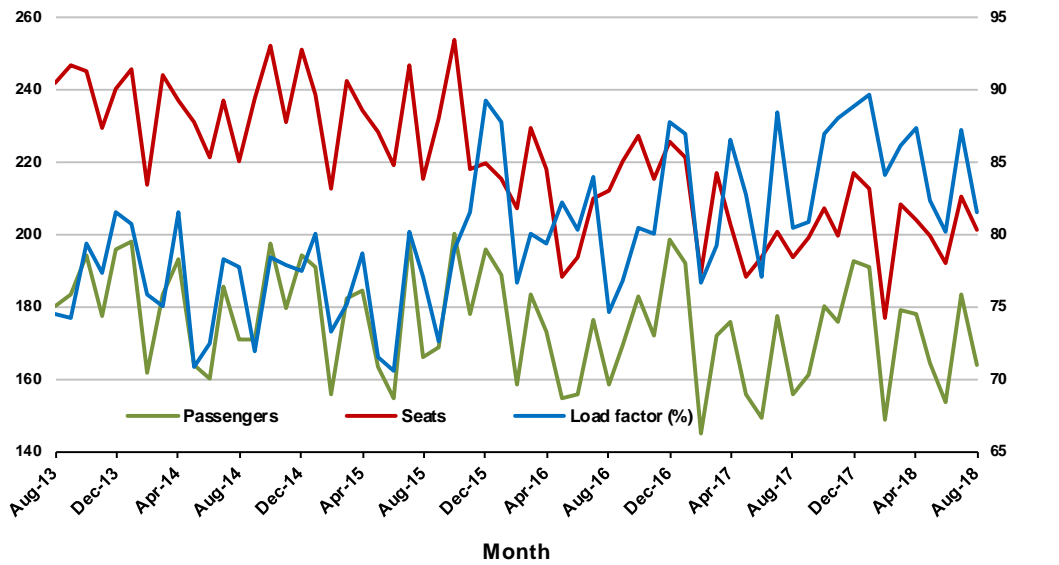
## 7. Melbourne - Perth

### Monthly data

	Aug 2017	Aug 2018	% Change
Passengers carried (000s)	155.8	164.2	5.4
Seats (000s)	193.6	201.2	3.9
Load factor %	80.5	81.6	1.1 *
Aircraft trips	892	953	6.8

\* percentage point difference

### Passengers/seats (000s)

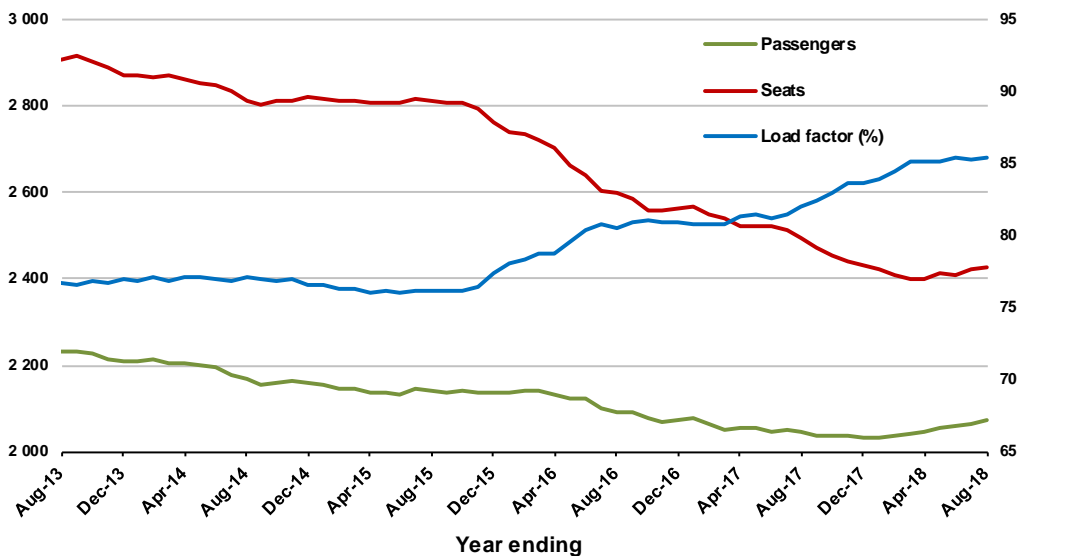


### Moving annual data

	YE Aug 2017	YE Aug 2018	% Change
Passengers carried (000s)	2 046.5	2 072.2	1.3
Seats (000s)	2 495.3	2 427.9	-2.7
Load factor %	82.0	85.4	3.3 *
Aircraft trips	11 319	11 345	0.2

\* percentage point difference

### Passengers/seats (000s)



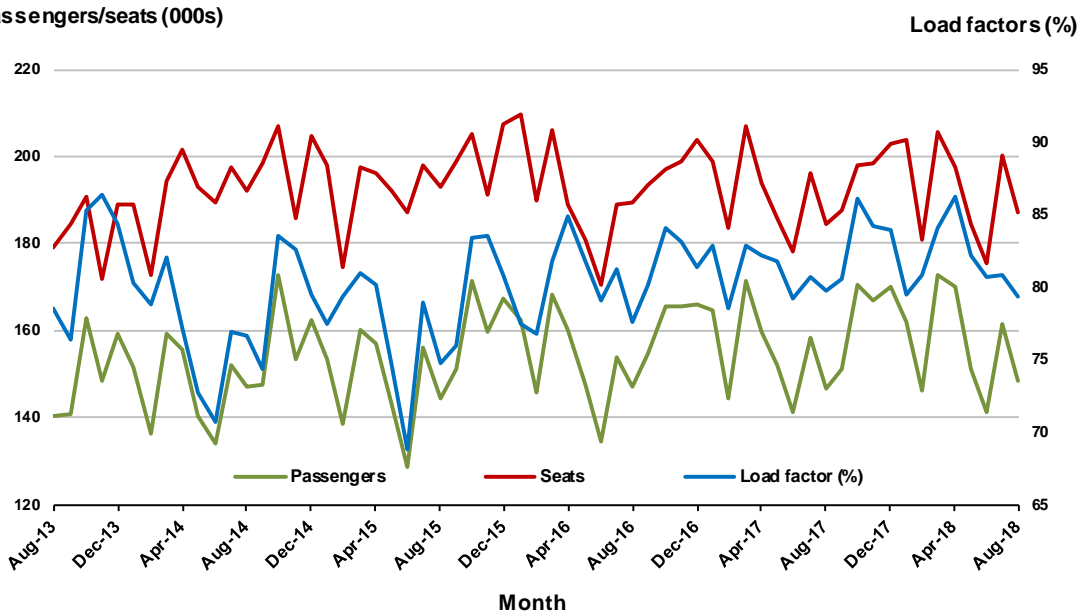
## 8. Adelaide - Sydney

### Monthly data

	Aug 2017	Aug 2018	% Change
Passengers carried (000s)	146.9	148.6	1.2
Seats (000s)	184.4	187.1	1.4
Load factor %	79.7	79.4	-0.3 *
Aircraft trips	1 133	1 120	-1.1

\* percentage point difference

### Passengers/seats (000s)

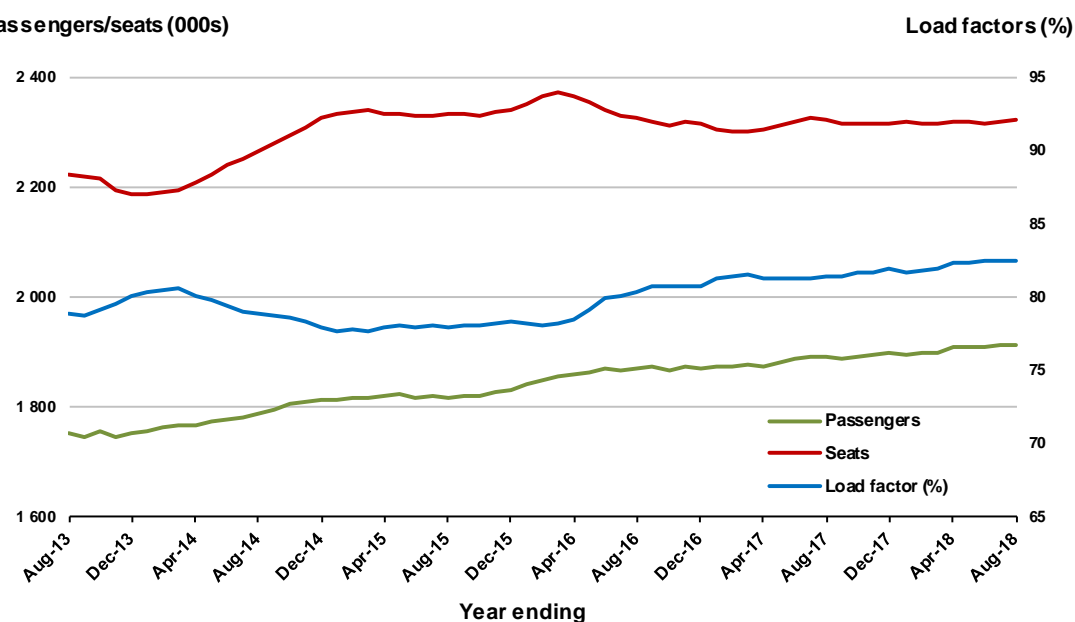


### Moving annual data

	YE Aug 2017	YE Aug 2018	% Change
Passengers carried (000s)	1 891.1	1 913.7	1.2
Seats (000s)	2 321.7	2 321.5	0.0
Load factor %	81.5	82.4	1.0 *
Aircraft trips	14 062	13 868	-1.4

\* percentage point difference

### Passengers/seats (000s)



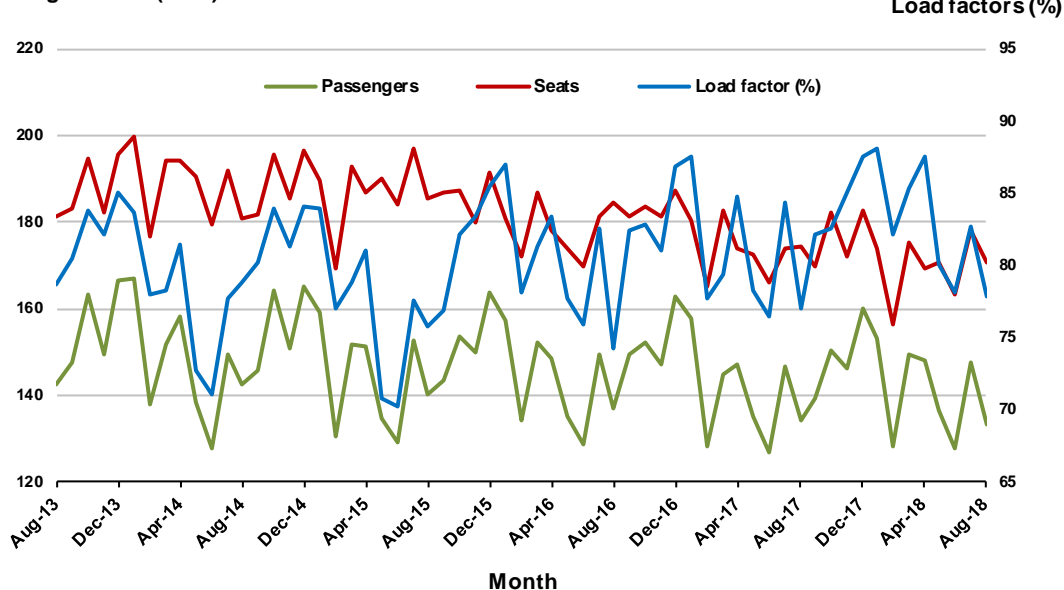
## 9. Perth - Sydney

### Monthly data

	Aug 2017	Aug 2018	% Change
Passengers carried (000s)	134.3	133.1	-0.9
Seats (000s)	174.4	170.8	-2.1
Load factor %	77.0	77.9	0.9 *
Aircraft trips	769	731	-4.9

\* percentage point difference

### Passengers/seats (000s)

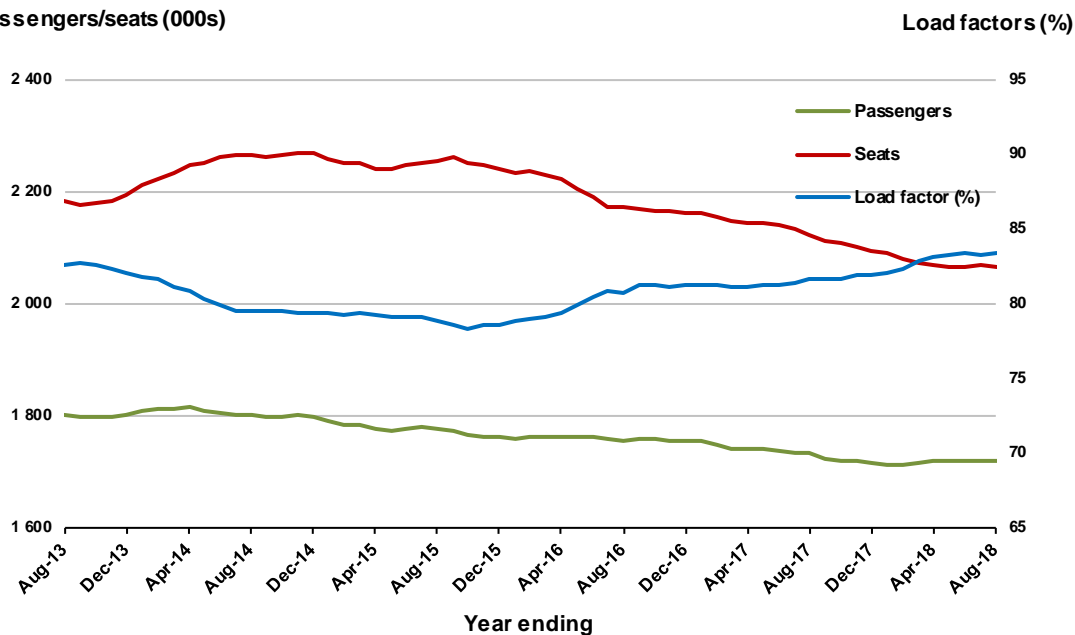


### Moving annual data

	YE Aug 2017	YE Aug 2018	% Change
Passengers carried (000s)	1 732.0	1 719.4	-0.7
Seats (000s)	2 121.8	2 063.8	-2.7
Load factor %	81.6	83.3	1.7 *
Aircraft trips	9 079	9 049	-0.3

\* percentage point difference

### Passengers/seats (000s)



## 10. Brisbane - Cairns

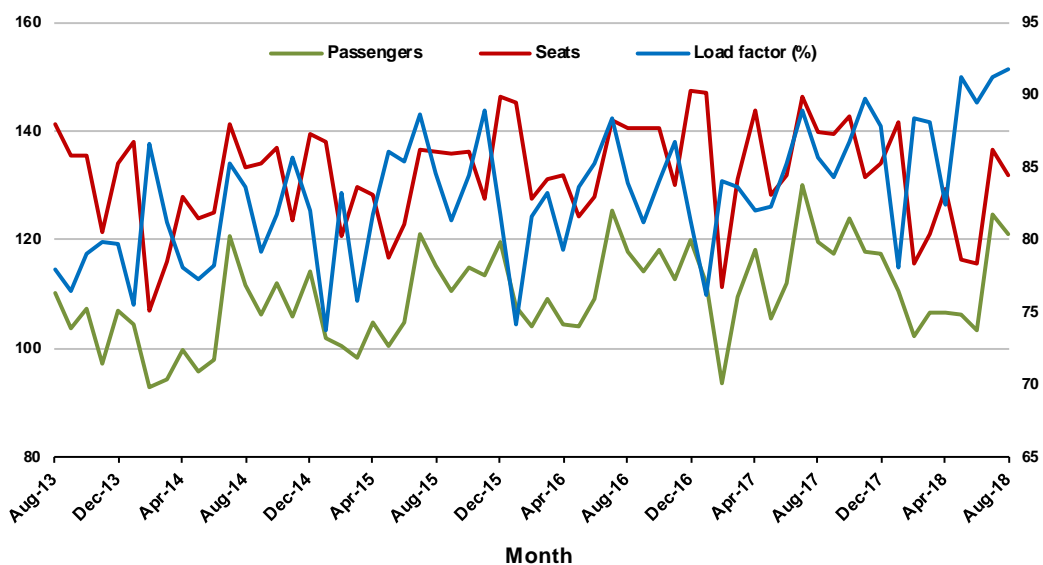
### Monthly data

	Aug 2017	Aug 2018	% Change
Passengers carried (000s)	119.7	121.0	1.1
Seats (000s)	139.7	131.8	-5.6
Load factor %	85.7	91.8	6.1 *
Aircraft trips	875	873	-0.2

\* percentage point difference

### Passengers/seats (000s)

### Load factors (%)



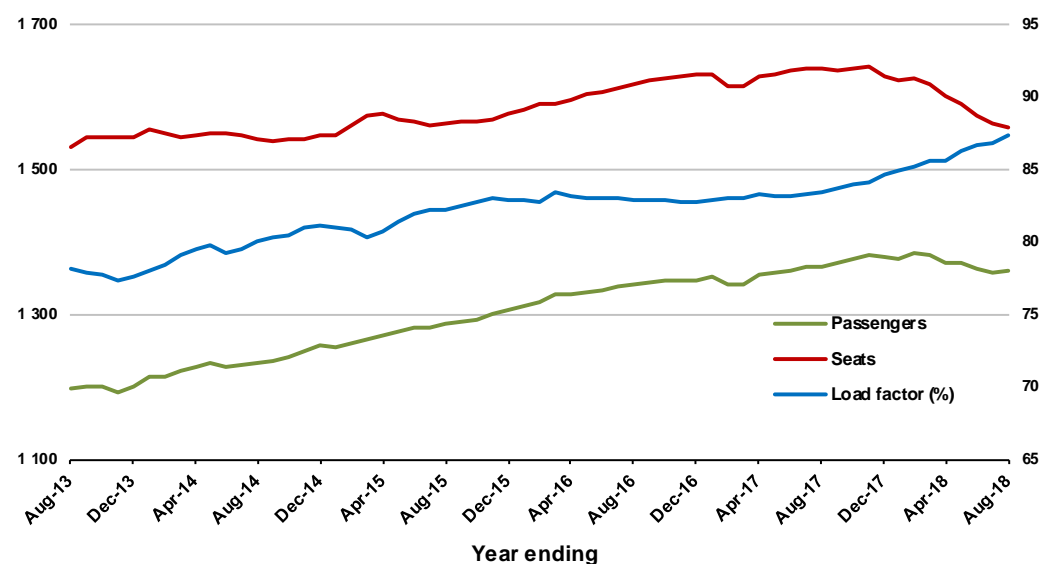
### Moving annual data

	YE Aug 2017	YE Aug 2018	% Change
Passengers carried (000s)	1 366.0	1 358.6	-0.5
Seats (000s)	1 638.1	1 556.2	-5.0
Load factor %	83.4	87.3	3.9 *
Aircraft trips	10 262	9 922	-3.3

\* percentage point difference

### Passengers/seats (000s)

### Load factors (%)



## TOP FIFTY REGIONAL AIRPORTS

**Table 10: Top fifty regional airports (000s) — passenger movements, monthly**

	<b>Airport</b>	<b>Aug 2017</b>	<b>Aug 2018</b>	<b>% Change</b>
1	Cairns	392.0	400.8	2.2
2	Hobart	175.2	188.9	7.8
3	Darwin	181.6	175.0	-3.7
4	Townsville	144.8	151.7	4.8
5	Newcastle	101.1	103.8	2.6
6	Launceston	90.1	94.6	5.1
7	Mackay	67.1	79.3	18.2
8	Alice Springs	58.0	60.2	3.8
9	Rockhampton	50.0	50.0	0.1
10	Broome	44.6	44.3	-0.8
11	Ayers Rock	34.3	43.2	25.8
12	Karratha	37.6	40.2	6.9
13	Ballina	33.8	40.1	18.6
14	Proserpine	39.5	38.0	-3.8
15	Hamilton Island	34.8	36.9	6.0
16	Port Hedland	30.7	33.1	7.8
17	Coffs Harbour	33.0	32.1	-2.7
18	Kalgoorlie	24.9	28.2	13.1
19	Newman	25.0	26.9	7.7
20	Mildura	22.1	24.8	12.3
21	Albury	24.5	23.6	-3.6
22	Gladstone	26.6	22.5	-15.3
23	Mount Isa	19.4	20.8	7.2
24	Wagga Wagga	19.8	19.9	0.5
25	Dubbo	20.8	19.6	-5.8
26	Emerald	17.2	18.4	7.0
27	Port Macquarie	19.8	17.7	-10.6
28	Tamworth	17.9	17.3	-3.3
29	Paraburdoo	14.8	16.2	9.2
30	Hervey Bay	14.8	14.1	-4.8
31	Bundaberg	16.4	13.9	-15.3
32	Port Lincoln	13.4	13.8	2.9
33	Devonport	12.2	12.5	2.2
34	Armidale	11.4	11.9	3.6
35	Toowoomba Wellcamp	13.2	11.5	-13.2
36	Kununurra	11.1	11.3	1.6
37	Geraldton	9.9	9.9	0.4
38	Moranbah	11.2	9.7	-13.7
39	Gove	8.6	8.6	0.5
40	Thursday Island	8.0	8.6	7.7
41	Roma	7.7	8.0	3.9
42	Weipa	7.0	7.5	7.6
43	Orange	6.0	7.4	23.1
44	Learmonth	8.5	7.4	-13.3
45	Whyalla	6.1	7.2	17.1
46	Griffith	6.7	7.1	7.0
47	Olympic Dam	6.5	7.0	7.5
48	Mount Gambier	7.2	7.0	-2.9
49	Broken Hill	5.5	6.4	17.0
50	Burnie	4.9	6.1	23.3
<b>Total top 50 regional airports</b>		<b>1 997.6</b>	<b>2 065.0</b>	<b>3.4</b>
<b>Total regional airports</b>		<b>2 112.6</b>	<b>2 187.2</b>	<b>3.5</b>
<b>Total domestic network</b>		<b>9 962.8</b>	<b>10 368.9</b>	<b>4.1</b>

Note: Airport passenger movement numbers are the sum of passenger arrivals and departures at each airport.



**Table 11: Top fifty regional airports (000s) — passenger movements, annual**

Airport	YE Aug 2017	YE Aug 2018	% Change
1 Cairns	4 296.0	4 339.8	1.0
2 Hobart	2 465.5	2 621.0	6.3
3 Darwin	1 814.1	1 771.7	-2.3
4 Townsville	1 553.1	1 656.8	6.7
5 Launceston	1 333.3	1 377.4	3.3
6 Newcastle	1 276.4	1 281.0	0.4
7 Mackay	771.7	838.4	8.6
8 Alice Springs	616.7	620.7	0.7
9 Rockhampton	568.2	558.5	-1.7
10 Ballina	502.5	537.8	7.0
11 Proserpine	375.3	467.4	24.5
12 Karratha	454.9	439.6	-3.4
13 Hamilton Island	472.6	421.5	-10.8
14 Broome	369.7	417.5	12.9
15 Coffs Harbour	408.7	411.5	0.7
16 Ayers Rock	363.4	394.6	8.6
17 Port Hedland	350.7	363.0	3.5
18 Newman	288.5	300.0	4.0
19 Kalgoorlie	247.2	274.4	11.0
20 Mildura	251.5	268.9	6.9
21 Albury	265.9	265.3	-0.2
22 Gladstone	296.9	259.8	-12.5
23 Dubbo	232.2	226.7	-2.4
24 Wagga Wagga	220.1	225.1	2.3
25 Port Macquarie	229.4	219.2	-4.5
26 Mount Isa	195.9	209.7	7.1
27 Emerald	199.2	196.9	-1.2
28 Tamworth	196.9	191.0	-3.0
29 Paraburdoo	166.9	174.3	4.4
30 Port Lincoln	173.9	169.7	-2.4
31 Hervey Bay	173.0	167.7	-3.0
32 Bundaberg	177.0	165.6	-6.5
33 Devonport	147.0	148.6	1.0
34 Toowoomba Wellcamp	146.0	146.4	0.2
35 Armidale	131.2	130.7	-0.4
36 Geraldton	115.3	111.6	-3.2
37 Kununurra	103.5	103.5	0.0
38 Moranbah	121.9	101.0	-17.1
39 Thursday Island	100.6	100.0	-0.6
40 Learmonth	81.4	86.2	5.9
41 Roma	83.4	85.9	3.0
42 Gove	84.1	85.9	2.1
43 Weipa	77.6	80.3	3.5
44 Mount Gambier	79.0	80.3	1.6
45 Olympic Dam	58.3	77.9	33.6
46 Griffith	72.7	75.9	4.4
47 Orange	59.0	73.3	24.1
48 Whyalla	62.2	72.9	17.2
49 Broken Hill	58.0	68.3	17.8
50 Merimbula	65.4	68.1	4.1
<b>Total top 50 regional airports</b>	<b>22 954.1</b>	<b>23 529.3</b>	<b>2.5</b>
<b>Total regional airports</b>	<b>24 291.6</b>	<b>24 932.0</b>	<b>2.6</b>
<b>Total domestic network</b>	<b>119 024.8</b>	<b>122 206.6</b>	<b>2.7</b>

Note: Airport passenger movement numbers are the sum of passenger arrivals and departures at each airport.

## DOMESTIC CHARTER ACTIVITY

**Table 12: Charter passengers carried and aircraft trips - annual activity**

	YE Aug 2017	YE Aug 2018	% Change
Total domestic charter passengers	2 418 600	2 439 886	0.9
Total domestic charter aircraft trips	45 256	44 624	-1.4

Note: Helicopter, joyflights and sightseeing charter flights not included.

**Table 13: Charter passengers carried and aircraft trips - monthly activity**

	Aug 2017	Aug 2018	% Change
Total domestic charter passengers	227 229	221 996	-2.3
Total domestic charter aircraft trips	4 178	3 846	-7.9

Note: Helicopter, joyflights and sightseeing charter flights not included.

**Table 14: Domestic airports - charter activity - annual**

	YE Aug 2017	YE Aug 2018	% Change
Total domestic charter passenger movements	4 837 200	4 879 772	0.9
Total domestic charter aircraft movements	90 512	89 248	-1.4
Perth airport charter passenger movements	1 861 242	1 833 320	-1.5
Perth airport charter aircraft movements	31 518	29 753	-5.6

Note: Helicopter, joyflights and sightseeing charter flights not included.

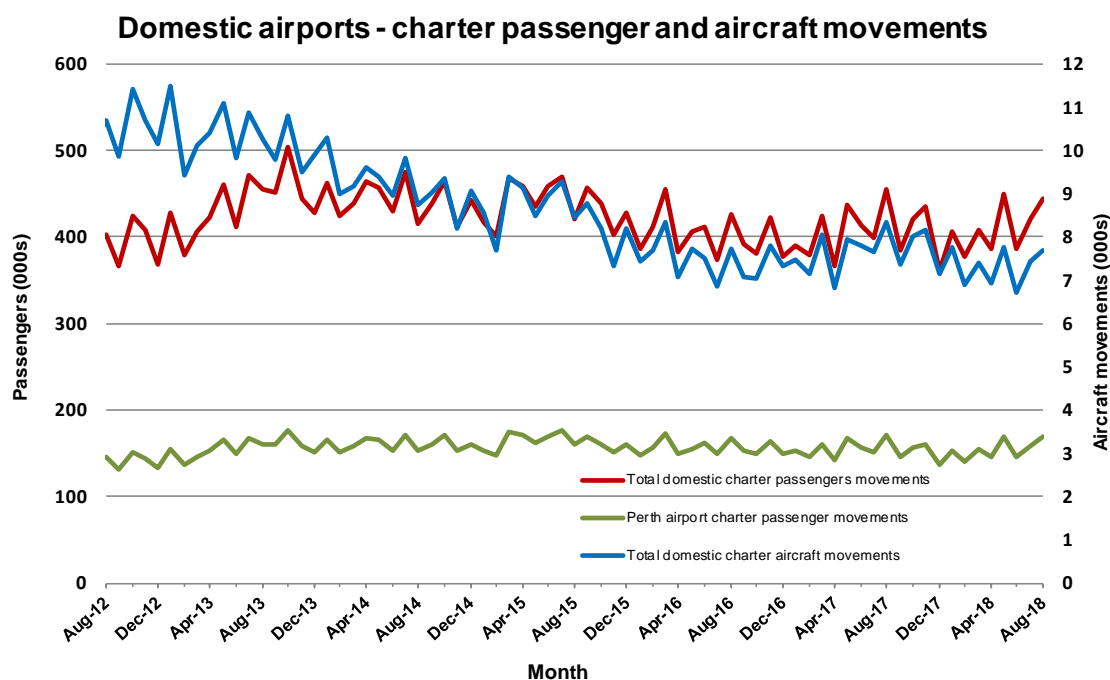
Charter passenger and aircraft movement numbers are the sum of arrivals and departures at each airport.

**Table 15: Domestic airports - charter activity - monthly**

	Aug 2017	Aug 2018	% Change
Total domestic charter passenger movements	454 458	443 992	-2.3
Total domestic charter aircraft movements	8 356	7 692	-7.9
Perth airport charter passenger movements	170 735	168 449	-1.3
Perth airport charter aircraft movements	2 821	2 568	-9.0

Note: Helicopter, joyflights and sightseeing charter flights not included.

Charter passenger and aircraft movement numbers are the sum of arrivals and departures at each airport.



## DEFINITIONS

Aircraft Trips	The number of flight stages. A return flight counts as two aircraft trips.
Airport Movements	Airport movements (passenger and cargo) are measured once on arrival and once on departure. Each domestic trip generates two movements at airports. For example, a trip from Melbourne to Sydney will be counted twice, as a passenger departure at Melbourne and as a passenger arrival at Sydney. At the national level, the sum of all domestic airport traffic will therefore be equal to twice the number of trips undertaken.
Available Seat Kilometres (ASKs)	Calculated by multiplying the number of seats available on each flight stage, by the distance in kilometres between the ports. The distances used are Great Circle Distances.
City-Pair	The ports shown make up the city-pair route. Passenger movements shown for a city pair reflect total traffic in both directions.
Flight Stage	The operation of an aircraft from take-off to landing.
Load Factor	The total revenue passenger kilometres performed as a percentage of the total available seat kilometres.
Passengers Carried	Revenue passengers carried.
Regular Public Transport Services (RPT)	All air service operations in which aircraft are available for the transport of members of the public and are conducted in accordance with fixed schedules. It does not include charter or other non-scheduled operations.
Revenue Passengers	All passengers paying any fare. Frequent flyer redemption travellers are regarded as revenue passengers.
Revenue Passenger Kilometres (RPKs)	Calculated by multiplying the number of revenue passengers travelling on each flight stage, by the distance in kilometres between the ports. The distances used are Great Circle Distances.
Traffic on board by stages	The total of all traffic (revenue passengers) on each flight stage between two directly connected airports.
..	Data not included
NA	Not applicable