

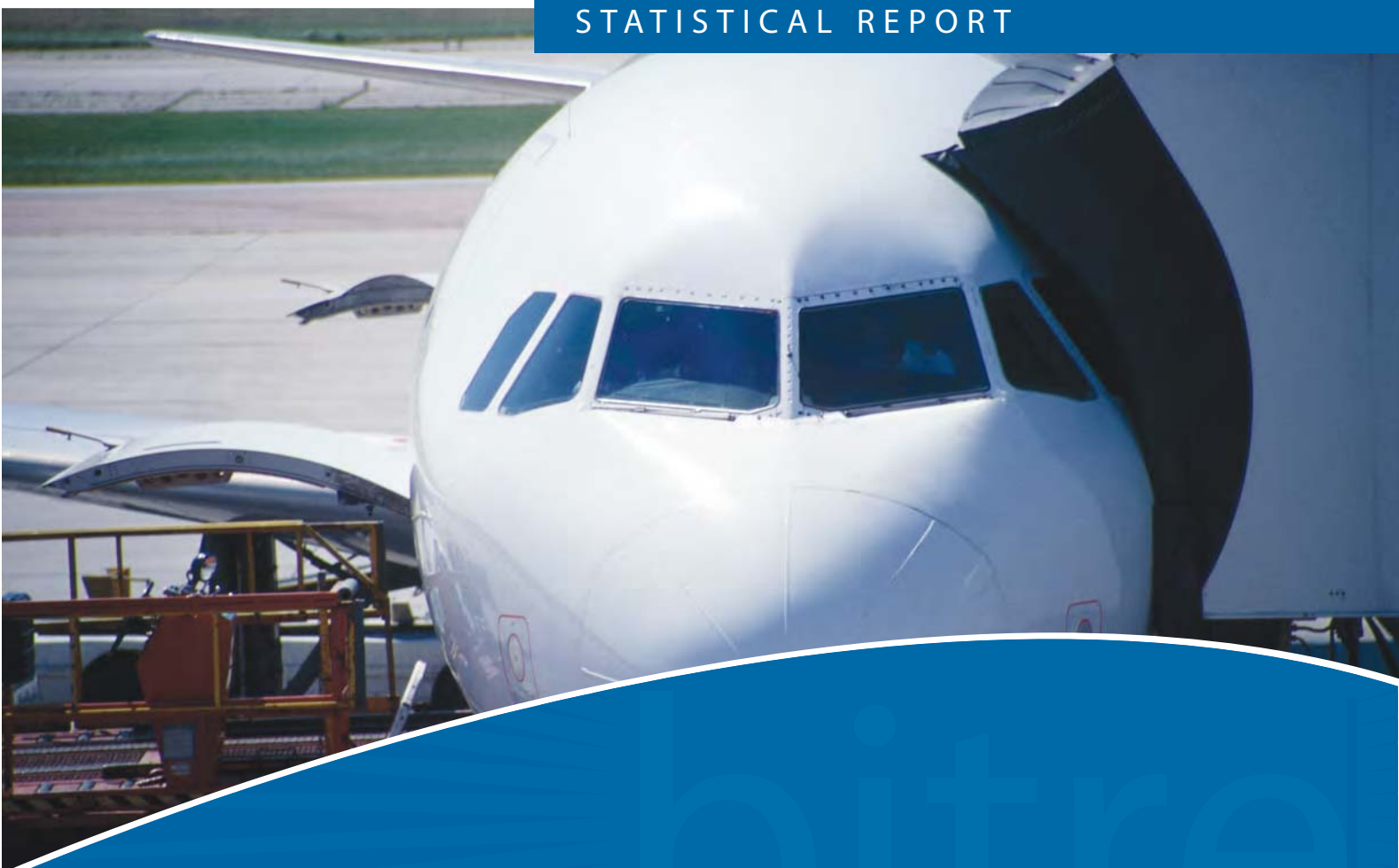


Australian Government

Department of Infrastructure and Regional Development

Bureau of Infrastructure, Transport and Regional Economics

STATISTICAL REPORT



Aviation

Domestic aviation activity
August 2017

© Commonwealth of Australia 2017

ISSN: 1832 - 1968

Ownership of intellectual property rights in this publication

Unless otherwise noted, copyright (and any other intellectual property rights, if any) in this publication is owned by the Commonwealth of Australia (referred to below as the Commonwealth).

Disclaimer

The material contained in this publication is made available on the understanding that the Commonwealth is not providing professional advice, and that users exercise their own skill and care with respect to its use, and seek independent advice if necessary.

The Commonwealth makes no representations or warranties as to the contents or accuracy of the information contained in this publication. To the extent permitted by law, the Commonwealth disclaims liability to any person or organisation in respect of anything done, or omitted to be done, in reliance upon information contained in this publication.

Creative Commons licence

With the exception of (a) the Coat of Arms; and (b) the Department of Infrastructure and Regional Development's photos and graphics, copyright in this publication is licensed under a Creative Commons Attribution 3.0 Australia Licence.

Creative Commons Attribution 3.0 Australia Licence is a standard form licence agreement that allows you to copy, communicate and adapt this publication provided that you attribute the work to the Commonwealth and abide by the other licence terms. A summary of the licence terms is available from <http://creativecommons.org/licenses/by/3.0/au/deed.en>. The full licence terms are available from <http://creativecommons.org/licenses/by/3.0/au/legalcode>.

Use of the Coat of Arms

The Department of the Prime Minister and Cabinet sets the terms under which the Coat of Arms is used. Please refer to the Department's Commonwealth Coat of Arms and Government branding web page <http://www.dpmc.gov.au/guidelines/index.cfm#brand> and, in particular, the Guidelines on the use of the Commonwealth Coat of Arms publication.

An appropriate citation for this report is:

Bureau of Infrastructure, Transport and Regional Economics (BITRE), 2017, Domestic aviation activity, Statistical Report, BITRE, Canberra ACT.

Contact us

This publication is available in PDF format. All other rights are reserved, including in relation to any Departmental logos or trade marks which may exist. For enquiries regarding the licence and any use of this publication, please contact:

Bureau of Infrastructure, Transport and Regional Economics (BITRE)
Department of Infrastructure and Regional Development
GPO Box 501, Canberra ACT 2601, Australia
Telephone: (international) +61 2 6274 7210
Fax: (international) +61 2 6274 6855
Email: bitre@infrastructure.gov.au
Website: www.bitre.gov.au

Inquiries

Should you require additional information about the statistics contained in this publication:

Nebojsa Pavlovic

Telephone (02) 6274 6817 or Facsimile (02) 6274 7727

Electronic mail: AVSTATS@infrastructure.gov.au

Nebojsa.Pavlovic@infrastructure.gov.au

Web site: <http://www.bitre.gov.au/statistics/aviation/domestic.aspx>

FOREWORD

This report provides an overview of domestic (including charter) commercial aviation activity in Australia for the month of August 2017.

The data cover revenue passengers carried by Australian-registered operators of scheduled regular public transport services over Australian flight stages and fixed-wing charter operators. These estimates include passengers carried between domestic airports on international flights operated by these carriers. The passengers carried refer to traffic on board by stages.

Estimates of passengers and aircraft movements for charter aviation are included in this publication, where BITRE confidentiality standards are met.

Individual routes shown are restricted to those with an average exceeding 8 000 passengers per month over the previous six months where two or more airlines operate in competition. For the month of August 2017 there were 65 such routes.

Information on the total network for the month of August 2017 and on the Regular Public Transport (RPT) network for the month of August 2017 is presented on page 2, with estimates for the year ended August 2017 presented on page 3.

Detailed information on the 65 individual routes can be found in the RPT summary pages 4-13 of this publication.

The top ten airports in terms of RPT passenger movements are shown on page 14.

Data on domestic RPT cargo movements at the top five cargo airports are provided on page 15. The table includes cargo carried on passenger flights operated by the Qantas group (including Jetstar), Virgin Australia, Air North and Skippers as well as the cargo carried by dedicated freighter aircraft operated by Qantas Freight, Toll Priority and Virgin Australia Cargo.

The long-term trends for the top ten competitive RPT routes are presented graphically on pages 16-25.

Domestic RPT passenger movements at the top 50 regional airports are presented on pages 26-27.

Tables providing estimates of domestic charter aviation activity are shown on page 28. BITRE confidentiality standards restrict publication of detailed estimates for individual Australian airports, with the exception of Perth Airport.

A list of definitions can be found on page 29.

This report was prepared by the Aviation Statistics Section of the Bureau of Infrastructure, Transport and Regional Economics with data provided by airlines.

Estimates are included where data were not available and data presented in this publication may contain revisions to previously published data.

Where figures have been rounded, discrepancies may occur between sums of component items and totals, and in percentage changes which are derived from figures prior to rounding.

CONTENTS

Highlights	1
Total network	2
RPT network	2
Top competitive routes	4
Top ten airports – passenger movements	14
Top five airports – cargo movements	15
Top ten routes	16
1. Melbourne – Sydney	16
2. Brisbane – Sydney	17
3. Brisbane – Melbourne	18
4. Gold Coast – Sydney.....	19
5. Adelaide – Melbourne	20
6. Gold Coast – Melbourne	21
7. Melbourne – Perth.....	22
8. Adelaide – Sydney	23
9. Perth – Sydney.....	24
10. Brisbane – Cairns.....	25
Top fifty regional airports	26
Domestic charter activity	28
Definitions	29

This page is intentionally left blank.

HIGHLIGHTS

There were 5.21 million passengers carried on Australian domestic commercial aviation (including charter operations) in August 2017, an increase of 2.0 per cent on August 2016. For the month of August 2017 there were 59 389 aircraft trips, a decrease of 0.4 per cent compared to August 2016.

4.98 million passengers were carried on RPT flights in August 2017, an increase of 1.9 per cent on August 2016.

For the year ending August 2017 there were 59.51 million RPT passengers, an increase of 1.6 per cent on the year ending August 2016.

RPT revenue passenger kilometres (RPKs) performed were 5.86 billion for the month, up 1.3 per cent compared with August 2016. Capacity, measured by available seat kilometres (ASKs), decreased by 1.2 per cent compared with August 2016 to a total of 7.50 billion.

With RPT passenger traffic increasing and capacity decreasing, the industry wide load factor (RPKs/ASKs) increased from 76.1 per cent in August 2016 to 78.0 per cent in August 2017. Load factors on individual routes increased on 46 of the 65 RPT routes available for publishing.

For the month of August 2017, Melbourne – Sydney remained Australia's busiest RPT route with 753 958 passengers, an increase of 2.0 per cent compared with August 2016. It was followed by Brisbane – Sydney with 398 640 passengers (up 1.9 per cent) and Brisbane – Melbourne with 298 157 passengers (up 3.7 per cent).

The greatest percentage increase in RPT passenger numbers, compared to August 2016, was on the Brisbane – Proserpine route (up 21.6 per cent). There were large increases on a number of other routes, including Broome – Perth (up 13.7 per cent) and Canberra – Melbourne and Brisbane – Bundaberg (both up 13.5 per cent).

Routes with traffic decreases in August 2017 compared with August 2016 included Hamilton Island – Sydney (down 20.5 per cent), Brisbane – Hamilton Island (down 18.9 per cent), Newman – Perth (down 11.9 per cent) and Karratha – Perth (down 10.0 per cent).

In August 2017, Sydney remained Australia's busiest domestic airport with 2.24 million passenger movements, followed by Melbourne with 2.07 million passenger movements and Brisbane with 1.47 million passenger movements.

Total cargo movements at Australian airports on domestic RPT flights were 38.5 thousand tonnes in August 2017, virtually the same as August 2016.

In August 2017 there were 2.11 million domestic passenger movements through regional airports, 2.2 per cent higher than in August 2016. Out of the top 50 regional airports, the strongest growth was at Olympic Dam airport (up 43.6 per cent on August 2016), while the largest decrease was at Hamilton Island airport (down 24.0 per cent on August 2016).

Fixed-wing charter operators carried 225.94 thousand passengers in August 2017, an increase of 6.2 per cent on August 2016. Perth airport accounted for 37.8 per cent of all charter passengers in Australia.

TOTAL NETWORK

Summary of monthly commercial aviation activity

	Aug 2016	Aug 2017	% Change
Total passengers carried (millions)	5.10	5.21	2.0
Aircraft trips (000s)	59.6	59.4	-0.4

Note: Regular Public Transport and charter aviation activity
Helicopter, joyflights and sightseeing charter flights not included.

RPT NETWORK

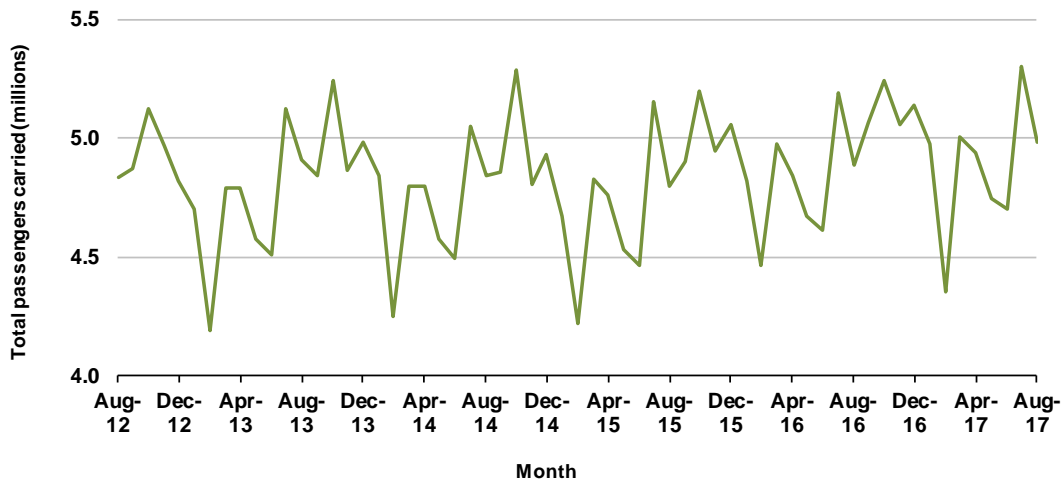
Summary of monthly RPT activity

	Aug 2016	Aug 2017	% Change
Total passengers carried (millions)	4.89	4.98	1.9
Revenue passenger kilometres (billions)	5.78	5.86	1.3
Available seats (millions)	6.59	6.56	-0.4
Available seat kilometres (billions)	7.60	7.50	-1.2
Load factor %	76.1	78.0	1.9 *
Aircraft trips (000s)	55.8	55.3	-0.9

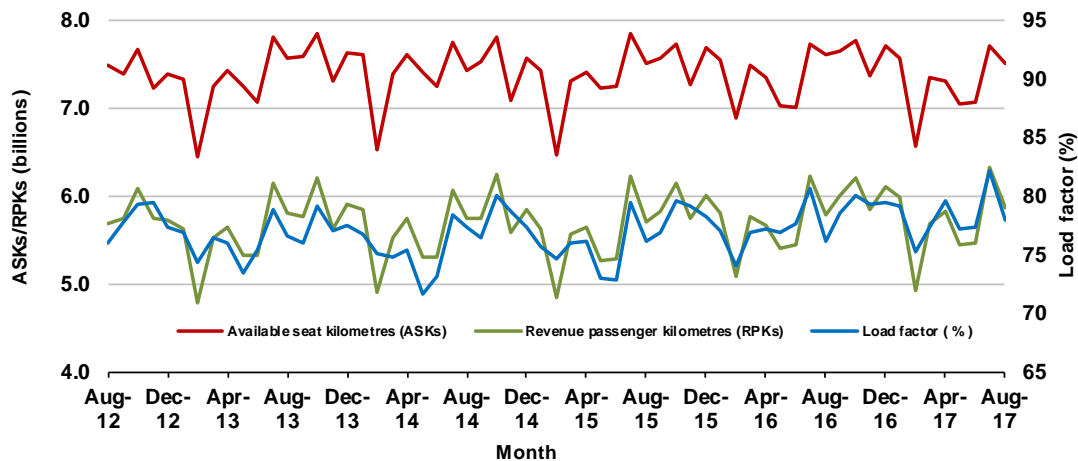
* percentage point difference

Domestic RPT passenger traffic

(monthly)



RPT Network utilisation



TOTAL NETWORK

Summary of annual commercial aviation activity

	YE Aug 2016	YE Aug 2017	% Change
Total passengers carried (millions)	61.06	61.92	1.4
Aircraft trips (000s)	687.9	686.3	-0.2

Note: Regular Public Transport and charter aviation activity
Helicopter, joyflights and sightseeing charter flights not included.

RPT NETWORK

Summary of annual RPT activity

	YE Aug 2016	YE Aug 2017	% Change
Total passengers carried (millions)	58.57	59.51	1.6
Revenue passenger kilometres (billions)	68.91	69.67	1.1
Available seats (millions)	77.23	77.24	0.0
Available seat kilometres (billions)	88.87	88.56	-0.3
Load factor %	77.5	78.7	1.1 *
Aircraft trips (000s)	641.5	641.1	-0.1

* percentage point difference

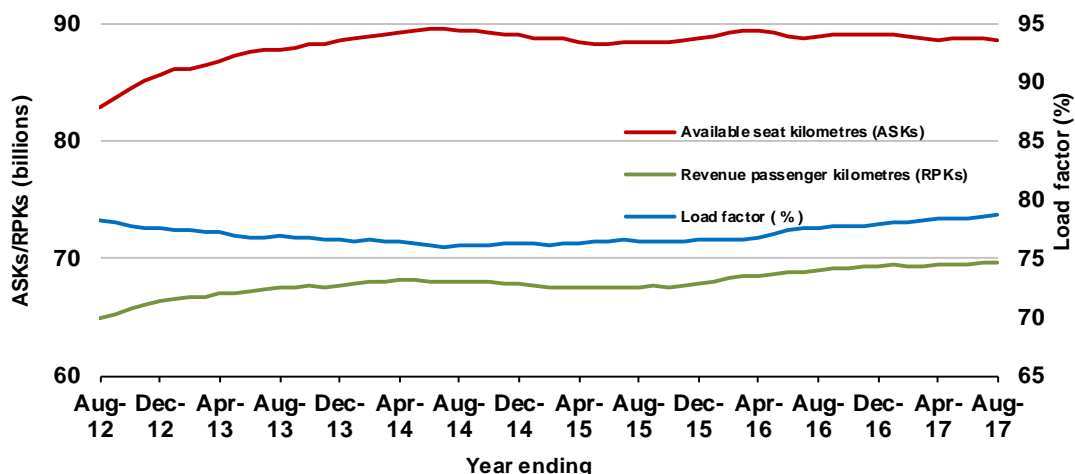
Domestic RPT passenger traffic

(moving annual totals)



RPT Network utilisation

(moving annual totals)



TOP COMPETITIVE ROUTES

Table 1: Passengers carried (000s) — annual activity

	City-Pair	YE Aug 2016	YE Aug 2017	%Change
1	Melbourne - Sydney	8 822.7	9 006.7	2.1
2	Brisbane - Sydney	4 632.8	4 707.7	1.6
3	Brisbane - Melbourne	3 461.4	3 522.0	1.8
4	Gold Coast - Sydney	2 718.9	2 713.4	-0.2
5	Adelaide - Melbourne	2 371.0	2 420.1	2.1
6	Melbourne - Perth	2 092.6	2 046.5	-2.2
7	Gold Coast - Melbourne	1 918.7	2 002.4	4.4
8	Adelaide - Sydney	1 869.8	1 891.1	1.1
9	Perth - Sydney	1 753.6	1 732.0	-1.2
10	Hobart - Melbourne	1 532.5	1 613.5	5.3
11	Brisbane - Cairns	1 340.9	1 366.0	1.9
12	Cairns - Sydney	1 088.6	1 126.3	3.5
13	Canberra - Melbourne	1 003.4	1 097.9	9.4
14	Brisbane - Perth	994.9	968.5	-2.7
15	Brisbane - Townsville	985.3	958.6	-2.7
16	Canberra - Sydney	949.9	955.5	0.6
17	Launceston - Melbourne	913.8	913.4	0.0
18	Cairns - Melbourne	806.0	838.3	4.0
19	Adelaide - Brisbane	822.3	831.0	1.1
20	Brisbane - Mackay	695.3	679.6	-2.3
21	Hobart - Sydney	594.5	642.9	8.1
22	Adelaide - Perth	614.7	614.6	0.0
23	Brisbane - Newcastle	560.8	588.7	5.0
24	Brisbane - Canberra	567.1	584.0	3.0
25	Sunshine Coast - Sydney	524.7	563.4	7.4
26	Brisbane - Rockhampton	566.4	539.5	-4.7
27	Melbourne - Newcastle	439.5	467.3	6.3
28	Melbourne - Sunshine Coast	430.5	463.6	7.7
29	Karratha - Perth	528.1	453.1	-14.2
30	Brisbane - Darwin	402.8	410.1	1.8
31	Ballina - Sydney	373.4	394.5	5.7
32	Coffs Harbour - Sydney	337.8	342.6	1.4
33	Perth - Port Hedland	349.5	342.6	-2.0
34	Darwin - Sydney	317.9	320.9	0.9
35	Darwin - Melbourne	297.1	307.0	3.3
36	Brisbane - Gladstone	359.0	296.5	-17.4
37	Broome - Perth	296.8	294.7	-0.7
38	Launceston - Sydney	290.0	288.8	-0.4
39	Newman - Perth	317.1	287.1	-9.5
40	Brisbane - Proserpine	233.4	238.1	2.0
41	Kalgoorlie - Perth	228.5	238.0	4.1
42	Albury - Sydney	222.7	225.2	1.1
43	Hamilton Island - Sydney	255.2	221.1	-13.4
44	Adelaide - Gold Coast	223.7	214.5	-4.1
45	Melbourne - Mildura	204.3	208.9	2.3
46	Brisbane - Hobart	202.7	208.7	2.9
47	Brisbane - Emerald	201.4	198.8	-1.3
48	Port Macquarie - Sydney	191.8	194.2	1.3
49	Darwin - Perth	182.7	193.1	5.7
50	Dubbo - Sydney	186.6	191.2	2.4

continued

Table 1: (continued) Passengers carried (000s) — annual activity

	City-Pair	YE Aug 2016	YE Aug 2017	% Change
51	Ayers Rock - Sydney	174.6	190.6	9.2
52	Sydney - Wagga Wagga	189.1	185.6	-1.8
53	Sydney - Tamworth	168.7	182.7	8.3
54	Adelaide - Canberra	169.7	177.8	4.8
55	Brisbane - Bundaberg	169.6	176.1	3.9
56	Adelaide - Port Lincoln	181.9	173.7	-4.5
57	Sydney - Townsville	158.6	158.1	-0.4
58	Cairns - Townsville	139.5	140.0	0.4
59	Brisbane - Hamilton Island	145.9	137.7	-5.6
60	Armidale - Sydney	127.1	126.8	-0.2
61	Adelaide - Alice Springs	119.4	123.2	3.2
62	Brisbane - Mount Isa	123.0	122.9	0.0
63	Brisbane - Moranbah	121.3	121.2	-0.1
64	Alice Springs - Darwin	116.5	117.6	1.0
65	Geraldton - Perth	118.1	113.5	-3.9
	Total domestic network	58 569.0	59 508.0	1.6

Table 2: Passengers carried (000s) — monthly activity

	City-Pair	Aug 2016	Aug 2017	% Change
1	Melbourne - Sydney	739.3	754.0	2.0
2	Brisbane - Sydney	391.2	398.6	1.9
3	Brisbane - Melbourne	287.7	298.2	3.7
4	Gold Coast - Sydney	210.5	207.4	-1.5
5	Adelaide - Melbourne	189.5	195.4	3.1
6	Gold Coast - Melbourne	162.4	163.3	0.6
7	Melbourne - Perth	158.5	155.8	-1.7
8	Adelaide - Sydney	147.0	146.9	-0.1
9	Perth - Sydney	137.1	134.3	-2.0
10	Brisbane - Cairns	117.7	119.7	1.6
11	Hobart - Melbourne	114.0	117.0	2.6
12	Cairns - Sydney	99.9	101.7	1.8
13	Canberra - Melbourne	83.6	94.9	13.5
14	Canberra - Sydney	85.7	86.2	0.6
15	Brisbane - Townsville	82.9	84.5	1.9
16	Cairns - Melbourne	77.1	80.0	3.8
17	Brisbane - Perth	77.2	78.8	2.1
18	Adelaide - Brisbane	67.4	67.9	0.8
19	Launceston - Melbourne	63.6	65.9	3.7
20	Brisbane - Mackay	57.4	59.3	3.2
21	Brisbane - Canberra	53.6	51.5	-4.0
22	Brisbane - Newcastle	47.7	47.6	-0.2
23	Adelaide - Perth	49.0	47.3	-3.4
24	Brisbane - Rockhampton	49.0	47.0	-4.1
25	Hobart - Sydney	39.7	42.8	7.9
26	Sunshine Coast - Sydney	39.7	41.8	5.4
27	Brisbane - Darwin	39.1	41.2	5.4
28	Melbourne - Sunshine Coast	37.2	39.9	7.1
29	Karratha - Perth	41.6	37.5	-10.0
30	Melbourne - Newcastle	37.0	34.9	-5.4
31	Broome - Perth	29.6	33.7	13.7
32	Darwin - Sydney	31.9	32.8	2.8
33	Darwin - Melbourne	30.7	30.3	-1.2
34	Perth - Port Hedland	30.0	29.9	-0.5
35	Ballina - Sydney	27.4	28.2	3.0
36	Coffs Harbour - Sydney	27.5	27.5	0.1
37	Brisbane - Gladstone	27.9	26.6	-4.7
38	Newman - Perth	28.4	25.0	-11.9
39	Kalgoorlie - Perth	21.7	24.0	10.7
40	Brisbane - Proserpine	19.3	23.5	21.6
41	Albury - Sydney	20.1	20.2	0.2
42	Darwin - Perth	17.7	18.9	6.9
43	Melbourne - Mildura	17.7	18.6	5.3
44	Adelaide - Gold Coast	18.4	18.0	-2.3
45	Ayers Rock - Sydney	17.8	17.8	0.2
46	Hamilton Island - Sydney	22.0	17.5	-20.5
47	Brisbane - Emerald	17.1	17.2	0.8
48	Dubbo - Sydney	16.3	17.1	5.5
49	Launceston - Sydney	17.4	16.6	-4.9
50	Brisbane - Bundaberg	14.5	16.4	13.5

continued

Table 2: (continued) Passengers carried (000s) — monthly activity

	City-Pair	Aug 2016	Aug 2017	% Change
51	Sydney - Tamworth	15.5	16.4	5.3
52	Port Macquarie - Sydney	15.4	15.8	2.7
53	Sydney - Wagga Wagga	16.0	15.6	-2.4
54	Adelaide - Canberra	15.0	15.6	3.8
55	Brisbane - Hobart	14.8	15.4	4.7
56	Sydney - Townsville	14.7	14.3	-2.7
57	Adelaide - Port Lincoln	14.5	13.4	-7.9
58	Alice Springs - Darwin	12.3	13.1	6.8
59	Cairns - Townsville	12.8	12.4	-3.1
60	Brisbane - Mount Isa	11.1	12.1	9.4
61	Brisbane - Moranbah	10.2	11.2	10.0
62	Adelaide - Alice Springs	10.2	11.0	7.3
63	Armidale - Sydney	10.7	10.7	0.0
64	Brisbane - Hamilton Island	12.2	9.9	-18.9
65	Geraldton - Perth	10.2	9.9	-3.2
	Total domestic network	4 888.9	4 979.8	1.9

Table 3: Available seats (000s) — monthly activity

	City-Pair	Aug 2016	Aug 2017	% Change
1	Melbourne - Sydney	922.1	930.4	0.9
2	Brisbane - Sydney	487.8	492.4	0.9
3	Brisbane - Melbourne	362.1	367.0	1.4
4	Gold Coast - Sydney	247.0	247.2	0.1
5	Adelaide - Melbourne	260.8	256.1	-1.8
6	Gold Coast - Melbourne	194.6	184.3	-5.3
7	Melbourne - Perth	212.1	193.6	-8.7
8	Adelaide - Sydney	189.4	184.4	-2.6
9	Perth - Sydney	184.5	174.4	-5.5
10	Brisbane - Cairns	140.4	139.7	-0.5
11	Hobart - Melbourne	155.9	150.3	-3.6
12	Cairns - Sydney	114.2	118.3	3.6
13	Canberra - Melbourne	132.3	155.1	17.2
14	Canberra - Sydney	124.8	115.9	-7.1
15	Brisbane - Townsville	110.4	110.4	0.1
16	Cairns - Melbourne	87.7	90.4	3.0
17	Brisbane - Perth	104.4	103.3	-1.1
18	Adelaide - Brisbane	94.3	91.1	-3.4
19	Launceston - Melbourne	82.2	83.1	1.2
20	Brisbane - Mackay	78.4	79.9	2.0
21	Brisbane - Canberra	69.4	71.9	3.6
22	Brisbane - Newcastle	67.5	71.5	5.9
23	Adelaide - Perth	76.9	68.3	-11.1
24	Brisbane - Rockhampton	66.1	55.8	-15.5
25	Hobart - Sydney	53.3	54.9	3.0
26	Sunshine Coast - Sydney	49.4	53.9	9.1
27	Brisbane - Darwin	45.9	48.5	5.6
28	Melbourne - Sunshine Coast	42.4	45.1	6.5
29	Karratha - Perth	72.4	58.5	-19.3
30	Melbourne - Newcastle	49.2	49.1	-0.2
31	Broome - Perth	38.8	43.2	11.5
32	Darwin - Sydney	39.6	40.0	0.9
33	Darwin - Melbourne	36.1	36.2	0.1
34	Perth - Port Hedland	52.3	47.0	-10.0
35	Ballina - Sydney	37.3	38.2	2.4
36	Coffs Harbour - Sydney	38.6	40.7	5.6
37	Brisbane - Gladstone	49.5	39.0	-21.3
38	Newman - Perth	53.2	48.7	-8.6
39	Kalgoorlie - Perth	35.3	42.0	19.1
40	Brisbane - Proserpine	22.1	28.1	26.8
41	Albury - Sydney	30.8	30.5	-1.1
42	Darwin - Perth	24.5	21.5	-12.4
43	Melbourne - Mildura	28.2	29.4	4.4
44	Adelaide - Gold Coast	23.0	21.9	-5.0
45	Ayers Rock - Sydney	21.9	22.0	0.3
46	Hamilton Island - Sydney	29.9	30.2	1.1
47	Brisbane - Emerald	33.1	25.4	-23.4
48	Dubbo - Sydney	25.9	25.0	-3.3
49	Launceston - Sydney	21.9	19.8	-9.8
50	Brisbane - Bundaberg	20.1	22.4	11.7

continued

Table 3: (continued) Available seats (000s) — monthly activity

	City-Pair	Aug 2016	Aug 2017	% Change
51	Sydney - Tamworth	26.0	25.1	-3.4
52	Port Macquarie - Sydney	22.5	21.6	-3.9
53	Sydney - Wagga Wagga	26.1	25.3	-3.1
54	Adelaide - Canberra	24.0	26.6	10.8
55	Brisbane - Hobart	18.8	18.3	-2.3
56	Sydney - Townsville	19.3	17.9	-7.0
57	Adelaide - Port Lincoln	24.8	25.8	3.8
58	Alice Springs - Darwin	20.2	20.4	1.1
59	Cairns - Townsville	26.9	24.3	-9.7
60	Brisbane - Mount Isa	20.7	17.0	-18.0
61	Brisbane - Moranbah	25.2	19.3	-23.4
62	Adelaide - Alice Springs	15.6	15.7	0.3
63	Armidale - Sydney	16.8	15.3	-8.7
64	Brisbane - Hamilton Island	16.2	15.8	-2.0
65	Geraldton - Perth	20.6	20.2	-1.9
	Total domestic network	6 587.8	6 558.2	-0.4

Table 4: Load factors (%) — monthly activity

	City-Pair	Aug 2016	Aug 2017	% Point diff
1	Melbourne - Sydney	80.2	81.0	0.8
2	Brisbane - Sydney	80.2	81.0	0.8
3	Brisbane - Melbourne	79.4	81.2	1.8
4	Gold Coast - Sydney	85.2	83.9	-1.3
5	Adelaide - Melbourne	72.7	76.3	3.6
6	Gold Coast - Melbourne	83.5	88.6	5.1
7	Melbourne - Perth	74.7	80.5	5.8
8	Adelaide - Sydney	77.6	79.7	2.1
9	Perth - Sydney	74.3	77.0	2.7
10	Brisbane - Cairns	83.9	85.7	1.8
11	Hobart - Melbourne	73.2	77.8	4.6
12	Cairns - Sydney	87.4	86.0	-1.4
13	Canberra - Melbourne	63.2	61.2	-2.0
14	Canberra - Sydney	68.7	74.4	5.7
15	Brisbane - Townsville	75.2	76.5	1.3
16	Cairns - Melbourne	87.8	88.5	0.7
17	Brisbane - Perth	74.0	76.3	2.3
18	Adelaide - Brisbane	71.4	74.5	3.1
19	Launceston - Melbourne	77.4	79.3	1.9
20	Brisbane - Mackay	73.3	74.1	0.8
21	Brisbane - Canberra	77.3	71.6	-5.7
22	Brisbane - Newcastle	70.7	66.6	-4.1
23	Adelaide - Perth	63.7	69.2	5.5
24	Brisbane - Rockhampton	74.2	84.2	10.0
25	Hobart - Sydney	74.5	78.0	3.5
26	Sunshine Coast - Sydney	80.3	77.5	-2.8
27	Brisbane - Darwin	85.2	85.1	-0.1
28	Melbourne - Sunshine Coast	87.8	88.4	0.6
29	Karratha - Perth	57.4	64.1	6.7
30	Melbourne - Newcastle	75.0	71.1	-3.9
31	Broome - Perth	76.5	78.0	1.5
32	Darwin - Sydney	80.4	81.9	1.5
33	Darwin - Melbourne	84.9	83.9	-1.0
34	Perth - Port Hedland	57.4	63.5	6.1
35	Ballina - Sydney	73.5	73.9	0.4
36	Coffs Harbour - Sydney	71.2	67.4	-3.8
37	Brisbane - Gladstone	56.3	68.1	11.8
38	Newman - Perth	53.3	51.4	-1.9
39	Kalgoorlie - Perth	61.3	57.0	-4.3
40	Brisbane - Proserpine	87.4	83.8	-3.6
41	Albury - Sydney	65.3	66.2	0.9
42	Darwin - Perth	71.9	87.8	15.9
43	Melbourne - Mildura	62.6	63.1	0.5
44	Adelaide - Gold Coast	80.0	82.2	2.2
45	Ayers Rock - Sydney	81.0	81.0	0.0
46	Hamilton Island - Sydney	73.6	57.9	-15.7
47	Brisbane - Emerald	51.5	67.8	16.3
48	Dubbo - Sydney	62.7	68.4	5.7
49	Launceston - Sydney	79.3	83.7	4.4
50	Brisbane - Bundaberg	72.1	73.3	1.2

continued

Table 4: (continued) Load factors (%) — monthly activity

	City-Pair	Aug 2016	Aug 2017	% Point diff
51	Sydney - Tamworth	59.7	65.1	5.4
52	Port Macquarie - Sydney	68.6	73.3	4.7
53	Sydney - Wagga Wagga	61.2	61.6	0.4
54	Adelaide - Canberra	62.6	58.6	-4.0
55	Brisbane - Hobart	78.6	84.2	5.6
56	Sydney - Townsville	76.5	80.0	3.5
57	Adelaide - Port Lincoln	58.4	51.8	-6.6
58	Alice Springs - Darwin	60.9	64.3	3.4
59	Cairns - Townsville	47.6	51.1	3.5
60	Brisbane - Mount Isa	53.5	71.3	17.8
61	Brisbane - Moranbah	40.6	58.3	17.7
62	Adelaide - Alice Springs	65.4	69.9	4.5
63	Armidale - Sydney	64.1	70.2	6.1
64	Brisbane - Hamilton Island	75.8	62.8	-13.0
65	Geraldton - Perth	49.4	48.8	-0.6
	Total domestic network	76.1	78.0	1.9

Table 5: Aircraft trips ^(a) — monthly activity

	City-Pair	Aug 2016	Aug 2017	% Change
1	Melbourne - Sydney	5 173	5 213	0.8
2	Brisbane - Sydney	3 040	3 031	-0.3
3	Brisbane - Melbourne	2 151	2 234	3.9
4	Gold Coast - Sydney	1 458	1 408	-3.4
5	Adelaide - Melbourne	1 641	1 587	-3.3
6	Gold Coast - Melbourne	1 043	977	-6.3
7	Melbourne - Perth	960	892	-7.1
8	Adelaide - Sydney	1 142	1 133	-0.8
9	Perth - Sydney	774	769	-0.6
10	Brisbane - Cairns	887	875	-1.4
11	Hobart - Melbourne	985	931	-5.5
12	Cairns - Sydney	666	649	-2.6
13	Canberra - Melbourne	951	1 019	7.2
14	Canberra - Sydney	1 568	1 491	-4.9
15	Brisbane - Townsville	763	772	1.2
16	Cairns - Melbourne	461	480	4.1
17	Brisbane - Perth	491	524	6.7
18	Adelaide - Brisbane	572	559	-2.3
19	Launceston - Melbourne	661	642	-2.9
20	Brisbane - Mackay	667	632	-5.2
21	Brisbane - Canberra	525	525	0.0
22	Brisbane - Newcastle	555	543	-2.2
23	Adelaide - Perth	482	444	-7.9
24	Brisbane - Rockhampton	793	705	-11.1
25	Hobart - Sydney	349	354	1.4
26	Sunshine Coast - Sydney	298	329	10.4
27	Brisbane - Darwin	280	297	6.1
28	Melbourne - Sunshine Coast	238	254	6.7
29	Karratha - Perth	605	526	-13.1
30	Melbourne - Newcastle	276	276	0.0
31	Broome - Perth	311	366	17.7
32	Darwin - Sydney	235	236	0.4
33	Darwin - Melbourne	206	206	0.0
34	Perth - Port Hedland	390	387	-0.8
35	Ballina - Sydney	259	257	-0.8
36	Coffs Harbour - Sydney	458	424	-7.4
37	Brisbane - Gladstone	633	513	-19.0
38	Newman - Perth	374	357	-4.5
39	Kalgoorlie - Perth	300	320	6.7
40	Brisbane - Proserpine	126	158	25.4
41	Albury - Sydney	574	561	-2.3
42	Darwin - Perth	146	128	-12.3
43	Melbourne - Mildura	433	426	-1.6
44	Adelaide - Gold Coast	130	124	-4.6
45	Ayers Rock - Sydney	124	124	0.0
46	Hamilton Island - Sydney	184	186	1.1
47	Brisbane - Emerald	435	346	-20.5
48	Dubbo - Sydney	577	542	-6.1
49	Launceston - Sydney	128	116	-9.4
50	Brisbane - Bundaberg	340	358	5.3

continued

Table 5: (continued) Aircraft trips ^(a) — monthly activity

	City-Pair	Aug 2016	Aug 2017	% Change
51	Sydney - Tamworth	432	401	-7.2
52	Port Macquarie - Sydney	394	376	-4.6
53	Sydney - Wagga Wagga	512	497	-2.9
54	Adelaide - Canberra	157	156	-0.6
55	Brisbane - Hobart	116	104	-10.3
56	Sydney - Townsville	133	112	-15.8
57	Adelaide - Port Lincoln	642	661	3.0
58	Alice Springs - Darwin	162	164	1.2
59	Cairns - Townsville	479	405	-15.4
60	Brisbane - Mount Isa	162	162	0.0
61	Brisbane - Moranbah	351	275	-21.7
62	Adelaide - Alice Springs	98	98	0.0
63	Armidale - Sydney	389	380	-2.3
64	Brisbane - Hamilton Island	123	130	5.7
65	Geraldton - Perth	206	202	-1.9
	Total domestic network	55 768	55 261	-0.9

(a) Includes RPT Cargo flights.

TOP TEN AIRPORTS – PASSENGER MOVEMENTS

Table 6: Top ten airports, RPT passenger movements (000s) - annual activity

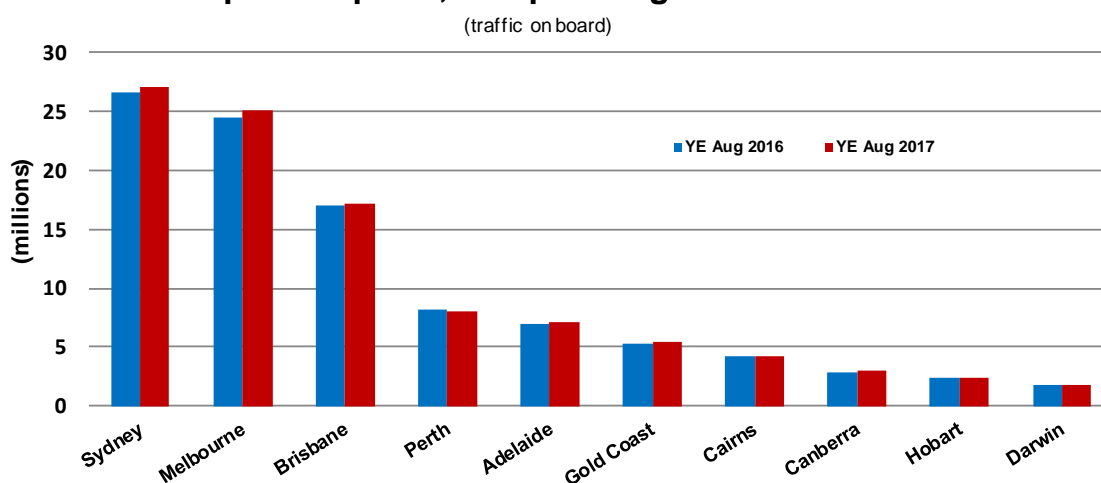
Airport	YE Aug 2016	YE Aug 2017	% Change	% of Total
1 Sydney	26 643.2	27 111.3	1.8	22.8
2 Melbourne	24 496.4	25 064.8	2.3	21.1
3 Brisbane	17 019.3	17 127.7	0.6	14.4
4 Perth	8 226.2	8 027.4	-2.4	6.7
5 Adelaide	6 932.2	7 060.1	1.8	5.9
6 Gold Coast	5 274.1	5 373.5	1.9	4.5
7 Cairns	4 164.0	4 291.3	3.1	3.6
8 Canberra	2 815.1	2 945.0	4.6	2.5
9 Hobart	2 323.3	2 458.8	5.8	2.1
10 Darwin	1 781.6	1 810.0	1.6	1.5
Total top ten airports	99 675.4	101 270.0	1.6	85.1
Total domestic network	117 137.9	119 016.1	1.6	100.0

Table 7: Top ten airports, RPT passenger movements (000s) - monthly activity

Airport	Aug 2016	Aug 2017	% Change	% of Total
1 Sydney	2 211.4	2 236.3	1.1	22.5
2 Melbourne	2 019.1	2 069.1	2.5	20.8
3 Brisbane	1 437.9	1 471.9	2.4	14.8
4 Perth	664.7	659.4	-0.8	6.6
5 Adelaide	564.5	574.9	1.8	5.8
6 Gold Coast	426.6	423.9	-0.6	4.3
7 Cairns	387.6	392.0	1.1	3.9
8 Canberra	250.7	262.4	4.7	2.6
9 Darwin	177.5	181.6	2.3	1.8
10 Hobart	168.5	175.2	4.0	1.8
Total top ten airports	8 308.6	8 446.8	1.7	84.8
Total domestic network	9 777.8	9 959.6	1.9	100.0

Note: Airport passenger movement numbers are the sum of passenger arrivals and departures at each airport.

Top ten airports, RPT passenger movements



TOP FIVE AIRPORTS – CARGO MOVEMENTS

Table 8: Top five airports, domestic RPT cargo movements (000s tonnes) - annual activity

Airport	YE Aug 2016	YE Aug 2017	% Change	% of Total
1 Melbourne	114.2	130.0	13.8	28.8
2 Sydney	100.2	105.1	4.8	23.3
3 Brisbane	61.2	67.0	9.5	14.9
4 Perth	55.3	63.2	14.3	14.0
5 Adelaide	22.7	26.4	16.5	5.9
Total top five airports	353.6	391.7	10.8	86.9
Total domestic network	404.6	450.9	11.4	100.0

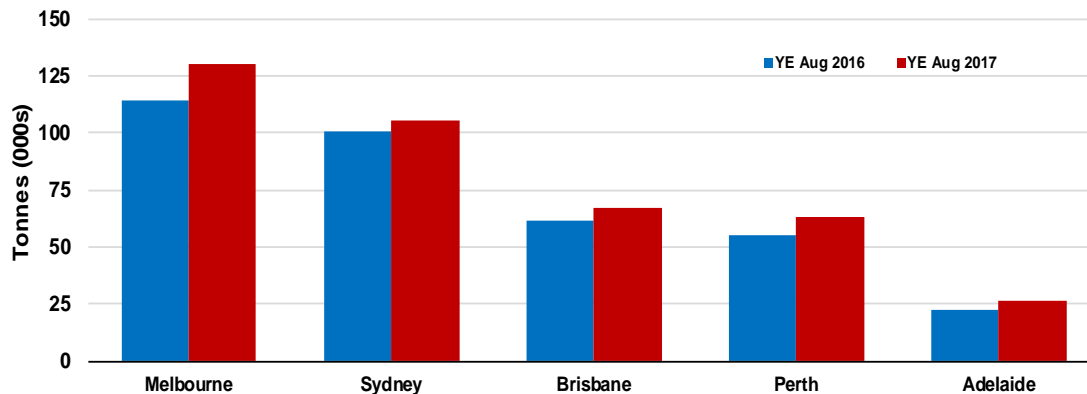
Table 9: Top five airports, domestic RPT cargo movements (000s tonnes) - monthly activity

Airport	Aug 2016	Aug 2017	% Change	% of Total
1 Melbourne	10.9	11.2	3.2	29.1
2 Sydney	9.0	8.3	-8.3	21.5
3 Perth	6.0	5.8	-3.3	15.1
4 Brisbane	5.2	5.7	10.0	14.9
5 Adelaide	2.1	2.3	8.7	6.0
Total top five airports	33.2	33.3	0.3	86.6
Total domestic network	38.5	38.5	0.0	100.0

Note: Airport cargo tonnes are the sum of cargo tonnes on arrivals and departures at each airport.

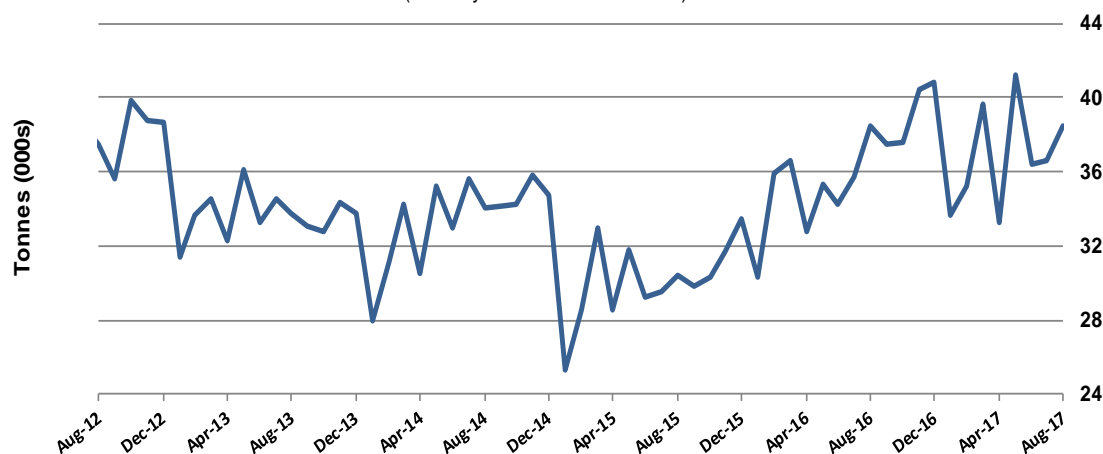
Top five airports, cargo movements

(Domestic cargo traffic - traffic on board)



Total domestic network - cargo movement

(monthly totals - traffic on board)



Note: Airport cargo tonnes are the sum of cargo tonnes on arrivals and departures at each airport.

TOP TEN ROUTES

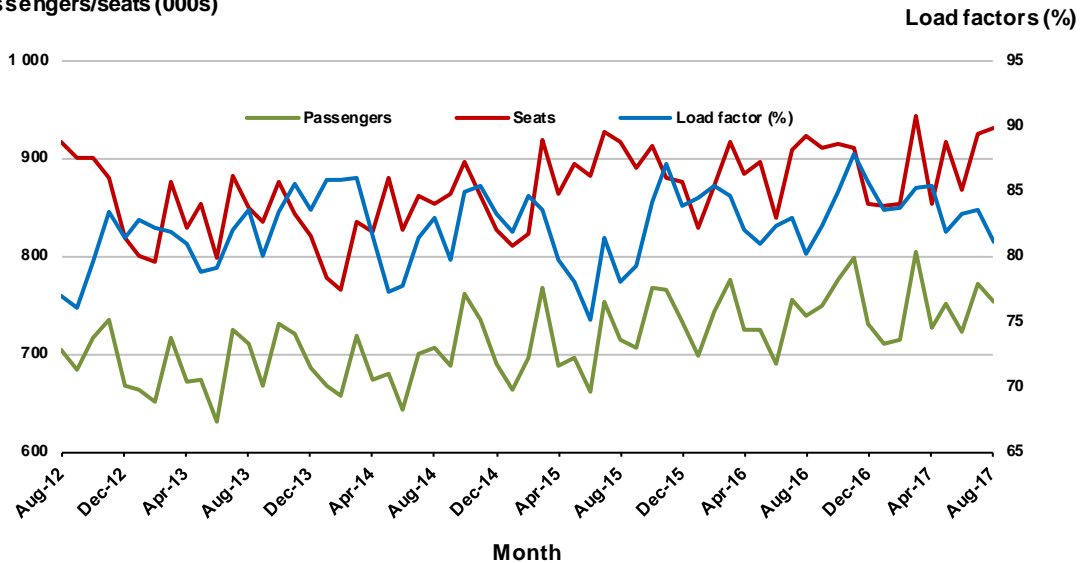
1. Melbourne - Sydney

Monthly data

	Aug 2016	Aug 2017	% Change
Passengers carried (000s)	739.3	754.0	2.0
Seats (000s)	922.1	930.4	0.9
Load factor %	80.2	81.0	0.8 *
Aircraft trips	5 173	5 213	0.8

* percentage point difference

Passengers/seats (000s)

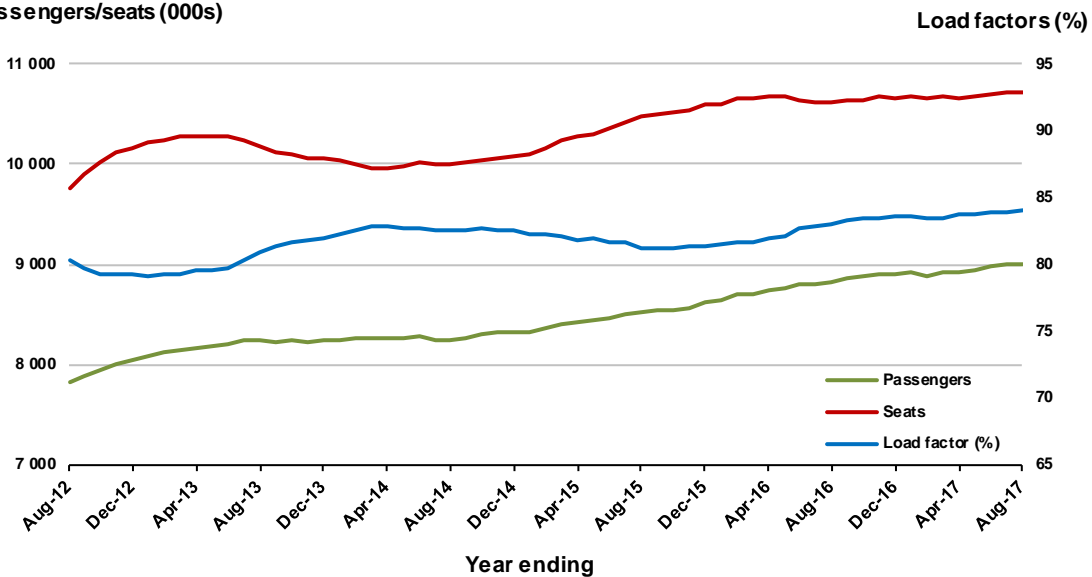


Moving annual data

	YE Aug 2016	YE Aug 2017	% Change
Passengers carried (000s)	8 822.7	9 006.7	2.1
Seats (000s)	10 623.8	10 723.7	0.9
Load factor %	83.0	84.0	0.9 *
Aircraft trips	59 428	59 736	0.5

* percentage point difference

Passengers/seats (000s)

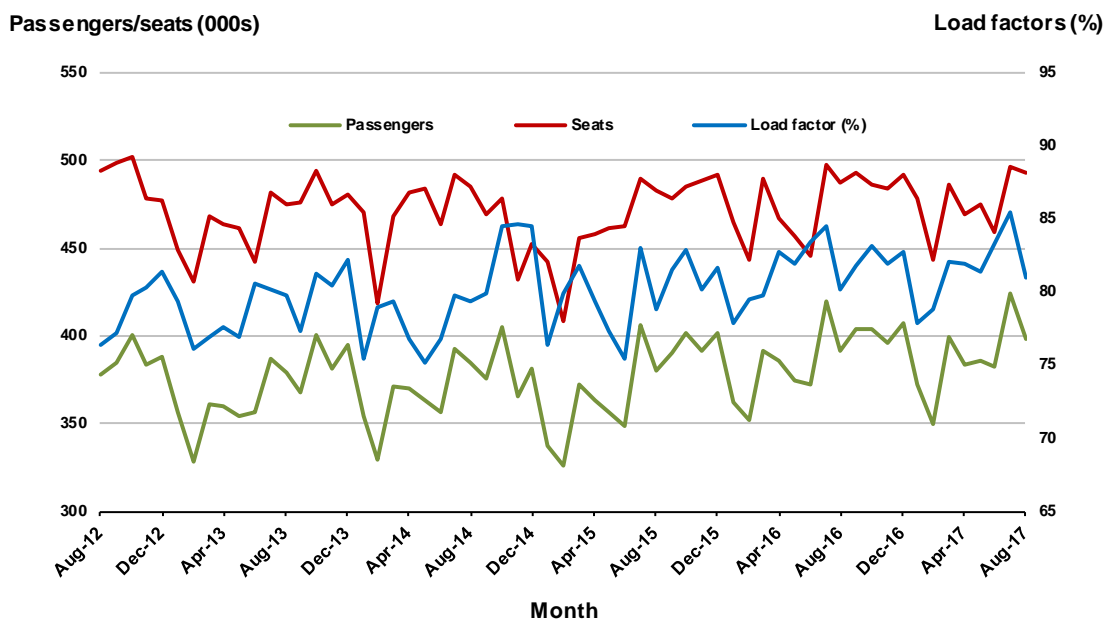


2. Brisbane - Sydney

Monthly data

	Aug 2016	Aug 2017	% Change
Passengers carried (000s)	391.2	398.6	1.9
Seats (000s)	487.8	492.4	0.9
Load factor %	80.2	81.0	0.8 *
Aircraft trips	3 040	3 031	-0.3

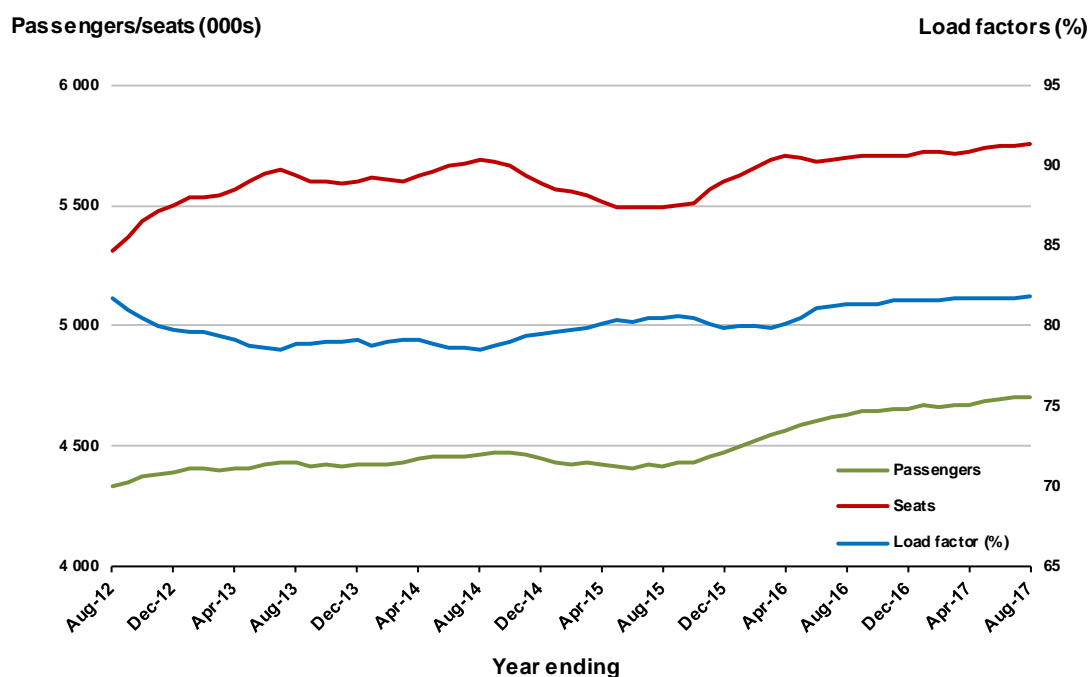
* percentage point difference



Moving annual data

	YE Aug 2016	YE Aug 2017	% Change
Passengers carried (000s)	4 632.8	4 707.7	1.6
Seats (000s)	5 694.5	5 754.3	1.0
Load factor %	81.4	81.8	0.5 *
Aircraft trips	35 537	35 496	-0.1

* percentage point difference



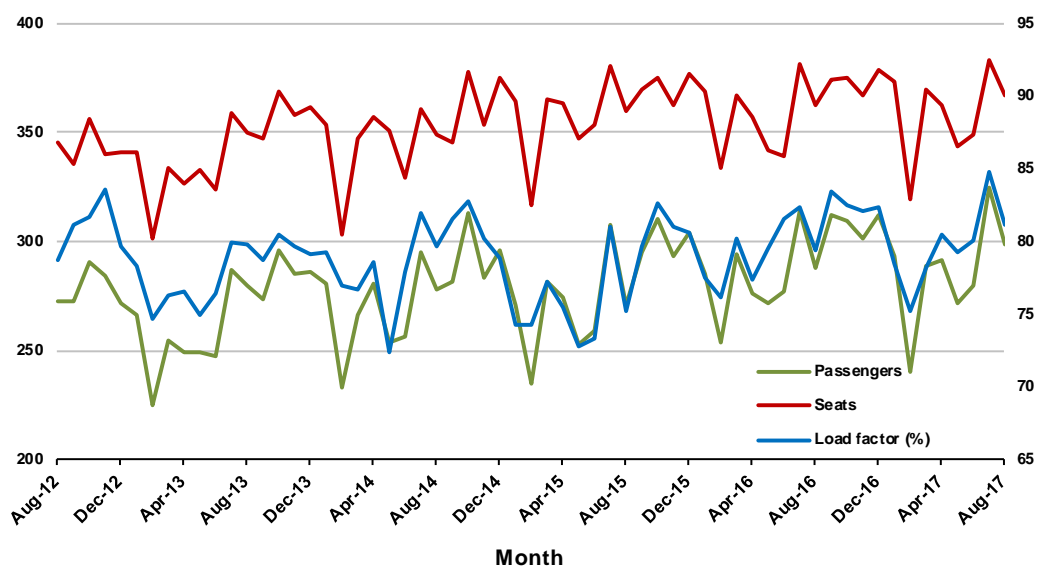
3. Brisbane - Melbourne

Monthly data

	Aug 2016	Aug 2017	% Change
Passengers carried (000s)	287.7	298.2	3.7
Seats (000s)	362.1	367.0	1.4
Load factor %	79.4	81.2	1.8 *
Aircraft trips	2 151	2 234	3.9

* percentage point difference

Passengers/seats (000s) Load factors (%)

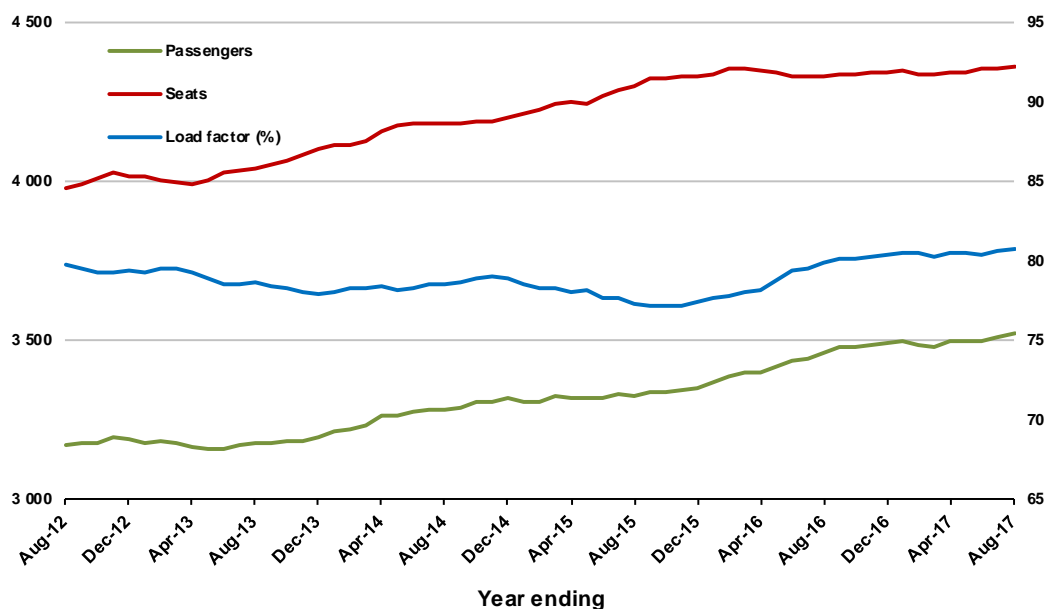


Moving annual data

	YE Aug 2016	YE Aug 2017	% Change
Passengers carried (000s)	3 461.4	3 522.0	1.8
Seats (000s)	4 332.7	4 361.7	0.7
Load factor %	79.9	80.7	0.9 *
Aircraft trips	25 958	25 819	-0.5

* percentage point difference

Passengers/seats (000s) Load factors (%)



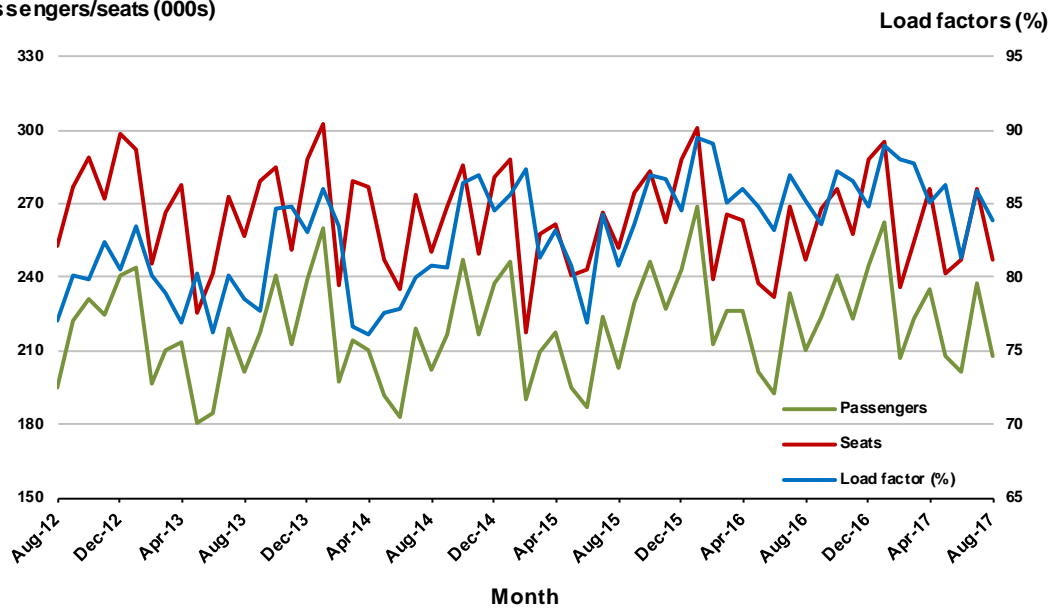
4. Gold Coast - Sydney

Monthly data

	Aug 2016	Aug 2017	% Change
Passengers carried (000s)	210.5	207.4	-1.5
Seats (000s)	247.0	247.2	0.1
Load factor %	85.2	83.9	-1.3 *
Aircraft trips	1 458	1 408	-3.4

* percentage point difference

Passengers/seats (000s)

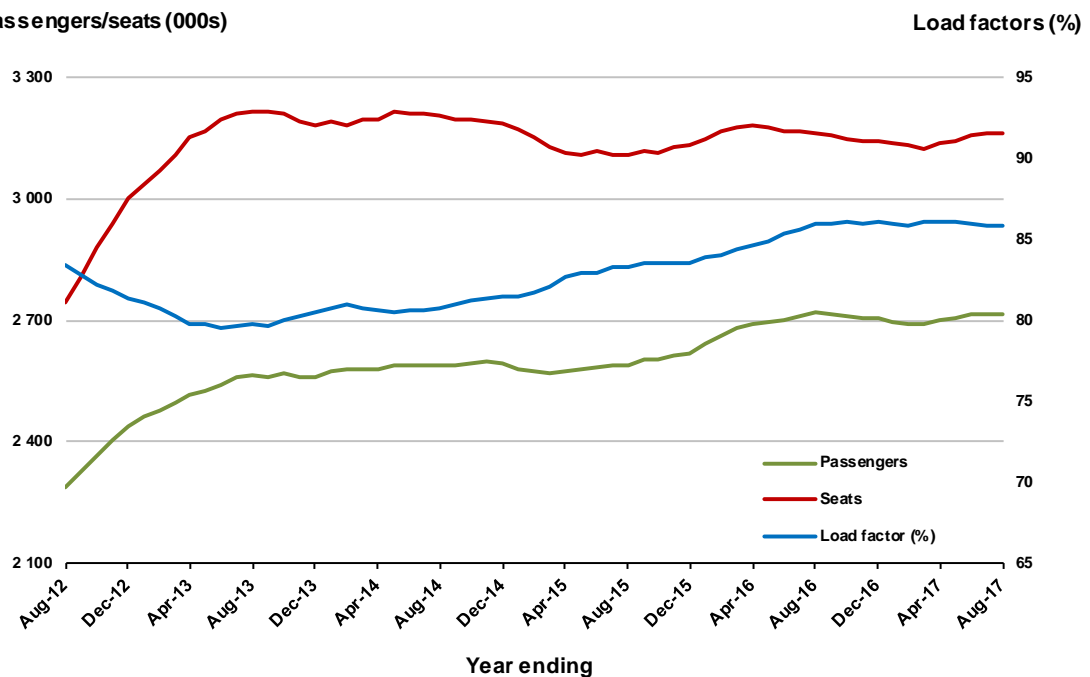


Moving annual data

	YE Aug 2016	YE Aug 2017	% Change
Passengers carried (000s)	2 718.9	2 713.4	-0.2
Seats (000s)	3 162.1	3 163.0	0.0
Load factor %	86.0	85.8	-0.2 *
Aircraft trips	18 459	18 188	-1.5

* percentage point difference

Passengers/seats (000s)



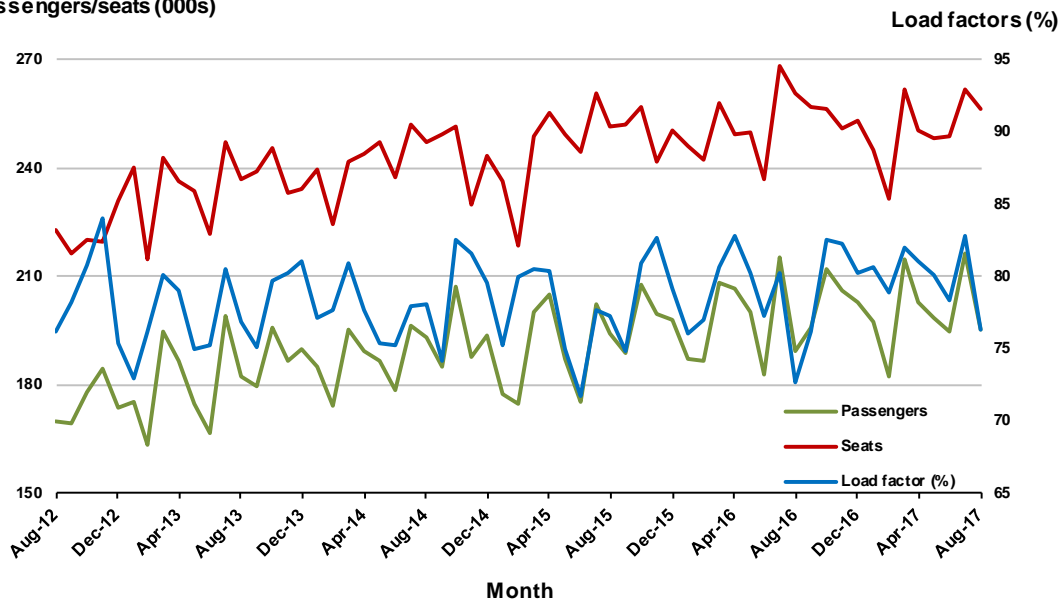
5. Adelaide - Melbourne

Monthly data

	Aug 2016	Aug 2017	% Change
Passengers carried (000s)	189.5	195.4	3.1
Seats (000s)	260.8	256.1	-1.8
Load factor %	72.7	76.3	3.6 *
Aircraft trips	1 641	1 587	-3.3

* percentage point difference

Passengers/seats (000s)

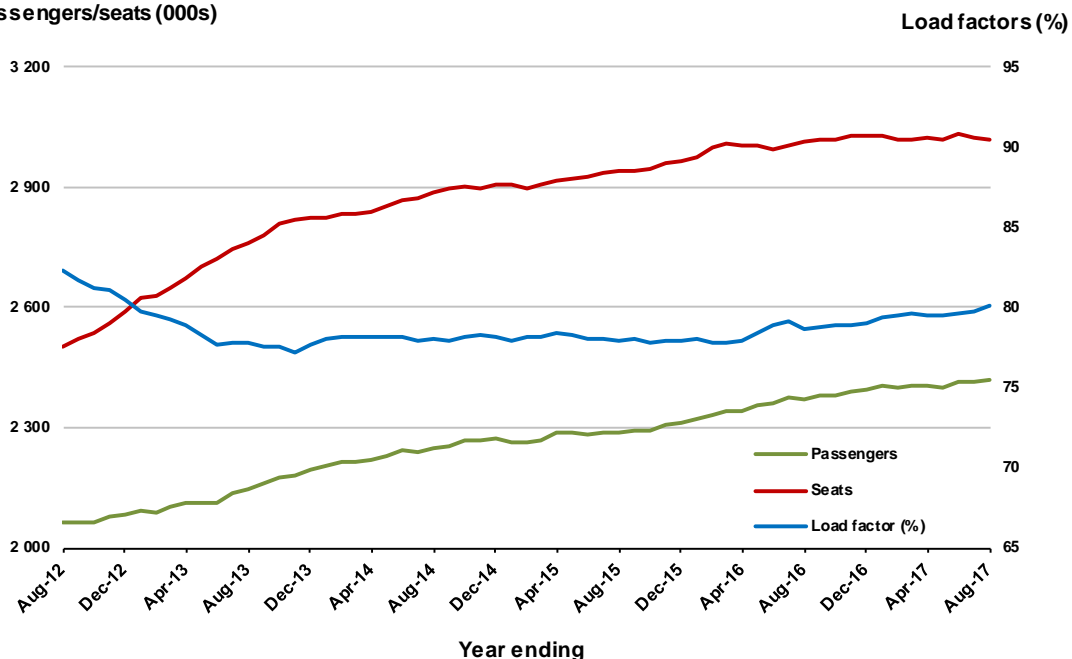


Moving annual data

	YE Aug 2016	YE Aug 2017	% Change
Passengers carried (000s)	2 371.0	2 420.1	2.1
Seats (000s)	3 012.7	3 020.6	0.3
Load factor %	78.7	80.1	1.4 *
Aircraft trips	19 257	19 128	-0.7

* percentage point difference

Passengers/seats (000s)



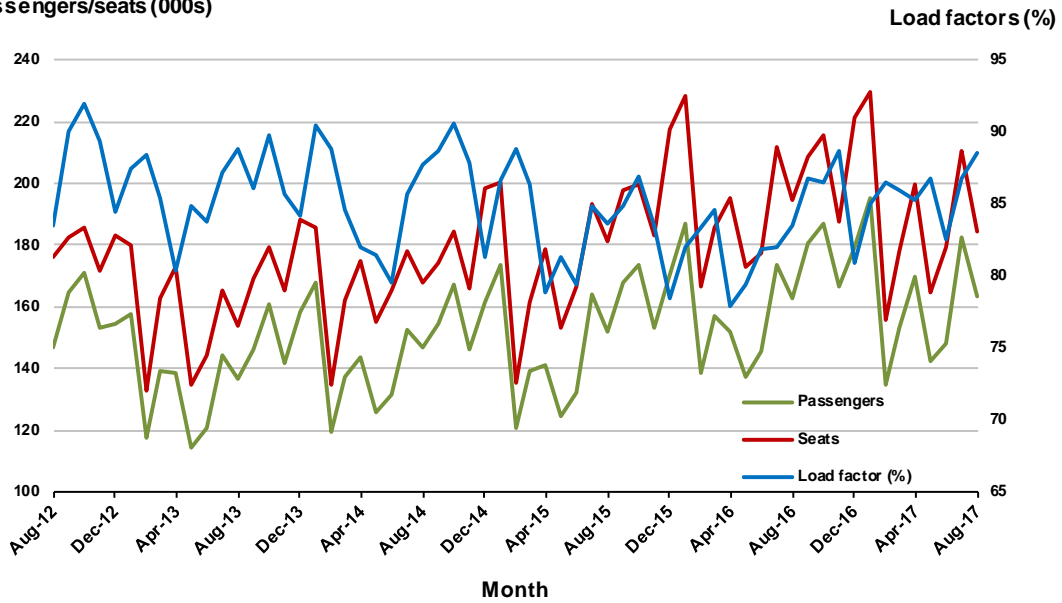
6. Gold Coast - Melbourne

Monthly data

	Aug 2016	Aug 2017	% Change
Passengers carried (000s)	162.4	163.3	0.6
Seats (000s)	194.6	184.3	-5.3
Load factor %	83.5	88.6	5.1 *
Aircraft trips	1 043	977	-6.3

* percentage point difference

Passengers/seats (000s)

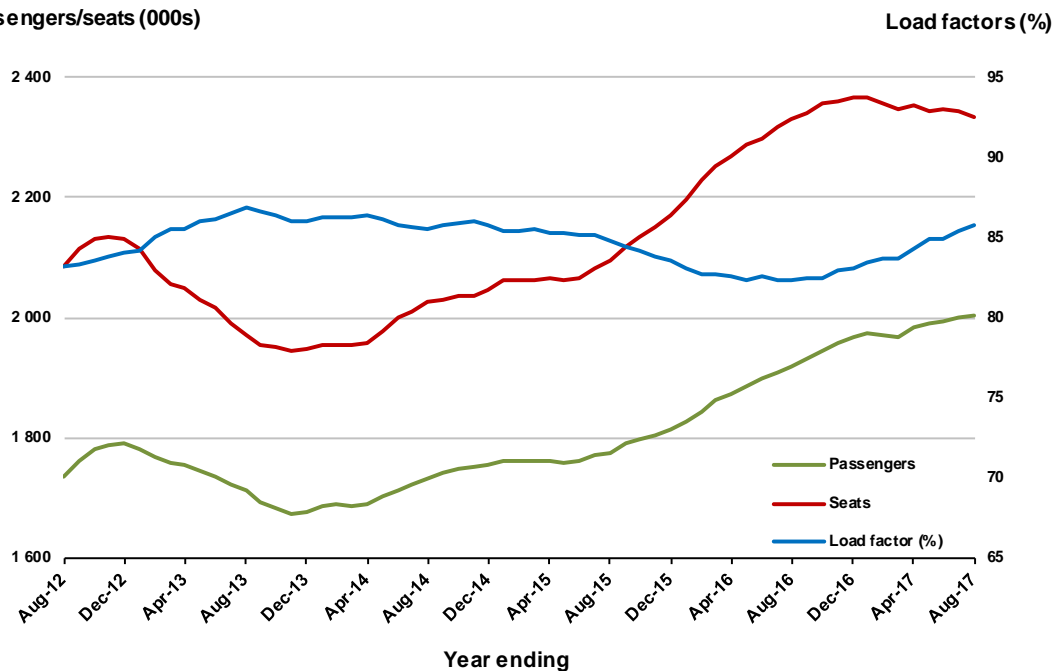


Moving annual data

	YE Aug 2016	YE Aug 2017	% Change
Passengers carried (000s)	1 918.7	2 002.4	4.4
Seats (000s)	2 330.8	2 334.7	0.2
Load factor %	82.3	85.8	3.4 *
Aircraft trips	12 514	12 471	-0.3

* percentage point difference

Passengers/seats (000s)



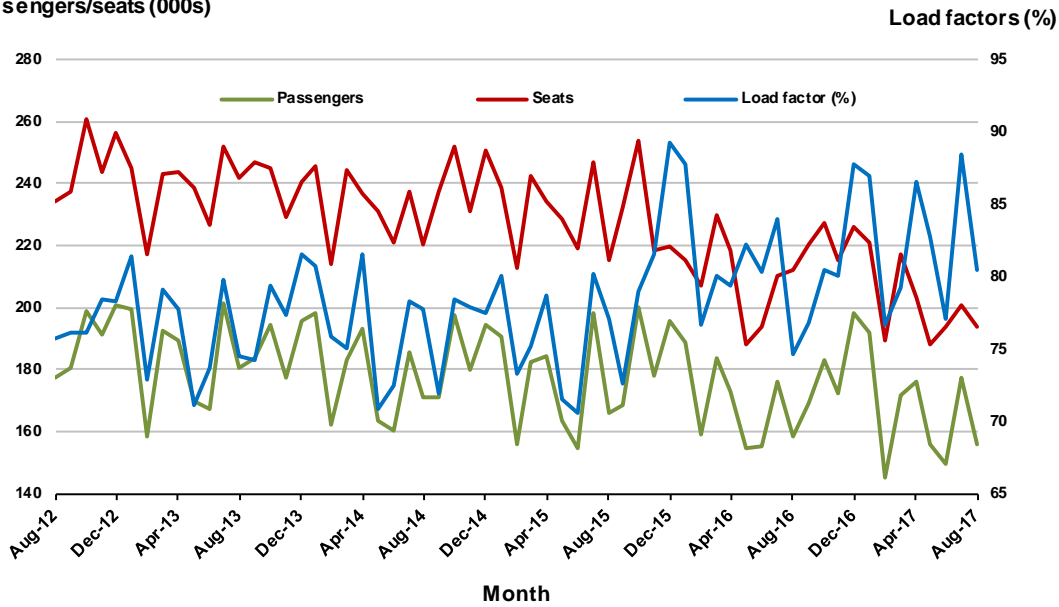
7. Melbourne - Perth

Monthly data

	Aug 2016	Aug 2017	% Change
Passengers carried (000s)	158.5	155.8	-1.7
Seats (000s)	212.1	193.6	-8.7
Load factor %	74.7	80.5	5.8 *
Aircraft trips	960	892	-7.1

* percentage point difference

Passengers/seats (000s)

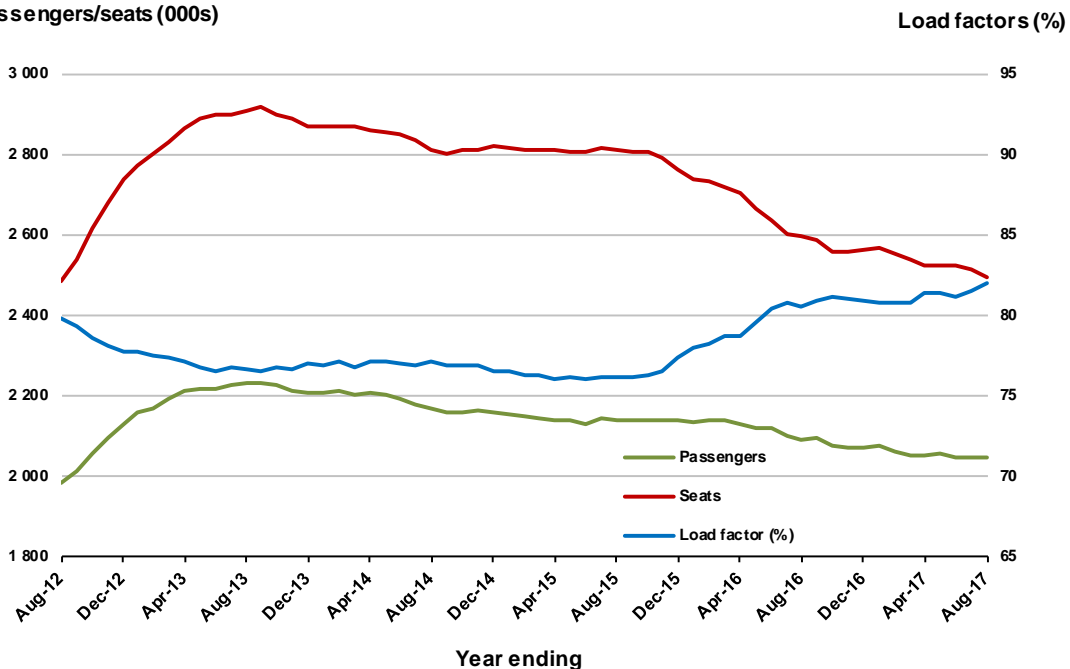


Moving annual data

	YE Aug 2016	YE Aug 2017	% Change
Passengers carried (000s)	2 092.6	2 046.5	-2.2
Seats (000s)	2 597.9	2 495.3	-4.0
Load factor %	80.5	82.0	1.5 *
Aircraft trips	11 756	11 319	-3.7

* percentage point difference

Passengers/seats (000s)

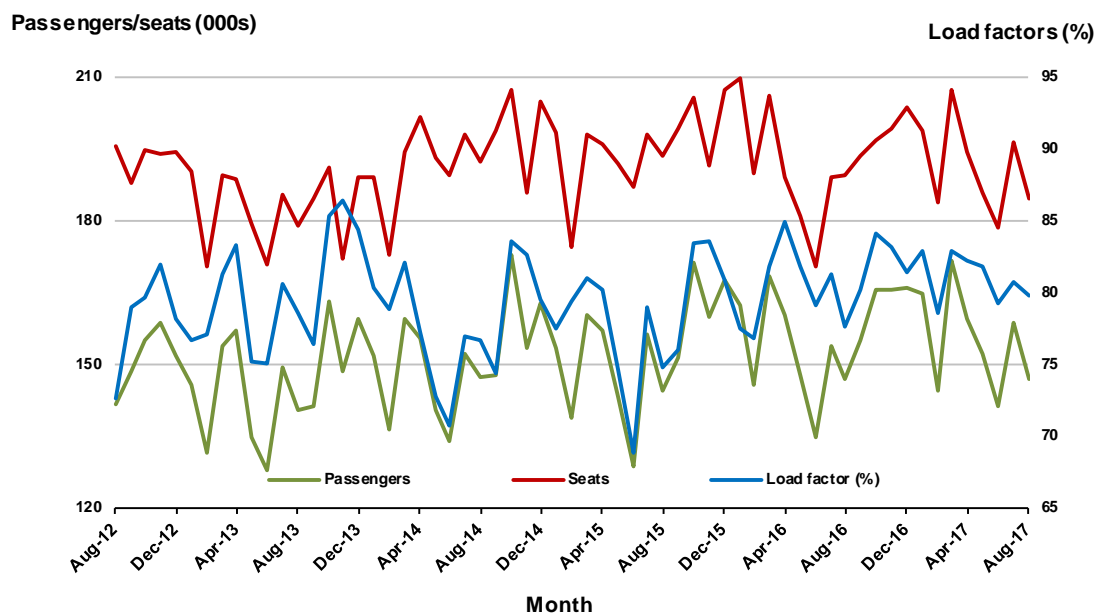


8. Adelaide - Sydney

Monthly data

	Aug 2016	Aug 2017	% Change
Passengers carried (000s)	147.0	146.9	-0.1
Seats (000s)	189.4	184.4	-2.6
Load factor %	77.6	79.7	2.1 *
Aircraft trips	1 142	1 133	-0.8

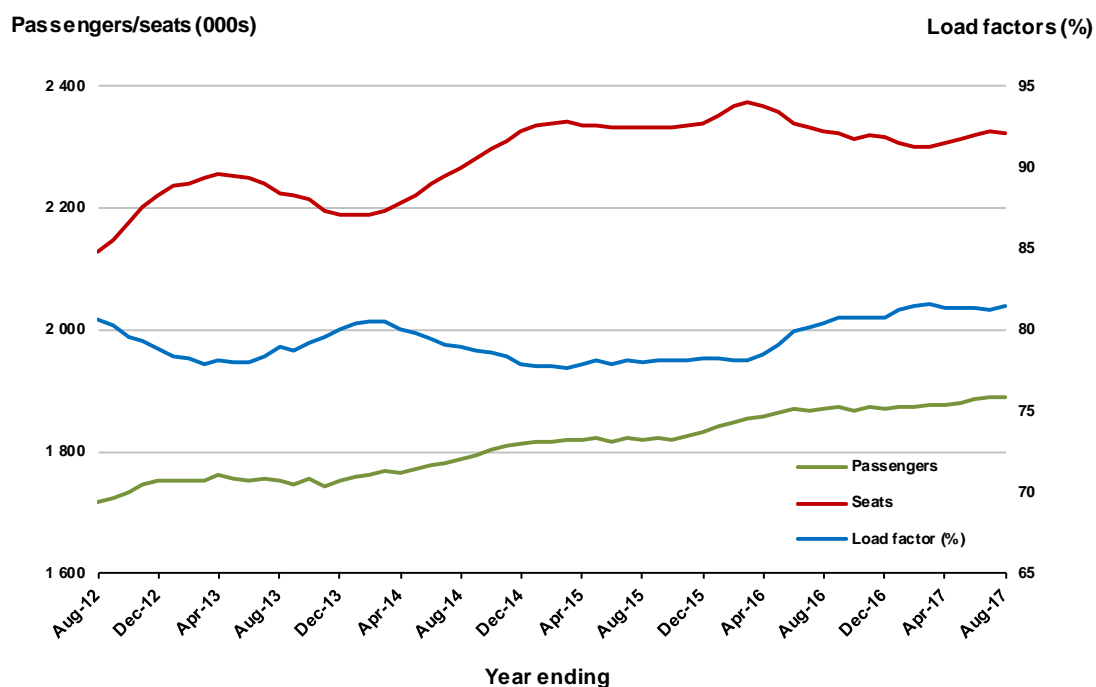
* percentage point difference



Moving annual data

	YE Aug 2016	YE Aug 2017	% Change
Passengers carried (000s)	1 869.8	1 891.1	1.1
Seats (000s)	2 327.3	2 321.7	-0.2
Load factor %	80.3	81.5	1.1 *
Aircraft trips	14 197	14 062	-1.0

* percentage point difference



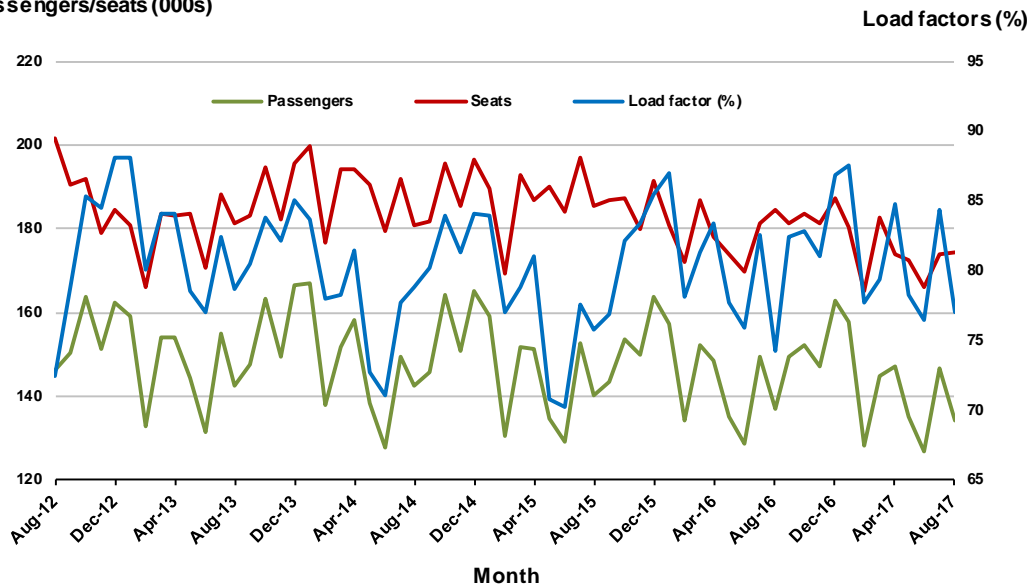
9. Perth - Sydney

Monthly data

	Aug 2016	Aug 2017	% Change
Passengers carried (000s)	137.1	134.3	-2.0
Seats (000s)	184.5	174.4	-5.5
Load factor %	74.3	77.0	2.7 *
Aircraft trips	774	769	-0.6

* percentage point difference

Passengers/seats (000s)

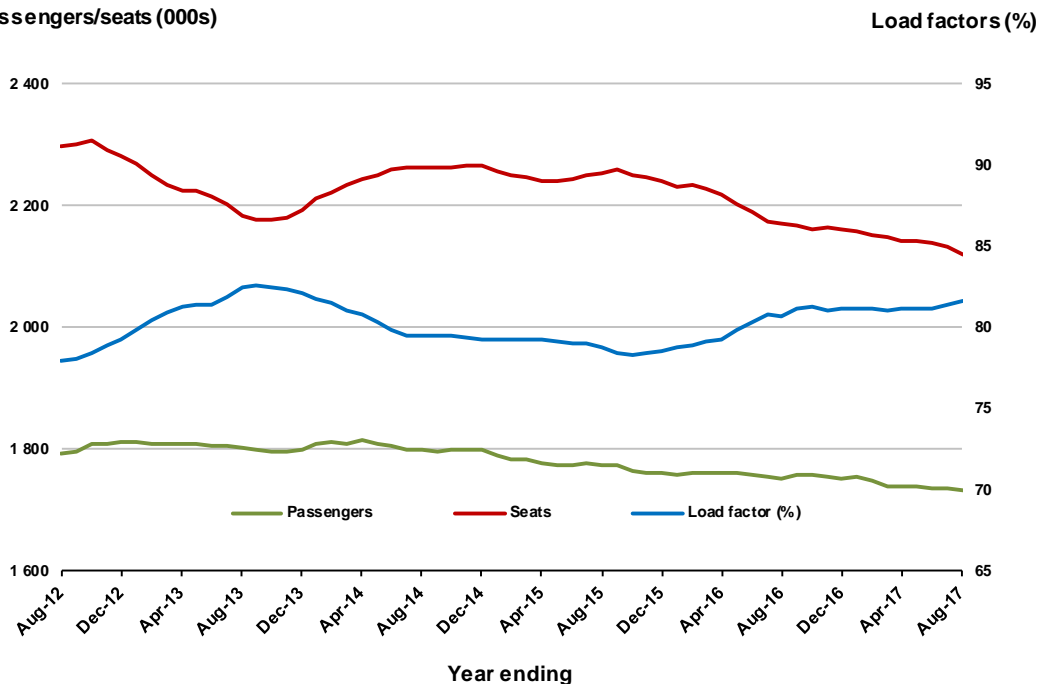


Moving annual data

	YE Aug 2016	YE Aug 2017	% Change
Passengers carried (000s)	1 753.6	1 732.0	-1.2
Seats (000s)	2 172.6	2 121.8	-2.3
Load factor %	80.7	81.6	0.9 *
Aircraft trips	9 143	9 079	-0.7

* percentage point difference

Passengers/seats (000s)

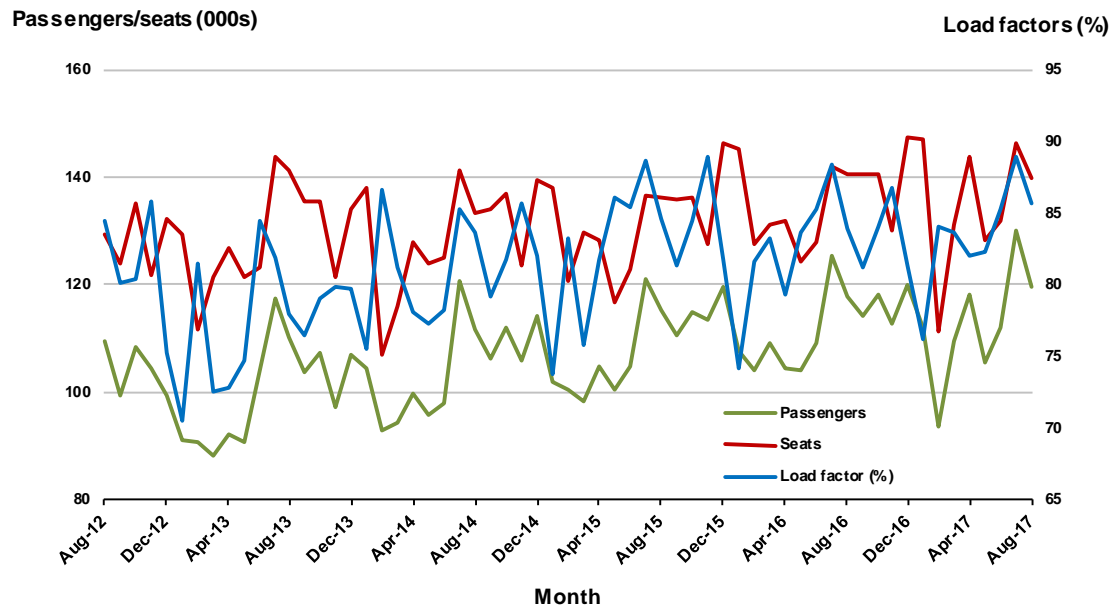


10. Brisbane - Cairns

Monthly data

	Aug 2016	Aug 2017	% Change
Passengers carried (000s)	117.7	119.7	1.6
Seats (000s)	140.4	139.7	-0.5
Load factor %	83.9	85.7	1.8 *
Aircraft trips	887	875	-1.4

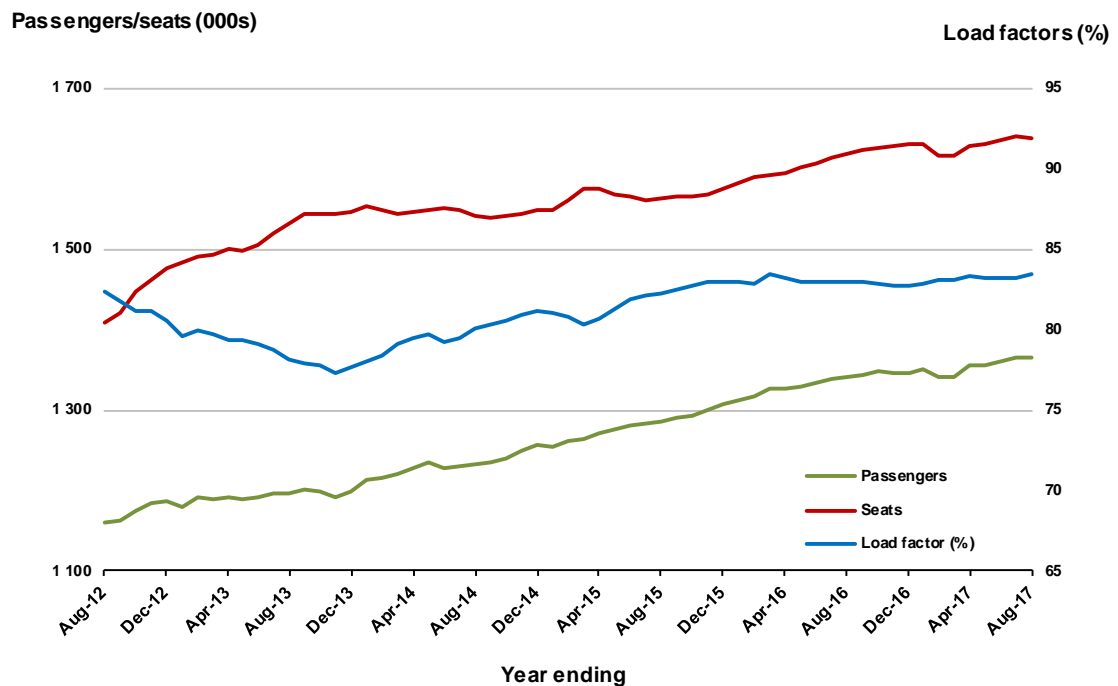
* percentage point difference



Moving annual data

	YE Aug 2016	YE Aug 2017	% Change
Passengers carried (000s)	1 340.9	1 366.0	1.9
Seats (000s)	1 617.1	1 638.1	1.3
Load factor %	82.9	83.4	0.5 *
Aircraft trips	10 067	10 262	1.9

* percentage point difference



TOP FIFTY REGIONAL AIRPORTS

Table 10: Top fifty regional airports (000s) — passenger movements, monthly

	Airport	Aug 2016	Aug 2017	% Change
1	Cairns	387.6	392.0	1.1
2	Darwin	177.5	181.6	2.3
3	Hobart	168.5	175.2	4.0
4	Townsville	134.1	144.5	7.8
5	Williamstown	103.0	101.1	-1.8
6	Launceston	89.6	90.1	0.5
7	Mackay	67.4	67.1	-0.5
8	Alice Springs	57.4	58.0	0.9
9	Rockhampton	50.6	49.5	-2.2
10	Broome	40.3	44.6	10.7
11	Proserpine	29.0	39.5	35.9
12	Karratha	41.9	37.6	-10.3
13	Hamilton Island	45.9	34.8	-24.0
14	Ayers Rock	35.1	34.3	-2.2
15	Ballina	33.9	33.8	0.0
16	Coffs Harbour	31.6	33.0	4.4
17	Port Hedland	31.7	30.7	-3.0
18	Gladstone	27.9	26.6	-4.5
19	Newman	28.6	25.0	-12.5
20	Kalgoorlie	22.2	24.9	12.1
21	Albury	22.4	23.4	4.7
22	Mildura	20.9	22.1	5.8
23	Dubbo	18.1	20.9	15.9
24	Port Macquarie	18.0	20.2	12.0
25	Mount Isa	17.7	19.4	9.4
26	Wagga Wagga	18.3	19.3	5.4
27	Tamworth	15.8	17.9	13.7
28	Emerald	17.1	17.2	1.0
29	Bundaberg	14.5	16.4	13.5
30	Hervey Bay	13.9	14.8	6.5
31	Paraburdoo	14.9	14.8	-0.7
32	Port Lincoln	14.5	13.4	-7.5
33	Wellcamp	10.9	13.2	21.2
34	Devonport	11.8	12.2	3.6
35	Armidale	11.0	11.4	4.0
36	Moranbah	10.2	11.2	10.0
37	Kununurra	11.0	11.1	1.0
38	Geraldton	10.2	9.9	-3.5
39	Gove	8.1	8.6	6.2
40	Learmonth	7.6	8.5	12.3
41	Thursday Island	8.8	8.0	-9.7
42	Roma	7.5	7.7	1.8
43	Mount Gambier	6.8	7.2	5.0
44	Weipa	7.3	7.0	-4.2
45	Griffith	6.2	6.7	7.3
46	Olympic Dam	4.5	6.5	43.6
47	Whyalla	5.4	6.1	13.6
48	Orange	4.9	6.0	22.9
49	Broken Hill	4.8	5.5	14.2
50	Merimbula	5.1	5.2	1.3
	Total top 50 regional airports	1 952.0	1 995.9	2.2
	Total regional airports	2 068.5	2 113.2	2.2
	Total domestic network	9 777.8	9 959.6	1.9

Note: Airport passenger movement numbers are the sum of passenger arrivals and departures at each airport.

Table 11: Top fifty regional airports (000s) — passenger movements, annual

	Airport	YE Aug 2016	YE Aug 2017	% Change
1	Cairns	4 176.7	4 296.0	2.9
2	Hobart	2 330.2	2 465.5	5.8
3	Darwin	1 783.4	1 814.1	1.7
4	Townsville	1 543.8	1 552.2	0.5
5	Launceston	1 327.4	1 333.3	0.4
6	Williamstown	1 203.7	1 276.4	6.0
7	Mackay	817.2	771.7	-5.6
8	Alice Springs	602.8	616.7	2.3
9	Rockhampton	586.6	567.0	-3.3
10	Ballina	473.1	502.5	6.2
11	Hamilton Island	527.9	472.6	-10.5
12	Karratha	534.6	454.9	-14.9
13	Coffs Harbour	383.0	408.7	6.7
14	Proserpine	345.6	375.3	8.6
15	Broome	378.6	369.7	-2.3
16	Ayers Rock	346.9	363.4	4.7
17	Port Hedland	371.7	350.7	-5.6
18	Gladstone	359.5	296.9	-17.4
19	Newman	318.5	288.5	-9.4
20	Albury	248.3	263.9	6.3
21	Mildura	245.2	251.5	2.6
22	Kalgoorlie	237.2	247.2	4.2
23	Dubbo	201.2	232.3	15.4
24	Port Macquarie	225.2	230.3	2.3
25	Wagga Wagga	215.1	218.1	1.4
26	Emerald	201.7	199.2	-1.2
27	Tamworth	170.6	196.7	15.3
28	Mount Isa	191.9	195.9	2.1
29	Bundaberg	169.8	177.0	4.3
30	Port Lincoln	181.9	173.9	-4.4
31	Hervey Bay	170.2	173.0	1.6
32	Paraburdoo	163.9	166.9	1.8
33	Devonport	145.7	147.0	0.9
34	Wellcamp	99.0	146.0	47.5
35	Armidale	129.0	131.2	1.7
36	Moranbah	121.4	121.9	0.4
37	Geraldton	118.9	115.3	-3.0
38	Kununurra	108.2	103.5	-4.4
39	Thursday Island	97.6	100.6	3.0
40	Gove	76.0	84.1	10.6
41	Roma	98.1	83.4	-15.0
42	Learmonth	86.0	81.4	-5.4
43	Mount Gambier	76.7	79.0	3.1
44	Weipa	77.8	77.6	-0.3
45	Griffith	68.8	72.7	5.6
46	Merimbula	61.9	65.4	5.5
47	Whyalla	65.3	62.2	-4.8
48	Burnie	60.7	60.6	-0.2
49	Orange	50.6	59.0	16.7
50	Olympic Dam	52.1	58.3	12.0
Total top 50 regional airports		22 627.5	22 951.5	1.4
Total regional airports		23 940.9	24 327.7	1.6
Total domestic network		117 137.9	119 016.1	1.6

Note: Airport passenger movement numbers are the sum of passenger arrivals and departures at each airport.

DOMESTIC CHARTER ACTIVITY

Table 12: Charter passengers carried and aircraft trips - annual activity

	YE Aug 2016	YE Aug 2017	% Change
Total domestic charter passengers	2 489 060	2 416 803	-2.9
Total domestic charter aircraft trips	46 434	45 183	-2.7

Note: Helicopter, joyflights and sightseeing charter flights not included.

Table 13: Charter passengers carried and aircraft trips - monthly activity

	Aug 2016	Aug 2017	% Change
Total domestic charter passengers	212 669	225 938	6.2
Total domestic charter aircraft trips	3 863	4 128	6.9

Note: Helicopter, joyflights and sightseeing charter flights not included.

Table 14: Domestic airports - charter activity - annual

	YE Aug 2016	YE Aug 2017	% Change
Total domestic charter passenger movements	4 978 120	4 833 606	-2.9
Total domestic charter aircraft movements	92 868	90 366	-2.7
Perth airport charter passenger movements	1 900 351	1 861 242	-2.1
Perth airport charter aircraft movements	31 826	31 518	-1.0

Note: Helicopter, joyflights and sightseeing charter flights not included.

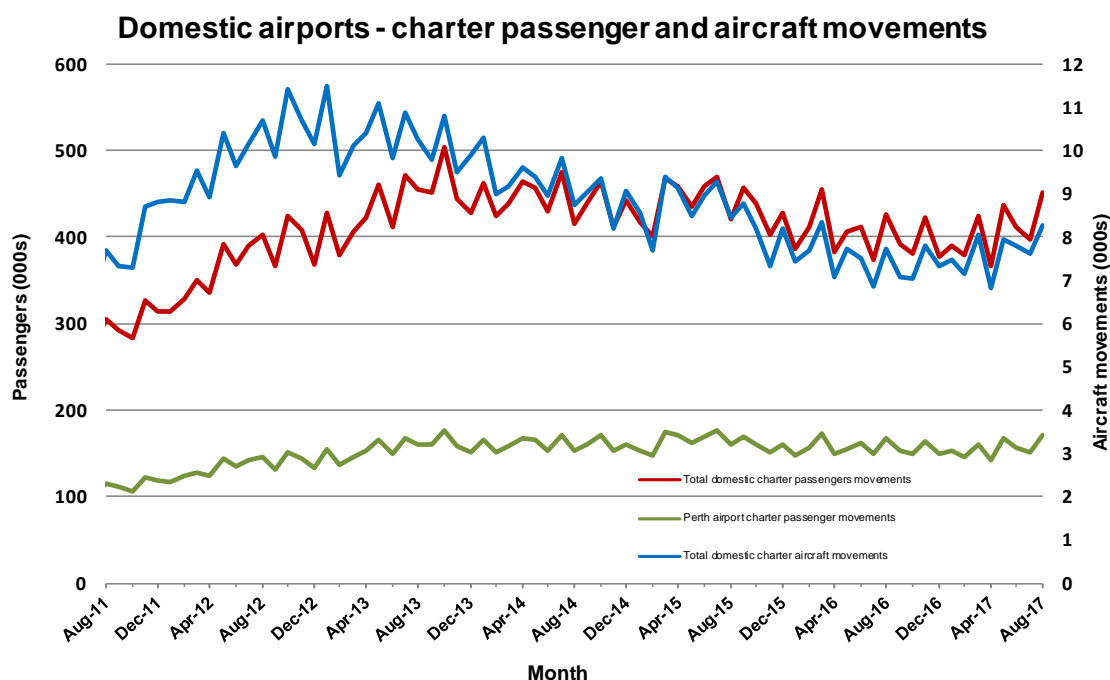
Charter passenger and aircraft movement numbers are the sum of arrivals and departures at each airport.

Table 15: Domestic airports - charter activity - monthly

	Aug 2016	Aug 2017	% Change
Total domestic charter passenger movements	425 338	451 876	6.2
Total domestic charter aircraft movements	7 726	8 256	6.9
Perth airport charter passenger movements	167 201	170 735	2.1
Perth airport charter aircraft movements	2 779	2 821	1.5

Note: Helicopter, joyflights and sightseeing charter flights not included.

Charter passenger and aircraft movement numbers are the sum of arrivals and departures at each airport.



DEFINITIONS

Aircraft Trips	The number of flight stages. A return flight counts as two aircraft trips.
Airport Movements	Airport movements (passenger and cargo) are measured once on arrival and once on departure. Each domestic trip generates two movements at airports. For example, a trip from Melbourne to Sydney will be counted twice, as a passenger departure at Melbourne and as a passenger arrival at Sydney. At the national level, the sum of all domestic airport traffic will therefore be equal to twice the number of trips undertaken.
Available Seat Kilometres (ASKs)	Calculated by multiplying the number of seats available on each flight stage, by the distance in kilometres between the ports. The distances used are Great Circle Distances.
City-Pair	The ports shown make up the city-pair route. Passenger movements shown for a city pair reflect total traffic in both directions.
Flight Stage	The operation of an aircraft from take-off to landing.
Load Factor	The total revenue passenger kilometres performed as a percentage of the total available seat kilometres.
Passengers Carried	Revenue passengers carried.
Regular Public Transport Services (RPT)	All air service operations in which aircraft are available for the transport of members of the public and are conducted in accordance with fixed schedules. It does not include charter or other non-scheduled operations.
Revenue Passengers	All passengers paying any fare. Frequent flyer redemption travellers are regarded as revenue passengers.
Revenue Passenger Kilometres (RPKs)	Calculated by multiplying the number of revenue passengers travelling on each flight stage, by the distance in kilometres between the ports. The distances used are Great Circle Distances.
Traffic on board by stages	The total of all traffic (revenue passengers) on each flight stage between two directly connected airports.
..	Data not included
NA	Not applicable