



Australian Government

Department of Infrastructure, Regional Development and Cities

Bureau of Infrastructure, Transport and Regional Economics

STATISTICAL REPORT



Aviation

Domestic aviation activity
April 2018

© Commonwealth of Australia 2018

ISSN: 1832 - 1968

Ownership of intellectual property rights in this publication

Unless otherwise noted, copyright (and any other intellectual property rights, if any) in this publication is owned by the Commonwealth of Australia (referred to below as the Commonwealth).

Disclaimer

The material contained in this publication is made available on the understanding that the Commonwealth is not providing professional advice, and that users exercise their own skill and care with respect to its use, and seek independent advice if necessary.

The Commonwealth makes no representations or warranties as to the contents or accuracy of the information contained in this publication. To the extent permitted by law, the Commonwealth disclaims liability to any person or organisation in respect of anything done, or omitted to be done, in reliance upon information contained in this publication.

Creative Commons licence

With the exception of (a) the Coat of Arms; and (b) the Department of Infrastructure, Regional Development and Cities' photos and graphics, copyright in this publication is licensed under a Creative Commons Attribution 3.0 Australia Licence.

Creative Commons Attribution 3.0 Australia Licence is a standard form licence agreement that allows you to copy, communicate and adapt this publication provided that you attribute the work to the Commonwealth and abide by the other licence terms. A summary of the licence terms is available from <http://creativecommons.org/licenses/by/3.0/au/deed.en>. The full licence terms are available from <http://creativecommons.org/licenses/by/3.0/au/legalcode>.

Use of the Coat of Arms

The Department of the Prime Minister and Cabinet sets the terms under which the Coat of Arms is used. Please refer to the Department's Commonwealth Coat of Arms and Government branding web page <http://www.dpmc.gov.au/guidelines/index.cfm#brand> and, in particular, the Guidelines on the use of the Commonwealth Coat of Arms publication.

An appropriate citation for this report is:

Bureau of Infrastructure, Transport and Regional Economics (BITRE), 2018, Domestic aviation activity, Statistical Report, BITRE, Canberra ACT.

Contact us

This publication is available in PDF format. All other rights are reserved, including in relation to any Departmental logos or trade marks which may exist. For enquiries regarding the licence and any use of this publication, please contact:

Bureau of Infrastructure, Transport and Regional Economics (BITRE)
Department of Infrastructure, Regional Development and Cities
GPO Box 501, Canberra ACT 2601, Australia
Telephone: (international) +61 2 6274 7210
Fax: (international) +61 2 6274 6855
Email: bitre@infrastructure.gov.au
Website: www.bitre.gov.au

Inquiries

Should you require additional information about the statistics contained in this publication:

Aiden Brown

Telephone (02) 6274 7658 or Facsimile (02) 6274 7727

Electronic mail: AVSTATS@infrastructure.gov.au

Aiden.Brown@infrastructure.gov.au

Web site: <http://www.bitre.gov.au/statistics/aviation/domestic.aspx>

FOREWORD

This report provides an overview of domestic (including charter) commercial aviation activity in Australia for the month of April 2018.

The data cover revenue passengers carried by Australian-registered operators of scheduled regular public transport services over Australian flight stages and fixed-wing charter operators. These estimates include passengers carried between domestic airports on international flights operated by these carriers. The passengers carried refer to traffic on board by stages.

Estimates of passengers and aircraft movements for charter aviation are included in this publication, where BITRE confidentiality standards are met.

Individual routes shown are restricted to those with an average exceeding 8 000 passengers per month over the previous six months where two or more airlines operate in competition. For the month of April 2018, there were 66 such routes.

Information on the total network for the month of April 2018 and on the Regular Public Transport (RPT) network for the month of April 2018 is presented on page 2, with estimates for the year ended April 2018 presented on page 3.

Detailed information on the 66 individual routes can be found in the RPT summary pages 4-13 of this publication.

The top ten airports in terms of RPT passenger movements are shown on page 14.

Data on domestic RPT cargo movements at the top five cargo airports are provided on page 15. The table includes cargo carried on passenger flights operated by the Qantas group (including Jetstar), Virgin Australia, Air North and Skippers as well as the cargo carried by dedicated freighter aircraft operated by Qantas Freight, Toll Priority and Virgin Australia Cargo.

The long-term trends for the top ten competitive RPT routes are presented graphically on pages 16-25.

Domestic RPT passenger movements at the top 50 regional airports are presented on pages 26-27.

Tables providing estimates of domestic charter aviation activity are shown on page 28. BITRE confidentiality standards restrict publication of detailed estimates for individual Australian airports, with the exception of Perth Airport.

A list of definitions can be found on page 29.

This report was prepared by the Aviation Statistics Section of the Bureau of Infrastructure, Transport and Regional Economics with data provided by airlines.

Estimates are included where data were not available and data presented in this publication may contain revisions to previously published data.

Where figures have been rounded, discrepancies may occur between sums of component items and totals, and in percentage changes which are derived from figures prior to rounding.

CONTENTS

Highlights	1
Total network.....	2
RPT network	2
Top competitive routes.....	4
Top ten airports – passenger movements.....	14
Top five airports – cargo movements.....	15
Top ten routes	16
1. Melbourne – Sydney	16
2. Brisbane – Sydney	17
3. Brisbane – Melbourne	18
4. Gold Coast – Sydney	19
5. Adelaide – Melbourne	20
6. Melbourne – Perth	21
7. Gold Coast – Melbourne	22
8. Adelaide – Sydney	23
9. Perth – Sydney	24
10. Hobart – Melbourne	25
Top fifty regional airports	26
Domestic charter activity.....	28
Definitions	29

This page is intentionally left blank.

HIGHLIGHTS

There were 5.29 million passengers carried on Australian domestic commercial aviation (including charter operations) in April 2018, an increase of 3.2 per cent on April 2017. For the month of April 2018 there were 55 690 aircraft trips, an increase of 0.8 per cent compared to April 2017.

5.10 million passengers were carried on RPT flights in April 2018, an increase of 3.1 per cent on April 2017.

For the year ending April 2018 there were 63.09 million RPT passengers, an increase of 2.6 per cent on the year ending April 2017.

RPT revenue passenger kilometres (RPKs) performed were 5.97 billion for the month, up 2.6 per cent compared with April 2017. Capacity, measured by available seat kilometres (ASKs), increased by 2.5 per cent compared with April 2017 to a total of 7.50 billion.

With RPT passenger traffic increasing at slightly higher rate than capacity, the industry wide load factor (RPKs/ASKs) increased slightly from 79.5 per cent in April 2017 to 79.6 per cent in April 2018. Load factors on individual routes increased on 40 of the 64 RPT routes for which data is available for publishing in both years.

For the month of April 2018, Melbourne – Sydney remained Australia's busiest RPT route with 770 997 passengers, an increase of 6.0 per cent compared with April 2017. It was followed by Brisbane – Sydney with 389 543 passengers (up 1.4 per cent) and Brisbane – Melbourne with 284 525 passengers (down 2.3 per cent).

The greatest percentage increase in RPT passenger numbers, compared to April 2017, was on the Sydney – Hamilton Island route (up 108.8 per cent). There were large increases on a number of other routes, including Brisbane – Rockhampton (up 41.3 per cent), Brisbane – Hamilton Island (up 37.0 per cent), Broome – Perth (up 24.4 per cent), and Kalgoorlie – Perth (up 17.0 per cent).

Routes with traffic decreases in April 2018 compared with April 2017 included Brisbane – Gladstone (down 29.3 per cent), Sydney Townsville (down 17.3 per cent), Brisbane – Cairns (down 9.7 per cent) and Alice Springs – Darwin (down 9.4 per cent).

In April 2018, Sydney remained Australia's busiest domestic airport with 2.33 million passenger movements, followed by Melbourne with 2.16 million passenger movements and Brisbane with 1.40 million passenger movements.

Total cargo movements at Australian airports on domestic RPT flights were 33.0 thousand tonnes in April 2018, a decrease of 0.9 per cent compared with April 2017.

In April 2018, there were 2.05 million domestic passenger movements through regional airports, 2.3 per cent higher than in April 2017. Out of the top 50 regional airports, the strongest growth was at Hamilton Island airport (up 95.1 per cent on April 2017), while the largest decrease was at Gladstone airport (down 29.7 per cent on April 2017).

Fixed-wing charter operators carried 193.1 thousand passengers in April 2018, an increase of 5.2 per cent on April 2017. Perth airport accounted for 37.6 per cent of all charter passengers in Australia.

TOTAL NETWORK

Summary of monthly commercial aviation activity

	Apr 2017	Apr 2018	% Change
Total passengers carried (millions)	5.13	5.29	3.2
Aircraft trips (000s)	55.2	55.7	0.8

Note: Regular Public Transport and charter aviation activity
Helicopter, joyflights and sightseeing charter flights not included.

RPT NETWORK

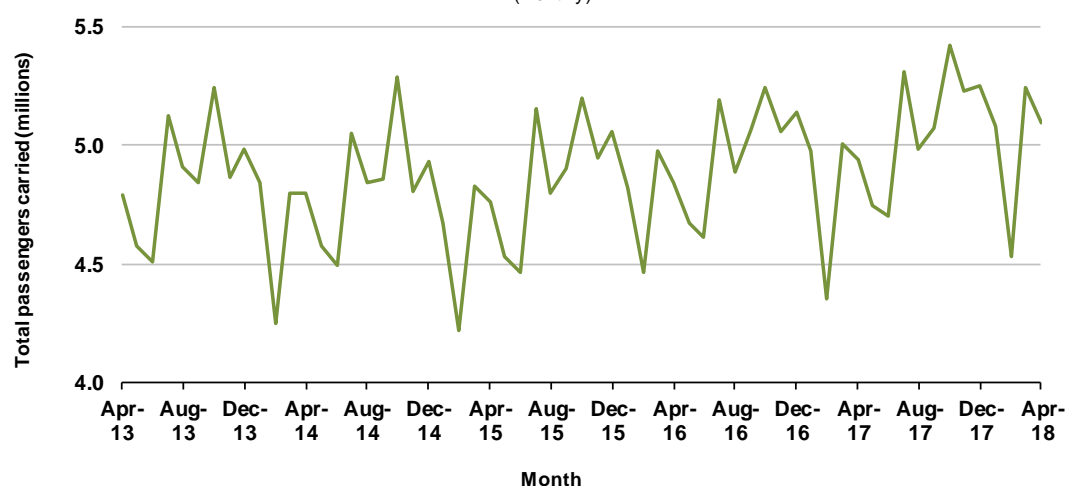
Summary of monthly RPT activity

	Apr 2017	Apr 2018	% Change
Total passengers carried (millions)	4.94	5.10	3.1
Revenue passenger kilometres (billions)	5.82	5.97	2.6
Available seats (millions)	6.35	6.52	2.8
Available seat kilometres (billions)	7.31	7.50	2.5
Load factor %	79.5	79.6	0.1 *
Aircraft trips (000s)	51.8	52.2	0.8

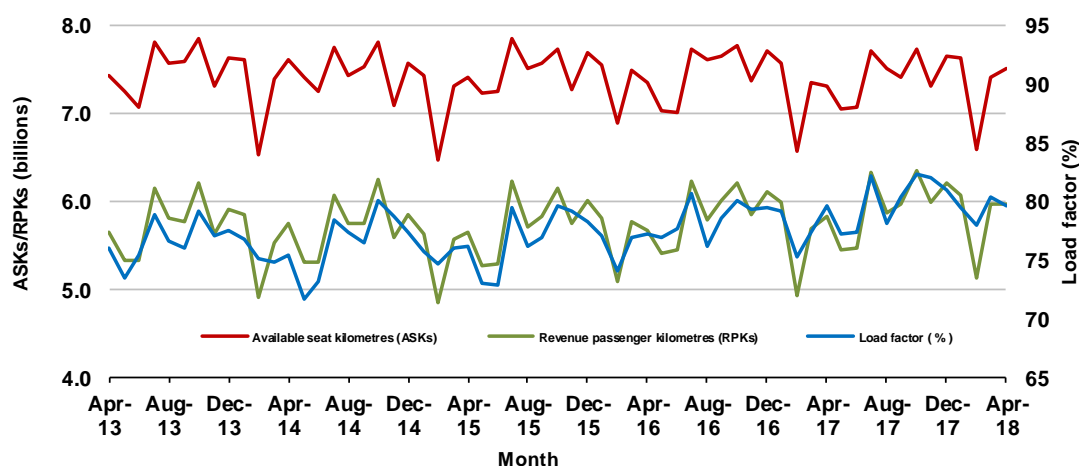
* percentage point difference

Domestic RPT passenger traffic

(monthly)



RPT Network utilisation



TOTAL NETWORK

Summary of annual commercial aviation activity

	YE Apr 2017	YE Apr 2018	% Change
Total passengers carried (millions)	61.52	63.09	2.6
Aircraft trips (000s)	685.0	683.8	-0.2

Note: Regular Public Transport and charter aviation activity
Helicopter, joyflights and sightseeing charter flights not included.

RPT NETWORK

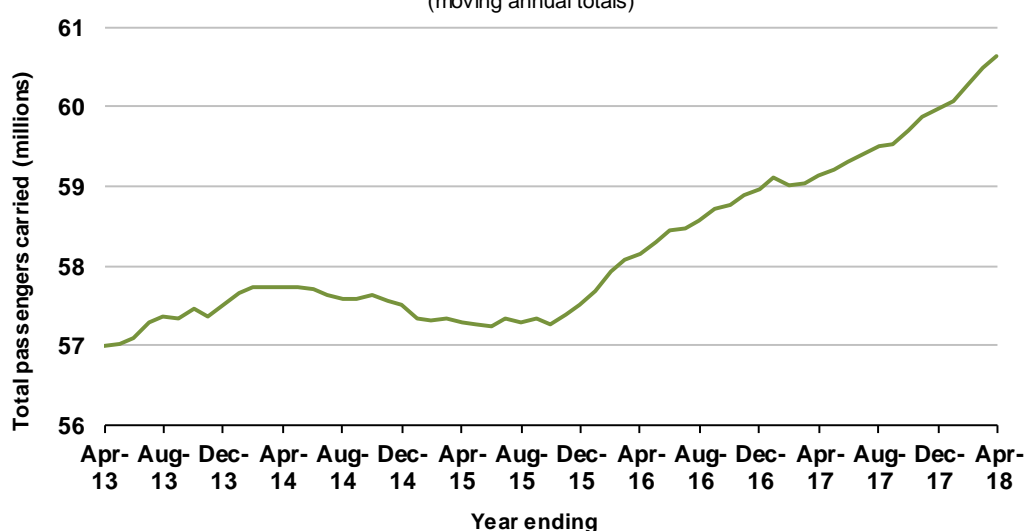
Summary of annual RPT activity

	YE Apr 2017	YE Apr 2018	% Change
Total passengers carried (millions)	59.14	60.65	2.6
Revenue passenger kilometres (billions)	69.43	70.72	1.9
Available seats (millions)	77.11	77.57	0.6
Available seat kilometres (billions)	88.60	88.53	-0.1
Load factor %	78.4	79.9	1.5 *
Aircraft trips (000s)	640.7	638.1	-0.4

* percentage point difference

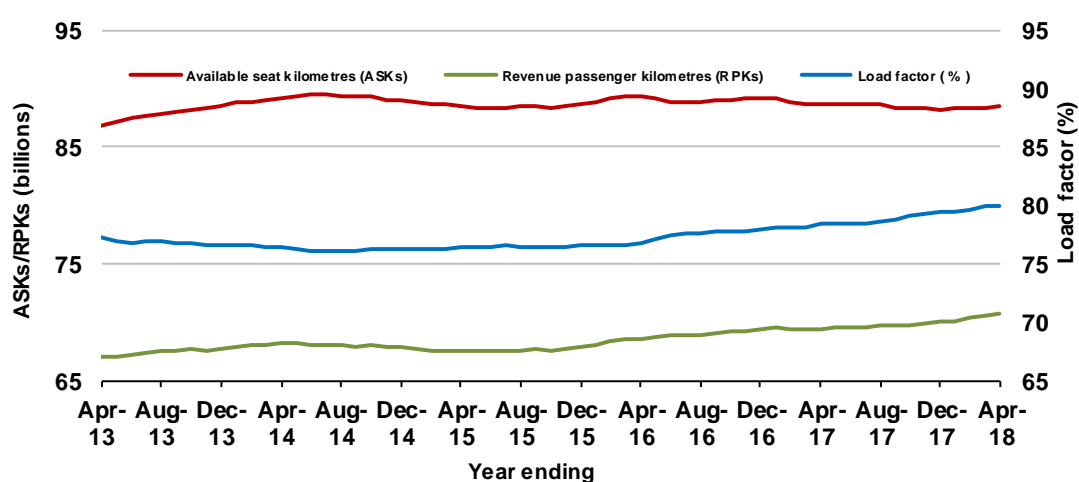
Domestic RPT passenger traffic

(moving annual totals)



RPT Network utilisation

(moving annual totals)



TOP COMPETITIVE ROUTES

Table 1: Passengers carried (000s) — annual activity

	City-Pair	YE Apr 2017	YE Apr 2018	%Change
1	Melbourne - Sydney	8 918.1	9 235.6	3.6
2	Brisbane - Sydney	4 673.0	4 775.5	2.2
3	Brisbane - Melbourne	3 497.4	3 549.1	1.5
4	Gold Coast - Sydney	2 698.3	2 766.3	2.5
5	Adelaide - Melbourne	2 403.1	2 487.9	3.5
6	Melbourne - Perth	2 053.2	2 044.9	-0.4
7	Gold Coast - Melbourne	1 984.4	2 038.0	2.7
8	Adelaide - Sydney	1 875.7	1 909.0	1.8
9	Perth - Sydney	1 739.5	1 717.6	-1.3
10	Hobart - Melbourne	1 593.5	1 645.8	3.3
11	Brisbane - Cairns	1 355.1	1 370.7	1.1
12	Canberra - Melbourne	1 056.2	1 146.3	8.5
13	Cairns - Sydney	1 125.4	1 133.1	0.7
14	Brisbane - Perth	965.4	978.7	1.4
15	Brisbane - Townsville	970.3	973.9	0.4
16	Canberra - Sydney	950.5	951.5	0.1
17	Launceston - Melbourne	918.2	940.5	2.4
18	Adelaide - Brisbane	829.9	854.2	2.9
19	Cairns - Melbourne	836.4	842.9	0.8
20	Brisbane - Mackay	673.6	713.4	5.9
21	Hobart - Sydney	630.0	679.0	7.8
22	Adelaide - Perth	619.0	619.7	0.1
23	Brisbane - Canberra	582.9	611.3	4.9
24	Sunshine Coast - Sydney	552.8	603.0	9.1
25	Brisbane - Newcastle	584.1	585.0	0.2
26	Brisbane - Rockhampton	544.8	524.1	-3.8
27	Melbourne - Sunshine Coast	459.7	507.9	10.5
28	Melbourne - Newcastle	467.1	483.6	3.5
29	Karratha - Perth	470.5	433.4	-7.9
30	Ballina - Sydney	391.4	420.0	7.3
31	Brisbane - Darwin	409.8	398.1	-2.9
32	Coffs Harbour - Sydney	341.0	347.4	1.9
33	Perth - Port Hedland	340.9	341.0	0.0
34	Broome - Perth	286.7	337.3	17.6
35	Darwin - Sydney	320.3	320.8	0.2
36	Darwin - Melbourne	305.0	303.2	-0.6
37	Newman - Perth	298.0	290.8	-2.4
38	Launceston - Sydney	292.2	285.4	-2.3
39	Brisbane - Proserpine	223.4	275.3	23.3
40	Brisbane - Gladstone	313.9	268.2	-14.6
41	Kalgoorlie - Perth	234.3	250.0	6.7
42	Albury - Sydney	224.0	221.9	-1.0
43	Adelaide - Gold Coast	216.8	219.4	1.2
44	Brisbane - Hobart	206.3	218.2	5.7
45	Melbourne - Mildura	206.6	215.9	4.5
46	Darwin - Perth	187.5	203.8	8.7
47	Hamilton Island - Sydney	246.3	196.3	-20.3
48	Brisbane - Emerald	198.5	195.5	-1.5
49	Ayers Rock - Sydney	191.2	193.9	1.4
50	Port Macquarie - Sydney	192.0	191.5	-0.2

continued

Table 1: (continued) Passengers carried (000s) — annual activity

	City-Pair	YE Apr 2017	YE Apr 2018	% Change
51	Dubbo - Sydney	188.2	190.1	1.0
52	Adelaide - Canberra	175.1	186.2	6.3
53	Sydney - Wagga Wagga	186.7	179.5	-3.9
54	Sydney - Tamworth	178.6	178.7	0.0
55	Brisbane - Bundaberg	173.7	171.7	-1.2
56	Adelaide - Port Lincoln	176.0	170.8	-2.9
57	Sydney - Townsville	158.8	158.8	0.0
58	Cairns - Townsville	139.2	147.2	5.8
59	Adelaide - Alice Springs	122.5	127.2	3.8
60	Brisbane - Mount Isa	120.0	126.9	5.7
61	Armidale - Sydney	125.7	125.2	-0.4
62	Brisbane - Hamilton Island	144.6	124.1	-14.2
63	Alice Springs - Darwin	116.5	114.7	-1.5
64	Geraldton - Perth	116.1	112.1	-3.4
65	Melbourne - Townsville	..	97.9	NA
66	Proserpine - Sydney	..	93.4	NA
Total domestic network		59 141.2	60 651.5	2.6

(a) Melbourne - Townsville route included from September 2017, prior data not shown.

(b) Proserpine - Sydney route included from September 2017, prior data not shown.

Table 2: Passengers carried (000s) — monthly activity

	City-Pair	Apr 2017	Apr 2018	% Change
1	Melbourne - Sydney	727.1	771.0	6.0
2	Brisbane - Sydney	384.0	389.5	1.4
3	Brisbane - Melbourne	291.2	284.5	-2.3
4	Gold Coast - Sydney	234.8	242.5	3.3
5	Adelaide - Melbourne	202.7	215.4	6.3
6	Melbourne - Perth	176.0	178.2	1.2
7	Gold Coast - Melbourne	169.9	171.8	1.1
8	Adelaide - Sydney	159.6	170.3	6.7
9	Perth - Sydney	147.3	148.2	0.6
10	Hobart - Melbourne	140.3	142.1	1.3
11	Brisbane - Cairns	118.0	106.6	-9.7
12	Canberra - Melbourne	90.2	96.5	7.0
13	Cairns - Sydney	97.0	92.0	-5.2
14	Launceston - Melbourne	81.2	85.4	5.1
15	Brisbane - Perth	77.8	82.9	6.6
16	Brisbane - Townsville	79.5	78.7	-1.1
17	Canberra - Sydney	71.1	75.0	5.5
18	Adelaide - Brisbane	70.9	70.7	-0.4
19	Cairns - Melbourne	72.0	67.9	-5.8
20	Hobart - Sydney	55.9	59.8	7.0
21	Brisbane - Mackay	59.9	57.3	-4.2
22	Sunshine Coast - Sydney	53.1	54.6	2.8
23	Adelaide - Perth	51.0	54.5	6.8
24	Brisbane - Canberra	46.8	52.5	12.0
25	Brisbane - Newcastle	49.7	48.6	-2.3
26	Melbourne - Sunshine Coast	44.2	44.8	1.4
27	Melbourne - Newcastle	42.4	43.7	3.0
28	Brisbane - Rockhampton	28.3	40.1	41.3
29	Ballina - Sydney	37.7	38.5	2.2
30	Karratha - Perth	35.5	36.0	1.5
31	Perth - Port Hedland	29.4	30.7	4.2
32	Brisbane - Darwin	33.1	30.4	-8.1
33	Broome - Perth	22.9	28.4	24.4
34	Coffs Harbour - Sydney	28.0	27.9	-0.5
35	Darwin - Sydney	26.3	26.1	-1.0
36	Launceston - Sydney	25.3	25.3	-0.1
37	Darwin - Melbourne	25.8	25.2	-2.5
38	Newman - Perth	21.7	24.2	11.4
39	Kalgoorlie - Perth	18.2	21.3	17.0
40	Brisbane - Gladstone	29.2	20.7	-29.3
41	Brisbane - Proserpine	19.4	20.0	3.4
42	Brisbane - Hobart	18.3	19.3	5.1
43	Adelaide - Gold Coast	17.5	18.7	6.7
44	Melbourne - Mildura	17.5	18.7	6.9
45	Albury - Sydney	19.4	18.3	-6.0
46	Ayers Rock - Sydney	16.4	16.7	2.0
47	Hamilton Island - Sydney	7.8	16.2	108.8
48	Adelaide - Canberra	14.5	16.1	11.0
49	Brisbane - Emerald	15.8	15.7	-0.2
50	Darwin - Perth	15.2	15.5	2.0

continued

Table 2: (continued) Passengers carried (000s) — monthly activity

	City-Pair	Apr 2017	Apr 2018	% Change
51	Port Macquarie - Sydney	15.5	15.3	-1.0
52	Dubbo - Sydney	15.0	15.1	0.2
53	Sydney - Tamworth	15.2	14.6	-4.2
54	Adelaide - Port Lincoln	14.5	14.5	0.0
55	Sydney - Wagga Wagga	15.4	14.5	-5.8
56	Brisbane - Bundaberg	14.2	13.3	-6.5
57	Sydney - Townsville	15.8	13.1	-17.3
58	Melbourne - Townsville	..	11.9	NA (a)
59	Cairns - Townsville	11.2	11.8	5.1
60	Armidale - Sydney	10.8	11.1	2.3
61	Proserpine - Sydney	..	10.9	NA (b)
62	Adelaide - Alice Springs	10.7	10.8	0.5
63	Brisbane - Mount Isa	9.5	10.5	10.3
64	Brisbane - Hamilton Island	6.8	9.4	37.0
65	Geraldton - Perth	9.4	9.2	-2.1
66	Alice Springs - Darwin	9.2	8.3	-9.4
Total domestic network		4 941.9	5 096.7	3.1

(a) Melbourne - Townsville route included from September 2017, prior data not shown.

(b) Proserpine - Sydney route included from September 2017, prior data not shown.

Table 3: Available seats (000s) — monthly activity

	City-Pair	Apr 2017	Apr 2018	% Change
1	Melbourne - Sydney	852.5	907.3	6.4
2	Brisbane - Sydney	468.7	480.9	2.6
3	Brisbane - Melbourne	362.2	368.5	1.7
4	Gold Coast - Sydney	276.1	283.5	2.7
5	Adelaide - Melbourne	250.2	257.2	2.8
6	Melbourne - Perth	203.1	204.1	0.5
7	Gold Coast - Melbourne	199.3	216.5	8.6
8	Adelaide - Sydney	194.1	197.6	1.8
9	Perth - Sydney	173.7	169.3	-2.5
10	Hobart - Melbourne	163.7	174.1	6.4
11	Brisbane - Cairns	143.9	129.4	-10.1
12	Canberra - Melbourne	135.8	139.8	2.9
13	Cairns - Sydney	115.8	117.8	1.8
14	Launceston - Melbourne	98.1	103.7	5.7
15	Brisbane - Perth	93.5	95.8	2.5
16	Brisbane - Townsville	101.9	106.2	4.3
17	Canberra - Sydney	102.6	105.6	3.0
18	Adelaide - Brisbane	92.6	89.6	-3.2
19	Cairns - Melbourne	87.4	92.9	6.3
20	Hobart - Sydney	65.4	69.8	6.7
21	Brisbane - Mackay	72.6	74.7	2.9
22	Sunshine Coast - Sydney	66.1	68.1	3.0
23	Adelaide - Perth	69.1	70.0	1.4
24	Brisbane - Canberra	65.2	71.2	9.2
25	Brisbane - Newcastle	65.1	65.0	-0.2
26	Melbourne - Sunshine Coast	54.7	54.7	0.1
27	Melbourne - Newcastle	54.0	53.1	-1.8
28	Brisbane - Rockhampton	33.5	52.2	55.9
29	Ballina - Sydney	45.4	45.3	-0.2
30	Karratha - Perth	56.0	54.9	-1.9
31	Perth - Port Hedland	44.0	44.3	0.5
32	Brisbane - Darwin	42.5	38.3	-9.9
33	Broome - Perth	31.4	35.3	12.5
34	Coffs Harbour - Sydney	36.5	38.4	5.3
35	Darwin - Sydney	35.9	36.7	2.0
36	Launceston - Sydney	29.8	28.6	-4.3
37	Darwin - Melbourne	31.7	33.3	4.9
38	Newman - Perth	42.0	43.5	3.7
39	Kalgoorlie - Perth	31.5	37.0	17.3
40	Brisbane - Gladstone	37.0	29.8	-19.5
41	Brisbane - Proserpine	28.8	23.8	-17.3
42	Brisbane - Hobart	21.4	22.8	6.5
43	Adelaide - Gold Coast	22.3	22.2	-0.3
44	Melbourne - Mildura	26.5	28.1	5.9
45	Albury - Sydney	28.1	25.7	-8.6
46	Ayers Rock - Sydney	21.2	21.2	0.0
47	Hamilton Island - Sydney	18.5	25.0	35.1
48	Adelaide - Canberra	21.2	22.3	5.1
49	Brisbane - Emerald	25.1	22.0	-12.2
50	Darwin - Perth	20.7	20.8	0.3

continued

Table 3: (continued) Available seats (000s) — monthly activity

	City-Pair	Apr 2017	Apr 2018	% Change
51	Port Macquarie - Sydney	21.6	19.6	-9.5
52	Dubbo - Sydney	23.9	21.9	-8.3
53	Sydney - Tamworth	24.2	22.8	-6.1
54	Adelaide - Port Lincoln	23.0	22.6	-1.9
55	Sydney - Wagga Wagga	24.0	20.5	-14.5
56	Brisbane - Bundaberg	18.8	18.8	-0.1
57	Sydney - Townsville	19.7	16.9	-14.5
58	Melbourne - Townsville	..	16.4	NA (a)
59	Cairns - Townsville	22.8	21.0	-8.1
60	Armidale - Sydney	15.4	15.6	1.5
61	Proserpine - Sydney	..	13.7	NA (b)
62	Adelaide - Alice Springs	14.8	15.0	1.0
63	Brisbane - Mount Isa	14.8	13.8	-6.8
64	Brisbane - Hamilton Island	15.5	14.1	-9.1
65	Geraldton - Perth	18.9	18.6	-1.6
66	Alice Springs - Darwin	18.3	19.3	5.8
Total domestic network		6 346.2	6 524.5	2.8

(a) Melbourne - Townsville route included from September 2017, prior data not shown.

(b) Proserpine - Sydney route included from September 2017, prior data not shown.

Table 4: Load factors (%) — monthly activity

	City-Pair	Apr 2017	Apr 2018	% Point diff
1	Melbourne - Sydney	85.3	85.0	-0.3
2	Brisbane - Sydney	81.9	81.0	-0.9
3	Brisbane - Melbourne	80.4	77.2	-3.2
4	Gold Coast - Sydney	85.0	85.5	0.5
5	Adelaide - Melbourne	81.0	83.7	2.7
6	Melbourne - Perth	86.6	87.3	0.7
7	Gold Coast - Melbourne	85.2	79.3	-5.9
8	Adelaide - Sydney	82.2	86.2	4.0
9	Perth - Sydney	84.8	87.6	2.8
10	Hobart - Melbourne	85.7	81.6	-4.1
11	Brisbane - Cairns	82.0	82.4	0.4
12	Canberra - Melbourne	66.4	69.0	2.6
13	Cairns - Sydney	83.8	78.1	-5.7
14	Launceston - Melbourne	82.8	82.4	-0.4
15	Brisbane - Perth	83.2	86.5	3.3
16	Brisbane - Townsville	78.1	74.1	-4.0
17	Canberra - Sydney	69.3	71.0	1.7
18	Adelaide - Brisbane	76.6	78.9	2.3
19	Cairns - Melbourne	82.4	73.1	-9.3
20	Hobart - Sydney	85.5	85.7	0.2
21	Brisbane - Mackay	82.5	76.8	-5.7
22	Sunshine Coast - Sydney	80.4	80.2	-0.2
23	Adelaide - Perth	73.9	77.8	3.9
24	Brisbane - Canberra	71.8	73.7	1.9
25	Brisbane - Newcastle	76.4	74.8	-1.6
26	Melbourne - Sunshine Coast	80.9	82.0	1.1
27	Melbourne - Newcastle	78.5	82.3	3.8
28	Brisbane - Rockhampton	84.7	76.8	-7.9
29	Ballina - Sydney	83.0	85.0	2.0
30	Karratha - Perth	63.4	65.6	2.2
31	Perth - Port Hedland	66.8	69.3	2.5
32	Brisbane - Darwin	77.9	79.4	1.5
33	Broome - Perth	72.8	80.5	7.7
34	Coffs Harbour - Sydney	76.9	72.6	-4.3
35	Darwin - Sydney	73.2	71.1	-2.1
36	Launceston - Sydney	84.8	88.4	3.6
37	Darwin - Melbourne	81.4	75.7	-5.7
38	Newman - Perth	51.8	55.6	3.8
39	Kalgoorlie - Perth	57.7	57.6	-0.1
40	Brisbane - Gladstone	79.0	69.5	-9.5
41	Brisbane - Proserpine	67.3	84.1	16.8
42	Brisbane - Hobart	85.6	84.5	-1.1
43	Adelaide - Gold Coast	78.7	84.3	5.6
44	Melbourne - Mildura	66.0	66.7	0.7
45	Albury - Sydney	69.2	71.1	1.9
46	Ayers Rock - Sydney	77.5	79.0	1.5
47	Hamilton Island - Sydney	41.9	64.8	22.9
48	Adelaide - Canberra	68.7	72.5	3.8
49	Brisbane - Emerald	63.0	71.6	8.6
50	Darwin - Perth	73.4	74.7	1.3

continued

Table 4: (continued) Load factors (%) — monthly activity

	City-Pair	Apr 2017	Apr 2018	% Point diff
51	Port Macquarie - Sydney	71.5	78.2	6.7
52	Dubbo - Sydney	63.0	68.8	5.8
53	Sydney - Tamworth	62.9	64.2	1.3
54	Adelaide - Port Lincoln	63.1	64.3	1.2
55	Sydney - Wagga Wagga	64.1	70.7	6.6
56	Brisbane - Bundaberg	75.5	70.7	-4.8
57	Sydney - Townsville	80.1	77.5	-2.6
58	Melbourne - Townsville	..	72.7	NA (a)
59	Cairns - Townsville	49.2	56.3	7.1
60	Armidale - Sydney	70.2	70.8	0.6
61	Proserpine - Sydney	..	79.4	NA (b)
62	Adelaide - Alice Springs	72.3	71.9	-0.4
63	Brisbane - Mount Isa	64.3	76.0	11.7
64	Brisbane - Hamilton Island	44.0	66.4	22.4
65	Geraldton - Perth	50.9	49.6	-1.3
66	Alice Springs - Darwin	50.4	43.1	-7.3
Total domestic network		79.5	79.6	0.1

(a) Melbourne - Townsville route included from September 2017, prior data not shown.

(b) Proserpine - Sydney route included from September 2017, prior data not shown.

Table 5: Aircraft trips ^(a) — monthly activity

	City-Pair	Apr 2017	Apr 2018	% Change
1	Melbourne - Sydney	4 732	4 970	5.0
2	Brisbane - Sydney	2 883	2 880	-0.1
3	Brisbane - Melbourne	2 128	2 138	0.5
4	Gold Coast - Sydney	1 579	1 617	2.4
5	Adelaide - Melbourne	1 561	1 583	1.4
6	Melbourne - Perth	912	938	2.9
7	Gold Coast - Melbourne	1 086	1 137	4.7
8	Adelaide - Sydney	1 163	1 173	0.9
9	Perth - Sydney	757	749	-1.1
10	Hobart - Melbourne	1 013	961	-5.1
11	Brisbane - Cairns	884	838	-5.2
12	Canberra - Melbourne	902	883	-2.1
13	Cairns - Sydney	638	635	-0.5
14	Launceston - Melbourne	735	748	1.8
15	Brisbane - Perth	469	499	6.4
16	Brisbane - Townsville	718	709	-1.3
17	Canberra - Sydney	1 235	1 236	0.1
18	Adelaide - Brisbane	560	558	-0.4
19	Cairns - Melbourne	452	483	6.9
20	Hobart - Sydney	411	435	5.8
21	Brisbane - Mackay	616	587	-4.7
22	Sunshine Coast - Sydney	399	410	2.8
23	Adelaide - Perth	446	459	2.9
24	Brisbane - Canberra	488	523	7.2
25	Brisbane - Newcastle	507	425	-16.2
26	Melbourne - Sunshine Coast	308	309	0.3
27	Melbourne - Newcastle	302	298	-1.3
28	Brisbane - Rockhampton	425	638	50.1
29	Ballina - Sydney	301	285	-5.3
30	Karratha - Perth	501	477	-4.8
31	Perth - Port Hedland	380	363	-4.5
32	Brisbane - Darwin	255	232	-9.0
33	Broome - Perth	268	320	19.4
34	Coffs Harbour - Sydney	418	363	-13.2
35	Darwin - Sydney	213	217	1.9
36	Launceston - Sydney	173	165	-4.6
37	Darwin - Melbourne	180	174	-3.3
38	Newman - Perth	307	334	8.8
39	Kalgoorlie - Perth	271	294	8.5
40	Brisbane - Gladstone	484	390	-19.4
41	Brisbane - Proserpine	162	134	-17.3
42	Brisbane - Hobart	122	129	5.7
43	Adelaide - Gold Coast	126	126	0.0
44	Melbourne - Mildura	389	379	-2.6
45	Albury - Sydney	506	455	-10.1
46	Ayers Rock - Sydney	120	119	-0.8
47	Hamilton Island - Sydney	109	152	39.4
48	Adelaide - Canberra	128	132	3.1
49	Brisbane - Emerald	339	292	-13.9
50	Darwin - Perth	124	124	0.0

continued

Table 5: (continued) Aircraft trips — monthly activity

	City-Pair	Apr 2017	Apr 2018	% Change
51	Port Macquarie - Sydney	366	299	-18.3
52	Dubbo - Sydney	517	435	-15.9
53	Sydney - Tamworth	382	328	-14.1
54	Adelaide - Port Lincoln	590	573	-2.9
55	Sydney - Wagga Wagga	454	398	-12.3
56	Brisbane - Bundaberg	318	262	-17.6
57	Sydney - Townsville	118	104	-11.9
58	Melbourne - Townsville	..	90	NA (b)
59	Cairns - Townsville	367	332	-9.5
60	Armidale - Sydney	360	369	2.5
61	Proserpine - Sydney	..	76	NA (c)
62	Adelaide - Alice Springs	93	106	14.0
63	Brisbane - Mount Isa	144	147	2.1
64	Brisbane - Hamilton Island	117	114	-2.6
65	Geraldton - Perth	189	186	-1.6
66	Alice Springs - Darwin	149	168	12.8
	Total domestic network	51 825	52 229	0.8

(a) Includes RPT Cargo flights.

(b) Melbourne - Townsville route included from September 2017, prior data not shown.

(c) Proserpine - Sydney route included from September 2017, prior data not shown.

TOP TEN AIRPORTS – PASSENGER MOVEMENTS

Table 6: Top ten airports, RPT passenger movements (000s) - annual activity

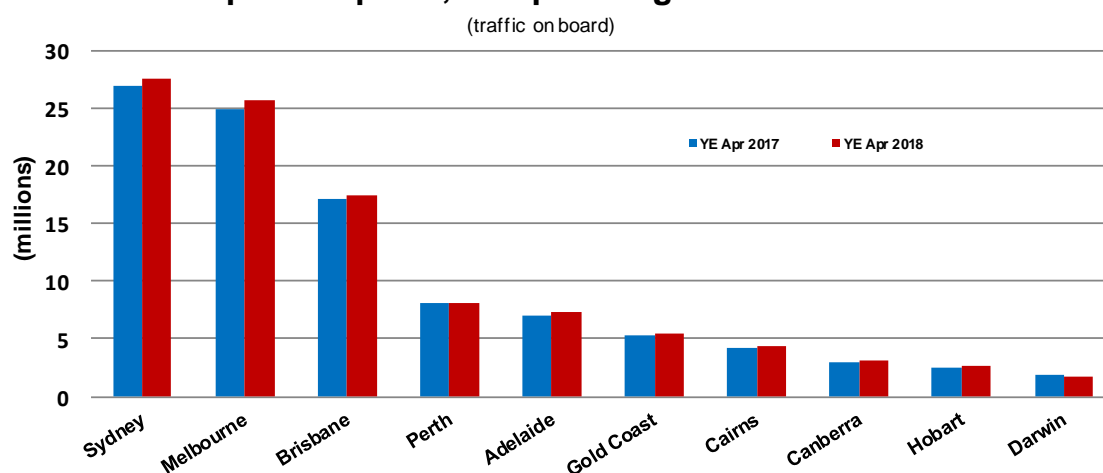
Airport	YE Apr 2017	YE Apr 2018	% Change	% of Total
1 Sydney	26 974.3	27 617.6	2.4	22.8
2 Melbourne	24 919.4	25 636.3	2.9	21.1
3 Brisbane	17 073.5	17 374.3	1.8	14.3
4 Perth	8 046.3	8 075.2	0.4	6.7
5 Adelaide	7 028.5	7 255.4	3.2	6.0
6 Gold Coast	5 337.8	5 504.1	3.1	4.5
7 Cairns	4 283.6	4 326.4	1.0	3.6
8 Canberra	2 918.3	3 067.5	5.1	2.5
9 Hobart	2 430.0	2 588.9	6.5	2.1
10 Darwin	1 815.0	1 798.2	-0.9	1.5
Total top ten airports	100 826.7	103 244.0	2.4	85.1
Total domestic network	118 282.3	121 303.0	2.6	100.0

Table 7: Top ten airports, RPT passenger movements (000s) - monthly activity

Airport	Apr 2017	Apr 2018	% Change	% of Total
1 Sydney	2 243.9	2 326.6	3.7	22.8
2 Melbourne	2 093.6	2 162.9	3.3	21.2
3 Brisbane	1 408.0	1 403.7	-0.3	13.8
4 Perth	670.0	697.3	4.1	6.8
5 Adelaide	591.1	633.5	7.2	6.2
6 Gold Coast	463.9	479.6	3.4	4.7
7 Cairns	365.6	348.6	-4.6	3.4
8 Canberra	237.4	257.3	8.4	2.5
9 Hobart	214.5	229.9	7.2	2.3
10 Townsville	145.5	145.8	0.2	1.4
Total top ten airports	8 433.6	8 685.3	3.0	85.2
Total domestic network	9 883.8	10 193.4	3.1	100.0

Note: Airport passenger movement numbers are the sum of passenger arrivals and departures at each airport.

Top ten airports, RPT passenger movements



TOP FIVE AIRPORTS – CARGO MOVEMENTS

Table 8: Top five airports, domestic RPT cargo movements (000s tonnes) - annual activity

Airport	YE Apr 2017	YE Apr 2018	% Change	% of Total
1 Melbourne	126.3	133.6	5.8	29.0
2 Sydney	105.0	106.2	1.1	23.1
3 Brisbane	66.6	68.1	2.3	14.8
4 Perth	60.6	65.8	8.5	14.3
5 Adelaide	25.3	27.1	7.2	5.9
Total top five airports	383.8	400.8	4.4	87.1
Total domestic network	441.9	460.3	4.2	100.0

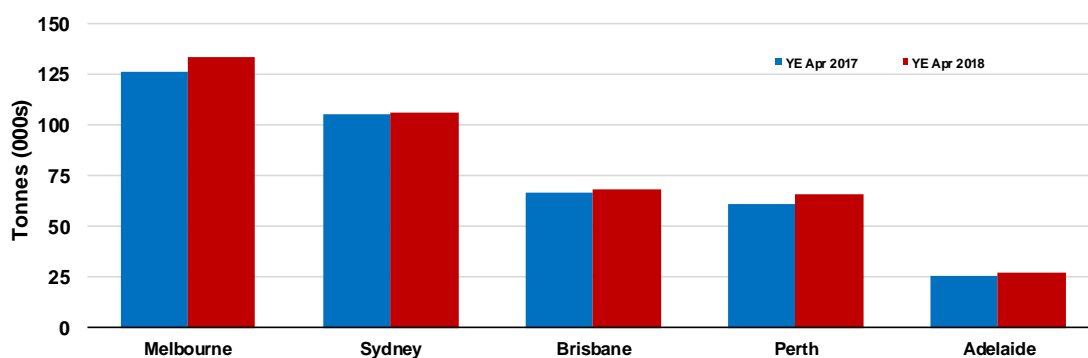
Table 9: Top five airports, domestic RPT cargo movements (000s tonnes) - monthly activity

Airport	Apr 2017	Apr 2018	% Change	% of Total
1 Melbourne	9.4	9.5	0.3	28.7
2 Sydney	7.9	7.7	-1.9	23.4
3 Perth	4.9	5.0	2.0	15.0
4 Brisbane	5.0	4.9	-1.6	14.9
5 Adelaide	1.9	2.0	1.8	6.0
Total top five airports	29.1	29.0	-0.2	88.0
Total domestic network	33.3	33.0	-0.9	100.0

Note: Airport cargo tonnes are the sum of cargo tonnes on arrivals and departures at each airport.

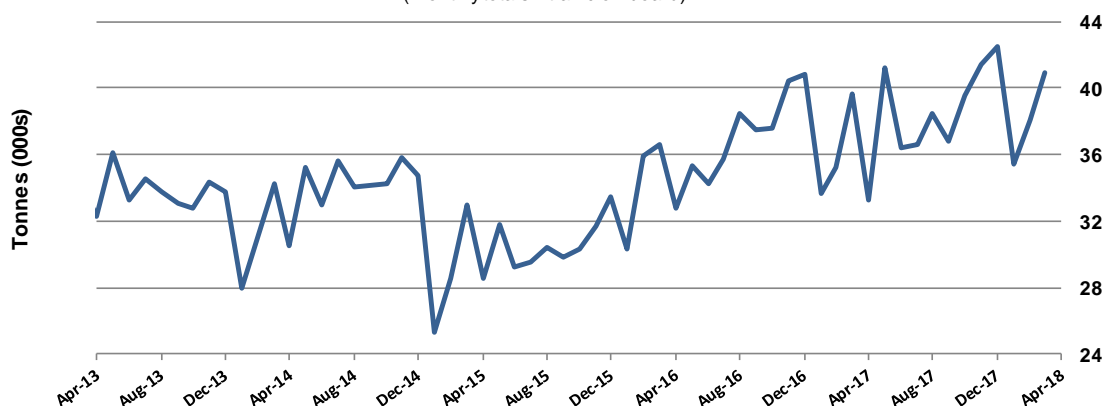
Top five airports, cargo movements

(Domestic cargo traffic - traffic on board)



Total domestic network - cargo movement

(monthly totals - traffic on board)



Note: Airport cargo tonnes are the sum of cargo tonnes on arrivals and departures at each airport.

TOP TEN ROUTES

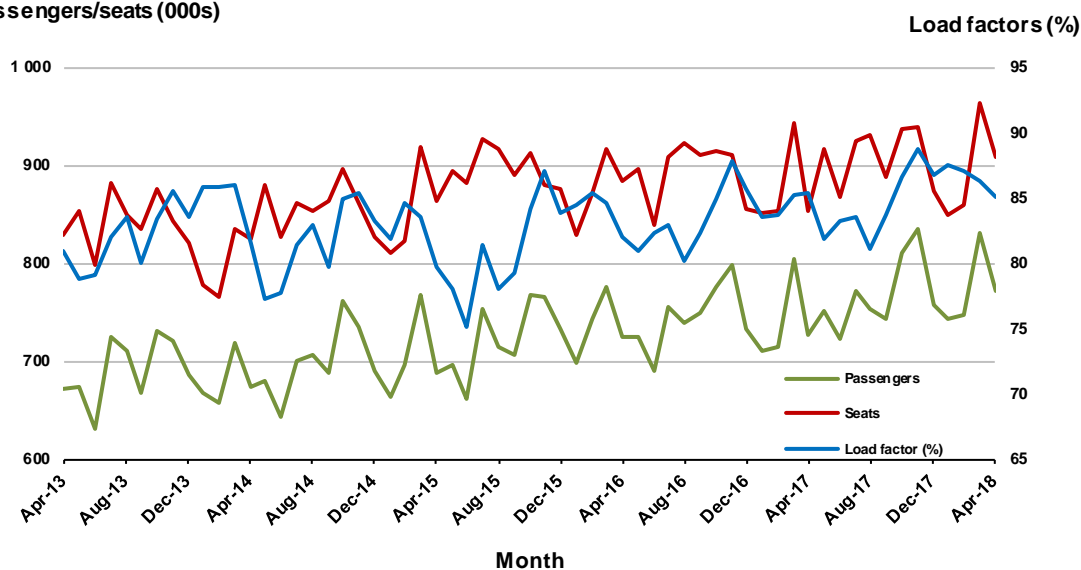
1. Melbourne - Sydney

Monthly data

	Apr 2017	Apr 2018	% Change
Passengers carried (000s)	727.1	771.0	6.0
Seats (000s)	852.5	907.3	6.4
Load factor %	85.3	85.0	-0.3 *
Aircraft trips	4 732	4 970	5.0

* percentage point difference

Passengers/seats (000s)

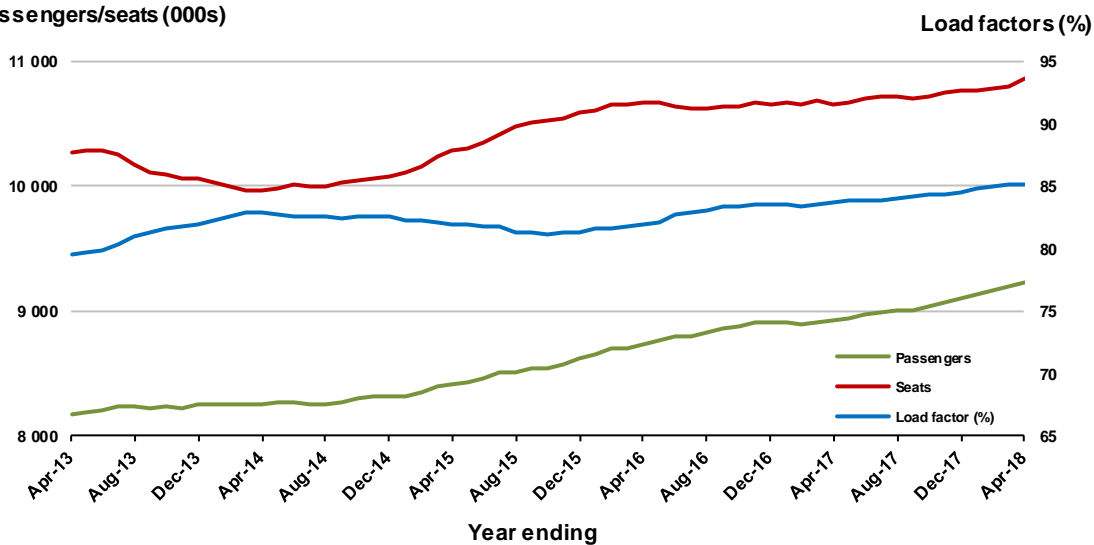


Moving annual data

	YE Apr 2017	YE Apr 2018	% Change
Passengers carried (000s)	8 918.1	9 235.6	3.6
Seats (000s)	10 651.1	10 854.2	1.9
Load factor %	83.7	85.1	1.4 *
Aircraft trips	59 219	60 374	2.0

* percentage point difference

Passengers/seats (000s)



2. Brisbane - Sydney

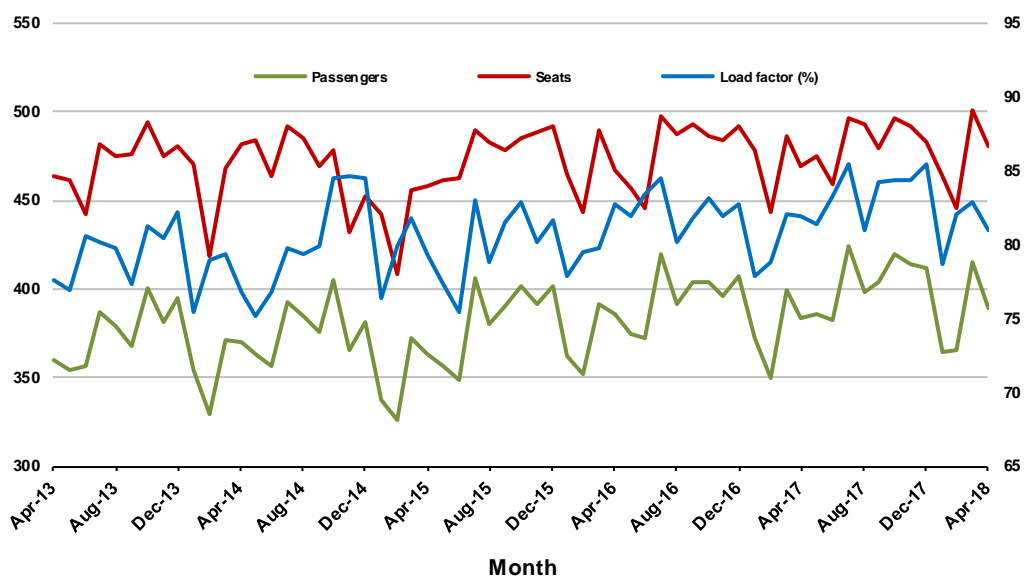
Monthly data

	Apr 2017	Apr 2018	% Change
Passengers carried (000s)	384.0	389.5	1.4
Seats (000s)	468.7	480.9	2.6
Load factor %	81.9	81.0	-0.9 *
Aircraft trips	2 883	2 880	-0.1

* percentage point difference

Passengers/seats (000s)

Load factors (%)



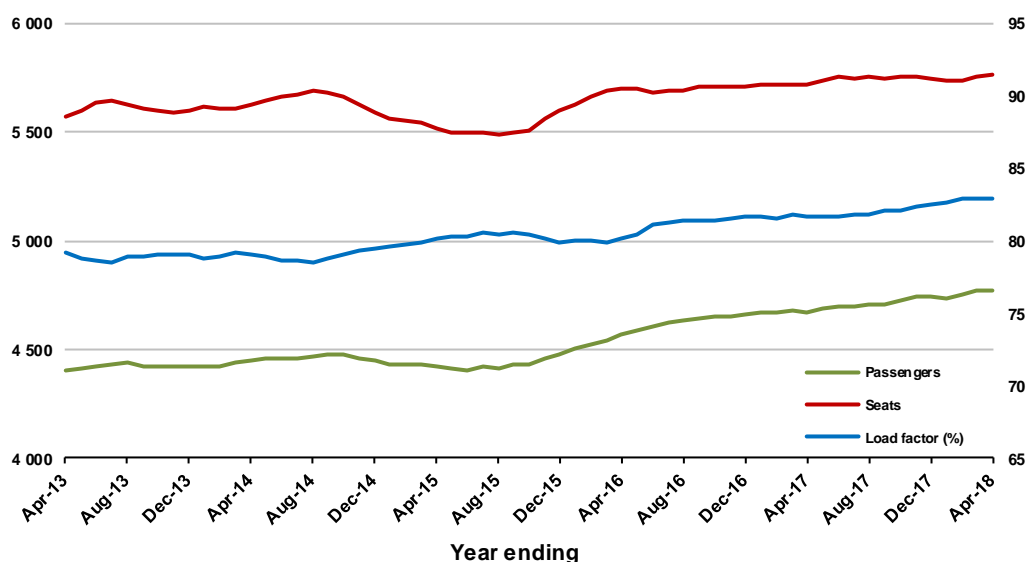
Moving annual data

	YE Apr 2017	YE Apr 2018	% Change
Passengers carried (000s)	4 673.0	4 775.5	2.2
Seats (000s)	5 719.8	5 762.3	0.7
Load factor %	81.7	82.9	1.2 *
Aircraft trips	35 416	35 243	-0.5

* percentage point difference

Passengers/seats (000s)

Load factors (%)

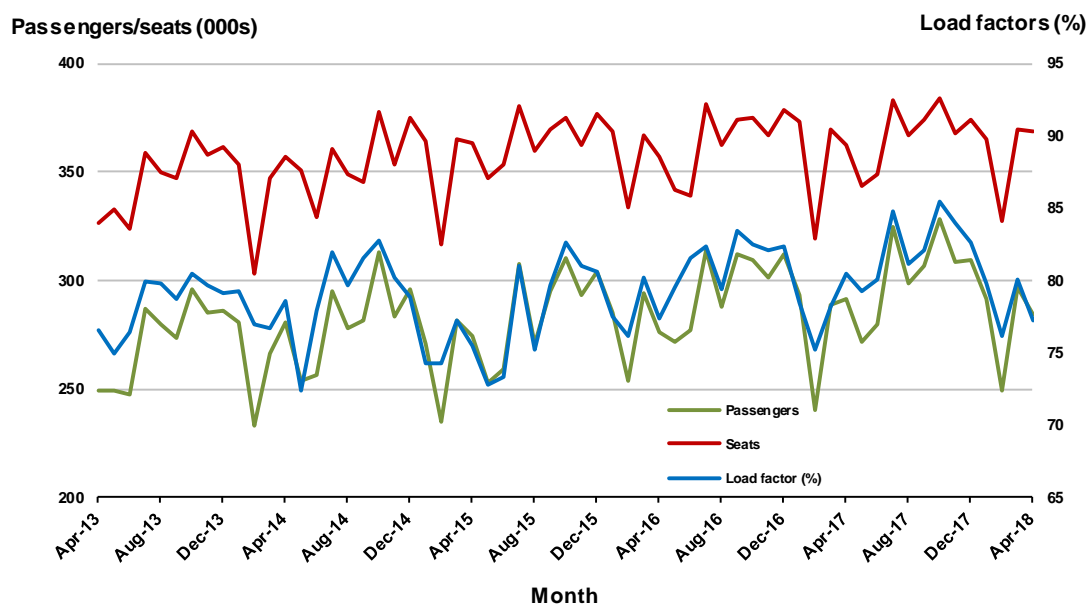


3. Brisbane - Melbourne

Monthly data

	Apr 2017	Apr 2018	% Change
Passengers carried (000s)	291.2	284.5	-2.3
Seats (000s)	362.2	368.5	1.7
Load factor %	80.4	77.2	-3.2 *
Aircraft trips	2 128	2 138	0.5

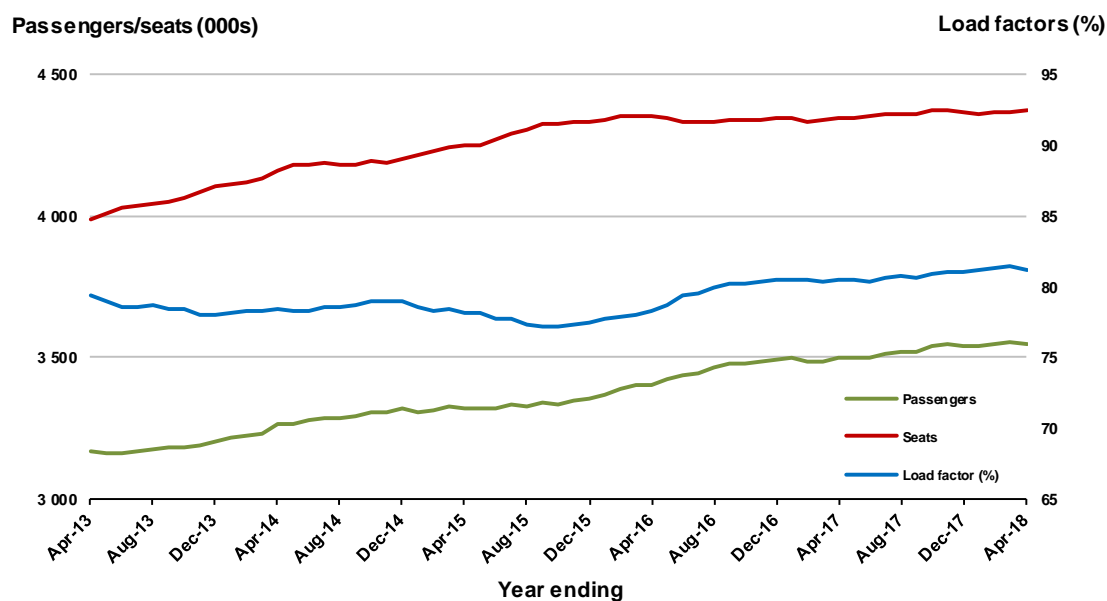
* percentage point difference



Moving annual data

	YE Apr 2017	YE Apr 2018	% Change
Passengers carried (000s)	3 497.4	3 549.1	1.5
Seats (000s)	4 342.7	4 373.7	0.7
Load factor %	80.5	81.1	0.6 *
Aircraft trips	25 760	25 838	0.3

* percentage point difference



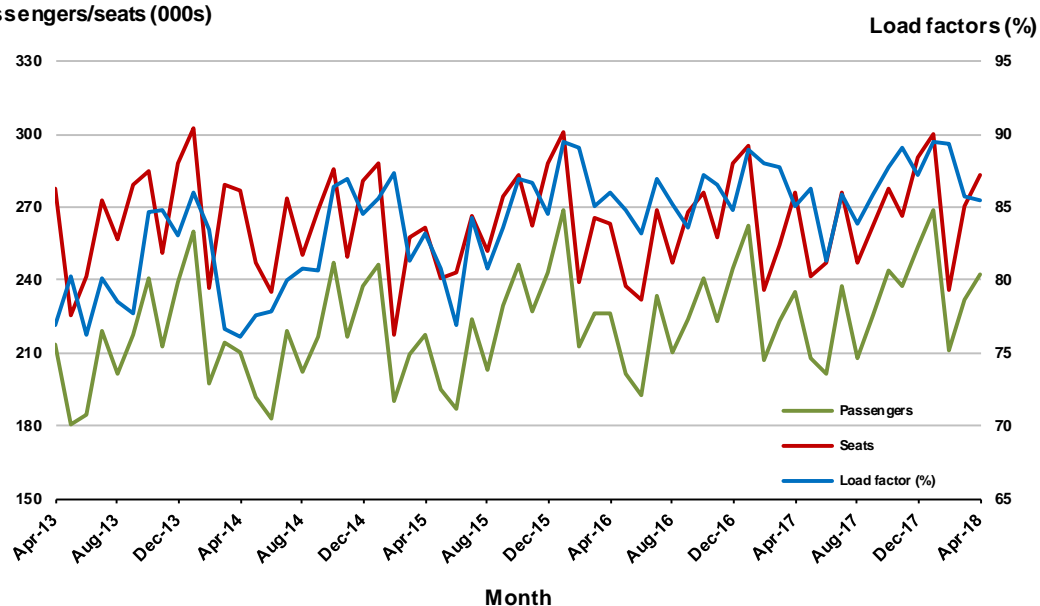
4. Gold Coast - Sydney

Monthly data

	Apr 2017	Apr 2018	% Change
Passengers carried (000s)	234.8	242.5	3.3
Seats (000s)	276.1	283.5	2.7
Load factor %	85.0	85.5	0.5 *
Aircraft trips	1 579	1 617	2.4

* percentage point difference

Passengers/seats (000s)

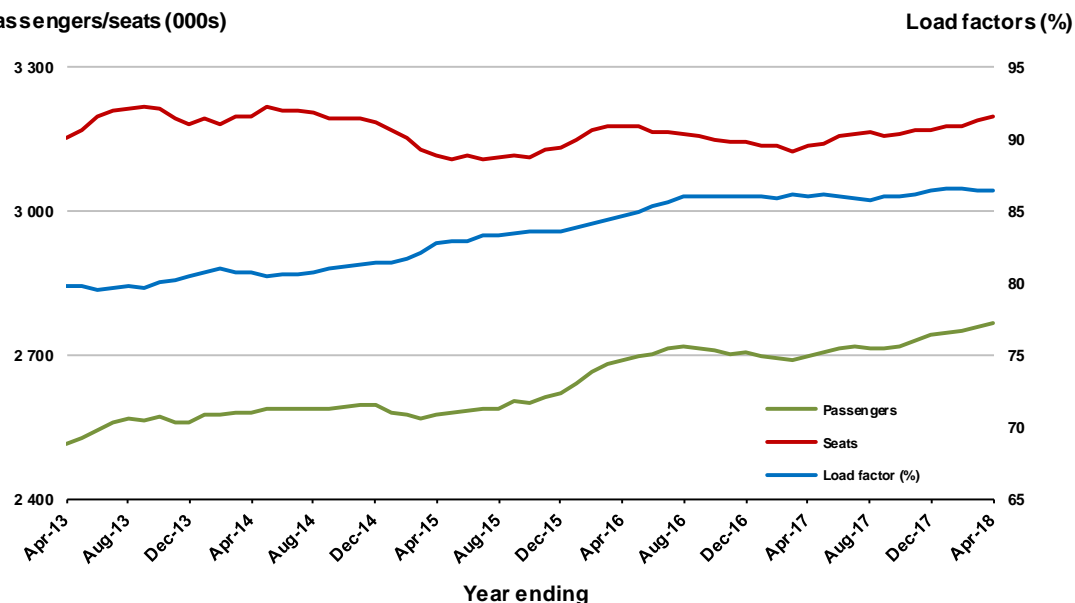


Moving annual data

	YE Apr 2017	YE Apr 2018	% Change
Passengers carried (000s)	2 698.3	2 766.3	2.5
Seats (000s)	3 136.3	3 198.8	2.0
Load factor %	86.0	86.5	0.4 *
Aircraft trips	18 268	18 059	-1.1

* percentage point difference

Passengers/seats (000s)



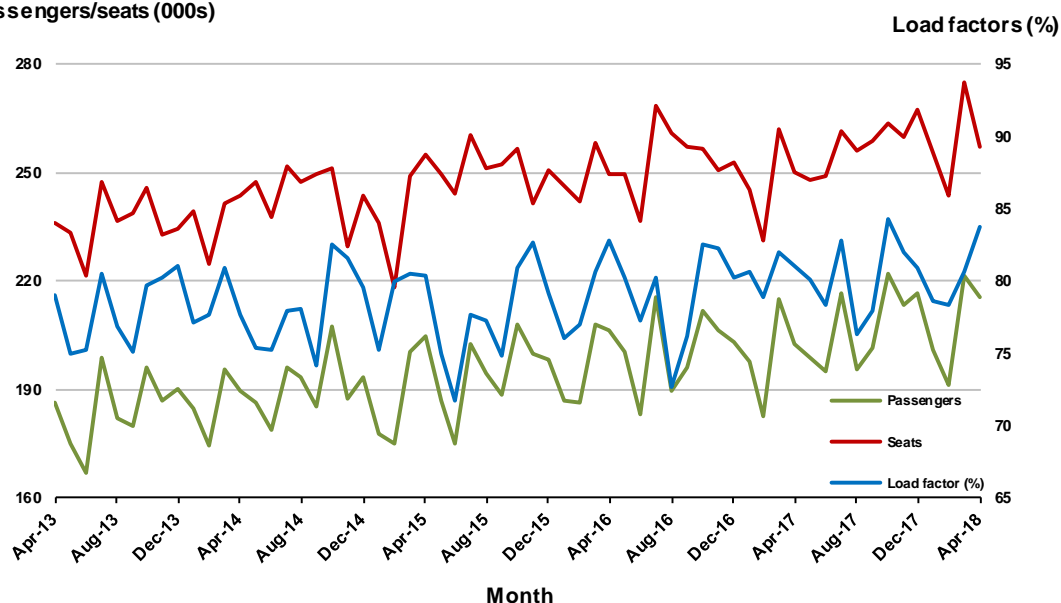
5. Adelaide - Melbourne

Monthly data

	Apr 2017	Apr 2018	% Change
Passengers carried (000s)	202.7	215.4	6.3
Seats (000s)	250.2	257.2	2.8
Load factor %	81.0	83.7	2.7 *
Aircraft trips	1 561	1 583	1.4

* percentage point difference

Passengers/seats (000s)

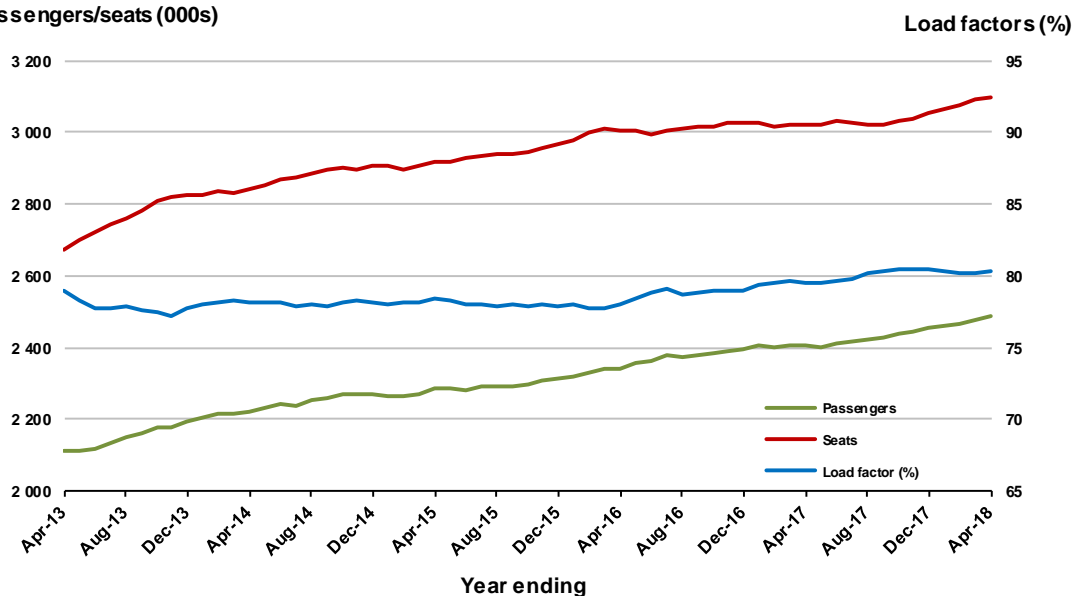


Moving annual data

	YE Apr 2017	YE Apr 2018	% Change
Passengers carried (000s)	2 403.1	2 487.9	3.5
Seats (000s)	3 021.9	3 096.3	2.5
Load factor %	79.5	80.3	0.8 *
Aircraft trips	19 221	19 270	0.3

* percentage point difference

Passengers/seats (000s)



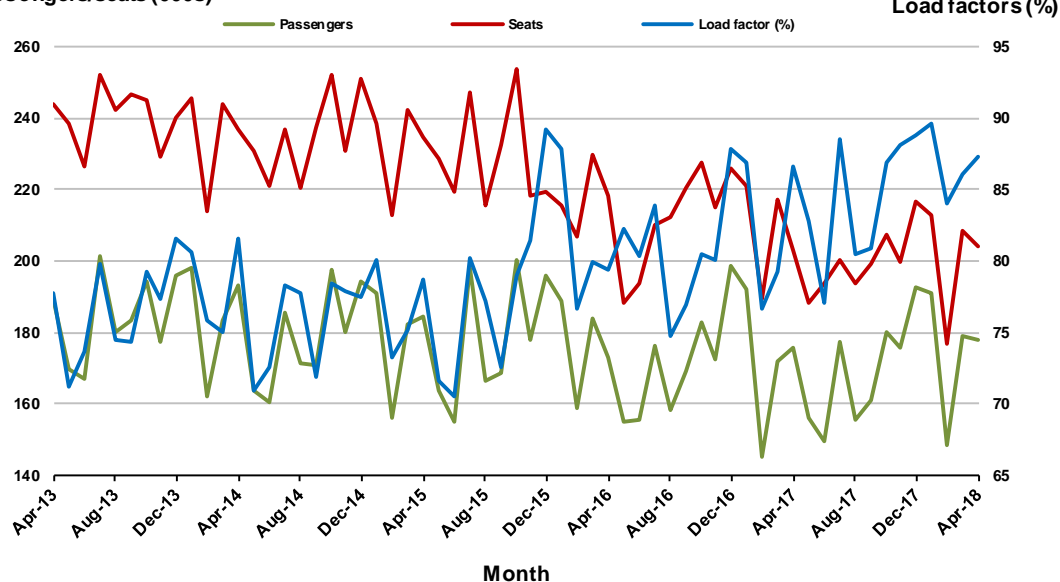
6. Melbourne - Perth

Monthly data

	Apr 2017	Apr 2018	% Change
Passengers carried (000s)	176.0	178.2	1.2
Seats (000s)	203.1	204.1	0.5
Load factor %	86.6	87.3	0.7 *
Aircraft trips	912	938	2.9

* percentage point difference

Passengers/seats (000s)

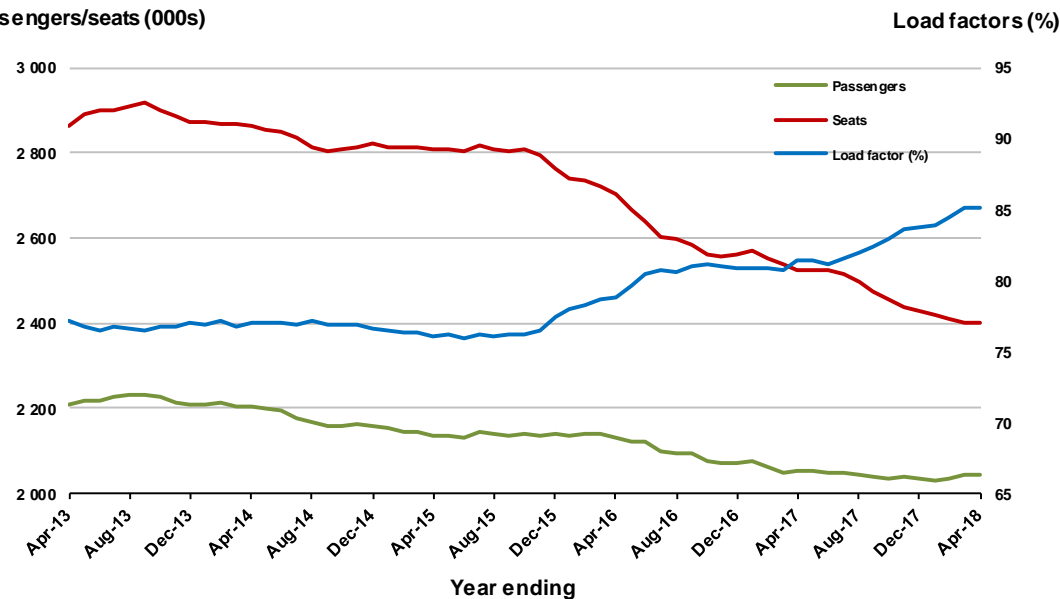


Moving annual data

	YE Apr 2017	YE Apr 2018	% Change
Passengers carried (000s)	2 053.2	2 044.9	-0.4
Seats (000s)	2 523.3	2 400.7	-4.9
Load factor %	81.4	85.2	3.8 *
Aircraft trips	11 423	11 085	-3.0

* percentage point difference

Passengers/seats (000s)



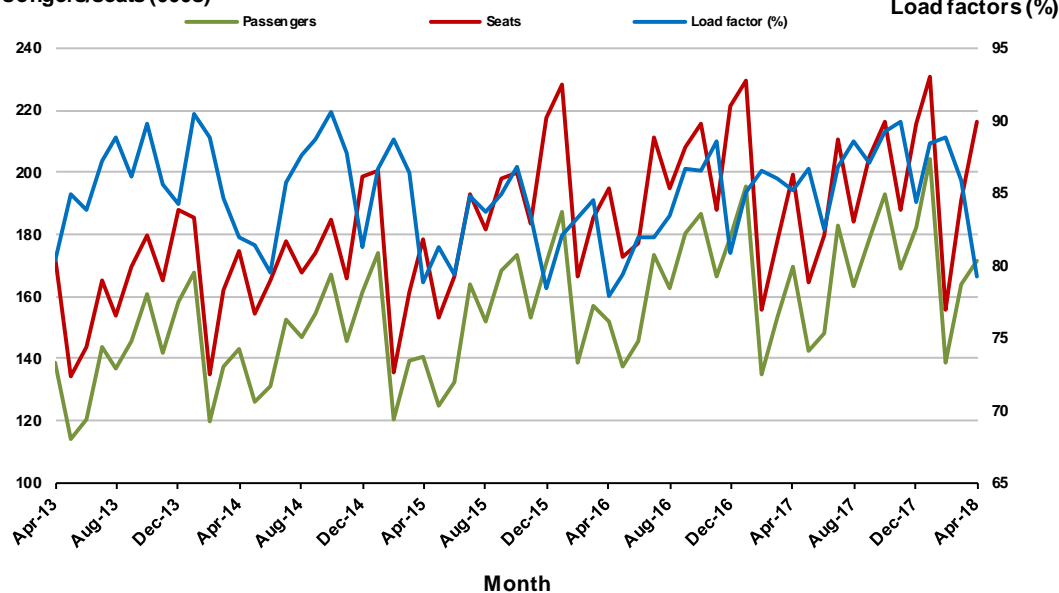
7. Gold Coast - Melbourne

Monthly data

	Apr 2017	Apr 2018	% Change
Passengers carried (000s)	169.9	171.8	1.1
Seats (000s)	199.3	216.5	8.6
Load factor %	85.2	79.3	-5.9 *
Aircraft trips	1 086	1 137	4.7

* percentage point difference

Passengers/seats (000s)

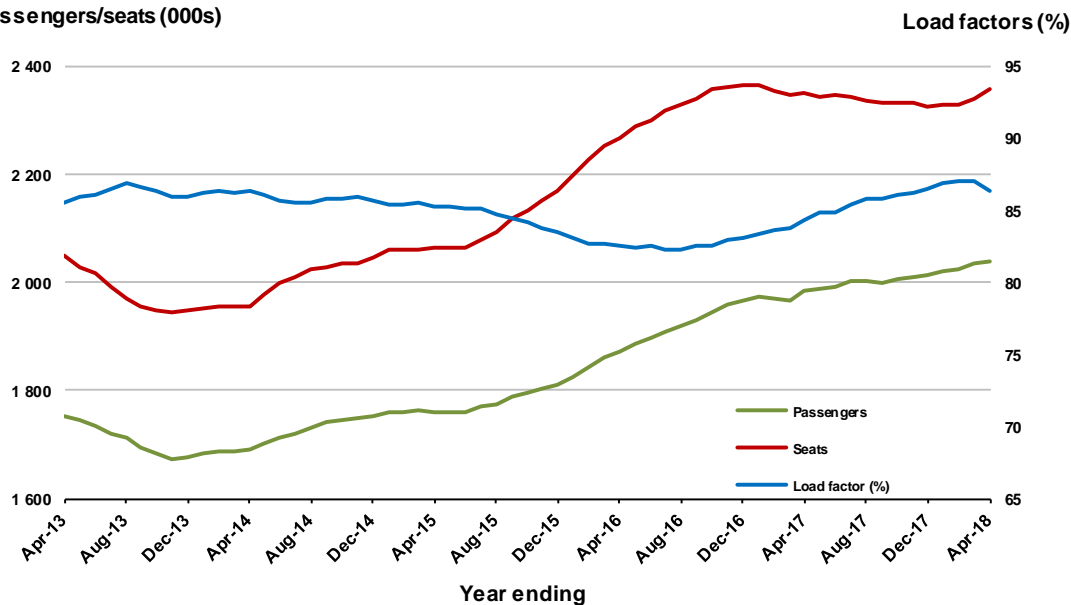


Moving annual data

	YE Apr 2017	YE Apr 2018	% Change
Passengers carried (000s)	1 984.4	2 038.0	2.7
Seats (000s)	2 352.6	2 358.3	0.2
Load factor %	84.3	86.4	2.1 *
Aircraft trips	12 594	12 509	-0.7

* percentage point difference

Passengers/seats (000s)



8. Adelaide - Sydney

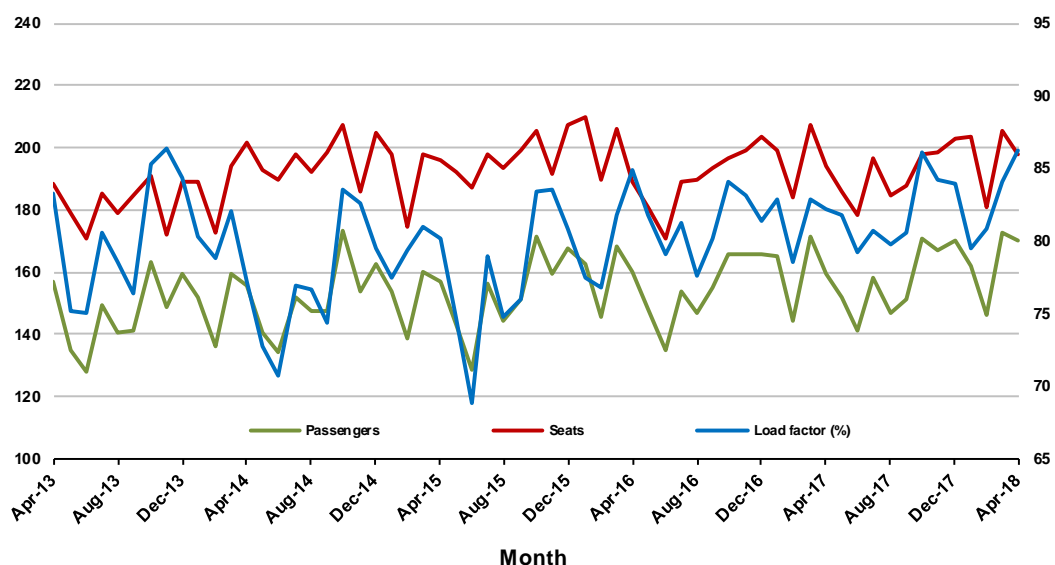
Monthly data

	Apr 2017	Apr 2018	% Change
Passengers carried (000s)	159.6	170.3	6.7
Seats (000s)	194.1	197.6	1.8
Load factor %	82.2	86.2	4.0 *
Aircraft trips	1 163	1 173	0.9

* percentage point difference

Passengers/seats (000s)

Load factors (%)



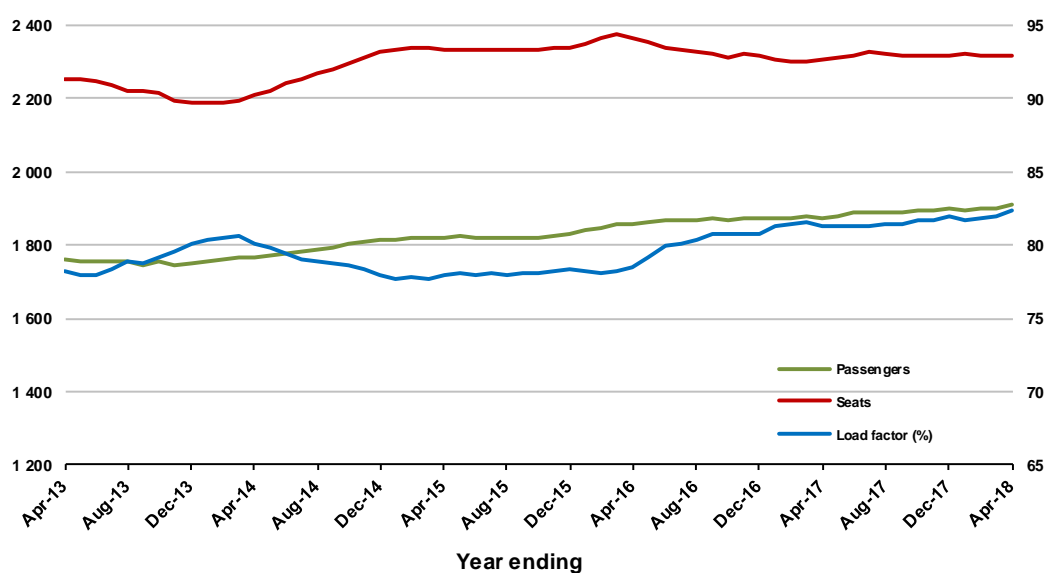
Moving annual data

	YE Apr 2017	YE Apr 2018	% Change
Passengers carried (000s)	1 875.7	1 909.0	1.8
Seats (000s)	2 306.4	2 319.6	0.6
Load factor %	81.3	82.3	1.0 *
Aircraft trips	14 000	13 916	-0.6

* percentage point difference

Passengers/seats (000s)

Load factors (%)



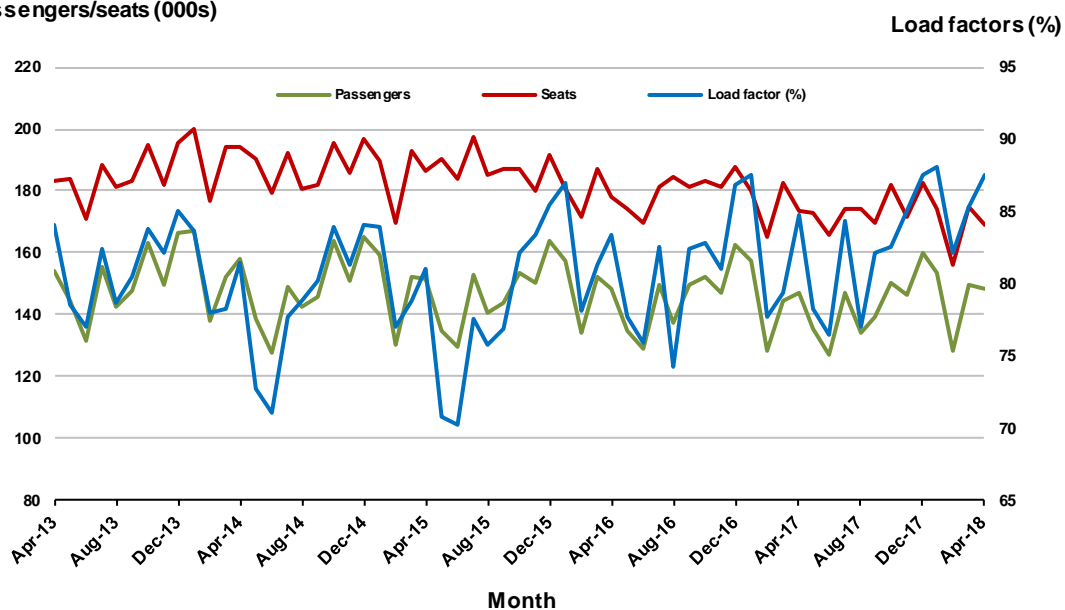
9. Perth - Sydney

Monthly data

	Apr 2017	Apr 2018	% Change
Passengers carried (000s)	147.3	148.2	0.6
Seats (000s)	173.7	169.3	-2.5
Load factor %	84.8	87.6	2.8 *
Aircraft trips	757	749	-1.1

* percentage point difference

Passengers/seats (000s)

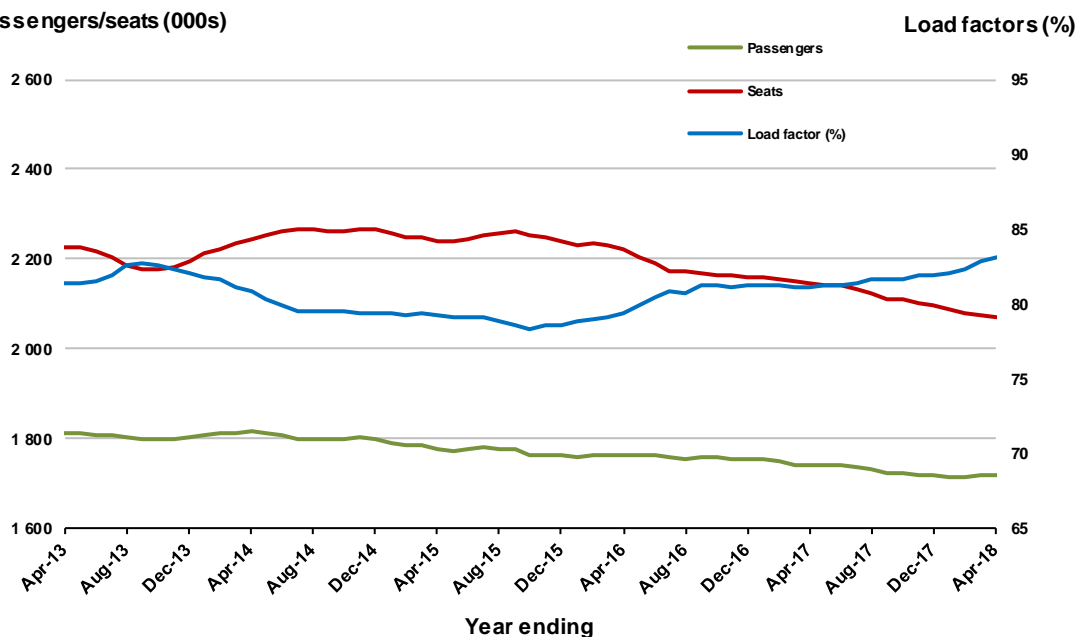


Moving annual data

	YE Apr 2017	YE Apr 2018	% Change
Passengers carried (000s)	1 739.5	1 717.6	-1.3
Seats (000s)	2 143.9	2 067.6	-3.6
Load factor %	81.1	83.1	1.9 *
Aircraft trips	9 086	9 027	-0.6

* percentage point difference

Passengers/seats (000s)



10. Hobart - Melbourne

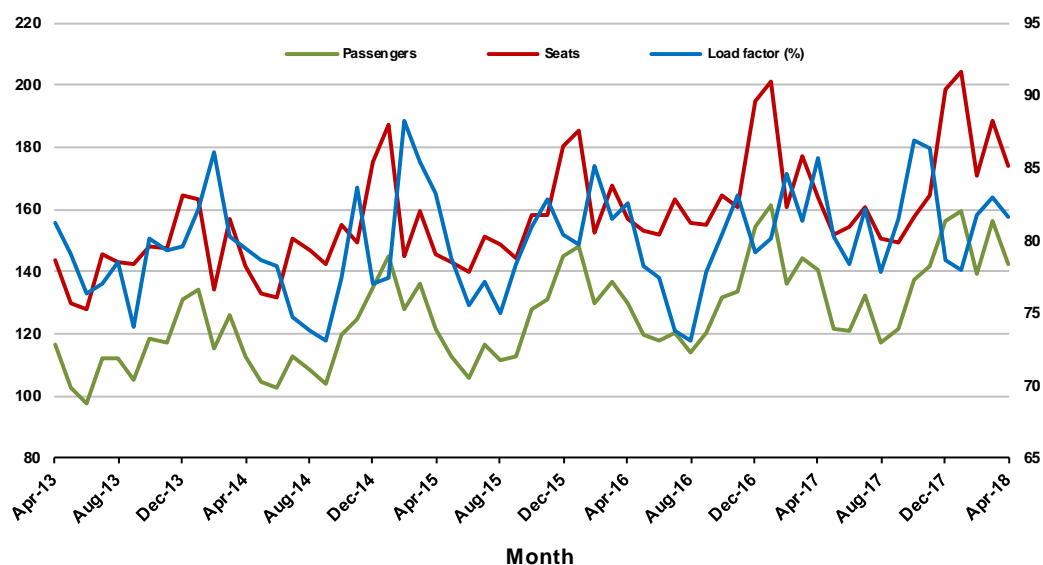
Monthly data

	Apr 2017	Apr 2018	% Change
Passengers carried (000s)	140.3	142.1	1.3
Seats (000s)	163.7	174.1	6.4
Load factor %	85.7	81.6	-4.1 *
Aircraft trips	1 013	961	-5.1

* percentage point difference

Passengers/seats (000s)

Load factors (%)



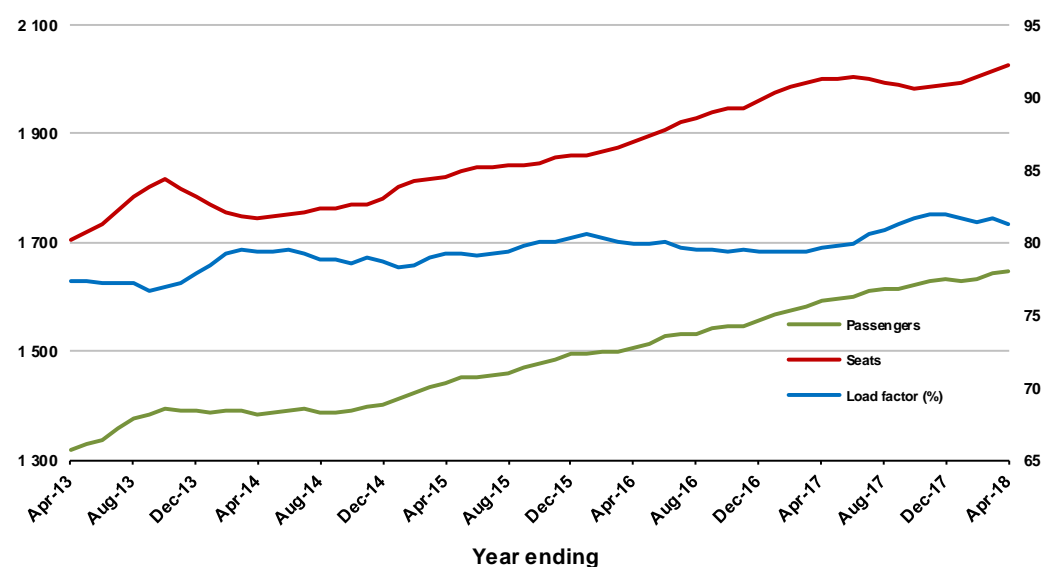
Moving annual data

	YE Apr 2017	YE Apr 2018	% Change
Passengers carried (000s)	1 593.5	1 645.8	3.3
Seats (000s)	2 001.2	2 025.6	1.2
Load factor %	79.6	81.3	1.6 *
Aircraft trips	12 446	12 096	-2.8

* percentage point difference

Passengers/seats (000s)

Load factors (%)



TOP FIFTY REGIONAL AIRPORTS

Table 10: Top fifty regional airports (000s) — passenger movements, monthly

	Airport	Apr 2017	Apr 2018	% Change
1	Cairns	365.6	348.6	-4.6
2	Hobart	214.5	229.9	7.2
3	Darwin	145.5	145.8	0.2
4	Townsville	130.7	131.5	0.6
5	Launceston	119.0	123.0	3.3
6	Newcastle	110.7	105.6	-4.6
7	Mackay	66.5	64.9	-2.3
8	Alice Springs	51.9	48.8	-6.0
9	Ballina	48.6	47.4	-2.4
10	Rockhampton	30.1	43.2	43.6
11	Karratha	35.6	36.1	1.5
12	Proserpine	30.6	36.1	18.0
13	Ayers Rock	30.6	34.0	11.4
14	Broome	28.4	33.4	17.4
15	Coffs Harbour	33.9	33.2	-2.1
16	Hamilton Island	16.8	32.8	95.1
17	Port Hedland	30.1	31.3	4.0
18	Newman	21.8	24.2	11.3
19	Kalgoorlie	19.0	22.5	18.7
20	Mildura	20.9	22.5	7.9
21	Albury	23.0	22.2	-3.5
22	Gladstone	29.4	20.7	-29.7
23	Dubbo	19.3	18.1	-5.9
24	Port Macquarie	18.5	17.8	-4.2
25	Mount Isa	15.1	17.4	15.2
26	Wagga Wagga	18.2	17.2	-5.7
27	Tamworth	16.9	16.1	-4.8
28	Emerald	15.8	15.7	-0.5
29	Paraburdoo	14.1	14.6	3.8
30	Port Lincoln	14.5	14.6	0.4
31	Hervey Bay	14.3	13.5	-5.7
32	Bundaberg	14.2	13.3	-6.5
33	Toowoomba Wellcamp	12.2	12.2	0.0
34	Devonport	12.7	11.7	-7.6
35	Armidale	11.4	11.7	1.9
36	Geraldton	9.5	9.2	-2.4
37	Learmonth	8.0	9.1	13.5
38	Kununurra	8.8	8.8	0.0
39	Thursday Island	7.7	7.6	-0.7
40	Moranbah	9.0	7.6	-15.7
41	Weipa	7.0	7.1	1.0
42	Roma	6.5	7.0	6.7
43	Gove	6.5	6.8	5.2
44	Griffith	5.8	6.5	11.9
45	Mount Gambier	6.1	6.2	2.1
46	Burnie	5.4	6.1	12.6
47	Norfolk Island	6.0	6.0	1.1
48	Olympic Dam	4.6	6.0	30.8
49	Whyalla	4.8	5.8	21.5
50	Orange	4.8	5.8	21.0
Total top 50 regional airports		1 900.7	1 937.2	1.9
Total regional airports		2 008.5	2 054.6	2.3
Total domestic network		9 883.8	10 193.4	3.1

Note: Airport passenger movement numbers are the sum of passenger arrivals and departures at each airport.

Table 11: Top fifty regional airports (000s) — passenger movements, annual

	Airport	YE Apr 2017	YE Apr 2018	% Change
1	Cairns	4 283.6	4 326.4	1.0
2	Hobart	2 430.0	2 588.9	6.5
3	Darwin	1 815.0	1 798.2	-0.9
4	Townsville	1 537.2	1 630.3	6.1
5	Launceston	1 342.0	1 361.1	1.4
6	Newcastle	1 268.0	1 281.8	1.1
7	Mackay	774.0	806.3	4.2
8	Alice Springs	618.2	612.9	-0.9
9	Rockhampton	568.7	563.6	-0.9
10	Ballina	501.2	521.7	4.1
11	Proserpine	338.9	471.0	39.0
12	Karratha	473.6	435.1	-8.1
13	Coffs Harbour	401.7	416.3	3.7
14	Hamilton Island	522.3	411.9	-21.1
15	Broome	362.5	410.9	13.4
16	Ayers Rock	367.3	373.8	1.8
17	Port Hedland	354.4	350.8	-1.0
18	Newman	299.7	291.6	-2.7
19	Albury	258.2	269.1	4.2
20	Gladstone	314.5	268.7	-14.6
21	Kalgoorlie	243.2	261.0	7.3
22	Mildura	248.5	260.6	4.9
23	Dubbo	219.5	233.3	6.3
24	Wagga Wagga	215.0	226.0	5.1
25	Port Macquarie	226.4	224.9	-0.7
26	Mount Isa	190.4	205.7	8.0
27	Tamworth	187.0	196.1	4.9
28	Emerald	198.9	195.6	-1.7
29	Hervey Bay	170.0	172.4	1.4
30	Bundaberg	174.1	171.8	-1.3
31	Port Lincoln	176.1	171.1	-2.9
32	Paraburdoo	165.6	169.2	2.2
33	Toowoomba Wellcamp	135.4	151.7	12.0
34	Devonport	146.1	147.7	1.1
35	Armidale	128.1	132.8	3.7
36	Geraldton	116.3	112.2	-3.5
37	Moranbah	118.3	108.2	-8.6
38	Kununurra	104.4	103.8	-0.6
39	Thursday Island	100.9	99.8	-1.0
40	Learmonth	82.9	85.8	3.5
41	Gove	84.7	85.3	0.8
42	Roma	84.3	84.4	0.1
43	Mount Gambier	77.2	80.9	4.8
44	Weipa	79.0	78.1	-1.1
45	Griffith	71.2	74.9	5.2
46	Olympic Dam	52.4	74.8	42.7
47	Orange	53.7	69.3	29.1
48	Whyalla	61.4	67.7	10.4
49	Merimbula	64.1	66.5	3.8
50	Broken Hill	55.0	65.2	18.7
Total top 50 regional airports		22 861.0	23 367.2	2.2
Total regional airports		24 180.8	24 749.7	2.4
Total domestic network		118 282.3	121 303.0	2.6

Note: Airport passenger movement numbers are the sum of passenger arrivals and departures at each airport.

DOMESTIC CHARTER ACTIVITY

Table 12: Charter passengers carried and aircraft trips - annual activity

	YE Apr 2017	YE Apr 2018	% Change
Total domestic charter passengers	2 377 022	2 439 236	2.6
Total domestic charter aircraft trips	44 292	45 690	3.2

Note: Helicopter, joyflights and sightseeing charter flights not included.

Table 13: Charter passengers carried and aircraft trips - monthly activity

	Apr 2017	Apr 2018	% Change
Total domestic charter passengers	183 539	193 085	5.2
Total domestic charter aircraft trips	3 417	3 461	1.3

Note: Helicopter, joyflights and sightseeing charter flights not included.

Table 14: Domestic airports - charter activity - annual

	YE Apr 2017	YE Apr 2018	% Change
Total domestic charter passenger movements	4 754 044	4 878 472	2.6
Total domestic charter aircraft movements	88 584	91 380	3.2
Perth airport charter passenger movements	1 847 756	1 835 500	-0.7
Perth airport charter aircraft movements	31 303	30 493	-2.6

Note: Helicopter, joyflights and sightseeing charter flights not included.

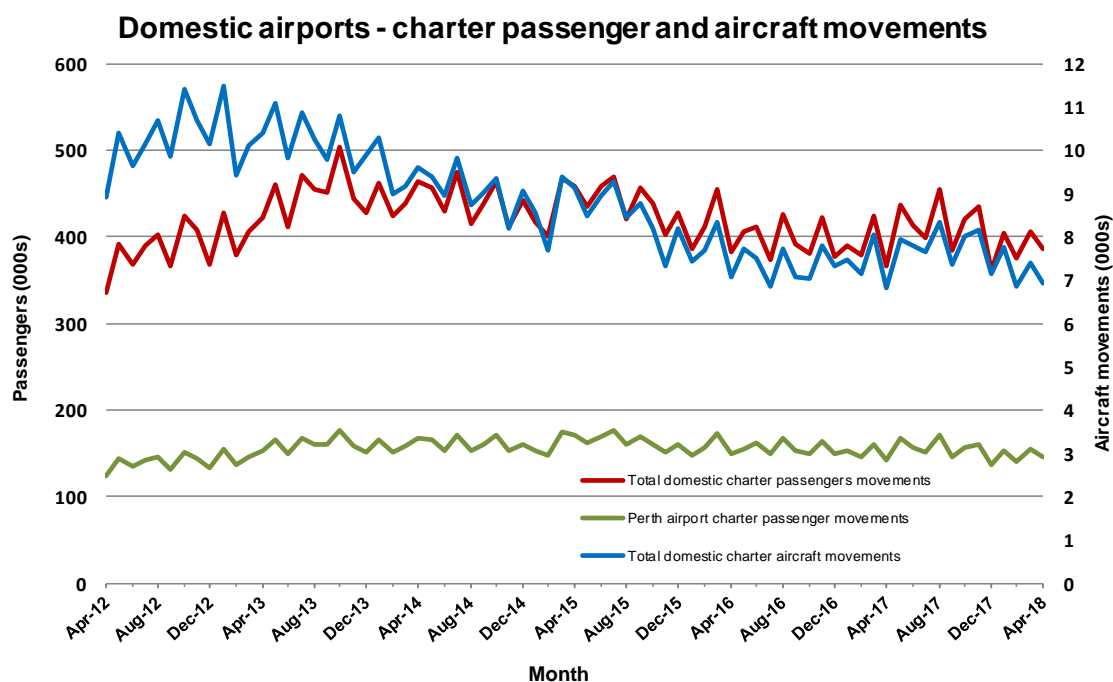
Charter passenger and aircraft movement numbers are the sum of arrivals and departures at each airport.

Table 15: Domestic airports - charter activity - monthly

	Apr 2017	Apr 2018	% Change
Total domestic charter passenger movements	367 078	386 170	5.2
Total domestic charter aircraft movements	6 834	6 922	1.3
Perth airport charter passenger movements	141 415	145 144	2.6
Perth airport charter aircraft movements	2 372	2 297	-3.2

Note: Helicopter, joyflights and sightseeing charter flights not included.

Charter passenger and aircraft movement numbers are the sum of arrivals and departures at each airport.



DEFINITIONS

Aircraft Trips	The number of flight stages. A return flight counts as two aircraft trips.
Airport Movements	Airport movements (passenger and cargo) are measured once on arrival and once on departure. Each domestic trip generates two movements at airports. For example, a trip from Melbourne to Sydney will be counted twice, as a passenger departure at Melbourne and as a passenger arrival at Sydney. At the national level, the sum of all domestic airport traffic will therefore be equal to twice the number of trips undertaken.
Available Seat Kilometres (ASKs)	Calculated by multiplying the number of seats available on each flight stage, by the distance in kilometres between the ports. The distances used are Great Circle Distances.
City-Pair	The ports shown make up the city-pair route. Passenger movements shown for a city pair reflect total traffic in both directions.
Flight Stage	The operation of an aircraft from take-off to landing.
Load Factor	The total revenue passenger kilometres performed as a percentage of the total available seat kilometres.
Passengers Carried	Revenue passengers carried.
Regular Public Transport Services (RPT)	All air service operations in which aircraft are available for the transport of members of the public and are conducted in accordance with fixed schedules. It does not include charter or other non-scheduled operations.
Revenue Passengers	All passengers paying any fare. Frequent flyer redemption travellers are regarded as revenue passengers.
Revenue Passenger Kilometres (RPKs)	Calculated by multiplying the number of revenue passengers travelling on each flight stage, by the distance in kilometres between the ports. The distances used are Great Circle Distances.
Traffic on board by stages	The total of all traffic (revenue passengers) on each flight stage between two directly connected airports.
..	Data not included
NA	Not applicable