



Australian Government

Department of Infrastructure, Transport, Cities and Regional Development

Bureau of Infrastructure, Transport and Regional Economics

STATISTICAL REPORT



Aviation

Domestic aviation activity
2018-19

© Commonwealth of Australia 2019

ISSN: 1832 - 1968

Ownership of intellectual property rights in this publication

Unless otherwise noted, copyright (and any other intellectual property rights, if any) in this publication is owned by the Commonwealth of Australia (referred to below as the Commonwealth).

Disclaimer

The material contained in this publication is made available on the understanding that the Commonwealth is not providing professional advice, and that users exercise their own skill and care with respect to its use, and seek independent advice if necessary.

The Commonwealth makes no representations or warranties as to the contents or accuracy of the information contained in this publication. To the extent permitted by law, the Commonwealth disclaims liability to any person or organisation in respect of anything done, or omitted to be done, in reliance upon information contained in this publication.

Creative Commons licence

With the exception of (a) the Coat of Arms; and (b) the Department of Infrastructure, Transport, Cities and Regional Developments' photos and graphics, copyright in this publication is licensed under a Creative Commons Attribution 3.0 Australia Licence.

Creative Commons Attribution 3.0 Australia Licence is a standard form licence agreement that allows you to copy, communicate and adapt this publication provided that you attribute the work to the Commonwealth and abide by the other licence terms. A summary of the licence terms is available from <http://creativecommons.org/licenses/by/3.0/au/deed.en>.

The full licence terms are available from <http://creativecommons.org/licenses/by/3.0/au/legalcode>.

Use of the Coat of Arms

The Department of the Prime Minister and Cabinet sets the terms under which the Coat of Arms is used. Please refer to the Department's Commonwealth Coat of Arms and Government branding web page <http://www.dpmc.gov.au/guidelines/index.cfm#brand> and, in particular, the Guidelines on the use of the Commonwealth Coat of Arms publication.

An appropriate citation for this report is:

Bureau of Infrastructure, Transport and Regional Economics (BITRE), 2019, Domestic aviation activity, Statistical Report, BITRE, Canberra ACT.

Contact us

This publication is available in PDF format. All other rights are reserved, including in relation to any Departmental logos or trade marks which may exist. For enquiries regarding the licence and any use of this publication, please contact:

Bureau of Infrastructure, Transport and Regional Economics (BITRE)
Department of Infrastructure, Transport, Cities and Regional Development
GPO Box 501, Canberra ACT 2601, Australia
Telephone: (international) +61 2 6274 7210
Fax: (international) +61 2 6274 6855
Email: bitre@infrastructure.gov.au
Website: www.bitre.gov.au

Inquiries

Should you require additional information about the statistics contained in this publication:

Nebojsa Pavlovic

Telephone (02) 6274 6817 or Facsimile (02) 6274 7727

Electronic mail: AVSTATS@infrastructure.gov.au

Nebojsa.Pavlovic@infrastructure.gov.au

Web site: <http://www.bitre.gov.au/statistics/aviation/domestic.aspx>

FOREWORD

This report provides an overview of domestic (including charter) commercial aviation activity in Australia for the year ending June 2019.

The data cover revenue passengers carried by Australian-registered operators of scheduled regular public transport services over Australian flight stages and fixed-wing charter operators. These estimates include passengers carried between domestic airports on international flights operated by these carriers. The passengers carried refer to traffic on board by stages.

Estimates of passengers and aircraft movements for charter aviation are included in this publication, where BITRE confidentiality standards are met.

Individual routes shown are restricted to those with an average exceeding 8 000 passengers per month where two or more airlines operate in competition. For the year ending June 2019 there were 65 such routes.

Information on both the total network and the Regular Public Transport (RPT) network for the year ending June 2019 is presented on page 2.

Detailed information on the 65 individual routes can be found in the RPT summary pages 3–10 of this publication.

The top ten airports in terms of RPT passenger movements are shown on page 11.

Data on domestic RPT cargo movements at the top five cargo airports are provided on page 12. The table includes cargo carried on passenger flights operated by the Qantas group (including Jetstar), Virgin Australia, Air North and Skippers as well as the cargo carried by dedicated freighter aircraft operated by Qantas Freight, Toll Priority and Virgin Australia Cargo.

The long-term trends for the top twenty competitive RPT routes are presented graphically on pages 13–22.

Domestic RPT passenger movements at the top 50 regional airports are presented on page 23.

Tables providing estimates of domestic charter aviation activity are shown on page 24. BITRE confidentiality standards restrict publication of detailed airport-level estimates for any Australian airport, with the exception of Perth Airport.

A list of definitions can be found on page 25.

This report was prepared by the Aviation Statistics Section of the Bureau of Infrastructure, Transport and Regional Economics with data provided by airlines.

Estimates are included where data were not available and data presented in this publication may contain revisions to previously published data.

Where figures have been rounded, discrepancies may occur between sums of component items and totals, and in percentage changes which are derived from figures prior to rounding.

CONTENTS

Highlights	1
RPT network.....	2
Top competitive routes.....	3
Top ten airports – passenger movements	11
Top five airports – cargo movements.....	12
Top twenty routes	13
1. Melbourne – Sydney	13
2. Brisbane – Sydney.....	13
3. Brisbane – Melbourne	14
4. Gold Coast – Sydney.....	14
5. Adelaide – Melbourne	15
6. Melbourne – Perth	15
7. Gold Coast – Melbourne	16
8. Adelaide – Sydney.....	16
9. Perth – Sydney	17
10. Hobart – Melbourne	17
11. Brisbane – Cairns	18
12. Canberra – Melbourne	18
13. Cairns – Sydney	19
14. Brisbane – Townsville	19
15. Launceston – Melbourne	20
16. Brisbane – Perth.....	20
17. Canberra – Sydney.....	21
18. Cairns – Melbourne	21
19. Adelaide – Brisbane.....	22
20. Brisbane – Mackay	22
Top fifty regional airports.....	23
Domestic charter activity.....	24
Definitions	25

This page is intentionally left blank.

HIGHLIGHTS

There were 63.52 million passengers carried on Australian domestic commercial aviation (including charter operations) in the year ending June 2019, an increase of 0.5 per cent compared with the year ending June 2018. In the year ending June 2019 there were 677.9 thousands aircraft trips, a decrease of 0.3 per cent compared to the previous year.

60.95 million passengers were carried on RPT flights in the year ending June 2019, an increase of 0.3 compared with the year ending June 2018.

RPT revenue passenger kilometres (RPKs) increased by 0.3 per cent compared with the year ending June 2018, to a total of 71.06 billion.

Capacity, measured by available seat kilometres (ASKs), was 88.50 billion in the year, virtually the same as in the year ending June 2018.

The industry wide load factor (RPKs/ASKs) increased from 80.1 per cent in the year ending June 2018 to 80.3 per cent in the year ending June 2019. Load factors on individual routes increased on 35 of the 64 RPT routes for which complete data is available in both years.

In the year ending June 2019, Melbourne – Sydney remained Australia's busiest RPT route with 9.20 million passengers, a decrease of 0.5 per cent compared with the previous year. It was followed by Brisbane – Sydney with 4.81 million passengers (up 0.6 per cent) and Brisbane – Melbourne with 3.59 million passengers (up 1.1 per cent).

The greatest percentage increase in RPT passenger numbers, compared to the year ending June 2018, was on the Kalgoorlie – Perth route (up 11.3 per cent). There were large increases on a number of other routes, including Brisbane – Hobart (up 10.1 per cent), Newman – Perth (up 9.9 per cent) and Adelaide – Alice Springs (up 9.4 per cent).

RPT routes with traffic decreases in the year ending June 2019, compared with the year ending June 2018, included Brisbane – Proserpine (down 10.4 per cent), Darwin – Perth (down 9.9 per cent), Brisbane – Darwin (down 9.0 per cent) and Brisbane – Bundaberg (down 7.7 per cent).

In the year ending June 2019, Sydney remained Australia's busiest domestic airport with 27.51 million passenger movements, followed by Melbourne with 25.90 million passenger movements and Brisbane with 17.38 million passenger movements.

Total cargo movements at Australian airports on domestic RPT flights were 472.6 thousand tonnes in the year ending June 2019, an increase of 2.2 per cent compared to the year ending June 2018.

In the year ending June 2019, the number of domestic aviation passengers travelling through regional airports was 24.87 million, 0.4 per cent higher than for the year ending June 2018. Out of the top 50 regional airports, the strongest growth was at Ayers Rock airport, up 20.1 per cent on year ending June 2018, while the largest decrease was recorded at Toowoomba Wellcamp airport, down 17.2 per cent compared to the previous year.

Fixed-wing charter operators carried 2.57 million passengers in the year ending June 2019, an increase of 5.0 per cent compared with the year ending June 2018. Perth airport accounted for 38.3 per cent of all charter passengers in Australia.

TOTAL NETWORK

Summary of annual commercial aviation activity

	YE Jun 2018	YE Jun 2019	% Change
Total passengers carried (millions)	63.20	63.52	0.5
Aircraft trips (000s)	680.1	677.9	-0.3

Note: Regular Public Transport and charter aviation activity, Helicopter, joyflights and sightseeing charter flights not included.

RPT NETWORK

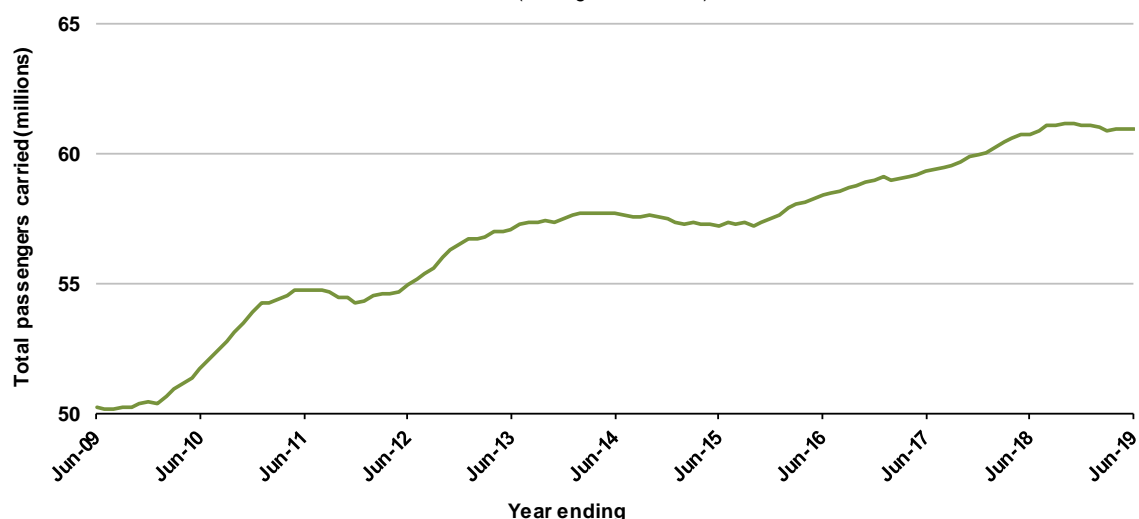
Summary of annual RPT activity

	YE Jun 2018	YE Jun 2019	% Change
Total passengers carried (millions)	60.75	60.95	0.3
Revenue passenger kilometres (billions)	70.86	71.06	0.3
Available seats (millions)	77.49	77.48	0.0
Available seat kilometres (billions)	88.52	88.50	0.0
Load factor %	80.1	80.3	0.2 *
Aircraft trips (000s)	634.4	633.4	-0.1

* percentage point difference

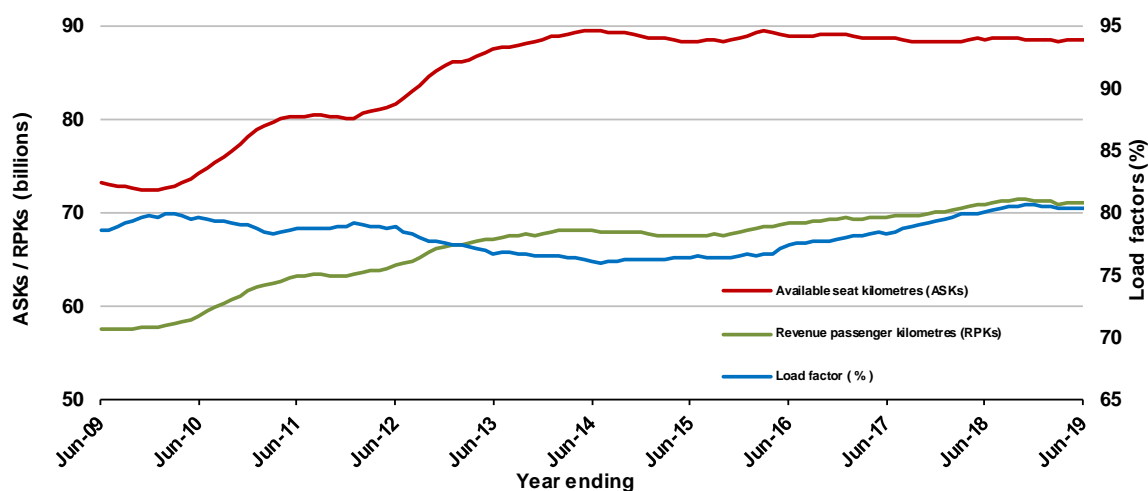
Domestic RPT passenger traffic

(moving annual totals)



RPT Network utilisation

(moving annual totals)



TOP COMPETITIVE ROUTES

Table 1: Passengers carried (000s) — annual activity

	City-Pair	YE Jun 2018	YE Jun 2019	% Change
1	Melbourne - Sydney	9 240.1	9 196.2	-0.5
2	Brisbane - Sydney	4 787.9	4 814.3	0.6
3	Brisbane - Melbourne	3 557.0	3 594.8	1.1
4	Gold Coast - Sydney	2 751.6	2 692.0	-2.2
5	Adelaide - Melbourne	2 487.2	2 506.8	0.8
6	Melbourne - Perth	2 057.8	2 115.7	2.8
7	Gold Coast - Melbourne	2 042.2	2 083.4	2.0
8	Adelaide - Sydney	1 908.7	1 877.3	-1.6
9	Perth - Sydney	1 719.9	1 690.4	-1.7
10	Hobart - Melbourne	1 638.6	1 661.3	1.4
11	Brisbane - Cairns	1 362.5	1 291.9	-5.2
12	Canberra - Melbourne	1 150.3	1 178.3	2.4
13	Cairns - Sydney	1 134.2	1 103.2	-2.7
14	Brisbane - Townsville	976.9	1 006.7	3.0
15	Launceston - Melbourne	945.7	960.8	1.6
16	Brisbane - Perth	976.1	941.9	-3.5
17	Canberra - Sydney	951.6	927.3	-2.6
18	Cairns - Melbourne	847.2	855.6	1.0
19	Adelaide - Brisbane	856.8	850.4	-0.8
20	Brisbane - Mackay	717.3	757.7	5.6
21	Hobart - Sydney	686.2	712.6	3.8
22	Brisbane - Canberra	618.5	647.4	4.7
23	Sunshine Coast - Sydney	612.5	644.6	5.2
24	Adelaide - Perth	629.8	634.0	0.7
25	Brisbane - Newcastle	584.1	588.6	0.8
26	Melbourne - Sunshine Coast	515.8	551.5	6.9
27	Brisbane - Rockhampton	522.3	520.7	-0.3
28	Melbourne - Newcastle	488.4	487.7	-0.1
29	Karratha - Perth	431.6	446.1	3.4
30	Ballina - Sydney	424.9	432.6	1.8
31	Perth - Port Hedland	346.7	365.0	5.3
32	Brisbane - Darwin	395.9	360.1	-9.0
33	Coffs Harbour - Sydney	346.5	331.5	-4.3
34	Broome - Perth	343.8	329.4	-4.2
35	Newman - Perth	293.6	322.7	9.9
36	Darwin - Sydney	318.1	310.3	-2.5
37	Darwin - Melbourne	302.7	309.6	2.3
38	Launceston - Sydney	283.4	289.6	2.2
39	Kalgoorlie - Perth	255.5	284.4	11.3
40	Brisbane - Gladstone	265.3	246.6	-7.1
41	Brisbane - Proserpine	273.2	244.7	-10.4
42	Brisbane - Hobart	217.0	238.8	10.1
43	Melbourne - Mildura	218.5	228.7	4.7
44	Albury - Sydney	221.8	228.7	3.1
45	Adelaide - Gold Coast	220.1	215.2	-2.2
46	Hamilton Island - Sydney	200.0	202.5	1.3
47	Brisbane - Emerald	195.6	196.3	0.4
48	Adelaide - Canberra	190.2	195.0	2.5
49	Ayers Rock - Sydney	196.2	193.5	-1.4
50	Port Macquarie - Sydney	189.8	187.5	-1.2

(continued)

Table 1: (continued): Passengers carried (000s) — annual activity

	City-Pair	YE Jun 2018	YE Jun 2019	% Change
51	Dubbo - Sydney	189.6	184.7	-2.6
52	Darwin - Perth	203.2	183.1	-9.9
53	Sydney - Wagga Wagga	179.6	179.6	0.0
54	Sydney - Townsville	160.9	174.1	8.2
55	Sydney - Tamworth	176.4	173.6	-1.6
56	Adelaide - Port Lincoln	169.1	168.8	-0.2
57	Brisbane - Bundaberg	169.4	156.4	-7.7
58	Cairns - Townsville	147.9	144.6	-2.2
59	Adelaide - Alice Springs	127.9	139.8	9.4
60	Brisbane - Mount Isa	127.6	134.0	5.0
61	Brisbane - Hamilton Island	123.9	124.9	0.8
62	Armidale - Sydney	123.5	122.8	-0.6
63	Proserpine - Sydney	112.9	121.8	NA (a)
64	Geraldton - Perth	111.7	110.2	-1.3
65	Alice Springs - Darwin	113.8	110.0	-3.3
	Total domestic network	60 749.9	60 953.2	0.3

(a) Proserpine - Sydney route included from September 2017, prior data not shown.

Table 2: Available seats (000s) — annual activity

	City-Pair	YE Jun 2018	YE Jun 2019	% Change
1	Melbourne - Sydney	10 870.1	10 784.5	-0.8
2	Brisbane - Sydney	5 776.1	5 774.0	0.0
3	Brisbane - Melbourne	4 373.8	4 322.1	-1.2
4	Gold Coast - Sydney	3 177.6	3 118.5	-1.9
5	Adelaide - Melbourne	3 096.9	3 109.5	0.4
6	Melbourne - Perth	2 410.4	2 501.2	3.8
7	Gold Coast - Melbourne	2 357.5	2 358.4	0.0
8	Adelaide - Sydney	2 315.2	2 275.9	-1.7
9	Perth - Sydney	2 063.2	2 019.8	-2.1
10	Hobart - Melbourne	2 024.9	2 097.2	3.6
11	Brisbane - Cairns	1 573.6	1 514.9	-3.7
12	Canberra - Melbourne	1 743.0	1 749.8	0.4
13	Cairns - Sydney	1 343.7	1 329.0	-1.1
14	Brisbane - Townsville	1 278.0	1 275.1	-0.2
15	Launceston - Melbourne	1 176.1	1 212.5	3.1
16	Brisbane - Perth	1 179.5	1 131.9	-4.0
17	Canberra - Sydney	1 292.4	1 242.6	-3.9
18	Cairns - Melbourne	1 003.6	1 007.5	0.4
19	Adelaide - Brisbane	1 112.2	1 085.0	-2.5
20	Brisbane - Mackay	917.7	983.9	7.2
21	Hobart - Sydney	833.5	863.1	3.5
22	Brisbane - Canberra	862.3	866.4	0.5
23	Sunshine Coast - Sydney	754.4	789.5	4.7
24	Adelaide - Perth	841.9	834.1	-0.9
25	Brisbane - Newcastle	794.5	801.4	0.9
26	Melbourne - Sunshine Coast	606.7	639.5	5.4
27	Brisbane - Rockhampton	641.4	664.5	3.6
28	Melbourne - Newcastle	599.0	595.2	-0.6
29	Karratha - Perth	677.0	693.4	2.4
30	Ballina - Sydney	514.6	519.7	1.0
31	Perth - Port Hedland	530.7	567.7	7.0
32	Brisbane - Darwin	485.3	452.6	-6.7
33	Coffs Harbour - Sydney	477.7	459.9	-3.7
34	Broome - Perth	441.0	433.3	-1.8
35	Newman - Perth	533.3	556.5	4.3
36	Darwin - Sydney	428.2	414.0	-3.3
37	Darwin - Melbourne	383.8	384.4	0.1
38	Launceston - Sydney	328.3	340.4	3.7
39	Kalgoorlie - Perth	438.2	496.9	13.4
40	Brisbane - Gladstone	372.0	364.8	-1.9
41	Brisbane - Proserpine	324.7	312.9	-3.6
42	Brisbane - Hobart	257.1	289.6	12.7
43	Melbourne - Mildura	341.3	349.2	2.3
44	Albury - Sydney	317.1	326.4	2.9
45	Adelaide - Gold Coast	263.6	261.4	-0.8
46	Hamilton Island - Sydney	305.6	294.1	-3.8
47	Brisbane - Emerald	277.2	285.8	3.1
48	Adelaide - Canberra	289.6	291.5	0.7
49	Ayers Rock - Sydney	246.2	251.4	2.1
50	Port Macquarie - Sydney	243.3	251.0	3.2

(continued)

Table 2: (continued): Available seats (000s) — annual activity

	City-Pair	YE Jun 2018	YE Jun 2019	% Change
51	Dubbo - Sydney	261.9	260.6	-0.5
52	Darwin - Perth	260.5	261.3	0.3
53	Sydney - Wagga Wagga	269.4	262.5	-2.6
54	Sydney - Townsville	204.4	215.9	5.6
55	Sydney - Tamworth	270.1	268.4	-0.6
56	Adelaide - Port Lincoln	282.4	289.7	2.6
57	Brisbane - Bundaberg	238.1	227.3	-4.5
58	Cairns - Townsville	262.2	245.4	-6.4
59	Adelaide - Alice Springs	183.0	190.8	4.3
60	Brisbane - Mount Isa	177.6	185.3	4.3
61	Brisbane - Hamilton Island	179.0	175.2	-2.1
62	Armidale - Sydney	178.0	180.6	1.5
63	Proserpine - Sydney	141.2	148.9	NA (a)
64	Geraldton - Perth	225.3	202.0	-10.3
65	Alice Springs - Darwin	213.3	232.9	9.2
	Total domestic network	77 487.2	77 476.5	0.0

(a) Proserpine - Sydney route included from September 2017, prior data not shown.

Table 3: Load factors (%) — annual activity

	City-Pair	YE Jun 2018	YE Jun 2019	% Change
1	Melbourne - Sydney	85.0	85.3	0.3
2	Brisbane - Sydney	82.9	83.4	0.5
3	Brisbane - Melbourne	81.3	83.2	1.8
4	Gold Coast - Sydney	86.6	86.3	-0.3
5	Adelaide - Melbourne	80.3	80.6	0.3
6	Melbourne - Perth	85.4	84.6	-0.8
7	Gold Coast - Melbourne	86.6	88.3	1.8
8	Adelaide - Sydney	82.4	82.5	0.0
9	Perth - Sydney	83.4	83.7	0.3
10	Hobart - Melbourne	80.9	79.2	-1.7
11	Brisbane - Cairns	86.6	85.3	-1.3
12	Canberra - Melbourne	66.0	67.3	1.3
13	Cairns - Sydney	84.4	83.0	-1.4
14	Brisbane - Townsville	76.4	78.9	2.5
15	Launceston - Melbourne	80.4	79.2	-1.2
16	Brisbane - Perth	82.8	83.2	0.5
17	Canberra - Sydney	73.6	74.6	1.0
18	Cairns - Melbourne	84.3	84.9	0.6
19	Adelaide - Brisbane	77.0	78.4	1.3
20	Brisbane - Mackay	78.2	77.0	-1.2
21	Hobart - Sydney	82.3	82.6	0.2
22	Brisbane - Canberra	71.7	74.7	3.0
23	Sunshine Coast - Sydney	81.2	81.6	0.4
24	Adelaide - Perth	74.8	76.0	1.2
25	Brisbane - Newcastle	73.5	73.4	-0.1
26	Melbourne - Sunshine Coast	85.0	86.2	1.2
27	Brisbane - Rockhampton	81.4	78.4	-3.1
28	Melbourne - Newcastle	81.5	81.9	0.4
29	Karratha - Perth	63.8	64.3	0.6
30	Ballina - Sydney	82.6	83.2	0.7
31	Perth - Port Hedland	65.3	64.3	-1.0
32	Brisbane - Darwin	81.6	79.6	-2.0
33	Coffs Harbour - Sydney	72.5	72.1	-0.4
34	Broome - Perth	78.0	76.0	-1.9
35	Newman - Perth	55.0	58.0	3.0
36	Darwin - Sydney	74.3	74.9	0.7
37	Darwin - Melbourne	78.8	80.5	1.7
38	Launceston - Sydney	86.3	85.1	-1.2
39	Kalgoorlie - Perth	58.3	57.2	-1.1
40	Brisbane - Gladstone	71.3	67.6	-3.7
41	Brisbane - Proserpine	84.1	78.2	-5.9
42	Brisbane - Hobart	84.4	82.4	-1.9
43	Melbourne - Mildura	64.0	65.5	1.5
44	Albury - Sydney	70.0	70.1	0.1
45	Adelaide - Gold Coast	83.5	82.3	-1.2
46	Hamilton Island - Sydney	65.4	68.9	3.4
47	Brisbane - Emerald	70.6	68.7	-1.9
48	Adelaide - Canberra	65.7	66.9	1.2
49	Ayers Rock - Sydney	79.7	77.0	-2.7
50	Port Macquarie - Sydney	78.0	74.7	-3.3

(continued)

Table 3: (continued): Load factors (%) — annual activity

	City-Pair	YE Jun 2018	YE Jun 2019	% Change
51	Dubbo - Sydney	72.4	70.9	-1.5
52	Darwin - Perth	78.0	70.1	-7.9
53	Sydney - Wagga Wagga	66.6	68.4	1.8
54	Sydney - Townsville	78.7	80.6	1.9
55	Sydney - Tamworth	65.3	64.7	-0.6
56	Adelaide - Port Lincoln	59.9	58.3	-1.6
57	Brisbane - Bundaberg	71.1	68.8	-2.4
58	Cairns - Townsville	56.4	59.0	2.6
59	Adelaide - Alice Springs	69.9	73.3	3.4
60	Brisbane - Mount Isa	71.8	72.3	0.5
61	Brisbane - Hamilton Island	69.2	71.3	2.1
62	Armidale - Sydney	69.4	68.0	-1.4
63	Proserpine - Sydney	79.9	81.8	NA (a)
64	Geraldton - Perth	49.7	54.6	4.9
65	Alice Springs - Darwin	53.3	47.2	-6.1
	Total domestic network	80.1	80.3	0.2

(a) Proserpine - Sydney route included from September 2017, prior data not shown.

Table 4: Aircraft trips ^(a) — annual activity

	City-Pair	YE Jun 2018	YE Jun 2019	% Change
1	Melbourne - Sydney	60 338	60 159	-0.3
2	Brisbane - Sydney	35 197	35 254	0.2
3	Brisbane - Melbourne	25 804	25 497	-1.2
4	Gold Coast - Sydney	17 962	17 806	-0.9
5	Adelaide - Melbourne	19 212	19 027	-1.0
6	Melbourne - Perth	11 196	12 234	9.3
7	Gold Coast - Melbourne	12 504	12 457	-0.4
8	Adelaide - Sydney	13 877	13 656	-1.6
9	Perth - Sydney	9 062	9 075	0.1
10	Hobart - Melbourne	11 914	11 487	-3.6
11	Brisbane - Cairns	9 937	10 210	2.7
12	Canberra - Melbourne	11 415	11 115	-2.6
13	Cairns - Sydney	7 373	6 962	-5.6
14	Brisbane - Townsville	8 822	8 686	-1.5
15	Launceston - Melbourne	8 936	9 047	1.2
16	Brisbane - Perth	6 017	6 102	1.4
17	Canberra - Sydney	16 045	16 270	1.4
18	Cairns - Melbourne	5 249	5 178	-1.4
19	Adelaide - Brisbane	6 717	6 608	-1.6
20	Brisbane - Mackay	7 182	7 508	4.5
21	Hobart - Sydney	5 016	5 295	5.6
22	Brisbane - Canberra	6 236	6 361	2.0
23	Sunshine Coast - Sydney	4 547	4 759	4.7
24	Adelaide - Perth	5 590	5 602	0.2
25	Brisbane - Newcastle	5 624	5 637	0.2
26	Melbourne - Sunshine Coast	3 444	3 576	3.8
27	Brisbane - Rockhampton	7 869	8 055	2.4
28	Melbourne - Newcastle	3 350	3 294	-1.7
29	Karratha - Perth	5 979	5 949	-0.5
30	Ballina - Sydney	3 317	3 323	0.2
31	Perth - Port Hedland	4 399	4 473	1.7
32	Brisbane - Darwin	2 976	2 792	-6.2
33	Coffs Harbour - Sydney	4 845	4 678	-3.4
34	Broome - Perth	3 911	3 729	-4.7
35	Newman - Perth	3 991	4 095	2.6
36	Darwin - Sydney	2 537	2 405	-5.2
37	Darwin - Melbourne	2 139	2 101	-1.8
38	Launceston - Sydney	1 896	1 931	1.8
39	Kalgoorlie - Perth	3 530	3 926	11.2
40	Brisbane - Gladstone	4 896	4 804	-1.9
41	Brisbane - Proserpine	1 830	1 763	-3.7
42	Brisbane - Hobart	1 458	1 648	13.0
43	Melbourne - Mildura	4 763	4 749	-0.3
44	Albury - Sydney	5 760	5 917	2.7
45	Adelaide - Gold Coast	1 490	1 465	-1.7
46	Hamilton Island - Sydney	1 866	1 829	-2.0
47	Brisbane - Emerald	3 706	4 050	9.3
48	Adelaide - Canberra	1 714	1 750	2.1
49	Ayers Rock - Sydney	1 389	1 414	1.8
50	Port Macquarie - Sydney	4 060	3 798	-6.5

(continued)

Table 4: (continued): Aircraft trips ^(a)— annual activity

	City-Pair	YE Jun 2018	YE Jun 2019	% Change
51	Dubbo - Sydney	5 682	5 562	-2.1
52	Darwin - Perth	1 555	1 531	-1.5
53	Sydney - Wagga Wagga	5 196	5 166	-0.6
54	Sydney - Townsville	1 224	1 243	1.6
55	Sydney - Tamworth	4 190	4 097	-2.2
56	Adelaide - Port Lincoln	7 234	7 477	3.4
57	Brisbane - Bundaberg	3 497	3 444	-1.5
58	Cairns - Townsville	4 293	3 836	-10.6
59	Adelaide - Alice Springs	1 297	1 374	5.9
60	Brisbane - Mount Isa	1 817	1 808	-0.5
61	Brisbane - Hamilton Island	1 436	1 357	-5.5
62	Armidale - Sydney	4 255	4 303	1.1
63	Proserpine - Sydney	784	821	NA (b)
64	Geraldton - Perth	2 263	2 021	-10.7
65	Alice Springs - Darwin	1 860	1 777	-4.5
	Total domestic network	634 355	633 418	-0.1

(a) Includes RPT Cargo flights.

(b) Proserpine - Sydney route included from September 2017, prior data not shown.

TOP TEN AIRPORTS – PASSENGER MOVEMENTS

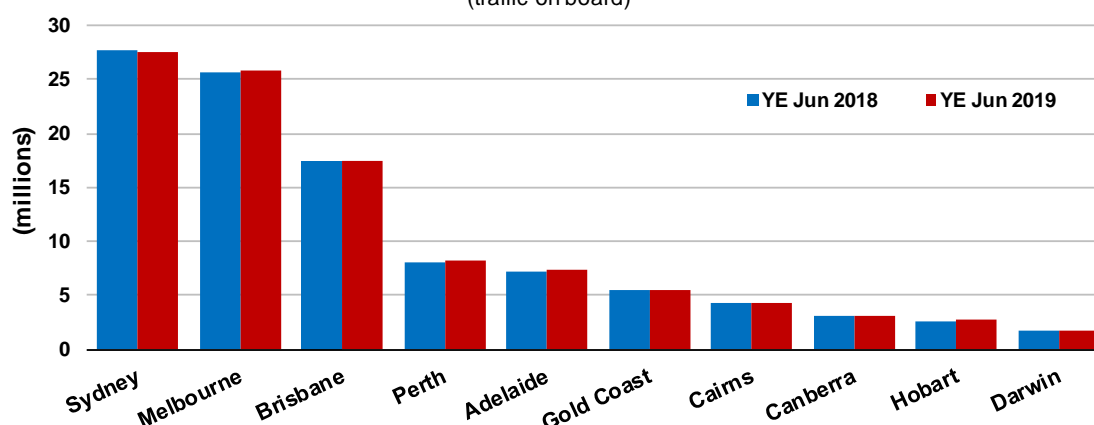
Table 5: Top ten airports, RPT passenger movements (000s) — annual activity

Airport	YE Jun 2018	YE Jun 2019	% Change	% of Total
1 Sydney	27 647.2	27 505.2	-0.5	22.8
2 Melbourne	25 689.0	25 896.5	0.8	21.1
3 Brisbane	17 378.3	17 384.4	0.0	14.3
4 Perth	8 103.9	8 209.5	1.3	6.7
5 Adelaide	7 275.7	7 307.0	0.4	6.0
6 Gold Coast	5 495.4	5 475.5	-0.4	4.5
7 Cairns	4 329.5	4 225.2	-2.4	3.6
8 Canberra	3 086.1	3 131.9	1.5	2.5
9 Hobart	2 596.1	2 725.6	5.0	2.1
10 Darwin	1 778.6	1 715.5	-3.5	1.5
Total top ten airports	103 379.8	103 576.3	0.2	85.1
Total domestic network	121 499.8	121 906.3	0.3	100.0

Note: Airport passenger movement numbers are the sum of passenger arrivals and departures at each airport.

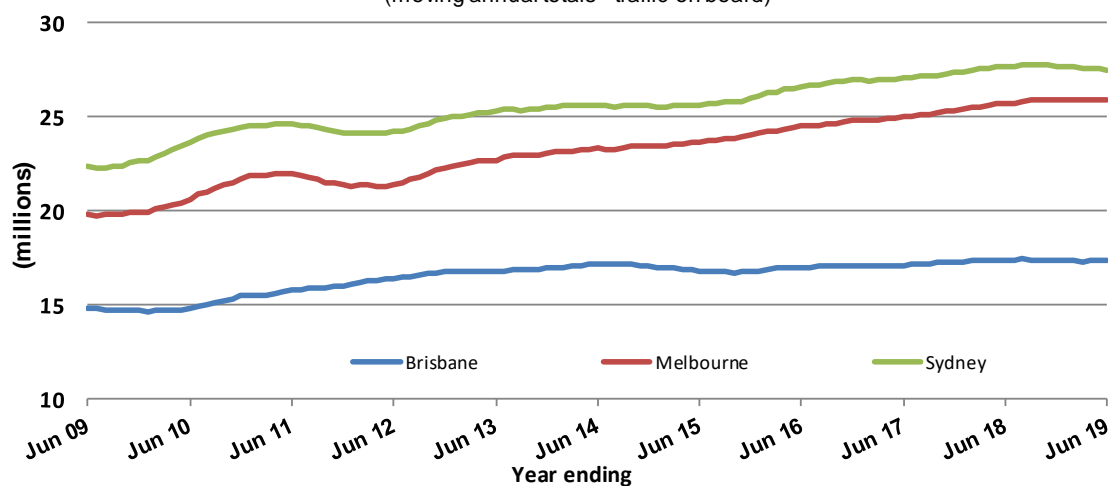
Top ten airports, RPT passenger movements

(traffic on board)



Top three airports, domestic passenger movements

(moving annual totals - traffic on board)



TOP FIVE AIRPORTS – CARGO MOVEMENTS

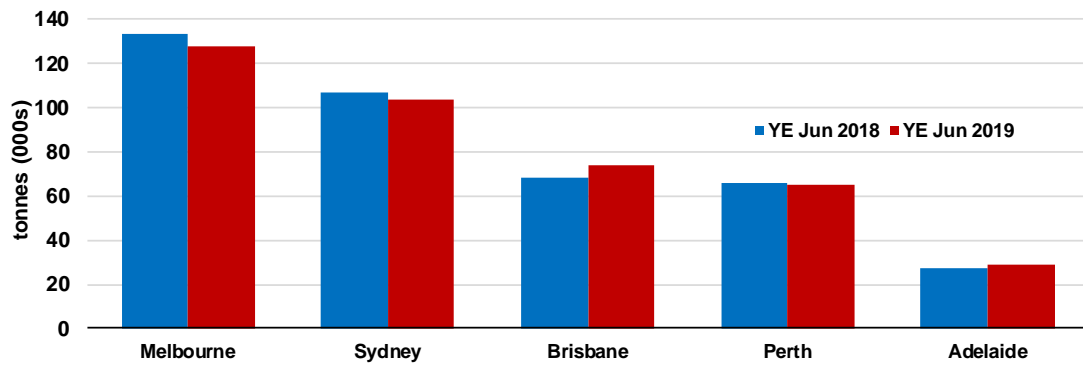
Table 6: Top five airports, domestic RPT cargo movements (000s tonnes) - annual activity

Airport	YE Jun 2018	YE Jun 2019	% Change	% of Total
1 Melbourne	133.7	127.6	-4.5	27.0
2 Sydney	106.5	103.9	-2.5	22.0
3 Brisbane	68.7	74.2	8.0	15.7
4 Perth	66.1	65.3	-1.1	13.8
5 Adelaide	27.3	29.1	6.6	6.2
Total top five airports	402.3	400.1	-0.5	84.6
Total domestic network	462.4	472.6	2.2	100.0

Note: Airport cargo tonnes are the sum of cargo tonnes on arrivals and departures at each airport.

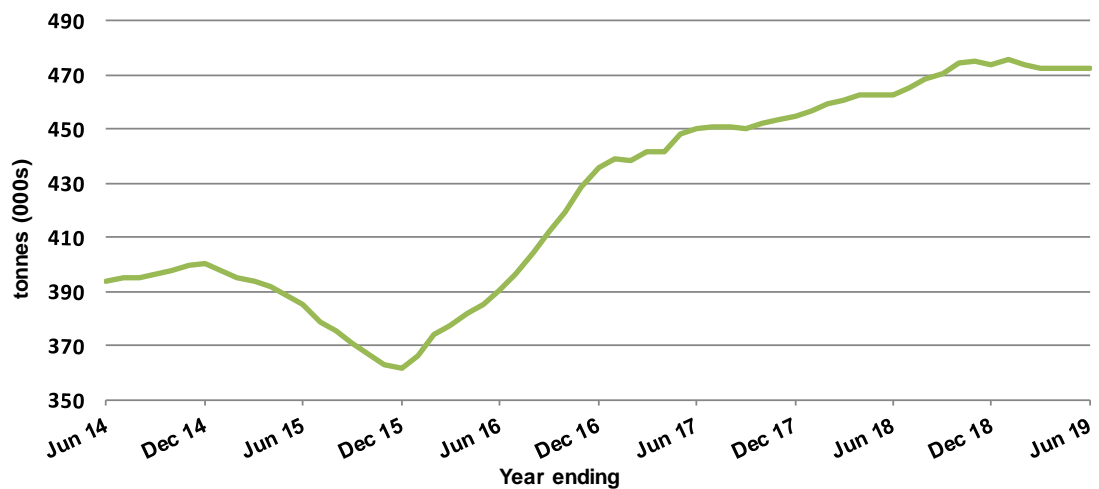
Top five airports, cargo movements

(Domestic cargo traffic - traffic on board)



Total domestic network - cargo movements

(moving annual totals - traffic on board)



Note: Airport cargo tonnes are the sum of cargo tonnes on arrivals and departures at each airport.

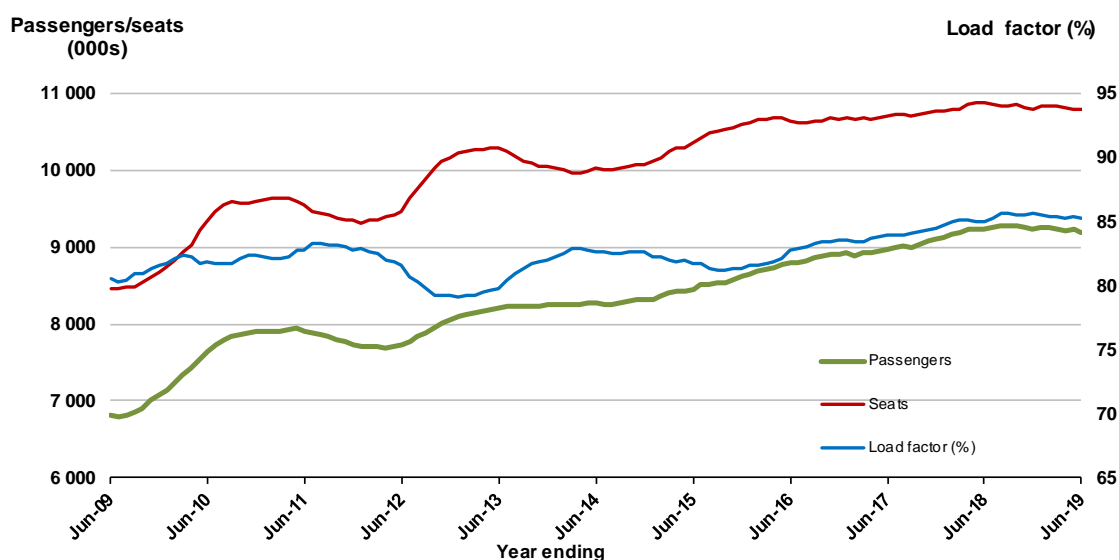
TOP TWENTY ROUTES

1. Melbourne - Sydney

Moving annual data

	YE Jun 2018	YE Jun 2019	% Change
Passengers carried (000s)	9 240.1	9 196.2	-0.5
Seats (000s)	10 870.1	10 784.5	-0.8
Load factor %	85.0	85.3	0.3*
Aircraft trips	60 338	60 159	-0.3

* percentage point difference

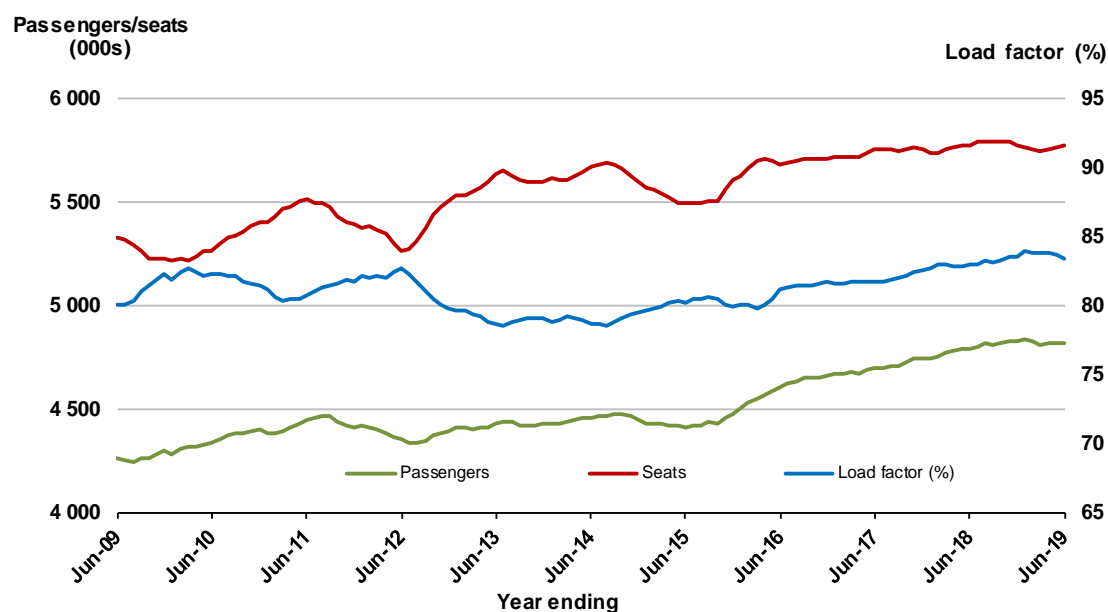


2. Brisbane - Sydney

Moving annual data

	YE Jun 2018	YE Jun 2019	% Change
Passengers carried (000s)	4 787.9	4 814.3	0.6
Seats (000s)	5 776.1	5 774.0	0.0
Load factor %	82.9	83.4	0.5*
Aircraft trips	35 197	35 254	0.2

* percentage point difference

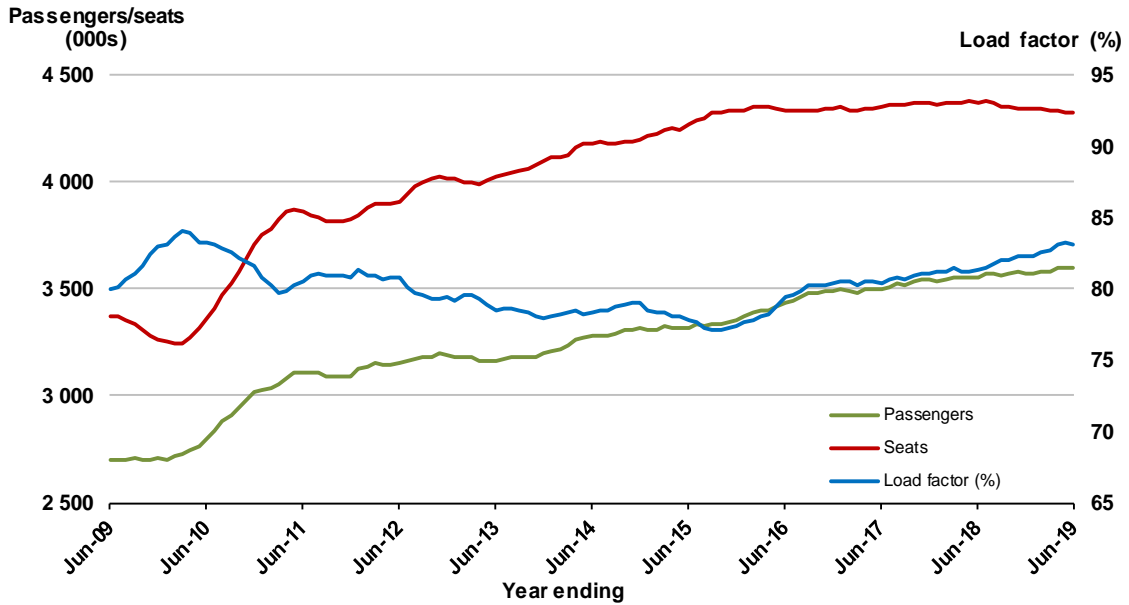


3. Brisbane - Melbourne

Moving annual data

	YE Jun 2018	YE Jun 2019	% Change
Passengers carried (000s)	3 557.0	3 594.8	1.1
Seats (000s)	4 373.8	4 322.1	-1.2
Load factor %	81.3	83.2	1.8 *
Aircraft trips	25 804	25 497	-1.2

* percentage point difference

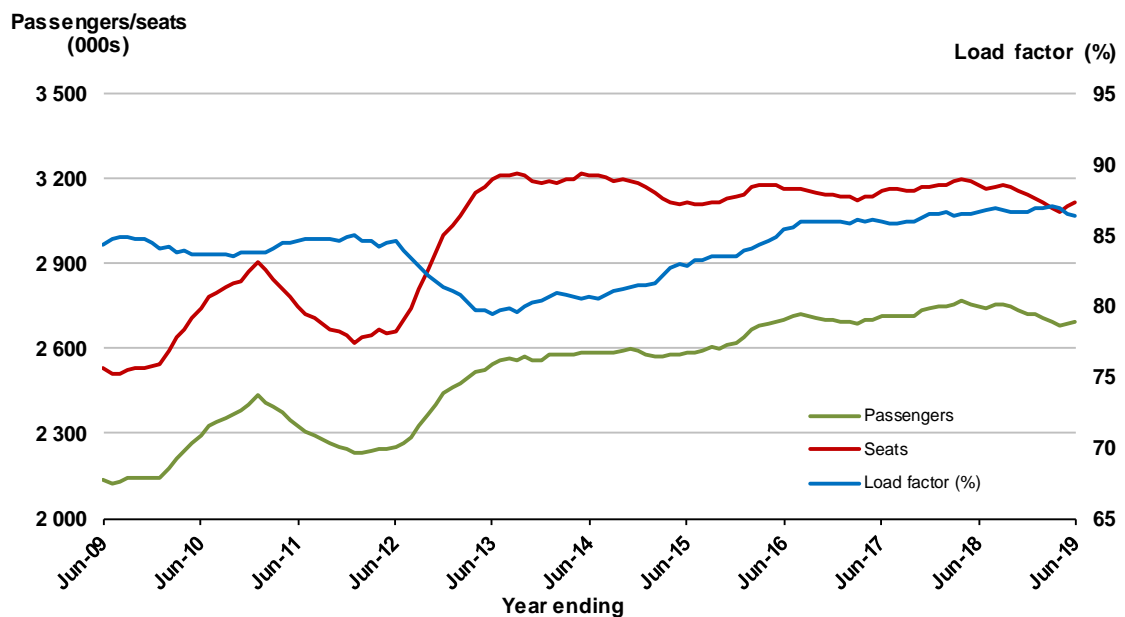


4. Gold Coast - Sydney

Moving annual data

	YE Jun 2018	YE Jun 2019	% Change
Passengers carried (000s)	2 751.6	2 692.0	-2.2
Seats (000s)	3 177.6	3 118.5	-1.9
Load factor %	86.6	86.3	-0.3 *
Aircraft trips	17 962	17 806	-0.9

* percentage point difference

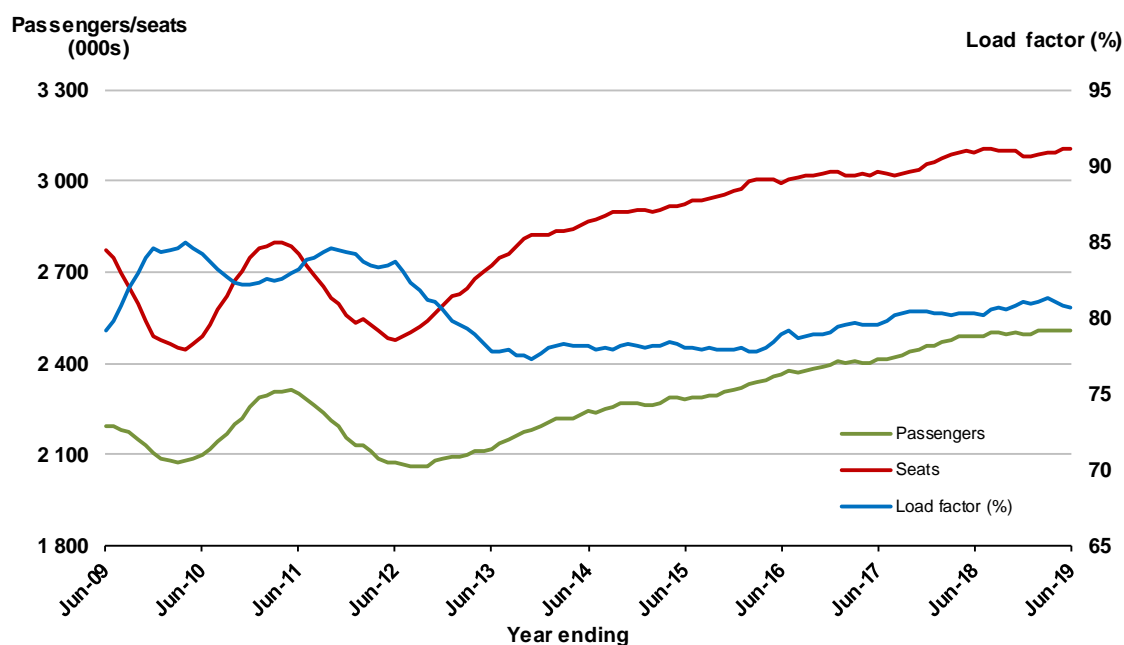


5. Adelaide - Melbourne

Moving annual data

	YE Jun 2018	YE Jun 2019	% Change
Passengers carried (000s)	2 487.2	2 506.8	0.8
Seats (000s)	3 096.9	3 109.5	0.4
Load factor %	80.3	80.6	0.3 *
Aircraft trips	19 212	19 027	-1.0

* percentage point difference

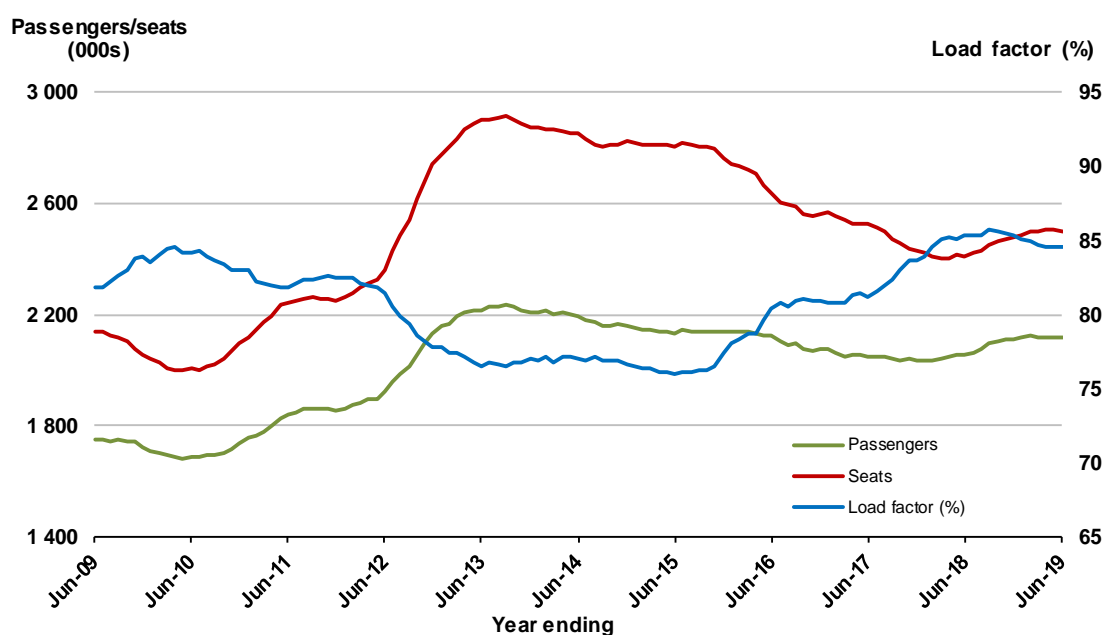


6. Melbourne - Perth

Moving annual data

	YE Jun 2018	YE Jun 2019	% Change
Passengers carried (000s)	2 057.8	2 115.7	2.8
Seats (000s)	2 410.4	2 501.2	3.8
Load factor %	85.4	84.6	-0.8 *
Aircraft trips	11 196	12 234	9.3

* percentage point difference

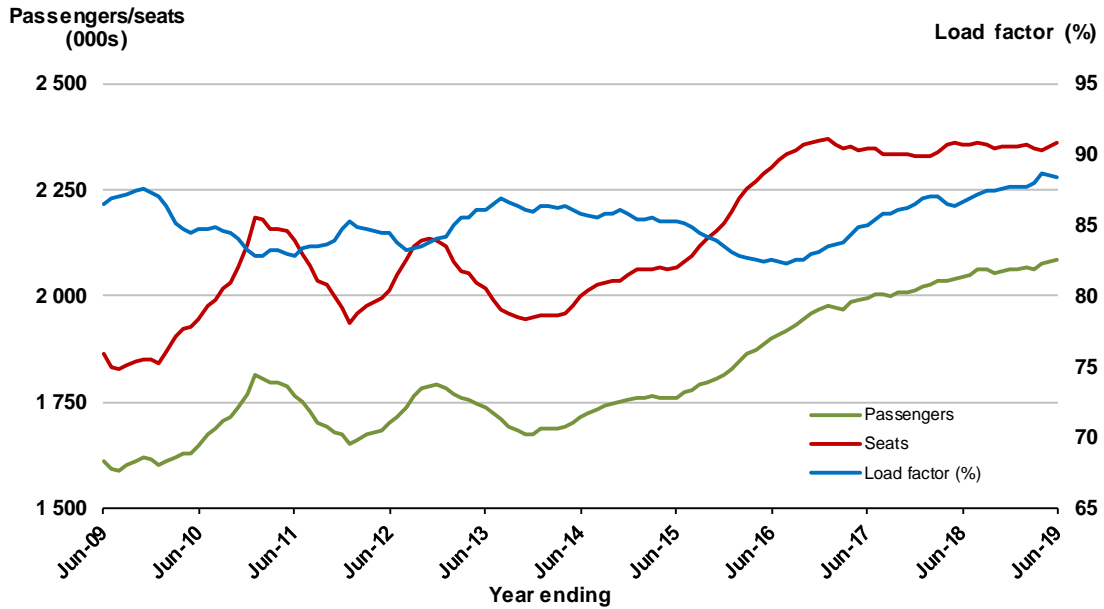


7. Gold Coast - Melbourne

Moving annual data

	YE Jun 2018	YE Jun 2019	% Change
Passengers carried (000s)	2 042.2	2 083.4	2.0
Seats (000s)	2 357.5	2 358.4	0.0
Load factor %	86.6	88.3	1.8*
Aircraft trips	12 504	12 457	-0.4

* percentage point difference

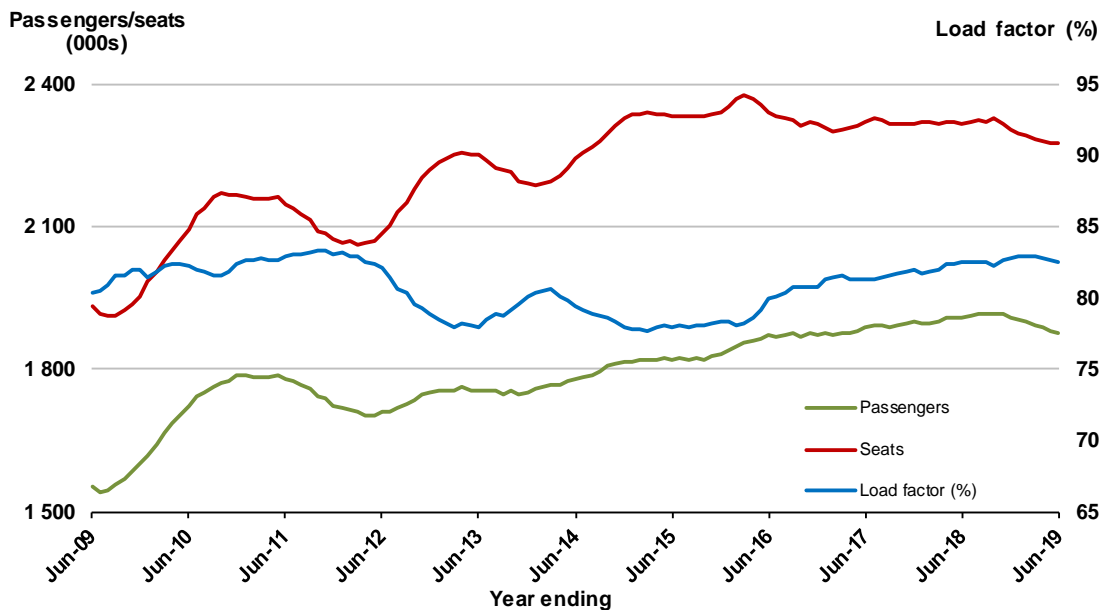


8. Adelaide - Sydney

Moving annual data

	YE Jun 2018	YE Jun 2019	% Change
Passengers carried (000s)	1 908.7	1 877.3	-1.6
Seats (000s)	2 315.2	2 275.9	-1.7
Load factor %	82.4	82.5	0.0*
Aircraft trips	13 877	13 656	-1.6

* percentage point difference

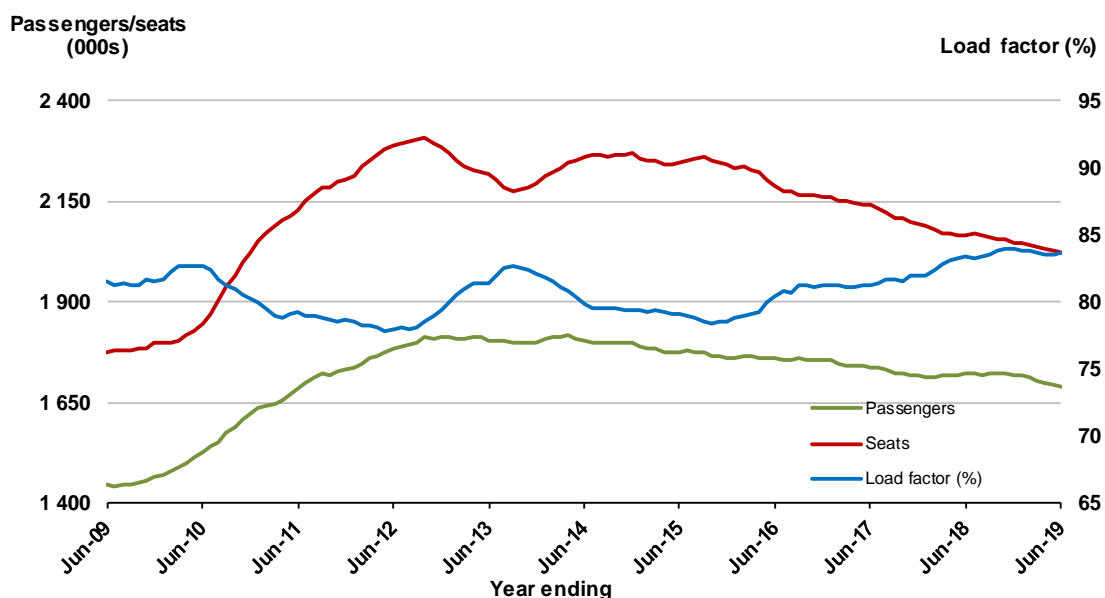


9. Perth - Sydney

Moving annual data

	YE Jun 2018	YE Jun 2019	% Change
Passengers carried (000s)	1 719.9	1 690.4	-1.7
Seats (000s)	2 063.2	2 019.8	-2.1
Load factor %	83.4	83.7	0.3 *
Aircraft trips	9 062	9 075	0.1

* percentage point difference

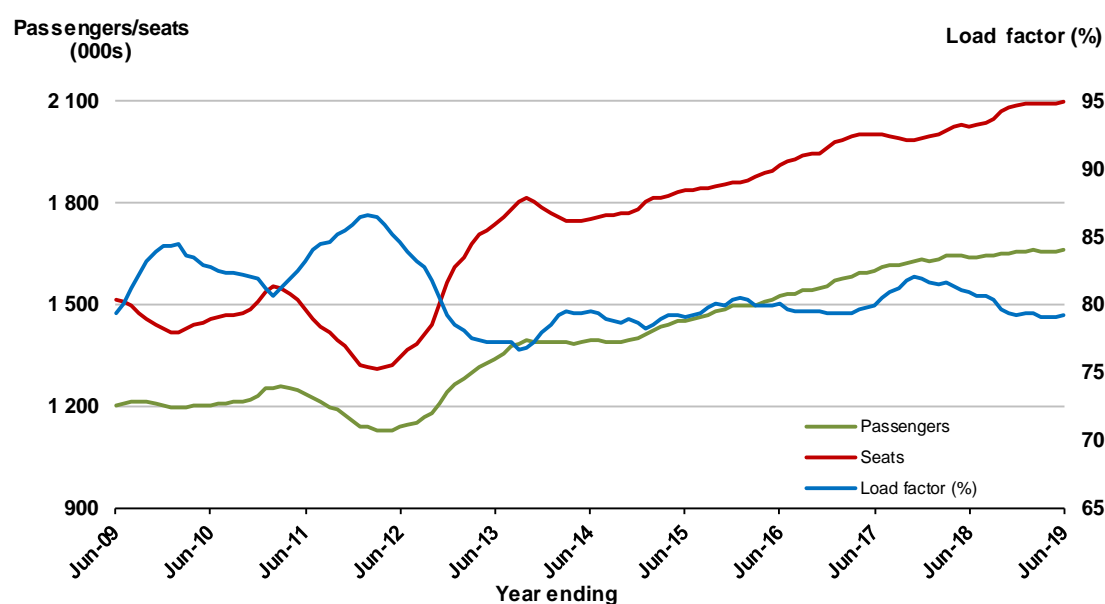


10. Hobart - Melbourne

Moving annual data

	YE Jun 2018	YE Jun 2019	% Change
Passengers carried (000s)	1 638.6	1 661.3	1.4
Seats (000s)	2 024.9	2 097.2	3.6
Load factor %	80.9	79.2	-1.7 *
Aircraft trips	11 914	11 487	-3.6

* percentage point difference

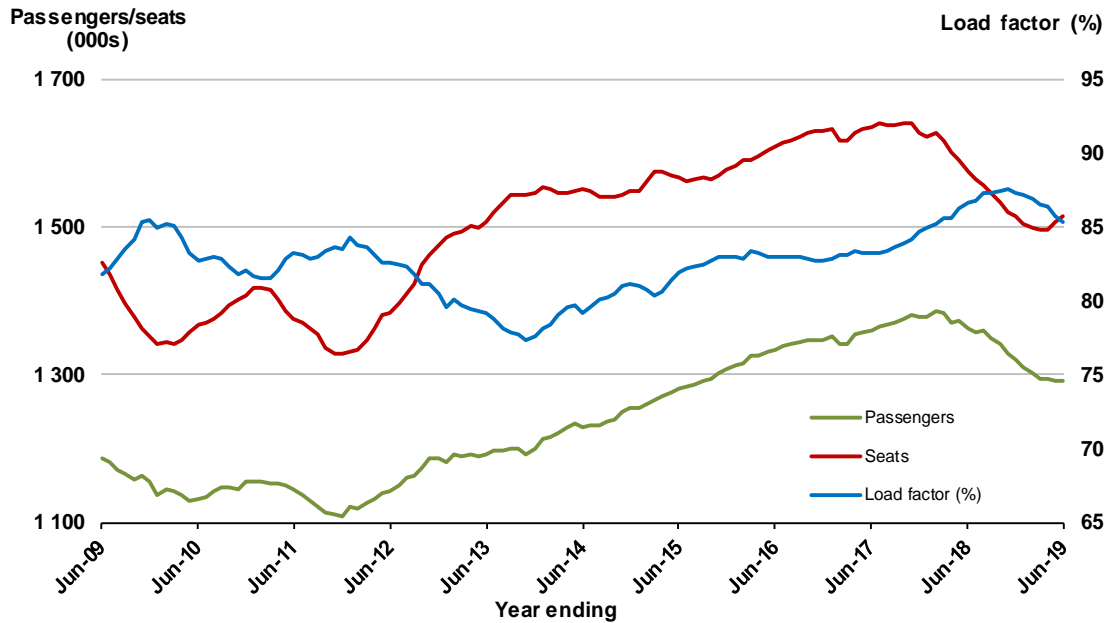


11. Brisbane - Cairns

Moving annual data

	YE Jun 2018	YE Jun 2019	% Change
Passengers carried (000s)	1 362.5	1 291.9	-5.2
Seats (000s)	1 573.6	1 514.9	-3.7
Load factor %	86.6	85.3	-1.3 *
Aircraft trips	9 937	10 210	2.7

* percentage point difference

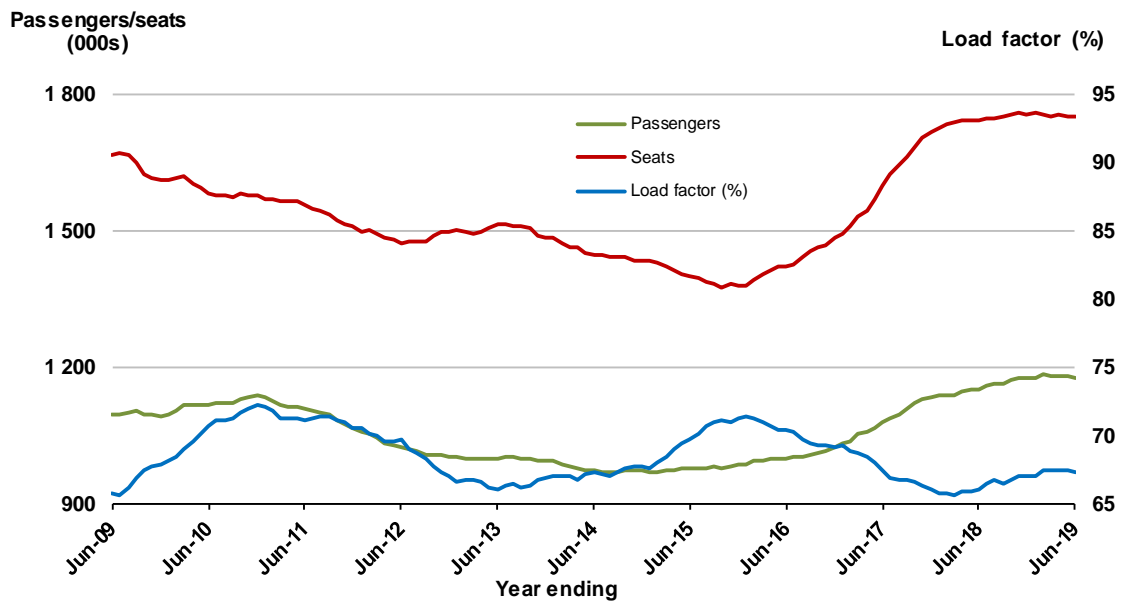


12. Canberra - Melbourne

Moving annual data

	YE Jun 2018	YE Jun 2019	% Change
Passengers carried (000s)	1 150.3	1 178.3	2.4
Seats (000s)	1 743.0	1 749.8	0.4
Load factor %	66.0	67.3	1.3 *
Aircraft trips	11 415	11 115	-2.6

* percentage point difference

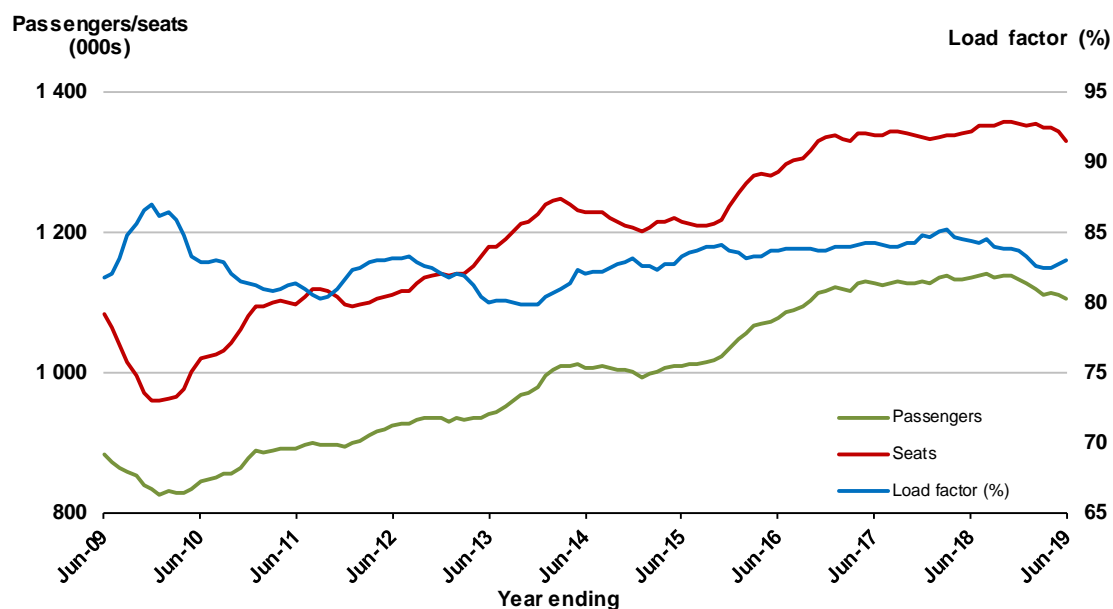


13. Cairns - Sydney

Moving annual data

	YE Jun 2018	YE Jun 2019	% Change
Passengers carried (000s)	1 134.2	1 103.2	-2.7
Seats (000s)	1 343.7	1 329.0	-1.1
Load factor %	84.4	83.0	-1.4 *
Aircraft trips	7 373	6 962	-5.6

* percentage point difference

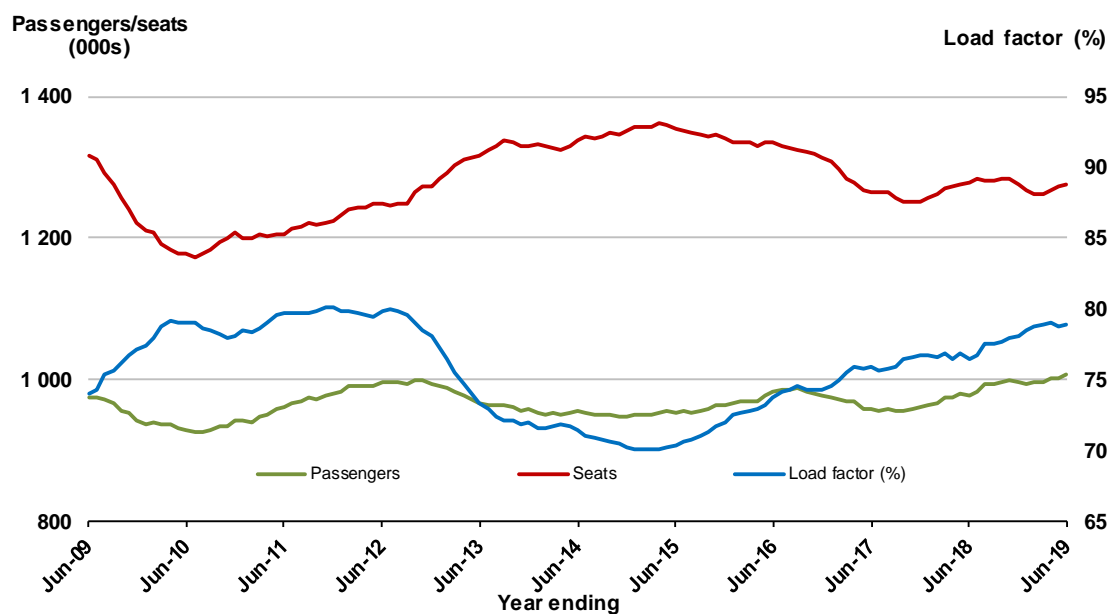


14. Brisbane - Townsville

Moving annual data

	YE Jun 2018	YE Jun 2019	% Change
Passengers carried (000s)	976.9	1 006.7	3.0
Seats (000s)	1 278.0	1 275.1	-0.2 *
Load factor %	76.4	78.9	2.5 *
Aircraft trips	8 822	8 686	-1.5

* percentage point difference

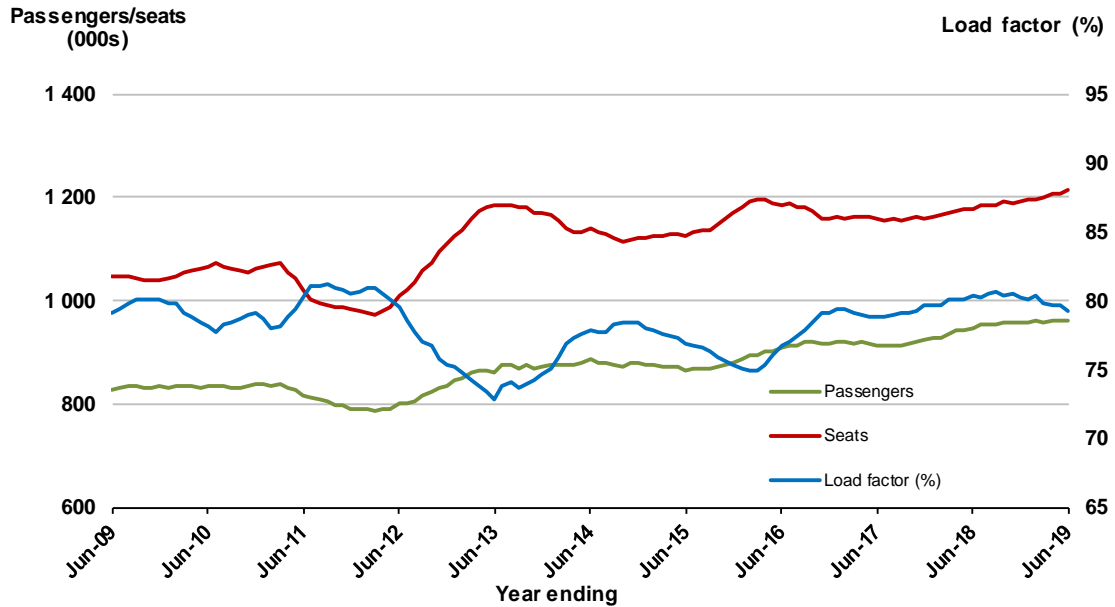


15. Launceston - Melbourne

Moving annual data

	YE Jun 2018	YE Jun 2019	% Change
Passengers carried (000s)	945.7	960.8	1.6
Seats (000s)	1 176.1	1 212.5	3.1
Load factor %	80.4	79.2	-1.2 *
Aircraft trips	8 936	9 047	1.2

* percentage point difference

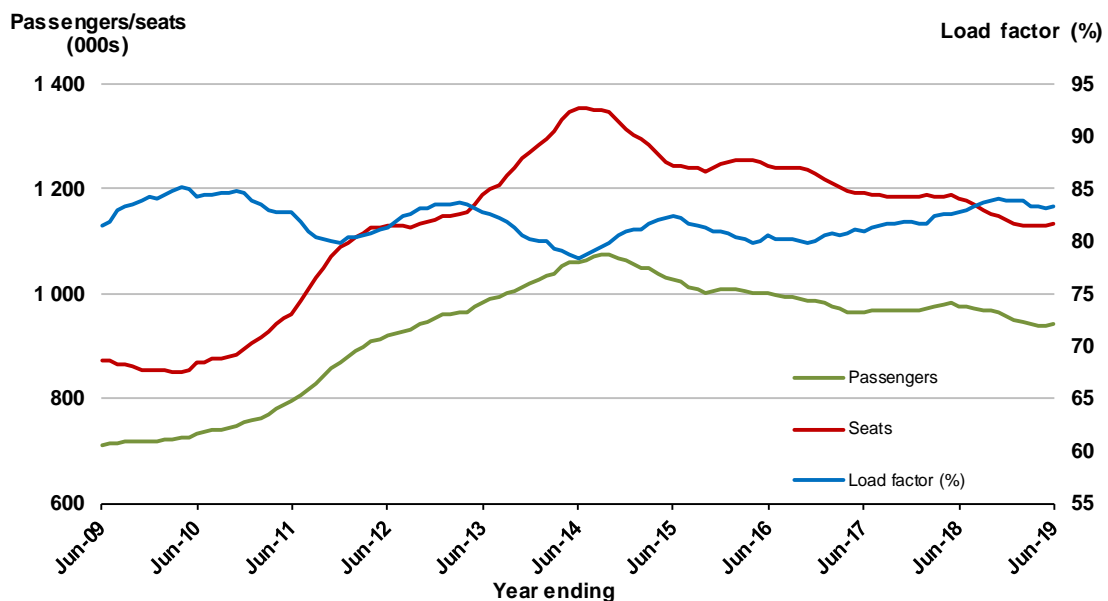


16. Brisbane - Perth

Moving annual data

	YE Jun 2018	YE Jun 2019	% Change
Passengers carried (000s)	976.1	941.9	-3.5
Seats (000s)	1 179.5	1 131.9	-4.0 *
Load factor %	82.8	83.2	0.5 *
Aircraft trips	6 017	6 102	1.4

* percentage point difference

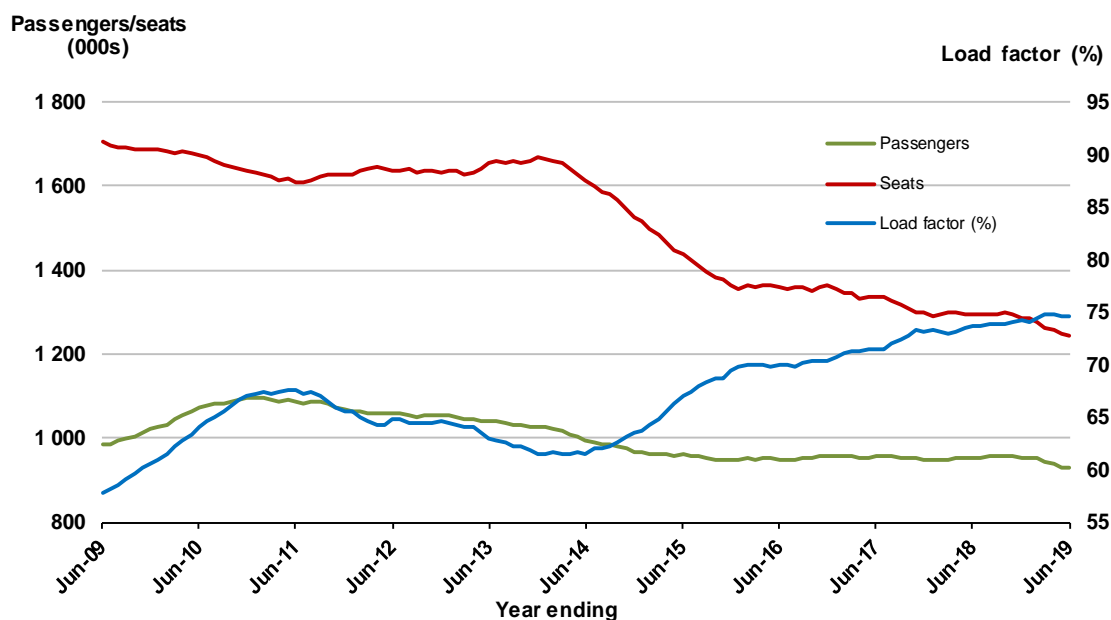


17. Canberra - Sydney

Moving annual data

	YE Jun 2018	YE Jun 2019	% Change
Passengers carried (000s)	951.6	927.3	-2.6
Seats (000s)	1 292.4	1 242.6	-3.9
Load factor %	73.6	74.6	1.0 *
Aircraft trips	16 045	16 270	1.4

* percentage point difference

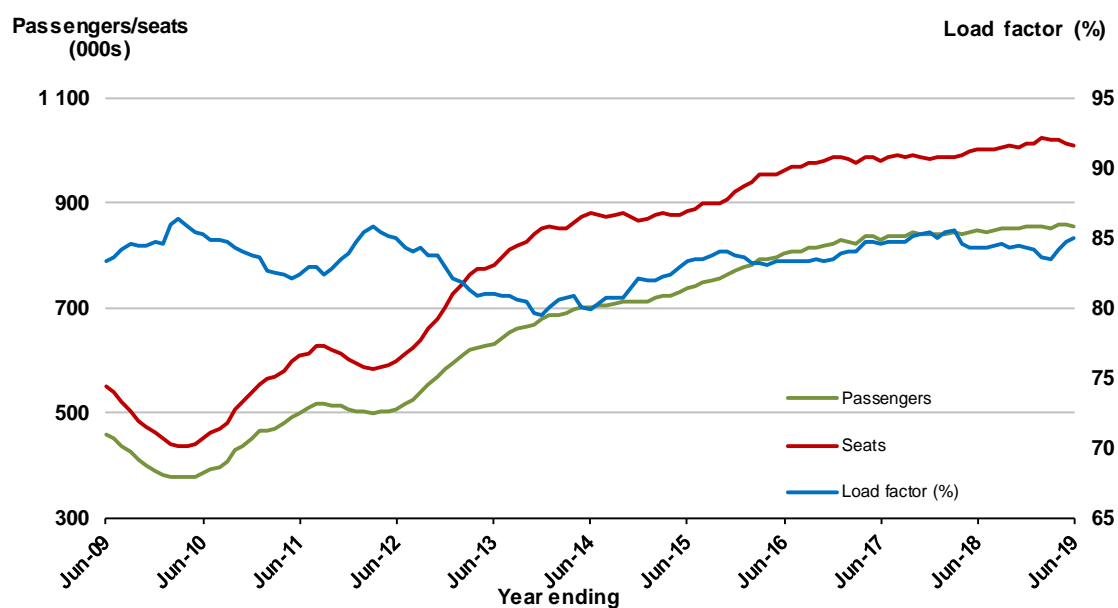


18. Cairns - Melbourne

Moving annual data

	YE Jun 2018	YE Jun 2019	% Change
Passengers carried (000s)	847.2	855.6	1.0
Seats (000s)	1 003.6	1 007.5	0.4
Load factor %	84.3	84.9	0.6 *
Aircraft trips	5 249	5 178	-1.4

* percentage point difference

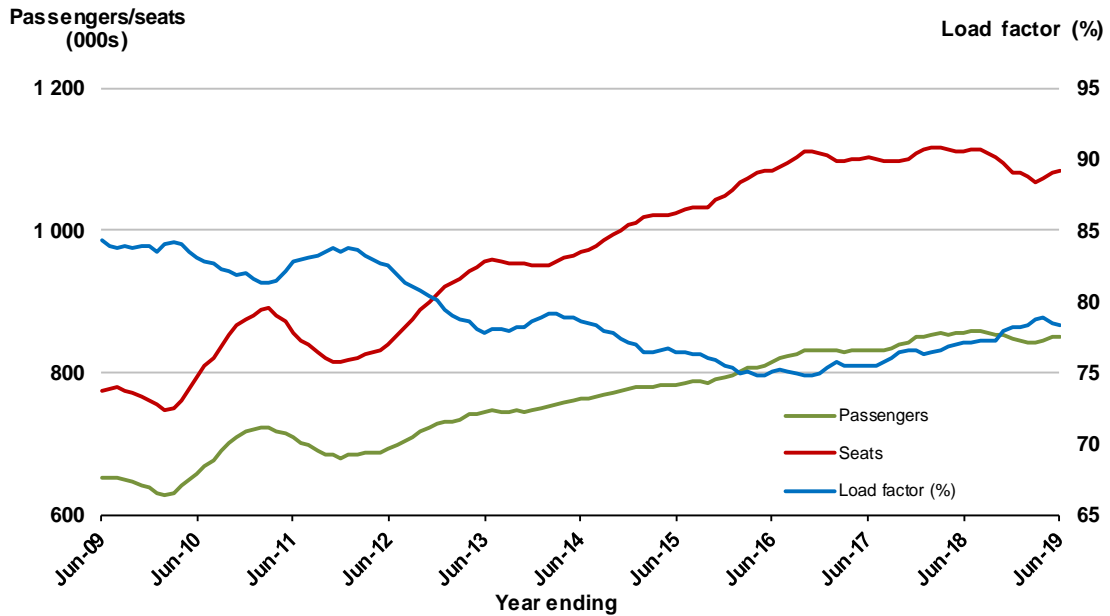


19. Adelaide - Brisbane

Moving annual data

	YE Jun 2018	YE Jun 2019	% Change
Passengers carried (000s)	856.8	850.4	-0.8
Seats (000s)	1 112.2	1 085.0	-2.5
Load factor %	77.0	78.4	1.3*
Aircraft trips	6 717	6 608	-1.6

* percentage point difference

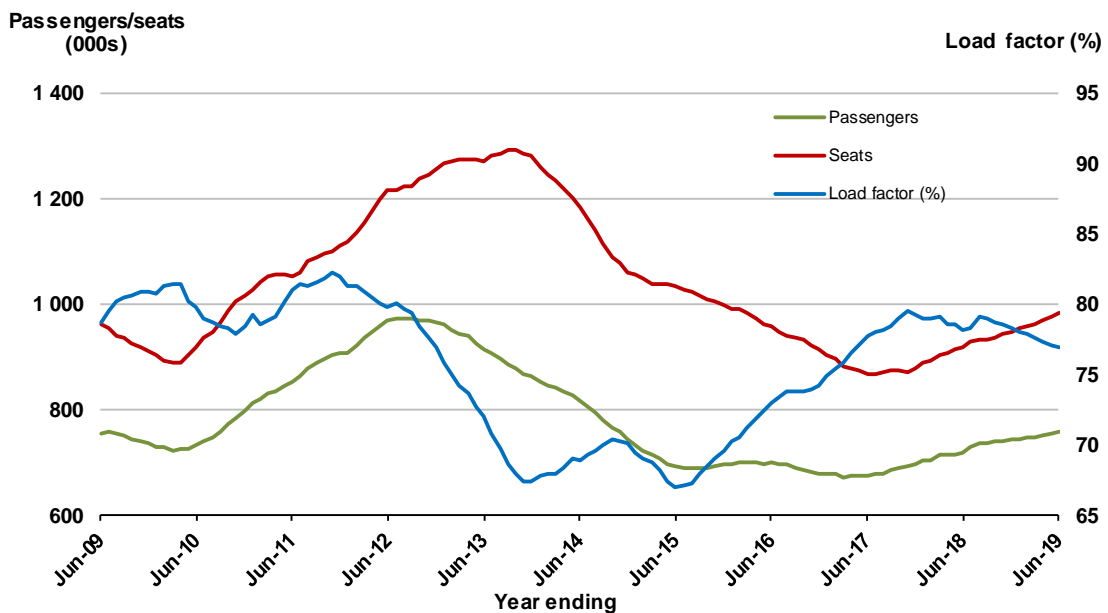


20. Brisbane - Mackay

Moving annual data

	YE Jun 2018	YE Jun 2019	% Change
Passengers carried (000s)	717.3	757.7	5.6
Seats (000s)	917.7	983.9	7.2
Load factor %	78.2	77.0	-1.2*
Aircraft trips	7 182	7 508	4.5

* percentage point difference



TOP FIFTY REGIONAL AIRPORTS

Table 7: Top fifty regional airports (000s) — passenger movements, annual

Airport	YE Jun 2018	YE Jun 2019	% Change
1 Cairns	4 329.5	4 225.2	-2.4
2 Hobart	2 596.1	2 725.6	5.0
3 Darwin	1 778.6	1 715.5	-3.5
4 Townsville	1 640.5	1 648.7	0.5
5 Launceston	1 363.1	1 390.6	2.0
6 Newcastle	1 279.4	1 260.8	-1.5
7 Mackay	813.9	861.9	5.9
8 Alice Springs	615.1	604.2	-1.8
9 Rockhampton	563.9	552.8	-2.0
10 Ballina	526.8	534.1	1.4
11 Ayers Rock	380.3	456.9	20.1
12 Karratha	433.2	448.3	3.5
13 Hamilton Island	416.4	431.2	3.6
14 Proserpine	470.0	430.0	-8.5
15 Broome	417.9	407.8	-2.4
16 Coffs Harbour	413.2	396.5	-4.0
17 Port Hedland	356.2	374.2	5.0
18 Newman	294.3	323.5	9.9
19 Kalgoorlie	266.6	294.7	10.5
20 Mildura	263.9	262.1	-0.7
21 Albury	268.1	253.8	-5.3
22 Gladstone	265.8	246.7	-7.2
23 Mount Isa	207.1	216.8	4.7
24 Port Macquarie	222.8	214.8	-3.6
25 Dubbo	229.7	212.6	-7.5
26 Wagga Wagga	225.3	208.0	-7.7
27 Emerald	195.8	196.4	0.3
28 Tamworth	192.7	187.7	-2.6
29 Paraburdoo	171.4	181.5	5.9
30 Port Lincoln	169.4	169.0	-0.3
31 Hervey Bay	170.0	161.5	-5.0
32 Bundaberg	169.5	156.4	-7.7
33 Devonport	147.7	146.8	-0.6
34 Armidale	130.9	130.3	-0.5
35 Toowoomba Wellcamp	149.8	124.1	-17.2
36 Kununurra	103.8	110.6	6.6
37 Geraldton	112.0	110.3	-1.5
38 Moranbah	104.3	109.5	5.0
39 Thursday Island	99.4	99.2	-0.3
40 Roma	85.2	92.8	9.0
41 Griffith	75.3	86.6	15.0
42 Learmonth	87.1	85.8	-1.5
43 Mount Gambier	80.6	81.8	1.5
44 Gove	86.6	81.4	-6.0
45 Orange	70.6	80.0	13.3
46 Whyalla	70.3	77.9	10.7
47 Olympic Dam	76.5	77.8	1.7
48 Weipa	79.2	77.7	-1.8
49 Burnie	65.5	72.6	10.8
50 Merimbula	67.0	68.5	2.3
Total top 50 regional airports	23 398.3	23 463.5	0.3
Total regional airports	24 772.9	24 871.8	0.4
Total domestic network	121 499.8	121 906.3	0.3

Note: Airport passenger movement numbers are the sum of passenger arrivals and departures at each airport. Regional airports are defined as airports which are, according to the Australian Bureau of Statistics "The Australian Statistical Geography Standard (ASGS)", not based in Major Urban areas.

DOMESTIC CHARTER ACTIVITY

Table 8: Charter passengers carried and aircraft trips - annual activity

	YE Jun 2018	YE Jun 2019	% Change
Total domestic charter passengers	2 445 537	2 567 510	5.0
Total domestic charter aircraft trips	45 772	44 519	-2.7

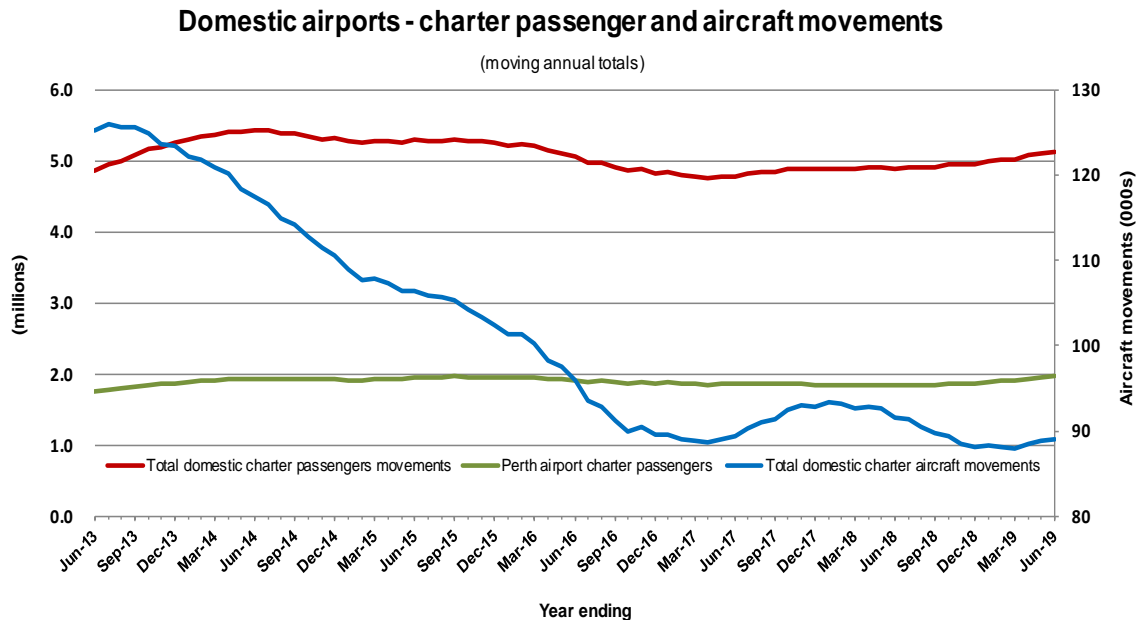
Note: Helicopter, joyflights and sightseeing charter flights not included.

Table 9: Domestic airports - charter activity - annual activity

	YE Jun 2018	YE Jun 2019	% Change
Total domestic charter passenger movements	4 891 074	5 135 020	5.0
Total domestic charter aircraft movements	91 544	89 038	-2.7
Perth airport charter passenger movements	1 838 557	1 966 218	6.9
Perth airport charter aircraft movements	30 783	30 789	0.0

Note: Helicopter, joyflights and sightseeing charter flights not included.

Charter passenger and aircraft movement numbers are the sum of arrivals and departures at each airport.



DEFINITIONS

Aircraft Trips	The number of flight stages. A return flight counts as two aircraft trips.
Airport Movements	Airport movements (passenger and cargo) are measured once on arrival and once on departure. Each domestic trip generates two movements at airports. For example, a trip from Melbourne to Sydney will be counted twice, as a passenger departure at Melbourne and as a passenger arrival at Sydney. At the national level, the sum of all domestic airport traffic will therefore be equal to twice the number of trips undertaken.
Available Seat Kilometres (ASKs)	Calculated by multiplying the number of seats available on each flight stage, by the distance in kilometres between the ports. The distances used are Great Circle Distances.
City-Pair	The ports shown make up the city-pair route. Passenger movements shown for a city pair reflect total traffic in both directions.
Flight Stage	The operation of an aircraft from take-off to landing.
Load Factor	The total revenue passenger kilometres performed as a percentage of the total available seat kilometres.
Passengers Carried	Revenue passengers carried.
Regular Public Transport Services (RPT)	All air service operations in which aircraft are available for the transport of members of public and are conducted in accordance with fixed schedules. It does not include charter or other non-scheduled operations.
Revenue Passengers	All passengers paying any fare. Frequent flyer redemption travellers are regarded as revenue passengers.
Revenue Passenger Kilometres (RPKs)	Calculated by multiplying the number of revenue passengers travelling on each flight stage, by the distance in kilometres between the ports. The distances used are Great Circle Distances.
Traffic on board by stages	The total of all traffic (revenue passengers) on each flight stage between two directly connected airports.
..	Data not included
NA	Not applicable