



Australian Government

Department of Infrastructure, Regional Development and Cities

Bureau of Infrastructure, Transport and Regional Economics

STATISTICAL REPORT



Aviation

Domestic aviation activity
2017-18

© Commonwealth of Australia 2018

ISSN: 1832 - 1968

Ownership of intellectual property rights in this publication

Unless otherwise noted, copyright (and any other intellectual property rights, if any) in this publication is owned by the Commonwealth of Australia (referred to below as the Commonwealth).

Disclaimer

The material contained in this publication is made available on the understanding that the Commonwealth is not providing professional advice, and that users exercise their own skill and care with respect to its use, and seek independent advice if necessary.

The Commonwealth makes no representations or warranties as to the contents or accuracy of the information contained in this publication. To the extent permitted by law, the Commonwealth disclaims liability to any person or organisation in respect of anything done, or omitted to be done, in reliance upon information contained in this publication.

Creative Commons licence

With the exception of (a) the Coat of Arms; and (b) the Department of Infrastructure, Regional Development and Cities' photos and graphics, copyright in this publication is licensed under a Creative Commons Attribution 3.0 Australia Licence.

Creative Commons Attribution 3.0 Australia Licence is a standard form licence agreement that allows you to copy, communicate and adapt this publication provided that you attribute the work to the Commonwealth and abide by the other licence terms. A summary of the licence terms is available from <http://creativecommons.org/licenses/by/3.0/au/deed.en>. The full licence terms are available from <http://creativecommons.org/licenses/by/3.0/au/legalcode>.

Use of the Coat of Arms

The Department of the Prime Minister and Cabinet sets the terms under which the Coat of Arms is used. Please refer to the Department's Commonwealth Coat of Arms and Government branding web page <http://www.dpmc.gov.au/guidelines/index.cfm#brand> and, in particular, the Guidelines on the use of the Commonwealth Coat of Arms publication.

An appropriate citation for this report is:

Bureau of Infrastructure, Transport and Regional Economics (BITRE), 2018, Domestic aviation activity, Statistical Report, BITRE, Canberra ACT.

Contact us

This publication is available in PDF format. All other rights are reserved, including in relation to any Departmental logos or trade marks which may exist. For enquiries regarding the licence and any use of this publication, please contact:

Bureau of Infrastructure, Transport and Regional Economics (BITRE)
Department of Infrastructure, Regional Development and Cities
GPO Box 501, Canberra ACT 2601, Australia
Telephone: (international) +61 2 6274 7210
Fax: (international) +61 2 6274 7727
Email: bitre@infrastructure.gov.au
Website: www.bitre.gov.au

Inquiries

Should you require additional information about the statistics contained in this publication:

Nebojsa Pavlovic

Telephone (02) 6274 6817 or Facsimile (02) 6274 7727

Electronic mail: AVSTATS@infrastructure.gov.au

Nebojsa.Pavlovic@infrastructure.gov.au

Web site: <http://www.bitre.gov.au/statistics/aviation/domestic.aspx>

FOREWORD

This report provides an overview of domestic (including charter) commercial aviation activity in Australia for the year ending June 2018.

The data cover revenue passengers carried by Australian-registered operators of scheduled regular public transport services over Australian flight stages and fixed-wing charter operators. These estimates include passengers carried between domestic airports on international flights operated by these carriers. The passengers carried refer to traffic on board by stages.

Estimates of passengers and aircraft movements for charter aviation are included in this publication, where BITRE confidentiality standards are met.

Individual routes shown are restricted to those with an average exceeding 8 000 passengers per month where two or more airlines operate in competition. For the year ending June 2018 there were 66 such routes.

Information on both the total network and the Regular Public Transport (RPT) network for the year ending June 2018 is presented on page 2.

Detailed information on the 66 individual routes can be found in the RPT summary pages 3–10 of this publication.

The top ten airports in terms of RPT passenger movements are shown on page 11.

Data on domestic RPT cargo movements at the top five cargo airports are provided on page 12. The table includes cargo carried on passenger flights operated by the Qantas group (including Jetstar), Virgin Australia, Air North and Skippers as well as the cargo carried by dedicated freighter aircraft operated by Qantas Freight, Toll Priority and Virgin Australia Cargo.

The long-term trends for the top twenty competitive RPT routes are presented graphically on pages 13–22.

Domestic RPT passenger movements at the top 50 regional airports are presented on page 23.

Tables providing estimates of domestic charter aviation activity are shown on page 24. BITRE confidentiality standards restrict publication of detailed airport-level estimates for any Australian airport, with the exception of Perth Airport.

A list of definitions can be found on page 25.

This report was prepared by the Aviation Statistics Section of the Bureau of Infrastructure, Transport and Regional Economics with data provided by airlines.

Estimates are included where data were not available and data presented in this publication may contain revisions to previously published data.

Where figures have been rounded, discrepancies may occur between sums of component items and totals, and in percentage changes which are derived from figures prior to rounding.

CONTENTS

Highlights	1
RPT network	2
Top competitive routes	3
Top ten airports – passenger movements	11
Top five airports – cargo movements	12
Top twenty routes	13
1. Melbourne – Sydney	13
2. Brisbane – Sydney	13
3. Brisbane – Melbourne	14
4. Gold Coast – Sydney	14
5. Adelaide – Melbourne	15
6. Melbourne – Perth	15
7. Gold Coast – Melbourne	16
8. Adelaide – Sydney	16
9. Perth – Sydney	17
10. Hobart – Melbourne	17
11. Brisbane – Cairns	18
12. Canberra – Melbourne	18
13. Cairns – Sydney	19
14. Brisbane – Townsville	19
15. Brisbane – Perth	20
16. Canberra – Sydney	20
17. Launceston – Melbourne	21
18. Adelaide – Brisbane	21
19. Cairns – Melbourne	22
20. Brisbane – Mackay	22
Top fifty regional airports	23
Domestic charter activity	24
Definitions	25

This page is intentionally left blank.

HIGHLIGHTS

There were 63.20 million passengers carried on Australian domestic commercial aviation (including charter operations) in the year ending June 2018, an increase of 2.4 per cent compared with the previous year. In the year ending June 2018 there were 680 173 aircraft trips, a decrease of 0.9 per cent compared to the previous year.

60.76 million passengers were carried on RPT flights in the year ending June 2018, an increase of 2.5 per cent compared with the previous year.

RPT revenue passenger kilometres (RPKs) performed were 70.87 billion in the year, up 2.0 per cent on the previous year.

Capacity, measured by available seat kilometres (ASKs), decreased by 0.2 per cent compared with the previous year, to a total of 88.53 billion.

With RPT passenger traffic increasing and capacity decreasing, the industry wide load factor (RPKs/ASKs) increased from 78.4 per cent in the year ending June 2017 to 80.1 per cent in the year ending June 2018. Load factors on individual routes increased on 50 of the 64 RPT routes for which data is available in both years.

In the year ending June 2018, Melbourne – Sydney remained Australia's busiest RPT route with 9.25 million passengers, an increase of 3.1 per cent. It was followed by Brisbane – Sydney with 4.79 million passengers (up 2.0 per cent) and Brisbane – Melbourne with 3.56 million passengers (up 1.6 per cent).

The greatest percentage increase in RPT passenger numbers was on the Brisbane – Proserpine route (up 19.4 per cent). There were large increases on a number of other routes, including Broome – Perth (up 19.0 per cent) and Melbourne – Sunshine Coast (up 12.6 per cent).

RPT routes with traffic decreases in the year ending June 2018 included Hamilton Island – Sydney (down 14.4 per cent), Brisbane – Hamilton Island (down 12.6 per cent) and Brisbane – Gladstone (down 12.4 per cent).

In the year ending June 2018, Sydney remained Australia's busiest airport for domestic passengers with 27.65 million passenger movements, followed by Melbourne with 25.69 million passenger movements and Brisbane with 17.38 million passenger movements.

Total cargo movements at Australian airports on domestic RPT flights were 460 thousand tonnes in the year ending June 2018, an increase of 2.3 per cent compared to the previous year. Melbourne remained Australia's busiest airport for domestic cargo with 133 thousand tonnes, followed by Sydney with 106 thousand tonnes and Brisbane with 68 thousand tonnes.

In the year ending June 2018, the number of domestic aviation passengers travelling through regional airports was 24.79 million, 2.4 per cent higher than for the year ending June 2017. Out of the top 50 regional airports, the strongest growth was at Olympic Dam airport (up 40.3 per cent on the previous year), while the largest decrease was at Hamilton Island airport (down 16.2 per cent).

Fixed-wing charter operators carried 2.43 million passengers in the year ending June 2018, an increase of 1.8 per cent compared with the previous year. Perth airport accounted for 37.6 per cent of all charter passengers in Australia.

TOTAL NETWORK

Summary of annual commercial aviation activity

	YE Jun 2017	YE Jun 2018	% Change
Total passengers carried (millions)	61.70	63.20	2.4
Aircraft trips (000s)	686.3	680.2	-0.9

Note: Regular Public Transport and charter aviation activity
Helicopter, joyflights and sightseeing charter flights not included.

RPT NETWORK

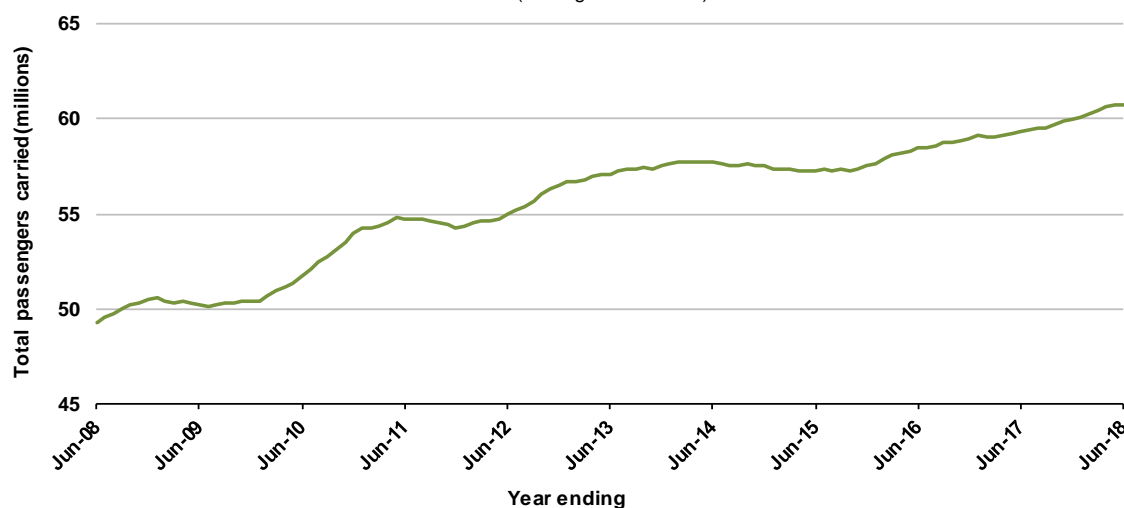
Summary of annual RPT activity

	YE Jun 2017	YE Jun 2018	% Change
Total passengers carried (millions)	59.30	60.76	2.5
Revenue passenger kilometres (billions)	69.49	70.87	2.0
Available seats (millions)	77.25	77.51	0.3
Available seat kilometres (billions)	88.67	88.53	-0.2
Load factor %	78.4	80.1	1.7 *
Aircraft trips (000s)	641.7	635.1	-1.0

* percentage point difference

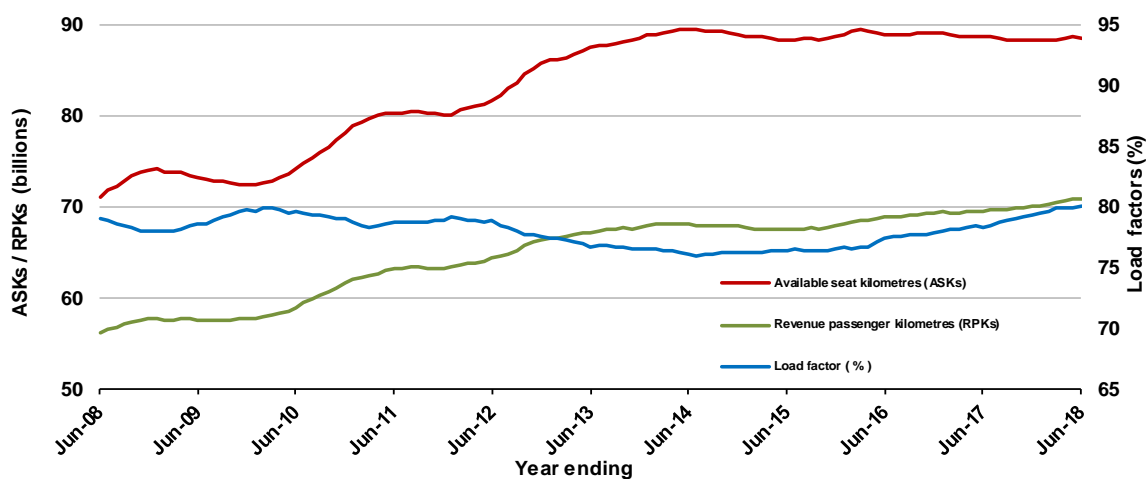
Domestic RPT passenger traffic

(moving annual totals)



RPT Network utilisation

(moving annual totals)



TOP COMPETITIVE ROUTES

Table 1: Passengers carried (000s) — annual activity

	City-Pair	YE Jun 2017	YE Jun 2018	% Change
1	Melbourne - Sydney	8 974.5	9 250.8	3.1
2	Brisbane - Sydney	4 695.7	4 788.1	2.0
3	Brisbane - Melbourne	3 500.4	3 556.9	1.6
4	Gold Coast - Sydney	2 712.7	2 751.6	1.4
5	Adelaide - Melbourne	2 413.4	2 487.3	3.1
6	Melbourne - Perth	2 048.1	2 057.8	0.5
7	Gold Coast - Melbourne	1 992.2	2 045.6	2.7
8	Adelaide - Sydney	1 886.5	1 908.6	1.2
9	Perth - Sydney	1 737.8	1 719.9	-1.0
10	Hobart - Melbourne	1 598.7	1 638.6	2.5
11	Brisbane - Cairns	1 359.6	1 362.5	0.2
12	Canberra - Melbourne	1 078.7	1 150.5	6.7
13	Cairns - Sydney	1 124.8	1 135.1	0.9
14	Brisbane - Townsville	958.6	976.9	1.9
15	Brisbane - Perth	964.8	976.1	1.2
16	Canberra - Sydney	955.0	952.0	-0.3
17	Launceston - Melbourne	912.9	945.7	3.6
18	Adelaide - Brisbane	831.0	856.8	3.1
19	Cairns - Melbourne	830.0	850.3	2.5
20	Brisbane - Mackay	675.1	717.3	6.3
21	Hobart - Sydney	634.4	686.2	8.2
22	Adelaide - Perth	615.2	629.7	2.3
23	Brisbane - Canberra	585.5	618.5	5.6
24	Sunshine Coast - Sydney	558.5	612.5	9.7
25	Brisbane - Newcastle	587.0	584.1	-0.5
26	Brisbane - Rockhampton	540.3	522.3	-3.3
27	Melbourne - Sunshine Coast	458.1	515.8	12.6
28	Melbourne - Newcastle	469.1	488.4	4.1
29	Karratha - Perth	461.5	431.8	-6.4
30	Ballina - Sydney	393.9	424.9	7.9
31	Brisbane - Darwin	408.7	396.1	-3.1
32	Perth - Port Hedland	340.7	346.7	1.8
33	Coffs Harbour - Sydney	342.2	346.5	1.3
34	Broome - Perth	288.9	343.8	19.0
35	Darwin - Sydney	320.1	318.1	-0.6
36	Darwin - Melbourne	306.3	302.7	-1.2
37	Newman - Perth	292.5	293.6	0.4
38	Launceston - Sydney	290.6	283.4	-2.5
39	Brisbane - Proserpine	228.8	273.2	19.4
40	Brisbane - Gladstone	303.0	265.3	-12.4
41	Kalgoorlie - Perth	235.6	255.6	8.5
42	Albury - Sydney	224.4	221.8	-1.2
43	Adelaide - Gold Coast	216.5	220.1	1.7
44	Melbourne - Mildura	207.4	218.5	5.4
45	Brisbane - Hobart	207.1	217.0	4.8
46	Darwin - Perth	190.4	203.2	6.7
47	Hamilton Island - Sydney	233.5	200.0	-14.4
48	Ayers Rock - Sydney	190.4	196.2	3.0
49	Brisbane - Emerald	197.3	195.6	-0.9
50	Adelaide - Canberra	175.3	190.2	8.5

(continued)

Table 1: (continued): Passengers carried (000s) — annual activity

	City-Pair	YE Jun 2017	YE Jun 2018	% Change
51	Port Macquarie - Sydney	192.9	189.8	-1.6
52	Dubbo - Sydney	189.4	189.6	0.1
53	Sydney - Wagga Wagga	186.6	179.6	-3.8
54	Sydney - Tamworth	181.3	176.4	-2.7
55	Brisbane - Bundaberg	174.4	169.4	-2.8
56	Adelaide - Port Lincoln	175.2	169.1	-3.5
57	Sydney - Townsville	158.1	160.9	1.8
58	Cairns - Townsville	139.9	147.9	5.7
59	Adelaide - Alice Springs	122.1	127.9	4.7
60	Brisbane - Mount Isa	121.2	127.6	5.2
61	Brisbane - Hamilton Island	141.7	123.9	-12.6
62	Armidale - Sydney	126.8	123.5	-2.5
63	Melbourne - Townsville	..	120.5	NA (a)
64	Alice Springs - Darwin	116.4	113.8	-2.2
65	Proserpine - Sydney	..	112.9	NA (b)
66	Geraldton - Perth	115.7	111.9	-3.3
	Total domestic network	59 303.5	60 764.8	2.5

(a) Melbourne - Townsville route included from September 2017, prior data not shown.

(b) Proserpine - Sydney route included from September 2017, prior data not shown.

Table 2: Available seats (000s) — annual activity

	City-Pair	YE Jun 2017	YE Jun 2018	% Change
1	Melbourne - Sydney	10 700.4	10 884.8	1.7
2	Brisbane - Sydney	5 750.4	5 776.2	0.4
3	Brisbane - Melbourne	4 354.7	4 373.6	0.4
4	Gold Coast - Sydney	3 155.0	3 177.6	0.7
5	Adelaide - Melbourne	3 032.4	3 096.9	2.1
6	Melbourne - Perth	2 523.4	2 410.4	-4.5
7	Gold Coast - Melbourne	2 346.1	2 362.9	0.7
8	Adelaide - Sydney	2 319.4	2 315.1	-0.2
9	Perth - Sydney	2 139.0	2 063.2	-3.5
10	Hobart - Melbourne	2 002.3	2 024.9	1.1
11	Brisbane - Cairns	1 634.7	1 573.6	-3.7
12	Canberra - Melbourne	1 597.9	1 743.2	9.1
13	Cairns - Sydney	1 336.5	1 345.4	0.7
14	Brisbane - Townsville	1 263.5	1 278.0	1.2
15	Brisbane - Perth	1 191.3	1 179.5	-1.0
16	Canberra - Sydney	1 337.5	1 292.9	-3.3
17	Launceston - Melbourne	1 158.5	1 176.1	1.5
18	Adelaide - Brisbane	1 101.7	1 112.2	1.0
19	Cairns - Melbourne	980.8	1 009.0	2.9
20	Brisbane - Mackay	868.2	917.7	5.7
21	Hobart - Sydney	770.4	833.5	8.2
22	Adelaide - Perth	868.0	841.7	-3.0
23	Brisbane - Canberra	829.2	862.3	4.0
24	Sunshine Coast - Sydney	690.9	754.4	9.2
25	Brisbane - Newcastle	787.4	794.5	0.9
26	Brisbane - Rockhampton	699.6	641.4	-8.3
27	Melbourne - Sunshine Coast	536.9	606.7	13.0
28	Melbourne - Newcastle	598.7	599.0	0.1
29	Karratha - Perth	761.4	677.4	-11.0
30	Ballina - Sydney	489.1	514.6	5.2
31	Brisbane - Darwin	516.5	485.5	-6.0
32	Perth - Port Hedland	563.0	530.7	-5.7
33	Coffs Harbour - Sydney	458.8	477.7	4.1
34	Broome - Perth	393.7	441.0	12.0
35	Darwin - Sydney	442.0	428.2	-3.1
36	Darwin - Melbourne	382.2	383.8	0.4
37	Newman - Perth	568.3	533.3	-6.2
38	Launceston - Sydney	345.8	328.3	-5.1
39	Brisbane - Proserpine	278.2	324.7	16.7
40	Brisbane - Gladstone	459.7	372.0	-19.1
41	Kalgoorlie - Perth	394.6	438.3	11.1
42	Albury - Sydney	345.9	317.1	-8.3
43	Adelaide - Gold Coast	270.9	263.6	-2.7
44	Melbourne - Mildura	323.8	341.3	5.4
45	Brisbane - Hobart	245.9	257.1	4.6
46	Darwin - Perth	266.1	260.5	-2.1
47	Hamilton Island - Sydney	312.0	305.6	-2.1
48	Ayers Rock - Sydney	245.6	246.2	0.2
49	Brisbane - Emerald	339.9	277.2	-18.4
50	Adelaide - Canberra	267.6	289.6	8.2

(continued)

Table 2: (continued): Available seats (000s) — annual activity

	City-Pair	YE Jun 2017	YE Jun 2018	% Change
51	Port Macquarie - Sydney	263.9	243.3	-7.8
52	Dubbo - Sydney	293.1	261.9	-10.6
53	Sydney - Wagga Wagga	294.5	269.4	-8.5
54	Sydney - Tamworth	294.0	270.1	-8.1
55	Brisbane - Bundaberg	231.7	238.1	2.8
56	Adelaide - Port Lincoln	288.0	282.4	-1.9
57	Sydney - Townsville	209.5	204.4	-2.4
58	Cairns - Townsville	285.8	262.2	-8.3
59	Adelaide - Alice Springs	181.1	183.0	1.1
60	Brisbane - Mount Isa	202.6	177.6	-12.3
61	Brisbane - Hamilton Island	190.7	179.0	-6.1
62	Armidale - Sydney	190.8	178.0	-6.7
63	Melbourne - Townsville	..	153.9	NA (a)
64	Alice Springs - Darwin	212.1	213.3	0.6
65	Proserpine - Sydney	..	141.2	NA (b)
66	Geraldton - Perth	240.3	226.2	-5.9
	Total domestic network	77 254.9	77 510.2	0.3

(a) Melbourne - Townsville route included from September 2017, prior data not shown.

(b) Proserpine - Sydney route included from September 2017, prior data not shown.

Table 3: Load factors (%) — annual activity

	City-Pair	YE Jun 2017	YE Jun 2018	% Change
1	Melbourne - Sydney	83.9	85.0	1.1
2	Brisbane - Sydney	81.7	82.9	1.2
3	Brisbane - Melbourne	80.4	81.3	0.9
4	Gold Coast - Sydney	86.0	86.6	0.6
5	Adelaide - Melbourne	79.6	80.3	0.7
6	Melbourne - Perth	81.2	85.4	4.2
7	Gold Coast - Melbourne	84.9	86.6	1.7
8	Adelaide - Sydney	81.3	82.4	1.1
9	Perth - Sydney	81.2	83.4	2.1
10	Hobart - Melbourne	79.8	80.9	1.1
11	Brisbane - Cairns	83.2	86.6	3.4
12	Canberra - Melbourne	67.5	66.0	-1.5
13	Cairns - Sydney	84.2	84.4	0.2
14	Brisbane - Townsville	75.9	76.4	0.6
15	Brisbane - Perth	81.0	82.8	1.8
16	Canberra - Sydney	71.4	73.6	2.2
17	Launceston - Melbourne	78.8	80.4	1.6
18	Adelaide - Brisbane	75.4	77.0	1.6
19	Cairns - Melbourne	84.6	84.3	-0.3
20	Brisbane - Mackay	77.8	78.2	0.4
21	Hobart - Sydney	82.4	82.3	0.0
22	Adelaide - Perth	70.9	74.8	3.9
23	Brisbane - Canberra	70.6	71.7	1.1
24	Sunshine Coast - Sydney	80.8	81.2	0.3
25	Brisbane - Newcastle	74.5	73.5	-1.0
26	Brisbane - Rockhampton	77.2	81.4	4.2
27	Melbourne - Sunshine Coast	85.3	85.0	-0.3
28	Melbourne - Newcastle	78.3	81.5	3.2
29	Karratha - Perth	60.6	63.8	3.2
30	Ballina - Sydney	80.5	82.6	2.0
31	Brisbane - Darwin	79.1	81.6	2.4
32	Perth - Port Hedland	60.6	65.3	4.7
33	Coffs Harbour - Sydney	74.6	72.5	-2.0
34	Broome - Perth	73.5	78.0	4.5
35	Darwin - Sydney	72.4	74.3	1.9
36	Darwin - Melbourne	80.1	78.8	-1.3
37	Newman - Perth	51.5	55.0	3.5
38	Launceston - Sydney	84.0	86.3	2.3
39	Brisbane - Proserpine	82.2	84.1	1.9
40	Brisbane - Gladstone	65.9	71.3	5.4
41	Kalgoorlie - Perth	59.7	58.3	-1.4
42	Albury - Sydney	64.9	70.0	5.1
43	Adelaide - Gold Coast	79.9	83.5	3.6
44	Melbourne - Mildura	64.1	64.0	0.0
45	Brisbane - Hobart	84.2	84.4	0.2
46	Darwin - Perth	71.6	78.0	6.5
47	Hamilton Island - Sydney	74.8	65.4	-9.4
48	Ayers Rock - Sydney	77.5	79.7	2.2
49	Brisbane - Emerald	58.1	70.6	12.5
50	Adelaide - Canberra	65.5	65.7	0.2

(continued)

Table 3: (continued): Load factors (%) — annual activity

	City-Pair	YE Jun 2017	YE Jun 2018	% Change
51	Port Macquarie - Sydney	73.1	78.0	4.9
52	Dubbo - Sydney	64.6	72.4	7.8
53	Sydney - Wagga Wagga	63.4	66.6	3.3
54	Sydney - Tamworth	61.7	65.3	3.7
55	Brisbane - Bundaberg	75.3	71.1	-4.1
56	Adelaide - Port Lincoln	60.8	59.9	-1.0
57	Sydney - Townsville	75.5	78.7	3.3
58	Cairns - Townsville	49.0	56.4	7.4
59	Adelaide - Alice Springs	67.4	69.9	2.4
60	Brisbane - Mount Isa	59.8	71.8	12.0
61	Brisbane - Hamilton Island	74.3	69.2	-5.1
62	Armidale - Sydney	66.4	69.4	3.0
63	Melbourne - Townsville	..	78.3	NA (a)
64	Alice Springs - Darwin	54.9	53.3	-1.5
65	Proserpine - Sydney	..	79.9	NA (b)
66	Geraldton - Perth	48.5	49.5	0.9
	Total domestic network	78.4	80.1	1.7

(a) Melbourne - Townsville route included from September 2017, prior data not shown.

(b) Proserpine - Sydney route included from September 2017, prior data not shown.

Table 4: Aircraft trips ^(a) — annual activity

	City-Pair	YE Jun 2017	YE Jun 2018	% Change
1	Melbourne - Sydney	59 599	60 368	1.3
2	Brisbane - Sydney	35 508	35 198	-0.9
3	Brisbane - Melbourne	25 757	25 804	0.2
4	Gold Coast - Sydney	18 250	17 962	-1.6
5	Adelaide - Melbourne	19 282	19 213	-0.4
6	Melbourne - Perth	11 432	11 196	-2.1
7	Gold Coast - Melbourne	12 549	12 520	-0.2
8	Adelaide - Sydney	14 036	13 876	-1.1
9	Perth - Sydney	9 098	9 062	-0.4
10	Hobart - Melbourne	12 377	11 914	-3.7
11	Brisbane - Cairns	10 246	9 937	-3.0
12	Canberra - Melbourne	10 908	11 416	4.7
13	Cairns - Sydney	7 496	7 378	-1.6
14	Brisbane - Townsville	8 938	8 822	-1.3
15	Brisbane - Perth	5 721	6 017	5.2
16	Canberra - Sydney	16 514	16 048	-2.8
17	Launceston - Melbourne	8 958	8 936	-0.2
18	Adelaide - Brisbane	6 710	6 717	0.1
19	Cairns - Melbourne	5 188	5 265	1.5
20	Brisbane - Mackay	7 414	7 182	-3.1
21	Hobart - Sydney	4 833	5 016	3.8
22	Adelaide - Perth	5 510	5 589	1.4
23	Brisbane - Canberra	6 004	6 236	3.9
24	Sunshine Coast - Sydney	4 191	4 547	8.5
25	Brisbane - Newcastle	6 323	5 624	-11.1
26	Brisbane - Rockhampton	8 599	7 869	-8.5
27	Melbourne - Sunshine Coast	3 038	3 444	13.4
28	Melbourne - Newcastle	3 362	3 350	-0.4
29	Karratha - Perth	6 625	5 984	-9.7
30	Ballina - Sydney	3 289	3 317	0.9
31	Brisbane - Darwin	3 148	2 977	-5.4
32	Perth - Port Hedland	4 554	4 399	-3.4
33	Coffs Harbour - Sydney	5 244	4 845	-7.6
34	Broome - Perth	3 317	3 911	17.9
35	Darwin - Sydney	2 616	2 537	-3.0
36	Darwin - Melbourne	2 177	2 139	-1.7
37	Newman - Perth	4 139	3 991	-3.6
38	Launceston - Sydney	2 004	1 896	-5.4
39	Brisbane - Proserpine	1 581	1 830	15.7
40	Brisbane - Gladstone	6 122	4 896	-20.0
41	Kalgoorlie - Perth	3 374	3 531	4.7
42	Albury - Sydney	6 291	5 760	-8.4
43	Adelaide - Gold Coast	1 532	1 490	-2.7
44	Melbourne - Mildura	4 886	4 763	-2.5
45	Brisbane - Hobart	1 417	1 458	2.9
46	Darwin - Perth	1 608	1 555	-3.3
47	Hamilton Island - Sydney	1 877	1 866	-0.6
48	Ayers Rock - Sydney	1 395	1 389	-0.4
49	Brisbane - Emerald	4 526	3 706	-18.1
50	Adelaide - Canberra	1 712	1 714	0.1

(continued)

Table 4: (continued): Aircraft trips ^(a)— annual activity

	City-Pair	YE Jun 2017	YE Jun 2018	% Change
51	Port Macquarie - Sydney	4 532	4 060	-10.4
52	Dubbo - Sydney	6 397	5 682	-11.2
53	Sydney - Wagga Wagga	5 658	5 196	-8.2
54	Sydney - Tamworth	4 705	4 190	-10.9
55	Brisbane - Bundaberg	3 875	3 497	-9.8
56	Adelaide - Port Lincoln	7 408	7 234	-2.3
57	Sydney - Townsville	1 331	1 224	-8.0
58	Cairns - Townsville	4 836	4 293	-11.2
59	Adelaide - Alice Springs	1 139	1 297	13.9
60	Brisbane - Mount Isa	1 847	1 817	-1.6
61	Brisbane - Hamilton Island	1 544	1 436	-7.0
62	Armidale - Sydney	4 521	4 255	-5.9
63	Melbourne - Townsville	..	857	NA (b)
64	Alice Springs - Darwin	1 719	1 860	8.2
65	Proserpine - Sydney	..	784	NA (c)
66	Geraldton - Perth	2 403	2 272	-5.5
	Total domestic network	641 719	635 098	-1.0

(a) Includes RPT Cargo flights.

(b) Melbourne - Townsville route included from September 2017, prior data not shown.

(c) Proserpine - Sydney route included from September 2017, prior data not shown.

TOP TEN AIRPORTS – PASSENGER MOVEMENTS

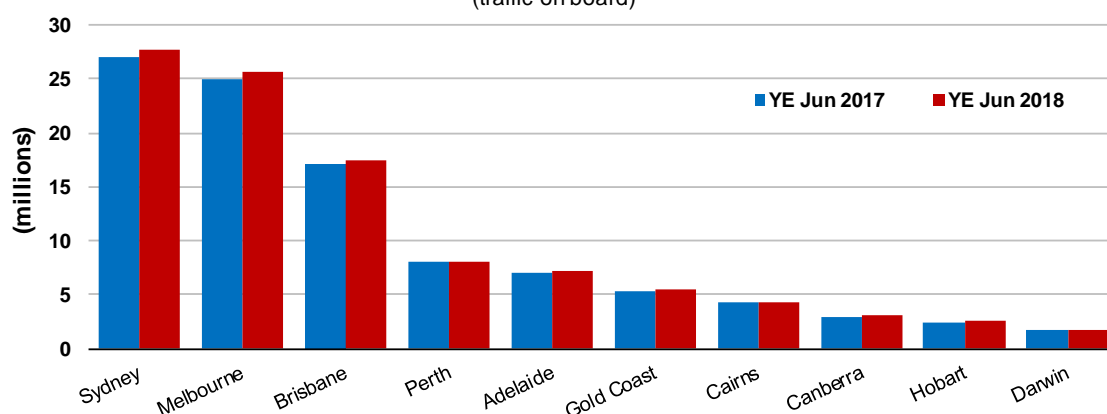
Table 5: Top ten airports, RPT passenger movements (000s) — annual activity

Airport	YE Jun 2017	YE Jun 2018	% Change	% of Total
1 Sydney	27 091.7	27 647.5	2.1	22.8
2 Melbourne	24 996.8	25 689.1	2.8	21.1
3 Brisbane	17 103.0	17 378.3	1.6	14.4
4 Perth	8 029.5	8 118.5	1.1	6.8
5 Adelaide	7 049.2	7 275.7	3.2	5.9
6 Gold Coast	5 362.8	5 495.1	2.5	4.5
7 Cairns	4 283.3	4 329.5	1.1	3.6
8 Canberra	2 950.8	3 086.6	4.6	2.5
9 Hobart	2 440.8	2 596.1	6.4	2.1
10 Darwin	1 809.4	1 778.6	-1.7	1.5
Total top ten airports	101 117.3	103 394.9	2.3	85.3
Total domestic network	118 607.1	121 529.5	2.5	100.0

Note: Airport passenger movement numbers are the sum of passenger arrivals and departures at each airport.

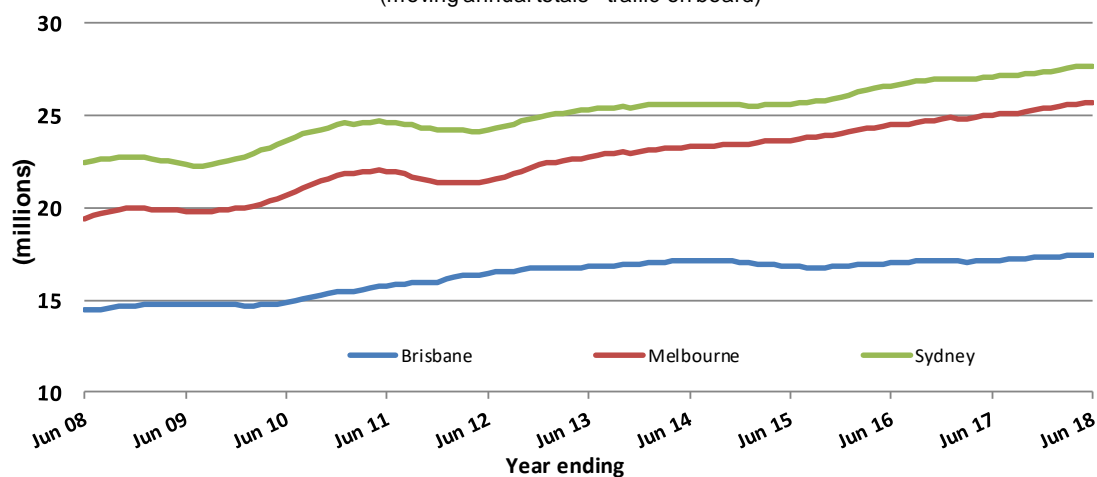
Top ten airports, RPT passenger movements

(traffic on board)



Top three airports, domestic passenger movements

(moving annual totals - traffic on board)



TOP FIVE AIRPORTS – CARGO MOVEMENTS

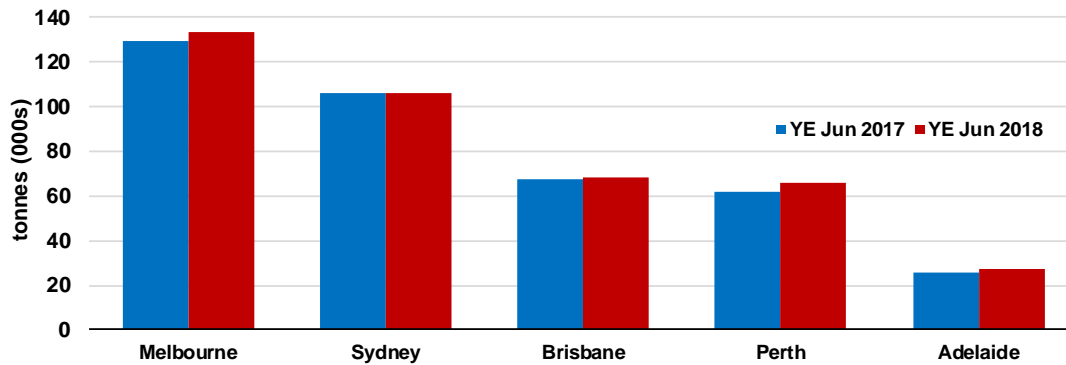
Table 6: Top five airports, domestic RPT cargo movements (000s tonnes) - annual activity

Airport	YE Jun 2017	YE Jun 2018	% Change	% of Total
1 Melbourne	129.0	133.1	3.2	28.9
2 Sydney	106.3	106.0	-0.2	23.0
3 Brisbane	67.4	68.3	1.2	14.8
4 Perth	62.0	66.0	6.4	14.3
5 Adelaide	25.9	27.1	4.5	5.9
Total top five airports	390.6	400.5	2.5	87.0
Total domestic network	450.0	460.1	2.3	100.0

Note: Airport cargo tonnes are the sum of cargo tonnes on arrivals and departures at each airport.

Top five airports, cargo movements

(Domestic cargo traffic - traffic on board)



Total domestic network - cargo movements

(moving annual totals - traffic on board)



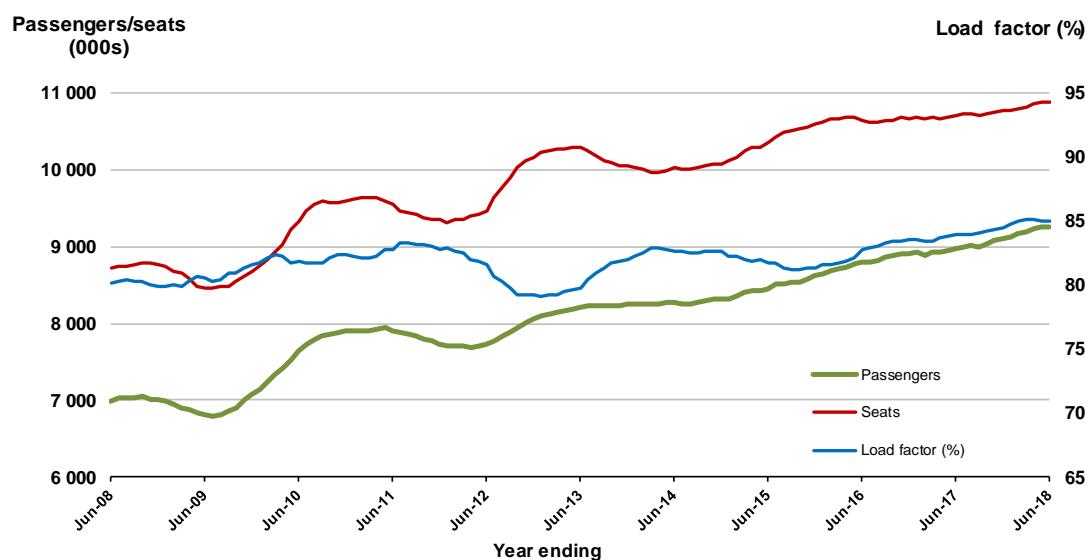
TOP TWENTY ROUTES

1. Melbourne - Sydney

Moving annual data

	YE Jun 2017	YE Jun 2018	% Change
Passengers carried (000s)	8 974.5	9 250.8	3.1
Seats (000s)	10 700.4	10 884.8	1.7
Load factor %	83.9	85.0	1.1 *
Aircraft trips	59 599	60 368	1.3

* percentage point difference

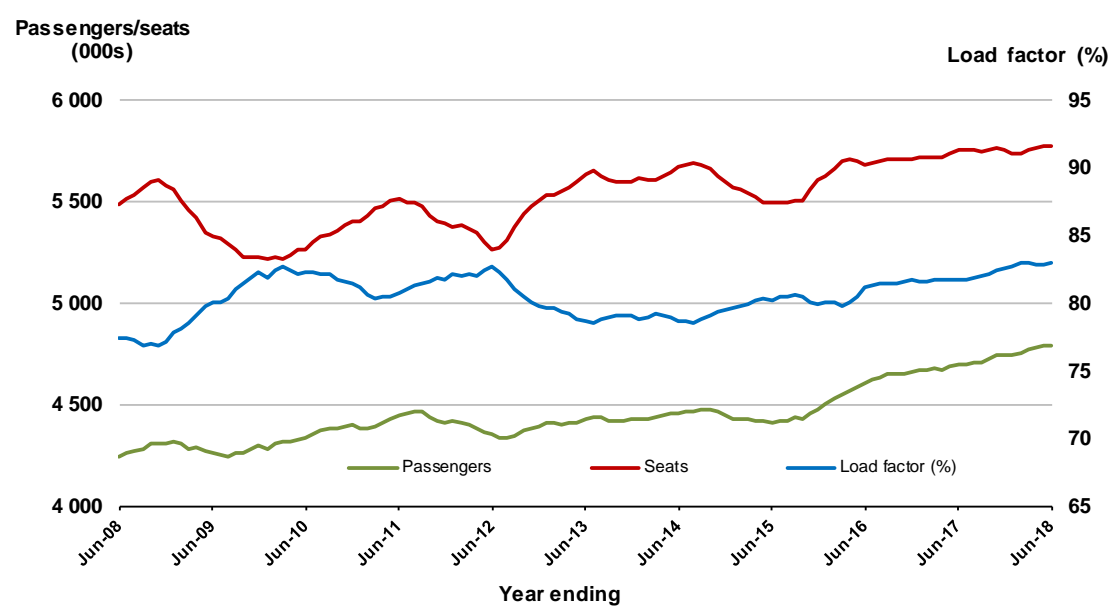


2. Brisbane - Sydney

Moving annual data

	YE Jun 2017	YE Jun 2018	% Change
Passengers carried (000s)	4 695.7	4 788.1	2.0
Seats (000s)	5 750.4	5 776.2	0.4
Load factor %	81.7	82.9	1.2 *
Aircraft trips	35 508	35 198	-0.9

* percentage point difference

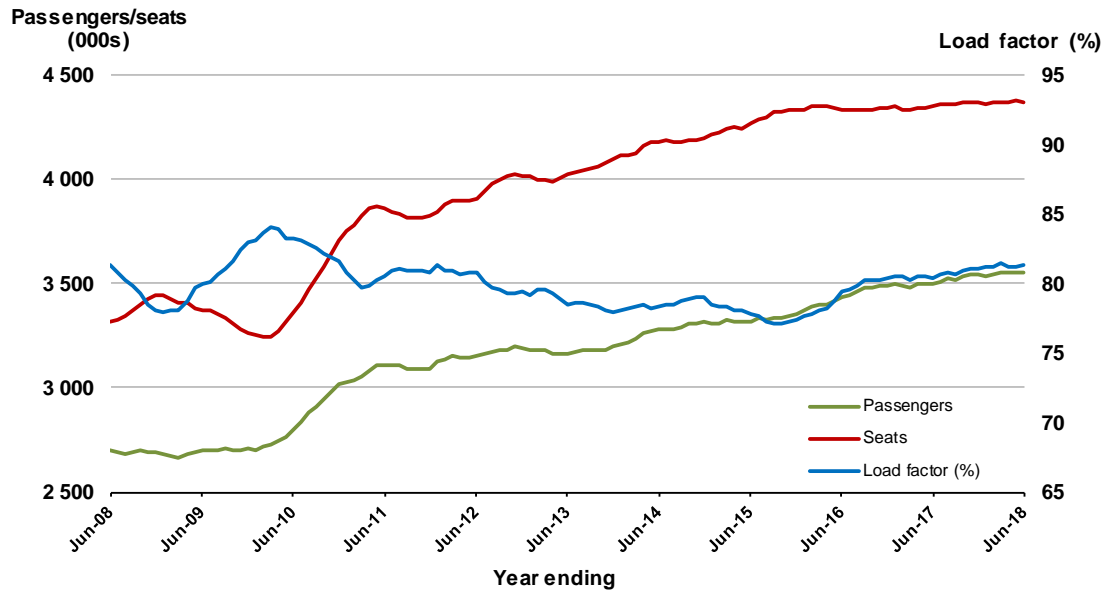


3. Brisbane - Melbourne

Moving annual data

	YE Jun 2017	YE Jun 2018	% Change
Passengers carried (000s)	3 500.4	3 556.9	1.6
Seats (000s)	4 354.7	4 373.6	0.4
Load factor %	80.4	81.3	0.9*
Aircraft trips	25 757	25 804	0.2

* percentage point difference

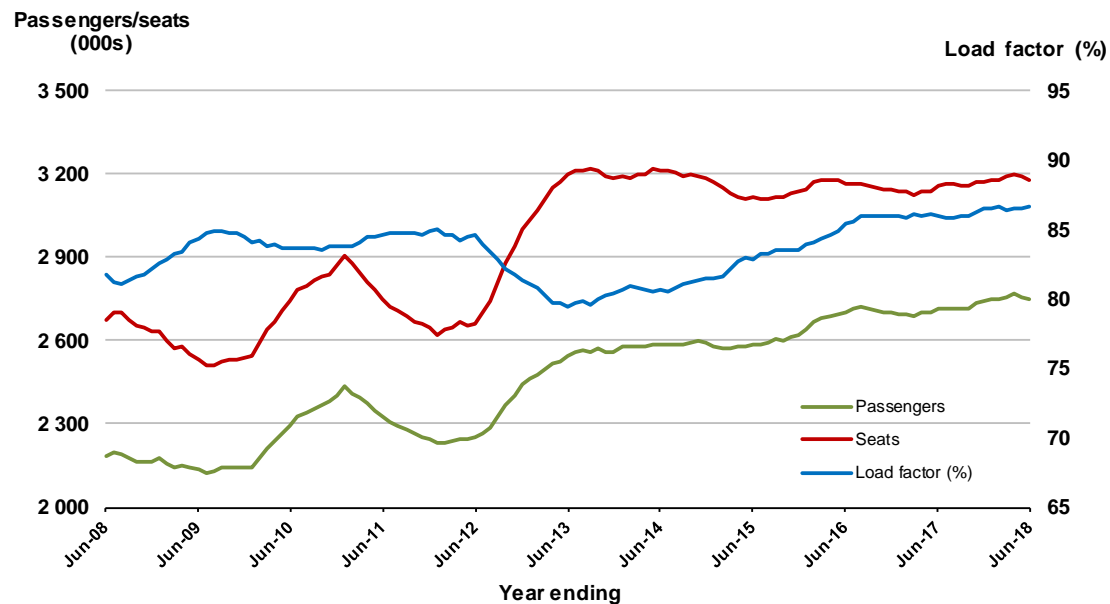


4. Gold Coast - Sydney

Moving annual data

	YE Jun 2017	YE Jun 2018	% Change
Passengers carried (000s)	2 712.7	2 751.6	1.4
Seats (000s)	3 155.0	3 177.6	0.7
Load factor %	86.0	86.6	0.6*
Aircraft trips	18 250	17 962	-1.6

* percentage point difference

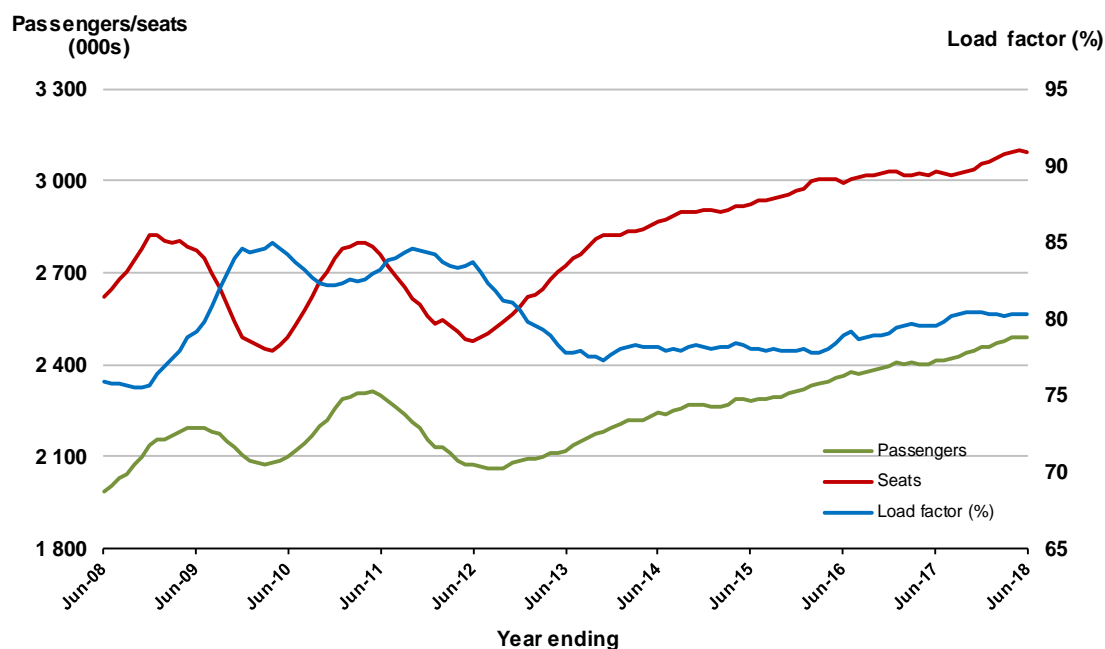


5. Adelaide - Melbourne

Moving annual data

	YE Jun 2017	YE Jun 2018	% Change
Passengers carried (000s)	2 413.4	2 487.3	3.1
Seats (000s)	3 032.4	3 096.9	2.1
Load factor %	79.6	80.3	0.7 *
Aircraft trips	19 282	19 213	-0.4

* percentage point difference

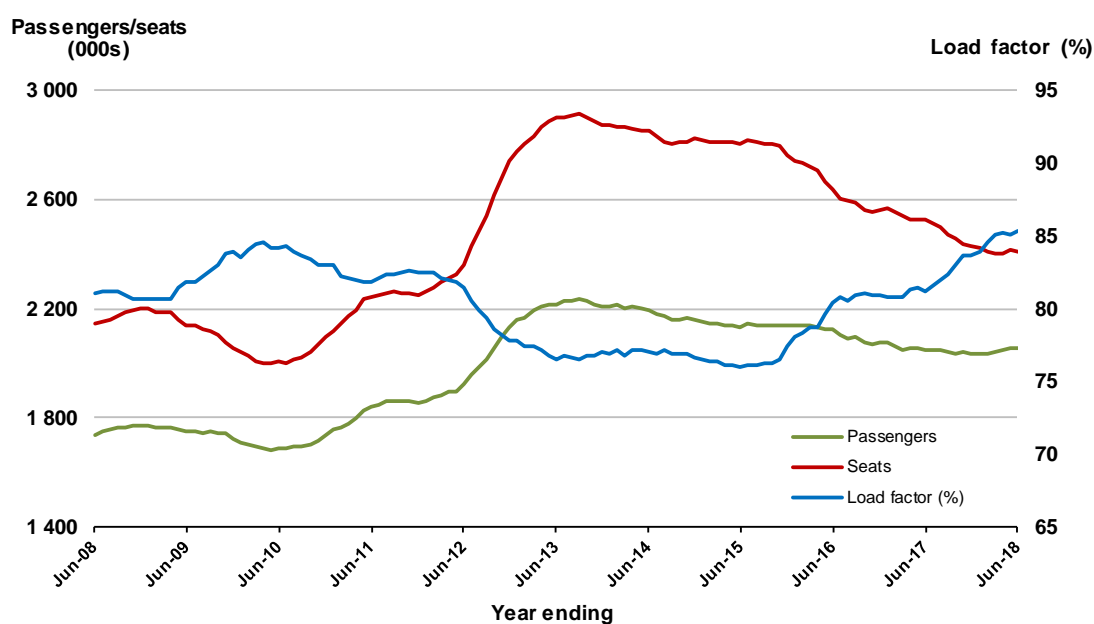


6. Melbourne - Perth

Moving annual data

	YE Jun 2017	YE Jun 2018	% Change
Passengers carried (000s)	2 048.1	2 057.8	0.5
Seats (000s)	2 523.4	2 410.4	-4.5
Load factor %	81.2	85.4	4.2 *
Aircraft trips	11 432	11 196	-2.1

* percentage point difference

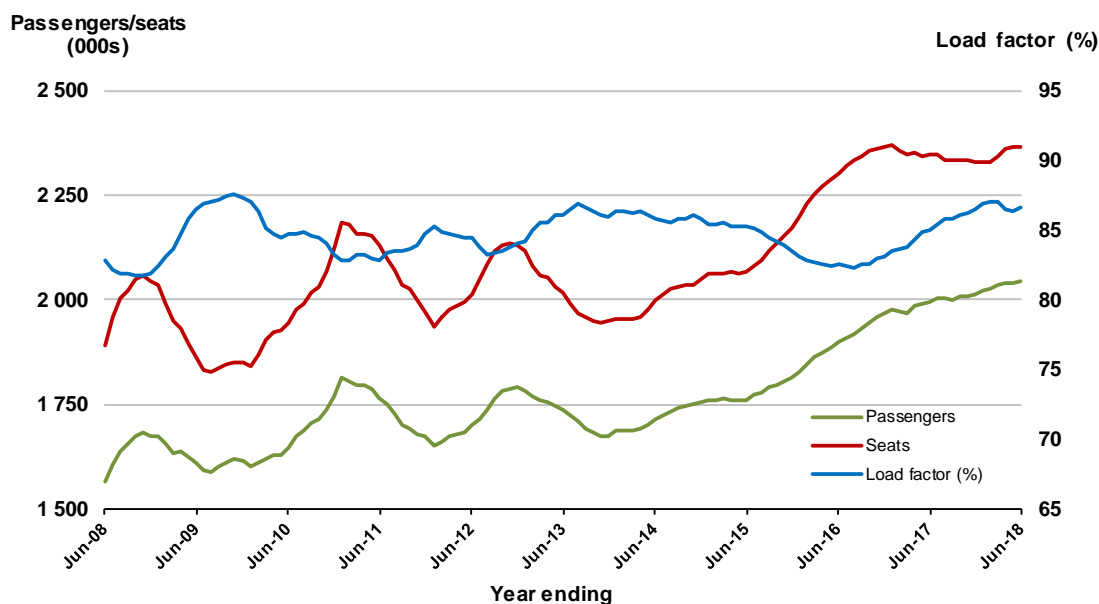


7. Gold Coast - Melbourne

Moving annual data

	YE Jun 2017	YE Jun 2018	% Change
Passengers carried (000s)	1 992.2	2 045.6	2.7
Seats (000s)	2 346.1	2 362.9	0.7
Load factor %	84.9	86.6	1.7 *
Aircraft trips	12 549	12 520	-0.2

* percentage point difference

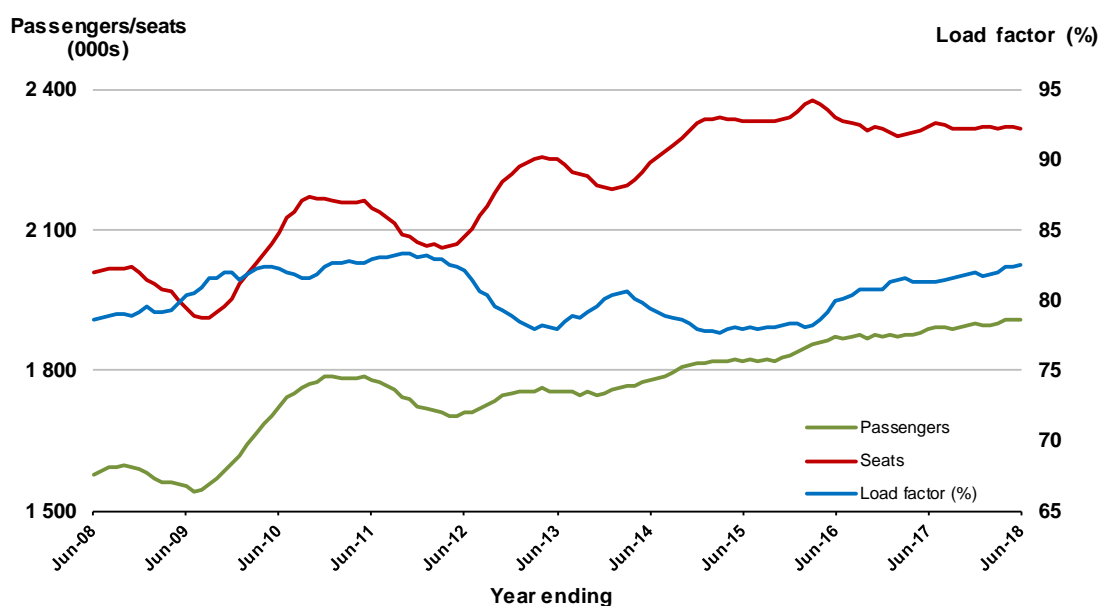


8. Adelaide - Sydney

Moving annual data

	YE Jun 2017	YE Jun 2018	% Change
Passengers carried (000s)	1 886.5	1 908.6	1.2
Seats (000s)	2 319.4	2 315.1	-0.2
Load factor %	81.3	82.4	1.1 *
Aircraft trips	14 036	13 876	-1.1

* percentage point difference

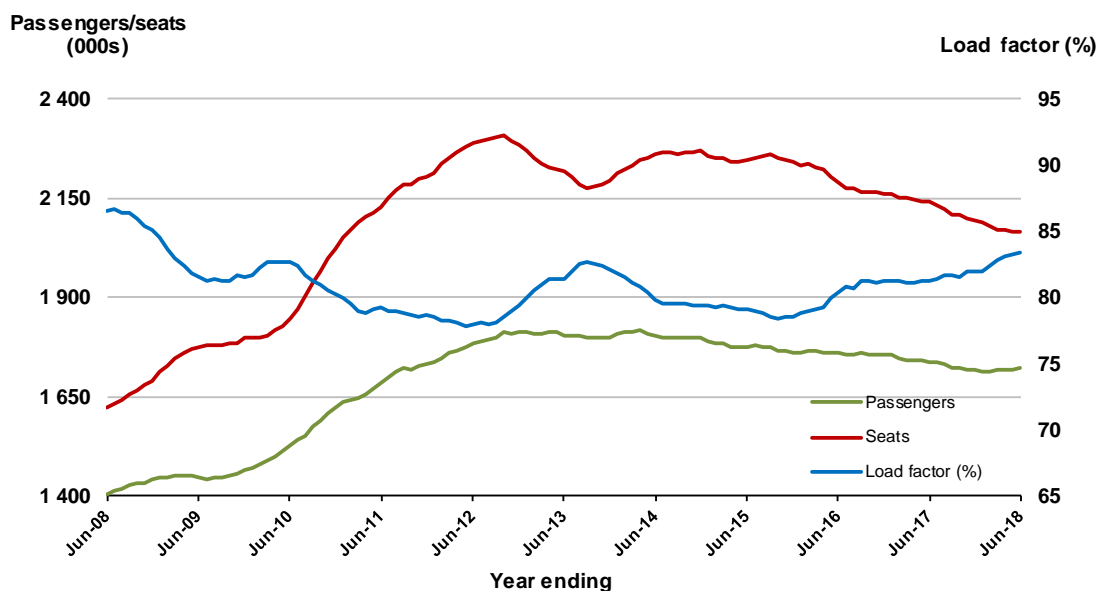


9. Perth - Sydney

Moving annual data

	YE Jun 2017	YE Jun 2018	% Change
Passengers carried (000s)	1 737.8	1 719.9	-1.0
Seats (000s)	2 139.0	2 063.2	-3.5
Load factor %	81.2	83.4	2.1 *
Aircraft trips	9 098	9 062	-0.4

* percentage point difference

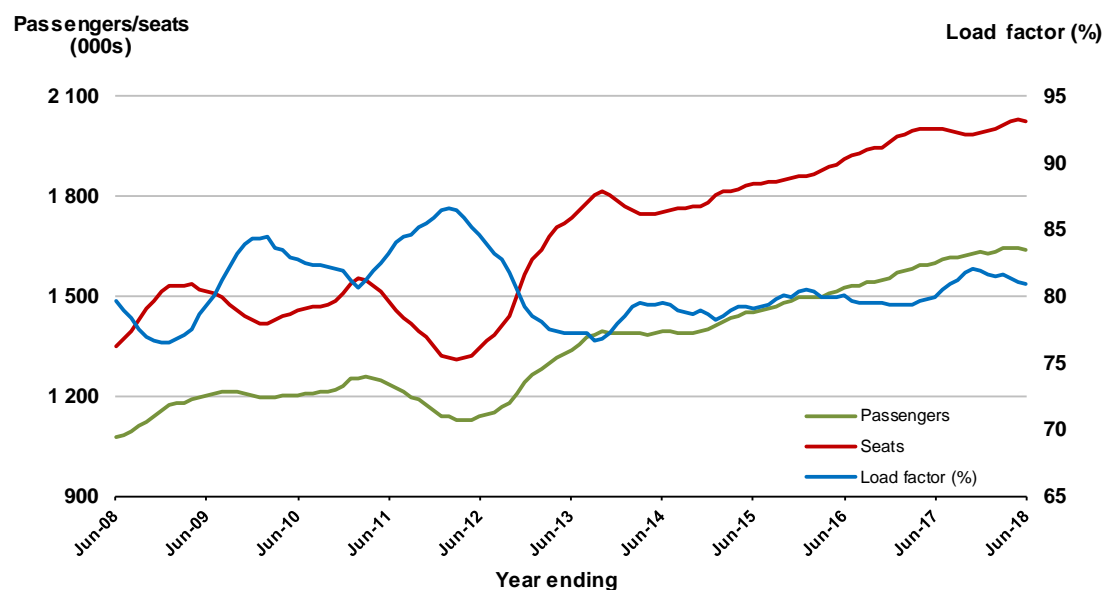


10. Hobart - Melbourne

Moving annual data

	YE Jun 2017	YE Jun 2018	% Change
Passengers carried (000s)	1 598.7	1 638.6	2.5
Seats (000s)	2 002.3	2 024.9	1.1
Load factor %	79.8	80.9	1.1 *
Aircraft trips	12 377	11 914	-3.7

* percentage point difference

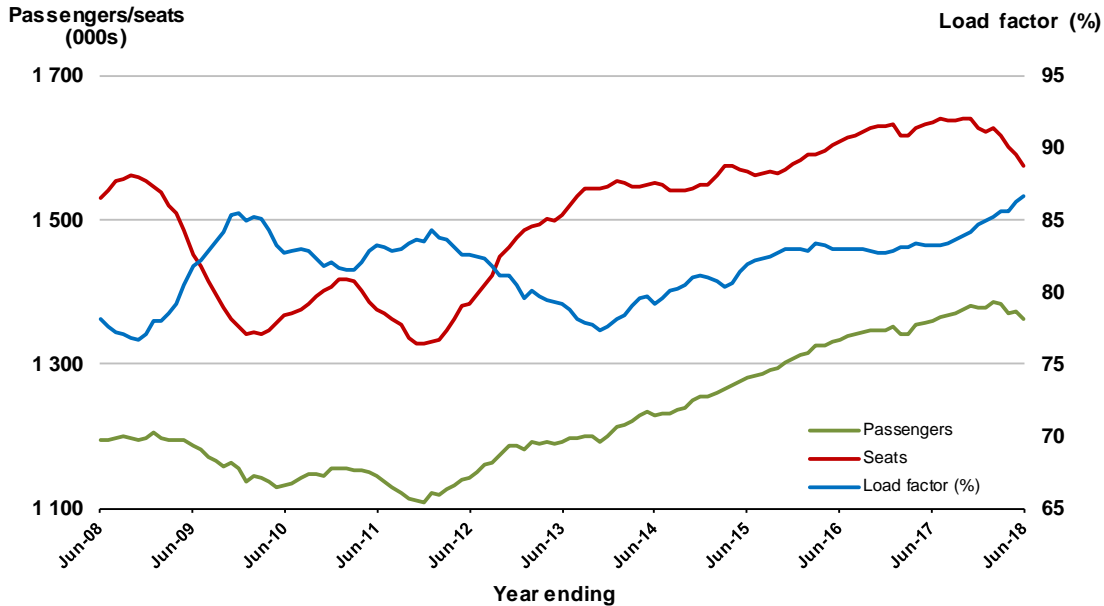


11. Brisbane - Cairns

Moving annual data

	YE Jun 2017	YE Jun 2018	% Change
Passengers carried (000s)	1 359.6	1 362.5	0.2
Seats (000s)	1 634.7	1 573.6	-3.7
Load factor %	83.2	86.6	3.4*
Aircraft trips	10 246	9 937	-3.0

* percentage point difference

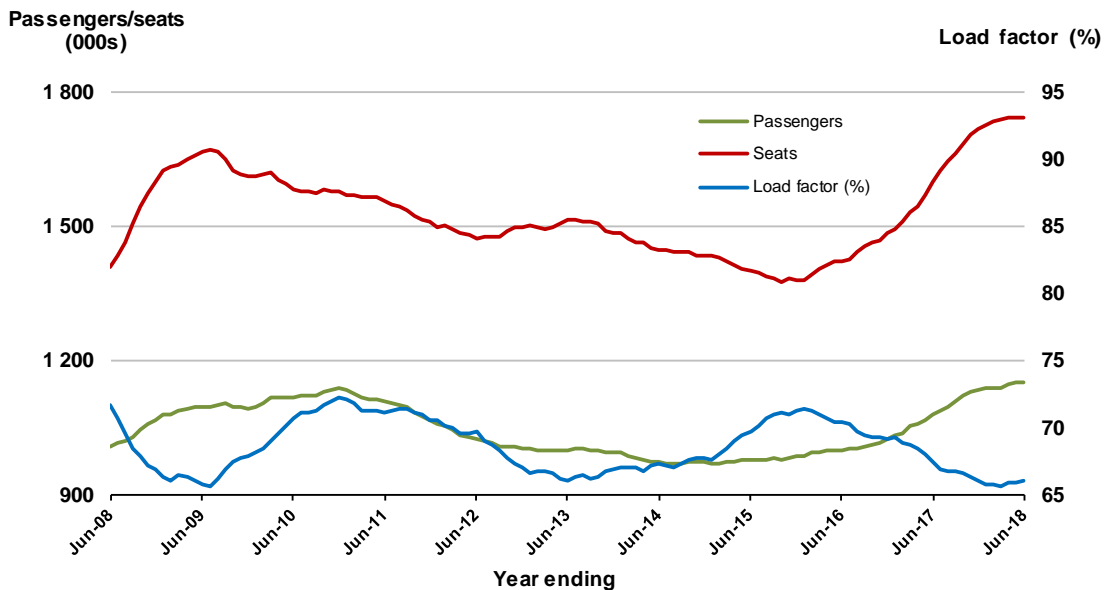


12. Canberra - Melbourne

Moving annual data

	YE Jun 2017	YE Jun 2018	% Change
Passengers carried (000s)	1 078.7	1 150.5	6.7
Seats (000s)	1 597.9	1 743.2	9.1
Load factor %	67.5	66.0	-1.5*
Aircraft trips	10 908	11 416	4.7

* percentage point difference

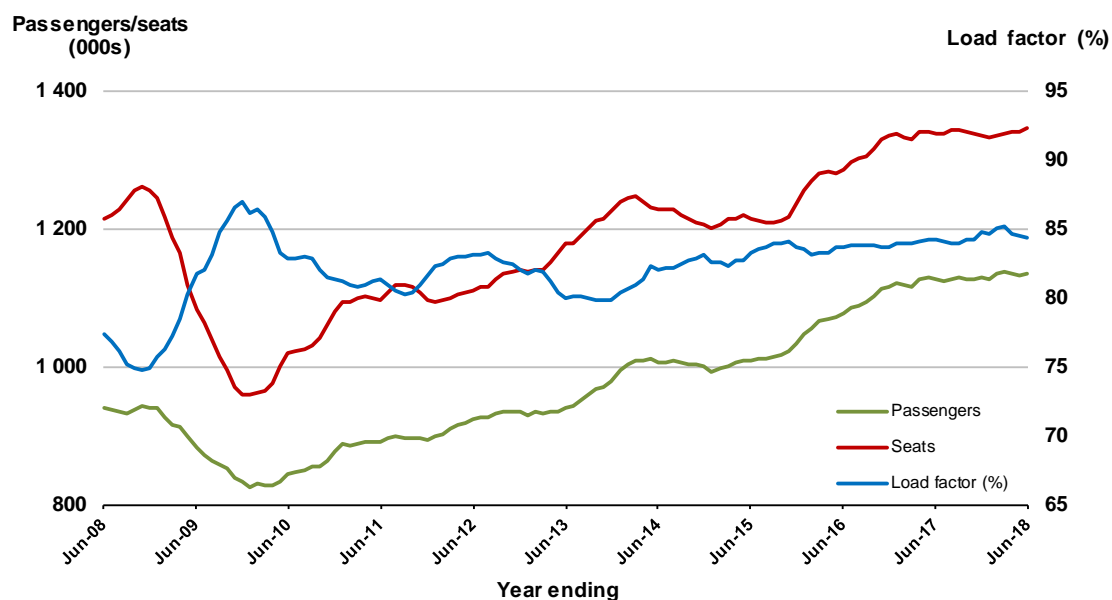


13. Cairns - Sydney

Moving annual data

	YE Jun 2017	YE Jun 2018	% Change
Passengers carried (000s)	1 124.8	1 135.1	0.9
Seats (000s)	1 336.5	1 345.4	0.7
Load factor %	84.2	84.4	0.2 *
Aircraft trips	7 496	7 378	-1.6

* percentage point difference

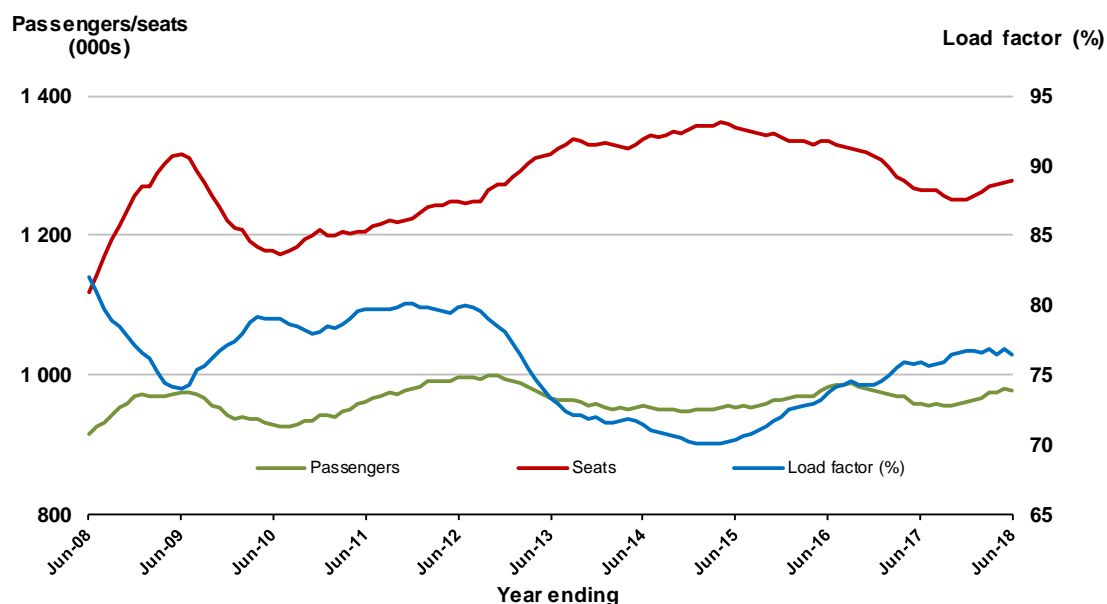


14. Brisbane - Townsville

Moving annual data

	YE Jun 2017	YE Jun 2018	% Change
Passengers carried (000s)	958.6	976.9	1.9
Seats (000s)	1 263.5	1 278.0	1.2
Load factor %	75.9	76.4	0.6 *
Aircraft trips	8 938	8 822	-1.3

* percentage point difference

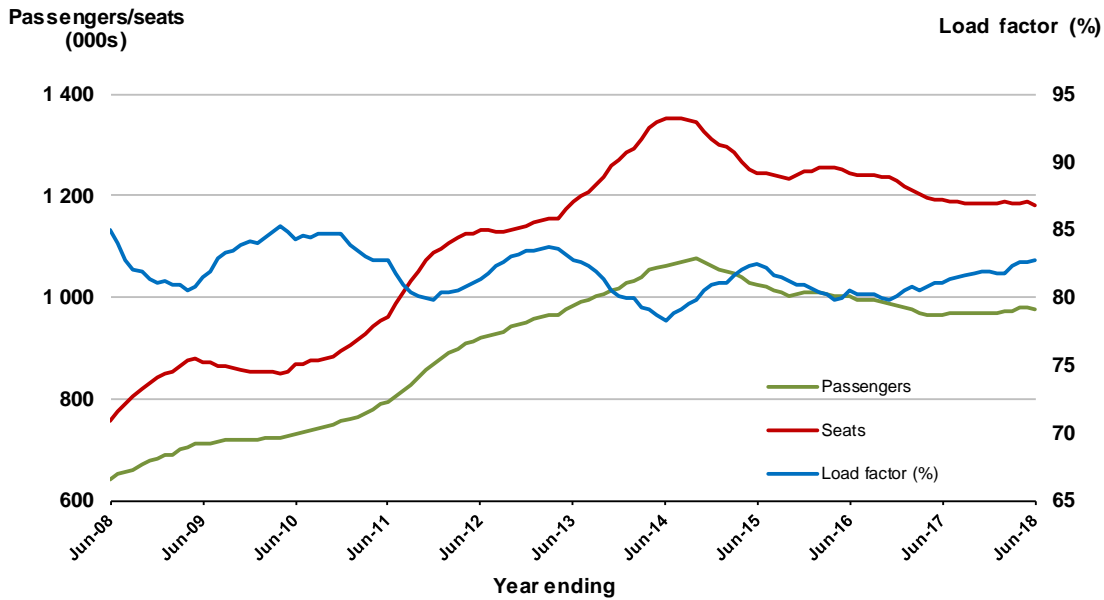


15. Brisbane - Perth

Moving annual data

	YE Jun 2017	YE Jun 2018	% Change
Passengers carried (000s)	964.8	976.1	1.2
Seats (000s)	1 191.3	1 179.5	-1.0
Load factor %	81.0	82.8	1.8*
Aircraft trips	5 721	6 017	5.2

* percentage point difference

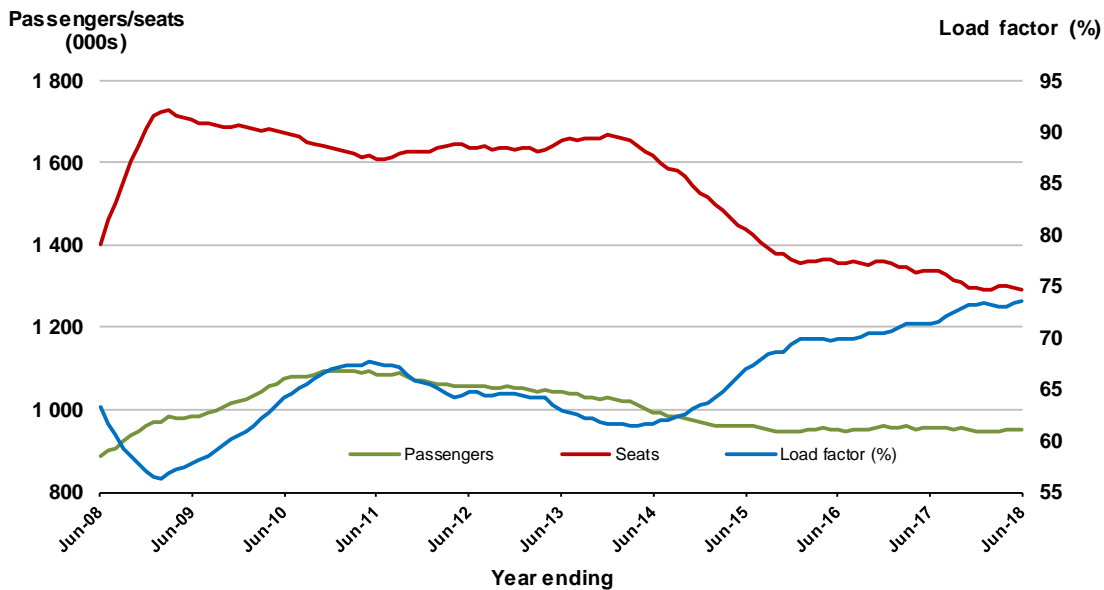


16. Canberra - Sydney

Moving annual data

	YE Jun 2017	YE Jun 2018	% Change
Passengers carried (000s)	955.0	952.0	-0.3
Seats (000s)	1 337.5	1 292.9	-3.3
Load factor %	71.4	73.6	2.2*
Aircraft trips	16 514	16 048	-2.8

* percentage point difference

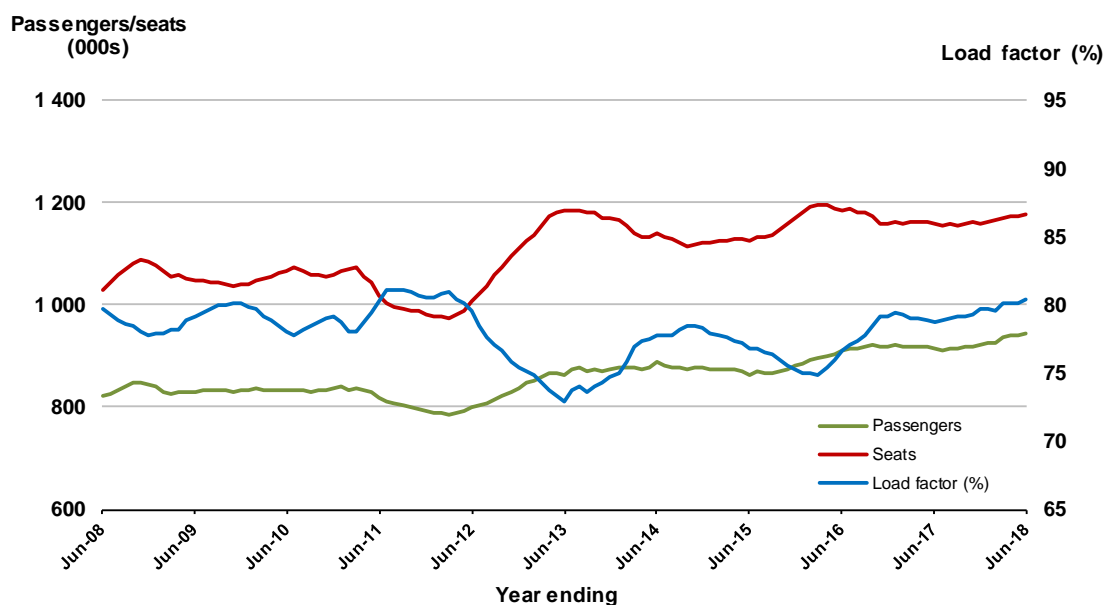


17. Launceston - Melbourne

Moving annual data

	YE Jun 2017	YE Jun 2018	% Change
Passengers carried (000s)	912.9	945.7	3.6
Seats (000s)	1 158.5	1 176.1	1.5
Load factor %	78.8	80.4	1.6 *
Aircraft trips	8 958	8 936	-0.2

* percentage point difference

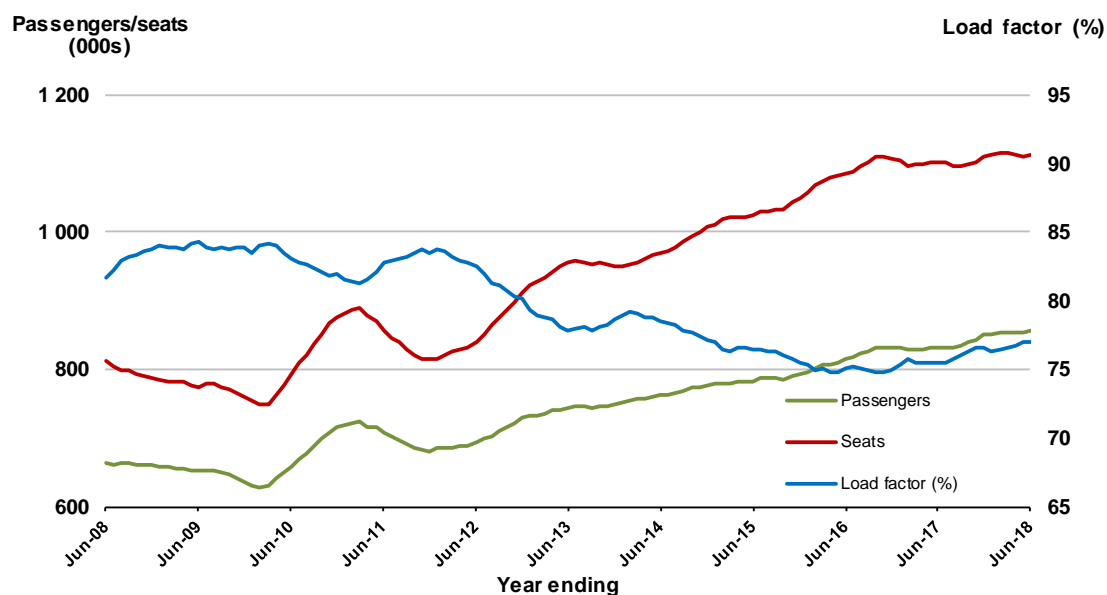


18. Adelaide - Brisbane

Moving annual data

	YE Jun 2017	YE Jun 2018	% Change
Passengers carried (000s)	831.0	856.8	3.1
Seats (000s)	1 101.7	1 112.2	1.0
Load factor %	75.4	77.0	1.6 *
Aircraft trips	6 710	6 717	0.1

* percentage point difference

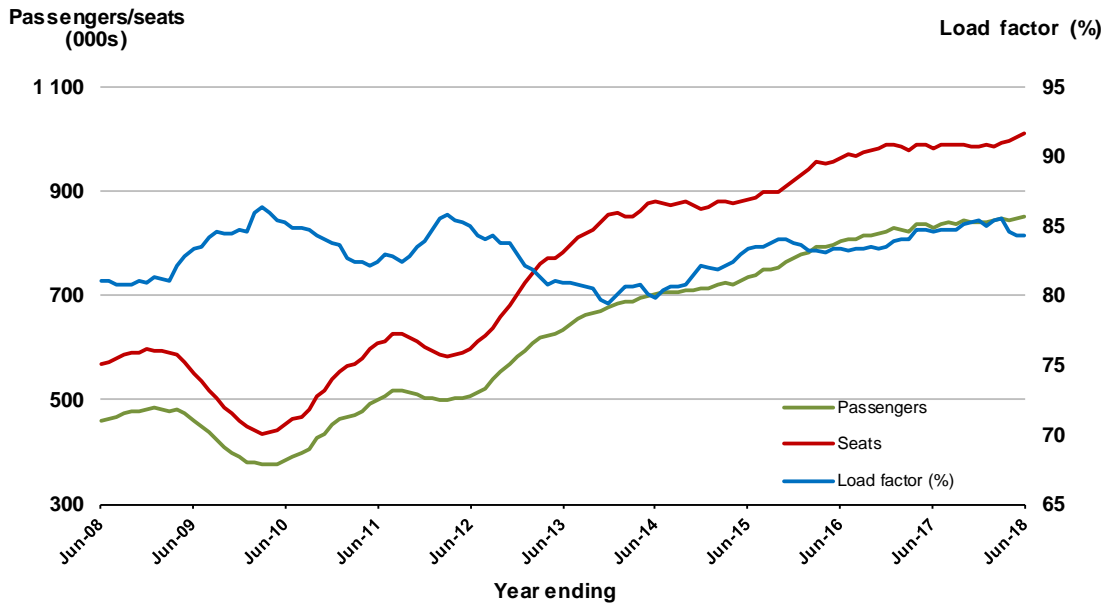


19. Cairns - Melbourne

Moving annual data

	YE Jun 2017	YE Jun 2018	% Change
Passengers carried (000s)	830.0	850.3	2.5
Seats (000s)	980.8	1 009.0	2.9
Load factor %	84.6	84.3	-0.3*
Aircraft trips	5 188	5 265	1.5

* percentage point difference

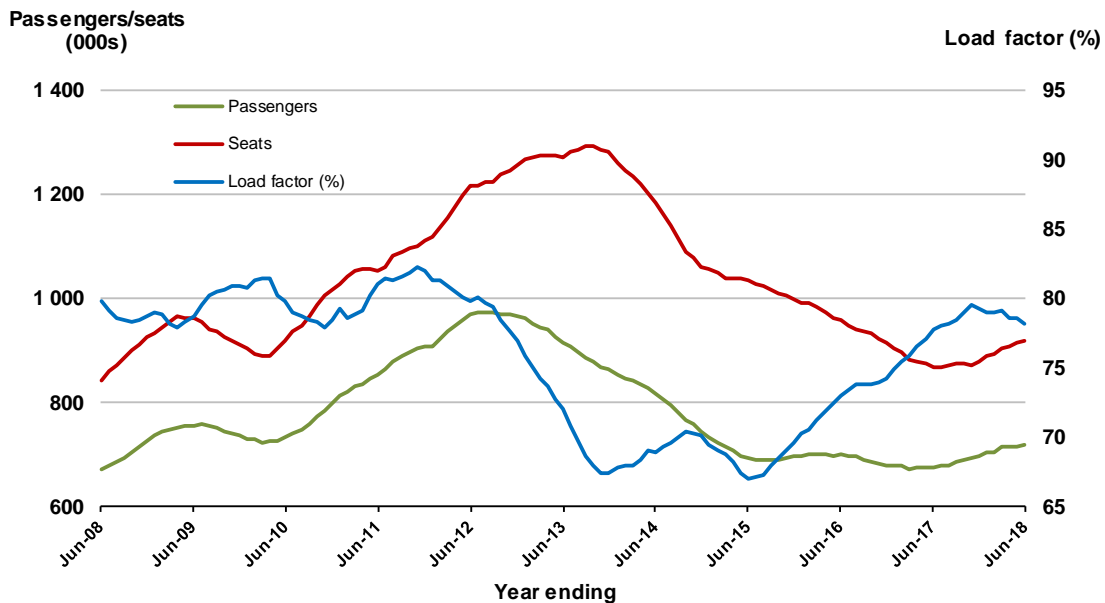


20. Brisbane - Mackay

Moving annual data

	YE Jun 2017	YE Jun 2018	% Change
Passengers carried (000s)	675.1	717.3	6.3
Seats (000s)	868.2	917.7	5.7
Load factor %	77.8	78.2	0.4*
Aircraft trips	7 414	7 182	-3.1

* percentage point difference



TOP FIFTY REGIONAL AIRPORTS

Table 7: Top fifty regional airports (000s) — passenger movements, annual

	Airport	YE Jun 2017	YE Jun 2018	% Change
1	Cairns	4 283.3	4 329.5	1.1
2	Hobart	2 440.8	2 596.1	6.4
3	Darwin	1 809.4	1 778.6	-1.7
4	Townsville	1 533.7	1 640.5	7.0
5	Launceston	1 335.9	1 363.1	2.0
6	Newcastle	1 275.7	1 279.4	0.3
7	Mackay	772.3	813.9	5.4
8	Alice Springs	617.2	615.1	-0.3
9	Rockhampton	566.3	563.9	-0.4
10	Ballina	502.9	526.8	4.7
11	Proserpine	353.1	470.0	33.1
12	Karratha	464.0	433.5	-6.6
13	Broome	364.1	418.1	14.8
14	Hamilton Island	496.6	416.4	-16.2
15	Coffs Harbour	405.9	413.2	1.8
16	Ayers Rock	364.8	380.3	4.2
17	Port Hedland	353.6	356.2	0.7
18	Newman	294.2	294.4	0.1
19	Albury	261.3	268.1	2.6
20	Kalgoorlie	244.5	266.8	9.1
21	Gladstone	303.7	265.8	-12.5
22	Mildura	249.6	263.9	5.7
23	Dubbo	226.2	229.7	1.6
24	Wagga Wagga	217.7	225.3	3.5
25	Port Macquarie	226.7	222.8	-1.7
26	Mount Isa	193.1	207.1	7.2
27	Emerald	197.8	195.8	-1.0
28	Tamworth	192.7	192.7	0.0
29	Paraburdoo	166.6	171.4	2.9
30	Hervey Bay	170.7	170.0	-0.4
31	Bundaberg	174.8	169.5	-3.1
32	Port Lincoln	175.4	169.4	-3.4
33	Toowoomba Wellcamp	140.5	149.8	6.6
34	Devonport	146.1	147.7	1.1
35	Armidale	130.3	130.9	0.5
36	Geraldton	115.9	112.0	-3.4
37	Moranbah	119.6	104.3	-12.9
38	Kununurra	103.8	103.8	0.0
39	Thursday Island	101.5	99.4	-2.1
40	Learmonth	80.6	87.1	8.1
41	Gove	84.3	86.6	2.7
42	Roma	83.3	85.2	2.2
43	Mount Gambier	78.3	80.6	2.9
44	Weipa	78.2	79.2	1.2
45	Olympic Dam	54.6	76.5	40.3
46	Griffith	71.5	75.3	5.2
47	Orange	56.6	70.6	24.6
48	Whyalla	61.4	70.3	14.5
49	Merimbula	65.1	67.0	2.9
50	Broken Hill	56.7	66.5	17.3
	Total top 50 regional airports	22 863.0	23 400.0	2.3
	Total regional airports	24 196.1	24 787.5	2.4
	Total domestic network	118 607.1	121 529.5	2.5

Note: Airport passenger movement numbers are the sum of passenger arrivals and departures at each airport.

DOMESTIC CHARTER ACTIVITY

Table 8: Charter passengers carried and aircraft trips - annual activity

	YE Jun 2017	YE Jun 2018	% Change
Total domestic charter passengers	2 391 868	2 434 023	1.8
Total domestic charter aircraft trips	44 544	45 075	1.2

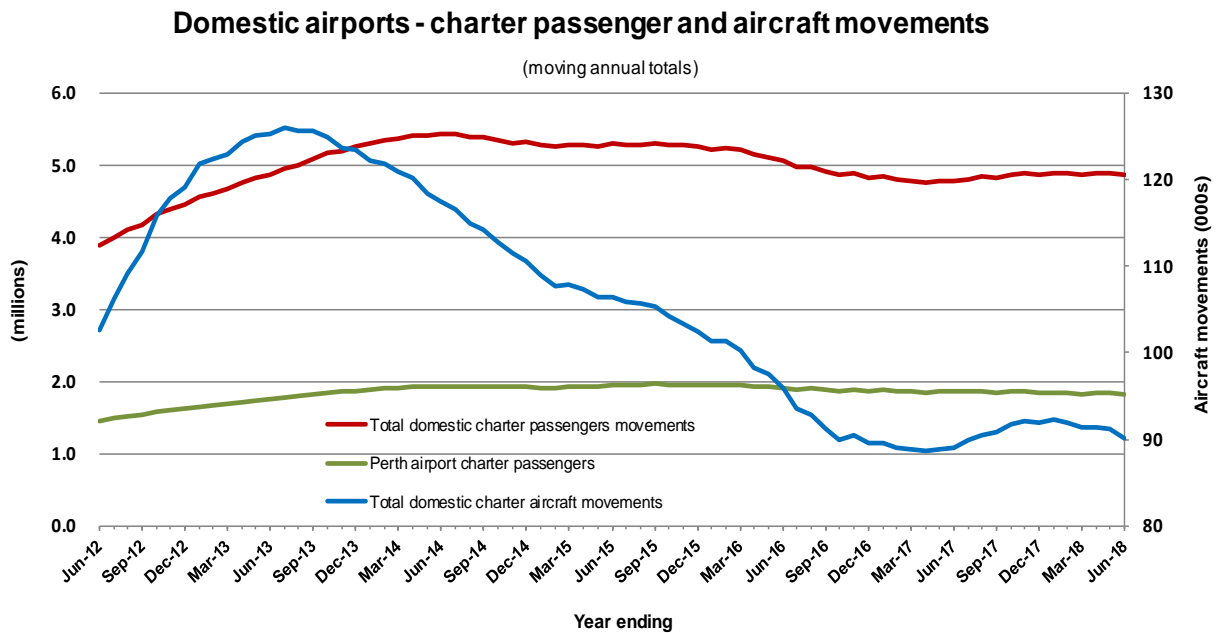
Note: Helicopter, joyflights and sightseeing charter flights not included.

Table 9: Domestic airports - charter activity - annual activity

	YE Jun 2017	YE Jun 2018	% Change
Total domestic charter passenger movements	4 783 736	4 867 892	1.8
Total domestic charter aircraft movements	89 088	90 146	1.2
Perth airport charter passenger movements	1 855 452	1 827 974	-1.5
Perth airport charter aircraft movements	31 432	30 061	-4.4

Note: Helicopter, joyflights and sightseeing charter flights not included.

Charter passenger and aircraft movement numbers are the sum of arrivals and departures at each airport.



DEFINITIONS

Aircraft Trips	The number of flight stages. A return flight counts as two aircraft trips.
Airport Movements	Airport movements (passenger and cargo) are measured once on arrival and once on departure. Each domestic trip generates two movements at airports. For example, a trip from Melbourne to Sydney will be counted twice, as a passenger departure at Melbourne and as a passenger arrival at Sydney. At the national level, the sum of all domestic airport traffic will therefore be equal to twice the number of trips undertaken.
Available Seat Kilometres (ASKs)	Calculated by multiplying the number of seats available on each flight stage, by the distance in kilometres between the ports. The distances used are Great Circle Distances.
City-Pair	The ports shown make up the city-pair route. Passenger movements shown for a city pair reflect total traffic in both directions.
Flight Stage	The operation of an aircraft from take-off to landing.
Load Factor	The total revenue passenger kilometres performed as a percentage of the total available seat kilometres.
Passengers Carried	Revenue passengers carried.
Regular Public Transport Services (RPT)	All air service operations in which aircraft are available for the transport of members of public and are conducted in accordance with fixed schedules. It does not include charter or other non-scheduled operations.
Revenue Passengers	All passengers paying any fare. Frequent flyer redemption travellers are regarded as revenue passengers.
Revenue Passenger Kilometres (RPKs)	Calculated by multiplying the number of revenue passengers travelling on each flight stage, by the distance in kilometres between the ports. The distances used are Great Circle Distances.
Traffic on board by stages	The total of all traffic (revenue passengers) on each flight stage between two directly connected airports.
..	Data not included
NA	Not applicable