



Australian Government

Department of Infrastructure, Regional Development and Cities

Bureau of Infrastructure, Transport and Regional Economics

STATISTICAL REPORT



Aviation

Domestic aviation activity

September 2018

© Commonwealth of Australia 2018

ISSN: 1832 - 1968

Ownership of intellectual property rights in this publication

Unless otherwise noted, copyright (and any other intellectual property rights, if any) in this publication is owned by the Commonwealth of Australia (referred to below as the Commonwealth).

Disclaimer

The material contained in this publication is made available on the understanding that the Commonwealth is not providing professional advice, and that users exercise their own skill and care with respect to its use, and seek independent advice if necessary.

The Commonwealth makes no representations or warranties as to the contents or accuracy of the information contained in this publication. To the extent permitted by law, the Commonwealth disclaims liability to any person or organisation in respect of anything done, or omitted to be done, in reliance upon information contained in this publication.

Creative Commons licence

With the exception of (a) the Coat of Arms; and (b) the Department of Infrastructure, Regional Development and Cities' photos and graphics, copyright in this publication is licensed under a Creative Commons Attribution 3.0 Australia Licence.

Creative Commons Attribution 3.0 Australia Licence is a standard form licence agreement that allows you to copy, communicate and adapt this publication provided that you attribute the work to the Commonwealth and abide by the other licence terms. A summary of the licence terms is available from <http://creativecommons.org/licenses/by/3.0/au/deed.en>. The full licence terms are available from <http://creativecommons.org/licenses/by/3.0/au/legalcode>.

Use of the Coat of Arms

The Department of the Prime Minister and Cabinet sets the terms under which the Coat of Arms is used. Please refer to the Department's Commonwealth Coat of Arms and Government branding web page <http://www.dpmc.gov.au/guidelines/index.cfm#brand> and, in particular, the Guidelines on the use of the Commonwealth Coat of Arms publication.

An appropriate citation for this report is:

Bureau of Infrastructure, Transport and Regional Economics (BITRE), 2018, Domestic aviation activity, Statistical Report, BITRE, Canberra ACT.

Contact us

This publication is available in PDF format. All other rights are reserved, including in relation to any Departmental logos or trade marks which may exist. For enquiries regarding the licence and any use of this publication, please contact:

Bureau of Infrastructure, Transport and Regional Economics (BITRE)
Department of Infrastructure, Regional Development and Cities
GPO Box 501, Canberra ACT 2601, Australia
Telephone: (international) +61 2 6274 7210
Fax: (international) +61 2 6274 6855
Email: bitre@infrastructure.gov.au
Website: www.bitre.gov.au

Inquiries

Should you require additional information about the statistics contained in this publication:

Nebojsa Pavlovic

Telephone (02) 6274 6817 or Facsimile (02) 6274 7727

Electronic mail: AVSTATS@infrastructure.gov.au

Nebojsa.Pavlovic@infrastructure.gov.au

Web site: <http://www.bitre.gov.au/statistics/aviation/domestic.aspx>

FOREWORD

This report provides an overview of domestic (including charter) commercial aviation activity in Australia for the month of September 2018.

The data cover revenue passengers carried by Australian-registered operators of scheduled regular public transport services over Australian flight stages and fixed-wing charter operators. These estimates include passengers carried between domestic airports on international flights operated by these carriers. The passengers carried refer to traffic on board by stages.

Estimates of passengers and aircraft movements for charter aviation are included in this publication, where BITRE confidentiality standards are met.

Individual routes shown are restricted to those with an average exceeding 8 000 passengers per month over the previous six months where two or more airlines operate in competition. For the month of September 2018, there were 65 such routes.

Information on the total network for the month of September 2018 and on the Regular Public Transport (RPT) network for the month of September 2018 is presented on page 2, with estimates for the year ended September 2018 presented on page 3.

Detailed information on the 65 individual routes can be found in the RPT summary pages 4-13 of this publication.

The top ten airports in terms of RPT passenger movements are shown on page 14.

Data on domestic RPT cargo movements at the top five cargo airports are provided on page 15. The table includes cargo carried on passenger flights operated by the Qantas group (including Jetstar), Virgin Australia, Air North and Skippers as well as the cargo carried by dedicated freighter aircraft operated by Qantas Freight, Toll Priority and Virgin Australia Cargo.

The long-term trends for the top ten competitive RPT routes are presented graphically on pages 16-25.

Domestic RPT passenger movements at the top 50 regional airports are presented on pages 26-27.

Tables providing estimates of domestic charter aviation activity are shown on page 28. BITRE confidentiality standards restrict publication of detailed estimates for individual Australian airports, with the exception of Perth Airport.

A list of definitions can be found on page 29.

This report was prepared by the Aviation Statistics Section of the Bureau of Infrastructure, Transport and Regional Economics with data provided by airlines.

Estimates are included where data were not available and data presented in this publication may contain revisions to previously published data.

Where figures have been rounded, discrepancies may occur between sums of component items and totals, and in percentage changes which are derived from figures prior to rounding.

CONTENTS

| | |
|--|-----------|
| Highlights | 1 |
| Total network..... | 2 |
| RPT network..... | 2 |
| Top competitive routes..... | 4 |
| Top ten airports – passenger movements..... | 14 |
| Top five airports – cargo movements..... | 15 |
| Top ten routes | 16 |
| 1. Melbourne – Sydney | 16 |
| 2. Brisbane – Sydney..... | 17 |
| 3. Brisbane – Melbourne..... | 18 |
| 4. Gold Coast – Sydney | 19 |
| 5. Adelaide – Melbourne | 20 |
| 6. Melbourne – Perth | 21 |
| 7. Gold Coast – Melbourne | 22 |
| 8. Adelaide – Sydney | 23 |
| 9. Perth – Sydney | 24 |
| 10. Hobart – Melbourne | 25 |
| Top fifty regional airports | 26 |
| Domestic charter activity..... | 28 |
| Definitions | 29 |

This page is intentionally left blank.

HIGHLIGHTS

There were 5.28 million passengers carried on Australian domestic commercial aviation (including charter operations) in September 2018, an increase of 0.2 per cent on September 2017. For the month of September 2018 there were 55 550 aircraft trips, a decrease of 2.5 per cent compared to September 2017.

5.08 million passengers were carried on RPT flights in September 2018, an increase of 0.2 per cent on September 2017.

For the year ending September 2018 there were 61.10 million RPT passengers, an increase of 2.7 per cent on the year ending September 2017.

RPT revenue passenger kilometres (RPKs) performed were 6.02 billion for the month, up 1.1 per cent compared with September 2017. Capacity, measured by available seat kilometres (ASKs), decreased by 0.2 per cent compared with September 2017 to a total of 7.40 billion.

With RPT passenger traffic increasing and capacity decreasing, the industry wide load factor (RPKs/ASKs) increased from 80.4 per cent in September 2017 to 81.4 per cent in September 2018. Load factors on individual routes increased on 35 of the 65 RPT routes for which data is available for publishing in both years.

For the month of September 2018, Melbourne – Sydney remained Australia's busiest RPT route with 739 653 passengers, a decrease of 0.3 per cent compared with September 2017. It was followed by Brisbane – Sydney with 397 239 passengers (down 1.6 per cent) and Brisbane – Melbourne with 303 208 passengers (down 1.3 per cent).

The greatest percentage increase in RPT passenger numbers, compared to September 2017, was on the Melbourne – Perth route (up 15.6 per cent). There were large increases on a number of other routes, including Melbourne – Sunshine Coast (up 15.4 per cent), Kalgoorlie – Perth (up 14.1 per cent) and Proserpine – Sydney (up 11.9 per cent).

Routes with traffic decreases in September 2018 compared with September 2017 included Brisbane – Proserpine (down 20.8 per cent), Brisbane – Gladstone (down 12.2 per cent), Brisbane – Darwin (down 9.6 per cent) and Brisbane – Cairns (down 9.1 per cent).

In September 2018, Sydney remained Australia's busiest domestic airport with 2.26 million passenger movements, followed by Melbourne with 2.15 million passenger movements and Brisbane with 1.45 million passenger movements.

Total cargo movements at Australian airports on domestic RPT flights were 40.1 thousand tonnes in September 2018, an increase of 9.0 per cent compared with September 2017.

In September 2018, there were 2.10 million domestic passenger movements through regional airports, 0.2 per cent lower than in September 2017. Out of the top 50 regional airports, the strongest growth was at Ayers Rock airport (up 28.0 per cent on September 2017), while the largest decrease was recorded at Toowoomba Wellcamp airport (down 21.4 per cent on September 2017).

Fixed-wing charter operators carried 195.6 thousand passengers in September 2018, an increase of 1.4 per cent on September 2017. Perth Airport accounted for 37.9 per cent of all charter passengers in Australia.

TOTAL NETWORK

Summary of monthly commercial aviation activity

| | Sep 2017 | Sep 2018 | % Change |
|-------------------------------------|----------|----------|----------|
| Total passengers carried (millions) | 5.26 | 5.28 | 0.2 |
| Aircraft trips (000s) | 57.0 | 55.6 | -2.5 |

Note: Regular Public Transport and charter aviation activity
Helicopter, joyflights and sightseeing charter flights not included.

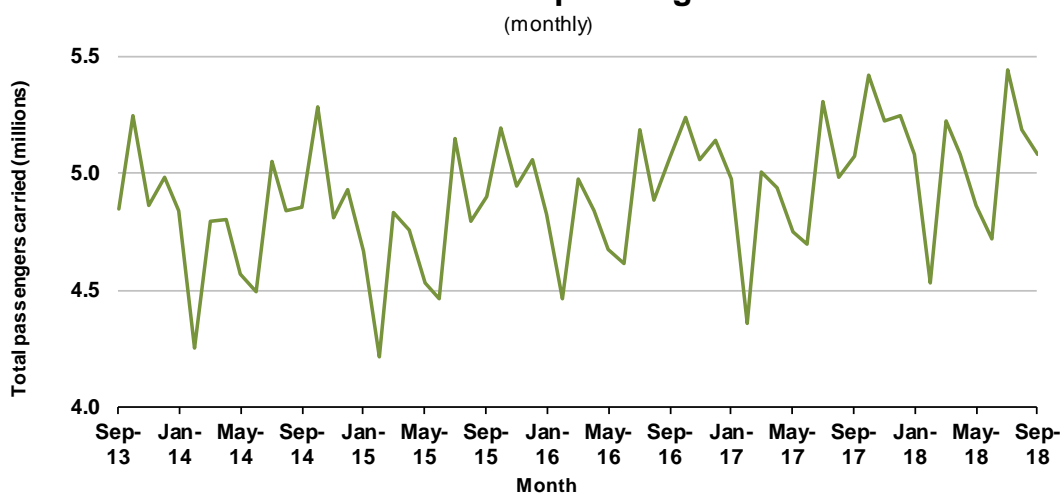
RPT NETWORK

Summary of monthly RPT activity

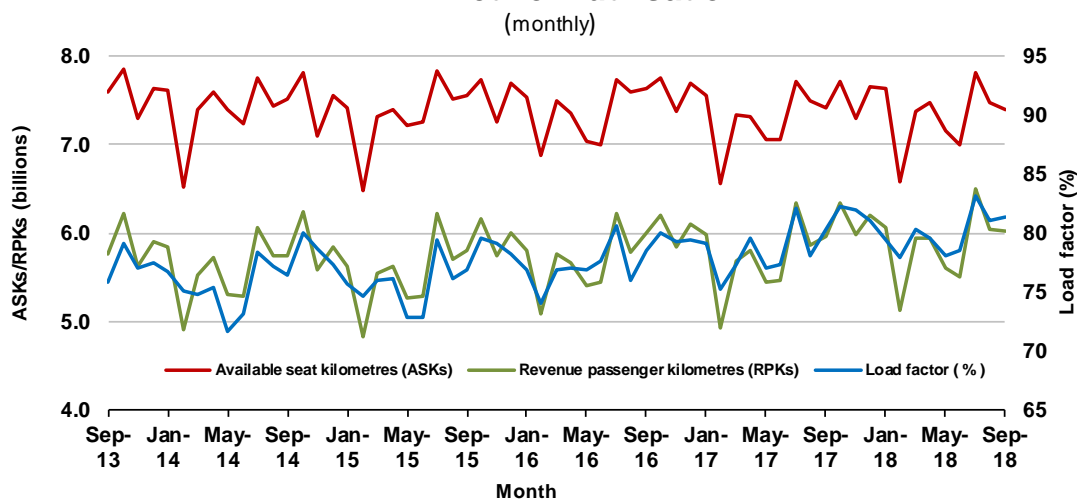
| | Sep 2017 | Sep 2018 | % Change |
|---|----------|----------|----------|
| Total passengers carried (millions) | 5.07 | 5.08 | 0.2 |
| Revenue passenger kilometres (billions) | 5.96 | 6.02 | 1.1 |
| Available seats (millions) | 6.43 | 6.40 | -0.5 |
| Available seat kilometres (billions) | 7.41 | 7.40 | -0.2 |
| Load factor % | 80.4 | 81.4 | 1.0 * |
| Aircraft trips (000s) | 53.2 | 52.2 | -1.9 |

* percentage point difference

Domestic RPT passenger traffic



RPT Network utilisation



TOTAL NETWORK

Summary of annual commercial aviation activity

| | YE Sep 2017 | YE Sep 2018 | % Change |
|-------------------------------------|-------------|-------------|----------|
| Total passengers carried (millions) | 61.94 | 63.55 | 2.6 |
| Aircraft trips (000s) | 684.8 | 676.0 | -1.3 |

Note: Regular Public Transport and charter aviation activity
Helicopter, joyflights and sightseeing charter flights not included.

RPT NETWORK

Summary of annual RPT activity

| | YE Sep 2017 | YE Sep 2018 | % Change |
|---|-------------|-------------|----------|
| Total passengers carried (millions) | 59.52 | 61.10 | 2.7 |
| Revenue passenger kilometres (billions) | 69.63 | 71.29 | 2.4 |
| Available seats (millions) | 77.07 | 77.47 | 0.5 |
| Available seat kilometres (billions) | 88.34 | 88.58 | 0.3 |
| Load factor % | 78.8 | 80.5 | 1.7 * |
| Aircraft trips (000s) | 639.1 | 631.2 | -1.2 |

* percentage point difference

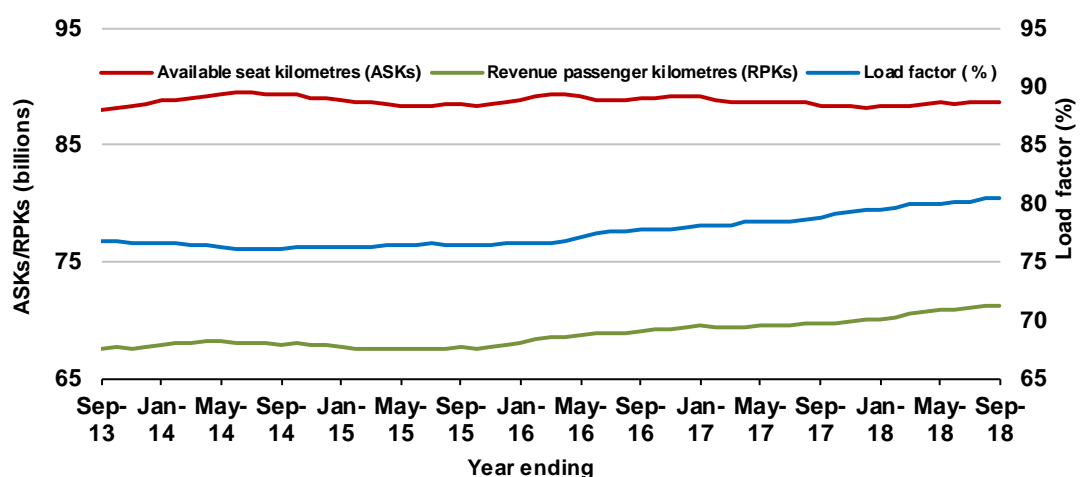
Domestic RPT passenger traffic

(moving annual totals)



RPT Network utilisation

(moving annual totals)



TOP COMPETITIVE ROUTES

Table 1: Passengers carried (000s) — annual activity

| | City-Pair | YE Sep 2017 | YE Sep 2018 | %Change |
|----|----------------------------|-------------|-------------|---------|
| 1 | Melbourne - Sydney | 8 999.6 | 9 279.6 | 3.1 |
| 2 | Brisbane - Sydney | 4 708.2 | 4 809.9 | 2.2 |
| 3 | Brisbane - Melbourne | 3 517.2 | 3 566.1 | 1.4 |
| 4 | Gold Coast - Sydney | 2 714.3 | 2 754.2 | 1.5 |
| 5 | Adelaide - Melbourne | 2 426.0 | 2 499.4 | 3.0 |
| 6 | Melbourne - Perth | 2 038.1 | 2 097.4 | 2.9 |
| 7 | Gold Coast - Melbourne | 2 000.4 | 2 064.1 | 3.2 |
| 8 | Adelaide - Sydney | 1 887.3 | 1 913.8 | 1.4 |
| 9 | Perth - Sydney | 1 722.0 | 1 720.9 | -0.1 |
| 10 | Hobart - Melbourne | 1 614.8 | 1 642.7 | 1.7 |
| 11 | Brisbane - Cairns | 1 369.3 | 1 347.9 | -1.6 |
| 12 | Canberra - Melbourne | 1 109.0 | 1 163.8 | 4.9 |
| 13 | Cairns - Sydney | 1 127.5 | 1 135.8 | 0.7 |
| 14 | Brisbane - Townsville | 955.5 | 993.8 | 4.0 |
| 15 | Brisbane - Perth | 966.9 | 969.0 | 0.2 |
| 16 | Canberra - Sydney | 953.5 | 957.3 | 0.4 |
| 17 | Launceston - Melbourne | 914.4 | 954.3 | 4.4 |
| 18 | Adelaide - Brisbane | 834.6 | 856.5 | 2.6 |
| 19 | Cairns - Melbourne | 837.9 | 854.7 | 2.0 |
| 20 | Brisbane - Mackay | 684.9 | 738.0 | 7.7 |
| 21 | Hobart - Sydney | 644.7 | 697.0 | 8.1 |
| 22 | Brisbane - Canberra | 587.2 | 634.5 | 8.1 |
| 23 | Adelaide - Perth | 613.8 | 634.4 | 3.3 |
| 24 | Sunshine Coast - Sydney | 567.2 | 621.2 | 9.5 |
| 25 | Brisbane - Newcastle | 589.1 | 583.6 | -0.9 |
| 26 | Melbourne - Sunshine Coast | 466.6 | 539.9 | 15.7 |
| 27 | Brisbane - Rockhampton | 535.4 | 514.2 | -4.0 |
| 28 | Melbourne - Newcastle | 468.4 | 493.6 | 5.4 |
| 29 | Karratha - Perth | 446.6 | 439.5 | -1.6 |
| 30 | Ballina - Sydney | 396.5 | 433.8 | 9.4 |
| 31 | Brisbane - Darwin | 407.5 | 387.7 | -4.9 |
| 32 | Perth - Port Hedland | 338.6 | 354.3 | 4.6 |
| 33 | Coffs Harbour - Sydney | 343.8 | 344.1 | 0.1 |
| 34 | Broome - Perth | 297.0 | 341.7 | 15.1 |
| 35 | Darwin - Sydney | 321.2 | 314.8 | -2.0 |
| 36 | Darwin - Melbourne | 307.2 | 307.4 | 0.1 |
| 37 | Newman - Perth | 284.8 | 300.6 | 5.6 |
| 38 | Launceston - Sydney | 288.0 | 287.8 | 0.0 |
| 39 | Kalgoorlie - Perth | 238.6 | 266.1 | 11.5 |
| 40 | Brisbane - Proserpine | 244.4 | 261.4 | 7.0 |
| 41 | Brisbane - Gladstone | 292.2 | 256.6 | -12.2 |
| 42 | Albury - Sydney | 224.6 | 223.7 | -0.4 |
| 43 | Melbourne - Mildura | 209.3 | 223.6 | 6.8 |
| 44 | Adelaide - Gold Coast | 214.3 | 222.3 | 3.7 |
| 45 | Brisbane - Hobart | 209.8 | 222.0 | 5.8 |
| 46 | Hamilton Island - Sydney | 214.5 | 203.3 | -5.2 |
| 47 | Darwin - Perth | 193.6 | 200.7 | 3.7 |
| 48 | Ayers Rock - Sydney | 190.4 | 196.9 | 3.4 |
| 49 | Brisbane - Emerald | 198.5 | 196.2 | -1.2 |
| 50 | Adelaide - Canberra | 178.1 | 194.9 | 9.5 |

continued

Table 1: (continued) Passengers carried (000s) — annual activity

| | City-Pair | YE Sep 2017 | YE Sep 2018 | %Change |
|----|-------------------------------|--------------------|--------------------|----------------|
| 51 | Dubbo - Sydney | 190.8 | 190.1 | -0.4 |
| 52 | Port Macquarie - Sydney | 193.3 | 188.4 | -2.5 |
| 53 | Sydney - Wagga Wagga | 184.9 | 182.3 | -1.4 |
| 54 | Sydney - Tamworth | 182.4 | 175.6 | -3.7 |
| 55 | Adelaide - Port Lincoln | 173.7 | 169.1 | -2.6 |
| 56 | Sydney - Townsville | 159.3 | 165.7 | 4.0 |
| 57 | Brisbane - Bundaberg | 176.5 | 164.7 | -6.7 |
| 58 | Cairns - Townsville | 140.0 | 148.6 | 6.2 |
| 59 | Proserpine - Sydney | 10.9 | 138.4 | NA (a) |
| 60 | Adelaide - Alice Springs | 123.1 | 129.0 | 4.8 |
| 61 | Brisbane - Mount Isa | 124.0 | 128.9 | 3.9 |
| 62 | Brisbane - Hamilton Island | 134.8 | 124.2 | -7.9 |
| 63 | Armidale - Sydney | 126.7 | 123.7 | -2.3 |
| 64 | Alice Springs - Darwin | 117.8 | 112.5 | -4.5 |
| 65 | Geraldton - Perth | 114.2 | 111.6 | -2.3 |
| | Total domestic network | 59 516.3 | 61 099.1 | 2.7 |

(a) Proserpine - Sydney route included from September 2017, prior data not shown.

Table 2: Passengers carried (000s) — monthly activity

| | City-Pair | Sep 2017 | Sep 2018 | % Change |
|----|----------------------------|-----------------|-----------------|-----------------|
| 1 | Melbourne - Sydney | 742.2 | 739.7 | -0.3 |
| 2 | Brisbane - Sydney | 403.9 | 397.2 | -1.6 |
| 3 | Brisbane - Melbourne | 307.1 | 303.2 | -1.3 |
| 4 | Gold Coast - Sydney | 225.1 | 222.9 | -1.0 |
| 5 | Adelaide - Melbourne | 201.7 | 201.8 | 0.0 |
| 6 | Melbourne - Perth | 161.0 | 186.2 | 15.6 |
| 7 | Gold Coast - Melbourne | 178.6 | 179.2 | 0.4 |
| 8 | Adelaide - Sydney | 151.2 | 151.3 | 0.1 |
| 9 | Perth - Sydney | 139.4 | 141.0 | 1.1 |
| 10 | Hobart - Melbourne | 121.8 | 122.6 | 0.7 |
| 11 | Brisbane - Cairns | 117.6 | 107.0 | -9.1 |
| 12 | Canberra - Melbourne | 98.4 | 96.8 | -1.7 |
| 13 | Cairns - Sydney | 96.4 | 91.3 | -5.2 |
| 14 | Brisbane - Townsville | 85.3 | 86.4 | 1.4 |
| 15 | Cairns - Melbourne | 78.8 | 83.0 | 5.3 |
| 16 | Canberra - Sydney | 82.6 | 82.1 | -0.6 |
| 17 | Brisbane - Perth | 83.0 | 79.3 | -4.5 |
| 18 | Launceston - Melbourne | 69.6 | 70.6 | 1.5 |
| 19 | Adelaide - Brisbane | 73.2 | 70.1 | -4.2 |
| 20 | Brisbane - Mackay | 64.2 | 63.8 | -0.7 |
| 21 | Brisbane - Canberra | 55.2 | 57.1 | 3.5 |
| 22 | Melbourne - Sunshine Coast | 47.1 | 54.3 | 15.4 |
| 23 | Hobart - Sydney | 49.7 | 51.1 | 2.8 |
| 24 | Adelaide - Perth | 50.5 | 50.4 | -0.2 |
| 25 | Sunshine Coast - Sydney | 50.0 | 50.0 | -0.1 |
| 26 | Brisbane - Newcastle | 50.8 | 47.5 | -6.4 |
| 27 | Brisbane - Rockhampton | 46.5 | 43.6 | -6.2 |
| 28 | Melbourne - Newcastle | 41.9 | 40.1 | -4.5 |
| 29 | Karratha - Perth | 35.1 | 36.6 | 4.2 |
| 30 | Ballina - Sydney | 36.0 | 35.7 | -1.0 |
| 31 | Broome - Perth | 32.2 | 32.3 | 0.2 |
| 32 | Brisbane - Darwin | 35.6 | 32.2 | -9.6 |
| 33 | Perth - Port Hedland | 28.5 | 29.4 | 3.0 |
| 34 | Darwin - Sydney | 29.8 | 28.7 | -3.8 |
| 35 | Darwin - Melbourne | 27.1 | 28.6 | 5.3 |
| 36 | Coffs Harbour - Sydney | 30.0 | 27.9 | -7.0 |
| 37 | Newman - Perth | 23.6 | 24.9 | 5.6 |
| 38 | Kalgoorlie - Perth | 20.6 | 23.5 | 14.1 |
| 39 | Brisbane - Gladstone | 23.4 | 20.6 | -12.2 |
| 40 | Brisbane - Proserpine | 25.8 | 20.4 | -20.8 |
| 41 | Albury - Sydney | 19.6 | 20.0 | 1.9 |
| 42 | Launceston - Sydney | 18.9 | 19.9 | 5.5 |
| 43 | Brisbane - Hobart | 17.9 | 19.2 | 7.1 |
| 44 | Melbourne - Mildura | 17.7 | 19.1 | 7.8 |
| 45 | Adelaide - Gold Coast | 18.5 | 18.8 | 2.0 |
| 46 | Hamilton Island - Sydney | 16.9 | 18.1 | 7.2 |
| 47 | Adelaide - Canberra | 16.3 | 17.9 | 10.0 |
| 48 | Darwin - Perth | 17.8 | 17.2 | -3.4 |
| 49 | Ayers Rock - Sydney | 17.1 | 16.8 | -1.8 |
| 50 | Sydney - Townsville | 15.5 | 16.8 | 8.3 |

continued

Table 2: (continued) Passengers carried (000s) — monthly activity

| | City-Pair | Sep 2017 | Sep 2018 | % Change |
|----|-------------------------------|-----------------|-----------------|-----------------|
| 51 | Dubbo - Sydney | 16.6 | 16.5 | -0.6 |
| 52 | Brisbane - Emerald | 16.8 | 16.2 | -3.4 |
| 53 | Sydney - Wagga Wagga | 15.6 | 16.0 | 2.4 |
| 54 | Port Macquarie - Sydney | 15.9 | 15.5 | -2.2 |
| 55 | Sydney - Tamworth | 15.4 | 15.4 | -0.1 |
| 56 | Brisbane - Bundaberg | 14.8 | 14.0 | -5.5 |
| 57 | Adelaide - Port Lincoln | 14.0 | 13.7 | -2.6 |
| 58 | Cairns - Townsville | 12.3 | 12.3 | 0.0 |
| 59 | Proserpine - Sydney | 10.9 | 12.2 | 11.9 |
| 60 | Adelaide - Alice Springs | 11.1 | 11.2 | 1.1 |
| 61 | Brisbane - Mount Isa | 11.3 | 11.0 | -3.3 |
| 62 | Armidale - Sydney | 10.2 | 10.8 | 5.5 |
| 63 | Brisbane - Hamilton Island | 10.7 | 10.7 | -0.5 |
| 64 | Alice Springs - Darwin | 11.0 | 10.3 | -5.6 |
| 65 | Geraldton - Perth | 9.4 | 9.4 | 0.3 |
| | Total domestic network | 5 071.6 | 5 080.8 | 0.2 |

Table 3: Available seats (000s) — monthly activity

| | City-Pair | Sep 2017 | Sep 2018 | % Change |
|----|----------------------------|-----------------|-----------------|-----------------|
| 1 | Melbourne - Sydney | 886.8 | 884.9 | -0.2 |
| 2 | Brisbane - Sydney | 479.8 | 478.6 | -0.3 |
| 3 | Brisbane - Melbourne | 374.2 | 357.4 | -4.5 |
| 4 | Gold Coast - Sydney | 262.5 | 265.8 | 1.3 |
| 5 | Adelaide - Melbourne | 258.9 | 252.6 | -2.4 |
| 6 | Melbourne - Perth | 199.0 | 219.5 | 10.3 |
| 7 | Gold Coast - Melbourne | 204.9 | 197.7 | -3.5 |
| 8 | Adelaide - Sydney | 187.6 | 187.1 | -0.3 |
| 9 | Perth - Sydney | 169.7 | 166.7 | -1.8 |
| 10 | Hobart - Melbourne | 149.4 | 157.6 | 5.5 |
| 11 | Brisbane - Cairns | 139.6 | 127.6 | -8.6 |
| 12 | Canberra - Melbourne | 144.6 | 147.7 | 2.1 |
| 13 | Cairns - Sydney | 116.9 | 118.4 | 1.2 |
| 14 | Brisbane - Townsville | 104.7 | 105.2 | 0.5 |
| 15 | Cairns - Melbourne | 91.1 | 93.5 | 2.6 |
| 16 | Canberra - Sydney | 106.7 | 107.3 | 0.5 |
| 17 | Brisbane - Perth | 100.7 | 91.3 | -9.3 |
| 18 | Launceston - Melbourne | 87.2 | 87.3 | 0.1 |
| 19 | Adelaide - Brisbane | 92.4 | 88.6 | -4.1 |
| 20 | Brisbane - Mackay | 79.2 | 78.9 | -0.3 |
| 21 | Brisbane - Canberra | 71.9 | 73.8 | 2.7 |
| 22 | Melbourne - Sunshine Coast | 52.0 | 59.0 | 13.5 |
| 23 | Hobart - Sydney | 60.0 | 62.6 | 4.2 |
| 24 | Adelaide - Perth | 69.5 | 64.1 | -7.8 |
| 25 | Sunshine Coast - Sydney | 59.8 | 61.0 | 2.0 |
| 26 | Brisbane - Newcastle | 63.9 | 66.1 | 3.5 |
| 27 | Brisbane - Rockhampton | 53.5 | 52.9 | -0.9 |
| 28 | Melbourne - Newcastle | 51.1 | 49.7 | -2.7 |
| 29 | Karratha - Perth | 53.4 | 54.0 | 1.2 |
| 30 | Ballina - Sydney | 44.0 | 43.2 | -1.7 |
| 31 | Broome - Perth | 40.9 | 40.2 | -1.7 |
| 32 | Brisbane - Darwin | 41.1 | 39.1 | -5.0 |
| 33 | Perth - Port Hedland | 43.4 | 42.6 | -1.7 |
| 34 | Darwin - Sydney | 36.8 | 37.1 | 0.8 |
| 35 | Darwin - Melbourne | 31.6 | 33.8 | 6.9 |
| 36 | Coffs Harbour - Sydney | 37.6 | 38.4 | 2.1 |
| 37 | Newman - Perth | 42.8 | 42.4 | -0.8 |
| 38 | Kalgoorlie - Perth | 35.9 | 38.2 | 6.5 |
| 39 | Brisbane - Gladstone | 30.1 | 28.8 | -4.3 |
| 40 | Brisbane - Proserpine | 29.7 | 25.0 | -16.0 |
| 41 | Albury - Sydney | 26.7 | 27.7 | 3.6 |
| 42 | Launceston - Sydney | 22.1 | 22.8 | 3.3 |
| 43 | Brisbane - Hobart | 20.4 | 22.5 | 10.1 |
| 44 | Melbourne - Mildura | 28.8 | 29.3 | 1.8 |
| 45 | Adelaide - Gold Coast | 21.2 | 21.6 | 1.6 |
| 46 | Hamilton Island - Sydney | 27.5 | 27.4 | -0.5 |
| 47 | Adelaide - Canberra | 24.7 | 25.0 | 1.3 |
| 48 | Darwin - Perth | 21.8 | 22.8 | 4.7 |
| 49 | Ayers Rock - Sydney | 21.2 | 21.5 | 1.4 |
| 50 | Sydney - Townsville | 19.0 | 20.2 | 6.7 |

continued

Table 3: (continued) Available seats (000s) — monthly activity

| | City-Pair | Sep 2017 | Sep 2018 | % Change |
|----|-------------------------------|-----------------|-----------------|-----------------|
| 51 | Dubbo - Sydney | 21.7 | 21.0 | -3.1 |
| 52 | Brisbane - Emerald | 23.7 | 21.6 | -8.8 |
| 53 | Sydney - Wagga Wagga | 24.0 | 22.1 | -8.0 |
| 54 | Port Macquarie - Sydney | 19.9 | 19.6 | -1.4 |
| 55 | Sydney - Tamworth | 22.7 | 21.9 | -3.2 |
| 56 | Brisbane - Bundaberg | 20.1 | 18.9 | -6.1 |
| 57 | Adelaide - Port Lincoln | 24.7 | 24.5 | -1.1 |
| 58 | Cairns - Townsville | 23.2 | 20.0 | -14.0 |
| 59 | Proserpine - Sydney | 14.0 | 14.5 | 3.3 |
| 60 | Adelaide - Alice Springs | 14.7 | 15.1 | 2.4 |
| 61 | Brisbane - Mount Isa | 15.5 | 13.8 | -11.2 |
| 62 | Armidale - Sydney | 14.1 | 15.1 | 7.2 |
| 63 | Brisbane - Hamilton Island | 15.2 | 13.7 | -9.4 |
| 64 | Alice Springs - Darwin | 19.1 | 19.0 | -0.2 |
| 65 | Geraldton - Perth | 18.6 | 18.3 | -1.6 |
| | Total domestic network | 6 434.5 | 6 400.7 | -0.5 |

Table 4: Load factors (%) — monthly activity

| | City-Pair | Sep 2017 | Sep 2018 | % Point diff |
|----|----------------------------|-----------------|-----------------|---------------------|
| 1 | Melbourne - Sydney | 83.7 | 83.6 | -0.1 |
| 2 | Brisbane - Sydney | 84.2 | 83.0 | -1.2 |
| 3 | Brisbane - Melbourne | 82.1 | 84.8 | 2.7 |
| 4 | Gold Coast - Sydney | 85.8 | 83.9 | -1.9 |
| 5 | Adelaide - Melbourne | 77.9 | 79.9 | 2.0 |
| 6 | Melbourne - Perth | 80.9 | 84.8 | 3.9 |
| 7 | Gold Coast - Melbourne | 87.1 | 90.6 | 3.5 |
| 8 | Adelaide - Sydney | 80.6 | 80.8 | 0.2 |
| 9 | Perth - Sydney | 82.2 | 84.6 | 2.4 |
| 10 | Hobart - Melbourne | 81.5 | 77.8 | -3.7 |
| 11 | Brisbane - Cairns | 84.3 | 83.8 | -0.5 |
| 12 | Canberra - Melbourne | 68.1 | 65.5 | -2.6 |
| 13 | Cairns - Sydney | 82.4 | 77.2 | -5.2 |
| 14 | Brisbane - Townsville | 81.5 | 82.2 | 0.7 |
| 15 | Cairns - Melbourne | 86.4 | 88.7 | 2.3 |
| 16 | Canberra - Sydney | 77.4 | 76.5 | -0.9 |
| 17 | Brisbane - Perth | 82.5 | 86.8 | 4.3 |
| 18 | Launceston - Melbourne | 79.8 | 80.9 | 1.1 |
| 19 | Adelaide - Brisbane | 79.2 | 79.1 | -0.1 |
| 20 | Brisbane - Mackay | 81.1 | 80.8 | -0.3 |
| 21 | Brisbane - Canberra | 76.7 | 77.3 | 0.6 |
| 22 | Melbourne - Sunshine Coast | 90.6 | 92.1 | 1.5 |
| 23 | Hobart - Sydney | 82.8 | 81.7 | -1.1 |
| 24 | Adelaide - Perth | 72.7 | 78.7 | 6.0 |
| 25 | Sunshine Coast - Sydney | 83.7 | 82.0 | -1.7 |
| 26 | Brisbane - Newcastle | 79.5 | 72.0 | -7.5 |
| 27 | Brisbane - Rockhampton | 87.0 | 82.3 | -4.7 |
| 28 | Melbourne - Newcastle | 82.1 | 80.7 | -1.4 |
| 29 | Karratha - Perth | 65.8 | 67.8 | 2.0 |
| 30 | Ballina - Sydney | 81.9 | 82.4 | 0.5 |
| 31 | Broome - Perth | 78.8 | 80.3 | 1.5 |
| 32 | Brisbane - Darwin | 86.6 | 82.5 | -4.1 |
| 33 | Perth - Port Hedland | 65.8 | 69.0 | 3.2 |
| 34 | Darwin - Sydney | 81.0 | 77.4 | -3.6 |
| 35 | Darwin - Melbourne | 85.9 | 84.7 | -1.2 |
| 36 | Coffs Harbour - Sydney | 79.7 | 72.6 | -7.1 |
| 37 | Newman - Perth | 55.2 | 58.8 | 3.6 |
| 38 | Kalgoorlie - Perth | 57.3 | 61.4 | 4.1 |
| 39 | Brisbane - Gladstone | 77.8 | 71.4 | -6.4 |
| 40 | Brisbane - Proserpine | 86.9 | 81.9 | -5.0 |
| 41 | Albury - Sydney | 73.4 | 72.2 | -1.2 |
| 42 | Launceston - Sydney | 85.6 | 87.5 | 1.9 |
| 43 | Brisbane - Hobart | 87.8 | 85.4 | -2.4 |
| 44 | Melbourne - Mildura | 61.5 | 65.1 | 3.6 |
| 45 | Adelaide - Gold Coast | 87.0 | 87.4 | 0.4 |
| 46 | Hamilton Island - Sydney | 61.3 | 66.1 | 4.8 |
| 47 | Adelaide - Canberra | 65.9 | 71.5 | 5.6 |
| 48 | Darwin - Perth | 81.9 | 75.5 | -6.4 |
| 49 | Ayers Rock - Sydney | 80.7 | 78.2 | -2.5 |
| 50 | Sydney - Townsville | 81.6 | 82.8 | 1.2 |

continued

Table 4: (continued) Load factors (%) — monthly activity

| | City-Pair | Sep 2017 | Sep 2018 | % Point diff |
|----|-------------------------------|-----------------|-----------------|---------------------|
| 51 | Dubbo - Sydney | 76.3 | 78.3 | 2.0 |
| 52 | Brisbane - Emerald | 70.8 | 75.0 | 4.2 |
| 53 | Sydney - Wagga Wagga | 65.1 | 72.5 | 7.4 |
| 54 | Port Macquarie - Sydney | 79.9 | 79.2 | -0.7 |
| 55 | Sydney - Tamworth | 67.8 | 70.0 | 2.2 |
| 56 | Brisbane - Bundaberg | 73.4 | 73.9 | 0.5 |
| 57 | Adelaide - Port Lincoln | 56.8 | 55.9 | -0.9 |
| 58 | Cairns - Townsville | 52.7 | 61.3 | 8.6 |
| 59 | Proserpine - Sydney | 77.9 | 84.4 | 6.5 |
| 60 | Adelaide - Alice Springs | 74.9 | 74.0 | -0.9 |
| 61 | Brisbane - Mount Isa | 73.1 | 79.6 | 6.5 |
| 62 | Armidale - Sydney | 72.5 | 71.4 | -1.1 |
| 63 | Brisbane - Hamilton Island | 70.8 | 77.8 | 7.0 |
| 64 | Alice Springs - Darwin | 57.5 | 54.3 | -3.2 |
| 65 | Geraldton - Perth | 50.6 | 51.6 | 1.0 |
| | Total domestic network | 80.4 | 81.4 | 1.0 |

Table 5: Aircraft trips ^(a) — monthly activity

| | City-Pair | Sep 2017 | Sep 2018 | % Change |
|----|----------------------------|-----------------|-----------------|-----------------|
| 1 | Melbourne - Sydney | 4 952 | 4 935 | -0.3 |
| 2 | Brisbane - Sydney | 2 965 | 2 939 | -0.9 |
| 3 | Brisbane - Melbourne | 2 207 | 2 108 | -4.5 |
| 4 | Gold Coast - Sydney | 1 482 | 1 517 | 2.4 |
| 5 | Adelaide - Melbourne | 1 608 | 1 578 | -1.9 |
| 6 | Melbourne - Perth | 915 | 1 036 | 13.2 |
| 7 | Gold Coast - Melbourne | 1 079 | 1 052 | -2.5 |
| 8 | Adelaide - Sydney | 1 127 | 1 146 | 1.7 |
| 9 | Perth - Sydney | 746 | 710 | -4.8 |
| 10 | Hobart - Melbourne | 932 | 884 | -5.2 |
| 11 | Brisbane - Cairns | 866 | 839 | -3.1 |
| 12 | Canberra - Melbourne | 978 | 943 | -3.6 |
| 13 | Cairns - Sydney | 632 | 628 | -0.6 |
| 14 | Brisbane - Townsville | 735 | 734 | -0.1 |
| 15 | Cairns - Melbourne | 485 | 488 | 0.6 |
| 16 | Canberra - Sydney | 1 354 | 1 395 | 3.0 |
| 17 | Brisbane - Perth | 509 | 487 | -4.3 |
| 18 | Launceston - Melbourne | 698 | 671 | -3.9 |
| 19 | Adelaide - Brisbane | 558 | 553 | -0.9 |
| 20 | Brisbane - Mackay | 621 | 601 | -3.2 |
| 21 | Brisbane - Canberra | 520 | 536 | 3.1 |
| 22 | Melbourne - Sunshine Coast | 293 | 330 | 12.6 |
| 23 | Hobart - Sydney | 381 | 394 | 3.4 |
| 24 | Adelaide - Perth | 465 | 424 | -8.8 |
| 25 | Sunshine Coast - Sydney | 362 | 366 | 1.1 |
| 26 | Brisbane - Newcastle | 496 | 427 | -13.9 |
| 27 | Brisbane - Rockhampton | 671 | 669 | -0.3 |
| 28 | Melbourne - Newcastle | 286 | 277 | -3.1 |
| 29 | Karratha - Perth | 484 | 476 | -1.7 |
| 30 | Ballina - Sydney | 287 | 280 | -2.4 |
| 31 | Broome - Perth | 360 | 337 | -6.4 |
| 32 | Brisbane - Darwin | 254 | 237 | -6.7 |
| 33 | Perth - Port Hedland | 364 | 355 | -2.5 |
| 34 | Darwin - Sydney | 218 | 216 | -0.9 |
| 35 | Darwin - Melbourne | 180 | 181 | 0.6 |
| 36 | Coffs Harbour - Sydney | 400 | 369 | -7.8 |
| 37 | Newman - Perth | 318 | 317 | -0.3 |
| 38 | Kalgoorlie - Perth | 286 | 309 | 8.0 |
| 39 | Brisbane - Gladstone | 397 | 381 | -4.0 |
| 40 | Brisbane - Proserpine | 168 | 140 | -16.7 |
| 41 | Albury - Sydney | 498 | 502 | 0.8 |
| 42 | Launceston - Sydney | 130 | 132 | 1.5 |
| 43 | Brisbane - Hobart | 116 | 127 | 9.5 |
| 44 | Melbourne - Mildura | 415 | 401 | -3.4 |
| 45 | Adelaide - Gold Coast | 120 | 121 | 0.8 |
| 46 | Hamilton Island - Sydney | 168 | 168 | 0.0 |
| 47 | Adelaide - Canberra | 145 | 153 | 5.5 |
| 48 | Darwin - Perth | 130 | 136 | 4.6 |
| 49 | Ayers Rock - Sydney | 120 | 120 | 0.0 |
| 50 | Sydney - Townsville | 108 | 124 | 14.8 |

continued

Table 5: (continued) Aircraft trips ^(a) — monthly activity

| | City-Pair | Sep 2017 | Sep 2018 | % Change |
|----|-------------------------------|-----------------|-----------------|-----------------|
| 51 | Dubbo - Sydney | 499 | 443 | -11.2 |
| 52 | Brisbane - Emerald | 322 | 290 | -9.9 |
| 53 | Sydney - Wagga Wagga | 468 | 443 | -5.3 |
| 54 | Port Macquarie - Sydney | 343 | 306 | -10.8 |
| 55 | Sydney - Tamworth | 357 | 321 | -10.1 |
| 56 | Brisbane - Bundaberg | 306 | 264 | -13.7 |
| 57 | Adelaide - Port Lincoln | 640 | 632 | -1.3 |
| 58 | Cairns - Townsville | 376 | 316 | -16.0 |
| 59 | Proserpine - Sydney | 78 | 80 | 2.6 |
| 60 | Adelaide - Alice Springs | 106 | 109 | 2.8 |
| 61 | Brisbane - Mount Isa | 150 | 150 | 0.0 |
| 62 | Armidale - Sydney | 336 | 363 | 8.0 |
| 63 | Brisbane - Hamilton Island | 124 | 103 | -16.9 |
| 64 | Alice Springs - Darwin | 167 | 169 | 1.2 |
| 65 | Geraldton - Perth | 186 | 183 | -1.6 |
| | Total domestic network | 53 229 | 52 211 | -1.9 |

(a) Includes RPT Cargo flights.

TOP TEN AIRPORTS – PASSENGER MOVEMENTS

Table 6: Top ten airports, RPT passenger movements (000s) - annual activity

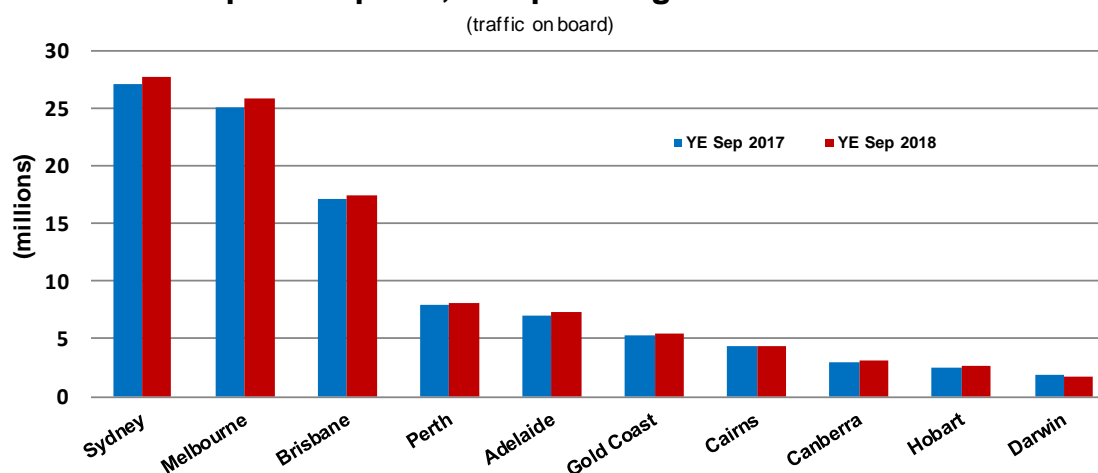
| Airport | YE Sep 2017 | YE Sep 2018 | % Change | % of Total |
|-------------------------------|------------------|------------------|------------|--------------|
| 1 Sydney | 27 133.0 | 27 763.6 | 2.3 | 22.7 |
| 2 Melbourne | 25 114.7 | 25 863.6 | 3.0 | 21.2 |
| 3 Brisbane | 17 179.9 | 17 399.2 | 1.3 | 14.2 |
| 4 Perth | 7 988.6 | 8 179.0 | 2.4 | 6.7 |
| 5 Adelaide | 7 079.7 | 7 332.7 | 3.6 | 6.0 |
| 6 Gold Coast | 5 372.8 | 5 515.9 | 2.7 | 4.5 |
| 7 Cairns | 4 297.4 | 4 331.8 | 0.8 | 3.5 |
| 8 Canberra | 2 989.2 | 3 131.5 | 4.8 | 2.6 |
| 9 Hobart | 2 469.9 | 2 630.3 | 6.5 | 2.2 |
| 10 Darwin | 1 810.8 | 1 772.4 | -2.1 | 1.5 |
| Total top ten airports | 101 436.0 | 103 920.0 | 2.4 | 85.0 |
| Total domestic network | 119 032.6 | 122 198.3 | 2.7 | 100.0 |

Table 7: Top ten airports, RPT passenger movements (000s) - monthly activity

| Airport | Sep 2017 | Sep 2018 | % Change | % of Total |
|-------------------------------|-----------------|-----------------|------------|--------------|
| 1 Sydney | 2 271.3 | 2 261.0 | -0.5 | 22.3 |
| 2 Melbourne | 2 119.1 | 2 145.2 | 1.2 | 21.1 |
| 3 Brisbane | 1 499.9 | 1 454.9 | -3.0 | 14.3 |
| 4 Perth | 665.7 | 696.6 | 4.6 | 6.9 |
| 5 Adelaide | 591.6 | 601.3 | 1.7 | 5.9 |
| 6 Gold Coast | 462.8 | 459.1 | -0.8 | 4.5 |
| 7 Cairns | 377.8 | 369.8 | -2.1 | 3.6 |
| 8 Canberra | 267.4 | 270.7 | 1.2 | 2.7 |
| 9 Hobart | 189.5 | 198.7 | 4.9 | 2.0 |
| 10 Darwin | 159.9 | 160.6 | 0.4 | 1.6 |
| Total top ten airports | 8 605.0 | 8 617.9 | 0.1 | 84.8 |
| Total domestic network | 10 143.3 | 10 161.5 | 0.2 | 100.0 |

Note: Airport passenger movement numbers are the sum of passenger arrivals and departures at each airport.

Top ten airports, RPT passenger movements



TOP FIVE AIRPORTS – CARGO MOVEMENTS

Table 8: Top five airports, domestic RPT cargo movements (000s tonnes) - annual activity

| Airport | YE Sep 2017 | YE Sep 2018 | % Change | % of Total |
|--------------------------------|--------------|--------------|------------|--------------|
| 1 Melbourne | 130.1 | 134.8 | 3.6 | 28.8 |
| 2 Sydney | 104.9 | 109.5 | 4.4 | 23.4 |
| 3 Brisbane | 66.3 | 70.1 | 5.7 | 15.0 |
| 4 Perth | 63.6 | 65.7 | 3.3 | 14.0 |
| 5 Adelaide | 26.3 | 27.9 | 6.2 | 6.0 |
| Total top five airports | 391.2 | 408.0 | 4.3 | 87.2 |
| Total domestic network | 450.2 | 468.1 | 4.0 | 100.0 |

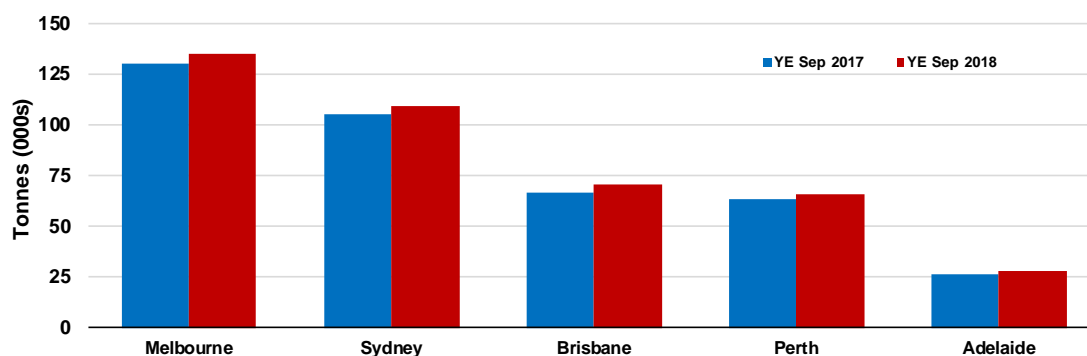
Table 9: Top five airports, domestic RPT cargo movements (000s tonnes) - monthly activity

| Airport | Sep 2017 | Sep 2018 | % Change | % of Total |
|--------------------------------|-------------|-------------|-------------|--------------|
| 1 Melbourne | 10.6 | 11.2 | 5.3 | 27.9 |
| 2 Sydney | 8.5 | 10.0 | 16.5 | 24.8 |
| 3 Brisbane | 5.3 | 6.3 | 18.1 | 15.7 |
| 4 Perth | 5.4 | 5.1 | -4.9 | 12.8 |
| 5 Adelaide | 2.0 | 2.6 | 28.7 | 6.4 |
| Total top five airports | 31.9 | 35.1 | 10.2 | 87.6 |
| Total domestic network | 36.8 | 40.1 | 9.0 | 100.0 |

Note: Airport cargo tonnes are the sum of cargo tonnes on arrivals and departures at each airport.

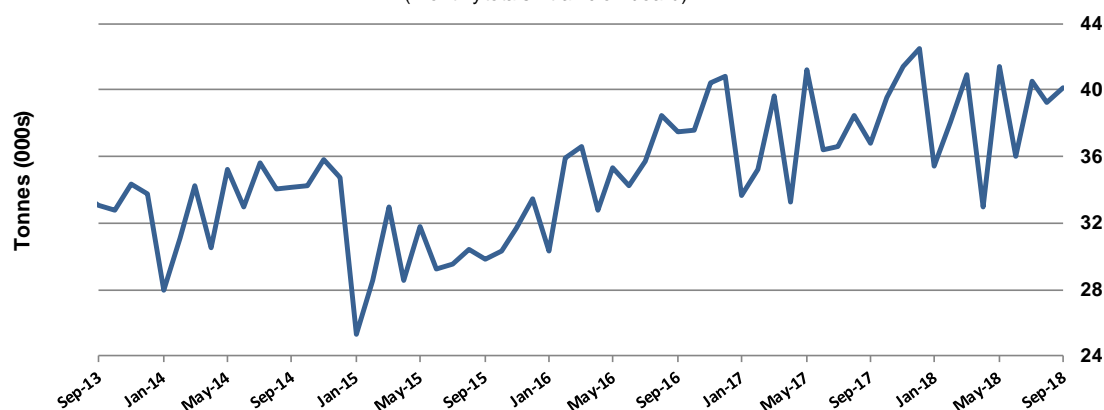
Top five airports, cargo movements

(Domestic cargo traffic - traffic on board)



Total domestic network - cargo movement

(monthly totals - traffic on board)



Note: Airport cargo tonnes are the sum of cargo tonnes on arrivals and departures at each airport.

TOP TEN ROUTES

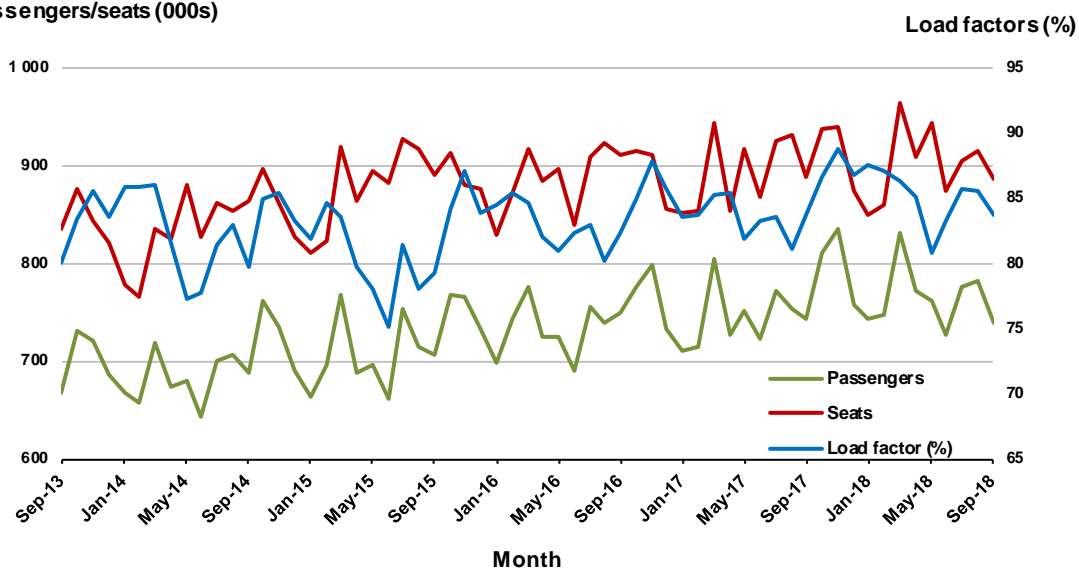
1. Melbourne - Sydney

Monthly data

| | Sep 2017 | Sep 2018 | % Change |
|---------------------------|----------|----------|----------|
| Passengers carried (000s) | 742.2 | 739.7 | -0.3 |
| Seats (000s) | 886.8 | 884.9 | -0.2 |
| Load factor % | 83.7 | 83.6 | -0.1 * |
| Aircraft trips | 4 952 | 4 935 | -0.3 |

* percentage point difference

Passengers/seats (000s)

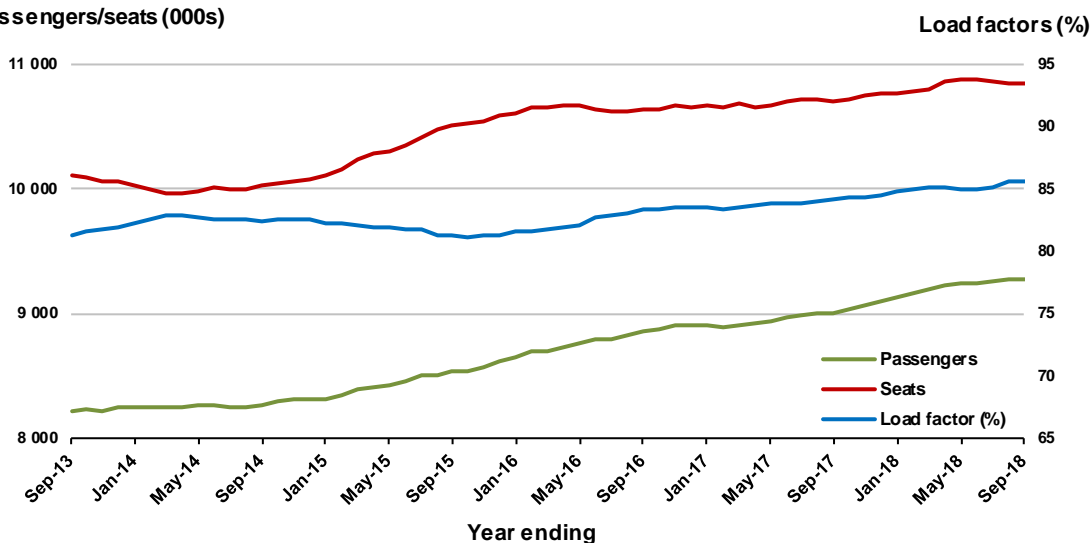


Moving annual data

| | YE Sep 2017 | YE Sep 2018 | % Change |
|---------------------------|-------------|-------------|----------|
| Passengers carried (000s) | 8 999.6 | 9 279.6 | 3.1 |
| Seats (000s) | 10 700.6 | 10 847.7 | 1.4 |
| Load factor % | 84.1 | 85.6 | 1.5 * |
| Aircraft trips | 59 625 | 60 046 | 0.7 |

* percentage point difference

Passengers/seats (000s)

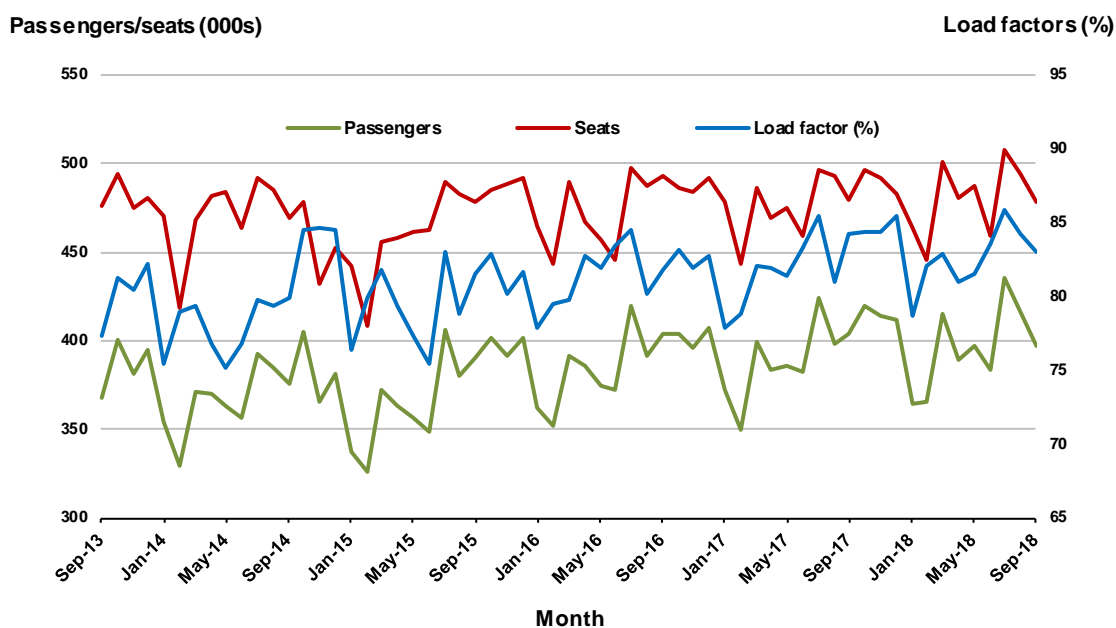


2. Brisbane - Sydney

Monthly data

| | Sep 2017 | Sep 2018 | % Change |
|---------------------------|----------|----------|----------|
| Passengers carried (000s) | 403.9 | 397.2 | -1.6 |
| Seats (000s) | 479.8 | 478.6 | -0.3 |
| Load factor % | 84.2 | 83.0 | -1.2 * |
| Aircraft trips | 2 965 | 2 939 | -0.9 |

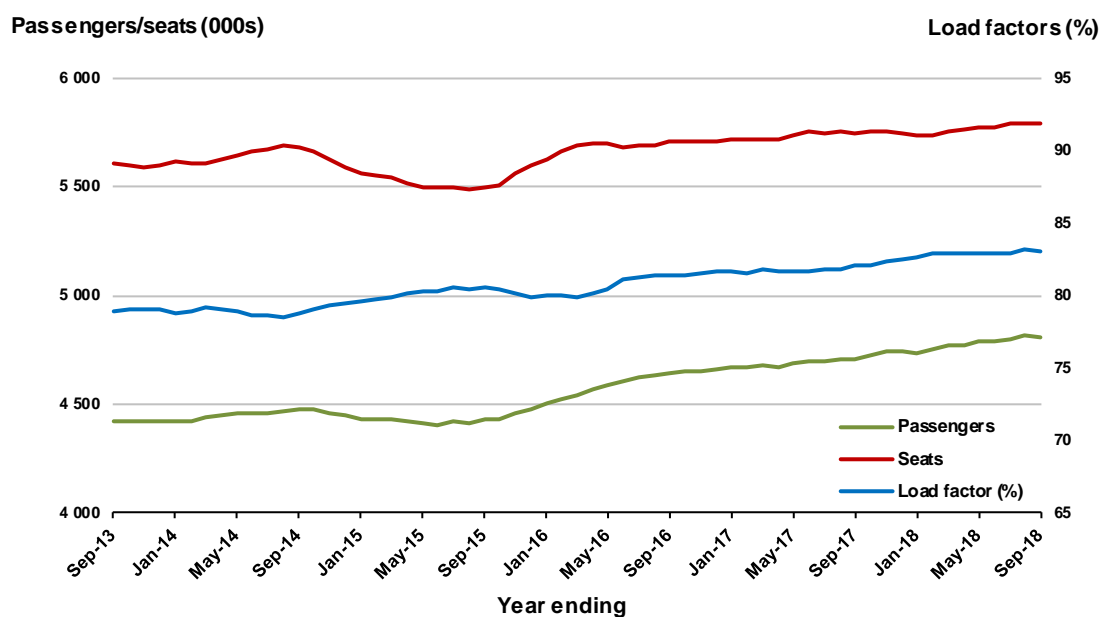
* percentage point difference



Moving annual data

| | YE Sep 2017 | YE Sep 2018 | % Change |
|---------------------------|-------------|-------------|----------|
| Passengers carried (000s) | 4 708.2 | 4 809.9 | 2.2 |
| Seats (000s) | 5 740.7 | 5 787.6 | 0.8 |
| Load factor % | 82.0 | 83.1 | 1.1 * |
| Aircraft trips | 35 414 | 35 174 | -0.7 |

* percentage point difference

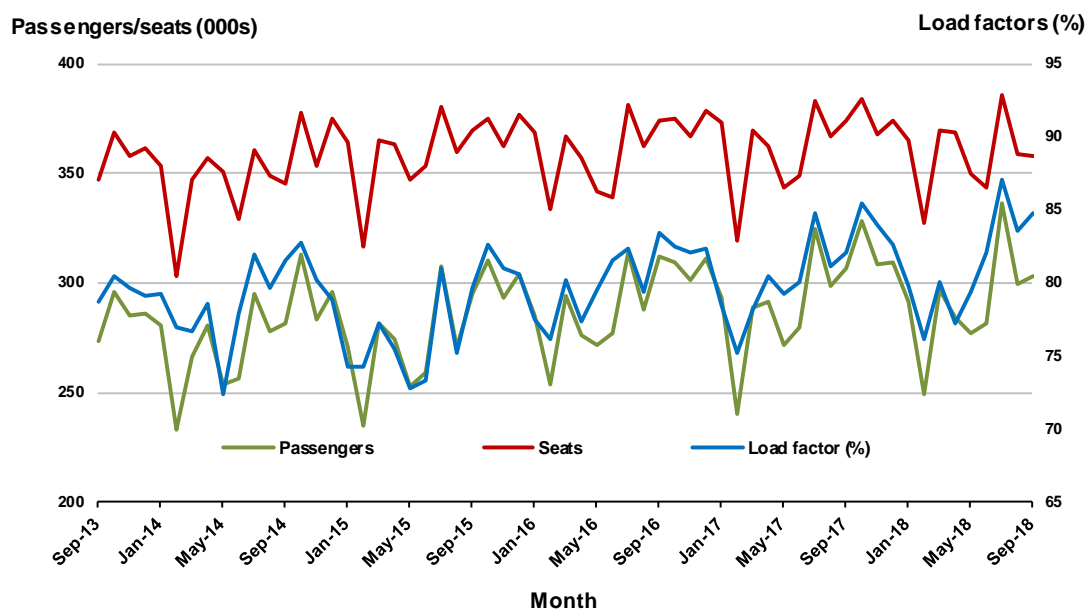


3. Brisbane - Melbourne

Monthly data

| | Sep 2017 | Sep 2018 | % Change |
|---------------------------|----------|----------|----------|
| Passengers carried (000s) | 307.1 | 303.2 | -1.3 |
| Seats (000s) | 374.2 | 357.4 | -4.5 |
| Load factor % | 82.1 | 84.8 | 2.7 * |
| Aircraft trips | 2 207 | 2 108 | -4.5 |

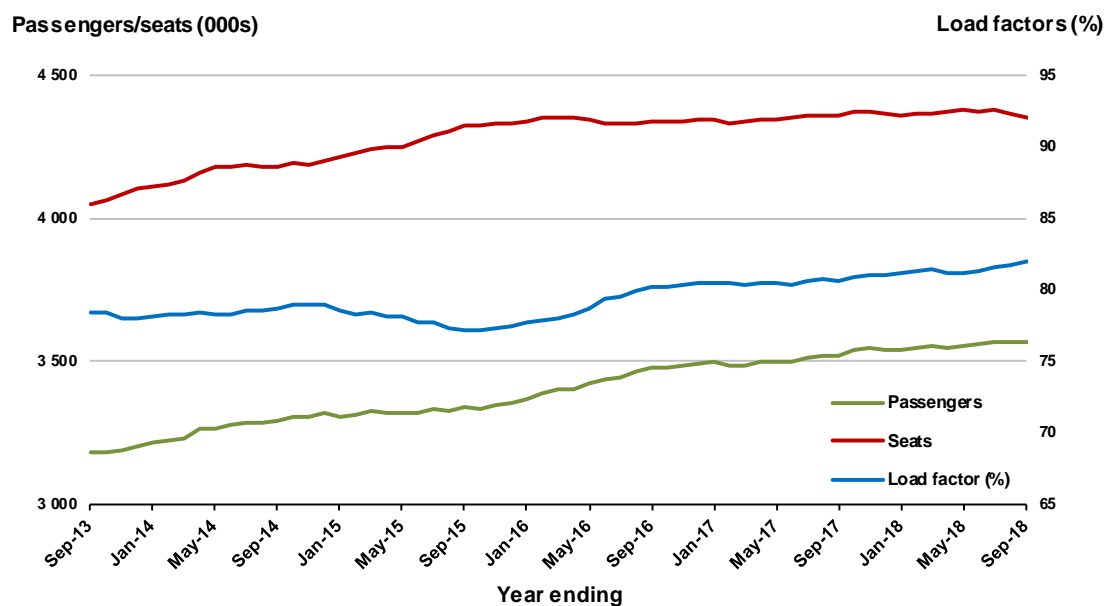
* percentage point difference



Moving annual data

| | YE Sep 2017 | YE Sep 2018 | % Change |
|---------------------------|-------------|-------------|----------|
| Passengers carried (000s) | 3 517.2 | 3 566.1 | 1.4 |
| Seats (000s) | 4 361.9 | 4 351.4 | -0.2 |
| Load factor % | 80.6 | 82.0 | 1.3 * |
| Aircraft trips | 25 791 | 25 548 | -0.9 |

* percentage point difference



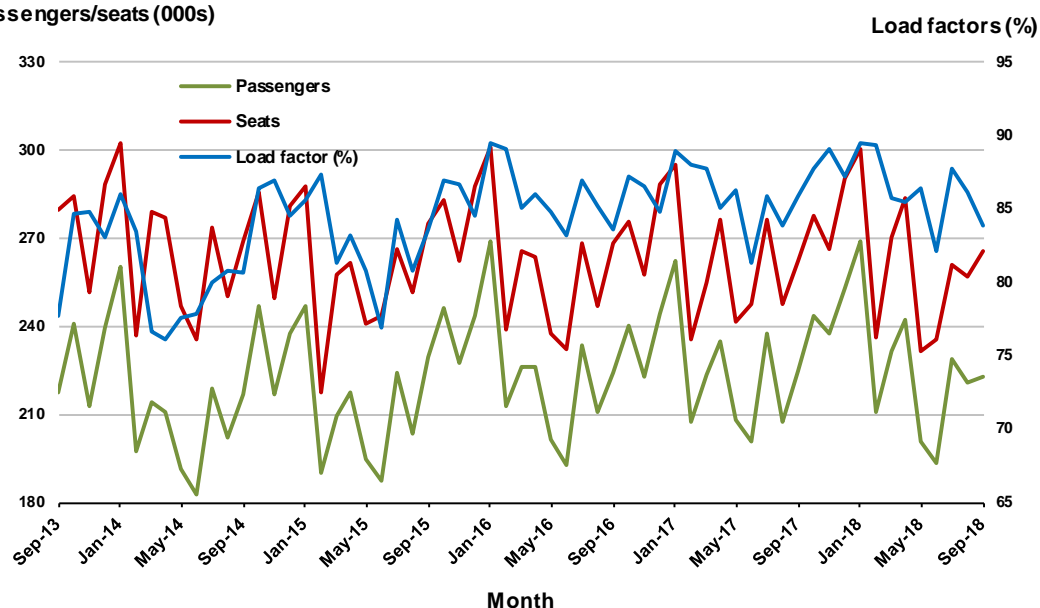
4. Gold Coast - Sydney

Monthly data

| | Sep 2017 | Sep 2018 | % Change |
|---------------------------|----------|----------|----------|
| Passengers carried (000s) | 225.1 | 222.9 | -1.0 |
| Seats (000s) | 262.5 | 265.8 | 1.3 |
| Load factor % | 85.8 | 83.9 | -1.9 * |
| Aircraft trips | 1 482 | 1 517 | 2.4 |

* percentage point difference

Passengers/seats (000s)

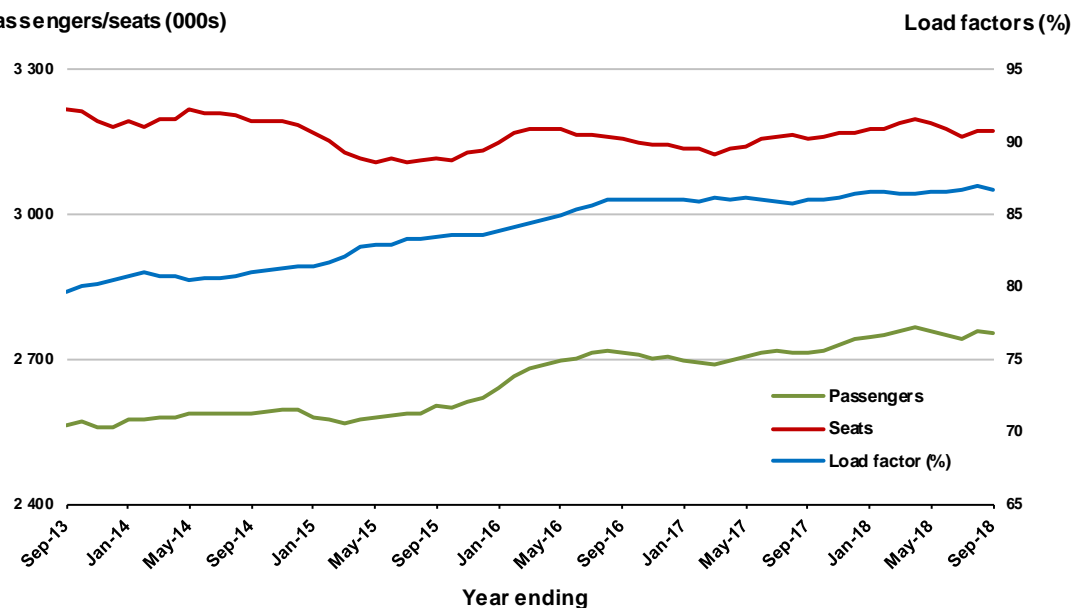


Moving annual data

| | YE Sep 2017 | YE Sep 2018 | % Change |
|---------------------------|-------------|-------------|----------|
| Passengers carried (000s) | 2 714.3 | 2 754.2 | 1.5 |
| Seats (000s) | 3 157.4 | 3 174.7 | 0.5 |
| Load factor % | 86.0 | 86.8 | 0.8 * |
| Aircraft trips | 18 093 | 17 990 | -0.6 |

* percentage point difference

Passengers/seats (000s)



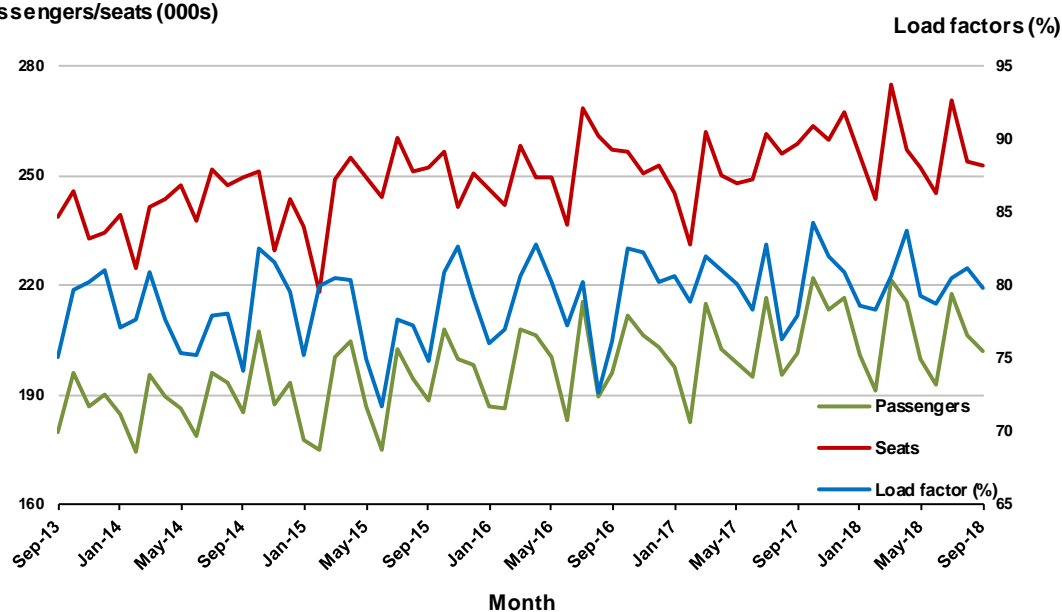
5. Adelaide - Melbourne

Monthly data

| | Sep 2017 | Sep 2018 | % Change |
|---------------------------|----------|----------|----------|
| Passengers carried (000s) | 201.7 | 201.8 | 0.0 |
| Seats (000s) | 258.9 | 252.6 | -2.4 |
| Load factor % | 77.9 | 79.9 | 2.0 * |
| Aircraft trips | 1 608 | 1 578 | -1.9 |

* percentage point difference

Passengers/seats (000s)

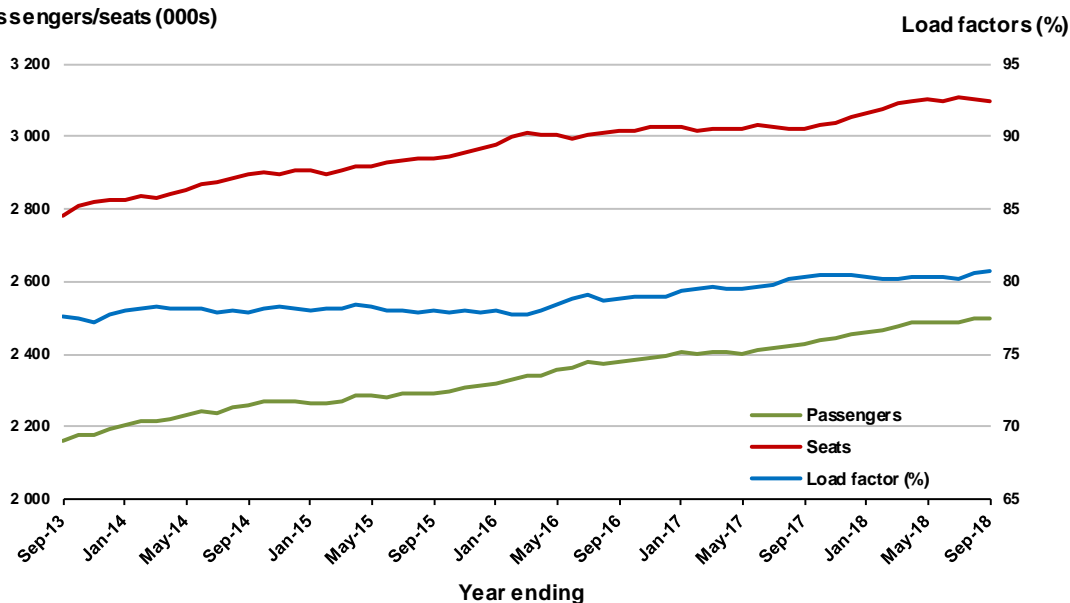


Moving annual data

| | YE Sep 2017 | YE Sep 2018 | % Change |
|---------------------------|-------------|-------------|----------|
| Passengers carried (000s) | 2 426.0 | 2 499.4 | 3.0 |
| Seats (000s) | 3 022.5 | 3 097.3 | 2.5 |
| Load factor % | 80.3 | 80.7 | 0.4 * |
| Aircraft trips | 19 082 | 19 218 | 0.7 |

* percentage point difference

Passengers/seats (000s)



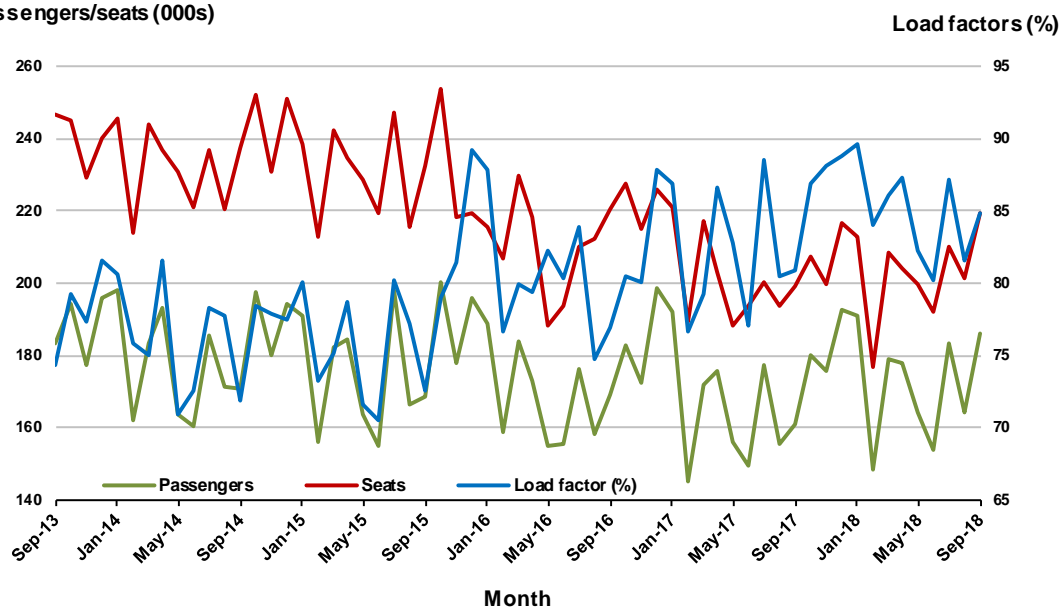
6. Melbourne - Perth

Monthly data

| | Sep 2017 | Sep 2018 | % Change |
|---------------------------|----------|----------|----------|
| Passengers carried (000s) | 161.0 | 186.2 | 15.6 |
| Seats (000s) | 199.0 | 219.5 | 10.3 |
| Load factor % | 80.9 | 84.8 | 3.9 * |
| Aircraft trips | 915 | 1 036 | 13.2 |

* percentage point difference

Passengers/seats (000s)

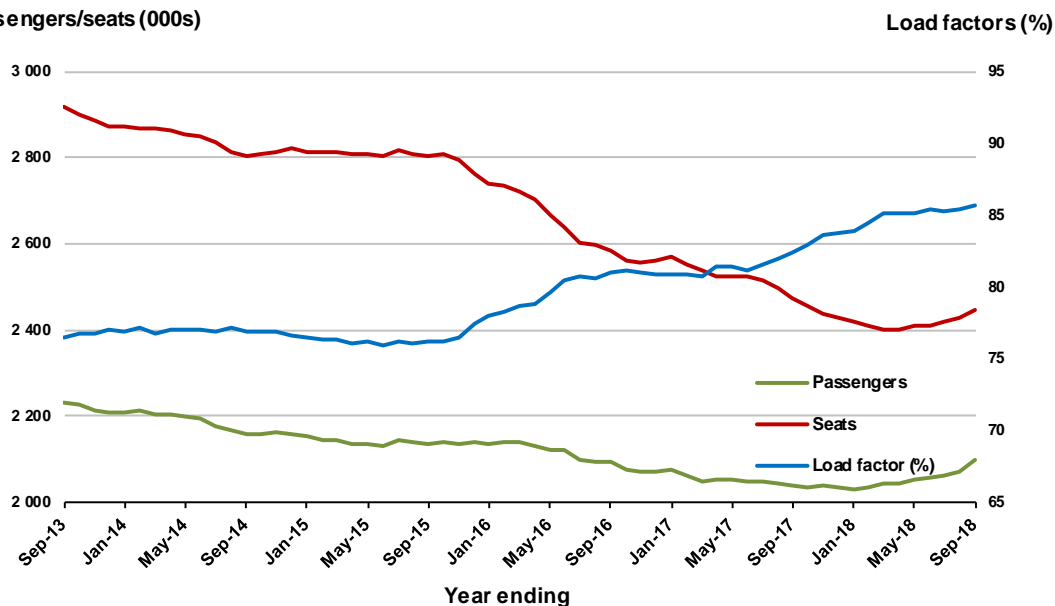


Moving annual data

| | YE Sep 2017 | YE Sep 2018 | % Change |
|---------------------------|-------------|-------------|----------|
| Passengers carried (000s) | 2 038.1 | 2 097.4 | 2.9 |
| Seats (000s) | 2 473.9 | 2 448.4 | -1.0 |
| Load factor % | 82.4 | 85.7 | 3.3 * |
| Aircraft trips | 11 235 | 11 466 | 2.1 |

* percentage point difference

Passengers/seats (000s)



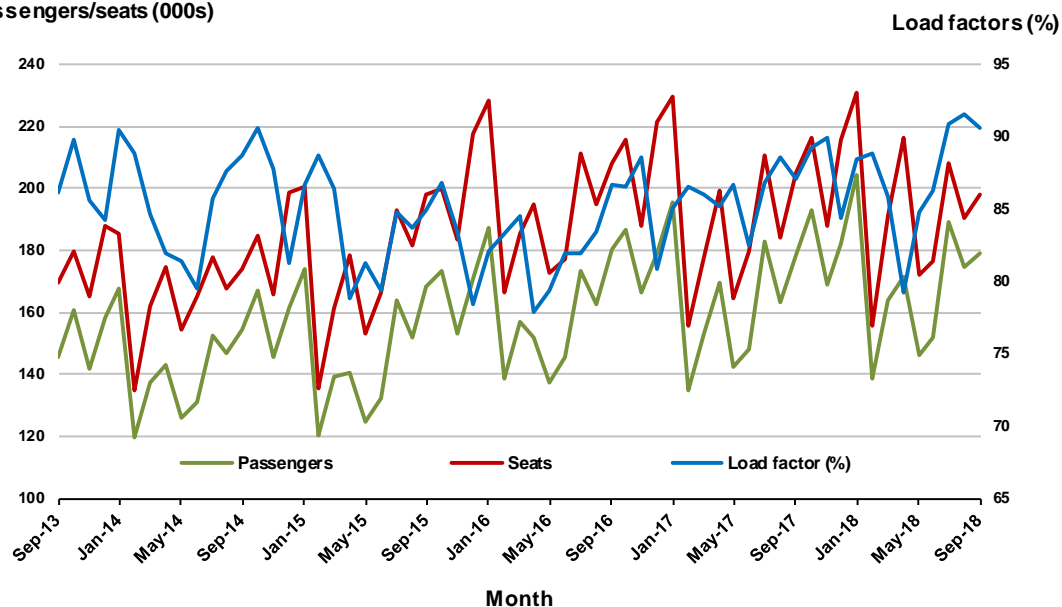
7. Gold Coast - Melbourne

Monthly data

| | Sep 2017 | Sep 2018 | % Change |
|---------------------------|----------|----------|----------|
| Passengers carried (000s) | 178.6 | 179.2 | 0.4 |
| Seats (000s) | 204.9 | 197.7 | -3.5 |
| Load factor % | 87.1 | 90.6 | 3.5 * |
| Aircraft trips | 1 079 | 1 052 | -2.5 |

* percentage point difference

Passengers/seats (000s)

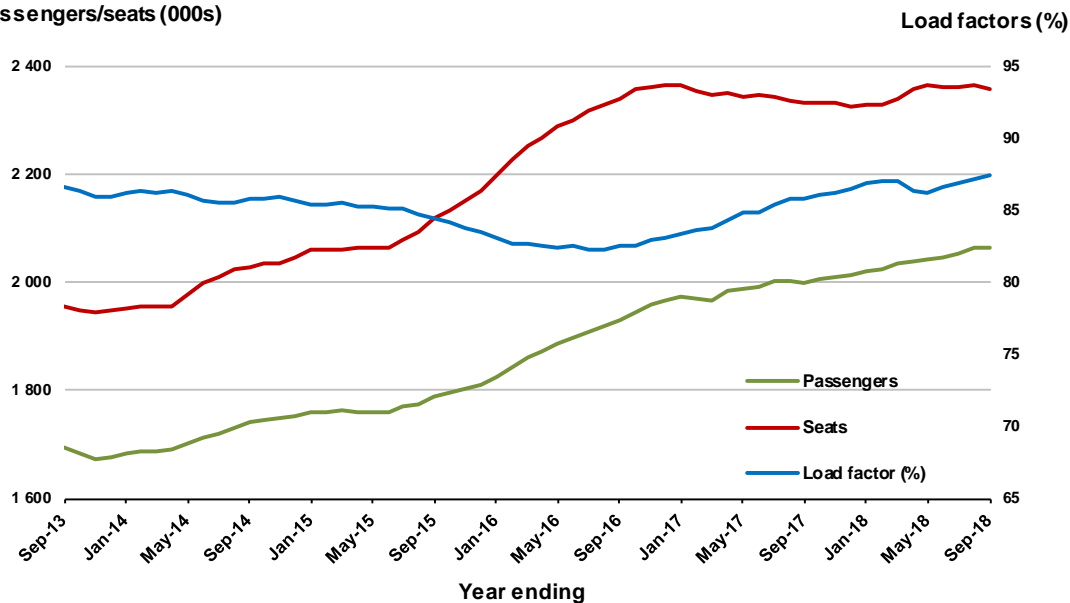


Moving annual data

| | YE Sep 2017 | YE Sep 2018 | % Change |
|---------------------------|-------------|-------------|----------|
| Passengers carried (000s) | 2 000.4 | 2 064.1 | 3.2 |
| Seats (000s) | 2 331.3 | 2 359.8 | 1.2 |
| Load factor % | 85.8 | 87.5 | 1.7 * |
| Aircraft trips | 12 437 | 12 500 | 0.5 |

* percentage point difference

Passengers/seats (000s)



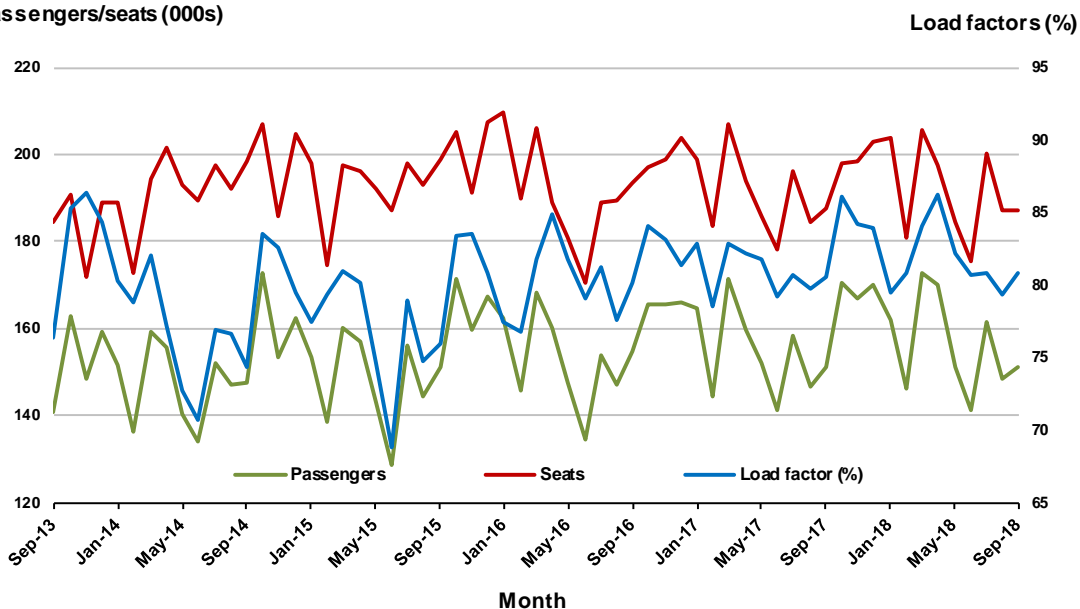
8. Adelaide - Sydney

Monthly data

| | Sep 2017 | Sep 2018 | % Change |
|---------------------------|----------|----------|----------|
| Passengers carried (000s) | 151.2 | 151.3 | 0.1 |
| Seats (000s) | 187.6 | 187.1 | -0.3 |
| Load factor % | 80.6 | 80.8 | 0.2 * |
| Aircraft trips | 1 127 | 1 146 | 1.7 |

* percentage point difference

Passengers/seats (000s)

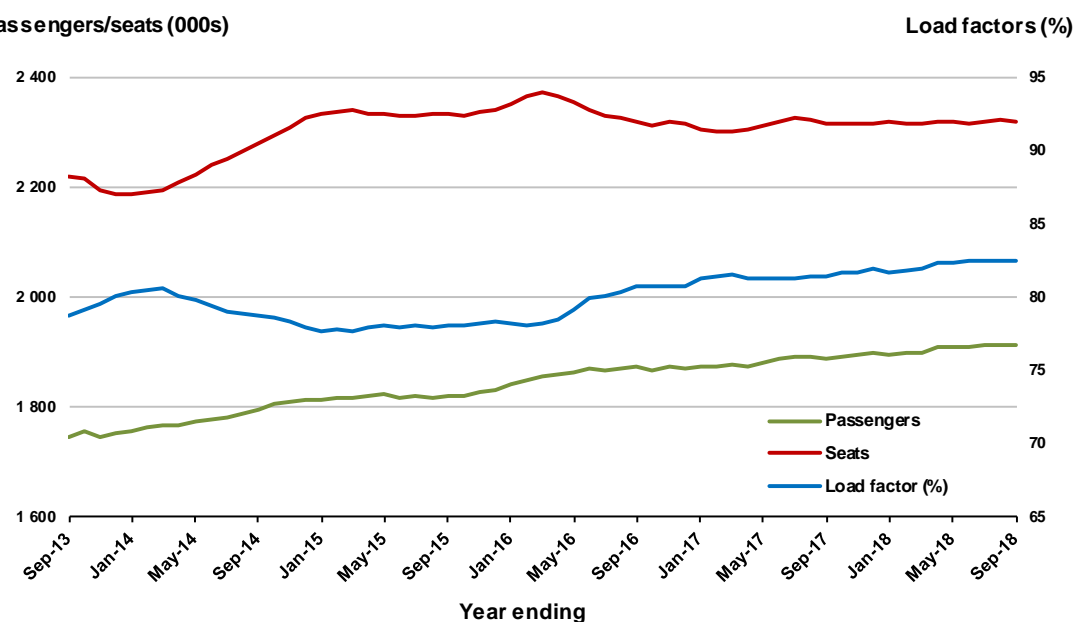


Moving annual data

| | YE Sep 2017 | YE Sep 2018 | % Change |
|---------------------------|-------------|-------------|----------|
| Passengers carried (000s) | 1 887.3 | 1 913.8 | 1.4 |
| Seats (000s) | 2 316.0 | 2 321.0 | 0.2 |
| Load factor % | 81.5 | 82.5 | 1.0 * |
| Aircraft trips | 14 026 | 13 887 | -1.0 |

* percentage point difference

Passengers/seats (000s)



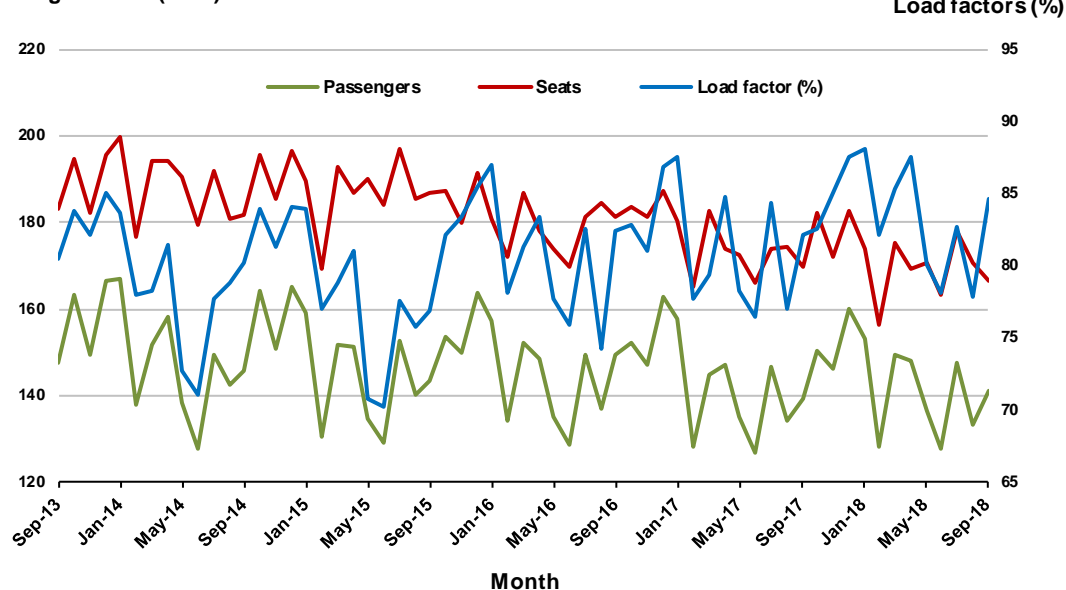
9. Perth - Sydney

Monthly data

| | Sep 2017 | Sep 2018 | % Change |
|---------------------------|----------|----------|----------|
| Passengers carried (000s) | 139.4 | 141.0 | 1.1 |
| Seats (000s) | 169.7 | 166.7 | -1.8 |
| Load factor % | 82.2 | 84.6 | 2.4 * |
| Aircraft trips | 746 | 710 | -4.8 |

* percentage point difference

Passengers/seats (000s)

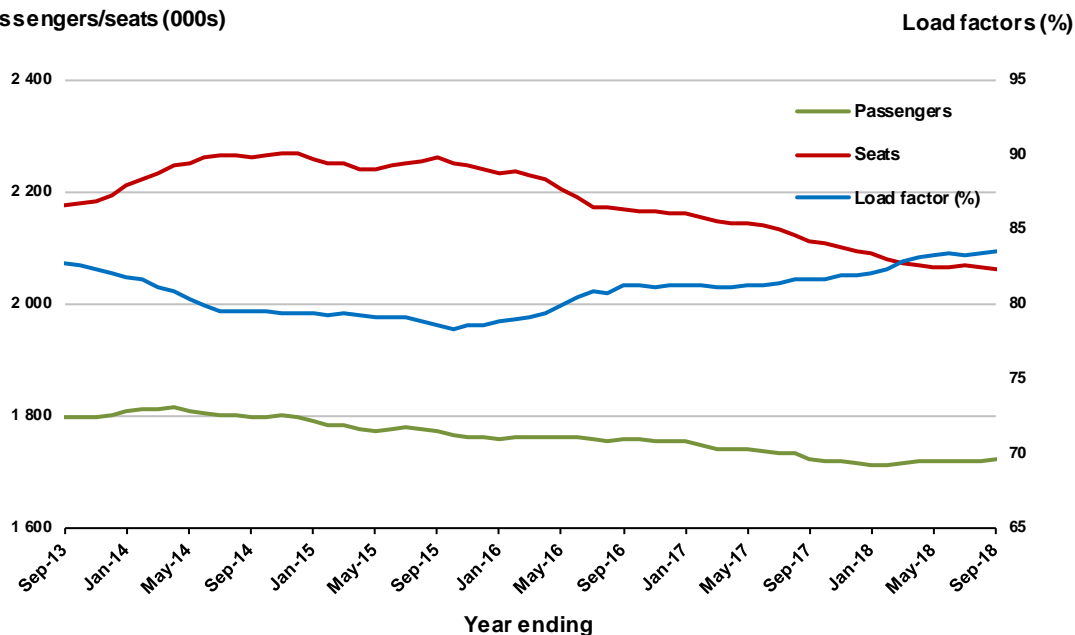


Moving annual data

| | YE Sep 2017 | YE Sep 2018 | % Change |
|---------------------------|-------------|-------------|----------|
| Passengers carried (000s) | 1 722.0 | 1 720.9 | -0.1 |
| Seats (000s) | 2 110.0 | 2 060.8 | -2.3 |
| Load factor % | 81.6 | 83.5 | 1.9 * |
| Aircraft trips | 9 070 | 9 013 | -0.6 |

* percentage point difference

Passengers/seats (000s)



10. Hobart - Melbourne

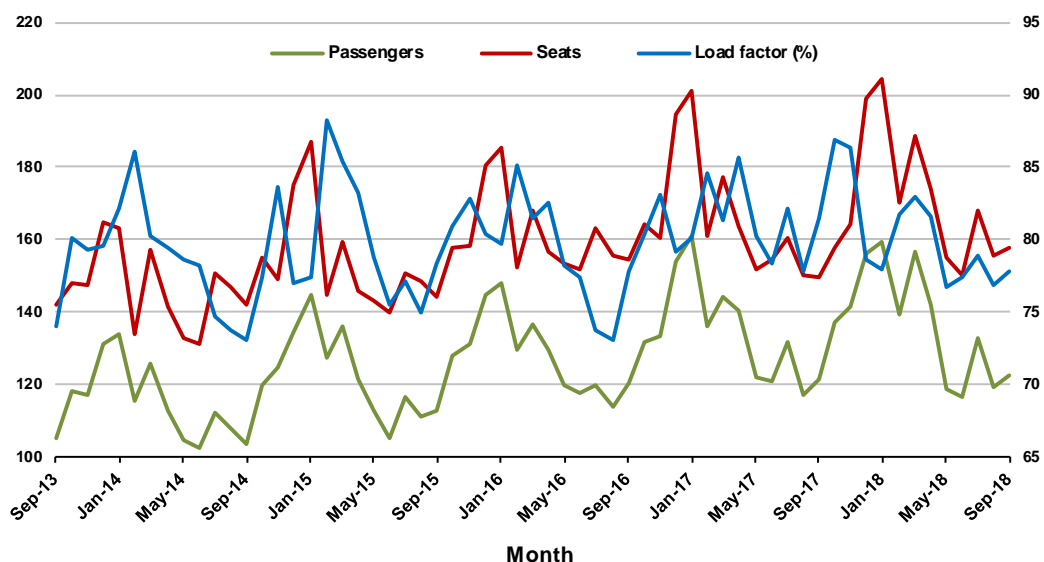
Monthly data

| | Sep 2017 | Sep 2018 | % Change |
|---------------------------|----------|----------|----------|
| Passengers carried (000s) | 121.8 | 122.6 | 0.7 |
| Seats (000s) | 149.4 | 157.6 | 5.5 |
| Load factor % | 81.5 | 77.8 | -3.7 * |
| Aircraft trips | 932 | 884 | -5.2 |

* percentage point difference

Passengers/seats (000s)

Load factors (%)



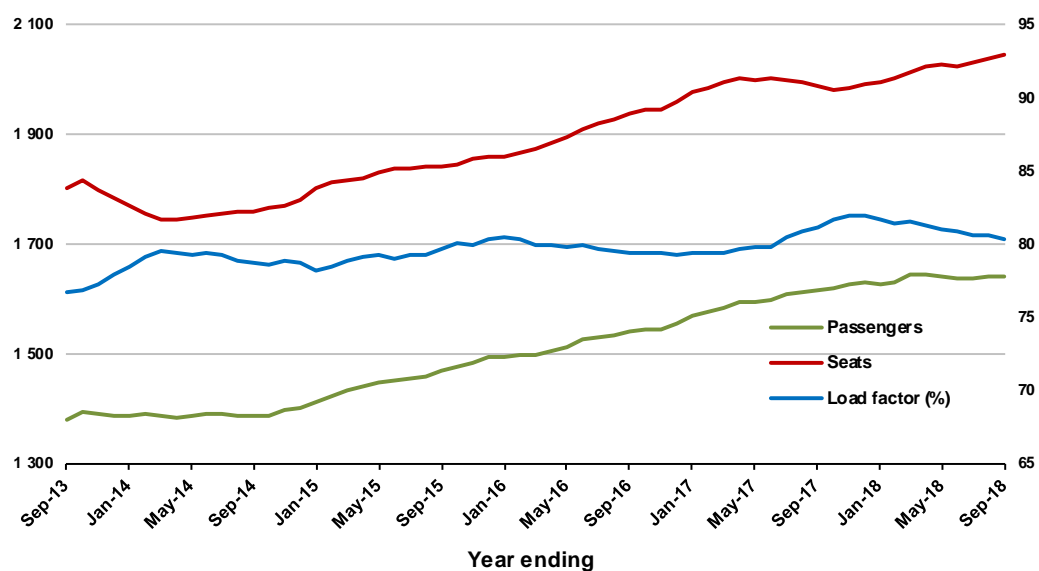
Moving annual data

| | YE Sep 2017 | YE Sep 2018 | % Change |
|---------------------------|-------------|-------------|----------|
| Passengers carried (000s) | 1 614.8 | 1 642.7 | 1.7 |
| Seats (000s) | 1 989.3 | 2 045.6 | 2.8 |
| Load factor % | 81.2 | 80.3 | -0.9 * |
| Aircraft trips | 12 235 | 11 735 | -4.1 |

* percentage point difference

Passengers/seats (000s)

Load factors (%)



TOP FIFTY REGIONAL AIRPORTS

Table 10: Top fifty regional airports (000s) — passenger movements, monthly

| Airport | Sep 2017 | Sep 2018 | % Change |
|---------------------------------------|-----------------|-----------------|-------------|
| 1 Cairns | 377.8 | 369.8 | -2.1 |
| 2 Hobart | 189.5 | 198.7 | 4.9 |
| 3 Darwin | 159.9 | 160.6 | 0.4 |
| 4 Townsville | 144.9 | 142.2 | -1.9 |
| 5 Newcastle | 112.1 | 101.9 | -9.1 |
| 6 Launceston | 98.6 | 100.6 | 2.0 |
| 7 Mackay | 72.2 | 73.2 | 1.4 |
| 8 Alice Springs | 54.3 | 56.7 | 4.3 |
| 9 Rockhampton | 50.1 | 46.7 | -6.9 |
| 10 Ballina | 44.0 | 43.0 | -2.3 |
| 11 Broome | 39.8 | 41.2 | 3.5 |
| 12 Ayers Rock | 31.4 | 40.2 | 28.0 |
| 13 Hamilton Island | 38.5 | 39.8 | 3.5 |
| 14 Proserpine | 42.0 | 38.3 | -8.8 |
| 15 Karratha | 35.3 | 36.7 | 4.1 |
| 16 Coffs Harbour | 36.1 | 32.9 | -9.0 |
| 17 Port Hedland | 29.2 | 30.2 | 3.2 |
| 18 Newman | 23.6 | 25.0 | 5.8 |
| 19 Kalgoorlie | 21.7 | 24.4 | 12.6 |
| 20 Mildura | 21.3 | 23.3 | 9.5 |
| 21 Albury | 23.9 | 22.1 | -7.8 |
| 22 Gladstone | 23.5 | 20.6 | -12.4 |
| 23 Dubbo | 20.5 | 18.7 | -8.5 |
| 24 Wagga Wagga | 20.0 | 18.6 | -6.8 |
| 25 Port Macquarie | 19.0 | 17.8 | -6.5 |
| 26 Mount Isa | 17.7 | 17.6 | -0.8 |
| 27 Tamworth | 16.8 | 16.4 | -2.4 |
| 28 Emerald | 16.8 | 16.2 | -3.4 |
| 29 Paraburdoo | 13.6 | 14.5 | 6.8 |
| 30 Hervey Bay | 15.6 | 14.3 | -8.6 |
| 31 Bundaberg | 14.8 | 14.0 | -5.5 |
| 32 Port Lincoln | 14.0 | 13.7 | -2.2 |
| 33 Toowoomba Wellcamp | 14.8 | 11.6 | -21.4 |
| 34 Devonport | 11.7 | 11.6 | -1.3 |
| 35 Armidale | 10.9 | 11.4 | 4.6 |
| 36 Kununurra | 9.8 | 10.8 | 9.4 |
| 37 Geraldton | 9.4 | 9.4 | 0.3 |
| 38 Thursday Island | 9.2 | 9.4 | 2.2 |
| 39 Moranbah | 8.7 | 9.0 | 4.2 |
| 40 Learmonth | 7.8 | 7.5 | -3.6 |
| 41 Roma | 7.2 | 7.4 | 2.5 |
| 42 Weipa | 6.6 | 6.9 | 5.2 |
| 43 Whyalla | 5.9 | 6.7 | 14.5 |
| 44 Orange | 5.5 | 6.7 | 22.4 |
| 45 Griffith | 6.7 | 6.7 | 0.7 |
| 46 Mount Gambier | 6.9 | 6.7 | -3.4 |
| 47 Gove | 7.2 | 6.4 | -10.8 |
| 48 Olympic Dam | 7.0 | 6.4 | -7.7 |
| 49 Broken Hill | 5.9 | 6.3 | 7.5 |
| 50 Burnie | 4.9 | 5.8 | 18.2 |
| Total top 50 regional airports | 1 984.7 | 1 976.7 | -0.4 |
| Total regional airports | 2 099.7 | 2 095.2 | -0.2 |
| Total domestic network | 10 143.3 | 10 161.5 | 0.2 |

Note: Airport passenger movement numbers are the sum of passenger arrivals and departures at each airport.

Table 11: Top fifty regional airports (000s) — passenger movements, annual

| Airport | YE Sep 2017 | YE Sep 2018 | % Change |
|---------------------------------------|--------------------|--------------------|-----------------|
| 1 Cairns | 4 297.4 | 4 331.8 | 0.8 |
| 2 Hobart | 2 469.9 | 2 630.3 | 6.5 |
| 3 Darwin | 1 810.8 | 1 772.4 | -2.1 |
| 4 Townsville | 1 559.4 | 1 654.1 | 6.1 |
| 5 Launceston | 1 333.0 | 1 379.4 | 3.5 |
| 6 Newcastle | 1 277.9 | 1 270.8 | -0.6 |
| 7 Mackay | 776.0 | 839.4 | 8.2 |
| 8 Alice Springs | 614.8 | 623.1 | 1.4 |
| 9 Rockhampton | 566.0 | 555.0 | -1.9 |
| 10 Ballina | 503.9 | 536.8 | 6.5 |
| 11 Proserpine | 387.7 | 463.7 | 19.6 |
| 12 Karratha | 448.6 | 441.1 | -1.7 |
| 13 Hamilton Island | 460.3 | 422.9 | -8.1 |
| 14 Broome | 372.0 | 418.9 | 12.6 |
| 15 Coffs Harbour | 411.3 | 408.3 | -0.7 |
| 16 Ayers Rock | 361.7 | 403.4 | 11.5 |
| 17 Port Hedland | 349.4 | 363.9 | 4.1 |
| 18 Newman | 286.0 | 301.3 | 5.3 |
| 19 Kalgoorlie | 248.2 | 277.2 | 11.7 |
| 20 Mildura | 252.0 | 270.9 | 7.5 |
| 21 Albury | 267.4 | 263.4 | -1.5 |
| 22 Gladstone | 292.9 | 256.9 | -12.3 |
| 23 Dubbo | 233.9 | 224.9 | -3.9 |
| 24 Wagga Wagga | 221.3 | 223.7 | 1.1 |
| 25 Port Macquarie | 229.6 | 217.9 | -5.1 |
| 26 Mount Isa | 197.1 | 209.6 | 6.3 |
| 27 Emerald | 198.9 | 196.4 | -1.3 |
| 28 Tamworth | 198.0 | 190.6 | -3.7 |
| 29 Paraburdoo | 166.5 | 175.2 | 5.2 |
| 30 Port Lincoln | 173.9 | 169.4 | -2.6 |
| 31 Hervey Bay | 173.9 | 166.4 | -4.3 |
| 32 Bundaberg | 176.7 | 164.7 | -6.8 |
| 33 Devonport | 146.5 | 148.4 | 1.3 |
| 34 Toowoomba Wellcamp | 148.4 | 143.2 | -3.5 |
| 35 Armidale | 131.6 | 131.2 | -0.3 |
| 36 Geraldton | 114.3 | 111.7 | -2.3 |
| 37 Kununurra | 103.9 | 104.4 | 0.5 |
| 38 Moranbah | 121.0 | 101.4 | -16.2 |
| 39 Thursday Island | 100.5 | 100.2 | -0.3 |
| 40 Roma | 83.4 | 86.1 | 3.2 |
| 41 Learmonth | 82.0 | 85.9 | 4.8 |
| 42 Gove | 84.0 | 85.1 | 1.3 |
| 43 Weipa | 77.4 | 80.6 | 4.2 |
| 44 Mount Gambier | 79.5 | 80.0 | 0.7 |
| 45 Olympic Dam | 60.9 | 77.4 | 27.2 |
| 46 Griffith | 73.0 | 76.0 | 4.1 |
| 47 Orange | 59.9 | 74.5 | 24.4 |
| 48 Whyalla | 63.0 | 73.7 | 17.1 |
| 49 Burnie | 60.4 | 68.8 | 13.8 |
| 50 Broken Hill | 58.8 | 68.7 | 16.8 |
| Total top 50 regional airports | 22 965.1 | 23 521.1 | 2.4 |
| Total regional airports | 24 302.0 | 24 914.7 | 2.5 |
| Total domestic network | 119 032.6 | 122 198.3 | 2.7 |

Note: Airport passenger movement numbers are the sum of passenger arrivals and departures at each airport.

DOMESTIC CHARTER ACTIVITY

Table 12: Charter passengers carried and aircraft trips - annual activity

| | YE Sep 2017 | YE Sep 2018 | % Change |
|---------------------------------------|-------------|-------------|----------|
| Total domestic charter passengers | 2 419 767 | 2 452 977 | 1.4 |
| Total domestic charter aircraft trips | 45 703 | 44 810 | -2.0 |

Note: Helicopter, joyflights and sightseeing charter flights not included.

Table 13: Charter passengers carried and aircraft trips - monthly activity

| | Sep 2017 | Sep 2018 | % Change |
|---------------------------------------|----------|----------|----------|
| Total domestic charter passengers | 192 993 | 195 622 | 1.4 |
| Total domestic charter aircraft trips | 3 741 | 3 339 | -10.7 |

Note: Helicopter, joyflights and sightseeing charter flights not included.

Table 14: Domestic airports - charter activity - annual

| | YE Sep 2017 | YE Sep 2018 | % Change |
|--|-------------|-------------|----------|
| Total domestic charter passenger movements | 4 839 534 | 4 905 954 | 1.4 |
| Total domestic charter aircraft movements | 91 406 | 89 620 | -2.0 |
| Perth airport charter passenger movements | 1 857 827 | 1 846 293 | -0.6 |
| Perth airport charter aircraft movements | 31 786 | 30 212 | -5.0 |

Note: Helicopter, joyflights and sightseeing charter flights not included.

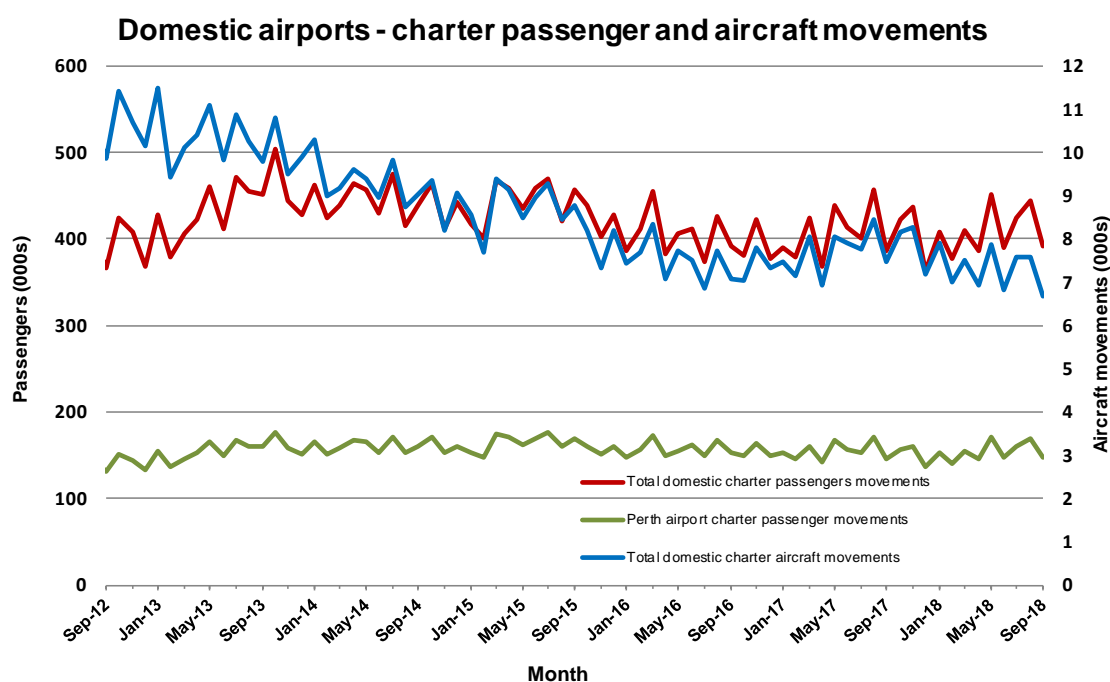
Charter passenger and aircraft movement numbers are the sum of arrivals and departures at each airport.

Table 15: Domestic airports - charter activity - monthly

| | Sep 2017 | Sep 2018 | % Change |
|--|----------|----------|----------|
| Total domestic charter passenger movements | 385 986 | 391 244 | 1.4 |
| Total domestic charter aircraft movements | 7 482 | 6 678 | -10.7 |
| Perth airport charter passenger movements | 145 267 | 148 299 | 2.1 |
| Perth airport charter aircraft movements | 2 504 | 2 288 | -8.6 |

Note: Helicopter, joyflights and sightseeing charter flights not included.

Charter passenger and aircraft movement numbers are the sum of arrivals and departures at each airport.



DEFINITIONS

| | |
|---|---|
| Aircraft Trips | The number of flight stages. A return flight counts as two aircraft trips. |
| Airport Movements | Airport movements (passenger and cargo) are measured once on arrival and once on departure. Each domestic trip generates two movements at airports. For example, a trip from Melbourne to Sydney will be counted twice, as a passenger departure at Melbourne and as a passenger arrival at Sydney. At the national level, the sum of all domestic airport traffic will therefore be equal to twice the number of trips undertaken. |
| Available Seat Kilometres (ASKs) | Calculated by multiplying the number of seats available on each flight stage, by the distance in kilometres between the ports. The distances used are Great Circle Distances. |
| City-Pair | The ports shown make up the city-pair route. Passenger movements shown for a city pair reflect total traffic in both directions. |
| Flight Stage | The operation of an aircraft from take-off to landing. |
| Load Factor | The total revenue passenger kilometres performed as a percentage of the total available seat kilometres. |
| Passengers Carried | Revenue passengers carried. |
| Regular Public Transport Services (RPT) | All air service operations in which aircraft are available for the transport of members of the public and are conducted in accordance with fixed schedules. It does not include charter or other non-scheduled operations. |
| Revenue Passengers | All passengers paying any fare. Frequent flyer redemption travellers are regarded as revenue passengers. |
| Revenue Passenger Kilometres (RPKs) | Calculated by multiplying the number of revenue passengers travelling on each flight stage, by the distance in kilometres between the ports. The distances used are Great Circle Distances. |
| Traffic on board by stages | The total of all traffic (revenue passengers) on each flight stage between two directly connected airports. |
| .. | Data not included |
| NA | Not applicable |