



Australian Government

Department of Infrastructure, Transport, Cities and Regional Development

Bureau of Infrastructure, Transport and Regional Economics

STATISTICAL REPORT



Aviation

Domestic airline on time performance
June 2019

© Commonwealth of Australia 2019

ISSN: 1832-0759

Ownership of intellectual property rights in this publication

Unless otherwise noted, copyright (and any other intellectual property rights, if any) in this publication is owned by the Commonwealth of Australia (referred to below as the Commonwealth).

Disclaimer

The material contained in this publication is made available on the understanding that the Commonwealth is not providing professional advice, and that users exercise their own skill and care with respect to its use, and seek independent advice if necessary.

The Commonwealth makes no representations or warranties as to the contents or accuracy of the information contained in this publication. To the extent permitted by law, the Commonwealth disclaims liability to any person or organisation in respect of anything done, or omitted to be done, in reliance upon information contained in this publication.

Creative Commons licence

With the exception of (a) the Coat of Arms; and (b) the Department of Infrastructure, Transport, Cities and Regional Development's photos and graphics, copyright in this publication is licensed under a Creative Commons Attribution 3.0 Australia Licence.

Creative Commons Attribution 3.0 Australia Licence is a standard form licence agreement that allows you to copy, communicate and adapt this publication provided that you attribute the work to the Commonwealth and abide by the other licence terms. A summary of the licence terms is available from <http://creativecommons.org/licenses/by/3.0/au/deed.en>. The full licence terms are available from <http://creativecommons.org/licenses/by/3.0/au/legalcode>.

Use of the Coat of Arms

The Department of the Prime Minister and Cabinet sets the terms under which the Coat of Arms is used. Please refer to the Department's Commonwealth Coat of Arms and Government branding web page <http://www.dpmc.gov.au/guidelines/index.cfm#brand> and, in particular, the Guidelines on the use of the Commonwealth Coat of Arms publication.

An appropriate citation for this report is:

Bureau of Infrastructure, Transport and Regional Economics (BITRE), 2019, Domestic airline on time performance, Statistical Report, BITRE, Canberra ACT.

Contact us

This publication is available in PDF format. All other rights are reserved, including in relation to any Departmental logos or trade marks which may exist. For enquiries regarding the licence and any use of this publication, please contact:

Bureau of Infrastructure, Transport and Regional Economics (BITRE)
Department of Infrastructure, Transport, Cities and Regional Development
GPO Box 501, Canberra ACT 2601, Australia
Telephone: (international) +61 2 6274 7210
Fax: (international) +61 2 6274 6855
Email: bitre@infrastructure.gov.au
Website: www.bitre.gov.au

Inquiries

Should you require additional information about the statistics contained in this publication:

Telephone (02) 6274 7790 or Facsimile (02) 6274 7727

Electronic mail: AVSTATS@infrastructure.gov.au

Web site: <http://www.bitre.gov.au/statistics/aviation/otphome.aspx>

Foreword

The Bureau of Infrastructure, Transport and Regional Economics (BITRE) monitors the punctuality and reliability of major domestic airlines operating between Australian airports. The purpose of this is to allow for evaluation of overall industry and individual airline performance, so that consumers of air travel can make informed decisions.

The following domestic airlines currently report this information monthly to the BITRE: Jetstar, Qantas, QantasLink, Regional Express, Tigerair Australia, Virgin Australia and Virgin Australia Regional Airlines. Data has been gathered since November 2003, although some airlines commenced reporting at a later date, including Jetstar which first reported in May 2004, MacAir in July 2005, Tigerair Australia in April 2008 and Virgin Australia Regional Airlines in May 2013. MacAir ceased operations in February 2009 and data was not received for December 2008 onwards. Virgin Blue was rebranded as Virgin Australia in May 2011 and Tiger Airways was rebranded as Tigerair Australia in July 2013 and time series data in Microsoft Excel spreadsheet format on the BITRE website have been revised to reflect these changes. Services operated by Skywest on behalf of Virgin Australia using ATR/F100 aircraft commenced in November 2011 and were shown separately as Virgin Australia – ATR/F100 Operations. Virgin Australia Regional Airlines commenced operations in May 2013. It was formed after the acquisition of Skywest by Virgin Australia and represented a combination of operations previously reported under Skywest and Virgin Australia – ATR/F100 Operations. In January 2016, Virgin Australia transferred their ATR fleet from Virgin Australia Regional Airlines to Virgin Australia.

Information presented in this report is for Australian domestic routes for which the passenger load averaged 8 000 or more passengers per month over the previous six months and where two or more airlines operated in competition on those routes. There were 65 routes that met this definition in June 2019. Over time, routes which meet these criteria change as airline networks and traffic levels vary.

Participating airlines report their overall monthly network performance where this is possible.

Total industry figures encompass all services operated by reporting airlines only. These airlines collectively carried over 95 per cent of total domestic passengers (regular public transport only) in 2018.

The method of capturing on time performance varies between airlines utilising different recording systems. Jetstar and Qantas jet aircraft use Aircraft Communication Addressing and Reporting System (ACARS) to electronically measure on time performance. Regional Express, Tigerair Australia, Virgin Australia, Virgin Australia Regional Airlines and the Qantas non-jet fleet record on time performance manually using records from pilots, gate agents and/or ground crews.

After initial data is collected, aggregate reports are audited internally by participating airlines prior to publication.

Reports and detailed time series data in Microsoft Excel spreadsheet format are available from the BITRE website at: <http://www.bitre.gov.au/statistics/aviation/otphome.aspx>.

Contents

	Page
Industry performance	1
Individual routes	10
Airports.....	24
Definitions	30

Industry performance

For June 2019, on time performance over all routes operated by participating airlines (Jetstar, Qantas, QantasLink, Regional Express, Tigerair Australia, Virgin Australia and Virgin Australia Regional Airlines) averaged 78.6 per cent for on time arrivals and 80.8 per cent for on time departures. Cancellations represented 1.7 per cent of all scheduled flights. The equivalent figures for June 2018 were 76.5 per cent for on time arrivals, 78.0 per cent for on time departures and 1.9 per cent for cancellations.

This month's on time arrivals figure was lower than the long term average performance for all routes (82.5 per cent) and the on time departures figure was also lower than the long term average (83.8 per cent). The rate of cancellations was higher than the long term average of 1.5 per cent.

Virgin Australia achieved the highest on time arrivals among the major domestic airlines at 80.0 per cent followed by Jetstar at 77.8 per cent, Qantas at 77.6 per cent and Tigerair Australia at 66.1 per cent. Of the regional airlines, Regional Express recorded 81.8 per cent for on time arrivals, followed by QantasLink at 80.0 per cent and Virgin Australia Regional Airlines at 71.1 per cent. The Qantas network (Qantas and QantasLink combined operations) recorded 78.9 per cent for on time arrivals while the Virgin Australia network (Virgin Australia and Virgin Australia Regional Airlines combined operations) recorded 79.3 per cent.

Virgin Australia also achieved the highest level of on time departures among the major domestic airlines for June 2019 at 83.2 per cent, followed by Qantas at 80.9 per cent, Jetstar at 77.1 per cent and Tigerair Australia at 68.2 per cent. Of the regional airlines, Regional Express recorded 84.6 per cent for on time departures, followed by QantasLink at 80.9 per cent and Virgin Australia Regional Airlines at 79.0 per cent. The Qantas network recorded 80.9 per cent for on time departures while the Virgin Australia network recorded 82.9 per cent.

Qantas recorded the highest percentage of cancellations (2.9 per cent) during the month, followed by Tigerair Australia (2.1 per cent), QantasLink (1.8 per cent), Virgin Australia Regional Airlines and Virgin Australia (both at 1.6 per cent), Jetstar (0.8 per cent) and Regional Express (0.6 per cent).

Airlines' on time performance varies across the routes they serve. Individual route data by specific airline for 65 routes are shown on pages 10-23.

Of the 65 routes which met the criteria for on time performance reporting in June 2019, the Cairns-Townsville route had the highest percentage of on time arrivals (93.7 per cent) and the Perth-Karratha route had the highest percentage of on time departures (93.9 per cent). The Townsville-Sydney route had the lowest percentage of on time arrivals (56.1 per cent) and the lowest percentage of on time departures (48.8 per cent).

Cancellations were highest on the Melbourne-Sydney route at 6.2 per cent, followed by the Sydney-Melbourne route at 6.1 per cent, the Karratha-Perth route at 4.2 per cent, the

Proserpine-Sydney route at 3.0 per cent, and the Sydney-Brisbane, Canberra-Sydney, Newman-Perth and Brisbane-Sydney routes at 2.9 per cent.

Emerald Airport recorded the highest percentage of on time arrivals (90.9 per cent) and Bundaberg Airport recorded the highest percentage of on time departures (91.8 per cent). Port Macquarie Airport recorded the lowest percentage of on time arrivals (68.8 per cent) and Ayers Rock Airport recorded the lowest percentage of on time departures (50.0 per cent). These figures only refer to reported routes and do not cover all flights at these airports.

Table 1 On time performance for June 2019 — Total Industry

	<i>Sectors</i>		<i>Arrivals On Time</i>		<i>Departures On Time</i>		<i>Cancellations</i>	
	<i>Scheduled</i>	<i>Flown</i>	<i>No.</i>	<i>%</i>	<i>No.</i>	<i>%</i>	<i>No.</i>	<i>%</i>
Jetstar	6 363	6 315	4 910	77.8	4 870	77.1	48	0.8
Qantas	8 938	8 681	6 739	77.6	7 019	80.9	257	2.9
QantasLink	9 948	9 768	7 819	80.0	7 905	80.9	180	1.8
Regional Express	5 975	5 938	4 860	81.8	5 024	84.6	37	0.6
Tigerair Australia	2 240	2 192	1 449	66.1	1 495	68.2	48	2.1
Virgin Australia	10 961	10 791	8 628	80.0	8 981	83.2	170	1.6
Virgin Australia Regional Airlines	827	814	579	71.1	643	79.0	13	1.6
All Airlines	45 252	44 499	34 984	78.6	35 937	80.8	753	1.7
Qantas - all QF designated services	18 886	18 449	14 558	78.9	14 924	80.9	437	2.3
Virgin Australia - all VA designated services	11 788	11 605	9 207	79.3	9 624	82.9	183	1.6

Total airline network data (including routes not shown in this report).

Airlines' on time performance varies across the routes they serve. Individual route data by specific airline for 65 routes are shown on pages 10-23.

Table 2 Top ten routes for on time performance for June 2019 (participating airlines only)

<i>Arrivals</i>		<i>Departures</i>	
<i>Route</i>	<i>On Time (%)</i>	<i>Route</i>	<i>On Time (%)</i>
Cairns-Townsville	93.7	Perth-Karratha	93.9
Townsville-Cairns	92.9	Sydney-Proserpine	93.8
Canberra-Adelaide	91.5	Cairns-Townsville	93.7
Brisbane-Emerald	90.9	Darwin-Alice Springs	93.7
Alice Springs-Darwin	90.9	Adelaide-Gold Coast	92.2
Sydney-Proserpine	90.6	Townsville-Cairns	92.1
Brisbane-Bundaberg	90.4	Bundaberg-Brisbane	91.8
Adelaide-Port Lincoln	90.4	Brisbane-Gladstone	91.7
Emerald-Brisbane	90.3	Canberra-Adelaide	91.5
Adelaide-Canberra	90.0	Perth-Port Hedland	91.5

Table 3 Top ten airports for on time performance for June 2019 (participating airlines and reported routes only)

<i>Arrivals</i>		<i>Departures</i>	
<i>Airport</i>	<i>On Time (%)</i>	<i>Airport</i>	<i>On Time (%)</i>
Emerald	90.9	Bundaberg	91.8
Bundaberg	90.4	Karratha	89.9
Port Lincoln	90.4	Port Lincoln	89.7
Gladstone	87.7	Rockhampton	89.5
Newman	86.4	Newman	88.0
Mackay	85.5	Emerald	87.3
Karratha	85.3	Mackay	87.0
Port Hedland	85.1	Newcastle	86.1
Geraldton	84.8	Port Hedland	86.0
Ballina	84.7	Adelaide	85.9

Total industry on time performance

Figure 1 On time performance (by month from June 2016)—Total Industry

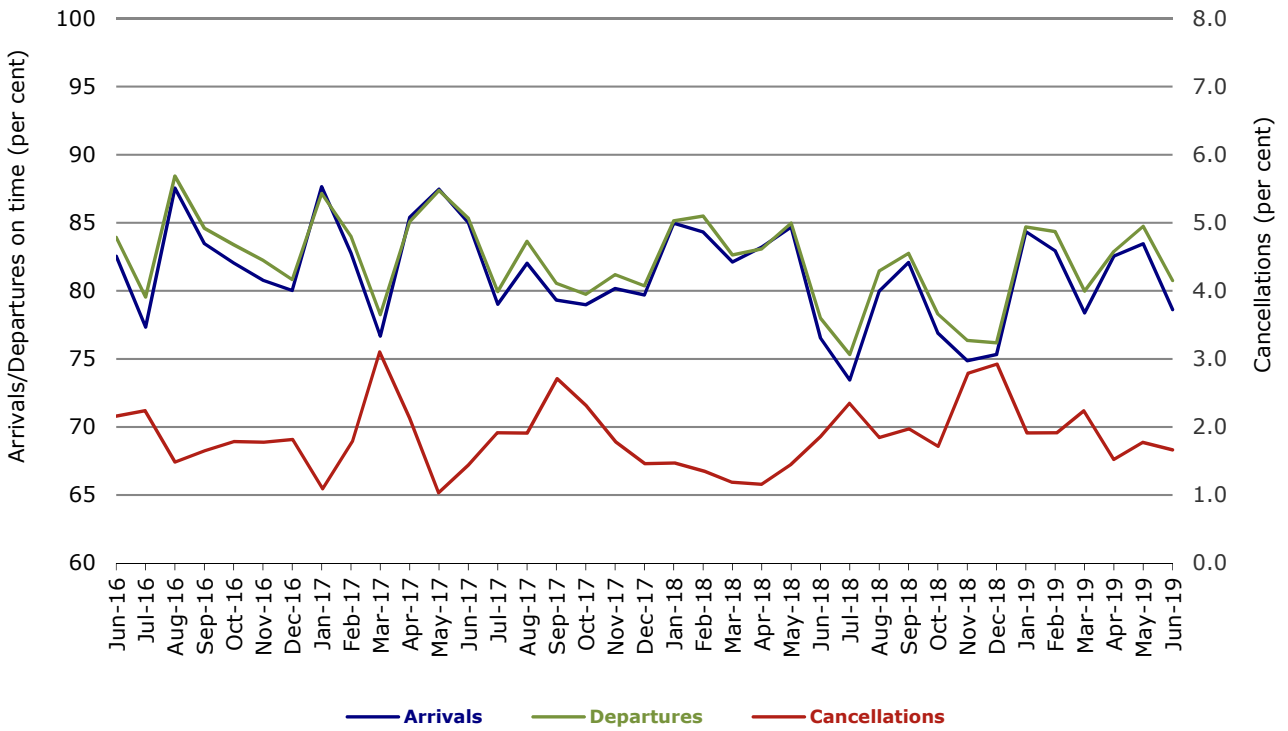


Figure 2 Arrivals on time (by month from June 2018)

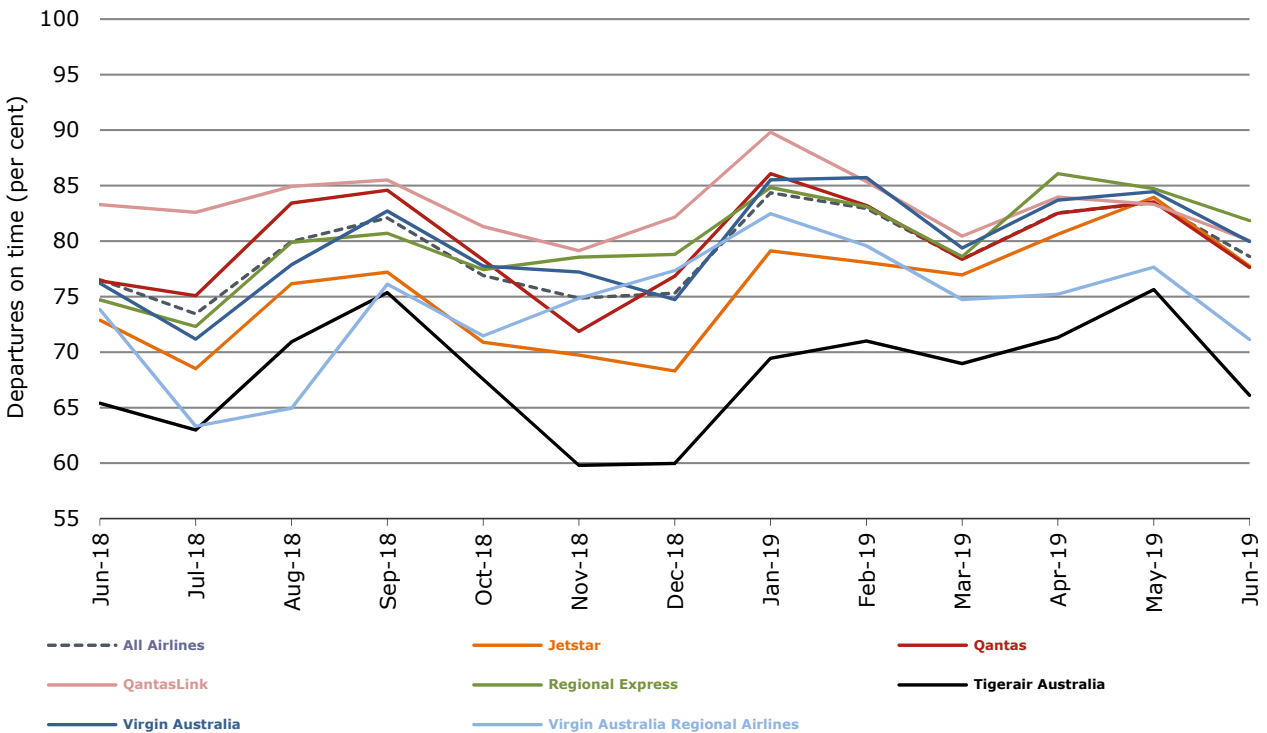


Figure 3 Departures on time (by month from June 2018)

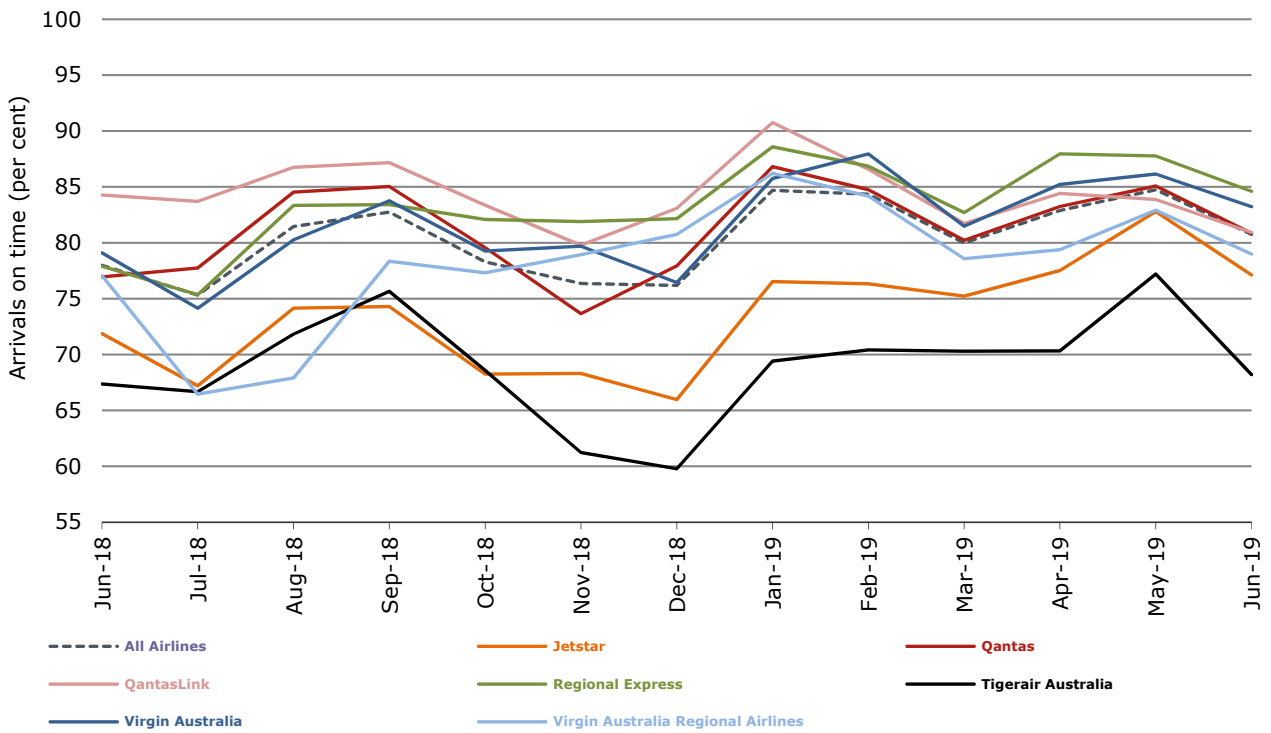
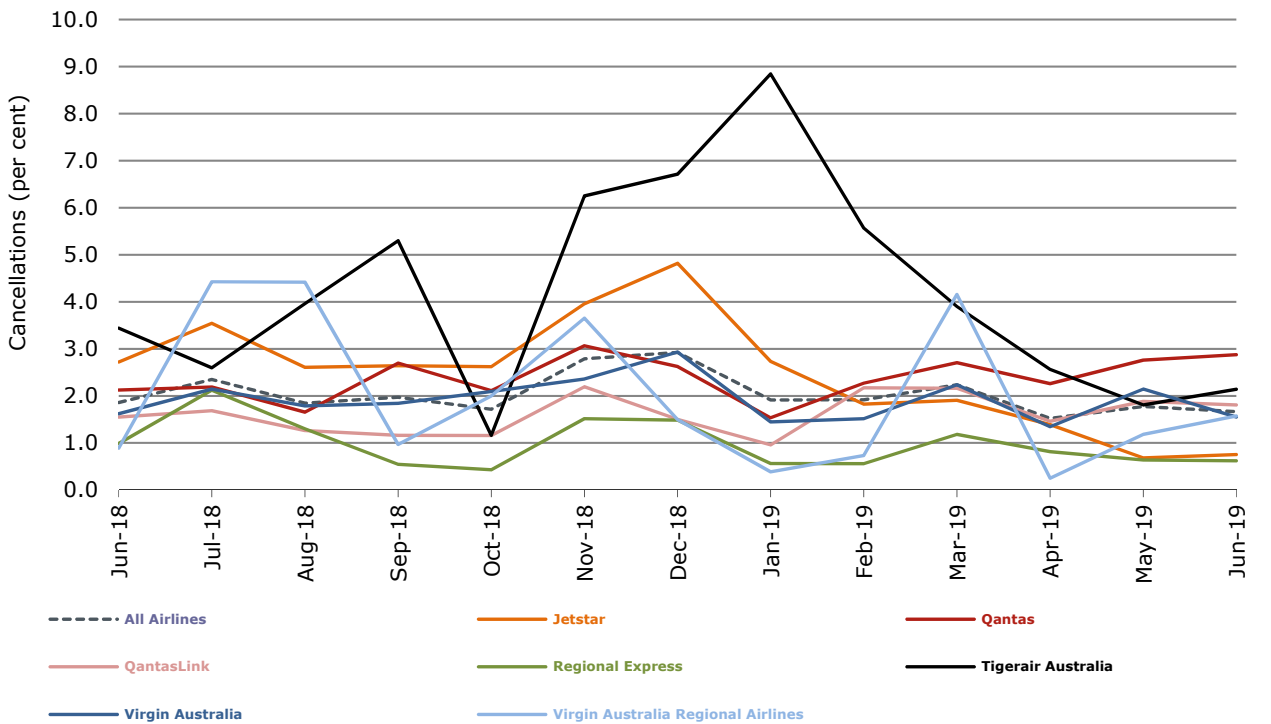


Figure 4 Cancellations (by month from June 2018)



Major domestic airlines on time performance

Figure 5 On time performance (by month from June 2016)—Jetstar

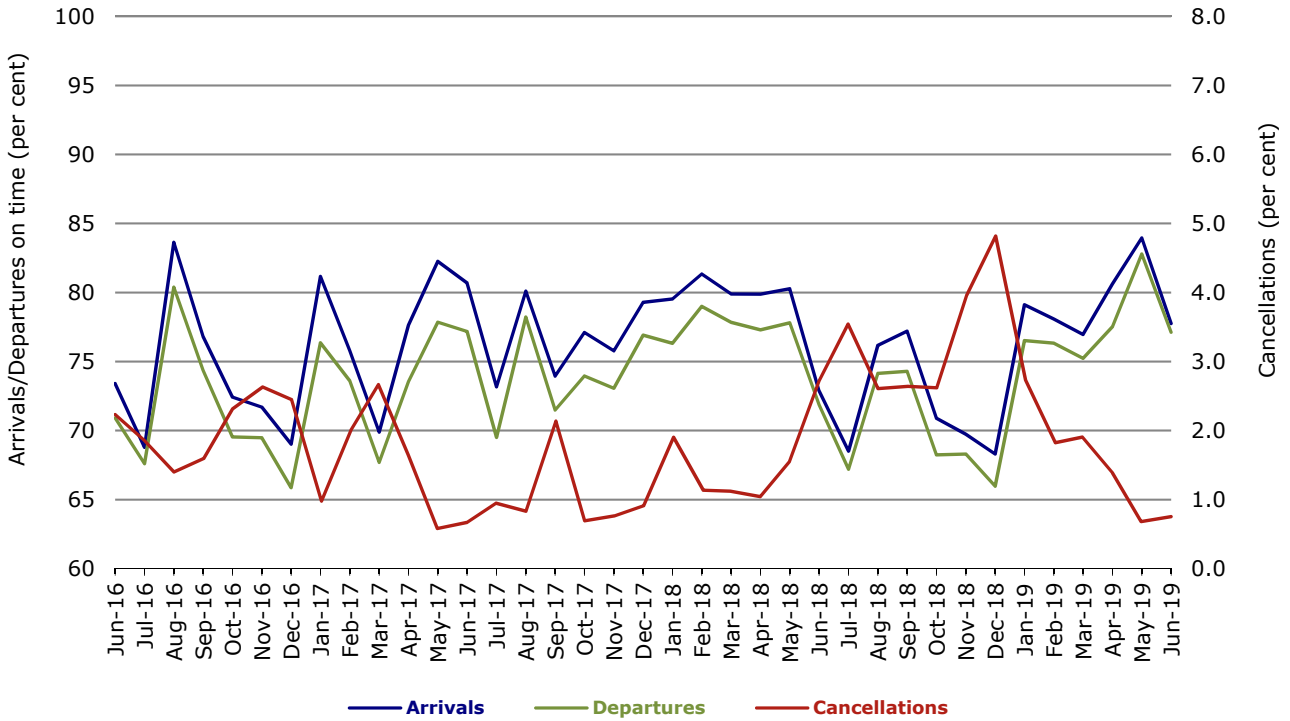


Figure 6 On time performance (by month from June 2016)—Qantas

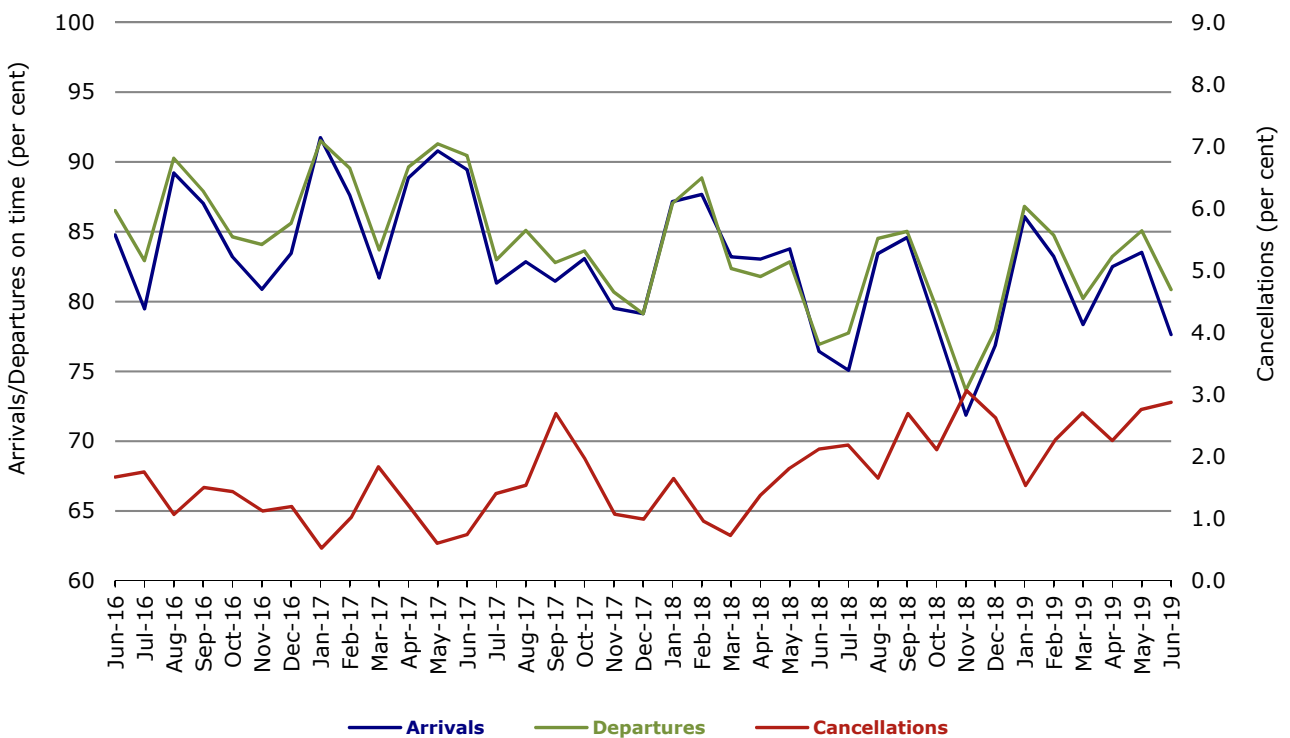


Figure 7 On time performance (by month from June 2016)—Tigerair Australia

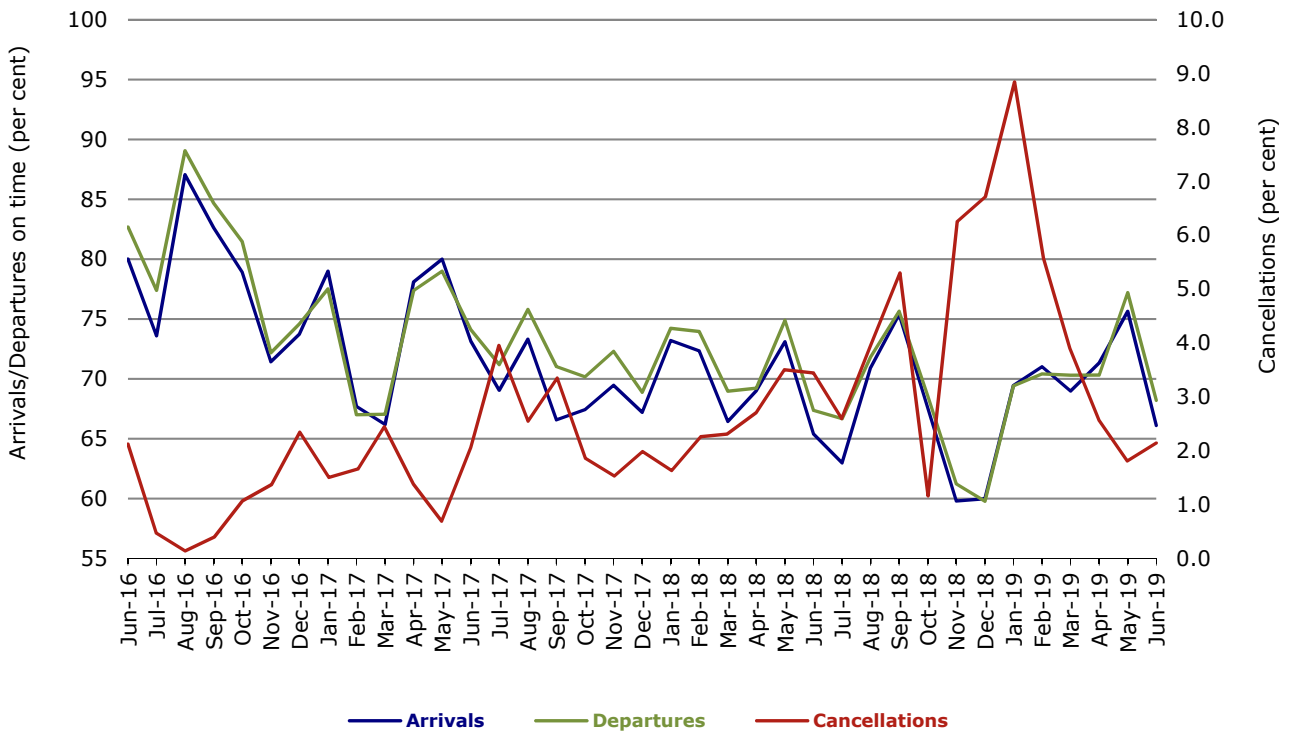
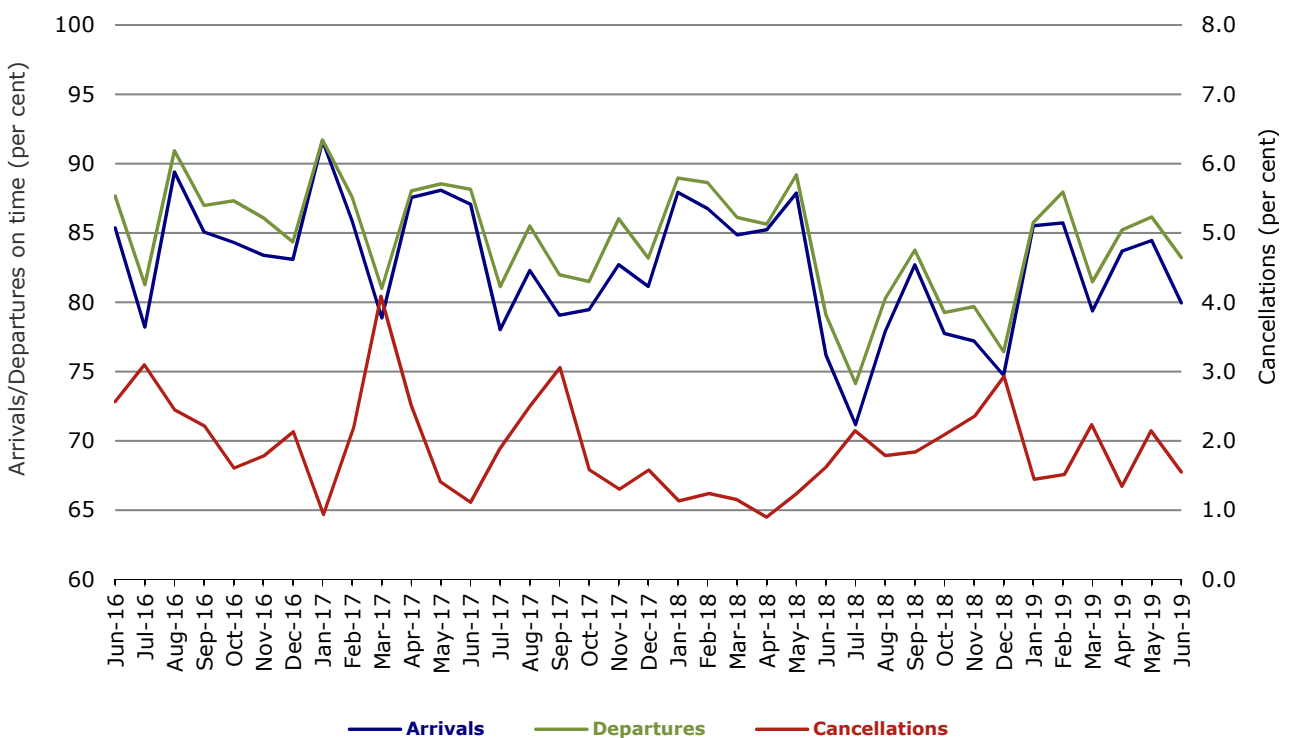


Figure 8 On time performance (by month from June 2016)—Virgin Australia



Major regional airlines on time performance

Figure 9 On time performance (by month from June 2016)—QantasLink

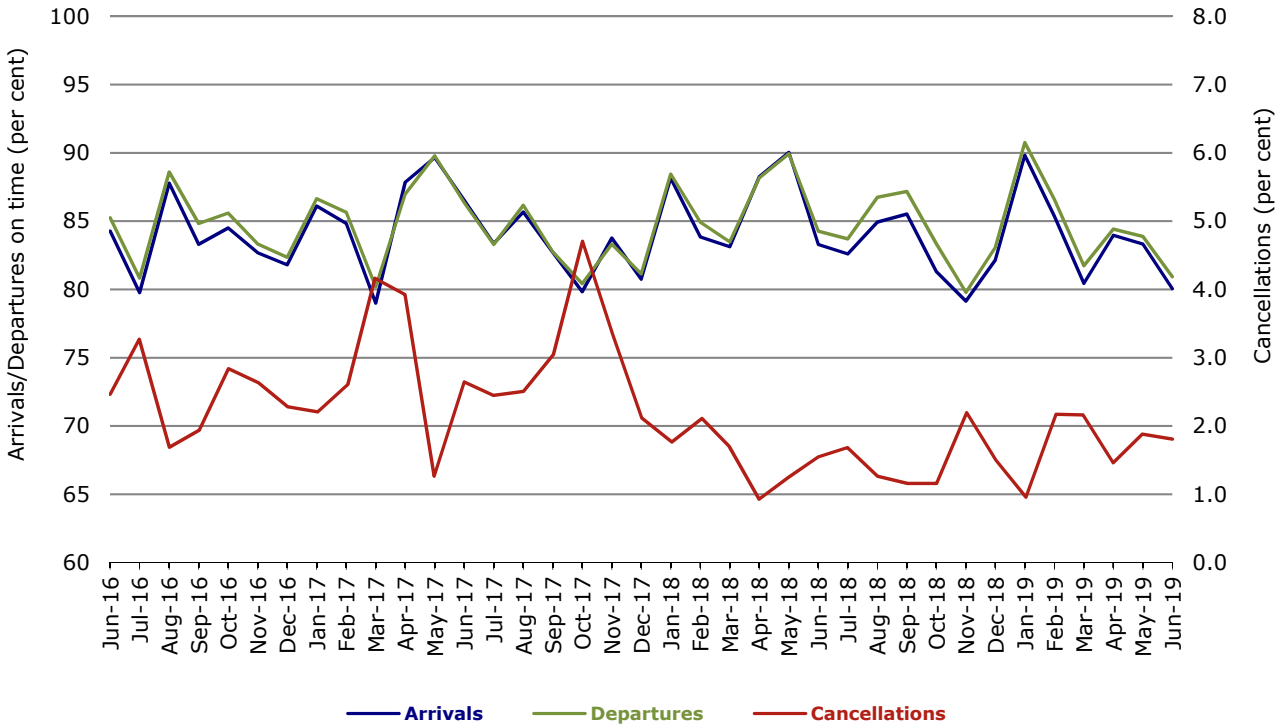


Figure 10 On time performance (by month from June 2016)—Regional Express

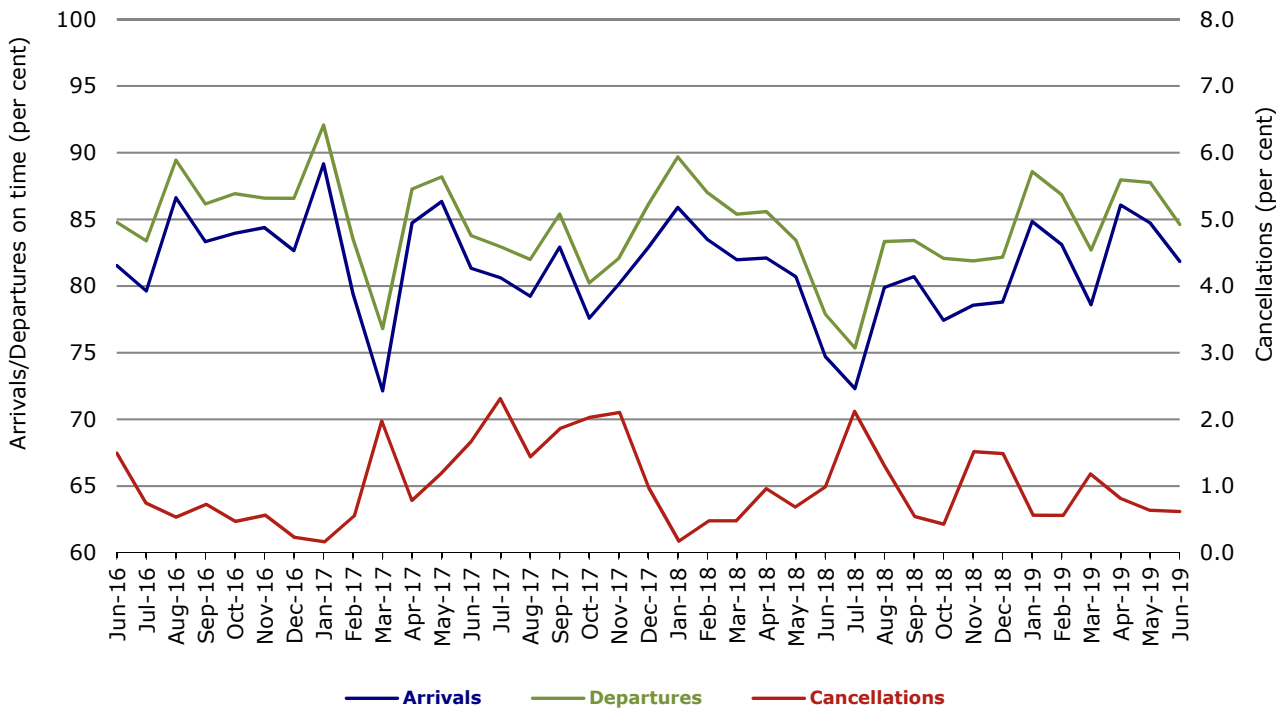
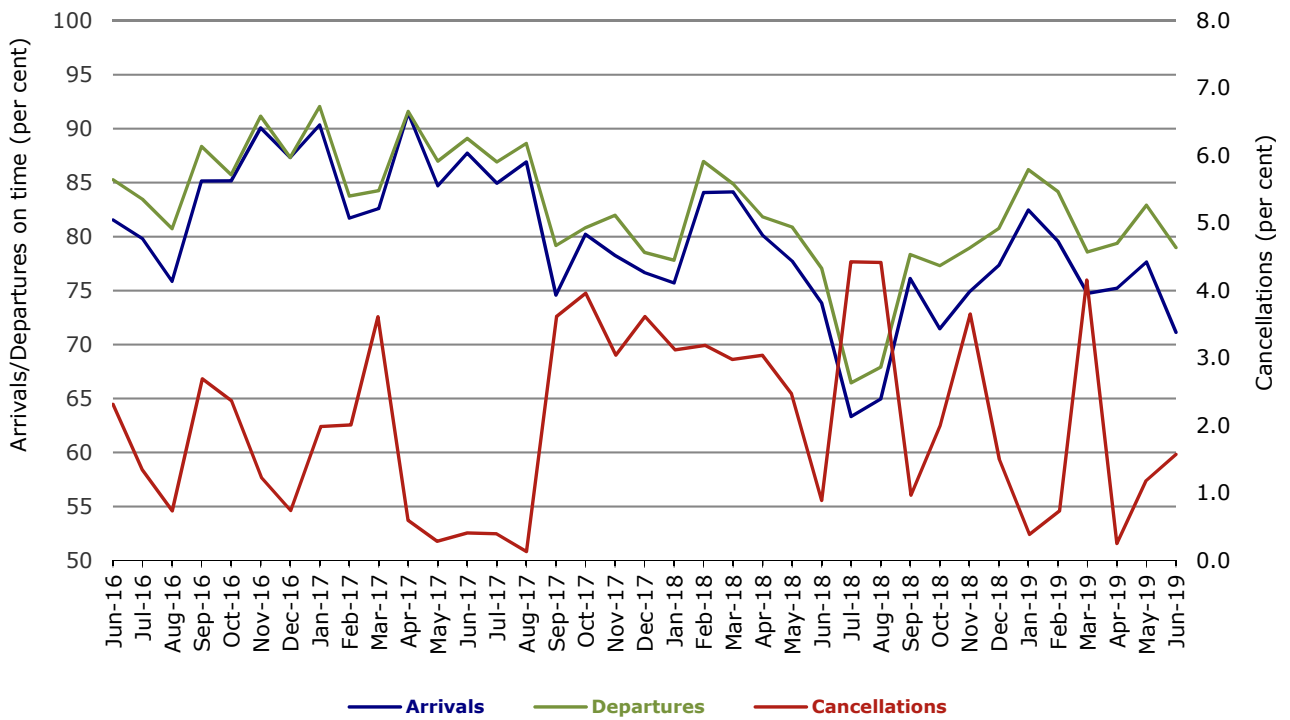


Figure 11 On time performance (by month from June 2016)
Virgin Australia Regional Airlines



Individual routes

On time performance is reported for all routes where the passenger load averages over 8000 passengers per month over the previous six months, and where two or more airlines operate in competition on those routes. There are now 65 routes which meet this definition. Over time, however, routes which meet this definition may change as airline networks and traffic levels vary.

	<i>Sectors</i>		<i>Arrivals On Time</i>		<i>Departures On Time</i>		<i>Cancellations</i>	
	<i>Sched.</i>	<i>Flown</i>	<i>No.</i>	<i>%</i>	<i>No.</i>	<i>%</i>	<i>No.</i>	<i>%</i>
Adelaide-Alice Springs								
Qantas	30	30	25	83.3	27	90.0	0	0.0
Virgin Australia	12	12	9	75.0	10	83.3	0	0.0
Virgin Australia Regional Airlines	8	8	2	25.0	4	50.0	0	0.0
All Airlines	50	50	36	72.0	41	82.0	0	0.0
Adelaide-Brisbane								
Jetstar	22	22	20	90.9	21	95.5	0	0.0
Qantas	105	103	83	80.6	89	86.4	2	1.9
QantasLink	1	1	0	0.0	0	0.0	0	0.0
Tigerair Australia	30	30	19	63.3	18	60.0	0	0.0
Virgin Australia	102	102	94	92.2	96	94.1	0	0.0
All Airlines	260	258	216	83.7	224	86.8	2	0.8
Adelaide-Canberra								
Qantas	42	41	37	90.2	36	87.8	1	2.4
QantasLink	5	5	4	80.0	5	100.0	0	0.0
Virgin Australia	24	24	22	91.7	23	95.8	0	0.0
All Airlines	71	70	63	90.0	64	91.4	1	1.4
Adelaide-Gold Coast								
Jetstar	26	26	24	92.3	25	96.2	0	0.0
Virgin Australia	25	25	19	76.0	22	88.0	0	0.0
All Airlines	51	51	43	84.3	47	92.2	0	0.0
Adelaide-Melbourne								
Jetstar	93	89	74	83.1	72	80.9	4	4.3
Qantas	287	282	243	86.2	250	88.7	5	1.7
Tigerair Australia	76	73	49	67.1	47	64.4	3	3.9
Virgin Australia	239	233	199	85.4	214	91.8	6	2.5
Virgin Australia Regional Airlines	12	12	9	75.0	10	83.3	0	0.0
All Airlines	707	689	574	83.3	593	86.1	18	2.5
Adelaide-Perth								
Jetstar	26	26	20	76.9	22	84.6	0	0.0
Qantas	111	111	91	82.0	97	87.4	0	0.0
QantasLink	2	2	2	100.0	2	100.0	0	0.0
Virgin Australia	32	32	30	93.8	30	93.8	0	0.0
Virgin Australia Regional Airlines	46	41	21	51.2	30	73.2	5	10.9
All Airlines	217	212	164	77.4	181	85.4	5	2.3
Adelaide-Port Lincoln								
QantasLink	97	96	87	90.6	86	89.6	1	1.0
Regional Express	206	205	185	90.2	186	90.7	1	0.5
All Airlines	303	301	272	90.4	272	90.4	2	0.7
Adelaide-Sydney								
Jetstar	90	88	65	73.9	71	80.7	2	2.2
Qantas	231	231	160	69.3	190	82.3	0	0.0
Tigerair Australia	29	29	22	75.9	23	79.3	0	0.0
Virgin Australia	149	149	106	71.1	122	81.9	0	0.0
All Airlines	499	497	353	71.0	406	81.7	2	0.4

	Sectors		Arrivals On Time		Departures On Time		Cancellations	
	Sched.	Flown	No.	%	No.	%	No.	%
Albury-Sydney								
QantasLink	97	93	53	57.0	60	64.5	4	4.1
Regional Express	99	98	76	77.6	83	84.7	1	1.0
Virgin Australia	51	51	32	62.7	36	70.6	0	0.0
All Airlines	247	242	161	66.5	179	74.0	5	2.0
Alice Springs-Adelaide								
Qantas	30	30	24	80.0	23	76.7	0	0.0
Virgin Australia	12	12	12	100.0	12	100.0	0	0.0
Virgin Australia Regional Airlines	9	9	2	22.2	2	22.2	0	0.0
All Airlines	51	51	38	74.5	37	72.5	0	0.0
Alice Springs-Darwin								
Qantas	58	57	55	96.5	54	94.7	1	1.7
Virgin Australia	12	12	9	75.0	9	75.0	0	0.0
Virgin Australia Regional Airlines	8	8	6	75.0	5	62.5	0	0.0
All Airlines	78	77	70	90.9	68	88.3	1	1.3
Armidale-Sydney								
QantasLink	109	109	75	68.8	72	66.1	0	0.0
Regional Express	70	70	54	77.1	58	82.9	0	0.0
All Airlines	179	179	129	72.1	130	72.6	0	0.0
Ayers Rock-Sydney								
Jetstar	30	30	18	60.0	13	43.3	0	0.0
Virgin Australia	30	30	22	73.3	17	56.7	0	0.0
All Airlines	60	60	40	66.7	30	50.0	0	0.0
Ballina-Sydney								
Jetstar	70	70	57	81.4	55	78.6	0	0.0
Regional Express	24	23	14	60.9	15	65.2	1	4.2
Virgin Australia	30	30	25	83.3	23	76.7	0	0.0
All Airlines	124	123	96	78.0	93	75.6	1	0.8
Brisbane-Adelaide								
Jetstar	22	22	21	95.5	20	90.9	0	0.0
Qantas	105	104	98	94.2	92	88.5	1	1.0
QantasLink	1	1	1	100.0	1	100.0	0	0.0
Tigerair Australia	30	30	19	63.3	19	63.3	0	0.0
Virgin Australia	95	95	86	90.5	84	88.4	0	0.0
All Airlines	253	252	225	89.3	216	85.7	1	0.4
Brisbane-Bundaberg								
QantasLink	118	116	103	88.8	102	87.9	2	1.7
Virgin Australia	30	30	29	96.7	30	100.0	0	0.0
All Airlines	148	146	132	90.4	132	90.4	2	1.4
Brisbane-Cairns								
Jetstar	80	80	67	83.8	69	86.3	0	0.0
Qantas	31	31	26	83.9	25	80.6	0	0.0
QantasLink	149	144	102	70.8	109	75.7	5	3.4
Tigerair Australia	30	30	14	46.7	15	50.0	0	0.0
Virgin Australia	123	122	94	77.0	97	79.5	1	0.8
All Airlines	413	407	303	74.4	315	77.4	6	1.5
Brisbane-Canberra								
Qantas	2	2	2	100.0	2	100.0	0	0.0
QantasLink	141	141	112	79.4	106	75.2	0	0.0
Tigerair Australia	22	22	14	63.6	15	68.2	0	0.0
Virgin Australia	98	98	81	82.7	85	86.7	0	0.0
All Airlines	263	263	209	79.5	208	79.1	0	0.0

	<i>Sectors</i>		<i>Arrivals On Time</i>		<i>Departures On Time</i>		<i>Cancellations</i>	
	<i>Sched.</i>	<i>Flown</i>	<i>No.</i>	<i>%</i>	<i>No.</i>	<i>%</i>	<i>No.</i>	<i>%</i>
Brisbane-Darwin								
Jetstar	21	21	18	85.7	20	95.2	0	0.0
Qantas	41	41	31	75.6	27	65.9	0	0.0
Tigerair Australia	16	16	14	87.5	14	87.5	0	0.0
Virgin Australia	35	35	21	60.0	25	71.4	0	0.0
All Airlines	113	113	84	74.3	86	76.1	0	0.0
Brisbane-Emerald								
QantasLink	115	115	102	88.7	101	87.8	0	0.0
Virgin Australia	50	50	48	96.0	49	98.0	0	0.0
All Airlines	165	165	150	90.9	150	90.9	0	0.0
Brisbane-Gladstone								
QantasLink	134	133	112	84.2	119	89.5	1	0.7
Virgin Australia	71	71	67	94.4	68	95.8	0	0.0
All Airlines	205	204	179	87.7	187	91.7	1	0.5
Brisbane-Hamilton Island								
QantasLink	30	30	25	83.3	22	73.3	0	0.0
Virgin Australia	30	30	22	73.3	24	80.0	0	0.0
All Airlines	60	60	47	78.3	46	76.7	0	0.0
Brisbane-Hobart								
Jetstar	19	19	19	100.0	19	100.0	0	0.0
Virgin Australia	38	38	30	78.9	31	81.6	0	0.0
All Airlines	57	57	49	86.0	50	87.7	0	0.0
Brisbane-Mackay								
Jetstar	31	31	23	74.2	22	71.0	0	0.0
QantasLink	134	131	114	87.0	115	87.8	3	2.2
Virgin Australia	142	142	123	86.6	128	90.1	0	0.0
All Airlines	307	304	260	85.5	265	87.2	3	1.0
Brisbane-Melbourne								
Jetstar	116	116	98	84.5	85	73.3	0	0.0
Qantas	394	392	324	82.7	326	83.2	2	0.5
QantasLink	4	4	4	100.0	4	100.0	0	0.0
Tigerair Australia	102	100	62	62.0	71	71.0	2	2.0
Virgin Australia	359	346	273	78.9	292	84.4	13	3.6
All Airlines	975	958	761	79.4	778	81.2	17	1.7
Brisbane-Mount Isa								
Qantas	2	2	2	100.0	2	100.0	0	0.0
QantasLink	53	53	35	66.0	45	84.9	0	0.0
Virgin Australia	16	16	13	81.3	16	100.0	0	0.0
All Airlines	71	71	50	70.4	63	88.7	0	0.0
Brisbane-Newcastle								
Jetstar	65	65	56	86.2	56	86.2	0	0.0
QantasLink	85	84	71	84.5	72	85.7	1	1.2
Virgin Australia	82	81	65	80.2	69	85.2	1	1.2
All Airlines	232	230	192	83.5	197	85.7	2	0.9
Brisbane-Perth								
Qantas	143	142	109	76.8	113	79.6	1	0.7
Virgin Australia	101	101	74	73.3	69	68.3	0	0.0
All Airlines	244	243	183	75.3	182	74.9	1	0.4

	Sectors		Arrivals On Time		Departures On Time		Cancellations	
	Sched.	Flown	No.	%	No.	%	No.	%
Brisbane-Proserpine								
Jetstar	27	27	21	77.8	23	85.2	0	0.0
Virgin Australia	35	34	26	76.5	32	94.1	1	2.9
All Airlines	62	61	47	77.0	55	90.2	1	1.6
Brisbane-Rockhampton								
QantasLink	177	175	154	88.0	154	88.0	2	1.1
Virgin Australia	135	135	105	77.8	117	86.7	0	0.0
All Airlines	312	310	259	83.5	271	87.4	2	0.6
Brisbane-Sydney								
Jetstar	167	165	119	72.1	118	71.5	2	1.2
Qantas	586	567	455	80.2	468	82.5	19	3.2
QantasLink	3	3	0	0.0	3	100.0	0	0.0
Tigerair Australia	124	119	76	63.9	72	60.5	5	4.0
Virgin Australia	500	486	404	83.1	417	85.8	14	2.8
All Airlines	1 380	1 340	1 054	78.7	1 078	80.4	40	2.9
Brisbane-Townsville								
Jetstar	61	61	54	88.5	58	95.1	0	0.0
Qantas	48	48	36	75.0	40	83.3	0	0.0
QantasLink	108	105	61	58.1	75	71.4	3	2.8
Virgin Australia	137	137	105	76.6	111	81.0	0	0.0
All Airlines	354	351	256	72.9	284	80.9	3	0.8
Broome-Perth								
Qantas	5	5	3	60.0	2	40.0	0	0.0
QantasLink	86	86	62	72.1	64	74.4	0	0.0
Virgin Australia	2	2	2	100.0	2	100.0	0	0.0
Virgin Australia Regional Airlines	68	67	51	76.1	50	74.6	1	1.5
All Airlines	161	160	118	73.8	118	73.8	1	0.6
Bundaberg-Brisbane								
QantasLink	118	116	101	87.1	104	89.7	2	1.7
Virgin Australia	30	30	29	96.7	30	100.0	0	0.0
All Airlines	148	146	130	89.0	134	91.8	2	1.4
Cairns-Brisbane								
Jetstar	81	81	74	91.4	73	90.1	0	0.0
Qantas	31	31	25	80.6	25	80.6	0	0.0
QantasLink	149	143	116	81.1	113	79.0	6	4.0
Tigerair Australia	30	30	19	63.3	14	46.7	0	0.0
Virgin Australia	123	122	112	91.8	105	86.1	1	0.8
All Airlines	414	407	346	85.0	330	81.1	7	1.7
Cairns-Melbourne								
Jetstar	99	98	81	82.7	82	83.7	1	1.0
Qantas	34	34	24	70.6	12	35.3	0	0.0
Tigerair Australia	31	30	20	66.7	18	60.0	1	3.2
Virgin Australia	30	30	20	66.7	20	66.7	0	0.0
All Airlines	194	192	145	75.5	132	68.8	2	1.0
Cairns-Sydney								
Jetstar	70	70	62	88.6	63	90.0	0	0.0
Qantas	61	61	39	63.9	36	59.0	0	0.0
Tigerair Australia	30	30	26	86.7	20	66.7	0	0.0
Virgin Australia	77	77	68	88.3	60	77.9	0	0.0
All Airlines	238	238	195	81.9	179	75.2	0	0.0

	<i>Sectors</i>		<i>Arrivals On Time</i>		<i>Departures On Time</i>		<i>Cancellations</i>	
	<i>Sched.</i>	<i>Flown</i>	<i>No.</i>	<i>%</i>	<i>No.</i>	<i>%</i>	<i>No.</i>	<i>%</i>
Cairns-Townsville								
QantasLink	131	130	122	93.8	122	93.8	1	0.8
Regional Express	13	13	12	92.3	12	92.3	0	0.0
All Airlines	144	143	134	93.7	134	93.7	1	0.7
Canberra-Adelaide								
Qantas	42	42	39	92.9	39	92.9	0	0.0
QantasLink	5	5	3	60.0	4	80.0	0	0.0
Virgin Australia	24	24	23	95.8	22	91.7	0	0.0
All Airlines	71	71	65	91.5	65	91.5	0	0.0
Canberra-Brisbane								
Qantas	2	2	2	100.0	2	100.0	0	0.0
QantasLink	143	139	99	71.2	113	81.3	4	2.8
Tigerair Australia	22	22	13	59.1	14	63.6	0	0.0
Virgin Australia	98	98	81	82.7	88	89.8	0	0.0
All Airlines	265	261	195	74.7	217	83.1	4	1.5
Canberra-Melbourne								
Qantas	224	222	186	83.8	185	83.3	2	0.9
QantasLink	42	40	28	70.0	27	67.5	2	4.8
Tigerair Australia	37	36	24	66.7	22	61.1	1	2.7
Virgin Australia	154	151	119	78.8	127	84.1	3	1.9
All Airlines	457	449	357	79.5	361	80.4	8	1.8
Canberra-Sydney								
QantasLink	452	434	301	69.4	313	72.1	18	4.0
Virgin Australia	235	233	191	82.0	203	87.1	2	0.9
All Airlines	687	667	492	73.8	516	77.4	20	2.9
Coffs Harbour-Sydney								
QantasLink	129	127	90	70.9	90	70.9	2	1.6
Tigerair Australia	24	24	20	83.3	17	70.8	0	0.0
Virgin Australia	30	30	23	76.7	24	80.0	0	0.0
All Airlines	183	181	133	73.5	131	72.4	2	1.1
Darwin-Alice Springs								
Qantas	58	58	54	93.1	56	96.6	0	0.0
Virgin Australia	12	12	11	91.7	12	100.0	0	0.0
Virgin Australia Regional Airlines	9	9	5	55.6	6	66.7	0	0.0
All Airlines	79	79	70	88.6	74	93.7	0	0.0
Darwin-Brisbane								
Jetstar	21	21	20	95.2	18	85.7	0	0.0
Qantas	41	41	33	80.5	27	65.9	0	0.0
Tigerair Australia	15	15	12	80.0	8	53.3	0	0.0
Virgin Australia	34	34	24	70.6	21	61.8	0	0.0
All Airlines	111	111	89	80.2	74	66.7	0	0.0
Darwin-Melbourne								
Jetstar	24	24	19	79.2	15	62.5	0	0.0
Qantas	36	35	25	71.4	19	54.3	1	2.8
Virgin Australia	34	34	29	85.3	26	76.5	0	0.0
All Airlines	94	93	73	78.5	60	64.5	1	1.1
Darwin-Perth								
Qantas	30	30	26	86.7	28	93.3	0	0.0
Virgin Australia	20	20	12	60.0	15	75.0	0	0.0
Virgin Australia Regional Airlines	10	10	8	80.0	7	70.0	0	0.0
All Airlines	60	60	46	76.7	50	83.3	0	0.0

	Sectors		Arrivals On Time		Departures On Time		Cancellations	
	Sched.	Flown	No.	%	No.	%	No.	%
Darwin-Sydney								
Jetstar	18	18	15	83.3	13	72.2	0	0.0
Qantas	61	61	43	70.5	33	54.1	0	0.0
Virgin Australia	31	31	15	48.4	12	38.7	0	0.0
All Airlines	110	110	73	66.4	58	52.7	0	0.0
Dubbo-Sydney								
QantasLink	116	113	81	71.7	87	77.0	3	2.6
Regional Express	119	117	87	74.4	96	82.1	2	1.7
All Airlines	235	230	168	73.0	183	79.6	5	2.1
Emerald-Brisbane								
QantasLink	115	115	100	87.0	97	84.3	0	0.0
Virgin Australia	50	50	49	98.0	47	94.0	0	0.0
All Airlines	165	165	149	90.3	144	87.3	0	0.0
Geraldton-Perth								
QantasLink	50	50	46	92.0	46	92.0	0	0.0
Virgin Australia Regional Airlines	30	29	21	72.4	21	72.4	1	3.3
All Airlines	80	79	67	84.8	67	84.8	1	1.3
Gladstone-Brisbane								
QantasLink	134	133	110	82.7	106	79.7	1	0.7
Virgin Australia	71	71	65	91.5	68	95.8	0	0.0
All Airlines	205	204	175	85.8	174	85.3	1	0.5
Gold Coast-Adelaide								
Jetstar	26	26	24	92.3	26	100.0	0	0.0
Virgin Australia	25	25	20	80.0	19	76.0	0	0.0
All Airlines	51	51	44	86.3	45	88.2	0	0.0
Gold Coast-Melbourne								
Jetstar	175	174	147	84.5	129	74.1	1	0.6
Qantas	31	31	17	54.8	15	48.4	0	0.0
Tigerair Australia	78	76	46	60.5	43	56.6	2	2.6
Virgin Australia	170	170	130	76.5	124	72.9	0	0.0
All Airlines	454	451	340	75.4	311	69.0	3	0.7
Gold Coast-Sydney								
Jetstar	282	278	236	84.9	228	82.0	4	1.4
Qantas	63	61	45	73.8	40	65.6	2	3.2
QantasLink	69	63	47	74.6	51	81.0	6	8.7
Tigerair Australia	81	79	53	67.1	51	64.6	2	2.5
Virgin Australia	238	234	178	76.1	177	75.6	4	1.7
All Airlines	733	715	559	78.2	547	76.5	18	2.5
Hamilton Island-Brisbane								
QantasLink	29	29	20	69.0	21	72.4	0	0.0
Virgin Australia	30	30	25	83.3	21	70.0	0	0.0
All Airlines	59	59	45	76.3	42	71.2	0	0.0
Hamilton Island-Sydney								
Jetstar	16	16	15	93.8	15	93.8	0	0.0
Qantas	7	7	6	85.7	5	71.4	0	0.0
QantasLink	20	20	15	75.0	12	60.0	0	0.0
Virgin Australia	18	18	15	83.3	12	66.7	0	0.0
All Airlines	61	61	51	83.6	44	72.1	0	0.0

	<i>Sectors</i>		<i>Arrivals On Time</i>		<i>Departures On Time</i>		<i>Cancellations</i>	
	<i>Sched.</i>	<i>Flown</i>	<i>No.</i>	<i>%</i>	<i>No.</i>	<i>%</i>	<i>No.</i>	<i>%</i>
Hobart-Brisbane								
Jetstar	18	18	18	100.0	18	100.0	0	0.0
Virgin Australia	38	38	21	55.3	28	73.7	0	0.0
All Airlines	56	56	39	69.6	46	82.1	0	0.0
Hobart-Melbourne								
Jetstar	138	138	94	68.1	91	65.9	0	0.0
Qantas	110	109	80	73.4	80	73.4	1	0.9
Tigerair Australia	41	41	26	63.4	25	61.0	0	0.0
Virgin Australia	142	142	103	72.5	108	76.1	0	0.0
All Airlines	431	430	303	70.5	304	70.7	1	0.2
Hobart-Sydney								
Jetstar	65	65	51	78.5	51	78.5	0	0.0
Qantas	1	1	0	0.0	0	0.0	0	0.0
QantasLink	71	68	41	60.3	47	69.1	3	4.2
Virgin Australia	78	77	62	80.5	66	85.7	1	1.3
All Airlines	215	211	154	73.0	164	77.7	4	1.9
Kalgoorlie-Perth								
Qantas	6	6	5	83.3	5	83.3	0	0.0
QantasLink	78	78	68	87.2	67	85.9	0	0.0
Virgin Australia	26	25	21	84.0	21	84.0	1	3.8
Virgin Australia Regional Airlines	52	50	37	74.0	37	74.0	2	3.8
All Airlines	162	159	131	82.4	130	81.8	3	1.9
Karratha-Perth								
Qantas	41	39	37	94.9	38	97.4	2	4.9
QantasLink	134	126	111	88.1	112	88.9	8	6.0
Virgin Australia	1	1	1	100.0	0	0.0	0	0.0
Virgin Australia Regional Airlines	61	61	51	83.6	54	88.5	0	0.0
All Airlines	237	227	200	88.1	204	89.9	10	4.2
Launceston-Melbourne								
Jetstar	95	95	62	65.3	54	56.8	0	0.0
QantasLink	114	110	93	84.5	96	87.3	4	3.5
Virgin Australia	98	98	84	85.7	90	91.8	0	0.0
All Airlines	307	303	239	78.9	240	79.2	4	1.3
Launceston-Sydney								
Jetstar	29	29	20	69.0	20	69.0	0	0.0
Virgin Australia	28	28	20	71.4	20	71.4	0	0.0
All Airlines	57	57	40	70.2	40	70.2	0	0.0
Mackay-Brisbane								
Jetstar	31	31	24	77.4	21	67.7	0	0.0
QantasLink	132	127	113	89.0	117	92.1	5	3.8
Virgin Australia	142	141	126	89.4	122	86.5	1	0.7
All Airlines	305	299	263	88.0	260	87.0	6	2.0
Melbourne-Adelaide								
Jetstar	94	91	69	75.8	70	76.9	3	3.2
Qantas	288	285	242	84.9	251	88.1	3	1.0
Tigerair Australia	76	73	48	65.8	51	69.9	3	3.9
Virgin Australia	240	234	200	85.5	208	88.9	6	2.5
Virgin Australia Regional Airlines	12	12	9	75.0	9	75.0	0	0.0
All Airlines	710	695	568	81.7	589	84.7	15	2.1

	<i>Sectors</i>		<i>Arrivals On Time</i>		<i>Departures On Time</i>		<i>Cancellations</i>	
	<i>Sched.</i>	<i>Flown</i>	<i>No.</i>	<i>%</i>	<i>No.</i>	<i>%</i>	<i>No.</i>	<i>%</i>
Melbourne-Brisbane								
Jetstar	115	115	80	69.6	85	73.9	0	0.0
Qantas	396	396	293	74.0	328	82.8	0	0.0
QantasLink	4	4	4	100.0	4	100.0	0	0.0
Tigerair Australia	102	100	71	71.0	83	83.0	2	2.0
Virgin Australia	362	353	291	82.4	314	89.0	9	2.5
All Airlines	979	968	739	76.3	814	84.1	11	1.1
Melbourne-Cairns								
Jetstar	99	98	69	70.4	78	79.6	1	1.0
Qantas	34	34	24	70.6	25	73.5	0	0.0
Tigerair Australia	31	31	23	74.2	26	83.9	0	0.0
Virgin Australia	30	30	22	73.3	29	96.7	0	0.0
All Airlines	194	193	138	71.5	158	81.9	1	0.5
Melbourne-Canberra								
Qantas	224	223	188	84.3	195	87.4	1	0.4
QantasLink	42	40	31	77.5	32	80.0	2	4.8
Tigerair Australia	37	36	23	63.9	22	61.1	1	2.7
Virgin Australia	153	150	123	82.0	130	86.7	3	2.0
All Airlines	456	449	365	81.3	379	84.4	7	1.5
Melbourne-Darwin								
Jetstar	24	24	12	50.0	20	83.3	0	0.0
Qantas	36	36	27	75.0	28	77.8	0	0.0
Virgin Australia	33	33	22	66.7	25	75.8	0	0.0
All Airlines	93	93	61	65.6	73	78.5	0	0.0
Melbourne-Gold Coast								
Jetstar	175	174	139	79.9	149	85.6	1	0.6
Qantas	32	32	22	68.8	24	75.0	0	0.0
Tigerair Australia	78	76	48	63.2	59	77.6	2	2.6
Virgin Australia	169	169	140	82.8	147	87.0	0	0.0
All Airlines	454	451	349	77.4	379	84.0	3	0.7
Melbourne-Hobart								
Jetstar	137	137	97	70.8	100	73.0	0	0.0
Qantas	110	110	86	78.2	95	86.4	0	0.0
Tigerair Australia	41	41	30	73.2	36	87.8	0	0.0
Virgin Australia	142	142	106	74.6	120	84.5	0	0.0
All Airlines	430	430	319	74.2	351	81.6	0	0.0
Melbourne-Launceston								
Jetstar	96	96	63	65.6	68	70.8	0	0.0
QantasLink	114	111	93	83.8	93	83.8	3	2.6
Virgin Australia	98	98	78	79.6	87	88.8	0	0.0
All Airlines	308	305	234	76.7	248	81.3	3	1.0
Melbourne-Mildura								
QantasLink	92	90	78	86.7	81	90.0	2	2.2
Regional Express	75	75	61	81.3	61	81.3	0	0.0
Virgin Australia	30	30	23	76.7	25	83.3	0	0.0
All Airlines	197	195	162	83.1	167	85.6	2	1.0
Melbourne-Newcastle								
Jetstar	106	106	85	80.2	83	78.3	0	0.0
Virgin Australia	30	30	25	83.3	25	83.3	0	0.0
All Airlines	136	136	110	80.9	108	79.4	0	0.0

	<i>Sectors</i>		<i>Arrivals On Time</i>		<i>Departures On Time</i>		<i>Cancellations</i>	
	<i>Sched.</i>	<i>Flown</i>	<i>No.</i>	<i>%</i>	<i>No.</i>	<i>%</i>	<i>No.</i>	<i>%</i>
Melbourne-Perth								
Jetstar	42	42	33	78.6	38	90.5	0	0.0
Qantas	195	194	131	67.5	138	71.1	1	0.5
Tigerair Australia	51	51	29	56.9	36	70.6	0	0.0
Virgin Australia	133	133	99	74.4	104	78.2	0	0.0
All Airlines	421	420	292	69.5	316	75.2	1	0.2
Melbourne-Sunshine Coast								
Jetstar	64	64	49	76.6	56	87.5	0	0.0
Virgin Australia	61	61	42	68.9	44	72.1	0	0.0
All Airlines	125	125	91	72.8	100	80.0	0	0.0
Melbourne-Sydney								
Jetstar	358	352	245	69.6	272	77.3	6	1.7
Qantas	1 020	929	669	72.0	776	83.5	91	8.9
Tigerair Australia	241	234	149	63.7	167	71.4	7	2.9
Virgin Australia	685	647	510	78.8	573	88.6	38	5.5
All Airlines	2 304	2 162	1 573	72.8	1 788	82.7	142	6.2
Mildura-Melbourne								
QantasLink	92	90	72	80.0	74	82.2	2	2.2
Regional Express	74	74	51	68.9	60	81.1	0	0.0
Virgin Australia	30	30	23	76.7	25	83.3	0	0.0
All Airlines	196	194	146	75.3	159	82.0	2	1.0
Mount Isa-Brisbane								
Qantas	2	2	2	100.0	2	100.0	0	0.0
QantasLink	53	53	41	77.4	39	73.6	0	0.0
Virgin Australia	12	12	11	91.7	11	91.7	0	0.0
All Airlines	67	67	54	80.6	52	77.6	0	0.0
Newcastle-Brisbane								
Jetstar	65	65	56	86.2	57	87.7	0	0.0
QantasLink	86	85	80	94.1	76	89.4	1	1.2
Virgin Australia	82	81	69	85.2	71	87.7	1	1.2
All Airlines	233	231	205	88.7	204	88.3	2	0.9
Newcastle-Melbourne								
Jetstar	106	106	85	80.2	87	82.1	0	0.0
Virgin Australia	30	30	25	83.3	25	83.3	0	0.0
All Airlines	136	136	110	80.9	112	82.4	0	0.0
Newman-Perth								
Qantas	34	34	32	94.1	32	94.1	0	0.0
QantasLink	101	96	81	84.4	85	88.5	5	5.0
Virgin Australia	14	14	10	71.4	11	78.6	0	0.0
Virgin Australia Regional Airlines	23	23	17	73.9	19	82.6	0	0.0
All Airlines	172	167	140	83.8	147	88.0	5	2.9
Perth-Adelaide								
Jetstar	26	25	21	84.0	16	64.0	1	3.8
Qantas	112	112	97	86.6	100	89.3	0	0.0
QantasLink	1	1	0	0.0	0	0.0	0	0.0
Virgin Australia	32	32	27	84.4	27	84.4	0	0.0
Virgin Australia Regional Airlines	45	44	25	56.8	39	88.6	1	2.2
All Airlines	216	214	170	79.4	182	85.0	2	0.9
Perth-Brisbane								
Qantas	145	145	116	80.0	124	85.5	0	0.0
Virgin Australia	100	100	75	75.0	87	87.0	0	0.0
All Airlines	245	245	191	78.0	211	86.1	0	0.0

	Sectors		Arrivals On Time		Departures On Time		Cancellations	
	Sched.	Flown	No.	%	No.	%	No.	%
Perth-Broome								
Qantas	5	5	4	80.0	5	100.0	0	0.0
QantasLink	86	86	69	80.2	73	84.9	0	0.0
Virgin Australia	2	2	2	100.0	2	100.0	0	0.0
Virgin Australia Regional Airlines	68	68	49	72.1	52	76.5	0	0.0
All Airlines	161	161	124	77.0	132	82.0	0	0.0
Perth-Darwin								
Qantas	30	30	27	90.0	27	90.0	0	0.0
Virgin Australia	20	20	17	85.0	16	80.0	0	0.0
Virgin Australia Regional Airlines	10	10	10	100.0	10	100.0	0	0.0
All Airlines	60	60	54	90.0	53	88.3	0	0.0
Perth-Geraldton								
QantasLink	50	50	45	90.0	44	88.0	0	0.0
Virgin Australia Regional Airlines	30	29	22	75.9	23	79.3	1	3.3
All Airlines	80	79	67	84.8	67	84.8	1	1.3
Perth-Kalgoorlie								
Qantas	6	6	4	66.7	5	83.3	0	0.0
QantasLink	78	78	64	82.1	69	88.5	0	0.0
Virgin Australia	26	26	22	84.6	24	92.3	0	0.0
Virgin Australia Regional Airlines	50	49	36	73.5	40	81.6	1	2.0
All Airlines	160	159	126	79.2	138	86.8	1	0.6
Perth-Karratha								
Qantas	41	40	38	95.0	39	97.5	1	2.4
QantasLink	134	129	111	86.0	119	92.2	5	3.7
Virgin Australia	1	1	0	0.0	1	100.0	0	0.0
Virgin Australia Regional Airlines	61	61	48	78.7	58	95.1	0	0.0
All Airlines	237	231	197	85.3	217	93.9	6	2.5
Perth-Melbourne								
Jetstar	41	41	33	80.5	28	68.3	0	0.0
Qantas	196	192	129	67.2	154	80.2	4	2.0
Tigerair Australia	50	50	24	48.0	21	42.0	0	0.0
Virgin Australia	130	130	99	76.2	111	85.4	0	0.0
All Airlines	417	413	285	69.0	314	76.0	4	1.0
Perth-Newman								
Qantas	34	34	31	91.2	32	94.1	0	0.0
QantasLink	101	98	83	84.7	89	90.8	3	3.0
Virgin Australia	14	14	12	85.7	13	92.9	0	0.0
Virgin Australia Regional Airlines	23	23	20	87.0	19	82.6	0	0.0
All Airlines	172	169	146	86.4	153	90.5	3	1.7
Perth-Port Hedland								
Qantas	32	32	30	93.8	30	93.8	0	0.0
QantasLink	109	106	86	81.1	94	88.7	3	2.8
Virgin Australia	16	16	15	93.8	16	100.0	0	0.0
Virgin Australia Regional Airlines	34	34	29	85.3	32	94.1	0	0.0
All Airlines	191	188	160	85.1	172	91.5	3	1.6
Perth-Sydney								
Jetstar	22	22	20	90.9	15	68.2	0	0.0
Qantas	192	191	121	63.4	135	70.7	1	0.5
Tigerair Australia	25	24	14	58.3	12	50.0	1	4.0
Virgin Australia	116	116	96	82.8	95	81.9	0	0.0
All Airlines	355	353	251	71.1	257	72.8	2	0.6

	Sectors		Arrivals On Time		Departures On Time		Cancellations	
	Sched.	Flown	No.	%	No.	%	No.	%
Port Hedland-Perth								
Qantas	32	31	30	96.8	30	96.8	1	3.1
QantasLink	108	105	91	86.7	93	88.6	3	2.8
Virgin Australia	16	16	11	68.8	12	75.0	0	0.0
Virgin Australia Regional Airlines	34	34	25	73.5	25	73.5	0	0.0
All Airlines	190	186	157	84.4	160	86.0	4	2.1
Port Lincoln-Adelaide								
QantasLink	97	96	86	89.6	86	89.6	1	1.0
Regional Express	206	205	182	88.8	184	89.8	1	0.5
All Airlines	303	301	268	89.0	270	89.7	2	0.7
Port Macquarie-Sydney								
QantasLink	112	110	77	70.0	80	72.7	2	1.8
Virgin Australia	51	50	36	72.0	36	72.0	1	2.0
All Airlines	163	160	113	70.6	116	72.5	3	1.8
Proserpine-Brisbane								
Jetstar	27	27	18	66.7	19	70.4	0	0.0
Virgin Australia	35	34	29	85.3	27	79.4	1	2.9
All Airlines	62	61	47	77.0	46	75.4	1	1.6
Proserpine-Sydney								
Jetstar	13	13	12	92.3	11	84.6	0	0.0
Tigerair Australia	20	19	16	84.2	17	89.5	1	5.0
All Airlines	33	32	28	87.5	28	87.5	1	3.0
Rockhampton-Brisbane								
QantasLink	181	179	156	87.2	162	90.5	2	1.1
Virgin Australia	135	135	123	91.1	119	88.1	0	0.0
All Airlines	316	314	279	88.9	281	89.5	2	0.6
Sunshine Coast-Melbourne								
Jetstar	64	64	41	64.1	40	62.5	0	0.0
Virgin Australia	61	61	30	49.2	29	47.5	0	0.0
All Airlines	125	125	71	56.8	69	55.2	0	0.0
Sunshine Coast-Sydney								
Jetstar	92	91	64	70.3	63	69.2	1	1.1
QantasLink	54	53	38	71.7	39	73.6	1	1.9
Virgin Australia	50	50	34	68.0	34	68.0	0	0.0
All Airlines	196	194	136	70.1	136	70.1	2	1.0
Sydney-Adelaide								
Jetstar	90	90	69	76.7	72	80.0	0	0.0
Qantas	231	229	181	79.0	176	76.9	2	0.9
QantasLink	1	1	1	100.0	1	100.0	0	0.0
Tigerair Australia	29	29	24	82.8	25	86.2	0	0.0
Virgin Australia	153	153	117	76.5	125	81.7	0	0.0
All Airlines	504	502	392	78.1	399	79.5	2	0.4
Sydney-Albury								
QantasLink	96	94	65	69.1	61	64.9	2	2.1
Regional Express	96	96	79	82.3	77	80.2	0	0.0
Virgin Australia	51	51	33	64.7	32	62.7	0	0.0
All Airlines	243	241	177	73.4	170	70.5	2	0.8
Sydney-Armidale								
QantasLink	110	110	77	70.0	76	69.1	0	0.0
Regional Express	70	70	61	87.1	62	88.6	0	0.0
All Airlines	180	180	138	76.7	138	76.7	0	0.0

	Sectors		Arrivals On Time		Departures On Time		Cancellations	
	Sched.	Flown	No.	%	No.	%	No.	%
Sydney-Ayers Rock								
Jetstar	30	30	22	73.3	23	76.7	0	0.0
Virgin Australia	30	30	22	73.3	25	83.3	0	0.0
All Airlines	60	60	44	73.3	48	80.0	0	0.0
Sydney-Ballina								
Jetstar	70	70	57	81.4	60	85.7	0	0.0
Regional Express	24	24	23	95.8	23	95.8	0	0.0
Virgin Australia	30	30	25	83.3	26	86.7	0	0.0
All Airlines	124	124	105	84.7	109	87.9	0	0.0
Sydney-Brisbane								
Jetstar	167	165	126	76.4	120	72.7	2	1.2
Qantas	584	568	436	76.8	465	81.9	16	2.7
Tigerair Australia	125	119	77	64.7	79	66.4	6	4.8
Virgin Australia	491	475	374	78.7	387	81.5	16	3.3
All Airlines	1 367	1 327	1 013	76.3	1 051	79.2	40	2.9
Sydney-Cairns								
Jetstar	69	69	60	87.0	63	91.3	0	0.0
Qantas	61	61	39	63.9	35	57.4	0	0.0
Tigerair Australia	30	30	23	76.7	28	93.3	0	0.0
Virgin Australia	77	77	60	77.9	59	76.6	0	0.0
All Airlines	237	237	182	76.8	185	78.1	0	0.0
Sydney-Canberra								
QantasLink	457	440	305	69.3	303	68.9	17	3.7
Virgin Australia	236	234	198	84.6	190	81.2	2	0.8
All Airlines	693	674	503	74.6	493	73.1	19	2.7
Sydney-Coffs Harbour								
QantasLink	129	127	94	74.0	85	66.9	2	1.6
Tigerair Australia	24	24	15	62.5	16	66.7	0	0.0
Virgin Australia	30	30	23	76.7	25	83.3	0	0.0
All Airlines	183	181	132	72.9	126	69.6	2	1.1
Sydney-Darwin								
Jetstar	18	18	12	66.7	14	77.8	0	0.0
Qantas	61	61	38	62.3	34	55.7	0	0.0
Virgin Australia	32	32	21	65.6	20	62.5	0	0.0
All Airlines	111	111	71	64.0	68	61.3	0	0.0
Sydney-Dubbo								
QantasLink	116	113	82	72.6	77	68.1	3	2.6
Regional Express	122	122	107	87.7	101	82.8	0	0.0
All Airlines	238	235	189	80.4	178	75.7	3	1.3
Sydney-Gold Coast								
Jetstar	282	278	245	88.1	239	86.0	4	1.4
Qantas	64	63	41	65.1	41	65.1	1	1.6
QantasLink	69	65	41	63.1	42	64.6	4	5.8
Tigerair Australia	80	79	55	69.6	57	72.2	1	1.3
Virgin Australia	238	235	177	75.3	181	77.0	3	1.3
All Airlines	733	720	559	77.6	560	77.8	13	1.8
Sydney-Hamilton Island								
Jetstar	16	16	14	87.5	11	68.8	0	0.0
Qantas	7	7	5	71.4	6	85.7	0	0.0
QantasLink	20	20	13	65.0	15	75.0	0	0.0
Virgin Australia	18	18	12	66.7	13	72.2	0	0.0
All Airlines	61	61	44	72.1	45	73.8	0	0.0

	<i>Sectors</i>		<i>Arrivals On Time</i>		<i>Departures On Time</i>		<i>Cancellations</i>	
	<i>Sched.</i>	<i>Flown</i>	<i>No.</i>	<i>%</i>	<i>No.</i>	<i>%</i>	<i>No.</i>	<i>%</i>
Sydney-Hobart								
Jetstar	65	65	55	84.6	56	86.2	0	0.0
Qantas	1	1	1	100.0	1	100.0	0	0.0
QantasLink	71	70	48	68.6	41	58.6	1	1.4
Virgin Australia	77	76	64	84.2	65	85.5	1	1.3
All Airlines	214	212	168	79.2	163	76.9	2	0.9
Sydney-Launceston								
Jetstar	29	29	23	79.3	23	79.3	0	0.0
Virgin Australia	28	28	26	92.9	24	85.7	0	0.0
All Airlines	57	57	49	86.0	47	82.5	0	0.0
Sydney-Melbourne								
Jetstar	357	352	274	77.8	273	77.6	5	1.4
Qantas	1 020	929	728	78.4	741	79.8	91	8.9
Tigerair Australia	241	233	156	67.0	157	67.4	8	3.3
Virgin Australia	686	649	515	79.4	544	83.8	37	5.4
All Airlines	2 304	2 163	1 673	77.3	1 715	79.3	141	6.1
Sydney-Perth								
Jetstar	22	22	18	81.8	16	72.7	0	0.0
Qantas	194	192	124	64.6	120	62.5	2	1.0
Tigerair Australia	25	25	17	68.0	15	60.0	0	0.0
Virgin Australia	116	116	76	65.5	75	64.7	0	0.0
All Airlines	357	355	235	66.2	226	63.7	2	0.6
Sydney-Port Macquarie								
QantasLink	112	110	72	65.5	72	65.5	2	1.8
Virgin Australia	51	50	38	76.0	38	76.0	1	2.0
All Airlines	163	160	110	68.8	110	68.8	3	1.8
Sydney-Proserpine								
Jetstar	12	12	11	91.7	12	100.0	0	0.0
Tigerair Australia	20	20	18	90.0	18	90.0	0	0.0
All Airlines	32	32	29	90.6	30	93.8	0	0.0
Sydney-Sunshine Coast								
Jetstar	92	92	67	72.8	63	68.5	0	0.0
QantasLink	54	52	38	73.1	40	76.9	2	3.7
Virgin Australia	50	50	34	68.0	33	66.0	0	0.0
All Airlines	196	194	139	71.6	136	70.1	2	1.0
Sydney-Tamworth								
QantasLink	119	118	82	69.5	74	62.7	1	0.8
Virgin Australia	49	48	41	85.4	42	87.5	1	2.0
All Airlines	168	166	123	74.1	116	69.9	2	1.2
Sydney-Townsville								
Jetstar	22	22	16	72.7	16	72.7	0	0.0
Virgin Australia	19	19	10	52.6	14	73.7	0	0.0
All Airlines	41	41	26	63.4	30	73.2	0	0.0
Sydney-Wagga Wagga								
QantasLink	107	106	78	73.6	69	65.1	1	0.9
Regional Express	125	123	103	83.7	99	80.5	2	1.6
All Airlines	232	229	181	79.0	168	73.4	3	1.3
Tamworth-Sydney								
QantasLink	119	118	85	72.0	87	73.7	1	0.8
Virgin Australia	49	48	43	89.6	42	87.5	1	2.0
All Airlines	168	166	128	77.1	129	77.7	2	1.2

	<i>Sectors</i>		<i>Arrivals On Time</i>		<i>Departures On Time</i>		<i>Cancellations</i>	
	<i>Sched.</i>	<i>Flown</i>	<i>No.</i>	<i>%</i>	<i>No.</i>	<i>%</i>	<i>No.</i>	<i>%</i>
Townsville-Brisbane								
Jetstar	61	60	48	80.0	42	70.0	1	1.6
Qantas	48	48	38	79.2	35	72.9	0	0.0
QantasLink	107	105	79	75.2	76	72.4	2	1.9
Virgin Australia	137	137	119	86.9	113	82.5	0	0.0
All Airlines	353	350	284	81.1	266	76.0	3	0.8
Townsville-Cairns								
QantasLink	129	128	118	92.2	117	91.4	1	0.8
Regional Express	12	12	12	100.0	12	100.0	0	0.0
All Airlines	141	140	130	92.9	129	92.1	1	0.7
Townsville-Sydney								
Jetstar	22	22	14	63.6	11	50.0	0	0.0
Virgin Australia	19	19	9	47.4	9	47.4	0	0.0
All Airlines	41	41	23	56.1	20	48.8	0	0.0
Wagga Wagga-Sydney								
QantasLink	107	106	72	67.9	72	67.9	1	0.9
Regional Express	123	121	92	76.0	104	86.0	2	1.6
All Airlines	230	227	164	72.2	176	77.5	3	1.3

Airports

On time performance is reported for all routes where the passenger load averages over 8000 passengers per month, and where two or more airlines operate in competition. The following data reports by airport against flights operated on those routes only. This month, 8 major city airports and 32 regional city airports are covered.

Airport	Arrivals			Departures		
	Sectors	On Time		Sectors	On Time	
	Flown	No.	%	Flown	No.	%
Adelaide						
Jetstar	254	204	80.3	251	211	84.1
Qantas	802	681	84.9	798	689	86.3
QantasLink	104	91	87.5	104	93	89.4
Regional Express	205	182	88.8	205	186	90.7
Tigerair Australia	132	91	68.9	132	88	66.7
Virgin Australia	575	485	84.3	577	517	89.6
Virgin Australia Regional Airlines	65	36	55.4	61	44	72.1
All Airlines	2 137	1 770	82.8	2 128	1 828	85.9
Relates to services to and from Alice Springs, Brisbane, Canberra, Gold Coast, Melbourne, Perth, Port Lincoln and Sydney.						
Albury						
QantasLink	94	65	69.1	93	60	64.5
Regional Express	96	79	82.3	98	83	84.7
Virgin Australia	51	33	64.7	51	36	70.6
All Airlines	241	177	73.4	242	179	74.0
Relates to services to and from Sydney only.						
Alice Springs						
Qantas	88	79	89.8	87	77	88.5
Virgin Australia	24	20	83.3	24	21	87.5
Virgin Australia Regional Airlines	17	7	41.2	17	7	41.2
All Airlines	129	106	82.2	128	105	82.0
Relates to services to and from Adelaide and Darwin.						
Armidale						
QantasLink	110	77	70.0	109	72	66.1
Regional Express	70	61	87.1	70	58	82.9
All Airlines	180	138	76.7	179	130	72.6
Relates to services to and from Sydney only.						
Ayers Rock						
Jetstar	30	22	73.3	30	13	43.3
Virgin Australia	30	22	73.3	30	17	56.7
All Airlines	60	44	73.3	60	30	50.0
Relates to services to and from Sydney only.						
Ballina						
Jetstar	70	57	81.4	70	55	78.6
Regional Express	24	23	95.8	23	15	65.2
Virgin Australia	30	25	83.3	30	23	76.7
All Airlines	124	105	84.7	123	93	75.6
Relates to services to and from Sydney only.						

Airport	Arrivals			Departures		
	Sectors	On Time		Sectors	On Time	
	Flown	No.	%	Flown	No.	%
Brisbane						
Jetstar	605	484	80.0	607	490	80.7
Qantas	1 336	1 028	76.9	1 329	1 095	82.4
QantasLink	1 229	1 019	82.9	1 235	1 028	83.2
Tigerair Australia	316	211	66.8	317	206	65.0
Virgin Australia	2 043	1 717	84.0	2 047	1 744	85.2
All Airlines	5 529	4 459	80.6	5 535	4 563	82.4

Relates to services to and from Adelaide, Bundaberg, Cairns, Canberra, Darwin, Emerald, Gladstone, Hamilton Island, Hobart, Mackay, Melbourne, Mount Isa, Newcastle, Perth, Proserpine, Rockhampton, Sydney and Townsville.

Broome

Qantas	5	4	80.0	5	2	40.0
QantasLink	86	69	80.2	86	64	74.4
Virgin Australia	2	2	100.0	2	2	100.0
Virgin Australia Regional Airlines	68	49	72.1	67	50	74.6
All Airlines	161	124	77.0	160	118	73.8

Relates to services to and from Perth only.

Bundaberg

QantasLink	116	103	88.8	116	104	89.7
Virgin Australia	30	29	96.7	30	30	100.0
All Airlines	146	132	90.4	146	134	91.8

Relates to services to and from Brisbane only.

Cairns

Jetstar	247	196	79.4	249	218	87.6
Qantas	126	89	70.6	126	73	57.9
QantasLink	272	220	80.9	273	235	86.1
Regional Express	12	12	100.0	13	12	92.3
Tigerair Australia	91	60	65.9	90	52	57.8
Virgin Australia	229	176	76.9	229	185	80.8
All Airlines	977	753	77.1	980	775	79.1

Relates to services to and from Brisbane, Melbourne, Sydney and Townsville.

Canberra

Qantas	266	227	85.3	266	226	85.0
QantasLink	626	452	72.2	618	457	73.9
Tigerair Australia	58	37	63.8	58	36	62.1
Virgin Australia	506	424	83.8	506	440	87.0
All Airlines	1 456	1 140	78.3	1 448	1 159	80.0

Relates to services to and from Adelaide, Brisbane, Melbourne and Sydney.

Coffs Harbour

QantasLink	127	94	74.0	127	90	70.9
Tigerair Australia	24	15	62.5	24	17	70.8
Virgin Australia	30	23	76.7	30	24	80.0
All Airlines	181	132	72.9	181	131	72.4

Relates to services to and from Sydney only.

Airport	Arrivals			Departures		
	Sectors Flown	On Time		Sectors Flown	On Time	
		No.	%		No.	%
Darwin						
Jetstar	63	42	66.7	63	46	73.0
Qantas	225	178	79.1	225	163	72.4
Tigerair Australia	16	14	87.5	15	8	53.3
Virgin Australia	132	90	68.2	131	86	65.6
Virgin Australia Regional Airlines	18	16	88.9	19	13	68.4
All Airlines	454	340	74.9	453	316	69.8
Relates to services to and from Alice Springs, Brisbane, Melbourne, Perth and Sydney.						
Dubbo						
QantasLink	113	82	72.6	113	87	77.0
Regional Express	122	107	87.7	117	96	82.1
All Airlines	235	189	80.4	230	183	79.6
Relates to services to and from Sydney only.						
Emerald						
QantasLink	115	102	88.7	115	97	84.3
Virgin Australia	50	48	96.0	50	47	94.0
All Airlines	165	150	90.9	165	144	87.3
Relates to services to and from Brisbane only.						
Geraldton						
QantasLink	50	45	90.0	50	46	92.0
Virgin Australia Regional Airlines	29	22	75.9	29	21	72.4
All Airlines	79	67	84.8	79	67	84.8
Relates to services to and from Perth only.						
Gladstone						
QantasLink	133	112	84.2	133	106	79.7
Virgin Australia	71	67	94.4	71	68	95.8
All Airlines	204	179	87.7	204	174	85.3
Relates to services to and from Brisbane only.						
Gold Coast						
Jetstar	478	408	85.4	478	383	80.1
Qantas	95	63	66.3	92	55	59.8
QantasLink	65	41	63.1	63	51	81.0
Tigerair Australia	155	103	66.5	155	94	60.6
Virgin Australia	429	336	78.3	429	320	74.6
All Airlines	1 222	951	77.8	1 217	903	74.2
Relates to services to and from Adelaide, Melbourne and Sydney.						
Hamilton Island						
Jetstar	16	14	87.5	16	15	93.8
Qantas	7	5	71.4	7	5	71.4
QantasLink	50	38	76.0	49	33	67.3
Virgin Australia	48	34	70.8	48	33	68.8
All Airlines	121	91	75.2	120	86	71.7
Relates to services to and from Brisbane and Sydney.						

Airport	Arrivals			Departures		
	Sectors Flown	On Time		Sectors Flown	On Time	
		No.	%		No.	%
Hobart						
Jetstar	221	171	77.4	221	160	72.4
Qantas	111	87	78.4	110	80	72.7
QantasLink	70	48	68.6	68	47	69.1
Tigerair Australia	41	30	73.2	41	25	61.0
Virgin Australia	256	200	78.1	257	202	78.6
All Airlines	699	536	76.7	697	514	73.7
Relates to services to and from Brisbane, Melbourne and Sydney.						
Kalgoorlie						
Qantas	6	4	66.7	6	5	83.3
QantasLink	78	64	82.1	78	67	85.9
Virgin Australia	26	22	84.6	25	21	84.0
Virgin Australia Regional Airlines	49	36	73.5	50	37	74.0
All Airlines	159	126	79.2	159	130	81.8
Relates to services to and from Perth only.						
Karratha						
Qantas	40	38	95.0	39	38	97.4
QantasLink	129	111	86.0	126	112	88.9
Virgin Australia	1	0	0.0	1	0	0.0
Virgin Australia Regional Airlines	61	48	78.7	61	54	88.5
All Airlines	231	197	85.3	227	204	89.9
Relates to services to and from Perth only.						
Launceston						
Jetstar	125	86	68.8	124	74	59.7
QantasLink	111	93	83.8	110	96	87.3
Virgin Australia	126	104	82.5	126	110	87.3
All Airlines	362	283	78.2	360	280	77.8
Relates to services to and from Melbourne and Sydney.						
Mackay						
Jetstar	31	23	74.2	31	21	67.7
QantasLink	131	114	87.0	127	117	92.1
Virgin Australia	142	123	86.6	141	122	86.5
All Airlines	304	260	85.5	299	260	87.0
Relates to services to and from Brisbane only.						
Melbourne						
Jetstar	1 297	1 008	77.7	1 299	1 019	78.4
Qantas	2 226	1 756	78.9	2 239	1 860	83.1
QantasLink	244	197	80.7	245	210	85.7
Regional Express	74	51	68.9	75	61	81.3
Tigerair Australia	639	407	63.7	642	480	74.8
Virgin Australia	2 104	1 649	78.4	2 110	1 831	86.8
Virgin Australia Regional Airlines	12	9	75.0	12	9	75.0
All Airlines	6 596	5 077	77.0	6 622	5 470	82.6
Relates to services to and from Adelaide, Brisbane, Cairns, Canberra, Darwin, Gold Coast, Hobart, Launceston, Mildura, Newcastle, Perth, Sunshine Coast and Sydney.						
Mildura						
QantasLink	90	78	86.7	90	74	82.2
Regional Express	75	61	81.3	74	60	81.1
Virgin Australia	30	23	76.7	30	25	83.3
All Airlines	195	162	83.1	194	159	82.0
Relates to services to and from Melbourne only.						

Airport	Arrivals			Departures		
	Sectors	On Time		Sectors	On Time	
	Flown	No.	%	Flown	No.	%
Mount Isa						
Qantas	2	2	100.0	2	2	100.0
QantasLink	53	35	66.0	53	39	73.6
Virgin Australia	16	13	81.3	12	11	91.7
All Airlines	71	50	70.4	67	52	77.6
Relates to services to and from Brisbane only.						
Newcastle						
Jetstar	171	141	82.5	171	144	84.2
QantasLink	84	71	84.5	85	76	89.4
Virgin Australia	111	90	81.1	111	96	86.5
All Airlines	366	302	82.5	367	316	86.1
Relates to services to and from Brisbane and Melbourne.						
Newman						
Qantas	34	31	91.2	34	32	94.1
QantasLink	98	83	84.7	96	85	88.5
Virgin Australia	14	12	85.7	14	11	78.6
Virgin Australia Regional Airlines	23	20	87.0	23	19	82.6
All Airlines	169	146	86.4	167	147	88.0
Relates to services to and from Perth only.						
Perth						
Jetstar	90	71	78.9	88	59	67.0
Qantas	784	588	75.0	787	651	82.7
QantasLink	543	461	84.9	548	488	89.1
Tigerair Australia	76	46	60.5	74	33	44.6
Virgin Australia	460	336	73.0	457	392	85.8
Virgin Australia Regional Airlines	315	231	73.3	318	273	85.8
All Airlines	2 268	1 733	76.4	2 272	1 896	83.5
Relates to services to and from Adelaide, Brisbane, Broome, Darwin, Geraldton, Kalgoorlie, Karratha, Melbourne, Newman, Port Hedland and Sydney.						
Port Hedland						
Qantas	32	30	93.8	31	30	96.8
QantasLink	106	86	81.1	105	93	88.6
Virgin Australia	16	15	93.8	16	12	75.0
Virgin Australia Regional Airlines	34	29	85.3	34	25	73.5
All Airlines	188	160	85.1	186	160	86.0
Relates to services to and from Perth only.						
Port Lincoln						
QantasLink	96	87	90.6	96	86	89.6
Regional Express	205	185	90.2	205	184	89.8
All Airlines	301	272	90.4	301	270	89.7
Relates to services to and from Adelaide only.						
Port Macquarie						
QantasLink	110	72	65.5	110	80	72.7
Virgin Australia	50	38	76.0	50	36	72.0
All Airlines	160	110	68.8	160	116	72.5
Relates to services to and from Sydney only.						

Airport	Arrivals			Departures		
	Sectors Flown	On Time		Sectors Flown	On Time	
		No.	%		No.	%
Proserpine						
Jetstar	39	32	82.1	40	30	75.0
Tigerair Australia	20	18	90.0	19	17	89.5
Virgin Australia	34	26	76.5	34	27	79.4
All Airlines	93	76	81.7	93	74	79.6
Relates to services to and from Brisbane and Sydney.						
Rockhampton						
QantasLink	175	154	88.0	179	162	90.5
Virgin Australia	135	105	77.8	135	119	88.1
All Airlines	310	259	83.5	314	281	89.5
Relates to services to and from Brisbane only.						
Sunshine Coast						
Jetstar	156	116	74.4	155	103	66.5
QantasLink	52	38	73.1	53	39	73.6
Virgin Australia	111	76	68.5	111	63	56.8
All Airlines	319	230	72.1	319	205	64.3
Relates to services to and from Melbourne and Sydney.						
Sydney						
Jetstar	1 329	1 013	76.2	1 330	1 061	79.8
Qantas	2 109	1 538	72.9	2 111	1 619	76.7
QantasLink	1 417	975	68.8	1 426	956	67.0
Regional Express	429	323	75.3	435	362	83.2
Tigerair Australia	558	376	67.4	559	395	70.7
Virgin Australia	2 404	1 889	78.6	2 401	1 918	79.9
All Airlines	8 246	6 114	74.1	8 262	6 311	76.4
Relates to services to and from Adelaide, Albury, Armidale, Ayers Rock, Ballina, Brisbane, Cairns, Canberra, Coffs Harbour, Darwin, Dubbo, Gold Coast, Hamilton Island, Hobart, Launceston, Melbourne, Perth, Port Macquarie, Proserpine, Sunshine Coast, Tamworth, Townsville and Wagga Wagga.						
Tamworth						
QantasLink	118	82	69.5	118	87	73.7
Virgin Australia	48	41	85.4	48	42	87.5
All Airlines	166	123	74.1	166	129	77.7
Relates to services to and from Sydney only.						
Townsville						
Jetstar	83	70	84.3	82	53	64.6
Qantas	48	36	75.0	48	35	72.9
QantasLink	235	183	77.9	233	193	82.8
Regional Express	13	12	92.3	12	12	100.0
Virgin Australia	156	115	73.7	156	122	78.2
All Airlines	535	416	77.8	531	415	78.2
Relates to services to and from Brisbane, Cairns and Sydney.						
Wagga Wagga						
QantasLink	106	78	73.6	106	72	67.9
Regional Express	123	103	83.7	121	104	86.0
All Airlines	229	181	79.0	227	176	77.5
Relates to services to and from Sydney only.						

Definitions

On time arrival	A flight arrival is counted as "on time" if it arrived at the gate before 15 minutes after the scheduled arrival time shown in the carriers' schedule. Neither diverted nor cancelled flights count as on time.
On time departure	A flight departure is counted as "on time" if it departs the gate before 15 minutes after the scheduled departure time shown in the carriers' schedule.
Cancellation	A flight removed from service within 7 days of scheduled departure is regarded as a cancellation.
On time departure percentage	The percentage of on time departures is measured against the number of departures <i>operated</i> on any particular sector.
On time arrival percentage	The percentage of on time arrivals is measured against the number of arrivals <i>operated</i> on any particular sector.
Cancellation percentage	The percentage of cancellations is measured against the number of services <i>scheduled</i> on any particular sector.
