



**Australian Government**

**Department of Infrastructure, Transport, Cities and Regional Development**

Bureau of Infrastructure, Transport and Regional Economics

STATISTICAL REPORT



# Aviation

Domestic airline on time performance  
July 2019

© Commonwealth of Australia 2019

ISSN: 1832-0759

### **Ownership of intellectual property rights in this publication**

Unless otherwise noted, copyright (and any other intellectual property rights, if any) in this publication is owned by the Commonwealth of Australia (referred to below as the Commonwealth).

### **Disclaimer**

The material contained in this publication is made available on the understanding that the Commonwealth is not providing professional advice, and that users exercise their own skill and care with respect to its use, and seek independent advice if necessary.

The Commonwealth makes no representations or warranties as to the contents or accuracy of the information contained in this publication. To the extent permitted by law, the Commonwealth disclaims liability to any person or organisation in respect of anything done, or omitted to be done, in reliance upon information contained in this publication.

### **Creative Commons licence**

With the exception of (a) the Coat of Arms; and (b) the Department of Infrastructure, Transport, Cities and Regional Development's photos and graphics, copyright in this publication is licensed under a Creative Commons Attribution 3.0 Australia Licence.

Creative Commons Attribution 3.0 Australia Licence is a standard form licence agreement that allows you to copy, communicate and adapt this publication provided that you attribute the work to the Commonwealth and abide by the other licence terms. A summary of the licence terms is available from <http://creativecommons.org/licenses/by/3.0/au/deed.en>. The full licence terms are available from <http://creativecommons.org/licenses/by/3.0/au/legalcode>.

### **Use of the Coat of Arms**

The Department of the Prime Minister and Cabinet sets the terms under which the Coat of Arms is used. Please refer to the Department's Commonwealth Coat of Arms and Government branding web page <http://www.dpmc.gov.au/guidelines/index.cfm#brand> and, in particular, the Guidelines on the use of the Commonwealth Coat of Arms publication.

An appropriate citation for this report is:

Bureau of Infrastructure, Transport and Regional Economics (BITRE), 2019, Domestic airline on time performance, Statistical Report, BITRE, Canberra ACT.

### **Contact us**

This publication is available in PDF format. All other rights are reserved, including in relation to any Departmental logos or trade marks which may exist. For enquiries regarding the licence and any use of this publication, please contact:

Bureau of Infrastructure, Transport and Regional Economics (BITRE)  
Department of Infrastructure, Transport, Cities and Regional Development  
GPO Box 501, Canberra ACT 2601, Australia  
Telephone: (international) +61 2 6274 7210  
Fax: (international) +61 2 6274 6855  
Email: [bitre@infrastructure.gov.au](mailto:bitre@infrastructure.gov.au)  
Website: [www.bitre.gov.au](http://www.bitre.gov.au)

### **Inquiries**

Should you require additional information about the statistics contained in this publication:

Telephone (02) 6274 7790 or Facsimile (02) 6274 7727

Electronic mail: [AVSTATS@infrastructure.gov.au](mailto:AVSTATS@infrastructure.gov.au)

Web site: <http://www.bitre.gov.au/statistics/aviation/otphome.aspx>

# Foreword

The Bureau of Infrastructure, Transport and Regional Economics (BITRE) monitors the punctuality and reliability of major domestic airlines operating between Australian airports. The purpose of this is to allow for evaluation of overall industry and individual airline performance, so that consumers of air travel can make informed decisions.

The following domestic airlines currently report this information monthly to the BITRE: Jetstar, Qantas, QantasLink, Regional Express, Tigerair Australia, Virgin Australia and Virgin Australia Regional Airlines. Data has been gathered since November 2003, although some airlines commenced reporting at a later date, including Jetstar which first reported in May 2004, MacAir in July 2005, Tigerair Australia in April 2008 and Virgin Australia Regional Airlines in May 2013. MacAir ceased operations in February 2009 and data was not received for December 2008 onwards. Virgin Blue was rebranded as Virgin Australia in May 2011 and Tiger Airways was rebranded as Tigerair Australia in July 2013 and time series data in Microsoft Excel spreadsheet format on the BITRE website have been revised to reflect these changes. Services operated by Skywest on behalf of Virgin Australia using ATR/F100 aircraft commenced in November 2011 and were shown separately as Virgin Australia – ATR/F100 Operations. Virgin Australia Regional Airlines commenced operations in May 2013. It was formed after the acquisition of Skywest by Virgin Australia and represented a combination of operations previously reported under Skywest and Virgin Australia – ATR/F100 Operations. In January 2016, Virgin Australia transferred their ATR fleet from Virgin Australia Regional Airlines to Virgin Australia.

Information presented in this report is for Australian domestic routes for which the passenger load averaged 8 000 or more passengers per month over the previous six months and where two or more airlines operated in competition on those routes. There were 65 routes that met this definition in July 2019. Over time, routes which meet these criteria change as airline networks and traffic levels vary.

Participating airlines report their overall monthly network performance where this is possible.

Total industry figures encompass all services operated by reporting airlines only. These airlines collectively carried over 95 per cent of total domestic passengers (regular public transport only) in 2018.

The method of capturing on time performance varies between airlines utilising different recording systems. Jetstar and Qantas jet aircraft use Aircraft Communication Addressing and Reporting System (ACARS) to electronically measure on time performance. Regional Express, Tigerair Australia, Virgin Australia, Virgin Australia Regional Airlines and the Qantas non-jet fleet record on time performance manually using records from pilots, gate agents and/or ground crews.

After initial data is collected, aggregate reports are audited internally by participating airlines prior to publication.

Reports and detailed time series data in Microsoft Excel spreadsheet format are available from the BITRE website at: <http://www.bitre.gov.au/statistics/aviation/otphome.aspx>.



# Contents

	Page
Industry performance .....	1
Individual routes .....	10
Airports.....	24
Definitions .....	30



# Industry performance

For July 2019, on time performance over all routes operated by participating airlines (Jetstar, Qantas, QantasLink, Regional Express, Tigerair Australia, Virgin Australia and Virgin Australia Regional Airlines) averaged 73.9 per cent for on time arrivals and 75.7 per cent for on time departures. Cancellations represented 2.5 per cent of all scheduled flights. The equivalent figures for July 2018 were 73.5 per cent for on time arrivals, 75.3 per cent for on time departures and 2.3 per cent for cancellations.

This month's on time arrivals figure was lower than the long term average performance for all routes (82.4 per cent) and the on time departures figure was also lower than the long term average (83.7 per cent). The rate of cancellations was higher than the long term average of 1.5 per cent.

Qantas achieved the highest on time arrivals among the major domestic airlines at 73.4 per cent followed by Virgin Australia at 72.2 per cent, Jetstar at 68.0 per cent and Tigerair Australia at 61.2 per cent. Of the regional airlines, Regional Express recorded 80.4 per cent for on time arrivals, followed by QantasLink at 79.7 per cent and Virgin Australia Regional Airlines at 70.7 per cent. The Qantas network (Qantas and QantasLink combined operations) recorded 76.7 per cent for on time arrivals while the Virgin Australia network (Virgin Australia and Virgin Australia Regional Airlines combined operations) recorded 72.1 per cent.

Qantas also achieved the highest level of on time departures among the major domestic airlines for July 2019 at 76.3 per cent, followed by Virgin Australia at 75.4 per cent, Jetstar at 66.7 per cent and Tigerair Australia at 64.1 per cent. Of the regional airlines, Regional Express recorded 82.9 per cent for on time departures, followed by QantasLink at 80.4 per cent and Virgin Australia Regional Airlines at 74.2 per cent. The Qantas network recorded 78.5 per cent for on time departures while the Virgin Australia network recorded 75.3 per cent.

Qantas and Tigerair Australia recorded the highest percentage of cancellations (3.9 per cent) during the month, followed by Jetstar (3.1 per cent), QantasLink (2.3 per cent), Regional Express (1.7 per cent), Virgin Australia (1.4 per cent) and Virgin Australia Regional Airlines (1.3 per cent).

Airlines' on time performance varies across the routes they serve. Individual route data by specific airline for 65 routes are shown on pages 10-23.

Of the 65 routes which met the criteria for on time performance reporting in July 2019, the Sydney-Proserpine route had the highest percentage of on time arrivals (97.1 per cent) and the Perth-Newman route had the highest percentage of on time departures (93.1 per cent). The Sunshine Coast-Melbourne route had the lowest percentage of on time arrivals (45.1 per cent) and the Darwin-Melbourne route had the lowest percentage of on time departures (45.1 per cent).

Cancellations were highest on the Hamilton Island-Brisbane and Melbourne-Sydney routes at 9.8 per cent, followed by the Sydney-Melbourne route at 9.4 per cent, the Brisbane-Hamilton

Island route at 8.3 per cent, the Launceston-Sydney route at 6.2 per cent, and the Launceston-Melbourne route at 4.7 per cent.

Newman Airport recorded the highest percentage of on time arrivals (91.0 per cent) and the highest percentage of on time departures (90.3 per cent). Melbourne Airport recorded the lowest percentage of on time arrivals (60.0 per cent) and Ayers Rock Airport recorded the lowest percentage of on time departures (50.0 per cent). These figures only refer to reported routes and do not cover all flights at these airports.



Table 1 On time performance for July 2019 – Total Industry

	<i>Sectors</i>		<i>Arrivals On Time</i>		<i>Departures On Time</i>		<i>Cancellations</i>	
	<i>Scheduled</i>	<i>Flown</i>	<i>No.</i>	<i>%</i>	<i>No.</i>	<i>%</i>	<i>No.</i>	<i>%</i>
Jetstar	8 118	7 867	5 352	68.0	5 245	66.7	251	3.1
Qantas	9 647	9 267	6 799	73.4	7 068	76.3	380	3.9
QantasLink	10 668	10 420	8 300	79.7	8 378	80.4	248	2.3
Regional Express	6 674	6 560	5 273	80.4	5 437	82.9	114	1.7
Tigerair Australia	2 450	2 354	1 440	61.2	1 510	64.1	96	3.9
Virgin Australia	11 931	11 759	8 485	72.2	8 870	75.4	172	1.4
Virgin Australia Regional Airlines	839	828	585	70.7	614	74.2	11	1.3
All Airlines	50 327	49 055	36 234	73.9	37 122	75.7	1 272	2.5
Qantas - all QF designated services	20 315	19 687	15 099	76.7	15 446	78.5	628	3.1
Virgin Australia - all VA designated services	12 770	12 587	9 070	72.1	9 484	75.3	183	1.4

Total airline network data (including routes not shown in this report).

Airlines' on time performance varies across the routes they serve. Individual route data by specific airline for 65 routes are shown on pages 10-23.

Table 2 Top ten routes for on time performance for July 2019 (participating airlines only)

<i>Arrivals</i>		<i>Departures</i>	
<i>Route</i>	<i>On Time (%)</i>	<i>Route</i>	<i>On Time (%)</i>
Sydney-Proserpine	97.1	Perth-Newman	93.1
Cairns-Townsville	91.9	Cairns-Townsville	92.6
Alice Springs-Darwin	91.5	Sydney-Proserpine	91.2
Perth-Newman	91.0	Perth-Port Hedland	91.0
Proserpine-Sydney	90.9	Brisbane-Hobart	90.9
Adelaide-Gold Coast	90.5	Proserpine-Sydney	90.9
Kalgoorlie-Perth	88.7	Perth-Kalgoorlie	90.5
Adelaide-Canberra	88.2	Newman-Perth	90.3
Darwin-Alice Springs	87.8	Adelaide-Port Lincoln	90.0
Brisbane-Gladstone	87.6	Kalgoorlie-Perth	89.3

Table 3 Top ten airports for on time performance for July 2019 (participating airlines and reported routes only)

<i>Arrivals</i>		<i>Departures</i>	
<i>Airport</i>	<i>On Time (%)</i>	<i>Airport</i>	<i>On Time (%)</i>
Newman	91.0	Newman	90.3
Gladstone	87.6	Kalgoorlie	89.3
Proserpine	87.6	Bundaberg	88.4
Port Lincoln	87.5	Port Lincoln	87.8
Kalgoorlie	86.3	Port Hedland	86.6
Wagga Wagga	85.1	Geraldton	86.5
Dubbo	84.9	Karratha	85.6
Alice Springs	83.9	Alice Springs	84.7
Port Hedland	83.8	Gladstone	83.9
Geraldton	83.8	Tamworth	83.0

## Total industry on time performance

Figure 1 On time performance (by month from July 2016)—Total Industry

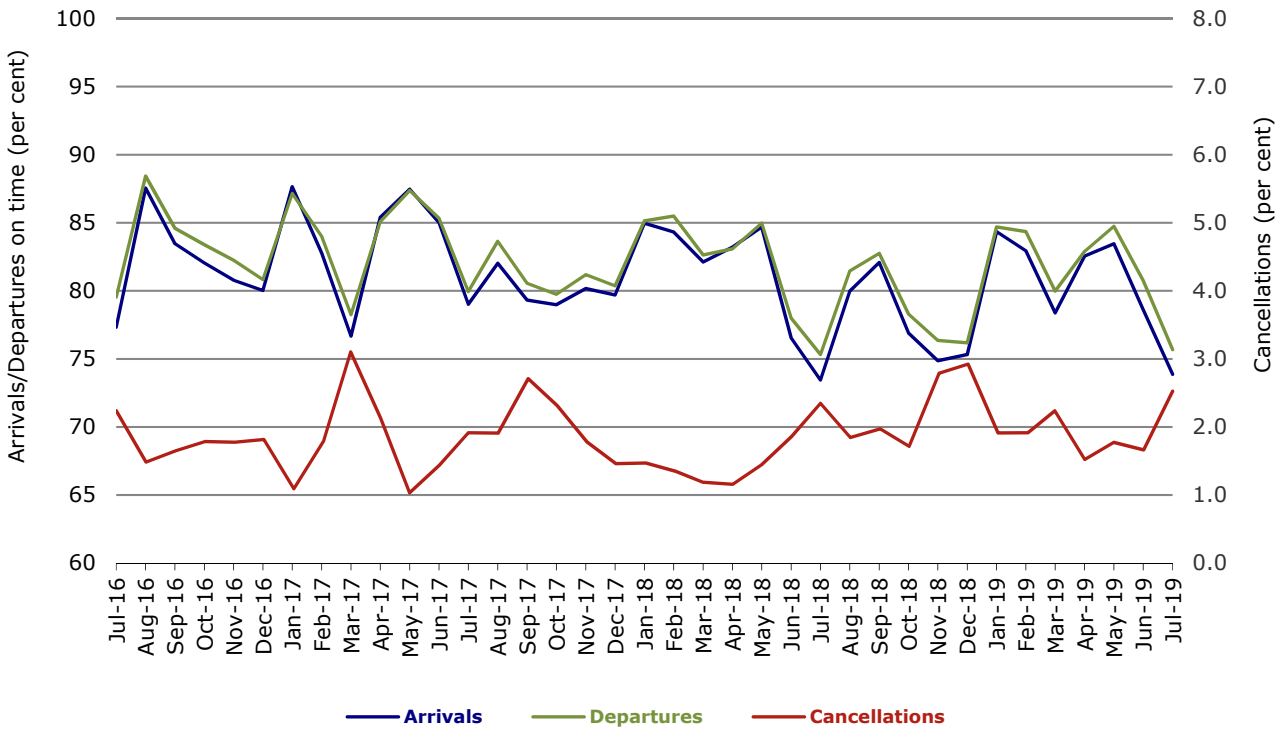


Figure 2 Arrivals on time (by month from July 2018)



Figure 3 Departures on time (by month from July 2018)

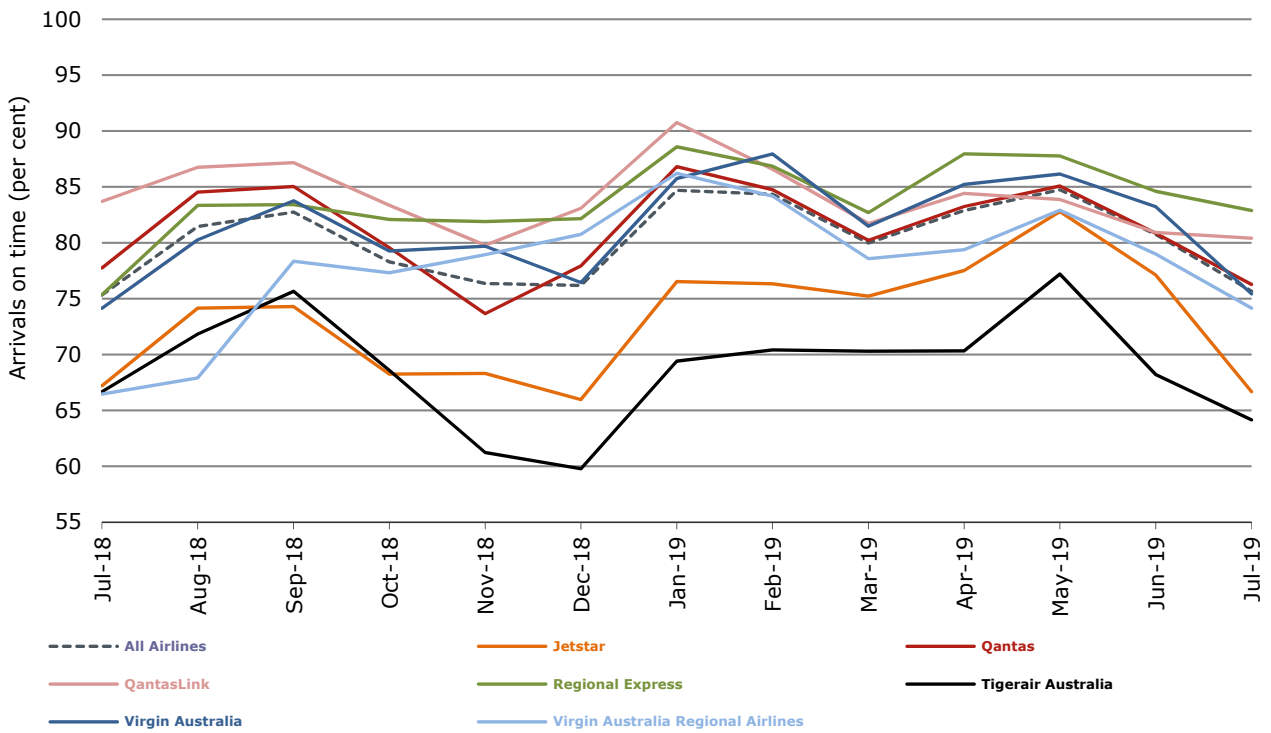
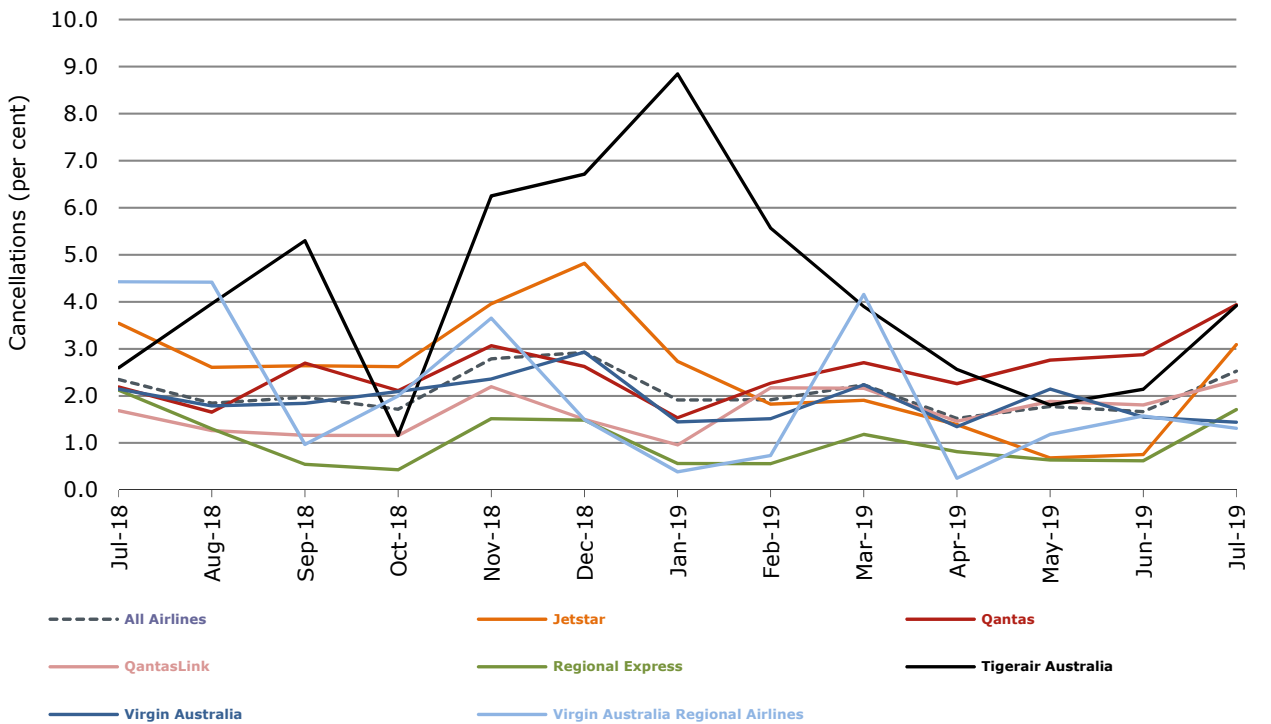


Figure 4 Cancellations (by month from July 2018)



## Major domestic airlines on time performance

Figure 5 On time performance (by month from July 2016)—Jetstar

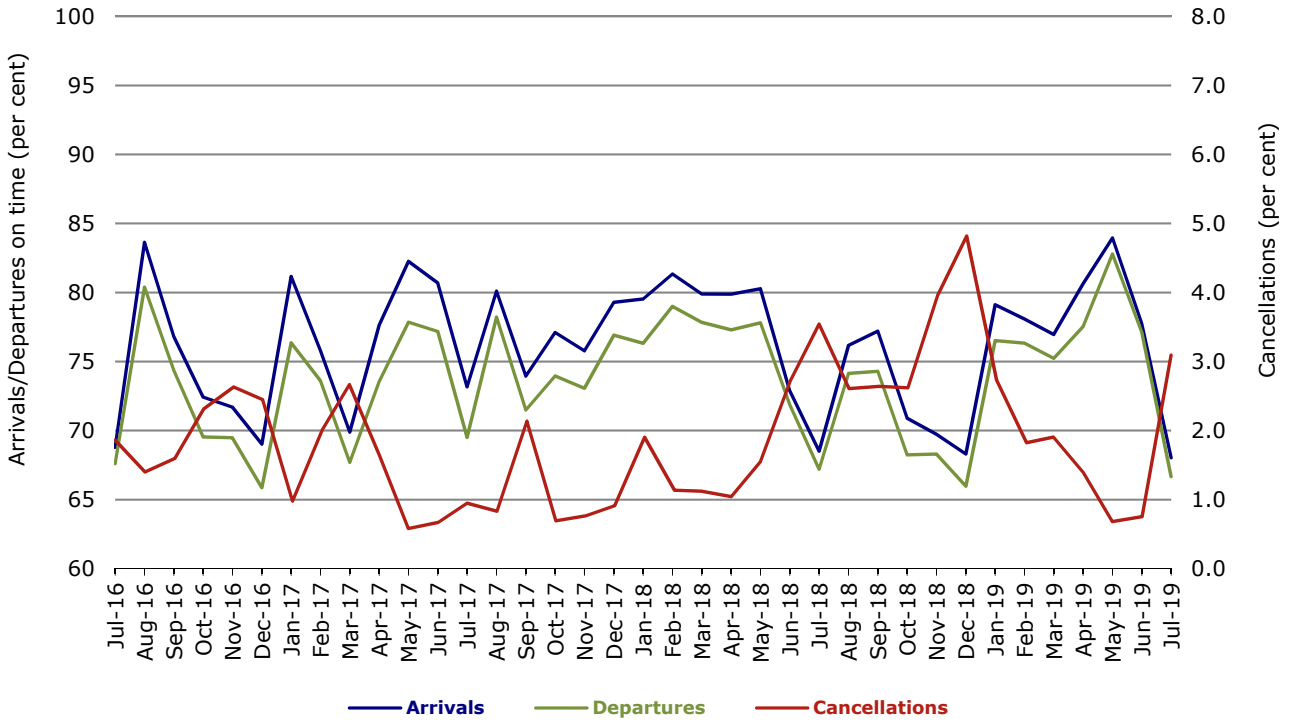


Figure 6 On time performance (by month from July 2016)—Qantas

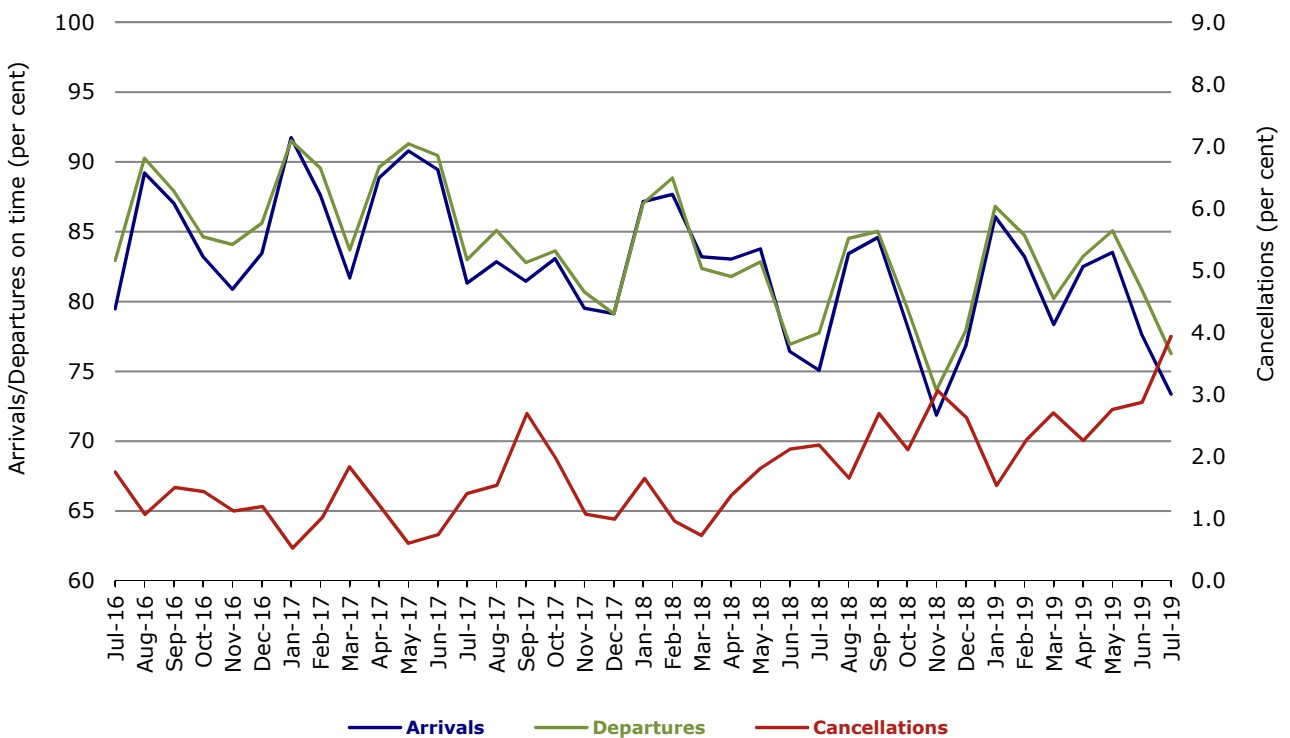


Figure 7 On time performance (by month from July 2016)—Tigerair Australia

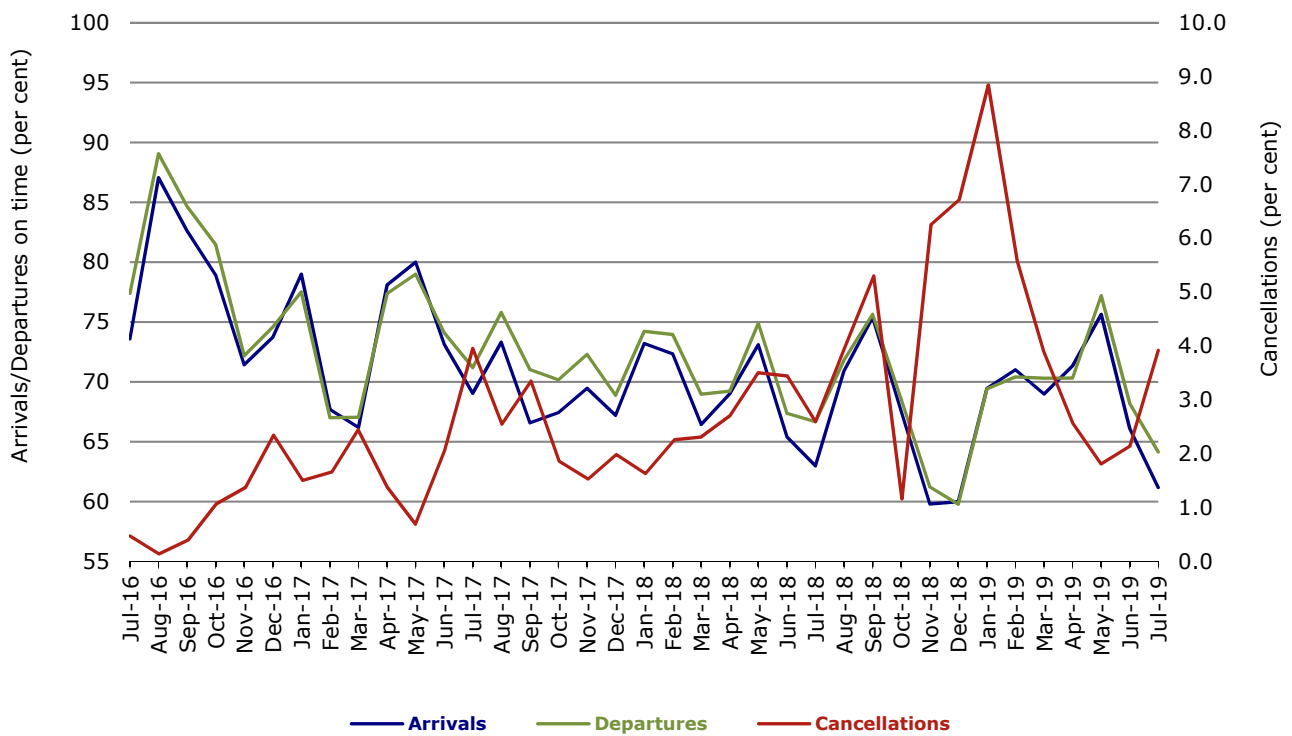
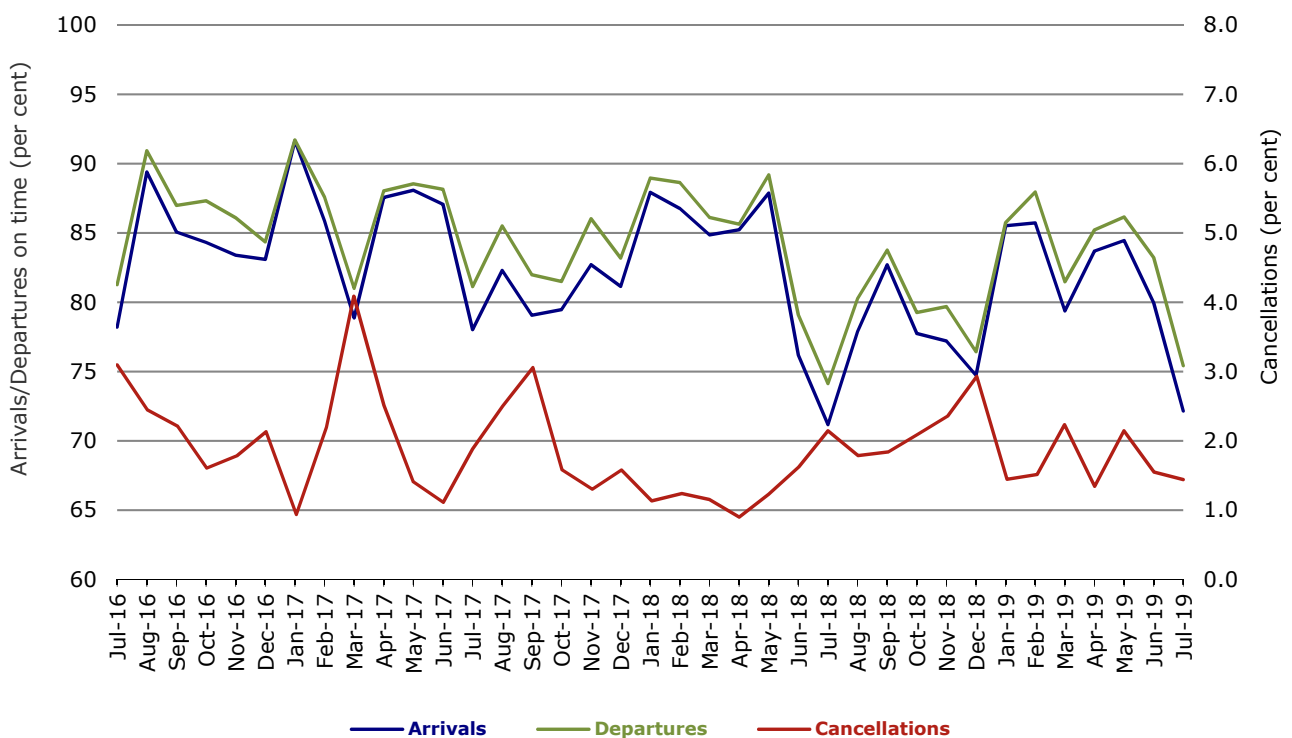


Figure 8 On time performance (by month from July 2016)—Virgin Australia



## Major regional airlines on time performance

Figure 9 On time performance (by month from July 2016)—QantasLink

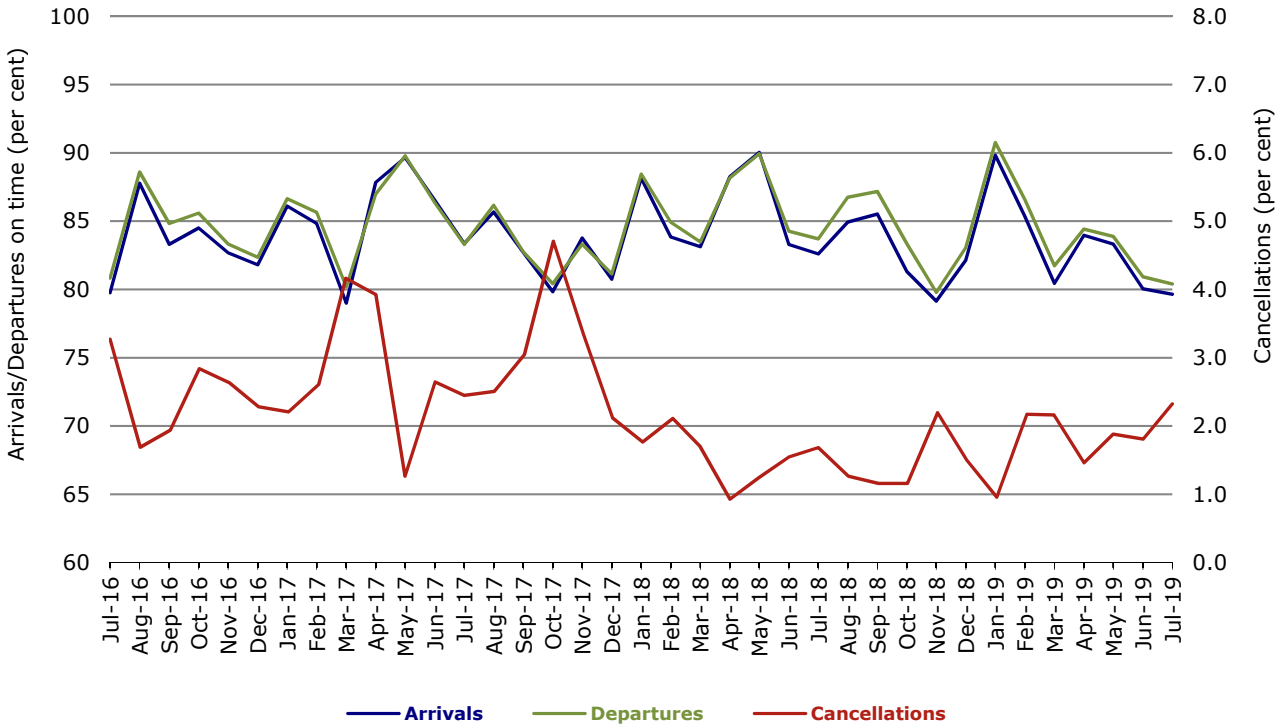


Figure 10 On time performance (by month from July 2016)—Regional Express

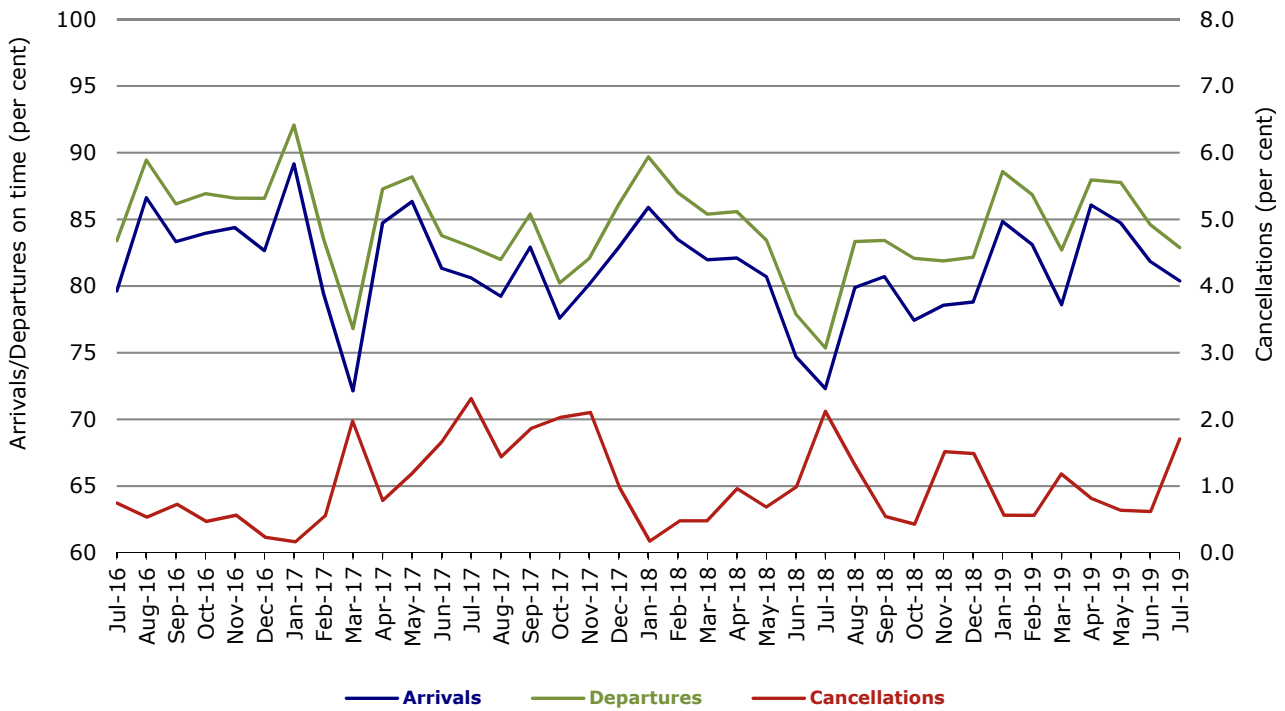
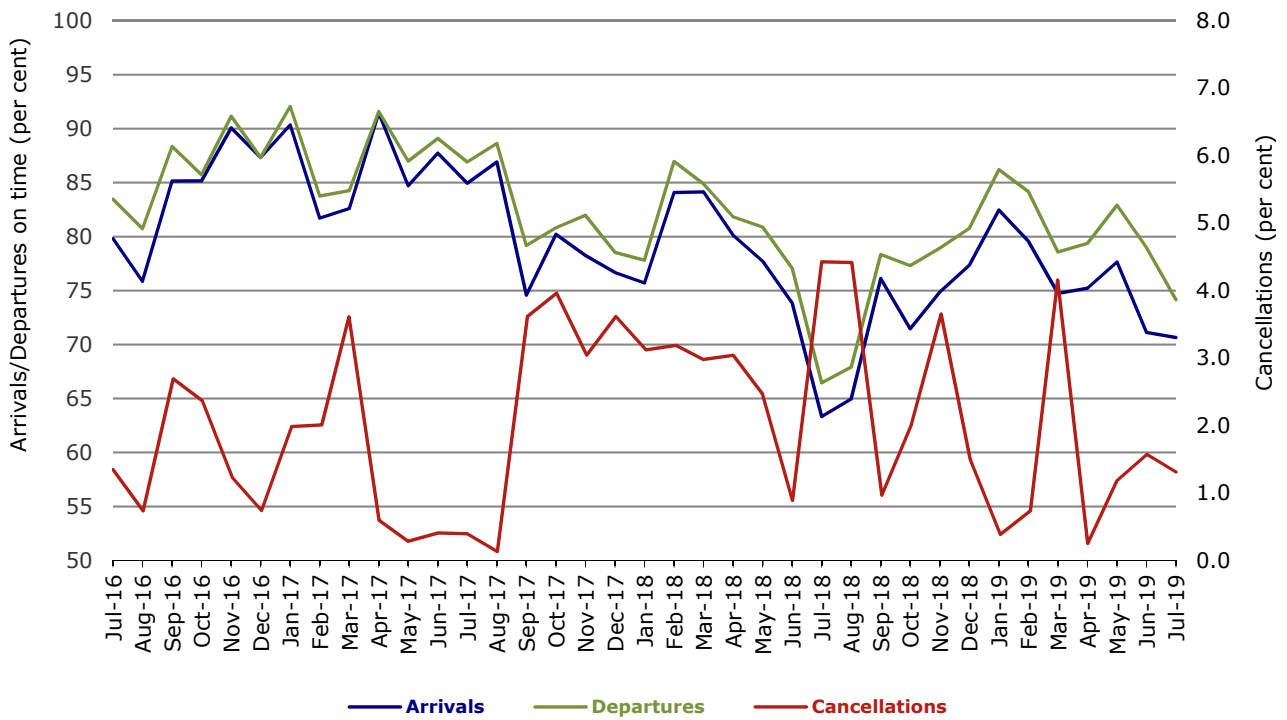


Figure 11 On time performance (by month from July 2016)  
Virgin Australia Regional Airlines



## Individual routes

On time performance is reported for all routes where the passenger load averages over 8000 passengers per month over the previous six months, and where two or more airlines operate in competition on those routes. There are now 65 routes which meet this definition. Over time, however, routes which meet this definition may change as airline networks and traffic levels vary.

	Sectors		Arrivals On Time		Departures On Time		Cancellations	
	Sched.	Flown	No.	%	No.	%	No.	%
<b>Adelaide-Alice Springs</b>								
Qantas	31	31	25	80.6	23	74.2	0	0.0
Virgin Australia	15	15	13	86.7	13	86.7	0	0.0
Virgin Australia Regional Airlines	9	9	5	55.6	5	55.6	0	0.0
All Airlines	55	55	43	78.2	41	74.5	0	0.0
<b>Adelaide-Brisbane</b>								
Jetstar	29	29	26	89.7	25	86.2	0	0.0
Qantas	106	106	93	87.7	90	84.9	0	0.0
Tigerair Australia	31	31	17	54.8	14	45.2	0	0.0
Virgin Australia	110	110	94	85.5	82	74.5	0	0.0
All Airlines	276	276	230	83.3	211	76.4	0	0.0
<b>Adelaide-Canberra</b>								
Qantas	47	45	41	91.1	41	91.1	2	4.3
QantasLink	4	4	3	75.0	3	75.0	0	0.0
Virgin Australia	27	27	23	85.2	23	85.2	0	0.0
All Airlines	78	76	67	88.2	67	88.2	2	2.6
<b>Adelaide-Gold Coast</b>								
Jetstar	31	31	29	93.5	27	87.1	0	0.0
Virgin Australia	32	32	28	87.5	26	81.3	0	0.0
All Airlines	63	63	57	90.5	53	84.1	0	0.0
<b>Adelaide-Melbourne</b>								
Jetstar	114	108	59	54.6	51	47.2	6	5.3
Qantas	295	291	206	70.8	213	73.2	4	1.4
Tigerair Australia	79	77	30	39.0	33	42.9	2	2.5
Virgin Australia	265	264	174	65.9	191	72.3	1	0.4
Virgin Australia Regional Airlines	6	6	0	0.0	1	16.7	0	0.0
All Airlines	759	746	469	62.9	489	65.5	13	1.7
<b>Adelaide-Perth</b>								
Jetstar	28	28	20	71.4	17	60.7	0	0.0
Qantas	124	123	108	87.8	107	87.0	1	0.8
Virgin Australia	39	39	33	84.6	33	84.6	0	0.0
Virgin Australia Regional Airlines	45	44	28	63.6	28	63.6	1	2.2
All Airlines	236	234	189	80.8	185	79.1	2	0.8
<b>Adelaide-Port Lincoln</b>								
QantasLink	102	98	85	86.7	86	87.8	4	3.9
Regional Express	224	222	195	87.8	202	91.0	2	0.9
All Airlines	326	320	280	87.5	288	90.0	6	1.8
<b>Adelaide-Sydney</b>								
Jetstar	115	107	77	72.0	73	68.2	8	7.0
Qantas	240	239	182	76.2	184	77.0	1	0.4
Tigerair Australia	31	29	21	72.4	23	79.3	2	6.5
Virgin Australia	164	164	124	75.6	130	79.3	0	0.0
All Airlines	550	539	404	75.0	410	76.1	11	2.0



	<i>Sectors</i>		<i>Arrivals On Time</i>		<i>Departures On Time</i>		<i>Cancellations</i>	
	<i>Sched.</i>	<i>Flown</i>	<i>No.</i>	<i>%</i>	<i>No.</i>	<i>%</i>	<i>No.</i>	<i>%</i>
<b>Albury-Sydney</b>								
QantasLink	107	104	77	74.0	81	77.9	3	2.8
Regional Express	111	107	91	85.0	94	87.9	4	3.6
Virgin Australia	58	58	39	67.2	40	69.0	0	0.0
All Airlines	276	269	207	77.0	215	79.9	7	2.5
<b>Alice Springs-Adelaide</b>								
Qantas	31	31	26	83.9	25	80.6	0	0.0
Virgin Australia	15	15	13	86.7	13	86.7	0	0.0
Virgin Australia Regional Airlines	9	9	5	55.6	5	55.6	0	0.0
All Airlines	55	55	44	80.0	43	78.2	0	0.0
<b>Alice Springs-Darwin</b>								
Qantas	62	59	57	96.6	55	93.2	3	4.8
Virgin Australia	15	15	14	93.3	14	93.3	0	0.0
Virgin Australia Regional Airlines	8	8	4	50.0	4	50.0	0	0.0
All Airlines	85	82	75	91.5	73	89.0	3	3.5
<b>Armidale-Sydney</b>								
QantasLink	121	119	86	72.3	87	73.1	2	1.7
Regional Express	74	72	49	68.1	50	69.4	2	2.7
All Airlines	195	191	135	70.7	137	71.7	4	2.1
<b>Ayers Rock-Sydney</b>								
Jetstar	31	31	23	74.2	17	54.8	0	0.0
Virgin Australia	31	31	19	61.3	14	45.2	0	0.0
All Airlines	62	62	42	67.7	31	50.0	0	0.0
<b>Ballina-Sydney</b>								
Jetstar	87	85	50	58.8	50	58.8	2	2.3
Regional Express	25	25	18	72.0	20	80.0	0	0.0
Virgin Australia	40	40	28	70.0	32	80.0	0	0.0
All Airlines	152	150	96	64.0	102	68.0	2	1.3
<b>Brisbane-Adelaide</b>								
Jetstar	29	29	26	89.7	24	82.8	0	0.0
Qantas	106	106	96	90.6	94	88.7	0	0.0
Tigerair Australia	31	31	16	51.6	24	77.4	0	0.0
Virgin Australia	102	102	74	72.5	79	77.5	0	0.0
All Airlines	268	268	212	79.1	221	82.5	0	0.0
<b>Brisbane-Bundaberg</b>								
QantasLink	125	125	107	85.6	109	87.2	0	0.0
Virgin Australia	31	31	23	74.2	23	74.2	0	0.0
All Airlines	156	156	130	83.3	132	84.6	0	0.0
<b>Brisbane-Cairns</b>								
Jetstar	115	112	103	92.0	93	83.0	3	2.6
Qantas	31	31	30	96.8	30	96.8	0	0.0
QantasLink	157	150	108	72.0	114	76.0	7	4.5
Tigerair Australia	31	31	22	71.0	21	67.7	0	0.0
Virgin Australia	130	130	113	86.9	103	79.2	0	0.0
All Airlines	464	454	376	82.8	361	79.5	10	2.2
<b>Brisbane-Canberra</b>								
Qantas	4	4	2	50.0	3	75.0	0	0.0
QantasLink	151	146	106	72.6	108	74.0	5	3.3
Tigerair Australia	31	31	16	51.6	18	58.1	0	0.0
Virgin Australia	102	102	79	77.5	82	80.4	0	0.0
All Airlines	288	283	203	71.7	211	74.6	5	1.7

	<i>Sectors</i>		<i>Arrivals On Time</i>		<i>Departures On Time</i>		<i>Cancellations</i>	
	<i>Sched.</i>	<i>Flown</i>	<i>No.</i>	<i>%</i>	<i>No.</i>	<i>%</i>	<i>No.</i>	<i>%</i>
<b>Brisbane-Darwin</b>								
Jetstar	29	29	28	96.6	25	86.2	0	0.0
Qantas	49	49	42	85.7	38	77.6	0	0.0
Tigerair Australia	24	24	20	83.3	19	79.2	0	0.0
Virgin Australia	31	31	23	74.2	20	64.5	0	0.0
All Airlines	133	133	113	85.0	102	76.7	0	0.0
<b>Brisbane-Emerald</b>								
QantasLink	126	125	102	81.6	105	84.0	1	0.8
Virgin Australia	54	54	47	87.0	49	90.7	0	0.0
All Airlines	180	179	149	83.2	154	86.0	1	0.6
<b>Brisbane-Gladstone</b>								
QantasLink	143	142	119	83.8	118	83.1	1	0.7
Virgin Australia	76	76	72	94.7	71	93.4	0	0.0
All Airlines	219	218	191	87.6	189	86.7	1	0.5
<b>Brisbane-Hamilton Island</b>								
QantasLink	30	26	17	65.4	14	53.8	4	13.3
Virgin Australia	30	29	25	86.2	24	82.8	1	3.3
All Airlines	60	55	42	76.4	38	69.1	5	8.3
<b>Brisbane-Hobart</b>								
Jetstar	27	27	25	92.6	26	96.3	0	0.0
Virgin Australia	39	39	30	76.9	34	87.2	0	0.0
All Airlines	66	66	55	83.3	60	90.9	0	0.0
<b>Brisbane-Mackay</b>								
Jetstar	36	35	23	65.7	20	57.1	1	2.8
QantasLink	149	147	122	83.0	118	80.3	2	1.3
Virgin Australia	150	150	125	83.3	128	85.3	0	0.0
All Airlines	335	332	270	81.3	266	80.1	3	0.9
<b>Brisbane-Melbourne</b>								
Jetstar	185	181	109	60.2	100	55.2	4	2.2
Qantas	428	424	279	65.8	327	77.1	4	0.9
Tigerair Australia	114	108	51	47.2	65	60.2	6	5.3
Virgin Australia	388	377	209	55.4	280	74.3	11	2.8
All Airlines	1 115	1 090	648	59.4	772	70.8	25	2.2
<b>Brisbane-Mount Isa</b>								
QantasLink	56	56	40	71.4	48	85.7	0	0.0
Virgin Australia	19	19	15	78.9	16	84.2	0	0.0
All Airlines	75	75	55	73.3	64	85.3	0	0.0
<b>Brisbane-Newcastle</b>								
Jetstar	77	77	61	79.2	62	80.5	0	0.0
QantasLink	93	90	77	85.6	78	86.7	3	3.2
Virgin Australia	90	90	72	80.0	80	88.9	0	0.0
All Airlines	260	257	210	81.7	220	85.6	3	1.2
<b>Brisbane-Perth</b>								
Qantas	152	152	128	84.2	123	80.9	0	0.0
Virgin Australia	110	110	80	72.7	71	64.5	0	0.0
All Airlines	262	262	208	79.4	194	74.0	0	0.0
<b>Brisbane-Proserpine</b>								
Jetstar	40	40	30	75.0	30	75.0	0	0.0
Virgin Australia	39	39	36	92.3	34	87.2	0	0.0
All Airlines	79	79	66	83.5	64	81.0	0	0.0

	<i>Sectors</i>		<i>Arrivals On Time</i>		<i>Departures On Time</i>		<i>Cancellations</i>	
	<i>Sched.</i>	<i>Flown</i>	<i>No.</i>	<i>%</i>	<i>No.</i>	<i>%</i>	<i>No.</i>	<i>%</i>
<b>Brisbane-Rockhampton</b>								
QantasLink	188	187	160	85.6	157	84.0	1	0.5
Virgin Australia	143	143	96	67.1	109	76.2	0	0.0
All Airlines	331	330	256	77.6	266	80.6	1	0.3
<b>Brisbane-Sydney</b>								
Jetstar	204	195	128	65.6	132	67.7	9	4.4
Qantas	643	628	501	79.8	514	81.8	15	2.3
Tigerair Australia	134	129	73	56.6	75	58.1	5	3.7
Virgin Australia	543	538	399	74.2	430	79.9	5	0.9
All Airlines	1 524	1 490	1 101	73.9	1 151	77.2	34	2.2
<b>Brisbane-Townsville</b>								
Jetstar	63	63	58	92.1	61	96.8	0	0.0
Qantas	63	63	59	93.7	57	90.5	0	0.0
QantasLink	110	105	60	57.1	64	61.0	5	4.5
Virgin Australia	147	146	120	82.2	116	79.5	1	0.7
All Airlines	383	377	297	78.8	298	79.0	6	1.6
<b>Broome-Perth</b>								
Qantas	7	7	3	42.9	2	28.6	0	0.0
QantasLink	90	90	60	66.7	54	60.0	0	0.0
Virgin Australia Regional Airlines	74	74	54	73.0	47	63.5	0	0.0
All Airlines	171	171	117	68.4	103	60.2	0	0.0
<b>Bundaberg-Brisbane</b>								
QantasLink	125	124	104	83.9	111	89.5	1	0.8
Virgin Australia	31	31	27	87.1	26	83.9	0	0.0
All Airlines	156	155	131	84.5	137	88.4	1	0.6
<b>Cairns-Brisbane</b>								
Jetstar	114	112	102	91.1	93	83.0	2	1.8
Qantas	32	32	29	90.6	29	90.6	0	0.0
QantasLink	156	149	114	76.5	119	79.9	7	4.5
Tigerair Australia	31	31	22	71.0	22	71.0	0	0.0
Virgin Australia	130	130	111	85.4	105	80.8	0	0.0
All Airlines	463	454	378	83.3	368	81.1	9	1.9
<b>Cairns-Melbourne</b>								
Jetstar	139	133	95	71.4	94	70.7	6	4.3
Qantas	44	44	20	45.5	19	43.2	0	0.0
Tigerair Australia	46	45	28	62.2	25	55.6	1	2.2
Virgin Australia	34	34	13	38.2	17	50.0	0	0.0
All Airlines	263	256	156	60.9	155	60.5	7	2.7
<b>Cairns-Sydney</b>								
Jetstar	117	116	97	83.6	89	76.7	1	0.9
Qantas	71	71	49	69.0	49	69.0	0	0.0
Tigerair Australia	37	37	31	83.8	30	81.1	0	0.0
Virgin Australia	94	94	71	75.5	71	75.5	0	0.0
All Airlines	319	318	248	78.0	239	75.2	1	0.3
<b>Cairns-Townsville</b>								
QantasLink	137	136	128	94.1	129	94.9	1	0.7
Regional Express	13	13	9	69.2	9	69.2	0	0.0
All Airlines	150	149	137	91.9	138	92.6	1	0.7

	Sectors		Arrivals On Time		Departures On Time		Cancellations	
	Sched.	Flown	No.	%	No.	%	No.	%
<b>Canberra-Adelaide</b>								
Qantas	47	47	38	80.9	38	80.9	0	0.0
QantasLink	4	4	2	50.0	1	25.0	0	0.0
Virgin Australia	27	27	22	81.5	21	77.8	0	0.0
All Airlines	78	78	62	79.5	60	76.9	0	0.0
<b>Canberra-Brisbane</b>								
Qantas	4	4	3	75.0	3	75.0	0	0.0
QantasLink	152	145	108	74.5	111	76.6	7	4.6
Tigerair Australia	31	31	17	54.8	15	48.4	0	0.0
Virgin Australia	103	103	92	89.3	87	84.5	0	0.0
All Airlines	290	283	220	77.7	216	76.3	7	2.4
<b>Canberra-Melbourne</b>								
Qantas	251	241	172	71.4	195	80.9	10	4.0
QantasLink	44	42	30	71.4	35	83.3	2	4.5
Tigerair Australia	39	38	19	50.0	21	55.3	1	2.6
Virgin Australia	167	158	104	65.8	122	77.2	9	5.4
All Airlines	501	479	325	67.8	373	77.9	22	4.4
<b>Canberra-Sydney</b>								
QantasLink	494	470	376	80.0	368	78.3	24	4.9
Virgin Australia	260	255	212	83.1	216	84.7	5	1.9
All Airlines	754	725	588	81.1	584	80.6	29	3.8
<b>Coffs Harbour-Sydney</b>								
QantasLink	139	138	109	79.0	108	78.3	1	0.7
Tigerair Australia	27	27	22	81.5	22	81.5	0	0.0
Virgin Australia	31	31	26	83.9	26	83.9	0	0.0
All Airlines	197	196	157	80.1	156	79.6	1	0.5
<b>Darwin-Alice Springs</b>								
Qantas	62	59	55	93.2	53	89.8	3	4.8
Virgin Australia	15	15	13	86.7	12	80.0	0	0.0
Virgin Australia Regional Airlines	8	8	4	50.0	5	62.5	0	0.0
All Airlines	85	82	72	87.8	70	85.4	3	3.5
<b>Darwin-Brisbane</b>								
Jetstar	29	29	25	86.2	24	82.8	0	0.0
Qantas	49	49	41	83.7	35	71.4	0	0.0
Tigerair Australia	24	24	19	79.2	14	58.3	0	0.0
Virgin Australia	31	31	18	58.1	20	64.5	0	0.0
All Airlines	133	133	103	77.4	93	69.9	0	0.0
<b>Darwin-Melbourne</b>								
Jetstar	31	29	14	48.3	9	31.0	2	6.5
Qantas	40	40	24	60.0	19	47.5	0	0.0
Virgin Australia	34	33	23	69.7	18	54.5	1	2.9
All Airlines	105	102	61	59.8	46	45.1	3	2.9
<b>Darwin-Perth</b>								
Qantas	31	31	29	93.5	25	80.6	0	0.0
Virgin Australia	23	23	19	82.6	15	65.2	0	0.0
Virgin Australia Regional Airlines	8	8	4	50.0	4	50.0	0	0.0
All Airlines	62	62	52	83.9	44	71.0	0	0.0
<b>Darwin-Sydney</b>								
Jetstar	29	29	24	82.8	25	86.2	0	0.0
Qantas	64	63	36	57.1	29	46.0	1	1.6
Virgin Australia	31	31	8	25.8	7	22.6	0	0.0
All Airlines	124	123	68	55.3	61	49.6	1	0.8

	<i>Sectors</i>		<i>Arrivals On Time</i>		<i>Departures On Time</i>		<i>Cancellations</i>	
	<i>Sched.</i>	<i>Flown</i>	<i>No.</i>	<i>%</i>	<i>No.</i>	<i>%</i>	<i>No.</i>	<i>%</i>
<b>Dubbo-Sydney</b>								
QantasLink	126	122	100	82.0	101	82.8	4	3.2
Regional Express	138	134	105	78.4	110	82.1	4	2.9
All Airlines	264	256	205	80.1	211	82.4	8	3.0
<b>Emerald-Brisbane</b>								
QantasLink	126	125	98	78.4	94	75.2	1	0.8
Virgin Australia	54	54	52	96.3	52	96.3	0	0.0
All Airlines	180	179	150	83.8	146	81.6	1	0.6
<b>Geraldton-Perth</b>								
QantasLink	54	54	46	85.2	49	90.7	0	0.0
Virgin Australia Regional Airlines	21	20	15	75.0	15	75.0	1	4.8
All Airlines	75	74	61	82.4	64	86.5	1	1.3
<b>Gladstone-Brisbane</b>								
QantasLink	143	141	115	81.6	112	79.4	2	1.4
Virgin Australia	76	76	67	88.2	70	92.1	0	0.0
All Airlines	219	217	182	83.9	182	83.9	2	0.9
<b>Gold Coast-Adelaide</b>								
Jetstar	31	31	29	93.5	29	93.5	0	0.0
Virgin Australia	32	32	20	62.5	26	81.3	0	0.0
All Airlines	63	63	49	77.8	55	87.3	0	0.0
<b>Gold Coast-Melbourne</b>								
Jetstar	234	227	146	64.3	143	63.0	7	3.0
Qantas	31	31	11	35.5	10	32.3	0	0.0
Tigerair Australia	85	84	34	40.5	40	47.6	1	1.2
Virgin Australia	189	187	94	50.3	104	55.6	2	1.1
All Airlines	539	529	285	53.9	297	56.1	10	1.9
<b>Gold Coast-Sydney</b>								
Jetstar	327	314	235	74.8	227	72.3	13	4.0
Qantas	71	71	49	69.0	48	67.6	0	0.0
QantasLink	65	61	39	63.9	42	68.9	4	6.2
Tigerair Australia	90	90	59	65.6	61	67.8	0	0.0
Virgin Australia	257	253	171	67.6	176	69.6	4	1.6
All Airlines	810	789	553	70.1	554	70.2	21	2.6
<b>Hamilton Island-Brisbane</b>								
QantasLink	30	26	12	46.2	11	42.3	4	13.3
Virgin Australia	31	29	23	79.3	22	75.9	2	6.5
All Airlines	61	55	35	63.6	33	60.0	6	9.8
<b>Hamilton Island-Sydney</b>								
Jetstar	29	28	16	57.1	16	57.1	1	3.4
Qantas	9	9	6	66.7	7	77.8	0	0.0
QantasLink	22	21	15	71.4	15	71.4	1	4.5
Virgin Australia	23	22	16	72.7	16	72.7	1	4.3
All Airlines	83	80	53	66.3	54	67.5	3	3.6
<b>Hobart-Brisbane</b>								
Jetstar	27	27	25	92.6	24	88.9	0	0.0
Virgin Australia	39	39	25	64.1	25	64.1	0	0.0
All Airlines	66	66	50	75.8	49	74.2	0	0.0

	<i>Sectors</i>		<i>Arrivals On Time</i>		<i>Departures On Time</i>		<i>Cancellations</i>	
	<i>Sched.</i>	<i>Flown</i>	<i>No.</i>	<i>%</i>	<i>No.</i>	<i>%</i>	<i>No.</i>	<i>%</i>
<b>Hobart-Melbourne</b>								
Jetstar	173	167	75	44.9	78	46.7	6	3.5
Qantas	114	113	64	56.6	75	66.4	1	0.9
Tigerair Australia	39	38	20	52.6	22	57.9	1	2.6
Virgin Australia	140	140	82	58.6	101	72.1	0	0.0
All Airlines	466	458	241	52.6	276	60.3	8	1.7
<b>Hobart-Sydney</b>								
Jetstar	85	83	57	68.7	52	62.7	2	2.4
QantasLink	75	73	51	69.9	53	72.6	2	2.7
Virgin Australia	72	71	53	74.6	51	71.8	1	1.4
All Airlines	232	227	161	70.9	156	68.7	5	2.2
<b>Kalgoorlie-Perth</b>								
Qantas	5	5	5	100.0	5	100.0	0	0.0
QantasLink	85	83	74	89.2	74	89.2	2	2.4
Virgin Australia	27	27	23	85.2	25	92.6	0	0.0
Virgin Australia Regional Airlines	56	53	47	88.7	46	86.8	3	5.4
All Airlines	173	168	149	88.7	150	89.3	5	2.9
<b>Karratha-Perth</b>								
Qantas	38	37	36	97.3	33	89.2	1	2.6
QantasLink	154	145	128	88.3	132	91.0	9	5.8
Virgin Australia	4	4	4	100.0	4	100.0	0	0.0
Virgin Australia Regional Airlines	65	64	43	67.2	45	70.3	1	1.5
All Airlines	261	250	211	84.4	214	85.6	11	4.2
<b>Launceston-Melbourne</b>								
Jetstar	125	120	64	53.3	61	50.8	5	4.0
QantasLink	120	110	72	65.5	75	68.2	10	8.3
Virgin Australia	98	97	60	61.9	75	77.3	1	1.0
All Airlines	343	327	196	59.9	211	64.5	16	4.7
<b>Launceston-Sydney</b>								
Jetstar	50	46	25	54.3	25	54.3	4	8.0
Virgin Australia	31	30	23	76.7	19	63.3	1	3.2
All Airlines	81	76	48	63.2	44	57.9	5	6.2
<b>Mackay-Brisbane</b>								
Jetstar	36	35	25	71.4	18	51.4	1	2.8
QantasLink	143	140	112	80.0	116	82.9	3	2.1
Virgin Australia	149	149	138	92.6	132	88.6	0	0.0
All Airlines	328	324	275	84.9	266	82.1	4	1.2
<b>Melbourne-Adelaide</b>								
Jetstar	115	106	59	55.7	70	66.0	9	7.8
Qantas	295	290	206	71.0	232	80.0	5	1.7
Tigerair Australia	79	77	38	49.4	46	59.7	2	2.5
Virgin Australia	269	268	191	71.3	203	75.7	1	0.4
Virgin Australia Regional Airlines	6	6	1	16.7	1	16.7	0	0.0
All Airlines	764	747	495	66.3	552	73.9	17	2.2
<b>Melbourne-Brisbane</b>								
Jetstar	186	182	84	46.2	82	45.1	4	2.2
Qantas	427	423	307	72.6	315	74.5	4	0.9
Tigerair Australia	114	108	74	68.5	75	69.4	6	5.3
Virgin Australia	386	376	279	74.2	286	76.1	10	2.6
All Airlines	1 113	1 089	744	68.3	758	69.6	24	2.2

	<i>Sectors</i>		<i>Arrivals On Time</i>		<i>Departures On Time</i>		<i>Cancellations</i>	
	<i>Sched.</i>	<i>Flown</i>	<i>No.</i>	<i>%</i>	<i>No.</i>	<i>%</i>	<i>No.</i>	<i>%</i>
<b>Melbourne-Cairns</b>								
Jetstar	138	134	89	66.4	87	64.9	4	2.9
Qantas	45	45	30	66.7	30	66.7	0	0.0
Tigerair Australia	46	46	31	67.4	36	78.3	0	0.0
Virgin Australia	34	34	26	76.5	30	88.2	0	0.0
All Airlines	263	259	176	68.0	183	70.7	4	1.5
<b>Melbourne-Canberra</b>								
Qantas	251	243	179	73.7	187	77.0	8	3.2
QantasLink	44	43	26	60.5	29	67.4	1	2.3
Tigerair Australia	39	38	22	57.9	21	55.3	1	2.6
Virgin Australia	168	160	117	73.1	123	76.9	8	4.8
All Airlines	502	484	344	71.1	360	74.4	18	3.6
<b>Melbourne-Darwin</b>								
Jetstar	30	29	10	34.5	11	37.9	1	3.3
Qantas	40	40	28	70.0	32	80.0	0	0.0
Virgin Australia	34	34	13	38.2	18	52.9	0	0.0
All Airlines	104	103	51	49.5	61	59.2	1	1.0
<b>Melbourne-Gold Coast</b>								
Jetstar	234	228	146	64.0	150	65.8	6	2.6
Qantas	31	31	18	58.1	19	61.3	0	0.0
Tigerair Australia	85	84	49	58.3	56	66.7	1	1.2
Virgin Australia	189	188	133	70.7	136	72.3	1	0.5
All Airlines	539	531	346	65.2	361	68.0	8	1.5
<b>Melbourne-Hobart</b>								
Jetstar	173	167	103	61.7	109	65.3	6	3.5
Qantas	114	114	78	68.4	89	78.1	0	0.0
Tigerair Australia	39	38	29	76.3	31	81.6	1	2.6
Virgin Australia	140	140	95	67.9	110	78.6	0	0.0
All Airlines	466	459	305	66.4	339	73.9	7	1.5
<b>Melbourne-Launceston</b>								
Jetstar	124	120	66	55.0	73	60.8	4	3.2
QantasLink	118	110	71	64.5	73	66.4	8	6.8
Virgin Australia	100	99	57	57.6	73	73.7	1	1.0
All Airlines	342	329	194	59.0	219	66.6	13	3.8
<b>Melbourne-Mildura</b>								
QantasLink	97	95	64	67.4	68	71.6	2	2.1
Regional Express	88	87	59	67.8	66	75.9	1	1.1
Virgin Australia	31	31	24	77.4	27	87.1	0	0.0
All Airlines	216	213	147	69.0	161	75.6	3	1.4
<b>Melbourne-Newcastle</b>								
Jetstar	113	110	76	69.1	64	58.2	3	2.7
Virgin Australia	31	31	18	58.1	18	58.1	0	0.0
All Airlines	144	141	94	66.7	82	58.2	3	2.1
<b>Melbourne-Perth</b>								
Jetstar	54	52	43	82.7	42	80.8	2	3.7
Qantas	210	209	127	60.8	124	59.3	1	0.5
Tigerair Australia	57	57	37	64.9	40	70.2	0	0.0
Virgin Australia	142	142	83	58.5	83	58.5	0	0.0
All Airlines	463	460	290	63.0	289	62.8	3	0.6

	<i>Sectors</i>		<i>Arrivals On Time</i>		<i>Departures On Time</i>		<i>Cancellations</i>	
	<i>Sched.</i>	<i>Flown</i>	<i>No.</i>	<i>%</i>	<i>No.</i>	<i>%</i>	<i>No.</i>	<i>%</i>
<b>Melbourne-Sunshine Coast</b>								
Jetstar	99	97	66	68.0	62	63.9	2	2.0
Virgin Australia	65	65	51	78.5	51	78.5	0	0.0
All Airlines	164	162	117	72.2	113	69.8	2	1.2
<b>Melbourne-Sydney</b>								
Jetstar	448	418	245	58.6	257	61.5	30	6.7
Qantas	1 102	957	678	70.8	735	76.8	145	13.2
Tigerair Australia	250	221	130	58.8	129	58.4	29	11.6
Virgin Australia	748	702	489	69.7	539	76.8	46	6.1
All Airlines	2 548	2 298	1 542	67.1	1 660	72.2	250	9.8
<b>Mildura-Melbourne</b>								
QantasLink	97	95	55	57.9	61	64.2	2	2.1
Regional Express	88	86	47	54.7	58	67.4	2	2.3
Virgin Australia	31	31	23	74.2	25	80.6	0	0.0
All Airlines	216	212	125	59.0	144	67.9	4	1.9
<b>Mount Isa-Brisbane</b>								
QantasLink	56	56	48	85.7	45	80.4	0	0.0
Virgin Australia	13	13	12	92.3	10	76.9	0	0.0
All Airlines	69	69	60	87.0	55	79.7	0	0.0
<b>Newcastle-Brisbane</b>								
Jetstar	77	77	66	85.7	66	85.7	0	0.0
QantasLink	93	90	75	83.3	76	84.4	3	3.2
Virgin Australia	90	90	80	88.9	82	91.1	0	0.0
All Airlines	260	257	221	86.0	224	87.2	3	1.2
<b>Newcastle-Melbourne</b>								
Jetstar	113	111	73	65.8	81	73.0	2	1.8
Virgin Australia	31	31	13	41.9	17	54.8	0	0.0
All Airlines	144	142	86	60.6	98	69.0	2	1.4
<b>Newman-Perth</b>								
Qantas	30	29	26	89.7	26	89.7	1	3.3
QantasLink	120	115	98	85.2	105	91.3	5	4.2
Virgin Australia	20	20	17	85.0	16	80.0	0	0.0
Virgin Australia Regional Airlines	21	21	17	81.0	20	95.2	0	0.0
All Airlines	191	185	158	85.4	167	90.3	6	3.1
<b>Perth-Adelaide</b>								
Jetstar	29	28	21	75.0	21	75.0	1	3.4
Qantas	125	124	112	90.3	110	88.7	1	0.8
Virgin Australia	38	38	31	81.6	32	84.2	0	0.0
Virgin Australia Regional Airlines	44	44	24	54.5	32	72.7	0	0.0
All Airlines	236	234	188	80.3	195	83.3	2	0.8
<b>Perth-Brisbane</b>								
Qantas	150	150	133	88.7	135	90.0	0	0.0
Virgin Australia	113	113	95	84.1	95	84.1	0	0.0
All Airlines	263	263	228	86.7	230	87.5	0	0.0
<b>Perth-Broome</b>								
Qantas	7	7	6	85.7	6	85.7	0	0.0
QantasLink	89	89	61	68.5	63	70.8	0	0.0
Virgin Australia Regional Airlines	74	74	46	62.2	51	68.9	0	0.0
All Airlines	170	170	113	66.5	120	70.6	0	0.0



	<i>Sectors</i>		<i>Arrivals On Time</i>		<i>Departures On Time</i>		<i>Cancellations</i>	
	<i>Sched.</i>	<i>Flown</i>	<i>No.</i>	<i>%</i>	<i>No.</i>	<i>%</i>	<i>No.</i>	<i>%</i>
<b>Perth-Darwin</b>								
Qantas	31	31	27	87.1	29	93.5	0	0.0
Virgin Australia	23	23	18	78.3	18	78.3	0	0.0
Virgin Australia Regional Airlines	8	8	8	100.0	8	100.0	0	0.0
All Airlines	62	62	53	85.5	55	88.7	0	0.0
<b>Perth-Geraldton</b>								
QantasLink	54	54	47	87.0	47	87.0	0	0.0
Virgin Australia Regional Airlines	21	20	15	75.0	15	75.0	1	4.8
All Airlines	75	74	62	83.8	62	83.8	1	1.3
<b>Perth-Kalgoorlie</b>								
Qantas	5	5	5	100.0	5	100.0	0	0.0
QantasLink	85	83	73	88.0	72	86.7	2	2.4
Virgin Australia	27	27	26	96.3	27	100.0	0	0.0
Virgin Australia Regional Airlines	56	53	41	77.4	48	90.6	3	5.4
All Airlines	173	168	145	86.3	152	90.5	5	2.9
<b>Perth-Karratha</b>								
Qantas	38	37	36	97.3	37	100.0	1	2.6
QantasLink	154	147	117	79.6	126	85.7	7	4.5
Virgin Australia	4	4	3	75.0	3	75.0	0	0.0
Virgin Australia Regional Airlines	65	64	47	73.4	56	87.5	1	1.5
All Airlines	261	252	203	80.6	222	88.1	9	3.4
<b>Perth-Melbourne</b>								
Jetstar	55	52	38	73.1	34	65.4	3	5.5
Qantas	210	209	145	69.4	151	72.2	1	0.5
Tigerair Australia	57	57	33	57.9	33	57.9	0	0.0
Virgin Australia	140	140	88	62.9	95	67.9	0	0.0
All Airlines	462	458	304	66.4	313	68.3	4	0.9
<b>Perth-Newman</b>								
Qantas	30	29	27	93.1	27	93.1	1	3.3
QantasLink	120	118	109	92.4	110	93.2	2	1.7
Virgin Australia	20	20	15	75.0	17	85.0	0	0.0
Virgin Australia Regional Airlines	21	21	20	95.2	21	100.0	0	0.0
All Airlines	191	188	171	91.0	175	93.1	3	1.6
<b>Perth-Port Hedland</b>								
Qantas	34	34	34	100.0	33	97.1	0	0.0
QantasLink	123	122	94	77.0	110	90.2	1	0.8
Virgin Australia	19	19	18	94.7	17	89.5	0	0.0
Virgin Australia Regional Airlines	35	35	30	85.7	31	88.6	0	0.0
All Airlines	211	210	176	83.8	191	91.0	1	0.5
<b>Perth-Sydney</b>								
Jetstar	27	27	22	81.5	15	55.6	0	0.0
Qantas	212	209	148	70.8	130	62.2	3	1.4
Tigerair Australia	27	27	18	66.7	13	48.1	0	0.0
Virgin Australia	125	125	106	84.8	96	76.8	0	0.0
All Airlines	391	388	294	75.8	254	65.5	3	0.8
<b>Port Hedland-Perth</b>								
Qantas	34	34	34	100.0	32	94.1	0	0.0
QantasLink	121	121	102	84.3	112	92.6	0	0.0
Virgin Australia	19	19	13	68.4	13	68.4	0	0.0
Virgin Australia Regional Airlines	35	35	25	71.4	24	68.6	0	0.0
All Airlines	209	209	174	83.3	181	86.6	0	0.0

	<i>Sectors</i>		<i>Arrivals On Time</i>		<i>Departures On Time</i>		<i>Cancellations</i>	
	<i>Sched.</i>	<i>Flown</i>	<i>No.</i>	<i>%</i>	<i>No.</i>	<i>%</i>	<i>No.</i>	<i>%</i>
<b>Port Lincoln-Adelaide</b>								
QantasLink	102	98	82	83.7	80	81.6	4	3.9
Regional Express	225	222	191	86.0	201	90.5	3	1.3
All Airlines	327	320	273	85.3	281	87.8	7	2.1
<b>Port Macquarie-Sydney</b>								
QantasLink	122	119	98	82.4	100	84.0	3	2.5
Virgin Australia	58	58	44	75.9	43	74.1	0	0.0
All Airlines	180	177	142	80.2	143	80.8	3	1.7
<b>Proserpine-Brisbane</b>								
Jetstar	40	40	29	72.5	28	70.0	0	0.0
Virgin Australia	39	39	33	84.6	34	87.2	0	0.0
All Airlines	79	79	62	78.5	62	78.5	0	0.0
<b>Proserpine-Sydney</b>								
Jetstar	13	13	12	92.3	12	92.3	0	0.0
Tigerair Australia	20	20	18	90.0	18	90.0	0	0.0
All Airlines	33	33	30	90.9	30	90.9	0	0.0
<b>Rockhampton-Brisbane</b>								
QantasLink	192	191	147	77.0	150	78.5	1	0.5
Virgin Australia	143	143	111	77.6	105	73.4	0	0.0
All Airlines	335	334	258	77.2	255	76.3	1	0.3
<b>Sunshine Coast-Melbourne</b>								
Jetstar	99	97	49	50.5	55	56.7	2	2.0
Virgin Australia	65	65	24	36.9	29	44.6	0	0.0
All Airlines	164	162	73	45.1	84	51.9	2	1.2
<b>Sunshine Coast-Sydney</b>								
Jetstar	116	110	64	58.2	67	60.9	6	5.2
QantasLink	58	55	33	60.0	32	58.2	3	5.2
Virgin Australia	51	51	27	52.9	29	56.9	0	0.0
All Airlines	225	216	124	57.4	128	59.3	9	4.0
<b>Sydney-Adelaide</b>								
Jetstar	115	110	76	69.1	74	67.3	5	4.3
Qantas	240	236	170	72.0	176	74.6	4	1.7
Tigerair Australia	31	29	22	75.9	22	75.9	2	6.5
Virgin Australia	169	169	127	75.1	133	78.7	0	0.0
All Airlines	555	544	395	72.6	405	74.4	11	2.0
<b>Sydney-Albury</b>								
QantasLink	107	104	78	75.0	73	70.2	3	2.8
Regional Express	109	105	89	84.8	86	81.9	4	3.7
Virgin Australia	58	58	39	67.2	42	72.4	0	0.0
All Airlines	274	267	206	77.2	201	75.3	7	2.6
<b>Sydney-Armidale</b>								
QantasLink	120	119	92	77.3	86	72.3	1	0.8
Regional Express	72	70	53	75.7	53	75.7	2	2.8
All Airlines	192	189	145	76.7	139	73.5	3	1.6
<b>Sydney-Ayers Rock</b>								
Jetstar	31	31	22	71.0	27	87.1	0	0.0
Virgin Australia	31	31	20	64.5	23	74.2	0	0.0
All Airlines	62	62	42	67.7	50	80.6	0	0.0

	<i>Sectors</i>		<i>Arrivals On Time</i>		<i>Departures On Time</i>		<i>Cancellations</i>	
	<i>Sched.</i>	<i>Flown</i>	<i>No.</i>	<i>%</i>	<i>No.</i>	<i>%</i>	<i>No.</i>	<i>%</i>
<b>Sydney-Ballina</b>								
Jetstar	87	85	53	62.4	56	65.9	2	2.3
Regional Express	24	24	22	91.7	22	91.7	0	0.0
Virgin Australia	40	40	33	82.5	33	82.5	0	0.0
All Airlines	151	149	108	72.5	111	74.5	2	1.3
<b>Sydney-Brisbane</b>								
Jetstar	204	195	133	68.2	124	63.6	9	4.4
Qantas	644	631	477	75.6	480	76.1	13	2.0
Tigerair Australia	134	129	88	68.2	85	65.9	5	3.7
Virgin Australia	534	527	385	73.1	390	74.0	7	1.3
All Airlines	1 516	1 482	1 083	73.1	1 079	72.8	34	2.2
<b>Sydney-Cairns</b>								
Jetstar	117	116	99	85.3	91	78.4	1	0.9
Qantas	70	70	54	77.1	47	67.1	0	0.0
Tigerair Australia	37	37	34	91.9	36	97.3	0	0.0
Virgin Australia	94	94	66	70.2	61	64.9	0	0.0
All Airlines	318	317	253	79.8	235	74.1	1	0.3
<b>Sydney-Canberra</b>								
QantasLink	492	469	348	74.2	367	78.3	23	4.7
Virgin Australia	259	255	204	80.0	197	77.3	4	1.5
All Airlines	751	724	552	76.2	564	77.9	27	3.6
<b>Sydney-Coffs Harbour</b>								
QantasLink	141	140	113	80.7	102	72.9	1	0.7
Tigerair Australia	27	27	20	74.1	21	77.8	0	0.0
Virgin Australia	31	31	28	90.3	28	90.3	0	0.0
All Airlines	199	198	161	81.3	151	76.3	1	0.5
<b>Sydney-Darwin</b>								
Jetstar	29	29	22	75.9	22	75.9	0	0.0
Qantas	64	64	38	59.4	36	56.3	0	0.0
Virgin Australia	31	31	22	71.0	20	64.5	0	0.0
All Airlines	124	124	82	66.1	78	62.9	0	0.0
<b>Sydney-Dubbo</b>								
QantasLink	126	122	105	86.1	99	81.1	4	3.2
Regional Express	140	137	115	83.9	110	80.3	3	2.1
All Airlines	266	259	220	84.9	209	80.7	7	2.6
<b>Sydney-Gold Coast</b>								
Jetstar	327	314	251	79.9	243	77.4	13	4.0
Qantas	71	71	53	74.6	47	66.2	0	0.0
QantasLink	65	62	39	62.9	38	61.3	3	4.6
Tigerair Australia	90	90	67	74.4	67	74.4	0	0.0
Virgin Australia	259	255	159	62.4	166	65.1	4	1.5
All Airlines	812	792	569	71.8	561	70.8	20	2.5
<b>Sydney-Hamilton Island</b>								
Jetstar	28	28	21	75.0	19	67.9	0	0.0
Qantas	9	8	7	87.5	6	75.0	1	11.1
QantasLink	21	21	16	76.2	14	66.7	0	0.0
Virgin Australia	23	22	16	72.7	17	77.3	1	4.3
All Airlines	81	79	60	75.9	56	70.9	2	2.5

	<i>Sectors</i>		<i>Arrivals On Time</i>		<i>Departures On Time</i>		<i>Cancellations</i>	
	<i>Sched.</i>	<i>Flown</i>	<i>No.</i>	<i>%</i>	<i>No.</i>	<i>%</i>	<i>No.</i>	<i>%</i>
<b>Sydney-Hobart</b>								
Jetstar	85	83	58	69.9	60	72.3	2	2.4
QantasLink	75	73	49	67.1	47	64.4	2	2.7
Virgin Australia	72	71	53	74.6	55	77.5	1	1.4
All Airlines	232	227	160	70.5	162	71.4	5	2.2
<b>Sydney-Launceston</b>								
Jetstar	48	47	35	74.5	33	70.2	1	2.1
Virgin Australia	31	31	23	74.2	24	77.4	0	0.0
All Airlines	79	78	58	74.4	57	73.1	1	1.3
<b>Sydney-Melbourne</b>								
Jetstar	449	419	242	57.8	278	66.3	30	6.7
Qantas	1 103	962	593	61.6	739	76.8	141	12.8
Tigerair Australia	250	222	114	51.4	137	61.7	28	11.2
Virgin Australia	753	712	447	62.8	528	74.2	41	5.4
All Airlines	2 555	2 315	1 396	60.3	1 682	72.7	240	9.4
<b>Sydney-Perth</b>								
Jetstar	27	27	17	63.0	9	33.3	0	0.0
Qantas	211	208	147	70.7	133	63.9	3	1.4
Tigerair Australia	27	27	18	66.7	16	59.3	0	0.0
Virgin Australia	125	125	75	60.0	68	54.4	0	0.0
All Airlines	390	387	257	66.4	226	58.4	3	0.8
<b>Sydney-Port Macquarie</b>								
QantasLink	120	119	99	83.2	99	83.2	1	0.8
Virgin Australia	58	58	49	84.5	46	79.3	0	0.0
All Airlines	178	177	148	83.6	145	81.9	1	0.6
<b>Sydney-Proserpine</b>								
Jetstar	14	14	14	100.0	13	92.9	0	0.0
Tigerair Australia	20	20	19	95.0	18	90.0	0	0.0
All Airlines	34	34	33	97.1	31	91.2	0	0.0
<b>Sydney-Sunshine Coast</b>								
Jetstar	115	110	73	66.4	66	60.0	5	4.3
QantasLink	58	56	31	55.4	33	58.9	2	3.4
Virgin Australia	50	50	28	56.0	27	54.0	0	0.0
All Airlines	223	216	132	61.1	126	58.3	7	3.1
<b>Sydney-Tamworth</b>								
QantasLink	131	130	109	83.8	101	77.7	1	0.8
Virgin Australia	54	54	45	83.3	45	83.3	0	0.0
All Airlines	185	184	154	83.7	146	79.3	1	0.5
<b>Sydney-Townsville</b>								
Jetstar	31	31	18	58.1	19	61.3	0	0.0
Virgin Australia	31	31	24	77.4	22	71.0	0	0.0
All Airlines	62	62	42	67.7	41	66.1	0	0.0
<b>Sydney-Wagga Wagga</b>								
QantasLink	116	116	101	87.1	98	84.5	0	0.0
Regional Express	135	132	110	83.3	112	84.8	3	2.2
All Airlines	251	248	211	85.1	210	84.7	3	1.2
<b>Tamworth-Sydney</b>								
QantasLink	130	128	104	81.3	105	82.0	2	1.5
Virgin Australia	54	54	43	79.6	46	85.2	0	0.0
All Airlines	184	182	147	80.8	151	83.0	2	1.1

	<i>Sectors</i>		<i>Arrivals On Time</i>		<i>Departures On Time</i>		<i>Cancellations</i>	
	<i>Sched.</i>	<i>Flown</i>	<i>No.</i>	<i>%</i>	<i>No.</i>	<i>%</i>	<i>No.</i>	<i>%</i>
<b>Townsville-Brisbane</b>								
Jetstar	63	63	50	79.4	54	85.7	0	0.0
Qantas	63	63	60	95.2	53	84.1	0	0.0
QantasLink	110	105	74	70.5	76	72.4	5	4.5
Virgin Australia	147	146	133	91.1	121	82.9	1	0.7
All Airlines	383	377	317	84.1	304	80.6	6	1.6
<b>Townsville-Cairns</b>								
QantasLink	139	138	121	87.7	124	89.9	1	0.7
Regional Express	13	13	9	69.2	9	69.2	0	0.0
All Airlines	152	151	130	86.1	133	88.1	1	0.7
<b>Townsville-Sydney</b>								
Jetstar	31	31	17	54.8	13	41.9	0	0.0
Virgin Australia	31	31	18	58.1	22	71.0	0	0.0
All Airlines	62	62	35	56.5	35	56.5	0	0.0
<b>Wagga Wagga-Sydney</b>								
QantasLink	116	116	93	80.2	92	79.3	0	0.0
Regional Express	134	130	108	83.1	110	84.6	4	3.0
All Airlines	250	246	201	81.7	202	82.1	4	1.6

## Airports

On time performance is reported for all routes where the passenger load averages over 8000 passengers per month, and where two or more airlines operate in competition. The following data reports by airport against flights operated on those routes only. This month, 8 major city airports and 32 regional city airports are covered.

Airport	Arrivals			Departures		
	Sectors Flown	On Time No.	%	Sectors Flown	On Time No.	%
<b>Adelaide</b>						
Jetstar	304	211	69.4	303	193	63.7
Qantas	834	648	77.7	835	658	78.8
QantasLink	102	84	82.4	102	89	87.3
Regional Express	222	191	86.0	222	202	91.0
Tigerair Australia	137	76	55.5	137	70	51.1
Virgin Australia	651	478	73.4	651	498	76.5
Virgin Australia Regional Airlines	59	30	50.8	59	34	57.6
All Airlines	2 309	1 718	74.4	2 309	1 744	75.5
Relates to services to and from Alice Springs, Brisbane, Canberra, Gold Coast, Melbourne, Perth, Port Lincoln and Sydney.						
<b>Albury</b>						
QantasLink	104	78	75.0	104	81	77.9
Regional Express	105	89	84.8	107	94	87.9
Virgin Australia	58	39	67.2	58	40	69.0
All Airlines	267	206	77.2	269	215	79.9
Relates to services to and from Sydney only.						
<b>Alice Springs</b>						
Qantas	90	80	88.9	90	80	88.9
Virgin Australia	30	26	86.7	30	27	90.0
Virgin Australia Regional Airlines	17	9	52.9	17	9	52.9
All Airlines	137	115	83.9	137	116	84.7
Relates to services to and from Adelaide and Darwin.						
<b>Armidale</b>						
QantasLink	119	92	77.3	119	87	73.1
Regional Express	70	53	75.7	72	50	69.4
All Airlines	189	145	76.7	191	137	71.7
Relates to services to and from Sydney only.						
<b>Ayers Rock</b>						
Jetstar	31	22	71.0	31	17	54.8
Virgin Australia	31	20	64.5	31	14	45.2
All Airlines	62	42	67.7	62	31	50.0
Relates to services to and from Sydney only.						
<b>Ballina</b>						
Jetstar	85	53	62.4	85	50	58.8
Regional Express	24	22	91.7	25	20	80.0
Virgin Australia	40	33	82.5	40	32	80.0
All Airlines	149	108	72.5	150	102	68.0
Relates to services to and from Sydney only.						

Airport	Arrivals			Departures		
	Sectors	On Time		Sectors	On Time	
	Flown	No.	%	Flown	No.	%
<b>Brisbane</b>						
Jetstar	789	565	71.6	788	573	72.7
Qantas	1 458	1 143	78.4	1 457	1 186	81.4
QantasLink	1 292	1 007	77.9	1 299	1 033	79.5
Tigerair Australia	354	237	66.9	354	222	62.7
Virgin Australia	2 199	1 775	80.7	2 206	1 749	79.3
All Airlines	6 092	4 727	77.6	6 104	4 763	78.0

Relates to services to and from Adelaide, Bundaberg, Cairns, Canberra, Darwin, Emerald, Gladstone, Hamilton Island, Hobart, Mackay, Melbourne, Mount Isa, Newcastle, Perth, Proserpine, Rockhampton, Sydney and Townsville.

#### Broome

Qantas	7	6	85.7	7	2	28.6
QantasLink	89	61	68.5	90	54	60.0
Virgin Australia Regional Airlines	74	46	62.2	74	47	63.5
All Airlines	170	113	66.5	171	103	60.2

Relates to services to and from Perth only.

#### Bundaberg

QantasLink	125	107	85.6	124	111	89.5
Virgin Australia	31	23	74.2	31	26	83.9
All Airlines	156	130	83.3	155	137	88.4

Relates to services to and from Brisbane only.

#### Cairns

Jetstar	362	291	80.4	361	276	76.5
Qantas	146	114	78.1	147	97	66.0
QantasLink	288	229	79.5	285	248	87.0
Regional Express	13	9	69.2	13	9	69.2
Tigerair Australia	114	87	76.3	113	77	68.1
Virgin Australia	258	205	79.5	258	193	74.8
All Airlines	1 181	935	79.2	1 177	900	76.5

Relates to services to and from Brisbane, Melbourne, Sydney and Townsville.

#### Canberra

Qantas	292	222	76.0	292	236	80.8
QantasLink	662	483	73.0	661	515	77.9
Tigerair Australia	69	38	55.1	69	36	52.2
Virgin Australia	544	423	77.8	543	446	82.1
All Airlines	1 567	1 166	74.4	1 565	1 233	78.8

Relates to services to and from Adelaide, Brisbane, Melbourne and Sydney.

#### Coffs Harbour

QantasLink	140	113	80.7	138	108	78.3
Tigerair Australia	27	20	74.1	27	22	81.5
Virgin Australia	31	28	90.3	31	26	83.9
All Airlines	198	161	81.3	196	156	79.6

Relates to services to and from Sydney only.

Airport	Arrivals			Departures		
	Sectors	On Time		Sectors	On Time	
	Flown	No.	%	Flown	No.	%
<b>Darwin</b>						
Jetstar	87	60	69.0	87	58	66.7
Qantas	243	192	79.0	242	161	66.5
Tigerair Australia	24	20	83.3	24	14	58.3
Virgin Australia	134	90	67.2	133	72	54.1
Virgin Australia Regional Airlines	16	12	75.0	16	9	56.3
All Airlines	504	374	74.2	502	314	62.5
Relates to services to and from Alice Springs, Brisbane, Melbourne, Perth and Sydney.						
<b>Dubbo</b>						
QantasLink	122	105	86.1	122	101	82.8
Regional Express	137	115	83.9	134	110	82.1
All Airlines	259	220	84.9	256	211	82.4
Relates to services to and from Sydney only.						
<b>Emerald</b>						
QantasLink	125	102	81.6	125	94	75.2
Virgin Australia	54	47	87.0	54	52	96.3
All Airlines	179	149	83.2	179	146	81.6
Relates to services to and from Brisbane only.						
<b>Geraldton</b>						
QantasLink	54	47	87.0	54	49	90.7
Virgin Australia Regional Airlines	20	15	75.0	20	15	75.0
All Airlines	74	62	83.8	74	64	86.5
Relates to services to and from Perth only.						
<b>Gladstone</b>						
QantasLink	142	119	83.8	141	112	79.4
Virgin Australia	76	72	94.7	76	70	92.1
All Airlines	218	191	87.6	217	182	83.9
Relates to services to and from Brisbane only.						
<b>Gold Coast</b>						
Jetstar	573	426	74.3	572	399	69.8
Qantas	102	71	69.6	102	58	56.9
QantasLink	62	39	62.9	61	42	68.9
Tigerair Australia	174	116	66.7	174	101	58.0
Virgin Australia	475	320	67.4	472	306	64.8
All Airlines	1 386	972	70.1	1 381	906	65.6
Relates to services to and from Adelaide, Melbourne and Sydney.						
<b>Hamilton Island</b>						
Jetstar	28	21	75.0	28	16	57.1
Qantas	8	7	87.5	9	7	77.8
QantasLink	47	33	70.2	47	26	55.3
Virgin Australia	51	41	80.4	51	38	74.5
All Airlines	134	102	76.1	135	87	64.4
Relates to services to and from Brisbane and Sydney.						



Airport	Arrivals			Departures		
	Sectors Flown	On Time		Sectors Flown	On Time	
		No.	%		No.	%
<b>Hobart</b>						
Jetstar	277	186	67.1	277	154	55.6
Qantas	114	78	68.4	113	75	66.4
QantasLink	73	49	67.1	73	53	72.6
Tigerair Australia	38	29	76.3	38	22	57.9
Virgin Australia	250	178	71.2	250	177	70.8
All Airlines	752	520	69.1	751	481	64.0
Relates to services to and from Brisbane, Melbourne and Sydney.						
<b>Kalgoorlie</b>						
Qantas	5	5	100.0	5	5	100.0
QantasLink	83	73	88.0	83	74	89.2
Virgin Australia	27	26	96.3	27	25	92.6
Virgin Australia Regional Airlines	53	41	77.4	53	46	86.8
All Airlines	168	145	86.3	168	150	89.3
Relates to services to and from Perth only.						
<b>Karratha</b>						
Qantas	37	36	97.3	37	33	89.2
QantasLink	147	117	79.6	145	132	91.0
Virgin Australia	4	3	75.0	4	4	100.0
Virgin Australia Regional Airlines	64	47	73.4	64	45	70.3
All Airlines	252	203	80.6	250	214	85.6
Relates to services to and from Perth only.						
<b>Launceston</b>						
Jetstar	167	101	60.5	166	86	51.8
QantasLink	110	71	64.5	110	75	68.2
Virgin Australia	130	80	61.5	127	94	74.0
All Airlines	407	252	61.9	403	255	63.3
Relates to services to and from Melbourne and Sydney.						
<b>Mackay</b>						
Jetstar	35	23	65.7	35	18	51.4
QantasLink	147	122	83.0	140	116	82.9
Virgin Australia	150	125	83.3	149	132	88.6
All Airlines	332	270	81.3	324	266	82.1
Relates to services to and from Brisbane only.						
<b>Melbourne</b>						
Jetstar	1 644	964	58.6	1 643	1 007	61.3
Qantas	2 355	1 514	64.3	2 352	1 763	75.0
QantasLink	247	157	63.6	248	170	68.5
Regional Express	86	47	54.7	87	66	75.9
Tigerair Australia	669	329	49.2	669	434	64.9
Virgin Australia	2 269	1 354	59.7	2 270	1 697	74.8
Virgin Australia Regional Airlines	6	0	0.0	6	1	16.7
All Airlines	7 276	4 365	60.0	7 275	5 138	70.6
Relates to services to and from Adelaide, Brisbane, Cairns, Canberra, Darwin, Gold Coast, Hobart, Launceston, Mildura, Newcastle, Perth, Sunshine Coast and Sydney.						
<b>Mildura</b>						
QantasLink	95	64	67.4	95	61	64.2
Regional Express	87	59	67.8	86	58	67.4
Virgin Australia	31	24	77.4	31	25	80.6
All Airlines	213	147	69.0	212	144	67.9
Relates to services to and from Melbourne only.						

Airport	Arrivals			Departures		
	Sectors Flown	On Time		Sectors Flown	On Time	
		No.	%		No.	%
<b>Mount Isa</b>						
QantasLink	56	40	71.4	56	45	80.4
Virgin Australia	19	15	78.9	13	10	76.9
All Airlines	75	55	73.3	69	55	79.7
Relates to services to and from Brisbane only.						
<b>Newcastle</b>						
Jetstar	187	137	73.3	188	147	78.2
QantasLink	90	77	85.6	90	76	84.4
Virgin Australia	121	90	74.4	121	99	81.8
All Airlines	398	304	76.4	399	322	80.7
Relates to services to and from Brisbane and Melbourne.						
<b>Newman</b>						
Qantas	29	27	93.1	29	26	89.7
QantasLink	118	109	92.4	115	105	91.3
Virgin Australia	20	15	75.0	20	16	80.0
Virgin Australia Regional Airlines	21	20	95.2	21	20	95.2
All Airlines	188	171	91.0	185	167	90.3
Relates to services to and from Perth only.						
<b>Perth</b>						
Jetstar	107	80	74.8	107	70	65.4
Qantas	835	643	77.0	835	663	79.4
QantasLink	608	508	83.6	613	528	86.1
Tigerair Australia	84	55	65.5	84	46	54.8
Virgin Australia	509	347	68.2	509	400	78.6
Virgin Australia Regional Airlines	319	233	73.0	319	262	82.1
All Airlines	2 462	1 866	75.8	2 467	1 969	79.8
Relates to services to and from Adelaide, Brisbane, Broome, Darwin, Geraldton, Kalgoorlie, Karratha, Melbourne, Newman, Port Hedland and Sydney.						
<b>Port Hedland</b>						
Qantas	34	34	100.0	34	32	94.1
QantasLink	122	94	77.0	121	112	92.6
Virgin Australia	19	18	94.7	19	13	68.4
Virgin Australia Regional Airlines	35	30	85.7	35	24	68.6
All Airlines	210	176	83.8	209	181	86.6
Relates to services to and from Perth only.						
<b>Port Lincoln</b>						
QantasLink	98	85	86.7	98	80	81.6
Regional Express	222	195	87.8	222	201	90.5
All Airlines	320	280	87.5	320	281	87.8
Relates to services to and from Adelaide only.						
<b>Port Macquarie</b>						
QantasLink	119	99	83.2	119	100	84.0
Virgin Australia	58	49	84.5	58	43	74.1
All Airlines	177	148	83.6	177	143	80.8
Relates to services to and from Sydney only.						

Airport	Arrivals			Departures		
	Sectors Flown	On Time		Sectors Flown	On Time	
		No.	%		No.	%
<b>Proserpine</b>						
Jetstar	54	44	81.5	53	40	75.5
Tigerair Australia	20	19	95.0	20	18	90.0
Virgin Australia	39	36	92.3	39	34	87.2
All Airlines	113	99	87.6	112	92	82.1
Relates to services to and from Brisbane and Sydney.						
<b>Rockhampton</b>						
QantasLink	187	160	85.6	191	150	78.5
Virgin Australia	143	96	67.1	143	105	73.4
All Airlines	330	256	77.6	334	255	76.3
Relates to services to and from Brisbane only.						
<b>Sunshine Coast</b>						
Jetstar	207	139	67.1	207	122	58.9
QantasLink	56	31	55.4	55	32	58.2
Virgin Australia	115	79	68.7	116	58	50.0
All Airlines	378	249	65.9	378	212	56.1
Relates to services to and from Melbourne and Sydney.						
<b>Sydney</b>						
Jetstar	1 633	1 092	66.9	1 639	1 134	69.2
Qantas	2 247	1 649	73.4	2 250	1 664	74.0
QantasLink	1 526	1 181	77.4	1 531	1 157	75.6
Regional Express	468	371	79.3	468	383	81.8
Tigerair Australia	580	372	64.1	581	402	69.2
Virgin Australia	2 639	1 916	72.6	2 645	1 925	72.8
All Airlines	9 093	6 581	72.4	9 114	6 665	73.1
Relates to services to and from Adelaide, Albury, Armidale, Ayers Rock, Ballina, Brisbane, Cairns, Canberra, Coffs Harbour, Darwin, Dubbo, Gold Coast, Hamilton Island, Hobart, Launceston, Melbourne, Perth, Port Macquarie, Proserpine, Sunshine Coast, Tamworth, Townsville and Wagga Wagga.						
<b>Tamworth</b>						
QantasLink	130	109	83.8	128	105	82.0
Virgin Australia	54	45	83.3	54	46	85.2
All Airlines	184	154	83.7	182	151	83.0
Relates to services to and from Sydney only.						
<b>Townsville</b>						
Jetstar	94	76	80.9	94	67	71.3
Qantas	63	59	93.7	63	53	84.1
QantasLink	241	188	78.0	243	200	82.3
Regional Express	13	9	69.2	13	9	69.2
Virgin Australia	177	144	81.4	177	143	80.8
All Airlines	588	476	81.0	590	472	80.0
Relates to services to and from Brisbane, Cairns and Sydney.						
<b>Wagga Wagga</b>						
QantasLink	116	101	87.1	116	92	79.3
Regional Express	132	110	83.3	130	110	84.6
All Airlines	248	211	85.1	246	202	82.1
Relates to services to and from Sydney only.						

## Definitions

---

On time arrival	A flight arrival is counted as "on time" if it arrived at the gate before 15 minutes after the scheduled arrival time shown in the carriers' schedule. Neither diverted nor cancelled flights count as on time.
On time departure	A flight departure is counted as "on time" if it departs the gate before 15 minutes after the scheduled departure time shown in the carriers' schedule.
Cancellation	A flight removed from service within 7 days of scheduled departure is regarded as a cancellation.
On time departure percentage	The percentage of on time departures is measured against the number of departures <i>operated</i> on any particular sector.
On time arrival percentage	The percentage of on time arrivals is measured against the number of arrivals <i>operated</i> on any particular sector.
Cancellation percentage	The percentage of cancellations is measured against the number of services <i>scheduled</i> on any particular sector.

---