



**Australian Government**

**Department of Infrastructure, Regional Development and Cities**

Bureau of Infrastructure, Transport and Regional Economics

STATISTICAL REPORT



# Aviation

Domestic airline on time performance 2018

© Commonwealth of Australia 2019

ISSN: 1832-0759

### **Ownership of intellectual property rights in this publication**

Unless otherwise noted, copyright (and any other intellectual property rights, if any) in this publication is owned by the Commonwealth of Australia (referred to below as the Commonwealth).

### **Disclaimer**

The material contained in this publication is made available on the understanding that the Commonwealth is not providing professional advice, and that users exercise their own skill and care with respect to its use, and seek independent advice if necessary.

The Commonwealth makes no representations or warranties as to the contents or accuracy of the information contained in this publication. To the extent permitted by law, the Commonwealth disclaims liability to any person or organisation in respect of anything done, or omitted to be done, in reliance upon information contained in this publication.

### **Creative Commons licence**

With the exception of (a) the Coat of Arms; and (b) the Department of Infrastructure, Regional Development and Cities' photos and graphics, copyright in this publication is licensed under a Creative Commons Attribution 3.0 Australia Licence.

Creative Commons Attribution 3.0 Australia Licence is a standard form licence agreement that allows you to copy, communicate and adapt this publication provided that you attribute the work to the Commonwealth and abide by the other licence terms. A summary of the licence terms is available from <http://creativecommons.org/licenses/by/3.0/au/deed.en>. The full licence terms are available from <http://creativecommons.org/licenses/by/3.0/au/legalcode>.

### **Use of the Coat of Arms**

The Department of the Prime Minister and Cabinet sets the terms under which the Coat of Arms is used. Please refer to the Department's Commonwealth Coat of Arms and Government branding web page <http://www.dpmc.gov.au/guidelines/index.cfm#brand> and, in particular, the Guidelines on the use of the Commonwealth Coat of Arms publication.

An appropriate citation for this report is:

Bureau of Infrastructure, Transport and Regional Economics (BITRE), 2019, Domestic airline on time performance, Statistical Report, BITRE, Canberra ACT.

### **Contact us**

This publication is available in PDF format. All other rights are reserved, including in relation to any Departmental logos or trade marks which may exist. For enquiries regarding the licence and any use of this publication, please contact:

Bureau of Infrastructure, Transport and Regional Economics (BITRE)  
Department of Infrastructure, Regional Development and Cities  
GPO Box 501, Canberra ACT 2601, Australia  
Telephone: (international) +61 2 6274 7210  
Fax: (international) +61 2 6274 6855  
Email: [bitre@infrastructure.gov.au](mailto:bitre@infrastructure.gov.au)  
Website: [www.bitre.gov.au](http://www.bitre.gov.au)

### **Inquiries**

Should you require additional information about the statistics contained in this publication:

Telephone (02) 6274 7790 or Facsimile (02) 6274 7727

Electronic mail: [AVSTATS@infrastructure.gov.au](mailto:AVSTATS@infrastructure.gov.au)

Web site: <http://www.bitre.gov.au/statistics/aviation/otphome.aspx>

# Foreword

The Bureau of Infrastructure, Transport and Regional Economics (BITRE) monitors the punctuality and reliability of major domestic airlines operating between Australian airports. The purpose of this is to allow for evaluation of overall industry and individual airline performance, so that consumers of air travel can make informed decisions.

The following domestic airlines currently report this information monthly to the BITRE: Jetstar, Qantas, QantasLink, Regional Express, Tigerair Australia, Virgin Australia and Virgin Australia Regional Airlines. Data has been gathered since November 2003, although some airlines commenced reporting at a later date, including Jetstar which first reported in May 2004, MacAir in July 2005, Tigerair Australia in April 2008 and Virgin Australia Regional Airlines in May 2013. MacAir ceased operations in February 2009 and data was not received for December 2008 onwards. Virgin Blue was rebranded as Virgin Australia in May 2011 and Tiger Airways was rebranded as Tigerair Australia in July 2013 and time series data in Microsoft Excel spreadsheet format on the BITRE website have been revised to reflect these changes. Services operated by Skywest on behalf of Virgin Australia using ATR/F100 aircraft commenced in November 2011 and were shown separately as Virgin Australia – ATR/F100 Operations. Virgin Australia Regional Airlines commenced operations in May 2013. It was formed after the acquisition of Skywest by Virgin Australia and represented a combination of operations previously reported under Skywest and Virgin Australia – ATR/F100 Operations. In January 2016, Virgin Australia transferred their ATR fleet from Virgin Australia Regional Airlines to Virgin Australia.

Information presented in this report is for Australian domestic routes for which the passenger load averaged 8 000 or more passengers per month over the previous six months and where two or more airlines operated in competition on those routes. There were 64 routes that met these criteria for all twelve months in 2018. Over time, routes which meet these criteria change as airline networks and traffic levels vary.

Participating airlines report their overall monthly network performance where this is possible.

Total industry figures encompass all services operated by reporting airlines only. These airlines collectively carried over 95 per cent of total domestic passengers (regular public transport only) in 2017.

The method of capturing on time performance varies between airlines utilising different recording systems. Jetstar and Qantas jet aircraft use Aircraft Communication Addressing and Reporting System (ACARS) to electronically measure on time performance. Regional Express, Tigerair Australia, Virgin Australia, Virgin Australia Regional Airlines and the Qantas non-jet fleet record on time performance manually using records from pilots, gate agents and/or ground crews.

After initial data is collected, aggregate reports are audited internally by participating airlines prior to publication.

Reports and detailed time series data in Microsoft Excel spreadsheet format are available from the BITRE website at: <http://www.bitre.gov.au/statistics/aviation/otphome.aspx>.



# Contents

	Page
Industry performance .....	1
Individual routes .....	9
Airports.....	24
Definitions .....	30



# Industry performance

For the year ended December 2018, on time performance over all routes operated by participating airlines (Jetstar, Qantas, QantasLink, Regional Express, Tigerair Australia, Virgin Australia and Virgin Australia Regional Airlines) averaged 79.8 per cent for on time arrivals and 80.8 per cent for on time departures. Cancellations represented 1.8 per cent of all scheduled flights. The equivalent figures for 2017 were 82.0 per cent for arrivals, 82.7 per cent for departures and 1.9 per cent for cancellations.

The 2018 on time arrivals figure was below the long term average performance for all routes of 82.5 per cent and the on time departures figure was also below the long term average of 83.8 per cent. The rate of cancellations was higher than the long term average of 1.5 per cent.

Qantas achieved the highest on time arrivals among the major domestic airlines at 80.9 per cent, followed by Virgin Australia at 80.8 per cent, Jetstar at 75.3 per cent and Tigerair Australia at 68.0 per cent. QantasLink was the best performing regional airline for on time arrivals at 84.3 per cent, followed by Regional Express at 79.6 per cent and Virgin Australia Regional Airlines at 75.3 per cent. The Qantas network (Qantas and QantasLink combined operations) recorded 82.7 per cent for on time arrivals while the Virgin Australia network (Virgin Australia and Virgin Australia Regional Airlines combined operations) recorded 80.4 per cent.

Virgin Australia achieved the highest level of on time departures for 2018 at 82.5 per cent, followed by Qantas at 81.5 per cent, Jetstar at 73.1 per cent and Tigerair Australia at 69.3 per cent. The regional airlines were led by QantasLink at 85.2 per cent, followed by Regional Express at 83.0 per cent and Virgin Australia Regional Airlines at 78.2 per cent. The Qantas network recorded 83.5 per cent for on time departures while the Virgin Australia network recorded 82.2 per cent.

Tigerair Australia had the highest percentage of cancellations at 3.5 per cent during 2018, followed by Virgin Australia Regional Airlines at 2.7 per cent, Jetstar at 2.5 per cent, Qantas at 1.9 per cent, Virgin Australia at 1.7 per cent, QantasLink at 1.5 per cent and Regional Express at 0.9 per cent.

Airlines' on time performance varies across the routes they serve. Individual route data by specific airline for 66 routes are shown on pages 9-23.

Of the 64 routes which met the criteria for on time performance reporting for all 12 months in 2018 (excludes Melbourne-Townsville and Townsville-Melbourne routes on which Jetstar is the only operating carrier after July 2018), the Adelaide-Gold Coast route had the highest percentage of on time arrivals at 90.8 per cent and the Adelaide-Port Lincoln route had the highest percentage of on time departures at 92.1 per cent. The Brisbane-Mount Isa route had the lowest percentage of on time arrivals at 65.8 per cent and the Ayers Rock-Sydney route had the lowest percentage of on time departures at 60.0 per cent.

Cancellations were highest on the Sydney-Melbourne and Melbourne-Sydney routes at 5.4 per cent, followed by the Brisbane-Sydney route at 3.0 per cent, the Broome-Perth route at 2.9

per cent, the Sydney-Brisbane and Canberra-Sydney routes at 2.8 per cent and the Alice Springs-Darwin route at 2.6 per cent.

Emerald Airport recorded the highest percentage of on time arrivals at 90.0 per cent and Port Lincoln Airport recorded the highest percentage of on time departures at 90.3 per cent. Mount Isa Airport recorded the lowest percentage of on time arrivals at 65.8 per cent and Ayers Rock Airport recorded the lowest percentage of on time departures at 60.0 per cent. These figures only refer to reported routes and do not cover all flights at these airports.



Table 1 On time performance for the year ended December 2018 — Total Industry

	Sectors		Arrivals On Time		Departures On Time		Cancellations	
	Scheduled	Flown	No.	%	No.	%	No.	%
Jetstar	86 682	84 510	63 626	75.3	61 744	73.1	2 172	2.5
Qantas	105 881	103 851	84 016	80.9	84 606	81.5	2 030	1.9
QantasLink	117 841	116 051	97 859	84.3	98 906	85.2	1 790	1.5
Regional Express	70 846	70 175	55 837	79.6	58 213	83.0	671	0.9
Tigerair Australia	28 652	27 656	18 795	68.0	19 167	69.3	996	3.5
Virgin Australia	139 716	137 316	110 907	80.8	113 301	82.5	2 400	1.7
Virgin Australia Regional Airlines	9 477	9 217	6 939	75.3	7 209	78.2	260	2.7
All Airlines	559 095	548 776	437 979	79.8	443 146	80.8	10 319	1.8
Qantas - all QF designated services	223 722	219 902	181 875	82.7	183 512	83.5	3 820	1.7
Virgin Australia - all VA designated services	149 193	146 533	117 846	80.4	120 510	82.2	2 660	1.8

Total airline network data (including routes not shown in this report).

Airlines' on time performance varies across the routes they serve. Individual route data by specific airline for 66 routes are shown on pages 9-23.

Table 2 Top ten routes for on time performance for the year ended December 2018 (routes for participating airlines only and with published data for the 12 month period)

Arrivals		Departures	
Route	On Time (%)	Route	On Time (%)
Adelaide-Gold Coast	90.8	Adelaide-Port Lincoln	92.1
Cairns-Townsville	90.3	Darwin-Alice Springs	91.9
Brisbane-Emerald	90.0	Perth-Newman	90.7
Darwin-Alice Springs	89.7	Port Lincoln-Adelaide	90.3
Townsville-Cairns	89.6	Perth-Kalgoorlie	90.3
Perth-Newman	89.5	Brisbane-Emerald	89.9
Perth-Kalgoorlie	89.3	Cairns-Townsville	89.9
Alice Springs-Darwin	89.2	Townsville-Cairns	89.6
Adelaide-Port Lincoln	89.2	Emerald-Brisbane	89.4
Newman-Perth	88.8	Brisbane-Hobart	89.2

Table 3 Top ten airports for on time performance for the year ended December 2018 (airports for participating airlines and reported routes only and with published data for the 12 month period)

Arrivals		Departures	
Airport	On Time (%)	Airport	On Time (%)
Emerald	90.0	Port Lincoln	90.3
Newman	89.5	Emerald	89.4
Kalgoorlie	89.3	Newman	88.4
Port Lincoln	89.2	Bundaberg	88.2
Bundaberg	87.0	Kalgoorlie	87.8
Port Hedland	87.0	Port Hedland	87.0
Proserpine	85.9	Mackay	86.4
Wagga Wagga	85.3	Alice Springs	86.2
Mackay	85.3	Townsville	85.6
Alice Springs	85.1	Gladstone	85.6

## Total industry on time performance

Figure 1 On time performance (by month from December 2013)—Total Industry

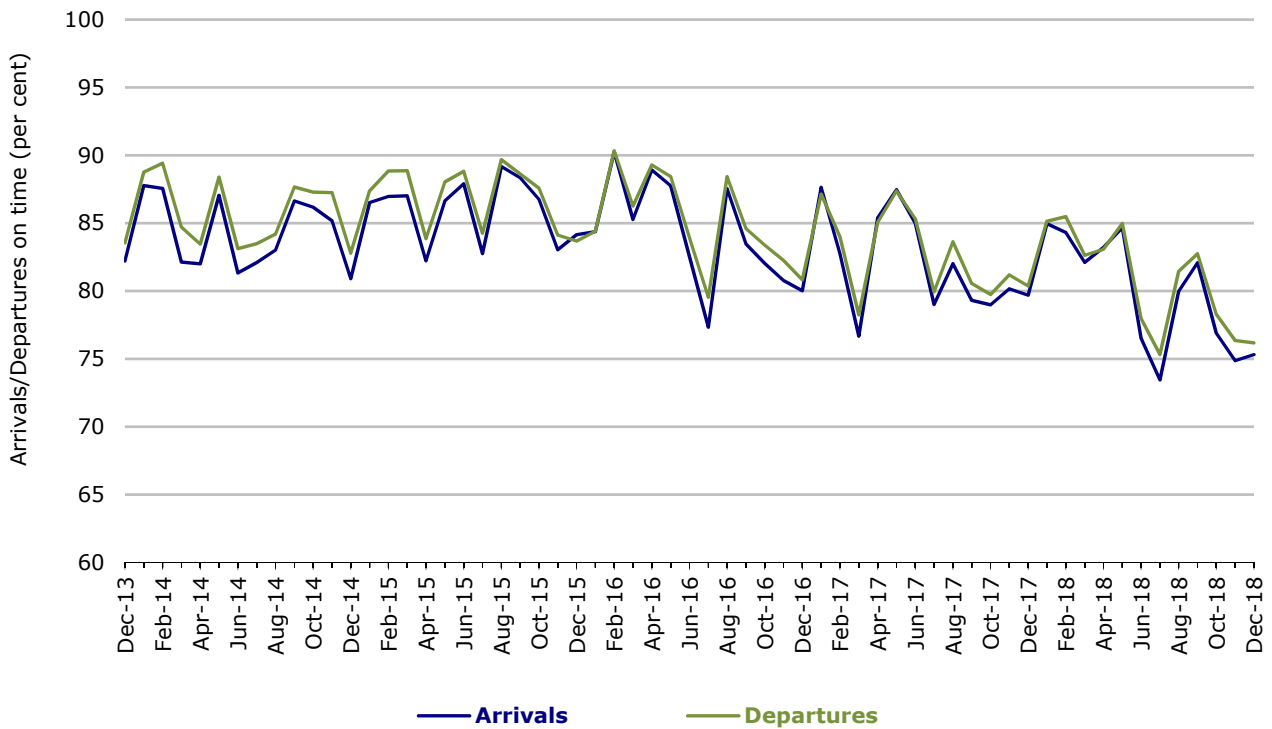
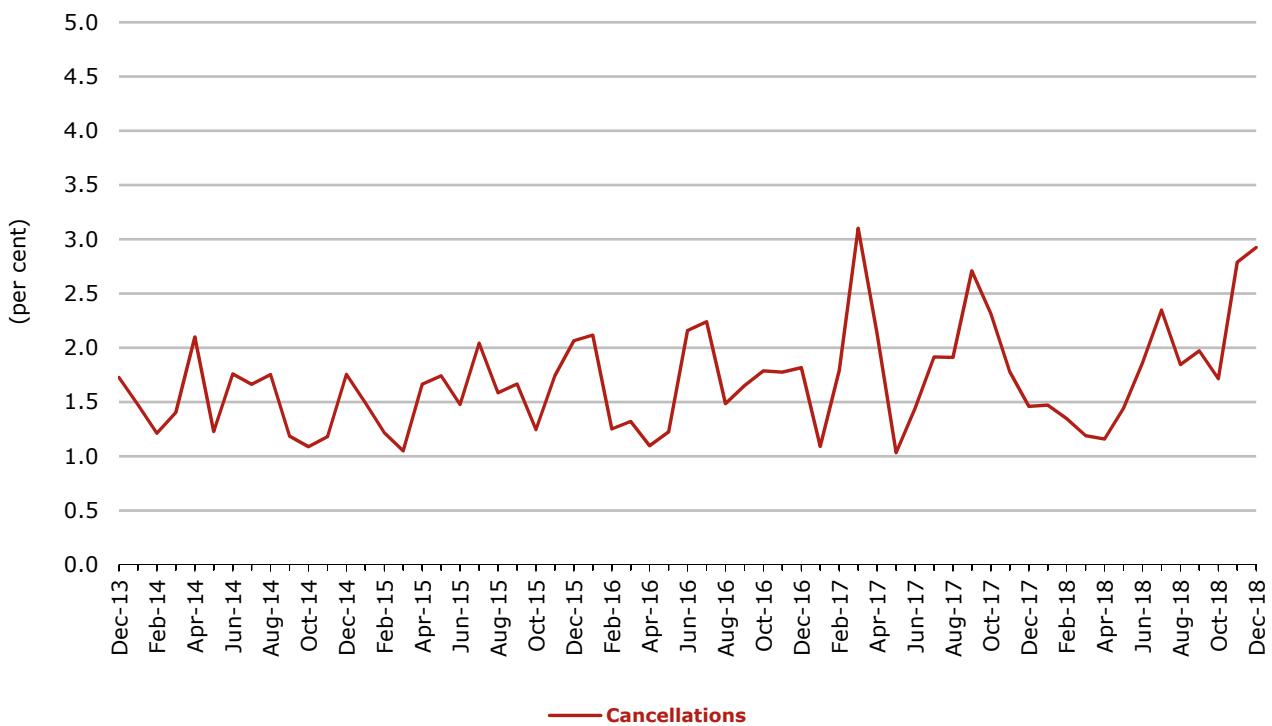


Figure 2 Cancellations (by month from December 2013)—Total Industry



## Major domestic airlines on time performance

Figure 3 On time performance (by month from December 2013)—Jetstar

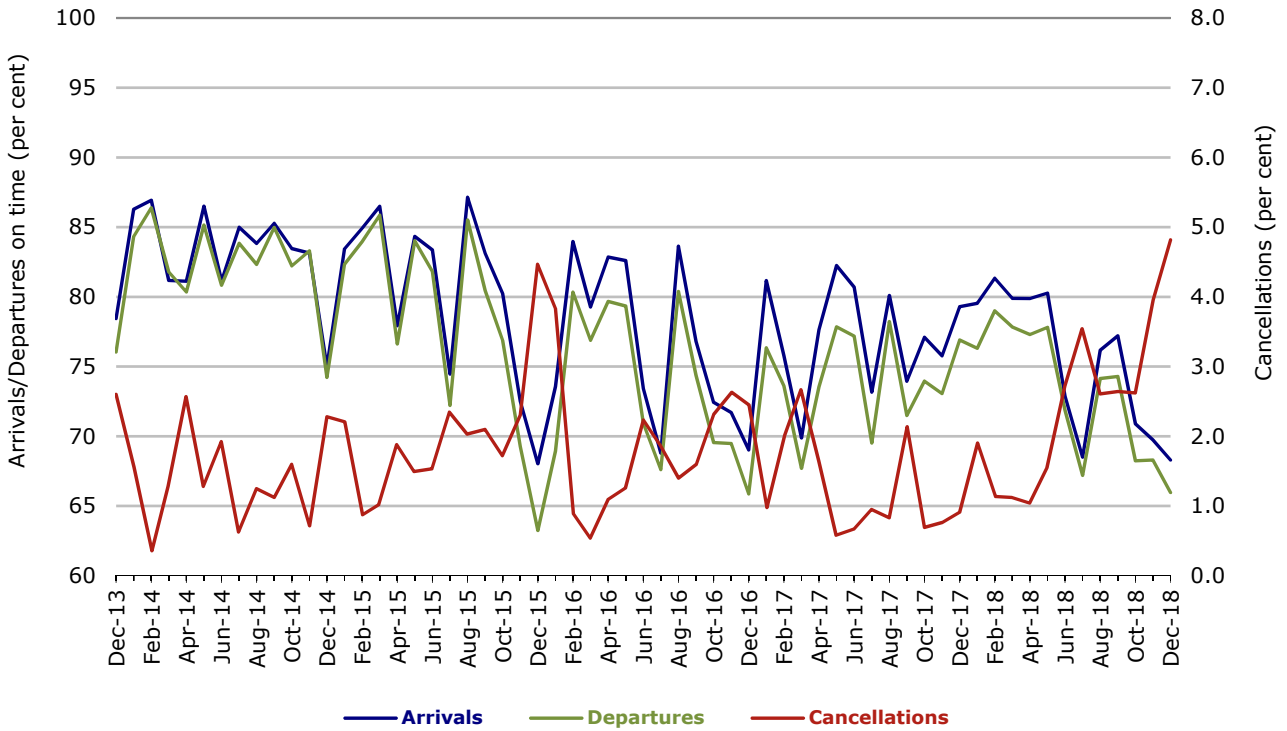


Figure 4 On time performance (by month from December 2013)—Qantas

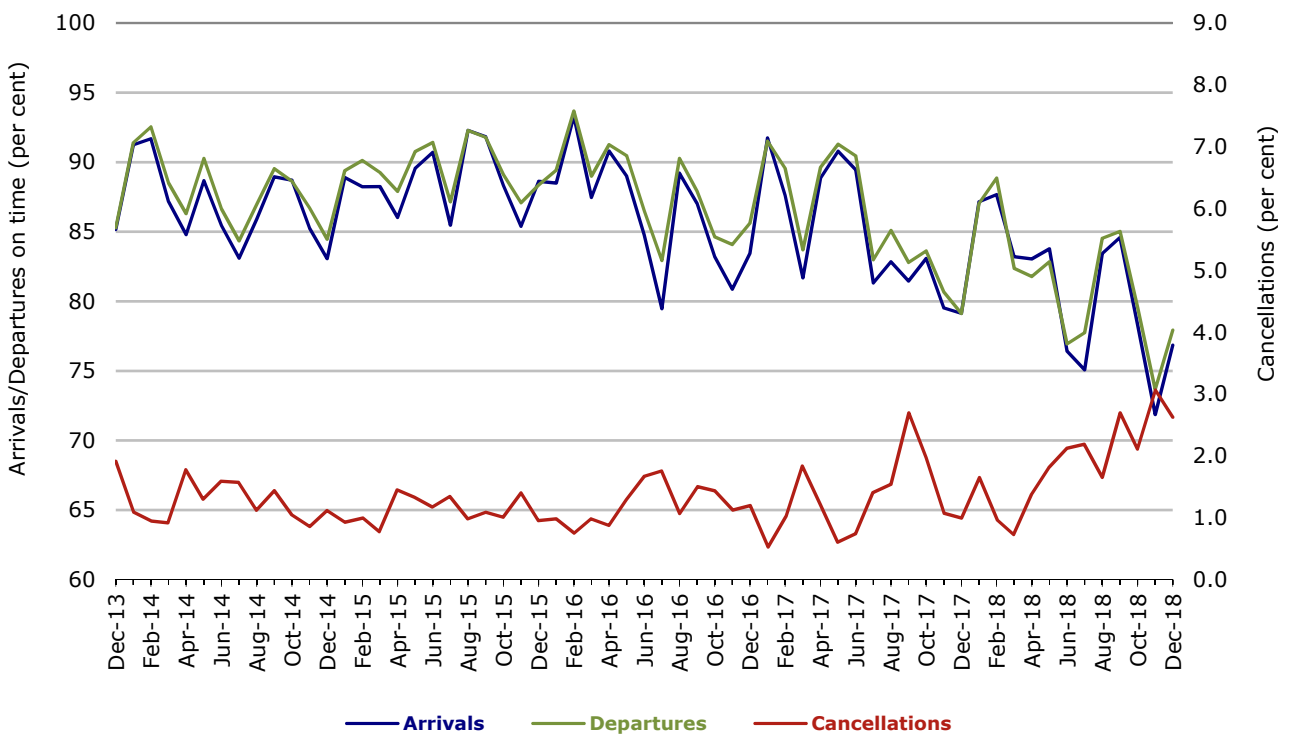


Figure 5 On time performance (by month from December 2013)—Tigerair Australia

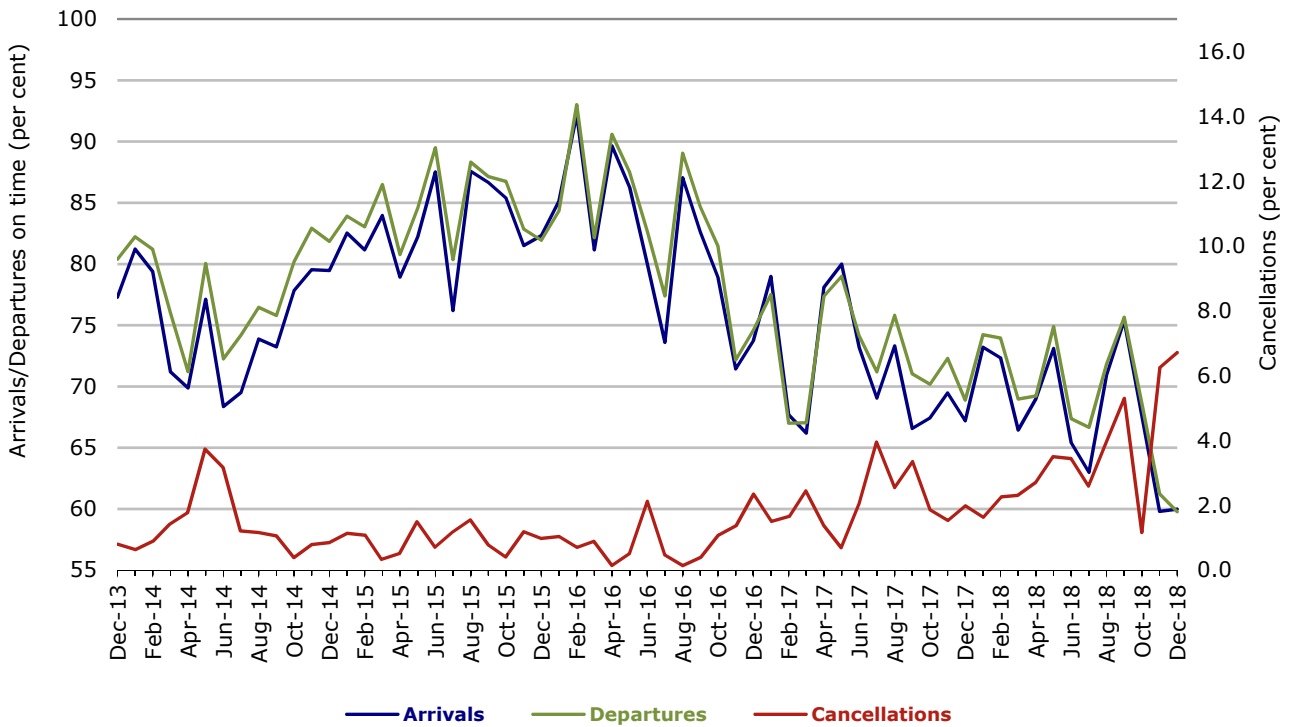
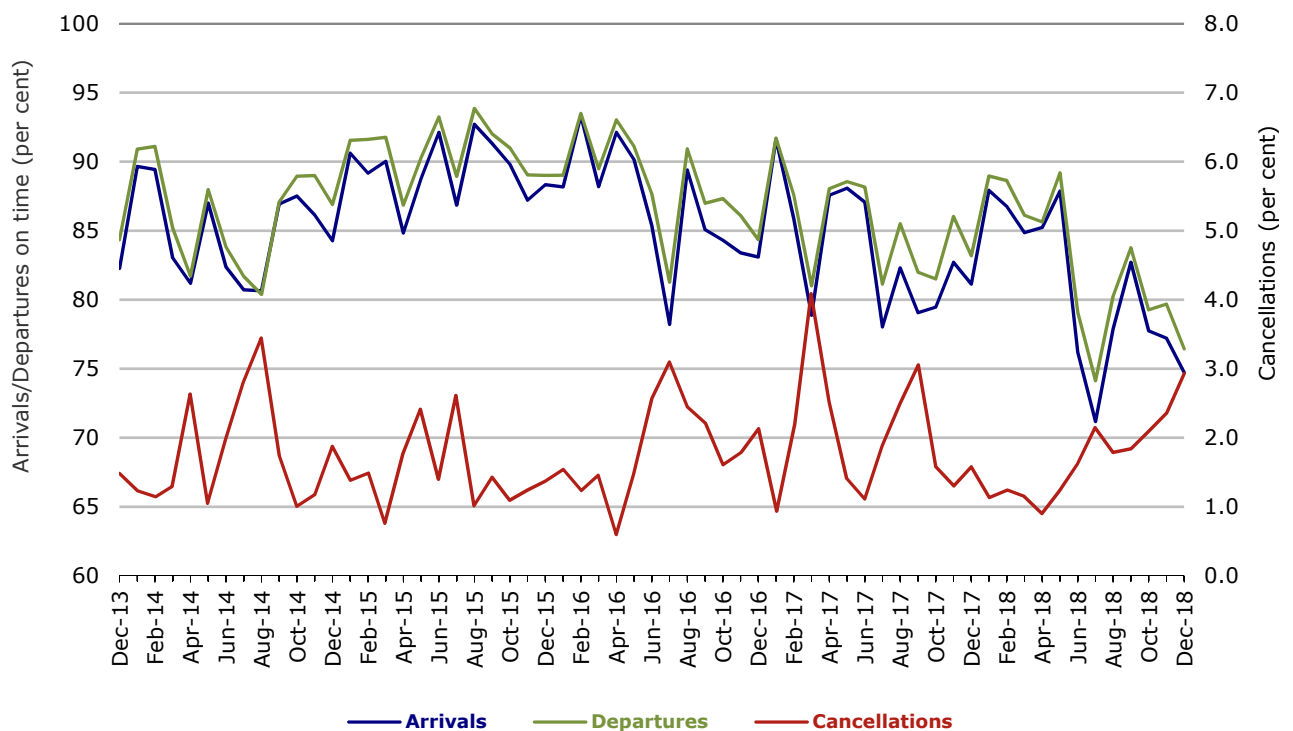


Figure 6 On time performance (by month from December 2013)—Virgin Australia



In January 2016, Virgin Australia transferred their ATR fleet from Virgin Australia Regional Airlines to Virgin Australia.

## Major regional airlines on time performance

Figure 7 On time performance (by month from December 2013)—QantasLink

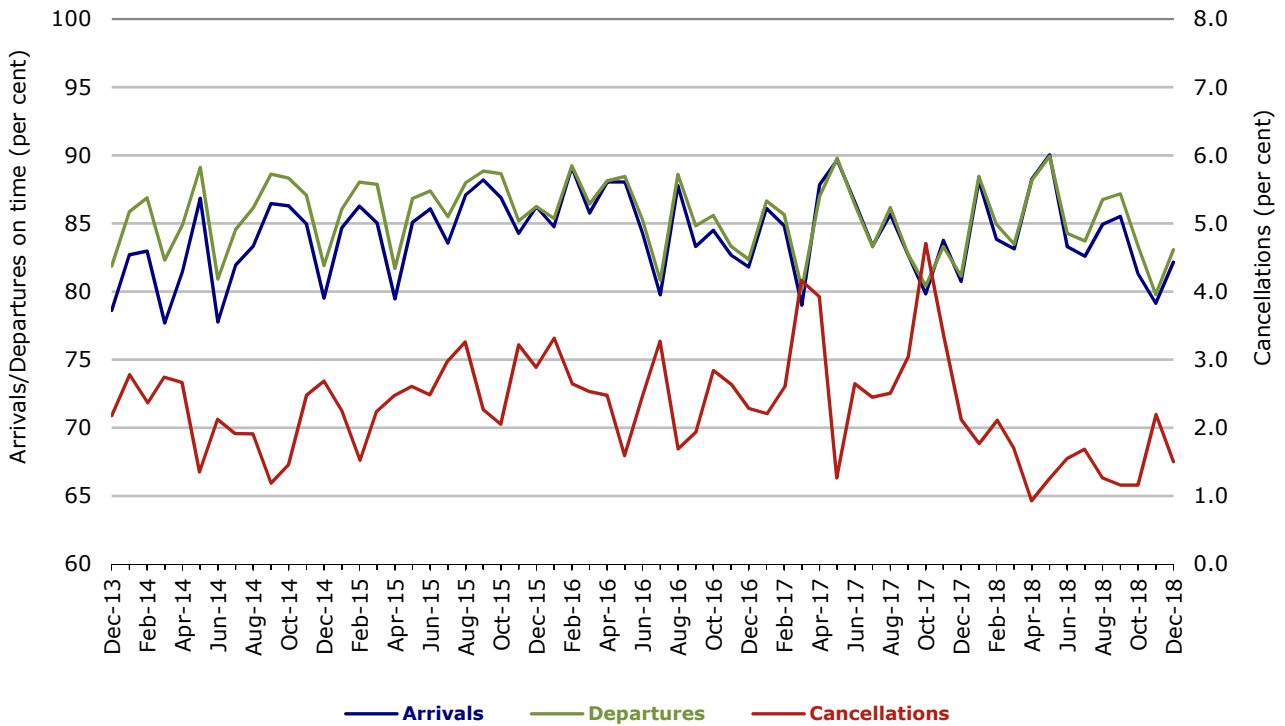


Figure 8 On time performance (by month from December 2013)—Regional Express

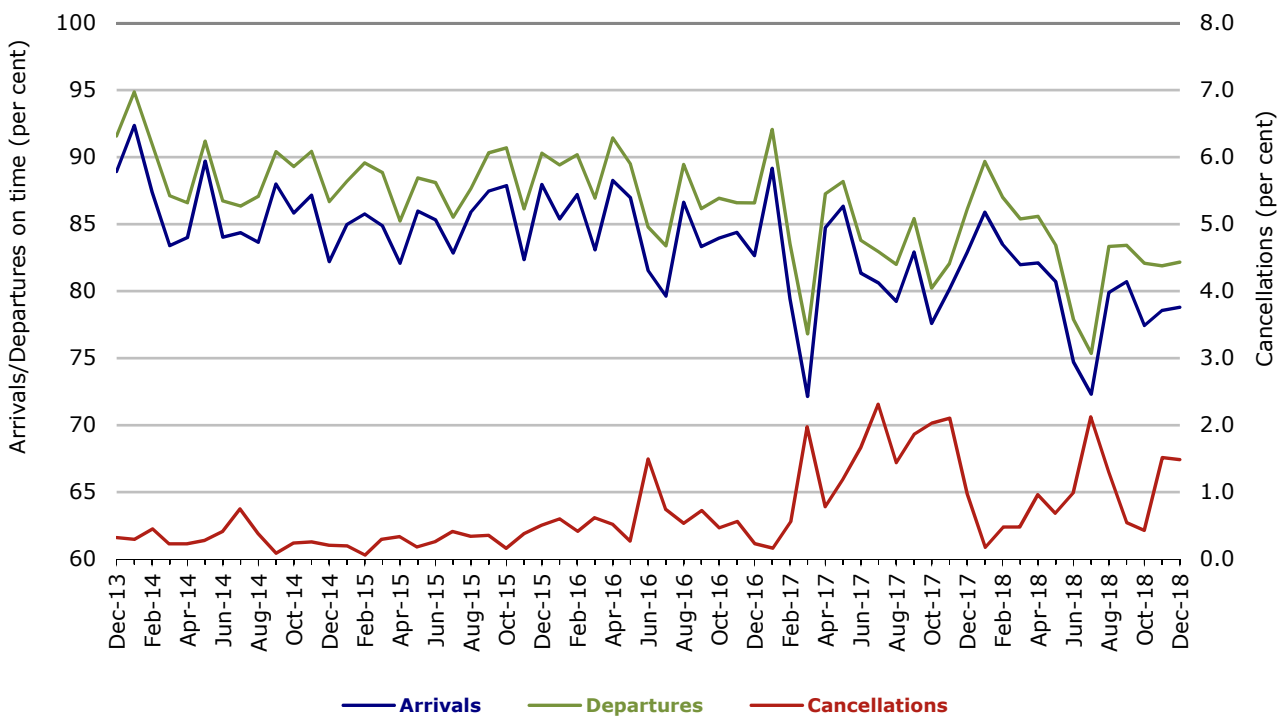
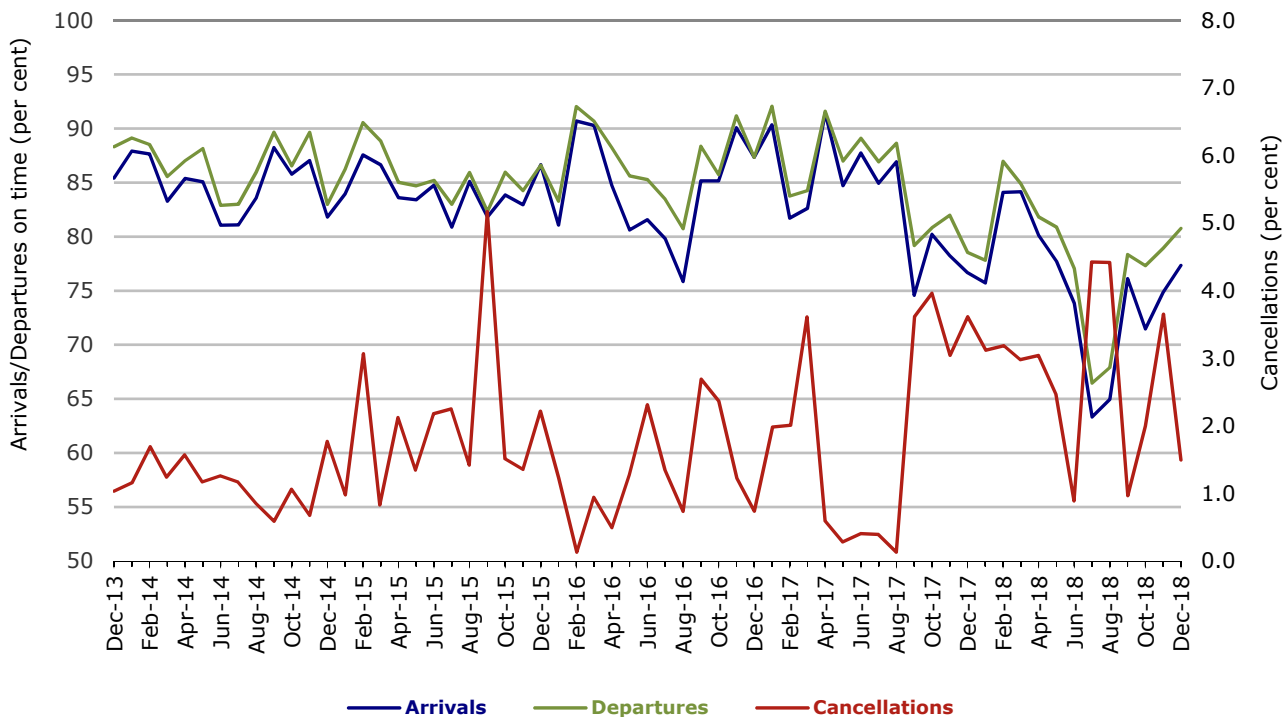


Figure 9 On time performance (by month from December 2013)  
Virgin Australia Regional Airlines



In January 2016, Virgin Australia transferred their ATR fleet from Virgin Australia Regional Airlines to Virgin Australia.

## Individual routes

On time performance is reported for all routes where the passenger load averages over 8000 passengers per month over the previous six months, and where two or more airlines operate in competition on those routes. There are now 66 routes which meet this definition. Over time, however, routes which meet this definition may change as airline networks and traffic levels vary.

	Sectors		Arrivals On Time		Departures On Time		Cancellations	
	Sched.	Flown	No.	%	No.	%	No.	%
<b>Adelaide-Alice Springs</b>								
Qantas	364	362	313	86.5	292	80.7	2	0.5
Virgin Australia	124	124	95	76.6	106	85.5	0	0.0
Virgin Australia Regional Airlines	138	134	79	59.0	91	67.9	4	2.9
All Airlines	626	620	487	78.5	489	78.9	6	1.0
<b>Adelaide-Brisbane</b>								
Jetstar	311	306	233	76.1	229	74.8	5	1.6
Qantas	800	800	708	88.5	705	88.1	0	0.0
QantasLink	635	619	514	83.0	547	88.4	16	2.5
Tigerair Australia	314	310	224	72.3	238	76.8	4	1.3
Virgin Australia	1 289	1 276	1 151	90.2	1 105	86.6	13	1.0
All Airlines	3 349	3 311	2 830	85.5	2 824	85.3	38	1.1
<b>Adelaide-Canberra</b>								
Qantas	507	507	454	89.5	443	87.4	0	0.0
QantasLink	18	18	4	22.2	8	44.4	0	0.0
Virgin Australia	313	310	266	85.8	264	85.2	3	1.0
All Airlines	838	835	724	86.7	715	85.6	3	0.4
<b>Adelaide-Gold Coast</b>								
Jetstar	363	360	322	89.4	296	82.2	3	0.8
Virgin Australia	383	382	352	92.1	350	91.6	1	0.3
All Airlines	746	742	674	90.8	646	87.1	4	0.5
<b>Adelaide-Melbourne</b>								
Jetstar	1 271	1 215	941	77.4	883	72.7	56	4.4
Qantas	3 298	3 273	2 752	84.1	2 730	83.4	25	0.8
Tigerair Australia	896	865	569	65.8	565	65.3	31	3.5
Virgin Australia	3 276	3 204	2 555	79.7	2 605	81.3	72	2.2
Virgin Australia Regional Airlines	24	19	13	68.4	13	68.4	5	20.8
All Airlines	8 765	8 576	6 830	79.6	6 796	79.2	189	2.2
<b>Adelaide-Perth</b>								
Jetstar	323	317	255	80.4	242	76.3	6	1.9
Qantas	1 174	1 172	1 045	89.2	1 025	87.5	2	0.2
QantasLink	136	132	119	90.2	126	95.5	4	2.9
Virgin Australia	505	501	423	84.4	450	89.8	4	0.8
Virgin Australia Regional Airlines	428	411	245	59.6	279	67.9	17	4.0
All Airlines	2 566	2 533	2 087	82.4	2 122	83.8	33	1.3
<b>Adelaide-Port Lincoln</b>								
QantasLink	1 300	1 291	1 176	91.1	1 181	91.5	9	0.7
Regional Express	2 364	2 340	2 064	88.2	2 162	92.4	24	1.0
All Airlines	3 664	3 631	3 240	89.2	3 343	92.1	33	0.9

	<i>Sectors</i>		<i>Arrivals On Time</i>		<i>Departures On Time</i>		<i>Cancellations</i>	
	<i>Sched.</i>	<i>Flown</i>	<i>No.</i>	<i>%</i>	<i>No.</i>	<i>%</i>	<i>No.</i>	<i>%</i>
<b>Adelaide-Sydney</b>								
Jetstar	1 350	1 291	1 003	77.7	961	74.4	59	4.4
Qantas	2 671	2 651	2 170	81.9	2 262	85.3	20	0.7
QantasLink	373	357	283	79.3	281	78.7	16	4.3
Tigerair Australia	523	511	288	56.4	289	56.6	12	2.3
Virgin Australia	1 923	1 901	1 582	83.2	1 631	85.8	22	1.1
All Airlines	6 840	6 711	5 326	79.4	5 424	80.8	129	1.9
<b>Albury-Sydney</b>								
QantasLink	1 109	1 095	839	76.6	852	77.8	14	1.3
Regional Express	1 088	1 075	873	81.2	897	83.4	13	1.2
Virgin Australia	701	694	535	77.1	541	78.0	7	1.0
All Airlines	2 898	2 864	2 247	78.5	2 290	80.0	34	1.2
<b>Alice Springs-Adelaide</b>								
Qantas	364	362	296	81.8	295	81.5	2	0.5
Virgin Australia	124	123	108	87.8	111	90.2	1	0.8
Virgin Australia Regional Airlines	139	134	98	73.1	102	76.1	5	3.6
All Airlines	627	619	502	81.1	508	82.1	8	1.3
<b>Alice Springs-Darwin</b>								
QantasLink	636	622	584	93.9	584	93.9	14	2.2
Virgin Australia	119	119	104	87.4	99	83.2	0	0.0
Virgin Australia Regional Airlines	141	132	91	68.9	95	72.0	9	6.4
All Airlines	896	873	779	89.2	778	89.1	23	2.6
<b>Armidale-Sydney</b>								
QantasLink	1 348	1 322	1 035	78.3	1 028	77.8	26	1.9
Regional Express	813	808	526	65.1	571	70.7	5	0.6
All Airlines	2 161	2 130	1 561	73.3	1 599	75.1	31	1.4
<b>Ayers Rock-Sydney</b>								
Jetstar	340	338	204	60.4	173	51.2	2	0.6
Virgin Australia	365	364	286	78.6	248	68.1	1	0.3
All Airlines	705	702	490	69.8	421	60.0	3	0.4
<b>Ballina-Sydney</b>								
Jetstar	1 008	1 001	737	73.6	656	65.5	7	0.7
Regional Express	261	256	164	64.1	182	71.1	5	1.9
Virgin Australia	418	414	345	83.3	348	84.1	4	1.0
All Airlines	1 687	1 671	1 246	74.6	1 186	71.0	16	0.9
<b>Brisbane-Adelaide</b>								
Jetstar	311	308	253	82.1	243	78.9	3	1.0
Qantas	852	850	752	88.5	732	86.1	2	0.2
QantasLink	638	627	539	86.0	560	89.3	11	1.7
Tigerair Australia	314	310	265	85.5	269	86.8	4	1.3
Virgin Australia	1 249	1 237	1 050	84.9	1 064	86.0	12	1.0
All Airlines	3 364	3 332	2 859	85.8	2 868	86.1	32	1.0
<b>Brisbane-Bundaberg</b>								
QantasLink	1 295	1 291	1 132	87.7	1 125	87.1	4	0.3
Virgin Australia	365	365	309	84.7	318	87.1	0	0.0
All Airlines	1 660	1 656	1 441	87.0	1 443	87.1	4	0.2



	<i>Sectors</i>		<i>Arrivals On Time</i>		<i>Departures On Time</i>		<i>Cancellations</i>	
	<i>Sched.</i>	<i>Flown</i>	<i>No.</i>	<i>%</i>	<i>No.</i>	<i>%</i>	<i>No.</i>	<i>%</i>
<b>Brisbane-Cairns</b>								
Jetstar	1 187	1 167	1 007	86.3	953	81.7	20	1.7
Qantas	795	791	721	91.2	724	91.5	4	0.5
QantasLink	704	703	532	75.7	536	76.2	1	0.1
Tigerair Australia	373	367	283	77.1	275	74.9	6	1.6
Virgin Australia	1 521	1 521	1 340	88.1	1 294	85.1	0	0.0
All Airlines	4 580	4 549	3 883	85.4	3 782	83.1	31	0.7
<b>Brisbane-Canberra</b>								
Qantas	185	184	165	89.7	165	89.7	1	0.5
QantasLink	1 631	1 611	1 350	83.8	1 359	84.4	20	1.2
Tigerair Australia	183	182	116	63.7	137	75.3	1	0.5
Virgin Australia	1 162	1 157	993	85.8	999	86.3	5	0.4
All Airlines	3 161	3 134	2 624	83.7	2 660	84.9	27	0.9
<b>Brisbane-Darwin</b>								
Jetstar	283	274	254	92.7	252	92.0	9	3.2
Qantas	464	463	410	88.6	385	83.2	1	0.2
Tigerair Australia	228	221	174	78.7	179	81.0	7	3.1
Virgin Australia	372	370	301	81.4	319	86.2	2	0.5
All Airlines	1 347	1 328	1 139	85.8	1 135	85.5	19	1.4
<b>Brisbane-Emerald</b>								
QantasLink	1 215	1 212	1 095	90.3	1 097	90.5	3	0.2
Virgin Australia	623	623	557	89.4	553	88.8	0	0.0
All Airlines	1 838	1 835	1 652	90.0	1 650	89.9	3	0.2
<b>Brisbane-Gladstone</b>								
QantasLink	1 511	1 502	1 238	82.4	1 263	84.1	9	0.6
Virgin Australia	869	863	763	88.4	794	92.0	6	0.7
All Airlines	2 380	2 365	2 001	84.6	2 057	87.0	15	0.6
<b>Brisbane-Hamilton Island</b>								
QantasLink	302	297	246	82.8	238	80.1	5	1.7
Virgin Australia	365	363	316	87.1	309	85.1	2	0.5
All Airlines	667	660	562	85.2	547	82.9	7	1.0
<b>Brisbane-Hobart</b>								
Jetstar	331	331	304	91.8	302	91.2	0	0.0
Qantas	5	5	1	20.0	4	80.0	0	0.0
Virgin Australia	439	439	382	87.0	385	87.7	0	0.0
All Airlines	775	775	687	88.6	691	89.2	0	0.0
<b>Brisbane-Mackay</b>								
Jetstar	403	398	311	78.1	310	77.9	5	1.2
QantasLink	1 369	1 346	1 176	87.4	1 169	86.8	23	1.7
Virgin Australia	1 673	1 668	1 422	85.3	1 418	85.0	5	0.3
All Airlines	3 445	3 412	2 909	85.3	2 897	84.9	33	1.0
<b>Brisbane-Melbourne</b>								
Jetstar	1 587	1 530	1 117	73.0	1 043	68.2	57	3.6
Qantas	4 808	4 775	3 819	80.0	3 999	83.7	33	0.7
QantasLink	96	95	72	75.8	80	84.2	1	1.0
Tigerair Australia	1 468	1 394	939	67.4	968	69.4	74	5.0
Virgin Australia	4 594	4 446	3 331	74.9	3 740	84.1	148	3.2
All Airlines	12 553	12 240	9 278	75.8	9 830	80.3	313	2.5

	Sectors		Arrivals On Time		Departures On Time		Cancellations	
	Sched.	Flown	No.	%	No.	%	No.	%
<b>Brisbane-Mount Isa</b>								
Qantas	31	31	28	90.3	28	90.3	0	0.0
QantasLink	616	613	350	57.1	494	80.6	3	0.5
Virgin Australia	210	210	184	87.6	189	90.0	0	0.0
All Airlines	857	854	562	65.8	711	83.3	3	0.4
<b>Brisbane-Newcastle</b>								
Jetstar	1 022	1 000	756	75.6	749	74.9	22	2.2
QantasLink	683	662	552	83.4	570	86.1	21	3.1
Virgin Australia	1 002	997	841	84.4	861	86.4	5	0.5
All Airlines	2 707	2 659	2 149	80.8	2 180	82.0	48	1.8
<b>Brisbane-Perth</b>								
Qantas	1 718	1 716	1 386	80.8	1 402	81.7	2	0.1
Tigerair Australia	33	33	32	97.0	32	97.0	0	0.0
Virgin Australia	1 275	1 273	928	72.9	979	76.9	2	0.2
All Airlines	3 026	3 022	2 346	77.6	2 413	79.8	4	0.1
<b>Brisbane-Proserpine</b>								
Jetstar	405	405	347	85.7	337	83.2	0	0.0
Tigerair Australia	33	32	31	96.9	30	93.8	1	3.0
Virgin Australia	422	422	374	88.6	381	90.3	0	0.0
All Airlines	860	859	752	87.5	748	87.1	1	0.1
<b>Brisbane-Rockhampton</b>								
QantasLink	1 990	1 967	1 567	79.7	1 620	82.4	23	1.2
Virgin Australia	1 672	1 665	1 309	78.6	1 341	80.5	7	0.4
All Airlines	3 662	3 632	2 876	79.2	2 961	81.5	30	0.8
<b>Brisbane-Sydney</b>								
Jetstar	2 091	1 972	1 431	72.6	1 387	70.3	119	5.7
Qantas	7 218	7 081	5 785	81.7	5 896	83.3	137	1.9
QantasLink	138	135	83	61.5	93	68.9	3	2.2
Tigerair Australia	1 329	1 271	879	69.2	903	71.0	58	4.4
Virgin Australia	6 233	6 039	4 909	81.3	5 122	84.8	194	3.1
All Airlines	17 009	16 498	13 087	79.3	13 401	81.2	511	3.0
<b>Brisbane-Townsville</b>								
Jetstar	630	626	510	81.5	517	82.6	4	0.6
Qantas	751	749	616	82.2	605	80.8	2	0.3
QantasLink	960	955	803	84.1	838	87.7	5	0.5
Virgin Australia	1 660	1 641	1 417	86.3	1 367	83.3	19	1.1
All Airlines	4 001	3 971	3 346	84.3	3 327	83.8	30	0.7
<b>Broome-Perth</b>								
Qantas	8	8	3	37.5	2	25.0	0	0.0
QantasLink	1 009	980	816	83.3	797	81.3	29	2.9
Virgin Australia	59	57	41	71.9	39	68.4	2	3.4
Virgin Australia Regional Airlines	826	801	611	76.3	587	73.3	25	3.0
All Airlines	1 902	1 846	1 471	79.7	1 425	77.2	56	2.9
<b>Bundaberg-Brisbane</b>								
QantasLink	1 296	1 290	1 149	89.1	1 141	88.4	6	0.5
Virgin Australia	365	365	315	86.3	318	87.1	0	0.0
All Airlines	1 661	1 655	1 464	88.5	1 459	88.2	6	0.4

	<i>Sectors</i>		<i>Arrivals On Time</i>		<i>Departures On Time</i>		<i>Cancellations</i>	
	<i>Sched.</i>	<i>Flown</i>	<i>No.</i>	<i>%</i>	<i>No.</i>	<i>%</i>	<i>No.</i>	<i>%</i>
<b>Cairns-Brisbane</b>								
Jetstar	1 188	1 172	1 008	86.0	972	82.9	16	1.3
Qantas	797	790	704	89.1	706	89.4	7	0.9
QantasLink	704	699	516	73.8	562	80.4	5	0.7
Tigerair Australia	373	367	292	79.6	267	72.8	6	1.6
Virgin Australia	1 520	1 520	1 352	88.9	1 305	85.9	0	0.0
All Airlines	4 582	4 548	3 872	85.1	3 812	83.8	34	0.7
<b>Cairns-Melbourne</b>								
Jetstar	1 212	1 191	916	76.9	928	77.9	21	1.7
Qantas	480	480	377	78.5	366	76.3	0	0.0
Tigerair Australia	486	476	318	66.8	304	63.9	10	2.1
Virgin Australia	422	421	258	61.3	304	72.2	1	0.2
All Airlines	2 600	2 568	1 869	72.8	1 902	74.1	32	1.2
<b>Cairns-Sydney</b>								
Jetstar	1 167	1 148	932	81.2	938	81.7	19	1.6
Qantas	909	907	783	86.3	771	85.0	2	0.2
Tigerair Australia	521	512	394	77.0	383	74.8	9	1.7
Virgin Australia	1 058	1 053	896	85.1	882	83.8	5	0.5
All Airlines	3 655	3 620	3 005	83.0	2 974	82.2	35	1.0
<b>Cairns-Townsville</b>								
QantasLink	1 600	1 592	1 446	90.8	1 436	90.2	8	0.5
Regional Express	213	204	176	86.3	178	87.3	9	4.2
All Airlines	1 813	1 796	1 622	90.3	1 614	89.9	17	0.9
<b>Canberra-Adelaide</b>								
Qantas	507	506	467	92.3	453	89.5	1	0.2
QantasLink	18	18	6	33.3	8	44.4	0	0.0
Virgin Australia	313	310	252	81.3	244	78.7	3	1.0
All Airlines	838	834	725	86.9	705	84.5	4	0.5
<b>Canberra-Brisbane</b>								
Qantas	216	214	205	95.8	203	94.9	2	0.9
QantasLink	1 599	1 574	1 329	84.4	1 341	85.2	25	1.6
Tigerair Australia	183	182	124	68.1	115	63.2	1	0.5
Virgin Australia	1 161	1 158	1 008	87.0	1 004	86.7	3	0.3
All Airlines	3 159	3 128	2 666	85.2	2 663	85.1	31	1.0
<b>Canberra-Melbourne</b>								
Qantas	2 673	2 643	2 363	89.4	2 415	91.4	30	1.1
QantasLink	656	639	526	82.3	538	84.2	17	2.6
Tigerair Australia	415	407	252	61.9	259	63.6	8	1.9
Virgin Australia	1 922	1 904	1 471	77.3	1 556	81.7	18	0.9
All Airlines	5 666	5 593	4 612	82.5	4 768	85.2	73	1.3
<b>Canberra-Sydney</b>								
Qantas	179	178	165	92.7	169	94.9	1	0.6
QantasLink	5 217	5 074	4 203	82.8	4 230	83.4	143	2.7
Virgin Australia	2 841	2 758	2 268	82.2	2 282	82.7	83	2.9
All Airlines	8 237	8 010	6 636	82.8	6 681	83.4	227	2.8
<b>Coffs Harbour-Sydney</b>								
QantasLink	1 581	1 565	1 290	82.4	1 306	83.5	16	1.0
Tigerair Australia	162	159	118	74.2	115	72.3	3	1.9
Virgin Australia	597	583	479	82.2	503	86.3	14	2.3
All Airlines	2 340	2 307	1 887	81.8	1 924	83.4	33	1.4

	<i>Sectors</i>		<i>Arrivals On Time</i>		<i>Departures On Time</i>		<i>Cancellations</i>	
	<i>Sched.</i>	<i>Flown</i>	<i>No.</i>	<i>%</i>	<i>No.</i>	<i>%</i>	<i>No.</i>	<i>%</i>
<b>Darwin-Alice Springs</b>								
QantasLink	636	623	576	92.5	584	93.7	13	2.0
Virgin Australia	120	119	107	89.9	112	94.1	1	0.8
Virgin Australia Regional Airlines	139	131	100	76.3	106	80.9	8	5.8
All Airlines	895	873	783	89.7	802	91.9	22	2.5
<b>Darwin-Brisbane</b>								
Jetstar	283	275	243	88.4	230	83.6	8	2.8
Qantas	464	462	392	84.8	368	79.7	2	0.4
Tigerair Australia	227	220	202	91.8	193	87.7	7	3.1
Virgin Australia	374	370	274	74.1	294	79.5	4	1.1
All Airlines	1 348	1 327	1 111	83.7	1 085	81.8	21	1.6
<b>Darwin-Melbourne</b>								
Jetstar	304	303	202	66.7	164	54.1	1	0.3
Qantas	389	385	269	69.9	285	74.0	4	1.0
Virgin Australia	373	370	317	85.7	337	91.1	3	0.8
All Airlines	1 066	1 058	788	74.5	786	74.3	8	0.8
<b>Darwin-Perth</b>								
Qantas	401	400	330	82.5	323	80.8	1	0.2
Virgin Australia	287	286	221	77.3	222	77.6	1	0.3
Virgin Australia Regional Airlines	86	82	62	75.6	59	72.0	4	4.7
All Airlines	774	768	613	79.8	604	78.6	6	0.8
<b>Darwin-Sydney</b>								
Jetstar	278	270	209	77.4	209	77.4	8	2.9
Qantas	573	570	410	71.9	369	64.7	3	0.5
Virgin Australia	369	367	252	68.7	289	78.7	2	0.5
All Airlines	1 220	1 207	871	72.2	867	71.8	13	1.1
<b>Dubbo-Sydney</b>								
QantasLink	1 238	1 226	962	78.5	990	80.8	12	1.0
Regional Express	1 458	1 449	1 099	75.8	1 182	81.6	9	0.6
All Airlines	2 696	2 675	2 061	77.0	2 172	81.2	21	0.8
<b>Emerald-Brisbane</b>								
QantasLink	1 213	1 203	1 024	85.1	1 059	88.0	10	0.8
Virgin Australia	624	623	579	92.9	574	92.1	1	0.2
All Airlines	1 837	1 826	1 603	87.8	1 633	89.4	11	0.6
<b>Geraldton-Perth</b>								
QantasLink	557	544	501	92.1	507	93.2	13	2.3
Virgin Australia Regional Airlines	608	596	457	76.7	443	74.3	12	2.0
All Airlines	1 165	1 140	958	84.0	950	83.3	25	2.1
<b>Gladstone-Brisbane</b>								
QantasLink	1 511	1 498	1 268	84.6	1 246	83.2	13	0.9
Virgin Australia	870	861	758	88.0	774	89.9	9	1.0
All Airlines	2 381	2 359	2 026	85.9	2 020	85.6	22	0.9
<b>Gold Coast-Adelaide</b>								
Jetstar	361	361	321	88.9	329	91.1	0	0.0
Virgin Australia	385	384	320	83.3	324	84.4	1	0.3
All Airlines	746	745	641	86.0	653	87.7	1	0.1

	<i>Sectors</i>		<i>Arrivals On Time</i>		<i>Departures On Time</i>		<i>Cancellations</i>	
	<i>Sched.</i>	<i>Flown</i>	<i>No.</i>	<i>%</i>	<i>No.</i>	<i>%</i>	<i>No.</i>	<i>%</i>
<b>Gold Coast-Melbourne</b>								
Jetstar	2 294	2 253	1 793	79.6	1 691	75.1	41	1.8
Qantas	383	381	285	74.8	259	68.0	2	0.5
Tigerair Australia	951	920	577	62.7	573	62.3	31	3.3
Virgin Australia	2 280	2 256	1 699	75.3	1 625	72.0	24	1.1
All Airlines	5 908	5 810	4 354	74.9	4 148	71.4	98	1.7
<b>Gold Coast-Sydney</b>								
Jetstar	3 462	3 359	2 630	78.3	2 572	76.6	103	3.0
Qantas	1 088	1 084	898	82.8	894	82.5	4	0.4
QantasLink	305	299	226	75.6	232	77.6	6	2.0
Tigerair Australia	1 228	1 186	791	66.7	774	65.3	42	3.4
Virgin Australia	3 021	2 964	2 402	81.0	2 340	78.9	57	1.9
All Airlines	9 104	8 892	6 947	78.1	6 812	76.6	212	2.3
<b>Hamilton Island-Brisbane</b>								
QantasLink	302	297	223	75.1	231	77.8	5	1.7
Virgin Australia	365	363	322	88.7	315	86.8	2	0.5
All Airlines	667	660	545	82.6	546	82.7	7	1.0
<b>Hamilton Island-Sydney</b>								
Jetstar	295	294	227	77.2	227	77.2	1	0.3
Qantas	118	118	104	88.1	101	85.6	0	0.0
QantasLink	214	205	170	82.9	168	82.0	9	4.2
Virgin Australia	314	308	265	86.0	261	84.7	6	1.9
All Airlines	941	925	766	82.8	757	81.8	16	1.7
<b>Hobart-Brisbane</b>								
Jetstar	331	331	298	90.0	271	81.9	0	0.0
Qantas	5	5	1	20.0	1	20.0	0	0.0
Virgin Australia	439	438	324	74.0	318	72.6	1	0.2
All Airlines	775	774	623	80.5	590	76.2	1	0.1
<b>Hobart-Melbourne</b>								
Jetstar	2 151	2 103	1 259	59.9	1 234	58.7	48	2.2
Qantas	1 079	1 075	866	80.6	904	84.1	4	0.4
QantasLink	293	287	240	83.6	250	87.1	6	2.0
Tigerair Australia	494	487	276	56.7	296	60.8	7	1.4
Virgin Australia	1 720	1 708	1 164	68.1	1 269	74.3	12	0.7
All Airlines	5 737	5 660	3 805	67.2	3 953	69.8	77	1.3
<b>Hobart-Sydney</b>								
Jetstar	1 010	1 000	685	68.5	653	65.3	10	1.0
Qantas	209	209	168	80.4	168	80.4	0	0.0
QantasLink	508	493	394	79.9	424	86.0	15	3.0
Virgin Australia	869	859	682	79.4	691	80.4	10	1.2
All Airlines	2 596	2 561	1 929	75.3	1 936	75.6	35	1.3
<b>Kalgoorlie-Perth</b>								
Qantas	111	111	102	91.9	98	88.3	0	0.0
QantasLink	855	837	763	91.2	760	90.8	18	2.1
Virgin Australia	424	421	361	85.7	355	84.3	3	0.7
Virgin Australia Regional Airlines	417	405	348	85.9	344	84.9	12	2.9
All Airlines	1 807	1 774	1 574	88.7	1 557	87.8	33	1.8
<b>Karratha-Perth</b>								
Qantas	156	150	141	94.0	135	90.0	6	3.8
QantasLink	2 054	2 017	1 762	87.4	1 754	87.0	37	1.8
Virgin Australia	71	70	51	72.9	55	78.6	1	1.4
Virgin Australia Regional Airlines	768	741	554	74.8	573	77.3	27	3.5
All Airlines	3 049	2 978	2 508	84.2	2 517	84.5	71	2.3

	<i>Sectors</i>		<i>Arrivals On Time</i>		<i>Departures On Time</i>		<i>Cancellations</i>	
	<i>Sched.</i>	<i>Flown</i>	<i>No.</i>	<i>%</i>	<i>No.</i>	<i>%</i>	<i>No.</i>	<i>%</i>
<b>Launceston-Melbourne</b>								
Jetstar	1 553	1 534	1 012	66.0	998	65.1	19	1.2
QantasLink	1 348	1 320	1 081	81.9	1 119	84.8	28	2.1
Virgin Australia	1 206	1 205	912	75.7	999	82.9	1	0.1
All Airlines	4 107	4 059	3 005	74.0	3 116	76.8	48	1.2
<b>Launceston-Sydney</b>								
Jetstar	581	566	405	71.6	406	71.7	15	2.6
Virgin Australia	367	367	305	83.1	294	80.1	0	0.0
All Airlines	948	933	710	76.1	700	75.0	15	1.6
<b>Mackay-Brisbane</b>								
Jetstar	407	396	325	82.1	285	72.0	11	2.7
QantasLink	1 339	1 319	1 100	83.4	1 129	85.6	20	1.5
Virgin Australia	1 674	1 668	1 518	91.0	1 510	90.5	6	0.4
All Airlines	3 420	3 383	2 943	87.0	2 924	86.4	37	1.1
<b>Melbourne-Adelaide</b>								
Jetstar	1 271	1 219	849	69.6	887	72.8	52	4.1
Qantas	3 308	3 294	2 700	82.0	2 751	83.5	14	0.4
Tigerair Australia	897	867	629	72.5	654	75.4	30	3.3
Virgin Australia	3 243	3 173	2 571	81.0	2 645	83.4	70	2.2
Virgin Australia Regional Airlines	24	19	8	42.1	10	52.6	5	20.8
All Airlines	8 743	8 572	6 757	78.8	6 947	81.0	171	2.0
<b>Melbourne-Brisbane</b>								
Jetstar	1 587	1 533	1 064	69.4	976	63.7	54	3.4
Qantas	4 913	4 867	3 880	79.7	3 832	78.7	46	0.9
QantasLink	98	96	71	74.0	73	76.0	2	2.0
Tigerair Australia	1 469	1 397	985	70.5	979	70.1	72	4.9
Virgin Australia	4 536	4 391	3 567	81.2	3 697	84.2	145	3.2
All Airlines	12 603	12 284	9 567	77.9	9 557	77.8	319	2.5
<b>Melbourne-Cairns</b>								
Jetstar	1 212	1 196	909	76.0	862	72.1	16	1.3
Qantas	480	480	380	79.2	378	78.8	0	0.0
Tigerair Australia	486	476	357	75.0	384	80.7	10	2.1
Virgin Australia	422	420	350	83.3	359	85.5	2	0.5
All Airlines	2 600	2 572	1 996	77.6	1 983	77.1	28	1.1
<b>Melbourne-Canberra</b>								
Qantas	2 703	2 671	2 284	85.5	2 289	85.7	32	1.2
QantasLink	655	632	540	85.4	540	85.4	23	3.5
Tigerair Australia	415	407	285	70.0	284	69.8	8	1.9
Virgin Australia	1 923	1 896	1 553	81.9	1 585	83.6	27	1.4
All Airlines	5 696	5 606	4 662	83.2	4 698	83.8	90	1.6
<b>Melbourne-Darwin</b>								
Jetstar	305	304	192	63.2	215	70.7	1	0.3
Qantas	389	387	331	85.5	338	87.3	2	0.5
Virgin Australia	375	373	270	72.4	269	72.1	2	0.5
All Airlines	1 069	1 064	793	74.5	822	77.3	5	0.5
<b>Melbourne-Gold Coast</b>								
Jetstar	2 291	2 254	1 659	73.6	1 656	73.5	37	1.6
Qantas	383	382	295	77.2	308	80.6	1	0.3
Tigerair Australia	948	920	653	71.0	663	72.1	28	3.0
Virgin Australia	2 277	2 256	1 814	80.4	1 860	82.4	21	0.9
All Airlines	5 899	5 812	4 421	76.1	4 487	77.2	87	1.5

	<i>Sectors</i>		<i>Arrivals On Time</i>		<i>Departures On Time</i>		<i>Cancellations</i>	
	<i>Sched.</i>	<i>Flown</i>	<i>No.</i>	<i>%</i>	<i>No.</i>	<i>%</i>	<i>No.</i>	<i>%</i>
<b>Melbourne-Hobart</b>								
Jetstar	2 150	2 108	1 475	70.0	1 538	73.0	42	2.0
Qantas	1 082	1 080	877	81.2	903	83.6	2	0.2
QantasLink	293	287	239	83.3	251	87.5	6	2.0
Tigerair Australia	493	488	337	69.1	372	76.2	5	1.0
Virgin Australia	1 723	1 708	1 307	76.5	1 400	82.0	15	0.9
All Airlines	5 741	5 671	4 235	74.7	4 464	78.7	70	1.2
<b>Melbourne-Launceston</b>								
Jetstar	1 551	1 533	1 111	72.5	1 094	71.4	18	1.2
QantasLink	1 348	1 319	1 096	83.1	1 080	81.9	29	2.2
Virgin Australia	1 203	1 203	908	75.5	973	80.9	0	0.0
All Airlines	4 102	4 055	3 115	76.8	3 147	77.6	47	1.1
<b>Melbourne-Mildura</b>								
QantasLink	1 124	1 103	954	86.5	973	88.2	21	1.9
Regional Express	894	890	723	81.2	781	87.8	4	0.4
Virgin Australia	365	365	272	74.5	302	82.7	0	0.0
All Airlines	2 383	2 358	1 949	82.7	2 056	87.2	25	1.0
<b>Melbourne-Newcastle</b>								
Jetstar	1 304	1 276	908	71.2	851	66.7	28	2.1
Virgin Australia	397	393	310	78.9	324	82.4	4	1.0
All Airlines	1 701	1 669	1 218	73.0	1 175	70.4	32	1.9
<b>Melbourne-Perth</b>								
Jetstar	589	565	484	85.7	466	82.5	24	4.1
Qantas	2 401	2 391	1 719	71.9	1 668	69.8	10	0.4
Tigerair Australia	602	579	378	65.3	394	68.0	23	3.8
Virgin Australia	1 691	1 685	1 205	71.5	1 179	70.0	6	0.4
All Airlines	5 283	5 220	3 786	72.5	3 707	71.0	63	1.2
<b>Melbourne-Sunshine Coast</b>								
Jetstar	1 002	995	766	77.0	749	75.3	7	0.7
QantasLink	18	18	12	66.7	13	72.2	0	0.0
Virgin Australia	786	782	652	83.4	638	81.6	4	0.5
All Airlines	1 806	1 795	1 430	79.7	1 400	78.0	11	0.6
<b>Melbourne-Sydney</b>								
Jetstar	4 697	4 404	2 952	67.0	3 067	69.6	293	6.2
Qantas	11 824	11 137	8 486	76.2	8 912	80.0	687	5.8
QantasLink	9	9	8	88.9	9	100.0	0	0.0
Tigerair Australia	3 065	2 905	1 798	61.9	1 884	64.9	160	5.2
Virgin Australia	8 858	8 469	6 610	78.0	7 016	82.8	389	4.4
All Airlines	28 453	26 924	19 854	73.7	20 888	77.6	1 529	5.4
<b>Melbourne-Townsville</b>								
			(To July 2018 only)					
Jetstar	178	178	133	74.7	131	73.6	0	0.0
Tigerair Australia	110	106	75	70.8	81	76.4	4	3.6
All Airlines	288	284	208	73.2	212	74.6	4	1.4
<b>Mildura-Melbourne</b>								
QantasLink	1 124	1 101	929	84.4	941	85.5	23	2.0
Regional Express	894	890	637	71.6	680	76.4	4	0.4
Virgin Australia	365	365	287	78.6	295	80.8	0	0.0
All Airlines	2 383	2 356	1 853	78.7	1 916	81.3	27	1.1

	<i>Sectors</i>		<i>Arrivals On Time</i>		<i>Departures On Time</i>		<i>Cancellations</i>	
	<i>Sched.</i>	<i>Flown</i>	<i>No.</i>	<i>%</i>	<i>No.</i>	<i>%</i>	<i>No.</i>	<i>%</i>
<b>Mount Isa-Brisbane</b>								
Qantas	31	31	24	77.4	20	64.5	0	0.0
QantasLink	610	607	431	71.0	408	67.2	3	0.5
Virgin Australia	209	209	150	71.8	174	83.3	0	0.0
All Airlines	850	847	605	71.4	602	71.1	3	0.4
<b>Newcastle-Brisbane</b>								
Jetstar	1 021	999	786	78.7	814	81.5	22	2.2
QantasLink	683	659	565	85.7	560	85.0	24	3.5
Virgin Australia	1 004	996	853	85.6	851	85.4	8	0.8
All Airlines	2 708	2 654	2 204	83.0	2 225	83.8	54	2.0
<b>Newcastle-Melbourne</b>								
Jetstar	1 301	1 266	892	70.5	897	70.9	35	2.7
Virgin Australia	397	390	278	71.3	303	77.7	7	1.8
All Airlines	1 698	1 656	1 170	70.7	1 200	72.5	42	2.5
<b>Newman-Perth</b>								
Qantas	395	387	362	93.5	368	95.1	8	2.0
QantasLink	1 154	1 124	991	88.2	971	86.4	30	2.6
Virgin Australia	190	190	177	93.2	178	93.7	0	0.0
Virgin Australia Regional Airlines	284	280	229	81.8	235	83.9	4	1.4
All Airlines	2 023	1 981	1 759	88.8	1 752	88.4	42	2.1
<b>Perth-Adelaide</b>								
Jetstar	325	316	251	79.4	219	69.3	9	2.8
Qantas	1 225	1 223	1 097	89.7	1 086	88.8	2	0.2
QantasLink	137	137	121	88.3	134	97.8	0	0.0
Virgin Australia	524	520	437	84.0	443	85.2	4	0.8
Virgin Australia Regional Airlines	430	419	273	65.2	345	82.3	11	2.6
All Airlines	2 641	2 615	2 179	83.3	2 227	85.2	26	1.0
<b>Perth-Brisbane</b>								
Qantas	1 694	1 692	1 446	85.5	1 455	86.0	2	0.1
Tigerair Australia	33	33	31	93.9	31	93.9	0	0.0
Virgin Australia	1 271	1 268	1 079	85.1	1 078	85.0	3	0.2
All Airlines	2 998	2 993	2 556	85.4	2 564	85.7	5	0.2
<b>Perth-Broome</b>								
Qantas	8	8	6	75.0	5	62.5	0	0.0
QantasLink	1 013	991	871	87.9	855	86.3	22	2.2
Virgin Australia	59	59	48	81.4	50	84.7	0	0.0
Virgin Australia Regional Airlines	823	805	631	78.4	639	79.4	18	2.2
All Airlines	1 903	1 863	1 556	83.5	1 549	83.1	40	2.1
<b>Perth-Darwin</b>								
Qantas	401	400	363	90.8	360	90.0	1	0.2
Virgin Australia	285	284	238	83.8	237	83.5	1	0.4
Virgin Australia Regional Airlines	85	82	66	80.5	61	74.4	3	3.5
All Airlines	771	766	667	87.1	658	85.9	5	0.6
<b>Perth-Geraldton</b>								
QantasLink	557	549	499	90.9	493	89.8	8	1.4
Virgin Australia Regional Airlines	609	600	465	77.5	471	78.5	9	1.5
All Airlines	1 166	1 149	964	83.9	964	83.9	17	1.5



	<i>Sectors</i>		<i>Arrivals On Time</i>		<i>Departures On Time</i>		<i>Cancellations</i>	
	<i>Sched.</i>	<i>Flown</i>	<i>No.</i>	<i>%</i>	<i>No.</i>	<i>%</i>	<i>No.</i>	<i>%</i>
<b>Perth-Kalgoorlie</b>								
Qantas	110	110	104	94.5	103	93.6	0	0.0
QantasLink	854	840	750	89.3	756	90.0	14	1.6
Virgin Australia	425	423	389	92.0	392	92.7	2	0.5
Virgin Australia Regional Airlines	415	402	342	85.1	352	87.6	13	3.1
All Airlines	1 804	1 775	1 585	89.3	1 603	90.3	29	1.6
<b>Perth-Karratha</b>								
Qantas	154	151	143	94.7	143	94.7	3	1.9
QantasLink	2 057	2 030	1 708	84.1	1 758	86.6	27	1.3
Virgin Australia	71	70	53	75.7	62	88.6	1	1.4
Virgin Australia Regional Airlines	770	747	596	79.8	658	88.1	23	3.0
All Airlines	3 052	2 998	2 500	83.4	2 621	87.4	54	1.8
<b>Perth-Melbourne</b>								
Jetstar	588	562	458	81.5	406	72.2	26	4.4
Qantas	2 424	2 413	1 991	82.5	1 960	81.2	11	0.5
Tigerair Australia	602	577	416	72.1	391	67.8	25	4.2
Virgin Australia	1 681	1 674	1 365	81.5	1 400	83.6	7	0.4
All Airlines	5 295	5 226	4 230	80.9	4 157	79.5	69	1.3
<b>Perth-Newman</b>								
Qantas	395	388	375	96.6	372	95.9	7	1.8
QantasLink	1 154	1 138	997	87.6	1 007	88.5	16	1.4
Virgin Australia	191	191	183	95.8	185	96.9	0	0.0
Virgin Australia Regional Airlines	281	276	229	83.0	243	88.0	5	1.8
All Airlines	2 021	1 993	1 784	89.5	1 807	90.7	28	1.4
<b>Perth-Port Hedland</b>								
Qantas	338	336	317	94.3	313	93.2	2	0.6
QantasLink	1 251	1 217	1 029	84.6	1 052	86.4	34	2.7
Virgin Australia	286	286	262	91.6	270	94.4	0	0.0
Virgin Australia Regional Airlines	339	339	286	84.4	298	87.9	0	0.0
All Airlines	2 214	2 178	1 894	87.0	1 933	88.8	36	1.6
<b>Perth-Sydney</b>								
Jetstar	326	318	236	74.2	198	62.3	8	2.5
Qantas	2 417	2 399	1 893	78.9	1 843	76.8	18	0.7
Tigerair Australia	325	316	258	81.6	244	77.2	9	2.8
Virgin Australia	1 442	1 439	1 239	86.1	1 203	83.6	3	0.2
All Airlines	4 510	4 472	3 626	81.1	3 488	78.0	38	0.8
<b>Port Hedland-Perth</b>								
Qantas	338	336	306	91.1	292	86.9	2	0.6
QantasLink	1 235	1 191	994	83.5	1 041	87.4	44	3.6
Virgin Australia	284	284	263	92.6	257	90.5	0	0.0
Virgin Australia Regional Airlines	340	340	277	81.5	282	82.9	0	0.0
All Airlines	2 197	2 151	1 840	85.5	1 872	87.0	46	2.1
<b>Port Lincoln-Adelaide</b>								
QantasLink	1 300	1 285	1 172	91.2	1 170	91.1	15	1.2
Regional Express	2 367	2 337	2 036	87.1	2 102	89.9	30	1.3
All Airlines	3 667	3 622	3 208	88.6	3 272	90.3	45	1.2
<b>Port Macquarie-Sydney</b>								
QantasLink	1 198	1 182	916	77.5	924	78.2	16	1.3
Virgin Australia	705	694	482	69.5	463	66.7	11	1.6
All Airlines	1 903	1 876	1 398	74.5	1 387	73.9	27	1.4

	<i>Sectors</i>		<i>Arrivals On Time</i>		<i>Departures On Time</i>		<i>Cancellations</i>	
	<i>Sched.</i>	<i>Flown</i>	<i>No.</i>	<i>%</i>	<i>No.</i>	<i>%</i>	<i>No.</i>	<i>%</i>
<b>Proserpine-Brisbane</b>								
Jetstar	405	404	322	79.7	321	79.5	1	0.2
Tigerair Australia	33	32	28	87.5	30	93.8	1	3.0
Virgin Australia	423	422	379	89.8	363	86.0	1	0.2
All Airlines	861	858	729	85.0	714	83.2	3	0.3
<b>Proserpine-Sydney</b>								
Jetstar	156	156	128	82.1	119	76.3	0	0.0
Tigerair Australia	296	294	211	71.8	211	71.8	2	0.7
All Airlines	452	450	339	75.3	330	73.3	2	0.4
<b>Rockhampton-Brisbane</b>								
QantasLink	2 013	1 991	1 579	79.3	1 619	81.3	22	1.1
Virgin Australia	1 674	1 668	1 427	85.6	1 409	84.5	6	0.4
All Airlines	3 687	3 659	3 006	82.2	3 028	82.8	28	0.8
<b>Sunshine Coast-Melbourne</b>								
Jetstar	1 002	993	665	67.0	603	60.7	9	0.9
QantasLink	17	17	15	88.2	16	94.1	0	0.0
Virgin Australia	785	781	534	68.4	514	65.8	4	0.5
All Airlines	1 804	1 791	1 214	67.8	1 133	63.3	13	0.7
<b>Sunshine Coast-Sydney</b>								
Jetstar	1 297	1 272	892	70.1	833	65.5	25	1.9
QantasLink	413	404	304	75.2	318	78.7	9	2.2
Virgin Australia	630	622	488	78.5	508	81.7	8	1.3
All Airlines	2 340	2 298	1 684	73.3	1 659	72.2	42	1.8
<b>Sydney-Adelaide</b>								
Jetstar	1 345	1 293	958	74.1	926	71.6	52	3.9
Qantas	2 559	2 543	2 107	82.9	2 083	81.9	16	0.6
QantasLink	370	355	273	76.9	287	80.8	15	4.1
Tigerair Australia	523	513	328	63.9	328	63.9	10	1.9
Virgin Australia	1 975	1 955	1 623	83.0	1 650	84.4	20	1.0
All Airlines	6 772	6 659	5 289	79.4	5 274	79.2	113	1.7
<b>Sydney-Albury</b>								
QantasLink	1 109	1 094	855	78.2	854	78.1	15	1.4
Regional Express	1 098	1 086	852	78.5	873	80.4	12	1.1
Virgin Australia	701	694	546	78.7	541	78.0	7	1.0
All Airlines	2 908	2 874	2 253	78.4	2 268	78.9	34	1.2
<b>Sydney-Armidale</b>								
QantasLink	1 348	1 331	1 051	79.0	1 059	79.6	17	1.3
Regional Express	802	802	631	78.7	628	78.3	0	0.0
All Airlines	2 150	2 133	1 682	78.9	1 687	79.1	17	0.8
<b>Sydney-Ayers Rock</b>								
Jetstar	339	339	242	71.4	256	75.5	0	0.0
Virgin Australia	365	364	294	80.8	304	83.5	1	0.3
All Airlines	704	703	536	76.2	560	79.7	1	0.1
<b>Sydney-Ballina</b>								
Jetstar	1 007	1 002	794	79.2	807	80.5	5	0.5
Regional Express	262	261	181	69.3	192	73.6	1	0.4
Virgin Australia	418	414	355	85.7	363	87.7	4	1.0
All Airlines	1 687	1 677	1 330	79.3	1 362	81.2	10	0.6

	Sectors		Arrivals On Time		Departures On Time		Cancellations	
	Sched.	Flown	No.	%	No.	%	No.	%
<b>Sydney-Brisbane</b>								
Jetstar	2 085	1 974	1 493	75.6	1 425	72.2	111	5.3
Qantas	7 162	7 041	5 657	80.3	5 695	80.9	121	1.7
QantasLink	171	164	120	73.2	124	75.6	7	4.1
Tigerair Australia	1 330	1 272	917	72.1	960	75.5	58	4.4
Virgin Australia	6 255	6 074	4 810	79.2	4 890	80.5	181	2.9
All Airlines	17 003	16 525	12 997	78.7	13 094	79.2	478	2.8
<b>Sydney-Cairns</b>								
Jetstar	1 167	1 152	972	84.4	885	76.8	15	1.3
Qantas	908	906	775	85.5	745	82.2	2	0.2
Tigerair Australia	521	513	422	82.3	430	83.8	8	1.5
Virgin Australia	1 058	1 054	862	81.8	833	79.0	4	0.4
All Airlines	3 654	3 625	3 031	83.6	2 893	79.8	29	0.8
<b>Sydney-Canberra</b>								
Qantas	179	178	166	93.3	169	94.9	1	0.6
QantasLink	5 186	5 074	4 123	81.3	4 182	82.4	112	2.2
Virgin Australia	2 841	2 756	2 220	80.6	2 146	77.9	85	3.0
All Airlines	8 206	8 008	6 509	81.3	6 497	81.1	198	2.4
<b>Sydney-Coffs Harbour</b>								
QantasLink	1 581	1 568	1 307	83.4	1 234	78.7	13	0.8
Tigerair Australia	162	159	117	73.6	126	79.2	3	1.9
Virgin Australia	597	584	513	87.8	515	88.2	13	2.2
All Airlines	2 340	2 311	1 937	83.8	1 875	81.1	29	1.2
<b>Sydney-Darwin</b>								
Jetstar	276	271	203	74.9	204	75.3	5	1.8
Qantas	573	569	428	75.2	379	66.6	4	0.7
Virgin Australia	370	367	300	81.7	305	83.1	3	0.8
All Airlines	1 219	1 207	931	77.1	888	73.6	12	1.0
<b>Sydney-Dubbo</b>								
QantasLink	1 237	1 231	968	78.6	974	79.1	6	0.5
Regional Express	1 460	1 453	1 221	84.0	1 184	81.5	7	0.5
All Airlines	2 697	2 684	2 189	81.6	2 158	80.4	13	0.5
<b>Sydney-Gold Coast</b>								
Jetstar	3 456	3 365	2 643	78.5	2 582	76.7	91	2.6
Qantas	1 089	1 083	861	79.5	821	75.8	6	0.6
QantasLink	305	300	231	77.0	237	79.0	5	1.6
Tigerair Australia	1 225	1 186	851	71.8	908	76.6	39	3.2
Virgin Australia	3 024	2 976	2 364	79.4	2 409	80.9	48	1.6
All Airlines	9 099	8 910	6 950	78.0	6 957	78.1	189	2.1
<b>Sydney-Hamilton Island</b>								
Jetstar	295	294	247	84.0	233	79.3	1	0.3
Qantas	118	118	102	86.4	96	81.4	0	0.0
QantasLink	214	207	165	79.7	173	83.6	7	3.3
Virgin Australia	314	309	262	84.8	267	86.4	5	1.6
All Airlines	941	928	776	83.6	769	82.9	13	1.4
<b>Sydney-Hobart</b>								
Jetstar	1 008	1 000	812	81.2	792	79.2	8	0.8
Qantas	210	210	189	90.0	177	84.3	0	0.0
QantasLink	507	498	381	76.5	392	78.7	9	1.8
Virgin Australia	867	858	735	85.7	762	88.8	9	1.0
All Airlines	2 592	2 566	2 117	82.5	2 123	82.7	26	1.0

	<i>Sectors</i>		<i>Arrivals On Time</i>		<i>Departures On Time</i>		<i>Cancellations</i>	
	<i>Sched.</i>	<i>Flown</i>	<i>No.</i>	<i>%</i>	<i>No.</i>	<i>%</i>	<i>No.</i>	<i>%</i>
<b>Sydney-Launceston</b>								
Jetstar	572	569	476	83.7	452	79.4	3	0.5
Virgin Australia	370	369	317	85.9	306	82.9	1	0.3
All Airlines	942	938	793	84.5	758	80.8	4	0.4
<b>Sydney-Melbourne</b>								
Jetstar	4 701	4 405	3 087	70.1	3 056	69.4	296	6.3
Qantas	11 952	11 254	8 270	73.5	8 578	76.2	698	5.8
QantasLink	10	10	10	100.0	9	90.0	0	0.0
Tigerair Australia	3 065	2 905	1 691	58.2	1 793	61.7	160	5.2
Virgin Australia	8 767	8 375	6 333	75.6	6 733	80.4	392	4.5
All Airlines	28 495	26 949	19 391	72.0	20 169	74.8	1 546	5.4
<b>Sydney-Perth</b>								
Jetstar	327	322	226	70.2	195	60.6	5	1.5
Qantas	2 467	2 454	1 801	73.4	1 725	70.3	13	0.5
Tigerair Australia	325	318	249	78.3	238	74.8	7	2.2
Virgin Australia	1 448	1 446	1 042	72.1	1 025	70.9	2	0.1
All Airlines	4 567	4 540	3 318	73.1	3 183	70.1	27	0.6
<b>Sydney-Port Macquarie</b>								
QantasLink	1 197	1 184	921	77.8	951	80.3	13	1.1
Virgin Australia	705	698	530	75.9	520	74.5	7	1.0
All Airlines	1 902	1 882	1 451	77.1	1 471	78.2	20	1.1
<b>Sydney-Proserpine</b>								
Jetstar	156	156	139	89.1	139	89.1	0	0.0
Tigerair Australia	297	295	234	79.3	225	76.3	2	0.7
All Airlines	453	451	373	82.7	364	80.7	2	0.4
<b>Sydney-Sunshine Coast</b>								
Jetstar	1 295	1 273	950	74.6	910	71.5	22	1.7
QantasLink	416	411	330	80.3	326	79.3	5	1.2
Virgin Australia	629	623	521	83.6	517	83.0	6	1.0
All Airlines	2 340	2 307	1 801	78.1	1 753	76.0	33	1.4
<b>Sydney-Tamworth</b>								
QantasLink	1 435	1 409	1 117	79.3	1 131	80.3	26	1.8
Virgin Australia	600	593	464	78.2	476	80.3	7	1.2
All Airlines	2 035	2 002	1 581	79.0	1 607	80.3	33	1.6
<b>Sydney-Townsville</b>								
Jetstar	306	304	217	71.4	213	70.1	2	0.7
Virgin Australia	303	300	257	85.7	250	83.3	3	1.0
All Airlines	609	604	474	78.5	463	76.7	5	0.8
<b>Sydney-Wagga Wagga</b>								
QantasLink	1 154	1 145	964	84.2	924	80.7	9	0.8
Regional Express	1 405	1 391	1 200	86.3	1 212	87.1	14	1.0
All Airlines	2 559	2 536	2 164	85.3	2 136	84.2	23	0.9
<b>Tamworth-Sydney</b>								
QantasLink	1 436	1 403	1 139	81.2	1 157	82.5	33	2.3
Virgin Australia	600	593	485	81.8	505	85.2	7	1.2
All Airlines	2 036	1 996	1 624	81.4	1 662	83.3	40	2.0

	<i>Sectors</i>		<i>Arrivals On Time</i>		<i>Departures On Time</i>		<i>Cancellations</i>	
	<i>Sched.</i>	<i>Flown</i>	<i>No.</i>	<i>%</i>	<i>No.</i>	<i>%</i>	<i>No.</i>	<i>%</i>
<b>Townsville-Brisbane</b>								
Jetstar	632	625	494	79.0	474	75.8	7	1.1
Qantas	751	748	654	87.4	651	87.0	3	0.4
QantasLink	959	948	768	81.0	805	84.9	11	1.1
Virgin Australia	1 662	1 642	1 526	92.9	1 519	92.5	20	1.2
All Airlines	4 004	3 963	3 442	86.9	3 449	87.0	41	1.0
<b>Townsville-Cairns</b>								
QantasLink	1 600	1 585	1 422	89.7	1 423	89.8	15	0.9
Regional Express	212	201	178	88.6	178	88.6	11	5.2
All Airlines	1 812	1 786	1 600	89.6	1 601	89.6	26	1.4
<b>Townsville-Melbourne</b>								
			(To July 2018 only)					
Jetstar	178	178	123	69.1	115	64.6	0	0.0
Tigerair Australia	110	105	75	71.4	68	64.8	5	4.5
All Airlines	288	283	198	70.0	183	64.7	5	1.7
<b>Townsville-Sydney</b>								
Jetstar	306	302	223	73.8	202	66.9	4	1.3
Virgin Australia	303	300	244	81.3	247	82.3	3	1.0
All Airlines	609	602	467	77.6	449	74.6	7	1.1
<b>Wagga Wagga-Sydney</b>								
QantasLink	1 154	1 144	937	81.9	939	82.1	10	0.9
Regional Express	1 410	1 396	1 078	77.2	1 156	82.8	14	1.0
All Airlines	2 564	2 540	2 015	79.3	2 095	82.5	24	0.9

## Airports

On time performance is reported for all routes where the passenger load averages over 8000 passengers per month, and where two or more airlines operate in competition. The following data reports by airport against flights operated on those routes only. This year, 8 major city airports and 32 regional city airports are covered.

Airport	Arrivals			Departures		
	Sectors	On Time		Sectors	On Time	
	Flown	No.	%	Flown	No.	%
<b>Adelaide</b>						
Jetstar	3 497	2 632	75.3	3 489	2 611	74.8
Qantas	8 778	7 419	84.5	8 765	7 457	85.1
QantasLink	2 422	2 111	87.2	2 417	2 143	88.7
Regional Express	2 337	2 036	87.1	2 340	2 162	92.4
Tigerair Australia	1 690	1 222	72.3	1 686	1 092	64.8
Virgin Australia	7 702	6 361	82.6	7 698	6 511	84.6
Virgin Australia Regional Airlines	572	379	66.3	564	383	67.9
All Airlines	26 998	22 160	82.1	26 959	22 359	82.9

Relates to services to and from Alice Springs, Brisbane, Canberra, Gold Coast, Melbourne, Perth, Port Lincoln and Sydney.

### Albury

QantasLink	1 094	855	78.2	1 095	852	77.8
Regional Express	1 086	852	78.5	1 075	897	83.4
Virgin Australia	694	546	78.7	694	541	78.0
All Airlines	2 874	2 253	78.4	2 864	2 290	80.0

Relates to services to and from Sydney only.

### Alice Springs

Qantas	362	313	86.5	362	295	81.5
QantasLink	623	576	92.5	622	584	93.9
Virgin Australia	243	202	83.1	242	210	86.8
Virgin Australia Regional Airlines	265	179	67.5	266	197	74.1
All Airlines	1 493	1 270	85.1	1 492	1 286	86.2

Relates to services to and from Adelaide and Darwin.

### Armidale

QantasLink	1 331	1 051	79.0	1 322	1 028	77.8
Regional Express	802	631	78.7	808	571	70.7
All Airlines	2 133	1 682	78.9	2 130	1 599	75.1

Relates to services to and from Sydney only.

### Ayers Rock

Jetstar	339	242	71.4	338	173	51.2
Virgin Australia	364	294	80.8	364	248	68.1
All Airlines	703	536	76.2	702	421	60.0

Relates to services to and from Sydney only.

### Ballina

Jetstar	1 002	794	79.2	1 001	656	65.5
Regional Express	261	181	69.3	256	182	71.1
Virgin Australia	414	355	85.7	414	348	84.1
All Airlines	1 677	1 330	79.3	1 671	1 186	71.0

Relates to services to and from Sydney only.

Airport	Arrivals			Departures		
	Sectors	On Time		Sectors	On Time	
	Flown	No.	%	Flown	No.	%
<b>Brisbane</b>						
Jetstar	8 015	6 266	78.2	8 011	6 093	76.1
Qantas	16 650	13 671	82.1	16 645	13 940	83.7
QantasLink	12 964	10 657	82.2	13 016	11 042	84.8
Tigerair Australia	3 813	2 803	73.5	3 810	2 793	73.3
Virgin Australia	25 312	21 392	84.5	25 299	21 433	84.7
All Airlines	66 754	54 789	82.1	66 781	55 301	82.8

Relates to services to and from Adelaide, Bundaberg, Cairns, Canberra, Darwin, Emerald, Gladstone, Hamilton Island, Hobart, Mackay, Melbourne, Mount Isa, Newcastle, Perth, Proserpine, Rockhampton, Sydney and Townsville.

#### Broome

Qantas	8	6	75.0	8	2	25.0
QantasLink	991	871	87.9	980	797	81.3
Virgin Australia	59	48	81.4	57	39	68.4
Virgin Australia Regional Airlines	805	631	78.4	801	587	73.3
All Airlines	1 863	1 556	83.5	1 846	1 425	77.2

Relates to services to and from Perth only.

#### Bundaberg

QantasLink	1 291	1 132	87.7	1 290	1 141	88.4
Virgin Australia	365	309	84.7	365	318	87.1
All Airlines	1 656	1 441	87.0	1 655	1 459	88.2

Relates to services to and from Brisbane only.

#### Cairns

Jetstar	3 515	2 888	82.2	3 511	2 838	80.8
Qantas	2 177	1 876	86.2	2 177	1 843	84.7
QantasLink	2 288	1 954	85.4	2 291	1 998	87.2
Regional Express	201	178	88.6	204	178	87.3
Tigerair Australia	1 356	1 062	78.3	1 355	954	70.4
Virgin Australia	2 995	2 552	85.2	2 994	2 491	83.2
All Airlines	12 532	10 510	83.9	12 532	10 302	82.2

Relates to services to and from Brisbane, Melbourne, Sydney and Townsville.

#### Canberra

Qantas	3 540	3 069	86.7	3 541	3 240	91.5
QantasLink	7 335	6 017	82.0	7 305	6 117	83.7
Tigerair Australia	589	401	68.1	589	374	63.5
Virgin Australia	6 119	5 032	82.2	6 130	5 086	83.0
All Airlines	17 583	14 519	82.6	17 565	14 817	84.4

Relates to services to and from Adelaide, Brisbane, Melbourne and Sydney.

#### Coffs Harbour

QantasLink	1 568	1 307	83.4	1 565	1 306	83.5
Tigerair Australia	159	117	73.6	159	115	72.3
Virgin Australia	584	513	87.8	583	503	86.3
All Airlines	2 311	1 937	83.8	2 307	1 924	83.4

Relates to services to and from Sydney only.

Airport	Arrivals			Departures		
	Sectors Flown	On Time		Sectors Flown	On Time	
		No.	%		No.	%
<b>Darwin</b>						
Jetstar	849	649	76.4	848	603	71.1
Qantas	1 819	1 532	84.2	1 817	1 345	74.0
QantasLink	622	584	93.9	623	584	93.7
Tigerair Australia	221	174	78.7	220	193	87.7
Virgin Australia	1 513	1 213	80.2	1 512	1 254	82.9
Virgin Australia Regional Airlines	214	157	73.4	213	165	77.5
All Airlines	5 238	4 309	82.3	5 233	4 144	79.2
Relates to services to and from Alice Springs, Brisbane, Melbourne, Perth and Sydney.						
<b>Dubbo</b>						
QantasLink	1 231	968	78.6	1 226	990	80.8
Regional Express	1 453	1 221	84.0	1 449	1 182	81.6
All Airlines	2 684	2 189	81.6	2 675	2 172	81.2
Relates to services to and from Sydney only.						
<b>Emerald</b>						
QantasLink	1 212	1 095	90.3	1 203	1 059	88.0
Virgin Australia	623	557	89.4	623	574	92.1
All Airlines	1 835	1 652	90.0	1 826	1 633	89.4
Relates to services to and from Brisbane only.						
<b>Geraldton</b>						
QantasLink	549	499	90.9	544	507	93.2
Virgin Australia Regional Airlines	600	465	77.5	596	443	74.3
All Airlines	1 149	964	83.9	1 140	950	83.3
Relates to services to and from Perth only.						
<b>Gladstone</b>						
QantasLink	1 502	1 238	82.4	1 498	1 246	83.2
Virgin Australia	863	763	88.4	861	774	89.9
All Airlines	2 365	2 001	84.6	2 359	2 020	85.6
Relates to services to and from Brisbane only.						
<b>Gold Coast</b>						
Jetstar	5 979	4 624	77.3	5 973	4 592	76.9
Qantas	1 465	1 156	78.9	1 465	1 153	78.7
QantasLink	300	231	77.0	299	232	77.6
Tigerair Australia	2 106	1 504	71.4	2 106	1 347	64.0
Virgin Australia	5 614	4 530	80.7	5 604	4 289	76.5
All Airlines	15 464	12 045	77.9	15 447	11 613	75.2
Relates to services to and from Adelaide, Melbourne and Sydney.						
<b>Hamilton Island</b>						
Jetstar	294	247	84.0	294	227	77.2
Qantas	118	102	86.4	118	101	85.6
QantasLink	504	411	81.5	502	399	79.5
Virgin Australia	672	578	86.0	671	576	85.8
All Airlines	1 588	1 338	84.3	1 585	1 303	82.2
Relates to services to and from Brisbane and Sydney.						



Airport	Arrivals			Departures		
	Sectors	On Time		Sectors	On Time	
	Flown	No.	%	Flown	No.	%
<b>Hobart</b>						
Jetstar	3 439	2 591	75.3	3 434	2 158	62.8
Qantas	1 295	1 067	82.4	1 289	1 073	83.2
QantasLink	785	620	79.0	780	674	86.4
Tigerair Australia	488	337	69.1	487	296	60.8
Virgin Australia	3 005	2 424	80.7	3 005	2 278	75.8
All Airlines	9 012	7 039	78.1	8 995	6 479	72.0
Relates to services to and from Brisbane, Melbourne and Sydney.						
<b>Kalgoorlie</b>						
Qantas	110	104	94.5	111	98	88.3
QantasLink	840	750	89.3	837	760	90.8
Virgin Australia	423	389	92.0	421	355	84.3
Virgin Australia Regional Airlines	402	342	85.1	405	344	84.9
All Airlines	1 775	1 585	89.3	1 774	1 557	87.8
Relates to services to and from Perth only.						
<b>Karratha</b>						
Qantas	151	143	94.7	150	135	90.0
QantasLink	2 030	1 708	84.1	2 017	1 754	87.0
Virgin Australia	70	53	75.7	70	55	78.6
Virgin Australia Regional Airlines	747	596	79.8	741	573	77.3
All Airlines	2 998	2 500	83.4	2 978	2 517	84.5
Relates to services to and from Perth only.						
<b>Launceston</b>						
Jetstar	2 102	1 587	75.5	2 100	1 404	66.9
QantasLink	1 319	1 096	83.1	1 320	1 119	84.8
Virgin Australia	1 572	1 225	77.9	1 572	1 293	82.3
All Airlines	4 993	3 908	78.3	4 992	3 816	76.4
Relates to services to and from Melbourne and Sydney.						
<b>Mackay</b>						
Jetstar	398	311	78.1	396	285	72.0
QantasLink	1 346	1 176	87.4	1 319	1 129	85.6
Virgin Australia	1 668	1 422	85.3	1 668	1 510	90.5
All Airlines	3 412	2 909	85.3	3 383	2 924	86.4
Relates to services to and from Brisbane only.						
<b>Melbourne</b>						
Jetstar	17 533	12 465	71.1	17 565	12 492	71.1
Qantas	26 679	20 992	78.7	26 689	21 379	80.1
QantasLink	3 469	2 873	82.8	3 464	2 939	84.8
Regional Express	890	637	71.6	890	781	87.8
Tigerair Australia	8 136	5 113	62.8	8 145	5 695	69.9
Virgin Australia	27 099	20 504	75.7	27 114	22 247	82.0
Virgin Australia Regional Airlines	19	13	68.4	19	10	52.6
All Airlines	83 825	62 597	74.7	83 886	65 543	78.1
Relates to services to and from Adelaide, Brisbane, Cairns, Canberra, Darwin, Gold Coast, Hobart, Launceston, Mildura, Newcastle, Perth, Sunshine Coast, Sydney and Townsville (to July 2018).						
<b>Mildura</b>						
QantasLink	1 103	954	86.5	1 101	941	85.5
Regional Express	890	723	81.2	890	680	76.4
Virgin Australia	365	272	74.5	365	295	80.8
All Airlines	2 358	1 949	82.7	2 356	1 916	81.3
Relates to services to and from Melbourne only.						

Airport	Arrivals			Departures		
	Sectors Flown	On Time		Sectors Flown	On Time	
		No.	%		No.	%
<b>Mount Isa</b>						
Qantas	31	28	90.3	31	20	64.5
QantasLink	613	350	57.1	607	408	67.2
Virgin Australia	210	184	87.6	209	174	83.3
All Airlines	854	562	65.8	847	602	71.1
Relates to services to and from Brisbane only.						
<b>Newcastle</b>						
Jetstar	2 276	1 664	73.1	2 265	1 711	75.5
QantasLink	662	552	83.4	659	560	85.0
Virgin Australia	1 390	1 151	82.8	1 386	1 154	83.3
All Airlines	4 328	3 367	77.8	4 310	3 425	79.5
Relates to services to and from Brisbane and Melbourne.						
<b>Newman</b>						
Qantas	388	375	96.6	387	368	95.1
QantasLink	1 138	997	87.6	1 124	971	86.4
Virgin Australia	191	183	95.8	190	178	93.7
Virgin Australia Regional Airlines	276	229	83.0	280	235	83.9
All Airlines	1 993	1 784	89.5	1 981	1 752	88.4
Relates to services to and from Perth only.						
<b>Perth</b>						
Jetstar	1 204	965	80.1	1 196	823	68.8
Qantas	9 125	7 195	78.8	9 120	7 640	83.8
QantasLink	6 825	5 946	87.1	6 902	6 055	87.7
Tigerair Australia	930	659	70.9	926	666	71.9
Virgin Australia	6 213	4 712	75.8	6 214	5 320	85.6
Virgin Australia Regional Airlines	3 656	2 783	76.1	3 670	3 067	83.6
All Airlines	27 953	22 260	79.6	28 028	23 571	84.1
Relates to services to and from Adelaide, Brisbane, Broome, Darwin, Geraldton, Kalgoorlie, Karratha, Melbourne, Newman, Port Hedland and Sydney.						
<b>Port Hedland</b>						
Qantas	336	317	94.3	336	292	86.9
QantasLink	1 217	1 029	84.6	1 191	1 041	87.4
Virgin Australia	286	262	91.6	284	257	90.5
Virgin Australia Regional Airlines	339	286	84.4	340	282	82.9
All Airlines	2 178	1 894	87.0	2 151	1 872	87.0
Relates to services to and from Perth only.						
<b>Port Lincoln</b>						
QantasLink	1 291	1 176	91.1	1 285	1 170	91.1
Regional Express	2 340	2 064	88.2	2 337	2 102	89.9
All Airlines	3 631	3 240	89.2	3 622	3 272	90.3
Relates to services to and from Adelaide only.						
<b>Port Macquarie</b>						
QantasLink	1 184	921	77.8	1 182	924	78.2
Virgin Australia	698	530	75.9	694	463	66.7
All Airlines	1 882	1 451	77.1	1 876	1 387	73.9
Relates to services to and from Sydney only.						

Airport	Arrivals			Departures		
	Sectors	On Time		Sectors	On Time	
	Flown	No.	%	Flown	No.	%
<b>Proserpine</b>						
Jetstar	561	486	86.6	560	440	78.6
Tigerair Australia	327	265	81.0	326	241	73.9
Virgin Australia	422	374	88.6	422	363	86.0
All Airlines	1 310	1 125	85.9	1 308	1 044	79.8
Relates to services to and from Brisbane and Sydney.						
<b>Rockhampton</b>						
QantasLink	1 967	1 567	79.7	1 991	1 619	81.3
Virgin Australia	1 665	1 309	78.6	1 668	1 409	84.5
All Airlines	3 632	2 876	79.2	3 659	3 028	82.8
Relates to services to and from Brisbane only.						
<b>Sunshine Coast</b>						
Jetstar	2 268	1 716	75.7	2 265	1 436	63.4
QantasLink	429	342	79.7	421	334	79.3
Virgin Australia	1 405	1 173	83.5	1 403	1 022	72.8
All Airlines	4 102	3 231	78.8	4 089	2 792	68.3
Relates to services to and from Melbourne and Sydney.						
<b>Sydney</b>						
Jetstar	17 691	12 894	72.9	17 719	13 075	73.8
Qantas	26 334	20 862	79.2	26 356	20 468	77.7
QantasLink	15 913	12 789	80.4	15 981	12 857	80.5
Regional Express	4 984	3 740	75.0	4 993	4 089	81.9
Tigerair Australia	7 154	4 737	66.2	7 161	5 008	69.9
Virgin Australia	30 788	24 754	80.4	30 809	24 812	80.5
All Airlines	102 864	79 776	77.6	103 019	80 309	78.0
Relates to services to and from Adelaide, Albury, Armidale, Ayers Rock, Ballina, Brisbane, Cairns, Canberra, Coffs Harbour, Darwin, Dubbo, Gold Coast, Hamilton Island, Hobart, Launceston, Melbourne, Perth, Port Macquarie, Proserpine, Sunshine Coast, Tamworth, Townsville and Wagga Wagga.						
<b>Tamworth</b>						
QantasLink	1 409	1 117	79.3	1 403	1 157	82.5
Virgin Australia	593	464	78.2	593	505	85.2
All Airlines	2 002	1 581	79.0	1 996	1 662	83.3
Relates to services to and from Sydney only.						
<b>Townsville</b>						
Jetstar	1 108	860	77.6	1 105	791	71.6
Qantas	749	616	82.2	748	651	87.0
QantasLink	2 547	2 249	88.3	2 533	2 228	88.0
Regional Express	204	176	86.3	201	178	88.6
Tigerair Australia	106	75	70.8	105	68	64.8
Virgin Australia	1 941	1 674	86.2	1 942	1 766	90.9
All Airlines	6 655	5 650	84.9	6 634	5 682	85.6
Relates to services to and from Brisbane, Cairns, Melbourne (to July 2018) and Sydney.						
<b>Wagga Wagga</b>						
QantasLink	1 145	964	84.2	1 144	939	82.1
Regional Express	1 391	1 200	86.3	1 396	1 156	82.8
All Airlines	2 536	2 164	85.3	2 540	2 095	82.5
Relates to services to and from Sydney only.						

## Definitions

---

On time arrival	A flight arrival is counted as "on time" if it arrived at the gate before 15 minutes after the scheduled arrival time shown in the carriers' schedule. Neither diverted nor cancelled flights count as on time.
On time departure	A flight departure is counted as "on time" if it departs the gate before 15 minutes after the scheduled departure time shown in the carriers' schedule.
Cancellation	A flight removed from service within 7 days of scheduled departure is regarded as a cancellation.
On time departure percentage	The percentage of on time departures is measured against the number of departures <i>operated</i> on any particular sector.
On time arrival percentage	The percentage of on time arrivals is measured against the number of arrivals <i>operated</i> on any particular sector.
Cancellation percentage	The percentage of cancellations is measured against the number of services <i>scheduled</i> on any particular sector.

---