



Australian Government

Department of Infrastructure, Transport, Cities and Regional Development

Bureau of Infrastructure, Transport and Regional Economics

STATISTICAL REPORT



Aviation

Domestic airline on time performance 2018-19

© Commonwealth of Australia 2019

ISSN: 1832-0759

Ownership of intellectual property rights in this publication

Unless otherwise noted, copyright (and any other intellectual property rights, if any) in this publication is owned by the Commonwealth of Australia (referred to below as the Commonwealth).

Disclaimer

The material contained in this publication is made available on the understanding that the Commonwealth is not providing professional advice, and that users exercise their own skill and care with respect to its use, and seek independent advice if necessary.

The Commonwealth makes no representations or warranties as to the contents or accuracy of the information contained in this publication. To the extent permitted by law, the Commonwealth disclaims liability to any person or organisation in respect of anything done, or omitted to be done, in reliance upon information contained in this publication.

Creative Commons licence

With the exception of (a) the Coat of Arms; and (b) the Department of Infrastructure, Transport, Cities and Regional Development's photos and graphics, copyright in this publication is licensed under a Creative Commons Attribution 3.0 Australia Licence.

Creative Commons Attribution 3.0 Australia Licence is a standard form licence agreement that allows you to copy, communicate and adapt this publication provided that you attribute the work to the Commonwealth and abide by the other licence terms. A summary of the licence terms is available from <http://creativecommons.org/licenses/by/3.0/au/deed.en>. The full licence terms are available from <http://creativecommons.org/licenses/by/3.0/au/legalcode>.

Use of the Coat of Arms

The Department of the Prime Minister and Cabinet sets the terms under which the Coat of Arms is used. Please refer to the Department's Commonwealth Coat of Arms and Government branding web page <http://www.dpmc.gov.au/guidelines/index.cfm#brand> and, in particular, the Guidelines on the use of the Commonwealth Coat of Arms publication.

An appropriate citation for this report is:

Bureau of Infrastructure, Transport and Regional Economics (BITRE), 2019, Domestic airline on time performance, Statistical Report, BITRE, Canberra ACT.

Contact us

This publication is available in PDF format. All other rights are reserved, including in relation to any Departmental logos or trade marks which may exist. For enquiries regarding the licence and any use of this publication, please contact:

Bureau of Infrastructure, Transport and Regional Economics (BITRE)
Department of Infrastructure, Transport, Cities and Regional Development
GPO Box 501, Canberra ACT 2601, Australia
Telephone: (international) +61 2 6274 7210
Fax: (international) +61 2 6274 6855
Email: bitre@infrastructure.gov.au
Website: www.bitre.gov.au

Inquiries

Should you require additional information about the statistics contained in this publication:

Telephone (02) 6274 7790 or Facsimile (02) 6274 7727

Electronic mail: AVSTATS@infrastructure.gov.au

Web site: <http://www.bitre.gov.au/statistics/aviation/otphome.aspx>

Foreword

The Bureau of Infrastructure, Transport and Regional Economics (BITRE) monitors the punctuality and reliability of major domestic airlines operating between Australian airports. The purpose of this is to allow for evaluation of overall industry and individual airline performance, so that consumers of air travel can make informed decisions.

The following domestic airlines currently report this information monthly to the BITRE: Jetstar, Qantas, QantasLink, Regional Express, Tigerair Australia, Virgin Australia and Virgin Australia Regional Airlines. Data has been gathered since November 2003, although some airlines commenced reporting at a later date, including Jetstar which first reported in May 2004, MacAir in July 2005, Tigerair Australia in April 2008 and Virgin Australia Regional Airlines in May 2013. MacAir ceased operations in February 2009 and data was not received for December 2008 onwards. Virgin Blue was rebranded as Virgin Australia in May 2011 and Tiger Airways was rebranded as Tigerair Australia in July 2013 and time series data in Microsoft Excel spreadsheet format on the BITRE website have been revised to reflect these changes. Services operated by Skywest on behalf of Virgin Australia using ATR/F100 aircraft commenced in November 2011 and were shown separately as Virgin Australia – ATR/F100 Operations. Virgin Australia Regional Airlines commenced operations in May 2013. It was formed after the acquisition of Skywest by Virgin Australia and represented a combination of operations previously reported under Skywest and Virgin Australia – ATR/F100 Operations. In January 2016, Virgin Australia transferred their ATR fleet from Virgin Australia Regional Airlines to Virgin Australia.

Information presented in this report is for Australian domestic routes for which the passenger load averaged 8 000 or more passengers per month over the previous six months and where two or more airlines operated in competition on those routes. There were 65 routes that met these criteria for all twelve months in 2018-19. Over time, routes which meet these criteria change as airline networks and traffic levels vary.

Participating airlines report their overall monthly network performance where this is possible.

Total industry figures encompass all services operated by reporting airlines only. These airlines collectively carried over 95 per cent of total domestic passengers (regular public transport only) in 2018.

The method of capturing on time performance varies between airlines utilising different recording systems. Jetstar and Qantas jet aircraft use Aircraft Communication Addressing and Reporting System (ACARS) to electronically measure on time performance. Regional Express, Tigerair Australia, Virgin Australia, Virgin Australia Regional Airlines and the Qantas non-jet fleet record on time performance manually using records from pilots, gate agents and/or ground crews.

After initial data is collected, aggregate reports are audited internally by participating airlines prior to publication.

Reports and detailed time series data in Microsoft Excel spreadsheet format are available from the BITRE website at: <http://www.bitre.gov.au/statistics/aviation/otphome.aspx>.

Contents

	Page
Industry performance	1
Individual routes	9
Airports.....	24
Definitions	30

Industry performance

For the year ended June 2019, on time performance over all routes operated by participating airlines (Jetstar, Qantas, QantasLink, Regional Express, Tigerair Australia, Virgin Australia and Virgin Australia Regional Airlines) averaged 79.4 per cent for on time arrivals and 80.6 per cent for on time departures. Cancellations represented 2.1 per cent of all scheduled flights. The equivalent figures for 2017-18 were 81.2 per cent for arrivals, 82.0 per cent for departures and 1.7 per cent for cancellations.

The 2018-19 on time arrivals figure was below the long term average performance for all routes of 82.5 per cent and the on time departures figure was also below the long term average of 83.8 per cent. The rate of cancellations was higher than the long term average of 1.5 per cent.

Qantas achieved the highest on time arrivals among the major domestic airlines at 80.1 per cent, followed by Virgin Australia at 79.9 per cent, Jetstar at 75.5 per cent and Tigerair Australia at 68.1 per cent. QantasLink was the best performing regional airline for on time arrivals at 83.2 per cent, followed by Regional Express at 80.5 per cent and Virgin Australia Regional Airlines at 74.0 per cent. The Qantas network (Qantas and QantasLink combined operations) recorded 81.7 per cent for on time arrivals while the Virgin Australia network (Virgin Australia and Virgin Australia Regional Airlines combined operations) recorded 79.6 per cent.

Virgin Australia achieved the highest level of on time departures for 2018-19 at 81.9 per cent, followed by Qantas at 81.6 per cent, Jetstar at 73.5 per cent and Tigerair Australia at 69.0 per cent. The regional airlines were led by QantasLink at 84.3 per cent, followed by Regional Express at 83.8 per cent and Virgin Australia Regional Airlines at 78.3 per cent. The Qantas network recorded 83.0 per cent for on time departures while the Virgin Australia network recorded 81.6 per cent.

Tigerair Australia had the highest percentage of cancellations at 4.3 per cent during 2018-19, followed by Jetstar at 2.5 per cent, Qantas at 2.4 per cent, Virgin Australia Regional Airlines at 2.1 per cent, Virgin Australia at 2.0 per cent, QantasLink at 1.6 per cent and Regional Express at 1.0 per cent.

Airlines' on time performance varies across the routes they serve. Individual route data by specific airline for 66 routes are shown on pages 9-23.

Of the 65 routes which met the criteria for on time performance reporting for all 12 months in 2018-19 (excludes Melbourne-Townsville and Townsville-Melbourne routes on which Jetstar is the only operating carrier after July 2018), the Adelaide-Gold Coast route had the highest percentage of on time arrivals at 92.1 per cent and the Adelaide-Port Lincoln route had the highest percentage of on time departures at 92.3 per cent. The Ayers Rock-Sydney route had the lowest percentage of on time arrivals at 65.8 per cent and the lowest percentage of on time departures at 54.3 per cent.

Cancellations were highest on the Melbourne-Sydney and Sydney-Melbourne routes at 6.4 per cent, followed by the Brisbane-Sydney route at 3.5 per cent, the Sydney-Brisbane route at 3.4 per cent, the Canberra-Sydney route at 3.1 per cent and the Karratha-Perth and Gold Coast-Sydney routes at 3.0 per cent.

Emerald Airport recorded the highest percentage of on time arrivals at 90.3 per cent and Port Lincoln Airport recorded the highest percentage of on time departures at 90.9 per cent. Melbourne Airport recorded the lowest percentage of on time arrivals at 74.7 per cent and Ayers Rock Airport recorded the lowest percentage of on time departures at 54.3 per cent. These figures only refer to reported routes and do not cover all flights at these airports.

Table 1 On time performance for the year ended June 2019 — Total Industry

	Sectors		Arrivals On Time		Departures On Time		Cancellations	
	Scheduled	Flown	No.	%	No.	%	No.	%
Jetstar	86 849	84 657	63 901	75.5	62 191	73.5	2 192	2.5
Qantas	105 928	103 385	82 779	80.1	84 338	81.6	2 543	2.4
QantasLink	120 411	118 460	98 529	83.2	99 866	84.3	1 951	1.6
Regional Express	71 974	71 262	57 342	80.5	59 708	83.8	712	1.0
Tigerair Australia	28 345	27 130	18 488	68.1	18 726	69.0	1 215	4.3
Virgin Australia	140 912	138 151	110 438	79.9	113 097	81.9	2 761	2.0
Virgin Australia Regional Airlines	9 415	9 214	6 818	74.0	7 212	78.3	201	2.1
All Airlines	563 834	552 259	438 295	79.4	445 138	80.6	11 575	2.1
Qantas - all QF designated services	226 339	221 845	181 308	81.7	184 204	83.0	4 494	2.0
Virgin Australia - all VA designated services	150 327	147 365	117 256	79.6	120 309	81.6	2 962	2.0

Total airline network data (including routes not shown in this report).

Airlines' on time performance varies across the routes they serve. Individual route data by specific airline for 66 routes are shown on pages 9-23.

Table 2 Top ten routes for on time performance for the year ended June 2019 (routes for participating airlines only and with published data for the 12 month period)

Arrivals		Departures	
Route	On Time (%)	Route	On Time (%)
Adelaide-Gold Coast	92.1	Adelaide-Port Lincoln	92.3
Brisbane-Emerald	90.3	Perth-Kalgoorlie	91.1
Cairns-Townsville	90.1	Perth-Newman	91.1
Adelaide-Port Lincoln	89.8	Port Lincoln-Adelaide	90.9
Port Lincoln-Adelaide	89.7	Darwin-Alice Springs	90.9
Bundaberg-Brisbane	89.7	Brisbane-Emerald	90.5
Perth-Newman	89.5	Cairns-Townsville	90.1
Townsville-Cairns	89.4	Perth-Port Hedland	89.9
Brisbane-Hobart	89.3	Bundaberg-Brisbane	89.5
Alice Springs-Darwin	88.8	Perth-Karratha	89.3

Table 3 Top ten airports for on time performance for the year ended June 2019 (airports for participating airlines and reported routes only and with published data for the 12 month period)

Arrivals		Departures	
Airport	On Time (%)	Airport	On Time (%)
Emerald	90.3	Port Lincoln	90.9
Port Lincoln	89.8	Bundaberg	89.5
Newman	89.5	Emerald	88.6
Kalgoorlie	88.4	Newman	88.6
Bundaberg	87.5	Kalgoorlie	88.2
Gladstone	87.0	Port Hedland	86.7
Port Hedland	86.2	Mackay	86.5
Geraldton	84.6	Gladstone	86.3
Townsville	84.5	Karratha	85.7
Mackay	84.4	Alice Springs	85.6

Total industry on time performance

Figure 1 On time performance (by month from June 2014)—Total Industry

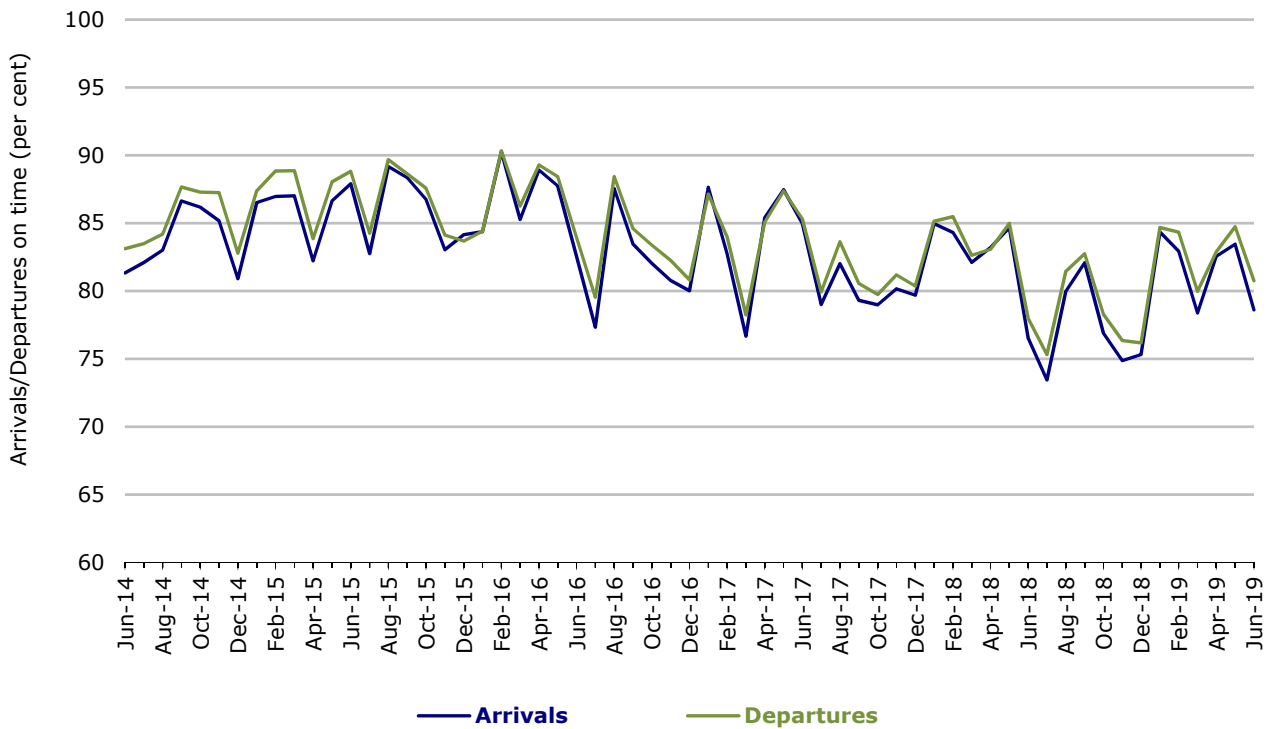
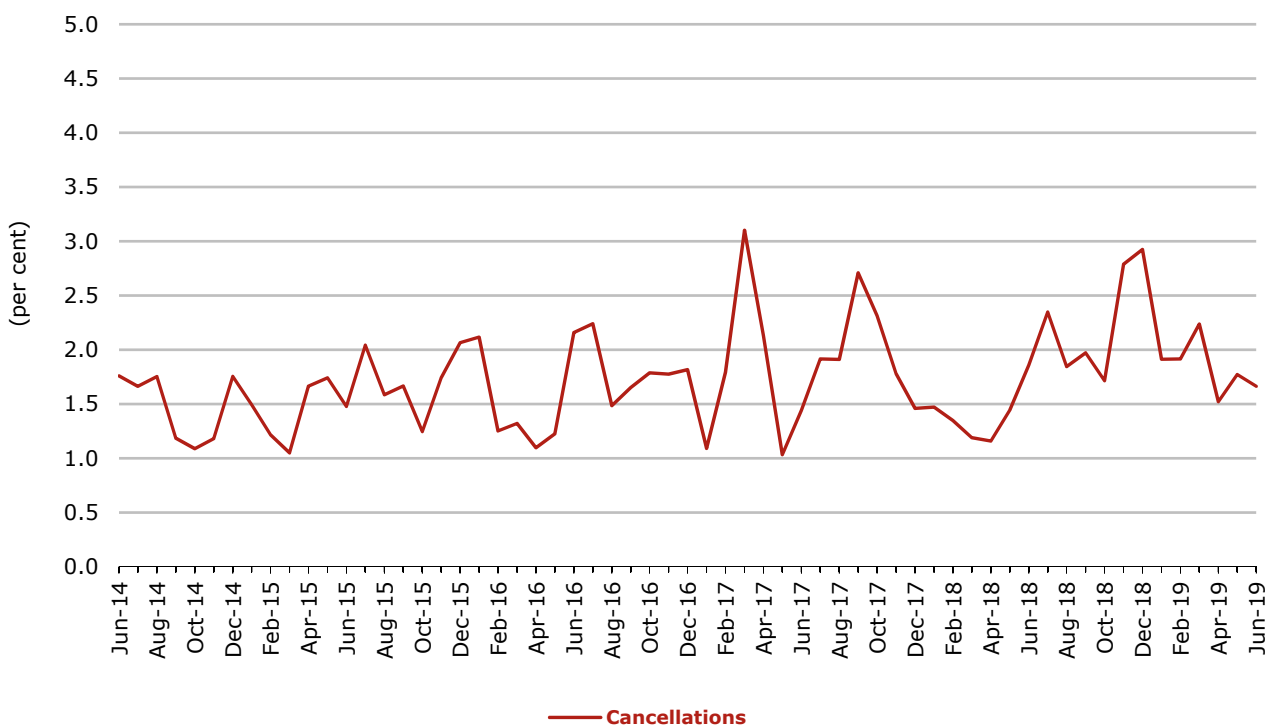


Figure 2 Cancellations (by month from June 2014)—Total Industry



Major domestic airlines on time performance

Figure 3 On time performance (by month from June 2014)—Jetstar

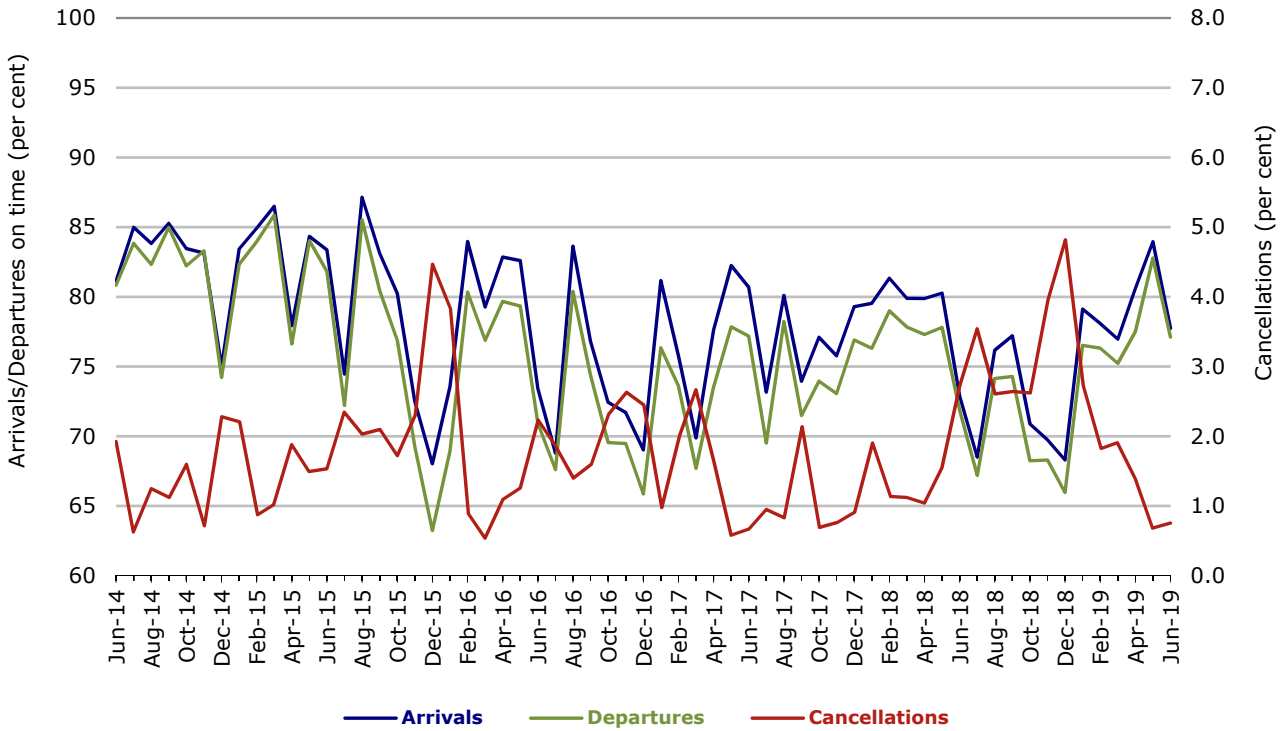


Figure 4 On time performance (by month from June 2014)—Qantas

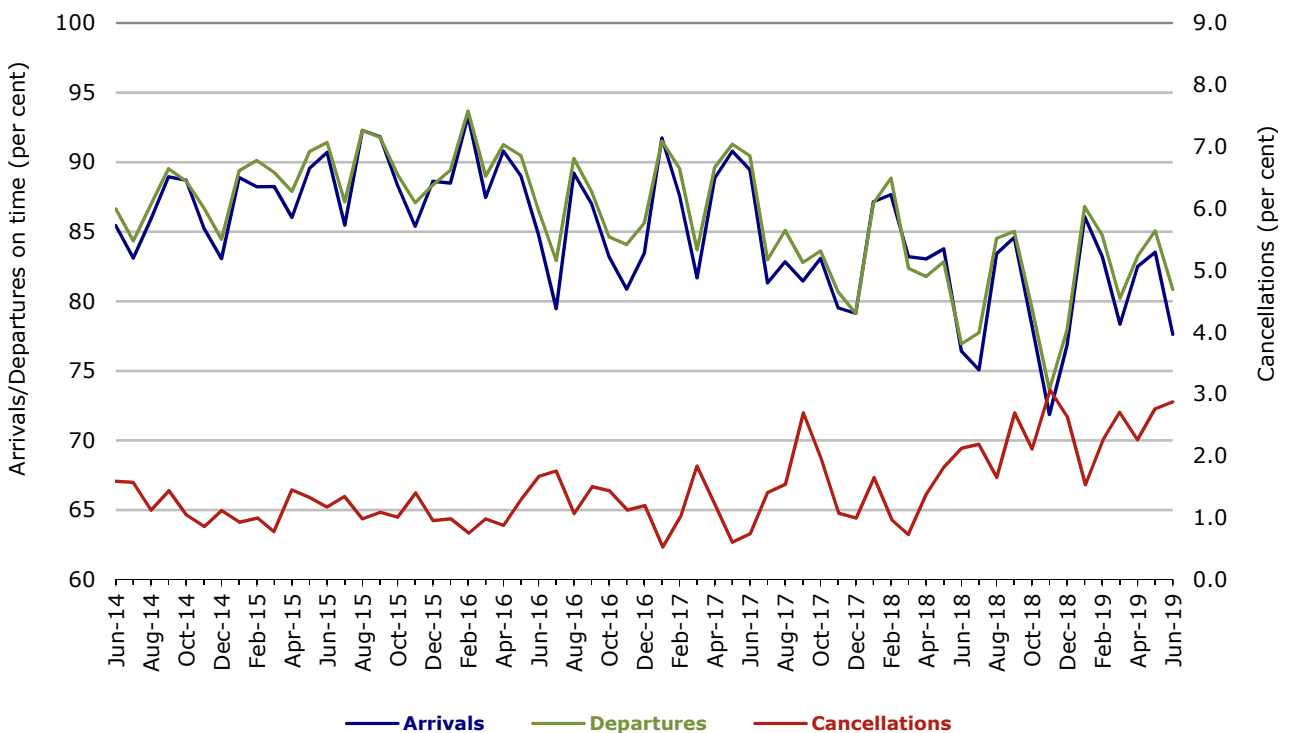


Figure 5 On time performance (by month from June 2014)—Tigerair Australia

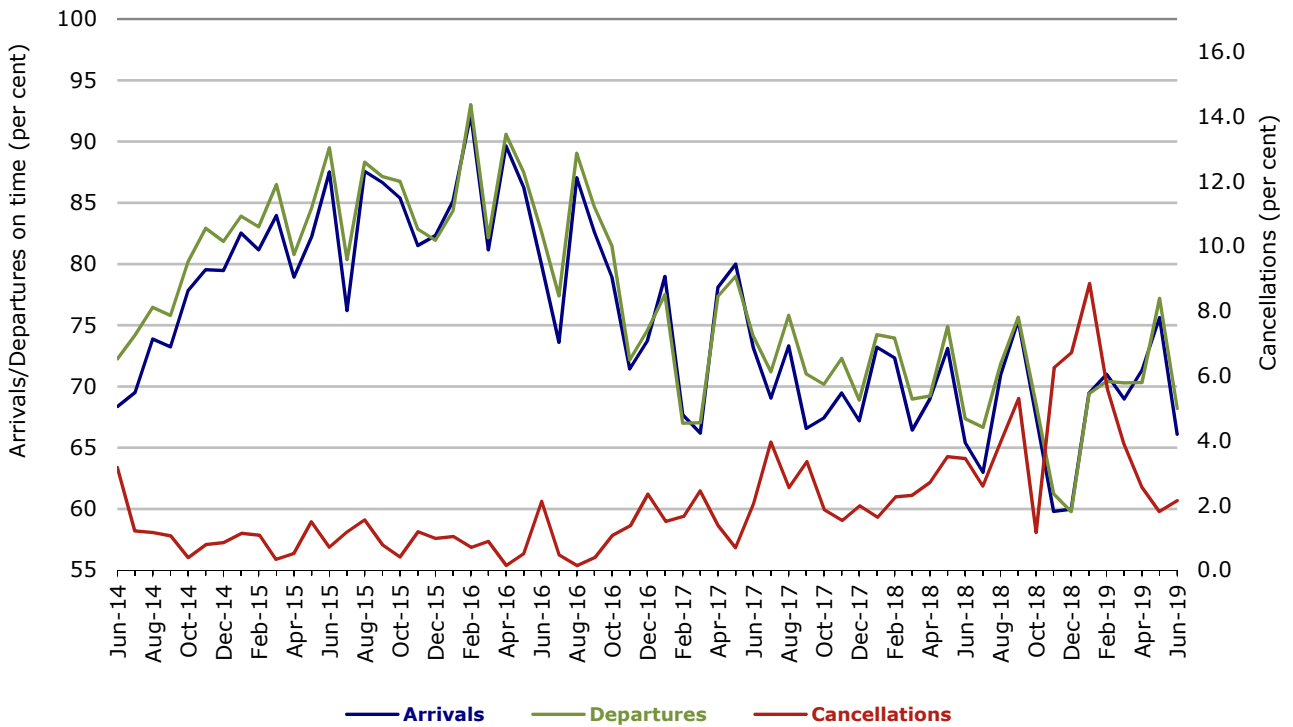
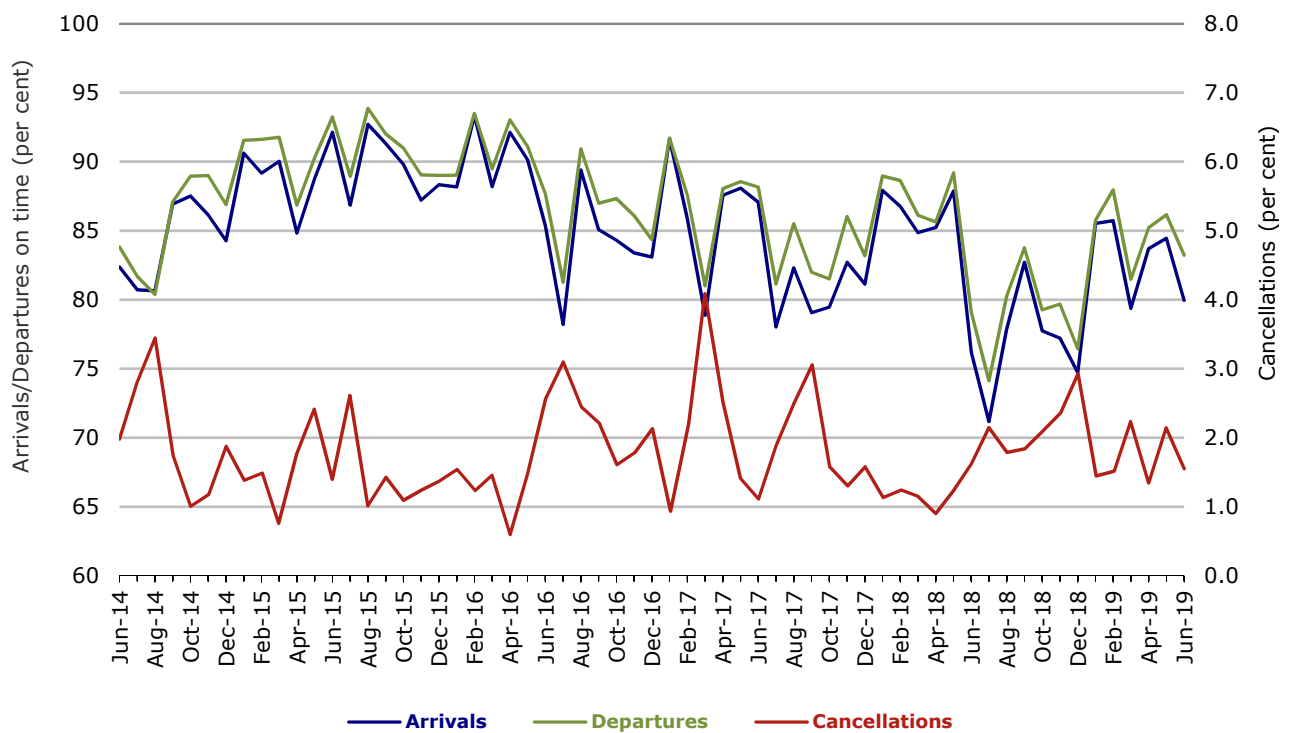


Figure 6 On time performance (by month from June 2014)—Virgin Australia



In January 2016, Virgin Australia transferred their ATR fleet from Virgin Australia Regional Airlines to Virgin Australia.

Major regional airlines on time performance

Figure 7 On time performance (by month from June 2014)—QantasLink

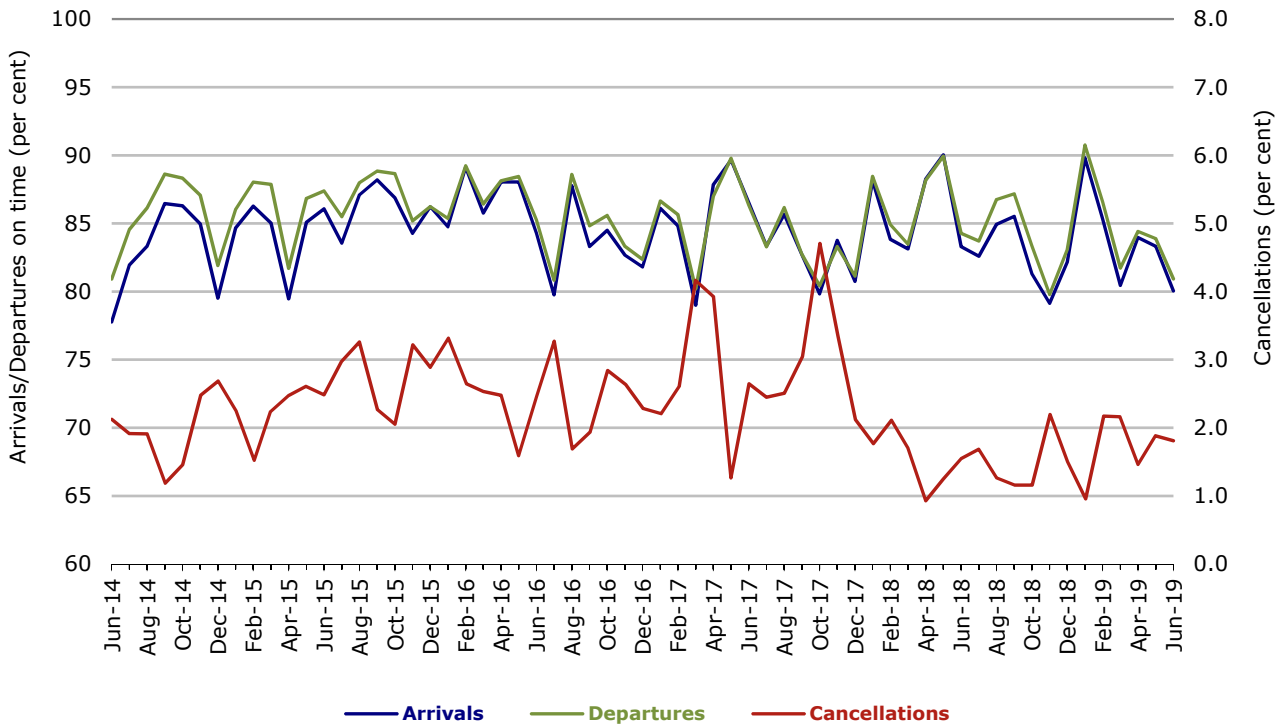


Figure 8 On time performance (by month from June 2014)—Regional Express

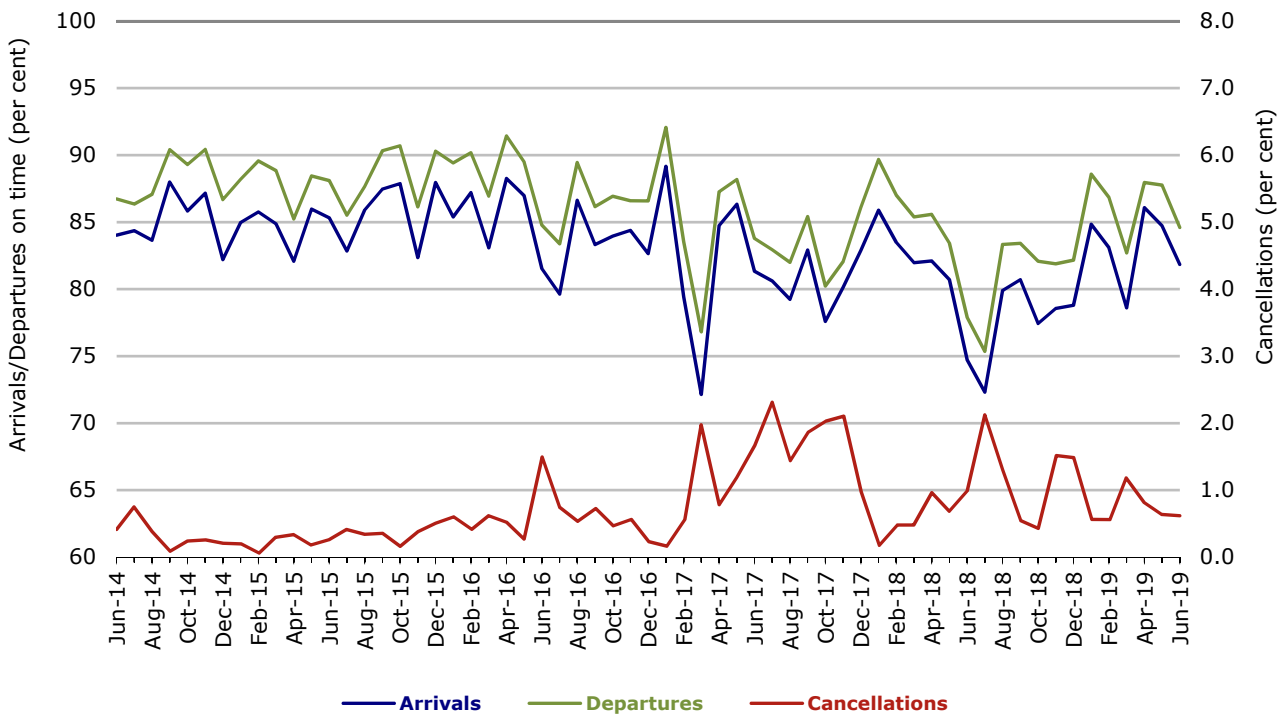
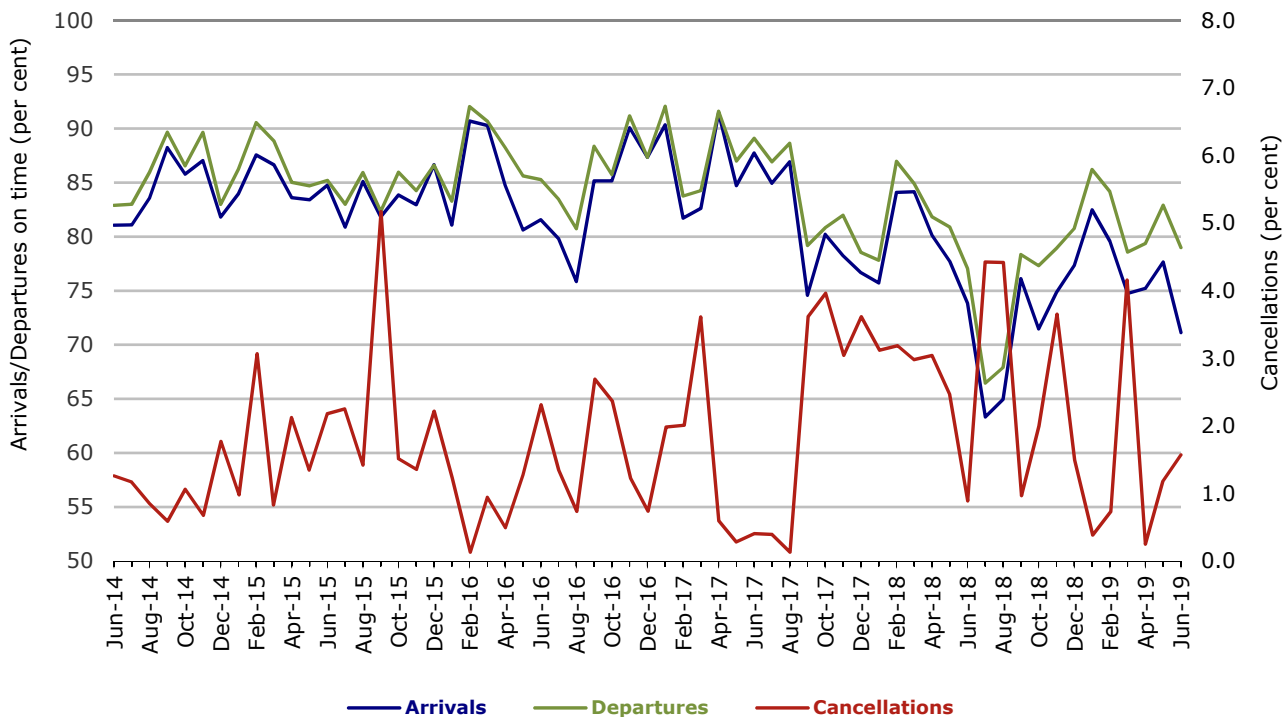


Figure 9 On time performance (by month from June 2014)
Virgin Australia Regional Airlines



In January 2016, Virgin Australia transferred their ATR fleet from Virgin Australia Regional Airlines to Virgin Australia.

Individual routes

On time performance is reported for all routes where the passenger load averages over 8000 passengers per month over the previous six months, and where two or more airlines operate in competition on those routes. There are now 65 routes which meet this definition. Over time, however, routes which meet this definition may change as airline networks and traffic levels vary.

	Sectors		Arrivals On Time		Departures On Time		Cancellations	
	Sched.	Flown	No.	%	No.	%	No.	%
Adelaide-Alice Springs								
Qantas	365	364	306	84.1	287	78.8	1	0.3
Virgin Australia	195	195	152	77.9	170	87.2	0	0.0
Virgin Australia Regional Airlines	68	66	31	47.0	40	60.6	2	2.9
All Airlines	628	625	489	78.2	497	79.5	3	0.5
Adelaide-Brisbane								
Jetstar	304	299	240	80.3	224	74.9	5	1.6
Qantas	855	853	757	88.7	749	87.8	2	0.2
QantasLink	522	509	427	83.9	443	87.0	13	2.5
Tigerair Australia	335	328	231	70.4	235	71.6	7	2.1
Virgin Australia	1 319	1 309	1 173	89.6	1 138	86.9	10	0.8
All Airlines	3 335	3 298	2 828	85.7	2 789	84.6	37	1.1
Adelaide-Canberra								
Qantas	516	515	445	86.4	434	84.3	1	0.2
QantasLink	43	43	19	44.2	28	65.1	0	0.0
Virgin Australia	312	310	265	85.5	268	86.5	2	0.6
All Airlines	871	868	729	84.0	730	84.1	3	0.3
Adelaide-Gold Coast								
Jetstar	353	351	320	91.2	296	84.3	2	0.6
Virgin Australia	381	381	354	92.9	353	92.7	0	0.0
All Airlines	734	732	674	92.1	649	88.7	2	0.3
Adelaide-Melbourne								
Jetstar	1 274	1 224	936	76.5	909	74.3	50	3.9
Qantas	3 362	3 318	2 792	84.1	2 800	84.4	44	1.3
Tigerair Australia	915	883	573	64.9	567	64.2	32	3.5
Virgin Australia	3 228	3 143	2 519	80.1	2 593	82.5	85	2.6
Virgin Australia Regional Airlines	80	72	53	73.6	56	77.8	8	10.0
All Airlines	8 859	8 640	6 873	79.5	6 925	80.2	219	2.5
Adelaide-Perth								
Jetstar	323	316	264	83.5	256	81.0	7	2.2
Qantas	1 244	1 243	1 084	87.2	1 069	86.0	1	0.1
QantasLink	82	79	71	89.9	76	96.2	3	3.7
Virgin Australia	430	426	355	83.3	379	89.0	4	0.9
Virgin Australia Regional Airlines	508	494	266	53.8	309	62.6	14	2.8
All Airlines	2 587	2 558	2 040	79.7	2 089	81.7	29	1.1
Adelaide-Port Lincoln								
QantasLink	1 275	1 260	1 140	90.5	1 139	90.4	15	1.2
Regional Express	2 504	2 482	2 222	89.5	2 313	93.2	22	0.9
All Airlines	3 779	3 742	3 362	89.8	3 452	92.3	37	1.0

	<i>Sectors</i>		<i>Arrivals On Time</i>		<i>Departures On Time</i>		<i>Cancellations</i>	
	<i>Sched.</i>	<i>Flown</i>	<i>No.</i>	<i>%</i>	<i>No.</i>	<i>%</i>	<i>No.</i>	<i>%</i>
Adelaide-Sydney								
Jetstar	1 369	1 304	1 000	76.7	987	75.7	65	4.7
Qantas	2 677	2 655	2 101	79.1	2 208	83.2	22	0.8
QantasLink	304	288	221	76.7	221	76.7	16	5.3
Tigerair Australia	425	417	231	55.4	233	55.9	8	1.9
Virgin Australia	1 940	1 915	1 558	81.4	1 625	84.9	25	1.3
All Airlines	6 715	6 579	5 111	77.7	5 274	80.2	136	2.0
Albury-Sydney								
QantasLink	1 154	1 139	840	73.7	853	74.9	15	1.3
Regional Express	1 131	1 114	901	80.9	933	83.8	17	1.5
Virgin Australia	702	695	517	74.4	525	75.5	7	1.0
All Airlines	2 987	2 948	2 258	76.6	2 311	78.4	39	1.3
Alice Springs-Adelaide								
Qantas	364	363	295	81.3	285	78.5	1	0.3
Virgin Australia	195	193	175	90.7	179	92.7	2	1.0
Virgin Australia Regional Airlines	68	66	37	56.1	40	60.6	2	2.9
All Airlines	627	622	507	81.5	504	81.0	5	0.8
Alice Springs-Darwin								
Qantas	177	172	162	94.2	166	96.5	5	2.8
QantasLink	451	436	400	91.7	404	92.7	15	3.3
Virgin Australia	187	187	164	87.7	156	83.4	0	0.0
Virgin Australia Regional Airlines	68	64	37	57.8	38	59.4	4	5.9
All Airlines	883	859	763	88.8	764	88.9	24	2.7
Armidale-Sydney								
QantasLink	1 375	1 346	1 017	75.6	1 019	75.7	29	2.1
Regional Express	807	800	534	66.8	583	72.9	7	0.9
All Airlines	2 182	2 146	1 551	72.3	1 602	74.7	36	1.6
Ayers Rock-Sydney								
Jetstar	345	343	191	55.7	156	45.5	2	0.6
Virgin Australia	365	364	274	75.3	228	62.6	1	0.3
All Airlines	710	707	465	65.8	384	54.3	3	0.4
Ballina-Sydney								
Jetstar	993	980	718	73.3	650	66.3	13	1.3
Regional Express	260	256	151	59.0	172	67.2	4	1.5
Virgin Australia	425	418	337	80.6	331	79.2	7	1.6
All Airlines	1 678	1 654	1 206	72.9	1 153	69.7	24	1.4
Brisbane-Adelaide								
Jetstar	304	301	251	83.4	249	82.7	3	1.0
Qantas	862	860	768	89.3	736	85.6	2	0.2
QantasLink	525	517	421	81.4	448	86.7	8	1.5
Tigerair Australia	335	328	262	79.9	262	79.9	7	2.1
Virgin Australia	1 284	1 273	1 087	85.4	1 098	86.3	11	0.9
All Airlines	3 310	3 279	2 789	85.1	2 793	85.2	31	0.9
Brisbane-Bundaberg								
QantasLink	1 367	1 357	1 180	87.0	1 184	87.3	10	0.7
Virgin Australia	365	365	327	89.6	326	89.3	0	0.0
All Airlines	1 732	1 722	1 507	87.5	1 510	87.7	10	0.6

	<i>Sectors</i>		<i>Arrivals On Time</i>		<i>Departures On Time</i>		<i>Cancellations</i>	
	<i>Sched.</i>	<i>Flown</i>	<i>No.</i>	<i>%</i>	<i>No.</i>	<i>%</i>	<i>No.</i>	<i>%</i>
Brisbane-Cairns								
Jetstar	1 176	1 152	984	85.4	938	81.4	24	2.0
Qantas	501	501	468	93.4	454	90.6	0	0.0
QantasLink	1 176	1 162	919	79.1	940	80.9	14	1.2
Tigerair Australia	366	363	254	70.0	242	66.7	3	0.8
Virgin Australia	1 544	1 541	1 323	85.9	1 301	84.4	3	0.2
All Airlines	4 763	4 719	3 948	83.7	3 875	82.1	44	0.9
Brisbane-Canberra								
Qantas	57	56	50	89.3	49	87.5	1	1.8
QantasLink	1 751	1 731	1 413	81.6	1 427	82.4	20	1.1
Tigerair Australia	221	220	153	69.5	168	76.4	1	0.5
Virgin Australia	1 162	1 158	979	84.5	986	85.1	4	0.3
All Airlines	3 191	3 165	2 595	82.0	2 630	83.1	26	0.8
Brisbane-Darwin								
Jetstar	276	267	250	93.6	247	92.5	9	3.3
Qantas	434	434	385	88.7	359	82.7	0	0.0
Tigerair Australia	215	208	177	85.1	174	83.7	7	3.3
Virgin Australia	375	374	300	80.2	315	84.2	1	0.3
All Airlines	1 300	1 283	1 112	86.7	1 095	85.3	17	1.3
Brisbane-Emerald								
QantasLink	1 304	1 294	1 157	89.4	1 162	89.8	10	0.8
Virgin Australia	622	622	574	92.3	572	92.0	0	0.0
All Airlines	1 926	1 916	1 731	90.3	1 734	90.5	10	0.5
Brisbane-Gladstone								
QantasLink	1 577	1 563	1 312	83.9	1 355	86.7	14	0.9
Virgin Australia	842	839	777	92.6	783	93.3	3	0.4
All Airlines	2 419	2 402	2 089	87.0	2 138	89.0	17	0.7
Brisbane-Hamilton Island								
QantasLink	321	312	241	77.2	231	74.0	9	2.8
Virgin Australia	364	362	308	85.1	310	85.6	2	0.5
All Airlines	685	674	549	81.5	541	80.3	11	1.6
Brisbane-Hobart								
Jetstar	335	335	317	94.6	312	93.1	0	0.0
Qantas	5	5	2	40.0	5	100.0	0	0.0
Virgin Australia	480	480	413	86.0	409	85.2	0	0.0
All Airlines	820	820	732	89.3	726	88.5	0	0.0
Brisbane-Mackay								
Jetstar	402	398	316	79.4	309	77.6	4	1.0
QantasLink	1 490	1 458	1 246	85.5	1 239	85.0	32	2.1
Virgin Australia	1 698	1 693	1 435	84.8	1 445	85.4	5	0.3
All Airlines	3 590	3 549	2 997	84.4	2 993	84.3	41	1.1
Brisbane-Melbourne								
Jetstar	1 649	1 599	1 189	74.4	1 093	68.4	50	3.0
Qantas	4 805	4 764	3 857	81.0	4 053	85.1	41	0.9
QantasLink	80	80	60	75.0	67	83.8	0	0.0
Tigerair Australia	1 407	1 319	876	66.4	895	67.9	88	6.3
Virgin Australia	4 598	4 442	3 341	75.2	3 713	83.6	156	3.4
All Airlines	12 539	12 204	9 323	76.4	9 821	80.5	335	2.7

	<i>Sectors</i>		<i>Arrivals On Time</i>		<i>Departures On Time</i>		<i>Cancellations</i>	
	<i>Sched.</i>	<i>Flown</i>	<i>No.</i>	<i>%</i>	<i>No.</i>	<i>%</i>	<i>No.</i>	<i>%</i>
Brisbane-Mount Isa								
Qantas	122	122	113	92.6	106	86.9	0	0.0
QantasLink	471	469	308	65.7	398	84.9	2	0.4
Virgin Australia	209	209	187	89.5	193	92.3	0	0.0
All Airlines	802	800	608	76.0	697	87.1	2	0.2
Brisbane-Newcastle								
Jetstar	980	969	761	78.5	736	76.0	11	1.1
QantasLink	876	853	714	83.7	724	84.9	23	2.6
Virgin Australia	1 002	999	839	84.0	862	86.3	3	0.3
All Airlines	2 858	2 821	2 314	82.0	2 322	82.3	37	1.3
Brisbane-Perth								
Qantas	1 779	1 775	1 454	81.9	1 510	85.1	4	0.2
Virgin Australia	1 286	1 285	906	70.5	957	74.5	1	0.1
All Airlines	3 065	3 060	2 360	77.1	2 467	80.6	5	0.2
Brisbane-Proserpine								
Jetstar	405	402	344	85.6	340	84.6	3	0.7
Virgin Australia	487	480	402	83.8	433	90.2	7	1.4
All Airlines	892	882	746	84.6	773	87.6	10	1.1
Brisbane-Rockhampton								
QantasLink	2 101	2 086	1 672	80.2	1 748	83.8	15	0.7
Virgin Australia	1 661	1 657	1 338	80.7	1 368	82.6	4	0.2
All Airlines	3 762	3 743	3 010	80.4	3 116	83.2	19	0.5
Brisbane-Sydney								
Jetstar	2 086	1 961	1 436	73.2	1 409	71.9	125	6.0
Qantas	7 151	6 971	5 802	83.2	6 010	86.2	180	2.5
QantasLink	188	181	116	64.1	132	72.9	7	3.7
Tigerair Australia	1 406	1 334	907	68.0	925	69.3	72	5.1
Virgin Australia	6 304	6 080	4 830	79.4	5 031	82.7	224	3.6
All Airlines	17 135	16 527	13 091	79.2	13 507	81.7	608	3.5
Brisbane-Townsville								
Jetstar	656	650	565	86.9	567	87.2	6	0.9
Qantas	559	556	469	84.4	472	84.9	3	0.5
QantasLink	1 181	1 157	923	79.8	967	83.6	24	2.0
Virgin Australia	1 713	1 688	1 430	84.7	1 403	83.1	25	1.5
All Airlines	4 109	4 051	3 387	83.6	3 409	84.2	58	1.4
Broome-Perth								
Qantas	18	18	12	66.7	7	38.9	0	0.0
QantasLink	1 015	1 003	841	83.8	819	81.7	12	1.2
Virgin Australia	47	45	32	71.1	29	64.4	2	4.3
Virgin Australia Regional Airlines	789	777	597	76.8	571	73.5	12	1.5
All Airlines	1 869	1 843	1 482	80.4	1 426	77.4	26	1.4
Bundaberg-Brisbane								
QantasLink	1 368	1 356	1 212	89.4	1 205	88.9	12	0.9
Virgin Australia	365	365	331	90.7	336	92.1	0	0.0
All Airlines	1 733	1 721	1 543	89.7	1 541	89.5	12	0.7
Cairns-Brisbane								
Jetstar	1 175	1 153	985	85.4	943	81.8	22	1.9
Qantas	501	500	452	90.4	447	89.4	1	0.2
QantasLink	1 179	1 154	926	80.2	964	83.5	25	2.1
Tigerair Australia	366	363	267	73.6	238	65.6	3	0.8
Virgin Australia	1 543	1 540	1 380	89.6	1 323	85.9	3	0.2
All Airlines	4 764	4 710	4 010	85.1	3 915	83.1	54	1.1

	<i>Sectors</i>		<i>Arrivals On Time</i>		<i>Departures On Time</i>		<i>Cancellations</i>	
	<i>Sched.</i>	<i>Flown</i>	<i>No.</i>	<i>%</i>	<i>No.</i>	<i>%</i>	<i>No.</i>	<i>%</i>
Cairns-Melbourne								
Jetstar	1 218	1 199	933	77.8	928	77.4	19	1.6
Qantas	463	462	359	77.7	330	71.4	1	0.2
Tigerair Australia	465	455	320	70.3	300	65.9	10	2.2
Virgin Australia	422	420	269	64.0	311	74.0	2	0.5
All Airlines	2 568	2 536	1 881	74.2	1 869	73.7	32	1.2
Cairns-Sydney								
Jetstar	1 145	1 121	934	83.3	939	83.8	24	2.1
Qantas	826	823	652	79.2	632	76.8	3	0.4
Tigerair Australia	469	460	372	80.9	353	76.7	9	1.9
Virgin Australia	1 067	1 061	888	83.7	864	81.4	6	0.6
All Airlines	3 507	3 465	2 846	82.1	2 788	80.5	42	1.2
Cairns-Townsville								
QantasLink	1 610	1 592	1 442	90.6	1 440	90.5	18	1.1
Regional Express	141	138	117	84.8	119	86.2	3	2.1
All Airlines	1 751	1 730	1 559	90.1	1 559	90.1	21	1.2
Canberra-Adelaide								
Qantas	514	513	464	90.4	456	88.9	1	0.2
QantasLink	43	43	22	51.2	23	53.5	0	0.0
Virgin Australia	312	310	251	81.0	250	80.6	2	0.6
All Airlines	869	866	737	85.1	729	84.2	3	0.3
Canberra-Brisbane								
Qantas	73	72	68	94.4	67	93.1	1	1.4
QantasLink	1 734	1 701	1 401	82.4	1 432	84.2	33	1.9
Tigerair Australia	221	220	148	67.3	145	65.9	1	0.5
Virgin Australia	1 159	1 156	986	85.3	997	86.2	3	0.3
All Airlines	3 187	3 149	2 603	82.7	2 641	83.9	38	1.2
Canberra-Melbourne								
Qantas	2 766	2 734	2 375	86.9	2 431	88.9	32	1.2
QantasLink	499	483	375	77.6	392	81.2	16	3.2
Tigerair Australia	447	438	278	63.5	284	64.8	9	2.0
Virgin Australia	1 919	1 895	1 436	75.8	1 531	80.8	24	1.3
All Airlines	5 631	5 550	4 464	80.4	4 638	83.6	81	1.4
Canberra-Sydney								
Qantas	43	42	37	88.1	38	90.5	1	2.3
QantasLink	5 415	5 247	4 166	79.4	4 283	81.6	168	3.1
Virgin Australia	2 886	2 793	2 234	80.0	2 272	81.3	93	3.2
All Airlines	8 344	8 082	6 437	79.6	6 593	81.6	262	3.1
Coffs Harbour-Sydney								
QantasLink	1 531	1 518	1 210	79.7	1 242	81.8	13	0.8
Tigerair Australia	234	230	177	77.0	179	77.8	4	1.7
Virgin Australia	493	479	378	78.9	394	82.3	14	2.8
All Airlines	2 258	2 227	1 765	79.3	1 815	81.5	31	1.4
Darwin-Alice Springs								
Qantas	178	175	162	92.6	166	94.9	3	1.7
QantasLink	453	439	391	89.1	396	90.2	14	3.1
Virgin Australia	189	187	169	90.4	179	95.7	2	1.1
Virgin Australia Regional Airlines	67	63	39	61.9	44	69.8	4	6.0
All Airlines	887	864	761	88.1	785	90.9	23	2.6

	<i>Sectors</i>		<i>Arrivals On Time</i>		<i>Departures On Time</i>		<i>Cancellations</i>	
	<i>Sched.</i>	<i>Flown</i>	<i>No.</i>	<i>%</i>	<i>No.</i>	<i>%</i>	<i>No.</i>	<i>%</i>
Darwin-Brisbane								
Jetstar	276	268	239	89.2	226	84.3	8	2.9
Qantas	434	434	365	84.1	341	78.6	0	0.0
Tigerair Australia	214	205	186	90.7	174	84.9	9	4.2
Virgin Australia	375	372	276	74.2	287	77.2	3	0.8
All Airlines	1 299	1 279	1 066	83.3	1 028	80.4	20	1.5
Darwin-Melbourne								
Jetstar	301	301	204	67.8	175	58.1	0	0.0
Qantas	375	374	250	66.8	254	67.9	1	0.3
Virgin Australia	374	372	320	86.0	330	88.7	2	0.5
All Airlines	1 050	1 047	774	73.9	759	72.5	3	0.3
Darwin-Perth								
Qantas	389	388	327	84.3	322	83.0	1	0.3
Virgin Australia	273	272	207	76.1	210	77.2	1	0.4
Virgin Australia Regional Airlines	98	96	72	75.0	63	65.6	2	2.0
All Airlines	760	756	606	80.2	595	78.7	4	0.5
Darwin-Sydney								
Jetstar	275	269	205	76.2	200	74.3	6	2.2
Qantas	561	559	387	69.2	354	63.3	2	0.4
Virgin Australia	350	348	222	63.8	249	71.6	2	0.6
All Airlines	1 186	1 176	814	69.2	803	68.3	10	0.8
Dubbo-Sydney								
QantasLink	1 293	1 274	985	77.3	1 008	79.1	19	1.5
Regional Express	1 443	1 429	1 073	75.1	1 166	81.6	14	1.0
All Airlines	2 736	2 703	2 058	76.1	2 174	80.4	33	1.2
Emerald-Brisbane								
QantasLink	1 304	1 288	1 104	85.7	1 114	86.5	16	1.2
Virgin Australia	623	622	591	95.0	579	93.1	1	0.2
All Airlines	1 927	1 910	1 695	88.7	1 693	88.6	17	0.9
Geraldton-Perth								
QantasLink	571	566	515	91.0	516	91.2	5	0.9
Virgin Australia Regional Airlines	503	492	374	76.0	360	73.2	11	2.2
All Airlines	1 074	1 058	889	84.0	876	82.8	16	1.5
Gladstone-Brisbane								
QantasLink	1 577	1 560	1 305	83.7	1 293	82.9	17	1.1
Virgin Australia	842	838	759	90.6	776	92.6	4	0.5
All Airlines	2 419	2 398	2 064	86.1	2 069	86.3	21	0.9
Gold Coast-Adelaide								
Jetstar	352	352	308	87.5	315	89.5	0	0.0
Virgin Australia	381	381	323	84.8	324	85.0	0	0.0
All Airlines	733	733	631	86.1	639	87.2	0	0.0
Gold Coast-Melbourne								
Jetstar	2 283	2 243	1 754	78.2	1 639	73.1	40	1.8
Qantas	387	385	264	68.6	232	60.3	2	0.5
Tigerair Australia	979	948	602	63.5	565	59.6	31	3.2
Virgin Australia	2 277	2 255	1 711	75.9	1 612	71.5	22	1.0
All Airlines	5 926	5 831	4 331	74.3	4 048	69.4	95	1.6

	Sectors		Arrivals On Time		Departures On Time		Cancellations	
	Sched.	Flown	No.	%	No.	%	No.	%
Gold Coast-Sydney								
Jetstar	3 492	3 366	2 659	79.0	2 578	76.6	126	3.6
Qantas	1 014	1 004	782	77.9	778	77.5	10	1.0
QantasLink	421	411	313	76.2	324	78.8	10	2.4
Tigerair Australia	1 160	1 105	768	69.5	746	67.5	55	4.7
Virgin Australia	3 042	2 971	2 335	78.6	2 272	76.5	71	2.3
All Airlines	9 129	8 857	6 857	77.4	6 698	75.6	272	3.0
Hamilton Island-Brisbane								
QantasLink	320	311	223	71.7	224	72.0	9	2.8
Virgin Australia	365	362	320	88.4	316	87.3	3	0.8
All Airlines	685	673	543	80.7	540	80.2	12	1.8
Hamilton Island-Sydney								
Jetstar	286	284	218	76.8	201	70.8	2	0.7
Qantas	101	101	88	87.1	83	82.2	0	0.0
QantasLink	235	229	176	76.9	168	73.4	6	2.6
Virgin Australia	302	298	241	80.9	236	79.2	4	1.3
All Airlines	924	912	723	79.3	688	75.4	12	1.3
Hobart-Brisbane								
Jetstar	335	335	309	92.2	294	87.8	0	0.0
Qantas	5	5	3	60.0	3	60.0	0	0.0
Virgin Australia	480	479	358	74.7	362	75.6	1	0.2
All Airlines	820	819	670	81.8	659	80.5	1	0.1
Hobart-Melbourne								
Jetstar	2 142	2 091	1 272	60.8	1 253	59.9	51	2.4
Qantas	1 367	1 360	1 002	73.7	1 065	78.3	7	0.5
Tigerair Australia	509	502	299	59.6	310	61.8	7	1.4
Virgin Australia	1 742	1 726	1 191	69.0	1 316	76.2	16	0.9
All Airlines	5 760	5 679	3 764	66.3	3 944	69.4	81	1.4
Hobart-Sydney								
Jetstar	1 023	1 013	680	67.1	678	66.9	10	1.0
Qantas	78	78	56	71.8	51	65.4	0	0.0
QantasLink	685	670	510	76.1	540	80.6	15	2.2
Virgin Australia	889	877	690	78.7	703	80.2	12	1.3
All Airlines	2 675	2 638	1 936	73.4	1 972	74.8	37	1.4
Kalgoorlie-Perth								
Qantas	102	101	88	87.1	87	86.1	1	1.0
QantasLink	884	873	792	90.7	791	90.6	11	1.2
Virgin Australia	448	439	387	88.2	381	86.8	9	2.0
Virgin Australia Regional Airlines	443	430	370	86.0	367	85.3	13	2.9
All Airlines	1 877	1 843	1 637	88.8	1 626	88.2	34	1.8
Karratha-Perth								
Qantas	228	218	206	94.5	203	93.1	10	4.4
QantasLink	1 982	1 921	1 675	87.2	1 693	88.1	61	3.1
Virgin Australia	34	33	19	57.6	21	63.6	1	2.9
Virgin Australia Regional Airlines	784	764	573	75.0	599	78.4	20	2.6
All Airlines	3 028	2 936	2 473	84.2	2 516	85.7	92	3.0
Launceston-Melbourne								
Jetstar	1 560	1 544	1 032	66.8	1 024	66.3	16	1.0
QantasLink	1 372	1 345	1 107	82.3	1 147	85.3	27	2.0
Virgin Australia	1 230	1 228	953	77.6	1 033	84.1	2	0.2
All Airlines	4 162	4 117	3 092	75.1	3 204	77.8	45	1.1

	<i>Sectors</i>		<i>Arrivals On Time</i>		<i>Departures On Time</i>		<i>Cancellations</i>	
	<i>Sched.</i>	<i>Flown</i>	<i>No.</i>	<i>%</i>	<i>No.</i>	<i>%</i>	<i>No.</i>	<i>%</i>
Launceston-Sydney								
Jetstar	584	569	373	65.6	386	67.8	15	2.6
Virgin Australia	379	378	308	81.5	306	81.0	1	0.3
All Airlines	963	947	681	71.9	692	73.1	16	1.7
Mackay-Brisbane								
Jetstar	407	396	317	80.1	284	71.7	11	2.7
QantasLink	1 439	1 403	1 193	85.0	1 211	86.3	36	2.5
Virgin Australia	1 699	1 692	1 541	91.1	1 524	90.1	7	0.4
All Airlines	3 545	3 491	3 051	87.4	3 019	86.5	54	1.5
Melbourne-Adelaide								
Jetstar	1 275	1 228	865	70.4	902	73.5	47	3.7
Qantas	3 358	3 332	2 752	82.6	2 835	85.1	26	0.8
Tigerair Australia	913	884	608	68.8	640	72.4	29	3.2
Virgin Australia	3 212	3 134	2 522	80.5	2 609	83.2	78	2.4
Virgin Australia Regional Airlines	80	73	43	58.9	44	60.3	7	8.8
All Airlines	8 838	8 651	6 790	78.5	7 030	81.3	187	2.1
Melbourne-Brisbane								
Jetstar	1 647	1 600	1 101	68.8	1 035	64.7	47	2.9
Qantas	4 863	4 821	3 878	80.4	3 958	82.1	42	0.9
QantasLink	81	80	53	66.3	62	77.5	1	1.2
Tigerair Australia	1 409	1 322	938	71.0	952	72.0	87	6.2
Virgin Australia	4 596	4 438	3 625	81.7	3 760	84.7	158	3.4
All Airlines	12 596	12 261	9 595	78.3	9 767	79.7	335	2.7
Melbourne-Cairns								
Jetstar	1 218	1 200	892	74.3	880	73.3	18	1.5
Qantas	462	462	369	79.9	372	80.5	0	0.0
Tigerair Australia	465	456	342	75.0	361	79.2	9	1.9
Virgin Australia	422	420	353	84.0	368	87.6	2	0.5
All Airlines	2 567	2 538	1 956	77.1	1 981	78.1	29	1.1
Melbourne-Canberra								
Qantas	2 785	2 756	2 327	84.4	2 349	85.2	29	1.0
QantasLink	501	478	399	83.5	395	82.6	23	4.6
Tigerair Australia	447	438	301	68.7	295	67.4	9	2.0
Virgin Australia	1 917	1 885	1 492	79.2	1 535	81.4	32	1.7
All Airlines	5 650	5 557	4 519	81.3	4 574	82.3	93	1.6
Melbourne-Darwin								
Jetstar	301	301	187	62.1	207	68.8	0	0.0
Qantas	374	373	302	81.0	315	84.5	1	0.3
Virgin Australia	375	375	264	70.4	267	71.2	0	0.0
All Airlines	1 050	1 049	753	71.8	789	75.2	1	0.1
Melbourne-Gold Coast								
Jetstar	2 280	2 244	1 628	72.5	1 659	73.9	36	1.6
Qantas	387	386	301	78.0	317	82.1	1	0.3
Tigerair Australia	977	946	651	68.8	678	71.7	31	3.2
Virgin Australia	2 275	2 255	1 810	80.3	1 871	83.0	20	0.9
All Airlines	5 919	5 831	4 390	75.3	4 525	77.6	88	1.5
Melbourne-Hobart								
Jetstar	2 140	2 095	1 481	70.7	1 512	72.2	45	2.1
Qantas	1 370	1 368	1 081	79.0	1 113	81.4	2	0.1
QantasLink	1	1	0	0.0	1	100.0	0	0.0
Tigerair Australia	508	502	350	69.7	375	74.7	6	1.2
Virgin Australia	1 743	1 728	1 312	75.9	1 405	81.3	15	0.9
All Airlines	5 762	5 694	4 224	74.2	4 406	77.4	68	1.2

	<i>Sectors</i>		<i>Arrivals On Time</i>		<i>Departures On Time</i>		<i>Cancellations</i>	
	<i>Sched.</i>	<i>Flown</i>	<i>No.</i>	<i>%</i>	<i>No.</i>	<i>%</i>	<i>No.</i>	<i>%</i>
Melbourne-Launceston								
Jetstar	1 560	1 543	1 101	71.4	1 094	70.9	17	1.1
QantasLink	1 371	1 349	1 126	83.5	1 118	82.9	22	1.6
Virgin Australia	1 225	1 225	927	75.7	992	81.0	0	0.0
All Airlines	4 156	4 117	3 154	76.6	3 204	77.8	39	0.9
Melbourne-Mildura								
QantasLink	1 121	1 099	934	85.0	941	85.6	22	2.0
Regional Express	913	911	750	82.3	794	87.2	2	0.2
Virgin Australia	365	365	282	77.3	316	86.6	0	0.0
All Airlines	2 399	2 375	1 966	82.8	2 051	86.4	24	1.0
Melbourne-Newcastle								
Jetstar	1 280	1 261	882	69.9	826	65.5	19	1.5
Virgin Australia	392	389	312	80.2	331	85.1	3	0.8
All Airlines	1 672	1 650	1 194	72.4	1 157	70.1	22	1.3
Melbourne-Perth								
Jetstar	599	582	505	86.8	496	85.2	17	2.8
Qantas	2 390	2 379	1 658	69.7	1 656	69.6	11	0.5
Tigerair Australia	613	588	390	66.3	416	70.7	25	4.1
Virgin Australia	1 762	1 754	1 240	70.7	1 240	70.7	8	0.5
All Airlines	5 364	5 303	3 793	71.5	3 808	71.8	61	1.1
Melbourne-Sunshine Coast								
Jetstar	976	969	759	78.3	747	77.1	7	0.7
Virgin Australia	822	821	675	82.2	669	81.5	1	0.1
All Airlines	1 798	1 790	1 434	80.1	1 416	79.1	8	0.4
Melbourne-Sydney								
Jetstar	4 719	4 433	2 981	67.2	3 126	70.5	286	6.1
Qantas	12 270	11 398	8 637	75.8	9 307	81.7	872	7.1
Tigerair Australia	3 076	2 850	1 786	62.7	1 907	66.9	226	7.3
Virgin Australia	8 845	8 376	6 440	76.9	6 967	83.2	469	5.3
All Airlines	28 910	27 057	19 844	73.3	21 307	78.7	1 853	6.4
Melbourne-Townsville								
			(To July 2018 only)					
Jetstar	31	31	25	80.6	23	74.2	0	0.0
Tigerair Australia	17	17	12	70.6	11	64.7	0	0.0
All Airlines	48	48	37	77.1	34	70.8	0	0.0
Mildura-Melbourne								
QantasLink	1 121	1 098	901	82.1	925	84.2	23	2.1
Regional Express	913	910	669	73.5	724	79.6	3	0.3
Virgin Australia	365	365	290	79.5	307	84.1	0	0.0
All Airlines	2 399	2 373	1 860	78.4	1 956	82.4	26	1.1
Mount Isa-Brisbane								
Qantas	121	121	107	88.4	91	75.2	0	0.0
QantasLink	468	464	374	80.6	357	76.9	4	0.9
Virgin Australia	199	199	158	79.4	174	87.4	0	0.0
All Airlines	788	784	639	81.5	622	79.3	4	0.5
Newcastle-Brisbane								
Jetstar	980	967	770	79.6	794	82.1	13	1.3
QantasLink	875	851	728	85.5	711	83.5	24	2.7
Virgin Australia	1 001	996	863	86.6	863	86.6	5	0.5
All Airlines	2 856	2 814	2 361	83.9	2 368	84.2	42	1.5

	<i>Sectors</i>		<i>Arrivals On Time</i>		<i>Departures On Time</i>		<i>Cancellations</i>	
	<i>Sched.</i>	<i>Flown</i>	<i>No.</i>	<i>%</i>	<i>No.</i>	<i>%</i>	<i>No.</i>	<i>%</i>
Newcastle-Melbourne								
Jetstar	1 278	1 257	898	71.4	899	71.5	21	1.6
Virgin Australia	392	388	281	72.4	311	80.2	4	1.0
All Airlines	1 670	1 645	1 179	71.7	1 210	73.6	25	1.5
Newman-Perth								
Qantas	293	289	276	95.5	277	95.8	4	1.4
QantasLink	1 299	1 268	1 101	86.8	1 113	87.8	31	2.4
Virgin Australia	171	171	153	89.5	155	90.6	0	0.0
Virgin Australia Regional Airlines	305	301	243	80.7	253	84.1	4	1.3
All Airlines	2 068	2 029	1 773	87.4	1 798	88.6	39	1.9
Perth-Adelaide								
Jetstar	324	314	259	82.5	234	74.5	10	3.1
Qantas	1 284	1 283	1 143	89.1	1 128	87.9	1	0.1
QantasLink	82	82	72	87.8	78	95.1	0	0.0
Virgin Australia	450	446	382	85.7	383	85.9	4	0.9
Virgin Australia Regional Airlines	510	502	294	58.6	416	82.9	8	1.6
All Airlines	2 650	2 627	2 150	81.8	2 239	85.2	23	0.9
Perth-Brisbane								
Qantas	1 751	1 747	1 463	83.7	1 485	85.0	4	0.2
Virgin Australia	1 289	1 287	1 073	83.4	1 072	83.3	2	0.2
All Airlines	3 040	3 034	2 536	83.6	2 557	84.3	6	0.2
Perth-Broome								
Qantas	18	18	14	77.8	15	83.3	0	0.0
QantasLink	1 015	1 008	870	86.3	876	86.9	7	0.7
Virgin Australia	47	47	39	83.0	40	85.1	0	0.0
Virgin Australia Regional Airlines	788	781	601	77.0	623	79.8	7	0.9
All Airlines	1 868	1 854	1 524	82.2	1 554	83.8	14	0.7
Perth-Darwin								
Qantas	388	388	347	89.4	346	89.2	0	0.0
Virgin Australia	271	270	220	81.5	222	82.2	1	0.4
Virgin Australia Regional Airlines	97	96	78	81.3	76	79.2	1	1.0
All Airlines	756	754	645	85.5	644	85.4	2	0.3
Perth-Geraldton								
QantasLink	571	568	513	90.3	507	89.3	3	0.5
Virgin Australia Regional Airlines	504	496	387	78.0	389	78.4	8	1.6
All Airlines	1 075	1 064	900	84.6	896	84.2	11	1.0
Perth-Kalgoorlie								
Qantas	102	101	92	91.1	94	93.1	1	1.0
QantasLink	884	874	773	88.4	801	91.6	10	1.1
Virgin Australia	447	442	403	91.2	408	92.3	5	1.1
Virgin Australia Regional Airlines	440	430	365	84.9	380	88.4	10	2.3
All Airlines	1 873	1 847	1 633	88.4	1 683	91.1	26	1.4
Perth-Karratha								
Qantas	228	220	209	95.0	208	94.5	8	3.5
QantasLink	1 988	1 949	1 660	85.2	1 733	88.9	39	2.0
Virgin Australia	34	33	21	63.6	29	87.9	1	2.9
Virgin Australia Regional Airlines	784	768	593	77.2	682	88.8	16	2.0
All Airlines	3 034	2 970	2 483	83.6	2 652	89.3	64	2.1

	<i>Sectors</i>		<i>Arrivals On Time</i>		<i>Departures On Time</i>		<i>Cancellations</i>	
	<i>Sched.</i>	<i>Flown</i>	<i>No.</i>	<i>%</i>	<i>No.</i>	<i>%</i>	<i>No.</i>	<i>%</i>
Perth-Melbourne								
Jetstar	598	577	469	81.3	416	72.1	21	3.5
Qantas	2 411	2 395	1 889	78.9	1 867	78.0	16	0.7
Tigerair Australia	613	587	422	71.9	388	66.1	26	4.2
Virgin Australia	1 744	1 736	1 403	80.8	1 437	82.8	8	0.5
All Airlines	5 366	5 295	4 183	79.0	4 108	77.6	71	1.3
Perth-Newman								
Qantas	294	290	277	95.5	278	95.9	4	1.4
QantasLink	1 297	1 281	1 130	88.2	1 145	89.4	16	1.2
Virgin Australia	172	172	163	94.8	167	97.1	0	0.0
Virgin Australia Regional Airlines	302	297	255	85.9	268	90.2	5	1.7
All Airlines	2 065	2 040	1 825	89.5	1 858	91.1	25	1.2
Perth-Port Hedland								
Qantas	387	382	355	92.9	356	93.2	5	1.3
QantasLink	1 249	1 223	1 018	83.2	1 080	88.3	26	2.1
Virgin Australia	278	278	256	92.1	265	95.3	0	0.0
Virgin Australia Regional Airlines	347	344	290	84.3	302	87.8	3	0.9
All Airlines	2 261	2 227	1 919	86.2	2 003	89.9	34	1.5
Perth-Sydney								
Jetstar	312	306	233	76.1	197	64.4	6	1.9
Qantas	2 430	2 409	1 820	75.6	1 805	74.9	21	0.9
Tigerair Australia	333	321	240	74.8	216	67.3	12	3.6
Virgin Australia	1 446	1 444	1 253	86.8	1 215	84.1	2	0.1
All Airlines	4 521	4 480	3 546	79.2	3 433	76.6	41	0.9
Port Hedland-Perth								
Qantas	387	379	352	92.9	340	89.7	8	2.1
QantasLink	1 247	1 213	993	81.9	1 058	87.2	34	2.7
Virgin Australia	277	277	251	90.6	247	89.2	0	0.0
Virgin Australia Regional Airlines	347	344	270	78.5	273	79.4	3	0.9
All Airlines	2 258	2 213	1 866	84.3	1 918	86.7	45	2.0
Port Lincoln-Adelaide								
QantasLink	1 275	1 258	1 137	90.4	1 130	89.8	17	1.3
Regional Express	2 503	2 476	2 211	89.3	2 266	91.5	27	1.1
All Airlines	3 778	3 734	3 348	89.7	3 396	90.9	44	1.2
Port Macquarie-Sydney								
QantasLink	1 220	1 203	942	78.3	966	80.3	17	1.4
Virgin Australia	699	687	464	67.5	453	65.9	12	1.7
All Airlines	1 919	1 890	1 406	74.4	1 419	75.1	29	1.5
Proserpine-Brisbane								
Jetstar	405	401	323	80.5	320	79.8	4	1.0
Virgin Australia	488	478	412	86.2	387	81.0	10	2.0
All Airlines	893	879	735	83.6	707	80.4	14	1.6
Proserpine-Sydney								
Jetstar	156	155	126	81.3	117	75.5	1	0.6
Tigerair Australia	261	254	188	74.0	186	73.2	7	2.7
All Airlines	417	409	314	76.8	303	74.1	8	1.9
Rockhampton-Brisbane								
QantasLink	2 152	2 133	1 704	79.9	1 748	82.0	19	0.9
Virgin Australia	1 661	1 658	1 446	87.2	1 421	85.7	3	0.2
All Airlines	3 813	3 791	3 150	83.1	3 169	83.6	22	0.6

	<i>Sectors</i>		<i>Arrivals On Time</i>		<i>Departures On Time</i>		<i>Cancellations</i>	
	<i>Sched.</i>	<i>Flown</i>	<i>No.</i>	<i>%</i>	<i>No.</i>	<i>%</i>	<i>No.</i>	<i>%</i>
Sunshine Coast-Melbourne								
Jetstar	977	967	659	68.1	621	64.2	10	1.0
Virgin Australia	822	819	531	64.8	524	64.0	3	0.4
All Airlines	1 799	1 786	1 190	66.6	1 145	64.1	13	0.7
Sunshine Coast-Sydney								
Jetstar	1 288	1 257	824	65.6	785	62.5	31	2.4
QantasLink	478	470	349	74.3	358	76.2	8	1.7
Virgin Australia	654	648	464	71.6	494	76.2	6	0.9
All Airlines	2 420	2 375	1 637	68.9	1 637	68.9	45	1.9
Sydney-Adelaide								
Jetstar	1 362	1 305	1 001	76.7	979	75.0	57	4.2
Qantas	2 636	2 613	2 120	81.1	2 102	80.4	23	0.9
QantasLink	302	285	211	74.0	231	81.1	17	5.6
Tigerair Australia	425	419	269	64.2	267	63.7	6	1.4
Virgin Australia	1 968	1 946	1 578	81.1	1 605	82.5	22	1.1
All Airlines	6 693	6 568	5 179	78.9	5 184	78.9	125	1.9
Sydney-Albury								
QantasLink	1 152	1 140	869	76.2	871	76.4	12	1.0
Regional Express	1 137	1 122	878	78.3	894	79.7	15	1.3
Virgin Australia	702	696	527	75.7	516	74.1	6	0.9
All Airlines	2 991	2 958	2 274	76.9	2 281	77.1	33	1.1
Sydney-Armidale								
QantasLink	1 381	1 362	1 052	77.2	1 049	77.0	19	1.4
Regional Express	797	796	625	78.5	626	78.6	1	0.1
All Airlines	2 178	2 158	1 677	77.7	1 675	77.6	20	0.9
Sydney-Ayers Rock								
Jetstar	343	343	245	71.4	261	76.1	0	0.0
Virgin Australia	365	364	292	80.2	307	84.3	1	0.3
All Airlines	708	707	537	76.0	568	80.3	1	0.1
Sydney-Ballina								
Jetstar	992	984	768	78.0	784	79.7	8	0.8
Regional Express	265	263	195	74.1	199	75.7	2	0.8
Virgin Australia	425	419	337	80.4	354	84.5	6	1.4
All Airlines	1 682	1 666	1 300	78.0	1 337	80.3	16	1.0
Sydney-Brisbane								
Jetstar	2 083	1 962	1 486	75.7	1 415	72.1	121	5.8
Qantas	7 116	6 956	5 558	79.9	5 660	81.4	160	2.2
QantasLink	208	199	130	65.3	139	69.8	9	4.3
Tigerair Australia	1 408	1 334	953	71.4	966	72.4	74	5.3
Virgin Australia	6 278	6 054	4 675	77.2	4 757	78.6	224	3.6
All Airlines	17 093	16 505	12 802	77.6	12 937	78.4	588	3.4
Sydney-Cairns								
Jetstar	1 144	1 126	949	84.3	882	78.3	18	1.6
Qantas	824	822	647	78.7	630	76.6	2	0.2
Tigerair Australia	468	462	377	81.6	383	82.9	6	1.3
Virgin Australia	1 066	1 063	838	78.8	818	77.0	3	0.3
All Airlines	3 502	3 473	2 811	80.9	2 713	78.1	29	0.8
Sydney-Canberra								
Qantas	43	42	35	83.3	37	88.1	1	2.3
QantasLink	5 400	5 277	4 145	78.5	4 249	80.5	123	2.3
Virgin Australia	2 884	2 793	2 215	79.3	2 152	77.0	91	3.2
All Airlines	8 327	8 112	6 395	78.8	6 438	79.4	215	2.6

	Sectors		Arrivals On Time		Departures On Time		Cancellations	
	Sched.	Flown	No.	%	No.	%	No.	%
Sydney-Coffs Harbour								
QantasLink	1 533	1 521	1 256	82.6	1 184	77.8	12	0.8
Tigerair Australia	234	231	160	69.3	170	73.6	3	1.3
Virgin Australia	493	480	419	87.3	420	87.5	13	2.6
All Airlines	2 260	2 232	1 835	82.2	1 774	79.5	28	1.2
Sydney-Darwin								
Jetstar	273	272	199	73.2	203	74.6	1	0.4
Qantas	563	561	421	75.0	366	65.2	2	0.4
Virgin Australia	352	349	274	78.5	274	78.5	3	0.9
All Airlines	1 188	1 182	894	75.6	843	71.3	6	0.5
Sydney-Dubbo								
QantasLink	1 293	1 282	995	77.6	1 006	78.5	11	0.9
Regional Express	1 470	1 463	1 208	82.6	1 181	80.7	7	0.5
All Airlines	2 763	2 745	2 203	80.3	2 187	79.7	18	0.7
Sydney-Gold Coast								
Jetstar	3 484	3 371	2 693	79.9	2 616	77.6	113	3.2
Qantas	1 015	1 002	779	77.7	736	73.5	13	1.3
QantasLink	422	414	310	74.9	312	75.4	8	1.9
Tigerair Australia	1 158	1 108	825	74.5	871	78.6	50	4.3
Virgin Australia	3 046	2 986	2 305	77.2	2 358	79.0	60	2.0
All Airlines	9 125	8 881	6 912	77.8	6 893	77.6	244	2.7
Sydney-Hamilton Island								
Jetstar	285	284	226	79.6	220	77.5	1	0.4
Qantas	101	101	83	82.2	83	82.2	0	0.0
QantasLink	234	231	160	69.3	183	79.2	3	1.3
Virgin Australia	302	299	246	82.3	254	84.9	3	1.0
All Airlines	922	915	715	78.1	740	80.9	7	0.8
Sydney-Hobart								
Jetstar	1 022	1 013	828	81.7	787	77.7	9	0.9
Qantas	78	78	62	79.5	63	80.8	0	0.0
QantasLink	685	675	493	73.0	494	73.2	10	1.5
Virgin Australia	888	878	737	83.9	751	85.5	10	1.1
All Airlines	2 673	2 644	2 120	80.2	2 095	79.2	29	1.1
Sydney-Launceston								
Jetstar	574	572	481	84.1	460	80.4	2	0.3
Virgin Australia	382	379	316	83.4	304	80.2	3	0.8
All Airlines	956	951	797	83.8	764	80.3	5	0.5
Sydney-Melbourne								
Jetstar	4 720	4 427	3 132	70.7	3 071	69.4	293	6.2
Qantas	12 322	11 457	8 525	74.4	9 004	78.6	865	7.0
Tigerair Australia	3 075	2 850	1 726	60.6	1 801	63.2	225	7.3
Virgin Australia	8 824	8 354	6 260	74.9	6 650	79.6	470	5.3
All Airlines	28 941	27 088	19 643	72.5	20 526	75.8	1 853	6.4
Sydney-Perth								
Jetstar	312	308	226	73.4	189	61.4	4	1.3
Qantas	2 465	2 445	1 713	70.1	1 621	66.3	20	0.8
Tigerair Australia	335	324	238	73.5	224	69.1	11	3.3
Virgin Australia	1 450	1 447	1 006	69.5	976	67.4	3	0.2
All Airlines	4 562	4 524	3 183	70.4	3 010	66.5	38	0.8

	<i>Sectors</i>		<i>Arrivals On Time</i>		<i>Departures On Time</i>		<i>Cancellations</i>	
	<i>Sched.</i>	<i>Flown</i>	<i>No.</i>	<i>%</i>	<i>No.</i>	<i>%</i>	<i>No.</i>	<i>%</i>
Sydney-Port Macquarie								
QantasLink	1 220	1 202	952	79.2	953	79.3	18	1.5
Virgin Australia	699	689	515	74.7	509	73.9	10	1.4
All Airlines	1 919	1 891	1 467	77.6	1 462	77.3	28	1.5
Sydney-Proserpine								
Jetstar	156	155	133	85.8	134	86.5	1	0.6
Tigerair Australia	262	256	206	80.5	203	79.3	6	2.3
All Airlines	418	411	339	82.5	337	82.0	7	1.7
Sydney-Sunshine Coast								
Jetstar	1 288	1 261	926	73.4	873	69.2	27	2.1
QantasLink	479	472	348	73.7	345	73.1	7	1.5
Virgin Australia	655	650	502	77.2	496	76.3	5	0.8
All Airlines	2 422	2 383	1 776	74.5	1 714	71.9	39	1.6
Sydney-Tamworth								
QantasLink	1 448	1 421	1 101	77.5	1 087	76.5	27	1.9
Virgin Australia	629	620	470	75.8	487	78.5	9	1.4
All Airlines	2 077	2 041	1 571	77.0	1 574	77.1	36	1.7
Sydney-Townsville								
Jetstar	307	304	211	69.4	203	66.8	3	1.0
Virgin Australia	315	310	252	81.3	252	81.3	5	1.6
All Airlines	622	614	463	75.4	455	74.1	8	1.3
Sydney-Wagga Wagga								
QantasLink	1 158	1 150	943	82.0	913	79.4	8	0.7
Regional Express	1 453	1 434	1 227	85.6	1 231	85.8	19	1.3
All Airlines	2 611	2 584	2 170	84.0	2 144	83.0	27	1.0
Tamworth-Sydney								
QantasLink	1 444	1 413	1 112	78.7	1 135	80.3	31	2.1
Virgin Australia	628	620	505	81.5	520	83.9	8	1.3
All Airlines	2 072	2 033	1 617	79.5	1 655	81.4	39	1.9
Townsville-Brisbane								
Jetstar	658	647	533	82.4	511	79.0	11	1.7
Qantas	561	557	494	88.7	485	87.1	4	0.7
QantasLink	1 180	1 154	930	80.6	959	83.1	26	2.2
Virgin Australia	1 713	1 688	1 552	91.9	1 538	91.1	25	1.5
All Airlines	4 112	4 046	3 509	86.7	3 493	86.3	66	1.6
Townsville-Cairns								
QantasLink	1 607	1 586	1 422	89.7	1 416	89.3	21	1.3
Regional Express	140	136	117	86.0	115	84.6	4	2.9
All Airlines	1 747	1 722	1 539	89.4	1 531	88.9	25	1.4
Townsville-Melbourne								
			(To July 2018 only)					
Jetstar	31	31	21	67.7	21	67.7	0	0.0
Tigerair Australia	17	16	10	62.5	10	62.5	1	5.9
All Airlines	48	47	31	66.0	31	66.0	1	2.1
Townsville-Sydney								
Jetstar	307	303	209	69.0	179	59.1	4	1.3
Virgin Australia	315	310	237	76.5	240	77.4	5	1.6
All Airlines	622	613	446	72.8	419	68.4	9	1.4

	<i>Sectors</i>		<i>Arrivals On Time</i>		<i>Departures On Time</i>		<i>Cancellations</i>	
	<i>Sched.</i>	<i>Flown</i>	<i>No.</i>	<i>%</i>	<i>No.</i>	<i>%</i>	<i>No.</i>	<i>%</i>
Wagga Wagga-Sydney								
QantasLink	1 156	1 148	918	80.0	921	80.2	8	0.7
Regional Express	1 456	1 435	1 102	76.8	1 201	83.7	21	1.4
All Airlines	2 612	2 583	2 020	78.2	2 122	82.2	29	1.1

Airports

On time performance is reported for all routes where the passenger load averages over 8000 passengers per month, and where two or more airlines operate in competition. The following data reports by airport against flights operated on those routes only. This year, 8 major city airports and 32 regional city airports are covered.

Airport	Arrivals			Departures		
	Sectors Flown	On Time No.	%	Sectors Flown	On Time No.	%
Adelaide						
Jetstar	3 500	2 684	76.7	3 494	2 672	76.5
Qantas	8 964	7 542	84.1	8 948	7 547	84.3
QantasLink	2 185	1 863	85.3	2 179	1 907	87.5
Regional Express	2 476	2 211	89.3	2 482	2 313	93.2
Tigerair Australia	1 631	1 139	69.8	1 628	1 035	63.6
Virgin Australia	7 683	6 318	82.2	7 679	6 526	85.0
Virgin Australia Regional Airlines	641	374	58.3	632	405	64.1
All Airlines	27 080	22 131	81.7	27 042	22 405	82.9

Relates to services to and from Alice Springs, Brisbane, Canberra, Gold Coast, Melbourne, Perth, Port Lincoln and Sydney.

Albury

QantasLink	1 140	869	76.2	1 139	853	74.9
Regional Express	1 122	878	78.3	1 114	933	83.8
Virgin Australia	696	527	75.7	695	525	75.5
All Airlines	2 958	2 274	76.9	2 948	2 311	78.4

Relates to services to and from Sydney only.

Alice Springs

Qantas	539	468	86.8	535	451	84.3
QantasLink	439	391	89.1	436	404	92.7
Virgin Australia	382	321	84.0	380	335	88.2
Virgin Australia Regional Airlines	129	70	54.3	130	78	60.0
All Airlines	1 489	1 250	83.9	1 481	1 268	85.6

Relates to services to and from Adelaide and Darwin.

Armidale

QantasLink	1 362	1 052	77.2	1 346	1 019	75.7
Regional Express	796	625	78.5	800	583	72.9
All Airlines	2 158	1 677	77.7	2 146	1 602	74.7

Relates to services to and from Sydney only.

Ayers Rock

Jetstar	343	245	71.4	343	156	45.5
Virgin Australia	364	292	80.2	364	228	62.6
All Airlines	707	537	76.0	707	384	54.3

Relates to services to and from Sydney only.

Ballina

Jetstar	984	768	78.0	980	650	66.3
Regional Express	263	195	74.1	256	172	67.2
Virgin Australia	419	337	80.4	418	331	79.2
All Airlines	1 666	1 300	78.0	1 654	1 153	69.7

Relates to services to and from Sydney only.

Airport	Arrivals			Departures		
	Sectors Flown	On Time		Sectors Flown	On Time	
		No.	%		No.	%
Brisbane						
Jetstar	8 028	6 303	78.5	8 034	6 200	77.2
Qantas	16 066	13 145	81.8	16 044	13 754	85.7
QantasLink	14 163	11 710	82.7	14 220	12 022	84.5
Tigerair Australia	3 772	2 723	72.2	3 772	2 666	70.7
Virgin Australia	25 533	21 519	84.3	25 547	21 505	84.2
All Airlines	67 562	55 400	82.0	67 617	56 147	83.0

Relates to services to and from Adelaide, Bundaberg, Cairns, Canberra, Darwin, Emerald, Gladstone, Hamilton Island, Hobart, Mackay, Melbourne, Mount Isa, Newcastle, Perth, Proserpine, Rockhampton, Sydney and Townsville.

Broome

Qantas	18	14	77.8	18	7	38.9
QantasLink	1 008	870	86.3	1 003	819	81.7
Virgin Australia	47	39	83.0	45	29	64.4
Virgin Australia Regional Airlines	781	601	77.0	777	571	73.5
All Airlines	1 854	1 524	82.2	1 843	1 426	77.4

Relates to services to and from Perth only.

Bundaberg

QantasLink	1 357	1 180	87.0	1 356	1 205	88.9
Virgin Australia	365	327	89.6	365	336	92.1
All Airlines	1 722	1 507	87.5	1 721	1 541	89.5

Relates to services to and from Brisbane only.

Cairns

Jetstar	3 478	2 825	81.2	3 473	2 810	80.9
Qantas	1 785	1 484	83.1	1 785	1 409	78.9
QantasLink	2 748	2 341	85.2	2 746	2 404	87.5
Regional Express	136	117	86.0	138	119	86.2
Tigerair Australia	1 281	973	76.0	1 278	891	69.7
Virgin Australia	3 024	2 514	83.1	3 021	2 498	82.7
All Airlines	12 452	10 254	82.3	12 441	10 131	81.4

Relates to services to and from Brisbane, Melbourne, Sydney and Townsville.

Canberra

Qantas	3 369	2 857	84.8	3 361	2 992	89.0
QantasLink	7 529	5 976	79.4	7 474	6 130	82.0
Tigerair Australia	658	454	69.0	658	429	65.2
Virgin Australia	6 146	4 951	80.6	6 154	5 050	82.1
All Airlines	17 702	14 238	80.4	17 647	14 601	82.7

Relates to services to and from Adelaide, Brisbane, Melbourne and Sydney.

Coffs Harbour

QantasLink	1 521	1 256	82.6	1 518	1 242	81.8
Tigerair Australia	231	160	69.3	230	179	77.8
Virgin Australia	480	419	87.3	479	394	82.3
All Airlines	2 232	1 835	82.2	2 227	1 815	81.5

Relates to services to and from Sydney only.

Airport	Arrivals			Departures		
	Sectors Flown	On Time		Sectors Flown	On Time	
		No.	%		No.	%
Darwin						
Jetstar	840	636	75.7	838	601	71.7
Qantas	1 928	1 617	83.9	1 930	1 437	74.5
QantasLink	436	400	91.7	439	396	90.2
Tigerair Australia	208	177	85.1	205	174	84.9
Virgin Australia	1 555	1 222	78.6	1 551	1 255	80.9
Virgin Australia Regional Airlines	160	115	71.9	159	107	67.3
All Airlines	5 127	4 167	81.3	5 122	3 970	77.5
Relates to services to and from Alice Springs, Brisbane, Melbourne, Perth and Sydney.						
Dubbo						
QantasLink	1 282	995	77.6	1 274	1 008	79.1
Regional Express	1 463	1 208	82.6	1 429	1 166	81.6
All Airlines	2 745	2 203	80.3	2 703	2 174	80.4
Relates to services to and from Sydney only.						
Emerald						
QantasLink	1 294	1 157	89.4	1 288	1 114	86.5
Virgin Australia	622	574	92.3	622	579	93.1
All Airlines	1 916	1 731	90.3	1 910	1 693	88.6
Relates to services to and from Brisbane only.						
Geraldton						
QantasLink	568	513	90.3	566	516	91.2
Virgin Australia Regional Airlines	496	387	78.0	492	360	73.2
All Airlines	1 064	900	84.6	1 058	876	82.8
Relates to services to and from Perth only.						
Gladstone						
QantasLink	1 563	1 312	83.9	1 560	1 293	82.9
Virgin Australia	839	777	92.6	838	776	92.6
All Airlines	2 402	2 089	87.0	2 398	2 069	86.3
Relates to services to and from Brisbane only.						
Gold Coast						
Jetstar	5 966	4 641	77.8	5 961	4 532	76.0
Qantas	1 388	1 080	77.8	1 389	1 010	72.7
QantasLink	414	310	74.9	411	324	78.8
Tigerair Australia	2 054	1 476	71.9	2 053	1 311	63.9
Virgin Australia	5 622	4 469	79.5	5 607	4 208	75.0
All Airlines	15 444	11 976	77.5	15 421	11 385	73.8
Relates to services to and from Adelaide, Melbourne and Sydney.						
Hamilton Island						
Jetstar	284	226	79.6	284	201	70.8
Qantas	101	83	82.2	101	83	82.2
QantasLink	543	401	73.8	540	392	72.6
Virgin Australia	661	554	83.8	660	552	83.6
All Airlines	1 589	1 264	79.5	1 585	1 228	77.5
Relates to services to and from Brisbane and Sydney.						

Airport	Arrivals			Departures		
	Sectors	On Time		Sectors	On Time	
	Flown	No.	%	Flown	No.	%
Hobart						
Jetstar	3 443	2 626	76.3	3 439	2 225	64.7
Qantas	1 451	1 145	78.9	1 443	1 119	77.5
QantasLink	676	493	72.9	670	540	80.6
Tigerair Australia	502	350	69.7	502	310	61.8
Virgin Australia	3 086	2 462	79.8	3 082	2 381	77.3
All Airlines	9 158	7 076	77.3	9 136	6 575	72.0
Relates to services to and from Brisbane, Melbourne and Sydney.						
Kalgoorlie						
Qantas	101	92	91.1	101	87	86.1
QantasLink	874	773	88.4	873	791	90.6
Virgin Australia	442	403	91.2	439	381	86.8
Virgin Australia Regional Airlines	430	365	84.9	430	367	85.3
All Airlines	1 847	1 633	88.4	1 843	1 626	88.2
Relates to services to and from Perth only.						
Karratha						
Qantas	220	209	95.0	218	203	93.1
QantasLink	1 949	1 660	85.2	1 921	1 693	88.1
Virgin Australia	33	21	63.6	33	21	63.6
Virgin Australia Regional Airlines	768	593	77.2	764	599	78.4
All Airlines	2 970	2 483	83.6	2 936	2 516	85.7
Relates to services to and from Perth only.						
Launceston						
Jetstar	2 115	1 582	74.8	2 113	1 410	66.7
QantasLink	1 349	1 126	83.5	1 345	1 147	85.3
Virgin Australia	1 604	1 243	77.5	1 606	1 339	83.4
All Airlines	5 068	3 951	78.0	5 064	3 896	76.9
Relates to services to and from Melbourne and Sydney.						
Mackay						
Jetstar	398	316	79.4	396	284	71.7
QantasLink	1 458	1 246	85.5	1 403	1 211	86.3
Virgin Australia	1 693	1 435	84.8	1 692	1 524	90.1
All Airlines	3 549	2 997	84.4	3 491	3 019	86.5
Relates to services to and from Brisbane only.						
Melbourne						
Jetstar	17 460	12 499	71.6	17 487	12 507	71.5
Qantas	27 249	21 313	78.2	27 275	22 222	81.5
QantasLink	3 006	2 443	81.3	3 007	2 517	83.7
Regional Express	910	669	73.5	911	794	87.2
Tigerair Australia	7 998	5 106	63.8	8 003	5 635	70.4
Virgin Australia	27 143	20 505	75.5	27 165	22 330	82.2
Virgin Australia Regional Airlines	72	53	73.6	73	44	60.3
All Airlines	83 838	62 588	74.7	83 921	66 049	78.7
Relates to services to and from Adelaide, Brisbane, Cairns, Canberra, Darwin, Gold Coast, Hobart, Launceston, Mildura, Newcastle, Perth, Sunshine Coast, Sydney and Townsville (to July 2018).						
Mildura						
QantasLink	1 099	934	85.0	1 098	925	84.2
Regional Express	911	750	82.3	910	724	79.6
Virgin Australia	365	282	77.3	365	307	84.1
All Airlines	2 375	1 966	82.8	2 373	1 956	82.4
Relates to services to and from Melbourne only.						

Airport	Arrivals			Departures		
	Sectors Flown	On Time		Sectors Flown	On Time	
		No.	%		No.	%
Mount Isa						
Qantas	122	113	92.6	121	91	75.2
QantasLink	469	308	65.7	464	357	76.9
Virgin Australia	209	187	89.5	199	174	87.4
All Airlines	800	608	76.0	784	622	79.3
Relates to services to and from Brisbane only.						
Newcastle						
Jetstar	2 230	1 643	73.7	2 224	1 693	76.1
QantasLink	853	714	83.7	851	711	83.5
Virgin Australia	1 388	1 151	82.9	1 384	1 174	84.8
All Airlines	4 471	3 508	78.5	4 459	3 578	80.2
Relates to services to and from Brisbane and Melbourne.						
Newman						
Qantas	290	277	95.5	289	277	95.8
QantasLink	1 281	1 130	88.2	1 268	1 113	87.8
Virgin Australia	172	163	94.8	171	155	90.6
Virgin Australia Regional Airlines	297	255	85.9	301	253	84.1
All Airlines	2 040	1 825	89.5	2 029	1 798	88.6
Relates to services to and from Perth only.						
Perth						
Jetstar	1 206	995	82.5	1 197	847	70.8
Qantas	9 235	7 170	77.6	9 233	7 582	82.1
QantasLink	6 923	5 988	86.5	6 985	6 220	89.0
Tigerair Australia	912	628	68.9	908	604	66.5
Virgin Australia	6 149	4 556	74.1	6 155	5 238	85.1
Virgin Australia Regional Airlines	3 698	2 765	74.8	3 714	3 136	84.4
All Airlines	28 123	22 102	78.6	28 192	23 627	83.8
Relates to services to and from Adelaide, Brisbane, Broome, Darwin, Geraldton, Kalgoorlie, Karratha, Melbourne, Newman, Port Hedland and Sydney.						
Port Hedland						
Qantas	382	355	92.9	379	340	89.7
QantasLink	1 223	1 018	83.2	1 213	1 058	87.2
Virgin Australia	278	256	92.1	277	247	89.2
Virgin Australia Regional Airlines	344	290	84.3	344	273	79.4
All Airlines	2 227	1 919	86.2	2 213	1 918	86.7
Relates to services to and from Perth only.						
Port Lincoln						
QantasLink	1 260	1 140	90.5	1 258	1 130	89.8
Regional Express	2 482	2 222	89.5	2 476	2 266	91.5
All Airlines	3 742	3 362	89.8	3 734	3 396	90.9
Relates to services to and from Adelaide only.						
Port Macquarie						
QantasLink	1 202	952	79.2	1 203	966	80.3
Virgin Australia	689	515	74.7	687	453	65.9
All Airlines	1 891	1 467	77.6	1 890	1 419	75.1
Relates to services to and from Sydney only.						

Airport	Arrivals			Departures		
	Sectors Flown	On Time		Sectors Flown	On Time	
		No.	%		No.	%
Proserpine						
Jetstar	557	477	85.6	556	437	78.6
Tigerair Australia	256	206	80.5	254	186	73.2
Virgin Australia	480	402	83.8	478	387	81.0
All Airlines	1 293	1 085	83.9	1 288	1 010	78.4
Relates to services to and from Brisbane and Sydney.						
Rockhampton						
QantasLink	2 086	1 672	80.2	2 133	1 748	82.0
Virgin Australia	1 657	1 338	80.7	1 658	1 421	85.7
All Airlines	3 743	3 010	80.4	3 791	3 169	83.6
Relates to services to and from Brisbane only.						
Sunshine Coast						
Jetstar	2 230	1 685	75.6	2 224	1 406	63.2
QantasLink	472	348	73.7	470	358	76.2
Virgin Australia	1 471	1 177	80.0	1 467	1 018	69.4
All Airlines	4 173	3 210	76.9	4 161	2 782	66.9
Relates to services to and from Melbourne and Sydney.						
Sydney						
Jetstar	17 664	12 787	72.4	17 687	13 077	73.9
Qantas	26 040	20 362	78.2	26 077	20 302	77.9
QantasLink	16 537	12 875	77.9	16 631	13 016	78.3
Regional Express	5 034	3 761	74.7	5 078	4 131	81.4
Tigerair Australia	6 971	4 669	67.0	6 984	4 885	69.9
Virgin Australia	30 762	24 175	78.6	30 776	24 240	78.8
All Airlines	103 008	78 629	76.3	103 233	79 651	77.2
Relates to services to and from Adelaide, Albury, Armidale, Ayers Rock, Ballina, Brisbane, Cairns, Canberra, Coffs Harbour, Darwin, Dubbo, Gold Coast, Hamilton Island, Hobart, Launceston, Melbourne, Perth, Port Macquarie, Proserpine, Sunshine Coast, Tamworth, Townsville and Wagga Wagga.						
Tamworth						
QantasLink	1 421	1 101	77.5	1 413	1 135	80.3
Virgin Australia	620	470	75.8	620	520	83.9
All Airlines	2 041	1 571	77.0	2 033	1 655	81.4
Relates to services to and from Sydney only.						
Townsville						
Jetstar	985	801	81.3	981	711	72.5
Qantas	556	469	84.4	557	485	87.1
QantasLink	2 749	2 365	86.0	2 740	2 375	86.7
Regional Express	138	117	84.8	136	115	84.6
Tigerair Australia	17	12	70.6	16	10	62.5
Virgin Australia	1 998	1 682	84.2	1 998	1 778	89.0
All Airlines	6 443	5 446	84.5	6 428	5 474	85.2
Relates to services to and from Brisbane, Cairns, Melbourne (to July 2018) and Sydney.						
Wagga Wagga						
QantasLink	1 150	943	82.0	1 148	921	80.2
Regional Express	1 434	1 227	85.6	1 435	1 201	83.7
All Airlines	2 584	2 170	84.0	2 583	2 122	82.2
Relates to services to and from Sydney only.						

Definitions

On time arrival	A flight arrival is counted as "on time" if it arrived at the gate before 15 minutes after the scheduled arrival time shown in the carriers' schedule. Neither diverted nor cancelled flights count as on time.
On time departure	A flight departure is counted as "on time" if it departs the gate before 15 minutes after the scheduled departure time shown in the carriers' schedule.
Cancellation	A flight removed from service within 7 days of scheduled departure is regarded as a cancellation.
On time departure percentage	The percentage of on time departures is measured against the number of departures <i>operated</i> on any particular sector.
On time arrival percentage	The percentage of on time arrivals is measured against the number of arrivals <i>operated</i> on any particular sector.
Cancellation percentage	The percentage of cancellations is measured against the number of services <i>scheduled</i> on any particular sector.
