



**Australian Government**

**Department of Infrastructure and Regional Development**

Bureau of Infrastructure, Transport and Regional Economics

STATISTICAL REPORT



## Aviation

Domestic airline on time performance 2016

© Commonwealth of Australia 2017

ISSN: 1832-0759

### **Ownership of intellectual property rights in this publication**

Unless otherwise noted, copyright (and any other intellectual property rights, if any) in this publication is owned by the Commonwealth of Australia (referred to below as the Commonwealth).

### **Disclaimer**

The material contained in this publication is made available on the understanding that the Commonwealth is not providing professional advice, and that users exercise their own skill and care with respect to its use, and seek independent advice if necessary.

The Commonwealth makes no representations or warranties as to the contents or accuracy of the information contained in this publication. To the extent permitted by law, the Commonwealth disclaims liability to any person or organisation in respect of anything done, or omitted to be done, in reliance upon information contained in this publication.

### **Creative Commons licence**

With the exception of (a) the Coat of Arms; and (b) the Department of Infrastructure and Regional Development's photos and graphics, copyright in this publication is licensed under a Creative Commons Attribution 3.0 Australia Licence.

Creative Commons Attribution 3.0 Australia Licence is a standard form licence agreement that allows you to copy, communicate and adapt this publication provided that you attribute the work to the Commonwealth and abide by the other licence terms. A summary of the licence terms is available from <http://creativecommons.org/licenses/by/3.0/au/deed.en>. The full licence terms are available from <http://creativecommons.org/licenses/by/3.0/au/legalcode>.

### **Use of the Coat of Arms**

The Department of the Prime Minister and Cabinet sets the terms under which the Coat of Arms is used. Please refer to the Department's Commonwealth Coat of Arms and Government branding web page <http://www.dpmmc.gov.au/guidelines/index.cfm#brand> and, in particular, the Guidelines on the use of the Commonwealth Coat of Arms publication.

An appropriate citation for this report is:

Bureau of Infrastructure, Transport and Regional Economics (BITRE), 2017, Domestic airline on time performance, Statistical Report, BITRE, Canberra ACT.

### **Contact us**

This publication is available in PDF format. All other rights are reserved, including in relation to any Departmental logos or trade marks which may exist. For enquiries regarding the licence and any use of this publication, please contact:

Bureau of Infrastructure, Transport and Regional Economics (BITRE)  
Department of Infrastructure and Regional Development  
GPO Box 501, Canberra ACT 2601, Australia  
Telephone: (international) +61 2 6274 7210  
Fax: (international) +61 2 6274 6855  
Email: [bitre@infrastructure.gov.au](mailto:bitre@infrastructure.gov.au)  
Website: [www.bitre.gov.au](http://www.bitre.gov.au)

### **Inquiries**

Should you require additional information about the statistics contained in this publication:

Telephone (02) 6274 7790 or Facsimile (02) 6274 7727

Electronic mail: [AVSTATS@infrastructure.gov.au](mailto:AVSTATS@infrastructure.gov.au)

Web site: <http://www.bitre.gov.au/statistics/aviation/otphome.aspx>

# Foreword

The Bureau of Infrastructure, Transport and Regional Economics (BITRE) monitors the punctuality and reliability of major domestic airlines operating between Australian airports. The purpose of this is to allow for evaluation of overall industry and individual airline performance, so that consumers of air travel can make informed decisions.

The following domestic airlines currently report this information monthly to the BITRE: Jetstar, Qantas, QantasLink, Regional Express, Tigerair Australia, Virgin Australia and Virgin Australia Regional Airlines. Data has been gathered since November 2003, although some airlines commenced reporting at a later date, including Jetstar which first reported in May 2004, MacAir in July 2005, Tigerair Australia in April 2008 and Virgin Australia Regional Airlines in May 2013. MacAir ceased operations in February 2009 and data was not received for December 2008 onwards. Virgin Blue was rebranded as Virgin Australia in May 2011 and Tiger Airways was rebranded as Tigerair Australia in July 2013 and time series data in Microsoft Excel spreadsheet format on the BITRE website have been revised to reflect these changes. Services operated by Skywest on behalf of Virgin Australia using ATR/F100 aircraft commenced in November 2011 and were shown separately as Virgin Australia – ATR/F100 Operations. Virgin Australia Regional Airlines commenced operations in May 2013. It was formed after the acquisition of Skywest by Virgin Australia and represented a combination of operations previously reported under Skywest and Virgin Australia – ATR/F100 Operations. In January 2016, Virgin Australia transferred their ATR fleet from Virgin Australia Regional Airlines to Virgin Australia.

Information presented in this report is for Australian domestic routes for which the passenger load averaged 8 000 or more passengers per month over the previous six months and where two or more airlines operated in competition on those routes. There were 66 routes that met these criteria for all twelve months in 2016. Over time, routes which meet these criteria change as airline networks and traffic levels vary.

Participating airlines report their overall monthly network performance where this is possible.

Total industry figures encompass all services operated by reporting airlines only. These airlines collectively carried over 95 per cent of total domestic passengers (regular public transport only) in 2015.

The method of capturing on time performance varies between airlines utilising different recording systems. Jetstar and Qantas jet aircraft use Aircraft Communication Addressing and Reporting System (ACARS) to electronically measure on time performance. Regional Express, Tigerair Australia, Virgin Australia, Virgin Australia Regional Airlines and the Qantas non-jet fleet record on time performance manually using records from pilots, gate agents and/or ground crews.

After initial data is collected, aggregate reports are audited internally by participating airlines prior to publication.

Reports and detailed time series data in Microsoft Excel spreadsheet format are available from the BITRE website at: <http://www.bitre.gov.au/statistics/aviation/otphome.aspx>.



# Contents

	Page
Industry performance .....	1
Individual routes .....	9
Airports .....	22
Definitions .....	28



# Industry performance

For the year ended December 2016, on time performance over all routes operated by participating airlines (Jetstar, Qantas, QantasLink, Regional Express, Tigerair Australia, Virgin Australia and Virgin Australia Regional Airlines) averaged 84.2 per cent for on time arrivals and 85.1 per cent for on time departures. Cancellations represented 1.7 per cent of all scheduled flights. The equivalent figures for 2015 were 86.0 per cent for arrivals, 87.0 per cent for departures and 1.6 per cent for cancellations.

The figures for 2016 were above the long term average performance for all routes (82.7 per cent for arrivals and 84.2 per cent for departures). The rate of cancellations was higher than the long term average of 1.4 per cent.

Virgin Australia achieved the highest on time arrivals among the major domestic airlines at 86.7 per cent, followed by Qantas at 86.4 per cent, Tigerair Australia at 81.6 per cent and Jetstar at 76.2 per cent. QantasLink was the best performing regional airline for on time arrivals at 85.0 per cent, followed by Regional Express at 84.4 per cent and Virgin Australia Regional Airlines at 84.3 per cent. The Qantas network (Qantas and QantasLink combined operations) recorded 85.7 per cent for on time arrivals while the Virgin Australia network (Virgin Australia and Virgin Australia Regional Airlines combined operations) recorded 86.6 per cent.

Virgin Australia also achieved the highest level of on time departures for 2016 at 88.4 per cent, followed by Qantas at 88.0 per cent, Tigerair Australia at 83.1 per cent and Jetstar at 73.3 per cent. The regional airlines were led by Regional Express at 87.5 per cent, followed by Virgin Australia Regional Airlines at 86.8 per cent and QantasLink at 85.7 per cent. The Qantas network recorded 86.8 per cent for on time departures while the Virgin Australia network recorded 88.3 per cent.

QantasLink had the highest percentage of cancellations (2.5 per cent) during 2016, followed by Jetstar and Virgin Australia (both at 1.9 per cent), Virgin Australia Regional Airlines (1.3 per cent), Qantas (1.2 per cent), Tigerair Australia (0.9 per cent) and Regional Express (0.6 per cent).

Airlines' on time performance varies across the routes they serve. Individual route data by specific airline for 66 routes are shown on pages 9-21.

Of the 66 routes which met the criteria for on time performance reporting for all 12 months in 2016, the Melbourne-Hamilton Island and Townsville-Cairns routes had the highest percentage of on time arrivals (94.1 per cent) and the Adelaide-Alice Springs route had the highest percentage of on time departures (95.2 per cent). The Port Macquarie-Sydney route had the lowest percentage of on time arrivals (70.5 per cent) and the Sunshine Coast-Melbourne route had the lowest percentage of on time departures (67.8 per cent).

Cancellations were highest on the Brisbane-Moranbah and Moranbah-Brisbane routes at 6.2 per cent, followed by the Canberra-Sydney route at 4.8 per cent, the Sydney-Canberra route

at 4.4 per cent, the Melbourne-Sydney and Sydney-Melbourne routes at 4.0 per cent and the Tamworth-Sydney, Karratha-Perth and Gladstone-Brisbane routes at 3.3 per cent.

Mount Isa Airport recorded the highest percentage of on time arrivals (93.9 per cent) and Newman Airport recorded the highest percentage of on time departures (93.3 per cent). Armidale Airport recorded the lowest percentage of on time arrivals (72.9 per cent) and Sunshine Coast Airport recorded the lowest percentage of on time departures (68.7 per cent). These figures only refer to reported routes and do not cover all flights at these airports.



Table 1 On time performance for the year ended December 2016 — Total Industry

	<i>Sectors</i>		<i>Arrivals On Time</i>		<i>Departures On Time</i>		<i>Cancellations</i>	
	<i>Scheduled</i>	<i>Flown</i>	<i>No.</i>	<i>%</i>	<i>No.</i>	<i>%</i>	<i>No.</i>	<i>%</i>
Jetstar	86 207	84 570	64 424	76.2	61 971	73.3	1 637	1.9
Qantas	110 498	109 149	94 340	86.4	96 036	88.0	1 349	1.2
QantasLink	124 753	121 675	103 399	85.0	104 271	85.7	3 078	2.5
Regional Express	74 239	73 792	62 277	84.4	64 604	87.5	447	0.6
Tigerair Australia	26 400	26 151	21 342	81.6	21 730	83.1	249	0.9
Virgin Australia	148 959	146 200	126 796	86.7	129 233	88.4	2 759	1.9
Virgin Australia Regional Airlines	7 955	7 852	6 622	84.3	6 814	86.8	103	1.3
All Airlines	579 011	569 389	479 200	84.2	484 659	85.1	9 622	1.7
Qantas - all QF designated services	235 251	230 824	197 739	85.7	200 307	86.8	4 427	1.9
Virgin Australia - all VA designated services	156 914	154 052	133 418	86.6	136 047	88.3	2 862	1.8

Total airline network data (including routes not shown in this report).

Airlines' on time performance varies across the routes they serve. Individual route data by specific airline for 66 routes are shown on pages 9-21.

Table 2 Top ten routes for on time performance for the year ended December 2016 (participating airlines only)

<i>Arrivals</i>		<i>Departures</i>	
<i>Route</i>	<i>On Time (%)</i>	<i>Route</i>	<i>On Time (%)</i>
Melbourne-Hamilton Island	94.1	Adelaide-Alice Springs	95.2
Townsville-Cairns	94.1	Darwin-Alice Springs	95.1
Cairns-Townsville	94.0	Brisbane-Mount Isa	94.2
Brisbane-Mount Isa	93.9	Perth-Newman	94.1
Brisbane-Hobart	93.5	Cairns-Townsville	94.0
Perth-Newman	93.5	Townsville-Cairns	93.5
Darwin-Alice Springs	93.5	Brisbane-Hobart	93.4
Perth-Darwin	93.0	Newman-Perth	93.3
Mount Isa-Brisbane	92.7	Adelaide-Port Lincoln	92.9
Newman-Perth	92.4	Perth-Darwin	92.8

Table 3 Top ten airports for on time performance for the year ended December 2016 (participating airlines and reported routes only)

<i>Arrivals</i>		<i>Departures</i>	
<i>Airport</i>	<i>On Time (%)</i>	<i>Airport</i>	<i>On Time (%)</i>
Mount Isa	93.9	Newman	93.3
Newman	93.5	Mount Isa	92.8
Alice Springs	93.0	Port Hedland	91.5
Port Lincoln	90.6	Moranbah	90.8
Townsville	90.4	Karratha	90.7
Kalgoorlie	90.1	Port Lincoln	90.5
Karratha	90.1	Kalgoorlie	89.7
Geraldton	89.4	Bundaberg	89.6
Moranbah	89.4	Geraldton	89.4
Emerald	89.3	Emerald	89.3

## Total industry on time performance

Figure 1 On time performance (by month from December 2011)—Total Industry

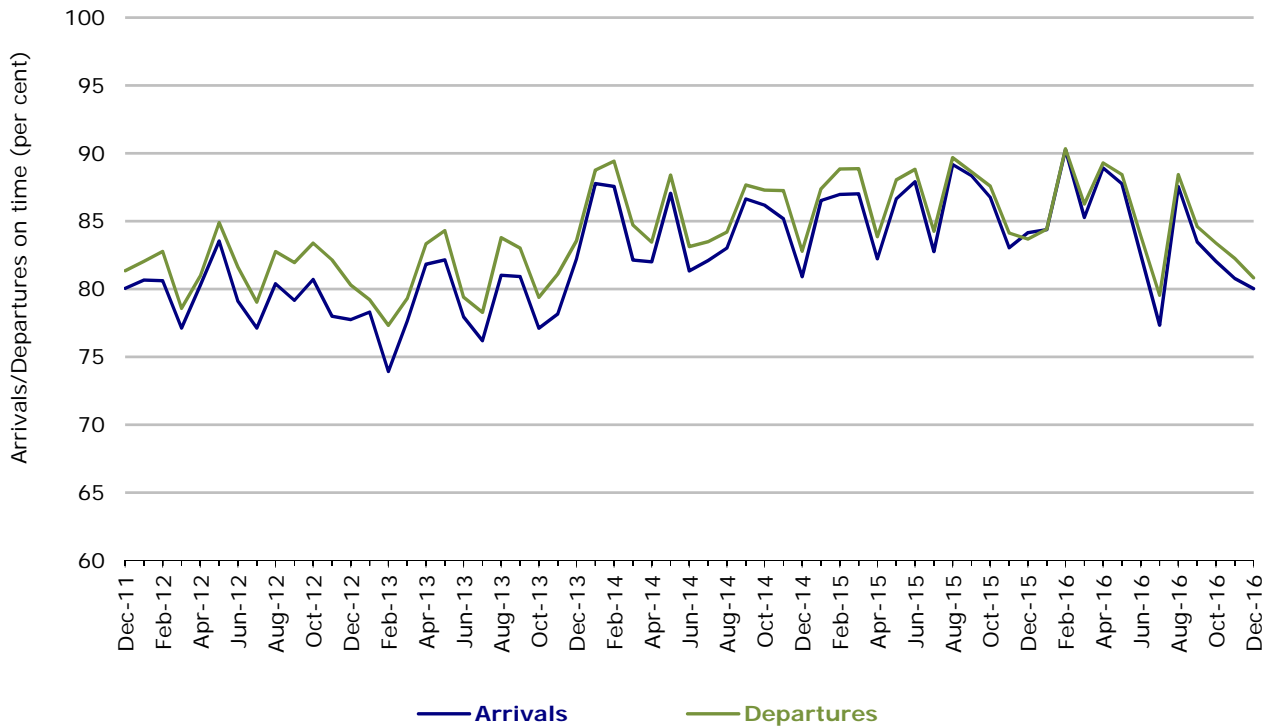
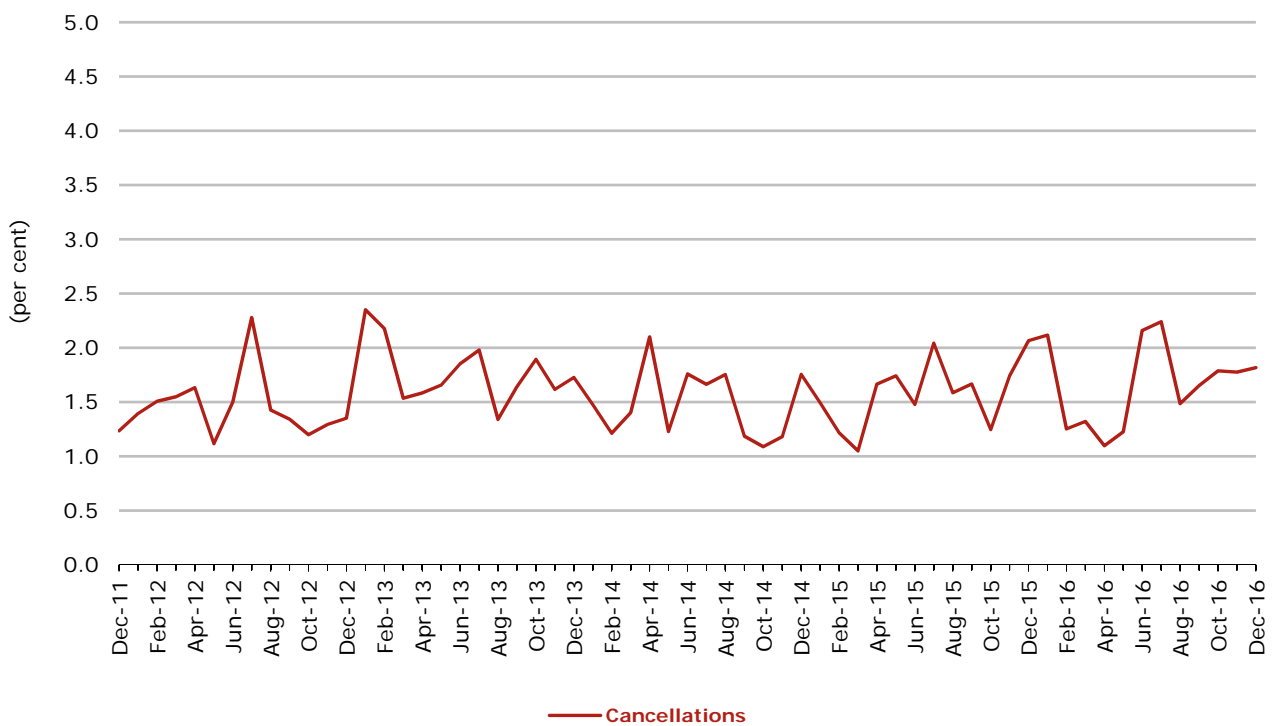


Figure 2 Cancellations (by month from December 2011)—Total Industry



## Major domestic airlines on time performance

Figure 3 On time performance (by month from December 2011)—Jetstar

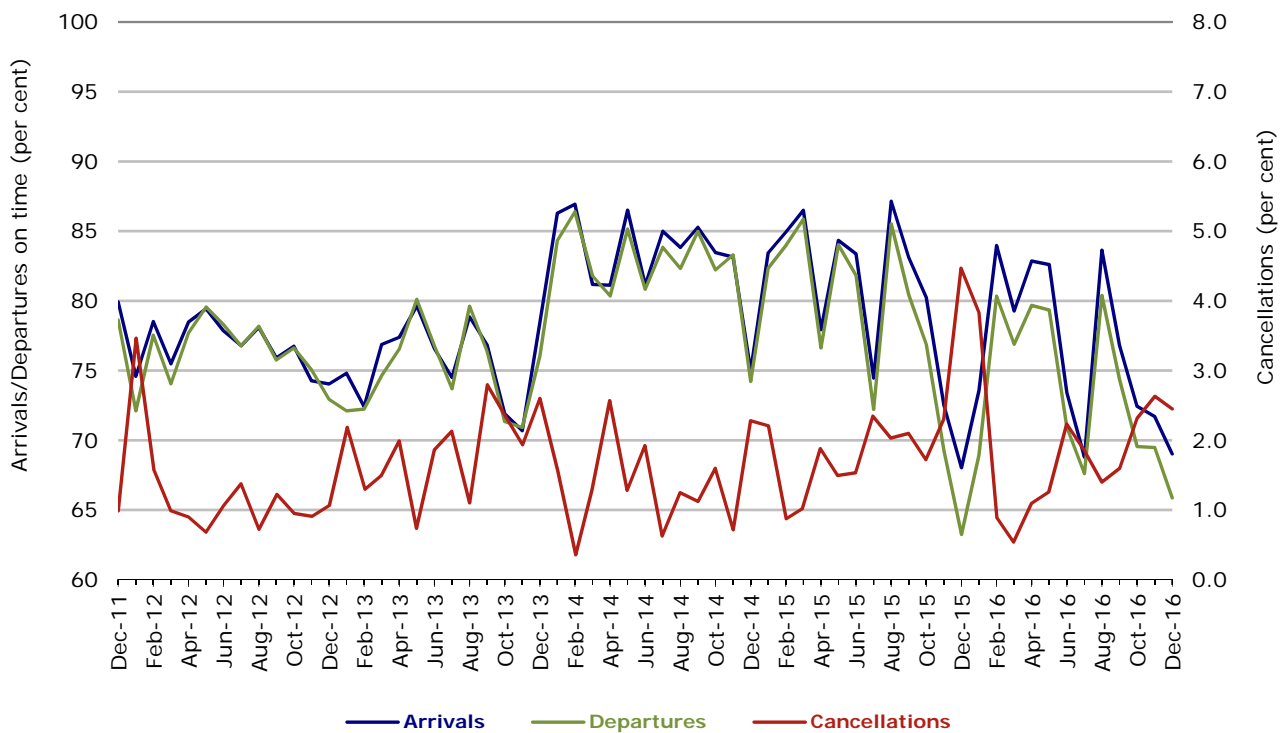


Figure 4 On time performance (by month from December 2011)—Qantas

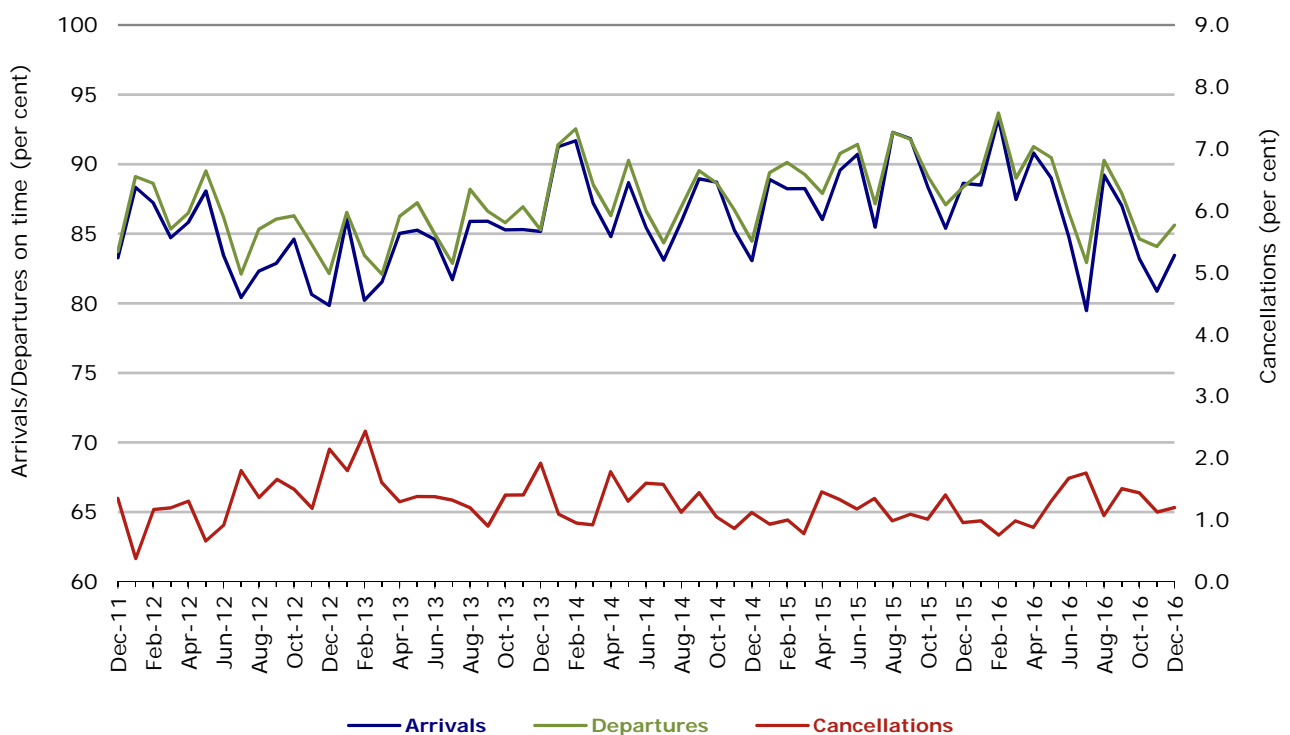


Figure 5 On time performance (by month from December 2011)—Tigerair Australia

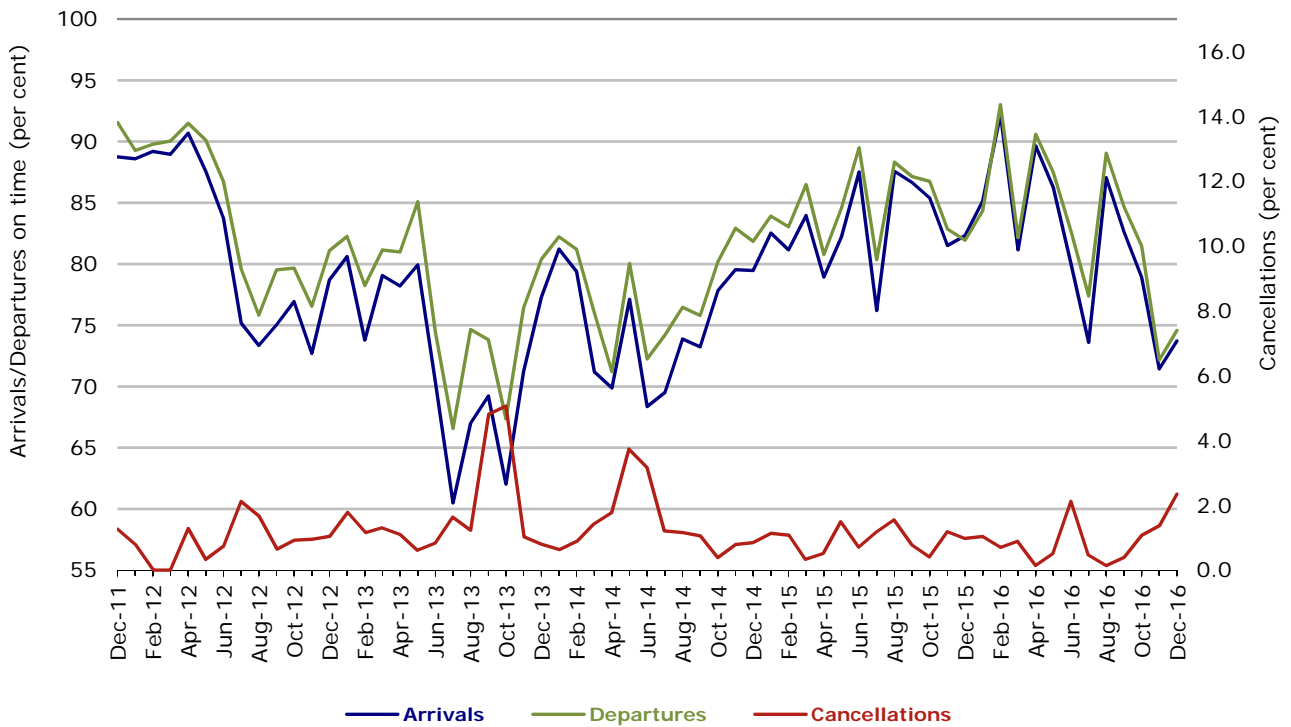
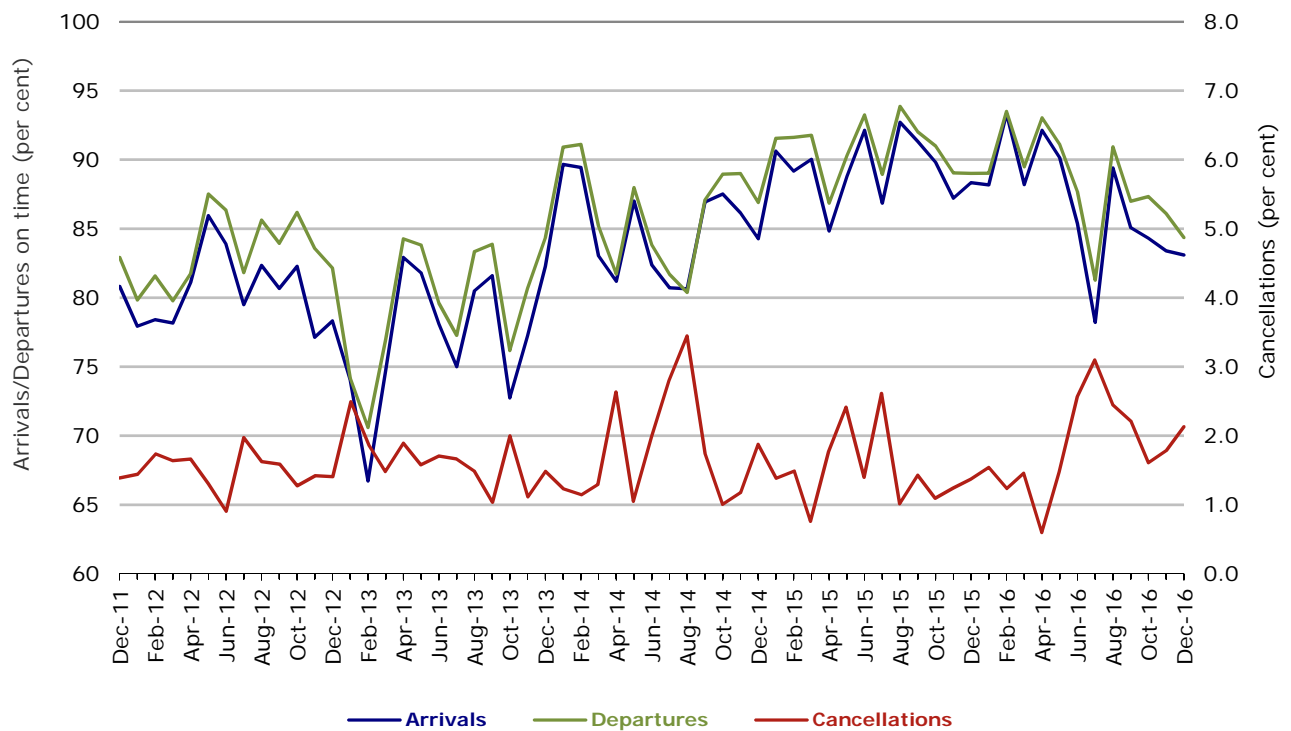


Figure 6 On time performance (by month from December 2011)—Virgin Australia



In January 2016, Virgin Australia transferred their ATR fleet from Virgin Australia Regional Airlines to Virgin Australia.

## Major regional airlines on time performance

Figure 7 On time performance (by month from December 2011)—QantasLink

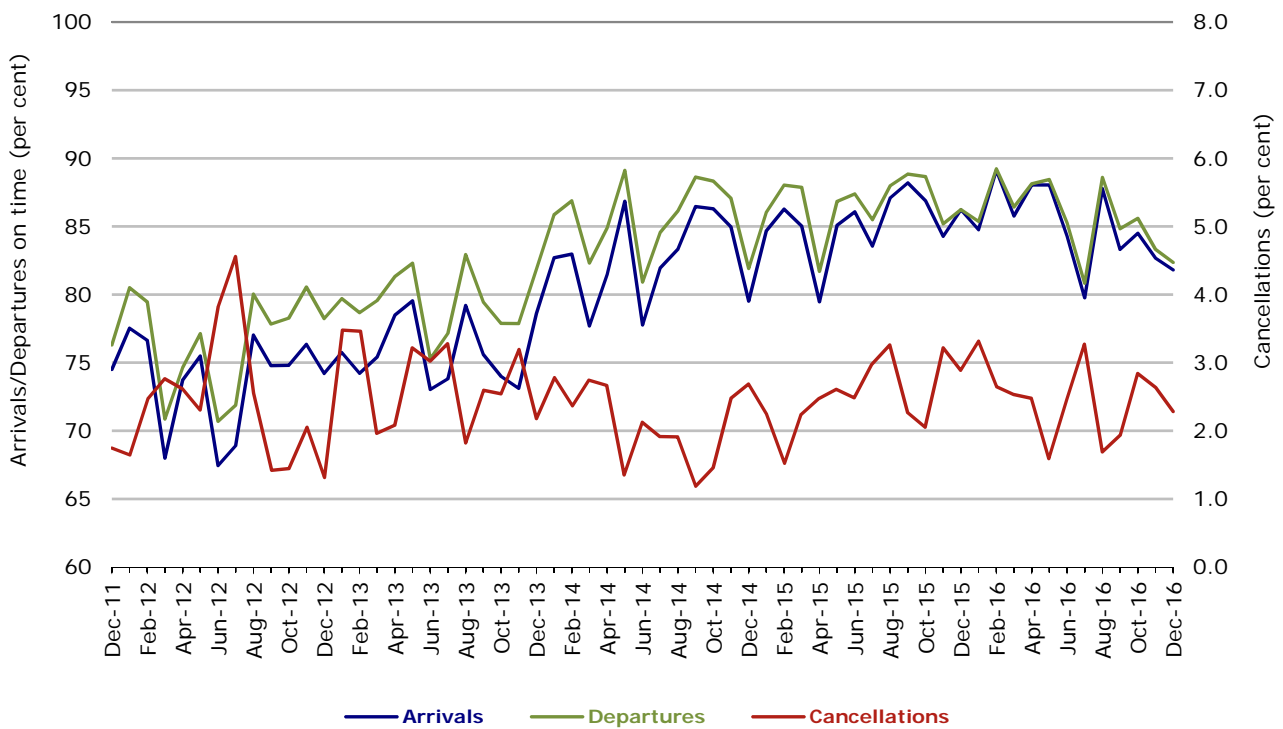


Figure 8 On time performance (by month from December 2011)—Regional Express

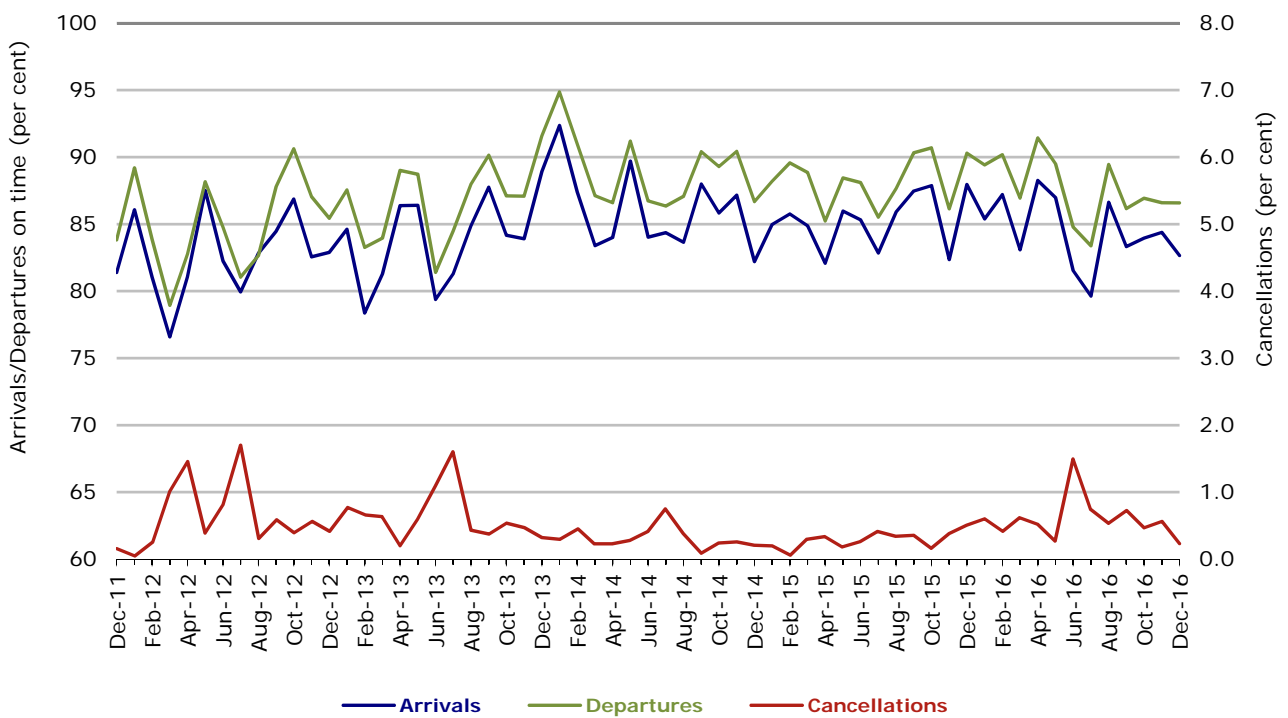
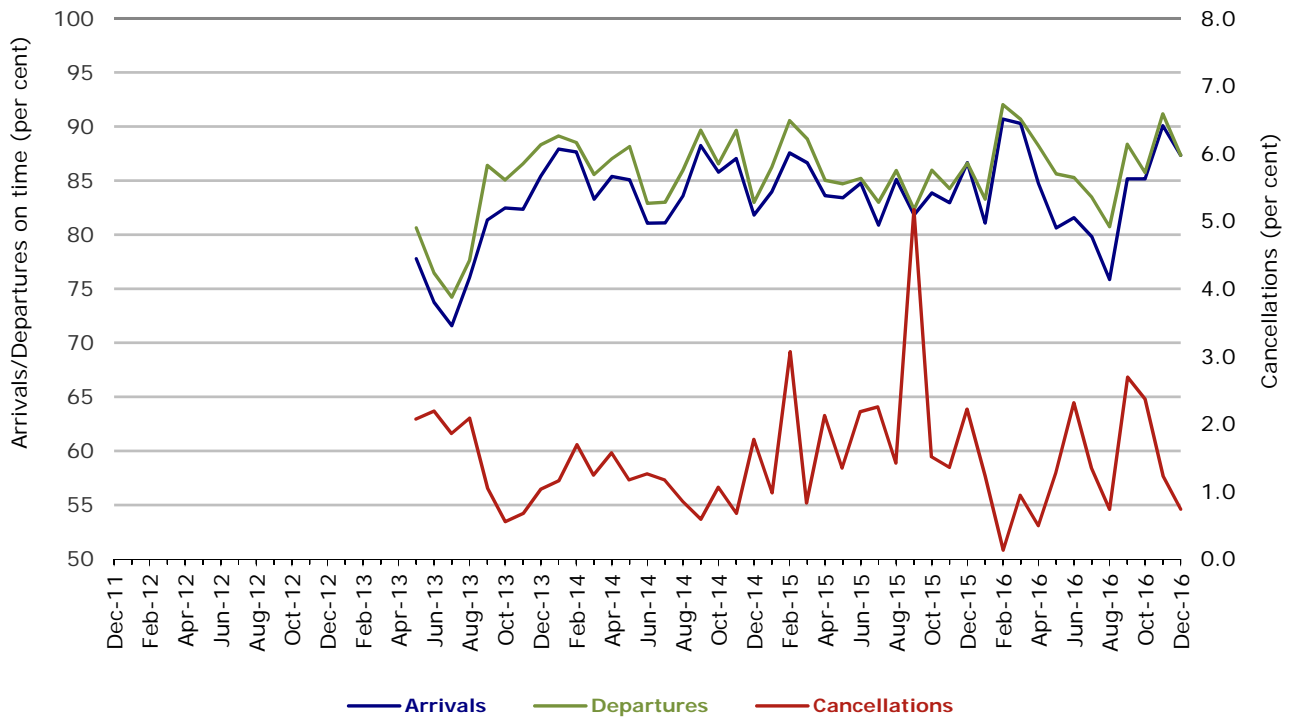


Figure 9 On time performance (by month from December 2011)  
Virgin Australia Regional Airlines



Virgin Australia Regional Airlines commenced operations in May 2013. It was formed after the acquisition of Skywest by Virgin Australia and represented a combination of operations previously reported under Skywest and Virgin Australia – ATR/F100 Operations. In January 2016, Virgin Australia transferred their ATR fleet from Virgin Australia Regional Airlines to Virgin Australia.

## Individual routes

On time performance is reported for all routes where the passenger load averages over 8000 passengers per month over the previous six months, and where two or more airlines operate in competition on those routes. There are now 66 routes which meet this definition. Over time, however, routes which meet this definition may change as airline networks and traffic levels vary.

	<i>Sectors</i>		<i>Arrivals On Time</i>		<i>Departures On Time</i>		<i>Cancellations</i>	
	<i>Sched.</i>	<i>Flown</i>	<i>No.</i>	<i>%</i>	<i>No.</i>	<i>%</i>	<i>No.</i>	<i>%</i>
<b>Adelaide-Alice Springs</b>								
Qantas	366	365	341	93.4	350	95.9	1	0.3
Virgin Australia	160	159	143	89.9	149	93.7	1	0.6
All Airlines	526	524	484	92.4	499	95.2	2	0.4
<b>Adelaide-Brisbane</b>								
Jetstar	326	325	268	82.5	271	83.4	1	0.3
Qantas	1 363	1 363	1 261	92.5	1 265	92.8	0	0.0
QantasLink	49	45	36	80.0	39	86.7	4	8.2
Tigerair Australia	289	288	250	86.8	246	85.4	1	0.3
Virgin Australia	1 364	1 357	1 244	91.7	1 205	88.8	7	0.5
All Airlines	3 391	3 378	3 059	90.6	3 026	89.6	13	0.4
<b>Adelaide-Canberra</b>								
Qantas	537	537	502	93.5	492	91.6	0	0.0
Virgin Australia	314	312	280	89.7	276	88.5	2	0.6
All Airlines	851	849	782	92.1	768	90.5	2	0.2
<b>Adelaide-Gold Coast</b>								
Jetstar	423	418	357	85.4	338	80.9	5	1.2
Virgin Australia	373	373	359	96.2	359	96.2	0	0.0
All Airlines	796	791	716	90.5	697	88.1	5	0.6
<b>Adelaide-Melbourne</b>								
Jetstar	1 308	1 274	955	75.0	855	67.1	34	2.6
Qantas	3 363	3 349	2 905	86.7	2 932	87.5	14	0.4
Tigerair Australia	916	906	747	82.5	739	81.6	10	1.1
Virgin Australia	3 392	3 344	2 882	86.2	2 879	86.1	48	1.4
All Airlines	8 979	8 873	7 489	84.4	7 405	83.5	106	1.2
<b>Adelaide-Perth</b>								
Jetstar	359	354	287	81.1	287	81.1	5	1.4
Qantas	1 367	1 364	1 232	90.3	1 249	91.6	3	0.2
QantasLink	13	13	11	84.6	10	76.9	0	0.0
Virgin Australia	881	875	753	86.1	793	90.6	6	0.7
All Airlines	2 620	2 606	2 283	87.6	2 339	89.8	14	0.5
<b>Adelaide-Port Lincoln</b>								
QantasLink	1 321	1 305	1 172	89.8	1 189	91.1	16	1.2
Regional Express	2 434	2 413	2 198	91.1	2 266	93.9	21	0.9
All Airlines	3 755	3 718	3 370	90.6	3 455	92.9	37	1.0
<b>Adelaide-Sydney</b>								
Jetstar	1 307	1 274	998	78.3	929	72.9	33	2.5
Qantas	2 776	2 761	2 494	90.3	2 535	91.8	15	0.5
QantasLink	329	308	249	80.8	237	76.9	21	6.4
Tigerair Australia	544	541	420	77.6	405	74.9	3	0.6
Virgin Australia	1 993	1 974	1 784	90.4	1 776	90.0	19	1.0
All Airlines	6 949	6 858	5 945	86.7	5 882	85.8	91	1.3
<b>Albury-Sydney</b>								
QantasLink	1 243	1 221	963	78.9	973	79.7	22	1.8
Regional Express	1 175	1 174	1 041	88.7	1 061	90.4	1	0.1
Virgin Australia	731	723	568	78.6	578	79.9	8	1.1
All Airlines	3 149	3 118	2 572	82.5	2 612	83.8	31	1.0

	<i>Sectors</i>		<i>Arrivals On Time</i>		<i>Departures On Time</i>		<i>Cancellations</i>	
	<i>Sched.</i>	<i>Flown</i>	<i>No.</i>	<i>%</i>	<i>No.</i>	<i>%</i>	<i>No.</i>	<i>%</i>
<b>Alice Springs-Adelaide</b>								
Qantas	366	364	303	83.2	295	81.0	2	0.5
Virgin Australia	160	158	143	90.5	139	88.0	2	1.3
All Airlines	526	522	446	85.4	434	83.1	4	0.8
<b>Alice Springs-Darwin</b>								
QantasLink	644	639	591	92.5	587	91.9	5	0.8
Virgin Australia	157	156	141	90.4	140	89.7	1	0.6
All Airlines	801	795	732	92.1	727	91.4	6	0.7
<b>Armidale-Sydney</b>								
QantasLink	1 479	1 439	1 056	73.4	1 023	71.1	40	2.7
Regional Express	859	849	649	76.4	708	83.4	10	1.2
All Airlines	2 338	2 288	1 705	74.5	1 731	75.7	50	2.1
<b>Ayers Rock-Sydney</b>								
Jetstar	335	330	262	79.4	241	73.0	5	1.5
Virgin Australia	366	363	316	87.1	279	76.9	3	0.8
All Airlines	701	693	578	83.4	520	75.0	8	1.1
<b>Ballina-Sydney</b>								
Jetstar	926	923	704	76.3	641	69.4	3	0.3
Regional Express	289	287	209	72.8	230	80.1	2	0.7
Virgin Australia	388	386	343	88.9	345	89.4	2	0.5
All Airlines	1 603	1 596	1 256	78.7	1 216	76.2	7	0.4
<b>Brisbane-Adelaide</b>								
Jetstar	325	324	293	90.4	295	91.0	1	0.3
Qantas	1 363	1 363	1 254	92.0	1 256	92.1	0	0.0
QantasLink	49	44	39	88.6	37	84.1	5	10.2
Tigerair Australia	289	289	252	87.2	248	85.8	0	0.0
Virgin Australia	1 382	1 376	1 219	88.6	1 245	90.5	6	0.4
All Airlines	3 408	3 396	3 057	90.0	3 081	90.7	12	0.4
<b>Brisbane-Bundaberg</b>								
QantasLink	1 587	1 582	1 409	89.1	1 415	89.4	5	0.3
Virgin Australia	367	367	329	89.6	326	88.8	0	0.0
All Airlines	1 954	1 949	1 738	89.2	1 741	89.3	5	0.3
<b>Brisbane-Cairns</b>								
Jetstar	1 275	1 258	1 049	83.4	948	75.4	17	1.3
Qantas	1 439	1 439	1 329	92.4	1 296	90.1	0	0.0
QantasLink	73	73	57	78.1	54	74.0	0	0.0
Tigerair Australia	358	358	313	87.4	311	86.9	0	0.0
Virgin Australia	1 631	1 631	1 505	92.3	1 477	90.6	0	0.0
All Airlines	4 776	4 759	4 253	89.4	4 086	85.9	17	0.4
<b>Brisbane-Canberra</b>								
Qantas	390	390	370	94.9	373	95.6	0	0.0
QantasLink	1 398	1 377	1 228	89.2	1 220	88.6	21	1.5
Virgin Australia	1 139	1 136	1 046	92.1	1 039	91.5	3	0.3
All Airlines	2 927	2 903	2 644	91.1	2 632	90.7	24	0.8
<b>Brisbane-Darwin</b>								
Jetstar	301	300	260	86.7	242	80.7	1	0.3
Qantas	559	559	527	94.3	535	95.7	0	0.0
Tigerair Australia	258	258	235	91.1	240	93.0	0	0.0
Virgin Australia	368	368	331	89.9	339	92.1	0	0.0
All Airlines	1 486	1 485	1 353	91.1	1 356	91.3	1	0.1
<b>Brisbane-Emerald</b>								
QantasLink	1 612	1 571	1 379	87.8	1 437	91.5	41	2.5
Virgin Australia	851	850	782	92.0	799	94.0	1	0.1
All Airlines	2 463	2 421	2 161	89.3	2 236	92.4	42	1.7



	<i>Sectors</i>		<i>Arrivals On Time</i>		<i>Departures On Time</i>		<i>Cancellations</i>	
	<i>Sched.</i>	<i>Flown</i>	<i>No.</i>	<i>%</i>	<i>No.</i>	<i>%</i>	<i>No.</i>	<i>%</i>
<b>Brisbane-Gladstone</b>								
QantasLink	2 194	2 123	1 839	86.6	1 931	91.0	71	3.2
Virgin Australia	1 492	1 454	1 299	89.3	1 299	89.3	38	2.5
All Airlines	3 686	3 577	3 138	87.7	3 230	90.3	109	3.0
<b>Brisbane-Hamilton Island</b>								
QantasLink	372	366	321	87.7	323	88.3	6	1.6
Virgin Australia	367	365	336	92.1	341	93.4	2	0.5
All Airlines	739	731	657	89.9	664	90.8	8	1.1
<b>Brisbane-Hobart</b>								
Jetstar	337	337	318	94.4	317	94.1	0	0.0
Qantas	6	6	6	100.0	6	100.0	0	0.0
Virgin Australia	370	370	343	92.7	343	92.7	0	0.0
All Airlines	713	713	667	93.5	666	93.4	0	0.0
<b>Brisbane-Mackay</b>								
Jetstar	548	547	411	75.1	386	70.6	1	0.2
QantasLink	1 281	1 254	1 113	88.8	1 119	89.2	27	2.1
Virgin Australia	1 793	1 776	1 609	90.6	1 601	90.1	17	0.9
All Airlines	3 622	3 577	3 133	87.6	3 106	86.8	45	1.2
<b>Brisbane-Melbourne</b>								
Jetstar	1 491	1 436	1 153	80.3	1 086	75.6	55	3.7
Qantas	5 077	5 048	4 331	85.8	4 519	89.5	29	0.6
Tigerair Australia	1 481	1 465	1 200	81.9	1 214	82.9	16	1.1
Virgin Australia	4 695	4 552	3 729	81.9	4 085	89.7	143	3.0
All Airlines	12 744	12 501	10 413	83.3	10 904	87.2	243	1.9
<b>Brisbane-Moranbah</b>								
QantasLink	1 264	1 149	1 040	90.5	1 047	91.1	115	9.1
Virgin Australia	766	756	663	87.7	676	89.4	10	1.3
All Airlines	2 030	1 905	1 703	89.4	1 723	90.4	125	6.2
<b>Brisbane-Mount Isa</b>								
Qantas	287	286	275	96.2	280	97.9	1	0.3
QantasLink	381	376	343	91.2	339	90.2	5	1.3
Virgin Australia	224	224	214	95.5	216	96.4	0	0.0
All Airlines	892	886	832	93.9	835	94.2	6	0.7
<b>Brisbane-Newcastle</b>								
Jetstar	1 016	1 000	795	79.5	777	77.7	16	1.6
QantasLink	1 133	1 110	981	88.4	985	88.7	23	2.0
Virgin Australia	1 063	1 054	954	90.5	954	90.5	9	0.8
All Airlines	3 212	3 164	2 730	86.3	2 716	85.8	48	1.5
<b>Brisbane-Perth</b>								
Qantas	1 577	1 576	1 339	85.0	1 371	87.0	1	0.1
Virgin Australia	1 318	1 315	1 032	78.5	1 109	84.3	3	0.2
All Airlines	2 895	2 891	2 371	82.0	2 480	85.8	4	0.1
<b>Brisbane-Proserpine</b>								
Jetstar	350	350	281	80.3	254	72.6	0	0.0
Virgin Australia	440	439	414	94.3	413	94.1	1	0.2
All Airlines	790	789	695	88.1	667	84.5	1	0.1
<b>Brisbane-Rockhampton</b>								
QantasLink	2 229	2 207	1 923	87.1	1 940	87.9	22	1.0
Virgin Australia	2 208	2 157	1 914	88.7	1 921	89.1	51	2.3
All Airlines	4 437	4 364	3 837	87.9	3 861	88.5	73	1.6

	<i>Sectors</i>		<i>Arrivals On Time</i>		<i>Departures On Time</i>		<i>Cancellations</i>	
	<i>Sched.</i>	<i>Flown</i>	<i>No.</i>	<i>%</i>	<i>No.</i>	<i>%</i>	<i>No.</i>	<i>%</i>
<b>Brisbane-Sydney</b>								
Jetstar	2 118	2 019	1 521	75.3	1 463	72.5	99	4.7
Qantas	7 334	7 257	6 453	88.9	6 596	90.9	77	1.0
Tigerair Australia	1 214	1 197	1 002	83.7	1 005	84.0	17	1.4
Virgin Australia	6 519	6 343	5 674	89.5	5 778	91.1	176	2.7
All Airlines	17 185	16 816	14 650	87.1	14 842	88.3	369	2.1
<b>Brisbane-Townsville</b>								
Jetstar	533	530	429	80.9	435	82.1	3	0.6
Qantas	1 345	1 344	1 231	91.6	1 207	89.8	1	0.1
QantasLink	390	384	330	85.9	332	86.5	6	1.5
Virgin Australia	1 747	1 730	1 585	91.6	1 567	90.6	17	1.0
All Airlines	4 015	3 988	3 575	89.6	3 541	88.8	27	0.7
<b>Broome-Perth</b>								
Qantas	236	235	201	85.5	198	84.3	1	0.4
QantasLink	748	741	672	90.7	655	88.4	7	0.9
Virgin Australia	71	70	63	90.0	61	87.1	1	1.4
Virgin Australia Regional Airlines	606	603	416	69.0	446	74.0	3	0.5
All Airlines	1 661	1 649	1 352	82.0	1 360	82.5	12	0.7
<b>Bundaberg-Brisbane</b>								
QantasLink	1 587	1 580	1 412	89.4	1 430	90.5	7	0.4
Virgin Australia	367	366	321	87.7	314	85.8	1	0.3
All Airlines	1 954	1 946	1 733	89.1	1 744	89.6	8	0.4
<b>Cairns-Brisbane</b>								
Jetstar	1 278	1 256	1 068	85.0	1 041	82.9	22	1.7
Qantas	1 440	1 440	1 329	92.3	1 348	93.6	0	0.0
QantasLink	73	71	55	77.5	56	78.9	2	2.7
Tigerair Australia	358	358	309	86.3	315	88.0	0	0.0
Virgin Australia	1 630	1 630	1 484	91.0	1 497	91.8	0	0.0
All Airlines	4 779	4 755	4 245	89.3	4 257	89.5	24	0.5
<b>Cairns-Melbourne</b>								
Jetstar	1 202	1 195	847	70.9	857	71.7	7	0.6
Qantas	491	491	362	73.7	389	79.2	0	0.0
Tigerair Australia	468	466	367	78.8	371	79.6	2	0.4
Virgin Australia	395	395	297	75.2	319	80.8	0	0.0
All Airlines	2 556	2 547	1 873	73.5	1 936	76.0	9	0.4
<b>Cairns-Sydney</b>								
Jetstar	1 229	1 208	1 017	84.2	1 016	84.1	21	1.7
Qantas	940	938	810	86.4	784	83.6	2	0.2
Tigerair Australia	499	499	413	82.8	419	84.0	0	0.0
Virgin Australia	1 088	1 086	983	90.5	968	89.1	2	0.2
All Airlines	3 756	3 731	3 223	86.4	3 187	85.4	25	0.7
<b>Cairns-Townsville</b>								
QantasLink	1 699	1 677	1 552	92.5	1 553	92.6	22	1.3
Regional Express	673	663	648	97.7	647	97.6	10	1.5
All Airlines	2 372	2 340	2 200	94.0	2 200	94.0	32	1.3
<b>Canberra-Adelaide</b>								
Qantas	537	537	498	92.7	495	92.2	0	0.0
Virgin Australia	314	310	268	86.5	275	88.7	4	1.3
All Airlines	851	847	766	90.4	770	90.9	4	0.5
<b>Canberra-Brisbane</b>								
Qantas	390	390	375	96.2	374	95.9	0	0.0
QantasLink	1 397	1 375	1 172	85.2	1 176	85.5	22	1.6
Virgin Australia	1 138	1 134	1 021	90.0	1 038	91.5	4	0.4
All Airlines	2 925	2 899	2 568	88.6	2 588	89.3	26	0.9

	<i>Sectors</i>		<i>Arrivals On Time</i>		<i>Departures On Time</i>		<i>Cancellations</i>	
	<i>Sched.</i>	<i>Flown</i>	<i>No.</i>	<i>%</i>	<i>No.</i>	<i>%</i>	<i>No.</i>	<i>%</i>
<b>Canberra-Melbourne</b>								
Qantas	2 363	2 346	2 111	90.0	2 153	91.8	17	0.7
QantasLink	957	924	744	80.5	756	81.8	33	3.4
Tigerair Australia	24	24	8	33.3	7	29.2	0	0.0
Virgin Australia	2 145	2 091	1 757	84.0	1 831	87.6	54	2.5
All Airlines	5 489	5 385	4 620	85.8	4 747	88.2	104	1.9
<b>Canberra-Sydney</b>								
Qantas	60	59	54	91.5	53	89.8	1	1.7
QantasLink	5 494	5 220	4 481	85.8	4 432	84.9	274	5.0
Virgin Australia	3 301	3 151	2 767	87.8	2 759	87.6	150	4.5
All Airlines	8 855	8 430	7 302	86.6	7 244	85.9	425	4.8
<b>Coffs Harbour-Sydney</b>								
QantasLink	1 816	1 783	1 406	78.9	1 421	79.7	33	1.8
Tigerair Australia	158	157	140	89.2	142	90.4	1	0.6
Virgin Australia	713	705	630	89.4	628	89.1	8	1.1
All Airlines	2 687	2 645	2 176	82.3	2 191	82.8	42	1.6
<b>Darwin-Alice Springs</b>								
QantasLink	644	639	599	93.7	607	95.0	5	0.8
Virgin Australia	157	156	144	92.3	149	95.5	1	0.6
All Airlines	801	795	743	93.5	756	95.1	6	0.7
<b>Darwin-Brisbane</b>								
Jetstar	300	298	261	87.6	240	80.5	2	0.7
Qantas	559	559	515	92.1	499	89.3	0	0.0
Tigerair Australia	258	257	238	92.6	242	94.2	1	0.4
Virgin Australia	369	368	289	78.5	319	86.7	1	0.3
All Airlines	1 486	1 482	1 303	87.9	1 300	87.7	4	0.3
<b>Darwin-Melbourne</b>								
Jetstar	333	330	245	74.2	207	62.7	3	0.9
Qantas	387	387	334	86.3	329	85.0	0	0.0
Virgin Australia	368	366	304	83.1	311	85.0	2	0.5
All Airlines	1 088	1 083	883	81.5	847	78.2	5	0.5
<b>Darwin-Perth</b>								
Qantas	436	436	414	95.0	409	93.8	0	0.0
Virgin Australia	368	368	325	88.3	326	88.6	0	0.0
All Airlines	804	804	739	91.9	735	91.4	0	0.0
<b>Darwin-Sydney</b>								
Jetstar	307	302	254	84.1	234	77.5	5	1.6
Qantas	592	592	498	84.1	474	80.1	0	0.0
Virgin Australia	366	366	291	79.5	295	80.6	0	0.0
All Airlines	1 265	1 260	1 043	82.8	1 003	79.6	5	0.4
<b>Dubbo-Sydney</b>								
QantasLink	1 494	1 465	1 133	77.3	1 145	78.2	29	1.9
Regional Express	1 740	1 720	1 446	84.1	1 515	88.1	20	1.1
All Airlines	3 234	3 185	2 579	81.0	2 660	83.5	49	1.5
<b>Emerald-Brisbane</b>								
QantasLink	1 610	1 561	1 365	87.4	1 349	86.4	49	3.0
Virgin Australia	854	851	803	94.4	805	94.6	3	0.4
All Airlines	2 464	2 412	2 168	89.9	2 154	89.3	52	2.1
<b>Geraldton-Perth</b>								
QantasLink	563	561	514	91.6	509	90.7	2	0.4
Virgin Australia Regional Airlines	682	676	597	88.3	597	88.3	6	0.9
All Airlines	1 245	1 237	1 111	89.8	1 106	89.4	8	0.6

	<i>Sectors</i>		<i>Arrivals On Time</i>		<i>Departures On Time</i>		<i>Cancellations</i>	
	<i>Sched.</i>	<i>Flown</i>	<i>No.</i>	<i>%</i>	<i>No.</i>	<i>%</i>	<i>No.</i>	<i>%</i>
<b>Gladstone-Brisbane</b>								
QantasLink	2 196	2 120	1 885	88.9	1 846	87.1	76	3.5
Virgin Australia	1 493	1 449	1 303	89.9	1 310	90.4	44	2.9
All Airlines	3 689	3 569	3 188	89.3	3 156	88.4	120	3.3
<b>Gold Coast-Adelaide</b>								
Jetstar	424	421	353	83.8	367	87.2	3	0.7
Virgin Australia	374	373	313	83.9	336	90.1	1	0.3
All Airlines	798	794	666	83.9	703	88.5	4	0.5
<b>Gold Coast-Melbourne</b>								
Jetstar	2 387	2 349	1 840	78.3	1 700	72.4	38	1.6
Qantas	376	376	286	76.1	289	76.9	0	0.0
Tigerair Australia	1 011	1 001	818	81.7	816	81.5	10	1.0
Virgin Australia	2 231	2 211	1 833	82.9	1 812	82.0	20	0.9
All Airlines	6 005	5 937	4 777	80.5	4 617	77.8	68	1.1
<b>Gold Coast-Sydney</b>								
Jetstar	3 555	3 494	2 806	80.3	2 684	76.8	61	1.7
Qantas	1 132	1 131	1 021	90.3	1 012	89.5	1	0.1
QantasLink	163	157	108	68.8	110	70.1	6	3.7
Tigerair Australia	1 364	1 350	1 080	80.0	1 056	78.2	14	1.0
Virgin Australia	3 080	3 031	2 609	86.1	2 596	85.6	49	1.6
All Airlines	9 294	9 163	7 624	83.2	7 458	81.4	131	1.4
<b>Hamilton Island-Brisbane</b>								
QantasLink	372	366	316	86.3	304	83.1	6	1.6
Virgin Australia	367	365	332	91.0	327	89.6	2	0.5
All Airlines	739	731	648	88.6	631	86.3	8	1.1
<b>Hamilton Island-Melbourne</b>								
Qantas	168	168	147	87.5	142	84.5	0	0.0
Virgin Australia	261	259	229	88.4	229	88.4	2	0.8
All Airlines	429	427	376	88.1	371	86.9	2	0.5
<b>Hamilton Island-Sydney</b>								
Jetstar	318	318	210	66.0	177	55.7	0	0.0
Qantas	179	178	144	80.9	125	70.2	1	0.6
QantasLink	122	122	85	69.7	85	69.7	0	0.0
Virgin Australia	370	367	312	85.0	294	80.1	3	0.8
All Airlines	989	985	751	76.2	681	69.1	4	0.4
<b>Hobart-Brisbane</b>								
Jetstar	333	333	305	91.6	290	87.1	0	0.0
Qantas	6	6	6	100.0	4	66.7	0	0.0
Virgin Australia	370	370	314	84.9	304	82.2	0	0.0
All Airlines	709	709	625	88.2	598	84.3	0	0.0
<b>Hobart-Melbourne</b>								
Jetstar	2 173	2 143	1 323	61.7	1 285	60.0	30	1.4
Qantas	35	35	27	77.1	27	77.1	0	0.0
QantasLink	1 619	1 592	1 227	77.1	1 320	82.9	27	1.7
Tigerair Australia	393	393	310	78.9	311	79.1	0	0.0
Virgin Australia	1 719	1 707	1 366	80.0	1 434	84.0	12	0.7
All Airlines	5 939	5 870	4 253	72.5	4 377	74.6	69	1.2
<b>Hobart-Sydney</b>								
Jetstar	986	977	684	70.0	651	66.6	9	0.9
Qantas	8	8	8	100.0	8	100.0	0	0.0
QantasLink	632	623	533	85.6	554	88.9	9	1.4
Virgin Australia	746	740	631	85.3	630	85.1	6	0.8
All Airlines	2 372	2 348	1 856	79.0	1 843	78.5	24	1.0

	<i>Sectors</i>		<i>Arrivals On Time</i>		<i>Departures On Time</i>		<i>Cancellations</i>	
	<i>Sched.</i>	<i>Flown</i>	<i>No.</i>	<i>%</i>	<i>No.</i>	<i>%</i>	<i>No.</i>	<i>%</i>
<b>Kalgoorlie-Perth</b>								
Qantas	65	63	56	88.9	56	88.9	2	3.1
QantasLink	899	894	801	89.6	789	88.3	5	0.6
Virgin Australia	377	373	347	93.0	342	91.7	4	1.1
Virgin Australia Regional Airlines	353	351	317	90.3	321	91.5	2	0.6
All Airlines	1 694	1 681	1 521	90.5	1 508	89.7	13	0.8
<b>Karratha-Perth</b>								
Qantas	460	441	421	95.5	420	95.2	19	4.1
QantasLink	1 987	1 920	1 769	92.1	1 768	92.1	67	3.4
Virgin Australia	178	176	159	90.3	158	89.8	2	1.1
Virgin Australia Regional Airlines	763	740	591	79.9	626	84.6	23	3.0
All Airlines	3 388	3 277	2 940	89.7	2 972	90.7	111	3.3
<b>Launceston-Melbourne</b>								
Jetstar	1 581	1 561	1 061	68.0	1 037	66.4	20	1.3
QantasLink	1 416	1 348	1 092	81.0	1 100	81.6	68	4.8
Virgin Australia	1 141	1 138	963	84.6	1 012	88.9	3	0.3
All Airlines	4 138	4 047	3 116	77.0	3 149	77.8	91	2.2
<b>Launceston-Sydney</b>								
Jetstar	613	607	412	67.9	397	65.4	6	1.0
Virgin Australia	368	368	318	86.4	317	86.1	0	0.0
All Airlines	981	975	730	74.9	714	73.2	6	0.6
<b>Mackay-Brisbane</b>								
Jetstar	546	543	393	72.4	361	66.5	3	0.5
QantasLink	1 282	1 254	1 080	86.1	1 065	84.9	28	2.2
Virgin Australia	1 795	1 776	1 631	91.8	1 630	91.8	19	1.1
All Airlines	3 623	3 573	3 104	86.9	3 056	85.5	50	1.4
<b>Melbourne-Adelaide</b>								
Jetstar	1 308	1 282	758	59.1	820	64.0	26	2.0
Qantas	3 363	3 350	2 892	86.3	2 950	88.1	13	0.4
Tigerair Australia	916	906	783	86.4	805	88.9	10	1.1
Virgin Australia	3 356	3 308	2 842	85.9	2 935	88.7	48	1.4
All Airlines	8 943	8 846	7 275	82.2	7 510	84.9	97	1.1
<b>Melbourne-Brisbane</b>								
Jetstar	1 490	1 444	1 036	71.7	976	67.6	46	3.1
Qantas	5 086	5 049	4 395	87.0	4 437	87.9	37	0.7
Tigerair Australia	1 483	1 467	1 208	82.3	1 223	83.4	16	1.1
Virgin Australia	4 665	4 522	3 923	86.8	4 032	89.2	143	3.1
All Airlines	12 724	12 482	10 562	84.6	10 668	85.5	242	1.9
<b>Melbourne-Cairns</b>								
Jetstar	1 200	1 197	812	67.8	757	63.2	3	0.3
Qantas	491	491	426	86.8	416	84.7	0	0.0
Tigerair Australia	470	470	400	85.1	418	88.9	0	0.0
Virgin Australia	395	395	334	84.6	350	88.6	0	0.0
All Airlines	2 556	2 553	1 972	77.2	1 941	76.0	3	0.1
<b>Melbourne-Canberra</b>								
Qantas	2 364	2 348	2 116	90.1	2 111	89.9	16	0.7
QantasLink	958	911	701	76.9	720	79.0	47	4.9
Tigerair Australia	24	24	16	66.7	17	70.8	0	0.0
Virgin Australia	2 141	2 087	1 819	87.2	1 849	88.6	54	2.5
All Airlines	5 487	5 370	4 652	86.6	4 697	87.5	117	2.1
<b>Melbourne-Darwin</b>								
Jetstar	334	333	267	80.2	260	78.1	1	0.3
Qantas	387	387	351	90.7	358	92.5	0	0.0
Virgin Australia	368	368	272	73.9	289	78.5	0	0.0
All Airlines	1 089	1 088	890	81.8	907	83.4	1	0.1

	<i>Sectors</i>		<i>Arrivals On Time</i>		<i>Departures On Time</i>		<i>Cancellations</i>	
	<i>Sched.</i>	<i>Flown</i>	<i>No.</i>	<i>%</i>	<i>No.</i>	<i>%</i>	<i>No.</i>	<i>%</i>
<b>Melbourne-Gold Coast</b>								
Jetstar	2 390	2 360	1 708	72.4	1 704	72.2	30	1.3
Qantas	376	376	306	81.4	312	83.0	0	0.0
Tigerair Australia	1 009	1 001	886	88.5	900	89.9	8	0.8
Virgin Australia	2 236	2 218	1 883	84.9	1 922	86.7	18	0.8
All Airlines	6 011	5 955	4 783	80.3	4 838	81.2	56	0.9
<b>Melbourne-Hamilton Island</b>								
Qantas	168	168	162	96.4	153	91.1	0	0.0
Virgin Australia	261	259	240	92.7	237	91.5	2	0.8
All Airlines	429	427	402	94.1	390	91.3	2	0.5
<b>Melbourne-Hobart</b>								
Jetstar	2 175	2 153	1 536	71.3	1 531	71.1	22	1.0
Qantas	35	35	33	94.3	34	97.1	0	0.0
QantasLink	1 619	1 589	1 306	82.2	1 339	84.3	30	1.9
Tigerair Australia	393	393	334	85.0	337	85.8	0	0.0
Virgin Australia	1 719	1 707	1 483	86.9	1 516	88.8	12	0.7
All Airlines	5 941	5 877	4 692	79.8	4 757	80.9	64	1.1
<b>Melbourne-Launceston</b>								
Jetstar	1 584	1 565	1 161	74.2	1 149	73.4	19	1.2
QantasLink	1 417	1 352	1 086	80.3	1 132	83.7	65	4.6
Virgin Australia	1 141	1 139	984	86.4	1 018	89.4	2	0.2
All Airlines	4 142	4 056	3 231	79.7	3 299	81.3	86	2.1
<b>Melbourne-Mildura</b>								
QantasLink	1 126	1 114	915	82.1	928	83.3	12	1.1
Regional Express	959	958	790	82.5	840	87.7	1	0.1
Virgin Australia	365	365	303	83.0	326	89.3	0	0.0
All Airlines	2 450	2 437	2 008	82.4	2 094	85.9	13	0.5
<b>Melbourne-Newcastle</b>								
Jetstar	1 244	1 231	907	73.7	860	69.9	13	1.0
Virgin Australia	375	373	319	85.5	334	89.5	2	0.5
All Airlines	1 619	1 604	1 226	76.4	1 194	74.4	15	0.9
<b>Melbourne-Perth</b>								
Jetstar	789	715	577	80.7	569	79.6	74	9.4
Qantas	2 353	2 349	1 778	75.7	1 883	80.2	4	0.2
Tigerair Australia	681	675	557	82.5	587	87.0	6	0.9
Virgin Australia	1 697	1 693	1 342	79.3	1 404	82.9	4	0.2
All Airlines	5 520	5 432	4 254	78.3	4 443	81.8	88	1.6
<b>Melbourne-Sunshine Coast</b>								
Jetstar	999	990	803	81.1	764	77.2	9	0.9
QantasLink	9	9	5	55.6	6	66.7	0	0.0
Virgin Australia	476	474	393	82.9	408	86.1	2	0.4
All Airlines	1 484	1 473	1 201	81.5	1 178	80.0	11	0.7
<b>Melbourne-Sydney</b>								
Jetstar	4 345	4 161	2 881	69.2	2 824	67.9	184	4.2
Qantas	11 575	11 106	9 223	83.0	9 393	84.6	469	4.1
Tigerair Australia	2 829	2 785	2 118	76.1	2 153	77.3	44	1.6
Virgin Australia	9 364	8 925	7 738	86.7	7 953	89.1	439	4.7
All Airlines	28 113	26 977	21 960	81.4	22 323	82.7	1 136	4.0
<b>Mildura-Melbourne</b>								
QantasLink	1 126	1 113	943	84.7	951	85.4	13	1.2
Regional Express	959	955	721	75.5	759	79.5	4	0.4
Virgin Australia	366	365	308	84.4	303	83.0	1	0.3
All Airlines	2 451	2 433	1 972	81.1	2 013	82.7	18	0.7

	<i>Sectors</i>		<i>Arrivals On Time</i>		<i>Departures On Time</i>		<i>Cancellations</i>	
	<i>Sched.</i>	<i>Flown</i>	<i>No.</i>	<i>%</i>	<i>No.</i>	<i>%</i>	<i>No.</i>	<i>%</i>
<b>Moranbah-Brisbane</b>								
QantasLink	1 217	1 107	997	90.1	1 000	90.3	110	9.0
Virgin Australia	765	753	685	91.0	689	91.5	12	1.6
All Airlines	1 982	1 860	1 682	90.4	1 689	90.8	122	6.2
<b>Mount Isa-Brisbane</b>								
Qantas	287	286	280	97.9	272	95.1	1	0.3
QantasLink	382	373	333	89.3	342	91.7	9	2.4
Virgin Australia	226	226	207	91.6	207	91.6	0	0.0
All Airlines	895	885	820	92.7	821	92.8	10	1.1
<b>Newcastle-Brisbane</b>								
Jetstar	1 016	1 000	776	77.6	810	81.0	16	1.6
QantasLink	1 133	1 106	1 010	91.3	981	88.7	27	2.4
Virgin Australia	1 065	1 052	954	90.7	951	90.4	13	1.2
All Airlines	3 214	3 158	2 740	86.8	2 742	86.8	56	1.7
<b>Newcastle-Melbourne</b>								
Jetstar	1 245	1 228	886	72.1	900	73.3	17	1.4
Virgin Australia	376	373	276	74.0	298	79.9	3	0.8
All Airlines	1 621	1 601	1 162	72.6	1 198	74.8	20	1.2
<b>Newman-Perth</b>								
Qantas	858	848	803	94.7	810	95.5	10	1.2
QantasLink	873	851	788	92.6	784	92.1	22	2.5
Virgin Australia	197	195	178	91.3	184	94.4	2	1.0
Virgin Australia Regional Airlines	263	260	222	85.4	231	88.8	3	1.1
All Airlines	2 191	2 154	1 991	92.4	2 009	93.3	37	1.7
<b>Perth-Adelaide</b>								
Jetstar	360	351	271	77.2	250	71.2	9	2.5
Qantas	1 420	1 416	1 341	94.7	1 318	93.1	4	0.3
QantasLink	13	13	12	92.3	12	92.3	0	0.0
Virgin Australia	901	894	825	92.3	818	91.5	7	0.8
All Airlines	2 694	2 674	2 449	91.6	2 398	89.7	20	0.7
<b>Perth-Brisbane</b>								
Qantas	1 564	1 563	1 398	89.4	1 412	90.3	1	0.1
Virgin Australia	1 321	1 320	1 190	90.2	1 200	90.9	1	0.1
All Airlines	2 885	2 883	2 588	89.8	2 612	90.6	2	0.1
<b>Perth-Broome</b>								
Qantas	236	235	210	89.4	208	88.5	1	0.4
QantasLink	749	742	690	93.0	679	91.5	7	0.9
Virgin Australia	71	71	66	93.0	67	94.4	0	0.0
Virgin Australia Regional Airlines	605	605	486	80.3	526	86.9	0	0.0
All Airlines	1 661	1 653	1 452	87.8	1 480	89.5	8	0.5
<b>Perth-Darwin</b>								
Qantas	436	436	411	94.3	408	93.6	0	0.0
Virgin Australia	368	368	337	91.6	338	91.8	0	0.0
All Airlines	804	804	748	93.0	746	92.8	0	0.0
<b>Perth-Geraldton</b>								
QantasLink	563	562	508	90.4	504	89.7	1	0.2
Virgin Australia Regional Airlines	673	670	594	88.7	596	89.0	3	0.4
All Airlines	1 236	1 232	1 102	89.4	1 100	89.3	4	0.3
<b>Perth-Kalgoorlie</b>								
Qantas	64	62	57	91.9	57	91.9	2	3.1
QantasLink	901	896	795	88.7	784	87.5	5	0.6
Virgin Australia	377	374	357	95.5	356	95.2	3	0.8
Virgin Australia Regional Airlines	353	351	308	87.7	319	90.9	2	0.6
All Airlines	1 695	1 683	1 517	90.1	1 516	90.1	12	0.7

	<i>Sectors</i>		<i>Arrivals On Time</i>		<i>Departures On Time</i>		<i>Cancellations</i>	
	<i>Sched.</i>	<i>Flown</i>	<i>No.</i>	<i>%</i>	<i>No.</i>	<i>%</i>	<i>No.</i>	<i>%</i>
<b>Perth-Karratha</b>								
Qantas	460	446	421	94.4	423	94.8	14	3.0
QantasLink	1 998	1 940	1 755	90.5	1 779	91.7	58	2.9
Virgin Australia	178	176	172	97.7	171	97.2	2	1.1
Virgin Australia Regional Airlines	763	747	632	84.6	683	91.4	16	2.1
All Airlines	3 399	3 309	2 980	90.1	3 056	92.4	90	2.6
<b>Perth-Melbourne</b>								
Jetstar	790	705	538	76.3	446	63.3	85	10.8
Qantas	2 356	2 352	2 059	87.5	2 039	86.7	4	0.2
Tigerair Australia	680	671	572	85.2	538	80.2	9	1.3
Virgin Australia	1 676	1 673	1 464	87.5	1 467	87.7	3	0.2
All Airlines	5 502	5 401	4 633	85.8	4 490	83.1	101	1.8
<b>Perth-Newman</b>								
Qantas	858	855	811	94.9	816	95.4	3	0.3
QantasLink	879	860	795	92.4	799	92.9	19	2.2
Virgin Australia	197	196	189	96.4	188	95.9	1	0.5
Virgin Australia Regional Airlines	260	259	234	90.3	238	91.9	1	0.4
All Airlines	2 194	2 170	2 029	93.5	2 041	94.1	24	1.1
<b>Perth-Port Hedland</b>								
Qantas	687	683	655	95.9	649	95.0	4	0.6
QantasLink	978	943	758	80.4	833	88.3	35	3.6
Virgin Australia	393	391	371	94.9	369	94.4	2	0.5
Virgin Australia Regional Airlines	224	224	205	91.5	213	95.1	0	0.0
All Airlines	2 282	2 241	1 989	88.8	2 064	92.1	41	1.8
<b>Perth-Sydney</b>								
Jetstar	363	357	302	84.6	214	59.9	6	1.7
Qantas	2 433	2 427	2 155	88.8	2 070	85.3	6	0.2
Tigerair Australia	310	308	288	93.5	279	90.6	2	0.6
Virgin Australia	1 427	1 423	1 303	91.6	1 258	88.4	4	0.3
All Airlines	4 533	4 515	4 048	89.7	3 821	84.6	18	0.4
<b>Port Hedland-Perth</b>								
Qantas	689	682	640	93.8	635	93.1	7	1.0
QantasLink	967	929	838	90.2	829	89.2	38	3.9
Virgin Australia	393	388	365	94.1	368	94.8	5	1.3
Virgin Australia Regional Airlines	224	224	193	86.2	203	90.6	0	0.0
All Airlines	2 273	2 223	2 036	91.6	2 035	91.5	50	2.2
<b>Port Lincoln-Adelaide</b>								
QantasLink	1 321	1 304	1 168	89.6	1 166	89.4	17	1.3
Regional Express	2 438	2 410	2 146	89.0	2 197	91.2	28	1.1
All Airlines	3 759	3 714	3 314	89.2	3 363	90.5	45	1.2
<b>Port Macquarie-Sydney</b>								
QantasLink	1 613	1 586	1 042	65.7	1 110	70.0	27	1.7
Virgin Australia	722	710	577	81.3	581	81.8	12	1.7
All Airlines	2 335	2 296	1 619	70.5	1 691	73.6	39	1.7
<b>Proserpine-Brisbane</b>								
Jetstar	350	350	276	78.9	261	74.6	0	0.0
Virgin Australia	440	439	398	90.7	392	89.3	1	0.2
All Airlines	790	789	674	85.4	653	82.8	1	0.1
<b>Rockhampton-Brisbane</b>								
QantasLink	2 232	2 203	1 879	85.3	1 900	86.2	29	1.3
Virgin Australia	2 207	2 150	1 962	91.3	1 962	91.3	57	2.6
All Airlines	4 439	4 353	3 841	88.2	3 862	88.7	86	1.9



	<i>Sectors</i>		<i>Arrivals On Time</i>		<i>Departures On Time</i>		<i>Cancellations</i>	
	<i>Sched.</i>	<i>Flown</i>	<i>No.</i>	<i>%</i>	<i>No.</i>	<i>%</i>	<i>No.</i>	<i>%</i>
<b>Sunshine Coast-Melbourne</b>								
Jetstar	998	987	680	68.9	636	64.4	11	1.1
QantasLink	9	9	6	66.7	6	66.7	0	0.0
Virgin Australia	475	471	364	77.3	352	74.7	4	0.8
All Airlines	1 482	1 467	1 050	71.6	994	67.8	15	1.0
<b>Sunshine Coast-Sydney</b>								
Jetstar	1 248	1 220	818	67.0	738	60.5	28	2.2
QantasLink	352	351	265	75.5	285	81.2	1	0.3
Virgin Australia	406	404	343	84.9	346	85.6	2	0.5
All Airlines	2 006	1 975	1 426	72.2	1 369	69.3	31	1.5
<b>Sydney-Adelaide</b>								
Jetstar	1 311	1 281	904	70.6	870	67.9	30	2.3
Qantas	2 725	2 711	2 340	86.3	2 379	87.8	14	0.5
QantasLink	330	311	238	76.5	252	81.0	19	5.8
Tigerair Australia	543	541	431	79.7	457	84.5	2	0.4
Virgin Australia	1 987	1 972	1 691	85.8	1 776	90.1	15	0.8
All Airlines	6 896	6 816	5 604	82.2	5 734	84.1	80	1.2
<b>Sydney-Albury</b>								
QantasLink	1 242	1 221	944	77.3	951	77.9	21	1.7
Regional Express	1 175	1 171	1 000	85.4	1 018	86.9	4	0.3
Virgin Australia	732	727	593	81.6	591	81.3	5	0.7
All Airlines	3 149	3 119	2 537	81.3	2 560	82.1	30	1.0
<b>Sydney-Armidale</b>								
QantasLink	1 476	1 450	975	67.2	1 066	73.5	26	1.8
Regional Express	862	858	708	82.5	717	83.6	4	0.5
All Airlines	2 338	2 308	1 683	72.9	1 783	77.3	30	1.3
<b>Sydney-Ayers Rock</b>								
Jetstar	337	335	282	84.2	303	90.4	2	0.6
Virgin Australia	366	364	298	81.9	327	89.8	2	0.5
All Airlines	703	699	580	83.0	630	90.1	4	0.6
<b>Sydney-Ballina</b>								
Jetstar	927	926	743	80.2	758	81.9	1	0.1
Regional Express	289	289	261	90.3	257	88.9	0	0.0
Virgin Australia	388	386	353	91.5	360	93.3	2	0.5
All Airlines	1 604	1 601	1 357	84.8	1 375	85.9	3	0.2
<b>Sydney-Brisbane</b>								
Jetstar	2 094	1 999	1 490	74.5	1 440	72.0	95	4.5
Qantas	7 236	7 176	6 079	84.7	6 330	88.2	60	0.8
Tigerair Australia	1 216	1 199	1 001	83.5	1 058	88.2	17	1.4
Virgin Australia	6 573	6 386	5 474	85.7	5 656	88.6	187	2.8
All Airlines	17 119	16 760	14 044	83.8	14 484	86.4	359	2.1
<b>Sydney-Cairns</b>								
Jetstar	1 230	1 211	999	82.5	923	76.2	19	1.5
Qantas	940	940	808	86.0	804	85.5	0	0.0
Tigerair Australia	497	497	440	88.5	457	92.0	0	0.0
Virgin Australia	1 087	1 087	957	88.0	956	87.9	0	0.0
All Airlines	3 754	3 735	3 204	85.8	3 140	84.1	19	0.5
<b>Sydney-Canberra</b>								
Qantas	60	59	52	88.1	54	91.5	1	1.7
QantasLink	5 484	5 239	4 247	81.1	4 248	81.1	245	4.5
Virgin Australia	3 300	3 155	2 667	84.5	2 645	83.8	145	4.4
All Airlines	8 844	8 453	6 966	82.4	6 947	82.2	391	4.4

	<i>Sectors</i>		<i>Arrivals On Time</i>		<i>Departures On Time</i>		<i>Cancellations</i>	
	<i>Sched.</i>	<i>Flown</i>	<i>No.</i>	<i>%</i>	<i>No.</i>	<i>%</i>	<i>No.</i>	<i>%</i>
<b>Sydney-Coffs Harbour</b>								
QantasLink	1 816	1 783	1 391	78.0	1 390	78.0	33	1.8
Tigerair Australia	158	157	144	91.7	147	93.6	1	0.6
Virgin Australia	713	705	641	90.9	636	90.2	8	1.1
All Airlines	2 687	2 645	2 176	82.3	2 173	82.2	42	1.6
<b>Sydney-Darwin</b>								
Jetstar	307	306	253	82.7	256	83.7	1	0.3
Qantas	592	592	487	82.3	478	80.7	0	0.0
Virgin Australia	366	366	315	86.1	334	91.3	0	0.0
All Airlines	1 265	1 264	1 055	83.5	1 068	84.5	1	0.1
<b>Sydney-Dubbo</b>								
QantasLink	1 491	1 468	1 059	72.1	1 034	70.4	23	1.5
Regional Express	1 732	1 715	1 534	89.4	1 526	89.0	17	1.0
All Airlines	3 223	3 183	2 593	81.5	2 560	80.4	40	1.2
<b>Sydney-Gold Coast</b>								
Jetstar	3 554	3 498	2 792	79.8	2 738	78.3	56	1.6
Qantas	1 131	1 131	1 019	90.1	1 001	88.5	0	0.0
QantasLink	163	157	115	73.2	126	80.3	6	3.7
Tigerair Australia	1 365	1 351	1 135	84.0	1 175	87.0	14	1.0
Virgin Australia	3 079	3 036	2 616	86.2	2 695	88.8	43	1.4
All Airlines	9 292	9 173	7 677	83.7	7 735	84.3	119	1.3
<b>Sydney-Hamilton Island</b>								
Jetstar	319	319	241	75.5	253	79.3	0	0.0
Qantas	179	178	164	92.1	160	89.9	1	0.6
QantasLink	123	122	87	71.3	94	77.0	1	0.8
Virgin Australia	370	368	318	86.4	338	91.8	2	0.5
All Airlines	991	987	810	82.1	845	85.6	4	0.4
<b>Sydney-Hobart</b>								
Jetstar	985	978	771	78.8	724	74.0	7	0.7
Qantas	8	8	8	100.0	8	100.0	0	0.0
QantasLink	632	628	523	83.3	514	81.8	4	0.6
Virgin Australia	746	741	668	90.1	675	91.1	5	0.7
All Airlines	2 371	2 355	1 970	83.7	1 921	81.6	16	0.7
<b>Sydney-Launceston</b>								
Jetstar	613	611	529	86.6	493	80.7	2	0.3
Virgin Australia	368	368	331	89.9	325	88.3	0	0.0
All Airlines	981	979	860	87.8	818	83.6	2	0.2
<b>Sydney-Melbourne</b>								
Jetstar	4 340	4 157	2 821	67.9	2 719	65.4	183	4.2
Qantas	11 582	11 114	8 744	78.7	9 484	85.3	468	4.0
Tigerair Australia	2 828	2 784	2 056	73.9	2 181	78.3	44	1.6
Virgin Australia	9 321	8 884	7 187	80.9	7 716	86.9	437	4.7
All Airlines	28 071	26 939	20 808	77.2	22 100	82.0	1 132	4.0
<b>Sydney-Perth</b>								
Jetstar	366	364	294	80.8	296	81.3	2	0.5
Qantas	2 469	2 464	1 877	76.2	1 960	79.5	5	0.2
Tigerair Australia	311	310	275	88.7	292	94.2	1	0.3
Virgin Australia	1 427	1 423	1 111	78.1	1 203	84.5	4	0.3
All Airlines	4 573	4 561	3 557	78.0	3 751	82.2	12	0.3
<b>Sydney-Port Macquarie</b>								
QantasLink	1 606	1 581	1 101	69.6	1 180	74.6	25	1.6
Virgin Australia	721	712	572	80.3	571	80.2	9	1.2
All Airlines	2 327	2 293	1 673	73.0	1 751	76.4	34	1.5

	<i>Sectors</i>		<i>Arrivals On Time</i>		<i>Departures On Time</i>		<i>Cancellations</i>	
	<i>Sched.</i>	<i>Flown</i>	<i>No.</i>	<i>%</i>	<i>No.</i>	<i>%</i>	<i>No.</i>	<i>%</i>
<b>Sydney-Sunshine Coast</b>								
Jetstar	1 251	1 231	932	75.7	868	70.5	20	1.6
QantasLink	353	351	257	73.2	272	77.5	2	0.6
Virgin Australia	405	403	361	89.6	370	91.8	2	0.5
All Airlines	2 009	1 985	1 550	78.1	1 510	76.1	24	1.2
<b>Sydney-Tamworth</b>								
QantasLink	1 854	1 786	1 382	77.4	1 430	80.1	68	3.7
Virgin Australia	447	444	371	83.6	378	85.1	3	0.7
All Airlines	2 301	2 230	1 753	78.6	1 808	81.1	71	3.1
<b>Sydney-Townsville</b>								
Jetstar	312	311	232	74.6	217	69.8	1	0.3
Virgin Australia	338	336	298	88.7	306	91.1	2	0.6
All Airlines	650	647	530	81.9	523	80.8	3	0.5
<b>Sydney-Wagga Wagga</b>								
QantasLink	1 345	1 330	990	74.4	1 038	78.0	15	1.1
Regional Express	1 511	1 506	1 338	88.8	1 364	90.6	5	0.3
All Airlines	2 856	2 836	2 328	82.1	2 402	84.7	20	0.7
<b>Tamworth-Sydney</b>								
QantasLink	1 855	1 782	1 420	79.7	1 428	80.1	73	3.9
Virgin Australia	447	443	372	84.0	383	86.5	4	0.9
All Airlines	2 302	2 225	1 792	80.5	1 811	81.4	77	3.3
<b>Townsville-Brisbane</b>								
Jetstar	533	529	430	81.3	395	74.7	4	0.8
Qantas	1 345	1 344	1 236	92.0	1 248	92.9	1	0.1
QantasLink	391	381	309	81.1	317	83.2	10	2.6
Virgin Australia	1 748	1 728	1 614	93.4	1 586	91.8	20	1.1
All Airlines	4 017	3 982	3 589	90.1	3 546	89.1	35	0.9
<b>Townsville-Cairns</b>								
QantasLink	1 700	1 671	1 556	93.1	1 543	92.3	29	1.7
Regional Express	675	662	639	96.5	639	96.5	13	1.9
All Airlines	2 375	2 333	2 195	94.1	2 182	93.5	42	1.8
<b>Townsville-Sydney</b>								
Jetstar	312	311	219	70.4	192	61.7	1	0.3
Virgin Australia	338	336	287	85.4	287	85.4	2	0.6
All Airlines	650	647	506	78.2	479	74.0	3	0.5
<b>Wagga Wagga-Sydney</b>								
QantasLink	1 347	1 330	1 082	81.4	1 065	80.1	17	1.3
Regional Express	1 507	1 502	1 270	84.6	1 333	88.7	5	0.3
All Airlines	2 854	2 832	2 352	83.1	2 398	84.7	22	0.8

## Airports

On time performance is reported for all routes where the passenger load averages over 8000 passengers per month, and where two or more airlines operate in competition. The following data reports by airport against flights operated on those routes only. This year, 8 major city airports and 33 regional city airports are covered.

Airport	Arrivals			Departures		
	Sectors	On Time		Sectors	On Time	
	Flown	No.	%	Flown	No.	%
<b>Adelaide</b>						
Jetstar	3 659	2 579	70.5	3 645	2 680	73.5
Qantas	9 741	8 628	88.6	9 739	8 823	90.6
QantasLink	1 672	1 457	87.1	1 671	1 475	88.3
Regional Express	2 410	2 146	89.0	2 413	2 266	93.9
Tigerair Australia	1 736	1 466	84.4	1 735	1 390	80.1
Virgin Australia	8 391	7 301	87.0	8 394	7 437	88.6
All Airlines	27 609	23 577	85.4	27 597	24 071	87.2

Relates to services to and from Alice Springs, Brisbane, Canberra, Gold Coast, Melbourne, Perth, Port Lincoln and Sydney.

### Albury

QantasLink	1 221	944	77.3	1 221	973	79.7
Regional Express	1 171	1 000	85.4	1 174	1 061	90.4
Virgin Australia	727	593	81.6	723	578	79.9
All Airlines	3 119	2 537	81.3	3 118	2 612	83.8

Relates to services to and from Sydney only.

### Alice Springs

Qantas	365	341	93.4	364	295	81.0
QantasLink	639	599	93.7	639	587	91.9
Virgin Australia	315	287	91.1	314	279	88.9
All Airlines	1 319	1 227	93.0	1 317	1 161	88.2

Relates to services to and from Adelaide and Darwin.

### Armidale

QantasLink	1 450	975	67.2	1 439	1 023	71.1
Regional Express	858	708	82.5	849	708	83.4
All Airlines	2 308	1 683	72.9	2 288	1 731	75.7

Relates to services to and from Sydney only.

### Ayers Rock

Jetstar	335	282	84.2	330	241	73.0
Virgin Australia	364	298	81.9	363	279	76.9
All Airlines	699	580	83.0	693	520	75.0

Relates to services to and from Sydney only.

### Ballina

Jetstar	926	743	80.2	923	641	69.4
Regional Express	289	261	90.3	287	230	80.1
Virgin Australia	386	353	91.5	386	345	89.4
All Airlines	1 601	1 357	84.8	1 596	1 216	76.2

Relates to services to and from Sydney only.

Airport	Arrivals			Departures		
	Sectors Flown	On Time		Sectors Flown	On Time	
		No.	%		No.	%
<b>Brisbane</b>						
Jetstar	8 077	6 303	78.0	8 101	6 203	76.6
Qantas	19 176	16 874	88.0	19 268	17 439	90.5
QantasLink	13 542	11 849	87.5	13 616	12 179	89.4
Tigerair Australia	3 569	3 006	84.2	3 567	3 018	84.6
Virgin Australia	28 242	25 149	89.0	28 263	25 528	90.3
All Airlines	72 606	63 181	87.0	72 815	64 367	88.4
Relates to services to and from Adelaide, Bundaberg, Cairns, Canberra, Darwin, Emerald, Gladstone, Hamilton Island, Hobart, Mackay, Melbourne, Moranbah, Mount Isa, Newcastle, Perth, Proserpine, Rockhampton, Sydney and Townsville.						
<b>Broome</b>						
Qantas	235	210	89.4	235	198	84.3
QantasLink	742	690	93.0	741	655	88.4
Virgin Australia	71	66	93.0	70	61	87.1
Virgin Australia Regional Airlines	605	486	80.3	603	446	74.0
All Airlines	1 653	1 452	87.8	1 649	1 360	82.5
Relates to services to and from Perth only.						
<b>Bundaberg</b>						
QantasLink	1 582	1 409	89.1	1 580	1 430	90.5
Virgin Australia	367	329	89.6	366	314	85.8
All Airlines	1 949	1 738	89.2	1 946	1 744	89.6
Relates to services to and from Brisbane only.						
<b>Cairns</b>						
Jetstar	3 666	2 860	78.0	3 659	2 914	79.6
Qantas	2 870	2 563	89.3	2 869	2 521	87.9
QantasLink	1 744	1 613	92.5	1 748	1 609	92.0
Regional Express	662	639	96.5	663	647	97.6
Tigerair Australia	1 325	1 153	87.0	1 323	1 105	83.5
Virgin Australia	3 113	2 796	89.8	3 111	2 784	89.5
All Airlines	13 380	11 624	86.9	13 373	11 580	86.6
Relates to services to and from Brisbane, Melbourne, Sydney and Townsville.						
<b>Canberra</b>						
Qantas	3 334	3 040	91.2	3 332	3 075	92.3
QantasLink	7 527	6 176	82.1	7 519	6 364	84.6
Tigerair Australia	24	16	66.7	24	7	29.2
Virgin Australia	6 690	5 812	86.9	6 686	5 903	88.3
All Airlines	17 575	15 044	85.6	17 561	15 349	87.4
Relates to services to and from Adelaide, Brisbane, Melbourne and Sydney.						
<b>Coffs Harbour</b>						
QantasLink	1 783	1 391	78.0	1 783	1 421	79.7
Tigerair Australia	157	144	91.7	157	142	90.4
Virgin Australia	705	641	90.9	705	628	89.1
All Airlines	2 645	2 176	82.3	2 645	2 191	82.8
Relates to services to and from Sydney only.						
<b>Darwin</b>						
Jetstar	939	780	83.1	930	681	73.2
Qantas	1 974	1 776	90.0	1 974	1 711	86.7
QantasLink	639	591	92.5	639	607	95.0
Tigerair Australia	258	235	91.1	257	242	94.2
Virgin Australia	1 626	1 396	85.9	1 624	1 400	86.2
All Airlines	5 436	4 778	87.9	5 424	4 641	85.6
Relates to services to and from Alice Springs, Brisbane, Melbourne, Perth and Sydney.						

Airport	Arrivals			Departures		
	Sectors Flown	On Time		Sectors Flown	On Time	
		No.	%		No.	%
<b>Dubbo</b>						
QantasLink	1 468	1 059	72.1	1 465	1 145	78.2
Regional Express	1 715	1 534	89.4	1 720	1 515	88.1
All Airlines	3 183	2 593	81.5	3 185	2 660	83.5
Relates to services to and from Sydney only.						
<b>Emerald</b>						
QantasLink	1 571	1 379	87.8	1 561	1 349	86.4
Virgin Australia	850	782	92.0	851	805	94.6
All Airlines	2 421	2 161	89.3	2 412	2 154	89.3
Relates to services to and from Brisbane only.						
<b>Geraldton</b>						
QantasLink	562	508	90.4	561	509	90.7
Virgin Australia Regional Airlines	670	594	88.7	676	597	88.3
All Airlines	1 232	1 102	89.4	1 237	1 106	89.4
Relates to services to and from Perth only.						
<b>Gladstone</b>						
QantasLink	2 123	1 839	86.6	2 120	1 846	87.1
Virgin Australia	1 454	1 299	89.3	1 449	1 310	90.4
All Airlines	3 577	3 138	87.7	3 569	3 156	88.4
Relates to services to and from Brisbane only.						
<b>Gold Coast</b>						
Jetstar	6 276	4 857	77.4	6 264	4 751	75.8
Qantas	1 507	1 325	87.9	1 507	1 301	86.3
QantasLink	157	115	73.2	157	110	70.1
Tigerair Australia	2 352	2 021	85.9	2 351	1 872	79.6
Virgin Australia	5 627	4 858	86.3	5 615	4 744	84.5
All Airlines	15 919	13 176	82.8	15 894	12 778	80.4
Relates to services to and from Adelaide, Melbourne and Sydney.						
<b>Hamilton Island</b>						
Jetstar	319	241	75.5	318	177	55.7
Qantas	346	326	94.2	346	267	77.2
QantasLink	488	408	83.6	488	389	79.7
Virgin Australia	992	894	90.1	991	850	85.8
All Airlines	2 145	1 869	87.1	2 143	1 683	78.5
Relates to services to and from Brisbane, Melbourne and Sydney.						
<b>Hobart</b>						
Jetstar	3 468	2 625	75.7	3 453	2 226	64.5
Qantas	49	47	95.9	49	39	79.6
QantasLink	2 217	1 829	82.5	2 215	1 874	84.6
Tigerair Australia	393	334	85.0	393	311	79.1
Virgin Australia	2 818	2 494	88.5	2 817	2 368	84.1
All Airlines	8 945	7 329	81.9	8 927	6 818	76.4
Relates to services to and from Brisbane, Melbourne and Sydney.						
<b>Kalgoorlie</b>						
Qantas	62	57	91.9	63	56	88.9
QantasLink	896	795	88.7	894	789	88.3
Virgin Australia	374	357	95.5	373	342	91.7
Virgin Australia Regional Airlines	351	308	87.7	351	321	91.5
All Airlines	1 683	1 517	90.1	1 681	1 508	89.7
Relates to services to and from Perth only.						

Airport	Arrivals			Departures		
	Sectors Flown	On Time		Sectors Flown	On Time	
		No.	%		No.	%
<b>Karratha</b>						
Qantas	446	421	94.4	441	420	95.2
QantasLink	1 940	1 755	90.5	1 920	1 768	92.1
Virgin Australia	176	172	97.7	176	158	89.8
Virgin Australia Regional Airlines	747	632	84.6	740	626	84.6
All Airlines	3 309	2 980	90.1	3 277	2 972	90.7
Relates to services to and from Perth only.						
<b>Launceston</b>						
Jetstar	2 176	1 690	77.7	2 168	1 434	66.1
QantasLink	1 352	1 086	80.3	1 348	1 100	81.6
Virgin Australia	1 507	1 315	87.3	1 506	1 329	88.2
All Airlines	5 035	4 091	81.3	5 022	3 863	76.9
Relates to services to and from Melbourne and Sydney.						
<b>Mackay</b>						
Jetstar	547	411	75.1	543	361	66.5
QantasLink	1 254	1 113	88.8	1 254	1 065	84.9
Virgin Australia	1 776	1 609	90.6	1 776	1 630	91.8
All Airlines	3 577	3 133	87.6	3 573	3 056	85.5
Relates to services to and from Brisbane only.						
<b>Melbourne</b>						
Jetstar	17 365	12 349	71.1	17 431	12 214	70.1
Qantas	25 666	21 306	83.0	25 659	22 047	85.9
QantasLink	4 986	4 012	80.5	4 975	4 125	82.9
Regional Express	955	721	75.5	958	840	87.7
Tigerair Australia	7 710	6 078	78.8	7 721	6 440	83.4
Virgin Australia	27 829	22 959	82.5	27 833	24 573	88.3
All Airlines	84 511	67 425	79.8	84 577	70 239	83.0
Relates to services to and from Adelaide, Brisbane, Cairns, Canberra, Darwin, Gold Coast, Hamilton Island, Hobart, Launceston, Mildura, Newcastle, Perth, Sunshine Coast and Sydney.						
<b>Mildura</b>						
QantasLink	1 114	915	82.1	1 113	951	85.4
Regional Express	958	790	82.5	955	759	79.5
Virgin Australia	365	303	83.0	365	303	83.0
All Airlines	2 437	2 008	82.4	2 433	2 013	82.7
Relates to services to and from Melbourne only.						
<b>Moranbah</b>						
QantasLink	1 149	1 040	90.5	1 107	1 000	90.3
Virgin Australia	756	663	87.7	753	689	91.5
All Airlines	1 905	1 703	89.4	1 860	1 689	90.8
Relates to services to and from Brisbane only.						
<b>Mount Isa</b>						
Qantas	286	275	96.2	286	272	95.1
QantasLink	376	343	91.2	373	342	91.7
Virgin Australia	224	214	95.5	226	207	91.6
All Airlines	886	832	93.9	885	821	92.8
Relates to services to and from Brisbane only.						

Airport	Arrivals			Departures		
	Sectors Flown	On Time		Sectors Flown	On Time	
		No.	%		No.	%
<b>Newcastle</b>						
Jetstar	2 231	1 702	76.3	2 228	1 710	76.8
QantasLink	1 110	981	88.4	1 106	981	88.7
Virgin Australia	1 427	1 273	89.2	1 425	1 249	87.6
All Airlines	4 768	3 956	83.0	4 759	3 940	82.8
Relates to services to and from Brisbane and Melbourne.						
<b>Newman</b>						
Qantas	855	811	94.9	848	810	95.5
QantasLink	860	795	92.4	851	784	92.1
Virgin Australia	196	189	96.4	195	184	94.4
Virgin Australia Regional Airlines	259	234	90.3	260	231	88.8
All Airlines	2 170	2 029	93.5	2 154	2 009	93.3
Relates to services to and from Perth only.						
<b>Perth</b>						
Jetstar	1 433	1 158	80.8	1 413	910	64.4
Qantas	10 458	8 761	83.8	10 475	9 400	89.7
QantasLink	5 909	5 393	91.3	5 956	5 390	90.5
Tigerair Australia	985	832	84.5	979	817	83.5
Virgin Australia	6 876	5 675	82.5	6 886	6 232	90.5
Virgin Australia Regional Airlines	2 854	2 336	81.9	2 856	2 575	90.2
All Airlines	28 515	24 155	84.7	28 565	25 324	88.7
Relates to services to and from Adelaide, Brisbane, Broome, Darwin, Geraldton, Kalgoorlie, Karratha, Melbourne, Newman, Port Hedland and Sydney.						
<b>Port Hedland</b>						
Qantas	683	655	95.9	682	635	93.1
QantasLink	943	758	80.4	929	829	89.2
Virgin Australia	391	371	94.9	388	368	94.8
Virgin Australia Regional Airlines	224	205	91.5	224	203	90.6
All Airlines	2 241	1 989	88.8	2 223	2 035	91.5
Relates to services to and from Perth only.						
<b>Port Lincoln</b>						
QantasLink	1 305	1 172	89.8	1 304	1 166	89.4
Regional Express	2 413	2 198	91.1	2 410	2 197	91.2
All Airlines	3 718	3 370	90.6	3 714	3 363	90.5
Relates to services to and from Adelaide only.						
<b>Port Macquarie</b>						
QantasLink	1 581	1 101	69.6	1 586	1 110	70.0
Virgin Australia	712	572	80.3	710	581	81.8
All Airlines	2 293	1 673	73.0	2 296	1 691	73.6
Relates to services to and from Sydney only.						
<b>Proserpine</b>						
Jetstar	350	281	80.3	350	261	74.6
Virgin Australia	439	414	94.3	439	392	89.3
All Airlines	789	695	88.1	789	653	82.8
Relates to services to and from Brisbane only.						
<b>Rockhampton</b>						
QantasLink	2 207	1 923	87.1	2 203	1 900	86.2
Virgin Australia	2 157	1 914	88.7	2 150	1 962	91.3
All Airlines	4 364	3 837	87.9	4 353	3 862	88.7
Relates to services to and from Brisbane only.						



Airport	Arrivals			Departures		
	Sectors	On Time		Sectors	On Time	
	Flown	No.	%	Flown	No.	%
<b>Sunshine Coast</b>						
Jetstar	2 221	1 735	78.1	2 207	1 374	62.3
QantasLink	360	262	72.8	360	291	80.8
Virgin Australia	877	754	86.0	875	698	79.8
All Airlines	3 458	2 751	79.6	3 442	2 363	68.7
Relates to services to and from Melbourne and Sydney.						
<b>Sydney</b>						
Jetstar	17 501	13 088	74.8	17 527	12 858	73.4
Qantas	26 457	22 860	86.4	26 373	22 658	85.9
QantasLink	17 387	13 823	79.5	17 427	13 595	78.0
Regional Express	5 532	4 615	83.4	5 539	4 882	88.1
Tigerair Australia	6 837	5 461	79.9	6 839	5 767	84.3
Virgin Australia	31 844	27 846	87.4	31 863	27 858	87.4
All Airlines	105 558	87 693	83.1	105 568	87 618	83.0
Relates to services to and from Adelaide, Albury, Armidale, Ayers Rock, Ballina, Brisbane, Cairns, Canberra, Coffs Harbour, Darwin, Dubbo, Gold Coast, Hamilton Island, Hobart, Launceston, Melbourne, Perth, Port Macquarie, Sunshine Coast, Tamworth, Townsville and Wagga Wagga.						
<b>Tamworth</b>						
QantasLink	1 786	1 382	77.4	1 782	1 428	80.1
Virgin Australia	444	371	83.6	443	383	86.5
All Airlines	2 230	1 753	78.6	2 225	1 811	81.4
Relates to services to and from Sydney only.						
<b>Townsville</b>						
Jetstar	841	661	78.6	840	587	69.9
Qantas	1 344	1 231	91.6	1 344	1 248	92.9
QantasLink	2 061	1 882	91.3	2 052	1 860	90.6
Regional Express	663	648	97.7	662	639	96.5
Virgin Australia	2 066	1 883	91.1	2 064	1 873	90.7
All Airlines	6 975	6 305	90.4	6 962	6 207	89.2
Relates to services to and from Brisbane, Cairns and Sydney.						
<b>Wagga Wagga</b>						
QantasLink	1 330	990	74.4	1 330	1 065	80.1
Regional Express	1 506	1 338	88.8	1 502	1 333	88.7
All Airlines	2 836	2 328	82.1	2 832	2 398	84.7
Relates to services to and from Sydney only.						

## Definitions

---

On time arrival	A flight arrival is counted as "on time" if it arrived at the gate before 15 minutes after the scheduled arrival time shown in the carriers' schedule. Neither diverted nor cancelled flights count as on time.
On time departure	A flight departure is counted as "on time" if it departs the gate before 15 minutes after the scheduled departure time shown in the carriers' schedule.
Cancellation	A flight removed from service within 7 days of scheduled departure is regarded as a cancellation.
On time departure percentage	The percentage of on time departures is measured against the number of departures <i>operated</i> on any particular sector.
On time arrival percentage	The percentage of on time arrivals is measured against the number of arrivals <i>operated</i> on any particular sector.
Cancellation percentage	The percentage of cancellations is measured against the number of services <i>scheduled</i> on any particular sector.

---