



Australian Government

Department of Infrastructure and Transport

Bureau of Infrastructure, Transport and Regional Economics

STATISTICAL REPORT



Aviation

Domestic airline on time performance 2011-12

© Commonwealth of Australia 2012

ISSN: 1832-0759

Ownership of intellectual property rights in this publication

Unless otherwise noted, copyright (and any other intellectual property rights, if any) in this publication is owned by the Commonwealth of Australia (referred to below as the Commonwealth).

Disclaimer

The material contained in this publication is made available on the understanding that the Commonwealth is not providing professional advice, and that users exercise their own skill and care with respect to its use, and seek independent advice if necessary.

The Commonwealth makes no representations or warranties as to the contents or accuracy of the information contained in this publication. To the extent permitted by law, the Commonwealth disclaims liability to any person or organisation in respect of anything done, or omitted to be done, in reliance upon information contained in this publication.

Creative Commons licence

With the exception of (a) the Coat of Arms; and (b) the Department of Infrastructure's photos and graphics, copyright in this publication is licensed under a Creative Commons Attribution 3.0 Australia Licence.

Creative Commons Attribution 3.0 Australia Licence is a standard form licence agreement that allows you to copy, communicate and adapt this publication provided that you attribute the work to the Commonwealth and abide by the other licence terms. A summary of the licence terms is available from <http://creativecommons.org/licenses/by/3.0/au/deed.en>. The full licence terms are available from <http://creativecommons.org/licenses/by/3.0/au/legalcode>.

Use of the Coat of Arms

The Department of the Prime Minister and Cabinet sets the terms under which the Coat of Arms is used. Please refer to the Department's Commonwealth Coat of Arms and Government branding web page <http://www.dpmmc.gov.au/guidelines/index.cfm#brand> and, in particular, the Guidelines on the use of the Commonwealth Coat of Arms publication.

An appropriate citation for this report is:

Bureau of Infrastructure, Transport and Regional Economics (BITRE), 2012, Domestic airline on time performance, Statistical Report, BITRE, Canberra ACT.

Contact us

This publication is available in PDF format. All other rights are reserved, including in relation to any Departmental logos or trade marks which may exist. For enquiries regarding the licence and any use of this publication, please contact:

Bureau of Infrastructure, Transport and Regional Economics (BITRE)
Department of Infrastructure and Transport
GPO Box 501, Canberra ACT 2601, Australia
Telephone: (international) +61 2 6274 7210
Fax: (international) +61 2 6274 6855
Email: bitre@infrastructure.gov.au
Website: www.bitre.gov.au

Inquiries

Should you require additional information about the statistics contained in this publication:

Telephone (02) 6274 7790 or Facsimile (02) 6274 7727

Electronic mail: AVSTATS@infrastructure.gov.au

Web site: <http://www.bitre.gov.au/statistics/aviation/otphome.aspx>

Foreword

The Bureau of Infrastructure, Transport and Regional Economics (BITRE) monitors the punctuality and reliability of major domestic airlines operating between Australian airports. The purpose of this is to allow for evaluation of overall industry and individual airline performance, so that consumers of air travel can make informed decisions.

The following domestic airlines report this information monthly to the BITRE: Jetstar, Qantas, QantasLink, Regional Express, Skywest Airlines, Tiger Airways, Virgin Australia and Virgin Australia – ATR/F100 Operations. Data has been gathered since November 2003, although some airlines commenced reporting at a later date, including Jetstar which first reported in May 2004, MacAir in July 2005 and Tiger Airways in April 2008. MacAir ceased operations in February 2009 and data was not received for December 2008 onwards. Virgin Blue was rebranded as Virgin Australia in May 2011 and time series data in Microsoft Excel spreadsheet format on the BITRE website has been revised to reflect this. Services operated by Skywest on behalf of Virgin Australia using ATR/F100 aircraft commenced in November 2011 and are shown separately as Virgin Australia – ATR/F100 Operations.

Information presented in this report is for Australian domestic routes for which the passenger load averaged 8000 or more passengers per month over the previous six months, and where two or more airlines operated in competition on those routes. 53 routes met these criteria for all twelve months in 2011-12 and another 3 routes did so for a shorter period of the year. Over time, routes which meet these criteria change as airline networks and traffic levels vary.

Participating airlines report their overall monthly network performance where this is possible.

Total industry figures encompass all services operated by reporting airlines only. These airlines collectively carried over 95 per cent of total domestic passengers (regular public transport only) in 2011.

The method of capturing on time performance varies between airlines utilising different recording systems. Jetstar and Qantas jet aircraft use Aircraft Communication Addressing and Reporting System (ACARS) to electronically measure on time performance. Regional Express, Skywest, Tiger Airways, Virgin Australia, Virgin Australia – ATR/F100 Operations and the Qantas non-jet fleet record on time performance manually using records from pilots, gate agents and/or ground crews.

After initial data is collected, aggregate reports are audited internally by participating airlines prior to publication.

Reports and detailed time series data in Microsoft Excel spreadsheet format are available from the BITRE website at: <http://www.bitre.gov.au/statistics/aviation/otphome.aspx>

Contents

	Page
Industry performance	1
Individual routes	9
Airports	20
Definitions	26

Industry performance

For the year ended June 2012, on time performance over all routes operated by participating airlines (Jetstar, Qantas, QantasLink, Regional Express, Skywest Airlines, Tiger Airways, Virgin Australia and Virgin Australia – ATR/F100 Operations) averaged 81.5 per cent for on time departures and 80.0 per cent for on time arrivals. Cancellations for 2011-12 represented 1.4 per cent of all scheduled flights. The equivalent figures for 2010-11 were 80.6 per cent for departures, 78.8 per cent for arrivals and 1.6 per cent for cancellations.

The long term average performance for all routes since reporting commenced in November 2003 is 84.0 per cent for on time departures and 82.7 per cent for on time arrivals. Cancellations averaged 1.2 per cent of all scheduled flights.

On time performance tracked around 87 per cent for the period before June 2007. There was then a noticeable decrease to 79 per cent for the period from June 2007 to December 2008. For the period January 2009 to June 2010, on time performance rose back up to 85 per cent but has dropped back down to 80 per cent for the period July 2010 to June 2012.

Tiger Airways resumed flights on 12 August 2011 after being grounded by CASA in early July 2011. It has operated on a reduced schedule since then with 8 059 sectors flown in 2011-12 compared to 20 153 sectors flown in 2010-11.

Of the major domestic airlines, Tiger Airways achieved the highest level of on time departures for 2011-12 at 89.5 per cent, followed by Qantas at 84.4 per cent, Virgin Australia at 82.8 per cent and Jetstar at 76.6 per cent. The regional airlines were led by Regional Express at 84.3 per cent, Skywest at 80.9 per cent, Virgin Australia – ATR/F100 Operations at 80.0 per cent and QantasLink at 77.7 per cent.

Tiger Airways also achieved the highest on time arrivals among the major domestic airlines at 87.8 per cent, followed by Qantas at 83.4 per cent, Virgin Australia at 80.9 per cent and Jetstar at 77.6 per cent. Regional Express was the best performing regional airline for on time arrivals at 81.7 per cent, followed by Skywest at 79.6 per cent, QantasLink at 75.3 per cent and Virgin Australia – ATR/F100 Operations at 74.2 per cent.

QantasLink had the highest percentage of cancellations for 2011-12 at 2.0 per cent, while Skywest had the lowest percentage at 0.2 per cent.

Of the 53 routes which met the criteria for on time performance reporting for all twelve months in 2011-12, the Adelaide-Port Lincoln route had the highest percentage of on time departures (92.4 per cent) and the Sunshine Coast-Melbourne route had the lowest percentage of on time departures (62.2 per cent). The Adelaide-Gold Coast route had the highest percentage of on time arrivals (93.0 per cent) and the Ballina-Sydney route had the lowest percentage of on time arrivals (59.6 per cent).

Cancellations were highest on the Canberra-Sydney route at 4.6 per cent, followed by Sydney-Canberra at 4.1 per cent, Karratha-Perth at 3.5 per cent, Port Hedland-Perth at 3.2 per cent and Broome-Perth at 3.1 per cent.

Of the airports with on time performance reporting for all twelve months in 2011-12, Port Lincoln Airport recorded the highest percentage of on time departures (91.8 per cent) and the highest percentage of on time arrivals (90.5 per cent). Ballina Airport recorded the lowest percentage of on time departures (69.1 per cent) and Port Macquarie Airport recorded the lowest percentage of on time arrivals (72.1 per cent). These figures only refer to reported routes and do not cover all flights at these airports.

Table 1 On time performance for the year ended June 2012 — Total Industry

	<i>Sectors</i>		<i>Departures On Time</i>		<i>Arrivals On Time</i>		<i>Cancellations</i>	
	<i>Scheduled</i>	<i>Flown</i>	<i>No.</i>	<i>%</i>	<i>No.</i>	<i>%</i>	<i>No.</i>	<i>%</i>
Jetstar	69 730	68 618	52 545	76.6	53 243	77.6	1 112	1.6
Qantas	121 720	119 636	100 919	84.4	99 818	83.4	2 084	1.7
QantasLink	109 796	107 566	83 530	77.7	81 023	75.3	2 230	2.0
Regional Express	63 859	63 576	53 568	84.3	51 938	81.7	283	0.4
Skywest	10 177	10 156	8 218	80.9	8 083	79.6	21	0.2
Tiger Airways	8 100	8 059	7 211	89.5	7 079	87.8	41	0.5
Virgin Australia	139 674	137 876	114 158	82.8	111 595	80.9	1 798	1.3
Virgin Australia - ATR/F100 Operations	7 455	7 345	5 879	80.0	5 453	74.2	110	1.5
All Airlines	530 511	522 832	426 028	81.5	418 232	80.0	7 679	1.4

Notes:

Total airline network data (including routes not shown in this report).

Virgin Australia - ATR/F100 Operations commenced in November 2011.

Table 2 Top ten routes for on time performance for the year ended June 2012 (covers participating airlines only and routes reported for all twelve months)

<i>Departures</i>		<i>Arrivals</i>	
<i>Route</i>	<i>On Time (%)</i>	<i>Route</i>	<i>On Time (%)</i>
Adelaide-Port Lincoln	92.4	Adelaide-Gold Coast	93.0
Adelaide-Gold Coast	92.0	Gold Coast-Adelaide	92.0
Port Lincoln-Adelaide	91.8	Port Lincoln-Adelaide	91.3
Canberra-Brisbane	91.1	Canberra-Adelaide	90.9
Gold Coast-Adelaide	90.3	Adelaide-Port Lincoln	90.5
Adelaide-Brisbane	89.9	Darwin-Perth	90.2
Perth-Darwin	89.6	Brisbane-Adelaide	89.9
Melbourne-Darwin	89.6	Adelaide-Canberra	89.9
Canberra-Adelaide	89.5	Brisbane-Canberra	88.3
Mildura-Melbourne	89.2	Ayers Rock-Sydney	88.2

Table 3 Top ten airports for on time performance for the year ended June 2012 (covers participating airlines only and routes reported for all twelve months)

<i>Departures</i>		<i>Arrivals</i>	
<i>Airport</i>	<i>On Time (%)</i>	<i>Airport</i>	<i>On Time (%)</i>
Port Lincoln	91.8	Port Lincoln	90.5
Mildura	89.2	Adelaide	87.7
Adelaide	88.2	Proserpine	86.2
Cairns	84.9	Port Hedland	85.9
Canberra	84.1	Newman	84.1
Melbourne	83.3	Karratha	83.7
Karratha	82.6	Townsville	82.4
Proserpine	82.4	Melbourne	82.1
Ayers Rock	82.3	Darwin	82.0
Brisbane	82.0	Mildura	81.7

Total industry on time performance

Figure 1 On time performance (by month from June 2007)—Total Industry

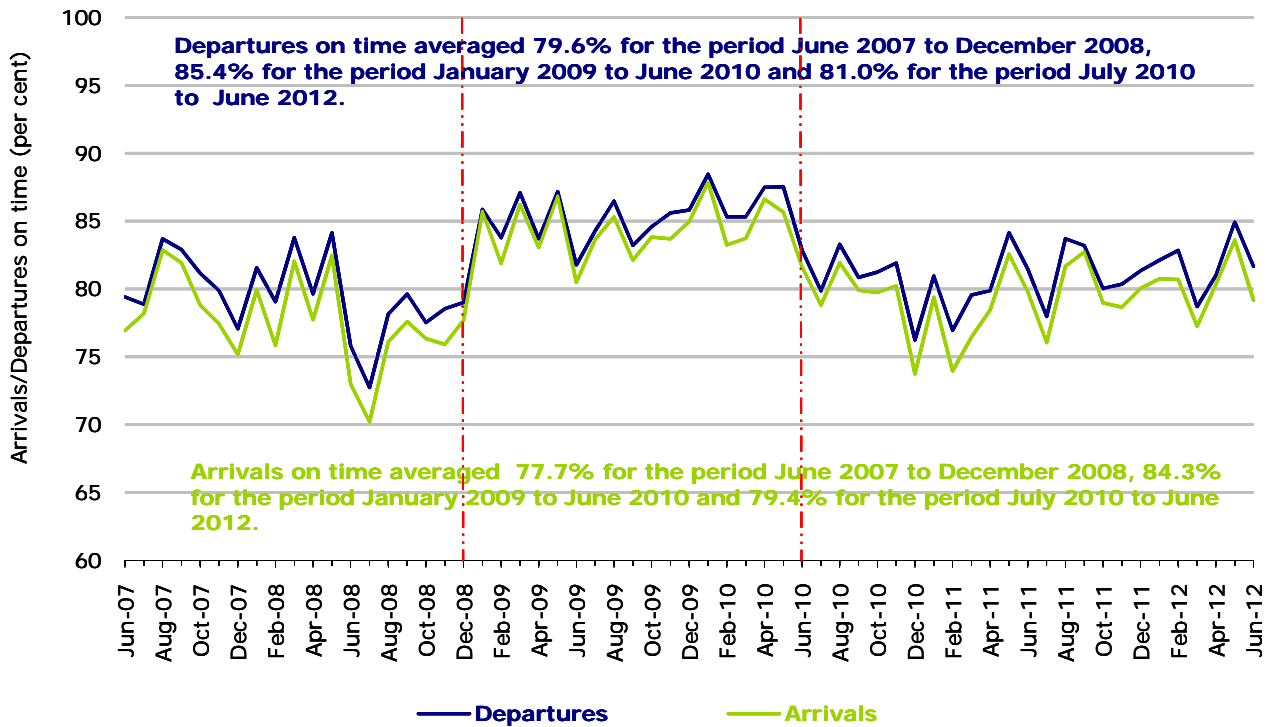
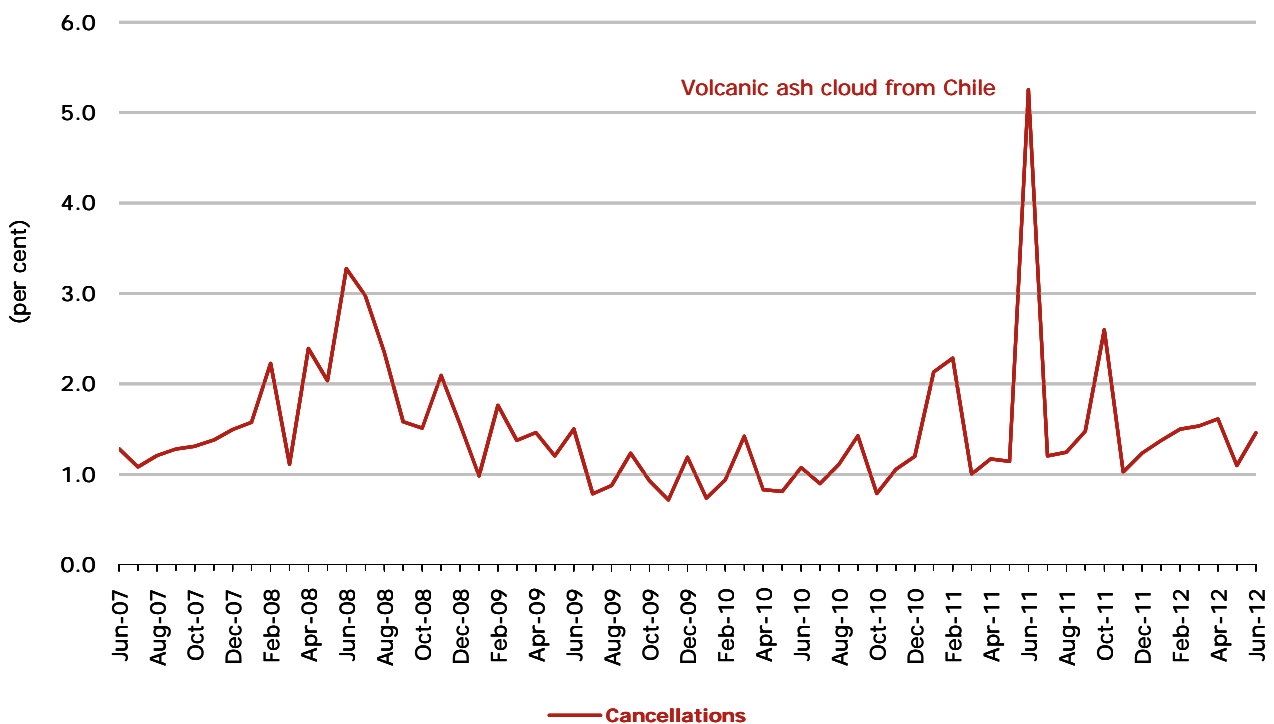


Figure 2 Cancellations (by month from June 2007)—Total Industry



Major domestic airlines on time performance

Figure 3 On time performance (by month from June 2007)—Jetstar

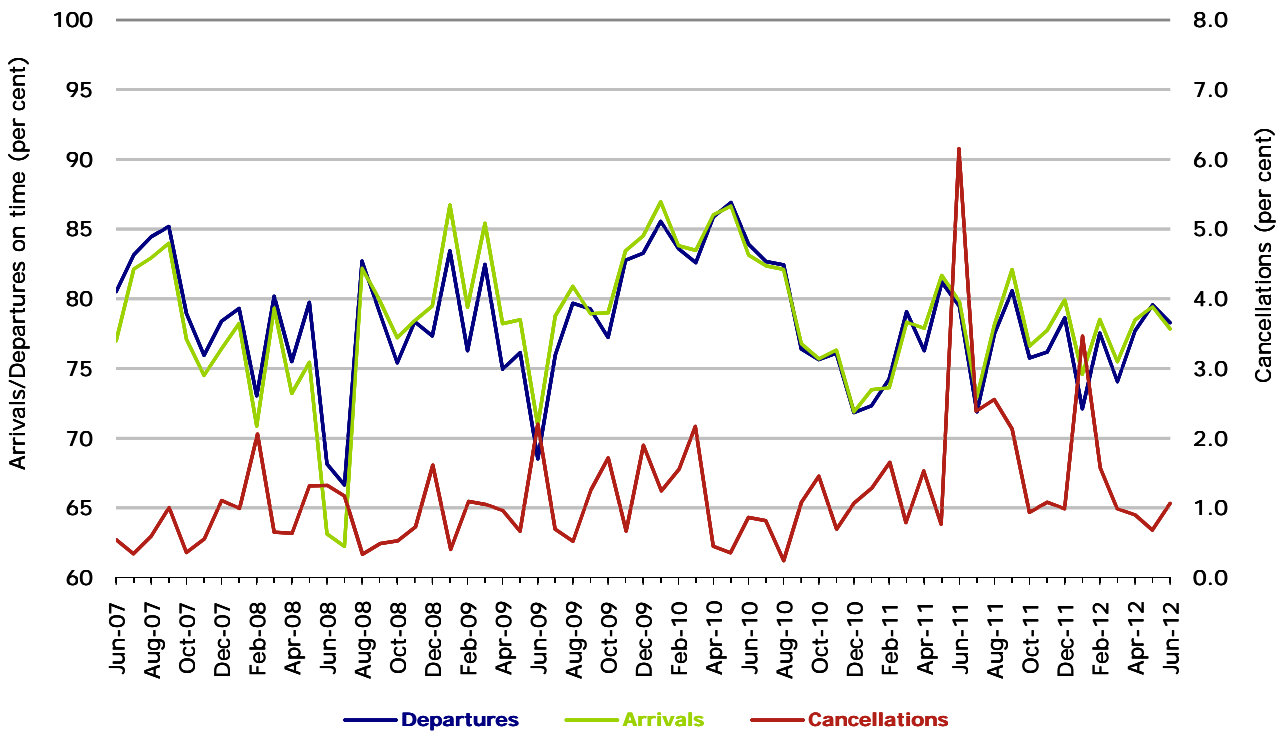
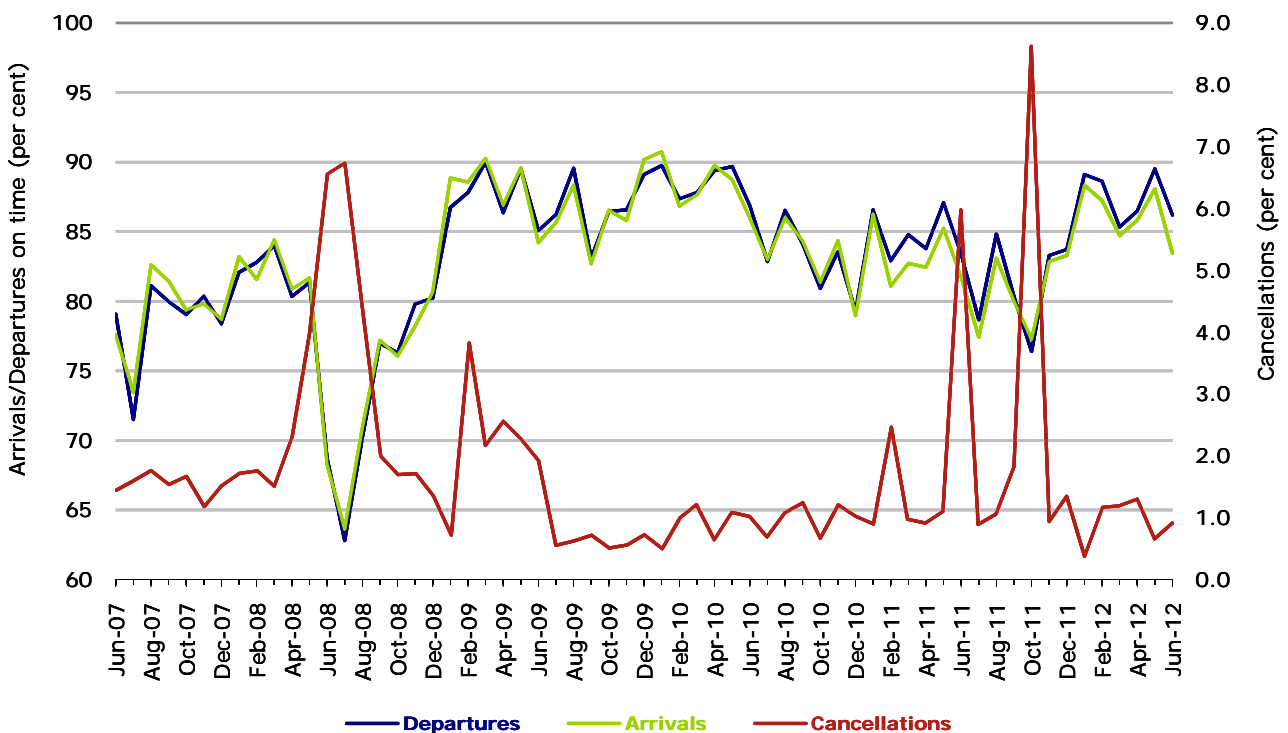
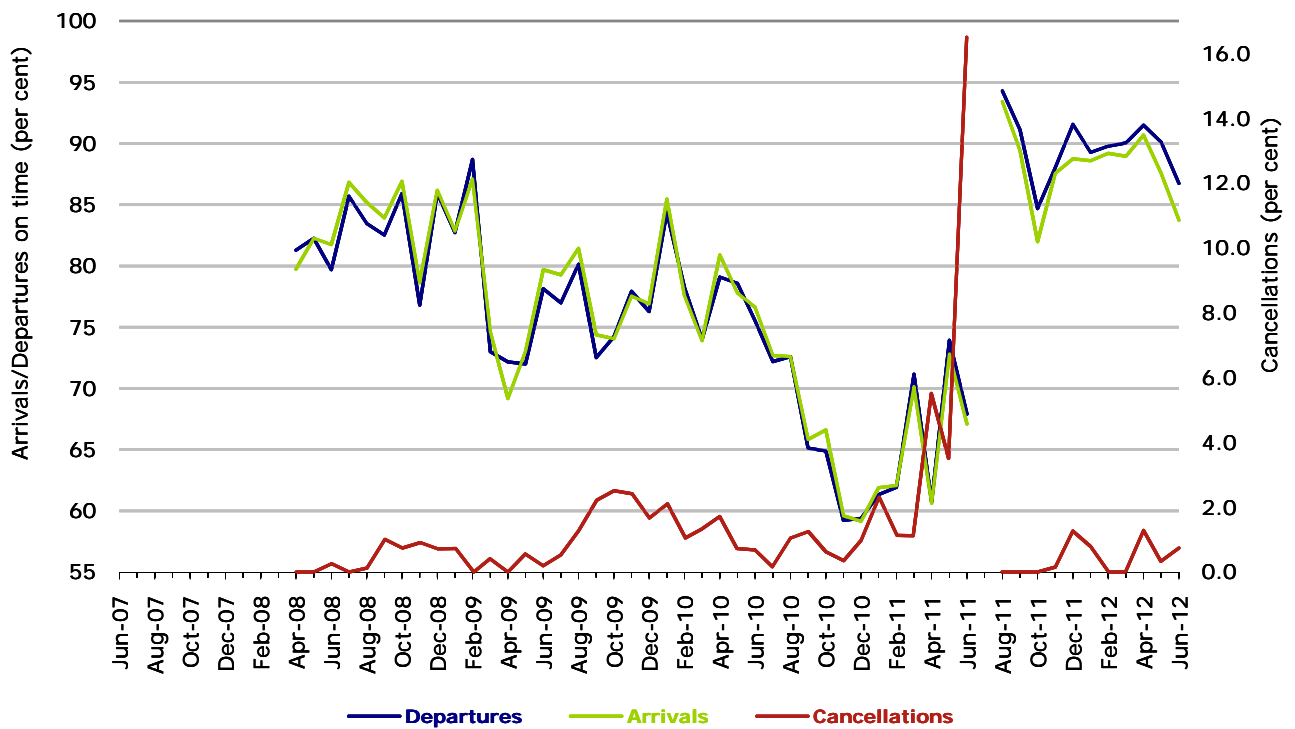


Figure 4 On time performance (by month from June 2007)—Qantas



During October 2011 there were disruptions to Qantas services on several days due to industrial disputes and the entire fleet was grounded for nearly 48 hours at the end of the month.

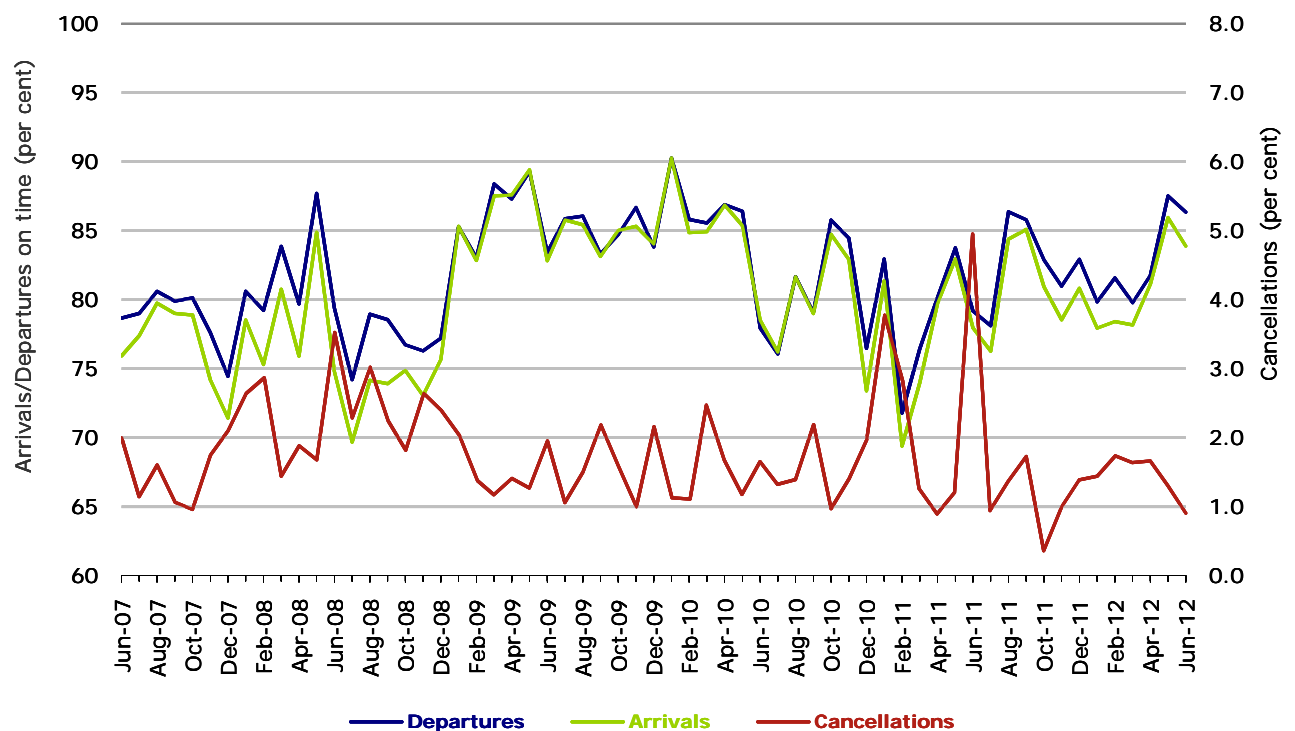
Figure 5 On time performance (by month from June 2007)—Tiger Airways



Tiger Airways commenced reporting in April 2008.

No data for Tiger Airways for July 2011 as it was grounded by CASA from 2/7/2011 to 11/8/2011.

Figure 6 On time performance (by month from June 2007)—Virgin Australia



Major regional airlines on time performance

Figure 7 On time performance (by month from June 2007)—QantasLink

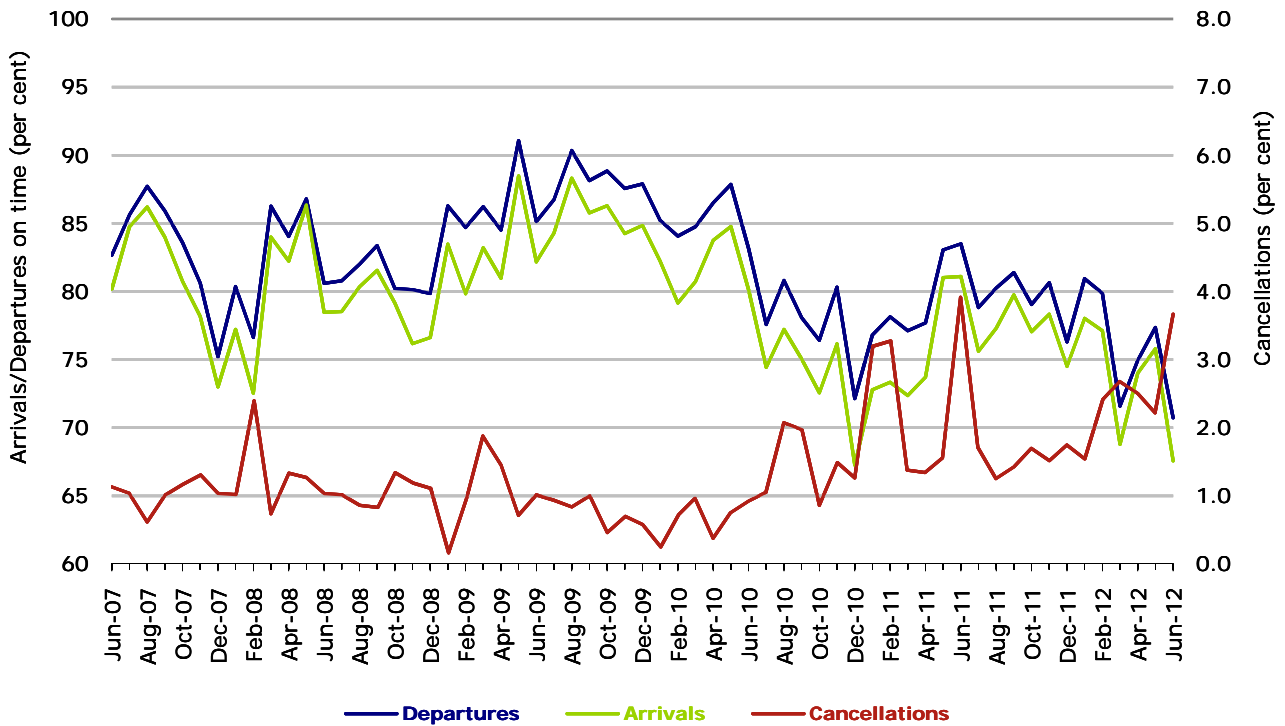


Figure 8 On time performance (by month from June 2007)—Regional Express

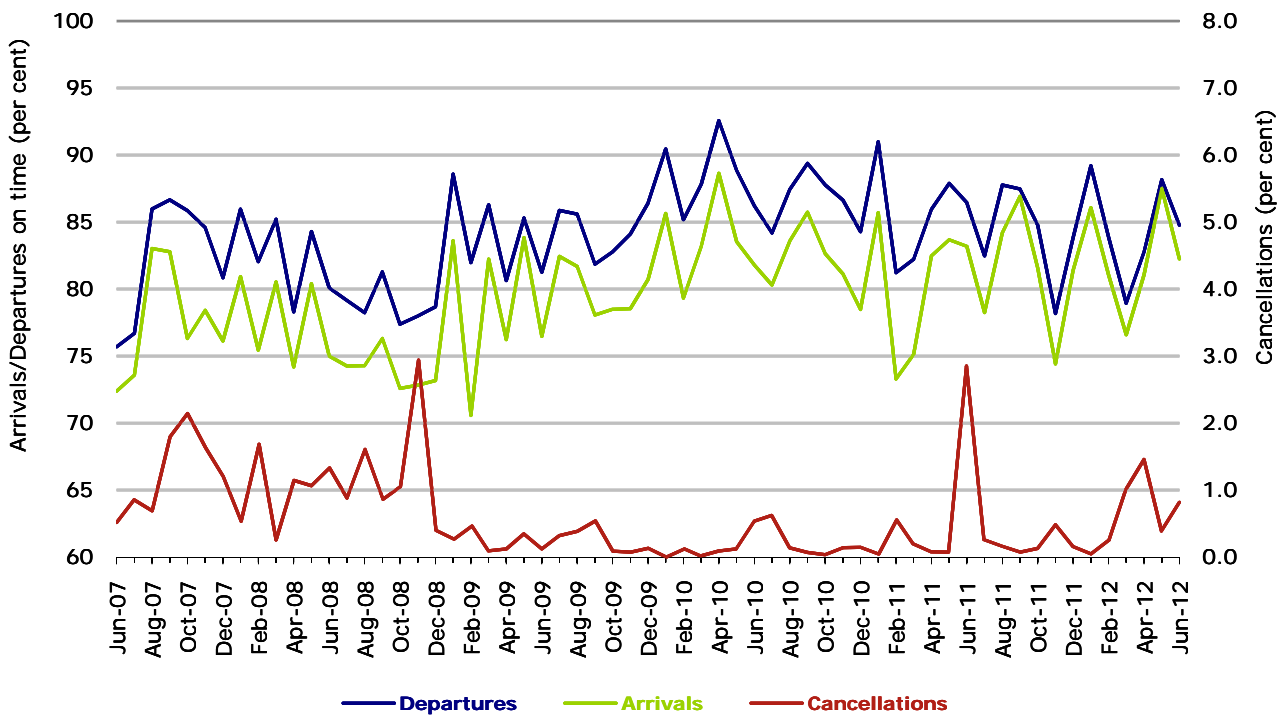


Figure 9 On time performance (by month from June 2007)—Skywest

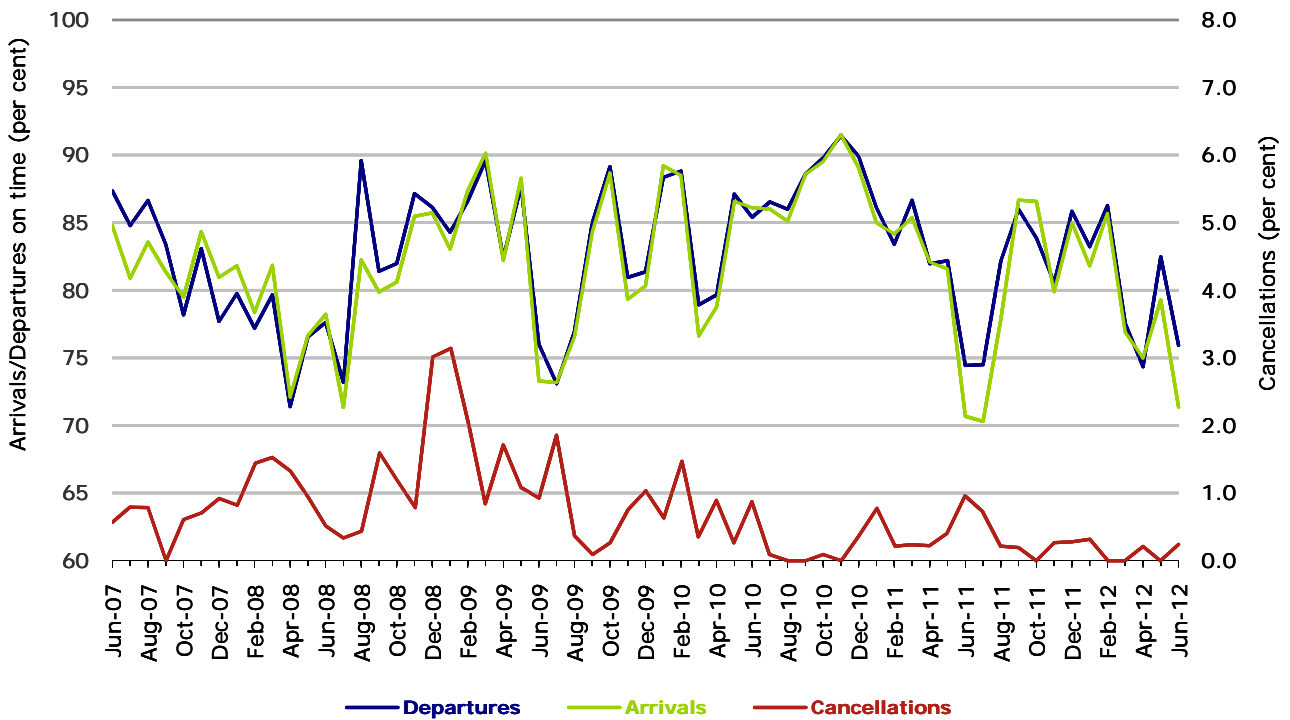
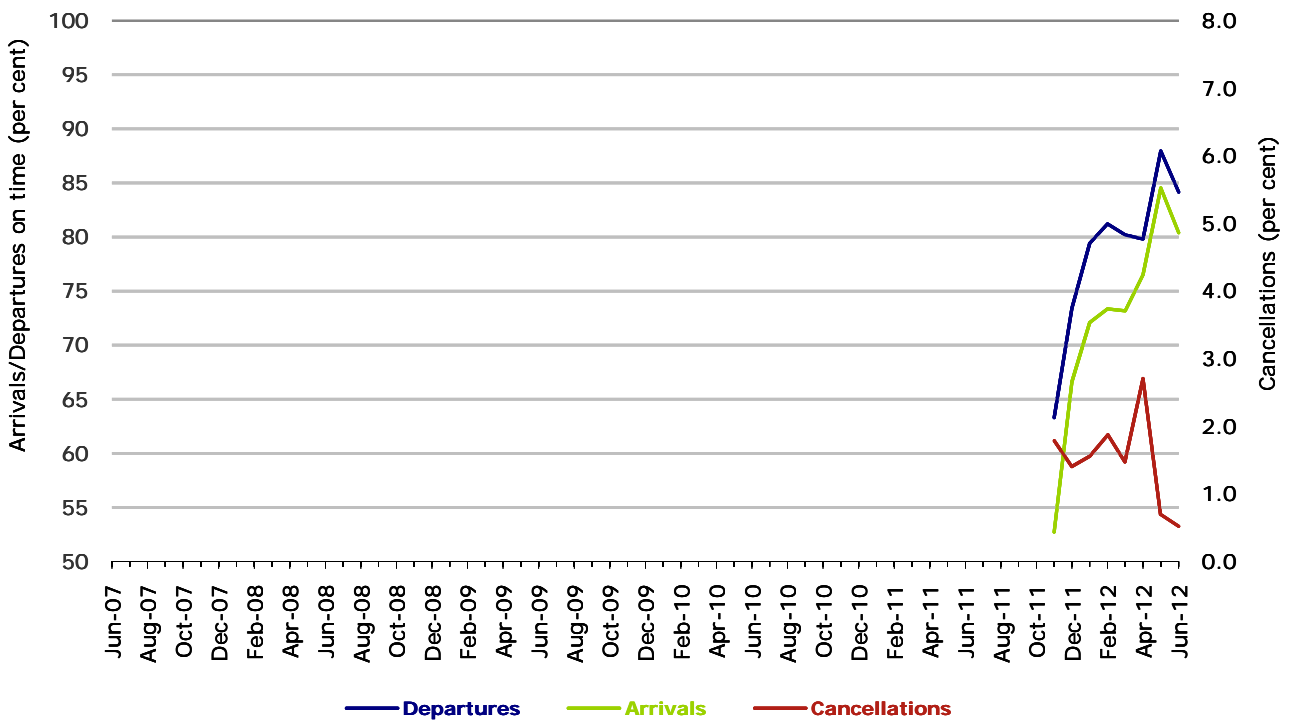


Figure 10 On time performance (by month from June 2007)
Virgin Australia - ATR/F100 Operations



Virgin Australia - ATR/F100 Operations commenced in November 2011.

Individual routes

On time performance is reported for all routes where the passenger load averages over 8000 passengers per month over the previous six months, and where two or more airlines operate in competition on those routes. There are now 56 routes which meet this definition. Over time, however, routes which meet this definition may change as airline networks and traffic levels vary.

	<i>Sectors</i>		<i>Departures On Time</i>		<i>Arrivals On Time</i>		<i>Cancellations</i>	
	<i>Sched.</i>	<i>Flown</i>	<i>No.</i>	<i>%</i>	<i>No.</i>	<i>%</i>	<i>No.</i>	<i>%</i>
Adelaide-Brisbane								
Jetstar	351	351	312	88.9	313	89.2	0	0.0
Qantas	1 268	1 261	1 146	90.9	1 101	87.3	7	0.6
Virgin Australia	1 110	1 099	979	89.1	967	88.0	11	1.0
All Airlines	2 729	2 711	2 437	89.9	2 381	87.8	18	0.7
Adelaide-Canberra								
Qantas	550	547	484	88.5	491	89.8	3	0.5
Virgin Australia	357	354	313	88.4	319	90.1	3	0.8
All Airlines	907	901	797	88.5	810	89.9	6	0.7
Adelaide-Gold Coast								
Jetstar	360	356	313	87.9	323	90.7	4	1.1
Virgin Australia	367	360	346	96.1	343	95.3	7	1.9
All Airlines	727	716	659	92.0	666	93.0	11	1.5
Adelaide-Melbourne								
Jetstar	930	917	723	78.8	719	78.4	13	1.4
Qantas	3 488	3 455	2 988	86.5	2 974	86.1	33	0.9
QantasLink	209	203	180	88.7	176	86.7	6	2.9
Virgin Australia	3 355	3 313	3 004	90.7	2 918	88.1	42	1.3
All Airlines	7 982	7 888	6 895	87.4	6 787	86.0	94	1.2
Adelaide-Perth								
Jetstar	379	378	276	73.0	298	78.8	1	0.3
Qantas	1 325	1 313	1 162	88.5	1 153	87.8	12	0.9
Virgin Australia	734	725	624	86.1	625	86.2	9	1.2
All Airlines	2 438	2 416	2 062	85.3	2 076	85.9	22	0.9
Adelaide-Port Lincoln								
QantasLink	1 189	1 163	1 031	88.7	1 013	87.1	26	2.2
Regional Express	2 402	2 396	2 256	94.2	2 208	92.2	6	0.2
All Airlines	3 591	3 559	3 287	92.4	3 221	90.5	32	0.9
Adelaide-Sydney								
Jetstar	990	979	764	78.0	738	75.4	11	1.1
Qantas	3 253	3 209	2 878	89.7	2 844	88.6	44	1.4
Virgin Australia	1 885	1 874	1 623	86.6	1 602	85.5	11	0.6
All Airlines	6 128	6 062	5 265	86.9	5 184	85.5	66	1.1
Albury-Sydney								
QantasLink	1 365	1 361	907	66.6	885	65.0	4	0.3
Regional Express	1 275	1 272	997	78.4	975	76.7	3	0.2
Virgin Australia	720	701	586	83.6	578	82.5	19	2.6
All Airlines	3 360	3 334	2 490	74.7	2 438	73.1	26	0.8
Ayers Rock-Sydney								
Qantas	366	364	318	87.4	329	90.4	2	0.5
Virgin Australia	367	364	281	77.2	313	86.0	3	0.8
All Airlines	733	728	599	82.3	642	88.2	5	0.7

	<i>Sectors</i>		<i>Departures On Time</i>		<i>Arrivals On Time</i>		<i>Cancellations</i>	
	<i>Sched.</i>	<i>Flown</i>	<i>No.</i>	<i>%</i>	<i>No.</i>	<i>%</i>	<i>No.</i>	<i>%</i>
Ballina-Sydney								
Jetstar	462	458	325	71.0	280	61.1	4	0.9
Regional Express	632	627	408	65.1	350	55.8	5	0.8
Virgin Australia	366	361	266	73.7	232	64.3	5	1.4
All Airlines	1 460	1 446	999	69.1	862	59.6	14	1.0
Brisbane-Adelaide								
Jetstar	348	348	320	92.0	321	92.2	0	0.0
Qantas	1 269	1 262	1 079	85.5	1 135	89.9	7	0.6
Virgin Australia	1 109	1 101	934	84.8	982	89.2	8	0.7
All Airlines	2 726	2 711	2 333	86.1	2 438	89.9	15	0.6
Brisbane-Cairns								
Jetstar	1 130	1 118	945	84.5	924	82.6	12	1.1
Qantas	1 372	1 366	1 109	81.2	1 169	85.6	6	0.4
Virgin Australia	1 756	1 751	1 534	87.6	1 531	87.4	5	0.3
Virgin Australia - ATR/F100 Operations	119	118	109	92.4	86	72.9	1	0.8
All Airlines	4 377	4 353	3 697	84.9	3 710	85.2	24	0.5
Brisbane-Canberra								
Qantas	1 657	1 646	1 474	89.6	1 503	91.3	11	0.7
QantasLink	244	236	172	72.9	190	80.5	8	3.3
Virgin Australia	1 415	1 406	1 208	85.9	1 211	86.1	9	0.6
All Airlines	3 316	3 288	2 854	86.8	2 904	88.3	28	0.8
Brisbane-Darwin								
Jetstar	6	6	5	83.3	6	100.0	0	0.0
Qantas	366	364	265	72.8	274	75.3	2	0.5
Virgin Australia	367	367	278	75.7	256	69.8	0	0.0
All Airlines	739	737	548	74.4	536	72.7	2	0.3
Brisbane-Emerald								
			(From April 2012 only)					
QantasLink	537	525	449	85.5	427	81.3	12	2.2
Virgin Australia - ATR/F100 Operations	208	208	188	90.4	192	92.3	0	0.0
All Airlines	745	733	637	86.9	619	84.4	12	1.6
Brisbane-Gladstone								
			(From January 2012 only)					
QantasLink	1 137	1 114	817	73.3	818	73.4	23	2.0
Virgin Australia - ATR/F100 Operations	469	465	413	88.8	407	87.5	4	0.9
All Airlines	1 606	1 579	1 230	77.9	1 225	77.6	27	1.7
Brisbane-Hamilton Island								
Jetstar	293	292	189	64.7	237	81.2	1	0.3
Virgin Australia	369	368	325	88.3	318	86.4	1	0.3
All Airlines	662	660	514	77.9	555	84.1	2	0.3
Brisbane-Mackay								
Jetstar	1 310	1 303	980	75.2	1 076	82.6	7	0.5
QantasLink	1 147	1 140	917	80.4	873	76.6	7	0.6
Virgin Australia	1 883	1 873	1 585	84.6	1 535	82.0	10	0.5
All Airlines	4 340	4 316	3 482	80.7	3 484	80.7	24	0.6
Brisbane-Melbourne								
Jetstar	1 081	1 057	768	72.7	829	78.4	24	2.2
Qantas	4 737	4 684	3 921	83.7	4 012	85.7	53	1.1
Tiger Airways	901	900	736	81.8	761	84.6	1	0.1
Virgin Australia	4 316	4 266	3 713	87.0	3 768	88.3	50	1.2
All Airlines	11 035	10 907	9 138	83.8	9 370	85.9	128	1.2

	<i>Sectors</i>		<i>Departures On Time</i>		<i>Arrivals On Time</i>		<i>Cancellations</i>	
	<i>Sched.</i>	<i>Flown</i>	<i>No.</i>	<i>%</i>	<i>No.</i>	<i>%</i>	<i>No.</i>	<i>%</i>
Brisbane-Newcastle								
Jetstar	1 379	1 373	1 127	82.1	1 142	83.2	6	0.4
QantasLink	818	804	565	70.3	415	51.6	14	1.7
Virgin Australia	450	449	398	88.6	389	86.6	1	0.2
Virgin Australia - ATR/F100 Operations	269	269	228	84.8	213	79.2	0	0.0
All Airlines	2 916	2 895	2 318	80.1	2 159	74.6	21	0.7
Brisbane-Perth								
Jetstar	331	328	258	78.7	254	77.4	3	0.9
Qantas	1 396	1 386	981	70.8	1 022	73.7	10	0.7
Virgin Australia	882	880	759	86.3	711	80.8	2	0.2
All Airlines	2 609	2 594	1 998	77.0	1 987	76.6	15	0.6
Brisbane-Proserpine								
Jetstar	336	335	293	87.5	287	85.7	1	0.3
Virgin Australia	367	365	320	87.7	321	87.9	2	0.5
Virgin Australia - ATR/F100 Operations	98	97	92	94.8	79	81.4	1	1.0
All Airlines	801	797	705	88.5	687	86.2	4	0.5
Brisbane-Rockhampton								
QantasLink	2 421	2 407	1 786	74.2	1 819	75.6	14	0.6
Virgin Australia	1 516	1 508	1 321	87.6	1 315	87.2	8	0.5
Virgin Australia - ATR/F100 Operations	356	347	308	88.8	298	85.9	9	2.5
All Airlines	4 293	4 262	3 415	80.1	3 432	80.5	31	0.7
Brisbane-Sydney								
Jetstar	1 186	1 170	802	68.5	752	64.3	16	1.3
Qantas	6 688	6 531	5 287	81.0	5 257	80.5	157	2.3
Virgin Australia	6 804	6 720	5 435	80.9	5 290	78.7	84	1.2
All Airlines	14 678	14 421	11 524	79.9	11 299	78.4	257	1.8
Brisbane-Townsville								
Jetstar	366	359	249	69.4	277	77.2	7	1.9
Qantas	1 713	1 703	1 440	84.6	1 446	84.9	10	0.6
Virgin Australia	1 990	1 981	1 725	87.1	1 744	88.0	9	0.5
All Airlines	4 069	4 043	3 414	84.4	3 467	85.8	26	0.6
Broome-Perth								
Qantas	433	427	277	64.9	294	68.9	6	1.4
QantasLink	547	520	398	76.5	398	76.5	27	4.9
Skywest	224	224	145	64.7	135	60.3	0	0.0
Virgin Australia	585	563	425	75.5	427	75.8	22	3.8
All Airlines	1 789	1 734	1 245	71.8	1 254	72.3	55	3.1
Cairns-Brisbane								
Jetstar	1 130	1 122	981	87.4	978	87.2	8	0.7
Qantas	1 373	1 365	1 217	89.2	1 141	83.6	8	0.6
Virgin Australia	1 757	1 748	1 561	89.3	1 523	87.1	9	0.5
Virgin Australia - ATR/F100 Operations	119	117	77	65.8	91	77.8	2	1.7
All Airlines	4 379	4 352	3 836	88.1	3 733	85.8	27	0.6
Cairns-Melbourne								
Jetstar	797	790	605	76.6	618	78.2	7	0.9
Qantas	366	364	276	75.8	288	79.1	2	0.5
Tiger Airways	67	67	54	80.6	54	80.6	0	0.0
Virgin Australia	419	418	346	82.8	341	81.6	1	0.2
All Airlines	1 649	1 639	1 281	78.2	1 301	79.4	10	0.6
Cairns-Sydney								
Jetstar	738	719	595	82.8	571	79.4	19	2.6
Qantas	1 159	1 150	983	85.5	1 022	88.9	9	0.8
Virgin Australia	1 089	1 083	941	86.9	947	87.4	6	0.6
All Airlines	2 986	2 952	2 519	85.3	2 540	86.0	34	1.1

	<i>Sectors</i>		<i>Departures On Time</i>		<i>Arrivals On Time</i>		<i>Cancellations</i>	
	<i>Sched.</i>	<i>Flown</i>	<i>No.</i>	<i>%</i>	<i>No.</i>	<i>%</i>	<i>No.</i>	<i>%</i>
Cairns-Townsville								
QantasLink	2 142	2 111	1 741	82.5	1 618	76.6	31	1.4
Virgin Australia	341	333	286	85.9	291	87.4	8	2.3
All Airlines	2 483	2 444	2 027	82.9	1 909	78.1	39	1.6
Canberra-Adelaide								
Qantas	602	598	550	92.0	557	93.1	4	0.7
Virgin Australia	356	353	301	85.3	307	87.0	3	0.8
All Airlines	958	951	851	89.5	864	90.9	7	0.7
Canberra-Brisbane								
Qantas	1 669	1 644	1 531	93.1	1 419	86.3	25	1.5
QantasLink	244	234	158	67.5	147	62.8	10	4.1
Virgin Australia	1 416	1 407	1 304	92.7	1 209	85.9	9	0.6
All Airlines	3 329	3 285	2 993	91.1	2 775	84.5	44	1.3
Canberra-Melbourne								
Qantas	2 953	2 921	2 589	88.6	2 500	85.6	32	1.1
QantasLink	466	438	371	84.7	356	81.3	28	6.0
Virgin Australia	2 017	1 993	1 670	83.8	1 645	82.5	24	1.2
All Airlines	5 436	5 352	4 630	86.5	4 501	84.1	84	1.5
Canberra-Sydney								
Qantas	1 793	1 759	1 528	86.9	1 477	84.0	34	1.9
QantasLink	4 687	4 365	3 359	77.0	3 081	70.6	322	6.9
Virgin Australia	1 622	1 575	1 315	83.5	1 207	76.6	47	2.9
Virgin Australia - ATR/F100 Operations	1 269	1 245	902	72.4	754	60.6	24	1.9
All Airlines	9 371	8 944	7 104	79.4	6 519	72.9	427	4.6
Coffs Harbour-Sydney								
QantasLink	1 730	1 717	1 135	66.1	1 248	72.7	13	0.8
Virgin Australia	721	698	552	79.1	559	80.1	23	3.2
All Airlines	2 451	2 415	1 687	69.9	1 807	74.8	36	1.5
Darwin-Brisbane								
Jetstar	7	7	7	100.0	7	100.0	0	0.0
Qantas	366	362	211	58.3	245	67.7	4	1.1
Virgin Australia	367	367	285	77.7	301	82.0	0	0.0
All Airlines	740	736	503	68.3	553	75.1	4	0.5
Darwin-Melbourne								
Jetstar	67	67	42	62.7	44	65.7	0	0.0
Qantas	171	170	142	83.5	140	82.4	1	0.6
Virgin Australia	367	366	351	95.9	343	93.7	1	0.3
All Airlines	605	603	535	88.7	527	87.4	2	0.3
Darwin-Perth								
Qantas	366	362	308	85.1	325	89.8	4	1.1
Virgin Australia	351	349	319	91.4	316	90.5	2	0.6
All Airlines	717	711	627	88.2	641	90.2	6	0.8
Dubbo-Sydney								
QantasLink	1 273	1 270	939	73.9	809	63.7	3	0.2
Regional Express	1 977	1 952	1 545	79.1	1 490	76.3	25	1.3
All Airlines	3 250	3 222	2 484	77.1	2 299	71.4	28	0.9
Emerald-Brisbane								
			(From April 2012 only)					
QantasLink	537	524	416	79.4	417	79.6	13	2.4
Virgin Australia - ATR/F100 Operations	208	208	195	93.8	193	92.8	0	0.0
All Airlines	745	732	611	83.5	610	83.3	13	1.7

	<i>Sectors</i>		<i>Departures</i>		<i>Arrivals</i>		<i>Cancellations</i>	
	<i>Sched.</i>	<i>Flown</i>	<i>On Time</i>		<i>On Time</i>		<i>No.</i>	<i>%</i>
			<i>No.</i>	<i>%</i>	<i>No.</i>	<i>%</i>		
Geraldton-Perth								
			(From March 2012 only)					
QantasLink	209	207	129	62.3	92	44.4	2	1.0
Skywest	366	366	261	71.3	245	66.9	0	0.0
All Airlines	575	573	390	68.1	337	58.8	2	0.3
Gladstone-Brisbane								
			(From January 2012 only)					
QantasLink	1 270	1 241	859	69.2	806	64.9	29	2.3
Virgin Australia - ATR/F100 Operations	470	460	409	88.9	395	85.9	10	2.1
All Airlines	1 740	1 701	1 268	74.5	1 201	70.6	39	2.2
Gold Coast-Adelaide								
Jetstar	359	357	309	86.6	317	88.8	2	0.6
Virgin Australia	366	358	337	94.1	341	95.3	8	2.2
All Airlines	725	715	646	90.3	658	92.0	10	1.4
Gold Coast-Melbourne								
Jetstar	2 496	2 447	1 847	75.5	1 865	76.2	49	2.0
Tiger Airways	654	649	546	84.1	542	83.5	5	0.8
Virgin Australia	2 524	2 482	2 017	81.3	2 105	84.8	42	1.7
All Airlines	5 674	5 578	4 410	79.1	4 512	80.9	96	1.7
Gold Coast-Sydney								
Jetstar	3 542	3 464	2 628	75.9	2 705	78.1	78	2.2
Virgin Australia	4 207	4 098	3 009	73.4	2 993	73.0	109	2.6
All Airlines	7 749	7 562	5 637	74.5	5 698	75.4	187	2.4
Hamilton Island-Brisbane								
Jetstar	294	291	217	74.6	234	80.4	3	1.0
Virgin Australia	369	365	305	83.6	301	82.5	4	1.1
All Airlines	663	656	522	79.6	535	81.6	7	1.1
Hamilton Island-Sydney								
Jetstar	364	362	265	73.2	265	73.2	2	0.5
Virgin Australia	370	366	269	73.5	271	74.0	4	1.1
All Airlines	734	728	534	73.4	536	73.6	6	0.8
Hobart-Melbourne								
Jetstar	1 670	1 655	1 124	67.9	1 134	68.5	15	0.9
Qantas	751	746	695	93.2	677	90.8	5	0.7
Virgin Australia	1 596	1 584	1 254	79.2	1 258	79.4	12	0.8
All Airlines	4 017	3 985	3 073	77.1	3 069	77.0	32	0.8
Hobart-Sydney								
Jetstar	728	722	526	72.9	521	72.2	6	0.8
Qantas	367	365	276	75.6	274	75.1	2	0.5
Virgin Australia	732	724	471	65.1	487	67.3	8	1.1
All Airlines	1 827	1 811	1 273	70.3	1 282	70.8	16	0.9
Kalgoorlie-Perth								
Qantas	852	844	659	78.1	667	79.0	8	0.9
QantasLink	210	202	157	77.7	156	77.2	8	3.8
Skywest	190	190	142	74.7	114	60.0	0	0.0
All Airlines	1 252	1 236	958	77.5	937	75.8	16	1.3
Karratha-Perth								
Qantas	2 341	2 278	1 931	84.8	1 875	82.3	63	2.7
QantasLink	641	596	508	85.2	495	83.1	45	7.0
Skywest	24	24	8	33.3	6	25.0	0	0.0
Virgin Australia	673	652	485	74.4	423	64.9	21	3.1
All Airlines	3 679	3 550	2 932	82.6	2 799	78.8	129	3.5

	<i>Sectors</i>		<i>Departures On Time</i>		<i>Arrivals On Time</i>		<i>Cancellations</i>	
	<i>Sched.</i>	<i>Flown</i>	<i>No.</i>	<i>%</i>	<i>No.</i>	<i>%</i>	<i>No.</i>	<i>%</i>
Launceston-Melbourne								
Jetstar	1 202	1 188	827	69.6	850	71.5	14	1.2
QantasLink	949	934	650	69.6	642	68.7	15	1.6
Virgin Australia	1 578	1 566	1 331	85.0	1 289	82.3	12	0.8
All Airlines	3 729	3 688	2 808	76.1	2 781	75.4	41	1.1
Launceston-Sydney								
Jetstar	449	440	327	74.3	333	75.7	9	2.0
Virgin Australia	366	366	229	62.6	227	62.0	0	0.0
All Airlines	815	806	556	69.0	560	69.5	9	1.1
Mackay-Brisbane								
Jetstar	1 227	1 214	901	74.2	884	72.8	13	1.1
QantasLink	1 148	1 141	864	75.7	862	75.5	7	0.6
Virgin Australia	1 884	1 869	1 617	86.5	1 514	81.0	15	0.8
All Airlines	4 259	4 224	3 382	80.1	3 260	77.2	35	0.8
Melbourne-Adelaide								
Jetstar	924	918	765	83.3	756	82.4	6	0.6
Qantas	3 486	3 458	3 105	89.8	3 066	88.7	28	0.8
QantasLink	209	202	143	70.8	143	70.8	7	3.3
Virgin Australia	3 357	3 320	2 892	87.1	2 907	87.6	37	1.1
All Airlines	7 976	7 898	6 905	87.4	6 872	87.0	78	1.0
Melbourne-Brisbane								
Jetstar	1 085	1 067	752	70.5	728	68.2	18	1.7
Qantas	4 740	4 694	4 064	86.6	3 772	80.4	46	1.0
Tiger Airways	904	903	848	93.9	774	85.7	1	0.1
Virgin Australia	4 313	4 268	3 688	86.4	3 470	81.3	45	1.0
All Airlines	11 042	10 932	9 352	85.5	8 744	80.0	110	1.0
Melbourne-Cairns								
Jetstar	794	788	637	80.8	664	84.3	6	0.8
Qantas	366	364	303	83.2	307	84.3	2	0.5
Tiger Airways	67	67	64	95.5	57	85.1	0	0.0
Virgin Australia	420	419	330	78.8	336	80.2	1	0.2
All Airlines	1 647	1 638	1 334	81.4	1 364	83.3	9	0.5
Melbourne-Canberra								
Qantas	2 952	2 925	2 572	87.9	2 571	87.9	27	0.9
QantasLink	466	438	387	88.4	342	78.1	28	6.0
Virgin Australia	2 017	2 003	1 670	83.4	1 661	82.9	14	0.7
All Airlines	5 435	5 366	4 629	86.3	4 574	85.2	69	1.3
Melbourne-Darwin								
Jetstar	71	71	54	76.1	56	78.9	0	0.0
Qantas	171	170	149	87.6	152	89.4	1	0.6
Virgin Australia	367	366	341	93.2	320	87.4	1	0.3
All Airlines	609	607	544	89.6	528	87.0	2	0.3
Melbourne-Gold Coast								
Jetstar	2 479	2 437	1 792	73.5	1 795	73.7	42	1.7
Tiger Airways	653	650	610	93.8	578	88.9	3	0.5
Virgin Australia	2 524	2 495	2 025	81.2	2 012	80.6	29	1.1
All Airlines	5 656	5 582	4 427	79.3	4 385	78.6	74	1.3
Melbourne-Hobart								
Jetstar	1 672	1 658	1 213	73.2	1 236	74.5	14	0.8
Qantas	750	746	577	77.3	567	76.0	4	0.5
Virgin Australia	1 595	1 585	1 325	83.6	1 299	82.0	10	0.6
All Airlines	4 017	3 989	3 115	78.1	3 102	77.8	28	0.7

	<i>Sectors</i>		<i>Departures On Time</i>		<i>Arrivals On Time</i>		<i>Cancellations</i>	
	<i>Sched.</i>	<i>Flown</i>	<i>No.</i>	<i>%</i>	<i>No.</i>	<i>%</i>	<i>No.</i>	<i>%</i>
Melbourne-Launceston								
Jetstar	1 200	1 188	885	74.5	900	75.8	12	1.0
QantasLink	949	936	728	77.8	621	66.3	13	1.4
Virgin Australia	1 577	1 569	1 284	81.8	1 300	82.9	8	0.5
All Airlines	3 726	3 693	2 897	78.4	2 821	76.4	33	0.9
Melbourne-Mildura								
QantasLink	1 040	1 033	789	76.4	725	70.2	7	0.7
Regional Express	1 036	1 036	967	93.3	949	91.6	0	0.0
Virgin Australia	366	364	314	86.3	313	86.0	2	0.5
All Airlines	2 442	2 433	2 070	85.1	1 987	81.7	9	0.4
Melbourne-Newcastle								
Jetstar	1 267	1 242	1 005	80.9	1 020	82.1	25	2.0
Virgin Australia	365	363	285	78.5	288	79.3	2	0.5
All Airlines	1 632	1 605	1 290	80.4	1 308	81.5	27	1.7
Melbourne-Perth								
Jetstar	891	871	646	74.2	652	74.9	20	2.2
Qantas	2 524	2 496	2 022	81.0	2 042	81.8	28	1.1
Tiger Airways	500	497	465	93.6	454	91.3	3	0.6
Virgin Australia	1 655	1 653	1 436	86.9	1 354	81.9	2	0.1
All Airlines	5 570	5 517	4 569	82.8	4 502	81.6	53	1.0
Melbourne-Sunshine Coast								
Jetstar	741	734	444	60.5	517	70.4	7	0.9
Virgin Australia	376	374	309	82.6	291	77.8	2	0.5
All Airlines	1 117	1 108	753	68.0	808	72.9	9	0.8
Melbourne-Sydney								
Jetstar	2 378	2 287	1 596	69.8	1 617	70.7	91	3.8
Qantas	10 466	10 052	8 499	84.6	8 080	80.4	414	4.0
Tiger Airways	1 925	1 914	1 757	91.8	1 789	93.5	11	0.6
Virgin Australia	9 527	9 305	7 851	84.4	7 321	78.7	222	2.3
All Airlines	24 296	23 558	19 703	83.6	18 807	79.8	738	3.0
Mildura-Melbourne								
QantasLink	1 040	1 034	891	86.2	805	77.9	6	0.6
Regional Express	1 035	1 035	959	92.7	946	91.4	0	0.0
Virgin Australia	366	364	320	87.9	326	89.6	2	0.5
All Airlines	2 441	2 433	2 170	89.2	2 077	85.4	8	0.3
Newcastle-Brisbane								
Jetstar	1 368	1 363	1 094	80.3	1 080	79.2	5	0.4
QantasLink	819	802	473	59.0	486	60.6	17	2.1
Virgin Australia	451	448	389	86.8	375	83.7	3	0.7
Virgin Australia - ATR/F100 Operations	269	269	200	74.3	176	65.4	0	0.0
All Airlines	2 907	2 882	2 156	74.8	2 117	73.5	25	0.9
Newcastle-Melbourne								
Jetstar	1 268	1 241	1 047	84.4	1 026	82.7	27	2.1
Virgin Australia	365	361	238	65.9	258	71.5	4	1.1
All Airlines	1 633	1 602	1 285	80.2	1 284	80.1	31	1.9
Newman-Perth								
Qantas	805	794	597	75.2	564	71.0	11	1.4
QantasLink	592	572	500	87.4	484	84.6	20	3.4
Virgin Australia	367	361	267	74.0	255	70.6	6	1.6
All Airlines	1 764	1 727	1 364	79.0	1 303	75.4	37	2.1

	<i>Sectors</i>		<i>Departures On Time</i>		<i>Arrivals On Time</i>		<i>Cancellations</i>	
	<i>Sched.</i>	<i>Flown</i>	<i>No.</i>	<i>%</i>	<i>No.</i>	<i>%</i>	<i>No.</i>	<i>%</i>
Perth-Adelaide								
Jetstar	383	377	249	66.0	279	74.0	6	1.6
Qantas	1 324	1 309	1 079	82.4	1 128	86.2	15	1.1
Virgin Australia	734	726	657	90.5	674	92.8	8	1.1
All Airlines	2 441	2 412	1 985	82.3	2 081	86.3	29	1.2
Perth-Brisbane								
Jetstar	329	327	132	40.4	199	60.9	2	0.6
Qantas	1 396	1 387	1 078	77.7	1 051	75.8	9	0.6
Virgin Australia	879	877	788	89.9	717	81.8	2	0.2
All Airlines	2 604	2 591	1 998	77.1	1 967	75.9	13	0.5
Perth-Broome								
Qantas	434	427	323	75.6	328	76.8	7	1.6
QantasLink	547	526	408	77.6	375	71.3	21	3.8
Skywest	215	215	153	71.2	156	72.6	0	0.0
Virgin Australia	585	565	459	81.2	457	80.9	20	3.4
All Airlines	1 781	1 733	1 343	77.5	1 316	75.9	48	2.7
Perth-Darwin								
Qantas	366	364	322	88.5	320	87.9	2	0.5
Virgin Australia	351	349	317	90.8	303	86.8	2	0.6
All Airlines	717	713	639	89.6	623	87.4	4	0.6
Perth-Geraldton								
			(From March 2012 only)					
QantasLink	209	208	112	53.8	134	64.4	1	0.5
Skywest	359	359	258	71.9	248	69.1	0	0.0
All Airlines	568	567	370	65.3	382	67.4	1	0.2
Perth-Kalgoorlie								
Qantas	851	844	713	84.5	703	83.3	7	0.8
QantasLink	209	205	171	83.4	166	81.0	4	1.9
Skywest	191	191	149	78.0	135	70.7	0	0.0
All Airlines	1 251	1 240	1 033	83.3	1 004	81.0	11	0.9
Perth-Karratha								
Qantas	2 338	2 280	1 997	87.6	1 981	86.9	58	2.5
QantasLink	641	600	517	86.2	496	82.7	41	6.4
Skywest	28	28	20	71.4	11	39.3	0	0.0
Virgin Australia	664	652	504	77.3	490	75.2	12	1.8
All Airlines	3 671	3 560	3 038	85.3	2 978	83.7	111	3.0
Perth-Melbourne								
Jetstar	889	869	587	67.5	606	69.7	20	2.2
Qantas	2 522	2 486	1 944	78.2	2 049	82.4	36	1.4
Tiger Airways	503	499	416	83.4	355	71.1	4	0.8
Virgin Australia	1 656	1 651	1 463	88.6	1 348	81.6	5	0.3
All Airlines	5 570	5 505	4 410	80.1	4 358	79.2	65	1.2
Perth-Newman								
Qantas	805	794	666	83.9	669	84.3	11	1.4
QantasLink	591	577	503	87.2	494	85.6	14	2.4
Virgin Australia	367	357	292	81.8	290	81.2	10	2.7
All Airlines	1 763	1 728	1 461	84.5	1 453	84.1	35	2.0
Perth-Port Hedland								
Qantas	1 097	1 064	914	85.9	898	84.4	33	3.0
QantasLink	439	418	380	90.9	371	88.8	21	4.8
Virgin Australia	800	787	693	88.1	679	86.3	13	1.6
All Airlines	2 336	2 269	1 987	87.6	1 948	85.9	67	2.9

	<i>Sectors</i>		<i>Departures On Time</i>		<i>Arrivals On Time</i>		<i>Cancellations</i>	
	<i>Sched.</i>	<i>Flown</i>	<i>No.</i>	<i>%</i>	<i>No.</i>	<i>%</i>	<i>No.</i>	<i>%</i>
Perth-Sydney								
Jetstar	512	471	346	73.5	370	78.6	41	8.0
Qantas	2 493	2 455	1 911	77.8	1 892	77.1	38	1.5
Virgin Australia	1 762	1 751	1 443	82.4	1 231	70.3	11	0.6
All Airlines	4 767	4 677	3 700	79.1	3 493	74.7	90	1.9
Port Hedland-Perth								
Qantas	1 097	1 062	830	78.2	813	76.6	35	3.2
QantasLink	438	415	376	90.6	375	90.4	23	5.3
Virgin Australia	806	788	646	82.0	621	78.8	18	2.2
All Airlines	2 341	2 265	1 852	81.8	1 809	79.9	76	3.2
Port Lincoln-Adelaide								
QantasLink	1 190	1 160	1 028	88.6	1 023	88.2	30	2.5
Regional Express	2 404	2 394	2 235	93.4	2 221	92.8	10	0.4
All Airlines	3 594	3 554	3 263	91.8	3 244	91.3	40	1.1
Port Macquarie-Sydney								
QantasLink	1 590	1 565	1 147	73.3	1 105	70.6	25	1.6
Virgin Australia	246	240	188	78.3	187	77.9	6	2.4
Virgin Australia - ATR/F100 Operations	478	471	370	78.6	313	66.5	7	1.5
All Airlines	2 314	2 276	1 705	74.9	1 605	70.5	38	1.6
Proserpine-Brisbane								
Jetstar	342	340	276	81.2	278	81.8	2	0.6
Virgin Australia	367	365	306	83.8	298	81.6	2	0.5
Virgin Australia - ATR/F100 Operations	98	97	79	81.4	63	64.9	1	1.0
All Airlines	807	802	661	82.4	639	79.7	5	0.6
Rockhampton-Brisbane								
QantasLink	2 155	2 144	1 512	70.5	1 476	68.8	11	0.5
Virgin Australia	1 517	1 508	1 305	86.5	1 258	83.4	9	0.6
Virgin Australia - ATR/F100 Operations	354	344	300	87.2	296	86.0	10	2.8
All Airlines	4 026	3 996	3 117	78.0	3 030	75.8	30	0.7
Sunshine Coast-Melbourne								
Jetstar	752	739	439	59.4	454	61.4	13	1.7
Virgin Australia	376	369	250	67.8	275	74.5	7	1.9
All Airlines	1 128	1 108	689	62.2	729	65.8	20	1.8
Sunshine Coast-Sydney								
Jetstar	1 190	1 162	900	77.5	908	78.1	28	2.4
Virgin Australia	456	441	367	83.2	356	80.7	15	3.3
All Airlines	1 646	1 603	1 267	79.0	1 264	78.9	43	2.6
Sydney-Adelaide								
Jetstar	984	977	804	82.3	825	84.4	7	0.7
Qantas	3 204	3 175	2 815	88.7	2 814	88.6	29	0.9
Virgin Australia	1 884	1 877	1 465	78.1	1 484	79.1	7	0.4
All Airlines	6 072	6 029	5 084	84.3	5 123	85.0	43	0.7
Sydney-Albury								
QantasLink	1 364	1 360	889	65.4	895	65.8	4	0.3
Regional Express	1 272	1 267	959	75.7	958	75.6	5	0.4
Virgin Australia	721	707	599	84.7	595	84.2	14	1.9
All Airlines	3 357	3 334	2 447	73.4	2 448	73.4	23	0.7
Sydney-Ayers Rock								
Qantas	367	365	319	87.4	319	87.4	2	0.5
Virgin Australia	366	365	277	75.9	254	69.6	1	0.3
All Airlines	733	730	596	81.6	573	78.5	3	0.4

	<i>Sectors</i>		<i>Departures On Time</i>		<i>Arrivals On Time</i>		<i>Cancellations</i>	
	<i>Sched.</i>	<i>Flown</i>	<i>No.</i>	<i>%</i>	<i>No.</i>	<i>%</i>	<i>No.</i>	<i>%</i>
Sydney-Ballina								
Jetstar	457	456	382	83.8	378	82.9	1	0.2
Regional Express	647	641	515	80.3	481	75.0	6	0.9
Virgin Australia	366	364	309	84.9	299	82.1	2	0.5
All Airlines	1 470	1 461	1 206	82.5	1 158	79.3	9	0.6
Sydney-Brisbane								
Jetstar	1 197	1 177	947	80.5	902	76.6	20	1.7
Qantas	6 670	6 545	5 421	82.8	5 116	78.2	125	1.9
Virgin Australia	6 805	6 713	5 375	80.1	5 185	77.2	92	1.4
All Airlines	14 672	14 435	11 743	81.4	11 203	77.6	237	1.6
Sydney-Cairns								
Jetstar	734	719	603	83.9	628	87.3	15	2.0
Qantas	1 159	1 154	953	82.6	1 008	87.3	5	0.4
Virgin Australia	1 088	1 085	768	70.8	777	71.6	3	0.3
All Airlines	2 981	2 958	2 324	78.6	2 413	81.6	23	0.8
Sydney-Canberra								
Qantas	1 844	1 814	1 615	89.0	1 562	86.1	30	1.6
QantasLink	4 686	4 391	3 220	73.3	3 116	71.0	295	6.3
Virgin Australia	1 620	1 585	1 244	78.5	1 220	77.0	35	2.2
Virgin Australia - ATR/F100 Operations	1 274	1 248	896	71.8	843	67.5	26	2.0
All Airlines	9 424	9 038	6 975	77.2	6 741	74.6	386	4.1
Sydney-Coffs Harbour								
QantasLink	1 729	1 714	1 244	72.6	1 200	70.0	15	0.9
Virgin Australia	723	703	540	76.8	548	78.0	20	2.8
All Airlines	2 452	2 417	1 784	73.8	1 748	72.3	35	1.4
Sydney-Dubbo								
QantasLink	1 270	1 268	950	74.9	954	75.2	2	0.2
Regional Express	1 979	1 961	1 584	80.8	1 621	82.7	18	0.9
All Airlines	3 249	3 229	2 534	78.5	2 575	79.7	20	0.6
Sydney-Gold Coast								
Jetstar	3 517	3 458	2 764	79.9	2 773	80.2	59	1.7
Virgin Australia	4 207	4 121	3 151	76.5	3 102	75.3	86	2.0
All Airlines	7 724	7 579	5 915	78.0	5 875	77.5	145	1.9
Sydney-Hamilton Island								
Jetstar	361	361	283	78.4	295	81.7	0	0.0
Virgin Australia	368	368	281	76.4	246	66.8	0	0.0
All Airlines	729	729	564	77.4	541	74.2	0	0.0
Sydney-Hobart								
Jetstar	730	726	611	84.2	619	85.3	4	0.5
Qantas	368	367	342	93.2	352	95.9	1	0.3
Virgin Australia	732	728	491	67.4	542	74.5	4	0.5
All Airlines	1 830	1 821	1 444	79.3	1 513	83.1	9	0.5
Sydney-Launceston								
Jetstar	446	441	350	79.4	357	81.0	5	1.1
Virgin Australia	365	365	274	75.1	259	71.0	0	0.0
All Airlines	811	806	624	77.4	616	76.4	5	0.6
Sydney-Melbourne								
Jetstar	2 363	2 282	1 697	74.4	1 710	74.9	81	3.4
Qantas	10 460	10 043	8 614	85.8	8 440	84.0	417	4.0
Tiger Airways	1 926	1 913	1 715	89.6	1 715	89.6	13	0.7
Virgin Australia	9 521	9 313	7 569	81.3	7 449	80.0	208	2.2
All Airlines	24 270	23 551	19 595	83.2	19 314	82.0	719	3.0

	<i>Sectors</i>		<i>Departures On Time</i>		<i>Arrivals On Time</i>		<i>Cancellations</i>	
	<i>Sched.</i>	<i>Flown</i>	<i>No.</i>	<i>%</i>	<i>No.</i>	<i>%</i>	<i>No.</i>	<i>%</i>
Sydney-Perth								
Jetstar	508	471	388	82.4	384	81.5	37	7.3
Qantas	2 493	2 468	1 912	77.5	1 924	78.0	25	1.0
Virgin Australia	1 762	1 753	1 382	78.8	1 331	75.9	9	0.5
All Airlines	4 763	4 692	3 682	78.5	3 639	77.6	71	1.5
Sydney-Port Macquarie								
QantasLink	1 590	1 566	1 163	74.3	1 161	74.1	24	1.5
Virgin Australia	246	244	179	73.4	176	72.1	2	0.8
Virgin Australia - ATR/F100 Operations	478	474	356	75.1	310	65.4	4	0.8
All Airlines	2 314	2 284	1 698	74.3	1 647	72.1	30	1.3
Sydney-Sunshine Coast								
Jetstar	1 174	1 156	917	79.3	942	81.5	18	1.5
Virgin Australia	456	447	366	81.9	363	81.2	9	2.0
All Airlines	1 630	1 603	1 283	80.0	1 305	81.4	27	1.7
Sydney-Townsville								
Jetstar	282	282	234	83.0	233	82.6	0	0.0
Virgin Australia	366	365	268	73.4	268	73.4	1	0.3
All Airlines	648	647	502	77.6	501	77.4	1	0.2
Sydney-Wagga Wagga								
QantasLink	1 316	1 313	980	74.6	861	65.6	3	0.2
Regional Express	1 450	1 446	1 191	82.4	1 172	81.1	4	0.3
All Airlines	2 766	2 759	2 171	78.7	2 033	73.7	7	0.3
Townsville-Brisbane								
Jetstar	364	356	251	70.5	255	71.6	8	2.2
Qantas	1 713	1 702	1 500	88.1	1 489	87.5	11	0.6
Virgin Australia	1 991	1 976	1 776	89.9	1 677	84.9	15	0.8
All Airlines	4 068	4 034	3 527	87.4	3 421	84.8	34	0.8
Townsville-Cairns								
QantasLink	2 146	2 103	1 530	72.8	1 377	65.5	43	2.0
Virgin Australia	340	331	278	84.0	280	84.6	9	2.6
All Airlines	2 486	2 434	1 808	74.3	1 657	68.1	52	2.1
Townsville-Sydney								
Jetstar	284	284	216	76.1	213	75.0	0	0.0
Virgin Australia	366	364	240	65.9	239	65.7	2	0.5
All Airlines	650	648	456	70.4	452	69.8	2	0.3
Wagga Wagga-Sydney								
QantasLink	1 317	1 313	978	74.5	889	67.7	4	0.3
Regional Express	1 448	1 444	1 231	85.2	1 148	79.5	4	0.3
All Airlines	2 765	2 757	2 209	80.1	2 037	73.9	8	0.3

Airports

On time performance is reported for all routes where the passenger load averages over 8000 passengers per month, and where two or more airlines operate in competition. The following data reports by airport against flights operated on those routes only.

Airport	Departures			Arrivals		
	Sectors	On Time		Sectors	On Time	
	Flown	No.	%	Flown	No.	%
Adelaide						
Jetstar	2 981	2 388	80.1	2 977	2 498	83.9
Qantas	9 785	8 658	88.5	9 802	8 700	88.8
QantasLink	1 366	1 211	88.7	1 362	1 166	85.6
Regional Express	2 396	2 256	94.2	2 394	2 221	92.8
Virgin Australia	7 725	6 889	89.2	7 735	6 695	86.6
All Airlines	24 253	21 402	88.2	24 270	21 280	87.7
Relates to services to and from Brisbane, Canberra, Gold Coast, Melbourne, Perth, Port Lincoln and Sydney.						
Albury						
QantasLink	1 361	907	66.6	1 360	895	65.8
Regional Express	1 272	997	78.4	1 267	958	75.6
Virgin Australia	701	586	83.6	707	595	84.2
All Airlines	3 334	2 490	74.7	3 334	2 448	73.4
Relates to services to and from Sydney only.						
Ayers Rock						
Qantas	364	318	87.4	365	319	87.4
Virgin Australia	364	281	77.2	365	254	69.6
All Airlines	728	599	82.3	730	573	78.5
Relates to services to and from Sydney only.						
Ballina						
Jetstar	458	325	71.0	456	378	82.9
Regional Express	627	408	65.1	641	481	75.0
Virgin Australia	361	266	73.7	364	299	82.1
All Airlines	1 446	999	69.1	1 461	1 158	79.3
Relates to services to and from Sydney only.						
Brisbane						
Jetstar	7 689	5 936	77.2	7 615	5 858	76.9
Qantas	18 942	15 556	82.1	18 960	15 334	80.9
QantasLink	6 226	4 706	75.6	6 086	4 194	68.9
Tiger Airways	900	736	81.8	903	774	85.7
Virgin Australia	23 035	19 535	84.8	23 010	18 795	81.7
Virgin Australia - ATR/F100 Operations	1 504	1 338	89.0	1 495	1 214	81.2
All Airlines	58 296	47 807	82.0	58 069	46 169	79.5
Relates to services to and from Adelaide, Cairns, Canberra, Darwin, Emerald, Gladstone, Hamilton Island, Mackay, Melbourne, Newcastle, Perth, Proserpine, Rockhampton, Sydney and Townsville.						

Airport	Departures			Arrivals		
	Sectors	On Time		Sectors	On Time	
	Flown	No.	%	Flown	No.	%
Broome						
Qantas	427	277	64.9	427	328	76.8
QantasLink	520	398	76.5	526	375	71.3
Skywest	224	145	64.7	215	156	72.6
Virgin Australia	563	425	75.5	565	457	80.9
All Airlines	1 734	1 245	71.8	1 733	1 316	75.9
Relates to services to and from Perth only.						
Cairns						
Jetstar	2 631	2 181	82.9	2 625	2 216	84.4
Qantas	2 879	2 476	86.0	2 884	2 484	86.1
QantasLink	2 111	1 741	82.5	2 103	1 377	65.5
Tiger Airways	67	54	80.6	67	57	85.1
Virgin Australia	3 582	3 134	87.5	3 586	2 924	81.5
Virgin Australia - ATR/F100 Operations	117	77	65.8	118	86	72.9
All Airlines	11 387	9 663	84.9	11 383	9 144	80.3
Relates to services to and from Brisbane, Melbourne, Sydney and Townsville.						
Canberra						
Qantas	6 922	6 198	89.5	6 932	6 127	88.4
QantasLink	5 037	3 888	77.2	5 065	3 648	72.0
Virgin Australia	5 328	4 590	86.1	5 348	4 411	82.5
Virgin Australia - ATR/F100 Operations	1 245	902	72.4	1 248	843	67.5
All Airlines	18 532	15 578	84.1	18 593	15 029	80.8
Relates to services to and from Adelaide, Brisbane, Melbourne and Sydney.						
Coffs Harbour						
QantasLink	1 717	1 135	66.1	1 714	1 200	70.0
Virgin Australia	698	552	79.1	703	548	78.0
All Airlines	2 415	1 687	69.9	2 417	1 748	72.3
Relates to services to and from Sydney only.						
Darwin						
Jetstar	74	49	66.2	77	62	80.5
Qantas	894	661	73.9	898	746	83.1
Virgin Australia	1 082	955	88.3	1 082	879	81.2
All Airlines	2 050	1 665	81.2	2 057	1 687	82.0
Relates to services to and from Brisbane, Melbourne and Perth.						
Dubbo						
QantasLink	1 270	939	73.9	1 268	954	75.2
Regional Express	1 952	1 545	79.1	1 961	1 621	82.7
All Airlines	3 222	2 484	77.1	3 229	2 575	79.7
Relates to services to and from Sydney only.						
Emerald						
	(From April 2012 only)					
QantasLink	524	416	79.4	525	427	81.3
Virgin Australia - ATR/F100 Operations	208	195	93.8	208	192	92.3
All Airlines	732	611	83.5	733	619	84.4
Relates to services to and from Brisbane only.						

Airport	Departures			Arrivals		
	Sectors	On Time		Sectors	On Time	
	Flown	No.	%	Flown	No.	%
Geraldton	(From March 2012 only)					
QantasLink	207	129	62.3	208	134	64.4
Skywest	366	261	71.3	359	248	69.1
All Airlines	573	390	68.1	567	382	67.4
Relates to services to and from Perth only.						
Gladstone	(From January 2012 only)					
QantasLink	1 241	859	69.2	1 114	818	73.4
Virgin Australia - ATR/F100 Operations	460	409	88.9	465	407	87.5
All Airlines	1 701	1 268	74.5	1 579	1 225	77.6
Relates to services to and from Brisbane only.						
Gold Coast						
Jetstar	6 268	4 784	76.3	6 251	4 891	78.2
Tiger Airways	649	546	84.1	650	578	88.9
Virgin Australia	6 938	5 363	77.3	6 976	5 457	78.2
All Airlines	13 855	10 693	77.2	13 877	10 926	78.7
Relates to services to and from Adelaide, Melbourne and Sydney.						
Hamilton Island						
Jetstar	653	482	73.8	653	532	81.5
Virgin Australia	731	574	78.5	736	564	76.6
All Airlines	1 384	1 056	76.3	1 389	1 096	78.9
Relates to services to and from Brisbane and Sydney.						
Hobart						
Jetstar	2 377	1 650	69.4	2 384	1 855	77.8
Qantas	1 111	971	87.4	1 113	919	82.6
Virgin Australia	2 308	1 725	74.7	2 313	1 841	79.6
All Airlines	5 796	4 346	75.0	5 810	4 615	79.4
Relates to services to and from Melbourne and Sydney.						
Kalgoorlie						
Qantas	844	659	78.1	844	703	83.3
QantasLink	202	157	77.7	205	166	81.0
Skywest	190	142	74.7	191	135	70.7
All Airlines	1 236	958	77.5	1 240	1 004	81.0
Relates to services to and from Perth only.						
Karratha						
Qantas	2 278	1 931	84.8	2 280	1 981	86.9
QantasLink	596	508	85.2	600	496	82.7
Skywest	24	8	33.3	28	11	39.3
Virgin Australia	652	485	74.4	652	490	75.2
All Airlines	3 550	2 932	82.6	3 560	2 978	83.7
Relates to services to and from Perth only.						
Launceston						
Jetstar	1 628	1 154	70.9	1 629	1 257	77.2
QantasLink	934	650	69.6	936	621	66.3
Virgin Australia	1 932	1 560	80.7	1 934	1 559	80.6
All Airlines	4 494	3 364	74.9	4 499	3 437	76.4
Relates to services to and from Melbourne and Sydney.						

Airport	Departures			Arrivals		
	Sectors	On Time		Sectors	On Time	
	Flown	No.	%	Flown	No.	%
Mackay						
Jetstar	1 214	901	74.2	1 303	1 076	82.6
QantasLink	1 141	864	75.7	1 140	873	76.6
Virgin Australia	1 869	1 617	86.5	1 873	1 535	82.0
All Airlines	4 224	3 382	80.1	4 316	3 484	80.7
Relates to services to and from Brisbane only.						
Melbourne						
Jetstar	13 261	9 789	73.8	13 252	9 855	74.4
Qantas	24 905	21 291	85.5	24 869	21 080	84.8
QantasLink	2 609	2 047	78.5	2 609	1 979	75.9
Regional Express	1 036	967	93.3	1 035	946	91.4
Tiger Airways	4 031	3 744	92.9	4 028	3 427	85.1
Virgin Australia	28 084	23 750	84.6	28 046	23 323	83.2
All Airlines	73 926	61 588	83.3	73 839	60 610	82.1
Relates to services to and from Adelaide, Brisbane, Cairns, Canberra, Darwin, Gold Coast, Hobart, Launceston, Mildura, Newcastle, Perth, Sunshine Coast and Sydney.						
Mildura						
QantasLink	1 034	891	86.2	1 033	725	70.2
Regional Express	1 035	959	92.7	1 036	949	91.6
Virgin Australia	364	320	87.9	364	313	86.0
All Airlines	2 433	2 170	89.2	2 433	1 987	81.7
Relates to services to and from Melbourne only.						
Newcastle						
Jetstar	2 604	2 141	82.2	2 615	2 162	82.7
QantasLink	802	473	59.0	804	415	51.6
Virgin Australia	809	627	77.5	812	677	83.4
Virgin Australia - ATR/F100 Operations	269	200	74.3	269	213	79.2
All Airlines	4 484	3 441	76.7	4 500	3 467	77.0
Relates to services to and from Brisbane and Melbourne.						
Newman						
Qantas	794	597	75.2	794	669	84.3
QantasLink	572	500	87.4	577	494	85.6
Virgin Australia	361	267	74.0	357	290	81.2
All Airlines	1 727	1 364	79.0	1 728	1 453	84.1
Relates to services to and from Perth only.						
Perth						
Jetstar	2 044	1 314	64.3	2 048	1 588	77.5
Qantas	13 410	10 947	81.6	13 430	10 679	79.5
QantasLink	2 534	2 091	82.5	2 512	2 000	79.6
Skywest	793	580	73.1	804	500	62.2
Tiger Airways	499	416	83.4	497	454	91.3
Virgin Australia	7 715	6 616	85.8	7 724	6 063	78.5
All Airlines	26 995	21 964	81.4	27 015	21 284	78.8
Relates to services to and from Adelaide, Brisbane, Broome, Darwin, Geraldton, Kalgoorlie, Karratha, Melbourne, Newman, Port Hedland and Sydney.						

Airport	Departures			Arrivals		
	Sectors	On Time		Sectors	On Time	
	Flown	No.	%	Flown	No.	%
Port Hedland						
Qantas	1 062	830	78.2	1 064	898	84.4
QantasLink	415	376	90.6	418	371	88.8
Virgin Australia	788	646	82.0	787	679	86.3
All Airlines	2 265	1 852	81.8	2 269	1 948	85.9
Relates to services to and from Perth only.						
Port Lincoln						
QantasLink	1 160	1 028	88.6	1 163	1 013	87.1
Regional Express	2 394	2 235	93.4	2 396	2 208	92.2
All Airlines	3 554	3 263	91.8	3 559	3 221	90.5
Relates to services to and from Adelaide only.						
Port Macquarie						
QantasLink	1 565	1 147	73.3	1 566	1 161	74.1
Virgin Australia	240	188	78.3	244	176	72.1
Virgin Australia - ATR/F100 Operations	471	370	78.6	474	310	65.4
All Airlines	2 276	1 705	74.9	2 284	1 647	72.1
Relates to services to and from Sydney only.						
Proserpine						
Jetstar	340	276	81.2	335	287	85.7
Virgin Australia	365	306	83.8	365	321	87.9
Virgin Australia - ATR/F100 Operations	97	79	81.4	97	79	81.4
All Airlines	802	661	82.4	797	687	86.2
Relates to services to and from Brisbane only.						
Rockhampton						
QantasLink	2 144	1 512	70.5	2 407	1 819	75.6
Virgin Australia	1 508	1 305	86.5	1 508	1 315	87.2
Virgin Australia - ATR/F100 Operations	344	300	87.2	347	298	85.9
All Airlines	3 996	3 117	78.0	4 262	3 432	80.5
Relates to services to and from Brisbane only.						
Sunshine Coast						
Jetstar	1 901	1 339	70.4	1 890	1 459	77.2
Virgin Australia	810	617	76.2	821	654	79.7
All Airlines	2 711	1 956	72.2	2 711	2 113	77.9
Relates to services to and from Melbourne and Sydney.						
Sydney						
Jetstar	12 506	9 980	79.8	12 518	9 273	74.1
Qantas	25 931	21 991	84.8	25 885	21 175	81.8
QantasLink	11 612	8 446	72.7	11 591	8 017	69.2
Regional Express	5 315	4 249	79.9	5 295	3 963	74.8
Tiger Airways	1 913	1 715	89.6	1 914	1 789	93.5
Virgin Australia	31 103	24 538	78.9	31 031	24 040	77.5
Virgin Australia - ATR/F100 Operations	1 722	1 252	72.7	1 716	1 067	62.2
All Airlines	90 102	72 171	80.1	89 950	69 324	77.1
Relates to services to and from Adelaide, Albury, Ayers Rock, Ballina, Brisbane, Cairns, Canberra, Coffs Harbour, Dubbo, Gold Coast, Hamilton Island, Hobart, Launceston, Melbourne, Perth, Port Macquarie, Sunshine Coast, Townsville and Wagga Wagga.						

<i>Airport</i>	<i>Departures</i>			<i>Arrivals</i>		
	<i>Sectors</i>	<i>On Time</i>		<i>Sectors</i>	<i>On Time</i>	
	<i>Flown</i>	<i>No.</i>	<i>%</i>	<i>Flown</i>	<i>No.</i>	<i>%</i>
Townsville						
Jetstar	640	467	73.0	641	510	79.6
Qantas	1 702	1 500	88.1	1 703	1 446	84.9
QantasLink	2 103	1 530	72.8	2 111	1 618	76.6
Virgin Australia	2 671	2 294	85.9	2 679	2 303	86.0
All Airlines	7 116	5 791	81.4	7 134	5 877	82.4
Relates to services to and from Brisbane, Cairns and Sydney.						
Wagga Wagga						
QantasLink	1 313	978	74.5	1 313	861	65.6
Regional Express	1 444	1 231	85.2	1 446	1 172	81.1
All Airlines	2 757	2 209	80.1	2 759	2 033	73.7
Relates to services to and from Sydney only.						

Definitions

On time departure A flight departure is counted as "on time" if it departs the gate within 15 minutes of the scheduled departure time shown in the carriers' schedule.

On time arrival A flight arrival is counted as "on time" if it arrived at the gate within 15 minutes of the scheduled arrival time shown in the carriers' schedule.
Neither diverted nor cancelled flights count as on time.

Cancellation A flight removed from service within 7 days of scheduled departure is regarded as a cancellation.

On time departure percentage The percentage of on time departures is measured against the number of departures *operated* on any particular sector.

On time arrival percentage The percentage of on time arrivals is measured against the number of arrivals *operated* on any particular sector.

Cancellation percentage The percentage of cancellations is measured against the number of services *scheduled* on any particular sector.
