



Australian Government

Department of Infrastructure, Transport,
Regional Development and Local Government
Bureau of Infrastructure, Transport and Regional Economics



bitre

AVIATION STATISTICS

Airline On Time Performance

2009—OTP 83

© Commonwealth of Australia 2010

ISSN 1832–0759

This work is copyright and the data contained in this publication should not be reproduced or used in any form without acknowledgement.

Enquiries

Bureau of Infrastructure, Transport and Regional Economics
GPO Box 501
Canberra ACT 2601

Telephone: 02 6274 7790

Facsimile: 02 6274 7727

Website: www.bitre.gov.au

Email: avstats@infrastructure.gov.au

This publication, including a spreadsheet of the time–series data, can be downloaded from the BITRE website:

<http://www.bitre.gov.au/info.aspx?ResourceId=214&NodeId=104>.

Disclaimers

BITRE seeks to publish its work to the highest professional standards. However, it cannot accept responsibility for any consequences arising from the use of information herein. Readers should rely on their own skill and judgment in applying any information or analysis to particular issues or circumstances.

Foreword

The Bureau of Infrastructure, Transport and Regional Economics (BITRE) monitors the punctuality and reliability of major domestic airlines operating between Australian airports. The purpose of this is to allow for evaluation of overall industry and individual airline performance, so that consumers of air travel can make informed decisions.

The following domestic airlines reported this data monthly to the BITRE during 2009: Jetstar, Qantas, QantasLink, Regional Express, Skywest Airlines, Tiger Airways, and Virgin Blue. Data has been gathered since November 2003, although some airlines commenced reporting since then, including Jetstar which first reported in May 2004, MacAir in July 2005 and Tiger Airways in April 2008. MacAir ceased operations in February 2009 and data was not received for December 2008 or January 2009.

Information presented in this report is for Australian domestic routes for which the passenger load averaged 8000 or more passengers per month over the previous six months, *and* where two or more airlines operated in competition on those routes. 48 routes met these criteria for all twelve months in 2009, plus another 7 routes did so for a shorter period of the year. Over time, routes which meet these criteria change as airline networks and traffic levels vary.

Participating airlines report their overall monthly network performance where this is possible. An exception was MacAir, which supplied total network data because it did not operate on competitive routes.

Total industry figures encompass all services operated by reporting airlines only. These airlines collectively carried over 95 per cent of total domestic passengers (regular public transport only) in 2009.

The method of capturing on time performance varies between airlines utilising different recording systems. Jetstar and Qantas jet aircraft use Aircraft Communication Addressing and Reporting System (ACARS) to electronically measure on time performance. MacAir, Regional Express, Skywest, Tiger Airways, Virgin Blue and the Qantas non-jet fleet record on time performance manually using records from pilots, gate agents and/or ground crews.

After initial data is collected, aggregate reports are audited internally by participating airlines prior to publication.

Reports and detailed time series data in Microsoft Excel spreadsheet format are available from the BITRE website at:

<http://www.bitre.gov.au/info.aspx?ResourceId=214&NodeId=104>.

Contents

	Page
Industry performance	1
Individual routes	9
Airports	21
Definitions.....	28

Industry performance

For the year ended December 2009, on time performance over all routes operated by participating airlines (Jetstar, Qantas, QantasLink, Regional Express, Skywest Airlines, Tiger Airways and Virgin Blue) averaged 85.0 per cent for on time departures, and 84.0 per cent for on time arrivals. Cancellations for 2009 represented 1.2 per cent of all scheduled flights. The equivalent figures for the year ended December 2008 were 79.1 per cent for departures, 77.1 per cent for arrivals and 2.1 per cent for cancellations.

The long term average performance for all routes since reporting commenced in November 2003 is 84.9 per cent for on time departures and 83.7 per cent for on time arrivals. Cancellations averaged 1.2 per cent of all scheduled flights.

As shown in Figure 1, there was a noticeable decrease in airline on time performance from June 2007 to December 2008. Whereas on time arrivals and on time departures tracked around 87 per cent before June 2007, they were below 80 per cent for June 2007 to December 2008. For 2009, they have risen back up to more than 84 per cent. Similarly, the percentage of cancelled flights rose from 0.9 per cent before June 2007 to 1.8 per cent for June 2007 to December 2008 before dropping back down to 1.2 per cent for 2009 (Figure 2 refers).

Of the major domestic airlines, Qantas achieved the highest level of on time departures for 2009 at 87.2 per cent, followed by Virgin Blue at 85.6 per cent, Jetstar at 78.3 per cent and Tiger Airways at 76.5 per cent. The regional airlines were led by QantasLink at 87.3 per cent, Regional Express at 84.2 per cent and Skywest at 82.6 per cent.

Qantas also achieved the highest on time arrivals among the major domestic airlines at 87.3 per cent, followed by Virgin Blue at 85.4 per cent, Jetstar at 80.4 per cent and Tiger Airways at 77.0 per cent. QantasLink was the best performing regional airline for on time arrivals at 84.4 per cent, followed by Skywest at 82.0 per cent, and Regional Express at 79.4 per cent.

Virgin Blue had the highest percentage of cancellations for 2009 at 1.6 per cent, while Regional Express had the lowest at 0.2 per cent.

Of the 48 routes which met the criteria for on time performance reporting for all twelve months in 2009, the Perth-Newman route had the highest percentage of on time departures (93.4 per cent) and on time arrivals (92.6 per cent). The Ballina-Sydney route had the lowest percentage of on time departures (72.8 per cent) and on time arrivals (67.7 per cent).

Cancellations were highest on the Sydney-Melbourne route at 3.8 per cent, followed by Melbourne-Sydney also at 3.8 per cent, Kalgoorlie-Perth 3.3 per cent, Canberra-Sydney also at 3.3 per cent and Perth-Kalgoorlie at 3.1 per cent.

Of the airports with on time performance reporting for all twelve months in 2009, Townsville Airport recorded the highest percentage of on time departures (90.2 per cent), while Ballina recorded the lowest (72.8 per cent). Newman Airport recorded the highest percentage of on time arrivals (92.6 per cent), while Wagga Wagga Airport recorded the lowest (74.9 per cent).

Table 1 On time performance for the year ended December 2009 — Total Industry

	<i>Sectors</i>		<i>Departures On Time</i>		<i>Arrivals On Time</i>		<i>Cancellations</i>	
	<i>Scheduled</i>	<i>Flown</i>	<i>No.</i>	<i>%</i>	<i>No.</i>	<i>%</i>	<i>No.</i>	<i>%</i>
Jetstar	57 918	57 288	44 873	78.3	46 066	80.4	630	1.1
Qantas	119 758	118 052	102 961	87.2	103 057	87.3	1 706	1.4
QantasLink	90 426	89 613	78 256	87.3	75 614	84.4	813	0.9
Regional Express	62 315	62 164	52 347	84.2	49 389	79.4	151	0.2
Skywest	12 343	12 205	10 076	82.6	10 009	82.0	138	1.1
Tiger Airways	13 135	12 979	9 924	76.5	9 992	77.0	156	1.2
Virgin Blue	136 268	134 142	114 854	85.6	114 527	85.4	2 126	1.6
All Airlines	492 163	486 443	413 291	85.0	408 654	84.0	5 720	1.2

1. Total airline network data (including routes not shown in this report).

Table 2 Top ten routes for on time performance for the year ended December 2009 (covers participating airlines only and routes reported for all twelve months)

<i>Departures</i>		<i>Arrivals</i>	
<i>Route</i>	<i>On Time (%)</i>	<i>Route</i>	<i>On Time (%)</i>
Perth-Newman	93.4	Perth-Newman	92.6
Canberra-Brisbane	92.0	Cairns-Brisbane	92.1
Cairns-Brisbane	91.0	Canberra-Brisbane	91.2
Perth-Karratha	90.3	Cairns-Sydney	91.2
Brisbane-Canberra	90.1	Townsville-Brisbane	90.9
Adelaide-Perth	90.1	Brisbane-Cairns	90.8
Townsville-Brisbane	90.0	Townsville-Sydney	90.6
Canberra-Melbourne	89.9	Brisbane-Canberra	90.4
Canberra-Adelaide	89.8	Brisbane-Townsville	89.7
Canberra-Sydney	89.8	Melbourne-Brisbane	89.5

Table 3 Top ten airports for on time performance for the year ended December 2009 (covers participating airlines only and routes reported for all twelve months)

<i>Departures</i>		<i>Arrivals</i>	
<i>Airport</i>	<i>On Time (%)</i>	<i>Airport</i>	<i>On Time (%)</i>
Townsville	90.2	Newman	92.6
Canberra	90.2	Townsville	89.7
Newman	89.6	Karratha	89.5
Cairns	88.7	Cairns	88.8
Karratha	88.5	Hamilton Island	88.3
Rockhampton	87.4	Kalgoorlie	87.9
Kalgoorlie	86.9	Rockhampton	87.7
Mildura	86.8	Brisbane	87.6
Adelaide	86.5	Proserpine	87.2
Brisbane	86.3	Canberra	87.2

Total industry on time performance

Figure 1 On time performance (by month from December 2004)—Total Industry

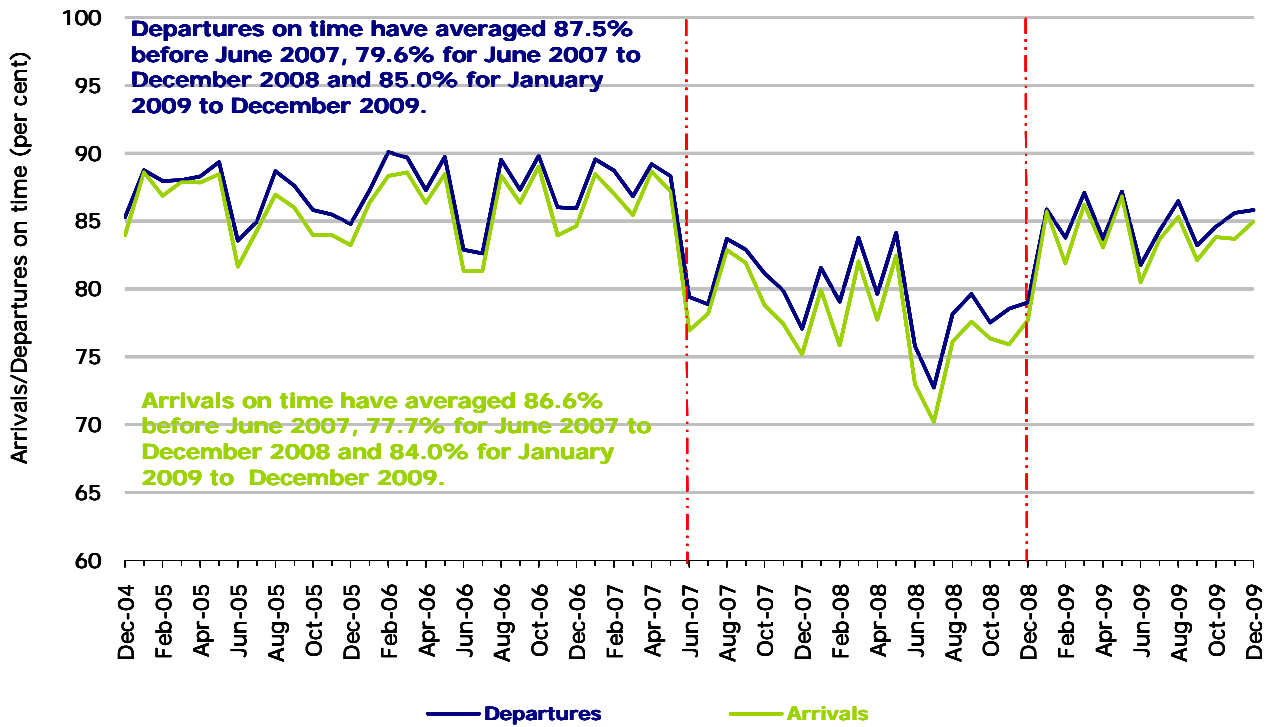
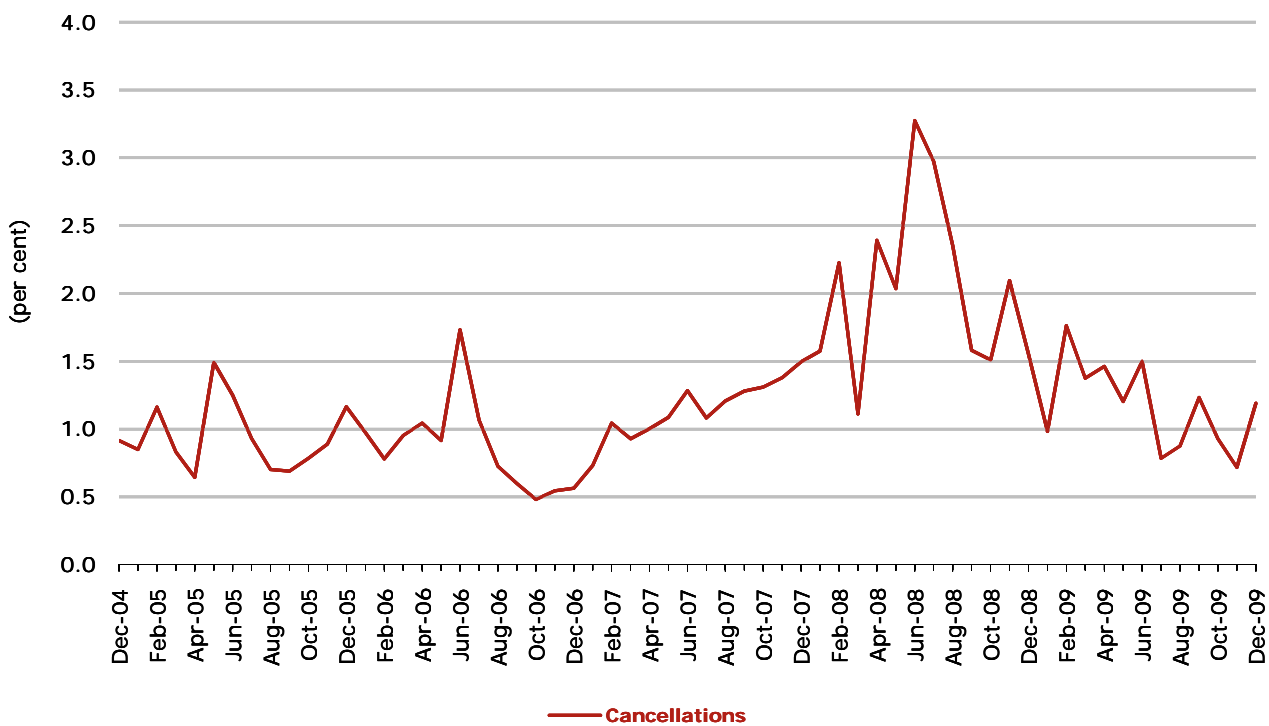
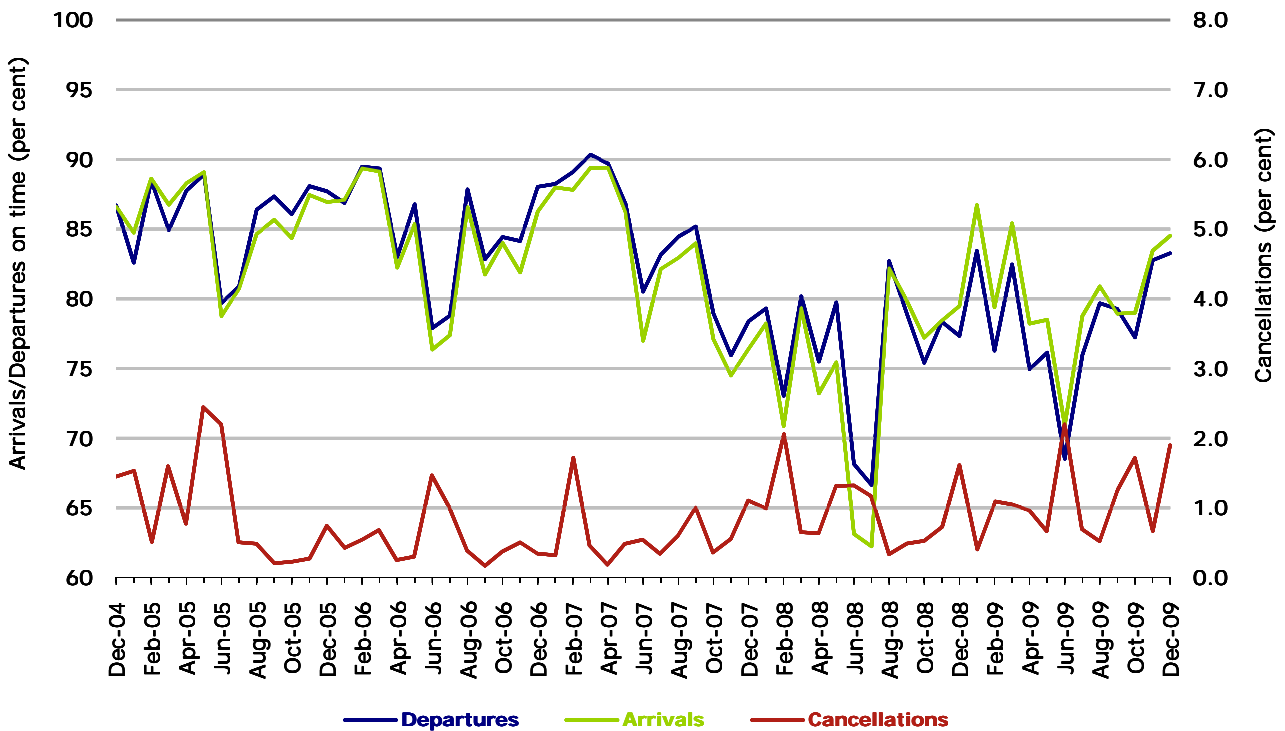


Figure 2 Cancellations (by month from December 2004)—Total Industry



Major domestic airlines on time performance

Figure 3 On time performance (by month from December 2004)—Jetstar



Jetstar commenced reporting in May 2004.

Figure 4 On time performance (by month from December 2004)—Qantas

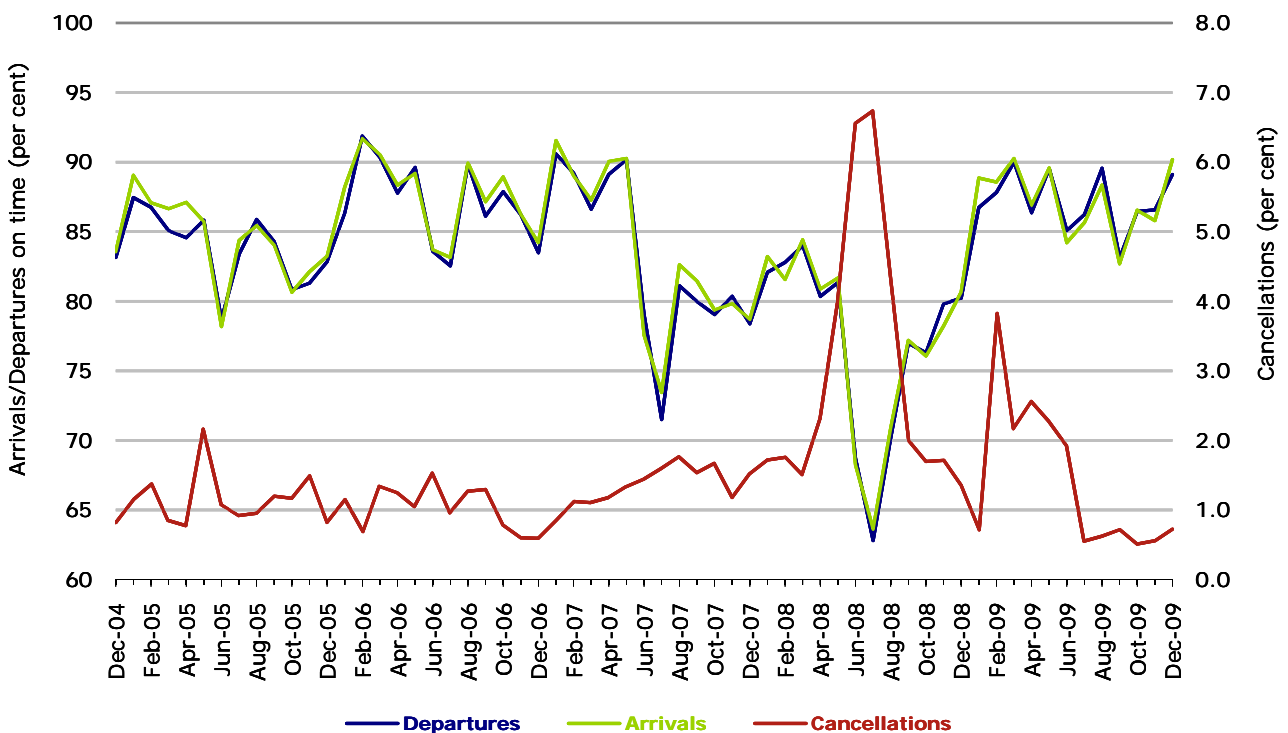
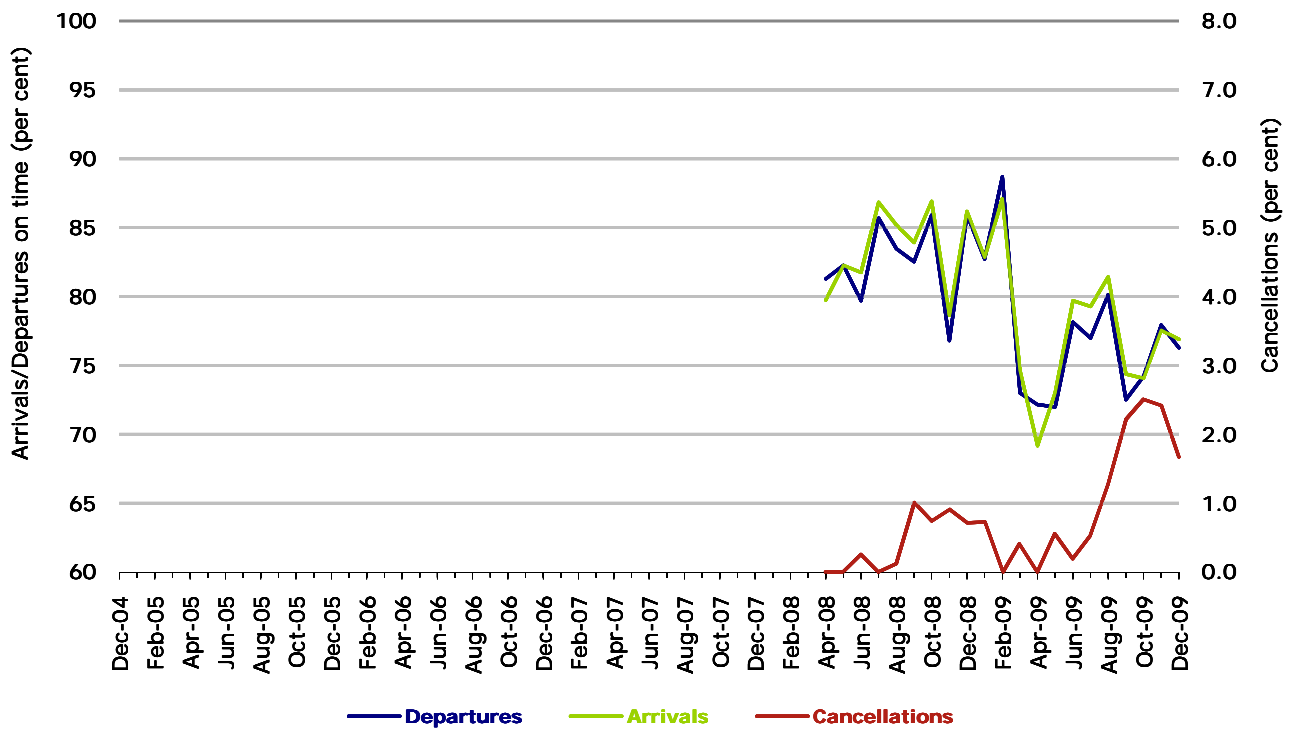
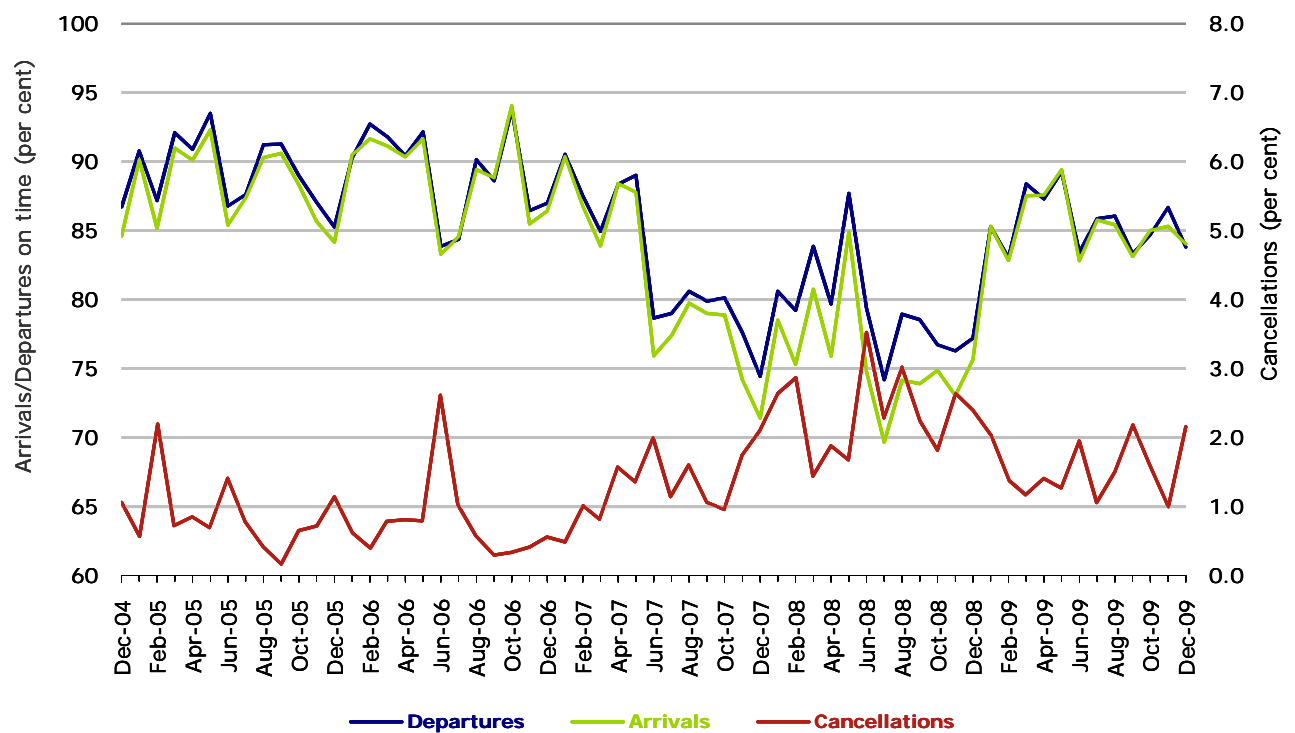


Figure 5 On time performance (by month from December 2004)—Tiger Airways



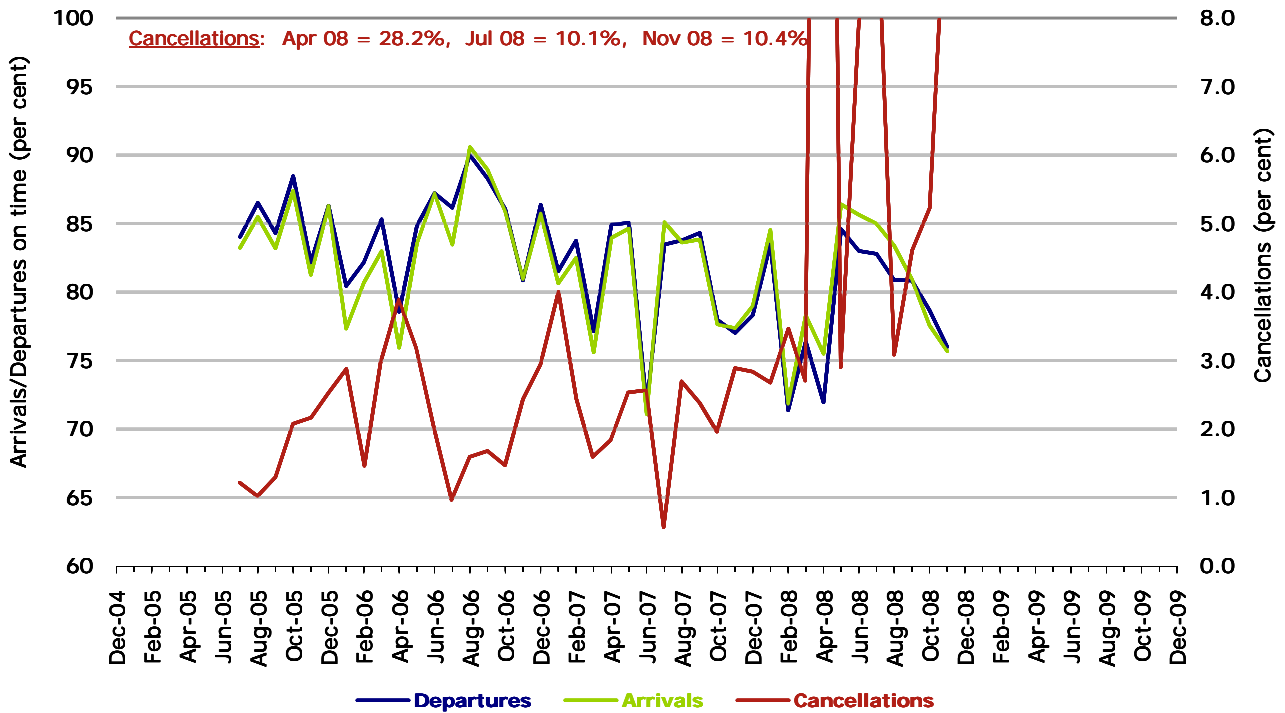
Tiger Airways commenced reporting in April 2008.

Figure 6 On time performance (by month from December 2004)—Virgin Blue



Major regional airlines on time performance

Figure 7 On time performance (by month from December 2004)—MacAir



MacAir commenced reporting in July 2005. No data received after November 2008. Operations ceased in February 2009.

Figure 8 On time performance (by month from December 2004)—QantasLink

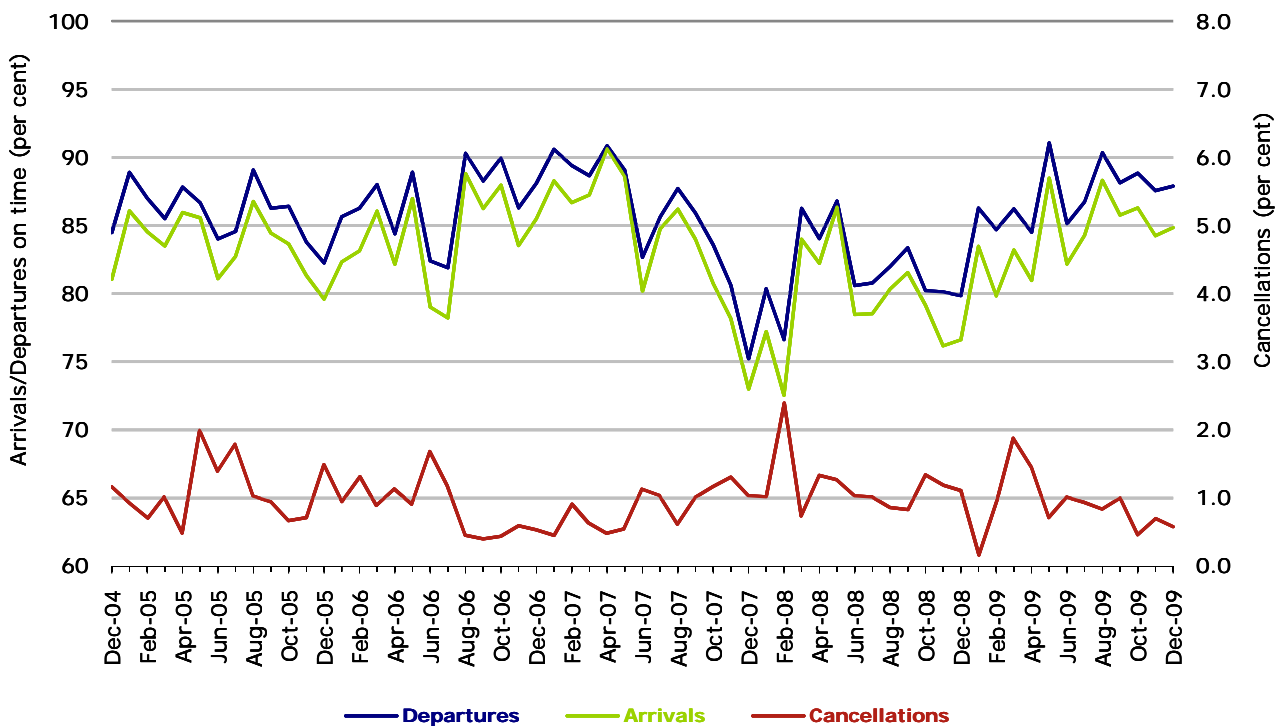


Figure 9 On time performance (by month from December 2004)—Regional Express

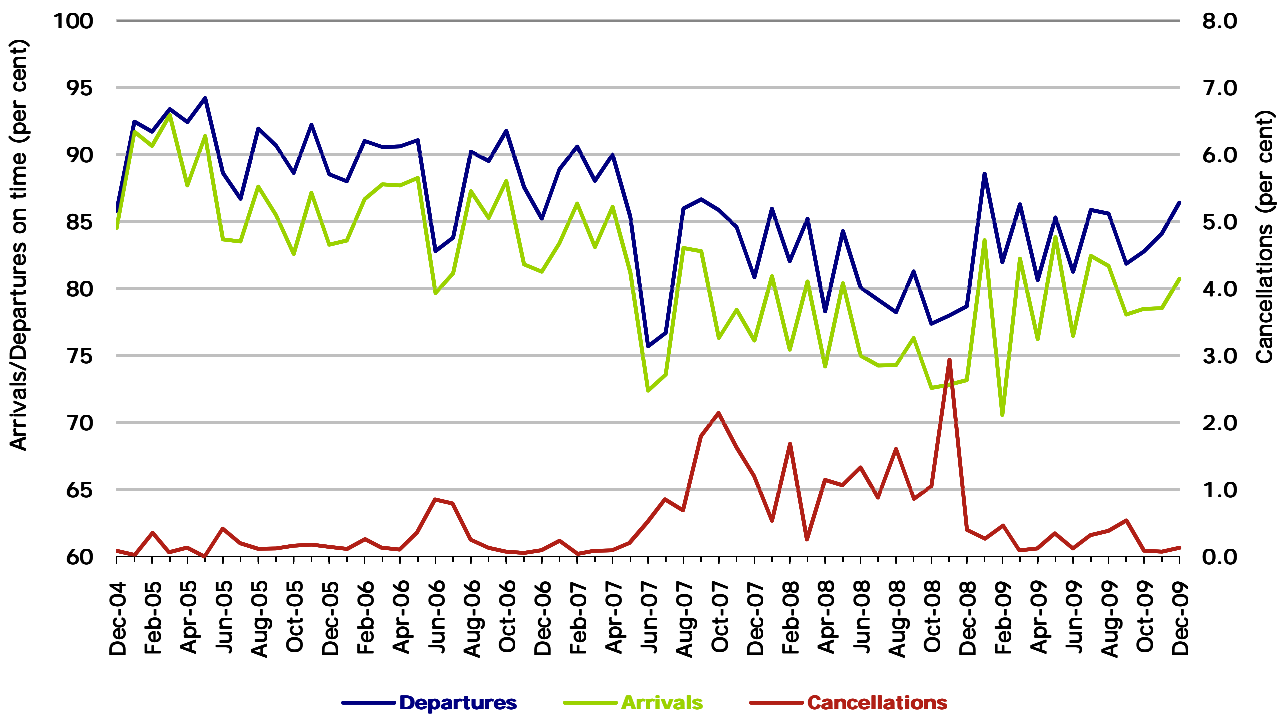
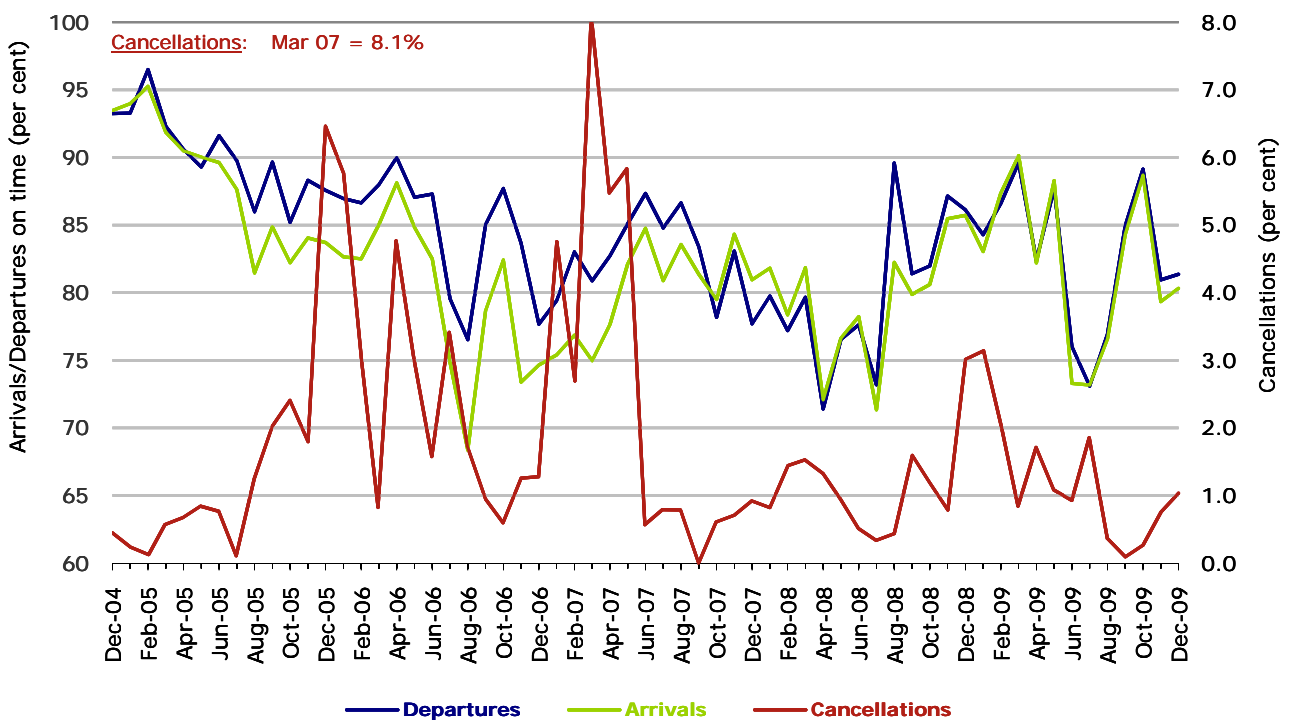


Figure 10 On time performance (by month from December 2004)—Skywest



Individual routes

On time performance is reported for all routes where the passenger load averages over 8000 passengers per month over the previous six months, and where two or more airlines operate in competition on those routes. 48 Routes met these criteria for all twelve months in 2009, plus another 7 routes for a shorter period of the year. Over time, however, routes which meet this definition may change as airline networks and traffic levels vary.

	<i>Sectors</i>		<i>Departures On Time</i>		<i>Arrivals On Time</i>		<i>Cancellations</i>	
	<i>Sched.</i>	<i>Flown</i>	<i>No.</i>	<i>%</i>	<i>No.</i>	<i>%</i>	<i>No.</i>	<i>%</i>
Adelaide-Alice Springs			(From June 2009 only)					
Qantas	215	215	191	88.8	191	88.8	0	0.0
Tiger Airways	92	92	75	81.5	68	73.9	0	0.0
All Airlines	307	307	266	86.6	259	84.4	0	0.0
Adelaide-Brisbane								
Jetstar	361	359	242	67.4	272	75.8	2	0.6
Qantas	1,052	1,052	969	92.1	976	92.8	0	0.0
Virgin Blue	1,194	1,181	1,014	85.9	1,028	87.0	13	1.1
All Airlines	2,607	2,592	2,225	85.8	2,276	87.8	15	0.6
Adelaide-Canberra								
Qantas	560	557	487	87.4	490	88.0	3	0.5
Tiger Airways	138	137	89	65.0	101	73.7	1	0.7
Virgin Blue	365	365	303	83.0	311	85.2	0	0.0
All Airlines	1,063	1,059	879	83.0	902	85.2	4	0.4
Adelaide-Gold Coast								
Jetstar	364	362	282	77.9	303	83.7	2	0.5
Tiger Airways	307	307	264	86.0	268	87.3	0	0.0
Virgin Blue	365	360	327	90.8	331	91.9	5	1.4
All Airlines	1,036	1,029	873	84.8	902	87.7	7	0.7
Adelaide-Melbourne								
Jetstar	573	571	309	54.1	329	57.6	2	0.3
Qantas	3,681	3,650	3,229	88.5	3,190	87.4	31	0.8
Tiger Airways	765	761	562	73.9	550	72.3	4	0.5
Virgin Blue	3,081	3,045	2,733	89.8	2,759	90.6	36	1.2
All Airlines	8,100	8,027	6,833	85.1	6,828	85.1	73	0.9
Adelaide-Perth								
Jetstar	274	274	247	90.1	215	78.5	0	0.0
Qantas	1,472	1,468	1,305	88.9	1,296	88.3	4	0.3
Tiger Airways	196	195	186	95.4	160	82.1	1	0.5
Virgin Blue	809	801	728	90.9	680	84.9	8	1.0
All Airlines	2,751	2,738	2,466	90.1	2,351	85.9	13	0.5

	<i>Sectors</i>		<i>Departures On Time</i>		<i>Arrivals On Time</i>		<i>Cancellations</i>	
	<i>Sched.</i>	<i>Flown</i>	<i>No.</i>	<i>%</i>	<i>No.</i>	<i>%</i>	<i>No.</i>	<i>%</i>
Adelaide-Sydney								
Jetstar	409	404	354	87.6	333	82.4	5	1.2
Qantas	3,409	3,381	3,088	91.3	3,047	90.1	28	0.8
Tiger Airways	211	210	163	77.6	172	81.9	1	0.5
Virgin Blue	1,755	1,744	1,446	82.9	1,496	85.8	11	0.6
All Airlines	5,784	5,739	5,051	88.0	5,048	88.0	45	0.8
Albury-Sydney								
QantasLink	1,254	1,253	1,001	79.9	974	77.7	1	0.1
Regional Express	1,350	1,350	1,125	83.3	1,097	81.3	0	0.0
Virgin Blue	719	712	573	80.5	573	80.5	7	1.0
All Airlines	3,323	3,315	2,699	81.4	2,644	79.8	8	0.2
Alice Springs-Adelaide (From June 2009 only)								
Qantas	214	214	183	85.5	194	90.7	0	0.0
Tiger Airways	92	92	69	75.0	71	77.2	0	0.0
All Airlines	306	306	252	82.4	265	86.6	0	0.0
Alice Springs-Melbourne								
Qantas	365	365	272	74.5	301	82.5	0	0.0
Tiger Airways	157	157	123	78.3	130	82.8	0	0.0
All Airlines	522	522	395	75.7	431	82.6	0	0.0
Ballina-Sydney								
Jetstar	382	378	298	78.8	300	79.4	4	1.0
Regional Express	1,001	998	657	65.8	580	58.1	3	0.3
Virgin Blue	399	394	333	84.5	319	81.0	5	1.3
All Airlines	1,782	1,770	1,288	72.8	1,199	67.7	12	0.7
Brisbane-Adelaide								
Jetstar	360	358	276	77.1	277	77.4	2	0.6
Qantas	1,053	1,053	959	91.1	976	92.7	0	0.0
Virgin Blue	1,194	1,183	1,043	88.2	1,013	85.6	11	0.9
All Airlines	2,607	2,594	2,278	87.8	2,266	87.4	13	0.5
Brisbane-Cairns								
Jetstar	1,140	1,138	943	82.9	996	87.5	2	0.2
Qantas	1,460	1,460	1,297	88.8	1,350	92.5	0	0.0
Virgin Blue	1,500	1,498	1,347	89.9	1,375	91.8	2	0.1
All Airlines	4,100	4,096	3,587	87.6	3,721	90.8	4	0.1
Brisbane-Canberra								
Qantas	1,702	1,698	1,558	91.8	1,586	93.4	4	0.2
QantasLink	104	103	100	97.1	98	95.1	1	1.0
Virgin Blue	1,554	1,539	1,351	87.8	1,336	86.8	15	1.0
All Airlines	3,360	3,340	3,009	90.1	3,020	90.4	20	0.6

	<i>Sectors</i>		<i>Departures On Time</i>		<i>Arrivals On Time</i>		<i>Cancellations</i>	
	<i>Sched.</i>	<i>Flown</i>	<i>No.</i>	<i>%</i>	<i>No.</i>	<i>%</i>	<i>No.</i>	<i>%</i>
Brisbane-Darwin								
Jetstar	397	393	293	74.6	267	67.9	4	1.0
Qantas	365	365	325	89.0	322	88.2	0	0.0
Virgin Blue	365	364	304	83.5	299	82.1	1	0.3
All Airlines	1,127	1,122	922	82.2	888	79.1	5	0.4
Brisbane-Hamilton Island								
Jetstar	365	363	296	81.5	317	87.3	2	0.5
Virgin Blue	369	367	333	90.7	336	91.6	2	0.5
All Airlines	734	730	629	86.2	653	89.5	4	0.5
Brisbane-Mackay								
Jetstar	1,020	1,012	783	77.4	801	79.2	8	0.8
QantasLink	801	799	688	86.1	661	82.7	2	0.2
Virgin Blue	1,690	1,683	1,460	86.7	1,461	86.8	7	0.4
All Airlines	3,511	3,494	2,931	83.9	2,923	83.7	17	0.5
Brisbane-Melbourne								
Jetstar	49	49	46	93.9	47	95.9	0	0.0
Qantas	5,075	5,010	4,413	88.1	4,502	89.9	65	1.3
Virgin Blue	4,111	4,059	3,641	89.7	3,562	87.8	52	1.3
All Airlines	9,235	9,118	8,100	88.8	8,111	89.0	117	1.3
Brisbane-Newcastle								
Jetstar	1,369	1,359	1,143	84.1	1,195	87.9	10	0.7
QantasLink	795	782	684	87.5	590	75.4	13	1.6
Virgin Blue	575	573	530	92.5	512	89.4	2	0.3
All Airlines	2,739	2,714	2,357	86.8	2,297	84.6	25	0.9
Brisbane-Perth								
Qantas	1,459	1,459	1,204	82.5	1,173	80.4	0	0.0
Virgin Blue	730	730	660	90.4	578	79.2	0	0.0
All Airlines	2,189	2,189	1,864	85.2	1,751	80.0	0	0.0
Brisbane-Proserpine								
Jetstar	364	363	277	76.3	301	82.9	1	0.3
Virgin Blue	365	365	324	88.8	334	91.5	0	0.0
All Airlines	729	728	601	82.6	635	87.2	1	0.1
Brisbane-Rockhampton								
Jetstar	364	364	308	84.6	323	88.7	0	0.0
QantasLink	2,013	2,007	1,772	88.3	1,756	87.5	6	0.3
Virgin Blue	1,777	1,755	1,544	88.0	1,539	87.7	22	1.2
All Airlines	4,154	4,126	3,624	87.8	3,618	87.7	28	0.7
Brisbane-Sydney								
Jetstar	907	863	685	79.4	685	79.4	44	4.9
Qantas	7,143	6,959	5,931	85.2	5,964	85.7	184	2.6
Virgin Blue	6,522	6,363	5,232	82.2	4,964	78.0	159	2.4
All Airlines	14,572	14,185	11,848	83.5	11,613	81.9	387	2.7

	<i>Sectors</i>		<i>Departures On Time</i>		<i>Arrivals On Time</i>		<i>Cancellations</i>	
	<i>Sched.</i>	<i>Flown</i>	<i>No.</i>	<i>%</i>	<i>No.</i>	<i>%</i>	<i>No.</i>	<i>%</i>
Brisbane-Townsville								
Jetstar	516	503	395	78.5	432	85.9	13	2.5
Qantas	1,762	1,756	1,543	87.9	1,580	90.0	6	0.3
Virgin Blue	1,755	1,748	1,554	88.9	1,582	90.5	7	0.4
All Airlines	4,033	4,007	3,492	87.1	3,594	89.7	26	0.6
Broome-Perth								
Qantas	192	190	125	65.8	138	72.6	2	1.0
QantasLink	770	763	648	84.9	663	86.9	7	0.9
Skywest	308	302	187	61.9	158	52.3	6	1.9
Virgin Blue	588	577	453	78.5	483	83.7	11	1.9
All Airlines	1,858	1,832	1,413	77.1	1,442	78.7	26	1.4
Cairns-Brisbane								
Jetstar	1,140	1,138	1,002	88.0	1,029	90.4	2	0.2
Qantas	1,460	1,460	1,336	91.5	1,374	94.1	0	0.0
Virgin Blue	1,500	1,498	1,390	92.8	1,370	91.5	2	0.1
All Airlines	4,100	4,096	3,728	91.0	3,773	92.1	4	0.1
Cairns-Melbourne								
Jetstar	389	386	318	82.4	297	76.9	3	0.8
Qantas	365	365	297	81.4	320	87.7	0	0.0
Virgin Blue	518	516	416	80.6	440	85.3	2	0.4
All Airlines	1,272	1,267	1,031	81.4	1,057	83.4	5	0.4
Cairns-Sydney								
Jetstar	476	468	375	80.1	411	87.8	8	1.7
Qantas	1,239	1,239	1,095	88.4	1,131	91.3	0	0.0
Virgin Blue	897	896	799	89.2	831	92.7	1	0.1
All Airlines	2,612	2,603	2,269	87.2	2,373	91.2	9	0.3
Cairns-Townsville								
			(From July 2009 only)					
QantasLink	938	931	844	90.7	822	88.3	7	0.7
Virgin Blue	184	181	177	97.8	177	97.8	3	1.6
All Airlines	1,122	1,112	1,021	91.8	999	89.8	10	0.9
Canberra-Adelaide								
Qantas	608	606	564	93.1	566	93.4	2	0.3
Tiger Airways	138	137	101	73.7	101	73.7	1	0.7
Virgin Blue	365	364	329	90.4	323	88.7	1	0.3
All Airlines	1,111	1,107	994	89.8	990	89.4	4	0.4
Canberra-Brisbane								
Qantas	1,701	1,693	1,582	93.4	1,562	92.3	8	0.5
QantasLink	104	103	93	90.3	92	89.3	1	1.0
Virgin Blue	1,557	1,536	1,391	90.6	1,385	90.2	21	1.3
All Airlines	3,362	3,332	3,066	92.0	3,039	91.2	30	0.9

	<i>Sectors</i>		<i>Departures On Time</i>		<i>Arrivals On Time</i>		<i>Cancellations</i>	
	<i>Sched.</i>	<i>Flown</i>	<i>No.</i>	<i>%</i>	<i>No.</i>	<i>%</i>	<i>No.</i>	<i>%</i>
Canberra-Melbourne								
Qantas	3,014	2,980	2,729	91.6	2,675	89.8	34	1.1
QantasLink	448	421	369	87.6	348	82.7	27	6.0
Tiger Airways	489	483	370	76.6	372	77.0	6	1.2
Virgin Blue	2,092	2,066	1,879	90.9	1,855	89.8	26	1.2
All Airlines	6,043	5,950	5,347	89.9	5,250	88.2	93	1.5
Canberra-Sydney								
Qantas	2,263	2,212	2,012	91.0	1,981	89.6	51	2.3
QantasLink	4,564	4,413	3,900	88.4	3,798	86.1	151	3.3
Virgin Blue	2,696	2,581	2,354	91.2	2,349	91.0	115	4.3
All Airlines	9,523	9,206	8,266	89.8	8,128	88.3	317	3.3
Coffs Harbour-Sydney								
QantasLink	1,459	1,456	1,141	78.4	1,115	76.6	3	0.2
Virgin Blue	733	724	619	85.5	615	84.9	9	1.2
All Airlines	2,192	2,180	1,760	80.7	1,730	79.4	12	0.5
Darwin-Brisbane								
Jetstar	397	393	300	76.3	342	87.0	4	1.0
Qantas	365	365	285	78.1	293	80.3	0	0.0
Virgin Blue	365	364	308	84.6	330	90.7	1	0.3
All Airlines	1,127	1,122	893	79.6	965	86.0	5	0.4
Darwin-Melbourne								
			(From July 2009 only)					
Jetstar	207	207	156	75.4	165	79.7	0	0.0
Virgin Blue	158	157	148	94.3	136	86.6	1	0.6
All Airlines	365	364	304	83.5	301	82.7	1	0.3
Darwin-Perth								
			(From July 2009 only)					
Qantas	214	214	202	94.4	203	94.9	0	0.0
Virgin Blue	184	183	178	97.3	144	78.7	1	0.5
All Airlines	398	397	380	95.7	347	87.4	1	0.3
Dubbo-Sydney								
QantasLink	1,154	1,151	1,023	88.9	959	83.3	3	0.3
Regional Express	1,854	1,847	1,458	78.9	1,400	75.8	7	0.4
All Airlines	3,008	2,998	2,481	82.8	2,359	78.7	10	0.3
Gold Coast-Adelaide								
Jetstar	364	362	292	80.7	290	80.1	2	0.5
Tiger Airways	306	305	261	85.6	263	86.2	1	0.3
Virgin Blue	365	360	312	86.7	324	90.0	5	1.4
All Airlines	1,035	1,027	865	84.2	877	85.4	8	0.8
Gold Coast-Melbourne								
Jetstar	2,128	2,107	1,623	77.0	1,612	76.5	21	1.0
Tiger Airways	1,109	1,100	846	76.9	865	78.6	9	0.8
Virgin Blue	1,875	1,862	1,592	85.5	1,568	84.2	13	0.7
All Airlines	5,112	5,069	4,061	80.1	4,045	79.8	43	0.8

	<i>Sectors</i>		<i>Departures On Time</i>		<i>Arrivals On Time</i>		<i>Cancellations</i>	
	<i>Sched.</i>	<i>Flown</i>	<i>No.</i>	<i>%</i>	<i>No.</i>	<i>%</i>	<i>No.</i>	<i>%</i>
Gold Coast-Newcastle								
Jetstar	363	362	279	77.1	295	81.5	1	0.3
Virgin Blue	156	154	149	96.8	149	96.8	2	1.3
All Airlines	519	516	428	82.9	444	86.0	3	0.6
Gold Coast-Sydney								
Jetstar	3,142	3,087	2,377	77.0	2,311	74.9	55	1.8
Virgin Blue	4,146	4,062	3,550	87.4	3,528	86.9	84	2.0
All Airlines	7,288	7,149	5,927	82.9	5,839	81.7	139	1.9
Hamilton Island-Brisbane								
Jetstar	365	363	286	78.8	302	83.2	2	0.5
Virgin Blue	368	365	331	90.7	327	89.6	3	0.8
All Airlines	733	728	617	84.8	629	86.4	5	0.7
Hamilton Island-Sydney (From September 2009 only)								
Jetstar	119	119	89	74.8	97	81.5	0	0.0
Virgin Blue	122	122	97	79.5	106	86.9	0	0.0
All Airlines	241	241	186	77.2	203	84.2	0	0.0
Hervey Bay-Sydney (To July 2009 only)								
Jetstar	121	121	99	81.8	99	81.8	0	0.0
Virgin Blue	212	211	177	83.9	182	86.3	1	0.5
All Airlines	333	332	276	83.1	281	84.6	1	0.3
Hobart-Melbourne								
Jetstar	1,522	1,512	1,043	69.0	1,078	71.3	10	0.7
Qantas	731	731	686	93.8	676	92.5	0	0.0
Tiger Airways	370	368	265	72.0	268	72.8	2	0.5
Virgin Blue	1,543	1,541	1,300	84.4	1,284	83.3	2	0.1
All Airlines	4,166	4,152	3,294	79.3	3,306	79.6	14	0.3
Hobart-Sydney								
Jetstar	689	689	517	75.0	559	81.1	0	0.0
Qantas	370	370	303	81.9	322	87.0	0	0.0
Virgin Blue	731	730	630	86.3	649	88.9	1	0.1
All Airlines	1,790	1,789	1,450	81.1	1,530	85.5	1	0.1
Kalgoorlie-Perth								
Qantas	410	398	343	86.2	346	86.9	12	2.9
QantasLink	695	680	596	87.6	591	86.9	15	2.2
Skywest	304	284	245	86.3	212	74.6	20	6.6
All Airlines	1,409	1,362	1,184	86.9	1,149	84.4	47	3.3
Karratha-Perth								
Qantas	1,706	1,675	1,504	89.8	1,464	87.4	31	1.8
QantasLink	410	392	368	93.9	365	93.1	18	4.4
Skywest	270	264	203	76.9	192	72.7	6	2.2
Virgin Blue	628	620	536	86.5	513	82.7	8	1.3
All Airlines	3,014	2,951	2,611	88.5	2,534	85.9	63	2.1

	<i>Sectors</i>		<i>Departures On Time</i>		<i>Arrivals On Time</i>		<i>Cancellations</i>	
	<i>Sched.</i>	<i>Flown</i>	<i>No.</i>	<i>%</i>	<i>No.</i>	<i>%</i>	<i>No.</i>	<i>%</i>
Launceston-Melbourne								
Jetstar	1,070	1,066	781	73.3	760	71.3	4	0.4
QantasLink	763	758	618	81.5	525	69.3	5	0.7
Tiger Airways	350	348	258	74.1	261	75.0	2	0.6
Virgin Blue	1,462	1,453	1,288	88.6	1,267	87.2	9	0.6
All Airlines	3,645	3,625	2,945	81.2	2,813	77.6	20	0.5
Launceston-Sydney								
Jetstar	364	362	248	68.5	285	78.7	2	0.5
Virgin Blue	366	365	291	79.7	297	81.4	1	0.3
All Airlines	730	727	539	74.1	582	80.1	3	0.4
Mackay-Brisbane								
Jetstar	1,021	1,013	782	77.2	799	78.9	8	0.8
QantasLink	801	799	688	86.1	693	86.7	2	0.2
Virgin Blue	1,689	1,682	1,510	89.8	1,492	88.7	7	0.4
All Airlines	3,511	3,494	2,980	85.3	2,984	85.4	17	0.5
Maroochydore-Melbourne								
Jetstar	700	692	460	66.5	477	68.9	8	1.1
Tiger Airways	219	219	186	84.9	193	88.1	0	0.0
Virgin Blue	466	454	385	84.8	376	82.8	12	2.6
All Airlines	1,385	1,365	1,031	75.5	1,046	76.6	20	1.4
Maroochydore-Sydney								
Jetstar	1,024	1,004	853	85.0	874	87.1	20	2.0
Virgin Blue	555	538	417	77.5	438	81.4	17	3.1
All Airlines	1,579	1,542	1,270	82.4	1,312	85.1	37	2.3
Melbourne-Adelaide								
Jetstar	571	570	520	91.2	510	89.5	1	0.2
Qantas	3,674	3,650	3,196	87.6	3,162	86.6	24	0.7
Tiger Airways	762	759	549	72.3	555	73.1	3	0.4
Virgin Blue	3,075	3,039	2,617	86.1	2,563	84.3	36	1.2
All Airlines	8,082	8,018	6,882	85.8	6,790	84.7	64	0.8
Melbourne-Alice Springs								
Qantas	365	365	305	83.6	312	85.5	0	0.0
Tiger Airways	157	157	129	82.2	126	80.3	0	0.0
All Airlines	522	522	434	83.1	438	83.9	0	0.0
Melbourne-Brisbane								
Jetstar	49	48	46	95.8	47	97.9	1	2.0
Qantas	5,042	4,977	4,407	88.5	4,477	90.0	65	1.3
Virgin Blue	4,107	4,044	3,487	86.2	3,594	88.9	63	1.5
All Airlines	9,198	9,069	7,940	87.6	8,118	89.5	129	1.4

	<i>Sectors</i>		<i>Departures On Time</i>		<i>Arrivals On Time</i>		<i>Cancellations</i>	
	<i>Sched.</i>	<i>Flown</i>	<i>No.</i>	<i>%</i>	<i>No.</i>	<i>%</i>	<i>No.</i>	<i>%</i>
Melbourne-Cairns								
Jetstar	390	386	326	84.5	332	86.0	4	1.0
Qantas	365	365	320	87.7	320	87.7	0	0.0
Virgin Blue	517	517	429	83.0	422	81.6	0	0.0
All Airlines	1,272	1,268	1,075	84.8	1,074	84.7	4	0.3
Melbourne-Canberra								
Qantas	3,012	2,982	2,679	89.8	2,700	90.5	30	1.0
QantasLink	447	419	380	90.7	368	87.8	28	6.3
Tiger Airways	489	483	351	72.7	377	78.1	6	1.2
Virgin Blue	2,056	2,034	1,766	86.8	1,794	88.2	22	1.1
All Airlines	6,004	5,918	5,176	87.5	5,239	88.5	86	1.4
Melbourne-Darwin (From July 2009 only)								
Jetstar	208	208	117	56.3	104	50.0	0	0.0
Virgin Blue	158	158	140	88.6	125	79.1	0	0.0
All Airlines	366	366	257	70.2	229	62.6	0	0.0
Melbourne-Gold Coast								
Jetstar	2,125	2,111	1,652	78.3	1,725	81.7	14	0.7
Tiger Airways	1,109	1,101	833	75.7	853	77.5	8	0.7
Virgin Blue	1,875	1,869	1,603	85.8	1,618	86.6	6	0.3
All Airlines	5,109	5,081	4,088	80.5	4,196	82.6	28	0.5
Melbourne-Hobart								
Jetstar	1,521	1,511	1,069	70.7	1,132	74.9	10	0.7
Qantas	731	731	602	82.4	594	81.3	0	0.0
Tiger Airways	370	370	283	76.5	281	75.9	0	0.0
Virgin Blue	1,542	1,540	1,250	81.2	1,246	80.9	2	0.1
All Airlines	4,164	4,152	3,204	77.2	3,253	78.3	12	0.3
Melbourne-Launceston								
Jetstar	1,069	1,064	777	73.0	802	75.4	5	0.5
QantasLink	766	755	593	78.5	548	72.6	11	1.4
Tiger Airways	352	350	266	76.0	265	75.7	2	0.6
Virgin Blue	1,462	1,457	1,263	86.7	1,254	86.1	5	0.3
All Airlines	3,649	3,626	2,899	80.0	2,869	79.1	23	0.6
Melbourne-Maroochydore								
Jetstar	701	697	501	71.9	526	75.5	4	0.6
Tiger Airways	219	219	191	87.2	190	86.8	0	0.0
Virgin Blue	467	460	400	87.0	413	89.8	7	1.5
All Airlines	1,387	1,376	1,092	79.4	1,129	82.0	11	0.8
Melbourne-Mildura								
QantasLink	1,193	1,190	990	83.2	884	74.3	3	0.3
Regional Express	1,066	1,065	987	92.7	959	90.0	1	0.1
Virgin Blue	366	364	333	91.5	308	84.6	2	0.5
All Airlines	2,625	2,619	2,310	88.2	2,151	82.1	6	0.2

	<i>Sectors</i>		<i>Departures On Time</i>		<i>Arrivals On Time</i>		<i>Cancellations</i>	
	<i>Sched.</i>	<i>Flown</i>	<i>No.</i>	<i>%</i>	<i>No.</i>	<i>%</i>	<i>No.</i>	<i>%</i>
Melbourne-Newcastle								
Jetstar	970	963	701	72.8	756	78.5	7	0.7
Virgin Blue	365	365	351	96.2	350	95.9	0	0.0
All Airlines	1,335	1,328	1,052	79.2	1,106	83.3	7	0.5
Melbourne-Perth								
Jetstar	683	675	506	75.0	469	69.5	8	1.2
Qantas	2,389	2,387	1,871	78.4	1,873	78.5	2	0.1
Tiger Airways	577	575	408	71.0	364	63.3	2	0.3
Virgin Blue	1,461	1,458	1,324	90.8	1,149	78.8	3	0.2
All Airlines	5,110	5,095	4,109	80.6	3,855	75.7	15	0.3
Melbourne-Sydney								
Jetstar	673	648	478	73.8	480	74.1	25	3.7
Qantas	10,829	10,423	8,940	85.8	8,907	85.5	406	3.7
Tiger Airways	891	843	667	79.1	642	76.2	48	5.4
Virgin Blue	8,949	8,622	6,762	78.4	6,950	80.6	327	3.7
All Airlines	21,342	20,536	16,847	82.0	16,979	82.7	806	3.8
Mildura-Melbourne								
QantasLink	1,192	1,191	990	83.1	968	81.3	1	0.1
Regional Express	1,067	1,066	975	91.5	971	91.1	1	0.1
Virgin Blue	365	364	311	85.4	321	88.2	1	0.3
All Airlines	2,624	2,621	2,276	86.8	2,260	86.2	3	0.1
Newcastle-Brisbane								
Jetstar	1,372	1,364	1,093	80.1	1,118	82.0	8	0.6
QantasLink	795	779	641	82.3	640	82.2	16	2.0
Virgin Blue	575	570	531	93.2	526	92.3	5	0.9
All Airlines	2,742	2,713	2,265	83.5	2,284	84.2	29	1.1
Newcastle-Gold Coast								
Jetstar	363	361	298	82.5	304	84.2	2	0.6
Virgin Blue	156	155	151	97.4	149	96.1	1	0.6
All Airlines	519	516	449	87.0	453	87.8	3	0.6
Newcastle-Melbourne								
Jetstar	966	964	744	77.2	792	82.2	2	0.2
Virgin Blue	365	362	348	96.1	347	95.9	3	0.8
All Airlines	1,331	1,326	1,092	82.4	1,139	85.9	5	0.4
Newman-Perth								
QantasLink	1,069	1,062	966	91.0	957	90.1	7	0.7
Virgin Blue	387	376	323	85.9	324	86.2	11	2.8
All Airlines	1,456	1,438	1,289	89.6	1,281	89.1	18	1.2
Perth-Adelaide								
Jetstar	274	273	190	69.6	145	53.1	1	0.4
Qantas	1,472	1,468	1,338	91.1	1,270	86.5	4	0.3
Tiger Airways	196	195	169	86.7	175	89.7	1	0.5
Virgin Blue	809	798	711	89.1	731	91.6	11	1.4
All Airlines	2,751	2,734	2,408	88.1	2,321	84.9	17	0.6

	<i>Sectors</i>		<i>Departures On Time</i>		<i>Arrivals On Time</i>		<i>Cancellations</i>	
	<i>Sched.</i>	<i>Flown</i>	<i>No.</i>	<i>%</i>	<i>No.</i>	<i>%</i>	<i>No.</i>	<i>%</i>
Perth-Brisbane								
Qantas	1,460	1,460	1,203	82.4	1,250	85.6	0	0.0
Virgin Blue	732	731	665	91.0	632	86.5	1	0.1
All Airlines	2,192	2,191	1,868	85.3	1,882	85.9	1	0.0
Perth-Broome								
Qantas	191	189	151	79.9	158	83.6	2	1.0
QantasLink	766	759	656	86.4	655	86.3	7	0.9
Skywest	303	297	221	74.4	207	69.7	6	2.0
Virgin Blue	587	583	496	85.1	499	85.6	4	0.7
All Airlines	1,847	1,828	1,524	83.4	1,519	83.1	19	1.0
Perth-Darwin (From July 2009 only)								
Qantas	213	213	201	94.4	194	91.1	0	0.0
Virgin Blue	183	182	171	94.0	175	96.2	1	0.5
All Airlines	396	395	372	94.2	369	93.4	1	0.3
Perth-Kalgoorlie								
Qantas	409	397	368	92.7	360	90.7	12	2.9
QantasLink	694	682	602	88.3	611	89.6	12	1.7
Skywest	304	284	228	80.3	227	79.9	20	6.6
All Airlines	1,407	1,363	1,198	87.9	1,198	87.9	44	3.1
Perth-Karratha								
Qantas	1,707	1,676	1,517	90.5	1,528	91.2	31	1.8
QantasLink	405	389	356	91.5	354	91.0	16	4.0
Skywest	272	265	224	84.5	198	74.7	7	2.6
Virgin Blue	627	616	562	91.2	556	90.3	11	1.8
All Airlines	3,011	2,946	2,659	90.3	2,636	89.5	65	2.2
Perth-Melbourne								
Jetstar	688	676	400	59.2	489	72.3	12	1.7
Qantas	2,379	2,374	1,850	77.9	1,933	81.4	5	0.2
Tiger Airways	576	573	337	58.8	364	63.5	3	0.5
Virgin Blue	1,461	1,459	1,326	90.9	1,321	90.5	2	0.1
All Airlines	5,104	5,082	3,913	77.0	4,107	80.8	22	0.4
Perth-Newman								
QantasLink	1,065	1,061	985	92.8	977	92.1	4	0.4
Virgin Blue	380	377	358	95.0	354	93.9	3	0.8
All Airlines	1,445	1,438	1,343	93.4	1,331	92.6	7	0.5
Perth-Port Hedland (From October 2009 only)								
Qantas	144	143	131	91.6	136	95.1	1	0.7
QantasLink	146	145	139	95.9	139	95.9	1	0.7
Virgin Blue	126	124	117	94.4	116	93.5	2	1.6
All Airlines	416	412	387	93.9	391	94.9	4	1.0

	<i>Sectors</i>		<i>Departures On Time</i>		<i>Arrivals On Time</i>		<i>Cancellations</i>	
	<i>Sched.</i>	<i>Flown</i>	<i>No.</i>	<i>%</i>	<i>No.</i>	<i>%</i>	<i>No.</i>	<i>%</i>
Perth-Sydney								
Jetstar	30	30	22	73.3	24	80.0	0	0.0
Qantas	2,426	2,415	1,932	80.0	1,959	81.1	11	0.5
Virgin Blue	1,796	1,782	1,619	90.9	1,664	93.4	14	0.8
All Airlines	4,252	4,227	3,573	84.5	3,647	86.3	25	0.6
Port Hedland-Perth (From October 2009 only)								
Qantas	143	142	129	90.8	126	88.7	1	0.7
QantasLink	145	144	133	92.4	129	89.6	1	0.7
Virgin Blue	126	123	110	89.4	112	91.1	3	2.4
All Airlines	414	409	372	91.0	367	89.7	5	1.2
Port Macquarie-Sydney								
QantasLink	1,259	1,258	1,062	84.4	1,009	80.2	1	0.1
Virgin Blue	729	721	598	82.9	600	83.2	8	1.1
All Airlines	1,988	1,979	1,660	83.9	1,609	81.3	9	0.5
Proserpine-Brisbane								
Jetstar	365	362	289	79.8	291	80.4	3	0.8
Virgin Blue	366	365	320	87.7	321	87.9	1	0.3
All Airlines	731	727	609	83.8	612	84.2	4	0.5
Rockhampton-Brisbane								
Jetstar	365	365	302	82.7	304	83.3	0	0.0
QantasLink	1,789	1,778	1,561	87.8	1,546	87.0	11	0.6
Virgin Blue	1,777	1,746	1,536	88.0	1,541	88.3	31	1.7
All Airlines	3,931	3,889	3,399	87.4	3,391	87.2	42	1.1
Sydney-Adelaide								
Jetstar	409	406	379	93.3	377	92.9	3	0.7
Qantas	3,365	3,348	2,974	88.8	3,022	90.3	17	0.5
Tiger Airways	211	210	165	78.6	165	78.6	1	0.5
Virgin Blue	1,755	1,745	1,508	86.4	1,466	84.0	10	0.6
All Airlines	5,740	5,709	5,026	88.0	5,030	88.1	31	0.5
Sydney-Albury								
QantasLink	1,254	1,253	1,042	83.2	972	77.6	1	0.1
Regional Express	1,348	1,348	1,109	82.3	1,016	75.4	0	0.0
Virgin Blue	718	717	596	83.1	588	82.0	1	0.1
All Airlines	3,320	3,318	2,747	82.8	2,576	77.6	2	0.1
Sydney-Ballina								
Jetstar	383	380	322	84.7	338	88.9	3	0.8
Regional Express	1,003	1,002	755	75.3	704	70.3	1	0.1
Virgin Blue	399	397	337	84.9	337	84.9	2	0.5
All Airlines	1,785	1,779	1,414	79.5	1,379	77.5	6	0.3
Sydney-Brisbane								
Jetstar	896	854	703	82.3	771	90.3	42	4.7
Qantas	7,177	7,014	6,015	85.8	6,160	87.8	163	2.3
Virgin Blue	6,520	6,359	4,879	76.7	5,208	81.9	161	2.5
All Airlines	14,593	14,227	11,597	81.5	12,139	85.3	366	2.5

	<i>Sectors</i>		<i>Departures On Time</i>		<i>Arrivals On Time</i>		<i>Cancellations</i>	
	<i>Sched.</i>	<i>Flown</i>	<i>No.</i>	<i>%</i>	<i>No.</i>	<i>%</i>	<i>No.</i>	<i>%</i>
Sydney-Cairns								
Jetstar	478	469	422	90.0	408	87.0	9	1.9
Qantas	1,239	1,239	1,051	84.8	1,095	88.4	0	0.0
Virgin Blue	896	895	730	81.6	779	87.0	1	0.1
All Airlines	2,613	2,603	2,203	84.6	2,282	87.7	10	0.4
Sydney-Canberra								
Qantas	2,311	2,271	2,074	91.3	2,042	89.9	40	1.7
QantasLink	4,567	4,428	3,839	86.7	3,656	82.6	139	3.0
Virgin Blue	2,732	2,624	2,264	86.3	2,261	86.2	108	4.0
All Airlines	9,610	9,323	8,177	87.7	7,959	85.4	287	3.0
Sydney-Coffs Harbour								
QantasLink	1,459	1,455	1,192	81.9	1,075	73.9	4	0.3
Virgin Blue	731	728	650	89.3	648	89.0	3	0.4
All Airlines	2,190	2,183	1,842	84.4	1,723	78.9	7	0.3
Sydney-Dubbo								
QantasLink	1,154	1,151	1,028	89.3	1,029	89.4	3	0.3
Regional Express	1,852	1,849	1,489	80.5	1,420	76.8	3	0.2
All Airlines	3,006	3,000	2,517	83.9	2,449	81.6	6	0.2
Sydney-Gold Coast								
Jetstar	3,139	3,094	2,461	79.5	2,576	83.3	45	1.4
Virgin Blue	4,148	4,072	3,452	84.8	3,591	88.2	76	1.8
All Airlines	7,287	7,166	5,913	82.5	6,167	86.1	121	1.7
Sydney-Hamilton Island (From September 2009 only)								
Jetstar	120	120	103	85.8	104	86.7	0	0.0
Virgin Blue	122	122	98	80.3	101	82.8	0	0.0
All Airlines	242	242	201	83.1	205	84.7	0	0.0
Sydney-Hervey Bay (To July 2009 only)								
Jetstar	121	121	108	89.3	106	87.6	0	0.0
Virgin Blue	212	212	182	85.8	183	86.3	0	0.0
All Airlines	333	333	290	87.1	289	86.8	0	0.0
Sydney-Hobart								
Jetstar	690	689	579	84.0	583	84.6	1	0.1
Qantas	370	370	342	92.4	346	93.5	0	0.0
Virgin Blue	732	730	592	81.1	570	78.1	2	0.3
All Airlines	1,792	1,789	1,513	84.6	1,499	83.8	3	0.2
Sydney-Launceston								
Jetstar	363	363	279	76.9	287	79.1	0	0.0
Virgin Blue	365	365	290	79.5	303	83.0	0	0.0
All Airlines	728	728	569	78.2	590	81.0	0	0.0
Sydney-Maroochydore								
Jetstar	1,019	1,012	880	87.0	894	88.3	7	0.7
Virgin Blue	555	542	450	83.0	452	83.4	13	2.3
All Airlines	1,574	1,554	1,330	85.6	1,346	86.6	20	1.3

	<i>Sectors</i>		<i>Departures On Time</i>		<i>Arrivals On Time</i>		<i>Cancellations</i>	
	<i>Sched.</i>	<i>Flown</i>	<i>No.</i>	<i>%</i>	<i>No.</i>	<i>%</i>	<i>No.</i>	<i>%</i>
Sydney-Melbourne								
Jetstar	652	631	504	79.9	495	78.4	21	3.2
Qantas	10,798	10,388	9,118	87.8	8,698	83.7	410	3.8
Tiger Airways	891	843	629	74.6	632	75.0	48	5.4
Virgin Blue	8,911	8,584	7,032	81.9	6,767	78.8	327	3.7
All Airlines	21,252	20,446	17,283	84.5	16,592	81.2	806	3.8
Sydney-Perth								
Jetstar	30	30	23	76.7	25	83.3	0	0.0
Qantas	2,413	2,411	1,917	79.5	1,834	76.1	2	0.1
Virgin Blue	1,788	1,783	1,493	83.7	1,335	74.9	5	0.3
All Airlines	4,231	4,224	3,433	81.3	3,194	75.6	7	0.2
Sydney-Port Macquarie								
QantasLink	1,258	1,257	1,081	86.0	1,024	81.5	1	0.1
Virgin Blue	731	726	591	81.4	599	82.5	5	0.7
All Airlines	1,989	1,983	1,672	84.3	1,623	81.8	6	0.3
Sydney-Townsville								
Jetstar	260	258	237	91.9	240	93.0	2	0.8
Virgin Blue	369	368	309	84.0	318	86.4	1	0.3
All Airlines	629	626	546	87.2	558	89.1	3	0.5
Sydney-Wagga Wagga								
QantasLink	1,488	1,486	1,310	88.2	1,213	81.6	2	0.1
Regional Express	1,516	1,511	1,186	78.5	1,031	68.2	5	0.3
All Airlines	3,004	2,997	2,496	83.3	2,244	74.9	7	0.2
Townsville-Brisbane								
Jetstar	519	506	406	80.2	431	85.2	13	2.5
Qantas	1,761	1,755	1,589	90.5	1,607	91.6	6	0.3
Virgin Blue	1,753	1,744	1,611	92.4	1,602	91.9	9	0.5
All Airlines	4,033	4,005	3,606	90.0	3,640	90.9	28	0.7
Townsville-Cairns								
								(From July 2009 only)
QantasLink	940	933	840	90.0	809	86.7	7	0.7
Virgin Blue	184	182	179	98.4	179	98.4	2	1.1
All Airlines	1,124	1,115	1,019	91.4	988	88.6	9	0.8
Townsville-Sydney								
Jetstar	261	260	230	88.5	242	93.1	1	0.4
Virgin Blue	369	368	332	90.2	327	88.9	1	0.3
All Airlines	630	628	562	89.5	569	90.6	2	0.3
Wagga Wagga-Sydney								
QantasLink	1,484	1,480	1,274	86.1	1,221	82.5	4	0.3
Regional Express	1,527	1,521	1,183	77.8	1,088	71.5	6	0.4
All Airlines	3,011	3,001	2,457	81.9	2,309	76.9	10	0.3

Airports

On time performance is reported for all routes where the passenger load averages over 8000 passengers per month, and where two or more airlines operate in competition. The following data reports by airport against flights operated on those routes only.

Airport	Departures			Arrivals		
	Sectors	On Time		Sectors	On Time	
	Flown	No.	%	Flown	No.	%
Adelaide						
Jetstar	1 970	1 434	72.8	1 969	1 599	81.2
Qantas	10 323	9 269	89.8	10 339	9 190	88.9
Tiger Airways	1 702	1 339	78.7	1 698	1 330	78.3
Virgin Blue	7 496	6 551	87.4	7 489	6 420	85.7
All Airlines	21 491	18 593	86.5	21 495	18 539	86.2
Relates to services to and from Alice Springs, Brisbane, Canberra, Gold Coast, Melbourne, Perth and Sydney.						
Albury						
QantasLink	1 253	1 001	79.9	1 253	972	77.6
Regional Express	1 350	1 125	83.3	1 348	1 016	75.4
Virgin Blue	712	573	80.5	717	588	82.0
All Airlines	3 315	2 699	81.4	3 318	2 576	77.6
Relates to services to and from Sydney only.						
Alice Springs						
Qantas	579	455	78.6	580	503	86.7
Tiger Airways	249	192	77.1	249	194	77.9
All Airlines	828	647	78.1	829	697	84.1
Relates to services to and from Adelaide and Melbourne.						
Ballina						
Jetstar	378	298	78.8	380	338	88.9
Regional Express	998	657	65.8	1 002	704	70.3
Virgin Blue	394	333	84.5	397	337	84.9
All Airlines	1 770	1 288	72.8	1 779	1 379	77.5
Relates to services to and from Sydney only.						
Brisbane						
Jetstar	6 765	5 445	80.5	6 765	5 706	84.3
Qantas	19 760	17 230	87.2	19 776	17 699	89.5
QantasLink	3 691	3 244	87.9	3 459	2 971	85.9
Virgin Blue	22 227	19 323	86.9	22 185	19 356	87.2
All Airlines	52 443	45 242	86.3	52 185	45 732	87.6
Relates to services to and from Adelaide, Cairns, Canberra, Darwin, Hamilton Island, Mackay, Melbourne, Newcastle, Perth, Proserpine, Rockhampton, Sydney and Townsville.						

Airport	Departures			Arrivals		
	Sectors	On Time		Sectors	On Time	
	Flown	No.	%	Flown	No.	%
Broome						
Qantas	190	125	65.8	189	158	83.6
QantasLink	763	648	84.9	759	655	86.3
Skywest	302	187	61.9	297	207	69.7
Virgin Blue	577	453	78.5	583	499	85.6
All Airlines	1 832	1 413	77.1	1 828	1 519	83.1
Relates to services to and from Perth only.						
Cairns						
Jetstar	1 992	1 695	85.1	1 993	1 736	87.1
Qantas	3 064	2 728	89.0	3 064	2 765	90.2
QantasLink	931	844	90.7	933	809	86.7
Virgin Blue	3 091	2 782	90.0	3 092	2 755	89.1
All Airlines	9 078	8 049	88.7	9 082	8 065	88.8
Relates to services to and from Brisbane, Melbourne, Sydney and Townsville.						
Canberra						
Qantas	7 491	6 887	91.9	7 508	6 818	90.8
QantasLink	4 937	4 362	88.4	4 950	4 122	83.3
Tiger Airways	620	471	76.0	620	478	77.1
Virgin Blue	6 547	5 953	90.9	6 562	5 702	86.9
All Airlines	19 595	17 673	90.2	19 640	17 120	87.2
Relates to services to and from Adelaide, Brisbane, Melbourne and Sydney.						
Coffs Harbour						
QantasLink	1 456	1 141	78.4	1 455	1 075	73.9
Virgin Blue	724	619	85.5	728	648	89.0
All Airlines	2 180	1 760	80.7	2 183	1 723	78.9
Relates to services to and from Sydney only.						
Darwin						
Jetstar	600	456	76.0	601	371	61.7
Qantas	579	487	84.1	578	516	89.3
Virgin Blue	704	634	90.1	704	599	85.1
All Airlines	1 883	1 577	83.7	1 883	1 486	78.9
Relates to services to and from Brisbane, Melbourne and Perth.						
Dubbo						
QantasLink	1 151	1 023	88.9	1 151	1 029	89.4
Regional Express	1 847	1 458	78.9	1 849	1 420	76.8
All Airlines	2 998	2 481	82.8	3 000	2 449	81.6
Relates to services to and from Sydney only.						

Airport	Departures			Arrivals		
	Sectors Flown	On Time No.	On Time %	Sectors Flown	On Time No.	On Time %
Gold Coast						
Jetstar	5 918	4 571	77.2	5 928	4 908	82.8
Tiger Airways	1 405	1 107	78.8	1 408	1 121	79.6
Virgin Blue	6 438	5 603	87.0	6 456	5 689	88.1
All Airlines	13 761	11 281	82.0	13 792	11 718	85.0
Relates to services to and from Adelaide, Melbourne, Newcastle and Sydney.						
Hamilton Island						
Jetstar	482	375	77.8	483	421	87.2
Virgin Blue	487	428	87.9	489	437	89.4
All Airlines	969	803	82.9	972	858	88.3
Relates to services to and from Brisbane and Sydney.						
Hervey Bay						
Jetstar	121	99	81.8	121	106	87.6
Virgin Blue	211	177	83.9	212	183	86.3
All Airlines	332	276	83.1	333	289	86.8
Relates to services to and from Sydney only.						
Hobart						
Jetstar	2 201	1 560	70.9	2 200	1 715	78.0
Qantas	1 101	989	89.8	1 101	940	85.4
Tiger Airways	368	265	72.0	370	281	75.9
Virgin Blue	2 271	1 930	85.0	2 270	1 816	80.0
All Airlines	5 941	4 744	79.9	5 941	4 752	80.0
Relates to services to and from Melbourne and Sydney.						
Kalgoorlie						
Qantas	398	343	86.2	397	360	90.7
QantasLink	680	596	87.6	682	611	89.6
Skywest	284	245	86.3	284	227	79.9
All Airlines	1 362	1 184	86.9	1 363	1 198	87.9
Relates to services to and from Perth only.						
Karratha						
Qantas	1 675	1 504	89.8	1 676	1 528	91.2
QantasLink	392	368	93.9	389	354	91.0
Skywest	264	203	76.9	265	198	74.7
Virgin Blue	620	536	86.5	616	556	90.3
All Airlines	2 951	2 611	88.5	2 946	2 636	89.5
Relates to services to and from Perth only.						

Airport	Departures			Arrivals		
	Sectors	On Time		Sectors	On Time	
	Flown	No.	%	Flown	No.	%
Launceston						
Jetstar	1 428	1 029	72.1	1 427	1 089	76.3
QantasLink	758	618	81.5	755	548	72.6
Tiger Airways	348	258	74.1	350	265	75.7
Virgin Blue	1 818	1 579	86.9	1 822	1 557	85.5
All Airlines	4 352	3 484	80.1	4 354	3 459	79.4
Relates to services to and from Melbourne and Sydney.						
Mackay						
Jetstar	1 013	782	77.2	1 012	801	79.2
QantasLink	799	688	86.1	799	661	82.7
Virgin Blue	1 682	1 510	89.8	1 683	1 461	86.8
All Airlines	3 494	2 980	85.3	3 494	2 923	83.7
Relates to services to and from Brisbane only.						
Maroochydore						
Jetstar	1 696	1 313	77.4	1 709	1 420	83.1
Tiger Airways	219	186	84.9	219	190	86.8
Virgin Blue	992	802	80.8	1 002	865	86.3
All Airlines	2 907	2 301	79.2	2 930	2 475	84.5
Relates to services to and from Melbourne and Sydney.						
Melbourne						
Jetstar	8 881	6 693	75.4	8 861	6 541	73.8
Qantas	25 880	22 320	86.2	25 863	22 295	86.2
QantasLink	2 364	1 963	83.0	2 370	1 841	77.7
Regional Express	1 065	987	92.7	1 066	971	91.1
Tiger Airways	4 857	3 677	75.7	4 852	3 635	74.9
Virgin Blue	25 927	21 725	83.8	25 922	22 003	84.9
All Airlines	68 974	57 365	83.2	68 934	57 286	83.1
Relates to services to and from Adelaide, Alice Springs, Brisbane, Cairns, Canberra, Darwin, Gold Coast, Hobart, Launceston, Maroochydore, Mildura, Newcastle, Perth and Sydney.						
Mildura						
QantasLink	1 191	990	83.1	1 190	884	74.3
Regional Express	1 066	975	91.5	1 065	959	90.0
Virgin Blue	364	311	85.4	364	308	84.6
All Airlines	2 621	2 276	86.8	2 619	2 151	82.1
Relates to services to and from Melbourne only.						
Newcastle						
Jetstar	2 689	2 135	79.4	2 684	2 246	83.7
QantasLink	779	641	82.3	782	590	75.4
Virgin Blue	1 087	1 030	94.8	1 092	1 011	92.6
All Airlines	4 555	3 806	83.6	4 558	3 847	84.4
Relates to services to and from Brisbane, Gold Coast and Melbourne.						

<i>Airport</i>	<i>Departures</i>			<i>Arrivals</i>		
	<i>Sectors Flown</i>	<i>On Time</i>		<i>Sectors Flown</i>	<i>On Time</i>	
		<i>No.</i>	<i>%</i>		<i>No.</i>	<i>%</i>
Newman						
QantasLink	1 062	966	91.0	1 061	977	92.1
Virgin Blue	376	323	85.9	377	354	93.9
All Airlines	1 438	1 289	89.6	1 438	1 331	92.6
Relates to services to and from Perth only.						
Perth						
Jetstar	979	612	62.5	979	709	72.4
Qantas	10 335	8 691	84.1	10 344	8 453	81.7
QantasLink	3 036	2 738	90.2	3 041	2 705	89.0
Skywest	846	673	79.6	850	562	66.1
Tiger Airways	768	506	65.9	770	524	68.1
Virgin Blue	6 652	6 025	90.6	6 651	5 318	80.0
All Airlines	22 616	19 245	85.1	22 635	18 271	80.7
Relates to services to and from Adelaide, Brisbane, Broome, Darwin, Kalgoorlie, Karratha, Melbourne, Newman, Port Hedland and Sydney.						
Port Hedland						
Qantas	142	129	90.8	143	136	95.1
QantasLink	144	133	92.4	145	139	95.9
Virgin Blue	123	110	89.4	124	116	93.5
All Airlines	409	372	91.0	412	391	94.9
Relates to services to and from Perth only.						
Port Macquarie						
QantasLink	1 258	1 062	84.4	1 257	1 024	81.5
Virgin Blue	721	598	82.9	726	599	82.5
All Airlines	1 979	1 660	83.9	1 983	1 623	81.8
Relates to services to and from Sydney only.						
Proserpine						
Jetstar	362	289	79.8	363	301	82.9
Virgin Blue	365	320	87.7	365	334	91.5
All Airlines	727	609	83.8	728	635	87.2
Relates to services to and from Brisbane only.						
Rockhampton						
Jetstar	365	302	82.7	364	323	88.7
QantasLink	1 778	1 561	87.8	2 007	1 756	87.5
Virgin Blue	1 746	1 536	88.0	1 755	1 539	87.7
All Airlines	3 889	3 399	87.4	4 126	3 618	87.7
Relates to services to and from Brisbane only.						

<i>Airport</i>	<i>Departures</i>			<i>Arrivals</i>		
	<i>Sectors Flown</i>	<i>On Time</i>		<i>Sectors Flown</i>	<i>On Time</i>	
		<i>No.</i>	<i>%</i>		<i>No.</i>	<i>%</i>
Sydney						
Jetstar	8 427	7 000	83.1	8 433	6 700	79.4
Qantas	27 041	23 491	86.9	26 999	23 311	86.3
QantasLink	11 030	9 492	86.1	11 011	9 076	82.4
Regional Express	5 710	4 539	79.5	5 716	4 165	72.9
Tiger Airways	1 053	794	75.4	1 053	814	77.3
Virgin Blue	30 969	25 453	82.2	30 935	25 888	83.7
All Airlines	84 230	70 769	84.0	84 147	69 954	83.1
Relates to services to and from Adelaide, Albury, Ballina, Brisbane, Cairns, Canberra, Coffs Harbour, Dubbo, Gold Coast, Hamilton Island, Hervey Bay Hobart, Launceston, Maroochydore, Melbourne, Perth, Port Macquarie, Townsville and Wagga Wagga.						
Townsville						
Jetstar	766	636	83.0	761	672	88.3
Qantas	1 755	1 589	90.5	1 756	1 580	90.0
QantasLink	933	840	90.0	931	822	88.3
Virgin Blue	2 294	2 122	92.5	2 297	2 077	90.4
All Airlines	5 748	5 187	90.2	5 745	5 151	89.7
Relates to services to and from Brisbane, Cairns and Sydney.						
Wagga Wagga						
QantasLink	1 480	1 274	86.1	1 486	1 213	81.6
Regional Express	1 521	1 183	77.8	1 511	1 031	68.2
All Airlines	3 001	2 457	81.9	2 997	2 244	74.9
Relates to services to and from Sydney only.						

Definitions

On time departure A flight departure is counted as "on time" if it departs the gate within 15 minutes of the scheduled departure time shown in the carriers' schedule.

On time arrival A flight arrival is counted as "on time" if it arrived at the gate within 15 minutes of the scheduled arrival time shown in the carriers' schedule.
Neither diverted nor cancelled flights count as on time.

Cancellation A flight is regarded as a cancellation if it is cancelled or rescheduled less than 7 days prior to its scheduled departure time.

On time departure percentage The percentage of on time departures is measured against the number of departures *operated* on any particular sector.

On time arrival percentage The percentage of on time arrivals is measured against the number of arrivals *operated* on any particular sector.

Cancellation percentage The percentage of cancellations is measured against the number of services *scheduled* on any particular sector.
