



Australian Government

Department of Transport and Regional Services
Bureau of Transport and Regional Economics



btre

AVIATION STATISTICS

Airline
On Time Performance

2005—OTP 28

© Commonwealth of Australia 2006

ISSN 1832-0759

This work is copyright and the data contained in this publication should not be reproduced or used in any form without acknowledgement.

Enquiries

Bureau of Transport and Regional Economics

GPO Box 501

Canberra ACT 2601

Telephone: 02 6274 7720

Facsimile: 02 6274 7727

Website: www.btre.gov.au

Email: avstats@dotars.gov.au

This publication can be downloaded from the BTRE website. A spreadsheet format of the time-series data is also available at

<http://www.btre.gov.au/statistics/aviation/domestic.aspx>

Disclaimers

The BTRE seeks to publish its work to the highest professional standards. However, it cannot accept responsibility for any consequences arising from the use of information herein. Readers should rely on their own skill and judgment in applying any information or analysis to particular issues or circumstances.

FOREWORD

In late 2003, the Bureau of Transport and Regional Economics (BTRE) established an agreement with major Australian airlines to report domestic aviation on time performance statistics. Qantas, QantasLink, Regional Express, Skywest Airlines and Virgin Blue agreed to report monthly on time performance statistics to BTRE from November 2003. Since then two additional airlines have joined the scheme, with Jetstar reporting from May 2004 and Macair reporting from July 2005. The purpose of collecting and publishing this information is to monitor overall industry and individual airline performance on punctuality and to allow consumers of air travel to make informed decisions when planning air travel.

On time performance is reported for all routes which are flown by two or more airlines where the passenger load averages over 8,000 passengers per month. There are currently 49 routes which meet this definition, however, over time routes which meet this definition may change as airline networks and traffic levels vary.

Airlines also report overall monthly network performance. Total industry figures refer to all services operated by reporting airlines only. This currently represents over 95 per cent of scheduled aviation services in Australia.

The method of capturing on time performance varies between airlines utilising different recording systems. Jetstar and Qantas jet aircraft use Aircraft Communication Addressing and Reporting System (ACARS) to electronically measure on time performance. Virgin Blue, Regional Express, Macair, Skywest and the Qantas non-jet fleet record on time performance manually using records from pilots, gate agents and/or ground crews.

Reports are published monthly on the BTRE web site. After collection of initial data, aggregate reports are subject to internal audit by participating airlines prior to publication. This report collates data for the total industry and individual routes and airports for the year ended 31 December 2005.

Definitions relating to on time performance are provided at the end of this report.

Detailed time series data is available in Microsoft Excel spreadsheet format from the BTRE web site at http://www.btre.gov.au/statistics/aviation/otp_downloads.aspx

Bureau of Transport and Regional Economics
GPO Box 501
Canberra ACT 2601

Telephone: 02 6274 7720

Facsimile: 02 6274 7727

Website: <http://www.btre.gov.au/statistics/statsindex.aspx>

Email: avstats@dotars.gov.au

CONTENTS

Industry performance	1
Individual routes	3
Airports	15
Definitions	18

INDUSTRY PERFORMANCE

The proportion of on time departures over all routes operated by participating airlines averaged 86.9 per cent in 2005, compared to 88.2 per cent in 2004. The proportion of on time arrivals also decreased from 87.7 per cent in 2004 to 85.8 per cent in 2005. Cancellations of all scheduled flights averaged 0.9 per cent in 2005 compared to 0.8 per cent in 2004.

The highest level of on time performance was recorded in January, with 88.7 per cent of departures on time and 88.6 per cent of arrivals on time. The lowest percentage of cancellations was recorded in April, with 0.6 per cent of scheduled flights cancelled.

The lowest level of on time performance was recorded in June, when airline operations on the east coast of Australia were particularly impacted by wet weather. In June 83.6 per cent of departures and 81.6 per cent of arrivals were on time. The highest percentage of cancellations was recorded in May, with 1.5 per cent of scheduled flights cancelled.

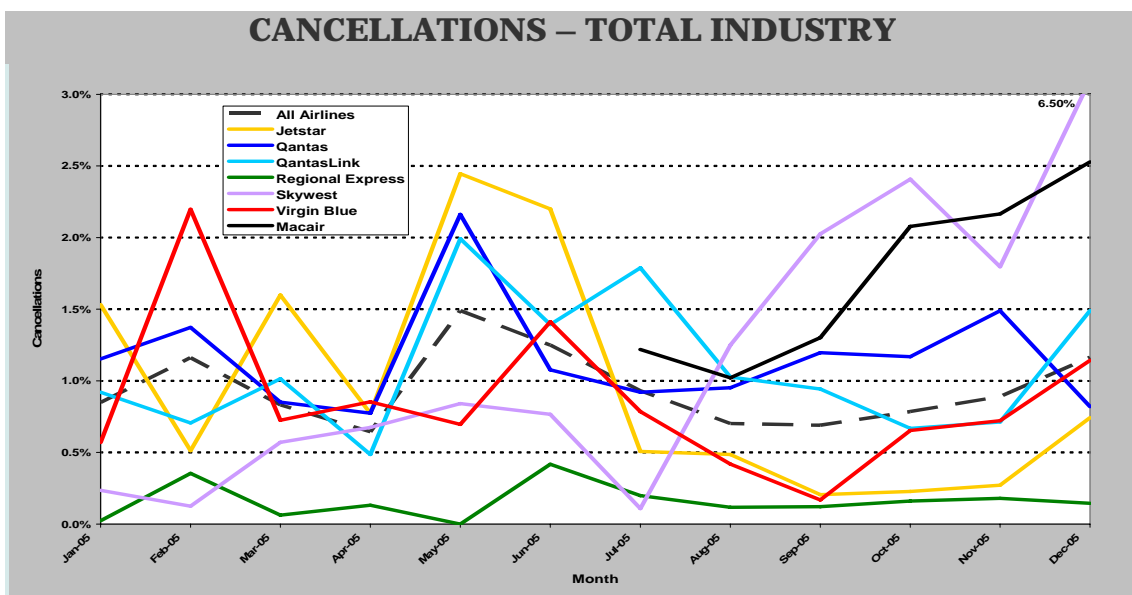
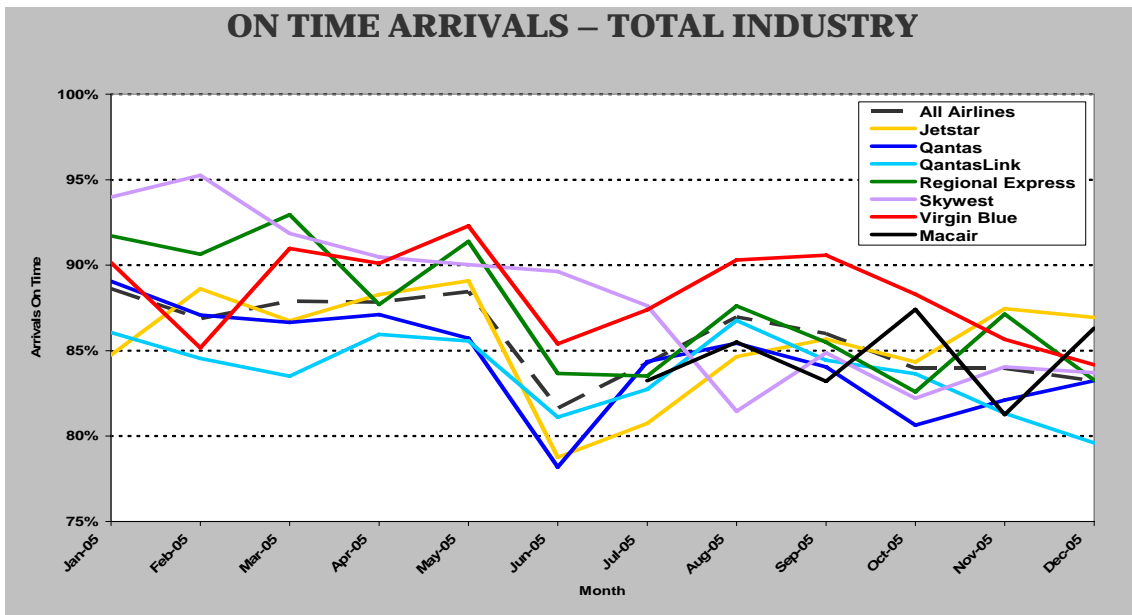
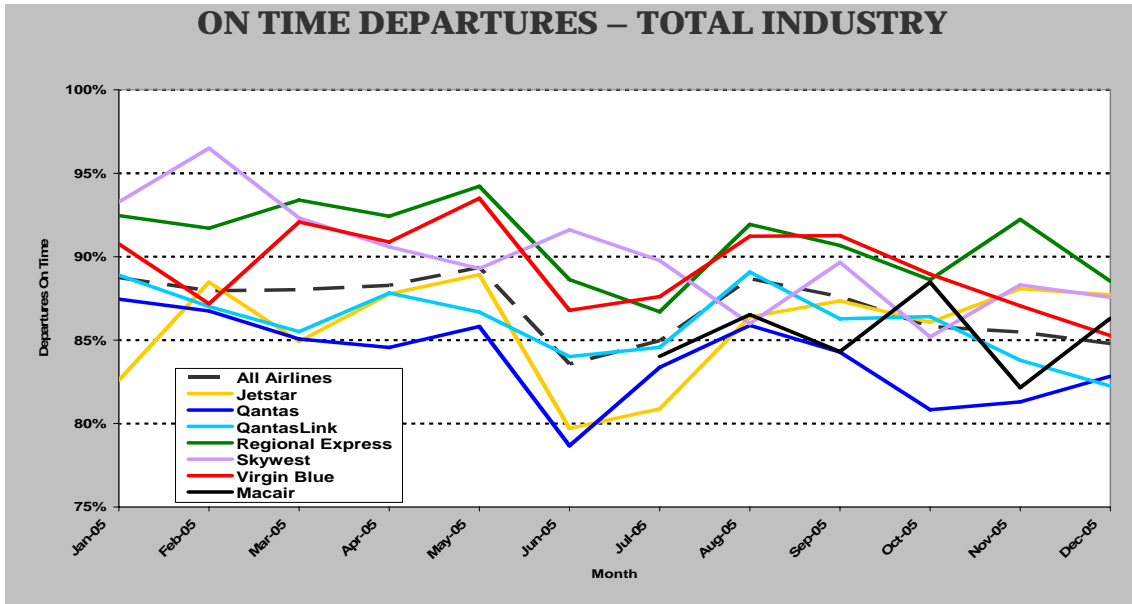
Regional Express (90.9 per cent), Skywest (89.8 per cent) and Virgin Blue (89.4 per cent) achieved the highest levels of on time departures in 2005. The same three airlines had the best results for on time arrivals.

Regional Express had the lowest proportion of cancelled flights (0.2 per cent), while Macair (1.7 per cent) and Skywest (1.5 per cent) had the highest proportion.

Hamilton Island achieved the highest level of on time departures (92.6 per cent) and on time arrivals (93.1 per cent). The best performing major airport was Adelaide with 88.7 per cent for on time departures and 88.3 per cent for on time arrivals.

On time performance – total industry for the year ending 31 December 2005

	Jetstar	Macair	Qantas	Qantas Link	Regional Express	Skywest	Virgin Blue	All Airlines
Sectors Scheduled	46 141	8 768	120 752	96 785	57 178	11 193	104 283	445 100
Sectors Flown	45 696	8 618	119 350	95 720	57 087	11 020	103 399	440 890
On Time Departures	39 160	7 352	100 125	82 345	51 900	9 900	92 429	383 211
On Time Arrivals	39 059	7 281	100 797	80 193	49 769	9 663	91 400	378 162
Cancellations	445	150	1,402	1,065	91	173	884	4,210
On Time Departures (%)	85.7	85.3	83.9	86.0	90.9	89.8	89.4	86.9
On Time Arrivals (%)	85.5	84.5	84.5	83.8	87.2	87.7	88.4	85.8
Cancellations (%)	1.0	1.7	1.2	1.1	0.2	1.5	0.8	0.9



INDIVIDUAL ROUTES

On time performance is reported for all routes which are flown by two or more airlines where the passenger load averages over 8,000 passengers per month. There are currently 49 routes which meet this definition, however, over time routes which meet this definition may change as airline networks and traffic levels vary.

	Sectors		On time departures		On time arrivals		Cancellations	
	sched.	flown	no.	%	no.	%	no.	%
Adelaide-Alice Springs								
Qantas	273	273	238	87.2%	240	87.9%	0	0.0%
Virgin Blue	125	125	113	90.4%	104	83.2%	0	0.0%
All Airlines	398	398	351	88.2%	344	86.4%	0	0.0%
Adelaide-Brisbane								
Qantas	1 240	1 240	1 134	91.5%	1 143	92.2%	0	0.0%
Virgin Blue	1 039	1 037	881	85.0%	876	84.5%	2	0.2%
All Airlines	2 279	2 277	2 015	88.5%	2 019	88.7%	2	0.1%
Adelaide-Canberra								
Qantas	543	543	460	84.7%	468	86.2%	0	0.0%
Virgin Blue	362	362	323	89.2%	328	90.6%	0	0.0%
All Airlines	905	905	783	86.5%	796	88.0%	0	0.0%
Adelaide-Gold Coast								
Jetstar	334	330	288	87.3%	301	91.2%	4	1.2%
Qantas	10	10	10	100.0%	10	100.0%	0	0.0%
Virgin Blue	396	392	340	86.7%	342	87.2%	4	1.0%
All Airlines	740	732	638	87.2%	653	89.2%	8	1.1%
Adelaide-Melbourne								
Qantas	4 278	4 216	3 708	88.0%	3 710	88.0%	62	1.4%
Virgin Blue	3 036	3 009	2 746	91.3%	2 750	91.4%	27	0.9%
All Airlines	7 314	7 225	6 454	89.3%	6 460	89.4%	89	1.2%
Adelaide-Perth								
Qantas	1 435	1 434	1 191	83.1%	1 116	77.8%	1	0.1%
Virgin Blue	451	450	416	92.4%	379	84.2%	1	0.2%
All Airlines	1 886	1 884	1 607	85.3%	1 495	79.4%	2	0.1%
Adelaide-Sydney								
Qantas	3 756	3 736	3 359	89.9%	3 382	90.5%	20	0.5%
Virgin Blue	1 748	1 744	1 566	89.8%	1 561	89.5%	4	0.2%
All Airlines	5 504	5 480	4 925	89.9%	4 943	90.2%	24	0.4%
Albury-Sydney								
QantasLink	1 374	1 369	1 079	78.8%	1 125	82.2%	5	0.4%
Regional Express	1 239	1 238	1 111	89.7%	1 054	85.1%	1	0.1%
All Airlines	2 627	2 621	2 203	84.1%	2 193	83.7%	6	0.2%

	Sectors		On time departures		On time arrivals		Cancellations	
	sched.	flown	no.	%	no.	%	no.	%
Alice Springs-Adelaide								
Qantas	273	272	223	82.0%	223	82.0%	1	0.4%
Virgin Blue	125	125	102	81.6%	94	75.2%	0	0.0%
All Airlines	398	397	325	81.9%	317	79.8%	1	0.3%
Ballina-Sydney								
Jetstar	141	140	121	86.4%	129	92.1%	1	0.7%
QantasLink	562	557	460	82.6%	460	82.6%	5	0.9%
Regional Express	1 173	1 172	1 031	88.0%	939	80.1%	1	0.1%
Virgin Blue	376	370	284	76.8%	279	75.4%	6	1.6%
All Airlines	2 252	2 239	1 896	84.7%	1 807	80.7%	13	0.6%
Brisbane-Adelaide								
Qantas	1 240	1 239	1 047	84.5%	1 116	90.1%	1	0.1%
Virgin Blue	1 039	1 039	968	93.2%	961	92.5%	0	0.0%
All Airlines	2 279	2 278	2 015	88.5%	2 077	91.2%	1	0.0%
Brisbane-Cairns								
Jetstar	937	929	787	84.7%	738	79.4%	8	0.9%
Qantas	1 327	1 327	1 094	82.4%	1 098	82.7%	0	0.0%
Virgin Blue	1 409	1 409	1 313	93.2%	1 292	91.7%	0	0.0%
All Airlines	3 673	3 665	3 194	87.1%	3 128	85.3%	8	0.2%
Brisbane-Canberra								
Qantas	1 404	1 403	1 200	85.5%	1 258	89.7%	1	0.1%
Virgin Blue	1 089	1 089	1 018	93.5%	1 032	94.8%	0	0.0%
All Airlines	2 493	2 492	2 218	89.0%	2 290	91.9%	1	0.0%
Brisbane-Darwin								
Qantas	611	611	489	80.0%	509	83.3%	0	0.0%
Virgin Blue	365	364	323	88.7%	299	82.1%	1	0.3%
All Airlines	976	975	812	83.3%	808	82.9%	1	0.1%
Brisbane-Hamilton Island								
Jetstar	92	92	84	91.3%	87	94.6%	0	0.0%
Qantas	22	22	19	86.4%	18	81.8%	0	0.0%
Virgin Blue	104	103	89	86.4%	97	94.2%	1	1.0%
All Airlines	218	217	192	88.5%	202	93.1%	1	0.5%
Brisbane-Hobart								
Jetstar	301	300	243	81.0%	248	82.7%	1	0.3%
Virgin Blue	365	365	350	95.9%	348	95.3%	0	0.0%
All Airlines	666	665	593	89.2%	596	89.6%	1	0.2%
Brisbane-Mackay								
Jetstar	1 083	1 074	950	88.5%	954	88.8%	9	0.8%
Qantas	365	365	311	85.2%	315	86.3%	0	0.0%
Virgin Blue	1 040	1 040	913	87.8%	907	87.2%	0	0.0%
All Airlines	2 488	2 479	2 174	87.7%	2 176	87.8%	9	0.4%

	Sectors		On time departures		On time arrivals		Cancellations	
	sched.	flown	no.	%	no.	%	no.	%
Brisbane-Melbourne								
Jetstar	1	0	0	0.0%	0	0.0%	1	100.0%
Qantas	5 419	5 338	4 492	84.2%	4 505	84.4%	81	1.5%
Virgin Blue	3 526	3 488	3 147	90.2%	3 135	89.9%	38	1.1%
All Airlines	8 946	8 826	7 639	86.6%	7 640	86.6%	120	1.3%
Brisbane-Newcastle								
Jetstar	925	923	791	85.7%	792	85.8%	2	0.2%
QantasLink	781	780	666	85.4%	646	82.8%	1	0.1%
Virgin Blue	365	365	332	91.0%	328	89.9%	0	0.0%
All Airlines	2 071	2 068	1 789	86.5%	1 766	85.4%	3	0.1%
Brisbane-Perth								
Qantas	901	901	731	81.1%	689	76.5%	0	0.0%
Virgin Blue	365	364	318	87.4%	281	77.2%	1	0.3%
All Airlines	1 266	1 265	1 049	82.9%	970	76.7%	1	0.1%
Brisbane-Proserpine								
Jetstar	365	365	335	91.8%	331	90.7%	0	0.0%
Virgin Blue	375	375	345	92.0%	337	89.9%	0	0.0%
All Airlines	740	740	680	91.9%	668	90.3%	0	0.0%
Brisbane-Rockhampton								
Jetstar	513	512	456	89.1%	455	88.9%	1	0.2%
Qantas	150	149	138	92.6%	139	93.3%	1	0.7%
QantasLink	2 472	2 459	2 246	91.3%	2 204	89.6%	13	0.5%
Virgin Blue	1 054	1 054	927	88.0%	928	88.0%	0	0.0%
All Airlines	4 189	4 174	3 767	90.2%	3 726	89.3%	15	0.4%
Brisbane-Sydney								
Qantas	7 329	7 212	6 151	85.3%	6 039	83.7%	117	1.6%
Virgin Blue	5 872	5 780	5 309	91.9%	5 172	89.5%	92	1.6%
All Airlines	13 201	12 992	11 460	88.2%	11 211	86.3%	209	1.6%
Brisbane-Townsville								
Jetstar	61	61	58	95.1%	60	98.4%	0	0.0%
Qantas	1 764	1 759	1 417	80.6%	1 416	80.5%	5	0.3%
Virgin Blue	1 170	1 167	1 062	91.0%	1 075	92.1%	3	0.3%
All Airlines	2 995	2 987	2 537	84.9%	2 551	85.4%	8	0.3%
Broome-Perth								
Qantas	463	460	335	72.8%	364	79.1%	3	0.6%
QantasLink	351	346	302	87.3%	300	86.7%	5	1.4%
Skywest	246	242	202	83.5%	193	79.8%	4	1.6%
Virgin Blue	278	276	210	76.1%	209	75.7%	2	0.7%
All Airlines	1 338	1 324	1 049	79.2%	1 066	80.5%	14	1.0%
Burnie-Melbourne								
QantasLink	1 182	1 151	1 016	88.3%	930	80.8%	31	2.6%
Regional Express	918	912	876	96.1%	842	92.3%	6	0.7%
All Airlines	2 100	2 063	1 892	91.7%	1 772	85.9%	37	1.8%

	Sectors		On time departures		On time arrivals		Cancellations	
	sched.	flown	no.	%	no.	%	no.	%
Cairns-Brisbane								
Jetstar	935	925	747	80.8%	735	79.5%	10	1.1%
Qantas	1 461	1 456	1 283	88.1%	1 300	89.3%	5	0.3%
Virgin Blue	1 409	1 409	1 332	94.5%	1 336	94.8%	0	0.0%
All Airlines	3 805	3 790	3 362	88.7%	3 371	88.9%	15	0.4%
Cairns-Melbourne								
Jetstar	497	494	428	86.6%	443	89.7%	3	0.6%
Qantas	365	365	283	77.5%	320	87.7%	0	0.0%
Virgin Blue	700	698	576	82.5%	590	84.5%	2	0.3%
All Airlines	1 562	1 557	1 287	82.7%	1 353	86.9%	5	0.3%
Cairns-Sydney								
Jetstar	388	388	343	88.4%	351	90.5%	0	0.0%
Qantas	1 172	1 166	988	84.7%	1 053	90.3%	6	0.5%
Virgin Blue	940	935	810	86.6%	791	84.6%	5	0.5%
All Airlines	2 500	2 489	2 141	86.0%	2 195	88.2%	11	0.4%
Canberra-Adelaide								
Qantas	593	593	532	89.7%	539	90.9%	0	0.0%
Virgin Blue	362	362	345	95.3%	345	95.3%	0	0.0%
All Airlines	955	955	877	91.8%	884	92.6%	0	0.0%
Canberra-Brisbane								
Qantas	1 396	1 393	1 221	87.7%	1 196	85.9%	3	0.2%
Virgin Blue	1 090	1 090	1 020	93.6%	1 022	93.8%	0	0.0%
All Airlines	2 486	2 483	2 241	90.3%	2 218	89.3%	3	0.1%
Canberra-Melbourne								
Qantas	2 635	2 625	2 207	84.1%	2 235	85.1%	10	0.4%
QantasLink	1 190	1 145	955	83.4%	931	81.3%	45	3.8%
Virgin Blue	1 201	1 198	1 108	92.5%	1 096	91.5%	3	0.2%
All Airlines	5 026	4 968	4 270	86.0%	4 262	85.8%	58	1.2%
Coffs Harbour-Sydney								
QantasLink	2 076	2 056	1 737	84.5%	1 700	82.7%	20	1.0%
Virgin Blue	657	655	593	90.5%	585	89.3%	2	0.3%
All Airlines	2 733	2 711	2 330	85.9%	2 285	84.3%	22	0.8%
Darwin-Brisbane								
Qantas	612	612	461	75.3%	495	80.9%	0	0.0%
Virgin Blue	365	363	298	82.1%	297	81.8%	2	0.5%
All Airlines	977	975	759	77.8%	792	81.2%	2	0.2%
Darwin-Melbourne								
Qantas	281	280	225	80.4%	234	83.6%	1	0.4%
Virgin Blue	155	155	115	74.2%	107	69.0%	0	0.0%
All Airlines	436	435	340	78.2%	341	78.4%	1	0.2%

	Sectors		On time departures		On time arrivals		Cancellations	
	sched.	flown	no.	%	no.	%	no.	%
Darwin-Sydney								
Qantas	273	273	223	81.7%	246	90.1%	0	0.0%
Virgin Blue	182	182	144	79.1%	131	72.0%	0	0.0%
All Airlines	455	455	367	80.7%	377	82.9%	0	0.0%
Devonport-Melbourne								
QantasLink	1 420	1 392	1 219	87.6%	1 137	81.7%	28	2.0%
Regional Express	307	305	294	96.4%	286	93.8%	2	0.7%
All Airlines	1 727	1 697	1 513	89.2%	1 423	83.9%	30	1.7%
Dubbo-Sydney								
QantasLink	1 524	1 492	1 285	86.1%	1 220	81.8%	32	2.1%
Regional Express	1 215	1 214	985	81.1%	966	79.6%	1	0.1%
All Airlines	2 739	2 706	2 270	83.9%	2 186	80.8%	33	1.2%
Gold Coast-Adelaide								
Jetstar	334	331	314	94.9%	310	93.7%	3	0.9%
Qantas	10	10	10	100.0%	10	100.0%	0	0.0%
Virgin Blue	396	393	340	86.5%	340	86.5%	3	0.8%
All Airlines	740	734	664	90.5%	660	89.9%	6	0.8%
Gold Coast-Melbourne								
Jetstar	1 957	1 932	1 475	76.3%	1 498	77.5%	25	1.3%
Qantas	7	5	2	40.0%	4	80.0%	2	28.6%
Virgin Blue	2 219	2 197	1 889	86.0%	1 943	88.4%	22	1.0%
All Airlines	4 183	4 134	3 366	81.4%	3 445	83.3%	49	1.2%
Gold Coast-Sydney								
Jetstar	2 774	2 739	2 430	88.7%	2 432	88.8%	35	1.3%
Qantas	730	727	665	91.5%	670	92.2%	3	0.4%
Virgin Blue	3 355	3 326	2 943	88.5%	2 964	89.1%	29	0.9%
All Airlines	6 859	6 792	6 038	88.9%	6 066	89.3%	67	1.0%
Hamilton Island-Brisbane								
Jetstar	92	92	86	93.5%	82	89.1%	0	0.0%
Qantas	22	22	19	86.4%	20	90.9%	0	0.0%
Virgin Blue	104	103	96	93.2%	99	96.1%	1	1.0%
All Airlines	218	217	201	92.6%	201	92.6%	1	0.5%
Hobart-Brisbane								
Jetstar	303	301	270	89.7%	255	84.7%	2	0.7%
Virgin Blue	365	365	330	90.4%	335	91.8%	0	0.0%
All Airlines	668	666	600	90.1%	590	88.6%	2	0.3%
Hobart-Melbourne								
Jetstar	1 706	1 692	1 310	77.4%	1 315	77.7%	14	0.8%
Qantas	730	730	648	88.8%	616	84.4%	0	0.0%
Virgin Blue	1 488	1 483	1 335	90.0%	1 316	88.7%	5	0.3%
All Airlines	3 924	3 905	3 293	84.3%	3 247	83.1%	19	0.5%

	Sectors		On time departures		On time arrivals		Cancellations	
	sched.	flown	no.	%	no.	%	no.	%
Hobart-Sydney								
Jetstar	916	904	820	90.7%	802	88.7%	12	1.3%
Qantas	366	366	270	73.8%	310	84.7%	0	0.0%
Virgin Blue	727	725	630	86.9%	639	88.1%	2	0.3%
All Airlines	2 009	1 995	1 720	86.2%	1 751	87.8%	14	0.7%
Kalgoorlie-Perth								
Qantas	585	583	409	70.2%	415	71.2%	2	0.3%
QantasLink	394	394	349	88.6%	350	88.8%	0	0.0%
Skywest	593	568	544	95.8%	529	93.1%	25	4.2%
Virgin Blue	7	0	0	0.0%	0	0.0%	7	100.0%
All Airlines	1 579	1 545	1 302	84.3%	1 294	83.8%	34	2.2%
Karratha-Perth								
Qantas	631	631	573	90.8%	579	91.8%	0	0.0%
QantasLink	642	638	545	85.4%	567	88.9%	4	0.6%
Skywest	249	238	213	89.5%	215	90.3%	11	4.4%
All Airlines	1 522	1 507	1 331	88.3%	1 361	90.3%	15	1.0%
Launceston-Melbourne								
Jetstar	1 402	1 389	1 214	87.4%	1 204	86.7%	13	0.9%
Qantas	377	377	360	95.5%	356	94.4%	0	0.0%
Virgin Blue	1 380	1 375	1 280	93.1%	1 285	93.5%	5	0.4%
All Airlines	3 159	3 141	2 854	90.9%	2 845	90.6%	18	0.6%
Launceston-Sydney								
Jetstar	420	415	373	89.9%	369	88.9%	5	1.2%
Qantas	1	1	1	100.0%	1	100.0%	0	0.0%
Virgin Blue	375	375	326	86.9%	323	86.1%	0	0.0%
All Airlines	796	791	700	88.5%	693	87.6%	5	0.6%
Mackay-Brisbane								
Jetstar	1 087	1 077	933	86.6%	921	85.5%	10	0.9%
Qantas	365	364	273	75.0%	304	83.5%	1	0.3%
Virgin Blue	1 040	1 040	979	94.1%	988	95.0%	0	0.0%
All Airlines	2 492	2 481	2 185	88.1%	2 213	89.2%	11	0.4%
Maroochydore-Melbourne								
Jetstar	649	644	499	77.5%	479	74.4%	5	0.8%
Virgin Blue	771	767	676	88.1%	687	89.6%	4	0.5%
All Airlines	1 420	1 411	1 175	83.3%	1 166	82.6%	9	0.6%
Maroochydore-Sydney								
Jetstar	1 084	1 066	834	78.2%	864	81.1%	18	1.7%
Virgin Blue	488	484	424	87.6%	425	87.8%	4	0.8%
All Airlines	1 572	1 550	1 258	81.2%	1 289	83.2%	22	1.4%
Melbourne-Adelaide								
Qantas	4 448	4 386	3 681	83.9%	3 811	86.9%	62	1.4%
Virgin Blue	3 035	3 008	2 636	87.6%	2 627	87.3%	27	0.9%
All Airlines	7 483	7 394	6 317	85.4%	6 438	87.1%	89	1.2%

	Sectors		On time departures		On time arrivals		Cancellations	
	sched.	flown	no.	%	no.	%	no.	%
Melbourne-Brisbane								
Qantas	5 427	5 351	4 545	84.9%	4 586	85.7%	76	1.4%
Virgin Blue	3 524	3 489	3 143	90.1%	3 060	87.7%	35	1.0%
All Airlines	8 951	8 840	7 688	87.0%	7 646	86.5%	111	1.2%
Melbourne-Burnie								
QantasLink	1 189	1 164	973	83.6%	971	83.4%	25	2.1%
Regional Express	911	905	850	93.9%	835	92.3%	6	0.7%
All Airlines	2 100	2 069	1 823	88.1%	1 806	87.3%	31	1.5%
Melbourne-Cairns								
Jetstar	496	495	410	82.8%	442	89.3%	1	0.2%
Qantas	334	334	267	79.9%	293	87.7%	0	0.0%
Virgin Blue	700	698	605	86.7%	581	83.2%	2	0.3%
All Airlines	1 530	1 527	1 282	84.0%	1 316	86.2%	3	0.2%
Melbourne-Canberra								
Qantas	2 364	2 357	1 977	83.9%	1 941	82.4%	7	0.3%
QantasLink	1 175	1 116	911	81.6%	927	83.1%	59	5.0%
Virgin Blue	1 201	1 198	1 090	91.0%	1 086	90.7%	3	0.2%
All Airlines	4 740	4 671	3 978	85.2%	3 954	84.6%	69	1.5%
Melbourne-Darwin								
Qantas	282	281	213	75.8%	195	69.4%	1	0.4%
Virgin Blue	155	155	144	92.9%	131	84.5%	0	0.0%
All Airlines	437	436	357	81.9%	326	74.8%	1	0.2%
Melbourne-Devonport								
QantasLink	1 423	1 398	1 107	79.2%	1 161	83.0%	25	1.8%
Regional Express	309	307	292	95.1%	294	95.8%	2	0.6%
All Airlines	1 732	1 705	1 399	82.1%	1 455	85.3%	27	1.6%
Melbourne-Gold Coast								
Jetstar	1 964	1 941	1 664	85.7%	1 630	84.0%	23	1.2%
Qantas	6	4	4	100.0%	3	75.0%	2	33.3%
Virgin Blue	2 221	2 202	1 954	88.7%	1 934	87.8%	19	0.9%
All Airlines	4 191	4 147	3 622	87.3%	3 567	86.0%	44	1.0%
Melbourne-Hobart								
Jetstar	1 721	1 694	1 407	83.1%	1 384	81.7%	27	1.6%
Qantas	730	730	533	73.0%	548	75.1%	0	0.0%
Virgin Blue	1 489	1 487	1 327	89.2%	1 332	89.6%	2	0.1%
All Airlines	3 940	3 911	3 267	83.5%	3 264	83.5%	29	0.7%
Melbourne-Launceston								
Jetstar	1 400	1 387	1 226	88.4%	1 227	88.5%	13	0.9%
Qantas	378	378	245	64.8%	249	65.9%	0	0.0%
Virgin Blue	1 376	1 372	1 206	87.9%	1 201	87.5%	4	0.3%
All Airlines	3 154	3 137	2 677	85.3%	2 677	85.3%	17	0.5%

	Sectors		On time departures		On time arrivals		Cancellations	
	sched.	flown	no.	%	no.	%	no.	%
Melbourne-Maroochydore								
Jetstar	712	708	639	90.3%	620	87.6%	4	0.6%
Virgin Blue	772	768	714	93.0%	707	92.1%	4	0.5%
All Airlines	1 484	1 476	1 353	91.7%	1 327	89.9%	8	0.5%
Melbourne-Mildura								
QantasLink	1 598	1 586	1 306	82.3%	1 262	79.6%	12	0.8%
Regional Express	1 005	1 003	948	94.5%	894	89.1%	2	0.2%
All Airlines	2 603	2 589	2 254	87.1%	2 156	83.3%	14	0.5%
Melbourne-Newcastle								
Jetstar	843	842	753	89.4%	749	89.0%	1	0.1%
QantasLink	842	828	701	84.7%	676	81.6%	14	1.7%
Virgin Blue	364	364	325	89.3%	314	86.3%	0	0.0%
All Airlines	2 049	2 034	1 779	87.5%	1 739	85.5%	15	0.7%
Melbourne-Perth								
Qantas	2 195	2 194	1 567	71.4%	1 393	63.5%	1	0.0%
Virgin Blue	1 469	1 466	1 337	91.2%	1 209	82.5%	3	0.2%
All Airlines	3 664	3 660	2 904	79.3%	2 602	71.1%	4	0.1%
Melbourne-Sydney								
Qantas	10 067	9 708	8 398	86.5%	8 163	84.1%	359	3.6%
Virgin Blue	8 123	7 952	7 141	89.8%	6 988	87.9%	171	2.1%
All Airlines	18 190	17 660	15 539	88.0%	15 151	85.8%	530	2.9%
Mildura-Melbourne								
QantasLink	1 590	1 569	1 325	84.4%	1 294	82.5%	21	1.3%
Regional Express	1 002	1 001	952	95.1%	884	88.3%	1	0.1%
All Airlines	2 592	2 570	2 277	88.6%	2 178	84.7%	22	0.8%
Newcastle-Brisbane								
Jetstar	925	923	785	85.0%	785	85.0%	2	0.2%
QantasLink	803	800	687	85.9%	662	82.8%	3	0.4%
Virgin Blue	365	365	328	89.9%	295	80.8%	0	0.0%
All Airlines	2 093	2 088	1 800	86.2%	1 742	83.4%	5	0.2%
Newcastle-Melbourne								
Jetstar	845	842	738	87.6%	742	88.1%	3	0.4%
QantasLink	840	829	697	84.1%	639	77.1%	11	1.3%
Virgin Blue	365	364	324	89.0%	326	89.6%	1	0.3%
All Airlines	2 050	2 035	1 759	86.4%	1 707	83.9%	15	0.7%
Perth-Adelaide								
Qantas	1 417	1 413	1 138	80.5%	1 233	87.3%	4	0.3%
Virgin Blue	450	449	373	83.1%	405	90.2%	1	0.2%
All Airlines	1 867	1 862	1 511	81.1%	1 638	88.0%	5	0.3%
Perth-Brisbane								
Qantas	902	901	586	65.0%	679	75.4%	1	0.1%
Virgin Blue	365	364	283	77.7%	255	70.1%	1	0.3%
All Airlines	1 267	1 265	869	68.7%	934	73.8%	2	0.2%

	Sectors		On time departures		On time arrivals		Cancellations	
	sched.	flown	no.	%	no.	%	no.	%
Perth-Broome								
Qantas	462	460	367	79.8%	384	83.5%	2	0.4%
QantasLink	295	293	258	88.1%	272	92.8%	2	0.7%
Skywest	254	250	203	81.2%	204	81.6%	4	1.6%
Virgin Blue	279	277	233	84.1%	221	79.8%	2	0.7%
All Airlines	1 290	1 280	1 061	82.9%	1 081	84.5%	10	0.8%
Perth-Kalgoorlie								
Qantas	584	584	471	80.7%	460	78.8%	0	0.0%
QantasLink	394	394	351	89.1%	359	91.1%	0	0.0%
Skywest	595	569	541	95.1%	545	95.8%	26	4.4%
Virgin Blue	7	0	0	0.0%	0	0.0%	7	100.0%
All Airlines	1 580	1 547	1 363	88.1%	1 364	88.2%	33	2.1%
Perth-Karratha								
Qantas	632	632	578	91.5%	576	91.1%	0	0.0%
QantasLink	725	722	602	83.4%	631	87.4%	3	0.4%
Skywest	216	212	192	90.6%	187	88.2%	4	1.9%
All Airlines	1 573	1 566	1 372	87.6%	1 394	89.0%	7	0.4%
Perth-Melbourne								
Qantas	2 247	2 239	1 486	66.4%	1 692	75.6%	8	0.4%
Virgin Blue	1 469	1 467	1 276	87.0%	1 312	89.4%	2	0.1%
All Airlines	3 716	3 706	2 762	74.5%	3 004	81.1%	10	0.3%
Perth-Sydney								
Qantas	1 839	1 834	1 346	73.4%	1 466	79.9%	5	0.3%
Virgin Blue	1 093	1 091	926	84.9%	924	84.7%	2	0.2%
All Airlines	2 932	2 925	2 272	77.7%	2 390	81.7%	7	0.2%
Proserpine-Brisbane								
Jetstar	365	365	328	89.9%	324	88.8%	0	0.0%
Virgin Blue	376	375	337	89.9%	333	88.8%	1	0.3%
All Airlines	741	740	665	89.9%	657	88.8%	1	0.1%
Rockhampton-Brisbane								
Jetstar	514	513	435	84.8%	426	83.0%	1	0.2%
Qantas	151	150	132	88.0%	140	93.3%	1	0.7%
QantasLink	2 109	2 095	1 902	90.8%	1 933	92.3%	14	0.7%
Virgin Blue	1 055	1 054	970	92.0%	969	91.9%	1	0.1%
All Airlines	3 829	3 812	3 439	90.2%	3 468	91.0%	17	0.4%
Sydney-Adelaide								
Qantas	3 550	3 534	2 997	84.8%	3 152	89.2%	16	0.5%
Virgin Blue	1 748	1 743	1 562	89.6%	1 514	86.9%	5	0.3%
All Airlines	5 298	5 277	4 559	86.4%	4 666	88.4%	21	0.4%
Sydney-Albury								
QantasLink	1 379	1 376	1 149	83.5%	1 021	74.2%	3	0.2%
Regional Express	1 242	1 242	1 059	85.3%	1 017	81.9%	0	0.0%
All Airlines	2 621	2 618	2 208	84.3%	2 038	77.8%	3	0.1%

	Sectors		On time departures		On time arrivals		Cancellations	
	sched.	flown	no.	%	no.	%	no.	%
Sydney-Ballina								
Jetstar	142	142	130	91.5%	130	91.5%	0	0.0%
QantasLink	563	560	481	85.9%	440	78.6%	3	0.5%
Regional Express	1 172	1 172	1 077	91.9%	1 034	88.2%	0	0.0%
Virgin Blue	377	375	302	80.5%	286	76.3%	2	0.5%
All Airlines	2 254	2 249	1 990	88.5%	1 890	84.0%	5	0.2%
Sydney-Brisbane								
Qantas	7 330	7 218	6 350	88.0%	6 276	86.9%	112	1.5%
Virgin Blue	5 870	5 771	5 071	87.9%	5 000	86.6%	99	1.7%
All Airlines	13 200	12 989	11 421	87.9%	11 276	86.8%	211	1.6%
Sydney-Cairns								
Jetstar	387	387	343	88.6%	334	86.3%	0	0.0%
Qantas	1 079	1 074	890	82.9%	894	83.2%	5	0.5%
Virgin Blue	940	936	733	78.3%	747	79.8%	4	0.4%
All Airlines	2 406	2 397	1 966	82.0%	1 975	82.4%	9	0.4%
Sydney-Coffs Harbour								
QantasLink	2 082	2 067	1 767	85.5%	1 665	80.6%	15	0.7%
Virgin Blue	658	657	604	91.9%	587	89.3%	1	0.2%
All Airlines	2 740	2 724	2 371	87.0%	2 252	82.7%	16	0.6%
Sydney-Darwin								
Qantas	273	273	207	75.8%	185	67.8%	0	0.0%
Virgin Blue	182	182	154	84.6%	128	70.3%	0	0.0%
All Airlines	455	455	361	79.3%	313	68.8%	0	0.0%
Sydney-Dubbo								
QantasLink	1 523	1 491	1 257	84.3%	1 226	82.2%	32	2.1%
Regional Express	1 217	1 217	1 049	86.2%	1 023	84.1%	0	0.0%
All Airlines	2 740	2 708	2 306	85.2%	2 249	83.1%	32	1.2%
Sydney-Gold Coast								
Jetstar	2 775	2 743	2 412	87.9%	2 423	88.3%	32	1.2%
Qantas	728	726	628	86.5%	630	86.8%	2	0.3%
Virgin Blue	3 356	3 332	2 944	88.4%	2 973	89.2%	24	0.7%
All Airlines	6 859	6 801	5 984	88.0%	6 026	88.6%	58	0.8%
Sydney-Hobart								
Jetstar	916	901	793	88.0%	754	83.7%	15	1.6%
Qantas	365	365	317	86.8%	324	88.8%	0	0.0%
Virgin Blue	728	726	616	84.8%	610	84.0%	2	0.3%
All Airlines	2 009	1 992	1 726	86.6%	1 688	84.7%	17	0.8%
Sydney-Launceston								
Jetstar	420	416	384	92.3%	383	92.1%	4	1.0%
Virgin Blue	375	375	351	93.6%	354	94.4%	0	0.0%
All Airlines	795	791	735	92.9%	737	93.2%	4	0.5%
Sydney-Maroochydore								
Jetstar	1 085	1 072	929	86.7%	905	84.4%	13	1.2%
Virgin Blue	488	487	437	89.7%	437	89.7%	1	0.2%
All Airlines	1 573	1 559	1 366	87.6%	1 342	86.1%	14	0.9%

	Sectors		On time departures		On time arrivals		Cancellations	
	sched.	flown	no.	%	no.	%	no.	%
Sydney-Melbourne								
Qantas	9 942	9 599	8 078	84.2%	8 067	84.0%	343	3.5%
Virgin Blue	8 128	7 965	7 192	90.3%	7 072	88.8%	163	2.0%
All Airlines	18 070	17 564	15 270	86.9%	15 139	86.2%	506	2.8%
Sydney-Perth								
Qantas	1 934	1 931	1 574	81.5%	1 316	68.2%	3	0.2%
Virgin Blue	1 093	1 092	946	86.6%	866	79.3%	1	0.1%
All Airlines	3 027	3 023	2 520	83.4%	2 182	72.2%	4	0.1%
Sydney-Townsville								
Jetstar	36	36	33	91.7%	33	91.7%	0	0.0%
Qantas	314	314	295	93.9%	281	89.5%	0	0.0%
Virgin Blue	360	359	320	89.1%	318	88.6%	1	0.3%
All Airlines	710	709	648	91.4%	632	89.1%	1	0.1%
Sydney-Wagga Wagga								
QantasLink	1 524	1 509	1 246	82.6%	1 113	73.8%	15	1.0%
Regional Express	1 293	1 291	1 097	85.0%	948	73.4%	2	0.2%
All Airlines	2 817	2 800	2 343	83.7%	2 061	73.6%	17	0.6%
Townsville-Brisbane								
Jetstar	61	61	60	98.4%	57	93.4%	0	0.0%
Qantas	1 764	1 758	1 498	85.2%	1 493	84.9%	6	0.3%
Virgin Blue	1 170	1 167	1 108	94.9%	1 092	93.6%	3	0.3%
All Airlines	2 995	2 986	2 666	89.3%	2 642	88.5%	9	0.3%
Townsville-Sydney								
Jetstar	35	35	31	88.6%	30	85.7%	0	0.0%
Qantas	318	317	274	86.4%	287	90.5%	1	0.3%
Virgin Blue	360	359	330	91.9%	330	91.9%	1	0.3%
All Airlines	713	711	635	89.3%	647	91.0%	2	0.3%
Wagga Wagga-Sydney								
QantasLink	1 523	1 504	1 236	82.2%	1 128	75.0%	19	1.2%
Regional Express	1 294	1 292	1 136	87.9%	1 081	83.7%	2	0.2%
All Airlines	2 817	2 796	2 372	84.8%	2 209	79.0%	21	0.7%

AIRPORTS

On time performance is reported for all routes which are flown by two or more airlines where the passenger load averages over 8,000 passengers per month. The following data reports by airport against flights operated on those routes only.

	Departures			Arrivals		
	Sectors Flown	No. on Time	% on Time	Sectors Flown	No. on Time	% on Time

Adelaide Airport

Jetstar	330	288	87.3	331	310	93.7
Qantas	11 452	10 100	88.2	11 447	10 084	88.1
Virgin Blue	7 119	6 385	89.7	7 119	6 286	88.3
All Airlines	18 901	16 773	88.7	18 897	16 680	88.3

Relates to services to and from Brisbane, Canberra, Gold Coast, Melbourne, Perth and Sydney.

Albury Airport

Regional Express	1 238	1 111	89.7	1 242	1 017	81.9
QantasLink	1 369	1 079	78.8	1 376	1 021	74.2
All Airlines	2 613	2 190	83.8	2 618	2 038	77.8

Relates to services to and from Sydney Only.

Alice Springs Airport

Qantas	272	223	82.0	273	240	87.9
Virgin Blue	125	102	81.6	125	104	83.2
All Airlines	397	325	81.9	398	344	86.4

Relates to services to and from Sydney Only.

Ballina Airport

Jetstar	140	121	86.4	142	130	91.5
QantasLink	557	460	82.6	560	440	78.6
Regional Express	1 172	1 031	88.0	1 172	1 034	88.2
Virgin Blue	370	284	76.8	375	286	76.3
All Airlines	2 239	1 896	84.7	2 249	1 890	84.0

Relates to services to and from Sydney Only.

Brisbane Airport

Jetstar	4 256	3 704	87.0	4 257	3 585	84.2
Qantas	20 326	17 089	84.1	20 465	17 632	86.2
QantasLink	3 239	2 912	89.9	2 895	2 595	89.6
Virgin Blue	18 002	16 414	91.2	17 992	15 957	88.7
All Airlines	45 823	40 119	87.6	45 609	39 769	87.2

Relates to services to and from Adelaide, Cairns, Canberra, Darwin, Hobart, Mackay, Melbourne, Newcastle, Rockhampton, Sydney and Townsville.

Broome Airport

Qantas	460	335	72.8	460	384	83.5
QantasLink	346	302	87.3	293	272	92.8
Skywest	242	202	83.5	250	204	81.6
Virgin Blue	276	210	76.1	277	221	79.8
All Airlines	1 324	1 049	79.2	1 280	1 081	84.5

Relates to services to and from Perth Only.

	Departures			Arrivals		
	Sectors Flown	No. on Time	% on Time	Sectors Flown	No. on Time	% on Time
Burnie Airport						
Regional Express	912	876	96.1	905	835	92.3
QantasLink	1 151	1 016	88.3	1 164	971	83.4
All Airlines	2 063	1 892	91.7	2 069	1 806	87.3
Relates to services to and from Melbourne Only.						
Cairns Airport						
Virgin Blue	3 042	2 718	89.3	3 043	2 620	86.1
Qantas	2 987	2 554	85.5	2 735	2 285	83.5
Jetstar	1 807	1 518	84.0	1 811	1 514	83.6
All Airlines	7 836	6 790	86.7	7 589	6 419	84.6
Relates to services to and from Brisbane, Melbourne and Sydney.						
Canberra Airport						
Qantas	4 611	3 960	85.9	4 303	3 667	85.2
QantasLink	1 145	955	83.4	1 116	927	83.1
Virgin Blue	2 650	2 473	93.3	2 649	2 446	92.3
All Airlines	8 406	7 388	87.9	8 068	7 040	87.3
Relates to services to and from Adelaide, Brisbane, Melbourne and Sydney.						
Coffs Harbour Airport						
QantasLink	2 056	1 737	84.5	2 067	1 665	80.6
Virgin Blue	655	593	90.5	657	587	89.3
All Airlines	2 711	2 330	85.9	2 724	2 252	82.7
Relates to services to and from Sydney Only.						
Darwin Airport						
Qantas	1 165	909	78.0	1 165	889	76.3
Virgin Blue	700	557	79.6	701	558	79.6
All Airlines	1 865	1 466	78.6	1 866	1 447	77.5
Relates to services to and from Brisbane and Sydney.						
Devonport Airport						
QantasLink	1 392	1 219	87.6	1 398	1 161	83.0
Regional Express	305	294	96.4	307	294	95.8
All Airlines	1 697	1 513	89.2	1 705	1 455	85.3
Relates to services to and from Melbourne Only.						
Dubbo Airport						
QantasLink	1 492	1 285	86.1	1 491	1 226	82.2
Regional Express	1 214	985	81.1	1 217	1 023	84.1
All Airlines	2 706	2 270	83.9	2 708	2 249	83.1
Relates to services to and from Sydney Only.						
Gold Coast Airport						
Jetstar	5 002	4 219	84.3	5 014	4 354	86.8
Qantas	742	677	91.2	740	643	86.9
Virgin Blue	5 916	5 172	87.4	5 926	5 249	88.6
All Airlines	11 660	10 068	86.3	11 680	10 246	87.7
Relates to services to and from Adelaide, Melbourne and Sydney.						
Hamilton Island Airport						
Jetstar	92	86	93.5	92	87	94.6
Qantas	22	19	86.4	22	18	81.8
Virgin Blue	103	96	93.2	103	97	94.2
All Airlines	217	201	92.6	217	202	93.1
Relates to services to and from Brisbane only.						

	Departures			Arrivals		
	Sectors Flown	No. on Time	% on Time	Sectors Flown	No. on Time	% on Time
Hobart Airport						
Jetstar	2 897	2 400	82.8	2 895	2 386	82.4
Qantas	1 096	918	83.8	1 095	872	79.6
Virgin Blue	2 573	2 295	89.2	2 578	2 290	88.8
All Airlines	6 566	5 613	85.5	6 568	5 548	84.5
Relates to services to and from Brisbane and Melbourne.						
Kalgoorlie Airport						
Qantas	583	409	70.2	584	460	78.8
QantasLink	394	349	88.6	394	359	91.1
Skywest	568	544	95.8	569	545	95.8
All Airlines	1 545	1 302	84.3	1 547	1 364	88.2
Relates to services to and from Perth Only.						
Karratha Airport						
Qantas	631	573	90.8	632	576	91.1
QantasLink	638	545	85.4	722	631	87.4
Skywest	238	213	89.5	212	187	88.2
All Airlines	1 507	1 331	88.3	1 566	1 394	89.0
Relates to services to and from Perth only.						
Launceston Airport						
Jetstar	1 804	1 587	88.0	1 803	1 610	89.3
Qantas	378	361	95.5	378	249	65.9
Virgin Blue	1 750	1 606	91.8	1 747	1 555	89.0
All Airlines	3 932	3 554	90.4	3 928	3 414	86.9
Relates to services to and from Melbourne Only.						
Mackay Airport						
Jetstar	1 077	933	86.6	1 074	954	88.8
Qantas	364	273	75.0	365	315	86.3
Virgin Blue	1 040	979	94.1	1 040	907	87.2
All Airlines	2 481	2 185	88.1	2 479	2 176	87.8
Relates to services to and from Brisbane Only.						
Maroochydore Airport						
Jetstar	1 710	1 333	78.0	1 780	1 525	85.7
Virgin Blue	1 251	1 100	87.9	1 255	1 144	91.2
All Airlines	2 961	2 433	82.2	3 035	2 669	87.9
Relates to services to and from Melbourne and Sydney.						
Melbourne Airport						
Jetstar	7 067	6 099	86.3	6 993	5 681	81.2
Qantas	25 723	21 430	83.3	25 774	21 739	84.3
QantasLink	6 092	4 998	82.0	6 086	4 931	81.0
Regional Express	2 215	2 090	94.4	2 218	2 012	90.7
Virgin Blue	24 159	21 622	89.5	24 166	21 619	89.5
All Airlines	65 256	56 239	86.2	65 237	55 982	85.8
Relates to services to and from Adelaide, Brisbane, Burnie, Cairns, Canberra, Devonport, Gold Coast, Hobart, Launceston, Maroochydore, Mildura, Newcastle, Perth and Sydney.						

	Departures			Arrivals		
	Sectors Flown	No. on Time	% on Time	Sectors Flown	No. on Time	% on Time
Mildura Airport						
QantasLink	1 569	1 325	84.4	1 586	1 262	79.6
Regional Express	1 001	952	95.1	1 003	894	89.1
All Airlines	2 570	2 277	88.6	2 589	2 156	83.3
Relates to services to and from Brisbane and Melbourne.						
Newcastle Airport						
Jetstar	1 765	1 523	86.3	1 765	1 541	87.3
QantasLink	1 629	1 384	85.0	1 608	1 322	82.2
Virgin Blue	729	652	89.4	729	642	88.1
All Airlines	4 123	3 559	86.3	4 102	3 505	85.4
Relates to services to and from Brisbane and Melbourne.						
Perth Airport						
Qantas	8 063	5 972	74.1	8 134	5 872	72.2
QantasLink	1 409	1 211	85.9	1 378	1 217	88.3
Skywest	1 031	936	90.8	1 048	937	89.4
Virgin Blue	3 648	3 091	84.7	3 648	2 944	80.7
All Airlines	14 151	11 210	79.2	14 208	10 970	77.2
Relates to services to and from Adelaide, Brisbane, Broome, Kalgoorlie, Melbourne and Sydney.						
Proserpine Airport						
Jetstar	365	328	89.9	365	331	90.7
Virgin Blue	375	337	89.9	375	337	89.9
All Airlines	740	665	89.9	740	668	90.3
Relates to services to and from Brisbane Only.						
Rockhampton Airport						
Jetstar	513	435	84.8	512	455	88.9
Qantas	150	132	88.0	149	139	93.3
QantasLink	2 095	1 902	90.8	2 459	2 204	89.6
Virgin Blue	1 054	970	92.0	1 054	928	88.0
All Airlines	3 812	3 439	90.2	4 174	3 726	89.3
Relates to services to and from Brisbane Only.						
Sydney Airport						
Jetstar	5 697	5 024	88.2	5 687	4 977	87.5
Qantas	25 034	21 336	85.2	25 340	21 617	85.3
QantasLink	7 003	5 900	84.2	6 978	5 633	80.7
Regional Express	4 922	4 282	87.0	4 916	4 040	82.2
Virgin Blue	24 000	21 232	88.5	23 978	21 112	88.0
All Airlines	66 656	57 774	86.7	66 913	57 393	85.8
Relates to services to and from Adelaide, Albury, Alice springs, Ballina, Brisbane, Cairns, Canberra, Coffs Harbour, Darwin, Dubbo, Gold Coast, Maroochydore, Melbourne, Perth, Townsville and Wagga Wagga.						
Townsville Airport						
Jetstar	96	91	94.8	97	93	95.9
Qantas	2 075	1 772	85.4	2 073	1 697	81.9
Virgin Blue	1 526	1 438	94.2	1 526	1 393	91.3
All Airlines	3 697	3 301	89.3	3 696	3 183	86.1
Relates to services to and from Brisbane and Sydney.						
Wagga Wagga Airport						
QantasLink	1 504	1 236	82.2	1 509	1 113	73.8
Regional Express	1 292	1 136	87.9	1 291	948	73.4
All Airlines	2 796	2 372	84.8	2 800	2 061	73.6
Relates to services to and from Sydney Only.						

DEFINITIONS

On time departure	A flight departure is counted as "on time" if it departs the gate within 15 minutes of the scheduled departure time shown in the carriers' schedule.
On time arrival	A flight arrival is counted as "on time" if it arrived at the gate within 15 minutes of the scheduled arrival time shown in the carriers' schedule. Neither diverted nor cancelled flights count as on time.
Cancellation	A flight is regarded as a cancellation if it is cancelled or rescheduled less than 7 days prior to its scheduled departure time.
On time departure percentage	The percentage of on time departures is measured against the number of departures <i>operated</i> on any particular sector.
On time arrival percentage	The percentage of on time arrivals is measured against the number of arrivals <i>operated</i> on any particular sector.
Cancellation percentage	The percentage of cancellations is measured against the number of services <i>scheduled</i> on any particular sector.
