



Australian Government
Department of Transport and Regional Services
Bureau of Transport and Regional Economics

BUREAU OF TRANSPORT AND REGIONAL ECONOMICS

airline on time performance
2004/05

AVIATION STATISTICS

OTP 22

© Commonwealth of Australia

ISSN 1832-0759

This work is copyright and the data contained in this publication should not be reproduced or used in any form without acknowledgement.

This publication is available free of charge from the Bureau of Transport and Regional Economics, GPO Box 501, Canberra, ACT 2601, by downloading it from our website (see below), by phone (02) 6274 7210, fax (02) 6274 6816 or email: btre@dotars.gov.au

<http://www.btre.gov.au/statistics/aviation/otphome.aspx>

Disclaimers

The BTRE seeks to publish its work to the highest professional standards. However, it cannot accept responsibility for any consequences arising from the use of information herein. Readers should rely on their own skill and judgment in applying any information or analysis to particular issues or circumstances.

FOREWORD

In late 2003, the Bureau of Transport and Regional Economics (BTRE) established an agreement with major Australian airlines to report domestic aviation on time performance statistics. Qantas, QantasLink, Regional Express, Skywest Airlines and Virgin Blue agreed to report monthly on time performance statistics to BTRE from November 2003. Jetstar, which commenced operations on 25 May 2004, is also now participating. The purpose of collecting and publishing this information is to monitor overall industry and individual airline performance on punctuality and to allow consumers of air travel to make informed decisions when planning air travel.

On time performance is reported for all routes which are flown by two or more airlines where the passenger load averages over 8,000 passengers per month. There are currently 48 routes which meet this definition, however, over time routes which meet this definition may change as airline networks and traffic levels vary.

Airlines also report overall monthly network performance. Total industry figures refer to all services operated by reporting airlines only. This currently represents over 95 per cent of scheduled aviation services in Australia.

The method of capturing on time performance varies between airlines utilising different recording systems. Jetstar and Qantas jet aircraft use Aircraft Communication Addressing and Reporting System (ACARS) to electronically measure on time performance. Virgin Blue, Regional Express, Skywest and the Qantas non-jet fleet record on time performance manually using records from pilots, gate agents and/or ground crews.

Reports are published monthly on the BTRE web site. After collection of initial data, aggregate reports are subject to internal audit by participating airlines prior to publication. This report collates data for the total industry and individual routes and airports for the year ended 30 June 2005.

Definitions relating to on time performance are provided at the end of this report.

Detailed time series data is available in Microsoft Excel spreadsheet format from the BTRE web site at http://www.btre.gov.au/statistics/aviation/otp_downloads.aspx

Bureau of Transport and Regional Economics
GPO Box 501
Canberra ACT 2601

Telephone: 02 6274 7720

Facsimile: 02 6274 7727

Website: <http://www.btre.gov.au/statistics/statsindex.aspx>

Email: avstats@dotars.gov.au

CONTENTS

Industry performance	1
Individual routes	3
Airports	15
Definitions	19

INDUSTRY PERFORMANCE

Airline on time performance over all routes operated by airlines participating in on time performance reporting (i.e. Jetstar, Qantas, QantasLink, Regional Express, Skywest Airlines and Virgin Blue), averaged 87.0 per cent in terms of on time departures and 86.4 per cent for on time arrivals for the year ended 30 June 2005. Cancellations averaged 0.9 per cent of all scheduled flights.

The highest level of on time performance was recorded in January, with 88.7 per cent of departures on time and 88.6 per cent of arrivals on time. The lowest percentage of cancellations was recorded in April, with 0.6 per cent of scheduled flights cancelled.

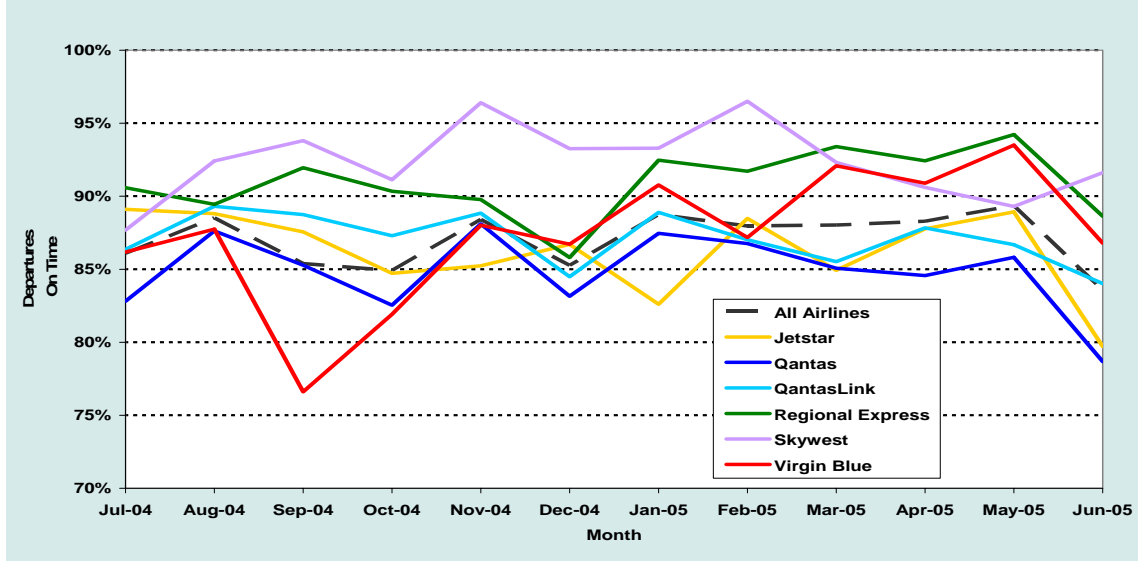
The lowest level of on time performance was recorded in June, when airline operations on the east coast of Australia were particularly impacted by wet weather. In June 83.6 per cent of departures and 81.6 per cent of arrivals were on time. The highest percentage of cancellations was recorded in May, with 1.5 per cent of scheduled flights cancelled.

On time performance – total industry for the year ending 30 June 2005

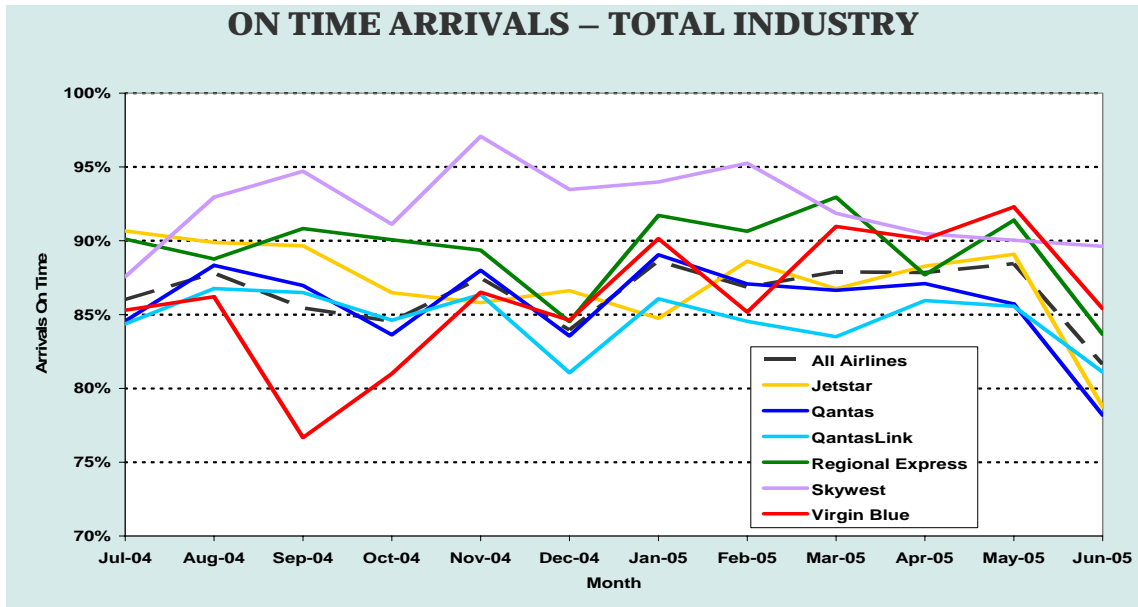
	Jetstar	Qantas	Qantas Link	Regional Express	Skywest	Virgin Blue	All Airlines
Sectors Scheduled	43 994	122 081	96 584	55 885	10 718	101 452	430 714
Sectors Flown	43 411	120 763	95 605	55 796	10 670	100 417	426 662
On Time Departures	37 382	102 410	83 241	50 701	9 847	87 756	371 337
On Time Arrivals	37 774	103 532	80 971	49 816	9 847	86 590	368 530
Cancellations	577	1 318	979	115	48	1 035	4 072
OnTime Departures (%)	86.1%	84.8%	87.1%	90.9%	92.3%	87.4%	87.0%
OnTime Arrivals (%)	87.0%	85.7%	84.7%	89.3%	92.3%	86.2%	86.4%
Cancellations (%)	1.3%	1.1%	1.0%	0.2%	0.4%	1.0%	0.9%

Data may not sum due to unresolved data errors in 0.01 per cent of flights

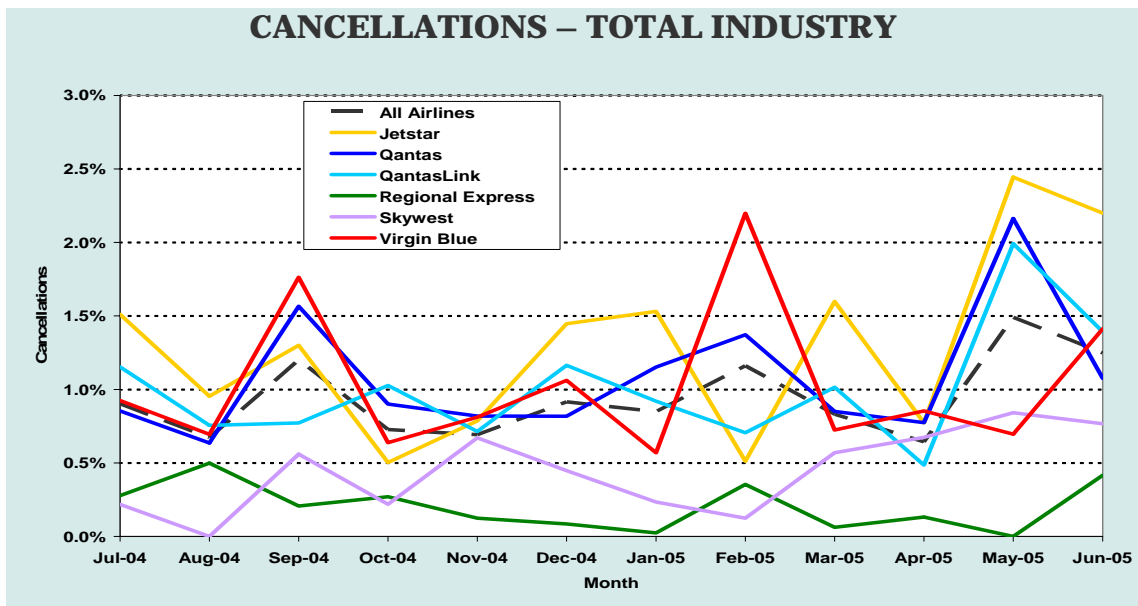
ON TIME DEPARTURES – TOTAL INDUSTRY



ON TIME ARRIVALS – TOTAL INDUSTRY



CANCELLATIONS – TOTAL INDUSTRY



INDIVIDUAL ROUTES

On time performance is reported for all routes which are flown by two or more airlines where the passenger load averages over 8,000 passengers per month. There are currently 48 routes which meet this definition, however, over time routes which meet this definition may change as airline networks and traffic levels vary.

	Sectors		On time departures		On time arrivals		Cancellations	
	sched.	flown	no.	%	no.	%	no.	%
Adelaide-Alice Springs								
Qantas	181	181	158	87.3%	163	90.1%	0	0.0%
Virgin Blue	87	87	83	95.4%	82	94.3%	0	0.0%
All Airlines	268	268	241	89.9%	245	91.4%	0	0.0%
Adelaide-Brisbane								
Qantas	1 092	1 092	987	90.4%	1 010	92.5%	0	0.0%
Virgin Blue	924	922	775	84.1%	775	84.1%	2	0.2%
All Airlines	2 016	2 014	1 762	87.5%	1 785	88.6%	2	0.1%
Adelaide-Canberra								
Qantas	544	544	480	88.2%	479	88.1%	0	0.0%
Virgin Blue	344	344	331	96.2%	326	94.8%	0	0.0%
All Airlines	888	888	811	91.3%	805	90.7%	0	0.0%
Adelaide-Gold Coast								
Jetstar	150	148	137	92.6%	137	92.6%	2	1.3%
Qantas	62	62	54	87.1%	54	87.1%	0	0.0%
Virgin Blue	365	363	327	90.1%	323	89.0%	2	0.5%
All Airlines	577	573	518	90.4%	514	89.7%	4	0.7%
Adelaide-Melbourne								
Qantas	4 419	4 357	3 848	88.3%	3 825	87.8%	62	1.4%
Virgin Blue	2 871	2 832	2 535	89.5%	2 527	89.2%	39	1.4%
All Airlines	7 290	7 189	6 383	88.8%	6 352	88.4%	101	1.4%
Adelaide-Perth								
Qantas	1 483	1 483	1 289	86.9%	1 269	85.6%	0	0.0%
Virgin Blue	523	522	471	90.2%	425	81.4%	1	0.2%
All Airlines	2 006	2 005	1 760	87.8%	1 694	84.5%	1	0.0%
Adelaide-Sydney								
Qantas	3 705	3 690	3 376	91.5%	3 372	91.4%	15	0.4%
Virgin Blue	1 748	1 739	1 587	91.3%	1 541	88.6%	9	0.5%
All Airlines	5 453	5 429	4 963	91.4%	4 913	90.5%	24	0.4%
Albury-Sydney								
QantasLink	1 399	1 397	1 124	80.5%	1 161	83.1%	2	0.1%
Regional Express	1 159	1 158	1 083	93.5%	1 031	89.0%	1	0.1%
All Airlines	2 572	2 569	2 220	86.4%	2 206	85.9%	3	0.1%

	Sectors		On time departures		On time arrivals		Cancellations	
	sched.	flown	no.	%	no.	%	no.	%
Alice Springs-Adelaide								
Qantas	181	180	152	84.4%	153	85.0%	1	0.6%
Virgin Blue	87	87	79	90.8%	73	83.9%	0	0.0%
All Airlines	268	267	231	86.5%	226	84.6%	1	0.4%
Alice Springs-Sydney								
Qantas	153	153	123	80.4%	143	93.5%	0	0.0%
Virgin Blue	108	108	79	73.1%	76	70.4%	0	0.0%
All Airlines	261	261	202	77.4%	219	83.9%	0	0.0%
Ballina-Sydney								
QantasLink	842	838	711	84.8%	692	82.6%	4	0.5%
Regional Express	537	536	463	86.4%	432	80.6%	1	0.2%
Virgin Blue	301	296	205	69.3%	194	65.5%	5	1.7%
All Airlines	1 680	1 670	1 379	82.6%	1 318	78.9%	10	0.6%
Brisbane-Adelaide								
Qantas	1 093	1 093	912	83.4%	1 004	91.9%	0	0.0%
Virgin Blue	925	924	852	92.2%	844	91.3%	1	0.1%
All Airlines	2 071	2 017	1 764	87.5%	1 848	91.6%	1	0.0%
Brisbane-Cairns								
Jetstar	1 181	1 172	1 024	87.4%	1 007	85.9%	9	0.8%
Qantas	1 334	1 334	1 132	84.9%	1 140	85.5%	0	0.0%
Virgin Blue	1 410	1 409	1 289	91.5%	1 285	91.2%	1	0.1%
All Airlines	3 895	3 915	3 445	88.0%	3 432	87.7%	10	0.3%
Brisbane-Canberra								
Qantas	1 396	1 395	1 197	85.8%	1 257	90.1%	1	0.1%
Virgin Blue	1 088	1 088	1 006	92.5%	1 007	92.6%	0	0.0%
All Airlines	2 424	2 483	2 203	88.7%	2 264	91.2%	1	0.0%
Brisbane-Darwin								
Qantas	625	625	513	82.1%	535	85.6%	0	0.0%
Virgin Blue	363	363	299	82.4%	276	76.0%	0	0.0%
All Airlines	988	988	812	82.2%	811	82.1%	0	0.0%
Brisbane-Hobart								
Jetstar	365	364	304	83.5%	323	88.7%	1	0.3%
Virgin Blue	365	365	346	94.8%	343	94.0%	0	0.0%
All Airlines	730	729	650	89.2%	666	91.4%	1	0.1%
Brisbane-Mackay								
Jetstar	1 091	1 084	994	91.7%	997	92.0%	7	0.6%
Qantas	365	365	315	86.3%	316	86.6%	0	0.0%
Virgin Blue	904	904	811	89.7%	805	89.0%	0	0.0%
All Airlines	2 360	2 353	2 120	90.1%	2 118	90.0%	7	0.3%

	Sectors		On time departures		On time arrivals		Cancellations	
	sched.	flown	no.	%	no.	%	no.	%
Brisbane-Melbourne								
Jetstar	1	0	0	0.0%	0	0.0%	1	100.0%
Qantas	5 464	5 403	4 555	84.3%	4 650	86.1%	61	1.1%
Virgin Blue	3 590	3 557	3 183	89.5%	3 185	89.5%	33	0.9%
All Airlines	9 055	8 960	7 738	86.4%	7 835	87.4%	95	1.0%
Brisbane-Newcastle								
Jetstar	581	579	480	82.9%	487	84.1%	2	0.3%
QantasLink	996	994	885	89.0%	862	86.7%	2	0.2%
Virgin Blue	365	365	323	88.5%	310	84.9%	0	0.0%
All Airlines	1 942	1 938	1 688	87.1%	1 659	85.6%	4	0.2%
Brisbane-Perth								
Qantas	744	744	602	80.9%	604	81.2%	0	0.0%
Virgin Blue	365	365	312	85.5%	288	78.9%	0	0.0%
All Airlines	1 109	1 109	914	82.4%	892	80.4%	0	0.0%
Brisbane-Proserpine								
Jetstar	357	357	329	92.2%	325	91.0%	0	0.0%
Virgin Blue	380	380	338	88.9%	333	87.6%	0	0.0%
All Airlines	737	737	667	90.5%	658	89.3%	0	0.0%
Brisbane-Rockhampton								
Jetstar	698	697	648	93.0%	649	93.1%	1	0.1%
Qantas	334	332	294	88.6%	304	91.6%	2	0.6%
QantasLink	1 482	1 481	1 326	89.5%	1 294	87.4%	1	0.1%
Virgin Blue	918	918	793	86.4%	796	86.7%	0	0.0%
All Airlines	3 432	3 428	3 061	89.3%	3 043	88.8%	4	0.1%
Brisbane-Sydney								
Qantas	7 707	7 591	6 608	87.1%	6 561	86.4%	116	1.5%
Virgin Blue	5 801	5 703	5 227	91.7%	5 110	89.6%	98	1.7%
All Airlines	13 508	13 294	11 835	89.0%	11 671	87.8%	214	1.6%
Brisbane-Townsville								
Qantas	1 755	1 749	1 428	81.6%	1 407	80.4%	6	0.3%
Virgin Blue	1 171	1 169	1 047	89.6%	1 039	88.9%	2	0.2%
All Airlines	2 926	2 918	2 475	84.8%	2 446	83.8%	8	0.3%
Broome-Perth								
Qantas	434	429	269	62.7%	308	71.8%	5	1.2%
QantasLink	411	405	370	91.4%	361	89.1%	6	1.5%
Skywest	247	242	189	78.1%	176	72.7%	6	2.4%
Virgin Blue	188	186	138	74.2%	150	80.6%	2	1.1%
All Airlines	1 280	1 262	966	76.5%	995	78.8%	19	1.5%
Burnie-Melbourne								
QantasLink	1 302	1 269	1 117	88.0%	1 040	82.0%	33	2.5%
Regional Express	862	856	815	95.2%	793	92.6%	6	0.7%
All Airlines	2 164	2 125	1 932	90.9%	1 833	86.3%	39	1.8%

	Sectors		On time departures		On time arrivals		Cancellations	
	sched.	flown	no.	%	no.	%	no.	%
Cairns-Brisbane								
Jetstar	1 181	1 170	1 019	87.1%	1 035	88.5%	11	0.9%
Qantas	1 458	1 453	1 275	87.7%	1 313	90.4%	5	0.3%
Virgin Blue	1 411	1 410	1 319	93.5%	1 335	94.7%	1	0.1%
All Airlines	4 050	4 033	3 613	89.6%	3 683	91.3%	17	0.4%
Cairns-Melbourne								
Jetstar	187	185	149	80.5%	160	86.5%	2	1.1%
Qantas	365	365	292	80.0%	306	83.8%	0	0.0%
Virgin Blue	709	705	596	84.5%	586	83.1%	4	0.6%
All Airlines	1 261	1 255	1 037	82.6%	1 052	83.8%	6	0.5%
Cairns-Sydney								
Jetstar	168	168	140	83.3%	146	86.9%	0	0.0%
Qantas	1 298	1 294	1 096	84.7%	1 167	90.2%	4	0.3%
Virgin Blue	956	951	819	86.1%	814	85.6%	5	0.5%
All Airlines	2 422	2 413	2 055	85.2%	2 127	88.1%	9	0.4%
Canberra-Adelaide								
Qantas	592	592	530	89.5%	546	92.2%	0	0.0%
Virgin Blue	344	343	325	94.8%	323	94.2%	1	0.3%
All Airlines	936	935	855	91.4%	869	92.9%	1	0.1%
Canberra-Brisbane								
Qantas	1 396	1 394	1 228	88.1%	1 187	85.2%	2	0.1%
Virgin Blue	1 089	1 089	1 013	93.0%	1 006	92.4%	0	0.0%
All Airlines	2 485	2 483	2 241	90.3%	2 193	88.3%	2	0.1%
Canberra-Melbourne								
Qantas	2 683	2 659	2 267	85.3%	2 292	86.2%	24	0.9%
QantasLink	1 184	1 134	976	86.1%	939	82.8%	50	4.2%
Virgin Blue	1 197	1 195	1 067	89.3%	1 057	88.5%	2	0.2%
All Airlines	5 064	4 988	4 310	86.4%	4 288	86.0%	76	1.5%
Canberra-Sydney								
Qantas	794	789	684	86.7%	648	82.1%	5	0.6%
QantasLink	3 018	2 945	2 632	89.4%	2 576	87.5%	73	2.4%
Regional Express	866	850	774	91.1%	764	89.9%	16	1.8%
Virgin Blue	61	57	55	96.5%	51	89.5%	4	6.6%
All Airlines	4 739	4 641	4 145	89.3%	4 039	87.0%	98	2.1%
Coffs Harbour-Sydney								
Qantas	2	2	1	50.0%	1	50.0%	0	0.0%
QantasLink	2 090	2 074	1 768	85.2%	1 747	84.2%	16	0.8%
Virgin Blue	492	491	435	88.6%	433	88.2%	1	0.2%
All Airlines	2 584	2 567	2 204	85.9%	2 181	85.0%	17	0.7%
Darwin-Brisbane								
Qantas	624	624	488	78.2%	535	85.7%	0	0.0%
Virgin Blue	364	362	298	82.3%	303	83.7%	2	0.5%
All Airlines	988	986	786	79.7%	838	85.0%	2	0.2%

	Sectors		On time departures		On time arrivals		Cancellations	
	sched.	flown	no.	%	no.	%	no.	%
Darwin-Melbourne								
Qantas	133	132	102	77.3%	103	78.0%	1	0.8%
Virgin Blue	77	77	63	81.8%	57	74.0%	0	0.0%
All Airlines	210	209	165	78.9%	160	76.6%	1	0.5%
Darwin-Sydney								
Qantas	387	387	317	81.9%	356	92.0%	0	0.0%
Virgin Blue	243	243	182	74.9%	199	81.9%	0	0.0%
All Airlines	630	630	499	79.2%	555	88.1%	0	0.0%
Devonport-Melbourne								
QantasLink	1 727	1 689	1 521	90.1%	1 438	85.1%	38	2.2%
Regional Express	435	433	411	94.9%	398	91.9%	2	0.5%
All Airlines	2 162	2 122	1 932	91.0%	1 836	86.5%	40	1.9%
Dubbo-Sydney								
QantasLink	1 571	1 535	1 328	86.5%	1 280	83.4%	26	1.7%
Regional Express	1 191	1 190	1 001	84.1%	951	79.9%	1	0.1%
All Airlines	2 762	2 725	2 329	85.5%	2 231	81.9%	27	1.0%
Gold Coast-Adelaide								
Jetstar	150	148	139	93.9%	138	93.2%	2	1.3%
Qantas	62	62	54	87.1%	57	91.9%	0	0.0%
Virgin Blue	365	364	309	84.9%	313	86.0%	1	0.3%
All Airlines	577	574	502	87.5%	508	88.5%	3	0.5%
Gold Coast-Melbourne								
Jetstar	2 005	1 974	1 596	80.9%	1 609	81.5%	31	1.5%
Qantas	47	45	37	82.2%	40	88.9%	2	4.3%
Virgin Blue	2 010	1 992	1 663	83.5%	1 716	86.1%	18	0.9%
All Airlines	4 062	4 011	3 296	82.2%	3 365	83.9%	51	1.3%
Gold Coast-Sydney								
Jetstar	2 846	2 781	2 378	85.5%	2 448	88.0%	66	2.3%
Qantas	731	729	665	91.2%	671	92.0%	2	0.3%
Virgin Blue	3 367	3 317	2 779	83.8%	2 763	83.3%	50	1.5%
All Airlines	6 944	6 827	5 822	85.3%	5 882	86.2%	118	1.7%
Hobart-Brisbane								
Jetstar	366	364	342	94.0%	331	90.9%	2	0.5%
Virgin Blue	365	365	322	88.2%	334	91.5%	0	0.0%
All Airlines	731	729	664	91.1%	665	91.2%	2	0.3%
Hobart-Melbourne								
Jetstar	2 379	2 342	2 021	86.3%	2 058	87.9%	38	1.6%
Qantas	730	730	632	86.6%	590	80.8%	0	0.0%
Virgin Blue	1 473	1 470	1 294	88.0%	1 279	87.0%	3	0.2%
All Airlines	4 582	4 542	3 947	86.9%	3 927	86.5%	41	0.9%

	Sectors		On time departures		On time arrivals		Cancellations	
	sched.	flown	no.	%	no.	%	no.	%
Hobart-Sydney								
Jetstar	521	511	461	90.2%	450	88.1%	10	1.9%
Qantas	182	182	123	67.6%	147	80.8%	0	0.0%
Virgin Blue	360	360	299	83.1%	305	84.7%	0	0.0%
All Airlines	1 063	1 053	883	83.9%	902	85.7%	10	0.9%
Kalgoorlie-Perth								
Qantas	570	570	383	67.2%	410	71.9%	0	0.0%
QantasLink	416	415	368	88.7%	363	87.5%	1	0.2%
Skywest	539	534	516	96.6%	517	96.8%	8	1.5%
Virgin Blue	7	0	0	0.0%	0	0.0%	7	100.0%
All Airlines	1 532	1 519	1 267	83.4%	1 290	84.9%	16	1.0%
Karratha-Perth								
Qantas	496	496	449	90.5%	458	92.3%	0	0.0%
QantasLink	437	435	383	88.0%	396	91.0%	2	0.5%
Skywest	191	189	164	86.8%	171	90.5%	2	1.0%
All Airlines	1 124	1 120	996	88.9%	1 025	91.5%	4	0.4%
Launceston-Melbourne								
Jetstar	1 428	1 417	1 253	88.4%	1 263	89.1%	16	1.1%
Qantas	381	381	356	93.4%	348	91.3%	0	0.0%
Virgin Blue	1 270	1 264	1 126	89.1%	1 135	89.8%	6	0.5%
All Airlines	3 079	3 062	2 735	89.3%	2 746	89.7%	22	0.7%
Launceston-Sydney								
Jetstar	236	231	207	89.6%	207	89.6%	5	2.1%
Qantas	1	1	1	100.0%	1	100.0%	0	0.0%
Virgin Blue	181	181	152	84.0%	145	80.1%	0	0.0%
All Airlines	418	413	360	87.2%	353	85.5%	5	1.2%
Mackay-Brisbane								
Jetstar	1 094	1 085	966	89.0%	971	89.5%	9	0.8%
Qantas	365	364	283	77.7%	313	86.0%	1	0.3%
Virgin Blue	902	902	846	93.8%	855	94.8%	0	0.0%
All Airlines	2 361	2 351	2 095	89.1%	2 139	91.0%	10	0.4%
Maroochydore-Melbourne								
Jetstar	569	565	431	76.3%	450	79.6%	5	0.9%
Virgin Blue	713	711	594	83.5%	593	83.4%	2	0.3%
All Airlines	1 282	1 276	1 025	80.3%	1 043	81.7%	7	0.5%
Maroochydore-Sydney								
Jetstar	1 013	993	783	78.9%	807	81.3%	20	2.0%
Virgin Blue	530	526	458	87.1%	450	85.6%	4	0.8%
All Airlines	1 543	1 519	1 241	81.7%	1 257	82.8%	24	1.6%
Melbourne-Adelaide								
Qantas	4 500	4 445	3 712	83.5%	3 898	87.7%	55	1.2%
Virgin Blue	2 870	2 831	2 457	86.8%	2 481	87.6%	39	1.4%
All Airlines	7 370	7 276	6 169	84.8%	6 379	87.7%	94	1.3%

	Sectors		On time departures		On time arrivals		Cancellations	
	sched.	flown	no.	%	no.	%	no.	%
Melbourne-Brisbane								
Qantas	5 483	5 434	4 693	86.4%	4 726	87.0%	49	0.9%
Virgin Blue	3 588	3 558	3 116	87.6%	3 016	84.8%	30	0.8%
All Airlines	9 071	8 992	7 809	86.8%	7 742	86.1%	79	0.9%
Melbourne-Burnie								
QantasLink	1 311	1 277	1 061	83.1%	1 064	83.3%	34	2.6%
Regional Express	855	849	793	93.4%	787	92.7%	6	0.7%
All Airlines	2 166	2 126	1 854	87.2%	1 851	87.1%	40	1.8%
Melbourne-Cairns								
Jetstar	189	189	136	72.0%	156	82.5%	0	0.0%
Qantas	334	334	267	79.9%	278	83.2%	0	0.0%
Virgin Blue	709	705	578	82.0%	571	81.0%	4	0.6%
All Airlines	1 232	1 228	981	79.9%	1 005	81.8%	4	0.3%
Melbourne-Canberra								
Qantas	2 420	2 401	2 008	83.6%	1 992	83.0%	19	0.8%
QantasLink	1 174	1 114	941	84.5%	943	84.6%	60	5.1%
Virgin Blue	1 199	1 196	1 047	87.5%	1 033	86.4%	3	0.3%
All Airlines	4 793	4 711	3 996	84.8%	3 968	84.2%	82	1.7%
Melbourne-Darwin								
Qantas	135	134	95	70.9%	97	72.4%	1	0.7%
Virgin Blue	77	77	73	94.8%	65	84.4%	0	0.0%
All Airlines	212	211	168	79.6%	162	76.8%	1	0.5%
Melbourne-Devonport								
QantasLink	1 729	1 694	1 411	83.3%	1 465	86.5%	35	2.0%
Regional Express	439	437	413	94.5%	413	94.5%	2	0.5%
All Airlines	2 168	2 131	1 824	85.6%	1 878	88.1%	37	1.7%
Melbourne-Gold Coast								
Jetstar	2 009	1 981	1 788	90.3%	1 749	88.3%	29	1.4%
Qantas	46	44	38	86.4%	38	86.4%	2	4.3%
Virgin Blue	2 010	1 994	1 687	84.6%	1 703	85.4%	16	0.8%
All Airlines	4 065	4 019	3 513	87.4%	3 490	86.8%	47	1.2%
Melbourne-Hobart								
Jetstar	2 392	2 344	2 098	89.5%	2 097	89.5%	48	2.0%
Qantas	730	730	549	75.2%	528	72.3%	0	0.0%
Virgin Blue	1 473	1 470	1 258	85.6%	1 257	85.5%	3	0.2%
All Airlines	4 595	4 544	3 905	85.9%	3 882	85.4%	51	1.1%
Melbourne-Launceston								
Jetstar	1 430	1 415	1 276	90.2%	1 268	89.6%	15	1.0%
Qantas	382	382	288	75.4%	272	71.2%	0	0.0%
Virgin Blue	1 269	1 263	1 076	85.2%	1 029	81.5%	6	0.5%
All Airlines	3 081	3 060	2 640	86.3%	2 569	84.0%	21	0.7%

	Sectors		On time departures		On time arrivals		Cancellations	
	sched.	flown	no.	%	no.	%	no.	%
Melbourne-Maroochydore								
Jetstar	631	627	550	87.7%	528	84.2%	4	0.6%
Virgin Blue	712	711	621	87.3%	620	87.2%	1	0.1%
All Airlines	1 343	1 338	1 171	87.5%	1 148	85.8%	5	0.4%
Melbourne-Mildura								
QantasLink	1 615	1 608	1 366	85.0%	1 350	84.0%	7	0.4%
Regional Express	911	909	849	93.4%	825	90.8%	2	0.2%
All Airlines	2 526	2 517	2 215	88.0%	2 175	86.4%	9	0.4%
Melbourne-Newcastle								
Jetstar	624	623	540	86.7%	540	86.7%	1	0.2%
QantasLink	854	842	716	85.0%	695	82.5%	12	1.4%
Virgin Blue	364	364	308	84.6%	282	77.5%	0	0.0%
All Airlines	1 842	1 829	1 564	85.5%	1 517	82.9%	13	0.7%
Melbourne-Perth								
Qantas	2 053	2 051	1 477	72.0%	1 468	71.6%	2	0.1%
Virgin Blue	1 459	1 454	1 276	87.8%	1 200	82.5%	5	0.3%
All Airlines	3 512	3 505	2 753	78.5%	2 668	76.1%	7	0.2%
Melbourne-Sydney								
Qantas	10 242	9 887	8 597	87.0%	8 380	84.8%	355	3.5%
Virgin Blue	8 199	7 988	6 901	86.4%	6 731	84.3%	211	2.6%
All Airlines	18 441	17 875	15 498	86.7%	15 111	84.5%	566	3.1%
Mildura-Melbourne								
QantasLink	1 608	1 597	1 369	85.7%	1 331	83.3%	11	0.7%
Regional Express	907	906	847	93.5%	791	87.3%	1	0.1%
All Airlines	2 515	2 503	2 216	88.5%	2 122	84.8%	12	0.5%
Newcastle-Brisbane								
Jetstar	581	579	475	82.0%	484	83.6%	2	0.3%
QantasLink	1 118	1 114	979	87.9%	950	85.3%	4	0.4%
Virgin Blue	365	365	299	81.9%	306	83.8%	0	0.0%
All Airlines	2 064	2 058	1 753	85.2%	1 740	84.5%	6	0.3%
Newcastle-Melbourne								
Jetstar	626	623	527	84.6%	523	83.9%	3	0.5%
QantasLink	852	838	737	87.9%	647	77.2%	14	1.6%
Virgin Blue	365	364	307	84.3%	322	88.5%	1	0.3%
All Airlines	1 843	1 825	1 571	86.1%	1 492	81.8%	18	1.0%
Perth-Adelaide								
Qantas	1 443	1 438	1 212	84.3%	1 261	87.7%	5	0.3%
Virgin Blue	522	521	443	85.0%	444	85.2%	1	0.2%
All Airlines	1 965	1 959	1 655	84.5%	1 705	87.0%	6	0.3%
Perth-Brisbane								
Qantas	744	744	564	75.8%	606	81.5%	0	0.0%
Virgin Blue	365	364	310	85.2%	279	76.6%	1	0.3%
All Airlines	1 109	1 108	874	78.9%	885	79.9%	1	0.1%

	Sectors		On time departures		On time arrivals		Cancellations	
	sched.	flown	no.	%	no.	%	no.	%
Perth-Broome								
Qantas	432	429	320	74.6%	339	79.0%	3	0.7%
QantasLink	408	406	373	91.9%	386	95.1%	2	0.5%
Skywest	256	246	221	89.8%	216	87.8%	10	3.9%
Virgin Blue	189	187	165	88.2%	151	80.7%	2	1.1%
All Airlines	1 285	1 268	1 079	85.1%	1 092	86.1%	17	1.3%
Perth-Kalgoorlie								
Qantas	568	568	475	83.6%	456	80.3%	0	0.0%
QantasLink	413	413	373	90.3%	376	91.0%	0	0.0%
Skywest	544	536	513	95.7%	514	95.9%	8	1.5%
Virgin Blue	7	0	0	0.0%	0	0.0%	7	100.0%
All Airlines	1 532	1 517	1 361	89.7%	1 346	88.7%	15	1.0%
Perth-Karratha								
Qantas	497	497	454	91.3%	454	91.3%	0	0.0%
QantasLink	496	494	422	85.4%	434	87.9%	2	0.4%
Skywest	157	154	136	88.3%	136	88.3%	3	1.9%
All Airlines	1 150	1 145	1 012	88.4%	1 024	89.4%	5	0.4%
Perth-Melbourne								
Qantas	2 105	2 101	1 541	73.3%	1 628	77.5%	4	0.2%
Virgin Blue	1 460	1 456	1 306	89.7%	1 241	85.2%	4	0.3%
All Airlines	3 565	3 557	2 847	80.0%	2 869	80.7%	8	0.2%
Perth-Sydney								
Qantas	1 781	1 777	1 383	77.8%	1 420	79.9%	4	0.2%
Virgin Blue	1 224	1 218	1 053	86.5%	980	80.5%	6	0.5%
All Airlines	3 005	2 995	2 436	81.3%	2 400	80.1%	10	0.3%
Proserpine-Brisbane								
Jetstar	357	357	319	89.4%	322	90.2%	0	0.0%
Virgin Blue	381	381	330	86.6%	335	87.9%	0	0.0%
All Airlines	738	738	649	87.9%	657	89.0%	0	0.0%
Rockhampton-Brisbane								
Jetstar	698	696	646	92.8%	646	92.8%	2	0.3%
Qantas	335	333	271	81.4%	308	92.5%	2	0.6%
QantasLink	1 117	1 114	992	89.0%	1 008	90.5%	3	0.3%
Virgin Blue	918	917	830	90.5%	828	90.3%	1	0.1%
All Airlines	3 068	3 060	2 739	89.5%	2 790	91.2%	8	0.3%
Sydney-Adelaide								
Qantas	3 617	3 602	3 100	86.1%	3 267	90.7%	15	0.4%
Virgin Blue	1 749	1 739	1 544	88.8%	1 501	86.3%	10	0.6%
All Airlines	5 366	5 341	4 644	87.0%	4 768	89.3%	25	0.5%
Sydney-Albury								
QantasLink	1 402	1 401	1 154	82.4%	1 035	73.9%	1	0.1%
Regional Express	1 159	1 159	1 008	87.0%	1 005	86.7%	0	0.0%
All Airlines	2 561	2 560	2 162	84.5%	2 040	79.7%	1	0.0%

	Sectors		On time departures		On time arrivals		Cancellations	
	sched.	flown	no.	%	no.	%	no.	%
Sydney-Alice Springs								
Qantas	153	153	130	85.0%	141	92.2%	0	0.0%
Virgin Blue	108	108	90	83.3%	82	75.9%	0	0.0%
All Airlines	261	261	220	84.3%	223	85.4%	0	0.0%
Sydney-Ballina								
QantasLink	843	840	735	87.5%	670	79.8%	3	0.4%
Regional Express	536	536	504	94.0%	489	91.2%	0	0.0%
Virgin Blue	303	301	234	77.7%	207	68.8%	2	0.7%
All Airlines	1 682	1 677	1 473	87.8%	1 366	81.5%	5	0.3%
Sydney-Brisbane								
Qantas	7 685	7 573	6 740	89.0%	6 650	87.8%	112	1.5%
Virgin Blue	5 795	5 684	4 940	86.9%	4 873	85.7%	111	1.9%
All Airlines	13 480	13 257	11 680	88.1%	11 523	86.9%	223	1.7%
Sydney-Cairns								
Jetstar	168	168	141	83.9%	141	83.9%	0	0.0%
Qantas	1 204	1 199	960	80.1%	1 007	84.0%	5	0.4%
Virgin Blue	955	952	713	74.9%	686	72.1%	3	0.3%
All Airlines	2 327	2 319	1 814	78.2%	1 834	79.1%	8	0.3%
Sydney-Canberra								
Qantas	952	946	840	88.8%	855	90.4%	6	0.6%
QantasLink	3 014	2 949	2 681	90.9%	2 545	86.3%	65	2.2%
Regional Express	864	850	757	89.1%	762	89.6%	14	1.6%
Virgin Blue	56	56	48	85.7%	49	87.5%	0	0.0%
All Airlines	4 886	4 801	4 326	90.1%	4 211	87.7%	85	1.7%
Sydney-Coffs Harbour								
Qantas	2	2	1	50.0%	1	50.0%	0	0.0%
QantasLink	2 094	2 083	1 782	85.5%	1 696	81.4%	11	0.5%
Virgin Blue	493	492	448	91.1%	428	87.0%	1	0.2%
All Airlines	2 589	2 577	2 231	86.6%	2 125	82.5%	12	0.5%
Sydney-Darwin								
Qantas	387	387	310	80.1%	292	75.5%	0	0.0%
Virgin Blue	243	243	188	77.4%	172	70.8%	0	0.0%
All Airlines	630	630	498	79.0%	464	73.7%	0	0.0%
Sydney-Dubbo								
QantasLink	1 562	1 535	1 319	85.9%	1 302	84.8%	27	1.7%
Regional Express	1 191	1 190	1 035	87.0%	1 034	86.9%	1	0.1%
All Airlines	3 038	3 007	2 589	86.1%	2 569	85.4%	31	1.0%
Sydney-Gold Coast								
Jetstar	2 847	2 786	2 386	85.6%	2 424	87.0%	62	2.2%
Qantas	731	729	631	86.6%	633	86.8%	2	0.3%
Virgin Blue	3 367	3 331	2 850	85.6%	2 827	84.9%	36	1.1%
All Airlines	6 945	6 846	5 867	85.7%	5 884	85.9%	100	1.4%

	Sectors		On time departures		On time arrivals		Cancellations	
	sched.	flown	no.	%	no.	%	no.	%
Sydney-Hobart								
Jetstar	522	510	437	85.7%	434	85.1%	12	2.3%
Qantas	181	181	162	89.5%	165	91.2%	0	0.0%
Virgin Blue	362	362	289	79.8%	297	82.0%	0	0.0%
All Airlines	1 065	1 053	888	84.3%	896	85.1%	12	1.1%
Sydney-Launceston								
Jetstar	236	232	210	90.5%	212	91.4%	4	1.7%
Virgin Blue	181	181	171	94.5%	171	94.5%	0	0.0%
All Airlines	417	413	381	92.3%	383	92.7%	4	1.0%
Sydney-Maroochydore								
Jetstar	1 013	997	856	85.9%	848	85.1%	16	1.6%
Virgin Blue	531	530	462	87.2%	471	88.9%	1	0.2%
All Airlines	1 544	1 527	1 318	86.3%	1 319	86.4%	17	1.1%
Sydney-Melbourne								
Qantas	10 055	9 746	8 292	85.1%	8 366	85.8%	309	3.1%
Virgin Blue	8 201	7 991	6 982	87.4%	6 933	86.8%	210	2.6%
All Airlines	18 256	17 737	15 274	86.1%	15 299	86.3%	519	2.8%
Sydney-Perth								
Qantas	1 854	1 853	1 512	81.6%	1 486	80.2%	1	0.1%
Virgin Blue	1 223	1 217	968	79.5%	933	76.7%	6	0.5%
All Airlines	3 077	3 070	2 480	80.8%	2 419	78.8%	7	0.2%
Sydney-Townsville								
Qantas	361	361	331	91.7%	324	89.8%	0	0.0%
Virgin Blue	360	360	332	92.2%	316	87.8%	0	0.0%
All Airlines	721	721	663	92.0%	640	88.8%	0	0.0%
Sydney-Wagga Wagga								
QantasLink	1 559	1 537	1 243	80.9%	1 104	71.8%	22	1.4%
Regional Express	1 160	1 157	993	85.8%	941	81.3%	3	0.3%
All Airlines	2 719	2 694	2 236	83.0%	2 045	75.9%	25	0.9%
Townsville-Brisbane								
Qantas	1 756	1 749	1 510	86.3%	1 534	87.7%	7	0.4%
Virgin Blue	1 171	1 169	1 089	93.2%	1 089	93.2%	2	0.2%
All Airlines	2 927	2 918	2 599	89.1%	2 623	89.9%	9	0.3%
Townsville-Sydney								
Qantas	363	362	311	85.9%	316	87.3%	1	0.3%
Virgin Blue	360	360	317	88.1%	309	85.8%	0	0.0%
All Airlines	723	722	628	87.0%	625	86.6%	1	0.1%
Wagga Wagga-Sydney								
QantasLink	1 555	1 532	1 239	80.9%	1 164	76.0%	24	1.5%
Regional Express	1 159	1 156	1 024	88.6%	978	84.6%	3	0.3%
All Airlines	2 714	2 688	2 263	83.4%	2 142	79.7%	27	1.0%

AIRPORTS

On time performance is reported for all routes which are flown by two or more airlines where the passenger load averages over 8,000 passengers per month. The following data reports by airport against flights operated on those routes only.

	Departures			Arrivals		
	Sectors Flown	No. on Time	% on Time	Sectors Flown	No. on Time	% on Time
Adelaide Airport						
Virgin Blue	6 809	6 109	89.7	6 809	5 979	87.8
Qantas	11 409	10 192	89.3	11 412	10 186	89.3
All Airlines	18 366	16 438	89.5	18 369	16 303	88.8
Relates to services to and from Alice Springs, Brisbane, Canberra, Gold Coast, Melbourne, Perth and Sydney.						
Albury Airport						
Regional Express	1 158	1 083	93.5	1 159	1 005	86.7
QantasLink	1 397	1 124	80.5	1 401	1 035	73.9
All Airlines	2 569	2 220	86.4	2 560	2 040	79.7
Relates to services to and from Sydney Only.						
Alice Springs Airport						
Virgin Blue	195	158	81.0	195	164	84.1
Qantas	333	275	82.6	334	304	91.0
All Airlines	528	433	82.0	529	468	88.5
Relates to services to and from Adelaide and Sydney Only.						
Ballina Airport						
Virgin Blue	296	205	69.3	301	207	68.8
QantasLink	838	711	84.8	840	670	79.8
All Airlines	1 670	1 379	82.6	1 677	1 366	81.5
Relates to services to and from Sydney Only.						
Brisbane Airport						
Virgin Blue	17 510	15 826	90.4	17 488	15 334	87.7
QantasLink	2 475	2 211	89.3	2 228	1 958	87.9
Qantas	20 631	17 556	85.1	20 760	18 182	87.6
Jetstar	4 253	3 779	88.9	4 251	3 789	89.1
All Airlines	44 869	39 372	87.7	44 727	39 263	87.8
Relates to services to and from Adelaide, Cairns, Canberra, Darwin, Hobart, Mackay, Melbourne, Newcastle, Proserpine, Rockhampton, Sydney and Townsville.						
Broome Airport						
Virgin Blue	186	138	74.2	187	151	80.7
Skywest	242	189	78.1	246	216	87.8
QantasLink	405	370	91.4	406	386	95.1
Qantas	429	269	62.7	429	339	79.0
All Airlines	1 262	966	76.5	1 268	1 092	86.1
Relates to services to and from Perth Only.						

	Departures			Arrivals		
	Sectors Flown	No. on Time	% on Time	Sectors Flown	No. on Time	% on Time
Burnie Airport						
Regional Express	856	815	95.2	849	787	92.7
QantasLink	1 269	1 117	88.0	1 277	1 064	83.3
All Airlines	2 125	1 932	90.9	2 126	1 851	87.1
Relates to services to and from Melbourne Only.						
Cairns Airport						
Virgin Blue	3 066	2 734	89.2	1 529	2 542	166.3
Qantas	3 112	2 663	85.6	2 867	2 425	84.6
Jetstar	1 523	1 308	85.9	1 529	1 304	85.3
All Airlines	7 701	6 705	87.1	7 462	6 271	84.0
Relates to services to and from Brisbane, Melbourne and Sydney.						
Canberra Airport						
Virgin Blue	2 684	2 460	91.7	2 684	2 415	90.0
Regional Express	850	774	91.1	850	762	89.6
QantasLink	4 079	3 608	88.5	4 063	3 488	85.8
Qantas	5 434	4 709	86.7	5 286	4 583	86.7
All Airlines	13 047	11 551	88.5	12 883	11 248	87.3
Relates to services to and from Adelaide, Brisbane, Melbourne and Sydney.						
Coffs Harbour Airport						
Virgin Blue	491	435	88.6	492	428	87.0
QantasLink	2 074	1 768	85.2	2 083	1 696	81.4
All Airlines	2 567	2 204	85.9	2 577	2 125	82.5
Relates to services to and from Sydney Only.						
Darwin Airport						
Virgin Blue	682	543	79.6	683	513	75.1
Qantas	1 143	907	79.4	1 146	924	80.6
All Airlines	1 825	1 450	79.5	1 829	1 437	78.6
Relates to services to and from Brisbane, Melbourne and Sydney.						
Devonport Airport						
Regional Express	433	411	94.9	437	413	94.5
QantasLink	1 689	1 521	90.1	1 694	1 465	86.5
All Airlines	2 122	1 932	91.0	2 131	1 878	88.1
Relates to services to and from Melbourne Only.						
Dubbo Airport						
Regional Express	1 190	1 001	84.1	1 190	1 034	86.9
QantasLink	1 535	1 328	86.5	1 535	1 302	84.8
All Airlines	2 725	2 329	85.5	3 007	2 569	85.4
Relates to services to and from Sydney Only.						
Gold Coast Airport						
Virgin Blue	5 673	4 751	83.7	5 688	4 853	85.3
Qantas	836	756	90.4	835	725	86.8
Jetstar	4 903	4 113	83.9	4 915	4 310	87.7
All Airlines	11 412	9 620	84.3	11 438	9 888	86.4
Relates to services to and from Adelaide, Melbourne and Sydney.						

	Departures			Arrivals		
	Sectors Flown	No. on Time	% on Time	Sectors Flown	No. on Time	% on Time
Hobart Airport						
Virgin Blue	2 195	1 915	87.2	2 197	1 897	86.3
Qantas	912	755	82.8	911	693	76.1
Jetstar	3 217	2 824	87.8	3 218	2 854	88.7
All Airlines	6 324	5 494	86.9	6 326	5 444	86.1
Relates to services to and from Brisbane, Melbourne and Sydney.						
Kalgoorlie Airport						
Skywest	534	516	96.6	536	514	95.9
QantasLink	415	368	88.7	413	376	91.0
Qantas	570	383	67.2	568	456	80.3
All Airlines	1 519	1 267	83.4	1 517	1 346	88.7
Relates to services to and from Perth Only.						
Karratha Airport						
Skywest	189	164	86.8	154	136	88.3
QantasLink	435	383	88.0	494	434	87.9
Qantas	496	449	90.5	497	454	91.3
All Airlines	1120	996	88.9	1145	1024	89.4
Relates to services to and from Perth only.						
Launceston Airport						
Virgin Blue	1 445	1 278	88.4	1 444	1 200	83.1
Qantas	382	357	93.5	382	272	71.2
Jetstar	1 648	1 460	88.6	1 647	1 480	89.9
All Airlines	3 475	3 095	89.1	3 473	2 952	85.0
Relates to services to and from Melbourne and Sydney.						
Mackay Airport						
Virgin Blue	902	846	93.8	904	805	89.0
Qantas	364	283	77.7	365	316	86.6
Jetstar	1 085	966	89.0	1 084	997	92.0
All Airlines	2 351	2 095	89.1	2 353	2 118	90.0
Relates to services to and from Brisbane Only.						
Maroochydore Airport						
Virgin Blue	1 237	1 052	85.0	1 241	1 091	87.9
Jetstar	1 558	1 214	77.9	1 624	1 376	84.7
All Airlines	2 795	2 266	81.1	2 865	2 467	86.1
Relates to services to and from Melbourne and Sydney.						
Melbourne Airport						
Virgin Blue	23 611	20 398	86.4	23 614	20 631	87.4
Regional Express	2 195	2 055	93.6	2 195	1 982	90.3
QantasLink	6 535	5 495	84.1	6 527	5 395	82.7
Qantas	25 842	21 724	84.1	25 919	22 148	85.5
Jetstar	7 179	6 388	89.0	7 106	6 063	85.3
All Airlines	65 362	56 060	85.8	65 361	56 219	86.0
Relates to services to and from Adelaide, Brisbane, Burnie, Cairns, Canberra, Darwin, Devonport, Gold Coast, Hobart, Launceston, Maroochydore, Mildura, Newcastle, Perth and Sydney.						

	Departures			Arrivals		
	Sectors Flown	No. on Time	% on Time	Sectors Flown	No. on Time	% on Time
Mildura Airport						
Regional Express	906	847	93.5	909	825	90.8
QantasLink	1 597	1 369	85.7	1 608	1 350	84.0
All Airlines	2 503	2 216	88.5	2 517	2 175	86.4
Relates to services to and from Brisbane and Melbourne.						
Newcastle Airport						
Virgin Blue	729	606	83.1	729	592	81.2
QantasLink	1 952	1 716	87.9	1 836	1 557	84.8
Jetstar	1 202	1 002	83.4	1 202	1 027	85.4
All Airlines	3 883	3 324	85.6	3 767	3 176	84.3
Relates to services to and from Brisbane and Melbourne.						
Perth Airport						
Virgin Blue	3 746	3 277	87.5	3 744	2 996	80.0
Skywest	936	870	92.9	965	864	89.5
QantasLink	1 313	1 168	89.0	1 255	1 120	89.2
Qantas	7 554	5 949	78.8	7 626	6 003	78.7
All Airlines	13 549	11 264	83.1	13 590	10 983	80.8
Relates to services to and from Adelaide, Brisbane, Broome, Kalgoorlie, Melbourne and Sydney.						
Proserpine Airport						
Virgin Blue	381	330	86.6	380	333	87.6
Jetstar	357	319	89.4	357	325	91.0
All Airlines	738	649	87.9	737	658	89.3
Relates to services to and from Brisbane Only.						
Rockhampton Airport						
Virgin Blue	917	830	90.5	918	796	86.7
QantasLink	1 114	992	89.0	1 481	1 294	87.4
Qantas	333	271	81.4	332	304	91.6
Jetstar	696	646	92.8	697	649	93.1
All Airlines	3 060	2 739	89.5	3 428	3 043	88.8
Relates to services to and from Brisbane Only.						
Sydney Airport						
Virgin Blue	23 547	20 259	86.0	23 538	20 101	85.4
Regional Express	4 892	4 297	87.8	4 890	4 156	85.0
QantasLink	10 345	8 914	86.2	10 321	8 620	83.5
Qantas	26 732	23 009	86.1	26 844	23 183	86.4
Jetstar	4 693	4 030	85.9	4 684	4 058	86.6
All Airlines	70 491	60 744	86.2	70 291	60 132	85.5
Relates to services to and from Adelaide, Albury, Alice Springs, Ballina, Brisbane, Cairns, Canberra, Coffs Harbour, Darwin, Dubbo, Gold Coast, Maroochydore, Melbourne, Perth, Townsville and Wagga Wagga.						
Townsville Airport						
Virgin Blue	1 529	1 406	92.0	1 529	1 355	88.6
Qantas	2 111	1 821	86.3	2 110	1 731	82.0
All Airlines	3 640	3 227	88.7	3 639	3 086	84.8
Relates to services to and from Brisbane and Sydney.						
Wagga Wagga Airport						
Regional Express	1 156	1 024	88.6	1 157	941	81.3
QantasLink	1 532	1 239	80.9	1 537	1 104	71.8
All Airlines	2 688	2 263	84.2	2 694	2 045	75.9
Relates to services to and from Sydney Only.						

DEFINITIONS

On time departure	A flight departure is counted as "on time" if it departs the gate within 15 minutes of the scheduled departure time shown in the carriers' schedule.
On time arrival	A flight arrival is counted as "on time" if it arrived at the gate within 15 minutes of the scheduled arrival time shown in the carriers' schedule. Neither diverted nor cancelled flights count as on time.
Cancellation	A flight is regarded as a cancellation if it is cancelled or rescheduled less than 7 days prior to its scheduled departure time.
On time departure percentage	The percentage of on time departures is measured against the number of departures <i>operated</i> on any particular sector.
On time arrival percentage	The percentage of on time arrivals is measured against the number of arrivals <i>operated</i> on any particular sector.
Cancellation percentage	The percentage of cancellations is measured against the number of services <i>scheduled</i> on any particular sector.