



Australian Government  
Department of Transport and Regional Services  
Bureau of Transport and Regional Economics

**BUREAU OF TRANSPORT AND REGIONAL ECONOMICS**

---

airline on time performance  
2004

AVIATION STATISTICS

OTP 15

© Commonwealth of Australia

ISSN 1832-0759

This work is copyright and the data contained in this publication should not be reproduced or used in any form without acknowledgement.

This publication is available free of charge from the Bureau of Transport and Regional Economics, GPO Box 501, Canberra, ACT 2601, by downloading it from our website (see below), by phone (02) 6274 7210, fax (02) 6274 6816 or email: [btre@dotars.gov.au](mailto:btre@dotars.gov.au)

<http://www.btre.gov.au/statistics/aviation/otphome.aspx>

#### Disclaimers

The BTRE seeks to publish its work to the highest professional standards. However, it cannot accept responsibility for any consequences arising from the use of information herein. Readers should rely on their own skill and judgment in applying any information or analysis to particular issues or circumstances.

## FOREWORD

In late 2003, the Bureau of Transport and Regional Economics (BTRE) established an agreement with major Australian airlines to report domestic aviation on time performance statistics. Qantas, QantasLink, Regional Express, Skywest Airlines and Virgin Blue agreed to report monthly on time performance statistics to BTRE from November 2003. Jetstar, which commenced operations on 25 May 2004, is also now participating. The purpose of collecting and publishing this information is to monitor overall industry and individual airline performance on punctuality and to allow consumers of air travel to make informed decisions when planning air travel.

On time performance is reported for all routes which are flown by two or more airlines where the passenger load averages over 8,000 passengers per month. There are currently 46 routes which meet this definition, however, over time routes which meet this definition may change as airline networks and traffic levels vary.

Airlines also report overall monthly network performance. Total industry figures refer to all services operated by reporting airlines only. This currently represents over 95 per cent of scheduled aviation services in Australia.

The method of capturing on time performance varies between airlines utilising different recording systems. Jetstar and Qantas jet aircraft use Aircraft Communication Addressing and Reporting System (ACARS) to electronically measure on time performance. Virgin Blue, Regional Express, Skywest and the Qantas non-jet fleet record on time performance manually using records from pilots, gate agents and/or ground crews.

Reports are published monthly on the BTRE web site. After collection of initial data, aggregate reports are subject to internal audit by participating airlines prior to publication. This report collates data for the total industry and individual routes and airports for the 2004 year.

Definitions relating to on time performance are provided at the end of this report.

Detailed time series data is available in Microsoft Excel spreadsheet format from the BTRE web site at [http://www.btre.gov.au/statistics/aviation/otp\\_downloads.aspx](http://www.btre.gov.au/statistics/aviation/otp_downloads.aspx)

**Bureau of Transport and Regional Economics**

**GPO Box 501**

**Canberra ACT 2601**

**Telephone: 02 6274 7720**

**Facsimile: 02 6274 7727**

**Website: <http://www.btre.gov.au/statistics/statsindex.aspx>**

**Email: [avstats@dotars.gov.au](mailto:avstats@dotars.gov.au)**

# CONTENTS

<b>Industry performance</b> .....	<b>1</b>
<b>Individual routes</b> .....	<b>3</b>
<b>Airports</b> .....	<b>14</b>
<b>Definitions</b> .....	<b>18</b>



## INDUSTRY PERFORMANCE

For all routes operated by airlines participating in on time performance reporting (i.e. Jetstar, Qantas, QantasLink, Regional Express, Skywest Airlines and Virgin Blue), for the year ended 31 December 2004, airline on time performance averaged 88.2 per cent in terms of on time departures and 87.7 per cent for on time arrivals. Cancellations averaged 0.8 per cent of all scheduled flights.

The best performing month was May with 92.1 per cent for on time departures and 91.9 per cent for on time arrivals. February was the best performing month for cancellations with only 0.6 per cent of all scheduled flights cancelled.

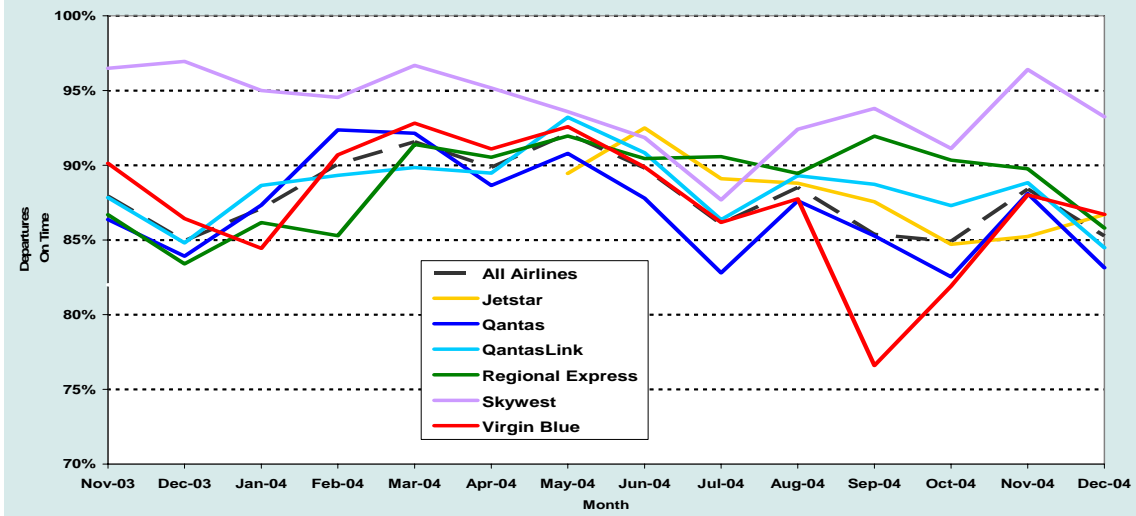
The worst performing month was October with 84.9 per cent for on time departures (the only occasion on time departures dropped below 85 per cent), and December with 84.0 per cent for on time arrivals. On time arrivals also dropped below 85 per cent in October. September was the worst performing month for cancellations at 1.2 per cent of all scheduled flights.

### On time performance – total industry in 2004

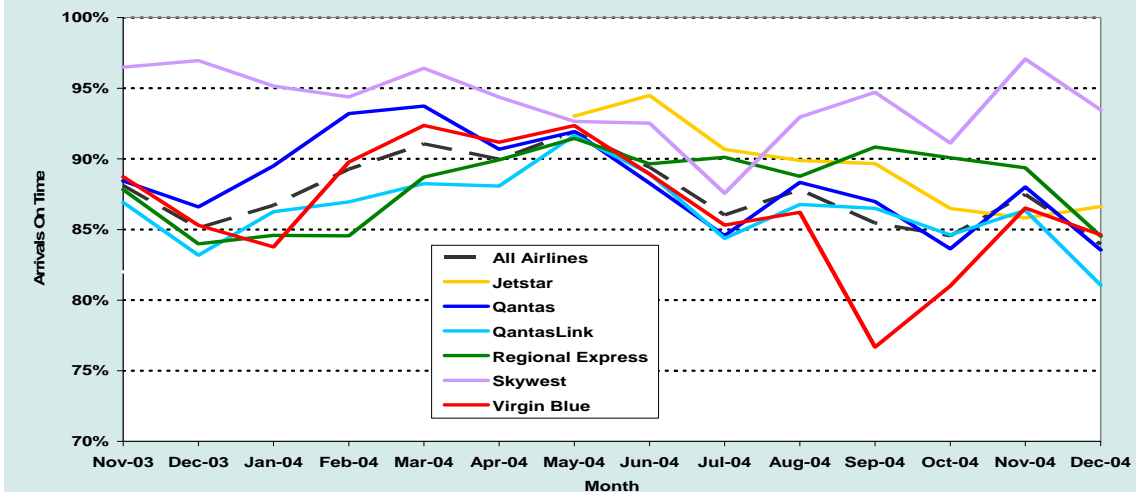
	Jetstar	Qantas	Qantas Link	Regional Express	Skywest	Virgin Blue	All Airlines
Sectors Scheduled	24 439	123 127	107 497	54 782	9 973	95 417	415 235
Sectors Flown	24 199	122 127	106 540	54 675	9 952	94 625	412 118
On Time Departures	21 220	106 657	94 797	48 959	9 285	82 544	363 462
On Time Arrivals	21 537	108 069	92 476	48 456	9 295	81 733	361 566
Cancellations	234	1 000	957	133	21	792	3 137
OnTime Departures (%)	87.7%	87.3%	89.0%	89.5%	93.3%	87.2%	88.2%
OnTime Arrivals (%)	89.0%	88.5%	86.8%	88.6%	93.4%	86.4%	87.7%
Cancellations (%)	1.0%	0.8%	0.9%	0.2%	0.2%	0.8%	0.8%

*Data may not sum due to unresolved data errors in 0.005 per cent of flights*

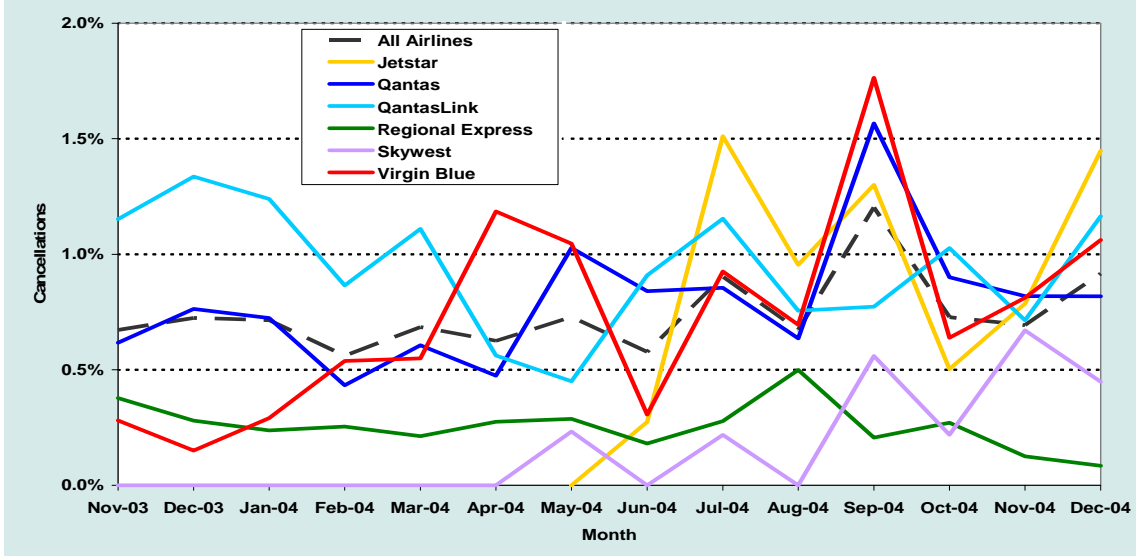
### ON TIME DEPARTURES – TOTAL INDUSTRY



### ON TIME ARRIVALS – TOTAL INDUSTRY



### CANCELLATIONS – TOTAL INDUSTRY





## INDIVIDUAL ROUTES

On time performance is reported for all routes which are flown by two or more airlines where the passenger load averages over 8,000 passengers per month. There are currently 46 routes which meet this definition, however, over time routes which meet this definition may change as airline networks and traffic levels vary.

	Sectors		On time departures		On time arrivals		Cancellations	
	sched.	flown	no.	%	no.	%	no.	%
<b>Adelaide-Brisbane</b>								
Qantas	1 099	1 098	979	89.2%	1 014	92.3%	1	0.1%
Virgin Blue	770	770	631	81.9%	623	80.9%	0	0.0%
All Airlines	1 869	1 868	1 610	86.2%	1 637	87.6%	1	0.1%
<b>Adelaide-Canberra</b>								
Qantas	566	566	515	91.0%	517	91.3%	0	0.0%
Virgin Blue	321	320	311	97.2%	305	95.3%	1	0.3%
All Airlines	887	886	826	93.2%	822	92.8%	1	0.1%
<b>Adelaide-Gold Coast</b>								
Qantas	104	104	92	88.5%	91	87.5%	0	0.0%
Virgin Blue	366	366	342	93.4%	331	90.4%	0	0.0%
All Airlines	470	470	434	92.3%	422	89.8%	0	0.0%
<b>Adelaide-Melbourne</b>								
Qantas	4 318	4 281	3 860	90.2%	3 886	90.8%	37	0.9%
Virgin Blue	2 576	2 553	2 269	88.9%	2 268	88.8%	23	0.9%
All Airlines	6 894	6 834	6 129	89.7%	6 154	90.0%	60	0.9%
<b>Adelaide-Perth</b>								
Qantas	1 513	1 513	1 351	89.3%	1 325	87.6%	0	0.0%
Virgin Blue	654	654	585	89.4%	523	80.0%	0	0.0%
All Airlines	2 167	2 167	1 936	89.3%	1 848	85.3%	0	0.0%
<b>Adelaide-Sydney</b>								
Qantas	3 675	3 668	3 398	92.6%	3 438	93.7%	7	0.2%
Virgin Blue	1 826	1 817	1 663	91.5%	1 654	91.0%	9	0.5%
All Airlines	5 501	5 485	5 061	92.3%	5 092	92.8%	16	0.3%
<b>Albury-Sydney</b>								
QantasLink	1 399	1 396	1 132	81.1%	1 179	84.5%	3	0.2%
Regional Express	1 058	1 058	1 002	94.7%	978	92.4%	0	0.0%
All Airlines	2 457	2 454	2 134	87.0%	2 157	87.9%	3	0.1%
<b>Alice Springs-Sydney</b>								
Qantas	337	337	291	86.4%	325	96.4%	0	0.0%
Virgin Blue	289	289	240	83.0%	240	83.0%	0	0.0%
All Airlines	626	626	531	84.8%	565	90.3%	0	0.0%
<b>Ballina-Sydney</b>								
QantasLink	341	341	286	83.9%	274	80.4%	0	0.0%
Virgin Blue	122	120	74	61.7%	63	52.5%	2	1.6%
All Airlines	463	461	360	78.1%	337	73.1%	2	0.4%

	Sectors		On time departures		On time arrivals		Cancellations	
	<i>sched.</i>	<i>flown</i>	<i>no.</i>	<i>%</i>	<i>no.</i>	<i>%</i>	<i>no.</i>	<i>%</i>
<b>Brisbane-Adelaide</b>								
Qantas	1 097	1 097	933	85.1%	1 026	93.5%	0	0.0%
Virgin Blue	770	769	703	91.4%	684	88.9%	1	0.1%
All Airlines	1 867	1 866	1 636	87.7%	1 710	91.6%	1	0.1%
<b>Brisbane-Cairns</b>								
Jetstar	712	710	655	92.3%	667	93.9%	2	0.3%
Qantas	1 747	1 741	1 515	87.0%	1 563	89.8%	6	0.3%
QantasLink	16	16	14	87.5%	14	87.5%	0	0.0%
Virgin Blue	1 358	1 356	1 238	91.3%	1 248	92.0%	2	0.1%
All Airlines	3 833	3 823	3 422	89.5%	3 492	91.3%	10	0.3%
<b>Brisbane-Canberra</b>								
Qantas	1 337	1 335	1 179	88.3%	1 225	91.8%	2	0.1%
QantasLink	73	72	69	95.8%	71	98.6%	1	1.4%
Virgin Blue	1 046	1 043	958	91.9%	936	89.7%	3	0.3%
All Airlines	2 456	2 450	2 206	90.0%	2 232	91.1%	6	0.2%
<b>Brisbane-Darwin</b>								
Qantas	648	647	560	86.6%	590	91.2%	1	0.2%
Virgin Blue	364	363	292	80.4%	286	78.8%	1	0.3%
All Airlines	1 012	1 010	852	84.4%	876	86.7%	2	0.2%
<b>Brisbane-Hobart</b>								
Jetstar	184	184	154	83.7%	166	90.2%	0	0.0%
Virgin Blue	184	184	173	94.0%	168	91.3%	0	0.0%
All Airlines	368	368	327	88.9%	334	90.8%	0	0.0%
<b>Brisbane-Mackay</b>								
Jetstar	663	662	623	94.1%	622	94.0%	1	0.2%
Qantas	221	221	197	89.1%	200	90.5%	0	0.0%
QantasLink	505	501	468	93.4%	468	93.4%	4	0.8%
Virgin Blue	768	767	708	92.3%	706	92.0%	1	0.1%
All Airlines	2 157	2 151	1 996	92.8%	1 996	92.8%	6	0.3%
<b>Brisbane-Melbourne</b>								
Qantas	5 502	5 482	4 813	87.8%	4 900	89.4%	20	0.4%
Virgin Blue	3 671	3 640	3 243	89.1%	3 197	87.8%	31	0.8%
All Airlines	9 173	9 122	8 056	88.3%	8 097	88.8%	51	0.6%
<b>Brisbane-Newcastle</b>								
Jetstar	196	196	169	86.2%	173	88.3%	0	0.0%
QantasLink	496	494	450	91.1%	434	87.9%	2	0.4%
Virgin Blue	184	184	155	84.2%	145	78.8%	0	0.0%
All Airlines	876	874	774	88.6%	752	86.0%	2	0.2%
<b>Brisbane-Perth</b>								
Qantas	731	730	605	82.9%	595	81.5%	1	0.1%
Virgin Blue	366	366	305	83.3%	290	79.2%	0	0.0%
All Airlines	1 097	1 096	910	83.0%	885	80.7%	1	0.1%

	Sectors		On time departures		On time arrivals		Cancellations	
	<i>sched.</i>	<i>flown</i>	<i>no.</i>	<i>%</i>	<i>no.</i>	<i>%</i>	<i>no.</i>	<i>%</i>
<b>Brisbane-Proserpine</b>								
Jetstar	197	197	188	95.4%	187	94.9%	0	0.0%
QantasLink	65	65	60	92.3%	60	92.3%	0	0.0%
Virgin Blue	340	340	310	91.2%	308	90.6%	0	0.0%
All Airlines	602	602	558	92.7%	555	92.2%	0	0.0%
<b>Brisbane-Rockhampton</b>								
Jetstar	427	427	409	95.8%	406	95.1%	0	0.0%
Qantas	221	220	190	86.4%	200	90.9%	1	0.5%
QantasLink	1 456	1 453	1 320	90.8%	1 307	90.0%	3	0.2%
Virgin Blue	646	646	556	86.1%	558	86.4%	0	0.0%
All Airlines	2 750	2 746	2 475	90.1%	2 471	90.0%	4	0.1%
<b>Brisbane-Sydney</b>								
Qantas	7 744	7 646	6 807	89.0%	6 757	88.4%	98	1.3%
QantasLink	1	1	1	100.0%	1	100.0%	0	0.0%
Virgin Blue	5 934	5 844	5 336	91.3%	5 240	89.7%	90	1.5%
All Airlines	13 678	13 490	12 144	90.0%	11 998	88.9%	188	1.4%
<b>Brisbane-Townsville</b>								
Qantas	1 546	1 542	1 294	83.9%	1 288	83.5%	4	0.3%
QantasLink	164	162	144	88.9%	141	87.0%	2	1.2%
Virgin Blue	1 085	1 082	945	87.3%	930	86.0%	3	0.3%
All Airlines	2 795	2 786	2 383	85.5%	2 359	84.7%	9	0.3%
<b>Broome-Perth</b>								
Qantas	416	410	258	62.9%	301	73.4%	6	1.4%
QantasLink	482	475	447	94.1%	444	93.5%	7	1.5%
Skywest	228	227	176	77.5%	162	71.4%	2	0.9%
Virgin Blue	58	58	36	62.1%	45	77.6%	0	0.0%
All Airlines	1 184	1 170	917	78.4%	952	81.4%	15	1.3%
<b>Burnie-Melbourne</b>								
QantasLink	1 287	1 269	1 126	88.7%	1 030	81.2%	18	1.4%
Regional Express	741	737	677	91.9%	670	90.9%	4	0.5%
All Airlines	2 028	2 006	1 803	89.9%	1 700	84.7%	22	1.1%
<b>Cairns-Brisbane</b>								
Jetstar	712	709	657	92.7%	669	94.4%	3	0.4%
Qantas	1 743	1 735	1 576	90.8%	1 592	91.8%	8	0.5%
QantasLink	16	16	14	87.5%	15	93.8%	0	0.0%
Virgin Blue	1 357	1 354	1 269	93.7%	1 274	94.1%	3	0.2%
All Airlines	3 828	3 814	3 516	92.2%	3 550	93.1%	14	0.4%
<b>Cairns-Melbourne</b>								
Qantas	378	378	325	86.0%	333	88.1%	0	0.0%
Virgin Blue	665	655	563	86.0%	542	82.7%	10	1.5%
All Airlines	1 043	1 033	888	86.0%	875	84.7%	10	1.0%

	Sectors		On time departures		On time arrivals		Cancellations	
	sched.	flown	no.	%	no.	%	no.	%
<b>Cairns-Sydney</b>								
Qantas	1 471	1 462	1 303	89.1%	1 359	93.0%	9	0.6%
Virgin Blue	1 000	992	880	88.7%	873	88.0%	8	0.8%
All Airlines	2 471	2 454	2 183	89.0%	2 232	91.0%	17	0.7%
<b>Canberra-Adelaide</b>								
Qantas	592	592	540	91.2%	552	93.2%	0	0.0%
Virgin Blue	322	321	295	91.9%	289	90.0%	1	0.3%
All Airlines	914	913	835	91.5%	841	92.1%	1	0.1%
<b>Canberra-Brisbane</b>								
Qantas	1 338	1 337	1 213	90.7%	1 187	88.8%	1	0.1%
QantasLink	73	72	69	95.8%	65	90.3%	1	1.4%
Virgin Blue	1 045	1 040	966	92.9%	954	91.7%	5	0.5%
All Airlines	2 456	2 449	2 248	91.8%	2 206	90.1%	7	0.3%
<b>Canberra-Melbourne</b>								
Qantas	2 771	2 748	2 453	89.3%	2 469	89.8%	23	0.8%
QantasLink	1 122	1 080	948	87.8%	895	82.9%	42	3.7%
Virgin Blue	1 168	1 166	1 052	90.2%	1 031	88.4%	2	0.2%
All Airlines	5 061	4 994	4 453	89.2%	4 395	88.0%	67	1.3%
<b>Canberra-Sydney</b>								
Qantas	1 562	1 557	1 401	90.0%	1 365	87.7%	5	0.3%
QantasLink	5 904	5 789	5 243	90.6%	5 147	88.9%	115	1.9%
Regional Express	1 648	1 627	1 517	93.2%	1 501	92.3%	21	1.3%
Virgin Blue	223	219	209	95.4%	200	91.3%	4	1.8%
All Airlines	9 337	9 192	8 370	91.1%	8 213	89.3%	145	1.6%
<b>Coffs Harbour-Sydney</b>								
Qantas	2	2	1	50.0%	1	50.0%	0	0.0%
QantasLink	2 079	2 071	1 810	87.4%	1 770	85.5%	8	0.4%
Virgin Blue	384	383	334	87.2%	330	86.2%	1	0.3%
All Airlines	2 465	2 456	2 145	87.3%	2 101	85.5%	9	0.4%
<b>Darwin-Brisbane</b>								
Qantas	645	644	560	87.0%	580	90.1%	1	0.2%
Virgin Blue	365	363	297	81.8%	308	84.8%	2	0.5%
All Airlines	1 010	1 007	857	85.1%	888	88.2%	3	0.3%
<b>Darwin-Sydney</b>								
Qantas	401	400	347	86.8%	377	94.3%	1	0.2%
Virgin Blue	275	275	202	73.5%	224	81.5%	0	0.0%
All Airlines	676	675	549	81.3%	601	89.0%	1	0.1%
<b>Devonport-Melbourne</b>								
QantasLink	1 807	1 770	1 637	92.5%	1 543	87.2%	37	2.0%
Regional Express	425	423	387	91.5%	379	89.6%	2	0.5%
All Airlines	2 232	2 193	2 024	92.3%	1 922	87.6%	39	1.7%

	Sectors		On time departures		On time arrivals		Cancellations	
	sched.	flown	no.	%	no.	%	no.	%
<b>Dubbo-Sydney</b>								
QantasLink	1 597	1 565	1 388	88.7%	1 361	87.0%	22	1.4%
Regional Express	1 187	1 183	1 040	87.9%	1 008	85.2%	4	0.3%
All Airlines	2 784	2 748	2 428	88.4%	2 369	86.2%	26	0.9%
<b>Gold Coast-Adelaide</b>								
Qantas	104	104	90	86.5%	95	91.3%	0	0.0%
Virgin Blue	366	366	322	88.0%	323	88.3%	0	0.0%
All Airlines	470	470	412	87.7%	418	88.9%	0	0.0%
<b>Gold Coast-Melbourne</b>								
Jetstar	1 165	1 154	977	84.7%	964	83.5%	11	0.9%
Qantas	549	546	466	85.3%	492	90.1%	3	0.5%
QantasLink	145	144	137	95.1%	141	97.9%	1	0.7%
Virgin Blue	1 756	1 751	1 445	82.5%	1 492	85.2%	5	0.3%
All Airlines	3 615	3 595	3 025	84.1%	3 089	85.9%	20	0.6%
<b>Gold Coast-Sydney</b>								
Jetstar	1 783	1 741	1 489	85.5%	1 528	87.8%	43	2.4%
Qantas	1 310	1 300	1 143	87.9%	1 192	91.7%	10	0.8%
QantasLink	247	246	234	95.1%	236	95.9%	1	0.4%
Virgin Blue	2 957	2 926	2 454	83.9%	2 457	84.0%	31	1.0%
All Airlines	6 297	6 213	5 320	85.6%	5 413	87.1%	85	1.3%
<b>Hobart-Brisbane</b>								
Jetstar	184	184	175	95.1%	171	92.9%	0	0.0%
Virgin Blue	184	184	156	84.8%	169	91.8%	0	0.0%
All Airlines	368	368	331	89.9%	340	92.4%	0	0.0%
<b>Hobart-Melbourne</b>								
Jetstar	1 701	1 677	1 509	90.0%	1 524	90.9%	25	1.5%
Qantas	442	442	373	84.4%	351	79.4%	0	0.0%
QantasLink	1 308	1 302	1 175	90.2%	1 174	90.2%	6	0.5%
Virgin Blue	1 448	1 447	1 241	85.8%	1 213	83.8%	1	0.1%
All Airlines	4 899	4 868	4 298	88.3%	4 262	87.6%	32	0.7%
<b>Kalgoorlie-Perth</b>								
Qantas	565	564	426	75.5%	452	80.1%	1	0.2%
QantasLink	419	416	380	91.3%	370	88.9%	1	0.2%
Skywest	483	484	472	97.5%	472	97.5%	2	0.4%
All Airlines	1 467	1 464	1 278	87.3%	1 294	88.4%	4	0.3%
<b>Karratha-Perth</b>								
Qantas	165	165	153	92.7%	158	95.8%	0	0.0%
QantasLink	143	142	125	88.0%	129	90.8%	1	0.7%
Skywest	67	67	53	79.1%	59	88.1%	0	0.0%
All Airlines	375	374	331	88.5%	346	92.5%	1	0.3%

	Sectors		On time departures		On time arrivals		Cancellations	
	sched.	flown	no.	%	no.	%	no.	%
<b>Launceston-Melbourne</b>								
Jetstar	879	878	792	90.2%	810	92.3%	6	0.7%
Qantas	227	227	205	90.3%	205	90.3%	0	0.0%
QantasLink	730	727	656	90.2%	666	91.6%	3	0.4%
Virgin Blue	1 051	1 049	895	85.3%	915	87.2%	2	0.2%
All Airlines	2 887	2 881	2 548	88.4%	2 596	90.1%	11	0.4%
<b>Mackay-Brisbane</b>								
Jetstar	663	661	602	91.1%	614	92.9%	2	0.3%
Qantas	221	221	162	73.3%	187	84.6%	0	0.0%
QantasLink	506	503	478	95.0%	474	94.2%	3	0.6%
Virgin Blue	767	766	720	94.0%	724	94.5%	1	0.1%
All Airlines	2 157	2 151	1 962	91.2%	1 999	92.9%	6	0.3%
<b>Maroochydore-Melbourne</b>								
Jetstar	302	301	224	74.4%	244	81.1%	2	0.7%
QantasLink	145	141	125	88.7%	134	95.0%	4	2.8%
Virgin Blue	512	511	416	81.4%	417	81.6%	1	0.2%
All Airlines	959	953	765	80.3%	795	83.4%	7	0.7%
<b>Maroochydore-Sydney</b>								
Jetstar	519	512	399	77.9%	414	80.9%	7	1.3%
QantasLink	307	300	265	88.3%	273	91.0%	7	2.3%
Virgin Blue	512	510	440	86.3%	435	85.3%	2	0.4%
All Airlines	1 338	1 322	1 104	83.5%	1 122	84.9%	16	1.2%
<b>Melbourne-Adelaide</b>								
Qantas	4 357	4 327	3 750	86.7%	3 898	90.1%	30	0.7%
Virgin Blue	2 578	2 556	2 203	86.2%	2 187	85.6%	22	0.9%
All Airlines	6 935	6 883	5 953	86.5%	6 085	88.4%	52	0.7%
<b>Melbourne-Brisbane</b>								
Qantas	5 538	5 513	4 939	89.6%	4 978	90.3%	25	0.5%
Virgin Blue	3 671	3 642	3 141	86.2%	3 093	84.9%	29	0.8%
All Airlines	9 209	9 155	8 080	88.3%	8 071	88.2%	54	0.6%
<b>Melbourne-Burnie</b>								
QantasLink	1 298	1 278	1 076	84.2%	1 065	83.3%	20	1.5%
Regional Express	739	736	680	92.4%	679	92.3%	3	0.4%
All Airlines	2 037	2 014	1 756	87.2%	1 744	86.6%	23	1.1%
<b>Melbourne-Cairns</b>								
Qantas	378	377	328	87.0%	319	84.6%	1	0.3%
Virgin Blue	665	655	535	81.7%	537	82.0%	10	1.5%
All Airlines	1 043	1 032	863	83.6%	856	82.9%	11	1.1%
<b>Melbourne-Canberra</b>								
Qantas	2 465	2 448	2 116	86.4%	2 148	87.7%	17	0.7%
QantasLink	1 122	1 076	947	88.0%	955	88.8%	46	4.1%
Virgin Blue	1 169	1 168	1 033	88.4%	1 020	87.3%	1	0.1%
All Airlines	4 756	4 692	4 096	87.3%	4 123	87.9%	64	1.3%

	Sectors		On time departures		On time arrivals		Cancellations	
	sched.	flown	no.	%	no.	%	no.	%
<b>Melbourne-Devonport</b>								
QantasLink	1 809	1 774	1 555	87.7%	1 583	89.2%	35	1.9%
Regional Express	426	426	389	91.3%	388	91.1%	0	0.0%
All Airlines	2 235	2 200	1 944	88.4%	1 971	89.6%	35	1.6%
<b>Melbourne-Gold Coast</b>								
Jetstar	1 162	1 153	1 078	93.5%	1 056	91.6%	10	0.9%
Qantas	550	550	489	88.9%	489	88.9%	0	0.0%
QantasLink	145	144	119	82.6%	115	79.9%	1	0.7%
Virgin Blue	1 758	1 752	1 450	82.8%	1 489	85.0%	6	0.3%
All Airlines	3 615	3 599	3 136	87.1%	3 149	87.5%	17	0.5%
<b>Melbourne-Hobart</b>								
Jetstar	1 698	1 674	1 508	90.1%	1 528	91.3%	24	1.4%
Qantas	443	443	334	75.4%	304	68.6%	0	0.0%
QantasLink	1 305	1 298	1 157	89.1%	1 179	90.8%	7	0.5%
Virgin Blue	1 447	1 446	1 222	84.5%	1 216	84.1%	1	0.1%
All Airlines	4 893	4 861	4 221	86.8%	4 227	87.0%	32	0.7%
<b>Melbourne-Launceston</b>								
Jetstar	881	876	799	91.2%	798	91.1%	5	0.6%
Qantas	230	230	175	76.1%	161	70.0%	0	0.0%
QantasLink	729	728	637	87.5%	631	86.7%	1	0.1%
Virgin Blue	1 051	1 049	876	83.5%	823	78.5%	2	0.2%
All Airlines	2 891	2 883	2 487	86.3%	2 413	83.7%	8	0.3%
<b>Melbourne-Maroochydore</b>								
Jetstar	302	301	253	84.1%	247	82.1%	1	0.3%
Qantas	1	1	1	100.0%	1	100.0%	0	0.0%
QantasLink	144	141	129	91.5%	125	88.7%	3	2.1%
Virgin Blue	510	510	438	85.9%	444	87.1%	0	0.0%
All Airlines	957	953	821	86.1%	817	85.7%	4	0.4%
<b>Melbourne-Mildura</b>								
QantasLink	1 623	1 611	1 406	87.3%	1 384	85.9%	12	0.7%
Regional Express	887	887	809	91.2%	805	90.8%	0	0.0%
All Airlines	2 510	2 498	2 215	88.7%	2 189	87.6%	12	0.5%
<b>Melbourne-Newcastle</b>								
Jetstar	282	282	249	88.3%	250	88.7%	0	0.0%
Qantas	1	1	1	100.0%	1	100.0%	0	0.0%
QantasLink	786	770	642	83.4%	635	82.5%	16	2.0%
Virgin Blue	306	306	264	86.3%	235	76.8%	0	0.0%
All Airlines	1 375	1 359	1 156	85.1%	1 121	82.5%	16	1.2%
<b>Melbourne-Perth</b>								
Qantas	2 069	2 068	1 672	80.9%	1 599	77.3%	1	0.0%
Virgin Blue	1 433	1 431	1 238	86.5%	1 157	80.9%	2	0.1%
All Airlines	3 502	3 499	2 910	83.2%	2 756	78.8%	3	0.1%

	Sectors		On time departures		On time arrivals		Cancellations	
	sched.	flown	no.	%	no.	%	no.	%
<b>Melbourne-Sydney</b>								
Qantas	10 241	9 977	8 960	89.8%	8 840	88.6%	264	2.6%
Virgin Blue	8 009	7 853	6 742	85.9%	6 692	85.2%	156	1.9%
All Airlines	18 250	17 830	15 702	88.1%	15 532	87.1%	420	2.3%
<b>Mildura-Melbourne</b>								
QantasLink	1 620	1 608	1 409	87.6%	1 385	86.1%	12	0.7%
Regional Express	888	887	806	90.9%	784	88.4%	1	0.1%
All Airlines	2 508	2 495	2 215	88.8%	2 169	86.9%	13	0.5%
<b>Newcastle-Brisbane</b>								
Jetstar	196	196	169	86.2%	172	87.8%	0	0.0%
QantasLink	597	595	528	88.7%	512	86.1%	2	0.3%
Virgin Blue	184	184	131	71.2%	149	81.0%	0	0.0%
All Airlines	977	975	828	84.9%	833	85.4%	2	0.2%
<b>Newcastle-Melbourne</b>								
Jetstar	283	283	242	85.5%	239	84.5%	0	0.0%
Qantas	1	1	1	100.0%	1	100.0%	0	0.0%
QantasLink	786	769	690	89.7%	588	76.5%	17	2.2%
Virgin Blue	306	306	254	83.0%	273	89.2%	0	0.0%
All Airlines	1 376	1 359	1 187	87.3%	1 101	81.0%	17	1.2%
<b>Perth-Adelaide</b>								
Qantas	1 464	1 461	1 264	86.5%	1 317	90.1%	3	0.2%
Virgin Blue	653	653	578	88.5%	582	89.1%	0	0.0%
All Airlines	2 117	2 114	1 842	87.1%	1 899	89.8%	3	0.1%
<b>Perth-Brisbane</b>								
Qantas	731	730	584	80.0%	648	88.8%	1	0.1%
Virgin Blue	366	366	328	89.6%	324	88.5%	0	0.0%
All Airlines	1 097	1 096	912	83.2%	972	88.7%	1	0.1%
<b>Perth-Broome</b>								
Qantas	416	413	321	77.7%	333	80.6%	3	0.7%
QantasLink	484	478	445	93.1%	458	95.8%	5	1.0%
Skywest	233	226	206	91.2%	199	88.1%	7	3.0%
Virgin Blue	58	58	50	86.2%	44	75.9%	0	0.0%
All Airlines	1 191	1 175	1 022	87.0%	1 034	88.0%	15	1.3%
<b>Perth-Kalgoorlie</b>								
Qantas	567	565	506	89.6%	494	87.4%	2	0.4%
QantasLink	415	414	382	92.3%	384	92.8%	0	0.0%
Skywest	486	484	462	95.5%	463	95.7%	2	0.4%
All Airlines	1 468	1 463	1 350	92.3%	1 341	91.7%	4	0.3%
<b>Perth-Karratha</b>								
Qantas	165	165	155	93.9%	155	93.9%	0	0.0%
QantasLink	169	168	144	85.7%	147	87.5%	1	0.6%
Skywest	50	50	40	80.0%	44	88.0%	0	0.0%
All Airlines	384	383	339	88.5%	346	90.3%	1	0.3%



	Sectors		On time departures		On time arrivals		Cancellations	
	sched.	flown	no.	%	no.	%	no.	%
	<b>Perth-Melbourne</b>							
Qantas	2 124	2 122	1 666	78.5%	1 778	83.8%	2	0.1%
Virgin Blue	1 435	1 431	1 292	90.3%	1 247	87.1%	4	0.3%
All Airlines	3 559	3 553	2 958	83.3%	3 025	85.1%	6	0.2%
<b>Perth-Sydney</b>								
Qantas	1 808	1 803	1 435	79.6%	1 542	85.5%	5	0.3%
Virgin Blue	1 360	1 354	1 158	85.5%	1 179	87.1%	6	0.4%
All Airlines	3 168	3 157	2 593	82.1%	2 721	86.2%	11	0.3%
<b>Proserpine-Brisbane</b>								
Jetstar	197	197	184	93.4%	188	95.4%	0	0.0%
QantasLink	65	65	61	93.8%	61	93.8%	0	0.0%
Virgin Blue	341	341	303	88.9%	311	91.2%	0	0.0%
All Airlines	603	603	548	90.9%	560	92.9%	0	0.0%
<b>Rockhampton-Brisbane</b>								
Jetstar	441	440	409	93.0%	410	93.2%	1	0.2%
Qantas	214	213	164	77.0%	197	92.5%	1	0.5%
QantasLink	1 008	1 005	927	92.2%	934	92.9%	3	0.3%
Virgin Blue	645	645	582	90.2%	582	90.2%	0	0.0%
All Airlines	2 308	2 303	2 082	90.4%	2 123	92.2%	5	0.2%
<b>Sydney-Adelaide</b>								
Qantas	3 666	3 657	3 166	86.6%	3 356	91.8%	9	0.2%
Virgin Blue	1 825	1 817	1 618	89.0%	1 568	86.3%	8	0.4%
All Airlines	5 491	5 474	4 784	87.4%	4 924	90.0%	17	0.3%
<b>Sydney-Albury</b>								
QantasLink	1 402	1 400	1 191	85.1%	1 069	76.4%	2	0.1%
Regional Express	1 062	1 060	950	89.6%	951	89.7%	2	0.2%
All Airlines	2 464	2 460	2 141	87.0%	2 020	82.1%	4	0.2%
<b>Sydney-Alice Springs</b>								
Qantas	338	338	301	89.1%	322	95.3%	0	0.0%
Virgin Blue	289	289	246	85.1%	248	85.8%	0	0.0%
All Airlines	627	627	547	87.2%	571	91.1%	0	0.0%
<b>Sydney-Ballina</b>								
QantasLink	340	340	299	87.9%	280	82.4%	0	0.0%
Virgin Blue	122	121	87	71.9%	73	60.3%	1	0.8%
All Airlines	462	461	386	83.7%	353	76.6%	1	0.2%
<b>Sydney-Brisbane</b>								
Qantas	7 709	7 625	6 938	91.0%	6 876	90.2%	84	1.1%
QantasLink	2	2	2	100.0%	2	100.0%	0	0.0%
Virgin Blue	5 929	5 828	5 118	87.8%	5 074	87.1%	101	1.7%
All Airlines	13 640	13 455	12 058	89.6%	11 952	88.8%	185	1.4%

	Sectors		On time departures		On time arrivals		Cancellations	
	sched.	flown	no.	%	no.	%	no.	%
<b>Sydney-Cairns</b>								
Qantas	1 470	1 464	1 210	82.7%	1 300	88.8%	6	0.4%
Virgin Blue	999	993	779	78.4%	760	76.5%	6	0.6%
All Airlines	2 469	2 457	1 989	81.0%	2 060	83.8%	12	0.5%
<b>Sydney-Canberra</b>								
Qantas	1 894	1 888	1 713	90.7%	1 732	91.7%	6	0.3%
QantasLink	5 903	5 803	5 349	92.2%	5 127	88.4%	100	1.7%
Regional Express	1 646	1 627	1 479	90.9%	1 491	91.6%	19	1.2%
Virgin Blue	218	218	199	91.3%	200	91.7%	0	0.0%
All Airlines	9 661	9 536	8 740	91.7%	8 550	89.7%	125	1.3%
<b>Sydney-Coffs Harbour</b>								
Qantas	2	2	1	50.0%	1	50.0%	0	0.0%
QantasLink	2 077	2 074	1 829	88.2%	1 755	84.6%	3	0.1%
Virgin Blue	384	383	345	90.1%	330	86.2%	1	0.3%
All Airlines	2 463	2 459	2 175	88.5%	2 086	84.8%	4	0.2%
<b>Sydney-Darwin</b>								
Qantas	400	396	335	84.6%	316	79.8%	4	1.0%
Virgin Blue	275	275	226	82.2%	225	81.8%	0	0.0%
All Airlines	675	671	561	83.6%	541	80.6%	4	0.6%
<b>Sydney-Dubbo</b>								
QantasLink	1 589	1 566	1 362	87.0%	1 372	87.6%	23	1.4%
Regional Express	1 185	1 182	1 043	88.2%	1 053	89.1%	3	0.3%
All Airlines	3 059	3 030	2 640	87.1%	2 658	87.7%	29	0.9%
<b>Sydney-Gold Coast</b>								
Jetstar	1 792	1 740	1 475	84.8%	1 507	86.6%	43	2.4%
Qantas	1 314	1 307	1 169	89.4%	1 174	89.8%	7	0.5%
QantasLink	246	245	217	88.6%	218	89.0%	1	0.4%
Virgin Blue	2 953	2 935	2 499	85.1%	2 446	83.3%	18	0.6%
All Airlines	6 305	6 227	5 360	86.1%	5 345	85.8%	69	1.1%
<b>Sydney-Maroochydore</b>								
Jetstar	518	512	440	85.9%	438	85.5%	6	1.2%
QantasLink	307	301	269	89.4%	268	89.0%	6	2.0%
Virgin Blue	513	513	445	86.7%	451	87.9%	0	0.0%
All Airlines	1 338	1 326	1 154	87.0%	1 157	87.3%	12	0.9%
<b>Sydney-Melbourne</b>								
Qantas	10 002	9 775	8 645	88.4%	8 702	89.0%	227	2.3%
Virgin Blue	8 010	7 851	6 935	88.3%	6 905	88.0%	159	2.0%
All Airlines	18 012	17 626	15 580	88.4%	15 607	88.5%	386	2.1%
<b>Sydney-Perth</b>								
Qantas	1 858	1 857	1 543	83.1%	1 486	80.0%	1	0.1%
Virgin Blue	1 359	1 351	1 096	81.1%	1 052	77.9%	8	0.6%
All Airlines	3 217	3 208	2 639	82.3%	2 538	79.1%	9	0.3%

	Sectors		On time departures		On time arrivals		Cancellations	
	sched.	flown	no.	%	no.	%	no.	%
<b>Sydney-Townsville</b>								
Qantas	274	274	244	89.1%	245	89.4%	0	0.0%
Virgin Blue	275	275	244	88.7%	232	84.4%	0	0.0%
All Airlines	549	549	488	88.9%	477	86.9%	0	0.0%
<b>Sydney-Wagga Wagga</b>								
QantasLink	1 580	1 558	1 326	85.1%	1 176	75.5%	22	1.4%
Regional Express	1 029	1 026	890	86.7%	893	87.0%	3	0.3%
All Airlines	2 609	2 584	2 216	85.8%	2 069	80.1%	25	1.0%
<b>Townsville-Brisbane</b>								
Qantas	1 546	1 542	1 365	88.5%	1 379	89.4%	4	0.3%
QantasLink	164	162	149	92.0%	151	93.2%	2	1.2%
Virgin Blue	1 085	1 082	983	90.9%	992	91.7%	3	0.3%
All Airlines	2 795	2 786	2 497	89.6%	2 522	90.5%	9	0.3%
<b>Townsville-Sydney</b>								
Qantas	275	275	230	83.6%	227	82.5%	0	0.0%
Virgin Blue	275	275	227	82.5%	218	79.3%	0	0.0%
All Airlines	550	550	457	83.1%	445	80.9%	0	0.0%
<b>Wagga Wagga-Sydney</b>								
QantasLink	1 580	1 561	1 303	100.0%	1 243	95.4%	19	1.2%
Regional Express	1 029	1 027	930	100.0%	910	97.8%	2	0.2%
All Airlines	2 609	2 588	2 233	100.0%	2 153	96.4%	21	0.8%

# AIRPORTS

On time performance is reported for all routes which are flown by two or more airlines where the passenger load averages over 8,000 passengers per month. The following data reports by airport against flights operated on those routes only.

	Departures			Arrivals		
	Sectors Flown	No. on Time	% on Time	Sectors Flown	No. on Time	% on Time
<b>Adelaide Airport</b>						
Virgin Blue	6 368	5 690	89.4%	6 369	5 546	87.1%
Qantas	11 233	10 202	90.8%	11 246	10 299	91.6%
All Airlines	17 601	15 892	90.3%	17 615	15 845	90.0%
Relates to services to and from Brisbane, Canberra, Gold Coast, Melbourne, Perth and Sydney.						
<b>Albury Airport</b>						
Regional Express	1 041	985	94.6%	1 044	945	90.5%
QantasLink	1 386	1 124	81.1%	1 389	1 071	77.1%
All Airlines	2 427	2 109	86.9%	2 433	2 016	82.9%
Relates to services to and from Sydney only.						
<b>Alice Springs Airport</b>						
Virgin Blue	349	296	84.8%	349	304	87.1%
Qantas	380	330	86.8%	381	364	95.5%
All Airlines	729	626	85.9%	730	669	91.6%
Relates to services to and from Sydney only.						
<b>Ballina Airport</b>						
Virgin Blue	60	37	61.7%	60	37	61.7%
QantasLink	166	142	85.5%	166	136	81.9%
All Airlines	226	179	79.2%	226	173	76.5%
Relates to services to and from Sydney only.						
<b>Brisbane Airport</b>						
Virgin Blue	16 122	14 523	90.1%	16 108	14 173	88.0%
QantasLink	3 246	2 964	91.3%	2 769	2 575	93.0%
Qantas	20 628	18 004	87.3%	20 630	18 591	90.1%
Jetstar	1 683	1 573	93.5%	1 696	1 603	94.5%
All Airlines	41 678	37 064	88.9%	41 203	36 942	89.7%
Relates to services to and from Adelaide, Cairns, Canberra, Darwin, Hobart, Mackay, Melbourne, Newcastle, Rockhampton, Sydney and Townsville.						
<b>Broome Airport</b>						
Virgin Blue	24	9	37.5%	24	15	62.5%
Skywest	208	163	78.4%	207	185	89.4%
QantasLink	486	454	93.4%	488	468	95.9%
Qantas	401	269	67.1%	404	327	80.9%
All Airlines	1 119	895	80.0%	1 123	995	88.6%
Relates to services to and from Perth only.						

	Departures			Arrivals		
	Sectors Flown	No. on Time	% on Time	Sectors Flown	No. on Time	% on Time
<b>Burnie Airport</b>						
Regional Express	662	593	89.6%	662	606	91.5%
QantasLink	1 248	1 106	88.6%	1 251	1 053	84.2%
All Airlines	1 910	1 699	89.0%	1 913	1 659	86.7%
Relates to services to and from Melbourne only.						
<b>Cairns Airport</b>						
Virgin Blue	2 881	2 604	90.4%	2 885	2 459	85.2%
Qantas	3 773	3 410	90.4%	3 784	3 401	89.9%
Jetstar	516	479	92.8%	516	488	94.6%
All Airlines	7 237	6 554	90.6%	7 252	6 411	88.4%
Relates to services to and from Brisbane, Melbourne and Sydney.						
<b>Canberra Airport</b>						
Virgin Blue	2 708	2 501	92.4%	2 711	2 434	89.8%
Regional Express	1 688	1 599	94.7%	1 690	1 572	93.0%
QantasLink	7 003	6 271	89.5%	7 012	6 193	88.3%
Qantas	6 166	5 554	90.1%	6 170	5 564	90.2%
All Airlines	17 565	15 925	90.7%	17 583	15 763	89.6%
Relates to services to and from Adelaide, Brisbane, Melbourne and Sydney.						
<b>Coffs Harbour Airport</b>						
Virgin Blue	370	322	87.0%	370	322	87.0%
QantasLink	2 048	1 777	86.8%	2 051	1 736	84.6%
All Airlines	2 420	2 100	86.8%	2 423	2 059	85.0%
Relates to services to and from Sydney only.						
<b>Darwin Airport</b>						
Virgin Blue	651	496	76.2%	652	538	82.5%
Qantas	1 040	906	87.1%	1 037	898	86.6%
All Airlines	1 691	1 402	82.9%	1 689	1 436	85.0%
Relates to services to and from Brisbane and Sydney.						
<b>Devonport Airport</b>						
Regional Express	419	386	92.1%	423	379	89.6%
QantasLink	1 776	1 636	92.1%	1 779	1 586	89.2%
All Airlines	2 195	2 022	92.1%	2 202	1 965	89.2%
Relates to services to and from Melbourne only.						
<b>Dubbo Airport</b>						
Regional Express	1 215	1 085	89.3%	1 215	1 091	89.8%
QantasLink	1 530	1 354	88.5%	1 532	1 331	86.9%
All Airlines	2 745	2 439	88.9%	2 747	2 422	88.2%
Relates to services to and from Sydney only.						
<b>Gold Coast Airport</b>						
Virgin Blue	4 838	4 116	85.1%	4 842	4 104	84.8%
Qantas	2 304	1 970	85.5%	2 315	2 074	89.6%
Jetstar	2 083	1 790	85.9%	2 080	1 860	89.4%
All Airlines	9 808	8 430	86.0%	9 819	8 527	86.8%
Relates to services to and from Adelaide, Melbourne and Sydney.						

	Departures			Arrivals		
	Sectors Flown	No. on Time	% on Time	Sectors Flown	No. on Time	% on Time
<b>Hobart Airport</b>						
Virgin Blue	1 543	1 305	84.6%	1 543	1 309	84.8%
Qantas	320	266	83.1%	321	212	66.0%
Jetstar	1 334	1 229	92.1%	1 333	1 230	92.3%
All Airlines	5 045	4 442	88.0%	5 041	4 387	87.0%
Relates to services to and from Brisbane and Melbourne.						
<b>Kalgoorlie Airport</b>						
Skywest	453	445	98.2%	453	432	95.4%
QantasLink	412	383	93.0%	412	383	93.0%
Qantas	554	431	77.8%	555	489	88.1%
All Airlines	1 419	1 259	88.7%	1 420	1 304	91.8%
Relates to services to and from Perth only.						
<b>Launceston Airport</b>						
Virgin Blue	994	839	84.4%	995	780	78.4%
Qantas	166	146	88.0%	169	120	71.0%
Jetstar	636	563	88.5%	633	570	90.0%
All Airlines	2 838	2 469	87.0%	2 840	2 346	82.6%
Relates to services to and from Melbourne only.						
<b>Mackay Airport</b>						
Virgin Blue	730	677	92.7%	731	666	91.1%
Qantas	160	114	71.3%	160	146	91.3%
Jetstar	479	440	91.9%	480	455	94.8%
All Airlines	2 082	1 907	91.6%	2 082	1 932	92.8%
Relates to services to and from Brisbane only.						
<b>Maroochydore Airport</b>						
Virgin Blue	943	776	82.3%	945	815	86.2%
Jetstar	515	401	77.9%	515	446	86.6%
All Airlines	2 089	1 732	82.9%	2 093	1 824	87.1%
Relates to services to and from Melbourne and Sydney.						
<b>Melbourne Airport</b>						
Virgin Blue	21 820	18 610	85.3%	21 811	19 013	87.2%
Regional Express	1 975	1 797	91.0%	1 970	1 762	89.4%
QantasLink	9 592	8 332	86.9%	9 593	8 278	86.3%
Qantas	26 040	22 924	88.0%	26 097	23 376	89.6%
Jetstar	2 995	2 742	91.6%	3 003	2 689	89.5%
All Airlines	62 422	54 405	87.2%	62 474	55 118	88.2%
Relates to services to and from Adelaide, Brisbane, Burnie, Cairns, Canberra, Devonport, Gold Coast, Hobart, Launceston, Maroochydore, Mildura, Newcastle, Perth and Sydney.						
<b>Mildura Airport</b>						
Regional Express	889	803	90.3%	890	814	91.5%
QantasLink	1 598	1 409	88.2%	1 601	1 388	86.7%
All Airlines	2 487	2 212	88.9%	2 491	2 202	88.4%
Relates to services to and from Brisbane and Melbourne.						

	Departures			Arrivals		
	Sectors Flown	No. on Time	% on Time	Sectors Flown	No. on Time	% on Time
<b>Newcastle Airport</b>						
Virgin Blue	368	280	76.1%	368	276	75.0%
QantasLink	1 031	923	89.5%	1 031	885	85.8%
Jetstar	284	252	88.7%	283	258	91.2%
All Airlines	1 684	1 456	86.5%	1 683	1 420	84.4%
Relates to services to and from Brisbane and Melbourne.						
<b>Perth Airport</b>						
Virgin Blue	3 894	3 469	89.1%	3 893	3 085	79.2%
Skywest	678	633	93.4%	684	615	89.9%
QantasLink	954	881	92.3%	944	874	92.6%
Qantas	7 232	5 969	82.5%	7 282	5 901	81.0%
All Airlines	12 758	10 952	85.8%	12 803	10 475	81.8%
Relates to services to and from Adelaide, Brisbane, Broome, Kalgoorlie, Melbourne and Sydney.						
<b>Proserpine Airport</b>						
Virgin Blue	275	244	88.7%	274	246	89.8%
Jetstar	136	127	93.4%	136	130	95.6%
All Airlines	476	432	90.8%	475	436	91.8%
Relates to services to and from Brisbane only.						
<b>Rockhampton Airport</b>						
Virgin Blue	554	505	91.2%	555	485	87.4%
QantasLink	1 070	1 004	93.8%	1 550	1 392	89.8%
Qantas	152	111	73.0%	152	137	90.1%
Jetstar	319	295	92.5%	305	289	94.8%
All Airlines	2 095	1 915	91.4%	2 569	2 310	89.9%
Relates to services to and from Brisbane only.						
<b>Sydney Airport</b>						
Virgin Blue	22 687	19 800	87.3%	22 694	19 836	87.4%
Regional Express	4 952	4 435	89.6%	4 949	4 482	90.6%
QantasLink	13 300	11 834	89.0%	13 279	11 513	86.7%
Qantas	28 938	25 470	88.0%	28 777	25 828	89.8%
Jetstar	1 603	1 373	85.7%	1 603	1 404	87.6%
All Airlines	71 767	63 131	88.0%	71 301	63 063	88.4%
Relates to services to and from Adelaide, Albury, Alice springs, Ballina, Brisbane, Cairns, Canberra, Coffs Harbour, Darwin, Dubbo, Gold Coast, Maroochydore, Melbourne, Perth, Townsville and Wagga Wagga.						
<b>Townsville Airport</b>						
Virgin Blue	1 237	1 091	88.2%	1 237	1 049	84.8%
Qantas	1 647	1 426	86.6%	1 646	1 390	84.4%
All Airlines	3 167	2 778	87.7%	3 166	2 691	85.0%
Relates to services to and from Brisbane and Sydney.						
<b>Wagga Wagga Airport</b>						
Regional Express	1 005	905	90.0%	1 003	882	87.9%
QantasLink	1 533	1 292	84.3%	1 529	1 172	76.7%
All Airlines	2 538	2 197	86.6%	2 532	2 054	81.1%
Relates to services to and from Sydney only.						

## DEFINITIONS

---

On time departure	A flight departure is counted as "on time" if it departs the gate within 15 minutes of the scheduled departure time shown in the carriers' schedule.
On time arrival	A flight arrival is counted as "on time" if it arrived at the gate within 15 minutes of the scheduled arrival time shown in the carriers' schedule. Neither diverted nor cancelled flights count as on time.
Cancellation	A flight is regarded as a cancellation if it is cancelled or rescheduled less than 7 days prior to its scheduled departure time.
On time departure percentage	The percentage of on time departures is measured against the number of departures <i>operated</i> on any particular sector.
On time arrival percentage	The percentage of on time arrivals is measured against the number of arrivals <i>operated</i> on any particular sector.
Cancellation percentage	The percentage of cancellations is measured against the number of services <i>scheduled</i> on any particular sector.

---