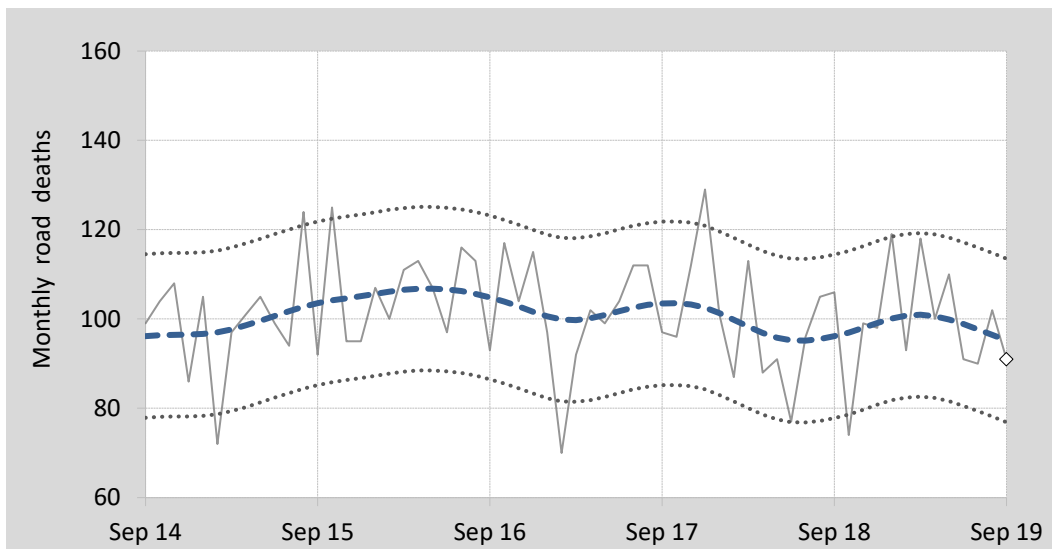




This month's key figures

- There was a total of 91 road deaths during the month of September 2019. The current figure is 6.6 per cent lower than the average for September over the previous five years.
- During the 12 months ended September 2019, there were 1,185 road deaths. This is a decrease of 1.3 per cent from the 12-month period ending September 2018.
- Presently, the rate of annual deaths per 100,000 population stands at 4.7. This is a 2.8 per cent reduction compared to the rate for the 12-month period ending September 2018.

Monthly road deaths—last five years, with trend and error bounds



Note: Shown is a trend and a 90 per cent prediction interval for the monthly observations.

Data Sources

Data are obtained from

- Transport for NSW
- Department of Transport, Victoria
- Department of Transport and Main Roads, Queensland
- Department of Planning, Transport and Infrastructure, SA
- Western Australia Police
- Department of State Growth, Tasmania
- Department of Infrastructure, Planning and Logistics, NT
- Territory and Municipal Services Directorate, ACT
- Australian Bureau of Statistics (3101.0)

Inquiries

For further information about data in this bulletin, contact:

Bureau of Infrastructure, Transport and Regional Economics
 Web : www.bitre.gov.au
 Email : roadsafety@infrastructure.gov.au

Road deaths from recent months are preliminary and subject to revision.

© Copyright. Commonwealth of Australia

I. Deaths by jurisdiction

Table I.1 Current month

Current month	NSW	Vic	Qld	SA	WA	Tas	NT	ACT	Australia
September 2018	34	19	20	10	15	5	2	1	106
September 2019	33	18	20	4	12	2	1	1	91
Per cent change	-2.9	-5.3	0.0	-60.0	-20.0	-60.0	-50.0	0.0	-14.2

Table I.2 Year to date

Year to date	NSW	Vic	Qld	SA	WA	Tas	NT	ACT	Australia
January 2018 - September 2018	273	152	192	55	122	26	36	8	864
January 2019 - September 2019	281	208	160	82	131	25	23	4	914
Per cent change	2.9	36.8	-16.7	49.1	7.4	-3.8	-36.1	-50.0	5.8

Table I.3 Year ending September

12 months ended September	NSW	Vic	Qld	SA	WA	Tas	NT	ACT	Australia
2015	331	249	233	107	174	35	46	12	1,187
2016	388	281	244	92	176	37	41	13	1,272
2017	367	258	257	97	167	30	38	7	1,221
2018	379	225	252	84	171	36	45	9	1,201
2019	355	269	213	107	167	32	37	5	1,185
Latest per cent change	-6.3	19.6	-15.5	27.4	-2.3	-11.1	-17.8	-44.4	-1.3
Average trend change per year (per cent)	1.2	-0.7	-1.5	-0.9	-1.1	-2.0	-3.4	-19.1	-0.6

2. Deaths by road user, age-group and gender

Table 2.1 By road user

12 months ended September	Driver	Passenger	Pedestrian	Motorcyclist ^b	Pedal ^b cyclist	Total ^c
2015	537	249	160	206	30	1,187
2016	619	210	174	232	35	1,272
2017	568	226	159	228	32	1,221
2018	558	219	182	196	39	1,201
2019	558	209	172	207	35	1,185
Latest per cent change	0.0	-4.6	-5.5	5.6	-10.3	-1.3
Average trend change per year (per cent)	-0.3	-3.0	1.9	-1.6	4.3	-0.6

Table 2.2 By age-group^a (years)

12 months ended September	0 to 16	17 to 25	26 to 39	40 to 64	65 to 74	≥ 75	Total ^c
2015	76	242	267	351	106	145	1,187
2016	47	244	284	417	115	165	1,272
2017	63	250	259	370	105	174	1,221
2018	47	233	255	398	125	141	1,201
2019	46	238	242	375	110	170	1,185
Latest per cent change	-2.1	2.1	-5.1	-5.8	-12.0	20.6	-1.3
Average trend change per year (per cent)	-9.6	-0.8	-3.0	0.9	1.6	1.6	-0.6

2. Deaths by road user, age-group and gender (continued)

Table 2.3 By gender

12 months ended September	Males	Females	Total ^d
2015	852	335	1,187
2016	923	349	1,272
2017	892	328	1,221
2018	900	300	1,201
2019	894	291	1,185
<i>Latest per cent change</i>	-0.7	-3.0	-1.3
<i>Average trend change per year (per cent)</i>	0.7	-4.2	-0.6

a Age groups were changed in April 2014.

b Includes pillion passengers.

c Includes deaths to persons with either age or road user type not recorded.

d Includes deaths of persons where gender is not recorded or unspecified.

3. Annual deaths per 100,000 population

Table 3.1 Year ended September

12 months ended September	NSW	Vic	Qld	SA	WA	Tas	NT	ACT	Australia
2015	4.36	4.15	4.89	6.30	6.86	6.80	18.93	3.04	5.00
2016	5.03	4.58	5.06	5.38	6.89	7.16	16.76	3.24	5.28
2017	4.68	4.10	5.24	5.63	6.50	5.75	15.42	1.70	4.98
2018	4.76	3.50	5.05	4.84	6.60	6.83	18.25	2.15	4.82
2019	4.40	4.10	4.20	6.12	6.38	6.00	15.07	1.17	4.69
<i>Latest per cent change</i>	-7.7	17.1	-16.9	26.3	-3.3	-12.2	-17.4	-45.3	-2.8
<i>Average trend change per year (per cent)</i>	-0.4	-2.9	-3.0	-1.6	-1.8	-2.9	-3.6	-20.6	-2.2

Table 3.2 Calendar year period

Calendar year	NSW	Vic	Qld	SA	WA	Tas	NT	ACT	Australia
2014	4.09	4.21	4.72	6.40	7.27	6.42	16.06	2.57	4.90
2015	4.60	4.18	5.09	6.00	6.26	6.60	20.03	3.79	5.06
2016	4.91	4.70	5.18	5.02	7.55	7.15	18.32	2.73	5.34
2017	4.94	4.10	5.01	5.80	6.18	6.13	12.52	1.21	4.97
2018	4.35	3.30	4.89	4.61	6.09	6.25	20.23	2.14	4.54
<i>Latest per cent change</i>	-12.0	-19.5	-2.4	-20.6	-1.4	2.0	61.5	76.4	-8.5

4. Monthly deaths by jurisdiction — last 24 months

— raw
 - - - smoothed
(Whittaker-Henderson)

Figure 4.1 NSW

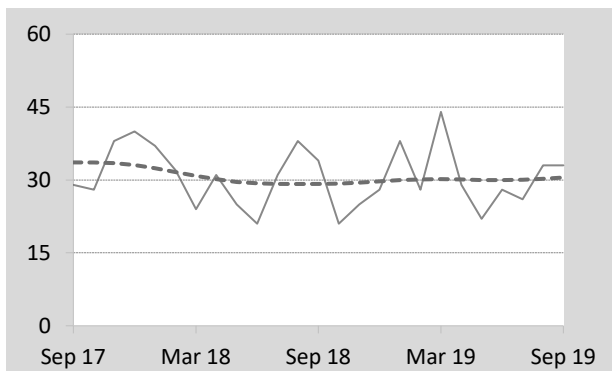


Figure 4.2 Vic

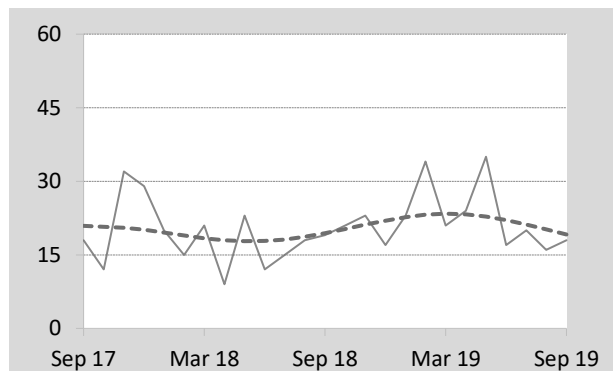


Figure 4.3 Qld

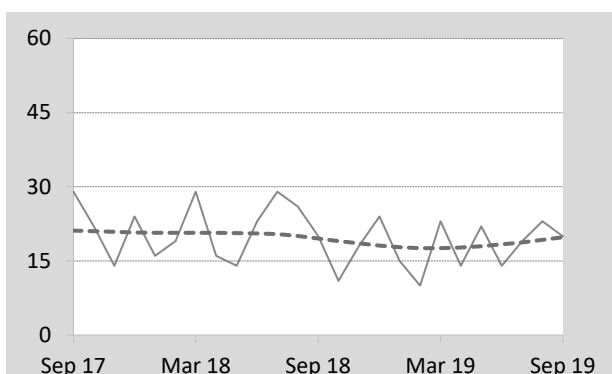


Figure 4.4 SA

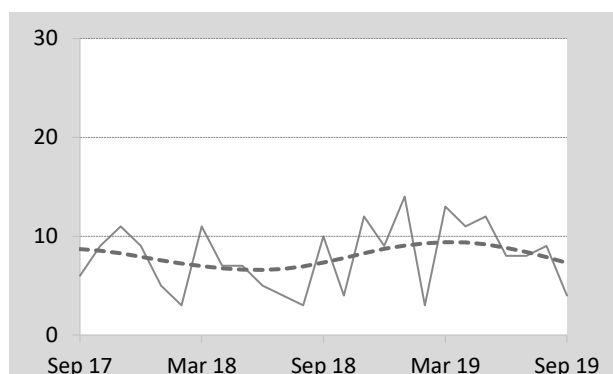


Figure 4.5 WA

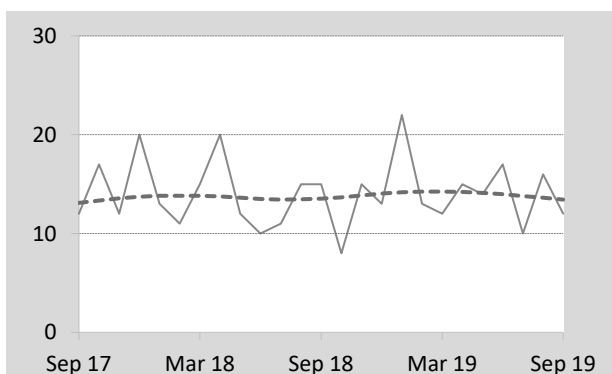


Figure 4.6 Tas

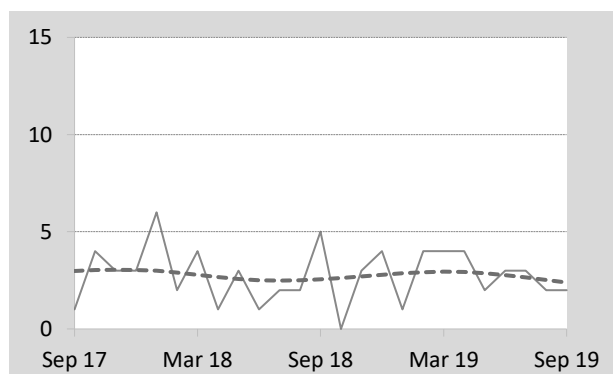


Figure 4.7 NT

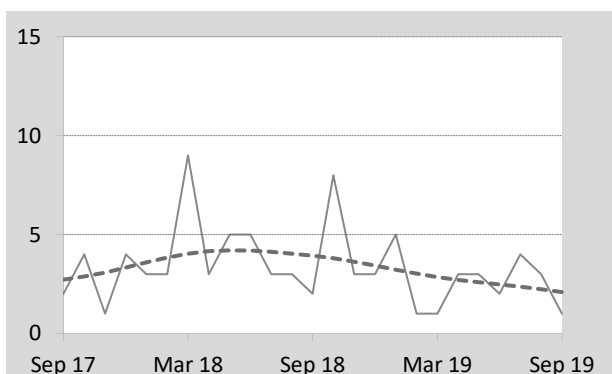
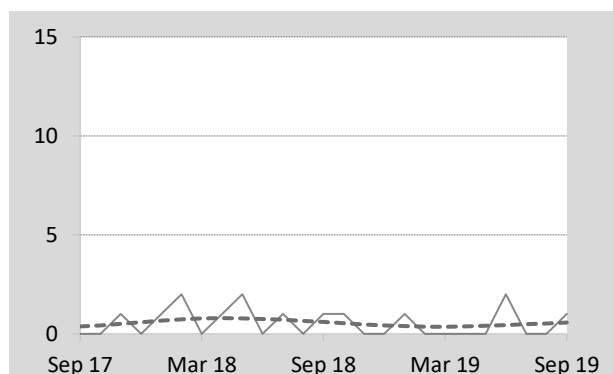


Figure 4.8 ACT



5. Fatal crashes: counts and characteristics

Table 5.1 By Crash type and Posted speed limit

12 months ended September	Crash type ^a			Posted speed limit						Total ^b
	Single	Multiple	Pedestrian	≤ 40	50	60	70 to 90	100	≥ 110	
2015	486	441	158	19	124	206	236	353	141	1,085
2016	521	482	174	15	124	222	283	368	155	1,177
2017	499	472	158	30	136	213	246	344	154	1,129
2018	486	447	180	24	146	197	243	347	143	1,113
2019	524	408	170	18	134	188	232	339	170	1,102
Latest per cent change	7.8	-8.7	-5.6	-25.0	-8.2	-4.6	-4.5	-2.3	18.9	-1.0
Average trend change per year (per cent)	0.8	-2.3	1.8	3.7	3.2	-3.0	-1.8	-1.4	3.0	-0.2

Table 5.2 By Day of week and Time of day

12 months ended September	Day of week ^c		Time of day ^d	
	Weekday	Weekend	Day	Night
2015	656	429	663	422
2016	726	451	713	464
2017	706	423	726	403
2018	676	437	678	435
2019	683	419	684	418
Latest per cent change	1.0	-4.1	0.9	-3.9
Average trend change per year (per cent)	0.1	-0.8	0.1	-0.8

a 'Single' and 'Multiple' refer to the number of vehicles involved in a fatal crash where there is no pedestrian killed.

b Includes crashes where speed limit is unknown or not specified.

c 'Weekday' refers to 6am Monday through to 5:59pm Friday.

d 'Day' refers to 6am through to 5:59 pm.

Appendix

Definition

The road safety agencies in each jurisdiction use detailed criteria to define road crashes and road deaths. Briefly, a death is classified as resulting from a road crash if the crash occurred on a public road, is unintentional and the death occurred within 30 days from injuries sustained in the crash.

Population rates

Rates per population are based on the deaths to the current 12-month period, and the population at the midpoint of the period. The population at midpoints is interpolated if necessary.

New ongoing fields in September 2018 database

The *Australian Road Deaths Database* now includes geographic location information for fatal crashes. Back series of data for all jurisdictions is in development.

Average trend change (% per year)

Designed to provide a **one-number summary** of growth rates over recent time periods. Calculated by fitting an exponential curve through the data points, and quoting the constant (annual) change of this curve.

Smooth trend lines

These trend lines are designed to track medium-term trends and turning points in the raw data. Whittaker-Henderson smoothers have been used with value of 80 for the smoothing parameter. The application R (package *pracma*) can be used for such trend lines. Error bounds are 90% (approximately) around the monthly data.

Other sources for the tables in this bulletin

The underlying database used to produce this bulletin — *the Australian Road Deaths Database* is available for data extraction at <http://www.bitre.gov.au/statistics/safety/fatal_road_crash_database.aspx>.

Road deaths from recent months are preliminary and subject to revision.