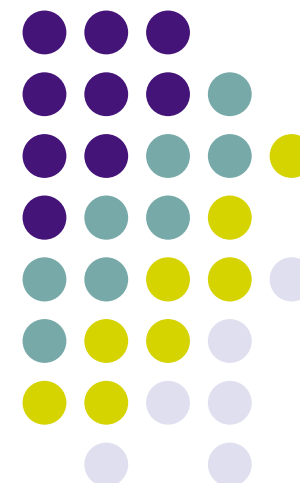


*Professor Edward J. Blakely*

*United States Studies Centre*

---

Sydney



In recent years, Portland,  
Oregon, has acquired a  
reputation as a big city with  
a small-town quality of life:

The air is fresh, the food  
is organic, the streets are  
paved with good intentions.

# Can a Place Be Too Perfect?

The Portland  
Farmers Market.  
Below: Share-It  
Square, in the  
neighborhood of  
Sellwood





# Global Warning





Loss Component	Gross Industry Loss Range	Notes
1 <sup>st</sup> Landfall in Florida	\$1-2 billion	Predominantly wind loss; < \$100 million from flood
Offshore Energy	\$2-5 billion	Loss of production could be substantial, \$1-2bn in platform losses
2 <sup>nd</sup> Landfall Wind & Surge	\$20-25 billion	Wind component ~2/3 of total gross loss
New Orleans Flooding	\$15-25 billion	Excludes expected losses of ~\$10bn to NFIP
Additional Loss Sources	\$2-3 billion	Marine, aggravated BI/ALE, off premises power, localized flooding

**Total  
Loss**

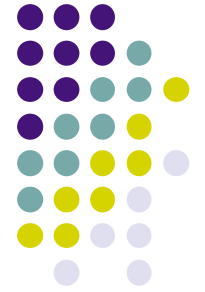
**\$40-60 billion  
estimated**

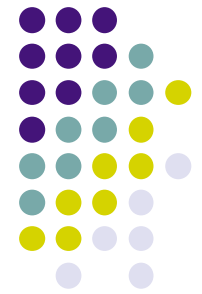
# Climate Change Damage





# New Orleans-Who's Next





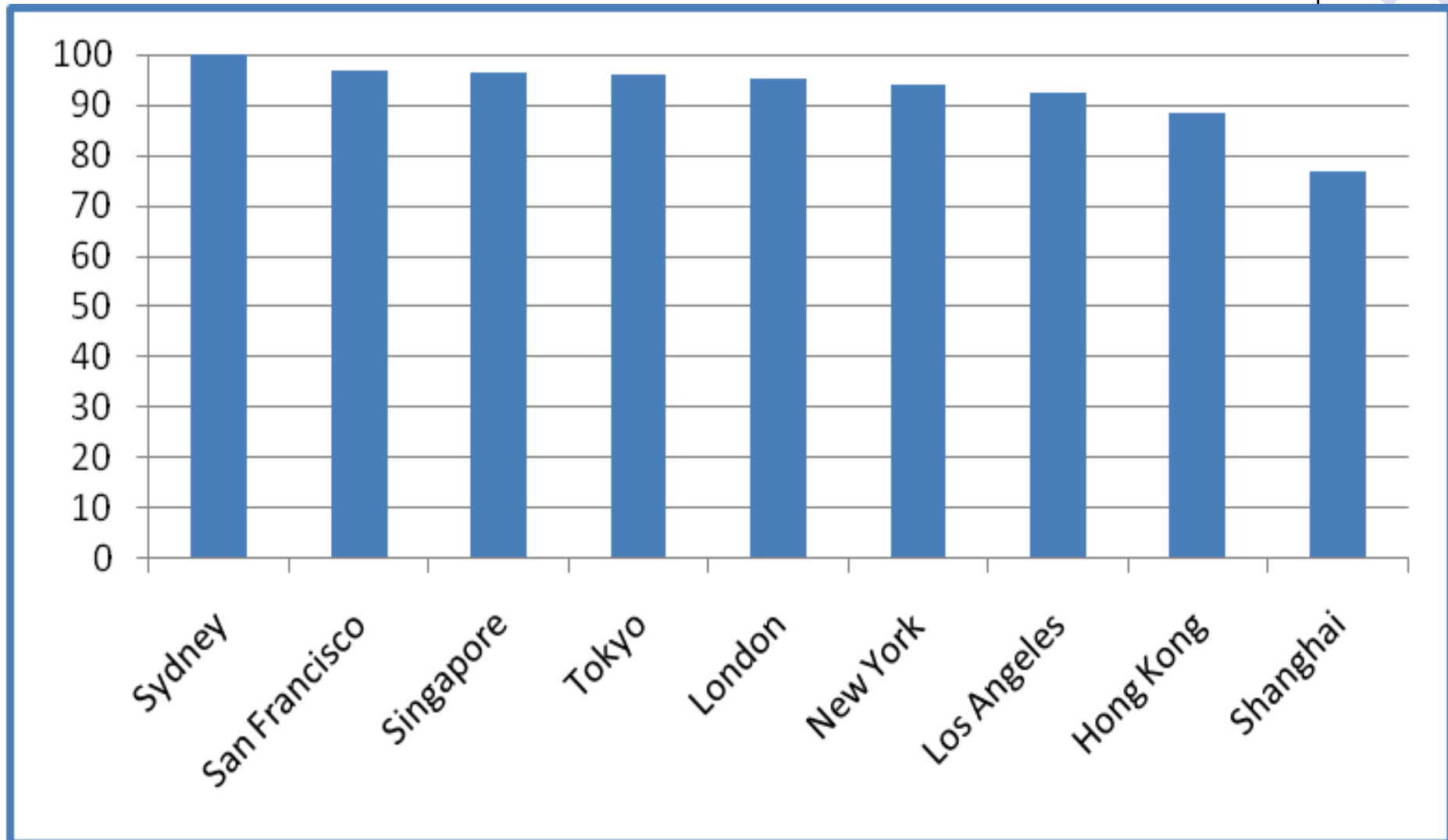
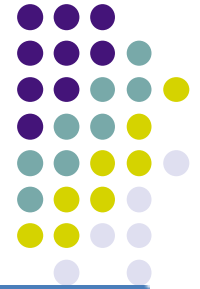








# Global Cities Liveability

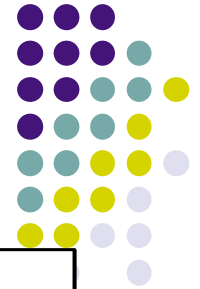




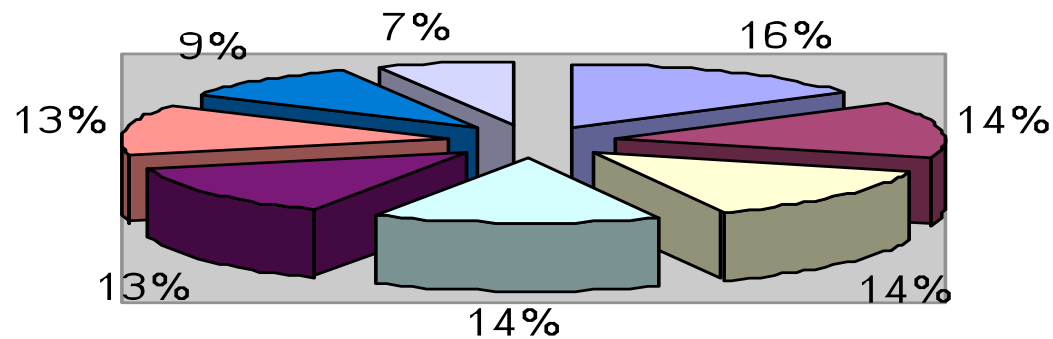
# Cleaning Up the world cities



# Land use and Energy



Energy Use

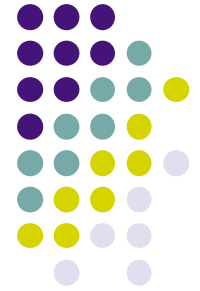




# Who are we doing this for?



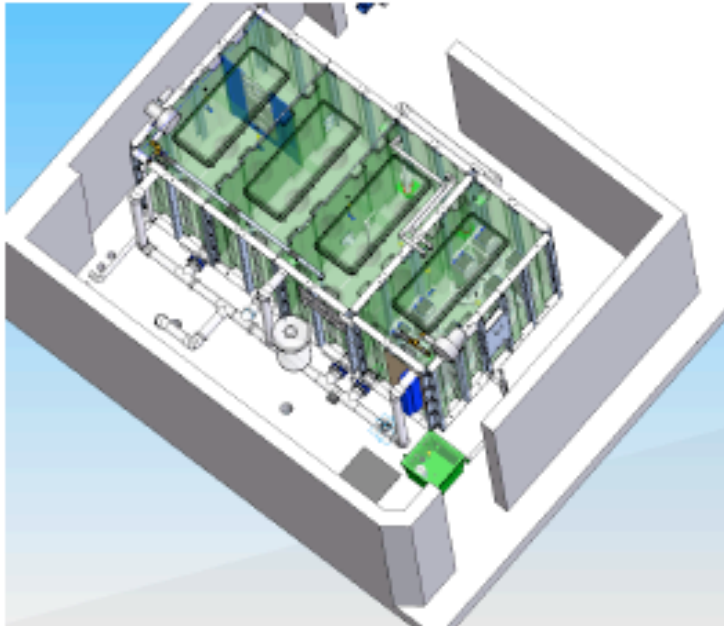
# Looking at our assets for Global Sustainable Urban Exports





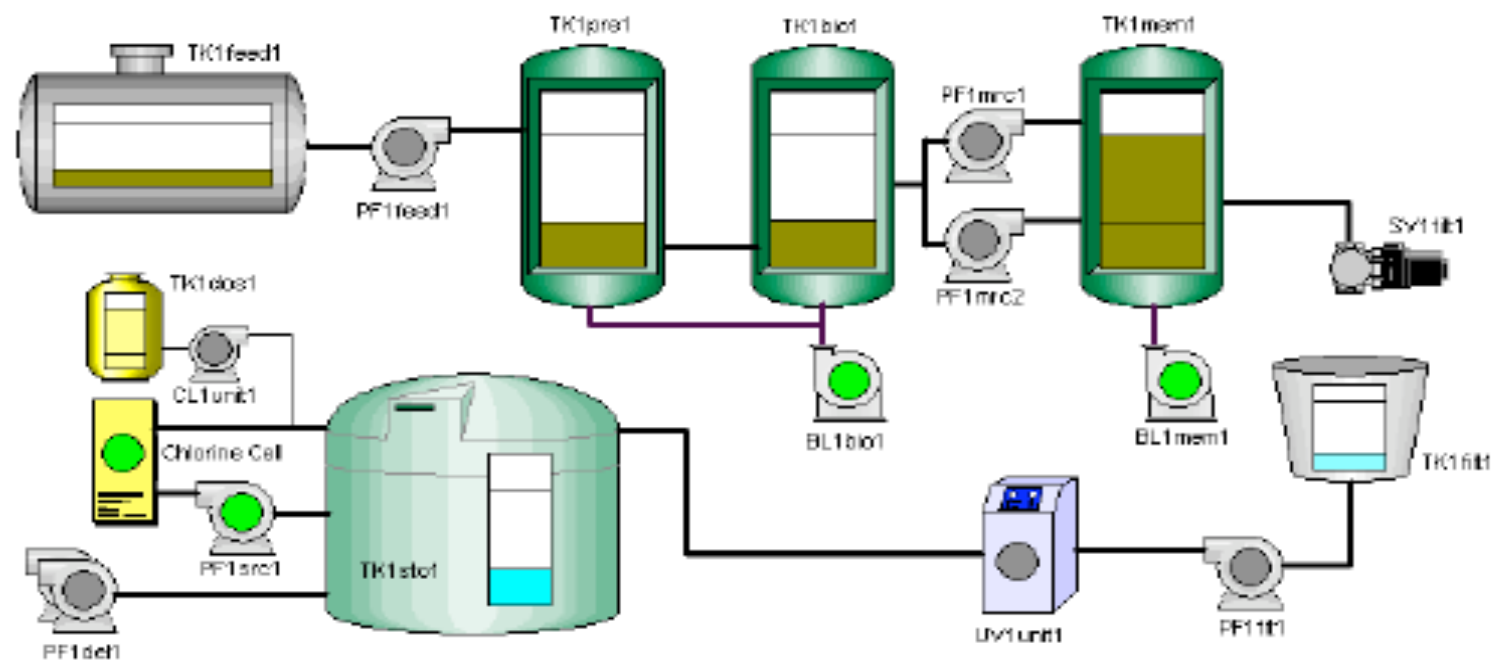
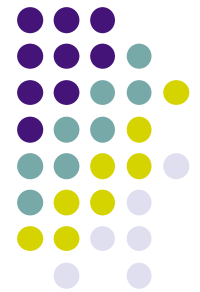


## Design

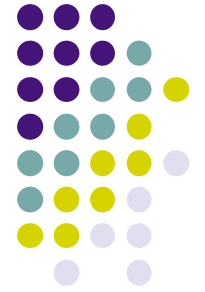


## Manufacture

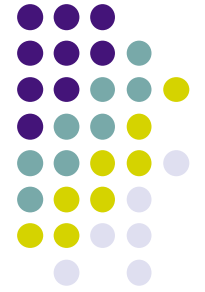




Service and monitoring







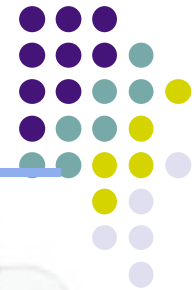
Single Dwellings











**Context**

The project is located in the heart of the city, surrounded by existing urban fabric. The site is bounded by the main road to the north and the railway line to the east. The surrounding area is a mix of residential and commercial buildings, with a high density of population.

**Site Analysis**

The site is a triangular plot, bounded by the main road to the north and the railway line to the east. The site is currently a mix of residential and commercial buildings, with a high density of population. The site is surrounded by existing urban fabric, with a mix of residential and commercial buildings.

**Concept**

The concept is a mixed-use development, combining residential, commercial, and public spaces. The development is designed to be a vibrant, walkable community, with a mix of housing types and amenities. The development is designed to be a vibrant, walkable community, with a mix of housing types and amenities.

**Design**

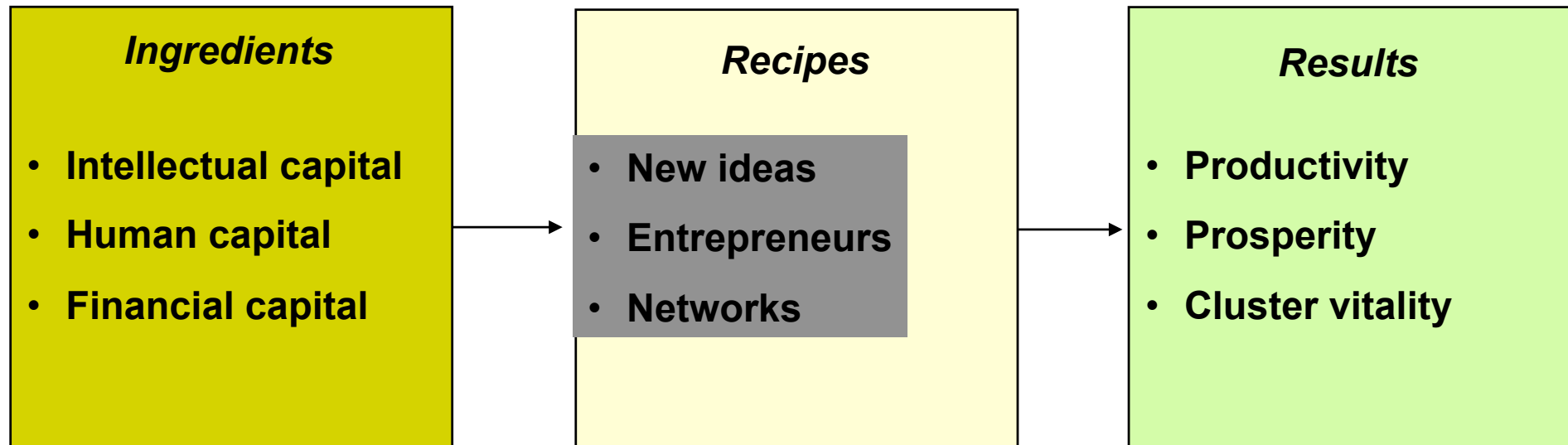
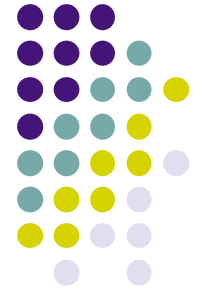
The design is a modern, multi-story building, with a mix of residential and commercial units. The building is designed to be a vibrant, walkable community, with a mix of housing types and amenities. The building is designed to be a vibrant, walkable community, with a mix of housing types and amenities.

**Implementation**

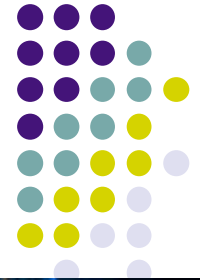
The implementation is a multi-phase process, starting with the construction of the main building. The implementation is a multi-phase process, starting with the construction of the main building. The implementation is a multi-phase process, starting with the construction of the main building.



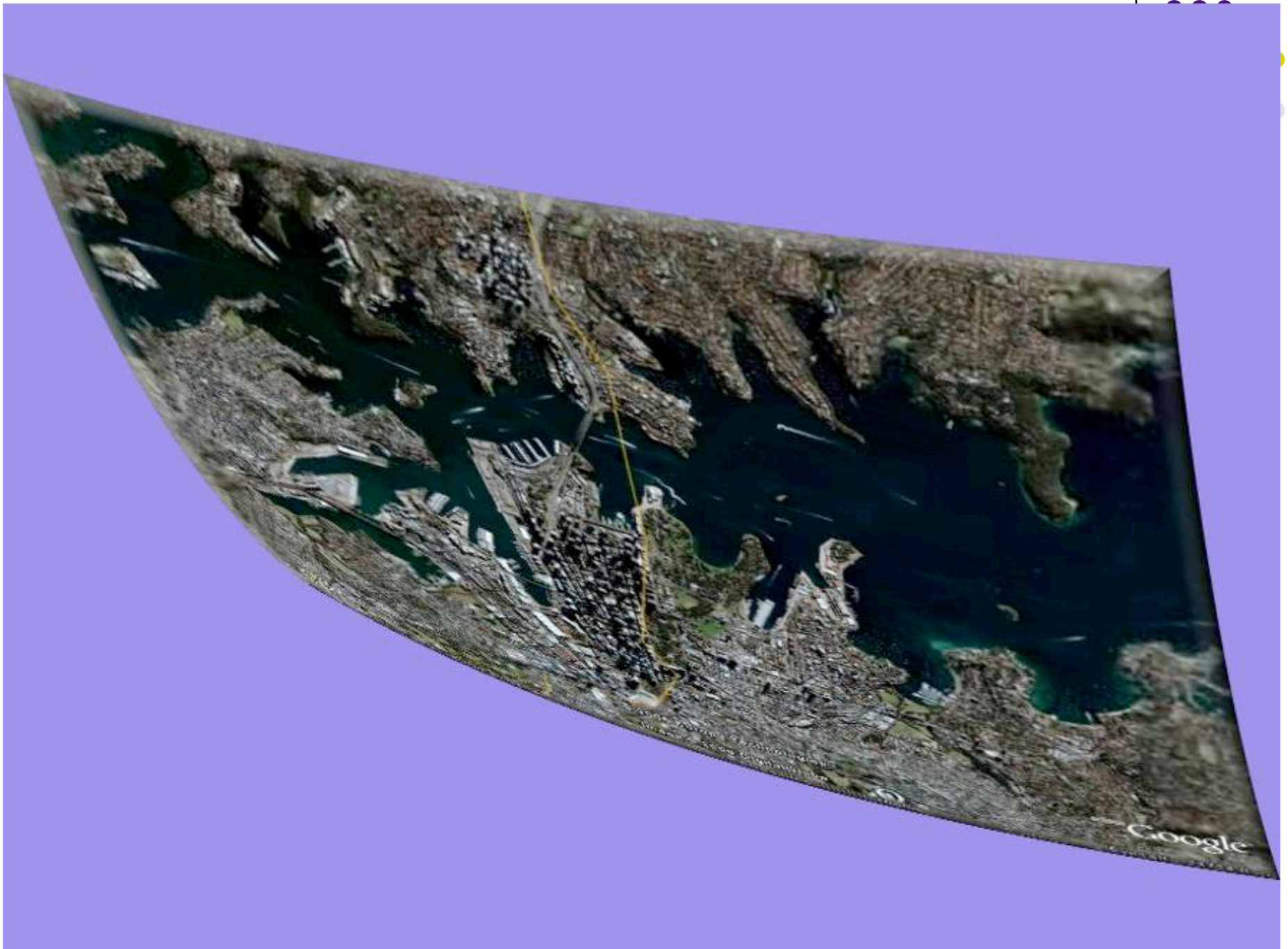
# Sustainable Development Theory



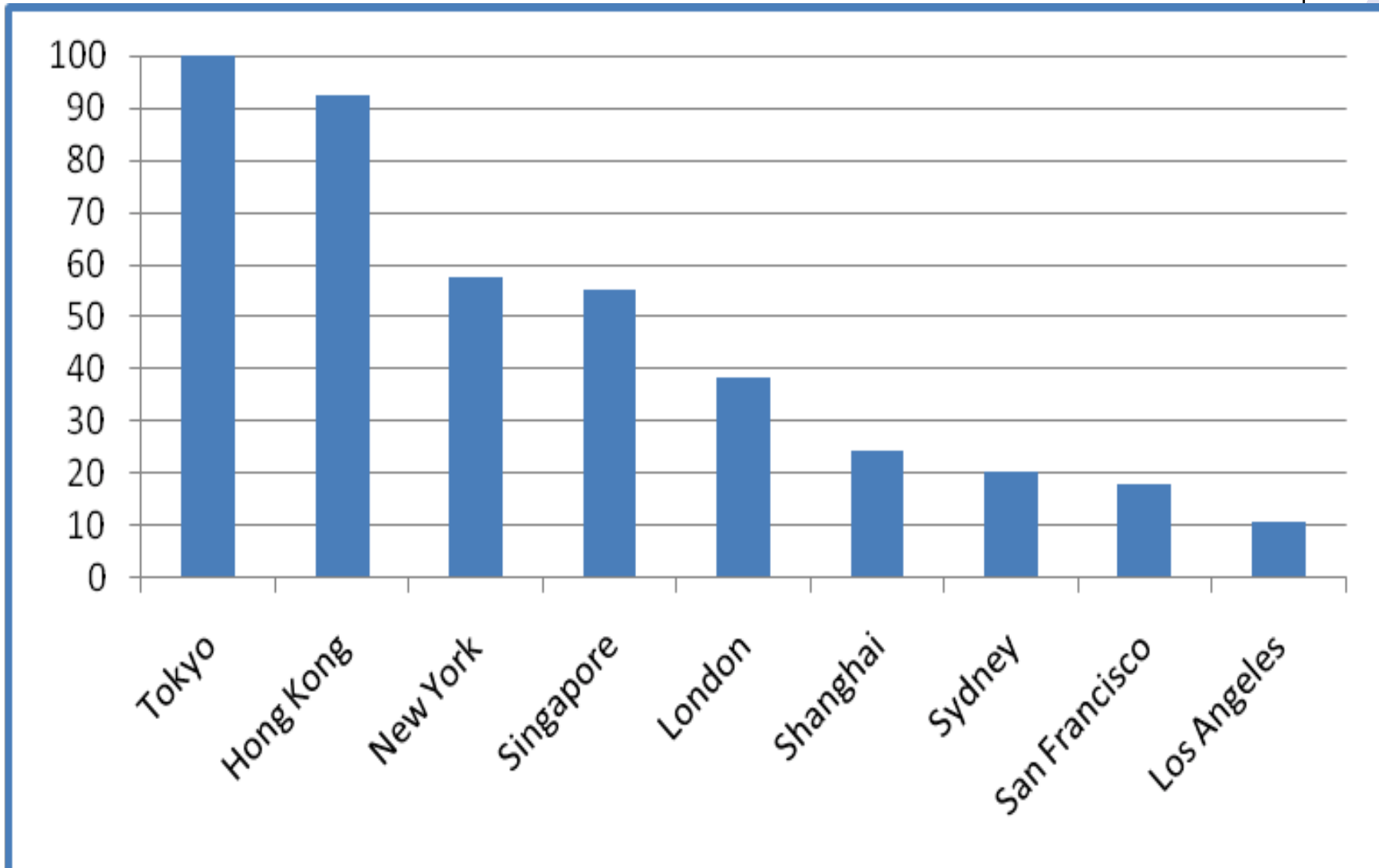
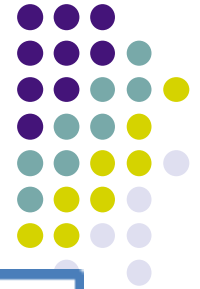
# The sustainability business

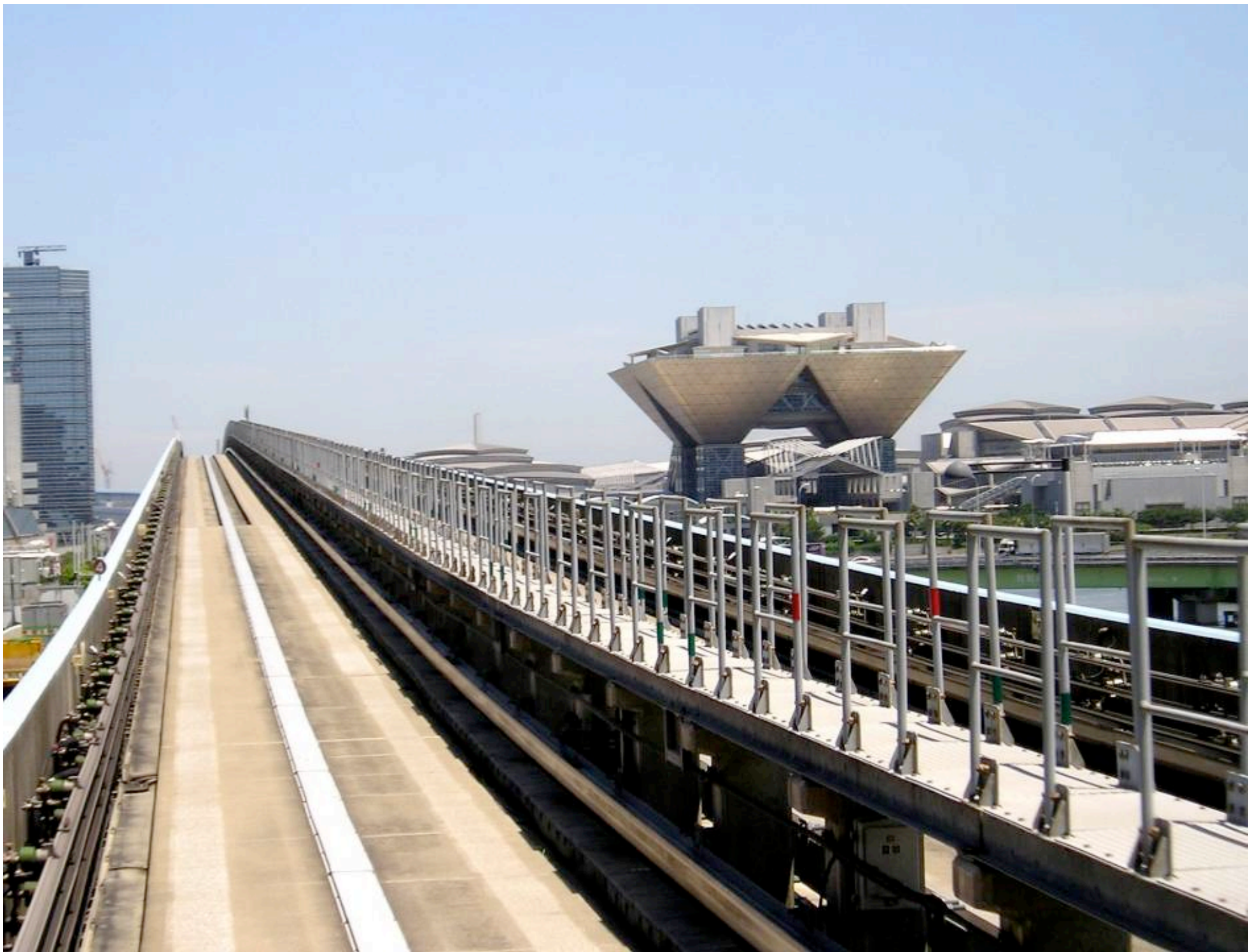






# Public Transport



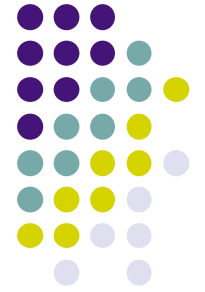












Panama city





# Accessibility and transportability

- key to a good community is to connect it in every manner possible by designing it so there are place to walk to, bicycle and connect it with real transportation programs that will move people to and from the community by public and private transportation





















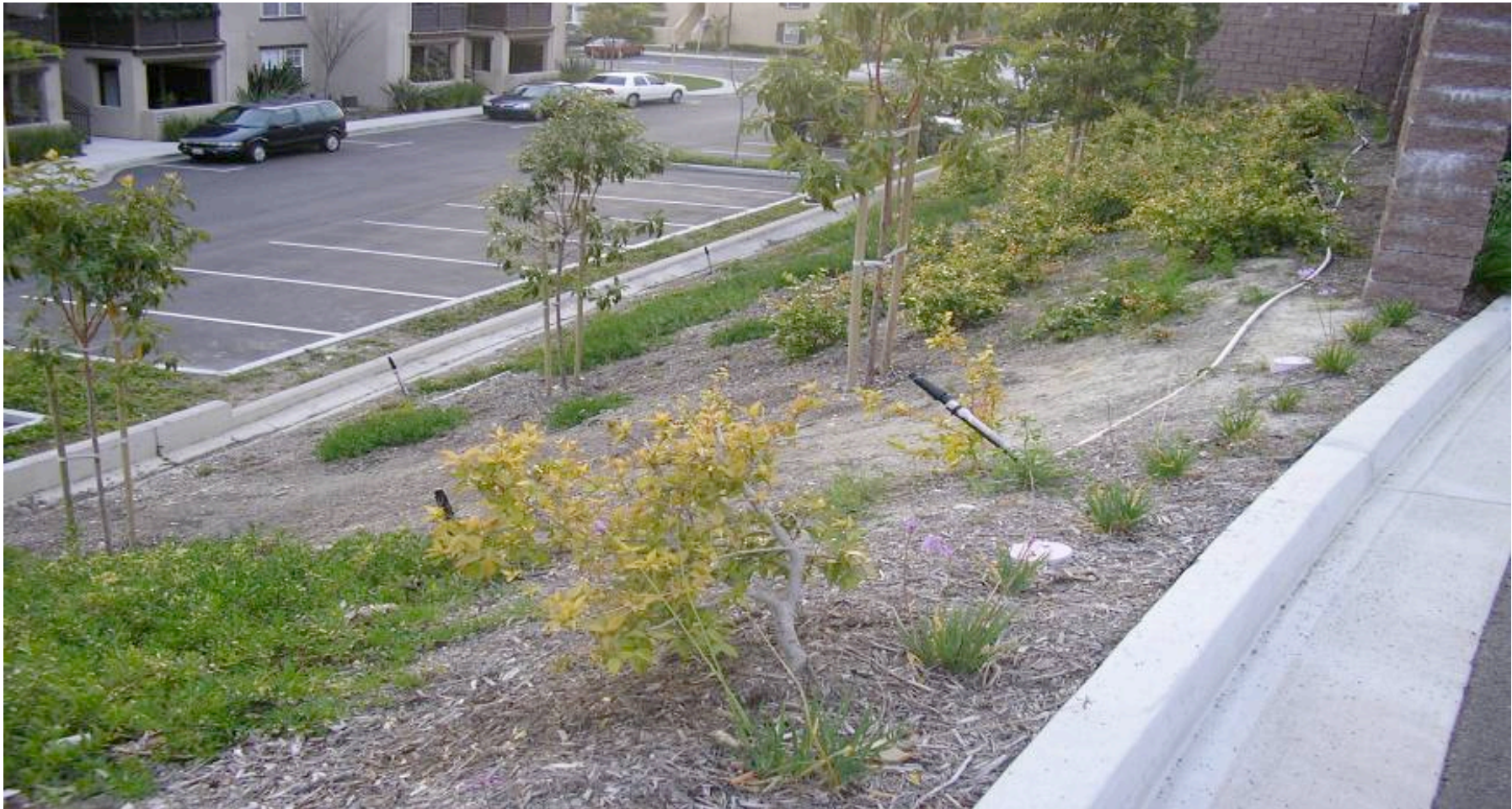
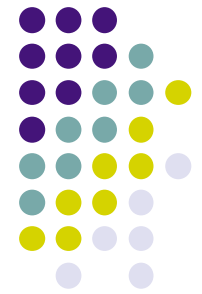




# Research as a basic Sustainability Industry and not a mere challenge for industry



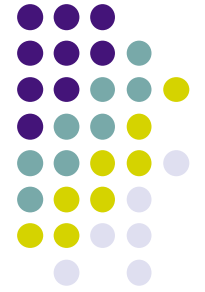
















$$(x+2)(x-2) = x^2 + x$$

$$7+2y = 7-3y+0.2y$$

$$7+2y = 7-3y+0.2y$$

$$7+2y = 7-3y+0.2y$$

$$7+2y = 7-3y+0.2y$$

$$7+2y = 7-3y+0.2y$$

$$7+2y = 7-3y+0.2y$$

Equation are entered:

$$x+2 = 3x+6$$

Solve from each

$$2 = +3x$$

$$-3x = -18$$

$$-3x = -18$$

$$-3x = -18$$

$$-3x = -18$$

$$-3x = -18$$

$$-3x = -18$$

$$-3x = -18$$

$$-3x = -18$$

$$-3x = -18$$

$$-3x = -18$$

$$-3x = -18$$

$$-3x = -18$$

$$-3x = -18$$

$$-3x = -18$$

$$-3x = -18$$

$$-3x = -18$$

ax

$$x^2 +$$

$$(x^2 + \frac{1}{a})$$

$$(x^2 + \frac{1}{a})$$

$$(x^2 + \frac{1}{a})$$

$$(x^2 + \frac{1}{a})$$

$$(x^2 + \frac{1}{a})$$

$$(x^2 + \frac{1}{a})$$

$$(x^2 + \frac{1}{a})$$

$$(x^2 + \frac{1}{a})$$

$$(x^2 + \frac{1}{a})$$

$$(x^2 + \frac{1}{a})$$

$$(x^2 + \frac{1}{a})$$

$$(x^2 + \frac{1}{a})$$

$$(x^2 + \frac{1}{a})$$

$$(x^2 + \frac{1}{a})$$

$$(x^2 + \frac{1}{a})$$

$$(x^2 + \frac{1}{a})$$

$$(x^2 + \frac{1}{a})$$

$$(x^2 + \frac{1}{a})$$







# Governance vs Government

