



Australian Government

Department of Infrastructure, Transport,
Regional Development and Local Government

Bureau of Infrastructure, Transport and Regional Economics

BITRE Colloquium 2009
*Infrastructure for the
nation's future*
18-19 June

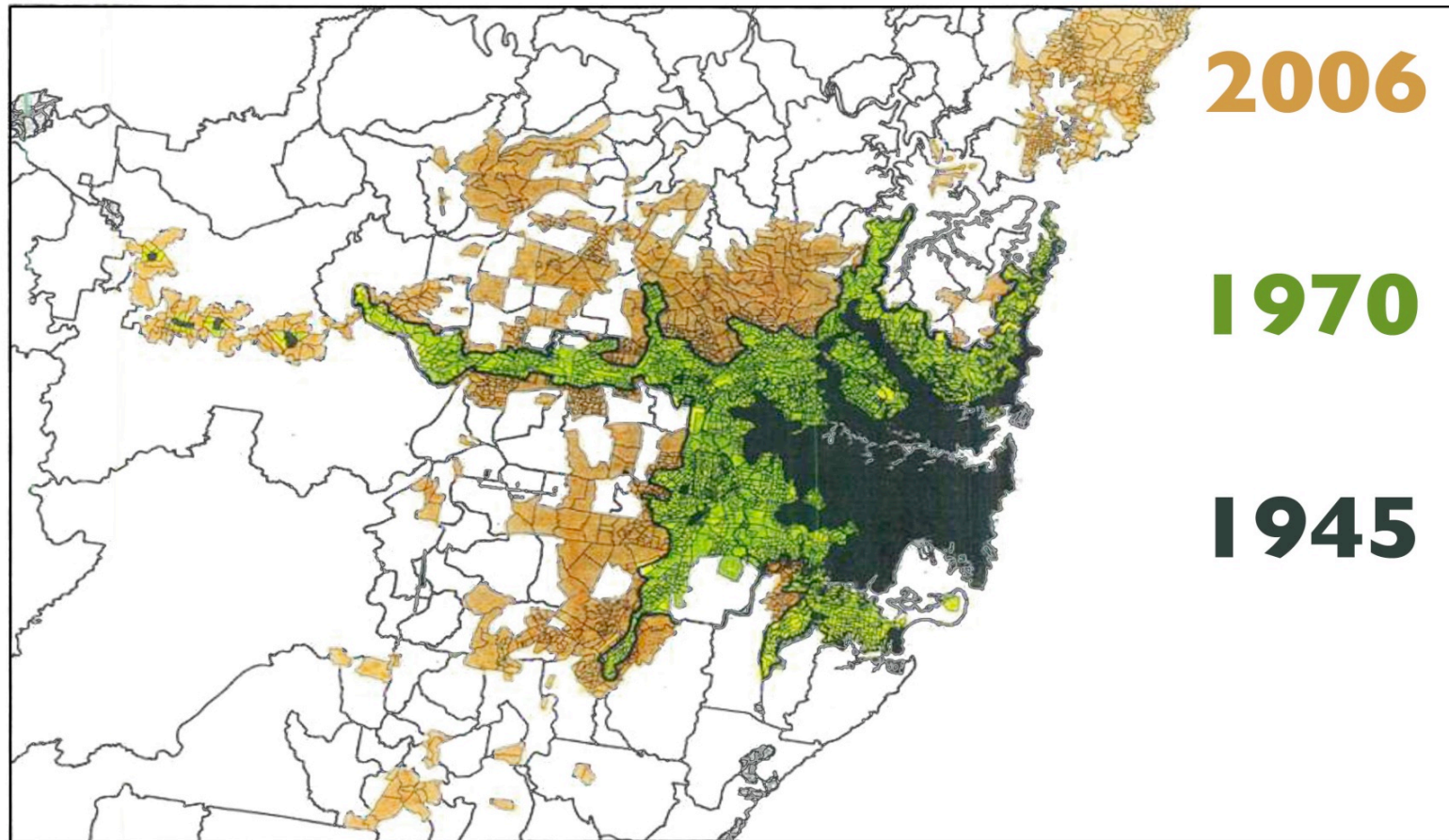
Urban Freight Logistics: What Are the Challenges for Growth?

Dr David Gargett
BITRE Research Leader

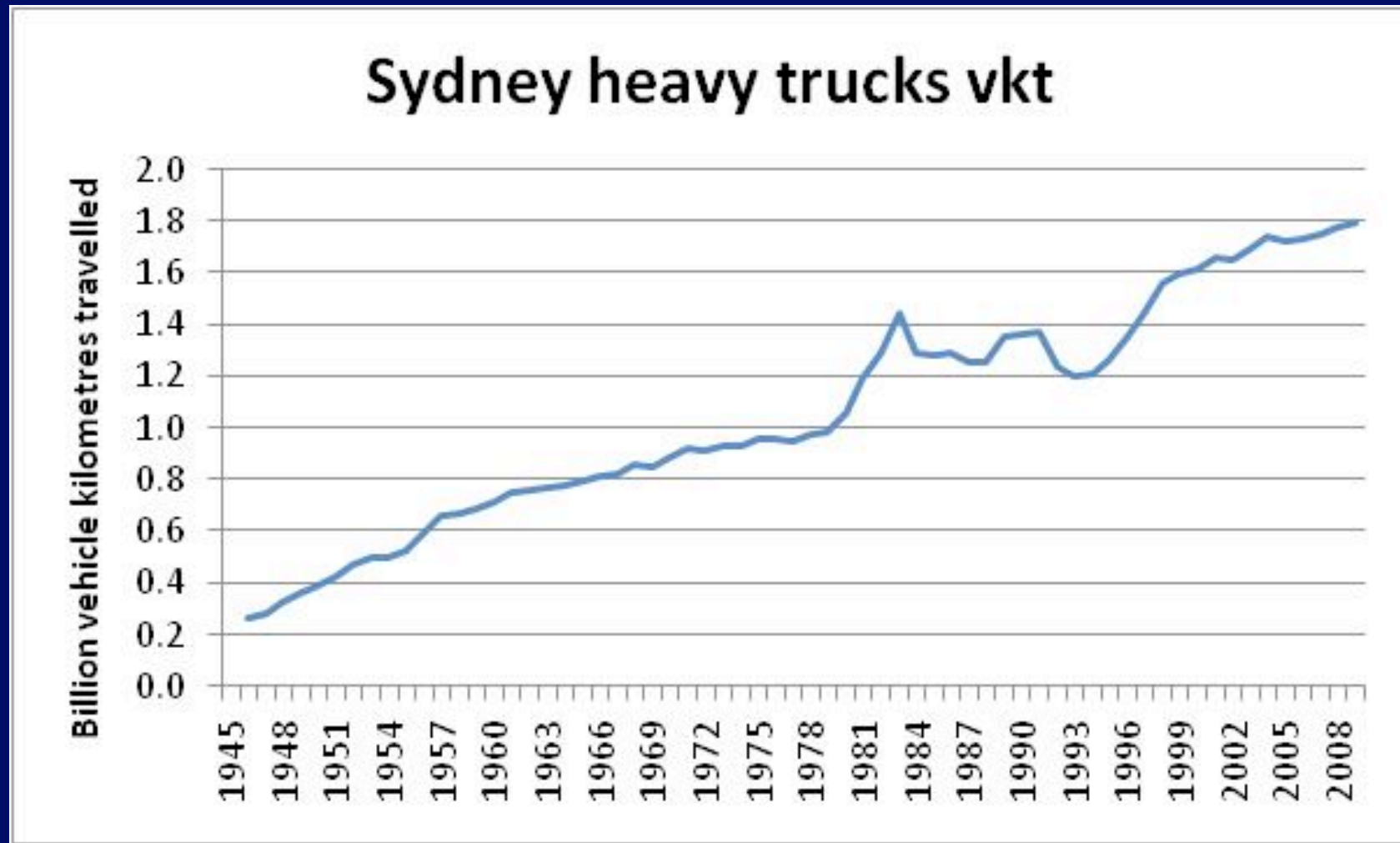
GROWTH

- A key word with regard to many issues in our capital cities
- Two examples :
- The spread of Sydney since 1945
- The growth in heavy vehicle kilometres travelled since 1945

GROWTH in Sydney's Area



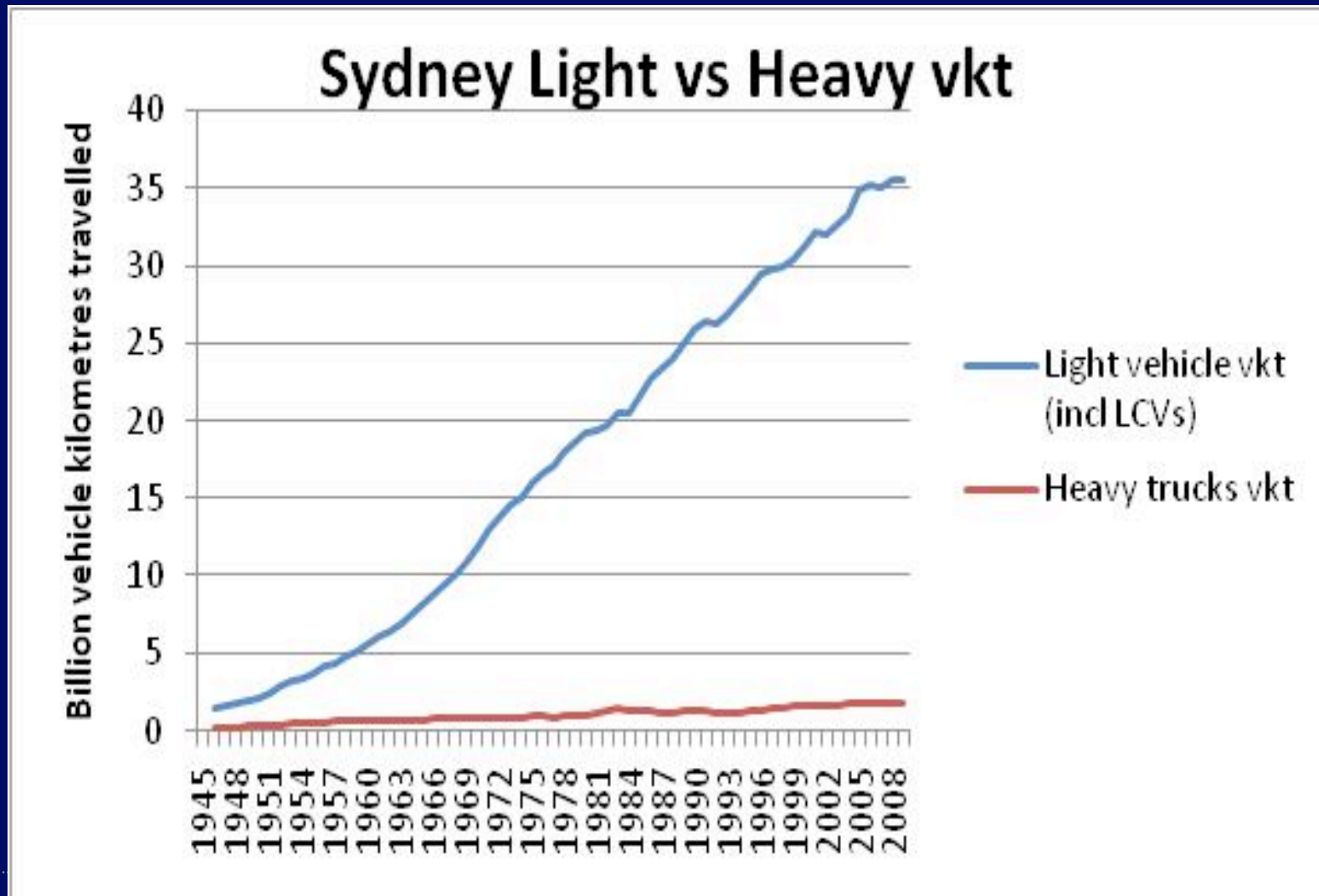
GROWTH in Sydney's Truck Traffic



Why Trucks for Urban Freight GROWTH?

- Some hot spots connected with other modes (e.g. Ports and their rail connections, Airports, Intermodal terminals),
- But overwhelmingly it's truck transport.
- The problem for urban freight logistics is that trucks share the roads with light vehicles,
- ...that form the majority of the traffic.

GROWTH in Light vs Heavy Vehicle Traffic in Sydney



GROWTH in traffic = GROWTH in Congestion

- Growth in traffic is substantial:
 - Traffic in Sydney over the next decade expected to grow by about 20 per cent
- The result will be continuing increases in congestion and congestion-related delay.
- It is estimated that a 30 kilometre trip will take 3 minutes longer in 2020 in Sydney than today – not an horrendous increase, but an inexorable trend.
- Except for certain hot spots, congestion affects trucks, not the other way around.

The Challenge Posed by GROWTH for City Freight Logistics

- How to move a growing volume of freight on more congested city networks?
 - Need for more drivers, just as generational change subtracts them
 - Need for larger, more purpose-built trucks?
 - Need to vary delivery times to avoid peak traffic periods?
 - Need for more freight pooling to cut down on local trips?
 - Need for specific freight infrastructure
 - Need to get the right balance between community and industry interests
 - Etcetera, as our speakers will now elaborate.