



Australian Government

Department of Infrastructure, Transport, Cities and Regional Development

Bureau of Infrastructure, Transport and Regional Economics

STATISTICAL REPORT



Aviation

Domestic aviation activity
September 2019

© Commonwealth of Australia 2019

ISSN: 1832 - 1968

Ownership of intellectual property rights in this publication

Unless otherwise noted, copyright (and any other intellectual property rights, if any) in this publication is owned by the Commonwealth of Australia (referred to below as the Commonwealth).

Disclaimer

The material contained in this publication is made available on the understanding that the Commonwealth is not providing professional advice, and that users exercise their own skill and care with respect to its use, and seek independent advice if necessary.

The Commonwealth makes no representations or warranties as to the contents or accuracy of the information contained in this publication. To the extent permitted by law, the Commonwealth disclaims liability to any person or organisation in respect of anything done, or omitted to be done, in reliance upon information contained in this publication.

Creative Commons licence

With the exception of (a) the Coat of Arms; and (b) the Department of Infrastructure, Transport, Cities and Regional Developments' photos and graphics, copyright in this publication is licensed under a Creative Commons Attribution 3.0 Australia Licence.

Creative Commons Attribution 3.0 Australia Licence is a standard form licence agreement that allows you to copy, communicate and adapt this publication provided that you attribute the work to the Commonwealth and abide by the other licence terms. A summary of the licence terms is available from <http://creativecommons.org/licenses/by/3.0/au/deed.en>.

The full licence terms are available from <http://creativecommons.org/licenses/by/3.0/au/legalcode>.

Use of the Coat of Arms

The Department of the Prime Minister and Cabinet sets the terms under which the Coat of Arms is used. Please refer to the Department's Commonwealth Coat of Arms and Government branding web page <http://www.dpmc.gov.au/guidelines/index.cfm#brand> and, in particular, the Guidelines on the use of the Commonwealth Coat of Arms publication.

An appropriate citation for this report is:

Bureau of Infrastructure, Transport and Regional Economics (BITRE), 2019, Domestic aviation activity, Statistical Report, BITRE, Canberra ACT.

Contact us

This publication is available in PDF format. All other rights are reserved, including in relation to any Departmental logos or trade marks which may exist. For enquiries regarding the licence and any use of this publication, please contact:

Bureau of Infrastructure, Transport and Regional Economics (BITRE)
Department of Infrastructure, Transport, Cities and Regional Development
GPO Box 501, Canberra ACT 2601, Australia
Telephone: (international) +61 2 6274 7210
Fax: (international) +61 2 6274 6855
Email: bitre@infrastructure.gov.au
Website: www.bitre.gov.au

Inquiries

Should you require additional information about the statistics contained in this publication:

Nebojsa Pavlovic

Telephone (02) 6274 6817 or Facsimile (02) 6274 7727

Electronic mail: AVSTATS@infrastructure.gov.au

Nebojsa.Pavlovic@infrastructure.gov.au

Web site: <http://www.bitre.gov.au/statistics/aviation/domestic.aspx>

FOREWORD

This report provides an overview of domestic (including charter) commercial aviation activity in Australia for the month of September 2019.

The data cover revenue passengers carried by Australian-registered operators of scheduled regular public transport services over Australian flight stages and fixed-wing charter operators. These estimates include passengers carried between domestic airports on international flights operated by these carriers. The passengers carried refer to traffic on board by stages.

Estimates of passengers and aircraft movements for charter aviation are included in this publication, where BITRE confidentiality standards are met.

Individual routes shown are restricted to those with an average exceeding 8 000 passengers per month over the previous six months where two or more airlines operate in competition. For the month of September 2019, there were 64 such routes.

Information on the total network for the month of September 2019 and on the Regular Public Transport (RPT) network for the month of September 2019 is presented on page 2, with estimates for the year ended September 2019 presented on page 3.

Detailed information on the 64 individual routes can be found in the RPT summary pages 4-13 of this publication.

The top ten airports in terms of RPT passenger movements are shown on page 14.

Data on domestic RPT cargo movements at the top five cargo airports are provided on page 15. The table includes cargo carried on passenger flights operated by the Qantas group (including Jetstar), Virgin Australia, Air North and Skippers as well as the cargo carried by dedicated freighter aircraft operated by Qantas Freight, Toll Aviation and Virgin Australia Cargo.

The long-term trends for the top ten competitive RPT routes are presented graphically on pages 16-25.

Domestic RPT passenger movements at the top 50 regional airports are presented on pages 26-27.

Tables providing estimates of domestic charter aviation activity are shown on page 28. BITRE confidentiality standards restrict publication of detailed estimates for individual Australian airports, with the exception of Perth Airport.

A list of definitions can be found on page 29.

This report was prepared by the Aviation Statistics Section of the Bureau of Infrastructure, Transport and Regional Economics with data provided by airlines.

Estimates are included where data were not available and data presented in this publication may contain revisions to previously published data.

Where figures have been rounded, discrepancies may occur between sums of component items and totals, and in percentage changes which are derived from figures prior to rounding.

CONTENTS

Highlights	1
Total network.....	2
RPT network.....	2
Top competitive routes.....	4
Top ten airports – passenger movements.....	14
Top five airports – cargo movements.....	15
Top ten routes	16
1. Melbourne – Sydney	16
2. Brisbane – Sydney.....	17
3. Brisbane – Melbourne.....	18
4. Gold Coast – Sydney	19
5. Adelaide – Melbourne	20
6. Gold Coast – Melbourne	21
7. Melbourne – Perth	22
8. Adelaide – Sydney	23
9. Perth – Sydney	24
10. Hobart – Melbourne	25
Top fifty regional airports	26
Domestic charter activity.....	28
Definitions	29

This page is intentionally left blank.

HIGHLIGHTS

There were 5.42 million passengers carried on Australian domestic commercial aviation (including charter operations) in September 2019, an increase of 2.7 per cent on September 2018. For the month of September 2019 there were 57.2 thousand aircraft trips, an increase of 3.3 per cent compared to September 2018.

5.19 million passengers were carried on RPT flights in September 2019, an increase of 2.1 per cent on September 2018.

For the year ending September 2019 there were 61.08 million RPT passengers, virtually the same as in the year ending September 2018.

RPT revenue passenger kilometres (RPKs) performed were 6.09 billion for the month, up 1.0 per cent compared with September 2018. Capacity, measured by available seat kilometres (ASKs), increased by 0.5 per cent compared with September 2018 to a total of 7.44 billion.

The industry wide load factor (RPKs/ASKs) increased from 81.4 per cent in September 2018 to 81.8 per cent in September 2019. Load factors on individual routes increased on 37 of the 64 published RPT routes.

For the month of September 2019, Melbourne – Sydney remained Australia's busiest RPT route with 747.7 thousand passengers, an increase of 1.1 per cent compared with September 2018. It was followed by Brisbane – Sydney with 401.7 thousand passengers (up 1.1 per cent) and Brisbane – Melbourne with 311.9 thousand passengers (up 2.9 per cent).

The greatest percentage increase in RPT passenger numbers, compared to September 2018, was on the Newman – Perth route (up 16.9 per cent). There were large increases on a number of other routes, including Brisbane – Hamilton Island (up 16.2 per cent), Brisbane – Proserpine (up 15.8 per cent) and Adelaide – Alice Springs (up 14.4 per cent).

Routes with traffic decreases in September 2019 compared with September 2018 included Proserpine – Sydney (down 20.8 per cent), Darwin – Perth (down 12.6 per cent), Melbourne – Perth (down 8.6 per cent) and Cairns – Sydney (down 7.6 per cent).

In September 2019, Sydney remained Australia's busiest domestic airport with 2.29 million passenger movements, followed by Melbourne with 2.18 million passenger movements and Brisbane with 1.52 million passenger movements.

Total cargo movements at Australian airports on domestic RPT flights were 36.0 thousand tonnes in September 2019, a decrease of 7.5 per cent compared with September 2018.

In September 2019, there were 2.14 million domestic passenger movements through regional airports, 2.3 per cent higher than in September 2018. Out of the top 50 regional airports, the strongest increase was at Griffith airport (up 26.2 per cent on September 2018), while the largest decrease was recorded at Weipa airport (down 16.7 per cent on September 2018).

Fixed-wing charter operators carried 229.0 thousand passengers in September 2019, an increase of 17.1 per cent on September 2018. Perth Airport accounted for 38.4 per cent of all charter passengers in Australia.

TOTAL NETWORK

Summary of monthly commercial aviation activity

	Sep 2018	Sep 2019	% Change
Total passengers carried (millions)	5.28	5.42	2.7
Aircraft trips (000s)	55.4	57.2	3.3

Note: Regular Public Transport and charter aviation activity
Helicopter, joyflights and sightseeing charter flights not included.

RPT NETWORK

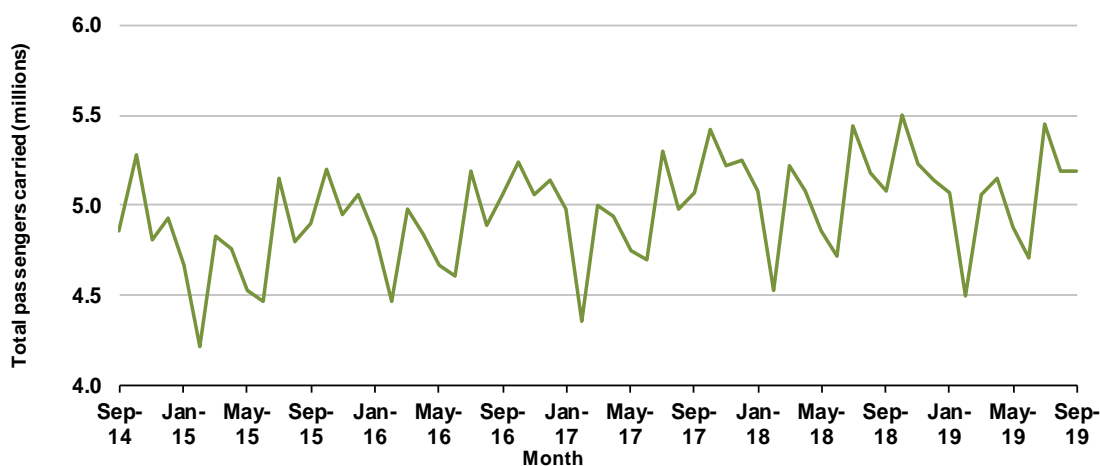
Summary of monthly RPT activity

	Sep 2018	Sep 2019	% Change
Total passengers carried (millions)	5.08	5.19	2.1
Revenue passenger kilometres (billions)	6.02	6.09	1.0
Available seats (millions)	6.40	6.49	1.5
Available seat kilometres (billions)	7.40	7.44	0.5
Load factor %	81.4	81.8	0.4 *
Aircraft trips (000s)	52.1	53.3	2.5

* percentage point difference

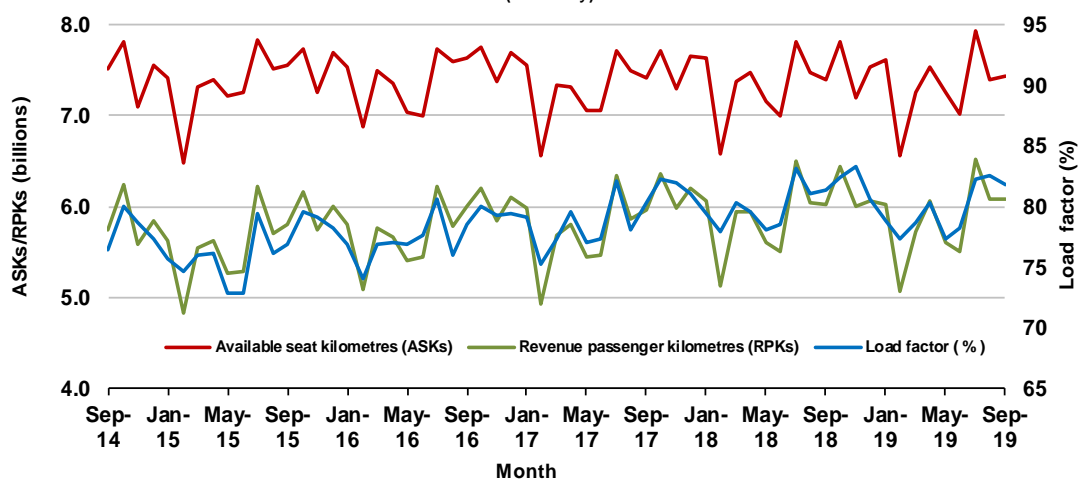
Domestic RPT passenger traffic

(monthly)



RPT Network utilisation

(monthly)



TOTAL NETWORK

Summary of annual commercial aviation activity

	YE Sep 2018	YE Sep 2019	% Change
Total passengers carried (millions)	63.55	63.74	0.3
Aircraft trips (000s)	675.9	681.7	0.9

Note: Regular Public Transport and charter aviation activity
Helicopter, joyflights and sightseeing charter flights not included.

RPT NETWORK

Summary of annual RPT activity

	YE Sep 2018	YE Sep 2019	% Change
Total passengers carried (millions)	61.10	61.08	0.0
Revenue passenger kilometres (billions)	71.29	71.18	-0.1
Available seats (millions)	77.47	77.65	0.2
Available seat kilometres (billions)	88.58	88.57	0.0
Load factor %	80.5	80.4	-0.1 *
Aircraft trips (000s)	631.1	635.9	0.8

* percentage point difference

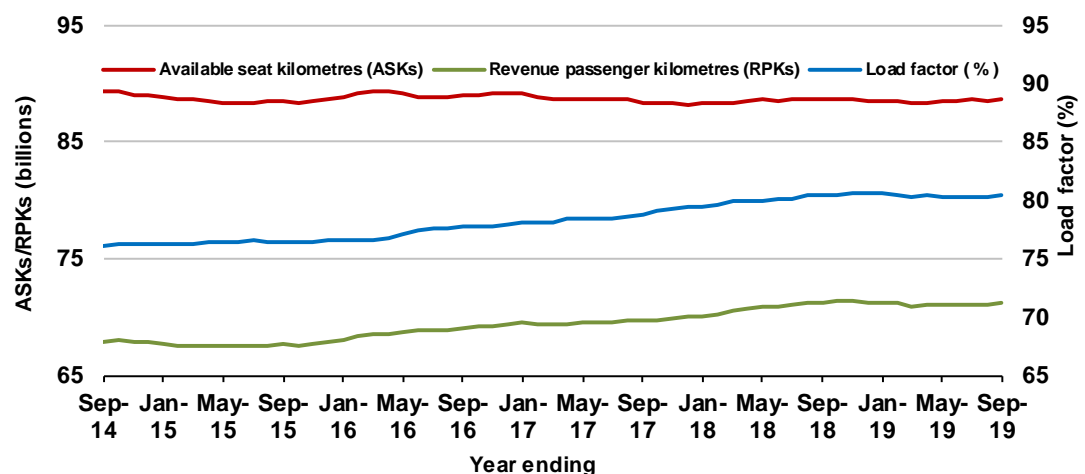
Domestic RPT passenger traffic

(moving annual totals)



RPT Network utilisation

(moving annual totals)



TOP COMPETITIVE ROUTES

Table 1: Passengers carried (000s) — annual activity

	City-Pair	YE Sep 2018	YE Sep 2019	% Change
1	Melbourne - Sydney	9 268.9	9 175.0	-1.0
2	Brisbane - Sydney	4 809.7	4 811.8	0.0
3	Brisbane - Melbourne	3 566.3	3 604.6	1.1
4	Gold Coast - Sydney	2 754.2	2 699.7	-2.0
5	Adelaide - Melbourne	2 499.3	2 526.9	1.1
6	Melbourne - Perth	2 097.4	2 105.5	0.4
7	Gold Coast - Melbourne	2 060.6	2 097.9	1.8
8	Adelaide - Sydney	1 913.9	1 876.4	-2.0
9	Perth - Sydney	1 721.2	1 685.1	-2.1
10	Hobart - Melbourne	1 642.7	1 670.5	1.7
11	Brisbane - Cairns	1 347.9	1 284.8	-4.7
12	Canberra - Melbourne	1 163.6	1 182.2	1.6
13	Cairns - Sydney	1 134.9	1 088.4	-4.1
14	Brisbane - Townsville	993.8	1 005.5	1.2
15	Launceston - Melbourne	954.3	957.3	0.3
16	Brisbane - Perth	969.0	948.6	-2.1
17	Canberra - Sydney	956.7	922.9	-3.5
18	Adelaide - Brisbane	856.5	862.5	0.7
19	Cairns - Melbourne	851.5	860.6	1.1
20	Brisbane - Mackay	738.0	760.3	3.0
21	Hobart - Sydney	697.0	719.0	3.2
22	Sunshine Coast - Sydney	621.2	659.7	6.2
23	Brisbane - Canberra	634.5	654.1	3.1
24	Adelaide - Perth	634.6	645.8	1.8
25	Brisbane - Newcastle	583.6	596.5	2.2
26	Melbourne - Sunshine Coast	539.9	550.2	1.9
27	Brisbane - Rockhampton	514.2	531.2	3.3
28	Melbourne - Newcastle	493.6	483.6	-2.0
29	Karratha - Perth	439.3	454.4	3.4
30	Ballina - Sydney	433.8	432.5	-0.3
31	Perth - Port Hedland	354.3	372.6	5.2
32	Brisbane - Darwin	387.6	357.3	-7.8
33	Newman - Perth	300.6	334.4	11.2
34	Broome - Perth	341.7	331.6	-3.0
35	Coffs Harbour - Sydney	344.1	329.6	-4.2
36	Darwin - Sydney	314.8	311.2	-1.2
37	Darwin - Melbourne	307.4	309.2	0.6
38	Launceston - Sydney	287.8	291.3	1.2
39	Kalgoorlie - Perth	265.8	281.6	5.9
40	Brisbane - Proserpine	261.4	251.8	-3.7
41	Brisbane - Gladstone	256.6	246.6	-3.9
42	Brisbane - Hobart	222.0	240.6	8.4
43	Melbourne - Mildura	223.6	229.6	2.7
44	Albury - Sydney	223.7	229.1	2.4
45	Adelaide - Gold Coast	222.3	213.9	-3.8
46	Hamilton Island - Sydney	203.3	206.2	1.4
47	Brisbane - Emerald	196.2	198.0	0.9
48	Ayers Rock - Sydney	196.9	197.1	0.1
49	Adelaide - Canberra	194.9	193.4	-0.8
50	Port Macquarie - Sydney	188.4	189.3	0.5

continued

Table 1: (continued) Passengers carried (000s) — annual activity

	City-Pair	YE Sep 2018	YE Sep 2019	% Change
51	Dubbo - Sydney	190.1	182.1	-4.2
52	Sydney - Wagga Wagga	182.3	179.1	-1.8
53	Darwin - Perth	200.7	176.3	-12.2
54	Sydney - Townsville	165.7	174.3	5.1
55	Sydney - Tamworth	175.6	172.2	-1.9
56	Adelaide - Port Lincoln	169.1	169.1	0.0
57	Brisbane - Bundaberg	164.7	154.7	-6.1
58	Adelaide - Alice Springs	129.0	144.8	12.2
59	Cairns - Townsville	148.6	143.1	-3.7
60	Brisbane - Mount Isa	128.9	136.1	5.5
61	Brisbane - Hamilton Island	124.2	129.3	4.1
62	Armidale - Sydney	123.7	123.0	-0.6
63	Proserpine - Sydney	138.4	114.6	-17.2
64	Alice Springs - Darwin	112.5	110.4	-1.9
	Total domestic network	61 098.1	61 080.8	0.0

Table 2: Passengers carried (000s) — monthly activity

	City-Pair	Sep 2018	Sep 2019	% Change
1	Melbourne - Sydney	739.7	747.7	1.1
2	Brisbane - Sydney	397.2	401.7	1.1
3	Brisbane - Melbourne	303.2	311.9	2.9
4	Gold Coast - Sydney	222.9	227.5	2.1
5	Adelaide - Melbourne	201.8	210.9	4.5
6	Gold Coast - Melbourne	179.2	186.8	4.2
7	Melbourne - Perth	186.2	170.2	-8.6
8	Adelaide - Sydney	151.3	152.9	1.1
9	Perth - Sydney	141.2	135.8	-3.8
10	Hobart - Melbourne	122.6	126.3	3.0
11	Brisbane - Cairns	107.0	110.0	2.8
12	Canberra - Melbourne	96.8	101.6	5.0
13	Brisbane - Townsville	86.4	91.3	5.7
14	Cairns - Melbourne	83.0	84.6	2.0
15	Cairns - Sydney	91.3	84.4	-7.6
16	Canberra - Sydney	81.8	83.9	2.5
17	Brisbane - Perth	79.3	82.9	4.6
18	Adelaide - Brisbane	70.1	75.7	8.0
19	Launceston - Melbourne	70.6	70.1	-0.8
20	Brisbane - Mackay	63.8	69.7	9.2
21	Brisbane - Canberra	57.1	60.7	6.3
22	Sunshine Coast - Sydney	50.0	57.0	14.1
23	Hobart - Sydney	51.1	56.0	9.5
24	Melbourne - Sunshine Coast	54.3	54.5	0.3
25	Adelaide - Perth	50.4	53.3	5.7
26	Brisbane - Newcastle	47.5	52.7	10.8
27	Brisbane - Rockhampton	43.6	47.3	8.4
28	Karratha - Perth	36.6	41.7	13.9
29	Melbourne - Newcastle	40.1	39.6	-1.2
30	Ballina - Sydney	35.7	35.9	0.6
31	Brisbane - Darwin	32.2	32.5	1.0
32	Perth - Port Hedland	29.4	32.4	10.2
33	Broome - Perth	32.3	31.5	-2.3
34	Darwin - Sydney	28.7	29.5	2.6
35	Newman - Perth	24.9	29.1	16.9
36	Coffs Harbour - Sydney	27.9	28.0	0.3
37	Darwin - Melbourne	28.6	27.9	-2.4
38	Brisbane - Proserpine	20.4	23.7	15.8
39	Kalgoorlie - Perth	23.5	23.2	-1.1
40	Brisbane - Gladstone	20.6	21.4	3.9
41	Launceston - Sydney	19.9	20.9	4.8
42	Hamilton Island - Sydney	18.1	20.5	13.6
43	Melbourne - Mildura	19.1	20.2	6.2
44	Albury - Sydney	20.0	20.2	1.1
45	Brisbane - Hobart	19.2	19.2	-0.1
46	Ayers Rock - Sydney	16.8	18.6	10.6
47	Adelaide - Gold Coast	18.8	18.4	-2.5
48	Brisbane - Emerald	16.2	17.6	8.3
49	Adelaide - Canberra	17.9	17.1	-4.4
50	Sydney - Wagga Wagga	16.0	16.6	4.0

continued

Table 2: (continued) Passengers carried (000s) — monthly activity

	City-Pair	Sep 2018	Sep 2019	% Change
51	Sydney - Townsville	16.8	16.4	-2.4
52	Port Macquarie - Sydney	15.5	16.2	4.2
53	Dubbo - Sydney	16.5	15.7	-4.5
54	Sydney - Tamworth	15.4	15.3	-0.6
55	Darwin - Perth	17.2	15.1	-12.6
56	Adelaide - Port Lincoln	13.7	14.5	5.9
57	Brisbane - Bundaberg	14.0	13.5	-3.4
58	Adelaide - Alice Springs	11.2	12.8	14.4
59	Brisbane - Hamilton Island	10.7	12.4	16.2
60	Cairns - Townsville	12.3	12.4	0.9
61	Brisbane - Mount Isa	11.0	12.3	12.6
62	Armidale - Sydney	10.8	11.1	2.7
63	Alice Springs - Darwin	10.3	9.9	-4.2
64	Proserpine - Sydney	12.2	9.7	-20.8
	Total domestic network	5 080.5	5 189.1	2.1

Table 3: Available seats (000s) — monthly activity

	City-Pair	Sep 2018	Sep 2019	% Change
1	Melbourne - Sydney	884.9	885.6	0.1
2	Brisbane - Sydney	478.6	487.1	1.8
3	Brisbane - Melbourne	357.4	360.2	0.8
4	Gold Coast - Sydney	265.8	264.0	-0.7
5	Adelaide - Melbourne	252.6	260.4	3.1
6	Gold Coast - Melbourne	197.7	200.7	1.5
7	Melbourne - Perth	219.5	204.9	-6.6
8	Adelaide - Sydney	187.1	181.0	-3.3
9	Perth - Sydney	167.0	163.2	-2.3
10	Hobart - Melbourne	157.6	159.6	1.2
11	Brisbane - Cairns	127.6	132.3	3.7
12	Canberra - Melbourne	147.7	149.0	0.9
13	Brisbane - Townsville	105.2	111.8	6.3
14	Cairns - Melbourne	93.5	96.7	3.3
15	Cairns - Sydney	118.4	103.7	-12.4
16	Canberra - Sydney	107.0	109.0	1.8
17	Brisbane - Perth	91.3	95.1	4.1
18	Adelaide - Brisbane	88.6	94.5	6.7
19	Launceston - Melbourne	87.3	87.3	0.0
20	Brisbane - Mackay	78.9	86.3	9.4
21	Brisbane - Canberra	73.8	78.7	6.6
22	Sunshine Coast - Sydney	61.0	68.1	11.8
23	Hobart - Sydney	62.6	67.9	8.5
24	Melbourne - Sunshine Coast	59.0	58.8	-0.3
25	Adelaide - Perth	64.1	68.6	7.0
26	Brisbane - Newcastle	66.1	68.1	3.1
27	Brisbane - Rockhampton	52.9	55.1	4.1
28	Karratha - Perth	54.0	59.2	9.7
29	Melbourne - Newcastle	49.7	47.0	-5.5
30	Ballina - Sydney	43.2	42.5	-1.6
31	Brisbane - Darwin	39.1	40.0	2.5
32	Perth - Port Hedland	42.6	50.2	17.9
33	Broome - Perth	40.2	37.6	-6.4
34	Darwin - Sydney	37.1	36.6	-1.4
35	Newman - Perth	42.4	48.1	13.4
36	Coffs Harbour - Sydney	38.4	38.1	-0.8
37	Darwin - Melbourne	33.8	32.3	-4.2
38	Brisbane - Proserpine	25.0	27.2	9.1
39	Kalgoorlie - Perth	38.2	41.5	8.6
40	Brisbane - Gladstone	28.8	31.3	8.9
41	Launceston - Sydney	22.8	23.9	5.0
42	Hamilton Island - Sydney	27.4	26.7	-2.5
43	Melbourne - Mildura	29.3	29.4	0.3
44	Albury - Sydney	27.7	27.8	0.4
45	Brisbane - Hobart	22.5	22.3	-0.8
46	Ayers Rock - Sydney	21.5	21.5	0.2
47	Adelaide - Gold Coast	21.6	21.2	-1.7
48	Brisbane - Emerald	21.6	25.4	17.6
49	Adelaide - Canberra	25.0	25.6	2.2
50	Sydney - Wagga Wagga	22.1	24.5	11.1

continued

Table 3: (continued) Available seats (000s) — monthly activity

	City-Pair	Sep 2018	Sep 2019	% Change
51	Sydney - Townsville	20.2	19.7	-2.8
52	Port Macquarie - Sydney	19.6	22.8	16.6
53	Dubbo - Sydney	21.0	23.5	11.6
54	Sydney - Tamworth	21.9	21.5	-2.2
55	Darwin - Perth	22.8	20.7	-9.1
56	Adelaide - Port Lincoln	24.5	23.8	-2.9
57	Brisbane - Bundaberg	18.9	18.6	-1.3
58	Adelaide - Alice Springs	15.1	16.5	9.3
59	Brisbane - Hamilton Island	13.7	15.4	12.4
60	Cairns - Townsville	20.0	20.3	1.7
61	Brisbane - Mount Isa	13.8	16.1	17.0
62	Armidale - Sydney	15.1	15.8	4.2
63	Alice Springs - Darwin	19.0	26.7	40.3
64	Proserpine - Sydney	14.5	11.4	-21.2
	Total domestic network	6 400.5	6 494.8	1.5

Table 4: Load factors (%) — monthly activity

	City-Pair	Sep 2018	Sep 2019	% Point diff
1	Melbourne - Sydney	83.6	84.4	0.8
2	Brisbane - Sydney	83.0	82.5	-0.5
3	Brisbane - Melbourne	84.8	86.6	1.8
4	Gold Coast - Sydney	83.9	86.2	2.3
5	Adelaide - Melbourne	79.9	81.0	1.1
6	Gold Coast - Melbourne	90.6	93.1	2.5
7	Melbourne - Perth	84.8	83.0	-1.8
8	Adelaide - Sydney	80.8	84.5	3.7
9	Perth - Sydney	84.6	83.2	-1.4
10	Hobart - Melbourne	77.8	79.1	1.3
11	Brisbane - Cairns	83.8	83.1	-0.7
12	Canberra - Melbourne	65.5	68.2	2.7
13	Brisbane - Townsville	82.2	81.7	-0.5
14	Cairns - Melbourne	88.7	87.6	-1.1
15	Cairns - Sydney	77.2	81.4	4.2
16	Canberra - Sydney	76.5	77.0	0.5
17	Brisbane - Perth	86.8	87.2	0.4
18	Adelaide - Brisbane	79.1	80.1	1.0
19	Launceston - Melbourne	80.9	80.3	-0.6
20	Brisbane - Mackay	80.8	80.7	-0.1
21	Brisbane - Canberra	77.3	77.0	-0.3
22	Sunshine Coast - Sydney	82.0	83.6	1.6
23	Hobart - Sydney	81.7	82.4	0.7
24	Melbourne - Sunshine Coast	92.1	92.6	0.5
25	Adelaide - Perth	78.7	77.8	-0.9
26	Brisbane - Newcastle	72.0	77.3	5.3
27	Brisbane - Rockhampton	82.3	85.7	3.4
28	Karratha - Perth	67.8	70.4	2.6
29	Melbourne - Newcastle	80.7	84.3	3.6
30	Ballina - Sydney	82.4	84.3	1.9
31	Brisbane - Darwin	82.5	81.2	-1.3
32	Perth - Port Hedland	69.0	64.5	-4.5
33	Broome - Perth	80.3	83.9	3.6
34	Darwin - Sydney	77.4	80.5	3.1
35	Newman - Perth	58.8	60.6	1.8
36	Coffs Harbour - Sydney	72.6	73.5	0.9
37	Darwin - Melbourne	84.7	86.3	1.6
38	Brisbane - Proserpine	81.9	86.9	5.0
39	Kalgoorlie - Perth	61.4	55.9	-5.5
40	Brisbane - Gladstone	71.4	68.2	-3.2
41	Launceston - Sydney	87.5	87.3	-0.2
42	Hamilton Island - Sydney	66.1	77.0	10.9
43	Melbourne - Mildura	65.1	68.9	3.8
44	Albury - Sydney	72.2	72.7	0.5
45	Brisbane - Hobart	85.4	86.0	0.6
46	Ayers Rock - Sydney	78.2	86.4	8.2
47	Adelaide - Gold Coast	87.4	86.6	-0.8
48	Brisbane - Emerald	75.0	69.0	-6.0
49	Adelaide - Canberra	71.5	66.9	-4.6
50	Sydney - Wagga Wagga	72.5	67.9	-4.6

continued

Table 4: (continued) Load factors (%) — monthly activity

	City-Pair	Sep 2018	Sep 2019	% Point diff
51	Sydney - Townsville	82.8	83.2	0.4
52	Port Macquarie - Sydney	79.2	70.8	-8.4
53	Dubbo - Sydney	78.3	67.0	-11.3
54	Sydney - Tamworth	70.0	71.1	1.1
55	Darwin - Perth	75.5	72.6	-2.9
56	Adelaide - Port Lincoln	55.9	60.9	5.0
57	Brisbane - Bundaberg	73.9	72.4	-1.5
58	Adelaide - Alice Springs	74.0	77.5	3.5
59	Brisbane - Hamilton Island	77.8	80.5	2.7
60	Cairns - Townsville	61.3	60.9	-0.4
61	Brisbane - Mount Isa	79.6	76.6	-3.0
62	Armidale - Sydney	71.4	70.4	-1.0
63	Alice Springs - Darwin	54.3	37.1	-17.2
64	Proserpine - Sydney	84.4	84.8	0.4
	Total domestic network	81.4	81.8	0.4

Table 5: Aircraft trips ^(a) — monthly activity

	City-Pair	Sep 2018	Sep 2019	% Change
1	Melbourne - Sydney	4 894	4 976	1.7
2	Brisbane - Sydney	2 887	2 954	2.3
3	Brisbane - Melbourne	2 108	2 110	0.1
4	Gold Coast - Sydney	1 517	1 528	0.7
5	Adelaide - Melbourne	1 569	1 588	1.2
6	Gold Coast - Melbourne	1 052	1 058	0.6
7	Melbourne - Perth	1 036	1 012	-2.3
8	Adelaide - Sydney	1 146	1 063	-7.2
9	Perth - Sydney	723	740	2.4
10	Hobart - Melbourne	884	877	-0.8
11	Brisbane - Cairns	839	914	8.9
12	Canberra - Melbourne	939	949	1.1
13	Brisbane - Townsville	734	743	1.2
14	Cairns - Melbourne	488	481	-1.4
15	Cairns - Sydney	620	527	-15.0
16	Canberra - Sydney	1 390	1 431	2.9
17	Brisbane - Perth	487	511	4.9
18	Adelaide - Brisbane	553	539	-2.5
19	Launceston - Melbourne	671	682	1.6
20	Brisbane - Mackay	601	669	11.3
21	Brisbane - Canberra	536	558	4.1
22	Sunshine Coast - Sydney	366	421	15.0
23	Hobart - Sydney	394	434	10.2
24	Melbourne - Sunshine Coast	330	327	-0.9
25	Adelaide - Perth	441	455	3.2
26	Brisbane - Newcastle	427	491	15.0
27	Brisbane - Rockhampton	669	655	-2.1
28	Karratha - Perth	476	489	2.7
29	Melbourne - Newcastle	277	258	-6.9
30	Ballina - Sydney	280	278	-0.7
31	Brisbane - Darwin	237	245	3.4
32	Perth - Port Hedland	351	396	12.8
33	Broome - Perth	337	328	-2.7
34	Darwin - Sydney	216	208	-3.7
35	Newman - Perth	317	349	10.1
36	Coffs Harbour - Sydney	369	416	12.7
37	Darwin - Melbourne	181	175	-3.3
38	Brisbane - Proserpine	140	152	8.6
39	Kalgoorlie - Perth	309	329	6.5
40	Brisbane - Gladstone	381	417	9.4
41	Launceston - Sydney	132	134	1.5
42	Hamilton Island - Sydney	168	161	-4.2
43	Melbourne - Mildura	401	407	1.5
44	Albury - Sydney	502	521	3.8
45	Brisbane - Hobart	127	126	-0.8
46	Ayers Rock - Sydney	120	120	0.0
47	Adelaide - Gold Coast	121	118	-2.5
48	Brisbane - Emerald	290	373	28.6
49	Adelaide - Canberra	153	153	0.0
50	Sydney - Wagga Wagga	443	490	10.6

continued

Table 5: (continued) Aircraft trips ^(a) — monthly activity

	City-Pair	Sep 2018	Sep 2019	% Change
51	Sydney - Townsville	124	112	-9.7
52	Port Macquarie - Sydney	306	356	16.3
53	Dubbo - Sydney	443	503	13.5
54	Sydney - Tamworth	321	339	5.6
55	Darwin - Perth	136	120	-11.8
56	Adelaide - Port Lincoln	632	620	-1.9
57	Brisbane - Bundaberg	264	300	13.6
58	Adelaide - Alice Springs	109	118	8.3
59	Brisbane - Hamilton Island	103	124	20.4
60	Cairns - Townsville	316	319	0.9
61	Brisbane - Mount Isa	150	152	1.3
62	Armidale - Sydney	363	376	3.6
63	Alice Springs - Darwin	169	162	-4.1
64	Proserpine - Sydney	80	63	-21.3
	Total domestic network	52 065	53 348	2.5

(a) Includes RPT Cargo flights.

TOP TEN AIRPORTS – PASSENGER MOVEMENTS

Table 6: Top ten airports, RPT passenger movements (000s) - monthly activity

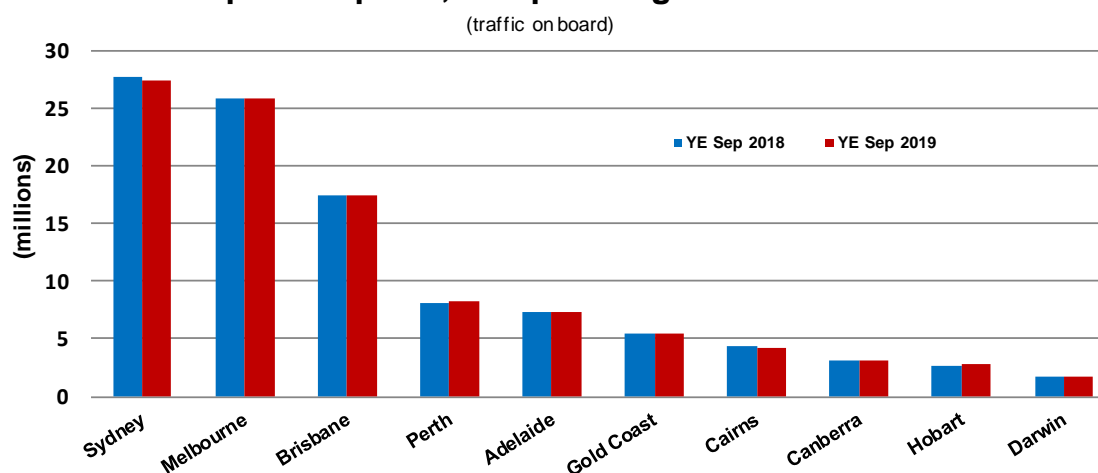
Airport	Sep 2018	Sep 2019	% Change	% of Total
1 Sydney	2 261.0	2 286.7	1.1	22.0
2 Melbourne	2 145.2	2 179.0	1.6	21.0
3 Brisbane	1 454.9	1 517.9	4.3	14.6
4 Perth	696.6	691.1	-0.8	6.7
5 Adelaide	601.3	616.3	2.5	5.9
6 Gold Coast	459.1	475.5	3.6	4.6
7 Cairns	369.8	360.4	-2.5	3.5
8 Canberra	270.2	280.0	3.6	2.7
9 Hobart	198.7	212.5	7.0	2.0
10 Darwin	160.6	153.0	-4.7	1.5
Total top ten airports	8 617.4	8 772.3	1.8	84.5
Total domestic network	10 161.0	10 378.2	2.1	100.0

Table 7: Top ten airports, RPT passenger movements (000s) - annual activity

Airport	YE Sep 2018	YE Sep 2019	% Change	% of Total
1 Sydney	27 763.3	27 484.7	-1.0	22.5
2 Melbourne	25 863.6	25 927.1	0.2	21.2
3 Brisbane	17 399.2	17 463.3	0.4	14.3
4 Perth	8 178.8	8 235.2	0.7	6.7
5 Adelaide	7 332.7	7 344.4	0.2	6.0
6 Gold Coast	5 516.2	5 510.2	-0.1	4.5
7 Cairns	4 331.8	4 181.9	-3.5	3.4
8 Canberra	3 130.5	3 134.6	0.1	2.6
9 Hobart	2 630.3	2 761.7	5.0	2.3
10 Darwin	1 772.4	1 700.4	-4.1	1.4
Total top ten airports	103 918.7	103 743.5	-0.2	84.9
Total domestic network	122 196.1	122 161.5	0.0	100.0

Note: Airport passenger movement numbers are the sum of passenger arrivals and departures at each airport.

Top ten airports, RPT passenger movements



TOP FIVE AIRPORTS – CARGO MOVEMENTS

Table 8: Top five airports, domestic RPT cargo movements (000s tonnes) - monthly activity

Airport	Sep 2018	Sep 2019	% Change	% of Total
1 Melbourne	10.8	9.6	-11.0	26.8
2 Sydney	8.7	7.9	-9.6	21.9
3 Brisbane	6.5	5.7	-11.4	15.9
4 Perth	5.3	4.6	-12.9	12.9
5 Adelaide	2.4	2.2	-7.7	6.2
Total top five airports	33.8	30.1	-10.8	83.7
Total domestic network	38.9	36.0	-7.5	100.0

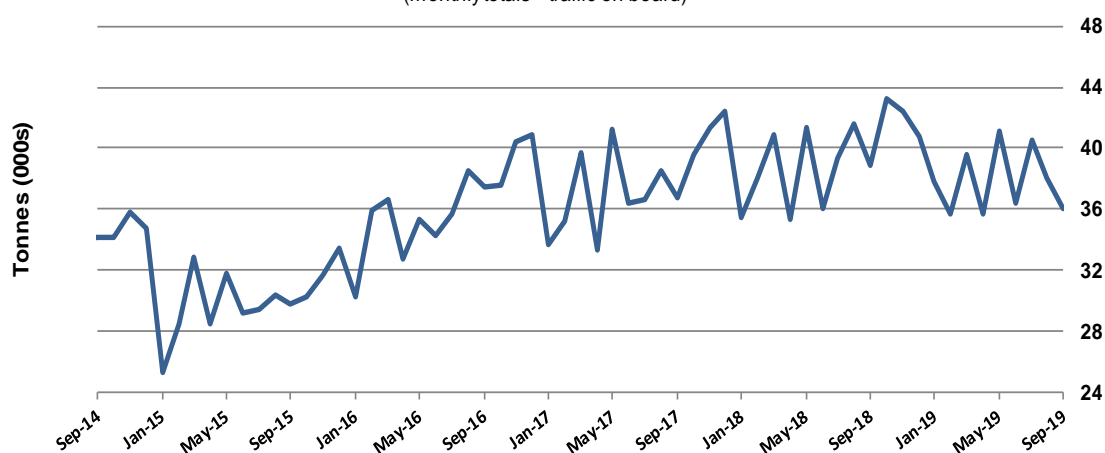
Table 9: Top five airports, domestic RPT cargo movements (000s tonnes) - annual activity

Airport	YE Sep 2018	YE Sep 2019	% Change	% of Total
1 Melbourne	135.1	125.5	-7.1	26.9
2 Sydney	108.4	102.4	-5.5	21.9
3 Brisbane	70.1	74.1	5.7	15.9
4 Perth	66.3	64.4	-2.9	13.8
5 Adelaide	27.6	28.9	4.6	6.2
Total top five airports	407.5	395.3	-3.0	84.6
Total domestic network	470.4	467.3	-0.7	100.0

Note: Airport cargo tonnes are the sum of cargo tonnes on arrivals and departures at each airport.

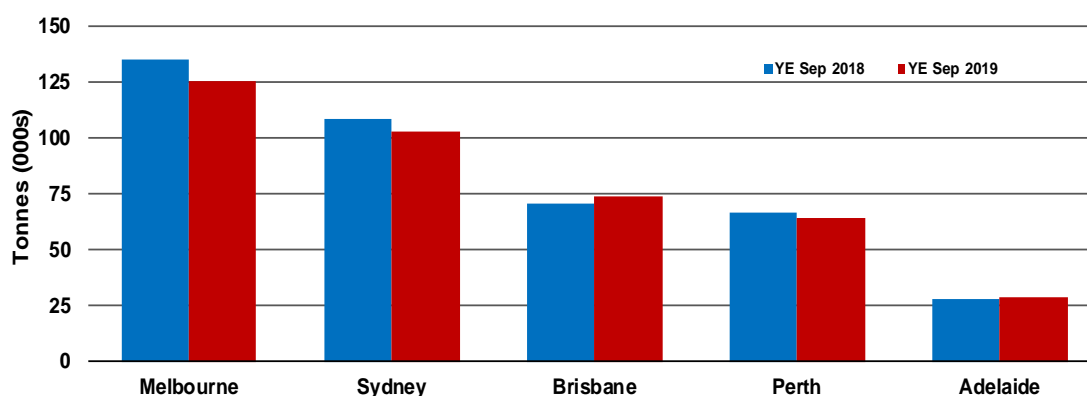
Total domestic network - cargo movement

(monthly totals - traffic on board)



Top five airports, cargo movements

(Domestic cargo traffic - traffic on board)



TOP TEN ROUTES

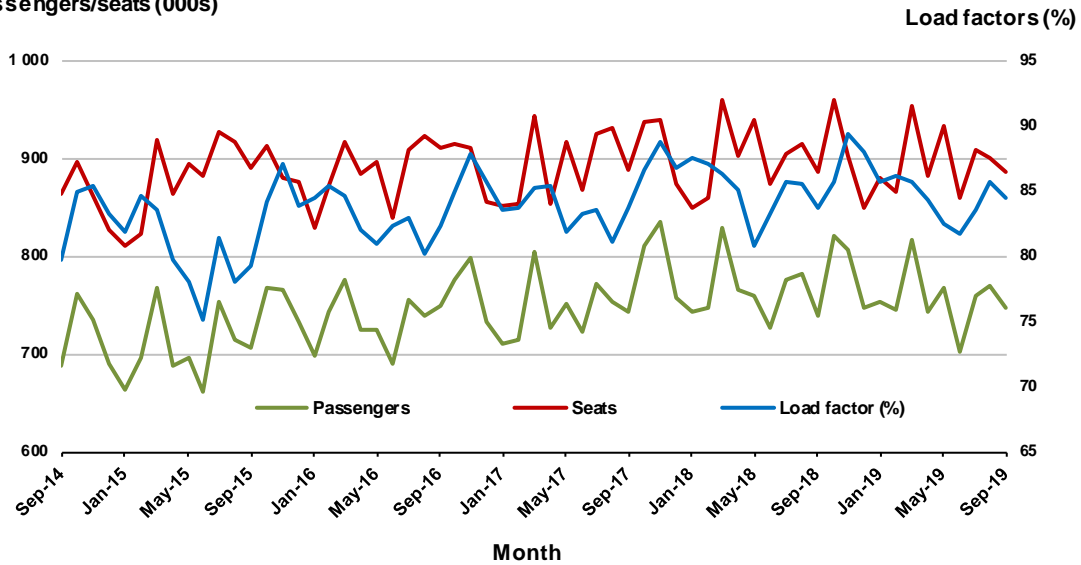
1. Melbourne - Sydney

Monthly data

	Sep 2018	Sep 2019	% Change
Passengers carried (000s)	739.7	747.7	1.1
Seats (000s)	884.9	885.6	0.1
Load factor %	83.6	84.4	0.8 *
Aircraft trips	4 894	4 976	1.7

* percentage point difference

Passengers/seats (000s)

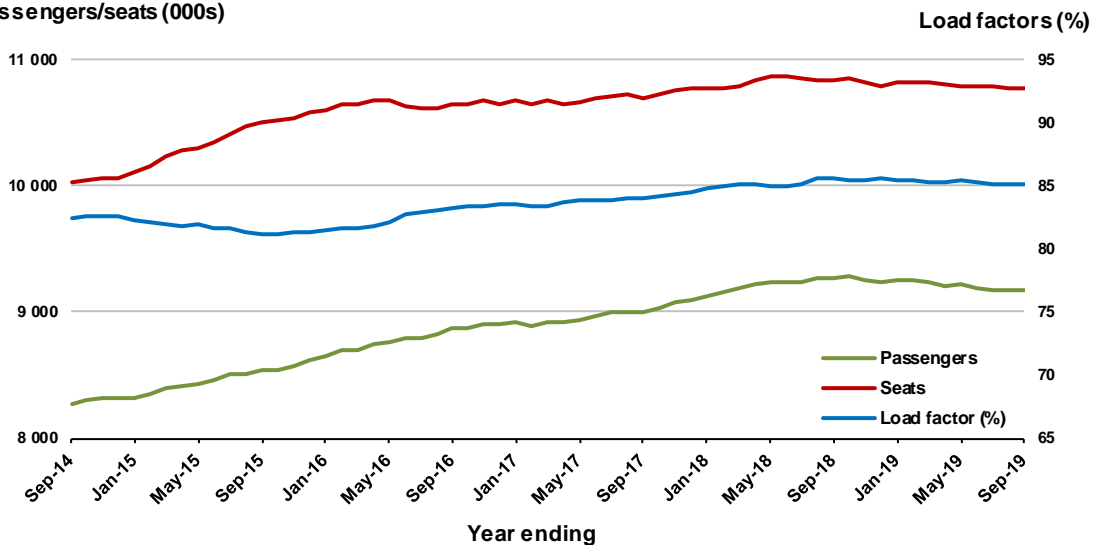


Moving annual data

	YE Sep 2018	YE Sep 2019	% Change
Passengers carried (000s)	9 268.9	9 175.0	-1.0
Seats (000s)	10 833.0	10 773.9	-0.5
Load factor %	85.6	85.2	-0.4 *
Aircraft trips	59 973	60 352	0.6

* percentage point difference

Passengers/seats (000s)

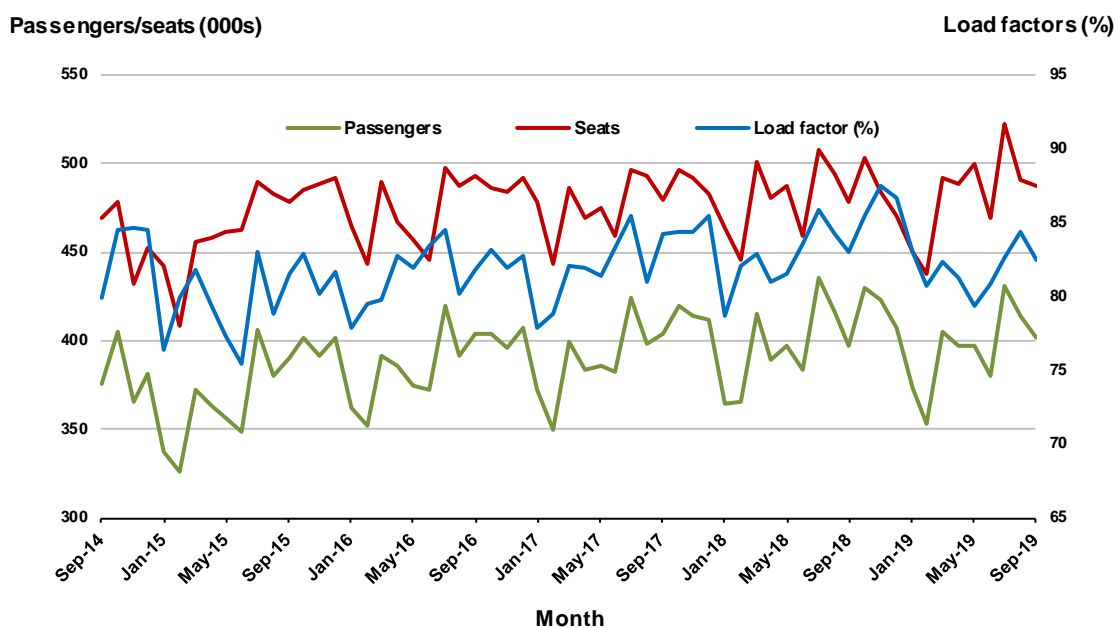


2. Brisbane - Sydney

Monthly data

	Sep 2018	Sep 2019	% Change
Passengers carried (000s)	397.2	401.7	1.1
Seats (000s)	478.6	487.1	1.8
Load factor %	83.0	82.5	-0.5 *
Aircraft trips	2 887	2 954	2.3

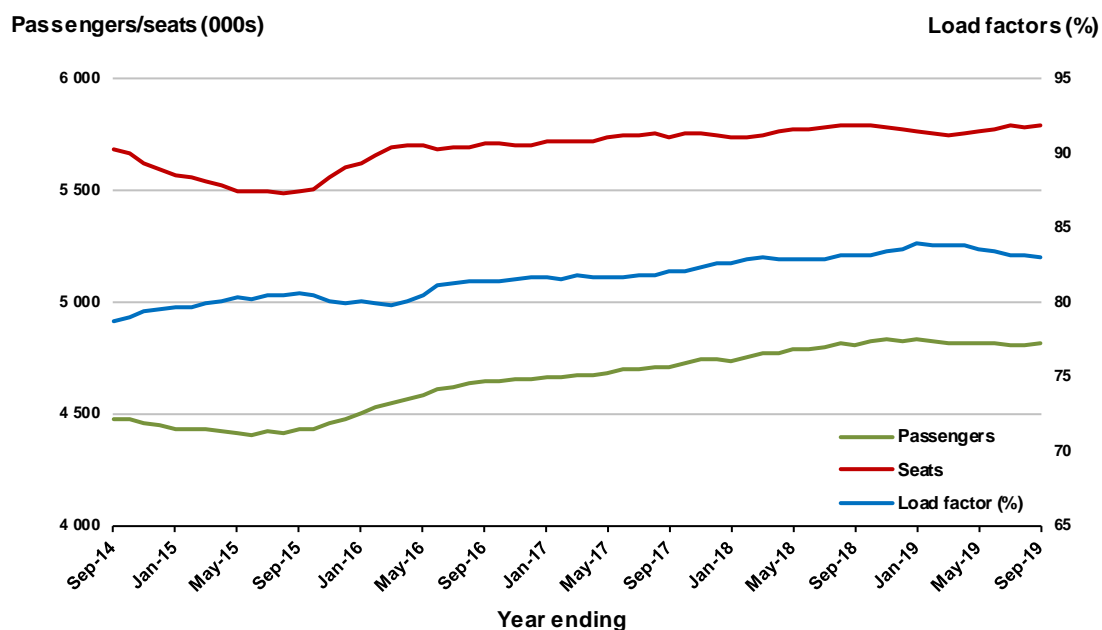
* percentage point difference



Moving annual data

	YE Sep 2018	YE Sep 2019	% Change
Passengers carried (000s)	4 809.7	4 811.8	0.0
Seats (000s)	5 787.5	5 793.2	0.1
Load factor %	83.1	83.1	0.0 *
Aircraft trips	35 127	35 364	0.7

* percentage point difference

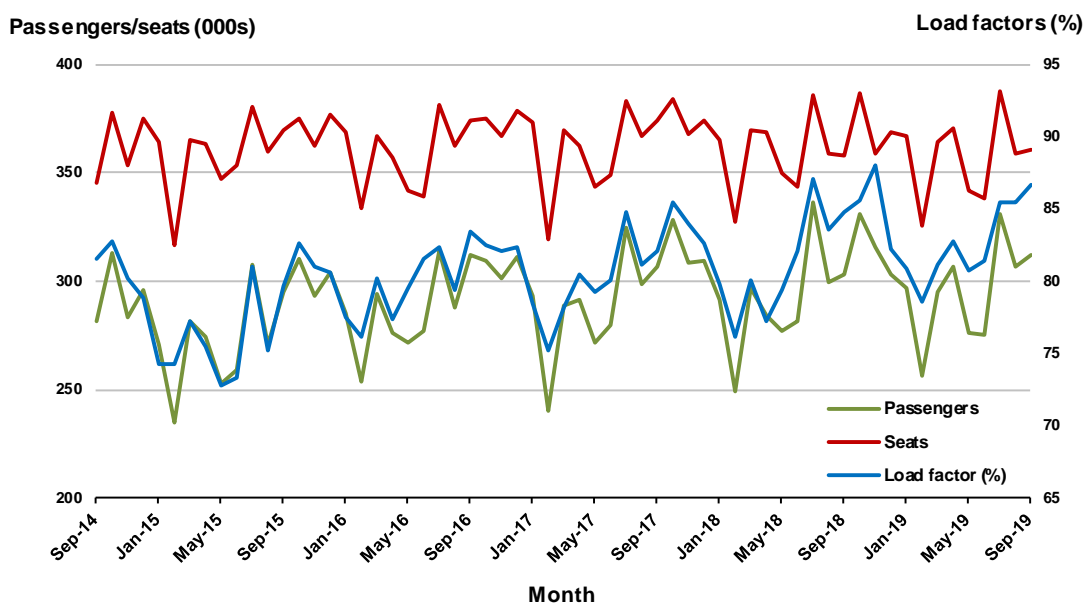


3. Brisbane - Melbourne

Monthly data

	Sep 2018	Sep 2019	% Change
Passengers carried (000s)	303.2	311.9	2.9
Seats (000s)	357.4	360.2	0.8
Load factor %	84.8	86.6	1.8 *
Aircraft trips	2 108	2 110	0.1

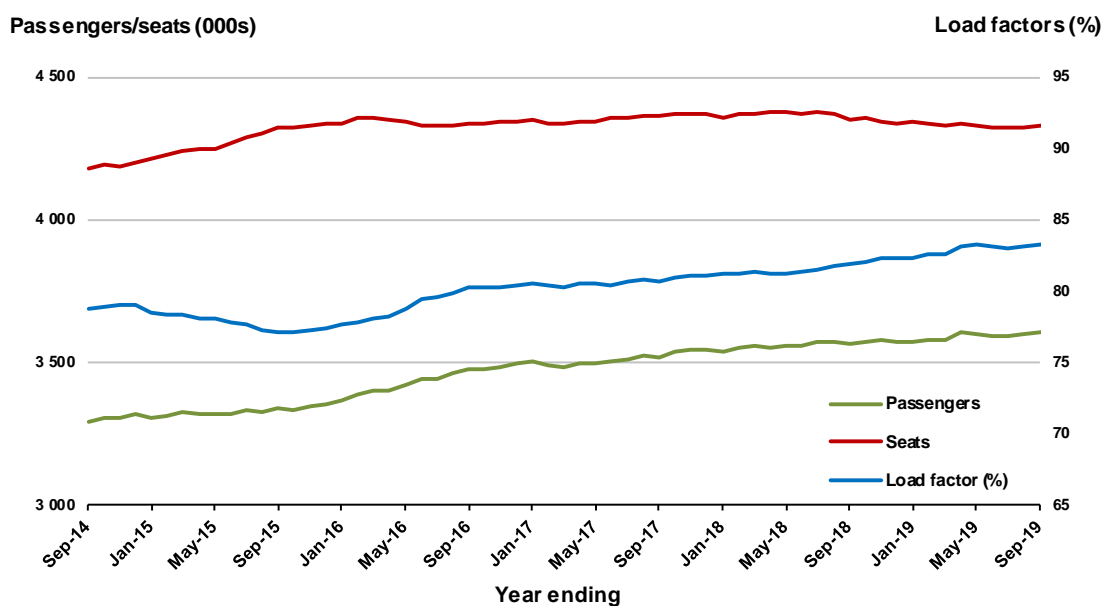
* percentage point difference



Moving annual data

	YE Sep 2018	YE Sep 2019	% Change
Passengers carried (000s)	3 566.3	3 604.6	1.1
Seats (000s)	4 351.5	4 326.5	-0.6
Load factor %	82.0	83.3	1.4 *
Aircraft trips	25 548	25 543	0.0

* percentage point difference



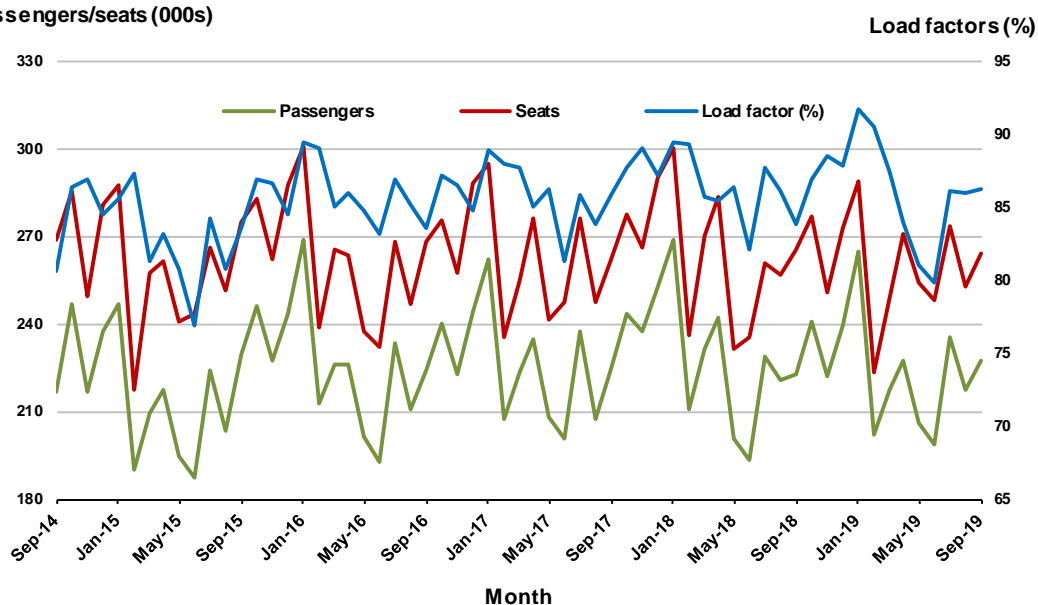
4. Gold Coast - Sydney

Monthly data

	Sep 2018	Sep 2019	% Change
Passengers carried (000s)	222.9	227.5	2.1
Seats (000s)	265.8	264.0	-0.7
Load factor %	83.9	86.2	2.3 *
Aircraft trips	1 517	1 528	0.7

* percentage point difference

Passengers/seats (000s)

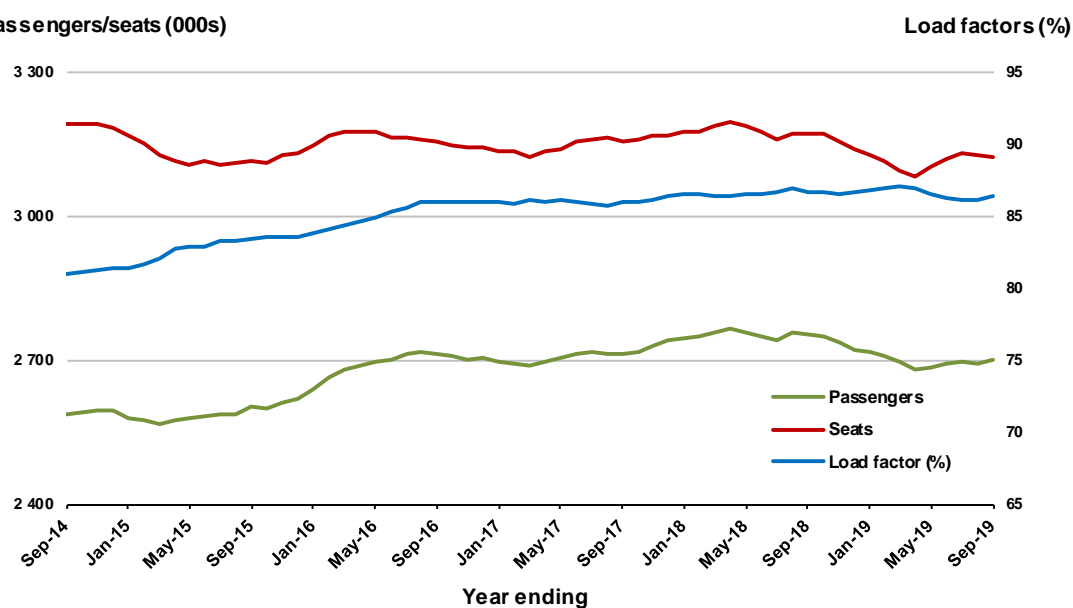


Moving annual data

	YE Sep 2018	YE Sep 2019	% Change
Passengers carried (000s)	2 754.2	2 699.7	-2.0
Seats (000s)	3 174.7	3 125.5	-1.6
Load factor %	86.8	86.4	-0.4 *
Aircraft trips	17 990	17 893	-0.5

* percentage point difference

Passengers/seats (000s)



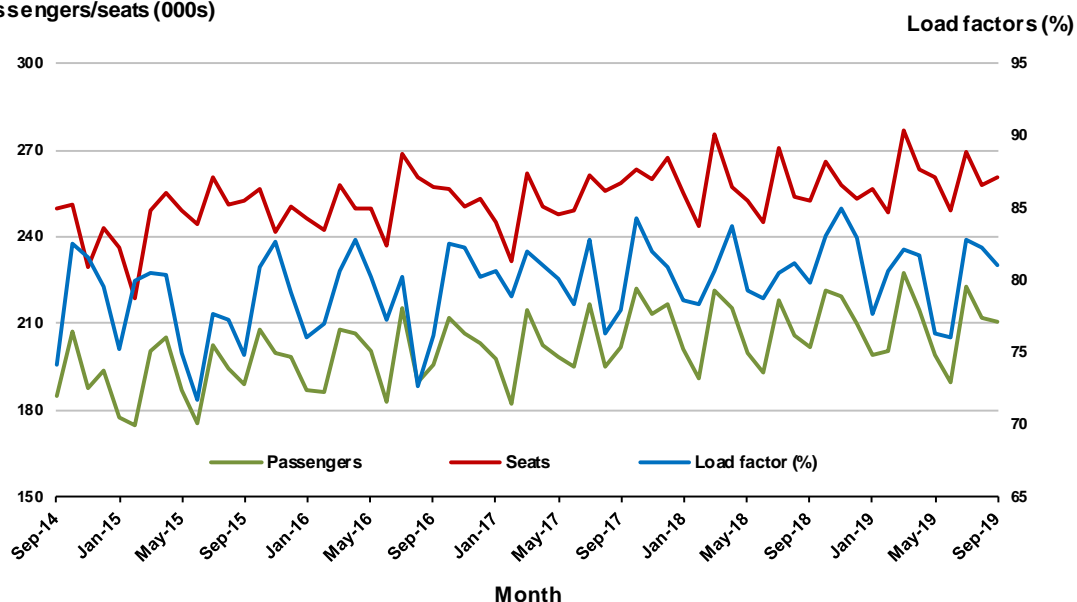
5. Adelaide - Melbourne

Monthly data

	Sep 2018	Sep 2019	% Change
Passengers carried (000s)	201.8	210.9	4.5
Seats (000s)	252.6	260.4	3.1
Load factor %	79.9	81.0	1.1 *
Aircraft trips	1 569	1 588	1.2

* percentage point difference

Passengers/seats (000s)

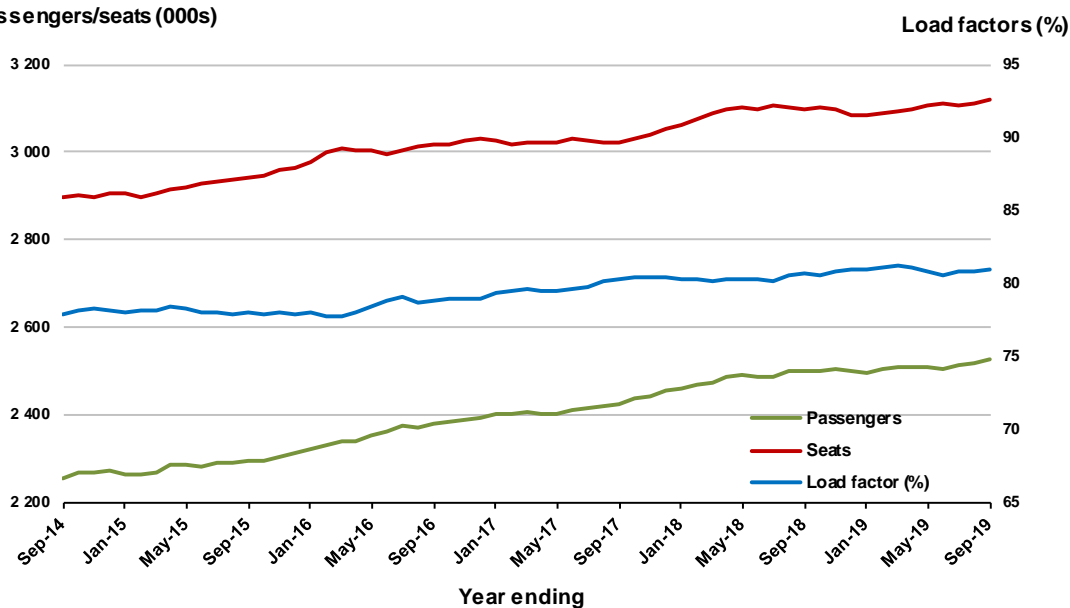


Moving annual data

	YE Sep 2018	YE Sep 2019	% Change
Passengers carried (000s)	2 499.3	2 526.9	1.1
Seats (000s)	3 097.3	3 120.1	0.7
Load factor %	80.7	81.0	0.3 *
Aircraft trips	19 218	19 005	-1.1

* percentage point difference

Passengers/seats (000s)



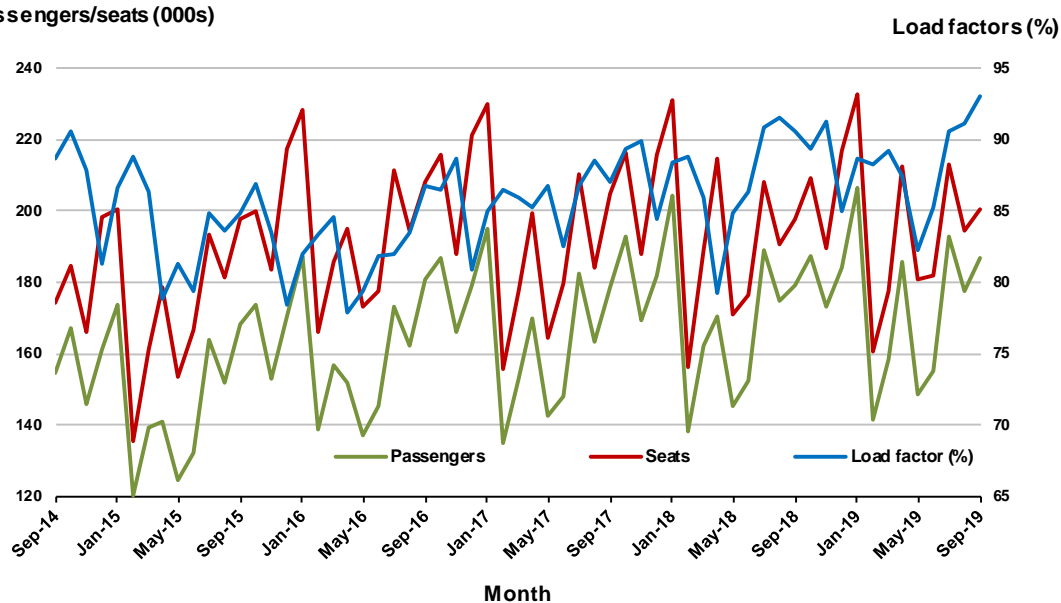
6. Gold Coast - Melbourne

Monthly data

	Sep 2018	Sep 2019	% Change
Passengers carried (000s)	179.2	186.8	4.2
Seats (000s)	197.7	200.7	1.5
Load factor %	90.6	93.1	2.5 *
Aircraft trips	1 052	1 058	0.6

* percentage point difference

Passengers/seats (000s)

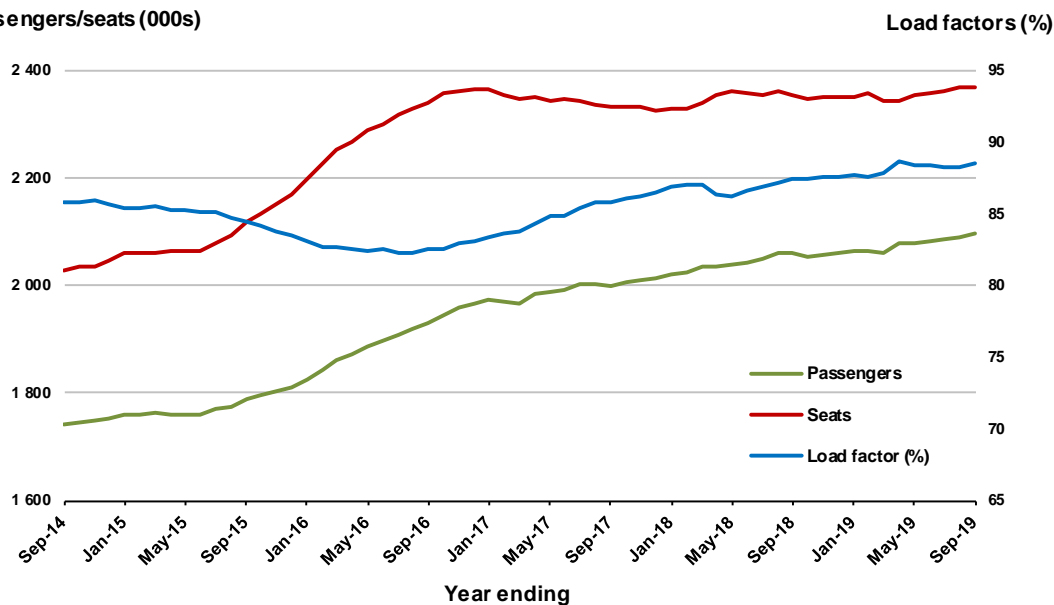


Moving annual data

	YE Sep 2018	YE Sep 2019	% Change
Passengers carried (000s)	2 060.6	2 097.9	1.8
Seats (000s)	2 354.4	2 370.3	0.7
Load factor %	87.5	88.5	1.0 *
Aircraft trips	12 484	12 514	0.2

* percentage point difference

Passengers/seats (000s)



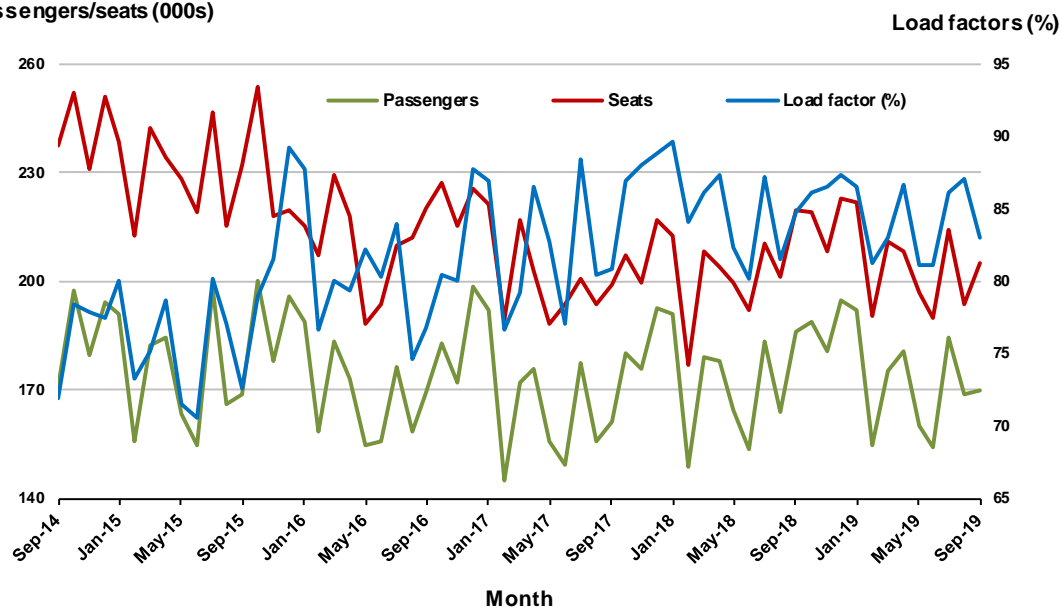
7. Melbourne - Perth

Monthly data

	Sep 2018	Sep 2019	% Change
Passengers carried (000s)	186.2	170.2	-8.6
Seats (000s)	219.5	204.9	-6.6
Load factor %	84.8	83.0	-1.8 *
Aircraft trips	1 036	1 012	-2.3

* percentage point difference

Passengers/seats (000s)

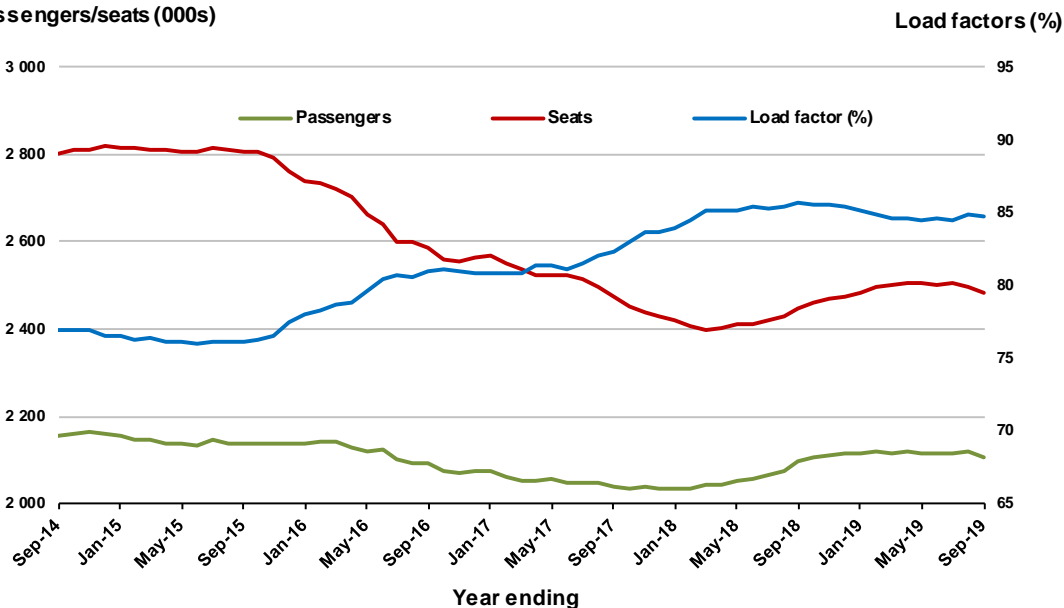


Moving annual data

	YE Sep 2018	YE Sep 2019	% Change
Passengers carried (000s)	2 097.4	2 105.5	0.4
Seats (000s)	2 448.4	2 483.2	1.4
Load factor %	85.7	84.8	-0.9 *
Aircraft trips	11 466	12 339	7.6

* percentage point difference

Passengers/seats (000s)



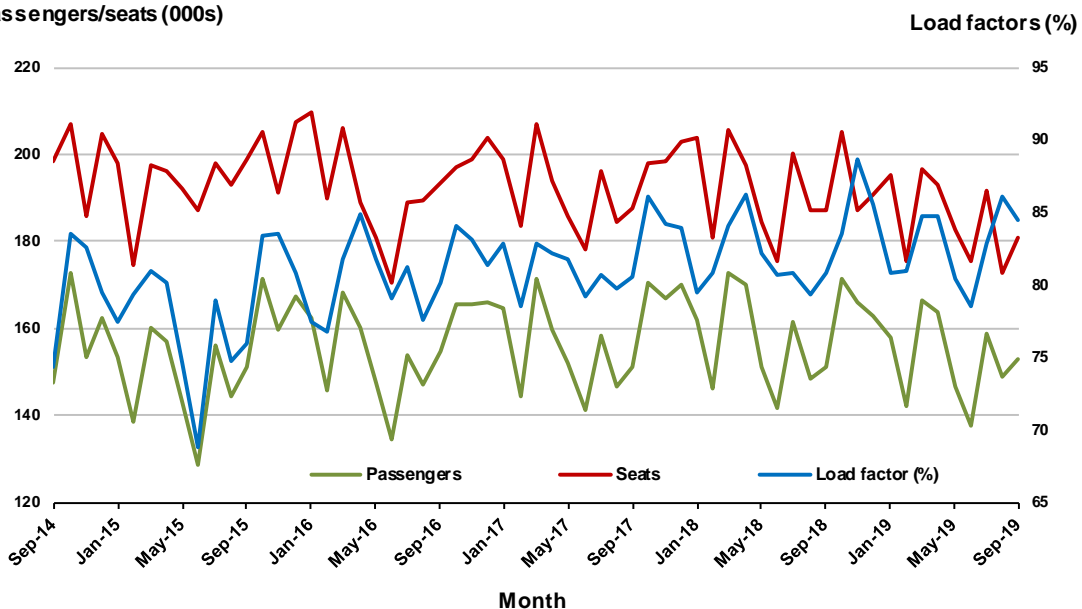
8. Adelaide - Sydney

Monthly data

	Sep 2018	Sep 2019	% Change
Passengers carried (000s)	151.3	152.9	1.1
Seats (000s)	187.1	181.0	-3.3
Load factor %	80.8	84.5	3.7 *
Aircraft trips	1 146	1 063	-7.2

* percentage point difference

Passengers/seats (000s)

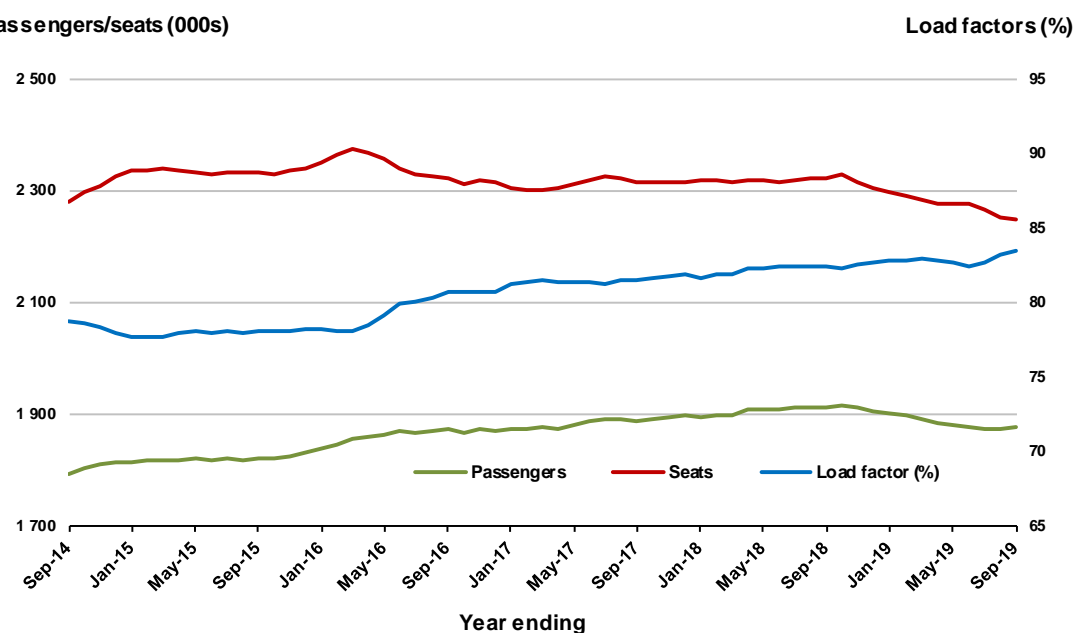


Moving annual data

	YE Sep 2018	YE Sep 2019	% Change
Passengers carried (000s)	1 913.9	1 876.4	-2.0
Seats (000s)	2 321.2	2 247.4	-3.2
Load factor %	82.5	83.5	1.0 *
Aircraft trips	13 888	13 404	-3.5

* percentage point difference

Passengers/seats (000s)



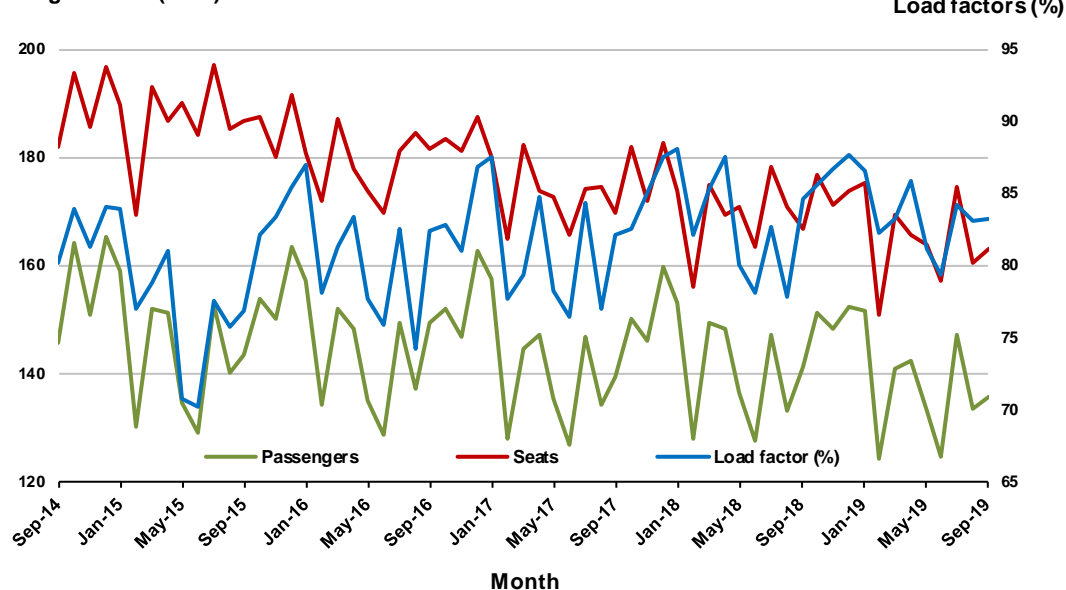
9. Perth - Sydney

Monthly data

	Sep 2018	Sep 2019	% Change
Passengers carried (000s)	141.2	135.8	-3.8
Seats (000s)	167.0	163.2	-2.3
Load factor %	84.6	83.2	-1.4 *
Aircraft trips	723	740	2.4

* percentage point difference

Passengers/seats (000s)

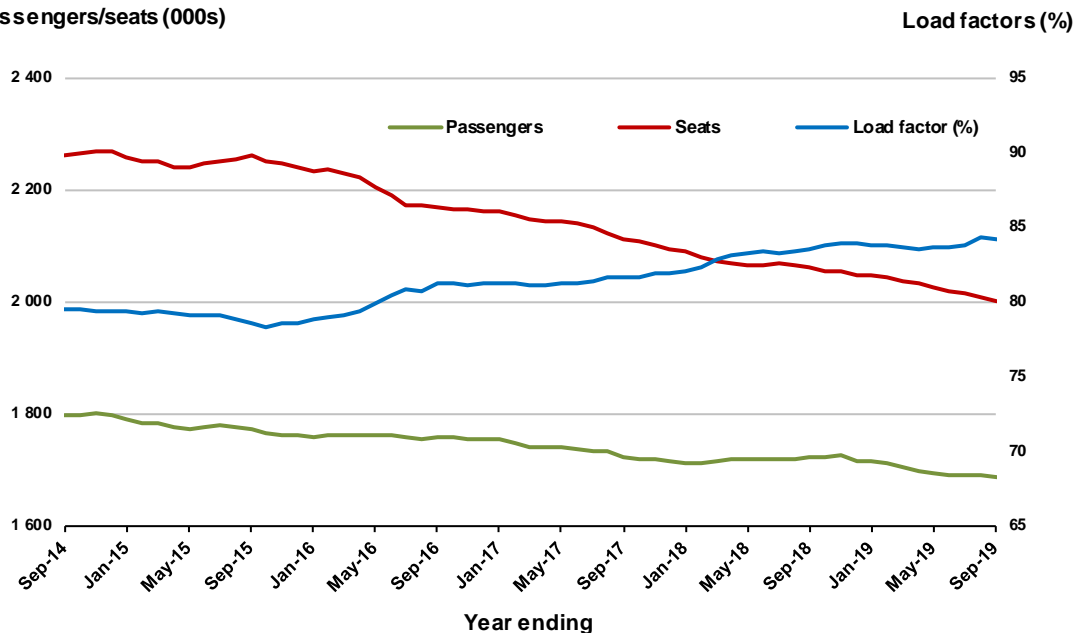


Moving annual data

	YE Sep 2018	YE Sep 2019	% Change
Passengers carried (000s)	1 721.2	1 685.1	-2.1
Seats (000s)	2 061.0	2 002.4	-2.8
Load factor %	83.5	84.2	0.6 *
Aircraft trips	9 026	9 080	0.6

* percentage point difference

Passengers/seats (000s)



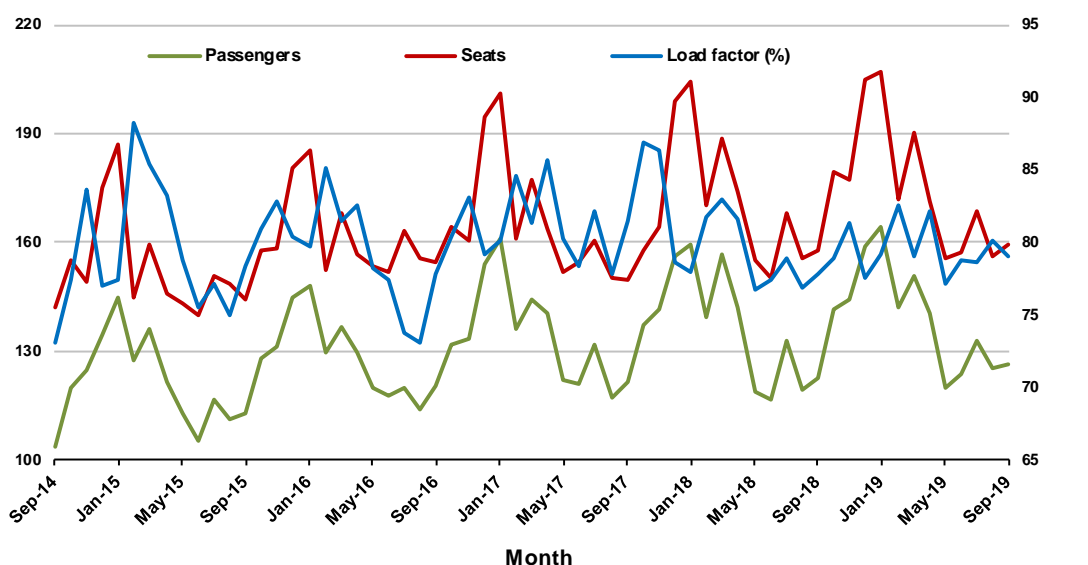
10. Hobart - Melbourne

Monthly data

	Sep 2018	Sep 2019	% Change
Passengers carried (000s)	122.6	126.3	3.0
Seats (000s)	157.6	159.6	1.2
Load factor %	77.8	79.1	1.3 *
Aircraft trips	884	877	-0.8

* percentage point difference

Passengers/seats (000s)

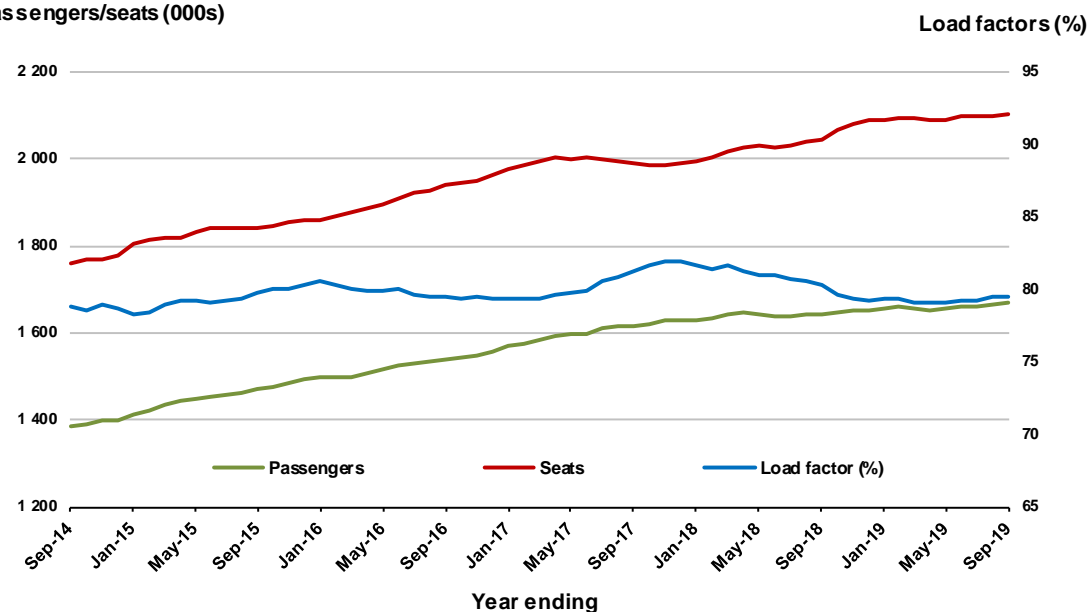


Moving annual data

	YE Sep 2018	YE Sep 2019	% Change
Passengers carried (000s)	1 642.7	1 670.5	1.7
Seats (000s)	2 045.6	2 100.4	2.7
Load factor %	80.3	79.5	-0.8 *
Aircraft trips	11 735	11 477	-2.2

* percentage point difference

Passengers/seats (000s)



TOP FIFTY REGIONAL AIRPORTS

Table 10: Top fifty regional airports (000s) — passenger movements, monthly

	Airport	Sep 2018	Sep 2019	% Change
1	Cairns	369.8	360.4	-2.5
2	Hobart	198.7	212.5	7.0
3	Darwin	160.6	153.0	-4.7
4	Townsville	142.2	150.7	6.0
5	Newcastle	101.9	107.1	5.1
6	Launceston	100.6	101.8	1.2
7	Mackay	73.2	78.8	7.6
8	Rockhampton	46.7	50.1	7.3
9	Alice Springs	56.7	49.7	-12.4
10	Ayers Rock	40.2	47.3	17.5
11	Hamilton Island	39.8	44.4	11.5
12	Ballina	43.0	43.5	1.3
13	Karratha	36.7	41.8	13.7
14	Broome	41.2	39.7	-3.6
15	Proserpine	38.3	39.3	2.5
16	Coffs Harbour	32.9	34.2	4.0
17	Port Hedland	30.2	33.1	9.9
18	Newman	25.0	29.5	17.9
19	Kalgoorlie	24.4	24.2	-0.9
20	Albury	22.1	22.3	1.0
21	Mildura	23.3	22.1	-5.4
22	Gladstone	20.6	21.4	3.9
23	Mount Isa	17.6	19.6	11.6
24	Wagga Wagga	18.6	19.0	2.1
25	Port Macquarie	17.8	18.5	4.2
26	Dubbo	18.7	18.3	-2.2
27	Emerald	16.2	17.6	8.3
28	Paraburdoo	14.5	16.9	16.4
29	Tamworth	16.4	16.8	2.1
30	Hervey Bay	14.3	15.3	7.0
31	Port Lincoln	13.7	14.5	5.4
32	Bundaberg	14.0	13.5	-3.4
33	Devonport	11.6	12.0	3.9
34	Armidale	11.4	11.9	3.7
35	Toowoomba Wellcamp	11.6	11.1	-4.2
36	Kununurra	10.8	11.0	1.7
37	Moranbah	9.0	9.2	1.7
38	Thursday Island	9.4	9.0	-3.4
39	Geraldton	9.4	9.0	-4.2
40	Griffith	6.7	8.5	26.2
41	Roma	7.4	8.3	11.9
42	Orange	6.7	7.5	12.1
43	Mount Gambier	6.7	7.4	10.9
44	Whyalla	6.7	7.0	4.4
45	Learmonth	7.5	7.0	-7.3
46	Gove	6.4	6.2	-3.8
47	Burnie	5.8	6.0	3.7
48	Olympic Dam	6.4	6.0	-7.5
49	Weipa	6.9	5.7	-16.7
50	Broken Hill	6.3	5.3	-15.5
Total top 50 regional airports		1 976.7	2 024.9	2.4
Total regional airports		2 095.2	2 143.5	2.3
Total domestic network		10 161.0	10 378.2	2.1

Note: Airport passenger movement numbers are the sum of passenger arrivals and departures at each airport.

Regional airports are defined as airports which are, according to the Australian Bureau of Statistics

"The Australian Statistical Geography Standard (ASGS)", not based in Major Urban areas.

Table 11: Top fifty regional airports (000s) — passenger movements, annual

Airport	YE Sep 2018	YE Sep 2019	% Change
1 Cairns	4 331.8	4 181.9	-3.5
2 Hobart	2 630.3	2 761.7	5.0
3 Darwin	1 772.4	1 700.4	-4.1
4 Townsville	1 654.1	1 650.9	-0.2
5 Launceston	1 379.4	1 390.7	0.8
6 Newcastle	1 270.8	1 267.8	-0.2
7 Mackay	839.4	863.5	2.9
8 Alice Springs	623.1	583.8	-6.3
9 Rockhampton	555.0	563.0	1.4
10 Ballina	536.8	533.9	-0.5
11 Ayers Rock	403.4	482.7	19.6
12 Karratha	440.8	456.5	3.6
13 Hamilton Island	422.9	441.1	4.3
14 Proserpine	463.7	429.7	-7.3
15 Broome	418.9	406.7	-2.9
16 Coffs Harbour	408.3	397.6	-2.6
17 Port Hedland	363.9	381.6	4.8
18 Newman	301.3	335.5	11.4
19 Kalgoorlie	276.7	292.1	5.6
20 Mildura	270.9	255.8	-5.6
21 Albury	263.4	254.3	-3.4
22 Gladstone	256.9	246.9	-3.9
23 Mount Isa	209.6	220.0	5.0
24 Port Macquarie	217.9	217.0	-0.4
25 Dubbo	224.9	211.7	-5.9
26 Wagga Wagga	223.7	206.6	-7.6
27 Emerald	196.4	198.0	0.8
28 Tamworth	190.6	186.9	-1.9
29 Paraburdoo	175.2	185.6	5.9
30 Port Lincoln	169.4	169.1	-0.1
31 Hervey Bay	166.4	164.3	-1.3
32 Bundaberg	164.7	154.9	-6.0
33 Devonport	148.4	147.2	-0.8
34 Armidale	131.2	130.7	-0.4
35 Toowoomba Wellcamp	143.2	119.9	-16.3
36 Kununurra	104.4	114.0	9.2
37 Moranbah	101.4	109.3	7.8
38 Geraldton	111.7	108.6	-2.8
39 Thursday Island	100.2	98.4	-1.8
40 Roma	86.1	95.7	11.2
41 Griffith	76.0	91.4	20.2
42 Learmonth	85.9	87.2	1.5
43 Mount Gambier	80.0	84.1	5.0
44 Gove	85.1	81.7	-4.0
45 Orange	74.5	80.9	8.6
46 Whyalla	73.7	79.0	7.2
47 Olympic Dam	77.4	77.3	-0.1
48 Weipa	80.6	74.1	-8.1
49 Burnie	68.8	72.1	4.8
50 Merimbula	68.3	67.5	-1.2
Total top 50 regional airports	23 520.0	23 511.2	0.0
Total regional airports	24 918.3	24 869.6	-0.2
Total domestic network	122 196.1	122 161.5	0.0

Note: Airport passenger movement numbers are the sum of passenger arrivals and departures at each airport. Regional airports are defined as airports which are, according to the Australian Bureau of Statistics "The Australian Statistical Geography Standard (ASGS)", not based in Major Urban areas.

DOMESTIC CHARTER ACTIVITY

Table 12: Charter passengers carried and aircraft trips - monthly activity

	Sep 2018	Sep 2019	% Change
Total domestic charter passengers	195 622	229 003	17.1
Total domestic charter aircraft trips	3 339	3 893	16.6

Note: Helicopter, joyflights and sightseeing charter flights not included.

Table 13: Charter passengers carried and aircraft trips - annual activity

	YE Sep 2018	YE Sep 2019	% Change
Total domestic charter passengers	2 453 439	2 657 525	8.3
Total domestic charter aircraft trips	44 837	45 858	2.3

Note: Helicopter, joyflights and sightseeing charter flights not included.

Table 14: Domestic airports - charter activity - monthly

	Sep 2018	Sep 2019	% Change
Total domestic charter passenger movements	391 244	458 006	17.1
Total domestic charter aircraft movements	6 678	7 786	16.6
Perth airport charter passenger movements	148 299	176 012	18.7
Perth airport charter aircraft movements	2 288	2 716	18.7

Note: Helicopter, joyflights and sightseeing charter flights not included.

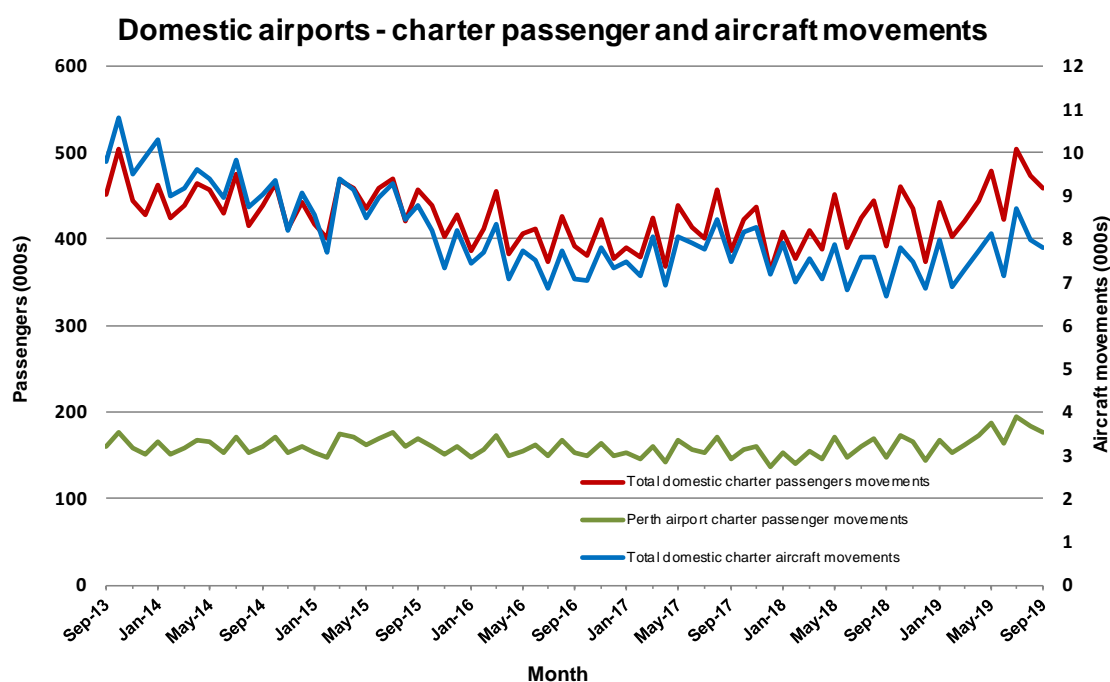
Charter passenger and aircraft movement numbers are the sum of arrivals and departures at each airport.

Table 15: Domestic airports - charter activity - annual

	YE Sep 2018	YE Sep 2019	% Change
Total domestic charter passenger movements	4 906 878	5 315 050	8.3
Total domestic charter aircraft movements	89 674	91 716	2.3
Perth airport charter passenger movements	1 846 618	2 045 411	10.8
Perth airport charter aircraft movements	30 230	31 986	5.8

Note: Helicopter, joyflights and sightseeing charter flights not included.

Charter passenger and aircraft movement numbers are the sum of arrivals and departures at each airport.



DEFINITIONS

Aircraft Trips	The number of flight stages. A return flight counts as two aircraft trips.
Airport Movements	Airport movements (passenger and cargo) are measured once on arrival and once on departure. Each domestic trip generates two movements at airports. For example, a trip from Melbourne to Sydney will be counted twice, as a passenger departure at Melbourne and as a passenger arrival at Sydney. At the national level, the sum of all domestic airport traffic will therefore be equal to twice the number of trips undertaken.
Available Seat Kilometres (ASKs)	Calculated by multiplying the number of seats available on each flight stage, by the distance in kilometres between the ports. The distances used are Great Circle Distances.
City-Pair	The ports shown make up the city-pair route. Passenger movements shown for a city pair reflect total traffic in both directions.
Flight Stage	The operation of an aircraft from take-off to landing.
Load Factor	The total revenue passenger kilometres performed as a percentage of the total available seat kilometres.
Passengers Carried	Revenue passengers carried.
Regular Public Transport Services (RPT)	All air service operations in which aircraft are available for the transport of members of the public and are conducted in accordance with fixed schedules. It does not include charter or other non-scheduled operations.
Revenue Passengers	All passengers paying any fare. Frequent flyer redemption travellers are regarded as revenue passengers.
Revenue Passenger Kilometres (RPKs)	Calculated by multiplying the number of revenue passengers travelling on each flight stage, by the distance in kilometres between the ports. The distances used are Great Circle Distances.
Traffic on board by stages	The total of all traffic (revenue passengers) on each flight stage between two directly connected airports.
..	Data not included
NA	Not applicable