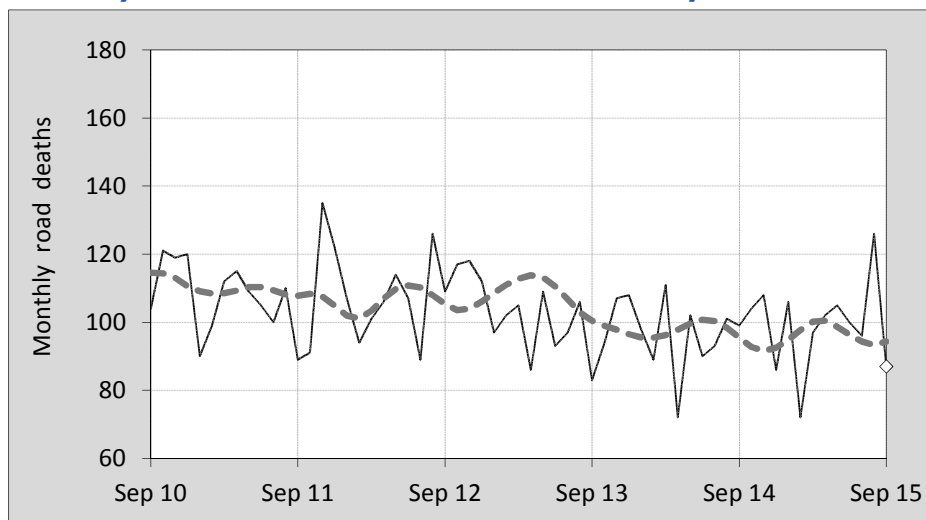




## This month's key figures

- There was a total of 87 road deaths during the month of September 2015. In comparison to the average for September over the previous five years, the current figure is 10.1 per cent lower.
- During the 12 months ended September there were 1,189 road deaths. This is a 2.1 per cent increase compared to the total for the 12-monthly period ended September 2014.
- Presently the rate of annual deaths per 100,000 population stands at 5.0. Compared to the figure for the 12-monthly period ending September 2014, this is a 0.8 per cent increase.

## Monthly Australian road deaths — last five years, with trend



### Data Sources

Data are obtained from

- Transport for NSW
- Vicroads
- Department of Transport and Main Roads, Queensland
- Department of Planning, Transport and Infrastructure, S.A.
- Western Australia Police
- Department of State Growth, Tasmania
- Department of Transport, Northern Territory
- Territory and Municipal Services Directorate, ACT
- Australian Bureau of Statistics (3101.0)

### Inquiries

For further information about data in this bulletin, contact:

Bureau of Infrastructure, Transport and  
Regional Economics  
Web : [www.bitre.gov.au](http://www.bitre.gov.au)  
Email : [roadsafety@infrastructure.gov.au](mailto:roadsafety@infrastructure.gov.au)

Road deaths from recent months are preliminary and subject to revision.

© Copyright. Commonwealth of Australia

## I. Deaths by jurisdiction

**Table I.1** Current month

| Current month   | NSW | Vic   | Qld  | SA    | WA   | Tas  | NT   | ACT | Australia |
|-----------------|-----|-------|------|-------|------|------|------|-----|-----------|
| September 2014  | 24  | 20    | 21   | 11    | 16   | 3    | 2    | 2   | 99        |
| September 2015  | 24  | 12    | 20   | 7     | 15   | 4    | 3    | 2   | 87        |
| Per cent change | 0.0 | -40.0 | -4.8 | -36.4 | -6.3 | 33.3 | 50.0 | 0.0 | -12.1     |

**Table I.2** Year to date

| Year to date                  | NSW  | Vic | Qld | SA  | WA   | Tas | NT   | ACT  | Australia |
|-------------------------------|------|-----|-----|-----|------|-----|------|------|-----------|
| January 2014 - September 2014 | 234  | 188 | 170 | 71  | 128  | 26  | 30   | 8    | 855       |
| January 2015 - September 2015 | 260  | 188 | 176 | 71  | 121  | 28  | 37   | 10   | 891       |
| Per cent change               | 11.1 | 0.0 | 3.5 | 0.0 | -5.5 | 7.7 | 23.3 | 25.0 | 4.2       |

**Table I.3** Year ending September

| 12 months ended September                | NSW  | Vic  | Qld  | SA   | WA   | Tas  | NT   | ACT  | Australia |
|--|------|------|------|------|------|------|------|------|-----------|
| 2011                                     | 364  | 284  | 262  | 115  | 190  | 26   | 41   | 7    | 1,289     |
| 2012                                     | 380  | 277  | 284  | 90   | 179  | 29   | 54   | 8    | 1,301     |
| 2013                                     | 325  | 259  | 285  | 101  | 176  | 29   | 40   | 10   | 1,225     |
| 2014                                     | 333  | 256  | 226  | 92   | 168  | 41   | 39   | 9    | 1,164     |
| 2015                                     | 333  | 249  | 229  | 107  | 176  | 37   | 46   | 12   | 1,189     |
| Latest per cent change                   | 0.0  | -2.7 | 1.3  | 16.3 | 4.8  | -9.8 | 17.9 | 33.3 | 2.1       |
| Average trend change per year (per cent) | -3.1 | -3.4 | -4.9 | -1.2 | -2.1 | 11.1 | -0.9 | 12.7 | -2.7      |

## 2. Deaths by road user, age-group and gender

**Table 2.1** By road user

| 12 months ended September                | Driver | Passenger | Pedestrian | Motorcyclist <sup>b</sup> | Pedal <sup>b</sup> cyclist | Total <sup>c</sup> |
|--|--------|-----------|------------|---------------------------|----------------------------|--------------------|
| 2011                                     | 579    | 275       | 191        | 206                       | 37                         | 1,289              |
| 2012                                     | 598    | 266       | 174        | 229                       | 33                         | 1,301              |
| 2013                                     | 597    | 230       | 151        | 203                       | 36                         | 1,225              |
| 2014                                     | 530    | 229       | 157        | 194                       | 53                         | 1,164              |
| 2015                                     | 539    | 247       | 162        | 206                       | 30                         | 1,189              |
| Latest per cent change                   | 1.7    | 7.9       | 3.2        | 6.2                       | -43.4                      | 2.1                |
| Average trend change per year (per cent) | -2.6   | -3.6      | -4.2       | -1.6                      | 0.5                        | -2.7               |

**Table 2.2** By age-group<sup>a</sup> (years)

| 12 months ended September                | 0 to 16 | 17 to 25 | 26 to 39 | 40 to 64 | 65 to 74 | ≥ 75 | Total <sup>c</sup> |
|--|---------|----------|----------|----------|----------|------|--------------------|
| 2011                                     | 81      | 300      | 271      | 407      | 87       | 143  | 1,289              |
| 2012                                     | 80      | 274      | 309      | 392      | 94       | 151  | 1,301              |
| 2013                                     | 70      | 264      | 265      | 372      | 102      | 152  | 1,225              |
| 2014                                     | 61      | 219      | 231      | 386      | 123      | 141  | 1,164              |
| 2015                                     | 75      | 245      | 269      | 356      | 104      | 140  | 1,189              |
| Latest per cent change                   | 23.0    | 11.9     | 16.5     | -7.8     | -15.4    | -0.7 | 2.1                |
| Average trend change per year (per cent) | -4.2    | -6.1     | -3.0     | -2.8     | 6.5      | -1.1 | -2.7               |

## 2. Deaths by road user, age-group and gender (continued)

**Table 2.3** By gender

| 12 months ended September                | Males | Females | Total <sup>d</sup> |
|--|-------|---------|--------------------|
| 2011                                     | 928   | 359     | 1,289              |
| 2012                                     | 928   | 373     | 1,301              |
| 2013                                     | 874   | 350     | 1,225              |
| 2014                                     | 845   | 318     | 1,164              |
| 2015                                     | 853   | 336     | 1,189              |
| Latest per cent change                   | 0.9   | 5.7     | 2.1                |
| Average trend change per year (per cent) | -2.6  | -2.9    | -2.7               |

a Age groups were changed in March 2014.

b Includes pillion passengers

c Includes deaths to persons with either age or road user type not recorded.

d Includes deaths to persons with gender not recorded.

## 3. Annual deaths per 100,000 population

**Table 3.1** Year ended September

| 12 months ended September                | NSW  | Vic  | Qld  | SA   | WA   | Tas   | NT    | ACT  | Australia |
|--|------|------|------|------|------|-------|-------|------|-----------|
| 2011                                     | 5.05 | 5.14 | 5.88 | 7.03 | 8.13 | 5.09  | 17.81 | 1.91 | 5.79      |
| 2012                                     | 5.21 | 4.94 | 6.25 | 5.45 | 7.41 | 5.66  | 23.10 | 2.14 | 5.75      |
| 2013                                     | 4.40 | 4.54 | 6.15 | 6.06 | 7.04 | 5.65  | 16.61 | 2.63 | 5.32      |
| 2014                                     | 4.44 | 4.40 | 4.80 | 5.47 | 6.58 | 7.97  | 16.03 | 2.34 | 4.97      |
| 2015                                     | 4.38 | 4.21 | 4.80 | 6.31 | 6.80 | 7.17  | 18.87 | 3.08 | 5.01      |
| Latest per cent change                   | -1.3 | -4.3 | 0.0  | 15.3 | 3.3  | -10.0 | 17.7  | 31.7 | 0.8       |
| Average trend change per year (per cent) | -4.3 | -5.0 | -6.4 | -2.1 | -4.6 | 10.8  | -2.5  | 11.0 | -4.2      |

**Table 3.2** Calendar year period

| Calendar year          | NSW  | Vic  | Qld   | SA   | WA   | Tas  | NT    | ACT  | Australia |
|------------------------|------|------|-------|------|------|------|-------|------|-----------|
| 2010                   | 5.67 | 5.27 | 5.65  | 7.25 | 8.42 | 6.09 | 21.76 | 5.25 | 6.14      |
| 2011                   | 5.04 | 5.18 | 6.01  | 6.28 | 7.61 | 4.69 | 19.46 | 1.63 | 5.72      |
| 2012                   | 5.05 | 5.01 | 6.13  | 5.68 | 7.51 | 6.05 | 20.77 | 3.20 | 5.72      |
| 2013                   | 4.50 | 4.24 | 5.83  | 5.87 | 6.44 | 7.02 | 15.25 | 1.84 | 5.13      |
| 2014                   | 4.08 | 4.26 | 4.72  | 6.35 | 7.15 | 6.80 | 15.98 | 2.59 | 4.91      |
| Latest per cent change | -9.2 | 0.6  | -18.9 | 8.2  | 11.0 | -3.1 | 4.7   | 41.2 | -4.3      |

4. Monthly deaths by jurisdiction — last 24 months

— raw  
 - - - smoothed  
 (unweighted 5-point moving average)

Figure 4.1 NSW

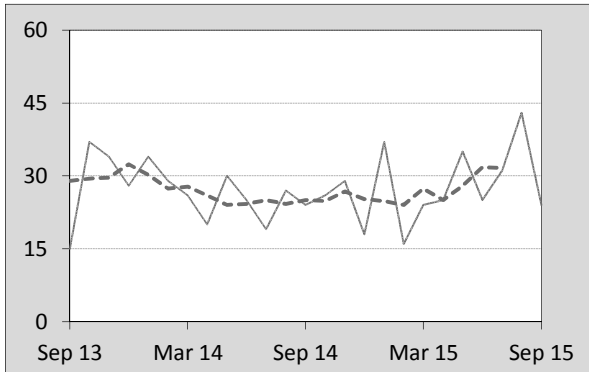


Figure 4.2 Vic

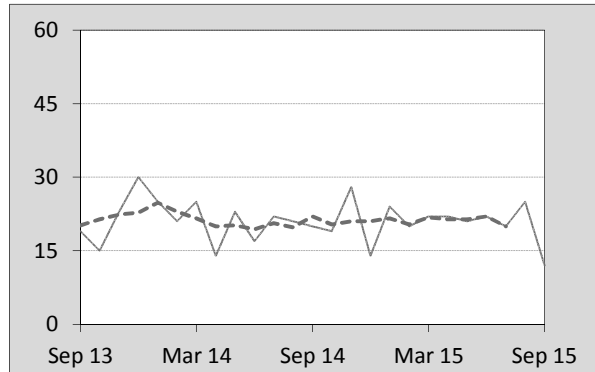


Figure 4.3 Qld

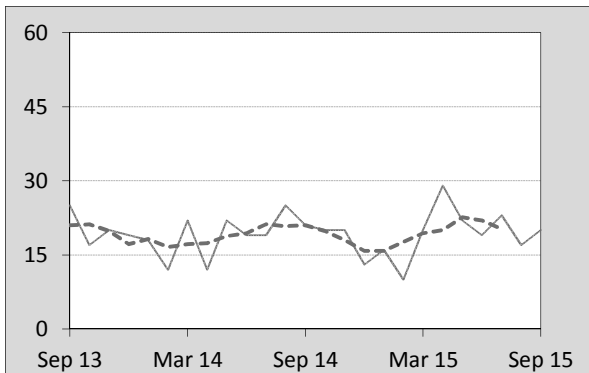


Figure 4.4 SA

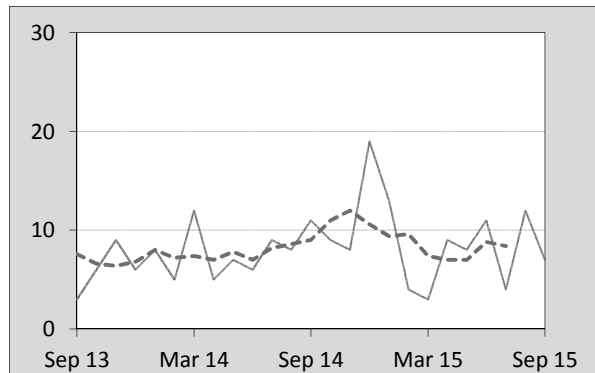


Figure 4.5 WA

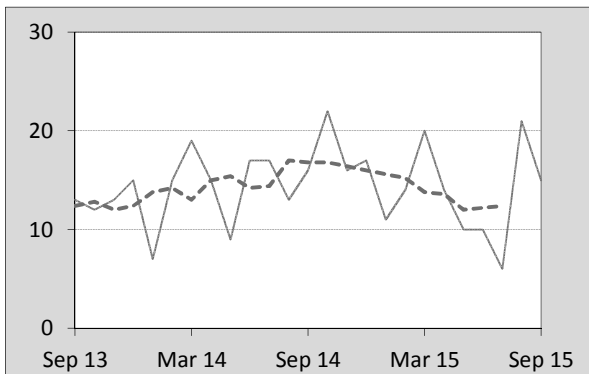


Figure 4.6 Tas

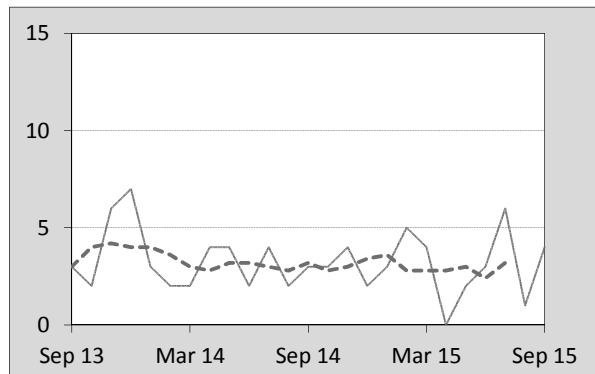


Figure 4.7 NT

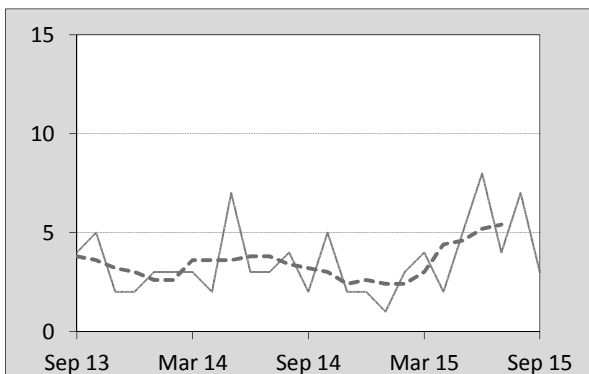
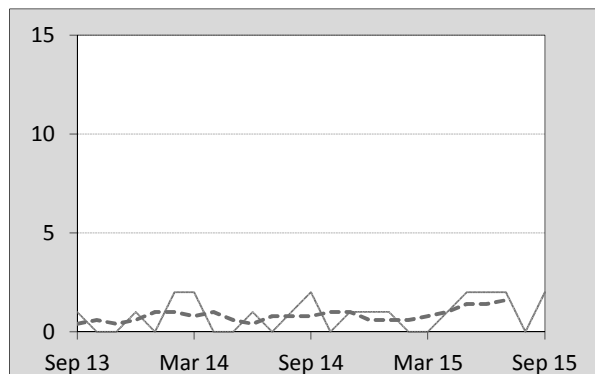


Figure 4.8 ACT



## 5. Fatal crashes: counts and characteristics

**Table 5.1** By Crash type and Posted speed limit

| 12 months ended September                | Crash type <sup>a</sup> |          |            | Posted speed limit |          |      |       | Total <sup>b</sup> |
|--|-------------------------|----------|------------|--------------------|----------|------|-------|--------------------|
|  | Single                  | Multiple | Pedestrian | 0 to 60            | 70 to 90 | 100  | ≥ 110 |                    |
| 2011                                     | 512                     | 477      | 188        | 347                | 259      | 408  | 153   | 1,177              |
| 2012                                     | 515                     | 498      | 171        | 400                | 266      | 365  | 140   | 1,184              |
| 2013                                     | 527                     | 443      | 150        | 359                | 254      | 359  | 138   | 1,120              |
| 2014                                     | 480                     | 432      | 155        | 321                | 242      | 366  | 123   | 1,067              |
| 2015                                     | 485                     | 442      | 160        | 349                | 230      | 346  | 144   | 1,087              |
| Latest per cent change                   | 1.0                     | 2.3      | 3.2        | 8.7                | -5.0     | -5.5 | 17.1  | 1.9                |
| Average trend change per year (per cent) | -1.8                    | -2.9     | -4.1       | -2.1               | -3.3     | -3.2 | -2.5  | -2.6               |

**Table 5.2** By Day of week and Time of day

| 12 months ended September                | Day of week <sup>c</sup> |         | Time of Day <sup>d</sup> |       |
|--|--------------------------|---------|--------------------------|-------|
|  | Weekday                  | Weekend | Day                      | Night |
| 2011                                     | 707                      | 470     | 711                      | 466   |
| 2012                                     | 706                      | 478     | 743                      | 441   |
| 2013                                     | 685                      | 435     | 705                      | 415   |
| 2014                                     | 663                      | 404     | 679                      | 388   |
| 2015                                     | 651                      | 436     | 662                      | 425   |
| Latest per cent change                   | -1.8                     | 7.9     | -2.5                     | 9.5   |
| Average trend change per year (per cent) | -2.3                     | -3.1    | -2.3                     | -3.1  |

a 'Single' and 'Multiple' refer to the number of vehicles involved in a fatal crash where there is no pedestrian killed.

b Includes crashes where speed limit is unknown

c 'Weekday' refers to 6am Monday through to 5:59pm Friday.

d 'Day' refers to 6am through to 5:59 pm.

## Appendix

### Definition

The road safety agencies in each jurisdiction use detailed criteria to define road crashes and road deaths. Briefly, a death is classified as resulting from a road crash if the crash occurred on a public road, is unintentional and the death occurred within 30 days from injuries sustained in the crash.

### Population rates

Rates per population are based on the deaths to the current 12 monthly period, and the population at the midpoint of the period. The population at midpoints are interpolated if necessary.

### Average trend change ( % per year )

Calculated by fitting an exponential curve through the five data points, and quoting the constant (annual) change of this curve.

### Other sources for the tables in this bulletin

The underlying database used to produce this bulletin — *the Australian Road Deaths Database* is available for data extraction at <[http://www.bitre.gov.au/statistics/safety/fatal\\_road\\_crash\\_database.aspx](http://www.bitre.gov.au/statistics/safety/fatal_road_crash_database.aspx)>.

Road deaths from recent months are preliminary and subject to revision.