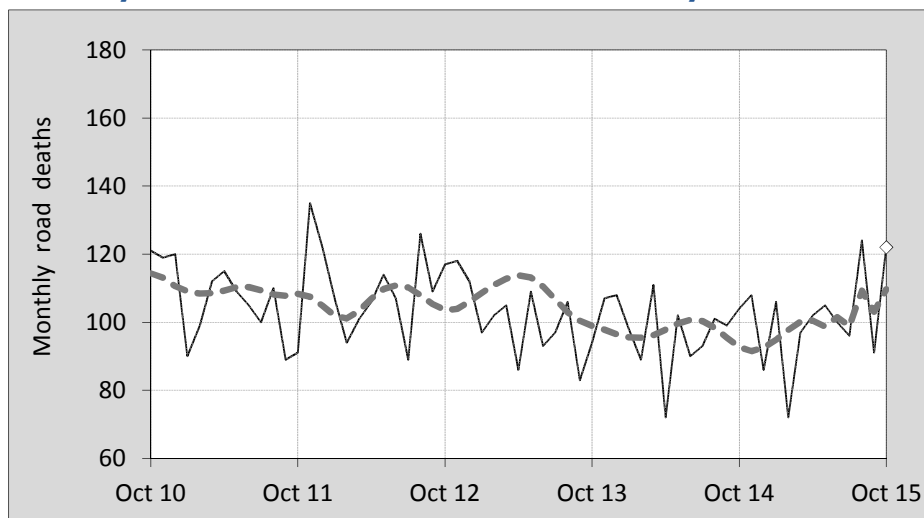




## This month's key figures

- There was a total of 122 road deaths during the month of October 2015. In comparison to the average for October over the previous five years, the current figure is 15.7 per cent higher.
- During the 12 months ended October there were 1,209 road deaths. This is a 3.0 per cent increase compared to the total for the 12-monthly period ended October 2014.
- Presently the rate of annual deaths per 100,000 population stands at 5.1. Compared to the figure for the 12-monthly period ending October 2014, this is a 1.6 per cent increase.

## Monthly Australian road deaths — last five years, with trend



### Data Sources

Data are obtained from

- Transport for NSW
- Vicroads
- Department of Transport and Main Roads, Queensland
- Department of Planning, Transport and Infrastructure, S.A.
- Western Australia Police
- Department of State Growth, Tasmania
- Department of Transport, Northern Territory
- Territory and Municipal Services Directorate, ACT
- Australian Bureau of Statistics (3101.0)

### Inquiries

For further information about data in this bulletin, contact:

Bureau of Infrastructure, Transport and  
Regional Economics  
Web : [www.bitre.gov.au](http://www.bitre.gov.au)  
Email : [roadsafety@infrastructure.gov.au](mailto:roadsafety@infrastructure.gov.au)

Road deaths from recent months are preliminary and subject to revision.

© Copyright. Commonwealth of Australia

## I. Deaths by jurisdiction

**Table 1.1** Current month

Current month	NSW	Vic	Qld	SA	WA	Tas	NT	ACT	Australia
October 2014	26	19	20	9	22	3	5	0	104
October 2015	31	27	26	18	11	5	4	0	122
Per cent change	19.2	42.1	30.0	100.0	-50.0	66.7	-20.0	-	17.3

**Table 1.2** Year to date

Year to date	NSW	Vic	Qld	SA	WA	Tas	NT	ACT	Australia
January 2014 - October 2014	260	207	190	80	150	29	35	8	959
January 2015 - October 2015	291	216	203	89	132	33	41	10	1,015
Per cent change	11.9	4.3	6.8	11.3	-12.0	13.8	17.1	25.0	5.8

**Table 1.3** Year ending October

12 months ended October	NSW	Vic	Qld	SA	WA	Tas	NT	ACT	Australia
2011	348	270	261	110	195	26	42	7	1,259
2012	385	289	293	88	181	30	52	9	1,327
2013	334	240	277	102	169	29	42	9	1,202
2014	322	260	229	95	178	42	39	9	1,174
2015	338	258	236	116	165	39	45	12	1,209
Latest per cent change	5.0	-0.8	3.1	22.1	-7.3	-7.1	15.4	33.3	3.0
Average trend change per year (per cent)	-2.3	-1.9	-4.4	1.8	-3.4	12.2	-1.5	11.4	-2.0

## 2. Deaths by road user, age-group and gender

**Table 2.1** By road user

12 months ended October	Driver	Passenger	Pedestrian	Motorcyclist <sup>b</sup>	Pedal <sup>b</sup> cyclist	Total <sup>c</sup>
2011	571	269	182	201	35	1,259
2012	617	271	175	228	35	1,327
2013	572	219	155	206	42	1,202
2014	541	233	157	191	49	1,174
2015	562	247	156	211	30	1,209
Latest per cent change	3.9	6.0	-0.6	10.5	-38.8	3.0
Average trend change per year (per cent)	-1.6	-3.2	-4.1	-0.8	0.3	-2.0

**Table 2.2** By age-group<sup>a</sup> (years)

12 months ended October	0 to 16	17 to 25	26 to 39	40 to 64	65 to 74	≥ 75	Total <sup>c</sup>
2011	86	285	267	397	84	140	1,259
2012	78	277	318	402	95	156	1,327
2013	67	253	250	369	108	155	1,202
2014	64	229	244	382	115	137	1,174
2015	69	239	269	372	116	144	1,209
Latest per cent change	7.8	4.4	10.2	-2.6	0.9	5.1	3.0
Average trend change per year (per cent)	-6.2	-5.3	-2.5	-1.8	8.7	-0.7	-2.0

## 2. Deaths by road user, age-group and gender (continued)

**Table 2.3** By gender

<b>12 months ended October</b>	<i>Males</i>	<i>Females</i>	<i>Total<sup>d</sup></i>
2011	909	348	1,259
2012	948	379	1,327
2013	860	341	1,202
2014	846	327	1,174
2015	867	342	1,209
<i>Latest per cent change</i>	2.5	4.6	3.0
<i>Average trend change per year (per cent)</i>	-2.1	-1.8	-2.0

a Age groups were changed in March 2014.

b Includes pillion passengers

c Includes deaths to persons with either age or road user type not recorded.

d Includes deaths to persons with gender not recorded.

## 3. Annual deaths per 100,000 population

**Table 3.1** Year ended October

<b>12 months ended October</b>	<i>NSW</i>	<i>Vic</i>	<i>Qld</i>	<i>SA</i>	<i>WA</i>	<i>Tas</i>	<i>NT</i>	<i>ACT</i>	<i>Australia</i>
2011	4.83	4.89	5.85	6.72	8.32	5.08	18.21	1.91	5.65
2012	5.28	5.14	6.44	5.32	7.47	5.86	22.18	2.41	5.85
2013	4.52	4.20	5.97	6.11	6.74	5.65	17.40	2.37	5.21
2014	4.29	4.46	4.86	5.64	6.96	8.16	16.02	2.34	5.01
2015	4.44	4.35	4.95	6.83	6.37	7.55	18.45	3.07	5.09
<i>Latest per cent change</i>	3.6	-2.4	1.8	21.1	-8.5	-7.4	15.2	31.6	1.6
<i>Average trend change per year (per cent)</i>	-3.7	-3.7	-6.0	0.9	-5.9	11.9	-2.9	9.7	-3.6

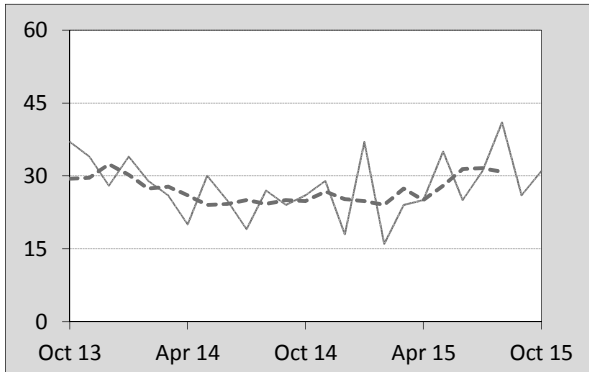
**Table 3.2** Calendar year period

<b>Calendar year</b>	<i>NSW</i>	<i>Vic</i>	<i>Qld</i>	<i>SA</i>	<i>WA</i>	<i>Tas</i>	<i>NT</i>	<i>ACT</i>	<i>Australia</i>
2010	5.67	5.27	5.65	7.25	8.42	6.09	21.76	5.25	6.14
2011	5.04	5.18	6.01	6.28	7.61	4.69	19.46	1.63	5.72
2012	5.05	5.01	6.13	5.68	7.51	6.05	20.77	3.20	5.72
2013	4.50	4.24	5.83	5.87	6.44	7.02	15.25	1.84	5.13
2014	4.08	4.26	4.72	6.35	7.15	6.80	15.98	2.59	4.91
<i>Latest per cent change</i>	-9.2	0.6	-18.9	8.2	11.0	-3.1	4.7	41.2	-4.3

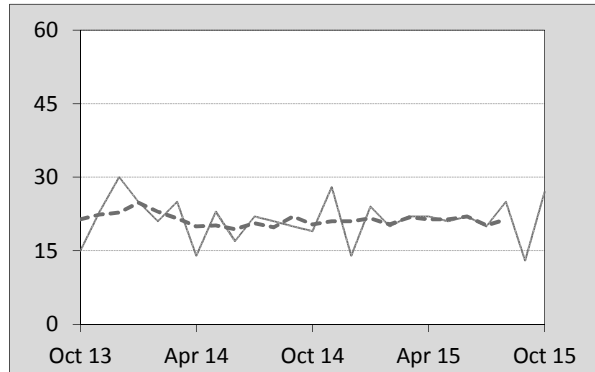
#### 4. Monthly deaths by jurisdiction — last 24 months

— raw  
 - - - smoothed  
 (unweighted 5-point moving average)

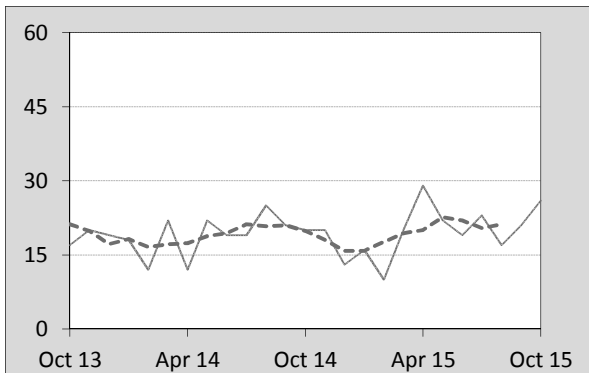
**Figure 4.1 NSW**



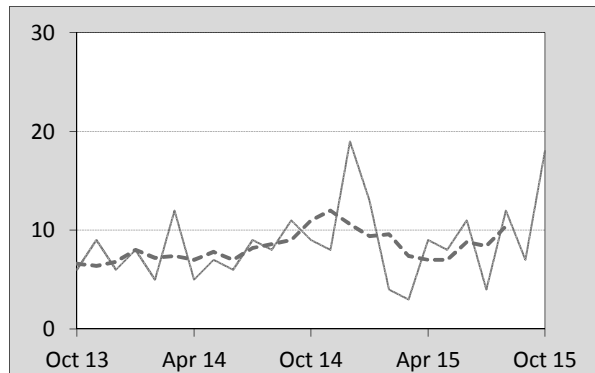
**Figure 4.2 Vic**



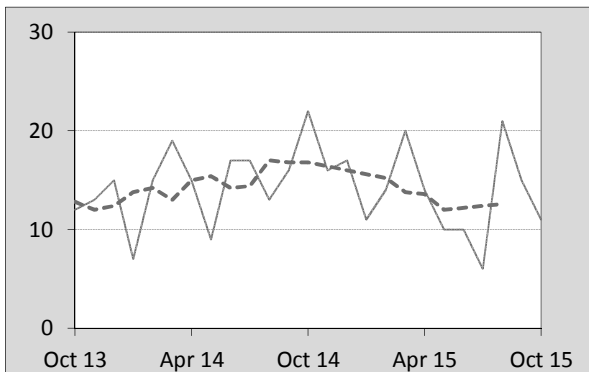
**Figure 4.3 Qld**



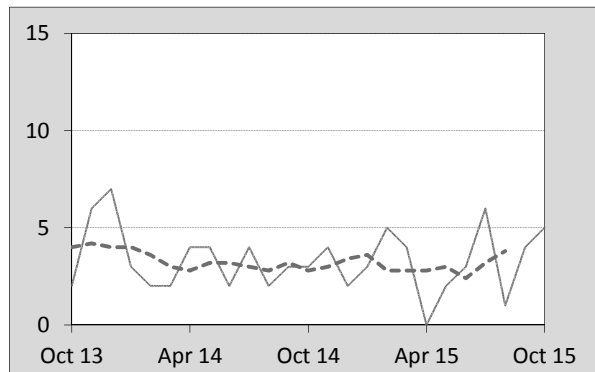
**Figure 4.4 SA**



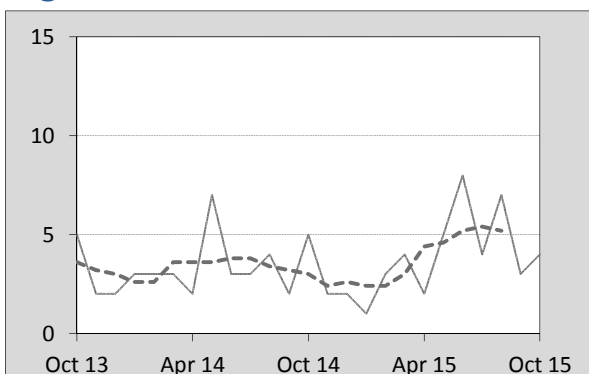
**Figure 4.5 WA**



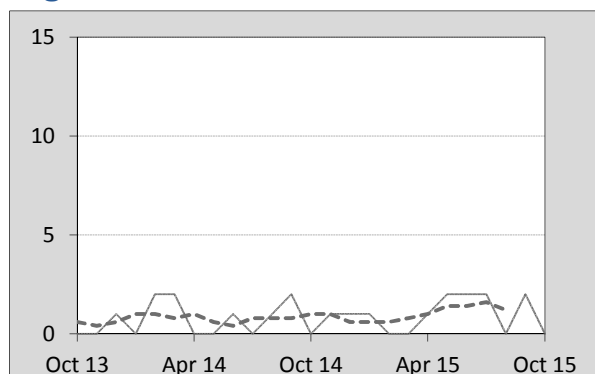
**Figure 4.6 Tas**



**Figure 4.7 NT**



**Figure 4.8 ACT**



## 5. Fatal crashes: counts and characteristics

**Table 5.1** By Crash type and Posted speed limit

12 months ended October	Crash type <sup>a</sup>			Posted speed limit				Total <sup>b</sup>
	Single	Multiple	Pedestrian	0 to 60	70 to 90	100	≥ 110	
2011	504	465	180	339	252	391	157	1,149
2012	525	513	172	406	274	374	141	1,210
2013	517	431	153	355	254	353	132	1,101
2014	489	430	156	323	235	374	128	1,075
2015	532	419	154	349	241	342	143	1,105
Latest per cent change	8.8	-2.6	-1.3	8.0	2.6	-8.6	11.7	2.8
Average trend change per year (per cent)	0.4	-3.8	-4.0	-1.7	-2.4	-2.6	-2.8	-1.9

**Table 5.2** By Day of week and Time of day

12 months ended October	Day of week <sup>c</sup>		Time of Day <sup>d</sup>	
	Weekday	Weekend	Day	Night
2011	690	459	701	448
2012	742	468	755	455
2013	661	440	696	405
2014	672	403	683	392
2015	661	444	675	430
Latest per cent change	-1.6	10.2	-1.2	9.7
Average trend change per year (per cent)	-1.8	-2.1	-1.7	-2.3

a 'Single' and 'Multiple' refer to the number of vehicles involved in a fatal crash where there is no pedestrian killed.

b Includes crashes where speed limit is unknown

c 'Weekday' refers to 6am Monday through to 5:59pm Friday.

d 'Day' refers to 6am through to 5:59 pm.

## Appendix

### Definition

The road safety agencies in each jurisdiction use detailed criteria to define road crashes and road deaths. Briefly, a death is classified as resulting from a road crash if the crash occurred on a public road, is unintentional and the death occurred within 30 days from injuries sustained in the crash.

### Population rates

Rates per population are based on the deaths to the current 12 monthly period, and the population at the midpoint of the period. The population at midpoints are interpolated if necessary.

### Average trend change ( % per year )

Calculated by fitting an exponential curve through the five data points, and quoting the constant (annual) change of this curve.

### Other sources for the tables in this bulletin

The underlying database used to produce this bulletin — *the Australian Road Deaths Database* is available for data extraction at <[http://www.bitre.gov.au/statistics/safety/fatal\\_road\\_crash\\_database.aspx](http://www.bitre.gov.au/statistics/safety/fatal_road_crash_database.aspx)>.

Road deaths from recent months are preliminary and subject to revision.