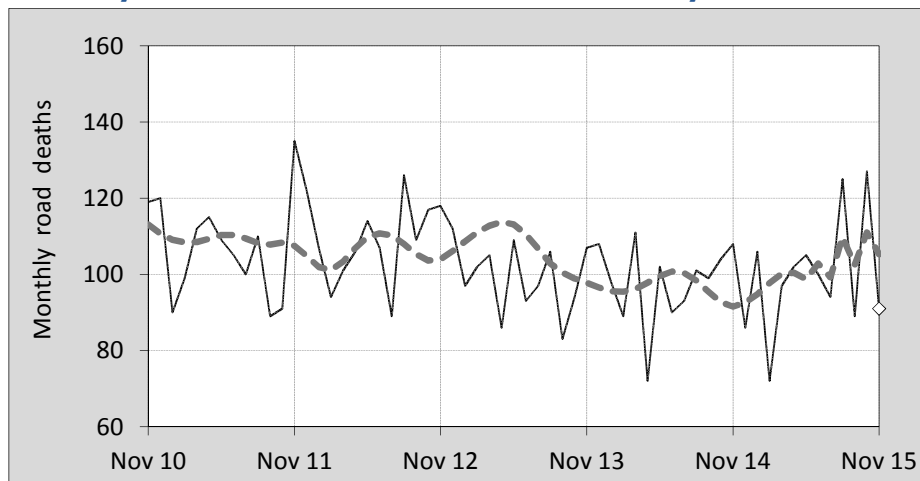




This month's key figures

- There was a total of 91 road deaths during the month of November 2015. In comparison to the average for November over the previous five years, the current figure is 22.5 per cent lower.
- During the 12 months ended November there were 1,194 road deaths. This is a 1.6 per cent increase compared to the total for the 12-monthly period ended November 2014.
- Presently the rate of annual deaths per 100,000 population stands at 5.0. Compared to the figure for the 12-monthly period ending November 2014, this is a 0.3 per cent increase.

Monthly Australian road deaths — last five years, with trend



Data Sources

Data are obtained from

- Transport for NSW
- Vicroads
- Department of Transport and Main Roads, Queensland
- Department of Planning, Transport and Infrastructure, S.A.
- Western Australia Police
- Department of State Growth, Tasmania
- Department of Transport, Northern Territory
- Territory and Municipal Services Directorate, ACT
- Australian Bureau of Statistics (3101.0)

Inquiries

For further information about data in this bulletin, contact:

Bureau of Infrastructure, Transport and
Regional Economics
Web : www.bitre.gov.au
Email : roadsafety@infrastructure.gov.au

Road deaths from recent months are preliminary and subject to revision.

© Copyright. Commonwealth of Australia

I. Deaths by jurisdiction

Table I.1 Current month

Current month	NSW	Vic	Qld	SA	WA	Tas	NT	ACT	Australia
November 2014	29	28	20	8	16	4	2	1	108
November 2015	30	17	22	8	11	1	1	1	91
Per cent change	3.4	-39.3	10.0	0.0	-31.3	-75.0	-50.0	0.0	-15.7

Table I.2 Year to date

Year to date	NSW	Vic	Qld	SA	WA	Tas	NT	ACT	Australia
January 2014 - November 2014	289	235	210	88	166	33	37	9	1,067
January 2015 - November 2015	321	233	226	97	144	34	42	11	1,108
Per cent change	11.1	-0.9	7.6	10.2	-13.3	3.0	13.5	22.2	3.8

Table I.3 Year ending November

12 months ended November	NSW	Vic	Qld	SA	WA	Tas	NT	ACT	Australia
2011	349	288	269	104	188	26	44	7	1,275
2012	381	285	283	90	182	28	50	11	1,310
2013	333	237	274	103	163	34	40	7	1,191
2014	317	265	229	94	181	40	39	10	1,175
2015	339	247	239	116	161	36	44	12	1,194
Latest per cent change	6.9	-6.8	4.4	23.4	-11.0	-10.0	12.8	20.0	1.6
Average trend change per year (per cent)	-2.4	-3.7	-4.4	2.7	-3.1	10.6	-2.5	10.3	-2.4

2. Deaths by road user, age-group and gender

Table 2.1 By road user

12 months ended November	Driver	Passenger	Pedestrian	Motorcyclist ^b	Pedal ^o cyclist	Total ^c
2011	582	281	183	196	32	1,275
2012	595	274	177	226	37	1,310
2013	581	207	150	200	45	1,191
2014	533	232	158	200	49	1,175
2015	554	242	163	203	29	1,194
Latest per cent change	3.9	4.3	3.2	1.5	-40.8	1.6
Average trend change per year (per cent)	-2.1	-4.5	-3.4	-0.5	0.8	-2.4

Table 2.2 By age-group^a (years)

12 months ended November	0 to 16	17 to 25	26 to 39	40 to 64	65 to 74	≥ 75	Total ^c
2011	89	285	272	397	84	148	1,275
2012	81	275	305	395	91	162	1,310
2013	63	242	246	377	114	149	1,191
2014	66	234	256	366	117	133	1,175
2015	63	230	266	373	116	146	1,194
Latest per cent change	-4.5	-1.7	3.9	1.9	-0.9	9.8	1.6
Average trend change per year (per cent)	-8.6	-5.7	-2.2	-2.0	9.4	-2.2	-2.4

2. Deaths by road user, age-group and gender (continued)

Table 2.3 By gender

12 months ended November	Males	Females	Total ^d
2011	918	355	1,275
2012	937	373	1,310
2013	849	341	1,191
2014	845	329	1,175
2015	856	338	1,194
Latest per cent change	1.3	2.7	1.6
Average trend change per year (per cent)	-2.4	-2.2	-2.4

a Age groups were changed in March 2014.

b Includes pillion passengers.

c Includes deaths to persons with either age or road user type not recorded.

d Includes deaths to persons with gender not recorded.

3. Annual deaths per 100,000 population

Table 3.1 Year ended November

12 months ended November	NSW	Vic	Qld	SA	WA	Tas	NT	ACT	Australia
2011	4.84	5.21	6.02	6.35	8.01	5.08	19.05	1.90	5.71
2012	5.22	5.07	6.21	5.44	7.49	5.47	21.26	2.94	5.77
2013	4.50	4.14	5.90	6.17	6.49	6.63	16.53	1.84	5.16
2014	4.22	4.54	4.85	5.58	7.06	7.77	16.01	2.59	5.01
2015	4.45	4.16	5.00	6.83	6.21	6.97	18.04	3.07	5.02
Latest per cent change	5.6	-8.3	3.1	22.4	-12.2	-10.3	12.7	18.4	0.3
Average trend change per year (per cent)	-3.7	-5.4	-6.0	1.7	-5.5	10.3	-3.9	8.6	-3.9

Table 3.2 Calendar year period

Calendar year	NSW	Vic	Qld	SA	WA	Tas	NT	ACT	Australia
2010	5.67	5.27	5.65	7.25	8.42	6.09	21.76	5.25	6.14
2011	5.04	5.18	6.01	6.28	7.61	4.69	19.46	1.63	5.72
2012	5.05	5.01	6.13	5.68	7.51	6.05	20.77	3.20	5.72
2013	4.50	4.24	5.83	5.87	6.44	7.02	15.25	1.84	5.13
2014	4.08	4.26	4.72	6.35	7.15	6.80	15.98	2.59	4.91
Latest per cent change	-9.2	0.6	-18.9	8.2	11.0	-3.1	4.7	41.2	-4.3

4. Monthly deaths by jurisdiction — last 24 months

— raw
 - - - smoothed
 (13-point moving average)

Figure 4.1 NSW

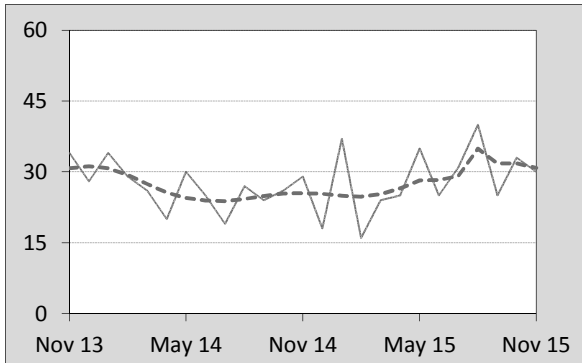


Figure 4.2 Vic

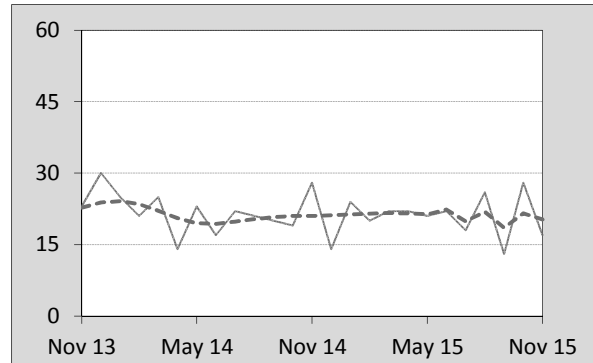


Figure 4.3 Qld

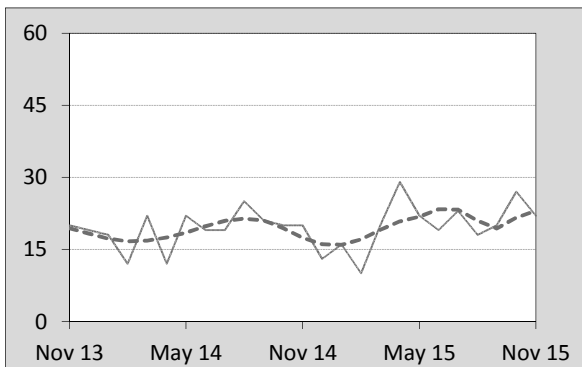


Figure 4.4 SA

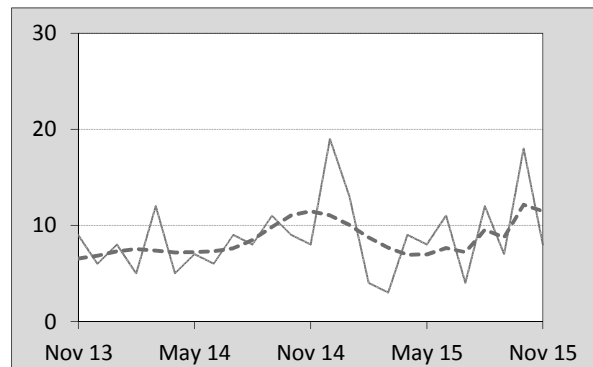


Figure 4.5 WA

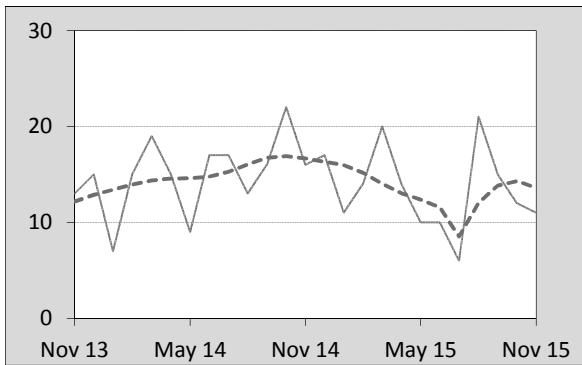


Figure 4.6 Tas

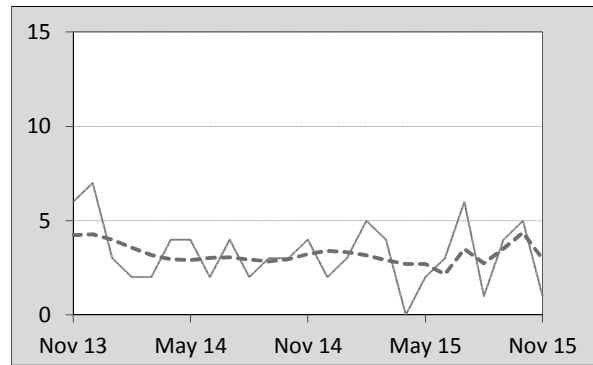


Figure 4.7 NT

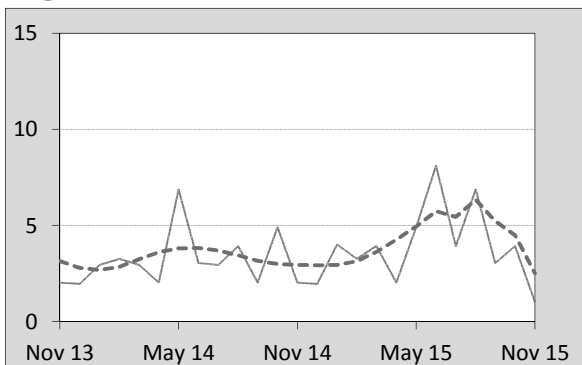
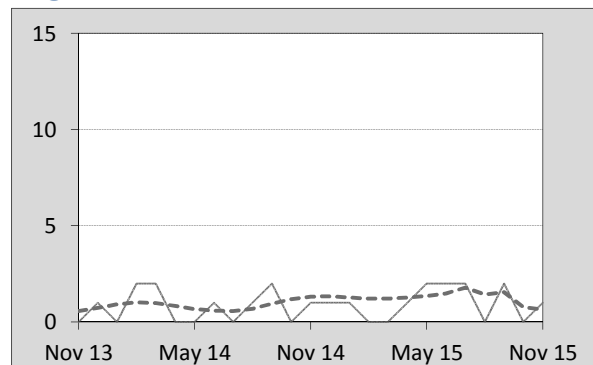


Figure 4.8 ACT



5. Fatal crashes: counts and characteristics

Table 5.1 By Crash type and Posted speed limit

12 months ended November	Crash type ^a			Posted speed limit				Total ^b
	Single	Multiple	Pedestrian	0 to 60	70 to 90	100	≥ 110	
2011	499	470	181	349	242	391	157	1,150
2012	521	506	174	405	282	368	131	1,201
2013	519	432	148	342	250	366	134	1,099
2014	478	440	157	329	235	369	128	1,075
2015	488	443	159	342	236	335	142	1,090
<i>Latest per cent change</i>	2.1	0.7	1.3	4.0	0.4	-9.2	10.9	1.4
<i>Average trend change per year (per cent)</i>	-1.3	-2.5	-3.6	-2.5	-2.3	-3.0	-2.2	-2.2

Table 5.2 By Day of week and Time of day

12 months ended November	Day of week ^c		Time of Day ^d	
	Weekday	Weekend	Day	Night
2011	684	466	700	450
2012	745	456	756	445
2013	649	450	693	406
2014	672	403	684	391
2015	664	426	670	420
<i>Latest per cent change</i>	-1.2	5.7	-2.0	7.4
<i>Average trend change per year (per cent)</i>	-1.6	-3.0	-1.9	-2.6

- a 'Single' and 'Multiple' refer to the number of vehicles involved in a fatal crash where there is no pedestrian killed.
 b Includes crashes where speed limit is unknown.
 c 'Weekday' refers to 6am Monday through to 5:59pm Friday.
 d 'Day' refers to 6am through to 5:59 pm.

Appendix

Definition

The road safety agencies in each jurisdiction use detailed criteria to define road crashes and road deaths. Briefly, a death is classified as resulting from a road crash if the crash occurred on a public road, is unintentional and the death occurred within 30 days from injuries sustained in the crash.

Population rates

Rates per population are based on the deaths to the current 12 monthly period, and the population at the midpoint of the period. The population at midpoints are interpolated if necessary.

Average trend change (% per year)

Calculated by fitting an exponential curve through the five data points, and quoting the constant (annual) change of this curve.

Other sources for the tables in this bulletin

The underlying database used to produce this bulletin — *the Australian Road Deaths Database* is available for data extraction at <http://www.bitre.gov.au/statistics/safety/fatal_road_crash_database.aspx>.

Road deaths from recent months are preliminary and subject to revision.