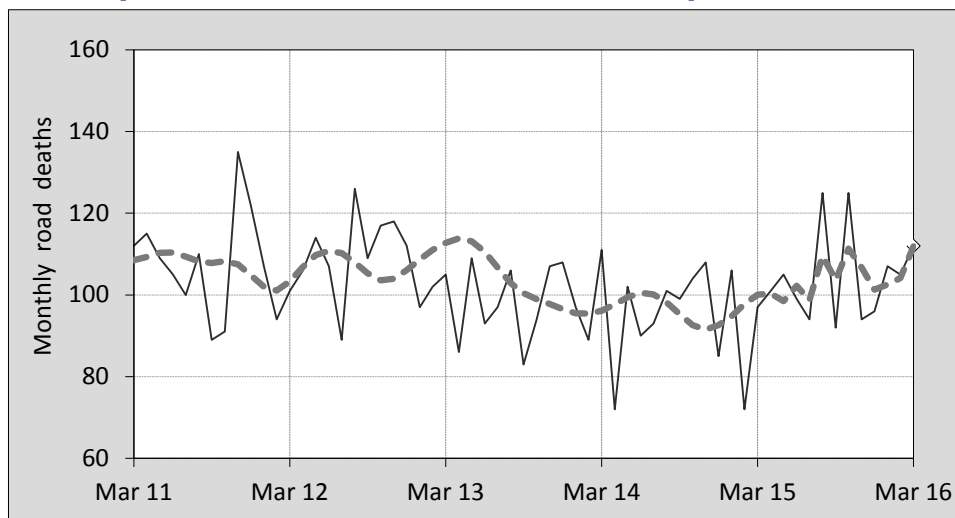




## This month's key figures

- There was a total of 112 road deaths during the month of March 2016. In comparison to the average for March over the previous five years, the current figure is 6.5 per cent higher.
- During the 12 months ended March, there were 1,255 road deaths. This is a 11.2 per cent increase compared to the total for the 12-month period ended March 2015.
- Presently, the rate of annual deaths per 100,000 population stands at 5.3. Compared to the figure for the 12-month period ending March 2015, this is a 9.7 per cent increase.

## Monthly Australian road deaths — last five years, with trend



### Data Sources

Data are obtained from

- Transport for NSW
- Vicroads
- Department of Transport and Main Roads, Queensland
- Department of Planning, Transport and Infrastructure, S.A.
- Western Australia Police
- Department of State Growth, Tasmania
- Department of Transport, Northern Territory
- Territory and Municipal Services Directorate, ACT
- Australian Bureau of Statistics (3101.0)

### Inquiries

For further information about data in this bulletin, contact:

Bureau of Infrastructure, Transport and  
Regional Economics  
Web : [www.bitre.gov.au](http://www.bitre.gov.au)  
Email : [roadsafety@infrastructure.gov.au](mailto:roadsafety@infrastructure.gov.au)

Road deaths from recent months are preliminary and subject to revision.

© Copyright. Commonwealth of Australia

## I. Deaths by jurisdiction

**Table I.1** Current month

Current month	NSW	Vic	Qld	SA	WA	Tas	NT	ACT	Australia
March 2015	24	22	21	3	20	3	4	0	97
March 2016	33	26	16	8	20	4	3	2	112
Per cent change	37.5	18.2	-23.8	166.7	0.0	33.3	-25.0	-	15.5

**Table I.2** Year to date

Year to date	NSW	Vic	Qld	SA	WA	Tas	NT	ACT	Australia
January 2015 - March 2015	77	66	47	20	45	11	8	1	275
January 2016 - March 2016	94	81	56	20	51	11	9	2	324
Per cent change	22.1	22.7	19.1	0.0	13.3	0.0	12.5	100.0	17.8

**Table I.3** Year ending March

12 months ended March	NSW	Vic	Qld	SA	WA	Tas	NT	ACT	Australia
2012	365	290	270	100	181	23	49	0	1,278
2013	357	269	298	101	181	34	46	16	1,302
2014	344	252	248	91	162	33	43	7	1,180
2015	295	243	218	102	187	39	38	7	1,129
2016	368	267	252	102	166	34	50	16	1,255
Latest per cent change	24.7	9.9	15.6	0.0	-11.2	-12.8	31.6	128.6	11.2
Average trend change per year (per cent)	-1.7	-2.6	-4.4	0.5	-1.4	9.6	-1.5	-	-1.8

## 2. Deaths by road user, age-group and gender

**Table 2.1** By road user

12 months ended March	Driver	Passenger	Pedestrian	Motorcyclist <sup>b</sup>	Pedal <sup>b</sup> cyclist	Total <sup>c</sup>
2012	569	288	184	202	33	1,278
2013	628	249	160	222	39	1,302
2014	542	213	166	202	52	1,180
2015	518	220	153	196	39	1,129
2016	589	240	165	223	35	1,255
Latest per cent change	13.7	9.1	7.8	13.8	-10.3	11.2
Average trend change per year (per cent)	-1.2	-4.8	-2.6	0.7	1.2	-1.8

**Table 2.2** By age-group<sup>a</sup> (years)

12 months ended March	0 to 16	17 to 25	26 to 39	40 to 64	65 to 74	≥ 75	Total <sup>c</sup>
2012	94	290	305	374	81	134	1,278
2013	74	288	286	409	100	144	1,302
2014	62	212	241	386	118	161	1,180
2015	63	225	251	348	106	133	1,129
2016	59	247	272	387	122	167	1,255
Latest per cent change	-6.3	9.8	8.4	11.2	15.1	25.6	11.2
Average trend change per year (per cent)	-10.3	-5.5	-3.5	-0.9	9.2	3.7	-1.8

## 2. Deaths by road user, age-group and gender (continued)

**Table 2.3** By gender

<b>12 months ended March</b>	<i>Males</i>	<i>Females</i>	<i>Total<sup>d</sup></i>
2012	930	346	1,278
2013	916	385	1,302
2014	858	322	1,180
2015	802	326	1,129
2016	905	349	1,255
<i>Latest per cent change</i>	12.8	7.1	11.2
<i>Average trend change per year (per cent)</i>	-1.9	-1.5	-1.8

a Age groups were changed in March 2014.

b Includes pillion passengers.

c Includes deaths to persons with either age or road user type not recorded.

d Includes deaths to persons with gender not recorded.

## 3. Annual deaths per 100,000 population

**Table 3.1** Year ended March

<b>12 months ended March</b>	<i>NSW</i>	<i>Vic</i>	<i>Qld</i>	<i>SA</i>	<i>WA</i>	<i>Tas</i>	<i>NT</i>	<i>ACT</i>	<i>Australia</i>
2012	5.04	5.22	6.00	6.09	7.63	4.49	21.07	0.00	5.70
2013	4.87	4.76	6.49	6.09	7.36	6.64	19.34	4.24	5.70
2014	4.63	4.37	5.31	5.44	6.41	6.43	17.69	1.83	5.08
2015	3.91	4.14	4.60	6.04	7.29	7.57	15.60	1.81	4.79
2016	4.81	4.47	5.26	6.00	6.39	6.57	20.45	4.08	5.26
<i>Latest per cent change</i>	23.1	8.0	14.3	-0.7	-12.3	-13.2	31.1	125.4	9.7
<i>Average trend change per year (per cent)</i>	-3.1	-4.3	-5.9	-0.4	-3.6	9.3	-2.7	-	-3.3

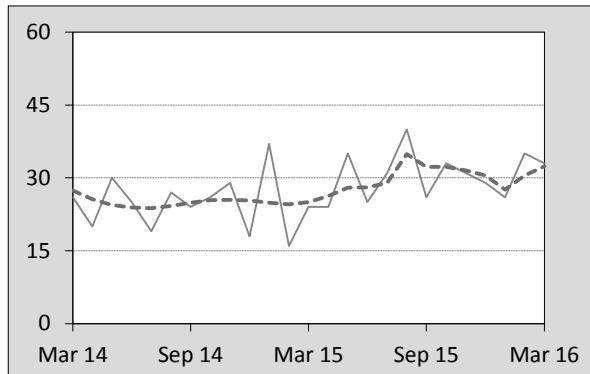
**Table 3.2** Calendar year period

<b>Calendar year</b>	<i>NSW</i>	<i>Vic</i>	<i>Qld</i>	<i>SA</i>	<i>WA</i>	<i>Tas</i>	<i>NT</i>	<i>ACT</i>	<i>Australia</i>
2011	5.04	5.18	6.01	6.28	7.61	4.69	19.46	1.63	5.72
2012	5.05	5.01	6.13	5.68	7.51	6.05	20.77	3.20	5.72
2013	4.50	4.24	5.83	5.87	6.44	7.02	15.25	1.84	5.13
2014	4.09	4.25	4.72	6.35	7.16	6.61	16.03	2.60	4.91
2015	4.61	4.24	5.08	6.00	6.18	6.58	20.06	3.84	5.07
<i>Latest per cent change</i>	12.8	-0.1	7.6	-5.4	-13.7	-0.4	25.2	47.9	3.4

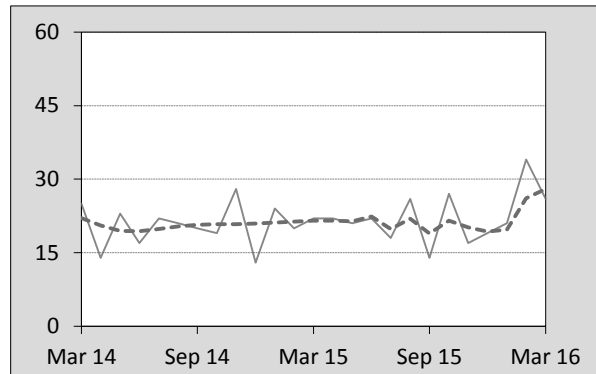
#### 4. Monthly deaths by jurisdiction — last 24 months

— raw  
 - - - smoothed  
 (13-point moving average)

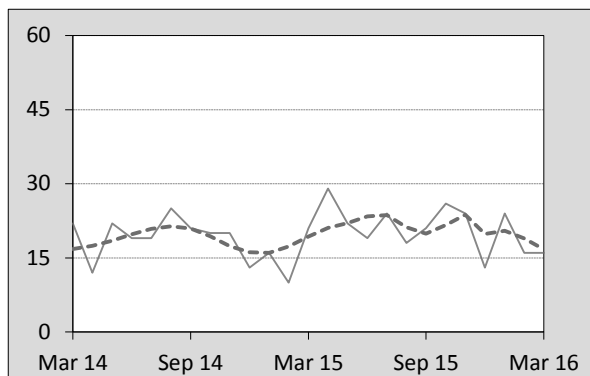
**Figure 4.1 NSW**



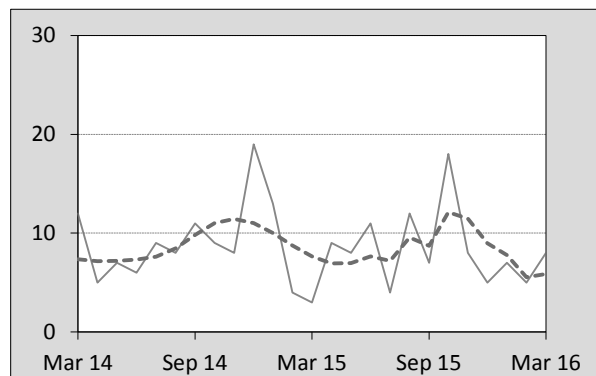
**Figure 4.2 Vic**



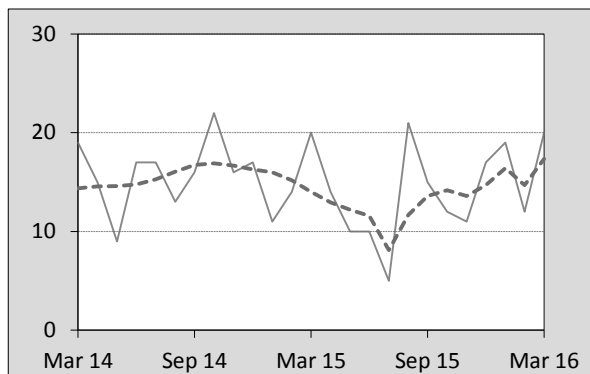
**Figure 4.3 Qld**



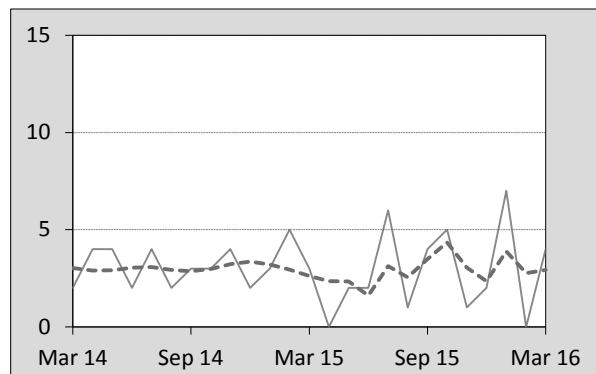
**Figure 4.4 SA**



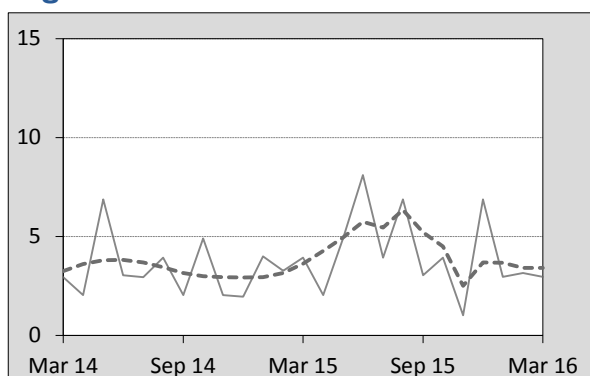
**Figure 4.5 WA**



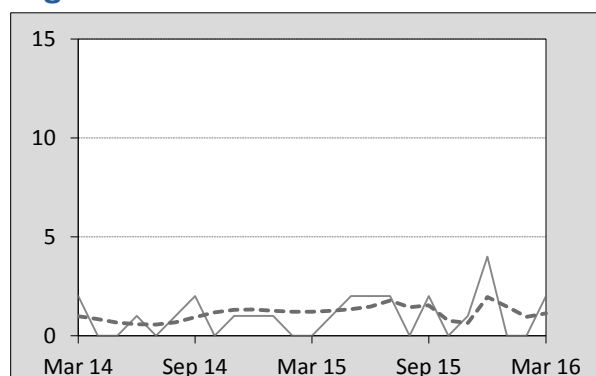
**Figure 4.6 Tas**



**Figure 4.7 NT**



**Figure 4.8 ACT**



## 5. Fatal crashes: counts and characteristics

**Table 5.1 By Crash type and Posted speed limit**

12 months ended March	Crash type <sup>a</sup>			Posted speed limit				Total <sup>b</sup>
	Single	Multiple	Pedestrian	0 to 60	70 to 90	100	≥ 110	
2012	519	457	180	351	245	403	145	1,156
2013	544	490	160	402	279	356	144	1,194
2014	485	441	164	340	243	370	125	1,090
2015	453	424	151	323	220	336	140	1,028
2016	520	471	161	362	246	359	151	1,152
Latest per cent change	14.8	11.1	6.6	12.1	11.8	6.8	7.9	12.1
Average trend change per year (per cent)	-1.8	-0.8	-2.8	-1.6	-2.3	-2.8	0.5	-1.6

**Table 5.2 By Day of week and Time of day**

12 months ended March	Day of week <sup>c</sup>		Time of Day <sup>d</sup>	
	Weekday	Weekend	Day	Night
2012	675	481	708	448
2013	738	456	742	452
2014	664	426	693	397
2015	632	396	650	378
2016	722	430	716	436
Latest per cent change	14.2	8.6	10.2	15.3
Average trend change per year (per cent)	-0.2	-3.6	-1.1	-2.3

a 'Single' and 'Multiple' refer to the number of vehicles involved in a fatal crash where there is no pedestrian killed.

b Includes crashes where speed limit is unknown.

c 'Weekday' refers to 6am Monday through to 5:59pm Friday.

d 'Day' refers to 6am through to 5:59 pm.

## Appendix

### Definition

The road safety agencies in each jurisdiction use detailed criteria to define road crashes and road deaths. Briefly, a death is classified as resulting from a road crash if the crash occurred on a public road, is unintentional and the death occurred within 30 days from injuries sustained in the crash.

### Population rates

Rates per population are based on the deaths to the current 12-month period, and the population at the midpoint of the period. The population at midpoints is interpolated if necessary.

### Average trend change ( % per year )

Calculated by fitting an exponential curve through the five data points, and quoting the constant (annual) change of this curve.

### Other sources for the tables in this bulletin

The underlying database used to produce this bulletin — the *Australian Road Deaths Database* is available for data extraction at <[http://www.bitre.gov.au/statistics/safety/fatal\\_road\\_crash\\_database.aspx](http://www.bitre.gov.au/statistics/safety/fatal_road_crash_database.aspx)>.

Road deaths from recent months are preliminary and subject to revision.

## 6. Supplementary data — Easter 2016

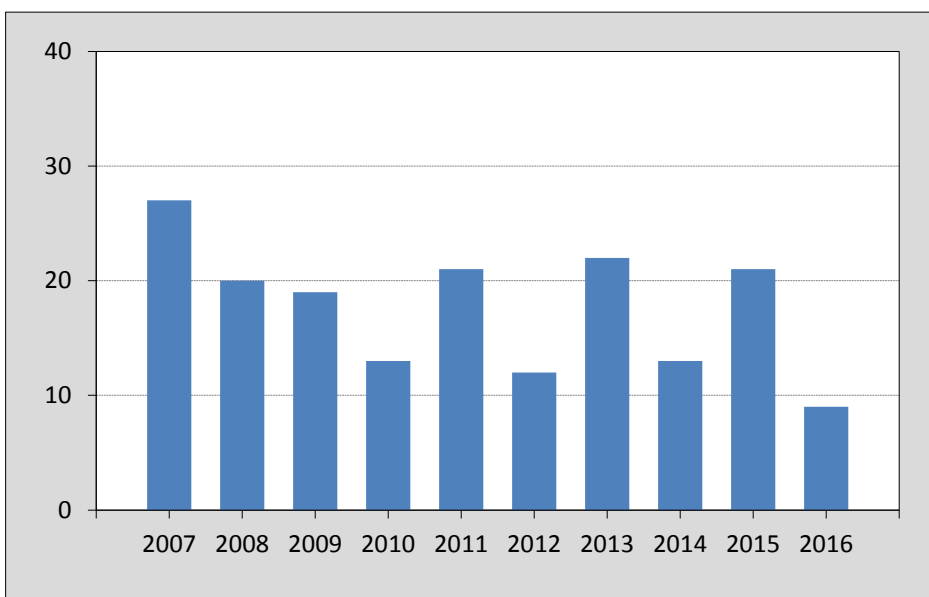
This month's supplementary section presents an analysis of a 5-day Easter period. There is no uniformly defined 'Easter holiday period' amongst Australia's road safety authorities. In some or all jurisdictions, there are defined periods of more stringent road safety enforcement, but the types and start-finish dates vary. The Australia and New Zealand Police Advisory Agency (ANZPAA) no longer publish the series of 'holiday period' fatalities.

The following analyses are based on a fixed 5-day period starting on the Thursday before Easter Sunday each year, referred to here as the 'Easter period'.

**Table 6.1** Fatalities during Easter period

	<i>NSW</i>	<i>Vic</i>	<i>Qld</i>	<i>SA</i>	<i>WA</i>	<i>Tas</i>	<i>NT</i>	<i>ACT</i>	<i>Australia</i>
2007	10	9	4	1	2	0	0	1	27
2008	0	4	6	1	6	3	0	0	20
2009	9	2	5	0	1	1	0	1	19
2010	3	3	2	3	1	0	0	1	13
2011	5	3	6	1	5	1	0	0	21
2012	2	5	1	1	0	0	3	0	12
2013	3	5	4	5	3	2	0	0	22
2014	2	1	3	0	6	1	0	0	13
2015	4	4	8	1	3	0	1	0	21
2016	2	2	0	1	3	0	1	0	9

**Figure 6.1** Fatalities during Easter period — Australia



## 6. Supplementary data — Easter 2016 (continued)

**Figure 6.2 Fatalities during Easter period — by jurisdiction**

