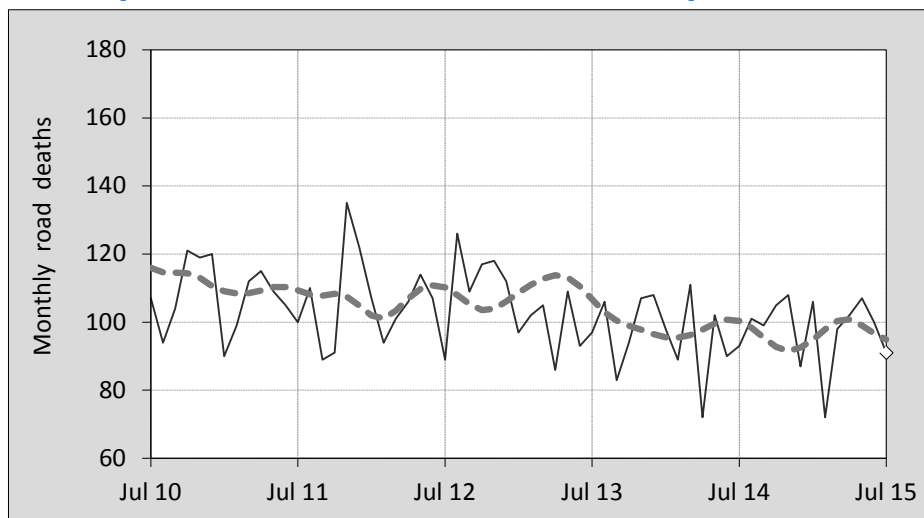




This month's key figures

- There was a total of 91 road deaths during the month of July 2015. In comparison to the average for July over the previous five years, the current figure is 6.4 per cent lower.
- During the 12 months ended July there were 1,176 road deaths. This is a 2.0 per cent increase compared to the total for the 12-monthly period ended July 2014.
- Presently the rate of annual deaths per 100,000 population stands at 5.0. Compared to the figure for the 12-monthly period ending July 2014, this is a 0.6 per cent increase.

Monthly Australian road deaths — last five years, with trend



Data Sources

Data are obtained from

- Transport for NSW
- Vicroads
- Department of Transport and Main Roads, Queensland
- Department of Planning, Transport and Infrastructure, S.A.
- Western Australia Police
- Department of State Growth, Tasmania
- Department of Transport, Northern Territory
- Territory and Municipal Services Directorate, ACT
- Australian Bureau of Statistics (3101.0)

Inquiries

For further information about data in this bulletin, contact:

Bureau of Infrastructure, Transport and
Regional Economics
Web : www.bitre.gov.au
Email : roadsafety@infrastructure.gov.au

Road deaths from recent months are preliminary and subject to revision.

© Copyright. Commonwealth of Australia

I. Deaths by jurisdiction

Table I.1 Current month

Current month	NSW	Vic	Qld	SA	WA	Tas	NT	ACT	Australia
July 2014	19	22	19	9	17	4	3	0	93
July 2015	30	18	22	4	6	5	4	2	91
Per cent change	57.9	-18.2	15.8	-55.6	-64.7	25.0	33.3	-	-2.2

Table I.2 Year to date

Year to date	NSW	Vic	Qld	SA	WA	Tas	NT	ACT	Australia
January 2014 - July 2014	183	147	124	52	99	21	24	5	655
January 2015 - July 2015	195	147	140	51	86	22	27	8	676
Per cent change	6.6	0.0	12.9	-1.9	-13.1	4.8	12.5	60.0	3.2

Table I.3 Year ending July

12 months ended July	NSW	Vic	Qld	SA	WA	Tas	NT	ACT	Australia
2011	361	293	253	111	190	29	43	8	1,288
2012	381	261	270	87	188	22	50	6	1,265
2013	343	262	298	106	177	32	43	10	1,271
2014	330	254	230	85	163	41	42	8	1,153
2015	321	249	239	106	170	36	42	13	1,176
Latest per cent change	-2.7	-2.0	3.9	24.7	4.3	-12.2	0.0	62.5	2.0
Average trend change per year (per cent)	-3.7	-3.5	-2.7	-1.1	-3.6	11.1	-2.2	13.4	-2.7

2. Deaths by road user, age-group and gender

Table 2.1 By road user

12 months ended July	Driver	Passenger	Pedestrian	Motorcyclist ^b	Pedal ^b cyclist	Total ^c
2011	609	265	172	207	34	1,288
2012	558	268	187	221	30	1,265
2013	621	249	152	202	39	1,271
2014	523	216	162	195	56	1,153
2015	543	241	149	206	32	1,176
Latest per cent change	3.8	11.6	-8.0	5.6	-42.9	2.0
Average trend change per year (per cent)	-2.9	-4.0	-4.2	-1.3	5.2	-2.7

Table 2.2 By age-group^a (years)

12 months ended July	0 to 16	17 to 25	26 to 39	40 to 64	65 to 74	≥ 75	Total ^c
2011	72	323	273	402	86	132	1,288
2012	89	267	311	371	80	147	1,265
2013	70	277	264	396	109	154	1,271
2014	63	211	249	377	115	137	1,153
2015	69	242	270	348	105	138	1,176
Latest per cent change	9.5	14.7	8.4	-7.7	-8.7	0.7	2.0
Average trend change per year (per cent)	-4.2	-7.8	-2.4	-2.7	7.9	0.2	-2.7

2. Deaths by road user, age-group and gender (continued)

Table 2.3 By gender

12 months ended July	<i>Males</i>	<i>Females</i>	<i>Total^d</i>
2011	939	348	1,288
2012	903	361	1,265
2013	911	359	1,271
2014	835	317	1,153
2015	830	346	1,176
<i>Latest per cent change</i>	-0.6	9.1	2.0
<i>Average trend change per year (per cent)</i>	-3.2	-1.4	-2.7

a Age groups were changed in March 2014.

b Includes pillion passengers

c Includes deaths to persons with either age or road user type not recorded.

d Includes deaths to persons with gender not recorded.

3. Annual deaths per 100,000 population

Table 3.1 Year ended July

12 months ended July	<i>NSW</i>	<i>Vic</i>	<i>Qld</i>	<i>SA</i>	<i>WA</i>	<i>Tas</i>	<i>NT</i>	<i>ACT</i>	<i>Australia</i>
2011	5.02	5.32	5.69	6.79	8.17	5.68	18.67	2.19	5.80
2012	5.24	4.67	5.96	5.28	7.83	4.30	21.45	1.61	5.61
2013	4.66	4.60	6.45	6.37	7.12	6.24	17.93	2.64	5.54
2014	4.42	4.38	4.90	5.07	6.40	7.98	17.25	2.08	4.94
2015	4.24	4.23	5.03	6.26	6.58	6.99	17.21	3.35	4.97
<i>Latest per cent change</i>	-4.0	-3.6	2.5	23.6	2.8	-12.4	-0.3	60.8	0.6
<i>Average trend change per year (per cent)</i>	-5.0	-5.1	-4.4	-2.0	-6.2	10.9	-3.7	11.7	-4.2

Table 3.2 Calendar year period

Calendar year	<i>NSW</i>	<i>Vic</i>	<i>Qld</i>	<i>SA</i>	<i>WA</i>	<i>Tas</i>	<i>NT</i>	<i>ACT</i>	<i>Australia</i>
2010	5.67	5.27	5.65	7.25	8.42	6.09	21.76	5.25	6.14
2011	5.04	5.18	6.01	6.28	7.61	4.69	19.46	1.63	5.72
2012	5.05	5.01	6.13	5.68	7.51	6.05	20.77	3.20	5.72
2013	4.50	4.24	5.83	5.87	6.44	7.02	15.25	1.84	5.13
2014	4.11	4.26	4.72	6.35	7.13	6.80	15.94	2.59	4.92
<i>Latest per cent change</i>	-8.5	0.6	-18.9	8.2	10.8	-3.1	4.5	41.2	-4.2

4. Monthly deaths by jurisdiction — last 24 months

— raw
 - - - smoothed
 (unweighted 5-point moving average)

Figure 4.1 NSW

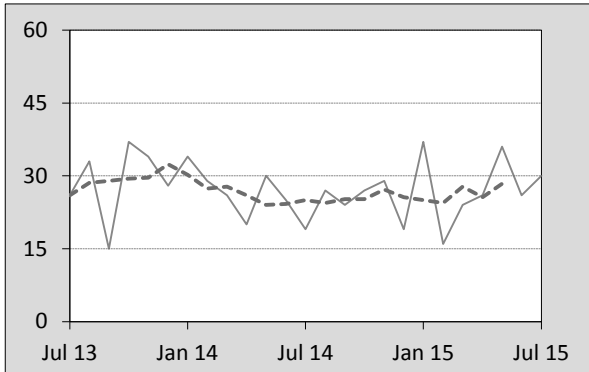


Figure 4.2 Vic

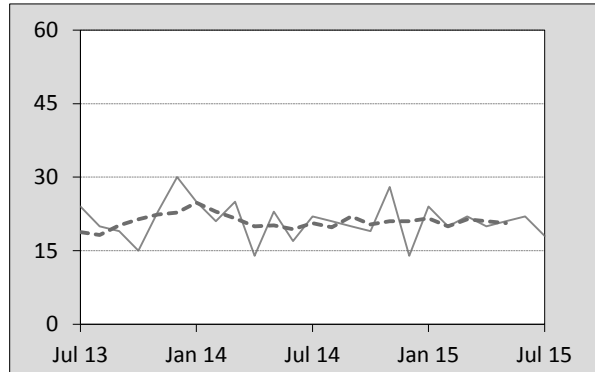


Figure 4.3 Qld

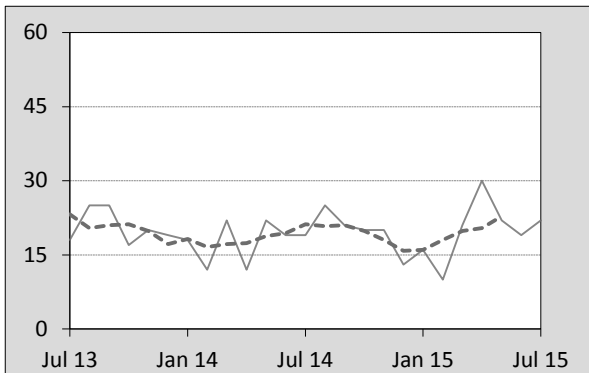


Figure 4.4 SA

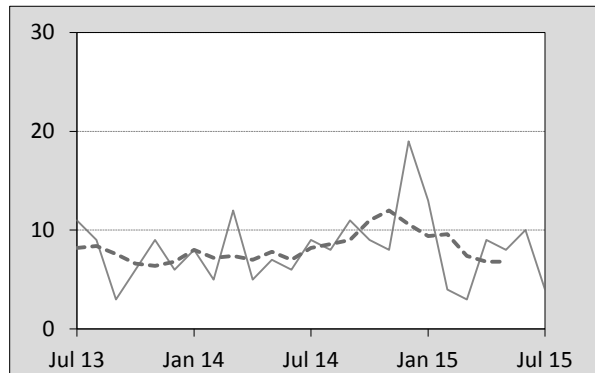


Figure 4.5 WA

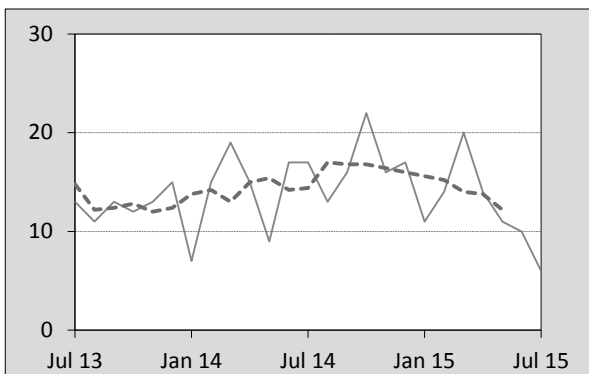


Figure 4.6 Tas

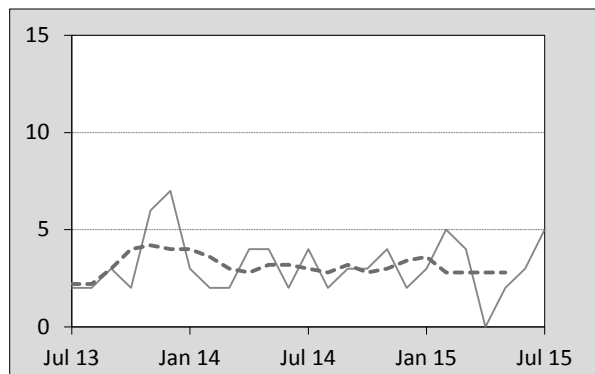


Figure 4.7 NT

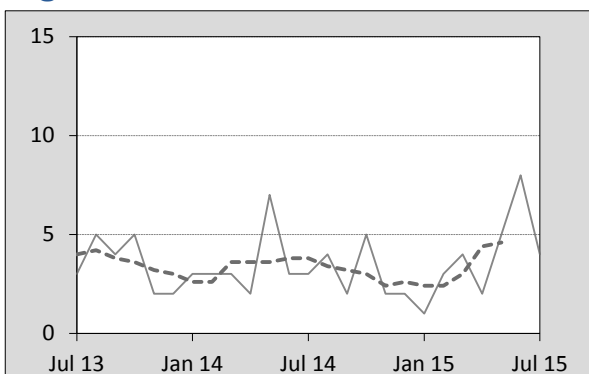
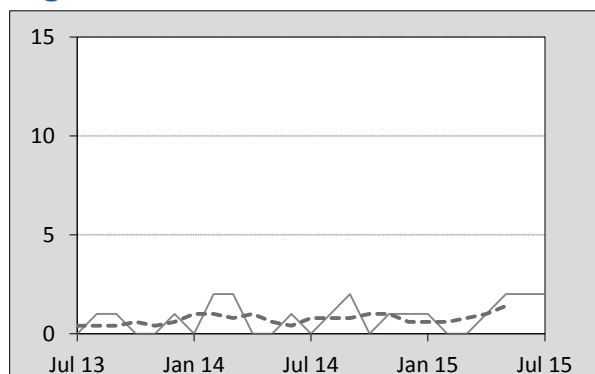


Figure 4.8 ACT



5. Fatal crashes: counts and characteristics

Table 5.1 By Crash type and Posted speed limit

12 months ended July	Crash type ^a			Posted speed limit				Total ^b
	Single	Multiple	Pedestrian	0 to 60	70 to 90	100	≥ 110	
2011	527	483	170	333	271	408	160	1,180
2012	498	475	183	398	255	363	127	1,156
2013	542	463	151	372	263	366	143	1,156
2014	466	438	160	320	242	356	133	1,064
2015	485	436	147	337	215	354	141	1,068
Latest per cent change	4.1	-0.5	-8.1	5.3	-11.2	-0.6	6.0	0.4
Average trend change per year (per cent)	-2.3	-2.8	-4.2	-1.9	-5.0	-3.0	-2.0	-2.8

Table 5.2 By Day of week and Time of day

12 months ended July	Day of week ^c		Time of Day ^d	
	Weekday	Weekend	Day	Night
2011	701	479	695	485
2012	698	458	725	431
2013	710	446	725	431
2014	643	421	670	394
2015	651	417	662	406
Latest per cent change	1.2	-1.0	-1.2	3.0
Average trend change per year (per cent)	-2.3	-3.6	-1.7	-4.4

a 'Single' and 'Multiple' refer to the number of vehicles involved in a fatal crash where there is no pedestrian killed.

b Includes crashes where speed limit is unknown

c 'Weekday' refers to 6am Monday through to 5:59pm Friday.

d 'Day' refers to 6am through to 5:59 pm.

Appendix

Definition

The road safety agencies in each jurisdiction use detailed criteria to define road crashes and road deaths. Briefly, a death is classified as resulting from a road crash if the crash occurred on a public road, is unintentional and the death occurred within 30 days from injuries sustained in the crash.

Population rates

Rates per population are based on the deaths to the current 12 monthly period, and the population at the midpoint of the period. The population at midpoints are interpolated if necessary.

Average trend change (% per year)

Calculated by fitting an exponential curve through the five data points, and quoting the constant (annual) change of this curve.

Other sources for the tables in this bulletin

The underlying database used to produce this bulletin — *the Australian Road Deaths Database* is available for data extraction at <http://www.bitre.gov.au/statistics/safety/fatal_road_crash_database.aspx>.

Road deaths from recent months are preliminary and subject to revision.