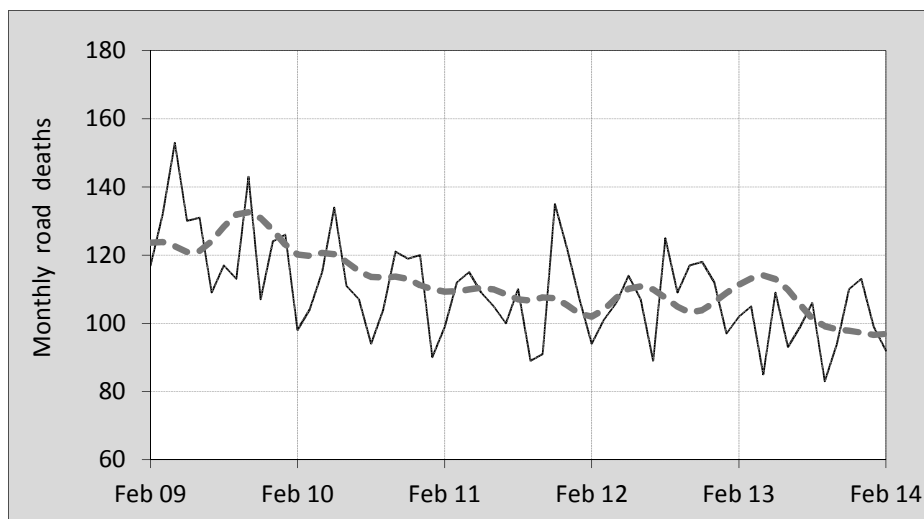




This month's key figures

- There was a total of 92 road deaths during the month of February 2014. In comparison to the average for February over the previous five years, the current figure is 9.8 per cent lower.
- During the 12 months ended February there were 1,188 road deaths. This is a 8.4 per cent reduction compared to the total for the 12-monthly period ended February 2013.
- Presently the rate of annual deaths per 100,000 population stands at 5.1. Compared to the figure for the 12-monthly period ending February 2013, this is a 10.0 per cent reduction.

Monthly Australian road deaths — last five years, with trend



Data Sources

Data are obtained from

- Transport for NSW
- Vicroads
- Department of Transport and Main Roads, Queensland
- Department for Transport, Energy and Infrastructure, S.A.
- Western Australia Police
- Department of Infrastructure, Energy and Resources, Tasmania
- Department of Transport, Northern Territory
- Department of Territory and Municipal Services, ACT
- Australian Bureau of Statistics (3101.0)

Inquiries

For further information about data in this bulletin, contact:

Bureau of Infrastructure, Transport and Regional Economics

Web : www.bitre.gov.au

Email : roadsafety@infrastructure.gov.au

Road deaths from recent months are preliminary and subject to revision.

© Copyright. Commonwealth of Australia

I. Current month and year to date

Deaths by jurisdiction

Current month	NSW	Vic	Qld	SA	WA	Tas	NT	ACT	Australia
February 2013	33	24	24	4	13	3	1	0	102
February 2014	31	21	12	6	15	2	3	2	92
Per cent change	-6.1	-12.5	-50.0	50.0	15.4	-33.3	200.0	-	-9.8

Year to date	NSW	Vic	Qld	SA	WA	Tas	NT	ACT	Australia
January 2013 - February 2013	48	38	56	15	33	5	3	1	199
January 2014 - February 2014	65	46	31	14	22	5	6	2	191
Per cent change	35.4	21.1	-44.6	-6.7	-33.3	0.0	100.0	100.0	-4.0

2. Yearly deaths — last five 12 monthly periods

Deaths by jurisdiction

12 months ended February	NSW	Vic	Qld	SA	WA	Tas	NT	ACT	Australia
2010	471	292	313	128	175	54	35	15	1,483
2011	386	275	247	109	207	30	46	18	1,318
2012	363	299	278	97	176	24	48	4	1,289
2013	360	270	294	94	188	31	47	13	1,297
2014	360	250	246	97	151	36	40	8	1,188
Latest per cent change	0.0	-7.4	-16.3	3.2	-19.7	16.1	-14.9	-38.5	-8.4
Average trend change per year (per cent)	-5.9	-3.2	-3.0	-6.8	-3.8	-7.5	2.9	-14.6	-4.5

Deaths by road user

12 months ended February	Driver	Passenger	Pedestrian	Motorcyclist	Cyclist	Total ^a
2010	701	332	197	220	33	1,483
2011	613	277	165	226	36	1,318
2012	571	290	192	200	34	1,289
2013	622	248	162	225	36	1,297
2014	556	211	156	208	50	1,188
Latest per cent change	-10.6	-14.9	-3.7	-7.6	38.9	-8.4
Average trend change per year (per cent)	-4.4	-9.7	-4.7	-1.2	8.7	-4.5

a Includes deaths where road user type is unknown

Deaths by age-group (years)

12 months ended February	<i>0 to 16</i>	<i>17 to 25</i>	<i>26 to 39</i>	<i>40 to 59</i>	<i>60 to 69</i>	<i>≥ 70</i>	<i>Total^b</i>
2010	107	349	344	381	110	191	1,483
2011	68	315	289	365	114	167	1,318
2012	95	293	298	311	106	186	1,289
2013	73	280	293	328	132	190	1,297
2014	66	217	241	326	128	207	1,188
<i>Latest per cent change</i>	-9.6	-22.5	-17.7	-0.6	-3.0	8.9	-8.4
<i>Average trend change per year (per cent)</i>	-8.6	-10.1	-6.7	-4.1	4.6	2.9	-4.5

b Includes deaths to persons with age not recorded.

Deaths by gender

12 months ended February	<i>Males</i>	<i>Females</i>	<i>Total^c</i>
2010	1,086	395	1,483
2011	951	366	1,318
2012	940	347	1,289
2013	920	376	1,297
2014	859	328	1,188
<i>Latest per cent change</i>	-6.6	-12.8	-8.4
<i>Average trend change per year (per cent)</i>	-4.9	-3.4	-4.5

c Includes deaths to persons with gender not recorded.

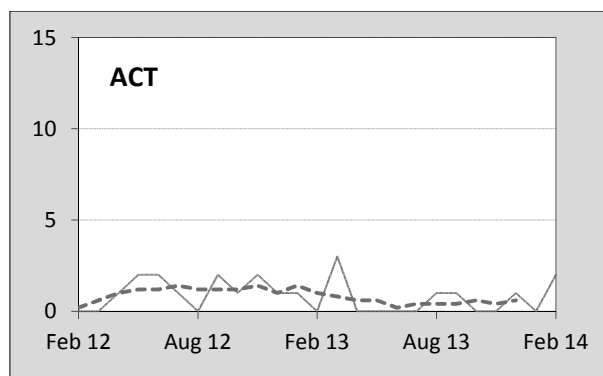
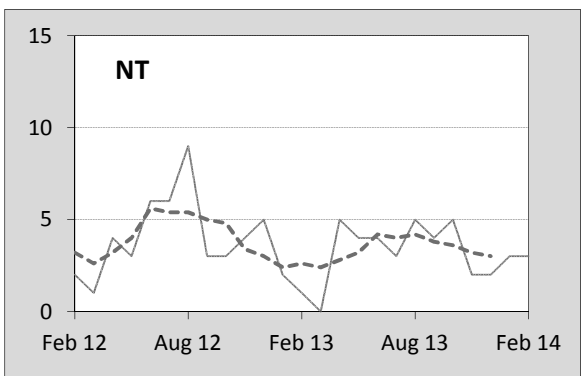
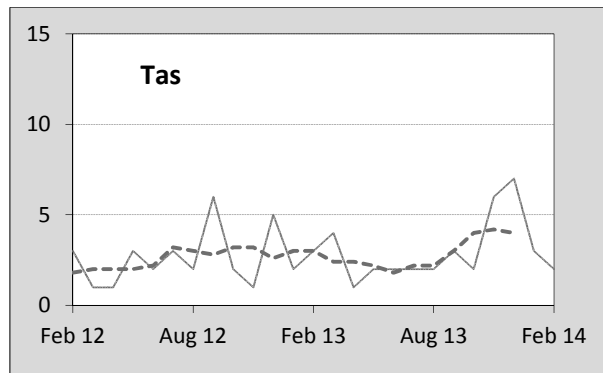
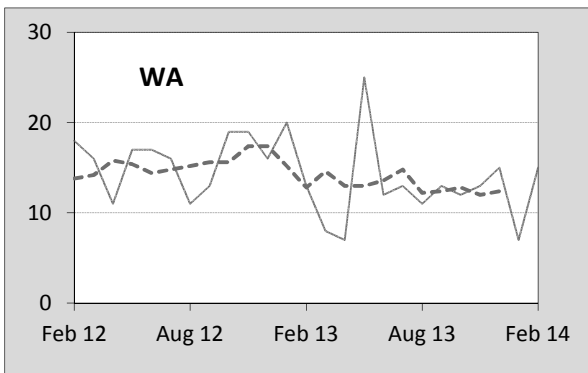
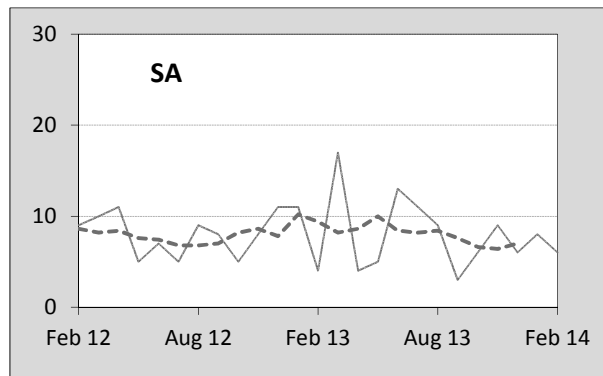
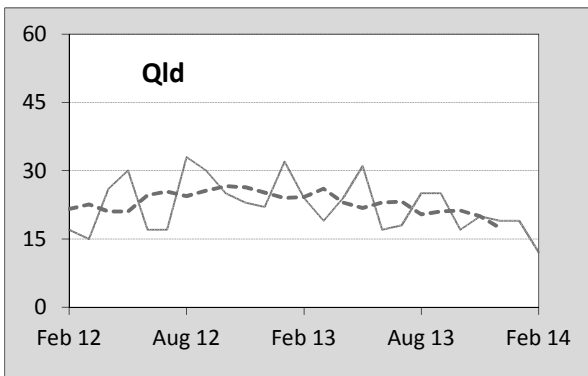
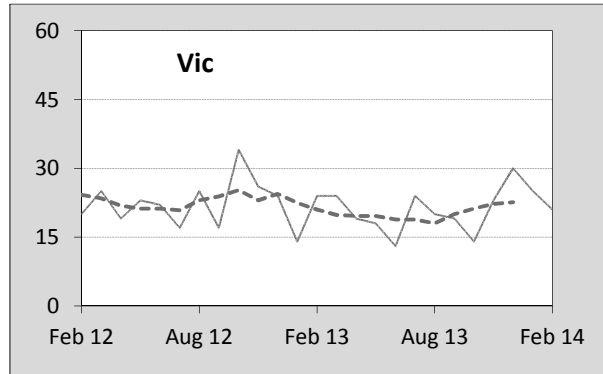
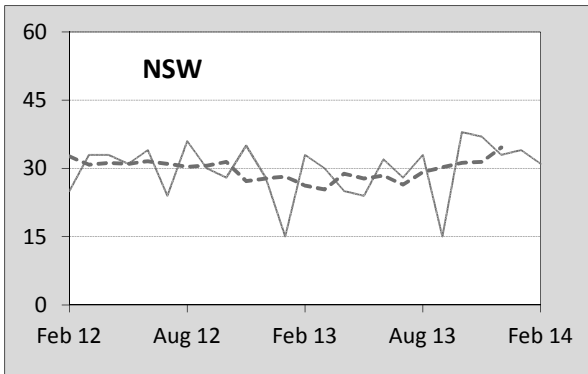
3. Annual deaths per 100,000 population

By jurisdiction

12 months ended February	<i>NSW</i>	<i>Vic</i>	<i>Qld</i>	<i>SA</i>	<i>WA</i>	<i>Tas</i>	<i>NT</i>	<i>ACT</i>	<i>Australia</i>
2010	6.65	5.42	7.21	7.94	7.74	10.69	14.99	4.22	6.80
2011	5.39	5.02	5.59	6.69	9.08	5.89	19.55	4.97	5.97
2012	5.02	5.38	6.19	5.91	7.40	4.69	20.25	1.08	5.75
2013	4.92	4.78	6.41	5.67	7.67	6.05	19.90	3.45	5.69
2014	4.85	4.35	5.27	5.80	5.97	7.02	16.62	2.08	5.12
<i>Latest per cent change</i>	-1.4	-9.1	-17.9	2.3	-22.2	15.9	-16.4	-39.8	-10.0
<i>Average trend change per year (per cent)</i>	-7.0	-4.8	-4.8	-7.6	-6.6	-7.8	2.3	-16.3	-6.0
Calendar year	<i>NSW</i>	<i>Vic</i>	<i>Qld</i>	<i>SA</i>	<i>WA</i>	<i>Tas</i>	<i>NT</i>	<i>ACT</i>	<i>Australia</i>
2009	6.42	5.40	7.65	7.40	8.48	12.49	13.27	3.38	6.86
2010	5.67	5.27	5.65	7.25	8.42	6.09	21.32	5.25	6.14
2011	5.04	5.18	6.01	6.28	7.65	4.69	19.02	1.63	5.72
2012	5.05	5.01	6.13	5.68	7.47	6.05	20.83	3.20	5.72
2013	4.63	4.22	5.82	5.87	6.44	7.02	15.45	1.83	5.17
<i>Latest per cent change</i>	-8.3	-15.8	-5.1	3.3	-13.9	15.9	-25.8	-42.9	-9.5

4. Monthly deaths by jurisdiction — last 24 months

— raw
 - - - smoothed (unweighted 5-point moving average)



5. Fatal crashes: counts and characteristics

12 months ended February	Crash type ^d			Posted speed limit				Total ^e
	Single	Multiple	Pedestrian	0 to 60	70 to 90	100	≥ 110	
2010	641	501	191	406	312	436	171	1,333
2011	530	521	163	361	272	408	168	1,214
2012	518	460	188	354	248	410	142	1,166
2013	527	495	162	408	274	350	141	1,184
2014	511	434	154	324	249	363	135	1,099
Average trend change per year (per cent)	-4.5	-3.3	-4.3	-3.2	-4.3	-5.1	-6.3	-4.0

12 months ended February	Day of week ^f		Time of Day ^g	
	Weekday	Weekend	Day	Night
2010	818	515	774	559
2011	701	513	723	491
2012	692	474	711	455
2013	728	456	732	452
2014	663	436	699	400
Average trend change per year (per cent)	-3.8	-4.4	-1.9	-7.2

d 'Single' and 'Multiple' refer to the number of vehicles involved in a fatal crash where there is no pedestrian killed.

e Includes crashes where speed limit is unknown

f 'Weekday' refers to 6am Monday through to 5:59pm Friday.

g 'Day' refers to 6am through to 5:59 pm.

Appendix

Definition

The road safety agencies in each jurisdiction use detailed criteria to define road crashes and road deaths. Briefly, a death is classified as resulting from a road crash if the crash occurred on a public road, is unintentional and the death occurred within 30 days from injuries sustained in the crash.

Population rates

Rates per population are based on the deaths to the current 12 monthly period, and the population at the midpoint of the period. The population at midpoints are interpolated if necessary.

Average trend change (% per year)

Calculated by fitting an exponential curve through the five data points, and quoting the constant (annual) change of this curve.

Other sources for the tables in this bulletin

The underlying database used to produce this bulletin — the Australian Road Deaths Database is available for online querying and data extraction at

< http://www.bitre.gov.au/statistics/safety/fatal_road_crash_database.aspx >

Road deaths from recent months are preliminary and subject to revision.