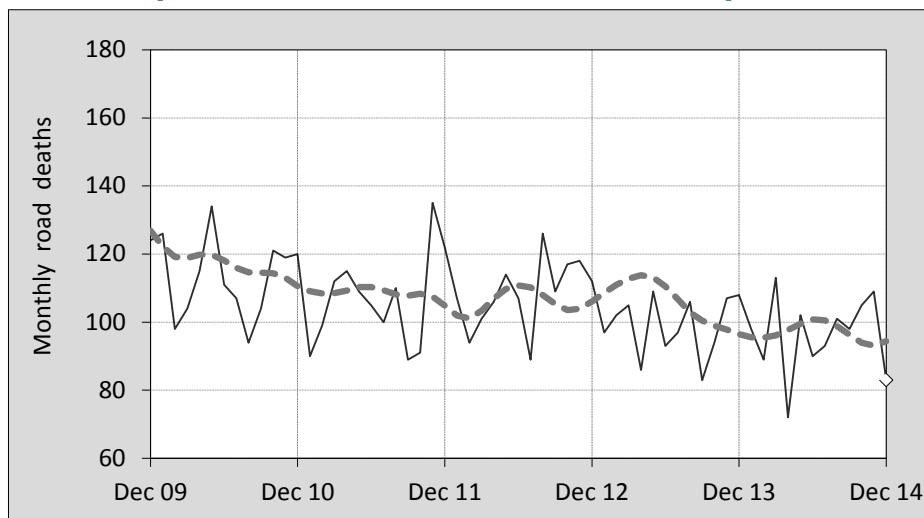




## This month's key figures

- There was a total of 83 road deaths during the month of December 2014. In comparison to the average for December over the previous five years, the current figure is 29.2 per cent lower.
- During the 12 months ended December there were 1,153 road deaths. This is a 2.9 per cent reduction compared to the total for the 12-monthly period ended December 2013.
- Presently the rate of annual deaths per 100,000 population stands at 4.9. Compared to the figure for the 12-monthly period ending December 2013, this is a 4.4 per cent reduction.

## Monthly Australian road deaths — last five years, with trend



### Data Sources

Data are obtained from

- Transport for NSW
- Vicroads
- Department of Transport and Main Roads, Queensland
- Department of Planning, Transport and Infrastructure, S.A.
- Western Australia Police
- Department of State Growth, Tasmania
- Department of Transport, Northern Territory
- Territory and Municipal Services Directorate, ACT
- Australian Bureau of Statistics (3101.0)

### Inquiries

For further information about data in this bulletin, contact:

Bureau of Infrastructure, Transport and  
Regional Economics  
Web : [www.bitre.gov.au](http://www.bitre.gov.au)  
Email : [roadsafety@infrastructure.gov.au](mailto:roadsafety@infrastructure.gov.au)

Road deaths from recent months are preliminary and subject to revision.

© Copyright. Commonwealth of Australia

## I. Deaths by jurisdiction

**Table I.1** Current month

Current month	NSW	Vic	Qld	SA	WA	Tas	NT	ACT	Australia
December 2013	28	30	19	6	15	7	2	1	108
December 2014	17	15	13	19	14	2	2	1	83
Per cent change	-39.3	-50.0	-31.6	216.7	-6.7	-71.4	0.0	0.0	-23.1

**Table I.2** Year to date

Year to date	NSW	Vic	Qld	SA	WA	Tas	NT	ACT	Australia
January 2013 - December 2013	333	243	271	98	162	36	37	7	1,187
January 2014 - December 2014	309	249	223	107	181	35	39	10	1,153
Per cent change	-7.2	2.5	-17.7	9.2	11.7	-2.8	5.4	42.9	-2.9

**Table I.3** Year ending December

12 months ended December	NSW	Vic	Qld	SA	WA	Tas	NT	ACT	Australia
2010	405	288	249	118	193	31	50	19	1,353
2011	364	287	269	103	179	24	45	6	1,277
2012	369	282	280	94	183	31	49	12	1,300
2013	333	243	271	98	162	36	37	7	1,187
2014	309	249	223	107	181	35	39	10	1,153
Latest per cent change	-7.2	2.5	-17.7	9.2	11.7	-2.8	5.4	42.9	-2.9
Average trend change per year (per cent)	-6.1	-4.5	-2.1	-2.4	-2.3	6.7	-6.7	-10.7	-3.9

## 2. Deaths by road user, age-group and gender

**Table 2.1** By road user

12 months ended December	Driver	Passenger	Pedestrian	Motorcyclist <sup>b</sup>	Pedal <sup>b</sup> cyclist	Total <sup>c</sup>
2010	636	284	170	224	38	1,353
2011	568	286	186	202	34	1,277
2012	610	260	170	223	33	1,300
2013	557	202	158	213	50	1,187
2014	532	230	151	192	45	1,153
Latest per cent change	-4.5	13.9	-4.4	-9.9	-10.0	-2.9
Average trend change per year (per cent)	-3.7	-7.4	-3.9	-2.5	7.5	-3.9

**Table 2.2** By age-group<sup>a</sup> (years)

12 months ended December	0 to 16	17 to 25	26 to 39	40 to 64	65 to 74	≥ 75	Total <sup>c</sup>
2010	74	336	305	418	97	122	1,353
2011	93	280	275	398	83	148	1,277
2012	70	284	300	400	96	149	1,300
2013	66	230	243	374	118	156	1,187
2014	66	230	252	362	111	127	1,153
Latest per cent change	0.0	0.0	3.7	-3.2	-5.9	-18.6	-2.9
Average trend change per year (per cent)	-5.6	-9.1	-4.9	-3.4	6.4	1.3	-3.9

## 2. Deaths by road user, age-group and gender (continued)

**Table 2.3** By gender

<b>12 months ended December</b>	<i>Males</i>	<i>Females</i>	<i>Total<sup>d</sup></i>
2010	982	370	1,353
2011	920	355	1,277
2012	931	369	1,300
2013	852	334	1,187
2014	821	331	1,153
<i>Latest per cent change</i>	-3.6	-0.9	-2.9
<i>Average trend change per year (per cent)</i>	-4.3	-2.8	-3.9

a Age groups were changed in March 2014.

b Includes pillion passengers

c Includes deaths to persons with either age or road ruser type not recorded.

d Includes deaths to persons with gender not recorded.

## 3. Annual deaths per 100,000 population

**Table 3.1** Year ended December

<b>12 months ended December</b>	<i>NSW</i>	<i>Vic</i>	<i>Qld</i>	<i>SA</i>	<i>WA</i>	<i>Tas</i>	<i>NT</i>	<i>ACT</i>	<i>Australia</i>
2010	5.67	5.27	5.65	7.25	8.42	6.09	21.76	5.25	6.14
2011	5.04	5.18	6.01	6.28	7.61	4.69	19.46	1.63	5.72
2012	5.05	5.01	6.13	5.68	7.47	6.05	20.77	3.20	5.72
2013	4.49	4.24	5.83	5.87	6.43	7.02	15.26	1.84	5.13
2014	4.11	4.26	4.72	6.35	7.03	6.80	15.91	2.59	4.91
<i>Latest per cent change</i>	-8.6	0.6	-18.9	8.2	9.4	-3.1	4.3	41.1	-4.4
<i>Average trend change per year (per cent)</i>	-7.3	-6.1	-3.8	-3.3	-5.2	6.4	-8.3	-12.1	-5.4

**Table 3.2** Calendar year period

<b>Calendar year</b>	<i>NSW</i>	<i>Vic</i>	<i>Qld</i>	<i>SA</i>	<i>WA</i>	<i>Tas</i>	<i>NT</i>	<i>ACT</i>	<i>Australia</i>
2009	5.67	5.27	5.65	7.25	8.42	6.09	21.76	5.25	6.14
2010	5.04	5.18	6.01	6.28	7.61	4.69	19.46	1.63	5.72
2011	5.05	5.01	6.13	5.68	7.47	6.05	20.77	3.20	5.72
2012	4.49	4.24	5.83	5.87	6.43	7.02	15.26	1.84	5.13
2013	4.11	4.26	4.72	6.35	7.03	6.80	15.91	2.59	4.91
<i>Latest per cent change</i>	-8.6	0.6	-18.9	8.2	9.4	-3.1	4.3	41.1	-4.4

4. Monthly deaths by jurisdiction — last 24 months

— raw  
 - - - smoothed  
 (unweighted 5-point moving average)

Figure 4.1 NSW

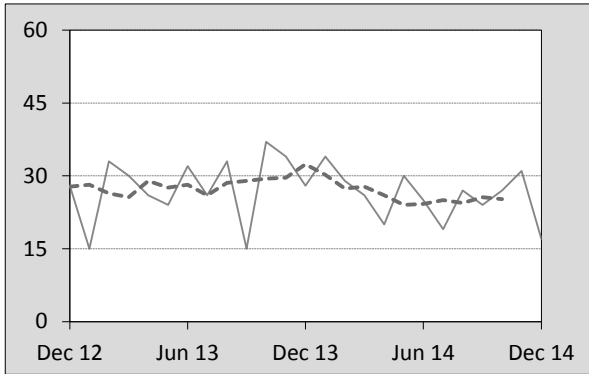


Figure 4.2 Vic

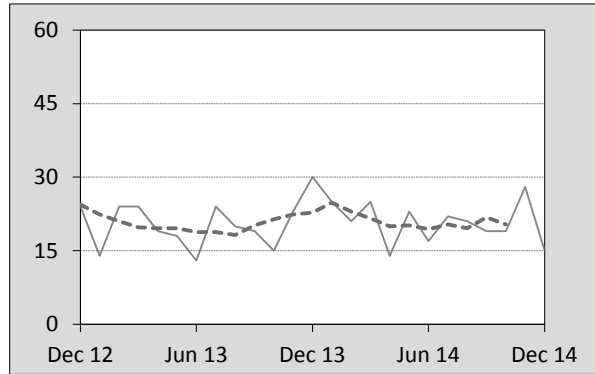


Figure 4.3 Qld

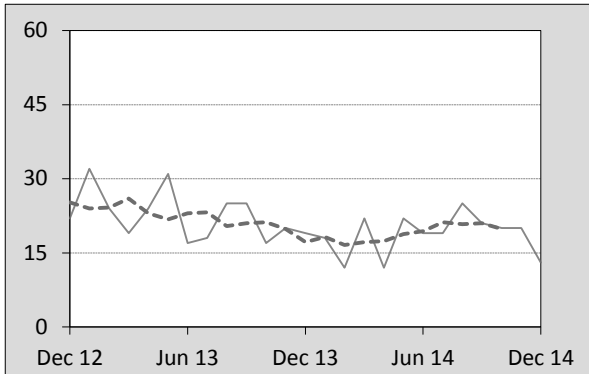


Figure 4.4 SA

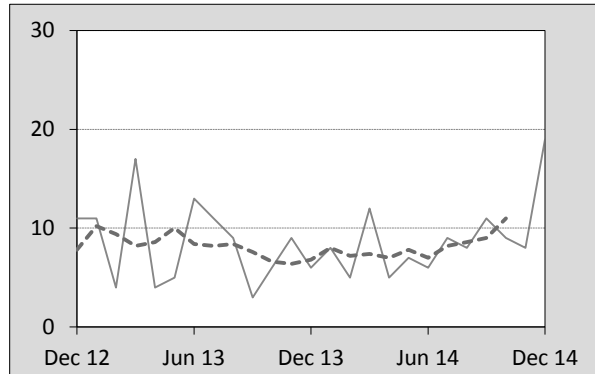


Figure 4.5 WA

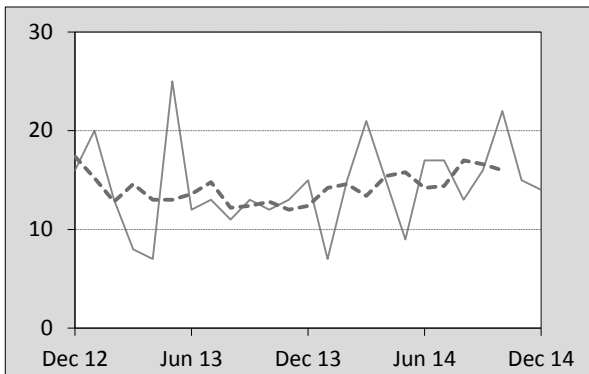


Figure 4.6 Tas

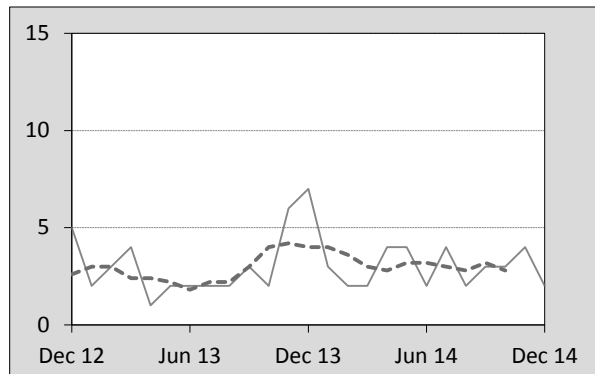


Figure 4.7 NT

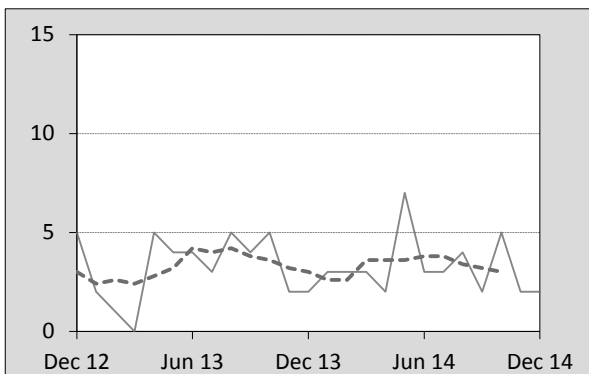
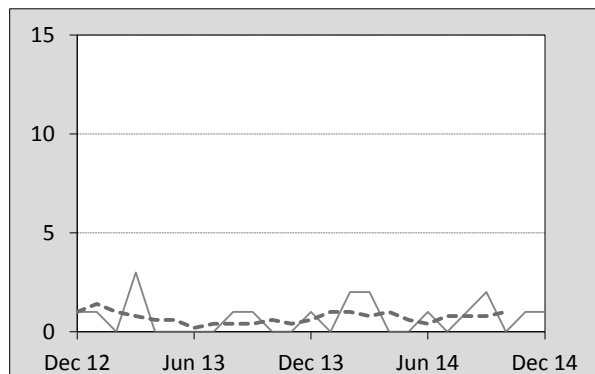


Figure 4.8 ACT



## 5. Fatal crashes: counts and characteristics

**Table 5.1** By Crash type and Posted speed limit

12 months ended December	Crash type <sup>a</sup>			Posted speed limit				Total <sup>b</sup>
	Single	Multiple	Pedestrian	0 to 60	70 to 90	100	≥ 110	
2010	544	520	169	359	283	425	163	1,233
2011	504	463	184	346	239	403	151	1,151
2012	520	503	167	402	276	360	139	1,190
2013	515	430	156	348	251	368	124	1,101
2014	466	438	150	319	224	356	130	1,054
Latest per cent change	-9.5	1.9	-3.8	-8.3	-10.8	-3.3	4.8	-4.3
Average trend change per year (per cent)	-2.8	-4.1	-4.0	-2.3	-4.1	-4.4	-6.3	-3.5

**Table 5.2** By Day of week and Time of day

12 months ended December	Day of week <sup>c</sup>		Time of Day <sup>d</sup>	
	Weekday	Weekend	Day	Night
2010	714	519	727	506
2011	674	477	702	449
2012	747	443	753	437
2013	654	447	694	407
2014	657	397	666	388
Latest per cent change	0.5	-11.2	-4.0	-4.7
Average trend change per year (per cent)	-1.9	-5.8	-1.9	-6.1

- a 'Single' and 'Multiple' refer to the number of vehicles involved in a fatal crash where there is no pedestrian killed.  
 b Includes crashes where speed limit is unknown  
 c 'Weekday' refers to 6am Monday through to 5:59pm Friday.  
 d 'Day' refers to 6am through to 5:59 pm.

## Appendix

### Definition

The road safety agencies in each jurisdiction use detailed criteria to define road crashes and road deaths. Briefly, a death is classified as resulting from a road crash if the crash occurred on a public road, is unintentional and the death occurred within 30 days from injuries sustained in the crash.

### Population rates

Rates per population are based on the deaths to the current 12 monthly period, and the population at the midpoint of the period. The population at midpoints are interpolated if necessary.

### Average trend change ( % per year )

Calculated by fitting an exponential curve through the five data points, and quoting the constant (annual) change of this curve.

### Other sources for the tables in this bulletin

The underlying database used to produce this bulletin — *the Australian Road Deaths Database* is available for data extraction at <[http://www.bitre.gov.au/statistics/safety/fatal\\_road\\_crash\\_database.aspx](http://www.bitre.gov.au/statistics/safety/fatal_road_crash_database.aspx)>.

Road deaths from recent months are preliminary and subject to revision.