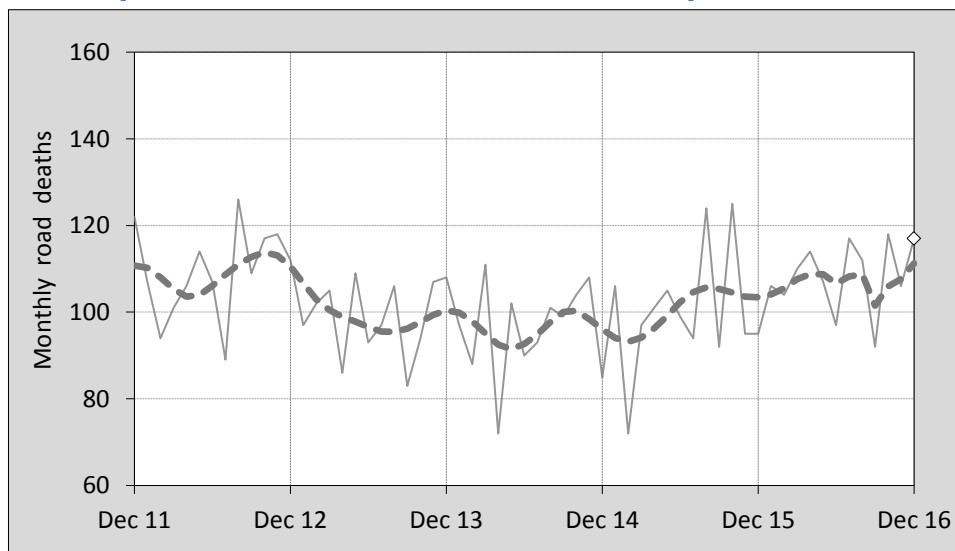




This month's key figures

- There was a total of 117 road deaths during the month of December 2016. In comparison to the average for December over the previous five years, the current figure is 12.1 per cent higher.
- During the 12 months ended December, there were 1,300 road deaths. This is a 7.9 per cent increase compared to the total for the 12-month period ended December 2015.
- Presently, the rate of annual deaths per 100,000 population stands at 5.4. Compared to the figure for the 12-month period ending December 2015, this is a 6.4 per cent increase.

Monthly Australian road deaths — last five years, with trend



Data Sources

Data are obtained from

- Transport for NSW
- Vicroads
- Department of Transport and Main Roads, Queensland
- Department of Planning, Transport and Infrastructure, S.A.
- Western Australia Police
- Department of State Growth, Tasmania
- Department of Transport, Northern Territory
- Territory and Municipal Services Directorate, ACT
- Australian Bureau of Statistics (3101.0)

Inquiries

For further information about data in this bulletin, contact:

Bureau of Infrastructure, Transport and
Regional Economics
Web : www.bitre.gov.au
Email : roadsafety@infrastructure.gov.au

Road deaths from recent months are preliminary and subject to revision.

© Copyright. Commonwealth of Australia

1. Deaths by jurisdiction

Table 1.1 Current month

Current month	NSW	Vic	Qld	SA	WA	Tas	NT	ACT	Australia
December 2015	28	19	13	5	17	2	7	4	95
December 2016	29	26	29	6	19	4	4	0	117
Per cent change	3.6	36.8	123.1	20.0	11.8	100.0	-42.9	-100.0	23.2

Table 1.2 Year to date

Year to date	NSW	Vic	Qld	SA	WA	Tas	NT	ACT	Australia
January 2015 - December 2015	350	252	243	102	160	34	49	15	1,205
January 2016 - December 2016	384	292	250	89	193	38	45	9	1,300
Per cent change	9.7	15.9	2.9	-12.7	20.6	11.8	-8.2	-40.0	7.9

Table 1.3 Year ending December

12 months ended December	NSW	Vic	Qld	SA	WA	Tas	NT	ACT	Australia
2012	369	282	280	94	183	31	49	12	1,300
2013	333	243	271	98	162	36	37	7	1,187
2014	307	248	223	107	183	33	39	10	1,150
2015	350	252	243	102	160	34	49	15	1,205
2016	384	292	250	89	193	38	45	9	1,300
Latest per cent change	9.7	15.9	2.9	-12.7	20.6	11.8	-8.2	-40.0	7.9
Average trend change per year (per cent)	1.3	1.1	-3.3	-0.7	0.9	3.6	1.1	1.9	0.2

2. Deaths by road user, age-group and gender

Table 2.1 By road user

12 months ended December	Driver	Passenger	Pedestrian	Motorcyclist ^b	Pedal ^b cyclist	Total ^c
2012	610	260	170	223	33	1,300
2013	557	204	158	213	50	1,187
2014	532	228	151	191	45	1,150
2015	555	251	162	203	31	1,205
2016	629	206	185	248	29	1,300
Latest per cent change	13.3	-17.9	14.2	22.2	-6.5	7.9
Average trend change per year (per cent)	0.6	-2.5	2.0	1.7	-7.1	0.2

Table 2.2 By age-group^a (years)

12 months ended December	0 to 16	17 to 25	26 to 39	40 to 64	65 to 74	≥ 75	Total ^c
2012	70	284	300	400	96	149	1,300
2013	66	230	243	374	118	156	1,187
2014	65	234	252	359	108	129	1,150
2015	65	225	272	373	118	152	1,205
2016	61	264	291	415	105	163	1,300
Latest per cent change	-6.2	17.3	7.0	11.3	-11.0	7.2	7.9
Average trend change per year (per cent)	-2.9	-1.7	0.5	0.7	1.8	1.5	0.2

2. Deaths by road user, age-group and gender (continued)

Table 2.3 By gender

12 months ended December	<i>Males</i>	<i>Females</i>	<i>Total^d</i>
2012	931	369	1,300
2013	852	334	1,187
2014	818	331	1,150
2015	866	339	1,205
2016	961	338	1,300
<i>Latest per cent change</i>	11.0	-0.3	7.9
<i>Average trend change per year (per cent)</i>	0.8	-1.6	0.2

a Age groups were changed in March 2014.

b Includes pillion passengers.

c Includes deaths to persons with either age or road user type not recorded.

d Includes deaths to persons with gender not recorded.

3. Annual deaths per 100,000 population

Table 3.1 Year ended December

12 months ended December	<i>NSW</i>	<i>Vic</i>	<i>Qld</i>	<i>SA</i>	<i>WA</i>	<i>Tas</i>	<i>NT</i>	<i>ACT</i>	<i>Australia</i>
2012	5.05	5.01	6.13	5.68	7.51	6.05	20.77	3.20	5.72
2013	4.50	4.24	5.83	5.87	6.44	7.02	15.25	1.84	5.13
2014	4.09	4.25	4.72	6.35	7.16	6.41	16.03	2.60	4.90
2015	4.59	4.24	5.08	6.00	6.18	6.58	20.05	3.84	5.07
2016	4.97	4.81	5.16	5.21	7.37	7.32	18.38	2.27	5.39
<i>Latest per cent change</i>	8.2	13.5	1.5	-13.2	19.4	11.2	-8.4	-40.8	6.4
<i>Average trend change per year (per cent)</i>	-0.1	-0.8	-4.7	-1.5	-0.8	3.2	0.3	0.5	-1.3

Table 3.2 Calendar year period

Calendar year	<i>NSW</i>	<i>Vic</i>	<i>Qld</i>	<i>SA</i>	<i>WA</i>	<i>Tas</i>	<i>NT</i>	<i>ACT</i>	<i>Australia</i>
2011	5.05	5.01	6.13	5.68	7.51	6.05	20.77	3.20	5.72
2012	4.50	4.24	5.83	5.87	6.44	7.02	15.25	1.84	5.13
2013	4.09	4.25	4.72	6.35	7.16	6.41	16.03	2.60	4.90
2014	4.59	4.24	5.08	6.00	6.18	6.58	20.05	3.84	5.07
2015	4.97	4.81	5.16	5.21	7.37	7.32	18.38	2.27	5.39
<i>Latest per cent change</i>	8.2	13.5	1.5	-13.2	19.4	11.2	-8.4	-40.8	6.4

4. Monthly deaths by jurisdiction — last 24 months

— raw
 - - - smoothed
 (13-point moving average)

Figure 4.1 NSW

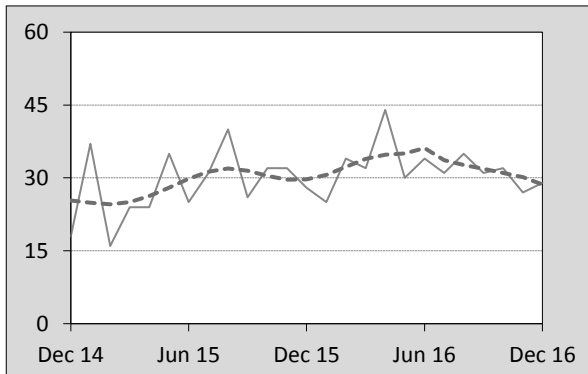


Figure 4.2 Vic

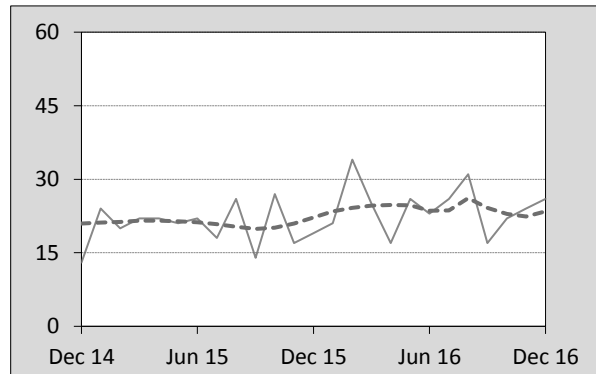


Figure 4.3 Qld

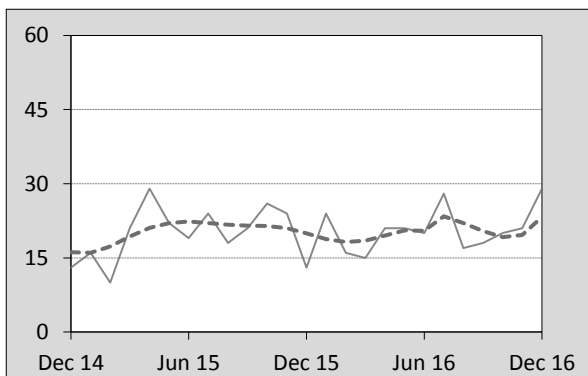


Figure 4.4 SA

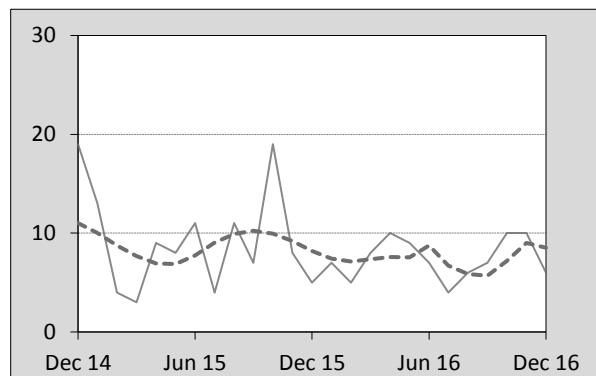


Figure 4.5 WA

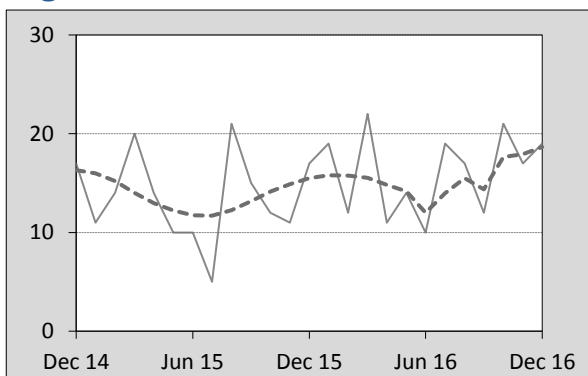


Figure 4.6 Tas

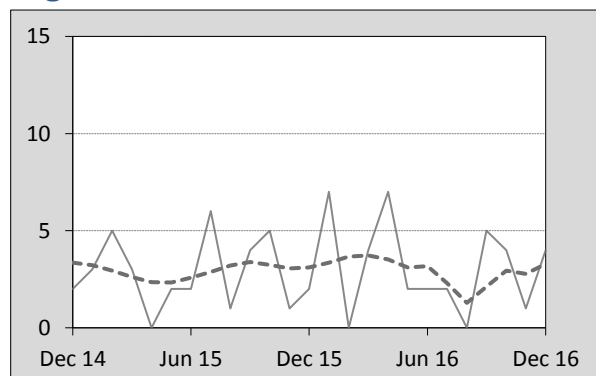


Figure 4.7 NT

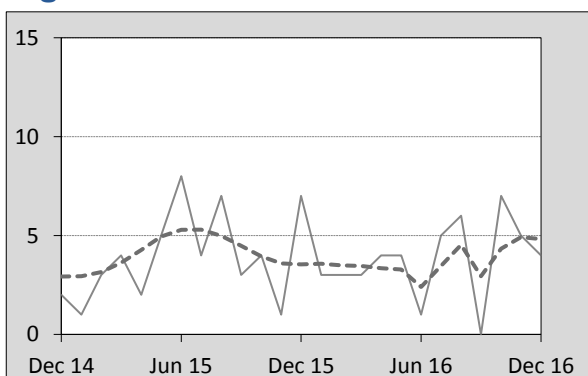
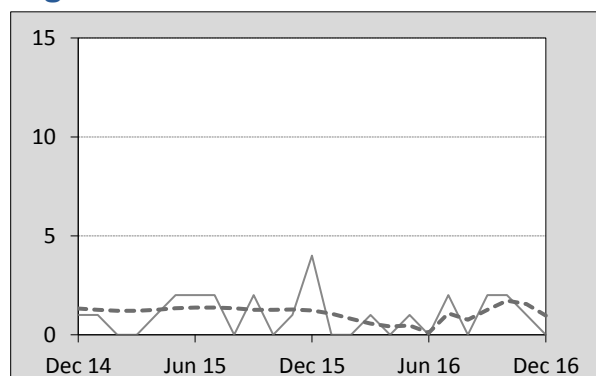


Figure 4.8 ACT



5. Fatal crashes: counts and characteristics

Table 5.1 By Crash type and Posted speed limit

12 months ended December	Crash type ^a			Posted speed limit				Total ^b
	Single	Multiple	Pedestrian	0 to 60	70 to 90	100	≥ 110	
2012	520	503	167	402	276	360	139	1,190
2013	515	430	156	348	251	368	124	1,101
2014	463	438	149	321	229	355	134	1,050
2015	490	450	161	354	249	346	141	1,101
2016	533	502	171	357	281	361	168	1,206
Latest per cent change	8.8	11.6	6.2	0.8	12.9	4.3	19.1	9.5
Average trend change per year (per cent)	0.0	0.4	0.8	-2.2	0.3	-0.6	5.2	0.3

Table 5.2 By Day of week and Time of day

12 months ended December	Day of week ^c		Time of Day ^d	
	Weekday	Weekend	Day	Night
2012	747	443	753	437
2013	654	447	694	407
2014	655	395	661	389
2015	677	424	677	424
2016	725	481	717	489
Latest per cent change	7.1	13.4	5.9	15.3
Average trend change per year (per cent)	-0.3	1.1	-1.2	2.7

a 'Single' and 'Multiple' refer to the number of vehicles involved in a fatal crash where there is no pedestrian killed.

b Includes crashes where speed limit is unknown.

c 'Weekday' refers to 6am Monday through to 5:59pm Friday.

d 'Day' refers to 6am through to 5:59 pm.

Appendix

Definition

The road safety agencies in each jurisdiction use detailed criteria to define road crashes and road deaths. Briefly, a death is classified as resulting from a road crash if the crash occurred on a public road, is unintentional and the death occurred within 30 days from injuries sustained in the crash.

Population rates

Rates per population are based on the deaths to the current 12-month period, and the population at the midpoint of the period. The population at midpoints is interpolated if necessary.

Average trend change (% per year)

Calculated by fitting an exponential curve through the five data points, and quoting the constant (annual) change of this curve.

Other sources for the tables in this bulletin

The underlying database used to produce this bulletin — the *Australian Road Deaths Database* is available for data extraction at <http://www.bitre.gov.au/statistics/safety/fatal_road_crash_database.aspx>.

Road deaths from recent months are preliminary and subject to revision.