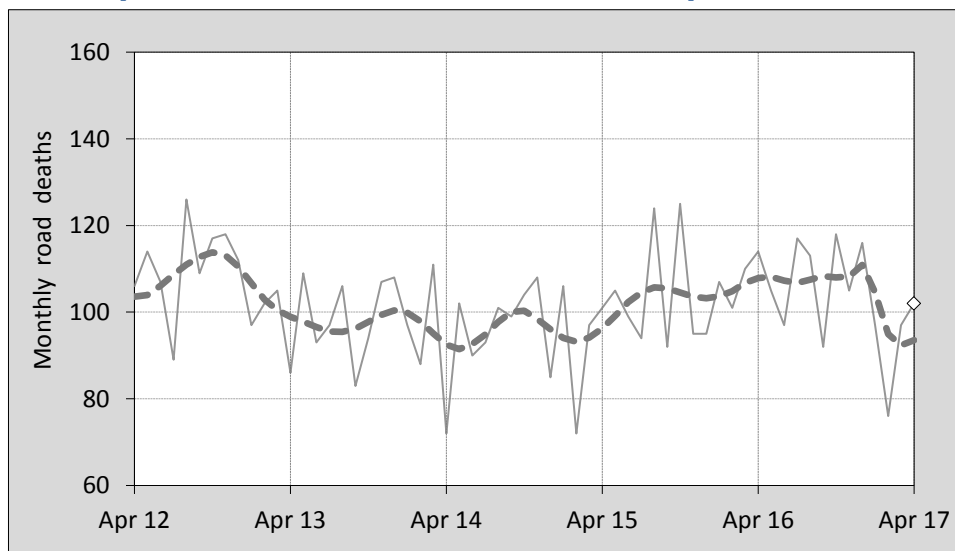




This month's key figures

- There was a total of 102 road deaths during the month of April 2017. In comparison to the average for April over the previous five years, the current figure is 6.5 per cent higher.
- During the 12 months ended April 2017, there were 1,235 road deaths. This is a 2.1 per cent decrease compared to the total for the 12-month period ended April 2016.
- Presently, the rate of annual deaths per 100,000 population stands at 5.1. Compared to the figure for the 12-month period ending April 2016, this is a 3.5 per cent decrease.

Monthly Australian road deaths — last five years, with trend



Data Sources

Data are obtained from

- Transport for NSW
- Vicroads
- Department of Transport and Main Roads, Queensland
- Department of Planning, Transport and Infrastructure, S.A.
- Western Australia Police
- Department of State Growth, Tasmania
- Department of Transport, Northern Territory
- Territory and Municipal Services Directorate, ACT
- Australian Bureau of Statistics (3101.0)

Inquiries

For further information about data in this bulletin, contact:

Bureau of Infrastructure, Transport and Regional Economics
 Web : www.bitre.gov.au
 Email : roadsafety@infrastructure.gov.au

Road deaths from recent months are preliminary and subject to revision.

© Copyright. Commonwealth of Australia

1. Deaths by jurisdiction

Table 1.1 Current month

Current month	NSW	Vic	Qld	SA	WA	Tas	NT	ACT	Australia
April 2016	44	17	21	10	11	7	4	0	114
April 2017	31	27	12	9	19	1	3	0	102
Per cent change	-29.5	58.8	-42.9	-10.0	72.7	-85.7	-25.0	-	-10.5

Table 1.2 Year to date

Year to date	NSW	Vic	Qld	SA	WA	Tas	NT	ACT	Australia
January 2016 - April 2016	134	96	77	29	64	18	13	1	432
January 2017 - April 2017	113	87	68	27	58	6	11	2	372
Per cent change	-15.7	-9.4	-11.7	-6.9	-9.4	-66.7	-15.4	100.0	-13.9

Table 1.3 Year ending April

12 months ended April	NSW	Vic	Qld	SA	WA	Tas	NT	ACT	Australia
2013	350	269	296	94	177	34	47	15	1,282
2014	338	247	236	92	170	35	40	7	1,165
2015	299	251	235	106	186	35	38	8	1,158
2016	383	260	244	102	165	41	52	14	1,261
2017	362	282	242	84	187	25	43	10	1,235
Latest per cent change	-5.5	8.5	-0.8	-17.6	13.3	-39.0	-17.3	-28.6	-2.1
Average trend change per year (per cent)	1.9	1.5	-3.6	-1.2	0.8	-4.5	0.8	-1.2	0.0

2. Deaths by road user, age-group and gender

Table 2.1 By road user

12 months ended April	Driver	Passenger	Pedestrian	Motorcyclist ^b	Pedal ^b cyclist	Total ^c
2013	626	246	153	217	36	1,282
2014	531	214	164	193	58	1,165
2015	528	232	158	204	33	1,158
2016	601	239	159	224	36	1,261
2017	602	208	167	229	24	1,235
Latest per cent change	0.2	-13.0	5.0	2.2	-33.3	-2.1
Average trend change per year (per cent)	0.5	-2.2	1.5	2.6	-12.1	0.0

Table 2.2 By age-group^a (years)

12 months ended April	0 to 16	17 to 25	26 to 39	40 to 64	65 to 74	≥ 75	Total ^c
2013	72	283	282	405	100	139	1,282
2014	60	210	247	373	118	157	1,165
2015	69	233	248	359	106	140	1,158
2016	60	248	272	389	123	169	1,261
2017	66	253	281	391	95	149	1,235
Latest per cent change	10.0	2.0	3.3	0.5	-22.8	-11.8	-2.1
Average trend change per year (per cent)	-1.7	-0.6	0.9	-0.3	-0.6	2.1	0.0

2. Deaths by road user, age-group and gender (continued)

Table 2.3 By gender

12 months ended April	<i>Males</i>	<i>Females</i>	<i>Total^d</i>
2013	912	369	1,282
2014	849	316	1,165
2015	815	342	1,158
2016	914	347	1,261
2017	915	319	1,235
<i>Latest per cent change</i>	0.1	-8.1	-2.1
<i>Average trend change per year (per cent)</i>	0.8	-2.0	0.0

a Age groups were changed in March 2014.

b Includes pillion passengers.

c Includes deaths to persons with either age or road user type not recorded.

d Includes deaths to persons with gender not recorded.

3. Annual deaths per 100,000 population

Table 3.1 Year ended April

12 months ended April	<i>NSW</i>	<i>Vic</i>	<i>Qld</i>	<i>SA</i>	<i>WA</i>	<i>Tas</i>	<i>NT</i>	<i>ACT</i>	<i>Australia</i>
2013	4.77	4.75	6.44	5.66	7.18	6.64	19.72	3.98	5.61
2014	4.54	4.28	5.05	5.49	6.72	6.82	16.46	1.83	5.01
2015	3.96	4.27	4.96	6.27	7.24	6.79	15.58	2.07	4.91
2016	5.00	4.35	5.09	5.99	6.34	7.92	21.23	3.56	5.28
2017	4.66	4.61	4.97	4.91	7.12	4.81	17.49	2.51	5.09
<i>Latest per cent change</i>	-6.8	6.2	-2.2	-18.1	12.3	-39.3	-17.6	-29.7	-3.5
<i>Average trend change per year (per cent)</i>	0.5	-0.4	-5.0	-2.0	-0.7	-4.8	0.1	-2.5	-1.4

Table 3.2 Calendar year period

Calendar year	<i>NSW</i>	<i>Vic</i>	<i>Qld</i>	<i>SA</i>	<i>WA</i>	<i>Tas</i>	<i>NT</i>	<i>ACT</i>	<i>Australia</i>
2012	5.05	5.01	6.13	5.68	7.51	6.05	20.77	3.20	5.72
2013	4.50	4.24	5.83	5.87	6.44	7.02	15.25	1.84	5.13
2014	4.09	4.25	4.72	6.35	7.16	6.41	16.03	2.60	4.90
2015	4.59	4.24	5.09	6.00	6.18	6.58	20.03	3.83	5.06
2016	4.96	4.79	5.18	5.03	7.37	7.13	18.35	2.27	5.37
<i>Latest per cent change</i>	7.9	13.1	1.9	-16.1	19.4	8.3	-8.4	-40.8	6.0

4. Monthly deaths by jurisdiction — last 24 months

— raw
 - - - smoothed
 (13-point moving average)

Figure 4.1 NSW

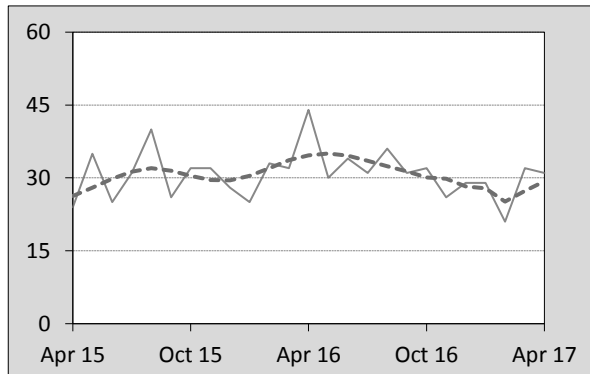


Figure 4.2 Vic

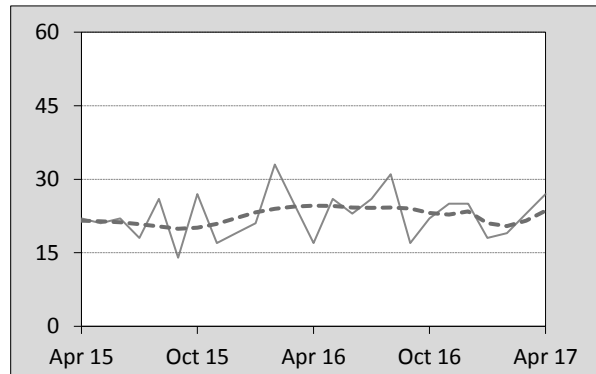


Figure 4.3 Qld

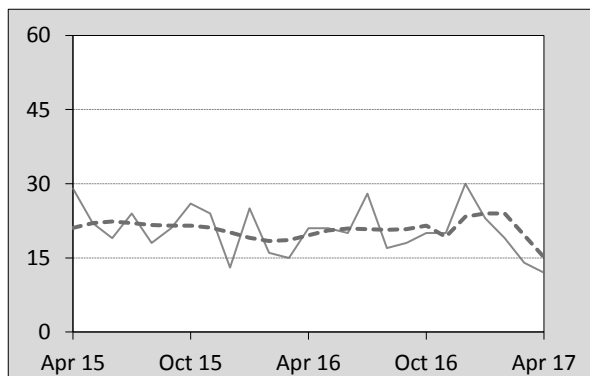


Figure 4.4 SA

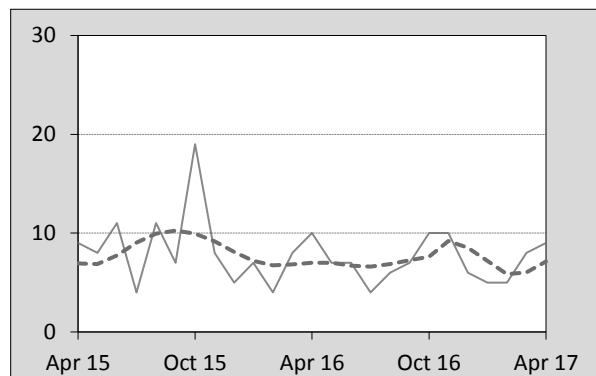


Figure 4.5 WA

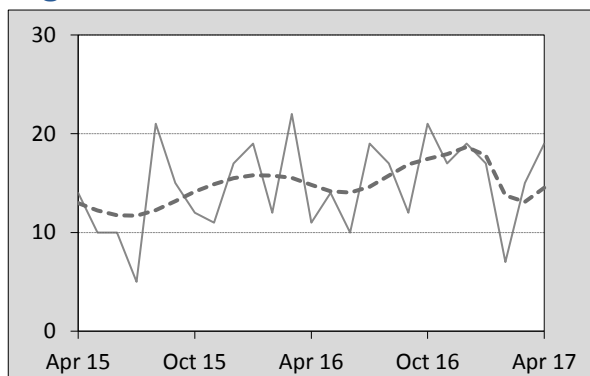


Figure 4.6 Tas

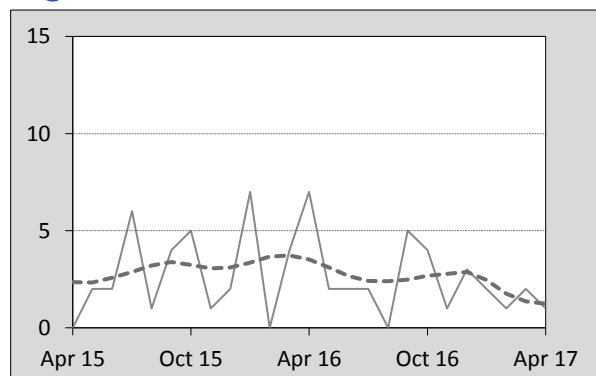


Figure 4.7 NT

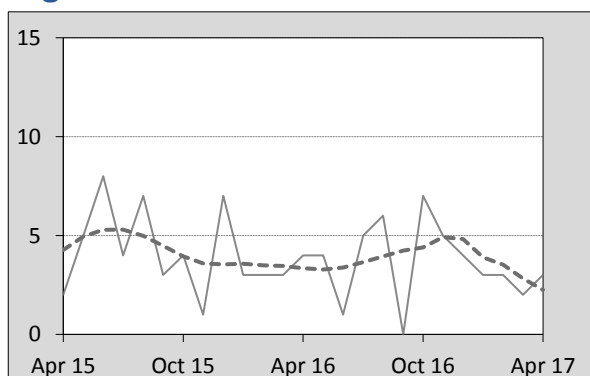
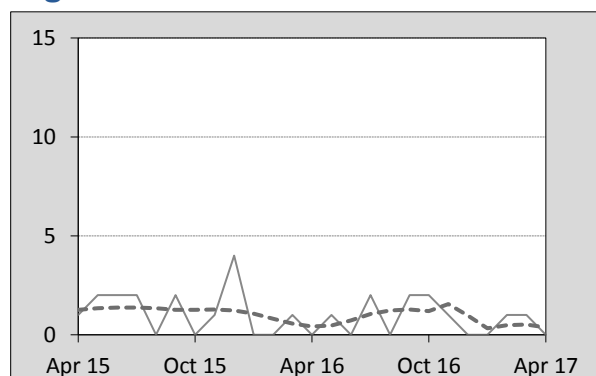


Figure 4.8 ACT



5. Fatal crashes: counts and characteristics

Table 5.1 By Crash type and Posted speed limit

12 months ended April	Crash type ^a			Posted speed limit						Total ^b
	Single	Multiple	Pedestrian	40	50	60	70 to 90	100	≥ 110	
2013	543	477	153	21	129	229	270	361	148	1,173
2014	472	442	162	10	130	192	239	364	126	1,076
2015	472	425	156	18	112	201	228	342	137	1,053
2016	519	482	153	11	123	225	255	368	161	1,154
2017	516	485	154	15	122	198	281	356	144	1,155
Latest per cent change	-0.6	0.6	0.7	36.4	-0.8	-12.0	10.2	-3.3	-10.6	0.1
Average trend change per year (per cent)	-0.1	1.2	-0.4	-5.6	-1.7	-1.3	1.5	-0.2	1.9	0.4

Table 5.2 By Day of week and Time of day

12 months ended April	Day of week ^c		Time of Day ^d	
	Weekday	Weekend	Day	Night
2013	735	438	729	444
2014	648	428	682	394
2015	644	409	671	382
2016	727	427	723	431
2017	708	447	682	473
Latest per cent change	-2.6	4.7	-5.7	9.7
Average trend change per year (per cent)	0.4	0.4	-0.7	2.2

a 'Single' and 'Multiple' refer to the number of vehicles involved in a fatal crash where there is no pedestrian killed.

b Includes crashes where speed limit is unknown or where the posted speed limit is 30km/hr or less.

c 'Weekday' refers to 6am Monday through to 5:59pm Friday.

d 'Day' refers to 6am through to 5:59 pm.

Appendix

Definition

The road safety agencies in each jurisdiction use detailed criteria to define road crashes and road deaths. Briefly, a death is classified as resulting from a road crash if the crash occurred on a public road, is unintentional and the death occurred within 30 days from injuries sustained in the crash.

Population rates

Rates per population are based on the deaths to the current 12-month period, and the population at the midpoint of the period. The population at midpoints is interpolated if necessary.

Average trend change (% per year)

Calculated by fitting an exponential curve through the five data points, and quoting the constant (annual) change of this curve.

Other sources for the tables in this bulletin

The underlying database used to produce this bulletin — *the Australian Road Deaths Database* is available for data extraction at <http://www.bitre.gov.au/statistics/safety/fatal_road_crash_database.aspx>.

Road deaths from recent months are preliminary and subject to revision.