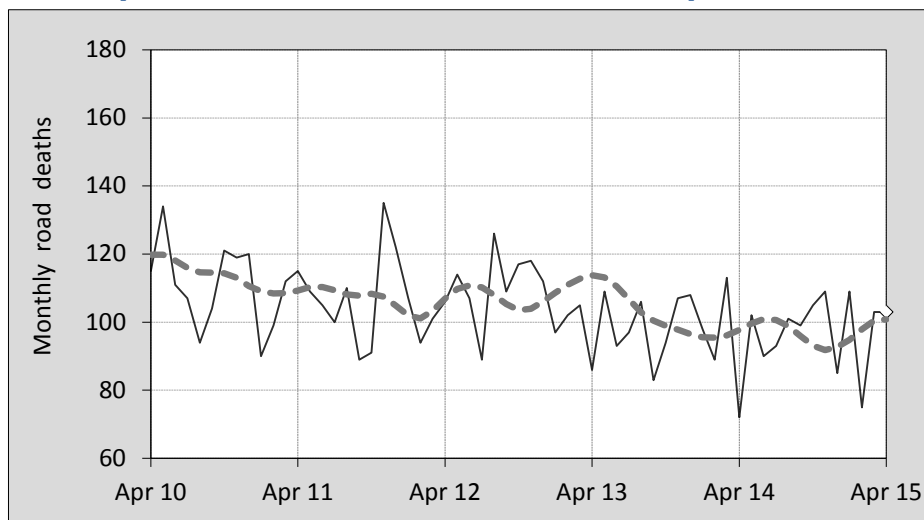




This month's key figures

- There was a total of 103 road deaths during the month of April 2015. In comparison to the average for April over the previous five years, the current figure is 4.3 per cent higher.
- During the 12 months ended April there were 1,174 road deaths. This is a 0.4 per cent increase compared to the total for the 12-monthly period ended April 2014.
- Presently the rate of annual deaths per 100,000 population stands at 5.0. Compared to the figure for the 12-monthly period ending April 2014, this is a 1.1 per cent reduction.

Monthly Australian road deaths — last five years, with trend



Data Sources

Data are obtained from

- Transport for NSW
- Vicroads
- Department of Transport and Main Roads, Queensland
- Department of Planning, Transport and Infrastructure, S.A.
- Western Australia Police
- Department of State Growth, Tasmania
- Department of Transport, Northern Territory
- Territory and Municipal Services Directorate, ACT
- Australian Bureau of Statistics (3101.0)

Inquiries

For further information about data in this bulletin, contact:

Bureau of Infrastructure, Transport and
Regional Economics
Web : www.bitre.gov.au
Email : roadsafety@infrastructure.gov.au

Road deaths from recent months are preliminary and subject to revision.

© Copyright. Commonwealth of Australia

I. Deaths by jurisdiction

Table 1.1 Current month

Current month	NSW	Vic	Qld	SA	WA	Tas	NT	ACT	Australia
April 2014	20	14	12	5	15	4	2	0	72
April 2015	26	22	29	8	14	0	2	2	103
Per cent change	30.0	57.1	141.7	60.0	-6.7	-100.0	0.0	-	43.1

Table 1.2 Year to date

Year to date	NSW	Vic	Qld	SA	WA	Tas	NT	ACT	Australia
January 2014 - April 2014	109	85	64	30	58	11	11	4	372
January 2015 - April 2015	108	94	77	28	59	11	10	3	390
Per cent change	-0.9	10.6	20.3	-6.7	1.7	0.0	-9.1	-25.0	4.8

Table 1.3 Year ending April

12 months ended April	NSW	Vic	Qld	SA	WA	Tas	NT	ACT	Australia
2011	373	297	257	109	203	29	44	14	1,326
2012	373	278	273	99	173	22	50	1	1,269
2013	350	269	296	94	177	34	47	15	1,282
2014	338	247	236	92	172	37	40	7	1,169
2015	311	258	236	105	182	35	38	9	1,174
Latest per cent change	-8.0	4.5	0.0	14.1	5.8	-5.4	-5.0	28.6	0.4
Average trend change per year (per cent)	-4.5	-3.9	-3.1	-1.5	-2.2	9.4	-5.0	11.2	-3.2

2. Deaths by road user, age-group and gender

Table 2.1 By road user

12 months ended April	Driver	Passenger	Pedestrian	Motorcyclist ^b	Pedal ^b cyclist	Total ^c
2011	616	285	174	223	28	1,326
2012	571	274	189	200	33	1,269
2013	626	246	153	217	36	1,282
2014	534	215	164	193	58	1,169
2015	537	232	162	206	34	1,174
Latest per cent change	0.6	7.9	-1.2	6.7	-41.4	0.4
Average trend change per year (per cent)	-3.4	-6.3	-2.8	-1.9	10.0	-3.2

Table 2.2 By age-group^a (years)

12 months ended April	0 to 16	17 to 25	26 to 39	40 to 64	65 to 74	≥ 75	Total ^c
2011	74	328	283	418	96	127	1,326
2012	90	283	305	370	83	138	1,269
2013	72	283	282	405	100	139	1,282
2014	60	210	248	375	118	158	1,169
2015	72	232	249	366	111	140	1,174
Latest per cent change	20.0	10.5	0.4	-2.4	-5.9	-11.4	0.4
Average trend change per year (per cent)	-4.5	-9.4	-4.5	-2.5	6.6	3.4	-3.2

2. Deaths by road user, age-group and gender (continued)

Table 2.3 By gender

12 months ended April	<i>Males</i>	<i>Females</i>	<i>Total^d</i>
2011	960	365	1,326
2012	907	361	1,269
2013	912	369	1,282
2014	852	317	1,169
2015	828	342	1,174
<i>Latest per cent change</i>	-2.8	7.9	0.4
<i>Average trend change per year (per cent)</i>	-3.5	-2.6	-3.2

a Age groups were changed in March 2014.

b Includes pillion passengers

c Includes deaths to persons with either age or road ruser type not recorded.

d Includes deaths to persons with gender not recorded.

3. Annual deaths per 100,000 population

Table 3.1 Year ended April

12 months ended April	<i>NSW</i>	<i>Vic</i>	<i>Qld</i>	<i>SA</i>	<i>WA</i>	<i>Tas</i>	<i>NT</i>	<i>ACT</i>	<i>Australia</i>
2011	5.20	5.42	5.81	6.68	8.79	5.69	19.10	3.85	5.99
2012	5.15	4.99	6.06	6.02	7.27	4.30	21.50	0.27	5.65
2013	4.77	4.75	6.44	5.66	7.18	6.64	19.72	3.98	5.61
2014	4.54	4.28	5.05	5.49	6.77	7.20	16.42	1.83	5.03
2015	4.12	4.39	4.97	6.21	7.02	6.80	15.40	2.32	4.97
<i>Latest per cent change</i>	-9.3	2.6	-1.5	13.2	3.6	-5.7	-6.2	27.1	-1.1
<i>Average trend change per year (per cent)</i>	-5.8	-5.6	-4.8	-2.3	-5.1	9.1	-6.8	9.4	-4.8

Table 3.2 Calendar year period

Calendar year	<i>NSW</i>	<i>Vic</i>	<i>Qld</i>	<i>SA</i>	<i>WA</i>	<i>Tas</i>	<i>NT</i>	<i>ACT</i>	<i>Australia</i>
2010	5.67	5.27	5.65	7.25	8.42	6.09	21.76	5.25	6.14
2011	5.04	5.18	6.01	6.28	7.61	4.69	19.46	1.63	5.72
2012	5.05	5.01	6.13	5.68	7.51	6.05	20.77	3.20	5.72
2013	4.49	4.24	5.83	5.87	6.43	7.02	15.26	1.84	5.13
2014	4.15	4.26	4.72	6.35	7.03	6.80	15.91	2.59	4.92
<i>Latest per cent change</i>	-7.7	0.6	-18.9	8.2	9.4	-3.1	4.3	41.1	-4.1

4. Monthly deaths by jurisdiction — last 24 months

— raw
 - - - smoothed
 (unweighted 5-point moving average)

Figure 4.1 NSW

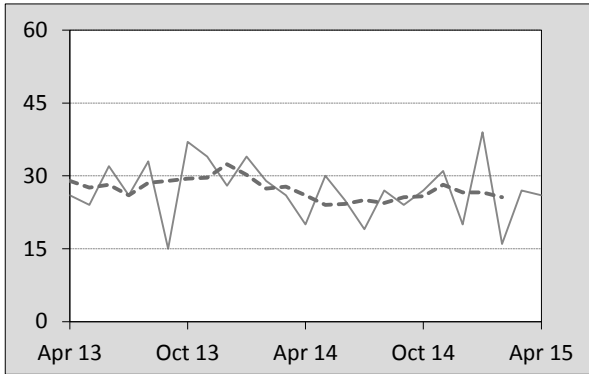


Figure 4.2 Vic

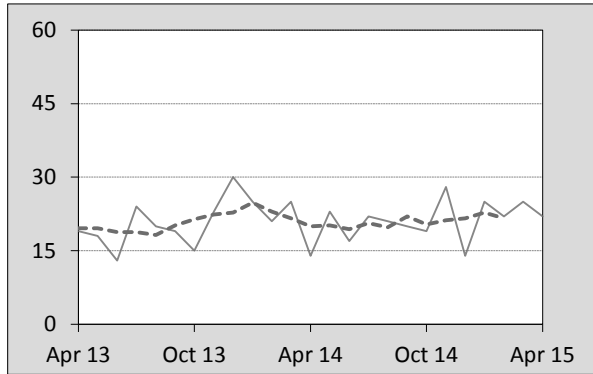


Figure 4.3 Qld

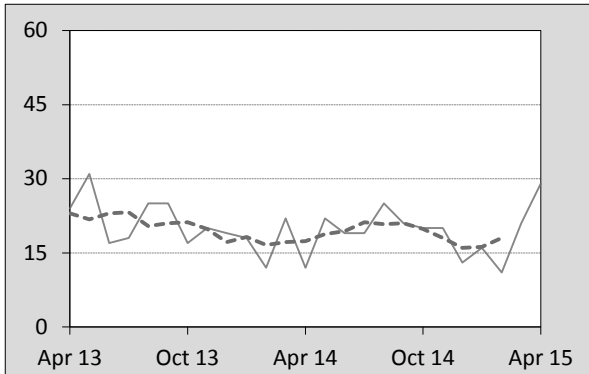


Figure 4.4 SA

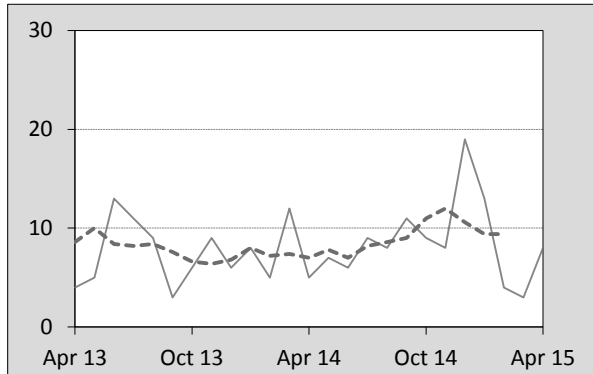


Figure 4.5 WA

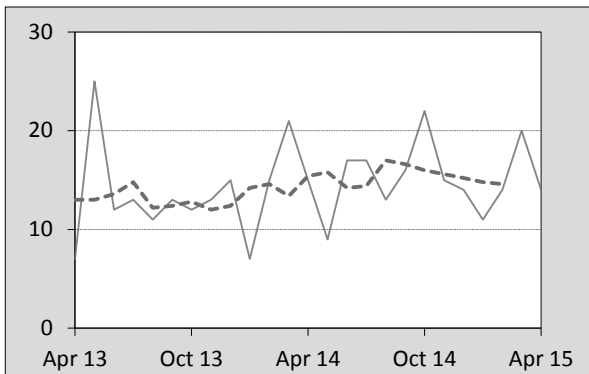


Figure 4.6 Tas

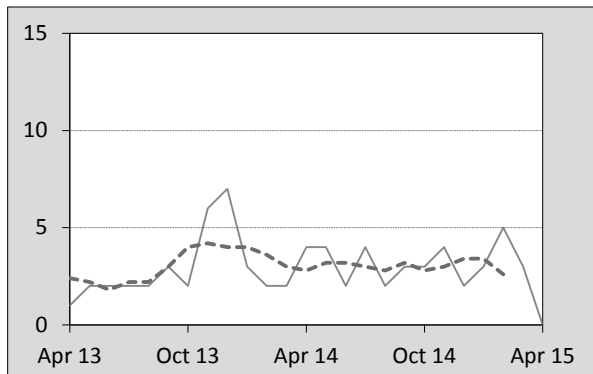


Figure 4.7 NT

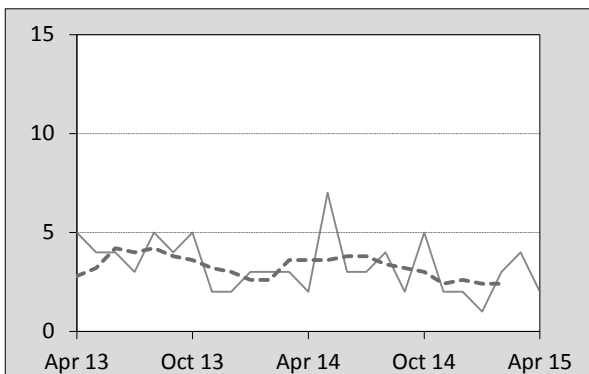
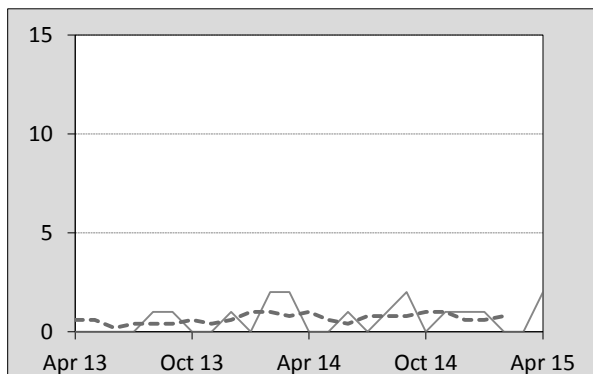


Figure 4.8 ACT



5. Fatal crashes: counts and characteristics

Table 5.1 By Crash type and Posted speed limit

12 months ended April	Crash type ^a			Posted speed limit				Total ^b
	Single	Multiple	Pedestrian	0 to 60	70 to 90	100	≥ 110	
2011	540	504	172	352	279	415	165	1,216
2012	504	463	185	364	251	387	136	1,152
2013	543	477	153	384	270	361	148	1,173
2014	477	441	162	335	241	365	127	1,080
2015	500	409	160	340	228	338	132	1,069
Latest per cent change	4.8	-7.3	-1.2	1.5	-5.4	-7.4	3.9	-1.0
Average trend change per year (per cent)	-2.1	-4.6	-2.7	-1.5	-4.3	-4.6	-5.0	-3.2

Table 5.2 By Day of week and Time of day

12 months ended April	Day of week ^c		Time of Day ^d	
	Weekday	Weekend	Day	Night
2011	697	519	706	510
2012	681	471	713	439
2013	735	438	729	444
2014	650	430	686	394
2015	656	413	680	389
Latest per cent change	0.9	-4.0	-0.9	-1.3
Average trend change per year (per cent)	-1.7	-5.3	-1.1	-6.3

a 'Single' and 'Multiple' refer to the number of vehicles involved in a fatal crash where there is no pedestrian killed.

b Includes crashes where speed limit is unknown

c 'Weekday' refers to 6am Monday through to 5:59pm Friday.

d 'Day' refers to 6am through to 5:59 pm.

Appendix

Definition

The road safety agencies in each jurisdiction use detailed criteria to define road crashes and road deaths. Briefly, a death is classified as resulting from a road crash if the crash occurred on a public road, is unintentional and the death occurred within 30 days from injuries sustained in the crash.

Population rates

Rates per population are based on the deaths to the current 12 monthly period, and the population at the midpoint of the period. The population at midpoints are interpolated if necessary.

Average trend change (% per year)

Calculated by fitting an exponential curve through the five data points, and quoting the constant (annual) change of this curve.

Other sources for the tables in this bulletin

The underlying database used to produce this bulletin — *the Australian Road Deaths Database* is available for data extraction at <http://www.bitre.gov.au/statistics/safety/fatal_road_crash_database.aspx>.

Road deaths from recent months are preliminary and subject to revision.

6. Supplementary data — Easter 2015

This month's supplementary section presents a graphical analysis of the 5-day Easter period.

Figure 6.1 Deaths over the 5-day Easter period by jurisdiction

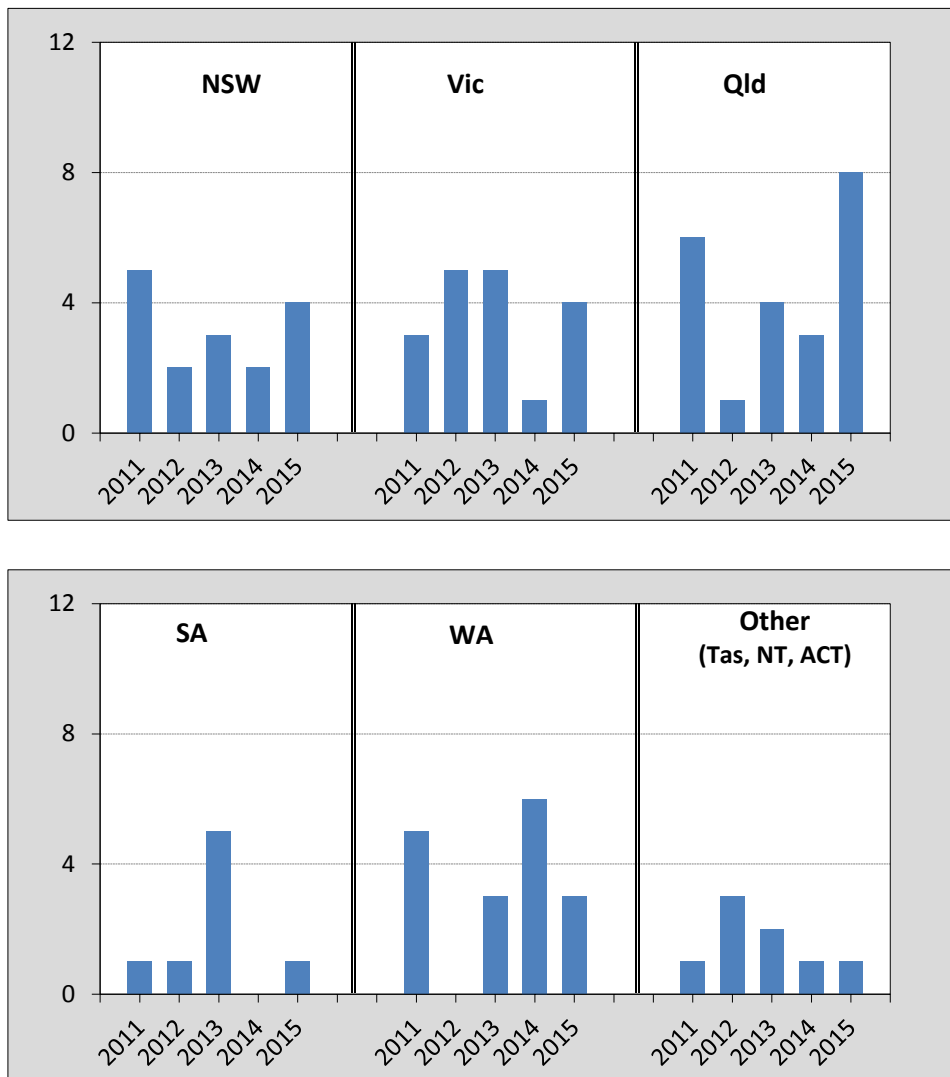


Figure 6.2 Comparing deaths over Easter with the whole year

