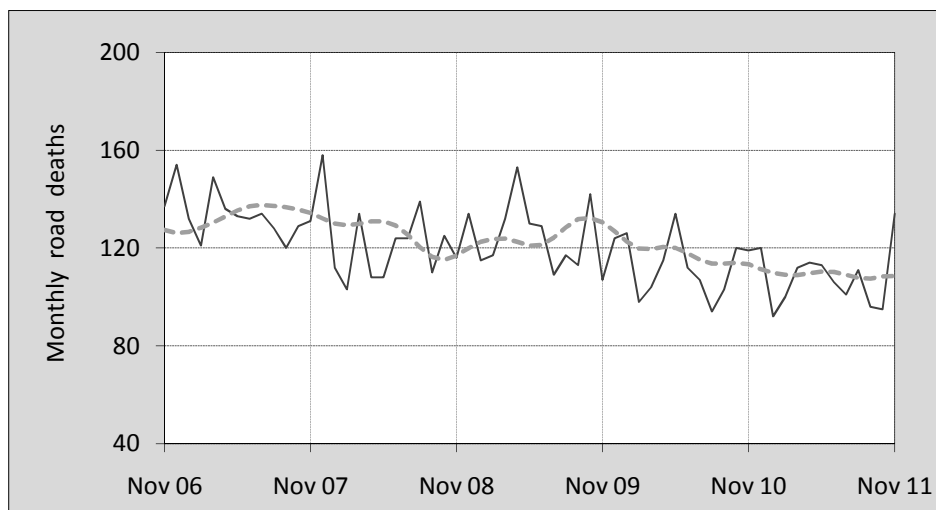




This month's key figures

- There were 134 deaths from road crashes in November 2011. Compared to the average for the month of November over the last five years, this is a 9.8 per cent increase.
- During the 12 months ended November 2011 there were 1,294 deaths. This is a 4.6 per cent decrease from the 12-monthly period ending November 2010.
- The rate of annual deaths per 100 000 population presently stands at 5.8. This is a 4.6 per cent decrease from the 12-monthly period ending November 2010.

Monthly Australian road deaths — last five years, with trend



Data Sources

Data are obtained from

- Roads and Traffic Authority, NSW
- Vicroads
- Department of Transport and Main Roads, Queensland
- Department for Transport, Energy and Infrastructure, S.A.
- Western Australia Police
- Department of Infrastructure, Energy and Resources, Tasmania
- Department of Lands and Planning, Northern Territory
- Department of Territory and Municipal Services, ACT
- Australian Bureau of Statistics (3101.0)

Inquiries

For further information about data in this bulletin, contact:

Bureau of Infrastructure, Transport and

Regional Economics

Web : www.bitre.gov.au

Email : roadsafety@infrastructure.gov.au

Road deaths from recent months are preliminary and subject to revision.

© Copyright. Commonwealth of Australia

I. Current month and year to date

Deaths by jurisdiction

Current month	NSW	Vic	Qld	SA	WA	Tas	NT	ACT	Australia
November 2010	38	12	25	12	25	3	4	0	119
November 2011	39	29	32	6	18	4	6	0	134
Per cent change	2.6	141.7	28.0	-50.0	-28.0	33.3	50.0	-	12.6

Year to date	NSW	Vic	Qld	SA	WA	Tas	NT	ACT	Australia
January 2010 - November 2010	380	260	224	110	169	27	44	18	1,232
January 2011 - November 2011	343	258	243	96	166	24	38	6	1,174
Latest per cent change	-9.7	-0.8	8.5	-12.7	-1.8	-11.1	-13.6	-66.7	-4.7

2. Yearly deaths — last five 12 monthly periods

Deaths by jurisdiction

12 months ended November	NSW	Vic	Qld	SA	WA	Tas	NT	ACT	Australia
2007	434	330	370	120	232	46	51	16	1,599
2008	375	319	323	103	209	37	81	14	1,461
2009	453	281	342	121	194	62	32	13	1,498
2010	416	294	243	118	187	34	46	18	1,356
2011	368	286	268	104	190	28	43	7	1,294
Latest per cent change	-11.5	-2.7	10.3	-11.9	1.6	-17.6	-6.5	-61.1	-4.6
Average change per year (per cent)	-2.2	-3.6	-8.9	-1.5	-5.0	-10.2	-8.7	-13.1	-4.9

Deaths by road user

12 months ended November	Driver	Passenger	Pedestrian	Motorcyclist	Cyclist	Total ^a
2007	796	323	198	239	43	1,599
2008	677	318	191	246	27	1,461
2009	714	320	198	232	33	1,498
2010	633	286	170	228	38	1,356
2011	596	280	190	192	35	1,294
latest per cent change	-5.8	-2.1	11.8	-15.8	-7.9	-4.6
Average change per year (per cent)	-6.3	-3.8	-2.0	-5.0	-0.7	-4.9

^a Includes deaths of unknown road user type

Deaths by age-group (years)

12 months ended November	<i>0 to 16</i>	<i>17 to 25</i>	<i>26 to 39</i>	<i>40 to 59</i>	<i>60 to 69</i>	<i>≥ 70</i>	<i>Total^a</i>
2007	101	394	409	386	112	196	1,599
2008	92	379	345	367	95	183	1,461
2009	98	379	360	383	101	177	1,498
2010	75	328	316	365	112	159	1,356
2011	94	283	273	345	104	189	1,294
<i>latest per cent change</i>	25.3	-13.7	-13.6	-5.5	-7.1	18.9	-4.6
<i>Average change per year (per cent)</i>	-3.4	-7.7	-8.6	-2.3	0.2	-2.1	-4.9

a Includes deaths to persons with age not recorded.

Deaths by gender

12 months ended November	<i>Males</i>	<i>Females</i>	<i>Total^b</i>
2007	1,171	428	1,599
2008	1,072	388	1,461
2009	1,092	403	1,498
2010	980	374	1,356
2011	933	358	1,294
<i>latest per cent change</i>	-4.8	-4.3	-4.6
<i>Average change per year (per cent)</i>	-5.3	-3.9	-4.9

b Includes deaths to persons with gender not recorded.

3. Annual deaths per 100,000 population

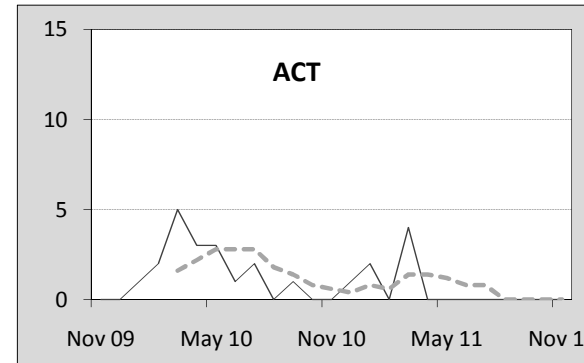
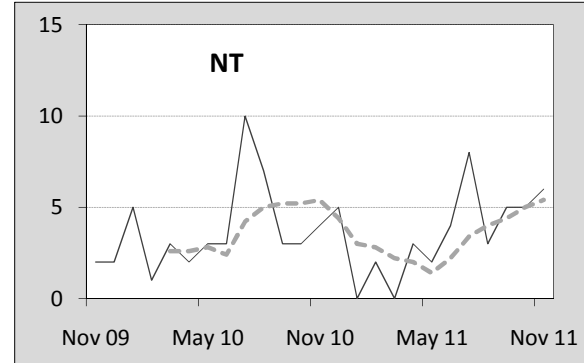
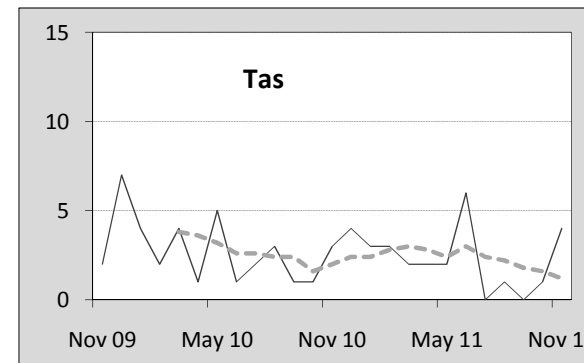
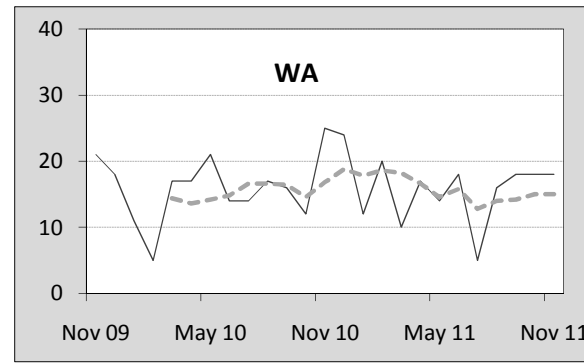
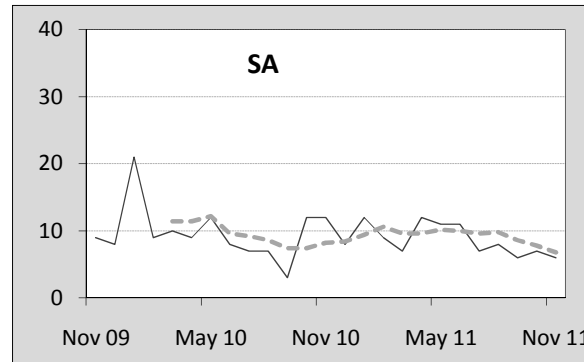
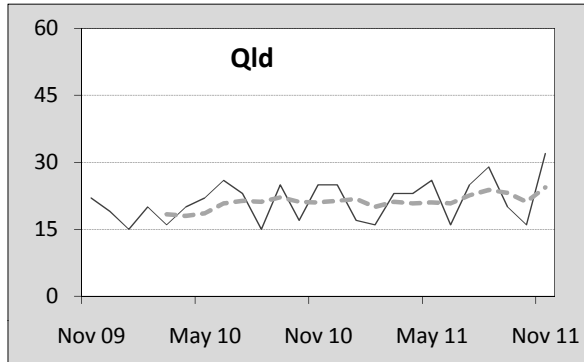
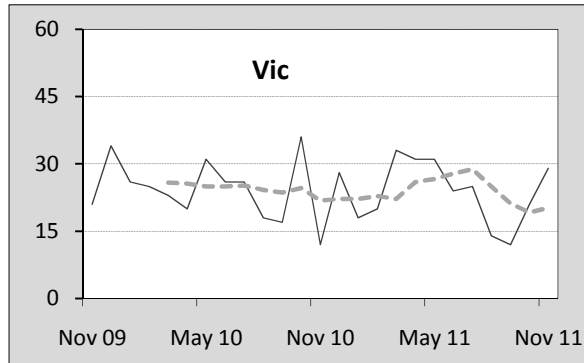
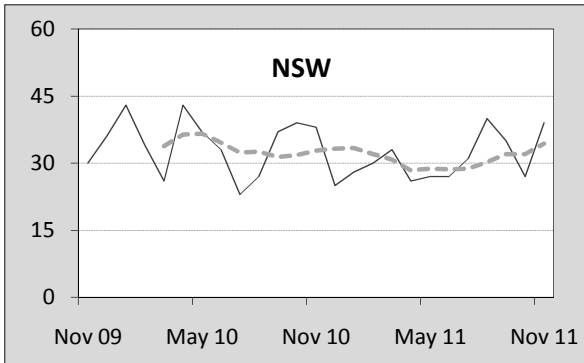
By jurisdiction

12 months ended November	<i>NSW</i>	<i>Vic</i>	<i>Qld</i>	<i>SA</i>	<i>WA</i>	<i>Tas</i>	<i>NT</i>	<i>ACT</i>	<i>Australia</i>
2007	6.29	6.33	8.84	7.57	11.00	9.33	23.79	4.70	7.60
2008	5.35	6.00	7.51	6.43	9.62	7.44	36.84	4.05	6.81
2009	6.36	5.17	7.74	7.46	8.66	12.33	14.63	3.69	6.84
2010	5.76	5.31	5.39	7.18	8.17	6.70	20.06	5.03	6.08
2011	5.11	5.18	5.88	6.31	8.29	5.51	18.64	1.96	5.80
<i>latest per cent change</i>	-11.3	-2.3	9.1	-12.2	1.5	-17.8	-7.1	-60.9	-4.6

Calendar year	<i>NSW</i>	<i>Vic</i>	<i>Qld</i>	<i>SA</i>	<i>WA</i>	<i>Tas</i>	<i>NT</i>	<i>ACT</i>	<i>Australia</i>
2006	7.28	6.57	8.19	7.46	9.71	11.23	21.84	3.89	7.73
2007	6.30	6.36	8.58	7.82	11.12	9.12	27.00	4.10	7.61
2008	5.33	5.69	7.61	6.17	9.42	7.83	34.01	4.04	6.68
2009	6.36	5.32	7.48	7.33	8.47	12.52	13.70	3.41	6.78
2010	5.60	5.19	5.52	7.18	8.42	6.11	21.33	5.30	6.05
<i>latest per cent change</i>	-11.9	-2.5	-26.3	-2.1	-0.6	-51.2	55.7	55.6	-10.7

Monthly deaths by jurisdiction — last 24 months

— raw
 - - - smoothed (unweighted 5-point moving average)



5. Characteristics of fatal crashes

12 months ended November	Crashtype ^a			Posted speed limit				Total ^b
	Single	Multiple	Pedestrian	0 to 60	70 to 90	100	≥ 110	
2007	691	575	197	450	309	486	178	1,463
2008	631	498	190	393	313	429	151	1,319
2009	655	515	192	421	307	431	178	1,362
2010	553	518	168	350	275	434	157	1,239
2011	509	472	188	343	237	382	157	1,169
<i>Average change per year (per cent)</i>	-7.2	-3.5	-2.1	-6.4	-6.4	-4.6	-2.1	-5.0

12 months ended November	Day of week ^c		Time of Day ^d	
	Weekday	Weekend	Day	Night
2007	875	565	829	634
2008	764	542	727	592
2009	848	495	780	582
2010	714	509	729	510
2011	698	455	711	458
<i>Average change per year (per cent)</i>	-5.1	-4.8	-3.0	-7.7

a 'Single' and 'Multiple' refer to the the number of vehicles involved in a fatal crash where there is no pedestrian killed.

b Includes crashes where speed limit is unknown

c 'Weekday' refers to 6am Monday through to 5:59pm Friday.

d 'Day' refers to 6am through to 5:59 pm.

Appendix

Definition

The road safety agencies in each jurisdiction use detailed criteria to define road crashes and road deaths. Briefly, a death is classified as resulting from a road crash if the crash occurred on a public road, is unintentional and the death occurred within 30 days from injuries sustained in the crash.

Population rates

Rates per population are based on the deaths to the current 12 monthly period, and the population at the midpoint of the period. The population at midpoints are interpolated if necessary.

Average (%) change per year

Calculated by fitting an exponential curve through the five data points, and quoting the constant (annual) change of this curve.

Other sources for the tables in this bulletin

The underlying database used to produce this bulletin — *the Australian Road Deaths Database*

is available for online querying and data extraction at <http://www.bitre.gov.au/info.aspx?Nodetd=167>

Road deaths from recent months are preliminary and subject to revision.