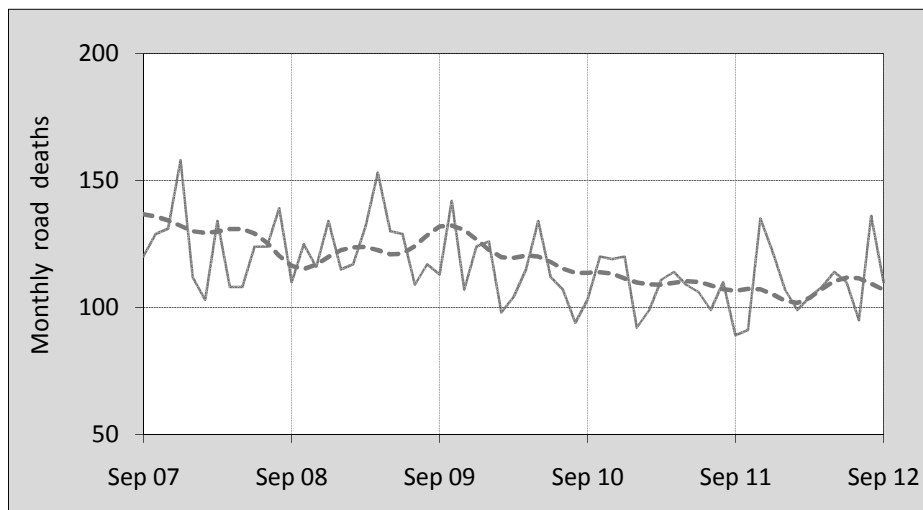




This month's key figures

- There was a total of 110 road deaths in September 2012. In comparison to the average for September over the previous five years, the current figure is 2.8 per cent higher.
- During the 12 months ended September 2012 there were 1,331 deaths. This is a 3.3 per cent increase over the total for the 12-monthly period ending September 2011.
- Presently the rate of annual deaths per 100,000 population stands at 5.9. This is a 2.8 per cent increase over the figure for the 12-monthly period ending September 2011.

Monthly Australian road deaths — last five years, with trend



Data Sources

Data are obtained from

- Roads and Traffic Authority, NSW
- Vicroads
- Department of Transport and Main Roads, Queensland
- Department for Transport, Energy and Infrastructure, S.A.
- Western Australia Police
- Department of Infrastructure, Energy and Resources, Tasmania
- Department of Lands and Planning, Northern Territory
- Department of Territory and Municipal Services, ACT
- Australian Bureau of Statistics (3101.0)

Inquiries

For further information about data in this bulletin, contact:

Bureau of Infrastructure, Transport and Regional Economics
 Web : www.bitre.gov.au
 Email : roadsafety@infrastructure.gov.au

Road deaths from recent months are preliminary and subject to revision.

© Copyright. Commonwealth of Australia

I. Current month and year to date

Deaths by jurisdiction

Current month	NSW	Vic	Qld	SA	WA	Tas	NT	ACT	Australia
September 2011	29	12	20	6	17	0	5	0	89
September 2012	32	17	29	8	13	6	3	2	110
Per cent change	10.3	41.7	45.0	33.3	-23.5	-	-40.0	-	23.6

Year to date	NSW	Vic	Qld	SA	WA	Tas	NT	ACT	Australia
January 2011 - September 2011	262	208	195	83	130	18	27	6	929
January 2012 - September 2012	297	205	209	72	133	23	36	8	983
Latest per cent change	13.4	-1.4	7.2	-13.3	2.3	27.8	33.3	33.3	5.8

2. Yearly deaths — last five 12 monthly periods

Deaths by jurisdiction

12 months ended September	NSW	Vic	Qld	SA	WA	Tas	NT	ACT	Australia
2008	375	331	325	112	206	37	78	16	1,480
2009	448	283	347	120	181	61	39	11	1,490
2010	414	295	245	110	202	34	46	20	1,366
2011	364	284	262	115	191	26	39	7	1,288
2012	399	284	283	92	183	29	53	8	1,331
Latest per cent change	9.6	0.0	8.0	-20.0	-4.2	11.5	35.9	14.3	3.3
Average change per year (per cent)	-0.8	-3.0	-5.4	-4.3	-1.8	-12.5	-7.4	-16.8	-3.5

Deaths by road user

12 months ended September	Driver	Passenger	Pedestrian	Motorcyclist	Cyclist	Total ^a
2008	700	320	182	248	29	1,480
2009	686	325	204	240	33	1,490
2010	655	289	169	214	38	1,366
2011	579	275	190	206	37	1,288
2012	620	265	182	229	34	1,331
latest per cent change	7.1	-3.6	-4.2	11.2	-8.1	3.3
Average change per year (per cent)	-4.0	-5.3	-0.7	-3.1	4.4	-3.5

^a Includes deaths of unknown road user type

Deaths by age-group (years)

12 months ended September	<i>0 to 16</i>	<i>17 to 25</i>	<i>26 to 39</i>	<i>40 to 59</i>	<i>60 to 69</i>	<i>≥ 70</i>	<i>Total^a</i>
2008	88	389	362	366	82	192	1,480
2009	101	388	356	373	101	171	1,490
2010	84	314	320	365	116	166	1,366
2011	81	300	272	348	105	182	1,288
2012	82	276	311	321	137	200	1,331
<i>latest per cent change</i>	1.2	-8.0	14.3	-7.8	30.5	9.9	3.3
<i>Average change per year (per cent)</i>	-3.6	-9.0	-5.6	-3.3	11.2	1.5	-3.5

a Includes deaths to persons with age not recorded.

Deaths by gender

12 months ended September	<i>Males</i>	<i>Females</i>	<i>Total^b</i>
2008	1,092	387	1,480
2009	1,100	388	1,490
2010	983	380	1,366
2011	928	358	1,288
2012	951	379	1,331
<i>latest per cent change</i>	2.5	5.9	3.3
<i>Average change per year (per cent)</i>	-4.4	-1.2	-3.5

b Includes deaths to persons with gender not recorded.

3. Annual deaths per 100,000 population

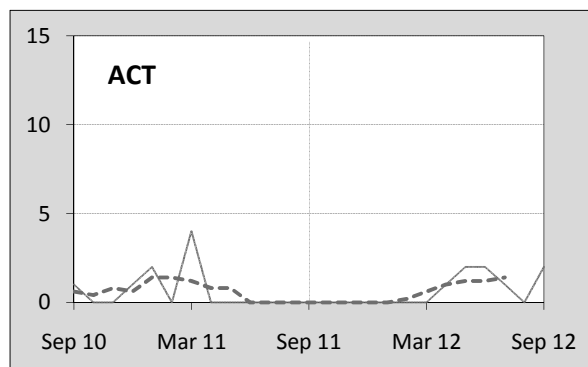
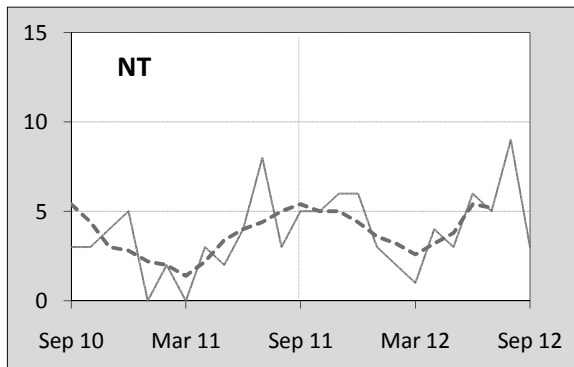
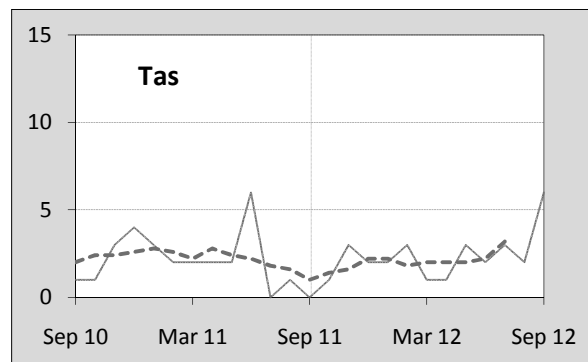
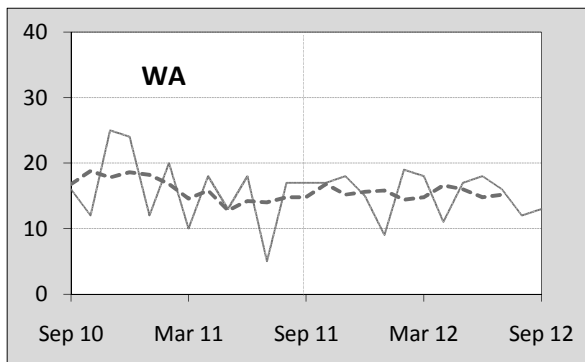
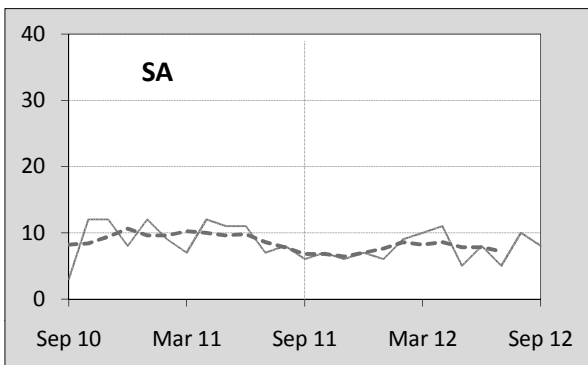
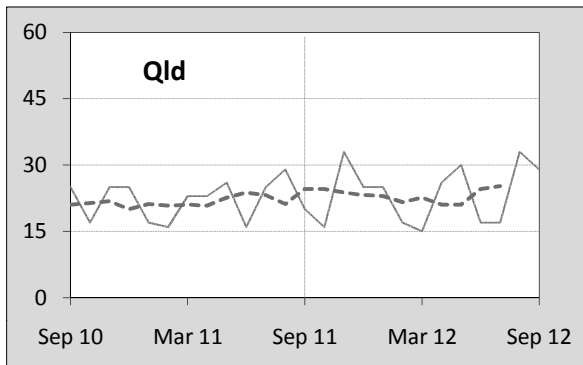
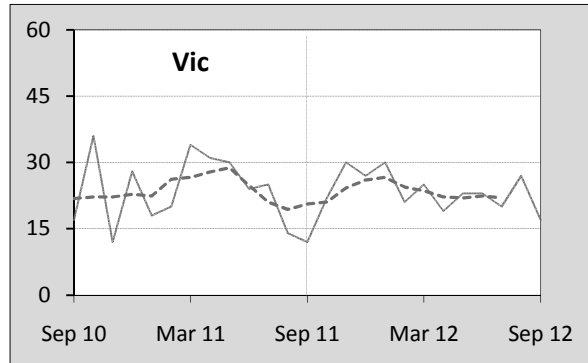
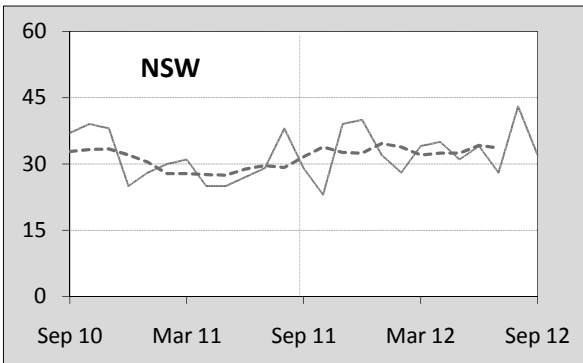
By jurisdiction

12 months ended September	<i>NSW</i>	<i>Vic</i>	<i>Qld</i>	<i>SA</i>	<i>WA</i>	<i>Tas</i>	<i>NT</i>	<i>ACT</i>	<i>Australia</i>
2008	5.36	6.24	7.59	7.00	9.53	7.44	35.67	4.64	6.92
2009	6.31	5.22	7.89	7.41	8.11	12.14	17.40	3.13	6.82
2010	5.75	5.34	5.46	6.71	8.86	6.71	20.15	5.60	6.14
2011	4.99	5.07	5.74	6.95	8.19	5.10	17.02	1.92	5.72
2012	5.48	5.07	6.10	5.53	7.82	5.67	22.72	2.21	5.88
<i>latest per cent change</i>	9.6	0.1	6.2	-20.4	-4.6	11.2	33.5	15.0	2.8

Calendar year	<i>NSW</i>	<i>Vic</i>	<i>Qld</i>	<i>SA</i>	<i>WA</i>	<i>Tas</i>	<i>NT</i>	<i>ACT</i>	<i>Australia</i>
2007	6.30	6.36	8.58	7.82	11.12	9.12	27.00	4.10	7.61
2008	5.33	5.69	7.61	6.17	9.42	7.83	34.01	4.04	6.68
2009	6.36	5.32	7.48	7.33	8.47	12.52	13.26	3.41	6.78
2010	5.61	5.20	5.53	7.18	8.43	6.11	21.37	5.30	6.06
2011	4.98	5.10	5.87	6.22	7.67	4.70	19.12	1.64	5.66
<i>latest per cent change</i>	-11.1	-1.8	6.3	-13.4	-9.0	-23.1	-10.6	-69.0	-6.7

4. Monthly deaths by jurisdiction — last 24 months

— raw
 - - - smoothed (unweighted 5-point moving average)



5. Fatal crashes: counts and characteristics

12 months ended September	Crash type ^a			Posted speed limit				Total ^b
	Single	Multiple	Pedestrian	0 to 60	70 to 90	100	≥ 110	
2008	636	519	181	387	310	452	149	1,336
2009	650	497	200	424	324	418	160	1,347
2010	563	523	166	355	268	429	172	1,252
2011	514	476	187	343	259	405	151	1,177
2012	527	508	179	398	271	361	144	1,214
<i>Average change per year (per cent)</i>	-5.9	-0.9	-0.9	-1.5	-4.8	-4.7	-1.3	-3.2

12 months ended September	Day of week ^c		Time of Day ^d	
	Weekday	Weekend	Day	Night
2008	775	546	729	607
2009	840	493	773	574
2010	733	500	730	522
2011	706	456	714	463
2012	731	469	766	448
<i>Average change per year (per cent)</i>	-2.9	-3.7	0.2	-7.9

a 'Single' and 'Multiple' refer to the the number of vehicles involved in a fatal crash where there is no pedestrian killed.

b Includes crashes where speed limit is unknown

c 'Weekday' refers to 6am Monday through to 5:59pm Friday.

d 'Day' refers to 6am through to 5:59 pm.

Appendix

Definition

The road safety agencies in each jurisdiction use detailed criteria to define road crashes and road deaths. Briefly, a death is classified as resulting from a road crash if the crash occurred on a public road, is unintentional and the death occurred within 30 days from injuries sustained in the crash.

Population rates

Rates per population are based on the deaths to the current 12 monthly period, and the population at the midpoint of the period. The population at midpoints are interpolated if necessary.

Average (%) change per year

Calculated by fitting an exponential curve through the five data points, and quoting the constant (annual) change of this curve.

Other sources for the tables in this bulletin

The underlying database used to produce this bulletin — *the Australian Road Deaths Database* is available for online querying and data extraction at

< http://www.bitre.gov.au/statistics/safety/fatal_road_crash_database.aspx >

Road deaths from recent months are preliminary and subject to revision.