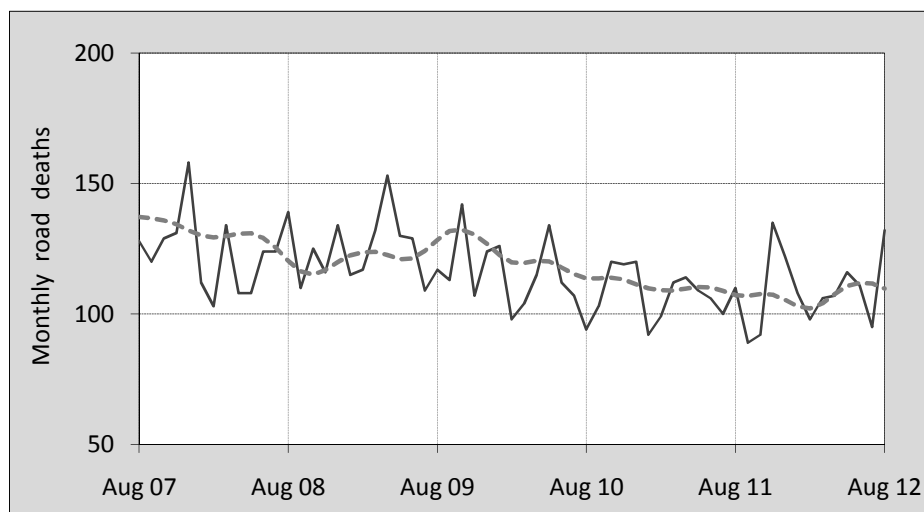




## This month's key figures

- There was a total of 132 road deaths in August 2012. In comparison to the average for August over the previous five years, the current figure is 12.2 per cent higher.
- During the 12 months ended August 2012 there were 1,311 deaths. This is a 0.5 per cent increase from the 12-monthly period ending August 2011.
- Presently the rate of annual deaths per 100,000 population stands at 5.8. This is no change from the 12-monthly period ending August 2011.

## Monthly Australian road deaths — last five years, with trend



### Data Sources

Data are obtained from

- Roads and Traffic Authority, NSW
- Vicroads
- Department of Transport and Main Roads, Queensland
- Department for Transport, Energy and Infrastructure, S.A.
- Western Australia Police
- Department of Infrastructure, Energy and Resources, Tasmania
- Department of Lands and Planning, Northern Territory
- Department of Territory and Municipal Services, ACT
- Australian Bureau of Statistics (3101.0)

### Inquiries

For further information about data in this bulletin, contact:

Bureau of Infrastructure, Transport and Regional Economics  
 Web : [www.bitre.gov.au](http://www.bitre.gov.au)  
 Email : [roadsafety@infrastructure.gov.au](mailto:roadsafety@infrastructure.gov.au)

Road deaths from recent months are preliminary and subject to revision.

© Copyright. Commonwealth of Australia

## I. Current month and year to date

### Deaths by jurisdiction

Current month	NSW	Vic	Qld	SA	WA	Tas	NT	ACT	Australia
August 2011	38	14	29	8	17	1	3	0	110
August 2012	39	27	33	10	12	2	9	0	132
Per cent change	2.6	92.9	13.8	25.0	-29.4	-	200.0	-	20.0

Year to date	NSW	Vic	Qld	SA	WA	Tas	NT	ACT	Australia
January 2011 - August 2011	235	196	175	77	113	18	22	6	842
January 2012 - August 2012	263	188	180	66	120	17	33	6	873
Latest per cent change	11.9	-4.1	2.9	-14.3	6.2	-5.6	50.0	0.0	3.7

## 2. Yearly deaths — last five 12 monthly periods

### Deaths by jurisdiction

12 months ended August	NSW	Vic	Qld	SA	WA	Tas	NT	ACT	Australia
2008	374	336	331	108	214	38	74	15	1,490
2009	439	287	340	123	184	61	43	10	1,487
2010	419	292	252	118	194	33	47	21	1,376
2011	374	289	267	112	190	27	37	8	1,304
2012	395	279	274	92	187	23	55	6	1,311
Latest per cent change	5.6	-3.5	2.6	-17.9	-1.6	-14.8	48.6	-25.0	0.5
Average change per year (per cent)	-0.5	-3.6	-6.0	-4.1	-2.3	-16.6	-7.2	-18.6	-3.8

### Deaths by road user

12 months ended August	Driver	Passenger	Pedestrian	Motorcyclist	Cyclist	Total <sup>a</sup>
2008	716	317	185	245	26	1,490
2009	667	331	203	250	35	1,487
2010	665	288	172	212	37	1,376
2011	600	278	181	208	36	1,304
2012	600	265	187	226	30	1,311
latest per cent change	0.0	-4.7	3.3	8.7	-16.7	0.5
Average change per year (per cent)	-4.5	-5.2	-0.9	-3.4	3.2	-3.8

<sup>a</sup> Includes deaths of unknown road user type

## Deaths by age-group (years)

<b>12 months ended August</b>	<i>0 to 16</i>	<i>17 to 25</i>	<i>26 to 39</i>	<i>40 to 59</i>	<i>60 to 69</i>	<i>≥ 70</i>	<i>Total<sup>a</sup></i>
2008	88	394	355	376	81	195	1,490
2009	99	387	365	359	104	173	1,487
2010	84	309	323	371	113	175	1,376
2011	80	316	273	351	110	174	1,304
2012	85	269	314	315	121	202	1,311
<i>latest per cent change</i>	6.3	-14.9	15.0	-10.3	10.0	16.1	0.5
<i>Average change per year (per cent)</i>	-2.8	-9.2	-5.2	-3.7	9.0	0.8	-3.8

a Includes deaths to persons with age not recorded.

## Deaths by gender

<b>12 months ended August</b>	<i>Males</i>	<i>Females</i>	<i>Total<sup>b</sup></i>
2008	1,111	378	1,490
2009	1,088	397	1,487
2010	992	381	1,376
2011	936	366	1,304
2012	945	364	1,311
<i>latest per cent change</i>	1.0	-0.5	0.5
<i>Average change per year (per cent)</i>	-4.6	-1.6	-3.8

b Includes deaths to persons with gender not recorded.

## 3. Annual deaths per 100,000 population

### By jurisdiction

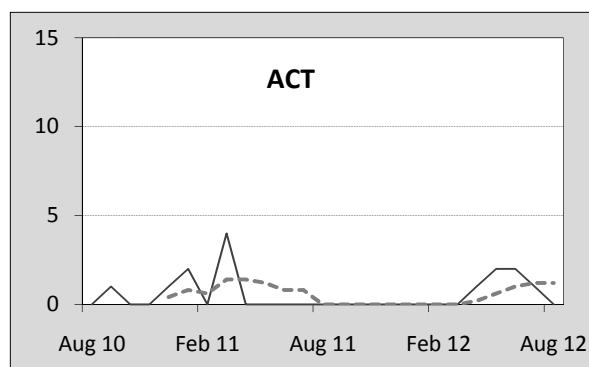
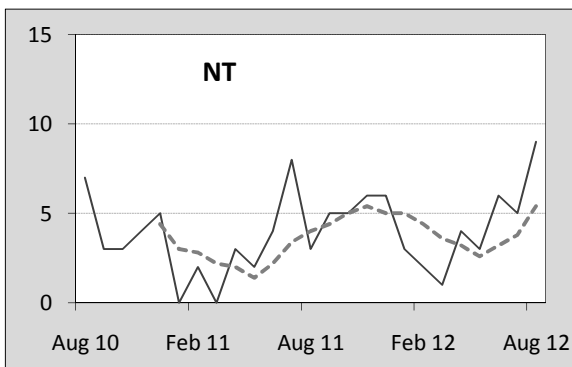
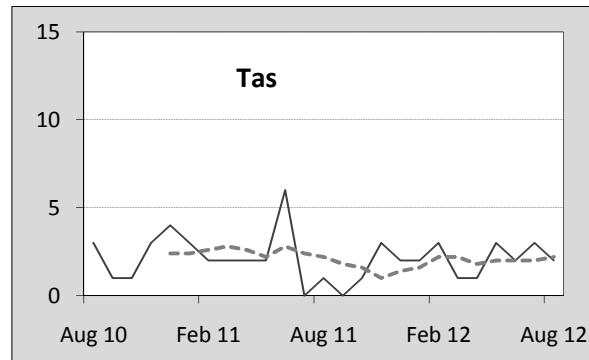
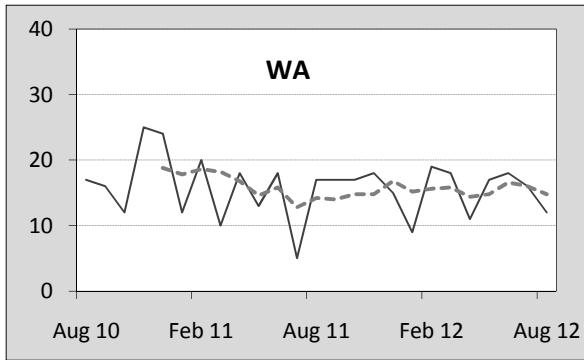
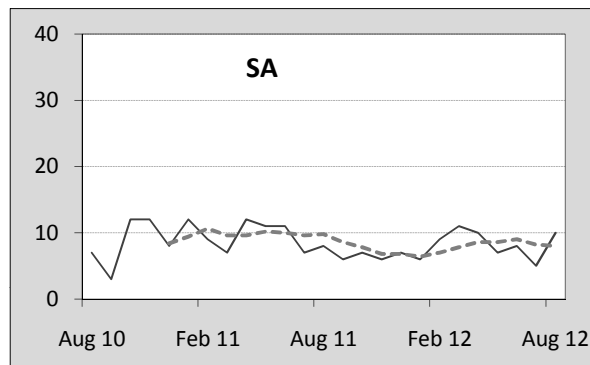
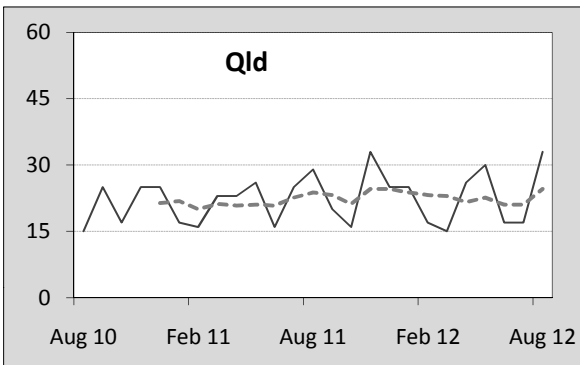
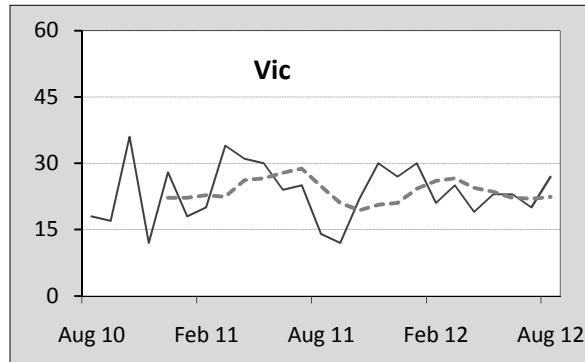
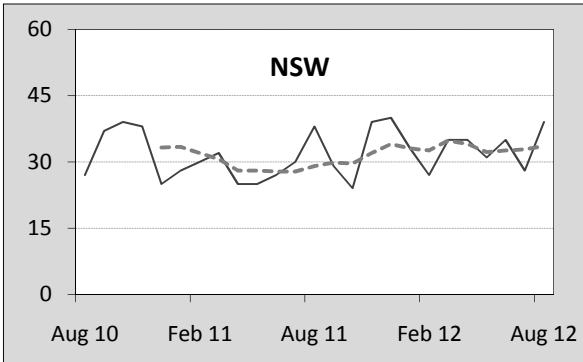
<b>12 months ended August</b>	<i>NSW</i>	<i>Vic</i>	<i>Qld</i>	<i>SA</i>	<i>WA</i>	<i>Tas</i>	<i>NT</i>	<i>ACT</i>	<i>Australia</i>
2008	5.36	6.35	7.75	6.76	9.93	7.65	33.90	4.36	6.98
2009	6.19	5.31	7.75	7.60	8.26	12.15	19.22	2.86	6.82
2010	5.82	5.30	5.62	7.20	8.52	6.52	20.61	5.89	6.20
2011	5.14	5.16	5.86	6.78	8.17	5.30	16.14	2.20	5.79
2012	5.42	4.98	5.91	5.53	7.99	4.50	23.62	1.66	5.79
<i>latest per cent change</i>	5.5	-3.6	0.9	-18.3	-2.2	-15.1	46.3	-24.8	0.0

<b>Calendar year</b>	<i>NSW</i>	<i>Vic</i>	<i>Qld</i>	<i>SA</i>	<i>WA</i>	<i>Tas</i>	<i>NT</i>	<i>ACT</i>	<i>Australia</i>
2007	6.30	6.36	8.58	7.82	11.12	9.12	27.00	4.10	7.61
2008	5.33	5.69	7.61	6.17	9.42	7.83	34.01	4.04	6.68
2009	6.36	5.32	7.48	7.33	8.47	12.52	13.26	3.41	6.78
2010	5.61	5.20	5.53	7.18	8.43	6.11	21.37	5.30	6.06
2011	5.02	5.10	5.87	6.22	7.67	4.70	19.12	1.64	5.66
<i>latest per cent change</i>	-10.4	-1.8	6.3	-13.4	-9.0	-23.1	-10.6	-69.0	-6.7

#### 4. Monthly deaths by jurisdiction — last 24 months

— raw  
 - - - smoothed (unweighted 5-point moving average)



## 5. Characteristics of fatal crashes

12 months ended August	Crashtype <sup>a</sup>			Posted speed limit				Total <sup>b</sup>
	Single	Multiple	Pedestrian	0 to 60	70 to 90	100	≥ 110	
2008	651	517	184	389	306	468	153	1,352
2009	640	501	200	433	326	405	154	1,341
2010	572	521	168	353	265	436	178	1,261
2011	522	491	178	331	272	419	150	1,191
2012	518	495	184	405	247	354	139	1,197
Average change per year (per cent)	-6.4	-1.1	-1.2	-1.9	-5.9	-5.1	-2.2	-3.6

12 months ended August	Day of week <sup>c</sup>		Time of Day <sup>d</sup>	
	Weekday	Weekend	Day	Night
2008	783	569	752	600
2009	831	510	765	576
2010	738	523	736	525
2011	715	476	716	475
2012	732	465	761	436
Average change per year (per cent)	-2.8	-4.6	-0.4	-8.0

a 'Single' and 'Multiple' refer to the the number of vehicles involved in a fatal crash where there is no pedestrian killed.

b Includes crashes where speed limit is unknown

c 'Weekday' refers to 6am Monday through to 5:59pm Friday.

d 'Day' refers to 6am through to 5:59 pm.

## Appendix

### Definition

The road safety agencies in each jurisdiction use detailed criteria to define road crashes and road deaths. Briefly, a death is classified as resulting from a road crash if the crash occurred on a public road, is unintentional and the death occurred within 30 days from injuries sustained in the crash.

### Population rates

Rates per population are based on the deaths to the current 12 monthly period, and the population at the midpoint of the period. The population at midpoints are interpolated if necessary.

### Average (%) change per year

Calculated by fitting an exponential curve through the five data points, and quoting the constant (annual) change of this curve.

### Other sources for the tables in this bulletin

The underlying database used to produce this bulletin — *the Australian Road Deaths Database* is available for online querying and data extraction at

< [http://www.bitre.gov.au/statistics/safety/fatal\\_road\\_crash\\_database.aspx](http://www.bitre.gov.au/statistics/safety/fatal_road_crash_database.aspx) >

Road deaths from recent months are preliminary and subject to revision.