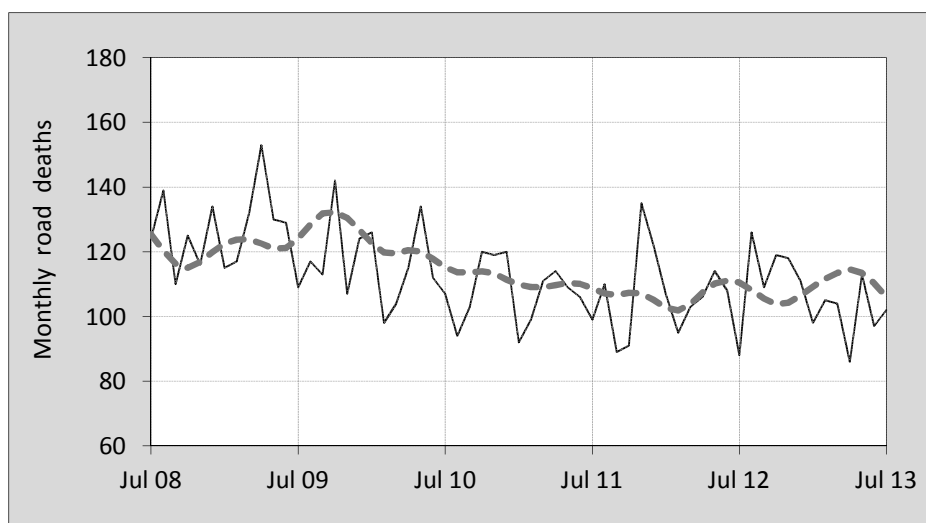




## This month's key figures

- There was a total of 102 road deaths in July 2013. In comparison to the average for July over the previous five years, the current figure is 3.2 per cent lower.
- During the 12 months ended July there were 1,288 road deaths. This is a 1.6 per cent increase over the total for the 12-monthly period ending July 2012.
- Presently the rate of annual deaths per 100,000 population stands at 5.6. Compared to the figure for the 12-monthly period ending July 2012, this is a 0.1 per cent reduction.

## Monthly Australian road deaths — last five years, with trend



### Data Sources

Data are obtained from

- Transport for NSW
- Vicroads
- Department of Transport and Main Roads, Queensland
- Department for Transport, Energy and Infrastructure, S.A.
- Western Australia Police
- Department of Infrastructure, Energy and Resources, Tasmania
- Department of Lands and Planning, Northern Territory
- Department of Territory and Municipal Services, ACT
- Australian Bureau of Statistics (3101.0)

### Inquiries

For further information about data in this bulletin, contact:

Bureau of Infrastructure, Transport and Regional Economics

Web : [www.bitre.gov.au](http://www.bitre.gov.au)

Email : [roadsafety@infrastructure.gov.au](mailto:roadsafety@infrastructure.gov.au)

Road deaths from recent months are preliminary and subject to revision.

© Copyright. Commonwealth of Australia

## I. Current month and year to date

### Deaths by jurisdiction

Current month	NSW	Vic	Qld	SA	WA	Tas	NT	ACT	Australia
July 2012	23	17	17	5	16	3	6	1	88
July 2013	29	24	19	11	13	3	3	0	102
Per cent change	26.1	41.2	11.8	120.0	-18.8	0.0	-50.0	-100.0	15.9

Year to date	NSW	Vic	Qld	SA	WA	Tas	NT	ACT	Australia
January 2012 - July 2012	211	156	147	53	108	15	25	6	721
January 2013 - July 2013	197	137	166	67	100	16	19	3	705
Per cent change	-6.6	-12.2	12.9	26.4	-7.4	6.7	-24.0	-50.0	-2.2

## 2. Yearly deaths — last five 12 monthly periods

### Deaths by jurisdiction

12 months ended July	NSW	Vic	Qld	SA	WA	Tas	NT	ACT	Australia
2009	425	293	351	125	191	60	51	13	1,509
2010	441	295	260	120	188	32	42	21	1,399
2011	361	293	253	111	190	29	41	8	1,286
2012	380	261	270	87	192	22	50	6	1,268
2013	356	263	299	108	177	34	42	9	1,288
Latest per cent change	-6.3	0.8	10.7	24.1	-7.8	54.5	-16.0	50.0	1.6
Average trend change per year (per cent)	-4.9	-3.3	-2.8	-6.0	-1.3	-14.0	-2.1	-18.0	-4.1

### Deaths by road user

12 months ended July	Driver	Passenger	Pedestrian	Motorcyclist	Cyclist	Total <sup>a</sup>
2009	680	339	205	248	36	1,509
2010	668	292	179	222	36	1,399
2011	608	266	171	206	34	1,286
2012	561	266	189	221	30	1,268
2013	636	249	152	203	40	1,288
Latest per cent change	13.4	-6.4	-19.6	-8.1	33.3	1.6
Average trend change per year (per cent)	-3.0	-6.9	-5.3	-4.0	0.3	-4.1

a Includes deaths where road user type is unknown

## Deaths by age-group (years)

12 months ended July	0 to 16	17 to 25	26 to 39	40 to 59	60 to 69	≥ 70	Total <sup>b</sup>
2009	99	394	370	367	107	172	1,509
2010	83	307	319	385	119	185	1,399
2011	72	323	274	344	105	168	1,286
2012	90	268	311	296	113	190	1,268
2013	72	278	264	326	146	198	1,288
Latest per cent change	-20.0	3.7	-15.1	10.1	29.2	4.2	1.6
Average trend change per year (per cent)	-5.4	-8.0	-6.8	-4.9	5.9	3.1	-4.1

b Includes deaths to persons with age not recorded.

## Deaths by gender

12 months ended July	Males	Females	Total <sup>c</sup>
2009	1,090	417	1,509
2010	1,015	381	1,399
2011	937	348	1,286
2012	905	362	1,268
2013	933	354	1,288
Latest per cent change	3.1	-2.2	1.6
Average trend change	-4.2	-3.7	-4.1

c Includes deaths to persons with gender not recorded.

## 3. Annual deaths per 100,000 population

### By jurisdiction

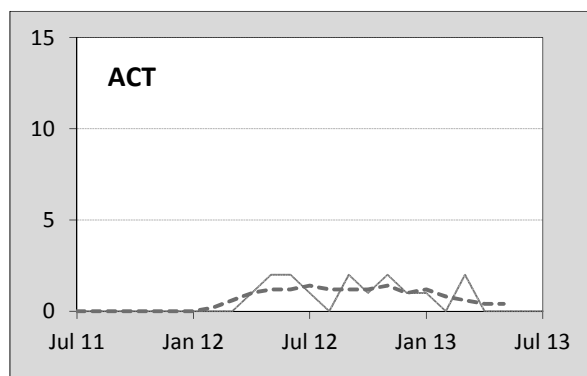
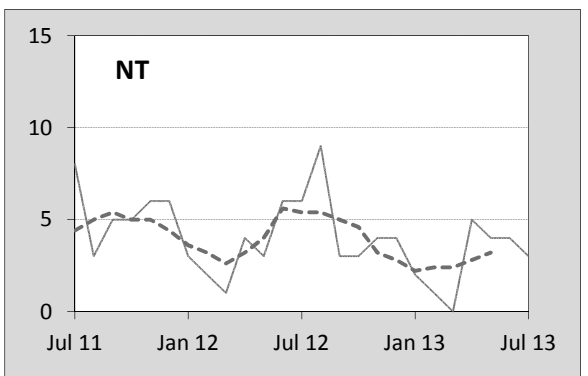
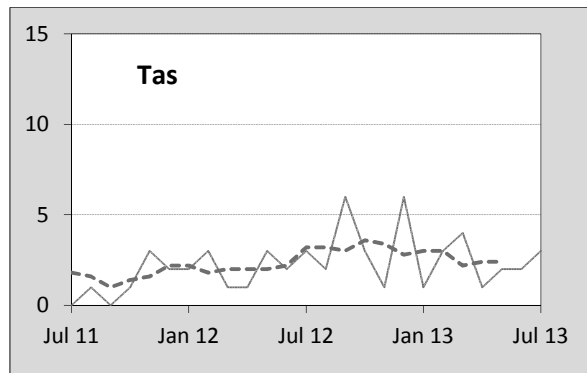
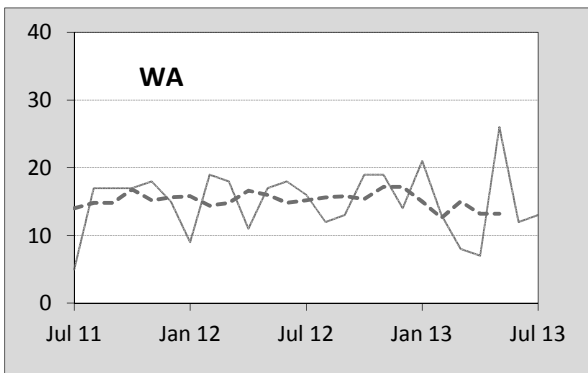
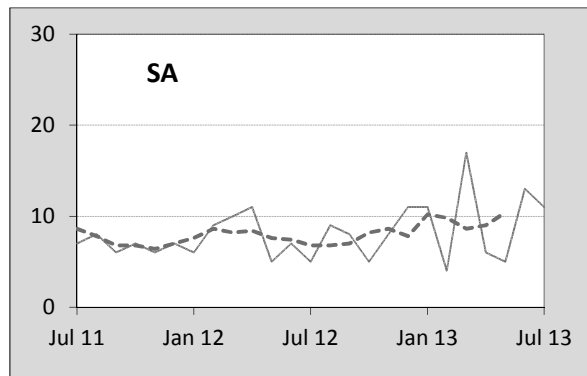
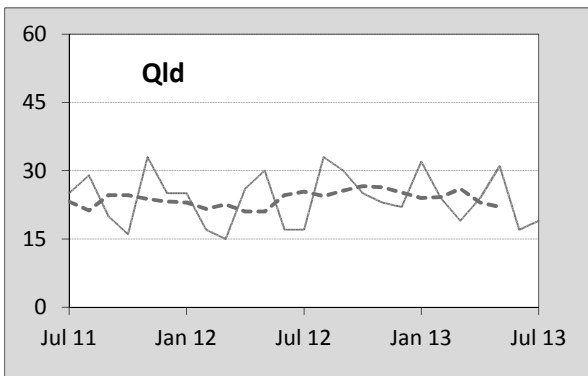
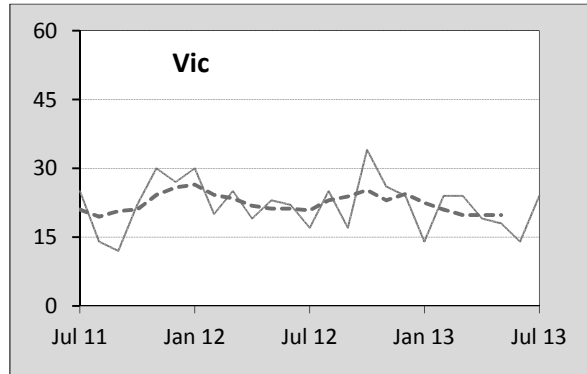
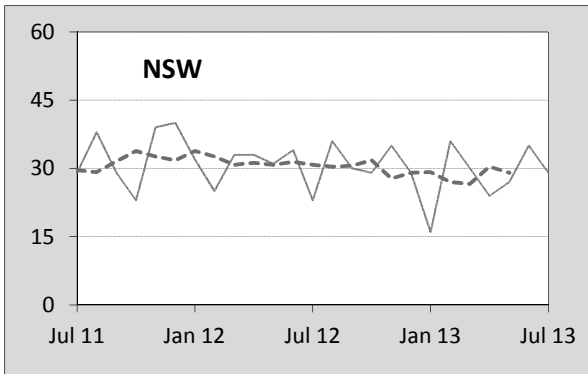
12 months ended July	NSW	Vic	Qld	SA	WA	Tas	NT	ACT	Australia
2009	6.06	5.50	8.19	7.81	8.62	11.94	22.87	3.69	7.01
2010	6.20	5.43	5.94	7.41	8.29	6.31	18.42	5.85	6.39
2011	5.02	5.32	5.69	6.79	8.17	5.68	17.80	2.19	5.79
2012	5.23	4.67	5.96	5.28	8.01	4.30	21.46	1.61	5.62
2013	4.84	4.63	6.45	6.49	7.20	6.63	17.72	2.39	5.62
Latest per cent change	-7.4	-0.8	8.2	22.9	-10.1	54.3	-17.4	47.9	-0.1
Average trend change per year (per cent)	-6.0	-4.8	-4.6	-6.9	-3.9	-14.5	-3.5	-19.4	-5.5

Calendar year	NSW	Vic	Qld	SA	WA	Tas	NT	ACT	Australia
2008	5.39	5.76	7.77	6.23	9.44	7.82	34.11	4.02	6.76
2009	6.42	5.40	7.65	7.40	8.48	12.49	13.27	3.38	6.86
2010	5.67	5.27	5.65	7.25	8.42	6.09	21.32	5.25	6.14
2011	5.04	5.18	6.01	6.28	7.65	4.69	19.02	1.63	5.72
2012	5.07	5.01	6.13	5.68	7.60	6.44	20.41	3.20	5.74
Latest per cent change	0.5	-3.3	2.1	-9.7	-0.6	37.3	7.3	96.3	0.4

#### 4. Monthly deaths by jurisdiction — last 24 months

— raw  
 - - - smoothed (unweighted 5-point moving average)



## 5. Fatal crashes: counts and characteristics

12 months ended July	Crash type <sup>d</sup>			Posted speed limit				Total <sup>e</sup>
	Single	Multiple	Pedestrian	0 to 60	70 to 90	100	≥ 110	
2009	649	510	203	439	325	410	160	1,362
2010	586	518	174	368	266	446	169	1,278
2011	529	481	169	328	270	405	159	1,179
2012	499	475	185	398	253	363	129	1,159
2013	555	468	151	367	264	361	143	1,174
<i>Average trend change per year (per cent)</i>	-4.6	-2.6	-5.2	-2.8	-4.6	-4.5	-4.8	-3.9

12 months ended July	Day of week <sup>f</sup>		Time of Day <sup>g</sup>	
	Weekday	Weekend	Day	Night
2009	835	527	767	595
2010	751	527	753	525
2011	700	479	696	483
2012	702	457	730	429
2013	724	450	738	436
<i>Average trend change per year (per cent)</i>	-3.5	-4.5	-1.1	-7.9

d 'Single' and 'Multiple' refer to the number of vehicles involved in a fatal crash where there is no pedestrian killed.

e Includes crashes where speed limit is unknown

f 'Weekday' refers to 6am Monday through to 5:59pm Friday.

g 'Day' refers to 6am through to 5:59 pm.

## Appendix

### Definition

The road safety agencies in each jurisdiction use detailed criteria to define road crashes and road deaths. Briefly, a death is classified as resulting from a road crash if the crash occurred on a public road, is unintentional and the death occurred within 30 days from injuries sustained in the crash.

### Population rates

Rates per population are based on the deaths to the current 12 monthly period, and the population at the midpoint of the period. The population at midpoints are interpolated if necessary.

### Average trend change ( % per year )

Calculated by fitting an exponential curve through the five data points, and quoting the constant (annual) change of this curve.

### Other sources for the tables in this bulletin

The underlying database used to produce this bulletin — the Australian Road Deaths Database is available for online querying and data extraction at

< [http://www.bitre.gov.au/statistics/safety/fatal\\_road\\_crash\\_database.aspx](http://www.bitre.gov.au/statistics/safety/fatal_road_crash_database.aspx) >

Road deaths from recent months are preliminary and subject to revision.