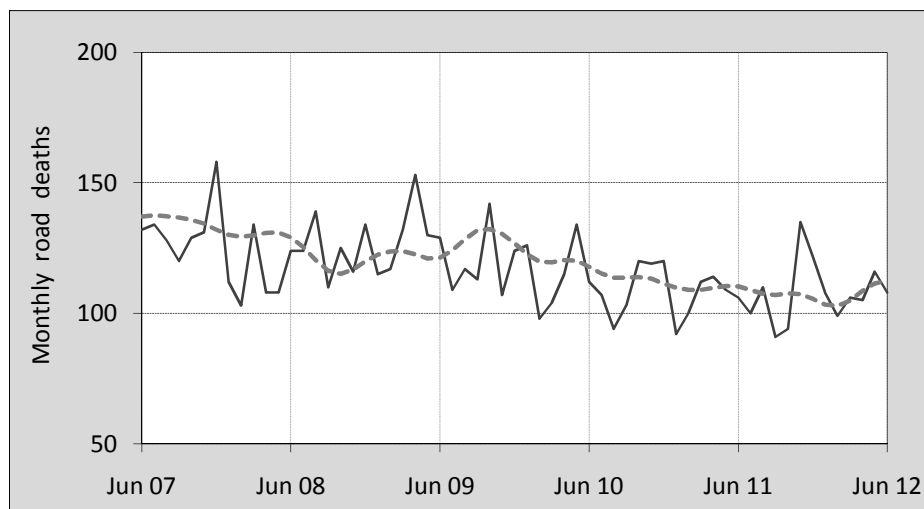




## This month's key figures

- There was a total of 108 road deaths in June 2012. In comparison to the average for the month of June over the previous five years, the current figure is 11.7 per cent lower.
- During the 12 months ended June 2012 there were 1,294 deaths. This is a 0.2 per cent reduction from the 12-monthly period ending June 2011 (1,296 deaths).
- The rate of annual deaths per 100,000 population presently stands at 5.7. This is a 1.0 per cent reduction from the 12-monthly period ending June 2011.

## Monthly Australian road deaths — last five years, with trend



### Data Sources

Data are obtained from

- Roads and Traffic Authority, NSW
- Vicroads
- Department of Transport and Main Roads, Queensland
- Department for Transport, Energy and Infrastructure, S.A.
- Western Australia Police
- Department of Infrastructure, Energy and Resources, Tasmania
- Department of Lands and Planning, Northern Territory
- Department of Territory and Municipal Services, ACT
- Australian Bureau of Statistics (3101.0)

### Inquiries

For further information about data in this bulletin, contact:

Bureau of Infrastructure, Transport and Regional Economics  
 Web : [www.bitre.gov.au](http://www.bitre.gov.au)  
 Email : [roadsafety@infrastructure.gov.au](mailto:roadsafety@infrastructure.gov.au)

Road deaths from recent months are preliminary and subject to revision.

© Copyright. Commonwealth of Australia

## I. Current month and year to date

### Deaths by jurisdiction

Current month	NSW	Vic	Qld	SA	WA	Tas	NT	ACT	Australia
June 2011	27	24	16	11	18	6	4	0	106
June 2012	33	23	18	8	16	2	6	2	108
Per cent change	22.2	-4.2	12.5	-27.3	-11.1	-66.7	50.0	-	1.9

Year to date	NSW	Vic	Qld	SA	WA	Tas	NT	ACT	Australia
January 2011 - June 2011	167	157	121	62	91	18	11	6	633
January 2012 - June 2012	192	140	133	51	90	12	19	5	642
Latest per cent change	15.0	-10.8	9.9	-17.7	-1.1	-33.3	72.7	-16.7	1.4

## 2. Yearly deaths — last five 12 monthly periods

### Deaths by jurisdiction

12 months ended June	NSW	Vic	Qld	SA	WA	Tas	NT	ACT	Australia
2008	376	330	331	107	221	41	69	14	1,489
2009	432	301	351	128	195	49	55	13	1,524
2010	445	288	269	118	183	43	35	20	1,401
2011	356	294	251	111	199	32	43	10	1,296
2012	396	270	281	92	179	19	52	5	1,294
Latest per cent change	11.2	-8.2	12.0	-17.1	-10.1	-40.6	20.9	-50.0	-0.2
Average change per year (per cent)	-0.9	-4.2	-6.4	-4.3	-3.9	-17.8	-7.8	-20.7	-4.3

### Deaths by road user

12 months ended June	Driver	Passenger	Pedestrian	Motorcyclist	Cyclist	Total <sup>a</sup>
2008	727	306	194	234	28	1,489
2009	688	338	206	257	33	1,524
2010	675	290	176	220	38	1,401
2011	603	275	174	211	33	1,296
2012	570	271	197	220	31	1,294
latest per cent change	-5.5	-1.5	13.2	4.3	-6.1	-0.2
Average change per year (per cent)	-6.0	-4.4	-1.4	-3.2	2.1	-4.3

<sup>a</sup> Includes deaths of unknown road user type

## Deaths by age-group (years)

<b>12 months ended June</b>	<i>0 to 16</i>	<i>17 to 25</i>	<i>26 to 39</i>	<i>40 to 59</i>	<i>60 to 69</i>	<i>≥ 70</i>	<i>Total<sup>a</sup></i>
2008	94	386	357	369	84	198	1,489
2009	93	408	373	368	109	173	1,524
2010	87	302	319	397	115	180	1,401
2011	70	326	279	345	104	172	1,296
2012	93	270	321	296	114	197	1,294
<i>latest per cent change</i>	32.9	-17.2	15.1	-14.2	9.6	14.5	-0.2
<i>Average change per year (per cent)</i>	-3.0	-9.0	-4.9	-4.9	5.8	-0.2	-4.3

a Includes deaths to persons with age not recorded.

## Deaths by gender

<b>12 months ended June</b>	<i>Males</i>	<i>Females</i>	<i>Total<sup>b</sup></i>
2008	1,100	388	1,489
2009	1,095	427	1,524
2010	1,023	375	1,401
2011	950	345	1,296
2012	929	364	1,294
<i>latest per cent change</i>	-2.2	5.5	-0.2
<i>Average change per year (per cent)</i>	-4.7	-3.4	-4.3

b Includes deaths to persons with gender not recorded.

## 3. Annual deaths per 100,000 population

### By jurisdiction

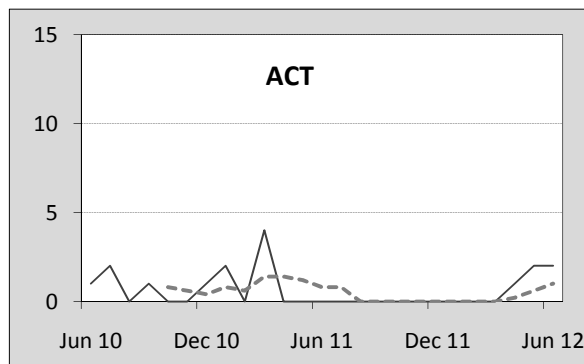
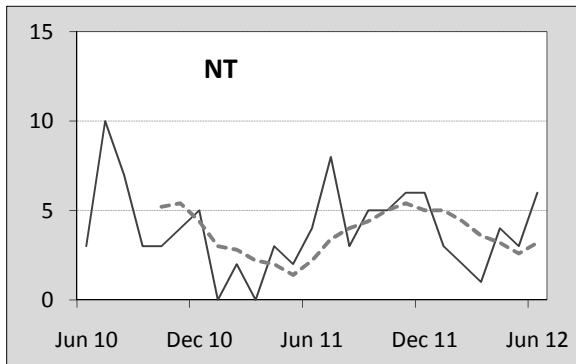
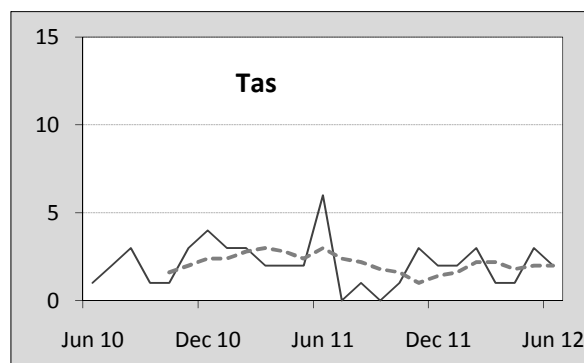
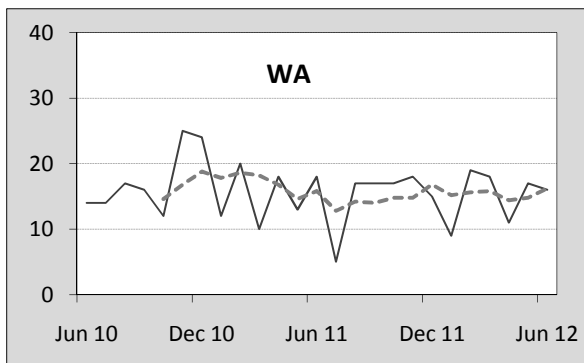
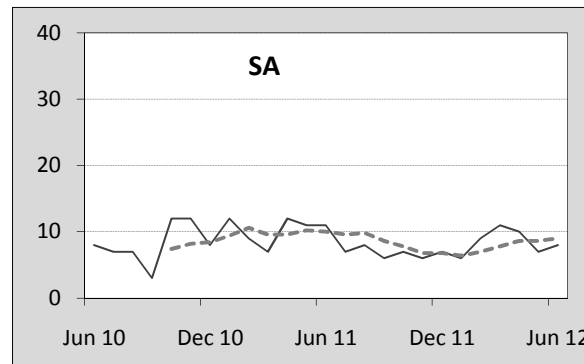
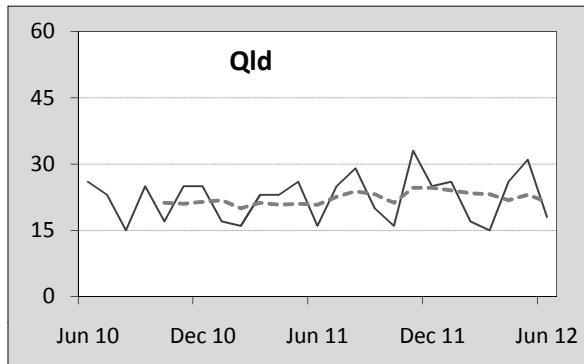
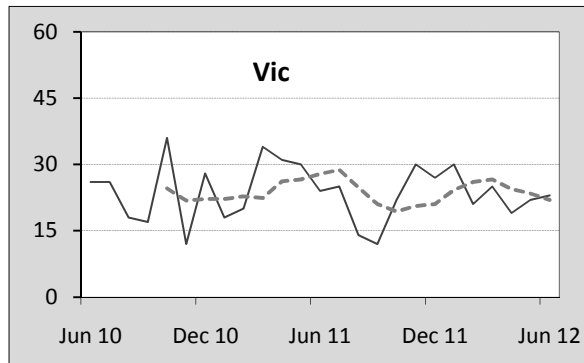
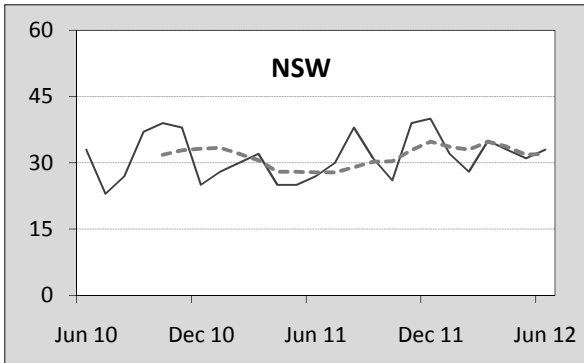
<b>12 months ended June</b>	<i>NSW</i>	<i>Vic</i>	<i>Qld</i>	<i>SA</i>	<i>WA</i>	<i>Tas</i>	<i>NT</i>	<i>ACT</i>	<i>Australia</i>
2008	5.41	6.26	7.79	6.71	10.32	8.27	31.73	4.09	7.00
2009	6.11	5.59	8.03	7.93	8.81	9.78	24.67	3.73	7.01
2010	6.20	5.24	6.02	7.22	8.07	8.51	15.37	5.63	6.33
2011	4.90	5.27	5.53	6.73	8.60	6.29	18.74	2.76	5.77
2012	5.43	4.81	6.08	5.54	7.64	3.72	22.39	1.38	5.72
<i>latest per cent change</i>	10.8	-8.6	10.0	-17.7	-11.1	-40.9	19.5	-50.1	-1.0

<b>Calendar year</b>	<i>NSW</i>	<i>Vic</i>	<i>Qld</i>	<i>SA</i>	<i>WA</i>	<i>Tas</i>	<i>NT</i>	<i>ACT</i>	<i>Australia</i>
2007	6.30	6.36	8.58	7.82	11.12	9.12	27.00	4.10	7.61
2008	5.33	5.69	7.61	6.17	9.42	7.83	34.01	4.04	6.68
2009	6.36	5.32	7.48	7.33	8.47	12.52	13.26	3.41	6.78
2010	5.61	5.20	5.53	7.18	8.43	6.11	21.37	5.30	6.06
2011	5.08	5.10	5.87	6.22	7.67	4.90	19.12	1.64	5.68
<i>latest per cent change</i>	-9.4	-1.8	6.3	-13.4	-9.0	-19.9	-10.6	-69.0	-6.3

# Monthly deaths by jurisdiction — last 24 months

— raw  
 - - - smoothed (unweighted 5-point moving average)



## 5. Characteristics of fatal crashes

12 months ended June	Crash type <sup>a</sup>			Posted speed limit				Total <sup>b</sup>
	Single	Multiple	Pedestrian	0 to 60	70 to 90	100	≥ 110	
2008	632	529	193	394	310	459	150	1,354
2009	658	516	205	446	330	414	160	1,379
2010	584	519	170	370	267	442	166	1,273
2011	537	483	172	327	270	409	167	1,192
2012	510	480	193	388	249	361	125	1,183
Average change per year (per cent)	-6.1	-2.6	-1.7	-3.4	-6.2	-4.8	-3.2	-4.1

12 months ended June	Day of week <sup>c</sup>		Time of Day <sup>d</sup>	
	Weekday	Weekend	Day	Night
2008	815	539	767	587
2009	833	546	778	601
2010	767	506	751	522
2011	694	498	706	486
2012	722	461	747	436
Average change per year (per cent)	-4.2	-4.0	-1.5	-7.8

a 'Single' and 'Multiple' refer to the the number of vehicles involved in a fatal crash where there is no pedestrian killed.

b Includes crashes where speed limit is unknown

c 'Weekday' refers to 6am Monday through to 5:59pm Friday.

d 'Day' refers to 6am through to 5:59 pm.

## Appendix

### Definition

The road safety agencies in each jurisdiction use detailed criteria to define road crashes and road deaths. Briefly, a death is classified as resulting from a road crash if the crash occurred on a public road, is unintentional and the death occurred within 30 days from injuries sustained in the crash.

### Population rates

Rates per population are based on the deaths to the current 12 monthly period, and the population at the midpoint of the period. The population at midpoints are interpolated if necessary.

### Average (%) change per year

Calculated by fitting an exponential curve through the five data points, and quoting the constant (annual) change of this curve.

### Other sources for the tables in this bulletin

The underlying database used to produce this bulletin — *the Australian Road Deaths Database* is available for online querying and data extraction at

< [http://www.bitre.gov.au/statistics/safety/fatal\\_road\\_crash\\_database.aspx](http://www.bitre.gov.au/statistics/safety/fatal_road_crash_database.aspx) >

Road deaths from recent months are preliminary and subject to revision.