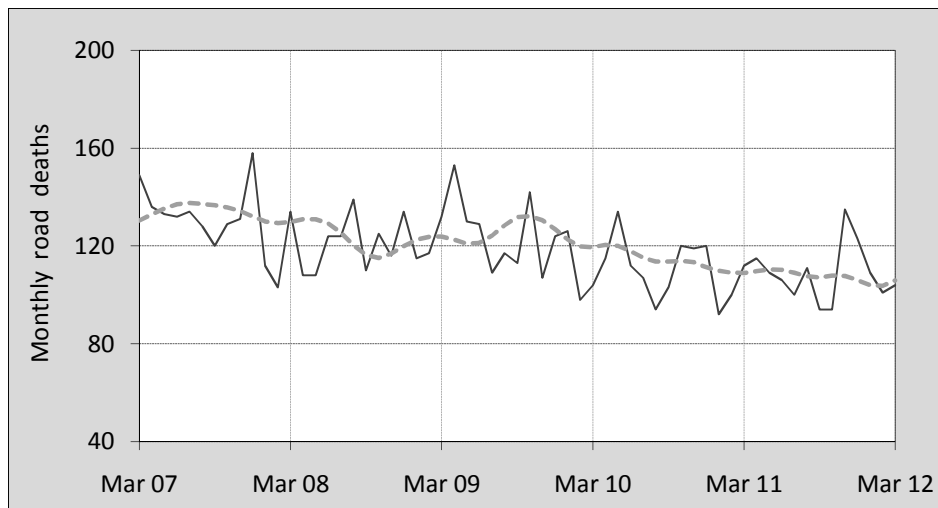




This month's key figures

- There was a total of 104 road deaths in March 2012. In comparison to the average for the month of March over the previous five years, the current figure is 11.3 per cent lower.
- During the 12 months ended March 2012 there were 1,301 deaths. This is a 2.0 per cent reduction from the 12-monthly period ending March 2011.
- The rate of annual deaths per 100,000 population presently stands at 5.7. This is a 3.1 per cent reduction from the 12-monthly period ending March 2011.

Monthly Australian road deaths — last five years, with trend



Data Sources

Data are obtained from

- Roads and Traffic Authority, NSW
- Vicroads
- Department of Transport and Main Roads, Queensland
- Department for Transport, Energy and Infrastructure, S.A.
- Western Australia Police
- Department of Infrastructure, Energy and Resources, Tasmania
- Department of Lands and Planning, Northern Territory
- Department of Territory and Municipal Services, ACT
- Australian Bureau of Statistics (3101.0)

Inquiries

For further information about data in this bulletin, contact:

Bureau of Infrastructure, Transport and Regional Economics

Web : www.bitre.gov.au

Email : roadsafety@infrastructure.gov.au

Road deaths from recent months are preliminary and subject to revision.

© Copyright. Commonwealth of Australia

I. Current month and year to date

Deaths by jurisdiction

| Current month | NSW | Vic | Qld | SA | WA | Tas | NT | ACT | Australia |
|-----------------|-----|-------|-------|------|------|-------|----|--------|-----------|
| March 2011 | 32 | 34 | 23 | 7 | 10 | 2 | 0 | 4 | 112 |
| March 2012 | 33 | 26 | 15 | 10 | 18 | 1 | 1 | 0 | 104 |
| Per cent change | 3.1 | -23.5 | -34.8 | 42.9 | 80.0 | -50.0 | - | -100.0 | -7.1 |

| Year to date | NSW | Vic | Qld | SA | WA | Tas | NT | ACT | Australia |
|---------------------------|-----|------|-----|-------|-----|-------|----|--------|-----------|
| January 2011 - March 2011 | 90 | 72 | 56 | 28 | 42 | 8 | 2 | 6 | 304 |
| January 2012 - March 2012 | 93 | 81 | 58 | 25 | 45 | 6 | 6 | 0 | 314 |
| Latest per cent change | 3.3 | 12.5 | 3.6 | -10.7 | 7.1 | -25.0 | - | -100.0 | 3.3 |

2. Yearly deaths — last five 12 monthly periods

Deaths by jurisdiction

| 12 months ended March | NSW | Vic | Qld | SA | WA | Tas | NT | ACT | Australia |
|------------------------------------|------|------|------|------|------|-------|------|--------|-----------|
| 2008 | 415 | 339 | 353 | 114 | 210 | 46 | 59 | 14 | 1,550 |
| 2009 | 387 | 290 | 332 | 112 | 204 | 44 | 68 | 15 | 1,452 |
| 2010 | 457 | 292 | 298 | 125 | 175 | 53 | 35 | 17 | 1,452 |
| 2011 | 392 | 286 | 254 | 106 | 202 | 29 | 42 | 17 | 1,328 |
| 2012 | 380 | 296 | 271 | 100 | 183 | 23 | 48 | 0 | 1,301 |
| Latest per cent change | -3.1 | 3.5 | 6.7 | -5.7 | -9.4 | -20.7 | 14.3 | -100.0 | -2.0 |
| Average change per year (per cent) | -1.6 | -2.8 | -7.7 | -3.1 | -2.8 | -16.5 | -8.6 | - | -4.3 |

Deaths by road user

| 12 months ended March | Driver | Passenger | Pedestrian | Motorcyclist | Cyclist | Total ^a |
|------------------------------------|--------|-----------|------------|--------------|---------|--------------------|
| 2008 | 742 | 340 | 199 | 236 | 33 | 1,550 |
| 2009 | 687 | 293 | 188 | 250 | 32 | 1,452 |
| 2010 | 682 | 320 | 197 | 215 | 36 | 1,452 |
| 2011 | 620 | 280 | 168 | 227 | 33 | 1,328 |
| 2012 | 586 | 287 | 189 | 201 | 34 | 1,301 |
| latest per cent change | -5.5 | 2.5 | 12.5 | -11.5 | 3.0 | -2.0 |
| Average change per year (per cent) | -5.6 | -3.8 | -2.1 | -4.1 | 0.9 | -4.3 |

^a Includes deaths of unknown road user type

Deaths by age-group (years)

| 12 months ended March | <i>0 to 16</i> | <i>17 to 25</i> | <i>26 to 39</i> | <i>40 to 59</i> | <i>60 to 69</i> | <i>≥ 70</i> | <i>Total^a</i> |
|---|----------------|-----------------|-----------------|-----------------|-----------------|-------------|--------------------------|
| 2008 | 99 | 374 | 394 | 384 | 95 | 203 | 1,550 |
| 2009 | 83 | 392 | 359 | 355 | 103 | 160 | 1,452 |
| 2010 | 103 | 330 | 324 | 388 | 113 | 193 | 1,452 |
| 2011 | 69 | 325 | 295 | 360 | 108 | 171 | 1,328 |
| 2012 | 93 | 293 | 307 | 312 | 114 | 179 | 1,301 |
| <i>latest per cent change</i> | 34.8 | -9.8 | 4.1 | -13.3 | 5.6 | 4.7 | -2.0 |
| <i>Average change per year (per cent)</i> | -3.1 | -6.5 | -6.7 | -3.9 | 4.2 | -1.8 | -4.3 |

a Includes deaths to persons with age not recorded.

Deaths by gender

| 12 months ended March | <i>Males</i> | <i>Females</i> | <i>Total^b</i> |
|---|--------------|----------------|--------------------------|
| 2008 | 1,128 | 422 | 1,550 |
| 2009 | 1,049 | 401 | 1,452 |
| 2010 | 1,063 | 386 | 1,452 |
| 2011 | 960 | 367 | 1,328 |
| 2012 | 951 | 347 | 1,301 |
| <i>latest per cent change</i> | -0.9 | -5.4 | -2.0 |
| <i>Average change per year (per cent)</i> | -4.2 | -4.7 | -4.3 |

b Includes deaths to persons with gender not recorded.

3. Annual deaths per 100,000 population

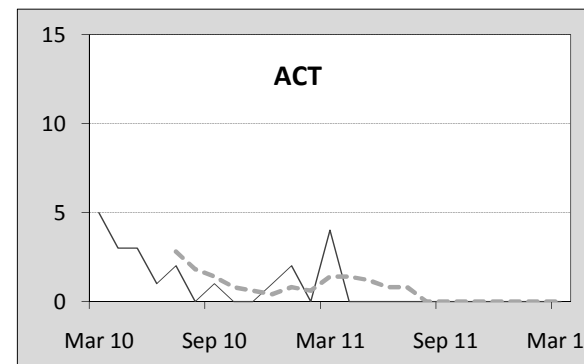
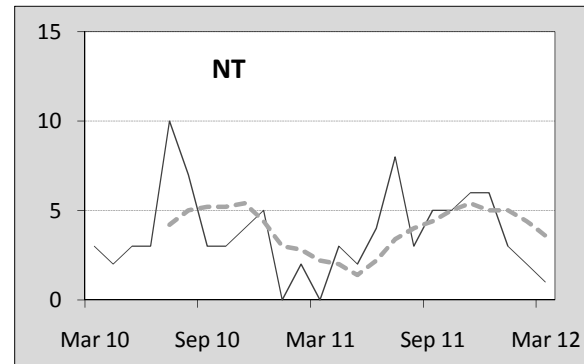
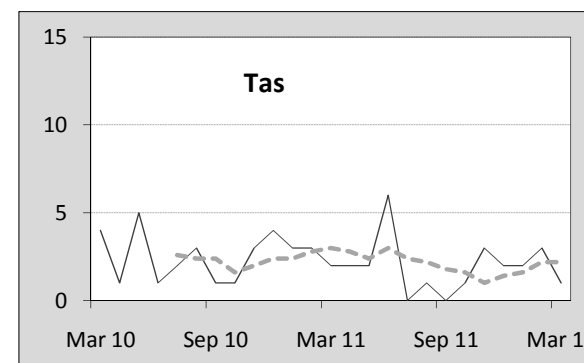
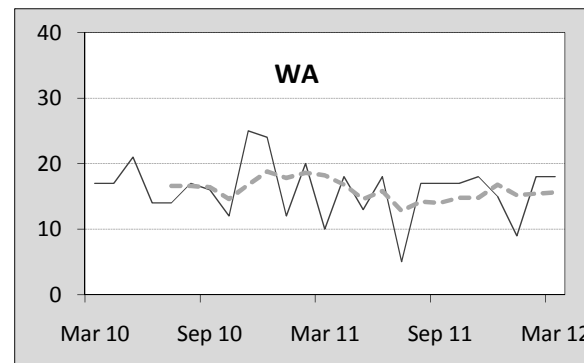
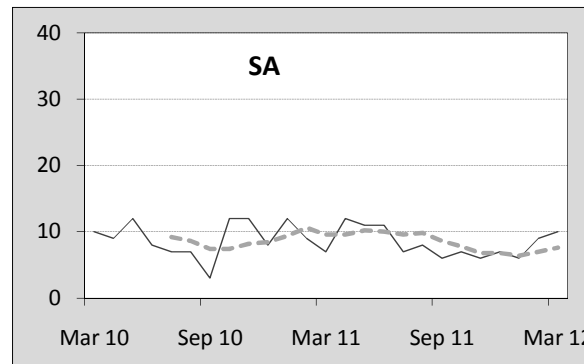
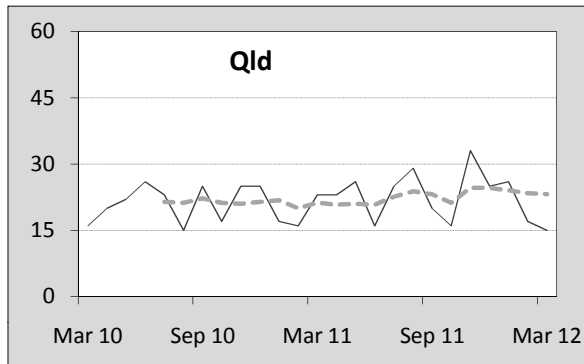
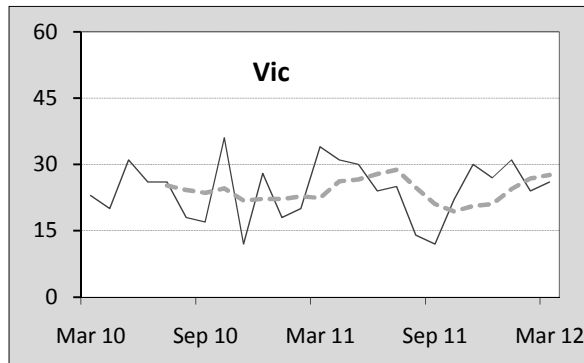
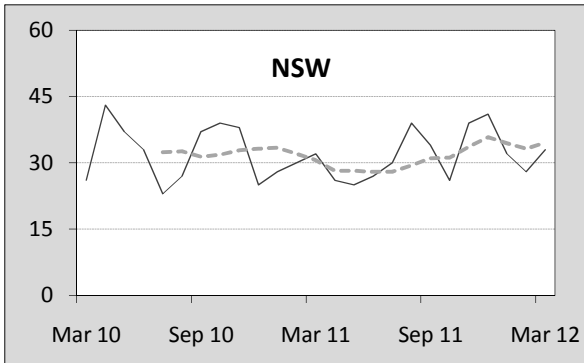
By jurisdiction

| 12 months ended March | <i>NSW</i> | <i>Vic</i> | <i>Qld</i> | <i>SA</i> | <i>WA</i> | <i>Tas</i> | <i>NT</i> | <i>ACT</i> | <i>Australia</i> |
|-------------------------------|------------|------------|------------|-----------|-----------|------------|-----------|------------|------------------|
| 2008 | 5.99 | 6.46 | 8.36 | 7.17 | 9.87 | 9.31 | 27.30 | 4.10 | 7.32 |
| 2009 | 5.49 | 5.41 | 7.65 | 6.96 | 9.29 | 8.81 | 30.64 | 4.32 | 6.72 |
| 2010 | 6.39 | 5.33 | 6.70 | 7.67 | 7.75 | 10.51 | 15.40 | 4.81 | 6.58 |
| 2011 | 5.41 | 5.14 | 5.61 | 6.43 | 8.77 | 5.71 | 18.28 | 4.72 | 5.93 |
| 2012 | 5.21 | 5.27 | 5.89 | 6.03 | 7.81 | 4.50 | 20.76 | 0.00 | 5.75 |
| <i>latest per cent change</i> | -3.8 | 2.5 | 4.9 | -6.3 | -11.0 | -21.1 | 13.6 | -100.0 | -3.1 |

| Calendar year | <i>NSW</i> | <i>Vic</i> | <i>Qld</i> | <i>SA</i> | <i>WA</i> | <i>Tas</i> | <i>NT</i> | <i>ACT</i> | <i>Australia</i> |
|-------------------------------|------------|------------|------------|-----------|-----------|------------|-----------|------------|------------------|
| 2007 | 6.30 | 6.36 | 8.58 | 7.82 | 11.12 | 9.12 | 27.00 | 4.10 | 7.61 |
| 2008 | 5.33 | 5.69 | 7.61 | 6.17 | 9.42 | 7.83 | 34.01 | 4.04 | 6.68 |
| 2009 | 6.36 | 5.32 | 7.48 | 7.33 | 8.47 | 12.52 | 13.26 | 3.41 | 6.78 |
| 2010 | 5.61 | 5.20 | 5.53 | 7.18 | 8.43 | 6.11 | 21.37 | 5.30 | 6.06 |
| 2011 | 5.16 | 5.10 | 5.87 | 6.22 | 7.67 | 4.90 | 19.12 | 1.64 | 5.71 |
| <i>latest per cent change</i> | -8.0 | -1.8 | 6.3 | -13.4 | -9.0 | -19.9 | -10.6 | -69.0 | -5.9 |

Monthly deaths by jurisdiction — last 24 months

— raw
 - - - smoothed (unweighted 5-point moving average)



5. Characteristics of fatal crashes

| 12 months ended March | Crash type ^a | | | Posted speed limit | | | | Total ^b |
|------------------------------------|-------------------------|----------|------------|--------------------|----------|------|-------|--------------------|
| | Single | Multiple | Pedestrian | 0 to 60 | 70 to 90 | 100 | ≥ 110 | |
| 2008 | 647 | 548 | 197 | 416 | 307 | 476 | 156 | 1,392 |
| 2009 | 633 | 511 | 187 | 420 | 318 | 406 | 156 | 1,331 |
| 2010 | 619 | 498 | 191 | 397 | 281 | 434 | 169 | 1,308 |
| 2011 | 537 | 517 | 166 | 344 | 280 | 408 | 164 | 1,220 |
| 2012 | 535 | 459 | 185 | 355 | 240 | 392 | 142 | 1,179 |
| Average change per year (per cent) | -5.3 | -3.4 | -2.4 | -5.0 | -6.0 | -3.8 | -1.4 | -4.1 |

| 12 months ended March | Day of week ^c | | Time of Day ^d | |
|------------------------------------|--------------------------|---------|--------------------------|-------|
| | Weekday | Weekend | Day | Night |
| 2008 | 851 | 525 | 804 | 588 |
| 2009 | 782 | 536 | 732 | 599 |
| 2010 | 803 | 488 | 770 | 538 |
| 2011 | 711 | 489 | 719 | 501 |
| 2012 | 693 | 472 | 724 | 455 |
| Average change per year (per cent) | -4.9 | -3.0 | -2.2 | -6.7 |

a 'Single' and 'Multiple' refer to the the number of vehicles involved in a fatal crash where there is no pedestrian killed.

b Includes crashes where speed limit is unknown

c 'Weekday' refers to 6am Monday through to 5:59pm Friday.

d 'Day' refers to 6am through to 5:59 pm.

Appendix

Definition

The road safety agencies in each jurisdiction use detailed criteria to define road crashes and road deaths. Briefly, a death is classified as resulting from a road crash if the crash occurred on a public road, is unintentional and the death occurred within 30 days from injuries sustained in the crash.

Population rates

Rates per population are based on the deaths to the current 12 monthly period, and the population at the midpoint of the period. The population at midpoints are interpolated if necessary.

Average (%) change per year

Calculated by fitting an exponential curve through the five data points, and quoting the constant (annual) change of this curve.

Other sources for the tables in this bulletin

The underlying database used to produce this bulletin — *the Australian Road Deaths Database* is available for online querying and

data extraction at http://www.bitre.gov.au/statistics/safety/fatal_road_crash_database.aspx

Road deaths from recent months are preliminary and subject to revision.