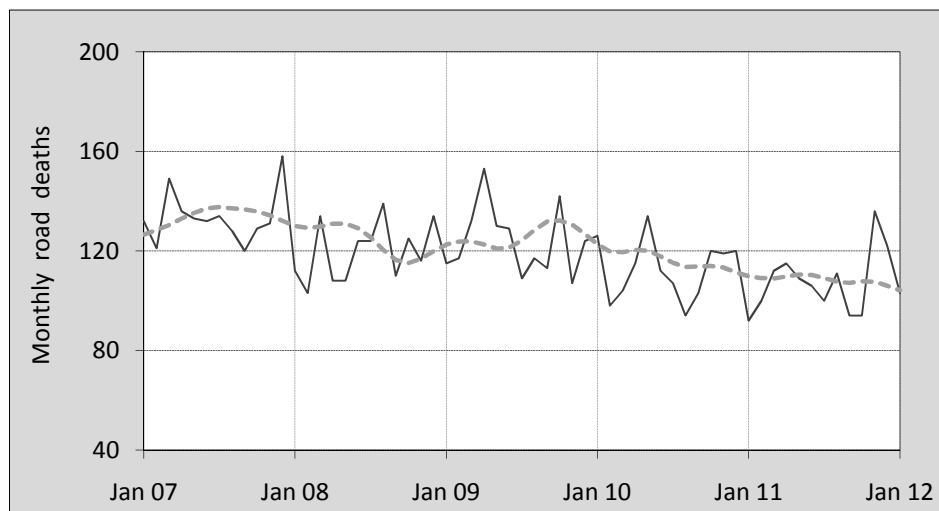




This month's key figures

- There was a total of 103 road deaths in January 2012. Compared to the average for the month of January over the previous five years, this is a 15.8 per cent decrease.
- During the 12 months ended January 2012 there were 1,302 deaths. This is a 1.2 per cent decrease from the 12-monthly period ending January 2011.
- The rate of annual deaths per 100,000 population presently stands at 5.8. This is a 2.5 per cent decrease from the 12-monthly period ending January 2011.

Monthly Australian road deaths — last five years, with trend



Data Sources

Data are obtained from

- Roads and Traffic Authority, NSW
- Vicroads
- Department of Transport and Main Roads, Queensland
- Department for Transport, Energy and Infrastructure, S.A.
- Western Australia Police
- Department of Infrastructure, Energy and Resources, Tasmania
- Department of Lands and Planning, Northern Territory
- Department of Territory and Municipal Services, ACT
- Australian Bureau of Statistics (3101.0)

Inquiries

For further information about data in this bulletin, contact:

Bureau of Infrastructure, Transport and
Regional Economics
Web : www.bitre.gov.au
Email : roadsafety@infrastructure.gov.au

Road deaths from recent months are preliminary and subject to revision.

© Copyright. Commonwealth of Australia

I. Current month and year to date

Deaths by jurisdiction

Current month	NSW	Vic	Qld	SA	WA	Tas	NT	ACT	Australia
January 2011	28	18	17	12	12	3	0	2	92
January 2012	30	29	25	6	8	2	3	0	103
Per cent change	7.1	61.1	47.1	-50.0	-33.3	-33.3	-	-100.0	12.0

Year to date	NSW	Vic	Qld	SA	WA	Tas	NT	ACT	Australia
January 2011 - January 2011	28	18	17	12	12	3	0	2	92
January 2012 - January 2012	30	29	25	6	8	2	3	0	103
Latest per cent change	7.1	61.1	47.1	-50.0	-33.3	-33.3	-	-100.0	12.0

2. Yearly deaths — last five 12 monthly periods

Deaths by jurisdiction

12 months ended January	NSW	Vic	Qld	SA	WA	Tas	NT	ACT	Australia
2008	429	337	367	117	218	45	55	15	1,583
2009	372	306	327	100	202	45	75	13	1,440
2010	470	285	319	134	189	56	33	13	1,499
2011	390	280	251	109	194	30	44	20	1,318
2012	378	298	277	97	176	25	47	4	1,302
Latest per cent change	-3.1	6.4	10.4	-11.0	-9.3	-16.7	6.8	-80.0	-1.2
Average change per year (per cent)	-2.0	-3.3	-7.9	-2.8	-4.6	-14.6	-8.1	-19.9	-4.7

Deaths by road user

12 months ended January	Driver	Passenger	Pedestrian	Motorcyclist	Cyclist	Total ^a
2008	770	334	197	240	42	1,583
2009	673	301	189	246	29	1,440
2010	714	334	196	222	32	1,499
2011	611	276	170	221	39	1,318
2012	590	293	187	201	30	1,302
latest per cent change	-3.4	6.2	10.0	-9.0	-23.1	-1.2
Average change per year (per cent)	-6.1	-3.4	-2.1	-4.5	-3.7	-4.7

^a Includes deaths of unknown road user type

Deaths by age-group (years)

12 months ended January	<i>0 to 16</i>	<i>17 to 25</i>	<i>26 to 39</i>	<i>40 to 59</i>	<i>60 to 69</i>	<i>≥ 70</i>	<i>Total^a</i>
2008	100	390	407	384	103	198	1,583
2009	87	376	345	362	99	171	1,440
2010	108	361	350	383	111	186	1,499
2011	70	322	298	353	108	166	1,318
2012	91	284	289	336	113	186	1,302
<i>latest per cent change</i>	30.0	-11.8	-3.0	-4.8	4.6	12.0	-1.2
<i>Average change per year (per cent)</i>	-4.0	-7.6	-8.0	-2.9	2.8	-1.5	-4.7

a Includes deaths to persons with age not recorded.

Deaths by gender

12 months ended January	<i>Males</i>	<i>Females</i>	<i>Total^b</i>
2008	1,163	420	1,583
2009	1,047	391	1,440
2010	1,093	403	1,499
2011	950	367	1,318
2012	945	353	1,302
<i>latest per cent change</i>	-0.5	-3.8	-1.2
<i>Average change per year (per cent)</i>	-5.0	-4.0	-4.7

b Includes deaths to persons with gender not recorded.

3. Annual deaths per 100,000 population

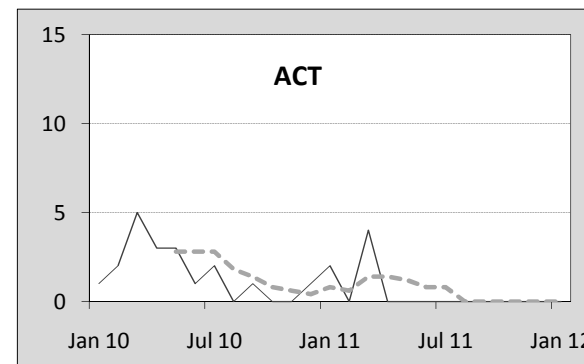
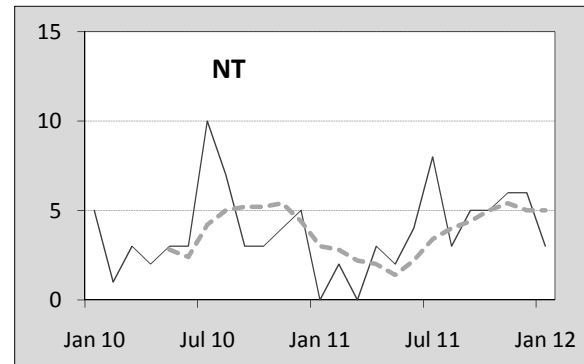
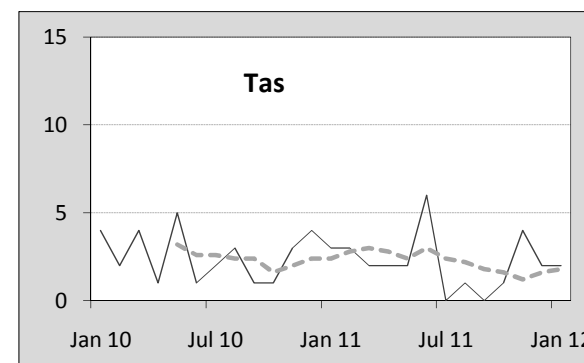
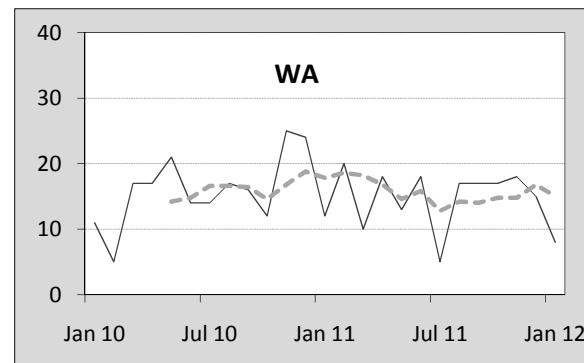
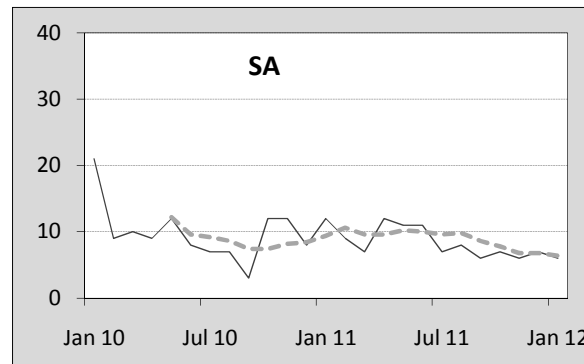
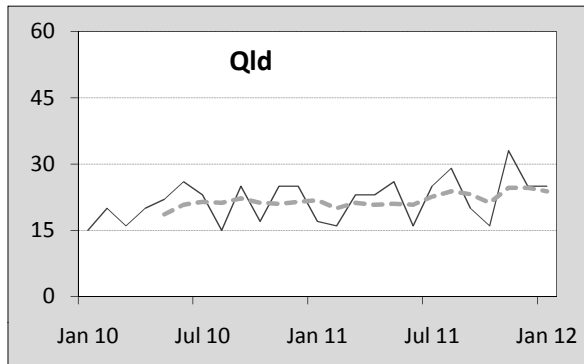
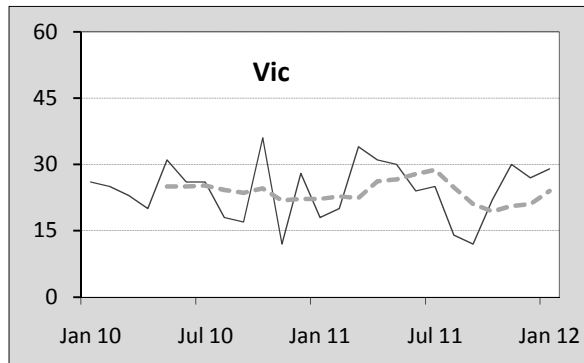
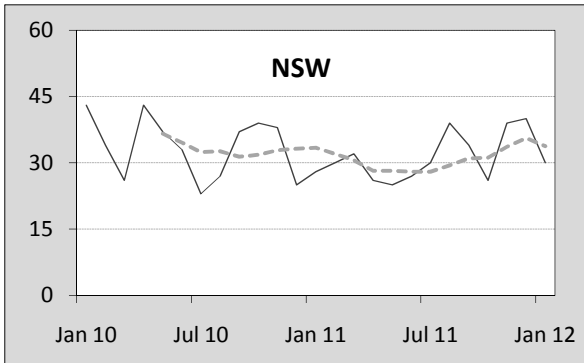
By jurisdiction

12 months ended January	<i>NSW</i>	<i>Vic</i>	<i>Qld</i>	<i>SA</i>	<i>WA</i>	<i>Tas</i>	<i>NT</i>	<i>ACT</i>	<i>Australia</i>
2008	6.21	6.44	8.73	7.37	10.29	9.12	25.55	4.40	7.50
2009	5.30	5.73	7.57	6.23	9.25	9.03	33.94	3.75	6.69
2010	6.59	5.22	7.20	8.24	8.40	11.12	15.01	3.69	6.82
2011	5.40	5.05	5.56	6.63	8.45	5.91	19.18	5.57	5.90
2012	5.18	5.30	6.04	5.85	7.50	4.90	20.39	1.10	5.76
<i>latest per cent change</i>	-4.1	5.0	8.5	-11.7	-11.2	-17.2	6.3	-80.3	-2.5

Calendar year	<i>NSW</i>	<i>Vic</i>	<i>Qld</i>	<i>SA</i>	<i>WA</i>	<i>Tas</i>	<i>NT</i>	<i>ACT</i>	<i>Australia</i>
2007	6.30	6.36	8.58	7.82	11.12	9.12	27.00	4.10	7.61
2008	5.33	5.69	7.61	6.17	9.42	7.83	34.01	4.04	6.68
2009	6.36	5.32	7.48	7.33	8.47	12.52	13.70	3.41	6.78
2010	5.61	5.20	5.53	7.18	8.43	6.11	21.37	5.30	6.06
2011	5.15	5.10	5.87	6.22	7.67	5.09	19.12	1.64	5.71
<i>latest per cent change</i>	-8.2	-1.8	6.3	-13.4	-9.0	-16.7	-10.6	-69.0	-5.9

Monthly deaths by jurisdiction — last 24 months

— raw
 - - - smoothed (unweighted 5-point moving average)



5. Characteristics of fatal crashes

12 months ended January	Crash type ^a			Posted speed limit				Total ^b
	Single	Multiple	Pedestrian	0 to 60	70 to 90	100	≥ 110	
2008	661	575	196	435	307	485	166	1,432
2009	639	493	188	413	314	414	150	1,320
2010	651	503	189	404	300	435	177	1,343
2011	529	517	169	349	274	411	158	1,215
2012	527	465	183	337	238	399	145	1,175
Average change per year (per cent)	-6.2	-3.7	-2.4	-6.6	-6.3	-3.9	-2.2	-4.7

12 months ended January	Day of week ^c		Time of Day ^d	
	Weekday	Weekend	Day	Night
2008	879	533	817	615
2009	761	545	729	591
2010	822	505	776	567
2011	703	494	721	494
2012	698	462	719	456
Average change per year (per cent)	-5.3	-3.8	-2.6	-7.5

- a 'Single' and 'Multiple' refer to the the number of vehicles involved in a fatal crash where there is no pedestrian killed.
 b Includes crashes where speed limit is unknown
 c 'Weekday' refers to 6am Monday through to 5:59pm Friday.
 d 'Day' refers to 6am through to 5:59 pm.

Appendix

Definition

The road safety agencies in each jurisdiction use detailed criteria to define road crashes and road deaths. Briefly, a death is classified as resulting from a road crash if the crash occurred on a public road, is unintentional and the death occurred within 30 days from injuries sustained in the crash.

Population rates

Rates per population are based on the deaths to the current 12 monthly period, and the population at the midpoint of the period. The population at midpoints are interpolated if necessary.

Average (%) change per year

Calculated by fitting an exponential curve through the five data points, and quoting the constant (annual) change of this curve.

Other sources for the tables in this bulletin

The underlying database used to produce this bulletin — *the Australian Road Deaths Database* is available for online querying and data extraction at <http://www.bitre.gov.au/info.aspx?Nodetd=167>

Road deaths from recent months are preliminary and subject to revision.